



The Wisconsin Union quarterly. August-December 1982

Madison, Wisconsin: Wisconsin Union, August-December 1982

<https://digital.library.wisc.edu/1711.dl/I5LHU5BY3ABKK87>

This material may be protected by copyright law (e.g., Title 17, US Code).

For information on re-use, see

<http://digital.library.wisc.edu/1711.dl/Copyright>

The libraries provide public access to a wide range of material, including online exhibits, digitized collections, archival finding aids, our catalog, online articles, and a growing range of materials in many media.

When possible, we provide rights information in catalog records, finding aids, and other metadata that accompanies collections or items. However, it is always the user's obligation to evaluate copyright and rights issues in light of their own use.

The Wisconsin Union **Quarterly** A Communique for Members

August - December, 1982

WEEKEND ART SESSIONS FOR CHILDREN ANNOUNCED FOR FALL

The children of Union members are invited to take part in a variety of art and craft classes on Saturdays and Sundays this fall in the Memorial Union Craftshop.

The groups are broken down according to age and the maximum in a group ranges from 6 to 8 children. Classes are scheduled from 9 to 11 a.m., 11 a.m. to 1 p.m., and 1 to 3 p.m. This is the first time afternoon classes have been held.

Two sessions—one from September 18 through October 24 and the second from October 30 through November 28—will be offered. The deadline for enrollment in the first session is September 13 while the second session deadline is October 25.

Course titles include: Play With Clay; Mixed Media; Puppet Making; Ceramics/Handbuilding; Printing; Animation; Woodworking; Calligraphy; Wood For Tots; Drawing and Painting; Ceramics/Wheel; Advanced Wheel; and Batik.

Registrations and information are available at (608) 262-1282 and 262-0330.

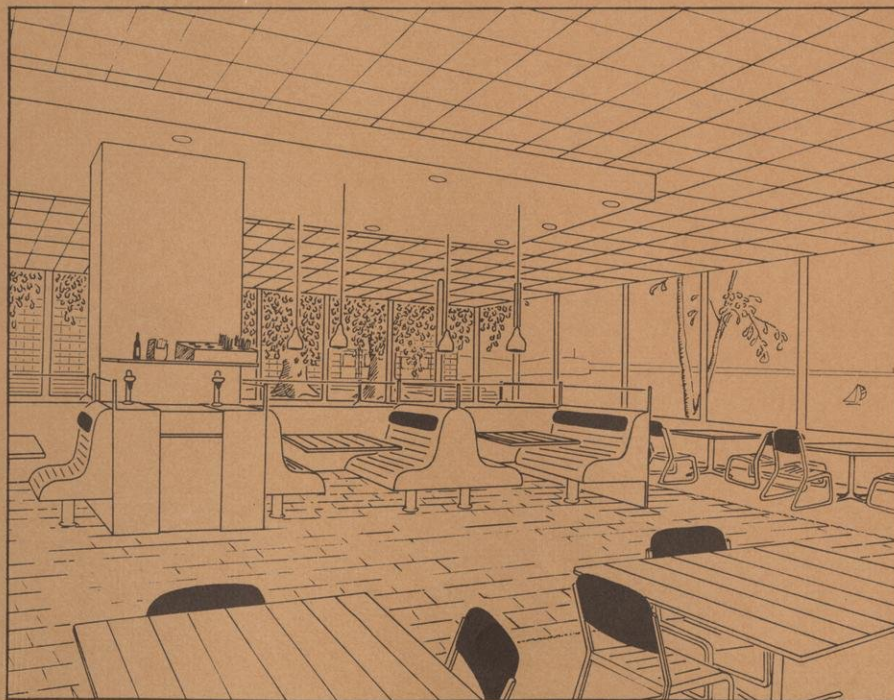
NEW FOOD SERVICE OPENED BY UNION SOUTH AT OLD HOSPITAL

A new deli has begun operation in the old University Hospital building on University Ave. Located inside the Charter Street entrance, the ICU Deli serves continental breakfast from 9 to 11 a.m. and sandwiches, soups, salads, desserts, cold and hot beverages and one hot entree daily from 11 a.m. to 1 p.m. Monday through Friday.

CHINA AND GLASS TO BE SOLD AT UNION SOUTH

You may find something recognizable at the Union South sale of surplus china and glass. A place setting from the Cafeteria circa 1940? Glasses from the days of 3.2 beer in the Rathskeller? Who knows?

On August 25 through 27 from 10 a.m. to 3 p.m. the Union South lobby (near the information desk) will be the scene of the sale of china and glass items which the Unions no longer use.



As the dust begins to settle in the Memorial Union Lakefront Cafeteria, plans are being made for the opening of the remodeled dining room. As we go to press, the estimate of the opening date is "soon after Labor Day." The rendering of the finished room at the left was done by Ken Sullivan, Union Graphic artist, and shows the northwest corner of the room. It depicts the new oak tables and chairs, and the low booths which will furnish the seating for 572 diners. The rendering also shows the floor treatment of both red ironstone brick and carpeting. The accent lighting shown above the booths is combined with new energy-efficient ceiling lights, supplementing the new over-all feeling of "warmth."

IF YOU MOVE LET US KNOW—

If you want to be kept up-to-date on Union plans and programs, it's important that you keep us up-to-date on your moves. When you change your address, please send us a notice at: the Union Membership Office, Room 410, Memorial Union, Madison, WI 53706. Send along both your old and new address and it will be changed immediately.



You will note in the calendar that this year we have scheduled the 50th annual Tudor Holiday Dinner Concerts on December 1-8. Information about tickets will be mailed to members in the third week of October. This is one good reason to keep your address information current so that time is not lost in getting your mailing to you.



A few chairs still remain available from the limited run in spring of the new Union terrace sunburst chairs. The Union made arrangements for Wisco Industries to do a limited run in red. They are sold in sets of two for \$149.95 (plus tax in Wisconsin and shipping charges from Oregon, Wisconsin). Anyone interested should write to Wisco Industries, Inc., 736 Janesville St., Oregon, WI 53575.

UW-MADISON BACK IN COLLEGE BOWL COMPETITION

The Association of College Unions-International (ACU-I) will be holding its College Bowl competition again this year. The game of questions and answers pits colleges and universities against each other at the campus, regional and national level. Last year, the team from UW-Madison finished third in the national competition.

The intramural elimination at Madison is organized and sponsored by Wisconsin Union Directorate's Union South Social area, and is open to all students at the University. In addition to their part in the national competition, South Social also puts together a Midwestern Invitational.

The Madison campus matches will be held at 4 p.m. on Sundays, beginning September 26 and running through November 21. All sessions in the local competition will be held at Union South.

MINI COURSES TEACH COOKERY, CULTURE, CROSS-STITCHING & MORE

Norwegian Art and Culture, Natural Cookery, Cross-Stitching, Self-Hypnosis and Stress Control, and Motivation Strategies are among the new Mini-Courses listed in the fall catalogue.

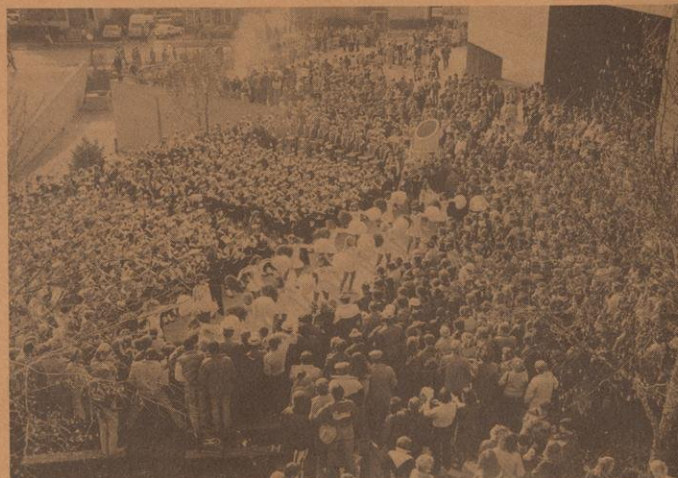
Registrations for the fall semester, which includes two six-week terms, will begin on August 23 with phone and mail registrations. In-person registration will take place on Wed., Sept. 1 from 4 to 6 p.m. in Great Hall. After that, registration will continue in the Memorial Union Commons lobby through Sept. 10.

Information about Mini-Courses can be obtained by calling (608) 262-3156.

THIRD BAND ADDED TO BADGER BASH CELEBRATIONS AT SOUTH

Football festivities at Union South this fall will be stepped up even more than in previous years with a third live band added to the entertainment. In addition to the music of Doc DeHaven in the Carousel Cafeteria and Roy B. and the Collegians in the Union Station, The Cheaters will play in Dag Hammarskjold Hall or the terrace on the Randall Ave. side of Union South if the weather permits.

The pre-game festivities featuring the UW Band and cheerleaders will again dominate the building and its surroundings (as shown in the picture). Brat stands will supplement the indoor dining rooms for pre-game lunching.



WHO ... WHAT ... WHEN ... WHERE

AUGUST

- 23 **Mini Course Phone & Mail Registration**, 8 a.m. - 4:30 p.m., Room 509, Memorial Union
- 23-29 **MovieTime**, "For Your Eyes Only," Fredric March Play Circle, Memorial Union
- 24 **Lakeside Cinema**, "Duck Soup," 8 p.m., Rathskeller, Memorial Union
- 25-Sept. 8 **Exhibition of works from the Union Loan Collection**, Main Gallery, Memorial Union
- 25-Sept. 8 **Drop a Line II**, a collection of summer vacation postcards, Class of 1925 Gallery, Memorial Union
- 25-27 **Union Surplus China Sale**, 10 a.m. - 3 p.m., Union South Lobby
- 27-Sept. 26 **From the Collection**, prints and drawings from the Union Collection, Susan B. Anthony Gallery, Union South
- 31 **Lakeside Cinema**, "Zorba the Greek," 8 p.m., Rathskeller, Memorial Union
- 31 **Hoofer Outing Club Fall Kick-off**, 7 p.m., Memorial Union

SEPTEMBER

- 1 **Mini Course In-Person Registration**, 4 - 6 p.m., Great Hall, Memorial Union
- 2-3, 6-10 **Mini Course Registration**, 11 a.m. - 5:30 p.m. (4 p.m. close on Friday), Commons Lobby, Memorial Union
- 6-11 **Art Poster Sale**, 9:30 a.m. - 7 p.m., Popover Room, Memorial Union
- 7 **Lakeside Cinema**, "Alice's Restaurant," 8 p.m., Rathskeller, Memorial Union
- 7-10 **Record Sale**, 10 a.m. - 5 p.m., Room 160, Union South
- 8 **Rental of works from Loan Collection**, 4 - 6 p.m., Main Gallery, Memorial Union
- 9-12 **MovieTime**, "On Golden Pond," Fredric March Play Circle, Memorial Union
- 9 **Hoofer Sailing Club Fall Kick-off**, 8 p.m., Great Hall, Memorial Union
- 10-12 **"Star Wars"**, 8 p.m. daily and 3 p.m. Sunday, Union Theater
- 11-Oct. 10 **Jim Haberman Photographs**, Main Gallery, Memorial Union
- 14 **Lakeside Cinema**, "The Thief of Bagdad," 8 p.m., Rathskeller, Memorial Union
- 16-19 **MovieTime**, "Chariots of Fire," Fredric March Play Circle, Memorial Union
- 21 **Lakeside Cinema**, "A Boy and His Dog," 8 p.m. Rathskeller, Memorial Union
- 21 **Andre-Michel Schub**, pianist, 8 p.m. Union Theater
- 24-26 **MovieTime**, "Mon Oncle D'Amerique," Fredric March Play Circle, Memorial Union
- 28 **Lakeside Cinema**, "Horsefeathers," 8 p.m., Rathskeller, Memorial Union
- 30-Oct. 17 **Art from the Engineering Loan Collection**, Susan B. Anthony Gallery, Union South
- 30 **International Dinner**, 4 - 7 p.m., Union Station, Union South

OCTOBER

- 1-3 **MovieTime**, "Ragtime," Fredric March Play Circle, Memorial Union
- 2-3 **Hoofer Sailing Club Fall Fury Regatta**, 9 a.m., Lake Mendota
- 4-5 **Travel Adventure Film**, "San Francisco!", 8 p.m., Union Theater*
- 5 **Lakeside Cinema**, "Gunga Din," 8 p.m., Rathskeller, Memorial Union
- 8-10 **MovieTime**, "Gallipoli," Fredric March Play Circle, Memorial Union
- 11-15 **Mini Course Commons Registration** (Fall 2), 11 a.m. - 5:30 p.m. (4 p.m. close on Fridays), Commons Lobby, Memorial Union
- 12 **Lakeside Cinema**, "Willy Wonka and the Chocolate Factory," 8 p.m., Rathskeller, Memorial Union
- 15-17 **MovieTime**, "French Lieutenant's Woman," Fredric March Play Circle, Memorial Union
- 16-Nov. 14 **Bill Amundson: Drawings and Sculpture**, Main Gallery, Memorial Union
- 17 **Festival of the Nile**, 8 p.m., Union Theater*
- 19 **Lakeside Cinema**, "Philadelphia Story," 8 p.m., Rathskeller, Memorial Union
- 21-Nov. 14 **Janet Pietsch: Photographs**, Susan B. Anthony Gallery, Union South
- 22-24 **MovieTime**, "Victor Victoria," Fredric March Play Circle, Memorial Union
- 25 **Saint Paul Chamber Orchestra**, 8 p.m., Union Theater
- 26 **Lakeside Cinema**, "The Last Hurrah," 8 p.m., Rathskeller, Memorial Union
- 28-Nov. 21 **Kathleen Shallock**, a personal collection of found objects and drawings, Theater Gallery, Memorial Union
- 29-31 **MovieTime**, "The Wizard of Oz," Fredric March Play Circle, Memorial Union
- 29-30 **Ballet Rambert**, 8 p.m., Union Theater
- 30-31 **Hoofer Sailing Club North American Tech Championships**, 9 a.m., Lake Mendota

(Continued on page 12)

TRAVEL CENTER AND SAGER-WILSON COMBINE TO MAKE TRAVELING FUN

The autumn season has become a favorite for travelers and the Union Travel Center and Sager-Wilson Travel Agency have combined to make your planning easy. Both are located in the Memorial Union and provide complementary services.

With a resource library that's growing every day, the Travel Center, located across from the Play Circle, can give you expert planning assistance. Sager-Wilson, a full-service travel agency located off the Trophy Room across from the Rathskeller, can make all airline, bus and train reservations.

Jane Johnson, manager of the Travel Center, points out that European travel is excellent in fall. "Weather, prices and the value of the dollar are all good," she says. It's also a good idea to think now about winter vacation bargains, according to Johnson. She says that the two travel services are planning many special trips this year including buses to out-of-town Badger games, holiday trips to New York City and St. Croix in March, and Canadian wilderness canoe trips next summer.

The following is a list of contemplated destinations for special trips. If you check the ones you are interested in, and mail the blank to the Wisconsin Union Travel Center, 800 Langdon Street, Madison, WI 53706, you will receive more information.

I would be interested in trips to:

St. Croix	_____
New York City	_____
Colombia	_____
Ireland	_____
Spain	_____
Portugal	_____
Britain	_____
Costa Rica	_____
Canadian Canoe Trip	_____
China Tour	_____
Jamaica	_____
Freeport	_____
Hawaii	_____
Europe (flight only)	_____
Aruba	_____
Mexico	_____
Puerto Rico	_____
Bus trips to Badger games	_____
Other	_____

NAME	_____
ADDRESS	_____
PHONE	_____

The newly appointed Assistant Food Service Director of the Memorial Union is Cynthia Tienor. She replaces Pam Grell, who left to become Manager of Lowell Hall.

Cindy is a graduate of UW-Stout and holds Master's and Doctor's degrees in food science administration at the UW-Madison. She has been Assistant Food Director at Methodist Hospital and on the staff of the Wisconsin Department of Agriculture, Trade and Consumer Protection.

Michael Goldberg, who has been on the Union Theater staff since 1979 and has served as acting Program Director since Ralph Sandler left to become Executive Director of the Madison Civic Center, has been named Program Director.

Goldberg has taught English for the Peace Corps in Ethiopia, has been Technical Director for the UW-Madison Opera Workshop and a member of the staff of the Association of College, University and Community Arts Administrators. He has also worked for the National Endowment for the Arts and Opportunity Resources for the Arts, Inc. He has been general manager of the Wisconsin Chamber Orchestra and has directed UW-Madison Opera Workshop and Madison Savoyards productions.

Once again Monday morning quarterbacks will gather at noon on the Mondays following Badger games at Union South for "At the Coach's Table," a brown bag lunch with the football coaching staff. The sessions are held in Dag Hammarskjold Hall from noon until 1:15 p.m. Admission is free to students, staff, faculty and Union members.

The July issue of MADISON magazine carried a short, nostalgic piece about the Memorial Union by Jeff Hagen, Madison freelance writer and artist. Titled "The Great Memorial Union," the article was inspired by a cafe proprietor the writer met on a trip in the South who asked if the Union was still here when Hagen revealed his hometown. "It's got to be one of a kind," the man said. A sketch by Hagen of the Union from the lake accompanies the article. "A place of tradition, a place of destiny . . . But, above all, like the city that surrounds it, it is a place beyond compare," Hagen concludes.

Union members are eligible to enroll their children in the Wisconsin Union Day Care Center, fondly called "Bernie's Place," by its friends and participants. The center, which boasts an opportunity to learn and interact with others in a supportive, multi-cultural setting, is now accepting applications for the fall semester. Information is available by calling 263-1725, or writing 206 Bernard Court, Madison, WI 53715.



a.



b.

CARMEN



c.



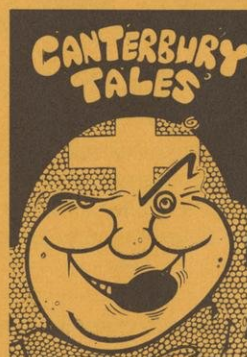
d.

**THE ACTING
COMPANY**

**FESTIVAL
OF
THE
NILE**



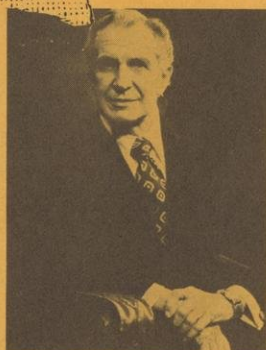
e.



f.



g.



Galliope
A Renaissance Band

THE 44TH SEASON

The Union Theater's tradition of excellence continues in 1982-83 with a lively and wide-ranging exploration of the performing arts. The 44th season brings the marvelous sound of music--from Bach, Beethoven and Bizet to the folk ballads of Egypt and the engaging beat of ragtime. Join us for superb dramatic entertainment, finely-honed and with a keen sense of the comic, and for dance, as two renowned troupes give distinctive expression to the kinetic art. You'll find that the Union Theater's fine acoustics and intimate mood help to make each evening of music, dance and drama a special experience--so plan now to take advantage of the Union Theater's tradition of excellence and to join us often during our 44th season.



WISCONSIN UNION THEATER

800 Langdon Street • Madison, WI 53706 • 608/262-2201



The New York City Opera National Company returns to the Union Theater stage and this season's Great Performance Series with "Carmen" (left), one of the world's best loved operas. The company, founded by New York City Opera manager Beverly Sills, blends the talents of seasoned artists from the City Opera roster with outstanding young performers, and includes a 30-member orchestra. For an evening of uproarious fun, Theater-Dance 82-83 offers the irrepressible New Vic Theatre of London (below) in a spirited recounting of Chaucer's "Canterbury Tales."

GREAT PERFORMANCE, THEATER - DANCE SPOTLIGHT DIVERSITY OF PERFORMING ARTS

Stories by Geoffrey Chaucer and music by Bizet, dance ranging from traditional folk to bold contemporary, and a lively touch of old-time Americana will highlight the new season's Great Performance Series and Theater-Dance 82-83.

The Theater's **Great Performance Series** will open its sixth year on October 17 with the **Festival of the Nile**, which spotlights 40 singers, dancers and musicians in a colorful panorama of Egyptian folklore. The native troupe is making its first U.S. tour. Another debut American tour brings **Ballet Rambert**, Britain's oldest ballet company, to the Union Theater on October 30. Devoted to the classical tradition in its first 40 years, the troupe changed course in 1966 and now ranks as Britain's most innovative contemporary company.

The **New York City Opera National Company**, which received rave reviews for its 1980-81 tour of "La Traviata," returns January 27 with a colorful new portrait of Bizet's bewitching gypsy girl, "Carmen." **Riverboat Ragtime Revue**, an evening of music and comedy reminiscent of turn-of-the-century days aboard Mississippi riverboats, will conclude the Great Performance Series on March 12.

The five-year-old **Theater-Dance** series will open October 29 with the **Ballet Rambert**; the British troupe will perform different programs on each series. "Tartuffe," one of Moliere's greatest comic observations on the foibles of human nature, will be presented November 5 by the renowned **Acting Company**, which earned enthusiastic reviews from Madison audiences last season for its production of "The Country Wife."

Another outstanding dramatic troupe, London's **New Vic Theatre**, will make its Madison debut February 16 with a

lively evening of "Canterbury Tales"--and it's the audience who determines the funniest, the bawdiest, the loveliest, the lustiest tales in the Geoffrey Chaucer Storytelling Competition. Theater-Dance 82-83 will close with the April 9 performance of the **Erick Hawkins Dance Company**. The highly acclaimed company was founded in 1957 by Hawkins who is considered a pioneer and, upon occasion a maverick, in the development of American modern dance.

Tickets for the Great Performance Series are \$48.50, \$44.50 and \$40.00; Theater-Dance 82-83 series tickets are \$46.50, \$40.00 and \$35.00.



Cover photos: a. Pinchas Zukerman b. Avner the Eccentric c. Narciso Yepes d. Erick Hawkins Dance Company e. Ballet Rambert f. Tokyo String Quartet g. Vincent Price

1982-83 SPECIAL EVENTS INCLUDE DRESDEN CONCERT

"Sinfonia come un grande lamente," by Udo Zimmermann, "Death and Transfiguration" by Strauss, and "Symphony No. 7 in A Major, Op. 92" by Beethoven will be performed February 22 when the renowned **Dresden Staatskapelle** makes its second Madison appearance. The Orchestra will perform at the Madison Civic Center.

Founded in 1548, the Dresden is the oldest and one of the most distinguished orchestras in the world. The ensemble premiered many of the major works of Richard Strauss and Richard Wagner and its illustrious history also includes close association with many other famous composers and musicians. Conductor for the 1983 tour will be music director **Herbert Blomstedt**, who led the Orchestra's 1979 Madison performance, part of the Dresden's first U.S. tour.

The Dresden's February concert is one of several special attractions on the Union Theater's 1982-83 season. Other special events will include an appearance by **Vincent Price**, who performed for a capacity house during the 1980-81 season and returns March 18 with "The Villains Still Pursue Me," a look at the history of evil and evildoers. On November 10, **Avner the Eccentric**, an "old-world clown" who excels at mime, magic, acrobatics, tightrope walking, juggling and assorted other ingenious feats, will provide an evening of family entertainment.

Advance tickets for the Dresden Staatskapelle concert and Mr. Price's appearance are available only to season subscribers to the Red or White Concert Series, the Great Performance Series or Theater-Dance 82-83. Dresden tickets are \$17.50 and \$15.50, with \$12.50 tickets reserved for students through the mail order period; the Price tickets are \$8.50 and \$7.50, with \$6.50 student tickets. General admission tickets for Avner the Eccentric will be available on mail order beginning September 27, and on open window sale beginning October 24, at \$5.00.



Herbert Blomstedt, conductor, Dresden Staatskapelle

TO ORDER TICKETS . . .

Tickets are now available on mail order for the Concert Series, Great Performance Series and Theater-Dance 82-83; patrons ordering any of these series may order advance tickets for the Dresden Staatskapelle and Vincent Price.

Tickets for Union Theater events are first offered on mail order approximately four weeks before each event, with Union members receiving advance mail-order notice and preference in reserving seats. About one week later, mail orders are available for UW faculty and then the general public. About two weeks before each event, remaining tickets are put on open sale at the Theater Box Office.

All sales for Union sponsored events are final. Refunds will be given only when an event is canceled and is not rescheduled. The Wisconsin Union Theater Arts Area reserves the right to substitute comparable attractions or to change the dates of programs if compelled to do so by conditions beyond its control. No refunds will be made under such circumstances.

Red and White Concert Series, Great Performance Series, Theater-Dance 82-83

Mail orders for the 1982-83 Wisconsin Union Theater series events are now being accepted and filled in order of receipt. Student prices apply only to students currently registered at The University of Wisconsin-Madison or intended students in the fall of 1982.

NAME _____ HOME TELEPHONE _____
ADDRESS _____ BUSINESS TELEPHONE _____
CITY _____ STATE _____ ZIP _____

_____ Student _____	_____ Union Member _____	_____ Faculty/Union Member _____	_____ Faculty _____	_____ Other _____
_____ Red Concert Series, \$35, \$30, \$25*	@ \$ _____	each = \$ _____		
_____ White Concert Series, \$40, \$35, \$30*	@ \$ _____	each = \$ _____		
_____ Great Performance Series, \$48.50, \$44.50, \$40.00*	@ \$ _____	each = \$ _____		
_____ Theater-Dance 82-83, \$46.50, \$40, \$35*	@ \$ _____	each = \$ _____		

Patrons ordering Red or White Concert Series or the Great Performance Series or Theater-Dance 82-83 may also order advance tickets for Vincent Price and the Dresden Staatskapelle. Tickets for individual events on the 1982-83 series are not available at this time; mail order and window sale dates for the individual programs will be announced in the theater newsletter throughout the season.

_____ Vincent Price, \$8.50, \$7.50, \$6.50* @ \$ _____ each = \$ _____
_____ Dresden Staatskapelle, \$17.50, \$15.50, \$12.50* @ \$ _____ each = \$ _____

*Reserved for students through mail order period.

Total = \$ _____

FOR OFFICE USE ONLY

_____ Red Concert Series
_____ White Concert Series
_____ Great Performance Series
_____ Theater-Dance 82-83
_____ Vincent Price
_____ Dresden Staatskapelle

If we are unable to fill your order at the price requested, may we substitute tickets at the next lowest price? _____ Yes _____ No

(Order form continues on reverse side.)



CONCERT SERIES CELEBRATES JOY OF MUSIC-MAKING

This season celebrates the 63rd anniversary of the Union's Concert Series—and again, the series brings a superb complement of outstanding artists to share, in live performance, the joy of music-making.

The **1982-83 Red Series** will open September 21, with a concert by pianist **Andre-Michel Schub**, winner of the 1981 Van Cliburn International Piano Competition. Internationally-renowned guitarist **Narciso Yepes** will make his Concert series debut on November 9, and another Series first is scheduled for December 4 as **Calliope**, an award-winning

A WORD FROM THE SPONSORS

The Union Theater's programming is sponsored by the Wisconsin Union Directorate Theater Arts Area, a volunteer student committee. John Hirsh served as chair of the 1981-82 committee which helped to plan the program for the 44th season; Jeff Heggem is chair of the Theater Arts interest area for 1982-83.

Renaissance ensemble, explores music, c. 1250 to 1650, on authentic period instruments. March 19 will bring the return of the acclaimed **Tokyo String Quartet**, and on April 16, the distinguished **New York Chamber Soloists** will conclude the Red Series with a performance of the six Brandenburg Concertos.

Enthusiastic response followed last season's performances by the **Saint Paul Chamber Orchestra**—so the ensemble, with conductor and violinist **Pinchas Zukerman**, returns for the 1982-83 White Series. Concerts are scheduled for October 25, with Zukerman as conductor; December 6, **Alexander Schneider**, guest conductor; February 7, Zukerman, conductor and violinist; and May 9, Zukerman, conductor, with soprano **Jessye Norman**.

Tickets for the Red Concert Series are \$35, \$30 and \$25; White Concert Series tickets are \$40, \$35 and \$30. Series subscribers will also receive a pass for the **1982-83 Debut Concerts**, featuring young performers who promise to be future Concert Series artists. This season's Debut Concerts will feature **Erie Mills**, soprano, December 3; **Susan Gulick**, guitarist, February 7; **Delphin and Romain**, duo-pianists, March 11; and **Jeffrey Kahane**, pianist, April 15. Debut Concert admission is \$4.00 for non-Concert Series subscribers.

Calliope (top), Jessye Norman (r.), Andre-Michel Schub (l.)



- ☐ Check or money order enclosed, payable to Wisconsin Union Theater.
- ☐ Payroll deduction card enclosed. (All faculty and academic staff, both 9 and 12-month appointments, and classified employees paid by the University payroll may purchase series tickets under the payroll deduction plan; payroll deduction cards are available through the Theater Box Office.)
- ☐ Charge to ☐ VISA ☐ Master Card

Card No. _____ Expires _____/_____/_____

Authorized Signature _____

Date _____

Return your order form, with the completed payroll deduction card, credit card authorization or your check or money order to the Wisconsin Union Theater, 800 Langdon Street, Madison, WI 53706. Please enclose a stamped, self-addressed envelope for the return of your tickets; orders received without a return envelope will be held as "Paid Reservations" at the Union Theater Box Office.

All prices include sales tax.

UNION ART COLLECTION CAN HANG ON YOUR OWN WALLS

The philosophy that art should be a vital part of daily living has been a part of the Wisconsin Union since the doors opened in 1928 and the first canvases were hung.

One of the ways that the Union carries out this philosophy is to hang art in more places than the art gallery. Although the two Unions house four art galleries, you will find original works hanging throughout both buildings in the hallways, offices and meeting rooms.

Another way that art is made a part of daily life by the Union is through the Union Loan Collection. Each semester a part of the Union's total collection is made available for rental to students. Union members, who are not students, are also eligible to rent works from the Loan Collection.

This year, the available works will be shown from August 25 to September 8 in the Main Gallery of the Memorial Union.

The show will be called "Art to Live With" and works included in it will be rented on September 8 between 4 and 6 p.m. in the gallery.

Works in the Union's large collection of originals have been acquired through purchase awards in competitive shows since the first Student Art show fifty five years ago. Other student competitions which also continue are Camera Concepts originated in 1934 and the Wisconsin Union Craft Exhibition which was started in 1972. Until 1971, the annual Wisconsin Salon of Art, a state-wide competition originated in 1934, also contributed works to the Union's collection.

The Union's collection currently totals over 700 works of art and is one of the largest collections of Wisconsin art in existence offering a unique kind of artistic legacy for the University community.



Students line up in 1950 to select original works from the Union Loan Collection for their rooms. The work at right is from the 1965 Wisconsin Salon of Art. It is entitled "No, NO ... 999 Time No!" and is by Judith Kelly, and will be available this year for rent.

COMPUTERS SAVE TIME AND MONEY FOR THE UNION

As our world becomes more and more dominated by the video screens, floppy disks and other hardware and software of the world of computers, the Union is also embracing computer technology.

Last year the Union's food ordering and production system was computerized in an effort to make it more responsive to the individual unit needs as well as to the requirements of the people who need to come up with financial reports.

The CSI system (Concept System, Inc.) is an automated food ordering and production system. It forecasts how many customers to expect during a given week four weeks in the future and generates portion forecasts for each item on the menu during that week. It precasts the menu as forecast based on current costs of the raw foods needed for that menu and comes up with a batched recipe for the exact number of portions needed for the expected customers. While preparing for its implementation last year, approximately 1,000 recipes were entered into the system.

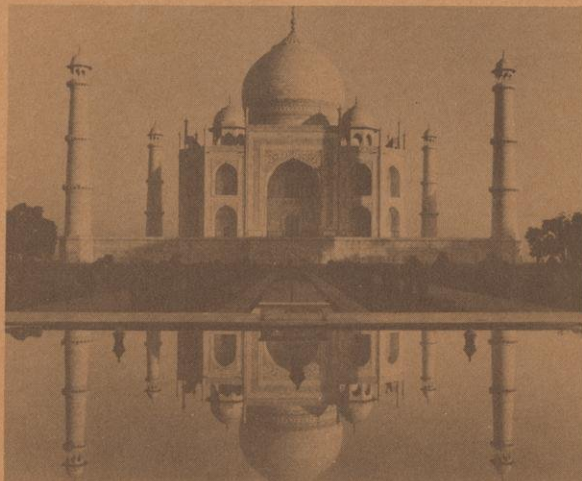
But, it doesn't stop there. The system then details the actual cost of all items shipped from the kitchen to each food unit.

This step provides both shipping/receiving reports and is the basis for accumulating food costs for financial reporting. To further tidy up the process, the computer then figures out the difference between actual raw product used and what was planned for in the forecast and "learns" from experience. Finally, it reports whether or not the Union's food prices are meeting the gross profit objective for the different categories of foods served in the dining rooms.

Another area benefiting from computer technology is the timekeeping system. Employees are now punching into special clocks which step up the process for managers to receive timely labor cost reports. The system produces payroll reports to replace the manual operation in the accounting office from time cards. Daily reports show the hours worked and cost incurred.

Other areas using computers include the annual budget-making process, monthly financial reporting, Mini-Course enrollment, membership, and inventory in various revenue units. Membership records and word processing are also in the development stage.

Get away from it all!



Make your reservations for

**THE 1982-83
TRAVEL ADVENTURE
FILM SERIES**

"San Francisco!"
October 4 or October 5

"Ireland"
November 22 or November 23

"Winter Magic Around the World"
January 24 or January 25

"Quebec Whales & Labrador Tales"
February 14 or February 15

"India"
March 7 or March 8

"The Greatness of Spain"
April 18 or April 19

The perfect way to travel on a budget!

Series Prices: \$12.50 and \$10.50

Individual Program Price: \$3.00



Call the Union Theater Box Office
(608/262-2201) for ticket information.

WHAT'S PLAYING AT THE MOVIES?

"On Golden Pond," "The French Lieutenant's Woman," "Ragtime" and "Chariots of Fire" are among 13 top films scheduled this fall at the Union's weekend MovieTime.

If you've never been a MovieTime attendee, you'll find that the program offers a perfect opportunity to take in those recent American films you really meant to see, plus some outstanding foreign films and frequently, a classic you'd like to see again. The films are shown in the Memorial Union's Fredric March Play Circle, a fully-equipped and air-conditioned 35mm motion picture theater which has served film fans for more than 40 years.

The MovieTime schedule generally features two showings on Friday and on Saturday evenings and a Sunday matinee, although this semester's bill includes a one-week run for registration week and several four-day runs.

The fall schedule will open August 23-29 with "For Your Eyes Only," the latest adventure of Roger Moore as Secret Agent 007. September 9-12 will feature "On Golden Pond," the award-winning pairing of Henry Fonda and Katharine Hepburn in a touching look at love, marriage and old age. Olympic glory and the passionate determination it stirs provide the theme for "Chariots of Fire," September 16-19, while September 24-26 brings "Mon Oncle D'Amerique," a witty examination of the human condition which earned a special Cannes Film Festival award for French director Alain Resnais.

"Ragtime," the adaptation of E.L. Doctorow's best-selling novel of pre-World War I, is slated for October 1-3. Australian director Peter Weir scores another success in "Gallipoli", October 8-10, a story of two young runners caught up in a world at war. On October 15-17, MovieTime presents the critically acclaimed film, "The French Lieutenant's Woman," starring Meryl Streep and Jeremy Irons in the compelling adaptation of John Fowles' novel. Paris, c. 1934, is the setting for Blake Edwards' film, "Victor Victoria", October 22-24, about a singer who finds an improbable solution to her floundering career.

All of you who can never get enough of Dorothy, Toto, the Scarecrow, the Munchkins, the horse of another color (and, of course, Margaret Hamilton as the world's wickedest witch) are invited to journey over the rainbow once again as MovieTime presents Frank Baum's classic, "The Wizard of Oz," October 29-31.

"Kagemusha," by renowned Japanese filmmaker Akira Kurosawa will be presented November 5-7; the work won the Best Film Award at the 1980 Cannes Film Festival. "My Dinner With Andre"--a mad tea party or perhaps a mad modern Platonic dialogue about the meaning of life--is slated for November 11-14. "Body Heat," writer-director Lawrence Kasdan's seamy exploration of corruption, is scheduled November 19-21, and the semester will conclude December 3-5 with "Diner," an amusing eavesdrop on six young men and their discussions of relationships--pre-sexual revolution.

MovieTime admission is \$2.00 and is limited to students and other Union members. Tickets may be purchased in advance for same day showings at the Play Circle Box Office beginning one half-hour before the first show of the day.

JUST PRESENT YOUR MEMBERSHIP CARD . . .

In addition to the services and programs covered in stories in this issue of the **Quarterly**, there are other ways in which you can use your membership in the Wisconsin Union -- ways that you may have forgotten or may have never have known.

For example, if you're planning a party, large or small, as a member you can use the Union's facilities for your private social events. To reserve a room at Memorial Union, call 262-2511; at Union South, 263-2543. Catering information can be obtained at those same numbers.

If you need a hotel room for visiting family or colleagues, as a Union member you receive a 10 percent discount. There are six rooms at Memorial Union and 14 at Union South. If the Union's rooms are full, Union members get the same discount at Lowell Hall, a block up Langdon Street from the Memorial Union. Call 262-1583 for Memorial Union reservations; 263-2600 for Union South.

Want to get out in the great outdoors but you need company and guidance? The Wisconsin Hooper outdoor recreation programs are open to all Union members. There are seven clubs -- sailing, mountaineering, outing, riding, skiing, scuba diving and hot air ballooning. Union members receive a discount on club fees. Call 262-1630 for further information.

Once you've joined the Hoopers and you need outdoor gear, don't forget the Pack Pole and Parka at Memorial Union and the Corner Store at Union South. Top quality equipment for hiking, camping and skiing is available at special member rates.

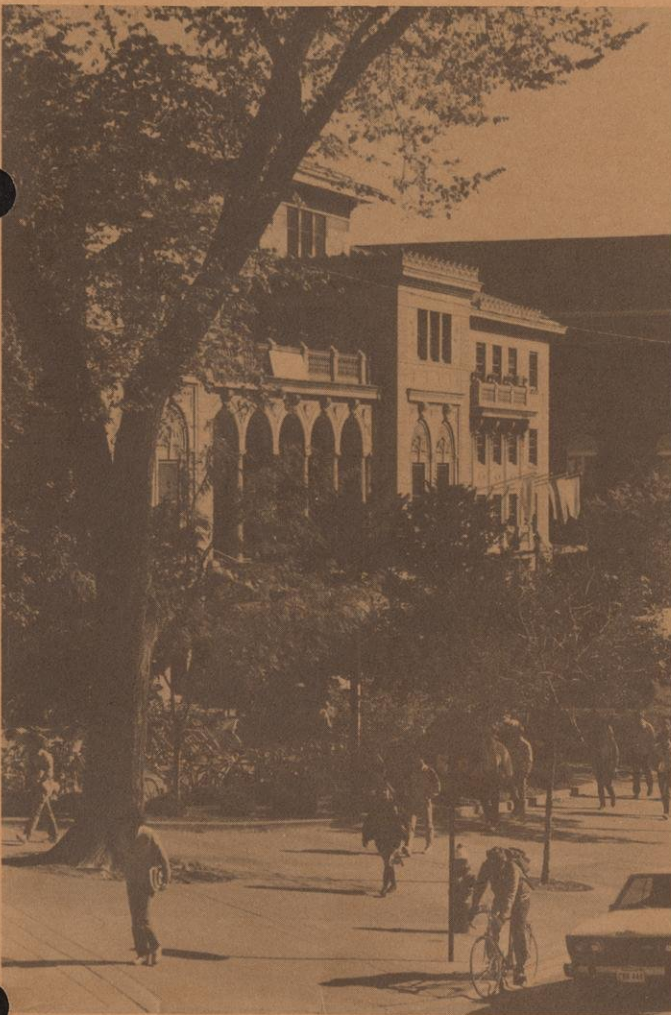
You can let your creativity come out in the Memorial Union Craftshop which includes a darkroom, woodshop, ceramics area as well as facilities for working in art metal, stained glass, batik, leather, framing and matting and silkscreening. Union members receive a discount on craftshop permits. (See story in this issue on Children's Crafts classes.)

As a Union member you are eligible to attend the weekend MovieTime programs in the Play Circle as well as the free films in the Rathskeller on the Lakeside Cinema series. The films scheduled for this semester are listed in the WHO... WHAT...WHEN...WHERE calendar. Call 262-6333 for schedule information.

Your membership card also will identify you to buy a beer in the Rathskeller or Stiftskeller, to cash a check, rent a locker, receive discounts in the games rooms, rent a boat or skis or a buoy, entertain guests . . . and much more.

(From page 10)

Union members are also invited to attend Lakeside Cinema, the free film series presented at 8 p.m. Tuesday in the Rathskeller or Stiftskeller at Memorial Union. Themes for this semester's films include "The Marx Brothers," "Cult Films" and "Hepburn & Tracy/With & Without." Films scheduled include "Duck Soup," "Zorba the Greek," "Horsefeathers," "Gunga Din," "Philadelphia Story," "The Last Hurrah," "The African Queen" and "A Night at the Opera." A complete listing of the Lakeside Cinema is included in the *Quarterly* calendar.



STAR WARS

If you've never seen it, or you're addicted to it and never miss a chance--here it is--"Star Wars." The Union Film Interest Area will present "Star Wars" on Friday, Saturday and Sunday, September 10, 11 and 12, in the Union Theater, with showings at 8 p.m. each evening and at 3 p.m. on Sunday. The film, released in 1977, was directed by George Lucas, with Mark Hamill, Harrison Ford, Carrie Fisher, Peter Cushing, Alec Guinness and scene-stealer R2D2. "'Star Wars' has brought fun back to the movies and glowingly demonstrated they still can make them like they used to," enthused the *Time* magazine reviewer. The film earned Academy Awards for sound, film editing, visual effects, original score, costume design, art direction-set decoration and a special award for sound effects creations. "Star Wars" tickets, at \$3.50 each, will be available beginning August 30 at the Union Theater Box Office.

The Wisconsin Union · University of Wisconsin - Madison
 800 Langdon St., Madison, WI 53706
 Address correction requested

Quarterly

The Wisconsin Union
 A Communique for Members

Non-Profit Org.
 U. S. Postage
PAID
 Madison, Wisconsin
 Permit No. 84

NOVEMBER

- 2 **Lakeside Cinema**, "Day at the Races," 8 p.m., Rathskeller, Memorial Union
- 5 **Acting Company in "Tartuffe,"** 8 p.m., Union Theater
- 5-7 **MovieTime**, "Kagemusha," Fredric March Play Circle, Memorial Union
- 9 **Lakeside Cinema**, "Adam's Rib," 8 p.m., Rathskeller, Memorial Union
- 9 **Narciso Yepes**, guitarist, 8 p.m., Union Theater
- 11-14 **MovieTime**, "My Dinner With Andre," Fredric March Play Circle, Memorial Union
- 12 **Avner the Eccentric**, 8 p.m., Union Theater
- 16 **Lakeside Cinema**, "Pat and Mike," 8 p.m., Rathskeller, Memorial Union
- 19-21 **MovieTime**, "Body Heat," Fredric March Play Circle, Memorial Union
- 20-Dec. 15 **From the Collection II**, Susan B. Anthony Gallery, Union South
- 20-Dec. 9 **Jean Stamsta: New Works in Fiber**, Class of 1925 Gallery, Memorial Union
- 20-Dec. 16 **34th Annual Camera Concepts**, Main Gallery, Memorial Union
- 22-23 **Travel Adventure Film**, "Ireland," 8 p.m., Union Theater*
- 23 **Lakeside Cinema**, "Inherit the Wind," 8 p.m., Rathskeller, Memorial Union
- 25 **Thanksgiving Buffet Dinner**, 11:30 a.m. - 1:30 p.m., Lakefront Cafeteria, Memorial Union
- 30 **Lakeside Cinema**, "African Queen," 8 p.m., Rathskeller, Memorial Union

DECEMBER

- 1-8 **50th annual Tudor Holiday Dinner Concerts**, 6:15 p.m., Great Hall, Memorial Union
- 3-5 **MovieTime**, "Diner," Fredric March Play Circle, Memorial Union
- 3 **Debut Series**, Erie Mills, soprano, 8 p.m., Union Theater
- 4 **Calliope**, a Renaissance Band, 8 p.m., Union Theater
- 6 **Saint Paul Chamber Orchestra**, 8 p.m., Union Theater
- 7 **Lakeside Cinema**, "Night at the Opera," 8 p.m., Rathskeller, Memorial Union

* A pre-theater dinner will be held prior to the program. Call 262-2511 for information and reservations.