



LIBRARIES

UNIVERSITY OF WISCONSIN-MADISON

**Site 1181: Young's Woods, Columbia County,
Township 10N, Range 9E, Section 12, NE 1/4;
Township 10N, Range 9E, Section 1, SE 1/4.
1952-07-26**

[s.l.]: [s.n.], 1952-07-26

<https://digital.library.wisc.edu/1711.dl/5MYAPDF7JKSXZ8B>

This material may be protected by copyright law (Title 17, US Code).

For information on re-use see:

<http://digital.library.wisc.edu/1711.dl/Copyright>

The libraries provide public access to a wide range of material, including online exhibits, digitized collections, archival finding aids, our catalog, online articles, and a growing range of materials in many media.

When possible, we provide rights information in catalog records, finding aids, and other metadata that accompanies collections or items. However, it is always the user's obligation to evaluate copyright and rights issues in light of their own use.

STAND RECORD

FORESTS

Stand No.

Name: Youngs Woods
County: Columbia
Date: 7/26 & 8/2/52
Size of Stand: 85 acres
Forest Type: Basswood-Hickory-Oak
Topography: Gently rolling with dry run in ravine

Locality: Arlington
T: 10N R: 9E Sec: NE12 & SE14 NW1/4 (of 100)
Observers: HC Greene, Chuck Mason, Peg Gilbert, Bear Mason Hale, G. Cottam & JTC
Size of Area Sampled: 40 acres
Soil Type:
Slope: Directions Various

Condition of Stand: Excellent. No grazing, some light cutting, but with little canopy-opening. Owned by John Young, whose grandfather settled in 1838 at which time area was in "timber" although present farm house was in oak opening and all land south & west was in open prairie (The Arlington prairie).

Canas all show admixture of *C. cordiformis*, especially in bark & fruit characters, although leaf shape & buds resemble *C. ovata*. Should have Clinch value of ca. 5.0
Many trees 50-60' to first branch

Open Grown Trees: One White Oak - BA 1030" % Canopy: 90-93%

Stumps:

- 1. Red Oak - 160 yrs 4. 7. 10.
- 2. Many other oaks & 5. 8. 11.
- 3. basswoods 6. 9. 12.

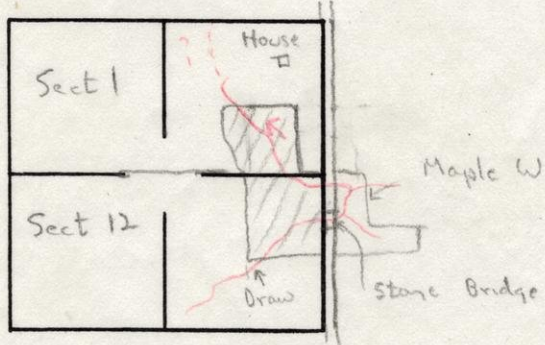
Soil Data:

	pH	N	P	K	Ca	Mg	Org. Mat.	Colloids	W.H.C.
A ₀									
A ₁									
A ₂									
B									

DEPTH	CHARACTERISTICS (Color, Texture, Structure, etc.)
A ₀ 3/8"	Matted leaves, with interlaced mycelial net at bottom
A ₁ 3"	Black silt loam
A ₂ 2 1/2"	Gray brown silt
B	Brown silt

Parent Material: Glacial till with limestone gravel

Map:



Maple Woods - See Stand No. 1182

Arlington Woods Summary

8/2/52 1181

	# Quads	Σ Freq %	# Trees	% Den	Total BA	Dom %	DFD	CI
<i>Carya ovata</i>	15	22.7	21	26.3	1274	10.3	59.3	207.5
<i>Fraxinus lanceol.</i>	6	9.1	6	7.5	598	4.8	21.4	160.5
<i>Ostrya</i>	9	13.6	10	12.5	256	2.3	28.4	255.6
<i>P. serotina</i>	1	1.5	1	1.2	130	1.0	3.7	12.9
<i>Q. alba</i>	7	10.6	9	11.2	2980	24.0	45.8	183.2
<i>Q. macrocarpa</i>	1	1.5	1	1.2	210	1.7	4.4	4.4
<i>Q. rubra</i>	3	4.5	3	4.7	1290	10.4	19.6	117.6
<i>Tilia</i>	16	24.2	21	26.3	4010	32.3	82.8	662.4
<i>U. americana</i>	1	1.5	1	1.2	20	0.6	3.3	13.2
<i>U. rubra</i>	7	10.6	7	8.7	1455	11.7	31.1	248.8
	66		80		12,403			1866.1

1st 20

POINT RECORD TREES

STATION NO.	1	2	3	4	5	6	7	8	9	10
Acer rubrum										
A. saccharum										
Betula papy.										
Carpinus car										
Carya cord										
C. ovata				22				22	30 30	90 13
Celtis occ										
Crataegus sp.										
Fagus grand										
Fraxinus am	110	120	80				26			
F. nigra										
Juglans cin										
J. nigra										
Ostrya virg			18		13					
Populus gran										
P. tremul										
Prunus serot										
Quercus alba	490	220								
Q. ellipsoid										
Q. macrocarpa										
Q. rubra										
Q. velutina										
Tilia amer				190	220	240 260		240		
Ulmus amer										
Ulmus fulva							170			
Distance	39'	34	33	30	23	21	26	17	11 1/2	17

POINT RECORD TREES

SOUTHERN HARDWOODS

Stand No.

STATION NO.	1	2	3	4	5	6	7	8	9	10
Acer rubrum										
A. saccharum										
Betula papy.										
Carpinus car										
Carya cord										
C. ovata	14 50	110	85		24	30	40 24	28	28	30 19
Celtis occ										
Crataegus sp.										
Fagus grand										
Fraxinus am										
F. nigra										
Juglanscin										
J. nigra										
Ostrya virg									50	
Populus gran										
P. tremul										
Prunus serot		130								
Quercus alba										
Q. ellipsoid										
Q. macrocarpa								210		
Q. rubra										
Q. velutina										
Tilia amer				250 210		120				
Ulmus amer										
Ulmus fulva			180		320			15		
Distance	17½	29	33	15	15	29	19½	13½	21	18

3rd 20

POINT RECORD TREES

STATION NO.	1	2	3	4	5	6	7	8	9	10
Acer rubrum										
A. saccharum										
Betula papy.										
Carpinus car										
Carya cord										
C. ovata	B									
Celtis occ										
Crataegus sp.										
Fagus grand										
Fraxinus am										
F. nigra										
Juglans cin										
J. nigra										
Ostrya virg									13	35
Populus gran										
P. tremul										
Prunus serot										
Quercus alba					360 170	220		100 500		
Q. ellipsoid										
Q. macrocarpa										
Q. rubra						70				
Q. velutina										
Tilia amer	310	110 40	60 80	150			110 120		130	120
Ulmus amer				20						
Ulmus fulva										
Distance	16	12	25 1/2	50	28 1/2	27 1/2	20 1/2	20	23 1/2	19

4th 20

POINT RECORD TREES

STATION NO.	1	2	3	4	5	6	7	8	9	10
Acer rubrum										
A. saccharum										
Betula papy.										
Carpinus car										
Carya cord										
C. ovata		110 230				260				
Celtis occ										
Crataegus sp.										
Fagus grand										
Fraxinus am <i>green</i>								12	250	
F. nigra										
Juglans cin										
J. nigra										
Ostrya virg	22			12	60		19 14			
Populus gran										
P. tremul										
Prunus serot										
Quercus alba	450				470					
Q. ellipsoid										
Q. macrocarpa										
Q. rubra			800							420
Q. velutina										
Tilia amer			340	270						400
Ulmus amer										
Ulmus fulva						150		600	20	
Distance	26 1/2	17	18	21 1/2	18	18	18 1/2	9 1/2	27 1/2	20

Presence List
(Uncommon species)

SOUTHERN UPLAND HARDWOODS

Stand No. 1181

Locality: *Arlington (Young's Wood)* County: *Columbia* Sec: *12* T: *10N* R: *9E*
 Date: *7/26/52* Observers: *HCG, G.C., JTC & CH Mason*
 Size of Stand: *85 acres* Size of Area Sampled:
 Condition of Stand: *See other sheets* Type: *Basswood-Hickory*

- | | | |
|-----------------------------|-----------------------------|-------------------------------|
| <i>Acalypha rhomboidea</i> | <i>Erigeron philadel.</i> | <i>Physocarpus opul.</i> |
| <i>Agastache scrophul.</i> | <i>Erythronium americ.</i> | <i>Phytolacca americana</i> |
| <i>Allium canadense</i> | <i>Evonymus atropur.</i> | <i>Pilea pumila</i> |
| <i>Amorpha canescens</i> | <i>Floerkea proserp.</i> | <i>Polymnia canad.</i> |
| <i>Anaphalis margarit.</i> | <i>Fragaria vesca</i> | <i>Polypodium vulgare</i> |
| <i>Anemone cylindrica</i> | ✓ <i>Galium boreale</i> | <i>Prunella vulgaris</i> |
| <i>Arabis canadensis</i> | <i>Gaultheria procumb.</i> | <i>Pteretis pensylvanica</i> |
| <i>A. laevigata</i> | <i>Gaylussacia baccata</i> | <i>Pyrus coronaria</i> |
| <i>A. lyrata</i> | <i>Gentiana quinquef.</i> | <i>P. ioensis</i> |
| <i>A. perstellata</i> | <i>Geum virginianum</i> | <i>Ranunculus fascicul.</i> |
| <i>Aralia hispida</i> | <i>Hedeoma hispida</i> | <i>R. rhomboideus</i> |
| <i>Arisaema dracont.</i> | <i>Hepatica americana</i> | <i>Rhus glabra</i> |
| <i>Asclepias ovalif.</i> | <i>Heracleum maximum</i> | <i>R. typhina</i> |
| ✓ <i>A. exaltata</i> | <i>Hieracium canad.</i> | <i>Rubus hispidus</i> |
| <i>Aster azureus</i> | <i>H. scabrum</i> | <i>R. pubescens</i> |
| <i>A. simplex</i> | <i>Hydrophyllum append.</i> | <i>Rudbeckia laciniata</i> |
| <i>A. prenanthoides</i> | <i>Hypoxis hirsuta</i> | <i>Salix sp.</i> |
| <i>Athyrium thelypter.</i> | <i>Ilex verticillata,</i> | <i>Sambucus pubens</i> |
| <i>Boehmeria cylindr.</i> | <i>Juncus tenuis</i> | <i>Saxifraga pennsylv.</i> |
| <i>Botrychium multif.</i> | <i>Juniperus communis</i> | <i>Scrophularia lan.</i> |
| <i>Bromus purgans</i> | <i>J. virginiana</i> | <i>S. marilandica</i> |
| <i>Camptosorus rhizop.</i> | <i>Krigia biflora</i> | <i>Senecio pauperculus</i> |
| <i>Carex convoluta</i> | <i>Lathyrus venosus</i> | <i>Silene stellata</i> |
| <i>Ceanothus americ.</i> | <i>Lilium philadel.</i> | <i>Solanum nigrum</i> |
| <i>Chimaphila umbell.</i> | <i>Liparis liliifolia</i> | <i>Solidago speciosa</i> |
| <i>Cirsium altissim.</i> | <i>Lobelia cardinalis</i> | <i>Staphylea trifolia</i> |
| <i>Clematis virgin.</i> | <i>Lonicera dioica</i> | <i>Streptopus roseus</i> |
| <i>Clintonia boreal.</i> | <i>L. hirsuta</i> | <i>Symplocarpus foet.</i> |
| <i>Comandra umbellata</i> | <i>Luzula acuminata</i> | <i>Taenidia integerr.</i> |
| <i>Conopholis americ.</i> | <i>L. multiflora</i> | <i>Taxus canadensis</i> |
| ✓ <i>Corallorrhiza mac.</i> | <i>Lysimachia ciliata</i> | <i>Thalictrum dasycarp.</i> |
| <i>Corydalis semperv.</i> | <i>L. hybrida</i> | <i>Thaspium aureum</i> |
| <i>Cynoglossum offic.</i> | <i>Milium effusum</i> | <i>Tradescantia ohio.</i> |
| <i>Cystopteris bulbif.</i> | <i>Mitchella repens</i> | <i>Uvularia sessilif.</i> |
| <i>Desmodium cuspidatum</i> | ✓ <i>Monotropa uniflora</i> | <i>Vaccinium myrtilloides</i> |
| ✓ <i>D. canadense</i> | <i>Onoclea sensibilis</i> | <i>Veronica serpyllif.</i> |
| <i>Dicentra canad.</i> | <i>Oryzopsis asperif.</i> | <i>Viburnum lentago</i> |
| <i>Diervilla lonicera</i> | <i>Osmunda cinnamomea</i> | <i>V. trilobum</i> |
| <i>Dioscorea villosa</i> | <i>Oxalis violacea</i> | <i>Vicia americana</i> |
| <i>Dirca palustris</i> | <i>Panax trifolium</i> | <i>Viola conspersa</i> |
| ✓ <i>Elymus villosus</i> | <i>Paronychia canad.</i> | <i>V. incognita</i> |
| <i>Epifagus virgin.</i> | <i>Pedicularis canad.</i> | <i>Wulfenia bullii</i> |

Additional Species:

Desmodium grandiflorum

Presence or Frequency
(Common species only)

Youngs *Arington Woods*
SOUTHERN UPLAND HARDWOODS

Stand No. 1181
Quadrat No.

- | | | |
|-------------------------------------|-----------------------------------|----------------------------------|
| ✓ <i>Actaea pachypoda</i> | ✓ <i>Eupatorium rugosum</i> | <i>Polygonatum canaliculatum</i> |
| ✓ <i>Adiantum pedatum</i> | <i>Festuca obtusa</i> | ✓ <i>Polygonatum pubescens</i> |
| ✓ <i>Agrimonia gryposepala</i> | ✓ <i>Fragaria virginiana</i> | <i>Potentilla simplex</i> |
| ✓ <i>Allium tricoccum</i> | ✓ <i>Galium aparine</i> | ✓ <i>Prenanthes alba</i> |
| ✓ <i>Amphicarpa braceata</i> | <i>G. circaezans</i> | <i>Pteridium aquilinum</i> |
| <i>Anemone quinquefolia</i> | ✓ <i>G. concinnum</i> | ✓ <i>Pyrola elliptica</i> |
| ✓ <i>A. virginiana</i> | <i>G. lanceolatum</i> | <i>Ranunculus abortivus</i> |
| ✓ <i>Anemonella thalictroides</i> | ✓ <i>G. triflorum</i> | <i>R. recurvatus</i> |
| <i>Antennaria sp.</i> | ✓ <i>Geranium maculatum</i> | <i>R. septentrionalis</i> |
| <i>Aplectrum hiemale</i> | <i>Gerardia grandiflora</i> | ✓ <i>Rhus radicans</i> |
| ✓ <i>Apocynum androsaemifolium</i> | ✓ <i>Geum canadense</i> | <i>Ribes americanum</i> |
| <i>Aquilegia canadensis</i> | <i>Goodyera pubescens</i> | ✓ <i>R. cynosbati</i> |
| <i>Aralia nudicaulis</i> | <i>Habenaria bracteata</i> | ✓ <i>R. missouriense</i> |
| ✓ <i>A. racemosa</i> | <i>Hackelia virginica</i> | <i>Rosa sp.</i> |
| <i>Arenaria lateriflora</i> | <i>Hamamelis virginiana</i> | <i>Rubus allegheniensis</i> |
| ✓ <i>Arisaema atrorubens</i> | ✓ <i>Helianthus strumosus</i> | ✓ <i>R. occidentalis</i> |
| <i>Asarum canadensis</i> | <i>Hepatica acutiloba</i> | <i>R. strigosus</i> |
| ✓ <i>Aster macrophyllus</i> | <i>Heuchera richardsonii</i> | <i>Sambucus canadensis</i> |
| ✓ <i>A. sagittifolius</i> | <i>Hydrastis canadensis</i> | <i>Sanguinaria canadensis</i> |
| ✓ <i>A. shortii</i> | ✓ <i>Hydrophyllum virginianum</i> | ✓ <i>Sanicula gregaria</i> |
| ✓ <i>Athyrium filix-femina</i> | <i>Hystrix patula</i> | <i>S. marilandica</i> |
| ✓ <i>Botrychium virginianum</i> | <i>Impatiens capensis</i> | ✓ <i>Smilacina racemosa</i> |
| ✓ <i>Brachyelytrum erectum</i> | <i>I. pallida</i> | <i>S. stellata</i> |
| <i>Campanula americana</i> | <i>Isopyrum biternatum</i> | ✓ <i>Smilax ecirrhata</i> |
| ✓ <i>Carex albursina</i> | <i>Lactuca biennis</i> | ✓ <i>S. herbacea</i> |
| ✓ <i>C. pensylvanica</i> | <i>Laportea canadensis</i> | <i>S. tamnoides</i> |
| ✓ <i>Caulophyllum thalictroides</i> | <i>Lathyrus ochroleucus</i> | <i>Solidago altissima</i> |
| <i>Celastrus scandens</i> | ✓ <i>Lonicera prolifera</i> | ✓ <i>S. flexicaulis</i> |
| ✓ <i>Circaea quadrifida</i> | <i>Lysimachia quadrifolia</i> | ✓ <i>S. ulmifolia</i> |
| <i>Claytonia virginiana</i> | ✓ <i>Maianthemum canadensis</i> | <i>Thalictrum dioicum</i> |
| ✓ <i>Cornus alternifolia</i> | <i>Menispermum canadensis</i> | <i>Tovara virginiana</i> |
| ✓ <i>C. femina</i> | <i>Mitella diphylla</i> | <i>Trillium cernuum</i> |
| <i>C. rugosa</i> | <i>Monarda fistulosa</i> | ✓ <i>T. flexipes</i> |
| <i>Corylus americana</i> | ✓ <i>Orchis spectabilis</i> | <i>T. grandiflorum</i> |
| ✓ <i>Cryptotaenia canadensis</i> | <i>Oryzopsis racemosa</i> | <i>T. recurvatum</i> |
| <i>Cypripedium pubescens</i> | ✓ <i>Osmorhiza clayton.</i> | <i>Triosteum perfoliatum</i> |
| ✓ <i>Cystopteris fragilis</i> | <i>O. longistylis</i> | ✓ <i>Uvularia grandiflora</i> |
| <i>Dentaria laciniata</i> | <i>Osmunda claytoni</i> | <i>Veronicastrum virginicum</i> |
| ✓ <i>Desmodium glutinosum</i> | ✓ <i>Panax quinquefolia</i> | <i>Viburnum acerifolium</i> |
| <i>D. nudiflorum</i> | ✓ <i>Panicum latifolium</i> | ✓ <i>V. rafinesquianum</i> |
| <i>Dicentra cucullaria</i> | <i>Parietaria pennsylvanica</i> | ✓ <i>Viola cucullata</i> |
| <i>Dodecatheon meadia</i> | ✓ <i>Parthenocissus inserta</i> | ✓ <i>V. pubescens</i> |
| ✓ <i>Dryopteris spinulosa</i> | <i>Phlox divaricata</i> | <i>Vitis aestivalis</i> |
| <i>Erigeron pulchellus</i> | ✓ <i>Phryma leptostachya</i> | <i>V. riparia</i> |
| <i>Erythronium albidum</i> | ✓ <i>Podophyllum peltatum</i> | <i>Xanthoxylum americ.</i> |
| ✓ <i>Eupatorium purpureum</i> | ✓ <i>Polemonium reptans</i> | <i>Zizia aurea</i> |

Additional species:

Aster lateriflorus
Rumex obtusifolius
Thal. dasycarpum

Al. Cleary
Acer
F. 1. 1. a
Ironwood
V. rubra
Red Oak
White Oak
Walnut
Corn Ash
Carya oval
Red Maple
Bittersweet
Cornus
Pop. grand

B&169
1952

Youngs Woods

Tree	No.	No.	Size Class sq. in.			No.	Sap.	F.%	F.%	D.%	Dom.%	D F D	Station No. 1181	
	:Pts.:	Tr.	12-80:	81-320:	321+ :	Dom:	Sap.:	Seed:	Seed:	Tr.:	Tr.:	Trees:		Index:
Acerrubrum	3	3				315	1	1		3.6	2.5	1.9	8.0	Total Length of Transect
A. saccharum	4	6				830				4.8	5.0	5.1	14.9	Total Length of Transect
Carya cord.														Total Length of Transect
C. ovata	9	12				1435	9	3		10.7	10.9	8.8	30.4	Ave. Dist. Btw'n Trees
Fagus grand.														Saplings/unit area
Fraxirus amer.														Ave. BA (Total BA: 80)
F. pennsylvani.														No. Trees/acre
Juglans cinere.														Dom./acre
J. nigra														
Ostrya virgin.	20	33				1087	104	28		23.8	27.5	6.7	58.0	
Populus grand.														
P. tremuloides														
Prunus serotin	2	2				165				2.3	1.7	1.0	5.0	
Quercus alba	9	12				3690				10.7	10.0	22.7	43.4	
Q. macrocarpa														
Q. rubra	6	8				2825				7.1	6.7	17.4	31.2	
Q. velutina														
Tilia american.	23	34				5112				27.4	28.3	31.5	87.2	
Ulmus american:	4	5				531				4.8	4.2	3.3	12.3	
U. fulva	4	5				236	4	3		4.8	4.2	1.8	10.5	
Crataegus sp							1	1						
Totals	84	80												

120

CI 2200

Bot 169- Fall 53 (5)

Tree	Size Class sq. in.			Dom.	Sap.	Seed	F.%	F.%	D.%	Dom.%	D.F.D.	Station No.
	No. Pts.	No. Tr.	12-80:81-320:321+									
Acerrubrum												Total Length of Transect
A. saccharum				0.8			14.1	10.7	11.2	36.0	360	Total Length of Transect
Carya cord.												Total Length of Transect
C. ovata				5.1			7.6	5.8	3.6	17.0	59.5	Ave. Dist. Btw'n Trees
CRATAEGUS Fagus grand.				2.5								Trees
Fraxinus amer.												Saplings/unit area
F. pennsylvani.												Ave. PA (Total BA: 80)
Juglans cinerea												No. Trees/acre
J. nigra												Dom./acre
Ostrya virgin.				88.1			23.9	25.6	4.1	53.6	482.4	
Populus grand.												
P. tremuloides												
Prunus serotin												
Quercus alba							33.9	30.6	53.9	108.4	433.6	
Q. macrocarpa												
Q. rubra							10.9	9.1	15.8	35.8	214.8	
Q. velutina												
Tilia american.				2.5			17.4	16.5	11.0	44.9	359.2	
Ulmus american.												
U. fulva				0.8			2.7	1.7	0.5	4.4	35.2	
Totals		80										

22,331

200-1

1944.7

Young's Woods Bot 169 10/55 36 quadrants

POINT RECORD TREES

SOUTHERN HARDWOODS

Stand No. 1181

STATION NO.	1	2	3	4	5	6	7	8	9	10
Acer rubrum										
A. saccharum				195	110	11				
Betula papy.										
Carpinus car										
Carya cord										
C. ovata						110 130	111			
Celtis occ										
Crataegus sp.										
Fagus grand										
Fraxinus am							1			
F. nigra										
Juglans cin.										
J. nigra										
Ostrya virg	1111 31	1111 16 29 19	1111 25	1111 36 16	111 19 21					
Populus gran										
P. tremul										
Prunus serot										
Quercus alba	285	127		410 320	640					
Q. ellipsoid										
Q. macrocarpa										
Q. rubra		530								
Q. velutina										
Tilia amer	125 102 90	43	435							
Ulmus amer										
Ulmus fulva										
Distance	17 21 33 29	27 7 24 13	15 19 20 10	28 7 10 26	4 19 14 3	11 20 20 30				

POINT RECORD TREES

SOUTHERN HARDWOODS

Stand No.

STATION NO.	1	2	3	4	5	6	7	8	9	10
Acer rubrum										
A. saccharum		390 170						/		67
Betula papy.										
Carpinus car										
Carya cord										
C. ovata		51 225					1			115
Celtis occ										
Crataegus sp.										
Fagus grand										
Fraxinus am										
F. nigra										
Juglans cin.										
J. nigra										
Ostrya virg		20		55	130	20	28	20	32	
Populus gran										
P. tremul										
Prunus serot										
Quercus alba	{ 285 275 260 92			69		480			390	
Q. ellipsoid										
Q. macrocarpa										
Q. rubra			230							
Q. velutina							500			
Tilia amer			170 150	175 49 124	130 150 95		25		255 285	145 77
Ulmus amer										
Ulmus fulva										
Distance	14 18 25 23	5 25 26 27	10 16 20 20	15 12 6 17	24 37 4 7	12 8 4 17	2 6 19 19	12 9 11 9	6 21 27 22	14 10 17 13

116
123
152
390

32

2

POINT RECORD TREES

SOUTHERN HARDWOODS

Stand No.

STATION NO.	1	2	3	4	5	6	7	8	9	10
Acer rubrum										
A. saccharum	11' 115' 22' 16	17' 55' 8' 118					/	/	/	37' 610
Betula papy.										
Carpinus car										
Carya cord										
C. ovata							17' 110		1	11
Celtis occ										
Crataegus sp.										
Fagus grand										
Fraxinus am										
F. nigra										
Juglans cin.										
J. nigra										
Ostrya virg	111	111	111 25' 13	11	111 8' 60	111 18' 40	111 8' 17 8' 35 18' 39	111 19' 27 17' 60	111 3' 13 28' 48 21' 55	11 26' 80 11 15' 13
Populus gran									27' 31	
P. tremul										
Prunus serot										
Quercus alba		16' 500 5' 120	28' 170 18' 95	15' 250 25' 105 6' 98	32' 105 15' 125					26' 518
Q. ellipsoid			17' 165							
Q. macrocarpa										
Q. rubra	280 22'									
Q. velutina										
Tilia amer	100 4'	1		12' 128	28' 25 12' 138	8' 130 8' 55 25' 858		25' 140		18' 198
Ulmus amer			21' 80		11					
Ulmus fulva										
Distance										

16 26
14 14

POINT RECORD TREES

SOUTHERN HARDWOODS

Stand No.

STATION NO.	1	2	3	4	5	6	7	8	9	10
Acer rubrum										
A. saccharum	6'142 32'103									
Betula papy.										
Carpinus car										
Carya cord										
C. ovata										
Celtis occ										
Crataegus sp.										
Fagus grand										
Fraxinus am										
F. nigra										
Juglans cin.										
J. nigra										
Ostrya virg	36'40 9'14	9'37	28'68	6'25	11'14	11'14	11'14	11'14	15'34	15'34
Populus gran										
P. tremul										
Prunus serot										
Quercus alba			9'35	16'28		7'51			11'46	15'23
Q. ellipsoid										
Q. macrocarpa										
Q. rubra	5'51				13'35 20'30	12'36 36'95	4'73	18'18	14'20	
Q. velutina										
Tilia amer	29'75	3'55 9'162	29'138 26'210	13'64	22'78	38'60	10'105 17'96 27'145	24'52 31'65	25'64	13'190
Ulmus amer										
Ulmus fulva										
Distance										

38

Young's Woods - Botany 169 - October 14, 1955 - 36 points

Species	Total No. of Points	Total No. of Trees	Total Basal Area	Total Saplings	No. Points Saplings
<i>Acer saccharum</i>	8	12	2093	9	7
<i>Carya ovata</i>	4	6	741	7	4
<i>Ostrya virginiana</i>	23	44	1441	120	34
<i>Quercus alba</i>	17	28	7555	—	0
<i>Quercus rubra</i>	9	11	3190	—	0
<i>Tilia americana</i>	24	41	5567	4	4
<i>Ulmus americana</i>	1	1	80	2	1
<i>Fraxinus americana</i>	—	—	—	3	3

Average distance to nearest tree = $\frac{2405}{144}$ = 16.7 feet

Young's Woods - Botany 169 - October 14, 1955 - 36 points

Species	Total No. of Points	Total No. of Trees	Total Basal Area	Total Saplings	No. Points Saplings
<i>Acer saccharum</i>	8	12	2093	9	7
<i>Carya ovata</i>	4	6	741	7	4
<i>Ostrya virginiana</i>	23	44	1441	120	34
<i>Quercus alba</i>	17	28	7555	—	0
<i>Quercus rubra</i>	9	11	3190	—	0
<i>Tilia americana</i>	24	41	5567	4	4
<i>Elmus americana</i>	1	1	80	2	1
<i>Fraxinus americana</i>	—	—	—	3	3

Average distance to nearest tree = $\frac{2405}{144} = 16.7$ feet

36 point sample

Young's Woods - W. oak - Barwood

Class Results 1955
Botany 169

Tree	No. : Pts.	No. : Tr.	No. : Dom.	No. : Sap.	No. : Sap.	F. % : Sap.	D. % : Sap.	F. % : Seed	F. % : Seed	D. % : Tr.	D. % : Tr.	Dom. % : Trees	I. I. :	C. I. :		
Acerrubrum																
A. saccharum	8	12	2093	7	9	13.1	6.2			9.3	8.4	10.1	27.8	278		
Carya cord.															16.7	Ave. Dist. Btw'n Trees
C. ovata	4	6	741	4	7					4.7	4.2	3.5	12.4	56		
Celtis occiden.																
Fagus grand.																
Fraxinus amer.				3	3	5.7	2.1								14.5	Ave. BA (Total BA ÷ 80)
F. lanceolata																
F. pennsylvani																
Juglans cinere															15.7	No. Trees Per acre
J. nigra																
Ostrya virgin.	23	44	1441	34	120	64.2	82.7			26.7	30.8	7.0	64.5	561		
Populus grand.																
P. tremuloides																
Prunus serotin															36.6	
Quercus alba	17	28	7555							19.7	19.6	37.2	76.5	275	26.9	
Q. ellipsoidalis															15.4	
Q. macrocarpa															10.1	
Q. rubra	9	11	3190							10.4	9.7	15.4	33.5	188		
Q. velutina																
Tilia american	24	41	5567	4	4	7.5	2.8			27.9	28.6	26.8	83.3	608		
Ulmus american	1	1	80	1	2	1.9	1.4			1.6	0.7	-	2.3	11		
U. rubra																
	86	143	20667	53	145	99.9	100.0			100.3	100.0	100.0	300.3	1977		

Tree Species	No. Quadrats Of occurrence	Relative Frequency	No. of trees	Density Percent	Total Basal Area	Dominance Percent	Importance Index
Basswood	6	17.6	11	23.7	1,517	23.1	61.7
Cherry, Black	2	5.9	2	3.4	230	3.5	12.8
Hickory, Shagbark	2	5.9	2	3.4	220	3.3	12.6
Ironwood	7	20.6	18	30.5	1111	6.7	57.8
Maple, Sugar	4	11.8	7	11.9	639	9.7	33.4
Oak, Red	4	11.8	6	10.2	1,680	25.1	47.4
Oak, White	9	26.5	10	16.9	1,850	28.0	71.4
Totals	34	100.1	59	100.0	6,610	100.0	300.1
Saplings	# Quads	F.	# Saplings	Den. %	Seedlings	# Quad.	F.
Basswood	2	12	3	2.3	Basswood	6	37
Hickory, Shagbark	2	12	9	7.0	Cherry, Black	5	31
Ironwood	13	81	105	81.4	Elm, Slippery	9	56
Elm, Slippery	2	12	7	5.4	Hickory, Shagbark	4	25
Ash, White	2	12	5	3.9	Ironwood	13	81
					Maple, Sugar	8	50
			129	100.0	Ash, White	10	62
Shrubs	# Quad.	F.	Shrubs	# Quad.	F.		
Blackberry	2	12	Raspberry	7	44		
Choke Cherry	5	31	Woodbine	1	6		
Elderberry	1	6	Honeysuckle	1	6		
Gooseberry	16	100	Hannyberry	3	19		
Grey Dogwood	3	19	Greenbriar	2	12		
Hawthorn	1	6	Red Osier Dogwood	1	6		
Hazelnut	4	25	Alternate leaved Dogwood	1	6		

Botany 164

 Youngs Woods, Friday Section
 May 11, 1956

Tree Species	No. Quadrats Of occurrence	Relative Frequency	No. of trees	Density Percent	Total Basal Area	Dominance Percent	Importance Index
Basswood	9	26.5	18	29.5	2,582	25.7	81.7
Elm, Slippery	1	2.9	1	1.6	350	3.5	8.0
Hickory, Shagbark	3	8.8	3	4.9	365	3.6	17.3
Ironwood	9	26.5	15	24.6	391	3.9	55.0
Maple, Sugar	3	8.8	5	8.2	508	5.1	22.1
Oak, Red	5	14.7	10	16.4	3,657	36.4	67.5
Oak, White	4	11.8	9	14.8	2,195	21.8	48.4
Totals	34	100.0	61	100.0	10,048	100.0	300.0
Saplings	# Quads	F.	# Saplings	Den. %	Seedlings	# Quad.	F.
Cherry, Black	1	7	1	.6	Basswood	7	46
Hickory, Shagbark	1	7	1	.6	Cherry, Black	4	27
Ironwood	14	93	152	97.4	Elm, Slippery	6	40
Maple, Sugar	1	7	1	.6	Hickory, Shagbark	1	7
Ash White	1	7	1	.6	Ironwood	13	87
			156	99.8	Maple, Sugar	10	67
					Ash White	11	73
Shrubs	# Quad.	F.	Shrubs	# Quad.	F.		
Choke Cherry	6	40					
Gooseberry	13	87					
Grey Dogwood	1	7					
Raspberry	5	33					
Green Briar	1	7					
Honeysuckle	2	13					
Nannyberry	1	7					

Environment

Light in - 5,280; Light out - 8,100 - 65%

Relative Humidity - 50% % canopy - 76

Air Temperature - 84.2

Soil Temperature - 57.2

pH A₁ - 6.0; A₂ - 5.5

Depth A₀ - 0.5; A₁ - 2.0; A₂ - 5.0