



# LIBRARIES

UNIVERSITY OF WISCONSIN-MADISON

## Site 2031: Rosecrans, Manitowoc County. 1952-06-20

[s.l.]: [s.n.], 1952-06-20

<https://digital.library.wisc.edu/1711.dl/7FMJCACPHQ2WO84>

This material may be protected by copyright law (Title 17, US Code).

For information on re-use see:

<http://digital.library.wisc.edu/1711.dl/Copyright>

The libraries provide public access to a wide range of material, including online exhibits, digitized collections, archival finding aids, our catalog, online articles, and a growing range of materials in many media.

When possible, we provide rights information in catalog records, finding aids, and other metadata that accompanies collections or items. However, it is always the user's obligation to evaluate copyright and rights issues in light of their own use.

STAND RECORD

FORESTS

Stand No. 2031

Name: ROSECRANS  
County: MANITOWOC  
Date: 6-20-52  
Size of Stand: 30A  
Forest Type: MAPLE-BEECH-HEMLOCK  
Topography: RAUINES

Locality:  
T: 21N R: 22E Sec: NW:NE 32  
Observers: WARD, WARE, BRAY  
Size of Area Sampled:  
Soil Type:  
Slope: Directions

Condition of Stand: GOOD  
OLD CUTTING + SOME NEW CUTTING - CANOPY PROBABLY  
NEVER OPEN

Open Grown Trees:

% Canopy: 85-90

Stumps:

- |    |    |    |     |
|----|----|----|-----|
| 1. | 4. | 7. | 10. |
| 2. | 5. | 8. | 11. |
| 3. | 6. | 9. | 12. |

Soil Data:

	pH	N	P	K	Ca	Mg	Org. Mat.	Colloids	W.H.C.
A <sub>0</sub>									
A <sub>1</sub>									
A <sub>2</sub>									
B									

DEPTH

CHARACTERISTICS (Color, Texture, Structure, etc.)

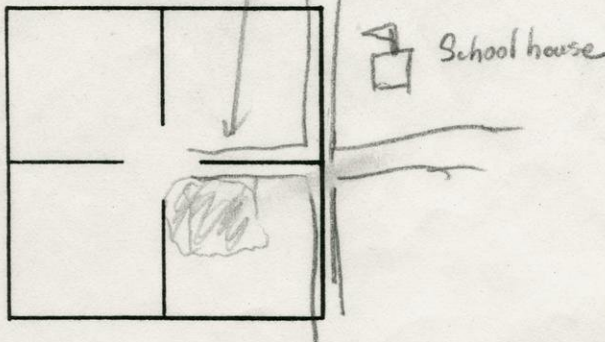
A <sub>0</sub>	1/4								
A <sub>1</sub>									
A <sub>2</sub>									
B									

Handwritten notes: A<sub>1</sub> - DK brown - black; A<sub>2</sub> - DK - ash grey

Parent Material:

Pasture Road

Map:





CT-2416

2031 N

26  
8 00  
1 35  
70  
75  
2 30  
1 60  
60  
3 50  
5 20  
3 50  
15  
45  
50  
2 10  
90  
90  
20  
5 80  
5 80  
2 40  
6 60  
7 20

SUG. AMBLE 60 76 \*

30  
35  
40  
CARGA ORD. 1 05 \*

70  
2 50  
2 00  
2 40  
2 40  
1 20  
40  
18  
2 70  
40  
1 10  
1 20  
2 10  
3 60  
60  
4 10  
1 40  
40  
2 80  
1 55  
2 60  
1 90  
25  
2 80

FAGUS GRAND. 4 1 28 \*

1 70  
FRAG. AMBL. 1 70 \*

1 10  
20  
55  
16

Ostrea Virg. 2 01 \*

70  
Pinnus sicut 70 \*

16  
THWA OCC. 16 \*

15  
16  
BASSWOOD 31 \*

75  
2 20  
40  
60  
30  
20  
22  
65  
25  
25  
50  
95

1 10  
35  
LUNA LAMBD. 8 72 \*

40  
16  
60  
50  
40

16  
35  
Mum. AMBL. ~~2 27~~ \*

292

60 7650.80  
1 05 0.88  
4 1 28 34.57  
1 70 1.42  
2 01 1.68  
70 0.58  
16 0.13  
31 0.26  
8 72 7.29

292 → ~~2 27~~ 2.44

Total P.A. → ~~1 19 26~~ \*

11961 99.99

S. MAPLE

# pts  $\frac{20}{40} = 50.00$

# trees  $\frac{23}{80} = 28.75$

% ED<sub>0</sub> = 50.80

% EF =  $\frac{27.78}{107.33}$

CARYA CORD

# pts  $\frac{3}{40} = 7.50$

# trees  $\frac{3}{80} = 3.75$

% ED<sub>0</sub> = 0.88

% EF =  $\frac{4.17}{8.80}$

FAGUS GRAND

# pts  $\frac{22}{40} = 55.00$

# trees  $\frac{24}{80} = 30.00$

% ED<sub>0</sub> = 34.51

% EF =  $\frac{30.26}{95.07}$

FRAX. AMER

# pts  $\frac{1}{40} = 2.50$

# trees  $\frac{1}{80} = 1.25$

% ED<sub>0</sub> = 1.42

% EF =  $\frac{1.39}{4.06}$

OSTREA VIRG.

# pts  $\frac{4}{40} = 10.00$

# trees  $\frac{4}{80} = 5.00$

% ED<sub>0</sub> = 1.66

% EF =  $\frac{5.55}{12.23}$

PRUNUS SEROT

# pts  $\frac{1}{40} = 2.50$

# trees  $\frac{1}{80} = 1.25$

% ED<sub>0</sub> = 0.58

% EF =  $\frac{1.39}{3.22}$

THUYA OCCID

# pts  $\frac{1}{40} = 2.50$

# trees  $\frac{1}{80} = 1.25$

% ED<sub>0</sub> = 0.13

% EF =  $\frac{1.39}{2.77}$

TILIA AMER.

# pts  $\frac{2}{40} = 5.00$

# trees  $\frac{2}{80} = 2.50$

% ED<sub>0</sub> = 0.26

% EF =  $\frac{2.78}{5.54}$

TSUGA CANAD

# pts  $\frac{12}{40} = 30.00$

# trees  $\frac{14}{80} = 17.50$

% ED<sub>0</sub> = 7.29

% EF =  $\frac{16.67}{41.46}$

ULMUS AMER

# pts  $\frac{6}{40} = 15.00$

# trees  $\frac{7}{80} = 8.75$

% ED<sub>0</sub> = 2.44

% EF =  $\frac{8.33}{19.52}$

**Σ EF = 180.00**

**Σ (% ED<sub>0</sub>) = 99.99**

**Σ (% D) = 100.00**

**Σ (% EF) = 100.01**

S. MAPLE

107.33 x 10 = 1073

CARYA CORD

8.80 x 8 = 70

FAGUS GRAND

95.07 x 10 = 951

FRAX. AMER

4.06 x 6 = 24

OSTREA VIRG

12.23 x 9 = 110

PRUNUS SEROT

3.22 x 4 = 13

THUYA OCCID

2.77 x 7 = 19

ULMUS AMER

19.52 x 8 = 156

TILIA

5.54 x 8 = 44

TSUGA

41.5 x 8 = 332

**2792**



①

Data Form No. 59

Plant Ecology Research

Univ. of Wisconsin

POINT RECORD TREES

BEECH WOODS

Stand No.

STATION NO.	1	2	3	4	5	6	7	8	9	10
Abies balsam										
Acer rubrum										
A. sacchar.	26	4/800	3/135	3/10	4	4	4/75	4/230	4/160	60
A. spicatum										
Betula lut.										
B. papyrif										
Carya cord	90		35							
C. ovata										
Fagus grand		70		250			200			
Fraxinus am							170			
F. nigra										
Ostrya virg						110				
Pinus strobus										
Populus bals										
P. grand										
P. trem										
Prunus pen.										
Prunus serot		✓		70						✓
Quercus alba										
Q. rubra										
Thuja occ										
Tilia amer					15					
Tsuga can						75		220		
Ulmus amer										40
U. rubra										40
Juniper										
Distance	6	12	19	25	11 1/2	13 1/2	15	13	15 1/2	29

1000 - Sugar Maple



POINT RECORD TREES

BEECH WOODS

Stand No. 2031

STATION NO.	1	2	3	4	5	6	7	8	9	10
Abies balsam										
Acer rubrum										
A. sacchar.	350/520 ✓	350/15 ✓	45 ✓	50 ✓	3 ✓		3 ✓	210 ✓	90 ✓	✓
A. spicatum										
Betula lut.										
B. papyrif										
Carya cord	✓									
C. ovata										
Fagus grand	✓	2/240 ✓	3/240 ✓	2 ✓	✓	120/40 ✓		18 ✓		
Fraxinus am										
F. nigra										
Ostrya virg	1 ✓			1 ✓			20 ✓	55 ✓		
Pinus strobus										
Populus bals										
P. grand										
P. trem										
Prunus pen.										
Prunus serot							✓			✓
Quercus alba										
Q. rubra										
Thuja occ										
Tilia amer										
Tsuga can					40/60 ✓		430 ✓	20 ✓	22 ✓	
Ulmus amer										
U. rubra										
Distance	19 1/2	25	16	23 1/2	18 1/2	16	14 1/2	10	19	12



POINT RECORD TREES

BEECH WOODS

Stand No. 2031

STATION NO.	1	2	3	4	5	6	7	8	9	10
Abies balsam										
Acer rubrum										
A. sacchar.	70		20	580		580	240			660
A. spicatum										
Betula lut.										
B. papyrif										
Carya cord										
C. ovata										
Fagus grand	270		40		110		220	210	260	60
Fraxinus am										
F. nigra										
Ostrya virg										
Pinus strobus										
Populus bals										
P. grand										
P. trem										
Prunus pen.										
Prunus serot										
Quercus alba										
Q. rubra										
Thuja occ										
Tilia amer									16	
Tsuga can		6 1/2			25	150		95		
Ulmus amer				16						
U. rubra										
Distance	14	25	17	25	13 1/2	11	17 1/2	38 1/2	26 1/2	17



4

POINT RECORD TREES

BEECH WOODS

Stand No. 2031

STATION NO.	1	2	3	4	5	6	7	8	9	10
Abies balsam										
Acer rubrum										
A. sacchar.		2	4		2	3	2			720 L
A. spicatum										
Betula lut.										
B. papyrif										
Carya cord			40							L
C. ovata										
Fagus grand	410 3		140	40	2	280	150 720	190	425	L 280 L
Fraxinus am										
F. nigra										
Ostrya virg	L	16			L					L
Pinus strobus										
Populus bals										
P. grand										
P. trem										
Prunus pen.										
Prunus serot										
Quercus alba										
Q. rubra										
Thuja occ								16		
Tilia amer										
Tsuga can		110							35	
Ulmus amer	35			60	50	216				
U. rubra										
Distance	12	15	20	16	26	29	33	25 1/2	17 1/2	13 1/2

89

2

29  
24

7460



6/20/52

Presence or Frequency  
(Common species only)

BEECH WOODS

Stand No. 2031  
Quadrat No. P

W. Borch (OK)

- Actaea pachypoda
- Actaea rubra ✓
- Adiantum pedatum ✓
- Allium triococum
- Amelanchier sp.
- Anemone quinquefolia
- Aquilegia canadensis
- Arabis canadensis
- Aralia nudicaulis
- Aralia racemosa
- Arisaema atrorubens ✓
- Aster macrophyllus ✓
- Aster sagittifolius
- Aster shortii
- Athyrium filix-femina
- Botrychium virginianum
- Brachyelytrum erectum
- Campanula americana
- Carex albursina
- Carex pennsylvanica
- Carpinus caroliniana
- Caulophyllum thalictroides ←
- Celastrus scandens
- Circaea quadrisulcata ←
- Claytonia virginiana
- Clintonia borealis
- Conoposis americ.
- Corallorhiza maculata
- Cornus alternifolia
- Cornus femina
- Cornus rugosa
- Corylus cornuta
- Cryptotaenia canadensis
- Cypripedium pubescens
- Cystopteris fragilis
- Diervilla lonicera
- Dioscorea villosa
- Dirca palustris
- Dryopteris disjuncta
- Dryopteris spinulosa ✓

- Epifagus virginiana
- Fragaria virginiana
- Galium aparine
- Galium circaezans ✓
- Galium concinnum
- Galium lanceolatum
- Galium triflorum
- Geranium maculatum
- Geum canadense
- Hamamelis virginiana
- Hepatica acutiloba ✓
- Hepatica americana
- Hydrophyllum virginianum ✓
- Hystrix patula
- Impatiens capensis
- Laportea canadensis ←
- Lonicera dioica
- Lonicera oblongifolia
- Lonicera prolifera
- Lycopodium lucidulum
- Lycopodium obscurum
- Maianthemum canadense
- Menispermum canadensis
- Mitchella repens
- Mitella diphylla
- Monotropa uniflora
- Oncoclea sensibilis
- Oryzopsis aspesifolia
- Osmorhiza claytoni ←
- Osmunda claytoniana
- Ostrya virginiana
- Parietaria pennsylvanica
- Parthenocissus inserta
- Phryma leptostachya
- Pilea pumila
- Podophyllum peltatum
- Polygonatum caniculatum ✓
- Polygonatum pubescens ✓
- Potentilla simplex
- Prepanthes alba

- Prunus virginiana
- Pteridium aquilinum
- Pyrola elliptica
- Ranunculus abortivus
- Ranunculus recurvatus
- Rhus radicans
- Ribes americanum ✓
- Rosa sp.
- Rubus-raspberry
- Sambucus canadensis ←
- Sambucus pubens
- Sanguinaria canadensis ←
- Sanicula gregaria
- Sanicula marilandica
- Smilacina racemosa ←
- Smilax ecirrhata ✓
- Smilax herbacea
- Solidago altissima
- Solidago flexicaulis
- Solidago ulmifolia
- Streptopus roseus ✓
- Symplocarpus foet.
- Taxus canadensis
- Thalictrum dioicum
- Trientalis borealis
- Trillium flexipes
- Trillium grandiflorum ←
- Triosteum perfoliatum
- Uvularia grandiflora ✓
- Viburnum acerifolium
- Viburnum rafinesquianum
- Vicia americana
- Viola canadensis
- Viola cucullata ✓
- Viola pallens
- Viola pennsylvanica
- Viola pubescens ✓
- Vitis aestivalis
- Zanthoxylum americanum

Additional Species:

- Carex comoluto
- C. pedunculata
- C. plantaginifolia
- Amphicarpa bracteata

Ribes cypripedii ✓



Presence List  
(Uncommon species)

## BEECH WOODS

Stand No. 2031  
P

Agrimonia gryposepala	Glecoma hederacea	Polygala pauciflora
Ajuga genevensis	Habenaria bracteata	Polygala senega
Anemone canadensis	Hackelia virginiana	Polygonum virginianum
Anemone cylindrica	Helianthus strumosus	Prunella vulgaris
Anemone virginianum	Heracleum canadensis	Prunus virginiana
Antennaria sp.	Heracleum maximum	Pteretis pensylvanica
Aplectrum hyemale	Heuchera richardsonii	Pyrola secunda
Apocynum androsaemifolium	Hydrastis canadensis	Pyrus americana
Arabis perstellata	Ilex verticillata	Ranunculus septentrionalis
Arenaria lateriflora	Impatiens capensis	Rubus-dewberry
Asarum canadense	Iris lacustris	Rubus-blackberry
Asclepias exaltata	Isopyrum biternatum	Rubus parviflorus
Aster prenanthoides	Jeffersonia diphylla	Shepherdia canadensis
Astragalus neglectus	Lactuca biennis	Smilacina stellata
Bromus purgans	Lactuca canadensis	Smilax tamnoides
Calypso bulbosa	Lathyrus ochroleucus	Solanum nigrum
Capsella bursa-pastoris	Lathyrus venosus	Staphylea trifolia
Chimaphila umbellata	Lilium philadelphicum	Streptopus amplexicaulis
Chrysosplenium americanum	Linnaea borealis	Symphoricarpus albus
Coptis groenlandica	Lithospermum latifolium	Taenidia integerr.
Corallorhiza striata	Lobelia siphilitica	Thalictrum dasycarpum
Corallorhiza trifida	Lonicera hirsulta	Trifolium repens
Corylus americana	Lonicera tatarica	Trillium cernuum
Cynoglossum boreale	Luzula acuminata	Trillium nivale
Cystopteris bulbif.	Lycopodium annotinum	Viburnum cassinoides
Dentaria diphylla	Lycopodium clavatum	Viburnum lentago
Desmodium glutinosum	Lycopodium complanatum	Viburnum trilobum
Dicentra canadensis	Lysimachia ciliata	Viola conspersa
Dicentra cucullaria	Medeola virginiana	Viola eriocarpa
Equisetum arvense	Milium effusum	Viola renifolia
Erigenia bulbosa	Mitella nuda	Viola rostrata
Erigeron pulchellus	Monarda fistulosa	Vitis sp.
Erythronium albidum	Moneses uniflora	Zygadenus elegans
Erythronium americanum	Monotropa uniflora	Zygadenus glauca
Eupatorium purpureum	Osmorhiza longistylis	
Eupatorium rugosum	Oxalis montana	
Festuca obtusa	Panax quinquefolia	
Geranium robertianum	Panax trifolium	
Gerardia pedicularia	Pedicularis lanceolata	
Geum laciniatum	Phlox divaricata	
	Poa sp.	

Additional species:



Presence or Frequency  
(Common species only)

## BEECH WOODS

Stand No. 203/  
Quadrat No. 1

Actaea pachypoda  
Actaea rubra  
Adiantum pedatum  
Allium triococcum  
Amelanchier sp.  
Anemone quinquefolia  
Aquilegia canadensis  
Arabis canadensis  
Aralia nudicaulis  
Aralia racemosa  
Arisaema atrorubens  
Aster macrophyllus  
Aster sagittifolius  
Aster shortii  
Athyrium filix-femina  
Botrychium virginianum  
Brachyelytrum erectum  
Campanula americana  
Carex albursina  
Carex pennsylvanica  
Carpinus caroliniana  
Caulophyllum thalictroides  
Celastrus scandens  
Circaea quadrisulcata  
Claytonia virginiana  
Clintonia borealis  
Conopholis americ.  
Coralorrhiza maculata  
Cornus alternifolia  
Cornus femina  
Cornus rugosa  
Corylus cornuta  
Cryptotaenia canadensis  
Cypripedium pubescens  
Cystopteris fragilis  
Diervilla lonicera  
Dioscorea villosa  
Dirca palustris  
Dryopteris disjuncta  
Dryopteris spinulosa

Epifagus virginiana  
Fragaria virginiana  
Galium aparine  
Galium circaeazans  
Galium concinnum  
Galium lanceolatum  
Galium triflorum  
Geranium maculatum  
Geum canadense  
Hamamelis virginiana  
Hepatica acutiloba  
Hepatica americana  
Hydrophyllum virginianum  
Hystrix patula  
Impatiens capensis  
Laportea canadensis ✓  
Lonicera dioica  
Lonicera oblongifolia  
Lonicera prolifera  
Lycopodium lucidulum  
Lycopodium obscurum  
Maianthemum canadense  
Menispermum canadensis  
Mitchella repens  
Mitella diphylla  
Monotropa uniflora  
Onoclea sensibilis  
Oryzopsis aspesifolia  
Osmorhiza claytoni ✓  
Osmunda claytoniana  
Ostrya virginiana  
Parietaria pennsylvanica  
Parthenocissus inserta  
Phryma leptostachya  
Pilea pumila  
Podophyllum peltatum  
Polygonatum caniculatum  
Polygonatum pubescens  
Potentilla simplex  
Prenanthes alba

Prunus virginiana  
Pteridium aquilinum  
Pyrola elliptica  
Ranunculus abortivus  
Ranunculus recurvatus  
Rhus radicans  
Ribes americanum  
Rosa sp.  
Rubus-raspberry  
Sambucus canadensis  
Sambucus pubens  
Sanguinaria canadensis  
Sanicula gregaria  
Sanicula marilandica  
Smilacina racemosa  
Smilax ecirrhata  
Smilax herbacea  
Solidago altissima  
Solidago flexicaulis  
Solidago ulmifolia  
Streptopus roseus  
Symplocarpus foet.  
Taxus canadensis  
Thalictrum dioicum  
Trientalis borealis  
Trillium flexipes  
Trillium grandiflorum ✓  
Triosteum perfoliatum  
Uvularia grandiflora  
Viburnum acerifolium  
Viburnum rafinesquianum  
Vicia americana  
Viola canadensis  
Viola cucullata ✓  
Viola pallens  
Viola pennsylvanica  
Viola pubescens  
Vitis aestivalis  
Zanthoxylum americanum

Additional Species:



Presence or Frequency  
(Common species only)

## BEECH WOODS

Stand No. 203/  
Quadrat No. 2

Actaea pachypoda	Epifagus virginiana	Prunus virginiana
Actaea rubra	Fragaria virginiana	Pteridium aquilinum
Adiantum pedatum	Galium aparine	Pyrola elliptica
Allium triococcum	Galium circaezans	Ranunculus abortivus
Amelanchier sp.	Galium concinnum	Ranunculus recurvatus
Anemone quinquefolia	Galium lanceolatum	Rhus radicans
Aquilegia canadensis	Galium triflorum	Ribes americanum
Arabis canadensis	Geranium maculatum	Rosa sp.
Aralia nudicaulis	Geum canadense	Rubus-raspberry
Aralia racemosa	Hamamelis virginiana	Sambucus canadensis
Arisaema atrorubens	Hepatica acutiloba	Sambucus pubens
Aster macrophyllus	Hepatica americana	Sanguinaria canadensis
Aster sagittifolius	Hydrophyllum virginianum	Sanicula gregaria
Aster shortii	Hystrix patula	Sanicula marilandica
Athyrium filix-femina	Impatiens capensis	Smilacina racemosa
Botrychium virginianum	Laportea canadensis	Smilax ecirrhata
Brachyelytrum erectum	Lonicera dioica	Smilax herbacea
Campanula americana	Lonicera oblongifolia	Solidago altissima
Carex albursina	Lonicera prolifera	Solidago flexicaulis
Carex pennsylvanica	Lycopodium lucidulum	Solidago ulmifolia
Carpinus caroliniana	Lycopodium obscurum	Streptopus roseus
Caulophyllum thalictroides	Maianthemum canadense	Symplocarpus foet.
Celastrus scandens	Menispermum canadensis	Taxus canadensis
Circaea quadrisulcata	Mitchella repens	Thalictrum dioicum
Claytonia virginiana	Mitella diphylla	Trientalis borealis
Clintonia borealis	Monotropa uniflora	Trillium flexipes
Conopholis americ.	Oncoclea sensibilis	Trillium grandiflorum
Coralorrhiza maculata	Oryzopsis aspesifolia	Triosteum perfoliatum
Cornus alternifolia	Osmorhiza claytoni ✓	Uvularia grandiflora
Cornus femina	Osmunda claytoniana	Viburnum acerifolium
Cornus rugosa	Ostrya virginiana	Viburnum rafinesquianum
Corylus cornuta	Parietaria pennsylvanica	Vicia americana
Cryptotaenia canadensis	Parthenocissus inserta	Viola canadensis
Cypripedium pubescens	Phryma leptostachya	Viola cucullata
Cystopteris fragilis	Pilea pumila	Viola pallens
Diervilla lonicera	Podophyllum peltatum	Viola pennsylvanica
Dioscorea villosa	Polygonatum caniculatum	Viola pubescens ✓
Dirca palustris	Polygonatum pubescens	Vitis aestivalis
Dryopteris disjuncta	Potentilla simplex	Zanthoxylum americanum
Dryopteris spinulosa	Prepanthes alba	

Additional Species:

Carex = Carex ✓ = C. pedunculata  
Carex sp. with dead fruit stalks ✓



Presence or Frequency  
(Common species only)

## BEECH WOODS

Stand No. 2031  
Quadrat No. 3

<i>Actaea pachypoda</i>	<i>Epifagus virginiana</i>	<i>Prunus virginiana</i>
<i>Actaea rubra</i>	<i>Fragaria virginiana</i>	<i>Pteridium aquilinum</i>
<i>Adiantum pedatum</i>	<i>Galium aparine</i>	<i>Pyrola elliptica</i>
<i>Allium triococum</i>	<i>Galium circaezans</i>	<i>Ranunculus abortivus</i>
<i>Amelanchier</i> sp.	<i>Galium concinnum</i>	<i>Ranunculus recurvatus</i>
<i>Anemone quinquefolia</i>	<i>Galium lanceolatum</i>	<i>Rhus radicans</i>
<i>Aquilegia canadensis</i>	<i>Galium triflorum</i>	<i>Ribes americanum</i>
<i>Arabis canadensis</i>	<i>Geranium maculatum</i>	<i>Rosa</i> sp.
<i>Aralia nudicaulis</i>	<i>Geum canadense</i>	<i>Rubus-raspberry</i>
<i>Aralia racemosa</i>	<i>Hamamelis virginiana</i>	<i>Sambucus canadensis</i>
<i>Arisaema atrorubens</i>	<i>Hepatica acutiloba</i> ✓	<i>Sambucus pubens</i>
<i>Aster macrophyllus</i>	<i>Hepatica americana</i>	<i>Sanguinaria canadensis</i> ✓
<i>Aster sagittifolius</i>	<i>Hydrophyllum virginianum</i>	<i>Sanicula gregaria</i>
<i>Aster shortii</i>	<i>Hystrix patula</i>	<i>Sanicula marilandica</i>
<i>Athyrium filix-femina</i>	<i>Impatiens capensis</i>	<i>Smilacina racemosa</i>
<i>Botrychium virginianum</i>	<i>Laportea canadensis</i>	<i>Smilax ecirrhata</i>
<i>Brachyelytrum erectum</i>	<i>Lonicera dioica</i>	<i>Smilax herbacea</i>
<i>Campanula americana</i>	<i>Lonicera oblongifolia</i>	<i>Solidago altissima</i>
<i>Carex albursina</i>	<i>Lonicera prolifera</i>	<i>Solidago flexicaulis</i>
<i>Carex pennsylvanica</i>	<i>Lycopodium lucidulum</i>	<i>Solidago ulmifolia</i>
<i>Carpinus caroliniana</i>	<i>Lycopodium obscurum</i>	<i>Streptopus roseus</i>
<i>Caulophyllum thalictroides</i>	<i>Maianthemum canadense</i>	<i>Symplocarpus foet.</i>
<i>Celastrus scandens</i>	<i>Menispermum canadensis</i>	<i>Taxus canadensis</i>
<i>Circaea quadrisulcata</i>	<i>Mitchella repens</i>	<i>Thalictrum dioicum</i>
<i>Claytonia virginiana</i>	<i>Mitella diphylla</i>	<i>Trientalis borealis</i>
<i>Clintonia borealis</i>	<i>Monotropa uniflora</i>	<i>Trillium flexipes</i>
<i>Conopholis americ.</i>	<i>Oncoclea sensibilis</i>	<i>Trillium grandiflorum</i>
<i>Corallorhiza maculata</i>	<i>Oryzopsis aspesifolia</i>	<i>Triosteum perfoliatum</i>
<i>Cornus alternifolia</i>	<i>Osmorhiza claytoni</i>	<i>Uvularia grandiflora</i>
<i>Cornus femina</i>	<i>Osmunda claytoniana</i>	<i>Viburnum acerifolium</i>
<i>Cornus rugosa</i>	<i>Ostrya virginiana</i>	<i>Viburnum rafinesquianum</i>
<i>Corylus cornuta</i>	<i>Parietaria pennsylvanica</i>	<i>Vicia americana</i>
<i>Cryptotaenia canadensis</i>	<i>Parthenocissus inserta</i>	<i>Viola canadensis</i>
<i>Cypripedium pubescens</i>	<i>Phryma leptostachya</i>	<i>Viola cucullata</i> ✓
<i>Cystopteris fragilis</i>	<i>Pilea pumila</i>	<i>Viola pallens</i>
<i>Diervilla lonicera</i>	<i>Podophyllum peltatum</i>	<i>Viola pennsylvanica</i>
<i>Dioscorea villosa</i>	<i>Polygonatum caniculatum</i>	<i>Viola pubescens</i> ✓
<i>Dirca palustris</i>	<i>Polygonatum pubescens</i> ✓	<i>Vitis aestivalis</i>
<i>Dryopteris disjuncta</i>	<i>Potentilla simplex</i>	<i>Zanthoxylum americanum</i>
<i>Dryopteris spinulosa</i>	<i>Prenanthes alba</i>	

Additional Species:

*Carex* ✓ = *C. pedunculata*



Presence or Frequency  
(Common species only)

## BEECH WOODS

Stand No. 2031  
Quadrat No. 4

Actaea pachypoda	Epifagus virginiana	Prunus virginiana
Actaea rubra	Fragaria virginiana	Pteridium aquilinum
Adiantum pedatum	Galium aparine	Pyrola elliptica
Allium triococum	Galium circaeans	Ranunculus abortivus
Amelanchier sp.	Galium concinnum	Ranunculus recurvatus
Anemone quinquefolia	Galium lanceolatum	Rhus radicans
Aquilegia canadensis	Galium triflorum	Ribes americanum
Arabis canadensis	Geranium maculatum	Rosa sp.
Aralia nudicaulis	Geum canadense	Rubus-raspberry
Aralia racemosa	Hamamelis virginiana	Sambucus canadensis
Arisaema atrorubens ✓	Hepatica acutiloba ✓	Sambucus pubens
Aster macrophyllus	Hepatica americana	Sanguinaria canadensis ✓
Aster sagittifolius	Hydrophyllum virginianum	Sanicula gregaria
Aster shortii	Hystrix patula	Sanicula marilandica
Athyrium filix-femina	Impatiens capensis	Smilacina racemosa
Botrychium virginianum	Laportea canadensis	Smilax ecirrhata
Brachyelytrum erectum	Lonicera dioica	Smilax herbacea
Campanula americana	Lonicera oblongifolia	Solidago altissima
Carex albursina	Lonicera prolifera	Solidago flexicaulis
Carex pennsylvanica	Lycopodium lucidulum	Solidago ulmifolia
Carpinus caroliniana	Lycopodium obscurum	Streptopus roseus
Caulophyllum thalictroides ✓	Maianthemum canadense	Symplocarpus foet.
Celastrus scandens	Menispermum canadensis	Taxus canadensis
Circaea quadrisulcata	Mitchella repens	Thalictrum dioicum
Claytonia virginiana	Mitella diphylla	Trientalis borealis
Clintonia borealis	Monotropa uniflora	Trillium flexipes
Conopholis americ.	Oncoclea sensibilis	Trillium grandiflorum
Corallorhiza maculata	Oryzopsis aspesifolia	Triosteum perfoliatum
Cornus alternifolia	Osmorhiza claytoni	Uvularia grandiflora
Cornus femina	Osmunda claytoniana	Viburnum acerifolium
Cornus rugosa	Ostrya virginiana	Viburnum rafinesquianum
Corylus cornuta	Parietaria pennsylvanica	Vicia americana
Cryptotaenia canadensis	Parthenocissus inserta	Viola canadensis
Cypripedium pubescens	Phryma leptostachya	Viola cucullata
Cystopteris fragilis	Pilea pumila	Viola pallens
Diervilla lonicera	Podophyllum peltatum	Viola pennsylvanica
Dioscorea villosa	Polygonatum caniculatum	Viola pubescens ✓
Dirca palustris	Polygonatum pubescens	Vitis aestivalis
Dryopteris disjuncta	Potentilla simplex	Zanthoxylum americanum
Dryopteris spinulosa	Prepanthes alba	

Additional Species:

Carex 2 = C. pedunculata  
Carex complanata



Presence or Frequency  
(Common species only)

## BEECH WOODS

Stand No. 2031  
Quadrat No. 5

Actaea pachypoda	Epifagus virginiana	Prunus virginiana
Actaea rubra	Fragaria virginiana	Pteridium aquilinum
Adiantum pedatum	Galium aparine	Pyrola elliptica
Allium triococcum	Galium circaezans	Ranunculus abortivus
Amelanchier sp.	Galium concinnum	Ranunculus recurvatus
Anemone quinquefolia	Galium lanceolatum	Rhus radicans
Aquilegia canadensis	Galium triflorum	Ribes americanum
Arabis canadensis	Geranium maculatum	Rosa sp.
Aralia nudicaulis	Geum canadense	Rubus-raspberry
Aralia racemosa	Hamamelis virginiana	Sambucus canadensis
Arisaema atrorubens	Hepatica acutiloba	Sambucus pubens
Aster macrophyllus	Hepatica americana	Sanguinaria canadensis
Aster sagittifolius	Hydrophyllum virginianum	Sanicula gregaria
Aster shortii	Hystrix patula	Sanicula marilandica
Athyrium filix-femina	Impatiens capensis	Smilacina racemosa
Botrychium virginianum	Laportea canadensis	Smilax ecirrhata
Brachyelytrum erectum	Lonicera dioica	Smilax herbacea
Campanula americana	Lonicera oblongifolia	Solidago altissima
Carex albursina	Lonicera prolifera	Solidago flexicaulis
Carex pennsylvanica	Lycopodium lucidulum	Solidago ulmifolia
Carpinus caroliniana	Lycopodium obscurum	Streptopus roseus
Caulophyllum thalictroides	Maianthemum canadense	Symplocarpus foet.
Celastrus scandens	Menispermum canadensis	Taxus canadensis
Circaea quadrisulcata	Mitchella repens	Thalictrum dioicum
Claytonia virginiana	Mitella diphylla	Trientalis borealis
Clintonia borealis	Monotropa uniflora	Trillium flexipes
Conopholis americ.	Oncoclea sensibilis	Trillium grandiflorum
Corallorhiza maculata	Oryzopsis aspesifolia	Triosteum perfoliatum
Cornus alternifolia	Osmorhiza claytoni ✓	Uvularia grandiflora ✓
Cornus femina	Osmunda claytoniana	Viburnum acerifolium
Cornus rugosa	Ostrya virginiana	Viburnum rafinesquianum
Corylus cornuta	Parietaria pennsylvanica	Vicia americana
Cryptotaenia canadensis	Parthenocissus inserta	Viola canadensis
Cypripedium pubescens	Phryma leptostachya	Viola cucullata
Cystopteris fragilis	Pilea pumila	Viola pallens
Diervilla lonicera	Podophyllum peltatum	Viola pennsylvanica
Dioscorea villosa	Polygonatum caniculatum	Viola pubescens ✓
Dirca palustris	Polygonatum pubescens ✓	Vitis aestivalis
Dryopteris disjuncta	Potentilla simplex	Zanthoxylum americanum
Dryopteris spinulosa	Prenanthes alba	

Additional Species:

*Amphicarpus bracteatus*



Presence or Frequency  
(Common species only)

## BEECH WOODS

Stand No. 2031  
Quadrat No. 6

<i>Actaea pachypoda</i>	<i>Epifagus virginiana</i>	<i>Prunus virginiana</i>
<i>Actaea rubra</i> ✓	<i>Fragaria virginiana</i>	<i>Pteridium aquilinum</i>
<i>Adiantum pedatum</i>	<i>Galium aparine</i>	<i>Pyrola elliptica</i>
<i>Allium triococum</i>	<i>Galium circaezans</i>	<i>Ranunculus abortivus</i>
<i>Amelanchier</i> sp.	<i>Galium concinnum</i>	<i>Ranunculus recurvatus</i>
<i>Anemone quinquefolia</i>	<i>Galium lanceolatum</i>	<i>Rhus radicans</i>
<i>Aquilegia canadensis</i>	<i>Galium triflorum</i>	<i>Ribes americanum</i>
<i>Arabis canadensis</i>	<i>Geranium maculatum</i>	<i>Rosa</i> sp.
<i>Aralia nudicaulis</i>	<i>Geum canadense</i>	<i>Rubus-raspberry</i>
<i>Aralia racemosa</i>	<i>Hamamelis virginiana</i>	<i>Sambucus canadensis</i>
<i>Arisaema atrorubens</i>	<i>Hepatica acutiloba</i>	<i>Sambucus pubens</i>
<i>Aster macrophyllus</i>	<i>Hepatica americana</i>	<i>Sanguinaria canadensis</i>
<i>Aster sagittifolius</i>	<i>Hydrophyllum virginianum</i>	<i>Sanicula gregaria</i>
<i>Aster shortii</i>	<i>Hystrix patula</i>	<i>Sanicula marilandica</i>
<i>Athyrium filix-femina</i>	<i>Impatiens capensis</i>	<i>Smilacina racemosa</i>
<i>Botrychium virginianum</i>	<i>Laportea canadensis</i>	<i>Smilax ecirrhata</i>
<i>Brachyelytrum erectum</i>	<i>Lonicera dioica</i>	<i>Smilax herbacea</i>
<i>Campanula americana</i>	<i>Lonicera oblongifolia</i>	<i>Solidago altissima</i>
<i>Carex albursina</i>	<i>Lonicera prolifera</i>	<i>Solidago flexicaulis</i>
<i>Carex pennsylvanica</i>	<i>Lycopodium lucidulum</i>	<i>Solidago ulmifolia</i>
<i>Carpinus caroliniana</i>	<i>Lycopodium obscurum</i>	<i>Streptopus roseus</i>
<i>Caulophyllum thalictroides</i>	<i>Maianthemum canadense</i>	<i>Symplocarpus foet.</i>
<i>Celastrus scandens</i>	<i>Menispermum canadensis</i>	<i>Taxus canadensis</i>
<i>Circaea quadrisulcata</i>	<i>Mitchella repens</i>	<i>Thalictrum dioicum</i>
<i>Claytonia virginiana</i>	<i>Mitella diphylla</i>	<i>Trientalis borealis</i>
<i>Clintonia borealis</i>	<i>Monotropa uniflora</i>	<i>Trillium flexipes</i>
<i>Conopholis americ.</i>	<i>Oncoclea sensibilis</i>	<i>Trillium grandiflorum</i>
<i>Corallorhiza maculata</i>	<i>Oryzopsis aspesifolia</i>	<i>Triosteum perfoliatum</i>
<i>Cornus alternifolia</i>	<i>Osmorhiza claytoni</i>	<i>Uvularia grandiflora</i>
<i>Cornus femina</i>	<i>Osmunda claytoniana</i>	<i>Viburnum acerifolium</i>
<i>Cornus rugosa</i>	<i>Ostrya virginiana</i>	<i>Viburnum rafinesquianum</i>
<i>Corylus cornuta</i>	<i>Parietaria pennsylvanica</i>	<i>Vicia americana</i>
<i>Cryptotaenia canadensis</i>	<i>Parthenocissus inserta</i>	<i>Viola canadensis</i>
<i>Cypripedium pubescens</i>	<i>Phryma leptostachya</i>	<i>Viola cucullata</i>
<i>Cystopteris fragilis</i>	<i>Pilea pumila</i>	<i>Viola pallens</i>
<i>Diervilla lonicera</i>	<i>Podophyllum peltatum</i>	<i>Viola pennsylvanica</i>
<i>Dioscorea villosa</i>	<i>Polygonatum caniculatum</i>	<i>Viola pubescens</i>
<i>Dirca palustris</i>	<i>Polygonatum pubescens</i>	<i>Vitis aestivalis</i>
<i>Dryopteris disjuncta</i>	<i>Potentilla simplex</i>	<i>Zanthoxylum americanum</i>
<i>Dryopteris spinulosa</i>	<i>Prenanthes alba</i>	

Additional Species:



Presence or Frequency  
(Common species only)

## BEECH WOODS

Stand No. 2031  
Quadrat No. 7

<i>Actaea pachypoda</i>	<i>Epifagus virginiana</i>	<i>Prunus virginiana</i>
<i>Actaea rubra</i>	<i>Fragaria virginiana</i>	<i>Pteridium aquilinum</i>
<i>Adiantum pedatum</i>	<i>Galium aparine</i>	<i>Pyrola elliptica</i>
<i>Allium triococcum</i>	<i>Galium circaezans</i>	<i>Ranunculus abortivus</i>
<i>Amelanchier</i> sp.	<i>Galium concinnum</i>	<i>Ranunculus recurvatus</i>
<i>Anemone quinquefolia</i>	<i>Galium lanceolatum</i>	<i>Rhus radicans</i>
<i>Aquilegia canadensis</i>	<i>Galium triflorum</i>	<i>Ribes americanum</i>
<i>Arabis canadensis</i>	<i>Geranium maculatum</i>	<i>Rosa</i> sp.
<i>Aralia nudicaulis</i>	<i>Geum canadense</i>	<i>Rubus-raspberry</i>
<i>Aralia racemosa</i>	<i>Hamamelis virginiana</i>	<i>Sambucus canadensis</i>
<i>Arisaema atrorubens</i>	<i>Hepatica acutiloba</i>	<i>Sambucus pubens</i>
<i>Aster macrophyllus</i>	<i>Hepatica americana</i>	<i>Sanguinaria canadensis</i>
<i>Aster sagittifolius</i>	<i>Hydrophyllum virginianum</i>	<i>Sanicula gregaria</i>
<i>Aster shortii</i>	<i>Hystrix patula</i>	<i>Sanicula marilandica</i>
<i>Athyrium filix-femina</i>	<i>Impatiens capensis</i>	<i>Smilacina racemosa</i>
<i>Botrychium virginianum</i>	<i>Laportea canadensis</i>	<i>Smilax ecirrhata</i>
<i>Brachyelytrum erectum</i>	<i>Lonicera dioica</i>	<i>Smilax herbacea</i>
<i>Campanula americana</i>	<i>Lonicera oblongifolia</i>	<i>Solidago altissima</i>
<i>Carex albursina</i>	<i>Lonicera prolifera</i>	<i>Solidago flexicaulis</i>
<i>Carex pennsylvanica</i>	<i>Lycopodium lucidulum</i>	<i>Solidago ulmifolia</i>
<i>Carpinus caroliniana</i>	<i>Lycopodium obscurum</i>	<i>Streptopus roseus</i>
<i>Caulophyllum thalictroides</i>	<i>Maianthemum canadense</i>	<i>Symplocarpus foet.</i>
<i>Celastrus scandens</i>	<i>Menispermum canadensis</i>	<i>Taxus canadensis</i>
<i>Circaea quadrisulcata</i>	<i>Mitchella repens</i>	<i>Thalictrum dioicum</i>
<i>Claytonia virginiana</i>	<i>Mitella diphylla</i>	<i>Trientalis borealis</i>
<i>Clintonia borealis</i>	<i>Monotropa uniflora</i>	<i>Trillium flexipes</i>
<i>Conopholis americ.</i>	<i>Oncoclea sensibilis</i>	<i>Trillium grandiflorum</i>
<i>Corallorhiza maculata</i>	<i>Oryzopsis aspesifolia</i>	<i>Triosteum perfoliatum</i>
<i>Cornus alternifolia</i>	<i>Osmorhiza claytoni</i>	<i>Uvularia grandiflora</i>
<i>Cornus femina</i>	<i>Osmunda claytoniana</i>	<i>Viburnum acerifolium</i>
<i>Cornus rugosa</i>	<i>Ostrya virginiana</i>	<i>Viburnum rafinesquianum</i>
<i>Corylus cornuta</i>	<i>Parietaria pennsylvanica</i>	<i>Vicia americana</i>
<i>Cryptotaenia canadensis</i>	<i>Parthenocissus inserta</i>	<i>Viola canadensis</i>
<i>Cypripedium pubescens</i>	<i>Phryma leptostachya</i>	<i>Viola cucullata</i> ✓
<i>Cystopteris fragilis</i>	<i>Pilea pumila</i>	<i>Viola pallens</i>
<i>Diervilla lonicera</i>	<i>Podophyllum peltatum</i>	<i>Viola pennsylvanica</i>
<i>Dioscorea villosa</i>	<i>Polygonatum caniculatum</i>	<i>Viola pubescens</i>
<i>Dirca palustris</i>	<i>Polygonatum pubescens</i>	<i>Vitis aestivalis</i>
<i>Dryopteris disjuncta</i>	<i>Potentilla simplex</i>	<i>Zanthoxylum americanum</i>
<i>Dryopteris spinulosa</i>	<i>Prepanthes alba</i>	

Additional Species:



Presence or Frequency  
(Common species only)

## BEECH WOODS

Stand No. 2031  
Quadrat No. 8

Actaea pachypoda	Epifagus virginiana	Prunus virginiana
Actaea rubra	Fragaria virginiana	Pteridium aquilinum
Adiantum pedatum	Galium aparine	Pyrola elliptica
Allium triococcum	Galium circaeazans	Ranunculus abortivus
Amelanchier sp.	Galium concinnum	Ranunculus recurvatus
Anemone quinquefolia	Galium lanceolatum	Rhus radicans
Aquilegia canadensis	Galium triflorum	Ribes americanum
Arabis canadensis	Geranium maculatum	Rosa sp.
Aralia nudicaulis	Geum canadense	Rubus-raspberry
Aralia racemosa	Hamamelis virginiana	Sambucus canadensis
Arisaema atrorubens	Hepatica acutiloba	Sambucus pubens
Aster macrophyllus	Hepatica americana	Sanguinaria canadensis
Aster sagittifolius	Hydrophyllum virginianum	Sanicula gregaria
Aster shortii	Hystrix patula	Sanicula marilandica
Athyrium filix-femina	Impatiens capensis	Smilacina racemosa
Botrychium virginianum	Laportea canadensis	Smilax ecirrhata
Brachyelytrum erectum	Lonicera dioica	Smilax herbacea
Campanula americana	Lonicera oblongifolia	Solidago altissima
Carex albursina	Lonicera prolifera	Solidago flexicaulis
Carex pennsylvanica	Lycopodium lucidulum	Solidago ulmifolia
Carpinus caroliniana	Lycopodium obscurum	Streptopus roseus
Caulophyllum thalictroides	Maianthemum canadense	Symplocarpus foet.
Celastrus scandens	Menispermum canadensis	Taxus canadensis
Circaea quadrisulcata	Mitchella repens	Thalictrum dioicum
Claytonia virginiana	Mitella diphylla	Trientalis borealis
Clintonia borealis	Monotropa uniflora	Trillium flexipes
Conopholis americ.	Oncoclea sensibilis	Trillium grandiflorum ✓
Corallorhiza maculata	Oryzopsis aspesifolia	Triosteum perfoliatum
Cornus alternifolia	Osmorhiza claytoni	Uvularia grandiflora
Cornus femina	Osmunda claytoniana	Viburnum acerifolium
Cornus rugosa	Ostrya virginiana	Viburnum rafinesquianum
Corylus cornuta	Parietaria pennsylvanica	Vicia americana
Cryptotaenia canadensis	Parthenocissus inserta	Viola canadensis
Cypripedium pubescens	Phryma leptostachya	Viola cucullata
Cystopteris fragilis	Pilea pumila	Viola pallens
Diervilla lonicera	Podophyllum peltatum	Viola pennsylvanica
Dioscorea villosa	Polygonatum caniculatum	Viola pubescens
Dirca palustris	Polygonatum pubescens ✓	Vitis aestivalis
Dryopteris disjuncta	Potentilla simplex	Zanthoxylum americanum
Dryopteris spinulosa ✓	Prenanthes alba	

Additional Species:

~~Juncus (8)~~ = Dryopteris spinulosa



Presence or Frequency  
(Common species only)

## BEECH WOODS

Stand No. 2031  
Quadrat No. 9

Actaea pachypoda	Epifagus virginiana	Prunus virginiana
Actaea rubra	Fragaria virginiana	Pteridium aquilinum
Adiantum pedatum	Galium aparine	Pyrola elliptica
Allium triococcum	Galium circaeazans	Ranunculus abortivus
Amelanchier sp.	Galium concinnum	Ranunculus recurvatus
Anemone quinquefolia	Galium lanceolatum	Rhus radicans
Aquilegia canadensis	Galium triflorum	Ribes americanum
Arabis canadensis	Geranium maculatum	Rosa sp.
Aralia nudicaulis	Geum canadense	Rubus-raspberry
Aralia racemosa	Hamamelis virginiana	Sambucus canadensis ✓
Arisaema atrorubens	Hepatica acutiloba	Sambucus pubens
Aster macrophyllus	Hepatica americana	Sanguinaria canadensis ✓
Aster sagittifolius	Hydrophyllum virginianum	Sanicula gregaria
Aster shortii	Hystrix patula	Sanicula marilandica
Athyrium filix-femina	Impatiens capensis	Smilacina racemosa
Botrychium virginianum	Laportea canadensis	Smilax ecirrhata
Brachyelytrum erectum	Lonicera dioica	Smilax herbacea
Campanula americana	Lonicera oblongifolia	Solidago altissima
Carex albursina	Lonicera prolifera	Solidago flexicaulis
Carex pennsylvanica	Lycopodium lucidulum	Solidago ulmifolia
Carpinus caroliniana	Lycopodium obscurum	Streptopus roseus
Caulophyllum thalictroides	Maianthemum canadense	Symplocarpus foet.
Celastrus scandens	Menispermum canadensis	Taxus canadensis
Circaea quadrisulcata	Mitchella repens	Thalictrum dioicum
Claytonia virginiana	Mitella diphylla	Trientalis borealis
Clintonia borealis	Monotropa uniflora	Trillium flexipes
Conopholis americ.	Onoclea sensibilis	Trillium grandiflorum
Corallorhiza maculata	Oryzopsis aspesifolia	Triosteum perfoliatum
Cornus alternifolia	Osmorhiza claytoni	Uvularia grandiflora
Cornus femina	Osmunda claytoniana	Viburnum acerifolium
Cornus rugosa	Ostrya virginiana	Viburnum rafinesquianum
Corylus cornuta	Parietaria pennsylvanica	Vicia americana
Cryptotaenia canadensis	Parthenocissus inserta	Viola canadensis
Cypripedium pubescens	Phryma leptostachya	Viola cucullata
Cystopteris fragilis	Pilea pumila	Viola pallens
Diervilla lonicera	Podophyllum peltatum	Viola pennsylvanica
Dioscorea villosa	Polygonatum caniculatum	Viola pubescens ✓
Dirca palustris	Polygonatum pubescens ✓	Vitis aestivalis
Dryopteris disjuncta	Potentilla simplex	Zanthoxylum americanum
Dryopteris spinulosa	Prenanthes alba	

Additional Species:

Carex (9) = C. plantaginea



Presence or Frequency  
(Common species only)

## BEECH WOODS

Stand No. 2031  
Quadrat No. 10

Actaea pachypoda	Epifagus virginiana	Prunus virginiana
Actaea rubra	Fragaria virginiana	Pteridium aquilinum
Adiantum pedatum	Galium aparine	Pyrola elliptica
Allium triococcum	Galium circaeazans	Ranunculus abortivus
Amelanchier sp.	Galium concinnum	Ranunculus recurvatus
Anemone quinquefolia	Galium lanceolatum	Rhus radicans
Aquilegia canadensis	Galium triflorum	Ribes americanum
Arabis canadensis	Geranium maculatum	Rosa sp.
Aralia nudicaulis	Geum canadense	Rubus-raspberry
Aralia racemosa	Hamamelis virginiana	Sambucus canadensis
Arisaema atrorubens	Hepatica acutiloba	Sambucus pubens
Aster macrophyllus	Hepatica americana	Sanguinaria canadensis
Aster sagittifolius	Hydrophyllum virginianum	Sanicula gregaria
Aster shortii	Hystrix patula	Sanicula marilandica
Athyrium filix-femina	Impatiens capensis	Smilacina racemosa
Botrychium virginianum	Laportea canadensis	Smilax ecirrhata
Brachyelytrum erectum	Lonicera dioica	Smilax herbacea
Campanula americana	Lonicera oblongifolia	Solidago altissima
Carex albursina	Lonicera prolifera	Solidago flexicaulis
Carex pennsylvanica	Lycopodium lucidulum	Solidago ulmifolia
Carpinus caroliniana	Lycopodium obscurum	Streptopus roseus
Caulophyllum thalictroides	Maianthemum canadense	Symplocarpus foet.
Celastrus scandens	Menispermum canadensis	Taxus canadensis
Circaea quadrisulcata ✓	Mitchella repens	Thalictrum dioicum
Claytonia virginiana	Mitella diphylla	Trientalis borealis
Clintonia borealis	Monotropa uniflora	Trillium flexipes
Conopholis americ.	Oncoclea sensibilis	Trillium grandiflorum
Corallorhiza maculata	Oryzopsis aspesifolia	Triosteum perfoliatum
Cornus alternifolia	Osmorhiza claytoni	Uvularia grandiflora
Cornus femina	Osmunda claytoniana	Viburnum acerifolium
Cornus rugosa	Ostrya virginiana	Viburnum rafinesquianum
Corylus cornuta	Parietaria pennsylvanica	Vicia americana
Cryptotaenia canadensis	Parthenocissus inserta	Viola canadensis
Cypripedium pubescens	Phryma leptostachya	Viola cucullata
Cystopteris fragilis	Pilea pumila	Viola pallens
Diervilla lonicera	Podophyllum peltatum	Viola pennsylvanica
Dioscorea villosa	Polygonatum caniculatum	Viola pubescens
Dirca palustris	Polygonatum pubescens	Vitis aestivalis
Dryopteris disjuncta	Potentilla simplex	Zanthoxylum americanum
Dryopteris spinulosa	Prenanthes alba	

Additional Species:

Carex 9 = C. plantaginosa  
Aster 10  
Carex 2 = C. pedunculata



Presence or Frequency  
(Common species only)

## BEECH WOODS

Stand No. 2031  
Quadrat No. 11

Actaea pachypoda  
Actaea rubra  
Adiantum pedatum  
Allium triococcum  
Amelanchier sp.  
Anemone quinquefolia  
Aquilegia canadensis  
Arabis canadensis  
Aralia nudicaulis  
Aralia racemosa  
Arisaema atrorubens  
Aster macrophyllus  
Aster sagittifolius  
Aster shortii  
Athyrium filix-femina  
Botrychium virginianum  
Brachyelytrum erectum  
Campanula americana  
Carex albursina  
Carex pensylvanica  
Carpinus caroliniana  
Caulophyllum thalictroides  
Celastrus scandens  
Circaea quadrisulcata  
Claytonia virginiana  
Clintonia borealis  
Conopholis americ.  
Corallorhiza maculata  
Cornus alternifolia  
Cornus femina  
Cornus rugosa  
Corylus cornuta  
Cryptotaenia canadensis  
Cypripedium pubescens  
Cystopteris fragilis  
Diervilla lonicera  
Dioscorea villosa  
Dirca palustris  
Dryopteris disjuncta  
Dryopteris spinulosa

Epifagus virginiana  
Fragaria virginiana  
Galium aparine  
Galium circaeazans ✓  
Galium concinnum  
Galium lanceolatum  
Galium triflorum  
Geranium maculatum  
Geum canadense  
Hamamelis virginiana  
Hepatica acutiloba  
Hepatica americana  
Hydrophyllum virginianum  
Hystrix patula  
Impatiens capensis  
Laportea canadensis  
Lonicera dioica  
Lonicera oblongifolia  
Lonicera prolifera  
Lycopodium lucidulum  
Lycopodium obscurum  
Maianthemum canadense  
Menispermum canadensis  
Mitchella repens  
Mitella diphylla  
Monotropa uniflora  
Oenoclea sensibilis  
Oryzopsis aspesifolia  
Osmorhiza claytoni  
Osmunda claytoniana  
Ostrya virginiana  
Parietaria pensylvanica  
Parthenocissus inserta  
Phryma leptostachya  
Pilea pumila  
Podophyllum peltatum  
Polygonatum canaliculatum  
Polygonatum pubescens  
Potentilla simplex  
Prepanthes alba

Prunus virginiana  
Pteridium aquilinum  
Pyrola elliptica  
Ranunculus abortivus  
Ranunculus recurvatus  
Rhus radicans  
Ribes americanum  
Rosa sp.  
Rubus-raspberry  
Sambucus canadensis ✓  
Sambucus pubens  
Sanguinaria canadensis  
Sanicula gregaria  
Sanicula marilandica  
Smilacina racemosa  
Smilax ecirrhata  
Smilax herbacea  
Solidago altissima  
Solidago flexicaulis  
Solidago ulmifolia  
Streptopus roseus  
Symplocarpus foet.  
Taxus canadensis  
Thalictrum dioicum  
Thriftalis borealis  
Trillium flexipes  
Trillium grandiflorum  
Triosteum perfoliatum  
Uvularia grandiflora  
Viburnum acerifolium  
Viburnum rafinesquianum  
Vicia americana  
Viola canadensis  
Viola cucullata  
Viola pallens  
Viola pensylvanica  
Viola pubescens  
Vitis aestivalis  
Zanthoxylum americanum

Additional Species:

*Sambucus pubens*



Presence or Frequency  
(Common species only)

## BEECH WOODS

Stand No. 2031  
Quadrat No. 12

Actaea pachypoda  
Actaea rubra  
Adiantum pedatum  
Allium triococcum  
Amelanchier sp.  
Anemone quinquefolia  
Aquilegia canadensis  
Arabis canadensis  
Aralia nudicaulis  
Aralia racemosa  
Arisaema atrorubens  
Aster macrophyllus  
Aster sagittifolius  
Aster shortii  
Athyrium filix-femina  
Botrychium virginianum  
Brachyelytrum erectum  
Campanula americana  
Carex albursina  
Carex pennsylvanica  
Carpinus caroliniana  
Caulophyllum thalictroides ✓  
Celastrus scandens  
Circaea quadrisulcata  
Claytonia virginiana  
Clintonia borealis  
Conopholis americ.  
Corallorhiza maculata  
Cornus alternifolia  
Cornus femina  
Cornus rugosa  
Corylus cornuta  
Cryptotaenia canadensis  
Cypripedium pubescens  
Cystopteris fragilis  
Diervilla lonicera  
Dioscorea villosa  
Dirca palustris  
Dryopteris disjuncta ✓  
Dryopteris spinulosa ✓

Epifagus virginiana  
Fragaria virginiana  
Galium aparine  
Galium circaezans  
Galium concinnum  
Galium lanceolatum  
Galium triflorum  
Geranium maculatum  
Geum canadense  
Hamamelis virginiana  
Hepatica acutiloba  
Hepatica americana  
Hydrophyllum virginianum  
Hystrix patula  
Impatiens capensis  
Laportea canadensis  
Lonicera dioica  
Lonicera oblongifolia  
Lonicera prolifera  
Lycopodium lucidulum  
Lycopodium obscurum  
Maianthemum canadense  
Menispermum canadensis  
Mitchella repens  
Mitella diphylla  
Monotropa uniflora  
Onoclea sensibilis  
Oryzopsis aspesifolia  
Osmorhiza claytoni  
Osmunda claytoniana  
Ostrya virginiana  
Parietaria pennsylvanica  
Parthenocissus inserta  
Phryma leptostachya  
Pilea pumila  
Podophyllum peltatum  
Polygonatum caniculatum  
Polygonatum pubescens  
Potentilla simplex  
Prenanthes alba

Prunus virginiana  
Pteridium aquilinum  
Pyrola elliptica  
Ranunculus abortivus  
Ranunculus recurvatus  
Rhus radicans  
Ribes americanum  
Rosa sp.  
Rubus-raspberry  
Sambucus canadensis  
Sambucus pubens  
Sanguinaria canadensis  
Sanicula gregaria  
Sanicula marilandica  
Smilacina racemosa  
Smilax ecirrhata  
Smilax herbacea  
Solidago altissima  
Solidago flexicaulis  
Solidago ulmifolia  
Streptopus roseus  
Symplocarpus foet.  
Taxus canadensis  
Thalictrum dioicum  
Trientalis borealis  
Trillium flexipes  
Trillium grandiflorum  
Triosteum perfoliatum  
Uvularia grandiflora  
Viburnum acerifolium  
Viburnum rafinesquianum  
Vicia americana  
Viola canadensis  
Viola cucullata  
Viola pallens  
Viola pennsylvanica  
Viola pubescens  
Vitis aestivalis  
Zanthoxylum americanum

Additional Species:

John D. S. pennsylvanica



Presence or Frequency  
(Common species only)

## BEECH WOODS

Stand No. 2031  
Quadrat No. 13

Actaea pachypoda  
Actaea rubra  
Adiantum pedatum  
Allium triococum  
Amelanchier sp.  
Anemone quinquefolia  
Aquilegia canadensis  
Arabis canadensis  
Aralia nudicaulis  
Aralia racemosa  
Arisaema atrorubens  
Aster macrophyllus  
Aster sagittifolius  
Aster shortii  
Athyrium filix-femina  
Botrychium virginianum  
Brachyelytrum erectum  
Campanula americana  
Carex albursina  
Carex pensylvanica  
Carpinus caroliniana  
Caulophyllum thalictroides  
Celastrus scandens  
Circaea quadrisulcata  
Claytonia virginiana  
Clintonia borealis  
Conopholis americ.  
Coralorrhiza maculata  
Cornus alternifolia  
Cornus femina  
Cornus rugosa  
Corylus cornuta  
Cryptotaenia canadensis  
Cypripedium pubescens  
Cystopteris fragilis  
Diervilla lonicera  
Dioscorea villosa  
Dirca palustris  
Dryopteris disjuncta  
Dryopteris spinulosa

Epifagus virginiana  
Fragaria virginiana  
Galium aparine  
Galium circaezans  
Galium concinnum  
Galium lanceolatum  
Galium triflorum  
Geranium maculatum  
Geum canadense  
Hamamelis virginiana  
Hepatica acutiloba ✓  
Hepatica americana  
Hydrophyllum virginianum  
Hystrix patula  
Impatiens capensis  
Laportea canadensis  
Lonicera dioica  
Lonicera oblongifolia  
Lonicera prolifera  
Lycopodium lucidulum  
Lycopodium obscurum  
Maianthemum canadense  
Menispermum canadense  
Mitchella repens  
Mitella diphylla  
Monotropa uniflora  
Onoclea sensibilis  
Oryzopsis aspesifolia  
Osmorhiza claytoni  
Osmunda claytoniana  
Ostrya virginiana  
Parietaria pensylvanica  
Parthenocissus inserta  
Phryma leptostachya  
Pilea pumila  
Podophyllum peltatum  
Polygonatum caniculatum  
Polygonatum pubescens ✓  
Potentilla simplex  
Prenanthes alba

Prunus virginiana  
Pteridium aquilinum  
Pyrola elliptica  
Ranunculus abortivus  
Ranunculus recurvatus  
Rhus radicans  
Ribes americanum  
Rosa sp.  
Rubus-raspberry  
Sambucus canadensis  
Sambucus pubens  
Sanguinaria canadensis ✓  
Sanicula gregaria  
Sanicula marilandica  
Smilacina racemosa  
Smilax ecirrhata  
Smilax herbacea  
Solidago altissima  
Solidago flexicaulis  
Solidago ulmifolia  
Streptopus roseus  
Symplocarpus foet.  
Taxus canadensis  
Thalictrum dioicum  
Trientalis borealis  
Trillium flexipes  
Trillium grandiflorum  
Triosteum perfoliatum  
Uvularia grandiflora  
Viburnum acerifolium  
Viburnum rafinesquianum  
Vicia americana  
Viola canadensis  
Viola cucullata  
Viola pallens  
Viola pensylvanica  
Viola pubescens  
Vitis aestivalis  
Zanthoxylum americanum

Additional Species:



Presence or Frequency  
(Common species only)

## BEECH WOODS

Stand No. 2031  
Quadrat No. 14

Actaea pachypoda	Epifagus virginiana	Prunus virginiana
Actaea rubra	Fragaria virginiana	Pteridium aquilinum
Adiantum pedatum	Galium aparine	Pyrola elliptica
Allium triococum	Galium circaezans	Ranunculus abortivus
Amelanchier sp.	Galium concinnum	Ranunculus recurvatus
Anemone quinquefolia	Galium lanceolatum	Rhus radicans
Aquilegia canadensis	Galium triflorum	Ribes americanum
Arabis canadensis	Geranium maculatum	Rosa sp.
Aralia nudicaulis	Geum canadense	Rubus-raspberry
Aralia racemosa	Hamamelis virginiana	Sambucus canadensis
Arisaema atrorubens	Hepatica acutiloba ✓	Sambucus pubens
Aster macrophyllus	Hepatica americana	Sanguinaria canadensis
Aster sagittifolius	Hydrophyllum virginianum	Sanicula gregaria
Aster shortii	Hystrix patula	Sanicula marilandica
Athyrium filix-femina	Impatiens capensis	Smilacina racemosa ✓
Botrychium virginianum	Laportea canadensis	Smilax ecirrhata
Brachyelytrum erectum	Lonicera dioica	Smilax herbacea
Campanula americana	Lonicera oblongifolia	Solidago altissima
Carex albursina	Lonicera prolifera	Solidago flexicaulis
Carex pennsylvanica	Lycopodium lucidulum	Solidago ulmifolia
Carpinus caroliniana	Lycopodium obscurum	Streptopus roseus
Caulophyllum thalictroides	Maianthemum canadense	Symplocarpus foet.
Celastrus scandens	Menispermum canadensis	Taxus canadensis
Circaea quadrisulcata	Mitchella repens	Thalictrum dioicum
Claytonia virginiana	Mitella diphylla	Trientalis borealis
Clintonia borealis	Monotropa uniflora	Trillium flexipes
Conoposis americ.	Oxoclea sensibilis	Trillium grandiflorum
Corallorhiza maculata	Oryzopsis aspesifolia	Triosteum perfoliatum
Cornus alternifolia	Osmorhiza claytoni	Uvularia grandiflora
Cornus femina	Osmunda claytoniana	Viburnum acerifolium
Cornus rugosa	Ostrya virginiana	Viburnum rafinesquianum
Corylus cornuta	Parietaria pennsylvanica	Vicia americana
Cryptotaenia canadensis	Parthenocissus inserta	Viola canadensis
Cypripedium pubescens	Phryma leptostachya	Viola cucullata
Cystopteris fragilis	Pilea pumila	Viola pallens
Diervilla lonicera	Podophyllum peltatum	Viola pennsylvanica
Dioscorea villosa	Polygonatum caniculatum	Viola pubescens
Dirca palustris	Polygonatum pubescens ✓	Vitis aestivalis
Dryopteris disjuncta	Potentilla simplex	Zanthoxylum americanum
Dryopteris spinulosa	Prepanthes alba	

Additional Species:



Presence or Frequency  
(Common species only)

## BEECH WOODS

Stand No. 2031  
Quadrat No. 15

Actaea pachypoda	Epifagus virginiana	Prunus virginiana
Actaea rubra ✓	Fragaria virginiana	Pteridium aquilinum
Adiantum pedatum	Galium aparine	Pyrola elliptica
Allium triococum	Galium circaeazans	Ranunculus abortivus
Amelanchier sp.	Galium concinnum	Ranunculus recurvatus
Anemone quinquefolia	Galium lanceolatum	Rhus radicans
Aquilegia canadensis	Galium triflorum	Ribes americanum
Arabis canadensis	Geranium maculatum	Rosa sp.
Aralia nudicaulis	Geum canadense	Rubus-raspberry
Aralia racemosa	Hamamelis virginiana	Sambucus canadensis
Arisaema atrorubens	Hepatica acutiloba	Sambucus pubens
Aster macrophyllus	Hepatica americana	Sanguinaria canadensis ✓
Aster sagittifolius	Hydrophyllum virginianum	Sanicula gregaria
Aster shortii	Hystrix patula	Sanicula marilandica
Athyrium filix-femina	Impatiens capensis	Smilacina racemosa
Botrychium virginianum	Laportea canadensis	Smilax ecirrhata
Brachyelytrum erectum	Lonicera dioica	Smilax herbacea
Campanula americana	Lonicera oblongifolia	Solidago altissima
Carex albursina	Lonicera prolifera	Solidago flexicaulis
Carex pennsylvanica	Lycopodium lucidulum	Solidago ulmifolia
Carpinus caroliniana	Lycopodium obscurum	Streptopus roseus
Caulophyllum thalictroides ✓	Maianthemum canadense	Symplocarpus foet.
Celastrus scandens	Menispermum canadensis	Taxus canadensis
Circaea quadrisulcata	Mitchella repens	Thalictrum dioicum
Claytonia virginiana	Mitella diphylla	Trientalis borealis
Clintonia borealis	Monotropa uniflora	Trillium flexipes
Conopholis americ.	Oxoclea sensibilis	Trillium grandiflorum
Corallorhiza maculata	Oryzopsis aspesifolia	Triosteum perfoliatum
Cornus alternifolia	Osmorhiza claytoni	Uvularia grandiflora ✓
Cornus femina	Osmunda claytoniana	Viburnum acerifolium
Cornus rugosa	Ostrya virginiana	Viburnum rafinesquianum
Corylus cornuta	Parietaria pennsylvanica	Vicia americana
Cryptotaenia canadensis	Parthenocissus inserta	Viola canadensis
Cypripedium pubescens	Phryma leptostachya	Viola cucullata
Cystopteris fragilis	Pilea pumila	Viola pallens
Diervilla lonicera	Podophyllum peltatum	Viola pennsylvanica
Dioscorea villosa	Polygonatum caniculatum	Viola pubescens
Dirca palustris	Polygonatum pubescens ✓	Vitis aestivalis
Dryopteris disjuncta	Potentilla simplex	Zanthoxylum americanum
Dryopteris spinulosa	Prepanthes alba	

Additional Species:



Presence or Frequency  
(Common species only)

## BEECH WOODS

Stand No. 2031  
Quadrat No. 16

Actaea pachypoda  
Actaea rubra ✓  
Adiantum pedatum  
Allium triococum  
Amelanchier sp.  
Anemone quinquefolia  
Aquilegia canadensis  
Arabis canadensis  
Aralia nudicaulis  
Aralia racemosa  
Arisaema atrorubens  
Aster macrophyllus  
Aster sagittifolius  
Aster shortii  
Athyrum filix-femina  
Botrychium virginianum  
Brachyelytrum erectum  
Campanula americana  
Carex albursina  
Carex pennsylvanica  
Carpinus caroliniana  
Caulophyllum thalictroides  
Celastrus scandens  
Circaea quadrisulcata  
Claytonia virginiana  
Clintonia borealis  
Conopholis americ.  
Corallorhiza maculata  
Cornus alternifolia  
Cornus femina  
Cornus rugosa  
Corylus cornuta  
Cryptotaenia canadensis  
Cypripedium pubescens  
Cystopteris fragilis  
Diervilla lonicera  
Dioscorea villosa  
Dirca palustris  
Dryopteris disjuncta  
Dryopteris spinulosa

Epifagus virginiana  
Fragaria virginiana  
Galium aparine  
Galium circaezans ✓  
Galium concinnum  
Galium lanceolatum  
Galium triflorum  
Geranium maculatum  
Geum canadense  
Hamamelis virginiana  
Hepatica acutiloba  
Hepatica americana  
Hydrophyllum virginianum  
Hystrix patula  
Impatiens capensis  
Laportea canadensis  
Lonicera dioica  
Lonicera oblongifolia  
Lonicera prolifera  
Lycopodium lucidulum  
Lycopodium obscurum  
Maianthemum canadense  
Menispermum canadensis  
Mitchella repens  
Mitella diphylla  
Monotropa uniflora  
Oncoclea sensibilis  
Oryzopsis aspesifolia  
Osmorhiza claytoni  
Osmunda claytoniana  
Ostrya virginiana  
Parietaria pennsylvanica  
Parthenocissus inserta  
Phryma leptostachya  
Pilea pumila  
Podophyllum peltatum  
Polygonatum caniculatum  
Polygonatum pubescens  
Potentilla simplex  
Prenanthes alba

Prunus virginiana  
Pteridium aquilinum  
Pyrola elliptica  
Ranunculus abortivus  
Ranunculus recurvatus  
Rhus radicans  
Ribes americanum  
Rosa sp.  
Rubus-raspberry  
Sambucus canadensis ✓  
Sambucus pubens  
Sanguinaria canadensis  
Sanicula gregaria  
Sanicula marilandica  
Smilacina racemosa  
Smilax ecirrhata  
Smilax herbacea  
Solidago altissima  
Solidago flexicaulis  
Solidago ulmifolia  
Streptopus roseus  
Symplocarpus foet.  
Taxus canadensis  
Thalictrum dioicum  
Trientalis borealis  
Trillium flexipes  
Trillium grandiflorum  
Triosteum perfoliatum  
Uvularia grandiflora  
Viburnum acerifolium  
Viburnum rafinesquianum  
Vicia americana  
Viola canadensis  
Viola cucullata  
Viola pallens  
Viola pennsylvanica  
Viola pubescens  
Vitis aestivalis  
Zanthoxylum americanum

Additional Species:



Presence or Frequency  
(Common species only)

## BEECH WOODS

Stand No. 203/  
Quadrat No. 17

Actaea pachypoda  
Actaea rubra  
Adiantum pedatum  
Allium triococum  
Amelanchier sp.  
Anemone quinquefolia  
Aquilegia canadensis  
Arabis canadensis  
Aralia nudicaulis  
Aralia racemosa  
Arisaema atrorubens  
Aster macrophyllus  
Aster sagittifolius  
Aster shortii  
Athyrium filix-femina  
Botrychium virginianum  
Brachyelytrum erectum  
Campanula americana  
Carex albursina  
Carex pennsylvanica  
Carpinus caroliniana  
Caulophyllum thalictroides  
Celastrus scandens  
Circaea quadrisulcata  
Claytonia virginiana  
Clintonia borealis  
Conopholis americ.  
Coralorrhiza maculata  
Cornus alternifolia  
Cornus femina  
Cornus rugosa  
Corylus cornuta  
Cryptotaenia canadensis  
Cypripedium pubescens  
Cystopteris fragilis  
Diervilla lonicera  
Dioscorea villosa  
Dirca palustris  
Dryopteris disjuncta  
Dryopteris spinulosa

Epifagus virginiana  
Fragaria virginiana  
Galium aparine  
Galium circaezans  
Galium concinnum  
Galium lanceolatum  
Galium triflorum  
Geranium maculatum  
Geum canadense  
Hamamelis virginiana  
Hepatica acutiloba  
Hepatica americana  
Hydrophyllum virginianum  
Hystrix patula  
Impatiens capensis  
Laportea canadensis  
Lonicera dioica  
Lonicera oblongifolia  
Lonicera prolifera  
Lycopodium lucidulum  
Lycopodium obscurum  
Maianthemum canadense  
Menispermum canadensis  
Mitchella repens  
Mitella diphylla  
Monotropa uniflora  
Onoclea sensibilis  
Oryzopsis aspesifolia  
Osmorhiza claytoni  
Osmunda claytoniana  
Ostrya virginiana  
Parietaria pennsylvanica  
Parthenocissus inserta  
Phryma leptostachya  
Pilea pumila  
Podophyllum peltatum  
Polygonatum caniculatum  
Polygonatum pubescens ✓  
Potentilla simplex  
Prepanthes alba

Prunus virginiana  
Pteridium aquilinum  
Pyrola elliptica  
Ranunculus abortivus  
Ranunculus recurvatus  
Rhus radicans  
Ribes americanum  
Rosa sp.  
Rubus-raspberry  
Sambucus canadensis  
Sambucus pubens  
Sanguinaria canadensis  
Sanicula gregaria  
Sanicula marilandica  
Smilacina racemosa  
Smilax ecirrhata  
Smilax herbacea  
Solidago altissima  
Solidago flexicaulis  
Solidago ulmifolia  
Streptopus roseus  
Symplocarpus foet.  
Taxus canadensis  
Thalictrum dioicum  
Trientalis borealis  
Trillium flexipes  
Trillium grandiflorum  
Triosteum perfoliatum  
Uvularia grandiflora  
Viburnum acerifolium  
Viburnum rafinesquianum  
Vicia americana  
Viola canadensis  
Viola cucullata  
Viola pallens  
Viola pennsylvanica  
Viola pubescens  
Vitis aestivalis  
Zanthoxylum americanum

Additional Species:



Presence or Frequency  
(Common species only)

## BEECH WOODS

Stand No. 203/  
Quadrat No. 18

Actaea pachypoda  
Actaea rubra  
Adiantum pedatum  
Allium triococcum  
Amelanchier sp.  
Anemone quinquefolia  
Aquilegia canadensis  
Arabis canadensis  
Aralia nudicaulis  
Aralia racemosa  
Arisaema atrorubens  
Aster macrophyllus  
Aster sagittifolius  
Aster shortii  
Athyrium filix-femina  
Botrychium virginianum  
Brachyelytrum erectum  
Campanula americana  
Carex albursina  
Carex pennsylvanica  
Carpinus caroliniana  
Caulophyllum thalictroides  
Celastrus scandens  
Circaea quadrisulcata  
Claytonia virginiana  
Clintonia borealis  
Conopholis americ.  
Coralorrhiza maculata  
Cornus alternifolia  
Cornus femina  
Cornus rugosa  
Corylus cornuta  
Cryptotaenia canadensis  
Cypripedium pubescens  
Cystopteris fragilis  
Diervilla lonicera  
Dioscorea villosa  
Dirca palustris  
Dryopteris disjuncta  
Dryopteris spinulosa

Epifagus virginiana  
Fragaria virginiana  
Galium aparine  
Galium circaeazans  
Galium concinnum  
Galium lanceolatum  
Galium triflorum  
Geranium maculatum  
Geum canadense  
Hamamelis virginiana  
Hepatica acutiloba  
Hepatica americana  
Hydrophyllum virginianum  
Hystrix patula  
Impatiens capensis  
Laportea canadensis  
Lonicera dioica  
Lonicera oblongifolia  
Lonicera prolifera  
Lycopodium lucidulum  
Lycopodium obscurum  
Maianthemum canadense  
Menispermum canadensis  
Mitchella repens  
Mitella diphylla  
Monotropa uniflora  
Onoclea sensibilis  
Oryzopsis aspesifolia  
Osmorhiza claytoni  
Osmunda claytoniana  
Ostrya virginiana  
Parietaria pennsylvanica  
Parthenocissus inserta  
Phryma leptostachya  
Pilea pumila  
Podophyllum peltatum  
Polygonatum caniculatum  
Polygonatum pubescens  
Potentilla simplex  
Prenanthes alba

Prunus virginiana  
Pteridium aquilinum  
Pyrola elliptica  
Ranunculus abortivus  
Ranunculus recurvatus  
Rhus radicans  
Ribes americanum  
Rosa sp.  
Rubus-raspberry  
Sambucus canadensis  
Sambucus pubens  
Sanguinaria canadensis  
Sanicula gregaria  
Sanicula marilandica  
Smilacina racemosa  
Smilax ecirrhata  
Smilax herbacea  
Solidago altissima  
Solidago flexicaulis  
Solidago ulmifolia  
Streptopus roseus  
Symplocarpus foet.  
Taxus canadensis  
Thalictrum dioicum  
Trientalis borealis  
Trillium flexipes  
Trillium grandiflorum  
Triosteum perfoliatum  
Uvularia grandiflora  
Viburnum acerifolium  
Viburnum rafinesquianum  
Vicia americana  
Viola canadensis  
Viola cucullata  
Viola pallens  
Viola pennsylvanica  
Viola pubescens  
Vitis aestivalis  
Zanthoxylum americanum

Additional Species:



Presence or Frequency  
(Common species only)

## BEECH WOODS

Stand No. 2031  
Quadrat No. 19

Actaea pachypoda  
Actaea rubra  
Adiantum pedatum  
Allium triococcum  
Amelanchier sp.  
Anemone quinquefolia  
Aquilegia canadensis  
Arabis canadensis  
Aralia nudicaulis  
Aralia racemosa  
Arisaema atrorubens  
Aster macrophyllus  
Aster sagittifolius  
Aster shortii  
Athyrium filix-femina  
Botrychium virginianum  
Brachyelytrum erectum  
Campanula americana  
Carex albursina  
Carex pensylvanica  
Carpinus caroliniana  
Caulophyllum thalictroides  
Celastrus scandens  
Circaea quadrisulcata  
Claytonia virginiana  
Clintonia borealis  
Conopholis americ.  
Corallorhiza maculata  
Cornus alternifolia  
Cornus femina  
Cornus rugosa  
Corylus cornuta  
Cryptotaenia canadensis  
Cypripedium pubescens  
Cystopteris fragilis  
Diervilla lonicera  
Dioscorea villosa  
Dirca palustris  
Dryopteris disjuncta  
Dryopteris spinulosa

Epifagus virginiana  
Fragaria virginiana  
Galium aparine  
Galium circaeazans  
Galium concinnum  
Galium lanceolatum  
Galium triflorum  
Geranium maculatum  
Geum canadense  
Hamamelis virginiana  
Hepatica acutiloba  
Hepatica americana  
Hydrophyllum virginianum  
Hystrix patula  
Impatiens capensis  
Laportea canadensis  
Lonicera dioica  
Lonicera oblongifolia  
Lonicera prolifera  
Lycopodium lucidulum  
Lycopodium obscurum  
Maianthemum canadense  
Menispermum canadensis  
Mitchella repens  
Mitella diphylla  
Monotropa uniflora  
Onoclea sensibilis  
Oryzopsis aspesifolia  
Osmorhiza claytoni  
Osmunda claytoniana  
Ostrya virginiana  
Parietaria pensylvanica  
Parthenocissus inserta  
Phryma leptostachya  
Pilea pumila  
Podophyllum peltatum  
Polygonatum caniculatum  
Polygonatum pubescens  
Potentilla simplex  
Prenanthes alba

Prunus virginiana  
Pteridium aquilinum  
Pyrola elliptica  
Ranunculus abortivus  
Ranunculus recurvatus  
Rhus radicans  
Ribes americanum  
Rosa sp.  
Rubus-raspberry  
Sambucus canadensis  
Sambucus pubens  
Sanguinaria canadensis  
Sanicula gregaria  
Sanicula marilandica  
Smilacina racemosa  
Smilax ecirrhata  
Smilax herbacea  
Solidago altissima  
Solidago flexicaulis  
Solidago ulmifolia  
Streptopus roseus  
Symplocarpus foet.  
Taxus canadensis  
Thalictrum dioicum  
Trientalis borealis  
Trillium flexipes  
Trillium grandiflorum  
Triosteum perfoliatum  
Uvularia grandiflora  
Viburnum acerifolium  
Viburnum rafinesquianum  
Vicia americana  
Viola canadensis  
Viola cucullata  
Viola pallens  
Viola pensylvanica  
Viola pubescens  
Vitis aestivalis  
Zanthoxylum americanum

Additional Species:



Presence or Frequency  
(Common species only)

## BEECH WOODS

Stand No. 2031  
Quadrat No. 20

Actaea pachypoda  
Actaea rubra  
Adiantum pedatum  
Allium triococcum  
Amelanchier sp.  
Anemone quinquefolia  
Aquilegia canadensis  
Arabis canadensis  
Aralia nudicaulis  
Aralia racemosa  
Arisaema atrorubens  
Aster macrophyllus  
Aster sagittifolius  
Aster shortii  
Athyrium filix-femina  
Botrychium virginianum  
Brachyelytrum erectum  
Campanula americana  
Carex albursina  
Carex pensylvanica  
Carpinus caroliniana  
Caulophyllum thalictroides  
Celastrus scandens  
Circaea quadrisulcata  
Claytonia virginiana  
Clintonia borealis  
Conopholis americ.  
Coralorrhiza maculata  
Cornus alternifolia  
Cornus femina  
Cornus rugosa  
Corylus cornuta  
Cryptotaenia canadensis  
Cypripedium pubescens  
Cystopteris fragilis  
Diervilla lonicera  
Dioscorea villosa  
Dirca palustris  
Dryopteris disjuncta  
Dryopteris spinulosa

Epifagus virginiana  
Fragaria virginiana  
Galium aparine  
Galium circaezans  
Galium concinnum  
Galium lanceolatum  
Galium triflorum  
Geranium maculatum  
Geum canadense  
Hamamelis virginiana  
Hepatica acutiloba  
Hepatica americana  
Hydrophyllum virginianum  
Hystrix patula  
Impatiens capensis  
Laportea canadensis  
Lonicera dioica  
Lonicera oblongifolia  
Lonicera prolifera  
Lycopodium lucidulum  
Lycopodium obscurum  
Maianthemum canadense  
Menispermum canadensis  
Mitchella repens  
Mitella diphylla  
Monotropa uniflora  
Onoclea sensibilis  
Oryzopsis aspesifolia  
Osmorhiza claytoni  
Osmunda claytoniana  
Ostrya virginiana  
Parietaria pensylvanica  
Parthenocissus inserta  
Phryma leptostachya  
Pilea pumila  
Podophyllum peltatum  
Polygonatum caniculatum  
Polygonatum pubescens ✓  
Potentilla simplex  
Prenanthes alba

Prunus virginiana  
Pteridium aquilinum  
Pyrola elliptica  
Ranunculus abortivus  
Ranunculus recurvatus  
Rhus radicans  
Ribes americanum  
Rosa sp.  
Rubus-raspberry  
Sambucus canadensis  
Sambucus pubens  
Sanguinaria canadensis  
Sanicula gregaria  
Sanicula marilandica  
Smilacina racemosa  
Smilax ecirrhata  
Smilax herbacea  
Solidago altissima  
Solidago flexicaulis  
Solidago ulmifolia  
Streptopus roseus  
Symlocarpus foet.  
Taxus canadensis  
Thalictrum dioicum  
Trientalis borealis  
Trillium flexipes  
Trillium grandiflorum  
Triosteum perfoliatum  
Uvularia grandiflora  
Viburnum acerifolium  
Viburnum rafinesquianum  
Vicia americana  
Viola canadensis  
Viola cucullata  
Viola pallens  
Viola pensylvanica  
Viola pubescens  
Vitis aestivalis  
Zanthoxylum americanum

Additional Species:























*ROSECRANS*

*Prob. 35*

*BECK*  
 Northern Pine-Hardwoods

Station Number: *2031*

TREE	# PTS	# TRS	DOM. CLASSES			TOT. DOM.	# SAP	D. % SAP	F. % SDL.	F. % TRS.	% SUM F. TR.	D. % TRS.	DOM% TRS.	DFD INDEX	C. I.
			-80	-320	321										
Abies bals															
Acer rubru															
A. sacchar	20	23	8	7	8	6076	89	58.6	85.00	50.00	27.78	28.75	5080	107.33	1073
A. spicatu															
Betula lut															
B. papyrif	P														
<del>CARYA CORP</del> Carpinus-c	3	3	3			105	2	1.3	5.00	7.50	4.17	3.75	0.88	8.80	70
Fagus gran	22	24	7	15	2	4128	29	19.1	45.00	55.00	30.56	30.00	34.51	95.07	957
* Ostrya vir	4	4	3	1		201	5	3.3		10.00	5.55	5.00	1.68	12.23	110
Picea glau															
Pinus Bank															
P. resinosa															
P. Strobus															
Populus ba															
P. grandid															
P. tremulo							1	0.7							
Prunus <sup>SEROT.</sup> <del>pen</del>	1	1	1			70			20.00	2.50	1.39	1.25	0.58	3.22	13
Quercus el															
Q. rubra															
Tilia amer	2	2	2			31	4	2.6		5.00	2.78	2.50	0.26	5.54	44
Tsuga cana	12	14	11	3		872	19	12.5	5.00	30.00	16.67	17.50	7.29	41.46	332
Thuja occi	1	1	1			16				2.50	1.39	1.25	0.13	2.77	19
Ulmus amer	6	7	7			292	3	2.0		15.00	8.33	8.75	2.44	19.52	156
U. fulva									5.00						
* FRAX. AMER	1	1				170				2.50	1.39	1.25	1.42	4.06	24
		80	113	27	10	11,961	152	100.01		180.00	100.01	100.00	99.99	300.00	2792

AVE. DIST. BTW'N TREES:

*18.7'*

AVE B. A.:

*149.5*

# TREES/ACRE:

*143.8*

DOM./ACRE:

*21,498.1*



Presence or Frequency  
(Common species only)

## BEECH WOODS

Stand No. 2021  
Quadrat No.

Presence

Actaea pachypoda ✓  
 Actaea rubra  
 Adiantum pedatum  
 Allium triococcum  
 Amelanchier sp.  
 Anemone quinquefolia ✓  
 Aquilegia canadensis  
 Arabis canadensis  
 Aralia nudicaulis  
 Aralia racemosa  
 Arisaema atrorubens ✓  
 Aster macrophyllus ✓  
 Aster sagittifolius  
 Aster shortii  
 Athyrium filix-femina  
 Botrychium virginianum ✓  
 Brachyelytrum erectum  
 Campanula americana  
 Carex albursina  
 Carex pensylvanica  
 Carpinus caroliniana  
 Caulophyllum thalictroides ✓  
 Celastrus scandens  
 Circaea quadrisulcata  
 Claytonia virginiana ✓  
 Clintonia borealis  
 Conopholis americ.  
 Corallorhiza maculata  
 Cornus alternifolia  
 Cornus femina  
 Cornus rugosa  
 Corylus cornuta  
 Cryptotaenia canadensis  
 Cyripedium pubescens  
 Cystopteris fragilis ✓  
 Diervilla lonicera  
 Dioscorea villosa  
 Dirca palustris  
 Dryopteris disjuncta  
 Dryopteris spinulosa

Epifagus virginiana ✓  
 Fragaria virginiana  
 Galium aparine  
 Galium circaeazans  
 Galium concinnum  
 Galium lanceolatum  
 Galium triflorum ✓  
 Geranium maculatum  
 Geum canadense  
 Hamamelis virginiana  
 Hepatica acutiloba ✓  
 Hepatica americana  
 Hydrophyllum virginianum  
 Hystrix patula  
 Impatiens capensis  
 Laportea canadensis  
 Lonicera dioica  
 Lonicera oblongifolia  
 Lonicera prolifera  
 Lycopodium lucidulum  
 Lycopodium obscurum  
 Maianthemum canadense ✓  
 Menispermum canadensis  
 Mitchella repens  
 Mitella diphylla ✓  
 Monotropa uniflora  
 Onoclea sensibilis  
 Oryzopsis aspesifolia  
 Osmorhiza claytoni ✓  
 Osmunda claytoniana  
 Ostrya virginiana  
 Parietaria pensylvanica  
 Parthenocissus inserta  
 Phryma leptostachya  
 Pilea pumila  
 Podophyllum peltatum ✓  
 Polygonatum caniculatum  
 Polygonatum pubescens ✓  
 Potentilla simplex  
 Prepanthes alba

Prunus virginiana  
 Pteridium aquilinum  
 Pyrola elliptica  
 Ranunculus abortivus  
 Ranunculus recurvatus  
 Rhus radicans  
 Ribes americanum ✓  
 Rosa sp.  
 Rubus-raspberry  
 Sambucus canadensis ✓  
 Sambucus pubens  
 Sanguinaria canadensis ✓  
 Sanicula gregaria  
 Sanicula marilandica  
 Smilacina racemosa ✓  
 Smilax ecirrhata  
 Smilax herbacea  
 Solidago altissima  
 Solidago flexicaulis  
 Solidago ulmifolia  
 Streptopus roseus  
 Symplocarpus foet.  
 Taxus canadensis  
 Thalictrum dioicum ✓  
 Trientalis borealis  
 Trillium flexipes  
 Trillium grandiflorum ✓  
 Triosteum perfoliatum  
 Uvularia grandiflora ✓  
 Viburnum acerifolium  
 Viburnum rafinesquianum  
 Vicia americana  
 Viola canadensis  
 Viola cucullata ✓  
 Viola pallens  
 Viola pensylvanica  
 Viola pubescens ✓  
 Vitis aestivalis  
 Zanthoxylum americanum

## Additional Species:

Dicentra ewald ✓  
 Umb. fern of 2042 ✓ = Botrych. very  
 #1 Fern - Cystop. fragilis  
 #1 wide-leaf Carex = C. hirtifolia

NOTES:

Dicentra past flowering  
 Claytonia in bloom  
 Erythron. amer. past flowering  
 Some Tulip in flower  
 Some tree leaves well started



Presence or Frequency  
(Common species only)

BEECH WOODS

Stand No. 003/  
Quadrat No. 15

Actaea pachypoda	Epifagus virginiana	Prunus virginiana
Actaea rubra	Fragaria virginiana	Pteridium aquilinum
Adiantum pedatum	Galium aparine	Pyrola elliptica
Allium triococcum	Galium circaezans	Ranunculus abortivus
Amelanchier sp.	Galium concinnum	Ranunculus recurvatus
Anemone quinquefolia	Galium lanceolatum	Rhus radicans
Aquilegia canadensis	Galium triflorum	Ribes americanum 3
Arabis canadensis	Geranium maculatum	Rosa sp.
Aralia nudicaulis	Geum canadense	Rubus-raspberry
Aralia racemosa	Hamamelis virginiana	Sambucus canadensis 2
Arisaema atrorubens 2	Hepatica acutiloba	<del>Sambucus pubens</del>
Aster macrophyllus/	Hepatica americana	Sanguinaria canadensis
Aster sagittifolius	Hydrophyllum virginianum	Sanicula gregaria
Aster shortii	Hystrix patula	Sanicula marilandica
Athyrium filix-femina	Impatiens capensis	Smilacina racemosa 4
Botrychium virginianum	Laportea canadensis	Smilax ecirrhata
Brachyelytrum erectum	Lonicera dioica	Smilax herbacea
Campanula americana	Lonicera oblongifolia	Solidago altissima
Carex albursina	Lonicera prolifera	Solidago flexicaulis
Carex pennsylvanica	Lycopodium lucidulum	Solidago ulmifolia
Carpinus caroliniana	Lycopodium obscurum	Streptopus roseus
Caulophyllum thalictroides	Maianthemum canadense	Symplocarpus foet.
Celastrus scandens	Menispermum canadensis	Taxus canadensis
Circaea quadrisulcata	Mitchella repens	Thalictrum dioicum
Claytonia virginiana 1,2,3,4,5	Mitella diphylla	Trientalis borealis
Clintonia borealis	Monotropa uniflora	Trillium flexipes
Conopholis americ.	Onoclea sensibilis	Trillium grandiflorum
Corallorhiza maculata	Oryzopsis aspesifolia	Triosteum perfoliatum
Cornus alternifolia	Osmorhiza claytoni 1,2,5	Uvularia grandiflora
Cornus femina	Osmunda claytoniana	Viburnum acerifolium
Cornus rugosa	Ostrya virginiana	Viburnum rafinesquianum
Corylus cornuta	Parietaria pennsylvanica	Vicia americana
Cryptotaenia canadensis	Parthenocissus inserta	Viola canadensis
Cypripedium pubescens	Phryma leptostachya	Viola cucullata
Cystopteris fragilis 1,3	Pilea pumila	Viola pallens
Diervilla lonicera	Podophyllum peltatum	Viola pennsylvanica
Dioscorea villosa	Polygonatum caniculatum	Viola pubescens 1,2,3,4
Dirca palustris	Polygonatum pubescens	Vitis aestivalis
Dryopteris disjuncta	Potentilla simplex	Zanthoxylum americanum
Dryopteris spinulosa	Prenanthes alba	

## Additional Species:

Erythron amer. 1,2,3,4,5

#1 Wide-leaf Carex 2,3,4

Dicentra cuc 3,5



5/15/53

Presence or Frequency  
(Common species only)

BEECH WOODS

Stand No. 2031  
Quadrat No. 6-10

Actaea pachypoda  
 Actaea rubra  
 Adiantum pedatum  
 Allium triococcum  
 Amelanchier sp.  
 Anemone quinquefolia  
 Aquilegia canadensis  
 Arabis canadensis  
 Aralia nudicaulis  
 Aralia racemosa  
 Arisaema atrorubens  
 Aster macrophyllus  
 Aster sagittifolius  
 Aster shortii  
 Athyrium filix-femina  
 Botrychium virginianum  
 Brachyelytrum erectum  
 Campanula americana  
 Carex albursina  
 Carex pensylvanica  
 Carpinus caroliniana  
 Caulophyllum thalictroides  
 Celastrus scandens  
 Circaea quadrisulcata  
 Claytonia virginiana 6, 7, 8, 10  
 Clintonia borealis  
 Conopholis americ.  
 Corallorhiza maculata  
 Cornus alternifolia  
 Cornus femina  
 Cornus rugosa  
 Corylus cornuta  
 Cryptotaenia canadensis  
 Cypripedium pubescens  
 Cystopteris fragilis  
 Diervilla lonicera  
 Dioscorea villosa  
 Dirca palustris  
 Dryopteris disjuncta  
 Dryopteris spinulosa

Epifagus virginiana  
 Fragaria virginiana  
 Galium aparine  
 Galium circaezans  
 Galium concinnum  
 Galium lanceolatum  
 Galium triflorum  
 Geranium maculatum  
 Geum canadense  
 Hamamelis virginiana  
 Hepatica acutiloba 6  
 Hepatica americana  
 Hydrophyllum virginianum  
 Hystrix patula  
 Impatiens capensis  
 Laportea canadensis  
 Lonicera dioica  
 Lonicera oblongifolia  
 Lonicera prolifera  
 Lycopodium lucidulum  
 Lycopodium obscurum  
 Maianthemum canadense  
 Menispermum canadensis  
 Mitchella repens  
 Mitella diphylla  
 Monotropa uniflora  
 Onoclea sensibilis  
 Oryzopsis aspesifolia  
 Osmorhiza claytoni  
 Osmunda claytoniana  
 Ostrya virginiana  
 Parietaria pensylvanica  
 Parthenocissus inserta  
 Phryma leptostachya  
 Pilea pumila  
 Podophyllum peltatum  
 Polygonatum caniculatum  
 Polygonatum pubescens 7  
 Potentilla simplex  
 Prenanthes alba

Prunus virginiana  
 Pteridium aquilinum  
 Pyrola elliptica  
 Ranunculus abortivus  
 Ranunculus recurvatus  
 Rhus radicans  
 Ribes americanum 9  
 Rosa sp.  
 Rubus-raspberry  
 Sambucus canadensis  
 Sambucus pubens 8  
 Sanguinaria canadensis 7  
 Sanicula gregaria  
 Sanicula marilandica  
 Smilacina racemosa  
 Smilax ecirrhata  
 Smilax herbacea  
 Solidago altissima  
 Solidago flexicaulis  
 Solidago ulmifolia  
 Streptopus roseus  
 Symplocarpus foet.  
 Taxus canadensis  
 Thalictrum dioicum  
 Trientalis borealis  
 Trillium flexipes  
 Trillium grandiflorum  
 Triosteum perfoliatum  
 Uvularia grandiflora  
 Viburnum acerifolium  
 Viburnum rafinesquianum  
 Vicia americana  
 Viola canadensis  
 Viola cucullata  
 Viola pallens  
 Viola pensylvanica  
 Viola pubescens  
 Vitis aestivalis  
 Zanthoxylum americanum

Additional Species:

*Syrph. amor.* 6, 7, 8, 9, 10  
*Dicentra cucull.* 7, 8, 9, 10



Presence or Frequency  
(Common species only)

## BEECH WOODS

Stand No. 2031  
Quadrat No. 11-15

Actaea pachypoda  
Actaea rubra  
Adiantum pedatum  
Allium triococcum  
Amelanchier sp.  
Anemone quinquefolia  
Aquilegia canadensis  
Arabis canadensis  
Aralia nudicaulis  
Aralia racemosa  
Arisaema atrorubens  
Aster macrophyllus  
Aster sagittifolius  
Aster shortii  
Athyrium filix-femina  
Botrychium virginianum  
Brachyelytrum erectum  
Campanula americana  
Carex albursina  
Carex pennsylvanica  
Carpinus caroliniana  
Caulophyllum thalictroides  
Celastrus scandens  
Circaea quadrifida  
Claytonia virginiana  
Clintonia borealis  
Conopholis americana  
Corallorhiza maculata  
Cornus alternifolia  
Cornus femina  
Cornus rugosa  
Corylus cornuta  
Cryptotaenia canadensis  
Cypripedium pubescens  
Cystopteris fragilis  
Diervilla lonicera  
Dioscorea villosa  
Dirca palustris  
Dryopteris disjuncta  
Dryopteris spinulosa

Epifagus virginiana  
Fragaria virginiana  
Galium aparine  
Galium circaezans  
Galium concinnum  
Galium lanceolatum  
Galium triflorum  
Geranium maculatum  
Geum canadense  
Hamamelis virginiana  
Hepatica acutiloba  
Hepatica americana  
Hydrophyllum virginianum  
Hystrix patula  
Impatiens capensis  
Laportea canadensis  
Lonicera dioica  
Lonicera oblongifolia  
Lonicera prolifera  
Lycopodium lucidulum  
Lycopodium obscurum  
Maianthemum canadense  
Menispermum canadense  
Mitchella repens  
Mitella diphylla  
Monotropa uniflora  
Onoclea sensibilis  
Oryzopsis asperifolia  
Osmorhiza claytoni  
Osmunda claytoniana  
Ostrya virginiana  
Parietaria pennsylvanica  
Parthenocissus inserta  
Phryma leptostachya  
Pilea pumila  
Podophyllum peltatum  
Polygonatum caniculatum  
Polygonatum pubescens  
Potentilla simplex  
Prenanthes alba

Prunus virginiana  
Pteridium aquilinum  
Pyrola elliptica  
Ranunculus abortivus  
Ranunculus recurvatus  
Rhus radicans  
Ribes americanum  
Rosa sp.  
Rubus-raspberry  
Sambucus canadensis  
Sambucus pubens  
Sanguinaria canadensis  
Sanicula gregaria  
Sanicula marilandica  
Smilacina racemosa  
Smilax ecirrhata  
Smilax herbacea  
Solidago altissima  
Solidago flexicaulis  
Solidago ulmifolia  
Streptopus roseus  
Symlocarpus foet.  
Taxus canadensis  
Thalictrum dioicum  
Trientalis borealis  
Trillium flexipes  
Trillium grandiflorum  
Triosteum perfoliatum  
Uvularia grandiflora  
Viburnum acerifolium  
Viburnum rafinesquianum  
Vicia americana  
Viola canadensis  
Viola cucullata  
Viola pallens  
Viola pennsylvanica  
Viola pubescens  
Vitis aestivalis  
Zanthoxylum americanum

11-Nolbung, 13-Nolbung, 14-Nolbung, 15-Nolbung } Hemlock fully abundant!

Gryllus amer 12



Presence or Frequency  
(Common species only)

## BEECH WOODS

5/15/53  
Stand No. 2031  
Quadrat No. 16-20

Actaea pachypoda  
Actaea rubra  
Adiantum pedatum  
Allium triococcum  
Amelanchier sp.  
Anemone quinquefolia  
Aquilegia canadensis  
Arabis canadensis  
Aralia nudicaulis  
Aralia racemosa  
Arisaema atrorubens  
Aster macrophyllus  
Aster sagittifolius  
Aster shortii  
Athyrium filix-femina  
Botrychium virginianum  
Brachyelytrum erectum  
Campanula americana  
Carex albursina  
Carex pennsylvanica  
Carpinus caroliniana  
Caulophyllum thalictroides  
Celastrus scandens  
Circaea quadrisulcata  
Claytonia virginiana  
Clintonia borealis  
Conopholis americ.  
Corallorhiza maculata  
Cornus alternifolia  
Cornus femina  
Cornus rugosa  
Corylus cornuta  
Cryptotaenia canadensis  
Cypripedium pubescens  
Cystopteris fragilis  
Diervilla lonicera  
Dioscorea villosa  
Dirca palustris  
Dryopteris disjuncta  
Dryopteris spinulosa

Epifagus virginiana 16  
Fragaria virginiana  
Galium aparine  
Galium circaezans  
Galium concinnum  
Galium lanceolatum  
Galium triflorum  
Geranium maculatum  
Geum canadense  
Hamamelis virginiana  
Hepatica acutiloba 17  
Hepatica americana  
Hydrophyllum virginianum  
Hystrix patula  
Impatiens capensis  
Laportea canadensis  
Lonicera dioica  
Lonicera oblongifolia  
Lonicera prolifera  
Lycopodium lucidulum  
Lycopodium obscurum  
Maianthemum canadense  
Menispermum canadensis  
Mitchella repens  
Mitella diphylla  
Monotropa uniflora  
Onoclea sensibilis  
Oryzopsis aspesifolia  
Osmorhiza claytoni  
Osmunda claytoniana  
Ostrya virginiana  
Parietaria pennsylvanica  
Parthenocissus inserta  
Phryma leptostachya  
Pilea pumila  
Podophyllum peltatum  
Polygonatum caniculatum  
Polygonatum pubescens 17, 18, 19  
Potentilla simplex  
Prenanthes alba

Prunus virginiana  
Pteridium aquilinum  
Pyrola elliptica  
Ranunculus abortivus  
Ranunculus recurvatus  
Rhus radicans  
Ribes americanum  
Rosa sp.  
Rubus-raspberry  
Sambucus canadensis  
Sambucus pubens  
Sanguinaria canadensis  
Sanicula gregaria  
Sanicula marilandica  
Smilacina racemosa 19  
Smilax ecirrhata  
Smilax herbacea  
Solidago altissima  
Solidago flexicaulis  
Solidago ulmifolia  
Streptopus roseus  
Symplocarpus foet.  
Taxus canadensis  
Thalictrum dioicum  
Trientalis borealis  
Trillium flexipes  
Trillium grandiflorum 17  
Triosteum perfoliatum  
Uvularia grandiflora  
Viburnum acerifolium  
Viburnum rafinesquianum  
Vicia americana  
Viola canadensis  
Viola cucullata  
Viola pallens  
Viola pennsylvanica  
Viola pubescens  
Vitis aestivalis  
Zanthoxylum americanum

20 - nothing  
Additional Species:

Erythron. amer 17



















