



# LIBRARIES

UNIVERSITY OF WISCONSIN-MADISON

## The 1926 meletean. Vol. 15 1926

[River Falls, Wis]: [Wisconsin State University, River Falls], 1926

<https://digital.library.wisc.edu/1711.dl/23FQSF6EQ7IJF8P>

This material may be protected by copyright law (e.g., Title 17, US Code).

For information on re-use, see

<http://digital.library.wisc.edu/1711.dl/Copyright>

The libraries provide public access to a wide range of material, including online exhibits, digitized collections, archival finding aids, our catalog, online articles, and a growing range of materials in many media.

When possible, we provide rights information in catalog records, finding aids, and other metadata that accompanies collections or items. However, it is always the user's obligation to evaluate copyright and rights issues in light of their own use.



The image shows the front cover of a book. The cover is a dark blue color with a fine, wrinkled texture. A large, stylized cross is embossed on the cover. The cross is composed of two intersecting bars. The vertical bar has a decorative, swirling pattern along its length. The horizontal bar is wider and contains the word "MELETEAN" in gold, serif, all-caps letters. Below the horizontal bar, on the vertical bar, is a small rectangular plaque containing the year "1926" in gold, serif, all-caps letters. The spine of the book is visible on the left edge, showing some wear and the same textured material.

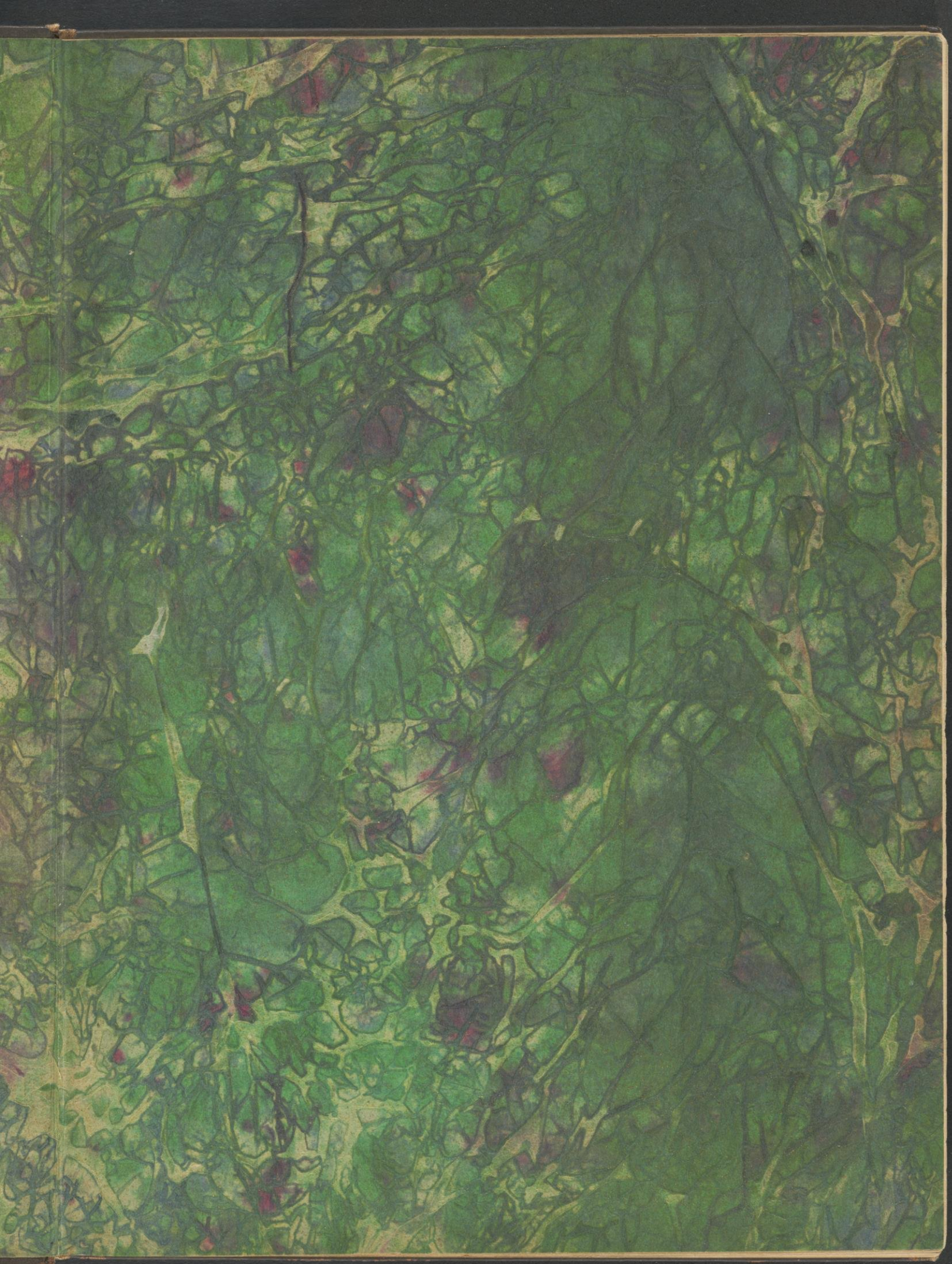
MELETEAN

1926





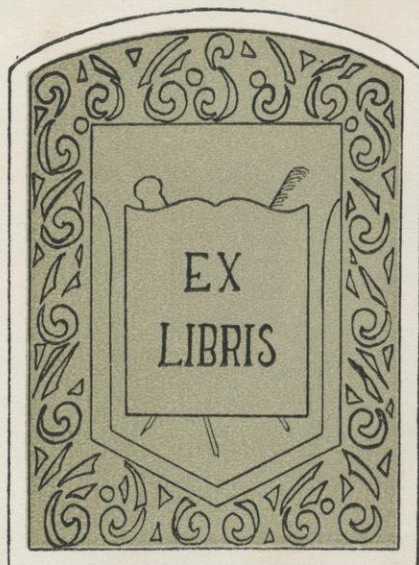














COPYRIGHT



VICTOR SIVERTSON  
*Editor*

MARCEL K. LYNUM  
*Business Manager*



# THE 1926 MELETEAN

PUBLISHED BY THE SENIOR CLASS  
*of the*  
STATE NORMAL SCHOOL



RIVER FALLS, WISCONSIN  
*Volume Fifteen*





THE TEACHER  
*Daniel Chester French*



# DEDICATION



*To the Teacher—*

Who stands at the point  
where all the rich and radi-  
ant forces of society come



to a focus, amidst the living issues of religion,  
of politics, of ethical adjustment, and of social  
evolution; ♦ Who is unwilling to sit com-  
placently behind the breastworks of ac-  
cumulated knowledge; ♦ Who is ever  
devoted to greater and nobler ideals  
of service; ♦ We, the Class  
of 1926, dedicate this  
our year-book







### *Foreword*

TO portray the present, to symbolically portray the future, its material and spiritual advancement, its greater capacity for service, — has been our purpose in the making of the 1926 Meletean.





# *C*ontents

ADMINISTRATION

CLASSES

ACTIVITIES

ORGANIZATIONS

THE CAMPUS





*Beautiful is the home  
of our Alma Mater  
with its spreading  
shade, vine-clad  
walls, wooded mounds in the distance,  
and falls and winding waters  
of the Kinnickinnic*







*The Campus*



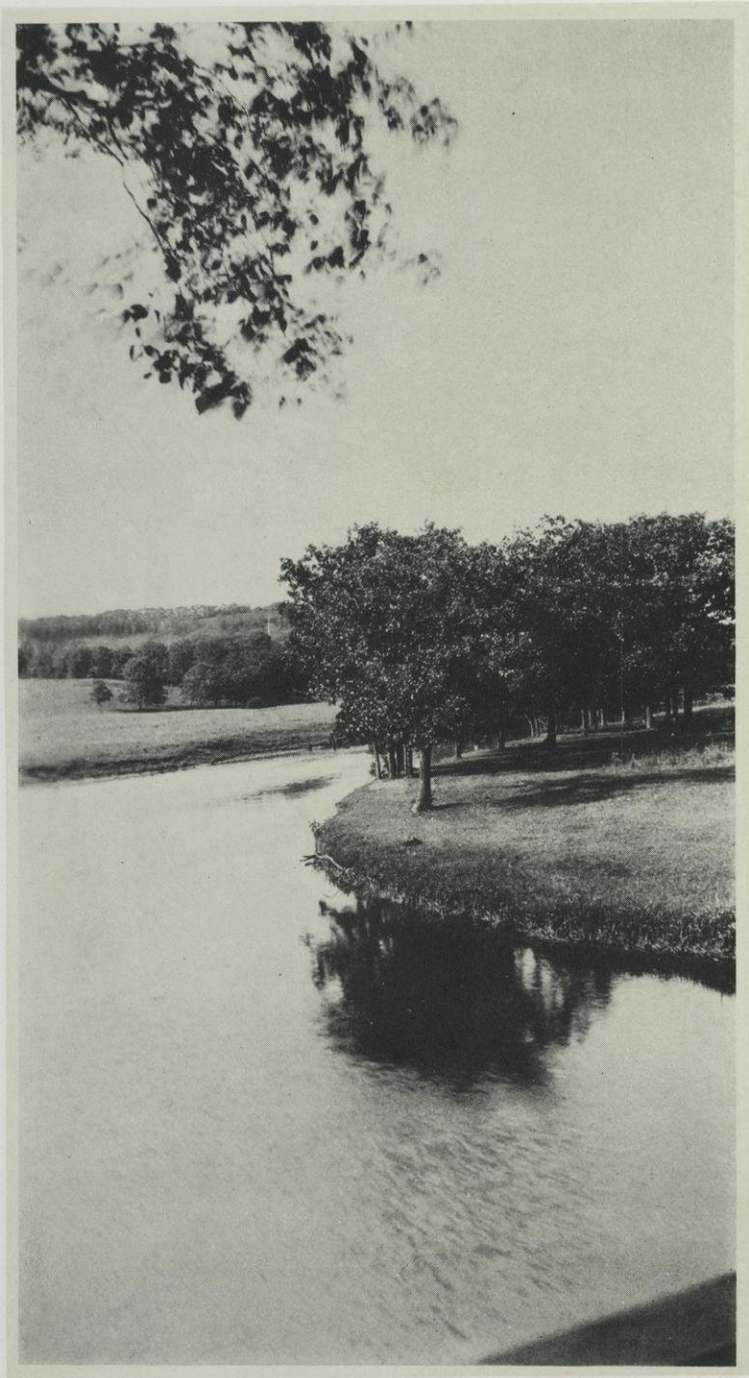






*North Hall, whose welcoming portals receive us when  
we enter and bid us an inspiring Godspeed when we  
depart as graduates.*

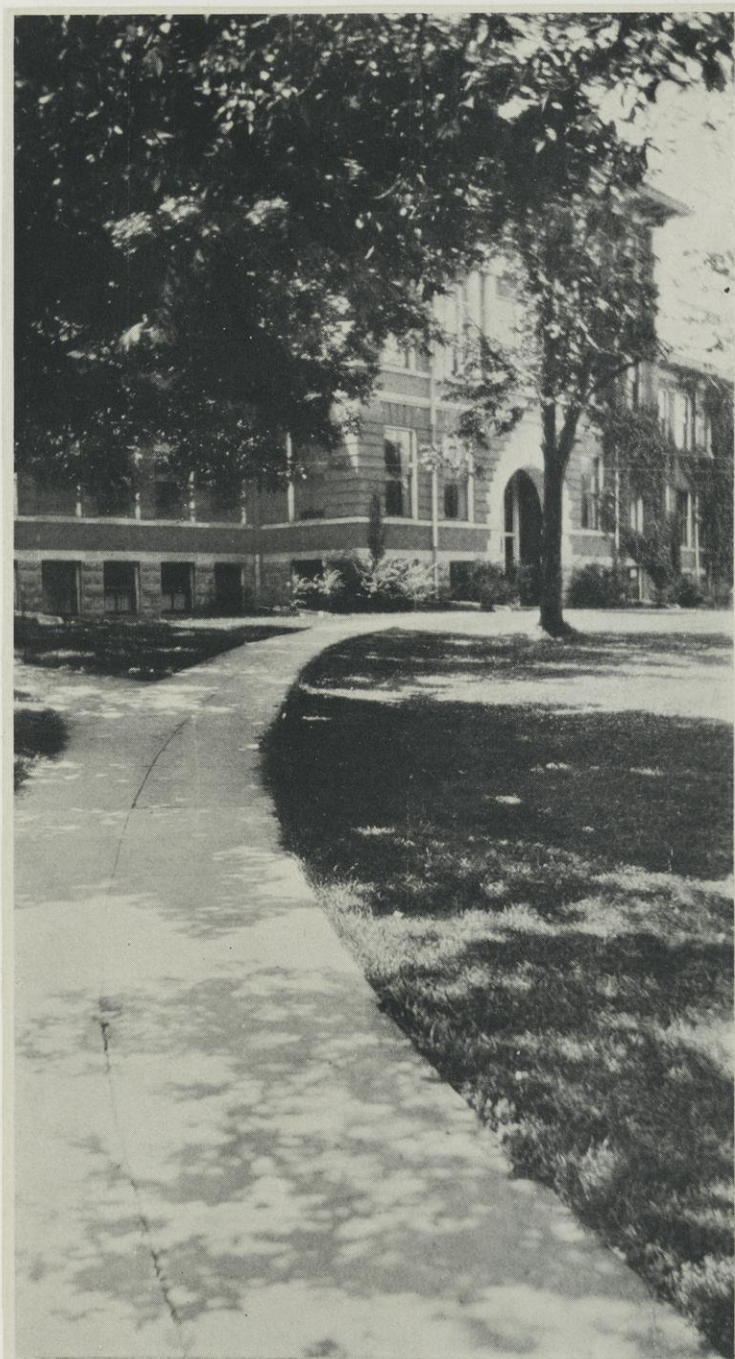




*The Kinnickinnic Valley—still and happy meadows  
that the sun has kissed.*

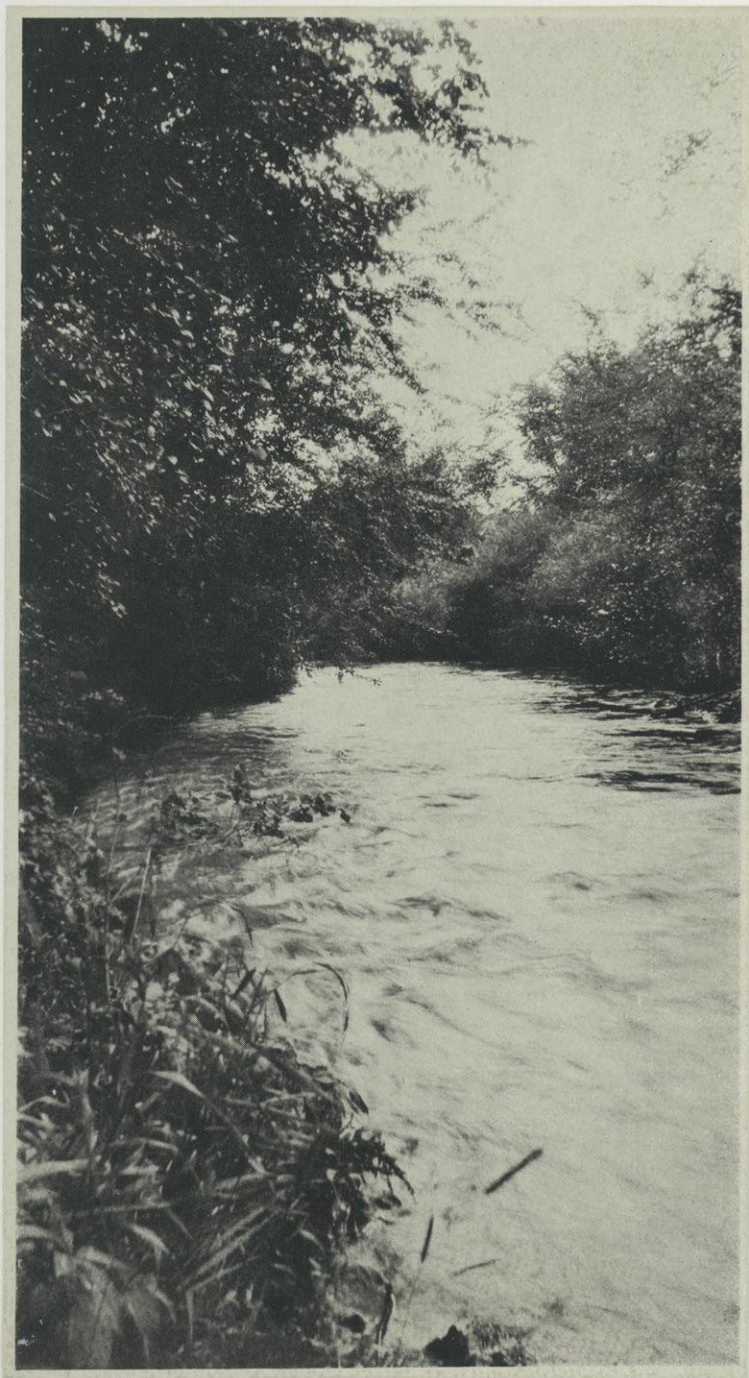






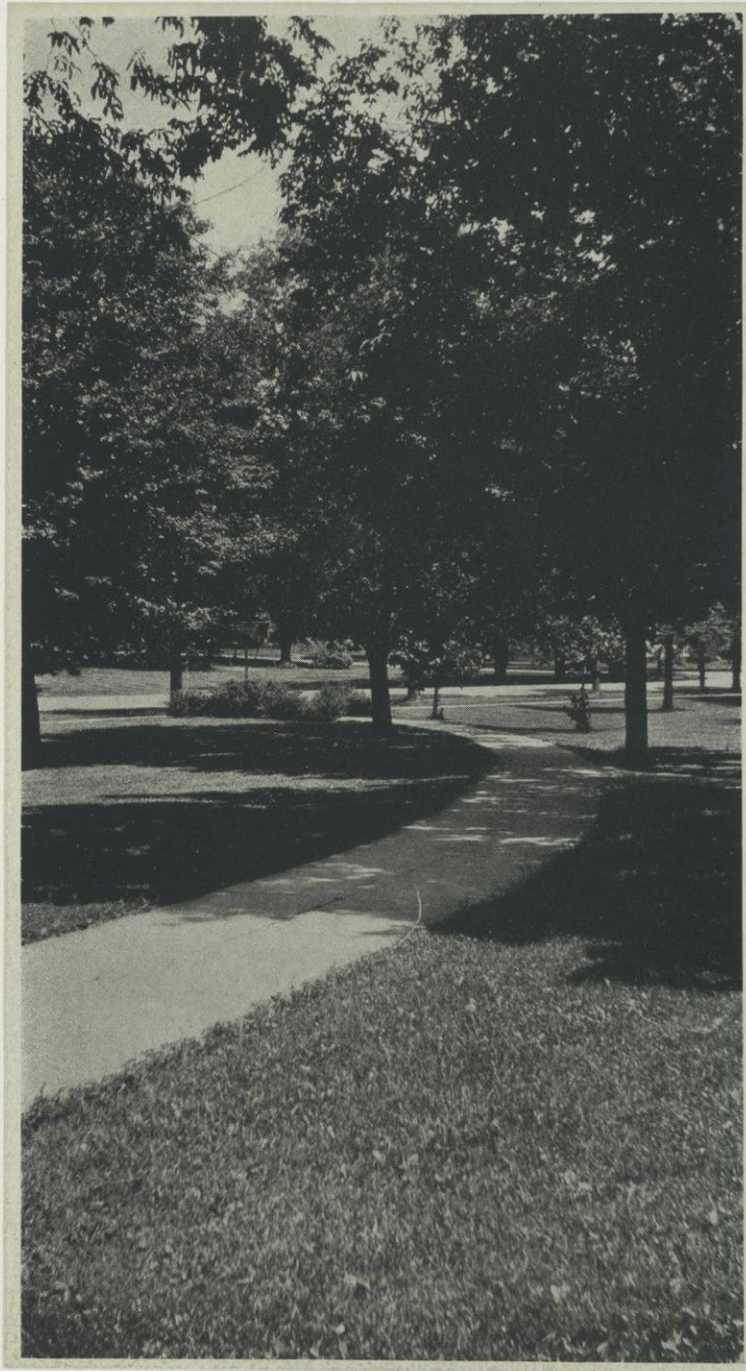
*South Hall—vine-clad, historic, beloved by young  
and old.*





*The Kinnickinnic—  
"Beauty and peace are here—  
And unceasing music."*





*The Campus, where "broad shadows spread the  
glimmering shade."*

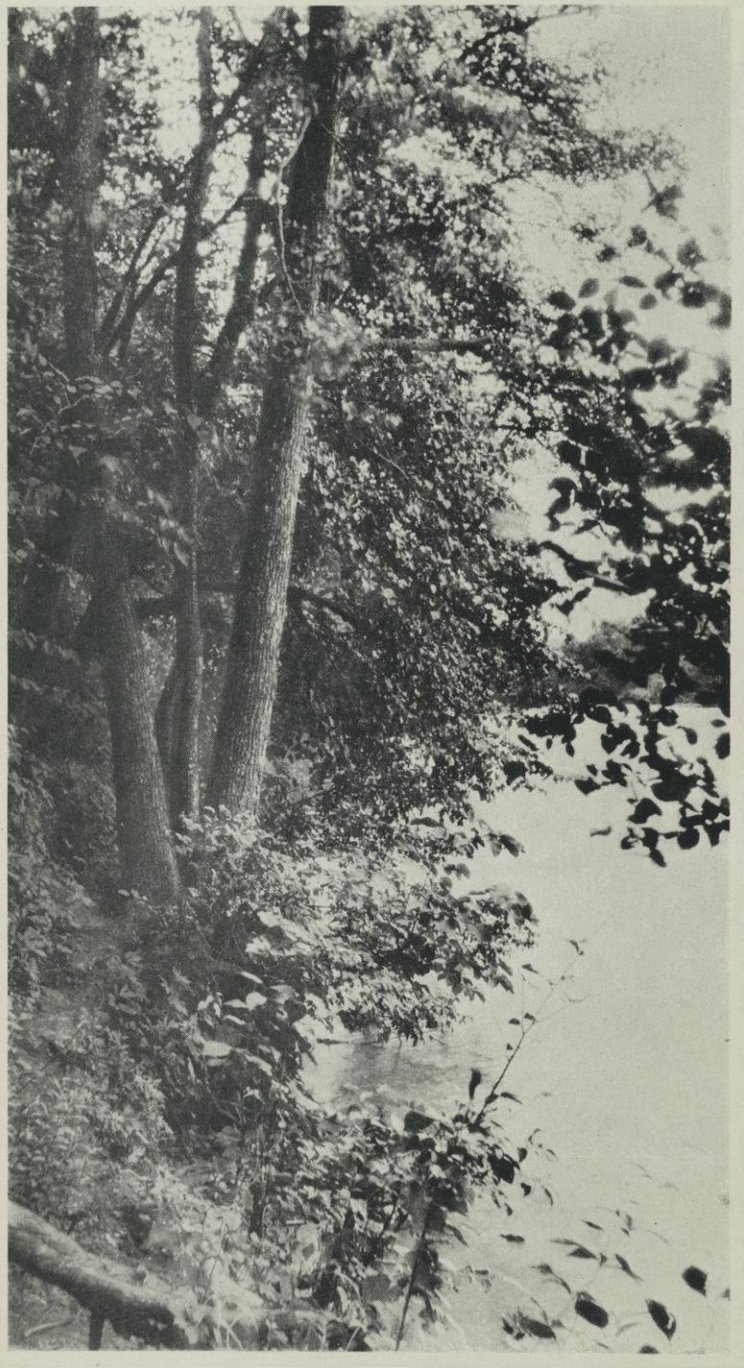




*"After Frost, with a gesture, leaves a white, unbroken  
glory, a gathered radiance."*







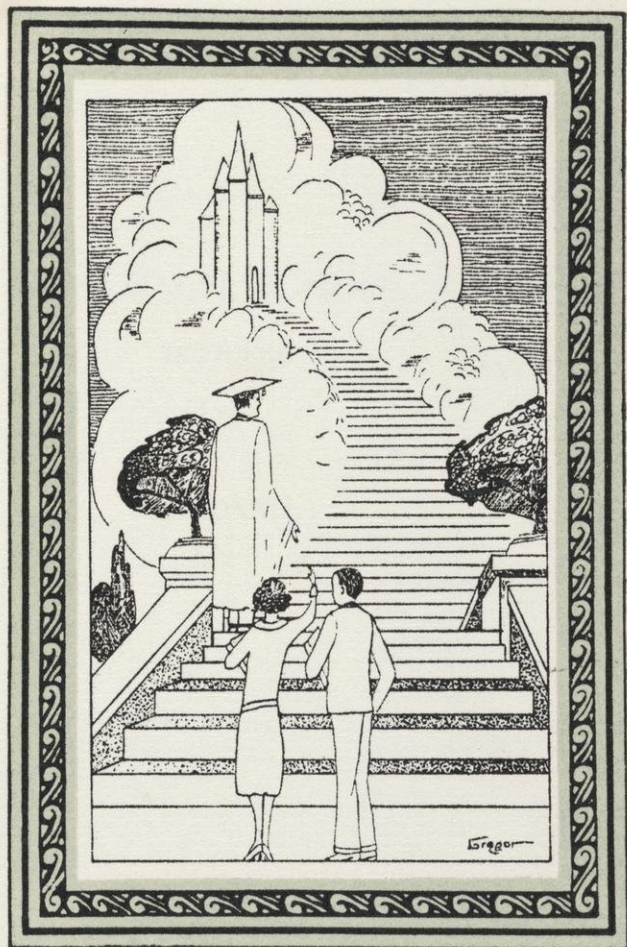
*Glen Park—*

*"Oh, joy, to go the path which lies  
Through woodlands where the trees are tall!"*









## *Administration*







## BOARD OF NORMAL SCHOOL REGENTS

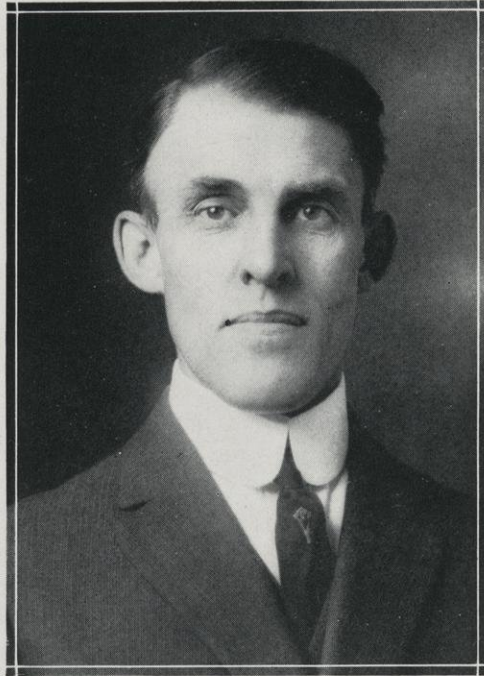
### OFFICERS

EDWARD J. DEMPSEY	-	-	-	-	-	<i>President</i>
WILLIAM KITTLE	-	-	-	-	-	<i>Secretary</i>
SOLOMON LEVITAN	-	-	-	-	-	<i>Treasurer</i>

### PERSONNEL

JOHN CALLAHAN	-	-	-	-	-	<i>Madison</i>
JOHN C. KACHEL	-	-	-	-	-	<i>Whitewater</i>
P. J. SMITH	-	-	-	-	-	<i>Eau Claire</i>
EDWARD J. DEMPSEY	-	-	-	-	-	<i>Oshkosh</i>
ROBERT I. DUGDALE	-	-	-	-	-	<i>Platteville</i>
CLOUGH GATES	-	-	-	-	-	<i>Superior</i>
MRS. ELIZABETH MALONEY	-	-	-	-	-	<i>Stevens Point</i>
P. W. RAMER	-	-	-	-	-	<i>River Falls</i>
LUTIE STEARNS	-	-	-	-	-	<i>Milwaukee</i>
A. W. ZERATSKY	-	-	-	-	-	<i>La Crosse</i>
WILLIAM KITTLE	-	-	-	-	-	<i>Madison</i>
SOLOMON LEVITAN	-	-	-	-	-	<i>Madison</i>





PRESIDENT J. H. AMES



## VALUES

IDEAS regarding education change with passing years. Recently we have discarded many of our earlier conceptions as to the purposes of education. We have substituted what we call practical courses for the cultural education of a generation ago.

This practical education, so called, is a part of our American materialism. It is difficult for us to conceive of the value of education apart from its material rewards. But what has American materialism accomplished other than to add amazingly to our physical comforts and conveniences? It has not promoted right living; it has not advanced morality.

It will be recognized that the stability of our political and social systems are dependent on a trained and disciplined citizenry not so much in the science of making a living but in the art of living itself. Education must be concerned with the larger values in life. It must enlarge the circle of interests, enrich the inner life, and deepen the feeling of civic responsibility.

A teacher training institution is dedicated to the service of the children of the state. It is highly important that such an institution should produce men and women whose spiritual natures have been enriched and made fruitful. "The soul is, after all, the thing of supreme and enduring worth."

Any institution which deserves a future must be founded on the principle that education is a social process whose aim is to produce not only useful and law-abiding citizens, but also those whose intellectual horizons have been enlarged, whose range of interests have been increased, and those whose sympathies have been deepened.

J. H. Ames

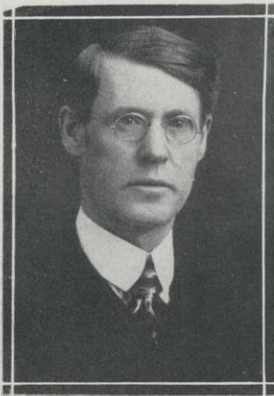




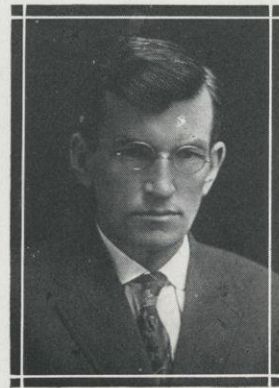
REXFORD S. MITCHELL  
A. M. University of Chicago  
*Civics and Public Speaking*  
*Dean of Men*



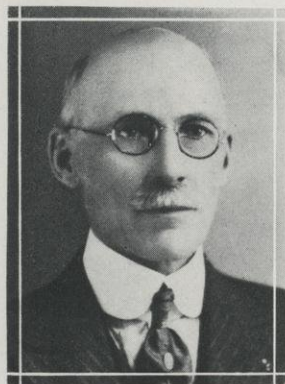
IRMA HATHORN  
A. M. Columbia University  
*Dean of Women*



WALTER B. DAVISON  
A. M. University of Wisconsin  
*History and Social Science*



JAMES I. MALOTT  
A. M. University of Missouri  
*Psychology, Director of*  
*Rural Education*



MAUD A. LATTA  
A. M. University of Chicago  
*History*



WALTER H. HUNT  
Ph. M. Valparaiso University  
*Principal, Principal's*  
*Department*





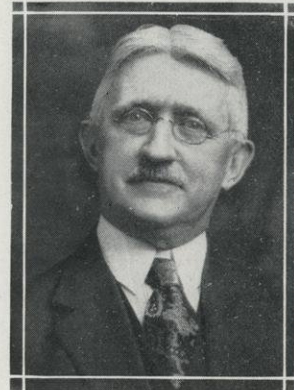
CHARLES G. STRATTON  
A. B. Michigan Normal College  
*Geology, Geography*



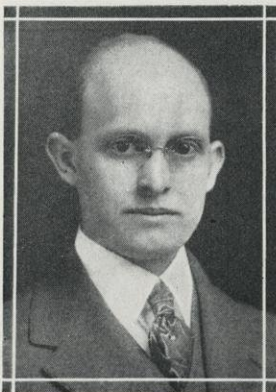
LLOYD GOBLE  
A. M. University of Illinois  
*English*



ERASMUS A. WHITENACK  
A. B. Rutgers College  
*Languages*



L. LUCILE HADDOW  
A. M. University of Wisconsin  
*English*



NELLE L. SCHLOSSER  
Boston School of Expression  
*English, Expression*



ORVILLE M. HANNA  
A. B. Franklin College  
*English*





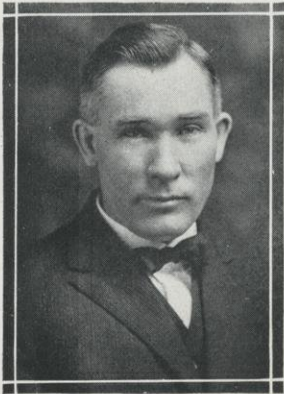
BRYAN E. SMITH  
A. M. University of Minnesota  
*Agricultural Economics*



JOHN M. MAY  
B. S. A. Kansas State Agri-  
cultural College  
*Director of Department  
of Agriculture*



ROY E. SPRIGGS  
B. S. Kansas State Agricultural  
College  
*Agricultural Mechanics*



E. J. PRUCHA  
B. S. University of Wisconsin  
*Agriculture, Registrar*



WILLIAM SEGERSTROM  
Stout Institute  
*Manual Training*



ARTHUR N. JOHNSON  
B. S. University of Wisconsin  
*Agriculture*





RUDOLPH A. KARGES  
Ph. M. University of Wisconsin  
*Chemistry*



GLEN P. JUNKMAN  
Ph. B. University of Wisconsin  
*Mathematics*



JAMES P. JACOBSON  
M. S. University of Wisconsin  
*Physics*



MARGARET F. CHAPMAN  
A. M. University of Wisconsin  
*Mathematics*



L. D. HERSHBERGER  
M. S. University of Wisconsin  
*Biology*



\*H. E. HAYWARD  
A. M. University of Chicago  
*Biology*

\*Leave of absence, 1925-26.





ALBERTA M. GREENE  
Teachers' College, Columbia  
University  
*Art*



MARVIN D. GEERE  
Warren Conservatory of Music  
*Director, Department of  
Music*



LILLIAN B. CLAWSON  
Western State Normal, Michigan  
*Art*



DOROTHY HATCH  
School of Music,  
University of Minnesota  
*Music*



EDITH E. WEBERG  
State Normal School,  
Stevens Point, Wisconsin  
*Home Economics*



CARA AMELIA WHARTON  
Diploma, MacPhail School  
of Music  
*History of Music, Theory,  
Piano*





MARY B. KIMBALL  
Diploma, Library School  
University of Wisconsin  
*Librarian*

TED COX  
A. B. University of Minnesota  
*Physical Education,  
Athletic Coach*



BETHINE MARCH SMITH  
Iowa State Teachers' College  
*Physical Education*

MARY BRADLEY  
Library School, University of  
Wisconsin  
*Assistant Librarian.*



CATHERINE A. ROHERTY  
State Normal School,  
LaCrosse, Wis.  
*Physical Education*

AMY FULLER  
State Normal School,  
River Falls, Wis.  
*Assistant Librarian*







MABEL L. BRIDGES  
A. B. University of Nebraska  
*Supervisor, Elementary  
Grades*



RUSSELL JOHNSTON  
A. B. Washington and Jefferson  
College  
*Principal, Junior High  
School*



MABEL JORSTAD  
State Normal School,  
River Falls, Wis.  
*Rural Critic*



NATHALIE DELANDER  
University of Minnesota  
*Geography and History  
Junior High School*



GARNET J. HORTON  
Western Illinois State Teachers'  
College  
*Fifth Grade Critic*



DOROTHEA E. BIRDSSELL  
A. M. University of Wisconsin  
*English, Junior High  
School*





IRMA B. ARMSTRONG  
B. S. Teachers' College  
Columbia University  
*Second Grade Critic*



MABLE M. PARKER  
Teachers' College, Columbia  
University  
*Fourth Grade Critic*



LUCILE M. FOBES  
Teachers' College, Columbia  
University  
*Primary Critic*



ADELINE C. PATTON  
Teachers' College, Columbia  
University  
*Third Grade Critic*

ESTHER MURPHY  
*Clerk*



ETHEL WEST  
*Chief Clerk*

BLANCH VANBERG









## *Classes*



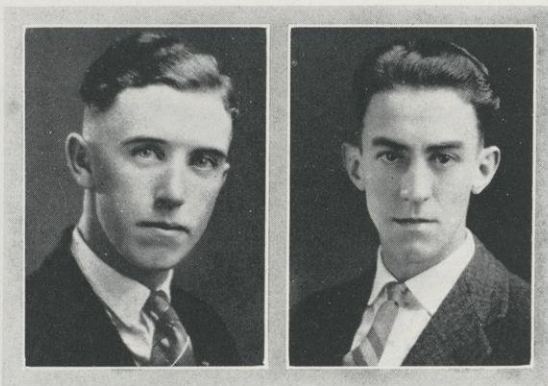






## THIRD YEAR CLASS





BURKE

LUTTRELL

# OFFICERS

## FIRST SEMESTER

JOHN BURKE - - - - - *President*

DAN WILE - - - - - *Vice President*

FRANCES LETHLEAN - - - - - *Secretary*

BARTLETTE LUTTRELL - - - - - *Treasurer*

*Faculty Advisor* - - - - -

## SECOND SEMESTER

BARTLETTE LUTTRELL

WILLIAM SMITH

CONSTANCE MILLER

BERNARD INGLI

MISS LATTA



MAUD A. LATTA



## THE THIRD YEAR CLASS

THE Third Year Class is a group made up of those students who are finishing one of the three-year courses for high school teachers and supervisors. For some time the number of students in these courses was not large, and they occupied the rather indefinite position of post graduates as far as school activities were concerned. However, there has been a steady growth from a small group to a well organized class, assuming the leadership of school activities.

The Third Year Class of 1926 has seventy-seven members, the largest group as yet to complete the three-year courses. Its history as a class began in September, 1923, when, together with students of other courses, it formed a freshman class of nearly two hundred and fifty. At the outset the class was fortunate in obtaining as class advisor, Miss Latta, who has contributed to whatever success the class has achieved. Since its organization a high mark of excellence has characterized all its activities. It put on the Prom in 1924, and cooperated with the other classes in giving the Prom of 1925. It published the Meletean of 1925, and then, in the rearrangement of class activities, assumed responsibility for the annual again, and published the present Meletean of 1926. It presented the class play in 1925, and, together with the Second Year Senior Class, will present the play in June, 1926.

In every branch of athletics, in debate, oratory, drama, music, school publications, and in scholarship the class has its representatives.

With the sound foundation already laid by Third Year groups, it is certain that the Third Year Classes that follow will perpetuate the spirit of leadership, progress, and service.





HAROLD ANNETTE



DAN LOIS BART



JACK



SYLVA

K  
i  
N  
G  
S



ESMER  
Q  
U  
E  
E  
N  
S



Bike



LYNUM JACK ROLLIE



RADY



STELLA





Gladys



Nary & Nary



Frank



Norma

K  
i  
n  
g  
s



Vic

Q  
u  
e  
e  
n  
s



Evelyn



DON



Cora



Dean



Brakken





EVERY AMES - - - - - River Falls

*History and English*

Y. W. C. A., 1, 2; G. O. P., 1, 2, 3; Mozart Club, 2, 3; Glee Club, 1, 2, 3; Girls' Quartette, 2, 3; "The Kleptomaniac," 2; Meletean Vaudeville, 2, 3; Prom Committee, 1; Ring Committee, 3.



OSBORNE ATTOE - - - - - Wautoma

*Mathematics and Science*

Y. M. C. A., 1, 2, 3; Lincolnian, 1, 2, 3; Track, 2; I. C. U. R. Norsk Club, 3.



LOIS BEERS - - - - - Elmwood

*Mathematics and Science*

Cornell College, 1; Y. W. C. A., 2, 3, World Fellowship Chairman, 2; G. A. A., 2, 3, Treasurer, 3, Basketball Chairman, 2, Volleyball, 2, Baseball, 2, "R" Sweater, 2; Student Voice, 2, 3, Assistant Editor, 2, Editor, 3.



CORA MARIE BELISLE - - - - - Somerset

*History and English*

N. C. A., 1, 2, 3; G. A. A., 1, 2, 3, Secretary, 3; Mozart Club, 3.



FRANK BELISLE - - - - - Balsam Lake

*History and Science*

N. C. A., 1, 2, 3; Lincolnian, 1; Civic Club, 3; Prom Committee, 1; Homecoming Committee, 3.





ELMER BERAN - - - - - Turtle Lake

*Mathematics and Science*

Y. M. C. A., 2, 3; Civic Club, 2; Class Treasurer, 2;  
Football, 3; Basketball, 1, 3; Baseball, 1, 3; Mele-  
tean Vaudeville, 2; Agrifallian Play, 2; Business  
Manager Meletean, 2.

SHERMAN BILES - - - - - Durand

*Agriculture and Mechanics*

Y. M. C. A., 1, 2, 3; Agrifallian, 1, 2, 3.

GLADYS BLEISNER - - - - - Baldwin

*English and Music*

Macalester College, 1; Y. W. C. A., 2; G. O. P., 3;  
Civic Club, 2; Mozart Club, 2, 3.

LORENE D. BRACKIN - - - - - Fairmont, N. D.

*History and English*

Y. W. C. A., 1, 2, 3; Social Chairman, 3; Aurelia  
Society, 2, 3; Civic Club, 2, 3, Vice-President, 3.  
Secretary and Treasurer, 2; Mozart Club, 2, 3; Glee  
Club, 1, 2, 3; Student Council, 2; Homecoming  
Committee, 3; Student Voice Staff, 2, 3.

EARL BRAKKEN - - - - - Cable

*Mathematics and Science*

Milton College, 1; Y. M. C. A., 1, 2, 3, Vice-Presi-  
dent, 3, Delegate to Geneva Conference, 2; Rural  
Life Club, 1, President, 1; 4L Club, 2; Glee Club,  
1, 2, 3; Mozart Club, 3; I. C. U. R. Norsk Club, 3;  
Prom Committee, 1; Student Social Committee, 2;  
Vice-President, 2; Student Council, 3; Track, 1, 2;  
Inter-Class Baseball, 1, 2; Meletean Staff, 3.







CLIFFORD BROOKS - - - - - Colfax

*Mathematics and History*

Lawrence College, 1; Civic Club, 2; Orchestra, 3;  
Football, 2, 3; Basketball, 3.



W. DONALD BROWNSON - - - - - Seymour

*Agriculture and Science*

Y. M. C. A., 1, 2, 3, President, 2, Cabinet, 3, De-  
legate to Geneva Conference, 2; Lincolnian, 3; Agri-  
fallian, 1, 2, 3.



ELLEN BURKE - - - - - Minneapolis, Minn.

*Mathematics and Science*

Ellendale State Normal and Industrial School, 2;  
G. A. A., 1, 3, President, 3; Rural Life Club, 1,  
President, 1; Class Vice-President, 1; Basketball, 3;  
Volleyball, 3; Prom Committee, 1.



JOHN C. BURKE - - - - - Casco

*Agriculture and Science*

Marquette University; N. C. A., 1, 2, 3, President, 2;  
Lincolnian, 1, 2, 3; Agrifallian, 1, 2, 3, Treasurer, 2;  
Class President, 3; Chairman of Victory Day Com-  
mittee, 3; Chairman of Student Council, 3; Chair-  
man of Pep Mass Meetings, 2, 3; Organization Ath-  
letics, N. C. A., 1, 2, 3; Debate Squad, 2, 3; Oratory,  
3, Local Representative, 3; Extemporaneous Speak-  
ing, 1, 2, 3.



LOUIS CERVANA - - - - - Bloomer

*Agriculture*

N. C. A., 1, 2, 3; Agrifallian, 1, 2, 3.





ANDREW CLEBERG - - - - - Rio

*Mathematics and Mechanics*

Y. M. C. A., 1; Class Football Team, 2, 3; Basketball, 1, 2, 3, Captain, 3.

EVA DAVISON - - - - - River Falls

*History and English*

G. O. P., 1, 2, 3; Prom Committee, 1; Homecoming Committee, 3; Meletean Staff, 3; Meletean Vaudeville, 3.

HAROLD EDWARDSON - - - - - River Falls

*Agriculture*

Y. M. C. A.; Agrifallian.

JACOB W. FOGO - - - - - Richland Center

*Principals*

Richland Center Training School; Baseball, 2, 3.

ARNOLD A. FALKOSKE - - - - - Ellsworth

*Agriculture*

Y. M. C. A., 1, 2, 3; Agrifallian, 1, 2; Football, 2.







HARRIET GILBERT - - - - Ellsworth

*History and English*

Hamline University, 1; Y. W. C. A., 3; Aurelia, 3;  
Mozart Club, 3; "The Ruling Class," 3; Meletean  
Vaudeville, 3.



PAUL F. L. GLEITER - - - - River Falls

*Agriculture and Principals*

Graduate of La Crosse State Normal School; Uni-  
versity of Wisconsin; Y. M. C. A., 3; Agrifallian, 3;  
Civic Club, 3.



DEAN R. GOODRICH - - - - Cylon

*Principals*

Y. M. C. A., 1, 2, 3; Civic Club, 1, 2, 3; "Maud  
the Third," 3; We-Wa-We-Pe-Li-Go-Na-By, 3



LITHA GREGOR - - - - River Falls

*History and English*

N. C. A., 1, 2, 3, Secretary, 2; G. O. P., 2, 3; G. A.  
A., 1, 2; Student Voice, 2, 3; Meletean Staff, 2, 3;  
Meletean Vaudeville, 2, 3.



ALICE HAGEN - - - - Nye

*History and Science*

Y. W. C. A., 1, 2, 3, Social Chairman, 2, President, 3,  
Delegate to Geneva Conference, 3; G. A. A., 1, 2, 3,  
Recording Secretary, 1, Track Head, 2, Volleyball  
Head, 3, "R" Sweater, 2; Class Secretary, 2; Prom  
Committee, 1; Student Council, 2; Homecoming  
Committee, 3; Meletean Staff, 2.





HAROLD C. HEGGEN - - - - Hudson

*Mathematics and Science*

Y. M. C. A., 1, 2, 3; Mozart Club, 2, 3; Glee Club,  
1, 2, 3; Football, 1, 2, 3; Track, 1, 2, 3; Student  
Voice, 3; Meletean Staff, 3; Meletean Vaudeville,  
2, 3; "Action," 3.

DELWARD HENDRICKSON - - Pillager, Minn.

*Agriculture and Principals*

Y. M. C. A., 1, 2, 3; Agrifallian, 1, 2, 3.

SYLVA HUNT - - - - Menomonie

*History and English*

Lawrence College; Stout Institute; G. O. P., 3; Civic  
Club, 2, 3, President, 2; Mozart Club, 2, 3; Glee  
Club, 2, 3; Prom Committee, 2; Meletean Staff, 3;  
Meletean Vaudeville, 2, 3.

BERNARD W. INGLI - - - - Ellsworth

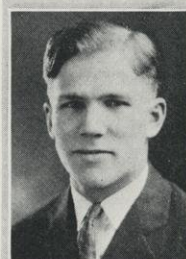
*Mathematics and Science*

Y. M. C. A., 1, 2, 3; 4L Club, 1, 2; Class Treasurer,  
3; Football, 1, 2, 3; Organization Basketball, 1, 2;  
Track, 1, 2, 3; Editor-in-Chief of Meletean, 2.

FRANK C. JANISCH - - - - Ellsworth

*Agriculture and Principals*

N. C. A., 1, 2, 3; Agrifallian, 1, 2, 3; 4L Club, 2;  
Organization Baseball; Agrifallian, 2.







JOHN R. JENNINGS - - - - Spring Valley

*Mathematics and Science*

N. C. A., 1, 2, 3, Treasurer, 2; Lincolnian, 2, 3, President, 3; Glee Club, 1, 2, 3; Prom Committee, 2; Ring Committee, 3; Victory Day Committee, 3; Football, 2; Track, 1; Meletean Staff, 3.



THEODORE J. JENSON - - - - Elk Mound

*Mathematics and Science*

Y. M. C. A., 1, 2, 3, President, 3, Cabinet, 2, President State Student Council, 3, Delegate to Geneva Conference, 2; Lincolnian, 1, 2, 3; Glee Club, 1, 2, 3; Victory Day Committee, 2; Football, 3.



CECILE W. KELLY - - - - River Falls

*Junior High School*

Y. W. C. A., 1, 2, 3; G. A. A., 1, 2, 3, Basketball, 1, 2, 3, Volleyball, 1, Baseball, 1.



THEODORE P. KEXEL - - - - Wabeno

*Agriculture and Principals*

N. C. A., 2; Agrifallian, 1, 2, 3, President, 3; Orchestra, 1, 2, 3; Band, 2, 3; Student Social Committee, President, 3; Homecoming Committee, 2; Class Play, 2; Student Voice, 3; Meletean Staff, 2.



ELIZABETH KLEIN - - - - Ellsworth

*History and English*

Y. W. C. A., 2, 3, Financial Committee, 3; Civic Club, 3.





HENRY A. KNOLL - - - - - Granton

*Agriculture and Mechanics*

Y. M. C. A., 2, 3; Agrifallian, 1, 2, 3, Vice-President, 2, Secretary, 3; Agrifallian Basketball, 1, 2, 3; Agrifallian Baseball, 1, 2, 3.



LORON B. KRUEGER - - - - - Ellsworth

*Agriculture and Mechanics*

Y. M. C. A., 3; Agrifallian, 1, 2, 3; Advertising Committee for Poultry Show, 3; Class Football, 3.



ANNETTE LANCKTON - - - - - Menomonie

*History and English*

Y. W. C. A., 1, 2, 3; Aurelia, 1; G. O. P., 2, 3; G. A. A., 2; Civic Club, 1; Student Social Committee, 1, 3; Student Council, 2; Homecoming Committee, 2, 3; Women's League of Voters, 2, 3, President, 3; Meletean Staff, 2.



FRANCES LETHLEAN - - - - - Apple River, Ill.

*Mathematics and Science*

Platteville Normal School, 1; Y. W. C. A., 2, 3, Cabinet, 3; G. O. P., 2, 3; Glee Club, 2, 3; Class Secretary, 3; Prom Committee, 2; Homecoming Committee, 3; Student Council, 2, 3; "Adam and Eva," 2; Debate, 2, 3.



JOHN C. LIGHTFOOT - - - - - Glenwood City

*Principals*

Y. M. C. A., 1, 2, 3; 4L Club, 1, 2; We-Wa-We-Pe Li-Go-Na-By, 3; Y. M. C. A. Basketball, 1, 2.







MARIE LUNDY - - - - - Hudson

*Junior High School*

N. C. A., 1, 2, 3; G. O. P., 1, 2, 3, Treasurer, 3;  
Music Club, 2; Prom Committee, 1; Student Council, 2; Student Voice, 2, 3.



J. BARTLETTE LUTTRELL - - - - - Osseo

*Mathematics and Science*

Y. M. C. A., 3; Class Treasurer, 3; Class President, 3; Student Voice, 1, 2, 3, Managing Editor, 2, 3.



MARCEL K. LYNUM - - - - - Baldwin

*Mathematics and Science*

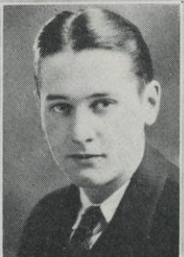
Y. M. C. A., 1; Lincolnian, 1, 2, 3; Civic Club, 3;  
Class Treasurer, 2; Homecoming Committee, 1, 2, 3;  
Chairman of Student Council, 2; Oratory, 1, 2;  
Dramatics, 1, 2, 3, Class Play, 2; Student Voice, 1, 2,  
Business Manager, 2; Business Manager of Mele-  
team, 3.



THERESA MACHMEIER - - - - - Mondovi

*Supervisors*

Milwaukee State Normal School; Y. W. C. A., 1, 2,  
Devotional Chairman, 2; Aurelia, 1, 2, Secretary, 2;  
Homecoming Committee, 2.



DONALD C. MACKINNON - - - - - River Falls

*Mathematics and Science*

University of Wisconsin, 2; Class President, 1;  
Prom Committee, 1.





GERTRUDE MERRILL - - - - - River Falls

*History and English*

G. O. P., 1, 2, 3; Mozart Club, 3; Ring Committee,  
3; Prom Committee, 1; Homecoming Committee, 3;  
Meletean Staff, 3.

CONSTANCE MILLER - - - - - Bay City

*History, English, and Music*

N. C. A., 1, 2, 3; G. O. P., 1, 2, 3; Glee Club, 2, 3;  
Orchestra, 1, 2, 3; Band, 1, 2, 3; Prom Committee,  
1; "Our Aunt from California," 3; G. A. A., 3;  
Meletean Vaudeville, 3.

LEONA MILLER - - - - - Ellsworth

*Mathematics and History*

N. C. A., 1, 2, 3; Meletean Staff, 3.

MARKHAM MORTON - - - - - Ellsworth

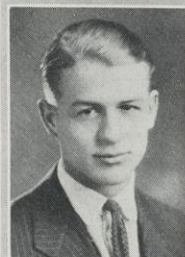
*Science and Foreign Languages*

Y. M. C. A., 3; Lincolnian, 3; Mozart Club, 3; Glee  
Club, 3; Orchestra, 3; Band, 3; Cheer Leader, 3.

LEDVIN R. MJAANES - - - - - Clayton

*Agriculture and Principals*

Y. M. C. A., 1, 2, 3, 4; Agrifallian, 1, 2; Glee Club,  
1, 2, 3, 4.







PHILIP J. NARY - - - - - River Falls  
*Mathematics and Science*  
 N. C. A., 1, 2, 3.



FREDRICK T. NARY - - - - - River Falls  
*Mathematics and Science*  
 N. C. A., 1, 2, 3, Secretary, 3.



ELDA M. NELSON - - - - - River Falls  
*History and English*  
 Y. W. C. A., 2, 3; Aurelia, 1, 2, 3, Secretary, 2,  
 Vice-President, 2; G. A. A., 1, 2; Mozart Club, 2, 3;  
 Glee Club, 1, 2, 3; Student Council, 2; Homecoming  
 Committee, 2, 3; Girls' Volleyball, 2; Student Voice,  
 2, 3.



EVELYN NELSON - - - - - Maiden Rock  
*Mathematics and History*  
 Y. W. C. A., 1, 2, 3; Finance Committee, 2, 3;  
 G. A. A., 2, 3.



FRANCIS L. NOLAN - - - - - Wabeno  
*Mathematics and Science*  
 Milwaukee Normal School, 1, 2; N. C. A., 3.





CLIFFORD OLSON - - - - - Cushing

*Agriculture and Principals*

Y. M. C. A., 1, 2, 3, Cabinet, 2; Agrifallian, 1, 2, 3,  
Vice-President, 3; Glee Club, 1; Meletean Staff, 3.

GLEN C. OLSON - - - - - Midway

*Agriculture*

Y. M. C. A., 2, 3; Agrifallian, 1, 2, 3; Football, 2;  
Track, 1.

GERALD PAUL - - - - - Durand

*Mathematics and Mechanics*

Y. M. C. A., 1, 2, 3; Social Committee, 1; Class  
Basketball, 2; Track, 2; Meletean Staff, 2.

STELLA PEDERSON - - - - - River Falls

*History and English*

Y. W. C. A., 1, 2, 3, Treasurer, 2, 3, Vice-President,  
1; G. A. A., 1, 2; Civic Club, 2, 3, Secretary and  
Treasurer, 3; Basketball, 3.

HALE QUANDT - - - - - Wausau

*Mathematics and History*

Football, 1, 2, 3; Basketball, 1, 2, 3; Baseball, 1, 2,  
3; Track, 1, 2, 3.







PAUL ROSENBERG - - - - - Colfax

*Mathematics and Science*

Y. M. C. A., 2; Vice-President of Social Committee,  
2; Prom Committee, 1, 2; Track, 1, 2.



CLARENCE A. SHERN - - - - - Deer Park

*Principals*

Y. M. C. A., 1, 2, 3; Lincolnian, 1, 2; Prom Com-  
mittee, 1; Homecoming Committee, 2.



VICTOR SIVERTSON - - - - - Colfax

*History and English*

St. Olaf College; Lincolnian, 2, 3; Civic Club, 2, 3;  
Editor-in-Chief of Meletean, 3.



GEORGIA JUANITA SLAUSON - - - - - Hudson

*History, English, and Latin*

Y. W. C. A., 3; G. O. P., 3; G. A. A., 2; Mozart  
Club, 2; Glee Club, 1, 2, 3.



WILLIAM SMITH - - - - - River Falls

*Mathematics and Science*

Y. W. C. A., 3; Lincolnian, 2; Class Vice-President,  
3; Football, 1, 2; Class Basketball, 1, 2.





KNUT S. SYVERUD - - - - - Mt. Horeb

*History and Social Science*

St. Olaf College, 1, 2; Football, 3; Basketball, 3.

JOHN E. ULRICH - - - - - Elk Mound

*Mathematics and Science*

N. C. A., 1, 2, 3; 4L Club, 2; Social Committee, 3;  
Class Track, 1, 2.

FRED H. WANDREY - - - - - Cumberland

*Mathematics and Science*

Lincolnian, 1, 2, 3, President, 2, 3; Debate, 1, 2, 3;  
Student Voice, 1.

ALYCE GAY WANISH - - - - - Boyd

*History and Social Science*

Eau Claire Normal School, 2; N. C. A., 1; Y. W.  
C. A., 3; G. A. A., 1, 3; Civic Club, 3.

FLORENCE WIGER - - - - - River Falls

*Primary Grades*

Y. W. C. A., 1, 2, 3.







DAN W. WILE - - - - - Cameron

*Mathematics and Science*

Y. M. C. A., 1, 2, 3; Orchestra, 1, 2, 3; Band, 1, 2, 3; Class Vice-President, 3; Social Committee, 1; Track, 1, 2, 3; Student Voice, 2, 3, Assistant Business Manager, 2, Business Manager, 3.



J. ALOYSIUS WILLIAMS - - - - - New Richmond

*Mathematics and Science*

State Teachers' College, Valley City, North Dakota; N. C. A., 1, 2, 3, President, 3; Lincolnian, 1, 2, 3; Victory Day Committee, 2, 3; Football, 1, 2, 3; Tennis Tournament, 2; Lincolnian Baseball, 1, 2; N. C. A. Baseball, 1, 2, 3; Inter-Class Track, 2; Debate, 2, 3; Business Manager Meletean, 2.



GEORGE R. WILSON - - - - - Pillager

*Agriculture and Principals*

Y. M. C. A., 1, 2, 3; Agrifallian, 1, 2, 3, President, 3; Debate, 3.



HAROLD WALTON - - - - - Downing

*Agriculture and Principals*

Y. M. C. A., 1, 2, 3; Agrifallian, 1, 2, 3; Homecoming Committee, 2, 3; Debate, 3.



NORMA YOUNG - - - - - River Falls

*History and English*

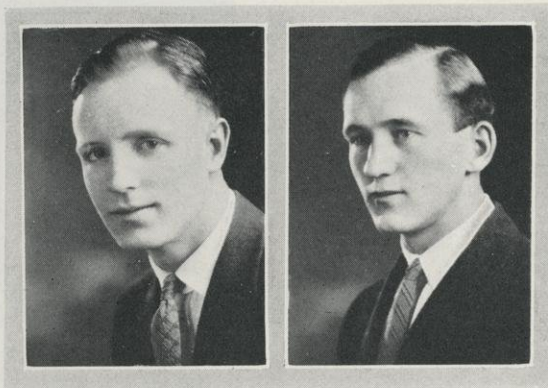






## SECOND YEAR CLASS





DAWSON

WESSLEN

# OFFICERS

## FIRST SEMESTER

LAWRENCE DAWSON - - - - *President*  
 GLADYS SPRIEGEL - - - - *Vice President*  
 HELEN YORK - - - - *Secretary*  
 MARGARET JACKSON - - - - *Treasurer*

*Faculty Advisor*

## SECOND SEMESTER

CLARENCE WESSLEN  
 JOHN HAASCH  
 EVELYN MOEN  
 MARGARET JACKSON

MR. KARGES



RUDOLPH A. KARGES



## THE SECOND YEAR CLASS

THE Second Year Class consists of two groups, a Second Year Senior Class, the members of which are completing some one of the two-year courses for elementary teachers, and a group, who are in the second year of their three-year course.

The members of the Second Year Senior Class, during their two years at River Falls, have contributed much to the school. With the other members of the Second Year Class, and the active cooperation of their advisor, Mr. Karges, they are at work on the chief project of the Second Year group, the Junior Prom, to be given May 19. Last year they cooperated with the other classes in the All-School Prom. Their names have appeared on the honor roll. They have been especially active in school organizations, many of them serving as presidents of these organizations during the past year. They have taken a prominent part in school activities, athletic, musical, and dramatic.





Doris

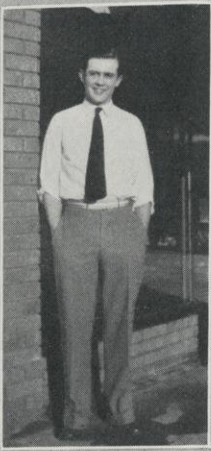


DAWSONS

OLGA



Kings and Queens



Joe



Begley George Haasch



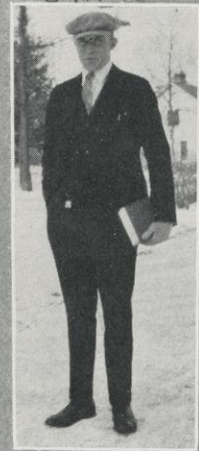
GLADYS



Korby



Grace Adalade



Dick



MINNIE BAARDSON - - - - - Baldwin

*Primary*  
Y. W. C. A., 1, 2.



VIOLET BATES - - - - - St. Paul, Minn.

*Primary*  
G. O. P., 2.



FLOSSIE L. BAUER - - - - - Spring Valley

*Primary*  
Y. W. C. A., 2.



MABEL BEASTROM - - - - - River Falls

*Primary*  
Y. W. C. A., 1, 2.



THELMA BEST - - - - - Downing

*Intermediate*  
Y. W. C. A., 1, 2; G. O. P., 2; G. A. A., 1.







CAROL ALBERTA BISHOP - - - Hammond

*Primary*

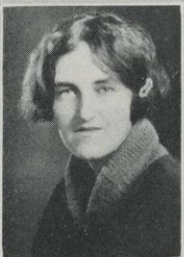
Y. W. C. A., 1, 2; Mozart Club, 2.



JESSIE BOLIN - - - Bay City

*Grammar*

Y. W. C. A., 2; G. A. A., 2, Volleyball, 2,  
Basketball, 2.



ALICE BROWN - - - Ellsworth

*Grammar*

Y. W. C. A., 2; Mozart Club, 2.



ELAINE CHRISTIANSEN - - - River Falls

*Primary*

Y. W. C. A., 1, 2; G. A. A., 1, 2; Mozart Club, 1, 2;  
Orchestra, 1, 2.



ELLA R. COLBY - - - Rio

*Primary*

Milwaukee Normal School, 1; Y. W. C. A., 2;  
Aurelia, 2.





ELLA C. COTONE - - - - - Cumberland

*Intermediate*

N. C. A., 1, 2, Treasurer, 2; G. O. P., 2; G. A. A., 2.

RUTH CUDDEBACH - - - - - Hudson

*Primary*

Y. W. C. A., 1, 2, Finance Committee, 1, 2, Program  
Committee, 2; Aurelia, 1, 2; G. A. A., 1.

ALICE DUNN - - - - - River Falls

*Intermediate*

G. O. P., 1, 2; Glee Club, 1, 2; Girls' Quartette, 2;  
Mozart Club; "Kleptomaniac."

LOUISE ELSTER - - - - - River Falls

*Grammar*

Y. W. C. A., 1, 2; Aurelia, 1, 2; Orchestra, 1, 2.

LILA EMBRETSON - - - - - Stanley

*Primary*

Y. W. C. A., 1, 2; G. O. P., 2; G. A. A., 1, 2.







BEATRICE FARM - - - - - Stockholm

*Grammar*

Y. W. C. A., 1, 2, Program Committee, 2; Aurelia,  
1, 2; Homecoming Committee, 2.



ARLENE FOSS - - - - - Beldenville

*Intermediate*

Y. W. C. A., 1, 2; Student Social Committee, 1;  
Volleyball, 1; Baseball, 1.



DORIS FREDERICKSON - - - - - St. Paul, Minn.

*Grammar*

Y. W. C. A., 1, 2, Secretary, 2, Delegate to Bruce  
Curry Conference, 1, Delegate to Northfield Con-  
ference, 2; Aurelia, 1, 2, Treasurer, 1; G. A. A., 1;  
Mozart Club, 1, 2; Homecoming Committee, 1, 2;  
Victory Day Committee, 2.



MAE FULLER - - - - - River Falls

*Primary*

Y. W. C. A., 2; G. A. A., 2; Tennis Tournament, 2;  
Volleyball, 2.



MARGARET HANNAH - - - - - Hudson

*Primary*

Y. W. C. A., 1, 2; Aurelia, 1, 2, President, 2; Glee  
Club, 1; "Our Aunt from California," 2.





IRENE F. HANSEN - - - - Turtle Lake  
*Primary*  
 N. C. A., 2; G. A. A., 1.

THEA HEGGEN - - - - Hudson  
*Grammar*  
 Y. W. C. A., 1, 2; G. A. A., 1, Recording Secretary,  
 1, Volleyball, 1; Civic Club, 1, 2; Glee Club, 1.

KARN HEYERDAHL - - - Lake City, Minn.  
*Intermediate*  
 Y. W. C. A., 1, 2; Aurelia, 2, Secretary, 2; G. A.  
 A., 2; Homecoming Committee, 2.

OLGA HOLMBECK - - - - Clear Lake  
*Intermediate*  
 Y. W. C. A., 1, 2.

TILDA HOLLINGSWORTH - - - Menomonie  
*Grammar*  
 Y. W. C. A., 1, 2; G. A. A., 2; Civic Club, 2; Eau  
 Claire Normal School, 1922; Stout Institute, 1923.







MARGARET J. JACKSON - - - St. Paul, Minn.

*Grammar*

Y. W. C. A., 1, 2, Vice-President, 2, Delegate to Geneva Conference, 1925, Delegate to Bruce Curry Conference, 1, Delegate to Northfield Conference, 2; Aurelia, 1, 2; Mozart Club, 1, 2, Secretary and Treasurer, 2; Glee Club, 1, 2; Class Treasurer, 2; Prom Committee, 1; Homecoming Committee, 2; Victory Day Committee, 2; Student Council, 1; Meletean Staff, 2.



ALISE E. JENSEN - - - - - River Falls

*Primary*

Y. W. C. A., 1, 2; G. O. P., 1, 2; Mozart Club, 1, 2.



HELENA JENSEN - - - - - Hammond

*Primary*

Y. W. C. A., 1, 2.



FLORENCE JEWELL - - - - - Rhinelander

*Primary*

N. C. A., 1, 2; G. O. P., 1, 2; G. A. A., 1, 2.



ESTHER JOHNSON - - - - - Deer Park

*Advanced Rural*

Y. W. C. A., 1, 2; G. A. A., 2; Rural Life Club, 1, 2, President, 2; Homecoming Committee, 2; Volleyball, 2; Basketball, 2.





LUCILLE JOHNSON - - - - New Richmond

*Primary*

Y. W. C. A., 1, 2; G. O. P., 2; Mozart Club, 1, 2,  
Vice-President, 2; Glee Club, 1, 2; Quartette, 1, 2;  
Ring Committee, 2.

ELLA MAE JONES - - - - Roberts

*Primary*

Y. W. C. A., 1; G. O. P., 2; G. A. A., 1, 2.

MARY ADALADE KEATING - - - New Richmond

*Intermediate*

N. C. A., 1, 2; Aurelia, 2; G. A. A., 1, 2, Secretary,  
2; Music Club, 1; Treasurer of League of Women  
Voters, 1; Homecoming Committee, 2.

VERDA KENDALL - - - - St. Paul, Minn.

*Primary*

Y. W. C. A., 1, 2; Aurelia, 2.

CORA KIELSMEIER - - - - St. Paul, Minn.

*Primary*

Y. W. C. A., 2; G. A. A., 2.







EDWARD KORBEIN - - - - Menomonie

*Grammar*

Y. M. C. A., 2; 4L Club, 1; Class Football, 1, 2;  
Organization Baseball, 1.



EMMA KURRELMEIER - - - So. St. Paul, Minn.

*Intermediate*

Y. W. C. A., 2.



IRENE LINDAHL - - - - Clear Lake

*Grammar*

Y. W. C. A., 2; Mozart Club, 2; Glee Club, 1, 2;  
Homecoming Committee, 2; Meletean Vaudeville, 1.



GRACE ELIZABETH MARTIN - - - New Richmond

*Grammar*

Superior Normal School, 1; N. C. A., 2; G. O. P., 2;  
G. A. A., 2; Homecoming Committee, 2.



EVELYN MOEN - - - - Menomonie

*Intermediate*

Y. W. C. A., 1, 2, Delegate to Bruce Curry Conference, 1, Social Committee, 2, Delegate to Northfield Conference, 2; Aurelia, 2; Aurelia Quartette, 2; Rural Life Club, 1, Treasurer, 1; Mozart Club, 1, 2; Orchestra, 1, 2; Prom Committee, 1; Homecoming Committee, 1, 2; Victory Day Committee, 2; Class Secretary, 2.





SIGNA MOLBERG - - - - - Turtle Lake

*Intermediate*

Y. W. C. A., 1, 2; Aurelia, 2.



RYDA M. MORGAN - - - Minneapolis, Minn.

*Intermediate*

Y. W. C. A., 1, 2, Social Service Chairman, 2, Delegate to Bruce Curry Conference, 1, Delegate to Northfield Conference, 2; Aurelia, 2; G. A. A., 1; Mozart Club, 1, 2; Prom Committee, 1; Homecoming Committee, 2.



MILDRED MYRVOLD - - - - - Woodville

*Primary*

Y. W. C. A., 1, 2, Program Committee, 2; Aurelia, 1, 2; Homecoming Committee, 2.



H. IRENE OLSON - - - - - Wanderoos

*Intermediate*

Y. W. C. A., 1, 2; G. A. A., 2, Volleyball, 2; Glee Club, 1; Rural Life Club, 1, Treasurer, 1.



GLADYS PERKINS - - - - - Hawkins

*Grammar*

Y. W. C. A., 1, 2; Aurelia, 1, 2; Mozart Club, 1, 2.







MARGARET PROSSER - - - - - Turtle Lake

*Grammar*

Y. W. C. A., 1, 2; G. A. A., 1, 2, Vice-President, 2,  
Basketball, 1, 2, Volleyball, 2.



MYRTLE RENANDER - - - - - Clayton

*Intermediate*

G. A. A., 1, 2; Civic Club, 1, 2.



LAURA SCHIEFELBEIN - - - - - Somerset

*Grammar*

Y. W. C. A., 1, 2; G. A. A., 1, 2.



ROSE SCHIEFELBEIN - - - - - Somerset

*Primary*

Y. W. C. A., 2; G. A. A., 2.



BERNICE SHELDREW - - - - - River Falls

*Junior High School*

Y. W. C. A., 2; G. O. P., 1, 2, Vice-President, 1, 2;  
Mozart Club, 2; Student Voice, 2; "Maude the  
Third," 2; Meletean Vaudeville, 2.





MARION SIMONSON - - - - Elmwood

*Primary*

Y. W. C. A., 1, 2; G. O. P., 2; G. A. A., 1, 2, Secretary, 2; Mozart Club, 1, 2.



MARVIN SCOTT - - - - River Falls

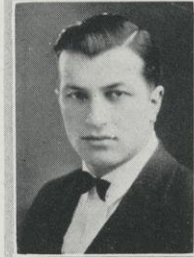
*Grammar*



RAYMOND W. SMITH - - - - Ellsworth

*Grammar*

Class Football, 2.



GLADYS SPRIEGEL - - - - St. Paul, Minn.

*Grammar*

Y. W. C. A., 2; G. O. P., 1, 2, President, 2; Mozart Club, 1, 2, Secretary, 1; Class Vice-President, 2; Victory Day Committee, 2.



MARIE STELSEL - - - - Hammond

*Intermediate*

Y. W. C. A., 1, 2; Mozart Club, 1, 2; Glee Club, 1, 2.







WINIFRED STEPHENS - - - - - Hammond

*Intermediate*

N. C. A., 1, 2; G. A. A., 1.



HELEN THIES - - - - - Pepin

*Intermediate*

Y. W. C. A., 2; G. A. A., 2, Volleyball, 2; Rural Life Club, 1.



DORIS TYVOL - - - - - Cumberland

*Primary*

Y. W. C. A., 1, 2; G. O. P., 1, 2, Secretary, 2; G. A. A., 1, 2, President, 1, 2, Volleyball, 1, 2, Baseball, 1, 2; Prom Committee, 1; "The Kleptomaniac," 1.



LYLA VAN ALSTINE - - - - - Hastings, Minn.

*Grammar*

Y. W. C. A., 1, 2; Aurelia, 2; Mozart Music Club, 1, 2; G. A. A., 1; Homecoming Committee, 2; "Our Aunt from California," 2.



CLYDE W. ZAMJAHN - - - - - Chaska, Minn.

*Grammar*

Agrifallian, 1; Glee Club, 2; Orchestra, 1, 2; Class President, 1; Football, 2; Basketball, 1, 2; Track, 1.







BUNNY IDA Alise Ev. Harriet

Hazel Kings AND Queens Mid



Al Cook



Alise



Oren



Lucille Fern



Margaret Evelyn Ryda





Alvin Amundson



Ruth Bailey



Alfred Baker



Harriet Beebe



Archie Begley



Milton Berlin



Eugene Brown



Frederick Cooke



Roy Cooke



Lawrence Dawson



Lowell Dawson



Agnes Detert



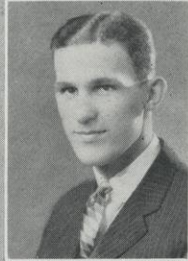
Bessie Dorwin



Walter Dunbar



Joe Freestone



Robert Gardner



Fern Gauvin



Lawrence Gibson



Arno Gluterson



Alvin Grahm





Floyd Helwig



Evelyn Holt



John Haasch



Margaret Hanley



Clarence Heebink



Hazel Heyer



Aldrich Horak



Welsena Jahr



Edward Johnson



Ida Johnson



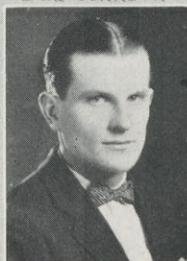
Alvin Maier



Russell Nelson



Tillman Nelson



Walter Paulson



Edith Pritchett



Alice Reardon



Orrin Rodewald



Agnes Schaffner



Sidney Scoville



George Simon





VIDA BEEBE - - - - - Cylon

*Grammar*

Y. W. C. A., 1; Glee Club, 1.

LILLIAN NORRIS - - - - - Maiden Rock

*Grammar*

Y. W. C. A., 1; Glee Club, 1.

MYRTLE MARIE PETERS - - - - - Pepin

*Advanced Rural*

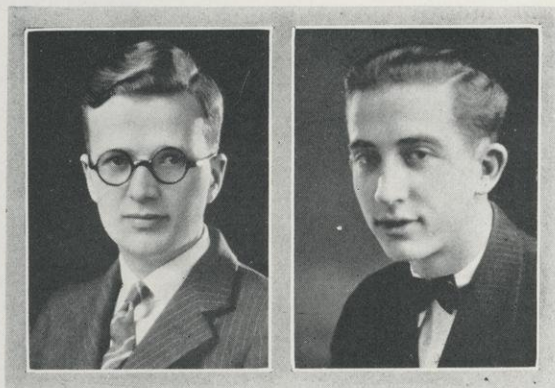
Y. W. C. A., 1, 2; Civic Club, 1; Rural Life Club, 1, 2; G. A. A., 2.





## FIRST YEAR CLASS





NORSENG

DAVISON

# OFFICERS

## FIRST SEMESTER

MARSHALL NORSENG - - - *President*  
 SARAH MCINTYRE - - - *Vice President*  
 EVA BARRETT - - - *Secretary*  
 VICTOR PETERSON - - - *Treasurer*

*Faculty Advisor* - - -

## SECOND SEMESTER

JOHN DAVISON  
 JAMES CASEY  
 RUTH JOHNSON  
 INEZ MORROW

MR. MAY



JOHN M. MAY



In Memoriam

---

Beatrice Ross Maier

Died January 14, 1926

Martin L. Anderson

Died April 18, 1926





ELEANOR



George Misch Meric



MILT

# KINGS<sup>AND</sup> QUEENS



Bee Ruth Bee



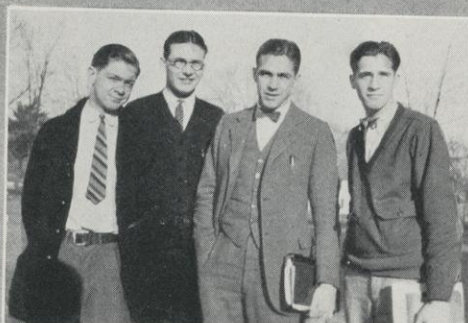
Dick Jim Bob Scott



Bud & Viv



Sig & Dick



Ole Tom Jim Rusty



Burnis





JACK



Ralph Dave  
KINGS  
AND  
Queens



SARA



ANNA



Lois Inez.



CHARLES



Chief



ALMA





Alma Aamodt



Milton Aasmundrud



Wilmet Ableidinger



Perry Adams



Martin Anderson



Kathryn Ausman



Madlyn Bandoli



Erle Barber



Arnold Barnes



Evelyn Barrett



Thomas Barry



Loretta Basil



Marion Brown



Scott Canney



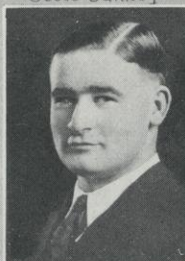
Gertrude Carruth



James Casey



Herbert Chapman



Leonard Collins



Ruby Cook



John Davison





Margaret Donavan



Russel Dort



Edna Erickson



Elsie Erickson



Roman Fait



Ruth Foley



Charlotte Gibbons



Truman Glass



Theodore Goble



Edwin Groh



Elma Guerhink



Bert Halberg



Raymond Halron



Glen Halron



Ralph Hardin



Pearl Heckel



Portia Hill



George Howard



Helen Hughes



Blanch Hulbert

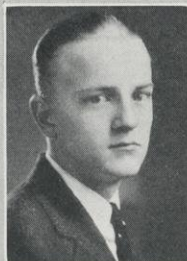




Lois Hunt



Nora Hurteen



Oscar Jahr



Dorothy James



Eleanor Jerde



Helen Johnson



Odella Johnson



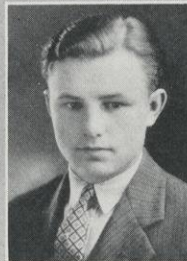
Ruth Johnson



Eunice Josephson



Katherine Kellogg



Edward Kinney



Max Klimper



Victor Knerr



Earl Kuhn



Lura May Lamson



James Landis



Emma Larson



Erwin Larson



Vernon Loker



Lucille Malott





Pearl Marquardt



Alma Mayer



Sara McIntyre



Nellie McKernon



Charles McIlabb



Lorenzo Meachem



Clifford Meyer



Eva Miller



Marion Miller



Blanche Moncken



Richard Mooney



Inez Morrow



Bernard Morton



Floyd Mullendore



Ray Nebel



Alvin Nelson



Lettie Nelson



Ruth Nelson



Marshall Norseng



Clarence Nyht





Edith Oliver



Pearl Olson



Rudolph Olson



Sigurd Oerby



Merric Overman



Archie Paulson



Minnie Pederson



Victor Peterson



Leota Prichard



Anna Rietz



Beatrice Roe



Beatrice Ross



George Rudiger



Edwin Sagen



Milton Shutte



Joseph Seely



Mayree Singleton



Eleanor Smith



Robert Smith



Julia Stein





Eilene Stolt



Luella Thies



Ford Thurston



Fern Turner



Vivian Vassau



Olive Yurink



Michael Wall



Hollis Weaver



Allen Weber



Raymond Weidenfeller



Olive Weld



Kurt Wennerberg



Richard Wittenkamp



Ellen Bannister



Harry Ellefsen



Dorothy Erickson



Burton Karges



Dorothy McDaniel



Mildred Paulson



Earl Weber









## *Activities*









# ATHLETICS





TED COX  
*Coach*

As a sterling athlete Ted Cox has placed his name among the really great football players of Minnesota. Throughout his college career he proved to be a steady, fighting athlete, who never knew what it meant to give up. Although he was handicapped by injuries, he did that which many thought could not be done, "Stop Red Grange." In this Illinois game he broke through the line and got Red so consistently that the brilliant flash was unable to get under way for open running. As a result, Ted, as captain, led his gang forward to a great victory to the tune of twenty to seven.

In basketball, Ted won his letter and was one of the reliable men in most of the conference games.

In track, Cox and Shutte were the two men upon whom Minnesota depended for their points in the weight events.

Letters in three major sports at a large university is the enviable record of our worthy coach.

As a coach, Ted has shown the same sterling qualities. The prospects for a championship team were not very bright at the beginning of the season. Several letter men were back, but the outstanding need was a *line*. But Ted knew just how every position in the line should be played, so he began at once to build a line that would uphold the expectations of the backfield veterans. He directed the backfield through the assistant coach in the early season, and then rounded up the whole team for the championship game against Superior. The shutout score indicated the stonewall ability of the line, and the large offensive score indicated the fighting attack of the backfield.

In basketball our record was not so enviable in games won, but the steady improvement of the team, and the sportsmanship developed in the games lost made it a very successful year. Prospects for another year indicate a higher percentage in the victory column.

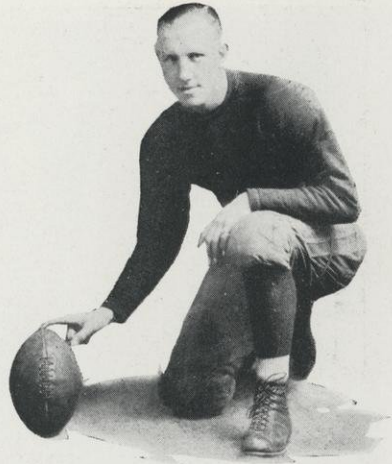
As a coach and as a man, Ted has won a place in the hearts of the younger boys and girls, the students, the faculty, and the people of the community.



L. D. HERSHBERGER  
*Assistant Coach*

Much of the success of the football team was due to the untiring efforts of Professor Hershberger, who acted as assistant coach. Mr. Hershberger came to River Falls with a record of several years as a very successful high school coach. Besides handling the second team, Mr. Hershberger did a great deal of work with all of the backfield men. His industry, loyalty, and intimate knowledge of the game made him a great help to Coach Cox and an inspiration to the players. Not the least of his services was that of scouting games; he always brought home the dope in the team he scouted. One circumstance that makes Mr. Hershberger's work so highly appreciated is that he came here for only one year to take Mr. Hayward's work. If he had been on a permanent appointment, he could not have taken hold with greater enthusiasm. Much is expected of our baseball team under his inspiring leadership.





*Captain*  
"MATT" NELSON

# FOOTBALL SEASON

## 1925





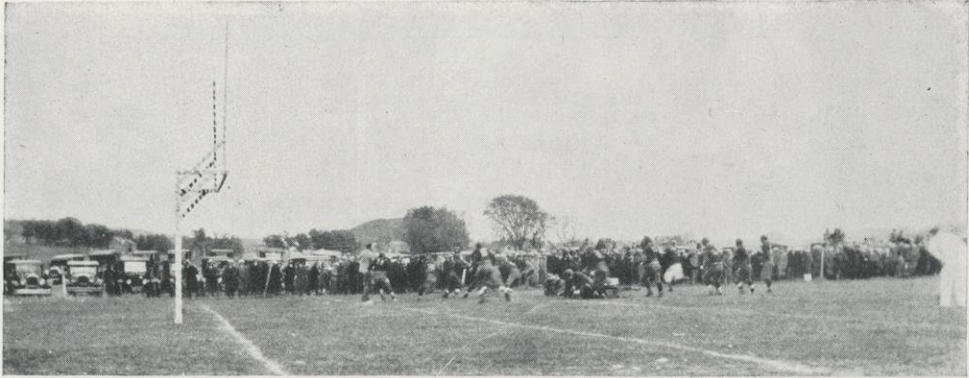
Top Row—Beran, Glass, Helwig, Jensen, Wennerberg, Farrell, Horak, Rademacher  
 Middle Row—Zamjahn, Paulson, Syverud, Weber, Ingli, Feske, Collins  
 Front Row—Cox (Coach), Heggen, Brooks, Quandt, Nelson (Captain), Dawson, Dawson, Gibson, Hershberger (Asst. Coach)  
 Cornie (Mascot)

## FOOTBALL SEASON---1925

LAST year when our grid heroes finished the season with an unblemished record, it seemed that our greatest anticipations had been realized, and little did we dream that another championship was in store for us so soon. But now when we look back upon the wonderful season we had this year and piece together the bits of football history, we can well understand and realize the reason. Championship teams are made through the efforts of not one man or eleven men, but through the efforts of a whole school, united together in one spirit, a spirit that fosters a determination to fight to the finish even though odds be great. It was just this sort of spirit that kept our team on the top and sent them full of fight into every game. The same spirit pervaded our ranks last year, and perhaps the glory of the championship in '24 gave added incentive this year.

A week before the fall term opened, Coach Cox sent out a call for the veterans in order that an early start might be made. Those who formed the nucleus for this year's team were Captain Matt Nelson, Paulson, Rademacher, Lowell and Lawrence Dawson, Pat Ingli, Quandt, and Heggen. With the opening of school came a wealth of good material which gave promise for a successful season. Owing to our early game with Eau Claire, intensive practice was necessary, and the men responded nobly. With the able assistance of Mr. Hershberger, Coach Cox soon had a well balanced team under way, a team which stopped every conference foe and tied with the state champions of Minnesota, Macalester. The splendid record, which this team has achieved, will go down in school history as one of the greatest, and it is with pride that we shall remember the State Champions of 1925.





PAULSON  
*Captain-Elect*

CAPTAIN NELSON, Rademacher, Ingli, Heggen, Quandt, Syverud, and Brooks played their last game for River Falls in the Superior game, and it is with regret that we view the departure of these men. For three year Nelson, Rademacher, Ingli, Heggen, and Quandt have played as regulars for the Red and White, and their presence in the line-up has been the backbone of the team. Matt's defense work has always been a marvel, his keen sense of judgment enabling him to size up a play and be ready to stop it. Quandt's speed and elusiveness have made him a dangerous man, and one feared by all our opponents. Ingli's work on the line has always been of a stonewall nature. Rady's clever defensive tactics will long be remembered, and Heggen's ability to block punts has put the Falls into position to score on numerous occasions.



QUANDT





## RIVER FALLS 12---MACALESTER 12



INGLI

IN the first game of the season the Falls met Macalester and battled them to a 12-12 tie. Although their first game, the Red and White showed wonderful possibilities, the line holding up fine against the battering of the heavier Macalester backfield. Dawson scored early in the first half, but the kick for goal failed. Both teams offered a strong offensive, but the lines offered too much opposition. Collins and Zamjahn played good ball at the guard positions. Quandt



DAWSON

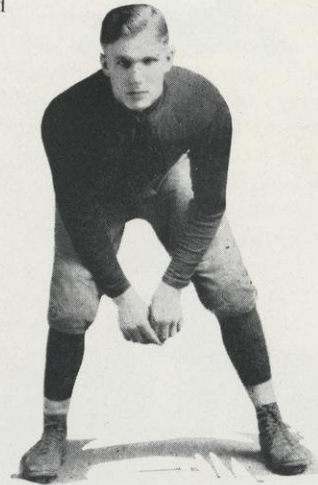
made the second score for the Falls in the fourth quarter. The wet field slowed up the game somewhat, but the brand of football which the River Falls team exhibited gave promise of a successful season.

## RIVER FALLS 22---LUTHER 0

THE Falls tucked another victory under their arm when they shut out the plucky Luther eleven in the game played on a wet field, which caused many fumbles and lowered the score. The Luther team, outplayed and forced to take a defensive stand the whole game, put up a praiseworthy showing. Brooks put over a nice dropkick for the initial score, but the team was unable to make another score until the third quarter when Coach Cox put in his first string, which straightway proceeded to run up a decisive score. Wennerberg played a good game in the fullback position.



RADEMACHER



HEGGEN





### RIVER FALLS 6---EAU CLAIRE 0

SWINGING into smooth working order, the Falls opened their conference season by downing the strong Eau Claire aggregation 6-0. The locals received their first kick-off, and with seemingly little opposition advanced the ball seventy yards in four straight downs for the first and only touchdown of the game. But on top of this splendid beginning came disaster when Rademacher was lost to the team for good by a broken leg. Helwig took Rady's place, but he too was forced out, his arm being dislocated early in the second half. The loss of two good ends was a bitter pill to swallow, but Gibson put up an excellent showing at that position, and continued to do so for the rest of the season. Several attempts to score by drop-kicking failed. Eau Claire was unable to work the ball within scoring distance, and the wonderful punting of "Ade" Olson was the only thing which kept the Falls from further scoring.



HELWIG



DAWSON



## RIVER FALLS 3---STOUT 0



JENSON

A DROP kick by Gibson in the third quarter spelled defeat for Stout and put joy into the followers of the Red and White. It was the homecoming game of the season and the victory gave River Falls a nice lead in the conference race. Both elevens put up a hard fight, the line work displaying unusually great strength. Weber showed up strong, breaking up many of Stout's offensive plays. Feske also played a fine game, and at one time recovered a Stout fumble which put us in a position to score. Gibson at end played a whale of a game, and it was his educated toe that won the battle.



GIBSON

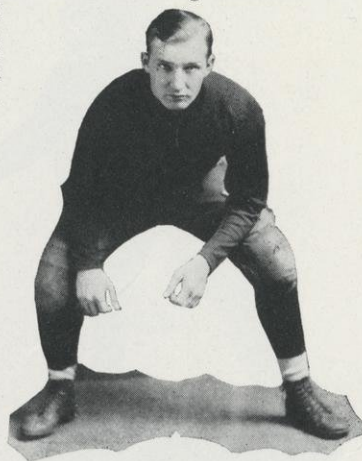
## RIVER FALLS 9---ST. MARY'S 13

PLAYING against odds and also one of the strongest lines in the Minnesota College Conference, the Red and White nearly walked off with a prized victory, and only because of an unusually strong comeback was St. Mary's able to best our total of nine points, amassed in the first half. Early in the game Heggen recovered a

St. Mary's fumble under the goal posts and put the ball in a position for a dropkick which Brooks executed. In the same quarter Captain Nelson carried the ball over the line for the other six points. The second quarter found the Falls again within scoring distance, but unable to penetrate the strong defensive St. Mary's line. Our visitors scored both of their touchdowns the last quarter by well placed forward passes, which the locals were unable to stop.



SYVERUD



ZAMJAHN





## RIVER FALLS 7---STEVENS POINT 0

THE game at the Point proved to be more of a kicking duel than anything else, Lowell Dawson getting away with some pretty punts, while Craney, of the opposition made some nice returns, keeping the ball well in neutral territory. The third quarter found the Falls with the upper hand, and by a varied offense of line bucks and a pretty pass from Dawson to Quandt, the champions put over the only touchdown of the game. The try for point was also made, making the score 7-0. Dawson's kicking and Heggen's defensive work were features of the combat. Jenson at tackle showed unusual offensive ability, and he also did some good defensive work.



BERAN



BROOKS

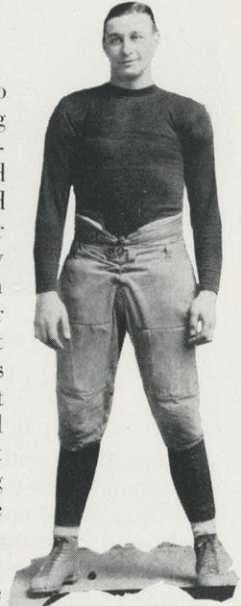


## RIVER FALLS 33---SUPERIOR 0



FESKE

WITH a championship at stake, and playing their lost game of the season, the fighting Red and White eleven, all primed for battle, handed Superior a defeat which showed very clearly the superiority which our team possesses over every team in the state. Matt Nelson led his team-mates out to battle with a spirit that is unquenchable, and the game he played, the last on Ramer Field, will long be remembered. It was the old reliable Matt who

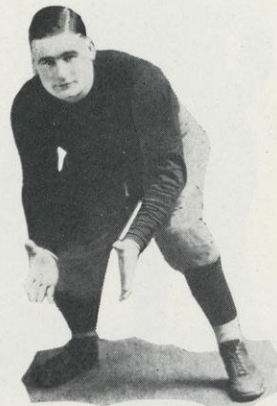


WEBER

backed up the line to perfection, and whose cool head made the best of every opportunity. The whole team played the best game of the season against Superior, with every player performing in stellar style. Paulson was a stonewall at center, controlling the pivot position admirably. "Tarz" continually broke through, upsetting play after play which the Superior team attempted. Pat Ingli, playing his old consistent game, was responsible for Superior's inability to score through the right side of our line.



WENNERBERG



COLLINS





*Captain*  
"BIKE" CLEBERG

# BASKETBALL SEASON 1926





BACK ROW—Jung, Price, Cox (Coach), Landis, Collins, Gibson  
FRONT ROW—Dawson, Quandt, Cleberg (Captain), Zamjahn, Beran

## BASKETBALL 1925-1926

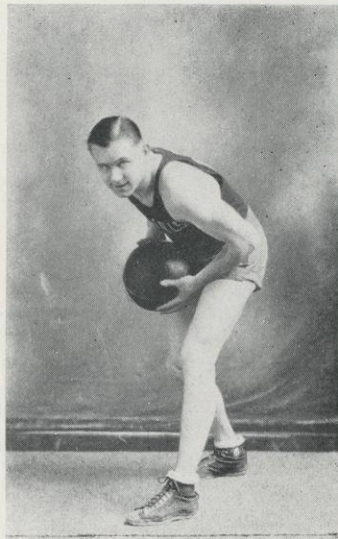
THE first call for basketball material by Coach Cox brought out a squad of about thirty men. The veterans back were Captain Cleberg, Lawrence and Lowell Dawson, Quandt, Gibson, and Zamjahn; with the addition of Syverud, Landis, Jung, Price, and Brooks, work was soon started in earnest.

In the first tilt of the season, the Falls dropped a close game at the hands of the St. Thomas quint, frequent fouling enabling the Tommies to outscore us. Against the Hamline aggregation the Red and White found more opposition, and lost by a more decided score. Cleberg starred for the Falls with six baskets to his credit. In the second game with St. Thomas, free throws again spelled defeat, for the locals outplayed their opponents most of the time.

Superior came up here after dropping a game to Stout, and with Peterson back of a good share of her shots, managed to put it over on the Falls. In the next three games our men seemed unable to work into good shooting form, and lost by close margins. In an overtime period, St. Mary's nosed the locals out by a single point, after the Falls had outplayed them the whole game. The game with Stout was a real battle, the Red and White showing that they were a fighting outfit. Stout found victory in the foul called during the last seconds of play. The final score was 23-24, with one point difference at the half also. When Eau Claire started out to chop off another victory, the Falls countered with a display of fight that scattered all her confidence to the winds. Trailing behind in a 14-2 score early in the quarter, when the half ended they were but a point behind. Dahl's uncanny shooting, however, kept Eau Claire in the lead until the final whistle. In both encounters with Stevens Point we found little difficulty in establishing our supremacy, and both games were won by decisive scores. Stout struck a snag in their last encounter with the Falls, and only after a stiff battle were they able to clinch their title of State Champions.



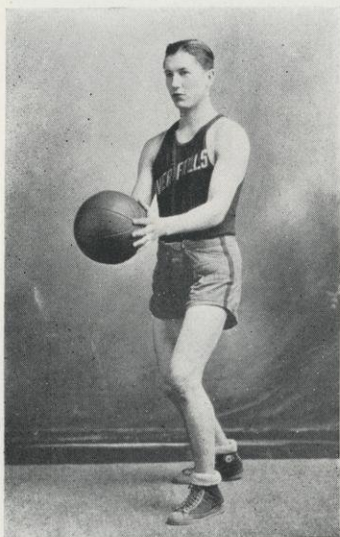
QUANDT is a man who has put in three seasons for the Falls. He will always be remembered for his aggressiveness and excellent guarding. A keen eye for the basket credits him with one and sometimes several neat ringers in nearly every game, and his ability to work the ball into the enemy's territory has established him as an important cog in the Red and White machine.



QUANDT

If one were to consider the number of games won and lost in judging the merits of our basketball team and their record, he would fall far short of the true estimate indeed. A glance at the scores alone would show that no game was lost by a very large margin, and that the majority of them were decided by a mere point or two. In the Stout game the Falls showed that they were able to battle on even terms with the State Champions, and winning from St. Mary's and Stevens Point was no mean accomplishment.

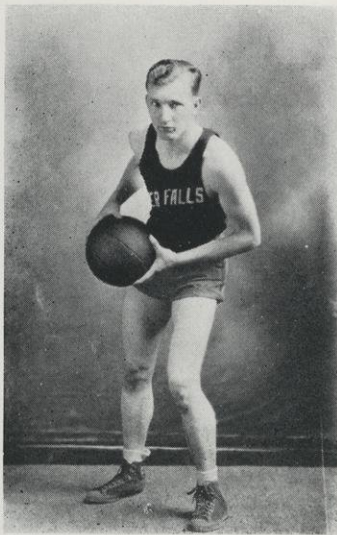
We are proud of the fight our men showed in every game they played, and their record will always be held as one, not so much of victories as of the spirit shown in upholding the standards of the Red and White.



BERAN

BERAN's clever floor work and his fight-to-the-finish spirit were responsible for much of the fight the team showed this year. He also proved to be a scoring factor in critical moments. His work in the Stout game will always be remembered.

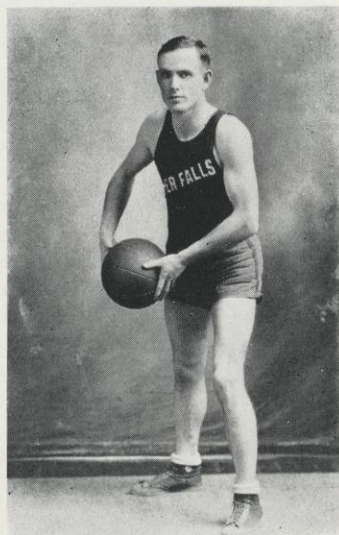




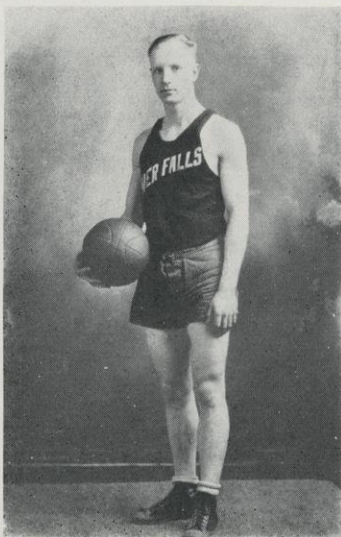
ZAMJAHN

ZAMJAHN carried the same old fight into basketball that he had in football, and because of this he was always a dangerous man for the opponents. His presence at the pivot position kept the team well balanced, and his aggressiveness put him into a position to score many times. Zamie put Chaska on the map at River Falls.

Because of injuries "GIBBY" was unable to play in many of the games, but whenever he was in the lineup, we were assured of good brand of basketball from him. He handled the ball well, and played a strong offensive game.



GIBSON

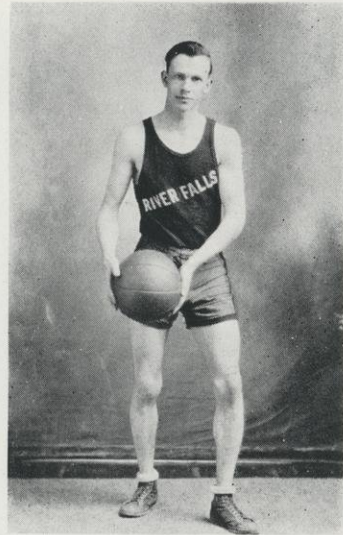


DAWSON

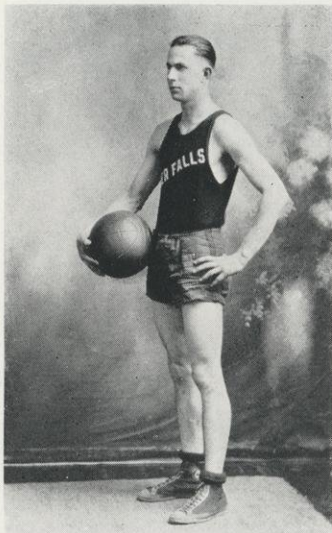
DAWSIE's work at guard will always be remembered with respect by the men of other teams, who have played against him. His ability to smother every offensive measure of the opponents in his direction kept the ball out of dangerous territory most of the time, and forced the opposing teams to long shots.



PRICE showed this year that he has the makings of a mighty good man, and with this year's experience he should become an important cog in next year's team. He is a good shot and plays a scrappy game all the time. We look for big things from him next year.



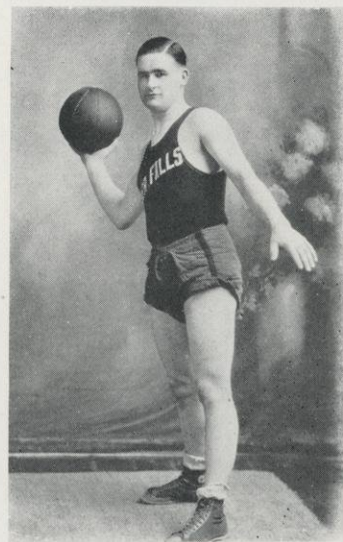
PRICE



JUNG

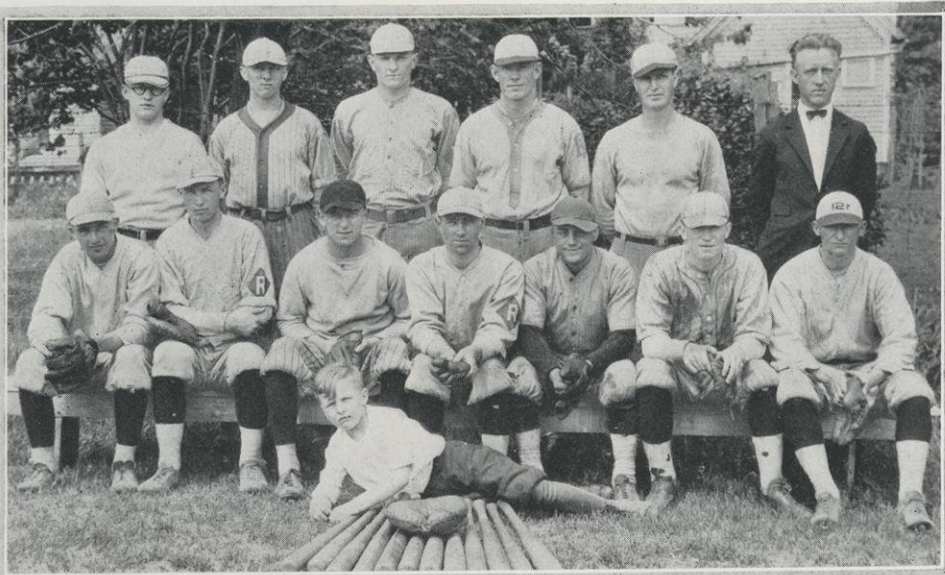
This is the first year for JUNG also, and his appearances on the Red and White team have shown that he will, without a doubt, round out into a dandy guard. Clever and tenacious, he is a hard man to work the ball through, and he has shown that he can hold his own in a wholly creditable way.

COLLINS' ability to step into the game in a time of need gave him a chance to display his wares, which he did in a creditable fashion. He is a good man both to break up plays and work the ball into a scoring position. He will be with us again next year.



COLLINS





STANDING—Brooks, L. Smith, Paulson, Fogo, Verrette (Coach)  
 SITTING—Keppler, Koenig, Quandt, Julian, Dunbar, O'Malley, M. Smith  
 Cornie (Mascot)

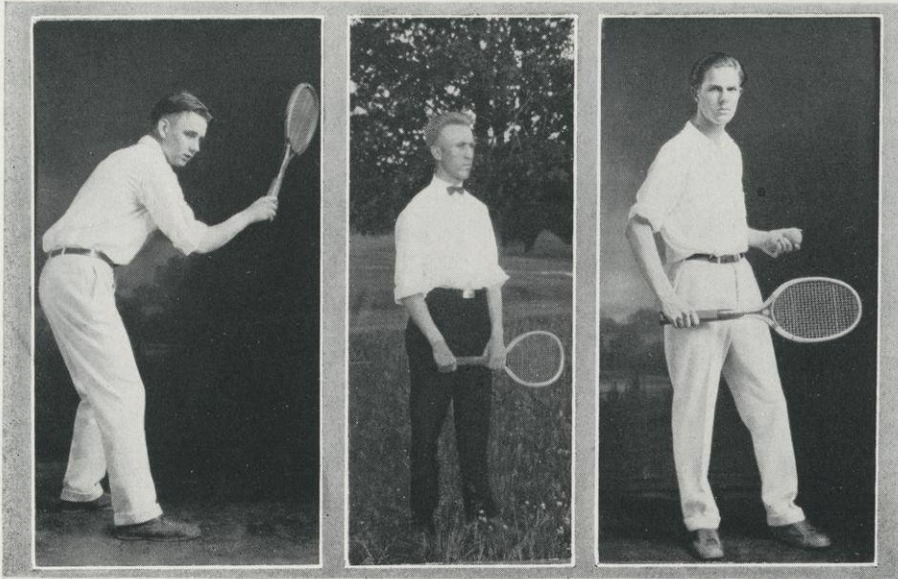
## BASEBALL

LAWRENCE GIBSON	-	-	-	-	-	-	-	-	-	Catchers
AUSTIN DUNBAR	-	-	-	-	-	-	-	-	-	
RAYMOND O'MALLEY	-	-	-	-	-	-	-	-	-	
MATT NELSON	-	-	-	-	-	-	-	-	-	Pitchers
TILMAN NELSON	-	-	-	-	-	-	-	-	-	
WALTER PAULSON	-	-	-	-	-	-	-	-	-	
JACOB FOGO	-	-	-	-	-	-	-	-	-	Shortstop
ELMER KOENIG	-	-	-	-	-	-	-	-	-	First Base
HALE QUANDT	-	-	-	-	-	-	-	-	-	Second Base
MILES SMITH	-	-	-	-	-	-	-	-	-	Third Base
LEO SMITH	-	-	-	-	-	-	-	-	-	Left Field
CLIFFORD BROOKS	-	-	-	-	-	-	-	-	-	Center Field
HENRY JULIAN	-	-	-	-	-	-	-	-	-	Right Field
LEROY KEPPLER	-	-	-	-	-	-	-	-	-	Outfielder

## SCHEDULE

River Falls	-	-	-	-	4	City Team	-	-	-	-	0
River Falls	-	-	-	-	4	St. Olaf College	-	-	-	-	19
River Falls	-	-	-	-	4	Carleton College	-	-	-	-	10
River Falls	-	-	-	-	2	St. Thomas College	-	-	-	-	8
River Falls	-	-	-	-	0	St. Thomas College	-	-	-	-	4
River Falls	-	-	-	-	11	Eau Claire	-	-	-	-	10
River Falls	-	-	-	-	8	Eau Claire	-	-	-	-	2





GALLUP

VERRETTE

WASCHATKA

## TENNIS 1925

THE spring tennis tournament was the most interesting and hotly contested ever held at River Falls. In a strenuous final match Waschatka nosed out Professor May and took first place. In the doubles Verrette and May defeated Hayward and Paul in a closely contested match.

In the summer school tournament the honors were taken by the faculty. Professor May defeated Mr. Eggebrecht in the finals.

With the new courts available this spring, tennis will undoubtedly rank as one of our leading spring sports. Doubles and singles tournaments for both men and women are being planned.





## SKATING

THIS winter another sport was added to River Falls' illustrious line. This new project, the skating rink, had seemed almost impossible for some time, but by the intense effort and enthusiasm of the Student Social Committee was at last successfully carried out.

The idea was first conceived a few years ago, but given practically no consideration, as most every one was pessimistic about the possibilities of constructing a rink. Then last year the idea came to light again, this time being sponsored by the Student Social Committee. The committee put aside money for the purpose, but because a large number of students and faculty believed a skating rink would be unsuccessful, the plan again failed. This year, however, the new Social Committee started out with a determination to complete a rink under any circumstances. They made arrangements for money to be spent, had the city furnish the water and light needed, solicited professional advice, and with the cooperation of Mr. Spriggs, the construction of the rink was soon under way.

Most of the work on the rink was done during the holidays and when the students returned from their vacation, they were very much surprised and at the same time delighted to find it really completed. Plans were then made for a big celebration and when the night came the rink was initiated with a bang. The band played, professional fancy skaters performed, stunts were pulled off, and then more than two hundred and fifty skaters joined hands in an all night's good time. From this night on crowds appeared on the rink almost constantly.

The rink was constructed primarily in the interest of the students, but it proved to be the playground for practically all the people of River Falls, old and young. On one Sunday afternoon the crowd on the rink numbered around seven hundred people, which goes to show that it was successful. The value of the rink to River Falls is inestimable; it not only offers the opportunity to more people to take active part in sports, but it also is a great factor in bringing excellent outdoor exercise to the students of the Normal School. The success of the project this year ought to inspire the members of the next year's Social Committee, and with that hope in mind, we feel confident that River Falls will have a bigger and better skating rink next year.





ALICE HAGEN  
*Winner of the G. A. A.  
Cup, 1926*

## GIRLS' ATHLETICS





TYVOL

BURKE

#### OFFICERS

FIRST SEMESTER				SECOND SEMESTER			
DORIS TYVOL	-	-	-	President	-	-	ELLEN BURKE
MARGARET PROSSER	-	-	-	Vice-President	-	-	MINNIE PEDERSEN
MAY FULLER	-	-	-	Recording Secretary	-	-	MARION SIMONSON
ADALADE KEATING	-	-	-	Secretary	-	-	CORA BELISLE
LOIS BEERS	-	-	-	Treasurer	-	-	MARION MILLER
MISS SMITH	-	-	-	Faculty Adviser	-	-	MISS SMITH

THE Girls' Athletic Association is an organization which fosters interest in girls' athletics as well as backs all athletic events and worthwhile activities of the school. It aims especially to bring more girls into active participation in athletics, and thus develop a sense of fairness and sportsmanship as well as to aid physical development.

Any girl is eligible to membership in the G. A. A., but until she has earned one hundred points by becoming a member of an athletic team she is not an active member. The associate members take part in the social affairs of the association, but the active members handle all business. Social events take place once a month and are in the form of out-of-door picnics, sleigh rides, tobogganning parties, and stunt parties in the gym. An annual week-end camping trip is held at the Y. M. C. A. camp on Lake St. Croix, where the facilities of the camp accommodate a large number of girls. This feature is very popular, and has come to be one of the big events of the school year.



BETHINE MARCH SMITH





During the year the G. A. A. has participated in a number of outside activities sponsored by the school. At Homecoming and Championship celebrations, the G. A. A. took an active part in making these events successful. The organization helped to earn money for the purchase of gold footballs for the championship football team. During the State Oratorical Contest the girls assisted in the furnishing of headquarters for visiting delegates. The association is very active, with varied interests, thus appealing to many girls.

The G. A. A. awards official "R" sweaters to all girls who have earned 600 points during their membership. Points are given for making class teams in any of the major sports of volleyball, basketball, and kittenball. Points are also earned by hiking, skiing, observing rules of personal hygiene, as well as by placing in any of the various track events. A girl must work consistently for two years to earn the sufficient number of points, therefore it is an honor to be the wearer of the red "R." A loving cup is also awarded annually to the girl, who at the end of that year has to her credit the largest number of points after having won a sweater. Since the organization of the Girls' Athletic Association in 1920, twenty-six girls have won the official "R" sweater.



## G. A. A. SWEATER AWARDS

MAE BROWN	-	-	'21
ALICE BROWN	-	-	'21
ANNA HAGESTAD	-	-	'21
JANET McNABB	-	-	'21
HELEN McNALLY	-	-	'21
HONOR McNALLY	-	-	'21
MAE PARKER	-	-	'21
STELLA COLLINS	-	-	'22
LUCY DEMULLING	-	-	'22
OLGA GAUSTAD	-	-	'22
MARIE MOYNIHAN	-	-	'22
FRANCES ELLSWORTH	-	-	'23
LAURA McNAMARA	-	-	'23



MARION SYLVESTER		'23	
LENORE RUD	-	-	'23
NELLIE ROESE	-	-	'23
VIOLA WHITE	-	-	'23
ABIGAIL BENNET	-	-	'24
FLORENCE BENNET	-	-	'24
GRACE HENDRICKSON	-	-	'24
AGNES McDONALD	-	-	'24
BESSIE NEEDHAM	-	-	'24
LOIS BEERS	-	-	'25
ALICE HAGEN	-	-	'25
MILDRED HUMMEL	-	-	'25
THELMA SEGERSTROM	-	-	'25





BACK ROW—*Johnson, Peters, Tyvol, Prosser, Smith (Coach)*  
FRONT ROW—*Bolin, Theis, Fuller, Olson*

## VOLLEY BALL

THE volleyball season opened early in the fall, when about thirty girls reported for practice with Miss Roherty, and later Miss Smith, as coaches. Many of the girls were amateurs, but this did not prevent them from becoming excellent players before the end of the season. Practice was held every Tuesday and Thursday afternoons, and later three teams were chosen for the entire group on the basis of class membership. After some practice, a tournament was run off on two successive afternoons to determine which class team would become the volleyball champions of 1925. The first game between the Freshmen and Sophomores was closely contested, but the final score was in favor of the latter. The winners then played the Seniors for the championship, and were again victorious, winning by a fairly large margin. This was the culmination of the volleyball season, which was very successful, inasmuch as a large number of girls participated and a wider knowledge of the game resulted.





*Hagen, Pedersen, Kelly, Bolin, Beers, Gregor, Burke*

## BASKETBALL

### THIRD YEAR TERM

LOIS BEERS	-	-	-	-	-	-	-	-	-	Forward (Captain)
STELLA PEDERSEN	-	-	-	-	-	-	-	-	-	Forward
CECILE KELLY	-	-	-	-	-	-	-	-	-	Side Center
ALICE HAGEN	-	-	-	-	-	-	-	-	-	Jumping Center
LITHA GREGOR	-	-	-	-	-	-	-	-	-	Guard
ELLEN BURKE	-	-	-	-	-	-	-	-	-	Guard
JESSIE BOLIN	-	-	-	-	-	-	-	-	-	Forward (Substitute)

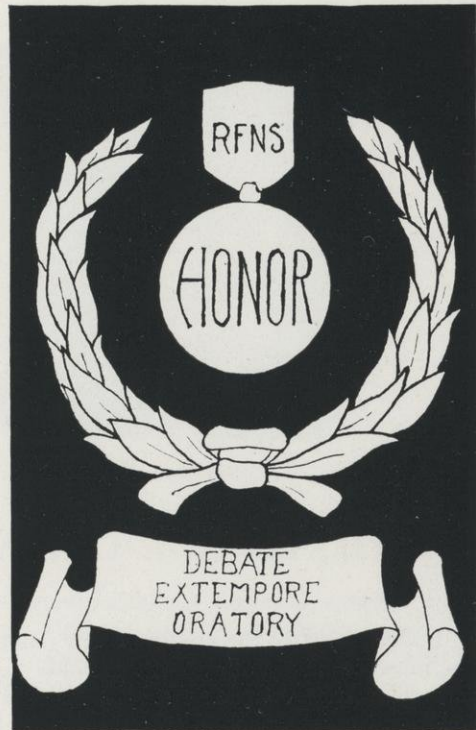
**B**ASKETBALL is the favorite sport of a large number of girls, and the season of 1926 proved this most conclusively. The practices were conducted in a similar manner to volleyball practice, with the season ending with a tournament to decide the championship. The early practices consisted mainly in work on the fundamentals of passing, guarding, and shooting, but later short scrimmages were held at each practice. Strict girls' rules were observed, and the game was played on a three-court floor which necessitated six players on a team. Several practice games were played with the local high school team.

The first game of the tournament was played between the Sophomores and Freshmen, in which only very close guarding on the part of the second years prevented the clever first-year team from winning by a larger margin than they did. The Sophomores met the Seniors for the second game, in which the Seniors won, contrary to all expectations. The rivalry was keen in the final game between the Freshmen and Seniors, with the Freshmen picked to win. However, by clever passing and accurate shooting early in the game, the Seniors established a four-point lead which was maintained throughout. By winning both games, the championship went to the Senior team.









# FORENSICS





REXFORD S. MITCHELL

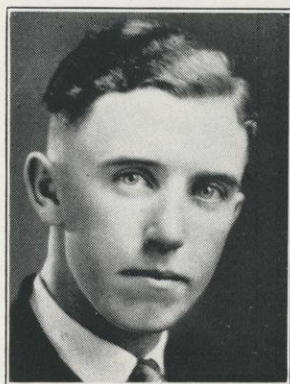
A LARGE part of the credit for our outstanding forensic record of this past year is most certainly due to the amiable personality, the practical methods, and the thorough work of Coach Rexford Mitchell.

We have in Coach Mitchell a man who can get the utmost work from the students who are interested in forensics. By his open-mindedness and congenial disposition he gets hold of every member of the squad. The debaters know that he is a "regular fellow," and if Coach Mitchell makes a suggestion, that suggestion is carried out.

Not only does the forensic student get a chance to work with an outstanding personality, but he gets a lot of good practical instruction in correct speech. Coach Mitchell made an enviable record in debate while in Lawrence College, and he demonstrates to us year after year, by the caliber of speakers he turns out, his ability to put across his knowledge of the art of speaking. Rather than thrust upon the orator a special style of delivery, the "dean" helps each one to develop and strengthen the style for which he is best suited. This up-to-the-minute style of training is most valuable to future men of affairs.

The most helpful asset a debate team can possibly have is a coach who knows the question to be discussed. Coach Mitchell thoroughly studied and had in mind the child labor situation, and he made use of what he knew. When our debaters got a new child labor remedy or evil into their heads and started off on a tangent, the coach was ever alert to get them back on the right track. He could argue on either side of the child labor question so effectively that it was hard in either case to disagree with him. The debaters were continually kept busy digging up figures, or reasoning out cases, in order that they might intelligently discuss the child labor problems with the coach.





BURKE



NORSENG

## EXTEMPORANEOUS SPEAKING AND ORATORY

THE annual inter-normal oratorical and extemporaneous speaking contests were held at River Falls this year. On March 19th we had as our guests some one hundred and fifty visitors from our sister normal schools. Eau Claire led with a delegation of seventy, including two glee clubs, an orchestra, and two quartettes. The day began with a pep and stunt program in the morning followed by a luncheon for all our visitors in the cafeteria at noon. In the afternoon occurred the extemporaneous speaking contest followed by a dance in North Hall gym. The oratorical contest took place in the evening, being preceded by a concert by some of the visiting musical organizations. Students and faculty alike entered into the spirit of the occasion and did their best to make our guests feel at home.

Our representatives in the contests performed well before the home audience, Marshall Norseng winning first place in extempore speaking, and John Burke placing second in oratory. The topic for extempore speaking was "The Need for a Re-Alignment of Political Parties in the United States." Marshall's victory was clean cut, as he received first rank from each of the three expert judges. The judges for both contests were Professors Barnes and Weaver of the Public Speaking Department of the University of Wisconsin, and Professor Franzke, Head of the Department of Public Speaking at Lawrence College. Donald Vetter of Stevens Point placed second, and Donald Gleason of Oshkosh third.

Alvin Churchill of Superior won the oratorical with an oration entitled "The Moral Courage of the Frontier," while John Burke finished a close second with his oration "The Rising Tide of Lawlessness." William Gavin of Eau Claire won third with "Visions and Ideals" as his topic.

Mr. Norseng was also a successful contestant in the inter-state contest. He was awarded first honors at Macomb, Illinois, by a unanimous decision of the judges. It is significant that many of the contestants at this extempore contest represented institutions which have four-year courses. This has been a most successful year in forensics—a first in extemporaneous speaking, a second in oratory, and a state championship in debate is a record that future representatives of the school in forensics may well strive to equal.



## DEBATE

THIS has been an outstanding year in debate. The schedules included more debates than ever before; our teams took part in thirteen no decision and four decision debates. The debates were exceptionally well attended and enthusiastically supported by the student body. We went through the season without losing a decision and we won our second state championship in five years.

The tryouts were held early in November. It was decided that this year the squad should consist of fifteen instead of twelve members. Four of last year's squad were back, namely, John Burke, Rollie Williams, Fred Wandrey, and Frances Lethlean. The judges selected the following eleven to complete the group: John Davison, Marshall Norseng, Robert Smith, Donald Olson, Bernard Morton, Harold Walton, Thomas Barry, Scott Canney, James Casey, George Wilson, and Theodore Goble. The question selected for discussion was, "The Adoption of the Proposed Twentieth Amendment Empowering Congress to Regulate Child Labor."

After a series of intra-squad debates a series of no decision practice debates were held with the Hammond, New Richmond, and River Falls high school teams; all the members of the squad participated in these debates. Then followed a series of no decision debates with two Minnesota colleges, St. Thomas and Hamline. At the close of this series the teams that were to compete in the conference decision debates were selected. Marshall Norseng, Bernard Morton, and Robert Smith made up the affirmative team with Donald Olson and Frances Lethlean as alternates, while John Davison, John Burke, and Fred Wandrey were selected as a negative team with Harold Walton and Thomas Barry as alternates. The remainder of the squad were organized into second teams.

The first conference debates occurred March 5. Our affirmative met Eau Claire here, while our negative journeyed to Superior. On their way to Superior, our negative stopped off at Cumberland to meet the Cumberland high school affirmative in a no decision practice debate. Incidentally the Cumberland teams later won the state championship. Both of our teams emerged victorious in their first encounters; our victories gave us the northern championship and the right to compete in the state championship debates.

The state championship debates were held March 30. Platteville, winner in the southern triangle, withdrew and the debate became a dual one with Stevens Point. Again our teams succeeded in winning both debates. Our negative defeated the strong Point affirmative in a very hotly contested debate on the home platform, while our affirmative walked away with a 100-87 decision at the Point. Thus our teams went through the season without suffering a defeat and River Falls became the first school to win two state championships in debate. (The first state championship debate was held in 1922 and won by River Falls). The winning of the championship was properly celebrated upon the return of the affirmative team.

This year's teams probably rank as the best that have ever represented the institution. All did exceptionally good work, but John Burke and Marshall Norseng, the two closing speakers, deserve special mention. Eleven of the members of this year's squad plan to return next year; only Wandrey, Burke, Lethlean, and Williams will be lost by graduation. While the loss of these four will be keenly felt, eleven experienced debaters should prove a strong nucleus for next year's squad.





MORTON

NORSENG

SMITH

## STATE CHAMPIONS

### AFFIRMATIVE TEAM

BERNARD MORTON

ROBERT SMITH

MARSHALL NORSENG (Closer)

Won from Eau Claire Negative at River Falls, March 5. Score 99 to 85.  
Professor I. M. Cochran of Carleton College, Expert Judge.

Won from Stevens Point Negative at Stevens Point, March 30. Score 100 to 87.  
Professor A. B. O'Neil of University of Wisconsin, Expert Judge.

### NEGATIVE TEAM

JOHN DAVISON

FRED WANDREY

JOHN BURKE (Closer)

Won from Superior Affirmative at Superior, March 5. Score 96 to 89.  
Professor G. Marsh of Carleton College, Expert Judge.

Won from Stevens Point Affirmative at River Falls, March 30. Score 100 to 96.  
Professor C. R. Decker of University of North Dakota, Expert Judge.



BURKE

WANDREY

DAVISON



## WEARERS OF THE FORENSIC "R"

THE forensic "R" is a key awarded to representatives in forensics upon a point basis. Five points are awarded to the person representing the school in oratory or extemporaneous speaking in the state contest, and five additional points for winning first, second, or third in the contest. Five points are awarded to members of debate teams each year with an additional five to members of state championship teams. These forensic awards have been made since 1920.

The wearers of the "R" are as follows:

### *Forensic "R" (plain key awarded for five points)*

LAURA KELLAR, '21	ALLAN McANDREWS, '23
JOHN WILLIAMS, '21	PHILIP MITCHELL, '23
LEO SHANNON, '21	MARGARET McDERMOTT, '25
WINFRED BIRD, '23	KENNETH PRESTON, '25

### *Honor Forensic "R" (key with one star awarded for 10 points)*

FRANK ALBEE, '22	CARLETON AMES, '25
LANGDON CHAPMAN, '22	BERNARD MORTON, '28
EVERETT SMITH, '25	ROBERT SMITH, '28
MARGARET BAILEY, '25	JOHN DAVISON, '28
RONALD BAKER, '25	

### *Distinctive Forensic "R" (key with two stars for 15 points)*

ALVIN HOWALT, '22	REYNOLD JENSON, '25
-------------------	---------------------

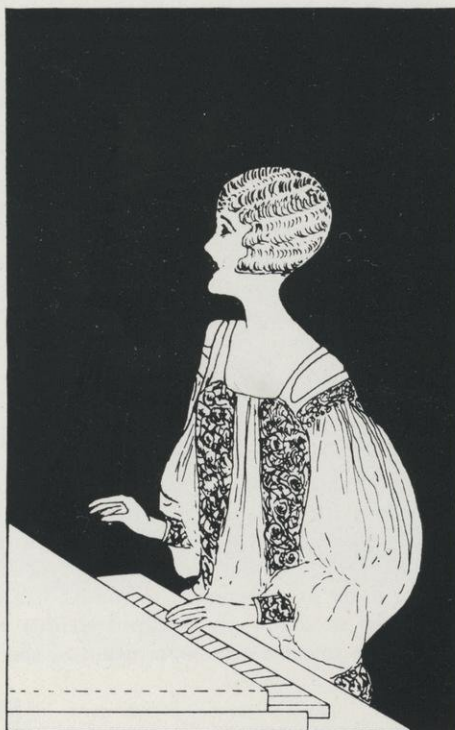
### *Double Honor "R" (key with three stars awarded for 20 points)*

EDWARD CASEY, '23	FRED WANDREY, '26
REX LIEBENBERG, '23	MARSHALL NORSENG, '28
CATHERINE CHAPMAN, '25	JOHN BURKE, '26

### *Double Distinctive "R" (key with four stars awarded for 30 points)*

MELVIN THOMSON, '22
---------------------





# MUSIC



## THE YEAR IN MUSIC

AMERICAN education demands the culture of music, and it is the aim, with the co-operation of the students, to make the Music Department of the River Falls Normal a "service station" for the musical life of the adjoining rural communities as well as to serve the Normal proper. Many rural districts have been visited this year in the way of furnishing musical programs for the schools and meetings of various Parent-Teacher Associations. Many improvements and additions have been made in the Department of Music, and students attending the Normal have unexcelled opportunities for the study of singing and voice culture, piano, organ, violin, cello and band instruments. Classes in history of music, harmony, and public school music have been formed and have interested a great many students in this line of study.

The Department of Music is responsible for seven musical organizations, which include the men's glee club, girls' glee club, girls' trio, string trio, orchestra, band, and mixed chorus, any one of them being capable of fine performances. Besides these organizations the members of the music faculty present many programs throughout the year both at home and abroad.

We cannot tell how much the future holds in store for the Department of Music, but when we consider the fact that nearly three hundred members of the present student body are interested in some form of music study or activity, we prophesy that within the next few years rapid strides will be made which will tend to strengthen further the present fine curriculum of the institution.





TOP ROW—Amundson, Barry, Canney, Nebel, Chapman  
 MIDDLE ROW—Smith, Morton, Wick, Goble, Miller  
 BOTTOM ROW—Kexel, Olson, Wile, Hatch (Director), Larson, Casey, Gardiner

## BAND

DOROTHY F. HATCH, *Director*

*Trumpets*  
 THEODORE KEXEL  
 DAN WILE  
 IRVING LARSON  
 JAMES CASEY  
 DONALD OLSON  
*Clarinets*  
 PERCY WICK  
 THEODORE GOBLE

*Trombones*  
 MARKHAM MORTON  
 ROBERT SMITH  
*Saxophones*  
 THEODORE BARRY  
 SCOTT CANNEY  
 ALVIN AMUNDSON  
 CONSTANCE MILLER

*Bass*  
 HERBERT CHAPMAN  
*Tuba*  
 RAY NEBEL  
*Drums*  
 ROBERT GARDINER  
 DONALD OLSON

ONE of the most important musical organizations of the school, although the youngest, is the Normal Band. Despite its recent organization it has appeared more frequently during the past year than any other musical group, proving thereby that its services are indispensable.

The origin of the band is the outcome of the Homecoming celebration in the fall. At that time the need for such an organization within the school itself was felt and a group of enthusiastic members responded to the call for volunteers. So successful was the first attempt that it was agreed that the band should become a permanent institution.

Within a few weeks two of the leading organizations on the campus, the G. O. P. and the Agrifallians, pledged their support to the band and set to work to provide uniforms, earning the money in various ways. On February 9 the band gave its first formal concert in uniform. It was a splendid success both musically and financially, and we felt that at last our band was established. It will doubtless do much in the future to create a loyal, enthusiastic school spirit and so fulfill its primary purpose.





TOP ROW—Miller, Mayer, Erickson, Stetzel, Lindahl  
 MIDDLE ROW—Brackin, Jackson, Nelson, Bailey, Lethlean  
 BOTTOM ROW—Squires, Johnson, Vassau, Randall, Ames, Slauson

## GIRLS' GLEE CLUB



AMES

VASSAU

JOHNSON





TOP ROW—Anderson, Barry, Gardiner, Jenson, Chapman, Taylor  
 MIDDLE ROW—Smith, Morton, Dort, Heebink, Norseng, Ford  
 BOTTOM ROW—Heggen, Jennings, Ellefson, Overby, Brakken, Zamjahn

## MEN'S GLEE CLUB



SMITH

WHARTON

HATCH





TOP ROW—Morton, Barry, Amundson, Canney, Wile, Kexel, Larson  
MIDDLE ROW—Norseng, Zamjahn, Nebel, Wick, Goble, Brooks, Miller  
BOTTOM ROW—B. Smith, R. Smith, Moen, Hatch (Director), Christianson, Elster, Chapman

## ORCHESTRA

DOROTHY F. HATCH, *Director*

### *Violins*

CLYDE ZAMJAHN  
MRS. J. H. AMES  
ELAINE CHRISTIANSON  
MARSHALL NORSENG  
ROBERT SMITH  
RICHARD WITTENKAMP  
ELAINE PETERSON  
ANNA REITZ  
RAY NEBEL  
EVELYN M. MOEN

### *Trumpets*

THEODORE KEXEL  
DAN WILE  
IRVING LARSON

### *Clarinets*

PERCY WICK  
CLIFFORD BROOKS  
THEODORE GOBLE

### *Trombone*

MARKHAM MORTON

### *Viola*

ROBERT DAVEE

### *Saxophones*

CONSTANCE MILLER  
SCOTT CANNEY  
ALVIN AMUNDSON  
THEODORE BARRY

### *Cello*

BETHINE SMITH

### *Bass*

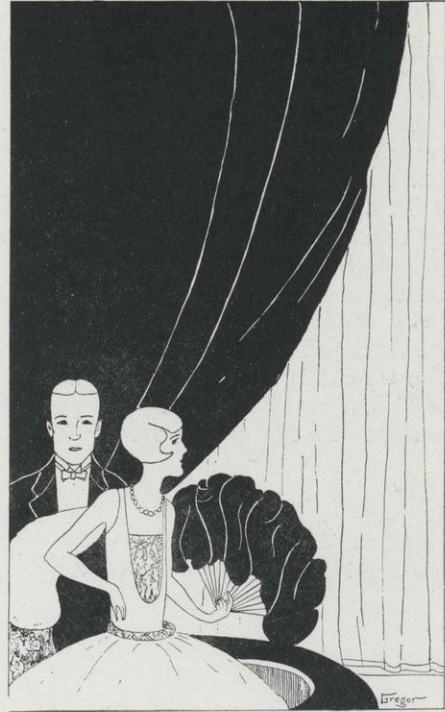
HERBERT CHAPMAN

### *Drums*

ROBERT GARDINER

THE Normal Orchestra for the year 1926 has been a live organization whose work has upheld the high standards of the previous years in orchestral achievement. It is the largest orchestra ever assembled at this school, its membership numbering twenty-six, with an increased range of instruments. The orchestra has performed at many programs and special occasions, and has proved itself a capable and necessary factor in the musical activities of the school.





# DRAMA



## THE YEAR IN DRAMATICS

THE work in dramatics this year has been unusually interesting. For class room work the drama class produced three plays, *The Rivals*, *She Stoops to Conquer*, *Twelfth Night*, as well as scenes from *Much Ado About Nothing*. For an assembly program, given January 7, six members of the drama class presented a one act play, *Our Aunt from California*. Doris Frederickson, a member of the class, wrote an *A. B. C. Playlette*, which was so popular that it was repeated many times for nearly by community gatherings. During the fall three one act plays, *The Ruling Class*, *Action*, *What They Think*, were given for the benefit of the Athletic Association. On the ninth of April, twelve students under the direction of Miss Schlosser staged *Polly With a Past*, by Middleton and Bolton. This play, given for the benefit of the Agrifallian Society, was so thoroughly enjoyed that it was repeated, April 16. The try-out is in progress for the senior class play, which is to be given Monday of Commencement Week. The play will probably be chosen from one of the following: *To the Ladies*, *Daddy Long-Legs*, *Only 38*.

### ONE ACT PLAYS

Presented December 11

#### THE RULING CLASS

By MARY WINTER

##### Cast

Lois Elston .....	Evelyn Barrett
Richard Elston, her husband.....	Fred Wandrey
Willette Spruance, their cook.....	Harriet Gilbert
A Girl, looking for a place.....	Connie Miller

#### ACTION

By HOLLAND HUDSON

##### Cast

The Stage Manager .....	Harry Ellefson
The Rowdy.....	Harold Heggen
Mr. Max.....	John Davison
George Max, his son.....	Robert Smith
Two Loft Workers.....	Erle Barber, Ted Kexel
Two Bootleggers .....	Sidney Scoville, Dale Jensen
Two Dry Agents .....	Raymond Trembley, Harry Ellefson
Two Patrolmen .....	Harold Heggen, Bernard Morton

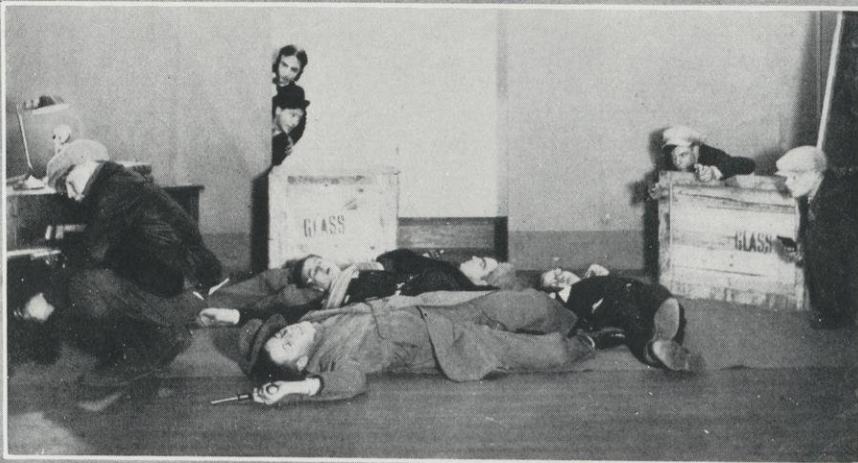
#### WHAT THEY THINK

By R. CROTHERS

##### Cast

Grandmother {	} in their courtship days.....	{	Litha Gregor
Grandfather {			Dean Goodrich
Mother .....	Marion Simonson		
Father .....	Earl Kuhn		
Bob, their son.....	Arthur Webster		
Maud, their daughter.....	Bernice Sheldrev		







# MELETEAN VAUDEVILLE

## RIP-WRINKLES OF 1926

Presented February 12

1. RIP VAN WINKLE'S AWAKENING  
Rip—Robert Gardiner.  
Boy—Markham Morton.  
Birds—Genevieve Stewart, Marie Lundy, Ida Johnson.
  2. THE MODELS OF 1866 AND 1926  
Avery Ames, Lucile Johnson, Juanita Slauson, Inez Morrow.
  3. PIANOLOGUE  
Harriet Gilbert.
  4. PEGGY'S PREDICAMENT  
Connie Miller, Lillian Norris, Thelma Best.
  5. KATY-DID  
Pearl Bushey, Carol Heggen, Pearl Weber, Harry Pearson, Robert Smith, Francis Nolan.
  6. VIVIAN VASSAU
- INTERMISSION
7. THE STORY OF THE ROSE  
Sylva Hunt, Mildred Randall, Bernice Sheldrew.
  8. MIDNITE WALTZ  
Frances Squires, Wilmot Ableidinger, Genevieve Stewart, Marie Lundy, Ida Johnson, Ella Mae Jones, Eva Davison, Lois Hunt.
  9. SCOVILLE AND GILBERT
  10. LA GROTESQUE  
Fern Gauvin, Evelyn Holt, Alise Jensen, Marion Simonson.
  11. VALENTINE DANCE  
Litha Gregor, Harriet Beebe, Florence Gass.
  12. GRAND FINALE

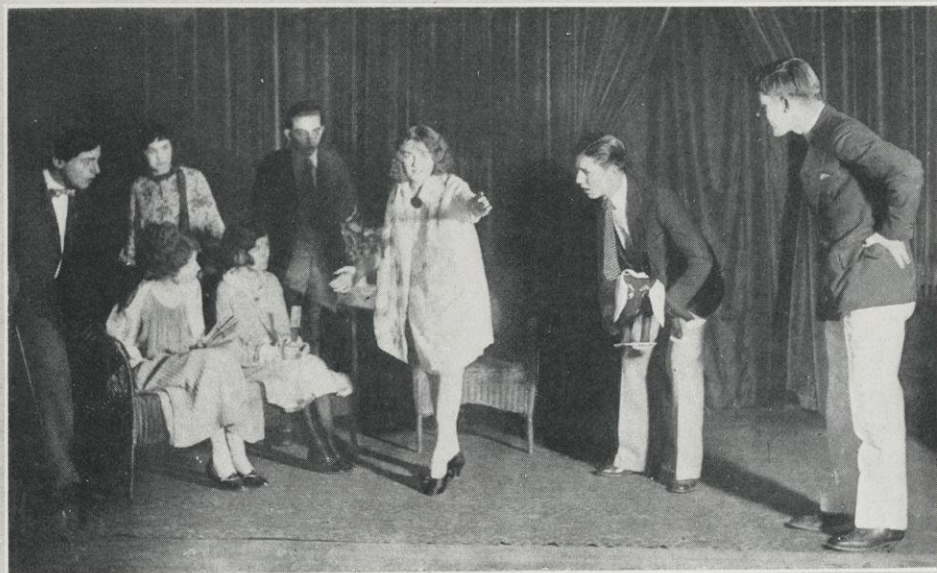
SYLVA HUNT	-	-	-	-	-	-	-	-	-	Director
VIVIAN VASSAU	-	-	-	-	-	-	-	-	-	Accompanist
MARCEL K. LYNUM	-	-	-	-	-	-	-	-	-	Advertising Manager
JOHN JENNINGS	-	-	-	-	-	-	-	-	-	Properties

THE Meletean vaudeville is an annual performance presented by the Third Year Class and managed by the Meletean staff for the benefit of the year book. The production this year was especially successful. "Rip-Wrinkles of 1926" consisted of a series of acts with a theme, Rip VanWinkle's reaction to the world of today, running throughout. The songs and dances were arranged by students, and the performance directed most successfully by Sylva Hunt.









## POLLY WITH A PAST

*A Comedy by* GEORGE MIDDLETON AND GUY BOLTON

Presented April 9 and 16

### *Cast*

Harry Richardson.....	Walter Pearson
Rex Van Zile.....	Elmer Beran
Prentice Van Zile.....	Arthur Webster
Stiles .....	Donald Brownson
Clay Collum, an interior decorator .....	John Davison
A Stranger.....	Bernard Morton
Commodore "Bob" Barker.....	Robert Smith
Polly Shannon.....	Mildred Randall
Mrs. Martha Van Zile.....	Helen York
Myrtle Davis.....	Bernice Sheldrew
Mrs. Clementine Davis.....	Lillian Norris
Parker, a maid.....	Inez Morrow





## SPECIAL OCCASIONS



## COMMENCEMENT 1925

### SUNDAY, JUNE 7

8:00 P. M. Baccalaureate Address ..... Auditorium  
Reverend W. C. Sainsbury, D. D.  
Central Park Methodist Episcopal Church, Saint Paul

### MONDAY, JUNE 8

8:15 P. M. Senior Class Play ..... Auditorium  
"Adam and Eva"—Middleton and Bolton

### TUESDAY, JUNE 9

10:00 A. M. Class Day Exercises ..... South Campus  
4:30 P. M. Class of 1920 Reunion ..... Glen Park  
8:00 P. M. President's Reception ..... Gymnasium, North Hall

### WEDNESDAY, JUNE 10

10:00 A. M. Commencement Exercises ..... Auditorium  
Address—President L. D. Coffman  
University of Minnesota  
1:00 P. M. Alumni Banquet ..... Congregational Church  
8:30 P. M. Alumni Ball ..... Gymnasium, North Hall

THE largest class in the history of the school took part in the 1925 Commencement. Diplomas and certificates were granted to 224 graduates; 61 to graduates of three-year courses, 105 to graduates of two-year courses, and 58 to graduates of the one-year rural course. The Commencement exercises were very impressive. President Coffman of the University of Minnesota gave an inspiring address to the class, and as they entered in the processional and later filed across the stage to receive their diplomas, one felt pride in the splendid group of young men and women that the Normal was sending out into the world.





## CLASS PLAY

### ADAM AND EVA

By GEORGE MIDDLETON AND GUY BOLTON

Presented June 8

#### Cast

James King, a rich man.....	Marcel Lynum
Corinthia, the maid .....	Irma Mitchell
Clinton DeWitt, his son-in-law.....	Lester Jacobson
Julie DeWitt, his daughter .....	Frances Lethlean
Eva King, his youngest daughter.....	Grace Cotts
Aunt Abby Rooker, his sister-in-law.....	Christine Larson
Dr. Jack Delamater, his neighbor.....	Gerald Dodge
Horace Pilgrim, his uncle.....	Theodore Kexel
Adam Smith, his business manager.....	Reynold Jensen
Lord Andrew Gordon, his would-be son-in-law.....	Reeve Thompson





## CLASS DAY EXERCISES

JUNE 9—SOUTH CAMPUS

Processional.....	Senior Women, Senior Men, Queen and Attendants
Coronation of Class Queen	
Dance of Welcome	
Class History .....	Margaret Bailey
Class Song	
Class Prophecy .....	Arranged by Elsie Wikholm, Dorothy Baker, and Ellen Lewis
Maypole Dance	
Presentation of Yoke .....	Edward Spriegel
Acceptance by First Year Class .....	Clyde Zamjahn
Tree Ceremony .....	Catherine Chapman and Myron Heebink
Pledge Song	

CLASS Day Exercises centered around the coronation of the class queen. Each member of the class had been asked to choose the young woman of the class who seemed to represent best the spirit and ideals of the school. The name of the person chosen was not revealed until, as the class formed in the procession to the campus, the queen appeared in her coronation robes. Catherine Chapman was queen of 1925 and Gladys Mason her maid of honor.





CLASS



DAY



1925







WAYNE TAYLOR

GRACE COTTS

## THE ALL-SCHOOL PROM

NORTH HALL GYMNASIUM, MAY 8, 1925

WAYNE TAYLOR . . . . . *Prom Chairman*  
GRACE COTTS . . . . . *Partner*

### COMMITTEE CHAIRMEN

SYLVA HUNT . . . . . *Decorations*  
WILLIAM JACOBSON . . . . . *Music*  
HARRIET BEEBE . . . . . *Programs*

### GENERAL COMMITTEE

#### *Third Year Class*

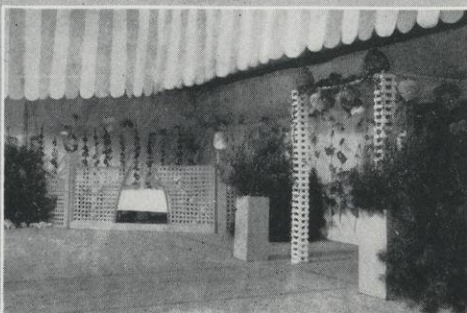
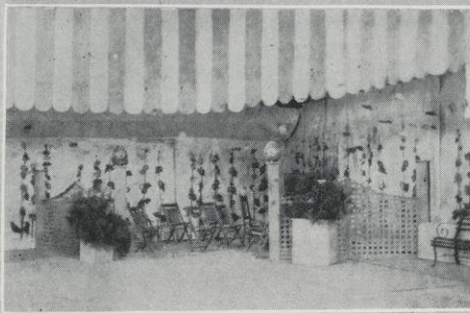
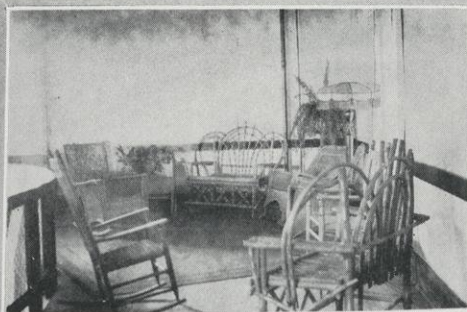
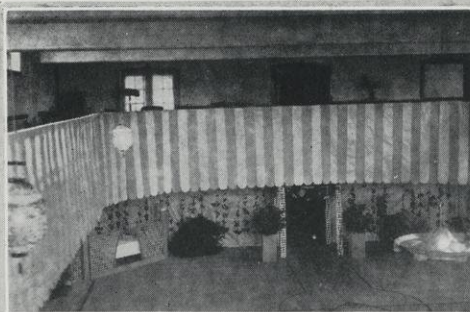
URSULA GAUVIN  
MYRON HEEBINK  
WILLIAM JACOBSON  
WILLIAM MOORE  
SIGRID RASMUSSEN  
WAYNE TAYLOR

#### *Second Year Class*

KATHRYN GABRIEL  
SYLVA HUNT  
JOHN JENNINGS  
ELLEN LEWIS  
FRANCES LETHLEAN  
PAUL ROSENBERG

#### *First Year Class*

HARRIET BEEBE  
STANLEY DAVISON  
LAWRENCE DAWSON  
GILBERT MEYER  
MILDRED RANDALL  
DORIS TYVOL





## HOMECOMING

FRIDAY, OCTOBER 16

7:30 P. M. Mass Meeting ..... Auditorium  
9:00 P. M. Torchlight Parade

SATURDAY, OCTOBER 17

10:30 A. M. Homecoming Parade  
2:00 P. M. Homecoming Game: Stout—River Falls.....Ramer Field  
8:30 P. M. Homecoming Ball .....North Hall Gymnasium

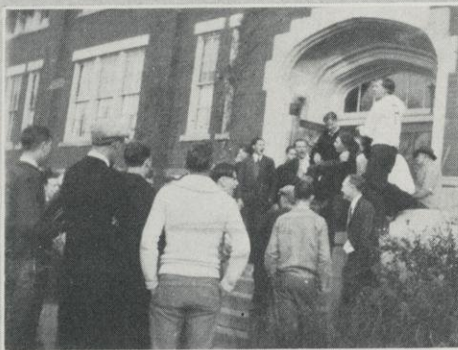
HOMECOMING was, as usual, the occasion for the gathering of the clans. Graduates came from far and near and celebrated the day right royally. The parade in the morning was well planned, and the floats were unusually attractive. The honors went to the Y. M. and Y. W. float, and to the Rural Life Club for the best comic presentation. The game with Stout was a hard fought and thrilling one, ending in a score of 3-0 for the Red and White. The day ended with a dance, Clyde Zamjahn's Mandarins furnishing the music.



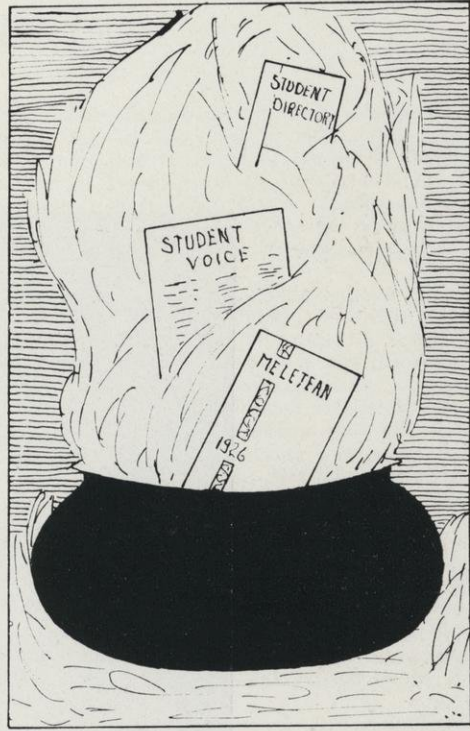




# Victory Day







## PUBLICATIONS





MAUD A. LATTA  
*Co-worker and Friend of  
Class and Staff*



## THE MELETEAN

WITH the publication of the 1926 Meletean we are issuing the fifteenth volume of the school annual. The first volume was brought out by the Class of 1912. Miss Jennie Wiesenthal was editor-in-chief; Robert Moser, now superintendent of schools at Cumberland, was business manager; and Homer Elertson, now of Tryon, North Carolina, one of the art editors. It is interesting to note Mr. Elertson's progress in the field of art. During the past winter he has given three exhibitions of his paintings: one of a group of forty-three canvasses in Albany, a second exhibition of the same group in Washington, and an exhibition of four of his largest pictures in Brooklyn.

The annual was given its name by Harvey Fletcher, one of the athletic editors. Harvey Fletcher later gave his life in the service as a reconnaissance officer in France. A weekly paper, the Badger, had formerly been published by the school, and the year book was in a way an outgrowth of this. However, the staff did not wish to keep the name, since it was that of the annual published at the University of Wisconsin, so the Latin word for badger, and the scientific name of the European badger—*meles*—was chosen, and from it was formed—Meletean.

As the life of the school has broadened, and new activities and organizations have developed, the Meletean has kept pace in its growth. In 1919 the first student directory was issued as a private business enterprise by a student of the school. The next year the Meletean, recognizing the desirability of issuing a directory as a school publication, took over this work, and transferred the advertising material from the annual to the directory. Since then no advertising material has appeared in the annual. This is a most desirable feature and one sought by all annual builders, but rarely attained because of the financial necessity of making the advertising pay in part for the book. The Meletean staffs are to be complimented for their successful solution of the problem of eliminating advertising material from the book, and at the same time gaining the financial assistance that it brings. The Student Directory has also grown until it is a complete handbook of school information, the compiling and publishing of which is no small task and might well be the work of a separate staff, but has always been carried on by the annual staff in addition to its other work.

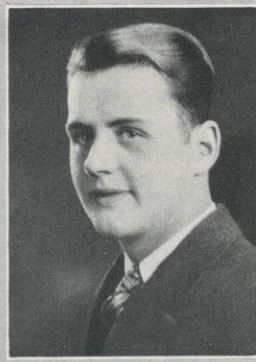
The present year book is the first to be issued by the Third Year Class. In the readjustment of class activities it became necessary for one class to issue the book two years in succession, and that has been the work of the Class of 1926. With one exception, however, there has been no duplication of members of the two staffs.

The 1926 Meletean is a true school product. The theme of the book is one closely related to the institution—the greater school of the future as expressed in the service of the teacher. The art motifs and designs have been taken from those found on the campus and familiar to every student. The art work, from the cover design to the last cartoon, has been the work of students. It is hoped that the book is a true expression of the spirit and individuality of the River Falls Normal School, and that it will mean to you—"Your School."





SIVERTSON



LYNUM

## THE 1926 MELETEAN

VICTOR SIVERTSON	- - - - -	<i>Editor-in-Chief</i>
MARCEL K. LYNUM	- - - - -	<i>Business Manager</i>
EARL BRAKKEN	- - - - -	<i>Assistant Business Manager</i>

### STAFF

#### *Administration and Classes*

GERTRUDE MERRILL

#### *Activities*

EVA DAVISON

#### *Literary*

LEONA MILLER

#### *Organizations*

CLIFFORD OLSON

#### *Art*

LITHA GREGOR

#### *Athletics*

HAROLD HEGGEN

#### *Photography*

JOHN JENNINGS

#### *The Campus*

HAROLD HEGGEN

SYLVA HUNT

HARRIET BEEBE

#### *Director, Meletean Vaudeville*

SYLVA HUNT

#### *Typist*

MARGARET JACKSON





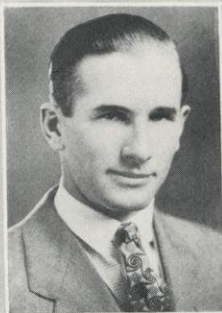
GREGOR



BRAKKEN



HUNT



JENNINGS



MERRILL



DAVISON



HEGGEN



OLSON



JACKSON

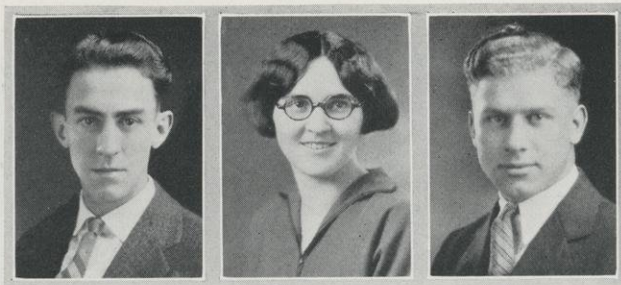


BEEBE



MILLER





LUTTRELL

BEERS

WILE

## THE STUDENT VOICE

### EDITORIAL STAFF

LOIS BEERS	- - - - -	<i>Editor-in-Chief</i>
CLARENCE WESSLEN	- - - - -	<i>Assistant Editor</i>
BARLETTE LUTTRELL	- - - - -	<i>Managing Editor</i>
HAROLD HEGGEN	- - - - -	<i>Athletic Editor</i>

### BUSINESS STAFF

DAN W. WILE	- - - - -	<i>Business Manager</i>
ALVIN R. AMUNDSON	- - - - -	<i>Assistant Business Manager</i>

### TYPISTS

EVELYN HOLT

MARIE LUNDY

### REPORTERS

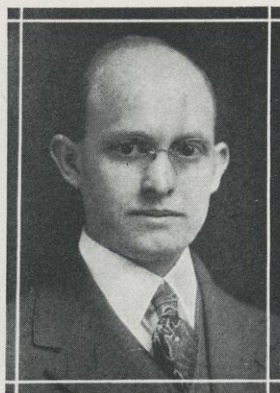
ELDA NELSON  
LITHA GREGOR  
DEAN GOODRICH

VIVIAN GOLDSMITH  
LORENE BRACKIN  
BERNICE SHELDREW

TED KEXEL

### FACULTY ADVISOR

MR. HANNA



ORVILLE M. HANNA





TOP ROW—Sheldrew, Amundson, Wesslen, Kexel, Lundy  
BOTTOM ROW—Goodrich, Holt, Brackin, Gregor, Nelson

THE Student Voice is a weekly publication, appearing on the campus each Wednesday of the school year. The staff has attempted to give interesting and accurate accounts of campus activities, as well as to report the doings of faculty and student body.

Two special editions were issued during the year, the first featuring our State Championship in Football, the second our success in the State Oratorical Contest and our State Championship Debate Teams. To give the students of the neighboring high schools some idea of college life at River Falls, 1,800 of each of these editions were printed and sent out to them.

On the whole, comments would indicate that the year has been a very successful one for the Student Voice.









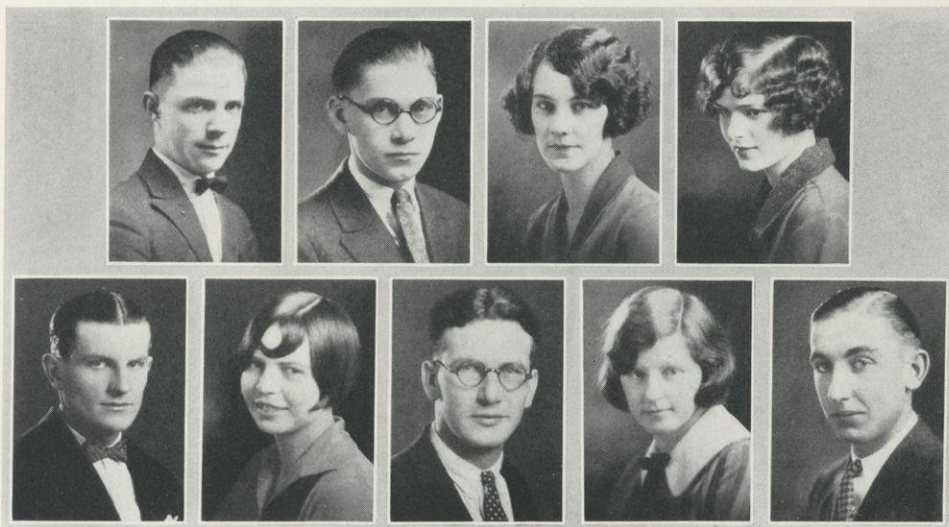


## *Organizations*









TOP ROW—Kexel, Wick, Bannister, Beebe  
 BOTTOM ROW—Paulson, Hunt, Berry, Lanckton, Ulrich

## STUDENT SOCIAL COMMITTEE

### OFFICERS

TED KEXEL	-	-	-	-	-	-	-	-	-	<i>President</i>
PERCY WICK	-	-	-	-	-	-	-	-	-	<i>Vice President</i>
LOIS HUNT	-	-	-	-	-	-	-	-	-	<i>Secretary</i>
HARRIET BEEBE	-	-	-	-	-	-	-	-	-	<i>Treasurer</i>

THE Student Social Committee is a representative body of ten members, three members from each class with Miss Hathorn representing the faculty. Its duty is to provide entertainment for the student body. The matinee and evening dances that have been given during the year are the result of the efforts of this committee. But it is the construction of the skating rink that should really bring to us the realization that the Social Committee is alive to the interests of the students. This new project was the special contribution of this year's committee to the usual social activities of the school.

In the further interest of the students the committee is proposing an all school picnic to be given in late spring. It believes that such an event is the desire of the graduating seniors especially, as this will give them at least one more opportunity to have a rollicking good time. It is the hope of the present committee that future members will still further increase the number of real social activities for the normal school students.





TOP ROW—Hagen, Jackson, Fredrickson, Pedersen  
 BOTTOM ROW—Machmeier, Brackin, Morgan, Lethlean

## YOUNG WOMEN'S CHRISTIAN ASSOCIATION

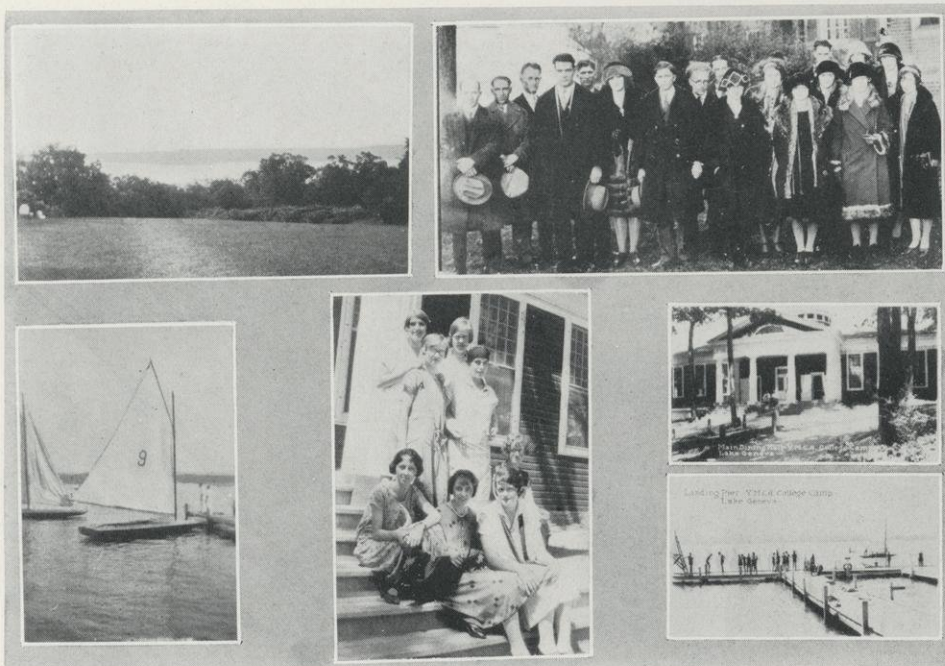
### OFFICERS

ALICE HAGEN	- - - - -	<i>President</i>
MARGARET JACKSON	- - - - -	<i>Vice President</i>
DORIS FREDRICKSON	- - - - -	<i>Secretary</i>
STELLA PEDERSEN	- - - - -	<i>Treasurer</i>
THERESA MACHMEIER	- - - - -	<i>Devotional Committee</i>
LORENE BRACKIN	- - - - -	<i>Social Committee</i>
RYDA MORGAN	- - - - -	<i>Social Service Committee</i>
FRANCES LETHLEAN	- - - - -	<i>World Fellowship Committee</i>
MISS HATHORN	- - - - -	<i>Faculty Advisor</i>



IRMA HATHORN





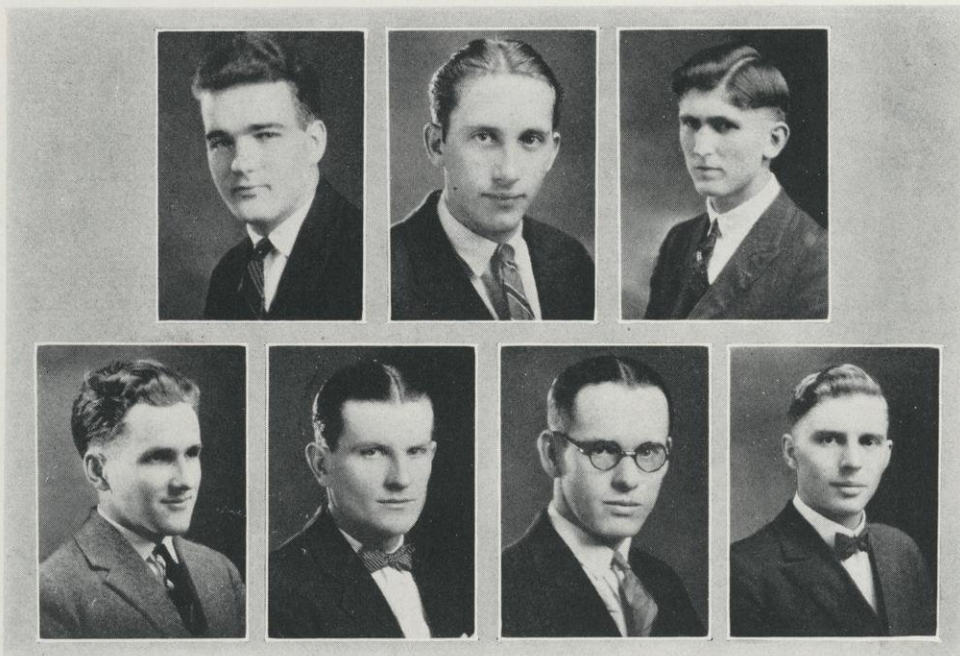
EARLY in the year 1925-26 one hundred forty girls extinguished the Candles of Self and lighted the Candles of Service during the impressive Candlelight Initiation Service of the Young Women's Christian Association, thus pledging themselves to become true followers of the Lord Jesus Christ.

A series of student-led discussions was carried on as a joint project of the Y. W. C. A. and Y. M. C. A., wherein the students discussed such problems as: "Where do we need new standards?", "How honest shall we be?", and "Correct social relationships between men and women." A measure of the success of the discussion groups was due, we feel, to the help gained from the Minnesota Student Conference in the spring of 1925, where the Y. W. C. A. had eight representatives, and from the Student Conference at Northfield, Minnesota, at which nine River Falls students were present. Such leaders as Bruce Curry, Sherwood Eddy, Henry Van Dusen, Margaret Quayle, and Frances Williams have brought much to the lives of the people attending the conferences, which has helped to make our organization vital on the campus.

The spirit of service was manifest at Christmas, when the organization, under the leadership of the Social Service Committee with Mrs. A. N. Johnson as advisor, filled Christmas boxes which were sent to a community in northern Wisconsin. We have learned that these boxes furnished the only Christmas cheer these people knew this year.

The girls in the Y. W. C. A. have taken an active part in all phases of the work, especially in the weekly meetings. Thus they have come into closer fellowship with one another while endeavoring together to live Jesus' law of love on our campus.



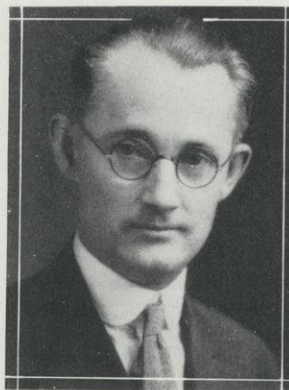


TOP ROW—Jenson, Brakken, Tostrud  
 BOTTOM ROW—Attoe, Paulson, Olson, Brownson

## YOUNG MEN'S CHRISTIAN ASSOCIATION

### OFFICERS

TED JENSON	-	-	-	-	-	-	-	-	<i>President</i>
EARL BRAKKEN	-	-	-	-	-	-	-	-	<i>Vice President</i>
ORVILLE TOSTRUD	-	-	-	-	-	-	-	-	<i>Secretary-Treasurer</i>
OSBORNE ATTOE	-	-	-	-	-	-	-	-	<i>Membership Committee</i>
DONALD BROWNSON	-	-	-	-	-	-	-	-	<i>Religious Education Committee</i>
WALTER PAULSON	-	-	-	-	-	-	-	-	<i>Social Committee</i>
CLIFFORD OLSON	-	-	-	-	-	-	-	-	<i>Community Service</i>
MR. JACOBSON	-	-	-	-	-	-	-	-	<i>Faculty Advisor</i>



JAMES P. JACOBSON





TOP ROW—Olson, Begley, Harding, Jenson, Meyer, Overby  
 FOURTH ROW—Wile, Krueger, Wilson, Webster, Paulson, Jahr, Brownson  
 THIRD ROW—Johnson, Hendrickson, Howard, Attoe, Cook, Barber, Sagen, Nelson  
 SECOND ROW—Gleiter, Falkoske, Olson, Wick, Jacobson (Advisor), Mjaanes, Brakken, Luttrell, Amundson  
 BOTTOM ROW—Goodrich, Tostrud, Morton, Mooney, Shern, Wittenkamp

WE feel that during the past year or two we have been unusually favored at River Falls. Through conventions and conferences it has been the privilege of many of our men to come into intimate contact with such men as Sherwood Eddy, Pitt VanDusen, Bruce Curry, Stitt Wilson, Glenn Clark, Kirby Page, and many others of national and international reputation. Conferences of the type that we attended at the University of Minnesota last spring, at Lake Geneva in June, at Northfield in November, not to mention our own sessions with Sherwood Eddy and G. V. Aldrich, have left an impression on our lives that is beginning to express itself in action.

During the past year the usual weekly meetings have been held. In the main the program at these meetings has consisted of a student-led devotional service followed by a purposeful address by members of the faculty or by prominent students or by outside talent. One prominent feature of this year's program has been our joint meetings and discussions with the other Christian organizations. Our group discussions on problems vital to men and women on the campus have stirred our thinking more perhaps than we are willing to admit. The opening joint mixer in September and the annual stag party in February were unusually successful. The weekly prayer service on Tuesday morning has been a source of power.

It is of interest to point out that of the five men in the cabinet of last year who were graduated last June four at present are devoting their entire time to Y. M. C. A. work, while the fifth is doing a fine bit of volunteer work with the Hi-Y group. There is some satisfaction in realizing that the activities that we are trying to promote here are giving men a vision that places service to God and man at a high level.





Top Row—Reitz, Cotone, Nary, Williams, Miller, Horak, Kinney  
 Third Row—Burke, Martin, Janisch, Dunbar  
 Second Row—Kexel, Gauvin, Belisle, Haasch  
 Bottom Row—Wahl, Gregor, Lundy, Donavan, Jennings, Holt, Ulrich

## NORMAL CATHOLIC ASSOCIATION

### OFFICERS

FIRST SEMESTER				SECOND SEMESTER			
J. ALOYSIUS WILLIAMS	-	-	-	President	-	-	EVELYN BARRETT
JAMES CASEY	-	-	-	Vice President	-	-	DAVID BURKE
FRED NARY	-	-	-	Secretary	-	-	GRACE MARTIN
ELLA COTONE	-	-	-	Treasurer	-	-	ELLA COTONE
Faculty Advisor				MR JUNKMAN			



GLEN P. JUNKMAN





TOP ROW—Carruth, Halron, Ableidinger, Fait, Burke, Foley, Belisle, Barrett

THIRD ROW—Morrow, Casey, Singleton, Simon

SECOND ROW—Schaffner, Hansen, Miller, McKernon

BOTTOM ROW—Nolan, Reardon, Canney, Collins, Jewell, Nary, Hughes, Trembley

THE Normal Catholic Association is a religious organization, consisting of all the Catholic students and faculty members of the school. Its purpose is to help the members mentally, socially, and religiously. The fifty members are among the most influential of the student body. They are active in all the inter-scholastic activities, besides having an enviable record in inter-organization athletics. The guiding influence of our faculty advisor, Mr. Glen P. Junkman, is a great asset to the organization.

Rev. Father Fassbender has increased the success of the society, not only by making possible many parties in the church parlors, but also by giving a course in apologetics during the season of Lent.





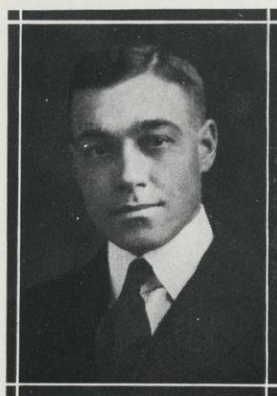
KEXEL

WILSON

## AGRIFALLIAN

### OFFICERS

FIRST SEMESTER				SECOND SEMESTER			
THEODORE KEXEL	-	-	-	<i>President</i>	-	-	GEORGE WILSON
CLIFFORD OLSON	-	-	-	<i>Vice President</i>	-	-	ARCHIE BECLEY
HENRY KNOLL	-	-	-	<i>Secretary</i>	-	-	DELWARD HENDRICKSON
MARTIN ANDERSON	-	-	-	<i>Treasurer</i>	-	-	FLOYD HELWIG
<i>Faculty Advisor</i>				MR. JOHNSON			



ARTHUR N. JOHNSON



THE Agrifallian Society is an organization of the agriculture students of the River Falls State Normal School. It is the oldest men's organization in the school and has a membership larger than that of any other literary society. The purpose of this organization is to stimulate and promote interest in the various phases of agriculture, and to give its members training in debating, public speaking, and parliamentary practice.

Meetings are held every other week, and interesting programs are rendered by members of the society. On many occasions outside speakers and educational films are obtained by the society. The programs deal not only with the practical side of agriculture, but also with social activities, which relieve the monotony of farm life. One of the big events of the year is the initiation of the freshman members.

Every fall the society holds a Poultry and Grain Show, at which the farmers and townspeople of the surrounding communities compete for prizes. Last fall between six and seven hundred birds were entered, which is an increase of over twenty-five per cent over the preceding years. Likewise, the crop exhibit showed an increase of nearly fifty per cent. This goes to show that a greater interest is being taken in agricultural activities.

Another feature is the Annual Stock Show which is held in the spring. This show was started fourteen years ago, and the number and quality of the animals shown compare well with the exhibits at the best county fairs.

The outstanding event of the year for the students is the Agricultural Field Day, on which students give demonstrations and educational exhibits, teaching important farm facts. Stock fitting, marketing, and judging demonstrations prepare the men who take part in this work to handle and meet conditions in their teaching and community work. After the field day the Annual Agrifallian Banquet is held, for which several outside speakers are obtained. At the banquet Field Day activities are promoted, and also the places are awarded to those winning in exhibit and demonstration work.

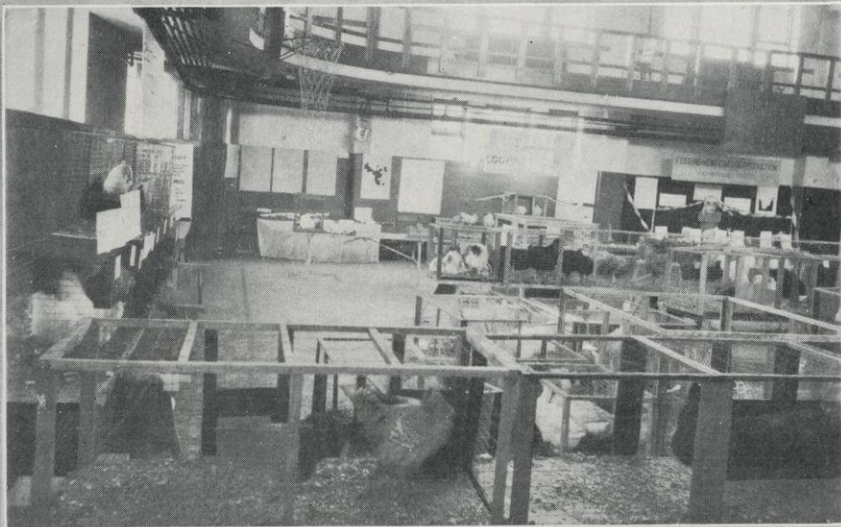
This year we inaugurated a High School Stock and Grain Judging Contest. Three high schools took part. Bruce High School won first place, being coached by William Wickelman, a former president of the Agrifallian Society. The boys and their coach were entertained by the school.

One of the most important events of the year was the staging of the play, "Polly with a Past," the proceeds of which were used to finance the Grain and Poultry Show, which is entirely managed by the members of the society.

This year suits for the band were purchased through the efforts of the G. O. P. and the Agrifallian Societies.

The future of this organization looks very promising indeed. We are confident that it will continue in the future, as it has in the past, to maintain the ideals and standards that have thus far been advanced toward the betterment of agricultural education in this institution.



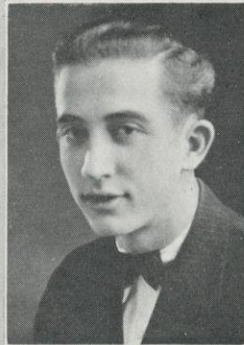






TOP ROW—Knoll, Simon, Olson, Widenfeller, Meyer, Thurston  
 FIFTH ROW—Rudiger, Wilson, Walton, Sagen, Burke, Biles  
 FOURTH ROW—Gluheisen, Edwardson, Loker, Chapman, Krueger, Maier  
 THIRD ROW—Berlin, Falkoske, Peterson, Glass, Cervana, Howard  
 SECOND ROW—Brownson, Janisch, Helwig, Olson, Anderson, Schutte  
 BOTTOM ROW—Nyght, Hendrickson, Barber, Casey, Weber, Begley





DAVISON

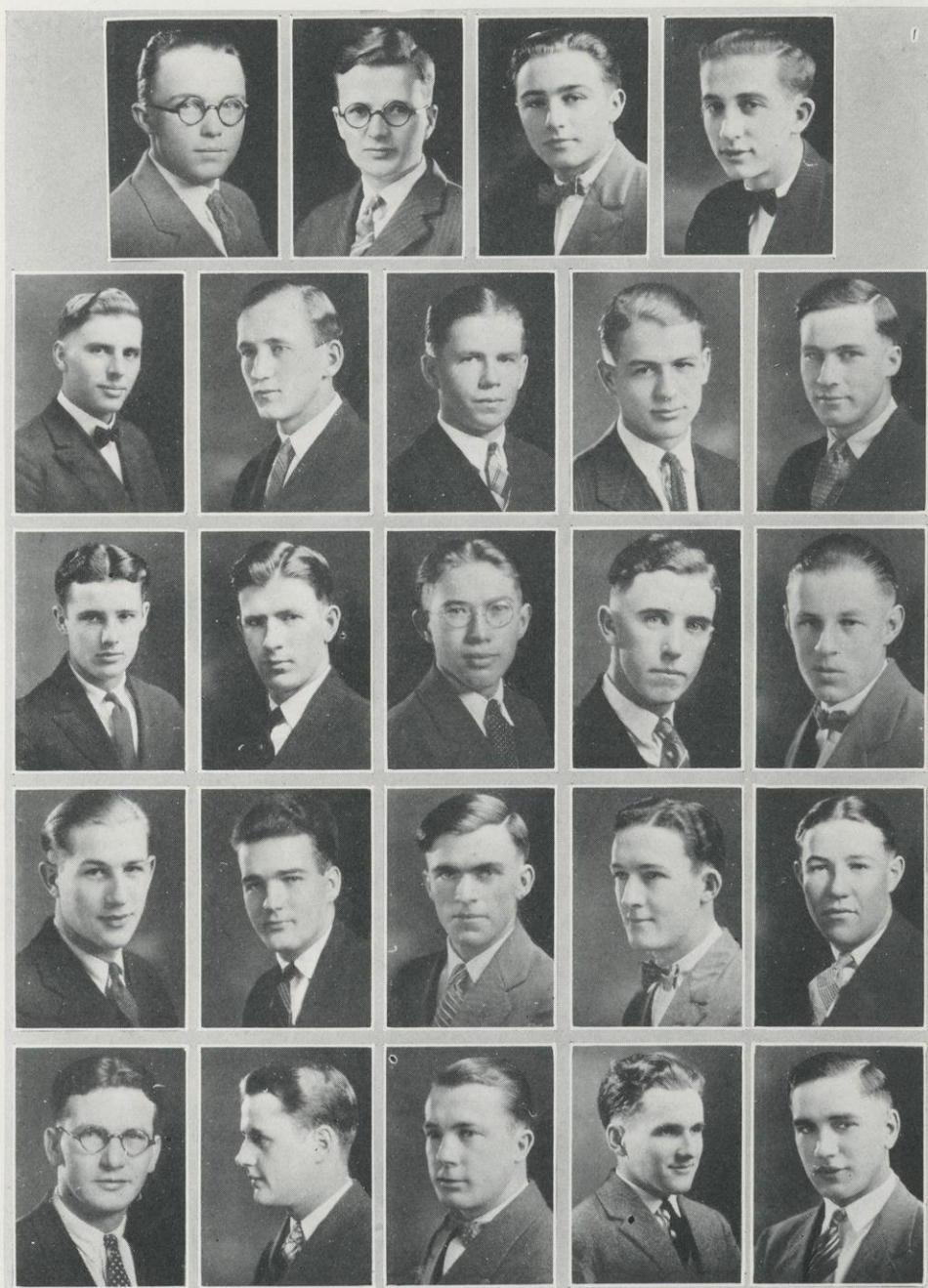
## OFFICERS

SECOND SEMESTER

JOHN R. JENNINGS	-	-	-	-	-	-	President	-	-	-	-	-	-	JOHN DAVISON
MARSHALL NORSENG	-	-	-	-	-	-	Vice President	-	-	-	-	-	-	CLARENCE WESSLEN
DONALD OLSON	-	-	-	-	-	-	Secretary-Treasurer	-	-	-	-	-	-	THEODORE GOBLE
Faculty Advisor	-	-	-	-	-	-		-	-	-	-	-	MR. MITCHELL	







TOP ROW—Nyght, Norsenz, Smith, Davison  
 FOURTH ROW—Brownson, Wesslen, Paulson, Morton, Casey  
 THIRD ROW—Wandrey, Williams, Goble, Burke, Scoville  
 SECOND ROW—Morton, Jensen, Dunbar, Canney, Meacham  
 BOTTOM ROW—Barry, Lynum, Sivertson, Attoe, Haasch





HANNAH

MALOTT

## AURELIA

### OFFICERS

FIRST SEMESTER				SECOND SEMESTER			
MARGARET HANNAH	-	-	-	<i>President</i>	-	-	LUCILLE MALOTT
				<i>Vice President</i>	-	-	ADALADE KEATING
THERESA MACHMEIER	-	-	-	<i>Secretary</i>	-	-	LILA VAN ALSTINE
DORIS FREDRICKSON	-	-	-	<i>Treasurer</i>	-	-	KARN HEYERDAHL
<i>Faculty Advisor</i>	-	-	-		-	-	MISS SCHLOSSER



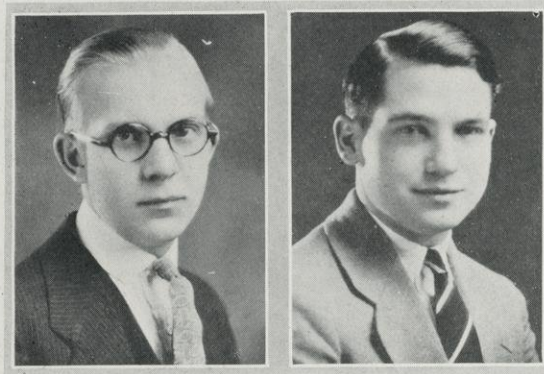
NELLE L. SCHLOSSER





TOP ROW—Fredrickson, Machmeier, Jackson  
 FIFTH ROW—Kellogg, Heyer  
 FOURTH ROW—Squires, Barrett, Walker, Morgan, Farm, Keating  
 THIRD ROW—Larson, Johnson, Kendall, Molberg, Perkins, Roe  
 SECOND ROW—Brackin, Heyerdahl, Cuddeback, Van Alstine, Ross, Elster  
 BOTTOM ROW—Myrvold, Miller, Malott, Moen, Oliver, Nelson





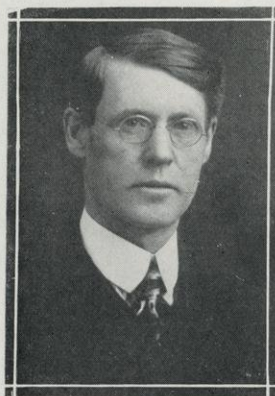
ELLEFSON

LARSON

## RURAL LIFE CLUB

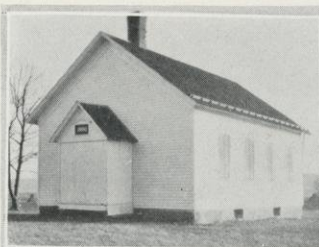
### OFFICERS

FIRST SEMESTER				SECOND SEMESTER			
RUBY IVERSON	-	-	-	President	-	-	HARRY ELLEFSEN
ESTHER JOHNSON	-	-	-	Vice President	-	-	IRVIN LARSON
PEARL MARQUART	-	-	-	Secretary	-	-	BLANCHE HURLBURT
JOE SEELEY	-	-	-	Treasurer	-	-	OLIVE VRUINK
Faculty Advisor				Mr. MALOTT			



JAMES I. MALOTT





Kinnickinnic School



Glover Station School



Liberty Hill School



Class Officers



At Liberty Hill



At Glover Station



At Normal



At Kinnickinnic



Chums



Peanut



Happy



Waiting



Dick



A friend in need  
Nov. 30, 1925.



Ethel



Nellie



Ruth



Leota



Why Groom?



The Percolator



Transportation to Liberty Hill  
and Kinnickinnic



Montana



Giggles



Transportation to Glover









TOP ROW—Barry, Sivertson, Lynum, Norseng, Wesslen  
 FOURTH ROW—Brackin, Klein  
 THIRD ROW—Goodrich, Lightfoot  
 SECOND ROW—Kielsmeyer, Hollinsworth, Dort, Williamson  
 BOTTOM ROW—Olson, Pedersen, Heggen, Wanisch, Gleiter





SPRIEGEL

AMES

## G. O. P.

### OFFICERS

FIRST SEMESTER				SECOND SEMESTER			
GLADYS SPRIEGEL	-	-	-	<i>President</i>	-	-	AVERY AMES
BERNICE SHELDREW	-	-	-	<i>Vice President</i>	-	-	SARA MCINTYRE
DORIS TYVOL	-	-	-	<i>Secretary</i>	-	-	RUTH BAILEY
MARIE LUNDY	-	-	-	<i>Treasurer</i>	-	-	INEZ MORROW
<i>Faculty Advisor</i>				-	-	MISS GREENE	



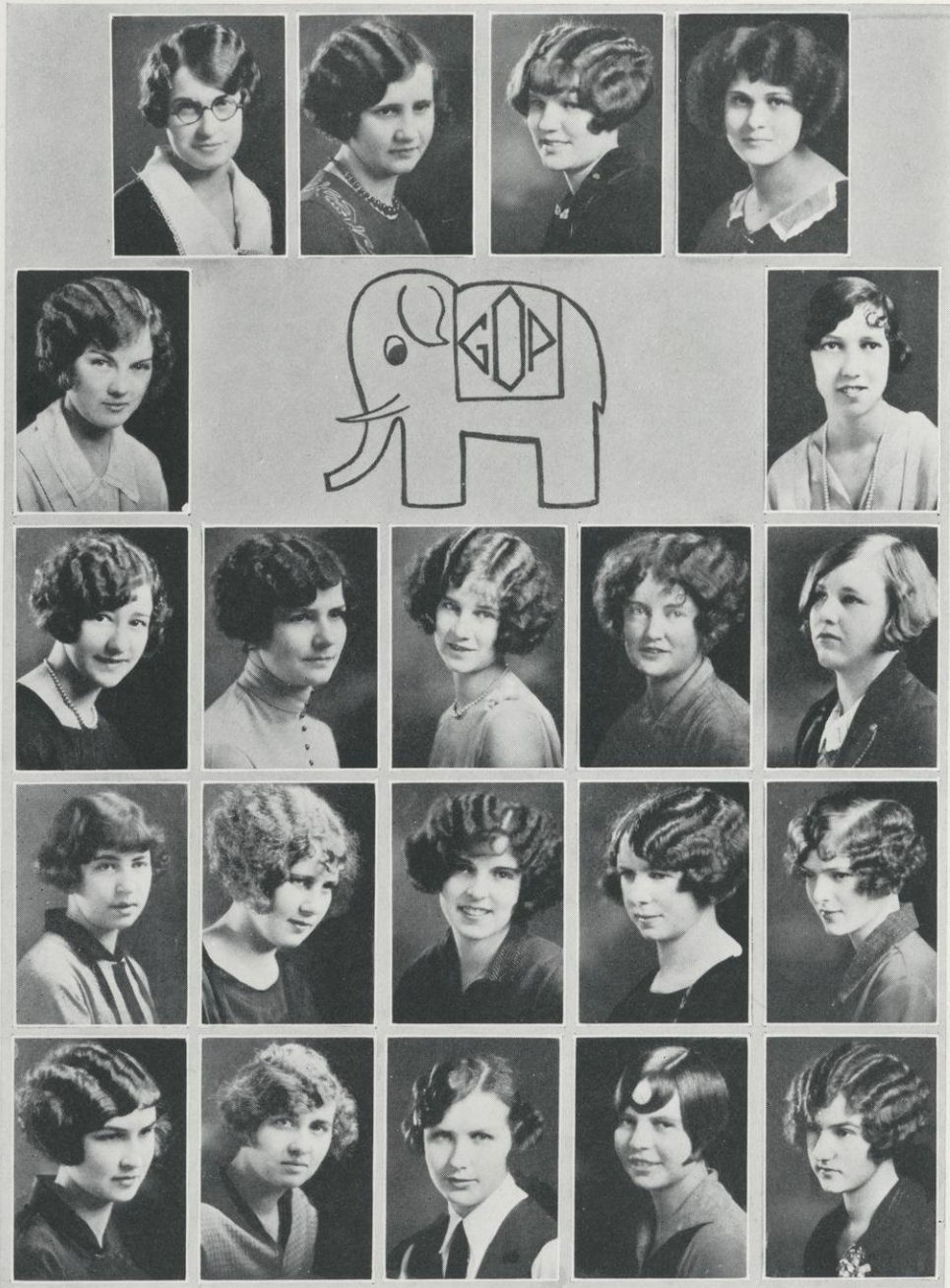
ALBERTA M. GREENE





TOP ROW—*Simonson, Bannister, Swenson*  
 FOURTH ROW—*Randall, Dunn*  
 THIRD ROW—*Lethlean, Hanley, Ableidinger, Bailey, Miller*  
 SECOND ROW—*Johnson, Merrill, Lanckton, Davison, Stewart*  
 BOTTOM ROW—*Holt, Lundy, Jones, McIntyre, Gauvin*





TOP ROW—York, Bates, Best, Cotone  
 FOURTH ROW—Bleisner, Goldsmith  
 THIRD ROW—Gregor, Pritchett, Johnson, Hunt, Jewell  
 SECOND ROW—Ames, Jensen, Morrow, Martin, Beebe  
 BOTTOM ROW—Sheldrew, Vassau, Tyvol, Hunt, Embretson





SQUIRES

JOHNSON

## MOZART CLUB

### OFFICERS

FRANCES SQUIRES	-	-	-	-	-	-	-	<i>President</i>
LUCILLE JOHNSON	-	-	-	-	-	-	-	<i>Vice President</i>
MARGARET J. JACKSON	-	-	-	-	-	-	-	<i>Secretary-Treasurer</i>
MR. GEERE	-	-	-	-	-	-	-	<i>Faculty Advisor</i>

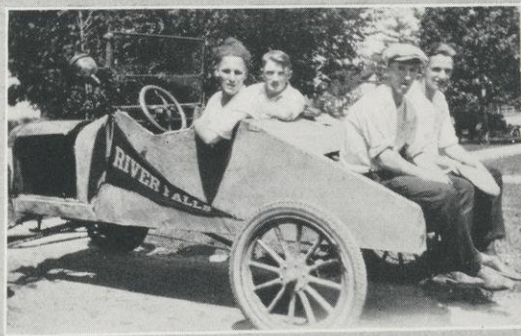


MARVIN D. GEERE











## POST MORTEM OF '25-'26



Upon a bright autumnal day  
Which ended our vacation  
Four hundred eager souls convened  
To seek their education.

A motley group, to say the least,  
And yet I sensed in part  
A friendly sort of fellowship  
That warmed and cheered my heart.

'Twas registration day, of course,  
And to us older fry  
The hard-earned dough which needs must go  
Departed with a sigh.

But not so with our younger friends,  
Who had but reached the mill;  
They cheerfully dished out their cash  
And even got a thrill.

Oh, youth, if thou couldst only see  
The things that lie ahead,  
How different would thy actions be!  
How small would be thy head!

Those early days that soon must pass—  
The joy, the grief, the gloom,  
The frantic efforts of the youth  
Who finds in vain his room.

The first few days pass rapidly,  
But then to shunt our joys  
Come pangs of aching homesickness  
To many girls and boys.

Life's journey here is stony, rough,  
And hearts must be like chrome  
To bear the pain, forget the train  
That waits to take us home.

From serious to frivolous  
We start the year out right  
By meeting all the other folks  
At North Hall Friday night.

A mixer full of pep and stunts  
That makes us feel at home  
And leaves us with a lighter heart  
And sweet thoughts in our dome.

Remember the third-year party,  
The classy music heard,  
When the Junkman-Whitenack duo  
The harps of heaven stirred.





We all remember vividly  
Our fighting football crew  
And what a record they achieved—  
Just what we knew they'd do.

They tied up with Macalester,  
Champs of our sister state,  
And Luther bowed to our attack;  
Theirs was a sadder fate.

And then Homecoming day arrived,  
Clean full of autumn zest;  
A day on which the Red and White  
Must meet another test.



The morning parade was peppy,  
Its spirit filled the air  
And gave the team the extra steam  
Which put Stout in despair.

We battled Eau Claire and beat them  
And left them in chagrin;  
Although we lost old "Rady",  
His spirit helped us win.

St. Mary's game we hold with pride;  
They found we're quite a joint.  
The next week we surged farther on  
By cleaning up the Point.

Now mind you, friends, with every game  
More backing was the cry,  
And old Superior in dismay  
Found out the reason why.

Three times eleven was our score,  
Superior's score was naught.  
We spent the next days to extol  
What our champions had wrought.

Now we must needs seek other lines  
Of many other different kinds,  
From Ramer Field to other things  
That any busy Normal brings.



The Grain and Poultry Show was held  
Some time back in December;  
Its closeness to our different rooms  
Helps us to well remember.

Then basketball broke into light  
And furious games ensued.  
St. Thomas nosed us out by points  
And Hamline beat us too.





St. Mary's beat us by a point—  
Our men were far the best—  
And when St. Mary's came up here—  
Oh, well, you know the rest.

Then Christmas came at last,  
Balm for aches long endured.  
No tales of "what I did at school"  
Can longer be deferred.

But in vacation days, it seems,  
The time flies far too fast.  
And back to learning's open doors  
Our footsteps lead at last.

To folks of different lines of sport  
A welcome thing, I think,  
Through efforts of the Normal school  
We had a skating rink.

Right here let us put in a word  
To praise our worthy band.  
They gave us lots of peppiness,  
When pep was in demand.

The musicale they gave was fine;  
The band looked mighty slick;  
And credit we must surely give  
To her who wields the stick.

We can't forget the vaudeville;  
It sure was lots of fun;  
The singing and the dancing  
Were worth another run.



An' brudder, you rememba'  
Dat minstrel show ob ours,  
Dem jokes and classy singin';  
Dey sho' deserves de flowers.

March was a month of action.  
Besides the minstrel show  
There came the high school tournament,  
As well you all must know.

And lest excitement dull our minds,  
Thus lead our thoughts astray,  
The thoughtful brains with careful pains  
Gave us exams each day.

Exams! ah me, pray let me sigh,  
But I dare no retort,  
For I am but a will-be grad  
And life is very short.





## The Oratory Bee

While in this reminiscent mood,  
Our memory brightly gleams;  
The shade of Clay would doff its hat  
To our debating teams.

They came out strong against Eau Claire.  
Superior was their meat,  
And then to cap the climax  
The whole state they did beat.

And, too, we vividly recall  
The oratory bee,  
When from each Normal school there came  
A group well filled with glee.

Each school brought something musical—  
Whate'er they had at hand—  
Some brought a glee club full of pep,  
And others brought a band.

Then Marshall brought the bacon home,  
And after him Burke came.  
It certainly made us feel proud  
To bag this noble game.

The balmy days of spring arrived,  
The fever got us all;  
The signs were very evident  
In every nook and hall.

Seniors began to think of jobs;  
The world seemed to call us;  
Commencement loomed not far away—  
Departure from this campus.

Fond memories of River Falls,  
In our minds'll e'er be fixed,  
And in high place among them all  
The year Twenty-five and Six.

H. H.





## A GLOSSARY OF CAMPUS TERMS

*Assembly:* The place where some go to talk, some go to listen, some go to sleep, and the rest of us go because we have to.

*Basketball:* A game played with short pants and a whistle. A ball is also used.

*Boiler Room:* The place where men walk a mile for a Camel.

*Campus:* The vacant lot on which the Normal was built.

*Coach:* The man who puts the kick in the football team; also directs other athletics. A director of dramatics is called a stagecoach.

*Collegiate:* A disease in which the victim goes bareheaded and wears baggy trousers.

*Dean:* The man who issues certificates of departure to students whose complexes are not suited to the R. F. atmosphere.

*English:* A foreign language taught by Professors Hanna and Goble.

*English:* We told you once, isn't that enough?

*Faculty:* A group of professional entertainers employed by the State to amuse the inmates of the Normal School.

*Greasy Spoon:* The local Ritz Carleton where Cockroach is king.

*Honor Roll:* The names of those students whom we might otherwise have overlooked.

*Ivory:* The theme of a new joke gotten off by Mr. Mitchell just recently.

*Individual:* A personal yell, usually given after a personal foul has been called on the individual.

*Janitors:* Men employed to salvage remnants of school property wrecked by students.

*Joke:* A story told by a Prof who expects everyone to laugh whether he gets the point or not.

*Kandy Kitchen:* A sanitorium where the love-smitten go for treatments.

*Korridor:* Ask someone else; this is no matrimonial bureau.

*Love:* We don't know what it is either.

*Library:* A place where unused books are stored; also a trysting place for lovers.

*Malott:* The man who discovered the neuron.

*Mixer:* A party where everyone sits around and waits for something to happen that doesn't.

*North Hall:* The other building.

*Normal Curve:* A method of delivering the ball first introduced by Matt Nelson in the St. Olaf game.

*Orchestra:* The audible part of a good movie show.



*Practice Teaching:* A special course introduced by Mr. Barnum for the training of wild animals.

*Question:* The means by which a Prof confirms his suspicions.

*Rural:* A department for the training of students for missionary work.

*Recitation:* A very diplomatic way of denying knowledge on a specified subject.

*Springs:* A means used by Prof for administering tests unexpectedly.

*Student Voice:* A handbill containing Y. M. C. A. notices and the names of those who spent the week-end in the cities.

*Test:* Just another form of the Spanish Inquisition.

*Tennis:* A game in which the contestants strive to see who can call the other the most pet names.

*"U":* Another name for Mecca.

*Vaudeville:* An entertainment originated by the Holeproof company for advertising purposes.

*Vanity Case:* A metal box containing a cracked mirror and thirty-six cents in cash. Originally carried by girls.

*Work:* A myth exploited as a universal excuse. Especially valuable to girls declining dates.

*X:* Unknown algebraic quantity; the way a kiss looks written.

*Yell:* A clamor set up by the student body when the leader insinuates that there is something the matter with someone.

*Y. M. C. A.:* An organization which serves excellent bean soup.

*Zoology:* A class in which the students just "cut up" mostly.

*Zo's your old man.*



"How long will it be before I can get a shave?" asked Skin Collins.  
"Well," said the barber, regarding his face, "you might be able to start in a year or so."

\* \* \*

Thomas Berry and Gladys Bleisner (he has lent her his pen) — "It writes beautifully," said she.

"I'm in love with the holder."  
She saw the point.

\* \* \*

Frosh (arriving at school): "Can you tell me where the library is?"  
Third Year Senior: "There it is, right across the hall. Any fool knows that."  
Frosh: "Yes, that's why I asked you."

\* \* \*

Williams: "I can't go to school today."  
Jennings: "Why?"  
Williams: "I don't feel well."  
Jennings: "Where don't you feel well?"  
Williams: "In school."

\* \* \*

Donald Bronson, the missionary: "Yes, during our sojourn of three years on the island my wife, Marjorie, saw only one white face and that was mine."  
Tarz: "Poor thing! How she must have suffered."

\* \* \*

#### IN ASSEMBLY

First Student: "What a dumb lecture! What time is it?"  
Second Student: "Twenty to eleven."  
Third Student (waking up): "Hurrah! Who made the touchdown?"

\* \* \*

Miss Kimball: "I want it so quiet in the library we can hear a pin drop."  
Student: "A rolling pin?"

\* \* \*

"For men may come and men may go, but I babble on forever," said Marshall Norseng to his audience.

\* \* \*

Paul Cudd: "Why the grip?"  
Helie: "Oh that's my knapsack."  
Cudd: "Knapsack?"  
Helie: "Yes, pajamas and things."

\* \* \*

John Davison: "Did you hear them applaud when I left the stage?"  
Norseng: "I don't blame them."

\* \* \*

A Normal Sheik: "Have you given up anything for Lent?"  
A Normal Co-ed: "Oh, yes! Candy, eating between meals, dances, movies . . . ."  
Normal Sheik: "Say, can I have a date tomorrow night?"

\* \* \*

Fred Wandrey: "I don't think the audience noticed the mistakes I made."  
Mitchell: "No, they were unconscious by that time."

\* \* \*

First Student: "Our landlord is so tight that he charges us to look at his gold fish."  
Second Student: "That's nothing. I've heard that 'Halli Hurchi' rents the air."

\* \* \*

Viv Vassau: "Whew! Just had a terrible quiz."  
Joe: "Finish?"  
Viv: "No, French."





"Smiling Thru"



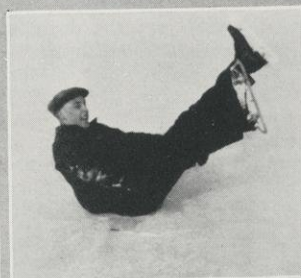
Inebriated?



"Tired"



Good News?



A New Skate



PAIS AND — ?



"Oh Wait A"



What Price Champs



Some Heads



CHARLESTON



#### EARL WEBER TO JIM LANDIS

I love my little room-mate,  
His clothes are not my size,  
He takes my sweetheart on a date,  
And so we have our fights.  
He leaves his shoes upon my bed,  
His necktie on my chair,  
He puts my Stacomb on his head  
To pacify his hair;  
He sings at midnight and at dawn  
He's silent not at all,  
He plays a banjo, though I yawn;  
I get no sleep at all.  
He swipes my pencils, pens, and ink  
All the blessed day,  
But I love my room-mate, 'cause I think  
He'll help me get an A.

\* \* \*

#### THE ESKIMOS' HOUR

Between the dark and the daylight,  
When our classes and duties are o'er,  
Comes a pause ere we start all our studying,  
That is known as the Eskimos' hour.

On the porch the boys start to gather,  
And stay till the girls come down.  
They are laughing and talking together  
But they dare not make too much sound.

Grave Donald and laughing Lucile,  
Wilmot with raven hair,  
Ellen and Pat on the front porch  
With Fern and Brooks on the stairs.

Oh, hush! and then the darkness,  
The lights are all turned low  
'Til the landlady sees the Eskimos  
On the veranda down below.

There on that icy front porch,  
Still remembered by many a heart,  
The Eskimos still continue  
'Til time takes these couples apart.

\* \* \*

#### WHY I DESERVE A NORMAL DIPLOMA

I know the light brigade wasn't an organization of lighthouse keepers.  
My intellect tells me that the Granger movement didn't have anything to do with football.  
I believe that the Monroe Doctrine was not written by Shakespeare.  
I know that two "sharps" and a "flat" can't make me "natural".



## AS TOLD IN 1936

Here lies the shattered hulk of what  
Was our friend Frank Belisle.  
He worked so hard in the town hotel  
That it drove himself to kill.

Avery Ames, you all have heard,  
Is in the Ziegfields show.  
She rings a doorbell seven times  
Behind the scenes, you know.

The smallest women in captivity,  
Says Warnum and Wailey's Circus,  
Are Viola Bates and Annette Lanckton  
Who once belonged to us.

Lois Beers, the lucky lass,  
Edits the London mail.  
The fight of fame versus men she won,  
For now she has no male.

Pick up any magazine  
That you by chance have seen,  
And Elmer Beran's photograph  
Advertises brilliantine.

Dean Goodrich has begun  
His life work as a preacher.  
But people say they cannot stay,  
So talks he to the bleachers.

John L. Burke, our worthy talker,  
Is using his powers of speech.  
For now he's caller of the trains  
In the station down our street.

The Old Ladies' Home is filled, I hear,  
With all the old maid school marms:  
Stewart, Tyvol, Slauson, and Merrill  
Are among those on the farm.

Connie Miller has changed her tune  
From cornet to bass horn.  
She's getting thinner every day  
From playing it until morn.

Frederick Nary and Philip Nary  
Are on the stage, I hear,  
And all the vegetables they do gather  
Will make a shortage, I fear.

Ted Kexel applied for Sousa's job,  
But did not stand the test.  
For in the tryouts he did play  
"Oh, Lord! I love thee Best."

Fire and brimstone seem to be  
For those I have said no word.  
Mathias Nelson, Fogo, and Quandt  
Do somewhere down there lurk.



### FINAL EXAM QUESTIONS

To all bright little readers who will save these questions for a year, and then pass them on to a next year's student in the hope that they will at least pass the test.

Who was:

Your room-mate?  
Ted Cox's girl?  
Teacher's pet?  
President Ames's godfather?

Where was:

The boys' smoking room?  
Down river?  
The R. F. S. N. School's Basketball Team?  
Hanna's bottle of hair restorer?

What was:

One question in Miss Latta's exam?  
Mitchell's pet joke?  
Sid Scoville's "Sitting Bull?"  
Your average?

\* \* \*

For some normal boarders life is one canned thing after another.

\* \* \*

The best radio story of the year is concerning Pat Heebink, who claimed he tuned out all of an orchestra but the saxophone and tuba.

\* \* \*

"Frances had a little lamp,  
A jealous one, no doubt.  
For each time Mr. Morton came in,  
The little lamp went out."

\* \* \*

A very well satisfied man arrived at the Pearly Gates and asked for admission.

"Where are you from?" asked St. Peter.

"River Falls State Normal School."

"Well, you can come in, but you won't like it."



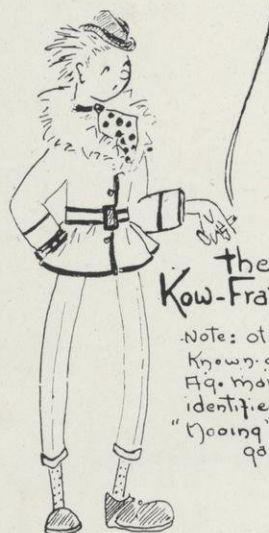




# Kampus Kapers at Kow Kollege



the  
Kampus Kow-ed  
flings a wicked  
Kalt



the  
Kow-Frat Man

Note: otherwise  
Known as the  
Fig. man. Can be  
identified by his  
"Kooing" at  
games.



Kwite.  
Kow-Ileqiate



A Study in  
"Kow-operation"

















