



LIBRARIES

UNIVERSITY OF WISCONSIN-MADISON

Fond du Lac illustrated, 1898. 1898

Williams, E. C.

Milwaukee [Wisconsin]: Williams, 1898

<https://digital.library.wisc.edu/1711.dl/QHDPYUVGVNE5K8G>

Images cannot be copied or reproduced without the written permission of the Fond du Lac Public Library. For information on re-use, see <http://digital.library.wisc.edu/1711.dl/Copyright>

The libraries provide public access to a wide range of material, including online exhibits, digitized collections, archival finding aids, our catalog, online articles, and a growing range of materials in many media.

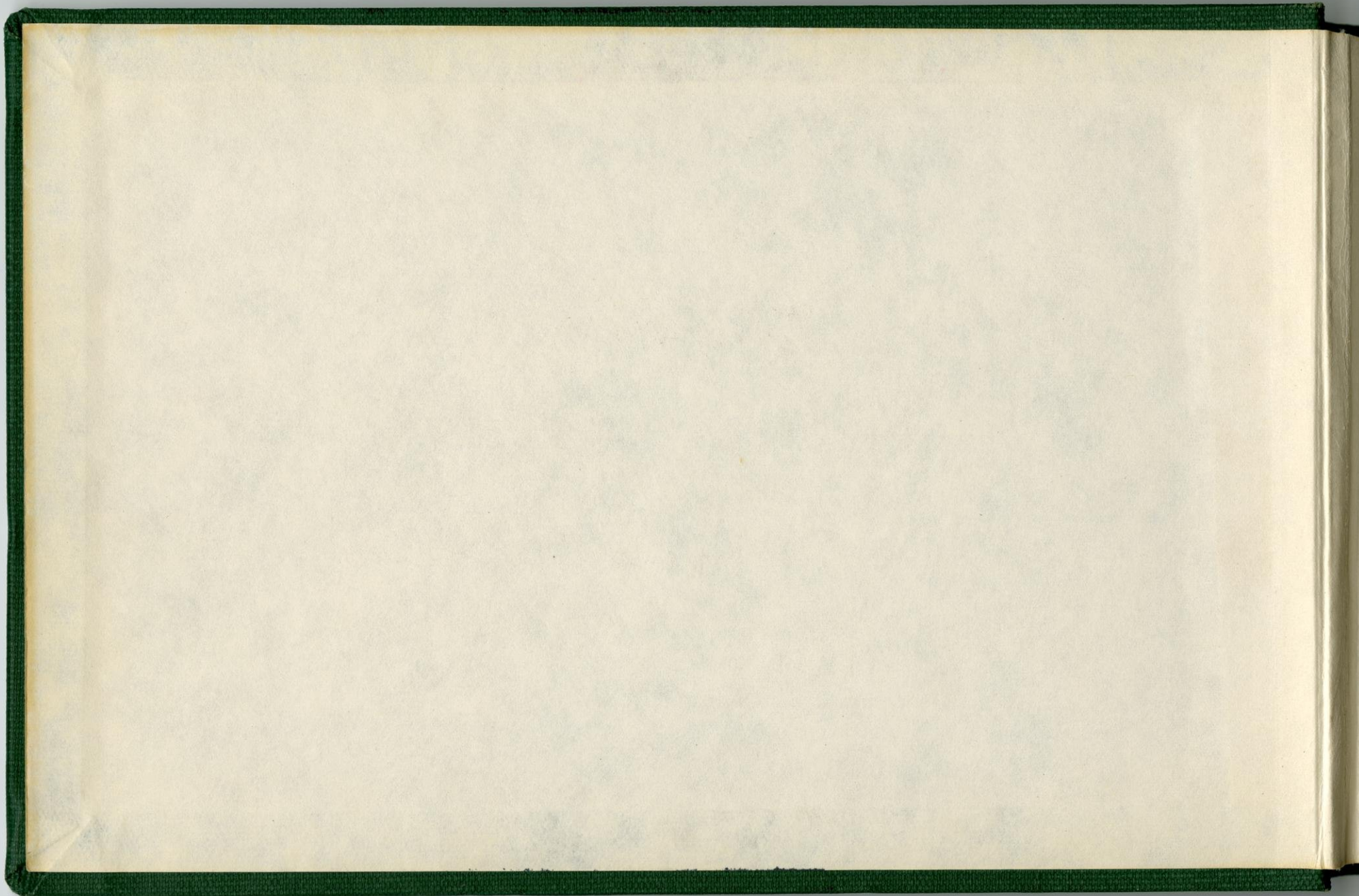
When possible, we provide rights information in catalog records, finding aids, and other metadata that accompanies collections or items. However, it is always the user's obligation to evaluate copyright and rights issues in light of their own use.



*

977.568
W671

7310



Keep in Librarian's Office

ADULT REFERENCE

c.4

*

977.568 W671

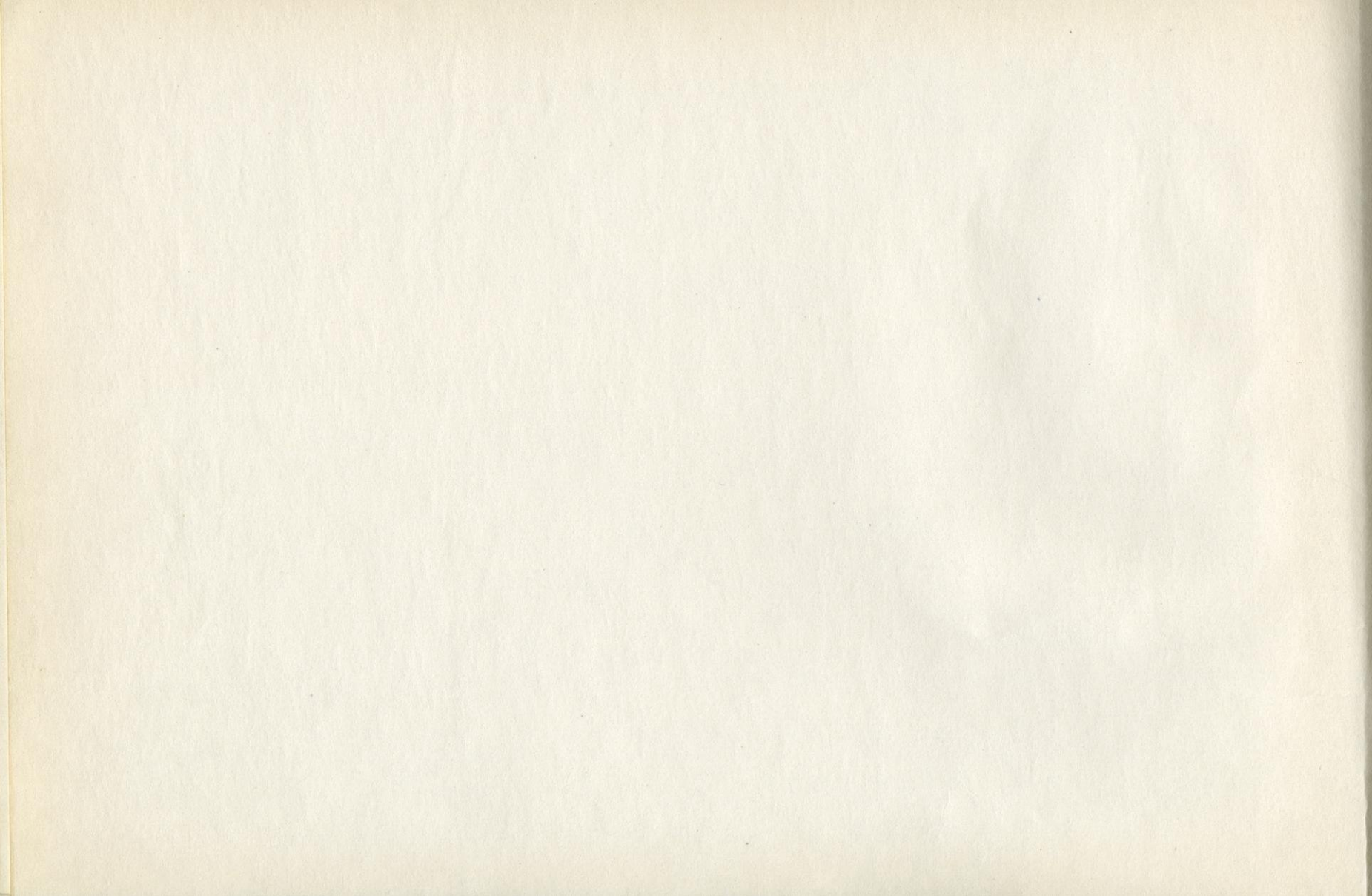
Williams, E. C

Fond du Lac illustrated, 1898



8000291069

Ref 2







Williams

Fond du Lac, Illustrated, 1898

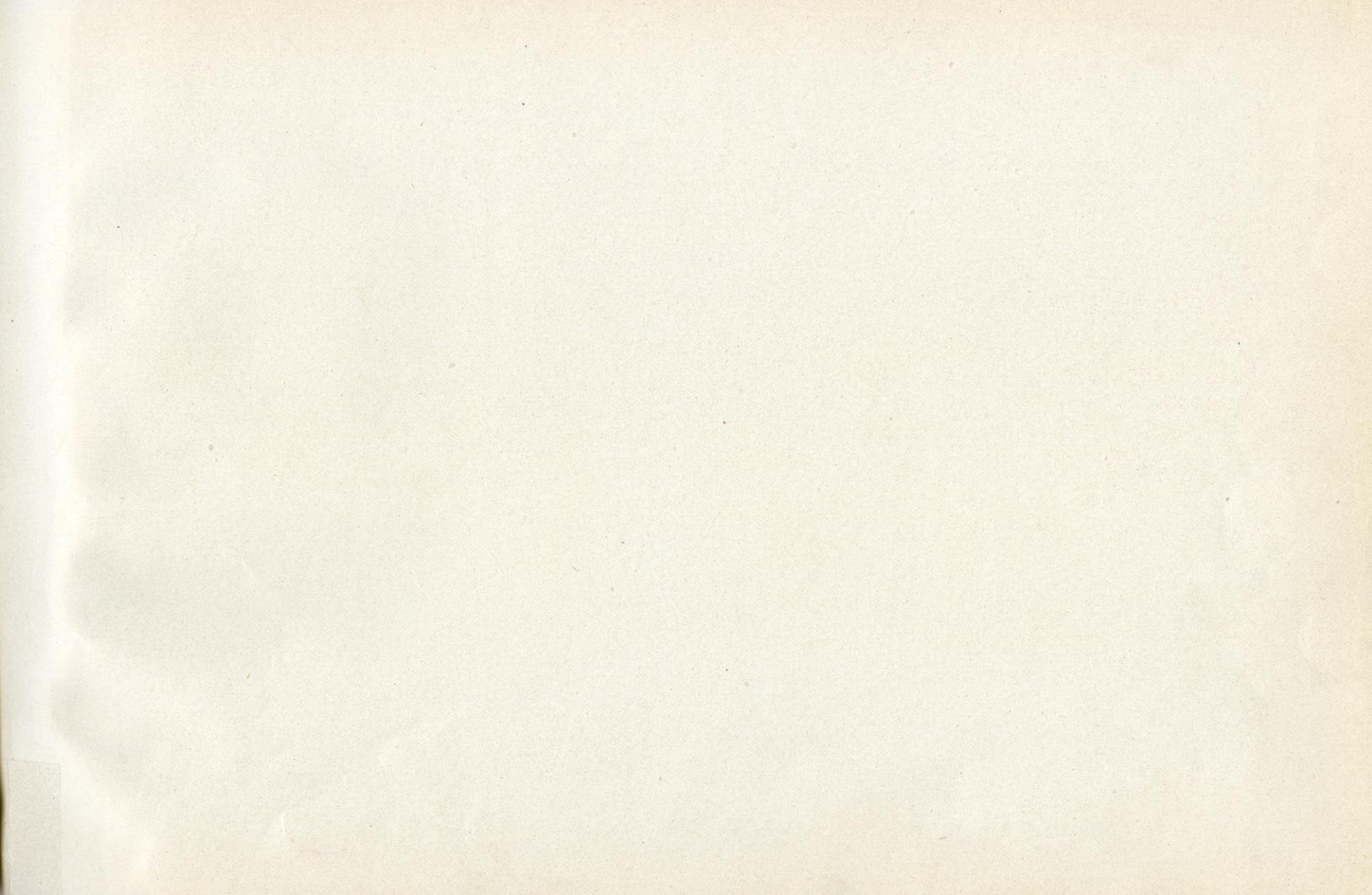



Donated by

by

George E. Fiske

Donated 1954



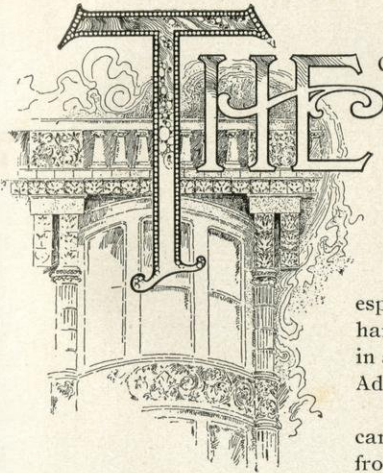


Engravings by
The Cramer Engraving Co.,
Milwaukee.

Printed by
The Evening Wisconsin Co.,
Milwaukee.

977.568
W671
c4

Fond du Lac, Wis.



City of FOND DU LAC is an inland Wisconsin city of 18,000 inhabitants, located in the rich east central portion of the state, about forty miles from Lake Michigan and sixty-three miles north of Milwaukee. The county seat of Fond du Lac county, it nestles snugly in the heart of a rich agricultural district, the growth of which has been conservatively steady but never spasmodic. Commercial ups and downs it does not know, a "boom" it has never permitted. Since the fifties, when the first strap rail steam road connected the town with the business world, Fond du Lac has gone directly ahead, prospering and to prosper.

The last five years have witnessed a marked improvement in both manufacturing and farming interests. Business was never better, the outlook never more encouraging.

The situation of Fond du Lac makes it a particularly desirable place for the location of factories, especially those that manufacture goods in which labor represents a large per cent. of the cost, and in which hard wood is used. It is on the edge of Wisconsin's hard wood timber belt, and good living is cheaper than in almost any northern city. Our claims in this particular are easy of substantiation, and the officers of the Advancement Association will be glad to discuss this phase of our city by mail or by person.

Fond du Lac is exceptionally fortunate in possessing unexcelled railroad facilities, making convenient the carriage of passengers and freight to and from all points. The Chicago & Northwestern Railroad reaches out from here in five directions—south to Milwaukee, Janesville and Chicago; west to Princeton and Madison; north to Oshkosh, Green Bay, Ashland, Duluth and Minneapolis; and east to Sheboygan. The main line of the Wisconsin Central and a branch of the Chicago, Milwaukee & St. Paul also reach this city. There are a dozen or more daily trains to through points in all directions. Freight rates are not high and the long distance scale offers advantages similar to those enjoyed in larger cities.

Fond du Lac has never seen a strike. Happily, labor troubles are unknown. Among the thousands of workmen contentment reigns and justice obtains, without the aid, knowledge or consent of trade unions. Equitable wage scales prevail, disputes are easily settled with approachable employers, harmony exists between wage earner and wage payer and the results are a constant source of gratification to every citizen. Our workmen are frugal, intelligent, orderly and industrious.

The officers of the Advancement Association are always ready to meet on a fair and equitable business basis any manufacturers or companies desirous of locating in Fond du Lac. There are to-day a number of available sites, convenient of access by rail, which may be had.

Among Fond du Lac's leading industries may be included the only piano manufacturing plant in Wisconsin, one large yeast factory, several lumber yards and two sash and door factories, two breweries, one immense tannery, two refrigerator factories, table factory, cold storage plants, malt and grain mills, postal bag rack plant, a drug mill, wagon and sleigh factories and wholesale grocery and provision houses.

The beautiful country, the unexcelled climate, the drinking water (equal in every respect to the famous Waukesha Spring product), combine to make this vicinity popular for summer resort as well as permanent residence. Along Winnebago Lake a cottage city occupied from June to October is rapidly growing, and over two hundred people summer around Lake De Neveu, that picturesque little body of water located about three and one-half miles southeast of the city (views of which are herein presented). The fishing of these lakes is par excellence, made particularly so by the recent law forbidding the use of nets.

copy 25.1516 1917

The city has long been distinguished for its excellent educational facilities, its commodious and modern school buildings and its efficient training of the young who desire to pursue their studies in the higher institutions of learning.

The churches of the city are active and nearly every denomination is represented by a congregation. The seat of the Fond du Lac diocese of the Episcopal church is here, the beautiful buildings connected therewith being the cathedral and the episcopal residence of Bishop Grafton.

Grafton Hall, school for young ladies, is most complete in all its appointments. Its handsome building and valuable equipment, the gift of generous friends, enable this school to offer the very best of educational advantages at a minimum of cost. The Bishop of Fond du Lac is its founder and patron. Four courses of study are offered, the English, the Scientific, Modern and Ancient Classical, and its Music and Art Departments easily rank with the best. The graduates from this school have already taken high rank amongst scholars and musicians. The aim is to thoroughly train the character as well as intellect, and in this it is greatly aided by its proximity to the beautiful Fond du Lac Cathedral, a house of worship that contains works of art, creations of sculpture and carving from the master hands of the Old World. The home life of the school is particularly emphasized, and every facility is afforded for making a comfortable and refining home. On the first floor the Grand Hall with its cozy corners, fire-place and easy chairs is naturally the center of the home life. This opens onto a large terrace that faces south and leads down to the school grounds. On one side is the ample Dining Hall with its large south and east windows, handsome sideboard and fire-place. On the other side is the Library opening into Study Hall, and the Class Rooms. On the second floor are twenty-five single bedrooms, bathrooms, and infirmary. On the third floor are Culture Hall, for music and recreation, practice rooms, art studio and chapel. The building is finished throughout in hardwoods with natural finish. A separate building houses the boilers, steam laundry, and room for the hired help. A dynamo on the premises gives ample lighting facilities and a complete waterworks system is also provided. The buildings are of stone, with solid partitions and slate roof, making them practically fireproof.

The city is liberally supplied with pure water from artesian wells from 350 to 2,000 feet deep. The water is not absolutely soft, but carries enough mineral to render it a delightful beverage. The Holley direct pressure system in its most modern construction is in use and great pressure is easily obtained. There is abundance to afford ample protection against fire. The water never sees the light until drawn from the faucet.

The city is provided with a modern gas and electric lighting system, both arc and incandescent, affording excellent service at reasonable rates.

The fire department, under an experienced chief, is equipped with all the latest appliances for fighting fire. This feature of Fond du Lac's capital has had a wholesome effect on our insurance rates, keeping them down to a surprisingly low figure.

Fond du Lac has two very pretty parks, the "West Side" and the "Lakeside." In season there are frequent band concerts by the Fond du Lac Military Band, one of the best band organizations in the state.

There are four sound and highly respected banks in Fond du Lac, the First National, the Fond du Lac National, Wells Banking House and Cole Savings Bank.

Because of its accessibility by rail, and also by reason of the public spirit of its citizens, Fond du Lac is fast becoming a convention city. Its hotels are maintained at a high standard, and traveling men make it a point, whenever possible, to "Sunday" in Fond du Lac.

Excluding Milwaukee, Fond du Lac possesses the largest and broadest circulating library in Wisconsin. It contains 16,398 carefully selected books, covering reading matter of every description. Its circulation last year was 47,643 volumes. It is absolutely free.

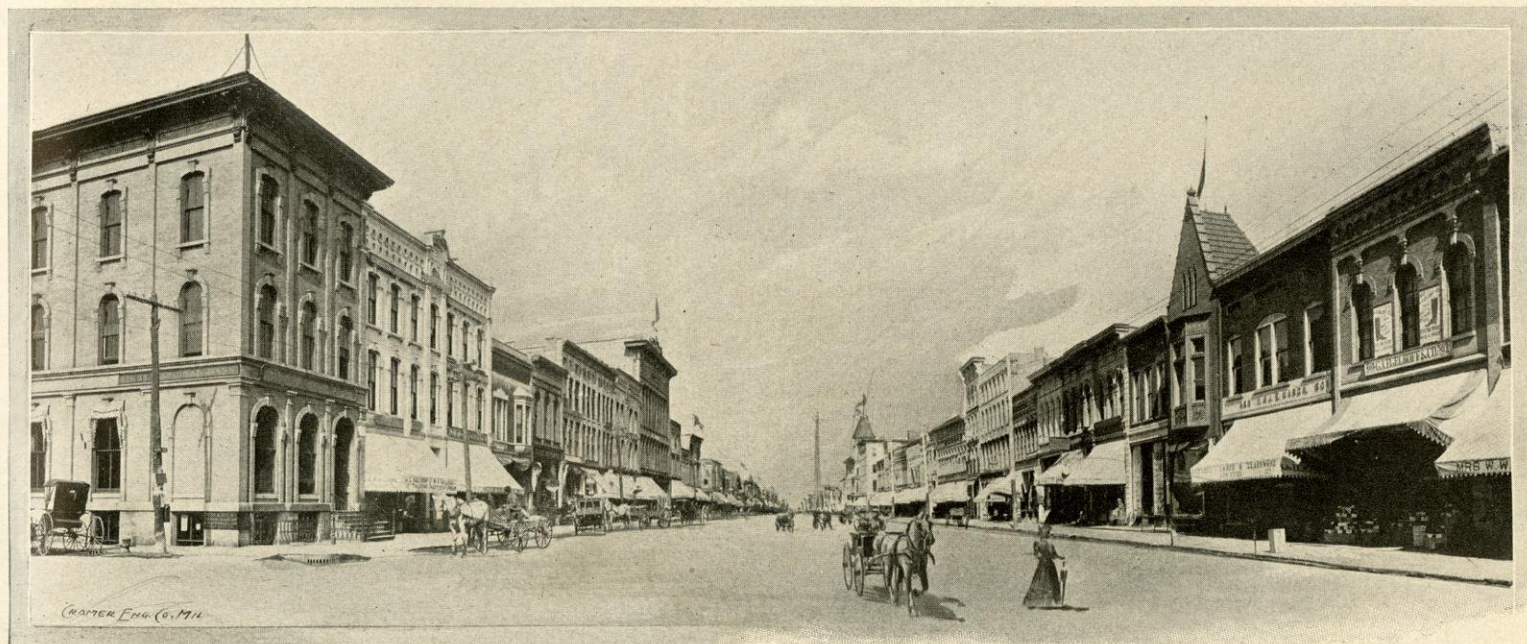
Though not of great commercial use, picturesque Lake Winnebago, whose waters lap the skirts of our city, is useful as well as ornamental. The peculiar location of this body of water and the hills back of the city, usually spoken of as "The Ledge," form for the city a shelter from wind storms and other climatic eccentricities. We have none of them. This is a *fact* worth dollars to our people.



Fond du Lac County Court House.



County_Poor House and Insane Asylum.



Main Street Looking South from Forest Avenue.



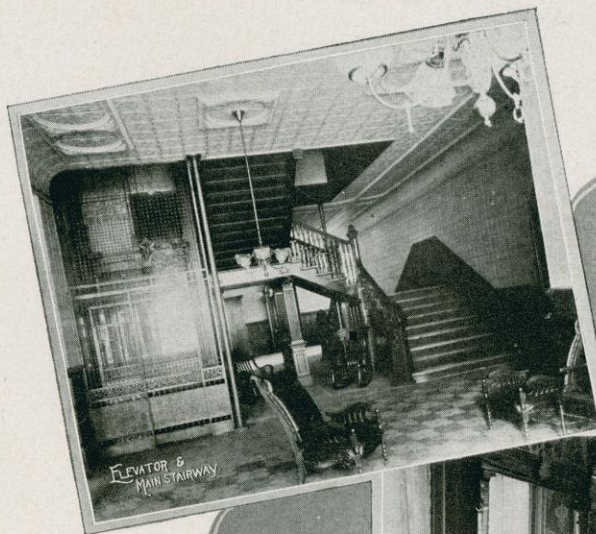
Main Street Looking North from First Street.



Main Street Looking South from First Street.



Palmer House.



Palmer House.



East Division Street,



Sheboygan Street.



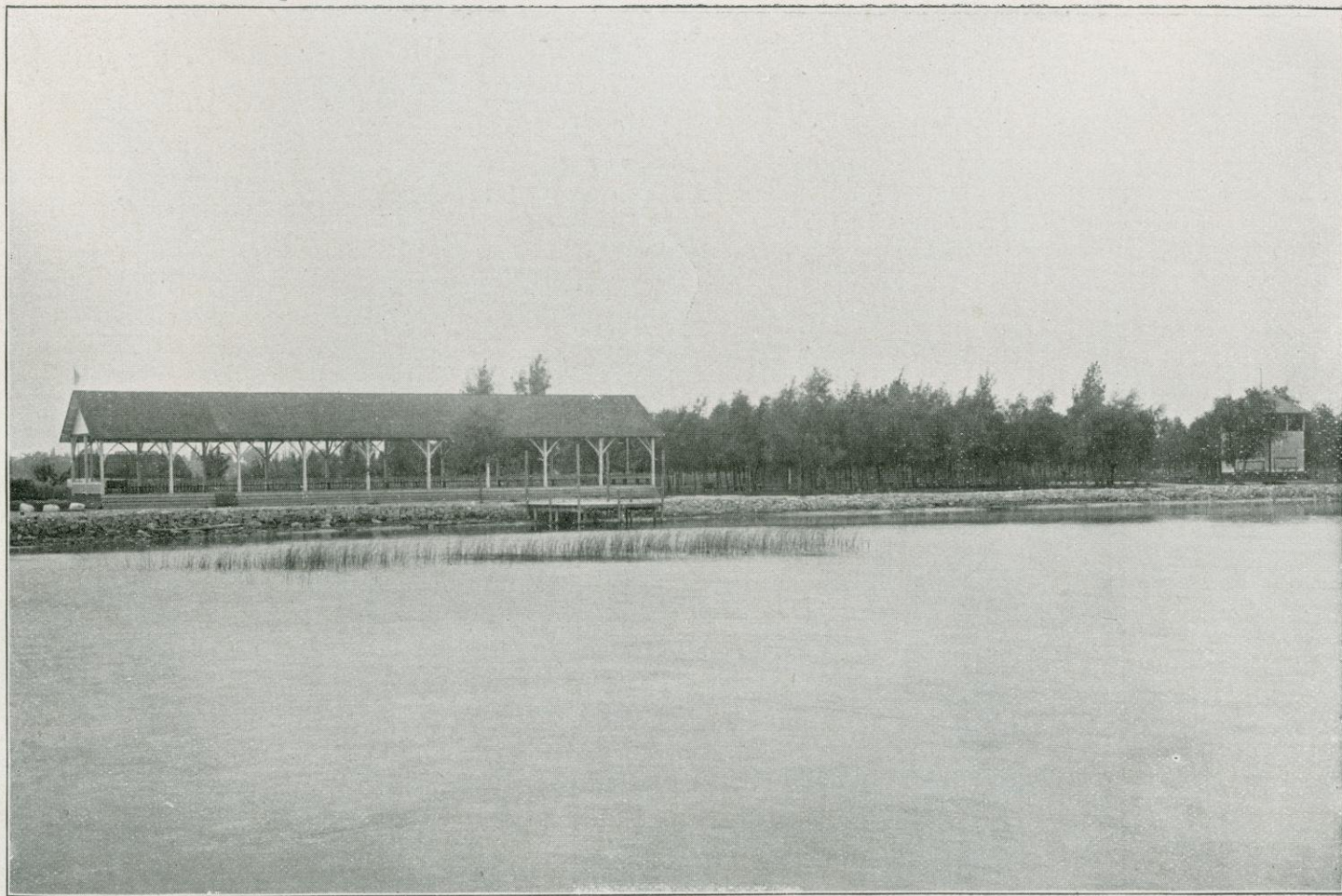
Forest Avenue.



West Side Park.



Entrance to Lake Side Park.



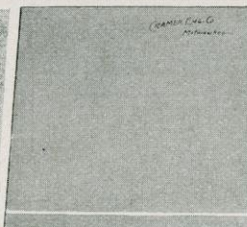
Lake Side Park.



Entrance to Winnebago Park.



Beach at Winnebago Park.



Cottages at Winnebago Park.



South Shore Lake Winnebago near Taychedah.



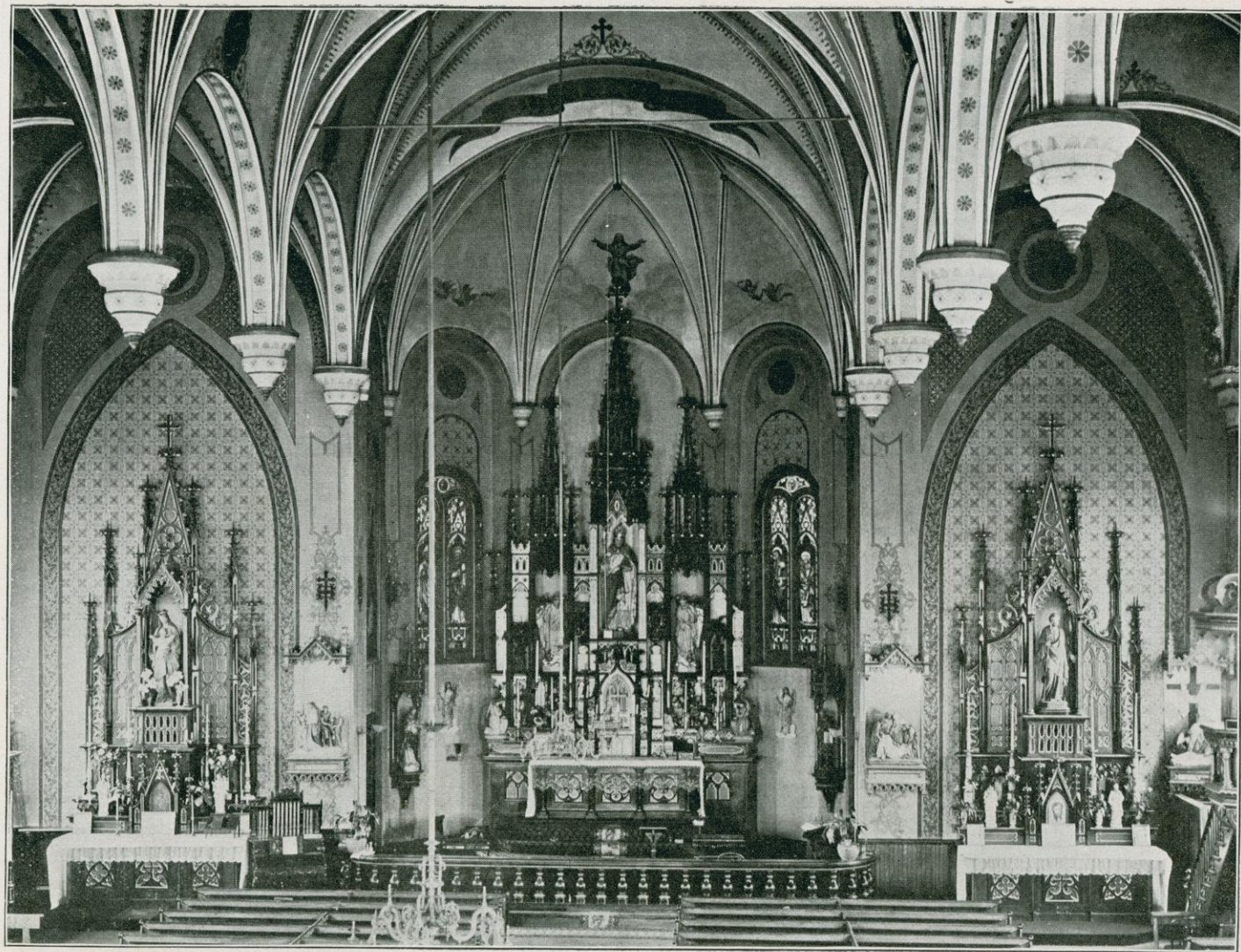
Views of Lake De Neveu.



St. Agnes' Hospital.



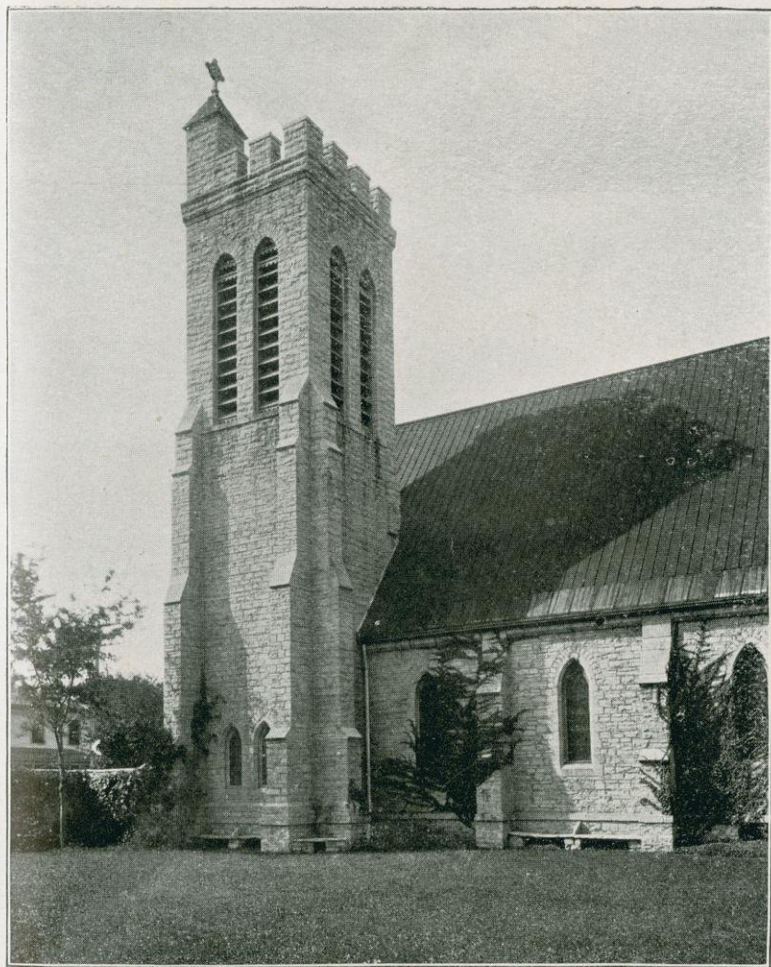
St. Joseph's Church.



Interior St. Patrick's Church.



Congregational Church.



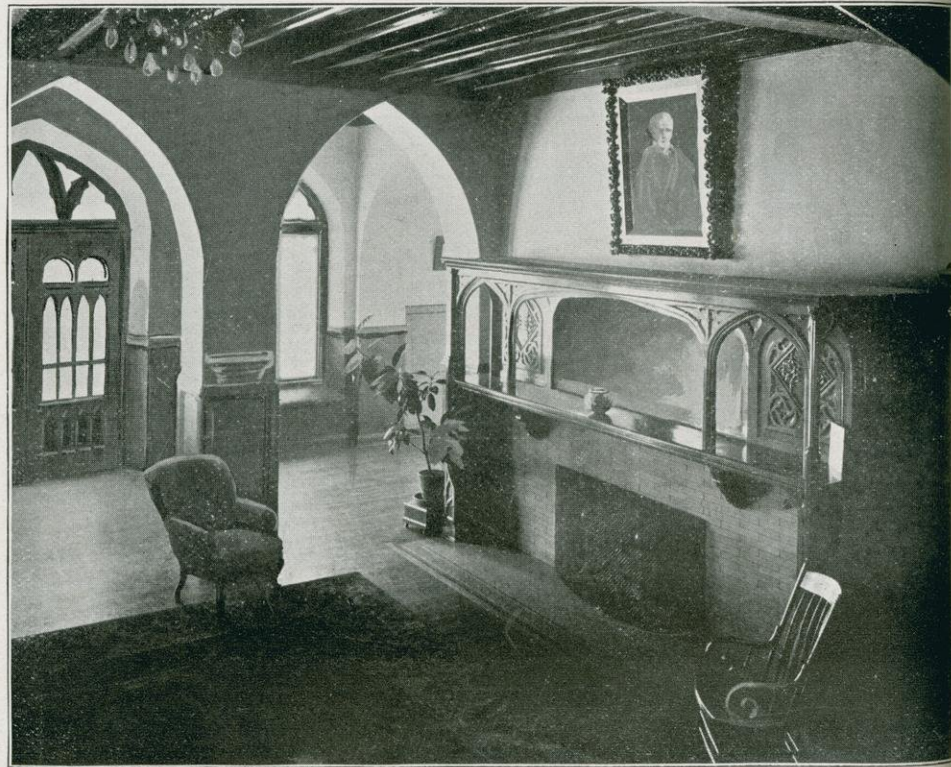
S. Paul's Cathedral.



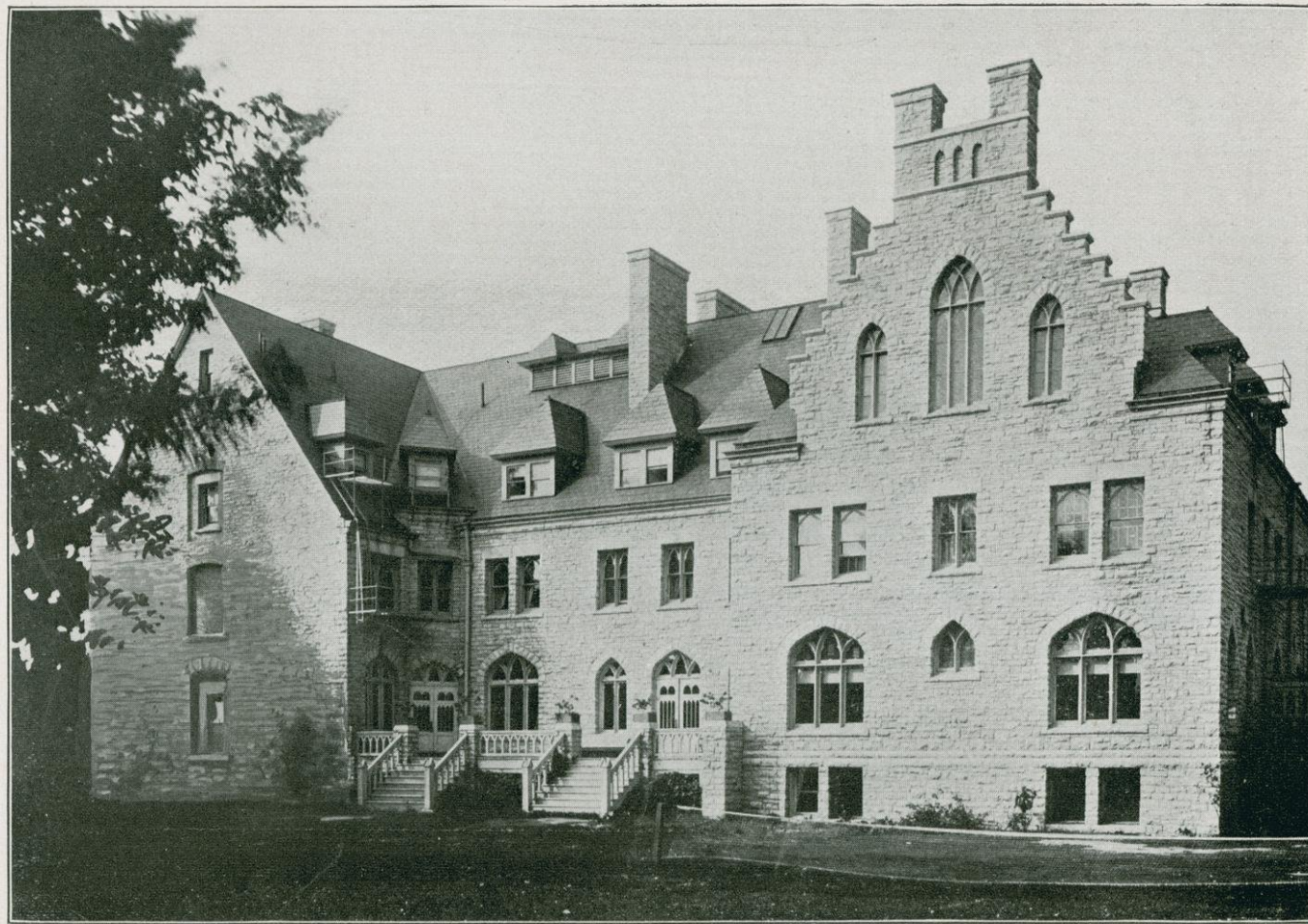
S. Augustine's Chapel.



Chancel and S. Ambrose Chapel.



Interior Grafton Hall.



Grafton Hall,



Residence of the Rt. Rev. C. C. Grafton, Bishop of Fond du Lac, and Convent of the Holy Nativity.



S. Margaret of Antioch.

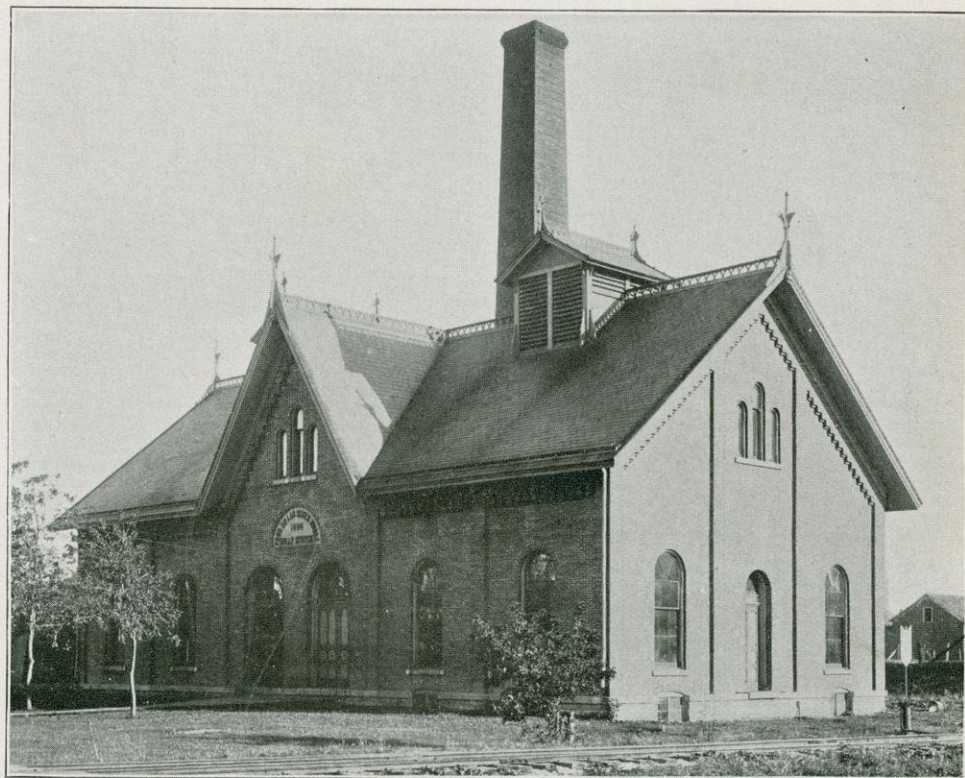
Mild Margaret that was God's own maid.
Maid Margaret that was so meeke and mild.



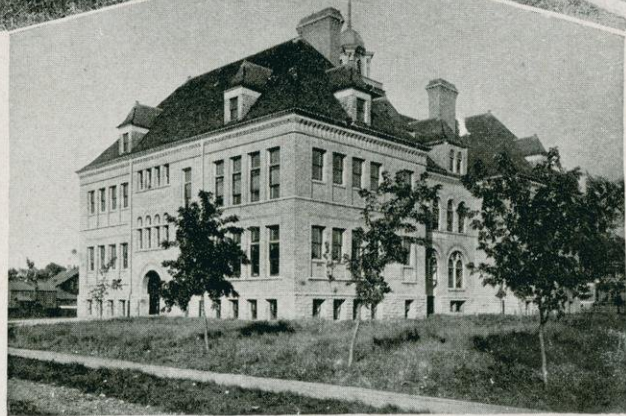
Lange Block.



No. 5 Engine House.



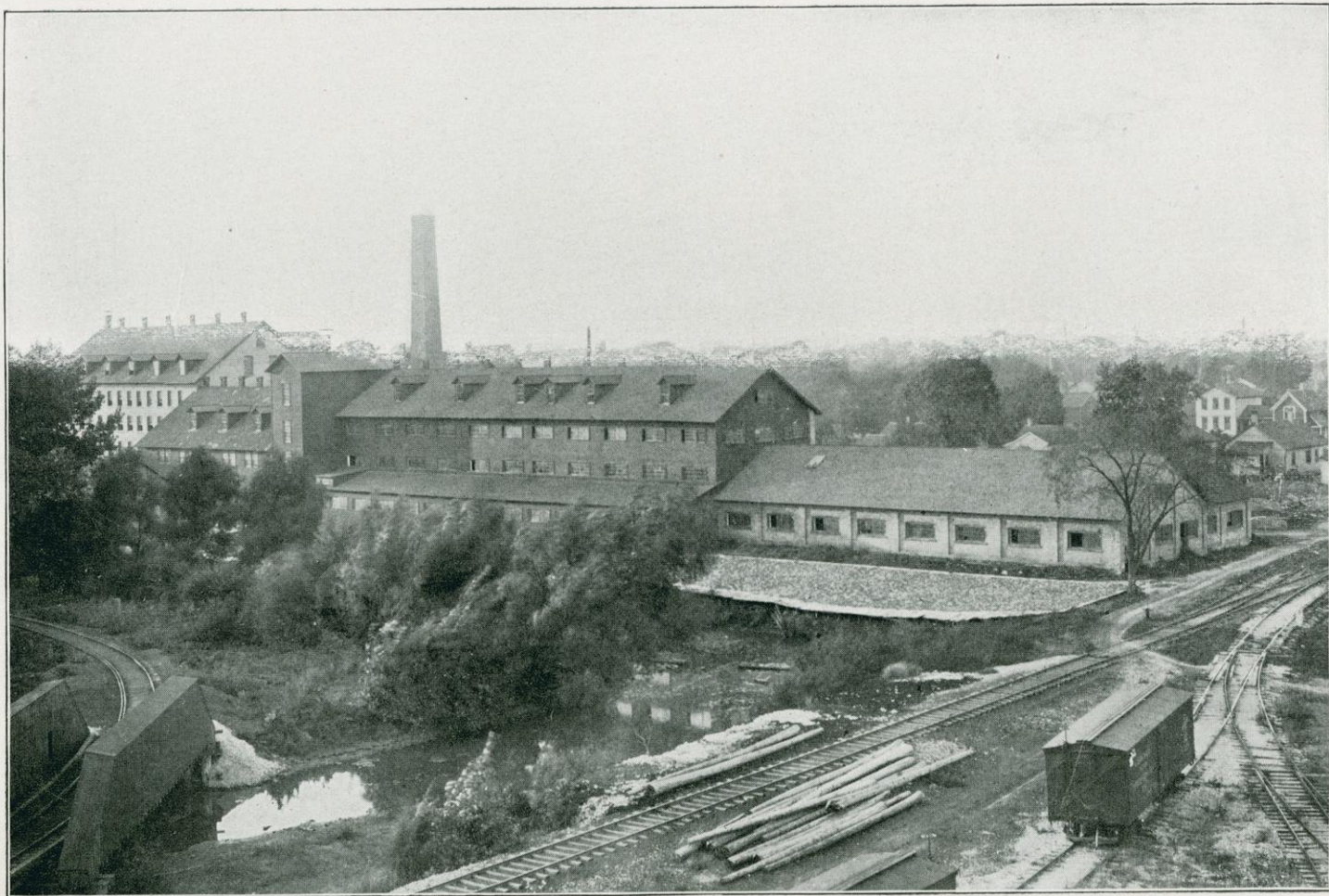
City Pumping Station.



Group of Public School Buildings.



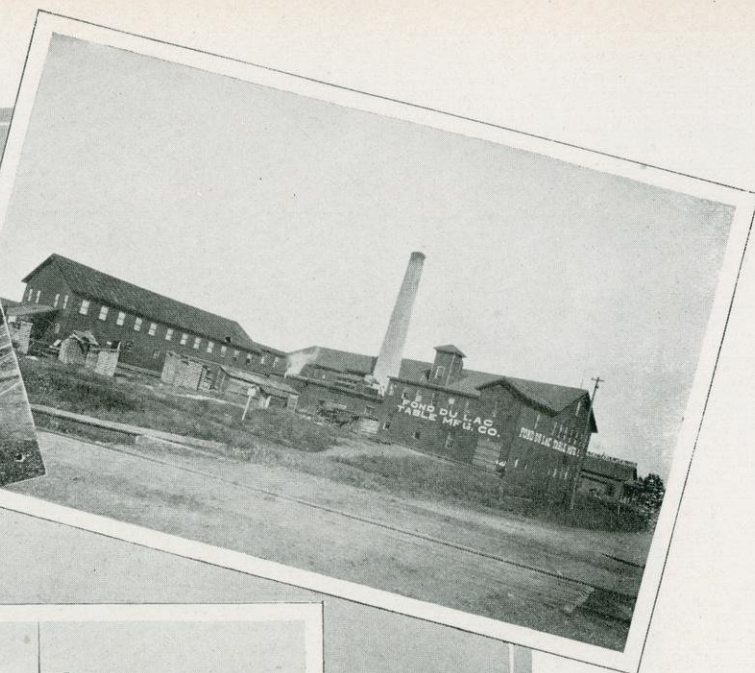
Gurney Refrigerator Company.



Fred Rueping Leather Company.



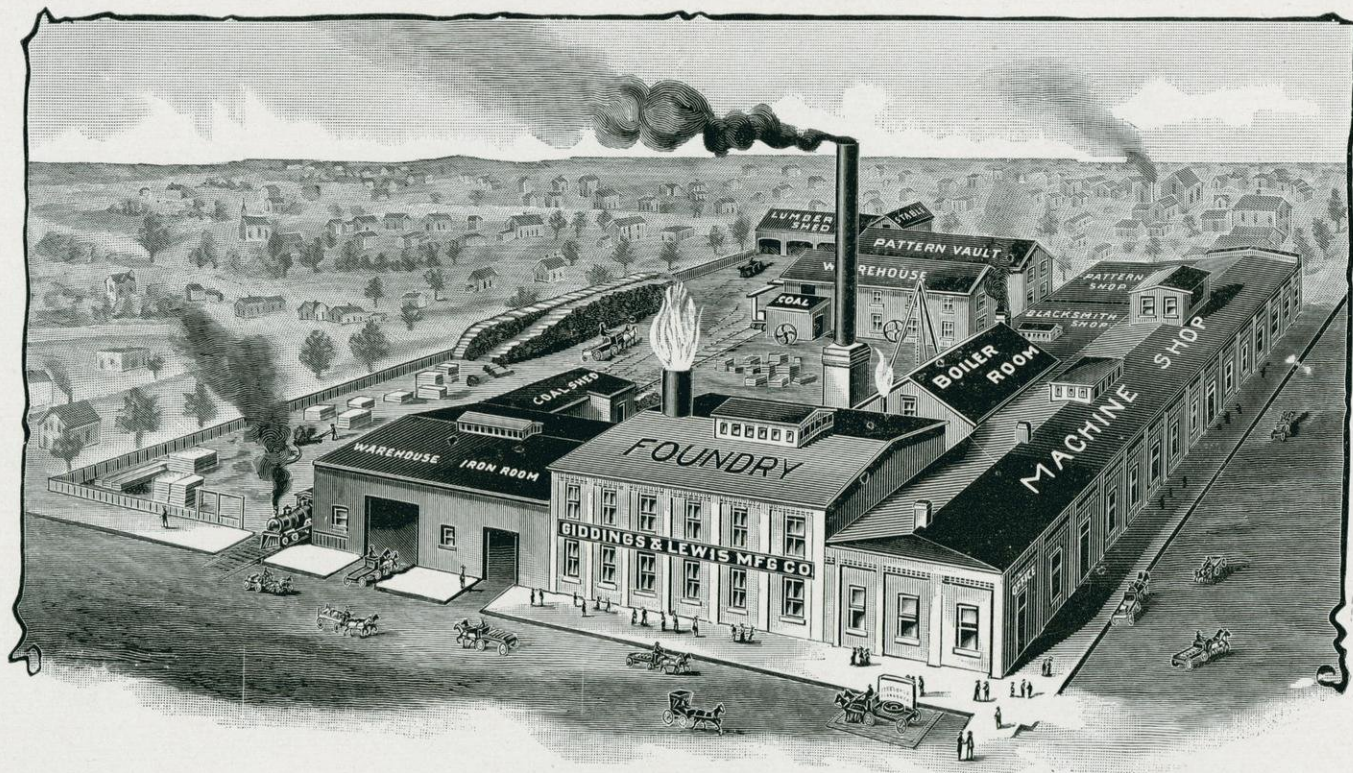
O. C. Steenberg Company.



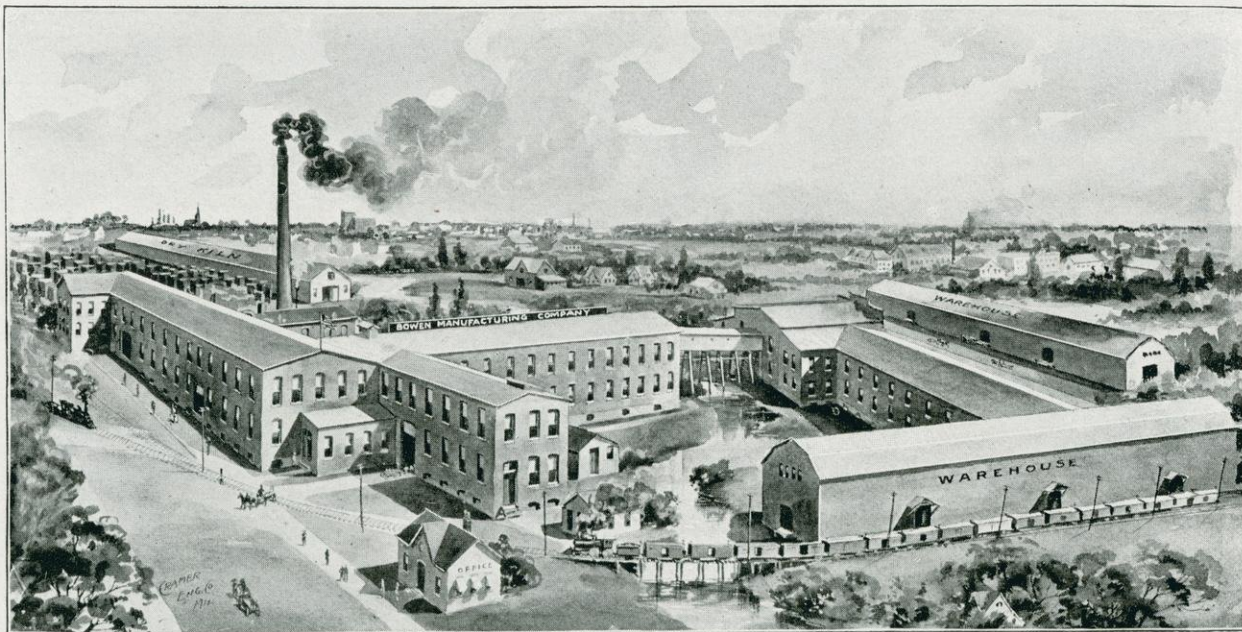
Fond du Lac Table
Manufacturing Company.



United States Manufacturing Company.



Giddings & Lewis Manufacturing Company.



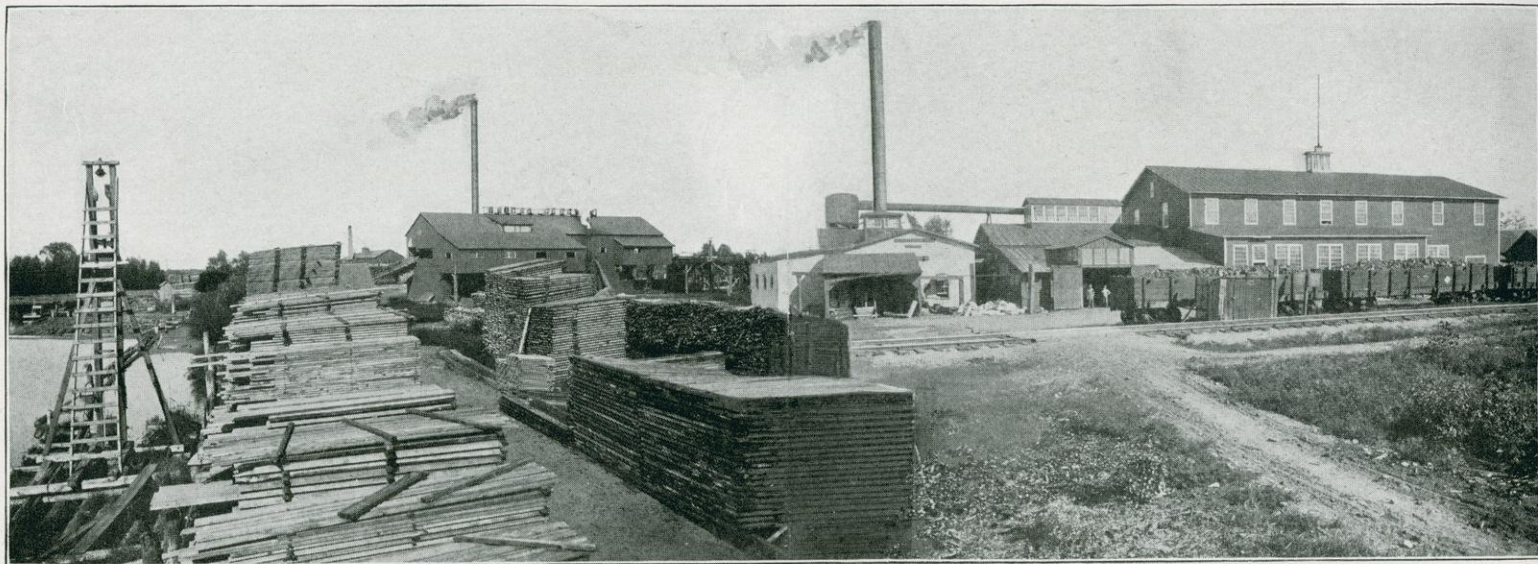
Bowen Manufacturing Company.



B. F. & H. L. Sweet Company.



M. B. Helmer Grain Elevator.



Moore & Galloway Lumber Company.



Fond du Lac Depots.

FOND DU LAC HOMES.



G. A. Knapp.



Major E. R. Herren.



R. Ebert.



H. Wallichs.



W. H. Bowe.



P. G. Van Blarcom.



Judge N. C. Giffin.



D. D. Sutherland.



Robert Zinke.



S. D. Wyatt.



B. F. Sweet.



E. A. Galloway.



R. Katz.



F. M. Givens.



W. C. Hamilton,



J. B. Perry.



C. J. Medberry.



Dr. L. A. Bishop.



Dr. D. B. Wyatt.



D. Babcock.



John T. Boyle.



Henry Boyle.



F. H. Sweet.



H. W. Moore.



B. Wild, Sr.



B. Wild, Jr.



John Heath.



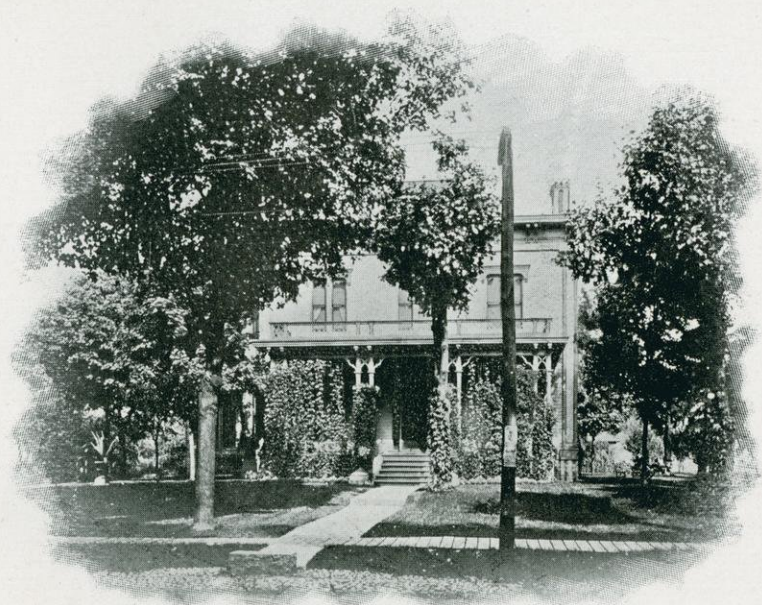
N. R. Heath.



W. W. Wild.



E. B. Wild.



Mrs. S. B. Amory.



C. R. Harrison.



M. B. Helmer.



D. B. Foster.



M. D. Moore.



Dr. T. F. Mayham.



Alexander McDonald.



S. B. Stanchfield.



H. R. Potter.



C. L. Encking.



Jas. T. Dana.



F. B. Hoskins.



Dr. E. E. Atkins.



Dr. S. A. Krumme.



Henry Durand,



M. J. Peck.

FOND DU LAC PUBLIC LIBRARY
FOND DU LAC, WISCONSIN



8000291069

