



LIBRARIES

UNIVERSITY OF WISCONSIN-MADISON

Wisconsin Dairymen's Association year book 1943. 1943

Wisconsin Dairymen's Association

Wisconsin: The Association, 1943

<https://digital.library.wisc.edu/1711.dl/YT2UROS NKW5LD8N>

This material may be protected by copyright law (e.g., Title 17, US Code).

For information on re-use, see

<http://digital.library.wisc.edu/1711.dl/Copyright>

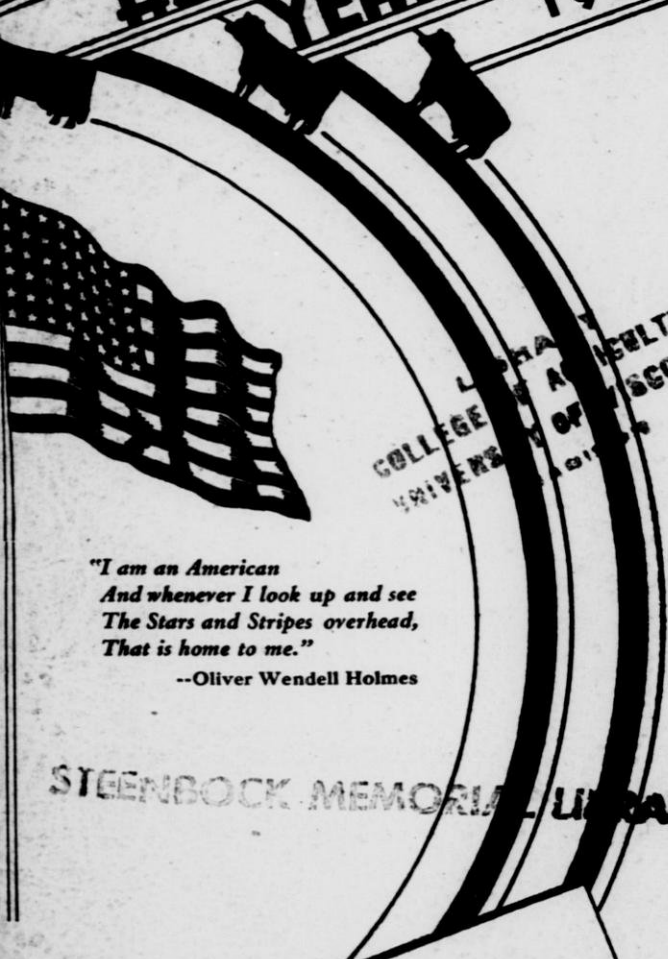
The libraries provide public access to a wide range of material, including online exhibits, digitized collections, archival finding aids, our catalog, online articles, and a growing range of materials in many media.

When possible, we provide rights information in catalog records, finding aids, and other metadata that accompanies collections or items. However, it is always the user's obligation to evaluate copyright and rights issues in light of their own use.

BX 7
115
Y
7

WISCONSIN DAIRYMEN'S ASSOCIATION YEAR BOOK

1943



LIBRARY
COLLEGE OF AGRICULTURE
UNIVERSITY OF WISCONSIN

*"I am an American
And whenever I look up and see
The Stars and Stripes overhead,
That is home to me."
--Oliver Wendell Holmes*

STEENBOCK MEMORIAL LIBRARY

Attend the
Wis. Dairymen's Ass'n.
&
Breed Association
Meetings

MADISON, WISCONSIN
Feb. 12, 1943
PARK HOTEL



Wisconsin Farmers!
We're Counting On
YOU!



For more
VICTORY FOODS

BE PROUD YOU ARE A BADGER!

In the face of critical shortages of labor and machinery, Wisconsin leads the nation in the 1942 quality Victory Food Program.

America and her boys on the fighting fronts can count on Wisconsin farmers doing another great job of food production in 1943.

WISCONSIN
Department of Agriculture

DAIRYMEN'S HEADQUARTERS

PARK HOTEL

MADISON, WIS.

— ROOM RATES —

From \$1.50 Per Day Single

From \$2.75 Per Day Double

Popular Priced Coffee Shop.

We Welcome You and Thank You for Coming!

Visit Our Famous
Circular Bar and Cocktail Lounge

W. R. McNEIL, INC.

M. H. McNeil, Pres.

M. J. Essex, Mgr.

We wish to take this opportunity to express appreciation to the Management of the **PARK HOTEL** for the interest and co-operation they have given in making arrangements for this meeting.



The entire program will be held at the **PARK HOTEL** which has been selected as Convention Headquarters.



May we suggest that you make your reservations early if you intend to stay over night in Madison at the time of the Convention, February 12, 1943.

**The Wisconsin
Dairymen's Association**



OUR JOB

•

DOING MORE

WITH LESS

•

War means sacrifices for all of us. Every citizen must recognize it as his duty to put forth his very best effort, for only in that way can we carry this war to a successful conclusion at the earliest possible moment.

Our individual sacrifices may be great. Yet, measured against those made by our boys in the foxholes of Bataan, in the swamps of Guadalcanal, in the deserts of North Africa, and in a score of other farflung outposts thousands of miles from their homes and their loved ones, we may pause a moment and reflect whether our best efforts have been enough.

As dairymen, we must make every man, every cow, every acre, every machine contribute his or its best in our "all out" effort to win this "all out" war.

To do our job of producing milk and its products — the Number One Food of this war — we must have men who can and will tackle the job with intelligence and wisdom, who will work with brains as well as brawn, making the most of every opportunity and of every available bit of equipment and material. Only in this way can we attain the maximum output of milk per man, per cow, per acre and per machine.

Our time is too valuable to waste it on boarder cows. And if any of us must do with fewer cows, let's be sure that it is the poorer ones we get rid of. Our time is so valuable, too, that we dare not waste it on poor seeds or on crops that will not permit our labor or our acres to produce the maximum of good dairy feed — and of milk.

We must carry on, doing our best despite obstacles, remembering all the while that our boys in uniform deserve that — and more.

Stanley Jamieson

President, Wisconsin Dairymen's Association

A PROCLAMATION



Record production of milk and manufactured dairy products was achieved in Wisconsin during the past year in answer to the government's request for more food to supply the United Nations.

Responding to the call for increased production, Wisconsin farmers produced 14½ billion pounds of milk — 12% of the national output and an all-time high for the state. A great deal of that record volume was distributed among our allies in the form of cheese, dried whole milk, dried skimmilk, and evaporated milk. In this way, a distinct contribution was made towards winning the war.

Through several decades Wisconsin farmers have been building the dairy industry of this state into the greatest enterprise of its kind in the world. Through specialization in dairy breeds, dairy herd improvement work, proper feeding and other good farming practices they have made Wisconsin universally famous for its dairy cattle and dairy products.

Through the years the influence of the Wisconsin Dairymen's Association, an organization which will hold its 71st annual convention in Madison, February 12, has been important in developing dairying to its present high levels of productiveness.

This meeting, therefore, provides a timely occasion for reminding the people of Wisconsin of the splendid job the dairy industry is doing in supplying food needed to win the war.

Now, therefore, I, Walter S. Goodland, Acting Governor of the State of Wisconsin, do hereby designate and proclaim February 12, 1943, as Dairy Day in Wisconsin and urge that the occasion be observed with fitting exercises in recognition of the Wisconsin dairy industry and its vital part in the food for victory program.

Walter S. Goodland

Acting Governor of Wisconsin.

Wisconsin Dairymen's Association

Organized 1872 Fort Atkinson, Wis. Incorporated 1917

OFFICERS

President _____ Stanley Jamison, Appleton
 Vice-President _____ J. P. Allyn, Delavan
 Sec'y-Treas. ____ R. W. Stumbo, Fort Atkinson
 Asst. Sec'y. _____ Jack Reynolds, Madison

DIRECTORS

R. C. Swanson, Wauwatosa, H. F. Schroeder, W. Bend
 Richard Brackett, Elk Mound, Fred Burhop, Grafton

EXTENSION FIELDMAN **OFFICE SECRETARY**
 R. W. Stumbo, Ft. Atkinson Doris Trieloff

PAST PRESIDENTS OF THE WISCONSIN DAIRYMEN'S ASSOCIATION

1872-4	Chester Hazen	Fond du Lac
1875-6	Hiram Smith	Sheboygan
1877	A. D. Leland	Sheboygan
1878	H. F. Dousman	Waukesha
1879	Z. G. Simmons	Kenosha
1880	Stephen Favill	Walworth
1881-2	C. R. Beach	Walworth
1883-6	W. H. Morrison	Walworth
1886	Stephen Favill	Dane
1887-9	H. C. Adams	Dane
1890	W. A. Henry	Dane
1891-3	W. D. Hoard	Jefferson
1894-5	C. H. Everett	Racine
1896-7	G. W. Burchard	Jefferson
1898-9	H. C. Taylor	Rock
1900-1	C. P. Goodrich	Jefferson
1901-3	J. Q. Emery	Dane
1904-5	Chas. L. Hill	Fond du Lac
1906-7	W. J. Gillette	Fond du Lac
1908-9	F. H. Scribner	Fond du Lac
1910-11	H. D. Griswold	La Crosse
1912-13	E. C. Jacobs	Dunn
1914-15	M. L. Welles	Fond du Lac
1916-17	Math. Michels	Fond du Lac
1918-19	Geo. McKerrow	Waukesha
1920-21	Chas. A. Peterson	Fond du Lac
1922-23	Geo. C. Humphrey	Dane
1924-25	H. F. Schroeder	Washington
1926-27	W. J. Dougan	Rock
1928-29	S. H. Bird	Fond du Lac
1930-31	J. E. Bowen	Barron
1932	W. J. Katterhenry	Rock
1933-34	P. C. Burchard	Jefferson
1935-36	G. W. Vergeront	Dane
1936-37	H. E. Hill	Sheboygan
1938-40	Richard Brackett	Dunn
1941-42	Stanley Jamison	Outagamie

MORE Milk, Eggs, Meat
 WITH LESS LABOR AND FEED



FORT ATKINSON, WISCONSIN

Program

Friday, February 12

ASSEMBLY ROOM, PARK HOTEL

R. A. Brackett, Chairman

- 10:00 Association Activities of 1942.....R. W. Stumbo, Secy.
Wisconsin Dairymen's Association
- 10:10 Our Job for 1943 Stanley Jamison, President
Wisconsin Dairymen's Association
- 10:20 Your State Department of Agriculture
..... Herman Ihde, Director
Wisconsin State Department of Agriculture
- 10:30 War Time Management of The Producing Herd
..... Geo. M. Newlin, Manager
Cesor Farms, Farmington, Michigan
- 11:00 Questions and Discussion.
- 11:15 Future Demands on the Nation's Dairy Herd
..... Dr. E. E. Heizer, Chairman
Department of Dairy Husbandry, University of Wisconsin
- 11:45 Questions and Discussion.
- 12:00 Adjourn for Luncheon Meetings — Park Hotel.**
- Wisconsin Holstein Breeders' Association Directors' Meeting.
Program: In Charge of John Last, President.
- Wisconsin Brown Swiss Breeders' Association Meeting
Program: In Charge of J. P. Allyn, President.
- Wisconsin Jersey Breeders' Association Meeting.
Program: In Charge of R. A. Brackett, President.
- Wisconsin Dairymen's Association Junior Luncheon.
Program: In Charge of Stanley Jamison, President.
- Our Message To You Milo Swanton, Secretary
Wisconsin Council of Agriculture
- Jr. D.H.I.A. Awards L. M. Sasman
State Supervisor, Vocational Agriculture
- 4-H Club Dairy Honor Awards....Verne V. Varney
Assistant State 4-H Club Leader
- Twenty-five Year D.H.I.A. Honor Awards
..... R. W. Stumbo
Secretary, Wisconsin Dairymen's Association
- 3:00 Group Assembly R. C. Swanson, Chairman
- 3:10 Owner-Tenant Co-operative War Effort
..... Burt Oderkirk, Manager
Babson Farms, Inc., DeKalb, Illinois
- Discussion.
- 4:00 Business Meeting.....Wisconsin Dairymen's Association
- 5:00 Adjournment.
- 6:30 Joint Informal Dinner — No Program.**
Special Entertainment and Fun in Charge of Gordon Crump, Dairy Promotion, State Department of Agriculture.

PLAN TO ATTEND

The 71st Annual Meeting of the Wisconsin Dairymen's Association — Your state-wide Dairymen's Organization, founded in Watertown, Wisconsin, 1872. For 71 years, the Wisconsin Dairymen's Association has worked for the interests of Wisconsin Dairymen.



FASTER

A Perfection Milk Filter Disc will filter milk as fast as you can "feed" it.

MORE ECONOMICAL

A Perfection Milk Filter Disc is stronger — it resists "washing" — lasts longer. Filters more milk.

MORE EFFICIENT

A Perfection Milk Filter Disc leaves your milk clean, completely free of sediment.

The New Schwartz

Perfection

Milk Filter Disc

SCHWARTZ MFG. COMPANY

TWO RIVERS, WIS.

SECRETARY'S REPORT

NOVEMBER 1, 1941, TO JANUARY 1, 1943

The policy of the Wisconsin Dairymen's Association to aid and assist in an educational way among dairy farmers of Wisconsin, and in Junior activities has been continued during the past year as always before. The activities of the Association have been directed toward the interest of both better dairying and greater dairy income for the state of Wisconsin. The Board of Directors of the Association, at the time of the last annual meeting, approved and adopted in its entirety the program of work which had been set up during the previous year. The program was outlined with the thought of extending cooperation to other existing agencies, including the College of Agriculture, Department of Agriculture, Vocational Agricultural Departments, County Agricultural Agents, Breed Associations, and the Wisconsin State Fair. To promote and encourage Bull Associations, Production Record Keeping, Production Shows and Breeding Schools, and to work in every way possible with the Junior Dairymen. The Association has endeavored to cooperate fully with the above named groups. A brief summary of activities is included in this report.

1941 FALL MEETING

The Seventieth Anniversary Convention of the Wisconsin Dairymen's Association was made a Fall Meeting, held at Wisconsin Rapids, Wisconsin, on December 7-8 and 9. The meeting this year was changed from a Spring Meeting upon the decision of the Board of Directors. In changing to a Fall Meeting, all Breed Associations in Wisconsin were invited to join in an attempt to make the meeting an All-Wisconsin Dairy Program.

The cooperation of many groups was necessary in carrying out, and making possible a program of this nature. To all those connected in any capacity whatever with the 70th Annual Convention, we express our appreciation and thanks for their cooperation and assistance.

In outlining the program for this Convention, Dairy Herd Improvement, Marketing Problems, and Production Testing were emphasized in every way possible. Breed Association activities were emphasized in their importance in a state-wide dairy development program.

In selecting speakers, particular attention was given to our effort of emphasizing the importance of a well Organized National Defense Program. It was on the Eve of December 7, during the opening ceremonies of the Convention, however, that the first announcement arrived of the shameful attack made on Pearl Harbor by Japan. Of course, the interest and attention of America was diverted to International activities on the following two days. As a result of this, combined with unfavorable weather conditions, the attendance was light; however, the speakers which had been selected for the program certainly gave everything they had in their attempt to add importance to the meeting.

GENERAL PROGRAM

In general, the program was organized in such a way as to combine interests of all dairy organizations for the first day and the forenoon of the second day, with the various Breed Associations meeting separately for their noon luncheon on the second day and continuing their business meeting following the luncheon. This general procedure was changed somewhat, however, in

accordance with the wishes of various Breed Associations.

During the first day's program, the following speakers made outstanding contributions to the interests of the group in attendance: Wisconsin Dairymen in the National 'Food for Defense' Program — W. W. Clark; Butter and Bureaucracy — Gordon Crump; The World Situation as It Affects the Wisconsin Dairy Cattle Breeding Program — Dr. E. E. Heizer; Building Efficiency of Production in Our Herds — F. W. Atkeson; Building a Future for Registered Cattle — J. C. Nisbet; Udder Infections, Their Severity and Control — Dr. Wm. D. Pounden.

At the evening banquet, the speaker of the evening was Dr. C. A. Dykstra, President of the University of Wisconsin, who spoke on the subject "Our Future". A special attraction on the banquet program was the Trempealeau County Homemakers' Chorus.

In the morning of the second day, Dr. E. E. Heizer spoke on Progress in Wisconsin Cooperative Breeding Associations; F. W. Atkeson on Merchandising Pure-Breds; and Dr. C. Bohstedt on Economical Dairy Feeding.

WOMEN'S PROGRAM

As has been the usual procedure in outlining programs for the Wisconsin Dairymen's Association Annual Convention, a special program was organized for women who were in attendance at the Convention. This program was under the direction of Cecelia Shestock, Home Demonstration Agent of Wood County. Under her capable leadership, the program was organized to give the women well-rounded discussions on subjects dealing with the home and its relationship to Wisconsin dairying. Dave Nusbaum discussed the Value of Clean Milk. Mary Brady, Nutrition Specialist, University of Wisconsin, discussed nutrition problems with those present. Table Settings and Flower Arrangements were demonstrated by Merle Rasmussen, Oshkosh Horticulturist. In the morning of the second day, the women were conducted on a tour through the Consolidated Paper Mills of Wisconsin Rapids. On the afternoon's program, Miss Rowe, Specialist, University of Minnesota, was present to give a demonstration on the use of dairy products; and Mrs. Lois Hurley, of the Wisconsin Agriculturist and Farmer, discussed activities in the Wisconsin farm home with the women.

JUNIOR PROGRAM

At the suggestion of Junior Leaders in the state of Wisconsin, the Junior Program this year was held in connection with the General Program of the Convention, rather than being organized separately as during the past years. At noon on the first day, however, a special Junior hour and dairy luncheon was provided, at which Mr. J. C. Nisbet spoke to the Juniors on Progress. The usual Junior awards and recognitions were made by the President of the Wisconsin Dairymen's Association, Stanley Jamison.

In the F. F. A. activities, recognitions were announced by a representative of the State Department of Future Farmers of America, at which time the 10 outstanding boys in Jr. D.H.I.A. work were awarded certificates of merit, and the 5 outstanding Chapters were awarded plaques. The individual awards went to: Donald Barta, Algoma; Maurice Johnson, Bloomer; Elmer Ferg, Bloomer; Ferdinand Kutz, Fort Atkinson; Charles Verbsky, Hillsboro; Merlin Hintz, New London; Clarence Schnell, Oshkosh; Alfred Devens, Oshkosh; Theodore Quade, Randolph; and Royce Lindholm, Shell

Lake. The Chapter awards of recognition were made to Kewaunee, Stanley, Stoughton, Whitewater, and Wisconsin Rapids.

The 10 honor 4-H Club members receiving recognition on the Junior Program as the high 10 boys or girls in the 4-H Club projects included: Dale Burdick, Hillsdale; Michael Dineen, Cedarburg; Ralph Elmer, Monticello; Diana Hochmuth, La Valle; Clifford Jurgens, Milton Jet.; Maynard Matthys, Barron; Harvey Pautz, Horicon; Helen Scherburne, Rusk; Lloyd Schneider, Merrill; and Earl Viney, Evansville.

RECOGNITION OF ACHIEVEMENTS

This year, again, honors were paid dairymen who had tested their herds over a period of 25 years or longer. In checking with the Department of Dairy Husbandry, Wisconsin College of Agriculture, it was found that two additional individuals were eligible to receive the recognition this year. Last year, this program was launched with the recognition of the following seven individuals:

William Beckwith, Barron -----	Spring Meeting, 1941
William Meisegeier, Barron ----	" " "
John Holloway, Union Grove ---	" " "
Charles Holloway, Union Grove---	" " "
Geo. Weiner & Son, Sparta -----	" " "
C. A. Schroeder, West Bend ----	" " "
Martin Rockman, Barron -----	" " "
Wm. O'Leary, East Troy -----	Fall Meeting, 1941
H. L. Felton, Richland Center --	" " "

This program of recognizing consistent and long time testing of dairy herds will be continued as an annual event by the Association.

PROGRAM OF WORK

Following is the program of work adopted by the Association's Board of Directors.

GOALS:

1. Organize ten new bull associations.
2. Three county bull programs.
3. Exhibits at twenty production shows and county fairs.
4. Make one state fair exhibit.
5. Develop plans for state tours.
6. Dairy schools—25 counties.
7. 125 vocational agriculture departments keeping complete records.

I. BETTER SIRES PROGRAM:

A. Bull Associations.

1. Visit farms of all Association members with county agent or vocational agricultural instructor in charge.
2. Make permanent record of bulls in use and results of Association bulls previously used.
3. Attend annual meetings when possible.
4. Assist in locating replacement bulls.
5. Make recommendations on better practices.
6. Organize new associations.
7. Bull Health.

B. County Bull Program.

1. Educational meetings.
 - (a) Bull Placement cooperative.
 - (b) Bull Associations.
 - (c) Artificial insemination.
 - (d) Junior bull clubs.
 - (e) Proved sires and offspring.
 - (f) Health.

2. Committees
 - (a) To hold bull meetings.
 - (b) For demonstrations.
 - (c) County Shows.
3. County Bull display days.

II. SHOWS AND EXHIBITS:

- A. Breed Production Shows.
 1. Assist in organization.
 2. Assist in conducting.
 3. Provide educational exhibits.
 4. Encourage educational features.
- B. County and State Fairs.
 1. Assistance in exhibits.
 2. Provide educational exhibits.
 3. Assist with dairy day program at State Fair.
 4. Proved sire exhibit at State Fair.
 5. Provide cooperative dairy educational exhibit at State Fair.

III. EDUCATIONAL MEETINGS:

- A. Summer Meetings.
 1. Develop plans for summer dairy tour.
 2. 4-H Clubs.
- B. Fall and Winter Schools.
 1. Work with college faculty in conducting feeding, breeding and management schools.
 2. Assist with farm institutes.
 3. Hold meetings with vocational agricultural departments and 4-H Clubs.

IV. SALES—CLASSIFICATIONS—PICNICS—ETC.:

- A. Cooperation with breed fieldmen.
 1. Attend and assist with herd classification.
 2. Attend major sales where possible.
 3. Attend and assist with summer picnics.
 4. Attend annual meetings of breed groups.

V. TESTING PROGRAM:

- A. Production record keeping.
 1. Cooperate with College on D.H.I.A. program.
 2. Encourage continuous testing of herds.
 3. Herd analysis to get greater use of records.
 4. Junior D.H.I.A.

VI. HERD HEALTH:

- A. Plan of work.
 1. Make up placard and supply to D.H.I.A. herds.
 2. Recognition for herd owners following herd health program; both vocational agriculture and D.H.I.A.

VII. DAIRY SCHOOLS:

- A. Breeding, Feeding and Management schools conducted in cooperation with other existing agencies: College of Agriculture, breed associations, vocational agricultural groups and county agricultural agents.

VIII. ANNUAL CONVENTION:

- A. Arrange and hold annual meeting of the Association.

IX. ORGANIZATION:

- A. Membership.
 - 1. Junior members.
 - 2. D.H.I.A. members.
 - 3. Other members.
- B. Awards.
 - 1. Junior.
 - 2. Senior.

EDUCATIONAL EXTENSION ACTIVITIES

In carrying out the Program of Work for the past year, cooperative Educational Extension Activities have been extended into the field in cooperation with representatives of the University of Wisconsin. County and District meetings have been jointly held in connection with the Extension force of the University, and in connection with the various Breed Associations, in sponsoring and carrying on their Breed Association activities.

During the year, particular emphasis has been placed on dairy herd management, and most rural educational meetings have been organized around this central thought.

Cooperation between various state agencies has been sought in every possible means. Bull Associations have continued to be a major project of the Wisconsin Dairymen's Association and much time was spent in organizing and supervising cooperative associations so that more good bulls would be alive when proven, and greater use would be made of the great sires when found.

County Better Sire Campaigns which were carried on for the past two years were continued in an organized way in Ozaukee County again this year. While during the past two years it was the intention and purpose of these meetings to lead to building of organization and cooperation in the use of selected sires, and cooperative exchange of sires, this year's meetings were, more or less, directed toward good dairy herd management practices, and other discussions centering around herd management practices which had a direct or indirect influence on the building of better herds through good breeding and management.

EXHIBITS

The Stars of the Milky Way exhibit at the Wisconsin State Fair, which has been provided for during the past two years through the cooperation of the Wisconsin Dairymen's Association, Wisconsin State Fair, University of Wisconsin, and many other cooperating agencies, was replaced this year with a timely exhibit exemplifying all the important phases of a sound and profitable herd management and herd development program.

The exhibit illustrated Wisconsin dairymen's interest in "Building for Victory Production", and was displayed in such a way as to illustrate the principal stages in the development and management of efficient dairy herds. The illustrated step of herd development began with the importance of breeding and inheritance of herd development, and the care and feeding of the baby calves. The story was told in such a way as to illustrate recommended practices in caring for and handling the baby calf up to six months of age.

The second important stage of this herd development program to be exemplified was that of caring for the young and growing heifer, and the importance of following a selection program within the heifer crop.

The third stage illustrated in this exhibit was the care and attention of the bred heifer prior to reaching freshening age. Here important facts concerning the proper care and development of the heifer in order that she may become an efficient and profitable cow were illustrated. Good sized, well nourished heifers freshening at the proper age was recommended.

The fourth stage in the exhibit illustrated recommendations of importance in connection with the efficiency of the producing herd. In this section of the exhibit, the importance of testing and selection, the importance of good health and long-life production, the importance of good crop and pasture production, and the importance of a continued effort toward selection improvement within the herd was brought to the attention of State Fair visitors.

The exhibit also included a sectional display on quality production, in which the Dairy Division of the Department of Agriculture cooperated in setting up an exhibit of utensils and equipment recommendable in our quality program.

It was the principal purpose in outlining and arranging the exhibit this year to offer a substitution for the Stars of the Milky Way program which would be timely, and offer constructive and worthwhile recommendations to Wisconsin dairy farmers in their all-out attempt toward production for the Victory Program.

DAIRY HONOR ROLL

This year, again, in cooperation with the Department of Dairy Husbandry and the Wisconsin State Fair, the Wisconsin Dairymen's Association prepared a special exhibit designated as the "Dairy Honor Roll". This exhibit consisted of a panel display at the State Fair giving the names and addresses of all D. H. I. A. members who had made an average of 350 lbs. production or above, for each year of the past three consecutive years. This exhibit consisted of the names of 329 breeders, each to receive a special certificate by the Wisconsin Dairymen's Association.

JUNIOR D.H.I.A. SUPPLIES

The Wisconsin Dairymen's Association during the past year has continued to cooperate and encourage Jr. D.H.I.A. activities in High School Vocational Agricultural Departments.

Herd book covers, cow record sheets, and monthly summaries which were furnished by the Wisconsin Dairymen's Association at cost has been the principal way in which our cooperation supported this activity. The number of copies of this material furnished through this office, as stated in the Activity Report, indicates the importance of this phase of work in the Wisconsin Dairymen's Association program. A correlation between the Jr. D.H.I.A. and the regular organized D.H.I.A. work has been encouraged in every way possible.

APPRECIATION

The Wisconsin Dairymen's Association, its officers and directors, truly appreciate the cooperation afforded by all those who assisted in making the past year's work possible.

ACTIVITY REPORT

July 1, 1941, to November 30, 1942

Days Spent in Office -----	132½
Days Spent in Field -----	278½
Days on Leave -----	11
Miles Traveled:	
Personal Car -----	25,706
Bus or Train -----	1,605
Otherwise -----	3,370
Total -----	30,681
Meetings and Conferences Participated In----	259
Attendance -----	23,639
Demonstrations Conducted -----	86
Attendance -----	14,472
Farm Visits and Individual Contacts -----	1,910
Bulletins and Circulars Prepared and Dis- tributed -----	9,595
Personal Letters Written -----	2,867
Memberships Received -----	1,430
Membership Cards Distributed -----	1,430
Individual Cow Record Sheets Distributed----	44,154
Monthly Herd Summary Sheets Distributed --	2,816
Herd Book Covers Distributed -----	1,320

INVENTORY OF ASSOCIATION SUPPLIES AND EQUIPMENT

SALABLE SUPPLIES ON HAND

	Quantity	Value	Quantity	Value
	July 1, 1941		July 1, 1942	
2-Ring Herd Book Covers	129	\$11.61	None	
Monthly Herd Summaries	725	6.90	682	\$ 6.36
Individual Cow Cards	2,625	22.51	178	1.51
3-Ring Herd Book Covers	100	9.00	100	9.00
		50.02		16.87

SUPPLIES AND EQUIPMENT NOT SALABLE

	Estimated Value	Estimated Value
	July 1, 1941	July 1, 1942
Stenographer's Chair and Desk	\$ 15.00	\$ 15.00
Typewriter and Stand -----	60.00	50.00
Filing Cabinet, 4x7 ft. -----	30.00	30.00
1 5-drawer Standard Letter File	10.00	10.00
2 Standard 4-Drawer Wooden Letter Files -----	15.00	15.00
1 8-Drawer Card File -----	5.00	5.00
One Desk Lamp -----		New 7.95
Miscellaneous Stationery and Supplies -----	25.00	25.00
2-Wheel Trailer and Box -----	15.00	15.00
Miscellaneous Exhibit Material	No value	No value
Charts — Stand — Cases -----	3.00	5.00
	\$178.00	\$177.95

**WISCONSIN DAIRYMEN'S ASSOCIATION
FINANCIAL STATEMENT**

July 1, 1941, to June 30, 1942

Outstanding Obligations July 1, 1941

Bank Loan ----- \$1,050.00

Bank Balance July 1, 1941 ----- \$ 4.05

Cash Balance on hand July 1, 1941 ----- 16.28

Receipts:

State Aid ----- \$6,000.00

Memberships Collected ----- 454.00

Sale of Agricultural School Supplies ----- 504.79

Sale of Advertising in Year Book ----- 494.42

Sale of Banquet Tickets ----- 267.50

State Fair Refunds, Premiums, and Milk Sales ----- 998.56

Contribution to Convention Fund by Wisconsin Rapids Community Club ----- 23.38

Total Receipts ----- \$8,742.65

Total Funds to be Accounted for \$8,762.98

Expenditures:

Salaries ----- \$3,400.09

Travel Expense ----- 1,187.01

Printing and Supplies ----- 1,063.70

Postage ----- 189.02

Insurance and Social Security --- 72.10

Annual Meeting ----- 332.10

Directors' Expenses ----- 191.57

Awards and Premiums ----- 130.79

General and Office Expenses ----- 99.04

State Fair Expenses (Direct) --- 652.27

Banquet Expense ----- 285.30

Repayment of Bank Loans of Prior Year ----- 1,050.00

Total Expenditures ----- \$8,652.99

Cash Balance June 30, 1942 ----- \$ 109.99

Outstanding Obligations June 30, 1942

Accounts Payable ----- \$ 225.00

Accounts Receivable -- 30.26

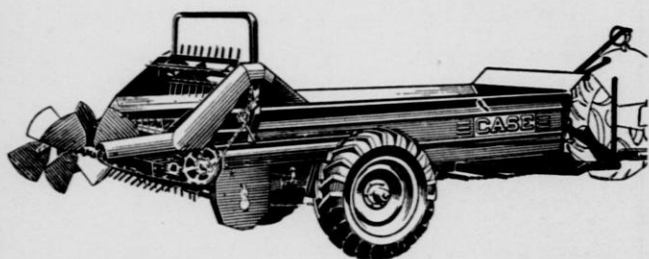
We, the undersigned officers of the Wisconsin Dairymen's Association, in accordance with Chapter 94.80 of the statutes, hereby certify that the within statement of the financial affairs of the said association is accurate to the best of our knowledge and belief and that the business of said association has been efficiently conducted during the preceding fiscal year, and in the interest of and for the promotion of the special agricultural interests of the state and for the purpose for which the association was organized.

Stanley Jamison
President

R. W. Stumbo
Secretary-Treasurer

DOUBLE

The Service of Your Spreader



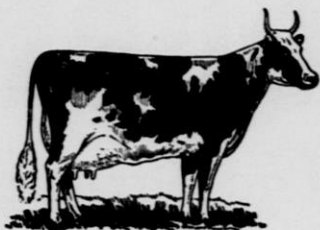
If you own one of the new Case tractor spreaders here is how to double its usefulness . . . loan or rent it to your neighbor or swap work — using it on his farm and letting him repay you by working on your farm with some machine of his. You both handle your own machinery, both get your work done faster and better.

Case manure spreaders are built with endurance to do extra work in emergencies. Use your Case dealer's service to keep your machinery always ship-shape and make it last longer.

J. I. CASE CO.
Racine



CASE



Wisconsin Ayrshires are noted for their freedom from disease, heavy production and good type — many herds from which to choose.

Why . . .
The AYRSHIRE
Is the Cow for
Wisconsin Farmers

1. Heaviest Producer of 4% Milk — at least feed cost.
2. Wears like iron — more 100,000 pound producers of 4% milk than any other breed.
3. Milk in demand for special market purposes.
4. Good grazers — hardy — rugged.
5. Correct type . . . sound udders — the buyer's choice.



For Literature or Help in Locating Stock Write

Ayrshire Breeders' Association

41 Center Street Brandon, Vermont

Ayrshire Breeders



Active Members of the Wisconsin Dairymen's Association

Name	Address	Reg. & Gr.	No.
*Blank, Lawrence,	Ripon, R. 1	Registered	11
*Dalton, J. A.,	Oconomowoc	Registered	36
*Ihde, Herman, & Son,	Neenah, R. 2	Registered	20
Kincannon, James,	Birchwood	Grade	24
Kressin, Harold,	Rockfield, R. 1	Reg. & Gr.	21
Lathrop, L. R.,	Medina, R. 1	Grade	20
Ray, James,	River Falls	Grade	15

*Also active members of the Wisconsin Ayrshire Breeders' Assn.

Additional Active Members of The Wisconsin Ayrshire Breeders' Association Not Already Listed.

(Reported by State Secretary as of December 1, 1942)

Name	Address
Dobratz, George	Merrimac
Elverman, John	Burlington
Ewers, Forrest, & Sons	Richland Center
Fuhrmann, Arnold	Dale
Hacker, Robert J., & Sons	Brillion
Hafs, Oscar W., & Sons	Genoa City
Harris, Roy T.	207 King Hall, Madison
Henschel, Roy	Sturgeon Bay, R. 7
Jones, Cornelius	Juneau
Jones, Royal	Darien
Krenke, Henry	Fremont, R. 2
Leick, J. J.	Greenleaf, R. 3
Marquart, E. B.	Knowles
Meyer, John G.	Whitewater, R. 2, Box 225
Rice, O. R.	Delavan
Richardson, Harry	Spring Green
Schroeter, Fred	Grafton
Seitz, Louis	Waukesha
Starrett, J., & Son	Bloomington
Stone, M. G.	Fisk
Ula, John D.	Blanchardville
Vine, Ernest J.	Granton
Wald, Christ	Alma
Westphal, Otto	Kendall
Wilbershide, B. A.	Valders, R. 1
Wilbershide, J. C.	401 Arcade Bldg., Racine
Wonoski, Gustav, & Sons	Dousman
Wurl, H. L.	Mayville

BROWN SWISS

In

WISCONSIN

Show an increase of 17.1% in registrations in 1942 over 1940.

185 new breeders bought their first pure-bred females during 1942.

Wisconsin Brown Swiss herds have furnished foundation animals for herds the country over.

Join the ranks of the rapidly growing list of Brown Swiss breeders. In war and in peace it's Victory With Brown Swiss!

The Wisconsin Brown Swiss Association is at your service.

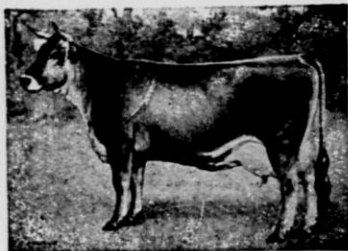
JOSEPH P. ALLYN, President
Delavan, Wis.

RUSSELL FOX, Secretary
Waterloo, Wis.

Literature, Information and Breeders' Lists May
Be Secured From

**The Brown Swiss Cattle Breeders'
Association of the United States of
America, Inc.**

Beloit, Wisconsin



Brown Swiss Breeders

Active Members of the Wisconsin Dairymen's Association

Name	Address	Reg. & Gr.	No.
*Allyn, J. P.	Delavan	Registered	70
Baumgartner, Ernest, & Son,	Waukesha	Reg. & Gr.	20
Bentz, Otto,	Cedarburg	Registered	29
Berg, Lyle,	Fairwater	Reg. & Gr.	28
Branham, C. V.,	Argonne	Grade	24
Cain, J. M., & Sons,	Soldiers Grove		30
Casey, H. L.,	Kansasville	Registered	26
*Cooke Estate, George,	Racine	Registered	14
Crossman, Dale,	Eldorado	Grade	26
Davis, Howard,	Downing	Grade	20
Doolittle, Laurence,	Birchwood, R. 2	Grade	16
Ellefson, John,	Genoa	Reg. & Gr.	15
*Evans, Willard R.,	Waukesha, R. 1	Registered	22
Flemming, Arnold,	Chilton, R. 2		16
Friday Bros.,	Markesan, Star R.	Reg. & Gr.	26
Gehler, Rudolph, Jr.,	Watertown, R. 4	Reg. & Gr.	17
Hasenbein, Oscar,	Burlington	Grade	22
Henning, George,	Burlington	Reg. & Gr.	17
Hughes, Gomer,	Waukesha, R. 2	Reg. & Gr.	25
Illing, H. T.,	Waukesha, R. 3	Registered	16
Jensen Emil,	Menomonie	Registered	21
Koelher, Mike, & Son,	Turtle Lake	Grade	21
Kortz, Mrs. Josephine,	Kaukauna	Reg. & Gr.	17
*Kurtz, Theo. J.,	Cedarburg	Registered	8
Landwehr, Joseph,	Seymour	Reg. & Gr.	27
Laudolf, William J.,	Fond du Lac, R. 4	Grade	18
Leach, Emmett G.,	Burlington, R. 3	Reg. & Gr.	22
*Lenz, H., & Son,	Tomah	Registered	16
Madans, John,	Burlington, R. 4	Grade	26
Manz, A. H.,	Eau Claire	Registered	20
Mezera, A. J.,	Barnum		39
Miller & Scharschmidt,	Markesan, R. 3	Registered	42
Mills, Stuart J.,	Union Grove	Reg. & Gr.	36
*Mortensen, J. C.,	Franksville	Reg. & Gr.	26
Myer, Frank, & Son,	Wilton	Registered	15
*Nackers, A. M.,	West De Pere	Registered	50
Rehberg, Mrs. Ella,	Tomah	Registered	11
Roesler, Ed.,	Dale	Reg. & Gr.	19
St. Francis Monastery,	Burlington	Reg. & Gr.	16
Savage, Haven,	Rhineland	Registered	4
*Schmidt, Emil,	Manitowoc, R. 2	Registered	22
Sherry, Sidney,	Soldiers Grove		19
*Sorensen, Bernard,	Franksville	Reg. & Gr.	20
*Witt, Louis,	West Allis, R. 4	Reg. & Gr.	29
Yahnke, Otto & John,	Burlington, R. 4	Reg. & Gr.	19
Yahnke, George & Lenard,	Burlington, R. 4	Reg. & Gr.	22

*Also active members of the Wisconsin Brown Swiss Breeders' Ass'n.

Complete Dispersal

Our Entire Herd, 34 Head

REGISTERED BROWN SWISS

Herd Headed by Son of Jane's Royal of Vernon
28594, World's Highest Index Sire—

Privet's Royal Jr. of Lee's Hill 37565

- 11 Years' Continuous D.H.I.A. Testing.
- 10 Cows with R.O.P. Records.
- 16 Producing Cows.
- 3 Bred Yearlings.
- 9 Open Yearlings and Heifers.
- 4 Bull Calves.
- Sr. and Jr. Herd Sires.

Complete Herd To Be Disposed Of
at Private Sale

WRITE FOR OUR CATALOG

Ve-de-O-Da Farm

E. H. Dargel

W. H. Vonder Ohe

REEDSBURG, WIS.

T. B. Accredited

Bang's Certified

Additional Active Members of the Wisconsin Brown Swiss Breeders' Association Not Already Listed

(Reported by State Secretary as of December 1, 1942)

Name	Address
Behnke, Fred W. -----	Brillion
Behnke, Richard -----	Hilbert
Brennecke, C. F. -----	Monroe
Brockmeyer, Leroy -----	Madison
Damerow, Charles -----	Beloit
Dargel, Edmund -----	Reedsburg
Drunasky, Geo. -----	Sun Prairie
Elliot, Joe -----	Beloit
Fox, Russell & Harley -----	Waterloo
George, Clarence -----	Evansville
Harris Bros. -----	Dodge
Inman, Howard -----	Beloit
Kastenmeier, Alois -----	Beaver Dam
Kruswick, Frank -----	Algoma
Kuester, John -----	Newton
Larson, Stanley -----	Cushing
Lee, Carl E. -----	2919 N. Prospect, Milwaukee
Martin Estate, Andrew -----	West Salem
Meier, Alfred -----	Argyle
Morgan, Clifford -----	Sparta
Rothmund, John -----	Manitowoc
Schmeisser, Herbert -----	Valders
Sennhenn, Erwin -----	Columbus
Van Kanwenberg, Joe -----	West De Pere
Voegeli, Jake -----	Monticello
Zick, Earl -----	Forest Junction

FRANKLIN

VACCINES AND SUPPLIES

Send Today for **FREE 80-Page Catalog**
of **FRANKLIN Livestock Supplies!**



Care for Your Own Stock. Use
FRANKLIN Products for
Milk Fever Lumpy Jaw
Infectious Abortion
Hemorrhagic Septicemia
Calf Scours Mastitis
Retained Afterbirth
Etc., Etc.

Also Dehorning Paste . . . Tattoo Outfits . . . and Dozens
of Other Supply Items.

O. M. FRANKLIN SERUM COMPANY

DENVER KANSAS CITY EL PASO MARFA AMARILLO FT. WORTH
WICHITA ALLIANCE SALT LAKE CITY LOS ANGELES

CONCRETE

DAIRY IMPROVEMENTS

*aid Milk Production --
Conserve scarce materials*

A concrete milk house, cooling tank, or dairy barn will help you step up milk production for war needs. Concrete's sanitary features meet health board requirements; keep your cows healthier; make your work easier.

The Portland Cement Association has prepared designs for these and other farm structures which **SUBSTANTIALLY REDUCE OR ELIMINATE REINFORCING STEEL**. Concrete materials are usually available locally, requiring a minimum use of transportation.

Write for the Helpful Free Booklet
"Dairy Farm Improvements of Concrete."

PORTLAND CEMENT ASSOCIATION

735 N. Water St., Milwaukee, Wis.

Dairy News

Sales of registered Guernseys have increased 10 per cent this year.

Prices received at public auction this year are up \$30 per animal. Thus far, in 98 public auctions 4,692 head sold for \$1,193,595, an average of \$254.39.

Long standing auction sale records were shattered as a Guernsey cow in Georgia brought \$8,800; another in New York sold for \$7,100, and one sale offering 29 animals brought an average of \$1,839. A mid-west breeder recently purchased a three-year-old Guernsey sire at private treaty for \$15,000.

Over half a million pounds of milk are being sold daily under the nationally advertised trade mark as GOLDEN GUERNSEY.

Now more Guernsey breeders are testing more animals for production under official rules than one year ago, despite the critical farm labor situation.

Breeders are finding the new method of publishing show winnings, production records, ancestral and progeny information in the PERFORMANCE REGISTER increasingly useful in planning breeding programs, selecting sires, and writing performance pedigrees.

**THE AMERICAN GUERNSEY
CATTLE CLUB**

Peterborough, N. H.



Guernsey Breeders

Active Members of the Wisconsin Dairymen's Association

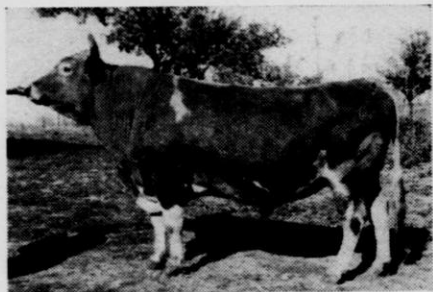
Name	Address	Reg. & Gr.	No.
Adney, Henry,	Bridgeport		14
Ahrens Bros.,	Prairie du Chien		52
Allen, Everett,	Cameron	Grade	11
Amdall, Andrew,	Dallas	Grade	22
Amundson, Henry,	Cameron	Grade	11
Amundson, Olaf,	Cameron	Grade	17
Anderson, Edwin F.,	Turtle Lake	Grade	18
Anderson, Hans,	Rice Lake	Grade	9
Andreas, A. C. & Son,	Turtle Lake	Grade	12
Ashton, W. R.,	Eagle River	Grade	6
Ask, Jenny,	Prairie Farm	Grade	19
Asplin, James, Owen, R. 2		Registered	18
Atlasta Farm,	Menomonie	Registered	21
Baker, George,	Chetek	Grade	22
Ballard & Baird,	Rosendale	Registered	27
Bandli, Henry,	Rice Lake	Registered	13
Barstad, Carl,	Barron, R. 3	Grade	38
Barta, Calvin,	Two Rivers, R. 1	Grade	16
Bartell, Erwin A.,	Cedarburg	Reg. & Gr.	23
Bartlett, C. M., & Leland Larson,	Barron, R. 2B	Grade	12
Basse, William H.,	Waukesha, R. 3	Registered	20
Battig, Edward,	Ripon, R. 2	Registered	21
Beck, C. E.,	Owen, R. 2	Registered	15
Becker, Harry,	Ft. Atkinson	Registered	11
Becker, Walter,	Ft. Atkinson	Registered	12
Becker, Wilbur M.,	Ft. Atkinson	Registered	26
Behrens, Bernhard,	Thiensville	Registered	21
Beirne Bros.,	Eden, R. 1	Reg. & Gr.	19
Beirne, George,	Oakfield	Registered	22
Berge, Anton, & Son,	Valders	Registered	21
Berge, Otis, & Son,	Valders	Reg. & Gr.	18
Berkseth, Oscar,	Baldwin	Registered	33
Berres, Alvin,	Campbellsport, R. 2	Grade	24
Best, Ted G.,	Downing	Grade	22
Better Farms, Inc., No. 1	Fond du Lac, R. 2	Grade	146
Better Farms, Inc., No. 2,	Oakfield	Grade	45
Better Farms, Inc., No. 3,	Fond du Lac, R. 2	Grade	52
Better Farms, Inc., No. 4,	Oakfield	Grade	51
Beyer, Hans,	Mishicot, R. 1	Reg. & Gr.	20
Biglow, Jake,	Rhineland	Grade	15
Birk, Dr. Benj. J.,	Thiensville	Reg. & Gr.	21
Blair, Lloyd,	Menomonie, R. 4	Grade	17
Blondey, Guy,	New London	Grade	21
Blumer, John,	Genoa	Grade	12
Bock, Elmer C.,	Malone, R. 1	Registered	16
Boese, Wm. R., & Son,	Ft. Atkinson	Registered	10
Bornong, Earl,	Turtle Lake	Grade	24
Bradley, Franklin, Jr.,	Sturtevant	Reg. & Gr.	15
Brath & Yankow Bros.,	Campbellsport, R. 1	Reg. & Gr.	30

Name	Address	Reg. & Gr.	No.
Brauch, Wm., Waukesha, R. 1		Reg. & Gr.	30
Breitrick, O. H., Appleton, R. 1		Registered	20
Briske, Clayton, Norwalk		Grade	25
Brosn, Mrs. Eva, Barron, R. 1		Grade	24
Brown, John, Chetek		Grade	23
Brunner, J. L., Manitowoc		Reg. & Gr.	24
Brunner, Matt, Durand, R. 2		Registered	48
Buchholtz, Sherman, Barron		Grade	14
Buck, Howard, Barron		Reg. & Gr.	35
Buck, Wm., Prairie Farm		Grade	18
Burchard & Erdman, Jefferson		Reg. & Gr.	19
Burhop, Fred, Grafton		Reg. & Gr.	15
Buric, John, Chetek		Grade	21
Burlingham, Lee, Dousman		Registered	30
Carew & Retzlaff, Green Lake		Grade	13
Carlson, Hansina, Chetek		Grade	15
Carr, Ray, Hillsdale		Grade	14
Casper, John, New Holstein		Grade	26
Catlin, S. A., Comstock		Grade	16
Chapple, J. J., Eden, R. 1		Grade	12
Chapin, Art., Brandon		Reg. & Gr.	32
Christensen, Jacob, Owen, R. 2		Grade	26
Christensen, L. C., Franksville		Grade	25
Christophersen, Pete, Withee, R. 1		Grade	17
Clausen, Dwight, Ripon		Registered	24
Clausing, Armin, Grafton		Reg. & Gr.	26
Clausing, Herbert, Grafton		Reg. & Gr.	23
Clausing Estate, Julius, Grafton		Registered	29
Clausing, Louis, Thiensville		Reg. & Gr.	24
Congdon, Bert, Galesville		Reg. & Gr.	17
Connell, C. J., Germantown		Grade	25
Conrad, Edgar, Elkhart Lake		Grade	13
Cordes, Wm., Comstock		Grade	29
Cowin, Dell, Chetek		Grade	26
Craig, O. P., Mukwonago		Reg. & Gr.	20
Cramer, Joe, & Son, Menomonie		Registered	33
Curry, D. W., Cumberland		Grade	11
Dahl Bros., Rock Falls		Grade	14
Dairy Farm, M. R., Eagle River		Registered	22
Dalen, Edwin, Angus		Grade	10
Damerow, Elmer, Tomah		Grade	25
Darling, Mrs. E., Oconomowoc		Grade	13
Davidson, Arthur, Waukesha, R. 4		Registered	30
Davies, Dr. E. B., Waukesha		Reg. & Gr.	61
Davis, Roy, Cumberland		Grade	12
Decorah Farm, West Bend, R. 5		Reg. & Gr.	34
Dick, Geo., Waukesha, R. 4		Grade	17
Dietrick Bros., Cumberland		Grade	26
Dietrick, Geo., Clayton		Grade	20
Dietz, Ed., Hortonville, R. 1		Registered	16
Dietz, Geo., Appleton, R. 2		Reg. & Gr.	16
Diller, Francis, Menomonie, R. 6		Reg. & Gr.	25
Dowd, Lewis, Dallas		Reg. & Gr.	11
Drost, Mathew, Rice Lake, R. 4		Grade	14
Duneman, Henry, & Son, Turtle Lake		Grade	25
Dusel, Albert, Barron		Reg. & Gr.	14
Edwards, J. B., Woodworth		Grade	24
Eggen, Vernon, Hillsdale		Grade	6
Eide, Arthur, Comstock		Grade	13
Elfers, Otto, Turtle Lake		Grade	16
Ellison, Carl, Barron		Grade	13
Emerson, Orville, Cameron		Grade	12
Engstrom, Gerald, Barron, R. 2A		Grade	12
Erdman, L. C., Jefferson		Reg. & Gr.	18
Espeseth, Gilbert, Prairie Farm		Grade	14
Evenson, Mrs. Elmer, Valders		Reg. & Gr.	21
Fedie, Albert, Eau Galle		Grade	15
Feiler, Louis, Rhinelander		Grade	32
Feldner, Adrian, St. Cloud		Grade	20
Fiedler, Charles, Tomah		Reg. & Gr.	28

Hoard's Dairyman Farm

Guernseys

SENIOR HERD SIRE



Allen's Show Boy

Purchased as a proved sire. Federal proved sire figures show:

5 dams, 8,160 lbs. milk, 5.1%, 419 lbs. fat.

5 dau., 9,065 lbs. milk, 5.7%, 519 lbs. fat.

One daughter, Monarch Dimple, 9,780 lbs. milk, 560 lbs. fat, class G, for a national class leader record; also records of 644, 667, and 697 lbs. fat.

Daughters on HOARD'S DAIRYMAN FARM are doing wonderfully well.

Raemelton Triumph Dairyman

Raemelton Triumph Dairyman, a junior herd sire that is being proved on HOARD'S DAIRYMAN FARM, was selected for use because of his excellent type, splendid production backing, and particularly for the strength and dairy qualities of his dam, Caumsett Bertha, who has a record of 607 lbs. fat in class G, and over 743 lbs. fat in AA.

Playhaven's Y. Plymouth

Playhaven's Y. Plymouth, our new 3-year-old sire, is a son of Douglaston Lady Dorothea 413158, who made 11341.5 lbs. milk and 629.5 lbs. butterfat as a junior 2-year-old. She in turn is sired by Imp. Financier of Myrtle Place 166260 whose 62 daughters average 11054 lbs. milk and 564 lbs. butterfat. The sire of Plymouth is Raemelton Yankee 222777. His daughters are large, roomy heifers that give promise of developing into very desirable cows. One of them has recently finished a record of 644 lbs. butterfat in GG. His dam, Green Meadow Tranquil 359360, made 801 lbs. butterfat as a junior 3-year-old and is considered one of the outstanding Guernsey cows of today. Plymouth combines both production and individuality.

Every female on HOARD'S DAIRYMAN FARM is production tested as long as she remains in the herd in regularly organized D. H. I. A. work.

HOARD'S DAIRYMAN FARM

FORT ATKINSON

WISCONSIN

ELDERBROOK FARM GUERNSEYS

Production . . . Type . . . For the Farmer-Breeder

Marge of Elderbrook 383379, selected for the Stars of the Milky Way Exhibit at the Wisconsin State Fair, 1940-41.

A son of Marge of Elderbrook now in use in the Trempealeau County Artificial Breeding Ass'n.

Continuous D.H.I.A. and A.R.H.T. Testing

Past year's production average on entire herd 429.4 lbs. B. F.

Herbert Hochmuth, La Valle, Wis.

SAUK COUNTY

Name	Address	Reg. & Gr.	No.
Filipa, Joe, Boyceville		Grade	21
Fisher, H. L., & Son, Valders		Reg. & Gr.	26
Fisher, John, Shiocton, R. 1		Grade	14
Fixen, Louis M., Whitewater, R. 2		Grade	25
Fladoes, Mrs. M. A., Milwaukee, Sta. F.		Registered	10
Foltz, Philip, Dousman		Reg. & Gr.	22
Ford, Gordon & Donald, Fond du Lac, R. 1		Grade	14
Fornell, Melvin, Barron, R. 1		Grade	18
Forry, George, Barron		Grade	14
Fortun, Ivan, DeSoto		Grade	16
Francois, Elmer, Chetek		Grade	28
Frederick, John, Appleton, R. 1		Registered	13
Frey, W. H., Owen, R. 2		Grade	24
Fuhrman, Leonard, Spring Valley		Grade	14
Galle, Fred, Fond du Lac, R. 1		Reg. & Gr.	20
Garlid, Oscar, Baldwin		Grade	18
Gasper, Leo J., Tomah		Reg. & Gr.	9
Gasteyer Bros., Elmwood, R. 2		Reg. & Gr.	16
Gasteyer, E. J., Elmwood, R. 2		Grade	14
Geissler, Harry, Watertown		Reg. & Gr.	15
Geizendanner, John, Barron, R. 2B		Reg. & Gr.	24
Gideo, Mike, Cumberland		Grade	12
Gilbertson, George, Manitowoc		Reg. & Gr.	15
Gillmore, Evange, Bristol		Grade	20
Gittins, E. J., Franksville		Registered	18
Gloekner, C., Minocqua		Registered	8
Goddard, Dr. W. F., Barron		Grade	16
Gonske, Edwin, Clayton		Grade	16
Gottlieb, & Gonske, Ed., Rice Lake		Reg. & Gr.	21
Goodrich, Douglas, Cylon		Grade	20
Grapes, A. B., Knapp		Registered	14
Grapes, Russell, Knapp		Reg. & Gr.	20
Grover, Lyle, Cumberland		Grade	15
Gruber, Erwin, Manitowoc, R. 2		Grade	18

SAUK COUNTY GUERNSEY BREEDERS' ASSOCIATION

— OFFICERS —

Pres., Herbert Hochmuth, La Valle
 Vice Pres., Carl Wichern, Baraboo
 Sec'y-Treas., Wm. Westerfeldt, Reedsburg

— DIRECTORS —

R. F. Klemm, Baraboo
 G. G. Schuette, Ableman
 Glen Johnson, Baraboo
 Fred Bisch, Baraboo
 Arthur Hyzer, Reedsburg
 Theodore Herwig, Reedsburg

— QUALITY GUERNSEYS —

ELK MEADOW FARM

REGISTERED GUERNSEYS

T. B. and Bang's Accredited Herd

Winners at Four 1942 Fairs

Continuous D. H. I. A. Testing

Last 4 Years Herd Average 413 Lbs. B. F.

We have proven two bulls in our herd in the last few years.

Boulder Bridge Leviathon 213384—four star

Boulder Bridge Resolute 237261—three star

BULL CALVES FOR SALE

JOHN F. STALLMAN & SONS Elk Mound, Wis.

Eau Claire telephone

Dunn Co.

Name	Address	Reg. & Gr.	No.
Gulla, Emil, Rice Lake, R. 3		Grade	16
Haase, Christ, Menomonie		Reg. & Gr.	60
Habiger, Oswald, Eagle River		Grade	10
Hagen, Erling, Cumberland		Grade	11
Hagen, J. M., Barron, R. 2A		Grade	15
Hagen, Oscar E., Barron, R. 2A		Grade	14
Halvorson, Albert, Rice Lake		Registered	13
Hammer, J. C., Appleton, R. 4		Grade	18
Hammons, Freeman, Clear Lake		Registered	13
Hansen, A. J., Dallas		Grade	15
Hansen, Charles, Kiel		Registered	12
Hansen, Chris, Viroqua		Reg. & Gr.	16
Hansen, Gilbert, New Holstein		Registered	17
Hansen, Martin, Clayton		Grade	22
Hanson, Howard, Chetek		Grade	14
Hanson, Jalmer T., Barron		Grade	9
Hargrave, A. W., Ripon, R. 1		Reg. & Gr.	29
Harrington, J. J., Hazelhurst		Registered	24
Hayes, Carl, Chetek		Grade	15
Heebink, Henry, Baldwin		Grade	17
Hei, Hubert, Barron		Grade	11
Heideman, Walter, Withee, R. 2		Grade	23
Heintz, J. P., Alma		Grade	29
Held, V. J., Stoddard		Grade	16
Hembre, Emil, Cameron		Grade	17
Hendricks, Ray, Campbellsport, R. 1		Grade	12
Hiber Bros., Barron, R. 1		Grade	18
Hill, John, Rosendale		Registered	27
Hill & Lawson, Rosendale		Registered	20
Hilt, Clem, New Holstein		Grade	15
Hinckley, Howard, Campbellsport, R. 2		Reg. & Gr.	9
Hintz, Alwin, Cedarburg		Reg. & Gr.	19
Hoard's Dairyman Farm, Ft. Atkinson		Registered	26
Hochmuth, Herbert, LaValle		Registered	18

SHANTITUCK FARM

REGISTERED GUERNSEYS

Bred for Production and Type Qualities

23 Years' Continuous D. H. I. A. and A. R. Herd Testing.

All Records Made on 2x Milking, Ordinary Farm Conditions.

1940 Herd Average 429 lbs. B. F.

1941 Herd Average 433 lbs. B. F.

1942 Herd Average 453 lbs. B. F.

Our Past Three Bulls Have Proven "Four Star Bulls"

WALTER MATTHYS & SONS

BARRON, WISCONSIN

Name	Address	Reg. & Gr.	No.
Hoff, Ernest, Hillsdale	-----	Registered	12
Hoff, Lewis, Barron	-----	Registered	17
Hoff, Martin, Barron	-----	Registered	12
Hoitomt, Mrs. H. C., & Son, Boyceville	-----	Grade	26
Hollen, Laurence, Prairie Farm	-----	Registered	14
Holman, Bert, Baldwin	-----	Grade	17
Hovener, Wm. H., Grafton	-----	Grade	25
Hover, Niles, Barron	-----	Reg. & Gr.	10
Howe, John, Comstock	-----	Grade	18
Hubbard Estate, W. E., Norwalk	-----	Reg. & Gr.	19
Hughes, Walter J., Spring Valley	-----	Grade	14
Hulburt, C. H., Waukesha, R. 5	-----	Reg. & Gr.	19
Huser, Frank, Comstock	-----	Reg. & Gr.	23
Immel, Louis J., Fond du Lac	-----	Grade	30
Isaacson, Rhinehart, Rice Lake	-----	Grade	8
Jacobson, Harry, Viroqua	-----	Reg. & Gr.	15

HOMESTEAD FARM GUERNSEYS

- The Home of Homestead Archer Boy 218222, whose daughters' production was an increase over their dams of 1085 pounds milk and 21 pounds butterfat under comparable conditions.
- We are members of the Outagamie Guernsey Bull Advancement Association.
- We are doing continuous herd testing.

JAMISON BROS.

Appleton, Wis., R. 1

Jamison Bros., Appleton, R. 1	-----	Registered	23
Jensen, Ted, Turtle Lake	-----	Grade	10
Jerdee, Ingle, Comstock	-----	Grade	23
Jerome, Fred, Barron	-----	Grade	24
Jodell, H. W., Knapp	-----	Reg. & Gr.	28
Johnson, Alvin, Angus	-----	Grade	14
Johnson, A. O., Angus	-----	Grade	40
Johnson, A. T., & Jones, C. B., Birchwood	-----	Grade	16
Johnson John, Brandon	-----	Reg. & Gr.	27
Johnson, L. G., Whitewater	-----	Reg. & Gr.	15
Johnson, Marius, Turtle Lake	-----	Grade	14
Johnson, Mrs. Ruth, Dallas	-----	Grade	15
Jones, Arthur, Waukesha, R. 1	-----	Registered	16
Jones, Lloyd, Tomah	-----	Grade	20
Jones, S. B., Hillsdale	-----	Grade	17
Jurkovic, John, Boyceville	-----	Reg. & Gr.	16
Kallas, Elmer, Ripon, R. 2	-----	Reg. & Gr.	18
Klessig, Walter, Cleveland	-----	Reg. & Gr.	30

Name	Address	Reg. & Gr.	No.
Kallenbach, Albert,	Dallas	Grade	22
Kallenback, Stanley,	Prairie Farm	Grade	20
Karls, Herman,	New Holstein	Grade	14
Kassilke, A. B.,	Appleton, R. 4	Grade	14
Kasuboski, Frank,	Berlin, R. 2	Grade	15
Kellar, Archie,	Chetek	Reg. & Gr.	18
Kerr, Laurence,	Nashotah	Reg. & Gr.	20
Ketteler & Tetzlaff,	Ripon, R. 1	Grade	30
Khuil, Alvin,	Tomah	Grade	20
Kichfski, Andrew,	Rhineland	Grade	15
Kiel, George,	Manitowoc	Registered	17
Kiesling, E. H.,	Jefferson	Reg. & Gr.	17
Kingsbury, E. W.,	Turtle Lake	Grade	17
Kingston, Delbert H.,	Mukwonago	Reg. & Gr.	10
Kipp, Frank,	North Prairie	Reg. & Gr.	17
Kistner, Paul,	Downing	Grade	20

**BANG'S
CERTIFIED**

**T. B.
ACCREDITED**

LAKE LEA FARM GUERNSEYS

- Increased production for War needs is being accomplished by the daughters of Whiteface Pride and King.
- Continuous D.H.I.A. Testing since 1922.
- Herd average for past fifteen years exceeds 400 lbs. B. F.
- A line-bred herd which has been headed by proved sires, and sons of proved sires for twenty years.
- Bull calves from proved brood cows, and proved sires available.

FRED BURHOP

GRAFTON, WISCONSIN

Telephone Port Washington 915-F2

Klann Bros.,	Chilton	Reg. & Gr.	19
Klitzkie, Harry,	Whitewater	Grade	18
Knapmiller, Henry,	Birchwood	Grade	16
Knapmiller, Stanley,	Birchwood	Grade	10
Knowlton, Bud,	Barron	Grade	24
Knowlton, R. C.,	Hillsdale	Grade	12
Knutson, Knute,	Comstock	Grade	17
Knutson, Louie,	Cumberland	Grade	19
Knutson, Martin,	Comstock	Grade	12
Koenig, Albert,	Hillsdale	Grade	12
Koenig, Conrad,	Barron, R. 2B	Reg. & Gr.	13
Kolb, Alden,	Cleveland	Grade	26
Kosman, Andrew,	Boyceville	Grade	13
Koukl, Frank,	Rice Lake	Grade	16
Krause, Ed.,	Pelican Lake	Grade	10
Krause, Wm.,	Watertown, R. 4	Grade	20
Krause & Krueger,	Ripon, R. 2	Grade	22
Krause & Priebe,	Ripon, R. 2	Reg. & Gr.	31

Name	Address	Reg. & Gr.	No.
Kreblein, C. H., Downing	-----	Reg. & Gr.	15
Kreutzberg, Clarence, Hortonville, R. 1	-----	Grade	28
Kringle, Joe, Birchwood	-----	Grade	10
Kringle, Noah, Barron	-----	Grade	18
Kritch, Harry, Cumberland	-----	Grade	12
Kroh, Earl, Fond du Lac	-----	Grade	19
Kuderer, T. S., Wilton	-----	Grade	19
Kugel, Charles, Rhineland, R. 2	-----	Grade	4
Kunkel, Mike, Turtle Lake	-----	Grade	14
Kyes, Harold, & Craig, Ontario	-----	Grade	30
Lane & Moore, Almena	-----	Grade	38
Laning, Albert, Brandon	-----	Registered	27
LaPointe, Harry, Birchwood	-----	Grade	18
Larson, Art., Rice Lake	-----	Reg. & Gr.	15
Lehmann, Myrle, Menomonie, R. 5	-----	Grade	19
Leiske, Henry, Ripon, R. 1	-----	Grade	19
Lempke, Geo., Kaukauna	-----	Grade	28

PROGRAM OF WISCONSIN GUERNSEY BREEDERS ASSOCIATION

1. **HEALTHY HERDS . . .**
Featuring the Abortion Testing Plan.
2. **PRODUCTION TESTED HERDS . . .**
By official Testing, featuring A. R. Herd Testing Associations.
3. **IMPROVED MARKETS . . .**
 - a. For Cattle — Through County Breeders' Associations and State Sale.
 - b. For Product — Through Sale of Golden Guernsey Milk, under the Copyright Trade Mark.
4. **BETTER SIRES . . .**
Selection based on complete information and lifetime production records.

WISCONSIN GUERNSEY BREEDERS' ASSN.

Pewaukee, Wis.

CLARENCE SHERIDAN, Pres.; GAVIN McKERROW, Sec'y.
GEO. D. BRITTS, Ass't. Sec'y.

Lenbom, Clinton, Chetek	-----	Grade	15
Leonard, B. C., Brill	-----	Grade	12
Leppa, Victor M., Appleton, R. 1	-----	Registered	31
Lewis, George, Readstown	-----	Grade	25
Lewis, Joe, Birchwood, R. 2	-----	Grade	18
Lincoln Dairy, Eagle River	-----	Reg. & Gr.	11
Loew, Austin, Mikana	-----	Grade	52
Lowell, Art., Cameron	-----	Grade	10
Lueder, Walter, Cedarburg	-----	Reg. & Gr.	21
Lurvey Bros., Dousman	-----	Registered	48
Maas, Emil, & Nelson, Lloyd, Barron	-----	Grade	30
Madans, John, Burlington, R. 4	-----	Grade	27
Malin, A. J., Genoa	-----	Reg. & Gr.	18
Malone, Guy, Canton	-----	Grade	12
Marco, Ed., Norwalk	-----	Grade	14
Marken, Otis, & Son, Valders	-----	Registered	17
Martinson, Ed., Conover	-----	Reg. & Gr.	6

Name	Address	Reg. & Gr.	No.
Mathesius & Richter,	Burlington, R. 4	Reg. & Gr.	22
Mathews, Roy,	Prairie Farm	Grade	29
Matthys, Math,	Almena	Grade	13
Matthys, Walter,	Barron, R. 2B	Registered	22
Maule, K. D.,	Dousman	Grade	18
Maule, K. D., & Sons,	Dousman	Reg. & Gr.	70
Meilahn & Steinke,	Eldorado		24
Meltz, Emory C.,	Appleton, R. 1	Registered	22
Meredith, Earl, Sr.,	Harshaw	Grade	15
Meyer, F. J.,	Hales Corners	Registered	16
Mikula, Walter,	Chetek	Grade	15
Miller, A. D.,	Almena	Grade	12
Miller, J. M., & King, M. L.,	Chetek	Grade	15
Miller, Leo,	Almena	Grade	16
Millerman, Harland & Rockman,	Barron	Reg. & Gr.	20
Mitchell, Chas.,	Waukesha, R. 5	Registered	30
Mitchell, Paul,	Waukesha, R. 5	Registered	14
Moe, Orville,	Chetek	Grade	20
Monick, Donald,	Camp Douglas	Reg. & Gr.	22
Moraine Guernsey Farm,	West Bend, R. 1	Reg. & Gr.	44
Morgan, Elton,	Cato	Registered	46
Morningcrest Farm,	Eau Claire	Registered	45
Muellenbach, John,	New Holstein	Grade	20
Muetzelburg, Erwin,	Cleveland	Grade	22
Muhlenkamp, Ben,	Sparta	Grade	20
Mullen, William H.,	Fond du Lac, R. 3		42
Murphy, A. C.,	Chilton	Reg. & Gr.	24
Murray, W. G.,	Ripon, R. 2	Grade	26
Mutz Bros.,	Trevor	Registered	26
McKee, Clyde,	Hillsdale	Registered	15
Nashotah Mission,	Nashotah	Reg. & Gr.	28
Nelson, Arthur,	Cumberland	Grade	14
Nelson Bros.,	Cumberland	Grade	21
Nelson, Charles,	Dousman	Registered	25
Nelson, Edwin,	Birchwood	Grade	18
Nelson, H. E.,	Boyceville	Grade	21
Nespodzany, Roman,	Manitowoc	Reg. & Gr.	23
Ness, Peter,	Rice Lake	Grade	8
Neumann, Harvey,	Dallas	Grade	20
Nichols, Adam,	Canton	Grade	14
Nichols, Wm.,	Chetek	Reg. & Gr.	36
North, Eugene R.,	Burlington	Reg. & Gr.	15
O'Brien, George,	Eden, R. 1	Reg. & Gr.	28
Odden, Ole,	Barronett	Grade	14
Oftedahl, O. E., & Sons,	Cameron	Grade	18
Ogie, John C.,	Fond du Lac, R. 3	Grade	19
Oines L. E.,	Galesville	Reg. & Gr.	17
Oldeen, Clifford,	Cumberland	Grade	8
Olson, Alvin,	Cameron	Grade	7
Olson, George,	New Auburn	Grade	12
Orn, C. J.,	Poskin	Grade	20
Orn, Julius,	Barron	Grade	20
Owens, William,	Oconomowoc	Grade	30
Owen, W. E.,	Downing	Registered	16
Oynes, Magnus,	Galesville	Grade	20
Palmer, George,	Argonne	Grade	25
Pattee, John R.,	Waupun	Registered	15
Paulson, Blaine G.,	Melrose, R. 3	Reg. & Gr.	24
Paulson, Helmer,	Barron	Grade	12
Paulsrud, Norman,	Chetek	Reg. & Gr.	18
Peck, K., & Donohue,	Ontario	Grade	28
Peterson, John A., & Sons,	Turtle Lake	Grade	25
Peterson, Peter & Christene,	Rice Lake	Grade	12
Pleasant Wood Farm,	Nashotah	Grade	20
Potocnik, John, Sr.,	Owen, R. 2	Grade	27
Poulter, Alfred,	Cumberland	Grade	20
Poulter, Clarence,	Cumberland	Reg. & Gr.	13
Poulter, Mrs. C. W.,	Cumberland	Reg. & Gr.	19

Name	Address	Reg. & Gr.	No.
Prellwitz Bros.,	Ripon, R. 1	Grade	22
Priedeman, G. O.,	Waukesha, R. 5	Reg. & Gr.	22
Pritzl, John,	Cato	Reg. & Gr.	19
Pucker, Albert,	Rosendale		20
Purdy, Floyd,	Tomah	Registered	12
Quam, Henry,	Barron	Grade	21
Quick, Jess, & Son,	Green Lake, R. 1	Grade	20
Rachut, Wm.,	Dallas	Grade	20
Rahr Malting Farm,	Manitowoc	Reg. & Gr.	19
Rather, Armand,	Malone	Registered	16
Rehberg, Art.,	Tomah	Reg. & Gr.	22
Rich, R. D., & Nicol,	A. L. New Auburn	Grade	28
Riemer, Erwin,	Cedarburg	Reg. & Gr.	17
Riemer, Henry,	Thiensville	Reg. & Gr.	23
Ring, Gordon,	Starks	Grade	8
Risacher, Jacob,	Comstock	Grade	16
Riskedahl, John,	Prairie Farm	Grade	25
Rivard, L. H.,	Turtle Lake	Grade	17
Riverside Stock Farm,	Poskin	Registered	38
Rockman, Martin,	Barron	Reg. & Gr.	23
Rogers, Philip,	Downing	Grade	17
Rosenbush, Joe,	Turtle Lake	Grade	12
Rosenthal, Wm., Sr., & Northwestern Mutual Life Ins.,	Menomonie, R. 3	Grade	17
Rouzer, Ira,	Cumberland	Grade	9
Rowe, Stanley,	Clayton	Grade	12
Rummler, Henry,	Watertown	Reg. & Gr.	18
Sabel, Clarence,	Eden, R. 1	Grade	14
St. Bonaventure College,	Sturtevant	Grade	20
Salen Farm No. 1,	Waukesha	Grade	38
Salsbury, Frank,	Dallas	Reg. & Gr.	24
Salverson, Ralph,	Manitowoc, R. 5	Grade	8
Samz, Oscar,	Mishicot, R. 1	Reg. & Gr.	24
Samz, Roland,	Mishicot, R. 1	Grade	12
Sanders, E. W., & Greene,	V. Knapp	Grade	22
Sankey Levi L.,	Durand, R. 2	Grade	18
Schalow, G. E., & Son,	Green Lake	Grade	19
Scheidhauer, Herman,	Rhineland	Registered	12
Scherwitz Bros.,	Ft. Atkinson	Reg. & Gr.	20
Schleiss, Victor,	Barron	Grade	16
Schlesner Bros.,	Johnson Creek	Registered	20
Schmidt, Elmer,	Greenleaf, R. 1	Registered	15
Schmidt, Harold,	Greenleaf, R. 1	Grade	27
Schmit, Theo. A.,	Greenville	Registered	24
Schoenborn, Jacob,	New Holstein	Grade	20
Schramm, Wm. H.,	Mishicot, R. 1	Grade	24
Schrank, Elmer,	Campbellsport	Grade	21
Schroeder, Ted, & Sons,	Menomonie	Reg. & Gr.	30
Schultz, Emil,	Appleton, R. 1	Grade	22
Schulz, Edward,	Kenosha	Reg. & Gr.	19
Schumacher, A. C.,	Waukesha, R. 2	Reg. & Gr.	30
Schwab, Edward,	Rice Lake, R. 4	Grade	32
Schwemmer, Geo.,	Waukesha	Reg. & Gr.	16
Schwertfeger, Louis,	Van Dyne	Registered	31
Scott, P. S.,	Menomonie, R. 5	Reg. & Gr.	20
Sedlacek, Myrtle,	Barron	Grade	6
Severson, Norris,	Chetek	Grade	12
Severude, Oscar,	Hillsdale	Grade	11
Shaker, Ed.,	Rock Falls	Grade	10
Shearer, Morton,	Cumberland	Grade	14
Sherburne, V. K.,	Rusk	Registered	40
Shiffer, Orrie,	Eau Claire	Reg. & Gr.	18
Shilberg, Carl,	Watertown, R. 3	Grade	23
Sierstad, Martin,	Cumberland	Grade	15
Simon, Henry, & Son,	Fon du Lac, R. 4	Reg. & Gr.	26
Sinz, C.,	Elmwood, R. 2	Reg. & Gr.	22
Skinner, J. G.,	Barron, R. 3	Grade	25
Skredi, Nick,	Readstown		20
Skubal, Anton,	Mishicot, R. 1	Grade	12
Sowinski, Henry,	Rhineland	Grade	9

Name	Address	Reg. & Gr.	No.
Specht, Henry,	Manitowoc, R. 5	Grade	18
Stallman, John F., & Sons,	Elk Mound	Registered	30
Stanchfield, Sam,	Fond du Lac, R. 3	Grade	22
Steege, Theodore,	Barronett	Grade	11
Steffen, Wm.,	Rice Lake, R. 2	Grade	14
Steinbach, Walter,	Appleton, R. 1	Grade	19
Steinberg, Leonard,	Hortonville	Grade	16
Steinhoff, George,	Wilton	Reg. & Gr.	20
Steinhoff, Henry,	Wilton	Reg. & Gr.	20
Stephan, Alfred G.,	Boyceville	Grade	18
Stephany, Oscar,	St. Cloud	Grade	
Stephany, Richard,	Byron	Grade	26
Stichman, Henry,	New London	Grade	30
Stout, Mrs. F. D.,	Birchwood	Registered	12
Suckow, Mrs. Helen,	Ripon, R. 1	Reg. & Gr.	22
Sutliff, F. C., & Son,	Boyceville	Grade	25
Swails, Orville,	Rhineland	Grade	20
Swanson, Elmer,	Barron	Reg. & Gr.	11

OZAUKEE COUNTY GUERNSEY BREEDERS' ASSOCIATION

An Active Organized County Association
for 29 Years.

70 Active Guernsey Breeders.

60% of Active Members Doing D.H.I.A.
Testing.

Grades and Pure Breds For Sale

FIELDMAN TO ASSIST

ALV. HINTZ, President
CEDARBURG

ERWIN J. RIEMER, Secretary
CEDARBURG

Sweeney, Alice,	Withee, R. 2	Reg. & Gr.	28
Swendson, E. A.,	Mukwonago	Reg. & Gr.	16
Sy, Fred,	Kiel	Registered	19
Taft, Lyle,	Chetek	Grade	19
Teal, Floyd,	Barron	Grade	10
Thatcher, C. B.,	Clear Lake	Registered	26
Thomas & Story,	Oconomowoc	Reg. & Gr.	35
Thompson, Art,	Barron	Grade	26
Thompson, Sewell,	Chetek	Grade	16
Thompson, T. L.,	Chetek	Grade	14
Thorsbakken, Martin,	Hillsdale	Grade	15
Tiedt, Wm.,	Black Creek	Grade	17
Timblin, Archie,	Hillsdale	Grade	12
Toetz, Charles F., & Son,	Fond du Lac, R. 3	Registered	28
Torgerson, J. G.,	Rock Falls	Grade	9

Name	Address	Reg. & Gr.	No.
Torgerson, Ted., Comstock		Grade	15
Torrey, James, & Son, Bristol		Reg. & Gr.	34
Tratt & Nicholas, Whitewater		Reg. & Gr.	28
Tratt, Ralph, Whitewater		Reg. & Gr.	28
Trowbridge, J. C., Hales Corners		Registered	12
Turner, Merton, Menomonie, R. 4		Reg. & Gr.	12
Tweed, Dan, Prairie Farm		Grade	26
Tyvoll, Len, Comstock		Grade	16
Tyyrell, Vernon, Dallas		Grade	16
Ursiny, John, Boyceville		Grade	16
Utschig, Joseph A., Appleton, R. 4		Grade	24
Vergin, Lester, Dallas		Grade	16
Vetter, Edmund, Fond du Lac		Grade	22
Vieth, Ben, Sparta		Grade	20
Voigt, E. T., Reedsville		Registered	19
Von Rueden, Victor, Wilton		Grade	25
Wachtendonk, Peter, Seymour		Grade	23
Wagner, Claude, Malone		Grade	14
Wagner, Joe, Fond du Lac, R. 1		Grade	32
Waldschmidt, Walter, St. Cloud		Grade	
Walgenbach, Al, Fond du Lac, R. 2		Reg. & Gr.	30
Wall, Elmer, Cameron		Grade	16
Walter, Elmer, & Son, Kendall		Registered	16
Walz, Irl, Norwalk		Grade	17
Warden, Russel K., Tomah		Grade	15
Warland, L. S., Turtle Lake		Reg. & Gr.	17
Watland, Wm., & Conral, V. H., Menomonie, R. 4		Grade	30
Weber, Gilbert, Birchwood		Grade	8
Weber, Joseph P., Sturtevant		Reg. & Gr.	32
Wegner, Walter, Elkhart Lake		Grade	18
Weinzirl, John, Elmwood, R. 2		Grade	16
Wenzel Bros., Sullivan		Grade	23
Wetzel, Geo., Prairie du Chien			19
Weyenberg, Mrs. F. L., Thiensville		Registered	15
Whitby, Edwin P., Malone		Grade	11
White Plains Farm, Kansasville		Reg. & Gr.	60
Whiting, Chas., Barron		Grade	13
Wiepking, Martin, Cedarburg		Reg. & Gr.	22
Wiesenthal, Robert C., Burlington		Grade	22
Wilde, Theo., Thiensville		Reg. & Gr.	18
Wille, Edgar, Thiensville		Reg. & Gr.	15
Willers, Geo., Clayton		Grade	17
Willers, Henry, Clayton		Grade	12
Wiltgen, Pete, & Valkenberg, C. V., Chetek		Grade	22
Winchell, D., & Craig, Ontario		Grade	21
Winkler Bros., Burlington, R. 4		Grade	40
Wisch, H. R., Jefferson		Registered	11
Woodard, Harry, & Lower, C. M., Wilton		Grade	17
Wright, Harold, Johnson Creek		Reg. & Gr.	12
Wulff, Wm., Thiensville		Reg. & Gr.	35
Wyss, John, Boyceville		Grade	16
Yndestad, Douglas, Prairie Farm		Grade	10
Young, Alberta, Rhinelander		Grade	4
Zirk, Ed., Kendall		Reg. & Gr.	23
Ziwiskey Bros., Clayton		Grade	31
Zschaechnu, Otto, Appleton, R. 1		Reg.	23

GROW IN YOUR BUSINESS

When you become a part of a sound organization, you begin to grow.

Are you a member of your state breed association?

Their work is for your interest.

Your support will prove to be a sound investment.

**A Complete Line of
DAIRY
AND ANIMAL HUSBANDRY
EQUIPMENT AND SUPPLIES**

**ORDER FROM THE
NATIONAL AGRICULTURAL
SUPPLY COMPANY, INC.**

**FORT ATKINSON, WISCONSIN
N. O. Eckley, Manager
CATALOG WILL BE SENT ON REQUEST**

"Your Problem and Ours"

The purpose of the Wisconsin Dairymen's Association is identical with the one of all major dairy breed associations to assist in every way possible in aiding to develop Wisconsin's dairy herds.

We desire to work with all breed associations in a cooperating way that will result in accomplishing this purpose and also in building a stronger support within each breed association.

BETTER FARMS, INC.

On Highway 151 — 5 Miles West of
FOND DU LAC, WISCONSIN

Aberdeen - Angus Herd

Breeding Stock Available:

Better Farms, Inc., has around 50 head of 6 to 10 months' old pure-bred Aberdeen-Angus calves — about one-half heifers and one-half bulls, and will have a larger number of 1943 calves.

Club Project Calves Available:

We are firmly of the opinion that the Aberdeen-Angus breed of beef cattle is the type to use in Wisconsin, and any farm boy or girl that wants to start raising a pure-bred Angus calf or a yearling can have one at the right price and easy payment terms.

COME AND LOOK THEM OVER!

——— Ask For ———

TOM MULLEN, Farm Superintendent

CHARLES H. THORNTON
PRESIDENT



WILLIAM H. MULLEN
SUPERINTENDENT

BETTER FARMS, INC.

Authorized Capital \$200,000⁰⁰

FOND DU LAC
WISCONSIN

The 3,000 acres of plowland, pasture, and small woodlots that make up the Better Farms total acreage, located 5 miles west of Fond du Lac on Highway 151, are mostly used for raising food for our Dairy Cattle, Beef Cattle, and Hogs.

A small acreage has been put into sugar beets, and recently we have raised some hemp, as both crops are perfect weed eliminators.

DAIRY CATTLE — About 375 head and progeny, part Guernseys and part Holsteins, mostly all of our own raising, having been bred to Registered and Proven sires.

A complete milk and butterfat record of every cow in the herd is being kept by the Dairy Herd Improvement Association, and it will probably be well along into mid-summer of 1943 before we will have any dairy heifers for sale.

BEEF CATTLE — A pure-bred Aberdeen-Angus herd of about 65 cows with progeny, made up mostly of 1942 calves. We are firmly of the opinion that the ANGUS BEEF BREED is the BREED for Wisconsin's dairy land. You can mate an Angus Bull to a boarder milk cow, any breed or color, and get a pure black calf that can be built up, either steer or heifer, into 800 or 900 lbs. in 10 to 12 months, and the stockyard buyer won't be able to tell whether it is a pure Angus or a crossbred.

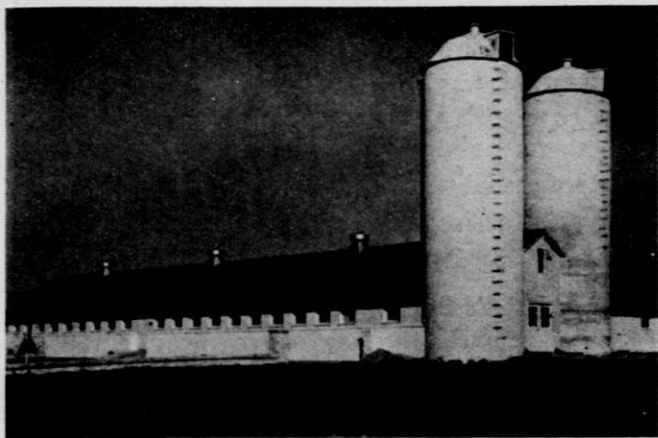
HOGS — We started with Hampshires because they frame up into bacon and ham in a way to tease stockyard buyers. Right now the demand is going strong for hogs that produce a larger percentage of lard than do the Hampshires, but the Hamps will come back into their own.

We can supply pure-bred Hampshires or grades.

VISITORS ALWAYS WELCOME

Better Farms, Inc.

**TAKE A TIP FROM BETTER FARMS, INC.
Fond du Lac, Wis.**



THEY BUY THE BEST . . . The roof and side-walls of this modern dairy barn are protected with J-M Asbestos Shingles — they are fireproof and rot-proof. The barn is completely insulated with J-M Ful-Thik Rock Wool which insures more uniform temperatures and helps increase production. The interior walls and ceiling are lined with J-M Asbestos Flex-board — fireproof, easy to clean, rotproof. For details write Johns-Manville, 757 North Broadway, Milwaukee, Wis.



Johns-Manville

Building Materials

We Nominate For

**DISTINGUISHED SERVICE AT
HOME . . .**

The Holstein - Friesian Cow

No medal will be pinned on her . . . she's not blasting any Jap Zeros . . . she's not bombing Berlin.

But she's fighting a great war!

She produces more casein than any other cow . . . and casein is vital for defense products.

Her milk is most desirable for cheese — a Vital Food.

She is unequalled for butter production — a "must" in all war-time diets.

She produces the most milk for evaporation and drying — needed by our Armed Forces and for Lend-Lease.

She's built to handle increased quantities of feed — to "step up" her production and help meet the need for more bottled milk.

Yes, sir! We're mighty proud of her.

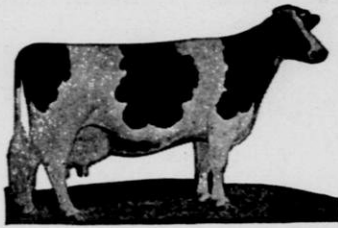
She's **more** than a cow . . . she's a dynamic force organized for Victory . . . helping to build the foundations for peace.

For proof of her superiority write
Box 1036.

Extension Service

**The Holstein-Friesian Association
of America**

BRATTLEBORO, VERMONT



Holstein Breeders

Active Members of the Wisconsin Dairymen's Association

Name	Address	Reg. & Gr.	No.
Abler, Nicholas P.,	Fond du Lac	Grade	11
Acheson, Geo.,	Oconomowoc	Reg. & Gr.	15
Adams, Delbert,	Waukesha, R. 4	Grade	14
Adams, Wesley,	Waukesha, R. 1	Reg. & Gr.	22
Afdahl, Delbert,	Hammond	Grade	22
Ahlers, Walter K.,	Grafton	Registered	25
Ahrens Bros.,	Prairie du Chien		52
Ahrens, Clarence,	Prairie du Chien		10
Alberg, Arnold,	Cumberland	Grade	15
Alexander, E. W.,	Owen, R. 1	Grade	29
Alexander, Robert,	Rice Lake, R. 2	Grade	14
Ammertorp, Ewald,	Withee, R. 1	Grade	24
Amundson, Henry,	Cameron	Grade	11
Amundson, Olaf,	Cameron	Grade	17
Anderson, Carl,	Sparta	Grade	19
Anderson, Hans,	Rice Lake	Grade	9
Anderson, J. W.,	Rice Lake, R. 2	Grade	14
Anderson, Orville,	Cumberland	Reg. & Gr.	13
Anderson, Esther M.,	Rice Lake, R. 2	Grade	12
Anderson, Walter,	Barron, R. 1	Grade	15
Anschuetz, Geo.,	Cedarburg	Grade	18
Anthes & May,	Ft. Atkinson, R. 1	Registered	20
Appleton, Frank,	Seymour,	Grade	24
Aspinall, Allen,	Honey Creek	Reg. & Gr.	21
Atwood & Davison,	Brandon	Registered	21
Baas, Alfred,	Waukesha, R. 3		16
Bailey & Willkomm,	Kenosha	Registered	23
Baird Bros.,	Waukesha, R. 2	Registered	35
Baker & Stone,	Ripon	Registered	18
Bakke, Albert,	Curtiss, R. 1	Grade	18
Ballbach, John, Jr.,	Milwaukee, Sta. D., R. 2	Reg. & Gr.	24
Barfknecht, Paul,	Rice Lake, R. 2	Grade	17
Barnhardt, H. L.,	Menomonie	Reg. & Gr.	25
Barritt, W. H., & Son,	Barron, R. 2B	Reg. & Gr.	18
Bartell, Wm., & Son,	Salem, R. 1	Reg. & Gr.	22
Bartelt, Paul,	Jackson, R.	Grade	14
Barthel, Jos.,	Thiensville	Reg. & Gr.	14
Barthels, George, Sr.,	Two Rivers, R. 2	Registered	24
Bast, Eugene,	Rockfield, R. 1	Grade	18
Bast, Jacob B.,	Rockfield, R. 1	Grade	15
Bast, Paul J.,	Rockfield, R. 1	Registered	25
Bast, Val., & Sons,	Rockfield	Registered	30
Batterman, E. A.,	Rosendale	Registered	18
Bauer, Frank,	Campbellsport	Grade	35
Baumberger, Walter,	Rice Lake, R. 1	Reg. & Gr.	23
Baus, Leo,	Glenbeulah	Grade	
Bayley, Ralph H.,	Lake Beulah	Reg. & Gr.	24
Bayley, Wallace,	Lake Beulah	Registered	18
Beaman, Claire,	Berlin, R. 2	Grade	20
Becker, L. B.,	Barron	Grade	27
Becker, N. P.,	Almena	Registered	9

Name	Address	Reg. & Gr.	No.
Becker, Ray, Oconomowoc		Grade	20
Beckwith, Wm. J., Barron, R. 2A		Grade	18
Behne, Fred, Cumberland		Grade	5
Beilke, Walter, & Son, Fairwater		Registered	40
Bender, Fred, Cleveland		Grade	30
Beneker, Louis, and Sons, Bridgeport			26
Benke, Paul, Hales Corners			16
Bennett, Harold, Oakfield		Registered	15
Bennin, Raymond, Chilton, R. 2		Grade	19
Berg, Fred, Hillsdale		Grade	24
Berg, F. W., Barron		Grade	15
Berg, Harold, Cumberland		Grade	16
Berg & Grams, Markesan, R. 1		Grade	22
Bergel, Frank, Two Rivers, R. 2		Grade	24
Berndt, Emil, Grafton		Grade	36
Berres, Alvin, Campbellsport, R. 2		Grade	24
Better Farms, Inc., No. 1, Fond du Lac, R. 2		Grade	146
Better Farms, Inc., No. 2, Oakfield		Grade	46
Better Farms, Inc., No. 4, Oakfield		Grade	51
Beuchel, Edwin, Sheboygan		Reg. & Gr.	30
Beule, E. A. & Zick, Wilbur, Beaver Dam		Reg. & Gr.	25
Beyrer, E. E., Downing		Reg. & Gr.	17
Biebow, August, Black Creek		Registered	12
Biehn Bros., Union Grove		Registered	16
Birkholz Bros., Menomonie		Grade	15
Birkholz, Walter, Cameron		Grade	15
Blackmore Bros., Campbellsport, R. 2		Reg. & Gr.	30
Blaha, Victor, Two Rivers, R. 1		Registered	20
Blank, Ray, Grafton		Registered	19
Blondey, Guy, New London		Grade	21
Bohl, Robert, Beaver Dam		Grade	30
Boldt, Harold, Waukesha, R. 3			18
Bonner, Robert, Kansasville		Reg. & Gr.	17
Borchardt, Aug., & Son, Brandon		Grade	17
Borchardt, Herman, Brandon		Grade	15
Borchardt, John, Ft. Atkinson, R. 1		Reg. & Gr.	23
Bowers, Asa, Chetek		Grade	36
Braatz, Harold, Oakfield		Grade	14
Brandau, Ernest, Sparta		Grade	22
Brandt, Harold, Sheboygan Falls		Registered	13
Brath & Yankow Bros., Campbellsport, R. 1		Reg. & Gr.	30
Brauch, Wm., Waukesha, R. 1		Reg. & Gr.	30
Braun, A. D., Grafton		Registered	18
Bray, Elmer, Van Dyne, R. 1		Reg. & Gr.	20
Bronn, Wm., Germontown		Reg. & Gr.	17
Brooks, A. H., Monico		Reg. & Gr.	16
Brown, Ed., Cumberland		Grade	18
Brown, Harry S., Barron, R. 2A		Registered	8
Brunnquell Bros., Port Washington		Registered	17
Buergi, Adolph, Rice Lake, R. 1		Reg. & Gr.	20
Bunker, L. P., Rice Lake		Registered	28
Burdick, Harold T., Hillsdale		Registered	22
Burhop, Armand, Grafton		Reg. & Gr.	24
Buse, Henry, Union Grove		Grade	20
Bussewitz, Alfred, Turtle Lake		Grade	9
Buth, Harvey, Oconomowoc		Registered	16
Butz, Frank, St. Cloud		Grade	19
Carlson Bros., Almena		Grade	18
Carlson Bros., Boyceville		Reg. & Gr.	18
Carlson, Carl A., Boyceville		Grade	11
Carlson, S. A., Chetek		Grade	24
Carnes, Fay, Ft. Atkinson, R. 2		Registered	28
Carpenter, Chas., Hortonville		Registered	14
Carpenter, Lester, Barron, R. 2A		Registered	9
Chadek, Chas. J., Franksville		Reg. & Gr.	19
Chase, Frank, Waupun		Reg. & Gr.	15
Christensen, Grant R., Caledonia		Grade	24
Christensen, L. C., Franksville		Grade	10

Name	Address	Reg. & Gr.	No.
Christensen, Norman W.,	Franksville	Grade	25
Clack, Harry,	Boyceville	Grade	20
Clark, B. A.,	Mukwonago	Reg. & Gr.	25
Clark County Asylum,	Owen, R. 2	Reg. & Gr.	60
Clark, F. T.,	Waupun	Registered	24
Clausen Bros.,	Kenosha	Registered	30
Clausen & Hansen,	Sturtevant	Registered	40
Clausen & Roeder,	Sturtevant	Reg. & Gr.	30
Clusen, Reinhold,	Manitowoc, R. 5	Reg. & Gr.	23
Conrad, Edgar,	Elkhart Lake	Grade	13
Corcoran, Clarence M.,			
Fond du Lac, R. 3		Registered	24
Cornelius, Clarence,	Barron, R. 1	Registered	12
Coughlin, Chas.,	Saukville	Registered	12
Cowles, Verne,	South Byron	Reg. & Gr.	30
Crawford County Farm,	Lynxville		23
Crisler, Harold,	Hillsdale	Grade	10
Curtiss, George,	Arkansaw	Reg. & Gr.	13
Dahl, Jake & Son,	Elk Mound	Reg. & Gr.	25
Daniels, Emil,	Kansasville	Grade	35
Dearth, J. A.,	Owen, R. 2	Grade	30
Dechant, Frank,	Kendall	Grade	24
Dibble, R. A., & Son,	Pewaukee	Registered	17
Dickrell, Jacob,	Elkhart Lake, R. 2	Grade	17
Dicmere Farm,	Oconomowoc	Registered	20
Dineen, Chas.,	Cedarburg	Registered	16
Dittmar, Roland,	South Milwaukee	Registered	16
Dix, Harry,	Menomonie	Registered	23
Dobberstein, A. W.,	New London	Reg. & Gr.	
Dobberstein, John,	Hortonville	Grade	20
Doornink, Chris,	Baldwin	Grade	13
Doornink, John,	Baldwin	Registered	22
Dornbrook, A. H.,	Green Lake, R. 1	Registered	26
Dowd, Lewis,	Dallas	Reg. & Gr.	11
Doyle Bros.,	Rice Lake, R. 1	Grade	24
Doyle, Joe,	Rice Lake, R. 1	Grade	20
Draeger, Alvin, & Wilcox, J.,			
Ft. Atkinson, R. 1		Reg. & Gr.	15
Draeger, Emil J.,	Ft. Atkinson, R. 3	Reg. & Gr.	20
Draeger, Harold,	Ft. Atkinson, R. 1	Registered	14
Dudzek, John,	Dousman	Grade	20
Dunn County Asylum,	Menomonie	Registered	65
Eblc, Roy,	Waukesha, R. 5	Reg. & Gr.	30
Eckardt, Herman,	Mishicot, R. 1	Reg. & Gr.	28
Eckelberg, Vern,	Tomah	Grade	17
Eckhardt, Edward,	Mishicot, R. 1	Reg. & Gr.	28
Edquist, Iver,	Kenosha	Reg. & Gr.	24
Edwards, Everard,	Baldwin	Grade	13
Ehlers, Edwin,	Cedarburg	Reg. & Gr.	15
Ehrhardt, Mrs. Rose,	Knowles	Grade	18
Ela & Haus,	Rochester	Registered	22
Ellefson, Caryle,	Viroqua	Grade	31
Ellison, Carl,	Barron	Grade	13
Elwood, Basil,	Chetek	Grade	16
Emerson, Julius,	Downing	Grade	15
Erickson Bros.,	Comstock	Grade	21
Ernst, Lorenz,	Thiensville	Reg. & Gr.	36
Espeseth, Gilbert,	Prairie Farm	Grade	14
Evenson, Chester,	Rice Lake, R. 1	Grade	12
Evenson, Cyril,	Menomonie	Reg. & Gr.	16
Feldner, Adrain,	St. Cloud	Grade	20
Ferguson & Phillips Farm 4,	Kenosha	Grade	25
Fisher, Paul W.,	Fond du Lac, R. 2	Grade	29
Fleming, Chas.,	Jefferson, R. 1	Reg. & Gr.	28
Foley, Francis,	Seymour	Registered	16
Ford, John,	Wilton	Registered	20
Foth, Frank, & Son,	Sparta	Grade	33
Fowler, Horace,	Bristol	Registered	20
Frank, Franz,	Union Grove	Grade	24
Franz, Ewald,	Elkhart Lake	Grade	11
Freudenberg & Wagner,	Markesan	Registered	27



WISCONSIN ADMIRAL BURKE LAD

GOLD MEDAL PROVEN SIRE
GRAND CHAMPION — UTAH 1937

Our herd sire, "Burke," has an index compiled by the Holstein-Friesian Association of America on 11 daughter-dam pairs of 21,290 lbs. of milk, 3.98%, 847 lbs. of fat in Class B.

The U. S. Bureau of Dairy Industry has daughter-dam comparisons on 12 pairs on 2x milking for 305 days. The daughters averaged 533 lbs. of fat, 3.7%, out of dams that averaged 413 lbs. of fat, 3.4%.

LISTEN TO THIS!

10 of the 12 daughters gave more milk than their dams.

10 of them tested more than their dams.

And each of the 12 made more fat than her dam.

This speaks well for the dependability of his transmitting high production and good test to his offspring.

●
His sons are available. Write us for pedigrees and prices.

●
Sons of our sire, Sir Ormsby Skylark Barbeta, are also available and desirable.

PABST FARMS

Oconomowoc

Wisconsin

ACCREDITED and NEGATIVE

Name	Address	Reg. & Gr.	No.
Frisbie Bros., Juneau	-----	Reg. & Gr.	32
Frommader, I. G., Rice Lake, R. 4	-----	Grade	35
Frost, Alfred, Withee, R. 1	-----	Grade	18
Gafke, A. J., Ft. Atkinson, R. 1	-----	Reg. & Gr.	30
Gallman, Woodrow, Ft. Atkinson, R. 2	-----	Reg. & Gr.	14
Gannon, G. P., Rice Lake	-----	Grade	17
Gardener, Russell, Barron	-----	Reg. & Gr.	12
Garner, Clayton, Chetek	-----	Reg. & Gr.	20
Garner, Perry, Chetek	-----	Reg. & Gr.	22
Gaspar, Nick, Jr., Barron	-----	Grade	12
Gaspar, Nick, Jr., Barron	-----	Grade	10
Gehler, Donald, Cameron	-----	Grade	8
Gehring, Oliver, Appleton	-----	Grade	17
Gengler Bros., West Bend, R. 2	-----	Reg. & Gr.	20
Gengler, E. J.	-----		
Milwaukee, Sta. F., R. 1	-----	Reg. & Gr.	25
Gibson, Irven, Eau Claire	-----	Registered	24
Giese, Ed., Rice Lake	-----	Grade	21
Gillette Farm, Eau Claire	-----	Registered	37
Gillis, C. G., Woodville	-----	Registered	20
Gillmore, B. J., & Sons, Bristol	-----	Registered	30
Glover, A. J., Ft. Atkinson	-----	Registered	36
Godden, Howard, Roberts	-----	Registered	27
Gonyer, Octave, Cumberland	-----	Grade	16
Goodwin, Elliot, Downing	-----	Grade	30
Grahl, Frank, Eden, R. 1	-----	Grade	32
Graul, Charles, Wauzeka	-----		25
Graul, Henry, Eastman	-----		13
Green, John, & LeJeune Estate, John, Rice Lake, R. 2	-----	Reg. & Gr.	13
Groff, Joe & Sons, Salem, R. 1	-----	Reg. & Gr.	12
Gross, Lloyd, Knapp	-----	Registered	20
Grosse, L. H., & Son, Rosendale	-----	Reg. & Gr.	18
Grossen, Sam, Campbellsport, R. 1	-----	Grade	20
Grover, Lyle, Cumberland	-----	Grade	15
Gruenewald, Harry, Thiensville	-----	Grade	20
Gruhle, Wm., West Bend, R. 2	-----	Grade	19
Guenther, Allen, South Milwaukee	-----	Grade	9
Gulla, Emil, Rice Lake, R. 3	-----	Grade	16
Guthrie, Sam, & Son, Eau Claire	-----	Reg. & Gr.	29
Haas, Chas., Withee, R. 1	-----	Grade	14
Haas, T. J., Withee, R. 1	-----	Grade	19
Habeck, Mrs. Bertha, & Sons, Eden, R. 1	-----	Registered	22
Halvorson, Oscar & Art., Dallas	-----	Reg. & Gr.	10
Halvorson, Geo., Menomonie	-----	Reg. & Gr.	16
Hamann, Harvey, Sheboygan	-----	Reg. & Gr.	26
Hamlyn, Elwyn W., West Bend, R. 1	-----	Reg. & Gr.	20
Hamm, Lenard, Owen, R. 2	-----	Grade	27
Hammen, Allmen J., Ripon	-----	Reg. & Gr.	12
Hammen, Arnold, Ripon	-----	Registered	12
Hammen, Louis, Ripon	-----	Registered	13
Hammer, J. C., Appleton, R. 4	-----	Grade	18
Hanke, Joe, Chilton, R. 2	-----	Grade	16
Hansen, Harold, Rice Lake, R. 1	-----	Reg. & Gr.	24
Hansen, Harry, Woodworth	-----	Registered	30
Hansen, Peter C., Bristol	-----	Reg. & Gr.	15
Hansman, H. F., Knapp	-----	Registered	24
Hanson, Art., Baldwin	-----	Registered	13
Hanson, Chas., Cumberland, R. 2	-----	Grade	13
Hanson, Freeman, Chetek	-----	Registered	20
Hanson, Joseph A., Chetek	-----	Registered	15
Hanson, Leonard, Rice Lake	-----	Registered	14
Hanson, Ted, Barron	-----	Grade	23
Harmon, Martin, Arkansaw	-----	Grade	17
Harmon, Tony, Arkansaw	-----	Grade	12
Harms, Walter, Sheboygan	-----	Grade	33
Harris, Jack, Eau Claire	-----	Reg. & Gr.	22
Hartzell, Ray, Barron	-----	Grade	6
Harvedale Farm, Oconomowoc	-----	Registered	14
Hasselkus Bros., Dousman	-----	Reg. & Gr.	24
Hatch & Spoerl, Campbellsport, R. 1	-----	Grade	20

Name	Address	Reg. & Gr.	No.
Hathaway, Sam,	Rice Lake, R. 1	Grade	24
Hayes, Carl, & Son,	Campbellsport, R. 1	Reg. & Gr.	32
Hayes, Herbert,	Rice Lake, R. 3	Grade	16
Hayes, Marvin,	Campbellsport, R. 1	Reg. & Gr.	14
Hedlund, W. E., & M. R.,	Boyceville	Reg. & Gr.	25
Heffner, E. L.,	Barron, R. 2A	Grade	24
Hegenbarth & Richter,	Rice Lake, R. 3	Grade	20
Heinrich, Walter,	Hales Corners	Reg. & Gr.	17
Heinzelmann & Kliveter,	Ripon	Registered	14
Helmer, W. S.,	Campbellsport, R. 2	Grade	8
Helms, Fred,	Grafton	Reg. & Gr.	18
Hembre, Emil,	Cameron	Grade	17
Hembrook, Rollo,	Chetek	Reg. & Gr.	20
Hench Bros.,	Turtle Lake	Grade	12
Henderson, George,	Chetek	Grade	15
Henning, E. L.,	Oconomowoc		16
Henning, L. A.,	Nashotah	Reg. & Gr.	14
Henning & Loehr,	Eldorado	Registered	24
Henrich, Phillip,	Rice Lake, R. 4	Grade	19
Henry, Murrel,	Menomonie	Grade	28
Hering, Dr. R.,	Grafton	Reg. & Gr.	15
Hesprich, John,	Lomira, R. 1	Reg. & Gr.	26

REGISTERED HOLSTEIN STOCK FOR SALE

Herd Fully Registered.
Several Years' Production Records.
Past Year's Herd Ave.: 383 Lbs. Butterfat.

HIAWATHA FARM

Two Miles South of Sturtevant, Wis.
L. R. CLAUSEN, Owner

Hess, L. J.,	South Milwaukee	Registered	19
Hetts, Allen,	Ft. Atkinson, R. 1	Registered	18
Hewitt, Lloyd,	Chetek	Reg. & Gr.	12
Hiber Bros.,	Barron, R. 1	Grade	18
Hielman Bros.,	Withee, R. 1	Reg. & Gr.	24
Hildebrandt Bros.,	Cameron	Grade	26
Hillman, Ore.,	Downing, R. 1		24
Hjelter, Ole,	Genoa	Reg. & Gr.	18
Hoff, Ben & Ludtke, G.,	Downing	Grade	25
Hofland, Edw.,	Menomonie	Registered	46
Hogan & Merchant,	Genoa City, R. 1.	Grade	23
Holle, Art.,	Baldwin	Grade	13
Holmstrom, John,	Rice Lake, R. 2	Grade	11
Holmstrom, Nels,	Rice Lake, R. 2	Registered	15
Holt, B. J.,	Kenosha	Reg. & Gr.	40
Houk, George,	Dousman	Grade	21
Houk, Pete,	Dousman	Grade	16
Howard, George,	Dousman	Registered	27
Howard, Henry,	Campbellsport, R. 1	Grade	10
Huchenbecker,	Harvey, Bridgeport		18
Hughes Bros.,	Waukesha, R. 1	Reg. & Gr.	24
Hughes, Lawrence,	Waukesha, R. 1	Reg. & Gr.	22
Huset, Harold,	Chetek	Grade	12
Huset, Oscar,	Chetek	Grade	18
Hyde, Harry,	Turtle Lake	Grade	12
Immel, Harold,	Calvary	Grade	18
Immel, Louis J.,	Fond du Lac	Grade	30
Jackley, Nick,	Kenosha, R. 4	Grade	23

Name	Address	Reg. & Gr.	No.
Jacobson, Anton & Son,	Menomonie	Registered	30
Jacque, Nic.,	Port Washington	Grade	36
Jaeger, Harley,	Watertown	Grade	22
Jefferson County Farm,	Jefferson	Reg. & Gr.	73
Jenny, Ben, Monroe, R. 3		Registered	30
Jensen, Arnold, Owen, R. 2		Grade	28
Jensen, Chris & Sons,	Colfax	Registered	22
Jensen, George,	Colfax	Reg. & Gr.	14
Jensen, Victor,	Racine	Reg. & Gr.	13
Jenson, Mrs. O., & Olson, Alfred,	Oconomowoc	Grade	16
Jindra, Alvin, Mishicot, R. 1		Grade	24
Johnson Bros.,	Rice Lake, R. 4	Grade	20
Johnson, C. A.,	Boyceville	Grade	14
Johnson, E. H.,	Union Grove	Reg. & Gr.	34
Johnson, Elmer, Ft. Atkinson, R. 1		Reg. & Gr.	11
Jones, Carey,	Barron, R. 1	Registered	10
Jones, John I.,	Dousman	Grade	20
Jones & Powers,	Racine	Reg. & Gr.	24
Jones, Seeley,	Hillsdale	Grade	14
June-Roy Farms,	Bristol, R. 1	Reg. & Gr.	33
Junk, Joe F.,	Manitowoc, R. 5	Reg. & Gr.	40
Kaiser Bros.,	Fond du Lac, R. 1	Grade	29

CORRECTION - HOLSTEINS

Buy a bull calf that is backed by 14 years of D.H.I.A. Testing and A. R. Tests. We also have some very fine heifers for sale at all times.

Last year's D. H. I. A. Record — 55 cows — 13,136 lbs. Milk, 490.3 lbs. Fat, Ave. Test 3.73%.

Our Brood Cow, (Extraordinary) Corr. Excetter Beatrice 953191, is still alive and feeling fine. She is still State Champion D. H. I. A. Cow with over 7,000 lbs. Fat.

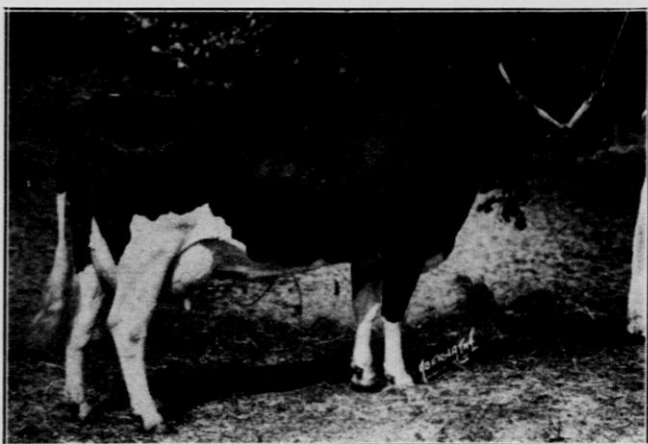
Milwaukee Co. House of Correction
Sta. F., Milwaukee, Wis.

Kappelman, Fred, & Son,	Two Rivers, R. 2	Grade	12
Kappelman, Wm. C.,	Manitowoc, R. 2	Grade	15
Kasierski, J. F.,	Princeton, R. 1	Registered	18
Kelley, Thos., Farm Corp.,	Menomonie	Reg. & Gr.	40
Kellogg, Charles,	Clayton	Grade	26
Ketteler & Tetzlaff,	Ripon, R. 1	Grade	30
Kiersten, Anton,	Fond du Lac	Grade	15
Kiesler, J. B.,	Bristol	Reg. & Gr.	25
King, Don,	Eau Galle	Grade	21
King, Stephen,	Eden, R. 1	Grade	28
Klein, Elmer,	West Bend, R. 4	Reg. & Gr.	28
Klein, Geo. & Floyd,	Hillsdale	Grade	38
Klein, L. T.,	Owen, R. 2	Grade	26
Klofanda, Reuben,	Racine	Reg. & Gr.	21
Klossner, Arnold,	Rice Lake, R. 1	Grade	12
Klug, Adam,	Almena	Reg. & Gr.	23
Knickel, M. R.,	Campbellsport	Grade	26
Knoblauch, W. G.,	Waukesha, R. 4	Registered	16
Knuth, Wilfred,	Thiensville	Reg. & Gr.	15
Knutson Bros. & Pabst,	Oconomowoc	Registered	20
Kocourek, Clarence B.,	Manitowoc, R. 2	Grade	14
Koenigs, Al,	Fond du Lac, R. 4	Reg. & Gr.	33
Koenigs, Nick & Wm.,	Fond du Lac, R. 3	Grade	30
Koepf, Robert W.,	Barron, R. 2A	Reg. & Gr.	16
Koepf, Wm.,	Barron, R. 3	Reg. & Gr.	14
Kohlwey, Ben.,	Grafton	Registered	23
Kohlwey, Martin,	Grafton	Grade	24
Kohlwey, Otto,	Thiensville	Registered	19

Name	Address	Reg. & Gr.	No.
Kolinski, M. C.,	Waterford	Reg. & Gr.	12
Kollman, Alvin,	Oakfield	Grade	20
Korf, Dave,	Kenosha	Registered	28
Krause & Krueger,	Ripon, R. 2	Grade	22
Krause, Walter,	Dallas	Grade	14
Krause, Wm.,	Watertown, R. 4	Grade	20
Krenz, Alfred,	Johnson Creek	Grade	17
Kreuscher, Roy,	Union Grove	Reg. & Gr.	23
Krift & Lois,	Burlington, R. 3	Grade	23
Kringle, Joe,	Birchwood	Grade	10
Kringle, Leonard & Gust,	Rice Lake, R. 1	Reg. & Gr.	28
Kroh, Earl,	Fond du Lac	Grade	19
Krueger, Emil,	Kaukauna	Reg & Gr.	15
Krueger, Theodore, & Son,	Elk Mound	Registered	18
Krumbus, Erwin,	Thiensville	Grade	15
Kuehn, Edw., & Son,	Princeton, R. 1	Registered	12
Kulbeck, Merton,	Dallas	Reg. & Gr.	16
Kummrow, Edw. H.,	Oconomowoc	Grade	29
Kuntz, Frank,	Turtle Lake	Grade	31
Kurtze, Lloyd,	Hales Corners	Reg. & Gr.	20
Kutchin, V. S.,	Green Lake	Grade	20
Laden Acres Farms,	Burlington, R. 3	Reg. & Gr.	60
Lahti, Geo.,	Turtle Lake	Grade	20
Laird, Geo.,	Black Creek	Grade	18
Lakeside Farm,	Elkhart Lake	Registered	20
Lake Tomahawk State Camp,	Lake Tomahawk	Registered	27
Lamberson, R. A.,	Whitehall	Registered	50
Lane & Moore,	Almena	Grade	38
Lange, A. M.,	Cumberland	Grade	19
Langenfeld, Paul,	New Holstein	Reg. & Gr.	35
Larson, Karl & Soderberg,	J. W. Chetek	Grade	15
Larson, Lewis,	Chetek	Grade	21
Lassig Bros.,	Taycheedah	Reg. & Gr.	34
Lassig, Theodore,	Rhineland	Grade	20
Laurson, Lauritz,	Union Grove	Registered	30
Lee, Melvin C.,	Barron, R. 2A	Grade	18
Lehman, Charles,	Barronett	Reg. & Gr.	13
Leist, Mrs. Laura,	Manitowoc, R. 2	Grade	14
Leisz, Anton,	Turtle Lake	Grade	23
Leisz, August,	Turtle Lake	Grade	19
Leisz, Edward,	Cumberland	Grade	14
Leith, Ray H.,	Van Dyne, R. 1	Grade	17
Lemke, Louis,	Thiensville	Grade	16
Lemmenes, Andrew,	Waupun	Grade	15
Lentz, Clarence,	Dallas	Reg. & Gr.	21
Lescohier & Dykstra,	Ft. Atkinson, R. 3	Reg. & Gr.	32
Lewis, Austin,	Kansasville	Registered	20
Lewis, Joe,	Birchwood, R. 2	Grade	20
Lichtenwalner, I. H.,	Barron	Registered	9
Lieske, Arnold,	Berlin, R. 2	Grade	19
Lillie, Dr. O. R.,	Waukesha, R. 5	Reg. & Gr.	30
Lind Bros.,	Cumberland	Grade	13
Lindberg, Hjalmer,	Turtle Lake	Grade	22
Loew, Austin,	Mikana	Grade	52
Lorier, Geo.,	Waukesha, R. 1	Reg. & Gr.	14
Lothe, Walter,	Waukesha, R. 5	Grade	17
Lowell, Art.,	Canton	Grade	10
Ludtke, George,	Downing	Grade	38
Lund, Geo.,	Arcadia	Registered	21
Lundmark, F. O.,	Cumberland	Grade	17
Lundstrom, Elling,	Cumberland, R. 2	Grade	17
Lusson, Joseph,	Rice Lake, R. 4	Grade	16
Maas, Emil, & Nelson,	Lloyd, Barron	Reg. & Gr.	30
Maass, Harvey,	Seymour	Reg. & Gr.	25
Macak, Albert,	Barron	Grade	18
Mack, Cecil,	Camp Douglas	Grade	26
Madans, John,	Burlington, R. 4	Grade	27
Makovic, Frank,	Owen, R. 1	Grade	26
Makovsky, E. J.,	Racine	Registered	20

Name	Address	Reg. & Gr.	No.
Malone, John,	West Allis, R. 5	Reg. & Gr.	9
Marco, Ed.,	Norwalk	Grade	14
Marcoe, Walter,	Van Dyne	Registered	21
Markert, Harry,	Helenville, R. 1	Reg. & Gr.	12
Markgren, Wm.,	Cumberland, R. 2	Grade	19
Martin, Everett, & Son,	Mukwonago	Registered	18
Martin, Jacob,	West Bend, R. 3	Grade	22
Massie, Albert,	Chetek	Grade	20
Massie, Ed.,	Chetek	Grade	25
Massie, Gomer,	Chetek	Grade	15
Massie, Leo,	Genoa	Grade	18
Massie, Robert,	Chetek	Grade	20
Mathews, Roy,	Prairie Farm	Grade	29
Matula, Steve,	Boyceville	Grade	15
Mayola, John,	Barron, R. 1	Grade	26
Meilahn & Steinke,	Eldorado		24
Meisegeier, Paul,	Barron	Grade	14
Meisegeier, Wm.,	Barron, R. 3	Registered	23
Meisegeier, Wm., Jr.,	Barron, R. 3	Reg. & Gr.	12
Messman, Herbert,	Two Rivers, R. 1	Reg. & Gr.	20
Meuschke, Wm.,	West Bend, R. 2	Registered	17
Meyer, Albert, Jr.,	Hales Corners	Registered	13
Meyer, John P.,	Manitowoc, R. 2	Grade	14
Midbøe, J.,	Chetek	Reg. & Gr.	12
Mildebrandt, Aug., & Son,			
Markesan, R. 1		Registered	25
Millar, Wm., Jr., & Sons,	Menomonie	Registered	35
Miller, A. J.,	Oconomowoc	Grade	17
Miller, Andrew, & Son,	Eastman		13
Miller, Jens,	Withee, R. 2	Grade	22
Miller, Wesley,	Burlington, R. 4	Grade	17
Milwaukee Co. House of Correction,			
Milwaukee		Registered	58
Milwaukee Co. Institutions,	Wauwatosa	Registered	110
Molls, Carl,	Almena	Grade	23
Moore, Evert,	Bridgeport		23
Moore, Perry,	Almena	Reg. & Gr.	18
Moore, S. T.,	Rice Lake, R. 4	Registered	16
Morgan, Harold,	Rosendale	Registered	30
Morning Crest Farm,	Eau Claire	Registered	40
Morris, Mrs. Catherine,	Oconomowoc	Reg. & Gr.	24
Mueller, Hilmer,	Seymour	Registered	26
Mueller, Walter,	Chilton, R. 2	Grade	25
Mueller, Wilbert,	Mishicot, R. 1	Reg. & Gr.	27
Mullen, William H.,	Fond du Lac, R. 3	Grade	42
Mundschau, Ray,	Dousman	Registered	33
Muschik, Math,	Clayton	Reg. & Gr.	18
McCourt, Howard,	Fond du Lac	Grade	25
McCourt, Sherman,	Fond du Lac	Grade	24
McGarro, Foster,	Woodworth	Reg. & Gr.	20
McIntyre, Kenneth,	Barron	Grade	12
McLachlan & Frey,	Cambridge, R. 1	Reg. & Gr.	25
Narges, Chas.,	Campbellsport	Grade	15
Nehrbass, Jacob,	Rockfield, R. 1	Registered	19
Nehrbass, William,	Rockfield, R. 1	Registered	16
Neilsen, Arnie,	Waukesha, R. 1	Grade	19
Nelson, Charles,	Rhineland	Grade	13
Nelson, Emil,	Chetek	Grade	15
Nelson, Fred,	Rice Lake	Grade	14
Nelson, George,	Dousman	Grade	17
Nelson, Harvey A.,	Union Grove	Reg. & Gr.	52
Nelson, Oswald,	Baldwin	Registered	12
Ness, Mrs. Einar L.,	Cumberland	Registered	18
Ness, Peter, Sr.,	Rice Lake	Grade	8
Newman, Gordan,	Chetek	Grade	9
Newman, Gust,	Dallas	Grade	22
Nielsen, G. M.,	Knapp	Reg. & Gr.	38
Nielson, Hilbert,	Barronett	Reg. & Gr.	12
Nilsestuen, Julius,	Arcadia	Reg. & Gr.	20
Norris Farm,	Wukwonago	Registered	18
Noth, Alvin,	Norwalk	Grade	19

**OUR 1942 ALL-AMERICAN
NOMINEE**



**Pansy Burton De Kol Burke
2131575**

First Prize Three-Year-Old and Champion Wisc. cow — Wisconsin State Fair 1942. Third at Waterloo.

She has a Junior three-year-old record of 646.8 lbs. Fat with a 4.1% test in 365 days on 2x.

We have recently purchased one-half interest in her Proven Sire, Sir Pansy Beets Ormsby Burke 729720, whose 15 nearest dams average 852 lbs. Fat.

Our calves by our Junior Sire, Hays' Little Joe 10th, look very promising and we have several young bull calves by Gray View Fobes Joe out of High Record Dams.

WRITE TODAY FOR ANY INFORMATION
ON THESE CALVES.

GRAY VIEW FARM

**H. A. NELSON & SONS
Union Grove, Wis.**

Name	Address	Reg. & Gr.	No.
Noth, Clarence,	Norwalk	Grade	18
O'Brien, George,	Eden, R. 1	Reg. & Gr.	28
O'Brien, John T.,	Eden, R. 1	Grade	28
O'Brien, T. W.,	Argonne	Grade	32
Ochs, Paul,	Elkhart Lake	Grade	18
Ochs, Walter,	Cleveland	Reg. & Gr.	24
Oettmeier, John,	Jefferson, R. 1	Reg. & Gr.	23
Ogie, John C.,	Fond du Lac, R. 3	Grade	19
O'Laughlin & Sampson,	Malone	Registered	26
Olsen, H. B.,	Hammond	Registered	25
Olsen, Ted & Antone,	Tomah	Grade	22
Olson, Geo. & Luverne,	Barronett	Grade	26
Olson, Ralph,	Baldwin	Grade	14
Oneida County Home,	Rhinelander	Grade	10
O'Neil, Dale H., & Son,	Rosendale	Registered	14
O'Neil & Hardgrove,	Rosendale	Registered	30
Ossman Bros.,	Tomahawk	Grade	10
Osterkamp Bros.,	Almena	Registered	18
Ours, E. Roy,	Campbellsport	Grade	23
Outagamie County Asylum,	Appleton	Grade	51
Overby, Simon,	Menomonie	Grade	17
Overson, Stanley,	Union Grove	Registered	22
Owens, William,	Oconomowoc	Reg. & Gr.	30
Palmbach, Geo.,	Appleton	Registered	12
Palmer, Alvin	Oakfield	Registered	17
Pamperin, Wm.,	Allenton	Registered	16
Paskey & Scholten,	Waupun	Reg. & Gr.	24
Paulsrud, Lauritz,	Chetek	Reg. & Gr.	18
Paulsrud, Norman,	Chetek	Reg. & Gr.	18
Peck, Wllis,	Menomonie	Grade	36
Pedretti, Joe,	Genoa	Reg. & Gr.	26
Perry Bros.,	Ft. Atkinson, R. 1	Reg. & Gr.	30
Pester, Clarence,	Whitewater, R. 1	Registered	24
Peters, Clarence,	Appleton	Grade	16
Peterson Bros,	Hillsdale	Grade	21
Peterson, Carl V.,	Barron	Grade	21
Peterson, Charles,	Oconomowoc	Grade	14
Peterson, Charles A.,	Barron, R. 2A	Grade	11
Peterson, E. M.,	Curtiss, R. 1	Reg. & Gr.	24
Peterson, Eric A.,	Rice Lake	Reg. & Gr.	18
Peterson, John A., & Sons,	Turtle Lake	Grade	25
Peterson, Maurice,	Mukwonago	Reg. & Gr.	40
Philipsky, Albert,	Oakfield	Grade	27
Phillips & Esplin,	Cumberland	Grade	13
Pickart, Albert,	New Holstein	Grade	20
Pieper, Henry,	Eden	Grade	24
Piepkorn, Chas.,	Appleton	Grade	15
Pipkorn, Emil,	Thiensville	Grade	24
Pipkorn, Gustave,	Cedarburg	Reg. & Gr.	21
Pipkorn, Louis,	Thiensville	Grade	15
Pipping & King,	Calvary	Grade	36
Piskula, S. J.,	Hales Corners	Reg. & Gr.	11
Post, Dr. C. C. & Seeman,	Barron	Registered	20
Powell & Gillmore,	Kenosha	Reg. & Gr.	24
Prange, Louis,	Sheboygan Falls	Grade	22
Prellwitz Bros.,	Ripon, R. 1	Grade	22
Price, Edith, & Sons,	Kenosha	Grade	17
Priem, Alvin,	Appleton, R. 3	Grade	15
Probert, Edward,	Dousman	Grade	24
Procknow, Ray,	Menomonie	Grade	15
Pucker, Albert,	Rosendale		20
Punzel, Fred C.,	Edgerton, R. 1	Registered	10
Punzel, Walter,	Edgerton, R. 1	Reg. & Gr.	19
Quick, Jess, & Son,	Green Lake, R. 1	Grade	20
Quilling L. H., & Sons,	Elk Mound	Reg. & Gr.	25
Quinn, Martin,	Rice Lake, R. 1	Grade	12
Rabe, H. O.,	Almena	Grade	15
Rabehl, Albert,	Rice Lake, R. 1	Grade	17
Rabehl, Arthur,	Rice Lake, R. 1	Grade	23
Racine County Asylum,	Racine	Reg. & Gr.	87
Radichel, Alvin,	Hortonville	Grade	16

Name	Address	Reg. & Gr.	No.
Radke, Louis, & Son,	Wilton	Reg. & Gr.	20
Radtke, E. H., & Son,	Downing	Registered	16
Radue, Ed., & Son,	Thiensville	Registered	18
Rahmlow, Paul,	Mishicot, R. 1	Reg. & Gr.	26
Rasmussen, Walter,	Baldwin	Grade	11
Ray, R. L.,	Eau Claire	Registered	20
Reetz & Lundeen,	Markesan, Star R	Reg. & Gr.	19
Reich, Raymond,	Oconomowoc	Grade	24
Reineking, Paul,	Plymouth	Reg. & Gr.	20
Reis, George M.,	Manitowoc, R. 2	Reg. & Gr.	16
Reisch Farm,	West Bend	Grade	18
Reiter, Wendolyn,	Bristol, R. 1	Grade	15
Richter, Elmer A.,	Burlington, R. 3	Grade	31
Richter, Frank,	Burlington, R. 3	Grade	27
Richter, Henry,	Union Grove	Registered	16
Richter, John,	Bristol, R. 1	Registered	11
Riewesthal, Alfred,	Hales Corners	Reg. & Gr.	22
Riskedahl, John,	Prairie Farm	Grade	25
Ristow, Laurence,	Cumberland	Grade	11
Robers, William,	Burlington	Registered	18
Robinson, Mark,	Stoddard	Reg. & Gr.	23
Roehl, Harold,	St. Cloud	Grade	27
Rolstad, Si, & Anderson,	Elmer, Barron	Grade	12
Romsos, Erling,	Barronett	Grade	11
Rosenbaum, Andrew,	Lynxville	Grade	14
Rosenow, H. E.,	Oconomowoc	Registered	19

MAKE IT YOUR BUSINESS TO VISIT THE
GREAT HOME FARM HERD
For Choice Bulls and Heifers
G. J. FEIDER, Belgium, Wis.

Rosenquist, John, Owen,	R. 2	Grade	24
Roux, George,	Rice Lake, R. 1	Grade	26
Roux, Leslie,	Rice Lake, R. 1	Grade	13
Roux, Victor,	Rice Lake, R. 4	Grade	22
Rowe, Weldon,	Prairie Farm	Grade	7
Rudy, Fred P.,	Kenosha, R. 2	Reg. & Gr.	29
Russart, Frank,	Sheboygan	Grade	26
Rust, Fred,	West Allis, R. 5	Registered	2
Ruud, Edw., & Son,	Menomonie	Reg. & Gr.	24
Sabel, Albert,	Fond du Lac, R. 4	Grade	25
St. Bonaventure College,	Sturtevant	Reg. & Gr.	25
St. Charles Boys' Home,	Wauwatosa	Registered	10
Salen Farm No. 1,	Waukesha	Grade	38
Salen Farm No. 2,	Dousman	Grade	22
Salsbury, Lloyd,	Dallas	Grade	14
Salter, Arthur,	Fond du Lac, R. 3	Grade	16
Sampe, Fred,	Manitowoc, R. 5	Grade	17
Sander, John,	Prairie Farm	Grade	23
Sandve, Arthur,	Cumberland	Grade	13
Sangel, Richard,	Mishicot, R. 1	Grade	12
Sar Berth Farm, Inc.,	Hales Corners	Reg. & Gr.	20
Savage, Glenn,	Barronett	Reg. & Gr.	21
Savage, Loran,	Barronett	Grade	14
Scannell, James, & Son,	Eden, R. 1	Reg. & Gr.	21
Schaefer, Henry,	Appleton	Registered	26
Schaffer, Alfred,	Clayton	Grade	11
Scharlau, C. A.,	Arcadia	Registered	20
Schenten, Nick, Jr.,	Barron, R. 1	Grade	12
Scheppert, Arthur,	Jefferson, R. 1	Reg. & Gr.	23
Scherer, Otto,	Calvary	Grade	
Schilder, Lawrence,	Ripon	Registered	14
Schlender, John,	Oconomowoc	Grade	18
Schlottman, Mrs. Lydia, & Sons,	Boyceville	Grade	22

Name	Address	Reg. & Gr.	No.
Schmidt, A. F.,	Campbellsport	Grade	17
Schmidt, Arnold P.,	Kenosha, R. 4	Reg. & Gr.	38
Schmidt, Geo. A.,	Hillsdale	Reg. & Gr.	18
Schmidtman, Herbert,	Two Rivers, R. 2	Grade	13
Schoenbeck, Otto,	West Bend, R. 1	Grade	27
Schoessow, Bernhard, & Sons,	Thiensville	Reg. & Gr.	22
Schrank, Elmer,	Campbellsport	Grade	21
Schreiber, John,	Sheboygan	Registered	18
Schroeder, C. A., & Son,	West Bend, R. 5	Registered	31
Schroeder, H. F., & Sons,	West Bend, R. 4	Registered	52
Schroeder, Ted, & Sons,	Menomonie	Registered	30
Schulte, Louie,	Cumberland	Grade	10
Schultz, Arthur,	Manitowoc, R. 2	Grade	22
Schultz Bros.,	Menomonie	Registered	24
Schulz, Charles,	Union Grove, R. 2	Registered	10
Schurz, Archie,	Bridgeport		29
Schutts, Fred,	Boyceville	Grade	16
Schutts, Leonard,	Boyceville	Grade	25
Schutts, Orval,	Boyceville	Grade	16
Schutts, Walter, & Son,	Boyceville	Grade	16
Schutz, Albert,	Dallas	Registered	20
Schutz, John,	Boyceville	Grade	20
Schwartz, Rolla,	Two Rivers, R. 1	Reg. & Gr.	18

ALBERTVILLE HOLSTEIN FARM

14 Years in Continuous D.H.I.A.
Records Up to Over 800 Lbs. Fat

Herd headed by St. Croixco Burke Skylark, 3 nearest dams average 823 lbs. fat, 3.8%. Index on first 5 pair daughter-dam comparisons on 2x, 305 day records give him an Index of 545 lbs. fat.

Stock for Sale

CHRIS. C. JENSEN

Accredited & Certified

R. 3, COLFAX, WIS.

Schwefel, Wm.,	Oakfield	Grade	26
Schweitzer, Charles,	Hales Corners	Grade	16
Schweitzer, John,	Hales Corners	Reg. & Gr.	22
Searle & Dalton,	Rice Lake, R. 4	Grade	20
Searle & Jackowski,	Markesan, R. 1	Grade	28
Seefeld, Art,	Campbellsport	Reg. & Gr.	12
Seeley, Wm.,	Oconomowoc	Grade	20
Seffern, Wm.,	Van Dyne	Grade	26
Seipel, Richard,	Elmwood, R. 2	Grade	12
Severson, Herman,	Cameron	Registered	11
Shaughnessy, Joseph,	Milwaukee, Sta. F., R. 1	Grade	8
Shea, M. E.,	Campbellsport	Grade	17
Sheldon, Bernard,	Rice Lake, R. 4		12
Sheldon, Howard,	Rice Lake	Reg. & Gr.	12
Shilberg, Carl,	Watertown, R. 3	Grade	23
Sias Grove Farm,	Sparta	Reg. & Gr.	31
Simon, Henry, & Son,	Fond du Lac, R. 4	Reg. & Gr.	26
Sims, Henry,	Rice Lake	Grade	14
Sirek, Louis,	Rice Lake, R. 4	Grade	20
Skoda, Ralph,	Rice Lake	Grade	24
Skroch, Mike,	Independence	Registered	25
Smith Bros.,	Dallas	Grade	15
Smith, Thomas D.,	Boyceville	Reg. & Gr.	20
Snoeyenbos, Lester,	Roberts	Grade	25
Snoeyenbos, Roy,	Glenwood	Grade	25
Sorensen, Axel,	Withee, R. 2	Grade	26
Southcott, Roy,	Oconomowoc		18
Spragg & McConnell,	Ripon, R. 2	Reg. & Gr.	34
Stack, George,	Eden	Grade	17
Stadler, Arthur,	Reedsville	Reg. & Gr.	16
Stafsholt, Toleff, & Son,	Glenwood City	Grade	30
Stair, Henry,	Barron	Grade	25

Name	Address	Reg. & Gr.	No.
Stanchfield, G. H.,	Fond du Lac, R. 3	Reg. & Gr.	26
Stanchfield, Sam C.,	Fond du Lac, R. 3	Registered	22
Starkey, Walter,	Rice Lake	Grade	11
Steel Bros. & Vogt,	Lyons	Grade	20
Steeps, Joe S.,	Berlin, R. 2	Grade	21
Steffen, Wm.,	Barron, R. 3	Grade	6
Steger, R. & E.,	Cedarburg	Grade	19
Steinke, Albert,	Waukesha, R. 3	Reg. & Gr.	12
Stephany, Oscar,	St. Cloud	Grade	
Stephany, Richard,	Byron	Grade	26
Stephenson, Martin,	Hillsdale	Grade	10
Stichman, Henry,	New London	Grade	30
Stichtman, H. C.,	New London	Registered	12
Strutz, Fred, & Son,	Two Rivers, R. 1	Reg. & Gr.	16
Summers, Louis,	Kansasville	Grade	20
Swant, Nevan,	Barron	Grade	15
Sweet, Blair,	Cumberland	Grade	13
Sykes, Clarence,	Chetek	Grade	9
Sykes, Ed.,	Chetek	Grade	9
Tans, Lyle,	Waukesha, R. 3		20
Thelen, A. P.,	La Farge	Grade	44
Thomas & Story,	Oconomowoc	Reg. & Gr.	35
Thompson, Gens,	Cumberland	Grade	12
Thompson, Ingval,	Dallas	Reg. & Gr.	18
Thompson State Farm,	c/o W. W. Kinyon, Madison	Reg. & Gr.	26
Thorsbakken, Martin,	Hillsdale	Grade	15
Tireman, Harvey,	Hillsdale	Grade	9
Titel, Emil,	Plymouth	Registered	42
Tollackson, Austin,	Viroqua	Reg. & Gr.	26
Tomlin, A. G.,	Waukesha	Grade	18
Torgerson, Mrs. Edw., & Son,	Menomonie	Reg. & Gr.	12
Torgerson, O. Theo.,	Rock Falls	Reg. & Gr.	10
Torrey, Earl, & Son,	Richmond, Ill.	Registered	16
Trainor, Miss E.,	Wilton	Grade	18
Tubbs, Geo.,	Seymour	Grade	18
Turville, S. E.,	Oakfield	Registered	30
Tvedt, C. O.,	Barron, R. 3	Registered	22
Tweed, Dan,	Prairie Farm	Grade	26
Twohig, Robert,	St. Cloud	Reg. & Gr.	25
Uchytel, Frank,	Rice Lake	Grade	14
Uhlenbrauck, Emil,	Appleton	Reg. & Gr.	20
Umberger, Clifford,	Genoa	Reg. & Gr.	16
Unser, C. F.,	Arkansaw	Grade	17
Vanderwerff, Tim,	Bristol, R. 1	Reg. & Gr.	18
Van Driest, Henry,	Cedar Grove	Reg. & Gr.	22
Ventnor Farms,	Oconomowoc	Registered	16
Vick, Orrin,	Rice Lake, R. 1	Grade	16
Vieth, August,	Kendall	Grade	23
Voelker, Emil,	Cameron	Grade	16
Voelkering, John J.,	Burlington, R. 3	Registered	24
Voight & Rhein,	Lomira, R. 1	Registered	31
Voland, Erwin,	Cedarburg	Registered	16
Voland, Oscar,	Cleveland	Grade	15
Von Rueden, Victor,	Wilton	Grade	25
Vos, Hugo B.,	Burlington, R. 3	Grade	38
Voss, Arno,	Sheboygan	Reg. & Gr.	16
Vrieze, Lawrence,	Baldwin	Grade	12
Wagenback, Edward,	Barron, R. 2A	Grade	23
Wagner, A. L.,	Cleveland	Registered	29
Wagner, Henry J.,	Calvary, R. 1	Registered	36
Wagner, Joe,	Fond du Lac, R. 1	Grade	32
Wakefield, Nelo,	Warrens	Reg. & Gr.	8
Waldschmidt, Henry,	Campbellsport, R. 1	Grade	28
Waldschmidt, Walter,	St. Cloud	Grade	
Walgenbach, Al.,	Fond du Lac, R. 2	Reg. & Gr.	30
Walters, R.,	Oconomowoc	Grade	16
Wampfler, J. G.,	Rice Lake, R. 1	Reg. & Gr.	13
Wampfler, J. O.,	Rice Lake, R. 4	Grade	20
Ward Bros.,	Bridgeport		9

Name	Address	Reg. & Gr.	No.
Ward Bros., Ft. Atkinson, R. 1	-----	Reg. & Gr.	20
Ward, H. D., Hillsdale	-----	Reg. & Gr.	21
Ward, Spencer E., Ft. Atkinson	-----	Reg. & Gr.	23
Warner, W. H., Salem, R. 1	-----	Registered	30
Washington County Asylum, West Bend	---	Grade	40
Wasserbach, Leon, Appleton	-----	Reg. & Gr.	18
Watland, Wm., & Contral, V. H., Menomonie, R. 4	-----	Grade	30
Waukesha Co. Farm Waukesha, R. 1	---	Reg. & Gr.	35
Weber, Gregory, Rice Lake, R. 4	-----	Grade	11
Weckler, Geo. C., Ft. Atkinson, R. 1	--	Reg. & Gr.	22
Wegmann, Ed., Cedarburg	-----	Reg. & Gr.	15

JOHN WUETHRICH

Breeder of

PUREBRED HOLSTEIN-FRIESIAN CATTLE

Senior Herd Sire:

Colony George Sir Heilo, Son of All American Colony Flood Colantha. Has 15 tested daughters with an average of 480 lbs. of Butterfat at 2 years of age.

Junior Herd Sire:

Carnation Typesetter.

Sire's Dam: 1,149 lbs. of Fat, 4.7% Test.

His Own Dam: 935.8 lbs. of Fat at 4 years of age. Test 4.3%.

11 nearest dams average 1,066 lbs. Fat over 4% Test.

JOHN WUETHRICH CREAMERY COMPANY

Greenwood, Wis.

Wehrmann, Arno, Elkhart Lake	-----	Reg. & Gr.	17
Weidman, Geo., Cedarburg	-----	Registered	12
Weis, Francis, Burlington, R. 3	-----	Grade	19
Weiskoph, H. R., Cleveland	-----	Registered	8
Welk, Franklin, Ripon, R. 1	-----	Grade	14
Welker, Jake, Union Grove	-----	Reg. & Gr.	16
Wenger, Ernest, Clayton	-----	Grade	28
Wentker, Edward, Mishicot, R. 1	-----	Registered	14
Wenzel Bros., Sullivan	-----	Grade	23
Wenzel, Roy, Sullivan	-----	Grade	27
West, R. W., Owen, R. 1	-----	Reg. & Gr.	23
Westcott, Nathan, Union Grove	-----	Grade	16
Westfield Bros., Princeton, R. 1	-----	Grade	13
Westin, Louis, Cumberland	-----	Grade	14
Weyker, Ed., Dousman	-----	Reg. & Gr.	10
White, Henry, Markesan, R. 1	-----	Grade	27
Whiteford, James, Barron	-----	Grade	10
Whiting, Lawrence, Brandon	-----	Registered	18
Whitney, Raymond, Eldorado	-----	Grade	15
Wiechert, Henry, Cedarburg	-----	Reg. & Gr.	17
Wieckert, Walter, Appleton	-----	Reg. & Gr.	28

Name	Address	Reg. & Gr.	No.
Wieland, F. W.,	Menomonie	Registered	20
Wienke, Elmer,	Bristol	Grade	18
Wiesner, Harold,	Rice Lake	Grade	9
Wilks, Raymond,	Union Grove	Reg. & Gr.	18
Willems, Nick,	Barron, R. 1	Registered	20
Willers, Henry,	Clayton	Grade	12
Williams, Bruce,	Randolph, R. 2	Registered	15
Wilsie, Walter W.,	Brandon	Registered	22
Wiltgen, Pete, & Valkenberg,	C. V., Chetek	Grade	22
Wippermann, E. C.,	Sheboygan	Reg. & Gr.	20
Wippermann, Hubert,	Cleveland	Reg. & Gr.	18
Wisconsin Home & Farm School,	Oconomowoc	Registered	18
Wisconsin State Prison,	Waupun	Registered	102
Wisti, Wm.,	Barron	Grade	25
Wollmer, Derral,	Mukwonago	Registered	16
Worm & Stearns,	Waupun	Registered	17
Wright, Harold,	Johnson Creek	Grade	12
Wyss, Fred,	Boyceville	Grade	22
Wyss, Harry,	Boyceville	Grade	17
Yahnke, George & Lenard,	Burlington, R. 4	Reg. & Gr.	22
Yerk, Henry, & Son,	Fairwater, R. 1	Grade	23
Zepnick, Jake,	Seymour	Reg. & Gr.	30
Ziegler, Ed.,	Appleton	Grade	22
Zieroth, Jack,	Rice Lake, R. 1	Grade	12
Zimmer, Herbert,	Rice Lake, R. 4	Grade	26
Zobel & Doering,	Green Lake	Registered	20
Zobel & Stone,	Green Lake	Registered	15



Jersey Breeders

Active Members of the Wisconsin Dairymen's Association

Name	Address	Reg. & Gr.	No.
Amundson, Julius, & Erickson, Peter,	Barron	Grade	24
Ausman, Sam, & Son,	Elk Mound	Registered	18
Bensend, John,	Turtle Lake	Grade	11
*Blank, Alvin,	Grafton	Registered	17
Block, Alton,	Eau Claire	Registered	20
Brackett, Richard,	Elk Mound	Registered	50
Bussewitz, Albert,	Turtle Lake	Reg. & Gr.	18
Cisler, J. E.,	Valders	Reg. & Gr.	43
*Craig, J. A.,	Janesville	Registered	40
Crotteau, Clyde,	Cumberland	Reg. & Gr.	12
*Dimick, R. J.,	Almena	Reg. & Gr.	18
Duncan, Claude,	Comstock	Reg. & Gr.	18
Emerson, Mrs. K.,	Wheeler, R. 2	Reg. & Gr.	17
Erickson, A. J.,	Kendall	Grade	19
Frisinger, Arthur,	Barron	Grade	12
Frisinger, Marshall,	Barron	Grade	14
Gansburg, Fred,	Menomonie, R. 6	Reg. & Gr.	14

Observer Sybil Baronet - 401100

A one-star Bull with 14 credits, descendant of three superior sires, is master of our Registered Jersey herd. All bulls from this outstanding sire have been sold — so place your order now!

Registered Berkshire Hogs.



ALTON DALE BLOCK

EAU CLAIRE

Name	Address	Reg. & Gr.	No.
*Gil-Bar Farms,	Janesville	Registered	135
Gilman, C. R.,	Oconomowoc	Registered	17
Guerkink, Roy,	Baldwin	Grade	13
Haegels, Alvin,	Pelican Lake	Grade	8
*Hawkinson, Jake,	Barron	Registered	20
Heebink, Herman,	Baldwin	Grade	18
Heebink, Wm.,	Baldwin	Grade	16
Held, V. J.,	Stoddard	Grade	16
*Hepburn, Howard,	Prairie Farm	Reg. & Gr.	14
Hoffmann Farms, Inc.,	Grafton	Registered	19
Holloway, Charles,	Union Grove	Registered	22
*Holloway, John,	Union Grove	Registered	25
Hollstrom, R. W.,	Waukesha, R. 1	Reg. & Gr.	24
Houston, Wallace,	Comstock	Reg. & Gr.	15
Howard, George L.,	Durand, R. 2	Reg. & Gr.	22
Howell, Harold,	Waukesha, R. 1	Reg. & Gr.	19
Jacobson, Rudolph,	Almena	Grade	16
Karnes, Carl,	Menomonie, R. 1	Grade	26
Karnes, Walter,	Spring Valley	Grade	24
*Keup, Ed.,	Cedarburg	Registered	20
*Kolb, John,	Cleveland	Reg. & Gr.	20
Kurschner, Merrill,	Prairie Farm	Reg. & Gr.	14
Larson, Roy,	Cumberland	Registered	20
Lee, Melvin C.,	Barron	Reg. & Gr.	18
Ling, Clarence,	Union Grove	Reg. & Gr.	22
Love, Addison F.,	Burlington	Registered	28
Marco, Ed.,	Norwalk	Grade	14
Mason, Herman,	Viroqua	Grade	15
Miller & Smith,	Cumberland	Grade	26
Miller, Edward A.,	Ridgeland, R. 1	Reg. & Gr.	20
Miller, Geo. O.,	Barron, R. 1	Grade	17
Miller, J. M., & King,	M. L., Chetek	Grade	15

Fawn Dawn Farm

— OUR PROGRAM —

Continuous testing for production, Bang's and T. B. Herd classification for type, using proven sires and star bulls. Just finished 17th year testing ave. 404 lbs. fat. Record this year on 30 cows 436 lbs. fat. Young stock of either sex for sale. Herd accredited.

P. N. STEFFANUS

DELAVAN, WIS.

Name	Address	Reg. & Gr.	No.
Miller, Wm.,	Turtle Lake	Grade	18
Nagel, Ray,	Elkhart Lake	Reg. & Gr.	18
*Neumann, Arwin,	Cleveland	Reg. & Gr.	23
Poisl, William,	Union Grove	Registered	15
Quilling, Geo. A.,	Menomonie	Grade	26
Reed, R. M.,	Lake Tomahawk	Grade	8
*Rheineck, Dr. A. F.,	Oconomowoc	Registered	20
Riebe, Roy,	Cumberland	Reg. & Gr.	17
Rolf, Herbert,	Almena	Registered	18
*Rusdahl, Martin,	Viroqua	Reg. & Gr.	12
Scribner, Ervin,	Comstock	Registered	14
Scribner, Glen,	Comstock	Reg. & Gr.	17
Snyder, Lyard,	Dallas	Grade	15
Sordahl, Albon,	Viroqua	Reg. & Gr.	13
Splett, Henry,	Almena	Reg. & Gr.	25

ELK LAKE FARM JERSEYS

HERD SIRES

Brampton Favorite Royal 382599.

Classified Good Plus

By Right Royal 79285 C. J. C. C., Gold and Silver Medal. Out of Brampton Favorite Girl 164965 C. J. C. C., Medal of Merit, Gold and Silver, with 1,020 lbs. butterfat.

Brampton Royal Aim High 391550.

Classified Very Good.

Jr. Champ. Minn. 1939.

By Valiant Aim P. S. 7133 H. C. First on Jersey, 1936. Classified Very Good. Out of Brampton Royal Vicki 94606 C. J. C. C. 544 lbs. butterfat as 4-year-old. Reserve Junior Champion, Grouville-St. Saviour.

RICHARD BRACKETT

ELK MOUND, WISCONSIN

Steffanus, P. N.,	Delavan	Registered	30
Stefl, Joe J.,	Mishicot, R. 1	Grade	18
Stockman, A. C.,	Turtle Lake	Grade	23
Stuckmann, Herman,	Plymouth	Reg. & Gr.	18
Tollackson, Austin,	Viroqua	Reg. & Gr.	26
Vernon County Asylum,	Viroqua	Registered	100
Von Rueden, Victor,	Wilton	Grade	25
*Wallace, H. M.,	Norwalk	Registered	22
*Wiegand, K. T.,	Cleveland	Registered	20
Wiegand, Mrs. Otto,	Cleveland	Registered	22

*Also active members of the Wisconsin Jersey Breeders' Association.

Our Jerseys at the Front On Ten Logical Counts

1. VERNON COUNTY JERSEYS earned ten State Class Championship certificates for production.

2. All but one of the living Wisconsin State Champions are in this herd.

3. Herd Improvement Registry production average for 1941, 429 lbs. butterfat per cow.

4. Premier Jersey Breeder award at the Wisconsin State Fair, under national competition, 1940 (last time shown).

5. Herd-sire, Valiant of Oaklands (imported), the only bull four times Champion over the Island of Jersey. Second high scoring sire of the breed for classified daughters (88.50%).

6. Herd - sire, Wonderful Standard You'll Do (imported), whose half-sister was twice Champion Milk Cow Over the Island of Jersey. First prize winner and sire of first prize and Champion winners.

7. Numerous one- and two-ton cows in the herd. The class that produces profitably from heiferhood through a long life.

8. A "sample" of our brood cows: Madcap Admiration, four successive Gold Medals, 653.32 lbs. fat as a four-year-old, 661.88 lbs. at 5 years, 692.05 lbs. at 6 years, 655.19 lbs. at 7. All 305-day tests. Holds two State production records.

9. Another "sample": Madcap Heiress, Gold Medal, 711.59 lbs. fat. Full sister to Madcap Admiration.

10. A profusion of the above blood, and other universally distinguished strains, permeates the herd of 150 select registered Jerseys.

Progressive Dairymen will conclude that
Quality Production Grows and Jersey Type
Improves with the use of this stimulating
Vernon County Blood.

SEND FOR BULL LIST

Occasionally we can supply Females bred to
Valiant of Oaklands.

**VERNON COUNTY
ASYLUM FARMS**
Viroqua, Wisconsin

PUREBRED JERSEY FIRSTS

In Things More Important

- First recorded date of recognition of Jersey cattle as a dairy breed — 1734.
- First dairy cow registered in America — a Jersey (Lily No. 1, dropped in 1851).
- First purebred dairy organization in America — American Jersey Cattle Club.
- First to conduct Parish Shows in America — Jersey breeders (1926 in Indiana).
- First in production efficiency in every impartial test — purebred Jersey cattle.
- First (and only) breed with a national butterfat average over 5% — Jerseys.
- First dairy breed in America to adopt Selective Registration — Jerseys (1939).
- First Super Registration ("Star Bull") program initiated by Jerseys (1939).
- First cow choice of 50,000 American dairy breeders — purebred Jerseys.
- First choice of 2,000,000 American dairy farmers — Jerseys (purebreds, grades).

Wisconsin Jersey Cattle Club

Richard Brackett, President, Elk Mound, Wis.
 J. A. Craig, Vice-President, Janesville, Wis.
 G. B. Price, Secretary, R. 3, Kenosha, Wis.

Additional Active Members of the Wisconsin Jersey Breeders' Association Not Already Listed

(Reported by State Secretary as of December 1, 1942)

Name	Address
Abromson, Joe	R. 6, Sawyer
Colvin, Emmet G.	Stratford
Cropley, W. R.	Kenosha
Dow, Parker	Whitewater
Fagan, Marion	Hartland
Feldman, Otto	Augusta
Finn, Chas.	Bridgeport
Fryda, Ernest A.	R. 1, Sussex
Gilbertson, Oscar	Fennimore
Harmeling, J.	Polk Ct., Sheboygan
Harris, Roy	Madison
Hasslinger, Carl	Hartland
Hoffman Estate, John	Grafton
Howell's Jersey Farm	Waukesha
Junio, Wm.	R. 1, Algoma
Keeney, Don	Mt. Hope
Kelsey, Forrest B.	Delavan
Krause, Charles	R. 1, Viroqua
Latimer, A. J.	Box 391, Viroqua
Lorentz, Conrad	Tony
Menn, Benn A.	R. 1, Norwalk
Metzler Bros.	R. 1, New Franklin
Noble, Dr. E. P.	R. 4, Darlington
Pellet, Orval	Viola
Peterson, John H.	R. 1, Box 53, Westby
Pieschel, Geo.	R. 2, Two Rivers
Price, G. B.	R. 3, Box 276, Kenosha

Name	Address
Pritzl, Art	R. 2, Reedsville
Pritzl, Ortman	R. 1, Cato
Saugstad, E. J.	R. 1, Westby
Schlies, Frank, Jr.	R. 1, Casco
Siewert, Theo. R.	R. 1, Sussex
Stafslie, Melvin	Box 391, Viroqua
Stoecker, W. J.	Mukwonago
Stoller, Eli	R. 1, Algoma
Trost, Hugo	Riverby Farms, Waukesha

GIL-BAR FARMS JERSEYS

--- FOR SALE ---

Bulls sired by Star Sires and from Tested and
Classified Dams.

Leading Herd Sire — Imp. Mary's Aim.

JANESVILLE

WISCONSIN



Milking Shorthorns

Active Members of the
Wisconsin Dairymen's Association

Name	Address	Reg. & Gr.	No.
Gerner, Ed., & Sons,	West Bend, R. 2	Registered	22
Gerner, Leslie,	West Bend, R. 2	Registered	13
Gray Albert L.,	Waterford	Grade	20
Johnson, Julius,	Waterford	Registered	12
Mezera, Tiny,	Prairie du Chien		22
Wisconsin Masonic Home,	Dousman	Grade	25

Red Polled

Active Members of the
Wisconsin Dairymen's Association

Name	Address	Reg. & Gr.	No.
Ahlers, J. B., & Son,	West Bend, R. 5	Registered	12
Miller, Art., & Son,	West Bend, R. 4	Registered	13

Mixed Breeds

Active Members of the Wisconsin Dairymen's Association

Name	Address	Reg. & Gr.	No.
Alexander, Charles, Chetek	-----	Grade	12
Beneker, Wm., Prairie du Chien	-----	Grade	16
Carter, John, Owen, R. 2	-----	Grade	12
Duncan, Claud A., Comstock	-----	Grade	13
Ender, Dr. L. W., 1130 Terry St., La Crosse	-----	Grade	11
Hoelz, Walter, Rockfield, R. 1	-----	Grade	24
Hysel, Jonathan, La Farge	-----	Grade	25
Krause & Hoffman, Ripon, R. 2	-----	Grade	15
McGough, James, Rice Lake, R. 4	-----	Grade	11
Peetz, Eddie, Clayton	-----	Grade	10
Peetz, John, Clayton	-----	Grade	18
Peters, Wm., Clayton	-----	Grade	14
Phillips, Theron, La Farge	-----	Grade	18
Roden, Peter, Saukville	-----	Grade	12
Stark, Louis, Owen, R. 2	-----	Grade	10
Van Dorstan, Roy, Hillsdale	-----	Grade	6
Wiesner, Elmer, Rice Lake	-----	Grade	12
Wiesner, Julius, Birchwood	-----	Grade	12
Zemke, Bert, Dallas	-----	Grade	10

Miscellaneous

Active Members of the Wisconsin Dairymen's Association

Name	Address
Bennett, Charles	Pontiac, Ill.
Caplin, Abe	Dousman
Casper, Gregor	New Holstein
Cramer, A. J.	College of Agriculture, Madison
Engel, Norbert	New Holstein
Fuhrmann, Chris	St. Cloud
Fuhrmann, Clifford	New Holstein
Guelig, Mrs. Theresa	Chilton
Gullickson, Edward	Barronett
Harris, Roy T.	College of Agriculture, Madison
Hill, Milo, Fieldman	Woodworth
Hoff, Ben, & Ludtke, G.	Downing
Idtse, Fred S.	Brown Swiss Breeders' Ass'n., Beloit
Jesse, Vincent	Cumberland
Julka, Edgar	Malone
Knapmiller, Elmer	Birchwood
Miller, Frank	R. 1, Rice Lake
Mueller, Armand	New Holstein
Orton, Everette	Cameron
Regner, Franklin, Fieldman	Owen
Rehrauer, Ben, Fieldman	8208 Woodland Ave., Milwaukee
Roehrig, Edgar	Malone
Roehrig, Raymond	Malone
Sasman, L. M.	
	Dept. of Voc. & Adult Education, Madison
Stafsholt, Tolleff, & Son	Glenwood
Vergeront, Glen	College of Agriculture, Madison
Wall, Lowell	Dallas
Wallin, Kenneth, Co. Agr'l Agent	Balsam Lake

Wisconsin Dairy Herd Improvement Ass'ns.

- (—) Associations without a Fieldman on Dec. 10, 1942
 (O) Owner-Sampler Plan (M) Mail Order Plan
 * Associations now having active membership in Wisconsin Dairymen's Association

NORTHWESTERN DISTRICT—Glen W. Vergeront, Extension Dairyman. On Standard DHIA Test 1,323 herds and 25,956 cows, July 1, 1942.

County Association	Fieldman	Secretaries
Barron —c/o County Agent, Barron, Wisconsin		
*Barron No. 1 (—)	-----	I. O. Hembre
*Barron No. 2 (—)	-----	I. O. Membre
*Barron No. 3 (—)	-----	I. O. Hembre
*Barron No. 4, Walter Mannigel	-----	I. O. Hembre
*Barron No. 5, Ernest Link	-----	I. O. Hembre
*Barron No. 6, Ed. C. Anderson	-----	I. O. Hembre
*Barron No. 7 (—)	-----	I. O. Hembre
*Barron No. 8 (—)	-----	I. O. Hembre
*Barron No. 9 (—)	-----	I. O. Hembre
*Barron No. 10 (—)	-----	I. O. Hembre
*Barron No. 11, No report since Apr.	---	I. O. Hembre
*Barron No. 12, George Miller	-----	I. O. Hembre
Buffalo —c/o County Agent, Alma, Wisconsin		
Buffalo-Alma (—)	-----	Hilmer Waelyt
Buffalo Co. No. 2 (—)	-----	Vilas Ede
Chippewa —c/o County Agent, Chippewa Falls, Wis.		
Chippewa No. 1, Howard Polzin		
Chippewa No. 3, Russell Allyn Churchward		
Clark —c/o County Agent, Neillsville, Wisconsin		
*Clark-Curtiss (—)	-----	C. E. Beck
Clark-Greenwood (—)	-----	Theo. Kippenhan
Clark-Taylor (—)		
Clark-Withee, Wm. Gust	-----	Herbert Frederick
Clark (M)		
Douglas —c/o County Agent, Superior, Wisconsin		
Douglas, Delbert Vogler	-----	Robert Faricy
Dunn —c/o County Agent, Menomonie, Wisconsin		
*Dunn No. 1 (—)	-----	Richard Brackett
*Dunn No. 2, Donald Hintzman	-----	H. W. Jodell
Dunn No. 3, Anthony Klingelhoets	----	Ray Kathlow
*Dunn No. 4, Herman Lewandoske	----	Lloyd Gross
Dunn No. 5, Keith Cropp	-----	Marvin Behling
*Dunn No. 7, Simon Olson	-----	Don King
*Dunn No. 8, Kenneth G. Moe		
Eau Claire —c/o County Agent, Eau Claire, Wisconsin		
Eau Claire, Arthur Engleman	-----	Erwin Sutton
Jackson —c/o County Agent, Black River Falls, Wis.		
Jackson No. 1, Phillip Reichenbach		
Pierce —c/o County Agent, Ellsworth, Wisconsin		
Pierce No. 1, Clarence Larson		
Pierce No. 2 (—)		
Pierce No. 3 (—)		
Polk —c/o County Agent, Balsam Lake, Wisconsin		
Polk Co. Co-op. (O), Lester Swanson	---	R. E. Dusel
		Russell Prell
Price —c/o County Agent, Phillips, Wisconsin		
Price No. 1, Joe Habel	-----	Vincent Zellinger
Rusk —c/o County Agent, Ladysmith, Wisconsin		
Rusk No. 1, Frank Fleischauer	----	Harold Clausen
Rusk No. 2, Harold Otto	-----	Clarence Leonard
Rusk No. 3, Ross Rott	-----	Carl Kobliska
Rusk No. 4, Dean Reynolds		
St. Croix —c/o County Agent, Baldwin, Wisconsin		
*St. Croix, Central, Vernon Anderson-Oswald Nelson		
St. Croix, Northern (—)		
St. Croix No. 4 (—)		
St. Croix-Pierce (O), A. O. Hornig	---	Osmer Wilkins

County Association	Fieldman	Secretaries
Trempealeau—c/o County Agent, Whitehall, Wisconsin	Arcadia Eleva-Strum, Donald Olson, Clifford Scharlau	Galesville (—) ----- Earl Trim
Whitehall, Paul Jaszewski		
Washburn—c/o County Agent, Spooner, Wisconsin	Washburn No. 1 (—) ----- Wm. Dougherty	
Wood—c/o County Agent, Wisconsin Rapids, Wisconsin	Wood, Frank Klimowski	

NORTHEASTERN DISTRICT—A. J. Cramer, Extension Dairyman. July 1, 1942 on Standard DHIA Test 1,752 herds, 36,825 cows.

County Association	Fieldman	Secretaries
Adams—c/o County Agent, Friendship, Wisconsin	Adams-Marquette (—)	
Brown—c/o County Agent, Green Bay, Wisconsin	Brown No. 1 (—)	
Brown No. 2, Lyle Hartman	----- Kenneth Stonebrook	
Brown No. 3, Lyle Hartman	----- Walter Noogen	
Calumet—c/o County Agent, Chilton, Wisconsin	Calumet Holstein, Alfred Fyksen	--- Leonard Seybold
Calumet No. 2 (—)	----- Otto Rusch	
Calumet No. 3, Elliott Wenzel		
Calumet No. 4 (—)	----- Hugo Salm	
Columbia—c/o County Agent, Portage, Wisconsin	Columbia-Columbia No. 2 (—)	----- John Lloyd
Columbia-Holstein, Warren Strassburg, W. W. Curtis		
Dodge—c/o County Agent, Juneau, Wisconsin	Dodge-Columbia (—)	----- Wm. Bussewitz
Dodge Co-op. (O), Frank M. Lasica	----- E. A. Beule	
Dodge Co-op. (O), James Rezach		
Dodge Co-op. (O), La Vern Knuth		
Dodge Co-op. (O), Sylvester Krofta		
Dodge Co-op. (O), Ted Habel		
Dodge Co-op. (O), Albert Habel		
Door—c/o County Agent, Sturgeon Bay, Wisconsin	Door No. 1 (—)	----- Lawrence Johnson
Door No. 2 (—)	----- John Schumacher	
Fond du Lac—c/o County Agent, Fond du Lac, Wis.	Byron, Gilbert Chadbourne	----- Bennett S. Bird
*Campbellsport, Harvey Jockmann	----- Jerome Chapple	
*Fond du Lac, Stanley Sosinske	----- Howard Lassig	
Mrs. E. Sargent, Assist.		
*Fond du Lac No. 6, Earl Skalitzky	----- Paul W. Fisher	
*Fond du Lac No. 7, Paul Behnke	----- Albert Philipsky	
Fond du Lac No. 8 (—)		
*Marytown, Elroy Egerer	----- Edwin Whitby	
Mrs. Egerer, Assist.		
*Waupun-Ladoga, Robt. Kastenschmidt	----- L. H. Grosse	
Mrs. Kastenschmidt		
Green Lake—c/o County Agent, Green Lake, Wisconsin	*Green Lake No. 1, Harold Jackowski	----- A. D. Carew
Green Lake No. 2 (—)		
Kewaunee—c/o County Agent, Kewaunee, Wisconsin	Kewaunee No. 1, Harold Gallenberger	----- Frank Schlies
Langlade—c/o County Agent, Antigo, Wisconsin	Langlade Co-op. (O), Tom Nelson	----- Louis Brown
Mrs. Tom Nelson, Asst.;	Pearl Robinson, Assist.	
Lincoln—c/o County Agent, Merrill, Wisconsin	Lincoln, Elsie Schneider	
Marvin Hinz	----- Harold Pope	
Manitowoc—c/o County Agent, Manitowoc, Wisconsin	Kiel, Earle Cork	----- E. R. Woodcock
Madsen-Valders, LeRoy Lutzke	----- Vincent Sieker	
*Guernsey, Mrs. Doris Ellestad	----- Oley Berge	
Holstein, Pete Weinsheim	----- Harry Zastrow	
Manitowoc No. 7 (—)		
Manitowoc No. 8 (—)		
*Mishicot (O), John A. Reis	----- Edwin Lutze	
Mrs. John A. Reis	----- Wm. Kappelman	

County Association	Fieldman	Secretaries
Marathon—c/o County Agent, Wausau, Wisconsin		
Marathan (M) & (O), Walter Barnetzke & helper		
Marinette—c/o County Agent, Marinette, Wisconsin		
Marinette No. 1 (—) -----		H. B. Phillips
Marinette No. 2 (—) -----		H. B. Phillips
Milwaukee—c/o County Agent, Wauwatosa, Wisconsin		
*Milwaukee, Ben Rehrauer -----		I. M. Benson
Oconto—c/o County Agent, Oconto, Wisconsin		
Oconto (O), Roy Schrock -----		John Anderson
	Mrs. Roy Schrock, Assist.	
Oneida—c/o County Agent, Rhinelander, Wisconsin		
*Oneida-Vilas (—) -----		A. H. Brooks
Outagamie—c/o County Agent, Appleton, Wisconsin		
*Outagamie Hol. No. 1, W. Flunker—	J. Dobberstein	
Outagamie Hol. No. 2, Warren E. Buchholz—	L. Timm	
Out. Cicero Blk. Creek, William Yonkman		
*Out. Guernsey, Francis Landwehr—	Theo. Schmit	
Outagamie No. 5 (—) -----		Laurence Bacheller
Outagamie No. 6, Chas. H. Pauls ----		Lester Krohn
Outagamie No. 7 (—) -----		Ervin Tesch
Ozaukee—c/o County Agent, Port Washington, Wis.		
*Ozaukee No. 2, C. Westerman ---		W. G. Brunnquell
*Thiensville-Lakefield, Joe Cain -----		Erwin Bartell
Shawano—c/o County Agent, Shawano, Wisconsin		
Shawano Co. Unit, Archie Johnson -----		Allen Pitt
	Carl J. Kampschoer	
Sheboygan—c/o County Agent, Sheboygan, Wisconsin		
Sheboygan (—)		
*Sheboygan No. 2, W. Drake ---		Herman Stuckmann
Sheboygan No. 3 (—) -----		Fred Bassuener
Sheboygan No. 4 (—) -----		Conrad Goelzer
Sheboygan No. 5, George Falter ----		Herbert F. Hinz
Washington—c/o County Agent, West Bend, Wis.		
*N. E. Washington (—) -----		Elwin Hamlyn
Richfield (—) -----		Herbert Lepien
Slinger, Wilfred Michels -----		Theo. F. Moser
Waupaca—c/o County Agent, Waupaca, Wisconsin		
Waupaca No. 1 (—)		
Waupaca No. 2 (—)		
Waupaca No. 3 (—)		
Waushara—c/o County Agent, Wautoma, Wisconsin		
Waushara, Raymond Jarvis		
Winnebago—c/o County Agent, Oshkosh, Wisconsin		
Winnebago No. 1, Harold Passer ---		R. C. Heffernan
Winnebago Co-op. (O), Herman Delleman, Keith Finch, Leo Tennie, (2 Lab. technicians)		

SOUTHERN DISTRICT—R. T. Harris, Extension Dairyman. July 1, 1942 on Standard DHIA Test 1,473 herds, 33,186 cows.

County Association	Fieldman	Secretaries
Crawford—c/o County Agent, Prairie du Chien, Wis.		
*Crawford, Fritz Rogers -----		Clarence Ahrens
Dane—c/o County Agent, Madison, Wisconsin		
Belleville, Carl Gall -----		Carl Gall
Cottage Grove) Joined since (—) --		R. J. McCarthy
Sun Prairie) July 1, Milton Wright --		F. Kearney
Mt. Horeb, Thos. Dolohanty -----		Bennie Grundahl
Stoughton No. 1 (—)		
Stoughton-Guern. (—) -----		Roy Segebrecht
Verona (—) -----		Albert Weineke
Grant—c/o County Agent, Lancaster, Wisconsin		
Grant No. 1, Sherley Streeter		
Southwestern, Geo. Lins ----		Mrs. Carl Doeringsfeld
Green—c/o County Agent, Monroe, Wisconsin		
Green No. 3 (—) -----		Alfred Meier
Green No. 4, Roy Moffitt -----		Robert Newman
Monroe, Ed Dallman -----		Frank Trumpy
Iowa—c/o County Agent, Dodgeville, Wisconsin		
Iowa-Dane, Wilbur Walker -----		Wilbur Walker

County Association	Fieldman	Secretaries
Jefferson—c/o County Agent, Jefferson, Wisconsin		
*Fort Atkinson, Earl Larson	-----	Geo. Weckler
*Jefferson-Guernsey, Walter Jaeckel		
Jefferson Holstein, Lyle Teschner	-----	Roy E. Haas
Juneau—c/o County Agent, Mauston, Wisconsin		
Juneau No. 1 (—)	-----	Merl Remington
Juneau No. 3 (—)	-----	Merl Remington
Kenosha—c/o County Agent, Kenosha, Wisconsin		
*Kenosha No. 1 (—)	-----	B. J. Edwards
*Kenosha No. 2 (—)	-----	Elmer Richter
Kenosha No. 3 (—)		
La Crosse—c/o County Agent, La Crosse, Wisconsin		
La Crosse-Guern., Paul Brown	----	Orville S. Hayes
La Crosse-Hol. (—)	-----	Ralph Dunlap
Lafayette—c/o County Agent, Darlington, Wisconsin		
Lafayette No. 1, George Teasdale		
Lafayette No. 2, Oscar Schaefer	----	W. H. Kracke
Lafayette No. 3 (—)		
Monroe—c/o County Agent, Sparta, Wisconsin		
*Monroe No. 1, Anthony Sousek	----	Louis Schlaver
Monroe No. 2, Anthony Sousek	----	Louis Schlaver
Monroe No. 3, Ivan Straight		
Racine—c/o County Agent, Rochester, Wisconsin		
Racine No. 1, Ivan Henderson	-----	J. C. Ellis
*Racine No. 2, Joseph Senneff	-----	Joseph Senneff
*Racine No. 3, Raymond R. Starr	----	Grant Christensen
Racine No. 4, Raye Winkler	-----	Everett Peterson
Richland—c/o County Agent, Richland Center, Wis.		
Richland No. 2, Mrs. O. H. Engendorff		
		Mrs. Vernon Williams
Rock—c/o County Agent, Janesville, Wisconsin		
Beloit, Arthur Raschke	-----	Howard Johnson
Brooklyn-Evansville (O), Morris Jensen (Assist.)		
Janesville, Chas. Imig		
Rock Co. DHIA (O), Elmer Lipke		
Milking Shorthorn, K. Stricker	----	Donald Morgan
Sauk—c/o County Agent, Baraboo, Wisconsin		
Sauk No. 1 (—), Wm. Westerfeldt	---	Elmer Kindschi
Sauk No. 2 (O), Fred Thorm, Assist.		
		Carroll Meyers, Assist.
Sauk No. 3 (—)		
Vernon—c/o County Agent, Viroqua, Wisconsin		
Hillsboro (—)	-----	Frank Gross
Vernon No. 1, Christian Anderson	----	Asle Packer
*Viroqua (—)	-----	Albon Sordahl
Walworth—c/o County Agent, Elkhorn, Wisconsin		
Delavan-Elkhorn, Charles Clingan		
LaGrange (—)		
Lake Geneva, Maurice Gillihan & Assist.		
Whitewater, Merle Grover	-----	Howard Hunt
Sharon, George Carroll		
Waukesha—c/o County Agent, Waukesha, Wisconsin		
*Waukesha (—)	-----	George Lorier
Merton-Lisbon (—)		
*Oconomowoc (—)		
Guernsey, H. C. Degner	-----	M. E. Claffey
*Waukesha No. 5 (—)	-----	Delbert Kingston
*Ottawa, Eugene Lyons	-----	Arden Morris
Genesse, Gerritt Zwaagstra		

Departments of Vocational Agriculture

Name of School	Address	Instructor
Abbotsford H. S., Abbotsford	-----	Richard Delorit
Albany H. S., Albany	-----	Victor U. Elmer
*Algoma H. S., Algoma	-----	Earle Sanford
Alma Center H. S., Alma Center	-----	F. C. Janisch
Amery H. S., Amery	-----	R. M. Starkey

Name of School	Address	Instructor
Antigo H. S., Antigo	-----	V. L. Peterson
*Arcadia H. S., Arcadia	-----	Parker B. Hagg
Arena H. S., Arena	-----	Ivan H. Ley
Argyle H. S., Argyle	-----	Roy Simpson
Arkansaw H. S., Arkansaw	-----	Bernard E. Polivka
Ashland H. S., Ashland	-----	Peder Pedersen
Ondossagon H. S., Ashland, R. 3	-----	Vernon O. Horne
Athens H. S., Athens	-----	William Rienks
Auburndale H. S., Auburndale	-----	George Gresch
Baldwin H. S., Baldwin	-----	N. S. Niccum
Baraboo H. S., Baraboo	-----	Arley Heinze
Barron H. S., Barron	-----	D. A. Hendrickson
*Barron Jr. Dairy Breeders' Ass'n., Barron	-----	A. K. Lyon, Advisor
Bear Creek H. S., Bear Creek	-----	W. D. Brownson
*Beaver Dam H. S., Beaver Dam	-----	L. R. Larson
Belleville H. S., Belleville	-----	J. Warren Deppe
Belmont H. S., Belmont	-----	Arnold Bluemke
Beloit H. S., Beloit	-----	Robert A. Perkins
Berlin H. S., Berlin	-----	L. A. Blackburn
Black Riv. Fls. H. S., Black Riv. Fls.	-----	Vernon Hanson
Blair H. S., Blair	-----	B. M. Smith
Blanchardville H. S., Blanchardville	-----	James Mohr
Bloomer H. S., Bloomer	-----	M. F. Stelzer
Bloomington H. S., Bloomington	-----	Earl Garthwaite
Blue River H. S., Blue River	-----	Glenn A. Ketchum
Bonduel H. S., Bonduel	-----	D. C. Aderhold
Boscobel H. S., Boscobel	-----	R. W. Davis
Bowler H. S., Bowler	-----	Arthur Mullen
Brillion H. S., Brillion	-----	Orrin W. Meyer
Bruce H. S., Bruce	-----	H. W. Duxbury
Cadott H. S., Cadott	-----	Amos Grundahl
Cameron H. S., Cameron	-----	M. S. Murray
Campbellsport H. S., Campbellsport	-----	Lyle Viney
Cashton H. S., Cashton	-----	Donald Hart
Cassville H. S., Cassville	-----	Francis Mayfield
Chetek H. S., Chetek	-----	H. J. Vruwink
Chilton H. S., Chilton	-----	Donovan Hohman
Chippewa Falls H. S., Chippewa Falls	-----	H. E. Rogers
Clayton H. S., Clayton	-----	
Clear Lake H. S., Clear Lake	-----	Earl E. McKenzie
Clinton H. S., Clinton	-----	Louis C. Frey
Clintonville H. S., Clintonville	-----	E. A. Hutchinson
Cobb H. S., Cobb	-----	Millard H. Gundlach
Cochrane H. S., Cochrane	-----	Ray R. Schall
Colby H. S., Colby	-----	Eugene Lehrmann
Colfax H. S., Colfax	-----	Harlan Stone
Columbus H. S., Columbus	-----	Willis D. Freitag
Crivitz H. S., Crivitz	-----	
Cuba City H. S., Cuba City	-----	Paul Oehrlein
Cumberland H. S., Cumberland	-----	M. A. Doser
Darlington H. S., Darlington	-----	Reuben James
Deerfield H. S., Deerfield	-----	
De Forest H. S., De Forest	-----	C. S. Grundahl
Dodgeville H. S., Dodgeville	-----	Kenneth Fox
Dorchester H. S., Dorchester	-----	Roger Winans
Downing H. S., Downing	-----	Lawrence Johnson
Durand H. S., Durand	-----	O. R. Hanson
Eau Claire H. S., Eau Claire	-----	D. C. Aebischer
Edgar H. S., Edgar	-----	Carl M. Johnson
Edgerton H. S., Edgerton	-----	Harold Reinecke
Ellsworth H. S., Ellsworth	-----	Kenneth Wall
Elmwood H. S., Elmwood	-----	Archie Johnson
Elroy H. S., Elroy	-----	Wilfred J. Pierick
Endeavor H. S., Endeavor	-----	Kenneth Davies
Fennimore H. S., Fennimore	-----	L. D. Kolar
Gibraltar H. S., Fish Creek	-----	Jack Whirry
*Ft. Atkinson H. S., Ft. Atkinson	-----	M. F. Ross
*Ft. Atkinson V. S., Ft. Atkinson	-----	O. W. Dobratz
Frederic H. S., Frederic	-----	Walter J. Steneman
Galesville H. S., Galesville	-----	J. O. Beadle

Name of School	Address	Instructor
Gays Mills H. S., Gays Mills	-----	C. M. Blakely
Gilman H. S., Gilman	-----	Michael Drozd
Gilmanton H. S., Gilmanton		
Glenwood City H. S., Glenwood City	-----	Raymond C. Wall
Granton H. S., Granton	-----	Herbert W. Kinney
*Grantsburg H. S., Grantsburg	-----	Bernard Hylkema
Green Lake H. S., Green Lake	-----	Delbert Winn
Greenwood H. S., Greenwood	-----	Glen A. Brigham
Hannibal H. S., Hannibal	-----	Michael Drozd
Hartford H. S., Hartford	-----	Orin J. Swingle
Hayward H. S., Hayward		
Hawkins H. S., Hawkins	-----	Orville M. Thompson
Highland H. S., Highland	-----	Dean Livingston
Hillsboro H. S., Hillsboro	-----	G. E. Niccum
Hixton H. S., Hixton	-----	Floyd W. Baker
Holmen H. S., Holmen	-----	Tim Main
Hortonville H. S., Hortonville	-----	Paul J. Kreul
Independence H. S., Independence	-----	Phil Newman
*Janesville H. S., Janesville	-----	J. W. Wiseman
Jefferson H. S., Jefferson	-----	Glenn Pacey
Johnson Creek H. S., Johnson Creek	-----	Henry P. Stephan
Kaukauna H. S., Kaukauna	-----	James T. Judd
Kendall H. S., Kendall	-----	Wilbur Foth
*Kewaunee H. S., Kewaunee	-----	C. H. Neitzke
Ladysmith H. S., Ladysmith	-----	Erle E. Barber
La Farge H. S., La Farge	-----	Fred Mercer
Lake Geneva H. S., Lake Geneva	-----	J. S. Smith
Lake Mills H. S., Lake Mills	-----	A. A. Zurbuch
Lancaster H. S., Lancaster	-----	William Jueds
Laona H. S., Laona	-----	Roy R. Koss
Lime Ridge H. S., Lime Ridge	-----	R. J. Rensink
Lodi H. S., Lodi	-----	George Dehnert
Lone Rock H. S., Lone Rock	-----	Frank Halloran
Loyal H. S., Loyal	-----	Carl Lawrenz
Luck H. S., Luck	-----	Arnold B. Cordes
Luxemburg H. S., Luxemburg	-----	George V. Gregor
Little Wolf H. S., Manawa	-----	H. P. Barrington
Marathon H. S., Marathon	-----	Clifford S. Nelson
Marion H. S., Marion	-----	Earle A. Clausen
*Markesan Jr. D.H.I.A., Markesan		M. Marquart, Sec'y.
Marshall H. S., Marshall	-----	Robert J. Iuey
*Marshfield H. S., Marshfield	-----	K. J. Heideman
Mauston H. S., Mauston	-----	Irving Gerhardt
Mayville H. S., Mayville	-----	Gregory Buechel
Mazomanie H. S., Mazomanie	-----	Ivan Ley
Medford H. S., Medford	-----	M. E. Jeglum
Melrose H. S., Melrose	-----	Albert Dickie
*Dunn Co. Agr. School, Menomonie	-----	Donald Peterson
		Wm. A. Mills
Middleton H. S., Middleton	-----	Howard Dosch
Milltown H. S., Milltown	-----	Myron Johansen
Milton Union H. S., Milton Jct.	-----	M. J. Burkhardt
Mindoro H. S., Mindoro	-----	Jesse Olson
Mineral Point H. S., Mineral Point	-----	Stanley Hore
Mishicot H. S., Mishicot	-----	Donald Halada
Mondovi H. S., Mondovi	-----	F. N. Abrams
Monroe H. S., Monroe	-----	Robert Bergstrom
Montello H. S., Montello	-----	Martin L. Kaster
Montfort H. S., Montfort	-----	Millard H. Gundlach
*Mt. Hope H. S., Mt. Hope	-----	Keith Weittenhiller
Mt. Horeb H. S., Mt. Horeb		
Muscoda H. S., Muscoda	-----	O. T. Baker
Neillsville H. S., Neillsville	-----	John W. Perkins
New Auburn H. S., New Auburn	-----	E. E. Anderson
New Glarus H. S., New Glarus	-----	Richard Schuster
New Holstein H. S., New Holstein	-----	Walter Babula
New London H. S., New London	-----	Leonard Warner
New Richmond H. S., New Richmond	-----	T. J. Madden
Norwalk H. S., Norwalk	-----	Keith Zintz

Name of School	Address	Instructor
Oconomowoc H. S.,	Oconomowoc	N. T. Meineke
Oconto Falls H. S.,	Oconto Falls	Arnold Solstad
Omro H. S.,	Omro	Ralph B. Locke
*Ontario H. S.,	Ontario	F. J. Haughe
Oregon H. S.,	Oregon	H. J. Morrissey
Osceola H. S.,	Osceola	Howard Askov
*Oshkosh H. S.,	Oshkosh	J. F. Wilkinson
Lincoln Hill H. S.,	Osseo	Harold Kinyon
Owen H. S.,	Owen	Everett Jacobson
Palmyra H. S.,	Palmyra	John W. Griffiths
*Phillips H. S.,	Phillips	A. J. Salquist
Pittsville H. S.,	Pittsville	E. L. Howard
Plainfield H. S.,	Plainfield	Vilas W. Matthias
Platteville H. S.,	Platteville	L. A. Bensed
Plum City H. S.,	Plum City	
Plymouth H. S.,	Plymouth	A. H. Splitgerber A. C. Hannemann
Portage H. S.,	Portage	F. T. Price
Poynette H. S.,	Poynette	Donald Rowe
Prairie du Sac H. S.,	Prairie du Sac	H. T. Shields
Prairie Farm H. S.,	Prairie Farm	Wilson Penberthy
Prescott H. S.,	Prescott	A. L. Jepsen
Princeton H. S.,	Princeton	Delbert Winn
*Pulaski H. S.,	Pulaski	O. I. Berge
Randolph H. S.,	Randolph	Martin J. Framberger
Readstown H. S.,	Readstown	R. A. Gilbertson
*Reedsburg H. S.,	Reedsburg	T. R. Lathrope
Rib Lake H. S.,	Rib Lake	
Rice Lake H. S.,	Rice Lake	Ed. Solum
Richland Ctr. H. S.,	Richland Ctr.	Leo P. Keegan
Ithaca H. S.,	Richland Ctr.	Robert Hemauer
Ripon H. S.,	Ripon	C. R. Tinkham
River Falls H. S.,	River Falls	C. B. Campbell
Warren Union H. S.,	Roberts	
Racine Co. Agr. School,	Rochester	A. E. Dittbrenner H. G. Klumb
Rosendale H. S.,	Rosendale	F. J. Miller
St. Croix Fls. H. S.,	St. Croix Fls.	Earl Price
Sauk City H. S.,	Sauk City	H. F. Krahn
Seneca H. S.,	Seneca	A. L. Cummings
Seymour H. S.,	Seymour	Willard T. Reese
Shawano H. S.,	Shawano	Stanley Kostus
Shell Lake H. S.,	Shell Lake	V. G. Geiger
Shiocton H. S.,	Shiocton	Earl B. Thompson
Shullsburg H. S.,	Shullsburg	John L. Wachter
Sparta H. S.,	Sparta	Marlon Schweir
Spooner H. S.,	Spooner	
Spring Green H. S.,	Spring Green	Roy Melvin
Spring Valley H. S.,	Spring Valley	Walter Hansen
*Stanley H. S.,	Stanley	B. R. Dugdale
Stevens Pt. H. S.,	Stevens Pt.	V. C. Hendrickson
Stoughton V. S.,	Stoughton	E. F. Vandrell
Stratford H. S.,	Stratford	William Waterman
*Sturgeon Bay H. S.,	Sturgeon Bay	E. R. Barden
Sevastopol Cons. H. S.,	Sturgeon Bay	C. P. Habermann
Superior V. S.,	Superior	Karl L. Helwig
Taylor H. S.,	Taylor	Logan Creswell
Thorp H. S.,	Thorp	Roy Swanson
Tomah H. S.,	Tomah	Arthur Weiner
Tony H. S.,	Tony	Howard Deetz
Tripoli H. S.,	Tripoli	W. J. Landry
Turtle Lake H. S.,	Turtle Lake	Olaf Pederson
Viola H. S.,	Viola	L. A. Davis
*Viroqua H. S.,	Viroqua	R. A. Power
Wabeno H. S.,	Wabeno	A. V. Dreier
Waterloo H. S.,	Waterloo	E. H. Abraham
*Waukesha H. S.,	Waukesha	D. N. McDowell
Waupaca H. S.,	Waupaca	Harold Porter
Waupun H. S.,	Waupun	Arnold Wochos
Wausau V. S.,	Wausau	I. J. Corey

Name of School	Address	Instructor
Wausaukee H. S., Wausaukee	-----	Herman J. Gorz
Wautoma H. S., Wautoma	-----	John Polich
Wauzeka H. S., Wauzeka	-----	Dale Doering
Webster H. S., Webster	-----	E. H. Barber
West Bend H. S., West Bend	-----	Irving Holzhueter
Westby H. S., Westby	-----	B. F. Schaefer
Westfield H. S., Westfield	-----	Norman Jennings
West Lima H. S., West Lima	-----	Arthur Leahy
West Salem H. S., West Salem	-----	N. N. Rowe
Weyauwega H. S., Weyauwega	-----	Arthur Kurtz
Weyerhauser H. S., Weyerhauser	---	Arthur Pynnonen
Whitehall H. S., Whitehall	-----	E. J. Schiesser
*Whitewater H. S., Whitewater	-----	H. W. Chapman
Wilmot H. S., Wilmot	-----	M. M. Schnurr
*Wilton H. S., Wilton	-----	E. A. Bergemann
Winneconne H. S., Winneconne	-----	Willis Di Vall
Winter H. S., Winter	-----	Ed Sirek
Wis. Dells H. S., Wis. Dells	-----	Russell Johannes
Wis. Rapids H. S., Wis. Rapids	-----	M. C. Kelley
Wittenberg H. S., Wittenberg	----	Marshal Bergstrom
Wonewoc H. S., Wonewoc	-----	Robert Larson

*Now having active Junior Membership in Wisconsin Dairymen's Association.

Guernsey Bull Testing Associations

Douglas County No. 1 **Organized 1941**

Members:

1. Paul Anderson, Poplar
2. Alex Jacobson, Sta. B., Superior
3. Roger Elm, Wentworth
4. Gust Holm, South Range
5. Erwin C. Albert, Wentworth

Bulls:

1. Ben's Actor of Shantituck 240066
2. Star's Rex of Nemadji Acres 237679
3. Troutwater Superior of Dr. K. 294995
4. Gold Steadfast of Clover Glen 292337
5. Shantituck Daisy's Dave 281341

Dunn County No. 2— **Organized 1938**

Members:

1. Edwin Gasteyer, Elmwood
2. Gasteyer Bros., Elmwood
3. Clarence Sinz, Elmwood

Bulls:

1. Gordon of the Oaks Farm 249708
2. Hero Cavalier of the Oaks Farm 218322
3. Peter of the Oaks Farm 225314

Galesville-Trempealeau No. 2— **Organized 1939**

Members:

1. M. E. Oynes, Galesville
2. Blaine G. Paulson, R. 3, Melrose
3. Bert C. Congdon, Galesville
4. L. E. Oines

Bulls:

1. Coronet's Duke of Alta Vista 222865
2. Lilly's Duke of Big Elm 233149
3. Loyal Leader of Elderbrook 285124
4. Mound City Lenora's Monarch 280695

Iola-Waupaca County— **Organized 1939**

Members:

1. Walter Biedermann, Iola
2. Biedermann Bros., Iola
3. Wolberg Bros., Iola
4. H. & N. Wolberg, Iola

Iola-Waupaca County (Continued)

Bulls:

- Mike of Berendsendale 252411
2. Nippersink Golden Slogan 247781
3. Moon's Blaise Art 267324

Mequon-Ozaukee County—

Organized 1941

Members:

1. Henry W. Riemer, Thiensville
2. Edgar Wille, Thiensville
3. Erwin Riemer, Cedarburg
4. Theodore Wilde, Thiensville

Bulls:

1. Coronet Maxim of Silent Brook 206753
2. Shoreland Sweetheart 217016
3. Coronet Champion of S. B. 224850
4. Realane's Champion King 289728
5. Realene's Sweet Maxim Prince 316648

Mishicot-Manitowoc County—

Organized 1938

Members:

1. Ralph Salverson, Manitowoc
2. Oscar Samz, Mishicot
3. Hans Beyer, Mishicot
4. Calvin Barta, Two Rivers
5. Roland Samz, Mishicot

Bulls:

1. Darling's Harvester 246641
2. Anita's Harvey 248904
3. Royal's Victor of Markendale 264345
4. Orpha's Elm Grove of Maud 269472

Outagamie County No. 1—

Organized 1939

Members:

1. Melvin Haferbecker, Appleton
2. Otto Zschaechner, Appleton
3. Jamison Bros., Appleton
4. Victor Leppla, Appleton

Bulls:

1. Foremost Rom 250676
2. Pine Manor Crown Majesty

Outagamie County No. 2—

Organized 1939

Members:

1. Jamison Bros., Appleton
2. O. H. Breitrack, Appleton
3. Ed. W. Dietz, Appleton
4. John H. Fredrich, Appleton

Bulls:

1. Pine Manor King's Ideal 289285
2. Bredablik Leader's Royal 254482
3. Pine Manor Crown Majesty

Pioneer-Green Lake County—

Organized 1937

Members:

1. G. E. Schalow, Green Lake
2. Krause & Martin Priebe, Ripon
3. Ed. Battig, Ripon

Bulls:

1. St. James Farm Bull
2. Luxerin Spoaksman 267636
3. Luxerin Statesman

Pleasana-Ozaukee County—

Organized 1938

Members:

1. Bernard Behrens, Grafton
2. Mrs. Julius Clausing, Grafton
3. Armin Clausing, Grafton
4. Herbert Clausing, Grafton

Bulls:

1. Regent's John of Everett 230929
2. Wey Acres Grandee's Splendor 293154
3. Gusanna's Captain 260494
4. Gusanna's Star Gazer 242330
5. Gusanna's Monarch 231392

St. Croix County—**Organized 1939****Members:**

1. Emmet Jensen, River Falls
2. Newton Pearson, River Falls
3. Bernard Casaw, Hudson
4. Ralph Katner, Hudson

Bulls:

1. Old Farmstead Virgil 272204
2. Bright Lad of the Oaks Farm 249971
3. Old Farmstead Dictator 285542

Trempealeau County No. 1—**Organized 1938****Members:**

1. Wilbur Osgood, Whitehall
2. A. J. Brovold Ettrick
3. A. E. Nehring, Whitehall
4. Ed. Hermanson, Whitehall

Bulls:

1. Susan's Gold Boy 271195
2. Patrick of the Oaks Farm 269542
3. Rancho Jumbo 256130
4. Univ. of Wis. Faye's Butter Fat 255124

Triangle-Ozaukee County—**Organized 1937****Members:**

1. Walter J. Lueder, Cedarburg
2. Alwin Hintz, Cedarburg
3. Martin H. Wiepking, Cedarburg

Bulls:

1. Gusanna's Comet 249136
2. Guernsey Grove Leader 253988
3. Gusanna's Ian 303655

Valders-Manitowoc County—**Organized 1939****Members:**

1. Otis Marken & Son, Valders
2. Otis Berge, Valders
3. Anton O. & Oley E. Berge, Valders
4. H. L. Fisher & Son, Valders

Bulls:

1. Beau Brummel's Majesty 274187
2. Luxerin Ultimas 291604
3. Corner Hill Crown Prince 281428
4. Lord Stephens Scottie 247174

Milton-Monroe County—**Organized 1936****Members:**

1. Elmer Walters, Kendall
2. Ben Muhlenkamp, Sparta
3. Henry Steinhoff, Wilton
4. George Steinhoff, Wilton
5. John Ford, Wilton

Bulls:

1. Rancho Ripple 256133
2. Fairview Bud 285004
3. Regent's Pat of Gusanna 265461
4. Ardella's King Arbor 240064
5. Rancho Slinger 256137

Winnebago County No. 1—**Organized 1938****Members:**

1. R. W. Harness, Neenah
2. Harlan J. Wilson, Rush Lake
3. Fahrwald Farm, Oshkosh
4. Carl E. Steiger, Oshkosh

Bulls:

1. Monarch's Bluebell's Champion 263446
2. Rex of Hedgeview 259581
3. Monarch's Ada's Buster 263445
4. Moon's Royal George 226774
5. Junior Bull Calf

Holstein Bull Testing Associations

Columbus-Columbia No. 1—

Organized 1938

Members:

1. B. A. Conlin, Columbus
2. Louis Trapp, Columbus
3. Arthur Weiner, Columbus
4. Sam Austin, Columbus
5. Arthur Biedermann, Columbus

Bulls:

1. Sammy Oostie Ormsby 787000
2. Baker Farm Infallible 770603
3. Milco Piebe Creamelle Segis 773698
4. Elmwood Admiral Lyons 849673

Dodge County No. 1—

Organized 1938

Members:

1. E. A. Beule, Fox Lake
2. H. Jaeger, Watertown
3. D. C. Frisbie, Juneau
4. Robert Bohl, Beaver Dam

Bulls:

1. Pabst Cascader Belmont 684341
2. Beckvale Pietertje Fobes 778074
3. Oriole Home Ormsby Sensation 806272
4. Oriole Home Ormsby Double 760068

Dunn County No. 1—

Organized 1938

Members:

1. Geo. Curtis, Arkansaw
2. C. F. Unser, Arkansaw
3. Tony Harmon, Arkansaw
4. Don King, Eau Galle

Bulls:

1. King Piebe Burke Fayne 750036
2. Count Ormsby Pansy Burke 803784
3. Ormsby Fobes Sir Inka 678365
4. Sir Piebe Ormsby Burton 750035

Freistadt-Ozaukee County—

Organized 1938

Members:

1. Joseph Barthel, Thiensville
2. Ed. Radue & Son, Thiensville
3. Lorenz Ernst, Thiensville
4. Louis Pipkorn, Thiensville

Bulls:

1. Admiral Rijanetto Johanna Ormsby 762549
2. Bonny Oak Sir Ormsby Ollie 713724
3. Belle Bess Ormsby 5th 752207
4. Beckvale Canary Pietertje 776139

Monroe County No. 1—

Organized 1941

Members:

1. Barrett Bros., Camp Douglas
2. Joe Connor, Kendall
3. Cecil Mack, Camp Douglas

Bulls:

1. King Jess Gerben 705054
2. Commander Prince Hengerveld 809419
3. Sir Posch Creamelle Ormsby 830143

Outagamie No. 1—

Organized 1939

Members:

1. Frank Appleton, Seymour
2. John Dobberstein, Hortonville
3. Maurice Powers, Shiocton
4. Leon Wasserbach, Appleton

Outagamie No. 1 (Continued)

Bulls:

1. Forest Fobes Sir 806419
2. Ormsby Boon-Crest Fobes 739825
3. King Ormsby Fobes Pabst 741882
4. Winnebago Sir Alexia Ann May 747110

St. Croix County No. 1—

Organized 1941

Members:

1. Bennett Bros., River Falls
2. Dusek Bros., River Falls
3. Clark Hunter, Hudson
4. Mrs. Louise Sontag, Stillwater

Bulls:

Trempealeau No. 1—

Organized 1938

Members:

1. Mike Skroch, Independence
2. C. A. Scharlau, Arcadia
3. Geo. Lund, Arcadia
4. R. A. Lamberson, Whitehall
5. Julius Nilsestuen, Arcadia

Bulls:

1. Lincoln Sir Inka Fobes 758187
2. Prince Ormsby Beets of Ivory Point 851348
3. Prince Bess Inka Blanche 824016
4. St. Croix Sir Pansy Bess Burke 774246
5. St. Croix Sir Belmont Alexiana 774247

Jersey Bull Testing Associations

St. Croix County No. 1—

Organized 1939

Members:

1. Jensen Bros., River Falls
2. Wm. Jensen, River Falls
3. Wm. Heebink, Baldwin
4. Walter Karnes, Spring Valley

Bulls:

1. Garnet Smoky Pedro 401483
2. Valiant Strongheart 387241
3. Elinda's Dan Cupid St. Mawes 405044
4. Garnet Smoky Duke 401482

Notes

JUSTIFY

a

RICH INHERITANCE

with

PROPER FEEDING

The good breeding behind Wisconsin herds is known the country over. But good breeding isn't enough. It must be coupled with a feeding program that will enable every cow to produce to the best of her bred-in ability. This is particularly important under wartime conditions.

The Purina Dairy Cycle Plan of feeding has helped many Wisconsin dairymen place their herds on a wartime production schedule. The Plan is the result of years of research at the Purina Experimental Farm and in the Purina Laboratories. For information about the Purina Dairy Cycle Plan, see your local Purina dealer or write to . . .

**PURINA
MILLS**
ST. LOUIS, MO.



**WISCONSIN
DAIRYMEN'S ASSOCIATION
FORT ATKINSON, WIS.**



Organized 1872

**BUILDING
WISCONSIN
DAIRY HERD
INCOME**

Sec. 502, P. L. & R.
U. S. POSTAGE
PAID
Permit No. 10
Ft. Atkinson, Wis.
