

The Wisconsin Union quarterly. Fall 1986

Madison, Wisconsin: Wisconsin Union, Fall 1986

<https://digital.library.wisc.edu/1711.dl/I5LHU5BY3ABKK87>

This material may be protected by copyright law (e.g., Title 17, US Code).

For information on re-use, see

<http://digital.library.wisc.edu/1711.dl/Copyright>

The libraries provide public access to a wide range of material, including online exhibits, digitized collections, archival finding aids, our catalog, online articles, and a growing range of materials in many media.

When possible, we provide rights information in catalog records, finding aids, and other metadata that accompanies collections or items. However, it is always the user's obligation to evaluate copyright and rights issues in light of their own use.



THE WISCONSIN UNION

Quarterly

A Communique for Wisconsin Union Members

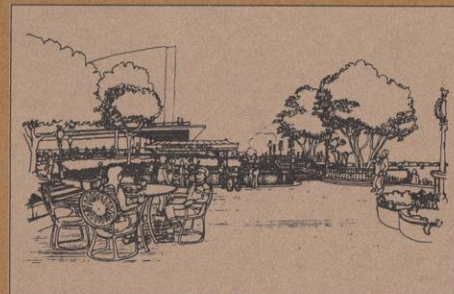
Fall 1986



The lakefront Terrace behind Memorial Union, 800 Langdon, continues to be "The place to be" for socializing, free music, food, beverages and people - watching while the construction on its "face lift" winds down.

A portion of the Terrace has been in the hands of construction crews since late spring, and completion is anticipated this fall.

The renovation, funded largely through donations, will double the seating capacity while preserving the beautiful lake views. Plans call for the renovation area to be transformed into bricked plazas, an outdoor cafe, a promenade and be entirely handicap accessible.



WISCONSIN UNION MEMBERSHIP

The Wisconsin Union is a membership organization...the membership roots date back to the early 1920's when individuals who contributed to the fund drive to build Memorial Union were given life memberships in the "Memorial Union Building."

Membership in the Union is automatic for registered UW students whose tuition includes a fee earmarked for the operation and maintenance of the Union buildings. Since 1928, nearly 60,000 non-students have additionally become Union members on a lifetime or annual basis by paying a membership fee.

Throughout the Union's facilities and publications, frequent reference is made to Union member preference or Union member rates: as a privilege of membership, Union members always have preference reserving tickets for Union events, members receive

advance notice of Union events, and whenever dual prices are listed, Union members always pay the lower rates. Spouses of members may request a spouse card and are entitled to the same membership privileges.

The Union serves the entire University community, including faculty, staff and guests who are not automatically Union members but who are eligible to participate in most Union programs and services and pay higher non-member rates.

Union Members with Full Privileges

- UW students & spouses
- Union members & spouses (Annual and Lifetime)
- + Pay reduced rates
- + Advance notice of Union events
- + Preference reserving tickets



Non-Members with Limited Union Privileges

- UW faculty
- UW staff
- University sponsored conference groups
- Invited guests
- + Pay higher Union rates on limited items/services
- + Access to Union facilities

Members of the University community, the general public and graduating seniors are all encouraged to maintain ties with the Wisconsin Union by becoming members. At each commencement, seniors are encouraged to join at a special life membership rate of \$40. Non-students are encouraged to join as annual members; annual fees of \$40 accrue to a life membership.

For further information about Union membership, benefits and privileges, call the Membership Secretary at 262-2263 or stop by the Membership Office, Room 410 Memorial Union on Langdon Street from 7:45 a.m. - 4:30 p.m.

New Look for Fall Mini Courses

Here's a preview of the fall line-up for Mini Courses.

Fall Nature Escape...Mystery Writing...Renaissance Court Dancing...Grant Writing...Making Your Own Board Games...these are just a few of the new additions to more than 100 non-credit classes designed to fit your schedule and budget.

Registration is a Breeze

Interested? Pick up the fall Mini Course catalogue, available after Aug. 20. Registration is easier than ever--by phone, mail or in person during extended Mini Course office hours: 8 a.m. - 8 p.m. Monday through Thursday, and from 8 a.m. - 4:30 p.m. Fridays beginning Sept. 8. (If charging by phone, Mastercard and VISA are accepted.)

First session of classes begin Monday, September 22, & the same slate of classes is offered during a second session beginning October 27. Call 262-3156 for more information.

Travel Center Helps Map the World

Once you've decided to head for the horizon, head for the Wisconsin Union Travel Center, located on the second floor of Memorial Union.

Getting From Here to There

A resource and advising service for students, Union members, faculty and staff, the Travel Center staff will counsel you in travel abroad and in the U.S., provide a travel checklist, passport applications & photos, and will direct you to their extensive resource library to research everything from work and study abroad opportunities, immigration and customs tips, cultural and background information. Student and Union members pay reduced rates for Travel Center tours and passport photos.

That's the Ticket

Alco and Trailways bus tickets are sold in the Travel Center, as are student tickets for *AIR FRANCE*. The Travel Center does not sell Amtrak or airline tickets (these can be purchased through Rhodes Travel Agency on the first floor, Memorial Union).

Visit Hong Kong, the Warm, the Wild

Group travel programs are also offered. Warm-weather spring break trips are always popular, Canadian wilderness canoe trips depart every summer, and special tours are being introduced. In March, 1987 a tour to Hong Kong and China is being organized. To get on the Travel Center mailing list for complete trip information, call 262-6200.

The Travel Center works closely with the Wisconsin Union Directorate Travel Committee sponsoring information programs on studying, working and traveling abroad.



Mini Courses Presents...

Murder Most Foul in Great Hall

Grab your spy glass, sharpen your wit and reserve your spot now for a deliciously mysterious evening of participatory dinner theater as Mini Courses presents:

The Case of the Cocksure Candidate

Sunday, October 26 - 7:00 p.m.

Great Hall, Memorial Union

The scene is set! You are a costumed character of the evening, mingling with new friends in stately Great Hall, enjoying hors d'oeuvres and pre-dinner spirits. It is the final big benefit bash for Grafton Steele, your Mystery Dinner candidate for governor. You have been assured by your good friend and Mystery Dinner campaign treasurer, Emily B. Ezzle (you call her Em) that victory is certain.

You feel elated, yet wary--there is murder in the air on this intriguing fall evening. You listen closely, watch carefully and question skillfully the other costumed participants, actors, innocent bystanders, even your dinner companions...seeking a bevy of clues to help you solve a murder you know is imminent. And when you least expect it, murder most foul rocks this gubernatorial campaign.

Whodunit? You solve it! Join us for hors d'oeuvres, cocktails, prime rib dinner and a scintillating evening of murder mystery. Prizes will be awarded to the successful sleuths who crack the case. Tickets are \$23.00 for Union members; \$29.50 for faculty/staff. Sign up for the Mystery Writing Mini Course and save \$5! Register through the Mini Course brochure or simply send the completed application below with payment to: Mini Courses Mystery Dinner, 800 Langdon St., Madison, WI 53706.

Please register together if you wish to be assigned at the same table. Your individual character is assigned upon registering and will be mailed with your acknowledgement.

Complete and mail with payment to: Mini Course Mystery Dinner, 800 Langdon St., Madison, WI 53706-1495, or call 262-3156 to charge with Mastercard or VISA.



Mystery Dinner Theater Registration

Reserve _____ places for the Mystery Dinner Theater on October 26, 1986 @ \$23.00 per ticket (Union members)/ \$29.50 per ticket (Faculty/Staff).

Total enclosed: _____

Classification: ☐ Union Member ☐ Student ☐ Faculty/staff

Name _____

Address _____

City, State, ZIP _____

Evening phone _____

Persons attending/seated together _____

Ballroom Dance Live - Cut a Rug

Dance to the big band sounds of Lonnie Nofsinger and Dimensions in Sound during the most popular dance night on campus, Tuesday, October 28, at 8 p.m. in Great Hall, Memorial Union. Ballroom Dance Live is open to all Union members, Mini Course participants and the University community. Admission is \$3 for Union members; \$4 for faculty/staff. Have two left feet? Bone up in advance by taking a Mini Course in ballroom, jitterbug or Latin dancing. Then come out and swing on October 28!

Wisconsin Union Theater Offers Splendid Array of Music, Theater & Dance

The Wisconsin Union Theater is polishing its spotlights for a dazzling new season.

The Wisconsin Union Directorate Theater Arts Area, a volunteer student committee, has fashioned a multi-faceted season of music for all.

The 1986-87 Concert Series features Yo-Yo Ma, the Cleveland Quartet with Emanuel Ax, Richard Stoltzman & Richard Goode, Bella Davidovich and I Musici. Two young musical geniuses, Anne-Marie McDermott, piano, and Mark Peskanov, violin, are introduced in debut recitals. The Milwaukee Symphony Orchestra will also perform under the baton of newly appointed music director, Zdenec Macal, assisted by rising young keyboard virtuoso, Stephen Hough.

Season subscriptions for the Concert Series are still available. Subscriber benefits include reduced ticket prices, free tickets to the Debut Recitals, an opportunity to purchase tickets for the Milwaukee Symphony Orchestra before they go on open sale, and the special perk of reserved parking. (Tickets for single events will go on sale at a later date).

Fabulous Folk Series II starts with a knockout of a group! Sweet Honey In the Rock, five black women singing gospel, blues, African songs and more--a cappella dynamite! Other artists include Canada's best known acoustic singer/songwriter, Ferron; Claudia Schmidt, a virtuoso of American folk, blues and jazz, joined by Australia's foremost woman singer, Judy Small; and living legend Odetta will return this year.

And there's more...lot's more!

September will feature jazz, dance and theater specials in conjunction with Madison's Festival of the Lakes. Jazz favorites Stanley Jordan, Ben Sidran and Richard Davis, ballet virtuoso Edward Villella, and A.P.T.'s Randall Duk Kim in his role as Hamlet, will share the spotlight on the Union Theater stage Sept. 19-21.

On October 17, a unique theater production, *Holy Fools--Short Stories & Tall Tales*, starring James Lawless, a perennial Guthrie Theater favorite, and Kevin Kling, master story teller and playwright, comes to the Union Theater stage. This original play portrays real-life stories, familiar tales, classic American and ethnic folklore and exaggerated truths of all kinds in a special evening of theatrical tale spinning and music.

Not to be overlooked, the popular Travel/Adventure Series continues this year, with an extra evening added to meet ticket demand. This year's personally narrated films offer an expedition over the Himalayas to the tiny kingdom of Hunza, a Passage to Spain, an intimate visit to Hungary, a traverse across Europe on the Orient Express, an excursion over the Australian continent, and an exploration of the Falkland Islands. Each film is repeated on a Monday, Tuesday and Wednesday evening. Pre-departure buffet dinners, featuring ethnic foods of the region you'll visit, will be served by reservation only in Tripp Commons in Memorial Union. Please call 263-1717 for reservations. Travel/Adventure Series subscriptions are still obtainable, with best seating available Wednesdays.

More complete information on the Union Theater events this fall is available in brochures at the Theater Box Office. Series subscriptions as well as tickets for some individual events in each series and other specials may be purchased by mail, phone charge or in person at the Theater Box Office, in Memorial Union on the corner of Park & Langdon Streets. UW-Madison students receive special discounts for Concert Series events, Milwaukee Symphony Orchestra and *Holy Fools*. For complete details, call or write the Union Theater Box Office, 800 Langdon St., Madison, WI 53706-1495, telephone 608/262-2201.

Union to Play Role in Festival of the Lakes

This fall will see the inauguration of the Madison Festival of the Lakes, a city-wide celebration of the arts that is expected to become an annual event showcasing local, regional, national and international performing and visual arts talent.

M A D I S O N
**FESTIVAL
OF THE
LAKES**

The Union Theater will host four major Festival events.

• *Music in Motion* with Stanley Jordan, Ben Sidran & Richard Davis - September 19 - 8 p.m.

• *Four Local Dance Troupes* September 20 - 10 a.m., 12:30 p.m.

• *Edward Villella Dance Performance* September 20 - 8 p.m.

• *Hamlet* with Randall Duk Kim - September 21 - 4:30 p.m.

For more information about the Festival of the Lakes and the Union's role in it, call the Festival at 608/262-2500 or the Union Theater Box Office at 608/262-2201. Better yet, come on down to your home on the campus, the Wisconsin Union, during Sept. 19-21 and join the fun at the *Madison Festival of the Lakes*, "...when a city becomes a stage."



Kevin Kling (Left) and James Lawless in the Artreach production of *Holy Fools - Short Stories and Tall Tales* by John Olive. The play is a portrait of an American storyteller in the early 1900s. Photo by Ted Volante

Hoofers Gear Up for Fall

Whether you're interested in sailing, out-ing, mountaineering, hang gliding, scuba, sailing or horseback riding, you can do it as a Wisconsin Union Hooper!

Established in 1931, the Hoofers are the largest collegiate outdoor recreation group in the country, boasting nearly 2800 annual members in seven clubs.

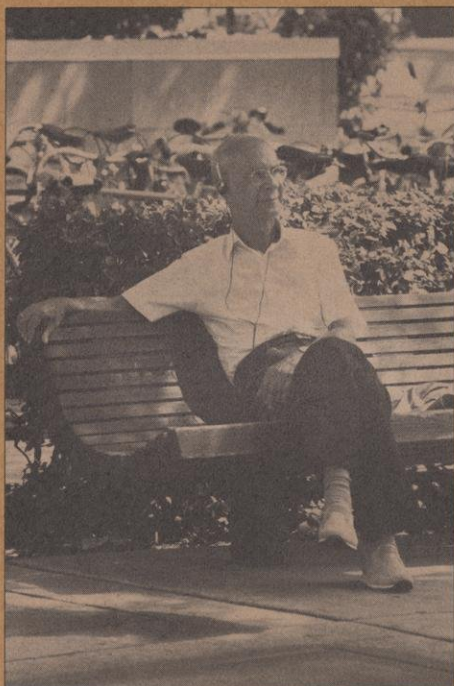
Come Check Us Out

Take a collective look at Hoofers on Tuesday, Sept. 2, at the All Hoofers Clubs Kickoff at 7 p.m. at Union South. After an overview of the organization, each of the seven clubs will offer exhibits, literature and information about club activities, trips, and instruction. Beverages and munchies are served & the kick-off is free.

Like to know specifically what each club has slated for fall? Five clubs have individual kickoffs between Sept. 3 and 9. Check the *Quarterly* calendar for dates and locations.

Hoof with the Outing Club

If your interest is Outing, the fall Outing Club calendar calls for moonlight canoeing on Sept. 11, a whitewater slalom race on the Wolf River Sept. 20 and 21, kayak lessons until Mendota chills (then lessons move to the UW natatorium), ice hockey at the UW Shell in October, and a new interest area: sea kayaking! Find out all about it on Tuesday, Sept. 9, at the kick-off in Tripp Commons, Memorial Union. For more information about any Wisconsin Hooper events, please call 262-7351.



Shorts

Start Creating!

Use your imagination at the Craftshop and create independent projects using ceramics, stained glass, woodworking, art metals and more. A full complement of tools, supplies and knowledgeable staff are available as you work on projects. Permits are required, \$20 per semester (\$25 for faculty and staff) or \$2.50 for day passes. Hours: Sun-Thur 1:00-10:00pm, Fri-Sat. 1:00-5:00pm

Outdoor Rentals

Ready for fall camping and canoeing? You will after a stop at Outdoor Rentals. Get into the camping mood with sleeping bags, tents, stoves, lanterns, backpacks, canoes, rowboats and more! Located in the Memorial Union boathouse until the snow flies and then in the back of P3 Campus Outfitters during the winter months, Outdoor Rentals rents by the hour, day, weekend or week at special Wisconsin Union student and member rates. Hours: Sept-Oct 11:00am-sunset, Nov. 11:00am-5:00pm

Grab a Corner of the Union

Whether you need a pencil in a hurry or are looking for that perfect greeting card the Corner Store at Union South has it all. In addition to school supplies, this store has a great selection of Wisconsin memorabilia, clothing, bookbags and more! Show your student id or valid union membership card for special prices. Hours: Mon-Fri 9:30am-5:30pm, Sat. 10:30am-5:00pm

Looking Good

P3 Campus Outfitters is the place to go for quality outdoor clothing and equipment. Rugbies, sweaters, backpacks and bookbags P3 Campus Outfitters has it all for looking good. Stop in today and check us out in the lower level of Memorial Union. Hours: Mon-Fri 9:00am-5:30pm, Sat. 10:30-5:00pm

Say cheese!

After you take your pictures have them developed at the Wisconsin Union Photo Service. The Photo Service offers superior quality and a complete range of services including "next day" delivery. Drop off your film at our convenient drop boxes in Memorial Union, Union South, Medical Science Building and the Copy Center in Steenbock Library. Finished orders can be picked up at P3 Campus Outfitters, Memorial Union or the Corner Store, Union South. Show your valid UW student ID or Union member card at the time of pick-up and pay the special low member cost!

US Games Room

The Union South Games Room is a great recreational activity center with 8 bowling lanes, 9 full-sized pool tables, a billiards table, table tennis tables and up-to-date video games. Bowling leagues for men, women and mixed teams begin the week of September 7 so sign up soon. Refreshments and munchies available. Hours: Sun-Thur until 11:00pm, Fri-Sat until the building closes

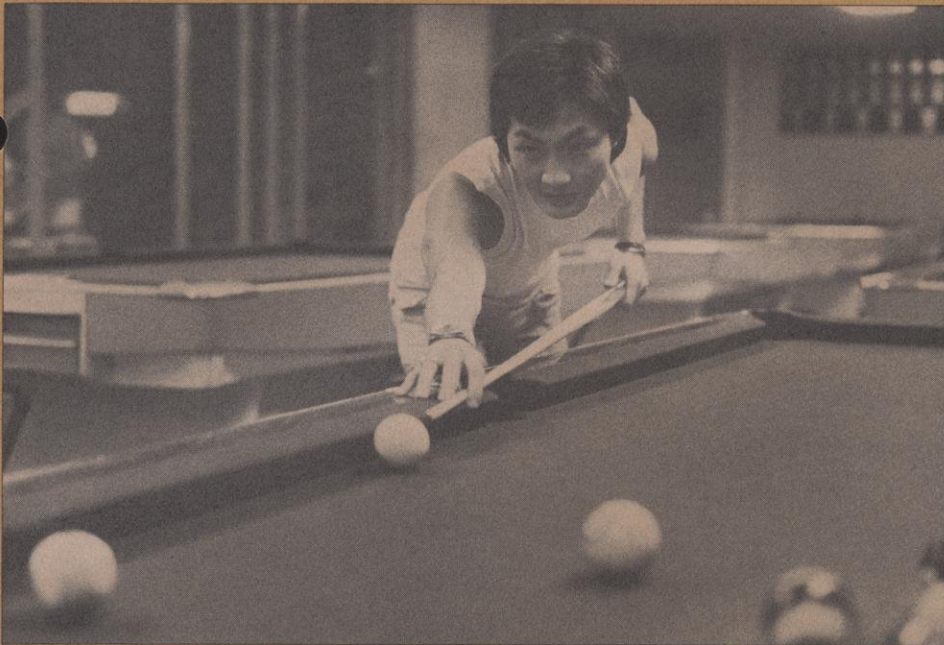
When you're on the other side of campus stop in at the Memorial Union Games Room. Enjoy 9 billiards tables, a table tennis table, a foosball table and pinball machines. Soda, beer, juices, chips and sandwiches available. Stop in today, lower level Memorial Union.

Think of the Union First

The Wisconsin Union offers one of the most adaptable conference facilities in the Madison area. Use either Memorial Union or Union South for meetings, conferences, graduation parties or wedding receptions. We can accommodate up to 1,300 people and provide food from morning coffee breaks to a sit down dinner. One call is all it takes to set up your next event, 262-2755.

Need a room?

Be our guest the next time you need a hotel room. Both Memorial Union and Union South



Guest Rooms offer rooms and suites at reasonable rates to anyone affiliated with the university. The six guest rooms at Memorial Union and 14 at Union South include color television, telephones and private bathrooms. For reservations call: Union South, 263-2600 or Memorial Union, 262-1583.

Brat Stands

Wisconsin Union has three brat stands on campus, Bascom Hill, Memorial Union Terrace and 1300 University Avenue. Hurry to a stand for brats, knackwurst, soda or chips before the leaves start changing colors and we close!

Leave the Cooking to Us!

Don't have time for shopping, cooking and cleaning up? Sign up for the Wisconsin Union meal plan and leave the cooking to us! One hot meal, four or five days a week, Monday through Friday at Union Station or Lakefront Cafeteria. What an easy way to cook!

Incredible Edibles

Wake up to a morning cup of coffee, enjoy the lake view during lunch, meet a friend for dinner or grab a snack on your way to class at the Wisconsin Union food units.

Memorial Union

Rathskeller • Daily 7 a.m.-9 p.m.

Lakefront Cafeteria • Mon - Fri 6:45 a.m.-10:30 a.m., 11:00 a.m.-1:30 p.m., 4:45 p.m.-6:30 p.m. Sunday 9 a.m.-1:30 p.m.

Tripp Commons • Mon - Fri 11:15 a.m.-1:15 p.m.

Deli • Daily 10 a.m.-10 p.m.

Union South

Union Station • Mon - Fri 6:45 a.m.-10:30 a.m., 11 a.m. - 1:30 p.m., 4:45 p.m. - 6:30 p.m., Sunday 9 a.m. - 1:30 p.m.

Carousel Cafeteria • Mon - Fri 11 a.m. - 1:30 p.m.

Red Oak Grill • Daily 11 a.m. - 11 p.m.

Deli • Daily 10 a.m. - 10 p.m.

ICU Deli • Mon - Fri 9 a.m. - 1 p.m. (Medical Science Building corner of University Ave. and Linden Dr.)

Construction Notes

The sounds of summer at the Wisconsin Union--reverberating with the echo of construction--will continue into the fall as renovation of the **Union Terrace** progresses, a Hoofer lake safety tower is erected, and the Helen C. White parking ramps are repaved.

Lake Safety Tower: A gift of the Class of '32, this 46-foot tower adjacent to the Helen C. White Library building will provide a safety lookout for Hoofer boats, severe weather warning lights, and space for drying Hooper sails. In addition, a direct walkway to the lake from in front of the tower will be constructed this fall.

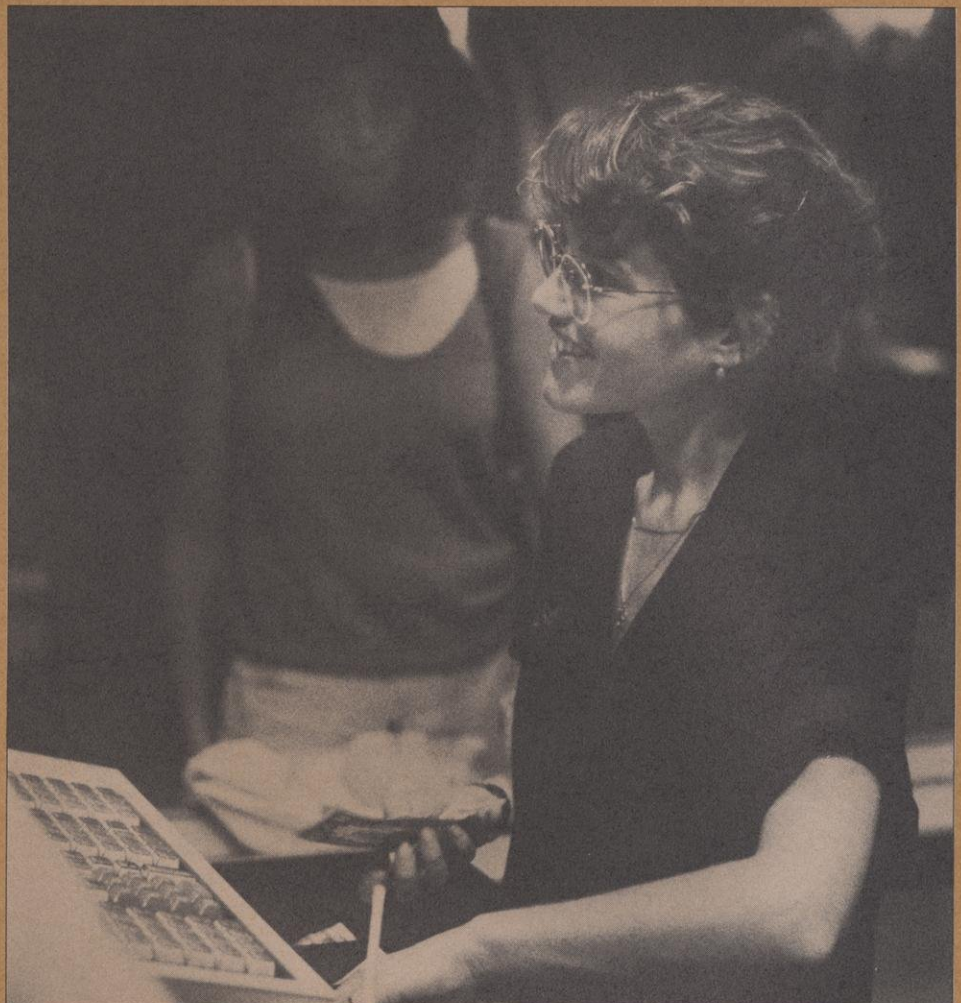
Helen C. White ramps: The lot is slated to reopen by the first Union Theater concert in late September.

Over the summer, the **Union Theater** was re-roofed, Union South's exterior masonry received a well-deserved facelift, and the Hoopers installed a new motorized boat hoist.

All the Right Moves

The Service Center has moved to P3 Campus Outfitters, lower level, Memorial Union. Now students and Union members have check cashing, stamp sales and UPS service at one

convenient location. Check cashing and stamp sales are available at the old location (across from the Rathskeller) for handicapped customers. Service Center Hours: Monday-Friday 9am - 5:30pm.



The Wisconsin Union Directorate



Tailgate With Us at Union South

What do you get with 1,400 pounds of brats & hamburger, 60 gallons of Babcock ice cream, 700 gallons of beer and soda, a marching band, pom pom girls and dancing? Badger Bash, the largest tailgate party on campus!

Join us at Union South before the game and after! The fall schedule looks like this (games beginning at 1:00): Sept. 13 (N. Illinois, Band Day); Sept. 27 (Wyoming, Parents Day); Oct. 4 (Michigan, 6:00pm, televised); Oct. 25 (Illinois, Homecoming); Nov. 8 (Minnesota) and Nov. 15 (Ohio State, W Club Day).



The Wisconsin Union Directorate is the student programming board that plans and sponsors a wide variety of recreational, entertaining, educational & artistic programs at Union South and Memorial Union.

There are 11 interest areas in The Wisconsin Union Directorate: Adult and Family Outreach, Art, Campus Outreach, Cross Culture, Film, Games & Activities, Hoofers, Ideas & Issues, Memorial Union Social, Theater Arts and Union South Music & Entertainment.

Wisconsin Union Directorate provides students with the opportunity to become involved and gain valuable experience planning and implementing programs for Memorial Union and Union South.

Ready, Camera, Action!

This fall enjoy some of Hollywood's favorites with the free movies presented by The Wisconsin Union Directorate. The fall lineup includes:

Lakeside Cinema, Tuesdays, 8pm, Memorial Union
Twilight Cinema, Wednesdays, 6pm, Union South

August 26-27	<i>One Flew Over the Cuckoo's Nest</i>
Sept. 2-3	<i>To Have and Have Not</i>
Sept. 9-10	<i>What's New Pussycat</i>
Sept. 16-17	<i>Harder They Come</i>
Sept. 23-24	<i>Smithereens</i>
Sept. 30-Oct. 1	<i>Polyester</i>
October 7-8	<i>The Big Chill</i>
October 14-15	<i>Altered States</i>
October 21-22	<i>The Kids are Alright</i>
October 28-29	<i>Spinal Tap</i>
Nov. 4-5	<i>Psycho</i>
Nov. 11-12	<i>Wait Until Dark</i>
Nov. 18-19	<i>Desperately Seeking Susan</i>
Nov. 25-26	<i>Harold and Maude</i>
December 2-3	<i>Airplane</i>
December 9	<i>Bugs Bunny & Road Runner</i>

Starlight Cinema, Thursdays, 8pm, Union South

August 28	<i>Sunset Boulevard</i>
September 4	<i>A Streetcar Named Desire</i>
September 11	<i>The Killing Fields</i>
September 18	<i>Brother From Another Planet</i>
September 25	<i>Montenegro</i>
October 2	<i>8 1/2</i>
October 9	<i>Lastrada</i>
October 16	<i>Runaway Train</i>
October 23	<i>Godfather I</i>
October 30	<i>Godfather II</i>
November 6	<i>Rumblefish</i>
November 13	<i>Lost Weekend</i>
November 20	<i>Jules and Jim</i>
December 4	<i>Elini</i>
December 11	<i>Blow Up</i>

Union South

Cross Cultures - Lunch Lecture Series, World of Cultures, Travel Committee. Andreas Leimbach, 263-2432

Campus Outreach - One to One Tutoring, Earthworks, GUTS/HASH, Youngblood, Younghearts. Kara Dinhoff, 263-2432

Adult/Family Outreach - Family Programs, Non-Traditional Student Network, Bernie's Place. Tina Dugan, 263-2432

Music & Entertainment - South Side Sounds, Music to Lunch By, Badger Bash. Mari Larson, 263-2432

Games & Activities - Chess, Table Tennis, Backgammon, College Bowl, Sunday Time Out. Laura Keegan, 263-2432



Memorial Union

Art - Camera Concepts, Art Film Series, Polaroid Gallery, and 59th Student Art Show. Mark Kaplan, 262-2216

Film - Movietime, Lakeside Cinema, Starlight Cinema, Twilight Film Series, Student Film Festival. Joshua Lerner, 262-1143

Hoofers - Sailing Club, Ski Club, Outing Club, Scuba Club, Riding Club, Mountaineering Club, Hang Gliding Club. Clark Heindl, 262-6897

Ideas & Issues - Womens Film, Fiction & Poetry, Contemporary Controversies, Distinguished Lecture Series. Elizabeth Shine, 262-7592

MU Social - TGIF I, TGIF II, Saturday Night Special, Open Mic, Cookin Music. Heidi Meyers, 262-2215

Theater Arts - Mornings with Mozart, Jazz Juggernaut. Lyz Bodner, 262-0827

THE WISCONSIN UNION **Quarterly Calendar**

Special Events and Programs

September - December 1986

MUSIC/THEATER

Sept. 19-21

Festival of the Lakes events, throughout Memorial Union, Union South, Union Theater. See Union Theater story for information, or call 608/262-2201 for details.

Sept. 25

Yo-Yo Ma, gifted cellist, 8 p.m., Union Theater*

Sept. 27

Sweet Honey in the Rock, powerful gospel, blues, acappella group, 8 p.m., Union Theater

Oct. 17

Holy Fools--Short Stories & Tall Tales, an original play starring Kevin Kling and James Lawless, 8 p.m., Union Theater

Oct. 28

Cleveland Quartet, with pianist Emanuel Ax, 8 p.m., Union Theater*

Nov. 8

Claudia Schmidt with Judy Small, American folk, blues and jazz links with Australia, 8 p.m., Union Theater

Nov. 14

Debut Recital: Anne-Marie McDermott, pianist, 8 p.m., Union Theater

Nov. 15

Special Concerto: Anne-Marie McDermott and the Wisconsin Chamber Orchestra, 8 p.m., Union Theater

Nov. 21

Richard Stotzman and Richard Goode, clarinet and piano duo, 8 p.m., Union Theater

Nov. 22

Odetta, folk singer and guitarist, 8 p.m., Union Theater

WEEKLY MUSIC EVENTS

Mondays

Music to Lunch By, 11:30 a.m.-1 p.m., King Lounge, Union South

Wednesdays

Music to Lunch By, 11:30 a.m.-1 p.m., King Lounge, Union South

Open Mic, 8 p.m.-10:30 p.m., Stiftskeller/Terrace, Memorial Union

Thursdays

Cookin' Music, 8:30 p.m. - 10:30 p.m., Stiftskeller/Terrace, Memorial Union

Fridays

South Side Sounds, 3:30 p.m.-5 p.m., Union Station, Union South

TGIF I, 4 p.m.-6 p.m., Rathskeller/Terrace, Memorial Union

TGIF II, 9 p.m.-12:30 a.m., Rathskeller/Terrace, Memorial Union

FILM

Travel Adventure Series...single tickets available Monday, Tuesday or Wednesday, 8 p.m., Union Theater*

Oct. 13, 14 & 15

Hunza: Kingdom of Longevity, with Jens Bjerre

Nov. 3, 4 & 5

Hungary, with Sherilyn Mentis

Dec. 1, 2 & 3

Passage to Spain, with Frank Klicar

SPECIAL EVENTS

Sept. 13, 27, Oct. 4, 25, Nov. 8, 15

Badger Bashes, pre- and post-football game festivities, all day, Union South

Oct. 26

Mystery Dinner Theater: The Case of the Cocksure Candidate, characters, clues, murder, mayhem, hors d'oeuvres, dinner, performance, pre-registration required, 7 p.m. Great Hall, Memorial Union

Oct. 28

Ballroom Dance Live!, dance to big band music, admission, 8 p.m., Great Hall, Memorial Union

Oct. 31

Hoofer Halloween Ball, come costumed, 8 p.m. Great Hall, Memorial Union

Dec. 3-7, 9 & 10

Tudor Dinner Holiday Concerts, reservations required, 6 p.m. Great Hall, Memorial Union. Invitations will be mailed only to Wisconsin Union members during the third week in October. Please note that this year the invitation will only be sent to Union members in Wisconsin in the interest of reducing postage expense. Union members residing outside Wisconsin who would like to order tickets should contact the Membership Coordinator. Please make sure your address is up to date with the membership office so your Tudor Dinner invitation is not lost or delayed in the mail.



Dec. 31

New Years Eve dinner and dancing to American Jazz Express in the city's finest ballroom, Great Hall, Memorial Union, 8 p.m., reservations required, 262-0887. Union members! Watch the mail for your invitation to Madison's premiere New Year's Eve extravaganza in Great Hall, Memorial Union! Prime rib dinner...Dancing to The Allen Chase Orchestra...Party favors & midnight champagne...Free, convenient parking...Free babysitting service!



OUTDOOR PROGRAMS

Sept. 2

All Hooper Clubs Kick-Off, Hooper overview, 7 club displays, refreshments, 7 p.m. Union South (check TITU*)

Sept. 3

Hooper Riding Club Kick-Off, 6 p.m. Memorial Union (check TITU)

Sept. 4

Hooper Sailing Club Kick-Off, 8 p.m. Tripp Commons, Memorial Union

Sept. 4

Hooper Scuba Club Kick-Off, 7 p.m., Union South (check TITU)

Sept. 9

Hooper Outing Club Kick-Off, 7 p.m., Memorial Union (check TITU). More club info and "how-to" presentations in Hooper Lounge following kick-off

Sept. 20-21

Fall Fury Regatta, open to 470, M20 and Laser classes, information will be mailed to past participants, registration open same day, Hooper piers, Memorial Union

Sept. 20-21

Last Ditch Whitewater Boating Slalom, sponsored by the Outing Club, Gilmore's Mistake Rapids on the Wolf River, entry fee

Nov. 1-2

Tech Intergalactics, Hooper sailing club homecoming, Hooper piers, Memorial Union

LEARNING

Sept. 8 - 22

Mini Course Registration at Memorial Union, in-person, phone and mail-in, 8 a.m. - 8 p.m. Monday-Thursday; til 4:30 p.m. Fridays, Room 509, Memorial Union, Madison, WI 53706, or phone 262-5771. Brochures available, for Fall 1 and Fall 2 classes.

Sept. 9-17

Mini Course Registration at Union South, in person, weekdays 11:30 a.m.-1:30 p.m., first floor lobby, Union South

TRAVEL

Sept. 25

Kenya, A Travel Escape Brown Bag Lunch, noon, Union South (check TITU).

ART EXHIBITS

Aug. 28-Sept. 28

Lures of the Lakes, Madison's Festival of the Lakes features two- and three-dimensional works by area artists using fishing lures as images, Theater Gallery, Memorial Union

Sept. 5-Oct. 5

Drop-A-Line, postcards of summer vacation spots from friends of the Union, Susan B. Anthony Gallery, Union South

Sept. 15

Art-To-Go Rental, rent works of art from the Union collection for \$10 per work per semester, check on member status, 1-6 p.m., Main Gallery, Memorial Union

Sept. 19-Oct. 19

Ruth Kao: Silk Tapestries, designed by the late UW-Milwaukee art professor and woven in China, these works incorporate traditional Chinese imagery with contemporary designs, Main and Class of 1925 Galleries, Memorial Union

Oct. 2-Nov. 2

Doris Hembrough: Silent Glory, color photographs by Mt. Horeb artist showing subtle use of shapes, textures and colors, Theater Gallery, Memorial Union

Oct. 24-Nov. 16

The County Seen: Two Photographers' Views, Dane County through the eyes of Lewis Koch and Steve Agard, Main Gallery, Memorial Union

Oct. 28

Reception for the Artists, Lewis Koch and Steve Agard, 7-9 p.m., Main Gallery, Memorial

MOVIE TIME

Films shown in Fredric March Playcircle, 2nd fl., Memorial Union, \$2.50

Aug. 29-31

9 1/2 Weeks (86) Adrian Lyne, Dir., 7 & 9 p.m.

Sept. 5-7

Out of Africa (85) Sydney Pollack, Dir., 7 & 9:45 p.m.

Sept. 12-14

The Official Story (85) Luis Puenzo, Dir., 7 & 9 p.m.

Sept. 19-21

Hannah and Her Sisters (86) Woody Allen, Dir., 7 & 9 p.m.

Sept. 26-28

Salvador (86) Oliver Stone, Dir., 7 & 9:30 p.m.

Oct. 3-5

Sugarbaby (85) Percy Adlon, Dir., 7 & 9 p.m.

Oct. 10-12

Ginger & Fred (86) Federico Fellini, Dir. 7 & 9:30 p.m.

Oct. 17-19

Kiss of the Spiderwoman (85) Hector Babenco, Dir. 7 & 9:30 pm

Oct. 24-26

Buddies (85) Arthur J. Bressan, Dir. 7 & 9 p.m.

Oct. 31-Nov. 2

Mishima (85) Paul Schrader, Dir., 7 & 9:30 p.m.

Nov. 7-9

Brazil (86) Terry Gilliam, Dir., 7 & 9:30 p.m.

Nov. 14-16

The Trip to Bountiful (86) Peter Masterson, Dir., 7 & 9 p.m.

Nov. 21-23

Hail Mary (85) Jean-Luc Godard, Dir., 7 & 9 p.m.

Dec. 5-7

Subway (85) Luc Besson, Dir., 7 & 9 p.m.

Dec. 12-14

The Color Purple (85) Steven Spielberg, Dir., 7 & 9:45 p.m.

*Today In The Union, daily listing/locations of events & programs

MAILING LIST REMINDER

All Union members recently received a postcard to update information for our membership mailing list. Please return the postcards by September 15; Union members who do not respond will be dropped from the mailing list (although regular membership privileges will continue). If you did not receive the mid-summer mailing, please write the Membership Secretary at:

Memorial Union, 800 Langdon St., Madison, WI 53706-1495.

The Wisconsin Union
University of Wisconsin-Madison
Memorial Union, 800 Langdon St.
Madison, WI 53706-1495
(608) 262-2263

Forwarding & Return
Postage Guaranteed

Non-Profit Org.
U.S. Postage
PAID
Madison, Wisconsin
Permit No. 84