



# LIBRARIES

UNIVERSITY OF WISCONSIN-MADISON

## Permanent improvement program 1951 through 1956.

Waukesha, Wisconsin: Southeastern Wisconsin Regional Planning Commission, 1951-06

<https://digital.library.wisc.edu/1711.dl/YNUWFX7UC4IBX85>

<http://rightsstatements.org/vocab/InC/1.0/>

The libraries provide public access to a wide range of material, including online exhibits, digitized collections, archival finding aids, our catalog, online articles, and a growing range of materials in many media.

When possible, we provide rights information in catalog records, finding aids, and other metadata that accompanies collections or items. However, it is always the user's obligation to evaluate copyright and rights issues in light of their own use.



**JUNE 1951**

Graduate Research Center  
Dept. of Urban & Regional Planning  
The University of Wisconsin  
Old Music Hall, 925 Lathrop Dr.  
Madison, Wisconsin 53706

**CITY OF MILWAUKEE  
PERMANENT IMPROVEMENT PROGRAM**

**1951 through 1956**

COMMON COUNCIL'S  
LONG TERM IMPROVEMENT PROGRAM TECHNICAL COMMITTEE

# MILWAUKEE CITY OFFICIALS 1948-1952

Mayor — FRANK P. ZEIDLER

The Common Council:

Ward	Alderman	Ward	Alderman
1	ALFRED C. HASS	15	WALTER A. KOEPKE
2	JOHN J. FLEMING	16	JAMES H. COLLINS
3	MILTON J. McGUIRE, Pres.	17	JOSEPH SCHMIDT
4	CHARLES H. QUIRK	18	PATRICK H. FASS
5	MATHIAS SCHIMENZ	19	IRVING G. RAHN
6	FRED P. MEYERS	20	WILLIAM P. KEPPLER
7	MARTIN E. SCHREIBER	21	JOHN H. GROMACKI
8	EDMUND CHOINSKI	22	EDW. A. HANSEN
9	FRED W. STEFFAN	23	MICHAEL M. JENDUSA
10	ALBERT E. HAACK	24	VALENTINE V. KUJAWA
11	GEORGE A. RUGER	25	JAMES J. MORTIER
12	CLEMENS F. MICHALSKI	26	CLARENCE A. HEIDEN
13	BERNARD B. KROENKE	27	ERWIN F. ZILLMAN
14	RICHARD B. NOWAKOWSKI		

City Attorney: WALTER J. MATTISON

City Comptroller: VIRGIL H. HURLESS

City Treasurer: JOSEPH J. KRUEGER

City Clerk: STANLEY J. WITKOWSKI

---

## THE LONG TERM IMPROVEMENT PROGRAM TECHNICAL COMMITTEE

WALTER M. SWIETLIK, Commissioner of Public Works, Chairman

ALVIN C. BROMM, Planning Director — Land Commission

ELMER KRIEGER, Executive Secretary — Land Commission

WALTER J. MATTISON, City Attorney

GEORGE C. SAFFRAN, Budget Supervisor

---

LLOYD D. KNAPP, City Engineer, Consultant to the Committee

CLARENCE BEERNINK, Executive Secretary and Program Coordinator

# CITY OF MILWAUKEE

LONG TERM IMPROVEMENT PROGRAM TECHNICAL COMMITTEE

ROOM 206 - CITY HALL

MILWAUKEE 2, WISCONSIN

June 29, 1951

TO THE PERSON RECEIVING THIS REPORT:

The enclosed copy of the eighth revision of the City of Milwaukee's Recommended Six-Year Permanent Improvement Program is sent to you with the compliments of the Long Term Improvement Program Technical Committee.

The report highlights in picture form some of the projects completed in the past, some underway in the present, and others programmed in future years. Individual projects are described in separate departmental schedules and the recommended appropriation is listed in the year in which construction is suggested.

The recommended program totals \$100 million (excluding Water Utility capital improvements) compared to the 1950-55 recommendation of \$66.3 million and to expenditures of \$46 million during the 1945-1950 six-year period.

In the letter of submission to the Milwaukee Common Council, it was suggested that recommendations for financing the construction of the proposed projects be formulated by the financial officers of the city prior to budget discussions in September.

If you desire any further information regarding the Permanent Improvement Program, please feel to call upon us.

Yours very truly,

LONG TERM IMPROVEMENT PROGRAM  
TECHNICAL COMMITTEE

Clarence Beernink  
Clarence Beernink, Secretary

# PERMANENT IMPROVEMENT PROGRAM

1951 through 1956

PERMANENT IMPROVEMENT BUDGET FOR 1951  
PERMANENT IMPROVEMENT PROGRAM FOR 1952-1956

RECOMMENDED BY

THE LONG TERM IMPROVEMENT PROGRAM  
TECHNICAL COMMITTEE

CITY OF MILWAUKEE



JUNE, 1951

# CONTENTS

Roster of City Officials . . . . .	Inside Cover
Title Page . . . . .	1
Contents . . . . .	2
LOOKING AHEAD . . . . .	3
WHY THE NEEDS ARE GREAT . . . . .	4
THE CITY'S NEEDS . . . . .	6
THE CITY'S PROGRAM . . . . .	7
PUBLIC IMPROVEMENT PROJECTS BY SERVICES (CHART) . . . . .	8
SUMMARY OF THE PROGRAM . . . . .	9
IMPROVEMENTS RECENTLY COMPLETED . . . . .	10
IMPROVEMENTS UNDERWAY OR TO START SOON . . . . .	14
OTHER IMPROVEMENTS RECOMMENDED . . . . .	18
SCHEDULES OF RECOMMENDED 1951-1956 PROGRAM . . . . .	21
SUMMARY SCHEDULE . . . . .	22
DEPARTMENTAL SCHEDULES . . . . .	24
SUMMARY OF PRESENT CAPITAL IMPROVEMENT PROGRAM . . . . .	42

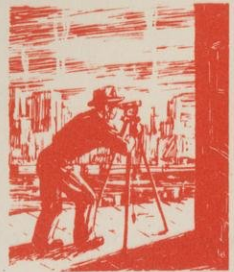
# LOOKING AHEAD

The Common Council directives requiring the yearly preparation of a recommended Six-Year Permanent Improvement Program for Milwaukee causes its officials and administrators to stop once a year to take stock — to inquire into the condition of its public streets, buildings, land and structures; the quality and sufficiency of its services for the protection of the life, health, and welfare of its citizens; and to make sure that the new investments it makes will help to bring about the "Milwaukee of the future" envisioned in the Master Plan prepared by the Board of Public Land Commissioners.

A city must look ahead to decide the things it wishes to accomplish over a period of 20 to 30 years, and then plan more definitely those items which should logically be done in the five or six years immediately ahead in order to achieve the long-range program. The Milwaukee Master Plan is the long-range plan for the city. This 1951-56 Permanent Improvement Program is the schedule of projects considered essential to be completed in the shorter six-year period immediately ahead.

This eighth revision of the Permanent Improvement Program recommended by the Council's Long Term Improvement Program Technical Committee is presented in a bound compact form for unity, clarity, and ease of handling. The close cooperation of those city departments which gave valuable assistance in the planning, writing, and art work contained in this program is gratefully acknowledged.

# Six Reasons Why the City's Improvement Needs are Great . . .



## 1. The increasing use of the automobile causes many traffic and parking problems.

This scene on N. 35th Street near State Street is typical of traffic congestion on many city streets.



## 2. Many old and outmoded city-owned structures need to be modernized or replaced.

This S. First Street Bridge and many other structures no longer meet present-day requirements.



## 3. Public services must be provided in newly annexed areas.

A new sewer extension under construction is shown here.



## 4. Blighted areas need redevelopment; the residents await rehousing.

These buildings on N. Milwaukee Street are typical of many recommended to be razed for the proposed Lincoln Terrace Project.

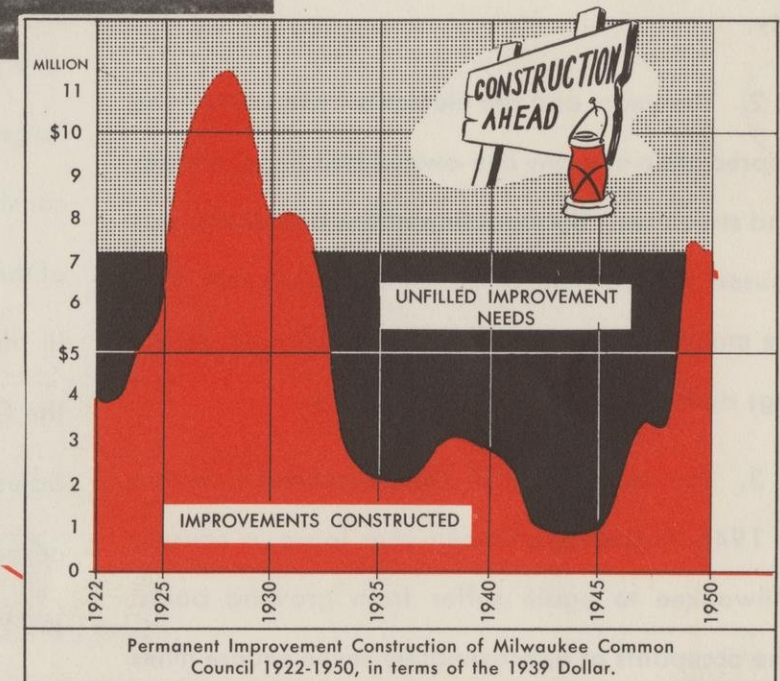


## 5. The current high home building volume is not meeting urgent demands.

Many residents are still living in unsatisfactory, overcrowded, or temporary dwellings.

## 6. Two decades of curtailed public construction.

Reduced spending during the depression and war years has created a heavy backlog of projects.





# THE CITY'S NEEDS

Steam shovels and cranes are working; pavement breakers and air hammers pound away doggedly; dirt is flying! Contracts are being let and plans drawn on many of the projects listed in this report. But the major needs of the city will probably retain their relative importance for the next six years.

There are six basic causes for these major needs:

1. The increasing use of the automobile causes an ever greater impact on the lives of Milwaukee citizens. It creates traffic confusion, noise, danger, and parking difficulties in residential and business areas alike. While it beneficially changes our way of living, it also brings complex problems to our city.

2. The years and the elements have caused the depreciation of many city-owned buildings, bridges and structures. The doubling of the population has caused their obsolescence. It is urgent now that we modernize, rebuild, repair, and plan our buildings and facilities for more efficiency.

3. The reactivation of the annexation program in 1946, following a fifteen-year lapse, is causing Milwaukee to again suffer from growing pains. The occupants of approximately seven square miles of new area expect and deserve the same quality of services, improvements, and protection as are given to other city dwellers.

4. Like other large American cities, Milwaukee has several "blighted" areas in which substandard houses and deteriorated commercial structures are breeding grounds for disease, juvenile delinquency, and low standards of living. The need to redevelop these areas is generally acknowledged.

5. Milwaukee is still faced with a housing deficiency of at least 20,000 dwelling units according to recent surveys, and hundreds of families are living in unsatisfactory temporary housing. Emphasis on residential construction and street improvements necessary for new residential areas must continue.

6. A sixth cause of the present need for a large program now is the lack of a realistic public construction program during the depression years of the 1930's and the war years of the early 1940's. In the five-year period 1926-30, expenditures by the Common Council for Permanent Improvements, adjusted to 1939 costs, totaled \$48.6 million compared to \$24.6 million in 1931-35, \$13.6 million in 1936-40, and a low of \$6.8 million in 1941-45. In the last five-year period 1946-50, the total crept upward to \$23.5 million. A deficiency of millions of dollars of improvement work has thus occurred.

# THE CITY'S PROGRAM

The recommended program provides construction work in each of the six major classifications of need.

1. The solution of the problems created by the greater use of the automobile is perhaps the greatest challenge facing our city officials and civic leaders today. Express highways, major thoroughfares, street widenings, the elimination of traffic bottlenecks, traffic control lighting, new parking facilities and sites, are programmed as a vigorous attack on these problems.

2. Projects intended to overcome the effects of obsolescence and deterioration include 23 new buildings; 7 new bridges, viaducts, and grade separations; and 18 projects to reconstruct or remodel present buildings and viaducts (excluding schools).

3. Services and facilities programmed for the newly annexed areas are numerous. Water and sewer connections, new streets and sidewalks, better lighting, schools, fire and police buildings, are some of the improvements proposed.

4. To clear the city's blighted areas the Milwaukee Housing Authority, as the agent for the

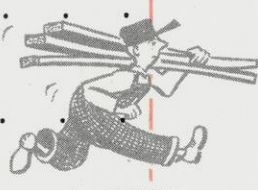
Common Council, is developing plans for projects in the 1st, 2nd, 5th, and 6th wards. The use of federal and city funds to acquire, clear, replat, and sell the redeveloped land to private builders is proposed. Additional low-cost housing is programmed with federal funds to provide dwelling units for those to be removed from the cleared areas.

5. The construction of homes, especially on lots in the outer areas of the city, is encouraged. The Department of Public Works prepares annually a detailed schedule for the extension of sewer and water lines, and the paving of streets and sidewalks, coordinated with the requirements of private builders and with the low-cost housing projects of the Milwaukee Housing Authority.

6. To overcome the effect of reduced appropriations for permanent improvements during the depression and war years, the new six-year program schedules projects totaling \$100 million dollars in comparison to \$46 million actually expended in the past six-year period, 1945 to 1950 inclusive.

## PUBLIC IMPROVEMENT PROJECTS BY SERVICES

	Recommended 1951-1956 Program	Completed or Under Contract 1943-1950	Not Started — Fully Financed		Completed in Progress or Fully Financed	Recommended 1951 - 1956 Program
Millions	\$5	\$10	\$15	\$20	\$25	
Street Construction and Lighting . . . . .	. . . . .				\$20,069,466	\$35,055,000
Sewer Construction . . . . .	. . . . .				13,304,907	17,750,000
Public Schools and Vocational School . . . . .	. . . . .				6,080,088	13,250,000
Auditorium, Library, Museum . . . . .	. . . . .				5,546,461	10,263,480
Public Buildings, Bridges, Grade Separations . . . . .	. . . . .				2,446,926	7,181,000
Fire and Police Protection . . . . .	. . . . .				1,514,316	4,779,500
Water Works and Harbor Facilities . . . . .	. . . . .				5,641,958	4,162,500
Housing and Health . . . . .	. . . . .				12,446,262	3,150,000
Lake Front and Civic Center Development . . . . .	. . . . .				3,646,475	2,093,500
Parking Projects . . . . .	. . . . .				628,800	2,001,000
Garbage Collection, Disposal, and Street Sanitation . . . . .	. . . . .				1,011,521	1,450,000
Playgrounds . . . . .	. . . . .				1,186,069	1,350,000
Other Miscellaneous Projects . . . . .	. . . . .				4,944,278	1,993,500
<b>TOTALS</b>					<b>\$78,467,527</b>	<b>\$104,479,480</b>



# RECOMMENDED SIX-YEAR PROGRAM

## Summary of Program

This 1951-56 Recommended Permanent Improvement Program schedules projects totaling \$104,489,480 for the next six years as compared to a total of \$78,467,527 for projects completed, in progress, or fully financed in the eight-year period since the first program was recommended in 1943.

Off-street Parking areas financed from meter revenue, bond sales, and benefit assessments, estimated at \$10,000,000; \$7,000,000 of new water mains paid from Water Department revenue; and an estimated \$9,000,000 of street, sewer, and water improvements assessed directly to benefited property owners will add another \$26,000,000 to the total proposed city expenditures.

This is the largest program ever recommended by the Long Term Improvement Program Technical Committee. It recognizes the increasing needs of the city and the intensified demand on the part of the general public for essential public improvements. The chart on the opposite page shows previous and recommended expenditures broken down by type of municipal service. Projects programmed for Street Construction and Lighting, including major trafficways, top the list with a total of \$35 million, followed by Sewer Construction with \$17.7 million, Schools \$13.2 million, Auditorium, Museum and Library \$10.2 million, and Public Buildings, Bridges and Grade Separations \$7.2 million.

The chart enables the citizen to see how the public money has been spent and is planned to be spent, and to participate in discussions with respect to it.

## Selection of Projects

The recommended program represents a judicious selection of projects, balanced as to effects upon business and benefits to the people. It is coordinated with the basic Master Plan for the city. Some important projects have been deferred pending further study of their relationship to other projects and to the general plan of future development for the city.

The projects included in the program were selected on the basis of:

1. Urgent necessity and benefit to the community.
2. Readiness — considering funds on hand or available, plans completed, land acquired.
3. Proper sequence of construction of related projects.
4. Balancing the program through the inclusion of reasonable proportions of different types of projects and by the restriction to the recommended annual total cost.

## Yearly Totals

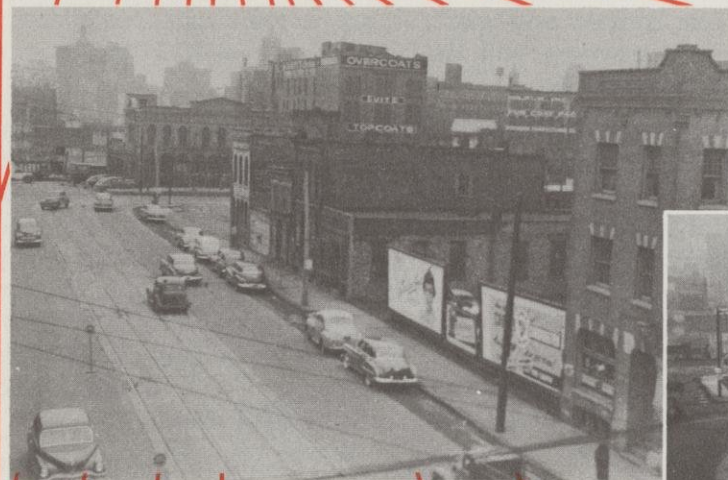
In setting up the six-year totals, a preliminary decision had to be made as to the size of the program in dollars. This was not an arbitrary choice. After careful study and discussion, the Technical Committee concluded that a level annual appropriation for public improvements totaling 20% of the annual budget should be recommended. This would make available approximately \$15 million yearly. The 1951 total is somewhat larger because of the \$5 million expressway program, and the 1952 figures include \$2.5 million for a recommended City Hall Annex.

## Estimated Costs

All estimates are based on the 1950 price level. Future revisions will reflect the effect of price variations, just as this report shows higher estimates for some projects previously recommended at lesser costs.

# Some Improvements

# Recently Completed



Before

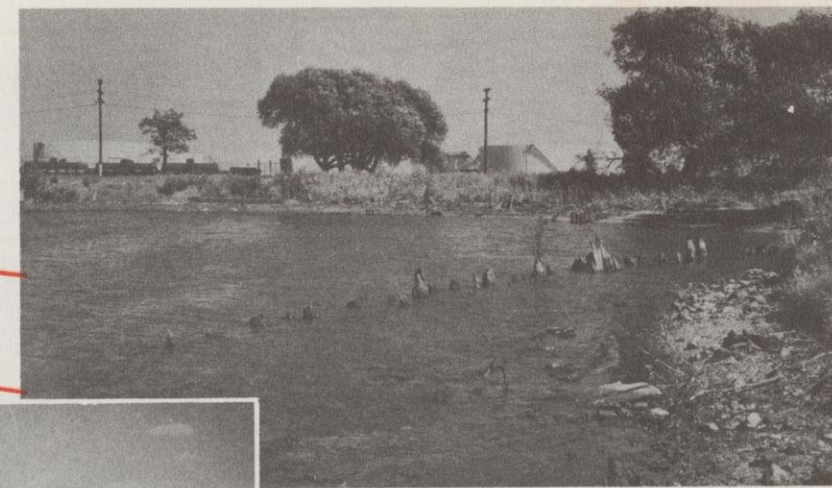


After

← The new S. First St. approach to the Water Street Bridge eliminated two sharp turns.



← A redesigned and repaved N. Plankinton Ave. intersection gives channelized access to widened W. Kilbourn Ave.



Before

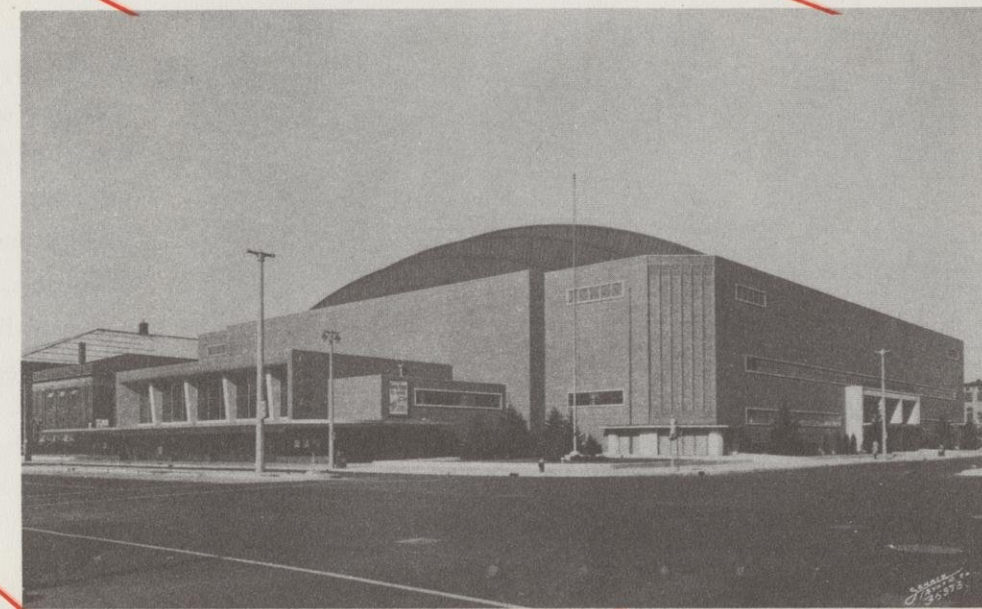
Milwaukee Journal Photo



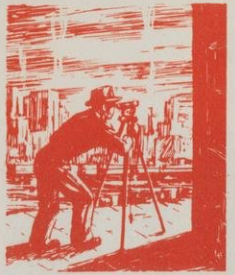
After

→ The old harbor entrance, west side of Jones Island. Another waterfront blighted area disappears.

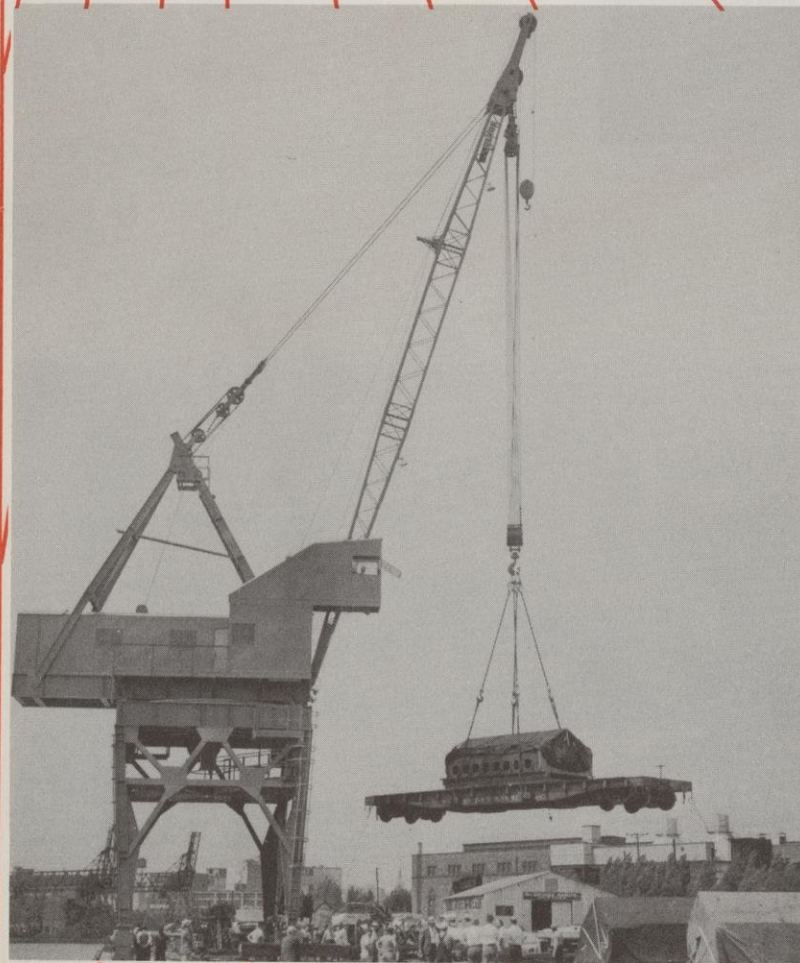
→ Over 1,000,000 persons were entertained in the \$5,000,000 Sports Arena Addition to the Auditorium in its first year of operation.



## More Improvements



This new \$134,000 Engine House on S. Chase Ave. near E. Euclid Ave. gives fire protection to newly built-up areas in the Southeasterly section of the city.



A new Clyde electric gantry crane installed at the Municipal Dock at a cost of \$120,000, has the largest capacity of any boat loading facility on the west coast of Lake Michigan. Picture shows the official test, lifting a 72.5 ton loaded railroad car.

## Recently Completed



Floor space doubled at the Central Library. A modernized Science and Industry Department at the first floor level and a new Art Department at the second floor level. Total cost \$47,000.



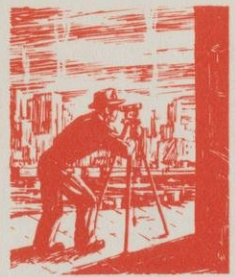
Berryland Veterans' Housing Project. Homes for 328 additional families provided in the Northwest part of the city at a cost of \$3,500,000.

*(\$10,640 per unit)*

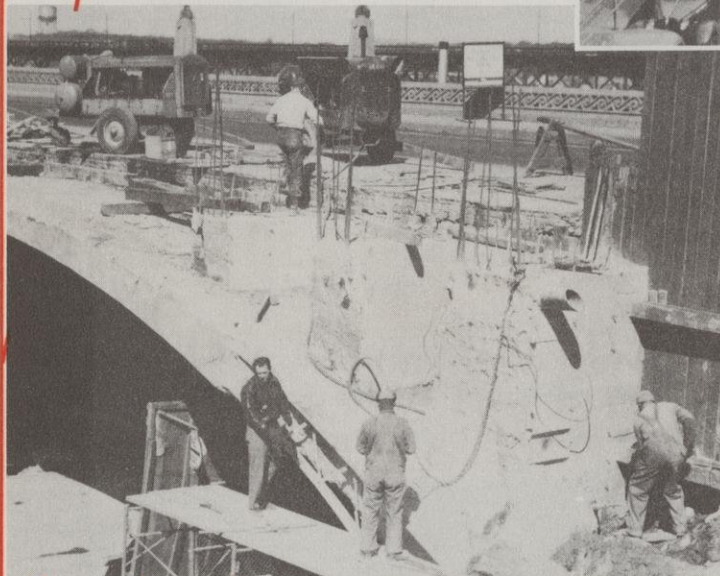


# Some Improvements Underway

# or to Start Soon



E. Pittsburgh Ave. Southeast corner to be cut off and north side widened to the Broadway Bridge. →



← Reconstruction of the Wisconsin Ave. Viaduct with a widened roadway will continue over a three-year period at a cost of \$645,000.

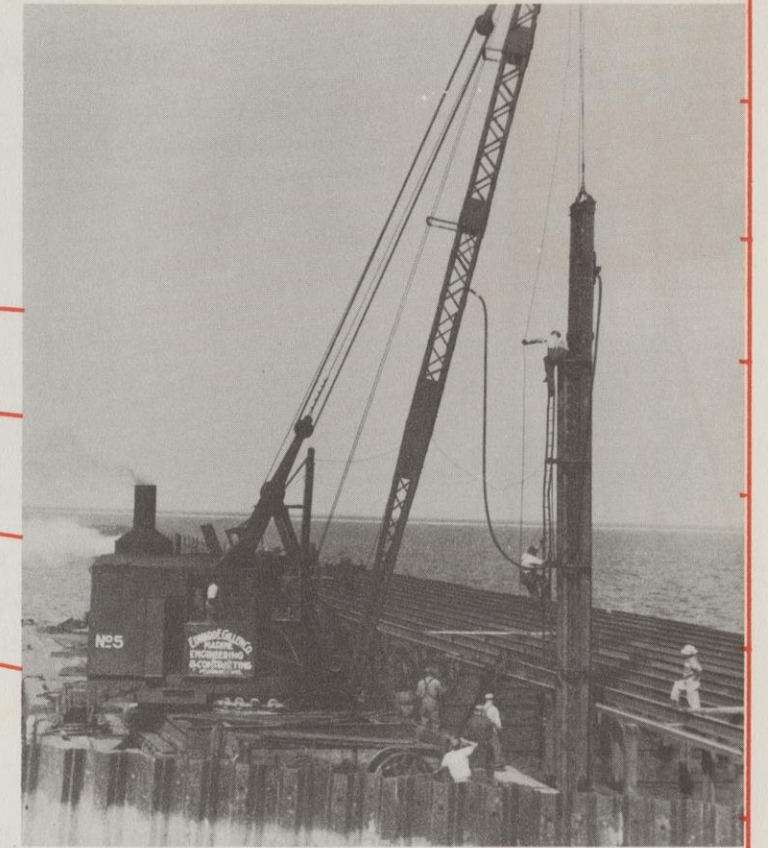
→ A new \$1,100,000 double span bascule bridge will soon replace this outmoded Juneau Ave. swing bridge.



Three lines of tanker vessels will utilize South Pier No. 5 immediately upon completion this summer. Approximate cost \$396,000. →

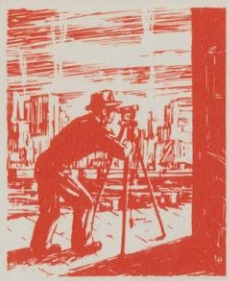


← S. 84th St. will be widened and rebuilt south from the Blue Mound Road.

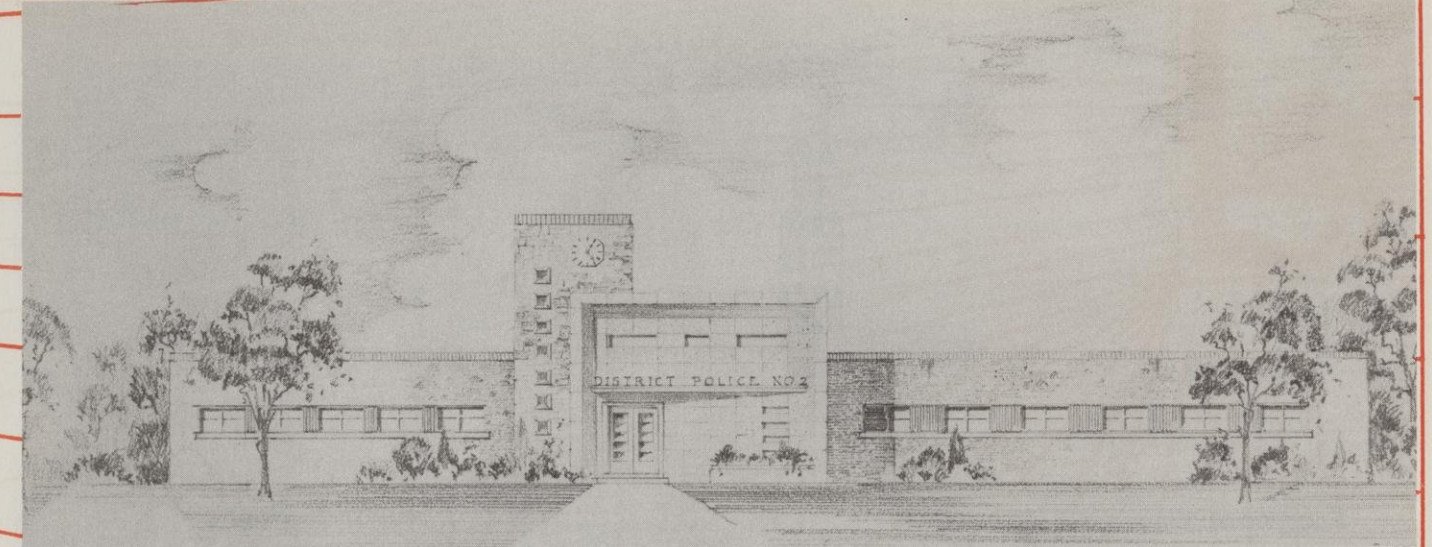


→ Westlawn Low-Rent Housing Development when completed will provide 728 more family units in the Northwest section of the city.



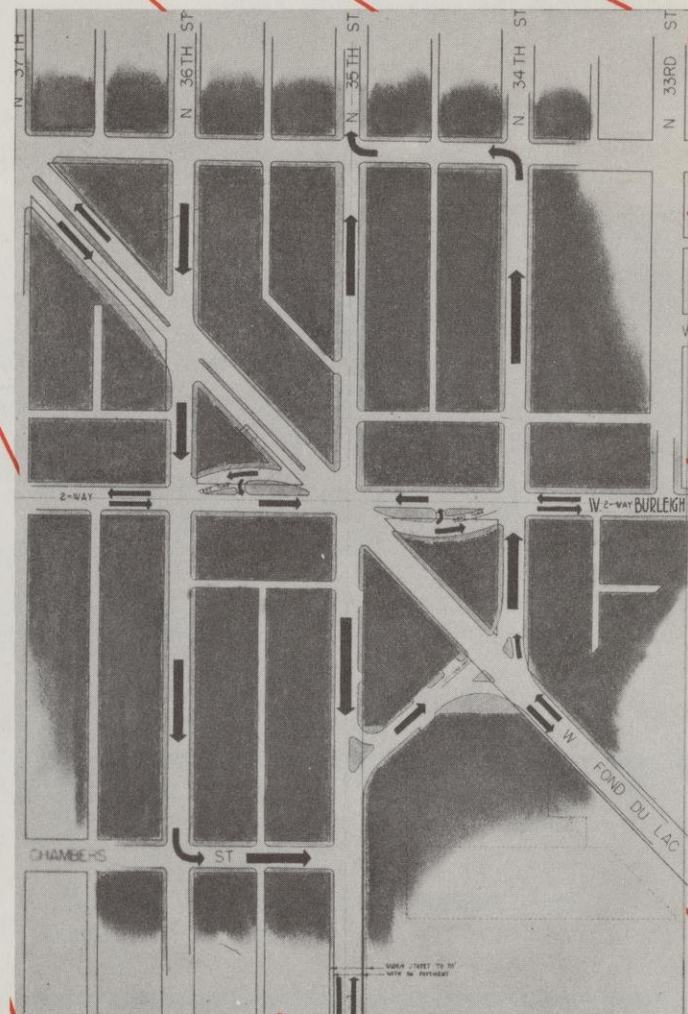


▲ A proposal to build either a W. St. Paul Ave. or W. Clybourn St. underpass in 1952 at this N. 6th St. intersection is receiving serious study.



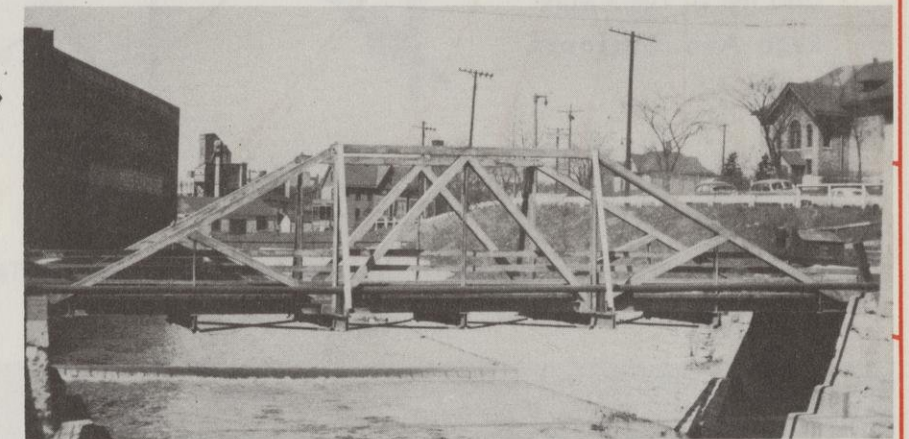
▲ Plans are in progress for the new District Police Station No. 2 designed for S. 3rd St. and W. Lincoln Ave. at an approximate construction cost of \$300,000.

This solution for easing traffic at the six-point intersection at N. 35th St., W. Fond du Lac Ave., and W. Burleigh St. is suggested for 1952 construction.

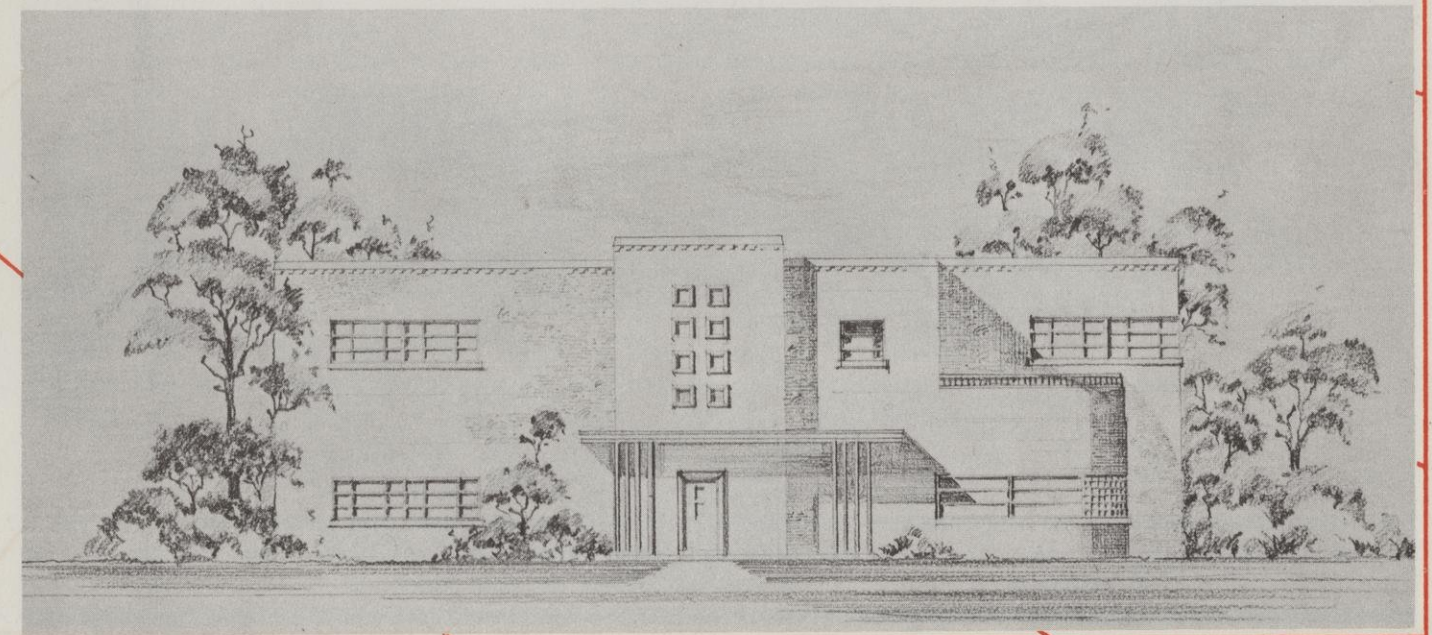


▲ Razing of the filling station and a frame dwelling at N. 35th St. and W. State St. and the rebuilding of the intersection will eliminate this jog in the east-west traffic.

Replacement of this one-way wooden bridge at N. 45th St. over the Menomonee River by a larger \$68,000 steel and concrete structure is expected to go ahead.

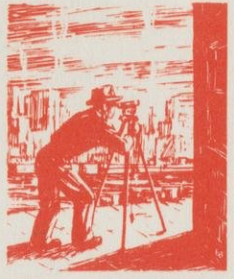


This new fire station is rapidly nearing completion at N. 20th St. and W. Hampton Ave. to improve fire protection service to the far North Side. (Side view)

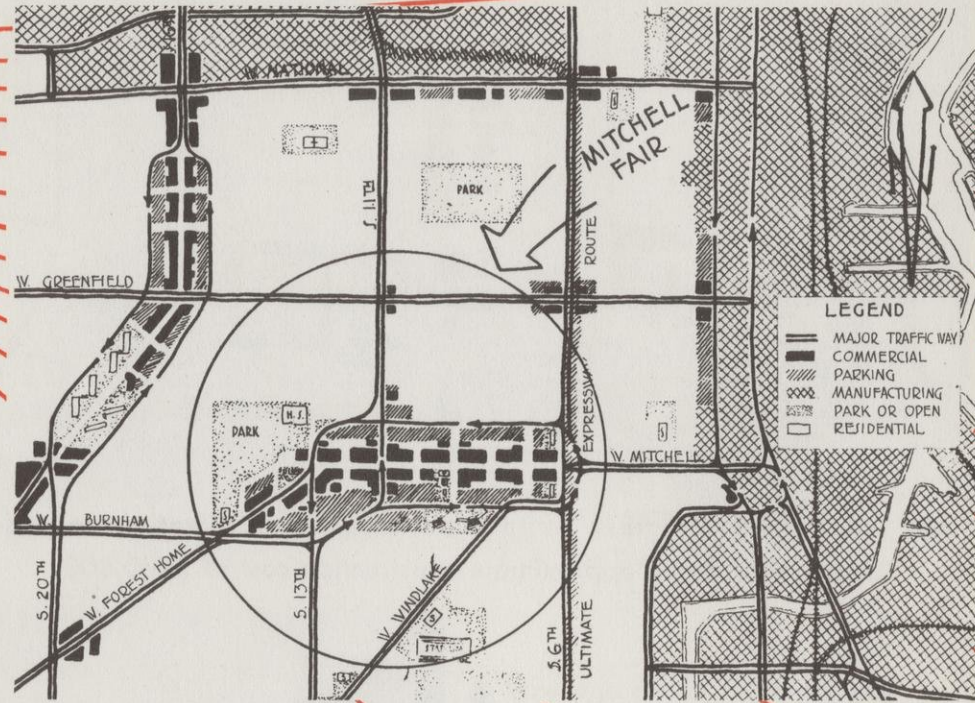




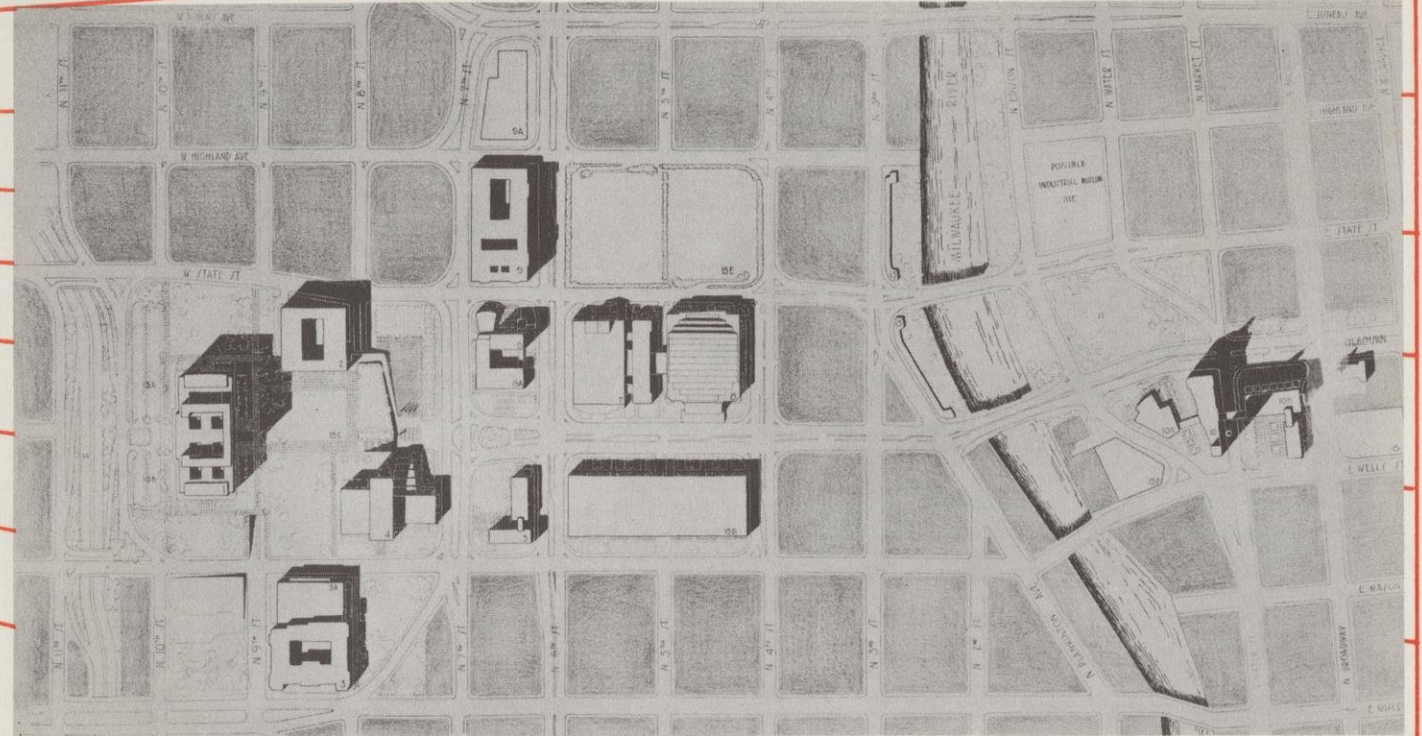
# Other Improvements in the Recommended Program



Suggested treatment for traffic and parking for Mitchell St. and the S. 16th-Muskego Ave. business areas.



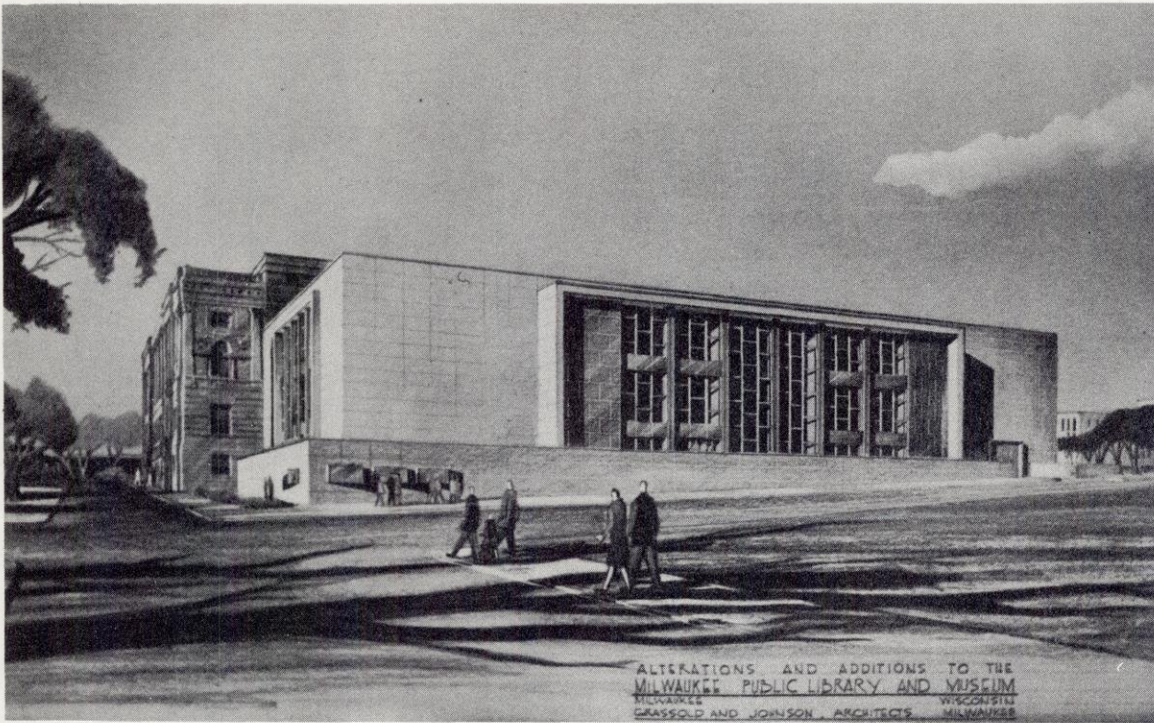
Proposed off-street parking site West of N. Teutonia Ave. looking south from W. Hadley St.




Plan recommended by Board of Public Land Commissioners for the orderly development of the Civic Center.

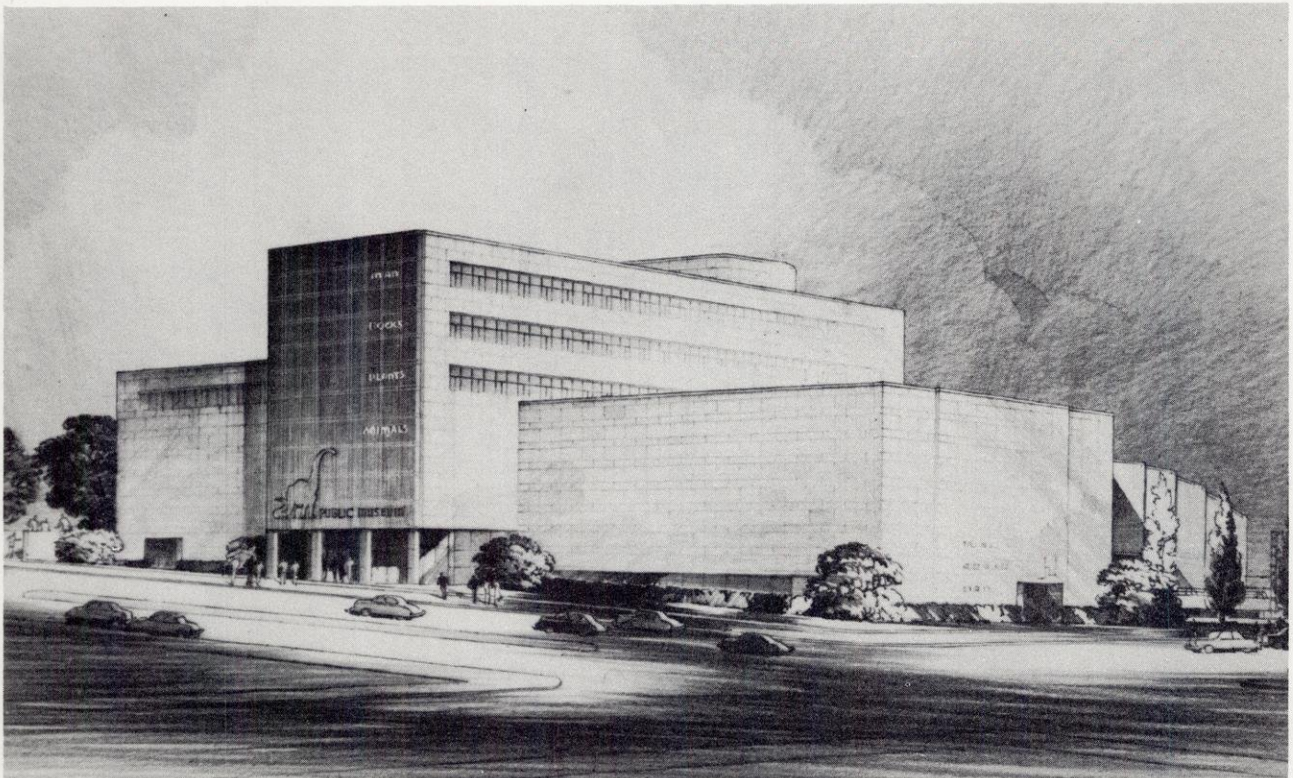
Segments of the expressway system approved by the Common Council are N. 44th St. from W. National Ave. to W. Wells St. and the West leg from N. 44th St. to N. 25th St. estimated to cost \$12.5 million.





Addition to the Central Library Building fronting on W. Wells St.  facing the Civic Center area. Programmed 1954-1955.

 Architect's conception of the proposed new Museum, facing W. Wells St. at N. 7th St. Programmed 1955-1956.



**SCHEDULES OF**

**THE RECOMMENDED 1951-1956**

**PERMANENT IMPROVEMENT PROGRAM**

RECOMMENDED 1951-1956 PERMANENT IMPROVEMENT PROGRAM

SUMMARY SCHEDULE

Sponsoring Department or Bureau	Estimated Cost to Complete	Funds Available from 1950	Budget 1951
Central Board of Purchases	\$ 168,500	\$	\$ 18,500
Fire Department	1,764,500		84,500
Harbor Commission	530,500	58,000	112,500
Health Department	332,000	182,000	
Land Purchase Fund	192,000	42,000	25,000
Library Board	5,051,480		70,000
Museum Board	7,637,000		
Police Department	890,000	25,000	350,000
Department of Public Works:			
General	5,853,500	260,000	293,500
Bureau of Bridges and Public Buildings - General	8,610,000	1,195,000	470,000
Bureau of Bridges and Public Buildings - Playground Division	8,015,000	23,000	350,000
Bureau of Electrical Service	7,080,000	80,000	750,000
Bureau of Engineers	1,123,000	117,000	173,000
Bureau of Forestry	320,000	20,000	50,000
Bureau of Garbage Collection and Disposal	1,677,000	527,000	900,000
Bureau of Municipal Equipment	400,000		
Bureau of Sewers	26,160,000	160,000	2,750,000
Bureau of Street Construction and Repairs - General	16,480,000	280,000	1,830,000
Bureau of Street Construction and Repairs - Major Trafficways or Express Highways	14,310,000	60,000	4,750,000
Bureau of Street Construction and Repairs - Street Openings, Widenings, and Grade Changes	4,364,200	289,200	600,000
Bureau of Street Sanitation	300,000		
Off-Street Parking, City Share	2,301,200	300,200	2,001,000
Public Housing	4,000,000	250,000	1,000,000
Miscellaneous Projects	1,250,000		500,000
School Board	18,200,000		2,000,000
Vocational School	1,250,000		1,250,000
<b>TOTAL RECOMMENDED 1951-1956 PERMANENT IMPROVEMENT PROGRAM</b>	<b>\$138,259,880</b>	<b>\$ 3,868,400</b>	<b>\$20,328,000</b>

RECOMMENDED 1951-1956 PERMANENT IMPROVEMENT PROGRAM

SUMMARY SCHEDULE

Recommended Appropriations					Total	Programed
1952	1953	1954	1955	1956	Six-Year	Later
					Program	
\$	\$ 150,000	\$	\$	\$	\$ 168,500	\$
490,000	440,000	100,000	275,000	225,000	1,614,500	150,000
50,000	75,000	75,000	85,000	75,000	472,500	
150,000					150,000	
25,000	25,000	25,000	25,000	25,000	150,000	
326,480		1,500,000	1,500,000	455,000	3,851,480	1,200,000
			3,000,000	3,137,000	6,137,000	1,500,000
60,000	55,000	200,000	200,000		865,000	
200,000	400,000	400,000	400,000	400,000	2,093,500	3,500,000
3,445,000	720,000	850,000	70,000	620,000	6,175,000	1,240,000
200,000	200,000	200,000	200,000	200,000	1,350,000	6,642,000
750,000	3,100,000	800,000	800,000	800,000	7,000,000	
408,000	425,000				1,006,000	
50,000	50,000	50,000	50,000	50,000	300,000	
	250,000				1,150,000	
	400,000				400,000	
3,000,000	3,000,000	3,000,000	3,000,000	3,000,000	17,750,000	8,250,000
2,000,000	2,000,000	2,200,000	2,000,000	2,000,000	12,030,000	4,170,000
	5,000,000	1,500,000	1,500,000	1,500,000	14,250,000	
800,000	600,000	600,000	735,000	740,000	4,075,000	
100,000	100,000	100,000			300,000	
					2,001,000	
250,000	750,000	250,000	750,000		3,000,000	750,000
150,000	150,000	150,000	150,000	150,000	1,250,000	
2,000,000	2,000,000	2,000,000	2,000,000	2,000,000	12,000,000	6,200,000
					1,250,000	
<u>\$14,454,480</u>	<u>\$19,890,000</u>	<u>\$14,000,000</u>	<u>\$16,740,000</u>	<u>\$15,377,000</u>	<u>\$100,789,480</u>	<u>\$33,602,000</u>

RECOMMENDED 1951-1956 PERMANENT IMPROVEMENT PROGRAM

Project Description	Estimated Cost to Complete	Funds Available from 1950	Budget 1951	Recommended	
				1952	1953
CENTRAL BOARD OF PURCHASES	\$ 168,500		\$ 18,500		\$ 150,000
Remodeling of Building at 176 N. Broadway for Storehouse Purposes	15,000		15,000		
New Piping and Pumps at 1028 N. Hawley Rd. Plant	3,500		3,500		
General Municipal Storehouse	150,000				150,000
<hr/>					
FIRE DEPARTMENT	\$1,764,500		\$ 84,500	\$ 490,000	\$ 440,000
Remodeling, Reconversion, and Changeovers of Fire Houses	254,500		79,500	50,000	50,000
Demolition of Old Station House - N. 19th St. & W. North Ave.	5,000		5,000		
New Fire Station - Vicinity N. 8th St. & W. Michigan St.	300,000			300,000	
New Fire Station - Southwest Side	140,000			140,000	
New Fire Station - S. 9th St. & W. Greenfield Ave.	250,000				250,000
New Fire Station - Northwest Side	140,000				140,000
Addition to Fire House - N. 40th St. & W. Hopkins St.	75,000				
Repair Shop Addition - 118 W. Virginia St.	250,000				
New Fire Station - Vicinity of State Fair Park	150,000				
Repairing and Renovating Existing Pipelines	200,000				

RECOMMENDED 1951-1956 PERMANENT IMPROVEMENT PROGRAM

Appropriations			Total	Programed	Remarks
1954	1955	1956	Six-Year Program	Later	
			\$ 168,500		CENTRAL BOARD OF PURCHASES
			15,000		Structural changes to increase floor loading capacities; install elevator; change lighting, heating, and front entrance doors of former fire engine house.
			3,500		Cross connections and valves in intake and outlet pipes will permit individual use of one 250,000 gallon tank for storage and issue of high octane gas.
			150,000		To save an estimated \$90,000 annually through quantity purchases and storage, delivery costs, bookkeeping costs, and standardization of items. Restores project postponed in 1949.
<u>\$ 100,000</u>	<u>\$ 275,000</u>	<u>\$ 225,000</u>	<u>\$1,614,500</u>	<u>\$ 150,000</u>	FIRE DEPARTMENT
25,000	25,000	25,000	254,500		Modern, heavier, and longer apparatus; the housing of additional men because of consolidations; and the deterioration of older buildings make a general modernization program essential for several years.
			5,000		Abandoned as a fire house. Condemned by City Building Inspector.
			300,000		To replace old fire house on N. 6th St. which will be razed as part of street widening project.
			140,000		To give protection to newly annexed built-up areas extending to S. 72nd St. & W. Morgan Ave.
			250,000		Site reserved. Replaces Engine House No. 12 on S. 13th St. near W. Orchard St., and Truck House No. 4 on S. 8th St. near W. Windlake Ave., both to be sold. Probable saving, \$2,000 annually.
			140,000		To give protection to additional territory taken in west of N. 54th St. and north of W. Hampton Ave. and to area rapidly building up west of N. 76th St. and north of W. Center St.
75,000			75,000		Land acquired in 1949. Modern equipment necessitates enlargement of structure.
	250,000		250,000		Need greater floor area for more and longer equipment.
		150,000	150,000		For protection of new areas lying between Wauwatosa and West Allis.
		50,000	50,000	150,000	High-pressure lines to industrial plants need an overhauling.

RECOMMENDED 1951-1956 PERMANENT IMPROVEMENT PROGRAM

Project Description	Estimated Cost to Complete	Funds Available from 1950	Budget 1951	Recommended	
				1952	1953
<b>HARBOR COMMISSION</b>	<u>\$ 530,500</u>	<u>\$ 58,000</u>	<u>\$ 112,500</u>	<u>\$ 50,000</u>	<u>\$ 75,000</u>
Service Road to New Tanker Pier	20,000		20,000		
Dock Office Building (Supplemental)	93,000	58,000	35,000		
Research Fund	2,500		2,500		
Dock and Work Equipment	65,000		30,000	10,000	
City-Owned Dock Walls Reconstruction	100,000		25,000	15,000	25,000
Rail Yard Expansion - South Harbor Tract	125,000			25,000	50,000
Sewer and Water Lines - South Harbor Tract	125,000				
<b>HEALTH DEPARTMENT</b>	<u>\$ 332,000</u>	<u>\$ 182,000</u>		<u>\$ 150,000</u>	
Rehabilitation of South View Hospital, Including Purchase of Equipment and Operating Facilities	332,000	182,000		150,000	
<b>LAND PURCHASE FUND</b>	<u>\$ 192,000</u>	<u>\$ 42,000</u>	<u>\$ 25,000</u>	<u>\$ 25,000</u>	<u>\$ 25,000</u>
Land Purchases - Delinquent Taxes	192,000	42,000	25,000	25,000	25,000
<b>LIBRARY BOARD</b>	<u>\$5,051,480</u>		<u>\$ 70,000</u>	<u>\$ 326,480</u>	
Central Library - Remodel Third Floor Area	70,000		70,000		
Branch Library - N. Sherman Blvd. & W. North Ave.	259,800			259,800	
Return of Federal Loan - Branch Library Plans	66,680			66,680	
Central Library Building Addition	3,000,000				
Remodeling Museum Area for Library Use	1,500,000				
Branch Library - N. 55th St. & W. Burleigh St.	155,000				



RECOMMENDED 1951-1956 PERMANENT IMPROVEMENT PROGRAM

Appropriations			Total	Programed	Remarks
1954	1955	1956	Six-Year Program	Later	
<u>\$ 75,000</u>	<u>\$ 85,000</u>	<u>\$ 75,000</u>	<u>\$ 472,500</u>		HARBOR COMMISSION
			20,000		To afford access to new pier #5 to be completed in 1951.
			35,000		Supplemental appropriation to complete the building now under construction.
			2,500		Will augment federal assistance for research and construction of models prior to design of harbor facilities.
	25,000		65,000		To purchase mobile crane in 1951, electric magnet for gantry crane in 1952, and additional equipment in 1955.
25,000	10,000		100,000		Approximately 600 ft. of dock to be replaced to prevent damage to banks and structures.
		50,000	125,000		Major expansion of port facilities must be accompanied by expansion of rail and highway facilities or effectiveness is lost.
50,000	50,000	25,000	125,000		To bring services and fire protection to expanded facilities.
			<u>\$ 150,000</u>		HALTH DEPARTMENT
			150,000		To remodel two floors of the east wing for hospital purposes and the upper floor of the west wing for laboratory purposes.
<u>\$ 25,000</u>	<u>\$ 25,000</u>	<u>\$ 25,000</u>	<u>\$ 150,000</u>		LAND PURCHASE FUND
25,000	25,000	25,000	150,000		For payment of delinquent taxes on tax deed land needed for City purposes.
<u>\$1,500,000</u>	<u>\$1,500,000</u>	<u>\$ 455,000</u>	<u>\$3,851,480</u>	<u>\$1,200,000</u>	LIBRARY BOARD
			70,000		Major reconstruction of skylights, floor, heating, and lighting in area vacated by removal of Cataloging Department.
			259,800		Site acquired. Standard design plans in progress under federal loan project.
			66,680		Full amount of federal loan is returnable when first branch building is started.
1,500,000	1,500,000		3,000,000		Addition to present building facing Civic Center area on W. Wells St. of concrete and steel construction, centralized book-handling facilities. Fireproof, dampproof storage bookracks. Plans complete.
		300,000	300,000	1,200,000	To follow removal of Museum activities and equipment to new building.
		155,000	155,000		Site acquired. Standard design plan in progress under federal loan project.

RECOMMENDED 1951-1956 PERMANENT IMPROVEMENT PROGRAM

Project Description	Estimated Cost to Complete	Funds Available from 1950	Budget 1951	Recommended	
				1952	1953
<b>MUSEUM BOARD</b>	<b><u>\$7,637,000</u></b>				
New Museum Building	6,137,000				
Furnishings and Equipment for New Building	1,500,000				
<b>POLICE DEPARTMENT</b>	<b><u>\$ 890,000</u></b>	<b><u>\$ 25,000</u></b>	<b><u>\$ 350,000</u></b>	<b><u>\$ 60,000</u></b>	<b><u>\$ 55,000</u></b>
New District Station - S. 3rd St. & W. Lincoln Ave.	300,000		300,000		
Radio Frequency Changeovers	125,000	25,000	50,000	50,000	
New Boat House near Riverside Pumping Station	10,000			10,000	
Garage Addition at No. 6 Station - 3320 W. Burnham St.	55,000				55,000
New Police Garage - Near Safety Building	200,000				
New Northwest Side Police Station	200,000				
<b>DEPARTMENT OF PUBLIC WORKS - GENERAL</b>	<b><u>\$5,853,500</u></b>	<b><u>\$ 260,000</u></b>	<b><u>\$ 293,500</u></b>	<b><u>\$ 200,000</u></b>	<b><u>\$ 400,000</u></b>
Kilbourn Avenue & MacArthur Square (Civic Center) Development - N. 11th St. to the Lake					
1. For Property Acquisition	3,250,000	250,000	200,000	200,000	200,000
2. For Underground Parking Construction	2,500,000				200,000
Land Acquisition and Improvement of Abandoned Wisconsin Electric Power Company R.O.W. and Adjacent Land - Between S. Whitnall Ave. & S. Pine Ave. Southward to Lakeside Belt Line	103,500	10,000	93,500		
<b>DEPARTMENT OF PUBLIC WORKS - BUREAU OF BRIDGES AND PUBLIC BUILDINGS</b>	<b><u>\$8,610,000</u></b>	<b><u>\$1,195,000</u></b>	<b><u>\$ 470,000</u></b>	<b><u>\$3,445,000</u></b>	<b><u>\$ 720,000</u></b>
Juneau Avenue Bascule Bridge Project	1,375,000	900,000	200,000	275,000	
Wisconsin Avenue Viaduct Restoration	645,000	245,000	200,000	200,000	
Conversion of Electrical Control Installation for 1-House Operation of Bascule Bridges	120,000		20,000	20,000	20,000

RECOMMENDED 1951-1956 PERMANENT IMPROVEMENT PROGRAM

Appropriations			Total	Programed	Remarks
1954	1955	1956	Six-Year Program	Later	
	<u>\$3,000,000</u>	<u>\$3,137,000</u>	<u>\$6,137,000</u>	<u>\$1,500,000</u>	MUSEUM BOARD
	3,000,000	3,137,000	6,137,000		Part of Civic Center improvement. Recommended for block between N. 7th & N. 8th Sts. facing Wells St. and Civic Center Plaza to north. Present building has display space for only one half of materials.
				1,500,000	
<u>\$ 200,000</u>	<u>\$ 200,000</u>		<u>\$ 865,000</u>		POLICE DEPARTMENT
			300,000		Will replace and consolidate #2 and #4 district stations, built in 1896 and 1904, now deteriorated and obsolete.
			100,000		To construct three remote control towers and convert squad and cycle equipment to ultra-high frequency.
			10,000		In parkway near Riverside Pumping Station.
			55,000		District serves larger area, houses more cars. Need additional land from School Board playfield.
200,000			200,000		To house 60 autos and 50 cycles for which there is no room in Safety Building. Site east of Safety Building suggested.
	200,000		200,000		To give added protection to newly annexed and built-up areas.
<u>\$ 400,000</u>	<u>\$ 400,000</u>	<u>\$ 400,000</u>	<u>\$2,093,500</u>	<u>\$3,500,000</u>	DEPARTMENT OF PUBLIC WORKS - GENERAL
200,000	200,000	200,000	1,200,000	1,800,000	To achieve architectural beauty in the heart of the City which will give enjoyment to the people and arouse civic pride in the citizens of Milwaukee.
200,000	200,000	200,000	800,000	1,700,000	
			93,500		For future housing site or resale after replatting and regrading.
<u>\$ 850,000</u>	<u>\$ 70,000</u>	<u>\$ 620,000</u>	<u>\$6,175,000</u>	<u>\$1,240,000</u>	DEPARTMENT OF PUBLIC WORKS - BUREAU OF BRIDGES AND PUBLIC BUILDINGS
			475,000		Federally approved plans complete. Start of project delayed by uncertainty of steel delivery.
			400,000		Reconstruction work programed over 1951 and 1952 to avoid closing bridge to traffic. Plans include a new, wider roadbed.
20,000	20,000	20,000	120,000		Installation of synchronized electrical controls will save \$10,000 per bridge annually.

RECOMMENDED 1951-1956 PERMANENT IMPROVEMENT PROGRAM

Project Description	Estimated Cost to Complete	Funds Available from 1950	Budget 1951	Recommended	
				1952	1953
DEPARTMENT OF PUBLIC WORKS - BUREAU OF BRIDGES AND PUBLIC BUILDINGS - (Continued)					
City Hall Remodeling and Lighting - Various Places in City Hall	300,000		50,000		
Municipal Building and Garage (City Hall Annex)	2,500,000			2,500,000	
South 1st Street Bridge - Kinnickinnic River	320,000	20,000		300,000	
New Bridge Shop and Storage Building	150,000			150,000	
Clybourn Street Bridge - Milwaukee River	1,400,000	20,000			700,000
South 35th Street Bridge - C. & N. W. Ry.	1,800,000	10,000			
DEPARTMENT OF PUBLIC WORKS - BUREAU OF BRIDGES AND PUBLIC BUILDINGS - PLAYGROUND DIVISION					
	<u>\$8,015,000</u>	<u>\$ 23,000</u>	<u>\$ 350,000</u>	<u>\$ 200,000</u>	<u>\$ 200,000</u>
Neighborhood Playgrounds and Playfields	8,015,000	23,000	350,000	200,000	200,000
DEPARTMENT OF PUBLIC WORKS - BUREAU OF ELECTRICAL SERVICE					
	<u>\$7,080,000</u>	<u>\$ 80,000</u>	<u>\$ 750,000</u>	<u>\$ 750,000</u>	<u>\$3,100,000</u>
Permanent Street Lighting, Traffic Control, and Fire and Police Alarm Facilities	4,750,000	50,000	750,000	750,000	800,000
New Central Fire Alarm Headquarters and Fire Department Administration Building, Including Two Emergency Operating Centers	2,330,000	30,000			2,300,000
DEPARTMENT OF PUBLIC WORKS - BUREAU OF ENGINEERS					
	<u>\$1,123,000</u>	<u>\$ 117,000</u>	<u>\$ 173,000</u>	<u>\$ 408,000</u>	<u>\$ 425,000</u>
Grade Separation - W. Hampton Ave. Crossing with the C. M. St. P. & P. R. R. Northern Division	500,000		50,000	225,000	225,000
Pedestrian Underpass - E. Morgan Ave. at C. & N. W. Ry.	123,000		123,000		

RECOMMENDED 1951-1956 PERMANENT IMPROVEMENT PROGRAM

Appropriations			Total	Programed	Remarks
1954	1955	1956	Six-Year Program	Later	
DEPARTMENT OF PUBLIC WORKS BUREAU OF BRIDGES AND PUBLIC BUILDINGS - (Continued)					
150,000	50,000		250,000	50,000	Modernization of areas vacated by departments moving to the Ideal Annex and to new City Hall Annex after construction.
			2,500,000		Space requirement studies of a Mayoral Committee and of Bureau of Bridges and Public Buildings support the need. Recommended in block east of City Hall. Federal loan obtained for plans. Architect not selected.
			300,000		Critical bottleneck for heavy traffic. Early replacement recommended by major trafficway consultants and by Land Commission.
			150,000		Addition to east of present shop at 6th & Canal Sts. Painters, carpenters, and ironworkers shops and storage.
680,000			1,380,000		A most urgent replacement project. Relationship with expressway plans to be resolved.
		600,000	600,000	1,190,000	Study of effects of new S. 44th St. express highway suggested before construction of this overhead.
DEPARTMENT OF PUBLIC WORKS - BUREAU OF BRIDGES AND PUBLIC BUILDINGS - PLAYGROUND DIVISION					
<u>\$ 200,000</u>	<u>\$ 200,000</u>	<u>\$ 200,000</u>	<u>\$1,350,000</u>	<u>\$6,642,000</u>	
200,000	200,000	200,000	1,350,000	6,642,000	Enlargement and rehabilitation, including lighting, of many playgrounds throughout City is recommended in accord with a new ten-year program in preparation by Board of Public Land Commissioners.
DEPARTMENT OF PUBLIC WORKS - BUREAU OF ELECTRICAL SERVICE					
<u>\$ 800,000</u>	<u>\$ 800,000</u>	<u>\$ 800,000</u>	<u>\$7,000,000</u>		
800,000	800,000	800,000	4,700,000		Work in connection with paving, widening, annexation, trackless trolley conversion, and one-way street and federal aid traffic improvement.
			2,300,000		Bombing danger gives emphasis to this project. Present quarters in Safety Building are needed by Police Department. Selected site recently denied by School Board.
DEPARTMENT OF PUBLIC WORKS - BUREAU OF ENGINEERS					
			<u>\$1,006,000</u>		
			500,000		Widening of Hampton Ave. will increase the need for grade separation. Some land acquired. General plans ready.
			123,000		Will give safe crossing for school children and adults. Plans ready. Need easement from C. & N. W. Ry.

RECOMMENDED 1951-1956 PERMANENT IMPROVEMENT PROGRAM

Project Description	Estimated Cost to Complete	Funds Available from 1950	Budget 1951	1952	Recommended 1953
DEPARTMENT OF PUBLIC WORKS - BUREAU OF ENGINEERS - (Continued)					
Grade Separation - S. Clement Ave. - C. & N. W. Ry.	500,000	117,000		183,000	200,000
DEPARTMENT OF PUBLIC WORKS - BUREAU OF FORESTRY					
	<u>\$ 320,000</u>	<u>\$ 20,000</u>	<u>\$ 50,000</u>	<u>\$ 50,000</u>	<u>\$ 50,000</u>
Concealed Lawn Irrigation Systems for New and Existing Areas and Landscaping of Newly Created Center Plots and Parkway Areas	320,000	20,000	50,000	50,000	50,000
DEPARTMENT OF PUBLIC WORKS - BUREAU OF GARBAGE COLLECTION AND DISPOSAL					
	<u>\$1,677,000</u>	<u>\$ 527,000</u>	<u>\$ 900,000</u>		<u>\$ 250,000</u>
Two Refuse Disposal Plants - North Side and South Side	1,427,000	527,000	900,000(B)		
Expand and Rehabilitate Existing Central Refuse Disposal Plant No. 2	250,000				250,000
DEPARTMENT OF PUBLIC WORKS - BUREAU OF MUNICIPAL EQUIPMENT					
	<u>\$ 400,000</u>				<u>\$ 400,000</u>
New Southwest Side Garage	400,000				400,000
DEPARTMENT OF PUBLIC WORKS - BUREAU OF SEWERS					
	<u>\$26,160,000</u>	<u>\$ 160,000</u>	<u>\$2,750,000</u>	<u>\$3,000,000</u>	<u>\$3,000,000</u>
For the Construction and Improvement of Sewers, Catch Basins, and Appurtenances	26,160,000	160,000	2,750,000 (B)	3,000,000	3,000,000
DEPARTMENT OF PUBLIC WORKS - BUREAU OF STREET CONSTRUCTION AND REPAIRS - GENERAL					
	<u>\$16,480,000</u>	<u>\$ 280,000</u>	<u>\$1,830,000</u>	<u>\$2,000,000</u>	<u>\$2,000,000</u>
Permanent Pavement Fund	16,280,000	280,000	1,830,000	2,000,000	2,000,000
Materials Laboratory and Equipment	200,000				

RECOMMENDED 1951-1956 PERMANENT IMPROVEMENT PROGRAM

Appropriations			Total	Programed	Remarks
1954	1955	1956	Six-Year Program	Later	
			383,000		DEPARTMENT OF PUBLIC WORKS - BUREAU OF ENGINEERS - (Continued)  Inclusion on federal urban aid system sought. Plans completed for many years.
<u>\$ 50,000</u>	<u>\$ 50,000</u>	<u>\$ 50,000</u>	<u>\$ 300,000</u>		DEPARTMENT OF PUBLIC WORKS - BUREAU OF FORESTRY
50,000	50,000	50,000	300,000		Sufficient funds are necessary to keep pace with areas created by a vigorous street rebuilding program. New system eliminates hose handling and purchase.
			<u>\$1,150,000</u>		DEPARTMENT OF PUBLIC WORKS - BUREAU OF GARBAGE COLLECTION AND DISPOSAL
			900,000		Capacity of present plants outgrown; structurally very poor; cost of long hauls prohibitive. Incineration of garbage and combustible waste proposed. (B) - Bond issue authorized in 1951 budget.
			250,000		Present plant built in 1930 is in need of major rehabilitation. Its continued use is recommended for the adjacent areas.
			<u>\$ 400,000</u>		DEPARTMENT OF PUBLIC WORKS - BUREAU OF MUNICIPAL EQUIPMENT
			400,000		A new garage on the south side will provide shelter for expanding fleets of trucks and equipment, saving traveling time from work areas.
<u>\$3,000,000</u>	<u>\$3,000,000</u>	<u>\$3,000,000</u>	<u>\$17,750,000</u>	<u>\$8,250,000</u>	DEPARTMENT OF PUBLIC WORKS - BUREAU OF SEWERS
3,000,000	3,000,000	3,000,000	17,750,000	8,250,000	A vigorous 6-year program will still leave unmet sewer needs exceeding \$8,000,000 in major replacements and new work in annexed areas. (B) - Bond issue authorized in 1951 budget.
<u>\$2,200,000</u>	<u>\$2,000,000</u>	<u>\$2,000,000</u>	<u>\$12,030,000</u>	<u>\$4,170,000</u>	DEPARTMENT OF PUBLIC WORKS - BUREAU OF STREET CONSTRUCTION AND REPAIRS - GENERAL
2,000,000	2,000,000	2,000,000	11,830,000	4,170,000	For permanent-type pavement for new trolley and motor bus lines and other major arteries, and pavements and sidewalks in newly built-up areas. Street work is also far behind the recommended program.
200,000			200,000		Present facilities extremely inadequate for tests on thousands of dollars of construction work and material purchases.

RECOMMENDED 1951-1956 PERMANENT IMPROVEMENT PROGRAM

Project Description	Estimated Cost to Complete	Funds Available from 1950	Budget 1951	Recommended	
				1952	1953
DEPARTMENT OF PUBLIC WORKS - BUREAU OF STREET CONSTRUCTION AND REPAIRS - MAJOR TRAFFICWAYS OR EXPRESS HIGHWAYS	<u>\$14,310,000</u>	<u>\$ 60,000</u>	<u>\$4,750,000</u>		<u>\$5,000,000</u>
For the City Share of the Cost of r.o.w. Acquisition and Damages, Engineering, and Construction of the Following Segments of an Express Highway:					
1. The 44th Street Project, from W. National Ave. to W. Wells St. )	9,300,000	50,000	4,750,000(B)		
2. East-West Route, from N. 6th & W. Clybourn Sts. to N. 44th St. )					
3. N. 6th St.-W. Clybourn St.-W. St. Paul Ave. - Grade Separation )					
4. N. and S. 11th Street Viaduct and its Extensions North and South	5,010,000	10,000			5,000,000

DEPARTMENT OF PUBLIC WORKS - BUREAU OF STREET CONSTRUCTION AND REPAIRS - STREET OPENINGS, WIDENINGS, AND GRADE CHANGES	<u>\$4,364,200</u>	<u>\$ 289,200</u>	<u>\$ 600,000</u>	<u>\$ 800,000</u>	<u>\$ 600,000</u>
A. Projects for Which Board of Assessment Plans and Reports Have Been Adopted by the Common Council:					
S. 1st St., from W. Mitchell St. to W. Lincoln Ave. and its Extension to S. Chase Ave.	491,900	50,000	191,900	250,000	
E. Howard Ave., from S. Lenox St. to East City Limits	70,000	12,000	58,000		
N. and S. 84th St., from W. Blue Mound Rd. South to C. M. St. P. & P. R. R. R.O.W.	17,200	2,200	15,000		
W. Hampton Ave., from N. Green Bay Ave. to N. Teutonia Ave.	120,000	55,000	50,000	15,000	
W. Marion St., from N. Sercombe Rd. to West City Limits	1,600		1,600		
N. Pierce St., from E. Melvina St. to E. Capitol Dr.	4,000		4,000		
N. 41st St., from W. Lancaster Ave. to W. Eggert Pl.	5,000		5,000		
W. Wisconsin Ave., from N. 36th St. to N. 37th St.	75,000		75,000		



RECOMMENDED 1951-1956 PERMANENT IMPROVEMENT PROGRAM

Appropriations			Total Six-Year Program	Programed Later	Remarks
1954	1955	1956			
<u>\$1,500,000</u>	<u>\$1,500,000</u>	<u>\$1,500,000</u>	<u>\$14,250,000</u>		DEPARTMENT OF PUBLIC WORKS - BUREAU OF STREET CONSTRUCTION AND REPAIRS - MAJOR TRAFFICWAYS OR EXPRESS HIGHWAYS
1,500,000	1,500,000	1,500,000	9,250,000		For r.o.w. acquisition, construction, engineering, and general administrative costs. An additional \$7,500,000 in state and federal aid has been pledged for the first stage development. Project recommended by traffic consultants and by Bd. of Public Land Commissioners. The new divided-lane highway will connect northern and southern sections of the western end of the City with the downtown area, affording a considerable saving in time and equipment costs. (B) - Bond issue authorized in 1951 budget.
			5,000,000		The design of the easterly segment of the express highway must coordinate with the design for the north approach to this viaduct. Construction of the viaduct should be scheduled as a segment of the system, and state and federal aids obtained.
<u>\$ 600,000</u>	<u>\$ 735,000</u>	<u>\$ 740,000</u>	<u>\$4,075,000</u>		DEPARTMENT OF PUBLIC WORKS - BUREAU OF STREET CONSTRUCTION AND REPAIRS - STREET OPENINGS, WIDENINGS, AND GRADE CHANGES
			441,900		The full benefits of a widened S. 1st St. and S. 2nd St. will not be obtainable until this section is widened and connected to S. Chase Ave.
			58,000		Several parcels acquired. Programed for 1951.
			15,000		On federal urban aid system. Programed for 1951.
			65,000		Several parcels acquired. Programed for 1951.
			1,600		Plan recently adopted. No property acquired.
			4,000		Plan recently adopted. No property acquired.
			5,000		Plan recently adopted. No property acquired.
			75,000		On federal urban aid system. Programed for 1951.

RECOMMENDED 1951-1956 PERMANENT IMPROVEMENT PROGRAM

Project Description	Estimated Cost to Complete	Funds Available from 1950	Budget 1951	Recommended	
				1952	1953
DEPARTMENT OF PUBLIC WORKS - BUREAU OF STREET CONSTRUCTION AND REPAIRS - STREET OPENINGS, WIDENINGS, AND GRADE CHANGES - (Continued)					
N. 50th St., from W. Fairmount Ave. to W. Villard Ave.; also, W. Eggert Pl., from N. 49th St. to N. 50th St.	2,500		2,500		
N. 48th St., from W. Fairmount Ave. to W. Villard Ave.; also, W. Eggert Pl., from N. 47th St. to N. 49th St.	17,000		17,000		
N. 31st St., from W. Capitol Dr. to W. Hope Ave. Extended; also, W. Hope Ave., from N. 27th St. to N. 31st St. Extended	55,000		55,000		
B. Other Recommended Major Projects:					
W. Burleigh St.-N. 35th St.-W. Fond du Lac Ave. Intersection	210,000	150,000		60,000	
N. 20th St., from W. Capitol Dr. to Junction with N. Green Bay Ave. South of W. Silver Spring Dr.	240,000		25,000	215,000	
North Approaches to 6th Street Viaduct	100,000			100,000	
South Approaches to 6th Street Viaduct	50,000			50,000	
S. 16th St.-W. Greenfield Ave.-W. Muskego Ave. Intersection	275,000				
N. Green Bay Ave., from W. Capitol Dr. to North City Limits	No Estimate				
W. Hampton Ave., from N. Teutonia Ave. to N. Sherman Blvd.	No Estimate				
W. Hampton Ave., from N. Sherman Blvd. to W. Fond du Lac Ave.	No Estimate				
W. Hampton Ave., from W. Fond du Lac Ave. to W. Appleton Ave.	No Estimate				
W. Hampton Ave., from W. Appleton Ave. to West City Limits	No Estimate				
Miscellaneous Street and Alley Openings	2,630,000	20,000	100,000	110,000	600,000

RECOMMENDED 1951-1956 PERMANENT IMPROVEMENT PROGRAM

Appropriations			Total	Programed Later	Remarks
1954	1955	1956	Six-Year Program		
					DEPARTMENT OF PUBLIC WORKS - BUREAU OF STREET CONSTRUCTION AND REPAIRS - STREET OPENINGS, WIDENINGS, AND GRADE CHANGES - (Continued)
			2,500		Plan recently adopted. No property acquired.
			17,000		Plan recently adopted. No property acquired.
			55,000		Truck route plan recently adopted. No property acquired.
			60,000		Critical intersection needs special treatment to ease traffic flow.
			240,000		Use of abandoned Electric Co. r.o.w. proposed. Plan not adopted.
			100,000		The full capacity of the viaduct is lost by restricted street patterns at the north and south approaches. Changes to the traffic patterns at both places is recommended in this six-year period.
			50,000		
	135,000	140,000	275,000		This five-point intersection requires special treatment involving changes to present street lines.  Presently on the federal urban aid system. Programing by State Highway Commission requested.
					The widening of Hampton Ave. to start this year should be continued in succeeding years until fully widened to the west City limits.
600,000	600,000	600,000	2,610,000		There are over 100 Kline Law resolutions and plans in various stages of completion. Land acquisition should be programed two years prior to construction, and appropriations provided accordingly.

RECOMMENDED 1951-1956 PERMANENT IMPROVEMENT PROGRAM

Project Description	Estimated Cost to Complete	Funds Available from 1950	Budget 1951	Recommended	
				1952	1953
DEPARTMENT OF PUBLIC WORKS - BUREAU OF STREET SANITATION	<u>\$ 300,000</u>			<u>\$ 100,000</u>	<u>\$ 100,000</u>
Relocation and Consolidation of Refuse Collection District Headquarters	300,000			100,000	100,000
<hr/>					
OFF-STREET PARKING, CITY SHARE	<u>\$2,301,200</u>	<u>\$ 300,200</u>	<u>\$2,001,000</u>		
For Land Acquisition and Construction Costs at the Following Locations:					
Kilbourn Ave. at N. 4th St.	1,750,000				
Teutonia Ave. at Center St.	129,000				
N. 47th St.-North Ave.-Lisbon Ave. Area	15,000				
Mitchell Street - First Stage	650,000				
Green Bay Ave. at Concordia Ave.	177,000				
Six Downtown Sites	3,500,000				
Broadway at Wells St.	1,012,000				
Lisbon Ave. at 48th St.	52,000				
3rd St., from Walnut St. to Burleigh St.	525,000				
S. 16th St.-Muskego Ave.-Greenfield Ave. Area	100,000				
Fond du Lac Ave.-Center St.-N. 27th St. Area	100,000				
North Ave., from N. 27th St. to N. 40th St.	115,000				
Vliet St. at 12th St.	70,000				
Lincoln Ave. at 13th St.	80,000				
Oakland Ave. at Locust St.	35,000				
Mitchell St. - Second Stage	1,200,000				
Other Future Sites	<u>500,000</u>				
Total	<u>\$10,010,000</u>				
<hr/>					
PUBLIC HOUSING	<u>\$1,000,000</u>	<u>\$ 250,000</u>	<u>\$1,000,000</u>	<u>\$ 250,000</u>	<u>\$ 750,000</u>
Urban Rehabilitation and Redevelopment - City Share of Loss	1,250,000				500,000
Urban Rehabilitation and Redevelopment - Displacement Housing	1,750,000	250,000		250,000	250,000

RECOMMENDED 1951-1956 PERMANENT IMPROVEMENT PROGRAM

Appropriations			Total	Programed	Remarks
1954	1955	1956	Six-Year Program	Later	
<u>\$ 100,000</u>			<u>\$ 300,000</u>		DEPARTMENT OF PUBLIC WORKS - BUREAU OF STREET SANITATION
100,000			300,000		Recommendations of the proposed reorganization of collection districts is presently under consideration by the Common Council. Remodeling of certain buildings and the relocation and disposal of other ward yards and buildings are contemplated. Appropriations should be scheduled to effectuate the reorganization.
			<u>\$2,001,000</u>		OFF-STREET PARKING, CITY SHARE

\$1,000 was provided as a Rotary Fund and \$2,000,000 in revenue bonds was authorized to finance the land acquisition and construction of various off-street parking projects estimated to cost in excess of \$10,000,000. Costs are expected to be reimbursed by revenues from meters, and benefit assessments against business properties.

<u>\$ 250,000</u>	<u>\$ 750,000</u>	<u>\$3,000,000</u>	<u>\$ 750,000</u>	PUBLIC HOUSING
250,000	500,000	1,250,000		Reservation for an initial federal loan of \$2,500,000 has been granted for 2/3 of slum clearance loss. Under Title I, City must bear 1/3 of net loss of projects.
	250,000	750,000	750,000	Recommended for estimated requirements under Title I of Federal Housing Act.

RECOMMENDED 1951-1956 PERMANENT IMPROVEMENT PROGRAM

Project Description	Estimated Cost to Complete	Funds Available from 1950	Budget 1951	1952	1953
PUBLIC HOUSING - (Continued)					
Veterans' Housing	1,000,000		1,000,000		
<hr/>					
MISCELLANEOUS PROJECTS	<u>\$1,250,000</u>		<u>\$ 500,000</u>	<u>\$ 150,000</u>	<u>\$ 150,000</u>
Auditorium Building Contribution	275,000		275,000		
Governmental Relations - Civilian Defense and Disaster	75,000		75,000		
Permanent Improvement Administration Cost and Adjustment Fund Reserve	900,000		150,000	150,000	150,000
<hr/>					
SCHOOL BOARD	<u>\$18,200,000</u>		<u>\$2,000,000</u>	<u>\$2,000,000</u>	<u>\$2,000,000</u>
Construction, Site Acquisition, and Modernization Program	18,200,000		2,000,000	2,000,000	2,000,000
<hr/>					
BOARD OF VOCATIONAL AND ADULT EDUCATION	<u>\$1,250,000</u>		<u>\$1,250,000</u>		
Additional Vocational School Building; Also Remodeling, Conversions, and Changeovers	1,250,000		1,250,000		

RECOMMENDED 1951-1956 PERMANENT IMPROVEMENT PROGRAM

1954	1955	1956	Total Six-Year Program	Programed Later	Remarks
PUBLIC HOUSING - (Continued)					
			1,000,000		A \$1,000,000 bond issue was authorized in the budget, primarily for additional equity to a \$600,000 tentative grant from state funds to finance a \$6,000,000 project recommended for the southwest side.
<u>\$ 150,000</u>	<u>\$ 150,000</u>	<u>\$ 150,000</u>	<u>\$1,250,000</u>		MISCELLANEOUS PROJECTS
			275,000		This is the final City contribution to the financing of the new Arena. Total cost including site acquisition was \$5,084,200.
			75,000		To provide a nucleus fund for City participation in any proposed federal plan for protective facilities.
150,000	150,000	150,000	900,000		Recommended to adjust appropriations for price changes and to cover Permanent Improvement Fund administration and cost accounting.
<u>\$2,000,000</u>	<u>\$2,000,000</u>	<u>\$2,000,000</u>	<u>\$12,000,000</u>	<u>\$6,200,000</u>	SCHOOL BOARD
2,000,000	2,000,000	2,000,000	12,000,000	6,200,000	For the purchase and erection of new school buildings and for additions to old buildings and to purchase school sites as recommended by the Board of School Directors.
			<u>\$1,250,000</u>		BOARD OF VOCATIONAL AND ADULT EDUCATION
			1,250,000		For the erection of buildings, enlargement of buildings, the making of additions to buildings, and to equip such new or old buildings.

SUMMARY STATEMENT OF THE PRESENT CAPITAL IMPROVEMENT PROGRAM

Sponsoring Department or Bureau	Estimated Cost	Expenditures 1943-1949 Inclusive
Central Board of Purchases	\$ 485,500.00	\$ 77,244.35
Fire Department	1,953,160.00	917,805.24
Harbor Commission	2,523,300.00	730,404.50
Health Department	370,000.00	32,994.44
Land Purchase Fund	2,032,370.00	1,779,483.46
Library Board	3,505,770.00	144,218.91
Museum Board	7,665,500.00	77,793.30
Police Department	608,570.00	105,090.98
Department of Public Works:		
General	20,583,500.00	25,512.60
Bureau of Bridges and Public Buildings - General	17,814,140.00	169,071.44
Bureau of Bridges and Public Buildings - Playground Division	6,399,740.00	782,559.98
Bureau of Electrical Service	9,715,246.00	1,555,675.01
Bureau of Engineers	1,717,500.00	50,736.14
Bureau of Forestry	453,380.00	39,466.95
Bureau of Garbage Collection and Disposal	1,670,940.00	128,642.24
Bureau of Municipal Equipment	2,432,210.00	2,223,128.67
Bureau of Sewers	39,304,910.00	8,891,857.51
Bureau of Street Construction and Repairs - General	20,255,590.00	11,092,768.46
Bureau of Street Construction and Repairs - Major Trafficways or Express Highways	9,353,680.00	53,680.30
Bureau of Street Construction and Repairs - Street Openings, Widening, and Grade Changes (Land Acquisition)	15,317,090.00	2,959,414.03
Bureau of Street Sanitation	375,280.00	94,712.42
Miscellaneous Projects:		
Administration and Governmental Relations	1,270,760.00	78,443.76
Auditorium - Arena	5,286,420.00	3,152,847.55
Off-Street Parking	10,248,620.00	63,764.33
Public Housing	27,446,342.00	13,083,950.24
Sealer of Weights and Measures	33,700.00	20,649.73
School Board	23,183,780.00	1,714,642.48
Vocational School	3,471,790.00	176,723.09
Water Department	7,250,000.00	2,337,088.88
<b>TOTAL PRESENT CAPITAL IMPROVEMENT PROGRAM</b>	<b>\$242,728,788.00</b>	<b>\$52,560,370.99</b>

SOURCE OF FUNDS AND DISTRIBUTION OF EXPENDITURES AND BALANCES:

City of Milwaukee 1951 Long Term Permanent Improvement Cash Appropriation	\$
City of Milwaukee 1951 Bond Authorizations	
City of Milwaukee Prior Long Term Permanent Improvement Funds	29,024,201.99
City of Milwaukee Special Capital Improvement Funds	13,681,387.85
City of Milwaukee Auditorium Board Funds	
City of Milwaukee Housing Authority Bond Funds	4,190,269.13
Federal Aid Funds	4,746,489.01
State Aid Funds	918,023.01
<b>TOTALS - ALL SOURCES</b>	<b>\$52,560,370.99</b>



SUMMARY STATEMENT OF THE PRESENT CAPITAL IMPROVEMENT PROGRAM

Expenditures 1950	Balance Available 12/31/50	Appropriations 1951	Total Available 1/1/51	Contract Reserves for Work in Progress	Unencumbered Balance 1/1/51
\$ 239,385.09	\$ 769.67	\$ 18,500.00	\$ 19,269.67	\$	\$ 19,269.67
193,723.41	194,289.00	84,500.00	278,789.00	148,563.64	130,225.36
669,652.62	302,332.09	112,500.00	414,832.09	237,209.49	177,622.60
1,971.60	184,487.95		184,487.95		184,487.95
59,042.18	43,839.86	25,000.00	68,839.86		68,839.86
77,768.80	45,645.29	70,000.00	115,645.29	16,137.19	99,508.10
136,114.93	40,000.00		40,000.00	40,000.00	
29,729.71	73,677.37	350,000.00	423,677.37		423,677.37
109,902.46	3,511,059.58	293,500.00	3,804,559.58	46,000.00	3,758,559.58
224,229.74	1,830,926.88	470,000.00	2,300,926.88	119,392.50	2,181,534.38
210,724.53	192,784.28	350,000.00	542,784.28	21,761.37	521,022.91
646,074.22	168,636.12	750,000.00	918,636.12		918,636.12
9,091.83	162,870.23	173,000.00	335,870.23		335,870.23
75,041.52	18,873.00	50,000.00	68,873.00		68,873.00
56,223.31	586,376.16	900,000.00	1,486,376.16	9,735.09	1,476,641.07
122,314.46	86,766.87		86,766.87		86,766.87
2,904,455.91	1,508,593.63	2,750,000.00	4,258,593.63	1,247,032.11	3,011,561.52
3,497,861.11	525,241.77	1,835,001.00	2,360,242.77	73,497.82	2,286,744.95
65,422.69	184,577.31	4,750,000.00	4,934,577.31	119,000.00	4,815,577.31
509,639.15	933,043.82	600,000.00	1,533,043.82		1,533,043.82
3,066.06	142,501.90		142,501.90		142,501.90
25,589.50	73,779.90	225,000.00	298,779.90		298,779.90
1,856,464.13	2,107.83	275,000.00	277,107.83		277,107.83
257,625.23	307,411.35	2,001,000.00	2,308,411.35	3,000.00	2,305,411.35
3,347,899.05	2,992,605.46	1,000,000.00	3,992,605.46		3,992,605.46
5,285.59	5,568.69		5,568.69		5,568.69
776,055.80	2,793,433.93	2,728,421.00	5,521,854.93	1,825,035.18	3,696,819.75
79,515.36	339,517.12	1,600,000.00	1,939,517.12	183,575.00	1,755,942.12
1,131,754.45	429,892.60	715,001.00	1,144,893.60	172,000.24	972,893.36
<b>\$17,321,624.44</b>	<b>\$17,681,609.66</b>	<b>\$22,126,423.00</b>	<b>\$39,808,032.66</b>	<b>\$ 4,261,939.63</b>	<b>\$35,546,093.03</b>
\$	\$	\$ 5,678,000.00	\$ 5,678,000.00	\$	\$ 5,678,000.00
12,594,235.10	11,607,679.84	14,650,000.00	14,650,000.00		14,650,000.00
2,002,547.92	3,509,891.38	1,798,423.00	5,308,314.38	2,081,329.21	9,526,350.63
784,541.00				2,180,610.42	3,127,703.96
229,716.73	180,014.14		180,014.14		180,014.14
1,594,633.52	2,384,024.30		2,384,024.30		2,384,024.30
115,950.17					
<b>\$17,321,624.44</b>	<b>\$17,681,609.66</b>	<b>\$22,126,423.00</b>	<b>\$39,808,032.66</b>	<b>\$ 4,261,939.63</b>	<b>\$35,546,093.03</b>

