



# LIBRARIES

UNIVERSITY OF WISCONSIN-MADISON

## **Marquette region, Michigan: [specimens] 21684-21772. No. 138 1892**

Phillips, H. F.

[s.l.]: [s.n.], 1892

<https://digital.library.wisc.edu/1711.dl/UH4ZKDTPD4OX39E>

<http://rightsstatements.org/vocab/InC/1.0/>

For information on re-use see:

<http://digital.library.wisc.edu/1711.dl/Copyright>

The libraries provide public access to a wide range of material, including online exhibits, digitized collections, archival finding aids, our catalog, online articles, and a growing range of materials in many media.

When possible, we provide rights information in catalog records, finding aids, and other metadata that accompanies collections or items. However, it is always the user's obligation to evaluate copyright and rights issues in light of their own use.

U. S. GEOLOGICAL SURVEY  
FIELD SECTION BOOK

138

Marquette Region  
Michigan  
H. F. Phillips

21684-21772

# LAKE SUPERIOR DIVISION.

## INSTRUCTIONS.

1. Ordinarily at least two pages of this book will be devoted to one section. On the left-hand page, place a map of as much of the section as has *actually been seen*. Denote rivers, lakes, marshes, etc., by the usual topographical signs. Denote the ledges of rock, when no structure is made out, by cross-hatching, making the cross-hatching cover as nearly as possible the areas occupied by the exposures. If the rock is a massive one, but still more or less plainly bedded, use the same sign with a dip arrow and number attached, showing the direction and amount of the dip. Denote a shaly or other very plainly bedded ledge by right parallel lines, and a ledge having a secondary structure by wavy parallel lines running in the direction of the strike, with dip arrow and number attached as before. The greatest care must be taken to avoid confusing slaty or schistose structure with bedding, and in all cases where there is the least doubt about the true bedding direction, indicate it by a query. To each exposure on the face of the map attach the number of the specimen representing it. In mapping the section count each of the spaces between the blue lines as 100 paces, and twenty of these spaces to one mile, or 2,000 paces. Usually the southeast corner will be placed at the bottom of the page, or at the first black line above the bottom of the page, and at the right-hand side. If, however, for any reason, it is desirable to show portions of an adjoining section, the southeast corner may be shifted up, or the map may be turned around and the north placed at the left-hand side of the page. The ruling of the left-hand pages is also arranged so that, if desirable, a larger or a smaller scale can be used, eight inches, two inches, one inch, or one-half inch to the mile. With the two-inch scale, the squares outlined in black represent sections, and those in red, quarter sections and "forties," while the space between the blue lines is 200 paces.

2. On the right-hand page place the notes descriptive of the exposures. Begin in each case with the number of the specimen, placing the number on the left-hand side of the red line, after which give in order on the right of the same red line the position of the ledges as reckoned in paces from the southeast corner of the section and the dip and strike when observable, the latter always being expressed from the north; for instance 4025, 250 N., 300 W., *Strike, N. 78° E., Dip 50° S.* Then follow with a full description of the ledge. When topographical maps are used for locations this paragraph applies only in part.

3. Collect a specimen from every ledge, or wherever there is a change of rock on any one ledge, taking care to get fresh material, unless for a special purpose the weathered surface is desired. In case of trips made on foot or in canoes, for long distances, neighboring ledges, unquestionably of one kind of rock, need not be specimened. The position and extent of the ledges not specimened should be marked on the map, with notes that each is of a rock identical with specimen so-and-so. Under the same conditions small-sized specimens, trimmed to a uniform size of  $2 \times 2\frac{1}{2} \times \frac{3}{4}$  inches will be allowed, but in all other cases *large-sized specimens*, trimmed to a size of  $3 \times 4 \times 1$  inches, must be selected, in accordance with section 3, chapter IV, p. 44, Regulations of the U. S. Geological Survey. Specimens should not be placed together without protection in the collecting bag, as the fresh surfaces, important in determining the character of rocks, are thus destroyed. They should be damaged by no temporary mark, but the numbers should be at once marked in at least two places upon the inclosing paper or cloth bags. Specimens may be permanently marked in camp by painting the numbers upon them in white upon a black background, using Silver White and Ivory Black oil tubes for color, with turpentine as a diluent.

4. On the last twenty-five pages of the book give, as may seem desirable, a general account of the examination of the region mapped in the previous pages, correlation of observations, sketches, cross sections, etc.

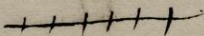
5. Forward this note book as filled as registered mail matter to C. R. Van Hise, U. S. Geologist, Madison, Wis.

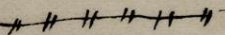
#138

Contour intervals approximately 10 ft., but indicate relative heights only, often only show shape of ledge.

Scale 6 inches to 1 mile unless otherwise indicated on the face of the map.

Line on map corresponding to course followed is indicated by an arrow pointing <sup>in</sup> direction of course passed over.

Highways 

Railroads 

G. = Greenstone

Q. = Quartzite

H. S. = Hornblende-Schist

Gr. = Granite

G. C. = Greenstone-conglomerate

# Book 3

H. G. Phillips

D. C. Forbes, Compassman

T. 49 N. - R. 26-27-28-W.

T. 48 N. - R. 27 W.

Specimens 21684-21772

---

All but last <sup>two</sup> pages of notes  
are TOWN 49 and are  
not platted

E. R. Mainer

Oct 12 - 92

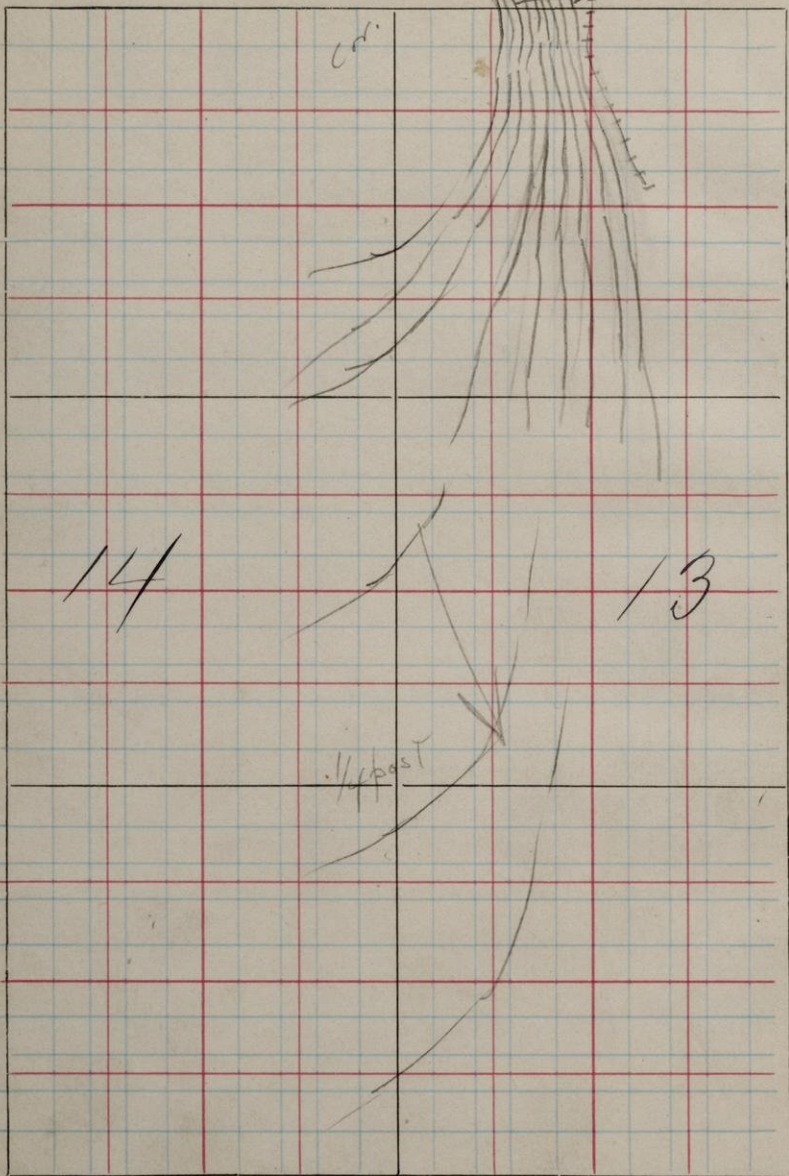
S.

T.

49

R.

26



14

13

1/4 post



Line Two. Sec's 13 & 14. Run S.

Drift area with gradu-  
al southerly slope and  
sharp fall east to Lake S.

Good Maple, birch and  
hemlock.



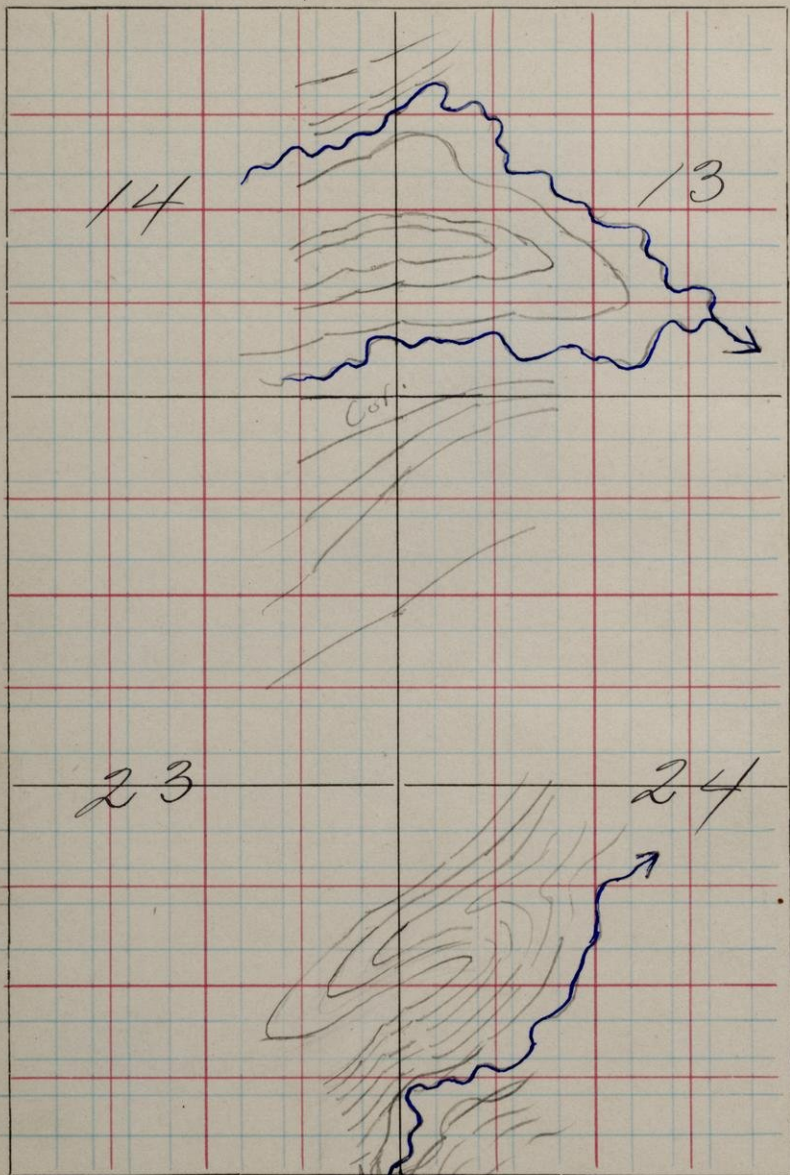
S.

T.

49

R.

26



Drift Stw. Secs 13 & 14<sup>and</sup> 23 & 24  
Running S.

Drift hills with good  
maple, birch, hemlock  
and some pine.

S.

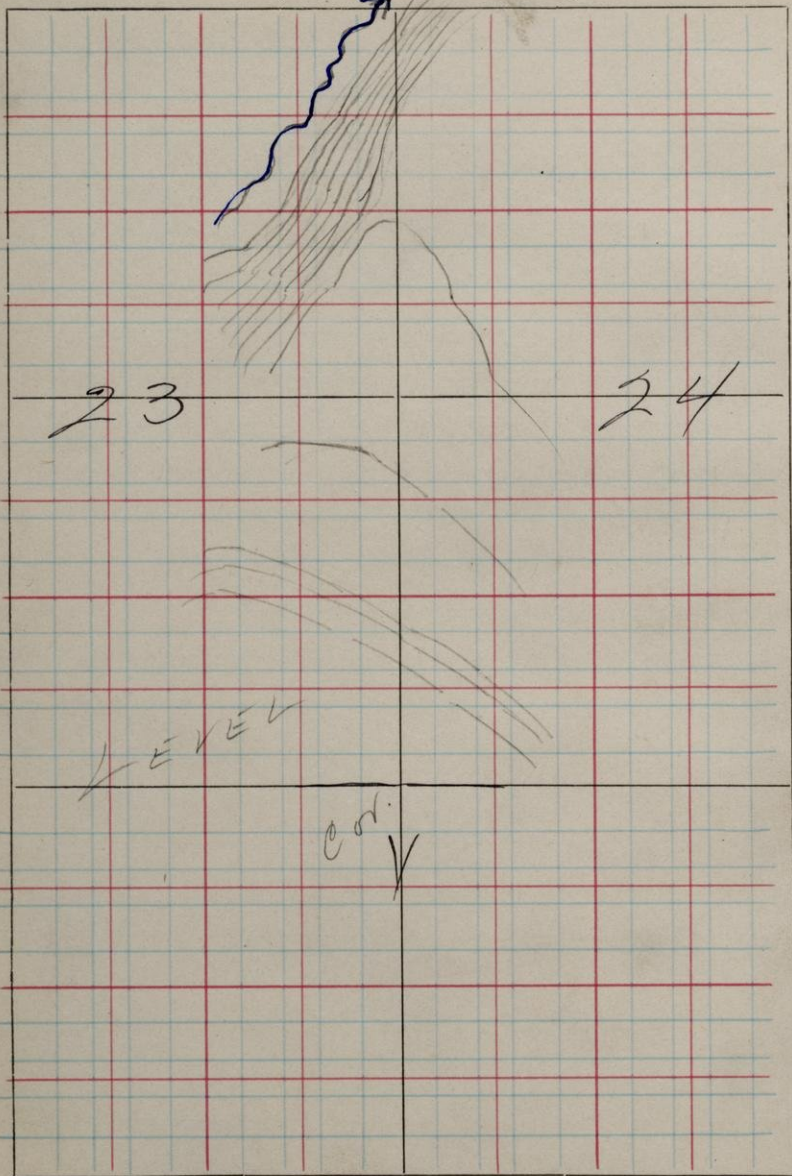
T.

49

1/4 cont.

R.

26



Line Old Secs 23 & 24. Quas S.

Line runs through drift  
Country.

Hardwood and Hemlock

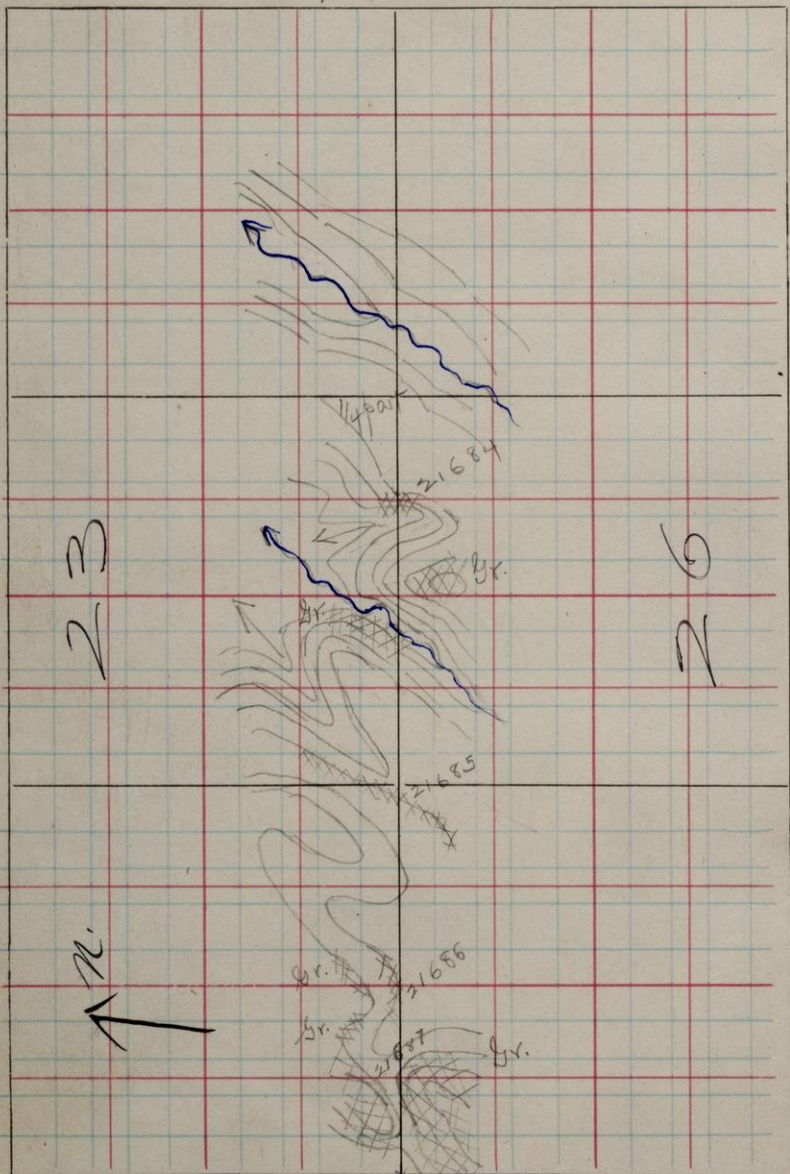
S.

T.

49

R.

26



1  
Limit runs blw Secs 23 & 24. Run SW.

21684 07N 1145W S.E. Cor. 23. Massive  
Small exposure, granite.  
Granite in creek bed at  
1300 W. Broken & weathered

21685 07N 1535W Broken & massive in  
appearance. Forms 5-10 ft  
terrace running abt. N.E. & S.W.  
Drops suddenly 200 ps N.E.  
with drift covered slope.  
Disappears 100 ps S.W. Large  
granite boulders on top.

21686 07N 1750W. massive & broken.  
Probably in place though possibly a boulder. Several  
similar occurrences 10-15  
feet high

21687 07N 1850W. From G. dyke in Gr.  
running N.E. & S.W. Shows  
contact.

S.

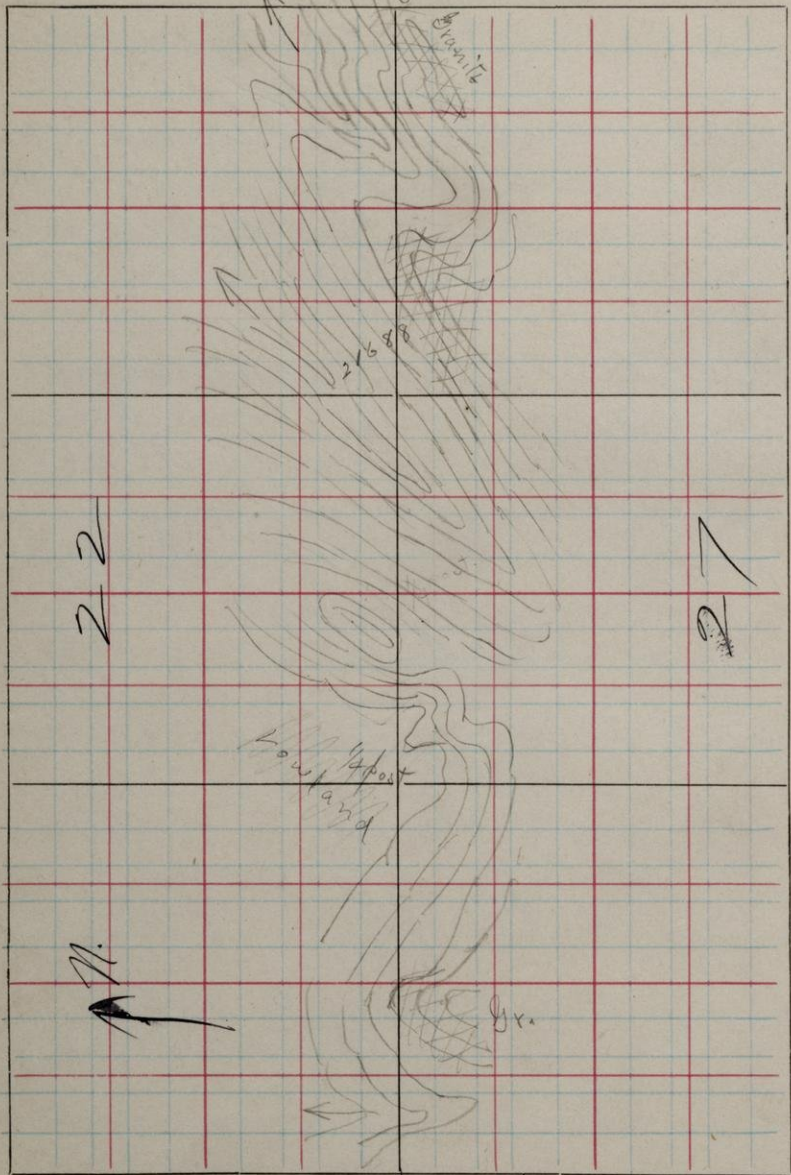
T.

49

Co.

R.

36



2  
Linc blw. Acs 22+27. Runs W.

21688 ON 400 W. Massive. From  
high ridge of granite not  
well exposed.

Slopes timbered with  
heavy hemlock and some  
hardwood.



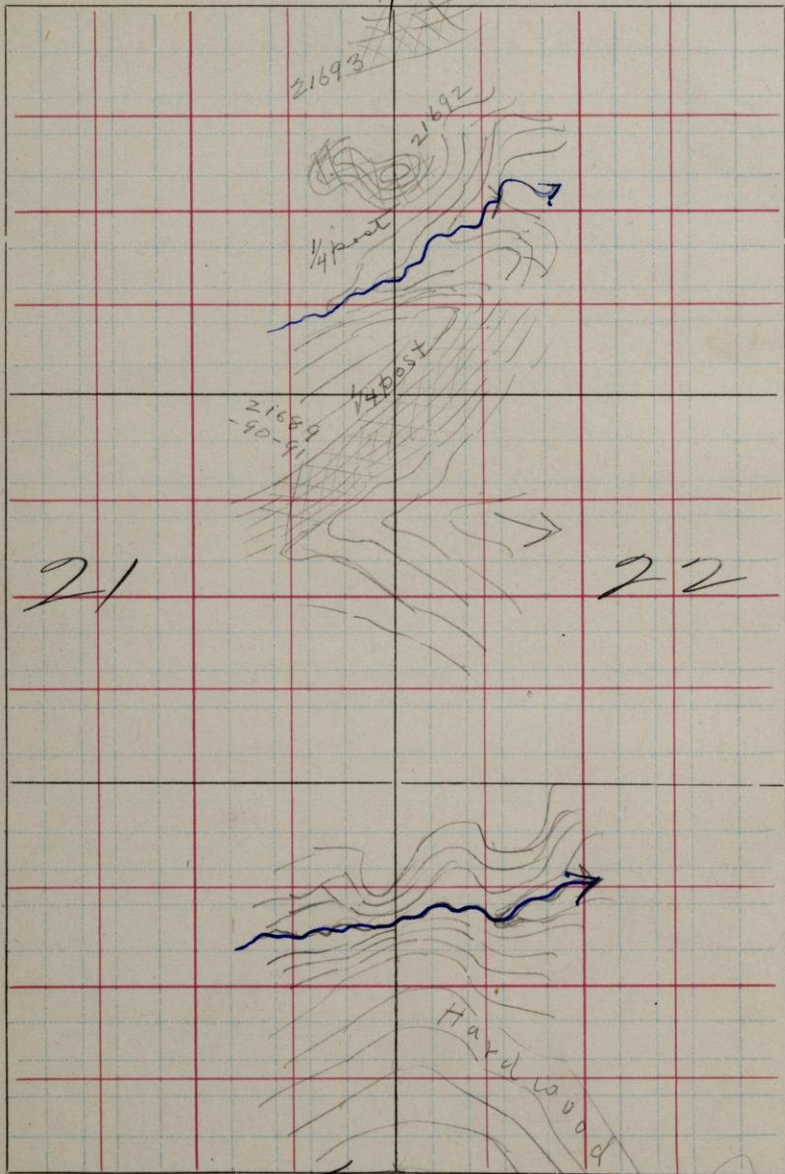
S.

T.

49

R.

26



ditto blw. Sec's 21 & 72. Runs N.

21689 900 N 70 W. S. E. Cor. 21. Massive  
From well exposed ridge

21690 900 N 70 W massive. Takx  
three feet west of -89.  
Forms irregular and in-  
distinct portion of <sup>or to top</sup> exposure.

21691 900 N 100 W From seam in (-89)  
Generally as a distinct seam  
though in places has appear-  
ance of a lense of granite.

21692 1280 N 0 W. Has coarse shistose  
planes standing nearly  
vertical with strike about  
N. x. E. Resembles some  
form of faulting in place

21693 1485 N 0 W. Massive. Small  
exposure. Specimen shows  
planes of foliation of about.

S.

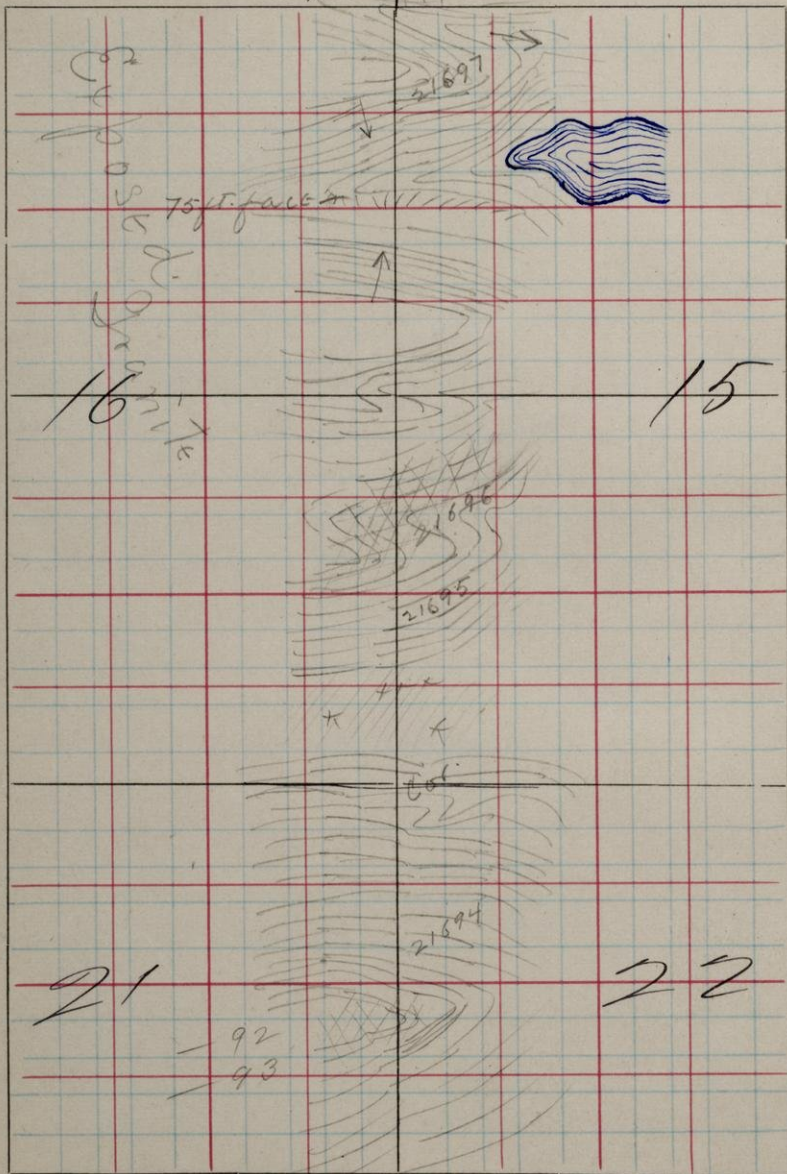
T.

49



R.

26



Limit the 21 & 22 and 15 & 16. Run N.

Top of ridge at 1700 N S.E. Cor. 21  
shows the presence of 92 & 93

21694 1815 N OW. S.E. Cor. 21. Massivet  
From N. slope of ridge. Ex-  
posure shows more or less  
<sup>fine part</sup> granite in stains and ir-  
regular blotches.

21695 200 N OW. S.E. Cor. 16. <sup>Massive</sup> Top of soft  
Considerable ~~granite~~ in  
irregular veins bearing  
a general E. + W. direction.

21696 330 N OW. Massivet. Trends  
E. + W. in granite. Diabase

21697 880 N OW. Top of soft terraced  
mass of granite fine grain-  
ed as in specimen but  
portions are crasstr.

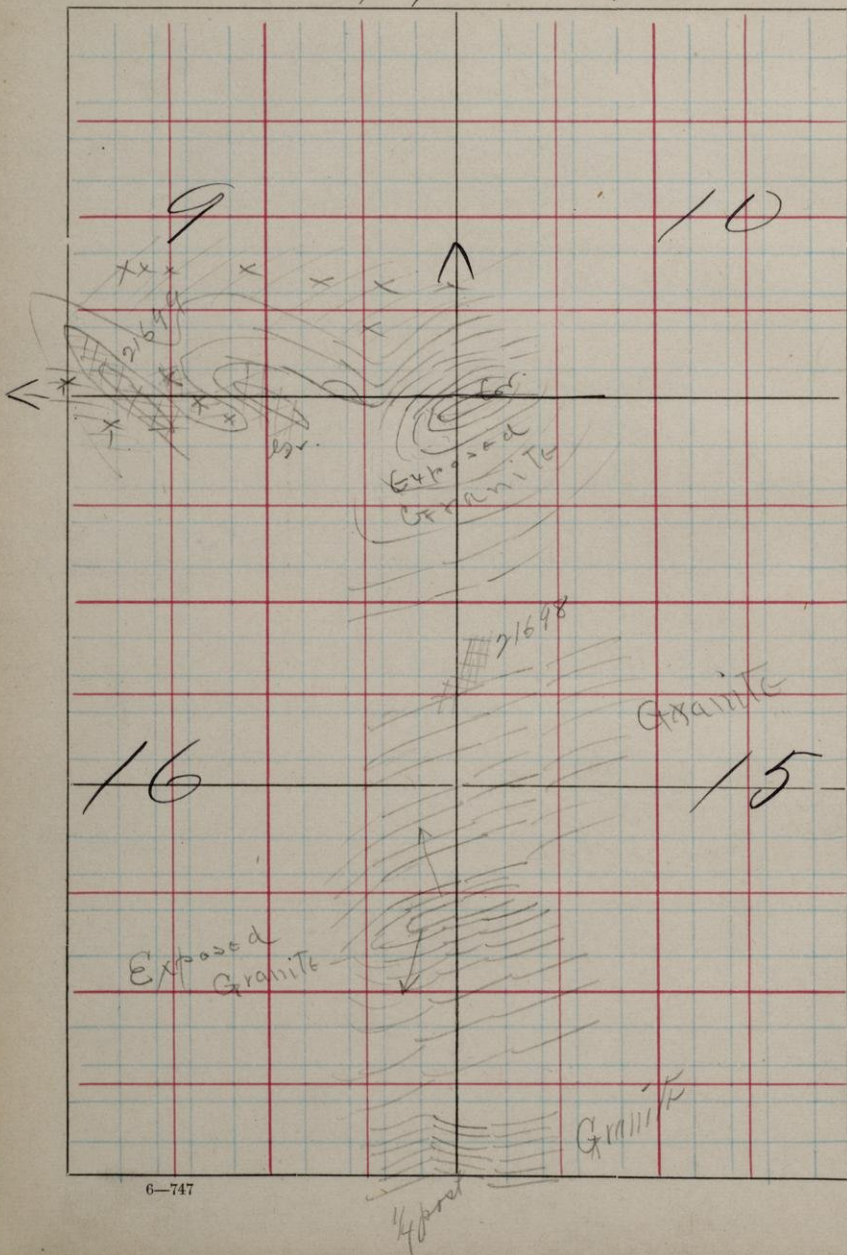
S.

T.

49

R.

26



Line bet 16x15 and 16x9.

21698 1680N. 0W. S.E. Cor. 16. Massive  
granite

21699 2000N 400W. Massive Granite

Granite exposures in sight  
the entire length of line.  
Few small dykes, as ~~repre~~  
sented in <sup>the</sup> 21696 observed,  
generally E. + W. but at times  
in other directions.

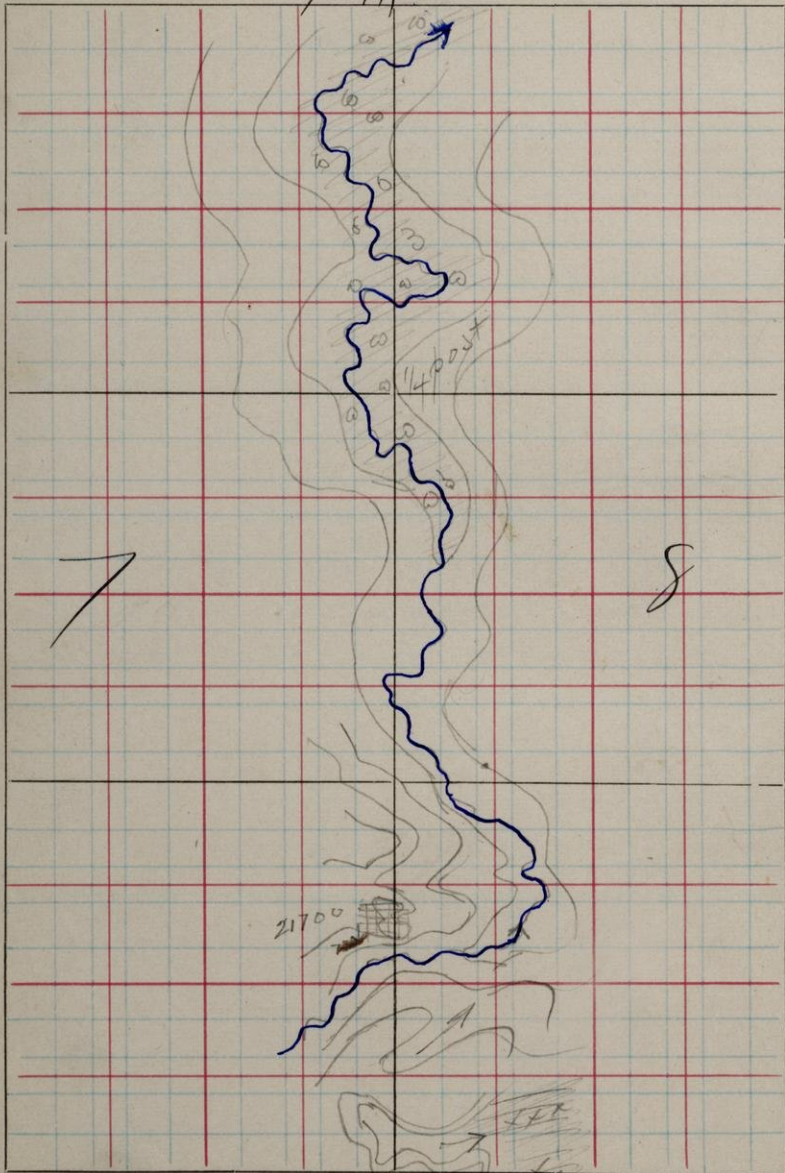
S.

T.

49

R.

26



Knit Oliv. Sts 7+8. Run 11.

21700 315 N. W. St. Cor. 7. ~~S. N. 90° E. D. 75° S.~~  
 Small knot 15 ft high,  
 well exposed.

Good maple, birch & hem-  
 lock on slopes to creek.



S.

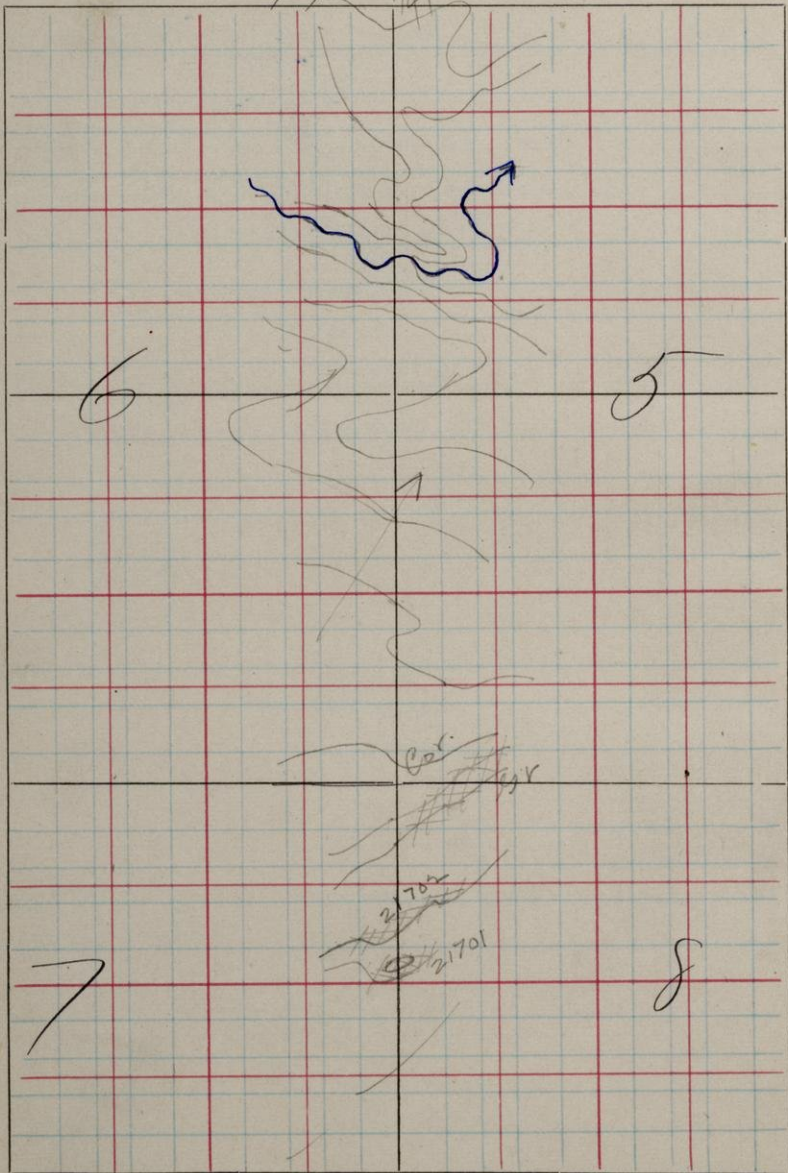
T.

49



R.

26



7  
dip + stw 7+8 and 5+6. Runs N.

21701 1765 N. 0W. S.E. Cor. J. Small poorly  
exposed outcrop.

21702 1845 N 10W No uniform struc-  
ture. 10 ft face to south.

Relations stw. -01 and -02  
cannot be seen. -01 rises  
10 ft in small knob and  
then drops to -02 which  
forms an irregular ridge  
trending abt n.e. + s.w.

S.

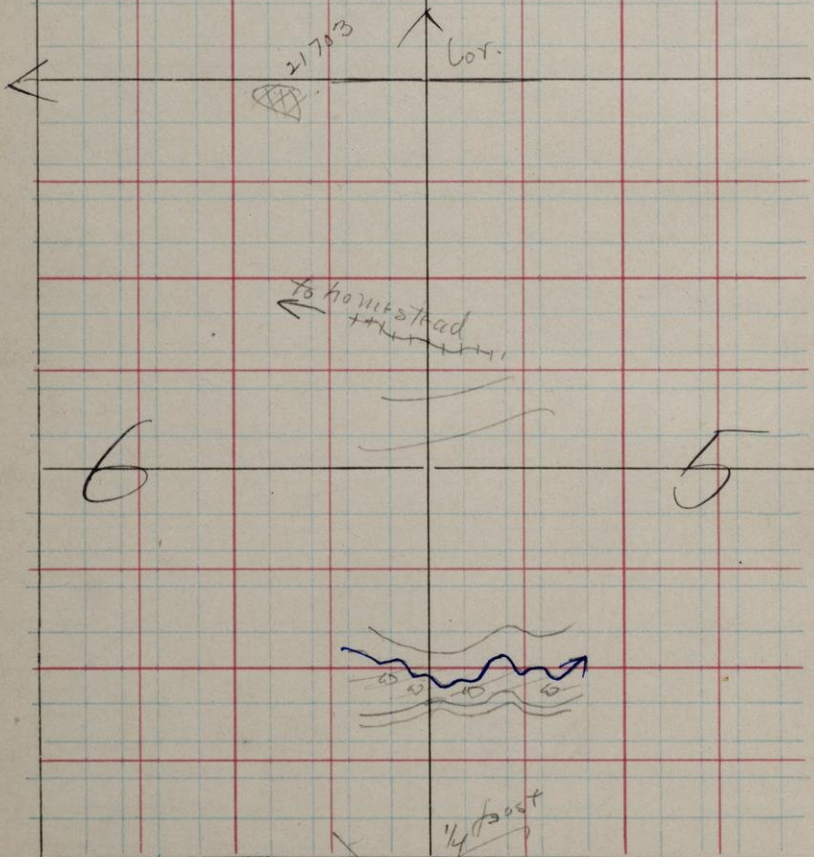
T.

49

R.

76

31



Line stw. Secs 5 & 6. Run N.

Wooded mostly with hard-  
wood and hemlock and  
a few good pines.

21703 1990 N 200 W S. E. Cor. 6. Poorly  
exposed and broken in ap-  
pearance. N. Sec.

Line west stw. 31-50-26 and  
6-49-26 is drift covered,  
generally level, rising toward  
N. W. Cor. 6 as shown on next p.

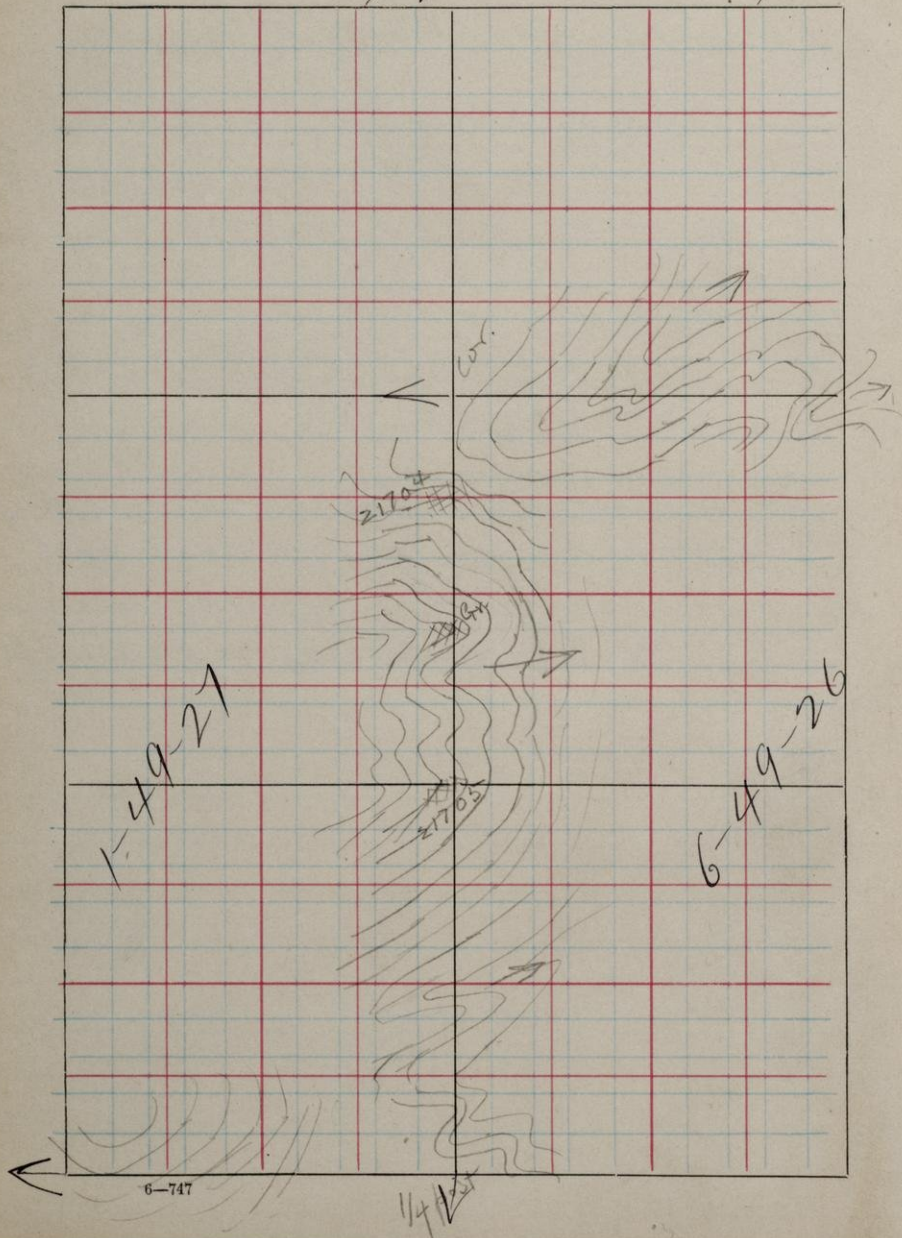
S.

T.

49

R.

26 + 27



ditto btw. 6-26 + 1-27. Runs S.

21704 1900 N 2000 W, S.E. cor. 6. Masswt.  
Slopt + mostly drift cover-  
ed. # Granite

21705 1490 N 2000 W. Small exposure  
on east slope of ridge.

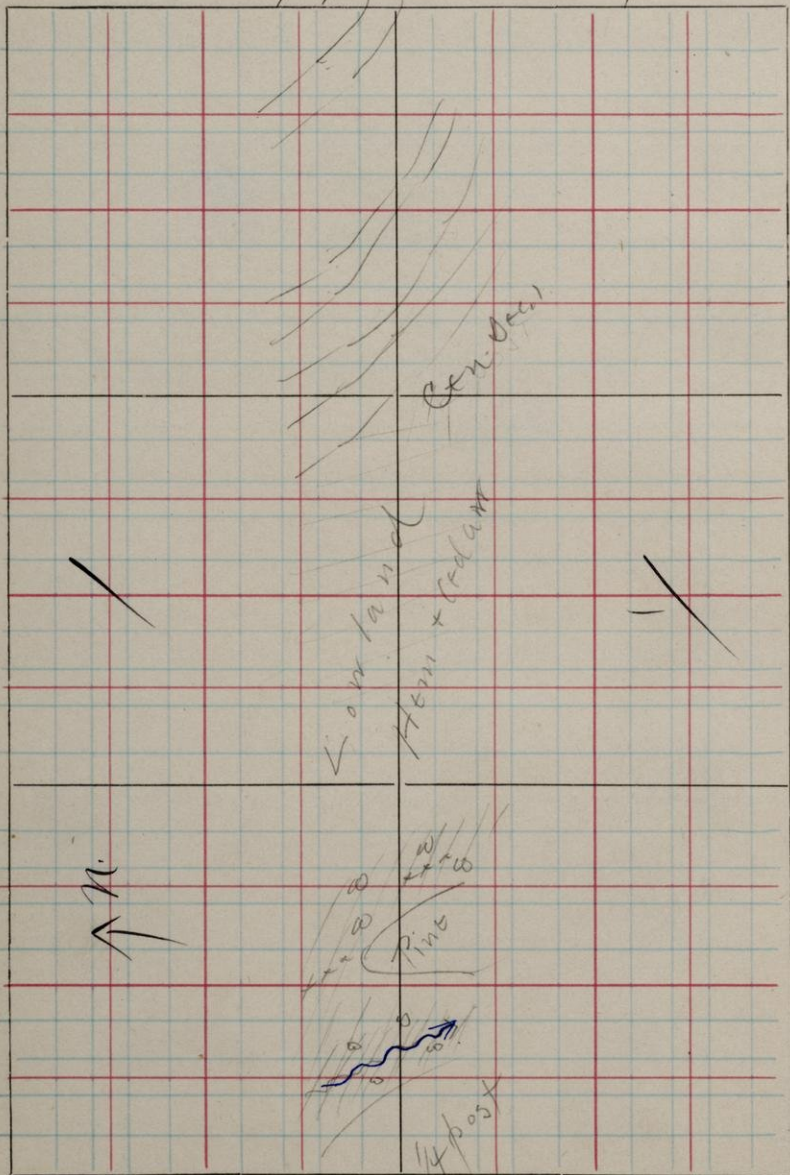
S.

T.

49

R.

27



E. & W.  $\frac{1}{4}$  line Sec. 1-49-27. Run W.

First five hundred feet west,  
hard wood and hemlock.

Last half mile lowland  
with hemlock and cedar.



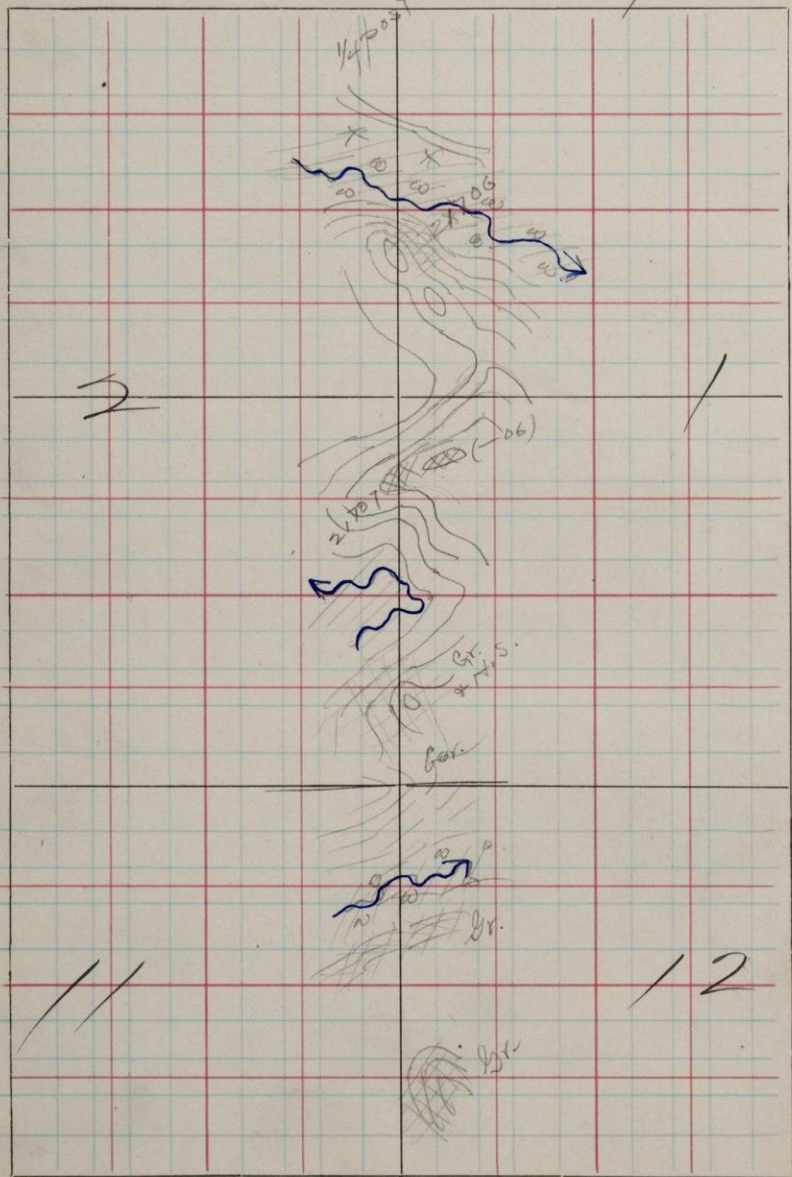
S.

T.

49

R.

27



Line bet. 1+2 and 11+12. Runs S.

21706 740N 1985W. S. E. Cor. #2. Massive  
Forms poorly exposed  
knob.

21707 430N 2000W. S. E. Cor. 1#  
Top of ridge composed of  
—06. This seems to  
lie under —06. Con-  
tact not seen.

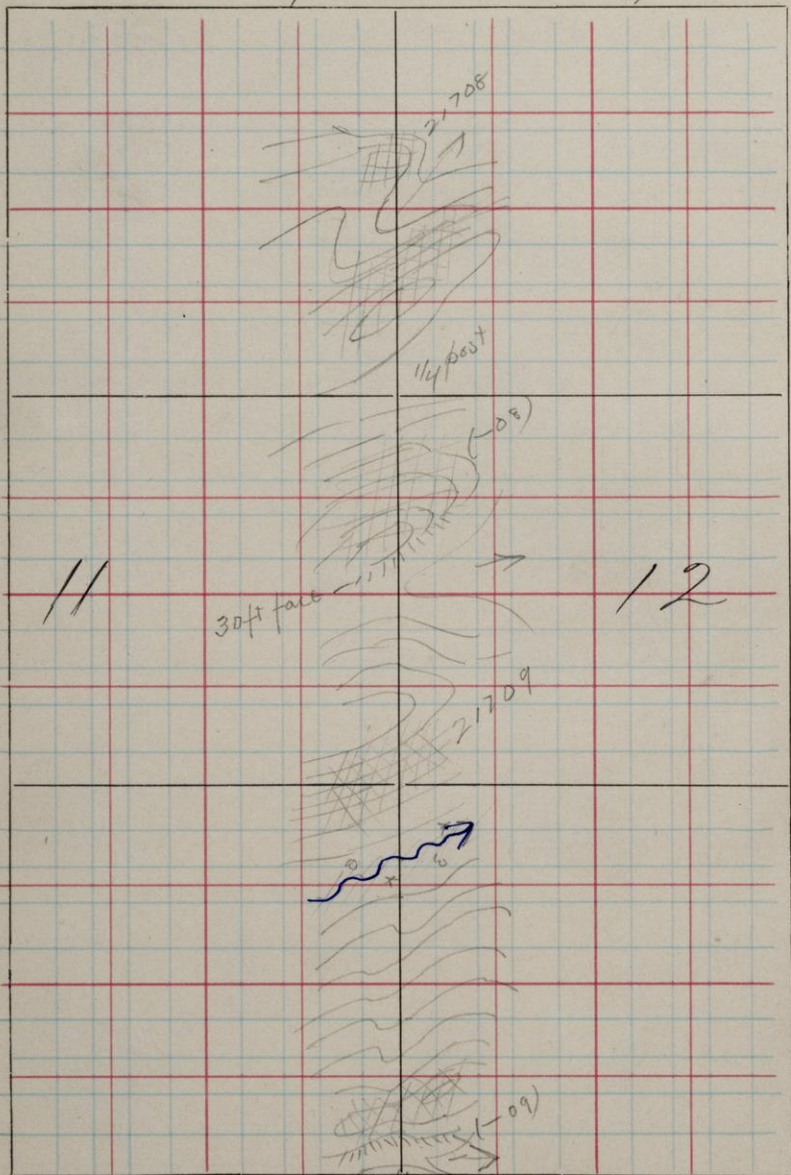
S.

T.

49

R.

27



Unit 615 Secs 11 & 12. Range 5.

21708 1325 N 2000 W. S.E. Cor. 12. Small  
exposure

21709 590 N 10 W. S.E. Cor. 11. Mass wt  
well exposed.

S.

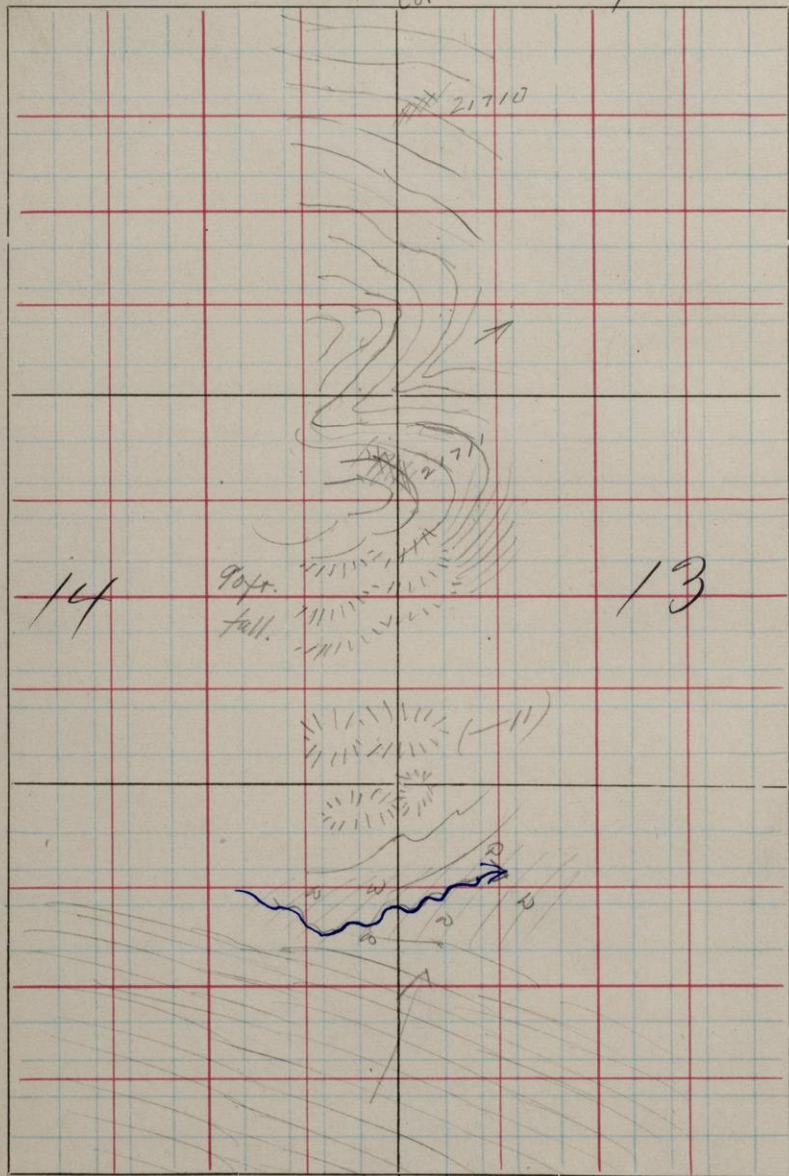
T.

49

R.

27

Cor.



Unit elev. 13 + 14. Running S.

21710 1875 n. 1980 w. S.E. cor. 13, Massive  
From top of first riser

21711 1390 n 2000 w. Massive  
Forms mass of ridge  
south from this corner.

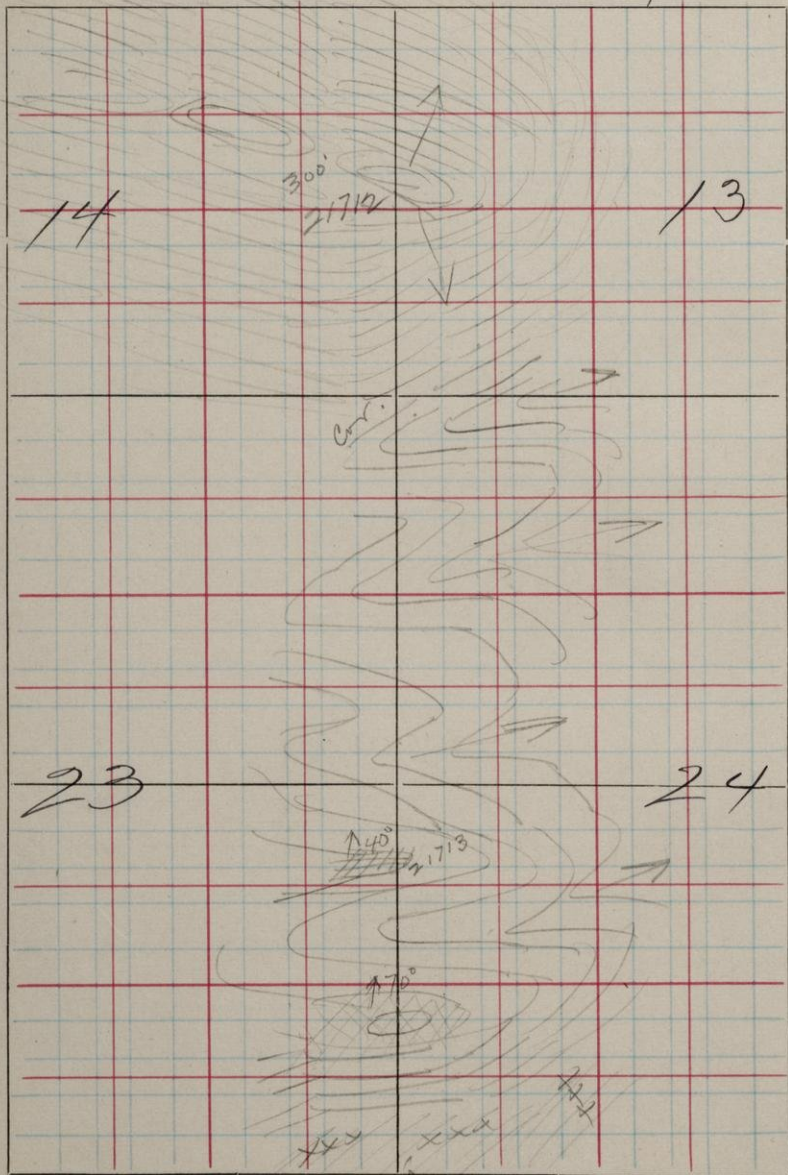
S.

T.

49

R.

27



Limit stw. 13 & 14 and 24 & 23, Purod.

21712 300N 200W. S.E. Wr. 13. Massive  
 Forms ridge running  $E 15^{\circ} S$ .  
 +  $N 15^{\circ} W$ . Rising at this  
 point 300 ft - about creek  
 at foot of north slope  
 Numerous exposures  
 Hardwood & ptm lock.

21713 14/10 N 200W. S.E. Wr. 23.  
 S. n.  $90^{\circ} E$ . D.  $40^{\circ} N$ .

S & D is that of uniform  
 planes developed in  
 exposure at top of spur.  
 Greenstone.

Exposure of same at 1220N  
 shows  $D 40^{\circ} N$ .



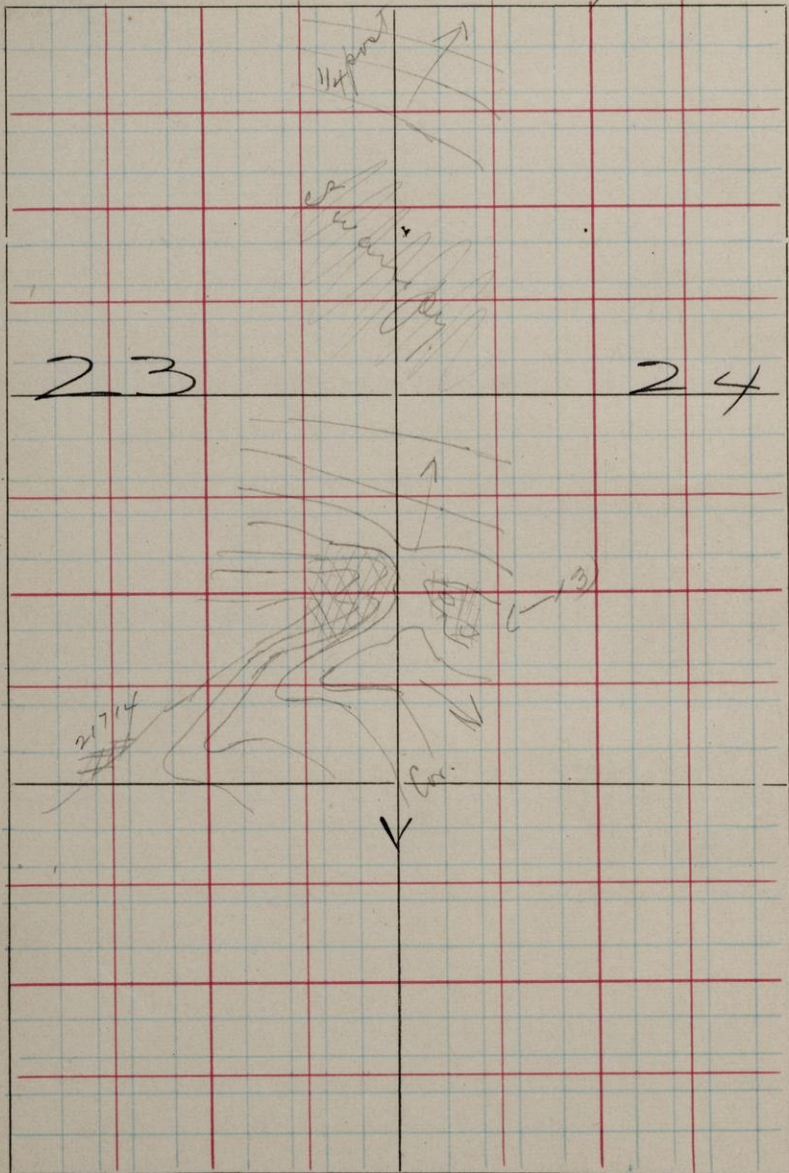
S.

T.

49

R.

27



omit bled. #3 ~~#4~~ and 24 & 23. Penns.

21714 20N. 410W. S.E. Cor. 23. Massive  
Ridge running N.E.  
Limestone

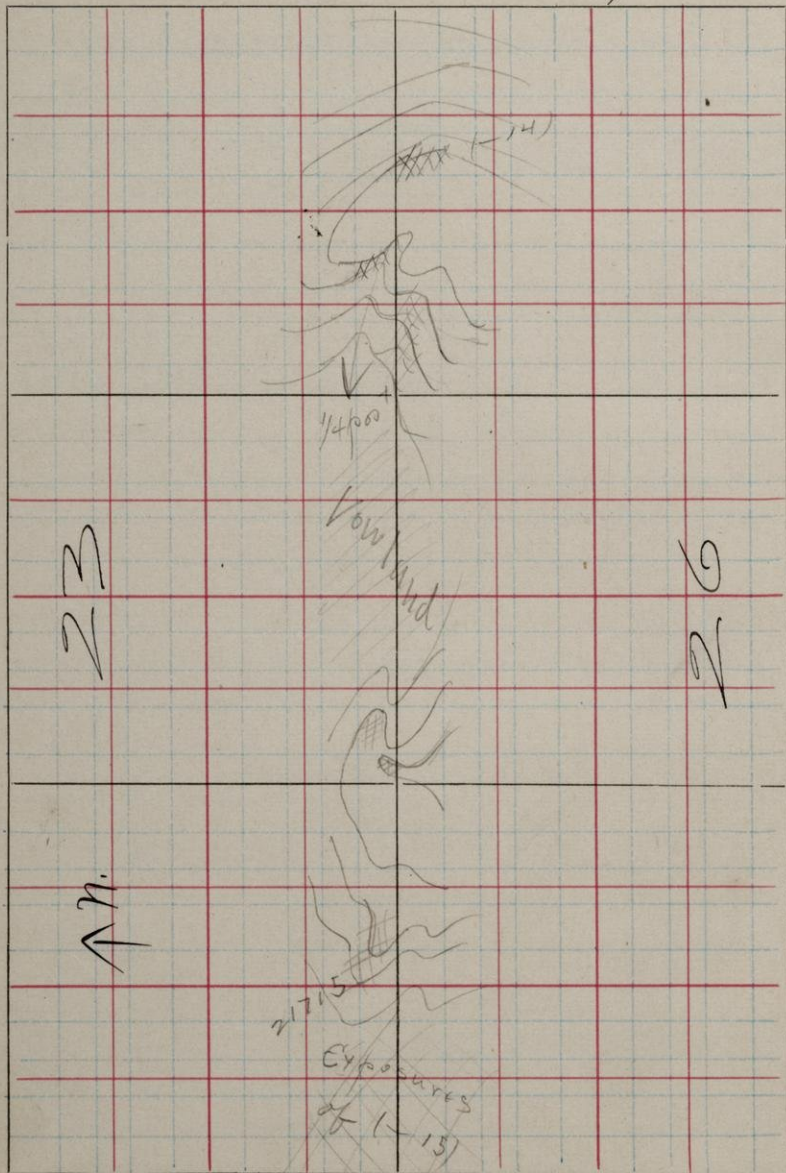
S.

T.

49

R.

27



Lint flw. Secs 23 & 24. Runs W.

21715 10N 1675W. S.E. Cor. 23.

Non-uniform in  
structure. Graustn-

Numerous outcroppings along the lint, some having a massive appearance and many having a non-uniform, shistose development. The dip is steep with an approximate ex. w. strike in some places and about N 40 in others. Nearly horizontal planes appear at joints in connection and at right angles with the other planes.

Rhomboidal parting

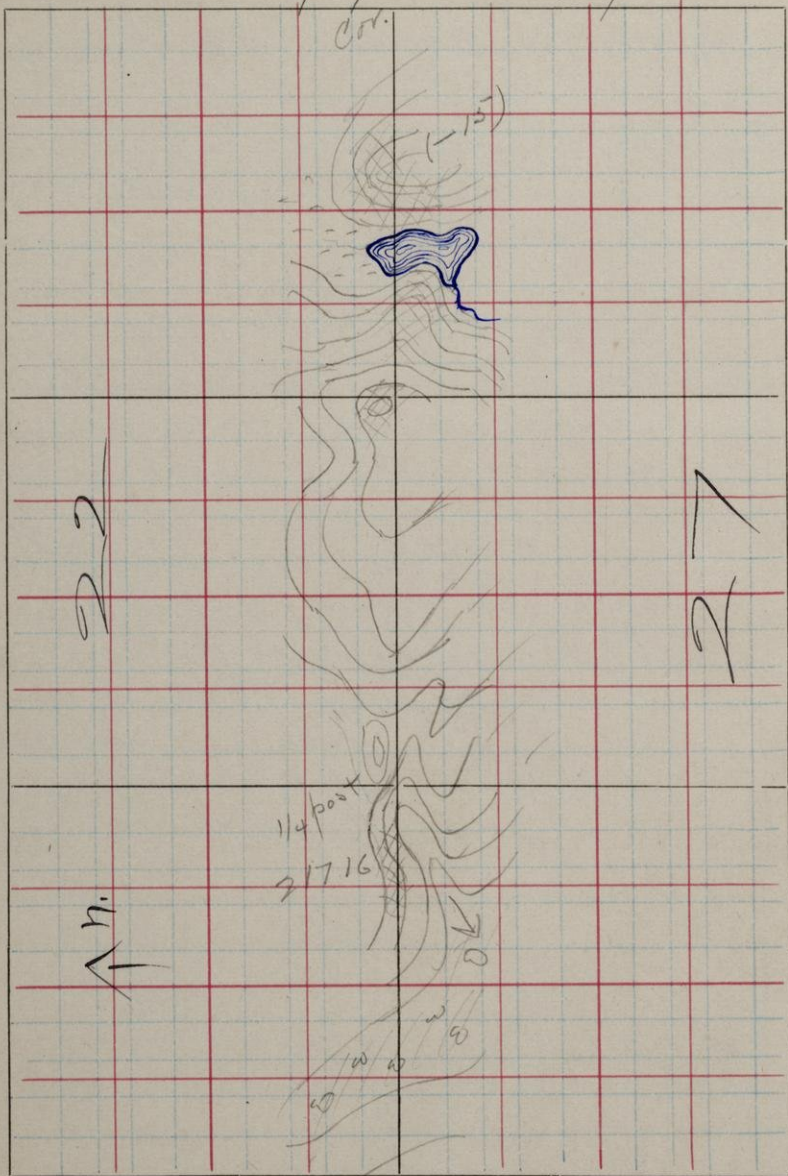
S.

T.

49  
Cor.

R.

27



d int 5th Secs 22 + 27. Running W.

217/6 ON 1125 W. S.E. Cor. 22. S. N. 10° E. D. 65° W.

S & D. is given of planes developed where specimen was taken. Within a few feet the dip is 80° W and in other parts the rock has a massive appearance. Green

S. 70° E and D 65-80° W appears most common only.

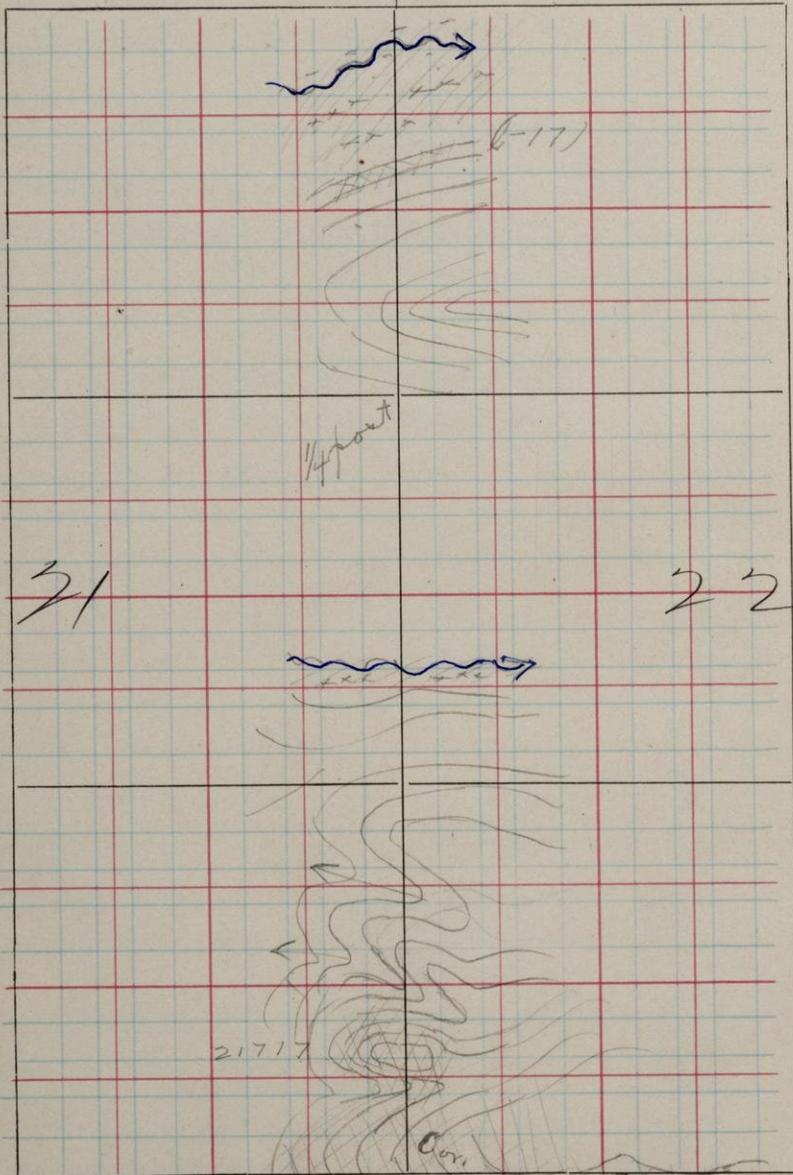
S.

T.

49 ↑

R.

27



31

22

1/4 part

21717

Cross

Line thw. Secs 21+22. Running N.

71717 170 N 0W. S.E. Cor. 21. Non-uniform  
and massive. Well ex-  
posed east and north of  
the corner. Plains to  
the south west. Greenstone



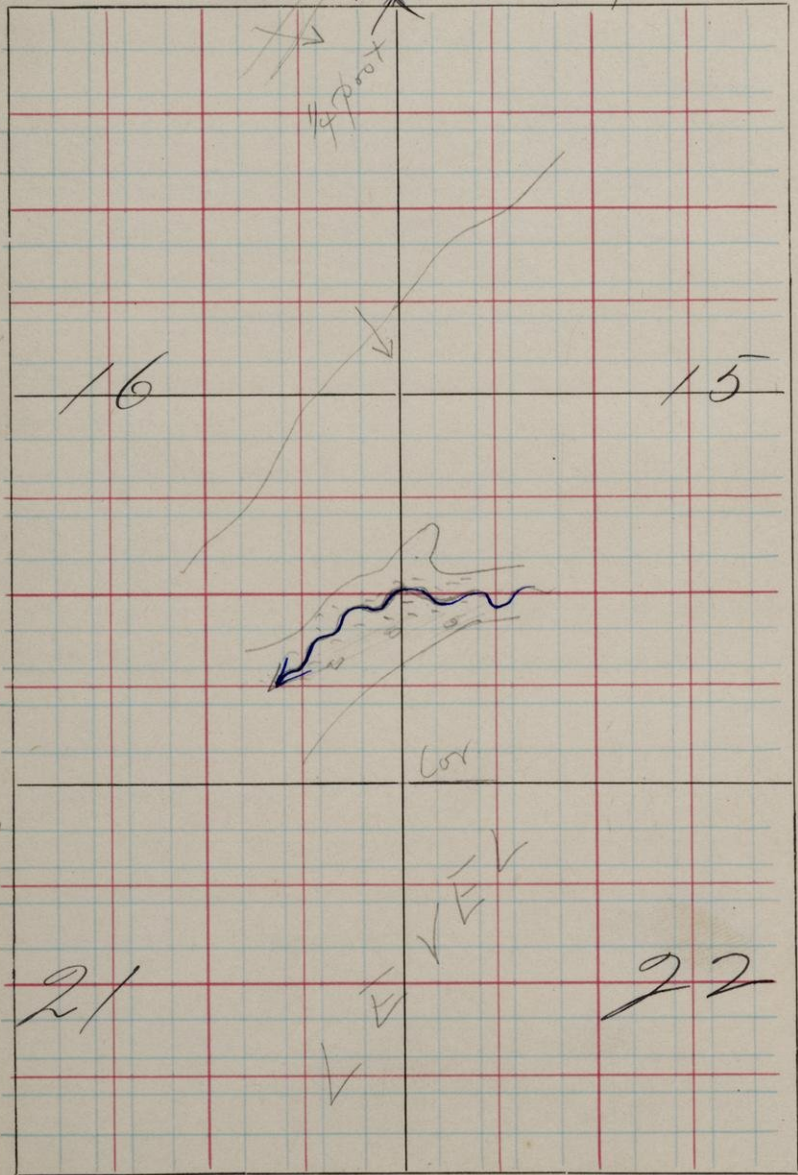
S.

T.

~~49~~

R.

27



1 mi + 5 tw. Secs 21 & 22 and 16 & 15. Remnant.

Country cut and burned  
clean north from corner.  
No exposures.

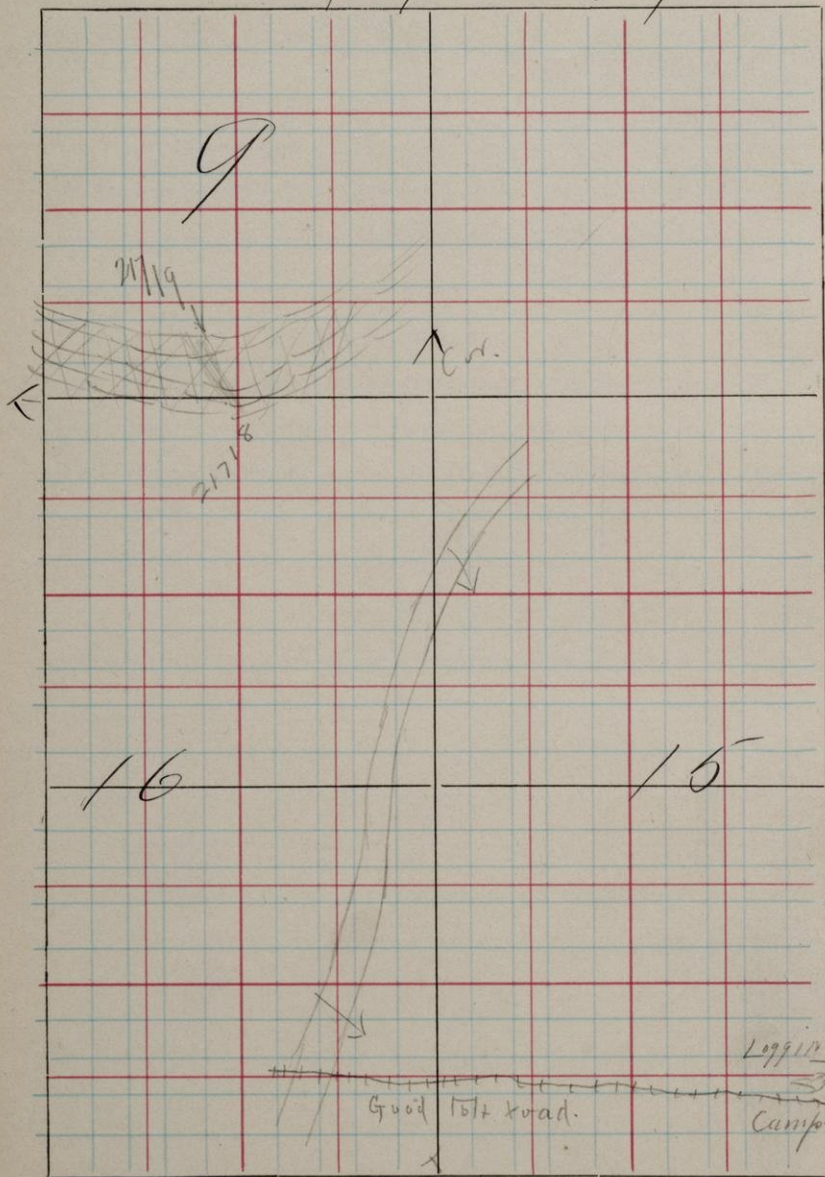
S.

T.

49

R.

27



Lint flw. Secs 15 & 16. Remo N.

21718 2000N 215W. S.E. Cor. 16 Massivt.

Appears at foot of south  
slope of east and west  
ridge composed of - 20

21719 2000N 250W N.W. & S.E. dyke

in - 18. Stands nearly  
vertical.

S.

T.

49 R. 27

6-747

↑ N.

9

W + H exposed  
(21720)

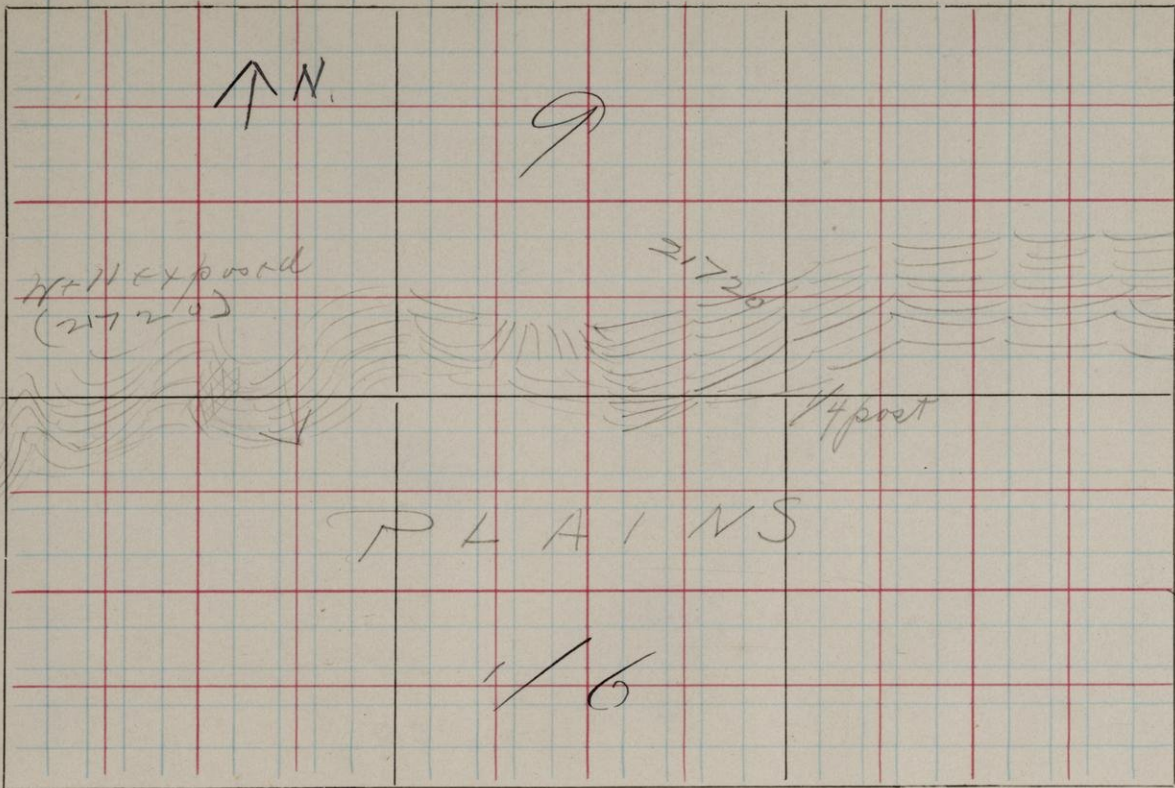
21720

1/4 post

PLAINS

1/6

Cross



Line thro. Sec's 9 & 16. Rms W

21 720 2000 N / 250 W. S. E. Cor. 16. Massur  
 Forms well expast d. ex. 10.  
 ridge with steep face to  
 the South.

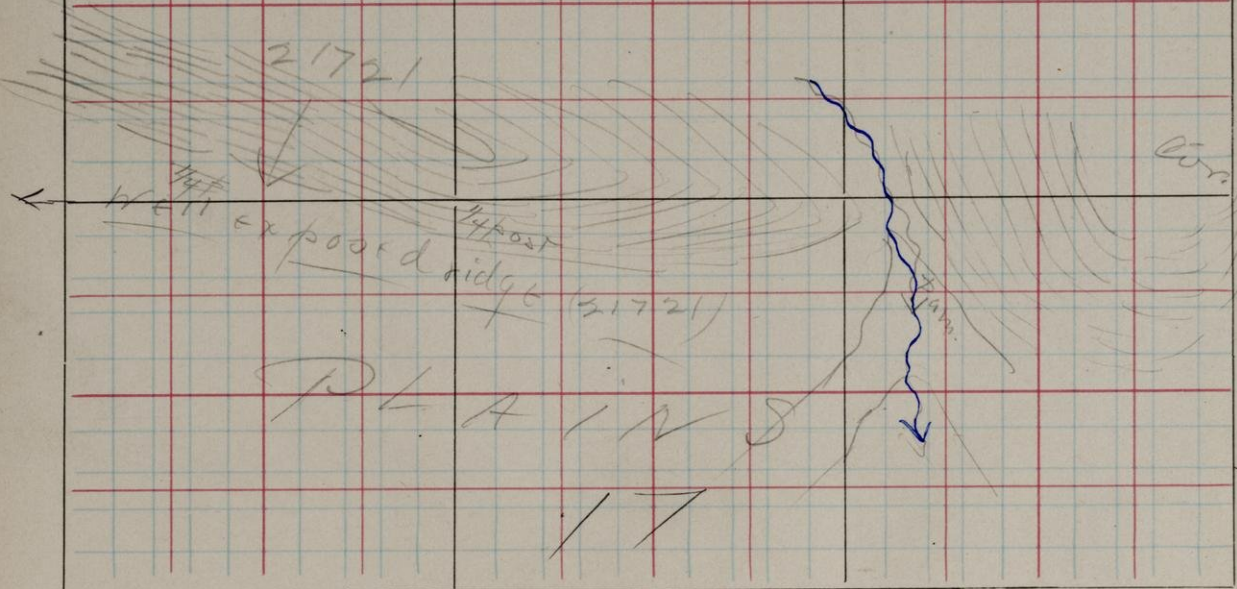
S. T. 49 R. 27

6-747

↑ N.

8

21721



Well exposed ridge (21721)

PLAIN

Limit to Secs 8 & 17. Running W.

21721 75 N. 1200 W. S. E. Cor. 8. S - D -  
 well exposed ridge. Plants  
 having N.W. & S.E. strike  
 with a northern dip are  
 well developed & exposed.  
 Greenstone.

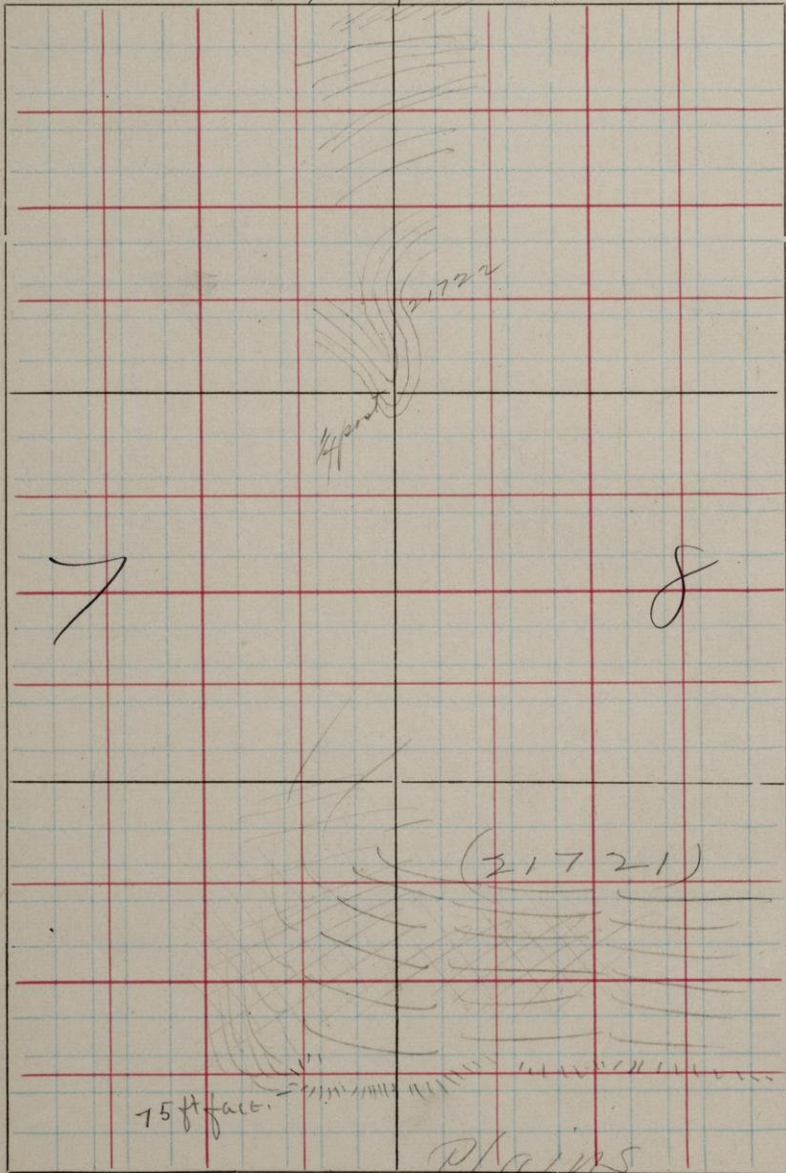


S.

T. 49



R. 27



Plains  
cont.

Unit No. 5 to 8, Running N.

21722 1100N SW. S. E. Cor. 7. Masscut  
Top of slope to north. Hum.

Well exposed first 500 ft  
Poorly exposed least 1000 ft.

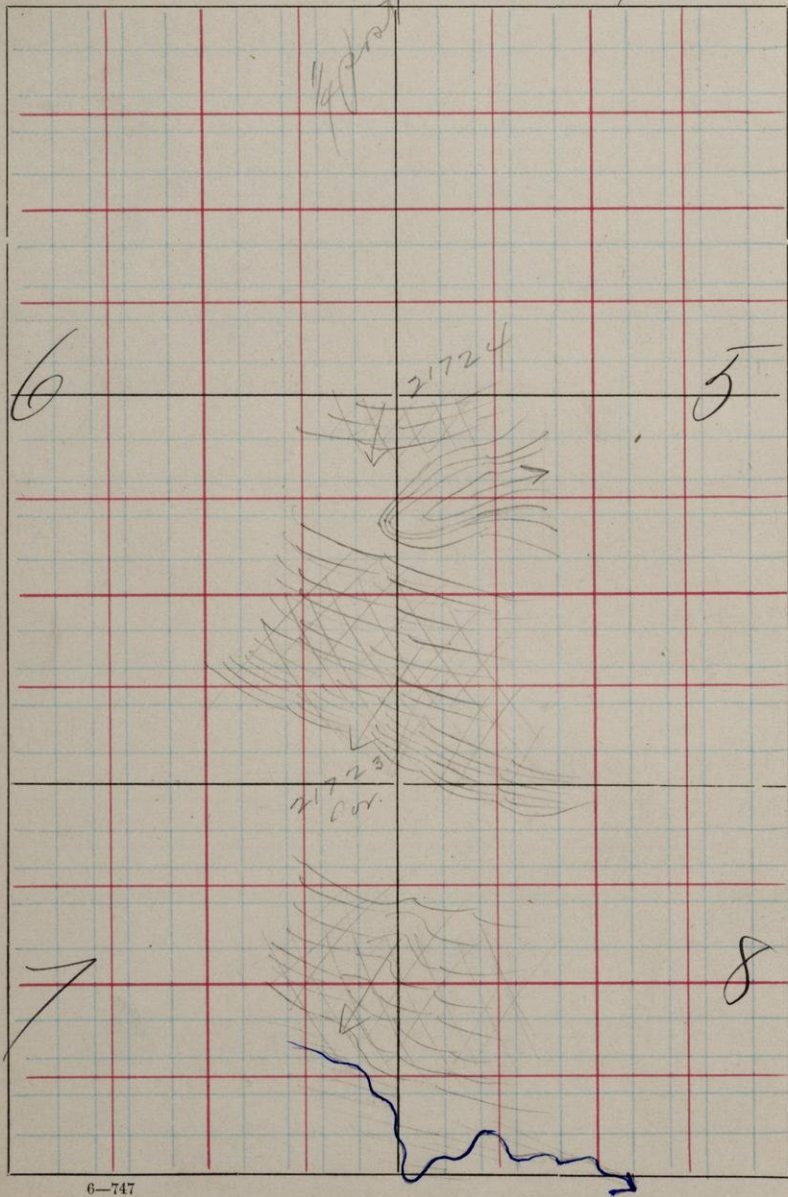
S.

T.

49 ↑

R.

27



of the two series 7 & 8 and 6 & 5. Pinnac.

21723 500 n. o. w. S. t. Cor. 6. Massivet.  
Well exposed north from  
corner. Has approximate  
n. w. strike and varying  
northern dip in places.

21724 500 n. o. w. Forms ~~an~~ dyke  
in 23.

Faces are steeper and better  
exposed to the south than  
to the north. At times the  
faces to the south are over-  
hanging as would seem  
natural with a northern  
dip of the strata

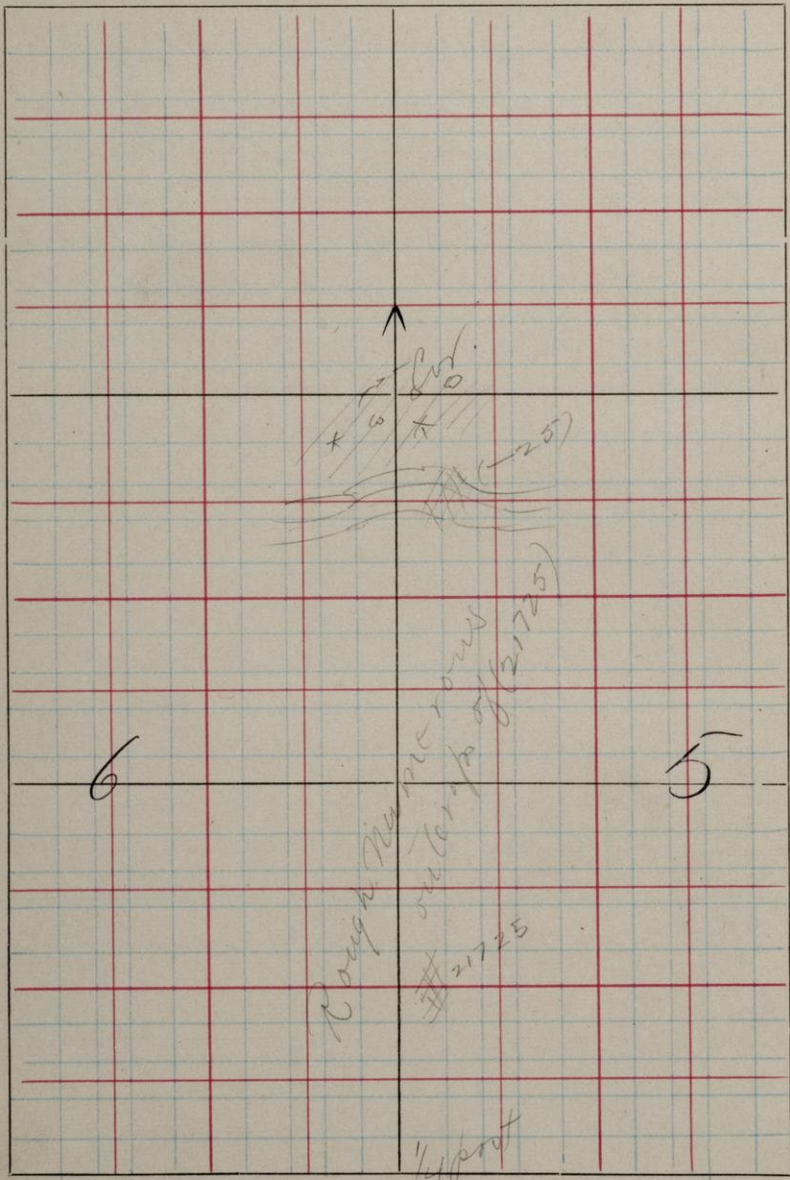
S.

T.

49

R.

27



Limit to. Sec 6 & 5. Run N.

21725 1265 N. 1980 W. S. E. Cor. 5. Massive

Numerous small exposures of the same along the line.

S. T. 49-50 N. R. 27

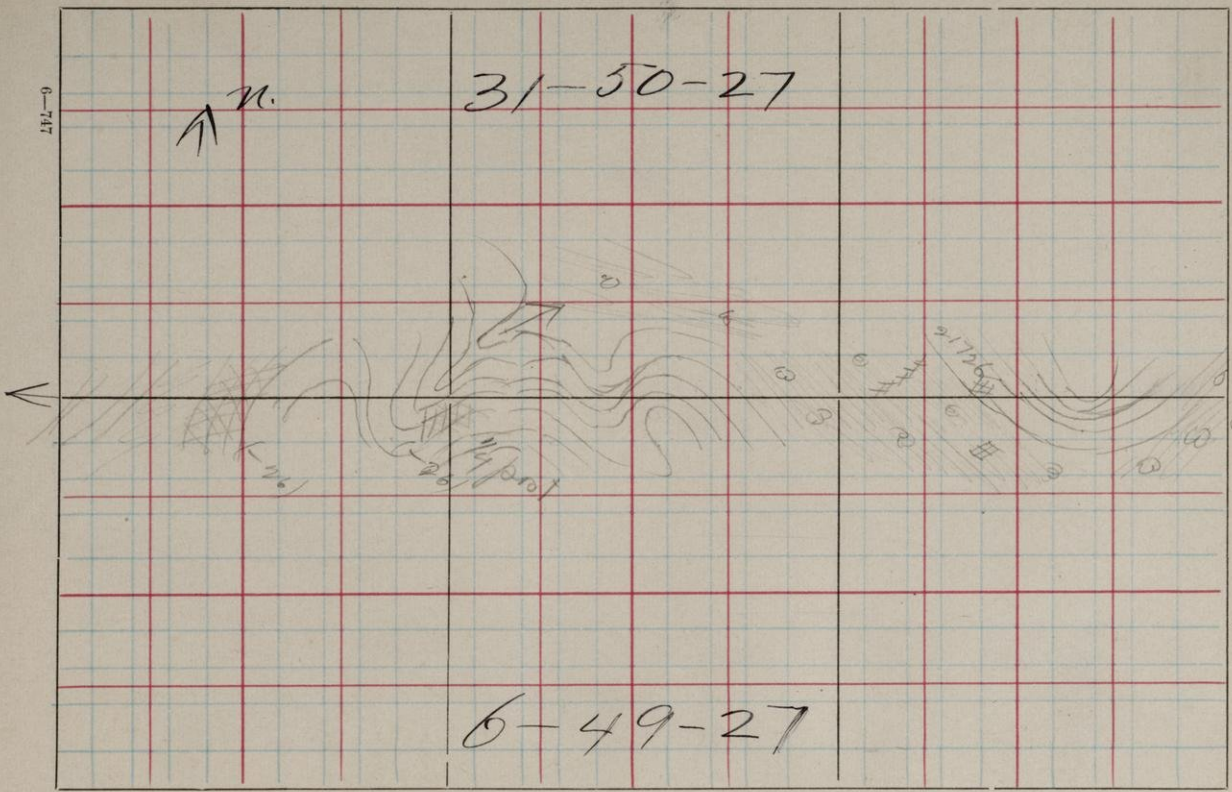
31-50-27

6-49-27

↑ N.

↑

6-747



Line No. 6-49 + 31-50. Runs W.

21726 2000 N 310 W. S. E. Cor. 6. Mass wt  
Small exposures of same  
westward along the line



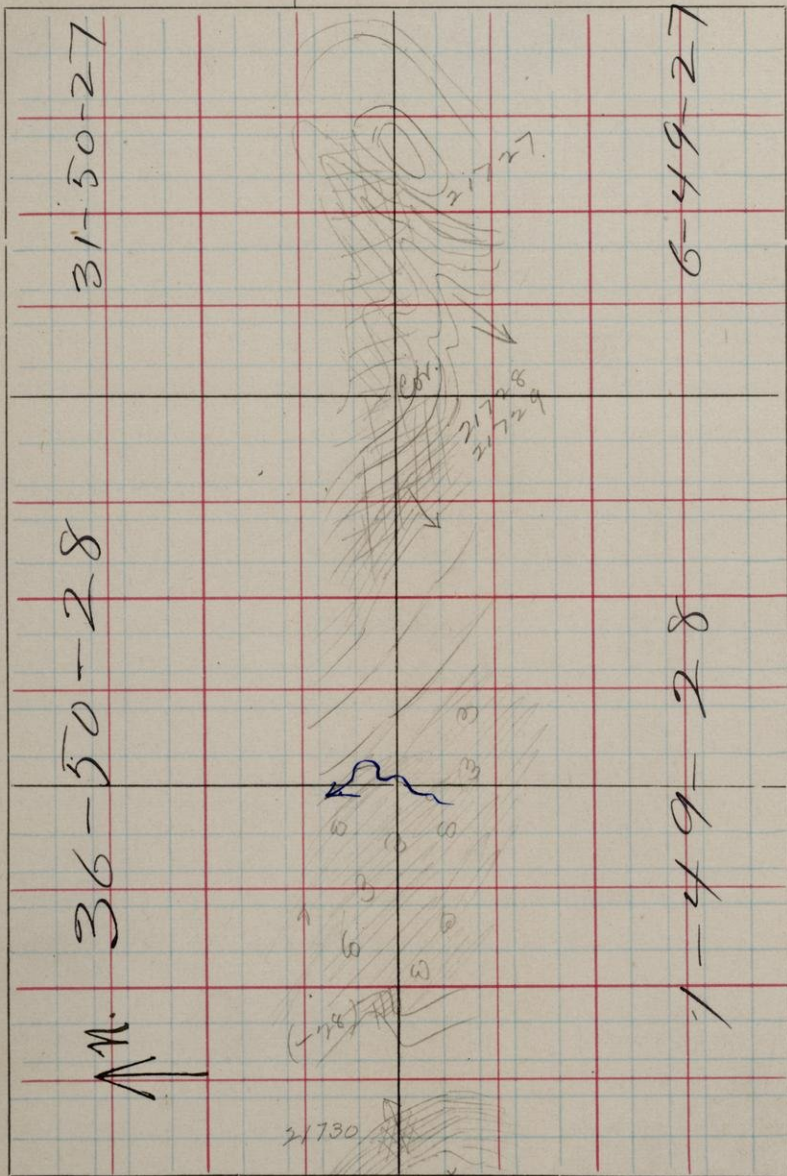
S.

T.

49-50

R.

27-28

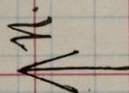


31-50-27

6-49-27

36-50-28

1-49-28



Line NW 31-50+6-49 and  
36-50 + 1-49. Run SW.

21727 2000 N. 1760 W. S.E. Cor. 6. Massive  
Poorly exposed.

21728 0 N. 65 W. S.E. Cor. 36. Massive  
Forms mass of exposure

21729 0 N. 70 W. massive. Lies south  
and apparently under  
— 28. (Possibly a dyke.)

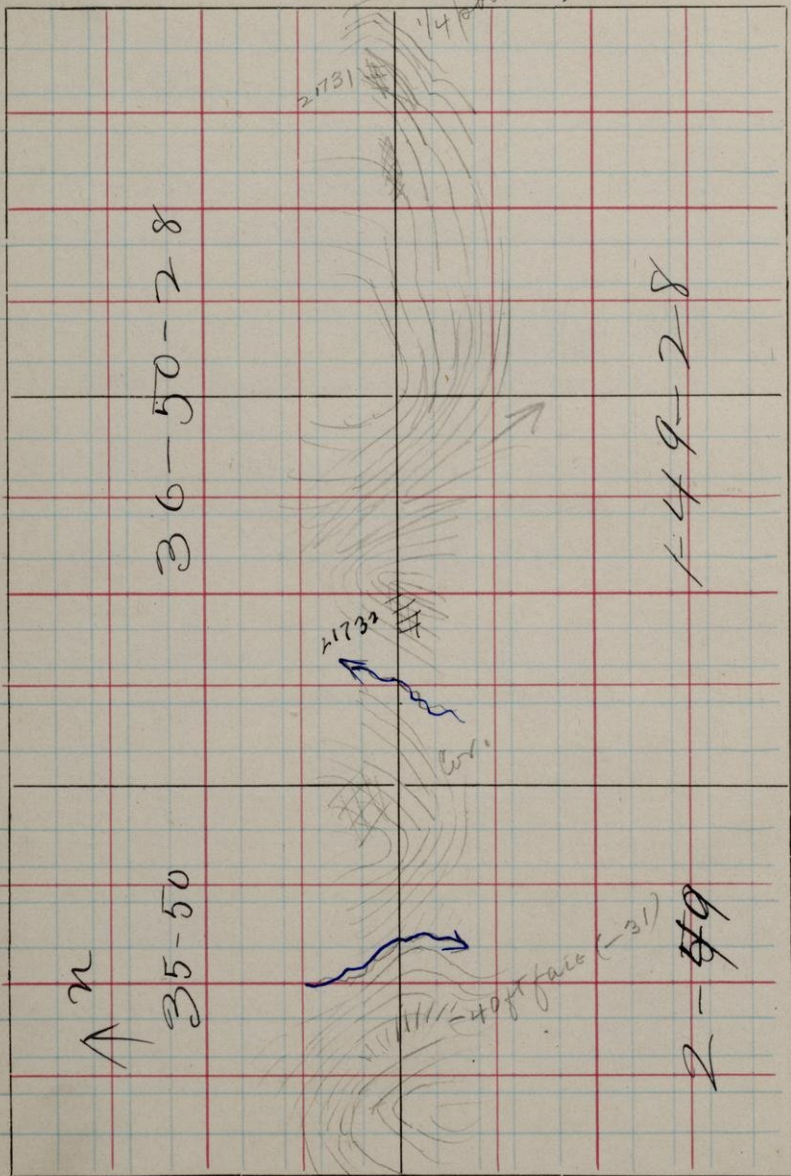
21730 0 N. 950 W. massive  
Slope to East. 50 ft high.

S.

T. 49-50

R.

28



2 int flow Stes 36+1 and 35+2. P. woods.

21/31 20. N1100 W.S. t. cor. 36. Massuit.  
On east slope. Excavation

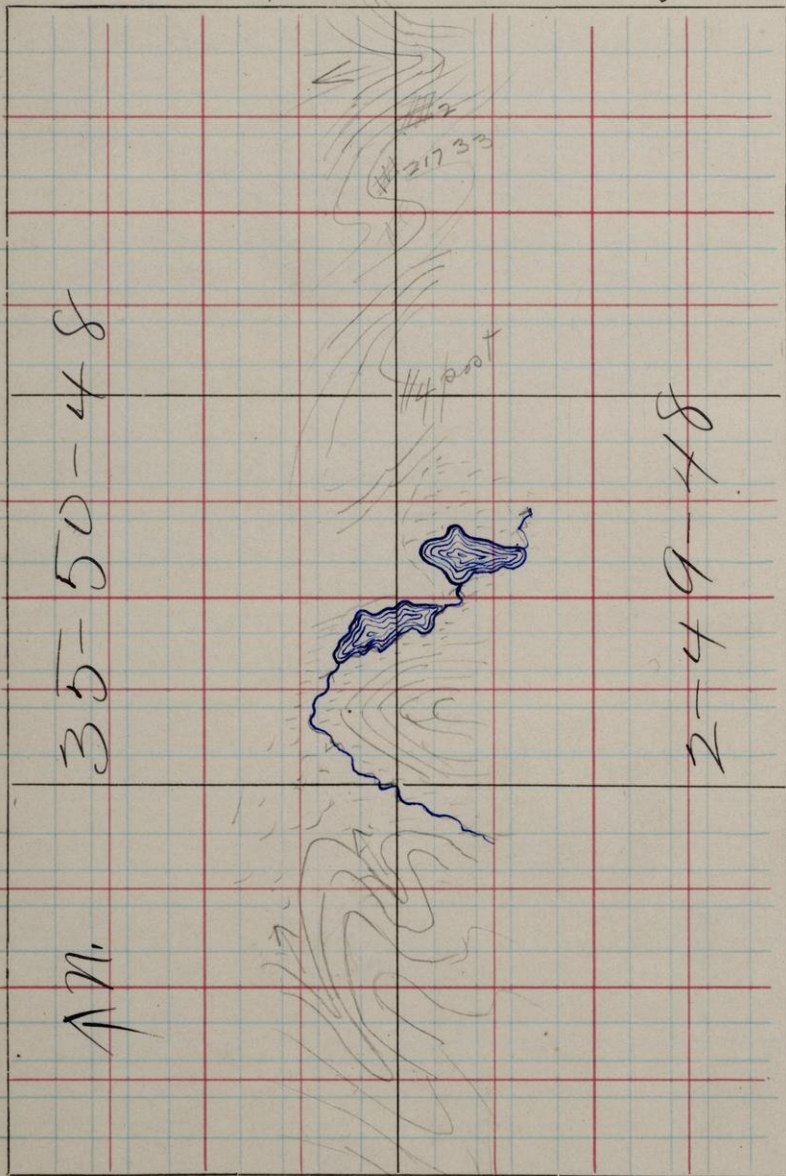
- 30 + - 31 at top of rock  
seemingly grading into  
out another.

21/32 0N 1795 W.S. t. cor. 36. Massuit.  
From W. slope + in connection  
with 31. Well exposed.

S.

T. 49-50 R.

28



Line thro. Pt is 35+2. Running N.

21733 50 N 70 W. S.E. Cor. 35. Massive.  
Several outcrops of same  
along the line.

21733 Forms surface rock  
along the line in small  
poorly exposed outcrops.

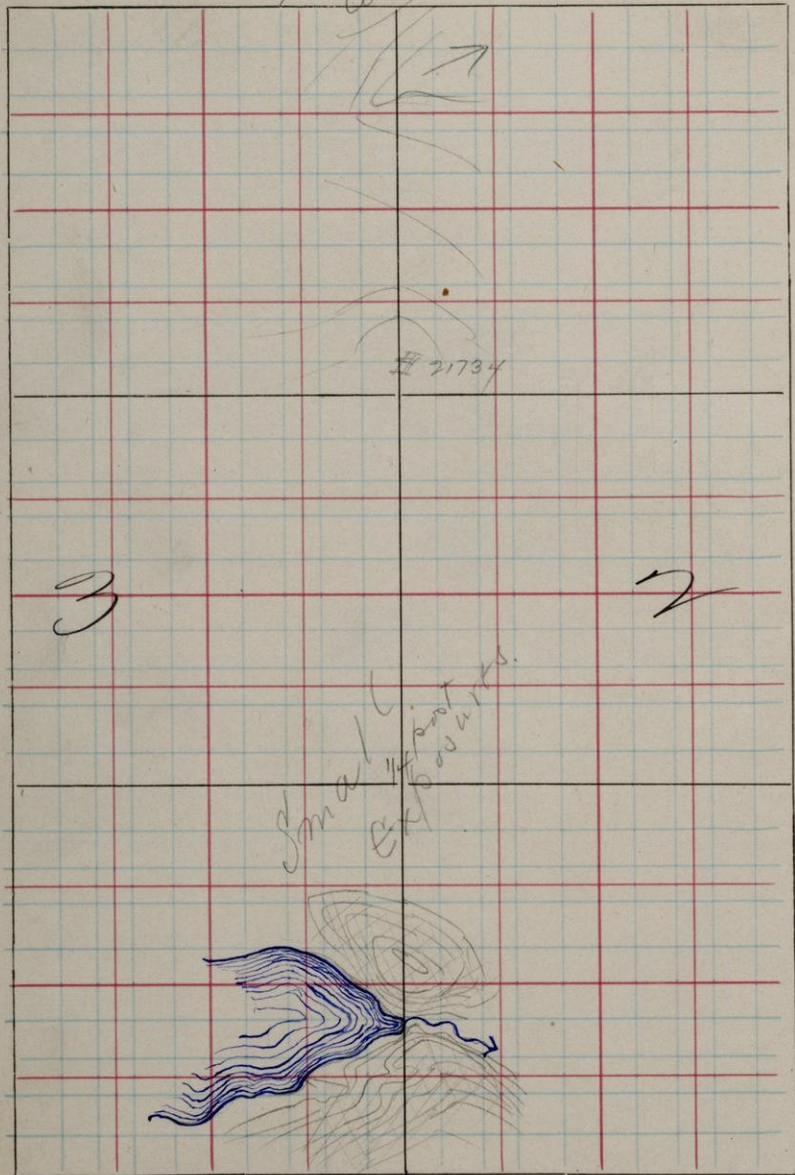
S.

T.

49  
cont.

R.

28



Limit the. Dec 2 + 3. P. unis J.

21734 1550 N. O. W. J. E. Cr. 3. Massint  
Sc. H. Small exposit. Tomb.

900-1200 small surface  
exposures of - 34. South  
of 1200 - 34 forms ridges.

P. unis.



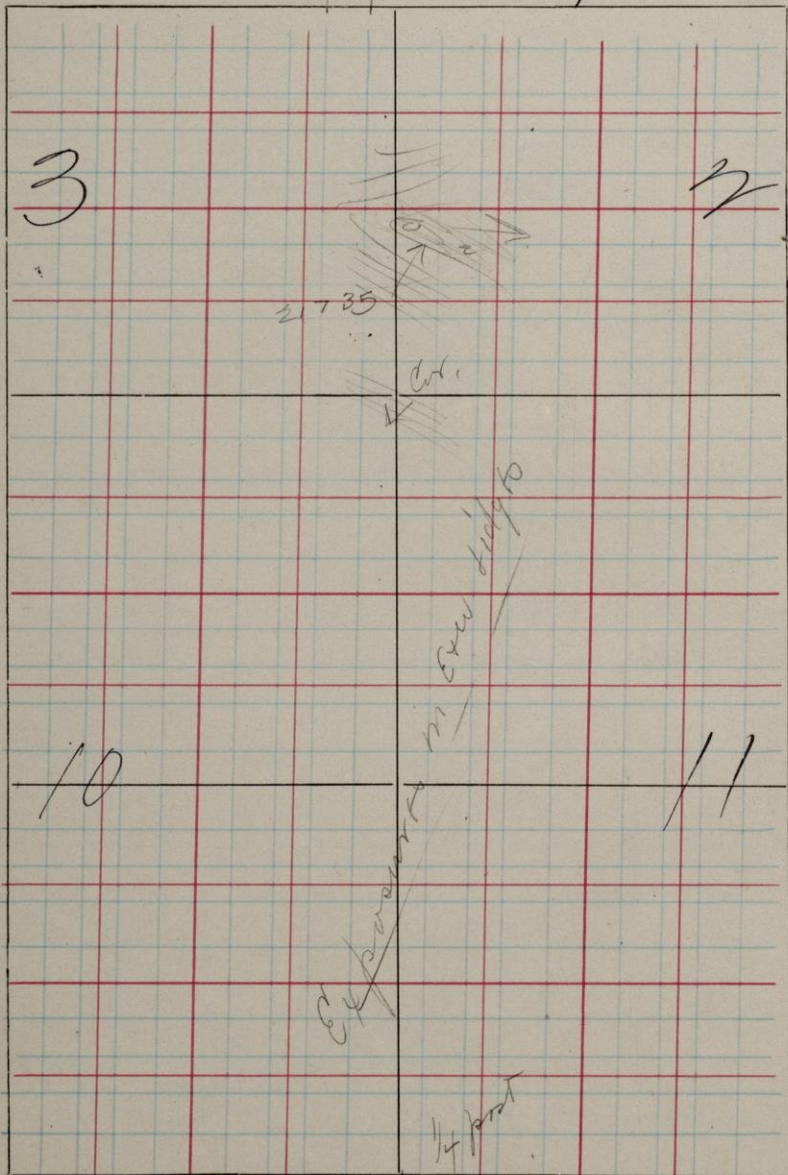
S.

T.

49

R.

28



Limit blw. 3+2 and 10+11. Runs S.

21735 120N 0W S.E. Cor. 3. Massive  
 numerous exposures  
 of sand along line,  
 generally forming exw  
 bridges. G.

Rain.

S.

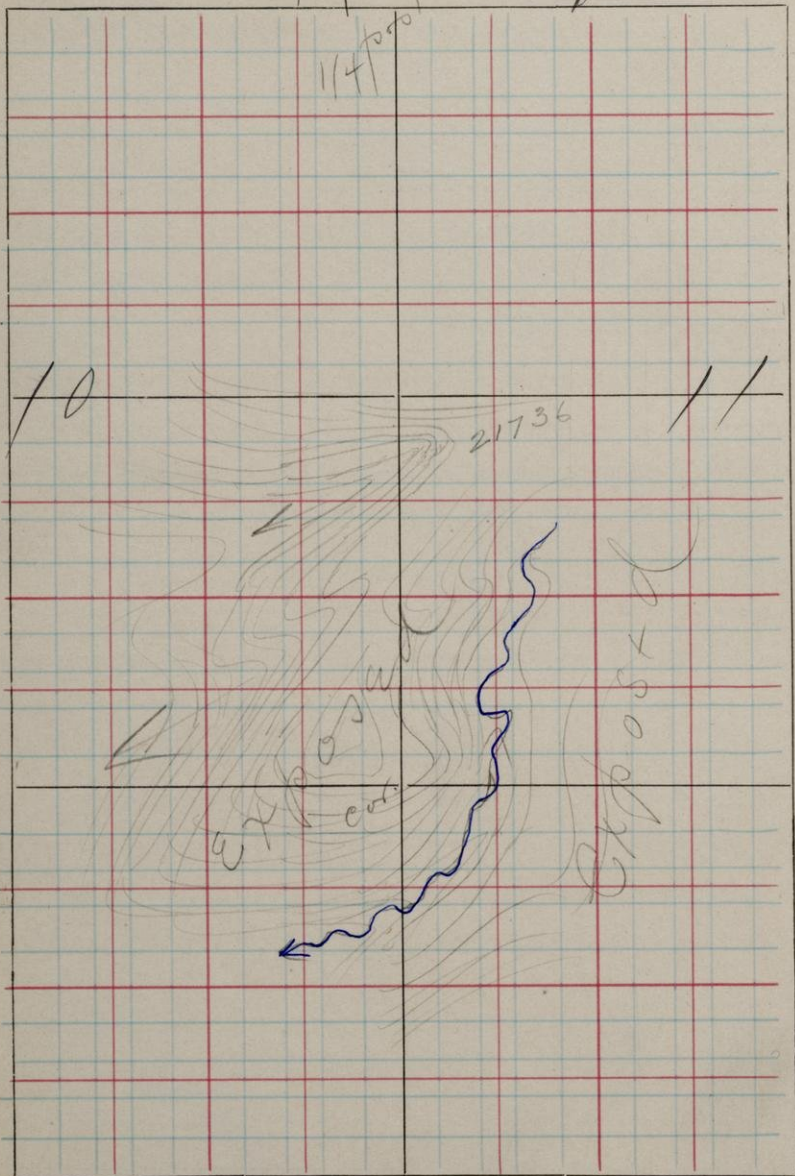
T.

49

R.

228

114<sup>1000</sup>



Lint flw. Stc's 10 + 11. Ruins.

21736. 450 N. O.W. S. t. Cor. 10. Massive  
Well exposed along this  
half mile. Greenstone.

Rain.

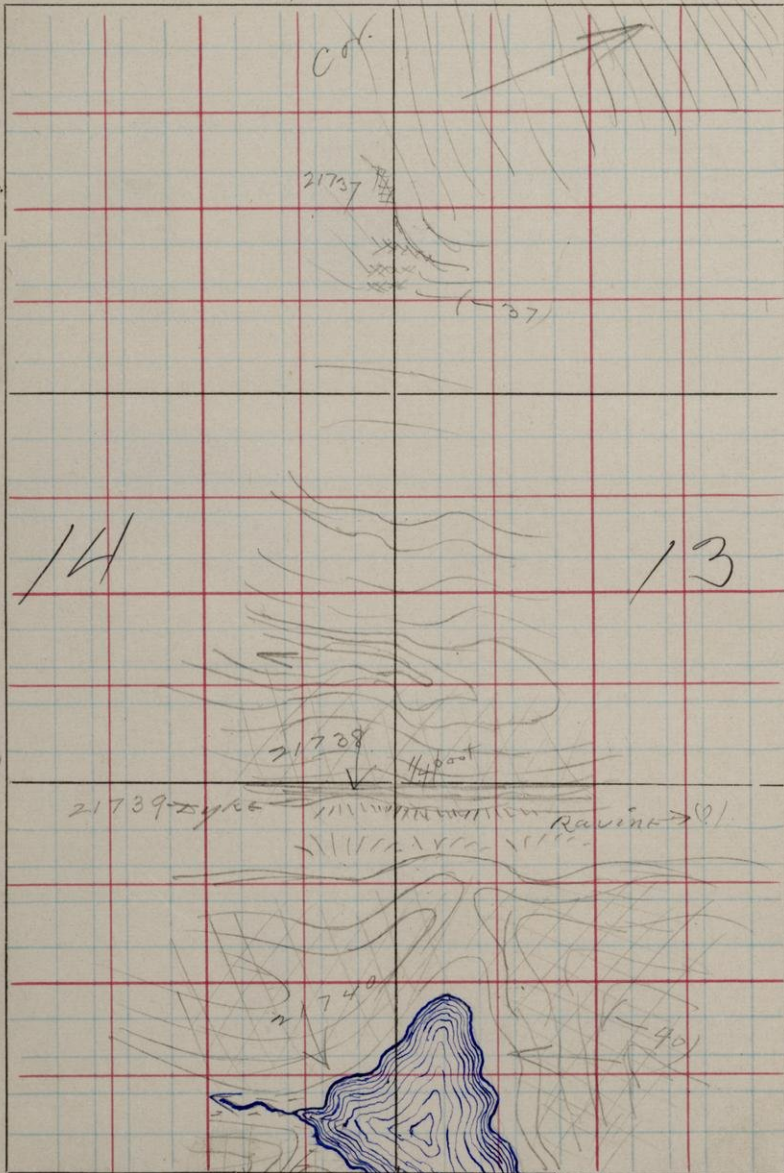
S.

T.

49

R.

28



ditto the S. is 14 + 13. Running S.

21737 1790 N. W. S. E. Cr. 14. Massive  
Small exposure. Greenstone.

21738 1040 N. W. S. E. Cr. 14. Massive.  
Slope + south from 650 S. fairly  
well exposed. Greenstone

21739 970 N. W. S. E. Cr. 14. From an  
irregularly E. W. dyke, 10 to  
30 ft. wide. R. + O. m. oles  
quartzite - but undoubt-  
edly is not.

21740 750 N. W. S. E. Cr. 14. Massive  
Separated from - 38 by  
porphyritic granite.

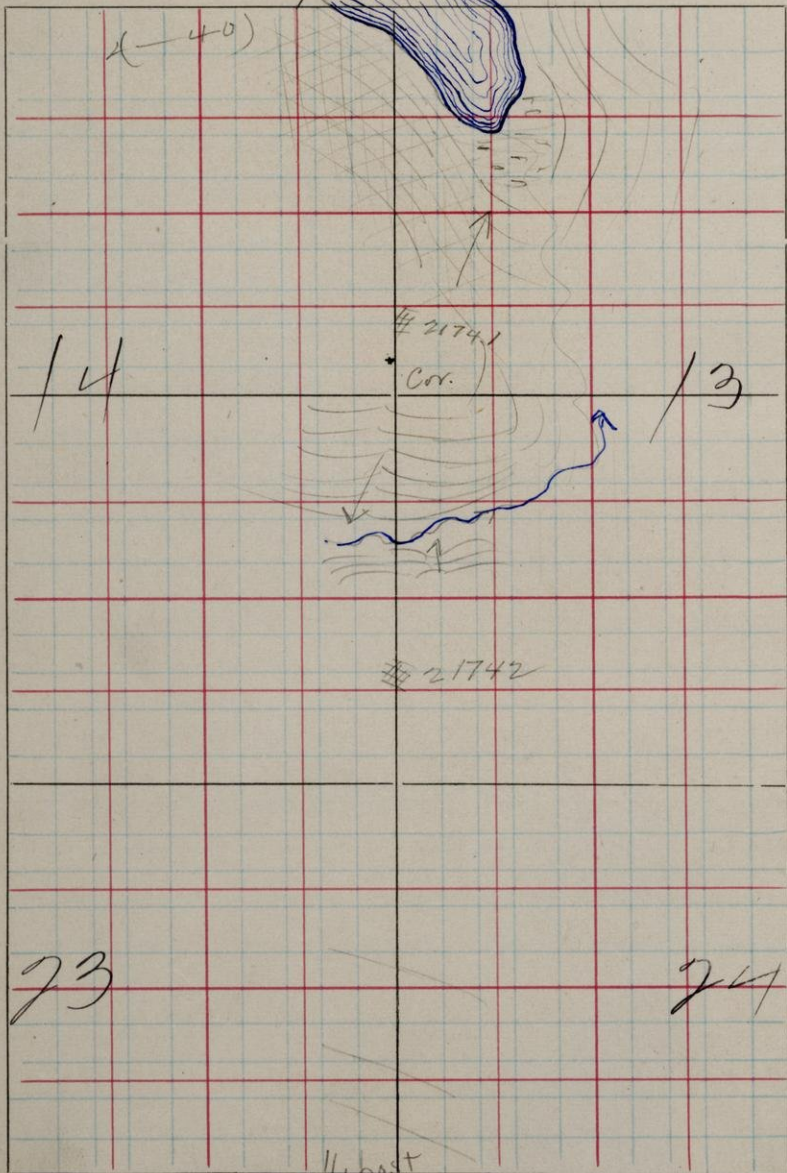
S.

T.

49

R.

28



Limit Fld S's 14 & 13 and 23 & 24. Quos.

21741 100 N. 0 W. S. E. Cor. 14. Massive  
 From top of slope. 21740  
 runs up into slope apparent-  
 ly grading into 21741.  
 No distinct contact being  
 found. Greenstone

21742 1655 N. 0 W. S. E. Cor. 23. Massive  
 : 15 ft rise. Greenstone



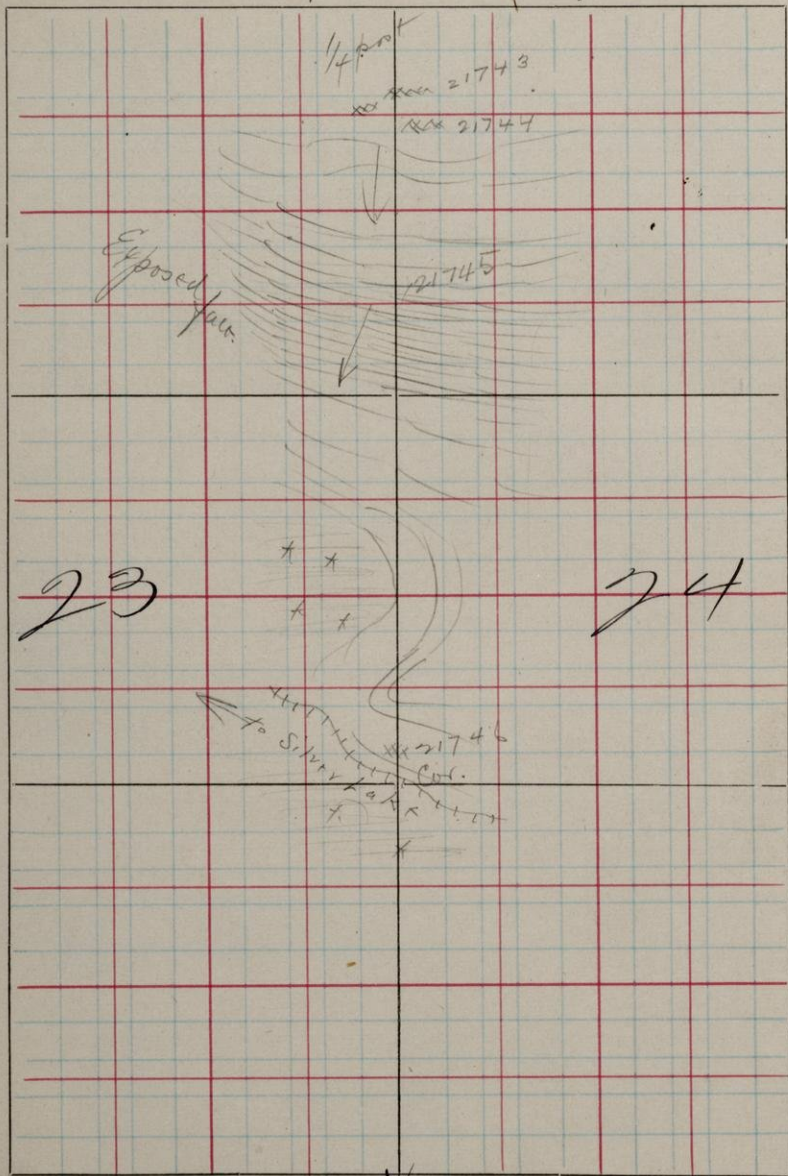
S.

T.

49

R.

28



Limit Old Series 23 & 24. Running S.

- 21743 900 N. O.W. S.E. Cor. 23. Massive  
 P. <sup>labrador</sup> Two exposures. Prob-  
 ably an E-W dyke in -44.
- 21744 870 N. O.W. S.E. Cor. 23. Massive  
 Relation with -43 not  
 to be seen. Both exposures  
 small.
- 21745 635 N. O.W. Massive. From top  
 of steep slope to south.
- 21746 615 N. O.W. S. N 90° E D 75° N.  
 Small surface exposure  
 of slate of Silver Lake area

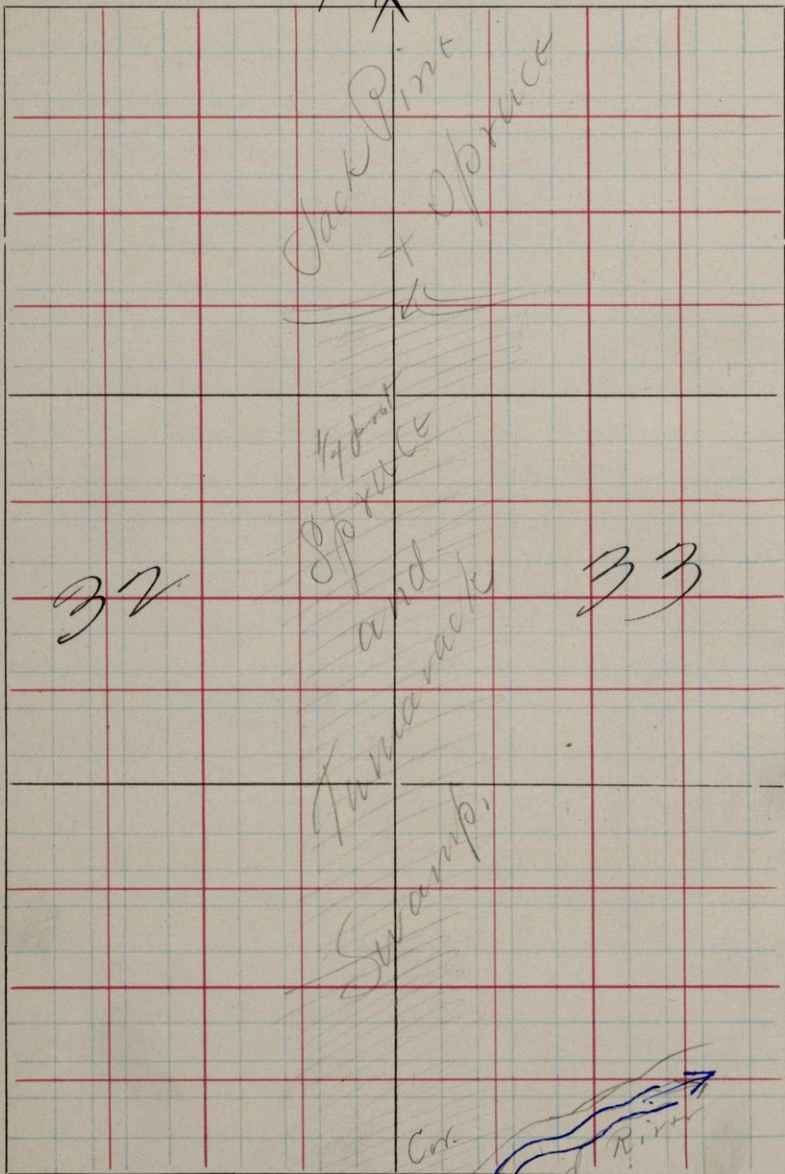
S.

T.

49

R.

27



1 mi. W. Sts 32 & 33. Pines N.

Open spruce and tamar -  
Craek swamp, partly  
burned north from  
Dead R. Pines 20-25 ft  
at 1100 N. S. E. on 32, onto  
jack pine plain.

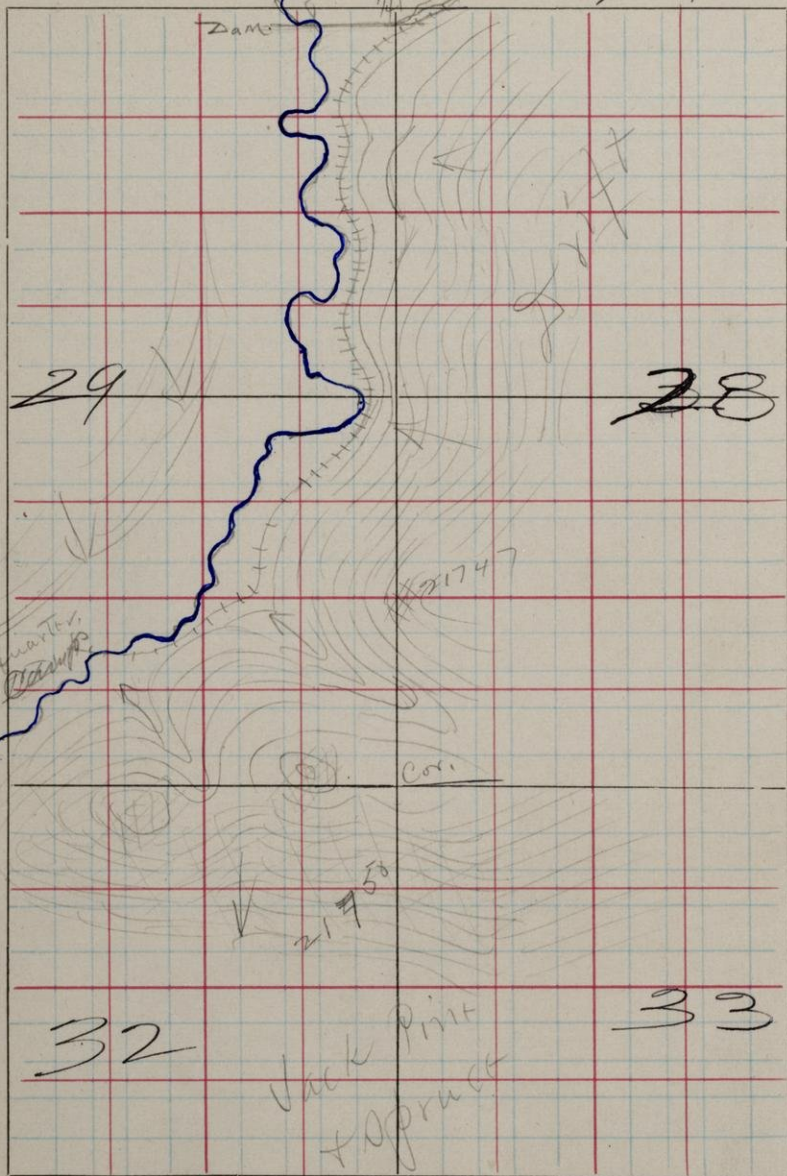
S.

T. 49



R.

27



Run + flow. 32 + 33 and 29 + 28. Run N.

21750 1920 N. O.W. S.E. Cr. 32. Mass wt.  
Well exposed on south  
slope.

21747 250 N. O.W. S.E. Cr. 29. Mass wt.  
Small exposures on the  
slope.

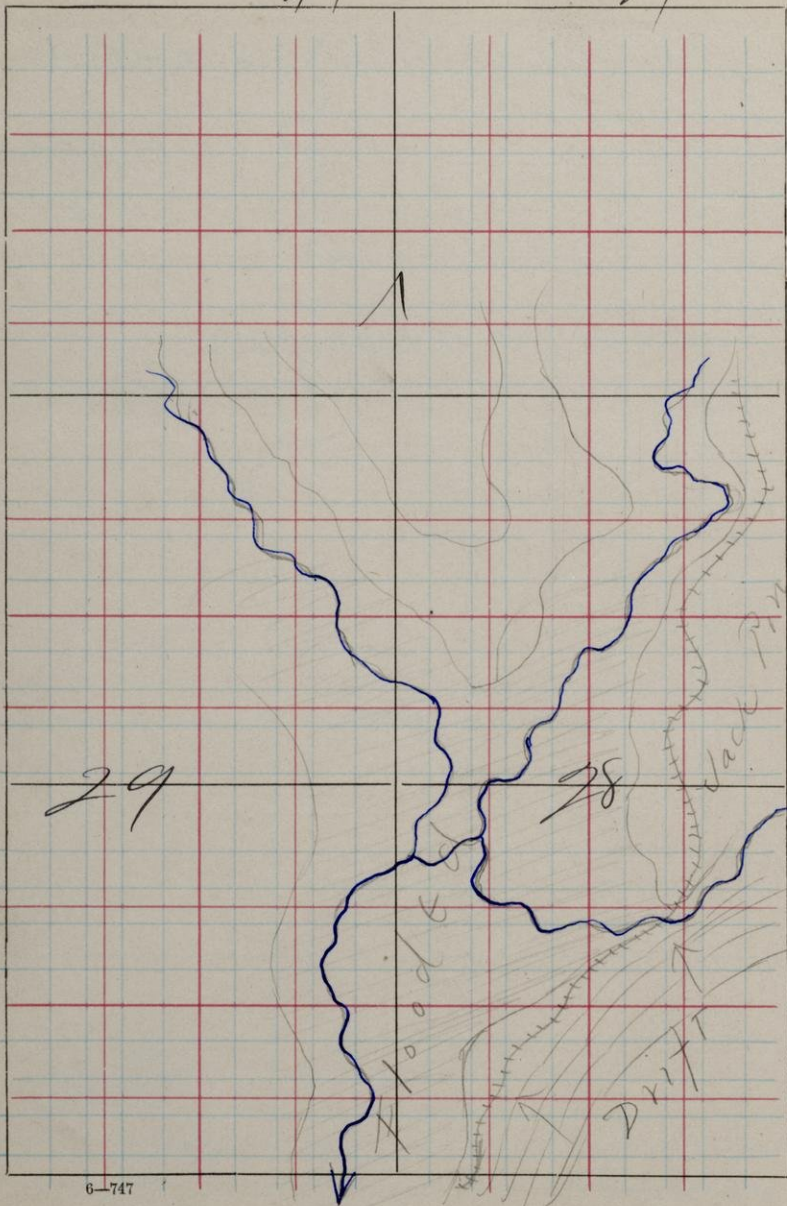
S.

T.

44

R.

27



Line stn. 29 & 28.

Swamp flooded by  
headwater above dam.  
Followed road. Swampy  
to the west and jack pine  
plains to the east



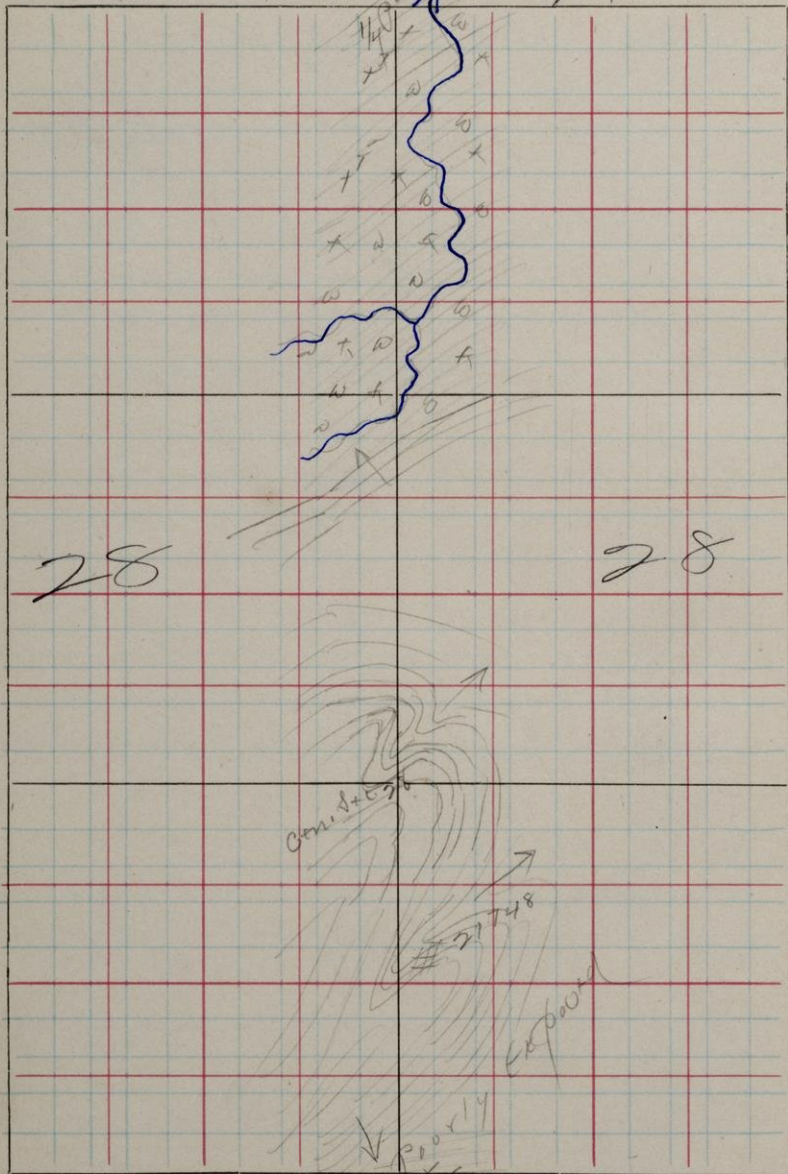
S.

T.

49

R.

27



NYS 1/4 Sect. 28. Renss. S.

21748 770 N 975 W. S. E. Cor. 28. Massitt.  
Proxly exposed

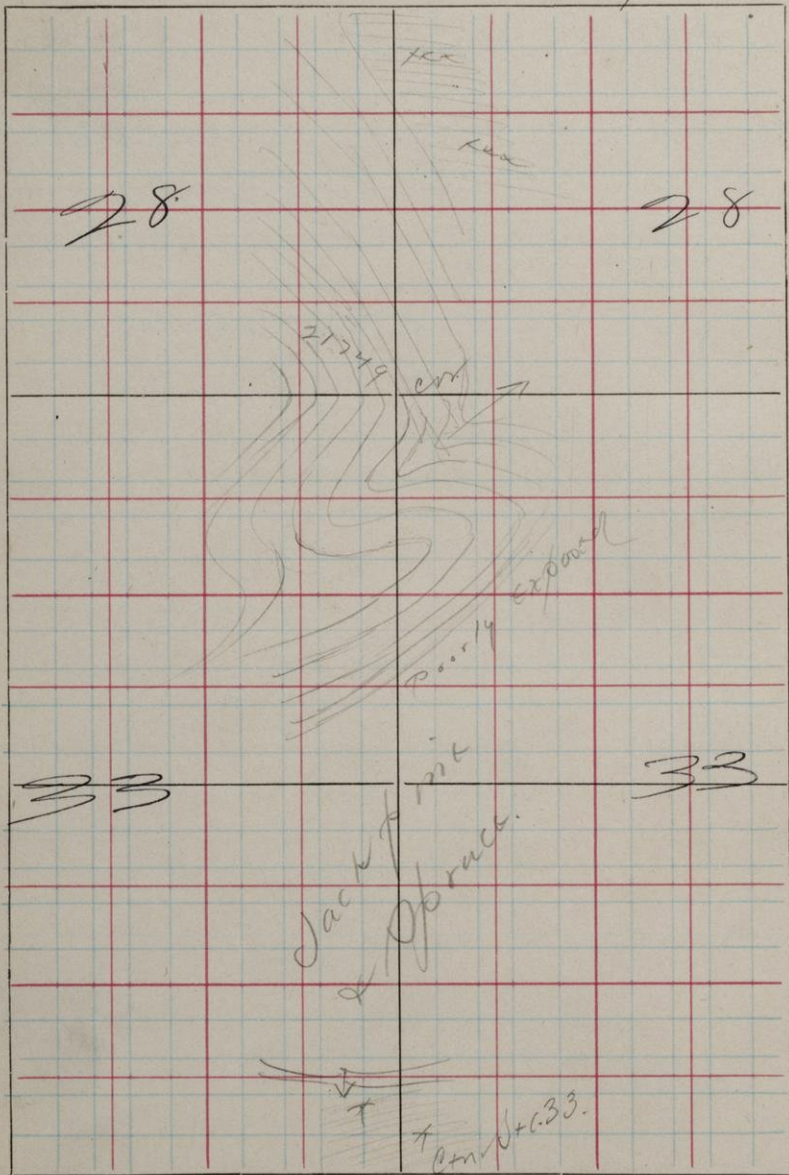
S.

T.

49

R.

27



NE 1/4 line Secs 28 + 33. Paris S.

21749 0 N. 15 W. S. E. Cor. 28.

Poorly exposed.

From centre Sec. 33 south  
on 1/4 line 760' to Dead R.  
Spruce & Tann Swamp.

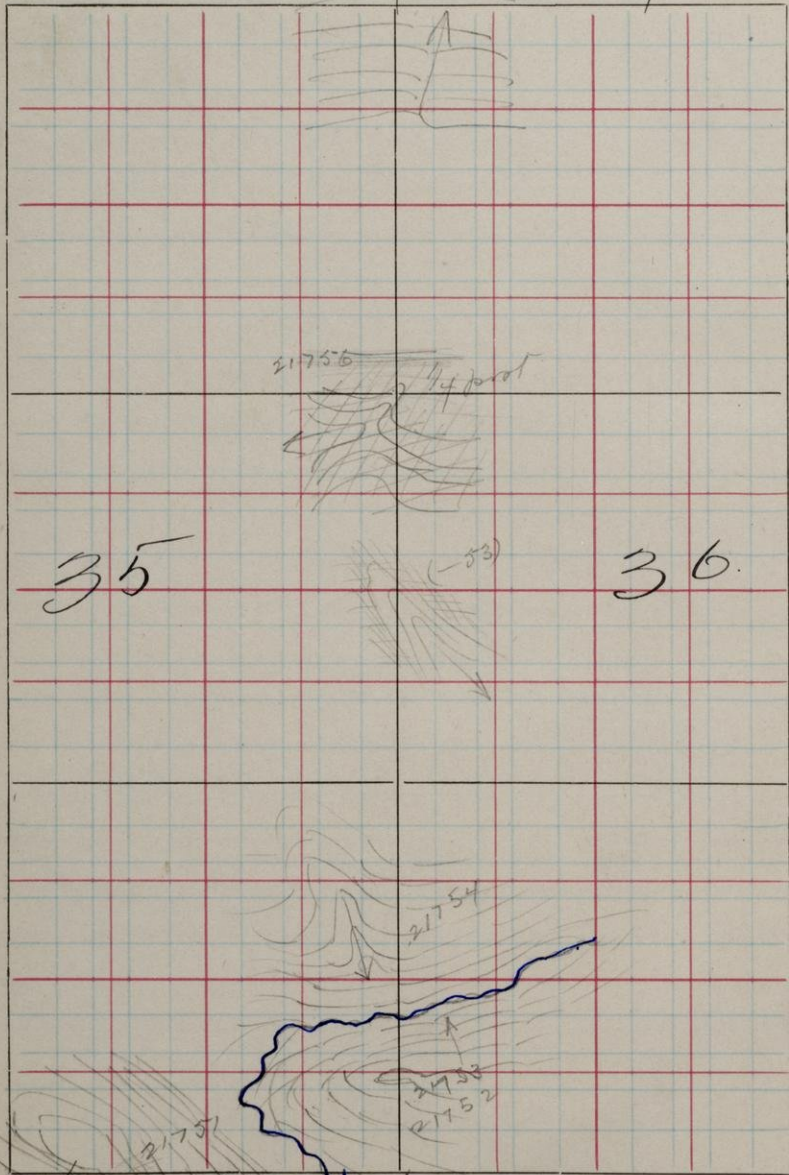
S.

T.

49

R.

27



35

(53)

36

21754

21753

2152

21757

Cor.

6-747

Lim + stw. Secs 35 + 36 - Run N.

21751 0 N. 37° W. S. E. Cor. 35. Massive  
well exposed ridges 400 ft  
north of section line.

21752 60° N 0° W. Massive.  
Near foot of south slope G.

21753 100° N 0° W non-uniform structure.  
From top of ridge. Broken in  
G. pieces. appearance. Hard, angular pieces

21754 315° N 0° W S. N. 45° W - D. 80° N. E.  
Near top of ridge, resembling  
G. rock from which - 52 + - 53 were taken

21755 95° N 0° W. Massive G. From  
south slope. Dyke at top  
G. of slope as shown in - 56

21756 105° N 10° W Massive, ex. dyke.  
75 ft wide here. Iron discoloration  
#1 Diabase.

S.

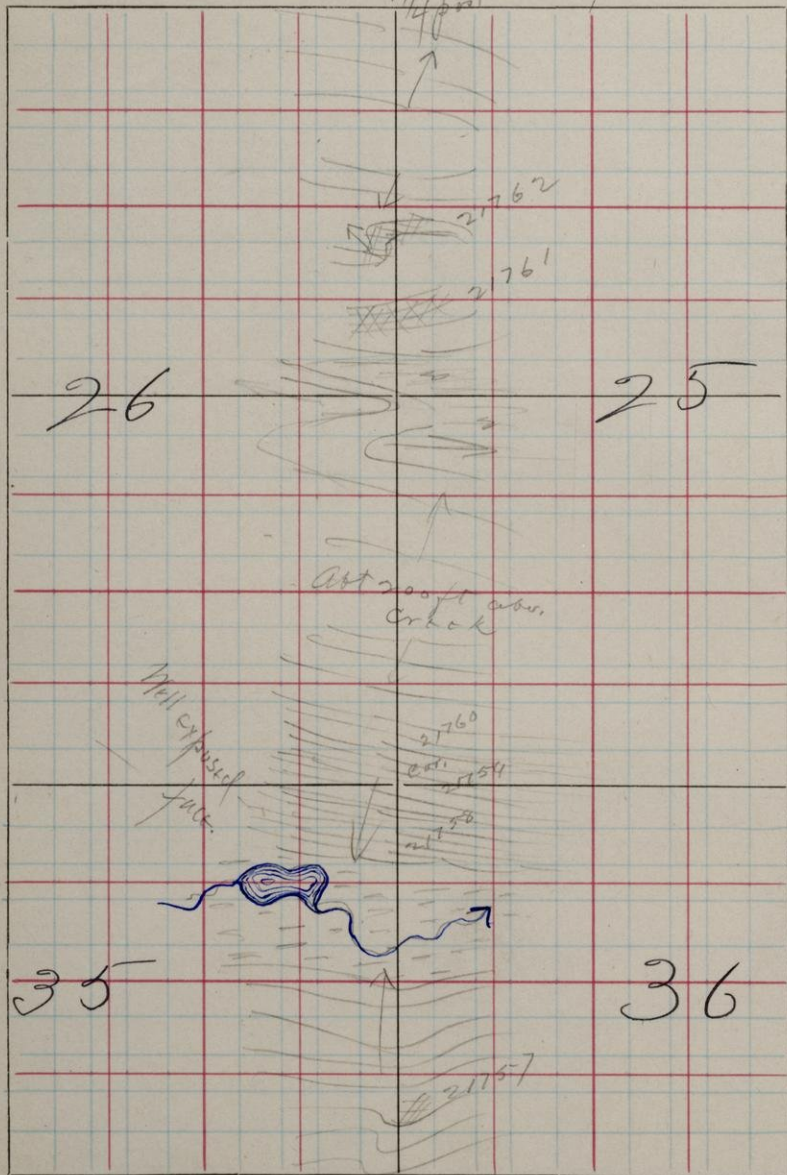
T.

49



R.

27



Line btw. Secs 35 & 36 and 26 & 25. Run N.

- 21757 1580 N. W. S. E. Cor. 35. Massive <sup>g.</sup> G.  
From north slope which  
is wooded and poorly ex-  
posed.
- 21758 1950 N. W. Massive. (-58) is found  
on the south slope, with the  
hard broken G. (-60) on  
top. Cut by ew diabase dyke  
and small dykes of (-59).  
21759  
21760 Out. running N.E. & S.W. cuts  
through the greenstone to-  
ward the diabase dyke  
but can not be traced into  
it. Exposed 200' N of S.E. Cor. 26.
- 21757  
21761 600 N. W. S. E. Cor. 26 Massive.  
Fairly well exposed from  
550 to 600 N. Greenstone
- 21762 700 N. 10 W. Massive.  
Probably an E.W. dyke (?)  
Coarse greenstone



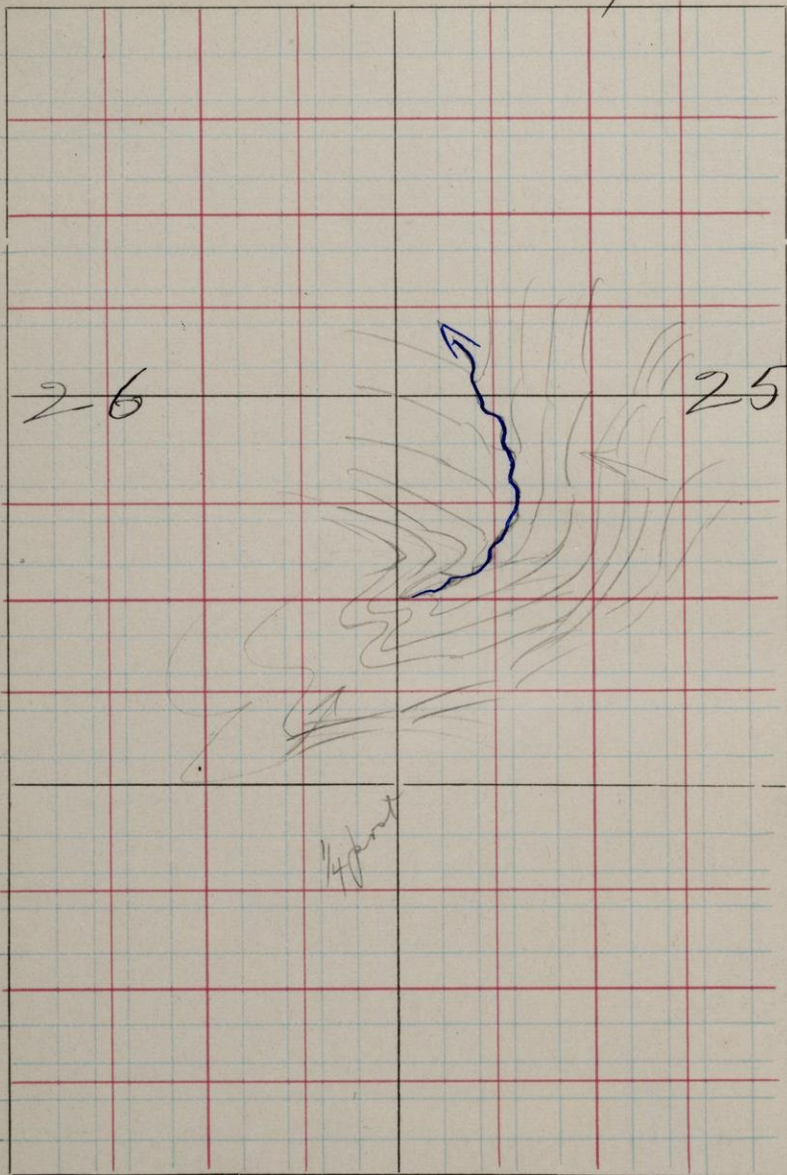
S.

T.

49

R.

27



Limit runs n. 500 ft from W $\frac{1}{4}$  25  
then east 500 ft.

#1 Exposure of 21762 at 1200n.

21763 1500n 1660w. S.E. Cor. 25. Massive  
well exposed. Coarse  
grained greenstone

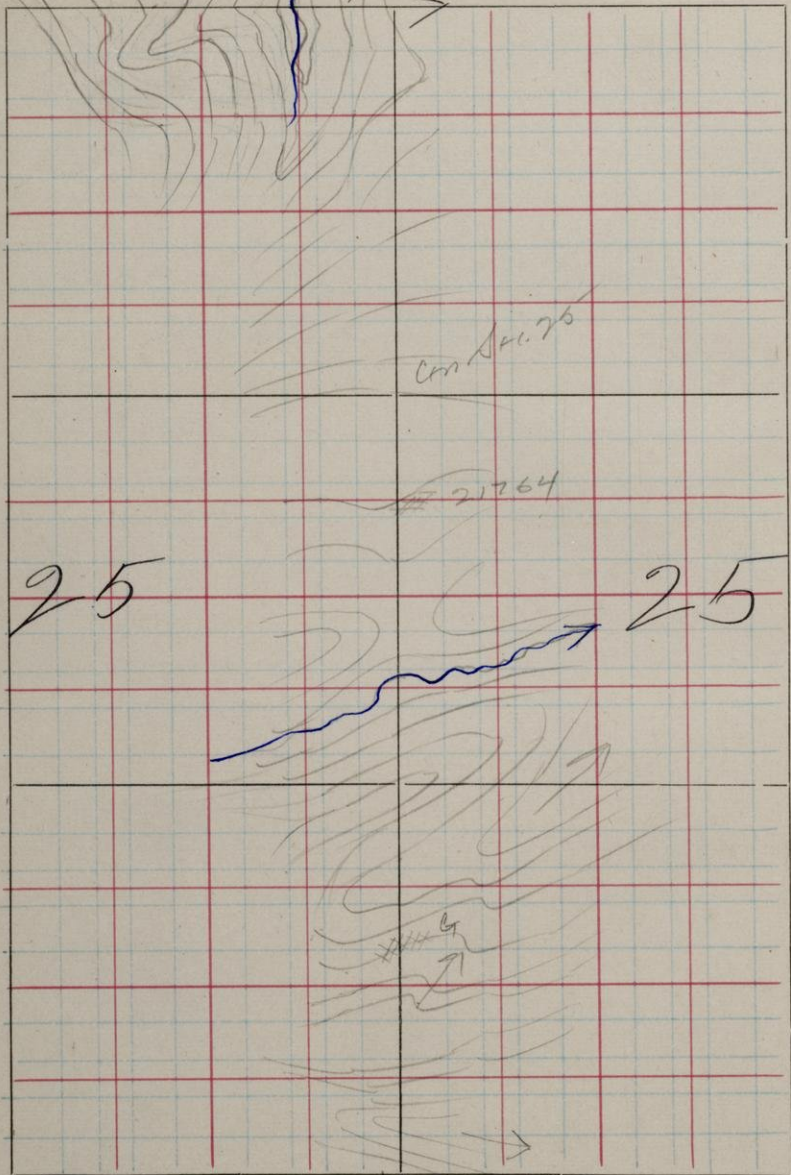
S.

T.

49

R.

27



Contour 25

21764

25

25

1/40 ft

1/40 ft

N. & S.  $\frac{1}{4}$  line Sec. 25 Range S.

21764 855 N 10000. S. T. 10. 25.

Massive ~~Granite~~

Several poorly exposed  
outcroppings of same  
south along the line.

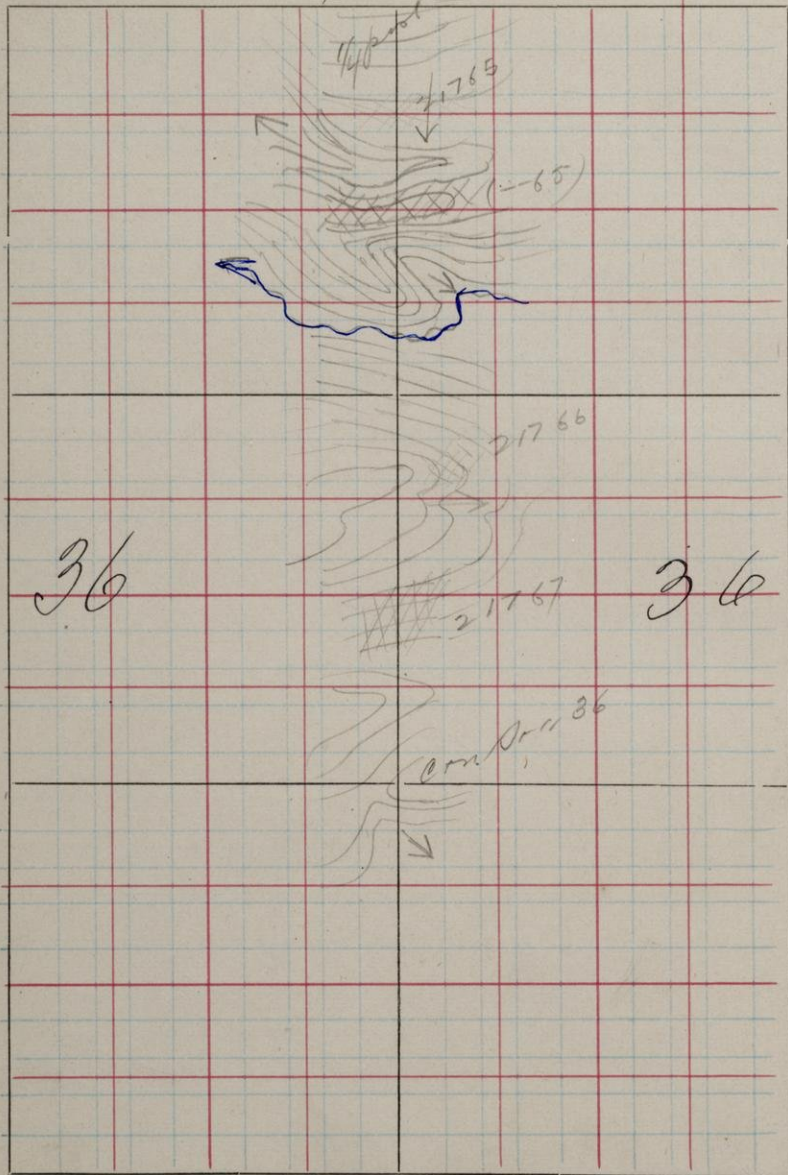
S.

T.

49

R.

27



N & S  $\frac{1}{4}$  line Sec. 36, Running S.

21765 1860 N. 975 W. S. & T. Cor. 36. Massive  
Small exposure. Green

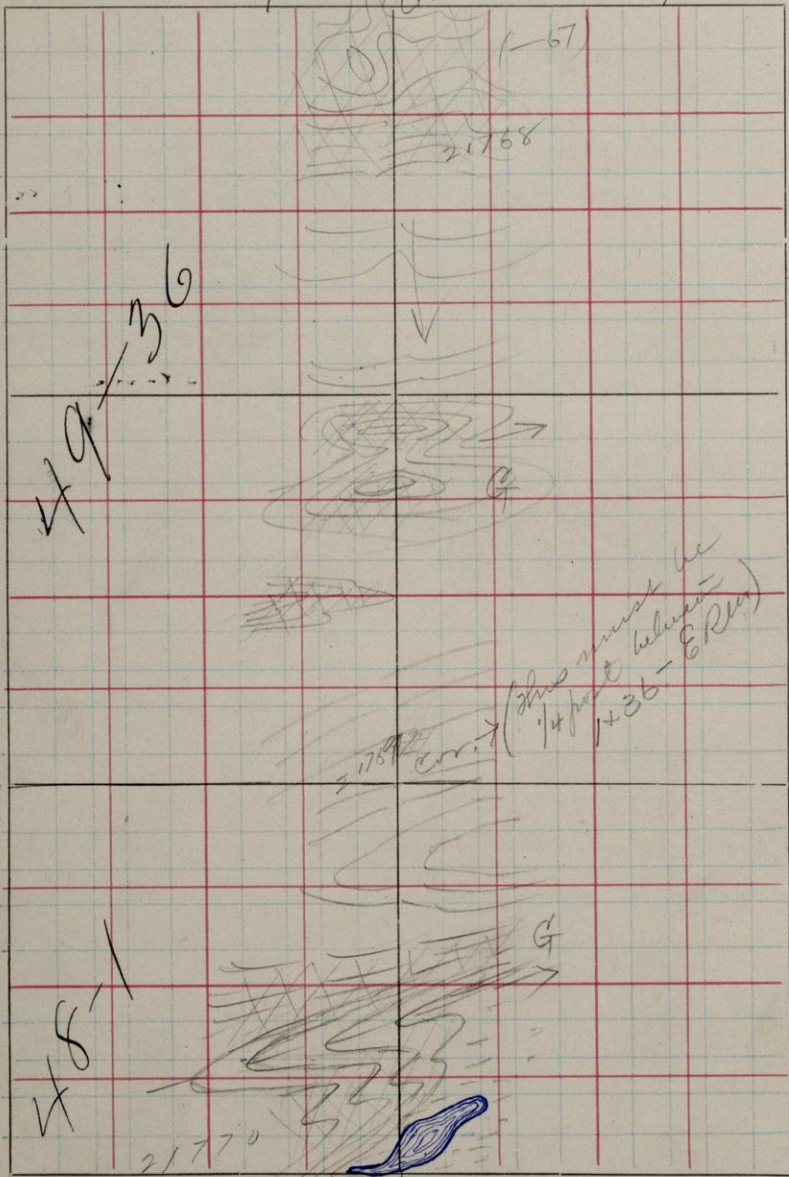
21766 1420 N 1000 W. Massive -  
From top of poorly exposed  
north slope. Greenstone

21767 1140 N 1000 W. Massive -  
G. Well exposed. Forms ridge.

S.

T. 48-49

Box 36 27



N.S.  $\frac{1}{4}$  line Sec's 36 & 1, Range S.

21768 810 N 1000 W, S.E. Cor. 36.  
massive. Granit.

21769 25 N 1000 W. Massive. Forms  
numerous well exposed  
ridges. Granit

21770 1500 N 1025 W, S.E. Cor. 1. Massive  
— Separated from -69 by  
topographic break. # -70 ex-  
tends southward. #6.



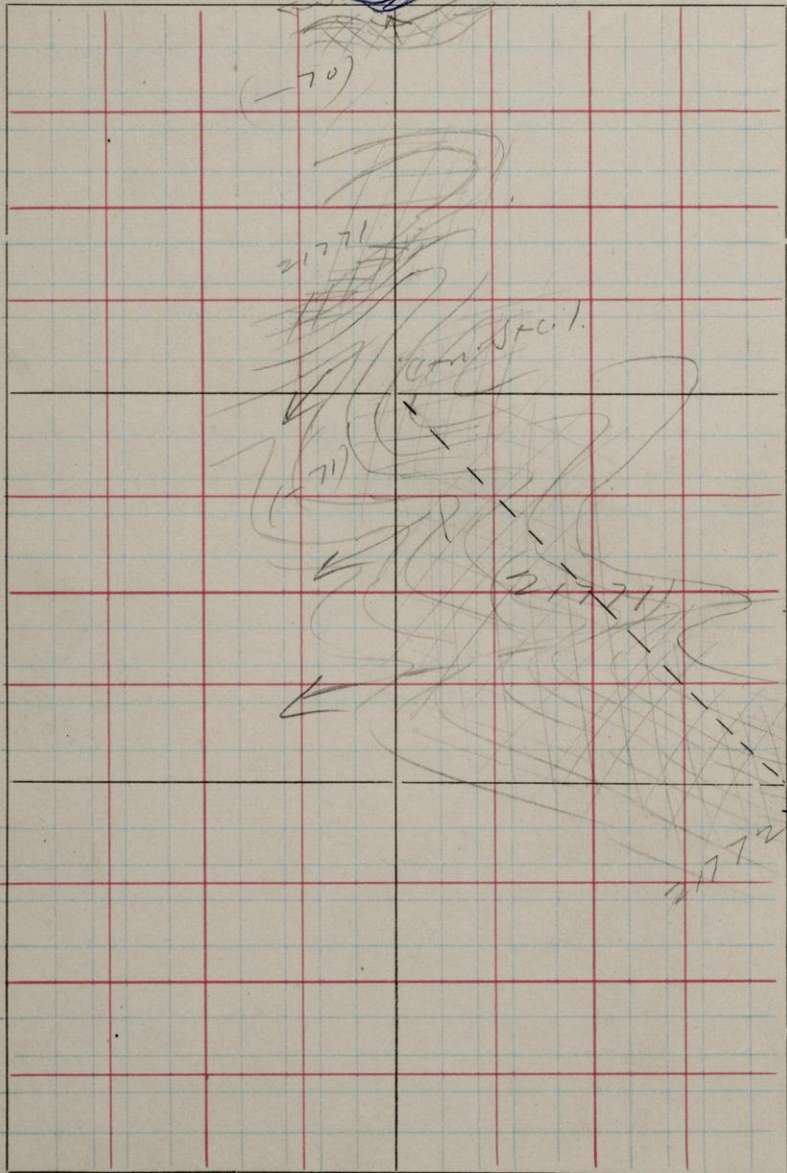
S.

T.

48

R.

27



center

1/4 line to Cen. S.C. 1, then S.E.

21771 1200N 1025W. S.E. Cor. 1 Massive  
Forms ridges.

✓ 21772 500N 500W. S.  $290^{\circ}$  E  $75^{\circ}$  S.  
Forms south slope. Massive  
greenstone on top.  
Shis test.

