



LIBRARIES

UNIVERSITY OF WISCONSIN-MADISON

What pure bred crops do for the farmer. Bulletin no. 17 January 1922

[s.l.]: [s.n.], January 1922

<https://digital.library.wisc.edu/1711.dl/PYCX2SL3FYFSF8S>

This material may be protected by copyright law (e.g., Title 17, US Code).

For information on re-use, see

<http://digital.library.wisc.edu/1711.dl/Copyright>

The libraries provide public access to a wide range of material, including online exhibits, digitized collections, archival finding aids, our catalog, online articles, and a growing range of materials in many media.

When possible, we provide rights information in catalog records, finding aids, and other metadata that accompanies collections or items. However, it is always the user's obligation to evaluate copyright and rights issues in light of their own use.

The Banker-Farmer

WISCONSIN
BANKERS'
ASSOCIATION

News Bulletin

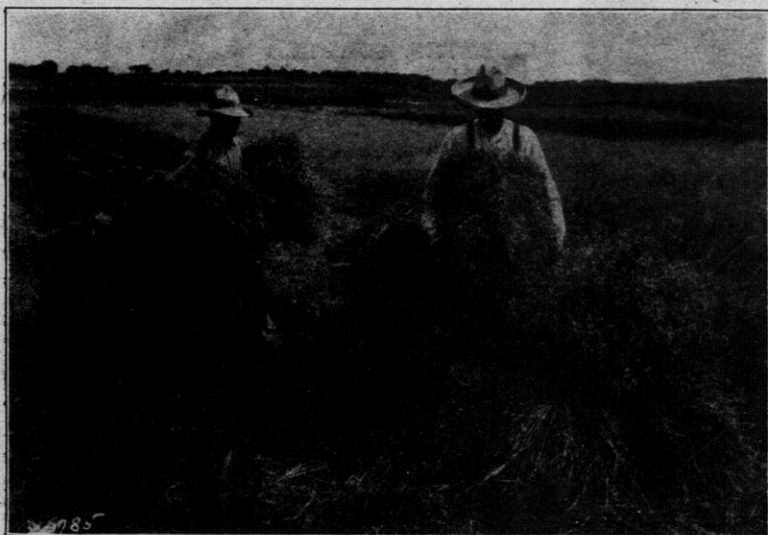
BANKER-
FARMER
EXCHANGE

A Little Journal of Agricultural
Information for the Farmer

BULLETIN No. 17

JANUARY, 1922

WHAT PURE BRED CROPS DO FOR THE FARMER



Better Seed Means Bigger and Better Crops.

Compliments of

BANKER-FARMER EXCHANGE

1822 Chadbourne Avenue,
MADISON, WIS.

WHAT PURE BRED CROPS DO FOR THE FARMER

Wisconsin has taken very rapid strides in the production of purebred field crops so that it is now ranked as the leading purebred seed state in the Union. Purebred seeds have been disseminated in every community by members of the Wisconsin Experiment Association.

HIGHER YIELDS

Every farmer who has grown pedigreed seeds realizes that he cannot go back to scrub varieties. Experiments have shown that pedigree barley averages four bushels per acre higher than common barley; pedigree winter wheat, six bushels higher per acre than common wheat; pedigree rye ten bushels higher per acre than common rye and pedigree oats ten bushels higher per acre than common oats.

BETTER ADAPTED

A large number of different strains of the various field crops have been tested at the Experiment Station. Only those strains which have proved especially adapted to Wisconsin conditions have been retained. Three strains of oats have been developed to meet with Wisconsin conditions. Wisconsin Wonder (Pedigree No. 1) is especially adapted to heavy soils. Swedish Select (Pedigree No. 5) is adapted to light sandy soils or heavy soils lacking in fertility, and the Kherson (Pedigree No. 7) is adapted to low wet soils. Corn, wheat, rye, barley and soy beans have also gone through special breeding to adapt them to Wisconsin conditions.

QUALITY

Pedigreed grains are bred not only for higher yields, but also for superior quality. Instances have been reported where millers have paid a higher price for pedigreed wheat and pedigreed rye than for common varieties, because the former was more uniform and possessed better milling qualities.

MORE LIVE STOCK

With increased yields the grower of purebred seeds has been enabled to produce more feed on his farm and consequently more farm animals to consume the products.

BETTER FARMING

More and better field crops with a larger number of farm animals increases the soil fertility by returning a larger amount of plant food in the form of stable manure to the soil. The growing of pedigreed seeds has a tendency to induce farmers to adopt better farming methods.

EDUCATIONAL VALUE

An enthusiastic grower of purebred seeds usually exhibits them at the local, county and state fairs. The educational value of such exhibits is far more valuable to the exhibitor than the premium he might receive. Even though he may not win first place at every fair he has an opportunity to compare his sample with the best sample exhibited and thus gain a better knowledge of the type of that variety.

SALE OF SEED

Careful growers of pedigreed field crops find a ready market for high grade seed at a high price per bushel, and buy feeding grain for their livestock at a much lower figure.

REPORTS FROM FARMERS

Some time ago a questionnaire was sent to a number of successful purebred seed growers in the state. The heading of this questionnaire was "What Purebred Seeds have done for me". The questions and answers are given below.

First: To what extent have purebred seeds increased your yields?

"The use of purebred seed has increased my crops about 30% on the average."

"Yields on small grains increased about 10 or 15% and on corn at least 25%."

"I get a larger yield by one-third more than with common grains."

"At least 25 or 30% more on corn and from 10 to 20% more than on other grains."

"Yield increased about 10% and with excellent care perhaps about 5% more."

"At least 20%."

"Fully 50% over the original scrub varieties."

Second: Has the use of purebred seeds enabled you to keep any more livestock on your farm?

"Our increased yields of pedigreed field crops enabled us to keep 20% more livestock."

"Our livestock has more than doubled since we started purebred seeds."

Third: To what extent have purebred seeds enabled you to increase your profits?

"First by returns of extra livestock kept, second, from the sale of seed direct to growers."

"Purebred seed has given us a market for seed at a big increase in price."

"By larger yields, income from premiums at fairs, and sales of seed over market price."

"Purebred seeds have always sold for enough over the market price to pay for hired help."

"We were able to buy two bushels of feeding grain for one bushel of purebred seed we sold."

"By growing seeds that produce more per acre, there is a great demand for such grain for seed purposes."

Fourth: Has the growing of purebred seeds increased your interest and enthusiasm for farming?

"The better crops a farm grows, the more profits; and therefore it would cause more enthusiasm."

"Yes by having a demand for seed grains."

"Yes it has enabled me to deal in seeds besides farming."

"Yes, especially during the present periods of depression."

"Yes, increased yields means increased profits, and increased profits enables me to buy modern labor saving devices and comfort on the farm."

Fifth: In what other respects have purebred seeds helped you?

"The growing of purebred seeds induces one to prepare his land better and use more fertilizer. Better crops of hay are produced and in that way keeps more cattle."

"By exhibiting grains and corn, getting orders from all over the United States, getting acquainted with all the best growers and learning the variety best adapted to your soil and climate."

"It has broadened our knowledge of farming since we were obliged to make a closer study of soil, methods of cultivation and care of crops after harvest. It has been necessary to study the conditions in those sections of the country where our seeds are shipped and caused us to operate our farm in a more businesslike manner."

"It has put my farming business on a good, sound basis."

Of Special Interest to Growers and Users of **PUREBRED SEEDS**

The Wisconsin Bankers' Association has worked out a plan whereby farmers who have purebred seeds for sale can list them at local banks and have buyers referred to them. Farmers desiring to purchase seeds can secure same at the price asked by the grower by letting their wants be known at the banks where they conduct their business.

We now have large quantities of the following seeds for sale, all tested for purity and germination and of high quality:

Timothy Barley Corn Oats Alfalfa Clover
Peas Spring Wheat Soy Beans Seed Potatoes

Interested parties should
get in touch with

Banker-Farmer Exchange

D. H. Otis, Director.



1822 Chadbourne Ave.

Madison, Wis.