



LIBRARIES

UNIVERSITY OF WISCONSIN-MADISON

MFA graduate catalog 2012. 2012

University of Wisconsin-Madison Art Department
Madison, Wisconsin: University of Wisconsin-Madison, 2012

<https://digital.library.wisc.edu/1711.dl/JWYWBQVUDMY428E>

<http://rightsstatements.org/vocab/InC/1.0/>

Copyright 2012 The Regents of the University of Wisconsin System

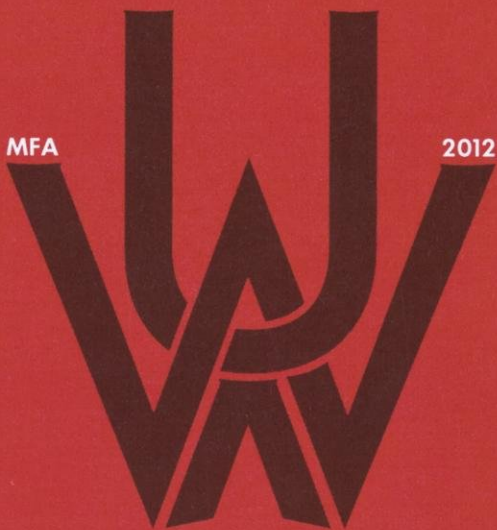
For information on re-use see:

<http://digital.library.wisc.edu/1711.dl/Copyright>

The libraries provide public access to a wide range of material, including online exhibits, digitized collections, archival finding aids, our catalog, online articles, and a growing range of materials in many media.

When possible, we provide rights information in catalog records, finding aids, and other metadata that accompanies collections or items. However, it is always the user's obligation to evaluate copyright and rights issues in light of their own use.

N
6530
.W6
U56
2012



UW/ART
UNIVERSITY OF WISCONSIN - MADISON

MFA Graduate Catalog 2012

6



MFA Graduate Catalog 2012



Tom Loeser

Art Department Chair

This catalogue is the third in a series of publications that showcase the work of our graduating MFA students. This year there is a big class of 29 students finishing their degrees and moving on. It is always a bitter sweet experience seeing the graduates with which we have worked so closely heading on to new venues and new experiences. We are happy for them, but we will miss them. The MFA exhibitions this Spring are absolutely amazing. The exhibitions offer a range of working styles and a level of sophistication that makes each week and each new set of shows like opening an endless series of gifts. The work is inspirational, challenging and visionary. We hope this publication can give you just a little taste of the energy we see in our galleries every week. To the graduating MFA students: Congratulations and good luck and we do hate to see you go.

Tom Loeser
Art Department Chair



University of
Wisconsin-Madison
Libraries

And a special thanks to Brian Lindstrom for two years of stellar graphic design work including this catalogue.

ART, LOCK UW-Madison Art Department

N
6530
Wb
U56
2012

The Department of Art at the University of Wisconsin-Madison is committed to teaching art in the context of a major research university and a vibrant intellectual community. Its mission is based on the premise that art is the nexus of all the humanities and that creative expression in the visual arts has provided some of the most enduring contributions to society and culture. The art department strives to provide both a fertile and challenging environment for aesthetic and critical engagement, and the technical skills necessary for the practice of art in the changing landscape of the twenty-first century. It encourages innovation and cross-disciplinary activity, and believes that students should utilize the vast academic resources of the university to inform and deepen their artistic vision.

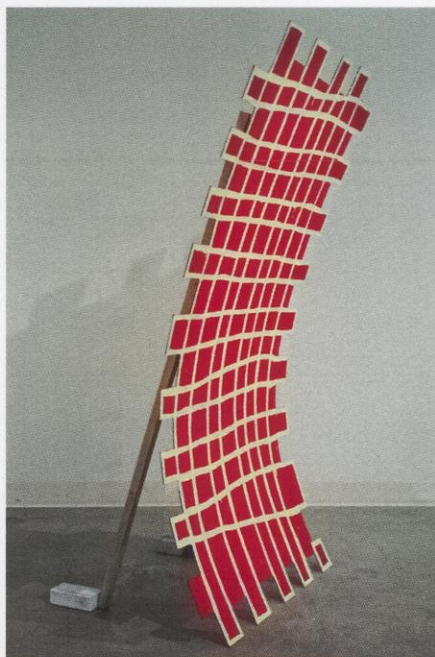
At the University of Wisconsin-Madison, education in the visual arts is provided by an outstanding faculty of accomplished practicing visual artists supplemented by an ongoing and active visiting artist series that presents both emerging and established artists. Disciplines are taught in well-equipped studio facilities that include the areas of painting, printmaking, graphic design, sculpture, ceramics, metalsmithing, glass, furniture-making, paper-making, photography, digital media, video, and performance. Both students and faculty cross these disciplinary boundaries easily and without hesitation, and students are encouraged to find their creative voice either within or outside of these boundaries. Artistic practice is defined by attitude, modes of inquiry, and processes of conceptualization—material and media are seen as a means to this end. Expanding the parameters of art-making in a continued effort to remain current and relevant is part of the department's mission. However, the department is equally committed to maintaining the more traditional art forms that have proven their ability to remain relevant throughout centuries of change.

The Art Department offers both undergraduate (BFA, BA, BS) and graduate degrees (MFA, PhD) in studio art and art education. The department has a distinguished history of providing exceptional education in the visual arts in a stimulating, nurturing and diverse community. We, as a department, believe that the arts can make a difference on the local, national, and international level, and that the arts play a vital role in the future of the global community.



Luke Ahern

Luke Ahern is an artist and musician who was born and raised in central Ohio. In March of 2012 he held his MFA thesis show, *Encountering (semi) Antics*, at the University of Wisconsin in Madison. He received his BFA in painting from Bowling Green State University in 2009. Luke's work has been exhibited nationally and most recently in *Epigram*, a solo exhibition at the University of Wisconsin Marathon County. His work incorporates multiple media and methods of working. Through this diverse process he asks questions about his own role as an artist through the lens of non-objective abstraction. His work seeks to force the viewer into an encounter with imagery that pushes perception and logic. Besides a rigorous studio practitioner Luke is an active jazz musician. He's also involved in the local art and political communities and is an avid worm composter.





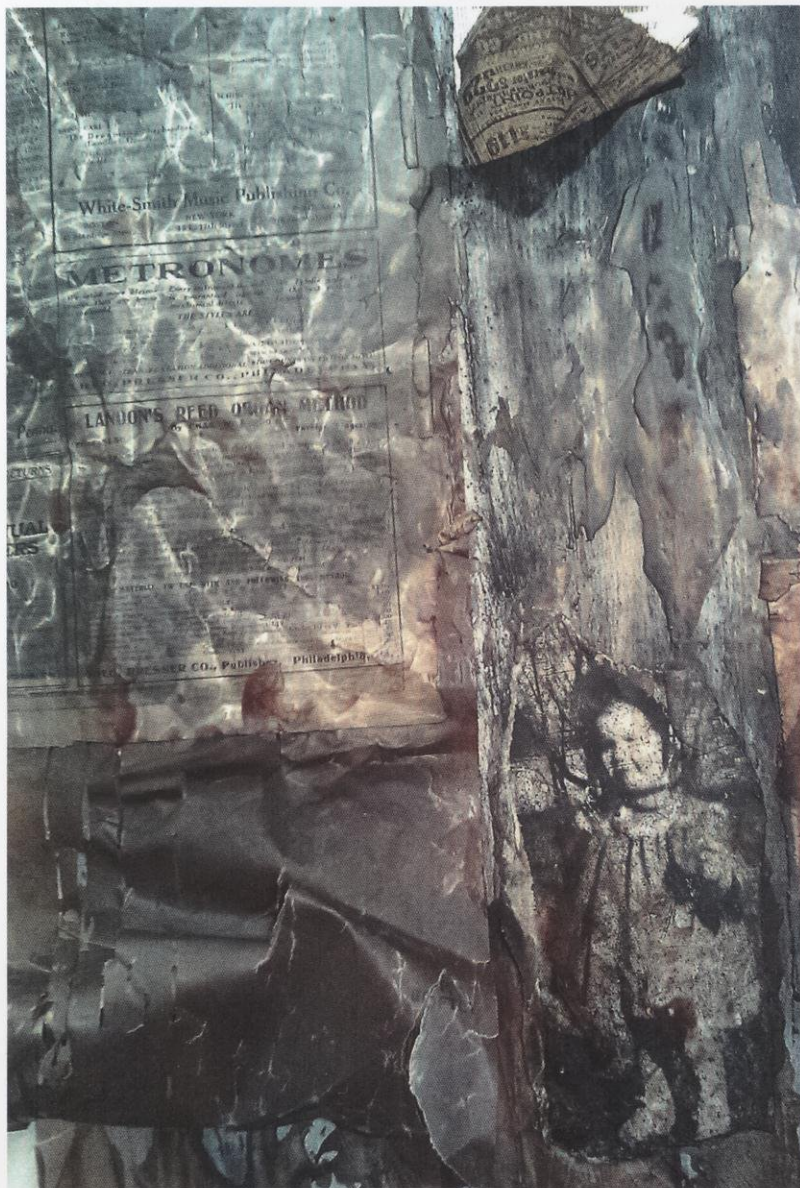


Sandra Anible

Sandra Anible is a multimedia artist who specializes in papermaking and book arts. Before earning her MFA from UW-Madison, she earned a BA in Biology, English, and Art from Westminster College in Fulton, Missouri and a BFA in Art from UW-Madison.

Her MFA exhibition, *The Repeat*, featured an installation which served as a visual and aural metaphor of cyclic, systemic collapse. The installation juxtaposed a wall collage of deteriorated newspapers, prints of photos, and piano roll segments from the 1920s against player pianos looping piano rolls to produce layers of cacophony.

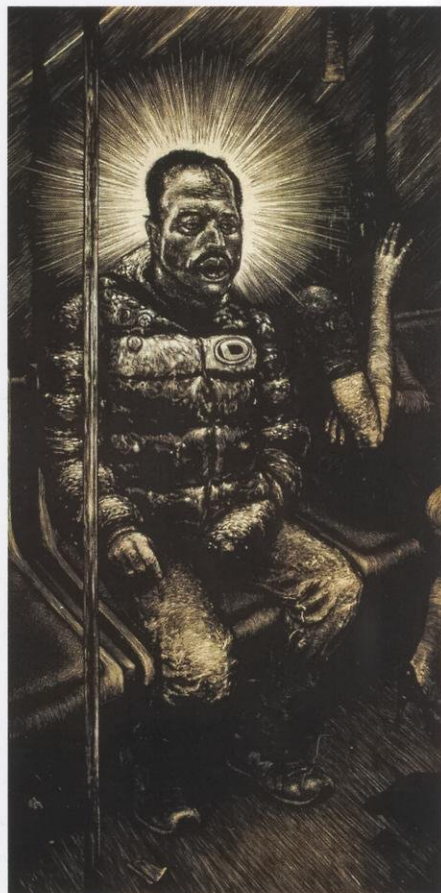


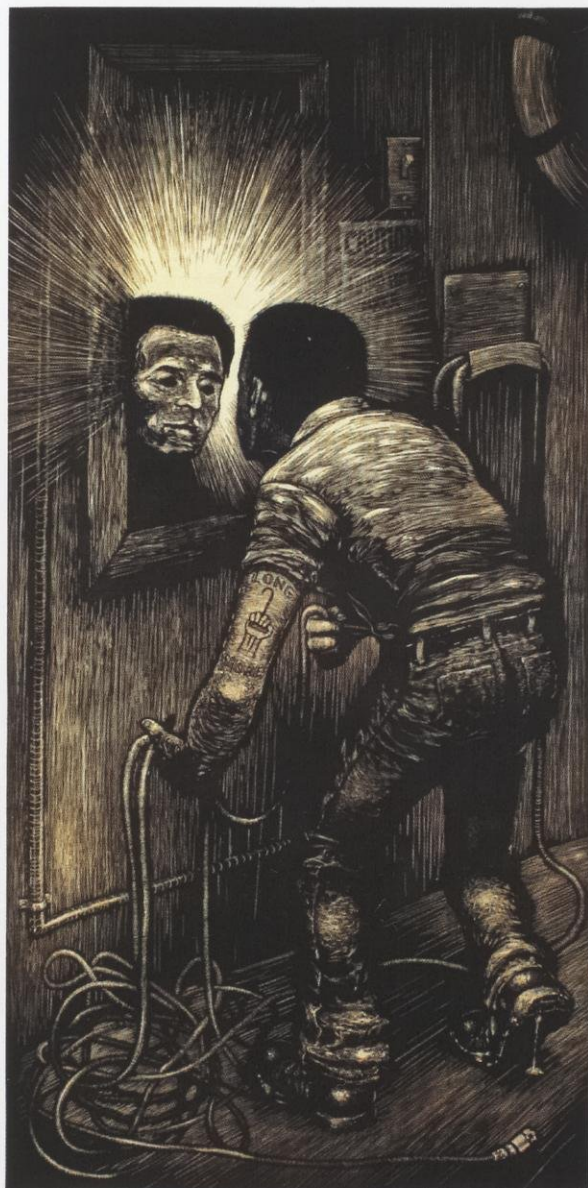




Marcus Benavides

Marcus Benavides grew up in Corpus Christi, TX and received his BFA from Texas A&M University Corpus Christi. He has been making prints for eight years and primarily works in the relief and lithographic methods. He has been in various juried and group exhibitions.







Tom Berenz

Tom Berenz is a painter who was born in Fond du Lac, Wisconsin. He received a BFA from UW-Oshkosh and an MA from Northern Illinois University.







Nic Bitting


Nic Bitting is a woodworker and sculptor. He creates participatory projects that encourage viewers into closer relationships with the natural world. His current project, waterblessing.net, is an interactive ecological mapping project that strives to honor watersheds and the vital function they play in the well-being of the world.

WaterBlessing.net

an interactive Ecological Mapping Project

[Home](#) [About](#) [Blessings](#) [Blog](#) [Participate](#) [Links](#)


Home



Imagery ©2012 NASA, TerraMetrics. Map data ©2012 MapLink, Tele Atlas. Terms of Use

[View Larger Map](#)

THERE ARE CURRENTLY 23 BLESSINGS IN THE WORLD



RECENT BLESSINGS

- St. John's, FL
- Tiskilwa, IL

[Follow](#)





Douglas Bosley

Born and raised in the upper Mojave Desert of Southern California, Douglas Bosley eventually found himself in rainy Washington by 1997. He graduated from Western Washington University in 2009 with a BFA in printmaking.

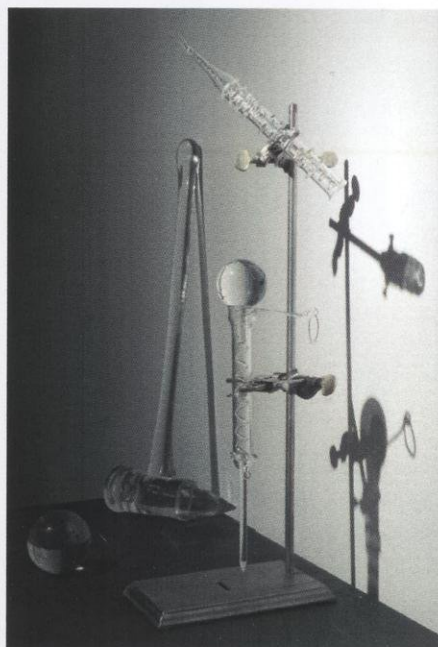
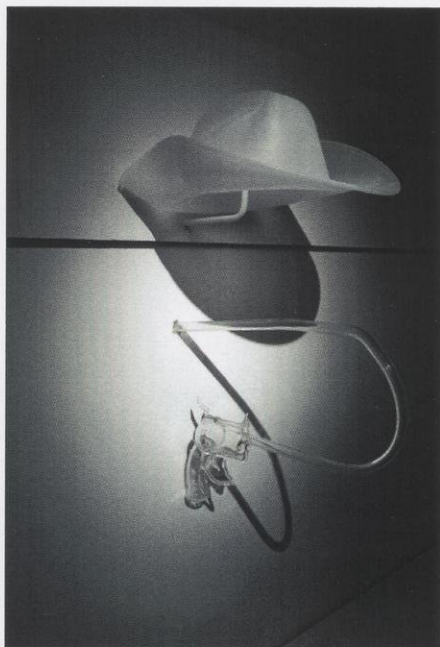






Shawn Everette

Shawn Everette began working with glass at Illinois State University in 2005 under the instruction of artists John Miller and Carmen Lozar. Falling into the addictive potential of the medium, it soon developed into the dominating form of creative expression. Experiences at Pilchuck Glass School, Penland School of Crafts, and Corning Museum of Glass helped to define the direction of artistic endeavors. During his final year of the MFA program at the University of Wisconsin-Madison he worked alongside Professor Steve Ferren and graduate student Matthew Piepenbrock to polish his artistic undertakings for the greater academic and artistic world. He aims to fabricate the remnants of memory and visions of prospective objects of a youthful imagination. Facilitated through blown, cast, and flameworked glass these vignettes of nostalgic mythos and heroic ethos are created as an attempt to capture the ideologies of our culture.



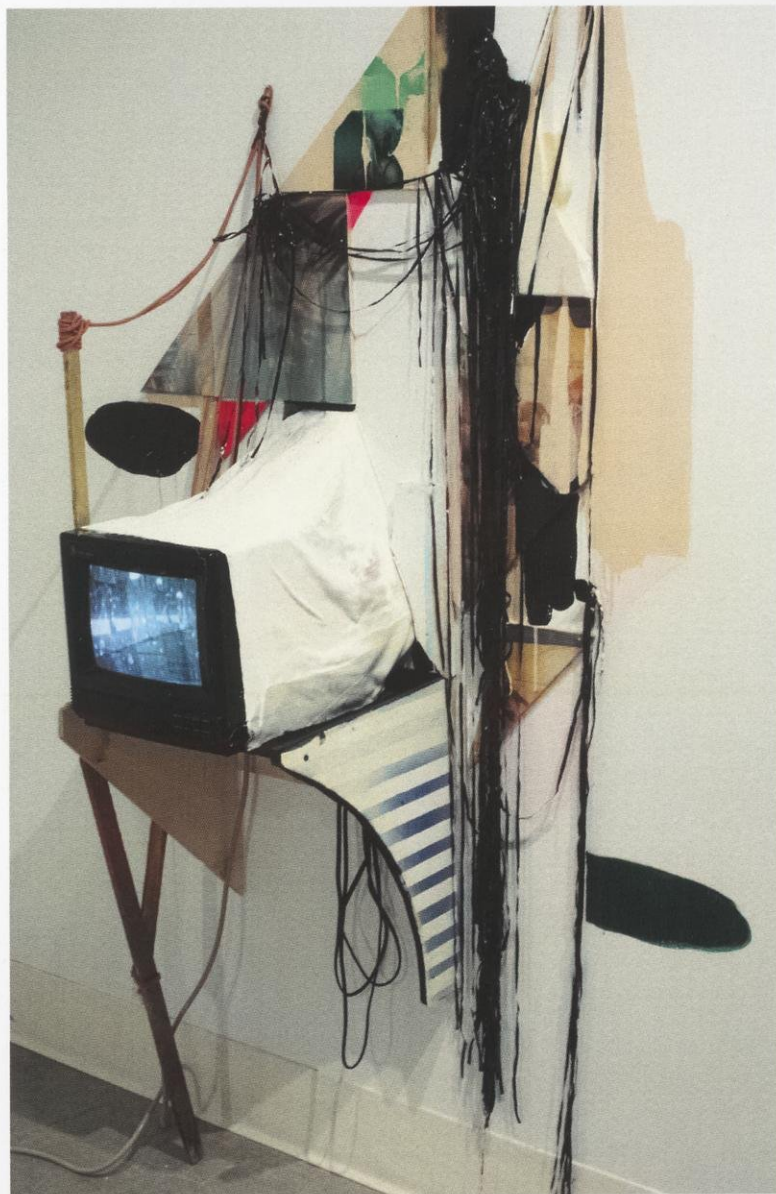




Sophia Flood

Sophia Flood grew up in a small fishing town north of Boston, and received her BFA from the University of Massachusetts-Amherst in 2007. Taking the form of painting, assemblage, video and myriad hybrids, her work articulates a moment at the edge of the familiar. Her practice involves seeking out and reworking fragments of material culture—images, objects, sounds and settings dated from various points within her lifetime—as a means of constructing contingent, non-linear narratives. A scene is set: borderland sites such as motel rooms, campgrounds and adolescent forts evoke makeshift zones of transformation. The real is in constant tension with the ideal. The viewer assembles the pieces for him or herself, and themes of immanence and desire double back on the creative process itself.

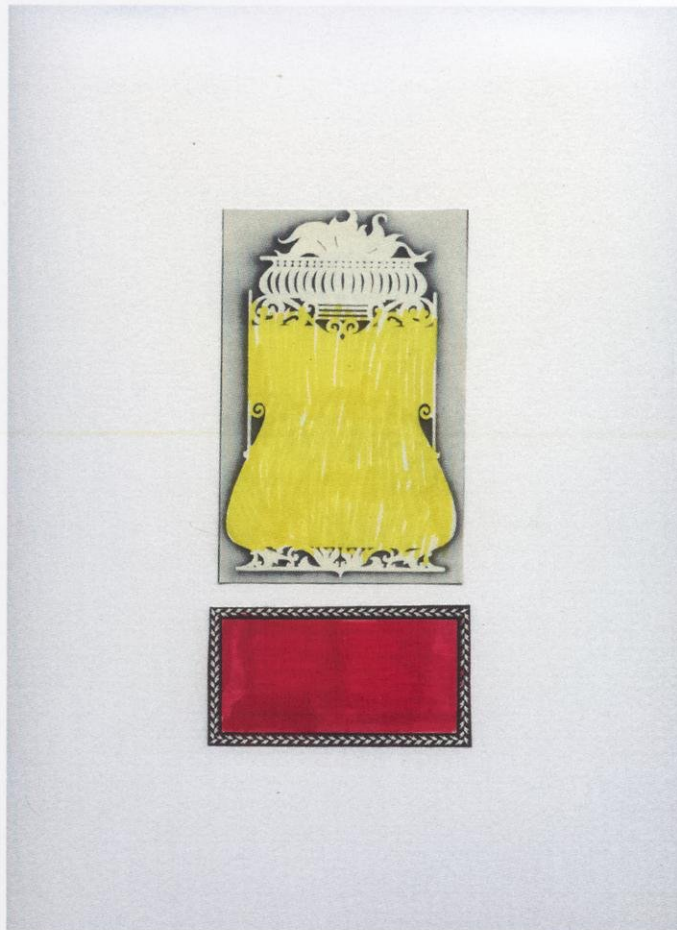






Courtney Hall

In like a lion, out like a lamb.







Heejin Hwang

Heejin Hwang is a metalsmith and jeweler. Her work is sculptural jewelry and object, and she often uses contemporary ideas combined with strong traditional techniques through the use of mixed media. Heejin holds a BFA degree from Konkuk University and an MFA degree from Seoul National University in Korea. She has won many awards and scholarships including The Hoover and Strong Scholarship (SNAG), a LEAP Award, and the Raphael Founder's Prize. Her work has been shown at galleries and museums internationally, including Silver Triennale (Germany), Bellevue Arts Museum, The Society for Contemporary Craft, Madison Museum of Contemporary Art, and Shemer Art Center and Museum.

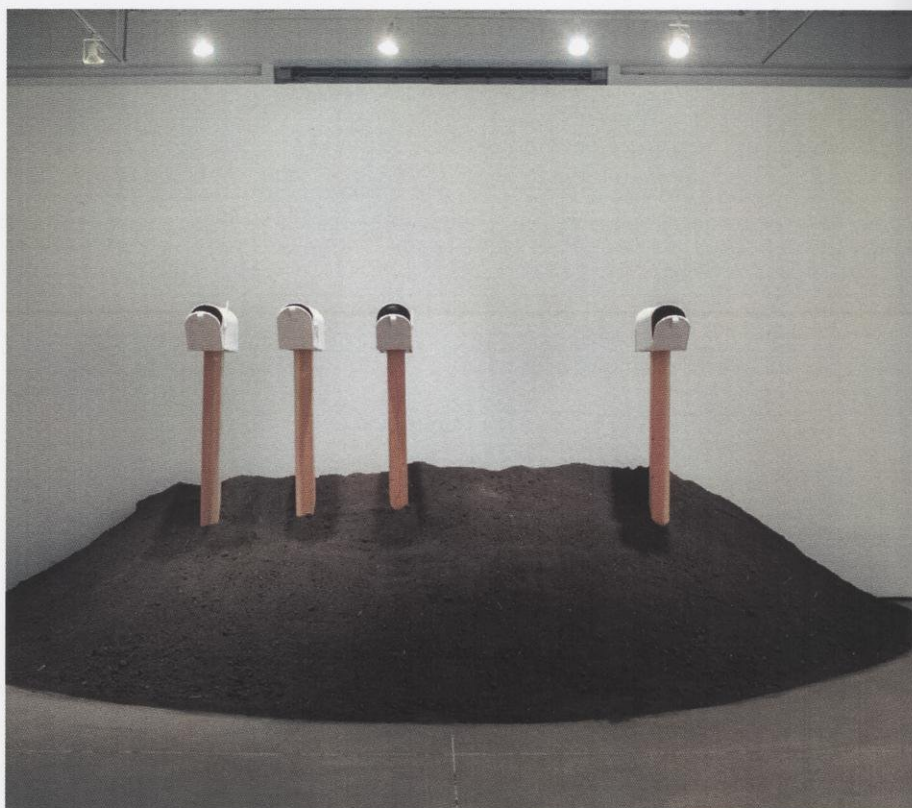


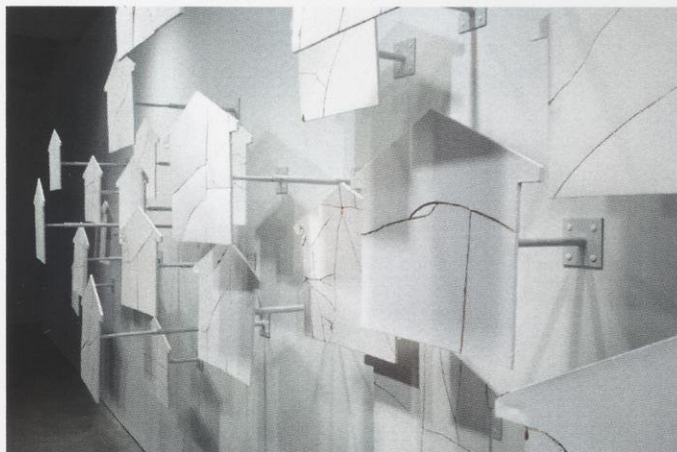
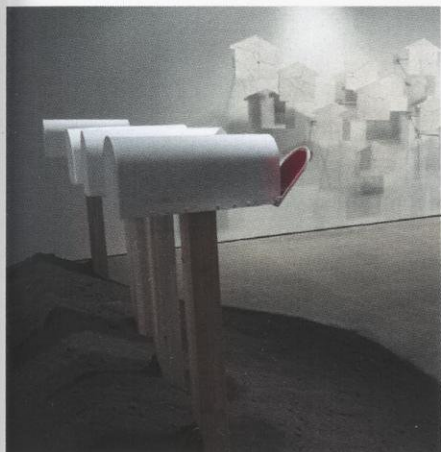




Niki Johnson

Born in Green Bay, Wisconsin in 1977, Niki Johnson is an interdisciplinary artist known for her material investigation and attention to craft. Johnson grew up moving. Reflexively her work investigates the tools used to assimilate in various American cultural settings. Rooted in the vernacular of the everyday, Johnson's work engages notions of both public and private identity through the reconfiguration of media derived imagery and common domestic objects.







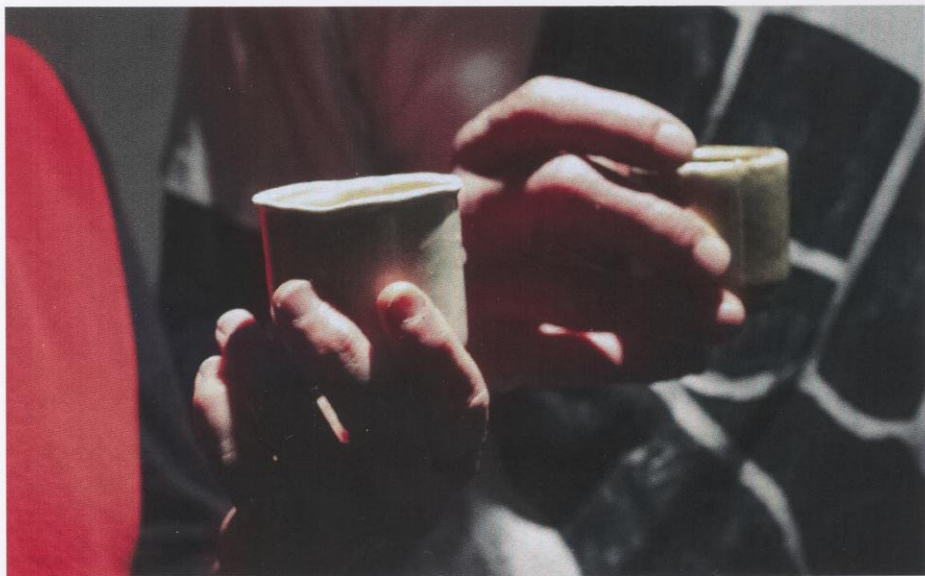
Dale Kaminski

During Dale's years in graduate school his work has explored many facets of creating art with digital technology. He has built a variety of real-time computer controlled media instruments. These various instruments create and control projections that add to the experience of performance. He has created an interface that he calls *pakapaka* that allows him to join any musical act and perform live visuals. He's become a VJ with this system and has performed all over the region with a wide variety of musical acts. He's created autonomous sensor based systems that control the soundscape of gallery. These audio pieces have appeared in museums and galleries throughout the Midwest.

When Dale started grad school he knew technically how to make these things; he needed to answer the question of why he was making them. He felt he would turn his technical skills into art by asking himself the "why?" question and working hard to answer it. Dale now realizes that collaboration and facilitating the face-to-face encounter is the answer to his question. The process of collaboration he has developed here further illuminates the answer to his question with every piece he creates.

Art is for People. Dale knows this in his bones now.



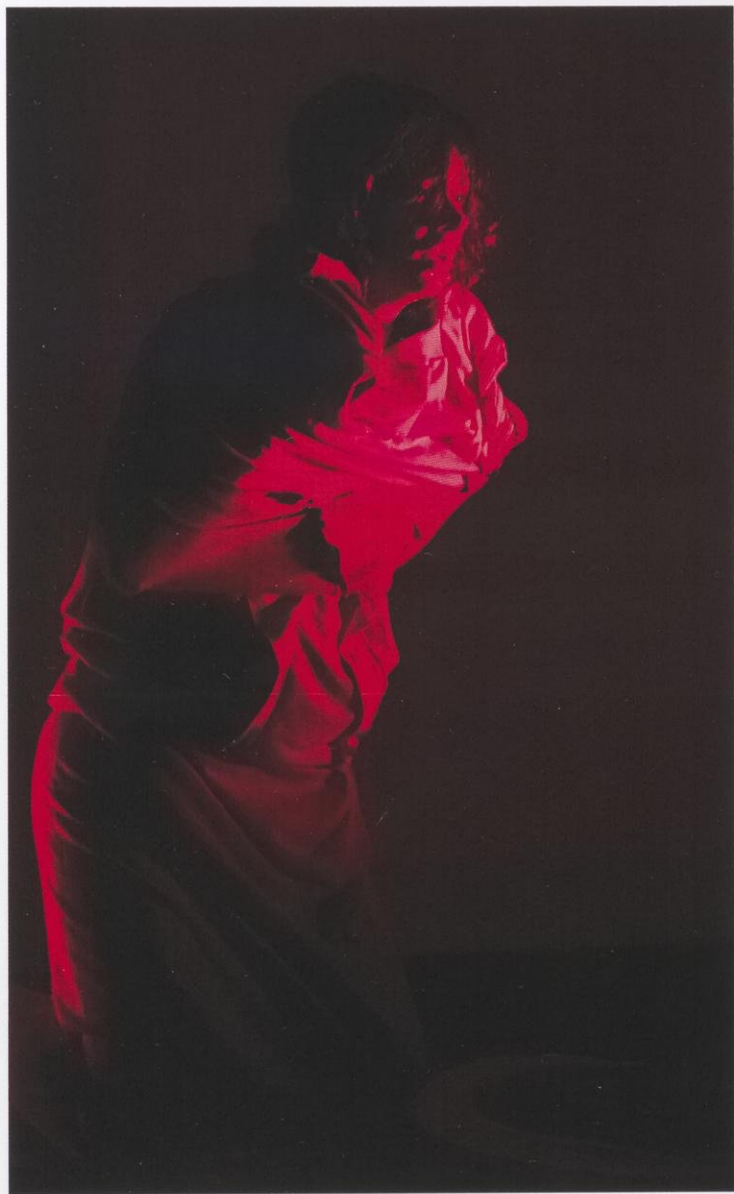




Marina Y. Kelly

Marina Y. Kelly considers her art practice to be a conduit for building relationships. She designs situations that bring people together; creating intimate occasions, site-responsive performances, live art tableaux, looping videos and sculptural installations. Much of her work is collaborative, utilizing processes whereby fellow artists and other participants share in the authorship of the work or shape the trajectory of the project. Marina often works with the autobiographical, calling upon discrete moments of desire, fear, embarrassment or compulsion. Recent work has been featured at the Raandesk Gallery in New York and the Urban Institute for Contemporary Arts in Grand Rapids, Michigan; with an essay (on the interactive site-specific performance, "Hey, Fighter" by Erin Hood & Marina Kelly) in the forthcoming book, *Emergency Index* (Ugly Duckling Presse, 2012).



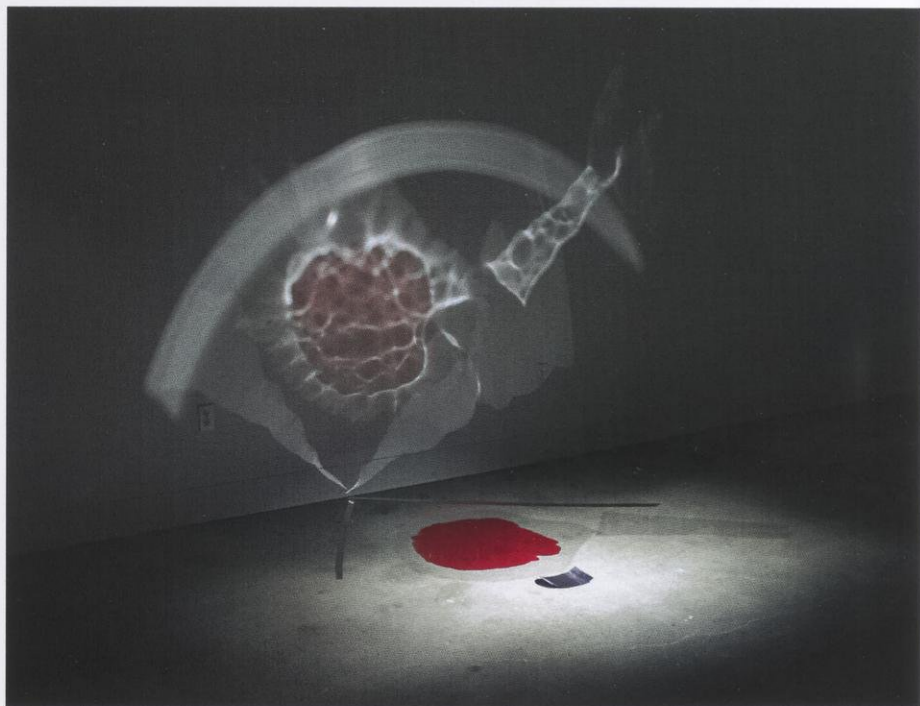


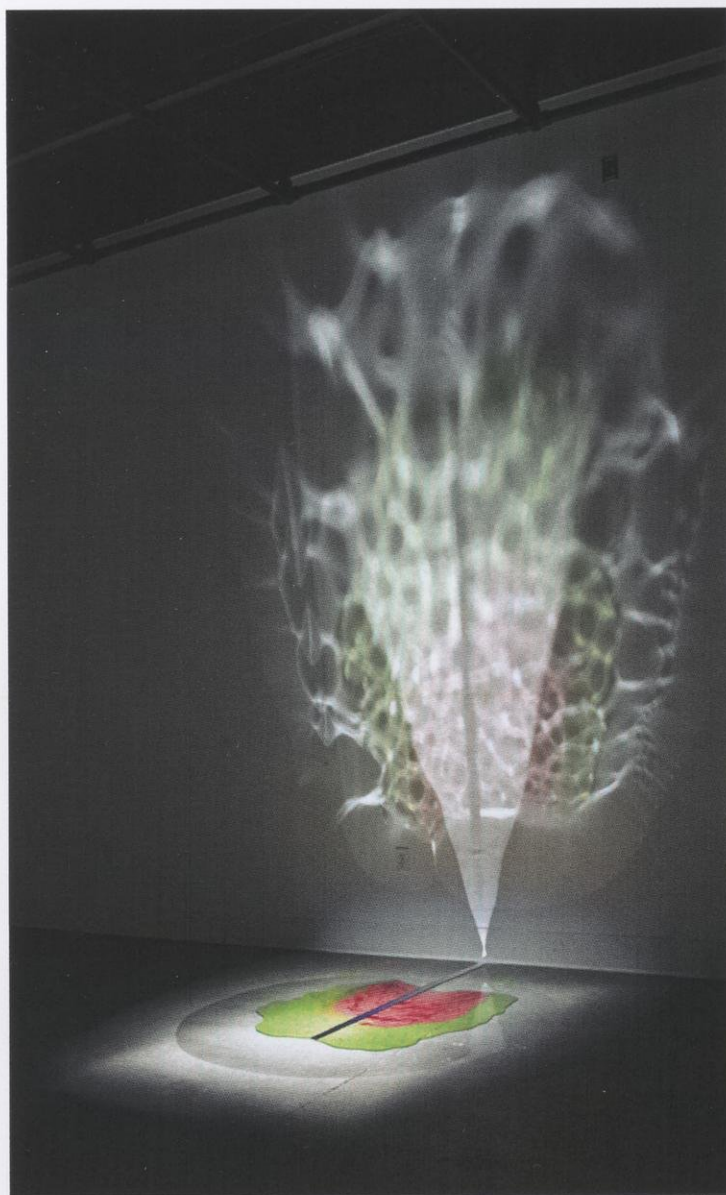


Jonathan Kramka

Born in Chicago in 1979, Jonathan Kramka is known for his media-diverse installations that incorporate light sculpture, painting, drawing and video. His transformative spaces investigate personal themes that include mental and physical thresholds, creative struggle, transformation and transcendence.

Kramka recently exhibited in a group show at the Tory Folliard Gallery in Milwaukee, WI and was included in numerous group shows throughout galleries in Madison, WI. His work is in the Wisconsin Union Collection as well as the PAH collection in Philadelphia, PA.



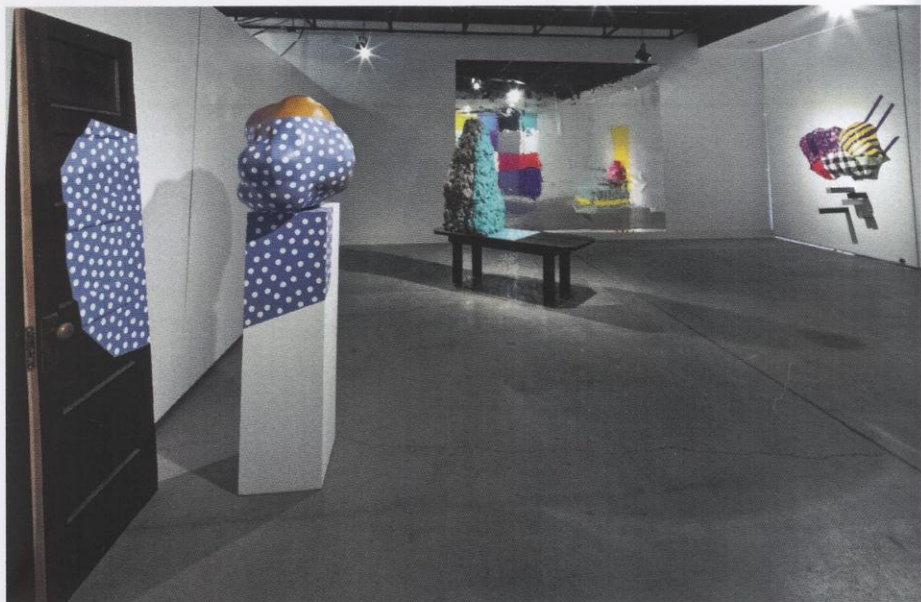




Ryan Lawless

Ryan's a Wisconsin native who splits his time between the Midwest and Washington state where you can find him designing functional ceramics or creating mixed media sculpture.

His work is essentially an investigation on material culture. Using both mundane and abstract objects, he arranges items into situations where they interact with external influences of color and space. The result is often arrangements that are somewhat baffling but find coherence in the zones where surfaces overlap. The repetition of color and form amongst neighboring objects and spaces creates a dialogue between objects. Ryan finds this parallel in the ways in which we attempt to use the history or status of objects to piece together a narrative about places that we are unfamiliar with.



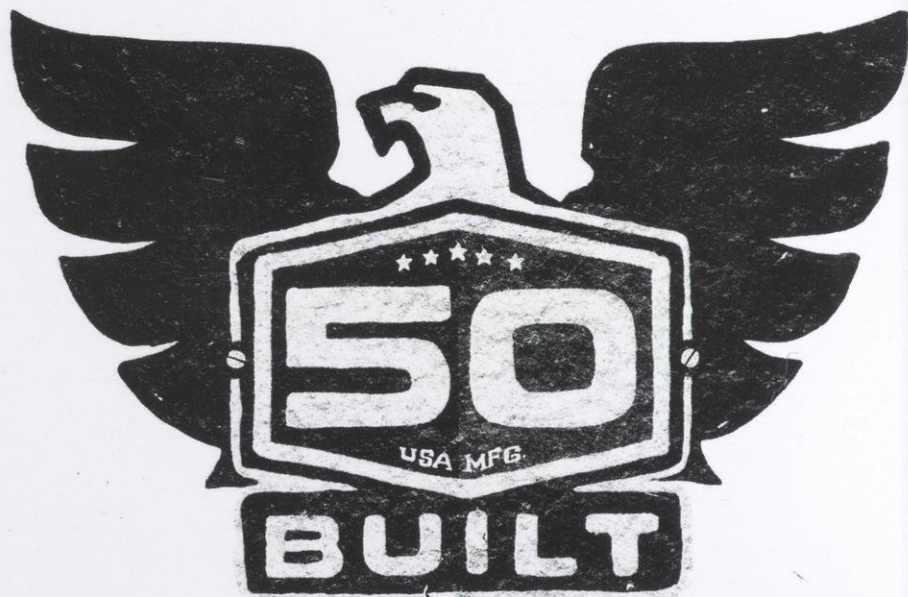




Brian Lindstrom

Brian Lindstrom is an Art Director & Graphic Designer currently holding it down in the Midwest. He was born and brainwashed with the Chicago can-do attitude and raised on the wild-wild-west coast of California. After doing his time designing for Oakley he set out and started his own design studio, Newbaric, doing work for clients like Skullcandy, Reef, Oakley, Coffee Bean & Tea Leaf, Rusty, Lost, Starbucks, ChopShop & Infinity Surfboards.

While pursuing his MFA at the University of Wisconsin, Brian focused on research-based design projects like Bases Loaded Series (.com) and 50 Built (.com). They're an exploration in brand-building via informative designs that place the human element at the center of every message. 50 Built is an entrepreneurial venture that is creating a conversation about American Manufacturing that everyone can turn to for information and resources.



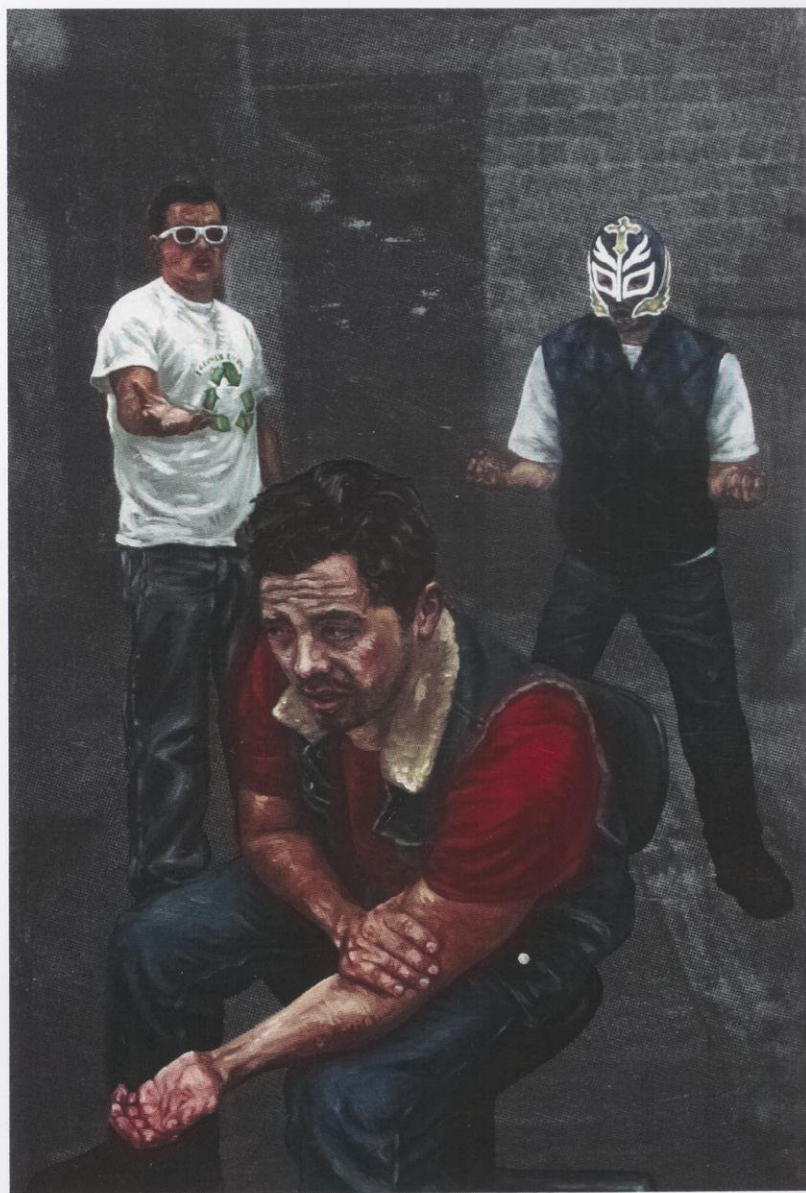




Gabriel Mejia

Gabriel Mejia is a Chicago-based artist who discovered art-making through his fascination with the visual storytelling ability of comic book and graphic novels at a young age. After obtaining his Art Education degree from Northern Illinois University, he enjoyed a 10 year career as a high school art teacher and exhibiting artist in the Los Angeles and Chicago areas. In 2009, he accepted a fellowship to UW-Madison and received his MFA in 2012. Through his multi-media art practice, Gabriel continues to explore internal and external notions of self through comparative and performative analysis.







Jaydan Moore

Jaydan Moore's Metal Arts career began as an undergraduate student at California College of Arts. During his time there, he focused on the production of oilcans, and their representation of craft and the Industrial Revolution. While studying at CCA, Jaydan worked as a machinist and bench jeweler for the high-end metal production company, Svartvik Metal Works.

Upon entering graduate school at the University of Wisconsin-Madison, Jaydan Moore began focusing his interests on the heirloom. Using the imagery of found silver-plated tableware, he fragments and reassembles these objects into new forms to challenge and commemorate the individual's ability to designate value to his/her own valuables and memories. By fabricating a new object out of stylistically and historically related wares, he creates a new image that takes all memories of its use into consideration, maintaining some semblance and evidence of their past incarnation.







Briony Morrow-Cribbs

After graduating from the Emily Carr Institute of Art and Design (Vancouver, BC) in 2005, Briony returned to her childhood home of Whidbey Island, Washington where she worked at the family printing press, Cat Skinner Press.

In 2008 Briony opened Twin Vixen Press in Battleboro Vermont with fellow printmaker Helen O'Donnell. They provide classes and studio facilities to local print artists.

Beginning in 2008 Briony began a professional relationship with Amy Stewart and Algonquin Books of Chapel Hill NC. She has subsequently illustrated two New York Times bestsellers: *Wicked Plants: The Weed that Killed Lincoln's Mother & Other Botanical Atrocities* and *Wicked Bugs: The Louse That Conquered Napoleon's Army & Other Diabolical Insects*.

While at the University of Wisconsin-Madison Briony was the recipient of the University Fellowship, a Vilas Travel Grant and several professional development awards.





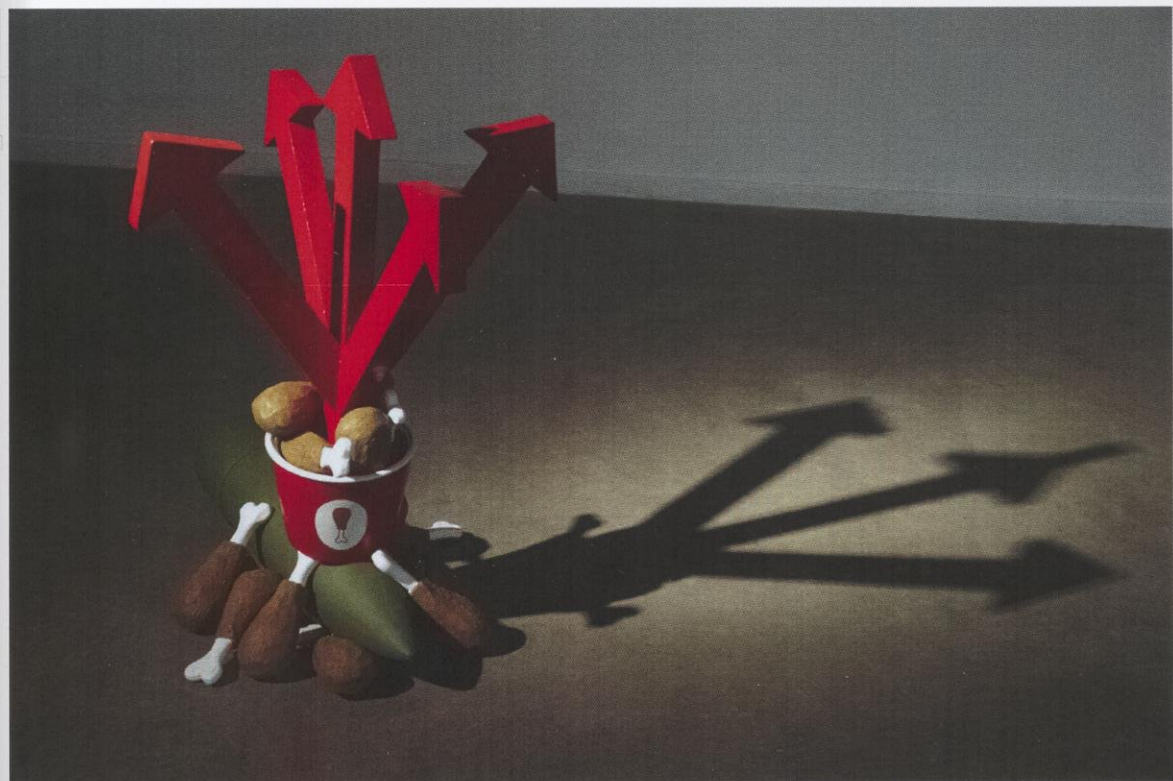


Brian Murer

Brian Murer is a maker who generally builds in lamination construction with plywood and foam. He makes weird and strange objects that are intended to interrupt the moment of first glance.

Brian is fascinated with the salacious nature of human beings and the endeavors of those individuals who pursue everything in life. Spectacle has snagged the majority and rendered them ineffective as human beings, which in turn leads them down a fantasy road paved in gold. He makes representations of representations in order to understand the human condition caught in the spectacle, and to cope with his own personal fear of the end through the use of humor, military imagery, and sexually suggestive objects.







Mary Niec

Mary Niec's process of art making is grounded in the deeply intimate. She attempts to express the inexpressible and hidden intimacy of everyday life. Each piece renders the hidden anguish and dissolution of life visible. She uses the art making process to explore her own existential dilemmas, and all her work has this personal touch. She does not expect the viewer to experience the same feelings she expresses while making. Instead, Mary hopes themes and emotions explored in her work will inspire the viewer to look within.

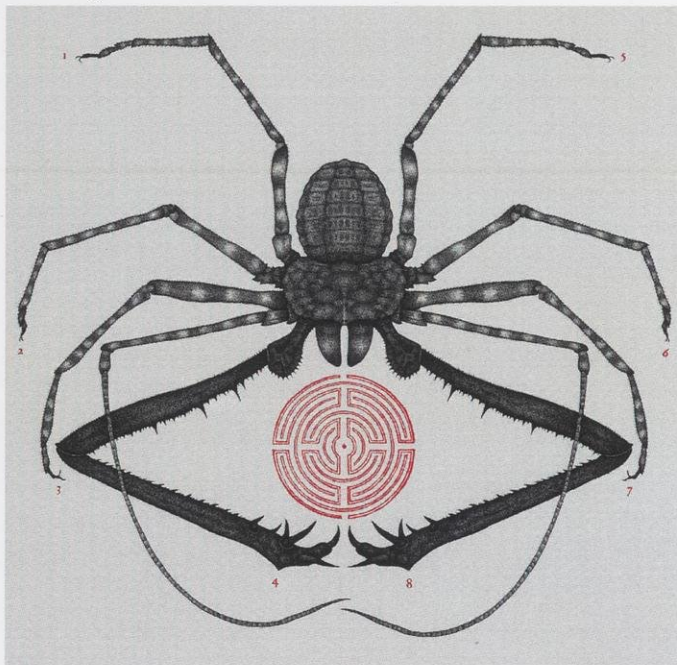






A.J. Nordhagen

A.J. Nordhagen is interested in the “what-ifs” of contemporary culture, particularly in areas such as cryptozoology, UFOlogy, conspiracy theory, religious eccentrics and doomsday cults. Rapidly advancing technology and scientific discovery, as well as the erosion of Western stability, have accelerated a widening gap between those who research methodically and those who more readily accept propaganda and predigested opinion. Much of his work in the past few years has explored the opportunistic and predatory nature of religions, cults, militias and the willingness of Americans to accept propaganda rather than research. By way of creating and implementing his own “hoax cult”, he has explored ways in which the public can be trained to accept false information as authenticity and truth, and how esoteric material can be transcribed from the fringe into the vernacular.

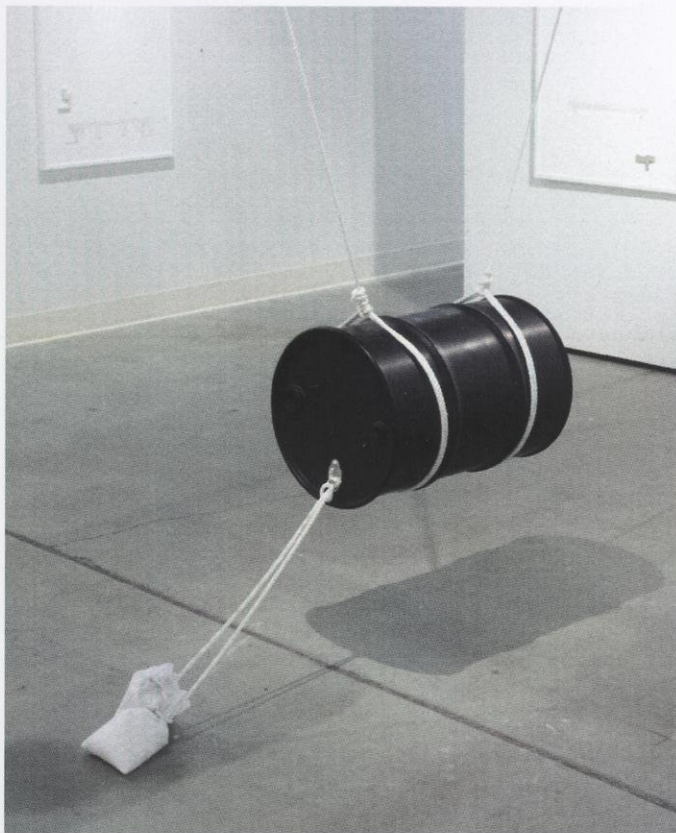






Kyle Patnaude

Kyle Patnaude received his BFA degree in sculpture from Pratt Institute in Brooklyn New York, and then trained in the rich tradition of metalsmithing for his MFA degree at the University of Wisconsin-Madison. His work deals with qualities of "queerness," or what one might call "identity," as a winding course. His art is the attempt to uncloak the non-communicability of meaning behind the "queer" into understandable and potent imagery. The integration of the highly skilled tradition of metalsmithing into sculpture has been critical in shaping his work.

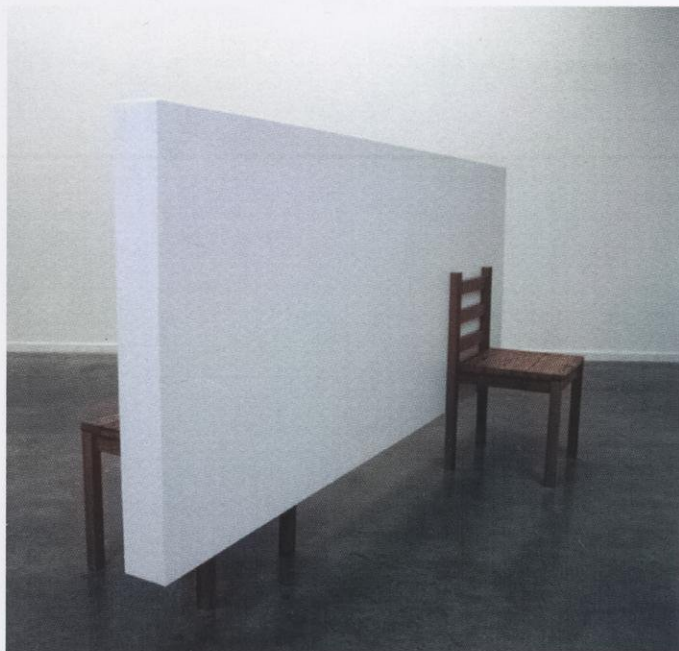






Jason Ramey

Sense of place is an underlying theme in all of Jason's work. In his early work he used the chair form as a stand-in for a person, usually himself. This work relied heavily on personal narrative, especially some specific stories from his own history. In his most recent work, the relationship between furniture and wall calls into question the actual role and meaning of both. Now, he is more interested in the viewer finding the humanity in the work through familiarity and personal associations with walls and interior spaces. This work is more about what might have been than what actually is and allows him to explore possibilities that otherwise would not happen in an interior space. Jason is not aiming for a fully resolved solution. Rather, each piece is a new question, creating more questions that can become part of the next piece.





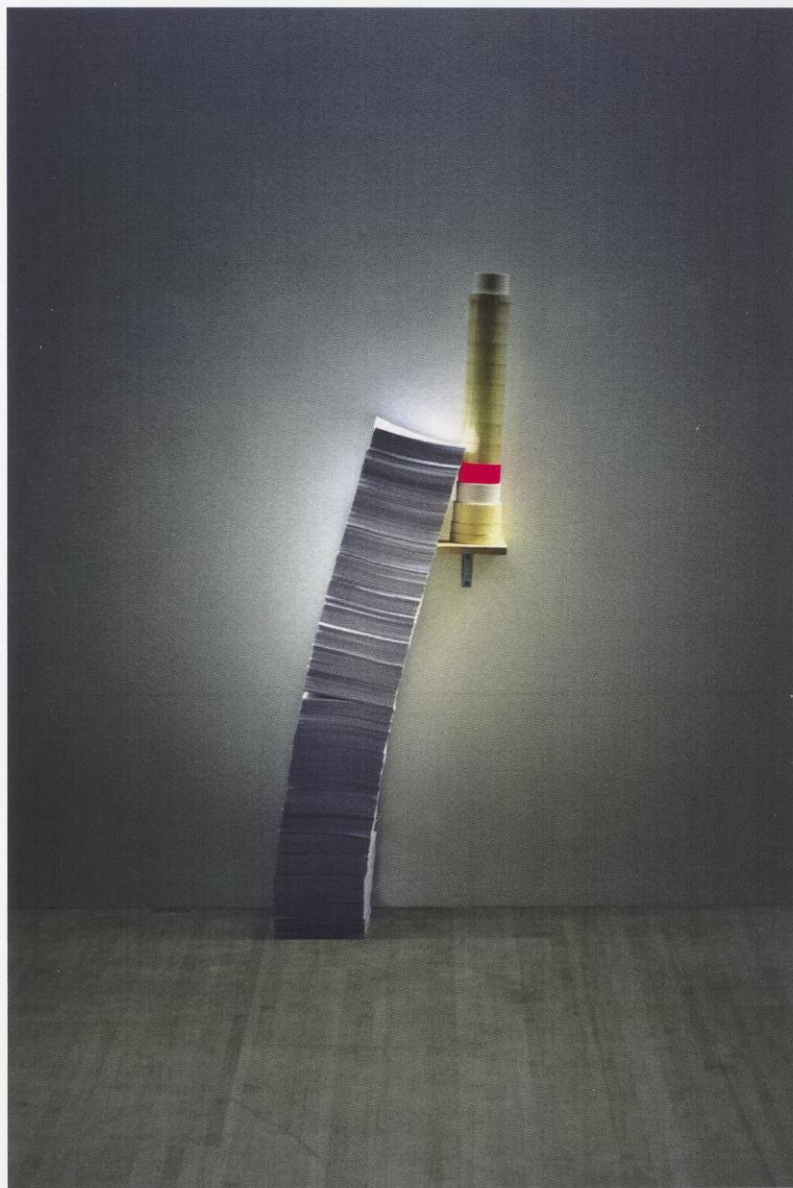


Andrew Salyer

Andrew Salyer is an artist who implements multiple mediums in his practice. His work includes performance, photography, video, installation, and drawing. Current interests include romantic conceptualism, spectatorship, the politics of failure, text and performativity, and illusions on the verge of collapse.

Andrew received his BFA from Herron School of Art in Indianapolis, Indiana. He currently resides in Madison, WI.







Jason Sandberg

Born in 1973, in the Heartland of Central Illinois, Sandberg grew up in a community that revolved around agriculture and agribusiness. His blue-collar parents invested in Lego building bricks, Erector Sets, and Kenner Girder and Panel kits as an alternative to premade toys allowing his creativity to flourish at a very young age. By age ten, Sandberg had negotiated with his father to take over nearly half of the garage to use as a studio.

Without plans for college, Sandberg joined the Air National Guard to work on fighter jets. After his initial military service working on aircraft weapons systems, Sandberg returned to his hometown and opened a sign shop on Main Street. At this time, he began college and worked toward a formal art degree. After six military deployments overseas, and painting murals world-wide, Jason moved to Edwardsville, IL to attend Southern Illinois University-Edwardsville. Under the guide of Thad Duhigg, he began to mesh his experiences of art and aircraft into a Sculpture BFA. Some of his inspiration comes from Rosenquist, Calder, Bontecou, Serra, and McMillan.

While deployed in Iraq, Sandberg was accepted to Graduate School at University of Wisconsin-Madison. There, he began working with Gail Simpson and Aristotle Georgiades while seeking lecture from printmakers John Hitchcock and Jack Damer. Another dimension came forth working with Douglas Rosenberg in installation and performance. He has been in numerous shows and installed public art pieces around the Midwest. He and his family remain in Madison where he is currently creating exhibits for the Madison Children's Museum.





Trina May Smith

Growing up in Missoula, Montana, the issues of seasonal jobs and industrial decline have been part of Trina May Smith's social context since childhood. Living in the Midwest and traveling to the rustbelt cities has fed her interest in the subject and become the focus of her professional work.

Trina received her BFA from the University of Washington and is represented by Tory Folliard Gallery.

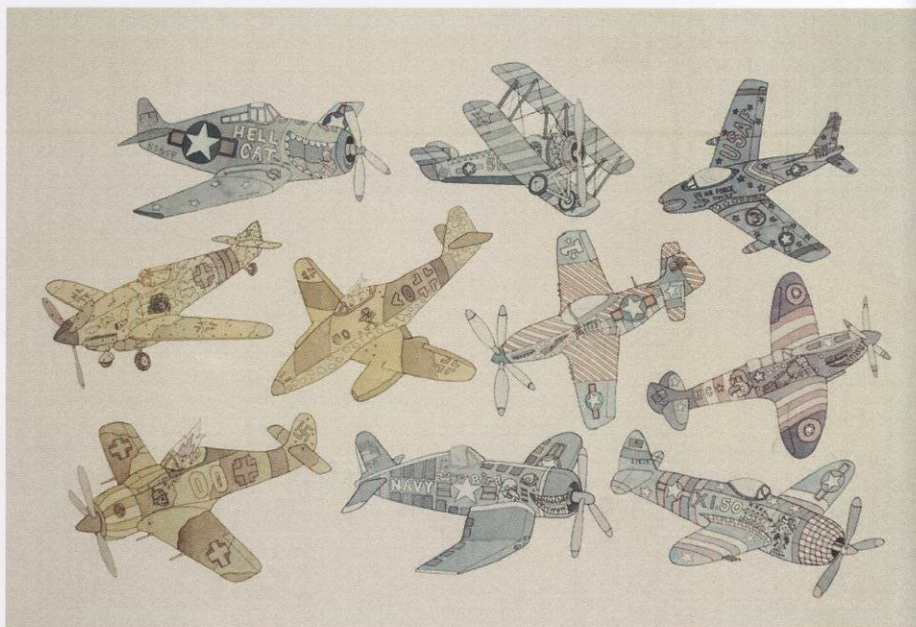


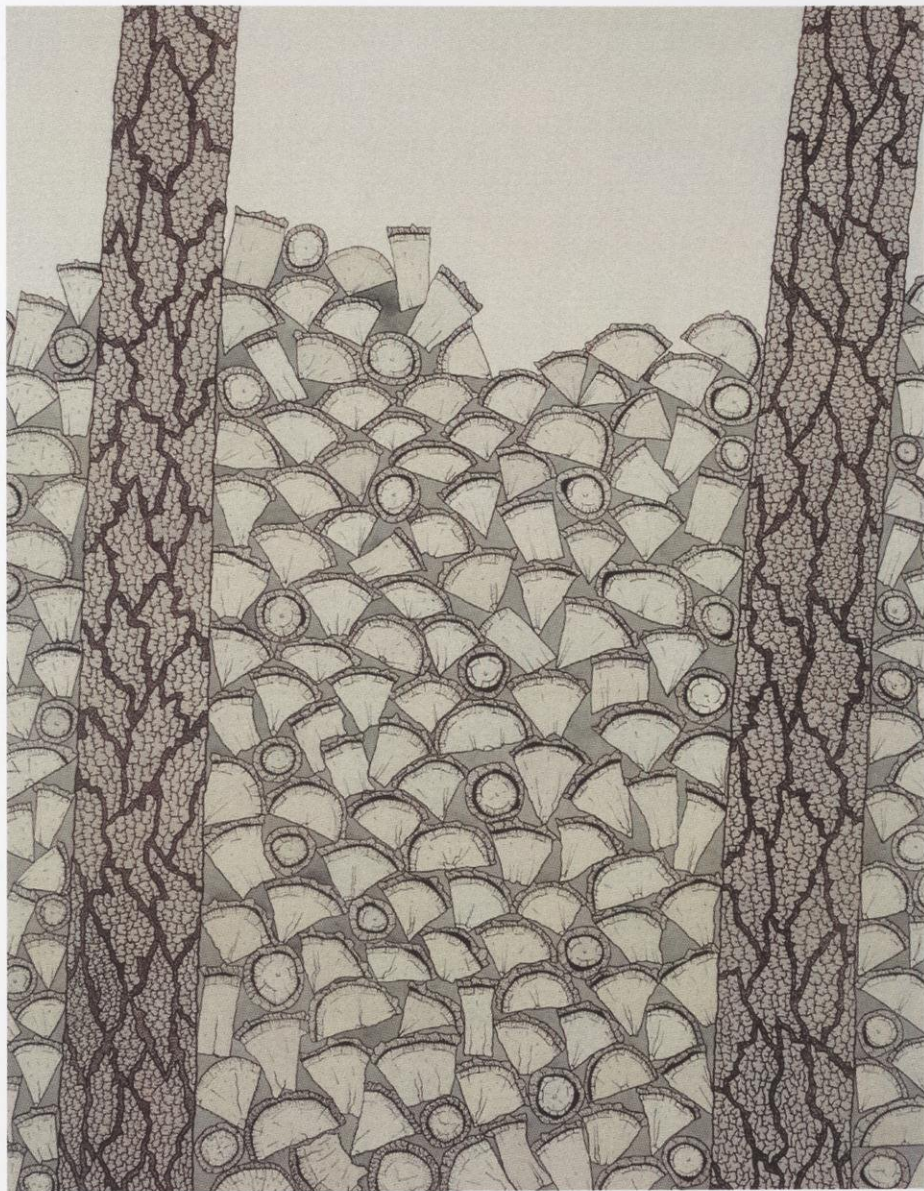




Patrick Smyczek

Patrick Smyczek was born in Milwaukee, Wisconsin. He received his BFA degree from the Maryland Institute College of Art in Baltimore, MD in 2007. He has also attended the Academy of Fine Arts in Wroclaw, Poland and the Tamarind Institute of Lithography in Albuquerque, NM. Patrick has also worked as a resident artist and taught lithography in Buenos Aires, Argentina. He has exhibited in the United States, Buenos Aires, Shanghai and Wroclaw. After graduate school Patrick plans on moving to Milwaukee.



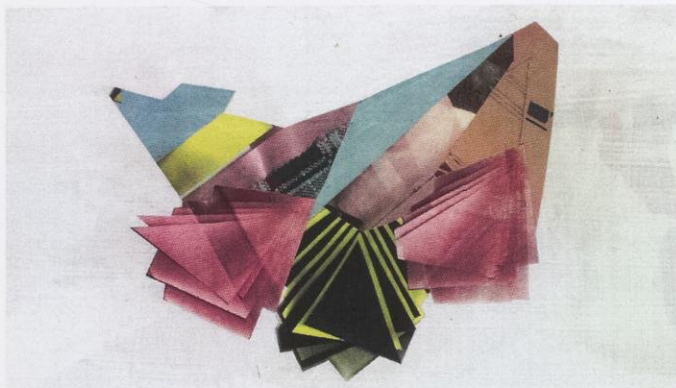


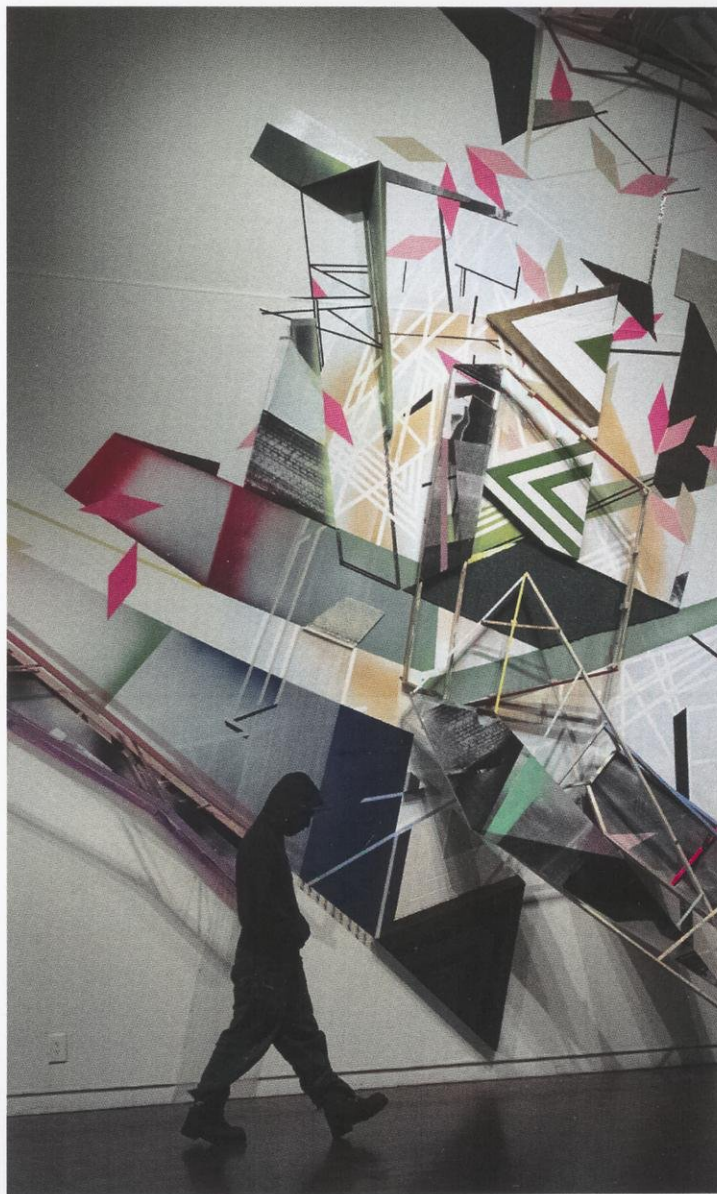


Eddie Villanueva

Eddie Villanueva creates evocative spaces and ambiguous narratives by layering diagrammatic drawing, geometric abstraction, and atmospheric mark making over fragmented surfaces. His work is translated through several different mediums including installation, printmaking, video, and sculptural forms. Villanueva works and reworks selected signs, images, and materials to develop structures that are graphic and dynamic, yet precarious and degraded.

Throughout his graduate tenure, Eddie Villanueva has achieved many academic and professional accomplishments. In the 2009/2010 academic year he was elected treasurer of the UW Printmaking club, he was awarded a Drawing 1 Teaching Assistant position for the 2010/2011 academic year, and in Spring 2011 he was awarded an Advanced Opportunity Fellowship for his final semester of graduate school. He has consistently shown in notable exhibitions including the *2010 Wisconsin Triennial* at the Madison Museum of Contemporary Art, *Mano/Mundo/Corazón* at the Columbia Collage - Center for Book and Paper Arts, and the *North American Graduate Art Survey* exhibition hosted by the Nash Gallery in Minneapolis. He is currently showing with the Circuit 12 Contemporary Gallery in Dallas, and will be attending the Anderson Ranch - Artist in Residence program in the spring of 2013. He was awarded an MA in 2011 and an MFA in 2012 by UW-Madison.







MFA Graduates - 2012

Luke Ahern	Niki Johnson	Mary Niec
Sandra Anible	Dale Kaminski	AJ Nordhagen
Marcus Benavides	Marina Y. Kelly	Kyle Patnaude
Tom Berenz	Jonathan Kramka	Jason Ramey
Nic Bitting	Ryan Lawless	Andrew Salyer
Douglas Bosley	Brian Lindstrom	Jason Sandberg
Shawn Everette	Gabriel Mejia	Trina May Smith
Sophia Flood	Jaydan Moore	Patrick Smyczek
Courtney Hall	Briony Morrow-Cribbs	Eduardo Villanueva
Heejin Hwang	Brian Murer	







89131467581



b89131467581a



ART DEPARTMENT
University of Wisconsin - Madison
6241 Humanities Building
455 North Park Street
Madison, Wisconsin 53706