



The daily cardinal. Vol. XXXII, No. 95 January 21, 1922

Madison, Wisconsin: University of Wisconsin, January 21, 1922

<https://digital.library.wisc.edu/1711.dl/YSX6ORO7MD6K38E>

<http://rightsstatements.org/vocab/InC/1.0/>

The libraries provide public access to a wide range of material, including online exhibits, digitized collections, archival finding aids, our catalog, online articles, and a growing range of materials in many media.

When possible, we provide rights information in catalog records, finding aids, and other metadata that accompanies collections or items. However, it is always the user's obligation to evaluate copyright and rights issues in light of their own use.

The Daily Cardinal

Owned and Controlled by the Student Body of the University of Wisconsin

VOL. XXXII. NO. 95

MADISON, WIS., SATURDAY, JANUARY 21, 1922

PRICE 5 CENTS

REGISTRATION TO COMMENCE NEXT MONDAY

Many Courses Make Initial Appearance in University Curriculum for Second Semester

Registration for the second semester will commence Monday morning. Time tables, which will be ready for distribution to students early next week, show many new courses offered in economics and other departments.

More than 500 students in the College of Engineering registered yesterday, and approximately 450 agricultural students registered Wednesday and Thursday. The registrar's office urges those not registered to do so during the first part of next week.

Should Register Early

The registrar's office will be open for registration during the examination period. Students are urged to register next week to avoid congestion on the scheduled registration days, which are Thursday and Friday, Feb. 2 and 3.

Fees may be paid at the bursar's office, Administration building, during the hours from 8:30 a. m. to 12:30 p. m., and from 2 p. m. to 4 p. m. each day. The fees must be paid before class cards are issued. An additional fee of \$1 will be charged students who report at the bursar's after February 3.

No-Cut Rule Applies

The second semester's schedule must be arranged with the advisor before the close of the first semester. Each advisor will post on his door a notice of his office hours during the examination period and registration days.

The rule regarding absences from first recitations after a recess applies to the opening of the second semester. Students will be held responsible for attendance on the first exercises of all classes for which they have registered.

New Courses Offered

Many courses are making their initial appearance in the time tables (Continued on Page 8)

ISSUE ICE MEET ENTRY BLANKS

Entry blanks for the second annual Ice carnival to be held on Lake Mendota Saturday, Feb. 11, will be available this afternoon at Morgan's, the University pharmacy, gymnasium, Y. M. C. A., Lathrop, Barnard, and Chadbourne, according to Gilbert Hoffman '24, chairman of entries. Blanks will also be distributed at the fraternity houses.

Contestants are permitted to enter as many events as they desire, but cannot compete in more than three events. A fee of 25 cents is charged those entering the contests for men except the one and two mile races and the fraternity relays. The distance races will be free, while relay teams are to be assessed \$2 each.

The entry blanks for men's events should be sent to Hoffman at 200 Langdon street, and Marg Daly '22 will receive entries for the women's races at 428 Sterling court. The prize women's costume parade will take place in the night carnival.

NOTICE TO SUBSCRIBERS

Those persons changing addresses between semesters should promptly notify the circulation manager at 752 Langdon street, in order to secure regular delivery on Tuesday, Feb. 7.

THEY LEAD GRAND MARCH AT BIG JUNIOR EVENT IN STATE CAPITOL



JAMES L. BRADER

Prom Chairman James L. Brader '23, Madison, and his partner, Miss Mary C. Baldwin '23, La Crosse, will lead the grand march at the 1923 Junior Promenade, which will be held in the state capitol on Friday evening, Feb. 3.

Brader is a member of Beta Theta Pi and Pi Epsilon Delta fraternities. He played tackle on the 1921 football team and has won three



MISS MARY C. BALDWIN

—Courtesy Hone & McKillop
"W's" in that sport. Brader is also a member of White Spades, Ku Klux Klan, and Edwin Booth.

Miss Baldwin is a member of Alpha Phi sorority. She is the daughter of Mr. and Mrs. C. L. Baldwin and was graduated from the La Crosse high school in 1919. Miss Baldwin is also a member of the Y. W. C. A. cabinet council and of W. A. A.

ALL-AGRIC BALL TO BE HELD IN LATHROP FEB. 18

**Kuckuck Names Committees
For First Annual
Dance**

Plans for the first annual All-Agric ball to be given in Lathrop hall on February 18 are rapidly being perfected, according to Harold Kuckuck '22, general chairman of the dance.

Under the auspices of The Country Magazine, this new agricultural function promises to become a yearly event of outstanding importance on the program of activities for the agricultural college students.

Committees for the ball have been announced by Chairman Kuckuck as follows:

Arrangements—Walter Ebling '22 chairman; F. Louise Thompson '23, Ethel Metz '23, Forrest Harris '23.

Publicity—Edith Fauerbach '22, chairman; Charles Byrne '22, Halbert Hoard '24, Mary Ausman '22.

Music—I. O. Hughes '22, chairman; H. O. Wetmore '24, Homer Chapman '22.

Tickets—"Scoop" Taylor '23, chairman; Mildred Downie '23, Byron Spear '22, Robert Boerner '22, Lewis W. Taylor '22, Elsie Hodgson '23, Volunta Dine '25.

Farewell Banquet Given to Gilmore

The Philippine Badger club gave its farewell and welcome banquet in honor of Prof. Eugene A. Gilmore, vice-governor general of the Philippine Islands, at the Madison club last evening.

Addresses were given by Felipe O. Cevallos, president of the Philippine Badger club, Nicanor Teodoro, Eustaquio Aquino, Pres. Edward A. Birge, Dean Scott H. Goodnight, and Secretary Frederick E. Wolf. Genuine Philippine music was rendered by the Philippine Badger club orchestra, and a Philippine love song was sung by the members of the club.

Meanwell Tells Of Short Pass Origin In Athletic Review

That quick, snappy, short-pass style of play which distinguishes Wisconsin's basketball team is not the result of a sudden inspiration or invention of Coach Walter Meanwell.

It is the result of a slow process of adaptation of tricks of wrestling, boxing, and gymnastics. But most of all it came from the exigencies of coaching a class of tough urchins in a Baltimore settlement house.

The gymnasium was so small and the players so many that the pass had to be short if it was made at all; such was the origin of the style of play that has won so many championships.

All this and much else is told by Dr. Meanwell himself in the basketball number of the Athletic Review, which will go on sale at the Minnesota game tonight.

Seniors Are Asked To Pay Class Dues

Due to an error in announcing the time of the senior class meeting yesterday, no meeting was held. Carl J. Englehardt, 614 Langdon street, class treasurer, announced, however, that all seniors, especially those graduating in February, should pay their regular dues of \$4 to be used for the chimes fund.

Some time during the second semester Guy Sundt, president, will call another meeting of the class. Before this meeting is held the financial committee will investigate several different plans.

Libe to Stay Open During Exam Period

The library will be open during the usual hours until Wednesday, Feb. 1. After that date the hours will be from 9 a. m. to 5 p. m. on Thursday and Friday, Feb. 2 and 3, and from 9 a. m. to 4 p. m., on Saturday, Feb. 4. Regular hours will be resumed on Monday, Feb. 6.

PREPARATIONS ARE COMPLETE FOR '23 PROM

**Heavy Ticket Sale Forecasts
Attendance of 2,000—Plan
of Boxes in Capitol
is Issued**

All arrangements have been completed for the 1923 Junior Promenade which will be held in the state capitol on Friday evening, Feb. 3.

With the approach of final examinations, the work of 150 committee members is over, and not a detail necessary to the success of the event has been overlooked.

The 1923 Prom will be the largest Promenade in the history of the university, according to the ticket sale to date. Almost 1,000 dancing couples will attend Prom this year, nearly 200 more couples than attended last year.

Breaks All Records

Of this number, 850 tickets include supper checks, which is an increase of 250 over the supper check sale of 1922, which heretofore held the record for the largest sale of university Proms. The spectator ticket sale will not close until the last ticket is sold at the door Friday, but at present a large number have been disposed of to local people.

The schedule of boxes for the various fraternities and organized groups attending Prom has been completed, and appears on Page 9 of this issue of the Cardinal. To avoid confusion, it is urged by Huston Schee, chairman of the box committee, that one member of each group go to the capitol and locate the box designated to his group before Prom night.

Issue Pre-Prom Program

Particular effort is being made this year to keep the boxes in the best order, and punch or any other refreshments will be prohibited in the boxes.

A preliminary program, which includes all detailed information regarding Prom, will be distributed to the fraternities and organized groups attending the event, next Wednesday. This will include the complete schedule of events, in- (Continued on Page 5)

TO INVESTIGATE UNEMPLOYMENT

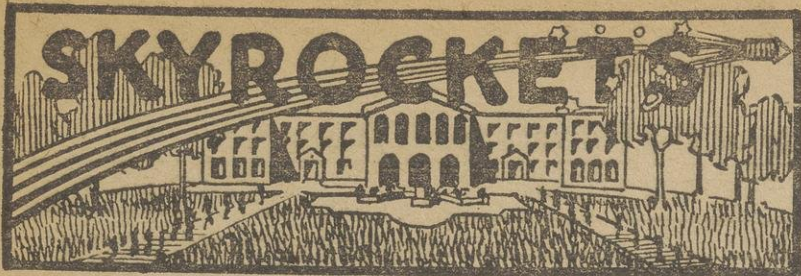
Gordon E. Nelson '22 has been appointed by F. M. Wilcox, chairman of the mayor's special committee on unemployment, to make a thorough survey of all possible sources of future work, particularly building and street construction in this city.

The appointment was made pursuant to a resolution passed by the committee on employment which met in the mayor's office last Wednesday night. Investigation will be carried on under the direction of Prof. D. D. Lescoghier of the economics department.

The committee, consisting of F. M. Wilcox, chairman; John F. Brabany, secretary; Miss Jeanette Davis, S. C. Scanlon, and Ald. Roy H. Proctor, pledged itself to do its utmost to create jobs at once for Madison's unemployed. The selection of Nelson for the job of making the survey was partly due to his previous experience in this line.

FINAL CARDINAL

With this issue The Daily Cardinal will suspend publication until after the opening of the second semester. The next regular issue will appear on Tuesday, Feb. 7.



WELL, folks, we are going to give you a chance to get a little studying done after today, because this is the last column for a couple of weeks. Isn't that kind of us not to place any distracting influences in your path to knowledge? So here beginneth ye last col.

AND being the last col, we take this opportunity to mention herein once more the far known name of Walt Schulke, who leaves our midst at the end of the semester. He is stepping forward into the great business world. He also says that his friends can say goodbye to him in the University pharmacy daily during the hours of 2 to 5 and 7 to 10 p. m.

SOMEHOW or other, the spectators don't seem to warm up to this hockey sport.

ALONG the same line, it might be well to repeat here the comment of one of the Swedes on the team from the north. During halves, with Minnesota leading, 2 to 0, he walks, or rather skates, up and says: "This game is on ice." We hope you weren't expecting anything better from a Swede.

WHAT CO-EDS THINK ABOUT
THE discussion in the English class hovered around and finally centered upon Oscar Wilde. Our sweet young thing grew inquisitive, and at last, with a cold stir of enthusiasm, questioned her neighbor in the class: "What fraternity does he belong to?"

I. WON DER.

FOR lack of anything else to do, we change the subject, and jump to the Candy shop fire. In that connection, we desire to announce that the appetizing window display has been changed.

AND right next door, more changes are in evidence, because hats are not the only things which are Fried in that place now.

'TIS sad but true that Tommie Kingston, local taxi-man, is a hackneyed person.

IT is quite necessary that this column contain some mention of the fairer sex, so we remind you that Mary Baldwin has accepted Jimmy Brader's bid to Prom, and the Alpha Phi's are so wrought up over it that they haven't been able to decide which they should give Jimmy a box of rope, a salute of kisses, or make him an honorary member of the sorority.

Oh, tell me, Gus, why is it so, Why are the jokes today so low?

Says Gus, "I guess it must be this,—
The air's too thin in heavenly bliss.

"We'll take our chance on Hell's half-acre
E'en though our wit would shock a Quaker.
For when our line is low, you see,
The girls will trip more easily."

COUNT de RIBS.

THE COUNT is a new contributor. Here's hoping that he is a regular one next semester.

AT A PROM PLAY, TOO!
FROM the write-up on the Pre-Prom play: "..... The very much concerned young women are putting something over on their husbands. The men think a considerable SCANDLE has entered their lives....."

OH, oh, my dears.....just imagine! What a terrible thing to have enter any one's life.

THE LIT is loose again, and, among other things, its covers protect the masterpiece of the season, entitled, "Ramifications of the Wisconsin Mind." If you want to find out just how simple you are, read that.

SO life goes. First they knock you down with the exams, and then they revive you by sticking a fee card under your nose.

POOR 'Lil Polly!! Our own beloved Horace Wetmore 'as gone and thrown her down for a wicked movie actress. Can you imagine him being Mary Anderson's leading man? But that is what she said, right out to the awe-inspired public, down at the Parkway the other day. We still wonder, however, whether it will be Horace or Mary who does the leading.

THE following list is a forecast on what may be expected along conversational lines during the next ten days?

"Sorry, gotta study."
"Good luck, old boy."
"I didn't study the right things."
"Just what I studied for."
"Wish I'd studied."
"How did you hit it?"
"That son-of-a-gun."

FAMOUS LAST LINES

"And if you have done your work faithfully during the semester, you ought to have no"

three daughters and one son. Her daughter, Helen, attended the university last year. The son, Ralph, was a student at the university two years ago and was a member of Sigma Alpha Epsilon fraternity.

AT THE PARKWAY.

Miss Mary Anderson, the dainty movie star, proved a hit with Parkway audiences before whom she appeared yesterday. She makes a pleasing personality as she trips out lightly onto the stage and does her bit to help the movies. The rest of the Parkway program was quite up to the standard and proved very entertaining. Alice Lake in "Over the Wire" was the feature picture. A clever kid comedy, "Three Good Pals," was well done. A scenic "People in White" closed the program. Monday night Chauncey Olcott makes his farewell appearance in this city in "Ragged Robin." Friday and Saturday "The Bat" with the original Chicago cast will be here. Mail orders are being taken now. Another special children's matinee will be given at the Parkway tomorrow morning at 9:30 a. m. Tom Mix in "The Rough Diamond" will be the feature attraction.

AT THE STRAND.

Will Rogers in "Doubling for Romeo" a picture written by himself and William Shakespears, is now being shown at the Strand theater. The added feature attractions are "The Beggar Maid," a photoplay inspired by Lord Alfred Tennyson's poem and E. Burne-Jones' famous painting, and movies of the Lake Mendota aero ice boat which was destroyed by fire.

AT THE MAJESTIC.

One of the most unusual roles ever seen in a motion picture is that portrayed by Betty Compson, new Paramount star, in her first starring vehicle, "At the End of the World," which can be seen at the Majestic this week. Miss Compson is seen as "Cherry" the beautiful daughter of a broken down Englishman who runs a cafe and gambling palace in Shanghai, China.

YOU'LL

understand, the minute you step into this cafeteria, why men and women have termed it "THE CAFETERIA OF MADISON,"—it merits the title.

Two Best Places to
Eat
Home & Cop's Cafe

Your Theses or Topics
Get them typewritten during vacation

Our four stenographers are at your services during vacation. Also during next semester.

Here your work will get our careful attention.

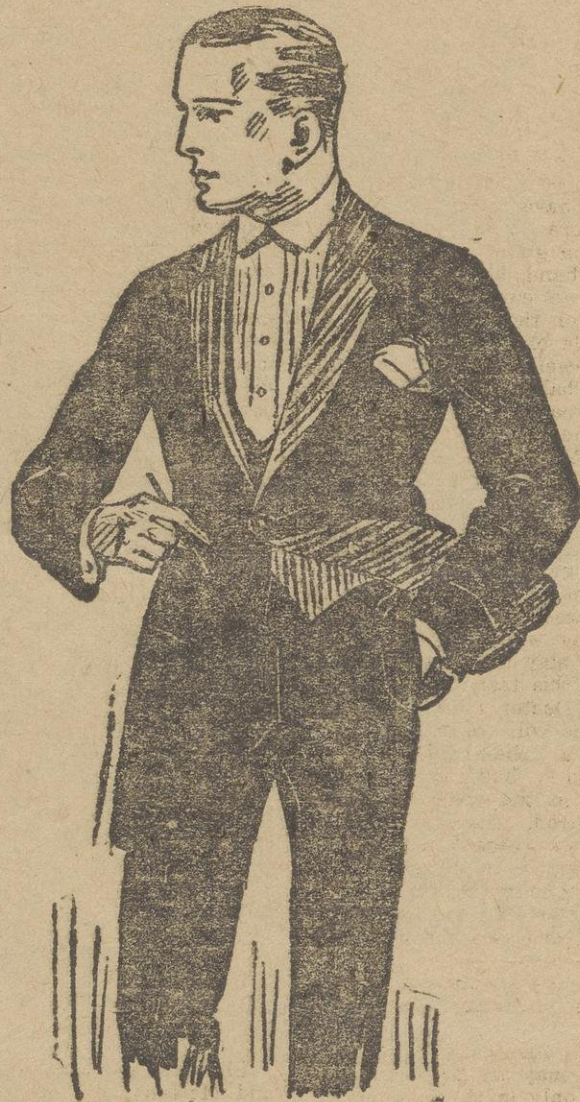
The service is excellent and the prices are reasonable.

WISCONSIN TYPING COMPANY

(A half block from University Ave.)

316 N. Mills

F. 1075



TAILORED AT FASHION PARK

Your Tuxedo

or your

Full Dress Suit

and all the other fixings

FOR PROM

Get set NOW—TODAY. We're showing all that's
new and CORRECT. Moderate prices

Speth's
ON STATE

90 Commerce Mag Reprints on Sale

Ninety copies of the 200 reprints of the "Wisconsin Mirror," which the Commerce Magazine has issued in pamphlet form, are on sale in the drug stores around the campus for 10 cents each.

Copies may also be had in Professor Gilman's office, fourth floor of Sterling hall. More than 100 copies of this reprint have been sold, and students who wish to send them home are urged to get them at once.

Mrs. A. M. Stondall Dies After Illness

Mrs. Albert M. Stondall, wife of A. M. Stondall, prominent real estate man, president of the Stondall Land and Timber Co., died this morning in a local hospital after an illness of a week. Mr. and Mrs. Stondall had made their home in Madison since Oct. 25, 1898, the date of their marriage.

She is survived by her husband,

NEWS OF CONFERENCE SPORTS

PLAY CRUCIAL BIG 10 TILT IN GYM TONIGHT

**Badgers and Gophers
Have Clear Records
Thus Far**

PROBABLE LINEUPS

Wisconsin	Minnesota
Ceaser	R. F. Doyle
Taylor	L. F. Severson
Gibson	C. Hanson
Williams	L. G. Hultkranz
Tebell	R. G. Kearney

One of the most crucial basketball games of the season will be played at the university gymnasium tonight when Doctor Cooke and his Gopher team stack up against the Badgers.

Both teams have a clear record, and both will fight furiously to stave off defeat, as the losers will stand little or no chance of winning the Big Ten Conference.

Teams Are Even

Advance dope gives neither team the advantage. The Gophers, in the games they have played thus far, have shown themselves to rate well up among the leading teams in the Conference. The team is nicely balanced, something new in a Minnesota team. The two veterans, Kearney and Hultkranz, form the nucleus of the defense, and opposing teams have found difficulty in scoring more than two or three field goals a game. The offense, on the other hand, has a habit of establishing an early lead, and then depending on the defense to hold it.

This style of attack may be just what Meanwell's team needs. They are in the habit of piling up a lead and then easing up a bit, which system came near to proving costly in the Michigan tilt. Tonight, therefore, if both fives spurt early in the game, fans should see an interesting battle.

2,200 Students to Attend

The Badgers are reported to be in poor shape for this important clash. Three of the players, although they will be used, will not be able to play their usual style of game, and this fact may prove beneficial for Doctor Cooke's warriors.

The game will have all the earmarks of a championship clash. Twenty-two hundred students bought all of the tickets on Thursday afternoon, leaving fully as many fellow-students and townspeople disappointed. Even standing room is no longer available, making one of the biggest crowds that has ever taxed the capacity of the sadly inadequate gymnasium.

Consequently, Doctor Meanwell was loathe, yesterday afternoon, to make any statement regarding the chances of his team in tonight's game. It may be predicted, however, that only in the final minutes of play will the outcome of the contest be decided.

Illinois Tank Men Practice For Dual Meet With Purdue

(Special to Daily Cardinal)

URBANA—The University of Illinois tankmen are practicing diligently for their first dual meet with Purdue at Lafayette, February 4.

Last year the Illini swimmers placed third in the final Conference race and with several veterans back Coach Manley expects to put up a game fight for first honors this season. Competition in the tanks is to be very keen in Big Ten circles. Chicago is led by Captain Blinks, who broke Conference records in the 40-yard, 100-yard, and 220-yard events last year.

The Gopher mainstay is Captain Lampher, who took the 440 Conference event and placed in all his swims last year. Northwestern, with Captain Paver and Hayford veterans; and Wisconsin with Bennett, a crack crawl stroke swim-

War Is Quilting Bee Compared To Ice Hockey

By L. H.
Apologies to "Chuck"

Minnesota beat Wisconsin, yesterday in a hockey game, and after watching the battle, I acclaim hockey is no place for the man with a gentle touch. It ain't no pink tea. The way the Minnesota gang went around that pen had Man O' War's record trot looking like Heinz Rubel making the fourth floor of the P. E. building.

The skates went up and down the ice so fast it looked like somebody was laying a steel track. This crowd from the north zig-zagged up and down like a flock of drunken humming birds. They cut more curves than an old lady running a new Ford. They did more capers on that ice than a crazy monkey in a mile of grape-vines. The rubber puck made more trips back and forth than President Wilson did in all the time he was president.

That game is no place for infants. They used clubs, but they should have staged the battle in the armory and used guns. The game should have started with a prayer, and ended with a roll call. Jesse James should have been score keeper, and Tommy O'Connor, the referee. Jack Dempsey should have been the time keeper. The coaches should be the champion embalmers of Madison and Minneapolis. Jones should be an undertaker. The space between the ring and the gym should be reserved for a burial ground. The fraternity brothers of the players should be provided with spades, and as soon as the game starts, they should start digging, so the work won't pile up so fast. The library should give way to a green house, where fresh flowers could be bought, like sandwiches.

The goal-keeper should be allowed to import his own hay stack to hide behind. He needs a padded cell. He was as busy as a one-armed paper hanger with the seven year itch. He did more turning away than Bob Quick did before the Chicago game.

And was this gang fast? They had three speeds forward: fast, faster, and fastest. They passed Wisconsin like a tramp passing a wood pile. They could handle their clubs better than a farmer handles a knife, and with equally gratifying results. When they couldn't hit the puck, they hit an opposing player. They usually hit the ice, and not with their skates either. Their team work looked like they had been spying on Doc Meanwell. Is football rough? After watching that hockey game, Coach Richards ought to serve tea between the halves of his games.

mer, are also to be reckoned with.

Illinois has back Royal, Postle, and McNally of the record-breaking 160-yard relay team. Captain Dennett, All-American back-stroke selection last season, is not in school; but Olsen and Beebe, veteran breast stroke, and Fox and Taylor, plungers, are coming through well in their events.

The Illini water-basketball team, Conference champions for the past two seasons, with veterans Wilson, Olson, Fox, Hardacre and Ott, should put up a game fight for continued honors. Barring ineligibility, the Illinois tank squad should come through with a good showing this season.

SCHEDULE OF GAMES

Jan. 23—Minnesota at Indiana.
Jan. 23—Purdue at Northwestern.
Jan. 28—Chicago at Minnesota.
Jan. 28—Iowa at Purdue.
Jan. 30—Iowa at Indiana.
Feb. 4—Indiana at Minnesota.
Feb. 4—Illinois at Ohio.
Feb. 6—Northwestern at Wisconsin

Centre College's football team has been invited to play the dedication game in the new \$1,000,000 stadium at the University of California on December 2.

3 FRAT QUINTETS CLAIM PLACE ON SEMI-FINAL CARD

Kappa Sigs, Pi K. A.'s and
Sigma Nu's Are Division
Winners

As a result of the inter-fraternity basketball games which were played last night, the Kappa Sigs, Pi K. A.'s, and Sigma Nus claimed a place in the semi-finals. The Betas and Kappa Psis, by defeating their opponents, caused a tie in each of their divisions.

The scores of the games were as follows: Kappa Sigma 25, Delta Chi 2; Pi Kappa Alpha 34, Tau Kappa Epsilon 10; Sigma Nu 12, Phi Kappa Sigma 5; Beta Theta Pi 21, Chi Phi 10; Kappa Psi 14, Theta Xi 8; Phi Kappa forfeited to Chi Psi.

Sixteen teams, two from each of the eight divisions, are to enter the semi-finals which will be played soon after the second semester starts. Five of the 16 quintets are as yet undefeated. They are the Kappa Sigs, Alpha Gamma Rhos, D. U.'s, Delta Sigs, and Chi Psis. The Deltas are also undefeated, but have to play a game today with the Phi Deltas.

The following teams will enter the semi-finals from their various divisions: Division 1, Kappa Sigma and Zeta Psi; Division 2, Alpha Gamma Rho and Pi Kappa Alpha; Division 3, Delta Upsilon and Alpha Sigma Phi; Division 4, Alpha Tau Omega and Phi Kappa Psi; Division 5, Two of these three: Delta Tau Delta, Alpha Pi Delta, and Phi Delta Theta; Division 6, Delta Sigma Phi and Sigma Nu; Division 7, Two of these three: Chi Phi, Sigma Phi Epsilon, and Beta Theta Pi; Division 8, Chi Psi and one of the following three: Kappa Psi, Theta ii, and Phi Kappa.

SKI JUMPERS GO TO TOURNAMENT IN CARY, ILLINOIS

Three Badgers Enter Meet For
National Amateur
Honors

Competing against dozens of national skiers at the National Championship meet at Cary Ill., tomorrow, will be three Wisconsin jumpers. Sverre Storm, Tom Norberg, and Sven Kvaven. Hans Gude, captain of the Badger team, will be unable to participate in the meet because of an injury to his arm when practicing football last fall.

Two years ago, Strom out-jumped all contestants at the Illinois state championship meet, and last year, although having no preliminary practice, he took second place in a similar tournament. Norberg and Kvaven placed high in the same meets, as well as in the mid-western tournament held at Minneapolis last winter.

The skiers, accompanied by university and city ski fans will leave for Cary, on the Northwestern road, at 7:50 tomorrow morning.

Several industrial concerns of Chicago have chartered special trains to carry their employees to the slide at Cary. Three trainloads of snow have been hauled from Iowa to cover the hill, one of which has been packed in place. The other two are being held in reserve.

The scaffold at Cary is the highest steel structure of its kind in the world, and jumps of 180 feet beyond its take-off are expected. The best professional ski-jumpers of the country will compete for national honors.

Wireless On Taxicabs Is To Be New Stunt

CHICAGO—Wireless telephones will be installed on taxicabs to facilitate their despatch to waiting customers, L. L. Miles, Louisville, Ky., told the National Association of Taxicab owners, of which he is vice president, today.

GOPHERS BEAT HOCKEY TEAM IN FIRST GAME

Badgers Lose Second
Game of Season
3 to 0

In their second game of the season yesterday afternoon, the Wisconsin hockey team went down to a 3 to 0 defeat before the strong attack of the veteran Gopher squad. The Badgers pucksters fought throughout the contest, but the momentary flashes of brilliant work on the part of individual Wisconsin players served only to temporarily check the steadier team work of their more experienced opponents.

Of the Badger string, perhaps the most spectacular work of the game was performed by Treadwell at goaltender's post. With the puck being played in Wisconsin territory a large part of the time, his cage was in constant danger. Combacker and Grieves also played their usual steady brand of hockey.

Game Was Hard Fought

Led by their fighting captain, Chet Bros, the Northerners played a fast and steady game, working together with a smoothness which baffled the new and untried Badgers. Eldridge, Bros, and Jakobson starred in the Gophers' offense, while Barrquist, at goal, held the Wisconsin end of the score down to zero.

Starting with the first whistle at 4 o'clock, the game was hard fought throughout. The first score was made when a throng of players milled about the Badger goal, and Bope Eldridge, Gopher center, succeeded in pushing the rubber pill in for a count. Just before the end of the 20-minute period, Bros, the Gopher captain, slammed in a pretty drive, making the score at the end of the half stand 2 to 0 in the Northerners' favor.

Badgers Have Spirit

The final count for Minnesota was made early in the second half when Jakobson scored a clean count. About the middle of the period Wisconsin threatened the Gopher goal and Baker drove the puck in for a goal which was ruled out on account of a foul.

The Lineups were:

Wisconsin: Treadwell, goaltender; Woods, left defense; Blodgett, right defense; Baker, center; Combacker, left wing; Grieve, right wing. Substitutions were Fisk for Blodgett; Morius for Woods; Ledine for Grieve.

Minnesota—Barrquist, goaltender; Wyatt, left defense; Bros, right defense; Jakobson, left wing; Bartlett, right wing; Eldridge, center. Substitutions were Huggins for Bartlett; Beard for Eldridge.

To Play Return Game

The Wisconsin hockey team will meet Minnesota in its second of a two-game series on the Varsity rink at 2 o'clock this afternoon. With the first game out of the way, the Badgers expect to make a better showing against the Gopher pucksters in their third contest of the season.

The Badgers have been invited to play a return pair of games at Minneapolis on Friday night and Saturday morning, February 3 and 4. The games will be one of the features of an all week carnival which the Twin Cities are putting on and will be played in an indoor ring seating 1,800 people.

The team will probably meet Michigan School of Mines and the University of Michigan in a pair of games to be decided upon soon. With the erection of bleachers around the hockey rink, the sport has become popular here. Nearly 30 spectators watched the contest yesterday.

Mahoney and Cohen Please With Songs In Pre-Prom Movie

By H. C. T.

The Pre-Prom photoplay, "At the End of the World," now showing at the Majestic with Betty Compson in the lead and with such supporters as Milton Sills and Spottiswood Aitken, is unusually successful.

Dave Mahoney and Jesse Cohen put on a singing specialty that is way above the ordinary. Dave singing while Jesse takes his position at the keys. After the introductory number, Cohen takes the spot for a piano solo.

It is fortunate for those in charge of the Pre-Prom movie that such an excellent picture was booked by the Majestic for this week. Directed by Stanlaws, the picture has abundant action from start to finish. The plot is laid in a powerful gambling joint in Shanghai and changes later to a lighthouse on a lonely island in the Pacific. The photography is especially realistic and the lighthouse interiors are genuine.

The plot is well knit and has a thread of humor that was probably not written into it. Several of the situations which are intended to be quite dramatic turn unexpectedly into near-burlesque. It is worth while seeing.

Uhlig Chosen to Head Mining Club

Mining club, an organization of mining engineers, elected officers at a meeting in the Engineering building Wednesday night. The following officers were elected:

President, W. F. Uhlig '22; vice-president, A. M. Hill '22; secretary and treasurer, M. H. McKay '23; publicity manager, Everett W. Jones '23; chief mucker, Mitchell G. Gorrow '24; assistant mucker, Donald M. Matheson '25.

John B. Holmes '22, retiring president, gave an address on the policy and purpose of the club. Prof. R. S. McCaffery and Prof. E. N. Shorey assisted in the installation of the officers.

Literary Magazine Has Unusual Sale

The supply of Wisconsin Literary magazines which went on sale yesterday morning was almost exhausted by 3 o'clock yesterday afternoon. According to Paul V. Gangelin '23, this has been the most successful month that this publication has had during the semester. The few remaining copies may be obtained at various downtown drug stores.

Will Extend Honor to Agriculturalists

Recognition of eminent men who have rendered important service to the upbuilding of agriculture is one of the important ceremonies that will be conducted by officials of the University of Wisconsin during farmer's week, January 30 to February 3.

The University of Wisconsin was the first state institution to recognize service to agriculture in this manner. Since the institution of the ceremony, many prominent men in Wisconsin and other states have been officially recognized by the university for unique services to the art of farming.

Rosenberry Speaks Before Badger Club

Justice Marvin B. Rosenberry will speak on "Christian Citizenship" at the regular meeting of the

Badger club at the Y. M. C. A. tomorrow night at 7 o'clock. Special music will be given by Janet Breitenbach '23.

Jane Addams, noted lecturer and writer on social and political reforms, will address the club on Sunday, Jan. 29. Tickets for this meeting may be obtained by members of the Badger club now, and for the public any time after Monday, Jan. 23. Admission is free, but tickets are necessary to secure admittance.

"Y" Offers Men Help on Exams

"How to Write an Examination" will be the subject for discussion at the Y. M. C. A. tomorrow morning at 9 o'clock. The meeting will be conducted by Prof. A. V. Millar, Prof. George C. Humphrey, and Milton C. Borman.

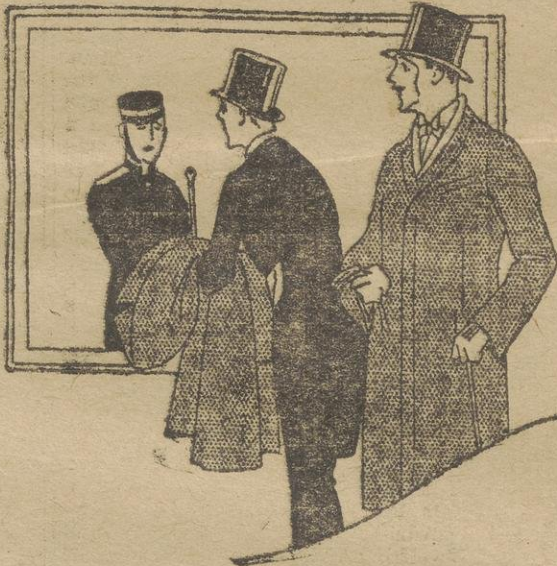
HINKSON'S
644 STATE ST.
Recreation & Refreshments
TRY OUR WAFFLES

Steak and Oyster
House

ST. NICHOLAS
CAFE

BEN STITGEN, Prop.

120 W. Main B. 922



Clothes for the Prom

Select your dress clothes now while the stocks are complete. Full Dress ane, Shoes, Mufflers. Shirts, Gloves, Ties, Hose, Shoes, Mffulers.

THE CO-OP

E. J. GRADY, Mgr.



Kessenich's

For Saturday

A special introduction sale of new Spring
Hats

\$7.00 and \$10.00

Of course you have thought about your new Hat, but it's so hard just to "think up" what you'd like, and not necessary either when you can actually see Spring's attractive new styles in our Millinery Section.

Hats of horsehair braid, off the face turbans, Spanish lace, soutache braiding and effective applique flowers are among the new features given prominence for Spring.

One group received yesterday at \$7.00

Another group at \$10.00

All are exclusive models



Millinery Section
Second Floor

TRUTH

HOARD MEMORIAL TO BE DEDICATED FARMERS' WEEK

Secretary of Agriculture Wallace to Speak Here at Exercises

Dedication of the Hoard memorial is one of the most impressive ceremonies that will be conducted by representatives of the farmers of the United States at the College of Agriculture during Farmer's week, January 30 to February 4.

The ceremony consists of the unveiling of a statue erected to William Dempster Hoard, a man who devoted much of his life to the advancement of the University of Wisconsin and the progress of the dairy industry throughout the world.

Henry C. Wallace, United States secretary of Agriculture, and D. D. Atikens, former president of the American Holstein Friesian association, will be the principal speakers at the exercises.

Many speakers have been engaged by the Agricultural Extension department to address the farmers and home-makers during farmer's week. Dr. Alonzo Taylor, of Leland Stanford university, will deliver an address on "Tropical Menace to American Agriculture."

Other prominent speakers will be H. L. Russell, dean of the College of Agriculture; Mrs. Nellie Kedzie Jones, leader of Home Demonstration agents; Abby L. Marlatt, director of Home Economics school; Physical Education, Edward Nordman, Director of Markets; Ex-Gov. Frank O. Lowden, Illinois, and H. A. Moehlenpach, formerly with the War Finance corporation.

23 LIBE STUDENTS GO TO WISCONSIN CITIES

Twenty-three students from the Library school have been assigned to 22 public libraries in 10 Wisconsin cities, for eight weeks beginning January 25, to receive practical field training. Each student has been given appointments in two libraries, one for February, and another for March. Members of the library school faculty will supervise the work.

Thorson and Irwin Stage "Springtime"

Sid Thorson '24 is in charge of the stage and lighting effects for "Springtime," Y. W. C. A. musical comedy, at the Parkway this afternoon and evening.

James Irwin '24 is assistant manager and master of properties. These men will have entire charge of the stage and the 300 people in the cast.

Plans For Junior Prom Are Complete

(Continued from Page 1)

cluding the cast of the Pre-Prom play, the transportation arrangements for Prom night, and the list of pieces and dances as arranged for the night at the capitol.

Many Organized Groups

Seventy couples will attend Prom in organized groups this year, according to the present reports of the men's arrangements committee. The Tiger club, a group under the chairmanship of Alvin Schujahn will hold a Pre-Prom dance and a Post-Prom dinner dance. The Weimer party, consisting of 10 couples, will attend the Pre-Prom play.

The Square club will have 30 couples in its party and will hold a Post-Prom dinner dance at the Menona hotel. The St. Francis group, consisting of 16 couples, will hold a Pre-Prom dance at the Episcopal club, will attend the Pre-Prom play, and will hold a Post-Prom party.

Play Opens Festivities

Prom festivities will open on Thursday, Feb. 2, with the play, "On the Hiring Line," produced by Edwin Booth, Red Domino, and Twelfth Night. A large number of fraternities and organized groups will attend the play in parties.

On Friday evening, Feb. 3, the program will be opened with the reception, which will be held in the governor's reception room at the capitol at 8:30. The grand march will begin with the first number, "On Wisconsin," at 9:15, after which Gov. John J. Blaine will deliver his address of welcome.

Dancing will begin at 10:15, and the supper hours will be 11:30 p. m., 1 a. m., and 2 a. m. Part of the Prom-goers will be served at the Capitol cafe and the remainder at the Garden Grill.

During the course of the evening the winning Prom fox trot will be introduced by Jesse Cohen, its composer, and Harold Taylor, who will play on the two grand pianos, which will be used by the Thompson Prom orchestra. "Doc" Dorward will sing the song.

Campbell Sisters Sing

The special features for the evening will take place at 12:30, when the Campbell sisters will entertain with southern songs and melodies. Their act will take place on a special feature platform which will be erected for the occasion. The platform will be decorated with a lattice work of smilax and illuminated American Beauty roses, and

will be so erected that all will be able to see the entertainment.

The decoration of the capitol for the evening will consist of a hanging garden of roses, extending from the first railing of the dome down to the orchestra stand. Special lighting effects, consisting of illuminated flowers and flood lights will also add to the beauty of the occasion.

Ends at 3 O'clock

The music will be furnished by Thompson's 21-piece orchestra, which will feature specialties on the cornet and clarinet by Cecil Brodt and Willard Sumner, a saxophone sextet, and a violin quartet.

Prom will end at 3 o'clock, and a system for taking the dancers to their homes, consisting of a division of the capitol exits among the various taxi companies, has been arranged by the transportation committee.



© C.R. & Co.
Stratford Clothes

At Prom Time

It's at Prom time that you'll want to be dressed with absolute correctness. For "the biggest social event of the school year" it is only fitting that extra thought be given to your appearance.

Our evening clothes are tailored beautifully from the finest of materials by the makers of "The Style Clothes of America." They assure you of being correctly dressed. See them now.

It is best, too, to be getting your accessories so that at the last minute you won't have to make a mad rush for a collar, tie, studs, shirt or socks. See us and we will outfit you completely in the latest fashions in evening clothes.

The Crescent
CLOTHING CO.
Specialists in Apparel for Men & Boys

**After February 1st--
In Our New Store
513 State Street**

**Sheet Music, Victrolas,
Brunswicks, Records,
Pianos, Musical Instruments**

**Victor and Brunswick Records
Now Back to Pre-War Prices
—Just Reduced**

**University Music Shop
508 State "at the Co-Op"**

The Daily Cardinal

Member Wisconsin Intercollegiate Press Association
Member the Western Conference Editorial Association

Student owned and controlled university daily, established 1892, and combined with the Wisconsin Daily News, established in 1912. Published every morning except Monday during the college year. Entered as second class matter at the Madison, Wis., postoffice. Subscription rates \$3.50 a year; \$2.00 a semester in advance.

Editorial Offices—Union Building, Phone Badger 250.
Capital Times Building, Phone Badger 1137.

Business Offices—Union Building, Phone Badger 6606.

CARDINAL BOARD OF CONTROL

Adrian Scolten, President; Caryl Parkinson, Vice-president; Arthur Freytag, Secretary; Ralph Balliet, Treasurer; Walter Ebling.

William M. Saic Managing Editor
Donald M. Bailey Business Manager

EDITORIAL STAFF

G. Fred Brewer News Editor
Marion Strassburger Woman's Editor
Charles J. Lewin Athletic Editor
H. Hickman Powell Assistant News Editor
George L. Geiger Conference News Editor
David K. Steenberg Desk Editor
Walter K. Schwinn Sunday Editor
Marv Brideman Society Editor
Sterling Tracy Chief Editorial Writer
Abraham Kaufman Editorial Writer
Desk Assistants—Porter Butts, Robert Reynolds.
Karl A. Maier, Maurice Perstein, Walter Pfister.
Special Writers—Margaret Daly, Bertha Burkhardt,
Marv Dickson, Helen Smallshaw, Elizabeth Wadmond, Pennell Crosby, William J. Tannewitz.
Reporters—Margaret Calisen, Wilhelmina Mead, H. E. McClelland, Elizabeth Briggs, Marjorie Ruff, E. J. Crane, W. W. Sovereign, Sheldon Vance, Kathryn Perry, Tom Daniels.

BUSINESS STAFF

Philip G. Bredesen Advertising Manager
Russell Frawley Circulation Manager
Associate Advertising Managers—Douglas K. Newell, Arthur H. Ardiel, Jean Rosenthal.
Merchandising Service Manager—Blanche K. Field
Advertising Assistants—Walter Plewke, Burt G. Billings, Marion Moehlenpahl, Lois Cole.
Business Assistants—William Peebles, Margaret Brenecke, Calvin Oakford, George O. Cooper.

NIGHT EDITOR—GEORGE L. GEIGER

THE PROM OF PROMS

NEVER before have more careful and extensive plans been made for that leading social function of the year—the annual Junior Promenade.

If progress toward the principles of democracy may be reckoned as an achievement, then already we must consider this year's prom to be highly successful. It is not so many years since Prom was considered to be an event only the wealthy could attend. In those days it was known as the Junior Promenade. Gradually the term became more inclusive and with this change came also a distinct and welcome elimination of the non-essentials.

For the past few years flowers and favors have been barred at Prom and also many of the Pre and Post-Prom functions. All along the line there have been well-directed efforts to make the function less expensive and consequently available to an increasingly larger number of students.

With the more adequate arrangements for the entertainment of non-fraternity groups, a very wise and democratic step has been taken. The spirit of recent years has been toward economy and democracy, as it is fitting that it should be.

Plans for the 1923 Prom have been to that end. The committees have succeeded in eliminating expensive details and yet in no whit detracting from the enjoyment of the affair. The Prom chairman and all assisting him are to be congratulated. There is every assurance that the 1923 Wisconsin Prom will truly live up to its slogan—"The Prom of Proms."

* * *

BRAVO!

AN entire student audience will view the game between Minnesota and Wisconsin this evening. Every ticket was sold out to students on the first day of sale.

There is something significant in such news as this. There is concrete proof that Wisconsin is recovering from the extra-social and in-

passing. It shows an intense loyalty to the team and it shows that the students have not forgotten how to enjoy clean sport.

We believe that even though the social calendar were at its height, there would still have been no seats left on the second day. We believe that with Wisconsin men and women, variety athletics come before dancing or similar functions.

And the future games of the year will justify that faith.

* * *

GATHERING IN

THERE is an uncomfortably large number of students who have recently taken stock of their acquaintanceship with their courses and found that many of the salient points were alien to them.

It might be entirely human to remind them that as ye sow so shall ye reap. But platitudes at this time will help no one.

Cramming for exams is but a poor way to acquire an education. It is at best but permissible as a last resort. The time has now come when last resort measures are necessary. Inconsistent and illogical cramming will aid little in preparing for the finals, but a methodical review of the entire course of the study may mean the difference between a "flunk" and a "fair."

Nothing should interfere with the reviews during the next two weeks. A little sacrifice of pleasure and even sleep may save a scholastic life.

There are a few students whose steady and earnest work throughout the semester has so prepared them for the coming exams that they are almost serenely unconscious of those impending fates. Then there are the afore-mentioned others. It may be well merited success and it may be good luck that will complete for each student the semester's work. But whatever it is the Cardinal wishes you a wealth of it.

* * *

BEFUDDLED

Are you horribly upset because the old ideas which used to form the basis of your philosophy and to seem the foundation of all truth have melted away into a mere shadow as you approach the pitiless light of scientific fact? Are all the things which used to inspire your efforts and your enthusiasm as you looked out upon a seemingly simple world naively and unquestioningly through your first pair of comfortably fitting colored glasses faded into nothingness, leaving you to group in a blinding light?

The tottering of old ideas and habits of thought, though it must upset one's complacency temporarily, need not disturb the student too much if he but remember that it is a process which everyone must go through in forming a philosophy with a solid foundation. It is the beginning of wisdom to face the blinding light and confess to oneself that the universe is not as simple as it at first seemed. The road to truth is strewn with the dead bodies of old ideas.—University of Washington Daily.

* * *

Portraits of six Wisconsin scientists were engraved on a medallion recently struck to commemorate the semi-centennial of the Wisconsin Academy of Sciences, Arts, and Letters.

* * *

"Distinguished Rating" has been won four times by the student cadet regiment of the university—in 1915, 1916, 1920 and 1921.

* * *

Many public libraries in Wisconsin cities are in charge of graduates of the Library school.

* * *

How to detect forgery was recently studied and tested by students in the psychology department of the university.

* * *

A total of 4,785 bachelor of science degrees have been granted by the university.

BULLETIN BOARD

PROM CARDINAL

and corrections will be received up to Tuesday, Jan. 31. Mail to C. P. MacInnis, 131 Langdon street.

ICE CARNIVAL ENTRIES

Men entering races for the ice carnival should call Gilbert Hoffman at F. 200. Women, call Marg Daly, at F. 156.

LETTERS ON "MIRRORS"

The Commerce Magazine invites communications from faculty and students on their survey feature, "The Wisconsin Mirror." Please send all communications to the editor, 630 Lake street, or Sterling hall.

BAND MUSICIANS, ATTENTION

Students wishing to try out for positions in the Regimental bands for the second semester may do so by appointment, beginning at once and lasting throughout the period between semesters. For appointments call at room 3, Music hall.

BADGER CLUB

All university men and women are cordially invited to the meeting of the Badger club Sunday at 8 p. m. Justice Rosenberry of the State Supreme court will speak on "Christian Citizenship."

ITALIAN 1A

Italian 1a will be given in the second semester. The hour will be 1:30, the room to be announced later. Students wishing to register for the course are requested to see Mr. Lipari at 321 Bascom hall.

ST. FRANCIS SOCIETY

Supper will be served Sunday evening at 6 o'clock in the club house, at 1015 University avenue. There will be a short meeting of the St. Francis society at 5:30 Sunday evening.

PHYSICAL ED EXERCISES

All excuses for absence from gymnastics and sports for the first semester must be in by noon, January 25.

LATIN 10

Classical Mythology, scheduled as Latin 10, will be repeated the second semester. The lectures are illustrated from ancient art. The course may be taken for one or two credits, and knowledge of Latin is not required. The hour will be 9 o'clock on Tuesday and Thursday in 260 Bascom hall.

University Churches

FIRST CHURCH OF CHRIST, SCIENTIST

240 West Gilman
11 a. m. Morning service, subject, "Truth."
9:45. Sunday school.
8 p. m. Wednesday meeting.

FIRST UNITARIAN

Wisconsin avenue and Dayton.
9:30 a. m. Church school in parish house.
10:30. Regular service, topic, "The Spirit of Liberalism."

SECOND CHURCH OF CHRIST, SCIENTIST

263 Langdon
9:30 a. m. Sunday school.
11:00. Morning service, subject, "Truth."
8 p. m. Wednesday meeting.

PRESBYTERIAN

State and Murray
10:45 a. m. Morning worship, subject, "The Steady Power of Faith."
5:30 p. m. Social hour and supper.
6:30. Discussion: Ideals of Education.

FIRST CONGREGATIONAL

West Washington avenue and Fairchild.
9:30 a. m. Church Bible school.
10:30. Morning worship. Sermon, "Possession a Trust."
5:00. Young people's social hour.
6:30. Christian Endeavor meeting.

Largest Art Exhibit Has Choice Painting

The present art exhibit at the museum is the largest this year. There are 37 paintings of Roy Brown's, and four by Frederick Waugh. Roy Brown's work is thoroughly American in feeling and he is considered to be one of America's choicest landscape painters. His three watercolors reveal a style of great beauty and flexibility.

The painting called, "In the Adirondacks," is almost purely decorative with its flatly curved tree forms and its lack of perspective. Two others in the same group, "Pines and Snow," and "The Wood Road" show imaginative realism.

One of the nicest of the smaller paintings which are hung on the south wall is "The Bridge." It has particularly good composition with a strong horizontal line dominating and giving restfulness.

The larger paintings have more vigor than the smaller ones. The two largest pictures, "The Big Hill," and "Autumn, Connecticut," are companion pieces in subject and treatment. Both must be looked upon as decorative compositions. "The Big Hill," remarkable for its strength and ease of lines, is the masterpiece of this exhibition.

UNIVERSITY METHODIST EPISCOPAL

University avenue and Charter.
9:30 a. m. Bible school. Campus Christianity, freshmen only.
10:30. Public worship and sermon.
12 m. Survey of the Bible; Social Christianity, women only; The Bible in Our Civilization; A Rational Basis of Belief.
5 p. m. Wesley (high school) Epworth league.
5:30. Cost supper and social hour.
7:00. University Epworth league
7:30 p. m. Wednesday, adult Bible class.

LUTHER MEMORIAL

626 University avenue
8 a. m. First morning service.
9:30. Student Bible classes.
10:45. Second morning service.
5:30 p. m. Social hour and cost supper.
6:45. Luther league.

Take Flashlights

of your room and bunkmate
—of the "gang"—of the little impromptu parties, etc.

It's the little "doings" that add the "trimmings" to your college days—yet you are inclined to go through school with never a thought of preserving the memory of it all in picture form.

Take Kodak flashlights—we make no charge for telling you how.



Wm. J. Meuer, Pres.

Registration For Second Semester

1921-22

The following regulations apply to all undergraduate students in the College of Letters and Science, Engineering, Agriculture, Medicine, Law, and the School of Music, who are in attendance during the present semester.

1. The rule regarding absences from first recitations after Christmas recess applies to the opening of the second semester. Students will be held responsible for attendance on the first exercises of all classes for which they have registered.

2. College of Letters and Science and Agriculture. Students must arrange the studies for the second semester by personal consultation with the adviser before the close of the first semester. Each adviser will post on his office door a statement of the hours when he may be consulted during the examination period and on registration days.

3. College of Engineering. Students who did not register on the 20th or 21st are urged to register at the Registrar's office early, during the first week of the examination period if possible.

Engineering advisers may be consulted on Thursday, January 26th. They will post their office hours for the above date on their office doors.

All advisers will register engineering students on Thursday, February 2nd, from 2 to 4 p. m., and on Friday, February 3rd, from 9 to 12 and 2 to 4. The advisers of freshmen will be in the Engineering Library during the above hours.

4. The Registrar's office is open for registration during the examination period and students are urged to register during the first week. Registration days are Thursday and Friday, February 2nd and 3rd.

5. University fees must be paid before class cards are issued. Fees may be paid at the Bursar's office, Administration Building. Office hours—8:30 a. m. to 12:30 p. m., and 2:00 p. m. to 4:00 p. m. An additional fee of one dollar must be paid by students paying fees after February 3rd.

6. Bonus students—see notice in time table of classes.

W. D. HIESTAND,
Registrar.

January 20, 1922.

READ CARDINAL ADS Read Cardinal Ads

FELLOWS! Our Reorganization Sale Continues Today and Next Week

We have listed a few items below which will give you an idea of the great bargains we are offering you in this sale. Prices are cut sharply and on such lines as Wilson Bros, Arrow Collars, Van Huesen Collars, Luxite Hosiery, etc. Come today while stocks are still complete.

Van Heusen Collars

"They do Not Wrinkle"
Regularly sold at 50c each, on sale at 3 for\$1.00

All Arrow Collars

All sizes and styles, price 20c each, sale price, 4 for50c

Caps

Unrestricted choice of men's Caps at \$1.50

Flannel Shirts

Well made of "all wool." Colors, gray, olive drab, plain colors and in checks. They are \$6.00 values, but we are selling them at..\$4.00

Special Shirts

Wilson Bros and Arrow shirts, the best on the market. You can get three shirts at the sale for what you would ordinarily pay for two.

Silk Shirts

Crepe de Chine, Jersey, and tub silks, values up to \$9.00 on sale at\$6.50

One lot of Silk Shirts formerly selling at \$7.00, sale price..\$4.75

Shirts of fibre silk, regularly sold at \$4 and \$5, sale price....\$2.85

Shirts of Woven Madras

In many stripes and colors, some are plain, \$3.50 values at..\$2.35

One lot of shirts, values from \$2.00 to \$2.50, sale price..\$1.35

Shirts

Particularly in small sizes, formerly \$1.50 to \$2.00, now..85c

Hosiery for You

Wilson Bros., Luxite, and Phoenix, the leading brands. It will pay you to buy several pairs at these prices.

Pure silk hose, regular 75c value, sale price55c

Fibre silk hose in brown or black, regular 45c and 60c values, we are selling them six pairs for\$2.60

Lisle hosiery, regular 40c values on sale only at.....25c

All our 25c hosiery will be sold at six pairs for\$1.00

A special lot of English wool hose, all sizes and prices to be sold at, a pair65c

Sweaters

All sizes, colors and styles, they are of the finest wool, and we are selling them at a discount of

33 1-3 per cent

Leather Vests

Designed for sport, but unexcelled as a practical garment for every day use, all on sale at a discount of

25 per cent

Sport Jackets

In browns, heathers, and mixed greens. They are unusual values. On sale at a discount of

33 1-3 per cent

Hightop Shoes

They're mostly army lasts, in tans and dark brown, 16 inch tops, values \$8, \$8.50, on sale at \$6.85

The prices quoted will enable you to make great savings in high-grade Men's Furnishings.

THE TOGGERY SHOP

1347 University Ave.

Discounts 20% to 35%

We'll be open evenings next week as well as this evening.

Registration Will Begin on Monday

(Continued from Page 1)

this semester. English 33, "Introduction to English Literature," provides the first semester's work of a new required sophomore course in literature for the general A. B. degree. Professors Pyre and Roberts are offering the course. Dr. D. S. Robinson will have charge of a new three-credit course in the Department of Philosophy.

"Auto-mechanics" is a new course in industrial education and applied arts. Although it is termed a popular course it may not be counted toward graduation except by students in the School of Education.

Money Given in Economics

Dr. G. H. Stuart is offering a two-credit course on "France and the Diplomacy of the War," in the department of political science. The course will deal with international law and diplomacy during the pre-war period and the time since the peace treaty. It is open to majors in political science and history.

The department of economics offers the greatest number of new courses. Prof. J. G. McKay will conduct a two-credit course in "Banking Systems," with "Money and Banking" as a pre-requisite. "Capitalism and Socialism" is a three-credit course open to seniors which is offered by Dr. John R. Commons. Dr. R. T. Ely will have charge of a three-credit course in urban land economics.

New French Course Offered

"International Economic Policies" will be the subject of a two-credit course conducted by Dr. W. H. Kiekhof. "Railway Finance," with "Railroad Transportation" as a pre-requisite, is a three-credit course offered by Dr. S. L. Miller. Senior standing is necessary before a student can take the new course in "Technique of Field Investigation" under Prof. D. D. Lescohier.

Prof. Charles Cestre, of the University of Paris, is offering two new courses in French and one in comparative literature. "French Civilization" is a one- or two-credit course in French with French 16 as a pre-requisite. "French Lyric Poetry," a three-credit course, is the second course offered by Professor Cestre. "French and English Romantic Poets," in comparative literature, is a three-credit course under Professor Cestre with "General Survey of English Literature" as a pre-requisite.

Classified Ads

Rates 1½¢ per word. Ads accepted over phone only from parties listed in the phone directory.

FOR SALE—Dress suit, size 38. Brand new. Can be seen at 413 State street, second floor. tf.

PERSON who found leather jacket last fall, please ring B. 1305 again.

RENT A CAR and drive it yourself. Basement Lake City Garage. F. 257. Flaherty Bros. tf.

FOR SALE—Dress suit, size 40; very good condition. Pantorium company, 538 State street. 19x3

FOR RENT — On University Heights, exceptionally large double room with two clothes closets. Also privilege of board. B. 3435. 19x3

AMATEUR THEATRICAL ARTISTS! For sale: quantity of gentlemen's apparel, including Prince Alberts, old Eng. goods; also tall silk hats in leather case, wigs, etc. Pyman, 210 State. B. 5249.

LOST—Green gold ring, bright blue opal setting, probably on Wingra Park street car. Reward. Call B. 5400.

XYLOPHONE — Without resonators; complete with stand and mallets, for sale reasonable. May be seen at any time at 728 W. Johnson street. B. 1804. 20x2

FOR SALE—New tailor made dress suit to fit man 6 feet tall, and weighing about 200 pounds. Call B. 5641. 20x2

LOST—Gold locket containing four photos. Call B. 4830. 20x2

FOR RENT—Large pleasant front room and alcove. Reasonable. 114 N. Charter. F. 557. 20x2

LOST—Gold Eversharp, Wednesday afternoon on State street, between square and Lawrence's. B. 7054. 20x2

FOR RENT — Large sunny two-room apartment; also single room. 111 N. Warren. F. 1176. 20x2

LOST—Gold Eversharp. Engraved B. F. L. Phone B. 6574.

FOR RENT—Large front room. First floor. For girls. B. 6877. 20x2

FOR RENT—Modern, nicely furnished room, very warm. University district. Meals convenient distance. Phone B. 6661.

LOST—A slide rule in Engineering building. Initials C. H. M. Call F. 1797.

FOUND—Striped muffler, Thursday, in Sterling hall. Call B. 3057.

LOST—Silver pencil with Delta Zeta crest. In library or on Langdon. F. 272.

FOR RENT — Nicely furnished rooms for gentlemen. Fine location. 640 N. Francis.

WHY NOT GET YOUR TYPING DONE DURING VACATION at reasonable price? Call F. 932 or enquire at this office. B. 6606.

FOR RENT—Double and single room. 403 W. Washington avenue.

FOUND—On Henry street, in front of D. K. E. house, a silver finger ring with dark red stone. Call B. 159.

LOST—On State street or University avenue, small book published by Y. M. C. A. press. Please phone B. 6354.

FOR SALE—Full dress suit in excellent condition; size 37. Reasonable. Call Don Murphy at B. 3646.

MORGAN'S MALTED MILK

TYPEWRITERS RENTED

Special Rates to Students

Special bargains in standard makes of rebuilt typewriters. All makes repaired or exchanged. See our new Gourland portable typewriter. This machine has a standard keyboard. Wisconsin Typewriter Exchange 519 State B. 1970



LAST TIMES TODAY

WILL ROGERS
And Sidney Ainsworth in

DOUBLING FOR ROMEO

BY
ELMER LEACE WILL ROGERS WILLIAM SHAKESPEARE
(ONE OF THESE BOYS WAS FAMOUS)

**"The Beggar
Maid"**

A Picture inspired by the
painting by Sir E. Burne-
Jones and the poem of Alfred
Lord Tennyson.

ALSO—"MADISON WINTER SPORTS"

STARTING SUNDAY

Double Feature Program

Mack Sennett Presents

BEN TURPIN

In His Latest Comedy

"BRIGHT EYES"

Also

"THE OLD OAKEN BUCKET"

A Picturization of the Song of a Century

FIRE SALE

OPENS MONDAY MORNING

Thurringer-Garbutt's \$50,000 High Grade Stock of General Dry Goods and Ready-to-Wear, partly damaged by smoke and water, all goes on sale Monday for a complete close-out. It's your golden opportunity. Come and get your share of the Bargains.

THURINGER-GARBUTT COMPANY

430 State Street

Arrangement of 1923 Prom Boxes

North Wing

GROUND FLOOR

Conservation Commission
Sigma Upsilon — Rooms 10 and 12
Delta Sigma Phi — Rooms 14 and 16

FIRST FLOOR

Banking Commission
Chi Psi—Room 146
Phi Psi—Room 146
T. K. E.—Room 107
Public Instruction Commission
Pi Kappa Alpha—Room 147
Chi Phi—Room 147
Square Club—Rooms 121 and 123
Civil Service Commission
Theta Xi—Rooms 134 and 136
Triangle—Room 138

SECOND FLOOR

Railroad Commission
Theta Chi—Rooms 226, 228 and 230
Phi Sigma Delta—Rooms 223 and 225
Sigma Phi—Rooms 234 and 236

East Wing

GROUND FLOOR

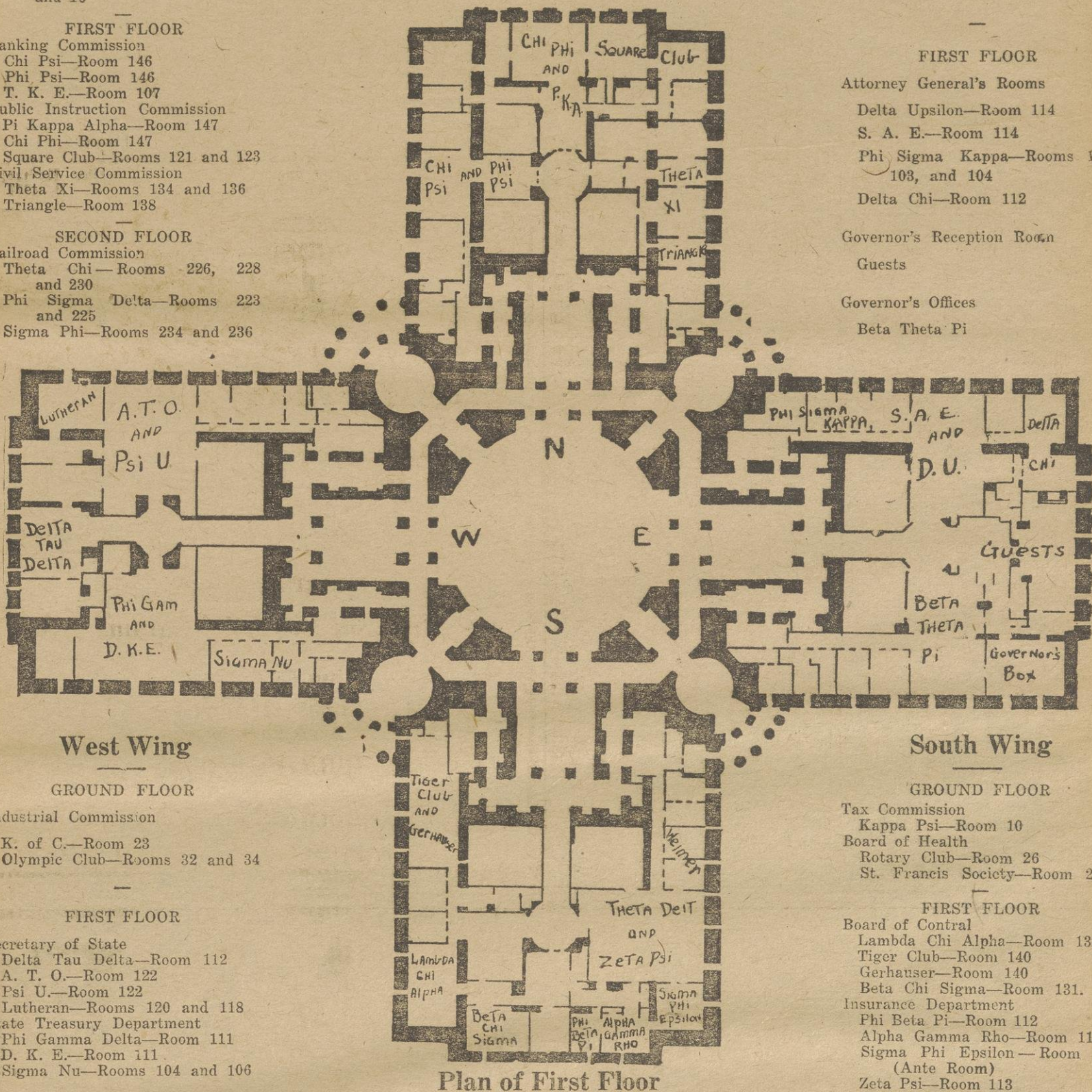
National Guard Commission
Alpha Sigma Phi—Rooms 29 and 31

FIRST FLOOR

Attorney General's Rooms
Delta Upsilon—Room 114
S. A. E.—Room 114
Phi Sigma Kappa—Rooms 102, 103, and 104
Delta Chi—Room 112

Governor's Reception Room
Guests

Governor's Offices
Beta Theta Pi



Plan of First Floor

West Wing

GROUND FLOOR

Industrial Commission
K. of C.—Room 23
Olympic Club—Rooms 32 and 34

FIRST FLOOR

Secretary of State
Delta Tau Delta—Room 112
A. T. O.—Room 122
Psi U.—Room 122
Lutheran—Rooms 120 and 118
State Treasury Department
Phi Gamma Delta—Room 111
D. K. E.—Room 111
Sigma Nu—Rooms 104 and 106

SECOND FLOOR

Assembly Parlors
Arthur Trost
Acacia

South Wing

GROUND FLOOR

Tax Commission
Kappa Psi—Room 10
Board of Health
Rotary Club—Room 26
St. Francis Society—Room 26

FIRST FLOOR

Board of Control
Lambda Chi Alpha—Room 132
Tiger Club—Room 140
Gerhauser—Room 140
Beta Chi Sigma—Room 131.
Insurance Department
Phi Beta Pi—Room 112
Alpha Gamma Rho—Room 119
Sigma Phi Epsilon—Room 119
(Ante Room)
Zeta Psi—Room 113
Theta Delta—Room 113
B. A. Weiner—Room 107 and 109

SECOND FLOOR

Senate Parlor
Kappa Sigma
Phi Delta Theta

WOMEN'S REST ROOMS

Railroad Commission—North Wing, Second Floor
Senate Chamber—South Wing, Second Floor

Polygon Chooses Henry as Leader

Edison E. Henry '22 was made president of Polygon, at a recent meeting, to succeed Lyle C. Harvey, who is graduating at the end of this semester. The present secretary and treasurer, Fred W. Nolte, remains in office.

Polygon is the student executive committee of the engineering college. Its members represent all of the engineering societies and clubs, two being chosen from each organization, so that the energies of the various groups may be centralized and co-ordinated on all matters of general interest.

"Polygon will stage a parade on St. Patrick's day," says Edison Henry, the new president, "that will make all previous efforts look like the funeral procession of a Mexican peon."

Open Rooms Listed at Office of Dean

Rooms available to students for the second semester are listed at the office of the dean of men and information concerning them can be secured there.

Students are not allowed to change rooms during the semester after having contracted for them and each student is advised to make sure he will be satisfied before engaging a room. Landladies must be notified when rooms are to be vacated to enable them to find new tenants.

Dean S. H. Goodnight suggested in an announcement yesterday that students who are planning to change rooming houses between semesters should consider carefully the price, location, and service of the new rooms before moving.

Prom Players to Rehearse Monday

The first rehearsal of the entire prom orchestra will be held Monday night with all 21 players directed by Al Thompson.

Special numbers have been under rehearsal for several weeks. These include a saxophone sextet, a clarinet specialty by Willard Sumner '23, a cornet selection by Cecil Brodt '22, a violin quartet feature, and the prom fox trot number on a double piano, with Dave Chudnow and Elliot Gilmore.

Short Horns Will Hold Party Today

A party for all short course men will be held in the Historical Library museum this afternoon at 2 o'clock. Arrangements for special lectures and a trip through the museum have been made.

TYPEWRITERS
If you want to buy. If you want to sell. If you want to rent. If you want repairs—SEE
KELLEY
521 State F. 422

Dr. V. G. Bancroft
Dr. J. A. Bancroft
DENTISTS
Badger 3682 901 Univ. Ave.

"If You Can Walk—
I'll Teach You to DANCE"
SARI FIELDS
The New Dances
"SOCIETY WALK" "THE SAUNTER"
Results Guaranteed—B 1806 for Terms

FROST AND HIGLEY ARRANGE PROM MUSIC AND FEATURES



MORTON C. FROST

Morton C. Frost has charge of the music committee of the 1923 Junior Promenade. The committee heard proposals of various out-of-town orchestras, who offered to furnish syncopation for Prom.

Frost is a member of Phi Gamma Delta fraternity, Ku Klux Klan, and Skull and Crescent. He is also a member of Union board, and is Junior class treasurer.

Parker H. Higley is special features chairman of Prom. Acts for



PARKER H. HIGLEY

—Courtesy Hone & McKillop

the entertainment of promenaders during dancing intermissions have been arranged by his committee. He is depended upon to provide the lighting effects at the capitol and his committee is working in close co-ordination with the decorations committee.

Higley is a member of Acacia fraernity and of the Chemistry club. He was ticket manager of the 1921 class play.

the opportunity for development of natural resources has never been equaled, and the reward will be great for the men who lead the way in opening up the backward countries of the world to the commerce of the United States.

WEATHER

The highest temperature during the last 24 hours, ending at 9 a. m. today, was 7 at 4 a. m., and the lowest was 2 at 7 p. m. Sunsets at 4:55.

The cold wave reached the central states this morning with a minima of 5 degrees in the lower lake region and in the Ohio valley. The temperature has risen rapidly in the west where southerly winds accompany low barometer. Northerly winds and another cold wave fol-

low the low in the Saskatchewan valley.

Copy for the Society column of the Sigma Delta Chi Prom Cardinal is due Friday, Jan. 27.

READ CARDINAL ADS

KEHL'S NEW DANCE STUDIO
3-5 N. Pinckney St.
Over Metropolitan Store

We teach you to dance to lead and follow

Terms most reasonable in the city.

Lady or gentleman teacher

Phones—Studio, F. 561

Residence, B. 1770

Flowers and Decorations for Prom

We call your attention to the fact that we are now booking orders and contracting for Floral Decorations for house parties. We are especially well prepared to take care of you for Prom week.

Our large greenhouses of 100,000 square feet of glass devoted entirely to cut flowers and decorative material, enables us to give you the very best and freshest stock.

Let us know your wants so we can give you figures.

Rentschler Floral Co.

Store 226 State St.

Phone B. 179

Greenhouses and Nurseries next to Cemeteries. B. 3877

Bateman Tells Of Wood Preservation In Engineer's Mag

"If a drop of a certain liquid will kill a bug in 10 minutes, how long will it take a fence post to rot off" sounds like a bit of sarcasm aroused by some of the numerous questions that are always asked about this time of the year, but it isn't. It is a question that is being answered by Ernest Bateman, chemist at the Forest Products laboratory in his treatise, "The Mechanism of the Protection of Wood by Preservatives," which begins in the January issue of The Wisconsin Engineer.

In this article Bateman demon-

strates that the relation between the life in minutes of the limnori, a wood destructive organism, and the concentration of the wood preservative fluid may be represented by an equation. The mathematical proof of the theory has required about three years of research work at the laboratory, but, by means of the equations developed, it is possible to foretell the exact length of life of wood products under various conditions.

In the discussion of "The Problem of Automobile Springs," by A. S. Krotz, senior mechanist, he claims that mass production and the unwillingness of the buying public to accept anything without a familiar trade-mark on it have hampered development in the riding qualities of the modern car.

A. F. Rohlfing, in an article on the "Opportunities for the Engineer in Foreign Countries," states that

**Send Those
Dresses, Gloves, or that
Dress Suit to the
Pantorium Today
and Get Careful Attention
Avoid Worry at the last minute
Call Badger 1180 or Badger 1598**

Submit Fifty Plays In Spanish Contest

About 50 plays have been handed in for the contest which is being held by the Spanish club to secure the four best Spanish plays written by students. The committee on prizes will announce the best four plays at the beginning of the second semester. One of these short comedies will be presented at each of the meetings of the Spanish club during the coming semester.

"I am very much pleased with the result of our contest," said Heriberto Sapper, president of the club, "and very glad to find such an interest for the Spanish club among the students."

The club plans a sleigh-ride party for Tuesday, Feb. 7.

Presbyterians Elect 4 Church Trustees

Four trustees were elected to complete the new organization of the University Presbyterian church, Wednesday night, at the first congregational banquet and meeting at Student headquarters. Those elected were Herman Huffman, Marion Hosack, Martha Whitlock, and Roland Baker. Twenty-eight members were present.

Prof. Haake Speaks To Student League

"Honor in Examination" will be discussed by Prof. A. P. Haake, of the commerce course, before the University Student league at 7 o'clock Sunday evening, at Wesley hall.

Professor Haake has during his student days and as a faculty member advocated an honor system, emphasizing his belief in the integrity of most students, and urged upon the university a more general use of an honor system.

A. O. Pis Lead in Sorority League

The standings of the sorority bowling teams are as follows:

Team	Won	Lost	Pct.
A. O. Pi	15	3	.83
Alpha Gamma Delta	20	7	.74
Alpha Xi Delta	15	6	.71
Kappa Delta	16	8	.67
Delta Zeta	13	8	.62
Alpha Chi O.	11	10	.52
Pi Phi	11	13	.46
Chi Omega	7	14	.33
Theta	6	12	.33
Achoth	4	20	.17
Kappa	2	19	.10

READ CARDINAL ADS

Baptists to Have New Club House

The Francis Wayland foundation has just purchased the structure at 429 North Park street from L. J. Pickarts, for \$17,500. The house will be used as a club house for Baptist students. Rev. J. B. Gleason will act as supervisor.

Miss Hazel West

Dancing Instructor
BOYD'S STUDIO
All the latest steps
Private lessons by appointment
B. 2729 and B. 4435

THE WAR IS OVER
20c Meal again

State Coffee House
306 State St.

Choice Table Board

MRS. JONES

209 Bernard Court

1½ Blocks From Campus

Try it a week—You'll like it

Real Home Cooking

To Look Your Best Tomorrow

Take care of your skin to-
night before retiring

MARINELLO

Tissue Cream for dry skin,
Acne Cream for Pimples,
Astringent Cream for large
pores, Lettuce Cream for
Cleansing, Whitening Cream
for Bleaching.

MRS. W. WENGEL
225 State

Bewitching Prom Gowns

Made as only a creative dressmaker can make them. There is still time to get one made up for Prom at

Lucile Q. Wolfe's

28 Vroman Block

Fairchild 1422

CLEANLINESS SERVICE QUALITY

A combination of them all is what you get
at the

The Varsity Cafe

831 University Ave.

MILWAUKEE

Get Set for ACE OF CLUBS' Big

Mid-Semester Hop

to be given at the

Athenaeum

Corner Cass and Biddle Sts.

on

Friday, Feb. 3

with Music by

The Seven Piece Donges Bay Orchestra

at 12 O'Clock

A Special Mid-nite Cabaret

Also

Dancing Till 1 O'Clock

Refreshments for you in the lounge rooms

Admission—Per Couple \$1.50

Payable at Door

This charge includes the War Tax

Dancing Every Friday at the Athenaeum

PARKWAY 27-28

THEATER

Friday—Saturday Jan.

Special Saturday Matinee

The greatest dramatic sensation in the history of the stage and the
play that broke all records in Chicago!

The Dramatic Smash!



By Mary Roberts Rinehart and Avery Hopwood
Full of fun and thrills—Sensation follows Sensation

LAUGHS AND THRILLS

MAIL ORDERS NOW—SEAT SALE

JANUARY 31

Prices:

Night—\$2.50, \$2.00, \$1.50, \$1.00
Matinee \$1.50, \$1.00

Plus Tax

Read Cardinal Ads

Read Cardinal Ads

Keeley-Neckerman Co.

HARRY S. MANCHESTER

The Prom of Proms--- Only 11 Shopping Days Away

Can't you almost hear the first alluring melodies?

Gay laughter, soft lights—everything just perfect if you realize that all-important knowledge that you look your very best.

To help you make this your "Prom of Proms," we have spent much thought in selecting just what you will want—in short, we have made this a Prom Store.



Fluttering Fans Join Hands with Beauty

Many Admiring Glances

She who judiciously carries a fan of feathers is destined to win many admiring glances over its fluttering plumes. A new shipment brings us many new styles, including many black ones of from one to five sweeping plumes, ranging in price from \$6.50 to \$25.

Tangerine, turquoise, American Beauty, orange, hennas, shell and orchid are among the many shades priced at from \$7 to \$15.

Smart Hose

Made Festive with Handwork

Italian hand embroidered and hand drawn black silk hose, \$9 to \$13.50, less one-third discount.

Silver and gold lace hose with clocks, \$4.50.

Black Italian silk lace hose, \$4.50.

Black silk fishnet hose, \$3.50.

Long Kid Gloves

For Formal Wear

Imported French Kid Gloves 16 button length, pearl buttons, \$8.

20 Button or shoulder length, \$9.

Slipper Pins, \$3

Jeweled slipper pins of rhinestones and silver are sure to find favor on gay little dancing slippers.

Slipper buttons, \$2.50 a pair.



New Prom Gowns

Continue to Arrive

She who has not yet chosen her Prom gown need not fear, as she will find charming new formal dresses here—and new ones appear almost every day.

New Silks

That Reflect the Spirit of Prom

She who is designing her own dress will find here the material that best falls in with her ideas. Changeable Gros de Londres, taffetas, and satins are most favored.

Changeable Gros de Londres, 36 in., \$3.25. In combinations of rose and silver, silver and blue, this is most desirable, and it's richer and heavier than taffeta.

Changeable Satin 36 in., \$3.50. American Beauty and silver, or pink and maize, are the exquisite combinations to be had in this rich fabric.

Changeable taffeta, 36 in. wide, \$2.50. Peach and rose, silver and blue, are the dainty combinations.

For Lingerie De Lux

Mallinson's Washable Pussywillow

Soft as thistledown, strong as broadcloth, comes this New York creation for superfine lingerie. The delightful "feel" and double wearing strength more than offset the extra cost. Colors are pink, flesh, white, pearl grey, and black.

With every piece we will give you, without charge, any pattern you may select from specially designed Mallinson underdress patterns.

Price \$3.75 a yard, 40 inches wide.

The Charm of Floating Draperies

Not Overlooked by the Thoughtful Girl.

A range of colors as wide as the rainbow distinguishes our malines and tulles.

Tulles, 72 in. wide, \$2.50, less 20%.

Malines, 27 in. wide, 60c, less discount.

