



# LIBRARIES

UNIVERSITY OF WISCONSIN-MADISON

## **Wood type, wood materials, equipment and supplies for printing : American Wood Type Mfg. Co. catalog no. 36.**

Chicago (608 So. Dearborn Street): American Wood Type Mfg. Co.,  
1936

<https://digital.library.wisc.edu/1711.dl/LK6J4UKT6Z2SG8A>

<http://rightsstatements.org/vocab/InC/1.0/>

The libraries provide public access to a wide range of material, including online exhibits, digitized collections, archival finding aids, our catalog, online articles, and a growing range of materials in many media.

When possible, we provide rights information in catalog records, finding aids, and other metadata that accompanies collections or items. However, it is always the user's obligation to evaluate copyright and rights issues in light of their own use.

# AMERICAN WOOD TYPE MFG. CO.

NEW YORK   ▪   ▪   ▪   ▪   ▪   CHICAGO

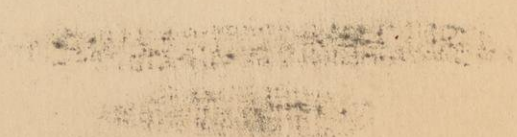
**WOOD TYPE - WOOD MATERIALS - EQUIPMENT AND SUPPLIES FOR PRINTING**

Rec'd 3-1-40

**CATALOG  
NO. 36**

1850

...



...

## Catalog No. 36

In this catalog are shown the standard wood type faces and a number of distinctive modern styles never before made in wood type. Here are also offered wood goods valuable in printing — and a complete line of printer's equipment and supplies. Printing with wood type and wood materials still remains the simplest and by far the most economical form of printing. Our products have been tested over a number of years and found to be of the highest quality.

### Contents

	Page		Page
GOTHIC TYPE .....	3- 6	LARGE TYPE .....	20-26
GOTHIC ITALICS .....	7	SPECIAL FONTS .....	27
COOPER BLACK .....	8- 9	WOOD RULES AND BORDERS .....	28-29
CHELTENHAM BOLD .....	10	ORNAMENT FONTS .....	30-31
MODE (like Futura) .....	11-13	TINT AND VARNISHING BLOCKS ..	32
RUGGED (like Neuland) .....	14	WOOD ENGRAVING .....	32
SHADOW (like Umbra) .....	15	REVERSE PRICE CUTS .....	33
EXTENDED GOTHICS .....	16	CALENDAR SETS .....	33
REX (like Girder) .....	17	REGLETS AND FURNITURE .....	34
ULTRA BODONI .....	17	CUTTING STICKS .....	34
MODERN SCRIPT (like Trafton) .....	18	COMPOSING ROOM EQUIPMENT ..	35
FOUR AND FIVE LINE TYPE .....	19	PRINTER'S SUPPLIES .....	36

# American Wood Type Mfg. Co.

~~608 So. Dearborn Street~~  
~~Chicago~~  
608 So. Dearborn Street  
Chicago

## Wood Type Price List

(SUBJECT TO CHANGE WITHOUT NOTICE)

- 12 Points = 1 Line or Pica; 6 Lines or Picas = 1 Inch.
- The price of any style of wood type depends on its classification. The class of each style is shown in brackets on the top of each page, directly under the name of the type face.
- Prices listed are in cents per character (when ordered) in fonts.

### SORT PRICES

- In quantities of less than 26 characters (one size and style) add 50% to font price per character as listed above.
- In quantities of more than 26 but less than 65 characters (one size and style), add 10% to font price per character, as listed above.
- In quantities of 65 or more characters (one size and style) regular font prices per character, as listed above, apply.
- Minimum order, \$1.00.

LINES OR PICAS	Class L	Class M	Class N	Class O	Class P	Class Q	Class R	Class S	Class T	Class U
2	.06	.06	.06	.06	.06	.06	.08	.10	.13	.16
3	.06	.06	.06	.06	.06	.06	.08	.12	.15	.18
4	.06	.06	.06	.06	.07	.07	.08	.12	.15	.18
5	.07	.07	.07	.07	.08	.09	.10	.15	.18	.21
6	.07	.07	.07	.07	.09	.11	.12	.17	.20	.23
8	.09	.09	.09	.09	.11	.13	.14	.19	.23	.27
10	.11	.11	.11	.11	.13	.16	.17	.21	.26	.31
12	.13	.13	.14	.14	.16	.19	.20	.25	.30	.34
14	.15	.16	.17	.16	.18	.22	.24	.28	.32	.36
15	.15	.16	.17	.17	.20	.23	.26	.30	.34	.38
16	.18	.19	.20	.18	.21	.24	.27	.32	.36	.40
18	.18	.19	.20	.20	.23	.26	.30	.35	.39	.44
20	.20	.21	.22	.22	.26	.30	.34	.39	.42	.46
24	.24	.25	.26	.26	.30	.34	.38	.44	.47	.50
25	.25	.26	.27	.27	.32	.36	.40	.47	.50	.52
30	.30	.31	.32	.32	.37	.42	.46	.54	.57	.60
36	.36	.38	.39	.39	.44	.49	.53	.59	.62	.65
40	.40	.42	.43	.43	.48	.53	.59	.63	.66	.69
45	.50	.51	.52	.53	.58	.67	.73	.74	.77	.80
50	.60	.61	.62	.63	.68	.77	.83	.84	.87	.90
60	.70	.71	.71	.71	.78	.88	.90	.93	.97	1.00
72	.88	.88	.88	.88	.95	1.05	1.08	1.10	1.20	1.20
80	.98	.98	.98	.98	1.03	1.13	1.17	1.20	1.30	1.40
100	1.20	1.20	1.20	1.20	1.30	1.33	1.36	1.40	1.50	1.60

● Prices of larger sizes on request.

## Wood Type Font Schemes

(SHOWING QUANTITY OF EACH CHARACTER IN EACH FONT LISTED)

### WOOD TYPE CAP AND LOWER CASE FONTS

CAP -- L.C.	3A-75 3a-60	4A-106 4a-86	5A-120 5a-100	7A-165 7a-134	9A-200 9a-164	12A-270 12a-220	15A-320 15a-261	20A-435 20a-357	30A-625 30a-511
A	3	4	5	7	9	12	15	20	30
B	2	3	3	4	5	7	8	10	15
C	2	3	4	5	6	9	10	14	22
D	2	3	4	5	6	8	9	12	17
E	4	5	6	9	11	15	20	26	38
F	2	3	3	4	5	7	8	11	15
G	2	3	3	4	5	7	8	10	15
H	2	3	4	5	6	8	9	12	17
I	4	4	5	7	9	13	15	22	32
J	2	3	3	4	4	5	6	8	10
K	1	2	2	3	4	5	5	8	10
L	3	5	6	7	7	9	11	15	22
M	2	3	4	5	6	8	10	13	18
N	3	4	5	7	9	13	16	22	32
O	3	4	5	7	9	13	16	22	32
P	2	3	3	4	5	8	9	12	17
Q	1	2	2	2	3	4	4	6	8
R	3	4	5	7	10	13	16	22	32
S	4	5	6	8	10	13	16	22	32
T	3	4	5	8	10	13	16	22	32
U	2	3	4	6	6	8	9	12	17
V	2	3	3	4	4	5	6	8	10
W	2	3	3	4	5	6	7	9	13
X	1	2	2	2	3	3	3	5	6
Y	2	3	3	4	5	5	6	9	13
Z	1	2	2	2	2	3	3	5	6
&	1	2	2	2	2	3	3	5	6
.	3	4	4	7	9	12	15	20	30
'	3	4	4	7	9	12	15	20	30
''	1	1	1	3	3	4	5	6	8
'''	2	2	2	3	4	6	7	9	14
...	1	1	1	2	2	3	3	4	6
!:	1	1	1	2	2	3	3	4	6
!:	2	3	3	3	3	4	5	6	8
?	1	1	1	2	2	3	3	4	6

### WOOD TYPE FIGURE FONTS

	No. 1 Font 26 Char.	No. 2 Font 40 Char.	No. 3 Font 65 Char.	No. 4 Font 90 Char.
Figure 1	4	6	9	12
Figure 2	3	4	7	9
Figure 3	2	3	6	8
Figure 4	2	3	5	7
Figure 5	2	4	6	9
Figure 6	2	3	5	7
Figure 7	2	3	5	7
Figure 8	2	3	5	7
Figure 9	2	3	5	7
Figure 0	4	6	9	14
\$	1	2	3	3

### IMPORTANT

- Cap Font Schemes and Lower Case Font Schemes are identical with this exception: Cap Fonts contain punctuation; Lower Case Fonts contain no punctuation.
- Cap Fonts, Lower Case Fonts or Figure Fonts may be purchased separately. Be sure to specify whether Caps, Lower Case or Figures are desired—also size of fonts desired.
- When ordering sorts, mention style, name or number as shown on each type page. We have many styles not shown in this catalog. For style not shown, send clear proofs of each character it is desired to match or at least clear proofs of H, R, S, A, M. Consult Sort Price List above for lowest prices in quantity.

Gothic No. 500  
(Class L)

SEE CORRECTED PRICES, PAGE 2

Gothic No. 510  
(Class L)

6 Line GOTHIC No. 500—7¢ per character in fonts  
3A Cap Font \$5.25; 4A Cap Font \$7.42; No. 1 Figure Font \$1.82

SECRETARY OF NAVY 3

8 Line GOTHIC No. 500—9¢ per character in fonts  
3A Cap Font \$6.75; 4A Cap Font \$9.54; No. 1 Figure Font \$2.34

MONTHLY SALE 16

10 Line GOTHIC No. 500—10¢ per character in fonts  
3A Cap Font \$7.50; 4A Cap Font \$10.60; No. 1 Figure Font \$2.60

DECORATOR 15

12 Line GOTHIC No. 500—12¢ per character in fonts  
3A Cap Font \$9.00; 4A Cap Font \$12.72; No. 1 Figure Font \$3.12

DESIGNER 2

15 Line GOTHIC No. 500—14¢ per character in fonts  
3A Cap Font \$10.50; 4A Cap Font \$14.84; No. 1 Figure Font \$3.64

ROSES 89

6 Line GOTHIC No. 510—7¢ per character in fonts  
3A Cap Font \$5.25; 4A Cap Font \$7.42; No. 1 Figure Font \$1.82

RECOVERY Act 3

8 Line GOTHIC No. 510—9¢ per character in fonts  
3A Cap Font \$6.75; 4A Cap Font \$9.54; No. 1 Figure Font \$2.34

GROUNDING 2

10 Line GOTHIC No. 510—10¢ per character in fonts  
3A Cap Font \$7.50; 4A Cap Font \$10.60; No. 1 Figure Font \$2.60

ENRICHES 1

12 Line GOTHIC No. 510—12¢ per character in fonts  
3A Cap Font \$9.00; 4A Cap Font \$12.72; No. 1 Figure Font \$3.12

RAIDER 6

15 Line GOTHIC No. 510—14¢ per character in fonts  
3A Cap Font \$10.50; 4A Cap Font \$14.84; No. 1 Figure Font \$3.64

BUNS 5

Gothic No. 540  
(Class L)

SEE CORRECTED PRICES, PAGE

Gothic No. 550  
(Class L)

6 Line GOTHIC No. 540—7¢ per character in fonts  
3A Cap Font \$5.25; 4A Cap Font \$7.42; No. 1 Figure Font \$1.82

**SOUND MONEY 1**

8 Line GOTHIC No. 540—9¢ per character in fonts  
3A Cap Font \$6.75; 4A Cap Font \$9.54; No. 1 Figure Font \$2.34

**RAINBOW 5**

10 Line GOTHIC No. 540—10¢ per character in fonts  
3A Cap Font \$7.50; 4A Cap Font \$10.60; No. 1 Figure Font \$2.60

**SHORN 13**

12 Line GOTHIC No. 540—12¢ per character in fonts  
3A Cap Font \$9.00; 4A Cap Font \$12.72; No. 1 Figure Font \$3.12

**GUIDE 2**

15 Line GOTHIC No. 540—14¢ per character in fonts  
3A Cap Font \$10.50; 4A Cap Font \$14.84; No. 1 Figure Font \$3.64

**RIGS 6**

6 Line GOTHIC No. 550—7¢ per character in fonts  
3A Cap Font \$5.25; 4A Cap Font \$7.42; No. 1 Figure Font \$1.82

**NORSE Men 3**

8 Line GOTHIC No. 550—9¢ per character in fonts  
3A Cap Font \$6.75; 4A Cap Font \$9.54; No. 1 Figure Font \$2.34

**BUSHES 2**

10 Line GOTHIC No. 550—10¢ per character in fonts  
3A Cap Font \$7.50; 4A Cap Font \$10.60; No. 1 Figure Font \$2.60

**ROBES 1**

12 Line GOTHIC No. 550—12¢ per character in fonts  
3A Cap Font \$9.00; 4A Cap Font \$12.72; No. 1 Figure Font \$3.12

**RIND 9**

15 Line GOTHIC No. 550—14¢ per character in fonts  
3A Cap Font \$10.50; 4A Cap Font \$14.84; No. 1 Figure Font \$3.64

**BEDS 5**

● The above styles made in any size to 100 line—sold in any size fonts or sorts. See Page 2 for complete Sort Prices, Price List and Font Schemes.

Gothic No. 590  
(Class M)

SEE CORRECTED PRICES, PAGE 2

Gothic No. 6243  
(Class M)

6 Line GOTHIC No. 590—7¢ per character in fonts  
3A Cap Font \$5.25; 4A Cap Font \$7.42; No. 1 Figure Font \$1.82

**SOUTHGIN 2**

8 Line GOTHIC No. 590—9¢ per character in fonts  
3A Cap Font \$6.75; 4A Cap Font \$9.54; No. 1 Figure Font \$2.34

**ROSES 5**

10 Line GOTHIC No. 590—10¢ per character in fonts  
3A Cap Font \$7.50; 4A Cap Font \$10.60; No. 1 Figure Font \$2.60

**DUCE 3**

12 Line GOTHIC No. 590—12¢ per character in fonts  
3A Cap Font \$9.00; 4A Cap Font \$12.72; No. 1 Figure Font \$3.12

**HOD 9**

15 Line GOTHIC No. 590—15¢ per character in fonts  
3A Cap Font \$11.25; 4A Cap Font \$15.90; No. 1 Figure Font \$3.90

**DIG 1**

6 Line GOTHIC No. 6243—7¢ per character in fonts  
3A Cap Font \$5.25; 4A Cap Font \$7.42; No. 1 Figure Font \$1.82

**CORN PIE 1**

8 Line GOTHIC No. 6243—9¢ per character in fonts  
3A Cap Font \$6.75; 4A Cap Font \$9.54; No. 1 Figure Font \$2.34

**RUGS 3**

10 Line GOTHIC No. 6243—10¢ per character in fonts  
3A Cap Font \$7.50; 4A Cap Font \$10.60; No. 1 Figure Font \$2.60

**DINE 5**

12 Line GOTHIC No. 6243—12¢ per character in fonts  
3A Cap Font \$9.00; 4A Cap Font \$12.72; No. 1 Figure Font \$3.12

**RID 9**

15 Line GOTHIC No. 6243—15¢ per character in fonts  
3A Cap Font \$11.25; 4A Cap Font \$15.90; No. 1 Figure Font \$3.90

**HE 8**

• The above styles made in any size to 100 line—sold in any size fonts or sorts. See Page 2 for complete Sort Prices, Price List and Font Schemes.



*Gothic No. 630*  
(Class N)

6 Line GOTHIC No. 630—7¢ per character in fonts  
3A Cap Font \$5.25; 4A Cap Font \$7.42; No. 1 Figure Font \$1.82

**RED Fur 1**

8 Line GOTHIC No. 630—9¢ per character in fonts  
3A Cap Font \$6.75; 4A Cap Font \$9.54; No. 1 Figure Font \$2.34

**SURF 8**

10 Line GOTHIC No. 630—11¢ per character in fonts  
3A Cap Font \$8.25; 4A Cap Font \$11.66; No. 1 Figure Font \$2.86

**HER 3**

12 Line GOTHIC No. 630—14¢ per character in fonts  
3A Cap Font \$10.50; 4A Cap Font \$14.84; No. 1 Figure Font \$3.64

**DIE 9**

15 Line GOTHIC No. 630—16¢ per character in fonts  
3A Cap Font \$12.00; 4A Cap Font \$16.96; No. 1 Figure Font \$4.16

**NO 1**

*Gothic No. 670*  
(Class O)

6 Line GOTHIC No. 670—7¢ per character in fonts  
3A Cap Font \$5.25; 4A Cap Font \$7.42; No. 1 Figure Font \$1.82

**ROBS 9**

8 Line GOTHIC No. 670—9¢ per character in fonts  
3A Cap Font \$6.75; 4A Cap Font \$9.54; No. 1 Figure Font \$2.34

**DUG 8**

10 Line GOTHIC No. 670—11¢ per character in fonts  
3A Cap Font \$8.25; 4A Cap Font \$11.66; No. 1 Figure Font \$2.86

**HR 2**

12 Line GOTHIC No. 670—14¢ per character in fonts  
3A Cap Font \$10.50; 4A Cap Font \$14.84; No. 1 Figure Font \$3.64

**BO 1**

15 Line GOTHIC No. 670—17¢ per character in fonts  
3A Cap Font \$12.75; 4A Cap Font \$18.02; No. 1 Figure Font \$4.42

**H 3**

• The above styles made in any size to 100 line—sold in any size fonts or sorts. See Page 2 for complete Sort Prices, Price List and Font Schemes.

*Gothic Italic Bold*  
(Class R)

6 Line GOTHIC ITALIC BOLD—12¢ per character in fonts  
3A Cap Font \$9.00; 4A Cap Font \$12.72; No. 1 Figure Font \$3.12

**RED3**

8 Line GOTHIC ITALIC BOLD—14¢ per character in fonts  
3A Cap Font \$10.50; 4A Cap Font \$14.84; No. 1 Figure Font \$3.64

**HN 1**

10 Line GOTHIC ITALIC BOLD—17¢ per character in fonts  
3A Cap Font \$12.75; 4A Cap Font \$18.02; No. 1 Figure Font \$4.42

**BR**

12 Line GOTHIC ITALIC BOLD—20¢ per character in fonts  
3A Cap Font \$15.00; 4A Cap Font \$21.20; No. 1 Figure Font \$5.20

**E2**

15 Line GOTHIC ITALIC BOLD—26¢ per character in fonts  
3A Cap Font \$19.50; 4A Cap Font \$27.56; No. 1 Figure Font \$6.76

**GI**

*Gothic Italic Condensed*  
(Class R)

6 Line GOTHIC ITALIC CONDENSED—12¢ per character in fonts  
3A Cap Font \$9.00; 4A Cap Font \$12.72; No. 1 Figure Font \$3.12

**BURDEN1**

8 Line GOTHIC ITALIC CONDENSED—14¢ per character in fonts  
3A Cap Font \$10.50; 4A Cap Font \$14.84; No. 1 Figure Font \$3.64

**HIRE 2**

10 Line GOTHIC ITALIC CONDENSED—17¢ per character in fonts  
3A Cap Font \$12.75; 4A Cap Font \$18.02; No. 1 Figure Font \$4.42

**RIB 3**

12 Line GOTHIC ITALIC CONDENSED—20¢ per character in fonts  
3A Cap Font \$15.00; 4A Cap Font \$21.20; No. 1 Figure Font \$5.20

**DEN**

15 Line GOTHIC ITALIC CONDENSED—26¢ per character in fonts  
3A Cap Font \$19.50; 4A Cap Font \$27.56; No. 1 Figure Font \$6.76

**HI2**

Cooper Black  
(Class O)

Cooper Black Highlight  
(Class R)

6 Line COOPER BLACK—7¢ per character in fonts  
3A Cap Font \$5.25; 4A Cap Font \$7.42; No. 1 Figure Font \$1.82

6 Line COOPER BLACK HIGHLIGHT—12¢ per character in fonts  
3A Cap Font \$9.00; 4A Cap Font \$12.72; No. 1 Figure Font \$3.12

**BOLD Acts 12**

8 Line COOPER BLACK—9¢ per character in fonts  
3A Cap Font \$6.75; 4A Cap Font \$9.54; No. 1 Figure Font \$2.34

8 Line COOPER BLACK HIGHLIGHT—14¢ per character in fonts  
3A Cap Font \$10.50; 4A Cap Font \$14.84; No. 1 Figure Font \$3.64

**SINGER 3**

10 Line COOPER BLACK—11¢ per character in fonts  
3A Cap Font \$8.25; 4A Cap Font \$11.66; No. 1 Figure Font \$2.86

10 Line COOPER BLACK HIGHLIGHT—17¢ per character in fonts  
3A Cap Font \$12.75; 4A Cap Font \$18.02; No. 1 Figure Font \$4.42

**DONG 4**

12 Line COOPER BLACK—14¢ per character in fonts  
3A Cap Font \$10.50; 4A Cap Font \$14.84; No. 1 Figure Font \$3.64

12 Line COOPER BLACK HIGHLIGHT—20¢ per character in fonts  
3A Cap Font \$15.00; 4A Cap Font \$21.20; No. 1 Figure Font \$5.20

**MUD 5**

15 Line COOPER BLACK—17¢ per character in fonts  
3A Cap Font \$12.75; 4A Cap Font \$18.02; No. 1 Figure Font \$4.42

15 Line COOPER BLACK HIGHLIGHT—26¢ per character in fonts  
3A Cap Font \$19.50; 4A Cap Font \$27.56; No. 1 Figure Font \$6.76

**RIID 6**

● The above styles made in any size to 100 line—sold in any size fonts or sorts. See Page 2 for complete Sort Prices, Price List and Font Schemes.

Cooper Black Condensed  
(Class O)

6 Line COOPER BLACK CONDENSED—7¢ per character in fonts  
3A Cap Font \$5.25; 4A Cap Font \$7.42; No. 1 Figure Font \$1.82

BIG JO 2

8 Line COOPER BLACK CONDENSED—9¢ per character in fonts  
3A Cap Font \$6.75; 4A Cap Font \$9.54; No. 1 Figure Font \$2.34

GUNS 5

10 Line COOPER BLACK CONDENSED—11¢ per character in fonts  
3A Cap Font \$8.25; 4A Cap Font \$11.66; No. 1 Figure Font \$2.86

SIE 3

12 Line COOPER BLACK CONDENSED—14¢ per character in fonts  
3A Cap Font \$10.50; 4A Cap Font \$14.84; No. 1 Figure Font \$3.64

SO 1

15 Line COOPER BLACK CONDENSED—17¢ per character in fonts  
3A Cap Font \$12.75; 4A Cap Font \$18.02; No. 1 Figure Font \$4.42

M 2

Cooper Black Extra Condensed  
(Class O)

6 Line COOPER BLACK EXTRA CONDENSED—7¢ per character in fonts  
3A Cap Font \$5.25; 4A Cap Font \$7.42; No. 1 Figure Font \$1.82

BLUE BIRD 5

8 Line COOPER BLACK EXTRA CONDENSED—9¢ per character in fonts  
3A Cap Font \$6.75; 4A Cap Font \$9.54; No. 1 Figure Font \$2.34

CHUMS 6

10 Line COOPER BLACK EXTRA CONDENSED—11¢ per character in fonts  
3A Cap Font \$8.25; 4A Cap Font \$11.66; No. 1 Figure Font \$2.86

ROBS 2

12 Line COOPER BLACK EXTRA CONDENSED—14¢ per character in fonts  
3A Cap Font \$10.50; 4A Cap Font \$14.84; No. 1 Figure Font \$3.64

HEN 3

15 Line COOPER BLACK EXTRA CONDENSED—17¢ per character in fonts  
3A Cap Font \$12.75; 4A Cap Font \$18.02; No. 1 Figure Font \$4.42

DR 9

• The above styles made in any size to 100 line—sold in any size fonts or sorts. See Page 2 for complete Sort Prices, Price List and Font Schemes.

*Cheltenham Bold*  
(Class O)

6 Line CHELTENHAM BOLD—7¢ per character in fonts  
3A Cap Font \$5.25; 4A Cap Font \$7.42; No. 1 Figure Font \$1.82

HERD 2

8 Line CHELTENHAM BOLD—9¢ per character in fonts  
3A Cap Font \$6.75; 4A Cap Font \$9.54; No. 1 Figure Font \$2.34

SUE 8

10 Line CHELTENHAM BOLD—11¢ per character in fonts  
3A Cap Font \$8.25; 4A Cap Font \$11.66; No. 1 Figure Font \$2.86

ED 4

12 Line CHELTENHAM BOLD—14¢ per character in fonts  
3A Cap Font \$10.50; 4A Cap Font \$14.84; No. 1 Figure Font \$3.64

BID

15 Line CHELTENHAM BOLD—17¢ per character in fonts  
3A Cap Font \$12.75; 4A Cap Font \$18.02; No. 1 Figure Font \$4.42

H 2

*Cheltenham Condensed*  
(Class O)

6 Line CHELTENHAM CONDENSED—7¢ per character in fonts  
3A Cap Font \$5.25; 4A Cap Font \$7.42; No. 1 Figure Font \$1.82

BUDGE 4

8 Line CHELTENHAM CONDENSED—9¢ per character in fonts  
3A Cap Font \$6.75; 4A Cap Font \$9.54; No. 1 Figure Font \$2.34

BEDS 6

10 Line CHELTENHAM CONDENSED—11¢ per character in fonts  
3A Cap Font \$8.25; 4A Cap Font \$11.66; No. 1 Figure Font \$2.86

RIG 2

12 Line CHELTENHAM CONDENSED—14¢ per character in fonts  
3A Cap Font \$10.50; 4A Cap Font \$14.84; No. 1 Figure Font \$3.64

ICES

15 Line CHELTENHAM CONDENSED—17¢ per character in fonts  
3A Cap Font \$12.75; 4A Cap Font \$18.02; No. 1 Figure Font \$4.42

RI 4

• The above style is also made in Cheltenham Bold Extra Condensed. See Page 2 for complete Sort Prices, Price List and Font Schemes.

*Mode Medium*  
(Class O)

6 Line MODE MEDIUM—7¢ per character in fonts  
3A Cap Font \$5.25; 4A Cap Font \$7.42; No. 1 Figure Font \$1.82

**CHICAGO Fair 6**

8 Line MODE MEDIUM—9¢ per character in fonts  
3A Cap Font \$6.75; 4A Cap Font \$9.54; No. 1 Figure Font \$2.34

**BLUE SKIES 2**

10 Line MODE MEDIUM—11¢ per character in fonts  
3A Cap Font \$8.25; 4A Cap Font \$11.66; No. 1 Figure Font \$2.86

**RESCUE 15**

12 Line MODE MEDIUM—14¢ per character in fonts  
3A Cap Font \$10.50; 4A Cap Font \$14.84; No. 1 Figure Font \$3.64

**HOME 9**

15 Line MODE MEDIUM—17¢ per character in fonts  
3A Cap Font \$12.75; 4A Cap Font \$18.02; No. 1 Figure Font \$4.42

**BRIG 2**

*Mode Bold*  
(Class O)

6 Line MODE BOLD—7¢ per character in fonts  
3A Cap Font \$5.25; 4A Cap Font \$7.42; No. 1 Figure Font \$1.82

**ONE NEW Suit 5**

8 Line MODE BOLD—9¢ per character in fonts  
3A Cap Font \$6.75; 4A Cap Font \$9.54; No. 1 Figure Font \$2.34

**SCHEMER 9**

10 Line MODE BOLD—11¢ per character in fonts  
3A Cap Font \$8.25; 4A Cap Font \$11.66; No. 1 Figure Font \$2.86

**DOUGH 1**

12 Line MODE BOLD—14¢ per character in fonts  
3A Cap Font \$10.50; 4A Cap Font \$14.84; No. 1 Figure Font \$3.64

**COGS 1**

15 Line MODE BOLD—17¢ per character in fonts  
3A Cap Font \$12.75; 4A Cap Font \$18.02; No. 1 Figure Font \$4.42

**HOD 9**

• The above style made in any size to 100 line—sold in any size fonts or sorts. See Page 2 for complete Sort Prices, Price List and Font Schemes.

*Mode Condensed*  
(Class O)

6 Line MODE CONDENSED—7¢ per character in fonts  
3A Cap Font \$5.25; 4A Cap Font \$7.42; No. 1 Figure Font \$1.82

**NORDIC Grandeur 19**

8 Line MODE CONDENSED—9¢ per character in fonts  
3A Cap Font \$6.75; 4A Cap Font \$9.54; No. 1 Figure Font \$2.34

**CONJUROR 170**

10 Line MODE CONDENSED—11¢ per character in fonts  
3A Cap Font \$8.25; 4A Cap Font \$11.66; No. 1 Figure Font \$2.86

**HORIZON 15**

12 Line MODE CONDENSED—14¢ per character in fonts  
3A Cap Font \$10.50; 4A Cap Font \$14.84; No. 1 Figure Font \$3.64

**GROUCH 15**

15 Line MODE CONDENSED—17¢ per character in fonts  
3A Cap Font \$12.75; 4A Cap Font \$18.02; No. 1 Figure Font \$4.42

**CORN 12**

● The above style made in any size to 100 line—sold in any size fonts or sorts. See Page 2 for complete Sort Prices, Price List and Font Schemes.



*Rugged*  
(Class O)

*Rugged Inline*  
(Class R)

6 Line RUGGED—7¢ per character in fonts  
3A Cap Font \$5.25; 4A Cap Font \$7.42; No. 1 Figure Font \$1.82

6 Line RUGGED INLINE—12¢ per character in fonts  
3A Cap Font \$9.00; 4A Cap Font \$12.72; No. 1 Figure Font \$3.12

**RECOVERIES 24**

8 Line RUGGED—9¢ per character in fonts  
3A Cap Font \$6.75; 4A Cap Font \$9.54; No. 1 Figure Font \$2.34

8 Line RUGGED INLINE—14¢ per character in fonts  
3A Cap Font \$10.50; 4A Cap Font \$14.84; No. 1 Figure Font \$3.64

**DESIGNER 8**

10 Line RUGGED—11¢ per character in fonts  
3A Cap Font \$8.25; 4A Cap Font \$11.66; No. 1 Figure Font \$2.86

10 Line RUGGED INLINE—17¢ per character in fonts  
3A Cap Font \$12.75; 4A Cap Font \$18.02; No. 1 Figure Font \$4.42

**BEGUN 15**

12 Line RUGGED—14¢ per character in fonts  
3A Cap Font \$10.50; 4A Cap Font \$14.84; No. 1 Figure Font \$3.64

12 Line RUGGED INLINE—20¢ per character in fonts  
3A Cap Font \$15.00; 4A Cap Font \$21.20; No. 1 Figure Font \$5.20

**HERDS 3**

15 Line RUGGED—17¢ per character in fonts  
3A Cap Font \$12.75; 4A Cap Font \$18.02; No. 1 Figure Font \$4.42

15 Line RUGGED INLINE—26¢ per character in fonts  
3A Cap Font \$19.50; 4A Cap Font \$27.56; No. 1 Figure Font \$6.76

**SOLE 5**

• The above styles made in any size to 100 line—sold in any size fonts or sorts. See Page 2 for complete Sort Prices, Price List and Font Schemes.

Shadow  
(Class P)

6 Line SHADOW—9¢ per character in fonts  
3A Cap Font \$6.75; 4A Cap Font \$9.54; No. 1 Figure Font \$2.34

ROMANCES 356

8 Line SHADOW—11¢ per character in fonts  
3A Cap Font \$8.25; 4A Cap Font \$11.66; No. 1 Figure Font \$2.86

DIAMOND 8

10 Line SHADOW—13¢ per character in fonts  
3A Cap Font \$9.75; 4A Cap Font \$13.78; No. 1 Figure Font \$3.38

SPECIAL 12

12 Line SHADOW—16¢ per character in fonts  
3A Cap Font \$12.00; 4A Cap Font \$16.96; No. 1 Figure Font \$4.16

GUIDES 5

15 Line SHADOW—20¢ per character in fonts  
3A Cap Font \$15.00; 4A Cap Font \$21.20; No. 1 Figure Font \$5.20

ROBE 3

Gothic No. 700  
(Class P)

3 Line GOTHIC No. 700—6¢ per character in fonts  
3A Cap Font \$4.50; 4A Cap Font \$6.36; No. 1 Figure Font \$1.56

**RUBICON 13**

6 Line GOTHIC No. 700—9¢ per character in fonts  
3A Cap Font \$6.75; 4A Cap Font \$9.54; No. 1 Figure Font \$2.34

**DUE 6**

4 Line GOTHIC No. 700—7¢ per character in fonts  
3A Cap Font \$5.25; 4A Cap Font \$7.42; No. 1 Figure Font \$1.82

**HONED 3**

5 Line GOTHIC No. 700—8¢ per character in fonts  
3A Cap Font \$6.00; 4A Cap Font \$8.48; No. 1 Figure Font \$2.08

**BOND 1**

8 Line GOTHIC No. 700—11¢ per character in fonts  
3A Cap Font \$8.25; 4A Cap Font \$11.66; No. 1 Figure Font \$2.86

**HORDE 5**

10 Line GOTHIC No. 700—13¢ per character in fonts  
3A Cap Font \$9.75; 4A Cap Font \$13.78; No. 1 Figure Font \$3.38

**RUNS 2**

Gothic No. 750  
(Class P)

3 Line GOTHIC No. 750—6¢ per character in fonts  
3A Cap Font \$4.50; 4A Cap Font \$6.36; No. 1 Figure Font \$1.56

**RUNG 3**

6 Line GOTHIC No. 750—9¢ per character in fonts  
3A Cap Font \$6.75; 4A Cap Font \$9.54; No. 1 Figure Font \$2.34

**NO 1**

4 Line GOTHIC No. 750—7¢ per character in fonts  
3A Cap Font \$5.25; 4A Cap Font \$7.42; No. 1 Figure Font \$1.82

**HOD 3**

5 Line GOTHIC No. 750—8¢ per character in fonts  
3A Cap Font \$6.00; 4A Cap Font \$8.48; No. 1 Figure Font \$2.08

**RM 5**

8 Line GOTHIC No. 750—11¢ per character in fonts  
3A Cap Font \$8.25; 4A Cap Font \$11.66; No. 1 Figure Font \$2.86

**SON 8**

• The above styles made in any size to 100 line—sold in any size fonts or sorts. See Page 2 for complete Sort Prices, Price List and Font Schemes.

*Ultra Bodoni*  
(Class P)

5 Line ULTRA BODONI—8¢ per character in fonts  
3A Cap Font \$6.00; 4A Cap Font \$8.48; No. 1 Figure Font \$2.08

**HORSE Eats 13**

6 Line ULTRA BODONI—9¢ per character in fonts  
3A Cap Font \$6.75; 4A Cap Font \$9.54; No. 1 Figure Font \$2.34

**TORRENCE 2**

8 Line ULTRA BODONI—11¢ per character in fonts  
3A Cap Font \$8.25; 4A Cap Font \$11.66; No. 1 Figure Font \$2.86

**SERGE 6**

*Rex*  
(Class P)

5 Line REX—8¢ per character in fonts  
3A Cap Font \$6.00; 4A Cap Font \$8.48; No. 1 Figure Font \$2.08

**THE WHALES 18**

6 Line REX—9¢ per character in fonts  
3A Cap Font \$6.75; 4A Cap Font \$9.54; No. 1 Figure Font \$2.34

**MASTERS 125**

8 Line REX—11¢ per character in fonts  
3A Cap Font \$8.25; 4A Cap Font \$11.66; No. 1 Figure Font \$2.86

**HOUND 13**

10 Line REX—13¢ per character in fonts  
3A Cap Font \$9.75; 4A Cap Font \$13.78; No. 1 Figure Font \$3.38

**BOND 16**

*Modern Script*  
(Class R)

- This attractive type face is similar to the popular Trafton Script metal type. An unusual feature of this wood type style is that all characters are cut on square bodies—formerly all wood type script came on angular bodies. An additional feature: All Caps, lower case and figures are set on uniform line height bodies, assuring easy alignment.

10 Line MODERN SCRIPT—17¢ per character in quantity of 65 characters  
3A Cap Font \$12.75; 4a L. C. Font \$14.62; No. 1 Figure Font \$4.42

The Great Days 23

12 Line MODERN SCRIPT—20¢ per character in quantity of 65 characters  
3A Cap Font \$15.00; 4a L. C. Font \$17.20; No. 1 Figure Font \$5.20

Blinding Sun 68

15 Line MODERN SCRIPT—26¢ per character in quantity of 65 characters  
3A Cap Font \$19.50; 4a L. C. Font \$22.36; No. 1 Figure Font \$6.76

Royal Life 9

18 Line MODERN SCRIPT—30¢ per character in quantity of 65 characters  
3A Cap Font \$22.25; 4a L. C. Font \$25.80; No. 1 Figure Font \$7.80

C. Mays 2

● The above style made in any size to 100 line—sold in any size fonts or sorts. See Page 2 for complete Sort Prices, Price List and Font Schemes.

*Kabel Bold*  
(Class O)

6 Line KABEL BOLD—7¢ per character in fonts; 11¢ per character in sorts  
3A Cap Font \$5.25; 4A Cap Font \$7.42; 4a L. C. Font \$6.02; No. 1 Figure Font \$1.82

NORSE Men 123

8 Line KABEL BOLD—9¢ per character in fonts; 14¢ per character in sorts  
3A Cap Font \$6.75; 4A Cap Font \$9.54; 4a L. C. Font \$7.74; No. 1 Figure Font \$2.34

HUGE Seas 15

10 Line KABEL BOLD—11¢ per character in fonts; 17¢ per character in sorts  
3A Cap Font \$8.25; 4A Cap Font \$11.66; No. 1 Figure Font \$2.86

RECORD 8

12 Line KABEL BOLD—14¢ per character in fonts; 21¢ per character in sorts  
3A Cap Font \$10.50; 4A Cap Font \$14.84; No. 1 Figure Font \$3.64

KINGS 9

15 Line KABEL BOLD—17¢ per character in fonts; 26¢ per character in sorts  
3A Cap Font \$12.75; 4A Cap Font \$18.02; No. 1 Figure Font \$4.42

SALE 1

*Flash Script*  
(Class R)

8 Line FLASH SCRIPT—14¢ per character in fonts; 21¢ per character in sorts  
3A Cap Font \$10.50; 4a L. C. Font \$12.04; No. 1 Figure Font \$3.64

American Wood Type 1

10 Line FLASH SCRIPT—17¢ per character in fonts; 26¢ per character in sorts  
3A Cap Font \$12.75; 4a L. C. Font \$14.62; No. 1 Figure Font \$4.42

Semi-Annual Days

12 Line FLASH SCRIPT—20¢ per character in fonts; 30¢ per character in sorts  
3A Cap Font \$15.00; 4a L. C. Font \$17.20; No. 1 Figure Font \$5.20

New York City 1

15 Line FLASH SCRIPT—26¢ per character in fonts; 39¢ per character in sorts  
3A Cap Font \$19.50; 4a L. C. Font \$22.36; No. 1 Figure Font \$6.76

February 20

*Modern Script* (See Catalog)  
(Class R)

8 Line MODERN SCRIPT—14¢ per character in fonts; 21¢ per character in sorts  
3A Cap Font \$10.50; 4a L. C. Font \$12.04; No. 1 Figure Font \$3.64

One Day Specials! 123

**BROADSTROKE SCRIPT (Class Q)**

6 Line BROADSTROKE SCRIPT  
11c per char. in fonts; 17c per char. in sorts  
3A Cap Font \$8.25; 4A Cap Font \$9.46; No. 1 Fig. Font \$2.86

Roadside 325

1 2 3 4

8 Line BROADSTROKE SCRIPT  
13c per char. in fonts; 20c per char. in sorts  
3A Cap Font \$9.75; 4a L. C. Font \$11.18; No. 1 Fig. Font \$3.38

Badland 5

1 2 3

10 Line BROADSTROKE SCRIPT  
16c per char. in fonts; 24c per char. in sorts  
3A Cap Font \$12.00; 4a L. C. Font \$13.76; No. 1 Fig. Font \$4.16

Water 5

1 2 3

12 Line BROADSTROKE SCRIPT  
19c per char. in fonts; 29c per char. in sorts  
3A Cap Font \$14.25; 4a L. C. Font \$16.34; No. 1 Fig. Font \$4.94

Hauser 1

1 2 3

15 Line BROADSTROKE SCRIPT  
23c per char. in fonts; 35c per char. in sorts  
3A Cap Font \$17.25; 4a L. C. Font \$19.78; No. 1 Fig. Font \$5.98

Sale 3

1 2 3

AMERICAN WOOD TYPE MFG. CO. - 608 S. DEARBORN ST. - CHICAGO

1 2 3



8 Line FLASH SCRIPT—14¢ per character in fonts; 21  
3A Cap Font \$10.50; 4a L. C. Font \$12.04; No. 1

America

10 Line FLASH SCRIPT—17¢ per character in fonts; 21  
3A Cap Font \$12.75; 4a L. C. Font \$14.62; No. 1

Semi-

12 Line FLASH SCRIPT—20¢ per character in fonts; 30  
3A Cap Font \$15.00; 4a L. C. Font \$17.20; No. 1

New

15 Line FLASH SCRIPT—26¢ per character in fonts; 39  
3A Cap Font \$19.50; 4a L. C. Font \$22.36; No. 1

Feb

8 Line MODERN SCRIPT—14¢ per character in fonts; 21  
3A Cap Font \$10.50; 4a L. C. Font \$12.04; No. 1

One Day

MISCELLANEOUS TYPE FACES

6 Line No. 160 FIGURES (Class O)  
Made to order in all sizes

12345

6 Line No. 165 FIGURES (Class O)  
Made to order in all sizes

235¢

6 Line No. 170 FIGURES (Class P)  
Made to order in all sizes from 4 to 72 line

123456¢

6 Line GOTHIC ART No. 2 (Class N)  
Made to order in all sizes from 4 to 72 line

LONG RULE 35

6 Line GOTHIC ART No. 4 (Class O)  
Made to order in all sizes from 4 to 72 line

SPORTS 35

6 Line HEBREW BOLD (Class Q)  
Made to order in all sizes from 4 to 72 line

אבגדוזממ

6 Line HEBREW CONDENSED (Class Q)  
Made to order in all sizes from 4 to 72 line

אבדדוזזממרע

AMERICAN WOOD TYPE MFG. CO. - 608 S. DEARBORN ST. - CHICAGO

MISCELLANEOUS TYPE FACES

6 Line MODE LIGHT (Class O)  
Made to order in all sizes from 4 to 72 line.

RED ROBIN 3

1 2 3 4

6 Line CASLON (Class O)  
Made to order in all sizes from 4 to 72 line.

RED Hat 13

e 1 2 3

6 Line KABEL BOLD CONDENSED (Class O)  
Made to order in all sizes from 4 to 72 line.

SANDWICH 5

e 1 2 3

6 Line RUGGED CONDENSED (Class O)  
Made to order in all sizes from 4 to 72 line.

BOY Scouts 3

d 1 2 3

6 Line No. 98 (Class O)  
Made to order in Caps, Lower Case and Figures in all sizes.

BOUND 28

a 1 2 3

6 Line FRANKLIN GOTHIC (Class O)  
Made to order in all sizes from 4 to 72 line.

BIG sale 2

1 2 3

AMERICAN WOOD TYPE MFG. CO. - 608 S. DEARBORN ST. - CHICAGO

MISCELLANEOUS TYPE FACES

8 Line FLASH SCRIPT—14¢ per character in fonts;  
3A Cap Font \$10.50; 4a L. C. Font \$12.04; No.

Americ

6 Line No. 630 OUTLINE (Class S)  
Made to order in all sizes from 4 to 72 line

BOUNDRY 23

10 Line FLASH SCRIPT—17¢ per character in fonts;  
3A Cap Font \$12.75; 4a L. C. Font \$14.62; No.

Semi-

6 Line VOGUE OUTLINE (Class S)  
Made to order in all sizes from 4 to 72 line

HONEY 35

12 Line FLASH SCRIPT—20¢ per character in fonts;  
3A Cap Font \$15.00; 4a L. C. Font \$17.20; No.

New

6 Line OLD ENGLISH (Class S)  
Made to order in all sizes from 4 to 72 line

Old Tales 5

6 Line BROADWAY CONDENSED (Class O)  
Made to order in all sizes from 4 to 72 line

FINE CLOTHS

15 Line FLASH SCRIPT—26¢ per character in fonts;  
3A Cap Font \$19.50; 4a L. C. Font \$22.36; No.

Feb

6 Line GOUDY EXTRA BOLD CONDENSED (Class O)  
Made to order in all sizes from 4 to 72 line

BROKEN 23

6 Line GOUDY EXTRA BOLD (Class O)  
Made to order in all sizes from 4 to 72 line

ROSES 123

8 Line MODERN SCRIPT—14¢ per character in fonts;  
3A Cap Font \$10.50; 4a L. C. Font \$12.04; No.

One

AMERICAN WOOD TYPE MFG. CO. - 608 S. DEARBORN ST. - CHICAGO

*New Wood Type Faces*

8 Line GOTHIC SCRIPT (Class R)—14¢ per character in fonts and 21¢ in sorts; 10 Line is 17¢ per character in fonts and 26¢ in sorts; 12 Line is 20¢ per character in fonts and 30¢ in sorts

*Gillies Gothic* 1234

8 Line CASLON BOLD (Class P)—11¢ per character in fonts and 17¢ in sorts; 6 Line is 9¢ per character in fonts and 14¢ in sorts; 10 Line is 13¢ per character in fonts and 20¢ in sorts; 12 Line is 16¢ per character in fonts and 24¢ in sorts

FOR Sale 123

8 Line ULTRA BODONI CONDENSED (Class P)—11¢ per character in fonts and 17¢ in sorts; 6 Line is 9¢ per character in fonts and 14¢ in sorts; 10 Line is 13¢ per character in fonts and 20¢ in sorts; 12 Line is 16¢ per character in fonts and 24¢ in sorts

RED Rose 123

8 Line CHELTENHAM BOLD EXTRA CONDENSED—9¢ per character in fonts and 14¢ in sorts; 6 Line is 7¢ per character in fonts and 11¢ in sorts; 10 Line is 11¢ per character in fonts and 17¢ in sorts; 12 Line is 14¢ per character in fonts and 21¢ in sorts

NURSE Maid 123

8 Line CHELTENHAM BOLD CONDENSED—9¢ per character in fonts and 14¢ in sorts; 6 Line is 7¢ per character in fonts and 11¢ in sorts; 10 Line is 11¢ per character in fonts and 17¢ in sorts; 12 Line is 14¢ per character in fonts and 21¢ in sorts

CHINA Sea 123

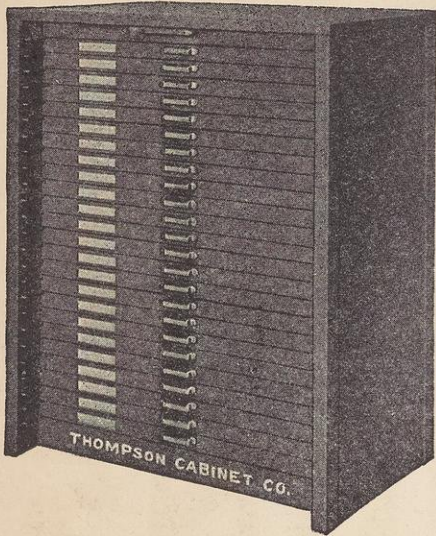
8 Line CHELTENHAM BOLD—9¢ per character in fonts and 14¢ in sorts; 6 Line is 7¢ per character in fonts and 11¢ in sorts; 10 Line is 11¢ per character in fonts and 17¢ in sorts; 12 Line is 14¢ per character in fonts and 21¢ in sorts

BIG Sea 123

Thompson Steel Composing Room Equipment

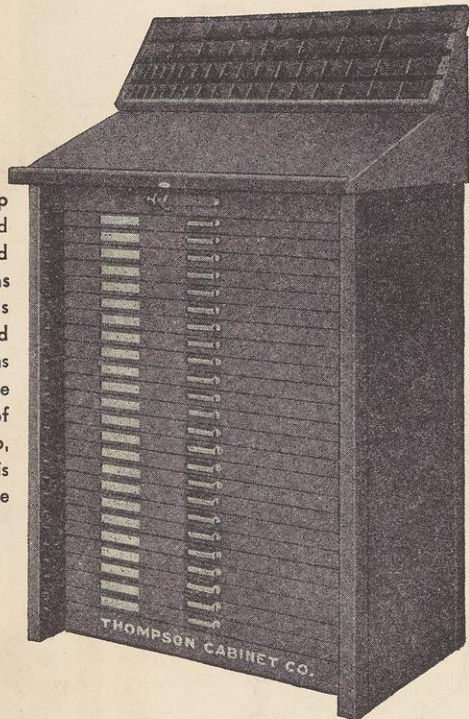
- Thompson all-steel equipment is designed and constructed to give an unlimited length of service. It is the most rigid composing room equipment made, bar none. All joints of Thompson equipment are securely welded. To increase strength, the galley and type case runs of cabinets are die stamped out of steel walls, not clinched or spot welded. All steel equipment is finished in olive green baked enamel. Prices are reasonable.

No. 12210-T STEEL TYPE CABINET



- No. 12210-T Steel Single Tier Flat Top Type Cabinet. Comes equipped with 23 Calif. Job Cases and one Blank Case (other kinds of cases may be furnished on special order). For storing cuts this cabinet comes with 24 blank cases. Dimensions of cabinet: 35 1/4" wide, 21 1/2" deep, 43" high. This cabinet is also made in double tier. Lights are extra.

No. 12001-T STEEL TYPE CABINET



- No. 12001-T Steel Work Top Type Cabinet. Top has a Lead and Slug Case for leads and slugs 4 to 26 picas by picas also 35 picas. Rear of top has a storage bank for Space and Quad Cases. Cabinet contains 23 Calif. Job cases and one Blank Case. Dimensions of cabinet: 36 1/8" wide, 24" deep, 44" high to work bank. This cabinet is also made in double tier.

RUSTPROOF PRESSED STEEL GALLEYS

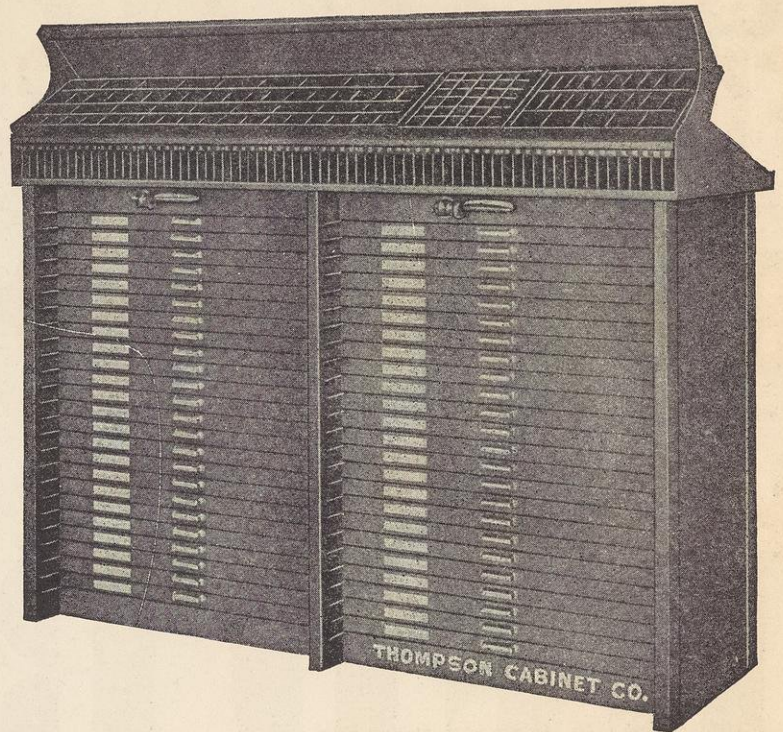


- Thompson Pressed Steel Galleys are of Rustproof Steel—the ideal metal for this purpose. Galleys are of uniform thickness with perfectly

smooth finish. The corners are spot welded—strongest rigid construction. Galleys are made in the following sizes:

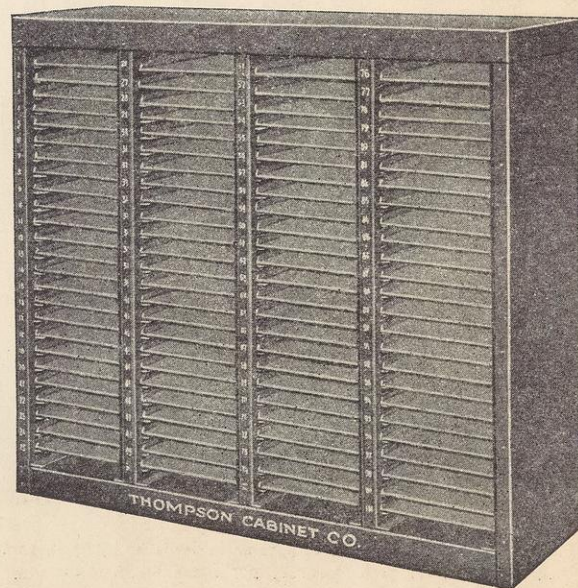
3 1/2 x 23 1/2" Galleys	6 x 10" Galleys
6 1/4 x 23 1/2" Galleys	8 3/4 x 13" Galleys
8 1/2 x 23 1/2" Galleys	10 x 18" Galleys
10 1/2 x 23 1/2" Galleys	12 x 16" Galleys

No. 12007-T STEEL TYPE CABINET



- No. 12007-T Steel Concentrated Type Cabinet. Top of this cabinet is equipped with a Space and Quad Case, a Copper and Brass Thin Space Case for 1/2 pt. copper and 1 pt. brass spaces, a Lead and Slug Case with double compartments for leads and slugs 1 1/2 to 9 1/2 picas long by nonpareils. The top is equipped with a rack to hold leads 10 to 40 picas and slugs 10 to 50 picas long by picas. The cabinet contains 46 Calif. Job Cases and 2 Blank Cases.

No. 13540-T STEEL GALLEY CABINET



- No. 13540-T Steel Galley Cabinet illustrated holds 100 galleys size 8 3/4 x 13". Thompson steel galley cabinets are rigidly constructed and very compact. They are all 38 1/2" high.

Other Galley Cabinets Available:

For 25 Galleys 12 x 18"	For 100 Galleys 12 x 18"
For 50 Galleys 8 3/4 x 13"	For 100 Galleys 3 1/2 x 23 1/2"
For 50 Galleys 6 1/4 x 23 1/2"	For 100 Galleys 6 1/4 x 23 1/2"
For 100 Galleys 10 x 16"	For 100 Galleys 8 1/2 x 23 1/2"

- Write for prices and full information on any item in the Thompson line including Machinist's Work Benches, Ink and Roller Cabinets, Type Cases, Desks, Drying Racks, Imposing Tables and Makeup Tables.

Four Line Type

4 Line GOTHIC No. 590—6¢ per character in fonts  
3A Cap Font \$4.50; 4A Cap Font \$6.36; No. 1 Figure Font \$1.56

**CONDEMNED 58**

4 Line GOTHIC No. 6243—6¢ per character in fonts  
3A Cap Font \$4.50; 4A Cap Font \$6.36; No. 1 Figure Font \$1.56

**FINANCIERS 23**

4 Line GOTHIC No. 630—6¢ per character in fonts  
3A Cap Font \$4.50; 4A Cap Font \$6.36; No. 1 Figure Font \$1.56

**BORN RICH 13**

4 Line GOTHIC No. 670—6¢ per character in fonts  
3A Cap Font \$4.50; 4A Cap Font \$6.36; No. 1 Figure Font \$1.56

**HORSES 12**

4 Line MODE BOLD—6¢ per character in fonts  
3A Cap Font \$4.50; 4A Cap Font \$6.36; No. 1 Figure Font \$1.56

**MODES 29**

4 Line MODE MEDIUM—6¢ per character in fonts  
3A Cap Font \$4.50; 4A Cap Font \$6.36; No. 1 Figure Font \$1.56

**ROGUES 12**

4 Line RUGGED—6¢ per character in fonts  
3A Cap Font \$4.50; 4A Cap Font \$6.36; No. 1 Figure Font \$1.56

**RESIGNS 25**

4 Line COOPER BLACK—6¢ per character in fonts  
3A Cap Font \$4.50; 4A Cap Font \$6.36; No. 1 Figure Font \$1.56

**CHURN 5**

Five Line Type

5 Line GOTHIC No. 550—7¢ per character in fonts  
3A Cap Font \$5.25; 4A Cap Font \$7.42; No. 1 Figure Font \$1.82

**GROUND HOG 5**

5 Line GOTHIC No. 590—7¢ per character in fonts  
3A Cap Font \$5.25; 4A Cap Font \$7.42; No. 1 Figure Font \$1.82

**BERING SEA 8**

5 Line GOTHIC No. 6243—7¢ per character in fonts  
3A Cap Font \$5.25; 4A Cap Font \$7.42; No. 1 Figure Font \$1.82

**REDUCERS 5**

5 Line GOTHIC No. 630—7¢ per character in fonts  
3A Cap Font \$5.25; 4A Cap Font \$7.42; No. 1 Figure Font \$1.82

**HUNGER 12**

5 Line GOTHIC No. 670—7¢ per character in fonts  
3A Cap Font \$5.25; 4A Cap Font \$7.42; No. 1 Figure Font \$1.82

**RINSE 23**

5 Line CHELTENHAM BOLD—7¢ per character in fonts  
3A Cap Font \$5.25; 4A Cap Font \$7.42; No. 1 Figure Font \$1.82

**HOUND 1**

5 Line MODE BOLD—7¢ per character in fonts  
3A Cap Font \$5.25; 4A Cap Font \$7.42; No. 1 Figure Font \$1.82

**CORN 16**

5 Line MODE MEDIUM—7¢ per character in fonts  
3A Cap Font \$5.25; 4A Cap Font \$7.42; No. 1 Figure Font \$1.82

**SCORE 15**

5 Line RUGGED—7¢ per character in fonts. (INLINE—10¢ per character)  
3A Cap Font \$5.25; 4A Cap Font \$7.42; No. 1 Figure Font \$1.82

**SHINER 7**

5 Line COOPER BLACK—7¢ per character in fonts  
3A Cap Font \$5.25; 4A Cap Font \$7.42; No. 1 Figure Font \$1.82

**SNOB 2**

• The above styles made in any size to 100 line—sold in any size fonts or sorts. See Page 2 for complete Sort Prices, Price List and Font Schemes.

Twenty Line Type SEE CORRECTED PRICES, PAGE 2

20 Line GOTHIC No. 500—16¢ per character in fonts  
3A Cap Font \$12.00; 4A Cap Font \$16.96; No. 1 Figure Font \$4.16

HOUR 9

20 Line GOTHIC No. 550—16¢ per character in fonts  
3A Cap Font \$12.00; 4A Cap Font \$16.96; No. 1 Figure Font \$4.16

BEE 3

20 Line GOTHIC No. 510—16¢ per character in fonts  
3A Cap Font \$12.00; 4A Cap Font \$16.96; No. 1 Figure Font \$4.16

HOG 1

20 Line GOTHIC No. 590—18¢ per character in fonts  
3A Cap Font \$13.50; 4A Cap Font \$19.08; No. 1 Figure Font \$4.68

HIG 9

20 Line GOTHIC No. 540—16¢ per character in fonts  
3A Cap Font \$12.00; 4A Cap Font \$16.96; No. 1 Figure Font \$4.16

DIE 8

20 Line GOTHIC No. 6243—18¢ per character in fonts  
3A Cap Font \$13.50; 4A Cap Font \$19.08; No. 1 Figure Font \$4.68

RRS

● The above styles made in any size to 100 line—sold in any size fonts or sorts. See Page 2 for complete Sort Prices, Price List and Font Schemes.

Twenty Line Type

SEE CORRECTED PRICES, PAGE 2

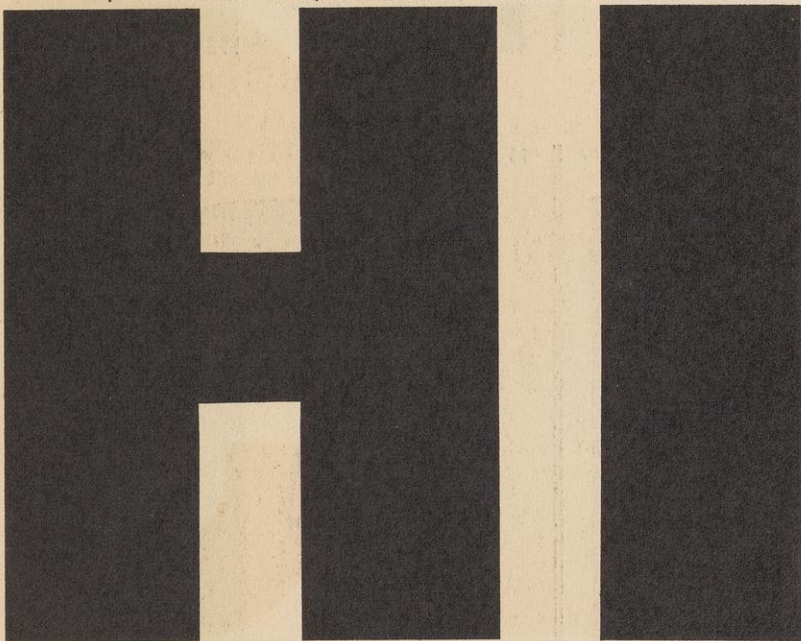
20 Line GOTHIC No. 630—20¢ per character in fonts  
3A Cap Font \$15.00; 4A Cap Font 21.20; No. 1 Figure Font \$5.20



20 Line COOPER BLACK—22¢ per character in fonts  
3A Cap Font \$16.50; 4A Cap Font \$23.32; No. 1 Figure Font \$5.72



20 Line GOTHIC No. 670—22¢ per character in fonts  
3A Cap Font \$16.50; 4A Cap Font \$23.32; No. 1 Figure Font \$5.72



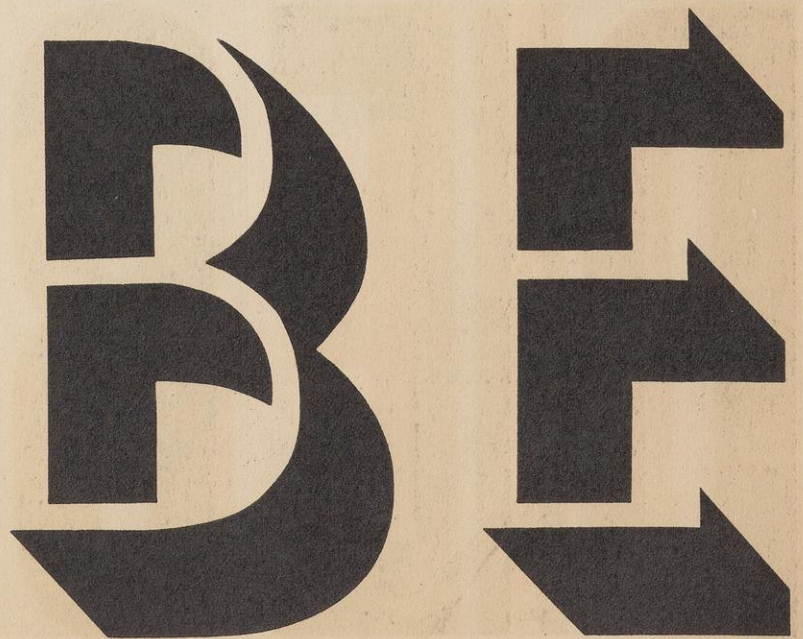
20 Line MODE MEDIUM—22¢ per character in fonts  
3A Cap Font \$16.50; 4A Cap Font \$23.32; No. 1 Figure Font \$5.72



20 Line GOTHIC No. 700—26¢ per character in fonts  
3A Cap Font \$19.50; 4A Cap Font \$27.56; No. 1 Figure Font \$6.76



20 Line SHADOW—26¢ per character in fonts  
3A Cap Font \$19.50; 4A Cap Font \$27.56; No. 1 Figure Font \$6.76



● The above styles made in any size to 100 line—sold in any size fonts or sorts. See Page 2 for complete Sort Prices, Price List and Font Schemes.



*Twenty-four Line Type* SEE CORRECTED PRICES, PAGE 2

24 Line GOTHIC No. 500—19¢ per character in fonts  
3A Cap Font \$14.25; No. 1 Figure Font \$4.94

ESZ

24 Line GOTHIC No. 510—19¢ per character in fonts  
3A Cap Font \$14.25; No. 1 Figure Font \$4.94

R3

24 Line GOTHIC No. 540—19¢ per character in fonts  
3A Cap Font \$14.25; No. 1 Figure Font \$4.94

BE

*Thirty-six Line Type*

36 Line GOTHIC No. 500—31¢ per character in fonts  
3A Cap Font \$23.25; No. 1 Figure Font \$8.06

HE

36 Line GOTHIC No. 510—31¢ per character in fonts  
3A Cap Font \$23.25; No. 1 Figure Font \$8.06

BI

36 Line GOTHIC No. 540—31¢ per character in fonts  
3A Cap Font \$23.25; No. 1 Figure Font \$8.06

R

● The above styles made in any size to 100 line—sold in any size fonts or sorts. See Page 2 for complete Sort Prices, Price List and Font Schemes.

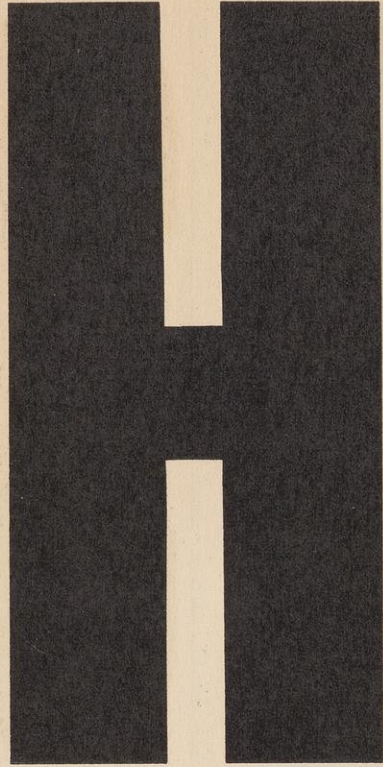
*Twenty-four Line Type*

SEE CORRECTED PRICES, PAGE 2

24 Line GOTHIC No. 550—19¢ per character in fonts  
3A Cap Font \$14.25; No. 1 Figure Font \$4.94



24 Line GOTHIC No. 590—21¢ per character in fonts  
3A Cap Font \$15.75; No. 1 Figure Font \$5.46



24 Line GOTHIC No. 6243—21¢ per character in fonts  
3A Cap Font \$15.75; No. 1 Figure Font \$5.46

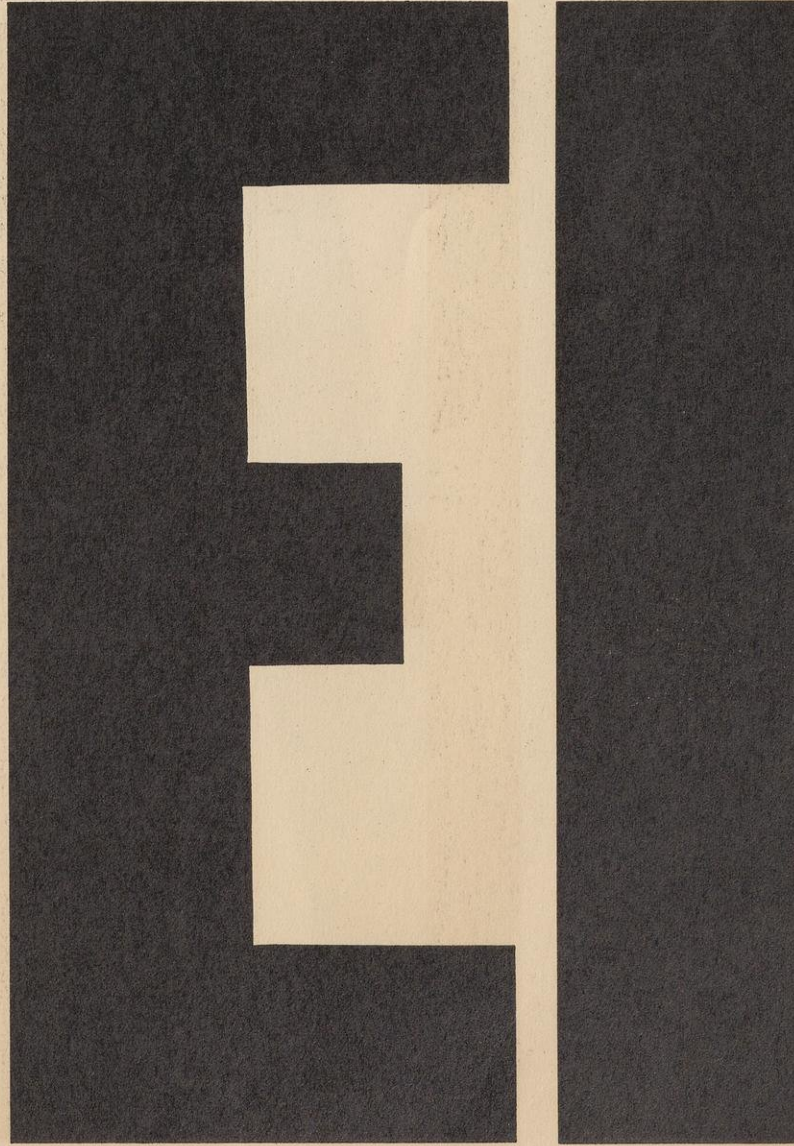


*Thirty-six Line Type*

36 Line GOTHIC No. 550—31¢ per character in fonts  
3A Cap Font \$23.25; 4A Cap Font \$31.86; No. 1 Figure Font \$8.06



36 Line GOTHIC No. 590—34¢ per character in fonts  
3A Cap Font \$25.50; 4A Cap Font \$36.04; No. 1 Figure Font \$8.84



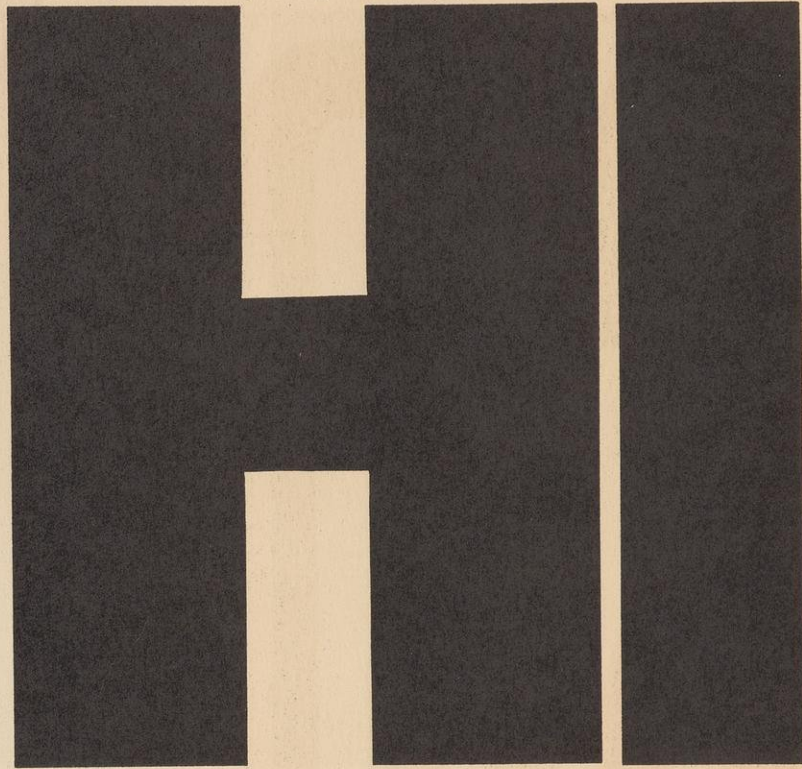
● The above styles made in any size to 100 line—sold in any size fonts or sorts. See Page 2 for complete Sort Prices, Price List and Font Schemes.

*Twenty-four Line Type* SEE CORRECTED PRICES, PAGE 2

24 Line GOTHIC No. 630—24¢ per character in fonts  
3A Cap Font \$18.00; 4A Cap Font \$25.44; No. 1 Figure Font \$6.24

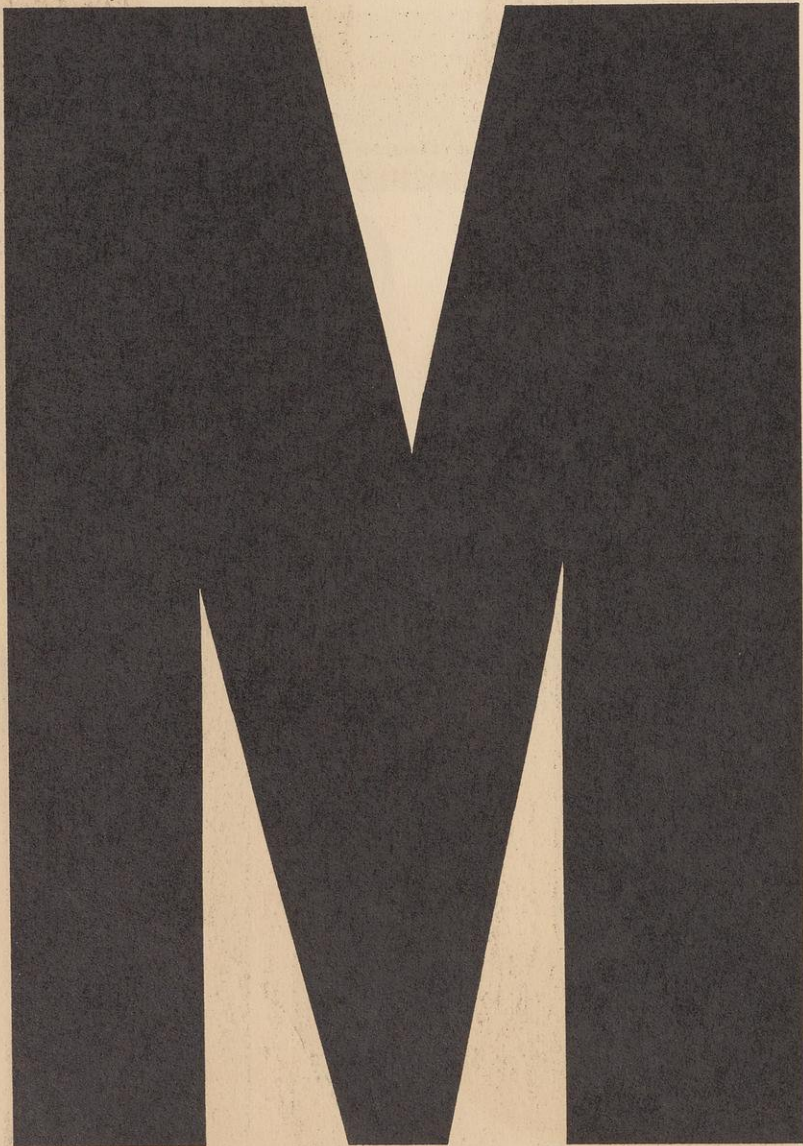


24 Line GOTHIC No. 670—26¢ per character in fonts  
3A Cap Font \$19.50; 4A Cap Font \$27.56; No. 1 Figure Font \$6.76



*Thirty-six Line Type*

36 Line GOTHIC No. 6243—34¢ per character in fonts  
3A Cap Font \$25.50; 4A Cap Font \$36.04; No. 1 Figure Font \$8.84



36 Line GOTHIC No. 630—37¢ per character in fonts  
3A Cap Font \$27.75; 4A Cap Font \$39.22; No. 1 Figure Font \$9.62



● The above styles made in any size to 100 line—sold in any size fonts or sorts. See Page 2 for complete Sort Prices, Price List and Font Schemes.

Thirty Line Type  SEE CORRECTED PRICES, PAGE 2

30 Line GOTHIC No. 500—25¢ per character in fonts  
3A Cap Font \$18.75; 4A Cap Font \$26.50; No. 1 Figure Font \$6.50

SIDE

30 Line GOTHIC No. 540—25¢ per character in fonts  
3A Cap Font \$18.75; 4A Cap Font \$26.50; No. 1 Figure Font \$6.50

BRN

30 Line GOTHIC No. 510—25¢ per character in fonts  
3A Cap Font \$18.75; 4A Cap Font \$26.50; No. 1 Figure Font \$6.50

RIB

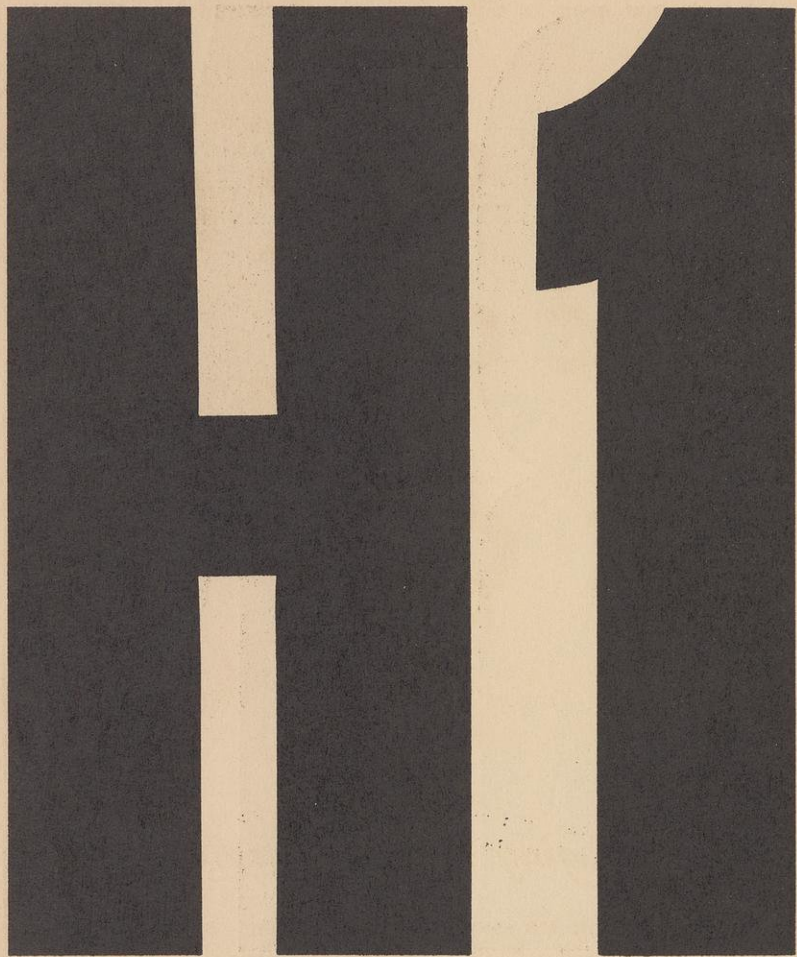
30 Line GOTHIC No. 550—25¢ per character in fonts  
3A Cap Font \$18.75; 4A Cap Font \$26.50; No. 1 Figure Font \$6.50

BE

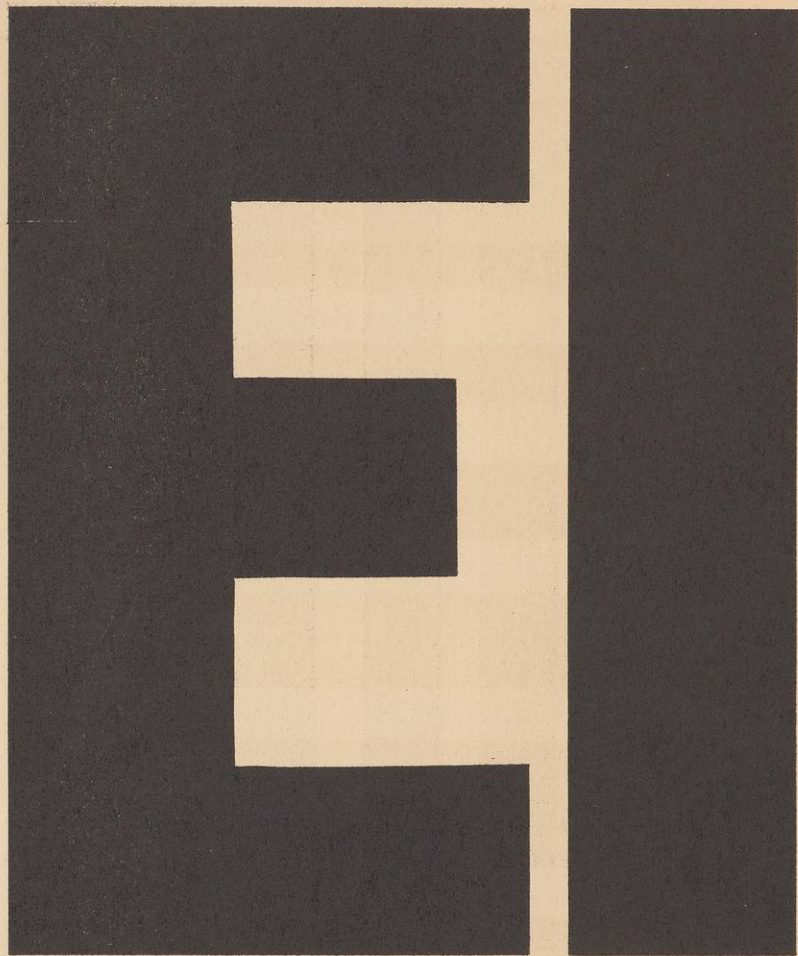
● The above styles made in any size to 100 line—sold in any size fonts or sorts. See Page 2 for complete Sort Prices, Price List and Font Schemes.

Thirty Line Type **SEE CORRECTED PRICES, PAGE 2**

30 Line GOTHIC No. 590—27¢ per character in fonts  
3A Cap Font \$20.25; 4A Cap Font \$28.62; No. 1 Figure Font \$7.02



30 Line GOTHIC No. 630—29¢ per character in fonts  
3A Cap Font \$21.75; 4A Cap Font \$30.74; No. 1 Figure Font \$7.54



30 Line GOTHIC No. 6243—27¢ per character in fonts  
3A Cap Font \$20.25; 4A Cap Font \$28.62; No. 1 Figure Font \$7.02



30 Line GOTHIC No. 670—32¢ per character in fonts  
3A Cap Font \$24.00; 4A Cap Font \$33.92; No. 1 Figure Font \$8.32



● The above styles made in any size to 100 line—sold in any size fonts or sorts. See Page 2 for complete Sort Prices, Price List and Font Schemes.

*Tint Block Font*

● This font contains 9 pieces of Rock Maple Endwood each 8 1/2" long, in the widths illustrated below. The wood is type high and has a fine printing surface making it excellent for printing on any kind of paper or cardboard. These tint blocks are easily cut on any printers saw to whatever length required. They can also be used for engraving since the wood is exactly the same as that used for wood type.

PRICE \$1.75

1 1/2 Line 8 1/2" long



2 Line 8 1/2" long



2 1/2 Line 8 1/2" long



3 Line 8 1/2" long



4 Line 8 1/2" long



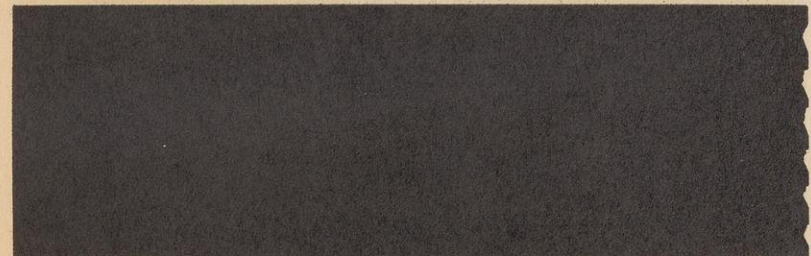
5 Line 8 1/2" long



6 Line 8 1/2" long



8 Line 8 1/2" long



10 Line 8 1/2" long



● Endwood rule or tint blocks may be purchased in any quantity and any size to 8 1/2". See Page 29 for prices.

*Cent Mark Font*

● Printers who have been accustomed to using ordinary "c"s for cent marks will be interested in this unusual offer. This font contains sixteen cent marks in different sizes as illustrated below.

PRICE \$1.60



*Playing Card Ornaments*

● These ornaments are sold in fonts. Each font contains four pieces, one each character: Club, Diamond, Heart and Spade.  
 ● All ornaments are of type high, Rock Maple, and are on square cornered bases. Card ornaments are sold in all sizes to 15".

3 Line Font contains one of each character as shown. PRICE 75¢



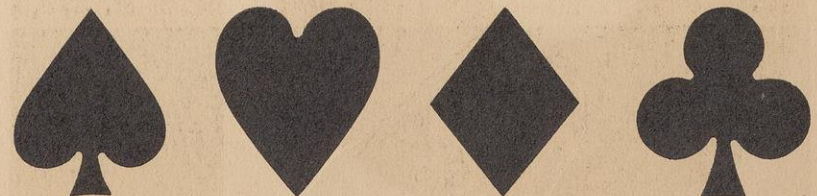
4 Line Font contains one of each character as shown. PRICE 90¢



5 Line Font contains one of each character as shown. PRICE \$1.00



6 Line Font contains one of each character as shown. PRICE \$1.20



8 Line Font, 4 pieces. PRICE \$1.40  
 10 Line Font, 4 pieces. PRICE \$1.60

12 Line Font, 4 pieces. PRICE \$1.80  
 15 Line Font, 4 pieces. PRICE \$2.00

Wood Rule and Border

● Our wood rule is made of the very finest, select Rock Maple. The wood has a highly polished surface that is scientifically finished. It is accurately type high. Our rule is comparable to metal rule and yet is sold at only a fraction of the price of metal rule. This wood rule is also cut to desired lengths. There is a small charge for cutting.

6 Point 20¢ per yard



12 Point 25¢ per yard



18 Point 25¢ per yard



24 Point 30¢ per yard



30 Point 35¢ per yard



36 Point 35¢ per yard



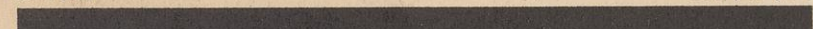
42 Point 40¢ per yard



48 Point 40¢ per yard



60 Point 50¢ per yard



72 Point 60¢ per yard



7 Line 75¢ per yard



8 Line 85¢ per yard



10 Line \$1.05 per yard



12 Line \$1.25 per yard



15 Line \$1.45 per yard





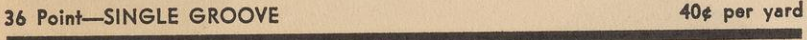



20 Line \$1.70 per yard



Wood Rule and Border

Grooved Rule

18 Point—SINGLE GROOVE	30¢ per yard
	
18 Point—DOUBLE GROOVE	35¢ per yard
	
24 Point—SINGLE GROOVE	35¢ per yard
	
24 Point—DOUBLE GROOVE	40¢ per yard
	
36 Point—SINGLE GROOVE	40¢ per yard
	
36 Point—DOUBLE GROOVE	45¢ per yard
	

Endwood Rule

- We carry in stock Rock Maple Endwood rule in widths from 18 pt. to 144 pt. and in lengths up to 8½" only.  
Endwood is extremely hard and is excellent for long press runs where small lengths of rule are required—guaranteed not to show grain in printing.

PRICES OF ENDWOOD RULES

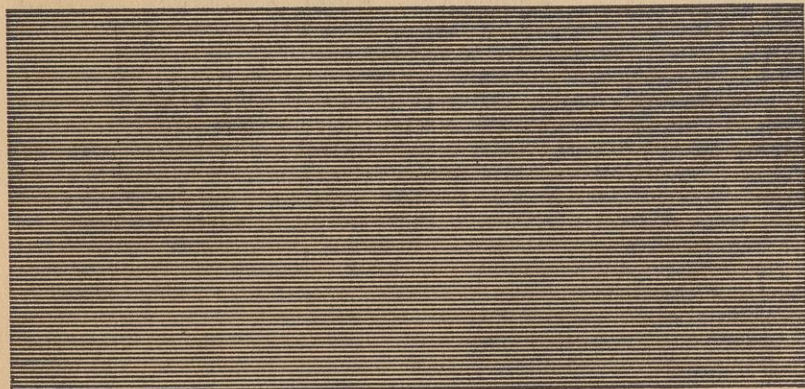
18 or 24 point	4¢ per inch
30 or 36 point	5¢ per inch
42 or 48 point	6¢ per inch
60 or 72 point	7¢ per inch
84 or 96 point	8¢ per inch
108 or 120 point	10¢ per inch
144 point	12¢ per inch

When ordering, specify lengths desired. Minimum quantity sold in any width is 35¢ worth.

Benday Wood

- This unusual material is now being offered for the first time. It is made of Rock Maple Endwood in which fine lines are cut (not stamped). The wood is good for thousands of impressions and makes perfect electros. It is especially valuable when used for tints or decorative spots, where a shaded effect is desired.

PRICE: 10¢ per square inch; (minimum price per block 75¢).



- We make to order type, engravings and shaped tint blocks cut in Benday wood. Estimates on request.

Solid Borders

- We are equipped to furnish excellent one piece borders cut out of solid blocks. COST: Solid borders are reasonably priced. For example: A solid border, 48 pt. thick, outside measurements 10 x 12" is \$3.00.
- Solid borders are supplied with mortises, if desired, at a small extra charge.

Mitered Borders

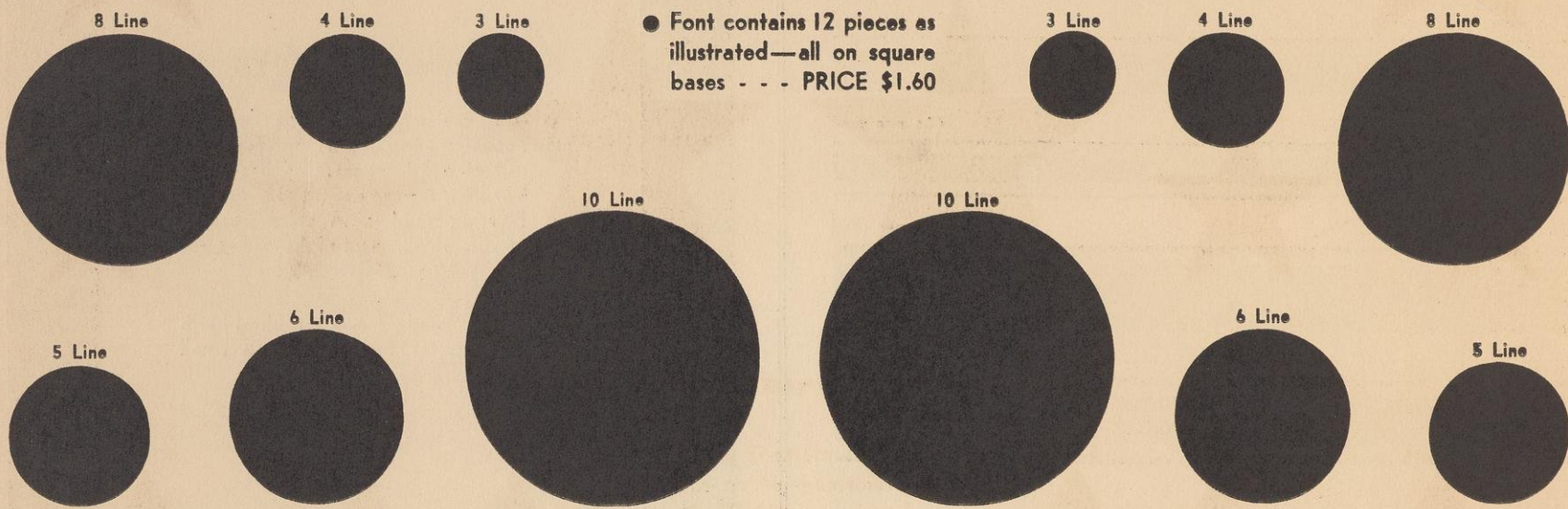
- We can furnish mitered borders to order in any size, using any rule shown. COST: 75¢ for mitering plus the price of the rule used. For example: A mitered 36 pt. border, outside measurement 12 x 15" is \$1.45.
- When ordering be sure to specify the thickness of the rule desired and the outside measurements of the border.



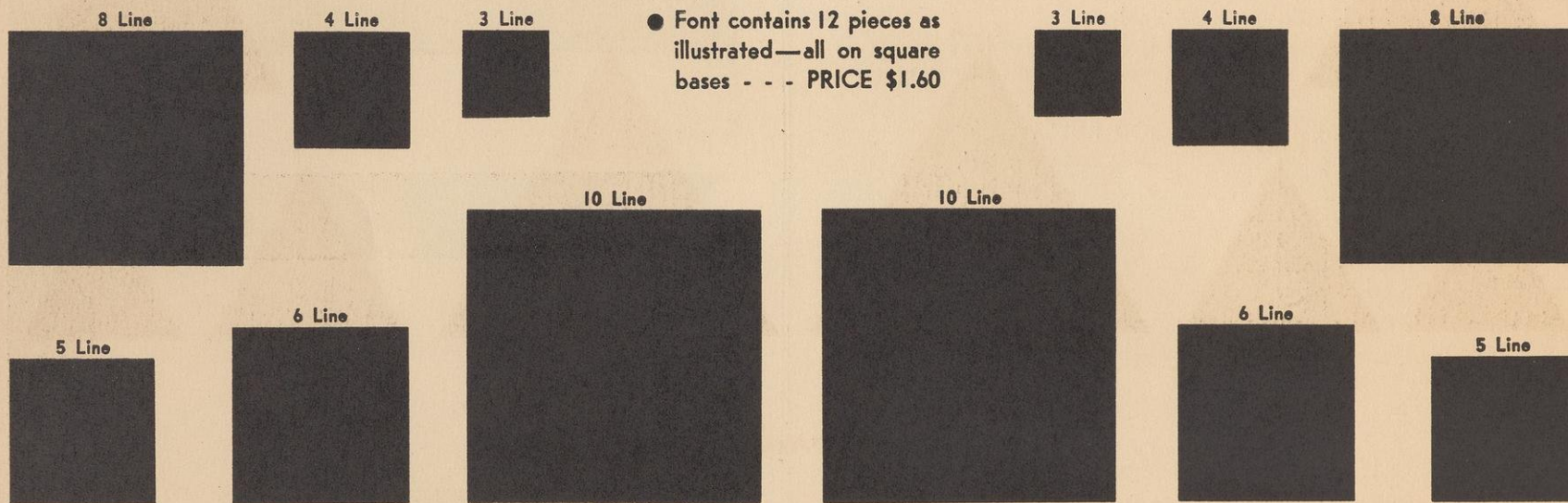
*Special Ornament Fonts*

- These popular ornaments are put up in handy useful fonts and are unusually low in price. They are especially attractive when used for tints or decorative spots.
- All ornaments are made of the finest, select, scientifically prepared Rock Maple Endwood. They are type high and have a perfect printing surface. All are on square bodies.
- PRICE: Each font contains 12 pieces and sells for \$1.60 (value \$5.00). Large sizes and special ornaments made to order. Outline ornaments also furnished in fonts. Price on request.

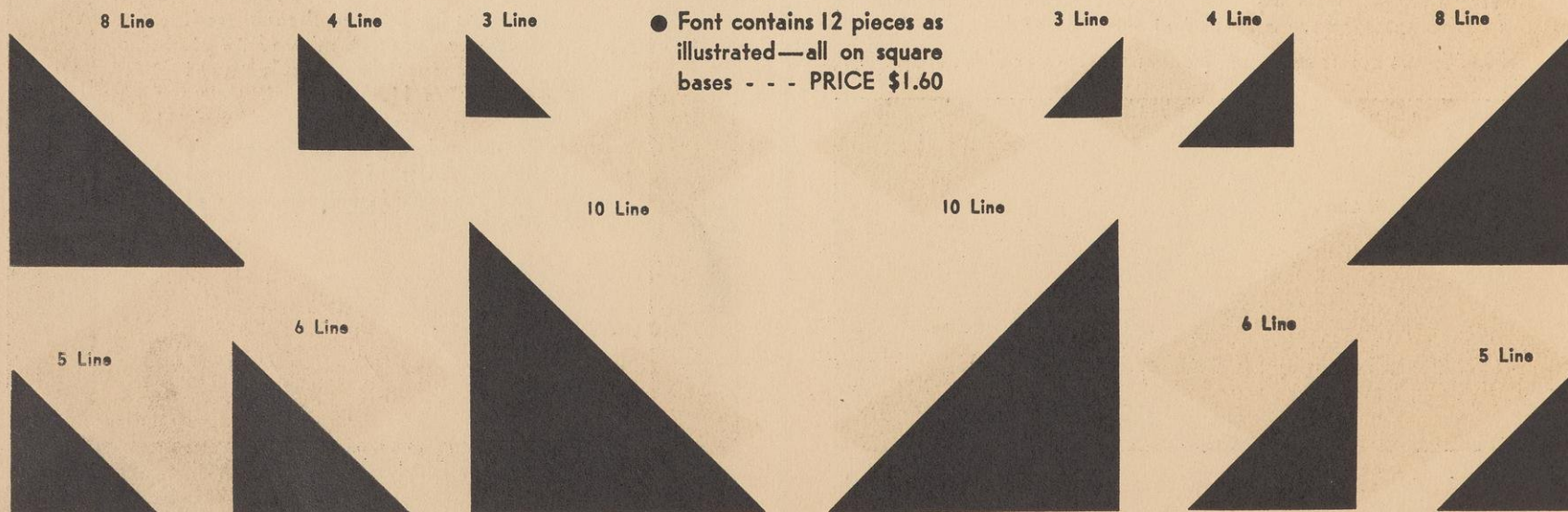
*Circle Font*



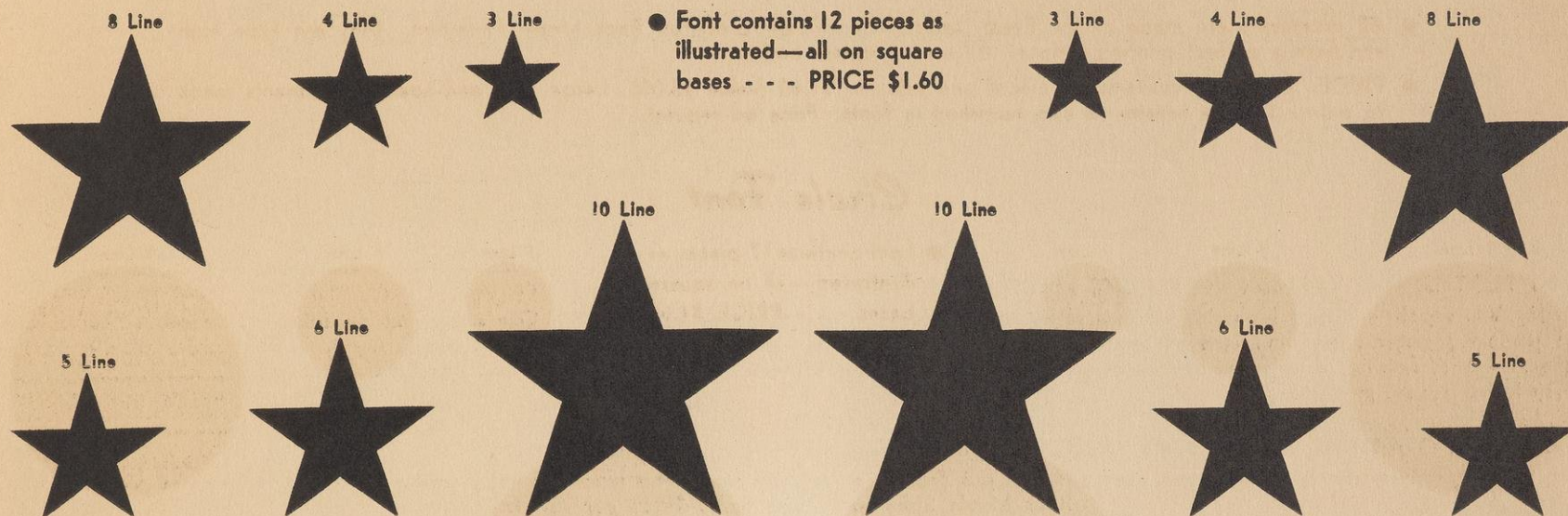
*Square Font*



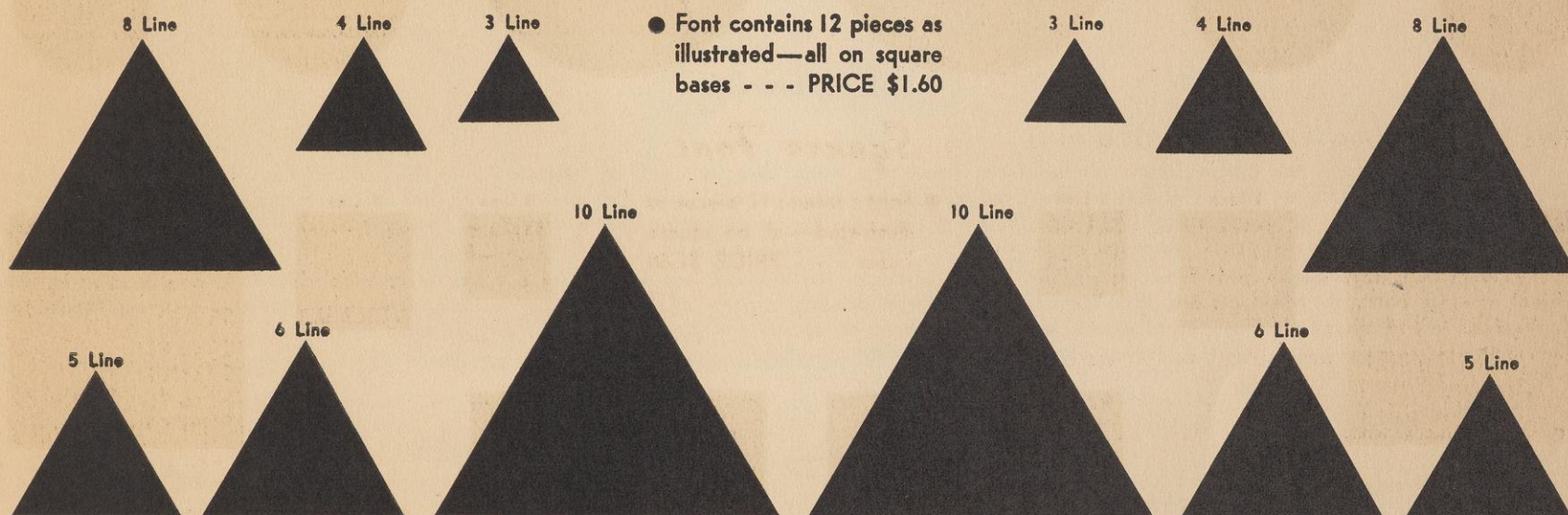
*Triangle Font*



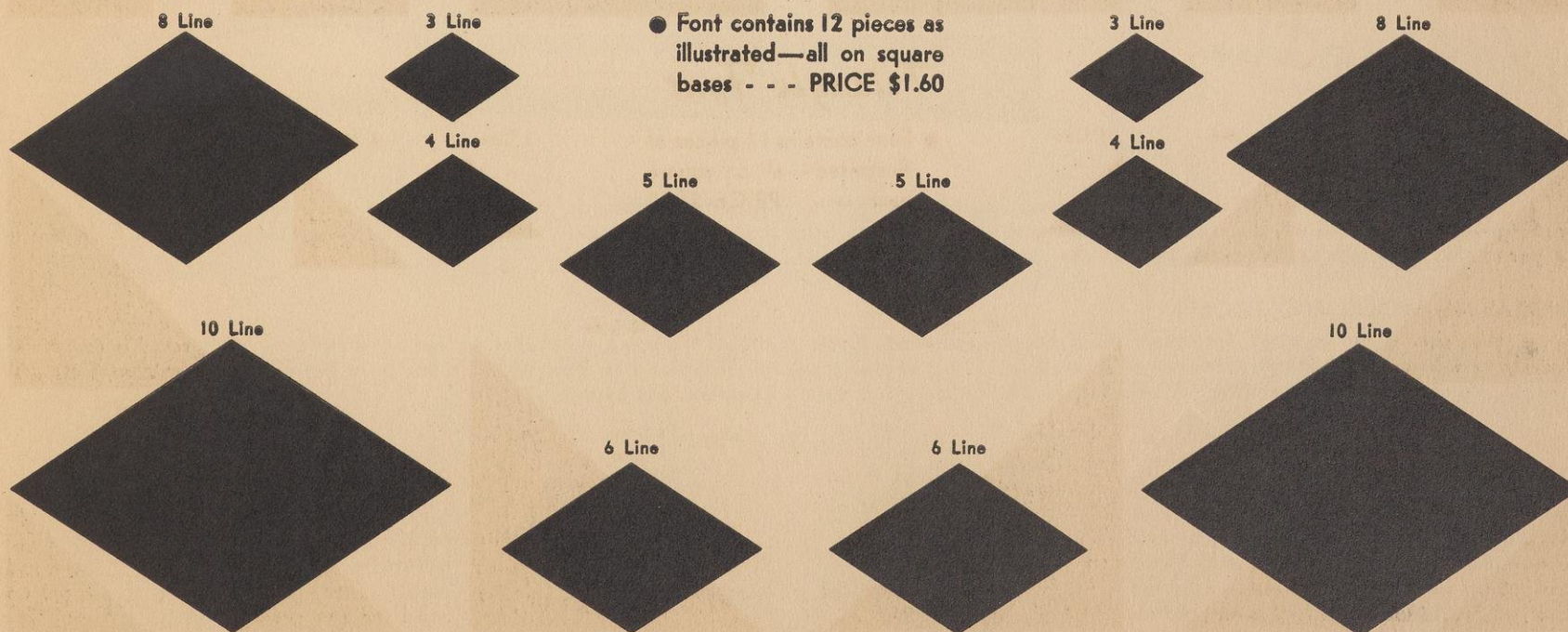
Star Font



Pyramid Font



Diamond Font



## Tint Blocks - Varnishing Blocks

Our Tint Blocks and Varnishing Blocks are made of the finest type high Rock Maple. The wood is scientifically surfaced and is as smooth as zinc. With ordinary care these blocks are good for at least 100,000 impressions. Hundreds of letters received from printers vouch for the perfect results achieved with our wood plates. Once a printer uses our wood blocks for printing or varnishing he finds that he can use our blocks for many jobs and thereby save a good deal of money. In ordering regular shaped blocks, simply specify exact length and width.

The prices of regular shaped blocks are as follows:

- 1½¢ per sq. in. for blocks over 100 sq. in.
  - 2¢ per sq. in. for blocks over 60 sq. in. but less than 100 sq. in.
  - 3¢ per sq. in. for blocks over 30 sq. in. but less than 60 sq. in.
  - 4¢ per sq. in. for blocks less than 30 sq. in.
- Minimum price per block is 25¢.

### TINT BLOCKS AND VARNISHING BLOCKS MADE IN ANY SHAPE—

We supply our type high tint blocks and varnishing blocks in any shape or size to 50". Our engraving department supervises the making of perfect register plates, cut outs of any kind, odd shapes, etc. These plates can be made from a pencil sketch or to register with a photo-engraving. A finished drawing is not necessary. Except in the case of very detailed plates, the cost of odd shaped wood blocks is usually from 1½¢ to 4¢ per sq. in.

### CUT YOUR OWN TINT BLOCKS AND VARNISHING BLOCKS—

For printers who have their own saws and can cut their own tint and varnishing blocks thereby saving time and money, we offer:  
Rock Maple Sidewood—type high—\$1.25 per sq. ft.

This is our regular tint block wood. It is type high and has an excellent printing surface especially prepared and ready for use.

### WOOD FOR POSTER ENGRAVERS—

We supply poster engravers all over the country with excellent Basswood or Side Maple Blocks in 27x40", 28x44", 40x54" and all other sizes. Prices on request.

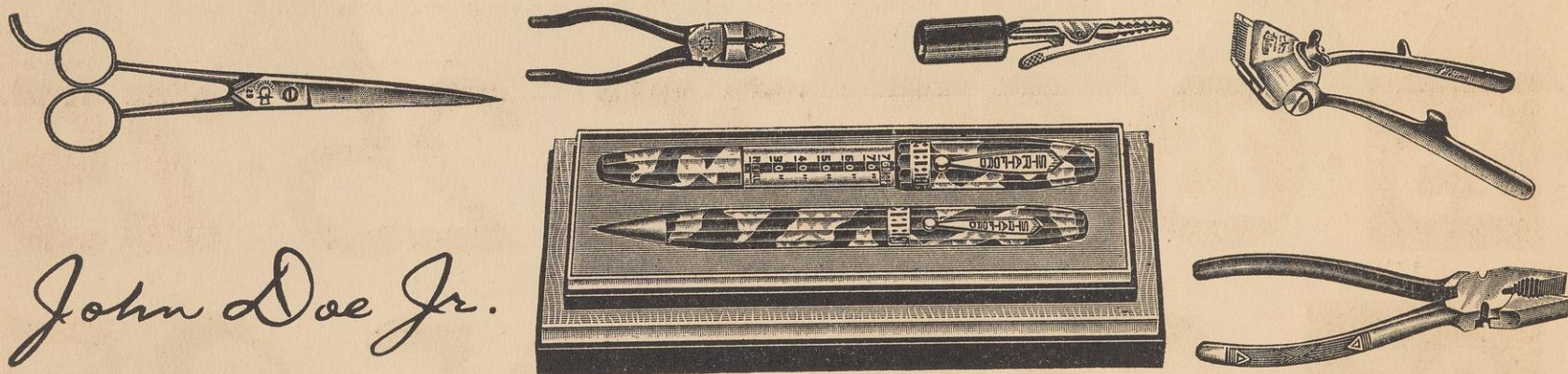
## Engraving

### FINE WOOD ENGRAVINGS AND WOOD CUTS—

All illustrations in this catalog were printed from wood cuts made directly from the objects. In making woodcuts, as the subject is drawn or photographed directly on the wood having been reduced to the required size, it is not necessary to retouch photographs or sketches used as copies. Any corrections or changes are taken care of by drawing on the block before the engraving is begun. Woodcuts can be made from any copies, photographs, pen or pencil drawings or sketches, or from the subject direct.

Woodcuts have depth and cleanness of line. For this reason the woodcut excels in bring out fine mechanical details of construction in any object or equipment. As woodcuts are open-line cuts, the superior printing quality of the woodcut is maintained when electrotypes are made for duplicates. Woodcuts or electrotypes of woodcuts will print sharp on almost any paper and under any printing conditions.

The illustrations below and those on the last few pages of this catalog show the excellent printed effect that wood engravings give.



*John Doe Jr.*

### POSTER ENGRAVING—

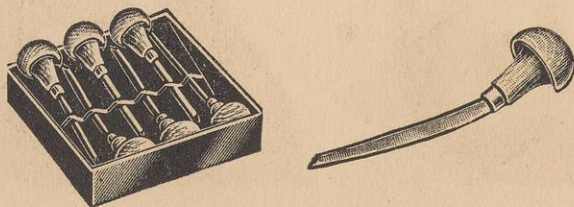
We make engravings for show cards, displays, posters, streamers, broadsides, billboards, etc. It is not necessary to have a carefully finished drawing—a pencil sketch will do. Our art department will be glad to help you with your layouts. The cost of these engravings is usually from about 2¢ per sq. in. to 4¢ per sq. in., depending on the size and details involved.

### ENGRAVING WOOD AND TOOLS—

We also carry in stock Engravers Rock Maple Endwood Blocks made of the same wood that we use for wood type. This wood is especially durable and is excellent for professional or amateur use as it engraves easily. This wood is type high. It has an especially prepared, very smooth surface. A sample block size 6x9" is sold for \$1.15. Other stock sizes and prices are as follows:

Size 12 x 12" ----- \$2.25      Size 12 x 18" ----- \$3.30      Size 12 x 24" ----- \$4.25      Size 14 x 22" ----- \$4.50

To accommodate wood engravers, printers and photo-engravers we carry in stock engraving tools, made by Muller and recognized as the finest to be had. These are put up in a handy box of six assorted tools, as illustrated. Single tool is also shown.

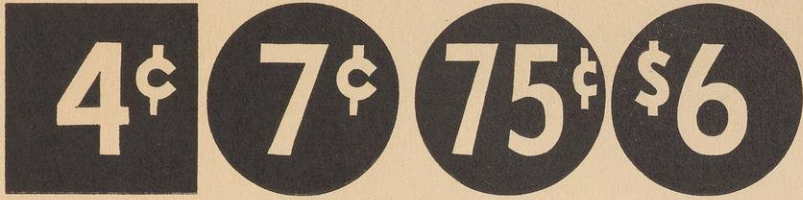


A set of six tools is \$3.00. The engraving tools may be purchased individually at 60¢ each. These tools are as good for working on photo-engravings as on wood plates. Every printer should have a set on hand for any emergency.

*Reverse Price Cuts*

- These cuts are used to excellent advantage on price tickets, displays, show cards, etc. They are made in any size from 6 line to 120 line (20"). All cuts are made on square bases.
- NOTE—You may select any figure or two figures with either a cent mark or dollar mark. In ordering specify whether reverse circle or reverse square cuts are wanted. Both are the same price.

6 Line—55¢ each, 30¢ each for any 5 or more



8 Line—65¢ each, 40¢ each for any 5 or more



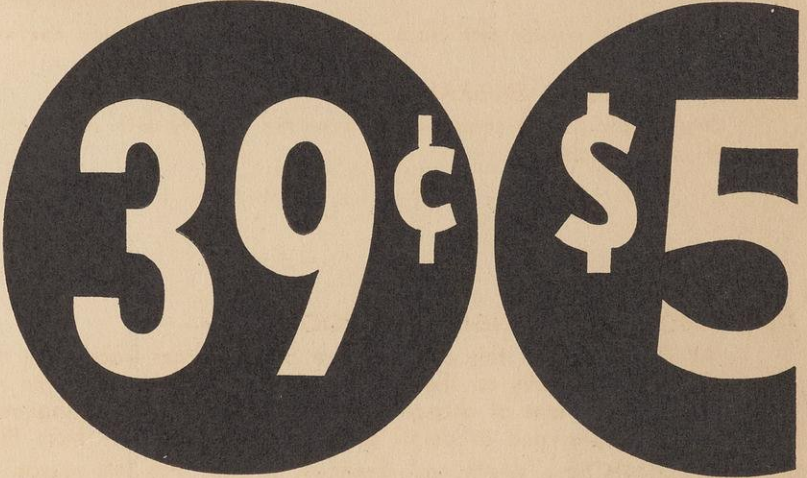
10 Line—75¢ each, 50¢ each for any 5 or more.



12 Line—90¢ each, 60¢ each for any 5 or more



15 Line—\$1.10 each, 75¢ each for any 5 or more



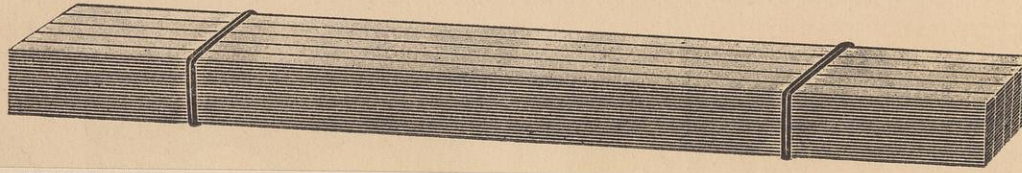
*Calendar Sets*

- Here are shown a few of the more important calendar figures and figure cuts. Please remember that any style of figure in our wood type line can be furnished in calendar sets. All styles are made in all sizes from 4 line up.



## Reglet and Furniture

- Our Reglet and Furniture is made by special machinery—for accuracy, durability and smoothness, it cannot be excelled. Only the finest thoroughly seasoned lumber is used—will not warp or shrink. All Reglet and Furniture is oil-dipped. Our Reglet and Furniture is sold in yard lengths, cut to size or labor saving fonts.



### PRICE LIST

(Reglet and Furniture in yard lengths)

Size	Price	Size	Price
6 Pt. -----	3c per yard	6 Line -----	12c per yard
12 Pt. -----	3 1/4c per yard	8 Line -----	15c per yard
18 Pt. -----	4c per yard	10 Line -----	19c per yard
2 Line -----	5 1/2c per yard	12 Line -----	24c per yard
3 Line -----	7c per yard	15 Line -----	33c per yard
4 Line -----	9c per yard	20 Line -----	44c per yard
5 Line -----	11c per yard	24 Line -----	49c per yard

- We sell 6 pt. and 12 pt. Reglet 3/4" high which is the same height as leads and slugs. Also softwood reglet.

### PRICE LIST

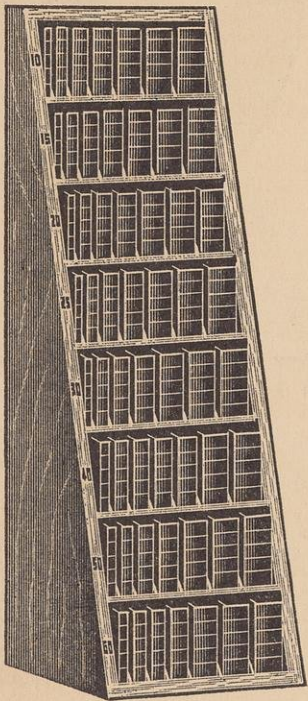
(Reglet in labor saving lengths)

Length	6 pt.	12 pt.	Length	6 pt.	12 pt.
10 Line -----	\$0.35	\$0.35	60 Line -----	\$1.50	\$1.65
15 Line -----	.40	.45	70 Line -----	1.75	1.90
20 Line -----	.50	.55	80 Line -----	2.00	2.15
25 Line -----	.60	.70	100 Line -----	2.45	2.70
30 Line -----	.75	.80	120 Line -----	3.00	3.25
40 Line -----	1.00	1.10	140 Line -----	3.45	3.80
50 Line -----	1.25	1.35	160 Line -----	3.95	4.30

- The above prices are for 100 pieces. Also sold in smaller quantities, in between widths or in wider sizes.

## Reglet and Furniture Cabinets and Fonts

- We have a complete line of Cabinets for labor saving Reglet and Furniture. Cabinets and contents may be purchased together or separately. Complete information and price on Cabinets to suit your purpose will be sent upon request.



No. 10

MIDGET FURNITURE CABINET

- The No. 10 Midget Furniture Cabinet contains 5 pieces of each length and width as follows: Widths 2, 3, 4, 5, 6, 8, 10 picas; Lengths 10, 15, 20, 25, 30, 40, 50 and 60 picas. Size stamped on each piece.

The Cabinet is 30 3/4" high, 9 3/4" wide and 10 1/2" deep—regularly supplied in Antique Oak finish (Olive Green finish to order).

#### PRICES

Cabinet alone .....	\$ 6.50
Contents alone .....	7.50
Complete .....	14.00

NOTE—We can also furnish the Standard No. 12 Furniture Cabinet which is twice as wide as the Midget Cabinet and contains exactly twice as much furniture. Cabinet is sold with or without contents. Price, complete with contents, \$18.50.

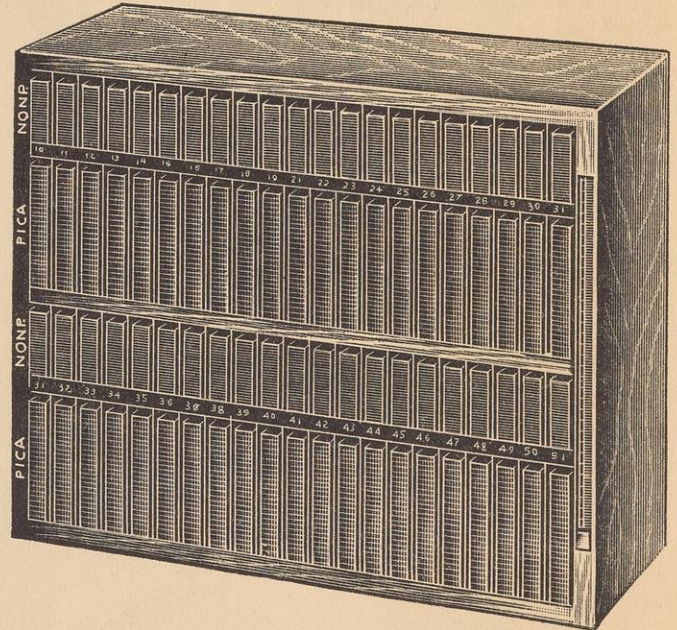
- The No. 4 Reglet Cabinet contains 2100 pieces of the best 6 and 12 pt. Reglets, in lengths of 10 to 51 picas, varying by picas. There are 25 pieces of 6 pt. and 25 pieces of 12 pt. in each length.

The Cabinet is 16 1/2" high, 20 3/4" long and 9 1/2" wide—regularly supplied in Antique Oak finish (Olive Green finish to order).

#### PRICES

Cabinet alone .....	\$ 9.50
Contents alone .....	16.50
Complete .....	26.00

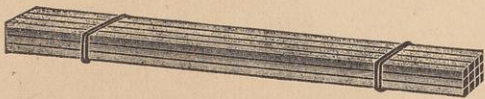
NOTE—We can also supply the No. 1 Reglet Cabinet. This contains 150 pieces each of 6 and 12 pt. reglet in each of the following lengths: 10, 20, 30, 40, 50, 60 picas. Total 1800 pieces. Cabinet is sold with or without contents. Price, complete with contents, \$17.00.



No. 4 REGLET CABINET

## Cutting Sticks

- These Sticks for Paper Cutters are made from the same selected Rock Maple that is used for wood type—thoroughly seasoned and of the highest quality in every detail. Our cutting sticks will outlast all others.
- Cutting Sticks supplied for Seybold, Oswego, Diamond, Challenge, Sheridan, C. & P., and all other cutters.



- Prices listed are per dozen. Add 25¢ for less than 1 dozen. Special discount on 3 dozen.

### PRICE LIST

Size	16 1/2"	20"	23 1/2"	27"	30 1/2"	33"	35"	37"	41"	45"	51"
1/2"	0.45	0.50	0.60	0.70	0.80	0.90	0.95	1.00	1.10	1.20	1.30
5/8"	.65	.70	.90	1.00	1.05	1.15	1.20	1.25	1.35	1.50	1.70
3/4"	.75	.90	1.00	1.15	1.25	1.35	1.50	1.65	1.75	2.00	2.20
1"	1.40	1.65	1.95	2.20	2.50	2.70	2.85	3.00	3.30	3.75	4.30
1 1/8"	1.65	1.90	2.20	2.45	2.75	3.00	3.20	3.40	3.85	4.30	4.75
1 1/4"	1.90	2.10	2.45	2.75	3.05	3.30	3.55	3.75	4.15	4.65	5.35
1 3/8"	2.10	2.30	2.75	3.20	3.50	3.80	3.95	4.25	4.65	5.10	5.80

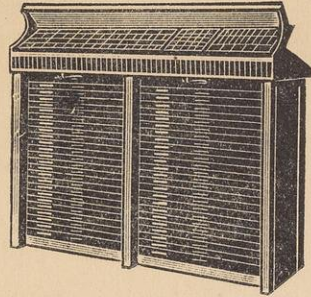
- We carry in stock Punching Blocks for the Wright Paper Drilling Machine—made of Rock Maple Endwood - - - PRICE: \$1.00 per dozen

## Composing Room Equipment

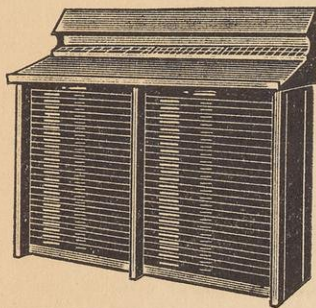
- We are selling agents for most of the important manufacturers of composing room equipment. Our type cabinets, imposing tables, galley and cut storage cabinets, chase racks, etc., are all Thompson made. All of this equipment is made in both wood and steel—always reasonably priced. Write for complete information and price on any item.

### CONCENTRATED TYPE CABINET

This cabinet concentrates a great deal of spacing material within easy reach of the compositor. The top of the side shown is equipped with a Space and Quad case, a Copper and Brass thin space case and Lead and Slug cases. The top of the side not shown is the working side. This cabinet has a double tier body with extension front. It is equipped with 46 California Job Cases and two Blank Cases. All cases are of standard depth. This cabinet is wired for electric lights.



### WALL TYPE CABINET



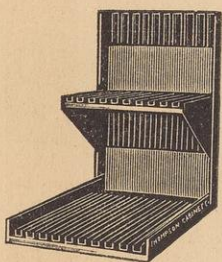
This type cabinet is especially designed to be placed against or near a wall—or at the end of a row of cabinets. The convenient cases of spacing materials make this cabinet an investment in modern efficiency. The cabinet is equipped with a removable working top with a sloping work bank. Though not illustrated, if desired the top can be fitted with additional cases of spacing materials. This removable top can fit any standard make flat top type cabinet. The cabinet is equipped with 46 California Job Cases and two Blank Cases. The body has an extension front.

### TYPE CASES

The illustration is a wood type case. Ends of case have grooves graduated by picas—supplied with six removable strips that can be adjusted to accommodate varying sizes of wood type. We can also supply California Job and other type cases, also spacing material cases at reasonable prices.



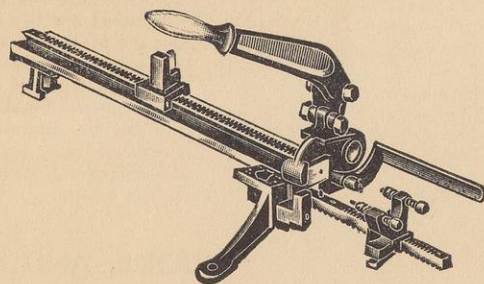
### CHASE RACKS



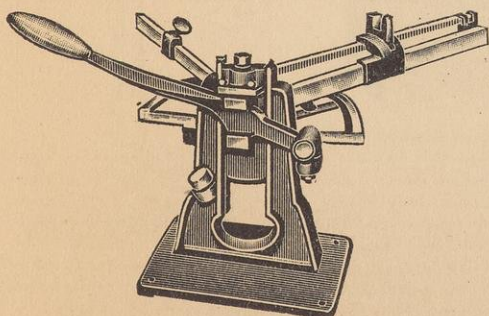
Chase Storage Racks are necessities in the modern method of printing plant operation. Our Chase Racks have deep channels and are extremely rigid. The rack illustrated has a capacity for 20 job press chases ranging in size from 8x12" to 14 1/2x22". We can also supply chase racks suitable for storing Cylinder Press forms. The Job Chase Rack illustrated and the Cylinder Chase Rack are the same size. Both are 19" wide, 25" deep and 30" high. Prices of these Chase Racks are very reasonable.

### LEAD AND RULE CUTTERS

We have a full line of Lead and Rule Cutters, all of well known makes. These are built to precision with the finest high-grade Swedish tool steel and best quality castings. The micrometer point adjustments on these machines allow the operator to cut any measure to required points. Write for complete information and prices.

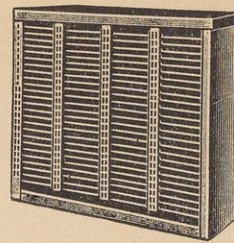


### HAND MITERING MACHINES



These are equipped with positive point gauges that set instantly and lock automatically to points. Rules can be mitered to quarter picas. The gauge bars are graduated to picas and numbered every 5 picas. The knives are of the best tool steel. Complete information and prices on request.

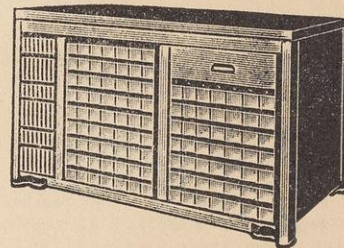
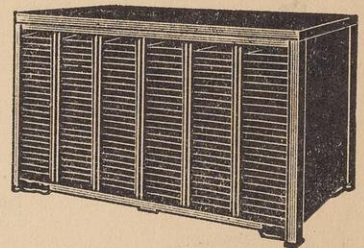
### GALLEY CABINETS



These are of rigid construction without undue bulk. The cabinet illustrated has a capacity of 100 galleys size 8 3/4x13". We can also supply a number of other galley cabinets holding 50 or 100 galleys size 8 3/4x13" or 6 1/4x23 1/2" or 10x16" or 12x18" or 3 1/2x23 1/2". Galleys or Galley Cabinets may be purchased separately. All galleys are made of rust proof steel and are of single wall construction. They are of uniform thickness with perfectly smooth finish. The neat corners are spot welded—the strongest, most rigid construction.

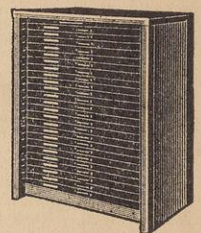
### IMPOSING TABLES

The table shown (front view and back view) is the popular Lock-Up and Storage Table. The illustration on the right shows side with six tiers of steel runs and is made to accommodate 138 8 3/4x13" steel galleys. Each galley opening is consecutively numbered on the upright posts. The illustration at left shows Lock-Up or Furniture Side. This side contains a Font of Labor Saving Reglets, two Fonts of Labor Saving Furniture and a drawer. The table provides for a cast iron or marble surface. We can also supply any other imposing table of wood or steel construction with space for chases, furniture and galleys.

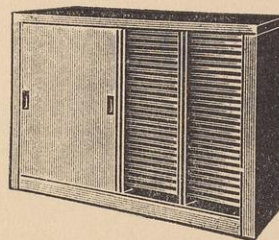


### FLAT TOP TYPE CABINET

The Flat Top Cabinet is used where there is no need for additional working space or space for materials. If desired the body can be fitted with any removable working top. The body is equipped with 23 California Job Cases and one Blank Case with center bar. It is wired for electric lighting and is equipped for one light above the cases as standard equipment. This cabinet is also made in double tier with twice as many cases.



### CUT STORAGE CABINETS

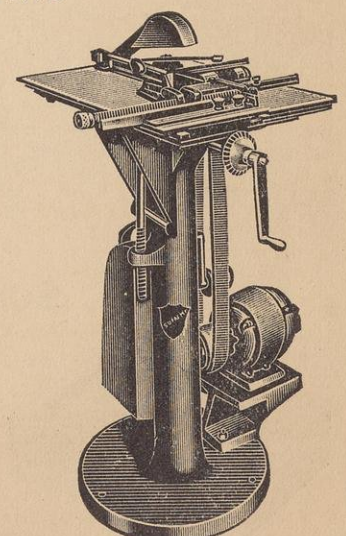


This cabinet solves the problem of safe and convenient storing of cuts. It has a capacity for 100 metal trays size 12 1/4x18 1/4". Each tray is plainly numbered to correspond with the number of its place in the cabinet. The cabinet is equipped with two steel sliding doors. These exclude dust and moisture, both dangerous to engravings and electros. The floor space required by this cabinet is 59 1/4x21 1/4". Height 40".

### PRINTER'S SAWS

We have a complete line of Printer's Saws made by Nelson, American Steel Chase, Supreme and others. These are priced so low that even the small size print shop should have one. The saws are all equipped with sliding gauges with micrometer attachments for gauging points. The workholders close easily and quickly. Saws are equipped with a number of attachments including a miterer. Under-cutting and outside mortising is easily done by a simple adjustment. These machines have guards which can be pushed back when necessary. Complete information on various types of saws can be had on request.

NOTE—We carry in stock the well-known Simmonds and Atkins saw blades. These fit all printer's saws. (See next page.)



## Printer's Supplies

- We offer a complete line of essential printing equipment and supplies. All items are the products of prominent manufacturers and are of the highest quality. Complete information on any item will be furnished upon request. Mail orders are given prompt and careful attention.

### MALLETS



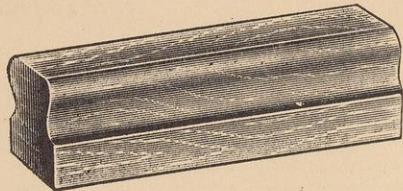
tion and molded into one piece). All mallets can be had in three different sizes.

We have a complete line of all kinds of mallets: The common Wooden Mallet (made of thoroughly seasoned Hickory), All-Rawhide Mallets (which are extremely durable, being made of rolled rawhide, specially treated and rolled into shape, and Miller Hard Rubber Mallets (of laminated construction

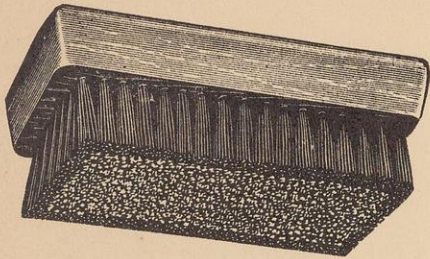
### WOODEN PLANERS

These Planers are made of the best thoroughly dried Rock Maple. They are carefully made and are extremely durable.

Small size Planer ..... 3 1/4 x 6"  
Leather Top Planer ... 3 1/4 x 8"  
Midget Planer ..... 1 3/4 x 3"

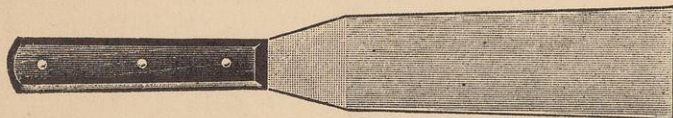


### BRUSHES



We have the standard Plate Brush and also regular Benzine Brushes. The body of the Plate Brush has delicate fibre brass wire that is surrounded by a row of bristles. This brush will not scratch the finest halftone. Our Benzine Brushes are of the very best quality. They have genuine China bristles securely set in hardwood.

### INK KNIVES AND SPATULAS



Regular ink knives like the one illustrated are made with blades 6, 8, 10 and 12 inches long. These knives with stiff blades can also be furnished in the round end style. We also have Ink Spatulas (with round or square ends). These have thin pliable blades and are exceptionally useful for mixing small quantities of ink.

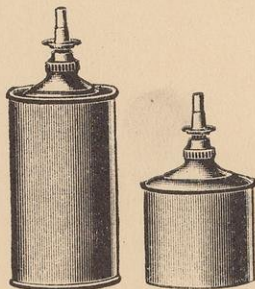
### TWEEZERS



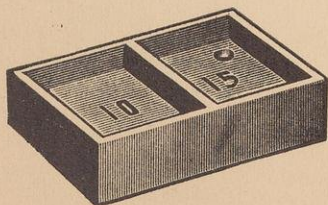
These tweezers are of good quality tempered steel, with file points. We can also supply the Smith Auto-Tweezers which operates on the opposite principle from the ordinary tweezers. In its normal position the points are closed. To open pressure must be exerted.

### BENZINE CANS

Benzine Cans are made in pint and quart sizes. They are of extra heavy brass and extremely strong and durable. We also carry the new Smith "Safety" Fountain Brush (a combination of benzine can and brush). This instrument holds a pint of cleaning fluid. It saves time, labor, waste and is non-explosive. Using only one hand, a person presses a button releasing the liquid that wets the brush. At the same time, the brush is operated to clean the type or cuts. The whole operation requires the use of only one hand.



### IRON FURNITURE



This is made of the best gray iron. It is absolutely accurate to the point and will remain so indefinitely. All pieces though light in weight are strongly braced and will not yield under the severest strain of lock-up. Iron furniture is sold in any selection of sizes and in a variety of regular fonts, standard assortments which meet all normal requirements. We can also supply the regular alloy furniture (inexpensive and light weight).

### PRINTER'S TAPE RULES

These very useful Printer's Tape Rules are made of flexible-rigid steel. They extend to 72" and are marked in picas, nonpareils and inches. The size of the case is only 2" and can be conveniently carried in a pocket. For newspaper work, we can furnish the same kind of tape rules with agate, pica and inch measurements.



### LINE GAUGES



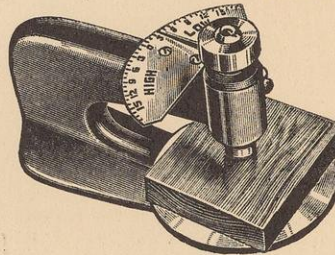
We carry a complete assortment of Line Gauges of standard make. These are made of solid brass with especially legible markings. Made in 8", 12", 18" and 22" lengths with 6 and 12 point and agate, or 6 and 12 point and inch graduations.

### COMPOSING STICKS

These are of high grade steel and are extremely rigid. They are of unsurpassed accuracy and construction. Made in various lengths to suit all requirements. We can also supply wood poster sticks in sizes to 42" long. These are fitted with an iron clamp and knee and are useful for setting lines of wood type.

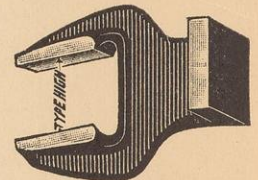


### TYPE HIGH GAUGES

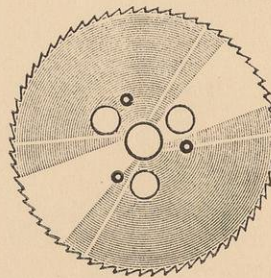


The Kemper Type High Gauge (the most useful instrument of its kind) gives instant reading and shows at a glance in thousandths how much a cut is high or low. By its use, cuts can be tested and sent to the pressroom type high, saving valuable press time. Unnecessary unlocking and locking of forms is avoided.

The Challenge Type High Gauge illustrated is the standard inexpensive instrument. It is absolutely accurate, being ground to .918" (type high). At the price at which they are sold, every man who handles cuts before printing should have one.

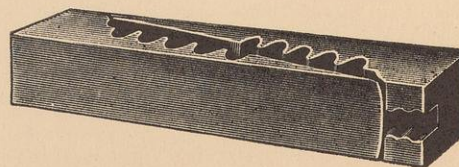


### PRINTER'S SAW BLADES

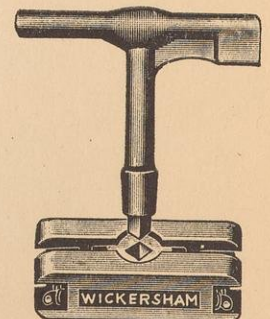


These Saw Blades (of Atkins' and Simmond's make) are the regular Printer's Saw Blades. They are 6" in diameter and have 64 teeth. All blades are sold perfectly sharpened. The saw blades fit all types of saws including the Miller, Nelson, American Steel Chase, etc. Blades with 128 teeth can be furnished for sawing lead, copper and wood. All saw blades are carried in stock for immediate delivery. Special discount on three or more.

### QUOINS AND KEYS



We carry the regular Hempel style quoins in three sizes: Midget, Small and Large (for cylinder chases). We also carry the Wickersham one piece quoins. These do not slip or slide since they have a direct spread. Another important type of quoin that we can supply is the Smith Tool Steel "Register" Quoin. Each quarter turn of the wrench advances this quoin spread one point. Regular and pressman's keys can be supplied for all quoins. We can also furnish the M. & W. and Stephens Expansion Locks. Complete information on request.



THE UNIVERSITY OF CHICAGO





**AMERICAN WOOD TYPE MFG. CO.**