



LIBRARIES

UNIVERSITY OF WISCONSIN-MADISON

Instruction on installation, care and operation of the chandler & price 10x15 and 12x18 craftsman press with rice automatic feeder 1934. 1934

Chandler & Price company

Cleveland, Ohio: Chandler & Price Company, 1934

<https://digital.library.wisc.edu/1711.dl/HQDZGTLCE7MMT9B>

This material may be protected by copyright law (e.g., Title 17, US Code).

For information on re-use see:

<http://digital.library.wisc.edu/1711.dl/Copyright>

The libraries provide public access to a wide range of material, including online exhibits, digitized collections, archival finding aids, our catalog, online articles, and a growing range of materials in many media.

When possible, we provide rights information in catalog records, finding aids, and other metadata that accompanies collections or items. However, it is always the user's obligation to evaluate copyright and rights issues in light of their own use.

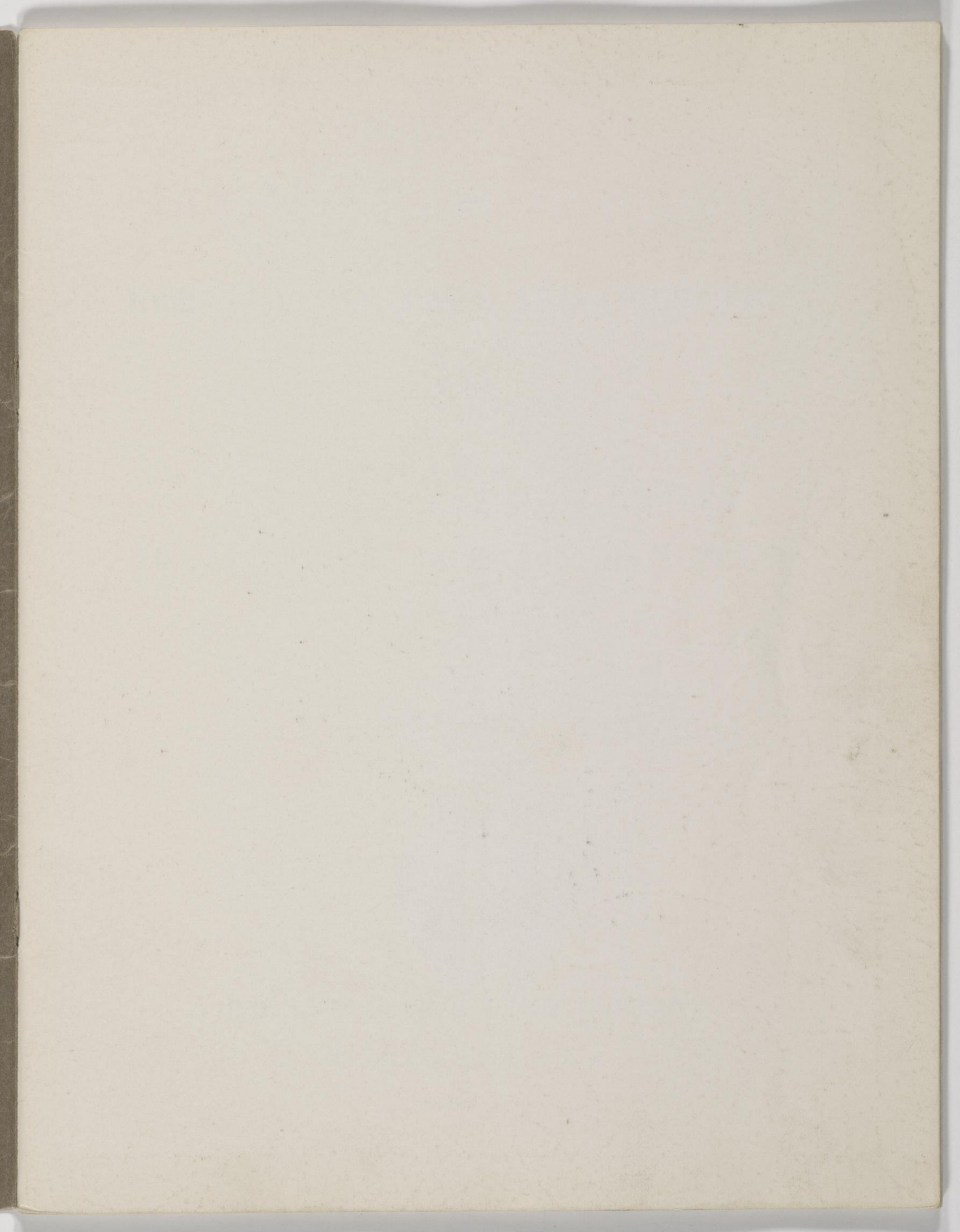
**CHANDLER & PRICE
CRAFTSMAN PRESS**

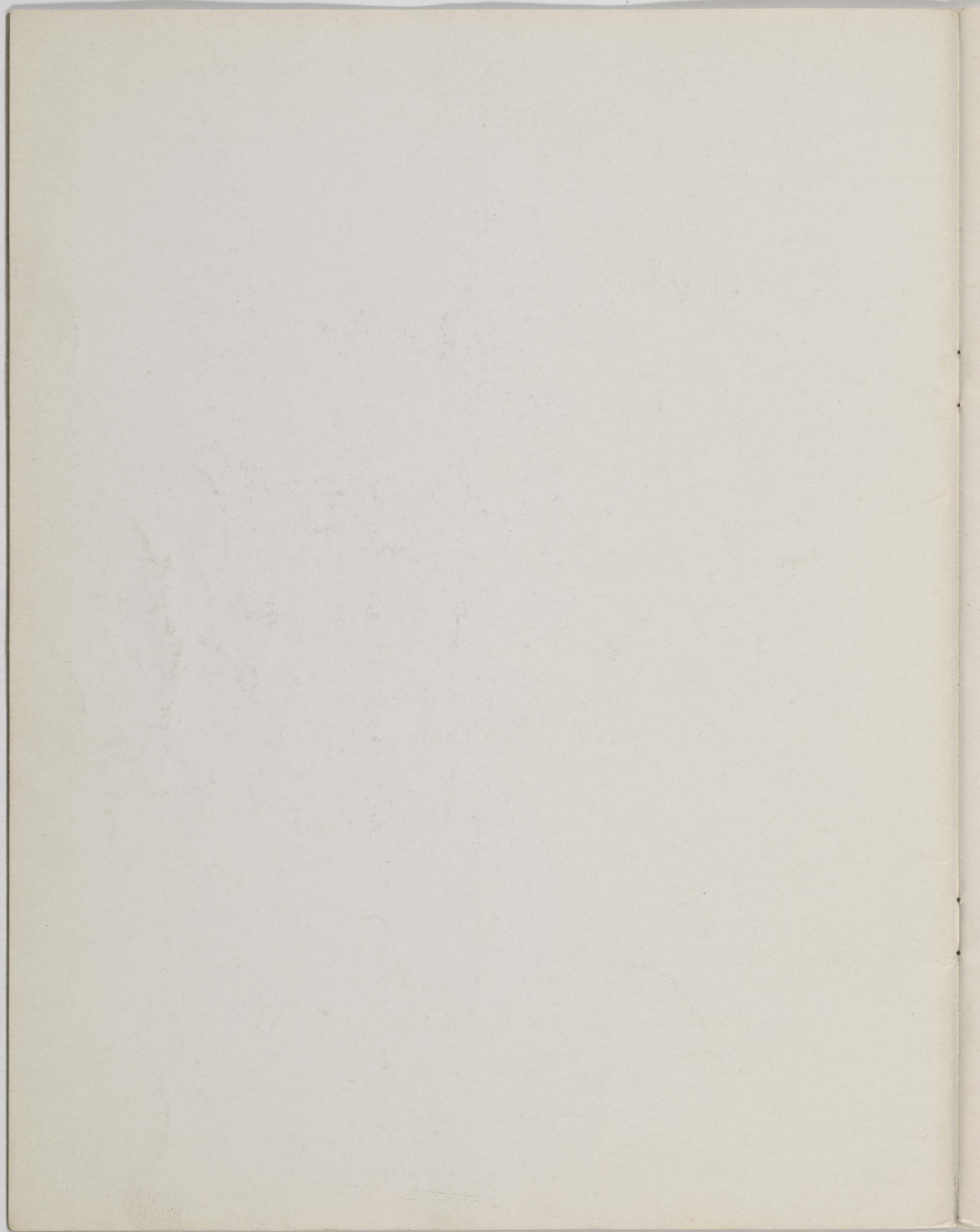
**WITH
RICE AUTOMATIC
FEEDER**

10x15 and 12x18



American Type Co
Marguerite 4/64



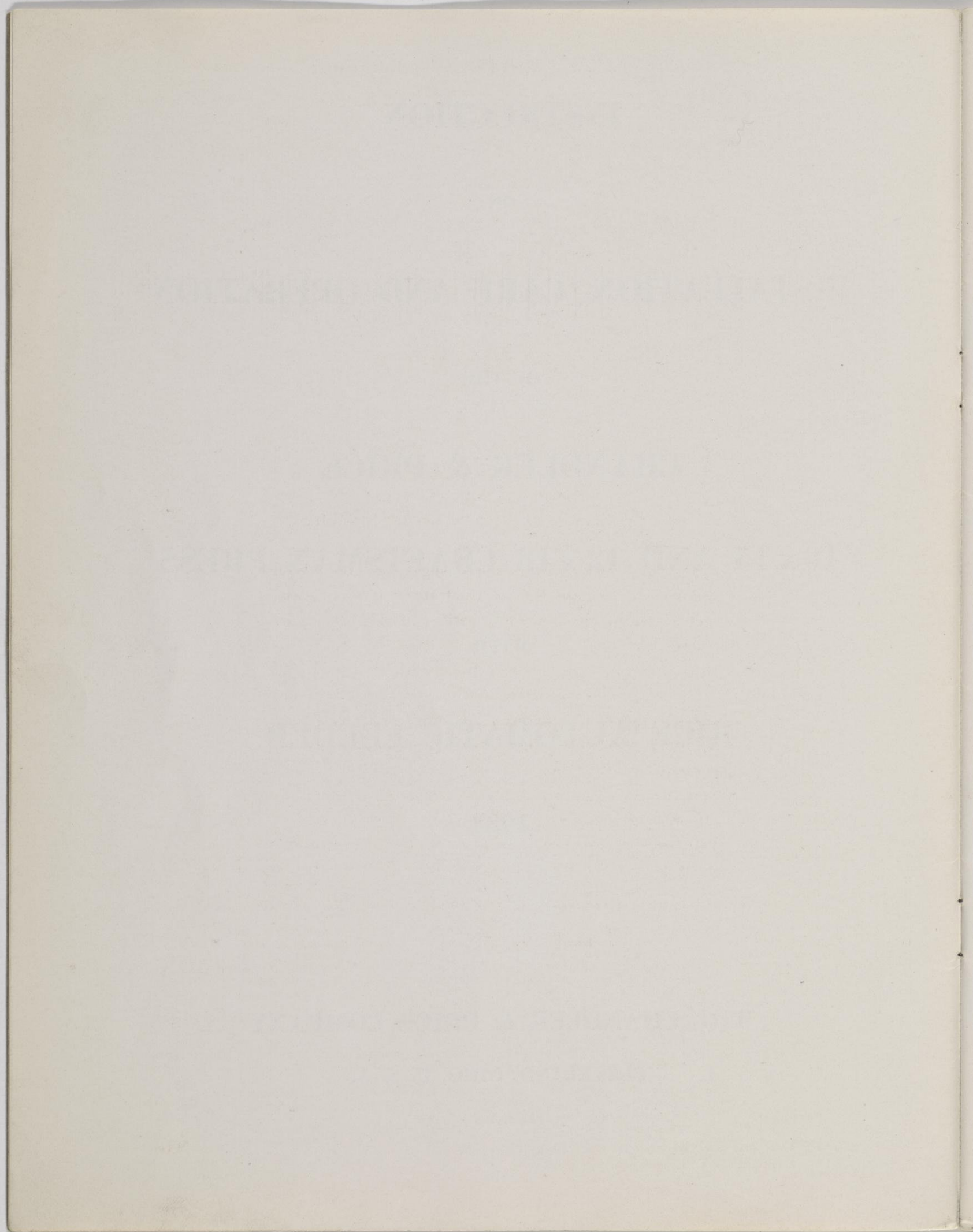


INSTRUCTION
ON
INSTALLATION, CARE AND OPERATION
OF THE
CHANDLER & PRICE
10 x 15 AND 12 x 18 CRAFTSMAN PRESS
WITH
RICE AUTOMATIC FEEDER
1934

THE CHANDLER & PRICE COMPANY

CLEVELAND, OHIO, U. S. A.

Printed in U. S. A.



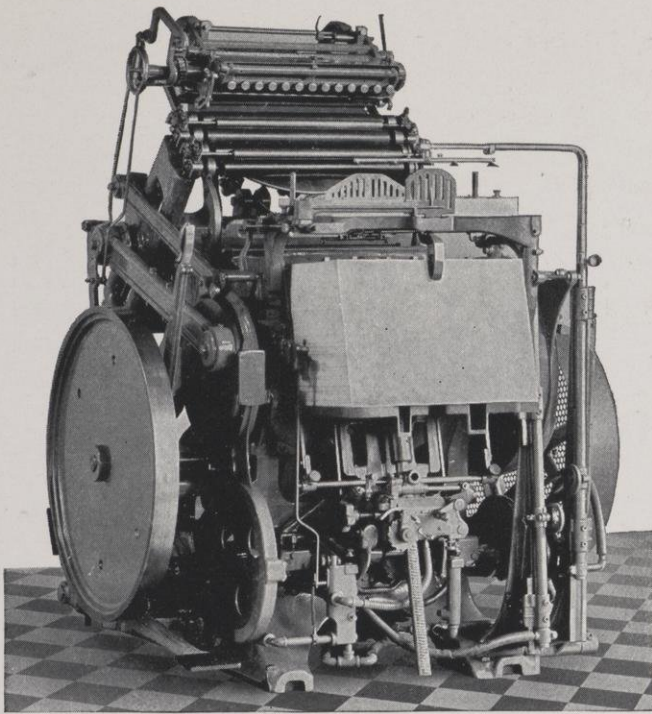
INTRODUCTION

IN this book of instructions it is our purpose to outline as briefly and clearly as possible the usual methods followed in the installation, care and operation of a Chandler & Price 10 x 15 or 12 x 18 Craftsman Press with Rice Automatic Feeder.

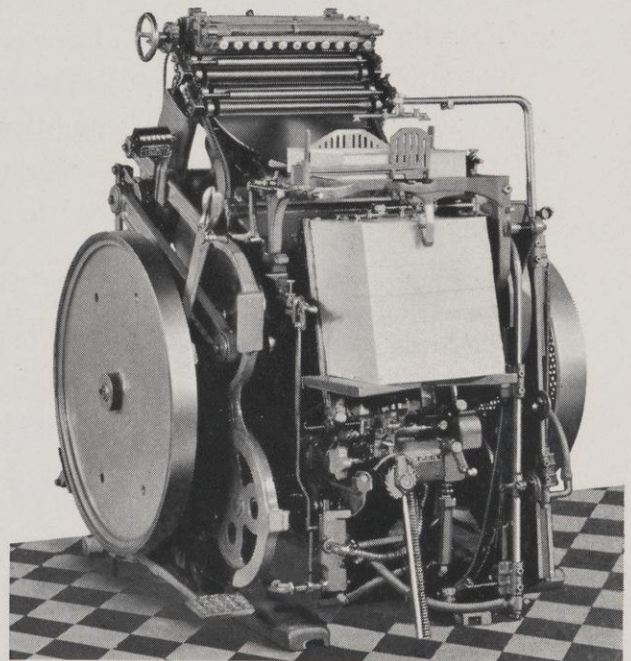
The procedure and methods suggested have been compiled by competent demonstrators and operators and represent the general practice in printing plants where these units have greatly increased the quality of the printing and the profits to the owners.

On account of conditions of an unusual nature sometimes present in separating, feeding, registering and printing, it may be that certain information will not be found in this book. As always, however, it can be said that it is the policy of this company to assist the operators and owners of Chandler & Price equipment with their special problems to the end that the equipment may render satisfactory and efficient service.

THE CHANDLER & PRICE COMPANY



*The Chandler & Price Craftsman Press
with Rice Automatic Feeder
12 x 18*



*The Chandler & Price Craftsman Press
with Rice Automatic Feeder
10 x 15*

SPECIFICATIONS

	10 x 15 UNIT	12 x 18 UNIT
Chase dimensions:		
Inside	10" x 15"	12" x 18"
Outside	12 $\frac{1}{2}$ " x 17"	15 $\frac{3}{8}$ " x 20 $\frac{1}{2}$ "
Maximum size of sheet	11" x 15 $\frac{1}{2}$ "	13" x 18 $\frac{1}{2}$ "
Minimum size of sheet	2 $\frac{3}{4}$ " x 4"	2 $\frac{7}{8}$ " x 4 $\frac{1}{2}$ "
Platen—dimensions	11 $\frac{1}{4}$ " x 18 $\frac{1}{8}$ "	13 $\frac{3}{16}$ " x 21 $\frac{3}{4}$ "
Disc—diameter	17 $\frac{1}{4}$ "	20 $\frac{5}{16}$ "
Flywheel:		
Diameter	30"	30"
Width of face	2 $\frac{1}{4}$ "	2 $\frac{1}{4}$ "
Form rollers (4 to set) should be cast—diameter	1 $\frac{3}{4}$ "	2"
Fountain roller (1) should be cast—diameter		1 $\frac{3}{4}$ "
Roller trucks—standard diameter	1 $\frac{11}{16}$ "	1 $\frac{15}{16}$ "
Revolutions of crankshaft to one impression	6	7
Press pulley—diameter	22"	22"
Horsepower recommended	1 $\frac{1}{4}$	1 $\frac{1}{2}$
Floor space	45" x 60"	50" x 65"
Opening through which unit will pass—regular shipment	47"	48 $\frac{1}{2}$ "
Weights:		
Net weight—lbs.	2475	3250
Crated for shipment—lbs.	2800	3570

INSTALLATION

Unpacking

The unit was shipped from the factory with a minimum number of parts removed. While unpacking, each individual part should be examined in order to become familiar with its particular use on the unit, as at some time or other a job will come along for which this or that part was included in the equipment.

After the parts have been examined thoroughly, clean the grease from each item with kerosene or gasoline and finally wipe dry with a clean cloth.

Foundation

It is essential that the unit be placed on as solid a foundation as possible. The press must be level and each foot must rest solidly on the foundation, using packing where necessary and then lagged to the floor.

Wiring

When motor equipment is furnished, a wiring diagram is included to assist the electrician. Particular attention must be given to the direction of the rotation of the motor pulley. This should be such that when facing the pulley of the motor the direction of rotation is clockwise.

The general practice is, if floor space permits, to place the control on the left side of the press so as to have easy access to the push button fastened to the side of the press and the flywheel foot brake. Enough room should be allowed between the controller and the unit for convenience of the operator.

CARE AND OILING

Lubrication

Before the press is turned over either by power or by hand it should be thoroughly lubricated with a good grade of machine oil. A successful method to follow in oiling is to commence at the same place each time and continue around the machine until the starting point is reached.

Oil holes should be used where provided, but it is highly essential that every moving part be lubricated at a point of contact or bearing.

Particular attention must be given to the main and back shaft bearings, the bed shaft, the pump and the crankshaft bearings, and to the feed bar and delivery arm slides, both on the slides proper and on their bearings at the bottom. Do not forget that all the bearings of this machine are good, tight fits and in order for the press to function properly and without injury frequent and thorough lubrication at all points is an absolute necessity.

In addition to the regular machine oil, an occasional supply of ~~3-in-One~~ #20 motor oil should be used on the feed bar and delivery arm slides and a good grade of ball-bearing grease should be used in the cam rollers and the saddle roller bearings.

Starting and Preliminary Running

The press should be turned over several times by hand to make sure that all connections have been properly made and that there are no interferences. It can be operated under power at slow speed and continually watched for bearings or moving parts getting warm.

The 10 x 15 press should not be run over 2500 and the 12 x 18 not more than 2000 impressions per hour for the first few days. The maximum speed can be used after the press has had a fairly good run-in.

During the preliminary running and before the feeding operations start, the feed bar and delivery arm should not be on the unit.

OPERATION

Plate A shows the approximate position of the gauge pins, the register finger and the sucker tips on an $8\frac{1}{2}$ " x 11" sheet when using two front and two rear feeder sucker tips in the crosshead, and two delivery sucker tips in the delivery head. Plate B shows the location of the gauge pins, the register finger, the feed and the delivery bar suckers, when using four front and two rear feed sucker tips in the feeder crosshead, and three delivery sucker tips in the delivery head. Stripper wires appear on both these prints merely to show approximate relation to front feed sucker tips.

Feeding

On an $8\frac{1}{2}$ " x 11" sheet we suggest that you copy the location of gauge pins' wire strippers and register finger as shown on Plate A or Plate B; then place this sheet on the platen as a guide for correct feeding set-up of these parts. In placing and adjusting the feed bar suckers, please notice that the markings were made before the sheet was moved to a side register; while the markings for the delivery arm were made after the sheet was registered.

Turn the press over by hand until the platen is in the open position and the curved feeding tube is in the forward position in relation to the platen. Attach the feed bar assembly, adjusting this on the end of the feed tube so that the sucker tips line up with the markings on the copy of Plate A or B and clamp securely in this position. A possible forward movement, upsetting the adjustment of the feed bar when running, is prevented by the stop screw at the end of the curved feeding tube.

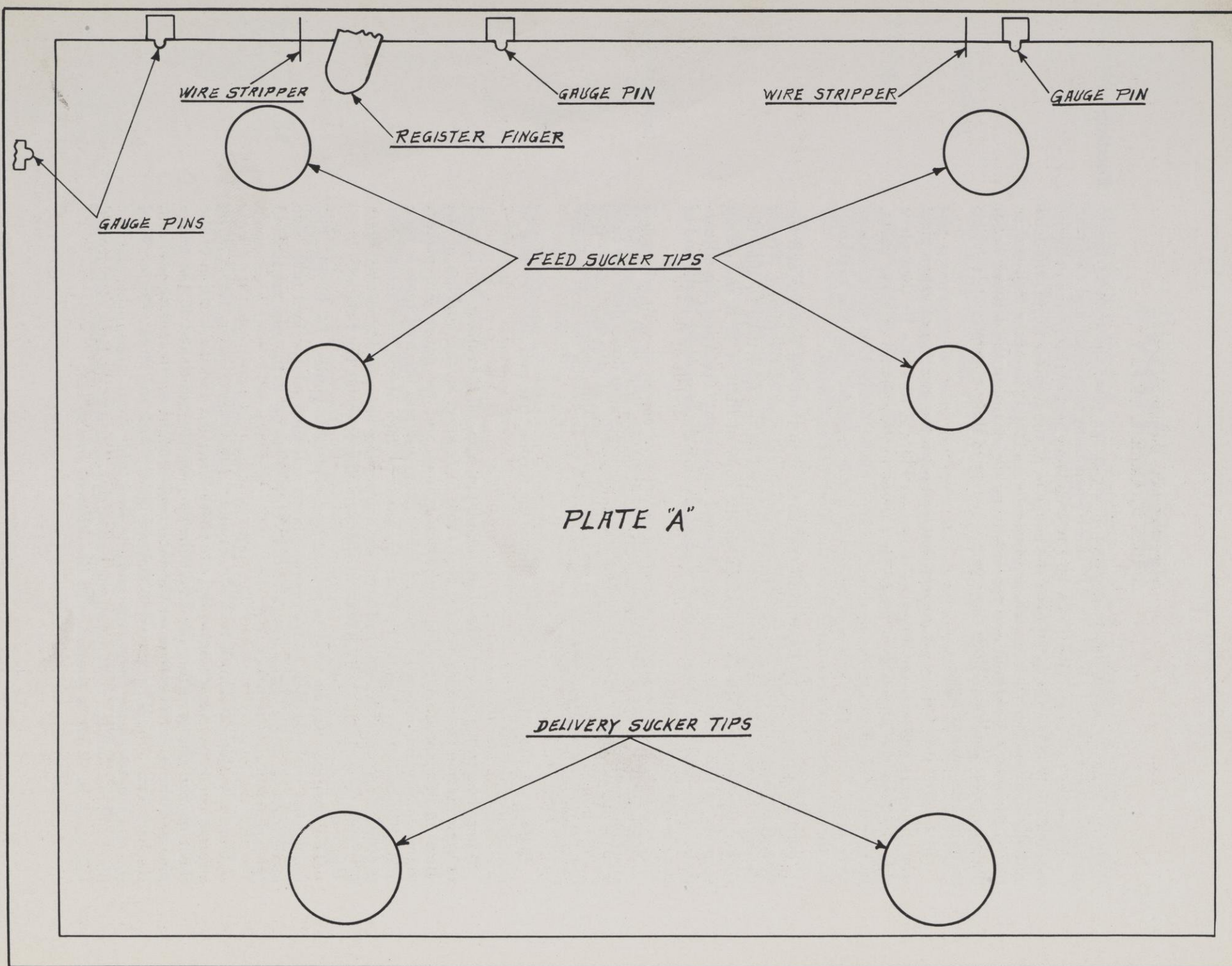
Next, turn the press backward until the delivery tube is in the forward position in relation to the platen and place the delivery arm down over the tube as far as it will go and at the same time adjust the arm so that the sucker tips line up with the markings on the copy of Plate A or B. Clamp the arm securely in this position.

Plate C of the attached bulletin shows the feeding bar and delivery arm in position on the press.

After the gauge pins are placed on the platen, a metal measuring bar is used to accurately and quickly set the feed table in relation to the position of the sheet on the platen. Assuming the platen is open and the gauge pins placed, the measuring bar is placed against a lower gauge pin and the feed table is then moved in or out by handle F, Plate D, until the face of the feed table front stop lines up with the inner side of the measuring bar projection (see Plate E). Then lock the table by means of the clamping screw at the bottom.

The same bar can be used to set the feed table side guides. To do this, line up the bar with the side gauge on the platen and then set the feed table side guide from $\frac{1}{4}$ " to $\frac{3}{8}$ " away from this line. This $\frac{1}{4}$ " to $\frac{3}{8}$ " is the amount allowed for register after the sheet is fed.

The back stop, as shown in Plate F, under the delivery table, needs to be adjusted in or out according to the size sheet being fed and the location of the sheet on the platen. After the feed table is properly positioned to the gauge pins and the paper is placed on the table and brought up to feeding position, the back stop should be moved to contact lightly with the stock. Do not bind the stock between the back stop and the feed table front stops, otherwise the blast will not fluff the stock up to the sucker tips. Turning the back stop around will reach in or out to contact with the different size sheets.



When a quantity of paper is placed between the guide fingers on the feed table and brought up to feeding position by handle C, Plate D, the press can be operated under power. The feeding can be started by dropping lever A, Plate D, which closes the feeder vacuum line and opens the blast.

The proper height of the stock on the feed table is about $\frac{1}{4}$ " or less below the lowest position of the feed bar suckers when over the feed table so that when the blast is on, the sheet will be raised to the sucker tips. Adjustment of the automatic feeler to keep the top of the stack in this position is explained in detail, under heading "Feeler," on page 15 of these instructions.

The operator, after observing the different settings and functions of the gauge pins, the register fork, the feed bar, the delivery arm, the jogger mechanism, the blast, the wire strippers and the feeler, will experience no difficulty in making simple alterations in the settings required for different kinds, weights and sizes of stock.

A few suggestions about the different settings follow:

The register bracket is adjustably mounted along the lower edge of the platen under the gripper bar. This can be moved to any position along the bottom of the platen and clamped by the knurled headed screw. As sent out the bracket is connected up to register to the left (see Plate G). To change to a right register simply disconnect the driving link from the bottom of the operating arm and connect this to the top of the arm on the pin provided, and change the coil spring likewise. The operating arm is located at the left of the platen.

Register

With each unit are shipped six register fingers of varying lengths. To select the proper length finger first place a blank to be printed against the bottom gauges and about $\frac{1}{4}$ " to $\frac{3}{8}$ " away from the side gauge. Place the register bracket in the proper position along the bottom of the platen and use a finger which when it is in the proper position on the register bracket will reach up under the edge of the blank about $\frac{1}{2}$ ".

Attach a finger spring clip in position and move the register finger by turning manually the register operating arm at the left of the platen, noting the results with respect to the movement of the blank. The mechanism should cause just enough friction to move the sheet against the side gauge, but at the same time allow itself to become free when the blank comes into contact with the side gauge.

If too much tension is exerted by the spring clip it will buckle the blank slightly and cause a rebound when released by the register finger. If not enough tension is exerted by the spring clip it will move the blank only slightly and possibly not at all.

It may be found necessary on particular kinds of stock to alter the register finger spring clip slightly in order to obtain the proper tension. Plate H shows the assembly of a register finger and spring clip. It will be noted that the spring clip is curved up at point 1, at 2 a portion of it rests on the finger, at 3 it has another bend up clear of the finger, and at 4 it is bent down so that the remainder lies flat on the finger being held down by the small knurled nut 6, which must always be turned down tight. This is the normal shape of the spring clip with respect to the finger.

To alter the tension of the spring clip, bend slightly at point 4. When changing the tension, be sure not to distort or change the shape of the register finger

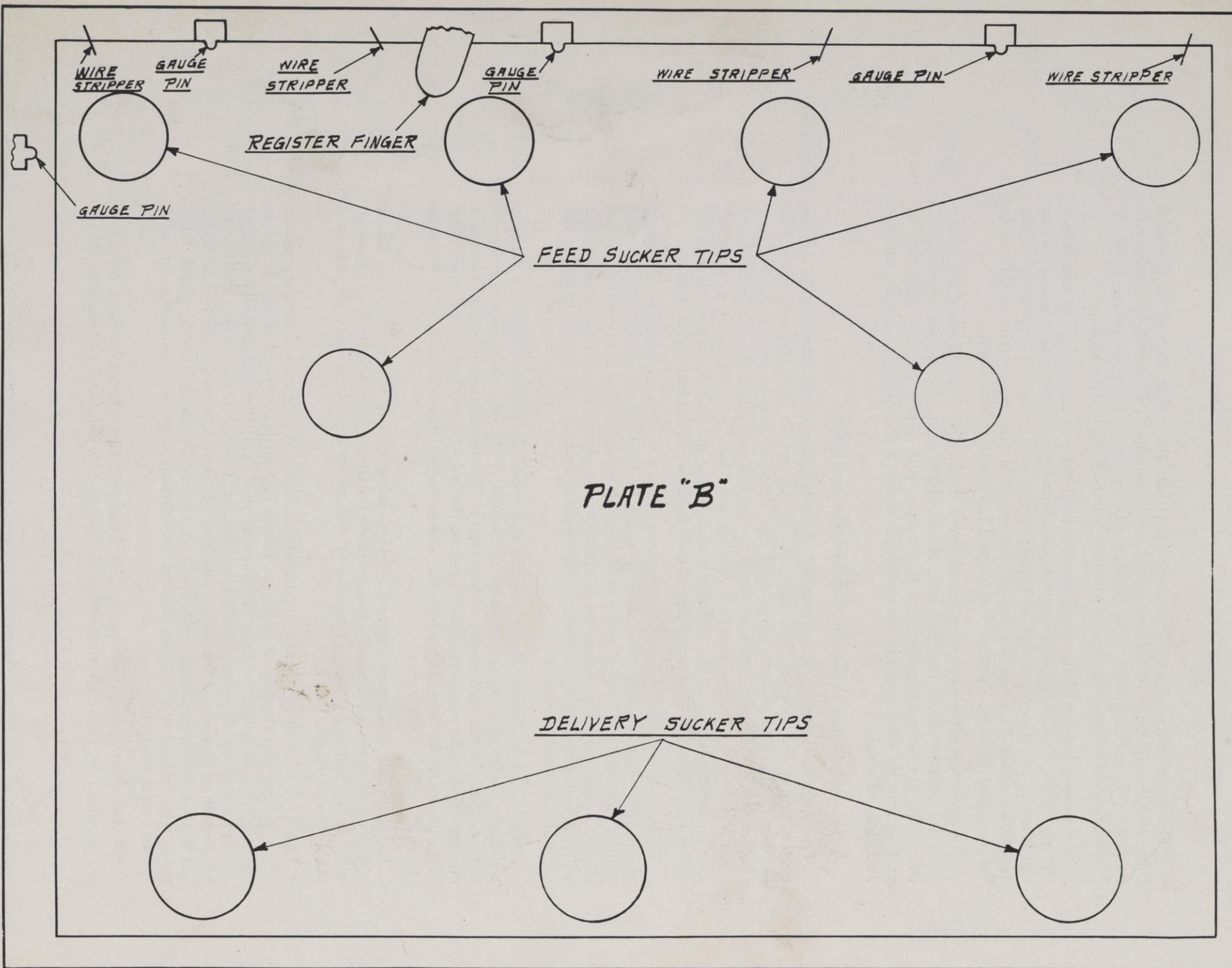


PLATE "B"

spring clip at points 1, 2, and 3. Always keep the grooved part of the spring clip central with narrow part of tongue of the register finger shown on Plate H at point 5.

A number of parts to take care of different kinds of feeding are provided and are detailed on the photostat print shipped with the unit. Combinations are such that from two to six suckers can be used at one time.

Feed Bar

On the light stock the front suckers should be placed nearer to the lower guide edge of the sheet than on heavier stock. This placing of the suckers assures accurate register and aids in separating stock from the feed table. The light stock, for example, when held near the edge, will yield more easily to separation, while the heavier stock, if picked up near the edge, has a tendency to be pulled away from the suckers, due to the unyielding action, in which case the sucker tips can be set back slightly from the edge of the sheet and the stripper wires may be adjusted likewise.

A good rule to follow is to use the metal tips on stock up to No. 24 bond and on stock heavier than this—envelopes, etc., use rubber tips.

On some of the tissues it will be necessary to cover the face of the metal tip with gummed paper so as to eliminate the concave nature of the tip. The punching of a small hole about $\frac{1}{8}$ " or less in diameter in the center of the gummed paper on the tip concentrates the vacuum and prevents distortion of sheet at this point.

Wire strippers are used to assist separation and should be located in relation to the front feeding sucker tips approximately as shown on Plates A and B. At times, however, it may be found necessary to place these wires slightly to one side or the other of the sucker tip. It is important to keep the wires as near as possible to the sucker tips, as shown on Plates A and B, in order to prevent buckling of the sheet.

Several kinds of delivery arm parts are forwarded with each unit. Combinations are such that from one to four sucker tips can be used at one time. These are also shown in detail on the photostat.

Delivery Arm

For most jobs the rubber sucker tips can be used. Only in cases where the stock is light and it has a tendency to suck up into the rubber tip is it necessary to use the metal tip, and at times a piece of paper glued on the face of the metal tip, with a small hole punched in the center, is desirable.

Where it is found necessary to come down with the delivery sucker tips on wet ink, triple naught (000) emery cloth should be glued on the face of the tip with the proper size hole in the center. This will prevent smearing of the sheet. Emery cloth can be used either on the rubber or the metal tips. Be sure that the face of the tip is thoroughly cleaned before the emery cloth is applied. The delivery bar tips are usually tipped slightly, that is, the part toward the top of the platen is raised. When possible, always place the delivery sucker tips on the extreme rear edge of the sheet.

To raise the table quickly, simply grasp the edge of the table and lift it up part way. The final, more sensitive raising can be done by turning handle C, Plate D. When lifting the table by hand care must be exercised to see that the table is not lifted too high and out of the bearing.

Feed Table

To lower the table quickly, grasp the same handle C, Plate D, with one hand and with the other move the feed table ratchet out of mesh by means of lever H,

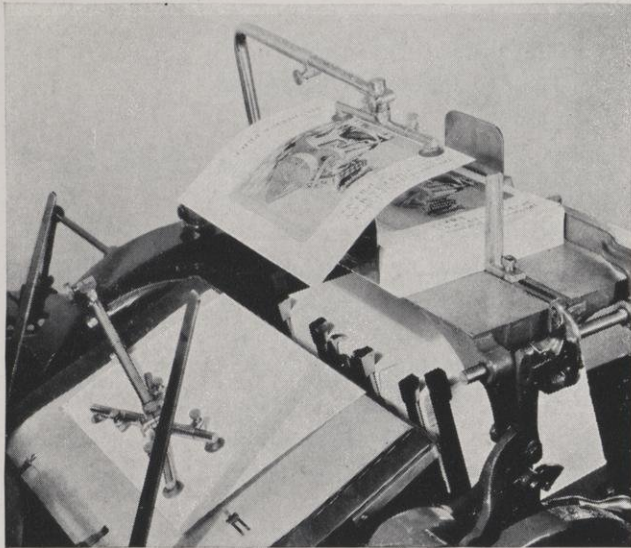


Plate C

Plate D

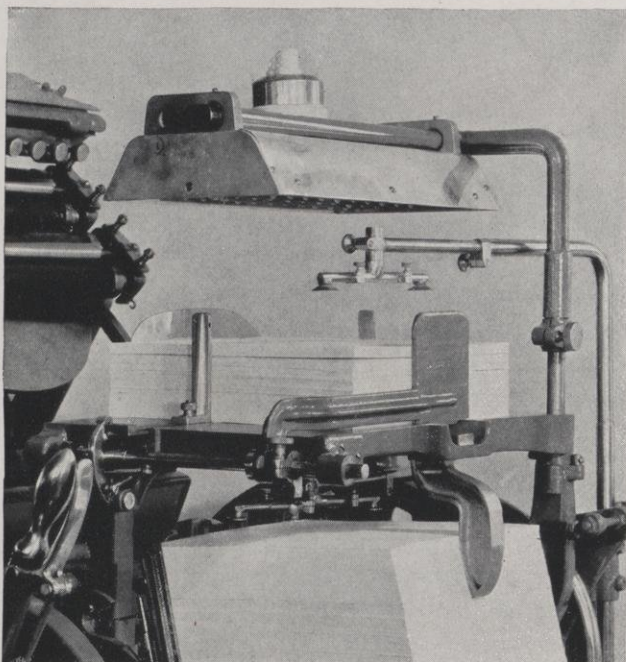
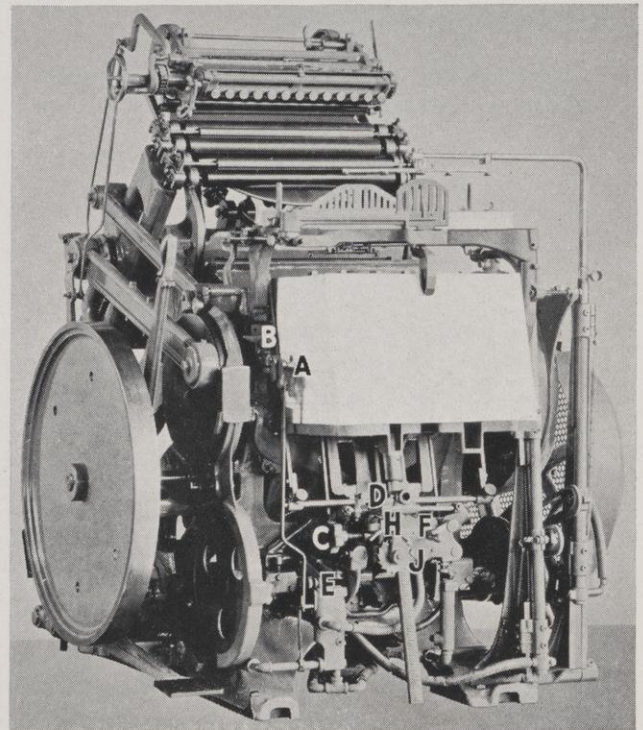


Plate F

Plate D. During this operation the hand on handle C acts as a brake to prevent the table from dropping too rapidly.

The blast is adjusted by screw B, Plate D. Turning this screw down decreases the blast, while the reverse increases it. **Blast**

On paper stocks the machine operates with an intermittent blast, while on the heavier cardboard stocks a continuous blast should be used.

Continuous blast is obtained by turning screw E, Plate D, out of contact with the valve lever. After this is done the lock nut should be tightened to hold the screw in place.

Light stocks require very little blast, while the heavier stocks require a stronger blast. The blast should always raise the sheet to the feed bar suckers. The two outside blast slots may be shut off by turning the knurled tube at either side of these slots so the smooth or flat side of the knurled part is down.

The feeler or pile height regulator is adjusted by regulating screw D, Plate D. Turning the screw clockwise keeps the top of the stack high. The reverse keeps the stack in a low position. If this screw is turned anti-clockwise too far, the feed table will not move at all. If the table is raised too high, the feed bar may pick more than one sheet at a time; or, if kept low, the bar may miss an occasional sheet. The lighter stocks should be kept farther away from the feeder sucker tips than the heavier stocks. **Feeler**

For stocks that are less than $\frac{1}{32}$ " in thickness the outer latch J which covers the teeth of the ratchet, Plate D, should be in against the teeth of the ratchet wheel. For thicker stocks, the outside latch should be thrown away from the ratchet wheel.

The delivery table should always be locked in position when the press is feeding stock. It can be moved in or out of the delivery position at any time when the press is not feeding, even though the press is running. No timing of this table is necessary. **Delivery Table**

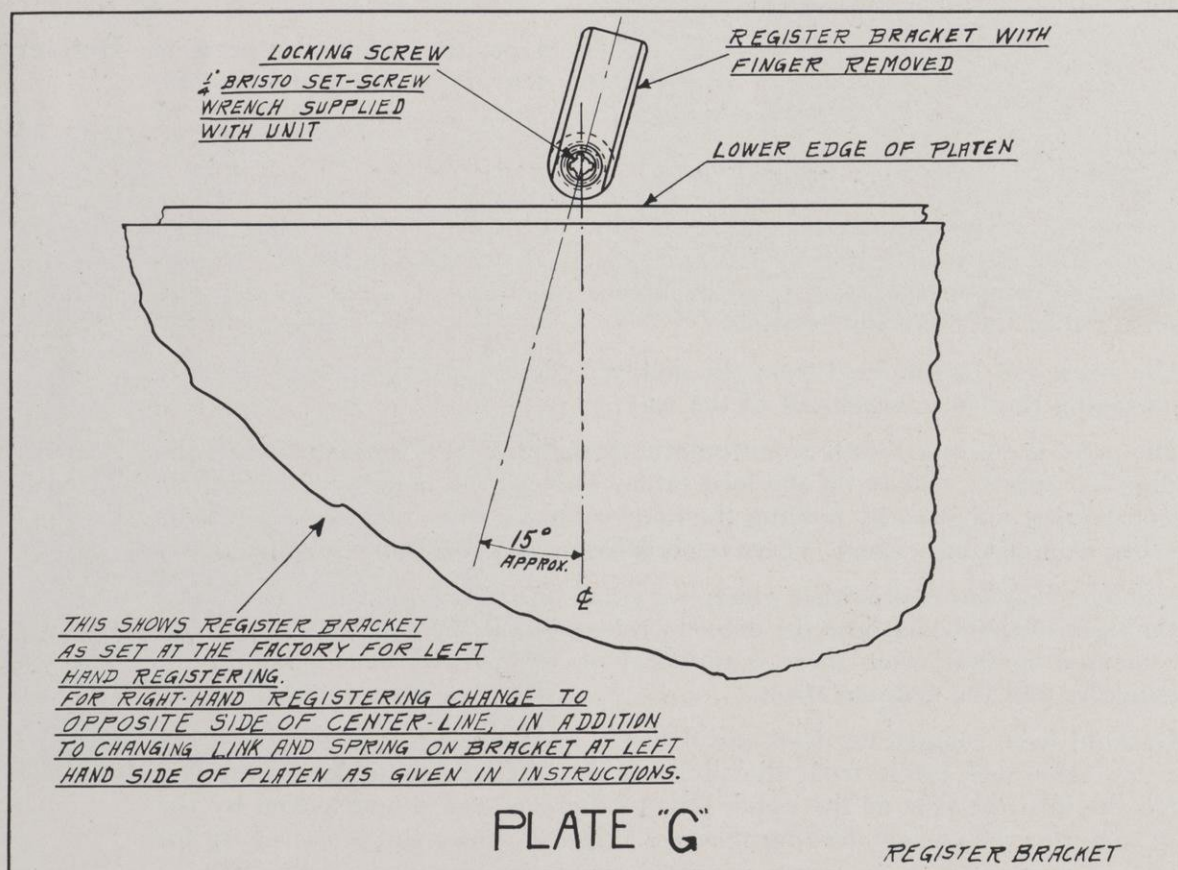
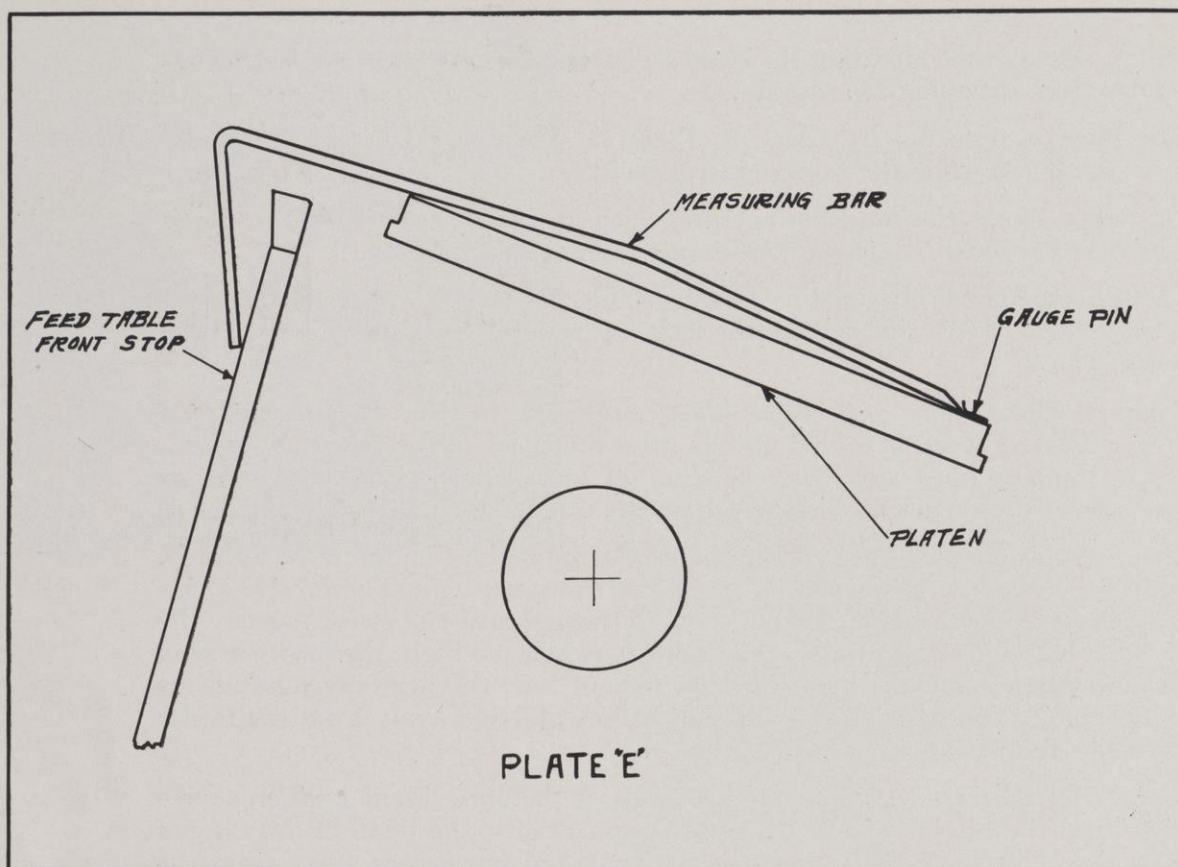
The jogger on the delivery table is so simple that it will not require any instructions, as an examination will show how to adjust it to the sheet. The jogger mechanism can be disconnected, if preferred, by moving the lever operated by the cam on the small head backward on its pivot while the delivery table is not in the receiving position.

The stock can be removed from the delivery table while the press is feeding by swinging the back jogger out of the way.

The press is equipped with an automatic throw-off which functions when the feeding bar misses a sheet on the feed table. This can be made to function for demonstrating purposes by holding the hand on top of the stack to prevent the feed bar from taking a sheet. There is no delivery throw-off on the unit. **Automatic Throw-Off**

A delivery cutout is provided which is a small horizontal plunger valve down at the right of the feeder near the delivery release valve. Its function is to break the vacuum so that when there is no sheet on the platen the suckers do not continually pull the tympan sheet.

To hand feed, remove the feed and delivery bar assemblies, then unlock the delivery table and lift it from the pivoting pin. A wooden table is provided which fits into the hole at the upper part of the gear guard and locked by the wing nut into the correct feeding position. Plate J shows the press set up for **Hand Feeding**



hand feeding. The automatic feed table can be stopped from raising by the adjusting screw D, Plate D, and used as a delivery table for the hand feeding. The automatic throw-off can be disconnected by tying the throw-off grip to the throw-off lever at the top.

A long back stop and post are provided for the feed table when feeding envelopes and all small blanks. These parts are shown in position in Plate K.

Envelopes size $6\frac{3}{4}$ or smaller should be fed to a position near the center of the platen similar to small cards, and so forth. With this setting, a long register finger must be used, one or more suckers on the delivery and two or more suckers on the feeding arm, depending upon the size of the envelopes.

Either press can be equipped with a two-up feeding arrangement, which can be easily attached.

No platen screws are used on this press for altering the impression. Instead, the back shaft and bed shaft are equipped with eccentrics which move the top and bottom of the bed to or from the platen. This is a valuable feature and the operator should become thoroughly familiar with its use as it eliminates considerable make-ready time.

To try the device place a chase in the press with a solid at the bottom and a line of large type at the top. Then move the top or bottom adjustments and note how the amount of impression can be altered. These adjustments can be brought back to type high parallelism by moving the handles until the indicators point to the zero lines. With care these adjustments can be made while the press is running.

These are four-roller presses equipped with two vibrators. The roller stocks are of the Craftsman type, equipped with ball-bearings on the ends. If exceptional distribution is required, the two lower rollers can be carried on two pairs of trip trucks which raise the rollers up from the form on the down stroke and drop to the form on the up stroke. If this type of distribution is not required, however, the regular trucks are also furnished for use on all rollers.

The flow of ink on all of the fountains described below is regulated by the many blade screws along the front of the fountain.

The 10 x 15 press is equipped with a Craftsman type of long fountain with front adjustment. This fountain can be made to contact more or less with the form rollers by moving the adjusting screw at the rear.

Easy wash-up is obtained by loosening the two end bolts in the fountain thumb screw carrier, allowing the bib of the fountain to drop away from the fountain roller. This exposes the roller; it can be removed for complete wash-up by disconnecting the driver and removing the caps.

At a small extra charge this press can be equipped with a vibrating brayer fountain the same type as furnished as standard equipment on the 12 x 18.

The 12 x 18 press is equipped with a vibrating brayer fountain. Exceptional ink distribution can be obtained with this fountain, due to the method of adjustment and ink control. On the left is an adjustment controlling the movement of the roller, which can be easily and quickly changed to give from one to four teeth on the ratchet. In addition, the vibrator roller can be locked in position up out of the way when this extra distribution is not needed.

Easy wash-up on this fountain is also obtained by loosening the two end bolts

Feeding Envelopes and Other Small Sizes

Platen Adjustment

Distribution and Fountain Adjustments

10 x 15 Fountain

12 x 18 Fountain

NOTE!

NEVER CHANGE SHAPE OF SPRING-CLIP
AT 1-2 OR 3.

TO CHANGE TENSION OF SPRING-CLIP
BEND AT 4.

TONGUE OF FINGER SHOULD BE IN CENTER
OF GROOVE OF SPRING-CLIP AS SHOWN AT 5
KEEP KNURLED NUT TIGHT AT ALL TIMES

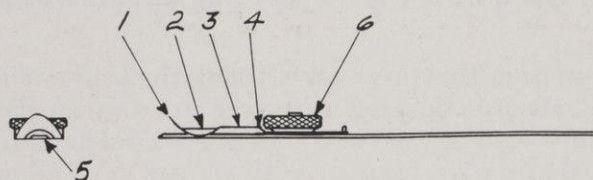


PLATE "H"

REGISTER FINGER

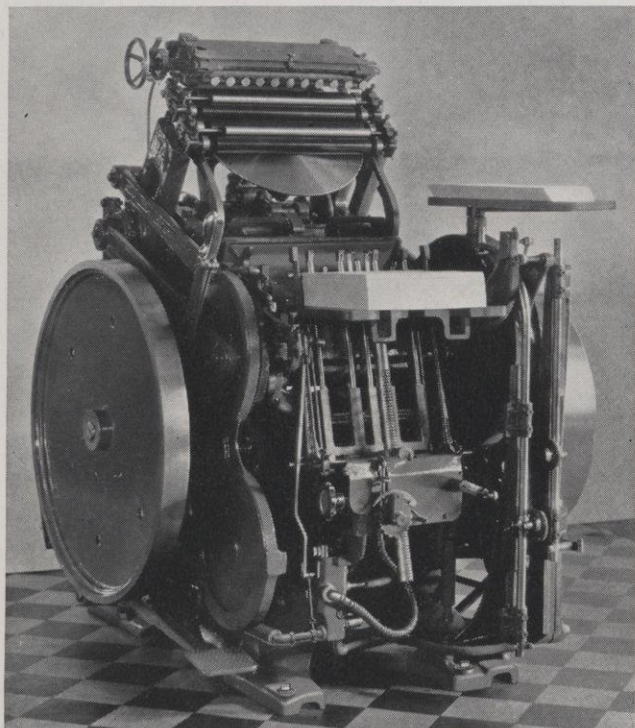


Plate J

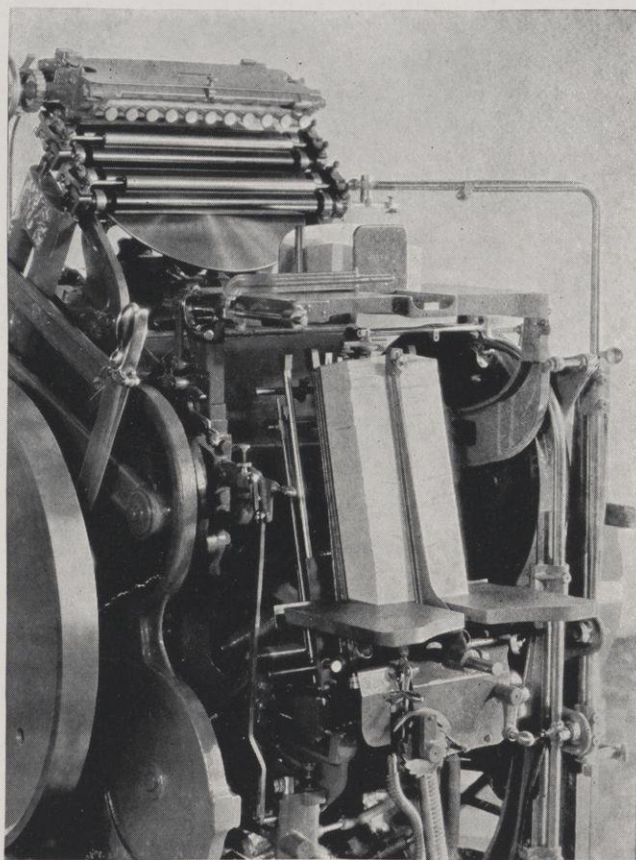


Plate K

in the fountain thumbscrew carrier, allowing the bib to drop away from the fountain roller. This exposes the roller and it can be removed for complete wash-ups by disconnecting the driver and removing the caps.

At an exchange allowance this press can be equipped with a Craftsman type of long fountain with front adjustment the same as furnished as standard equipment on the 10 x 15.

While these instructions cover in more or less detail the special settings and operation of the Craftsman presses with Rice automatic feeders, any additional information will be gladly sent if desired.

There are two Handwheels for adjusting the impression. One Handwheel is directly below the ink disc at the back of the press—the other is at the side between the bed and fly wheel. Near each Handwheel is a pointer indicator and scale.

Proper Use of Handwheel Impression Control

When both indicators are pointing to zero positions on the scales, impression is properly set for printing the average form of approximately 5 sq. in. in area on 100 lb. coated stock and with about 35 thousandths of packing on the platen (equivalent to one draw sheet of oiled tympan, 5 sheets of 50 lb. S & SC book paper, and one manilla pressboard of post card thickness).

When forms requiring more impression or lighter stocks are being printed, or when less packing is used on platen, turn Handwheels so that indicators move toward the "In" marks on scales, to increase the impression.

To decrease impression, for heavier stocks, lighter forms, or when using more packing on platen, turn Handwheels so that indicators move toward "Out" marks on scales.

Best results are obtained always by starting with light impression and increasing as needed, to save embossing the tympan.

It is not necessary that indicators point to same places on both scales, nor is it necessary to turn both Handwheels the same amount each time. Just remember that upper Handwheel increases or decreases the impression, while lower Handwheel maintains accurate alignment between form and platen while impression is being increased or decreased.

After you have obtained satisfactory adjustment of the Handwheels, and before starting to run your job, always tighten the locking thumbscrews beneath each Handwheel to prevent Handwheels turning out of adjustment while press is running.

THE CHANDLER & PRICE COMPANY, Cleveland, Ohio



[The following text is extremely faint and illegible due to fading or bleed-through from the reverse side of the page. It appears to be a multi-paragraph letter or document.]

[Faint vertical text or markings along the right edge of the page, possibly from the binding or adjacent page.]

CHANDLER & PRICE CRAFTSMAN PRESS

with

**C. & P. Rice Automatic
Feeder**

10x15 and 12x18



Component Parts List

When ordering parts:—

Always give the serial number of the unit which is found stamped on the bed of the press in the upper left-hand corner.

Always give the size of press, part number, and the name and description of the part wanted.

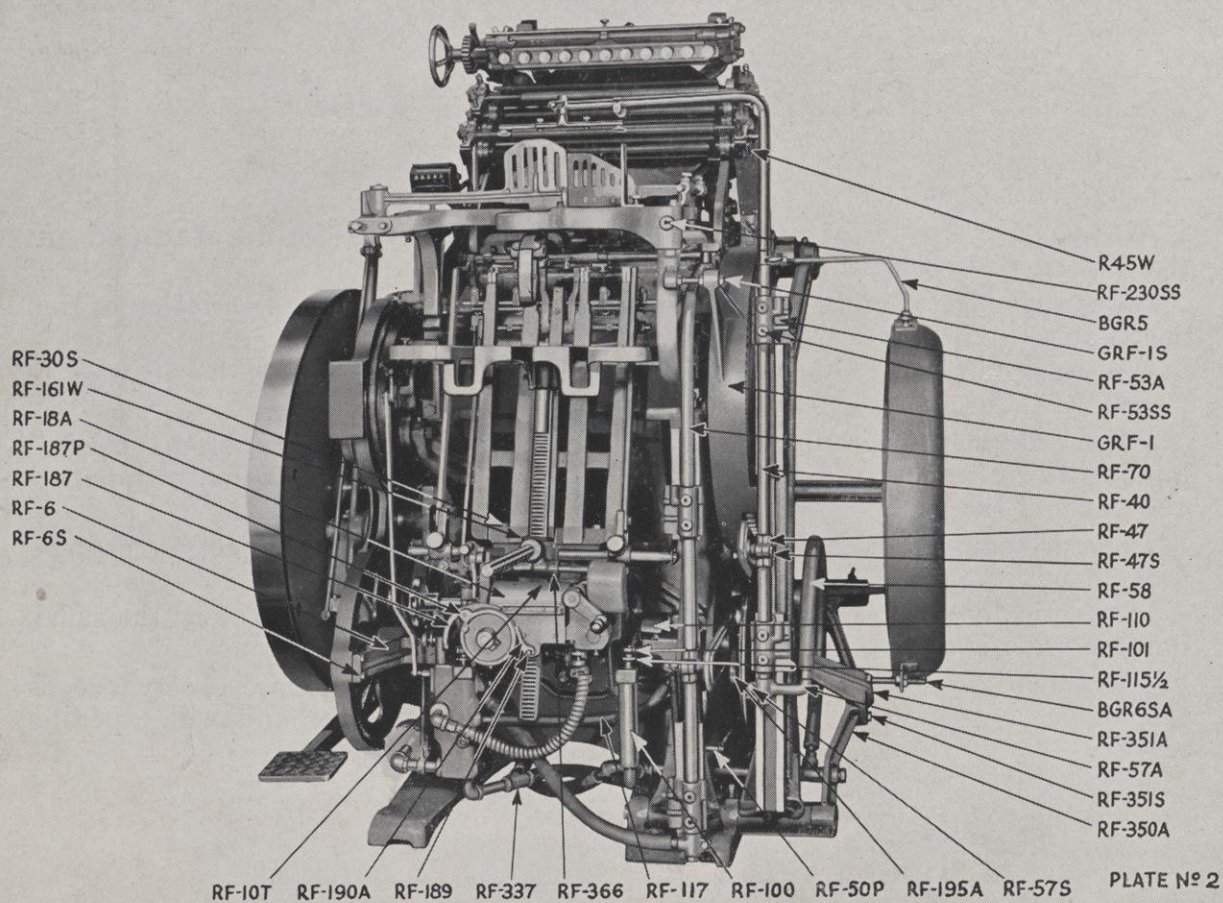
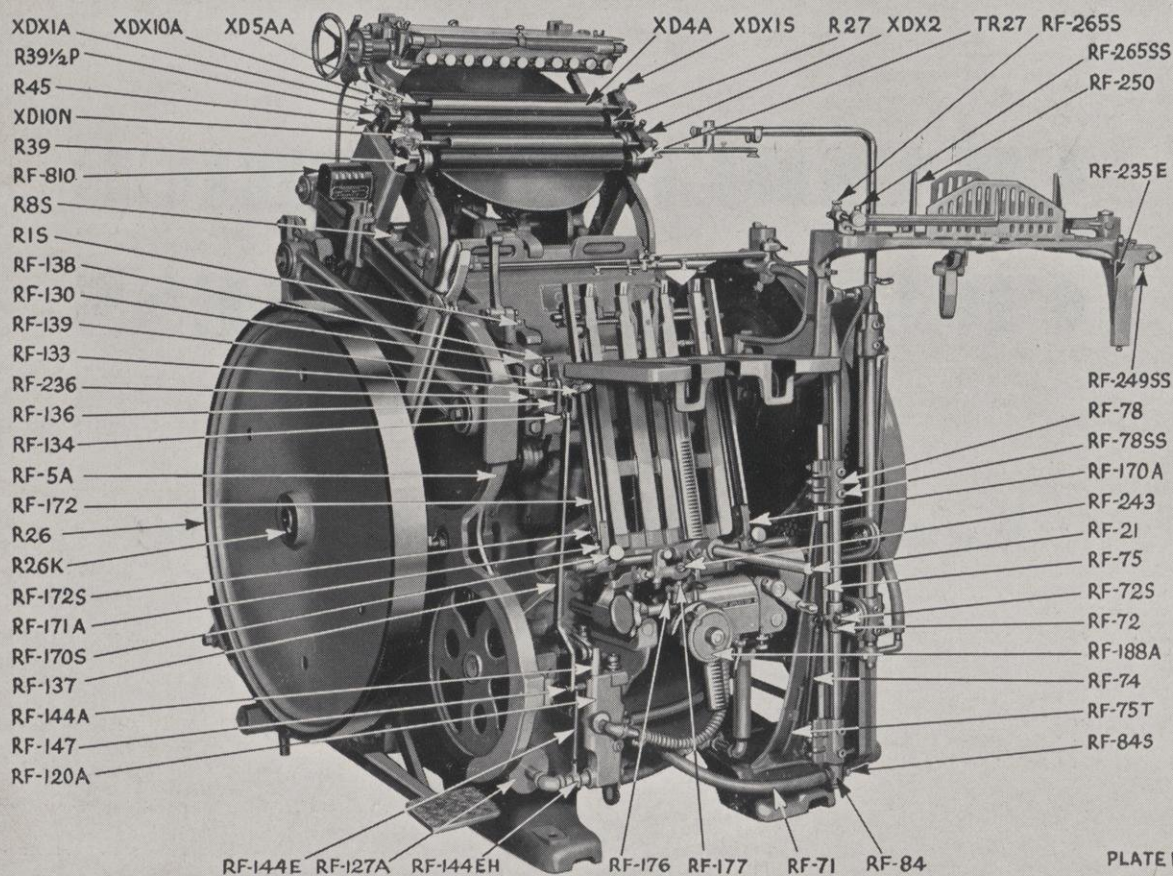
Always state the definite mode of transportation, whether Air Mail—Express—Parcel Post—Freight.

When ordering by wire, use Code words listed in the left-hand column, specifying quantity of each part wanted. The Code word will indicate to us the number and name of the part.

Parts are shipped f.o.b. factory and any prices listed are subject to change without notice.

In practically all cases parts ordered will be shipped from the factory the same day the order is received.

Too much information is always better than not enough. A close observance of the above suggestions will eliminate the possibility of error and will expedite service.



COMPONENT PARTS LIST

Part Number	Part Shown on Plate No.	Code	Name and Description
BGR2	3	OBABU	Belt Guard Rear Support
BGR2N	Not Shown	OBACE	Belt Guard Rear Support Screw Nut
BGR2S	3	OBADO	Belt Guard Rear Support Screw
BGR2W	Not Shown	OBABA	Belt Guard Rear Support Screw Washer
BGR4	Not Shown	OBAGR	Belt Guard Support Bracket
BGR5	2	OBABA	Belt Guard Brace Rod
BGR5LN	Not Shown	OBABI	Belt Guard Brace Rod Nut
BGR5N	Not Shown	OBAKS	Belt Guard Brace Rod Wing Nut
BGR5W	Not Shown	OBALM	Belt Guard Brace Rod Washer
BGR6A	Not Shown	OBAMI	Belt Guard Lower Support
BGR6N	Not Shown	OBANE	Belt Guard Lower Support Nut
BGR6SA	2	OBAPY	Belt Guard Lower Support Stud
BGR6SN	Not Shown	OBART	Belt Guard Lower Support Stud Nut
BGR6W	Not Shown	OBASM	Belt Guard Lower Support Washer
BGR7	3	OBATU	Belt Guide
BGR7N	3	OBAYI	Belt Guide Nut
BGR7W	3	OBAYL	Belt Guide Nut Washer
BGR10	3	OBAXE	Belt Guard
BL1	6	OBAGO	Brake Lever
BL1E	6	OBABM	Brake Lever Spring
BL1P	6	OBEBT	Brake Lever Pin
BL1PC	Not Shown	OBBSI	Brake Lever Cotter
BL2	6	OBBOF	Brake Lever Bracket
BL2S	Not Shown	OBBOV	Brake Lever Bracket Screw
BL2SN	Not Shown	OBBCAT	Brake Lever Bracket Screw Nut
BL2SS	6	OBCEB	Brake Lever Bracket Set Screw
BL2SW	Not Shown	OBCEI	Brake Lever Bracket Screw Washer
BL2SSN	Not Shown	OBCEB	Brake Lever Bracket Set Screw Lock Nut
BL3	3	OBCEU	*Brake Shoe
BL3S	3	OBCEM	Brake Shoe Screw
BL3SN	Not Shown	OBCEU	Brake Shoe Screw Nut
BL4	Not Shown	OBCEI	Brake Shoe Lining Rivet
BL5	6	OBCEP	Brake Shoe Lining
CF1A	10	OBCEB	Brayer Fountain Side Frame, Left
CF1N	Not Shown	OBEBI	Brayer Fountain Front Rod Nut
CF1R	Not Shown	OBEBI	Brayer Fountain Front Rod
CF1½	Not Shown	OBEDU	Brayer Fountain Side Frame Swivel Plug, Left
CF1½LS	Not Shown	OBEBT	Brayer Fountain Side Frame Swivel Plug Lock Screw
CF1½S	Not Shown	OBEGO	Brayer Fountain Side Frame Swivel Plug Adjusting Screw
CF2A	10	OBEBI	Brayer Fountain Side Frame, Right
CF2½	10	OBEBU	Brayer Fountain Side Frame Swivel Plug, Right
CF2½N	10	OBEBI	Brayer Fountain Side Frame Swivel Plug Nut
CF3A	10	OBEBI	Brayer Fountain Front Bar
CF3S	Not Shown	OBEBE	Brayer Fountain Front Bar Screw
CF4	10	OBEBN	Brayer Fountain Rear Bar
CF4S	Not Shown	OBEBP	Brayer Fountain Rear Bar Screw
CF5	10	OBEBU	Brayer Fountain Side Frame Cap, Left
CF5C	Not Shown	OBEBT	Brayer Fountain Side Frame Cap Oil Cup
CF5N	Not Shown	OBESH	Brayer Fountain Side Frame Cap Screw
CF5NP	Not Shown	OBETS	Brayer Fountain Side Frame Cap Screw Wing Nut Pin
CF5P	Not Shown	OBEBV	Brayer Fountain Side Frame Cap Pin
CF5S	Not Shown	OBEBT	Brayer Fountain Side Frame Cap Screw
CF6	10	OBEXU	Brayer Fountain Side Frame Cap, Right
CF7	10	OBEBY	Brayer Fountain Bracket, Left
CF7P	3	OBEBU	Brayer Fountain Bracket Retaining Pin
CF7S	Not Shown	OBFBT	Brayer Fountain Bracket Screw
CF7SS	Not Shown	OBFBT	Brayer Fountain Bracket Set Screw
CF7W	Not Shown	OBFBT	Brayer Fountain Bracket Set Screw Washer
CF8	10	OBFOG	Brayer Fountain Bracket, Right
CF9	10	OBFBU	Brayer Fountain Cover
CF9L	Not Shown	OBGAK	Brayer Fountain Cover Latch
CF9R	Not Shown	OBGED	Brayer Fountain Cover Rivet
CF10	Not Shown	OBGIT	Brayer Fountain Blade
CF10S	Not Shown	OBGOB	Brayer Fountain Blade Screw
CF13	10	OBGUS	Brayer Fountain Roll
CF15	Not Shown	OBHAC	Brayer Fountain Roll Shaft
CF16	10	OBHEN	Brayer Fountain Vibrating Roller
CF18	Not Shown	OBHIL	Brayer Fountain Vibrating Roller Shaft
CF19	Not Shown	OBHOT	Brayer Fountain Vibrating Roller Cam
CF19BB	Not Shown	OBHUM	Brayer Fountain Vibrating Roller Cam Ball
CF19N	Not Shown	OBIBS	Brayer Fountain Vibrating Roller Cam Ball Screw Lock Nut

Part Number	Part Shown on Plate No.	Code	Name and Description
CF19P	Not Shown	OBICA	Brayer Fountain Vibrating Roller Cam Pin
CF19S	Not Shown	OBIDY	Brayer Fountain Vibrating Roller Cam Ball Screw
CF20A	Not Shown	OBIFE	Brayer Fountain Brayer Arm Shaft
CF20EA	10	OBIGL	Brayer Fountain Spring
CF20EW	Not Shown	OBIIA	Brayer Fountain Spring Washer
CF20K	Not Shown	OBIIA	Brayer Fountain Brayer Arm Key
CF20P	Not Shown	OBIIY	Brayer Fountain Brayer Arm Taper Pin
CF21AA	10	OBILD	Brayer Fountain Brayer Arm, Left
CF21R	10	OBIMS	Brayer Fountain Spring Rod
CF21RC	Not Shown	OBINT	Brayer Fountain Spring Rod Cotter
CF21RS	10	OBIPU	Brayer Fountain Spring Rod Stud
CF21RSC	Not Shown	OBIIQ	Brayer Fountain Spring Rod Stud Cotter
CF21RSW	Not Shown	OBIRM	Brayer Fountain Spring Rod Stud Washer
CF21SS	Not Shown	OBIST	Brayer Fountain Brayer Arm Set Screw
CF22AA	10	OBITH	Brayer Fountain Brayer Arm, Right
CF22R	10	OBIVE	Brayer Fountain Brayer Arm Safety Handle
CF22½S	10	OBIIW	Brayer Fountain Swinging Arm Spring Rod Stud
CF23	10	OBIXL	Brayer Fountain Roll Large Gear
CF23P	Not Shown	OBIZO	Brayer Fountain Roll Large Gear Pin
CF24	10	OBJAW	Brayer Fountain Ratchet Lever
CF24PC	Not Shown	OBJEF	Brayer Fountain Ratchet Lever Stud Cotter
CF25	Not Shown	OBJIG	Brayer Fountain Ratchet Pawl Spring Latch
CF27A	Not Shown	OBJOB	Brayer Fountain Composition Roller Gear
CF27C	Not Shown	OBJUS	Brayer Fountain Composition Roller Gear Cotter
CF28	Not Shown	OBKAM	Brayer Fountain Composition Roller Saddle, Left
CF28C	Not Shown	OBKER	Brayer Fountain Composition Roller Saddle Cotter
CF28E	Not Shown	OBKIS	Brayer Fountain Composition Roller Saddle Spring
CF28S	Not Shown	OBKOF	Brayer Fountain Composition Roller Saddle Screw
CF28½	Not Shown	OBKUP	Brayer Fountain Composition Roller Saddle, Right
CF29	Not Shown	OBLAS	Brayer Fountain Composition Roller Stock
CF29 Cast	Not Shown	OBLEW	Brayer Fountain Composition Roller Stock Cast
CF30	Not Shown	OBLIX	Brayer Fountain Bracket Rod, Short
CF30N	Not Shown	OBLOG	Brayer Fountain Bracket Rod Nut
CF31	10	OBLUV	Brayer Fountain Bracket Rod, Long
CF34A	10	OBMAG	Brayer Fountain Index Plate
CF34N	10	OBMED	Brayer Fountain Index Plate Stud Wing Nut
CF34S	Not Shown	OBMIN	Brayer Fountain Index Plate Stud
CF34SW	Not Shown	OBMOK	Brayer Fountain Index Plate Stud Washer
CF35	10	OBMUL	Brayer Fountain Throw-Off Rod Stop Collar
CF35P	Not Shown	OBNAW	Brayer Fountain Throw-Off Rod Stop Collar Pin
CF36A	10	OBNEG	Brayer Fountain Throw-Off Plate
CF36E	Not Shown	OBNIL	Brayer Fountain Throw-Off Plate Spring
CF36P	Not Shown	OBNOB	Brayer Fountain Throw-Off Plate Roller Pin
CF37	10	OBNUB	Brayer Fountain Throw-Off Plate Roller
CF38	10	OBOPS	Brayer Fountain Ratchet Lever Roller
CF38S	Not Shown	OBOCI	Brayer Fountain Ratchet Lever Roller Stud
CF43C	Not Shown	OBODY	Brayer Fountain Throw-Off Rod Cotter
CF43E	10	OBIFA	Brayer Fountain Throw-Off Rod Spring
CF45	10	OBODI	Brayer Fountain Safety Stop Rod
CF45E	Not Shown	OBODN	Brayer Fountain Safety Stop Rod Pin
CF45P	Not Shown	OBODI	Brayer Fountain Safety Stop Rod Guide Pin
CF46	10	OBOKA	Brayer Fountain Safety Stop Rod Handle
CF46P	Not Shown	OBOLP	Brayer Fountain Safety Stop Rod Handle Pin
CF49AA	10	OBOME	Brayer Fountain Roll Handwheel
CF49P	Not Shown	OBONS	Brayer Fountain Roll Handwheel Pin
CF55	10	OBOPB	Brayer Fountain Side Arm Washer
CF55C	Not Shown	OBOPU	Brayer Fountain Side Arm Washer Cotter
CF55N	Not Shown	OBORN	Brayer Fountain Side Arm Washer Stud Nut

*Parts marked with an asterisk indicate special fitting and will be shipped with their mating part or parts.

IMPORTANT—Be sure to mention size of press for which parts are being ordered.

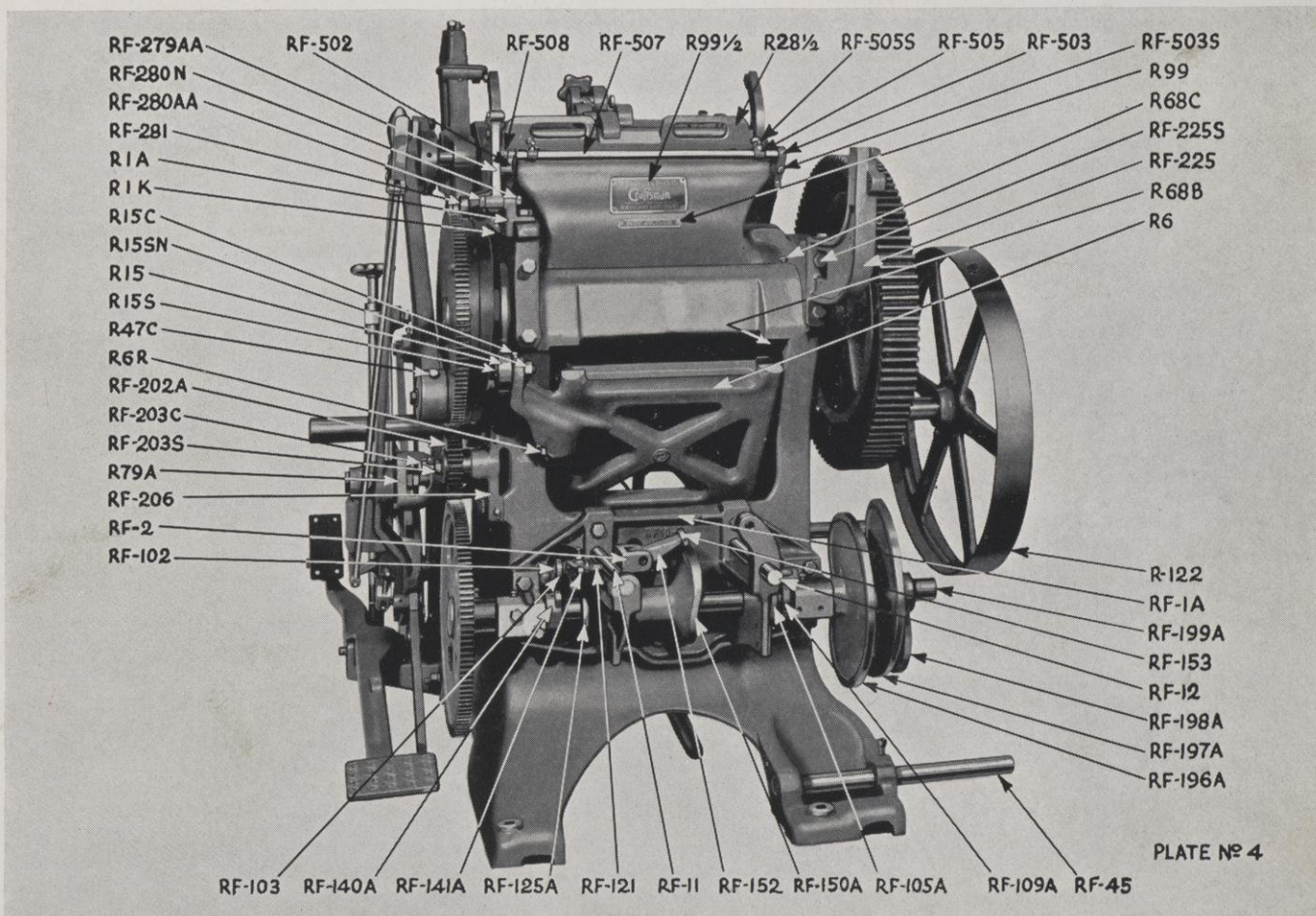
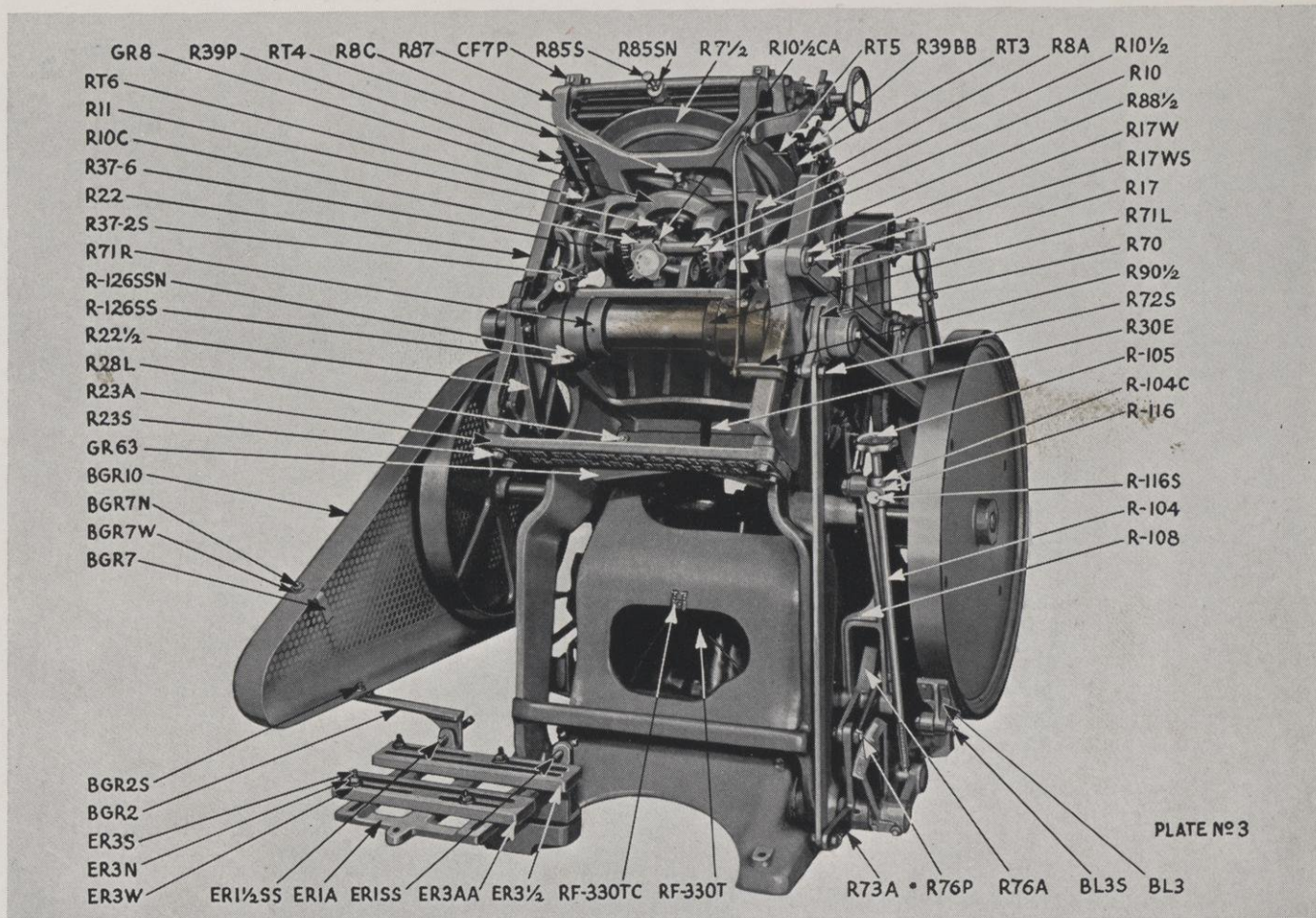
COMPONENT PARTS LIST—Continued

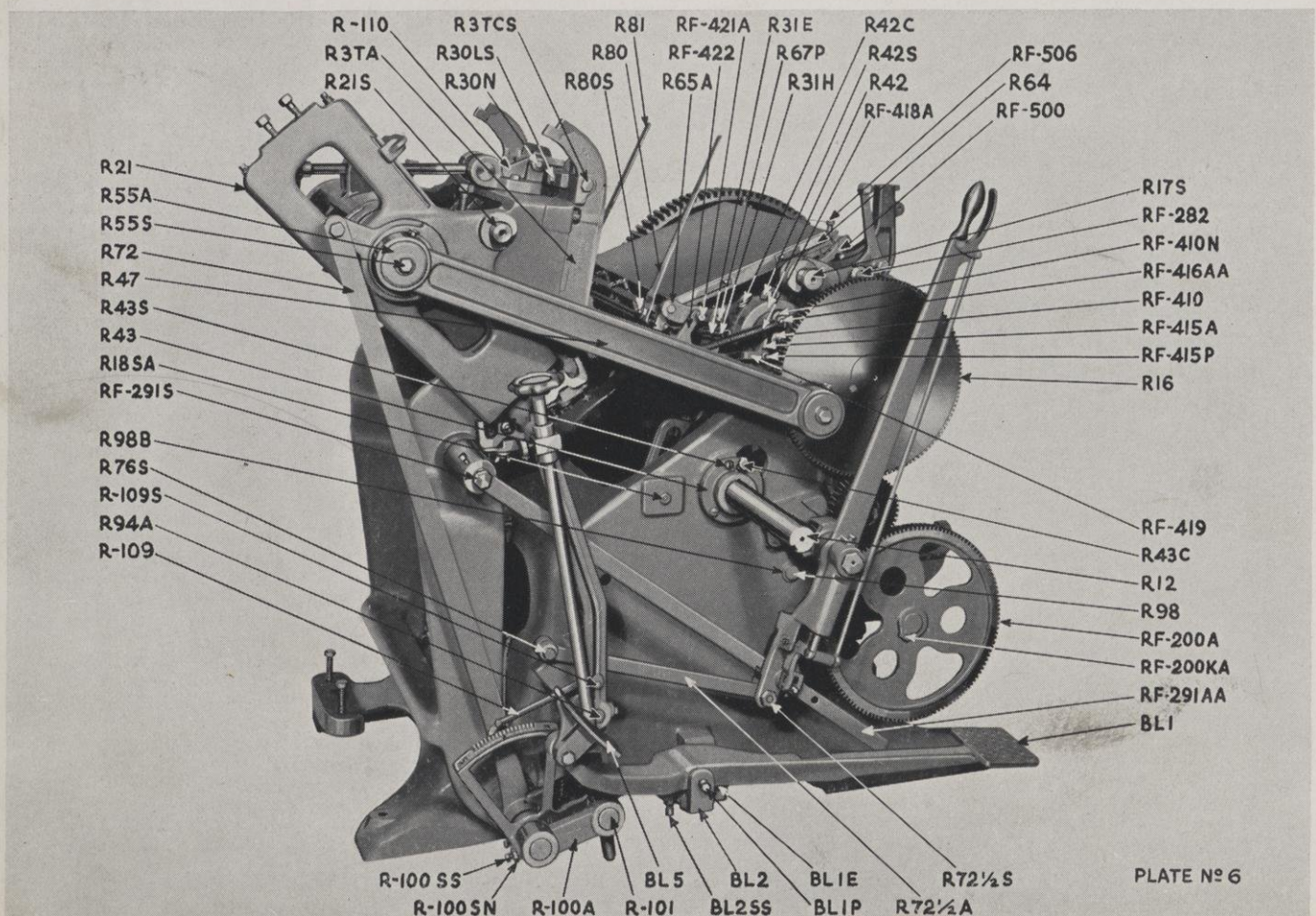
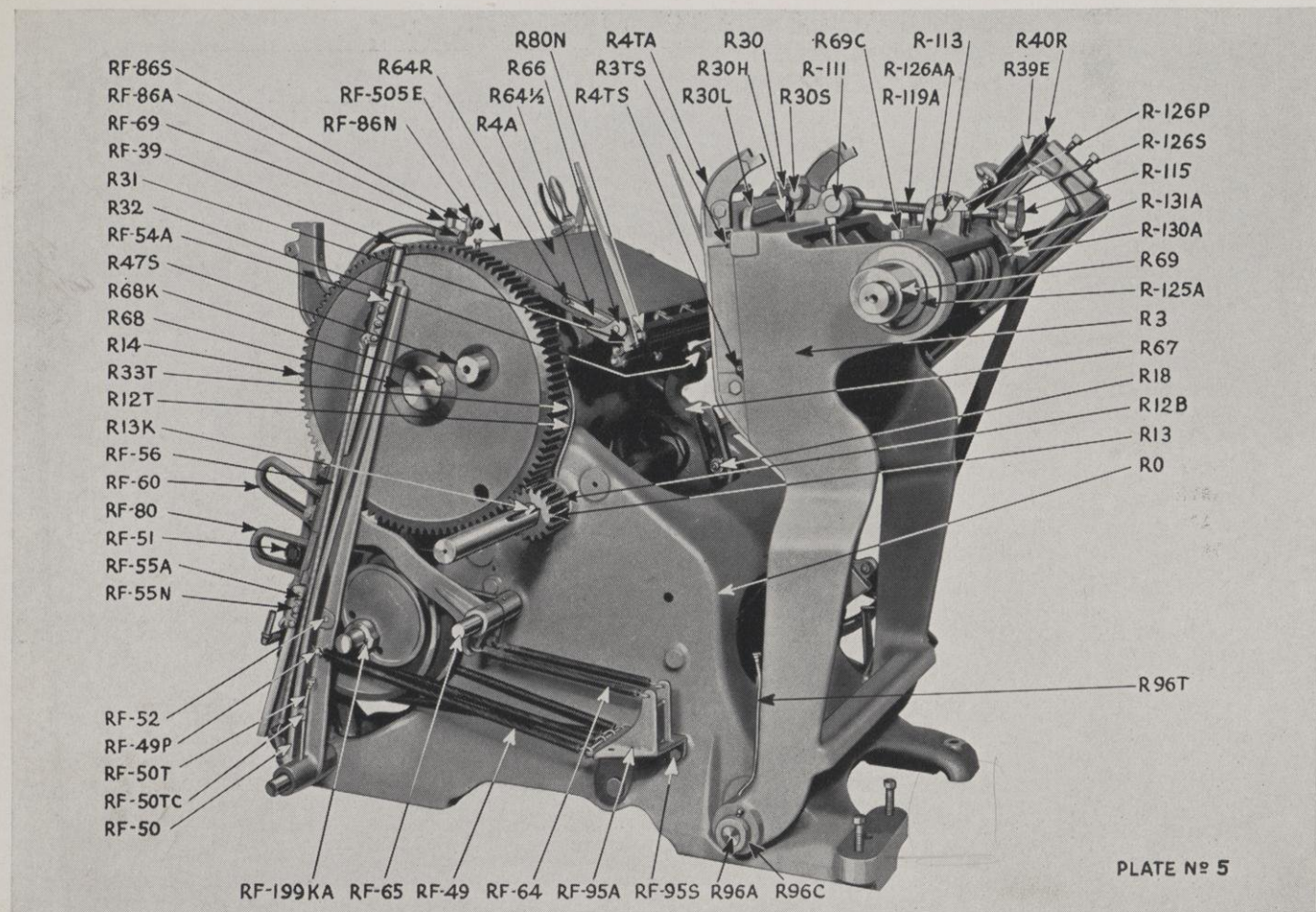
Part Number	Part Shown on Plate No.	Code	Name and Description	Part Number	Part Shown on Plate No.	Code	Name and Description
CF55P	Not Shown	OBOBK	Brayer Fountain Side Arm Washer Dowel	R12BSS	Not Shown	OCAHR	Crank Shaft Set Screw
CF55S	10	OBOTL	Brayer Fountain Side Arm Washer Stud	R12C	Not Shown	OCAJI	Crank Shaft Oil Cup
CF85T	10	OBOVE	Brayer Fountain Blade Adjusting Screw	R12T	5	OCAKO	Crank Shaft Oil Tube
CF89	10	OBOWT	Brayer Fountain Ratchet Wheel	R12TC	Not Shown	OCALM	Crank Shaft Single Oil Tube Clip
CF89K	Not Shown	OBOXI	Brayer Fountain Ratchet Wheel Key	R12TCP	Not Shown	OCALT	Crank Shaft Single Oil Tube Clip Rivet
CF90	10	OBOYS	Brayer Fountain Ratchet Pawl	R13	5	OCAMI	Pinion
CF90S	Not Shown	OBOZI	Brayer Fountain Ratchet Pawl Screw	R13K	5	OCANO	Pinion Key
CF90½S	Not Shown	OBPAN	Brayer Fountain Driver Stud	R14&33	5	OCAPU	*Large Gear Cam Wheel
CF90½SC	Not Shown	OBPES	Brayer Fountain Driver Stud Cotter	R14½	Not Shown	OCARS	Large Gear Cam Wheel Steel Segment
CF90½SN	Not Shown	OBPIL	Brayer Fountain Driver Stud Nut	R14½S	Not Shown	OCASM	Large Gear Cam Wheel Steel Segment Screw
CF90½SW	Not Shown	OBPOT	Brayer Fountain Driver Screw Washer	R15	4	OCATI	*Rocker Lock Roller
CF92	10	OBPUK	Brayer Fountain Cover Knob	R15C	4	OCAVA	Rocker Lock Roller Oil Cup
CF99	Not Shown	OBQAW	Brayer Fountain Name Plate	R15S	4	OCAWK	Rocker Lock Roller Stud
CF99R	Not Shown	OBQER	Brayer Fountain Name Plate Rivet	R15SN	4	OCAXY	Rocker Lock Roller Nut
CFR24P	10	OBQIK	Brayer Fountain Ratchet Lever Stud	R16	6	OCAYN	Small Head and Lock Cam
CFR26	10	OBQON	Brayer Fountain Ratchet Rod	R17	3	OCAZE	Roller Arm
CFR36S	10	OBQUE	Brayer Fountain Throw-Off Plate Stud	R17N	Not Shown	OCBAD	Roller Arm Stud Nut
CFR43	10	OBRAV	Brayer Fountain Throw-Off Rod	R17S	6	OCBEG	Roller Arm Stud
CFR90½	Not Shown	OBRED	Brayer Fountain Driver	R17W	3	OCBIN	Roller Arm Washer
CFR90½S	Not Shown	OBRIG	Brayer Fountain Driver Screw	R17WS	3	OCBOR	Roller Arm Washer Screw
ER1A	3	OBROT	Motor Bracket	R18	5	OCBUM	Gripper Cam Roller
ER1S	Not Shown	OBRUZ	Motor Bracket Screw	R18SA	6	OCCAL	Gripper Cam Roller Stud
ER1SS	3	OBSAK	Motor Bracket Set Screw (Short)	R18SN	Not Shown	OCCEB	Gripper Cam Roller Stud Nut
ER1SSN	Not Shown	OBSEZ	Motor Bracket Set Screw Nut	R20	10	OCCIK	Hand Feed Table Bracket
ER1½SS	3	OBSIN	Motor Bracket Set Screw (Long)	R21	6	OCCOF	*Roller Frame, Left
ER3AA	3	OBSOC	Motor Bracket Rail (Short)	R21S	6	OCCUR	Roller Frame Arm Stud
ER3N	3	OBSUT	Motor Bracket Rail Nut	R22	3	OCDDAM	Roller Frame, Right
ER3S	3	OBTAP	Motor Bracket Rail Screw	R22½	3	OCDET	Disc Lever Cam
ER3W	3	OBTEK	Motor Bracket Rail Screw Washer	R22½S	Not Shown	OCDIS	Disc Lever Cam Screw
ER3½	3	OBTIN	Motor Bracket Rail (Long)	R23A	3	OCODR	Name Plate
GR1	Not Shown	OBTOG	Hand Feed Gear and Pinion Guard	R23P	Not Shown	OCDUM	Name Plate Pin
GR1S	Not Shown	OBTUS	Hand Feed Gear and Pinion Guard Screw	R23S	3	OCEBI	Name Plate Screw
GR8	3	OBVAH	Disc Gear Guard	R26	1	OCECA	Fly Wheel
GR8S	Not Shown	OBVEY	Disc Gear Guard Screw	R26K	1	OCEDY	Fly Wheel Key
GR63	3	OBVIT	Form Roller Guard	R27	1	OCEFI	Roller Truck
GRF-1	2	OBVOL	Gear and Pinion Guard	R28L	3	OCEGO	Chase Lug (Bottom)
GRF-1S	2	OBVUD	Gear and Pinion Guard Screw	R28LN	Not Shown	OCEHS	Chase Lug Nut
R0	5	OBWAT	*Frame	R28LP	Not Shown	OCEJA	Chase Lug Pin
R1A	4	OBWEX	Roller Arm Bracket	R28½	4	OCEKL	Chase
R1K	4	OBWIN	Roller Arm Bracket Key	R30	5	OCELI	Chase Hook
R1S	1	OBWOP	Roller Arm Bracket Screw (Short)	R30E	3	OCEMP	Chase Hook Lever Spring
R1SS	Not Shown	OBWUJ	Roller Arm Bracket Screw (Long)	R30H	5	OCEMT	Chase Hook Lever Spring Hanger
R1W	Not Shown	OBXAC	Roller Arm Bracket Washer	R30L	5	OCEPU	Chase Hook Lever
R3	5	OBXEL	*Bed	R30LS	6	OCERD	Chase Hook Lever Screw
R3TA	6	OBXIP	*Adjustable Bed Track, Left	R30N	6	OCESA	Chase Hook Nut
R3TCS	6	OBXOR	Adjustable Bed Track Screw	R30S	5	OCETH	Chase Hook Screw
R3TR	Not Shown	OBXUM	Adjustable Bed Track Chase Stop (Side)	R31	5	OCEVL	*Gripper Bar
R3TS	5	OBYAT	Adjustable Bed Track Adjusting Screw (Upper)	R31E	6	OCEWS	Gripper Bar Spring
R4A	5	OBYBU	*Platen	R31H	6	OCEXI	Gripper Bar Spring Hook
R4PL	10	OBYCK	Cutting Plate	R31P	Not Shown	OCEZA	Gripper Bar Pin
R4TA	5	OBYDO	*Adjustable Bed Track, Right	R32	5	OCFAB	Gripper Bar Roller
R4TS	5	OBYET	Adjustable Bed Track Adjusting Screw (Lower)	R32N	Not Shown	OCFEK	Gripper Bar Roller Screw Nut
R6	4	OBYFA	Rocker Lock	R32S	Not Shown	OCFIS	Gripper Bar Roller Screw
R6E	Not Shown	OBYGI	Rocker Lock Spring	R33	Not Shown	OCFOM	*Cam Roller
R6R	4	OBYHA	Rocker Lock Spring Rod	R33S	Not Shown	OCFUL	*Cam Roller Stud
R6SS	Not Shown	OBYID	Rocker Lock Set Screw	R33SN	Not Shown	OCGAP	Cam Roller Stud Nut
R7½	3	OBYJU	*Disc	R33T	5	OCGES	Cam Roller Oil Tube
R7½S	Not Shown	OBYKA	Disc Stud	R33TC	Not Shown	OCGIN	Cam Roller Oil Tube Clamp
R8A	3	OBYLE	Disc Bracket	R33TCP	Not Shown	OCGOR	Cam Roller Oil Tube Clamp Pin
R8C	3	OBYMO	Disc Bracket Oil Cup	R36	9	OCGUP	Disc Lever Cam Roller
R8S	1	OBYNS	Disc Bracket Screw	R36S	9	OCHAW	Disc Lever Cam Roller Stud
R8SW	Not Shown	OBYOM	Disc Bracket Washer	R36SC	Not Shown	OCHEF	Disc Lever Cam Roller Stud Cotter
R10	3	OBYPA	Small Disc Gear	R37-1	9	OCHIF	*Adjustable Disc Lever
R10C	3	OBYRL	Small Disc Gear Lock	R37-1N	Not Shown	OCHOP	Adjustable Disc Lever Adjusting Screw Nut
R10CP	Not Shown	OBYSM	Small Disc Gear Lock Limit Pin	R37-1P	9	OCHUM	Adjustable Disc Lever Pin
R10E	Not Shown	OBYTU	Small Disc Gear Lock Spring	R37-1S	9	OCIBA	Adjustable Disc Lever Adjusting Screw
R10K	Not Shown	OBYUK	Small Disc Gear Key	R37-2	9	OCICE	Adjustable Disc Lever Link
R10P	Not Shown	OBYVI	Small Disc Gear Pin	R37-2N	Not Shown	OCIDI	Adjustable Disc Lever Link Stud Wing Nut
R10W	Not Shown	OBYWA	Small Disc Gear Washer	R37-2P	9	OCIFO	Adjustable Disc Lever Link Pin
R10½	3	OBYXA	Disc Gear Sleeve	R37-2PC	Not Shown	OCIGU	Adjustable Disc Lever Link Pin Cotter
R10½B	Not Shown	OBYZO	Disc Gear Sleeve Ball	R37-2S	3	OCIIA	Adjustable Disc Lever Link Stud
R10½CA	3	OBZAL	Disc Gear Lock Collar	R37-2SW	Not Shown	OCIJU	Adjustable Disc Lever Link Stud Washer
R10½CASS	Not Shown	OBZES	Disc Gear Set Screw	R37-3	9	OCIKE	Adjustable Disc Lever Arm
R11	3	OBZIF	Large Disc Gear	R37-3P	Not Shown	OCILD	Adjustable Disc Lever Arm Pin
R11K	Not Shown	OBZOR	Large Disc Gear Key	R37-4	9	OCIMF	Adjustable Disc Lever Bracket
R11LW	Not Shown	OBZUN	Large Disc Gear Lock Washer	R37-4S	Not Shown	OCINT	Adjustable Disc Lever Bracket Screw
R11S	Not Shown	OCABE	Large Disc Gear Screw	R37-4SS	Not Shown	OCIPS	Adjustable Disc Lever Bracket Set Screw
R11W	Not Shown	OCADU	Large Disc Gear Washer	R37-5	9	OCIRT	Adjustable Disc Lever Shaft
R12	6	OCAFI	Crank Shaft	R37-5LW	Not Shown	OCISA	Adjustable Disc Lever Shaft Lock Washer
R12B	5	OCAGL	Crank Shaft Bushing				

*Parts marked with an asterisk indicate special fitting and will be shipped with their mating part or parts.

IMPORTANT—Be sure to mention size of press for which parts are being ordered.

RC 1622 R73A





COMPONENT PARTS LIST—Continued

Part Number	Part Shown on Plate No.	Code	Name and Description	Part Number	Part Shown on Plate No.	Code	Name and Description
R37-5S	Not Shown	OCITI	Adjustable Disc Lever Shaft Screw	R76SN	Not Shown	OCUFI	Throw-Off Outer Arm Screw Nut
R37-6	3	OCIVU	Adjustable Disc Lever Shaft Collar	R78A	8	OCUGS	*Throw-Off Lever
R37-6SS	Not Shown	OCIWO	Adjustable Disc Lever Shaft Collar Set Screw	R78B	8	OCUHL	Throw-Off Lever Bushing
R38	9	OCIXI	*Silent Pawl Roller Cup	R78BA	8	OCUJO	Throw-Off Lever Latch Bushing
R38R	9	OCIYA	Silent Pawl Roller	R78C	8	OCUKE	Throw-Off Lever Oil Cup
R38W	9	OCIZE	Silent Pawl Retaining Plate	R78GA	8	OCULP	Throw-Off Sliding Bar Gib
R38½	9	OCJAM	*Silent Pawl Roller Carrier	R78GS	Not Shown	OCUMB	Throw-Off Sliding Plate Gib Screw
R38½EA	9	OCJEG	Silent Pawl Plunger Spring	R78GSW	Not Shown	OCUNT	Throw-Off Sliding Plate Gib Screw Washer
R38½K	Not Shown	OCJIT	Silent Pawl Key	R78L	8	OCUPA	Throw-Off Lever Latch
R38½PA	9	OCJOS	Silent Pawl Plunger	T78LC	8	OCURT	Throw-Off Lever Connection
R39	1	OCJUZ	*Ink Roller Double Saddle	R78LP	8	OCUSP	Throw-Off Lever Latch Pin
R39BB	3	OCKAR	Ink Roller Saddle Ball Bearing	R78LPC	Not Shown	OCUTI	Throw-Off Lever Latch Pin Cotter
R39C	Not Shown	OCKEJ	Ink Roller Saddle Rod Cotter	R78P	8	OCUVE	*Throw-Off Lever Shear Pin
R39E	5	OCKIF	Ink Roller Saddle Spring	R78PS	8	OCUWL	Throw-Off Lever Shear Pin Swivel
R39L	9	OCKOP	Ink Roller Saddle Lifter	R78PSS	8	OCUXI	Throw-Off Lever Shear Pin Swivel Set Screw
R39P	3	OCKUN	Ink Roller Saddle Pin, Right	R78SAA	8	OCUYN	Throw-Off Lever Screw
R39RP	Not Shown	OCLAS	Ink Roller Saddle Rod Pin	R78SN	8	OCUZO	Throw-Off Lever Screw Nut
R39½P	1	OCLEY	Ink Roller Saddle Pin, Left	R78½A	8	OCVAP	Throw-Off Lever Shear Pin Latch Lever
R40R	5	OCLIV	*Ink Roller Saddle Rod	R78½S	8	OCVEM	Throw-Off Lever Shear Pin Latch Lever Pin
R42	6	OCLOP	Rocker Box Cap	R79A	4	OCVID	Throw-Off Lever Bracket
R42C	6	OCLUB	Rocker Box Oil Cup	R79S	Not Shown	OCVOT	Throw-Off Lever Bracket Screw
R42S	6	OCMAT	Rocker Box Screw	R79SS	Not Shown	OCVUX	Throw-Off Lever Bracket Set Screw
R43	6	OCMED	Crank Shaft Box	R79SSN	Not Shown	OCWAN	Throw-Off Lever Bracket Set Screw Nut
R43C	6	OCMIP	Crank Shaft Box Oil Cup	R79SW	Not Shown	OCWET	Throw-Off Lever Bracket Screw Washer
R43S	6	OCMOK	Crank Shaft Box Screw	R80	6	OCWIP	Gripper, Left
R43W	Not Shown	OCMUB	Crank Shaft Box Washer	R80C	9	OCWOF	Extension Gripper, Left
R45	1	OCNAF	*Ink Roller Saddle Stud	R80CA	9	OCWUB	Gripper Extension 1" long
R45F	Not Shown	OCNEG	Ink Roller Saddle Stud Oil Packing	R80CB	9	OCXAB	Gripper Extension 2" long
R45K	Not Shown	OCNIT	Ink Roller Saddle Stud Guide Key	R80CD	9	OCXEL	Gripper Extension 3" long
R45W	2	OCNOS	Ink Roller Saddle Stud Packing Plate	R80CE	9	OCXIP	Gripper Extension 4" long
R45WP	Not Shown	OCNUM	Ink Roller Saddle Stud Packing Plate Pin	R80CF	9	OCXOF	Gripper Extension Finger
R47	6	OCOBR	*Side Arm	R80N	5	OCXUM	Gripper Nut
R47B	Not Shown	OCOCA	Side Arm Bushing	R80S	6	OCYAB	Gripper Bolt
R47C	4	OCODI	Side Arm Oil Cup	R81	6	OCYES	Gripper, Right
R47S	5	OCOFE	Side Arm Wrist Pin	R81C	9	OCYIL	Extension Gripper, Right
R55A	6	OCOGU	Side Arm Washer	R83	10	OCYON	*Hand Feed Table
R55S	6	OCOHL	Side Arm Washer Screw	R83S	Not Shown	OCYUC	Hand Feed Table Screw
R61	9	OCOJI	Gripper Wrench	R85L	9	OCZAL	Fountain Side Frame, Left
R62	Not Shown	OCOKU	Rocker Arm	R85N	9	OCZED	Fountain Side Frame Cap Screw Nut
R62P	Not Shown	OCOLD	Rocker Arm Pin	R85R	9	OCZIM	Fountain Side Frame, Right
R63	10	OCOMA	*Roller Stock	R85S	3	OCZOP	Fountain Adjusting Screw
R63B	Not Shown	OCONT	Roller Stock Steel Ball	R85SN	3	OCZUD	Fountain Adjusting Screw Wing Nut
R63E	Not Shown	OCOPE	Roller Stock Ball Spring	R85T	9	ODABE	Fountain Thumb Screw
R64	6	OCORP	Tympan Bale, Upper	R85½	9	ODACH	*Fountain Ink Roll
R64L	9	OCOSK	Tympan Bale Lifter	R85½B	Not Shown	ODADS	Fountain Ink Roll Bushing
R64R	5	OCOTH	Tympan Bale Rivet	R86C	Not Shown	ODAFI	Fountain Side Frame Oil Cup
R64½	5	OCOVR	Tympan Bale, Lower	R86L	9	ODAGU	Fountain Side Frame Cap, Left
R65A	6	OCOWL	Platen Ear, Left	R86NP	Not Shown	ODAHL	Fountain Side Frame Cap Screw Pin
R65P	Not Shown	OCOXE	Platen Ear Pin	R86P	Not Shown	ODAJE	Fountain Side Frame Cap Dowel Pin
R65S	Not Shown	OCOYA	Platen Ear Screw	R86R	9	ODAKU	Fountain Side Frame Cap, Right
R66	5	OCOZU	Platen Ear, Right	R86S	Not Shown	ODALP	Fountain Side Frame Cap Screw
R67	5	OCPAF	*Gripper Cam	R87	3	ODAMP	Fountain Bracket
R67P	6	OCPEM	Gripper Cam Pin	R87S	Not Shown	ODANT	Fountain Bracket Screw
R67PSS	Not Shown	OCPID	Gripper Cam Pin Set Screw	R87½	9	ODAPR	Fountain Cover
R68	5	OCPOX	Main Shaft	R87½L	Not Shown	ODARB	Fountain Cover Latch
R68B	4	OCPUF	Main Shaft Bushing	R87½R	Not Shown	ODASK	Fountain Cover Rivet
R68BP	Not Shown	OCQAW	Main Shaft Bushing Pin	R88	9	ODATA	Fountain Ratchet Lever
R68C	4	OCQED	Main Shaft Oil Cup	R88P	9	ODAVE	Fountain Ratchet Lever Pin
R68K	5	OCQIT	Main Shaft Key	R88½	3	ODAWN	Fountain Ratchet Lever Rod
R69	5	OCQOB	Back Shaft	R88½E	Not Shown	ODAXU	Fountain Ratchet Lever Rod Spring
R69C	5	OCQUA	Back Shaft Oil Cup	R89	9	ODAYM	Fountain Ratchet
R70	3	OCRAN	Throw-Off Saddle	R89K	Not Shown	ODAZL	Fountain Ratchet Key
R70K	Not Shown	OCREK	Throw-Off Saddle Key	R89½	9	ODBAN	Fountain Ink Blade
R70SS	Not Shown	OCRIL	Throw-Off Saddle Set Screw	R89½S	Not Shown	ODBER	Fountain Ink Blade Screw
R71L	3	OCROP	Back Shaft Collar (Left)	R90	9	ODBIT	Fountain Ratchet Pawl
R71R	3	OCRUS	Back Shaft Collar (Right)	R90S	9	ODBOS	Fountain Ratchet Pawl Screw
R71SS	Not Shown	OCSAP	Back Shaft Collar Set Screw	R90½	3	ODBUM	Fountain Driver
R72	6	OCSEK	Throw-Off Back Connection	R90½S	Not Shown	ODCAN	Fountain Driver Screw
R72N	Not Shown	OCSIN	Throw-Off Back Connection Nut	R90½SC	Not Shown	ODCEH	Fountain Driver Screw Cotter
R72S	3	OCSOR	Throw-Off Back Connection Screw	R91	9	ODCIJ	Fountain Adjusting Block
R72SC	Not Shown	OCSUT	Throw-Off Back Connection Screw Cotter	R92	Not Shown	ODCOP	Fountain Cover Knob
R72½A	6	OCTAV	Throw-Off Lower Connection	R92½	9	ODCUT	Fountain Handwheel
R72½S	6	OCTEL	Throw-Off Lower Connection Screw	R92½P	Not Shown	ODDAM	Fountain Handwheel Pin
R72½SN	Not Shown	OCTIN	Throw-Off Lower Connection Screw Nut	R93	9	ODDEZ	Fountain Front Brace
R73A	3	OCTOR	Throw-Off Slotted Piece	R93S	Not Shown	ODDIK	Fountain Front Brace Screw
R76A	3	OCTUF	Throw-Off Outer Arm	R93½	Not Shown	ODDOL	Fountain Back Separator Rod
R76P	3	OCUBA	Throw-Off Outer Arm Pin	R93½S	Not Shown	ODDUF	Fountain Back Separator Rod Screw
R76PC	Not Shown	OCUCH	Throw-Off Outer Arm Pin Cotter	R94A	6	ODEBA	Throw-Off Outer Arm Stud
R76S	6	OCUDS	Throw-Off Outer Arm Screw	R94N	Not Shown	ODECI	Throw-Off Outer Arm Stud Nut

*Parts marked with an asterisk indicate special fitting and will be shipped with their mating part or parts

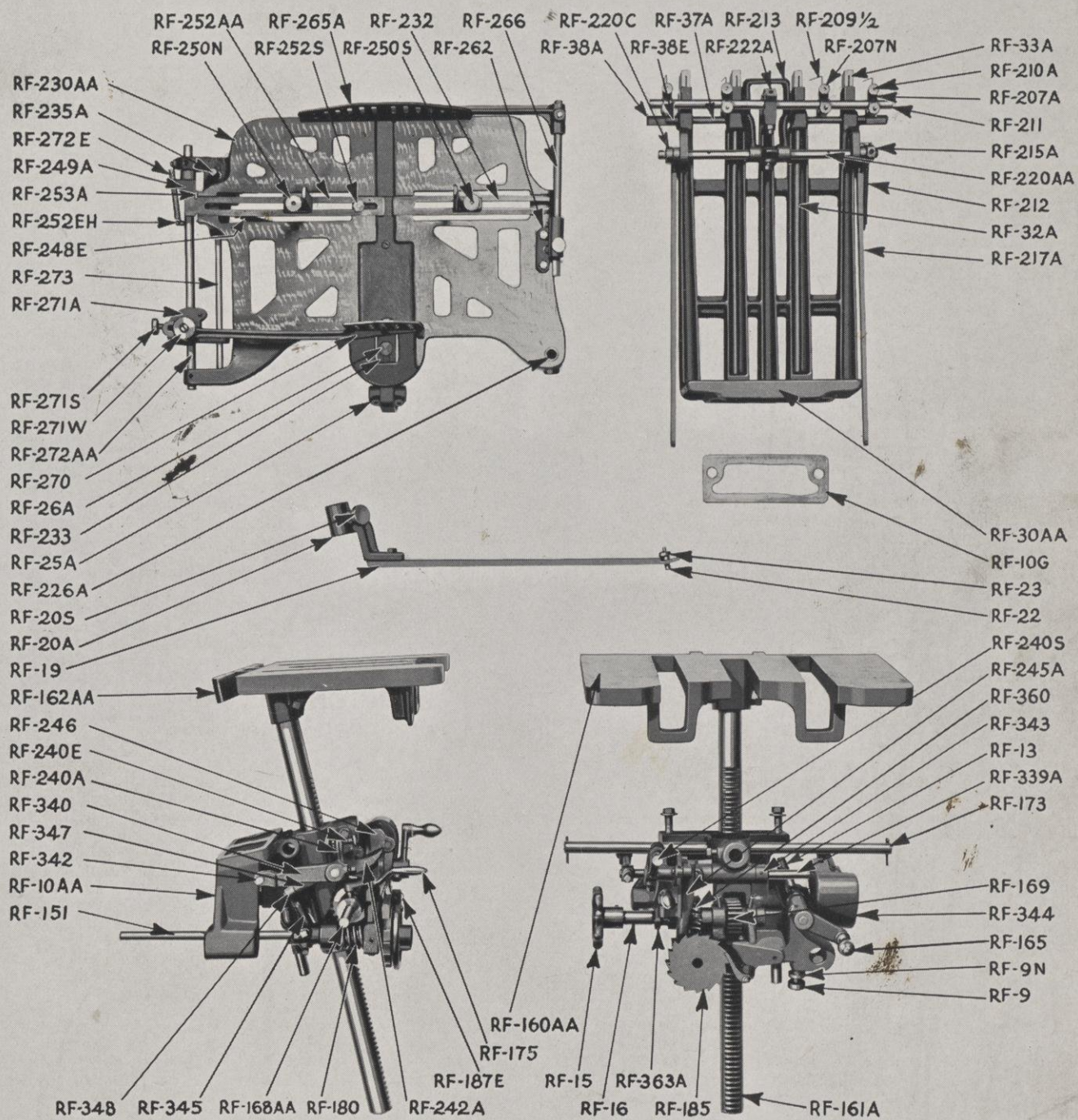
IMPORTANT—Be sure to mention size of press for which parts are being ordered.

COMPONENT PARTS LIST—Continued

Part Number	Part Shown on Plate No.	Code	Name and Description	Part Number	Part Shown on Plate No.	Code	Name and Description
R94NW	Not Shown	ODEDU	Throw-Off Outer Arm Stud Washer	RF-5A	1	ODMOL	Feeder Drive Gear Guard
R94SS	Not Shown	ODEFT	Throw-Off Outer Arm Stud Set Screw	RF-6	2	ODMUY	Feeder Drive Gear Guard Brace
R95	10	ODEGA	Motor Belt	RF-6S	2	ODNAD	Feeder Drive Gear Guard Brace Screw
R96A	5	ODEHL	Bed Shaft	RF-8	Not Shown	ODNEP	Feed Table Lock Screw Shoe
R96B	Not Shown	ODEJO	Bed Shaft Bushing	RF-9	7	ODNIB	Feed Table Lock Screw
R96C	5	ODEKS	Bed Shaft Collar	RF-9N	7	ODNOF	Feed Table Lock Screw Nut
R96CSS	Not Shown	ODELM	Bed Shaft Collar Set Screw	RF-10AA	7	ODNUH	Feed Table Bracket
R96K	Not Shown	ODEMT	Bed Shaft Key	RF-10G	7	ODOBS	Feed Table Bracket Gasket
R96SS	Not Shown	ODENK	Bed Shaft Set Screw	RF-10T	2	ODOCK	Feed Table Pinion Shaft Oil Tube
R96T	5	ODEPS	Bed Shaft Oil Tube	RF-11	4	ODODR	Feed Table Stationery Rail
R96TC	Not Shown	ODERK	Bed Shaft Oil Tube Clamp	RF-12	4	ODOFT	Feed Table Movable Rail
R96TCP	Not Shown	ODESL	Bed Shaft Oil Tube Clamp Pin	RF-13	7	ODOGI	Feed Table Adjusting Screw
R97	9	ODETU	Fountain Front Brace Rod	RF-13W	Not Shown	ODOHT	Feed Table Adjusting Screw Washer
R97S	Not Shown	ODEVL	Fountain Front Brace Rod Screw	RF-15	7	ODOJI	Feed Table Raising Handwheel
R98	6	ODEWP	Rocker Lock Shaft	RF-15P	Not Shown	ODOKA	Feed Table Raising Handwheel Pin
R98B	6	ODEXA	Rocker Lock Shaft Bushing	RF-16	7	ODOLF	Feed Table Release Ratchet Stop
R98BSS	Not Shown	ODEYI	Rocker Lock Shaft Bushing Set Screw	RF-18A	2	ODOMB	Feed Table Bracket Guard
R99	4	ODEZE	Name Plate	RF-18S	Not Shown	ODONT	Feed Table Bracket Guard Screw
R99P	Not Shown	ODFAQ	Name Plate Pin	RF-19	7	ODOPH	*Feed Table Long Back Stop
R99½	Not Shown	ODFEW	Fountain Name Plate	RF-19P	Not Shown	ODORI	Feed Table Long Back Stop Taper Pin
R99½P	Not Shown	ODFIV	Fountain Name Plate Pin	RF-19S	Not Shown	ODOSM	Feed Table Long Back Stop Screw
R-100A	6	ODFOS	Bed Shaft Adjusting Arm	RF-20A	7	ODOTU	Feed Table Long Back Stop Bracket
R-100SN	6	ODFUR	Bed Shaft Adjusting Arm Set Screw Nut	RF-20S	7	ODOVL	Feed Table Long Back Stop Bracket Clamping Screw
R-100SS	6	ODGAS	Bed Shaft Adjusting Arm Set Screw	RF-21	1	ODOWN	Feed Table Long Back Stop Post
R-101	6	ODGED	Bed Shaft Adjusting Screw Swivel Pin	RF-21SS	Not Shown	ODOXA	Feed Table Long Back Stop Post Set Screw
R-104	3	ODGIF	Bed Shaft Adjusting Screw	RF-22	7	ODOYT	Feed Table Long Back Stop Limit Pin
R-104C	3	ODGOL	Bed Shaft Adjusting Collar	RF-23	7	ODOZN	Feed Table Long Back Stop Limit Pin Lock Nut
R-104CP	Not Shown	ODGUP	Bed Shaft Adjusting Collar Pin	RF-25A	7	ODPAC	Feed Table Short Back Stop
R-104CSS	Not Shown	ODHAM	Bed Shaft Adjusting Collar Pin Set Screw	RF-26A	7	ODPEW	Feed Table Short Back Stop Clamp Screw
R-105	3	ODHEN	Bed Shaft Adjusting Screw Handwheel	RF-27A	Not Shown	ODPIN	Feed Table Short Back Stop Clamp Screw Nut
R-105P	Not Shown	ODHIP	Bed Shaft Adjusting Screw Handwheel Pin	RF-28A	Not Shown	ODPOB	Feed Table Short Back Stop Clamp Screw Spring
R-106A	Not Shown	ODHOR	*Bed Shaft Adjusting Tube	RF-30AA	7	ODPUG	*Feed Table Front Stop
R-107	Not Shown	ODHUS	Bed Shaft Adjusting Tube Bushing	RF-30S	2	ODQAF	Feed Table Front Stop Screw
R-107P	Not Shown	ODIBA	Bed Shaft Adjusting Tube Bushing Pin	RF-32A	7	ODQEB	Feed Table Front Stop Blast Tubing
R-108	3	ODICT	Bed Shaft Adjusting Screw Bracket	RF-33A	7	ODQIG	*Feed Table Front Stop Blast Nipple
R-108SS	Not Shown	ODIDE	Bed Shaft Adjusting Screw Bracket Set Screw	RF-34A	Not Shown	ODQOH	Feed Table Front Stop Blast Nipple Tube
R-109	6	ODIFR	Bed Shaft Adjusting Scale Pointer	RF-37A	7	ODQUI	*Feed Table Front Stop End Blast Connection
R-109S	6	ODIGS	Bed Shaft Adjusting Scale Pointer Screw	RF-38A	7	ODRAT	*Feed Table Front Stop End Blast Shut-Off
R-110	6	ODIHT	Bed Shaft Adjusting Screw Swivel Bracket	RF-38E	7	ODREM	Feed Table Front Stop End Blast Shut-Off Spring
R-110P	Not Shown	ODIJA	Bed Shaft Adjusting Screw Swivel Bracket Pin	RF-38W	Not Shown	ODRIK	Feed Table Front Stop End Blast Shut-Off Washer
R-110S	Not Shown	ODIKE	Bed Shaft Adjusting Screw Swivel Bracket Screw	RF-39	5	ODROF	*Delivery Air Line Screen
R-111	5	ODILF	Back Shaft Adjusting Screw Swivel Pin	RF-39BA	Not Shown	ODRUP	*Delivery Air Line Screen Bushing
R-113	5	ODIMP	Back Shaft Adjusting Screw Lock Screw	RF-39P	Not Shown	ODSAP	*Delivery Air Line Screen Plug
R-113P	Not Shown	ODING	Back Shaft Adjusting Screw Lock Screw Shoe	RF-40	2	ODSEB	*Delivery Slide Air Tube
R-115	5	ODIPH	Back Shaft Adjusting Screw Knob	RF-40P	Not Shown	ODSIC	*Delivery Slide Air Tube Plug
R-115P	Not Shown	ODIRT	Back Shaft Adjusting Screw Knob Pin	RF-41	9	ODSON	*Delivery Bar
R-116	3	ODISH	Bed Shaft Adjusting Screw Swivel Pin	RF-41S	9	ODSUM	*Delivery Bar Screw
R-116N	Not Shown	ODITS	Bed Shaft Adjusting Screw Swivel Nut	RF-43	9	ODTAC	*Delivery Bar Sliding Tube
R-116S	3	ODIVA	Bed Shaft Adjusting Screw Swivel Screw	RF-43S	9	ODTED	*Delivery Bar Sliding Tube Screw
R-116W	Not Shown	ODIWU	Bed Shaft Adjusting Screw Swivel Washer	RF-45	4	ODTIG	Delivery Slide Shaft
R-119A	5	ODIXE	Back Shaft Adjusting Screw	RF-47	2	ODTOK	Delivery Slide Air Tube Roller Carrier
R-119N	Not Shown	ODIYL	Back Shaft Adjusting Screw Nut	RF-47S	2	ODTUR	Delivery Slide Air Tube Roller Carrier Clamp Screw
R-119W	Not Shown	ODIZY	Back Shaft Adjusting Screw Washer	RF-49	5	ODUBL	Delivery Bar Pull-In Spring
R-122	4	ODJAK	Press Pulley	RF-49P	5	ODUCH	Delivery Bar Pull-In Spring Pin
R-125A	5	ODJEM	Back Shaft Eccentric	RF-49PC	Not Shown	ODUDI	Delivery Bar Pull-In Spring Pin Cotter
R-126AA	5	ODJIX	Back Shaft Eccentric Bracket	RF-50	5	ODUFT	*Delivery Slide
R-126P	5	ODJOG	Back Shaft Eccentric Bracket Swivel Pin	RF-50B	Not Shown	ODUGS	Delivery Slide Bushing
R-126S	5	ODJUF	Back Shaft Eccentric Bracket Swivel Pin Set Screw	RF-50P	2	ODUHM	Delivery Slide Bushing Spring Pin
R-126SS	3	ODKAT	Back Shaft Eccentric Set Screw	RF-50T	5	ODUJE	Delivery Slide Oil Tube
R-126SSN	3	ODKER	Back Shaft Eccentric Set Screw Lock Nut	RF-50TC	5	ODUKA	Delivery Slide Oil Tube Clamp
R-126SW	Not Shown	ODKIF	Back Shaft Eccentric Bracket Swivel Pin Set Screw Washer	RF-50TCS	Not Shown	ODULK	Delivery Slide Oil Tube Clamp Screw
R-130A	5	ODKOB	Back Shaft Adjusting Scale Pointer	RF-51	5	ODUMF	Feeder Ball Bearing Cam Roller
R-130S	Not Shown	ODKUC	Back Shaft Adjusting Scale Pointer Screw	RF-52	5	ODUNT	Feeder Ball Bearing Cam Roller Pin
R-131A	5	ODLAS	Back Shaft Adjusting Scale	RF-53A	2	ODUPO	*Delivery Slide Shoe
R-131P	Not Shown	ODLET	Back Shaft Adjusting Scale Pin	RF-53SS	2	ODURB	Delivery Slide Shoe Set Screw
RF-1A	4	ODLIC	Feeder Cam Shaft Bracket	RF-54A	5	ODUSC	Delivery Slide Shoe Gib
RF-1C	Not Shown	ODLOB	Feeder Cam Shaft Bracket Oil Cup	RF-55A	5	ODUTE	Delivery Slide Shoe Gib Screw
RF-1S	Not Shown	ODLUN	Feeder Cam Shaft Bracket Screw	RF-55N	5	ODUVR	Delivery Slide Shoe Gib Screw Nut
RF-2	4	ODMAG	Feed Table Elevator Shaft Bracket	RF-56	5	ODUWE	Delivery Bar Pull Down Spring
RF-2S	Not Shown	ODMEX	Feed Table Elevator Shaft Bracket Screw	RF-57A	2	ODUXI	Delivery Slide Hose Nipple
RF-3	Not Shown	ODMIN	Feed Table Elevator Cam Lever Spring Pin				

*Parts marked with an asterisk indicate special fitting and will be shipped with their mating part or parts.

IMPORTANT—Be sure to mention size of press for which parts are being ordered.



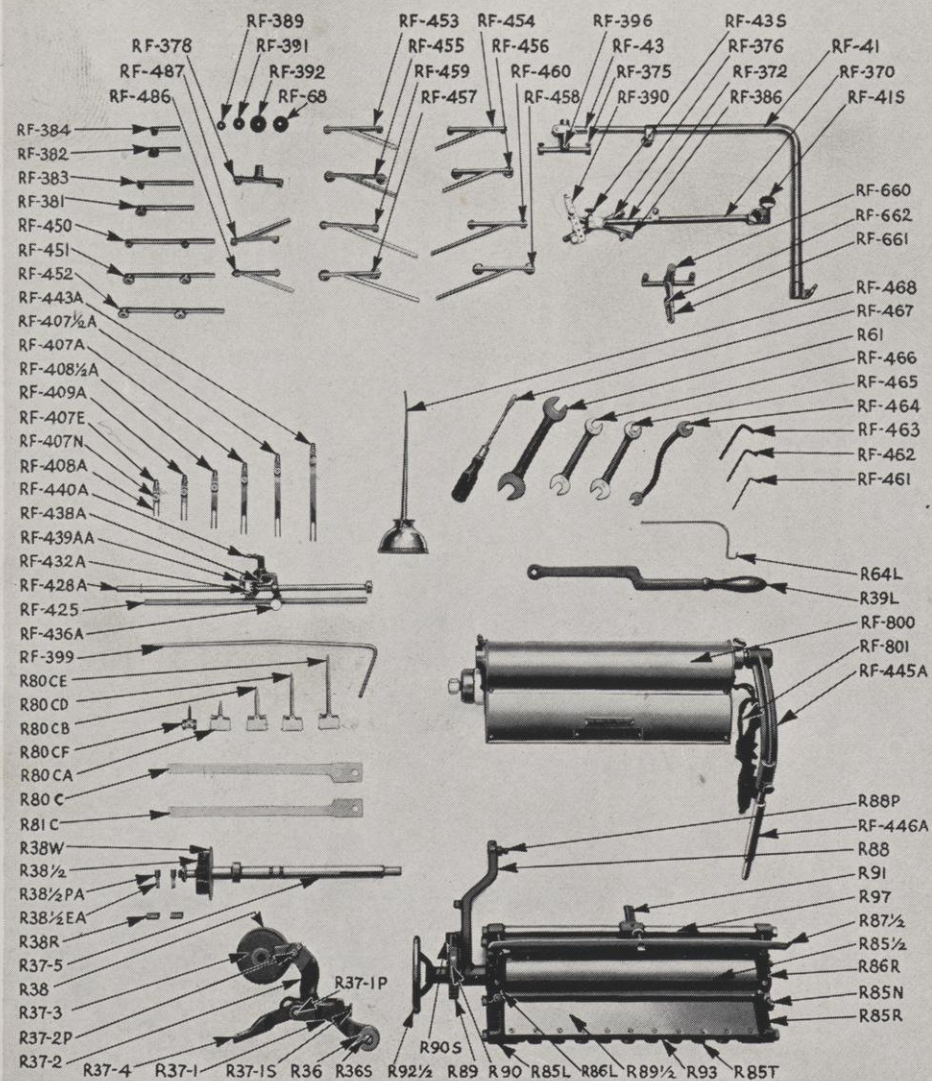


PLATE No 9

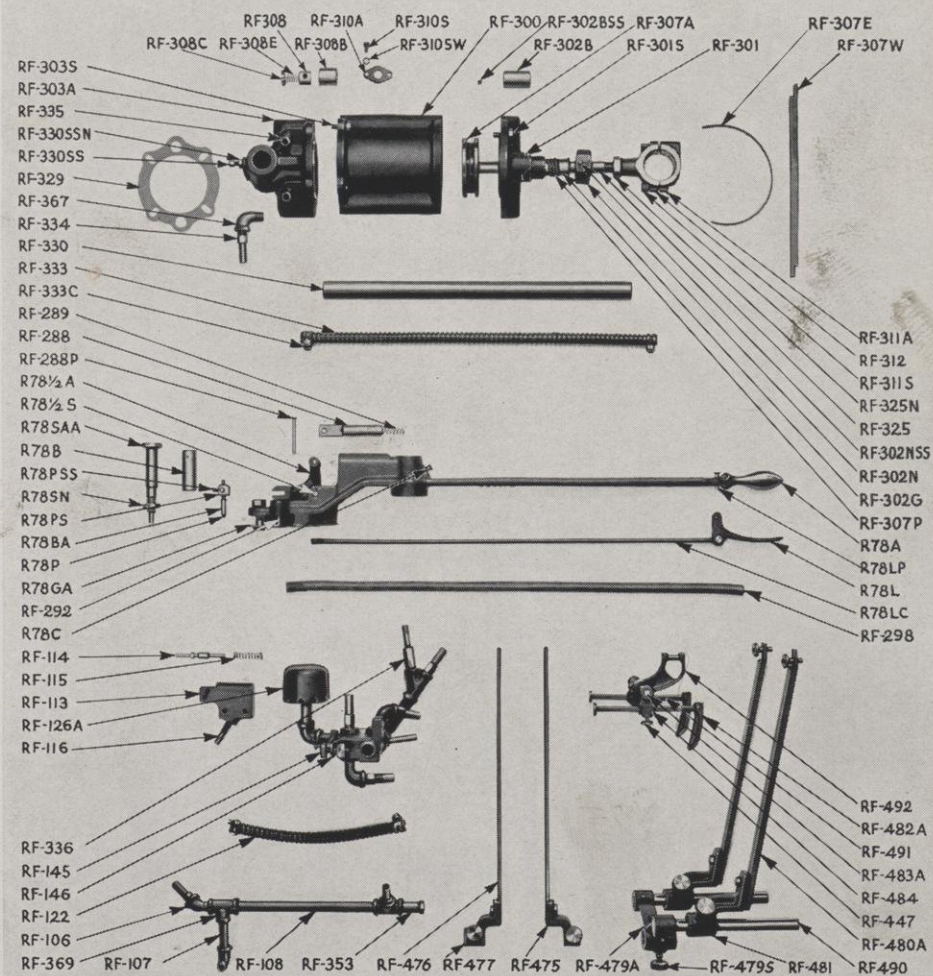


PLATE No 8

COMPONENT PARTS LIST—Continued

Part Number	Part Shown on Plate No.	Code	Name and Description	Part Number	Part Shown on Plate No.	Code	Name and Description
RF-57S	2	ODUYA	Delivery Slide Hose Nipple Clamp Screw	RF-141A	4	OFERM	*Blast Valve Cam Lever
RF-58	2	ODUZO	Delivery Slide Air Hose	RF-144A	1	OFESY	Blast Valve Plunger
RF-60	5	ODVAP	Delivery Slide Air Tube Lift Lever	RF-144E	1	OFETH	Blast Valve Plunger Spring
RF-64	5	ODVEC	Delivery Slide Air Tube Lift Lever Spring	RF-144EH	1	OFEVA	Blast Valve Plunger Spring Connection
RF-65	5	ODVIM	Delivery Slide Air Tube Lift Lever Stud	RF-145	8	OFEWT	Continuous Blast Screw
RF-68	9	ODVOH	Feed Bar Large Rubber Sucker Tip	RF-146	8	OFEYE	Continuous Blast Screw Lock Nut
RF-69	5	ODVUF	*Feed Air Line Screen	RF-147	1	OFEYR	Blast Valve Plunger Spring Stud
RF-69B	Not Shown	ODWAX	*Feed Air Line Screen Bushing	RF-147CP	Not Shown	OFEZO	Blast Valve Plunger Spring Stud Cotter
RF-70	2	ODWEZ	*Feed Slide Air Tube	RF-147W	Not Shown	OFFAB	Blast Valve Plunger Spring Stud Washer
RF-70P	Not Shown	ODWIV	*Feed Slide Air Tube Plug	RF-150A	4	OFFEC	Feed Table Elevator Cam
RF-70S	Not Shown	ODWOY	*Feed Slide Air Tube Plug Screw	RF-150SS	Not Shown	OFFID	Feed Table Elevator Cam Set Screw
RF-71	1	ODWUF	Feed Slide Air Hose	RF-151	7	OFFOJ	Feed Table Elevator Shaft
RF-72	1	ODXAR	Feed Slide Air Tube Roller Carrier	RF-152	4	OFFUT	*Feed Table Elevator Shaft Cam Lever
RF-72CP	Not Shown	ODXEY	Feed Slide Air Tube Roller Carrier Cotter	RF-152E	Not Shown	OFGAX	Feed Table Elevator Shaft Cam Lever Spring
RF-72S	1	ODXIT	Feed Slide Air Tube Roller Carrier Clamp Screw	RF-152H	Not Shown	OFGEH	Feed Table Elevator Shaft Cam Lever Spring Pin
RF-74	1	ODXON	Feed Slide Air Tube Pull Down Spring	RF-152K	Not Shown	OFGIN	Feed Table Elevator Shaft Cam Lever Key
RF-75	1	ODXUP	*Feed Slide	RF-152P	Not Shown	OFGOP	Feed Table Elevator Shaft Cam Lever Roller Pin
RF-75T	1	ODYAB	*Feed Slide Oil Tube	RF-153	4	OFGUB	Feed Table Elevator Shaft Cam Lever Roller
RF-78	1	ODYEC	*Feed Slide Shoe	RF-160AA	7	OFHAT	Feed Table
RF-78SS	1	ODYID	Feed Slide Shoe Set Screw	RF-161A	7	OFHEC	Feed Table Rack
RF-80	5	ODYOF	Feed Slide Air Tube Lift Lever	RF-161K	Not Shown	OFHIS	Feed Table Rack Key
RF-84	1	ODYUG	Feed Slide Hose Nipple	RF-161W	2	OFHOP	Feed Table Bumper Washer
RF-84S	1	ODZAH	Feed Slide Hose Nipple Clamp Screw	RF-162AA	7	OFHUG	Feed Table Front Bar
RF-86A	5	ODZEJ	*Feed Bar Air Tube Connection	RF-162P	Not Shown	OFIBR	Feed Table Front Bar Taper Pin
RF-86N	5	ODZIK	Feed Bar Limit Screw Nut	RF-162S	Not Shown	OFICL	Feed Table Front Bar Screw
RF-86S	5	ODZOL	Feed Bar Limit Screw	RF-165	7	OFIDO	Feed Table Adjusting Screw Crank
RF-87	Not Shown	ODZUM	*Feed Bar Air Tube Connection Plug	RF-165SS	Not Shown	OFIFE	Feed Table Adjusting Screw Set Screw
RF-95A	5	OFABS	Feed and Delivery Slide Spring Bracket	RF-168AA	7	OFIGA	Feed Table Pinion Shaft
RF-95S	5	OFACT	Feed and Delivery Slide Spring Bracket Screw	RF-169	7	OFIHM	*Feed Table Pinion
RF-100	2	OFADA	Delivery Air Valve Bracket	RF-169K	Not Shown	OFIKE	Feed Table Pinion Key
RF-100S	Not Shown	OFAFR	Delivery Air Valve Bracket Screw	RF-170A	1	OFILS	Feed Table Guide Finger Bracket, Right
RF-101	2	OFAGL	*Delivery Air Valve Cam Lever	RF-170S	1	OFIMT	Feed Table Guide Finger Bracket Screw
RF-101W	Not Shown	OFAHN	Delivery Air Valve Cam Lever Spacing Washer	RF-171A	1	OFING	Feed Table Guide Finger Bracket, Left
RF-102	4	OFAJU	Delivery Air Valve Cam Roller Pin	RF-172	1	OFIPU	*Feed Table Guide Finger
RF-103	4	OFAKL	Delivery Air Valve Cam Roller	RF-172S	1	OFIRE	Feed Table Guide Finger Screw
RF-104	Not Shown	OFALT	Delivery Air Valve Cam Lever Shaft	RF-173	7	OFISH	Feed Table Guide Finger Shaft
RF-105A	4	OFAMB	Delivery Air Valve Cam	RF-173CP	Not Shown	OFITS	Feed Table Guide Finger Shaft Cotter
RF-105SS	Not Shown	OFAND	Delivery Air Valve Cam Set Screw	RF-173SS	Not Shown	OFIVU	Feed Table Guide Finger Shaft Set Screw
RF-106	8	OFAPH	Delivery Air Valve Bracket Pipe Elbow	RF-175	7	OFIWO	*Feed Table Release Handle
RF-107	8	OFARQ	Delivery Air Valve Bracket Pipe Short Nipple	RF-176	1	OFIXU	Feed Table Release Handle Pin
RF-108	8	OFAST	Delivery Air Valve Bracket Pipe Long Nipple	RF-177	1	OFIYA	Feed Table Release Handle Swivel Pin
RF-109A	4	OFATU	Delivery Cutout Valve Cam	RF-180	7	OFIZL	Feed Table Worm
RF-110	2	OFAVY	*Delivery Cutout Valve Cam Lever	RF-180K	Not Shown	OFJAZ	Feed Table Worm Key
RF-113	8	OFAWL	*Delivery Cutout Valve	RF-182	Not Shown	OFJER	Feed Table Ratchet Wheel Sleeve
RF-113P	Not Shown	OFAXO	Delivery Cutout Valve Cotter	RF-185	7	OFJIG	Feed Table Ratchet Wheel
RF-113S	Not Shown	OFAYE	Delivery Cutout Valve Screw	RF-185K	Not Shown	OFJOB	Feed Table Ratchet Wheel Key
RF-114	8	OFAZL	Delivery Cutout Valve Plunger	RF-187	2	OFJUS	Feed Table Ratchet Pawl
RF-115	8	OFBAN	Delivery Cutout Valve Plunger Spring	RF-187P	2	OFKAN	Feed Table Ratchet Pawl Pin
RF-115½	2	OFBEG	Delivery Air Valve	RF-187E	7	OFKEB	Feed Table Ratchet Pawl Spring
RF-115½C	Not Shown	OFBIP	*Delivery Air Valve Cotter	RF-187ES	Not Shown	OFKIP	Feed Table Ratchet Pawl Spring Screw
RF-116	8	OFBOX	Delivery Cutout Valve Hose Nipple	RF-188A	1	OFKOF	*Feed Table Ratchet Pawl Lever
RF-117	2	OFBUR	Delivery Cutout Valve Air Hose	RF-188SS	Not Shown	OFKUD	Feed Table Ratchet Pawl Spring Screw
RF-119	Not Shown	OFCAB	Blast Muffler Nipple	RF-188W	Not Shown	OFLAM	Feed Table Ratchet Pawl Spring Washer
RF-120A	1	OFCED	Feed and Blast Valve Bracket	RF-189	2	OFLFX	Feed Table Ratchet Latch Stud
RF-120S	Not Shown	OFCIF	Feed and Blast Valve Bracket Screw	RF-189CP	Not Shown	OFLIZ	Feed Table Ratchet Latch Pin Cotter
RF-121	4	OFCOG	Feed Air Valve Cam Lever	RF-189W	Not Shown	OFLOY	Feed Table Ratchet Latch Pin Cotter Washer
RF-121SS	Not Shown	OFCUK	Feed Air Valve Cam Lever Screw	RF-190A	2	OFLUW	Feed Table Ratchet Pawl Latch
RF-121SSN	Not Shown	OFDAW	Feed Air Valve Cam Lever Screw Lock Nut	RF-195A	2	OFMAD	Feed Slide Air Tube Raising Cam
RF-122	8	OFDEY	Feed Table Blast Hose	RF-196A	4	OFMEN	Feed Slide Pushout Cam
RF-122C	8	OFDIJ	Feed Table Blast Hose Clamp	RF-197A	4	OFMIS	Delivery Slide Air Tube Raising Cam
RF-124	Not Shown	OFDON	Feed Air Valve Cam Lever Shaft	RF-198A	4	OFMOT	Delivery Slide Pushout Cam
RF-125A	4	OFDUL	Feed Air Valve Cam	RF-199A	4	OFMUK	*Feeder Cam Shaft
RF-126A	8	OFEBY	*Blast Muffler	RF-199KA	5	OFNAG	Feeder Cam Shaft Key
RF-127A	1	OFECT	*Blast Muffler Plate	RF-200A	6	OFNET	Feeder Drive Gear
RF-130	1	OFEDA	Feed Starting Lever Bracket	RF-200KA	6	OFNIC	Feeder Drive Gear Key
RF-133	1	OFEFI	*Feed Starting Lever	RF-202A	4	OFNOB	*Feeder Drive Intermediate Gear
RF-134	1	OFEGL	Feed Starting Lever Latch Pin	RF-203A	Not Shown	OFNUM	Feeder Drive Intermediate Gear Shaft
RF-134CP	Not Shown	OFEHR	Feed Starting Lever Latch Pin Cotter	RF-203C	4	OFOBA	Feeder Drive Intermediate Gear Shaft Oil Cup
RF-134W	Not Shown	OFEJY	Feed Starting Lever Latch Pin Washer	RF-203S	4	OFOCE	Feeder Drive Intermediate Gear Shaft Screw
RF-136	1	OFEKU	Feed Starting Lever Latch	RF-205A	Not Shown	OFODI	Feeder Drive Intermediate Gear Bushing
RF-137	1	OFELN	Blast Valve Connection	RF-206	4	OFOGU	Feeder Drive Intermediate Gear Bracket
RF-138	1	OFEMA	Blast Adjusting Screw	RF-207A	7	OFOHA	*Feed Table Stripper Wire Bracket
RF-139	1	OFENS	Blast Adjusting Screw Nut	RF-207N	7	OFOJY	Feed Table Stripper Wire Bracket Lock Nut
RF-140A	4	OFEPU	Blast Valve Cam				

*Parts marked with an asterisk indicate special fitting and will be shipped with their mating part or parts

IMPORTANT—Be sure to mention size of press for which parts are being ordered.

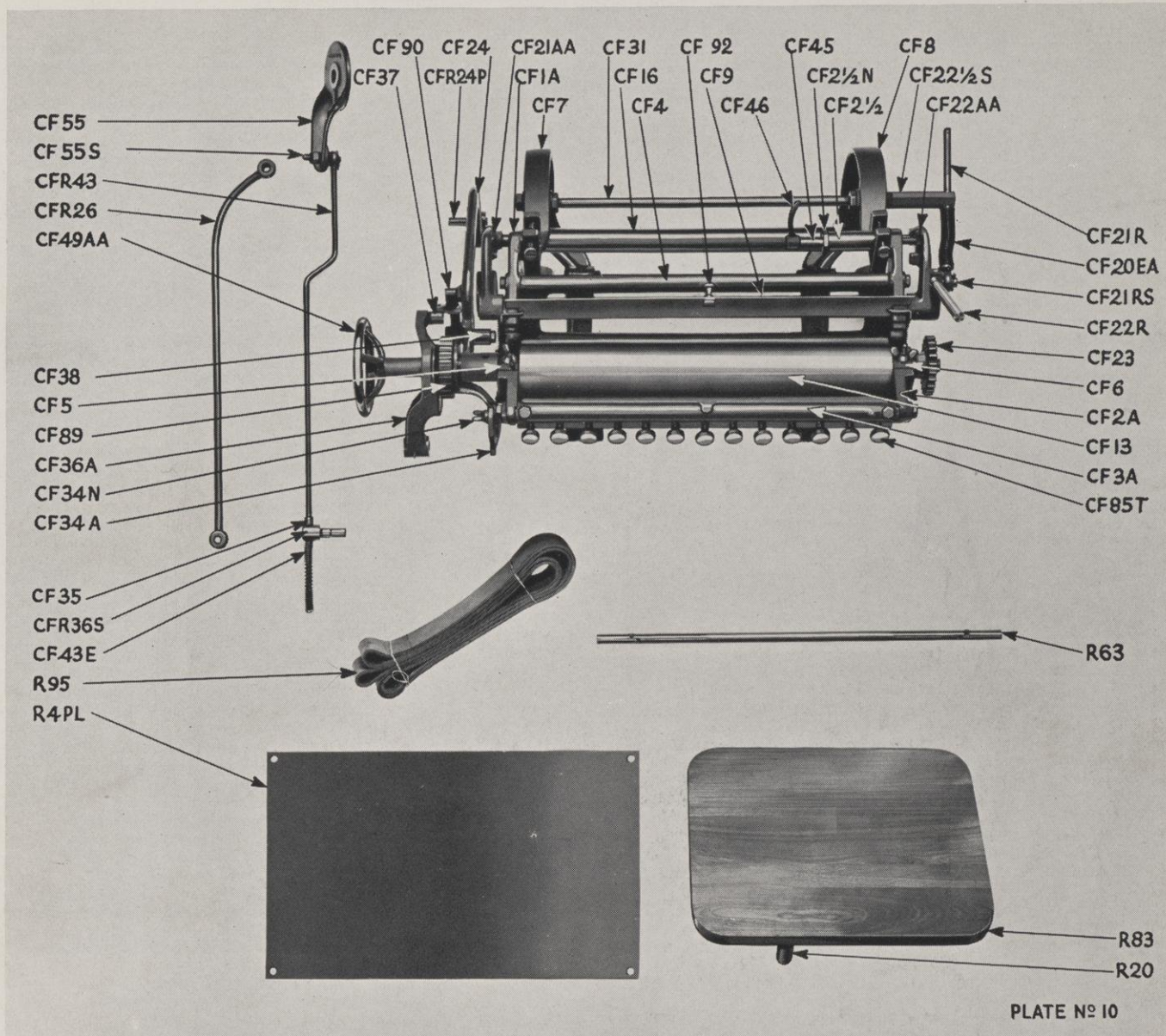
COMPONENT PARTS LIST—Continued

Part Number	Part Shown on Plate No.	Code	Name and Description	Part Number	Part Shown on Plate No.	Code	Name and Description
RF-207S	Not Shown	OFOKI	Feed Table Stripper Wire Bracket Screw	RF-271A	7	OFZIF	Delivery Table Rear Jogger Post
RF-209 1/4	7	OFOLEK	Feed Table Stripper Wire	RF-271P	Not Shown	OFZOR	Delivery Table Rear Jogger Stop Pin
RF-210A	7	OFOMT	Feed Table Stripper Wire Clamp Screw	RF-271S	7	OFZUN	Delivery Table Rear Jogger Post Screw
RF-210W	Not Shown	OFOFY	Feed Table Stripper Wire Clamp Screw Washer	RF-271W	7	OGABE	Delivery Table Rear Jogger Post Washer
RF-211	7	OFOPR	Feed Table Stripper Wire Bracket Shaft	RF-271WS	Not Shown	OGACI	Delivery Table Rear Jogger Post Washer Screw
RF-211CP	Not Shown	OFOFK	Feed Table Stripper Wire Bracket Shaft Spring Cotter	RF-272AA	7	OGADO	Delivery Table Rear Jogger Operating Shaft
RF-212	7	OFOFQ	Feed Table Feeler Spring	RF-272E	7	OGAFU	Delivery Table Rear Jogger Operating Shaft Spring
RF-213A	7	OFOFA	Feed Table Feeler	RF-272ES	Not Shown	OGAGY	Delivery Table Rear Jogger Operating Shaft Spring Screw
RF-213SS	Not Shown	OFOVI	Feed Table Feeler Set Screw	RF-273	7	OGAHR	Delivery Table Rear Jogger Guide Rod
RF-215A	7	OFOWP	Feed Table Feeler Shaft Stop Collar	RF-273SS	Not Shown	OGAJA	Delivery Table Rear Jogger Guide Rod Set Screw
RF-215SS	Not Shown	OFOX	Feed Table Feeler Shaft Stop Collar Set Screw	RF-279AA	4	OGAKR	Delivery Table Jogger Cam Lever
RF-217A	7	OFOYD	*Feed Table Feeler Lift Rod	RF-280AA	4	OGALP	Delivery Table Jogger Cam Lever Screw
RF-217P	Not Shown	OFOZE	Feed Table Feeler Lift Rod Spring Pin	RF-280N	4	OGAMB	Delivery Table Jogger Cam Lever Screw Nut
RF-218A	Not Shown	OFFAD	*Feed Table Feeler Lift Rod End	RF-281	4	OGANT	Delivery Table Jogger Cam Lever Roller
RF-220AA	7	OFPEB	Feed Table Feeler Shaft	RF-282	6	OGAPL	Delivery Table Jogger Cam Lever Roller Pin
RF-220C	7	OFPIQ	Feed Table Feeler Shaft Collar	RF-288	8	OGARD	Throw-Off Plunger
RF-220CSS	Not Shown	OFOPOK	Feed Table Feeler Shaft Collar Set Screw	RF-288P	8	OGAST	*Throw-Off Plunger Pin
RF-222A	7	OFPUZ	Feed Table Feeler Trip	RF-289	8	OGATH	Throw-Off Plunger Spring
RF-222AS	Not Shown	OFRAT	Feed Table Feeler Trip Screw	RF-291AA	6	OGAVR	*Throw-Off Sliding Bar
RF-222SS	Not Shown	OFRFK	Feed Table Feeler Trip Set Screw	RF-291B	Not Shown	OGAWK	Throw-Off Sliding Bar Bushing
RF-222SSN	Not Shown	OFRIB	Feed Table Feeler Trip Set Screw Nut	RF-291S	6	OGAXO	Throw-Off Sliding Bar Stud
RF-225	4	OFRQG	Delivery Table Bracket	RF-292	8	OGAYF	*Throw-Off Sliding Bar Guide
RF-225S	4	OFRUN	Delivery Table Bracket Screw	RF-293	Not Shown	OGAZU	Throw-Off Sliding Bar Guide Pin
RF-226A	7	OFSAD	Delivery Table Post	RF-298	8	OGBAC	Throw-Off Rubber Hose
RF-230AA	7	OFSEZ	*Delivery Table	RF-300	8	OGBED	Pump Cylinder
RF-230SS	2	OFSIK	Delivery Table Set Screw	RF-301	8	OGBIF	*Pump Top
RF-232	7	OFSON	Delivery Table Jogger Plate, Right	RF-301S	8	OGBOG	Pump Top Screw
RF-233	7	OFSUR	Feed Table Short Back Stop Plate	RF-302B	8	OGBUH	Pump Top Bushing
RF-235A	7	OFTAC	Delivery Table Locking Pin	RF-302BSS	8	OGCAJ	Pump Top Bushing Set Screw
RF-235CP	Not Shown	OFTEB	Delivery Table Locking Pin Cotter	RF-302G	8	OGCEK	Pump Top Gland
RF-235E	1	OFTIP	Delivery Table Locking Pin Spring	RF-302N	8	OGCIL	Pump Top Gland Nut
RF-235W	Not Shown	OFTOD	Delivery Table Locking Pin Washer	RF-302NSS	8	OGCOM	Pump Gland Nut Set Screw
RF-236	1	OFTUF	Feed Starting Lever Screw	RF-303A	8	OGCUN	*Pump Base
RF-236N	Not Shown	OFUBA	Feed Starting Lever Screw Nut	RF-303S	8	OGDAP	Pump Base Screw
RF-240A	7	OFUCE	Feed Table Elevator Adjusting Screw Bracket	RF-307A	8	OGDEQ	*Pump Piston
RF-240E	7	OFUDI	Feed Table Elevator Adjusting Screw Spring	RF-307E	8	OGDIR	Pump Piston Expanding Spring
RF-240S	7	OFUFT	Feed Table Elevator Adjusting Screw	RF-307P	8	OGDOS	Pump Piston Rod Packing
RF-240SS	Not Shown	OFUGO	Feed Table Elevator Adjusting Screw Bracket Set Screw	RF-307W	8	OGDUT	Pump Piston Leather Ring
RF-242A	7	OFUHL	Feed Table Elevator Trip Trigger	RF-308	8	OGEBI	*Pump Valve
RF-243	1	OFUJA	*Feed Table Elevator Trip Return Lever	RF-308B	8	OGECK	Pump Valve Cage
RF-243P	Not Shown	OFUKR	Feed Table Elevator Trip Return Lever Pin	RF-308C	8	OGEDU	Pump Valve Cap
RF-243SS	Not Shown	OFULM	Feed Table Elevator Trip Return Lever Set Screw	RF-308E	8	OGEFT	Pump Valve Spring
RF-245A	7	OFUMS	Feed Table Elevator Trip Bracket	RF-310A	8	OGEGL	Pump Valve Flanged Washer
RF-245P	Not Shown	OFUNK	Feed Table Elevator Trip Bracket Pin	RF-310S	8	OGEHD	Pump Valve Flanged Washer S.c.w
RF-246	7	OFUPE	Feed Table Elevator Trip	RF-310SW	8	OGEJE	Pump Valve Screw Washer
RF-246P	Not Shown	OFURK	Feed Table Elevator Trip Pin	RF-311A	8	OGEKA	*Pump Crank Shaft Bearing Top
RF-246W	Not Shown	OFUSL	Feed Table Elevator Trip Pin Washer	RF-311S	8	OGELE	Pump Crank Shaft Bearing Top Screw
RF-248E	7	OFUTE	Delivery Table Side Jogger Plate Spring	RF-312	8	OGEMS	*Pump Crank Shaft Bearing Bottom
RF-249A	7	OFUVR	Delivery Table Side Jogger Cam	RF-325	8	OGENF	Pump Piston Rod
RF-249SS	1	OFUWA	Delivery Table Side Jogger Cam Set Screw	RF-325N	8	OGEPY	Pump Piston Rod Lock Nut
RF-250	1	OFUXY	Delivery Table Side Jogger	RF-329	8	OGERF	Pump Gasket
RF-250N	7	OFUYI	Delivery Table Side Jogger Nut	RF-330	8	OGESK	Pump Shaft
RF-250S	7	OFUZA	Delivery Table Side Jogger Screw	RF-330SS	8	OGETY	Pump Shaft Set Screw
RF-252AA	7	OFVAB	*Delivery Table Jogger Plate, Left	RF-330SSN	8	OGEVO	Pump Shaft Set Screw Nut
RF-252EH	7	OFVEN	Delivery Table Jogger Plate Spring Pin	RF-330T	3	OGEPW	Pump Shaft Oil Tube
RF-252S	7	OFVIQ	Delivery Table Jogger Plate Screw	RF-330TC	3	OGEXT	Pump Shaft Oil Tube Clamp
RF-253A	7	OFVOS	Delivery Table Jogger Plate Gib	RF-333	8	OGEYU	Pump Blast Hose
RF-253S	Not Shown	OFVUR	Delivery Table Jogger Plate Gib Screw	RF-333C	8	OGEZI	Pump Blast Hose Clamp
RF-255A	Not Shown	OFWAH	Delivery Table Side Jogger Cam Roll	RF-334	8	OGFAP	Pump Blast Hose Nipple
RF-256A	Not Shown	OFWEF	Delivery Table Side Jogger Cam Roll Pin	RF-335	8	OGFEW	Pump Vacuum Hose Nipple
RF-262	7	OFWIP	Delivery Table Front Jogger Rod Bracket	RF-336	8	OGFIV	Throw-Off Hose Nipple
RF-262S	Not Shown	OFWOM	Delivery Table Front Jogger Rod Bracket Screw	RF-337	2	OGFOY	Feed Air Line "Y" Fitting
RF-265A	7	OFWUK	Delivery Table Front Jogger	RF-339A	7	OGFUM	Feed Table Feeler Lift Lever Shaft
RF-265S	1	OFYAL	Delivery Table Front Jogger Adjusting Screw	RF-340	7	OGGAB	Feed Table Feeler Lift Lever
RF-265SS	1	OFYEG	Delivery Table Front Jogger Set Screw	RF-342	7	OGGEC	Feed Table Feeler Lift Lever Pin
RF-266	7	OFYIN	Delivery Table Front Jogger Rod	RF-343	7	OGGID	Feed Table Feeler Lift Shaft Collar
RF-266P	Not Shown	OFYOD	Delivery Table Front Jogger Rod Pin	RF-343SS	Not Shown	OGGOF	Feed Table Feeler Lift Lever Set Screw
RF-268	Not Shown	OFYUJ	Delivery Table Rear Jogger Ball	RF-344	7	OGGUH	Feed Table Feeler Counter Weight
RF-269	Not Shown	OFZAN	Delivery Table Rear Jogger Ball Spring	RF-345	7	OGHAL	Feed Table Feeler Lift Cam
RF-270	7	OFZES	Delivery Table Rear Jogger	RF-345SS	Not Shown	OGHEM	Feed Table Feeler Lift Cam Set Screw
				RF-347	7	OGHIN	*Feed Table Feeler Lift Cam Lever
				RF-347P	Not Shown	OGHOP	Feed Table Feeler Lift Cam Lever Pin
				RF-347SS	Not Shown	OGHUQ	Feed Table Feeler Lift Cam Lever Pin Screw
				RF-348	7	OGIBU	Feed Table Feeler Lift Cam Lever Roller

*Parts marked with an asterisk indicate special fitting and will be shipped with their mating part or parts

IMPORTANT—Be sure to mention size of press for which parts are being ordered.

COMPONENT PARTS LIST—Continued



Part Number	Part Shown on Plate No.	Code	Name and Description
RF-350A	2	OGICO	Feed Cam Shaft Brace Connection
RF-350SS	Not Shown	OGIDE	Feed Cam Shaft Brace Connection Set Screw
RF-351A	2	OGIFA	Feed Cam Shaft Brace
RF-351S	2	OGIGS	Feed Cam Shaft Brace Screw
RF-353	8	OGIHK	Delivery Vacuum Pipe Connection Support
RF-360	7	OGIKU	Feed Table Worm Gear
RF-361	Not Shown	OGILF	Feed Table Fixed Release Ratchet
RF-362	Not Shown	OGIME	Feed Table Worm Gear Sleeve
RF-363A	7	OGING	Feed Table Sliding Release Ratchet
RF-364	Not Shown	OGIPS	Feed Table Sliding Release Ratchet Key
RF-365	Not Shown	OGIRB	Feed Table Sliding Release Ratchet Spring
RF-366	2	OGISM	Feed Table Sliding Release Ratchet Spring Collar
RF-366S	Not Shown	OGITA	Feed Table Sliding Release Ratchet Spring Set Screw
RF-367	8	OGIVU	*Feed Air Line Pipe Street Ell
RF-369	8	OGIWA	*Feed Air Line Pipe Tee
RF-370	9	OGIXL	*Feed Bar Clamp Tube
RF-372	9	OGIYA	*Feed Bar Sliding Tube
RF-375	9	OGIZO	Feed Bar Sucker Tip Holder Clamp Screw
RF-376	9	OGJAW	Feed Bar Cress Head

Part Number	Part Shown on Plate No.	Code	Name and Description
RF-378	9	OGJEX	Feed Bar Rubber Sucker Tip Head
RF-381	9	OGJIY	Feed Bar Metal Sucker Tip (Long)
RF-382	9	OGJOZ	Feed Bar Metal Sucker Tip (Short)
RF-383	9	OGJUR	Feed Bar Rubber Sucker Tip Holder (Long)
RF-384	9	OGKAS	Feed Bar Rubber Sucker Tip Holder (Short)
RF-386	9	OGKET	Feed Bar Cross Head Plug
RF-389	9	OGKIV	Feed Bar Small Rubber Tip
RF-390	9	OGKOP	Feed Bar Dummy Sucker
RF-391	9	OGKUQ	Rubber Sucker Tip Emery Face (Small)
RF-392	9	OGLAN	Rubber Sucker Tip Emery Face (Large)
RF-396	9	OGLEM	Delivery Bar Sucker Tip Head
RF-399	9	OGLIL	Feed Table Setting Gauge
RF-407A	9	OGLOK	*Register Gauge Finger (4 1/8" long)
RF-407E	9	OGLUJ	Register Gauge Finger Spring
RF-407N	9	OGMAH	Register Gauge Finger Spring Nut
RF-407S	Not Shown	OGMEG	Register Gauge Finger Spring Stud
RF-407 1/2 A	9	OGMIF	*Register Gauge Finger (5 3/8" long)
RF-408A	9	OGMOD	*Register Gauge Finger (2 1/4" long)
RF-408 1/2 A	9	OGMUC	*Register Gauge Finger (4" long)
RF-409A	9	OGNAB	*Register Gauge Finger (3 1/8" long)
RF-410	6	OGNEW	*Register Operating Spool
RF-410N	6	OGNIV	Register Operating Spool Adjusting Nut

*Parts marked with an asterisk indicate special fitting and will be shipped with their mating part or parts.

IMPORTANT—Be sure to mention size of press for which parts are being ordered.

COMPONENT PARTS LIST—Continued

Part Number	Part Shown on Plate No.	Code	Name and Description	Part Number	Part Shown on Plate No.	Code	Name and Description
RF-411	Not Shown	OGNOT	Register Operating Spool Stud	RF-482A	8	OGUYT	*Two-Up Feed Table Auxiliary Short Back Stop (Special)
RF-415A	6	OGNUS	*Register Operating Spool Cam	RF-483A	8	OGUZL	Two-Up Feed Table Auxiliary Short Back Stop Shaft (Special)
RF-415P	6	OGOBA	Register Operating Spool Cam Pin	RF-484	8	OGVAL	Two-Up Feed Table Auxiliary Short Back Stop Bracket (Special)
RF-416AA	6	OGOCH	Register Operating Spool Cam Stud	RF-485	Not Shown	OGVED	Two-Up Feed Table Auxiliary Feeler (Special)
RF-416N	Not Shown	OGODY	Register Operating Spool Adjusting Lock Nut	RF-486	9	OGVIP	*Feed Bar Double Rubber Sucker Tip, L. H. (Special)
RF-418A	6	OGOFE	Register Operating Connecting Link Spring	RF-487	9	OGVOF	*Feed Bar Double Rubber Sucker Tip, R. H. (Special)
RF-419	6	OGOGI	Register Operating Connecting Link	RF-490	8	OGVUC	Two-Up Feed Table Auxiliary Long Back Stop Finger Shaft (Special)
RF-421A	6	OGOHC	Register Operating Arm Pin	RF-491	8	OGWAN	Two-Up Feed Table Auxiliary Short Back Stop Adjustable Shaft (Special)
RF-422	6	OGOKS	*Register Operating Arm	RF-491S	Not Shown	OGWET	Two-Up Feed Table Auxiliary Short Back Stop Adjustable Shaft Screw (Special)
RF-422SS	Not Shown	OGOLK	Register Operating Arm Set Screw	RF-492	8	OGWIL	*Two-Up Short Back Stop Shaft Bracket (Special)
RF-425	9	OGOMP	Register Bracket Guide Shaft	RF-500	6	OGWOH	Hold Down Operating Lever
RF-428A	9	OGONC	Register Bracket Operating Shaft	RF-500SS	Not Shown	OGWUZ	Hold Down Operating Lever Set Screw
RF-428CP	Not Shown	OGOPU	Register Bracket Operating Shaft Cotter	RF-502	4	OGYAK	Hold Down Bracket, Left
RF-428W	Not Shown	OGORT	Register Bracket Operating Shaft Washer	RF-503	4	OGYES	Hold Down Bracket, Right
RF-429	Not Shown	OGOSL	Register Bracket Operating Shaft Collar	RF-503S	4	OGYIX	Hold Down Bracket Screw
RF-429SS	Not Shown	OGOTZ	Register Bracket Operating Shaft Collar Set Screw	RF-505	4	OGYOT	Hold Down Wire Bracket
RF-432A	9	GOVOT	*Register Bracket Operating Shaft Bevel Gear	RF-505E	5	OGYUM	Hold Down Wire
RF-432K	Not Shown	OGOWJ	Register Bracket Operating Shaft Bevel Gear Key	RF-505S	4	OGZAP	Hold Down Wire Bracket Clamp Screw
RF-436A	9	GOXOE	Register Bracket Lock Screw	RF-506	6	OGZEN	Hold Down Wire Bracket Washer
RF-436E	Not Shown	GOYOB	Register Bracket Lock Screw Spring	RF-506S	Not Shown	OGZIF	Hold Down Wire Bracket Washer Screw
RF-437AA	Not Shown	GOZA	Register Bracket Post	RF-507	4	OGZOR	Hold Down Shaft
RF-437SS	Not Shown	OGPAR	*Register Bracket Post Set Screw	RF-507W	Not Shown	OGZUL	Hold Down Shaft Washer
RF-438A	9	OGPES	*Register Bracket Post Bevel Gear	RF-508	4	OHABS	Hold Down Spring
RF-439AA	9	OGPIT	Register Bracket	RF-660	9	OHACL	*Delivery Head for Folders (Special)
RF-440A	9	OGPOV	*Register Bracket Finger Holder	RF-661	9	OHADI	Delivery Head Pick-Up Finger Plunger (Special)
RF-440N	Not Shown	OGPUZ	Register Bracket Finger Screw Nut	RF-662	9	OHAFI	Delivery Head Pick-Up Finger (Special)
RF-440S	Not Shown	OGRAY	Register Bracket Finger Screw	RF-800	9	OHAGU	*Electric Heater (Special)
RF-443A	9	OGREX	*Register Finger (6 3/8" long)	RF-801	9	OHAGE	Electric Heater Cord (Special)
RF-444	Not Shown	OGRIU	Electric Heater Cross Bar (Special)	RF-810	1	OHAKI	Impression Counter
RF-445A	9	OGROK	Electric Heater Bracket (Special)	RT3	3	OHALF	Bed Extension Track, Left
RF-446A	9	OGRUH	Electric Heater Post (Special)	RT3S	Not Shown	OHAMP	Bed Extension Track Screw
RF-447	8	OGSAH	Electric Heater Clamp Screw	RT4	3	OHANT	Bed Extension Track, Right
RF-450	9	OGSEG	Delivery Bar Double Rubber Sucker Tip Holder	RT5	3	OHAPS	Bed Extension Track Pin
RF-451	9	OGSIF	Delivery Bar Double Metal Sucker Tip	RT6	3	OHAPU	Bed Extension Track Adjusting Screw
RF-452	9	OGSOD	*Delivery Bar Double Metal Sucker Tip R. H. (Long)	RT6N	Not Shown	OHARD	Bed Extension Track Adjusting Screw Nut
RF-453	9	OGSUC	Feed Bar Double Rubber Sucker Tip Holder, L. H.	RT6W	Not Shown	OHASK	Bed Extension Track Adjusting Screw Washer
RF-454	9	OGTAB	Feed Bar Double Rubber Sucker Tip Holder, R. H.	RX99	Not Shown	OHATY	Fountain Roll Shaft
RF-455	9	OGTEM	Feed Bar Double Metal Sucker Tip, L. H.	TR27	1	OHAVL	*Trip Truck Sliding Sleeve
RF-456	9	OGTIN	Feed Bar Double Metal Sucker Tip, R. H.	TR27E	Not Shown	OHAWR	Trip Truck Spring
RF-457	9	OGTOP	Feed Bar Double Metal Sucker Tip, L. H. (Long)	TR27P	Not Shown	OHAXA	Trip Truck Pin
RF-458	9	OGTUQ	Feed Bar Double Metal Sucker Tip, R. H. (Long)	TR27 1/2	Not Shown	OHAYB	Trip Truck Roller
RF-459	9	OGUBA	Feed Bar Double Rubber Sucker Tip, L. H.	XD1C	Not Shown	OHAZE	Vibrator Box Stud Cotter
RF-460	9	OGUCE	Feed Bar Double Rubber Sucker Tip, R. H.	XD1E	Not Shown	OHBBM	Vibrator Box Stud Spring
RF-461	9	OGUDI	1/4" Headless Set Screw Wrench	XD1N	Not Shown	OHBBG	Vibrator Box Stud Nut
RF-462	9	OGUFO	1/8" Headless Set Screw Wrench	XD1P	Not Shown	OHBBID	Vibrator Box Stud Pin
RF-463	9	OGUGL	3/8" Headless Set Screw Wrench	XD1W	Not Shown	OHBOQ	Vibrator Box Stud Washer
RF-464	9	OGUHS	1/4" Square Head Set Screw Wrench	XD2E	Not Shown	OHBUZ	Vibrator Box Flat Spring (Long)
RF-465	9	OGUJM	1/8"-1/2" Open End Wrench	XD2ES	Not Shown	OHCAF	Vibrator Box Flat Spring Screw
RF-466	9	OGUKA	1/2"-1 1/8" Open End Wrench	XD2 1/2E	Not Shown	OHCEH	Vibrator Box Flat Spring (Short)
RF-467	9	OGULP	Screw Driver	XD4A	1	OHCIPI	Vibrator Roll
RF-468	9	OGUMY	Oil Can	XD5AA	1	OHCOG	Vibrator Rod
RF-475	8	OGUND	Two-Up Feed Table Center Finger Folder, R. H. (Special)	XD5D	Not Shown	OHCUV	Vibrator Rod Stop Pin
RF-476	8	OGUPL	*Two-Up Feed Table Center Finger, R. H. (Special)	XD6D	Not Shown	OHDDAR	Vibrator Roll Bushing Stop Pin
RF-477	8	OGURN	Two-Up Feed Table Center Finger Holder, L. H. (Special)	XD8A	Not Shown	OHDEX	Vibrator Rod Worm
RF-479A	8	OGUSH	Two-Up Feed Table Back Stop Bracket (Special)	XD8D	Not Shown	OHDIK	Vibrator Rod Worm Stop Pin
RF-479S	8	OGUTS	Two-Up Feed Table Back Stop Bracket Screw (Special)	XD9	Not Shown	OHDOC	Vibrator Ratchet Steel Ball
RF-480A	8	OGUVE	*Two-Up Feed Table Long Back Stop Finger (Special)	XD10N	1	OHDTU	Vibrator Box Latch Wing Nut
RF-481	8	OGUWI	Two-Up Feed Table Long Back Stop Finger Bracket (Special)	XD10S	Not Shown	OHEDA	Vibrator Box Latch Screw
RF-481S	Not Shown	OGUXA	Two-Up Feed Table Long Back Stop Finger Bracket Screw (Special)	XD10 1/2S	Not Shown	OHEDS	Vibrator Box Wing Nut Screw
				XD11A	Not Shown	OHEDL	Vibrator Ratchet Collar
				XD11P	Not Shown	OHETF	Vibrator Ratchet Collar Pin
				XDX1A	1	OHETR	Vibrator Box, Left
				XDX1S	1	OHEDJ	Vibrator Box Stud
				XDX2	1	OHEDU	Vibrator Box, Right
				XDX10A	1	OHEDM	Vibrator Box Latch

*Parts marked with an asterisk indicate special fitting and will be shipped with their mating part or parts.

IMPORTANT—Be sure to mention size of press for which parts are being ordered.

