



# LIBRARIES

UNIVERSITY OF WISCONSIN-MADISON

## **Orchestra part: basso. No. 2677 [between 1910 and 1930?]**

[s.l.]: [s.n.], [between 1910 and 1930?]

<https://digital.library.wisc.edu/1711.dl/EXM2Y6LAVX4558V>

This material may be protected by copyright law (e.g. Title 17, US Code).

For information on re-use see:

<http://digital.library.wisc.edu/1711.dl/Copyright>

The libraries provide public access to a wide range of material, including online exhibits, digitized collections, archival finding aids, our catalog, online articles, and a growing range of materials in many media.

When possible, we provide rights information in catalog records, finding aids, and other metadata that accompanies collections or items. However, it is always the user's obligation to evaluate copyright and rights issues in light of their own use.



NO. 2677

Basso.

Orchestration  
of

STREETS OF NEW YORK

Set No. ....

No Copying of this Work Allowed  
Under Any Circumstances.





...CECCE... (None Genuine without Watermark.) M. WITMARK & SONS, Selling Agent, New York & Chicago.



No. 2-12-1000



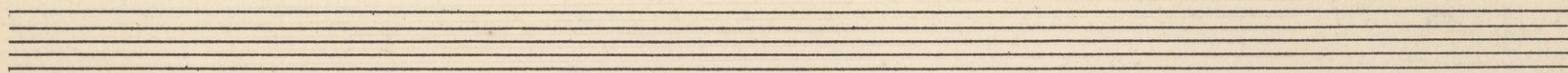
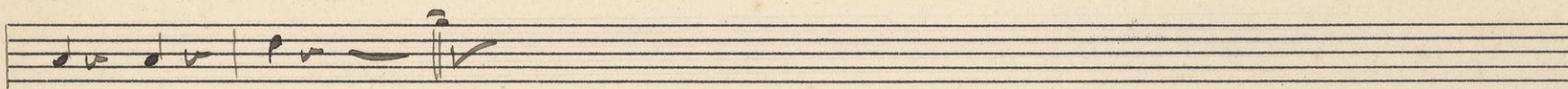
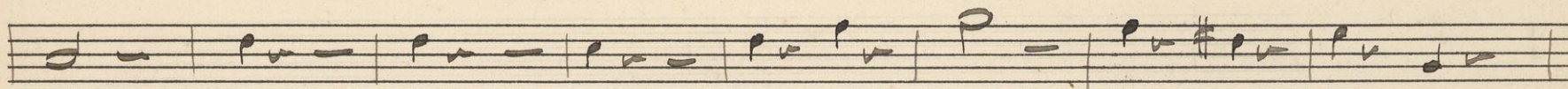
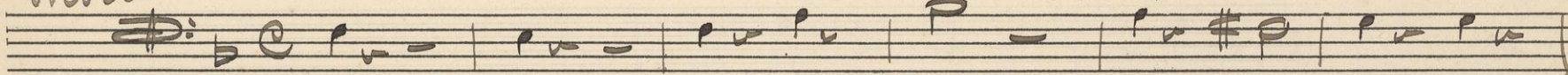
Street of New York

Act 4.

Basso

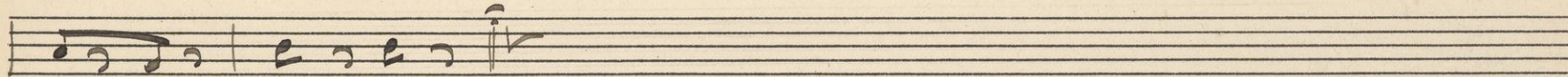
No. 4 Reci

*Moderato*

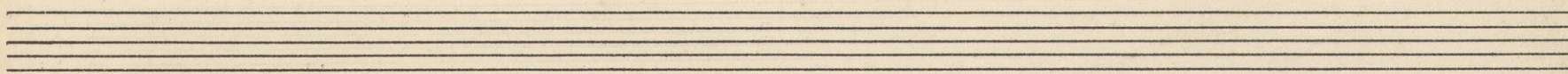


No. 5.

*allegro*



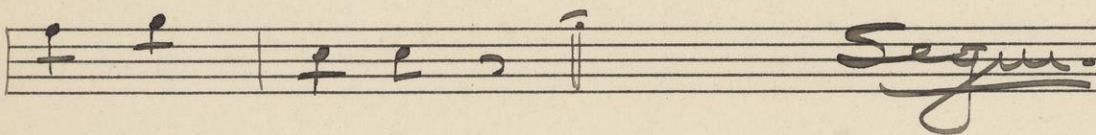
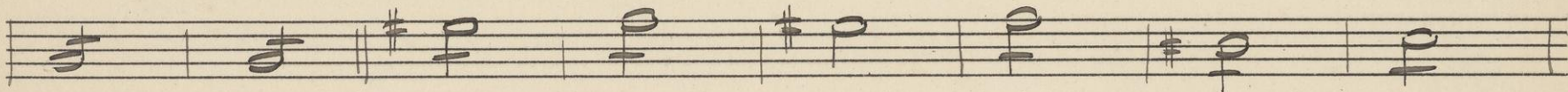
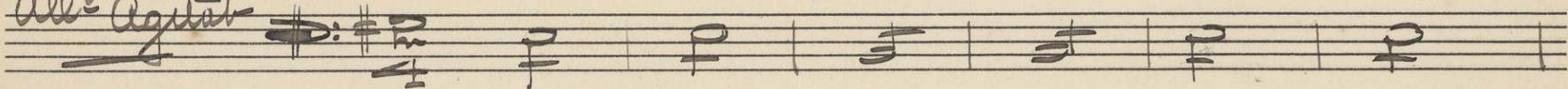
No. 5.





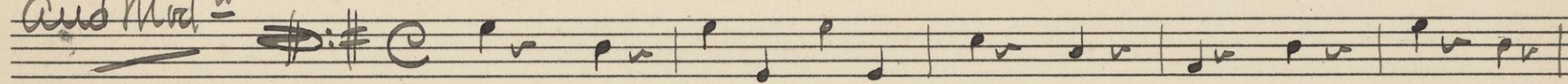
No. 3.

*all<sup>o</sup> Agitat<sup>o</sup>*

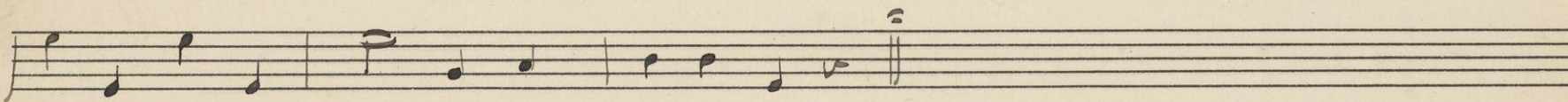


No. 4.

*And<sup>te</sup> Mod<sup>erato</sup>*



*Pizz*



*arco*

Curtain



Act 2<sup>nd</sup>

No. 5

all<sup>o</sup>  $\text{D}:\# \text{6}$   $\frac{6}{8}$

Repeat #5

No. 6

Mod<sup>to</sup>  $\text{D}:\flat \text{C}$   $\frac{6}{8}$

6  $\frac{1}{2}$  Repeat #5

No. 7

Mod<sup>to</sup>  $\text{D}:\#\#\ \text{3}$   $\frac{3}{4}$

pizz

-v.s





16 8

*all<sup>o</sup>* *Out*

Musical notation

Empty musical staff

19 9

*Andant*

*Pizz*

Musical notation

Musical notation

*arco*

*Segue*

20 10

*all<sup>o</sup>*

Musical notation

*Curtain*



Act 3<sup>a</sup>

10. 44

Moder

Musical staff with treble clef, key signature of two sharps (F# and C#), and common time (C). The melody consists of a sequence of eighth and quarter notes.

*Pizz*

Musical staff with a bass clef and a dynamic marking 'p'. The melody consists of a sequence of quarter notes.

*arco*

10. 72

all<sup>o</sup>

Musical staff with treble clef, key signature of two sharps (F# and C#), and 2/4 time signature. The melody consists of a sequence of eighth and quarter notes.

Musical staff with a bass clef. The melody consists of a sequence of quarter notes.

10. 73

all<sup>o</sup>

Musical staff with treble clef, key signature of three sharps (F#, C#, and G#), and 6/8 time signature. The melody consists of a sequence of quarter and eighth notes.

Musical staff with a bass clef. The melody consists of a sequence of quarter notes.

Curtain





Act 4<sup>th</sup>

19-74

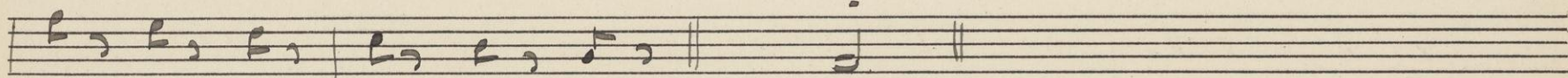
*Audant*

$\text{F} \sharp \text{C} \sharp \text{G} \sharp$   
4

*out*

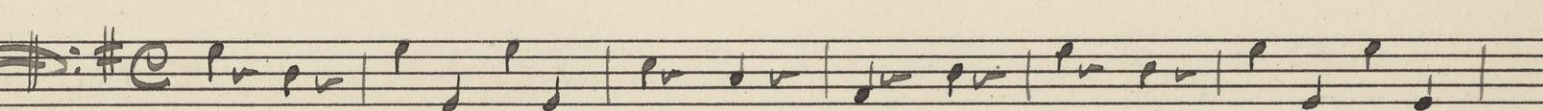
*12 instead 14*

*Pizz*

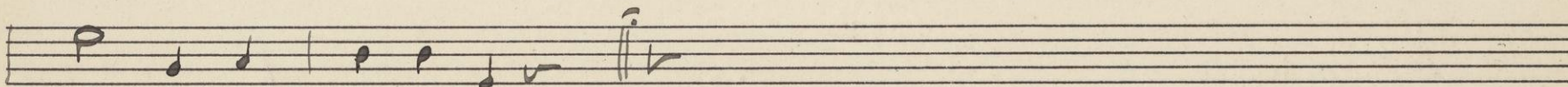


14-75

*Audant*



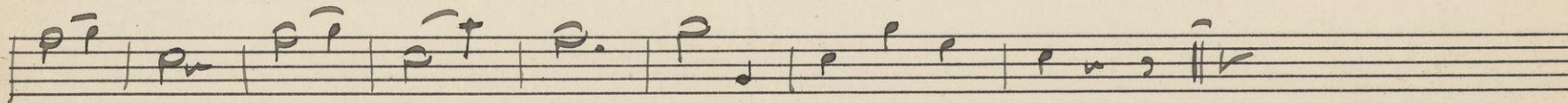
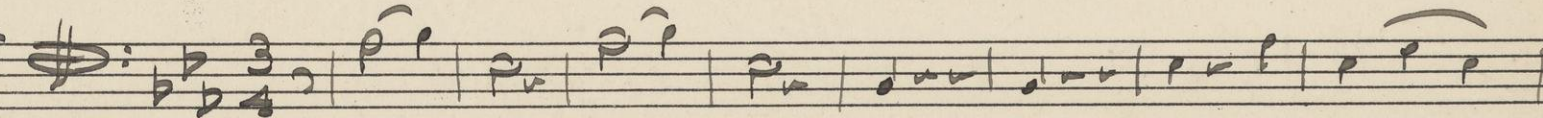
*Pizz*



*acc*

12-76

*Audant*



*long*



18-7 13

*Andant*

Musical staff with notes and dynamics: *pp*, *arc*, *pp*, *arc*

Musical staff with notes and dynamics: *pp*

Musical staff with notes and dynamics: *pp*

18-7 8

*All<sup>o</sup>*

Musical staff with notes and dynamics: *All<sup>o</sup>*

Musical staff with notes and dynamics: *Segue*

18-7 9

*Mod<sup>er</sup>*

Musical staff with notes and dynamics: *pp*

Musical staff with notes and dynamics: *v. 5*





~~No 20.~~

Audant

Handwritten musical notation on a five-line staff. It begins with a treble clef, a key signature of two flats (B-flat and E-flat), and a 3/4 time signature. The first measure contains a quarter rest. The following measures contain quarter notes with stems pointing up, some with accents. The piece concludes with a double bar line.

Handwritten musical notation on a five-line staff, continuing the piece from the previous staff. It features quarter notes with stems pointing up, some with accents, and a final quarter note.

Handwritten musical notation on a five-line staff, continuing the piece. It features quarter notes with stems pointing up, some with accents, and a final quarter note.

Empty five-line musical staff.

~~No 21~~

all<sup>o</sup>

Handwritten musical notation on a five-line staff. It begins with a treble clef, a key signature of two flats (B-flat and E-flat), and a common time signature (C). The notation consists of eighth notes with stems pointing up, some with accents. The piece concludes with a double bar line.

Handwritten musical notation on a five-line staff, continuing the piece. It features eighth notes with stems pointing up, some with accents, and a final quarter note with a fermata.

Empty five-line musical staff.

Finis

Empty five-line musical staff.

Empty five-line musical staff.

Empty five-line musical staff.



Act 5 <sup>th</sup>

10 2 2

All<sup>o</sup>  $\sharp$   $\sharp$   $\frac{2}{4}$

2 2 1/2 Play 2

10 2 3

All<sup>o</sup>  $\sharp$   $\sharp$   $\frac{2}{4}$

So

Curtain

- V.S





Act 6<sup>th</sup>

No. 4

Mod<sup>to</sup>

♩ = 1/2 C ♭ E - | ♭ = | ♭ ♭ | ♭ = | ♭ # ♭ | ♭ ♭ |

♩ = | ♭ = | ♭ = | ♭ = | ♭ ♭ | ♭ = | ♭ # ♭ | ♭ ♭ | ♭ ♭ | ♭ = ||

No. 5

all<sup>o</sup>

♩ = 1/4 ♯ ♯ 2/4 ♭ ♭ | ♭ ♭ | ♭ ♭ | ♭ ♭ | ♭ ♭ | ♭ ♭ | ♭ ♭ | ♭ ♭ |

♩ ♭ ♭ ♭ ||

Fine

No. 6 Repeat No. 5

Ed P. Champlin

Copy for Laws

Fine



