



LIBRARIES

UNIVERSITY OF WISCONSIN-MADISON

Page's wood type : specimens of machine cut wood type manufactured by the Wm. H. Page Wood Type Co..

Norwich, Connecticut (286-296 Franklin Street): Wm. H. Page Wood Type Co., 1888

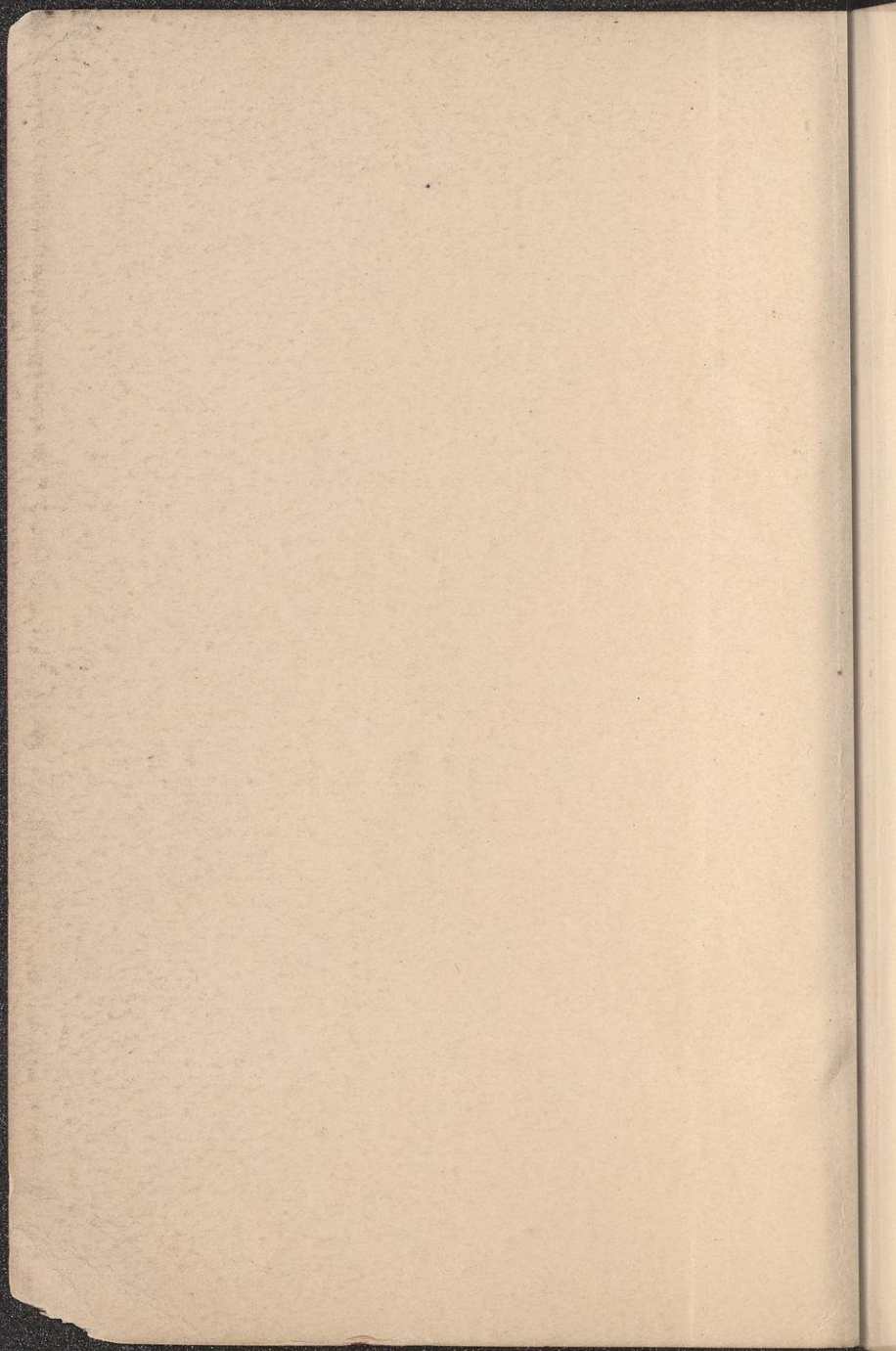
<https://digital.library.wisc.edu/1711.dl/F7BFMFVUDY7OW9A>

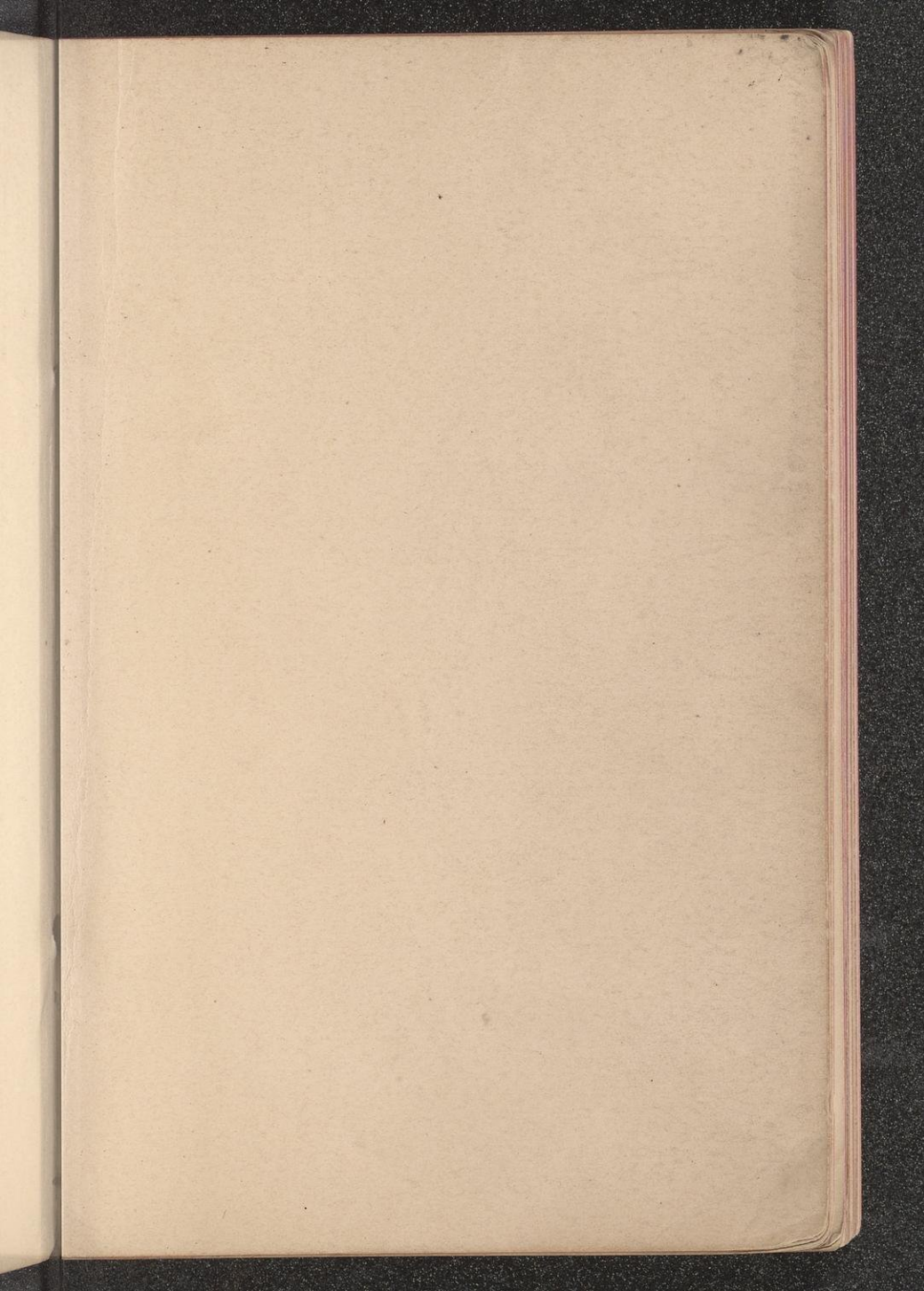
<http://rightsstatements.org/vocab/NoC-US/1.0/>

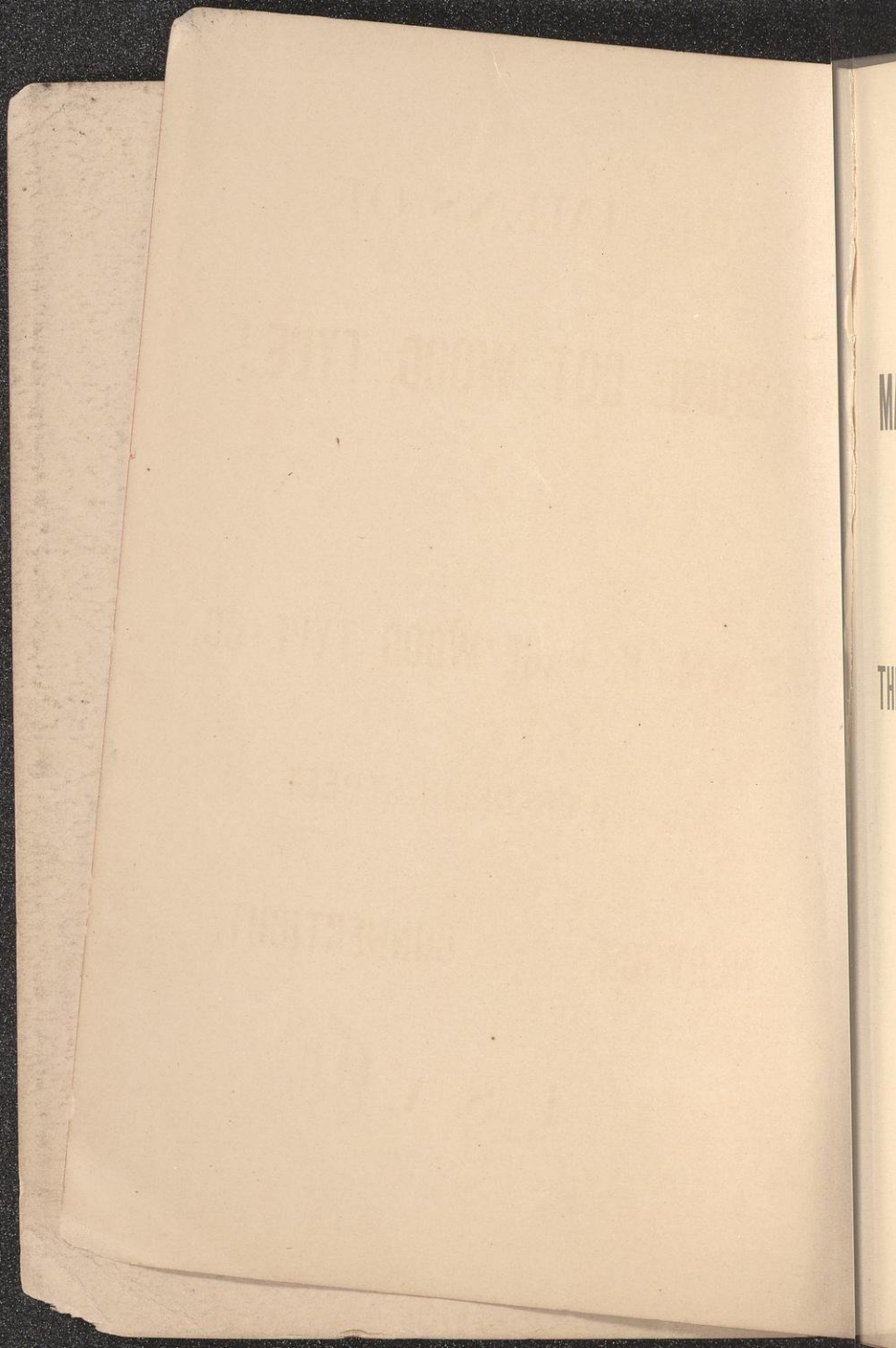
The libraries provide public access to a wide range of material, including online exhibits, digitized collections, archival finding aids, our catalog, online articles, and a growing range of materials in many media.

When possible, we provide rights information in catalog records, finding aids, and other metadata that accompanies collections or items. However, it is always the user's obligation to evaluate copyright and rights issues in light of their own use.

PAGE'S
WOOD TYPE







SPECIMENS OF
MACHINE CUT WOOD TYPE !

MANUFACTURED BY

THE WM. H. PAGE WOOD TYPE CO.

286-296 FRANKLIN STREET,

NORWICH, - CONNECTICUT.

U. S. A.

PRINTED BY
THE WM. H. PAGE WOOD TYPE CO.,
NORWICH, - CONN.

When you are quoted discounts from price list, see if the discount is from this list. This list is a 50 per cent. reduction over the old list. REMEMBER THIS.

REDUCED Price List, 1888.

Lines.	A	B	C	D	E	F	G	H
Pica	Cents	Cents	Cents	Cents	Cents	Cents	Cents	Cts
2	3	3	3	3	5	7	8	12
3	3	3	3	3	6	8	9	12
4	3	3	3	3	6	8	9	12
5	4	3	3	3	7	8	10	12
6	5	3	3	4	8	9	11	12
7	5	4	4	4	8	10	12	13
8	6	4	4	4	9	10	13	14
9	7	5	4	5	10	11	14	15
10	8	5	4	5	11	12	15	16
12	9	5	5	5	12	13	16	17
14	10	6	5	6	13	14	17	18
15	11	7	5	6	14	15	18	19
16	12	7	6	7	15	16	19	20
18	13	8	6	7	16	17	20	22
20	14	9	7	8	17	18	21	24
22	15	10	8	9	18	19	22	25
24	16	11	8	10	20	20	23	26
25	17	12	9	11	21	21	24	27
26	18	13	9	12	22	22	25	28
28	19	14	10	13	23	23	26	30
30	20	15	10	14	24	24	27	31
32	21	16	11	15	25	25	28	32
36	22	17	12	16	26	27	29	34
40	24	18	14	17	27	28	30	36
45	19	16	18	28	30	31	38	
50	20	18	20	30	32	32	41	
55	22	20	22	32	34	34	45	
60	25	22	24	34	36	38	47	
65	28	24	26	38	40	41	50	
72	30	26	28	40	42	45	53	
80	32	28	30	44	46	50	56	
90	34	30	33	48	50	55	60	
100	37	32	40	50	55	60	65	
110	40	34	43	54	60	65	70	
120	45	36	48	60	65	70	75	

We make a good article and sell it at a fair price. Our New Process Type is still cheaper than this list and will be found in another book ENTIRELY DISTINCT from this.

ENGRAVERS WOOD.

Rock Maple, 1 cent per inch
Boxwood, 2 to 8

MISCELLANEOUS.

Side Sticks, 6 cts. each
Shooting Sticks, Hickory, 5
Iron, 50
Lye Brushes, 50 and 75
Bearers, 12 to
Quoins, Hickory, 25 cts. per hundred.
Boxwood, 65

Job Sticks, Mahogany, with Page's Improved Knee, 16 inch \$1.30, 20 inch 1.40
24 inch, \$1.50, 30 inch \$1.75, 36 inch \$1.90,
40 inch, \$2.25.

Cutter Sticks, 6 to 10 cents each.
Mahogany and Cherry Blocking for Stereotypers.

CATCH WORDS,

Class II.

REGLET and FURNITURE.

Cherry, under 2 line, 2 cts. per yard.
from 2 to 3 lines, 3
4 to 5, 4
6 to 11, 4
12 to 16, 6
Pine under 2 lines, 1
from 2 to 3, 2
4 to 5, 3
6 to 11, 4
12 to 16, 6

RULES.

Wood Rule, side wood, 12 cts. per yard.
end, 15
Star, 15
Star Rule Corners, 25 per set
Ornamental Rule, No. 5, 6, 7, 3.00
4, 4.00
3, 6.00

REDUCED PRICE LIST.

TINTS PER SQUARE INCH.

No. 1,	1 cts.
2, 21,	3 "
3, 4, 7, 8, 9, 19, 23, 24, 25, 26, 4	"
5, 6, 10, 11, 12, 13, 14, 15, 16, 17,	"
18, 20, 22,	5 "

Block Tints No. 1. Class C. Blanks free.

RULE TO MATCH CORNERS,

Rule for Corners Nos. 6, 7, 9, 10, 11.
Fifty Cents per foot.

No's. 20, 36, 45, 48, 50, 56, 57, 58, 59,
60, 69, 70, 73 and 75, 30 cents per foot on
end wood, 25 cents per yard on side
wood, all others 15 cents per foot on end
wood, 12 cents per yard on side wood.

Oblong Corners 3.50, per set. Rule 20
cts. per foot

Japanese Corners 75 cents each.

Lines,	Class	Class	Class	Class	Class
	M.	I.	J.	K	L.
5	50	80.	1.25.	1.75.	2.50.
6	60	90.	1.25.	1.75.	2.50.
8	70	1.00.	1.25.	1.75.	2.50.
10	80	1.10.	1.35.	1.85.	2.60.
12	90	1.20.	1.45.	1.95.	2.70.
15	\$1.00	1.30.	1.55.	2.05.	2.90.
18	1.10	1.40.	1.65.	2.15.	3.00.
20	1.20	1.50.	1.75.	2.25.	3.80.

CORNERS PER SET OF 4.

CLASS M.

No's. 42, 44, 49, 28, 29, 52 55.

CLASS I.

Nos. 22, 23, 24, 25, 26, 36, 40, 41, 43, 45,
46, 47, 50, 51, 53, 54, 56, 57, 58, 63, 70,

CLASS J.

Nos. 2, 20, 27, 30, 31, 32, 33, 34, 38, 35,
39, 48, 59, 60, 61, 62, 71, 74, 76,
Oblong corners No. 2.

CLASS K.

Nos. 1, 4, 5, 8, 12, 13, 14, 15, 16, 17, 18,
19, 20, 21, 37, 65, 69, 72, 73, 75, 78,
Star Corners, Oblong Corners No. 1,

CLASS L.

Nos. 6, 7, 9, 10, 11

WAVE RULE.

From 1 to 12, 25 cents per foot.

13 to 20, 50 " " "

FANCY RULE, per foot.

No.	No.	No.	No.
4, 10 cts.	9, 30 cts.	13, 15 cts.	17, 30 cts.
5, 15 "	10, 35 "	14, 20 "	18, 35 "
6, 20 "	11, 45 "	15, 22 "	19, 40 "
7, 22 "	12, 10 "	16, 25 "	20, 45 "
8, 25 "			

From 21 to 50, 50 cents per foot.

PRICE PER FOOT FOR CHROMATIC BORDERS, COMPLETE FOR COLORS.

No.	Price.	No.	Price.	No.	Price.
17,	\$2.62	40,	\$3.00	61,	\$1.50
20,	1.87	42,	2.00	63,	2.35
21,	1.87	43,	2.50	68,	3.00
22,	1.87	44,	2.50	69,	2.75
25,	3.00	45,	1.87	70,	2.00
27,	3.00	46,	1.87	71,	2.00
28,	3.00	48,	3.50	72,	2.00
29,	3.00	51,	3.00	74,	2.00
34,	70	53,	2.75	75,	2.00
35,	2.50	55,	75	76,	1.75
36,	1.50	58,	2.00	77,	1.50
39,	3.50	59,	2.00		

Grecian Border No. 2 and 3, 2.00

Chain " 4, 5, 6, 7, 8, 2.00

" two colors, 2.00

" three 3.00

Circus " 3.00

National " 3.00

Mosaic " No. 1, 2.50

Ring " 1, 2.25

Scroll Border. Corners and Center pieces
\$6.00 per set of four each. Rule 40 cts.
per foot.

No. 67. Corners 3.00 per set. Rule 30 cts.
per foot.

CIRCLES, Inside Measure.

Size,	Price.	Size,	Price.
1 to 2 inches, 50cts.		6 to 7 inches	\$1.75.
2 to 3 "	75 "	7 to 8 "	2.00.
3 to 4 "	\$1.00.	8 to 9 "	2.25.
4 to 5 "	1.25.	9 to 10 "	2.50.
5 to 6 "	1.50.		

REDUCED PRICE LIST.

COMBINATION BORDER No. 2.

No. 30,	\$1.00 per foot
" 31, 32,	50 " "
" 1, 2, 3, 4, 7, 8, 11, 12, 15, 16,	50 cts. each.
" 5, 6, 9, 13, 14, 17, 18, 21, 22, 25,	
" 26, 27, 28,	25 " "
" 10, 19, 20,	15 " "
" 23, 24, 29,	10 " "

From 11 to 30 line 30 per cent extra.

COMBINATION BORDER NO. 20.

Squares 8 and 9	2 cents each.
" 10 " 11	2½ " "
" 12 " 13	3½ " "
" 14	4½ " "
" 15 " 16	5 " "
Fillets,	3 " "
Miters,	2 " "
¼ Squares.	3 " "
¼ " Blanks	50 cents per hundred.

COMBINATION BORDER.

Nos. 1, 32,	\$1.00 per foot.
" 8, 10, 23, 24,	50 cts. " "
" 25, 26, 29, 30, 31, 33, 34, 35, 36,	50 cts. each.
" 27,	35 " "
" 2, 3, 4, 5, 14, 15, 16, 18, 19, 20,	
" 21, 22,	25 " "
" 6, 7, 11,	20 " "
" 12, 13,	15 " "
" 9,	5 " "

From 11 to 20 line 50 per cent extra.

National Border No. 1.	2.00
Circus " " 1 and 2.	1.50
Chain " " 1, 2,	1.50
" " " 7, 9, 10,	1.25
" " " 3,	1.00
Grecian " " 1, 4, 5,	1.00
" " " 6,	1.25
" " " "	1.50
Mosaic " "	1.75
Ring " "	1.50
Rustic " "	1.00
Reversible " "	.75
Star " "	.50
Scroll Border No. 1, Corners and Centers	
3.00 per Set. Rule cut on end wood, 20	
cents per foot.	

*Panels furnished only when ordered.

End pieces 50 cents each. Rule 15 cents per foot. 25 per cent extra for less than six feet.

STARS.

No. 1, 11, 12, Class B.	No. 2. Class G.
" 4, 5, 6, 7, 8, 9, 10, 13, 14, 15, 16, 17,	" 4, 5, 6, 7, 8, 9, 10, 13, 14, 15, 16, 17,
18, 19, 20, 21, 22, 23, 24, 25, 26, 27, 28.	18, 19, 20, 21, 22, 23, 24, 25, 26, 27, 28.
	Class II.
" 3,	Double Class H.
Chromatic Double Star,, each color,	
	Class II

INDEXES, Per pair.

6 line \$1.00.	8 line \$1.10.	10 line \$1.30,
12 line \$1.50.	15 line \$1.70.	20 line \$1.85.
30 line \$2.00.	40 line \$3.00.	

CUT NO. 1.

24 line \$2.00.	40 line. \$2.75.	80 line \$6.00.
30 " 2.25.	50 " 3.25.	100 " 8.50.
36 " 2.50.	65 " 4.00.	120 " 12.00.

CUT NO. 3.

24 line \$2.50.	35 line 3.50.	48 line \$4.50.
30 " 3.00.	40 " 4.00.	65 " 6.00.

CUT No. 4.	Class F.
" " 5 and 6,	" H.
" " 7,	Double Class H.

FLOURISHES.

From No. 1 to 4, 10 cents each. From 5 to 14, 20 cents each, From 15 to 38, 25 cts. each. From 11 to 15 line, 25 per cent extra From 16 to 20 line, 50 per cent extra.

CALENDAR LOGOTYPES, PER SET.

6 line \$5.00	9 line \$7.50	14 line \$11.50
7 " 5.75	10 " 8.75	
8 " 6.50	12 " 10.00	

Table Figures No. 1. Class C.

COMBINATION DASHES.

5 cents each, Extension Lines 15 cents per foot.

ORNAMENTAL DASHES.

From one to three lines 15 cents each,

SPACE ORNAMENTS.

Price per pair, 4, 5 and 6 line 30 cents 7, 8 and 9 line 40 cents, 10 to 15 line, 50 cents, 16 to 20 line 60 cents.

SCALE OF FONTS.

3A	3a	4A	4a	5A	5a								
Capitals.	L'r. Case.	Capitals.	L'r. Case.	Capitals.	L'r. Case.								
75	65	106	90	120	104								
LETTERS.	LETTERS.	LETTERS.	LETTERS.	LETTERS.	LETTERS.								
A 3 B 2 C 2 D 2 E 2 F 4 G 2 H 2 I 4 J 2 K 1 L 4 M 2 N 3 O 3 P 2 Q 1 R 3 S 4 T 3 U 2 V 2 W 2 X 1 Y 2 Z 1 & 1 ! 2 . 3 , 1 : 1 ; 1 .	a 3 b 2 c 2 d 2 e 4 f 2 g 2 h 2 i 3 j 1 k 1 l 4 m 2 n 3 o 3 p 2 q 1 r 3 s 4 t 2 u 2 v 2 w 1 x 2 y 1 z 1 fi 1 ff 1 fm 1	A 4 B 3 C 3 D 3 E 5 F 3 G 3 H 3 I 4 J 3 K 2 L 5 M 3 N 4 O 4 P 3 Q 2 R 4 S 5 T 4 U 3 V 3 W 3 X 2 Y 3 Z 2 & 2 ! 3 . 4 , 1 : 2 ; 2 .	a 4 b 3 c 3 d 3 e 5 f 3 g 3 h 3 i 4 j 2 k 2 l 5 m 3 n 4 o 4 p 3 q 2 r 4 s 5 t 4 u 3 v 3 w 3 x 2 y 3 z 2 fi 1 ff 1 fm 1	A 5 B 3 C 4 D 4 E 6 F 3 G 3 H 4 I 5 J 3 K 2 L 6 M 4 N 5 O 5 P 3 Q 2 R 5 S 6 T 5 U 4 V 3 W 3 X 2 Y 3 Z 2 & 2 ! 3 . 4 , 1 : 2 ; 2 .	a 5 b 3 c 4 d 4 e 6 f 3 g 3 h 4 i 5 j 2 k 2 l 6 m 4 n 5 o 5 p 3 q 2 r 5 s 6 t 5 u 4 v 3 w 3 x 2 y 3 z 2 fi 1 ff 1 fm 1								
Figures,		1	2	3	4	5	6	7	8	9	0	\$	
No. of each,		3	2	2	2	2	2	2	3	2	5	1	26

SCALE OF GERMAN FONTS.

60 Letters	72 Letters	66 Letters	88 Letters	86 Letters	106 Letters
2 A	3 a	3 A	4 a	4 A	5 a
Capitals.	Lower case.	Capitals.	Lower Case	Capitals.	Lower Case
A 2 B 2 C 2 D 2 E 2 F 2 G 2 H 2 I 1 J 2 K 2 L 2 M 2 N 2 O 2 P 2 Q 2 R 2 S 2 T 2 U 2 V 1 W 1 X 2 Y 2 Z 2 ; 1 : 1 . 2 ' 2 ! 1 ? 1 " 2	a 3 b 2 c 2 d 2 e 4 f 2 g 2 h 2 i 3 j 1 k 1 l 2 m 2 n 3 o 2 p 2 q 1 r 3 s 2 t 3 u 2 v 2 w 2 x 1 y 1 z 1 ä 1 ö 1 ü 1 ch 2 ff 1 fl 1 cf 1 ll 1 ff 1 ff 1 ff 1 ff 1	A 3 B 2 C 2 D 2 E 3 F 2 G 2 H 2 I 2 J 2 K 2 L 2 M 2 N 2 O 2 P 1 Q 2 R 3 S 2 T 2 U 2 V 1 W 1 X 3 Y 1 Z 1 ; 1 : 1 . 3 ' 2 ! 1 ? 1 " 2	a 4 b 2 c 2 d 3 e 5 f 2 g 2 h 2 i 4 j 2 k 2 l 2 m 2 n 4 o 3 p 2 q 2 r 4 s 2 t 2 u 2 v 2 w 2 x 2 y 2 z 1 ä 1 ö 1 ü 1 ch 3 ff 1 fl 1 cf 1 ll 2 ff 1 ff 2 ff 1 ff 1	A 4 B 3 C 3 D 3 E 3 F 3 G 3 H 3 I 2 J 3 K 3 L 3 M 3 N 3 O 2 P 3 Q 3 R 3 S 2 T 2 U 2 V 1 W 2 X 4 Y 2 Z 4 ; 2 : 4 . 2 ' 2 ! 1 ? 1 " 2	a 5 b 3 c 2 d 4 e 6 f 2 g 3 h 3 i 5 j 2 k 3 l 3 m 3 n 5 o 4 p 2 q 2 r 5 s 3 t 3 u 5 v 2 w 2 x 2 y 2 z 3 ä 1 ö 1 ü 1 ch 4 ff 1 fl 1 cf 1 ll 1 ff 2 ff 1 ff 1
2 A, 3 a, complete 158 Letters		3 A, 4 a, complete 180 Letters.		4 A, 5 a, complete 218 Letters.	

26 Figures in each Font.

SPECIAL NOTICE!

Printers will please read this before ordering Wood Type.

The letter at the end, above each style denotes the class in the price list they belong in.

Bear in mind that you can get ANY SIZE of type of each style that we show in this book.

Lower Case and Figures are made to nearly all the type shown and in all sizes.

Always give the number of lines pica for size, also the number of caps, lower case and figures wanted according to our scale of fonts.

All the type shown in this book is cut by machinery and we guarantee satisfaction.

In ordering sorts always send a printed letter D to match by in order to insure a perfect match. If an O is sent or some others it may be a gothic or an antique we would not be able to tell which, as they may both be alike.

The long or descending letters in the lower case are not kerned in wood type as they will split off. They are made solid, therefore Printers will please not send them back saying they do not belong to the font, as is often the case.

Three Line Roman Extended Light Face. Class A.

RICE 8

Four Line Roman Light Face. B

BOWGIN
Cameo 23

Three Line Roman Light Face No. 1. B

MORTEN
Importers

Four Line Roman Condensed Light Face. B

RANSOM

Three Line Roman Extended.

A

ICE 2

Three Line Roman No. 2.

B

HORNS
Poetical

Four Line Roman.

B

LUNCH
Govern

Six Line Roman.

B

ICED

Four Line Roman Condensed.

B

ADIROND
New York

Six Line Roman Condensed.

B

CODES

Six Line Roman Extra Condensed No. 1.

C

WELKIN
Cards 61

Five Line Roman Extra Condensed C

ADVERTISER Lake Ontario

Eight Line Roman Double Extra Condensed. C

DESIGNED 52 Mathematics

Five Line Roman Extra Condensed Light Face. C

EXTRA MEN

Twelve Line Roman Treble Extra Condensed. C

SENATOR PENS

Twelve Line Roman Extra Condensed Light Face C

BEND

Three Line Old Style.

B

DESIGN 28
Old Roman

Six Line Old Style.

B

GILD

Ten Line Old Style.

B

ME

Four Line Old Style Condensed.

B

THOMSON
Roman bets

Six Line Old Style Condensed

B

SHERG

Ten Line Old Style Condensed.

B

MES

Three Line Aetna.

B

BUGLER
Musician

Four Line Aetna.

B

SIGN 5

Six Line Aetna.

B

DUN

Eight Line Aetna.

B

IOS

Four Line Aetna Condensed.

B

PLUMB 2
Trial Size

Eight Line Aetna Condensed.

B

REN

Ten Line Aetna Condensed.

B

SIR

Four Line Aetna Extra Condensed.

C

FURNISH 3
Watches 467

Six Line Aetna Extra Condensed.

C

SPECIAL

Ten Line Aetna Extra Condensed.

C

CENT

Eight Line Aetna Double Extra Condensed. C

STONE 6

Ten Line Aetna Double Extra Condensed. C.

CHIRM

Twelve Line Aetna Double Extra Condensed. C.

MINK

Four Line Aetna Extra Condensed No. 1. C

**BEAUTIFUL
Merchant 25**

Eight Line Aetna Extra Condensed No. 1. C

HORD

Ten Line Aetna Extra Condensed No. 1. C

SIGN

Three Line Antique Light Face.

B

FOREIGN

Four Line Antique Light Face.

B

HARTS

Six Line Antique Light Face.

B

FINE

Four Line Antique Extended Light Face.

A

RINE

Five Line Antique Extended Light Face.

A

NED

Two Line Antique Extended.

A

**NEW 6
Thare!**

Three Line Antique Extended.

A

LEU

Four Line Antique Extended.

A

UCY

Five Line Antique.

B

ICED

Eight Line Antique.

B

NG

Six Line Antique No. 4.

B

LINE

Nine Line Antique No. 4.

B

KM

Twelve Line Antique No. 4.

B

LS

Six Line Antique No. 1.

B

FRED

Nine Line Antique No. 1.

B

OLD

Twelve Line Antique No. 1.

B

RD

Six Line Antique No. 2.

B

PARK

Nine Line Antique No. 2.

B

DOT

Twelve Line Antique No. 2.

B

NR

Six Line Antique No. 3.

B

SNIP E

Nine Line Antique No. 3.

B

THE

Twelve Line Antique No. 3.

B

HN

Six Line Antique Condensed.

B

CHEST

Eight Line Antique Condensed.

B

Poke

Fifteen Line Antique Condensed.

B

HS

Eight Line Antique Extra Condensed.

C

PERIOD

Twenty-five Line Antique Extra Condensed. C

SG

Four Line Antique Extra Condensed No. 2. C

TELEPHONIC
breaking 28

Six Line Antique Extra Condensed No. 2. C

MISERY

Nine Line Antique Extra Condensed No. 2. C

HARP

Eight Line Antique Extra Condensed No. 3. C

ENVIRON
Claims 85

Twelve Line Antique Extra Condensed No. 3. C

NETS

Twelve Line Antique No. 5.

C

MAD

Fifteen Line Antique No. 5.

C

DOG

Six Line Antique No. 6.

C

BORDER

Nine Line Antique No. 6.

C.

BEND

Twelve Line Antique No. 6.

C

BOT

Six Line Antique No. 7.

A

FINE BIRDS

Nine Line Antique No. 7.

A

DEARLY

Twelve Line Antique No. 7.

A

OLDEN

Four Line Antique Extra Condensed No. 4. C

NOBLE HEROIC DEEDS

Soldiers and Sailors 8

Six Line Antique Extra Condensed No. 4. C

NORTH SOUTH

Nine Line Antique Extra Condensed No. 4. C

LECTURES

Twelve Line Antique Extra Condensed No. 4. C

SPRING

Fifteen Line Antique Extra Condensed No. 4. C

WORK

Twelve Line Antique Double Extra Condensed No.1 C

TOWEL

Twenty Line Antique Double Extra Condensed No.1 C

STE

Eight Line Antique Double Extra Condensed. C

MISS CHIVOUN

Twenty-four Line Antique X X Condensed. C

RIDE

Twelve Line Antique Treble Extra Condensed. C

MOONLIGHT

Twenty-four Line Antique X X X Condensed. C

INVENT

Five Line Antique Skeleton.

C

GRUMBLER

Eight Line Antique Skeleton.

C

MOUND

Six Line Mowry Antique.

C

CARTHOLES

Ten Line Mowry Antique.

C

ORGAN

Ten Line French Antique.

C

SCOLDING TOM

Twenty Line French Antique.

C

BINDS !

Four Line Gothic.

B

Charts 8

Six Line Gothic.

B

MAD

Eight Line Gothic.

B

INK

Ten Line Gothic.

B

ND

Six Line Gothic Condensed No. 2.

B

MART

Eight Line Gothic Condensed No. 2.

B

RIDE

Ten Line Gothic Condensed No. 2.

B

TUE

Five Line Gothic Condensed No. 3.

B

CHANCES
Blanks 58

Six Line Gothic Condensed No. 3.

B

POSTER

Twelve Line Gothic Condensed No. 3.

B

DEN

Six Line Gothic Condensed No. 4.

B

WHITEN

Eight Line Gothic Condensed No. 4.

B

SHINE

Fifteen Line Gothic Condensed No. 4.

B

MB

Four Line Gothic Condensed.

B

MOURNINGS

Ten Line Gothic Condensed.

B

LEND

Fifteen Line Gothic Condensed.

B

SIN

Six Line Gothic Condensed No. 1.

C

MEND SIR

Eight Line Gothic Condensed No. 1.

C

DESIGN

Fifteen Line Gothic Condensed No. 1.

C

CAN

Six Line Gothic Extra Condensed No. 1. C

PUBLIC GOOD

Ten Line Gothic Extra Condensed No. 1. C

MARKS

Twelve Line Gothic Extra Condensed No. 1. C

GROVE

Five Line Gothic Extra Condensed.

C

PORT HUDSON

Seven Line Gothic Extra Condensed.

C

BROTHER

Eight Line Gothic Extra Condensed.

C

BEAUTY

Ten Line Gothic Extra Condensed.

C

HIRAM

Five Line Gothic Double Extra Condensed. C

DECEMBER FROSTS
Winter Amusement

Six Line Gothic Double Extra Condensed. C

HARD LAWYER

Twelve Line Gothic Double Extra Condensed. C

REMAIN

Eight Line Gothic Treble Extra Condensed. C

COUNTY COURT

Twenty-five Line Gothic Treble Extra Condensed. C

BONE

Eight Line Gothic Back Slope.

C

MASTERY

Ten Line Gothic Back Slope

C

OUNCES

Five Line Gothic Round No. 1.

B

WORD

Six Line Gothic Round.

B

CASE

Four Line Gothic Round Light Face. B

EMPORIUMS

Five Line Gothic Round Light Face. B

QUARTER

Eight Line Gothic Round Extra Condensed. B

SMOKER

Twelve Line Gothic Round Extra Condensed. B

WORK

Four Line Gothic Light Face.

B

PRINTER

Six Line Gothic Light Face.

B

MORE

Seven Line Gothic Light Face.

B

ARK!

Eight Line Gothic Condensed Light Face.

B

SHOP!

Ten Line Gothic Condensed Light Face. C

GRIM

Twenty Line Gothic Condensed Light Face. C

BE

Ten Line Gothic Extra Condensed Light Face. C

ROBED !

Twenty Line Gothic Extra Condensed Light Face C

SUB

Four Line Gothic Pointed.

D

WANDER

Five Line Gothic Pointed.

D

SHORE

Eight Line Gothic Pointed.

D

DUN

Ten Line Gothic Pointed.

D

MIE

Four Line Gothic Pointed No. 1.

D

SENDER

Six Line Gothic Pointed No. 1.

D

BIRGE

Six Line Gothic Dotted.

D

RANE

Ten Line Gothic Dotted.

D

RIG

Four Line Grecian.

B

ROPES
Edition

Five Line Grecian.

B

CONE

Five Line Grecian Condensed No. 1.

B

ROBINS

Six Line Grecian Condensed No. 1.

B

NURM

Eight Line Grecian Extra Condensed.

C

DENESON

Ten Line Grecian Extra Condensed.

C

MOURN

Eight Line Grecian Condensed.

B

CRISERS

Twelve Line Grecian Double Extra Condensed. C

COUNTRY

Sixteen Line Grecian Double Extra Condensed. C

CORDES

Three Line Clarendon Extended.

A

CREAM

Four Line Clarendon Extended.

A

PENT

Five Line Clarendon Extended.

A

HER

Six Line Clarendon Extended.

A

MIS

Eight Line Clarendon Extended.

A

DIE

Four Line Clarendon.

B

WEATHER
Overwhelm

Eight Line Clarendon.

B

ECHO

Twelve Line Clarendon.

B

GIN

Five Line Clarendon Condensed.

B

SENDER

Seven Line Clarendon Condensed.

B

MIRN

Eighteen Line Clarendon Condensed.

B

ES

Four Line French Clarendon.

C

TELEGRAPH NOISE
Mercantile Associal

Six Line French Clarendon.

C

CURED HAMS

Ten Line French Clarendon.

C

SCHOLAR

Twelve Line French Clarendon.

C

GORDES

Eighteen Line French Clarendon.

C

FINE

Five Line French Clarendon No. 2.

C

MINSTREL

Six Line French Clarendon No. 2.

C

PRESS ON

Fifteen Line French Clarendon No. 2.

C

SET

Eight Line French Clarendon No. 2.

C

CHAINS

Twenty Line French Clarendon No. 2.

C

TO!

Six Line Clarendon Light Face.

B

CREED

Ten Line Clarendon Light Face.

B

BES

Twelve Line Clarendon Light Face.

B

OIL

Five Line Clarendon Extra Cond. Light Face. C

HOT SCENERY

Eight Line Clarendon Extra Cond. Light Face. C

BONNER

Ten Line Clarendon Extra Cond. Light Face. C

FORCES

Twelve Line Clarendon XX Condensed Light Face.C

THRONGS

Eighteen Line Clarendon XX Condensed Light Face C

HINDO

Ten Line Clarendon No. 1.

C

MIKA

Twenty Line Clarendon No. 1.

C

IOE

Seven Line Clarendon Extra Condensed.

C

HOSPITAL

Ten Line Clarendon Extra Condensed.

C

MOREN

Twelve Line Clarendon Extra Condensed.

C

PRIDE

Eight Line Clarendon Double Extra Condensed. C

ELEPHANT

Ten Line Clarendon Double Extra Condensed. C

PRINTER

Twelve Line Clarendon Double Extra Condensed. C

NOVELS

Five Line Clarendon Italian.

C

WRESTLE

Seven Line Clarendon Italian.

C

SNARE

Fifteen Line Clarendon Italian.

C

RM

Eight Line Round Clarendon.

D

MACHINE

Five Line Ionic No. 1.

B

BAND

Six Line Ionic No 1.

B

CITE

Eight Line Ionic No. 1.

B

HIS

Six Line Ionic.

B

RIGS

Eight Line Ionic.

B

NIE

Twelve Line Ionic Condensed.

B

BIS

Four Line Ionic Condensed.

B

STUPIDS!

Eight Line Ionic Condensed.

B

BITS

Fifteen Line Ionic Condensed.

B

NS

Two Line Aldine Expanded.

A

JEWELRY
Narrow153

Three Line Aldine Expanded.

A

MIROD

Four Line Aldine Expanded.

A

RUM

Five Line Aldine Expanded.

A

HIOB

Six Line Aldine.

B

HERD

Eight Line Aldine.

B

ONE

Twelve Line Aldine

B

HEE

Four Line Norwich Aldine.

B

ALDINE

Five Line Norwich Aldine.

B

PRICES

Seven Line Norwich Aldine.

B

SAGE

Eight Line Norwich Aldine.

B

DICE

Six Line Norwich Aldine No. 2.

B

DRAB

Eight Line Norwich Aldine No. 2.

B

RIM

Twelve Line Norwich Aldine No. 2.

B

NTB

Four Line Columbian.

B

HIVES 73

Six Line Columbian.

B

DIVE

Four Line Parisian.

C

SHOEPHILO

Seven Line Parisian.

C

SEARCH

Twelve Line Parisian.

C

BU C 1

Eighteen Line Parisian.

C

NK

Eight Line Egyptian.

C

MISER

Ten Line Egyptian.

C

CORE

Twelve Line Egyptian.

C

TEN

Twelve Line Egyptian Condensed.

C

HORSE

Twenty Line Egyptian Extra Condensed. C

SHIP

Six Line Egyptian No. 2.

B

ROSE

Eight Line Egyptian No. 2.

B

DOG

Five Line Indian.

B

SKOW

Eight Line Indian.

B

BOG

Six Line Egyptian Extra Condensed.

C

JOB PRINTER

Twenty-Five Line Egyptian Extra Condensed. C

STO

Eight Line Belgian.

C

ONE CREAM

Eighteen Line Belgian.

C

BEND

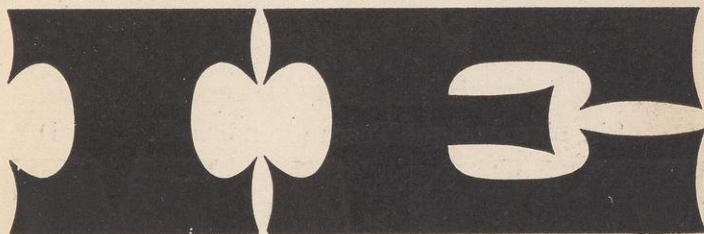
Two Line Antique Tuscan Expanded. A



Four Line Antique Tuscan Expanded. A



Seven Line Antique Tuscan Expanded. A



Three Line Antique Tuscan Extended. A



Four Line Antique Tuscan Extended. A



Six Line Antique Tuscan.

D

ORM

Eight Line Antique Tuscan.

D

STIR

Six Line Antique Tuscan Condensed.

D

DRAM

Eight Line Antique Tuscan Condensed.

D

MUD

Six Line Antique Tuscan Extra Condensed. D

DENVER

Eight Line Antique Tuscan Extra Condensed. D

SHOPS

Sixteen Line Antique Tuscan Extra Condensed. D

SM

Eight Line Antique Tuscan XX Condensed No. 1. D

READERS

Ten Line Antique Tuscan XX Condensed No. 1. D

GENIUS

Twelve Line Antique Tuscan XX Condensed No. 1. D

NOTES

Four Line Gothic Tuscan Extended.

A

HIM

Six Line Gothic Tuscan.

A

DINE

Eighteen Line Antique Tuscan XX Condensed. D

NICE

Six Line Gothic Tuscan Condensed.

D

BOUND

Eight Line Gothic Tuscan Condensed.

D

MICE

Eight Line Gothic Tuscan Extra Condensed.

D

GRAPES

Six Line Gothic Tuscan No. 2.

D

HAUNTED

Eight Line Gothic Tuscan No. 2.

D

HOMER

Fifteen Line Gothic Tuscan No. 1.

D

COME

Six Line Gothic Tuscan No. 4.

D

NORWICH

Ten Line Gothic Tuscan No. 4.

D

MORE

Ten Line Gothic Tuscan No. 3.

D

MEND

Ten Line Antique Tuscan No. 1.

D

STERION

Ten Line Antique Tuscan No. 2.

D

REMNA T

Ten Line Antique Tuscan No. 3.

D

RIGS

Five Line Antique Tuscan No. 4.

D

True Charity

Twelve Line Antique Tuscan No. 5.

D

NSH

Twelve Line Antique Tuscan No. 6.

D

GUN

Ten Line Antique Tuscan No. 9.

C

MEN PRODUCE

Fifteen Line Antique Tuscan No. 9.

C

MACHINE

Six Line Antique Tuscan No. 11.

C

SINGER

Eight Line Antique Tuscan No. 11.

C

MONE

Fifteen Line Antique Tuscan X Condensed No. 5. D

HD

Twelve Line Arcadian No. 1.

D

NILE

Twenty Line Arcadian No. 1.

D

RII

Six Line Arcadian No. 1.

D

REMEDY

Twenty-five Line Arcadian No. 1.

D

CB

Eight Line Arcadian.

E

BURIED

Ten Line Arcadian.

E

HORN

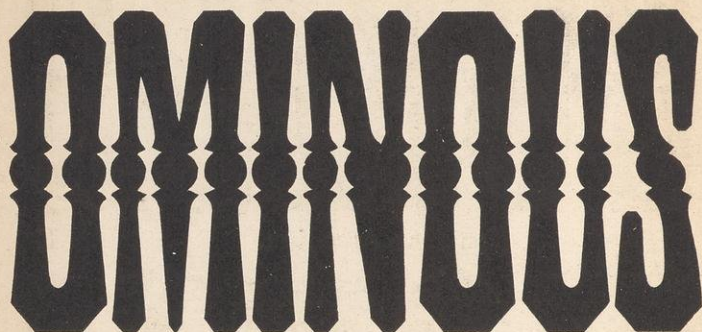
Twelve Line Arcadian.

E

COVE

Ten Line Arabian No. 1.

A

The word "OMINOUS" is rendered in a very bold, blackletter-style font. The letters are thick and have a decorative, slightly irregular quality. The 'O's are particularly large and rounded, while the 'M' and 'N' have sharp, pointed serifs. The overall style is reminiscent of traditional gothic or blackletter typefaces.

Sixteen Line Arabian.

A

The word "CHARME" is rendered in a very bold, blackletter-style font. The letters are thick and have a decorative, slightly irregular quality. The 'C' is particularly large and rounded, while the 'H' and 'M' have sharp, pointed serifs. The overall style is reminiscent of traditional gothic or blackletter typefaces.

Eight Line Athenian.

D

CHEAP!

Eight Line Athabaskan.

D

YORK

Twelve Line Athabaskan.

D

BET

Eight Line Armenian.

D

BANKS

Eight Line Caxton No. 7.

D

THIN

Twelve Line Celtic.

D

STEAM

Twelve Line Celtic No. 2.

D

STINGED

Fifteen Line Celtic No. 2.

D

RIOTS

Six Line Egyptian Ornamented.

D

SHORELINE

Twenty-five Line Egyptian Ornamented.

D

TIN

Six Line Modoc.

D

NEW YORK

Eight Line Modoc.

D

DRIVERS

Twelve Line Modoc.

D

MORE

Six Line Eureka.

D

BERLIN 21

Ten Line Eureka.

D

BED 4

Eight Line Italian.

D

EMPIRE

Twelve Line Italian.

D

SURE

Fifteen Line Ionian Condensed.

D

NED

Six Line Etruscan No. 4.

D

WORSHIP

Eight Line Etruscan No. 4.

D

SMOKE

Ten Line Etruscan No. 4.

D

SOME

Three Line Runic Expanded.

D

BRIGHT

Four Line Runic Expanded.

A

HEAD

Seven Line Runic.

B

SHARE

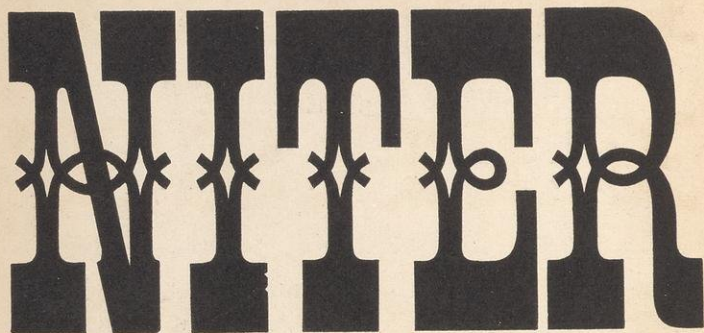
Fifteen Line Runic.

B

ICE

Ten Line Unique.

E



NITER

Eighteen Line Unique.

E



ION

Two Line Tuscan Extended.

A

REVISED

Three Line Tuscan Extended.

A

FIRST

Four Line Tuscan Extended.

A

WAG

Six Line Teutonic.

D

HOPER

Ten Line Teutonic.

D

SUN

Six Line No. 50.

D

SMEAR

Eight Line No. 50.

D

CUTS

Six Line No. 51.

D

GRINDS

Ten Line No. 51.

D

MUG

Four Line No. 52.

D

SHEAR

Seven Line No. 110.

D

DENS 8

Six Line No. 114.

D

ENO 23

Eight Line No. 114.

D

BEIR

Ten Line No. 117.

C

INSTITUTE AMERICA
INSTITUTE AMERICA
NEW YORK EXHIBITION
NEW YORK EXHIBITION

Twelve Line No. 117.

C

MANUFACTORY
MANUFACTORY

Five Line No. 116.

C

NEW YORK

Eight Line No. 116.

C

BERIN

Ten Line No. 116.

C

MIOR

Three Line No. 119.

B

Lithograph

Four Line No. 119.

B

Printers 6

Five Line No. 119.

B

Cash & c

Six Line No. 119.

B

NUN
Maker

Three and one-half Line No. 120.

B

OLD 15

Four Line No. 120.

B

SAID

Six Line No. 120

B

UOI

Eight Line No. 120.

B

SE

Six Line No. 121.

B

MEN

Ten Line No. 121.

B

NE

Fifteen Line No. 121.

B

M

Six Line No. 124.

C

Grand Perfect

Ten Line No. 124.

C

MARCH

Fourteen Line No. 124.

C

RAM

Six Line No. 126.

D

WESTERN
Established

Eight Line No. 126.

D

SHEAT 5

Ten Line No. 126.

D

RENT 8

Four Line No. 127.

D

PAGE TYPE CO

Eight Line No. 127.

D

RISOLE

Twelve Line No. 127.

D

BODE

Six Line No. 129.

C

OLD RINGS

Eight Line No. 129.

C

WILL BE

Twelve Line No. 129.

C

DRAG

Ten Line No. 130.

B

UIN

Twenty Line No. 130.

B

SI

Six Line No. 131.

B

TRIP

Seven Line No. 131.

B

THE

Ten Line No. 131.

B

NB

Four Line No. 128.

D

WOOD TYPE

Five Line No. 128.

D

BY PAGE

Seven Line No. 128.

D

HEBET

Ten Line No. 132.

D

NEW 3

Three Line No. 133.

B

Grand Mountains

Six Line No. 133.

B

GOLDEN

Eight Line No. 133.

B

NEWS

Twelve Line No. 133.

B

PEN

Six Line No. 139.

D

BARK

Twelve Line No. 139.

D

IOS

Twelve Line No. 138.

D

UC

Five Line No. 142.

C

BORDERS OF INK**Orders Solicited 8**

Six Line No. 142.

C

ESTABLISHED

Ten Line No. 142.

C

ENGLAND

Five Line No. 143.

C

SOLD ALL DEALERS

Norwich Manufactur

Eight Line No. 143.

C

NO WASHING

Ten Line No. 143.

C

AMERICAN

Twelve Line No. 143.

C

JOURNAL

Fifteen Line No. 143.

C

RESOLD

Five Line No. 144.

C

PRICES
Retail 3

Six Line No. 144.

C

DRAM

Eight Line No. 144.

C

MUD

Six Line No. 145.

B

NORICH

Eight Line No. 145.

B

TWO 2

Ten Line No. 145.

B

WIN

Five Line No. 151.

C

NATIONAL BANK 63
Thames and Shetucket

Twenty Line No. 149.

D

NBS

Eight Line No. 151.

C

ADVERTISER

Ten Line No. 151.

C

CALENDER

Twelve Line No. 151.

C

LENDER

Four Line No. 152.

C

Photographic

Six Line No. 152.

C

BANKER

Seven Line No. 152.

C

SALE 5

Eight Line No. 152.

C

PRINT

Two Line No. 153.

A

**RISE 8
Extend**

Two and one-half Line No. 153.

A

No 53

Three Line No. 153.

A

TWO

Four Line No. 153.

A

BID

Five Line No. 153.

A

ES

Four Line No. 156.

D

Warehouse

Six Line No. 156.

D

Bucking

Eight Line No. 156.

D

ONE 5

Ten Line No. 156.

D

ROD

Eight Line No. 154.

C

LIGHT FROSTS

Ten Line No. 154.

C

EXCURSION

Twelve Line No. 154.

C

STEAMER

Five Line No 155.

C

HEATERS 284

Seven Line No. 155.

C

STREAM

Eighteen Line No. 155.

C

TINY

Eight Line No. 157.

C

USE THE BEST

Ten Line No. 157.

C

CONDENSED

Twelve Line No. 157.

C

HARDNET

Eight Line No. 149.

D

Rhode Island

Twenty-four Line No. 165.

C

DIS

Twelve Line French Clarendon Condensed. C

RACE HORSE

Eighteen Line French Clarendon Condensed. C

BURNED

Eight Line No. 192.

C

DANCING

Ten Line No. 192.

C

ARISEN

Twelve Line No. 192.

C

GAME

Eight Line No. 158.

D

AUCTIONS!

Ten Line No. 158.

D

ALL FOR

Eight Line No. 159.

B

DUN

Four Line No. 160.

C

Delightful Park

Six Line No. 160.

C

FRIENDS

Four Line No. 161.

D

Delightful Park

Six Line No. 161

D

FRIENDS

Four Line No. 162.

D

Delightful Park

Six Line No. 162.

D

FRIENDS

Four Line No. 163.

D

Delightful Park

Six Line No. 163.

D

FRIENDS

Four Line No. 164.

D

WORKING
Auction 49

Six Line No. 164.

D

BRAND
Thames

Eight Line No. 164.

D

FANS

Six Line Initial Letters, Series No. 1.

D

COMES

Eight Line Initial Letters

D

BEID

Twelve Line Initial Letters.

D

PRO

Six Line Initial Letters, Series No. 2.

D

Two Styles of C, O, Q and T, with each set.

BICEE

Eight Line, Series No. 2.

D

HIS

Ten Line, Series No. 2.

D

IY

Five Line No. 171.

C

OUR TYPE

Eight Line No. 171

C

PREFIN

Twelve Line No. 171.

C

GABO

Six Line No. 172.

C

FRANKLIN ST

Eight Line No. 172.

C

Perfect 56

Twelve Line No. 172.

C

TUESTE

Eight Line No. 173.

C

FRANKS

Ten Line No. 173.

C

WCH 2

Twelve Line No. 173.

C

SAND

Three Line No. 111.

D

Normich Conn

Six Line No. 111.

D

Hand 5

Four Line No. 112.

D

Great Ticks

Six Line No. 112.

D

Switche

Six Line No. 113.

D

Newton

Four Line Arabesque.

B

UNITE 3
Plaster

Six Line No. 125.

D

Blankets

Eight Line No. 125.

D

Maker

Four Line Page's Bulletin.

D

ALERT
Proved

Four Line Clarendon Light Face Italic.

B

To Great

Six Line Clarendon Light Face Italic.

B

AND3

Five Line German.

E

Suchtust

Ten Line German Condensed.

D

Breta

Eight Line Bavarian.

B

Wahr

Four Line German Full Face.

E

Englisch

Eight Line Composite Condensed.

D

Schwäbisch

Ten Line German Extra Condensed.

D

Duffelgors

Eight Line Prussian.

D

Demont

Eight Line Church Text.

E

Darks

Eight Line Pica Black.

E

Muskets

Eight Line Double Gothic.

E

GOOD CARE

Ten Line No. 93.

F

FLOOR

Twelve Line Gothic Curved Shaded.

E

RAIN

Six Line No. 166.

D

BE SOME
Wood 48

Eight Line No. 168.

D

SHARP 5
Overtake

Two and one-half Line No. 122.

B

Cranston 79

Three and one-half Line No. 122.

B

Rich Cod

Six Line No. 122.

B

SIGN

Three Line No. 123.

B

Wach 2

Six Line No. 123.

B

DIE

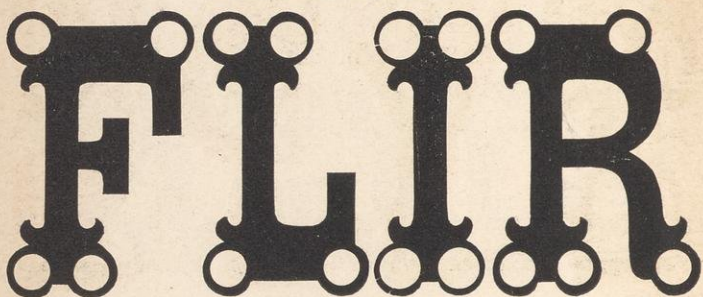
Eight Line No. 141.

D



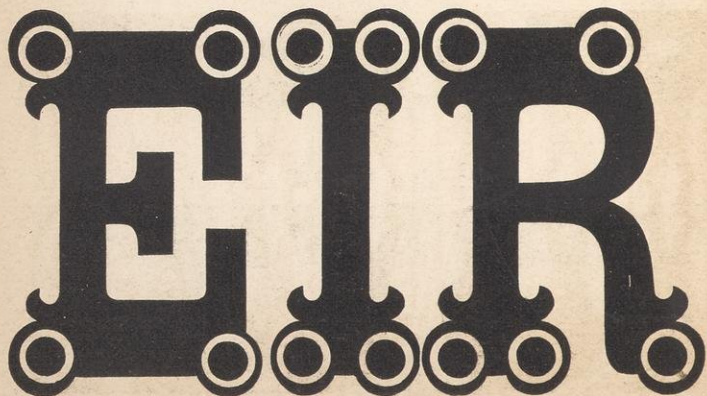
Nine Line No. 100.

D



Twelve Line No. 68.

D



Six Line Gothic Round Half Open.

E

RUSE

Ten Line No. 87.

F

TYPE

Twelve Line No. 91.

E

W O O R

Eight Line No. 146.

E

SHOP

Ten Line Gothic Ornamented No. 2.

E

MES

Twelve Line Gothic Ornamented No. 7.

E

TIME

Ten Line Antique Condensed, Ornamented.

E

RIDE

Ten Line Clarendon No. 1 Open.

E

LINES

Ten Line Arcadian Shade No. 1.

E

CONES

Seven Line Streamer No. 74.

D

A decorative banner with a black background and a white border. The word "CAN" is written in a large, bold, white serif font.

Seven Line Streamer No. 39.

D

A decorative banner with a black background and a white border. The word "SIGN" is written in a large, bold, white serif font.

Seven Line Streamer No. 38.

D

A decorative banner with a black background and a white border. The word "TRAVEL" is written in a large, bold, white serif font.

Seven Line Streamer No. 40.

D

A decorative banner with a black background and a white border. The word "LAR" is written in a large, bold, white serif font.

Three Line No. 198.

B

SUMNERS!

Four Line No. 198.

B

HER SIN

Five Line No. 198.

B

JQDRE

Six Line No. 198.

B

HUMS

Eight Line No. 198.

B

BED

Five Line Panel'd Condensed No. 1.

E

ANSERD

Twelve Line French Clarendon No. 4.

F

TIES

Twelve Line No. 134.

H

PEN

Four Line Expanded No. 3.

F

T T T

Eight Line Tuscan Condensed Ornamented. F

PINE

Eight Line Tuscan Condensed Shade No. 1. E

PLUM

Nine Line No. 182.

E

EVC

Six Line Streamer No. 6.

D

FAMILY

Six Line Streamer No. 5.

D

FLUID

Six Line Streamer No. 8.

D

FRAG

Six Line Streamer No. 7.

A

REX

Six Line Streamer No. 115.

A

SHINE

Eight Line Streamer No. 19.

D

FILBERT

Eight Line Streamer No. 20.

D

BOAT

Eight Line Streamer No. 21.

E

TONGUE

Eight Line Roman Shaded

E

MON

Eight Line Etruscan No. 5.

E

MINOR

Eight Line Etruscan No. 7.

E

MINER

Six Line Doric.

F

PURE

Six Line Doric No. 1.

F

MINE

Five Line Doric No. 2.

F

RINGS

Eight Line Doric No. 3.

F

GUT

Six Line Streamer No. 2.

D

EXCURSION

Six Line Streamer No. 3.

D

FRUITS

Six Line Streamer No. 1.

D

SHOR

Six Line Streamer No. 4.

D

MINSTR

Six Line Streamer No. 66.

D



Six Line Streamer No. 67.

D



Six Line Streamer No. 72.

D



Six Line Streamer No. 70.

D



Six Line Florentine.

F

BUNGE

Six Line Gothic Star Ornamented.

F

GAMIN

Six Line Clarendon Ornamented.

F

PURSE

Twelve Line Ionian No. 7.

G

HEAD

Ten Line Etruscan No. 6.

E

BANK

Ten Line Renaissance No. 1.

E

BART

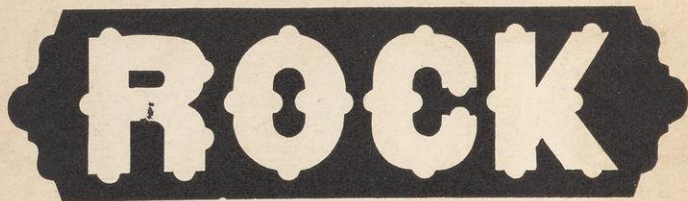
Ten Line No. 96.

F

WOW

Six Line Streamer Gothic Dotted.

D



ROCK

Six Line Streamer Gothic Condensed No. 4. D



TRADES

Six Line Streamer No. 24.

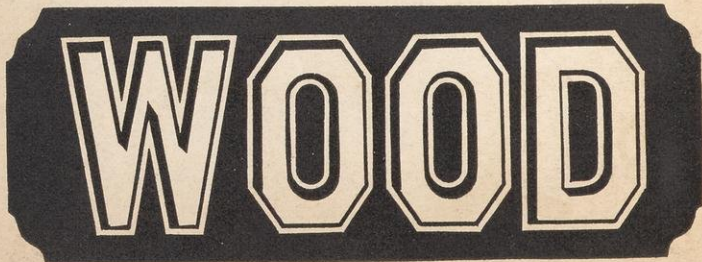
A



ICE

Eight Line Streamer Gothic Paneled.

E



WOOD

Seven Line Streamer No. 57.

D



Seven Line Streamer No. 52.

D



Seven Line Streamer No. 51.

D



Seven Line Streamer No. 54.

A



Eight Line Clarendon Open Shade.

E

COLE

Eight Line Clarendon Shade No. 1.

E

COLE

Eight Line Antique Condensed Shade No. 1. E

HER

40



19



33



15



49



50



41



30



21



47



39



20



43



27



16



63



62



23



2



45



24



28



52



44



49



55



59



43



For Rule 7



Extension Lines 15 Cents per foot.

B

One Line.



COMBINATION DASHES. CUT ANY SIZE

Two Line.



Two and one-half Line.



Three Line.



Three and one-half Line.



Four Line.



ORNAMENTAL DASHES.

Price from one to three Lines 15 cents each.

Price from three to five lines 25 cents each.

1



2



3



4



5



7



8



STAR RULE, 20 cents per foot. Corners 25cts per set.

10



3



2



6



5



1



8



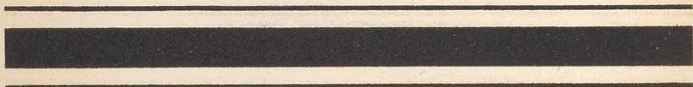
7



11



10



9



8



7



6



5



19



20



21



22



23



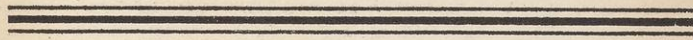
24



25



26



27



28



29



42



44



46



48



49



50



54



58



59



Thirty-six Line French Antique.

185
C

GAR

Thirty-six Line Antique Tuscan No. 9.

C

HOP

Thirty-six Line Gothic X Condensed.

C

157

W

Thirty-six Line No. 143.

B

MB

B

Thirty-six Line No. 149.

D

189



Thirty-six Line Clarendon No. 1.

C

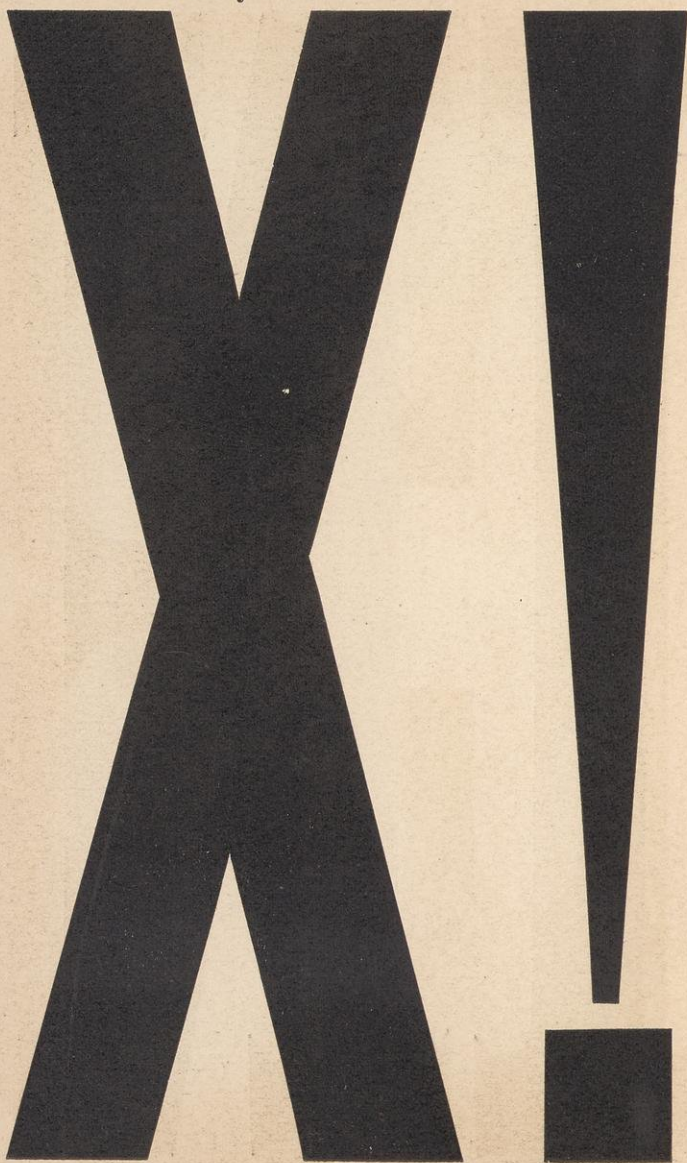


Thirty-six Line Antique Tuscan X X Condensed. D

TNT

Thirty-six Line No. 173.

C



193

Thirty-six Line Egyptian Extra Condensed. C

CB

SI

195

Thirty-six Line Antique X X Condensed. C

RI

Thirty-six Line French Clarendon Condensed. C

CAR

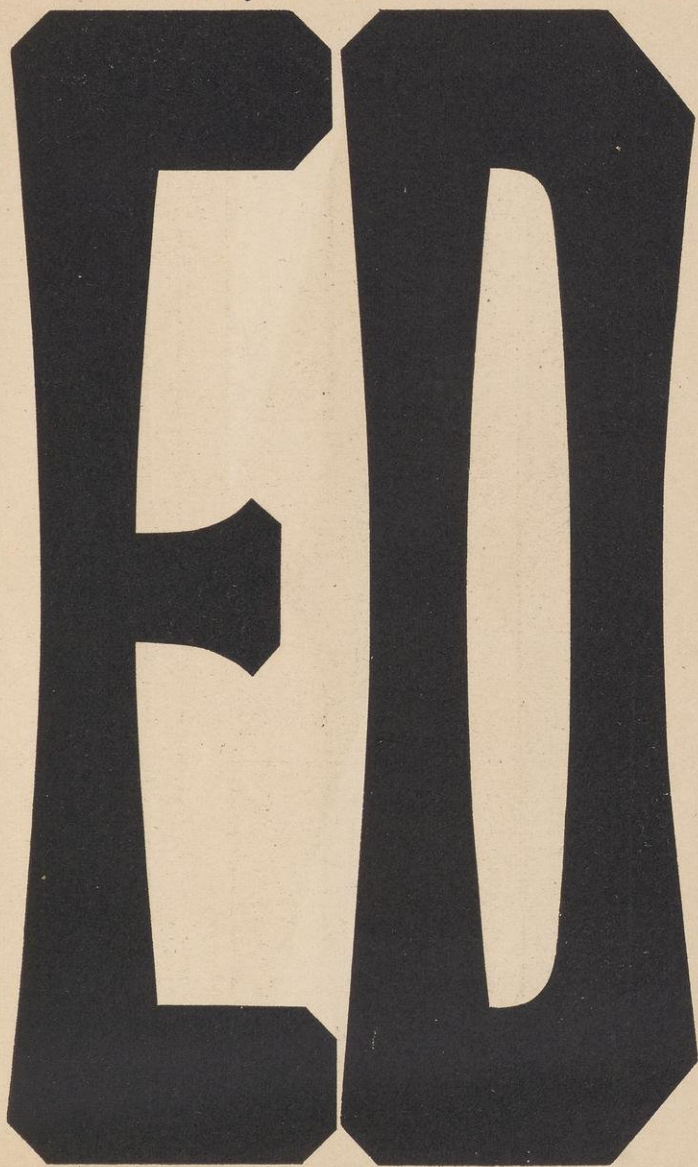
Thirty-six Line Clarendon X X Condensed. C

197

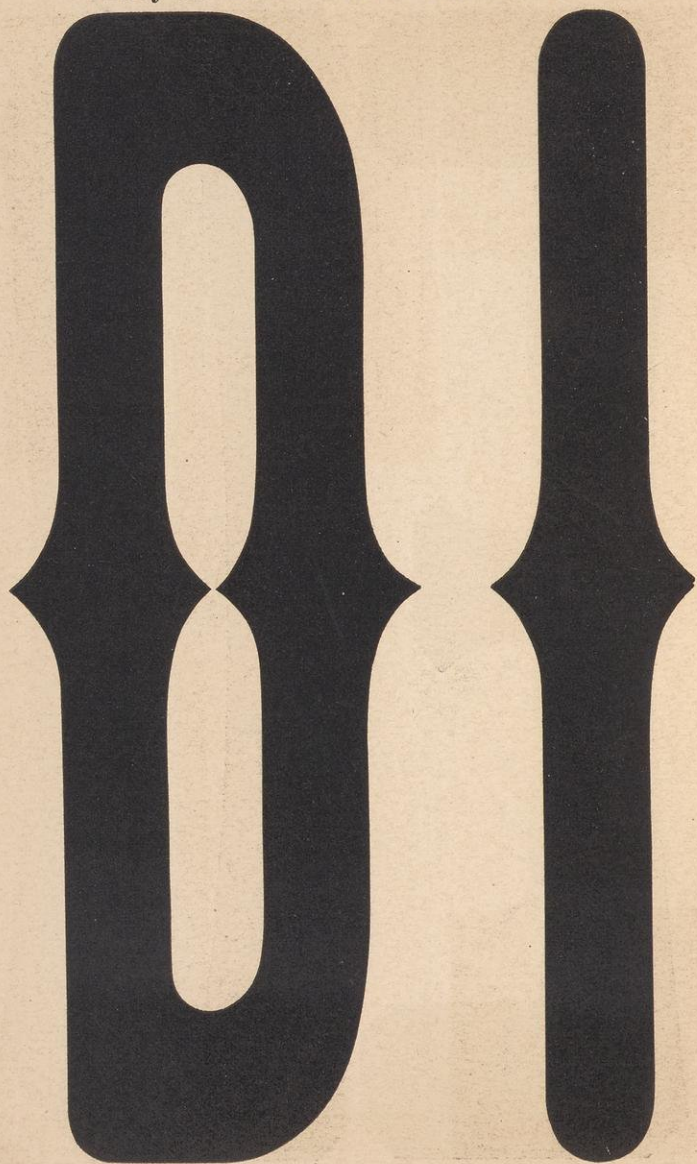
EO

Thirty-six Line Gothic Tuscan X Condensed. D

N



Thirty-six Line Gothic Tuscan No. 1. D



D

Thirty-six Line Egyptian Condensed.

201
C



Thirty-six Line Antique X X X Condensed. C

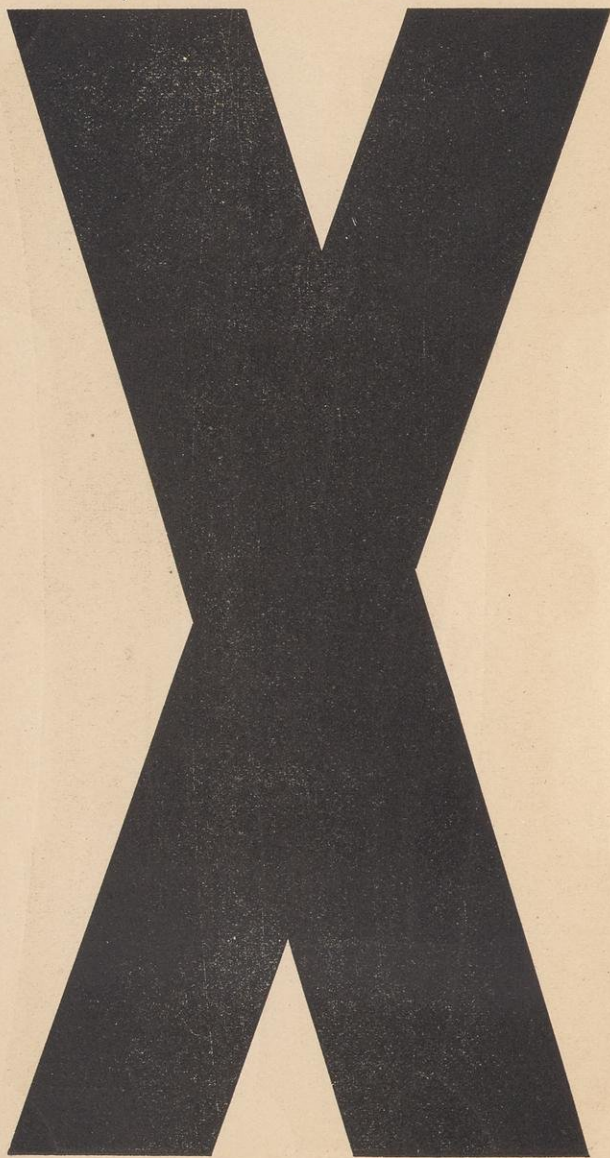
BED

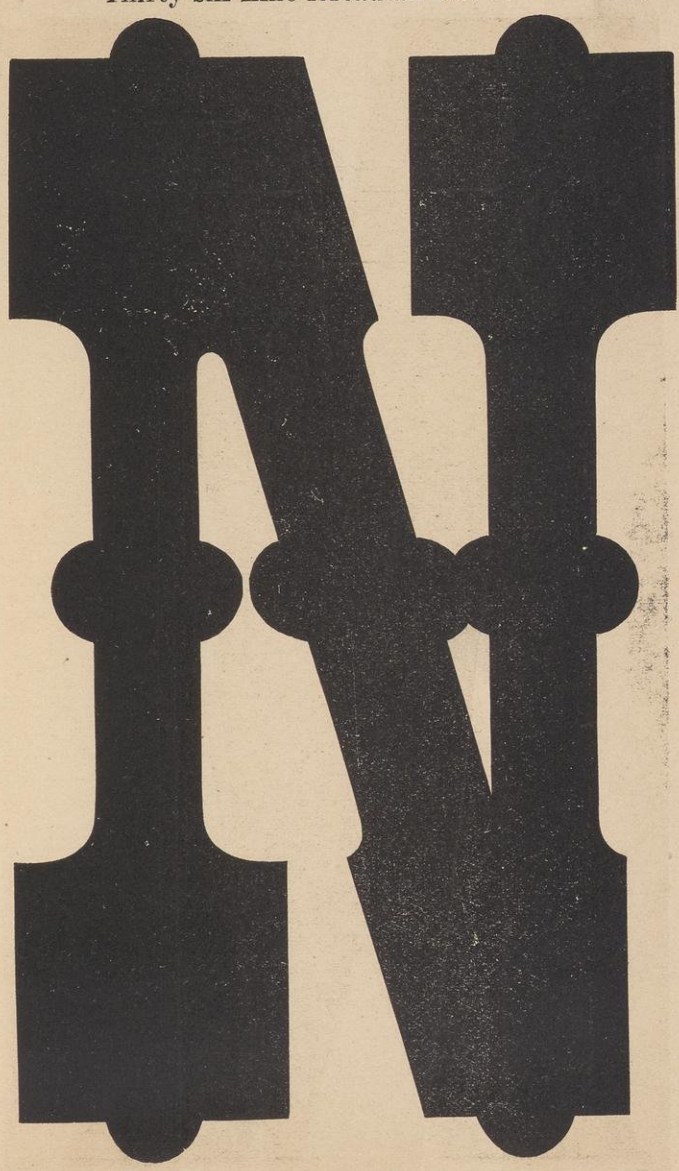
Thirty-six Line No. 124.

C



Thirty-six Line Gothic Condensed No. 1. C





Thirty-six Line Gothic X Condensed No. 1. C



Thirty-six Line Gothic X X X Condensed. C

U M

Thirty-six Line Antique X X Condensed No. 1. C

CO
T

209:

RI

Thirty-six Line French Clarendon.

C

RI



Thirty-six Line No. 155.

C



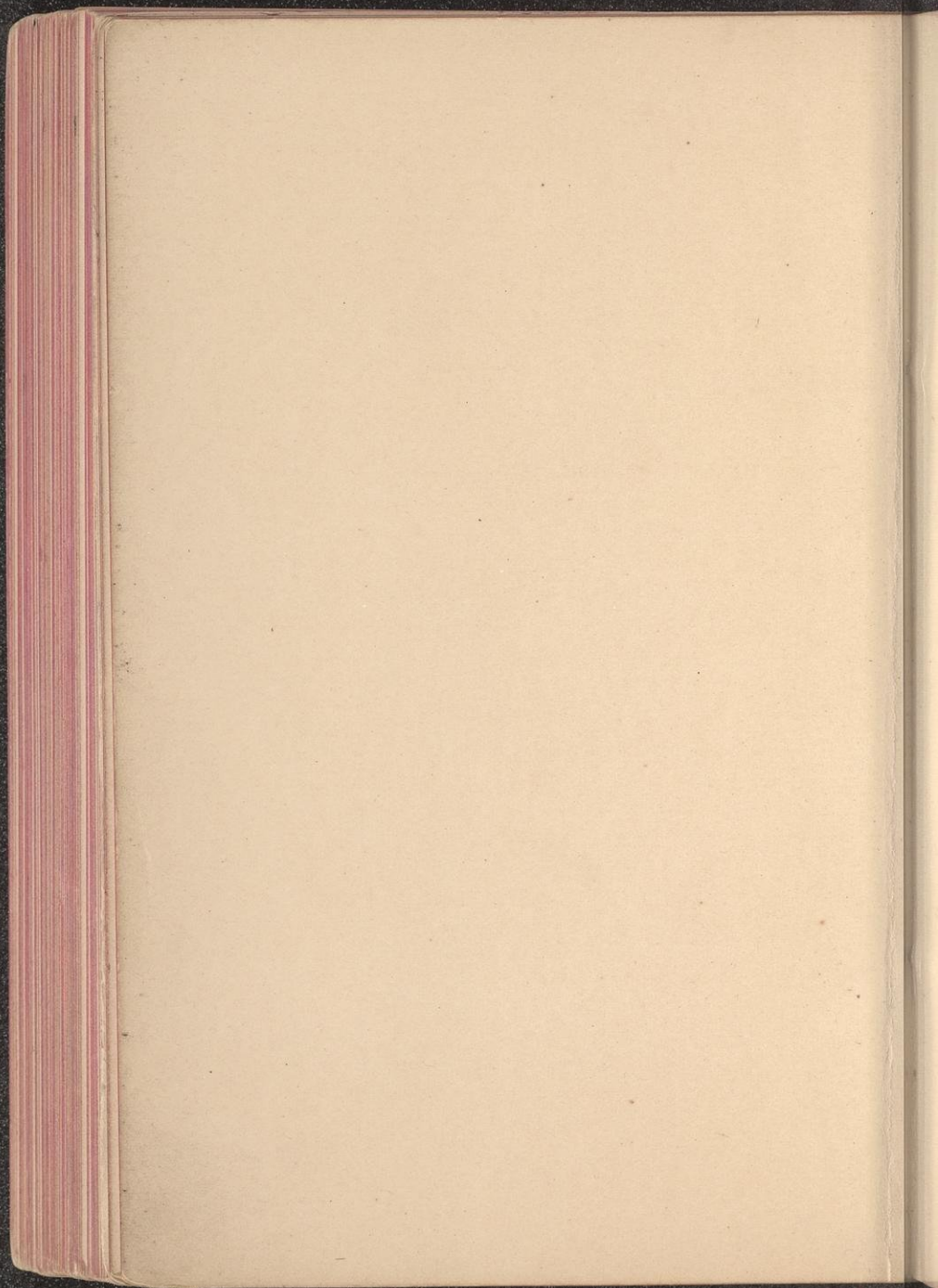
Thirty-six Line Clarendon X Condensed. C

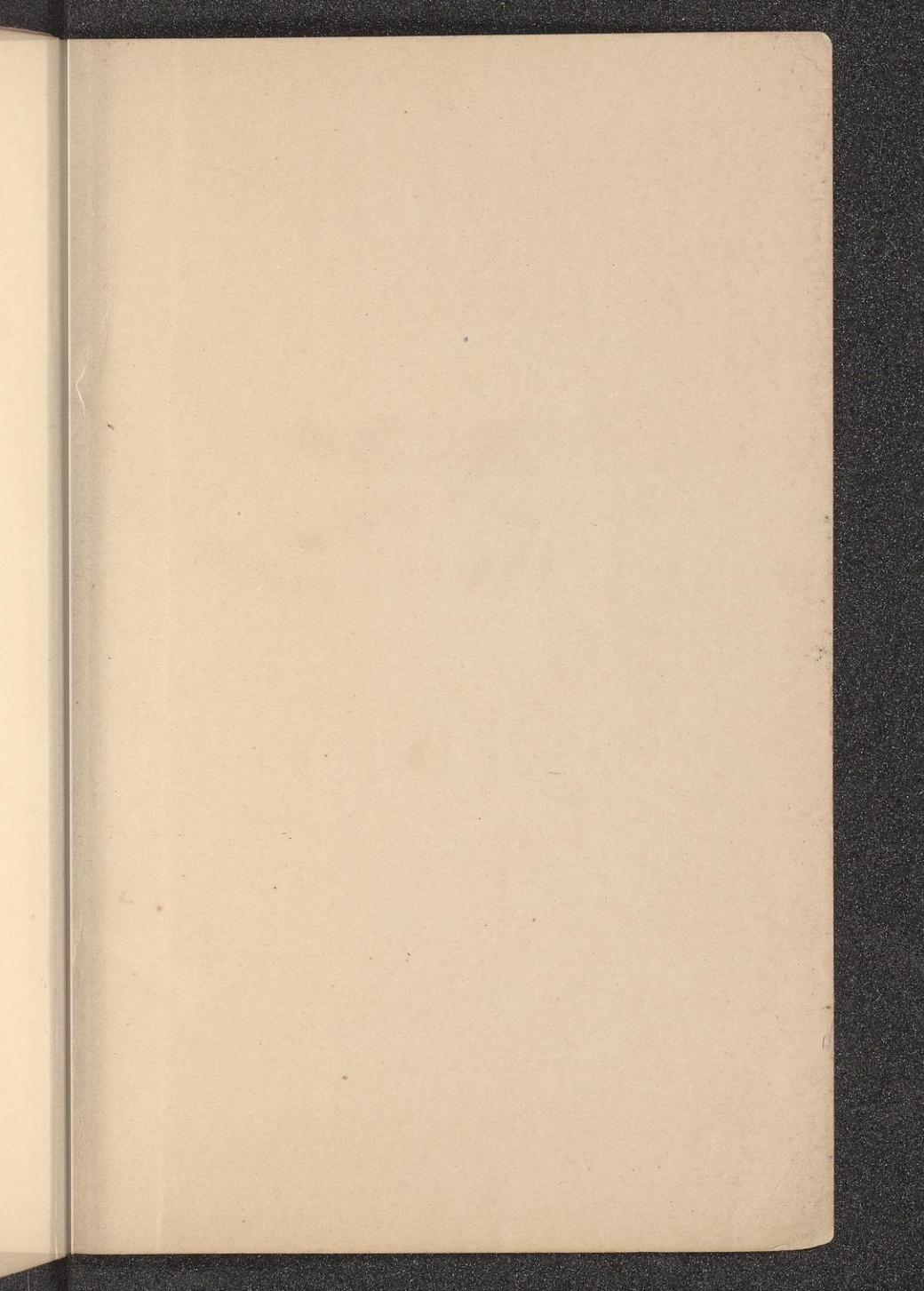
213

10

Thirty-six Line Gothic X X Condensed. C

OF





PAGE'S
WOOD TYPE