



# LIBRARIES

UNIVERSITY OF WISCONSIN-MADISON

## Kingdom coming!

Cleveland: S. Brainard & Co., 1862

<https://digital.library.wisc.edu/1711.dl/EEEKQOZWVQJEI9A>

<http://rightsstatements.org/vocab/NKC/1.0/>

The libraries provide public access to a wide range of material, including online exhibits, digitized collections, archival finding aids, our catalog, online articles, and a growing range of materials in many media.

When possible, we provide rights information in catalog records, finding aids, and other metadata that accompanies collections or items. However, it is always the user's obligation to evaluate copyright and rights issues in light of their own use.



# KINGDOM COMING!

SONG AND CHORUS,

BY

HENRY C. WORK,

AUTHOR OF

"NELLIE LOST AND FOUND;" "OUR CAPTAIN'S LAST WORDS;"

"BEAUTIFUL ROSE," Etc.



CHICAGO:

Published by **ROOT & CADY**; 95 Clark Street.

Wm. HALL & SON, } New York.  
FIRTH, POND & CO., }

HENRY TOLMAN & CO.,  
Boston.

S. BRAINARD & CO.,  
Cleveland.

H. N. HEMPSTED,  
Milwaukee.

J. H. WHITEMORE,  
Detroit.

Entered according to Act of Congress, in the year 1862, by Root & Cady, in the Clerk's Office of the District Court for the Northern District of Illinois.



# "KINGDOM COMING"

Words & Music by HENRY C. WORK.

Nº 10

PIANO FORTE

The piano introduction consists of two staves in 2/4 time. The right hand features a rhythmic melody with eighth and sixteenth notes, while the left hand provides a steady accompaniment of eighth notes.

The first vocal line is a single staff with a treble clef, containing the first measure of the melody.

1. Say, dar-keys, hab you seen de massa, Wid de muffstash on his

The piano accompaniment for the first measure, consisting of two staves in 2/4 time, with chords and eighth notes.

The second vocal line is a single staff with a treble clef, containing the second measure of the melody.

face, Go long de road some time dis mornin', Like he gwine to leab de place? He

The piano accompaniment for the second measure, consisting of two staves in 2/4 time, with chords and eighth notes.

The third vocal line is a single staff with a treble clef, containing the third measure of the melody.

seen a smoke, way up de ribber, Whar de Linkum gum-boats lay; He took his hat, an'

The piano accompaniment for the third measure, consisting of two staves in 2/4 time, with chords and eighth notes.



CHORUS.

AIR

lef bery sudden, An'I spec he's run a - way. De mas-sa run? ha ha! De

ALTO

TENOR

De mas-sa run? ha ha! De

BASE

dar-key stay? ho ho! It mus' be now de kingdom comin', An' de year ob Ju-bi-lo!

dar-key stay? ho ho! It mus' be now de kingdom comin', An' de year ob Ju-bi-lo!

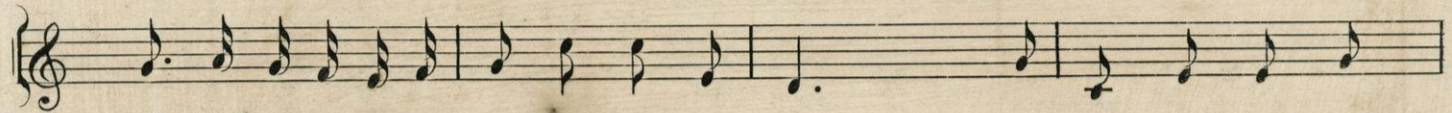




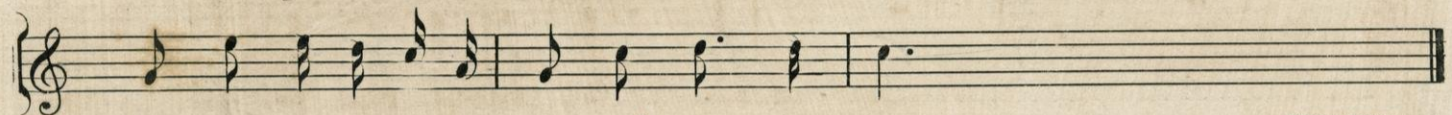
2. He six foot one way, two foot tudder, An' he weigh tree hundred pound, His coat so big, he



could'nt pay de tailor, An' it wont go half way round. He drill so much, dey



call him Cap'an, An' he get so dref-ful tann'd, I spec he try an'

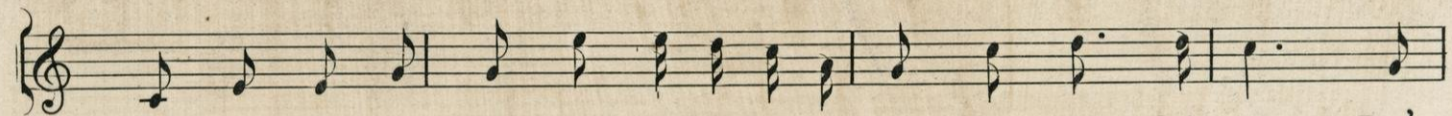


fool dem Yankees For to tink he's con--tra--band.

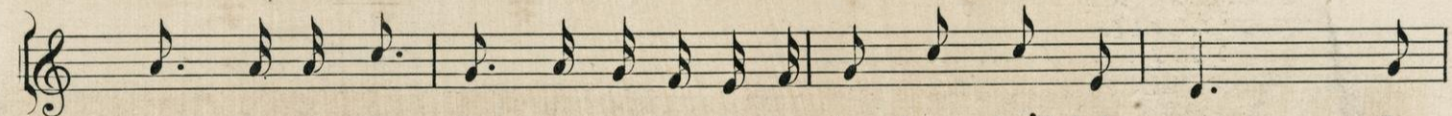
CHORUS.



3. De dar-keys feel so lone-some libing In de log-house on de lawn, Dey



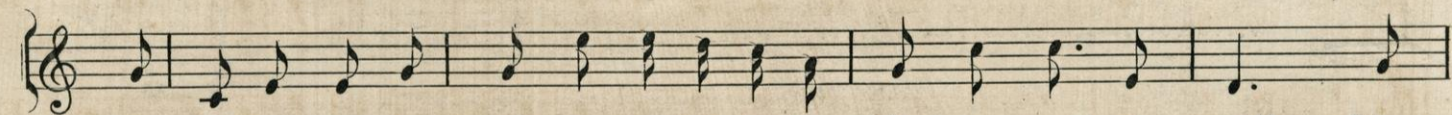
move dar tings to mas--sa's parlor For to keep it while he's gone. Dar's



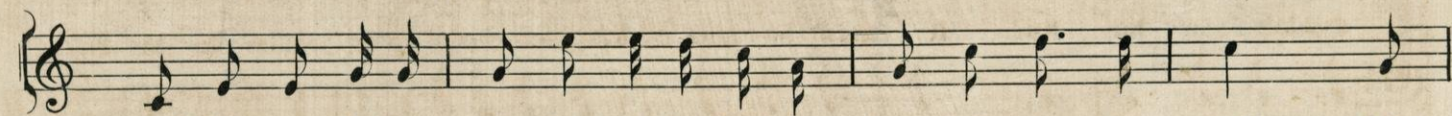
wine an' ci--der in de kitchen, An' de dar--keys dey'll hab some; I



spose dey'll all be corn-fis--ca--ted When de Lin-kum so--jers come. CHORUS.



4. De o--ber-seer he make us trouble, An' he dribe us round a spell; We



lock him up in de smoke-house cellar, Wid de key trown in de well. De



whip is lost, de han'-cuff broken, But de mas-sa'll hab his pay; He's



ole e-nough, big e-nough, ought to known better Dan to went an' run a--way. CHORUS.



NEW PUBLICATIONS  
BY  
**ROOT & CADY,**

95 Clark St., Opposite Court House,  
CHICAGO, ILLINOIS;

DEALERS IN EVERY DESCRIPTION OF  
**MUSIC BOOKS, INSTRUMENTS, SHEET MUSIC**

AND MUSICAL MERCHANDISE GENERALLY.

Steinways' Piano Fortes, Mason & Hamlin's Melodeons, Mason Brothers' Church  
AND OTHER MUSIC BOOKS.

**PIANO FORTES TO LET.**

Music sent to any part of the United States, Free of Postage on receipt of marked price.

- |  |   |
|--|---|
| BEAUTIFUL ROSE. <i>Henry C. Work</i> , ..... 25 cts.   | WELCOME TO SPRING. <i>S. W. Martin</i> ..... 25 cts.  |
| THE GIRLS AT HOME. <i>Henry C. Work</i> ... 25 cts.  | O! ARE YE SLEEPING MAGGIE. Scotch<br>Song,..... 25 cts.   |
| HAPPY DAYS OF YORE. <i>Francis Wolcott</i> ... 25 cts.   | FOREST REQUIEM. Song and Chorus. <i>G. C. W.</i> 25 cts.  |
| THE FIRST GUN IS FIRED! "May God protect the right." Song and Chorus. <i>G. F. Root</i> ... 25 cts.  | MY COTTAGE HOME, DEAR MOTHER. <i>Root</i> 25 cts.   |
| GOD BLESS OUR BRAVE YOUNG VOLUNTEERS! <i>G. F. Root</i> ..... 25 cts.  | MY HEART IS LIKE A SILENT LUTE. <i>Root</i> 25 cts.   |
| FORWARD BOYS, FORWARD! Quartette and Chorus, for men's voices..... 15 cts.   | DEATH OF THE ROBIN. <i>J. M. Hubbard</i> . 25 cts.  |
| THE STARS AND THE STRIPES, THE FLAG OF THE FREE. Song and Chorus. <i>Frisbie</i> . 25 cts.   | SONG OF THE EGYPTIAN GIRL. <i>Hubbard</i> . 25 cts.   |
| STAND UP FOR UNCLE SAM, MY BOYS, Song and Chorus. <i>Geo. F. Root</i> ..... 25 cts.  | THOU WILT COME NEVERMORE TO THE STREAM, KITTY. <i>H. L. Frisbie</i> . 25 cts.   |
| ENSIGN OF GLORY. National Anthem. <i>Rev. R. Park, D. D.</i> ..... 25 cts.   | JIMMY'S WOOING. <i>G. F. Root</i> . 15 cts.   |
| NEGRO BOATMEN'S SONG. Port Royal, 1861. <i>H. T. Merrill</i> ..... 25 cts.   | O COME YOU FROM THE INDIES, or Robert's Return from the War. <i>Wurzel</i> . 50 cts.  |
| THE DEAR ONES ALL AT HOME. Song and Chorus. <i>W. B. Bradbury</i> ..... 25 cts.  | The six following pieces simplified by <i>A. W. Berg</i> .  |
| NOW THE SWALLOWS ARE RETURNING. Song. <i>Abt</i> ..... 25 cts.<br><small>In the style of "When the Swallows homeward fly."</small>                             | GOUITTES D'EAU. (Frisbie)..... 25 cts.  |
| KITTY RYDER. Song. <i>G. F. Root</i> ..... 25 cts.<br><small>Sprightly.</small>  | CHANT NATIONAL DES CROATES..... 25 cts.   |
| NELLIE LOST AND FOUND. A touching Ballad, with Chorus. <i>Henry C. Work</i> ..... 25 cts.  | MARCH DE LA REINE..... 25 cts.  |
| OUR CAPTAIN'S LAST WORDS. <i>Henry C. Work</i> ..... 25 cts.   | LES DEUX ANGES. (Varied)..... 25 cts.   |
| THE VACANT CHAIR. Song and Chorus. <i>G. F. Root</i> ..... 25 cts.   | L'HEURE DE LA PRIERE. (Varied)..... 25 cts.   |
| TAKE YOUR GUN AND GO, JOHN! Song and Chorus. <i>H. T. Merrill</i> ..... 25 cts.  | VENZANO VALSE..... 25 cts.  |
| SILENT EVENING. Baritone or Contralto Solo. <i>J. M. Hubbard</i> ..... 25 cts.   | SPRING STYLE SCHOTTISCH. <i>Freund</i> ..... 15 cts.  |
| MINE OWN. Song. <i>J. M. Hubbard</i> ..... 25 cts.<br><small>Answer to "Call me Pet Names."</small>  | NORTH WESTERN RIFLE MARCH.<br><i>By C. G. L. Arranged by Vaas</i> ..... 25 cts.   |
| HOME FAR AWAY. Song. <i>Flotow</i> ..... 25 cts.<br><small>An adaptation of one of the most beautiful melodies in a new Opera by the author of Martha.</small> | POLKA GRACIEUSE. Instrumental. <i>Wm. Mason</i> . 60 cts.<br><small>Brilliant. Rather difficult.</small>  |
| DREAM ON, LILLIE. Song and Quartette. <i>G. F. Root</i> ..... 25 cts.  | GEN. FREMONT'S MARCH. <i>A. J. Vaas</i> ,... 40 cts.<br><small>(Lithographic Portrait.)</small>   |
| MOTHER, OH SING TO ME OF HEAVEN. Song and Quartette. <i>G. F. Root</i> ..... 25 cts.   | MAJOR ANDERSON'S MARCH. <i>A. J. Vaas</i> . 40 cts.<br><small>(With Portrait.) Highly effective.</small>  |
| I NEVER KISS AND TELL. Song. <i>J. M. Hubbard</i> ..... 25 cts.  | SHERMAN HOUSE POLKA REDOWA. <i>Vaas</i> . 35 cts.<br><small>(Lithograph Title.) Attractive and not difficult.</small>   |
| THE SECRET. Song. <i>Schubert</i> ..... 25 cts.<br><small>For Tenor or Soprano. Exquisite but difficult.</small>   | MARIE POLKA MAZURKA. <i>H. A. Wollenhaupt</i> ..... 40 cts.<br><small>One of the finest compositions of this author. Very graceful.</small>                     |
| EVENING. Song. <i>Clepus</i> ..... 25 cts.<br><small>Song for Contralto or Baritone—Classic and beautiful.</small>   | GRAND MARCH, from Tannhauser. <i>Wagner</i> . 30 cts.<br><small>Very fine but difficult.</small>  |
|  | THE ZOUAVE CADETS QUICKSTEP. <i>Vaas</i> . 50 cts.<br><small>Illustrated Title.</small>   |
|  | PET POLKA. <i>George A. Florence</i> ,..... 25 cts.<br><small>Not difficult.</small>  |
|  | LAFNER WALTZ. <i>F. R. Otto</i> ..... 25 cts.   |
|  | SKATING QUADRILLE. (Lithograph.) <i>A. J. Vaas</i> ..... 50 cts.  |
|  | ENCHANTRESS SCHOTTISH. (Lithograph.) 50 cts.  |
|  | FOREST BIRDS' WALTZ. <i>R. Zellner</i> ..... 30 cts.  |
|  | BRIGG'S HOUSE POLKA. <i>A. J. Vaas</i> ..... 25 cts.<br><small>Not difficult.</small>   |
|  | ELLSWORTH'S REQUIEM MARCH. <i>Vaas</i> . 40 cts.  |
|  | GEN. LYON'S BATTLE MARCH. <i>Eichburg</i> . 30 cts.   |
|  | DELUSION MAZURKA. <i>Klingemann</i> ..... 30 cts.<br><small>All the above Vocal and Instrumental Music can be relied upon as being good and attractive.</small> |