



# LIBRARIES

UNIVERSITY OF WISCONSIN-MADISON

## **A. Bailey's Janesville directory, city record and business advertiser, for 1862. 1862**

Milwaukee, Wisconsin: A. Bailey, 1862

<https://digital.library.wisc.edu/1711.dl/FLJTPJKIVUDUI8M>

Based on date of publication, this material is presumed to be in the public domain.

For information on re-use see:

<http://digital.library.wisc.edu/1711.dl/Copyright>

The libraries provide public access to a wide range of material, including online exhibits, digitized collections, archival finding aids, our catalog, online articles, and a growing range of materials in many media.

When possible, we provide rights information in catalog records, finding aids, and other metadata that accompanies collections or items. However, it is always the user's obligation to evaluate copyright and rights issues in light of their own use.

A. BAILEY'S  
JANESVILLE DIRECTORY,  
CITY RECORD

AND

**BUSINESS ADVERTISER,**

FOR 1862.

Free Public Library  
Compiled and Published by

A. BAILEY, 212, EAST WATER STREET, MILWAUKEE.

---

JANESVILLE, WIS.:  
MOSELEY & BROTHER, WEST MILWAUKEE STREET.

1862.

CITY RECORD  
JANESVILLE DIRECTORY  
A. B. ALLEN'S  
BUSINESS ADVERTISER  
FOR 1883  
The Milwaukee Journal  
Published Daily  
except on Sundays and Public Holidays  
JANESVILLE, WIS.  
JANESVILLE & MILWAUKEE  
1883

---

CALORIC PRESSES OF STARR & SON, 212 & 214, EAST WATER-ST., MILWAUKEE.

---

## PREFACE.

We present to the citizens of Janesville a New City Directory, believing it to be as nearly complete as a careful and systematic canvass could make it.

We return our thanks to those who have given us their support, and trust that such errors as usually occur in the compilation of works of this description will be overlooked.

THE PUBLISHER.



M. B. JOHNSON,  
**D E N T I S T,**

*Office in Jackman & Smith's Block, over the Rock County Bank,*

JANESVILLE, WIS.

---

**ROCK RIVER IRON WORKS!**

WEST SIDE OF THE RIVER, ONE BLOCK BELOW THE LOWER BRIDGE,  
**JANESVILLE, WISCONSIN.**

♦♦♦  
**HARRIS, GUILD, ANGELL & TYLER, Prop's.**

♦♦♦  
MADE TO ORDER,

**STEAM ENGINES AND MACHINERY,**

Castings and Forging, House Castings,  
*Separators and the celebrated Improved Climax Horse Powers,*  
*Sugar Cane Mills, (the best in use.)*

All kinds of Repairing done on short notice, and at the lowest prices.

JAMES HARRIS,

Z. GUILD,

R. R. ANGELL,

L. TYLER.

---

**B. F. PENDLETON,**  
**DENTIST!**

Office on Main Street, in Jenkins & Dewey's Block,

OVER C. MINER'S BOOT AND SHOE STORE.

☞ Residence on Academy Street. ☞

---

**EXCELSIOR HOTEL.**

JANESVILLE, WIS.

**A. NORRIS, PROPRIETOR.**

Corner of Main and North First Sts.

EXTENSIVE ACCOMMODATIONS FOR TEAMS.

# A. BAILEY'S

# JANESVILLE DIRECTORY,

## FOR 1862.

### ABBREVIATIONS.

ab—above.	com mer—commis'n mer-	n w c—north west corner.
agt—agent.	chant.	opp—opposite.
al—alley.	dent—dentist.	pat—patent.
atty—attorney.	dray—drayman.	phys—physician.
av—avenue.	drug—druggist.	pres—president.
b—between.	e—east of.	pro—proprietor.
barb—barber.	eng—engineer.	prod—produce.
bar k—bar keeper.	e s—east side.	rd—road.
bds—boards.	fordng—forwarding.	res—resides.
bel—below.	groc—grocer.	s—south of.
bk—book.	h—house.	sec—secretary.
b k—book keeper.	ins—insurance.	s e c—south east corner.
blksmith—blacksmith.	lab—laborer.	s s—south side.
confec—confectioner.	lith—lithographer.	supt—superintendent.
coop—cooper.	mach—machinist.	s w c—south west corner.
c or cor—corner.	manuf—manufacturer.	tob—tobacco.
cab mkr—cabinet maker.	med—medicines.	treas—treasurer.
carp—carpenter.	mer—merchant.	w—west of.
cash—cashier.	mkr—maker.	wag—wagon.
cig—cigar.	n—north of.	wh—wholesale.
clk—clerk.	n e c—north east corner.	w s—west side.
com—commission or com-	nr—near.	
missioner.	n s—north side.	

### A

**A**BEEL WALDO, agent Galena & Chicago Union R R, h n w c Pleasant and Academy  
 Abeel Geo., brakeman, bds Hyatt House  
 Adams Homer, phys, s s Milwaukee w Franklin, bds Hyatt House  
 Adams Jno, eng, h e s Franklin b Race and Ravine  
 Adams Lucius, carp, bds e s Wisconsin b Milwaukee and Court  
 Addy Wm., tailor, h n e c Franklin and Wall  
 Addy Mrs. Wm., sewing machines, n e c Franklin and Wall  
 Aegan Michael, lab, h S Union  
 Agan Morris, lab, h s Pleasant nr Union Passenger Depot  
 Agnew Barney, farmer, bds n w c Wall and Franklin

# AMERICAN HOUSE,

(FIRST CLASS.)

Corner Main and Court Streets.

---

**C. STEVENS, PROPRIETOR.**

---

The location is the best in the city, and Barn accommodations equal if not superior to any in the State.

Passengers conveyed to and from the Cars  
**FREE OF CHARGE.**

---

Board One Dollar per Day.

---

JANESVILLE, - - - - - WISCONSIN.

## MYERS HOUSE.

**JULIUS GRANGER, PROPRIETOR,**

Corner Main and Milwaukee Sts.

IS THOROUGHLY FITTED UP FOR THE RECEPTION OF GUESTS.

**JANESVILLE, WIS.**

---

## STEVENS HOUSE.

South First Street, between Main and Bluff,

**JANESVILLE, WIS.**

This House is thoroughly fitted and furnished for the accommodation of guests. The travelling public will find it to their interest to patronize this House. Good and commodious Stabling connected with the House.

**G. W. MILTIMORE, Proprietor.**



- Aiken Darwin, h e s Main b S Third and Racine Road  
 Aiken G. V. S., bds Hyatt House  
 Airis Jno., mason, h w s N. River b Olive and Jackson  
 Airis Mrs. Joanna, milliner, bds w s Franklin b Centre & School  
 Akerly Jno., lab, bds e s Jackson b Bluff and Wall  
 Alden Albert W., artist, h n w c Glen and Hickory  
 Alden Alfred, h e s Bluff nr Railroad bridge  
 Alden Chester A., (Jackman & A.) e s Main b S Second and S Third  
 Alden Jas. M., brk mkr, h e s Bluff nr Railroad bridge  
 Alden Jno. L., marble works, e s Bluff b Milwaukee & N First  
**A**LDEN LEVI, Clerk Circuit Court, office county buildings, h s s Racine e Main  
 Alexander Walter S., clk, bds n w c Pleasant and River  
 Alexon Louis, tailor, h s w c Race and Franklin  
 Alison Wm., barb, n s Milwaukee b Main and Bluff h w s Water b S First and S Second  
 Aller —, farmer, bds Stevens House  
 Allen Addison G., h w s Cherry b North and Holmes  
 Allen Asa K., groc, h w s Main b S Third and Beloit road  
 Allen Ira, e s Wisconsin s S Third  
 Allen Jas. L., w s Wisconsin b Milwaukee and Court  
**A**LLEN JOHN W., butcher, upper bridge h s e c Wisconsin and S Third  
 Allen Joseph S., music teacher, Institute for Blind  
 Allen Oscar, clk, h n w c Holmes and Centre  
 Allen Sidney G., clk, bds n e c Dodge and Franklin  
 Allen Thomas S., h Island  
 Altenburg Harvey, conductor, bds s w c Holmes and Linn  
 Amer Wm., phys, n s Milwaukee, b Bluff and Main h n e c Pleasant and Franklin  
**A**MERICAN EXPRESS CO., Jno. W. Nichols, agent, n s Milwaukee b Jackson and Franklin  
**A**MERICAN HOUSE, C. Stevens, proprietor, n w c Main and Court  
 Ames Wm. T., teamster, h w s Bluff b N Third and N Fourth  
 Amsden Mrs. Marcus, milliner, bds e s Jackson b W Bluff and Wall  
 Amsden Marcus, painter, e s Jackson b Wall and W Bluff  
 Anderson Mrs. Eunice S., principal Janesville Young Ladies Seminary, n e c Bluff and N Third, h n e c Bluff and N First  
 Anderson James M., b k, bds n e c Jackson and School  
 Anderson Jesse, barb, s s Court w Water, h w s Water s S Third  
 Anderson Walter, bds Schuyler House  
 Andrew Wm., groc, s e c Milwaukee and Jackson, h e s Cherry b Holmes and School  
 Andrew Wm., lab, h s s Jackson nr Chatham  
 Andrews Edward, painter, w s River b Milwaukee and Dodge, h n w c Union and Franklin  
 Andrews Geo. P., butch, bds s e c Cherry and South



## ED. CONNELL & CO.,

WHOLESALE AND RETAIL DEALERS IN

## GROCERIES, PROVISIONS, Wines, Liquors, Lime, and Wood.

Cash paid for all kinds of Country Produce. Store, corner of Bluff and Milwaukee Streets.

ED. CONNELL.

THOS. J. THORNTON.

## RICE'S TEMPLE OF ART!

**Pictures! Great Reduction in Prices!**

I have opened a Picture Gallery in Janesville, Wis., where you can get any kind of a picture that you may call for. Come one and all and examine samples and prices. I am bound not to be outdone or undersold.

With sixteen years experience in the various branches of the Fine Arts, I am enabled to produce the finest pictures, brilliant and soft in tone, with all of the middle tints and pure white and black.

P. S. Instructions given in the various branches, either with the Instrument or the Brush. Satisfaction warranted, or no charges.

Rooms corner Main and Court, near American House.

E. B. RICE.

## SEATON & CO.,

(SUCCESSORS OF EAGER & CO.,)

MANUFACTURERS OF

## WAGONS, CARRIAGES AND SLEIGHS,

Of Eastern Timber of our own selection.

## BLACKSMITHING AND HORSE SHOEING

Done at short notice and warranted to suit.

Near corner of River and Milwaukee.

D. W. LEWIS,

## GUN & LOCKSMITH.

All kinds of Gun Material, Powder, Shot, Caps, &c., Flasks, Belts, and Pouches, constantly on hand.

RIFLES MADE TO STYLE.

Sewing Machines repaired in the best of order. Keys of all kinds made and fitted to order. All work warranted satisfactory.

Shop Center Upper Bridge.

Andrews Wilbur, painter, bds w s Franklin b Wall and W Bluff  
 Angell Albert H., carp, n s Centre b Academy and Cherry  
 Angell Charles, carp, h e s High b School and Centre  
 Angell Russell R., (Harris, Guild, A. & Tyler,) e s High b Centre  
 and School

Anright Margaret, e s Main nr R R bridge  
 Archer Joseph, h e s River b Oliver and Jackson  
 Armstrong Duane J., printer, bds n e c Locust nnd Holmes  
 Armstrong James, s e c Holmes and Locust  
 Ashcraft Alfred, finisher, h n s N Second b Main and Bluff  
 Ashcraft Geo. clk, bds w s Academy b Centre and School  
 Ashcraft Henry W., barb, s s Milwaukee b Franklin and River  
 Ashcraft Theodore C., bds n s S Second b Division and East  
 Ashley Denison, fireman, h n s Wall b Marion and Madison  
**A** TWOOD VOLNEY, (Lawrence and A.,) s e c Franklin and  
 Dodge.

Austin Bradley, harnessmkr, h s s Court b Elm and Liberty  
**A** USTIN HENRY S., proprietor Schuyler House, s s Milwau-  
 kee b Bluff and Division

## B

**B** AASCH PETER, barber, n w c Milwaukee and Frankln bds  
 Hyatt House  
**B** ABBIT DAVID H., proprietor Oshkosh Lumber yard, all  
 kinds pine lumber, shingles, joists, flooring, posts, &c., e s  
 High b W Bluff and Race, bds w s Jackson b W Bluff and  
 Race.

Babcock Miss Jennie, bds n e c Centre Av and North  
 Badman Charles, tailor, bds Rock County House  
 Bailey Mrs. Abraham C., h s s Racine rd w Fair Grounds  
**B** AILEY E. STILLMAN, (Sloan, Patten & B.,) e s Main b  
 Racine and S Third

Bailey German A., harness mkr, bds w s Main nr Beloit rd  
 Bailey Jno. C., boots, shoes and leather, w s Main b Milwaukee  
 and Court, h n w c East and S Second  
 Bailey Dr. Samuel G., drugs, paints, oils, &c., s s Milwaukee b  
 Franklin and River, h s e c East and Milwaukee

Bailey Wm. H. H., bds w s Division b S Third and Racine rd  
 Baker Alvin J., clerk, bds e s Main s Racine

Baker Joel, farmer, bds e s Main nr First Racine rd

Baker Miss Mary, s s Milwaukee nr bridge

Baker Philip, (Eldredge & B.,) bds w s Main n Racine

Baker Wm., farmer, h w s Locust b Centre and School

**B** ALCH JUDE H., deputy, register deeds, h w s Milton Av b  
 Glen and Hyatt

Baldwin Samuel, conductor, h e s Terrace b W Bluff and Pleas-  
 ant

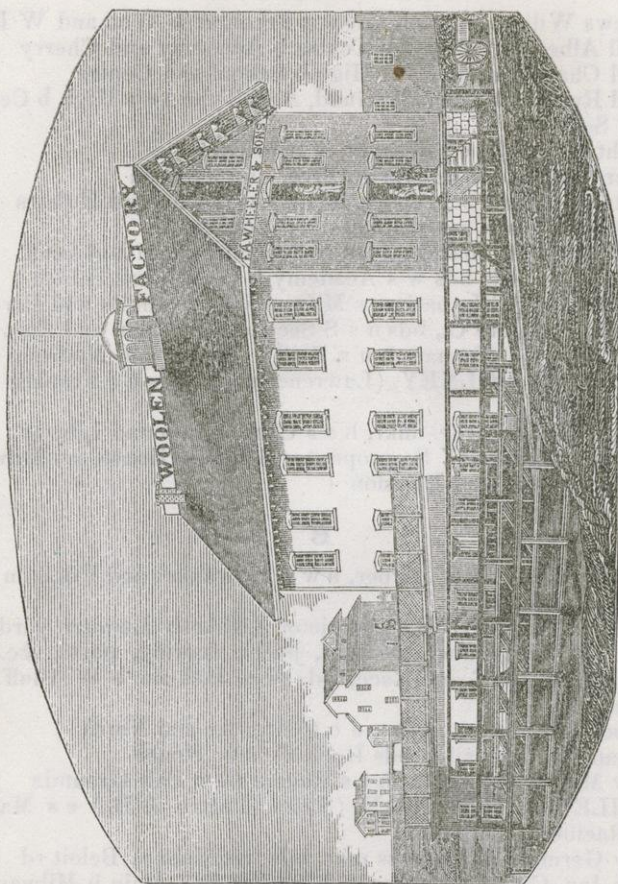
Ball Jno. H., clk, h n e c High and Wall

Ballow Devillo, groc, h s w c Bluff and N Third

Bare Rebecca, servt, w s Washington b W Bluff and Ravine



F. A. WHEELER &amp; SONS,



JANESVILLE, WIS.

**DEALERS IN WOOL**

AND MANUFACTURERS OF

Plain and Fancy Cassimeres, Doeskins, Tweeds, Plain and Checked  
Flannels, Stocking Yarn, &c., &c.

**DOTY & YOUNG,**

MANUFACTURERS AND DEALERS IN

**SASH, DOORS AND BLINDS.**

(Factory on North Third and Main Streets.)

Also dealers in Glass, Paints, Oils, Putty, Sash Locks, Window and  
Door Frames, Turpentine, Lead, &c. Sash Glazed and Blinds  
Painted to Order. Sales Rooms on Main Street, between  
North First and North Second.

E. P. DOTY. }  
R. P. YOUNG. }

**JANESVILLE.**

Barker Jno., conductor, bds e s Centre b School and Holmes  
 Barlass Robert, h e s Chatham b Jackson and Ravine  
 Barnham Jno. R., blk smth, bds w s Franklin nr Holmes  
 Barns G., h n s Court b Division and Wisconsin  
 Baron Thomas, carriage mkr, bds n s Centre nr Pleasant  
 Barrat Patrick, lab, bds n w c Academy and Washington  
 Barrere Felix, w s Jackson b School and Centre  
 Barrett Andrew, lab, h s e c Academy and North  
 Barrett Edward, lab, h w s Palm nr River  
 Barrett Patrick, lab, h s s Racine rd nr Fair Grounds  
 Barron Martin, mason, h n s North b W Milwaukee and Jackson  
 Barron Patrick, mason, h s Washington b Jackson and Union  
 Barrows E. S., hardware, stoves, &c., s e c River and Milwaukee h w s Cherry b School and Holmes  
 Barrows Lyman J., phys, h n w c Wall and Academy  
 Barry Edmund, bar k, bds s w c Main and Milwaukee  
 Barry Edward, bds w s Franklin b School and Holmes  
 Barry Richard, lab, h s Pleasant nr Union Passenger Depot  
 Barson, Mrs. Sarah, s w c School and High  
 Barson Thos. Jr., bds s e c School and High  
 Barstow G. H., bds e s River b Olive and Ravine  
 Barstow Wm. A., h e s River, b Olive and Ravine  
 Barton Darius A., clk, bds Myers House  
 Bartley Patrick, lab, h w s Franklin b W Bluff and Race  
 Bascom Mrs. Mary, h n e c Jackson and Centre  
 Bassett Mrs. Josephine, phys, n s Milwaukee b Main and Bluff  
 Bates Allen C., atty and notary, w s Main b Milwaukee and S First h n e c East and Milton Av  
 Bates James D., farmer, h w s Milton Av b Harmony and East  
 Bates Jeremiah, broom mkr, w s Main b N First and N Second h w s Main b N First and N Second  
 Battray Anthony, lab, h n s Racine road nr Main  
 Baues Geo. B., shoe mkr, h s s Claron b Jefferson and Adams  
 Baxter J., nr cor Jackson and Madison  
 Baynes Geo. B., shoe mkr, h s s Claron b Academy and Jefferson  
**B**EALE JOHN R., hatter and furrier, s s Milwaukee b Franklin and River h s w c Academy and Holmes  
 Beers Rev. Hiram W., w s Madison b Jackson and Ravine  
 Beetle Geo. L., telegraph operator, h n s Academy b W Bluff and Wall  
 Behnke Paul, lab, h w s River b W Bluff and Race  
 Bell Elizabeth, servt, w s Jackson b Milwaukee and Dodge  
 Bell Frank, carp, h s s Racine road e Main  
 Belton John, wagon mkr, bds e s Milwaukee b Franklin & River  
 Belton Jno. W., wheelwright, bds n e c Jackson and W Bluff  
**B**EMIS KIRON W., register of deeds, office s s Court b Main and Bluff h e s Academy b Holmes and North  
 Benaham Jno., lab, h e s Jackson b North and Galena  
**B**ENNETT, CASSODAY & GIBBS, (Jno. R. B., Jno. B. C., & Charles R. G.,) attorneys and counselors at law, s w c Main and Milwaukee



## MAHRLE & JERG,

Are now in successful operation, Cleaning, Dyeing, and Refinishing all kinds of Ladies' Goods, such as Laces, Bareges, Merinoes, Silks, Satins, Fringes, Shawls, Cloaks, &c., &c. To those going in mourning, I would say that I color upon Merinoes, Bareges, Shawls, &c., a pure jet black, that will not rub off or have an offensive smell, and finish them to look nearly or quite as well as new, having that same soft feeling and appearance.

All kinds of Silk Dresses, Merinoes and Muslins, dyed any color, or cleaned to look nearly as well as new goods.

Gentlemen's Clothing dyed or renovated in a very elegant and superior manner.

Corner of Bluff and Milwaukee Streets, Janesville, Wis.

## Ladies! Something for your Benefit!!

### MRS. J. BASSETT, DOCTRESS AND MIDWIFE,

Has arrived, and will practice in Janesville and vicinity.

Will examine all diseases, and tell the causes and the cures. She has a true knowledge of all diseases. Quick Consumptions, Coughs, and Female Weaknesses of all kinds, cured; and will satisfy all those who will favor her with a call.

Mrs. B. can be found at her residence, next door to Palmer's Drug Store, up stairs. Medicines prepared for all diseases, both male and female, sold at my office. All females that require care and attention will find it at the Doctress'.

## Prof. A. LUCAS, BARBER,

Crain's Protected Liquid Lightning Hair Dye,

Manufactured and sold by Prof. A. LUCAS, south side Milwaukee between Franklin and River, up stairs. Also

HAIR OILS, HAIR CREAMS, POMADES, &c.

Restoratives and Invigorators,  
Warranted to give satisfaction, or money refunded.

## Janesville Horse Infirmary. DR. HORNE, Veterinary Surgeon,

From the Buffalo Horse Infirmary Senior Member of the College of Veterinary Surgeons, Philadelphia, &c., &c., would intimate to the owners of Horses, &c., in Janesville and vicinity, that he may be found at the above Institution, situated in the rear of Lawrence & Atwood's Hardware Store, near the American House, where Horses laboring under any kind or description of disease will be received and attended to by himself, and where patients entrusted to his care will have that attention and skill applied to them which a duly qualified practitioner only can give. Horses, Cattle, or any other domestic animal, attended in the country, by night or day.

Horses fired for Spavin, Ring Bone, &c., in the most scientific manner; also pricked in an approved style.

Physic, Fever and Condition Balls, and all other medicines put up and for sale always.

Day or weekly boarders taken. Charges moderate.

Horses with any kind of contagious diseases strictly prohibited.

Horses bought and sold on commission, also examined as to soundness, and a certificate given. The best of references given if required.

WM. HORNE, Vet. Surg.

Bennett C. C., bds Hyatt House

Bennett Daniel, farmer, h e s Milton Av n St Mary's Av

**B**ENNETT DE WITT C., physician and surgeon, s s Milwaukee b Franklin and Jackson bds e s Milton Av nr Benton Avenue

Bennett Ensign, h n s Milwaukee b Bluff and Division

Bennett John R., (B., Cassoday and Gibbs,) n e c W Bluff and Washington

✓ Bennett Nathan H., music teacher, h w s Jackson b Bluff and Race

Bennett Norman A., bds American House

Bennett Orville K., dry goods, crockery and carpets, w s Main b Milwaukee & Court h s w c S First and Bluff

Bennett Walter, tinner, h w s Cornelia b Ann and Harmony

Benter Jacob, brewer, h e s Racine road nr Beloit road

Bentley Geo., eng, h e s Centre Av b School and Holmes

Benton Geo., tobacco and cigars, s s Milwaukee w Main nr bridge h w s Franklin b Centre and School

Berrie Jno., h n w c Centre and Linn

Bertrand Wm., mason, h nr Institute for Blind

Bettler Charles, lab, h w s River b W Bluff and Race

Biling Michael, lab, h n s Western Av nr Railroad bridge

Bishop Wm., e s Bluff b Court and Milwaukee

Black Jno., grain dealer, h e s River b Holmes and School

Black Lewis, cutter, h s w c Madison and Jackson

Blase Julia, servt, w s Main s Racine road

Bleedon Charles, tailor, h s s Harmony, b Caroline and Cornelia

Bliss E. T., clk, bds Hyatt House

Bliss James, carp, h w s Canal b Centre and Jefferson

Blood Andrew J., painter, bds e s Bluff b N Fourth and Glen

Blow Frederick, teamst, h e s River nr Ravine

Bludon Thomas, h s s Benton Av w Milton Av

Bludorn Charles, tailor, h nr cor Harmony and Wisconsin

Bly Edwin P., cab mkr, h w s River b Center and School

**B**ODLE GEORGE, saloon and eating house, s s Milwaukee b Franklin and River

Boies Ethan E., atty, w s Main b Milwaukee and Court, h w s Bluff b N Fourth and Glen

Booker Edwin, dray, h s s S First b Division and Wisconsin

Booth Wm., lab, h w s Milton Av b Glen and Hyatt

Bornhiem Geo., clk, h w s Bluff b N First and N Second

Bornheim Benj., mer tailor, e s Main b Milwaukee and Court, h w s Bluff b N First and N Second

Boss Andrew, jr., City Clerk, office n s Milwaukee b Main and Bluff, bds Hyatt House

Bostwick Joseph M., (Smith & B.,) w s Milton Av b Harmony and Milwaukee

Bostwick Robert M., clk, h w s Milton Av b East and Harmony

Bothe Wm., turner, h n e c Pleasant and Jackson

Boulter Miss Catharine, s w c Glen and Cornelia

Bowen Sarah, servt, n w c Franklin and School



**J. H. TICE,**

Ambrotype, Photograph and Stereoscopic Gallery.

Having facilities second to none in the State, I am prepared to execute all kinds of pictures in the best style. Also

**ALBUM PHOTOGRAPHS,**

Inferior to none. Pictures enlarged, and colored, from the smallest of Daguerreotype to any size desired, and

**A Life-like Likeness Procured.**

Call and see for yourselves.

JOHN R. BENNETT.

J. B. CASSODAY.

CHARLES R. GIBBS.

**BENNETT, CASSODAY & GIBBS,**

**Attorneys and Counselors at Law.**

OFFICE, No. 1 LAPPIN'S BLOCK, JANESVILLE, WIS.

Will furnish full and reliable Abstracts of Title of any lands in Rock County, Pay Taxes, Buy, Sell, Rent (and Loan Money on) Real Estate.

**LAWRENCE & ATWOOD,**

MAIN STREET, - - - - - JANESVILLE,

MANUFACTURERS OF

Tin Ware and Dealers in Stoves, Hardware, Wood, Coal, Stucco, Lime, Water Lime, and Agricultural Implements.

**The Florence Sewing Machine,**

Lock, Double-Lock, Knot, Double-Knot, and Reversible Feed

**SEWING MACHINES,**

New Style, lately Improved, for sale by

**Mrs. FRANCES RAYNER,**

Milwaukee St., over the Post Office, Janesville, Wis.

**OSCAR BROOKS,**

MANUFACTURER OF

**RIFLES, SHOT GUNS, PISTOLS, &C.**

Repairing done at Short Notice. Also, Sewing Machines Repaired. North side Milwaukee, near upper Bridge, (up stairs.)

**J. L. DARLING,**

Manufacturer and Dealer in

**Piano Fortes, Melodeons, Sheet Music, &c.**

All kinds of Musical Instruments Tuned and Repaired.

Opposite Central Bank, Janesville.

**WINTON & VAN DYKE,**

**HOUSE, SIGN AND PICTURE PAINTERS, GILDERS,**

Grainers, Paper Hangers, &c.

Window Shades, Banners, &c., Painted in the Highest Style of Art. Shop North Main st., foot of South First st., Janesville, Wis.

- Bowen Hiram, (Holt, B. & Wilcox,) n s Glen b Milton Av and Maria  
 Bowen Wheeler S., printer, bds Pease's Addition  
 Boyd Frank, clk, bds Madison House  
 Bracket Michael, lab, h w s Beloit rd nr Racine rd  
 Bradford W. S., bds Hyatt House  
 Bradley Daniel W., (D. W. B. & Co.) bds n w c Locust and Centre  
 Bradley Daniel W. & Co., lumber, s e c Pleasant and Linn  
 Bradley Edward, clk, bds n w c Locust and School  
 Bradley Wm. H., h n w c Locust and Centre  
 Brady Edward, peddler, h n s Main n N Fifth nr bridge  
 Braithwait Wilson, bds Rock County House  
 Bramer Jno., lab, h w s Cornelia nr Glen  
 Brand Daniel R., bds s s Milwaukee b River and Franklin  
 Brand Mrs. Lucina, e s Bluff n Glen nr R R bridge  
 Brandt Mrs. G., teamst, h s e c Holmes and Franklin  
 Brandt Thomas, drover, h n e c Milton Av and Glen  
 Brant Wm., teamster, h s e c Franklin and Holmes  
 Bray Mrs. Cecelia, h e s Union b North and Galena  
 Bray Sarah A., servt, s e c School and Cherry  
 Brean Mary, servt, n e c W Bluff and Franklin  
 Brenning Gustavus, shoemaker, bds e s Main b Court and Milwaukee  
 Briennan James, lab, h e s River b Rock and Union  
 Briggs —, plate cutter, bds Farmers' House  
 Broder Alice B., milliner, w s Main b Milwaukee and Court  
 Broder Paul Jr., clk, bds w s Main b Milwaukee and Court  
 Bronson Mrs. Oliver, h n s Ravine b Madison and Washington  
 Brooks Henry, mach, h n s Milwaukee b Bluff and Main  
**B**ROOKS OSCAR, gunsmith, manufacturing and repairing, n s Milwaukee nr bridge, h n s Milwaukee b Bluff and Main  
 Brophy Mrs. —, h s Pleasant nr Union Passenger Depot  
 Brophy Ellen, w s High, b Wall and W Bluff  
 Brophy James, bds nr Railroad Depot  
 Brown Carlos, carp, h n s Ann nr Cornelia  
 Brown Charles A., eng, h n e c Holmes and Franklin  
 Brown Cornelius H., clk Myers House  
 Brown Dan. C., printer, h w s Jackson nr Railroad bridge  
 Brown Geo., eng, h n e c Academy and Race  
 Brown James, saloon, w s River b Milwaukee and Dodge h s e c School and Academy  
 Brown James W., mach, h s s Dodge b High and Jackson  
 Brown Miss Johana, servt, American House  
 Brown Jno., carp, bds w s Main b Court and Milwaukee  
 Brown Jno., fireman, bds s s Centre b Linn and Locust  
 Brown Kate, s w c High and Holmes  
 Brown Mrs. Mahitable, n w c Glen and Hickory  
 Brown Mrs. Phebe, n s Pleasant b Jackson and Franklin  
 Brown Richard, lab, h w s Jackson b Bluff and Race  
 Brown Sarah, servt, Excelsior Hotel



**B. F. PENDLETON,****D E N T I S T**OFFICE ON MAIN-STREET, IN JENKINS & DEWEY'S  
BLOCK, OVER MINER'S BOOT & SHOE STORE.

RESIDENCE ON ACADEMY STREET.

**C. LOFTUS MARTIN,****VETERINARY SURGEON & M. R. V. C.,**

JANESVILLE, WIS.

INFIRMARY, - - - - - BLUFF STREET.

Horses receiving that attention which only persons of long practical experience are able to give.

CHARGES REASONABLE.


**STEVENS HOUSE,**

JANESVILLE, WIS.

GEORGE W. MILTIMORE, Proprietor.

**BOARD ONE DOLLAR PER DAY.**

North First Street, between Main and Bluff.

 This House has lately been renovated, and now contains ample room for any number of guests.

GOOD STABLING CONNECTED WITH THE HOUSE.

Brown Thomas, lab, bds s s Harmony b Caroline and Maria Av  
 Brown Wm. J., farmer, h n e c North and Franklin  
 Browning Charles G., mach, bds Farmers' Home  
 Buchholz Herman, wagon mkr, bds cor Harmony and Caroline  
 Bucklay James, bds e s Main nr Railroad bridge  
 Bucklay Thomas, lab, h e s Main nr Railroad bridge  
 Buckley Morris, miller, h s s Rock b Jackson and Franklin  
 Buckley Wm. H., clk, bds Myers House  
 Bullock Jno. B., jeweller, bds w s Jackson b Bluff and Race  
 Bump & Gray, (Hiram B. and Frank G.,) produce and com mer,  
     s Pleasant nr Union Passenger Depot  
 Bump Hiram, (B. & Gray,) w s Madison b Jackson and Ravine  
 Buob Jno., (B. & Rogers,) e s River b Jackson and Olive  
 Buob Michael, bds e s River b Olive and Jackson  
 Buob & Rogers, (John B. & A. R.,) pros City brewery, e s River  
     b Jackson and Olive  
 Burdick Edward, (B. & Newell,) w s Academy b Holmes & North  
 Burdick Mary, w s Main b N First and N Second  
 Burdick & Newell, (Edward B. & Harlow N.,) groc, provisions,  
     crocery, &c., s s Milwaukee b Franklin and Jackson.  
 Burdick Rowland S., cab maker, h s e c Academy and Holmes  
 Burgess James M., P. M., h w s Division b S Third and Racine rd  
 Burnham Mrs. Cynthia, h e s Bluff b N Fourth and Glen  
 Burnham Samuel C., h w s Bluff b N Third and N Fourth  
 Burns Jno, lab, h n River b Locust and Linn  
 Burns Margaret, servt, Excelsior Hotel  
 Burns Patrick, lab, h e s Franklin nr R R Bridge  
 Burns Thomas, teamst, s w e W Milwaukee and North  
 Burpee Austin E., carp n s Wall b Jackson and Franklin h w s  
     Madison b Racine and Bluff  
 Burrows Geo. S., fireman, h n s North b Locust and Academy  
 Burroughs Wm. P., mail contractor, n e c Franklin and Dodge  
 Bush Wm. H., carp, bds n w c Ringold and Josephine  
 Busfield Jno., spinner, h e s Franklin nr Ravine  
 Butler Celia, servt, n Wall b Jackson and High  
 Butler Linus H., carp, h s w c Franklin and North  
 Button Pelire, carp, h s s Glen w Cornelia  
 Bylan Jno, lab, h Smiths Addition nr R R  
 Byrne James, coop, bds s s Holmes b Jackson and High  
 Byrne Thomas, mason, h e s Chatham b Jackson and Ravine  
 Byrnes James, stone mason, h w s Academy b W Bluff and Wall

## C

Cahill Morris, lab, h e s River s Union  
 Cairns Robert, stone cutter, h w s Cherry b Holmes and North  
 Calahine Jerry, lab, h s s Pleasant nr R Road  
 Caley Daniel, h w s Pearl b Jackson and Ravine  
 Calf Edward, tinsmith, e s Franklin b Dodge and Milwaukee h  
     s w c Franklin and Holmes  
 Calkins Almon H., h e s Main nr Second Racine Road



# CHICAGO BREWERY,

ESTABLISHED 1835.

## LILL & DIVERSEY.

**BREWERS XXX STOCK, PALE, AMBER AND BITTER**

**Ales, Lager Beer, Brown Stout and Porter.**

DEALERS IN MALT AND HOPS.

*MANUFACTURERS OF MALT VINEGAR.*

**ALES, PORTER AND VINEGAR AT CHICAGO PRICES.**

*Cash paid for Barley at the North Western Depot.*

JOHN LILL, Agent,

JANESVILLE, WIS.

Campbell Ezra F., clk, h w s Franklin b Pleasant and Centre

Campbell Geo., miller h w s River b Jackson and Olive

Campbell Ithamore ostler, Stevens House

Cannon Daniel, section master, h w s Terrace b W Bluff and Ravine

Cantillon Patrick, lab, h w s Hickory b St. Mary av and Walker

Carey Samuel, barber, bds n e c Main and Milwaukee

Carle Levi B., (Dann & C.,) n w c School and Locust

Carle Patrick, lumberman, h w s Pearl b W Bluff and Ravine

Carlson Charles moulder, h w s Main b N Fourth and N Fifth

Caroy Anthony, bds Janesville House

Carpenter Wm., clk, bds n e c Linn and School

Carpenter Oliver S., h n s Race b High and Academy

Carr Miss Ellen, n e c Jackson and Holmes

Carr Jno, lab, h n s Western Av b Walnut and Pine

Carr Othniel, mason, h w s Liberty nr Ruger Av

Carr Robert, stone cutter, h n s Racine Road w Fair Grounds

Carroll Kate, waiter, Myers House

Carroll & Lee, (Philip C. & Andrew L.,) meat store, s w c Franklin and Wall

Carroll Philip, (C. & Lee,) res Town Janesville

Carroll Patrick, h Mitchell's Addition

Carswell Geo., clk, bds s w c Jackson and South First

Carswell Lockhart R., grocery and variety e s Main b Milwaukee and Court, h s w c Jackman and S First

Carson Mrs. T., e s River b Centre and School

Casar Wm., grain dealer, h s s Milwaukee b Franklin and River

Case Albert M., teacher, h n e c Centre and North

Case F. N., bds Schuyler House

Case Joseph C., carp, h e s Franklin b Race and Ravine

Case Nathaniel, carp, h n s Milwaukee b Main and Bluff

Case Wilmot W., carp, h s w c Palm and Western Av

Casey Mrs., h s Pleasant nr Union Passenger Depot

- Casey Patrick, lab, h w s Centre Av b School and Holmes  
 Casey Thomas, lab, h s Pleasant nr Union Passenger Depot  
 Casford Wm., lab, e Beloit road nr Second Racine road  
 Casler Wm., yard master, h w s Linn b Holmes and North  
**C**ASSODAY JOHN B., (Bennett C. & Gibbs) n w c Franklin  
 and School  
 Castle Josiah, carp, h s e c Glen and Caroline  
 Cawley James, lab, h s s Benton Av w Milton Av  
 Ceaveison Susan, servt, Hyatt House  
 Central Bank of Wisconsin, n w c Milwaukee and River, E R  
 Doe pres, J D Rexford cashr  
 Chamberlain Clark, brakesman, bds Hyatt House  
 Chamberlain James, fireman, bds Rock County House  
 Chamberlain Milton, conductor, bds Hyatt House  
 Chapin Alanson, h s w c Ravine and High  
 Chapin Josiah S., h s w c School and Jackson  
 Chapman Frederick L., h w s Madison b W Bluff and Ravine  
 Chapple Jno, wagon mkr, e s Franklin b Milwaukee and Wall, h  
 w s Pearl b W Bluff and Ravine  
 Chase Jno, miller, bds Myers House  
 Chase Jno, farmer, h w s Linn b North and Galena  
 Chase Stephen, farmer, h n e c Academy and Centre  
 Cheney Charles, teamster, h n w c Galena and Locust  
 Cheney Charles C., insurance agt, h n w c Locust and Galena  
 Cheney Chauncy J., carp, h n w c Jackson and River  
 Cheney S. C., clk, bds Myers House  
 Chesbroe Washington, (D. Stevenson & Co.), res Delavan  
 Chester Alden E., bds Rock County House  
 Chicago and Northwestern R R Depot, nr cor Centre Av, H E  
 Pattison agt  
 Childs Elias W., marble works, n s Milwaukee b Main and Bluff  
 Chisholm Jno, coop, h e s River b Centre and School  
 Chisholm Samuel, h e s Centre Av b North and Holmes  
 Chittenden Dr. Geo. W., phys, h w s Academy n Race  
 Church Charles, dept sheriff, h s w c Water and S Second  
 Church Jonathan, farmer, h D Noggle's Addition  
 Church Zala M., clk, h s s W Bluff b Academy and High  
 City Brewery, Buob & Rogers, pro, e s River b Jackson and Olive  
 Clark Chatman, coop, h A H Smith's Addition nr R R  
 Clark Elizabeth, servt, w s Academy b School and Holmes  
 Clark Francis, miller, bds s e c N Second and Main  
 Clark Henry O., h w s Cherry b Holmes and School  
**C**LARK J. & J., proprietors Bower City Mills, Race n Mil-  
 waukee  
 Clark James, miller, bds Myers House  
 Clark James, (J. & J. C.), bds n e c Jackson and Pleasant  
 Clark Jno, (J. & J. C.), s e c N Second and Main  
 Clark Jno. M., printer, bds Rock County House  
 Clark Jno, miller, h s e c Main and N Second  
 Clark Jno, lab, h n s St. Mary's Av n R R  
 Clark Mrs. Lydia, milliner, e s Main b Milwaukee and Court



- Clarke Nathan O., (Oreutt & Co.,) n e c Linn and School  
 Clarke Peter, lab, h e s Cherry b North and Holmes  
 Clark Wm., miller, bds n s Milwaukee b Franklin and River  
 Clark Wm., lab, h w s River b W Bluff and Race  
 Clow Daniel, mach, h w s Academy b Centre and School  
 Cobb Samuel, h e s Chatham b W Bluff and Pleasant  
 Cobb David H., farmer, h e s Beloit rd nr Racine rd  
 Cobb Steven, boarding, s s Pleasant b Cherry and Academy  
 Cobb Simeon, mach, bds s w c Centre Av and Holmes  
 Coben Philip, shoe mkr, h s e c River and School  
 Cody Wm., lab, h e s Milton Av b Harmony and Glen  
 Cole Nelson, builder, e s Main b N Second and N Third, h w s Wisconsin b Milwaukee and Court  
 Cole Samuel P., phys and surgeon, s s Milwaukee b Franklin and River, h n w c School and Cherry  
 Cole Thomas, carp, h s s St. Mary Av b Milton Av and Sarah  
 Colling Geo. K., carp, h w s Main b S Third and Beloit rd  
 Colling Wm. H., carp, h e s Sinclair nr Court  
 Collins Henry W., (Tallman & C.,) e s Bluff b S Second and Third  
 Collins Jno., farmer, h s s Racine rd e Main  
 Collins Jno., lab, h s Pleasant nr Union Passenger Depot  
 Collins Patrick, eng, h s s Holmes b High and Jackson  
 Collins Wm., carp, h e s Jackson b S Second and S Third  
 Colony Geo. J., mason, h w s Maria b Glen and Hyatt  
**COLWELL CHARLES B.**, wholesale drugs and groceries, e s Main b Milwaukee and Court, h w s Academy b Centre and School  
 Colwell Charles R., clk, bds w s Academy b Center and School  
**COMSTOCK HEMAN N.**, attorney, and police justice, s w c Main and Milwaukee h s e c Locust and Galena  
 Concanon Mrs. Catharine, w s River n Union  
 Concanon Michael, coop, h w s River b Union and Rock  
**CONGER & HAWES**, (Harmon S. C. & Wm. B. H.,) attorneys and councilors at law, n w c Milwaukee and River  
**CONGER HARMON S.**, (C. & Hawes,) bds w s Madison b Jackson and Ravine  
 Conley Jno., lab, h e s Jackson s Union  
 Conley Jno., lab, h n s N Third b Bluff and Main  
 Connell Ed. & Co., (Ed. C. & Thomas J. Thornton,) groceries, provisions, liquors, lime and wood, s w c Milwaukee and Bluff  
**CONNELL EDWARD**, (E. C. & Co.,) s s Milwaukee b Wisconsin and East  
 Connell Thomas, lab, h s s Racine rd nr Fair Grounds  
 Conners Catharine, servt, Hyatt House  
 Conners Geo., lab, h s s Pleasant nr Railroad  
 Conners Hannah, waiter, Myers House  
 Conners James, lab, h w s Division b Milwaukee and Court  
 Connors & Co., (Patrick C. & John Conway,) liquors, s s Milwaukee b Franklin and Jackson  
 Connors Jno., lab, h s Pleasant nr Union Passenger Depot

- Connors Mary, waiter, Myers House  
 Connors Patrick, (C. & Co.) n w c Franklin and Holmes  
 Connors Patrick, lab, h s Pleasant nr Union Passenger Depot  
 Connors Patrick, h n w c Franklin and Holmes  
 Conors Dudley, lab, h n s Western Av nr R R bridge  
 Conrad Charles H., groc and provisions, e s Main b Milwaukee  
 and Court, h w s Main b S Second and S Third  
 Conrad Jno H., clk, bds w s Main b S Second and S Third  
 Conroy Anthony, lab, bds Janesville House  
**C**ONROY REV. JOHN, pastor St. Cuthbert's Cath Church, h  
 e s Cherry b Holmes and North  
 Conroy Martin, lab, h w s Bridge nr R R Monterey  
 Conroy Wm., h s e c Cherry and South  
 Conway Jno., (Connors & Co.) nr Passenger Depot  
 Conway Jno., clk, h e s Washington b W Bluff and Wall  
 Cook Beri, h w s Academy b Holmes and North  
 Cook Daniel S., shoe mkr, h w s Pearl b Ravine and Jackson  
 Cooke Geo., butch, h w s Main b S Third and Beloit rd  
 Cooley Mrs. Jane, b Franklin and W Milwaukee n North  
 Copp Amasa, conductor, h n s Ravine b Terrace and Washing-  
 ton  
 Coppenger Michael, h s s Milwaukee b Jackson and Franklin  
 Coppinger Robt. F., bds n e c Jackson and Pleasant  
 Corey Hiram, carp, h cor Palm and Western Av  
 Carlson Carl, moulder, h w s Main nr dam  
 Cormick Jno., bds Myers House  
 Corn Exchange, n e c Milwaukee and Franklin, Alexander Suth-  
 erland president, Nathan O. Clark, vice president, Charles H.  
 Willmarth, secretary, Charles Williams treasurer. Meetings  
 held first Monday in each month  
 Corners Charles, lab, h s s Pleasant nr R R  
 Coryell A. P., phys and surgeon, s e c Franklin and Milwaukee, h  
 s e c Franklin and Centre  
 Cosgrove Michael, lab, n s Glen nr Hickory  
 Cotes Patrick, lab, s s South b Academy and Locust  
 County Jail, n w c Water and S Second  
 Covell Elisha, h n w c Jackson and Pleasant  
 Covell Selathiel G., groc and provisions, s s Milwaukee b Jackson  
 and Franklin, h n w c Jackson and Pleasant  
 Cowell Joshua, farmer, h n w c Milton Av and Benton Av  
 Cox Jno., carpet weaver, h n w c W Bluff and Franklin  
 Cox Mrs. Susanna, h s e c Franklin and Ravine  
 Cox Wm., mason, h w s Maria b Ann and Glen  
 Crane Lawrence, lab, h e s Locust b Galena and Washington  
 Crane Timothy, lab, h n s Western Av nr R R bridge  
 Croke Jno., lab, h w s Washington nr Boundary  
 Crossett Benjamin F., (Ford & C.) s w c Dodge and High  
 Cravin Michael, lab, h w s River s North  
 Croak Thomas, lab, h e s River s Union  
 Croft Mrs. Elizabeth, w s River b School and Centre  
 Croft Joseph L., carp, h w s Washington b Jackson and Ravine



Crowley Ellen, s w c Bluff and Glen  
 Croke Nicholas, lab, h s Washington b W Jackson and Union  
 Croke Thomas, lab, h e s Pearl nr Jackson  
 Croke Wm., lab, h e s Pearl nr Jackson  
 Cronan Michael, ostler, Excelsior Hotel  
 Cronon Michael, lab, h n s Western Av nr R R bridge  
 Crosby Frederick W., Teller Rock Co. Bank, bds w s Highland  
 b Benton and St. Mary Av  
**C**ROSBY JAMES B., Cashier Rock County Bank, h w s  
 Highland b Benton and St. Mary Av  
 Cross Henry L., butch, h w s Academy b Galena and Washing-  
 ton  
 Culver Henry P., h e s Main b S 1st and S 2d  
 Culver Samuel H., groc and provisions, n e c Court and Main,  
 bds s Main b S 1st and S 2d  
 Cunningham Jno., peddler, h w s Main n N Fifth  
 Curler Mrs. G. A., vest mkr, h s e c Locust and Centre  
 Curren Thomas, mason, bds e s Cherry b North and Holmes  
 Curtis Geo. R., drugs, paints, oils, &c., s w c Milwaukee and  
 Franklin, h s s Holmes b High and Franklin  
 Curtis Jno., eng, h e s Chatham b W Bluff and Pleasant  
 Curtis Milo H., truckman, h e s High b School and Holmes.  
 Curtis Reuben B., pastor M. E. Church, h n e c School and Cherry  
 Curtis Wm., eng, bds e s Chatham b W Bluff and Pleasant  
 Cushman Seth C., bds w s Main b Court and S First  
 Cutts Alonzo K., (Nash & C.,) e s Bluff b N Second and N  
 Third

## D

Daly Bernard, coop, w s River b Holmes and School  
 Daly Patrick, h s w c Glen and Hickory  
 Dann & Carle, (Obed D. and Levi B. C.,) groc, n s Milwaukee  
 b Franklin and River  
 Dann Obed, [D. and Carle,] n w c North and Locust  
 Dano Francis, farmer, h n s Jackson nr Boundary  
 Darling Darius, Island  
**D**ARLING JOSEPH L., music, musical instruments, &c., s  
 w c Milwaukee and River  
 Darrow Merritt, n e c Washington and Milwaukee  
 Davey Daniel M., miller, bds e s Terrace b Jackson and Ravine  
 Davey David C., bds e s Terrace b Jackson and Ravine  
 Davey Geo. B., e s Terrace b Jackson and Ravine  
 Davey Geo. H., miller, h n e c Terrace and Ravine  
 Davids Mrs. Sarah, n e c Academy and Pleasant  
 Davies David jr., groc, s s Milwaukee b Franklin and River, h n  
 w c Jackson and Race  
 Davies Edward H., clk, n w c Jackson and Race  
 Davis David E., lab, h w s Chatham b W Bluff and Ravine  
 Davis Francis M., e s Washington b W Bluff and Ravine  
 Davis German H., (D. & Jacobs,) h n s Pleasant nr Palm

- Davis & Jacobs, (German H. D. & Hannibal C. J.,) produce, w s  
 Centre Av nr Union Passenger Depot  
 Davis Loren, Monterey  
 Davis Reese W., mason, h w s Centre Av b Canal and Claron  
 Davis Thomas, carp, h w s Jefferson b Western Av and Claron  
 Day L. & Co, (Lorenzo D. & Fessenden J. D.,) boots and shoes,  
 n s Milwaukee b Main and Bluff  
 Day Fessenden (L. D. & Co.,) bds e s Caroline b Ann and Glen  
 Day Lorenzo, (L. D. & Co.,) n s Milwaukee b Main and Bluff  
 Day Jeremiah, Island  
 Day Jno., lab, h s Pleasant nr R R  
 Dea John, lab, h s Pleasant nr Union Passenger Depot  
 Deady James, blksmith, bds n s Dodge b River and Franklin  
 Dean Edward F., paiuter, h s s Harmony b Cornelia and Caro-  
 line  
 Dearborn Nathan, groc, n e c Main and Milwaukee, h s e c Lo-  
 cust and South  
 Dearborn Orin J., books, stationery and bindery, n w c Milwau-  
 kee and Main, bds Myers House  
 De Baun Andrew, cigars, n w c Franklin and North  
 Decker Miss Abigail, w s Milwaukee b Main and Bluff  
 De Groat M., n s St. Mary Av b Maria and Milton Av  
 Deitz J. W., teacher of handicraft, Institute for Blind  
 Delaney Ann, servt, American House  
 Delaney Margaret, servt, American House  
 Delaney Martin, w s William nr Walker  
 Delano Charles W. H., baggage man, w s Jackson b Race and  
 Ravine  
 Demming Margaret, servt, n e c Wall and Academy  
**D**ENELL JOHN A., watches, clocks, jewelry, &c., s e c  
 Main and Milwaukee, bds Myers House  
 Denning Jno., dray, h s s Polk e Ringgold  
**D**ENNISTON JAMES A., baker and confectioner, s s Mil-  
 waukee, b Franklin and Jackson  
 Denton Sidney, s s S First b Main and Bluff  
 Dermady James, lab, h e s Franklin s North  
 Detbner Fred., broom mkr, h s s Glen w Cornelia  
 Devny Jno., lab, h s Pleasant nr Union Passenger Depot  
 Dewey Alfred, carp, h e s Milton Av n Benton Av  
 Dewey Henry, blksmith, bds s e c Franklin and Holmes  
 Dewey Horace, millwright, h n w c Jackson and Rock  
 Dewey Jno., cig mkr, h n e c Holmes and Franklin  
 Dewey Martin, carp, h w s Jackson b Rock and Union  
 Dey Jno. M., carp, h n s Milwaukee b Main and Bluff  
 Dey Samuel L., h s w c Locust and School  
 Dichls Geo., clk, bds, n w c Milwaukee and Wisconsin  
 Dickson Ephraim, helper, h n w c Oliver and Madison  
 Dickson Jno. P., farmer, h w s Main b S Third and Beloit rd  
 Diggins H. W., conductor, bds Hyatt House  
 Dimick Mrs. Laura, w s Washington b Jackson and Ravine  
 Dimock Edward L., (Jackman and D.,) e s Academy n Race



Dinnin Silas P., printer, bds Hyatt House  
Disntell Francis, brakeman, h s w c School and Cherry

**D**IVERSEY MICHAEL,  
(Lill & D.,) res Chicago

Dixon Ephraim, lab, h n s River e N Washington

Dixon Wm., team, h e s Main nr Racine rd

Dodge Dana D., carp, h Monterey

**D**ODGE EDWARD F., physician, n w c Milwaukee and Main  
bds w s Jackson b Milwaukee and Dodge

Dodd Jno., stone mason, h s e c Galena and Locust

Doe E. R., pres, Central Bank, bds Hyatt House

Doe J. B., assist. cashier, Central Bank, h w s High b Milwaukee  
and Wall

Dolan Michael, lab, h s Pleasant nr Unior Passenger Depot

Donahue Daniel, conductor, bds Hyatt House

Donahue Margaret, servt, w s Academy n Race

Donigan Mary, servt, e s Cherry b Holmes and School

Donley Mrs. Bridget, e s Cherry b Rock and Union

Donnovan Jerry, lab, h n w c William and Walker

Donoghue Timothy, lab, h s w c Centre and Franklin

Donohoe Thomas, lab, s s Pleasant nr Railroad

Dooley Martin, farmer, h nr Institute for Blind

Dooley Thomas, lab, h s s Benton Av w Milton Av

Dooling Christie, lab, bds s e c East and Milwaukee

Doolittle A., fireman, bds Hyatt House

**D**OOLITTLE S. H., painter, s w c Milwaukee and Bluff, h e s  
Bluff b N Third and N Fourth

Doran Michael, tailor, h n s Glen nr Williams

Dorr Charles W., e s Jackson b Centre and School

Dos David, lab, h n e c N Third and Main

Doty E. P., (D. & Young,) n s Racine rd nr Fair Grounds

Doty Ellis, foreman Gazette office, h n w c Bluff and N Second

Doty Henry, mason, h n s South b Cherry and Franklin

**D**OTY & YOUNG, (E. P. D. & R. P. Y.,) sash door and  
blind factory, w s Main b N First and N Second

Doty Z. S., bds n s Racine rd nr Fair Grounds

Dougherty Jno., lab, h nr cor Galena and Union

Douglas Adam B., n e c S Second and Division

Douglass Geo. A., marble works, s w c Water and Court, h n w  
c River and Jackson

Douglass Jno. J., stone cutter, h cor River and Jackson

Douglass Jno., e s Main b N Second and N First

Douglass Lucus, boarding and Stable, s s Wall b Jackson and  
Franklin, bds Hyatt House

Douglass Rev. Wm. H., e s bridge n railroad

Dower James, lab, h e s Pleasant n railroad

Dower Michael, lab, h n s Milwaukee b Academy and Locust

Dowire Jno., lab, h s w c River and Race

Dowling Daniel, mason, h w s Terrace b Ravine and W Bluff

Down Fred'k R., carp, bds s e c Harmony and Milton Av

Down Richard, carp, h s e c Harmony and Milton Av

Downing Joseph, coop, bds Schuyler House  
 Downs Francis E., moulder, h n e c Centre and Washington  
 Doyle Catharine Mrs., w s Franklin b Wall and W Bluff  
 Doyle Lawrence, laborer, h w s Terrace b Bluff and Ravine  
 Doyle Mary, servt, w s Madison b Jackson and Ravine  
 Doyle Michael, lab, h n s N Third b Main and Bluff  
 Drake Jno. F., h n e c School and Locust  
 Dramsfield James B., boot and shoe mkr, s e c Milwaukee and Franklin, bds n e c Jackson and Pleasant  
 Draper Jno., producee, h w s Academy n Race  
 Driscoll Simon, dray, h s s Second Racine rd nr Beloit rd  
 Drummond Ann, servt, n e c School and Locust  
 Drummond Kate, servt, n e c School and Locust  
 Drummond Thomas H., teamster, h s e c Glen and Cornelia  
 Dugan Thomas, blksmth, h cor Harmony and Caroline  
 Dumphy Michael, lab, h w s Chatham b W Bluff and Ravine  
 Duncan Miss Jane, bds n e c W Bluff and Madison  
 Dunn Charles W., marble cutter, bds Hyatt House  
**D**UNN JNO. J., wholesale and retail liquors, s s Milwaukee b River and Franklin h n e c W Bluff and Franklin  
 Dunn Martin, (Hutson & D.) bds Hyatt House  
 Dunn Michael, lab, h e s River nr Union  
 Dunn Wm., tailor, h s w c Western Av and Gold  
 Durkee Mrs. S. G., millinery, n s Milwaukee b River and bridge h n s Milwaukee b River and bridge  
 Dustin Seth P., w s Gold b Western Av and Clarion  
 Dutton Ezra, farmer, h s s Milwaukee b High and Jackson  
 Dutton Noah, farmer, h w s Terrace b W Bluff and Ravine  
 Dwyer John H., bar k, bds n e c W Bluff and Franklin

## E

Eager Artemus H., blksmth, h w s Franklin b Rock and Holmes  
 Eager Wm. A., blksmth, h w s Franklin b Holmes and Rock  
 Eagle Brewery, Jno. Grovier pro, n s Milwaukee nr bridge  
 Earing Henry B., tinsmith, bds w s Franklin b Wall and W Bluff  
 Earing Wallace G., stoves and tin ware, n s Milwaukee b Franklin and River, bds Hyatt House  
 Eaton Samuel, lab, h n s Racine rd w Fair Grounds  
 Eaton Thomas, dray, h n s Racine rd w Fair Grounds  
**E**BBETTS WM. H., attorney, n s Milwaukee b Main and Bluff h n w c N Third and Bluff  
 Ebert Geo., carp, h e s River s Union  
 Eccleston Wm., saloon, liquors, w s Main n N First  
 Echlin & Foote, (Joseph C. E. & Edward F. F.,) mer tailors, n s Milwaukee b River and bridge  
 Echlin Joseph C., (E. & Foote,) w s Jackson b Dodge and Pleasant  
 Eddy Safford, blksmth, h e s Franklin b Race and W Bluff  
**E**EDWARDS JNO. J., pro Western Novelty Works, machinery, casting and repairing, s e c W Bluff and Franklin, bds w s River b Jackson and Olive



- Ehle John B., saloon, e s Main b Milwaukee and Court  
 Eizinger Jno., tailor, bds Farmer's Home  
 Eldred Frederick S., groc, n e c Milwaukee and River h n w c  
 Academy and Holmes  
 Eldredge & Baker, (James L. E. and Philip B.,) groc, w s Main  
 n Milwaukee  
 Eldredge Barnabas B., (E. & Pease,) w s Main b S Third and  
 Racine  
 Eldredge Jas. L., (E. & Baker,) e s Main s Racine  
**E**LDREDGE & PEASE, [Barnabas B. E. and Jno. J. R. P.,]  
 attorneys, e s Main b Milwaukee and Court  
 Eldredge Spencer, clk, bds w s Main b S Third and Beloit rd  
 Elles Miss Mary, waiter, American House  
 Eller Wm., (Seaton & Co.,) bds Schuyler House  
 Eli Mrs. Mary, h s s Dodge b High and Jackson  
 Ellis & Bro., (Henry E. and Arthur E.,) bakery and confec, e s  
 Main b Milwaukee and Court  
 Ellis Isaac, bds s w c Palm and Western Av  
 Elsham James, wagon mkr, h c s Pearl b W Bluff and Ravine  
 Elson Jno., carp, h e s River b Olive and Jackson  
 Ely Geo. B., w s Bluff n N Fourth  
 Emerson Celestia, servt, Hyatt House  
 Emerson Helen, waiter, Myers House  
 Emmons Edward, painter, h e s River nr R R  
 Engel Elizabeth, servt, w s Academy b School and Centre  
 Enright Patrick, harness mkr, bds e s Main nr Railroad bridge  
 Erler August E., lab, h s w c Western Av and Linn  
 Erring Henry, tinsmith, bds w s Franklin b Wall and W Bluff  
 Erwin Mrs. Augusta, dress mkr, e s Jackson b Wall and W Bluff  
 Estes Henry C., blksmth, h w s Jackson b W Bluff and Race  
 Estes Stephen M., carriage mkr, h w s Franklin b Wall and W  
 Bluff  
 Ethridge Benjamin, blksmth, h w s River b W Bluff and Race  
 Evans Carie, servt, s w c Academy and Milwaukee  
 Evans Jack, wagonmkr, bds Stevens House  
 Evans Jno., carriage mkr, bds n e c Jackson and Pleasant  
 Evens Joseph, teamster, s w c School and Linn  
 Evenson Guilbert, shoemkr, h e s Milton Av b Harmony and Mil-  
 waukee  
**E**VENSON OLE, plow manuf., w s Main b N Third and N  
 Fourth, h w s Milton Av nr Harmony  
 Everson Evert, cabmkr, res Rock T  
 Ewer H. D., clk, bds Hyatt House  
**E**XCELSIOR HOTEL, ALVIN NORRIS pro, n e c Main  
 and N. First  
 Excelsior Mill, C. W. Hadson pro, Race  
 Eycleshimer Platt, h s e c Jackman and Court

## F

Falder Jno., shoemkr, bds w s Bluff b Milwaukee and Court

Faley James, eng, h e s Main n N Fifth

Falon Patrick, lab, bds s w c School and Franklin

Farland Mary, servt, Schuyler House

**F**ARMERS' HOME, MICHAEL GEISS pro, s s Milwaukee  
b Bluff and Main

Farmers' Mill, Jackman & Alden pro, s s Milwaukee b River  
and Bridge

Farnd Geo., h w s Academy b Holmes and North

Farrell Michael, (Mealey & F.,) e s Franklin b W Bluff and Race

Fathers Jno., s s N Third b Bluff and Main

Feeney Patrick, n s South b Academy and Cherry

Fenton Elias J., livery stable, e s Franklin b Milwaukee and  
Wall, h n w c Franklin and Wall

Fenton Seneca, lab, bds n w c Wall and Franklin

Ferris Geo. C., pro Novelty Mill, Race n Milwaukee, h w s Pearl  
b Jackson and Washington

Feulon James, lab, h s Pleasant nr Union Passenger Depot

Fields Mrs. C., bds s e c School and Cherry

**F**IFIELD L. & BRO., (Lavitt F. and David E. F.,) lumber,  
shingles, flooring and eave spouts, w s River b Dodge and  
Pleasant

Fifield David E., (L. F. & Bro.,) s e c Linn and Centre

Fifield Lavitt, [L. F. and Brother,] w s River b Dodge and  
Pleasant

Fifield Thomas B., e s Jackson nr railroad

Finland James, lab, h nr Engine House

Finlay Bridget, servt, n s Race b High and Jackson

Finnigan Kate, servt, Myers House

Fish Esli, w s Pearl b W Bluff and Ravine

Fisher Bennet, lab, h e s Bluff nr R R bridge

Fisher S. Canning, b k, h e s High b School and Centre

Fissel James, brakeman, bds Rock County House

Fitch A. N., bds Schuyler House

Fitch H. S., bds Hyatt House

Fitzgerald Jno., marble cutter, bds American House

Fitzgerald Jno., stone cutter, bds cor River and Jackson

Fitzgibbon Edward, mach, bds s w c Linn and North

Fitzgird Jno., lab, bds s s Harmony b Caroline and Maria Av

Fitzpatrick Austin, mason, h n s Union b River and Franklin

Flanagan J., blksmth, bds Stevens House

Fleming I., brakeman, bds Myers House

Flemming Nicholas, lab, h s s Polk e Ringold

Flynn Levi, s s S First b Main and Bluff

Fogerty Patrick, lab, h s s Milwaukee nr railroad

Folds Mrs. Harriret, s w c Glen and Cornelia

Folds Richard, cashier, bds s w c Glen and Cornelia

Folds Robert W., clk, bds s w c Glen and Cornelia

Foley James, shoe mkr, h n s North w Milwaukee



Follins —, w s Franklin s Union  
 Folly Thomas, lab, s s Milwaukee nr Terrace  
 Folsom Miss Margaret, dress mkr, w s Jackson b Milwaukee and Wall  
 Folsom Dr. Zimri, oculist, w s Jackson b Milwaukee and Wall  
 Foord Sylvester, Jr., City Treasurer's office, n s Milwaukee b River and Jackson, h w s Jackson b Centre and School  
 Foote Mrs. Catharine, s s Centre b Linn and Locust  
 Foote Edward F., (Echlin & F.,) bds Hyatt House  
 Ford & Crossett, (Oliver B. F. & Benjamin F. C.,) pro Phoenix mills, Race n Milwaukee  
 Ford Jonas L., cutter, bds n e c Jackson and Centre  
 Ford Oliver B., (F. & Crossett,) n w c Franklin and Race  
 Ford Patrick, coop, h e s Franklin b Union and Rock  
 Ford Samuel D., miller, bds n w c Franklin and Race  
 Foster Geo., mason, h s s Racine rd w Fair Grounds  
 Foster Thomas, miller, h e s Locust b Holmes and School  
 Fowler Miss Alice, s w c Centre and Franklin  
 Frank Christian, dyer, h w s Bluff b N First and N Second  
 Francis Charles, gardener, h n w c Glen and Stoughton  
 Franklin Andrew, lab, h s e c Franklin and Ravine  
 Fredendall Jno. C., h w s Main nr Beloit rd  
 Fredericks Wm., bds s w c Jackson and Bluff  
 Fritz Gustavus, saloon, e s Main b Court and Milwaukee  
 Froman Jno., news boy, bds Hyatt House  
 Frost Thomas G., clk, bds n w c School and Locust  
 Frulson Stengrim, w s High b Ravine and Race  
 Frusher Thomas W., clk, n s Pleasant b River and Franklin  
 Fryor Daniel, w s Bluff b N Fourth and bridge  
 Fuller Rev. Cyrenius M., w s Bridge nr R R  
 Fuller Sydney, carp, h e s Pearl b Ravine and Jackson

## G

Gagan Patrick, nursery, w s Beloit rd nr Boundary  
 Gahagan Mary, servt, n w c Wall and Academy  
**G**ALENA & CHICAGO UNION R. R., Depot nr cor Pleasant and Centre Av.. WALDO ABEEL, Agt  
 Galletly Jno., mason, h s s Racine rd e Main  
 Galvin Julia, servt, Hyatt House  
 Galvin Kate, servt, Hyatt House  
 Gamble Richard, Chatham nr Jackson  
 Gammel Phebe, cook, Excelsior Hotel  
 Garaty Jno., lab, h w s Western Av nr R R bridge  
 Garry Richard, lab, h s s Pleasant nr R R  
 Gaul Jno. P., [Rice, G. & Rice,] bds Myers House  
 Gaul Richard, clk, bds Myers House  
 Gavin Michael, lab, bds n e c Clarion and Centre Av  
 Gay Abram D., coop, h s e c Locust and North  
 Geisler Henry, lab, bds e s River b Jackson and Olive  
 Gibbs Charles R., [Bennett, Cassoday & G.,] e s Main b S Third and Racine

- Gilbert B., shoemkr, h w s Pearl b W Bluff and Ravine  
 Gilbert E. P., miller, h e s Jackson b Holmes and Rock  
 Gilbertsen B., shoemkr, h Mitchell's 2d Addition  
 Gillett Caleb G., groc, w s Main b S Third and Racine rd  
 Gilmore Lucius M., n w c Glen and Caroline  
 Glass Henry B., carriage mkr, h w s Franklin b W Bluff and Race  
 Glasscott Archibald F., bds w s Main b Court and S First  
 Glasscott David S., b k, bds w s Main b Court and S. First  
 Glasscott Francis, clk, h e Franklin b W Bluff and Race  
 Gliem Peter, carriage trimmer, h w s High b Ravine and Race  
 Goky Charles H., barb, h e s Jackson b Union and North  
 Golner Jacob, shoe mkr, h e s Caroline b Ann and Glen  
 Goldesberry Thomas, blksmth, h w s Pearl b W Bluff and Ravine  
 Gallour Patrick, lab, h e s River s North  
 Goodspeed Rev. Edgar J., pastor Baptist church, bds n e c Centre and Jackson  
 Gordon James, h Island  
 Gorgan Ned, lab, h s s Pleasant nr R R  
 Gorman Jno., waiter, Hyatt House  
 Gorman Jno., coop, h s s Holmes b Jackson and High  
 Goss Joseph, peddler, bds Excelsior Hotel  
 Goudsary Thomas, blksmth, h w s Pearl b W Bluff and Ravine  
**G**OVIER JOHN, pro Eagle Brewery, ale, porter, &c., n s Milwaukee nf bridge, h n w c Wall and River  
**G**EISS MICHAEL, pro Farmers' Home, s s Milwaukee b Bluff and Main  
 Grady Jno., turnkey county jail, n w c Water and S Second  
 Graham Alexander, h w s Washington nr W Bluff  
 Graham Geo., groc, n s Milwaukee b Main and Bluff  
 Grange Wm., clk, h s s N Second b Bluff and Division  
**G**RANGER & CO., pro Myers House, s e c Main and Milwaukee  
 Granger Julius, [G. & Co.,] Myers House  
 Grant & Long, [Patrick H. G. & Jas. L.,] groc and crockery: w s Main b N First and Milwaukee  
 Grant Patrick H., [G and Long,] n w c River and Centre  
 Graves Mrs. Hannah J., n w c Jackson and Milwaukee  
 Gray Egbert H., carp, h s s Milwaukee b Franklin and River  
 Gray Frank, [Bump & G.,] w s Franklin b Centre and Pleasant  
 Gray George W., painter, n s Milwaukee nr bridge, h s e c Jackson and Centre  
 Gray James, wagon mkr, h n w c Wisconsin and Milwaukee  
 Gray Joshua C., saloon, s s Milwaukee b Franklin and River. h s w c Locust and Centre  
 Gray W. H., teamster, bds s w c Locust and Centre  
 Green —, coop, bds w s Franklin b Wall and Bluff  
 Greene Jno., lab, h s s Polk e Ringold  
 Green Jno., porter, American House  
 Green Marshall W., bds w s Franklin b W Bluff and Wall



Griffin Daniel, lab, h s Pleasant nr Union Passenger Depot  
 Griffin Jno., lab, h s s Pleasant nr railroad  
 Griffin Samuel, carp, h e s Locust b North and Galena  
 Griffin Thoms, lab, h n s Canal b Centre Av and Jefferson  
 Griffiths Jno., tin smth, h w s Franklin b Washington and Galena  
 Griffiths Wm. H., tin smth, h w s Franklin s Galena  
 Grinton Benjamin, barb, bds n s Milwaukee b Main and Bluff  
 Griswold Lucius, groc and provisions, s s Milwaukee b Jackson  
 and Franklin, h s s Centre b Jackson and High  
 Griswold Norris C, tinsmith, s s Milwaukee b Franklin and Jack-  
 son, h e s Linn b School and Holmes  
 Groat Henry, butch h e s Main n N Fifth  
 Grouse Geo., lab, h e s Cornelia nr Glen  
 Grove Henry, (G. & Westmacott,) n w c South and Franklin  
 Grove & Westmacott, [Henry G. & Thomas W.,] shoe mkr, n s  
 Milwaukee b Franklin and River  
 Grovesteen W. H., watch mkr, bds Myers House  
 Grubb Wm., groc, s s Milwaukee b Jackson and Franklin, h e s  
 Jackson b Dodge and Milwaukee  
**G**UERNSEY ORRIN, insurance agent, Lawrence & Atwood's  
 store, w s Main b Court and S First, h s Institute for Blind  
 Guild Zebediah, [Harris, G., Angell & Tyler,] e s Franklin b  
 School and Centre  
 Gunderson Samuel, ostler, Myers House  
 Gurins Mrs. Julia A., s w c Franklin and Race

## H

Hagies A., wagon mkr, bds Stevens House  
 Haise James, lab, h e s William s Glen  
 Hale Alonzo, peddler, bds w s Franklin, b Wall and W Bluff  
 Hale Dr. Wm., n s Ann w Cornelia  
 Hall Miss. A., e s Jackson b Wall and W Bluff  
 Hall James, cook, Myers House  
 Hall James B., cook, h n s N Fifth b Main and Bluff  
 Hallock Lewis, farmer, h e s Madison b High and Jackson  
**H**AMMOND HENRY, saloon, w s Main b Milwaukee and  
 Court  
 Hammond Thomas, carriage mkr, h e s Franklin b Dodge and  
 Pleasant  
 Hanchett G. M., miller, bds w s Main b S Second and S Third  
**H**ANCHETT JNO. M., [H. & Sutherland,] w s Main b S  
 Second and S Third  
 Hanchett Mark J., miller, h n s Main b S Third and Racine rd  
**H**ANCHETT & SUTHERLAND, [Jno M. H., & Alexander  
 S.,] merchant and custom mill, n s Milwaukee b bridge and  
 River  
 Hanley Jno., lab, h s Pleasant nr R R  
 Hanley Sarah, servt, Schuyler House  
 Hanlon Simon, harness mkr, h w s Cornelia b Glen and Ann  
 Hanney F. A., carp, bds Myers House

- Hannon James, coop, w s River s Holmes  
 Hanrehn Thomas, lab, s e c Union and Franklin  
 Hansen Anna, servt, Institute for Blind  
 Hanson Benjamin, shoe mkr, h w s River b Race and Ravine  
 Hansen Ellen, cook, Institute for Blind  
 Hansen Maria, laundress, Institute for Blind  
**H**ANSON CHRISTIAN, cabinet maker, e s Emmet b Centre School, h w s Terrace b W Bluff and Ravine  
 Hanson Magnus, cab mkr, h w s Terrace b W Bluff and Ravine  
 Hanson Neils, blksmth. h w s River s Union  
 Hanson Seth T. teamster, h e s Milton Av b Glenn and Hyatt  
 Hardin Wm. J., barb, h n s Harmony b Caroline and Maria  
 Harding J. S., miller, bds n e c High and School  
 Hardy Charles, fireman, bds Rock County House  
 Hardy Jno., butch, bds n s Milwaukee b Franklin and River  
**H**ARGER A., pro Hyatt House, n w c Milwaukee and Franklin  
 Haring Lewis, painter, bds Stevens House  
 Harlow Edward G., [H. & Norton,] n e c Washington and Ravine  
 Harlow Mrs. Geraldine, n e c Jackson and W Bluff  
 Harlow & Norton, [E. G. H. & Jno. T. N.,] produce and com, s s Milwaukee b River and Bridge  
 Harnick Thomas H., cab mkr, e s Main b Milwaukee and N First, h w s Franklin b Holmes and North  
 Harper Edward, s w c Milwaukee and Franklin  
**H**ARRINGTON JAMES A., [Granger & Co.,] Myers House  
 Harris Amos J., barb, s s Milwaukee nr bridge  
**H**ARRIS, GUILD, ANGELL & TYLER, [James H., Zeb- ediah G., Russell R. A. & Leonard T.,] pro Rock River Iron Works and machine shop, s w c Centre and River  
 Harris Henry, steward Institute for Blind, h n s Racine rd w Fair Grounds  
**H**ARRIS JAMES, [H., Guild, Angell & Tyler,] w s Pearl b W Bluff and Pleasant  
 Harris James, lab, h w s Centre Av b School and Holmes  
 Harris James K., tinsmith, h e s Chatham b Jackson and Ravine  
 Harris Jas., cab mkr, h e s Main b N First and Milwaukee  
**H**ARRISON BENJAMIN B., butcher, h e s River b Ravine and Race  
 Harrison Thomas, painter, h e s Hickory b Walker and Hyatt  
**H**ARSH MOSES, merchant tailor, hats and caps, e s Main b Milwaukee and Court, bds Myers House  
 Hart Wm. L., clk, bds n w c Academy and Holmes  
 Hartley O. P., clk, bds Hyatt House  
 Hartshorn Joel S., [Jenks & H.,] bds w s Bluff s South Third  
 Harvey Francis T., coop, bds w s Franklin, b Rock and Union  
 Harvey Geo., liquors, w s Main b Milwaukee aud N First  
 Harwood Charles E., atty, n e c Main and Milwaukee, h w s High b Race aud Ravine



- Harvey Michael, lab, h w s Franklin b Rock and Union  
 Haselton Jared M., h w s Jackson b Holmes and Rock  
 Haskell Geo., carp, h n w c Cherry and North  
 Hastings David, agt Gunn's Domestic Physician, h w s Jefferson b Western Av and Claron  
 Hatch Wm. M., carp, h w s Main b S Third and Beloit rd  
 Hathaway Asa W., painter, h n s South b Cherry and Franklin  
 Hathaway Lewis, carriage manuf, e s Jackson b Wall and W Bluff, h s e c High and Ravine  
 Hatherell Geo., e s Bounday b Pleasant and Jackson  
 Hawes Wm. B., [Congor & H.,] n s Wall b Jackson and High  
 Hawley Jno., lab, bds Smith's Addition  
 Hawley Leander, painter, h n e c Glen and Cornelia  
 Hawley Riley, lab, bds n e c Glen and Cornelia  
 Hays Jno., lab, h n St. Mary Av. b Maria and Milton Av  
 Hays Thomas, carriage mkr, bds Schuyler  
 Hayes Jno., mason, h s s Pleasant nr Boundary  
 Hayes Michael, lab, h e s Franklin b W Bluff and Race  
 Hayes Thomas, lab, h n s Racine rd w Fair Grounds  
 Hayner Silas, clk, h w s Locust b Holmes and North  
 Heal A. W., bds Stevens House  
 Heck Henry H., [H. & Reed,] bds Schuyler House  
 Heck & Reed, [Henry H. H. & Levi R.,] blksmths, n e c Milwaukee and Bluff  
 Hedd Mrs. Bertha, e s River b Olive and Jackson  
 Hefern Patrick, lab, h n s Western Av b Walnut and Pine  
 Heffernan Thomas, coop, h s e c High and Dodge  
 Heffernan Patrick, well digger, n w c River and School  
 Heller Edward, miller, h n s W Bluff b Academy and Madison  
 Hemingway Thomas, Chandler, h w s Main b S Third and Beloit road  
 Hemingway William D., miller, bds w s Main b S Third and Beloit road  
 Hemmans Thomas, n w c Washington and Franklin  
 Hemmens Jno. C., w s Wisconsin b S Third and Racine rd  
 Hemmens Thomas C., lab, h n w c W Franklin and Washington  
 Hemmens Wm., gardener, h s s Ann b Cornelia and Division  
 Hemming James, carriage mkr, bds s e c School and High  
 Henderson Nelson, brakeman, bds American House  
 Henderson Saml., butch, bds e s Franklin b Holmes and School  
 Hendrick James, lab, h e s Main n N Fifth  
 Henry Geo., grain dealer, h n w c W Milwaukee and Galena  
 Hering George, teamster, h w s Main b S Third and Racine rd  
 Herkimer Charles, farmer, bds s w c Academy and School  
 Herkimer Horace, farmer, bds s w c Academy and School  
 Herkimer Warren, farmer, h s w c Academy and School  
 Hernen Denes, lab, h e s River nr R R bridge  
 Herrington Jno., tailor, w s Main b Milwaukee and Court, h e s Locust b Holmes and North  
 Hess Jno., lab, h s s Pleasant nr R R  
 Hessian Martin, lab, h n s Western Av nr R R bridge

Hey Gilbert, wagon mkr, bds e s Franklin b Race and Ravine

**H**IBBARD FREDERICK M., groceries and provisions, n s Milwaukee b River and Franklin, bds Hyatt House

Hibbard Z. M., conductor, bds Hyatt House

Hickey Patrick, lab, h e s Ringold b Josephine and Racine rd

Hield Edward, farmer, h e s Washington nr Olive

Hield Geo, farmer, h e s Washington nr Olive

Hield Mrs. Mary, w s Washington nr Olive

Hill Geo., brakeman, bds s s Centre b Linn and Locust

Hill Hiram K., railroad master, h n e c Madison and Wall

Hill Roswell, blksmth, n w c Linn and Western Av, h w s Lynn b Washington and Western Av

Hilt Benjamin R., moulder, h e s Franklin b Race and Ravine

Hitchcock Mrs Alice, bds s s Racine e Main

Hitchcock Geo., clk, bds s s Racine nr Stoughton

Hitchcock James, farmer, h Racine rd e Beloit rd

Hitchcock Mrs. Sarah, seamstress, h s s Racine rd e Main

Hoag Rose, servt, Myers House

**H**OBSON J. W. & R. M., produce merchants, n s Pleasant nr Union Passenger Depot

Hobson Jno. W., (J. W. & R. M. H.,) n e c Dodge and Jackson

Hobson Robert M., (J. W. & R. M. H.,) s s Dodge b Jackson and Franklin

**H**OCKING SAMUEL, wines and liquors, malting and brewing, w s Main b N First and N Second

Hodge Robert, wagon mkr and blksmth, s e c Bluff and Milwaukee, h nr cor. Harmony and Caroline

Hodgens Michael, stone cutter, h e s High b Holmes and Rock

Hodson Charles W., pro Excelsior Mill, Race, bds Hyatt House

Hodson Thomas, w s Main b N First and N Second

Hodson Wm. T., teamster, h w s Main b N First and N Second

Hoffman Robert, watchman, bds w s Gold b Western Av and Claron

Hogan Abby, servt, Hyatt House

Holden W. W., ins agt, s w c Milwaukee and Main, h s w c Pleasant and Franklin

**H**OLDRIDGE SAMUEL JR., county treasurer, office County Buildings, h n e c Linn and North

Holley Joseph R., gardener, h w s Liberty nr Ruger Av

Holley Leander, painter, h Pease's Addition

Hollern Thomas, lab, h e s Bluff nr R R bridge

Hollinton Thomas, lab, h s s Glen nr William

Hollister Rufus M., saloon, w s Main b Milwaukee and Court, h e s Division b Court and Milwaukee

Holmes Edwin F., farmer, h D. Noggle's Addition

Holmes James, tailor, s s Milwaukee b Main and Bluff

Holmes Wm. C., tailor, n s Milwaukee b Main and Bluff

Holsworth Ira, blksmth, bds Schuyler House

**H**OLT, BOWEN & WILCOX, (Charles H., Hiram B. and Daniel W.,) pro Janesville Daily and Weekly Gazette, w s Main b Milwaukee and Court



Holt Charles, (H., Bowen & Wilcox,) n w c Jackson and Holmes  
 Holt David, watchmkr, n s Milwaukee b Main and Bluff, h s s  
 Court b High and Jackson

Holt Wm. H., printer, h s w c Cornelia and Ann

Hopkins Canvass W., painter, n w c River and Dodge, h e s  
 River b School and Centre.

Hopkins Charles, painter, h w s River b W Bluff and Race

Horn Albert, watchmkr, w s Main b Milwaukee and N First

Horn Fred. O., P. O. clk, bds s s S Third b Bluff and Division

Horn James, lab, w s Academy b Washington and Galena

Horne Geo. R., cig mkr, bds s e c S First and Main

**H**ORNE DR. WM., veterinary surgeon, w s Water b Court  
 and S First, h s e c Main and S First

Horner Edward A., w s Cornelia b Ann and Glen

Hoskins Silas E., eng, h w s Linn b School and Holmes

Hoteler —, e s Academy b Holmes and North

Hoton Alonzo, lab, h n e c Academy and North

Hovey James A., eating house, s s Pleasant nr passenger depot

Hovland Christian, carp, h s w c School and River

Hovland S., cab mkr, h w s Terrace b W Bluff and Ravine

Houghton Alonzo, n e c Academy and North

House Leonard, w s Washington b W Bluff and Wall

Howard —, w s High b Race and Ravine

Howard James, farmer, h s s Court b Stoughton and Elm

Howard Jas. N., w s Main b N Third and N Fourth

Howard Wm. H., s e c Main and S Third

Howell Edwin, w Bridge nr Institute for Blind

Howland Ellery A., h w s Main b S Third and Racine rd

Howland Isaac, livery, s s Court nr Bridge, h e s Main b S Third  
 and Racine rd

Howland Jerome, blksmth, h s w c Jackson and Bluff

Hoyatt —, lab, h w s Terrace nr R R

Hoyt Jno. P., h e s Bluff b N Fourth and N Fifth

Hubbard Orin, clk, bds Hyatt House

Hubbard S. D., bds Hyatt House

Huber Peter H., miller, h s s Milwaukee b High and Jackson

Hudson Sanford A., atty, w s Main b Milwaukee and Court, h w  
 s Madison b Bluff and Ravine

Huganin David R., eating saloon, n s Milwaukee b Franklin and  
 River

Hugh Mary, servt, American House

Hughes W., e s Beloit rd nr boundary

Hughes Jno., tailor, bds Stevens House

Hull Elmore P., marble cutter, bds Schuyler House

Hume James B., sash, door and blind factory, w s River b Cen-  
 tre and School, h n w c Pleasant and River

Hume Wm., b k, h w s Franklin b School and Centre

Hunneman Wm., eng, bds n e c Academy and Centre

Hunt Joseph, teamst, h s e c Ringold and Polk

Huntley Jno. M., eng, h e s Locust b Centre and School

Hurlbut Jno. W., sash mkr, bds s s N Second b Bluff and Division

Husbrook Timothy P., n s Benton Av w Milton Av  
 Hushan Jno., lab, h n s Western Av w R R bridge  
 Hutchinson Myron B., carp, h n e c Court and Jackman  
 Hutchinson Stoakley, painter, h e s Hickory b Glen aud Ann  
 Hutson & Dunn, (Solomon H. and Martin D.,) saloon, n w c Milwaukee and Franklin  
 Hutson James, boots and shoes, e s Main b Milwaukee and Court,  
 h w s Bluff b Milwaukee and Court  
 Hutson Solomon, (H. & Dunn,) bds Hyatt House  
 Hutton Walter, carp, h w s Main b S Third and Beloit rd  
 Hutton Wm., bds w s Main b S Third and Beloit rd  
**H**YATT HOUSE, A. HARER, proprietor, n w c Milwaukee and Franklin  
 Hyde Leslie R., clk, bds w s Main b Court and S First  
 Hyden Augustus, lab, bds n s North nr R R  
 Hyden Morris, bds n s North nr engine house  
 Hynes Jno., lab, h e s Franklin s Union  
 Hynes Patrick, dray, h s s North b Academy and Cherry  
 Hyzer Jacob B., tinsmith, n s Milwaukee b Franklin and River, h  
 s s Holmes b High and Cherry

## I

Ide Geo. P., dray, h w s Maria b Glen and Hyatt  
 Idell Sanford, carp, h n s Ann w Cornelia  
 Ingersoll Wm., farmer, h n w c Jackson and Wall  
 Ingrham Jno., conductor, h w s Linn b North and Holmes  
 Ingle James, lab, h w s Glen b Caroline and Cornelia  
 Ingles Wm., mason, h s s N Fourth b Bluff and Main  
 Ingledew J., bds Stevens House  
 Ingledew Lumley, law student, bds Stevens House  
 Inman David W., (Skelly, I. & Co.,) n s Pleasant b Franklin and  
 River  
 Irwin Wm., clk, h e s Main b N Second and N Third  
 Iverson Paul, blksmith, bds s s Rock b High and Jackson

## J

Jackman & Alden, (Hiram J. & Chester A. A.) pro Farmers  
 Mill, s s Milwaukee b River and bridge  
**J**ACKMAN & DIMOCK, (Timothy J. and Edward L. D.)  
 coal dealers, office, Lappin's Block, s w c Milwaukee and  
 Main  
**J**ACKMAN & SMITH, (Timothy J. & Shubael W. S.,)  
 real estate dealers, n e c Main and Milwaukee  
 Jackman Hiram, (J. & Alden,) n e c Court and Division  
 Jackman Timothy, Pres't. Rock County Bank, s e c East and  
 Court  
 Jacks Alexander A., carp, h e s East b Court and Milwaukee  
 Jacobs Hannibal C., (Davis & J.,) bds n s Pleast nr Palm  
 Jacobs S. C., tailor, h s s Western Av b Walnut and Pine  
 Jacobson Severin C., tailor, h n w c Clarion and Pine



Jackson Alfred A., (Knowlton & J.,) n e c Wall and Academy

Jackson Byron, shoe mkr, h w s River b Race and Ravine

James Alexander, mason, h w s Charles nr railroad

**JAMES SHEFFIELD L.**, clerk Board Supervisors, office,  
County Building, h w s Main b S Third and Beloit rd

James Thomas, marble cutter, h n s Olive nr Myrtle

**JANESVILLE GAZETTE**, (Daily and Weekly,) Holt, Bowen & Wilcox, publishers, w s Main b Milwaukee and Court  
Janesville Gas Light Co. Works, n railroad bridge b Bluff and Main, Jno. J. R. Pease, President, Joseph A. Sleeper, Secretary

Janesville House, F. Marsh pro, n s Milwaukee b Linn and Locust

**JANESVILLE YOUNG LADIES SEMINARY**, Eunice S. Anderson, principal, n e c Bluff and N Third

Jasslyn L. H., w s Pearl b Ravine and Jackson

Jebson Andrew, American House

Jenks Eliza, servt, Hyatt House

Jenks & Hartshorn, (Ira C. J. & Joel S. H.,) attorneys w s Main b Milwaukee and Court

Jenks Ira C., [J. & Hartshorn,] w s Bluff s S Third

Jenkins F. C., clk, bds Jackson nr Pleasant

Jenkins Jno. C., s e c Holmes and Jackson

Jenne Rev. J. H., s s School b High and Franklin

**JERG FRANK X.**,

[Mahrle & J.,] bds e s Main n N Fifth

Johaneson Jens., shoe mkr, s s Milwaukee b Main and Bluff, h n w c Glen and Augusta

Johnson Albert H., butch, bds w s Cherry b Holmes and North

Johnson C. H., servt, cor High and Cherry

Johnson Henry C., steward, American House

Johnson James, harness mkr, bds American House

Johnson James, lab, h s s Pleasant nr railroad

Johnson Jno., shoe mkr, bds e s River b Olive and Jackson

Johnson Mary, servt, Hyatt House

Johnson Milo, brakeman, bds American House

**JOHNSON MORTIMER B.**, dentist, n w c Milwaukee and Main, h n w c Holmes and High

Johnson Mrs. Tamer, w s Cherry b Holmes and North

Jonanneault Victor, stationer, n s Milwaukee b Franklin and Jackson, bds Hyatt House

Jones Miss Adeline A., bds w s Academy b School and Holmes

**JONES AMOS**, physician, e s Bluff b Milwaukee and N First

Jones S., shoe mkr, bds Excelsior Hotel

Jones Saml. G. R., shoe mkr., bds n e c Jackson and High

Jones Wm. B., gardener, h s s Racine e Main

**JONSON ELLING**, cabinet maker,  
h s w c School and River

Jonson Martin, blksmith, h e s Cornelia nr Glen

Judd T. C., bds Schuyler House

## K

- Kalle Albert, landscape painter, h e s Washington b Jackson and Ravine
- Kanady Martin, lab, h e s Locust s Galena
- Kanney Patrick, lab, bds Janesville House
- Karan Brazil, lab, h w s Hickory b St. Mary Av and Walker
- Kating Michael, conductor, h e s Cherry b North and Franklin
- Kavenagh Michael, lab, h e s Bluff n R R bridge
- Kavenagh Patrick, lab, h n w e Franklin and Rock
- Keating John J., clk, bds s s Milwaukee b Main and Bluff
- Keating Wm., dray, h n w c Milwaukee and North
- Keating Wm., teamster, h n s North b Franklin and Milwaukee
- Keating Wm. F., P. O. clk, bds w s Milwaukee n North
- Keenan Ann, servt, w s Centre Av. b North and Holmes
- Keger J. F., ostler, Stevens House
- Keith Alonzo, turner, h e s Bluff nr R R bridge
- Kelcher Timothy, lab, h w s Hickory n Glen
- Kelley Edward, lab, h n e c River and Holmes
- Kelley Francis, painter, h s s Ann b Cornelia and Division
- Kelley Michael, waiter, Hyatt House
- Kelley Thomas, lab, h s e c Holmes and River
- Kelly Bridget, servt, American House
- Kelly Jno., lab., h e s Caroline b Glen and Hyatt
- Kelly Sylvester D., carp, bds w s Franklin b Pleasant and Centre
- Kelly Washington, carp, h w s Linn b North and Galena
- Kellogg Chester B., w s Jackson b Race and Bluff
- Kellogg Mrs. Mary, w s Jackson b Centre and School
- Kellogg Seth, n s Western Av nr R R bridge
- Kemmitt James, blksmth, s s Court w Water, h e s Main nr R R bridge
- Kenairy Wm., saloon, s s Milwaukee b Linn and Locust
- Kendall —, carp, bds e s Academy b Milwaukee and Dodge
- Kenyon S. B., blksmth, bds Stevens House
- Keown Jno., carsmith, h w s Marion b W Bluff and R R
- Kethneng Christian, lab, h w s Main b S Third and Beloit rd
- Keys Allen C, clk, h w s Main nr Racine rd
- Killmer E. E., fireman, h s w c Linn and Centre
- Kilp Joseph, lab, bds e s High b School and Holmes
- Kimball Daniel F., groc, s w c Milwaukee and Jackson, bds n w c Jackson and Dodge
- Kimball Freeman A., s w c Ravine and High
- Kimball Geo. W., clk, h e s Jackson b Race and Bluff
- Kimball Jno. L., n w c Franklin and Dodge
- Kimble Warren, bds s s Milwaukee b Franklin and River
- Kimes David, bds Schuyler House
- Kimit Kate, servt, Stevens House
- Kimly Geo., clk, h e s Jackson b W Bluff and Race
- Kimmitt Jas., blksmth, h e s Main n N Fifth



**K**ING MRS. HANNAH M.,

n e c Bluff and N Fourth

**K**ING JOHN D., news depot, n s Milwaukee b Main and Bluff, h e s Main b Milwaukee and N First

King Mrs. Margaret, e s Main b N First and N Second

King Robert W., clk, bds e s Main b N First and N Second

King Thomas, eng, h w s Centre Av b North and Holmes

Kingsley Jno., carp, bds s s Holmes b Jackson and High

Kinney Bridget, servt, Stevens House

Kinney Henry, n w c Court and Division

Kinney Rev. M. P., pastor congregational church, h n w c School and Franklin

Kinney Patrick, lab, h s Pleasant nr Union depot

Kinney Patrick, lab, bds Janesville House

Kinsley James, lab, bds Rock County House

**K**IRK THOMAS, cooper, n e c River and School, h e s River b School and Centre

Klein Jacob, lab, h w s Caroline b Glenn and Hyatt

Kleist George, shoemkr, e s Main b Milwaukee and Court, h e s Main b Court and Milwaukee

Klienper Cornelius, s s Racine rd e Main

Knight Henry, joiner, h e s Franklin b W Bluff and Race

Knoff Hermann, lab, h s w c Cherry and Holmes

Knoff Wm., teamst, h w s Palm s Western Av

Knowlton & Jackson, (James H. K. and Alfred A. J.,) attys, n s Milwaukee b Franklin and Jackson

Knowlton James H., (K. & Jackson,) res Chicago

Knox Garial, bk binder, bds w s Cherry b Centre and School

Knudson Ole, tailor, s s Court b Water and Main, h n s River b Rock and Union

**K**NUILSN CANUDT, cabinet maker,

bds n w c River and Union

Kobelin J. Frederick, shoemkr, h w s Main b S Third and Beloit rd

Kohoa Michael, fireman, h w s Pearl b Ravine and Jackson

Koll Albert, landscape painter, h w s Washington b Jackson and Ravine

Kolle Dalltor, painter, bds e s Washington b Jackson and Ravine

Koon Peter, fireman, bds s s Centre b Linn and Locust

Kothman August, (K. & Winkley,) e s Jackson s Union

Kothman & Winkley, (August K. and Wm. W.,) harness mkr, upper bridge

Kreger Jno. F., ostler, bds Stevens House

Kricker F., servt, Janesville House

Kyle Edward, lab, h w s Main n Milwaukee

## L

Lahan Patrick, lab, w s Main n R R bridge

Laird Andrew J., conductor, h s e c Holmes and High

Lampkins A. D., bds Hyatt House

Lane Austin A., e s Bluff b Milwaukee and N First  
 Lane Geo. F., carp, h e s High b School and Centre  
 Langhoof Herman, lab, h w s Water b S First and S Second  
 Lane Joseph S., physician, n e c High and Pleasant  
 Lane Matthew, bds Myers House  
 Lappen Stephen, s s S Third b Division and Wisconsin  
 Lappin Thomas, n e c Division and Court  
 Lassenfey P., tailor, h e s Hickory b St. Mary's Av and Walker  
 Latter —, carp, bds Stevens House  
 Lattier L. D., bds e s High b School and Centre  
 Lavey Thomas, mason, h s s Union b Jackson and Franklin

**L**AWLER JNO., constable,  
 s e c Franklin and Rock

Lawler Michael, blksmth, bds Rock County House

**L**AURENCE & ATWOOD, [Wm. A. L. & Volney A.,] hard-  
 ware, tinware, stoves, coal and water lime, w s Main b  
 Court and S First

Lawrence Geo. W., e s Main nr Racine rd

Lawrence Wm. A., [L. & Atwood,] e s Bluff b N Fourth and  
 Glen

Leahy Patrick B., confec, n s Milwaukee b Main and Bluff

Leake Surrell, well digger, h n s N Second b Main and Bluff

Lee Andrew, (Carroll & L.) Magnolia rd

Lee Ann, servt, Stevens House

Lee Mrs. Aurilla, e s Main nr Racine rd

Lee Catharine, waiter, American House

Lee Edward G., carp, h w s Bluff n Second, Racine rd

Lee James T., miller, h n w c W Bluff and River

Lee Miss Kate, American House

**L**EE PHILIP A.,  
 [Webb & L.], s w c Milwaukee and Main

Leech Thomas, [Riordan & L.,] bds Myers House

Lehey Michael, lab, h nr Union Passenger Depot

Leicler Fredericks, bds Schuyler House

Leland Maria, cook, s s Milwaukee b River and Franklin

Lennardy Peter, cig mkr, h s s Center b Linn and Locust

Leon Westley, lab, h s s Court b Main and River

Leonard Gordius P., e s Main b S Third and Racine rd

Leonard Peter, cig mkr, h s s Center b Linn and Locust

Leonard W. S., bds Hyatt House

Leone Johanna, servt, Myers House

Leppard Wm., Smith's Addition nr railroad

Lepper Mrs., w s Cornelia nr Glen

Lepper Wm., eng, h w s Center Av nr Galena

Lesley Hyde, clk, w s Main b Court and S First

**L**EWIS DANIEL W., gun smith, upper bridge, h w s Rin-  
 gold nr E City Limits

Lewis Erastus, physician, n w c Franklin and Pleasant

Lewis Isaac, e s Jackson b W Bluff and Race

Lewis Jno., shoe mkr, bds Schuyler House



Leydon Peter, groc, e s Main b N First and Milwaukee, h e s  
Main b N First and N Second

- Libbey Thomas, s s Milwaukee, b Bluff and Division

Liddle Anson, carp, h n w c W Bluff and Chatham

Liddle Frasher, carp, h n w c Bluff and Chatham

Liddle Van R., carp, h e s Washington b W Bluff and Wall

**L**ILL & DIVERSY, (Wm. L. & Michael D.,) brewers,  
wines and vinegar, w s Main b N First and N Second

Lill Geo., sash mkr, bds w s Main b N First and N Second

Lill John, agt Lill & Diversy, w s Main b N First and N Second

Lill Wm., (L. & Diversy,) res Chicago

Lilly Celestine, eng, h s w c Terrace and Ravine

Ling James, carp, h w s Arch nr R R

Link Henry, shoe mkr, h e s Caroline b Glen and Hyatt

Lipe Ambrose, n w c Pleasant and Cherry

Lipe Jno., eng, h n s Wall b Madison and Marion

Little Barnard, w s Bluff nr R R bridge

Little Miss Elizabeth P. H., bds Institute for Blind

Little Miss Ellen, bds w s Academy b Holmes and North

Little Mrs. Sarah C., teacher Institute for Blind

**L**ITTLE THOMAS H., M. A.,  
Supt Institute for Blind

Little Mrs. Thomas E., s w c Jackson and Wall

Locke Martin, coop, bds w s Main b S First and S Second

Locke Wm., coop, e s Water b S First and S Second, h w s Main  
b S First and S Second

Lockwood Samuel T., Principal High School, h n w c Court and  
East

Loftis Anthony, lab, bds n e c Madison and Jackson

Loftus Jno., lab, h nr railroad n Western Av

Long Jno., lab, h w s William b St. Mary's Av and Walker

Long Jas., [Grant & L.,] s s Centre b Franklin and Jackson

Loring D. R., bds Hyatt House

Lord Enoch E., carp, bds e s Bluff b N Fourth and Glen

Loucks Harrison, h n e c Olive and Madison rd

Loucks Jno. H., n e c Olive and Washington

Loudon Francis W., nursery, n s Jackson nr Boundary

Loudon James, h s w c High and W Bluff

Loudon Philo, bds n s Jackson nr Boundary

Loughlin Lawrence, lab, h e s River b Holmes and School

Love Israel S., mail agt, w s Main b Milwaukee and N First, res  
Beloit

Lovejoy Allen P., lumber, bricks, &c., s s Milwaukee b High and  
Academy, bds Hyatt House

Lovejoy Daniel, e s Washington nr boundary

Lowber Wm. C., e s Locust b Holmes and North

Lowell Austin, wagon mkr, h e s Academy b Ravine and Race

Lowell Wallace, clk, bds e s Academy n Race

Lewis Jno. B., baker, bds s s Milwaukee b Main and bridge

Luckey Stephen, eng, h n e c Jefferson and Claron

**L**UCAS ALEXANDER, barber, s s Milwaukee b River and Franklin, bds w s Main b N First and N Second

Lund Ann, servt, Stevens House

Lynch Ann, servt, s s School b High and Franklin

Lund Jno., painter, s s Court b Water and Main, h n w c Jackson and North

Lynch Daniel, lab, h nr Institute for Blind

Lynch Humphrey, lab, h s Pleasant nr Union Depot

Lynch Jno. C., butch, h s s Dodge b Franklin and Jackson

Lynch Michael, civil eng and city surveyor, bds n s Dodge b Franklin and River

**L**YNCH THOMAS, meat store, n s Milwaukee b Franklin and Jackson, h n s Milwaukee b Franklin and Jackson

Lynch Thomas, lab, h n w c Academy and Washington

## M

Macloon Wm., s w c Jackson and Pleasant

Maden Michael, lab, n s Western Av w Railroad

Madden James, shoemkr, s s Milwaukee b River and bridge, h s s S Second b East and Wisconsin

Madden James, bds Myers House

Madlend Thomas, clk, h s w c Water and S First

Madlan Theodore, clk, bds s w c S Second and Water

Magniley C., lab, h n s N Third b Bluff and Main

Mahoney Mrs. Elizabeth, s s Pleasant nr Railroad

Mahoney James, saloon, nr Passenger Depot

**M**AHRLE & JERG, (Jno. C. M. and Frank X. J.,) tailors and clothes renovators, n w c Bluff and Milwaukee

**M**AHRLE JNO. C., (M. & Jerg,) e s Main nr Railroad bridge n N Fifth

Maine Fred. H., carp, h Island

Major Jno., shoemkr, h n e c Glen and Augusta

Malier Philip, butch, bds e s High b Holmes and Rock

Malone Alfred, coop, bds e s River b School and Centre

Maloney Dr. Richard S., bds w s Bridge nr Railroad

Maloy Thomas, mason, bds n s Glen nr Cornelia

Mangan Jno., tailor, bds Excelsior Hotel

Manion Patrick, lab, h e s Franklin s North

Mann Jason, clk, bds s w c Court and Jackson

Mansfield Chas. H., harnessmkr, bds cor High and Centre

Marcher Rev. Geo. H., e s Ringold b Racine rd and Josephine

**M**ARQUISSEE SETH H., cabinet manufacturer, n s North b W Milwaukee and W Jackson

Marselis A. G., bds Stevens House

Marsh Frederick, pro Janesville House, n s Milwaukee b Linn and Locust

Marshall Nicholas, lab, h n s N Third b Bluff and Main

**M**ARTIN C. LOFTUS, veterinary surgeon, w s Bluff b Milwaukee and Court, h w s Milton Av b Milwaukee and Harmony



- Masley, Geo. F., w s Madison b Jackson and Ravine  
 Matteson Elisha J., coop, h w s Main b S First and Court  
 Matteson Peleg, w s Main b Court and S First  
 Matteson Wm. P., clk, bds n s Main b Court and S First  
 Mattson H. C., bds Hyatt House  
 Maulin M., bds Hyatt House  
 May Jno. M., atty, n e c Main and Milwaukee, bds e s Main b  
 Milwaukee and N First  
 McCabe Daniel, tailor, h n w c Linn and Washington  
 McCabe James, conductor, bds Hyatt House  
 McCabe Patrick, lab, h Monterey  
 McCadam Ann, servt, American House  
 McCaffery Patrick, lab, h n e c Locust and Washington  
 McCammond Charles, lab, h n w c Holmes and Franklin  
 McCammond Jno., lab, bds n w c Holmes and Franklin  
 McCan Barney, lab, h n s N First b Division and Bluff  
 McCarty —, tailor, h e s River b Rock and Union  
 McCarty Jeremiah, blksmth, h n w c Main and S First  
 McCarty Jno., lab, h e s Cherry b North and Holmes  
 McCarty Jno., lab, h n s Western Av nr R R bridge  
 McCarty Mary, servt, Rock County House  
 McCarty Michael, lab, h n s Western Av nr R R bridge  
 McChesney David H., millwright, h w s N River b Jackson and  
 Olive  
 McClean Archibald, tailor, h n s Racine rd e Main  
 McCormick Edward, n s Western Av nr R R bridge  
 McCue Patrick, n s Western Av nr R R bridge  
 McCugho Jno., lab, h s s Racine rd nr Fair Grounds  
 McDonald Alexander, blksmth, bds n s Dodge b River and  
 Franklin  
 McDonald Mrs. Julia, h w s Chatham b W Bluff and Ravine  
 McDonald Patrick, lab, h n s Western Av w R R bridge  
 McDormitt Owen, lab, h Locust nr Pleasant  
 McDougall Alfred, builder, h e s High b Centre and School  
 McDougal Daniel, moulder, h w s Pearl b Ravine and Jackson  
 McFarland Patrick, coop, h Smith & Bailey's Addition  
 McGinley Patrick, lab, h w s Main n N Fifth  
 McGowen James S., carp, h e s Milton Av nr Benton Av  
 McGrail —, brakeman, bds Rock County House  
 McGrath James, gardener, bds e s Milton Av b Harmony and  
 Milwaukee  
 McGraw Wm., cook, h s s N First b Bluff and Main  
 McGuire Wm., blksmth, bds Stevens House  
 McGuire Patrick, lab, h n s Western Av nr R R bridge  
 McGuyr Jno., lab, h n s Western Av w Walnut  
 McGuyre Mary, servt, Myers House  
 McIntyre Wm., tailor, n s Milwaukee b Main and Bluff, h s w c  
 Main and Washington  
 McIntyre Michael, tailor, h s s S First b Wisconsin and East  
 McKenzie Heman S., clk, bds Stevens House  
 McKenzie Jno., s s Glen b Hickory and William

McKenna Wm., lab, h n s Glen nr William

McKeon James, stone cutter, h e s Terrace b Jackson and Ravine

McKeon Wm., s w c Centre Av and Galena

**M**CKEY & BRO., (Edward McK. & Michael F. McK.,) dry goods, millinery, boots, shoes, hats, caps, crockery, &c., e s Main b Milwaukee and Court

McKey Edward, (McKey & Bro.,) h w s Main b S Third and Racine rd

McKey Mrs. Maria, n s Ann b Cornelia and Caroline

McKey Michael F., (McKey & Bro.,) h s w c Main and S Third

McRiley Dominic, lab, h e s River s Union

**M**CKINNEY HENRY, wines and liquors, n s Milwaukee nr upper bridge, h n w c Court and Division

McKinsia Wm., clk, bds Stevens House

McKuna Patrick, lab, h s s Racine rd nr Fair Grounds

McLaughlin Andrew, bds n e c Claron and Centre Av

McLoughlin Patrick, lab, h w s Main nr R R bridge

McMartin Jno., harness mkr, s s Court w Water, h w s Jackson b Centre and Pleasant

McMinn Jno. C., ostler, Excelsior Hotel

McNellis Mrs. Fanny, s s N Third b Bluff and Main

McNellis Hannah, servt, Hyatt House

McNiece Mrs. Sarah, s s S First b Wisconsin and East

McNitt Miss Eleanor, n w c Wall and Franklin

McNitt Miss Mary J., n w c Wall and Franklin

Mead Virgil C., farmer, h e s Academy, b W Bluff and Wall

Mealey & Farrell, (Philip M. & Michael F.,) meats, s s Milwaukee b Jackson and Franklin

Mealey Philip, (M. & Farrell, bds e s High b Holmes and Rock

Melow Harmon D., blksmth, h w s Main b S Third and Racine road

Mendenhall James, mach, h w s Terrace b W Bluff and Ravine

Merchants Despatch, J. W. Nichols, Agt., n s Milwaukee b Franklin and Jackson

Merrill —, s s N Second b Bluff and Division

Merrill Mrs. V. L., bds n s Racine rd nr Fair Grounds

**M**MERRILL WILLARD, United States Court Commissioner and Attorney, s w c Main and Milwaukee, h w s Linn b Holmes and North

Metcalf Wm. J., harness mkr, h n s North b Locust and Academy

Meyer O. F., s w c Milwaukee and Wisconsin

Miles Jesse, drover, h n w c Glen and Milton Av

Millegan James H., dray, h n e c Harmony and Cornelia

Miller Ezra, civil eng, and surveyor, h w s Main s Racine rd

Miller Frederick, nail smth, w s Bluff b Milwaukee and N First

Miller Frederick, harness mkr, s s W Milwaukee b Franklin and River

Miller Robert, farmer, h w s Washington nr Olive

Miller Wm., bds w s Main s Racine rd



Mills David L., n s N Second b Bluff and Division

**M**ILLS JAMES, sash, door and blind factory, w s Main b N Third and N Fourth, h w s Bluff b N Fourth and N Fifth

Mills Jno., blk smth, h e s Milton Av b Harmony and Milwaukee

Milmine James, conductor, bds Hyatt House

Miltimore Geo., bds s e c Bridge and Racine rd

**M**ILTIMORE GEO. W., pro, Stevens House, n s N First b Main and Bluff

Miltimore Geo., farmer, bds s w c Claron and Centre Av

**M**ILTIMORE IRA, proprietor Monterey stone quarry, e s Bridge, Monterey, h s e c Racine and Bridge

Miltimore Ira, mill wright, h s w c Claron and Center Av

Milvane Michael, lab, h w Terrace n railroad

Milwaukee & Prairie du Chien R. R., Depot s w c Centre Av and Pleasant, Wm. B Strong, Agt

Miner Cyrus, shoes and leather, w s Main b Milwaukee and Court bds Hyatt House

Minich Augustus, stone cutter, h s e c Academy and Washington

Mitchell Mrs. Catharine, cook Hyatt House

Mitchell Charles E., groc, s s Milwaukee b Franklin and Jackson bds s w c Academy and Milwaukee

Mitchell Dr. Jno., s w c Academy and Milwaukee

Mitchell Robert B., s Pleasant nr Boundary

Mitchell Wm., cook, Hyatt House

Mitchell Wm. L., atty, s s Milwaukee b Franklin and Jackson bds s w c Academy and Milwaukee

Mitten Jno., lab, h s s S First b Wisconsin and East

Mohr Alonzo D., printer, bds s s Pleasant b Academy and High

Mohr Jno., h s s Pleasant b Jackson and High

Monaghan Patrick, wagon mkr, s e c Franklin and Wall h e s Franklin b Milwaukee and Wall

Monahan Michael, lab, h e s Franklin s Union

Monay Robert, shoemkr, h e s River b School and Holmes

Monigan Jno., lab, h n s Western Av w Walnut

**M**ONITOR, (weekly,) Palmer Brothers & Co., publishers, s s Milwaukee e River

Montgomery Margaret J., seamstress, Institute for Blind

Montgomery Sarah H., servt, Institute for Blind

Moon Jno. B., (M. & Treat,) n e c S Second and Division

**M**OOON & TREAT, [John B. M. & David S. T.,] lumber, n s Milwaukee, b Academy and Locust

Mooney Walter, lab, h s s School b Franklin and Cherry

Moore Mrs. D., w s Washington b Jackson and Olive

**M**OOORE D. & L. B., (Daniel M. & L. B. M.,) fanning mill manuf, w s Main b N Third and N Fourth

Moore Daniel, carder, bds n s N Second b Main and Bluff

Moore Daniel, [D. & L. B. M.,] s e c Milwaukee and Wisconsin

Moore Lester B., (D. & L. B. M.,) e s Locust b School and Centre

Moore R. B., bds Myers House

Moore Robert, fireman, bds s s Centre b Linn and Locust

- Moore Thomas L., fireman, bds n e c Academy and Centre  
 Moore Walker, e s Washington b W Bluff and Ravine  
 Moore Wm. C., painter, h e s Hickory b Glenn and Ann  
 Moran Jno., lab, h s Pleasant nr Union Depot  
 Morehouse Charles' wagon mkr, bds n e c Jackson and Pleasant  
 Morgan Benj. F., clk, h w s Milton Av b East and Harmony  
 Moriarty Mrs. Catherine, e s River b School and Holmes  
 Morissy Jno., e s Bluff nr Glen  
 Morohan Sarah, servt, e s Cherry b North and Holmes  
 Morris Henry, eng, h s s Locust b Holmes and North  
 Morris Margaret, w s Western Av w Railroad Bridge  
 Morrison James, lab, h s Pleasant nr Union Depot  
 Morrison Jno., lab, h n s Glen nr William  
 Morrison Patrick, lab, h s Pleasant nr Union Depot  
 Morse Jno. F., cab mkr, h n e c Court and East  
**M**OSELEY & BROTHER, books, stationery, paper hang-  
 ings, &c., n s Milwaukee b River and Bridge  
 Moseley Charles E., clk, bds n e c Centre and Jackson  
 Moseley Geo. F., (M. & Bro.,) w s Madison b Jackson and Ra-  
 vine  
 Moseley James E., (M. & Bro.,) res Madison  
**M**OSSES LEVI, furniture manufacturer, n s Milwaukee b  
 Franklin and River, h e s Cherry b School and Centre  
 Mosher Allen, w s Milton Av. n Benton Av  
 Motherway Wm., lab., h s Pleasant nr Union Depot  
 Muir Charles H., brakeman, h s s W Bluff nr Chatham  
 Mullan Patrick, saloon, s w c Union and River  
 Mulligan John, shoe mkr, h s e c S First and Bluff  
 Mulligan Wm., bds s e c S First and Bluff  
 Mulligan Wm., shoe mkr, h s s S First b Bluff and Division  
 Mullins Patrick, n e c Claron and Centre Av  
 Muly Patrick, carp, h e s Bluff n R R bridge  
 Munsell Orson W., carriage manuf, n e c Milwaukee aud Bluff,  
 h n e c Court and Milwaukee  
 Munsell Jno. W., carriage mkr, h n s Milwaukee b Milton Av  
 and Stoughton  
 Murdock Edwin, wheat buyer, h e s Milton Av b Glen and  
 Hyatt  
 Murphy —, lab, h nr Engine House  
 Murphy Edward, lab, h s s Pleasant nr R R  
 Murphy James, lab, h s s Pleasant nr R R  
 Murphy Jno., clk, bds Stevens House  
 Murphy Jno., lab, h n s Glen nr Hickory  
 Murphy Miss Mary, s s Pleasant nr R R  
 Murphy Michael, lab, h s s Pleasant nr R R  
 Murray Hugh, lab, h s s S First b Division and Bluff  
 Murray Jno., clk, bds Stevens House  
 Murray Jno., lab, h e s River s Union  
 Murray Michael, lab, h n s Western Av nr R R bridge  
 Murray Thomas, conductor, bds Hyatt House  
 Murray Wm., brakeman, bds American House



Murray Paul, lab, h s s Western Av b Walnut and Pine

Murty Peter, lab, h s s Milwaukee nr R R

Myer O. Fred., (O. F. M. & Bro.,) s w c Milwaukee and Wisconsin

Myer O. F. & Bro., groc, w s Main b Milwaukee and N First

Myers Hiram B., carp, h n s Bluff b High and Jackson

## MYERS HOUSE,

Granger & Co., pro, n e c Main and Milwaukee

Myhr Ole H., shoe mkr, h n s Glen b Augusta and Stoughton

## N

Nash & Cutts, (Jefferson N. & Alonzo K. C.,) fanning mill manuf, s w c Main and N Second

Nash Chas. B., painter, h w s Bluff b N Fifth and Glen

Nash Hiram, bds w s Bluff b N Fifth and Glen

Nash Jefferson, (N. & Cutts,) w s Bluff b N Fourth and N Fifth

Neate Henry, saloon, s s Milwaukee, b Jackson and Franklin, h w s Franklin b School and Centre

Nellis Alex., shoe mkr, h w s Chatham b W Bluff and Ravine

Nelson Caroline, servt, Hyatt House

Nelson Gustavus, shoe mkr, h s e c S Third and Wisconsin

Nelson Jacob, cab mkr, bds s s Rock b High and Jackson

Nelson Jno., blksmth, bds w s Milton Av b Harmony and East

Nelson Jno., carp, h e s River n Ravine

Nelson Jno, fireman, bds s s Centre b Linn and Locust

**N**ETTLETON GERRY, architect and builder, w s River b Centre and Pleasant, bds w s Franklin b Pleasant and Centre

New England House, s w c Dodge and Franklin

Newell Harlow, [Burdick & N.,] w s Academy b Holmes and North

Newell Noah, bds n w c Linn and North

Newkirk James C., carp, w s Main b Court and S First

Newmann Edward, miller, h e s High b Dodge and Pleasant

Newman Edwin, miller, bds e s High b Dodge and Pleasant

Newman J. L., bds Hyatt House

Newton Enos, carp, h n w c Terrace and W Bluff

Newton Owen, baggage master, h cor Pleasant and Academy

Nicholas Jno., atty and justice, n e c Milwaukee and River, h n w c Maria and Ann

**N**ICHOLS JNO. W., Agent American Express Company, bds Hyatt House

Nichols Wm. D., miller, bds s s Milton Av b Harmony and Milwaukee

Nichols W. D., miller, bds Stevens House

Nickerson David, coop, h e s Franklin b Pleasant and Dodge

Nickerson Mrs. Sarah, bds, n e c Jackson and Centre

Nicol Archibald, lab, h w s Centre Av b School and Holmes

Niel James, atty, n s Milwaukee b River and Bridge h e s Academy b School and Holmes

Nisbed James, miller, e s River nr railroad bridge  
 Nisbet A., servt, n w c Academy and School  
 Nisbet Wm., stone cutter, h e s River b Jackson and Olive  
 Nitengale Nicholas, lab, h s s Pleasant nr railroad  
 Nitengale Thomas, lab, h s s Pleasant nr railroad  
 Nixon Allen, shoe mkr, h w s Franklin b Holmes and School  
 Noggle David, Circuit Judge, w s Milwaukee b Franklin and  
 Jackson, bds Hyatt House

Noonan Thomas, lab, h n s Western Av nr railroad bridge

Normile Michael, lab, h s s Dodge nr Railroad

**N**ORRIS ALVIN, Proprietor Excelsior Hotel, n e c Main and  
 N First

Norris A. K., e s Main b S Third and First Racine rd

Norris Simon, e s Main nr Racine rd

North Isaac, mason, h e s River b Olive and Jackson

Northrop M. D., cig mkr, bds Stevens House

Northup Mumford, cig mkr, s e c Main and N First, bds Stevens  
 House

**N**ORTON & CO. (Otis W. N. & Warren N.,) steam elevator,  
 produce and storage, w s High b Ravine and W Bluff

Norton Charles, (Sleeper & N.,) bds Hyatt House

Norton Charles, e s Jackson nr W Bluff

Norton Harlow, produce and com, s s Milwaukee b River and  
 Bridge

Norton Isaac M., w s Franklin nr railroad bridge

Norton James, n s Wall b Madison and Marion

**N**ORTON JOHN, baggage man, h w s Washington b W  
 Bluff and Wall

Norton Jno. T., (Harlow & N.,) w s Jackson nr R R bridge

Norton Otis W., (N. & Co.,) w s Academy b W Bluff and  
 Race

Norton Samuel, baggage master, h w s Marion b W Bluff and  
 Railroad

Norton Warren, (N. & Co.,) n e c Race and High

Novelty Mills, Geo. C. Ferris pro, Race n Milwaukee

Noyes Wm. B., b k, h n s Ravine b Madison and Washington

Nutley Geo., shoemkr, e s Franklin b Milwaukee and Dodge, h  
 w s Franklin b Holmes and North

Nutt Hiram, miller, h w s River b Jackson and Olive

# O

O'Brady Jno., lab, h w s Bluff nr R R Bridge

O'Brien James F., cutter, h s e c Holmes and Franklin

O'Brien Mary, e s Main nr R R bridge

O'Brien James, helper, h Island

O'Brien Maggie, servt, Myers House

O'Brien Michael, lab, h e s River b Union and Holmes

Odea Mrs. Edith, milliner, e s Main b Milwaukee and Court

O'Donel Michael, lab, h e s River b Union and Rock

O'Garry H., lab, h s s Western Av nr R R bridge



O'Gara Jno., lab, h s w c Rock and Jackson  
 Ogilvie Jas. H., notary, n s Milwaukee b River and bridge, h w s  
 Madison b Ravine and Jackson  
 O'Hara Daniel, lab, h n e c Hickory and Walker  
 Olongton Oley, ostler, Schuyler House  
 Olson Simon, carp, h s w c School and River  
 O'Neil Charles, lab, res Janesville T  
 Orcutt & Clark, (Jno. G. O. and Nathan O. C.,) produce, w s  
 Centre Av nr Union Depot  
 Orcutt Jno. G., (O. & Clark,) w s Linn b Holmes and North  
 O'Rourke Farel, bds e s River n Jackson  
 O'Rourke Jno., mason, bds e s River n Jackson  
 O'Rourke Geo., stone mason, h e s River b Olive and Jackson  
 Ortas Thomas, lab, h n s Western Av w R R bridge  
 Orthar Austin, lab, h n s Western Av nr R R bridge  
 O'Ruark Timothy, lab, h e s Bluff n R R bridge  
 O'Ryan Lawrence, h s s Ravine nr Chatham  
 Ott Bernhard, harness mkr, bds e s Main b Milwaukee and N  
 First  
 Ott Michael A., harness mkr, h e s Main b Milwaukee and N  
 First  
 Ottman Abraham, miller, bds Stevens House  
 Ottman Henry, lab, bds w s Main b S Third and Beloit rd  
 O'Tool Larns, lab, bds s s S First b Wisconsin and East  
 O'Tool Mrs. Mary, bds s s S First b Wisconsin and East

## P

Packard Rufus, shoemkr. h s e c S First and Bluff  
 Packham James H., dray, h n e c Academy and Galena  
 Packham Richard, dray, h n e c Academy and Galena  
 Packham Wm., bds n e c Academy and Galena  
 Paddleford L. S., clk, American House  
 Page Amos, w s Jackson b Bluff and Wall  
 Paine Lewis, bds Myers House  
 Palmer Andrew, (P. Brothers & Co.,] s w c Academy and Plea-  
 sant  
 Palmer Andrew jr., [P. & Son,] s w c Academy and Pleasant  
**P**ALMER BROTHERS & CO., [Andrew P., Garrett D. P.,  
 and Andrew P. jr,] pros Monitor, s s Milwaukee e River  
 Palmer Carlos A., mach, bds w s Chatham b W Bluff and Ra-  
 vine  
 Palmer Charles R., clk, bds s w c Pleasant and Academy  
 Palmer Daniel, lab, h s e c Washington and Ravine  
 Palmer Freeman, bds w s Pearl b Jackson and Washington  
 Palmer Garret D., [P Brothers & Co.,] bds s w c Academy and  
 Pleasant  
 Palmer Henry, phys, w s Main b Court and Milwaukee, h e s  
 Madison b W Bluff and Ravine  
 Palmer Milo S., clk, h w s Terrace b W Bluff and Pleasant  
 Palmer Orville, grain buyer, h w s Linn b Holmes and North

- Palmer & Son, (Andrew P. & Andrew P. jr.) drug and groc, s  
s Milwaukee b High and Jackson
- Palmer Wm. E., moulder, bds w s Chatham b W Bluff and Ra-  
vine
- Palmer Wm. H., grain dealer, h w s Chatham b Ravine and W  
Bluff
- Pankhurst Jno., lime dealer, h w s Arch nr railroad
- Pankhurst Thomas, lab, bds w s Arch nr railroad
- Parker Abraham W., blk smth, h s e c Milwaukee and Division
- Parker Francis D., w s Water b S Second and S Third
- Parker Jno. S., clk, h n w c S Third and Main
- Parker Joseph W. D., atty, n s Main b Milwaukee and N First,  
h s w c Jackson and Holmes
- Parker Nathaniel, carp, h s e c Jackson and W Bluff
- Parker Robert, barb, n e c Main and Milwaukee, h s s Har-  
mony b Caroline and Maria Av
- Parker Thomas, lab, e s Main nr Racine rd
- Parker Warren D., bds s w c Jackson and Holmes
- Parks Wm., eating house, w s Main nr Milwaukee
- Parritt Willard, (P. & Storey,) n e c Holmes and Academy
- Parritt Willard, gas fitter, w s River b Milwaukee and Dodge, h  
n e c Holmes and Academy
- Parritt & Storey, (Willard P. & Charles W. S.,) groc, s w c  
Milwaukee and River
- Parshall Rev. Revilo F., w s Main nr Beloit rd
- Partridge F. A., clk, bds Myers House
- Partridge S. A., clk, bds Myers House
- Patno Frank P., blk smth, n s Western Av b Center Av and  
Linn
- Patten La Fayette, [Sloan, P. & Bailey,] w s Main b S Third and  
Racine
- P**ATTERSON ARCHIBALD, builder and jobber, w s Main b  
N First and N Second, h s w c S Third and Wisconsin
- Patterson Geo., sawyer, h Second Racine rd e Beloit rd
- P**ATTERSON HENRY A., attorney and justice of the peace,  
e s Main b Milwaukee and N First, h nr cor Milton Av and  
Harmony
- P**ATERSON MATTHEW, blacksmith, w s Main b N Third  
and Fourth, h w s Locust b School and Centre
- Pattison Henry E., freight agt, C. & N. W. R. R., h e s Jackson  
b Centre and Shool
- Paul Wm. T., cattle dealer, h e s Washington B W Bluff and  
Ravine
- Payne Wm. H., D. Noggle's Addition
- Pease Clark G., phys, w s Jackson nr Ravine
- Pease Jno. J. R., (Eldredge & P.,) w s Harmony b Division and  
Cornelia
- Pease Jno. P., h n w c Wisconsin and Harmony
- Pease Jno. F., h w s Chatham b W Bluff and Ravine
- Peasle Mrs. Sarah, milliner, e s Main b Milwaukee and Court
- Peck S., servt, Janesville House



- Peckham Jno., farmer, h w s Racine nr Beloit rd  
 Peirce Geo., harness mkr, h Milton Av  
 Piersol Mrs. Anna, bds n s N Second b Main and Bluff  
 Peirson Richard J., groc, w s Milwaukee b Franklin and River,  
 h s w c High and Holmes  
 Pelton Mrs. Elizabeth, n e c Jackson and W Bluff  
**P**ENDLETON DR. B. F., dentist, w s Main b Milwaukee  
 and Court, h w s Academy b School and Holmes  
 Penton Geo., tailor, h s s Harmony b Caroline and Milton Av  
 Perkins Amos H., roofer, h e s Bluff b Milwaukee and N First  
 Perry Jones, bds Schuyler House  
 Peters Henry, mason, h e s Chatham b W Bluff and Pleasant  
 Peters John, mason, h cor Jackson and Madison  
 Peterson Charles C., shoemkr, h w s Water b S Second and S  
 Third  
 Peterson Mrs. Louisa, s s Milwaukee b Division and Wisconsin  
 Peterson Miss Mary L., s s Milwaukee b Division and Wisconsin  
 Peterson Nelson, shoemkr, bds Schuyler House  
 Phaley James, eng, h e s Main nr R R bridge  
 Phelps Mrs. Catherine, carpet weaver, w s Palm s Western Av  
 Phelps Charles, carp, h s w c Bluff and Franklin  
 Phelps C. L., bds Schuyler House  
 Phelps Cornelius, mason, h w s Main b Milwaukee and N First  
 Phelps Cornelius C., washing mach manuf, w s Main n Milwaukee  
 Phelps Geo., lab, bds w s Palm s Western Av  
 Phelps James, mason, h w s Water nr S Third  
 Phelps Sherman, lab, bds w s Palm s Western Av  
 Philips Geo., farmer, bds Rock County House  
 Phoenix Mills, Ford & Crossit, pro, Race n Milwaukee  
**P**ICKERING GEORGE, cabinet turner, w s River b Centre  
 and Pleasant h s e c Franklin and Galena  
 Pickering Geo., bar k, bds Rock County House  
 Pickering Jno., bds Rock County House  
 Pierce Geo., harness mkr, h s e c Milton Av and Hyatt  
 Pierce Geo. M., farmer, h w Bridge nr Institute for Blind  
 Pierce Prosper A., farmer, bds w Bridge nr Institute for Blind  
 Pierson Ambrose, telegraph messenger, bds w s Franklin b Wall  
 and W Bluff  
 Pierson Mathias W., pressman Gazette, h w s Franklin b Wall  
 and Bluff  
 Pike Mrs. Clara J., e s Main b Milwaukee and N First  
 Pike George, eng, h n e c Locust and Centre  
 Pitts C. S., clk, bds Stevens House  
 Pixley Benjamin F., produce and com, n s Pleasant nr Union  
 Depot, h e s Jackson b W Bluff and Race  
 Plato Joshua W., constable, h e s Pearl b w Bluff and Racine  
 Plimpton James W., bar k, bds n w c Court and Division  
 Plowright Thomas, h w s Bluff b S Third and Racine rd  
 Plummer Jno P., dray, h n e c S First and Water  
 Potter Albert, printer, bds w s Washington b Jackson and Ra-  
 cine

Potter Jno. C., gunsmith, h e s Pearl b Ravine and Jackson  
 Powell Geo. L., baker, s s Milwaukee b Franklin and River, h e  
 s Linn b Holmes and North

Powell Henry, conductor, h e s East b Court and Milwaukee

Powell Leonard, h s s Milwaukee b Jackson and Franklin

Powers Anthony, lab, h w s Bluff n railroad bridge

**P**OWERS JOHN E., artist, s w c Main and Milwaukee, h w  
 s Locust b Cherry and School

Powers Morris, lab, h w s Bluff nr railroad bridge

Powers Noah, blksmith, h w s Franklin b Holmes and School

Powers Steward, mail carrier, bds e s Locust b Holmes and  
 School

Powers Wm., carp, h n e c High and Ravine

Powers Wm., n s Pleasant nr boundary

Powers Wm., lab, h s s Western Av w railroad bridge

Powl Frederick, baker, w s Jackson b Milwaukee and Dodge

Pratt Miss Cordelia, bds n e c Franklin and Dodge

Pratt Miss Ella L., bds n e c Franklin and Dodge

Prichard Amos C., county Judge office county building, h n w c  
 Wall and High

Price Mary, servt, Rock County House

**P**RICHARD MOSES S., attorney, n s Milwaukee b Franklin  
 and Jackson, h n w c High and Wall

Proper Joseph B., clk, h n s N Fourth b Main and Bluff

Proper Nathan W., carp, h n S Fourth b Bluff and Main

Puffer Prescott W., clk, bds Hyatt House

Pulker Charles, auctioneer, s s Milwaukee b Franklin and River,  
 h w s Jackson b Milwaukee and Wall

Pullen Edward, clk, bds w s Washington b Ravine and W Bluff

Pullen Henry B., w s Washington b W Bluff and Ravine

Putnam Mary, bds n e c Franklin and Dodge

Putnam S. J. M., sheriff, n w c Water and S Second

## Q

Quinn Jno., lab, h nr Engine house

Quirk Michael, lab, h Smith's Addition

## R

Ramo Wm., bds Rock County House

Randall Brusten, jeweler, h n e c Bluff and Court

Randolph Kinsey F., clk, h e s Academy b Milwaukee and Dodge

Randolph Saml. T., clk, bds Hyatt House

Randolph S. D., clk, bds Hyatt House

Ransom Mrs. M., h s s Racine rd nr Beloit rd

Ratheram Edward, mason, h s w c School and Linn

Ratheram Joseph J., mason, h s w c School and Linn

**R**AYNER MRS. FRANCES, sewing machine agent, n s Mil-  
 waukee b Main and Bluff

Rayner Daniel O., P. O. clk, h n s Milwaukee b Main and Bluff

Read Mrs. —, e s Washington b W Bluff and Ravine



- Read Wm. F., tailor, h w s Main b N First and Milwaukee  
 Reaves Jno., lab h s Pleasant nr Union Passenger Depot  
 Reddy Andrew W., shoemkr, h s s Wall b River and Franklin  
 Redman Isaiah, shoemkr, h s w c S First and Bluff  
 Reed Jno., lab, e s Jackson nr Ravine  
 Reed Levi, (Heck & R.,) w s Main b S Second and S Third  
 Reed Mrs. Luzilla, n e c School and Jackson  
 Reed Nicholas, w s Charles n R R  
 Reese James E., mason, bds n s South b Cherry and Franklin  
 Reeves Geo. P., watchmkr, h w s Linn b North and Holmes  
 Regan Dominick, driver, Myers House  
 Reifenberg Casper, lab, h s e c South and Academy  
 Reigart J H., bds Hyatt House  
 Reiley Mary, servt, s w c Academy and Milwaukee  
 Reilly Patrick, lab, h s e c Jackson and Union  
 Resseguie Alex. C., s w c Main and S Second  
 Resseguie Rufus, bds w s Main b S Second and S Third  
 Rexford John D., cashier Central Bank, h w s Washington nr  
 Boundary  
 Reynolds Miss Eliza, s s Milwaukee nr Bridge  
 Reynolds Mrs. Elizabeth, s s Milwaukee nr Bridge  
 Reynolds Heary, miller, h e s Hickory nr St. Mary's Av  
 Reynolds Mrs. Rose, millinery, s s Milwaukee nr Bridge  
 Reynolds Wm. A., boots and shoes, n w c Milwaukee and Main,  
 bds Myers House  
 Rhodes Mrs. Mary F., s e c Jackson and Terrace  
 Rice Eli B., photographer, w s Main b Court and S First  
 Rice. Gaul & Rice, (Jno. P. R., Jno. P. G. & Joshua M. R.,) dry  
 goods, &c., w s Main b Milwaukee and Court  
 Rice Jno. P., (R., Gaul & Rice,) res Fulton, Ill  
 Rice Joshua M., (Rice, Gaul & R.,) res Iowa  
 Rich E., brakeman, bds Myers House  
 Rich Eugene, baggage man, bds American House  
 Rich Sumner K., clk, Hyatt House  
 Richards Daniel, stone mason, h n e c Ravine and Chatham  
 Richards Frank, n s Milwaukee b Division and Wisconsin  
**R**ICHARDS HENRY, saloon, w s Main b N First and Mil-  
 waukee  
 Richards Miss S. A., teacher, bds Hyatt House  
 Richardson Chas., conductor, bds Hyatt House  
 Richardson Hamilton, s w c School and Franklin  
 Richardson M. L., w s Milton Av n Benton Av  
 Richardson R. J., stoves and tin ware, w s Main b Milwaukee  
 and Court, bds Hyatt House  
 Rice Cath., servt, n w c Jackson and Milwaukee  
 Rigby Wm., carp, h s w c Court and Main  
 Right Mrs. Ann, n s Milwaukee b Wisconsin and Division  
 Riker Jacob M., saddler, n s Milwaukee b Main and Bluff, h s w  
 c High and Centre  
 Riker Murillo T., harness mkr, bds s w c High and Centre  
 Riley Dominick, lab, h w s Franklin b Rock and Union

Riley Jno., waiter, Hyatt House  
 Riley Jno., lab, h e s River s Union  
 Riley Pat., waiter, Hyatt House  
 Riley Pat., lab, h s e c East and S First  
 Ring Frederick, e s Main n N Fourth  
 Ring Jno., blksmth, bds Main n R R bridge  
 Riordan Charles, (R. & Leech,) h s s Milwaukee b Wisconsin  
 and East

Riordan & Leech, (Charles R. & Thomas L.) dry goods, &c., w  
 s Main b Milwaukee and Court

Risdon Dan., bar k., bds w s Bluff b Ann and Glen

Rist Alonzo, bds Schuyler House

Ritter Martin J., miller, h n e c Claron and Linn

Robbins Jacob, mason, h n s Glen nr Cornelia

Roberts E. L., h n w c Ravine and Madison

Roberts Elford E., bds s e c Jackman and S First

Roberts Humphrey, tin smith, n e c School and Franklin

Roberts Jeremiah, s e c Jackman and S First

Robertson Hiram A., police, w s Main b S Third and Beloit rd

Robinson Elna A., mach, h w s Academy b North and Galena

Robinson Oliver P., phys, s w c Cherry and Centre

Robinson W., architect, w s Terrace b Washington and Jackson

Rock County Agricultural Fair Grounds, s w c Racine and Be-  
 loit rds

**R**OCK COUNTY BANK, n s Milwaukee b Main and Bridge,  
 Timothy Jackman, President, James B. Crosby, Cashier

**R**OCK COUNTY HOUSE, B. Spence pro, s s Milwaukee b  
 Linn and Locust

Rock Peter F., n e c Washington and Wall

Rock River Brewery, Jno. Roethinger pro, cor Racine and Beloit  
 rds

**R**OCK RIVER IRON WORKS, Harris, Guild, Angell and  
 Tyler, proprietors, s w c Center and River

Roethinger Jno., pro, Rock River Brewery, cor Racine and Be-  
 loit rds

Rogers —, mach, bds n e c Jackson and High

Rogers A., (Buob & R.) w s Milton Av b Harmony and East

Rogers Henry C., carriage trimmer, h n e c Holmes and High

Rogers Isaac, atty, s w c Milwaukee and Main, h s w c Jackson  
 and Centre

Rogers Jasiah B., painter, h n e c Locust and North

Rogers Orson C., mach, bds n s Centre b High and Jackson

**R**OOF ELIJAH C.,  
 carpenter, h s w c Franklin and Galena

Rooney Richard, cab mkr, h n s Glen nr Hickory

Roper Nathan W., n w c N Fourth and Bluff

Rose Frank, bds Stevens House

Rose Nathaniel, teamster, h n e c Ann and Caroline

**R**OSE ROBERT, pine lumber, shingles, flooring, lath, pickets,  
 &c., e s High b Milwaukee and Dodge, bds e s Academy  
 b Dodge and Milwaukee



Ross Wm., carp, h n e c Jackson and S Third  
 Ross Wm. H., miller, h n e c Jackson and Rock  
 Rothrock Reuben W., clk, h s e c Jackson and Holmes  
 Runey Mrs. Margaret, bds w s Academy b Holmes and North  
 Russ Herman, tailor, h e s Franklin b Holmes and School  
 Rust Robert, miller, h e s Main b S First and S Second  
 Russell Miss Ada, teacher, bds w s Milwaukee b Bluff and Division  
 Russell Albert J., land agt, n s Milwaukee b Franklin and Jackson, h n s Milwaukee b Jackson and Franklin  
 Russell Alexander, clk, bds s w c Academy and Pleasant  
 Russell Alfred, teamster, bds w s Main b S Second and S Third  
 Russell David W., carp, h s w c Elm and Court  
 Russell Geo., miller, h cor River and Olive  
 Russel Peyton, carp, h s w c Milwaukee and Division  
 Ryan E., tailor, bds Excelsior Hotel  
 Ryan Edward, baggage man, bds American House  
 Ryan Hannah, servt, w s Jackson nr R R Bridge  
 Ryan Patrick, lab, h w s Franklin s Union  
 Ryan Richard, tailor, bds Excelsior House  
 Ryne Jno., lab, h s s Harmony nr Caroline

## S

Sampson Mrs. Ophelia, dress mkr, w s Jackson b Milwaukee and Wall  
 Samson Thaddeus R., h n w c Ravine and Terrace  
 Sanborn G. W., conductor, bds Hyatt House  
 Sanders Franklin, bds Hyatt House  
 Sanderson Hannah, servt, w s Academy n Race  
 Sandling Jno., lab, h n s Pleasant b High and Jackson  
 Sandor Hermond, lab, h e s Main nr R R bridge  
 Sanner Jno., harness mkr, h n w c W Jackson and North  
 Sargeant Jno, butch, bds Excelsior Hotel  
 Sargent Edward, tinsmith, bds e s Wisconsin b S First and S Second  
 Sargent Gustavus, butch, w s Main n Milwaukee, bds w s Main nr Racine rd  
 Saunders Geo., w s Bluff b N First and N Second  
 Saunders Jno., carp, h n s Jackson b Madison and Washington  
 Sayer Joseph, carp. bds w s Franklin b Centre and School  
 Sayles Thomas A., s s Bluff b Jackson and High  
 Scanlan Daniel, stone cutter, h s w c St. Mary's Av and Hickory  
 Searcliff Geo., butch, s s Milwaukee b Franklin and River, h e s Franklin b School and Holmes  
 Searcliff Henry, bds e s Franklin b Holmes and School  
 Schaller Andrew, carp, h s s Josephine e Ringold  
 Schermerhorn Francis, harness mkr, h w s Franklin b Holmes and North  
 Schiker Jno., saloon, e s Main b Milwaukee and N First  
 Schoof Diedrich, carp, s s Polk e Ringold

**SCHUTT URIAH**, pine lumber, shingles, lath, posts, pickets, &c., e s River b Milwaukee and Dodge, h s e c Division and S Second

**SCHUYLER HOUSE**, Henry S. Austin pro, s s Milwaukee b Bluff and Division

**SCHUYLER MARCUS P.**, n e c Pleasant and Jackson

Scofield Daniel, w s W Bluff b Academy and Madison

Scofield Ezra, w s Cherry b Centre and School

Scofield Proctor D., clk, n s Bluff, b Madison and Washington

Scofield Miss Sabra A., teacher Institute for Blind

Scott Edward, tailor, h Island

Sears Mary, servt, e s Jackson b Wall and Bluff

Sears Mary N., teacher, bds e s Main b S Third and Racine road

**SEATON & CO.**, (Edward S. & Wm. Eller,) wagon manufacturers and blacksmiths, w s River b Dodge and Milwaukee

**SEATON EDWARD**, (S. & Co.,) bds Hyatt House

Seaver Calvin, e s East b S First and S Second

Selby Horatio T., groc, w s Main b Milwaukee and N First, bds s e c S Third and Main

Sexton Charles, blksmith, n e c Wall and Jackson, h n e c Bluff and Jackson

Sexton Handley B., blksmith, h n e c Jackson and Race

Shafer David, e s Main b S Third and First Racine rd

Shafner Marvin E., carp, h s s Claron between Centre Av and Jefferson

Sharp Maggie, servt, e s Jackson b W Bluff and Race

**SHATTUCK DR. WM. H.**, dentist and surgeon, n s Milwaukee b Main and Bluff

Shay Edward, lab, h e s River b Union and Holmes

Sheafe Mark W., h s s W Bluff b Marion and Madison

Sheahan Kate, milliner, w s Main b Milwaukee and Court

Sheahan Miss Lizzie, milliner, w s Main b Milwaukee and Court

Shearer Charles C., harness mkr, bds w s Jackson b Pleasant and Centre

Shearer Robert B., carp, h s s Racine rd nr Fair Grounds

Shelton Henry S., c High and Cherry

Shelton Wm., w s Cherry b Pleasant and Centre

Shepard Thomas J., mason, h w s Arch nr Railroad

Sherer Albert, harness mkr, e s Main b N First and Milwaukee, h w s Bluff b N First and N Second

Sherer Jno., harness mkr, bds w s Jackson b Center and Pleasant

Sheridan Thomas, lab, h e s Chatham b W Bluff and Pleasant

Sherman Nicholas, cab mkr, h n e c Jefferson and Claron

Sherwood Hezekiah, eng, h e s Academy b Ravine and Race

Shields Andrew, teamster, e s Palm s Western Av

Shields Martin, butch, h e s Main b S Third and S Second



- Shoeman Louis, clk, h n w c Bluff and N First  
 Shopbell Ellis, carp, bds w s Jackson n Milwaukee  
 Shortney Jno., b k, h s e c Dodge and Jackson  
 Shotbolt Jno. G., teamster, h s e c Josephine and Ringold  
 Shotbolt Mrs. Mary, e s River b Race and Ravine  
 Sillito Wm., cab mkr, e s Main b N First and Milwaukee  
 Simons Peter, lab, h s s N First b Main and Bluff  
 Sinclair Jefferson, s e c High and Bluff  
 Sisson Saml. G., carp, h w s Main b S Third and Beloit rd  
 Skelly Adam, printer, h n e c Linn and Washington  
 Skelly Charles, (S., Inman & Co.,) bds s e c Washington and Linn  
 Skelley Daniel, photographer, h s e c Washington and Linn  
 Skelley Geo., e s Locust nr Washington  
 Skelly Henry, wagon mkr, h e s Locust nr Washington  
 Skelly, Inman & Co., (Charles S., David W. I. & Randall Williams,) groc and com, s s Milwaukee b Franklin and River  
 Skelly Jno., e s Linn nr Washington  
 Skelly Patrick, stone mason, h w s Palm s Western Av  
 Skelly Wm., wagon mkr, n s Wall b Franklin and Jackson, h n e c Dodge and Academy  
 Skinner James E., carp, s w c Water and S Second  
 Slauscar Frederick, farmer, h s s Racine rd w Fair Grounds  
 Sleeper Joseph A., (S. & Norton,) n e c S Third and Main  
 Sleeper & Norton, (Joseph A. S. & Charles N.,) attys s s Milwaukee nr Bridge  
 Sleeper Thomas C., h n e c Main and S Third  
 Sloan Henry C., bds e s Main b S Third and Racine rd  
 Sloan Ithamar C., [S., Patten & Bailey,] e s Main b Racine and S Third  
**SLOAN, PATTEN & BAILEY**, [Ithamar C. S., La Fayette S. P. & E. Stillman B.,] attorneys, n w c Main and Milwaukee  
 Smidt August, eng wiper, h e s Locust b Centre and School  
 Smith A. Hyatt, n s Milwaukee b Franklin and Jackson  
 Smith & Bostwick, (M. C. S. and J. M. B.,) dry goods, s w c Main and Milwaukee  
 Smith Calvin, carp, h e s Pearl b W Bluff and Ravine  
 Smith Erastus C., n w c Academy and Galena  
 Smith Ezra, carp, h w s Main b S Second and S Third  
 Smith Frank M., clk, h w s Milton Av b East and Harmony  
 Smith Francis, clk, h n s Court b East and Jackman  
 Smith Geo. W., student, bds n w c Cherry and Galena  
 Smith H. D., saloon, bds Myers House  
 Smith Hezekiah L., stoves and hardware, w s Main b Court and Milwaukee, h s e c East and S First  
 Smith Isiah M., n s Pleasant nr boundary  
 Smith Jacob, carp, h n w c W Milwaukee and South  
 Smith Jno., bds Schuyler House  
 Smith Jno. W., fanning mill mkr, h s w c Glen and Caroline  
 Smith Levi, carp, h n e c Glen and Maria  
 Smith Luther, eng, bds n s W Bluff b Terrace and Pearl

Smith Lyman, carp, h s s S First b Wisconsin and Division  
 Smith Mrs. Mary, s Union b River and Franklin  
 Smith M. C., (S. & Bostwick,) s e c S First and Division  
 Smith Otis, e s Milton Av n Benton Av  
 Smith Parley, bds Hyatt House  
 Smith Philo L., carriage mkr, w s River b Wall and Milwaukee,  
   h s e c Cherry and School  
 Smith S. Norton, res Harmony T  
 Smith Shubael W., (Jackman & S.,) bds s e c Court and East  
 Smith Thomas, lab, h s e c Ann and Caroline  
 Smith Wm., painter, bds Excelsior House  
 Snider Geo., clk, American House  
 Somers Horace, eng, bds Hyatt House  
 Sonkel Louis, w s William nr Walker  
 Soper Palmer L., e s Pearl b W Bluff and Ravine  
 Southard Jocelyn, bds Rock County House  
 Spafford Peter B., clk, bds Myers House  
 Spalding Rev. Henry W., rector Christ Church, h s e c Bluff and  
   N Second  
 Sparham Wm. J., blksmth, h n s Holmes b River and Franklin  
 Sparling Jno., h n Wall b Academy and Marion  
 Spaulding Josiah, s w c Holmes and Centre Av  
 Spaulding Stephen C., jeweler, h s w c Holmes and Linn  
**S**PENCE BARTHOLOMEW, pro Rock County House, s s  
   Milwaukee b Linn and Locust  
 Spencer Charles, mach, bds n e c High and School  
 Spencer Jno. C., printer, h n e c Bluff and Glen  
 Spencer Moses, conductor, h n s W Bluff b Terrace and Pearl  
 Spencer Samuel H., pattern mkr, h n e c High and School  
 Spencer Ambrose, bds Hyatt House  
 Spohn Henry, lab, h n w c Locust and Washington  
 Spicer Mrs. Ann M., n w c Galena and Franklin  
 Spicer Erastus, mail carrier, h w s Washington b Jackson and  
   Ravine  
 Spohn Jno. F., harness mkr, h w s Main nr Racine rd  
 Spong Jno., lab, h e s River b Race and Ravine  
 Squires Z., bds Excelsior Hotel  
 St. John Albert, lab, h e s Jefferson b Western Av and Claron  
 St. John James, bds n s Racine rd nr Beloit rd  
 St. John Josephus, farmer, h n s Racine rd nr Beloit rd  
 St. John Sylvester, printer, bds e s Jefferson b Western Av and  
   Claron  
 Stack Julia, servt, Myers House  
 Stanley Jno. R., wagon mkr, h n s South b Milwaukee and Frank-  
   lin  
 Stemton James, lab, h n Western Av nr R R bridge  
 Steele Charles, coop, n e c River an School  
 Steele Wm. M., soap and candle manuf, s s Jackson nr boundary  
 Steembarge Abram, s e c Jackson and Terrace  
 Stevens Fred., clk, bds Myers House  
 Stevens —, w s Washington nr boundary



Stevens Asahel, confec, w s Main b Court and Milwaukee, h s e  
e Franklin and Holmes

# STEVENS CHAUNCY,

pro American House, n w c Main and Court

Stevens Charles, h w s Bluff b Court and Milwaukee

Stevens Geo. W., artist, bds w s Franklin b W Bluff and Race

Stevens Horace, lab, h n s Western Av w R R bridge

# STEVENS HOUSE, Geo. W. Miltimore pro, n s N First b Main and Bluff

Stevens Miss Jennie, select school, n w c Jackson and Pleasant

Stevens Jno. W., e s Academy b Race and Ravine

Stevens Palmer H., carp, h e s Centre Av b Washington and Ga-  
lena

Stevens Samuel, milkman, h w s Madison rd n Jackson

Stevens Wm., e s Centre Av b Washington and Galena

Stevenson David, (D. S. & Co.,) s s Milwaukee nr city limits

Stevenson D. & Co., (David S. and Washington Chesbroe,) mar-  
ble, s s Milwaukee b River and bridge

Stewart Wm., brakeman, bds Hyatt House

Stewart Wm. V., grain dealer, h s s Racine rd e Main

Stickney Charles D., painter, h w s Academy, b Race and W  
Bluff

Stickney Truman, painter, bds Stevens House

Stimson Saml., w s Milton Av n St. Mary Av

Stoddard A. D., clk, bds Myers House

Stone J. B., bds w s Bluff b Milwaukee and Court

Stone Lewis E., miller, h w s Main b S Third and Beloit rd

Story Charles, w s Madison b W Bluff and Ravine

Storey Harvey, blksmth, n s Milwaukee b Bluff and Division, h  
n s Glen nr Milton Av

Story Mrs. Huldah, s e c Holmes and High

Story Urias, wagon mkr, n s Milwaukee b Bluff and Division, h  
n s Glen nr Milton rd

Storey Charles W., (Parritt & S.,) w s Jackson b Centre and  
School

Strasberger Gideon S., w s Franklin b Centre and School

Strong Elihu H., h s e c Main and S Second

Strupp Elizabeth, w s Academy b W Bluff and Wall

Strong Wm. B., agt M & P du C R R, w s Academy nr W  
Bluff

# SUTHERLAND ALEXANDER, (Hanchett & S.,) w s Acad- emy, b North and Holmes

Sullivan B., lab, h s s Pleasant nr R R

Sullivan G. W., blksmth, bds Schuyler House

Sullivan Jno., coop, bds Stevens House

Sullivan Jno., coop, hds Schuyler House

Sullivan Jno., lab, h s s Pleasant nr Union Depot

Sullivan Mathew, watchman, h n w c Ravine and Chatham

Sullivan Michael, lab, h s Pleasant nr Union Depot

Sutherland James, St. Mary's Av

Suyhan Jeremiah, coop, bds e s River b School and Centre

Swagger Niels, furniture, n s Milwaukee, b Franklin and River, h s s Rock b Holmes and Jackson

Switzer Henry J., carriage mkr, w s Franklin b Wall and W. Bluff

Sykes Geo., dray, h e s Chatham b W Bluff and Pleasant

**SYKES JAMES**, peddler, h n e c South and Franklin

## T

Tahan Timothy, lab, h e s Main nr R R bridge

Tall Charles, dray, w s Cornelia nr Glen

Tallman & Collins, (Wm. H. T. & Henry W. C.) drug, w s Main b Milwaukee and Court

Tallman Wm. H., (T. & Collins,) e s Jackson nr Ravine

Tallman Wm. M., e s Jackson nr Ravine

Tarrant Charles, clk, bds Academy

**TARRANT GEORGE**, groceries, provisions and liquors, s s Milwaukee, b River and Bridge, h w s Academy b School and Holmes

Taylor David, baker, bds s s Milwaukee b Main and Bridge

Taylor Hiram, e s Milton Av b Harmony and Milwaukee

Taylor James, coop, h s w c Franklin and Rock

Taylor Wm., n s Racine rd e Main

Taylor Wm. V., carp, w s Franklin b Pleasant and Dodge, h s w c Franklin and Rock

Tennent Thomas, teamster, h s s S Third e Jackman

Terhune Jno., Jr., auction and com, e s Main b Milwaukee and Court, h s e c Shelton Av and Ruger Av

Terwilleger Frederick, tinner, h e s Linn b School and Holmes

Terrel Steven, lab, h n s N Third b Bluff and Main

Thayer Asabel, moulder, h n w c Franklin and North

Then Hannah, servt, s s Centre b Linn and Locust

Thomas Evan, shoe mkr, n s Milwaukee b Biver and Bridge, h e s River b Olive and Jackson

Thomas Richard, clk, bds n e c W Bluff and Madison

Thompson Rev. Charles S., pastor Presbyterian Church, h n w c Academy and School

Thompson Edward, driver, Hyatt House

Thompson Geo., ostler, h e s Main b S Second and S Third

Thompson Miss Jennie, dress mkr, w s Main b Milwaukee and Court

Thompson Jno., lab, h al n N Fifth nr Bridge

Thompson Luther F., bds n w c Jackson and Wall

Thompson Miss Mary, dress mkr, w s Main b Milwaukee and Court

Thompson Parker, miller, bds Schuyler House

Thompson Samuel F., photographer, s w c Milwaukee and Franklin, h s s Milwaukee b Franklin and Jackson

Thomson Geo., driver, American House



- Thomson Miss Jennett, bds w s Bridge, Monterey  
 Thomson Jno., tailor, n e c Main and Milwaukee, h w s Milton Av  
 b Harmony and East  
 Thomson Mary, servt, Schyuler House  
 Thomson Owen, lab, h n s S Second b Main and Bluff  
 Thorn Geo., bds Schuyler House  
**T**HORNE ELISHA R., mill wright, w s Madison b Ravine  
 and Jackson  
 Thornton Thos. J., [Ed. Connell & Co.,] s e c Franklin and  
 Washington  
 Tice Edmund K., s w c North and Locust  
**T**ICE JACOB, Photographer, s s Milwaukee b River and  
 Bridge, h e s Academy b School and Holmes  
 Tice James, wagon mkr, h s w c Locust, and North  
 Tilton Rev. Hezekiah C., w s Franklin b Milwaukee and Dodge  
 Tipney Jno., waiter, Hyatt House  
 Tipner Mrs. Lucy, s s Glen b Hickory and William  
 Todd Henry, lab, h Monterey  
 Todd Jno., gardener h Monterey  
 Todd Lemuel F., carp, h Beloit rd s Racine rd  
 Tompkins Wm. F., farmer, h n w c Dodge and Jackson  
 Toole Catharine, servt, e s Academy b Race and Ravine  
 Toole Stephen, lab, h w s Main b S Third and Beloit rd  
 Tornay James, upholsterer, h n w c Wall and River  
 Torrey Geo. F., [W. H. & G. F. T.,] n w c Ann and Caroline  
 Torrey Wm H., [W. H. & G. F. T.,] bds Myers House  
 Torrey W. H. & G. F., groc, n s Milwaukee b Main and Bluff  
 Towne Hiram, shoe mkr, e s Main b Milwaukee and N First, bds  
 w s Franklin b Wall and Bluff  
 Tracy Dexter G., farmer, h w s Linn b Washington and West-  
 ern Av  
 Tracy Lawrence, lab, h w s Centre Av, b North and Holmes  
 Tracy Thomas, principal, St. Cuthbert's Cathedral School, h s e  
 c Cherry and North  
 Trambie Jonas, shoe mkr, w s Main b North First and Milwaukee  
 h w s Bluff s R R Bridge  
 Trask Marion W., w s Main b S First and S Second  
**T**REAT DAVID S.,  
 [Moon & T.,] n e c S Third and East  
 Treat Mrs. F., n w c Linn and North  
**T**REAT ROBERT B., physician and surgeon, n w c Milwau-  
 kee and Main, h n s Jackson b Milwaukee and Dodge  
 Tripp Jack, eng, bds s w c Holmes and Linn  
 Trolson S., w s High b Ravine and Race  
 Trott Charles W., bds n e c S Third and Bluff  
 Trout Joseph, lab, h w s Academy b Galena and Washington  
 Trowbridge Alpheus S., w s Main nr Racine rd  
 True Geo. F., clk, bds w s Madison b Jackson and Ravine  
 True Miss Hettie, bds w s Madison b W Bluff and Ravine  
 Tuckwood Mrs. Jane, w s River b School and Centre

Tupper Francis J., farmer, bds e s River b School and Centre  
 Turner H. J., principal Turner's English and French Academy,  
 res Sauk City

Turner's English and French Academy, w s Milton Av b Har-  
 mony and East, H. J. Turner, principal, Rev. H. W. Spalding  
 visitor and patron

**T**YLER LEONARD, [Harris, Guild, Angell & T.,] w s Main  
 nr Racine rd

## U

**U**NION PASSENGER DEPOT, s w c Centre Av and Plea-  
 sant

Urchart Daniel, carp, h s w c Washington and W Jackson

## V

Valentine James, coop, h n w c Hickory and Ann

Valentine Jno., cook, h w s Main b Milwaukee and N First

Vanay Thomas, h w s Terrace b Jackson and Ravine

Van Derhide Jno., farmer, h Second Racine rd nr Beloit rd

Van Dyke Byron, (Winton & V.,) bds w s Front b Water and  
 Franklin

Van Kirk Jno. H., b k, bds Myers House

Van Kirk Oliver, n e c W Bluff and Madison

Vankirk Wm. T., clk, bds w s Main b S Second and S Third

Van Wagenen Frederick, e s Linn b School and Holmes

Vaughn Danl., bds Hyatt House

Veolker Ernst, lab, n s North nr Engine House

Verback A. F., bds Hyatt House

Vermilye Jno. H., cash, h w s Madison b Jackson and Ravine

Vialon Francis J., peddler, h e s River b Olive and Jackson

Vincent Edward, atty, bds Stevens House

Vosburgh Hiram, n s N Second b Bluff and Main

## W

**W**ACHTMANN HENRY, saloon, n s Milwaukee b River and  
 bridge

Wales Milton F., blksmth, h n e c Centre Av and Washington

Walker Miss Fannie, teacher, bds s s Bluff b High and Jackson

Ward Mrs. C., s s Racine rd e Main

Ward De Witt, mach, h s s Glen b Caroline and Cornelia

Ward Edward C., millwright, h n w c Washington and Ravine

Ward Mrs. Mary, e s River b Union and Rock

Warner Joseph, bds Stevens House

Warner Peter B., b k, h e s Jackson b Race and Ravine

Warren Andrew, clk, bds w s Cherry b Holmes and Centre

Warren Gore A., dray, h e s Hickory b St. Mary's Av and Walker

Warren Jno., bds Stevens House

Washington Cornelius, clk, w s Main, b Milwaukee and N First  
 h w s Terrace b Ravine and W Bluff



Waterman Noble, produce dealer, h e s Chatham b Jackson and Ravine

Waters Daniel J., mer tailor, s s Milwaukee b High and Jackson

Watson Mrs. Bridget, e s River s Union

Watson Charles, ostler, American House

Watson Jno., contractor, h s s Harmony b Caroline and Maria

Watson Michael, ostler, bds e s Main nr Racine rd

Watson Wm., gas fitter, h n s Pleasant b Cherry and Academy

Watts Jno. A., bds e s Main b Milwaukee and Court

Webb Alex., n s Main b Milwaukee and N First

**W**EBB & LEE, (Jas. A. W. and Philip A. L.,) watches, jewelry and silver ware, s w c Milwaukee and Main

Webb Jas. A., (W. & Lee,) s w c Court and Division

Webber Charles T., eng, h n e c Pleasant and Palm

Webber Mary, cook, American House

Weber David, (Williams & W.,) Pease's Addition

Weeden Jno. J., blksmth, e s Franklin b Milwaukee and Wall, h n e c Academy and Galena

Weeks Geo., painter, bds Schuyler House

Welch Jno. B., carp, h e s Academy b Holmes and North

Wells E. M., bds n w c Jackson and Wall

Wells Miss Fannie, e s Jackson b Wall and W Bluff

Wells Henry, n s Racine rd w Fair grounds

Welch Jno., dray, h s s South b Academy and Locust

Welch Kate, servt, Schuyler House

Welch Thomas, boiler mkr, h w s Main n bridge

Welch Edward F., clk, bds e s Academy b Holmes and North

Wells Mrs. W. H., n s Pleasant nr Arch

Wells Wm., spinner, h w s Main b N Second and N Third

**W**ENZEL HENRY G., butcher, s s Milwaukee b River and Franklin

Wenham James, bds w s Main b Milwaukee and Court

West Alanson, lab, h s e c Academy and Centre

West Geo. H., bds n s Dodge b Franklin and River

West Miss Margaret B., music teacher, n e c High and Wall

West Wm. B., n s Dodge b Franklin and River

**W**ESTERN NOVELTY WORKS, Jno. J. Edwards pro. s e c W Bluff and Franklin

Westmacott Thomas, (Grove & W.,) bds s w c Jackson and Wall

Wettstein Hermann, watchmkr, bds Myers House

Whalen Jno., lab, n e c School and Locust

Wheat Jno. S., road master, h s s Centre b Linn and Locust

Wheeler Andrew, liquors and vinegar, s e c Main and S First, h n e c Main and N Fourth

Wheeler Bentley, n w c Wisconsin and Court

Wheeler C. F., (W. & Sons,) w s Bluff b N Second and N Third

Wheeler Foster A., (F. A. W. & Sons,) w s Bluff b N Second and N Third

**W**HEELER F. A. & SONS, (Foster A. W., Wm. W. W. & Chas. F. W.,) woolen factory, w s Main b N Second and N Third

- Wheeler Frank M., mach, bds n e c High and Pleasant  
 Wheeler Henry M., clk, bds n e c Main and N Fourth  
 Wheeler Reuben M., b k, n e c High and Centre  
 Wheeler W. D., crockery, glass, &c., w s Main b Milwaukee and  
 Court, h n e c S Third and Bluff  
 Wheeler Wm. W., (F. A. W. & Sons,) w s Bluff b N Second  
 and N Third  
 Wheelock W. G., n e c S Third and Bluff  
 Whelan Thomas, lab, h w Charles nr R R  
 Whiffen Issac A., wagon mkr, bds Hyatt House  
 Whitaker Franklin, ins agt, Pease's block, bds Hyatt House  
 White Miss Eliza A., bds n e c Jackson and Pleasant  
 White Miss Florence P., bds n e c Jackson and Pleasant  
 White Jerome J., s w c Linn and North  
 White Miss Kate W., bds n e c Jackson and Pleasant  
 White Spooner, whitewasher, h s s Bluff b Franklin and Jack-  
 son  
 Whiting Mrs. Maria H., matron Institute for Blind  
 Whiting Joseph B., phys, s e c Stoughton and Milwaukee  
 Whitney Geo. F., brakeman, h n w c High and Race  
 Whiton Daniel G., n w c Milton Av and St. Mary's Av  
**W**HITON HENRY K., attorney, s w c Main and Milwau-  
 kee, h n e c Bluff and Madison  
 Whittier Charles, e s Hickory b St. Mary's Av and Walker  
 Whittier Francis C., printer, h n e c High and Pleasant  
 Whittier Henry H., printer, bds n e c High and Pleasant  
**W**ICKHAM ALBAN D., attorney, s w c Franklin and Mil-  
 waukee, h w s Locust b Holmes and North  
 Wilbur Calvin L., teamster, h e s Hickory b St. Mary's Av and  
 Walker  
 Wilbur Lewis, saloon, s w c Main and Milwaukee  
 Wilcox Charles, livery, s s Court w Main bds Stevens House  
 Wilcox Charles T., livery, s e c Water and Court bds American  
 House  
 Wilcox Daniel, (Holt, Bowen & W.,) e s High b Wall and Mil-  
 waukee  
 Wilcox Edward S., carp, h w s Locust b North and Galena  
 Wilcox Jno. T., carp., h w s Locust b North and Galena  
 Wilkes Jno. C., meats, w s Main b N First and Milwaukee  
 Wilkins Jno., lab, h e s Union b North and Galena  
 Williams Ann, servt, e s Academy b Milwaukee and Dodge  
**W**ILLIAMS CHARLES G., attorney, n s Milwaukee, b  
 Franklin and Jackson, h n s Race b Jackson and High  
 Williams Charles, (W. & Co.,) bds Hyatt House  
 Williams & Co., produce, s s Pleasant nr Union Depot  
 Williams Geo. G., b k, h w s Madison b Ravine and W Bluff  
 Williams Henry P., clk, bds s w c Academy and Pleasant  
 Williams James H., news agt, bds Rock County House  
 Williams Robert, (W. & Weber,) e s Main nr Bridge  
 Williams Randall, (Skelly, Inman & Co.,) n w c Cherry and Centre  
 Williams Stephen G., h w s Madison b W Bluff and Ravine



Williams Wm., carp, h s s Harmony b Milton Av and Stoughton  
 Williams & Weber, (Robert W. and David W.,) blksmths, w s  
 Main b N First and N Second

Williamson Manly, h w s Franklin b Race and Ravine  
 Williston Geo., h w s Franklin b Pleasant and Centre  
 Willmarth Charles A., h n s School b Jackson and Franklin  
 Willmarth, Geo. H., teamster, h w s Washington b Olive and  
 Jackson

Wills Charles, brick layer, h n w c Holmes and Locust  
 Willmot Charles, grain dealer, h n e c Jackson and School  
 Wilson Adam, wagon mkr, n w c Dodge and River h n s Dodge  
 b River and Franklin

**WILSON DAVID D.**, musical instruments, s w c Main and  
 Milwaukee, h n s Court nr St Clair

Wilson Mrs. Jno., e s Bluff nr R R bridge  
 Wilson Martin, well digger, bds s s Glen b Hickory and William  
 Wilson Parker, bds Excelsior Hotel  
 Wiltse Lathrop L., s e c Milwaukee and Division  
 Winans Jno., atty, n w c Milwaukee and River h s e c Jackson  
 and Washington

Windish Philip, tailor, bds e s Hickory b Ann and Glen  
 Windus Jno. W., music teacher, h w s Main nr R R bridge  
 Wing Jared B., wagon mkr, bds n e c Pleasant and Jackson  
 Wingate Henry, clk, bds s s Milwaukee w Stoughton  
 Wingate Jno. C., blksmth, e s Bluff b Milwaukee and N First  
 h s s Milwaukee w Stoughton

Wingate Jno. H., clk, h n s Court b Jackman and Sinclair  
 Winkley Wm., (Kothman & W.,) h s e c Walker and Hickory  
 Winters Andrew, lab, h b Locust and Linn nr River  
 Winters David, s s Milwaukee b Bluff and Division  
 Winters Orvis, brakeman, bds w s Linn b Holmes and North  
 Winton Byron, painter, h n w c Holmes and River

**WINTON BYRON J.**, [W. & Van Dyke,] w s Front b Wa-  
 ter and Franklin

**WINTON & VAN DYKE**, [Byron J. W. & Byron V.,]  
 painters, w s Main n Milwaukee

**WISCONSIN INSTITUTE FOR THE EDUCATION  
 OF THE BLIND**, Monterey nr Southern city limits, R.  
 B. Treat, M. D., President; Thomas H. Little, Superintendent;  
 Mrs. Maria H. Whiting, Matron

Withington Charles B., jeweler, n s Milwaukee b River and  
 Franklin, h w s Franklin b Wall and W Bluff

Withington Miss Emma, w s Franklin b Wall and Bluff  
 Witt Sylvester, printer, h n s St. Mary Av b Maria and Caroline  
 Witte Dora E., waiter Institute for Blind

Wittier Ezra M., bds n e c High and Pleasant  
 Wittier Francis C., printer, bds n e c High and Pleasant  
 Wood Daniel, teamster, h w s Caroline b Hyatt and Glen  
 Wood H. C., brakeman, bds Hyatt House

Wood Joseph A., miller, h s e c Centre and Jackson  
 Wood Joseph H., clk, bds s e c Centre and Jackson

- Wood Lucius, miller, h w s Beloit rd s Racine rd  
 Wood Mrs. Nancy P., w s Terrace b Ravine and Jackson  
 Wood Oramel, bds w s Terrace b Ravine and Jackson  
 Wood Royal, livery, e s Franklin b Milwaukee and Dodge  
 Wood Samuel C., clk, h s e c Jackson and Centre  
 Wood Wm., painter, h w s River b Race and Ravine  
 Woodle Allen S., bds n e c Hickory and Ann  
 Woodle Mrs. Cornelia, n e c Hickory and Ann  
 Woodruff Henry S., harness mkr, s s Milwaukee b Franklin and  
 River, h w s Washington b Jackson and Race  
 Woods Geo., lab, h e s River n Union  
 Woodward Wm. P., cigars, s s Milwaukee b River and Bridge,  
 bds n w c Division and Court  
 Woolliscraft Thomas B., bakery and saloon, s s Milwaukee b  
 Main and bridge  
 Wooster Geo. P., carriage mkr, cor Madison and Jackson, h e s  
 High b Ravine and Madison  
 Wright Mrs. Adeline S., dressmkr, e s Jackson b Bluff and Wall  
 Wright Geo. O., foreman Monitor office, bds Hyatt House  
**W**RIGHT CHARLES O., carriage maker, h e s Jackson b  
 Bluff and Wall  
 Wright H. T., b k, bds n e c Madison and Jackson  
 Wright Josiah T., saddles, saddlery hardware, leather and find-  
 ings, hides, &c., n e c Jackson and Milwaukee, h n e c Jack-  
 son and Madison  
**W**RIGHT ORIN S., pine, lumber, shingles, flooring &c., n  
 w c Milwaukee and Academy, h n w c Jackson and  
 School  
 Wright Samuel, mason, h n s North b Locust and Academy  
 Wright Wm., harness mkr, n s Milwaukee b Main and Bluff, h s  
 s Harmony nr Caroline  
 Wyckoff Aaron G., clk, bds s w c Academy and North  
 Wyckoff Jno J., carp, h s w c Academy and North  
 Wyckoff Jno. N., clk, bds s w c Academy and North  
 Wyley D. W., blk smth, bds Steven's House

## Y

- Yates Charles, carp, h s s Centre b Linn and Centre Av  
 Yates James, carp, h s w c Linn and Centre  
 Young Geo. A., butch, h s w c Water and S Second  
 Young Israel, s s S Second b Bluff and Wisconsin  
 Young Joseph B., soap factory, w s Main b Court and S First  
 bds w s Main b Court and S First  
 Young R. P., [Doty & Y.,] s s Second b Bluff and Wisconsin

## Z

- Zamzow Jno., shoe mkr, bds w s Bluff b Milwaukee and Court



---

**CALORIC POWER PRESS  
PRINTING ESTABLISHMENT,**

212 AND 214 EAST WATER ST.,

MILWAUKEE, WIS.

---

**STARR & SON**

CONTINUE TO EXECUTE

**BOOK AND JOB PRINTING,**

IN ALL ITS VARIETIES, AND WITH

**NEW CALORIC POWER PRESSES**

Of the most approved Construction, are enabled to execute work with dispatch, and at prices  
to compete with Eastern Establishments.

---

**COMMERCIAL PRINTING,**

Including Bills of Lading, Drafts, Checks, Notes, Receipts, Business Cards, Circulars, etc. etc.

**RAIL ROADS AND STEAMBOATS**

Supplied with all kinds of Bills, Tickets, Blanks, &c., with appropriate designs, plain and colors.

**BOOKS, PAMPHLETS & RAIL ROAD REPORTS.**

Especial attention devoted to the execution of Books, Pamphlets, Law Briefs, Periodicals, etc.

We can offer such terms as will be entirely satisfactory.

# Janesville Business Directory.

## Architects

NETTLETON G., w s River b Centre  
and Pleasant  
Robinson W., s w c Milwaukee and  
Main

## Attorneys at Law

Bates Allen O., w s Main b Milwaukee  
and S First  
BENNETT, CASSODAY & GIBBS, s  
w c Main and Milwaukee  
Boies E. E., w s Main b Milwaukee  
and Court  
Comstock H. N., s w c Main and Mil-  
waukee  
CONGER & HAWES, n w c Milwau-  
kee and River  
EBBETS WM. H., n s Milwaukee b  
Main and Bluff  
ELDREDGE & PEASE, e s Main b  
Milwaukee and Court  
Harwood C. E., n e c Main and Mil-  
waukee  
Hudson S. A., w s Main b Milwaukee  
and Court  
Jenks & Hartsborn, w s Main b Mil-  
waukee and Court  
Knowlton & Jackson, n s Milwaukee  
b Franklin and Jackson  
May Jno. W., n e c Main and Milwau-  
kee  
MERRILL W., s w c Main and Mil-  
waukee  
Mitchell Wm. L., s s Milwaukee b  
Franklin and Jackson  
Nichols Jno., n e c Milwaukee and  
River  
Niel James, n s Milwaukee b River  
and bridge  
Parker Jno. W. D., w s Main b Mil-  
waukee and N First  
PATTERSON HENRY A., e s Main b  
Milwaukee and N First  
PRICHARD M. S., n s Milwaukee b  
Franklin and Jackson  
Rogers I., s w c Main and Milwaukee

Sleeper & Norton, s s Milwaukee nr  
bridge  
SLOAN, PATTEN & BAILEY, n w c  
Main and Milwaukee  
WHITON H. K., s w c Main and Mil-  
waukee  
WICKHAM A. D., s w c Franklin and  
Milwaukee  
WILLIAMS CHARLES G., n s Mil-  
waukee b Franklin and Jackson  
Winans J., n w c River and Milwau-  
kee

## Auction and Commission

Pulker C., s s Milwaukee b Franklin  
and River  
Terhune J., e s Main b Milwaukee  
and Court

## Bakers

DENNISTON J. A., s s Milwaukee b  
Jackson and Franklin  
Ellis & Bro., e s Main b Milwaukee  
and Court  
Powell Geo. L., s s Milwaukee b  
Franklin and River  
Powl F., w s Jackson b Milwaukee  
and Dodge  
Woolliscraft T. B., s s Milwaukee b  
Main and Bridge

## Banks

Central Bank of Wisconsin, n w c  
Milwaukee and River  
ROCK COUNTY BANK, n s Milwau-  
kee b Main and Bridge

## Barbers

Alison W., n s Milwaukee b Main and  
Bluff  
Anderson J., s s Court w Water  
Ashcraft H. W., s s Milwaukee b  
Franklin and River  
BAASCH PETER, n w c Milwaukee  
and Franklin  
Harris A. J., s s Milwaukee nr Bridge  
LUCAS A., s s Milwaukee b Franklin  
and River  
Parker R., n e c Main and Milwaukee



**Blacksmiths**

Hathaway L., e s Jackson b Wall and W Bluff  
 Heck & Reed, n e c Milwaukee and Bluff  
 Hill R., n w c Western Av and Linn  
 Hodge R., s e c Bluff and Milwaukee  
 Kemmitt J., s s Court W Water  
 Monaghan P., s e c Franklin and Wall  
 PATERSON MATTHEW, w s Main b N Third and N Fourth  
 Patno F., n s Western Av b Centre Av and Linn  
 Sexton C., n e c Wall and Jackson  
 Story H., n s Milwaukee b Bluff and Division  
 Weeden J. J., e s Frankln b Milwaukee and Wall  
 Williams and Weber, w s Main b N First and N Second  
 Wilson A., n w c Dodge and River  
 Wingate J. C., e s Bluff b Milwaukee and N First

**Boarding and Sale Stable**

Douglass L., s s Wall b Jackson and Franklin

**Bookbinder**

Dearborn O. J., n w c Milwaukee and Main

**Books, Stationery, &c.**

Dearborn O. J., n w c Milwaukee and Main

MOSELEY & BROTHER, n s Milwaukee b River and Bridge

**Boot & Shoe Manufacturers and Dealers**

Bailey J. C., w s Main b Milwaukee and Court

Day L. & Co., n s Milwaukee b Main and Bluff

Dramsfield James B., s e c Milwaukee and Franklin

Foley J., n s North nr Franklin

Grove & Westmacott, n s Milwaukee b Franklin and River

Hutson J., e s Main b Milwaukee and Court

Johaneson J., s s Milwaukee b Main and Bluff

Kleist G., e s Main b Milwaukee and Court

McKEY & BRO., e s Main b Milwaukee and Court

Madden J., s s Milwaukee b River and bridge

Miner C., w s Main b Milwaukee and Court

Nutley G., e s Franklin b Milwaukee and Dodge

Reynolds W. A., n w c Milwaukee and Main

Thomas E., n s Milwaukee b River and Bridge

Towne H., e s Main b Milwaukee and N First

Tramblie J., w s Main b N First and Milwaukee

**Breweries**

City Brewery, e s River b Jackson and Olive

LILL & DIVERSY, w s Main b N First and N Second

Eagle Brewery, n s Milwaukee nr Bridge

HOCKING SAMUEL, w s Main b N First and N Second

Rock River Brewery, cor Racine and Beloit rds

**Broom Manufacturer**

Bates J., w s Main b N Second and N First

**Builders**

Burpee A., e s Wall b Jackson and Franklin

Cole N., e s Main b N Second and N Third

NETTLETON G., w s River b Centre and Pleasant

PATTERSON ARCHIBALD, w s Main b N First and N Second

**Carriage Manufacturers**

Hathaway L., e s Jackson b W Bluff and Wall

Munsell Orson, n e c Milwaukee and Bluff

Smith P. L., w s River b Wall and Milwaukee

**Carriage Trimmer**

Rogers H., n e c High and Holmes

**Clothing**

Echlin & Foote, n s Milwaukee b River and Bridge

HARSH M., e s Main b Milwaukee and Court

McKEY & BRO., e s Main b Milwaukee and Court

**Clothes Renovator**

MAHRLE & JERG, n w c Milwaukee and Bluff

**Coal**

JACKSON & DIMOCK, s w c Milwaukee and Main

**Commission Merchants**

Bump & Gray, s Pleasant nr Union Depot  
 Harlow & Norton, s s Milwaukee b River and Bridge  
 Pixley B. F., n s Pleasant nr Union Depot

**Confectioners**

[See Bakers.]

DENNISTON J A, s s Milwaukee b Franklin and Jackson  
 Leahey P. B., n s Milwaukee b Main and Bluff  
 Powell Geo., s s Milwaukee b Franklin and River  
 Stevens A., w s Main b Milwaukee and Court

**Coopers**

Daley B., w s River b School and Holmes  
 Hanchet J. M., n s Centre b Franklin and River  
 KIRK THOMAS, n e c River and School  
 Locke Wm., e s Water b S First and S Second

**Crockery**

[See Grocers.]

Bennett O. R., w s Main b Milwaukee and Court  
 Wheeler W. D., w s Main b Milwaukee and Court  
 Grant & Long, w s Main b N First and Milwaukee

**Dentists**

JOHNSON MORTIMER B., n w c Milwaukee and Main  
 PENDLETON B. F., w s Main b Milwaukee and Court  
 SHATTUCK WM. H., n s Milwaukee b Main and Bluff

**Dress Makers**

Erwin Mrs. A., e s Jackson b Wall and W Bluff  
 Folsom Miss M., w s Jackson b Milwaukee and Wall  
 Thompson Miss J., w s Main b Milwaukee and Court  
 Wright Mrs. A. S., e s Jackson b Bluff and Wall

**Druggists—Wholesale**

COLWELL C., e s Main b Milwaukee and Court  
 Palmer & Son, s s Milwaukee b High and Jackson

**Druggists—Retail**

Bailey S G., s s Milwaukee b River and Franklin  
 Curtis Geo. R., s w c Milwaukee and Franklin  
 Tallman & Collins, w s Main b Milwaukee and Court

**Dry Goods—Wholesale**

McKEY & BRO., e s Main b Milwaukee and Court  
 Rice, Gaul & Rice, w s Main b Milwaukee and Court

**Dry Goods—Retail**

Bennett O. K., w s Main b Milwaukee and Court  
 Riordan & Leech, w s Main b Milwaukee and Court  
 Smith & Bostwick, s w c Main and Milwaukee

**Eating Houses**

Ehle Jno. B., e s Main b Court and Milwaukee  
 Hovey James A., s s Pleasant nr Depot  
 Parks Wm., w. s. Main n. Milwaukee  
 Wilbur L., s w c Main and Milwaukee

**Elevator**

NORTON & CO., w s High b Ravine and W Bluff

**Fanning Mill Manufacturers**

MOORE D. & L. B., w s Main b N Third and N Fourth  
 Nash & Cutts, s w c Main and N Second

**Flouring Mills**

CLARK J. & J., Race n Milwaukee  
 Excelsior Mill, Race n Milwaukee  
 Farmers Mill, s s Milwaukee b River and Bridge  
 Ferris G. C., Race n Milwaukee  
 Ford's Mills, Race  
 HANCHETT & SUTHERLAND, n s Milwaukee b Bridge and River  
 Phoenix Mills, Race n Milwaukee

**Foundries and Machine Shops**

ROCK RIVER IRON WORKS, s w c Centre and River  
 Western Novelty Works, s e c W Bluff and Franklin

**Furniture Manufacturers**

ASHCRAFT WM. H., e s Main nr Milwaukee  
 Hornick T H., e s Main b Milwaukee and N First



MOSES LEVI, n s Milwaukee b  
Franklin and River  
Sillito W., e s Main b Milwaukee and  
N First  
Swager N., n s Milwaukee b Franklin  
and River

#### Gas Fitter

Parritt W., w s River b Dodge and  
Milwaukee

#### Grocer—Wholesale

Eldred S., n e c Milwaukee and River

#### Grocers—Retail

Andrew Wm., s w c Milwaukee and  
Jackson  
Burdick & Newell, s s Milwaukee b  
Franklin and Jackson  
Carswell L. R., e s Main b Milwaukee  
and Court  
COLWELL C., e s Main b Milwaukee  
and Court  
Dann & Carle, n s Milwaukee b  
Franklin and River  
Davies D., s s Milwaukee b Franklin  
and River  
Eldredge & Baker, w s Main b N First  
and Milwaukee  
Graham G., n s Milwaukee b Main  
and Bluff  
Grant & Long, w s Main b N First and  
Milwaukee  
Grubb W., s s Milwaukee b Jackson  
and Franklin  
HIBBARD FRDERICK M., n s Mil-  
waukee b Franklin and River  
Leydon P., e s Main b N First and  
Milwaukee  
Meyer O. F. & Bro., w s Main b Mil-  
waukee and N First  
Mitchell J., s s Milwaukee b Franklin  
and Jackson  
Palmer & Son, s s Milwaukee b High  
and Jackson  
Parritt & Storey, s w c Milwaukee and  
River  
Peirson R. J., n s Milwaukee b Frank-  
lin and River  
Selby H., w s Main b Milwaukee and  
N First  
Skelly, Inman & Co., s s Milwaukee  
b Franklin and River

#### Groceries and Provisions

CONNELL ED. & CO., s w c Mil-  
waukee and Bluff  
CONRAD C., e s Main b Court and  
Milwaukee  
Dearborn N., n w c Main and Milwau-  
kee

Griswold L., s s Milwaukee b Jackson  
and Franklin  
Kimball D. F., s w c Jackson and  
Milwaukee  
Selby H. T., w s Main b Milwaukee  
and N First  
TARRANT GEORGE, s s Milwaukee b  
River and Bridge  
Torrey W. H. & G. F., w s Milwauke  
b Main and Bluff

#### Gunsmiths

BROOKS OSCAR, n s Milwaukee nr  
Bridge  
LEWIS D. W., Upper Bridge

#### Hardware

Barrow E. S., s e c River and Mil-  
waukee  
Smith H. L., w s Main b Milwaukee  
and Court

#### Hats, Caps and Furs

Beale John R., s s Milwaukee b  
Franklin and River  
Bornhiem B., e s Main b Milwaukee  
and Court  
HARSH M., e s Main b Milwaukee  
and Court  
McKEY & BRO., e s Main b Milwau-  
kee and Court  
Rice, Gaul & Rice, w s Main b Mil-  
waukee and Court

#### Hotels

AMERICAN HOUSE, n w c Main  
and Court  
Excelsior Hotel, n e c Main and N  
First  
FARMERS' HOME, s s Milwaukee b  
Bluff and Main  
Ford House, s e c High and Milwau-  
kee  
HYATT HOUSE, n w c Milwaukee  
and Franklin  
Janesville House, n s Milwaukee b  
Linn and Locust  
MYERS HOUSE, s e c Main and  
Milwaukee  
New England House, s w c Dodge and  
Franklin  
ROCK COUNTY HOUSE, s s Mil-  
waukee b Linn and Locust  
SCHUYLER HOUSE, s s Milwaukee  
b Bluff and Division  
STEVENS HOUSE, n s N First b  
Main and Bluff

#### Insurance Agents

DIMOCK E. L., s w c Milwaukee and  
Main

GUERNSEY O., w s Main b Court  
and S First

Holden W. W., s w c Milwaukee and  
Main

Whitaker F., Pease's Block

#### Justices of the Peace

Nichols J., n e c Milwaukee and  
River

PATTERSON HENRY A., e s Main  
b Milwaukee and N First

#### Leather and Findings

WRIGHT JOSIAH T., n e c Jackson  
and Milwaukee

#### Livery Stables

Fenton E. J., e s Franklin b Milwau-  
kee and Wall

Howland J., s s Court nr Bridge

Wilcox C., s s Court w Main

Wood R., e s Franklin b Milwaukee  
and Dodge

#### Lumber

Babbitt David H., e s High b W Bluff  
and Race

Bradley D. W. & Co., s e c Linu and  
Pleasant

FIFIELD L. & BROTHER, w s Riv-  
er b Dodge end Pleasant

Lovejoy A. P., s s Milwaukee b High  
and Academy

MOON & TREAT, n s Milwaukee b  
Academy and Locust

ROSS ROBERT, e s High b Dodge  
and Milwaukee

SCHUTT URIAH, e s River b Mil-  
waukee and Dodge

Wright Orin S., n w c Milwaukee and  
Academy

#### Machine Shops

[See Foundries.]

#### Malt House

LILL & DIVERSY, w s Main b N  
First and N Second

#### Marble Works

Childs E., n s Milwaukee b Main and  
Bluff

Douglas Geo. A., s w c Water and  
Court

Stevenson D. & Co., s s Milwaukee b  
River and Bridge

#### Meat Stores

ALLEN JNO. W., Upper Bridge

Carroll & Lee, s w c Franklin and  
Wall

LYNCH F., n s Milwaukee b Frank-  
lin and Jackson

Mealey & Farrell, s s Milwaukee b  
Jackson and Franklin

Sargent G., w s Main n Milwaukee  
Searcliff Geo., s s Milwaukee b Frank-  
lin and River

WENSEL H. G., s s Milwaukee b  
Franklin and River

Wilkies Jno. C., w s Main b N First  
and Milwaukee

#### Millinery

Broder A. B., w s Main b Milwaukee  
and Court

Clark Mrs. Lydia, e s Main b Milwau-  
kee and Court

Durkee Mrs. S. G., n s Milwaukee b  
River and Bridge

Reynolds Mrs. R., s s Milwaukee nr  
Bridge

Sheahan Miss L., w s Main b Milwau-  
kee and Court

#### Music and Musical Instruments

DARLING J. L., s w c Milwaukee  
and River

Wilson D. D., s w c Main and Milwau-  
kee

#### Nailsmith

Miller F., w s Bluff b Milwaukee and  
N First

#### News Depot

King Jno. D., n s Milwaukee b Main  
and Bluff

#### Newspaper—Daily

JANESVILLE GAZETTE, w s Main  
b Milwaukee and Court

#### Newspapers—Weekly

JANESVILLE GAZETTE, w s Main  
b Milwaukee and Court

MONITOR, s s Milwaukee e River

#### Notaries Public

BAILEY E S., n w c Main and Mil-  
waukee

Barrere Felix, n s Milwaukee b  
Franklin and River

Bates A. C., w s Main b Milwaukee  
and S First

Boies E E, w s Main b Milwaukee and  
Court

ELDREDGE B. B., e s Main b Mil-  
waukee and Court

Foord Sylvester Jr., n s Milwaukee b  
River and Franklin

HAWES WM. B., n w c Milwaukee  
and River

Jackson A. A., n s Milwaukee b  
Franklin and Jackson



Niel James, n s Milwaukee b River and Bridge  
 Ogilvie James H., n s Milwaukee b Franklin and River  
 PATTEN L. F., n w c Main and Milwaukee  
 PEASE JNO. J. R., e s Main b Milwaukee and Court  
 RICHARD M. S., n s Milwaukee b Franklin and Jackson  
 Sleeper & Norton, s s Milwaukee nr Bridge  
 SLOAN J. C. n w c Main and Milwaukee  
 WICKHAM A. D., s w c Franklin and Milwaukee  
 WILLIAMS CHARLES G., n s Milwaukee b Franklin and Jackson  
 Winans Jno., n w c Milwaukee and River

#### Oculist

Folsom Z., w s Jackson b Milwaukee and Wall

#### Painters

[House and Sign.]

Amsden M., e s Jackson b Wall and Bluff  
 Andrews Edward, w s River b Milwaukee and Dodge  
 DOOLITTLE S. H., s e c Milwaukee and Bluff  
 Gray George, n s Milwaukee nr bridge  
 Hopkins C. W., n w c River and Dodge  
 Lund Jno., s s Court b Water and Main  
 WINTON & VAN DYKE, w s Main n Milwaukee

#### Photographers

Powers Jno. E., s w c Main and Milwaukee  
 RICE ELI B., w s Main b Court and S First  
 Thompson S. F., s w c Milwaukee and Franklin  
 TICE J., s s Milwaukee b River and Bridge

#### Physicians and Surgeons

Adams H., s s Milwaukee b Jackson and Franklin  
 Auer W., n s Milwaukee b Main and Bluff  
 BENNETT DEWITT C., s s Milwaukee b Franklin and Jackson  
 Cole Samuel P., s s Milwaukee b Franklin and River

DODGE E. F., n w c Milwaukee and Main  
 HORNE WM., w s Water b Court and S First  
 Palmer H., w s Main b Milwaukee and Court  
 Robinson O. P., s w c Cherry and Centre  
 Treat R. B., n w c Milwaukee and Main

#### Plow Manufacturer

EVENSON O., w s Main b N Third and N Fourth

#### Police Justice

COMSTOCK H. N., s w c Main and Milwaukee

#### Printers—Book and Job

HOLT, BOWEN & WILCOX, w s Main b Milwaukee and Court  
 PALMER BROTHERS & CO., s s Milwaukee e River

#### Produce Dealers

Bump & Gray, s Pleasant nr Union Depot  
 Davis & Jacobs, w s Centre Av nr Union Depot  
 Orcutt & Clark, w s Centre Av nr Union Depot  
 Pixley B. F., n s Pleasant nr Union Depot  
 HOBSON J W & R M., n s Pleasant nr Union Depot  
 Williams & Co., s Pleasant nr Union Depot

#### Real Estate Agents and Dealers

JACKMAN & SMITH, n e c Main and Milwaukee  
 Russell A. J., n s Milwaukee b Jackson and Franklin

#### Saddle and Harness Manufacturers and Dealers

McMartin Jno., s s Court w Water  
 Kothman & Winkley, Upper Bridge  
 Riker Jas., n s Milwaukee b Main and Bluff  
 Sherer A., e s Main b N First and Milwaukee  
 Woodruff Henry S., s s Milwaukee b Franklin and River  
 Wright Wm., n s Milwaukee b Bluff and Main

#### Saloons

AMERICAN HOUSE saloon, n w c Court and Main  
 BODLE GEORGE, s s Milwaukee b Franklin and River

Brown J., w s River b Milwaukee and Dodge

Eccleston W., w s Main n N First

Ehle B., e s Main b Court and Milwaukee

FARMERS' HOME SALOON, s s Milwaukee b Bluff and Main

Fritz G., e s Main b Court and Milwaukee

Gray J. C., s s Milwaukee, b Franklin and River

HAMMOND H., w s Main b Milwaukee and Court

Hollister R., w s Main b Milwaukee and Court

Huganin D. R., n s Milwaukee b Franklin and River

Hutson & Dunn, n w c Franklin and Jackson

HYATT HOUSE SALOON, n w c Milwaukee and Franklin

Janesville House Saloon, n s Milwaukee b Linn and Locust

Kenairy Wm., s s Milwaukee b Linn and Locust.

Leydon P., e s Main b N First and Milwaukee

Mahoney J., s s Pleasant nr R R

Meyer O. F. & Bro., w s Main b Milwaukee and N First

Mullan P., s w c River and Union

MYERS HOUSE SALOON, s e c Milwaukee and Main

Neate H., s s Milwaukee b Franklin and Jackson

RICHARDS H., w s Main b N First and Milwaukee

Rock County House, s s Milwaukee b Linn and Locust

Roethinger J., cor Racine and Beloit roads

Schiker J., e s Main b Milwaukee and N First

WACHTMAN HENRY, n s Milwaukee b River and Bridge

Wilbur L., s w c Main & Milwaukee

Woolliscraft T. B., s s Milwaukee b Main and Bridge

#### Sash, Door and Blind Factories

DOTY & YOUNG, w s Main b N First and N Second

Hume B., w s River b Centre and School

MILLS JAMES, w s Main b N Third and N Fourth

#### Seed Store

Selby H. T., w s Main b Milwaukee and N First

#### Soap Factories

Steele Wm. M., s s Jackson nr Boundary

Young J. B., w s Main b Court and S First

#### Stone Quarry

MILTIMORE I., e s Bridge, Monterey

#### Stoves and Tin Ware

Barrows E. S., s e c River and Milwaukee

Smith H. L., w s Main b Milwaukee and Court

Earing W. G., n s Milwaukee b Franklin and River

LAWRENCE & ATWOOD, w s Main b Court and S First

Richardson R. J., w s Main b Milwaukee and Court

#### Tailors

Barnhiem B., e s Main b Milwaukee and Court

Herrington J., w s Main b Milwaukee and Court

Holmes James, s s Milwaukee b Main and Bluff

Holmes Wm. C., n s Milwaukee b Main and Bluff

Knudson O., s s Court b Water and Main

MAHRLE & JERG, n w c Milwaukee and Bluff

McIntyre W. B., n s Milwaukee b Main and Bluff

Thomson J., n e c Main and Milwaukee

Waters D. J., s s Milwaukee b High and Jackson

#### Tin and Coppersmiths

Calf E., e s Franklin b Dodge and Milwaukee

Griswold N., s s Milwaukee b Franklin and Jackson

Hyzer J. B., n s Milwaukee b Franklin and River

#### Tobacco and Cigars

Benton Geo., s s Milwaukee nr Bridge

Meyer O. F. & Bro., w s Main b Milwaukee and N First

Woodward Wm. J., s s Milwaukee b River and Bridge

#### Turner

PICKERING GEO., w s River b Centre and Pleasant



**Upholsterers**

Hornick Thos. H., e s Main b Milwaukee and N First  
 Torney J., w s River b Wall & W Bluff

**Veterinary Surgeons**

HORNE WM., w s Water b Court and S First  
 MARTIN C. LOFTUS, w s Bluff b Milwaukee and Court

**Wagon Manufacturers**

Chapple J., e s Franklin b W Bluff and Wall  
 Hodge R., s e c Bluff and Milwaukee  
 Monaghan Patrick, s e c Franklin and Wall  
 SEATON & CO., w s River b Dodge and Milwaukee  
 Sexton C., n e c Jackson and Wall  
 Skelly W., n s Wall b Franklin and Jackson  
 Story W., n s Milwaukee b Bluff and Division  
 Wilson A., n w c Dodge and River

**Washing Machine Manufacturer**

Phelps C. C., w s Main n Milwaukee

**Watches, Jewelry, &c.**

DENELL JOHN A., s e c Main and Milwaukee

Holt D., n s Milwaukee b Main and Bluff

Horn A., w s Main b Milwaukee and N First

WEBB & LEE, s w c Milwaukee and Main

Withington C. B., n s Milwaukee b Franklin and River

**Wines and Liquors**

CONNELL ED. & CO., s w c Milwaukee and Bluff

CONNORS & CO., s s Milwaukee b Jackson and Franklin

DUNN JNO., s s Milwaukee b River and Franklin

Eccleston Wm., w s Main n N First  
 Harvey Geo., w s Main b Milwaukee and N First

HOCKING SAMUEL, w s Main b N First and N Second

McKINNEY HENRY, n s Milwaukee nr Upper Bridge

LILL & DIVERSY, w s Main b N First and N Second

Tarrant G., s s Milwaukee b River and Bridge

**Woolen Factory**

WHEELER F. A. & SONS, w s Main b N Second and N Third

**OMITTED.**

ASHCRAFT WM. H., furniture, e s Main nr Milwaukee

## STREET DIRECTORY.

---

- ACADEMY extends from South, north to Pleasant next west of Cherry, thence in a north easterly direction.
- ADAMS extends from Canal north to Pleasant next west of Jefferson.
- ANN or NORTH FOURTH lies next above North Third.
- ARCH lies next west of Kelley.
- ASH extends from South, north, next east of Rock River.
- AUGUSTA extends from Harmony north, east of Milton road.
- BLUFF extends from Rock River to Knox next above Wall.
- BUFFALO extends from Walker to Racine road, between Main and Division.
- BURTON lies next west of Arch.
- BYRON extends from Burton east to Knox next South of Canal.
- CANAL extends from Burton east to Centre next south of Mill.
- CAROLINE extends from Harmony north next east of Cornelia.
- CENTRE lies next below Pleasant.
- CENTRE AVENUE extends from Rock River north to Pleasant next west of Linn.
- CHATHAM lies next west of Pearl.
- CHERRY extends from South north to Pleasant next east of Academy.
- CLARON extends from Burton east next south of Western Av.
- CLAYTON lies next west of Ash.
- COOPER extends from Rock River north to Western Avenue, next West of Knox.
- CORNELIA extends from cor of Wisconsin and North Second north.
- COURT extends from Rock River east next below Milwaukee.
- DIVISION extends from North Fourth south east between Buffalo and Wisconsin.
- DODGE extends from Rock River to Academy next below Milwaukee.
- EAST extends from North Second south east next north east of Wisconsin.
- EMMETT lies next west of Gold.
- ENSIGN extends from Walker to Glen between Buffalo and Franklin.
- FARNHAM lies next south of Byron.
- FRANKLIN extends from Walker to Glen north east of Ensign.
- FRANKLIN extends from South north next east of Cherry.



**FRANKLIN** extends from Ravine to South next south west of River.

**GALENA** lies next below North.

**GLEN** lies next above North Fifth.

**GOLD** extends from Mill north to Pleasant next west of Adams.

**HARMONY** or **NORTH SECOND** lies next above North First.

**HICKORY** extends from Glen to Ann between Buffalo and William.

**HIGH** lies next south west of Jackson.

**HOLMES** lies next below School.

**HYATT** lies next above Sheldon.

**JACKSON** lies next south west of Franklin.

**JEFFERSON** extends from Canal north to Pleasant next west of Centre Avenue.

**KELLEY** lies next west of Cooper.

**KNOX** extends from Rock River north to Bluff next west of Walnut.

**LINN** extends from South north to Pleasant next west of Locust.

**LOCUST** extends from South north next west of Academy.

**MADISON** extends north from cor of Centre Avenue and Pleasant

**MAIN** extends from Walker to city limits between Rock River and Buffalo

**MAIN** extends east and west on the Island.

**MILL** extends from Walnut east to Gold next south of Claron.

**MILWAUKEE** extends from East through the centre of the city to cor of Pleasant and Centre Avenue.

**MILWAUKEE** extends from South north next west of Jackson.

**MARIA** extends from Harmony north, next east of Caroline.

**MARION** extends from Milwaukee to Bluff south west of Academy.

**NORTH** extends from Rock river west to Knox next below Holmes.

**NORTH FIRST** extends from Rock river east next above Milwaukee.

**NORTH SECOND** or **HARMONY** lies next above North First.

**NORTH THIRD** lies next above North Fourth.

**NORTH FOURTH** or **ANN** lies next north of North Third.

**NORTH FIFTH** lies next above North Fourth.

**PALM** lies next west of Emmett and Chatham.

**PEARL** lies next west of Terrace.

**PINE** lies next west of Palm.

**PLEASANT** extends from Rock river south west to High thence west to city limits, being next below Dodge.

**RACE** extends from Rock river to Academy next above Bluff.

**RAVINE** extends from River south west to Madison thence west to Chatham, being next above Race.

**RIVER** extends from Jackson to South, south west of and near Rock river.

**ROCK** extends from Rock river to High next below Holmes.

**SCHOOL** lies next below Centre.

**SHELDON** lies next above Glen.

**SOUTH** extends from Rock river west next below Galena.

**SOUTH FIRST** lies next below Court.

**SOUTH SECOND** lies next below South First.

**SOUTH THIRD** lies next below South Second.

**STOUGHTON** extends from Court north near eastern city line.

**TERRACE** extends from Pleasant north next west of Washington.

**UNION** extends from South north and north east to Rock river, being east of Jackson.

**WALKER** lies next above Hyatt.

**WALL** extends from Rock river south west to Madison next above Milwaukee.

**WALNUT** extends from Canal north next west of Pine.

**WASHINGTON** extends from Bluff north to Jackson, thence north east, being west of Madison.

**WATER** extends from Court to South Third next east of Rock River.

**WATER** extends from Walker to Sheldon next north east of Rock river.

**WESTERN AVENUE** extends from western city limits east next south of Galena.

**WILLIAM** extends from Glen to Ann north east of Hickory.

**WISCONSIN** extends from North Third south east between Division and East.

## MONTEREY STREET DIRECTORY.

**ADAMS** extends from First south next west of Bridge.

**BRIDGE** extends from Rock river south opposite Centre.

**EMMETT** lies next west of Adams.

**FIRST** lies next south of Rock river.

**ONE** lies next south of First.

**PINE** lies next west of Emmett.

**SECOND** lies next south of One.

**THIRD** lies next south of Second.

## WARD BOUNDARIES.

**FIRST WARD**—Includes all that part of the city lying west of Rock river and north of Pleasant street.

**SECOND WARD**—Includes all that part of the city lying east of Rock river and north of Court street.

**THIRD WARD**—Includes all that part of the city lying east and south of Rock River, south of Court street.

**FOURTH WARD**—Includes all that part of the city lying west of Rock River south of Pleasant street.



# CITY GOVERNMENT.

MAYOR.

J. BODWELL DOE.

CLERK.

ANDREW BOSS, JR.

TREASURER.

S. FOORD, JR.

CITY CIVIL ENGINEER.

EZRA MILLER.

POLICE JUSTICE.

H. N. COMSTOCK.

JUSTICES OF THE PEACE.

H. A. PATTERSON,

JOHN NICHOLS.

CONSTABLES.

First Ward—J. W. PLATO.

Second “ —JACOB ROBINS.

Third “ —PHILIP BAKER.

Fourth “ —JNO. LAWLER.

SCHOOL COMMISSIONER.

WM. A. LAWRENCE.

ASSESSORS.

C. R. GIBBS.

FELIX BARRERE.

ALDERMEN.

First Ward—D. H. McCHESNEY,

“ “ —JOHN WINANS,

Second “ —GEO. BARNES,

“ “ —A. C. BATES,

Third “ —H. W. COLLINS,

“ “ —L. F. PATTEN,

Fourth “ —H. S. SHELTON,

“ “ —H. E. PATTISON.

STANDING COMMITTEES.

JUDICIARY.

Ald. BATES, PATTEN, AND WINANS.

FINANCE.

Ald. WINANS, SHELTON, AND COLLINS.

POLICE.

Ald. PATTISON, BARNES, AND McCHESNEY.

FIRE DEPARTMENT.

Ald. BARNES, SHELTON, AND COLLINS.

LICENSES.

Ald. COLLINS, BATES, AND WINANS.

BRIDGES.

Ald. McCHESNEY, BARNES, PATTEN, AND SHELTON.

PARKS.

Ald. PATTEN, BATES, McCHESNEY, AND PATTISON.

PRINTING.

Ald. SHELTON, BATES, AND PATTEN.

SCHOOLS.

Ald. PATTEN, BARNES, WINANS, AND PATTISON.

GAS LIGHTS.

Ald. SHELTON, BATES, McCHESNEY, AND COLLINS.

FIRE DEPARTMENT.

Chief Engineer—JAMES HEMMING.

Assistant Engineers—JOHN C. SPENCER,  
JOHN W. BELTON.

BOARD OF TRUSTEES.

WM. T. PAUL, President.

A. D. STODDARD, Vice President.

R. P. YOUNG, Treasurer.

JOHN H. SAUNDERS, Secretary.

D. W. INMAN, Collector.

CHAS. HOLT, B. B. ELDREDGE, Engine Company No. 1.

JOHN C. SPENCER, D. R. BRAND, Engine Co. No. 2.

W. H. EBBETTS, CHAS. SKELLEY, Engine Co. No. 3.

DANIEL DOWLING, S. H. MARQUISSEE, Hook and Ladder Company No. 1.



## SACK COMPANY.

No. 1,—R. J. RICHARDSON, Foreman.

## ENGINE COMPANIES.

No. 2, WATER WITCH—West side Main b Milwaukee and N. 1st  
HENRY RICHARDS, Foreman.

No. 3, WASHINGTON—West side River, north of Milwaukee.  
JOHN T. WILCOX, Foreman.

## HOOK AND LADDER COMPANY.

No. 1, RESCUE—West side Franklin, between Milwaukee and  
Wall. W. T. Paul, Foreman.

---

## CHURCH DIRECTORY.

---

BAPTIST CHURCH—South-west corner Cherry and Pleasant. Rev. E. J. Goodspeed, Pastor.

CHRIST CHURCH (P. E.)—North side Court, between East and Wisconsin. Rev. H. W. Spaulding, Rector

CONGREGATIONAL CHURCH—South-west corner Dodge and Jackson. Rev. M. P. Kinney, Pastor.

METHODIST EPISCOPAL CHURCH—North-west corner Jackson and Centre. Rev. R. B. Curtis, Pastor.

PRESBYTERIAN CHURCH—West side Jackson between Wall and Bluff, Rev. Chas. S. Thompson, Pastor.

PRIMITIVE METHODIST CHURCH—West side Franklin between North and Holmes. Rev. John Sharpe, Pastor.

ST. CUTHBERT'S CHURCH (Catholic)—South-east corner Cherry and Holmes. Rev. John Conroy, Pastor.

TRINITY CHURCH (P. E.)—North-west corner Bluff and Jackson. Rev. Hiram W. Beers, Rector.

## SCHOOL DEPARTMENT.

---

### OFFICERS.

President—WM. B. STRONG.

Clerk—H. N. COMSTOCK.

### *Commissioners.*

1st Ward—WM. B. STRONG.

2d Ward—E. F. SPAULDING.

3d Ward—C. W. LAWRENCE.

4th Ward—JAMES ARMSTRONG.

At Large—WM. A. LAWRENCE.

---

HIGH SCHOOL—South side South Second between Wisconsin and East. S. T. Lockwood, Principal.

GRAMMAR SCHOOL—South side South Second between Wisconsin and East.

FIRST WARD SCHOOL—North-west corner Racine and Pearl

SECOND WARD SCHOOL—East side Caroline between Ann and Glen

FOURTH WARD SCHOOL—West side Linn between Galena and North

---

ST. CUTHBERT'S SCHOOL (Catholic)—South-east corner Cherry and Holmes. Thomas Tracy, Principal.

JANESVILLE YOUNG LADIES SEMINARY—North-east corner Bluff and North Third. Mrs. E. S. Anderson, Principal.



## MASONIC.

---

Hall, East side Main between Milwaukee and Court.

JANESVILLE COMMANDERY OF K. T., No. 2—Meets first Wednesday in each month.

COUNCIL OF R. & S. M.—Meets first Friday in each month.

JANESVILLE CHAPTER OF R. A. M., No. 5—Meets first Thursday in each month.

WESTERN STAR LODGE OF A. F. & A. M., No. 14—Regular communication first Tuesday at or preceding full moon of each month.

JANESVILLE CITY LODGE OF A. F. & A. M., No. 55—Regular communications first and third Mondays in each month

---

## I. O. OF O. F.

---

Hall, South-west corner Main and Milwaukee.

WISCONSIN LODGE No. 14—Meets every Wednesday evening.

---

## POST OFFICE.

---

North side Milwaukee between Main and Bluff. Open from 8 A. M. to 8 P. M.

## BANKS.

---

CENTRAL BANK OF WISCONSIN—Capital \$125,000. E. R. Doe, President; J. D. Rexford, Cashier. North-west corner Milwaukee and River.

ROCK COUNTY BANK—Capital \$50,000. Timothy Jackman, President; Jas. B. Crosby, Cashier. North side Milwaukee bet Main and Bridge.

---

## RAILROADS.

---

CHICAGO AND NORTH WESTERN R. R.—Depot near corner Centre Avenue and Pleasant.

GALENA AND CHICAGO UNION R. R.—Depot near corner centre Avenue and Pleasant.

MILWAUKEE AND PRAIRIE DU CHIEN R. R.—Depot near corner Centre Avenue and Pleasant.

---

## JANESVILLE GAS LIGHT CO.

---

Jno. J. R. Pease, President. Jos. A. Sleeper, Secretary. Works near R. R. Bridge, between Bluff and Main. Office south-west corner Main and Milwaukee.



## CORN EXCHANGE.

North-east corner Milwaukee and Franklin. Alexander Sutherland President; Charles H. Wilmarth, Secretary. Meetings first Monday in each month.

---

## PUBLIC BUILDINGS, HALLS, &C.

---

COUNTY JAIL—North-west corner Water and Second

COUNTY REGISTER'S OFFICE—South-west corner Court and Bluff

COURT HOUSE—South-east corner Bluff and Court.

HYATT HOUSE HALL—North-west corner Milwaukee and Franklin

LAPPIN'S HALL—South-west corner Milwaukee and Main

WISCONSIN INSTITUTE FOR THE EDUCATION OF THE BLIND—R. B. Treat, M. D., President; Thomas H. Little, Superintendent. Monterey, nr southern city limits.

YOUNG AMERICA HALL—East side Main between Milwaukee and Court

---

## PUBLIC SQUARE.

East of Bluff between Court and South First.

---

## FOURTH WARD PARK.

North side Galena between Jackson and South Milwaukee.

---

## OAK HILL CEMETERY.

Near North West corner of City.

---

## CATHOLIC CEMETERY.

East of Oak Hill Cemetery.

# COUNTY OFFICERS.

CIRCUIT COURT JUDGE.

DAVID NOGGLE.

DISTRICT ATTORNEY.

I. C. SLOAN.

CLERK OF THE CIRCUIT COURT.

LEVI ALDEN.

COUNTY JUDGE.

AMOS P. PRICHARD.

SHERIFF.

S. J. M. PUTNAM.

COUNTY TREASURER.

SAMUEL HOLDREDGE, JR.

REGISTER.

K. W. BEMIS.

CLERK OF BOARD OF SUPERVISORS.

S. L. JAMES.

SUPERINTENDENT OF COMMON SCHOOLS.

JOSEPH I. FOOT.

SURVEYOR.

EDWARD RUGER.

CORONER.

JOHN E. YOUNG.

BOARD OF SUPERVISORS,

REUBEN T. PEMBER, ..... Johnstown,

B. F. CAREY, ..... "

CYRUS BLISS, ..... Harmony,

THOMAS EARLE, ..... Porter,

E. L. CARPENTER, ..... Newark,

S. A. HUDSON, ..... Janesville,

CHAS. H. PARKER, ..... Beloit.

B. F. CAREY, Chairman.

S. L. JAMES, Clerk.



1862. THE CHEAPEST ROUTE EAST! 1862.

## People's Line of Steamers,

Consisting of the following First Class Steamers, viz:

EMPIRE STATE, [new,]	Capt. J. W. Brett.	BADGER STATE, [new,]	Capt. J. L. Beckwith.
ONEIDA,	" " Ira Hinkley.	POTOMAC,	" N. Gebhard.
RACINE,	" W. H. Arthur.	ACME,	" Jas. Hathway
PITTSBURGH,	" D. C. Webster.	BUFFALO, [rebuilt,]	" J. A. Douglass.
SUSQUEHANNAH, Capt. R. P. Webster.			

FORMING A

### DAILY LINE FROM MILWAUKEE!

Detroit, Cleveland and Buffalo!

With the following connections: At Buffalo, with the Buffalo, New York and Erie Railroad, and Erie Railway Co., for

**N. York, Boston, Elmira, Philadelphia, Baltimore, Wash'gton,**

And Principal Eastern Cities; Also with New York Central for Rochester, Syracuse, Utica, Troy and Albany; at Cleveland with C. and P. Railroad for

Pittsburgh, Bridgeport and Wheeling. Also C. C. & C. R. R. for Columbus, Dayton and Cincinnati.

These Steamers are of the Largest Class and are not excelled in Speed, Strength and Safety, by any in the world. Elegant Upper Cabins, Double and Single State Rooms, fitted and furnished with special reference to the comfort of Passengers. The Tables will be supplied with the delicacies of the season.

#### RATES OF CABIN PASSAGE:

Including State Rooms, Meals on Boats, and First Class Cars on Railroads, from Milwaukee to Buffalo, \$8; Cleveland, \$7; Detroit, \$5; New York, \$17; Boston, \$19; Albany, \$14; all other places in proportion.

### SHIPPERS OF FREIGHT,

Will find this the most desirable means of Transportation between East and West, having only one change between New York and Milwaukee.

For Tickets, Freight Contracts or other information, apply to the following Agents:

J. P. Worstell, 254 Broadway, N. Y.,	L. O. Tibbits, Pittsburgh, Pa.,
Fred. Wild, 254 Broadway, N. Y.,	H. C. McDowell, Cleveland, Ohio,
G. T. Nutter, 15 State St., Boston,	Hughes & Lester, "
A. T. Rumsey, La Crosse, Wis.,	J. C. & H. C. Burbank & Co., St. Paul, Minn.
CHAS. ENSIGN, Manager, Marine Block, Buffalo.	

**TIBBITS & STARKWEATHER.**

**J. M. CRUMMEY.**

At the La Crosse Railroad Docks,

Gen. Passenger Agent, 230 East Water St.

Milwaukee, Wis.

Milwaukee.

# Janesville Daily Gazette.

## AN EVENING PAPER,

Containing all the Telegraphic Reports up to the hour  
of Publication, and a General Summary of  
Current and Political News.

---

TERMS—\$6 PER YEAR; 50 CENTS PER MONTH.

---

## Gazette and Free Press.

A WEEKLY NINE-COLUMN JOURNAL.

---

### The Daily Telegraphic Reports

Are carefully condensed and arranged, and present a connected and full

### History of the Stirring Events of the Day.

The large amount of this and other reading matter, render it one of the most  
desirable local papers in the West, and its large circulation makes it

Unequalled in this section of the Country

AS AN

ADVERTISING MEDIUM.

---

ISSUED EVERY FRIDAY at \$1 50 A YEAR.

HOLT, BOWEN & WILCOX, Publishers.



# THE DAILY GAZETTE STEAM PRINTING ESTABLISHMENT.

---

The **JOBGING OFFICE** connected with the Establishment is one of

**THE BEST IN THE STATE,**

And its facilities for every variety of

**Plain and Ornamental Printing,**

IS NOT SURPASSED BY ANY IN WISCONSIN.

---

Orders are solicited and satisfaction as to style and prices guaranteed.

**HOLT, BOWEN & WILCOX, Publishers.**

## Index to Janesville Advertisements.

---

American House,.....	6
Anderson Mrs. E. S.,.....	opposite title.
Bassett Mrs. J.,.....	12
Bennett, Cassoday & Gibbs,.....	14
Brooks Oscar,.....	14
Connell Ed. & Co.,.....	8
Darling J. L.,.....	14
Denell Jno. A.,.....	first fly leaf.
Doty & Young,.....	10
Excelsior Hotel,.....	4
Holt, Bowen & Wilcox,.....	88
Horne Wm.,.....	12
Hyatt House,.....	opposite title.
Janesville Daily Gazette,.....	87
Johnson M. B.,.....	4
Lawrence & Atwood,.....	14
Lewis D. W.,.....	8
Lill & Diversey,.....	18
Lucas Prof. A.,.....	12
Mahrle & Jerg,.....	12
Martin C. Loftus,.....	16
Mills James,.....	opposite title.
Myers House,.....	7
Peoples Line of Steamers, (Milwaukee,).....	86
Paterson A.,.....	opposite title.
Pendleton B. F.,.....	16
Rayner Mrs. Frances,.....	14
Rice E. B.,.....	8
Rock River Iron Works,.....	4
Seaton & Co.,.....	8
Starr & Son, (Milwaukee,).....	66
Stevens House,.....	16
Tice J. H.,.....	14
Webb & Lee,.....	inside front cover.
Wheeler F. A. & Sons,.....	10
Winton & Van Dyke,.....	14



# Index to Janesville Advertisements

.....	American House	.....
.....	Anderson Mrs. H. S.	.....
.....	Asquith Mrs. J.	.....
.....	Bennett, Cassius & Gibbs	.....
.....	Brown Oscar	.....
.....	Connell H. & Co.	.....
.....	Darling J. E.	.....
.....	Daniel Jan. A.	.....
.....	Doy & Young	.....
.....	Excelsior Hotel	.....
.....	Hot, Haven & Wilson	.....
.....	Horne Wm.	.....
.....	Hyatt House	.....
.....	Janesville Daily Gazette	.....
.....	Johnson M. F.	.....
.....	Lawrence & Arnold	.....
.....	Levin D. H.	.....
.....	Mill & Diver	.....
.....	Lucas Fred. A.	.....
.....	Mahle & Jans	.....
.....	Martin C. Jackson	.....
.....	Miller James	.....
.....	Myers House	.....
.....	Peoples Line of Steamers (Milwaukee)	.....
.....	Robinson A.	.....
.....	Rundsten H. B.	.....
.....	Ryan Mrs. Frances	.....
.....	Shaw H. B.	.....
.....	Stock River Iron Works	.....
.....	Stanton & Co.	.....
.....	Stearns & Son (Milwaukee)	.....
.....	Stevens House	.....
.....	Tice J. H.	.....
.....	Webb & Jackson	.....
.....	Wheeler T. A. & Sons	.....
.....	Watson & Van Dyke	.....