



LIBRARIES

UNIVERSITY OF WISCONSIN-MADISON

Maps of Oshkosh city wards, 1-5, Oshkosh, Wisconsin. 1868

[s.l.]: [s.n.], 1868

<https://digital.library.wisc.edu/1711.dl/YACZVR3WA2WRN8X>

Based on date of publication, this material is presumed to be in the public domain.

Original material courtesy Oshkosh Public Museum.

For information on re-use, see

<http://digital.library.wisc.edu/1711.dl/Copyright>

The libraries provide public access to a wide range of material, including online exhibits, digitized collections, archival finding aids, our catalog, online articles, and a growing range of materials in many media.

When possible, we provide rights information in catalog records, finding aids, and other metadata that accompanies collections or items. However, it is always the user's obligation to evaluate copyright and rights issues in light of their own use.

Oshkosh, April 24th 1861
I certify that this is a correct map of the
First Ward of the City of Oshkosh as compiled
from the records in the office of the Register
of deeds of Winnebago County.

C. Palmer
City Surveyor.

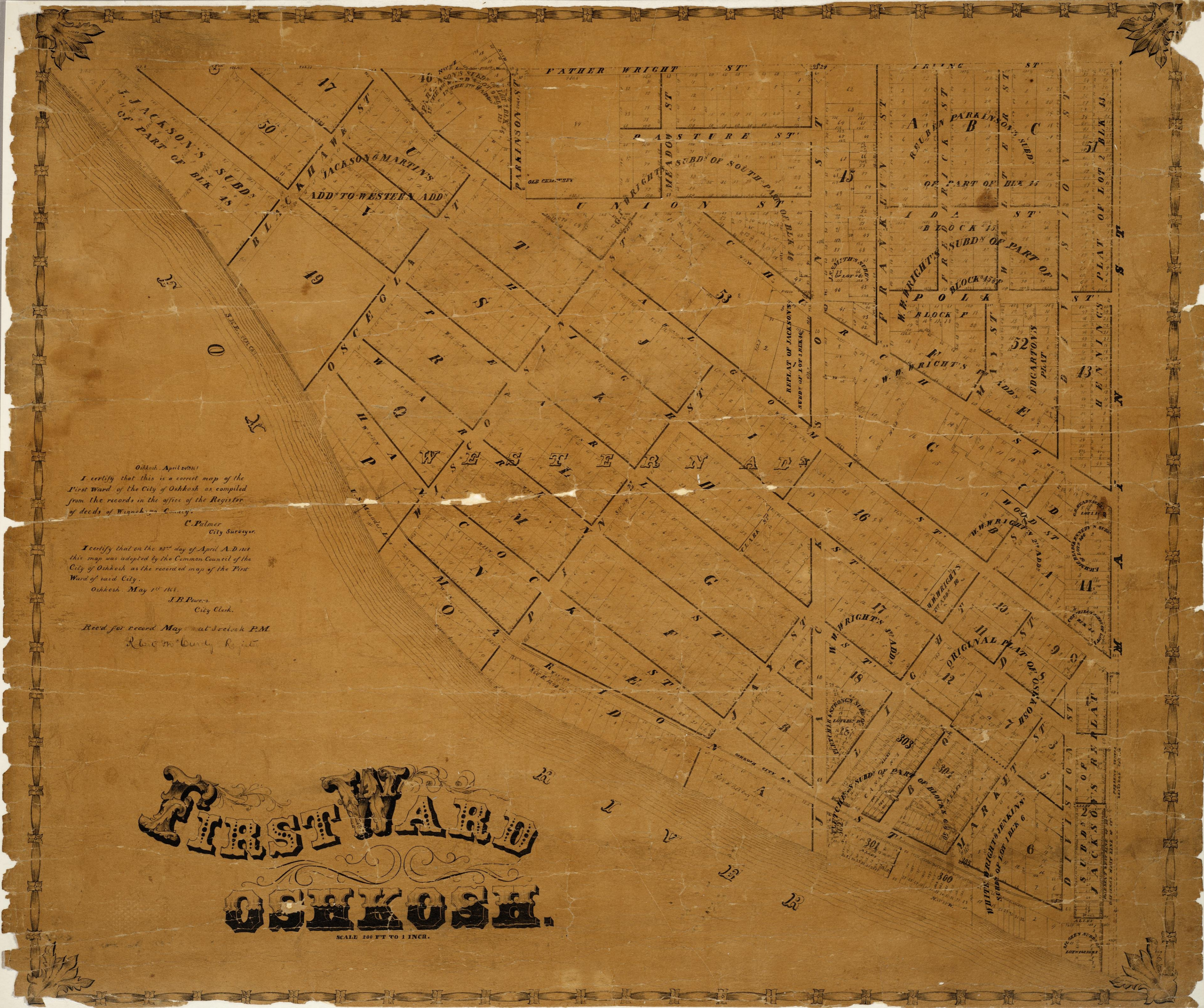
I certify that on the 23rd day of April A.D. 1861
this map was adopted by the Common Council of the
City of Oshkosh as the recorded map of the First
Ward of said City.

Oshkosh, May 1st 1861.
J.B. Powers,
City Clerk.

Rec'd for record May 1st at 3 o'clock P.M.
R. C. M. Curly, Regt.

FIRST WARD OSHKOSH.

SCALE 200 FT TO 1 INCH.





Oshkosh, April 24th 1881

I certify that this is a correct and true map of the Second Ward of the City of Oshkosh as compiled from the records in the office of the Register of deeds of Winnebago County.

C. Palmer
City Surveyor

I certify that on the 25th day of April A.D. 1881 this map was adopted by the Common Council of the City of Oshkosh as the recorded map of the Second Ward of said City.

Oshkosh, May 1st 1881

J.B. Powers.
City Clerk.

Recd for record May 4th 1881 at twelve P.M.
Robert M. Curly Register

SECOND WARD OSHKOSH.

SCALE 100 FT TO 1 INCH.

SW 1/4 or NE 1/4

SE 1/4 or NE 1/4

SW 1/4 or NW 1/4

P L A N K

108

109

105

88

72

58

37

35

39

40

F L O R I D A S T

106

89

73

59

H

12

43

10

OSBORN'S ADDITION

110 113

107

90

71

60

41

15

16

S E V E N T E E N T H S T

NW 1/4 or SE 1/4

111

112

JOHN SMITH'S ADDN

CLEMENT DOTY'S SUBD

S E V E N T E E N T H S T

LOT 3

E I G H T E E N T H S T

D O T Y S T

COTTRILL, PEASLEE & JOHNSTON'S SUBD OF LOTS 1-16

NW 1/4 or SE 1/4

NE 1/4 or SE 1/4

NW 1/4 or SW 1/4

S. E. 1/4 27

S. W. 1/4 26

S. E. 1/4 26

SW 1/4 or SE 1/4

SE 1/4 or SE 1/4

SW 1/4 or SW 1/4

SE 1/4 or SW 1/4

SW 1/4 or SE 1/4

SE 1/4 or SE 1/4

27 26
34 33

26 25
35 36

Ordinary Apportionment
 I certify that this is a correct map of the
 Third Ward of the City of Oklahoma as compiled
 from the records in the office of the Register of
 Deeds of Wagoner County, Oklahoma, in and
 out of the center of adjoining streets.
 C. P. and
 City Surveyor

*I certify that under act of April 2, 1906
 this map was adopted by the Common Council of the
 City of Oklahoma as the correct map of the Third
 Ward of said City.
 Oklahoma, May 19, 1907.
 J. B. Powers,
 City Clerk.*

*Read for record, May 19, 1907, at 10:30 A.M.
 Robert M. Curley, Register*

W I L L I A M S

NW 1/4 or SE 1/4

NE 1/4 or SE 1/4

NW 1/4 or SW 1/4

NE 1/4 or SW 1/4

S.E. 1/4 22

S.W. 1/4 23

SW 1/4 or SE 1/4

SE 1/4 or SE 1/4

SW 1/4 or SW 1/4

SE 1/4 or SW 1/4

NW 1/4 or NE 1/4

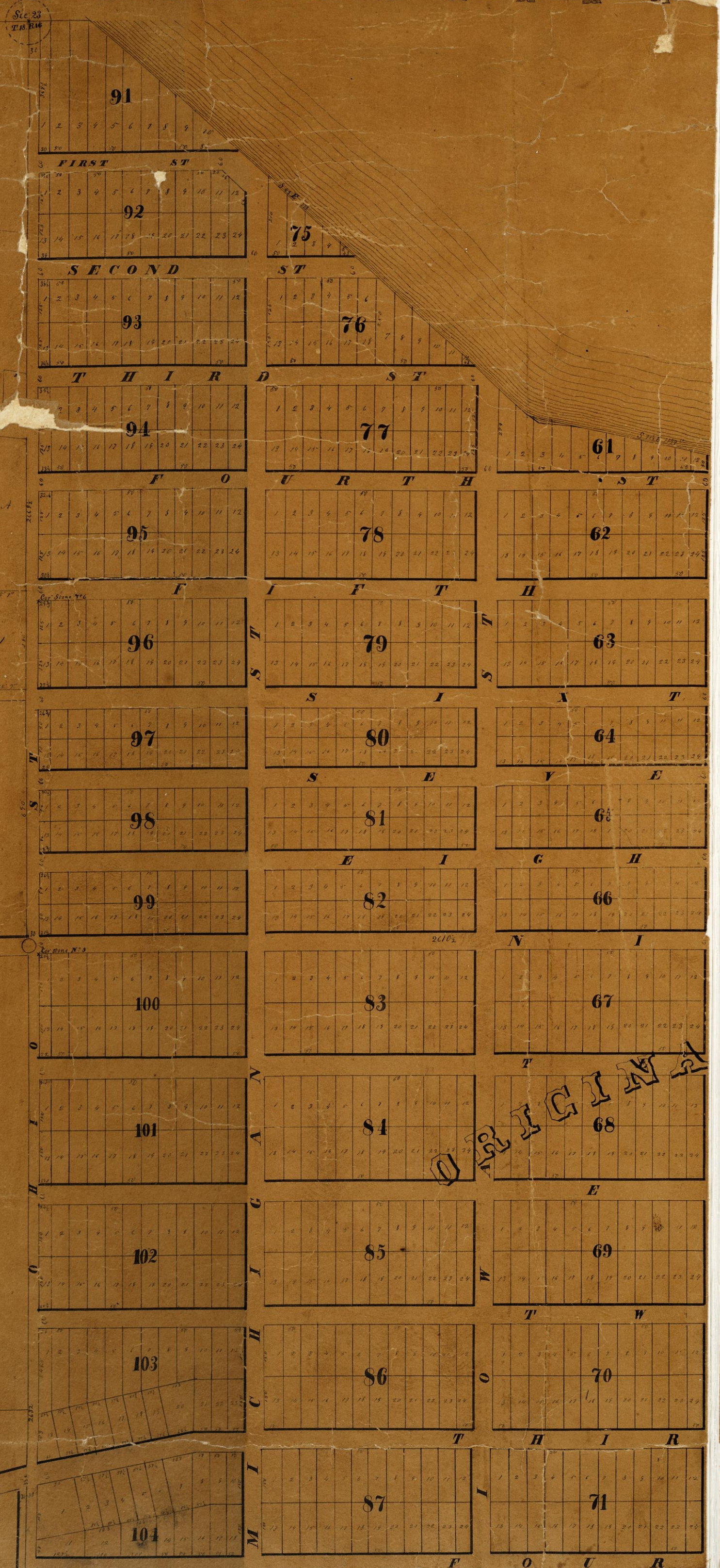
NE 1/4 or NE 1/4

NW 1/4 or NW 1/4

NE 1/4 or NW 1/4

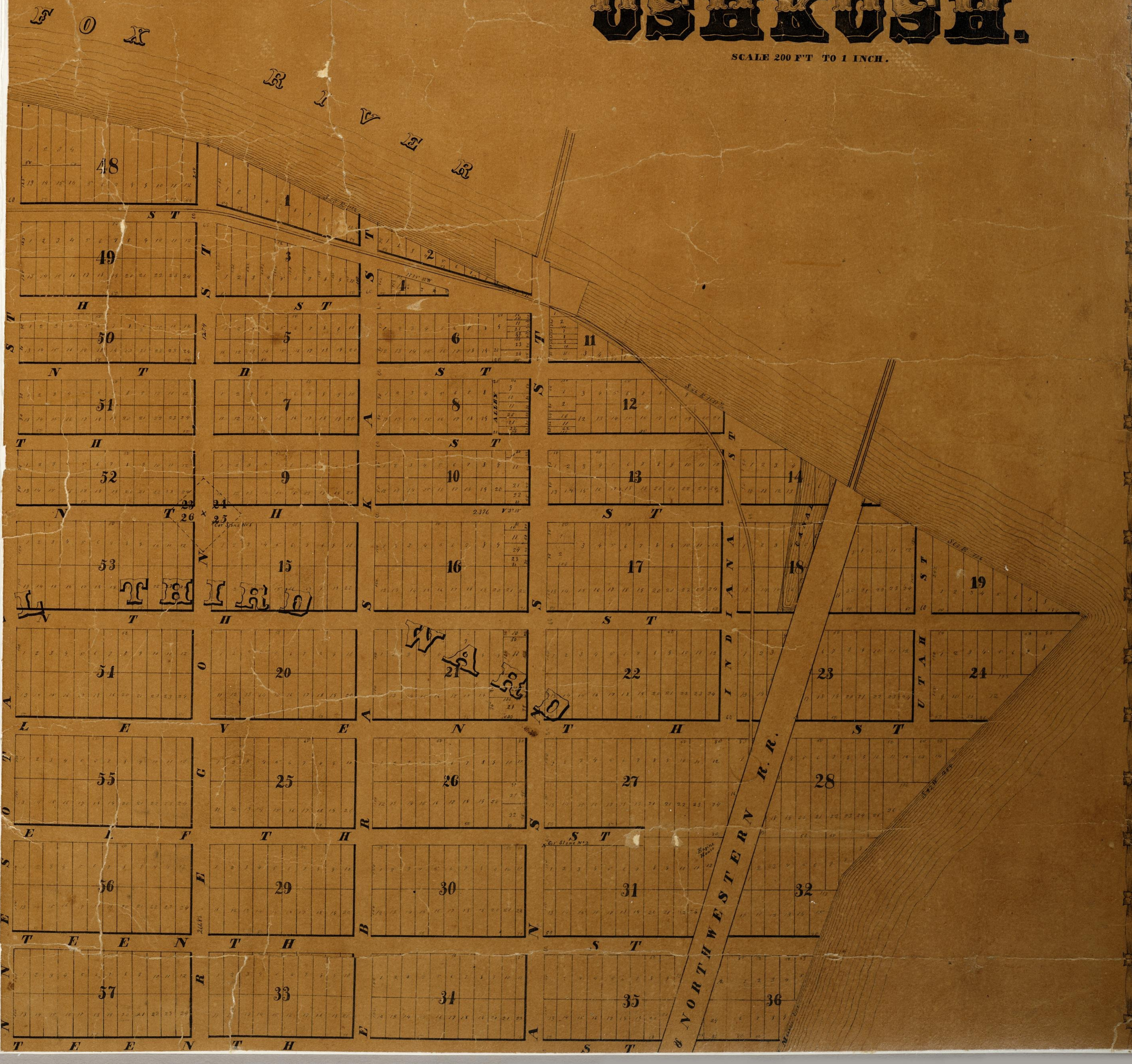
N.E. 1/4 27

N.W. 1/4 26



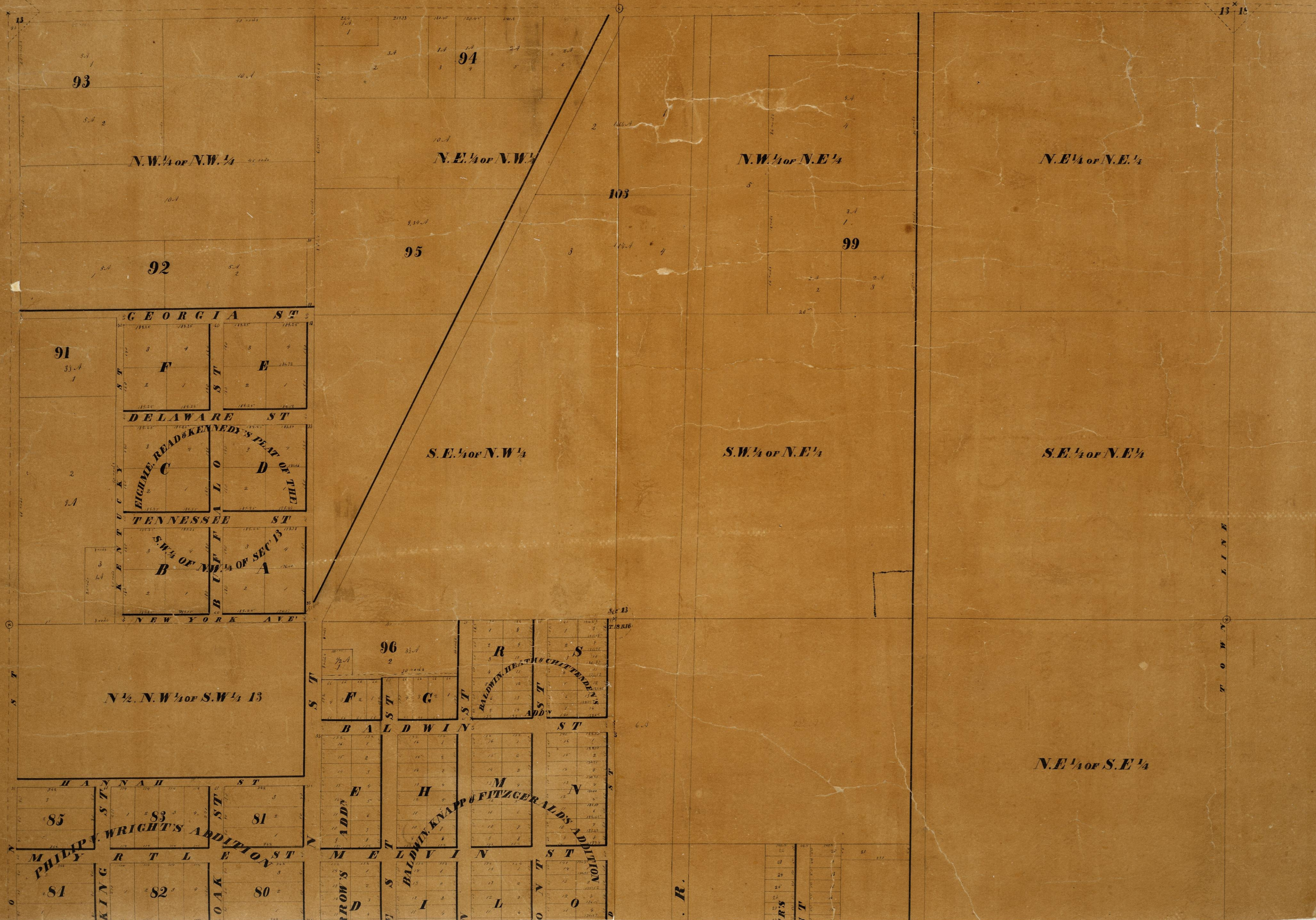
TITROWARD OSHKOSH.

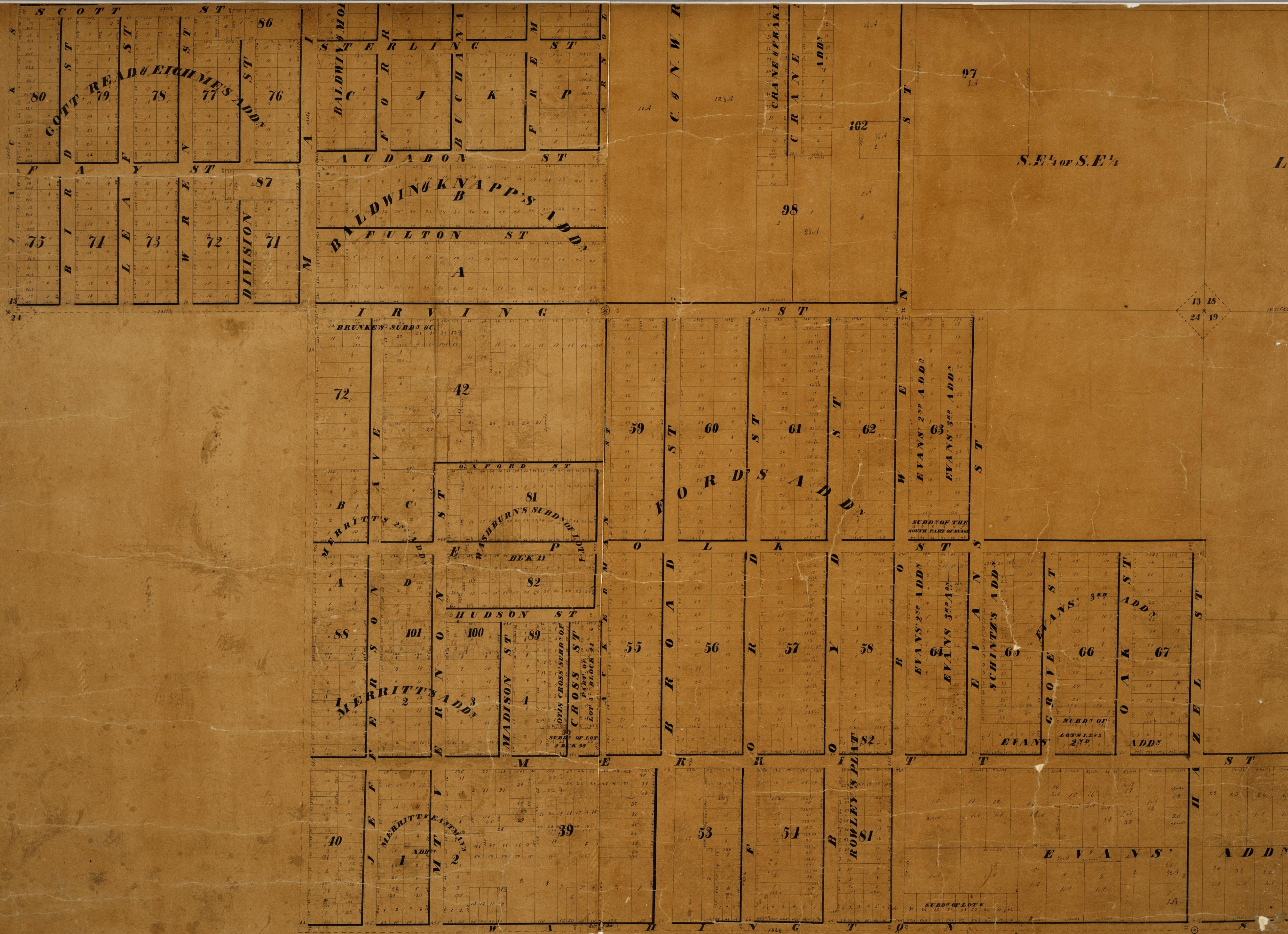
SCALE 200 FT TO 1 INCH.



ORIGINALLY
OWNED BY
THE
STATE OF
WISCONSIN

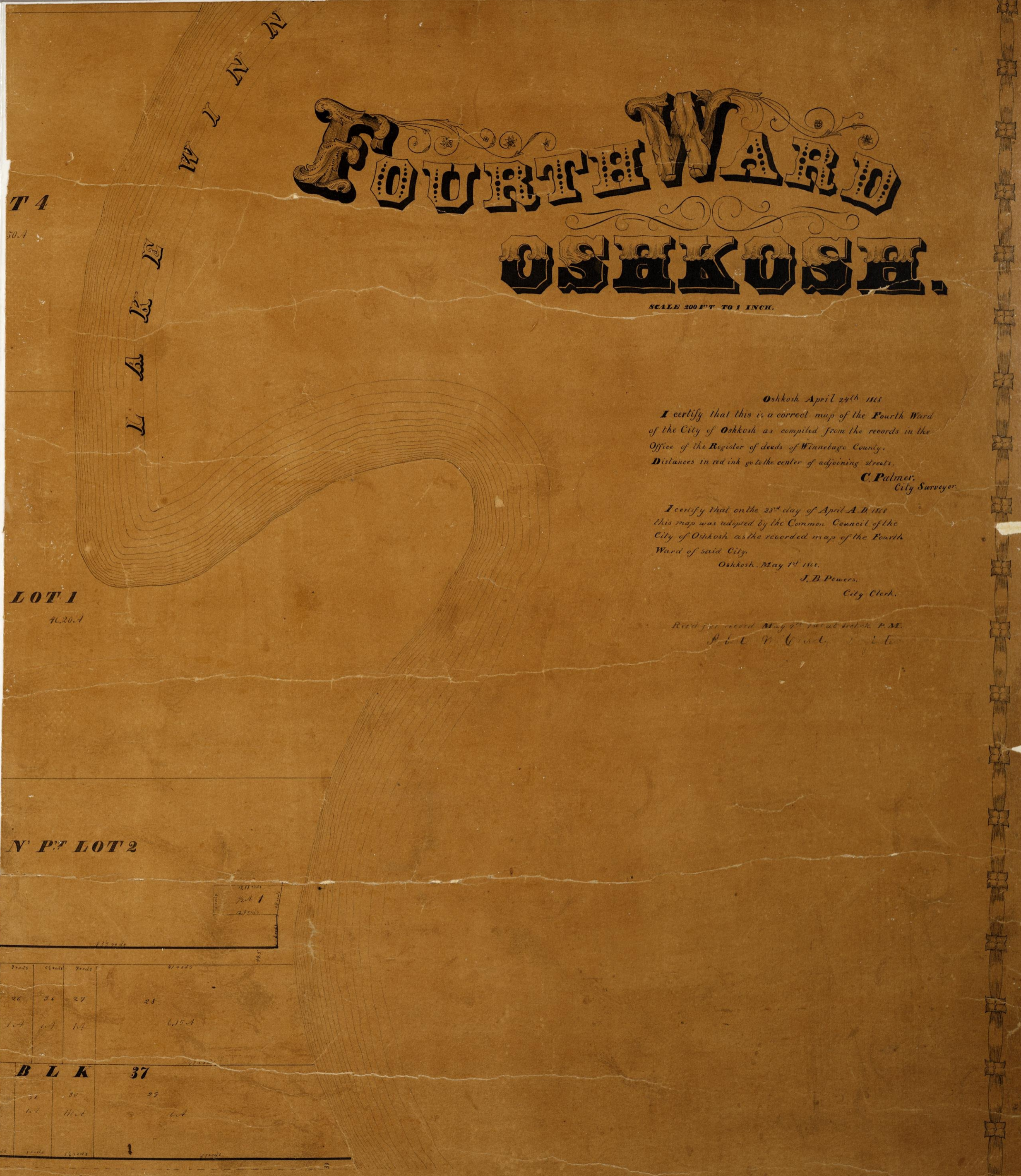
NORTHWESTERN R.R.





FOURTH WARD OSHKOSH.

SCALE 200 FT TO 1 INCH.



Oshkosh April 25th 1868
I certify that this is a correct map of the Fourth Ward
of the City of Oshkosh as compiled from the records in the
Office of the Register of deeds of Winnebago County.
Distances in red ink give the center of adjoining streets.
C. Palmer,
City Surveyor.

I certify that on the 25th day of April A. D. 1868
this map was adopted by the Common Council of the
City of Oshkosh as the recorded map of the Fourth
Ward of said City.
Oshkosh, May 1st 1868.
J. B. Powers,
City Clerk.

Exam. rec. record Map of 4th Ward at Oshkosh, Wis. M.
Feb. 11. 1868.

FRAC' or SEC' 10

NE 1/4 or NW 1/4



100

101

103

102

NW 1/4 or SE 1/4

LOT 3

CITY CEMETERY

10 11
15 14

105

106

124

THE REPEAT OF WINNEBAGO
MAIN ST

123

122

121

120

119

118

JAMES ST

SABERS OF CONGRESS ST
BLK 107

107

104

SW 1/4 or NE 1/4

SE 1/4 or NE 1/4

127

EDLOGG'S B ADDN

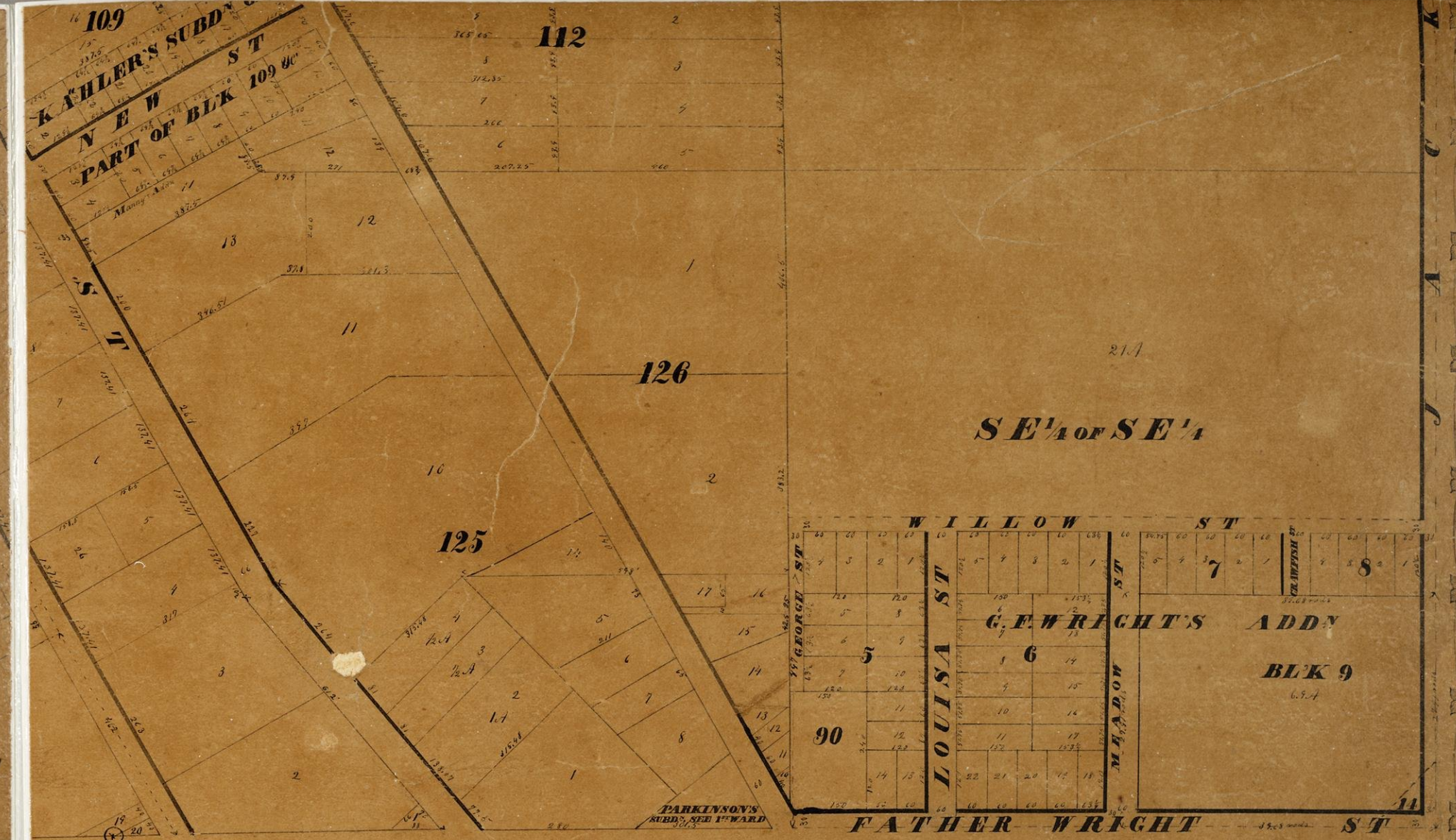
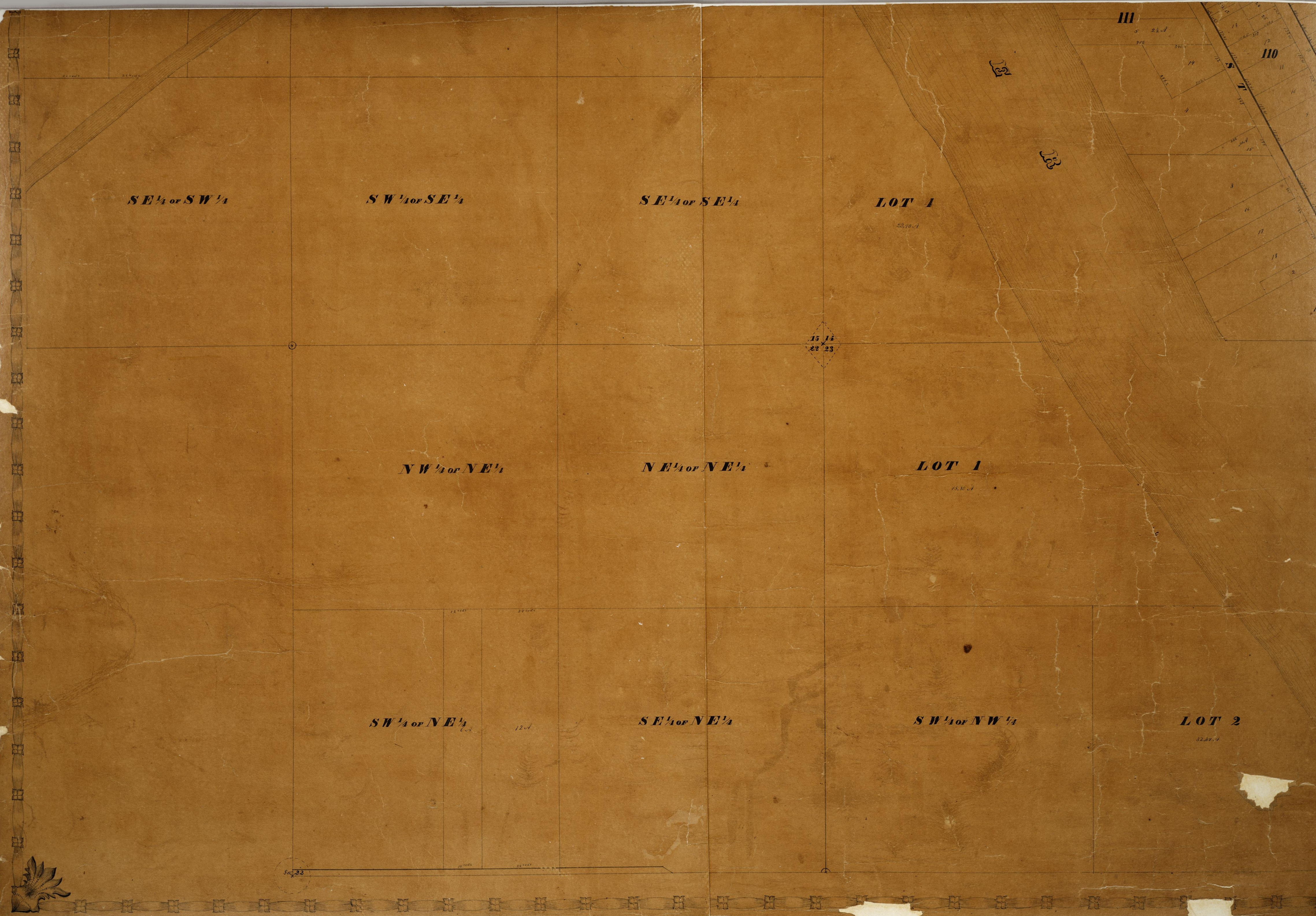
VINE ST

D ST

C

NE 1/4 or SE 1/4

MANNY'S ADDN



FIFTH WARD OSHKOSH.

SCALE 200 FT TO 1 INCH.

Oshkosh, April 29th 1855.
I certify that this is a correct map of the Fifth Ward of the City of Oshkosh as compiled from the records in the Office of the Register of Deeds of Winnebago County. Done in and at the City of Oshkosh, Wisconsin, this 29th day of April, A.D. 1855.
C. P. Palmer,
City Surveyor.

I certify that on the 23rd day of April A.D. 1855, this map was adopted by the Common Council of the City of Oshkosh as the recorded map of the Fifth Ward of said City.
Oshkosh, May 1st 1855.
J. B. Powers,
City Clerk.

Filed for record May 4th 1855, at 10:00 AM.
Robert M. Grant,
Recorder.