



# LIBRARIES

UNIVERSITY OF WISCONSIN-MADISON

## Mother is the battle over?.

St. Louis: Balmer & Weber (56 Fourth St.), 1862

<https://digital.library.wisc.edu/1711.dl/R26O5ZU3WHDD68C>

<http://rightsstatements.org/vocab/NKC/1.0/>

The libraries provide public access to a wide range of material, including online exhibits, digitized collections, archival finding aids, our catalog, online articles, and a growing range of materials in many media.

When possible, we provide rights information in catalog records, finding aids, and other metadata that accompanies collections or items. However, it is always the user's obligation to evaluate copyright and rights issues in light of their own use.

Wm S. Ball

Correct Edition

AS SUNG BY SHARPLEY'S MINSTRELS &  
At other places of Amusement.

# Mother is the battle over?

OR

WILL MY FATHER COME AGAIN

SONG WITH CHORUS

ARRANGED BY

## HENRY WERNER

— PIANO 3 GUITAR —

— ST. LOUIS —

Published by BALMER & WEBER 56 Fourth St.

Schaeff

Engel

# MOTHER IS THE BATTLE OVER?

as sung by Sharpley's & other Minstrels

Arranged by

HENRY WERNER

Andante

PIANO

The first system of piano introduction features a treble and bass clef with a common time signature. The music begins with a piano (p) dynamic. The right hand plays a series of eighth notes and quarter notes, while the left hand provides a steady accompaniment of eighth notes.

The second system continues the piano introduction with similar melodic and harmonic patterns in both hands.

3.V. Yes, my boy your noble { Fath - - er } Is one number'd with the  
 Broth - - er }

The first system of the vocal line shows a treble clef with a common time signature. The melody is simple and follows the lyrics above.

1.v. Moth - - er, is the battle o - - - ver! Thousands have been slain, they  
 2.v. Moth - - er dear, you're always sigh - - ing, Since you last the pa-per

The piano accompaniment for the first system features a treble and bass clef. The right hand has a melody with some grace notes, and the left hand plays a simple accompaniment. A piano (p) dynamic is indicated.

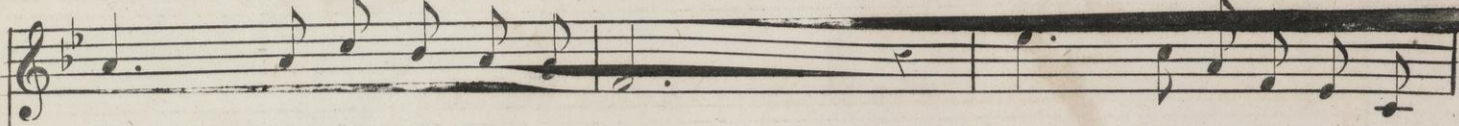
slain, Tho' he lov'd us ve-ry dear - - ly

The second system of the vocal line continues the melody with the lyrics above.

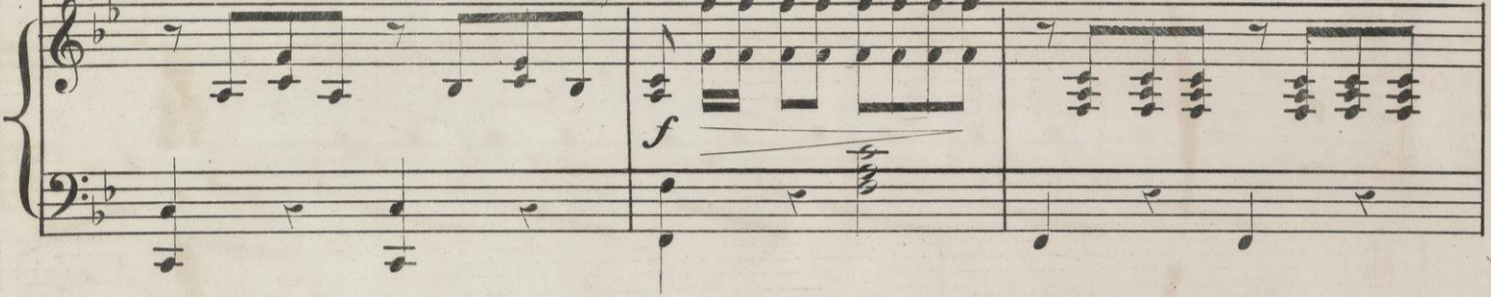
say, Is my { Father } coming! tell me,  
 read, Tell me, why you now are cry - - ing,

The piano accompaniment for the second system continues with the same accompaniment style as the first system.

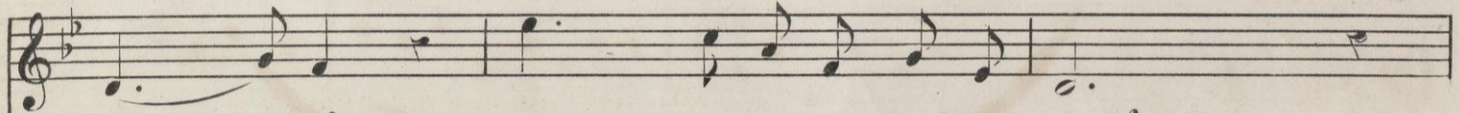
Ne'er on earth we'll meet a - gain, Fight ing for our Glorious



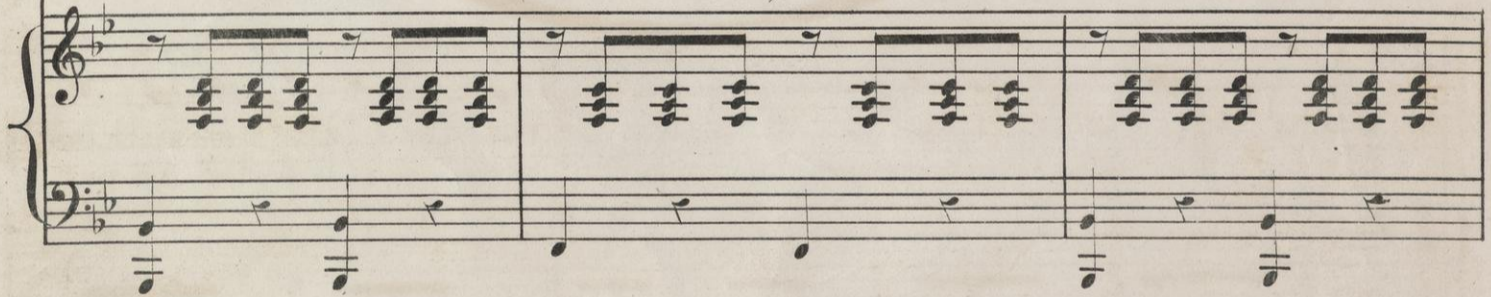
Has our Army gained the day! Is he well or is he  
Is { our dearest Father } dead! Ah! I see you cannot  
my darling Brother



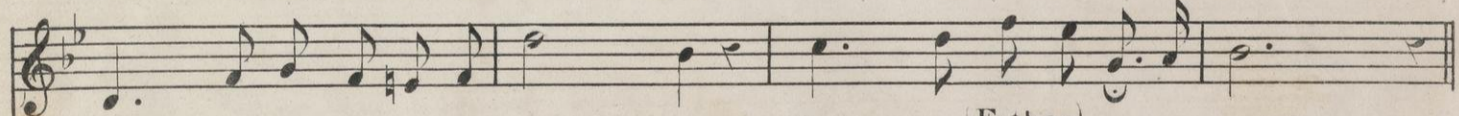
U - - nion Like a He - ro he was slain,



wound - - ed! Moth - - er do you think he's slain!  
tell me { Fath - - er's } one a - mong the slain!  
Broth - - er's



Still the day may not be dis - - tant; When in heav'n we'll meet a - gain!



If you know I pray you tell me, Will my { Father } come a - gain!  
Tho' he lov'd us ve - ry dear - ly Will he ev - er come a - gain!  
Brother



CHORUS

3.v. Fight - ing for our Glorious Uni - - on, Like a He-ro he was slain

BASS musical staff with notes and lyrics.

1&2v. Moth - er is the battle o - - ver! Thousands have been slain, they say,

TENOR musical staff with notes and lyrics.

3.v. Fight - ing for our Glorious Uni - - on, Like a He-ro he was slain,

AIR ALTO musical staff with notes and lyrics.

1&2v. Moth - er is the battle ov - - er! Thousands have been, slain they say,

Piano accompaniment for the first system.

3.v. Still the day may not be dis - - tant, When in heav'n we'll meet a - gain,

BASS musical staff with notes and lyrics.

1&2v. Is my {Father} coming! tell me, Has our Ar-my gained the day!

TENOR musical staff with notes and lyrics.

3.v. Still the day may not be dis - - tant, When in heav'n we'll meet a - gain,

AIR ALTO musical staff with notes and lyrics.

1&2v. Is my {Father} com- ing! tell me, Has our Ar-my gained the day!

Piano accompaniment for the second system.

Piano accompaniment for the third system, marked *mf*.