



# LIBRARIES

UNIVERSITY OF WISCONSIN-MADISON

## Utah Copper Co. properties, Bingham, Utah: [specimens] 18869-18896. No. 473 September 1916

Leith, C. K. (Charles Kenneth), 1875-1956  
[s.l.]: [s.n.], September 1916

<https://digital.library.wisc.edu/1711.dl/USOIK3KLOLGLJ8P>

<http://rightsstatements.org/vocab/InC/1.0/>

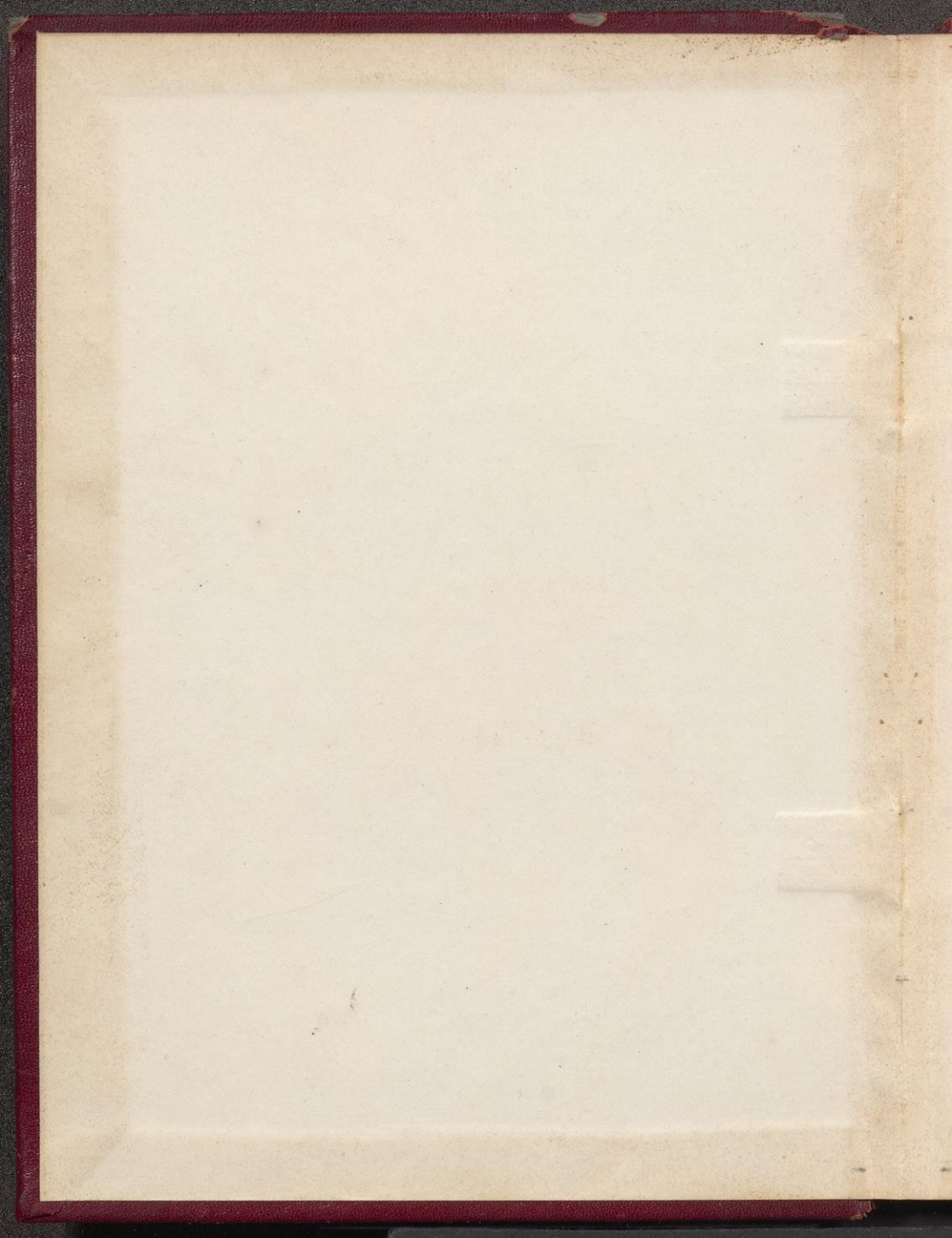
For information on re-use see:

<http://digital.library.wisc.edu/1711.dl/Copyright>

The libraries provide public access to a wide range of material, including online exhibits, digitized collections, archival finding aids, our catalog, online articles, and a growing range of materials in many media.

When possible, we provide rights information in catalog records, finding aids, and other metadata that accompanies collections or items. However, it is always the user's obligation to evaluate copyright and rights issues in light of their own use.

**FIELD SECTION BOOK**



Notebook No. 473  
Spec. U.W. 18869-18896

Utah Copper Co. Properties,  
Bingham, Utah

C. K. Leith  
September 1916

VW Nos.

# Utah Copper Sept. 1916

18869

A

Sut. 5. Light P. (Papill) See detailed  
location on underground plots

18870

B

Porphyry 18 inches from contact with 2. Sut. 5

18871

C'

Quartzite (2 samples) 2 inches from contact  
Sut. 5

18872

D

Sut. 5. Quartzite with vein of ore.

18873

E

Hard light porphyry Sut. 5

18874

F

Gouge along fault showing cleavage

18875

G

Dark Porphyry Sut. 5.

18876

H

Light porphyry near G.

18877

I

Light P for Sut. 8

18878

J

Dark P for Sut. 8

} Locations not given.

18879

4

st - Kc + v. + by 1 - 6 x 6

18880

m

st - 1 - 6 x 6 - 1 - 6 x 6 - 1 - 6 x 6





Handwritten text, likely a list or notes, starting with a checkmark and some illegible characters.

Handwritten text, possibly a list or notes, with some characters that appear to be 'x' and 'y'.

Handwritten text, possibly a list or notes, with some characters that appear to be 'x' and 'y'.

Handwritten text, possibly a list or notes, with some characters that appear to be 'x' and 'y'.

Handwritten text, possibly a list or notes, with some characters that appear to be 'x' and 'y'.

Handwritten text, possibly a list or notes, with some characters that appear to be 'x' and 'y'.







Ohio - Aug 19, 1916 - Frank

1. 26' 6" (45° 2.9) 0x  
(70' 6" 1.2) 0x  
2. 26' 6" (45° 2.9) 1.1x  
3. 26' 6" (45° 2.9) 1.1x  
4. 26' 6" (45° 2.9) 1.1x  
5. 26' 6" (45° 2.9) 1.1x  
6. 26' 6" (45° 2.9) 1.1x  
7. 26' 6" (45° 2.9) 1.1x  
8. 26' 6" (45° 2.9) 1.1x  
9. 26' 6" (45° 2.9) 1.1x  
10. 26' 6" (45° 2.9) 1.1x  
11. 26' 6" (45° 2.9) 1.1x  
12. 26' 6" (45° 2.9) 1.1x  
13. 26' 6" (45° 2.9) 1.1x  
14. 26' 6" (45° 2.9) 1.1x  
15. 26' 6" (45° 2.9) 1.1x  
16. 26' 6" (45° 2.9) 1.1x  
17. 26' 6" (45° 2.9) 1.1x  
18. 26' 6" (45° 2.9) 1.1x  
19. 26' 6" (45° 2.9) 1.1x  
20. 26' 6" (45° 2.9) 1.1x

21. 26' 6" (45° 2.9) 1.1x  
22. 26' 6" (45° 2.9) 1.1x  
23. 26' 6" (45° 2.9) 1.1x  
24. 26' 6" (45° 2.9) 1.1x  
25. 26' 6" (45° 2.9) 1.1x  
26. 26' 6" (45° 2.9) 1.1x  
27. 26' 6" (45° 2.9) 1.1x  
28. 26' 6" (45° 2.9) 1.1x  
29. 26' 6" (45° 2.9) 1.1x  
30. 26' 6" (45° 2.9) 1.1x

31. 26' 6" (45° 2.9) 1.1x  
32. 26' 6" (45° 2.9) 1.1x  
33. 26' 6" (45° 2.9) 1.1x  
34. 26' 6" (45° 2.9) 1.1x  
35. 26' 6" (45° 2.9) 1.1x  
36. 26' 6" (45° 2.9) 1.1x  
37. 26' 6" (45° 2.9) 1.1x  
38. 26' 6" (45° 2.9) 1.1x  
39. 26' 6" (45° 2.9) 1.1x  
40. 26' 6" (45° 2.9) 1.1x

41. 26' 6" (45° 2.9) 1.1x  
42. 26' 6" (45° 2.9) 1.1x  
43. 26' 6" (45° 2.9) 1.1x  
44. 26' 6" (45° 2.9) 1.1x  
45. 26' 6" (45° 2.9) 1.1x  
46. 26' 6" (45° 2.9) 1.1x  
47. 26' 6" (45° 2.9) 1.1x  
48. 26' 6" (45° 2.9) 1.1x  
49. 26' 6" (45° 2.9) 1.1x  
50. 26' 6" (45° 2.9) 1.1x

1000' r d r x p r i c t p i c p i c  
C. S. 50' L r Z x Z o r e o r q t i k  
C. S. r v, i, o r t - 10 r r b x

7.5 x 2-2 L 2 f, - v. 19 > 1 1 3 7, 7 x  
u b p x 1 4 2. r r - 5 - 5 6 - 7 2 x  
r y 4 1 / v 6. 4 - 2. 2 1 - 4 x

Description of Utah copper specimens,  
collected by C. K. Leith, September,  
1916.

UW

- 18869 Sub 5. Light porphyry called "Payroll porphyry." See location on level maps.
- 18870 Sub 5. Porphyry 18 inches from contact
- 18871 Sub 5. Quartzite (2 samples) 2 inches from contact.
- 18872 Sub 5. Quartzite with vein of ore.
- 18873 Sub 5. Hard light porphyry.
- 18874 Sub 5. Gouge along fault showing cleavage.
- 18875 Sub 5. Dark porphyry.
- 18876 Light porphyry near specimen 18875.
- 18877 Light porphyry from Sub 8.
- 18878 Dark porphyry from Sub 8.
- (Locations of 18877 and 18878 not given)
- 18879 Quartzite on K level showing pyrite and chalcocite disseminated and also in veins
- 18880 Quartzite from capping near same place. Carries almost no value. Very little carbonate staining.

- 18881 Quartzite from K Level showing veining near contact. Chalcocite replacing chalcopyrite and pyrite.
- 18882 Dark porphyry on K level, said to be typical.
- 18883 Capping over dark porphyry from M level south end. Carries no value.
- 18884 Capping of light porphyry from M level. Note leaching of feldspars.
- 18885 Hematite sulphide ore. Supposed to be replacement of carbonate just below the quartzite. This is commonly associated with the quartzite which in some places occurs between the dark and light porphyry. 3 to 4% copper. From M level.
- 18886 From fault on S level. Note the graphite or molybdenum which usually comes near the top or bottom of the gouge. This black material also follows the curved and inclined cleavage.
- 18887 Quartz deposited on the terminal faces of pyrite with chalcocite. What are its relations to the chalcocite?
- 18888 Carbonate ore from weathered porphyry on level I, south end.
- 18889 Chrysacolla from capping on the south side of level I

- 18890) Typical of the best light porphyry  
18891) ore from about the 1000 ft. section  
on level H. Shows chalcocite, covellite,  
chalcopyrite, secondary quartz. Said to be  
the hardest rock on the mountain. Due to  
recrystallization?
- 18892 Covellite ore in light porphyry from  
P level, near big trust fault. Covellite  
is confined to the upper levels.
- 18893 Quartzite ore from Ohio copper Mine
- 18894 " " " "
- 18895 " " " "
- 18896 Ohio copper, supposed porphyry sill  
above hanging wall vein, about 3' thick.

UW

Hole 66

55006 0+05  
55007 0+50  
55008 1+00  
55009 1+50  
55010 2+00  
55011 2+50  
55012 3+00  
55013 3+50  
55014 4+00  
55014a 4+50  
55015 5+00  
55016 5+50  
55017 6+00  
55018 6+50  
55019 7+00  
55020 7+50  
55021 8+00  
55022 8+50  
55023 9+00  
55024 9+50

Hole 78

55025 0+05  
55026 0+50  
55027 1+00



55028 1+50  
55029 2+00  
55030 2+50  
55031 3+00  
55032 3+50  
55033 4+00  
55034 4+50  
55035 5+00  
55036 5+50  
55037 5+95  
  
55038 0+35  
55039 1+30  
55040 2+30  
55041 3+40  
55042 4+40  
55043 5+50  
55044 6+50  
55045 7+35  
55046 8+30  
55047 9+30  
55048 10+30  
55049 11+75  
55050 12+40  
55051 13+30

Hoewer

55052 14+05

Lo 83

55053 0+30

55054 1+30

55055 2+30

55056 3+30

55057 4+30

55058 5+30

S.

T.

R.

