



# LIBRARIES

UNIVERSITY OF WISCONSIN-MADISON

## Dialogue part: Gateman. [189-?]

Kerker, Gustave, 1857-1923; Morton, Hugh, 1865-1916  
[s.l.]: [s.n.], [189-?]

<https://digital.library.wisc.edu/1711.dl/UVT67RPGI6F4W9B>

Based on date of publication, this material is presumed to be in the public domain.

For information on re-use see:

<http://digital.library.wisc.edu/1711.dl/Copyright>

The libraries provide public access to a wide range of material, including online exhibits, digitized collections, archival finding aids, our catalog, online articles, and a growing range of materials in many media.

When possible, we provide rights information in catalog records, finding aids, and other metadata that accompanies collections or items. However, it is always the user's obligation to evaluate copyright and rights issues in light of their own use.

Part No. 19 Set No.

DIALOGUE PART  
OF

*Gateman*

---

IN

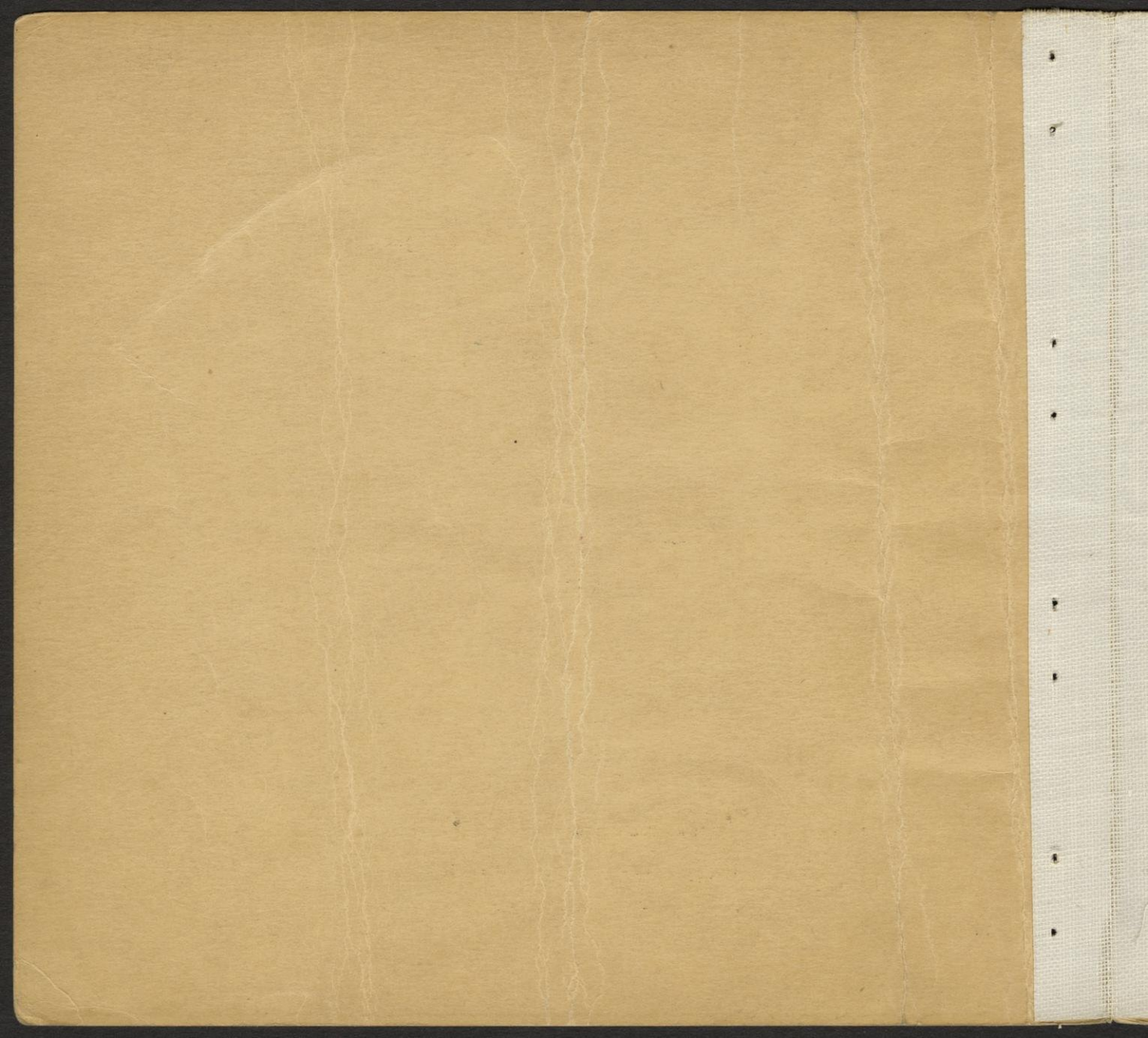
*"Belle of New York"*

---

PROPERTY OF

TAMS-WITMARK MUSIC LIBRARY, Inc.

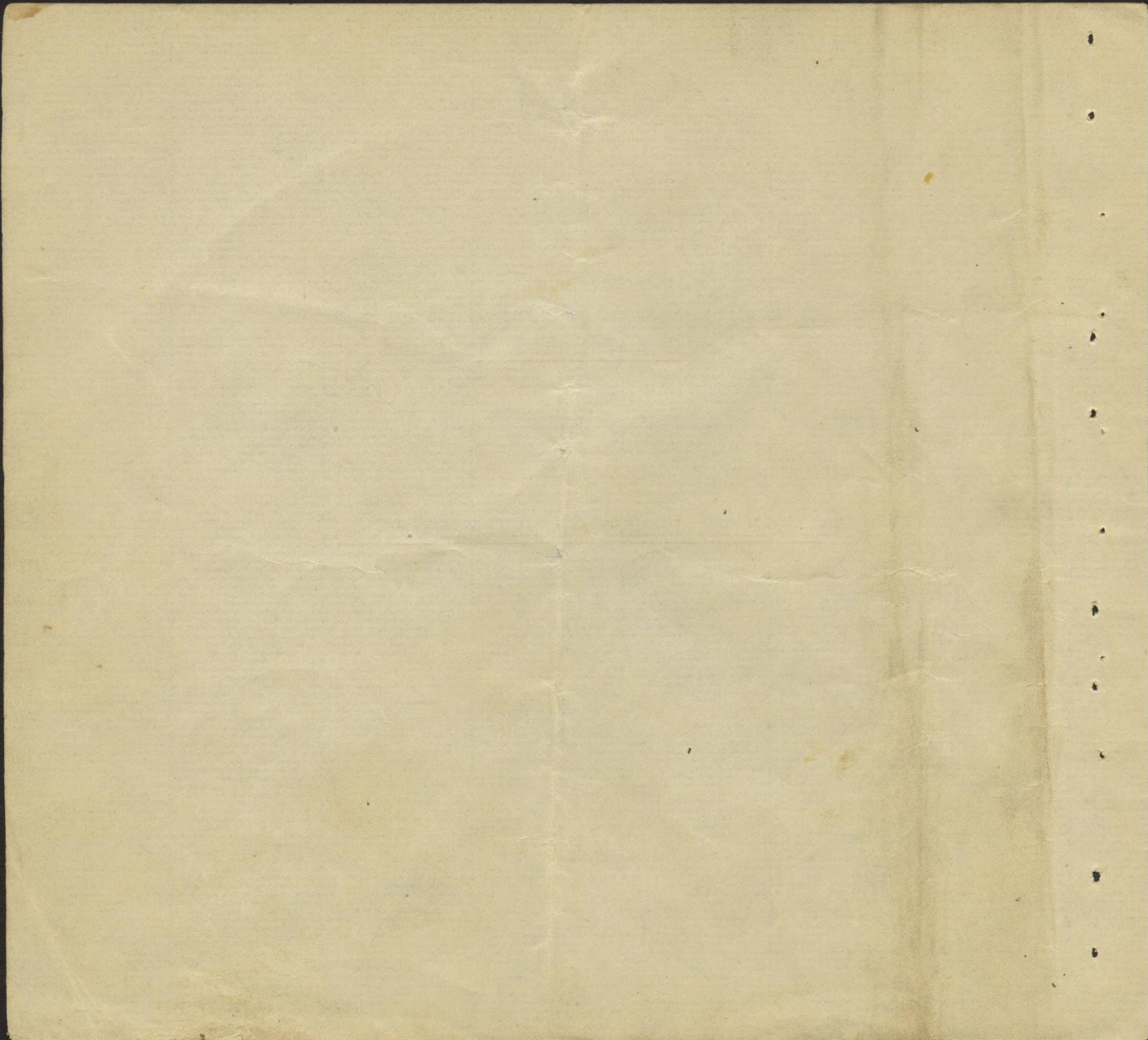
318-320 WEST 46th STREET  
NEW YORK CITY, N. Y. C.  
115 W. 45th ST., N. Y. C.



G A T E M A N

IN

"THE BELLE OF NEW YORK."



GATEMAN

IN

THE BELLE OF NEW YORK

ACT II. SCENE II.

(Calling) Shore lineexpress first stop Bridgport.

(Enter people)

(Calling) Shore Lineexpress, first stop Bridegport.

.....than mixed ale.

(Enter R. I. E)

.....kiss yer baby.

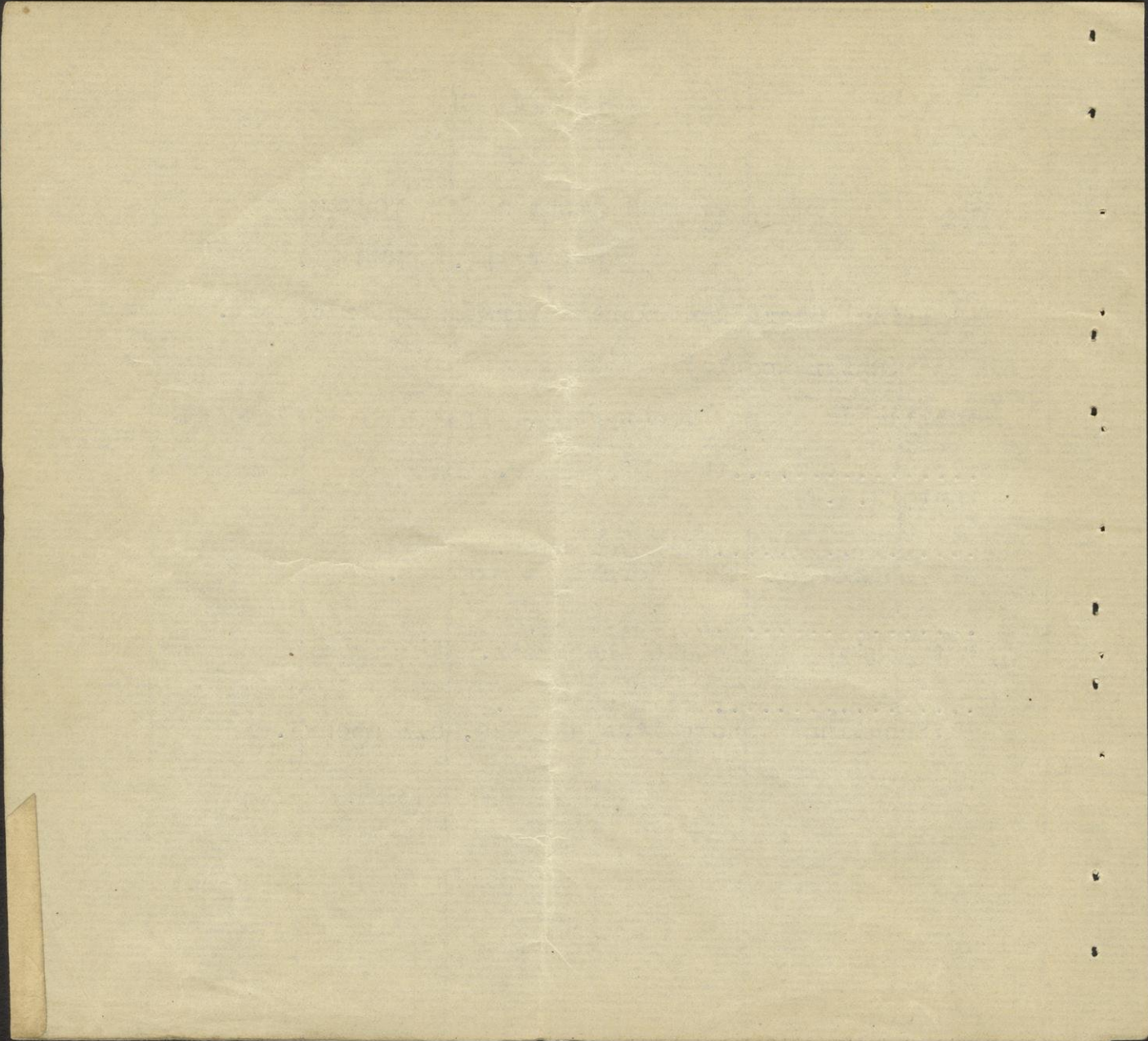
All aboard for the shore line express.

.....of yer face.

But you've got totake the train.

.....train will go.

(L. Shouting) Shore line express, all aboard.





1

2

3

4

5

6

7

8

9

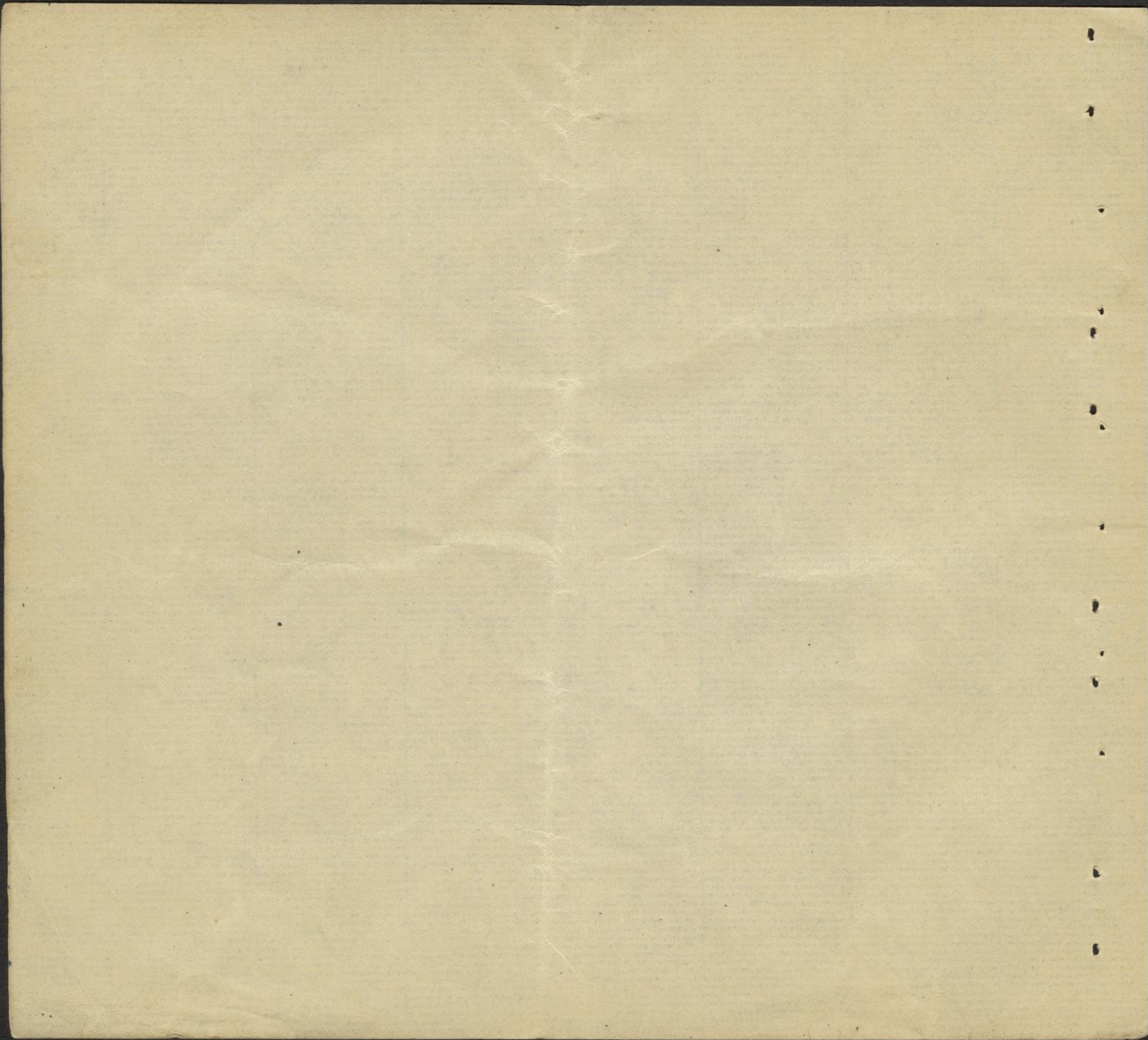
10

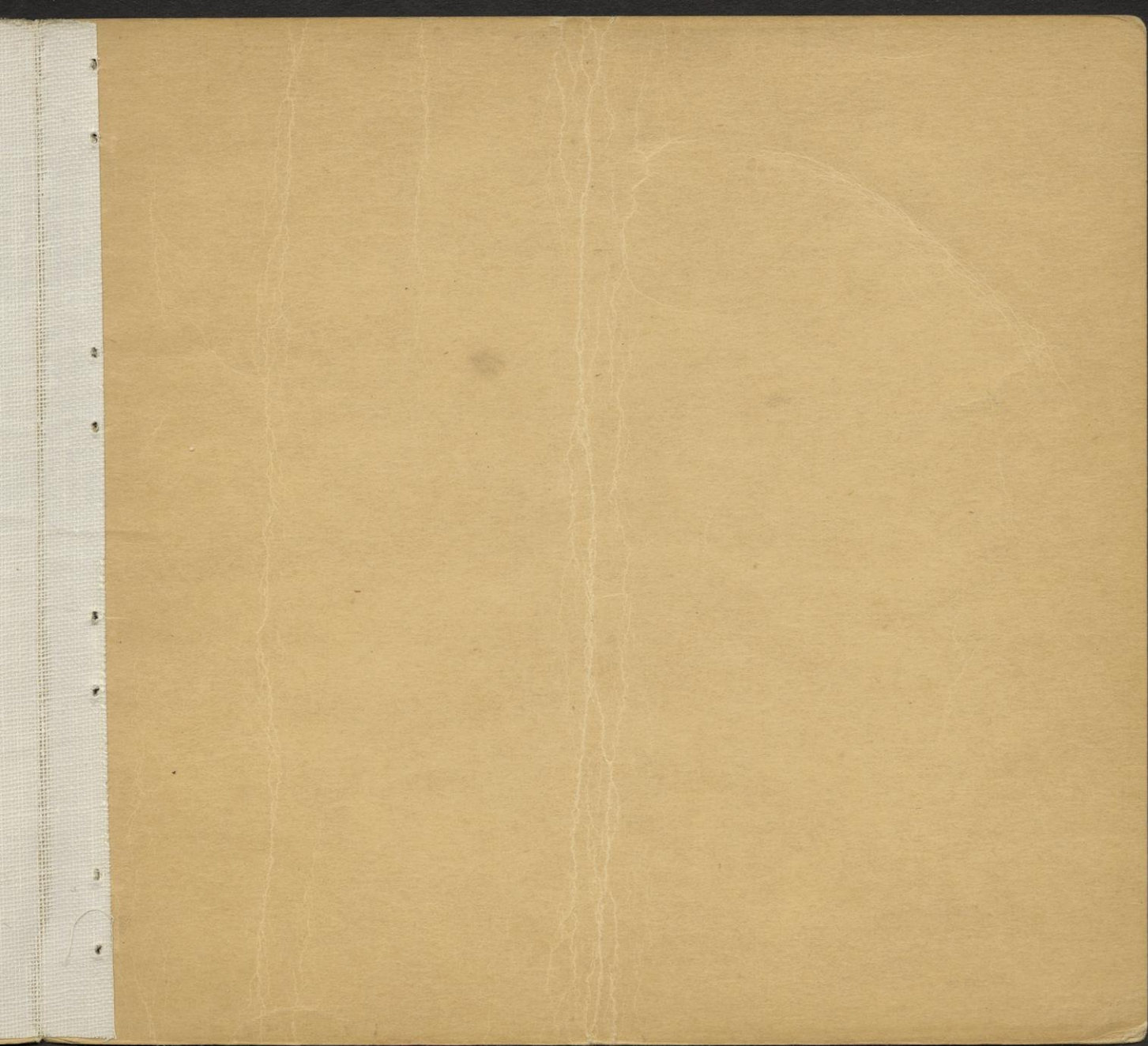
11

12

13







Fags on styris on wrists.

