



LIBRARIES

UNIVERSITY OF WISCONSIN-MADISON

Site 4091: Watertown, Jefferson County, Township 8N, Range 14E, Section 3. 1953-08-08

[s.l.]: [s.n.], 1953-08-08

<https://digital.library.wisc.edu/1711.dl/UPSCY3U32JU6F8R>

This material may be protected by copyright law (Title 17, US Code).

For information on re-use see:

<http://digital.library.wisc.edu/1711.dl/Copyright>

The libraries provide public access to a wide range of material, including online exhibits, digitized collections, archival finding aids, our catalog, online articles, and a growing range of materials in many media.

When possible, we provide rights information in catalog records, finding aids, and other metadata that accompanies collections or items. However, it is always the user's obligation to evaluate copyright and rights issues in light of their own use.

STAND RECORD

FORESTS

Stand No. 4091

Name: Watertown

Locality: SE:NW

County: Jefferson

T: 8N R: 14E Sec: 3

Date: Aug 8, 1953

Observers: Ware

Size of Stand: 10 A.

Size of Area Sampled: 10 A.

Forest Type: Bottomland hardwoods

Soil Type:

Topography: Almost flat, gentle slopes, low

Slope:

Directions

Condition of Stand:

Superficial appearance is fairly good. Enormous stumps of sugar maple. No sugar maple reproduction. Apparently grazed almost continuously for many years. Herbs so poor, sampling not done.

Open Grown Trees:

90% Canopy:

Stumps:

- | | | | |
|----|----|----|-----|
| 1. | 4. | 7. | 10. |
| 2. | 5. | 8. | 11. |
| 3. | 6. | 9. | 12. |

Soil Data:

| | pH | N | P | K | Ca | Mg | Org. Mat. | Colloids | W.H.C. |
|----------------|----|---|---|---|----|----|-----------|----------|--------|
| A ₀ | | | | | | | | | |
| A ₁ | | | | | | | | | |
| A ₂ | | | | | | | | | |
| B | | | | | | | | | |

DEPTH

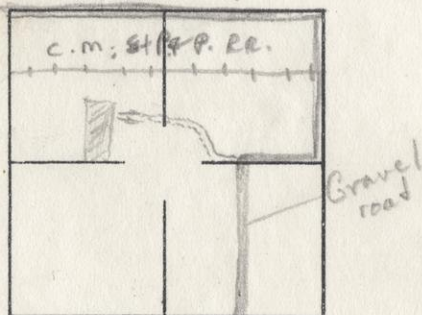
CHARACTERISTICS (Color, Texture, Structure, etc.)

| | | |
|----------------|-----|------------------------------|
| A ₀ | 1" | Decomposing leaves, twigs |
| A ₁ | 4-6 | Well developed, black, leamy |
| A ₂ | 2-3 | Black clay loam |
| B | 2-3 | Dark clay - silt |

Parent Material: Glacial till

Map:

S.H. 19



| STATION NO. | 1 | 2 | 3 | 4 | 5 | 6 | 7 | 8 | 9 | 10 |
|--------------------------------|-----|-----|-----|-----|----|-----------|----|------------|-----|------|
| Acer negundo | | | | | | | | | | |
| A. saccharinum | | | | | | | | | | |
| A. saccharum | 270 | | 450 | 250 | | | | | 580 | 2210 |
| Betula nigra | | | | | | | | | | |
| Carya cordiformis | | | 85 | | | | | | | |
| Celtis occident. | | | | | | | | | | |
| Crataegus sp. | | 1 | 1 | | | | | | | |
| Fraxinus americ. | | | | | | | | | | |
| F. nigra | | | | | | | | | | |
| F. pennsylvanica | | | | 220 | | | | | | |
| Gleditsia triacan. | | | | | | | | | | |
| Gymnocladus dioica | | | | | | | | | | |
| Juglans cinerea | | | 85 | | | | | | | |
| Platanus occident. | | | | | | | | | | |
| Populus deltoides | | | | | | | | | | |
| P. tremuloides | | | | | | | | | | |
| Prunus serotina | | | | | | | | | | 1 |
| Quercus bicolor | | | | | | | | | | |
| Q. rubra | | | | | | | | | | |
| Robinia pseudo. | | | | | | | | | | |
| Salix nigra | | | | | | | | | | |
| Tilia americana | | | | | | | | | | |
| Ulmus americana | | 110 | | 2 | | | 80 | 130 150 | | 85 |
| U. rubra thomasi | | | 1 | 1 | | 150 75 | | | | 1 |
| Ostrya | 35 | 20 | 2 | 3 | 1 | 20 65 | 4 | 25 | 4 | 450 |
| | | | | | | | | | | |
| | | | | | | | | | | |
| Distance | 20 | 24 | 15 | 34 | 17 | 23 | 18 | 14 | 10 | 35 |

1-10

11-20

| STATION NO. | 1 | 2 | 3 | 4 | 5 | 6 | 7 | 8 | 9 | 10 |
|-----------------------------|------------|-----|-------------|-----|-----------|----|----|----------|-----|------------|
| Acer negundo | | | | | | | | | | |
| A. saccharinum | | | | | | | | | | |
| A. saccharum | | | 1350 740 | 300 | 180 12 | | | 430 | 140 | 800 400 |
| Betula nigra | | | | | | | | | | |
| Carya cordiformis | | | | | | | | | | |
| Celtis occident. | | 14 | | | | | | | | |
| Crataegus sp. | | | | | 1 | | | | | |
| Fraxinus americ. | | | | | | | | | | |
| F. nigra | | | | | | | | | | |
| F. pensylvanica | | | | | | | | | | |
| Gleditsia triacan. | | | | | | | | | | |
| Gymnocladus dioica | | | | | | | | | | |
| Juglans cinerea | | | | | | | | | | |
| Platanus occident. | | | | | | | | | | |
| Populus deltoides | | | | | | | | 410 | | |
| P. tremuloides | | | | | | | | | | |
| Prunus serotina | | | | | | | | | | |
| Quercus bicolor | | | | | | | | | | |
| Q. rubra | | | | | | | | | | |
| Robinia pseudo. | | | | | | | | | | |
| Salix nigra | | | | | | | | | | |
| Tilia americana | | | | | | | | | | |
| Ulmus americana | | | 13 30 | | 22 1 | | | 60 45 | 12 | 1 |
| U. ^{thomasi} rubra | | 230 | | | | | | | | |
| Ostrya | 30 50/2 | | 1 | 1 | 3 | | | 3 | 4 | 4 |
| Distance | 23 | 17 | 17 | 25 | 34 | 26 | 12 | 22 | 15 | 34 |

21-30

| STATION NO. | 1 | 2 | 3 | 4 | 5 | 6 | 7 | 8 | 9 | 10 |
|-----------------------------|----|-----|----|-----|----|-----|----|----|----|----|
| Acer negundo | | | | | | | | | | |
| A. saccharinum | | | | | | | | | | |
| A. saccharum | | | | | | | 20 | 40 | | |
| Betula nigra | | | | | | | | | | |
| Carya cordiformis | | | | | | | | | | |
| Celtis occidental. | | | | | | | | | | |
| Crataegus sp. | | | | | | | | | | |
| Fraxinus americ. | | | | | | | | | | |
| F. nigra | | | | | | | | | | |
| F. pensylvanica | | | | | | | | | | |
| Gleditsia triacan. | | | | | | | | | | |
| Gymnocladus dioica | | | | | | | | | | |
| Juglans cinerea | | | | | | | | | | |
| Platanus occident. | | | | | | | | | | |
| Populus deltoides | | | | | | | | | | |
| P. tremuloides | | | | | | | | | | |
| Prunus serotina | | | | | | | | | | |
| Quercus bicolor | | | | | | | | | | |
| Q. rubra | | 500 | | | | | | | | |
| Robinia pseudo. | | | | | | | | | | |
| Salix nigra | | | | | | | | | | |
| Tilia americana | | | | 130 | | | | | | |
| Ulmus americana | | 115 | 35 | 30 | 1 | 250 | 80 | 90 | 25 | 1 |
| U. ^{thomasi} rubra | | | | 1 | 1 | 100 | | | | 30 |
| Ostrya | 35 | 18 | | | | 14 | 14 | | 35 | 50 |
| | 50 | 3 | | | | 13 | 4 | | 1 | |
| Distance | 17 | 23 | 20 | 37 | 24 | 18 | 30 | 21 | 14 | 12 |

31-40

| STATION NO. | 1 | 2 | 3 | 4 | 5 | 6 | 7 | 8 | 9 | 10 | | |
|---|----|-----|-----|----|----|-----|-----|----|----|----|-----|-----|
| Acer negundo | | | | | | | | | | | | |
| A. saccharinum | | | | | | | | | | | | |
| A. saccharum | | | | 65 | | 540 | 190 | | | | | |
| Betula nigra | | | | | | | | | | | | |
| ^{Bitternut} Carya cordiformis | | | 160 | | | | | | | | | |
| Celtis occident. | | | | | | | | | | | | |
| Crataegus sp. | | | | | | | | | | | | |
| Fraxinus americ. | | | | | | | | | | | | |
| F. nigra | | | | | | | | | | | | |
| F. pensylvanica | | | | | | | | | | | | |
| Gleditsia triacan. | | | | | | | | | | | | |
| Gymnocladus dioica | | | | | | | | | | | | |
| Juglans cinerea | | | | | | | | | | | | |
| Platanus occident. | | | | | | | | | | | | |
| Populus deltoides | | | | | | | | | | | | |
| P. tremuloides | | | | | | | | | | | | |
| Prunus serotina | | | | | | | | | | | | |
| Quercus bicolor | | | | | | | | | | | | |
| Q. rubra | | | | | | | | | | | | |
| Robinia pseudo. | | | | | | | | | | | | |
| Salix nigra | | | | | | | | | | | | |
| Tilia americana | | 350 | | | | | | | | | | |
| Ulmus americana | 20 | 3 | 50 | 65 | 2 | 35 | 2 | 50 | 70 | 3 | 290 | 45 |
| ^{Thomasi} U. rubra | 35 | | | | | | | | | | | 170 |
| Ostrya | | 35 | | 1 | | | 1 | 1 | 30 | 16 | 13 | |
| Distance | 11 | 23 | 25 | 28 | 18 | 30 | 20 | 12 | 18 | 15 | | |

Presence List
(Uncommon species)

FLOOD-PLAIN HARDWOODS

Stand No. 4091
Quadrat No.PRESENCE

| | | |
|------------------------------|-----------------------------|--------------------------|
| Acorus calamus | Comandra umbellata | Mitella diphylla |
| Actaea pachypoda | Cornus alternifolia | Monarda fistulosa |
| Actaea rubra | Cuscuta sp. | Muhlenbergia sp. |
| Agastache scrophulariaefolia | Dentaria laciniata | Napaea dioica |
| Agropyron trachycaulum | Desmodium nudiflorum | Nepeta hederacea |
| Alisma subcordatum | Dicentra cucullaria | Oryzopsis racemosa |
| Alnus incana | Diervilla lonicera | Osmunda cinnamomea |
| Alnus rugosa | Dryopteris cristata | Osmunda regalis |
| Ambrosia trifida | Dryopteris spinulosa | Oxalis europaea |
| Amorpha fruticosa | Dryopteris thelypteris | Oxalis stricta |
| Anemone quinquefolia | Ellisia hystelea | Parietaria pennsylvanica |
| Anemonella thalictroides | Elymus virginicus | Phalaris arundinacea |
| Angelica atropurpurea | Epilobium palustris | Phlox pilosa |
| Apios americana | Equisetum arvense | Physocarpus opulifolius |
| Aralia hispida | Equisetum hyemale | Pilea pumila |
| Aralia racemosa | Erigeron philadelphicus | Poa palustris |
| Asclepias incarnata | Erigeron pulchellus | Polygonatum biflorum |
| Aster cordifolius | Erythronium albidum | Polygonatum pubescens |
| Aster sagittifolius | Eupatorium perfoliatum | Polygonum hydropiper |
| Aster shortii | Eupatorium purpureum | Polygonum sagittatum |
| Bidens connata | Eupatorium rugosum | Pteridium aquilinum |
| Bidens coronata | Euonymus atropurpureus | Ranunculus recurvatus |
| Bidens frondosa | Festuca obtusa | Ratibida pinnata |
| Bidens vulgata | Fragaria vesca | Rubus allegheniensis |
| Botrychium virginianum | Galium tinctorium | Rubus occidentalis |
| Bromus purgans | Gerardia gradiflora | Rumex altissimus |
| Calamagrostis canadensis | Geum strictum | Salix amygdaloides |
| Carex albursina | Hackelia virginica | Salix interior |
| Carex alopecoidea | Helenium autumnale | Sanicula marilandica |
| Carex convoluta | Helianthus strumosus | Saxifraga pennsylvanica |
| Carex cristata | Hepatica acutiloba | Scutellaria lateriflora |
| Carex grisea | Heracleum maximum | Senecio aureus |
| Carex laxiflora | Hydrophyllum appendiculatum | Silphium perfoliatum |
| Carex molesta | Hypericum ascyron | Sium suave |
| Carex muskingumensis | Hypericum pyramidatum | Solidago gigantea |
| Carex pennsylvanica | Hystrix patula | Solidago ulmifolia |
| Carex projecta | Impatiens pallida | Spiraea alba |
| Carex stipata | Iris versicolor | Staphylea trifolia |
| Carex tribuloides | Isopyrum biternatum | Stellaria longifolia |
| Carex typhina | Juncus tenuis | Symplocarpus foetida |
| Carex vesicaria | Lactuca canadensis | Trientalis borealis |
| Cassia marilandica | Lilium michiganense | Trillium grandiflorum |
| Caulophyllum thalictroides | Lilium philadelphicum | Trillium recurvatum |
| Galaxstrus scandens | Lilium superbum | Triosteum perfoliatum |
| Chaerophyllum procumbens | Lippia lanceolata | Urtica dioica |
| Chelone glabra | Lonicera prolifera | Uvularia grandiflora |
| Cicuta bulbifera | Maianthemum canadense | Vernonia fasciculata |
| Circaea alpina | Mentha arvensis | Viola renifolia |
| Clematis virginiana | Mertensia virginica | Zizia aurea |
| Clintonia borealis | Mimulus ringens | |

Additional Species:

Presence or Frequency
(Common species only)

FLOOD-PLAIN HARDWOODS

Stand No. 4091
 Quadrat No.
PRESENCE

| | | |
|----------------------------------|---------------------------------|-----------------------------------|
| <i>Adiantum pedatum</i> | <i>Corylus americana</i> | <i>Polygonatum canaliculatum</i> |
| <i>Agrimonia gryposepala</i> | <i>Cryptotaenia canadensis</i> | <i>Prenanthes alba</i> |
| <i>Allium canadense</i> | <i>Desmodium glutinosum</i> | <i>Ranunculus abortivus</i> |
| <i>Allium tricoccum</i> | <i>Dioscorea villosa</i> | <i>Ranunculus septentrionalis</i> |
| <i>Amphicarpa bracteata</i> | <i>Echinocystis lobata</i> | <i>Rhus radicans</i> |
| <i>Anemone canadensis</i> | <i>Fragaria virginiana</i> | <i>Ribes americanum</i> |
| <i>Anemone virginiana</i> | <i>Galium aparine</i> | <i>Ribes cynosbati</i> |
| <i>Aralia nudicaulis</i> | <i>Galium concinnum</i> | <i>Ribes missouriense</i> |
| <i>Arenaria lateriflora</i> | <i>Galium obtusum</i> | <i>Rorippa islandica</i> |
| <i>Arisaema atrorubens</i> | <i>Galium triflorum</i> | <i>Rudbeckia laciniata</i> |
| <i>Arisaema dracontium</i> | <i>Geranium maculatum</i> | <i>Rumex verticillatus</i> |
| <i>Asarum canadense</i> | <i>Geum canadense</i> | <i>Sambucus canadensis</i> |
| <i>Aster lateriflorus</i> | <i>Glyceria striata</i> | <i>Sanguinaria canadensis</i> |
| <i>Aster simplex</i> | <i>Hydrophyllum virginianum</i> | <i>Sanicula gregaria</i> |
| <i>Athyrium filix-femina</i> | <i>Ilex verticillata</i> | <i>Smilacina racemosa</i> |
| <i>Athyrium thelypteroides</i> | <i>Impatiens capensis</i> | <i>Smilacina stellata</i> |
| <i>Boehmeria cylindrica</i> | <i>Iris virginica</i> | <i>Smilax ecirrhata</i> |
| <i>Brachyelytrum erectum</i> | <i>Lactuca biennis</i> | <i>Smilax herbacea</i> |
| <i>Caltha palustris</i> | <i>Laportea canadensis</i> | <i>Smilax tamnoides</i> |
| <i>Campanula americana</i> | <i>Leersia oryzoides</i> | <i>Solanum dulcamara</i> |
| <i>Carex crinita</i> | <i>Lobelia cardinalis</i> | <i>Stachys palustris</i> |
| <i>Carex grayii</i> | <i>Lycopus americanus</i> | <i>Teucrium canadense</i> |
| <i>Carex intumescens</i> | <i>Lycopus uniflorus</i> | <i>Thalictrum dasycarpum</i> |
| <i>Carex lupulina</i> | <i>Lysimachia ciliata</i> | <i>Thalictrum dioicum</i> |
| <i>Carex normalis</i> | <i>Lysimachia nummularia</i> | <i>Tovara virginiana</i> |
| <i>Carex vupinoidea</i> | <i>Menispermum canadense</i> | <i>Trillium flexipes</i> |
| <i>Cephalanthus occidentalis</i> | <i>Onoclea sensibilis</i> | <i>Uvularia sessilifolia</i> |
| <i>Cicuta maculata</i> | <i>Osmorhiza claytoni</i> | <i>Veronicastrum virginianum</i> |
| <i>Circaea quadrisulcata</i> | <i>Osmorhiza longistylis</i> | <i>Viburnum lentago</i> |
| <i>Cirsium altissimum</i> | <i>Parthenocissus inserta</i> | <i>Viola canadensis</i> |
| <i>Convolvulus sepium</i> | <i>Phlox divaricata</i> | <i>Viola conspersa</i> |
| <i>Cornus femina</i> | <i>Phryma leptostachya</i> | <i>Viola cucullata</i> |
| <i>Cornus obliqua</i> | <i>Physostegia virginiana</i> | <i>Viola pubescens</i> |
| <i>Cornus rugosa</i> | <i>Podophyllum peltatum</i> | <i>Vitis riparia</i> |
| <i>Cornus stolonifera</i> | <i>Polemonium reptans</i> | <i>Zanthoxylum americanum</i> |

Additional species:

Presence or Frequency
(Common species only)

FLOOD-PLAIN HARDWOODS

Stand No.
Quadrat No. 4091

Adiantum pedatum
Agrimonia gryposepala
Allium canadense
Allium tricoccum
Amphicarpa bracteata
Anemone canadensis
Anemone virginiana
Aralia nudicaulis
Arenaria lateriflora
Arisaema atrorubens
Arisaema dracontium
Asarum canadense
Aster lateriflorus
Aster simplex
Athyrium filix-femina
Athyrium thelypteroides
Boehmeria cylindrica
Brachyelytrum erectum
Caltha palustris
Campanula americana
Carex crinita
Carex grayii
Carex intumescens
Carex lupulina
Carex normalis
Carex vupinoidea
Cephalanthus occidentalis
Cicuta maculata
Circaea quadrisulcata
Cirsium altissimum
Convolvulus sepium
Cornus femina
Cornus obliqua
Cornus rugosa
Cornus stolonifera

Corylus americana
Cryptotaenia canadensis
Desmodium glutinosum
Dioscorea villosa
Echinocystis lobata
Fragaria virginiana
Galium aparine
Galium concinnum
Galium obtusum
Galium triflorum
Geranium maculatum
Geum canadense
Glyceria striata
Hydrophyllum virginianum
Ilex verticillata
Impatiens capensis
Iris virginica
Lactuca biennis
Laportea canadensis
Leersia oryzoides
Lobelia cardinalis
Lycopus americanus
Lycopus uniflorus
Lysimachia ciliata
Lysimachia nummularia
Menispermum canadense
Onoclea sensibilis
Osmorhiza claytoni
Osmorhiza longistylis
Parthenocissus inserta
Phlox divaricata
Phryma leptostachya
Physostegia virginiana
Podophyllum peltatum
Polemonium reptans

Polygonatum canaliculatum
Prenanthes alba
Ranunculus abortivus
Ranunculus septentrionalis
Rhus radicans
Ribes americanum
Ribes cynosbati
Ribes missouriense
Rorippa islandica
Rudbeckia laciniata
Rumex verticillatus
Sambucus canadensis
Sanguinaria canadensis
Sanicula gregaria
Smilacina racemosa
Smilacina stellata
Smilax ecirrhata
Smilax herbacea
Smilax tamnoides
Solanum dulcamara
Stachys palustris
Teucrium canadense
Thalictrum dasycarpum
Thalictrum dioicum
Tovara virginiana
Trillium flexipes
Uvularia sessilifolia
Veronicastrum virginianum
Viburnum lentago
Viola canadensis
Viola conspersa
Viola cucullata
Viola pubescens
Vitis riparia
Zanthoxylum americanum

Additional species:

Presence or Frequency
(Common species only)

FLOOD-PLAIN HARDWOODS

Stand No. 4091
Quadrat No.

| | | |
|----------------------------------|---------------------------------|-----------------------------------|
| <i>Adiantum pedatum</i> | <i>Corylus americana</i> | <i>Polygonatum canaliculatum</i> |
| <i>Agrimonia gryposepala</i> | <i>Cryptotaenia canadensis</i> | <i>Prenanthes alba</i> |
| <i>Allium canadense</i> | <i>Desmodium glutinosum</i> | <i>Ranunculus abortivus</i> |
| <i>Allium tricoccum</i> | <i>Dioscorea villosa</i> | <i>Ranunculus septentrionalis</i> |
| <i>Amphicarpa bracteata</i> | <i>Echinocystis lobata</i> | <i>Rhus radicans</i> |
| <i>Anemone canadensis</i> | <i>Fragaria virginiana</i> | <i>Ribes americanum</i> |
| <i>Anemone virginiana</i> | <i>Galium aparine</i> | <i>Ribes cynosbati</i> |
| <i>Aralia nudicaulis</i> | <i>Galium concinnum</i> | <i>Ribes missouriense</i> |
| <i>Arenaria lateriflora</i> | <i>Galium obtusum</i> | <i>Rorippa islandica</i> |
| <i>Arisaema atrorubens</i> | <i>Galium triflorum</i> | <i>Rudbeckia laciniata</i> |
| <i>Arisaema dracontium</i> | <i>Geranium maculatum</i> | <i>Rumex verticillatus</i> |
| <i>Asarum canadense</i> | <i>Geum canadense</i> | <i>Sambucus canadensis</i> |
| <i>Aster lateriflorus</i> | <i>Glyceria striata</i> | <i>Sanguinaria canadensis</i> |
| <i>Aster simplex</i> | <i>Hydrophyllum virginianum</i> | <i>Sanicula gregaria</i> |
| <i>Athyrium filix-femina</i> | <i>Ilex verticillata</i> | <i>Smilacina racemosa</i> |
| <i>Athyrium thelypteroides</i> | <i>Impatiens capensis</i> | <i>Smilacina stellata</i> |
| <i>Boehmeria cylindrica</i> | <i>Iris virginica</i> | <i>Smilax ecirrhata</i> |
| <i>Brachyelytrum erectum</i> | <i>Lactuca biennis</i> | <i>Smilax herbacea</i> |
| <i>Caltha palustris</i> | <i>Laportea canadensis</i> | <i>Smilax tamnoides</i> |
| <i>Campanula americana</i> | <i>Leersia oryzoides</i> | <i>Solanum dulcamara</i> |
| <i>Carex crinita</i> | <i>Lobelia cardinalis</i> | <i>Stachys palustris</i> |
| <i>Carex grayii</i> | <i>Lycopus americanus</i> | <i>Teucrium canadense</i> |
| <i>Carex intumescens</i> | <i>Lycopus uniflorus</i> | <i>Thalictrum dasycarpum</i> |
| <i>Carex lupulina</i> | <i>Lysimachia ciliata</i> | <i>Thalictrum dioicum</i> |
| <i>Carex normalis</i> | <i>Lysimachia nummularia</i> | <i>Tovara virginiana</i> |
| <i>Carex vupinoidea</i> | <i>Menispermum canadense</i> | <i>Trillium flexipes</i> |
| <i>Cephalanthus occidentalis</i> | <i>Onoclea sensibilis</i> | <i>Uvularia sessilifolia</i> |
| <i>Cicuta maculata</i> | <i>Osmorhiza claytoni</i> | <i>Veronicastrum virginianum</i> |
| <i>Circaea quadrisulcata</i> | <i>Osmorhiza longistylis</i> | <i>Viburnum lentago</i> |
| <i>Cirsium altissimum</i> | <i>Parthenocissus inserta</i> | <i>Viola canadensis</i> |
| <i>Convolvulus sepium</i> | <i>Phlox divaricata</i> | <i>Viola conspersa</i> |
| <i>Cornus femina</i> | <i>Phryma leptostachya</i> | <i>Viola cucullata</i> |
| <i>Cornus obliqua</i> | <i>Physostegia virginiana</i> | <i>Viola pubescens</i> |
| <i>Cornus rugosa</i> | <i>Podophyllum peltatum</i> | <i>Vitis riparia</i> |
| <i>Cornus stolonifera</i> | <i>Polemonium reptans</i> | <i>Zanthoxylum americanum</i> |

Additional species:

Presence or Frequency
(Common species only)

FLOOD-PLAIN HARDWOODS

Stand No. 4091
Quadrat No.

Adiantum pedatum
Agrimonia grypsossepala
Allium canadense
Allium tricoccum
Amphicarpa bracteata
Anemone canadensis
Anemone virginiana
Aralia nudicaulis
Arenaria lateriflora
Arisaema atrorubens
Arisaema dracontium
Asarum canadense
Aster lateriflorus
Aster simplex
Athyrium filix-femina
Athyrium thelypteroides
Boehmeria cylindrica
Brachyelytrum erectum
Caltha palustris
Campanula americana
Carex crinita
Carex grayii
Carex intumescens
Carex lupulina
Carex normalis
Carex vupinoidea
Cephalanthus occidentalis
Cicuta maculata
Circaea quadrisulcata
Cirsium altissimum
Convolvulus sepium
Cornus femina
Cornus obliqua
Cornus rugosa
Cornus stolonifera

Corylus americana
Cryptotaenia canadensis
Desmodium glutinosum
Dioscorea villosa
Echinocystis lobata
Fragaria virginiana
Galium aparine
Galium concinnum
Galium obtusum
Galium triflorum
Geranium maculatum
Geum canadense
Glyceria striata
Hydrophyllum virginianum
Ilex verticillata
Impatiens capensis
Iris virginica
Lactuca biennis
Laportea canadensis
Leersia oryzoides
Lobelia cardinalis
Lycopus americanus
Lycopus uniflorus
Lysimachia ciliata
Lysimachia nummularia
Menispermum canadense
Onoclea sensibilis
Osmorhiza claytoni
Osmorhiza longistylis
Parthenocissus inserta
Phlox divaricata
Phryma leptostachya
Physostegia virginiana
Podophyllum peltatum
Polemonium reptans

Polygonatum canaliculatum
Prenanthes alba
Ranunculus abortivus
Ranunculus septentrionalis
Rhus radicans
Ribes americanum
Ribes cynosbati
Ribes missouriense
Rorippa islandica
Rudbeckia laciniata
Rumex verticillatus
Sambucus canadensis
Sanguinaria canadensis
Sanicula gregaria
Smilacina racemosa
Smilacina stellata
Smilax ecirrhata
Smilax herbacea
Smilax tannoides
Solanum dulcamara
Stachys palustris
Teucrium canadense
Thalictrum dasycarpum
Thalictrum dioicum
Tovara virginiana
Trillium flexipes
Uvularia sessilifolia
Veronicastrum virginianum
Viburnum lentago
Viola canadensis
Viola conspersa
Viola cucullata
Viola pubescens
Vitis riparia
Zanthoxylum americanum

Additional species:

Presence or Frequency
(Common species only)

FLOOD-PLAIN HARDWOODS

Stand No. 4091
Quadrat No.

Adiantum pedatum
Agrimonia gryposepala
Allium canadense
Allium tricoccum
Amphicarpa bracteata
Anemone canadensis
Anemone virginiana
Aralia nudicaulis
Arenaria lateriflora
Arisaema atrorubens
Arisaema dracontium
Asarum canadense
Aster lateriflorus
Aster simplex
Athyrium filix-femina
Athyrium thelypteroides
Boehmeria cylindrica
Brachyelytrum erectum
Caltha palustris
Campanula americana
Carex crinita
Carex grayii
Carex intumescens
Carex lupulina
Carex normalis
Carex vupinoidea
Cephalanthus occidentalis
Cicuta maculata
Circaea quadrisulcata
Cirsium altissimum
Convolvulus sepium
Cornus femina
Cornus obliqua
Cornus rugosa
Cornus stolonifera

Corylus americana
Cryptotaenia canadensis
Desmodium glutinosum
Dioscorea villosa
Echinocystis lobata
Fragaria virginiana
Galium aparine
Galium concinnum
Galium obtusum
Galium triflorum
Geranium maculatum
Geum canadense
Glyceria striata
Hydrophyllum virginianum
Ilex verticillata
Impatiens capensis
Iris virginica
Lactuca biennis
Laportea canadensis
Leersia oryzoides
Lobelia cardinalis
Lycopus americanus
Lycopus uniflorus
Lysimachia ciliata
Lysimachia nummularia
Menispermum canadense
Onoclea sensibilis
Osmorhiza claytoni
Osmorhiza longistylis
Parthenocissus inserta
Phlox divaricata
Phryma leptostachya
Physostegia virginiana
Podophyllum peltatum
Polemonium reptans

Polygonatum canaliculatum
Prenanthes alba
Ranunculus abortivus
Ranunculus septentrionalis
Rhus radicans
Ribes americanum
Ribes cynosbati
Ribes missouriense
Rorippa islandica
Rudbeckia laciniata
Rumex verticillatus
Sambucus canadensis
Sanguinaria canadensis
Sanicula gregaria
Smilacina racemosa
Smilacina stellata
Smilax ecirrhata
Smilax herbacea
Smilax tannoides
Solanum dulcamara
Stachys palustris
Teucrium canadense
Thalictrum dasycarpum
Thalictrum dioicum
Tovara virginiana
Trillium flexipes
Uvularia sessilifolia
Veronicastrum virginianum
Viburnum lentago
Viola canadensis
Viola conspersa
Viola cucullata
Viola pubescens
Vitis riparia
Zanthoxylum americanum

Additional species: