



LIBRARIES

UNIVERSITY OF WISCONSIN-MADISON

Cow testing and farm profits. Bulletin no. 13 September 1921

Cramer, A. J.

[s.l.]: [s.n.], September 1921

<https://digital.library.wisc.edu/1711.dl/PYCX2SL3FYFSF8S>

This material may be protected by copyright law (e.g., Title 17, US Code).

For information on re-use, see

<http://digital.library.wisc.edu/1711.dl/Copyright>

The libraries provide public access to a wide range of material, including online exhibits, digitized collections, archival finding aids, our catalog, online articles, and a growing range of materials in many media.

When possible, we provide rights information in catalog records, finding aids, and other metadata that accompanies collections or items. However, it is always the user's obligation to evaluate copyright and rights issues in light of their own use.

The Banker-Farmer

WISCONSIN
BANKERS'
ASSOCIATION

News Bulletin

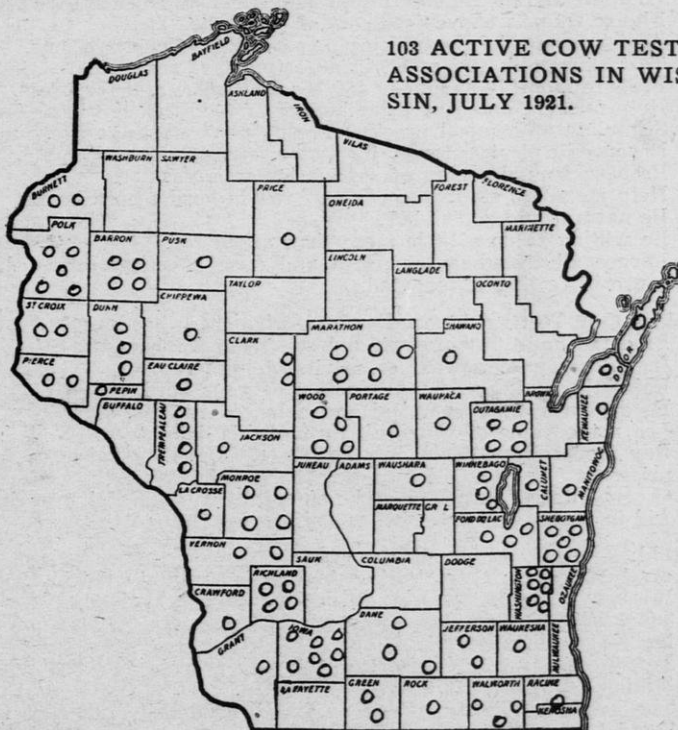
BANKER-
FARMER
EXCHANGE

A Little Journal of Agricultural
Information for the Farmer

BULLETIN No. 13

SEPTEMBER, 1921

Cow Testing and Farm Profits.



103 ACTIVE COW TESTING
ASSOCIATIONS IN WISCON-
SIN, JULY 1921.

Compliments of

BANKER-FARMER EXCHANGE

1822 Chadbourne Avenue,
MADISON, WIS.

NOTICE TO FARMERS: If interested in this Bulletin, ask your banker to place your name on his mailing list.

COW TESTING AND FARM PROFITS

By A. J. Cramer, College of Agriculture, University of Wisconsin

FACTS ABOUT WISCONSIN COW TESTING ASSOCIATIONS

Wisconsin C. T. A. slogans:

1. Every Dairy Cow in Wisconsin under test.
2. Feed Home Grown Feeds.
3. Oust unprofitable and tubercular animals.
4. Every sire in Wisconsin a purebred.
5. One C. T. A. in every township in Wisconsin.

What is a Cow Testing Association?

A cow testing association consists of a group of 26 or more dairy farmers organized for the purpose of securing the services of a tester to weigh and test the milk of each cow, and keep the feed costs and production records of their herds, one day each month for a year.

Duties of a tester:

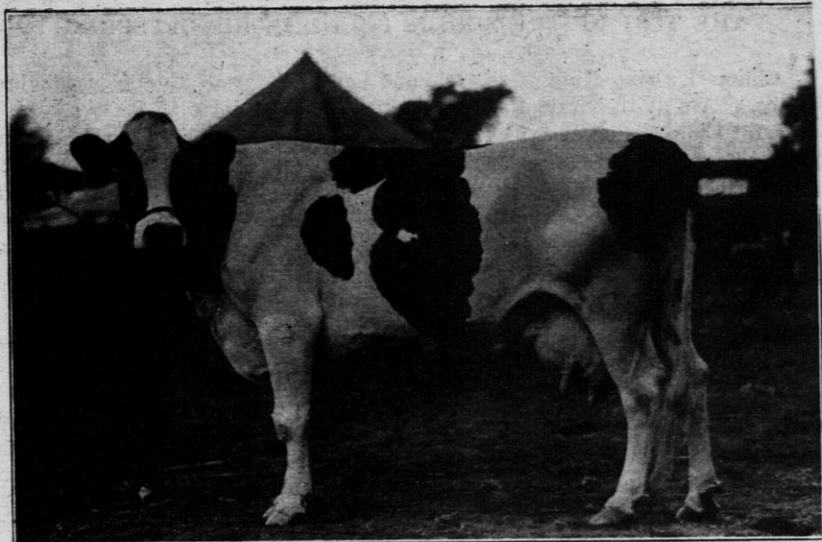
1. Spend one day a month on each farm.
2. Get weights and cost of feed fed to each cow.
3. Weigh and test night and morning milk to compute butterfat.
4. Compute and record monthly production of all cows in herd record book.
5. Figure returns above feed cost of each cow.
6. Assist farmer in planning economical and efficient rations.
7. Test skim milk and assist in adjustment of separator.
8. Prepare monthly summary for Madison office and for press.
9. Help farmers on cooperative buying of feed through local dealers.
10. Stimulate economical practices, hold "pep" meetings every month.
11. Encourage picnics, tours, institutes, etc.
12. Prepare annual report of association progress.
13. Help members study records on cows in herd record books.
14. Be natural and don't bluff.
15. Be willing to do a little more than asked for.
16. Forget all that has been said and done at other farms that might cause ill feeling if repeated.

Why Join a Cow Testing Association? Derive these benefits:

1. Find the unprofitable cows and sell them for beef.
2. Increase your net profit on merits of herd records.
3. Raise the milk and fat production of your herd.
4. Feed your cows economical and balanced rations.
5. Learn the value of your bull through his daughters.
6. Buy feed cooperatively, buy better cattle, sell tested cows for higher prices.
7. Create interest, pleasure and community spirit in dairy work.
8. Aid in more rigid selection of heifers for future herd.

Briefly told:

1. First Wisconsin Cow Testing Association was started in 1906.
2. Wisconsin had 103 active associations July 1, 1921.
3. 3,028 Wisconsin farmers owning 51,005 cows are members of cow testing associations.
4. 28,215 cows in 57 associations last year averaged 6,938 lbs. milk containing 264.5 lbs. fat.
5. The average Wisconsin cow produced 4,926 lbs. milk containing 190 lbs. fat.
6. There are 495 cows in the average Wisconsin C. T. A. and 16.5 cows per herd.
7. Bessie, a 12-year-old grade Guernsey cow holds the state C. T. A. record for butterfat. She produced 15,440 lbs. milk containing 726.2 lbs. fat.
8. Only 6.1 per cent of Wisconsin cow testing association members use scrub bulls, while 38% of Wisconsin farmers use scrub bulls.
9. C. T. A. members purchased 335 purebred bulls last year.
10. Wisconsin C. T. A. herds are 93.9 per cent free from scrub bulls.
11. 2,199 unprofitable cows were sold for beef last year.
12. 735 cows received R. O. P. certificates last year.



WISCONSIN CHAMPION C. T. A. COW 1920.

For second time Aaggie, a grade Holstein, owned by Huenink & Luback of Cedar Grove association has taken the blue ribbon for highest production in Wisconsin C. T. A. Her last year's record is 16,742 lbs. milk containing 689.2 lbs. fat. Did it pay to feed Aaggie? It cost \$277, but her 8 tons of milk brought \$566 to say nothing of the value of her heifer calf and the \$120 in prize money she won in the past two years. Her income over feed cost was \$288.

Choose Your Best Cow.

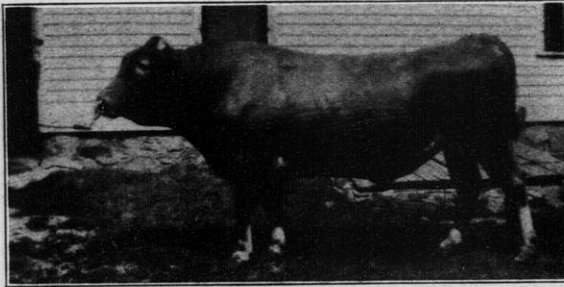
Two grade cows in North Lake C. T. A. kept under similar conditions with nearly the same feed.



LEFT TO RIGHT—BALDY, CURLEY.

THE TEST OF THE SIRE IS FOUND IN HIS OFFSPRING

Chilmark's May King of the Isle and ten of his grade Guernsey daughters will be shown at the State Fair this fall. The daughters' C. T. A. records of butterfat show an increase of 46% over their dams. As a rule, farmers purchase young untested bulls and sell them about two years later. Many a bull was sacrificed before his value was known. Chilmark's May King of the Isle was saved and is now owned by A. A. Glocke, Weyauwega, Wisconsin, who paid \$700 for him a few years ago. He has refused \$2,000 for him at 8 years of age.



Chilmark's May King of the Isle. Ten of his daughters are shown in the picture below.



Ten grade Guernsey daughters of Chilmark's May King of the Isle which increased their dams' records by 46% more butterfat. Average production is 368.7 lbs. butterfat.

	Average lbs. milk	Average lbs. fat
10 daughters	7,772	368.7
10 dams	6,024	249.0
10 daughters, increase over dams	1,748	119.7

Chilmark's May King of the Isle's 10 grade Guernsey daughters have increased their dams' C. T. A. butterfat record by 46%, amounting to 1,748 lbs. more milk containing 119.7 lbs. more fat.

COW TESTING INCREASES VALUE \$50 A HEAD

A dairy farmer from Northern Michigan came to Sheboygan county to look for a grade herd of Holstein cows with C. T. A. records. He chose a herd having an average production of 11,269 lbs. milk containing 390.5 lbs. butterfat. This herd was purchased at an average price of \$170 a head. The Michigan dairyman played safe since he bought a herd of cows with a known production of milk and fat. The former owners were asked what they thought the value of cow testing records was to them in this sale, and they replied, "\$50 a head."

DID IT PAY TO CHANGE GRAIN RATION?

Herman Peterson, member of Windsor C. T. A., learned that ground oats fed alone did not bring the results that were realized after feeding a ration of equal parts gr. oats, bran and cornmeal. Here are the results after changing the grain ration:

Month	No. of Cows	Lbs. Milk	Lbs. Fat	Av. Test	Value of Product	Cost of Feed	Income over Feed Cost
May	17	14274	516	3.6	\$227.04	\$102.85	\$124.04
April	17	10914	402	3.7	177.01	125.63	51.38
Increase	3360	114	—1	\$ 50.03	—\$ 22.78	\$ 72.66	

The feed cost per cow in April was \$7.39, in May \$6.05. \$22.78 was saved in second month on feed cost alone. There was an increase of 3,360 lbs. milk and 114 lbs. of butterfat. Butterfat selling at 44c per lb. in May gave \$50 increased value of butterfat second month over that of first month.

The income over feed cost second month in C. T. A. was \$72.66 greater than in first month. It paid Mr. Peterson to follow the advice of the tester since he increased his income over feed cost enough more the second month to offset cost of testing for 18 months.

NEW CHAMPION COW

Wisconsin cow testing associations must pay honor to a new champion cow, replacing the well known Holstein leader, Aaggie, owned by Huenink & Lubach, of Cedar Grove. The new association queen is Bessie of Oak Lawn Farm, a grade Guernsey cow owned by George Vandre, of Menomonie. This cow is enrolled in the Dunn Co. No. 1 association, of which Vernon O. Tietz is tester. The new champion's record in the association is 15,440 pounds of milk and 726.2 lbs. of butterfat, with an average test of 4.7 per cent. Mr. Tietz submits a record of the feed consumed as follows: 5,420 pounds silage, 2,200 pounds hay, 470 pounds ground oats, 80 pounds bran, 244 pounds oil meal, 1,545 pounds commercial dairy feed, and 133 days on pasture. The record of the former state leader, Aaggie of Cedar Grove, in test association work is 16,742 pounds of milk and 689.2 pounds of fat.

The fact that this new leader is a Guernsey puts a bit of breed rivalry into the spirit of friendly competition existing in Wisconsin testing associations. How long will Bessie of Oaklawn Farm retain her aurels?



Highest C. T. A. cow in Wisconsin. Bessie of Oak Lawn Farm, a grade Guernsey, of Dunn County No. 1 C. T. A. Production 15,440 lbs. milk, testing 4.7%, and 726.2 lbs. fat.

Name	Age	Lbs. Milk	Lbs. Fat	Value of Product	Cost of Feed	Returns over Feed Cost
Baldy	7	14679	594.5	\$438.52	\$166.60	\$271.92
Curley	8	8947	273.7	251.25	137.50	113.76
Baldy's increase		5732	320.8	\$187.27	\$ 29.10	\$158.16



Thirty-five Iowa county C. T. A. members who made tour through Green County for purpose of learning how members of Monticello Green County C. T. A. were caring for their herds.

The Banker-Farmer Exchange

IS NOW ENTERING ITS

Third Year of Service

TO

The Farmers of Wisconsin

CAN IT SERVE YOU?

Banker-Farmer Exchange

D. H. Otis, Director.



1822 Chadbourne Avenue

Madison, Wisconsin