



LIBRARIES

UNIVERSITY OF WISCONSIN-MADISON

Examples of domestic colonial architecture in New England. 1901

Corner, James M.; Soderholtz, E. E. (Eric Ellis)
Boston: Bates & Guild Company, 1901

<https://digital.library.wisc.edu/1711.dl/IEGL6C7FQJX4P9D>

<http://rightsstatements.org/vocab/UND/1.0/>

For information on re-use see:

<http://digital.library.wisc.edu/1711.dl/Copyright>

The libraries provide public access to a wide range of material, including online exhibits, digitized collections, archival finding aids, our catalog, online articles, and a growing range of materials in many media.

When possible, we provide rights information in catalog records, finding aids, and other metadata that accompanies collections or items. However, it is always the user's obligation to evaluate copyright and rights issues in light of their own use.

+WF83
+C81

*The
Colonial
Architecture
of
New
England*

*Corner
Sodecholtz*

*Boston
Bates & Guild Company
1901*

Library
of the
University of Wisconsin

Examples of
Domestic
Colonial Architecture
in
New England

Compiled and Photographed
by
James M. Corner
and
E. E. Soderholtz

Boston
Bates & Guild Company
1901

Copyright 1891
by
James M. Corner
and
E. E. Soderholtz

419122

APR 10 1935

+WF83

+C81

List of Plates.

1. Double House on Beacon Street, Boston, Mass., built about the beginning of the 19th Century.
2. Hall, Lepperill House, Kittery, Me., built in the latter half of the 18th Century.
3. Mantel, Lepperill House, Kittery, Me.
4. Entrance Door, Ayrault House, Newport, R. I., built 1739.
5. Entrance Porch, Pitman House, Salem, Mass., built 1820.
6. Entrance Porch, Tucker House, Salem, Mass., built 1808.
7. House built for Count Rumford, Woburn, Mass., opened 1800.
8. Portico Details: (right) Rumford House; (left) "King" Hooper House. (See Plate 24.)
9. Dalton House, Newburyport, Mass., built 1740.
10. Entrance Door, Dalton House, Newburyport, Mass.
11. Interior Door, Dalton House, Newburyport, Mass.
12. Arnold House, Weymouth, Mass., built 1790.
13. Entrance Porch, Tufts House, Charlestown, Mass., built about the beginning of the 19th Century.
14. Interior Door, Tufts House, Charlestown, Mass. Exterior Door, Portsmouth, N. H.
15. Hurd House, Charlestown, Mass., built about 1795.
16. Entrance Porch, Hurd House, Charlestown, Mass.
17. Warner House, Portsmouth, N. H., built 1723.

18. Bear Dormer-window, Rumford House, Woburn, Mass.
19. Hall, Ladd House, Portsmouth, N. H., built about 1765.
20. Detail of Jewel, Ladd House, Portsmouth, N. H.
21. Staircase, Ladd House, Portsmouth, N. H.
22. Old Gate-posts: (right) Cambridge, Mass.; (left) Salem, Mass.
23. Craigie Mansion (Longfellow's home) Cambridge, Mass., built about 1759.
24. "King" Hooper House, Danvers, Mass., built 1754.
25. Babson House, Newburyport, Mass., built 1781.
26. Entrance Door, Bartlett House, Newburyport, Mass., built 1812.
27. Jewels: (right) Dalton House, Newburyport, Mass.; (left) Hooper House, Marblehead, Mass.
28. Hodges House, Salem, Mass., built 1800.
29. Derby House, Salem, Mass., built 1760.
30. Mantel, Lee Mansion, Marblehead, Mass., built 1768.
31. Hall, Lee Mansion, Marblehead, Mass.
32. Detail of Jewel, Lee Mansion, Marblehead, Mass.
33. Detail of Balusters, Lee Mansion, Marblehead, Mass.
34. Hall, Gov. Gardner House, Portsmouth, N. H., built about 1780.
35. Gov. Langdon House, Portsmouth, N. H., built 1784.
36. Mantel, Haven House, Portsmouth, N. H., built about 1800.
37. Johnnot House, Salem, Mass., built 1780.
38. Entrance Porch, Johnnot House, Salem, Mass.
39. Gate-post, Johnnot House, Salem, Mass.
40. Mantel, Johnnot House, Salem, Mass.
41. Old Entrance Door, Providence, R. I.
42. Hall House, Medford, Mass., built 1789.
43. Mantel, old house, Salem, Mass.

44. Carrington House, Providence, R. I., built about the close of the 18th Century.
45. Old Entrance Door, Deerfield, Mass., built 1750.
46. Hall House, Medford, Mass., built 1785.
47. Entrance Halls: (right) Hooper House, Marblehead, Mass., built 1765; (left) Coleman House, Greenfield, Mass., built 1789.
48. Baldwin House, Salem, Mass., built 1800.
49. Mantel, Forrester House, Salem, Mass., built about 1780.
50. Otis House, Boston, Mass., built about the beginning of the 19th Century.

Examples of
Domestic Colonial Architecture
In New England.

The primary object in compiling this work was not to accumulate historical data, but rather to present in a form convenient for use and reference by architects and those interested in architecture, some typical examples of the better class of domestic edifices, which were erected mainly during the latter part of the eighteenth century.

In presenting here examples of domestic buildings exclusively, we hope we have produced a work of more practical value, to the profession in general, than if we had included public buildings and churches. An attempt to represent this latter material would necessarily render a work of this volume less useful, in that it would fail to cover the ground satisfactorily on any one subject, especially as our researches have been confined to New England.

Professionally, the term Colonial Architecture is generally understood to include all the architectural efforts of the original colonial districts prior to the period of Greek affection, which manifested itself during the first quarter of the present century.

The buildings erected in the seventeenth century, by the English colonists, were necessarily crude, and, owing to the limited facilities, lacked any attempt at refinement in the way of elaborate detail. This might be called the Colonial Period.

The second period, which was ushered in about the beginning of the eighteenth century, the commencement of an era of provincial prosperity, and terminated with the Revolution, could consistently be called the Provincial Period. The buildings of this era were more elaborate and refined than their predecessors. The growing wealth of the seaboard towns, together with the increased facilities for obtaining implements and materials, gave their builders the opportunity of applying the Free Classic details and motives of the Queen Anne and Georgian reigns in England to their own local efforts. The gambrel-roofed house attained its highest point of development about the middle of this period, when the so-called hip-roofed style began to supersede it.

The Federal Period would date from the birth of the nation to the commencement of the mania for Greek art in the early part of the nineteenth century. The dwellings of this era, erected not later than 1800, together with those of the latter part of the preceding period, comprised the best types of domestic architecture. Those grand old mansions, flanked with

great pilasters or quoins, crowned with cornices of well-proportioned members, often richly carved, and elaborated with magnificent frontices opening into hospitable halls, with broad staircases of carved balusters and twisted newels, raised panelled dadoes, and delicate cornices enriched with dentils and modillions, were products of these periods. Several of these specimens are still occupied by the descendants of the original families in Portsmouth, Hittery, Newburyport, Salem, and Marblehead.

The growing appreciation of the aesthetic principles employed in the erection of these buildings leads us to hope that the publication of these plates may be the means of stimulating closer study in their adaptation to modern domestic work.

The authors take this opportunity of expressing their sincere thanks for the many valuable suggestions they have received from the profession, and the numerous courtesies and kind assistance tendered them while selecting these examples.

James M. Corner.

E. E. Soderholtz

Boston, August, 1891.

Examples of Domestic Colonial Architecture in New England



LIBRARY
OF THE
UNIVERSITY OF
WISCONSIN

Plate 1.

Double House on Beacon Street, Boston, Mass.

Examples of Domestic Colonial Architecture in New England



LIBRARY
OF THE
UNIVERSITY OF
WISCONSIN

Plate 2.

Hall, Lepperill House, Kittery, Me.

Examples of Domestic Colonial Architecture in New England



Plate 3.

Mantel, Lepperill House, Kittery, Me.

Examples of Domestic Colonial Architecture in New England



LIBRARY
OF THE
UNIVERSITY OF
WISCONSIN

Plate 4.

Entrance Door, Ayrault House, Newport, R. I.

Examples of Domestic Colonial Architecture in New England



LIBRARY
OF THE
UNIVERSITY OF
WISCONSIN

Plate 5.

Entrance Porch, Pitman House, Salem, Mass.

Examples of Domestic Colonial Architecture in New England



LIBRARY
OF THE
UNIVERSITY OF
WISCONSIN

Plate 6.

Entrance Porch, Tucker House, Salem, Mass.

Examples of Domestic Colonial Architecture in New England



LIBRARY
OF THE
UNIVERSITY OF
WISCONSIN

Plate 7.

House built for Count Rumford, Woburn, Mass.

Examples of Domestic Colonial Architecture in New England



LIBRARY
OF
THE
UNIVERSITY OF
WISCONSIN

Plate 8.

Lortico, "King" Hooper House, Danvers, Mass.

Lortico, Pumphord House, Woburn, Mass.

Examples of Domestic Colonial Architecture in New England



LIBRARY
OF THE
UNIVERSITY OF
WISCONSIN

Plate 9.

Dalton House, Newburyport, Mass.

Examples of Domestic Colonial Architecture in New England

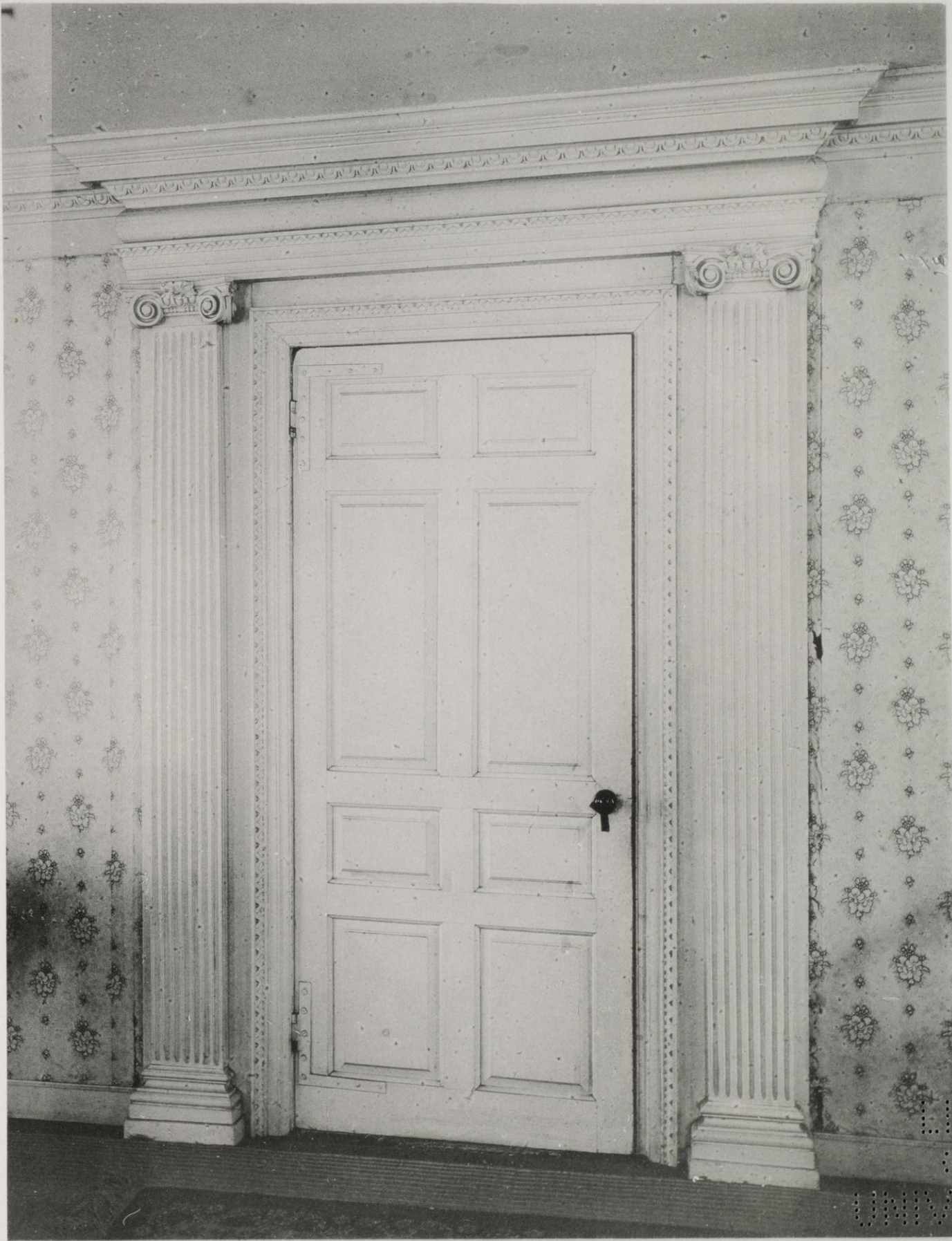


LIBRARY
OF THE
UNIVERSITY OF
WISCONSIN

Plate 10.

Entrance Door, Dalton House, Newburyport, Mass

Examples of Domestic Colonial Architecture in New England



LIBRARY
OF THE
UNIVERSITY OF
WISCONSIN

Plate 11.

Interior door, Dalton House, Newburyport, Mass.

Examples of Domestic Colonial Architecture in New England



LIBRARY
OF THE
UNIVERSITY OF
WISCONSIN

Plate 12.

Arnold House, Weymouth, Mass. Built 1790

Examples of Domestic Colonial Architecture in New England



LIBRARY
OF THE
UNIVERSITY OF
WISCONSIN

Plate 13.

Entrance porch, Tufts House, Charlestown, Mass.

Examples of Domestic Colonial Architecture in New England



Exterior door, Portsmouth, N. H.



Interior door, Tufts House, Charlestown, Mass.

LIBRARY
OF THE
UNIVERSITY OF
WISCONSIN

Examples of Domestic Colonial Architecture in New England



Plate 15.

Hurd House, Charlestown, Mass. Built about 1795.

LIBRARY
OF THE
UNIVERSITY OF
WISCONSIN

Examples of Domestic Colonial Architecture in New England



LIBRARY
OF THE
UNIVERSITY OF
WISCONSIN

Plate 16.

Entrance porch, Hurd House, Charlestown, Mass.

Examples of Domestic Colonial Architecture in New England



LIBRARY
OF THE
UNIVERSITY OF
WISCONSIN

Plate 17.

Warner House, Portsmouth, N. H. Built 1723.

Examples of Domestic Colonial Architecture in New England



LIBRARY
OF THE
UNIVERSITY OF
WISCONSIN

Plate 18.

Bear dormer window, Poulford House, Woburn, Mass.

Examples of Domestic Colonial Architecture in New England

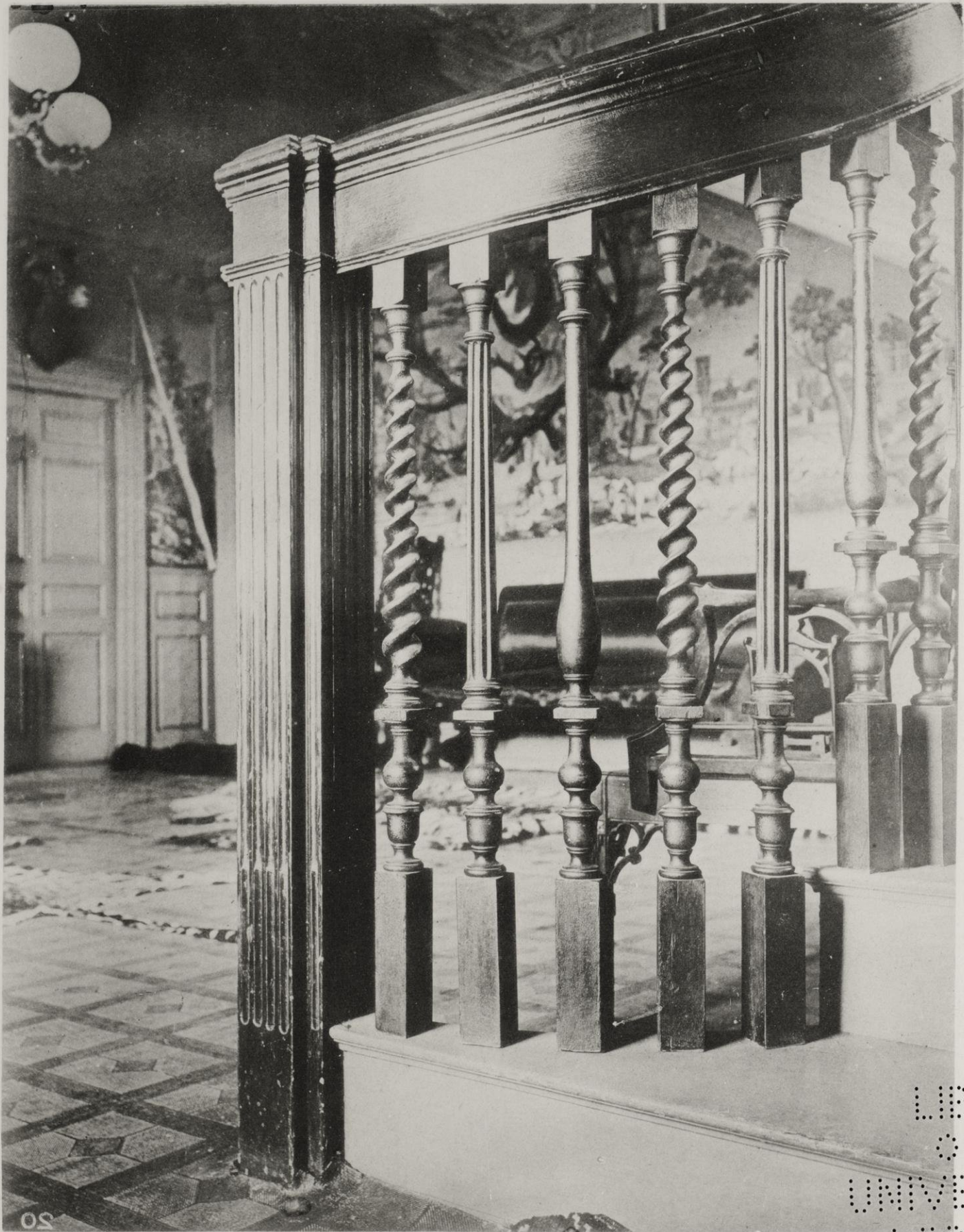


LIBRARY
THE
UNIVERSITY OF
WISCONSIN

Plate 19.

Hall, Ladd House, Portsmouth, N. H. Built about 1765.

Examples of Domestic Colonial Architecture in New England



LIBRARY
OF THE
UNIVERSITY OF
WISCONSIN

Plate 20.

Detail of newel, Ladd House, Portsmouth, N. H.

Examples of Domestic Colonial Architecture in New England

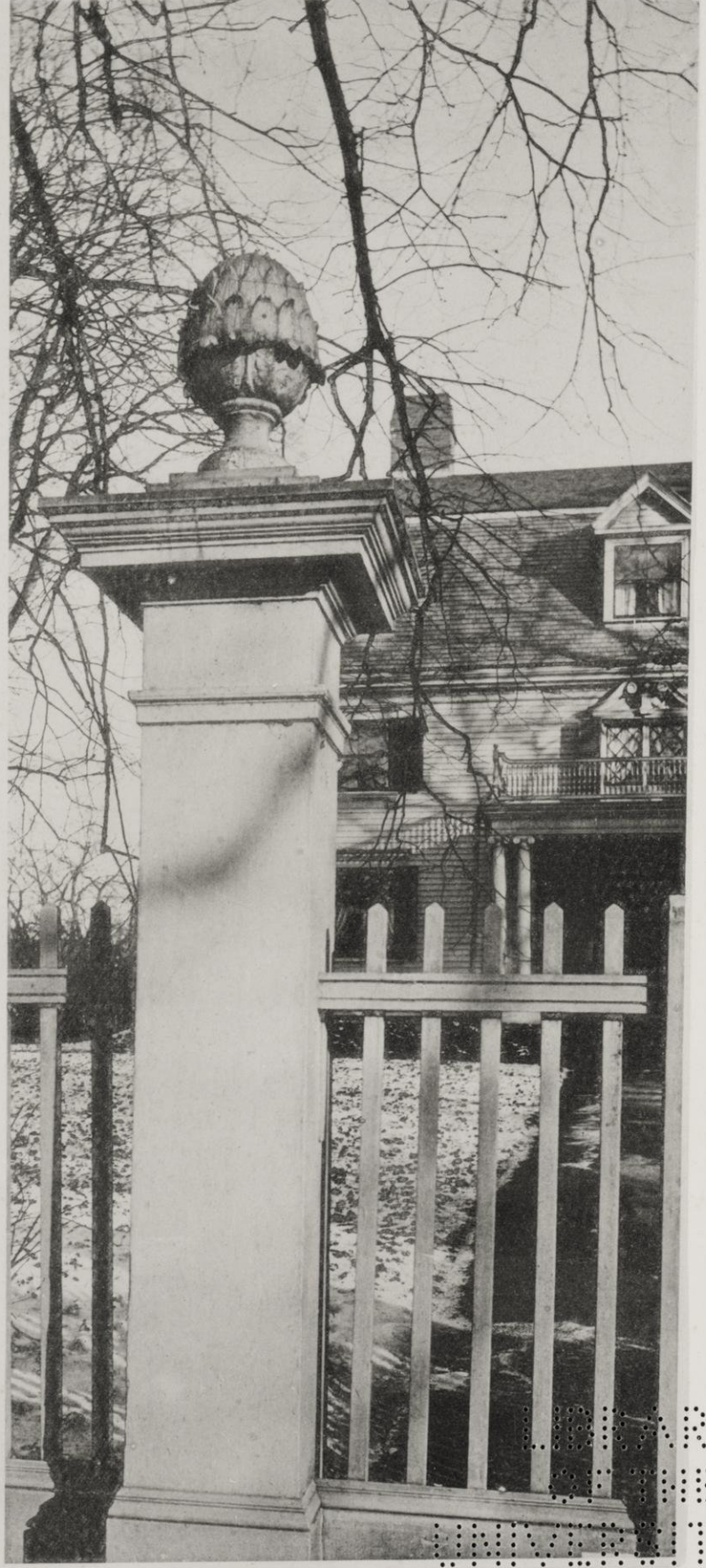


LIBRARY
OF THE
UNIVERSITY OF
WISCONSIN

Plate 21.

Staircase, Ladd House, Portsmouth, N. H.

Examples of Domestic Colonial Architecture in New England



UNIVERSITY OF
WISCONSIN

Plate 22.

Gate-Post, Salem, Mass.

Gate-Post, Cambridge, Mass.

Page Image not Available

Missing Plate

23

Examples of Domestic Colonial Architecture in New England



Plate 24.

"King" Hooper House, Danvers, Mass. Built 1754.

COPYRIGHT, 1891. BY JAMES M. CORNER AND E. E. SODERHOLTZ.

LIBRARY
OF THE
UNIVERSITY OF
WISCONSIN

Examples of Domestic Colonial Architecture in New England



Plate 25.

Babson House, Newburyport, Mass. Built 1781.

LIBRARY
OF THE
UNIVERSITY OF
WISCONSIN

Examples of Domestic Colonial Architecture in New England

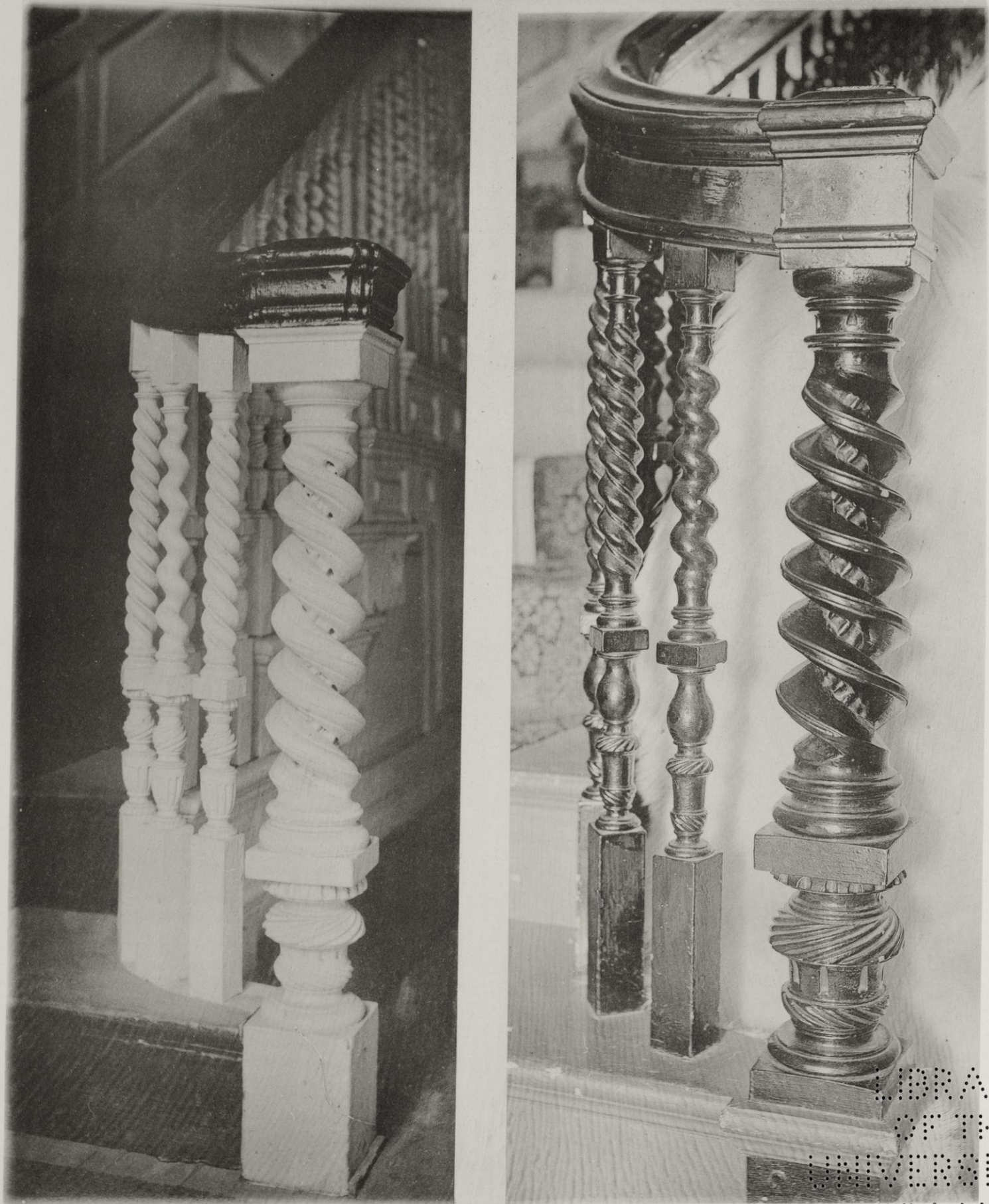


LIBRARY
OF THE
UNIVERSITY OF
WISCONSIN

Plate 26.

Entrance door, Bartlett House, Newburyport, Mass. Built 1812.

Examples of Domestic Colonial Architecture in New England



LIBRARY
OF THE
UNIVERSITY OF
WISCONSIN

Plate 27.

Hooper House, Marblehead, Mass.

Newels.

Dalton House, Newburyport, Mass.

Examples of Domestic Colonial Architecture in New England



Plate 28.

Hodges House, Salem, Mass. Built 1800.

LIBRARY
OF THE
UNIVERSITY OF
WISCONSIN

Examples of Domestic Colonial Architecture in New England



LIBRARY
OF THE
UNIVERSITY OF
WISCONSIN

Plate 29.

Derby House, Salem, Mass. Built 1760.

Examples of Domestic Colonial Architecture in New England



LIBRARY
OF THE
UNIVERSITY OF
WISCONSIN

Plate 30.

Mantel, Lee Mansion, Marblehead, Mass. Built 1768.

Examples of Domestic Colonial Architecture in New England



Plate 31.

Hall, Lee Mansion, Marblehead, Mass.

LIBRARY
OF THE
UNIVERSITY OF
WISCONSIN

Examples of Domestic Colonial Architecture in New England



LIBRARY
OF THE
UNIVERSITY OF
WISCONSIN

Plate 32.

Detail of newel, Lee Mansion, Marblehead, Mass.

Examples of Domestic Colonial Architecture in New England



LIBRARY
OF THE
UNIVERSITY OF
WISCONSIN

Plate 33.

Detail of balusters, Lee Mansion, Marblehead, Mass.

Examples of Domestic Colonial Architecture in New England



LIBRARY
OF THE
UNIVERSITY OF
WISCONSIN

Plate 34.

Hall, Gov. Gardner House, Portsmouth, N. H. Built about 1780.

Examples of Domestic Colonial Architecture in New England

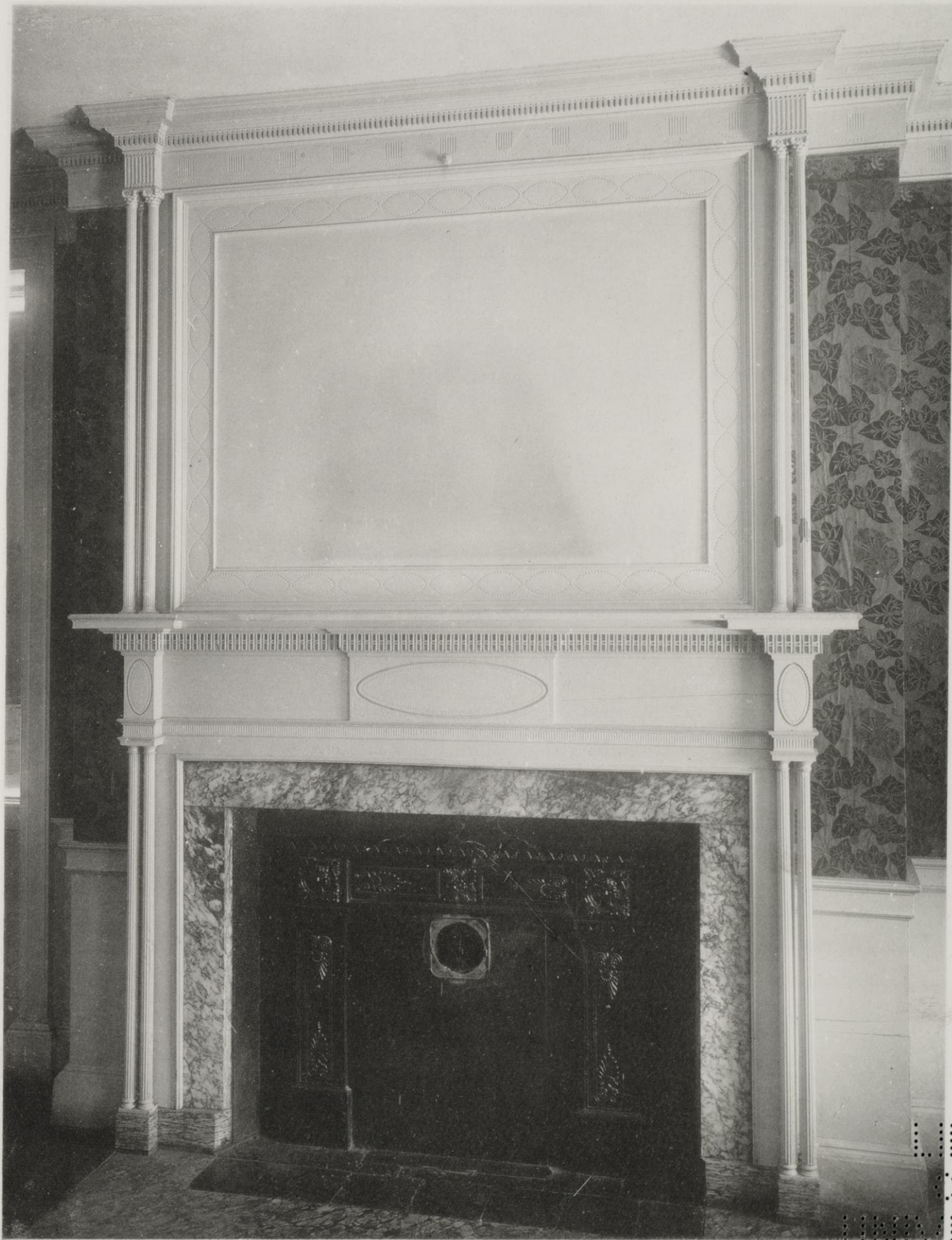


LIBRARY
OF THE
UNIVERSITY OF
WISCONSIN

Plate 35.

Gov. Langdon House, Portsmouth, N. H. Built 1784.

Examples of Domestic Colonial Architecture in New England



LIBRARY
OF THE
UNIVERSITY OF
WISCONSIN

Plate 36.

Mantel, Haven House, Portsmouth, N. H. Built about 1800.

Examples of Domestic Colonial Architecture in New England



LIBRARY
OF THE
UNIVERSITY OF
WISCONSIN

Plate 37.

Johonnot House, Salem, Mass. Built 1780.

Examples of Domestic Colonial Architecture in New England

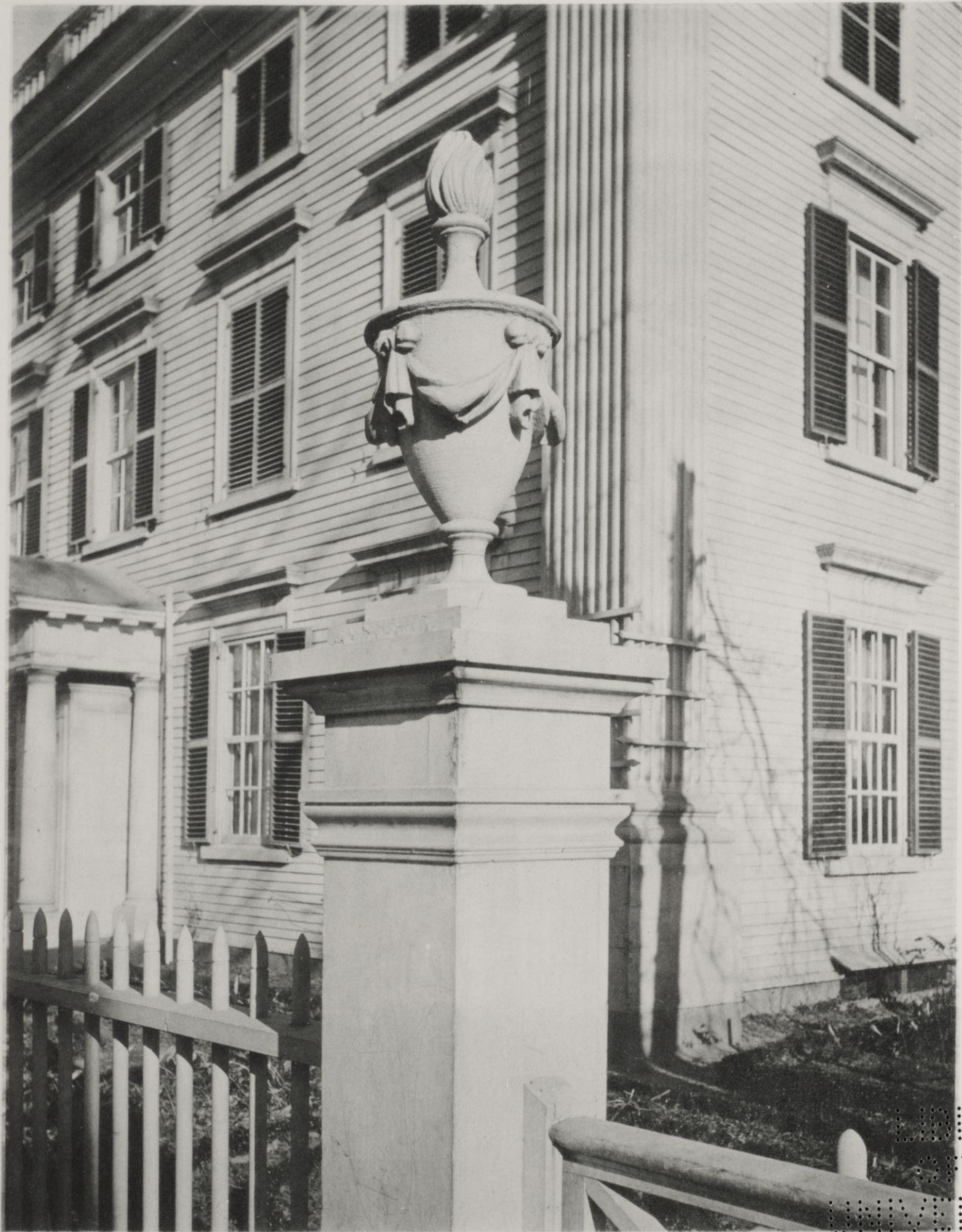


LIBRARY
OF THE
UNIVERSITY OF
WISCONSIN

Plate 38.

Entrance porch, Johannot House, Salem, Mass.

Examples of Domestic Colonial Architecture in New England

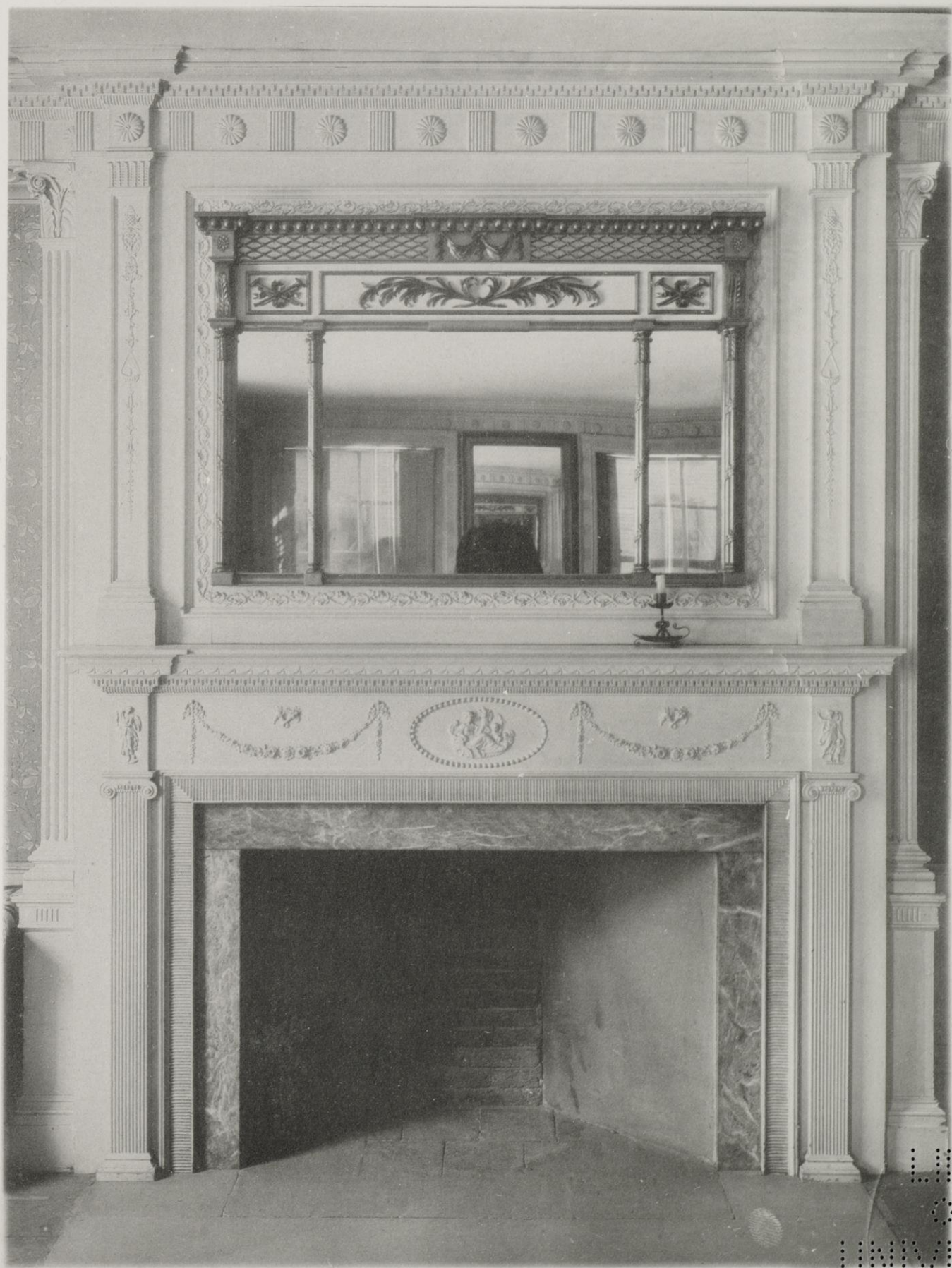


LIBRARY
OF THE
UNIVERSITY OF
WISCONSIN

Plate 39.

Gate-post, Jhonnot House, Salem, Mass.

Examples of Domestic Colonial Architecture in New England



LIBRARY
OF THE
UNIVERSITY OF
WISCONSIN

Plate 40.

Mantel, Johnnot House, Salem, Mass. Added in 1801.

Examples of Domestic Colonial Architecture in New England



LIBRARY
OF THE
UNIVERSITY OF
WISCONSIN

Plate 41.

Old entrance door, Providence, R. I.

Examples of Domestic Colonial Architecture in New England



LIBRARY
OF THE
UNIVERSITY OF
WISCONSIN

Plate 42.

Hall House, Medford, Mass. Built 1789.

Examples of Domestic Colonial Architecture in New England

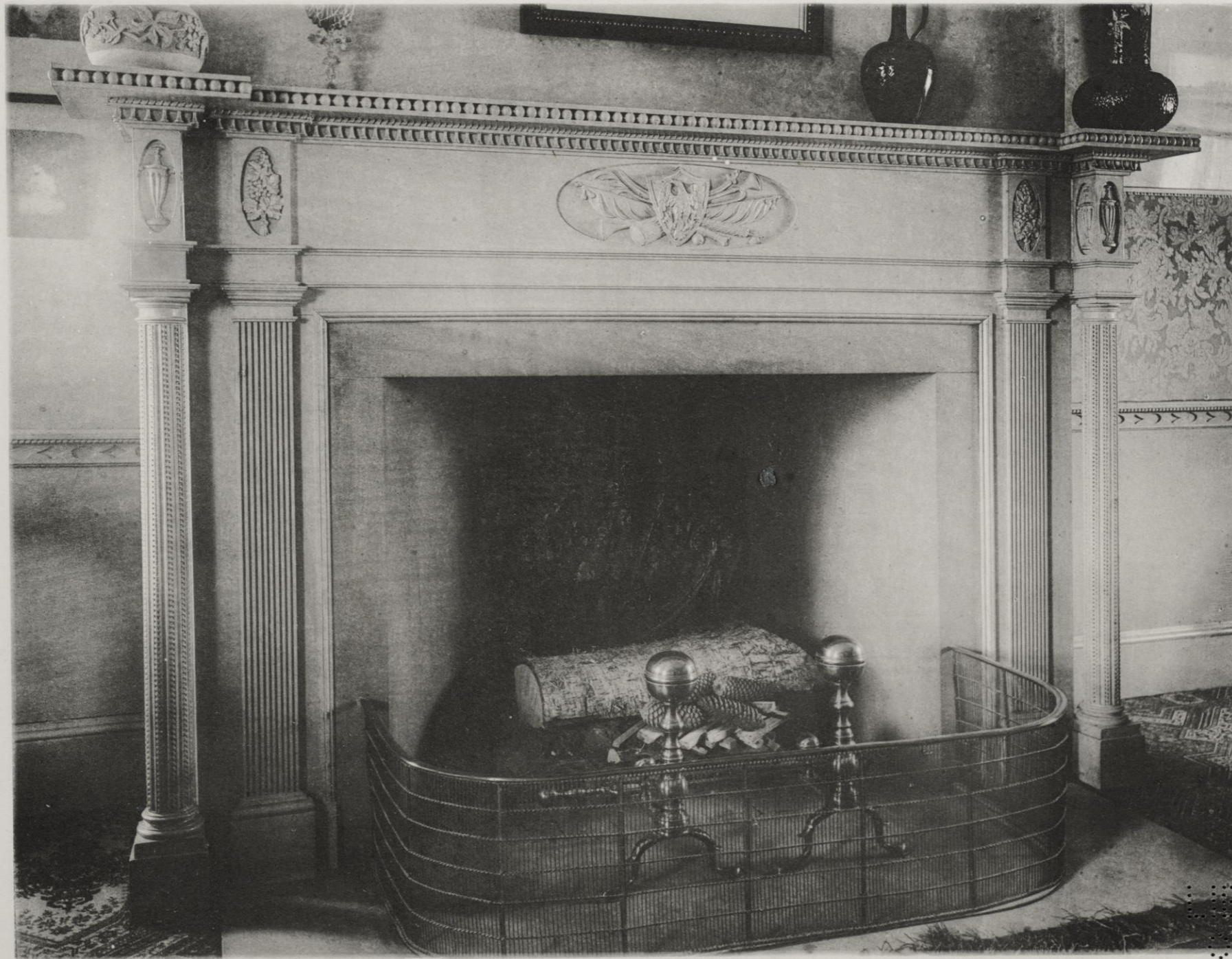


Plate 43.

Mantel, old house, Salem, Mass.

LIBRARY
OF THE
UNIVERSITY OF
WISCONSIN

Examples of Domestic Colonial Architecture in New England



LIBRARY
OF THE
UNIVERSITY OF
WISCONSIN

Plate 44.

Carrington House, Providence, R. I. Built about the close of the 18th Century.

Examples of Domestic Colonial Architecture in New England



LIBRARY
OF THE
UNIVERSITY OF
WISCONSIN

Plate 45.

Old entrance door, Deerfield, Mass. Built 1750.

Examples of Domestic Colonial Architecture in New England



LIBRARY
OF THE
UNIVERSITY OF
WISCONSIN

Plate 46.

Hall House, Medford, Mass. Built 1785.

Examples of Domestic Colonial Architecture in New England



Plate 47.

Coleman House, Greenfield Mass. 1789. Entrance halls. Hooper House, Marblehead, Mass. 1765.

LIBRARY
OF THE
UNIVERSITY OF
WISCONSIN

Examples of Domestic Colonial Architecture in New England



LIBRARY
OF THE
UNIVERSITY OF
WISCONSIN

Plate 48.

Baldwin House, Salem, Mass. Built 1800.

Examples of Domestic Colonial Architecture in New England



LIBRARY
OF THE
UNIVERSITY OF
WISCONSIN

Plate 49.

Mantel, Forrester House, Salem, Mass. Built about 1780.

Examples of Domestic Colonial Architecture in New England



LIBRARY
OF THE
UNIVERSITY OF
WISCONSIN

Plate 50.

Otis House, Boston. Built about the beginning of the 19th Century.

+W F83
+C81

DATE DUE

| | | | |
|------------------|--|--|--|
| OCT 28 '70 | | | |
| MAY 2 190 | | | |
| | | | |
| | | | |
| | | | |
| | | | |
| | | | |
| | | | |
| | | | |
| | | | |
| | | | |
| | | | |
| | | | |

KOHLER ART LIBRARY

DEMCO

89060132131



b89060132131a

