



# LIBRARIES

UNIVERSITY OF WISCONSIN-MADISON

## Hebrew and Semitic Studies.

[Madison, Wisconsin]: [s.n.], [s.d.]

<https://digital.library.wisc.edu/1711.dl/Y4CK32Z6W4OVP8Y>

This material may be protected by copyright law (e.g., Title 17, US Code).

For information on re-use, see

<http://digital.library.wisc.edu/1711.dl/Copyright>

The libraries provide public access to a wide range of material, including online exhibits, digitized collections, archival finding aids, our catalog, online articles, and a growing range of materials in many media.

When possible, we provide rights information in catalog records, finding aids, and other metadata that accompanies collections or items. However, it is always the user's obligation to evaluate copyright and rights issues in light of their own use.

*Distributes  
Hebrew &  
Semitic  
Studies*

Release: Immediately

10/29/87

CONTACT: Keith Schoville (608) 262-3204/262-2968

## DEAD SEA SCROLLS DISCOVERY COMMEMORATED AT SYMPOSIUM

MADISON--The mysteries of the Dead Sea Scrolls will be the subject of a traveling symposium Tuesday and Wednesday, Nov. 10 and 11 in Milwaukee and Madison.

The seven scrolls, found by Bedouin shepherds in 1947, contain two copies of the Book of Isaiah which are at least 1,000 years older than any previously-known versions. Scholars believe that the scrolls illuminate the historical context of the early Christian church and Rabbinical Judaism.

The University of Wisconsin-Madison department of Hebrew and Semitic studies is organizing the symposium to commemorate the 40th anniversary of the discovery of the scrolls. Other sponsors include the Madison Biblical Archaeological Society, Biblical Archaeological Society of Greater Milwaukee, Milwaukee Public Museum, Hewlett Committee, Anonymous Fund and the Wisconsin Humanities Committee.

Keith Schoville, UW-Madison professor of Hebrew and Semitic studies, is the symposium coordinator.

The symposium, held in Milwaukee Nov. 10 and repeated in Madison Nov. 11, begins at 3 p.m. with a panel on scroll research. Participants include William Sanford La Sor, professor of Old Testament at Fuller Seminary in Pasadena, Calif.; Lawrence Sinclair, Carroll College, Waukesha; John C. Trevor, director Claremont College's Dead Sea Scrolls project in California; and James A. Sanders, director of Claremont's Center for the Preservation of Ancient

Add 1--Dead Sea Scrolls

Manuscripts. The panel discussion will be held at the Milwaukee Public Museum and the State Historical Society in Madison.

La Sor will discuss "The Dead Sea Scrolls: The First 10 Years" at 7 p.m. in Milwaukee. Trevor will speak in Madison at 7 p.m. on "The Qumran Teacher and the Book of Daniel." Sanders will lecture in both Milwaukee and Madison at 8 p.m. on "The Dead Sea Scrolls 40 Years Later."

Milwaukee lectures will take place in the University of Wisconsin-Milwaukee's Golda Meir Library; all Madison events will be held at the State Historical Society. For more information, contact the UW-Madison department of Hebrew and Semitic studies at (608) 262-3204 or 262-2968.

###

-- Barbara Wolff (608) 262-8292

*Institute  
of Hebrew  
and Semitic  
Studies*

Release: Thursday October 20th, A.M.

(Note: This story is based on a talk that will be given on Wednesday evening by Professor Schoville)

CONTACT: Keith Schoville (608) 262-9785

## PROFESSOR SAYS WRITING WILL ADAPT TO CHANGING WORLD

MADISON--Novels are now written on word processors. Computer languages receive more publicity than common English. And experts say the newspapers and magazines of the future will be read on video display screens.

Will "pen and paper" writing survive? Will today's alphabets be recognizable 100 years from now?

The answer for both questions is "yes," according to Keith Schoville, a professor of Hebrew and Semitic studies at University of Wisconsin-Madison. "Computers are bringing changes, but we will have to be able to read and write to operate the computers," Schoville said. "The future of writing is assured -- at least in the foreseeable future."

Schoville presented a lecture on "The Future of Writing" Wednesday night (Oct. 19) as part of the "Sign, Symbol, Script" exhibition currently on display at the State Historical Society on the UW-Madison campus. The exhibition will be in Madison through Sunday (Oct. 23) before leaving to begin a nationwide tour at the Milwaukee Public Museum. Schoville is also director of the exhibition.

He said a combination of economics and art will keep pencils, pens and paper in most homes and offices. "On a practical level, for notes to family members or memos to co-workers, it's easier and cheaper to use pen and paper than a word processor," he said.

Add 1--Future of writing

On an emotional level, Schoville said things such as penmanship and ink and paper choice represent "expressions of personality and individuality that electronic machines do not allow.

"I can't imagine a time when love letters between young men and women will end up on floppy discs stored in an attic," Schoville said.

But changes may be seen in the English alphabet, he predicted. Children operating computers at an early age become familiar with assigning symbols to phonetic sounds, Schoville explained.

"This may lead to an alphabet that is altered to make it more phonetic. For instance, the word 'phonetic' sounds like it should begin with an 'f,' and in the future it may be spelled that way," he said. A distinction between a letter "s" that makes a "sss" sound and one that sounds like "zzz" is another example of a possible change.

But Schoville, who specializes in researching ancient texts, said the history of writing points to fairly gradual changes in coming years. There was a 2,000 year gap between appearance of the first forms of writing and the development of the first alphabet -- and another 1,000 years before alphabets became widely used, he explained.

"Change in our writing system will be difficult to bring about unless mandated by a central authority," he said. He points, however, to largely unsuccessful government mandates to get public to use of the metric system.

Schoville admitted that rapid changes in computer technology could speed these changes. "But to operate these machines, we still need explanatory manuals that are printed on paper," he added.

###

--Joel McNair (608) 262-2650

*Instituted  
Hebrews  
Semitic  
Studies*

Release: Immediately

10/11/83jm/meb

## UW-MADISON NEWSBRIEFS

CONTACT: Keith Schoville (608) 262-9785

### FUTURE OF WRITING FINAL 'SIGN, SYMBOL, SCRIPT' LECTURE

MADISON--Is writing threatened by technological advances? Or will it be enhanced?

Keith Schoville, a professor of Hebrew and Semitic studies at University of Wisconsin-Madison, will discuss the future of writing, Wed., Oct. 19, at a lecture being held in conjunction with the "Sign, Symbol, Script" exhibition at UW-Madison. The lecture, the final one of the series, will be at 7:30 p.m. in the auditorium of the State Historical Society, 816 State St. Schoville is director of the exhibition.

"Sign, Symbol, Script" describes the origins and history of writing and the alphabet. It will end a nine-week showing at the Historical Society Monday (Oct. 23), after which it will be moved to the Milwaukee Public Museum, the next stop on a nationwide tour. All exhibition events are free and open to the public.

-o-

-o-

-o-

### EUROPEAN LAW, SUBJECT OF DISCUSSION

MADISON--European law, the body of regulations governing relationships among the countries of the European community are, in some respects, superior to national laws, according to Joseph Weiler. Weiler, a professor of law from the European University Institute, Florence, Italy, will discuss the subject at noon Friday, Oct. 14, in the Memorial Union, University of Wisconsin-Madison.

Weiler is a visiting professor at the University of Michigan this fall. His appearance is being sponsored by the Interdisciplinary Legal Studies Colloquium and the Wisconsin International Law Society.

###



*Institute  
of Letters  
Seminar  
Studies*

From the University of Wisconsin-Madison / News Service, Bascom Hall, 500 Lincoln Drive, Madison 53706 / Telephone: 608/262-3571

Release: Immediately

10/5/83

CONTACT: Keith Schoville (608) 262-9785

LECTURE ON BIRTH OF THE ALPHABET AT 'SIGN, SYMBOL, SCRIPT'

MADISON--The birth of the alphabet in eastern Mediterranean regions will be the subject of a lecture Wednesday (Oct. 12) in conjunction with the "Sign, Symbol, Script" exhibition at University of Wisconsin-Madison.

"How the Alphabet Came to Be: The Miracle of Simplicity" will be presented by Professor George E. Mendenhall of the University of Michigan at 7:30 p.m. in the auditorium of the State Historical Society, 816 State St. Mendenhall is an internationally recognized authority on ancient texts.

"Sign, Symbol, Script" describes the history of writing and the alphabet through displays of artifacts and murals, lectures, demonstrations and films. All events and exhibits are free and open to the public.

The exhibition will be at the State Historical Society through Oct. 23.

###

*Institute  
Herb. Howe  
Emeritus  
Studies*

Release: **Immediately**

9/21/83

UW-MADISON NEWSBRIEFS

CONTACT: Keith Schoville (608) 262-9785

GREEK WRITING SUBJECT OF 'SIGN, SYMBOL, SCRIPT' LECTURE

Noted classicist Herbert M. Howe will lecture on the writing system of ancient Greece Wednesday (Sept. 28) at the "Sign, Symbol, Script" exhibition at UW-Madison.

An emeritus professor of classics at UW-Madison, Howe will speak at 7:30 p.m. in the auditorium of the State Historical Society, 816 State St. He will discuss how the early Greeks developed an alphabet that laid the foundation for their classical period of great literature.

"Sign, Symbol, Script," an exhibition on the history of writing and the alphabet, will be at the Historical Society through Oct. 23. It features exhibits of ancient artifacts, films, demonstrations and lectures. All events are free and open to the public.

-o-

-o-

-o-

VISITING SCHOLAR FROM PORTUGAL

Boaventura de Sousa Santos is the Edward Larocque Tinker Visiting Professor of Ibero-American studies at UW-Madison's Law School this fall.

Santos, professor of economics at the University of Coimbra, Portugal, is

-more-



*Institute  
of Hebrew  
Studies*

Release: Immediately

9/15/83

CONTACT: Keith Schoville (608) 262-9785

## HARVARD PROFESSOR TO LECTURE ON OLD HEBREW ALPHABET

MADISON--Frank Moore Cross Jr. of Harvard University will lecture on the early years of the Hebrew alphabet Wednesday (Sept. 21) at the "Sign, Symbol, Script" exhibition at University of Wisconsin-Madison.

Cross, the Hancock Professor of Hebrew and other languages and civilizations at Harvard, will discuss "The Old Hebrew Alphabet: Its First Thousand Years from the Times of David Until the Dead Sea Scrolls." The lecture is scheduled at 7:30 p.m. in the auditorium of the State Historical Society, 816 State St.

The lecture is free and open to the public. "Sign, Symbol, Script," an exhibition on the history of writing and the alphabet, will be at the Historical Society through Oct. 23.

###

*Institutes -  
Hebrew  
Semitic  
Studies*

Release: Immediately

8/31/83

CONTACT: Keith Schoville (608) 262-9785

## CHINESE WRITING LECTURE HIGHLIGHTS EXHIBITION

MADISON—Writing forms from 6,000 years ago will be the topic Wednesday (Aug. 31) when Professor Hung-Hsiang Chou of the University of California at Los Angeles lectures on the development of Chinese writing.

The 7:30 p.m. lecture is part of "Sign, Symbol, Script," an exhibition on the history of writing and the alphabet currently at the State Historical Society, 816 State St., on the University of Wisconsin-Madison campus.

Chou is an internationally recognized authority on the earliest forms of Chinese writing, said Keith N. Schoville, director of the UW-Madison Hebrew and Semitic Studies department and exhibition project director. Chou will discuss early texts inscribed on bone and tortoise shells.

Two other lectures are scheduled for the week at the exhibition. At 3:30 p.m. Monday (Aug. 29), UW-Madison Professor John McGovern will speak on writing surfaces that have been used through history.

Joann Hohler of the State Historical Society will speak at 3:30 p.m. Thursday (Sept. 1) on the fragility of paper.

All three lectures are at the Historical Society auditorium.

###

*Arthur  
Hewitt  
Jenkins  
Jenkins*

Release: **Immediately**

8/24/83

CONTACT: Keith Schoville (608) 262-8795

## CALLIGRAPHY DEMONSTRATION PLANNED FOR SATURDAY, AUGUST 27

MADISON--A calligraphy demonstration and workshop will be held Saturday, Aug. 27 at the State Historical Society, 816 State St. The demonstration/workshop is being put on for the public by the Wisconsin Calligraphers Guild and will be held from 10 a.m. to 2 p.m. in the lobby of the building.

This workshop is one of several activities taking place over the next few weeks in conjunction with the "Sign, Symbol, Script" exhibit, developed by the UW-Madison Department of Hebrew and Semitic Studies. The exhibit traces the origins and development of writing through displays of ancient and modern artifacts and through lectures, workshops and special presentations. It will be on display at the historical society through Oct. 23 after which it will travel to the Milwaukee Public Museum, second stop on a nationwide tour.

####

*Postville  
Schwey's  
Seminar  
Gardner*

Release: **Immediately**

8/17/83

CONTACT: Keith Schoville (608) 262-8795

## LECTURES HIGHLIGHT FIRST WEEK OF 'SIGN, SYMBOL, SCRIPT' EXHIBIT

MADISON--A lecture on the origins of the alphabet will highlight activities as "Sign, Symbol, Script" begins its nine-week showing Sunday (Aug. 21) at the State Historical Society, 816 State St.

Menahem Mansoor, a University of Wisconsin-Madison emeritus professor and internationally recognized Middle East historian, will lecture on "From A to Z: The Birth of the Alphabet" at 7:30 p.m. Sunday in the State Historical Society Auditorium. He will discuss the development of the alphabet from its origins about 1500 B.C. to just before the development of Greek culture.

Mansoor was instrumental in organizing "Sign, Symbol, Script," an exhibition on the origins and development of writing. The exhibit traces the development through displays of ancient artifacts and through lectures, workshops and special presentations.

Denise Schmandt-Besseret, a University of Texas professor, will lecture on "Reckoning Before Writing" at 7:30 p.m. Wednesday (Aug. 24) in the State Historical Society Auditorium. She will discuss the use of clay tokens, the forerunners to writing in the ancient Middle East.

Opening ceremonies for the exhibition will take place at 3 p.m. Sunday (Aug. 21) at the auditorium. "Sign, Symbol, Script" will be in Madison through Oct. 23 before traveling to the Milwaukee Public Museum, first stop on a nationwide tour.

###

-- Joel McNair (608) 262-2650

# UW news

From the University of Wisconsin-Madison / News Service, Bascom Hall, 500 Lincoln Drive, Madison 53706 / Telephone: 608/262-3571

*Institute  
Schoville  
Lemire  
Studer*

Release: Immediately

8/15/83

CONTACT: Karen Walsh, University News Service, (608) 262-0065

NOTE TO EDITORS AND NEWS DIRECTORS: There will be a press conference and media tour of the "Sign, Symbol, Script" exhibit Sunday (Aug. 21) prior to its opening to the public. The press conference will be held at 1:30 p.m. in the Sallery Room at the State Historical Society, 816 State St. Professor Keith Schoville, projector director, Professor Menahem Mansoor, who originally conceived of the exhibit, and Kim Brie (BRY) exhibit coordinator, will be on hand to answer questions.

Following the press conference, members of the media will be able to tour and photograph the exhibit before it opens to the general public at 3:30 p.m. The exhibit deals with the origins and development of written communication, from primitive man's crude etchings to today's computer communications. The rare and ancient artifacts featured in the exhibit offer excellent visual possibilities.

For more information on the exhibit, contact Schoville at (608) 262-9785 or Joel McNair at (608) 262-2650. For information on the press conference, contact Karen Walsh at (608) 262-0065.

###

# UW news

From The University of Wisconsin-Madison / University News and Publications Service, Bascom Hall, Madison 53706 / Telephone: (608) 262-3571

Release: Immediately

12/9/76 jb

*Distributes -  
Books -  
Spade*

MADISON--The University of Wisconsin-Madison department of Hebrew and Semitic studies and the Madison Biblical Archaeological Society are inviting the public to attend the premiere of THE BOOK AND THE SPADE, a color film based on the exhibit bearing the same title, held in April-May 1975. Over 85,000 persons saw that exhibit of biblical art and archaeology.

The film will be shown at the Memorial Union Theater Sunday (Dec. 12) at 7:30 p.m. Admission is free and open to the public.

Prof. Menahem Mansoor, chairman of the department of Hebrew and Semitic studies, also will speak on the monumental archaeological discovery by Italian archaeologists of some 20,000 tablets written in a hitherto unknown Semitic language bearing on the contents of the Book of Genesis.

The exhibit provided visitors with an opportunity for further knowledge about the cultural and religious development of man in the Near East, and in the Holy Land in particular, over a span of several thousand years of history. It featured ancient Palestinian, Greek, Roman, and Byzantine glassware; ornaments and cosmetics; sculpture in clay, bronze, silver and gold; gods and goddesses of the ancient Canaanite religion; biblical, Hellenistic, and Roman lamps, coins and inscriptions on stones; parchment and papyri, and fragments of the Dead Sea Scrolls. All these were captured in the film produced by Prof. Walter J. Meives of the UW Extension-Madison Photographic Media Center.

The script was prepared by Dr. Martha Carter, chairperson of the exhibit design and display; Mrs. Phyllis Anderson, exhibit registrar, and Prof. Mansoor, exhibit general chairman. The film is narrated by Gerald Bartell, chairman of the Wisconsin Arts Council Inc.

A travelogue on the Seminar in the Lands of the Bible in color and sound, prepared by Leona and Carl Stapel of Oshkosh, also will be shown.

# UW news

From The University of Wisconsin-Madison / University News and Publications Service, Bascom Hall, Madison 53706 / Telephone: (608) 262-3571

Release: **Immediately**

2/4/75 mm

*Institute  
Books  
Spade*

MADISON, Wis.--"The Book and the Spade," a new exhibit on the methods and exciting discoveries of modern biblical archaeology, will be held at the Wisconsin Center, 702 Langdon st., Madison from April 13 to May 4.

Sponsored by the University of Wisconsin-Madison department of Hebrew and Semitic studies, the display will feature ancient Palestinian, Greek, Roman, and Byzantine glassware; ornaments and cosmetics; sculpture in clay, bronze, silver, and gold; artifacts of the ancient Canaanite religion; early lamps; Greek, Roman, and Jewish coins; ancient inscriptions and papyri; Ugaritic and Mesopotamian inscribed tablets; fragments of the Dead Sea Scrolls and rare bibles from the University's Memorial Library in Madison.

In 1964, a similar exhibit, also presented by the department, in cooperation with the University and interested townspeople, attracted over 30,000 visitors for the two weeks it was on display.

In conjunction with the exhibit, world-famous archaeologists will present lectures. Prof. Yigael Yadin of Jerusalem, excavator of Masada and Hazor; Dame Kathleen Kenyon of London, excavator of Jericho; and other speakers including some 15 top U.S. archaeologists, will appear. The former Syrian archbishop of Jerusalem, now residing in the United States, has agreed to participate.

Demonstrations of ancient pottery-making will be held, as well as films, guided tours, and special luncheons and dinners for school, church, and civic groups.

Add one--archaeology exhibit

There is no admission charge and all people of Wisconsin are invited to attend this 20th anniversary celebration of the department of Hebrew and Semitic studies.

Prof. Menahem Mansoor, chairman, who initiated and conceived both exhibitions, says:

"The best way to celebrate the 20th anniversary of the establishment of the department will be to offer this exhibit to the citizens of this state in the best tradition of the Wisconsin Idea."

A 25-member committee has been working for over a year to set up arrangements, contact contributing museums, and raise funds. "The Book and the Spade," a booklet describing biblical archaeology, produced for the 1964 exhibit, has been revised and updated and will be available.

Groups interested in visiting this spring event are urged to make prior reservations by writing to the Department of Hebrew and Semitic Studies, University of Wisconsin, 1346 Van Hise Hall, Madison, Wis. 53706.

Institutions lending artifacts to the exhibit at present include: American Numismatic Society, Boston Museum of Fine Arts, Cardinal Spellman Philatelic Museum, Corning Museum of Glass, Cincinnati Art Museum, Cleveland Museum of Art, Field Museum of Natural History, Fogg Museum-Harvard University, Metropolitan Museum of Art, Nelson Gallery, Kansas City, Peabody Museum-Harvard University, St. Louis Art Museum, Semitic Museum-Harvard University, Smithsonian Institution; University of Chicago Oriental Institute, University of Missouri-Columbia, University of Pennsylvania Museum, and the UW-Madison Memorial Library.

Sponsors of the exhibit include: UW departments of Hebrew and Semitic studies, anthropology, and classics; Edgewood College; Wisconsin Department of Public Instruction; Institute for Research in the Humanities; and the Madison Biblical Archaeological Society.

###



PRESS RELEASE

For immediate publication

Madison--On Sunday, May 4, at 6:00 p.m., THE BOOK AND THE SPADE will close its gates. It opened on April 13. Unfortunately, it will not be possible to extend the exhibit beyond May 4. The public is urged to take advantage of this "once-in-a-lifetime" opportunity in the last few days available.

The exhibit has an excellent collection from 25 of the nation's best museums, as well as a gold figurine from Gezer and a page from the Dead Sea Scrolls from the Hebrew University in Israel. It is cautiously estimated by the Wisconsin Center authorities that more than 60,000 persons from all over Wisconsin and the neighboring states have visited the exhibit. Weekends alone drew between 15-16,000 visitors. So far over 200 church and school groups have attended. In addition to daily films, many lectures and archaeological workshops, some 20 scholars of international repute lectured during this period.

The highlights this week will include a workshop by Professor Richard R. Kuns, museum director of the Connecticut Historical Commission and museum curator of the Hartford Seminary Foundation. The workshop will demonstrate the techniques of restoring artifacts and ancient jewelry, and will be running alternately with Mrs. Mary Kimber's presentation for school groups. On Saturday, May 3, Professor Joe D. Seger of Hebrew Union College/Jewish Institute of Religion in California will speak on the excavation of Gezer. His lecture is entitled "Gezer in Bible, History, and Archaeology." Professor Menahem Mansoor, chairman of the Department of Hebrew and Semitic Studies and general chairman of the exhibit will give the closing lecture on Sunday, May 4, at 3:30 p.m. It will be entitled, "The Relevance and the Challenge of the Dead Sea Scrolls."

THE BOOK AND THE SPADE is an Exhibition of Biblical Art and Archaeology, initiated by the Department of Hebrew and Semitic Studies to celebrate its twentieth anniversary.

*Jack Burke*  
*14 Baa.*  
*5/1/75*  
*Institute*  
*Book*  
*Spade*

# news

From the University of Wisconsin-Madison / University News and Publications Service, Bascom Hall, Madison 53706 / Telephone: 608/262-3571

Release: **Immediately**

5/2/75 jb

*Institutes  
Books  
Spade*

## BOOK AND SPADE EXHIBIT TO CLOSE

MADISON--The Book and the Spade, the University of Wisconsin-Madison exhibition of biblical art and archaeology, will close at 6 p.m. Sunday (May 4).

The public is urged to visit the final events at the Wisconsin Center. Since it opened last month, the exhibition has attracted more than 60,000 persons from all over the midwest. Guests have included more than 200 church and school groups.

Features include the collections from 25 of the nation's premier museums, as well as a gold figurine from Gezer and a page from the Dead Sea Scrolls from the Hebrew University in Israel.

Weekend highlights will include a workshop by Prof. Richard R. Kuns, museum director of the Connecticut Historical Commission and the Hartford Seminary Foundation. He will demonstrate techniques of restoring artifacts and ancient jewelry. Prof. Joe D. Seger of Hebrew Union College-Jewish Institute of Religion in California will lecture Saturday on the Gezer excavation.

The closing lecture will be presented by UW-Madison Prof. Menahem Mansoor, chairman of the department of Hebrew and Semitic studies and general chairman of the Book and Spade. Titled "The Relevance and the Challenge of the Dead Sea Scrolls," it will be presented at 3:30 p.m. Sunday.

###



THE UNIVERSITY OF WISCONSIN  
MADISON, WISCONSIN 53706

DEPARTMENT OF HEBREW AND SEMITIC STUDIES  
1346 VAN HISE HALL  
1220 LINDEN DRIVE

January 22, 1975

*Institutes -  
Books  
Spade*

Mr. John F. Newman  
University of Wisconsin  
UW News and Publications Service  
10 Bascomb Hall  
Madison, Wisconsin

Dear Mr. Newman:

It is with great pleasure that we wish to invite you to attend a luncheon press conference to be held at the Wisconsin Center, 702 Langdon Street, on Tuesday, February 4 at noon. The conference will be over by 1:30. We would like you to be our guest.

On this occasion we are going to distribute a press release describing "The Book and the Spade: An Exhibition of Biblical Art and Archaeology", to be held from April 13 to May 4 (see enclosed material). At this time you will have ample opportunity to ask questions about it. A number of the committee members will attend the luncheon meeting.

We have undertaken this enterprise as a public service to the people of Wisconsin. So far we have had tremendous response from the churches, the colleges, the Wisconsin State Department of Public Instruction and, last but not least, our own University administration. We do expect between 60,000-80,000 people to attend our exhibit.

World-renowned archaeologists, such as Dr. Y. Yadin of the Hebrew University and excavator of Megiddo and Masada, Dame Kathleen Kenyon, excavator of Jericho and Jerusalem, and most U.S. archaeologists will participate during the exhibit. We are happy also to announce that Mar Athanasius Samuel, Syrian archbishop of Jerusalem and original possessor of the Dead Sea Scrolls will attend the opening ceremony.

We do hope you or your designated representative will attend this conference. We are very anxious to cooperate with you and serve the public.

Please return the enclosed stamped addressed envelope at your earliest convenience.

*John*  
*I hope you can come.*  
*Menahem*

Sincerely,

*Menahem*  
Menahem Mansoor  
Chairman  
Joseph L. Baron Professor

MM:cs  
Enclosures

# UW news

From The University of Wisconsin-Madison / University News and Publications Service, Bascom Hall, Madison 53706 / Telephone: (608) 262-3571

Release: **Immediately**

3/5/75

mm

*Institute  
Books  
Spade*

MADISON, Wis.--"The Book and the Spade," a new exhibit on the methods and exciting discoveries of modern biblical archaeology, will be held at the Wisconsin Center, 702 Langdon st., Madison from April 13 to May 4.

Sponsored by the University of Wisconsin-Madison department of Hebrew and Semitic studies, the display will feature ancient Palestinian, Greek, Roman, and Byzantine glassware; ornaments and cosmetics; sculpture in clay, bronze, silver, and gold; artifacts of the ancient Canaanite religion; early lamps; Greek, Roman, and Jewish coins; ancient inscriptions and papyri; Ugaritic and Mesopotamian inscribed tablets; fragments of the Dead Sea Scrolls and rare bibles from the University's Memorial Library in Madison.

In 1964, a similar exhibit, also presented by the department, in cooperation with the University and interested townspeople, attracted over 30,000 visitors for the two weeks it was on display.

In conjunction with the exhibit, world-famous archaeologists will present lectures. Prof. Yigael Yadin of Jerusalem, excavator of Masada and Hazor; Dame Kathleen Kenyon of London, excavator of Jericho; and other speakers including some 15 top U.S. archaeologists, will appear. The former Syrian archbishop of Jerusalem, now residing in the United States, has agreed to participate.

Demonstrations of ancient pottery-making will be held, as well as films, guided tours, and special luncheons and dinners for school, church, and civic groups.

Add one--archaeology exhibit

There is no admission charge and all people of Wisconsin are invited to attend this 20th anniversary celebration of the department of Hebrew and Semitic studies.

Prof. Menahem Mansoor, chairman, who initiated and conceived both exhibitions, says:

"The best way to celebrate the 20th anniversary of the establishment of the department will be to offer this exhibit to the citizens of this state in the best tradition of the Wisconsin Idea."

A 25-member committee has been working for over a year to set up arrangements, contact contributing museums, and raise funds. "The Book and the Spade," a booklet describing biblical archaeology, produced for the 1964 exhibit, has been revised and updated and will be available.

Groups interested in visiting this spring event are urged to make prior reservations by writing to the Department of Hebrew and Semitic Studies, University of Wisconsin, 1346 Van Hise Hall, Madison, Wis. 53706.

Institutions lending artifacts to the exhibit at present include: American Numismatic Society, Boston Museum of Fine Arts, Cardinal Spellman Philatelic Museum, Corning Museum of Glass, Cincinnati Art Museum, Cleveland Museum of Art, Field Museum of Natural History, Fogg Museum-Harvard University, Metropolitan Museum of Art, Nelson Gallery, Kansas City, Peabody Museum-Harvard University, St. Louis Art Museum, Semitic Museum-Harvard University, Smithsonian Institution; University of Chicago Oriental Institute, University of Missouri-Columbia, University of Pennsylvania Museum, and the UW-Madison Memorial Library.

Sponsors of the exhibit include: UW departments of Hebrew and Semitic studies, anthropology, and classics; Edgewood College; Wisconsin Department of Public Instruction; Institute for Research in the Humanities; and the Madison Biblical Archaeological Society.

# Exhibit weaves tapestry of ancient Near East

By SUSAN TROLLER  
Of The Capital Times Staff

A treasure of biblical art and artifacts will be on display at the Wisconsin Center April 13 through May 4, Prof. Menahem Mansoor of the University of Wisconsin-Madison department of Hebrew and Semitic studies announced Tuesday.

Entitled the Book and the Spade — 1975, this priceless exhibit will include ancient Near Eastern glassware, coins, fragments of the Dead Sea Scrolls sculpture in clay, bronze, silver and gold, jewelry, cosmetic tools and rare Bibles.

Called a "once-in-a-lifetime feast in ancient art and history in Biblical times" by Prof. Mansoor, the three-week exhibit will include lectures by world-renowned archaeologists and will feature films, workshops and demonstrations of ancient crafts like pottery and papyrus making.

The exhibit, which is sponsored by the University of Wisconsin-Madison department of Hebrew and Semitic studies in recognition of its 20th anniversary on the University campus, is an effort to weave ancient history, art and culture into one tapestry of the ancient Near East.

A similar exhibit presented in 1964 attracted over 30,000 people during the two weeks it was on display. This year's exhibit, billed as "bigger and better" by Prof. Keith Schoville of the Hebrew and Semitic studies department, anticipates between 60 and 70,000 visitors from throughout the state.

There is no admission charge and all the people of Wisconsin are invited to attend the unusual exhibit.

Although a display of rare Bibles may sound like a yawn to anyone but a religious fanatic, even the most blasé agnostic might generate some interest in seeing the "Britches Bible," which notes in Genesis that fig leaves were sewn together to make britches.

Even more intriguing is a copy of the rare, 200-year-old "Wicked Bible," which mistakenly (or so the story goes) left "not" out of the commandment, "Thou shalt not commit adultery." Needless to say, this version of the holy book was recalled.

All of the artifacts on display, representing ancient Greece, Palestine, Rome, the Byzantine empire, Mesopotamia and Canaan, are authentic. Because of the value of the exhibit, armed guards will be on continuous duty at the Wisconsin Center during the three weeks the unique collection is on display.

Some twenty museums in the United States and several from abroad are participating in the exhibit, loaning their treasures to the University. A sample of the museums participating includes the Boston Museum of Fine Arts, the Smithsonian Institute, the Metropolitan Museum of Art and the Cardinal Spellman Philatelic Museum, among others.

Although the idea for the Book and the Spade (the exhibit's title refers to the Bible and the study of archaeology) was initiated by the department of Hebrew and Semitic studies, it

has received enthusiastic support from the UW departments of anthropology and classics; from Edgewood College; the Wisconsin Department of Public Instruction; the Institute for Research in the Humanities and the Madison Biblical Archaeological Society.

Seventeen world-renowned Biblical scholars and archaeologists are scheduled to be on campus during the exhibit's three-week run. Prof. Yigael Yadin of Jerusalem, excavator of Masada and Hazor, and the former Syrian archbishop of Jerusalem who now lives in the United States have agreed to participate. Both look forward to their meeting here as "interesting."

Dame Kathleen Kenyon of London, excavator of Jericho, is also scheduled to participate in the lecture segment of the exhibit.

A 25-member committee has been working for over a year to set up arrangements, contact contributing museums and raise funds.

"The Book and the Spade," a booklet produced for the 1964 exhibit which describes biblical archaeology, has been revised and updated. The book, which the committee recommends reading before visiting the exhibit, costs \$2 and can be purchased through the Department of Hebrew and Semitic studies, 1346 Van Hise Hall. Checks should be made out to the University Board of Regents.

Groups interested in visiting the exhibit are urged to make prior reservations by writing the department of Hebrew and Semitic studies. Tour guides will be available.



Before unrolling, this fragment of the Dead Sea scrolls looked like a cocoon.



This 4000 year-old Mesopotamian stone prince will visit Madison, courtesy of the Fogg Museum at Harvard University.



# PBS film crew in town for one hectic day of shooting

By SUSAN TROLLER

Of The Capital Times Staff

Members of the film crew of "The Thin Edge," a new public television series focusing on mental health problems, may suffer psychological strain themselves by the time their

hectic, exhilarating project is completed in March.

Headed by producer Steve Gilford, the crew is criss-crossing the country, filming footage for the depression segment of the five-part series which is funded by Bristol-Myers.

In Madison one day recently for a film session at the UW Primate Center, Gilford said his crew had been in Los Angeles the preceding day, in Iowa the day before that and was moving to Topeka, Kansas, and the Menninger Institute that night.

The flurry of intense activity is part of an effort to completely finish the depression segment by March 10. The project has been underway only a month.

The first program in the series, "Depression: The Shadowed Valley" is scheduled for broadcast March 10.

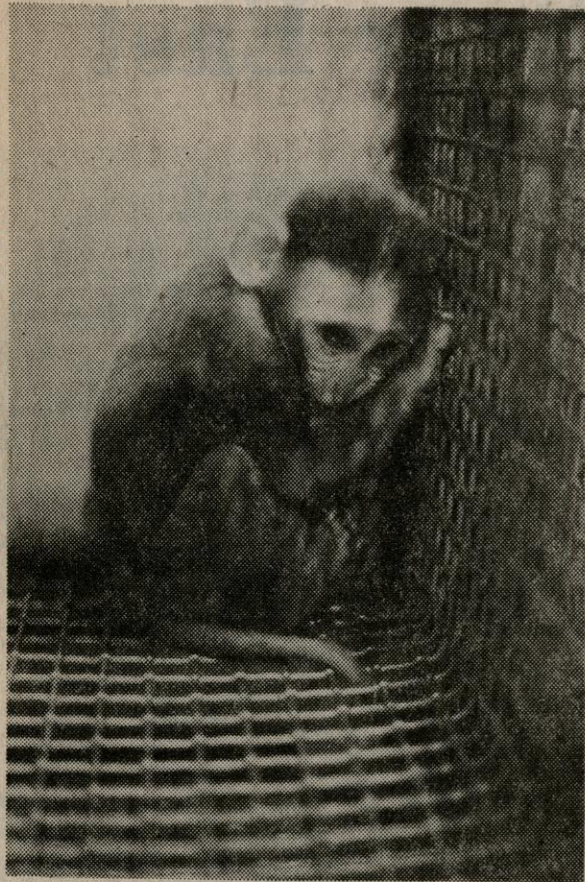
various therapy methods and an interview with Suomi discussing the Madison work.

Depression is created by separating six to ten-day-old monkeys from their mothers or peer group and isolating them for six weeks. They then develop symptoms that are quite close to human symptoms of depression, Gilford said.

Various methods of drawing the monkeys out of their depressed state are utilized, according to the producer. These include the use of anti-depressant drugs, shock treatment and animal therapists.

Animal therapists?

"These are outgoing, affectionate animals that are specially chosen to try and draw



*Loneliness is an element of depression — even in monkeys.*



*Institutes -  
Book to  
Spade*

Release: **Immediately**

4/7/75 mm

## BIBLICAL-ARCHAEOLOGY EXHIBIT TO OPEN

MADISON--One of the major cultural events in Wisconsin this year, unique of its kind, will be inaugurated officially here Sunday (April 13) by University of Wisconsin System Pres. John C. Weaver.

This announcement was made by Prof. Menahem Mansoor, chairman of the UW-Madison department of Hebrew and Semitic studies, speaking of "The Book and the Spade," an exhibit of biblical art and archaeology in the Wisconsin Center, 702 Langdon st.

The exhibit, two years in the planning, will feature displays of ancient coins, glass, and jewelry; pottery lamps and housewares; artifacts of the ancient Canaanite religion; manuscripts and inscriptions, including fragments of the Dead Sea Scrolls and inscribed tablets from Ugarit and Mesopotamia; and a display of rare printed Bibles.

Heading the list of speakers is Prof. Yigael Yadin of Hebrew University, Jerusalem, who will give two illustrated lectures at the Wisconsin Union Theater on the opening day, one at 3 p.m. titled "In Search of Solomon: Hazor and Megiddo," and another at 8 p.m. on "Masada in History and Archaeology."

According to Prof. Mansoor, the goal of the display is to illustrate the development of religion and culture in the lands of the Bible over a span of several thousand years of ancient history. The exhibit idea originated in his department, which is celebrating its 20th year on the Madison campus, but has received the cooperation and support of the University and other institutions, including UW Extension and the departments of anthropology, art and classics; Memorial Library; Wisconsin Union; Institute for Research in the Humanities; Edgewood College; State



Add one--Book and Spade

Department of Public Instruction; Wisconsin Society for Jewish Learning, and the Madison Biblical Archaeological Society.

Artifacts on display have been gathered from over 20 museums and individual collectors across the United States and overseas. These include:

The American Numismatic Society, Ashland Theological Seminary, Cincinnati Art Museum, Cleveland Museum of Art, Concordia Seminary, Corning Museum of Glass, Field Museum of Natural History, Fogg Art Museum-Harvard University, Hebrew Union College Library-Cincinnati, Hebrew Union College-Los Angeles, Metropolitan Museum of Art, Museum of Fine Arts-Boston, Palestine Institute Museum-Pacific School of Religion, Peabody Museum of Archaeology and Ethnology-Harvard University, St. Louis Art Museum, Smithsonian Institution, University of Chicago Oriental Institute, University of Missouri-Museum of Art and Archaeology, University of Pennsylvania Museum, Hebrew University, William Rockhill Nelson Gallery of Art-Atkins Museum of Fine Arts, and the Israel Department of Antiquities.

Individual participants include Michael H. Bennett, Prof. Mansoor, Prof. Hardean K. Naeseth, John L. Peterson, Charles F. Pfeiffer, Mar Athanasius Y. Samuel, Mrs. Leo Steppat, John C. Trever, Bastiaan Van Elderen, and Prof. Yadin.

Visitors will be able to see fragments of the famous Dead Sea Scrolls; the idols, gods and goddesses condemned by the prophets; ivories like those which filled the houses of the kings of Israel; the coin with Caesar's image and inscription referred to by Jesus.

Besides Pres. Weaver, other dignitaries will be present at opening ceremonies, including other UW-Madison officials and faculty, Sister Carey, president of Edgewood College; State Superintendent of Public Instruction Barbara Thompson; and former Syrian Archbishop of Jerusalem Mar Athanasius Y. Samuel, involved in the purchase of the Dead Sea Scrolls at an early date.

Add two--Book and Spade

A major feature will be lectures by internationally-known archaeologists and biblical scholars, including Dame Kathleen Kenyon of the British School of Archaeology in Jerusalem and London. She will lecture April 19 on her excavations at Jerusalem which have helped to resolve many questions about that famous city in biblical times, and April 20, on her dig at Jericho which uncovered the oldest city in the world. For her attainments, Dr. Kenyon was decorated by Queen Elizabeth II. Both talks are at 8 p.m. in the Wisconsin Union Theater.

The lectures and all activities of the exhibit are free. Tickets for the talks by Profs. Yadin and Kenyon may be obtained at the Wisconsin Union Theater box office.

The exhibit will open to the public April 13, at 4 p.m. It will be open daily thereafter from 10 a.m. to 9 p.m., and will run for three weeks, closing May 4, at 6 p.m.

Members of the exhibit committee:

Prof. Mansoor; Agnes Rapp, Hebrew and Semitic studies department; Mrs. A. D. Anderson; Thomas W. Bartelt, Madison West High School; Mrs. S. Berlow; Sister Barbara Beyenka, Edgewood College; Rev. John Bissett;

Dr. Martha Carter; Rev. Stanley Christensen; Mrs. Dan Cox; Mrs. Conrad A. Elvehjem; Rev. Larry Gruman; Mrs. Linda H. Halsey, UW-Extension;

Dorothy Heil; Rev. Gerhardt R. Hillmer; Rev. J. Carl Hillmer; Robert Lee, Wisconsin Center; Prof. John N. McGovern; Mrs. Iris Milan; Russell C. Mosely; Atty. Robert B. L. Murphy; James W. Newhall, Cuna Mutual Insurance Society; Rev. Charles Peterson;

Doris H. Platt, State Historical Society; Sister Marie S. Reges, Edgewood College;

David Rensberger; B. L. Roberts; Prof. Keith N. Schoville; and the Rev. Wayne Turner.

###

THE UNIVERSITY OF WISCONSIN  
MADISON, WISCONSIN 53706

11/24

*Includes  
Book Spade*

DEPARTMENT OF HEBREW AND SEMITIC STUDIES  
1346 VAN HISE HALL  
1220 LINDEN DRIVE

"The Book and the Spade," a new exhibit on the methods and exciting discoveries of modern biblical archaeology, will be held at the Wisconsin Center, 702 Langdon Street, for three weeks, April 13—May 5, 1975. Sponsored by the UW-Madison Department of Hebrew and Semitic Studies, the display will feature ancient Palestinian, Greek, Roman, and Byzantine glassware; ornaments and cosmetics; sculpture in clay, bronze, silver, and gold; artifacts of the ancient Canaanite religion; early lamps, Greek, Roman, and Jewish coins; ancient inscriptions and papyri; Ugaritic and Mesopotamian inscribed tablets; fragments of the Dead Sea Scrolls and rare Bibles from the University of Wisconsin Memorial Library.

In 1964, a similar exhibit, also presented by the Department, in cooperation with the University and interested townspeople, attracted over 30,000 visitors for the two weeks it was on display.

In conjunction with the exhibit, world-famous archaeologists will present lectures. Professor Yigael Yadin of Jerusalem, excavator of Masada and Hazor, and Dame Kathleen Kenyon of London, excavator of Jericho, and other speakers will appear. The Syrian Archbishop of Jerusalem, now residing in the United States, has agreed to participate.

Demonstrations of ancient pottery-making will be held, as well as films, guided tours, and special luncheons and dinners for school, church, and civic groups.

There is no admission charge and all people of Wisconsin are invited to attend this twentieth anniversary celebration of the Department of Hebrew and Semitic Studies.

Professor Menahem Mansoor, chairman, who initiated and conceived both exhibitions, says, "The best way to celebrate the twentieth anniversary of the establishment of the Department will be to offer this exhibit to the citizens of this State in the best tradition of the Wisconsin Idea."

Archaeology exhibit, page 2

A twenty-five member committee has been working for over a year to set up arrangements, contact contributing museums and raise funds. The Book and the Spade, a booklet describing biblical archaeology, produced for the 1964 exhibit, has been revised and updated and will be available.

Groups interested in visiting this spring event are urged to make prior reservations by writing to the Dept. of Hebrew and Semitic Studies, University of Wisconsin, 1346 Van Hise Hall, Madison, Wisconsin 53706.

Institutions lending artifacts to the exhibit at present include the following:

American Numismatic Society  
Boston Museum of Fine Arts  
Cardinal Spellman Philatelic Museum  
Corning Museum of Glass  
Cincinnati Art Museum  
Cleveland Museum of Art  
Field Museum of Natural History  
Indiana University Museum  
Metropolitan Museum of Art  
Nelson Gallery  
Peabody Museum  
St. Luis Art Museum  
Semitic Museum, Harvard University  
Smithsonian Institution  
University of Chicago Oriental Institute  
University of Missouri, Columbia  
University of Pennsylvania Museum  
University of Wisconsin Memorial Library

Sponsors of the exhibit include: University of Wisconsin Departments of Hebrew and Semitic Studies (initiator), Anthropology, and Classics; Edgewood College; Wisconsin State Department of Public Instruction; the Institute for Research in the Humanities; and the Madison Biblical Archaeological Society.

The exhibit will take place at the Wisconsin Center, 702 Langdon Street, Madison. It will open on Sunday, April 13, 1975, and continue for three weeks through May 4. No admission fee will be charged for any of the exhibit activities. The general public throughout Wisconsin is invited to attend. Guided tours of the exhibit will be provided.

# The Book and the Spade

The Book and the Spade—1975 is a biblical archaeological exhibition illustrating life, art and culture in the lands and times of the Bible. The exhibition will present some 1500 original and genuine specimens of antiquity (4000 B.C. to A.D. 200) uncovered in the Near East. A highlight of the exhibit will be fragments of the Dead Sea Scrolls.

The Book and the Spade—1975 will illustrate the history of the cultural and religious development of man over several thousand years in the Lands of the Bible.

This exhibition is presented as a public service to the Madison area communities, to the State of Wisconsin, and to our neighboring states in the best tradition of The Wisconsin Idea. Cooperating departments and sponsors include the

Department of Hebrew and Semitic Studies (UW—Madison)—Initiator

Wisconsin State Department of Public Instruction

Madison Biblical Archaeological Society

Department of Anthropology (UW—Madison)

Department of Classics (UW—Madison)

Institute for Research in the Humanities (UW—Madison)

Archaeological Institute of America (Madison Society)

University of Wisconsin Memorial Library



## Items on Display

Selection of items will especially reflect the art and archaeology of the Ancient Near East.

1. Palestinian, Greek, Roman, and Byzantine glassware, including jugs, juglets, vases, mirror and phials
2. Clay tablets, including Ugaritic and Mesopotamian inscriptions
3. Egyptian, Roman, Palestinian and Greek inscriptions and papyri
4. Fragments of the DEAD SEA SCROLLS and artifacts from the Dead Sea caves
5. Greek, Roman and Jewish coins
6. Ancient jewels, ornaments and cosmetics (up to about A.D. 200)
7. Figurines of the Canaanite and Ugaritic cult, including fertility goddesses
8. Ancient sculptural items of clay, bronze, silver and gold

9. Rare Bibles and codices, such as Gutenberg, Coverdale, and manuscripts possessing merit
10. Greek, Roman, Palestinian and Byzantine lamps

This exhibition will not include Bible collections, pictures and prints (unless needed to clarify an exhibition item), and artificial reproductions of artifacts.



## Loaning Museums

Over forty museums and private collections in the United States and abroad have been approached. Preliminary inquiries of some institutions indicate willingness to cooperate fully. Participants in the 1964 Exhibit included: Boston Museum of Fine Arts, Nelson Glueck's private museum, University of Chicago Oriental Institute, University of Pennsylvania Museum, Field Museum of Natural History, Israel Department of Antiquity and Cardinal Spellman Philatelic Museum.



## Other Activities

Films, slides, lectures (some by internationally known archaeologists and scholars from the United States and abroad) and guided tours will be an added feature of the Exhibit. Luncheons and dinners for groups will also be available by special arrangement.



## Admission

No admission fee will be collected by any of the Exhibit activities. The general public throughout Wisconsin will be invited.



## Groups

If you plan to visit the Exhibition as a group, it will be possible to assign to your group a convenient date. You will then be provided with a special guide, lectures and film presentations. If interested, please fill out and return the following form.

For all inquires please write to:

Professor Menahem Mansoor, Chairman  
Department of Hebrew and Semitic Studies  
University of Wisconsin—Madison  
1346 Van Hise Hall  
Madison, WI 53706

Or telephone Mrs. Agnes Rapp, Secretary (608) 262-3204



Your name \_\_\_\_\_

Name of your group or church \_\_\_\_\_

Address \_\_\_\_\_  
street

\_\_\_\_\_ city \_\_\_\_\_ state \_\_\_\_\_ zip

Date and time \_\_\_\_\_

Estimated number of participants \_\_\_\_\_

An exhibition of biblical art and archaeology  
Sunday, April 13, through Sunday, May 4, 1975

The Wisconsin Center, 702 Langdon Street, Madison, Wisconsin

*Initiated by the Department of Hebrew and Semitic Studies, University of Wisconsin—Madison*

# The Book and the Spade

**WEX**

UNIVERSITY OF WISCONSIN - EXTENSION

Department of Hebrew and Semitic Studies  
1346 Van Hise Hall  
Madison, Wisconsin 53706

Nonprofit Organization

U. S. POSTAGE

**PAID**

Madison, Wisconsin

Permit No. 1425

April 13 - May 4, 1975



# Biblical Show Opens

**'Book and Spade' at U. W.**

APRIL-MAY 1964

## Orthodox Church Leader To Open Bible Exhibit

Mar Athanasius Y. Samuel, archbishop of the Syrian Orthodox Church, Jerusalem, and key figure in the discovery of the famous Dead Sea Scrolls, will be among special guests taking part in the opening of "The Book and the Spade," University of Wisconsin exhibition on the Bible and Biblical archeology scheduled Sunday afternoon at the Wisconsin Center here.

Silver 'Coins of Judas' in  
'Book and Spade' Exhibition

### Bible 'Gold Mine' of Facts

MIKE SENTINEL MAY 22, 1964

Once-in-a-Lifetime Exhibit

Wisconsin State Journal, March 1, 1964

## Biblical Artifact Display Set Here

Dead Sea Scroll  
Portions Included  
in Unique 'Show'

By RICHARD W. VESEY  
(State Journal Staff Writer)

A unique, valuable, once-in-a-lifetime exhibit of rare Biblical artifacts will be held in Madison next month.

The exhibit, being staged by a combined committee of faculty and graduates of the University of Wisconsin department of Hebrew Studies, will include irreplaceable portions of the now-famed Dead Sea Scrolls.

State Journal, May 4, 1964  
7,000 Visit Display  
of Biblical Artifacts

More than 7,000 people viewed the Biblical artifacts on display at the Wisconsin Center Sunday, according to exhibit officials.

The lecture on "Footprints of a Lost Empire" by Richard Mitchell, director of the institute of Mediterranean studies at the University of California, was telecast to four rooms to accommodate the 700 listeners.

The exhibit, including fragments of the Dead Sea scrolls, will close Sunday.

Milwaukee Sentinel, April 25, 1964

## Rare Bible Display at UW Has 'Book and Spade' Theme

Milwaukee Journal, April 27, 1964  
Bibles, Artifacts Attract 500 at UW

# 'In the Beginning Was the Word'

Byrian Archbishop of Jerusalem Will Attend Opening

## *Artifacts of 2100 B. C., Dead Sea Scrolls In Exhibit Coming to U. W.*

By JOHN PATRICK HUNTER  
(Of The Capital Times Staff)

RECENT discoveries of Biblical antiquities that have led historians and archeologists back into the dim and vanished years when ancient civilization flourished and waned across thousands of years will be exhibited in Madison this spring.

Entitled "The Book and The Spade," a fortuitous title, the two-week-long exhibition on the Bible and Biblical archeology will be presented by the University of Wisconsin in co-operation with a number of leading American institutions and museums. The exhibit will open April 26 at the Wisconsin Center.

APRIL-MAY 1964

### 'The Book and The Spade'

## *U. W. Exhibit Dramatizes Story of Biblical 'Finds'*

### At 'Book and Spade' Exhibition

## *Holy Land Archeologists To Relate New Findings*

By RICHARD BRAUTIGAM  
(Of The Capital Times Staff)

The excitement and adventure of re-visiting the Biblical world of 4,000 years ago has been experienced by more than 4,000 Madison area residents who have viewed "The Book and the Spade" exhibit that opened at the Wisconsin Center last Sunday.

The forbidding sub-title, "A Biblical Archeological Exhibition," tells little of the treasures of the past that it contains or the prodigious effort that went into getting co-operation of 57 institutions, individuals and business concerns for loan of items, some of them priceless.

Priest Explains Dead Sea Scrolls' History



# Biblical Show Opens

**'Book and Spade' at U. W.**

APRIL-MAY 1964

## Orthodox Church Leader To Open Bible Exhibit

Mar Athanasius Y. Samuel, archbishop of the Syrian Orthodox Church, Jerusalem, and key figure in the discovery of the famous Dead Sea Scrolls, will be among special guests taking part in the opening of "The Book and the Spade," University of Wisconsin exhibition on the Bible and Biblical archeology scheduled Sunday afternoon at the Wisconsin Center here.

*Silver 'Coins of Judas' in  
'Book and Spade' Exhibition*

## Bible 'Gold Mine' of Facts

*MIKEE SENTINEL MAY 22, 1964*

Once-in-a-Lifetime Exhibit

*Wisconsin State Journal, March 1, 1964*

## Biblical Artifact Display Set Here

**Dead Sea Scroll  
Portions Included  
in Unique 'Show'**

By **RICHARD W. VESEY**  
(State Journal Staff Writer)

A unique, valuable, once-in-a-lifetime exhibit of rare Biblical artifacts will be held in Madison next month.

The exhibit, being staged by a combined committee of faculty and graduates of the University of Wisconsin department of Hebrew Studies, will include irreplaceable portions of the now-famed Dead Sea Scrolls.

*State Journal, May 4, 1964*  
**7,000 Visit Display  
of Biblical Artifacts**

More than 7,000 people viewed the Biblical artifacts on display at the Wisconsin Center Sunday, according to exhibit officials.

The lecture on "Footprints of a Lost Empire" by Richard Mitchell, director of the institute of Mediterranean studies at the University of California, was telecast to four rooms to accommodate the 700 listeners.

The exhibit, including fragments of the Dead Sea scrolls, will close Sunday.

*Milwaukee Sentinel, April 25, 1964*  
**Rare Bible Display at UW  
Has 'Book and Spade' Theme**

*Milwaukee Journal April 27, 1964*  
**Bibles, Artifacts Attract 500 at UW**

Observations by Professor Menahem Mansoor, chairman, Exhibit of Biblical Art and Archaeology, at the Press Conference on Tuesday, February 4, 1975.

*Instituted  
Books  
Spade*

In behalf of the thirty members of the Committee, I wish to welcome you today to acquaint you with our plan to hold THE BOOK AND THE SPADE: an Exhibit of Biblical Art and Archaeology. The Book is, of course, the Bible; the Spade represents archaeology. We hope that you have had an opportunity to read the press release distributed to you today.

In holding this exhibit, we had a twofold purpose: 1) to present this exhibit as a public service to the Madison area communities and to the State of Wisconsin in the best tradition of The Wisconsin Idea, as a token of gratitude for and appreciation of, the continuous support both moral and financial of Wisconsin citizens, especially those of the churches, the schools, and the mass media.

The Department was established in 1955 with the initial financial support of The Wisconsin Society for Jewish Learning. I have been serving as chairman since the inception of the Department. Since this is our twentieth year of service, we thought we would like to celebrate it by presenting something educationally meaningful and of general interest to all, irrespective of age, sex, or religion. What is more exciting than a tattered fragment of the Dead Sea Scrolls, a fertility goddess from the land of Canaan, or cosmetic tools. All these add so much to the understanding of the Bible and to the reconstruction of life in Biblical times. Although the idea of the exhibit initiated in the Department of Hebrew and Semitic Studies, it was received with enthusiasm by individuals, churches, and institutions, which includes other University of Wisconsin departments, Edgewood College, and the Wisconsin Department of Public Instruction. The response of the University Administration, the Wisconsin Arts Board, as well as others, has been very heartening.

2) the purpose of the exhibit is to illustrate life, art, and culture in Biblical lands and times. The Bible is better understood within the framework of the Eastern Mediterranean peoples and civilizations intimately involved. Hence, the exhibit includes a wide, but carefully selected number of artifacts from Iran, Iraq, Syria, Egypt, Jordan, Asia Minor, and Greece. These artifacts will help the visitors to the exhibit to correlate the Biblical

Observations, Mr. Mansoor, 2

narrative within a historical framework and to throw light on the setting in which the Biblical drama was set. The public will be able to view how man in the time of Abraham lived and worked in Babylon (about 2000 B.C.) what kinds of weapons the Philistines used in the time of King David (about 1000 B.C.), and what type of silver shekels and scrolls were in circulation in the days of Jesus.

All of the artifacts on display are authentic, collected from some twenty museums throughout the United States and a few from abroad. You have a list of the museums and institutions participating in our exhibit. In addition to artifacts, scrolls, and inscriptions, we are exhibiting a large collection of pre-printed Biblical manuscripts and some of the most famous rare Bibles. You will hear more about this from Sister Marie Stephen of Edgewood College and the Reverend J. Carl Hillmer.

We plan to have several workshops demonstrating the making of papyrus, the forming of pottery and jars, and the molding of lamps and tablets. The latter will be demonstrated by a member of our Committee, the Reverend Larry Gruman.

We are paying special attention to school children from grade 3 and above. In fact, Mrs. Mary Kimber, curator of the Palestine Archaeological Institute of the Pacific School of Religion, Berkeley, California, will spend three weeks with us to receive school children for talks, guided tours, and even archaeological treasure hunts.

We have also distributed to you a list of some of the scholars from the United States and abroad who will be visiting our campus during this period. Most of the scholars have been personally involved in the excavation, the decipherment, or the interpretation of the finds. In sum, we are presenting to the peoples of Wisconsin a truly exciting, once-in-a-lifetime "feast in ancient art and history in Biblical times."

Some twenty persons have been voluntarily and wholeheartedly working for the past two years with one aim in mind, to serve the public. We are seeking your cooperation--to join hands with us--and be partners in this worthy undertaking to serve the public, your readers, listeners, and viewers. Judging from the overwhelming response from communities all over Wisconsin and the neighboring states, we believe that with your cooperation some

Observations, Mr. Mansoor, 3

60 to 70 thousand persons can be expected to attend. You should have a list of members of the exhibit committee and the sponsoring institutions. This will be useful for ready reference when reporting before and during the exhibit. A special report on donors will be published in due course.

Mr. Bob Lee, director of the Wisconsin Center, has been most helpful. It was his suggestion that we meet here today so that you can see some of the facilities available to us. We will be using this beautiful setting, the lobby outside (which will be closed), the exhibit area next to the Auditorium and three additional rooms on the second floor for films and workshops.

Between now and April 13, the opening day of the exhibit, which will be formally opened by University of Wisconsin System President John Weaver, we will be sending you bi-monthly features and progress reports on the exhibit. We request you to give them wide publicity. Several members of the Committee will be happy to meet with you for radio interviews, newspaper features, and TV appearances. Chairmen of the various sub-committees (listed in your handouts) can be approached to discuss a specific topic, such as lamps and jars, scrolls, rare Bibles, art history of the Near East, lecturers, workshops, films and so forth.

Our committee includes Dr. Martha Carter, who has had much experience in field excavation. She has a Ph.D. in art history, and is chairman of the Loan and Display Committee. Thanks to her we will have a unique assemblage of some of the finest art pieces from the top museums in the United States. Professor Keith Schoville will meet with you on the significance of artifacts, Mrs. Phyllis Anderson on the New Testament Apocryphal materials, Professor John McGovern on writing materials, and many others.

Our desire is that you give us wide coverage on this, our first story of the exhibit, and keep the flame alive between now and April. Do not hesitate to get in touch direct with members of the Committee or telephone me at the office. In addition to your own, I can give you a number of feature ideas. I wish at this time to introduce some of the committee members who are present. Dr. Martha Carter, Loan and Display Chairperson, will tell you about some of the unique ancient art pieces to be displayed.

Comittee Members

THE BOOK AND THE SPADE: an Exhibition of Biblical Art and Archaeology

Mansoor, Professor Menahem

General Chairman, Hebrew and Semitic Studies

Rapp, Agnes

General Secretary, Hebrew and Semitic Studies

Schachter, Catherine

Project assistant

Lee, Mr. Robert

Committee member

Anderson, Mrs. A. D. (Phyllis)

Graduate seminar member

McGovern, Professor John

Committee member

Bartelt, Thomas

Teacher, West High School

Milan, Mrs. Iris

Committee member

Berlow, Mrs. S.

Committee member

Mosely, Mr. Russell

Department Public Instruction

Beyenka, Sister Barbara

Professor, Edgewood College

Murphy, Mr. Robert B.L.

Committee member

Bissett, The Reverend John

Graduate seminar member

Newhall, Mr. James

Art director, Cuna Mutual Ins.

Carter, Dr. Martha

Committee member

Peterson, Barbara H

Committee member

Christensen, The Reverend Stanley

Graduate seminar member

Peterson, The Reverend Charles

Graduate seminar member

Cox, Mrs. Don

Committee member

Platt, Ms. Doris

State Historical Society

Elvehjem, Mrs. Conrad

Committee member

Reges, Sister Marie Stephen

Professor, Edgewood College

Gruman, The Reverend Larry

Committee member

Rensberger, Mr. David

Graduate seminar member

Halsey, Mrs. Linda

Editor, UW—Extension

Schoville, Keith N

Professor, Hebrew and Semitic Studies

Hamann, Professor Albert

Committee member

Turner, The Reverend Wayne

Committee member

Heil, Dorothy

Committee member

Hillmer, The Reverend Gerhardt

Committee member

Hillmer, The Reverend J. Carl

Committee member