



LIBRARIES

UNIVERSITY OF WISCONSIN-MADISON

Bay Leaves. Volume 5, No. 23 June 17, 1937

Williams Bay, Wisconsin: Frank M. Van Epps, June 17, 1937

<https://digital.library.wisc.edu/1711.dl/7UOYYNUJPAMTM8M>

This material may be protected by copyright law (Title 17, US Code).

For information on re-use see:

<http://digital.library.wisc.edu/1711.dl/Copyright>

The libraries provide public access to a wide range of material, including online exhibits, digitized collections, archival finding aids, our catalog, online articles, and a growing range of materials in many media.

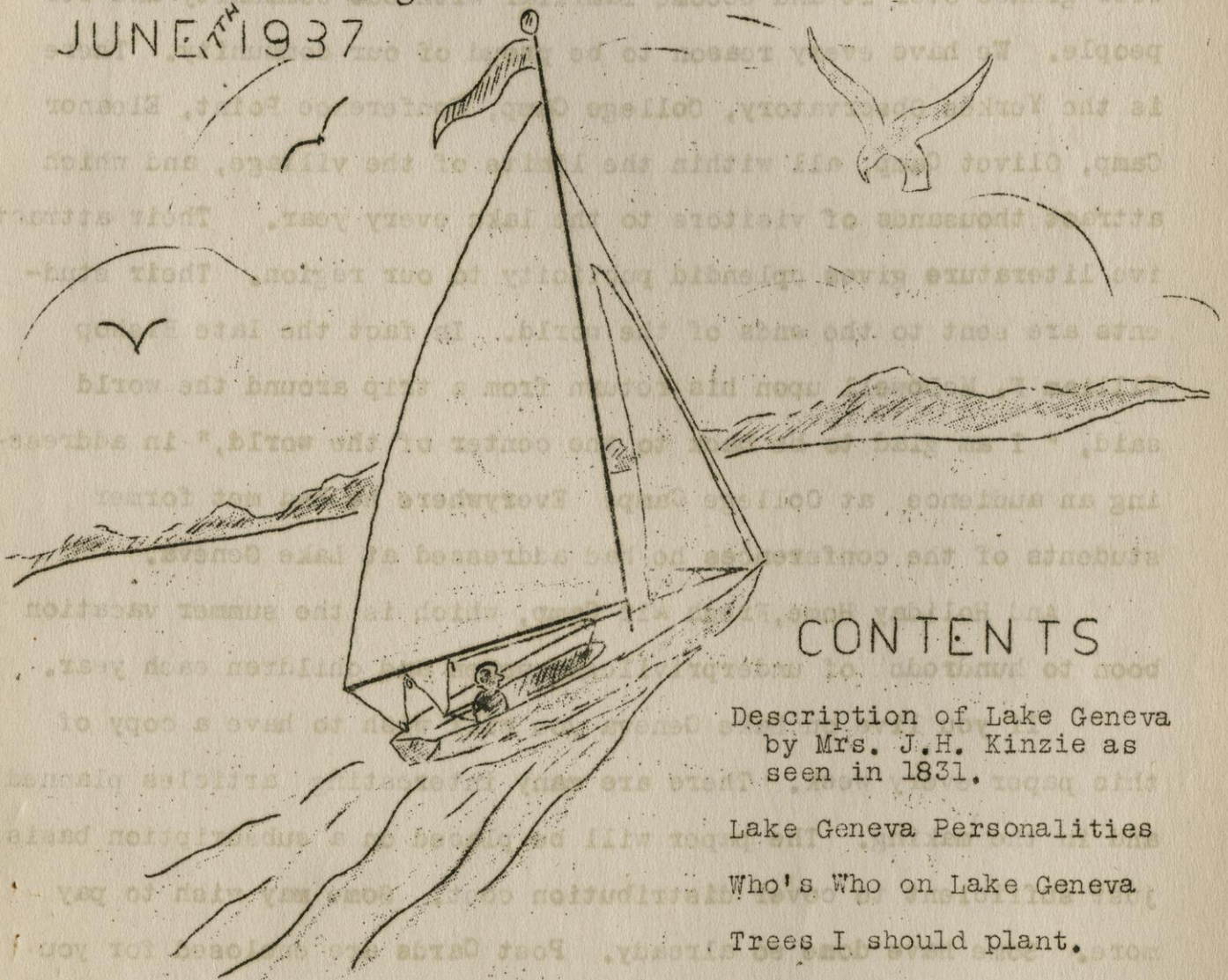
When possible, we provide rights information in catalog records, finding aids, and other metadata that accompanies collections or items. However, it is always the user's obligation to evaluate copyright and rights issues in light of their own use.

LAKE GENEVA OBSERVER

CONTINUING

BAY LEAVES

VOL. V NO. 23
JUNETH 1937



CONTENTS

Description of Lake Geneva
by Mrs. J.H. Kinzie as
seen in 1831.

Lake Geneva Personalities

Who's Who on Lake Geneva

Trees I should plant.

The Perennial Garden

Lake Geneva Gardeners

The Observer

"BAY LEAVES and "LAKE GENEVA OBSERVER "

The "Lake Geneva Observer" continuing the "Bay Leaves" reaches you this week. You are asked to give it more than passing attention. It is really gotten out for you and the other persons who have their homes on Lake Geneva or in those subdivisions with lake shore rights. Just as "BAY LEAVES" which has won a warm spot in the hearts of the residents of Williams Bay, so "LAKE GENEVA OBSERVER" will continue its news and comments to Lake Geneva (referring to the Lake).

"BAY LEAVES" will become a part of every issue and we hope you will glance over it and become familiar with our community and its people. We have every reason to be proud of our community. There is the Yerkes Observatory, College Camp, Conference Point, Eleanor Camp, Olivet Camp, all within the limits of the village, and which attract thousands of visitors to the lake every year. Their attractive literature gives splendid publicity to our region. Their students are sent to the ends of the world. In fact the late Bishop William F. McDowell upon his return from a trip around the world said, " I am glad to be back to the center of the world," in addressing an audience at College Camp. Everywhere he had met former students of the conferences he had addressed at Lake Geneva.

And Holiday Home, Fresh Air Camp, which is the summer vacation boon to hundreds of underprivileged women and children each year.

If you live on Lake Geneva you will wish to have a copy of this paper every week. There are many interesting articles planned and in the making. The paper will be placed on a subscription basis, just sufficient to cover distribution cost. Some may wish to pay more. Some have done so already. Post Cards are enclosed for you to indicate what interest you may have. These should be returned immediately after you have read your copy. The financial part of the paper is important but after this issue will be relegated to the background. Will you help in carrying out this policy?

FIRST DESCRIPTION OF LAKE GENEVA

The striking description given by Mrs. John H. Kinzie in her book "Waubun Tales" of her first view of Lake Geneva in 1831, is worthy of quoting. The party consisted of John H. Kinzie and his wife, his mother, Mrs. John Kinzie, a sister, Mrs. L.F. Helm and her small son, Edwin; two French employees, Petaillè Grengoron and Simon Lecuyer; a young half-breed "bound girl" Josette Ouilmette, and a negro boy, Harry. The party were on the fourth day out from Chicago on their way to Fort Winnebago (Portage) when Lake Geneva came into view. Mrs. Kinzie writes:

"We now found ourselves in a more diversified country than any we had hitherto traveled. Gently swelling hills, and lovely valleys, and bright sparkling streams were a feature of the landscape. Now and then a shout from the leader of our party (for according to custom, we traveled Indian file) would call our attention to a herd of deer "loping" as the westerners say, through the forest. But the game invariably contrived to disappear before we could reach it, and it was out of the question to leave the beaten track for a regular hunt."

"Soon after mid-day, we descended a long, sloping knoll, and by a sudden turn came in full view of the beautiful sheet of water denominated "Gros-pied" by the French, "Maunk-sauk" by the natives, and by ourselves, "Big-Foot", from the chief, whose village overlooked its waters. Bold, swelling hills jutted forward into the clear blue expanse, or retreated slightly to afford a green, level nook, as a resting place for the foot of man. On the nearer shore stretched a bright, gravelly beach, through which coursed here and there a pure, sparkling rivulet to join the larger sheet of water.

On the rising ground, at the foot of one of the bold bluffs in the middle distance, a collection of neat wigwams formed, with their surrounding gardens, no unpleasant feature in the picture.

A shout of delight burst involuntarily from the whole party, as this charming landscape met our view. It was like the Hudson, only less bold-, no, it was like the lake of the Forest Cantons, in the picture of the Chapel of William Tell! What could be imagined more enchanting! Oh, if our friends at the east could but enjoy it with us!

We paused long to admire, then spurred on, skirting the head of the lake, and were soon ascending the broad platform, on which stood the village of Maunk-sauk, or Big Foot."

Rev. Charles A. McAlpine, pastor of the Lafferts Park Baptist church, Brooklyn, New York, was a recent visitor in the home of Mrs. F. Hoppough, Lake Geneva, and also visited with other friends. He is the author of "Readers Bible and 'Life and Teachings of Jesus', two well known books.

the largest fleet this year that they have ever had.

Boats are beginning to arrive at the Lake Geneva Yacht Club in preparation for the regatta in August. The local club will have

In Wisconsin the annual tourist business has been variously estimated at from \$250,000,000 to \$350,000,000.

Best & Son, Lake Geneva, report the sale of the V.L. Alward lake shore near Fontana, to Dr. Edward W. White, Chicago, who has spent several summers on Lake Geneva.

COLLEGE CAMP GOLF CLUB

38TH SEASON

PUBLIC FEE COURSE

GREENS FEES

SEASON MEMBERSHIP

Men	\$15.00
Women	10.00
Juniors (18 years or under)	10.00

DAILY FEES

(Single day ticket - Monday thru Friday)	\$0.75
After 4:00 P.M.	.50

Saturdays	1.00
After 4:00 P.M.	.50

Holidays	1.25
After 4:00 P.M.	.75

Ten day coupon ticket (transferable)	6.00
---	------

NO SUNDAY PLAY

A COMMUNITY ASSET --- ONE OF THE REAL ATTRACTIONS TO
SUMMER VISITORS

A COZY CLUB HOUSE WITH VERANDA AND LOUNGE

REFRESHMENTS - GOLF MERCHANDISE - INSTRUCTION

YERKES OBSERVATORY

NOTE-

This is the first of a series of articles on the institutions on Lake Geneva. on the Observatory will be continued another week.

As one approaches Lake Geneva from any direction the dome of Yerkes Observatory becomes visible on the horizon to lend its beautiful architectural beauty with that of the work of the "Great Architect" who made this gem of a lake in such a beautiful setting.

The selection of this site for the location of the Observatory did not just happen, it was the result of careful study of many other sites and the rules guiding the selection. These rules were : -
(1) accessibility to Chicago and the University of Chicago; (2) remoteness from the dust, smoke, glare of street lights, and the jar of cities; (3) appreciable distance from trains and their vibration; (4) near but remote enough from a village to avoid smoke and glare.

The Observatory was the development of an idea of Professor George E. Hale, who owned a private observatory in the Kenwood district, Chicago, who upon hearing that a far-western institution of learning had ordered from Mantois of Paris, two 42 inch glass disks to be combined and finished as an object glass by Alvan Clark & Sons of Cambridge, Mass., but was unable to go on with the constructing and mounting of a telescope, and thought it would be possible to build such a telescope near Chicago.

President William Rainey Harper of the University of Chicago was interested in the plan and they secured from Charles T. Yerkes, Chicago financier, the funds for the telescope and buildings. Mr. John Johnson, Jr., who owned a home on the lake shore, gave the original fifty-three acres which has since been increased to eighty acres. The contracts for the disks and the mountings for the telescope were let in 1892 and the Observatory was finished in 1897.

The beautiful building which we behold was conceived by Dr. Hale after he had visited the various observatories in this and other countries and secured useful suggestions. The architect was Henry Ives Cobb.

The style is Romanesque with rather elaborate details. It is constructed of brown Roman brick, with terra-cotta ornaments to match. The design is that of a latin cross, with three towers and the meridian room at the extremities. The long axis lies east and west, with the great dome at the west. The length of the building in this direction is 326 feet. The original cost (which could almost be trebled now) was as follows- object glass complete, \$66,000; mounting, \$55,000; the dome, with rising floor, \$45,000; the remainder of the Observatory, about \$150,000. The land was originally valued at \$30,000. The instruments and equipment of the Kenwood Observatory given by William E. Hale and son, were valued at \$30,000; the Bruce telescope and building, \$8,000; the Snow telescope and building, \$10,000. About \$15,000 has been spent for landscaping.

The formal inspection by directors and officers was held on May 21, 1897, when President Harper and the trustees, C.L. Hutchinson, George C. Walker, A.K. Parker, Thos. W. Goodspeed, Martin A. Ryerson, Cyrus H. McCormick, Ferdinand Peck, H.A. Rust, F.A. Smith, Jesse Baldwin, and members of the faculty came to Williams Bay by special train in Marvin Hughitt's, C & N W president, private car.

REAL ESTATE

SALES

RENTALS

CONSULTATIONS - SERVICE

OUR SPECIALTIES

LARGE ESTATES AND MODEST HOMES ON THE SHORE AND
IN THE REGION OF GENEVA LAKE

CHOICE WALWORTH COUNTY FARMS

PROPERTY PROTECTION - INSURANCE IN ALL ITS FORMS

INSURANCE SURVEYS - APPRAISALS

PROPERTY MANAGEMENTS

HOTTON^{AND} SONS

WILLIAMS BAY, WISCONSIN

PHONE - LAKE GENEVA 360-J-3

A Growing Business for Eight Years

To preserve Geneva Lake Standards

" As friend with friend always "

SEEN AROUND LAKE GENEVA.

IN WILLIAMS BAY- the new Texaco Service Station which was formally opened last Saturday, June 12, looms up day and night with the large reflector lights brightening the highway on and around Geneva St. east of the Williams homestead. E.H. Hollister, the proprietor, gave favors of red roses to the ladies and cigars to the men, who thronged to visit the new station for the opening. The new station is modern in every respect, being equipped with all modern devices for super-service.

One block north the lumber yard office has been remodeled and made in keeping with the growing business under the management of Mr. Lawrence Hollister, who is conducting the business under the name of Hollister Lumber Co. Lawrence and Ed were in business over twenty-five years with their father, the late Albert Hollister of Delavan.

The carpenters are at work remodeling into an old English type of business building, the Southwick store which Hotton & Sons recently purchased. Modern store rooms, one of which they are now occupying for their Real Estate and Insurance Service are being placed down stairs and the second story will have modern apartments.

The old Williams homestead on Geneva Street has been remodeled by E.H. Hollister into three modern apartments. Portions of the house were erected back in 1839 by Royal J. Williams, the first settler in Williams Bay. It is interesting to note the hand hewn black walnut beams and split wood shingles and the solid walnut stair-case leading to the second floor.

William Stein's store was recently opened on Geneva Street, in the P.O. Peterson bld'g. He sells homemade ice cream and sundries.

Phil Fogle has made improvements in his Hamburger stand and is trying out something different in his line quite out of the ordinary.

A new beauty shop sign greets you on Walworth Avenue, "Bay Beauty Shop". Margaret Jensen Fogle is the proprietor. It is located above the Bjorge Gift Shop in the Bjorge Block.

The Laur'Elle Beauty Shop has an attractive Neon sign which helps also to add color to the business section.

The Lake View Nursery, Frank Johnson, Prop., keeps a fresh display of flowers in Elbert's Barber Shop window adds to the surroundings on the main corner of Geneva St. and Walworth Avenue.

Aron Granberg has taken over the service garage part in Clayton's Garage and is kept very busy.

Now that the village parks are looking so well kept as well as the lawns and yards of the home owners in the village and adjoining subdivisions, should not every owner of a vacant lot in the village want to cut the weeds or grass, where it is not mowed! This would then help to lend beauty all about us.

BRADLEY'S THE STORE FOR BATHING SUPPLIES

LADIES SWIM SUITS

Popular Styles

at

\$1.95 to \$9.50

CHILDRENS SWIM SUITS

Sizes 2 to 12

79¢ to \$1.95

BE SURE OUR STORE WHEN IN
DELAVER

Here you will also find a
very attractive assortment
of Ladies, Misses and Child-
rens BEACHWEAR

SLAX _____ \$1.00, \$1.25, \$1.50
and up to \$2.95

SHORTS _____ 59¢, 75¢ up to \$1.25

SPORT SHIRTS _____ 79¢, 89¢ to \$1.95

HALTERS _____ 25¢, 59¢ and 75¢

PHOENIX SPORT SOCKS, 25¢ to 35¢

W.W. BRADLEY & CO.

Delaver's Quality Department Store

MURPHY & O'NEILL

Walgreen System Store

Famous Chocolate

Sodas

DELAVER PHONE 252

Ford

DELAVER MOTORS

SIDNEY T. SJOBERG

FORD SALES & SERVICE

Delaver, Wisconsin

FUNERAL DIRECTORS
FURNITURE DEALERS

SUMMER FURNITURE

LATEST IN DESIGN

* * * * *

LACKEY, LIDDLE & O'BRIEN

DELAVER

WISCONSIN

SEEN AROUND LAKE GENEVA (continued)

AT FONTANA-

The Shore Drive to Fontana has been improved in the Fontana limits and is a beautiful place for a leisurely ride. Chairman of the town of Walworth, Quaas assured the Observer that the road leading to it past College Camp will be put in good shape this week.

Going by either road you will notice a sign "Butternut Inn", which is a new place to dine and be refreshed, located at their home under a spreading butternut tree, recently opened by the Misses Nellie Groesbeck and Carrie Northrup.

Mr. Adam Schiller has built a new Service Station next door to the Village Hall.

The village of Fontana recently purchased a new type fire engine of which the Volunteer Firemen are very proud.

A steady stream of trucks was hauling away gravel and sand from the Lake Geneva Sand & Gravel Co's pit which is running to capacity. In the office of the company the Observer met Mr. L.C. Douglass, who just recently completed a bus tour covering 13,000 miles in 40 states. He owns the pit which he leases. He told some interesting stories of the old mill which his father, C.L. Douglass had. (this will make a future story.)

The new street signs are unique as they are white with black letters and not only tell the names of the streets, such as Kinzie, Douglass St., Main St., North Shore Drive, South Shore Drive, 1st Avenue, etc., but give directions to the Catholic Church, Lake, Library, etc.

Joe Capponi whose new place of business occupies a prominent corner, has installed Sodium lights for outside illumination. The lights are a very new design as this is the second installation in Wisconsin and the sixth in the United States. They light up as bright as day without any glare. They are the same as are used on the new San Francisco Bridge.

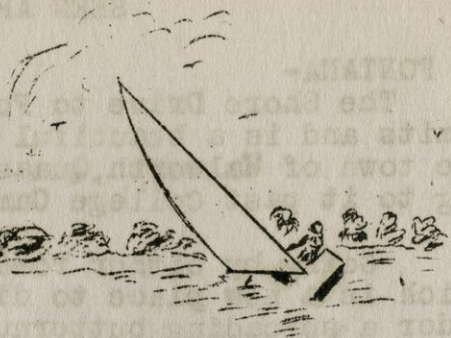
Emory Jaeger and his men at the Palmer Boat Co. were very busy launching a new sail boat as the observer rode by. A new covered pier was being painted and made ready for use.

Fontana is to be congratulated on the attractive yet usable lake front. The facilities for swimmers and picnic crowds is second to none. The idea of keeping the view of the lake open and parking across the street in adequate space provided by the village is a fine one.

Lew Buckles, the contractor has built seven new homes on the lake shore or in subdivisions on the shore during the winter and spring season. One for W.J. Brace of Kansas City, Mo., in Spring Haven. A log cabin for A.B. Jensen who has since sold it to Geo. F. Wolf of Chicago. (The American Builder will publish a picture of it soon) Another home thru Mr. Jensen for Mr. Wolf's brother, Ray. Others are Thor Chellberg and Howard Rischer in Country Club Estates. Two have been built or are under construction in Wooddale for Frank Ptaka and Walter Jepsen of Chicago.

BEAUVAIS BOAT COMPANY

Williams Bay, Wisconsin



CHRIS-CRAFTS

GAR-WOODS

STORAGE

REFINISHING

ENGINE SERVICE

ROW BOATS

20' INLAND SCOWS

PAINTS

HARDWARE

ROPE

HOLLISTER LUMBER CO.

WISHES TO FURNISH

YOUR

LUMBER, MILLWORK

and

BUILDING MATERIAL

FOR YOUR NEW HOME

OR REMODELING JOB



CALL FOR A BOOK OF PLANS

WILLIAMS BAY, WIS.

Phone 818 - W -1

WHO'S WHO OF LAKE GENEVA

This is the beginning of a series which will appear each week telling of men and women who are living on the shores of Lake Geneva today. These articles are to be written by the editor.

GEORGE FREDERICK MORSE, JR.

In recent issues of BAY LEAVES several Williams Bay residents whose names appeared in "WHO'S WHO" in America in 1937" were given recognition and the material regarding them in "WHO'S WHO" given verbatim. Those appearing were Dr. Otto Struve, Dr. F.E. Ross, Dr. G. Van Biesbroeck, Dr. Elliott R. Downing. While gathering material for the above it was found that three from Lake Geneva were named. George F. Morse, Jr., Rev. E.R. Killam and Mrs. Frances K. Hutchinson. The latter has passed away during the year as did Dr. Paul B. Jenkins who also appeared in the 1937 "WHO'S WHO".

Last week the editor has the pleasure of being in a party which made a tour of Wychwood under the guidance of Mr. Morse and was so impressed with the interesting work that he is doing, that right away the subject for this article was suggested.

"Wychwood", named from clumps of witch hazels, was the home of Mr. and Mrs. Charles L. Hutchinson who developed it from a wilderness to one of the most attractive estates on the Lake Geneva. There are 72 acres of wild beauty, with of course, the improved gardens. At the very beginning the owners made it a haven for wild bird life and plants.

The editor had a very pleasant conference with Mrs. Hutchinson just before her last illness.

Now, Wychwood is the property of the University of Chicago and is part of the Botanical Department for Research. Through the courtesy of the University groups of persons really interested in plant and bird life are welcome, provided permission is secured in advance and they can be fitted into the schedule of the personally conducted tours by Mr. Morse. It is a school for advanced research students. Keep this in mind and do not go there without previous permission or you will find the gates barred to you.

Now for the account of the delightful guide of our trip thru part of the ten miles of paths, with peeps at birds nests and millions of flowers.

George Frederick Morse Jr., zoologist, lecturer; born in Philadelphia, Pa., May 16, 1885; son of George F. and Mary E. (Harmas) Morse; graduate Phillips Exeter (N.H.) Academy, 1904. Married Elizabeth W. Taylor of Exeter, October 3, 1906. Children, George F. III, Charles T. (deceased), John C. Engaged in nature study and fur farming, 1906-14. Member Mass. House of Rep., 1913-1914., Secretary Mass. Fish and Game Protective Association, 1915-16., President Mass. Sportsmen's League 1916; curator Boston Zoological Park and Boston Aquarium 1918-22; director Chicago Zoological Society, 1922-24; Director Shedd Aquarium, Chicago, 1925-29; member staff, University of Chicago; Associate Director Wychwood Bird and Wild Flower Sanctuary. Lecturer on "Wild Animals in Captivity". Author of childrens animal books. Home-Lake Geneva, Wis.

WALWORTH

ZENDA

LUMBER CO.

LUMBER

MILLWORK

LIME

CEMENT

PAINT



PHONES - WALWORTH 3

LAKE GENEVA 1261 - J-3

BROWN & LOFTUS

DRUGISTS

LUICK ICE CREAM

MAX FACTOR TOILET PREPARATIONS

KODAKS & FILMS

WALWORTH, WISCONSIN

PHONE 55

PERPETUAL BLOOM IN THE GARDEN

To have flowers in your garden all season requires planting a variety of plants, both perennials and annuals should be used.

In planning a garden you should divide it into sections, planting each about alike, using some plants of each variety in each section. In this way you will have flowers in all of your garden and not have one side in full bloom and the other already out of bloom. It is also well to keep in mind the color and height of each flower so that you get the best arrangement and color harmony.

For early spring flowers the Narcissus and Tulips give a wide range of color and are very beautiful. The narcissus will be in bloom before the Tulip are through blooming and a few groups of them are very helpful to any garden at this time. A very nice combination for the last part of June and the first part of July is Delphiniums and Madonna Lilies planted together. Also for June is the lovely Columbine with all the colors of the rainbow.

A good collection of other perennials is Phlox, in all colors from white to dark red, Butterfly Bush in purple. Shasta Daisy for early white; Artemesia for late white; Veronica in blue; Bleeding Heart in pink, and the Painted Daisy in pink, white and red.

Then we must have the annuals. They have a much longer blooming period than the perennials. For annuals some of the most satisfactory are; Zinnias, Marigold, Aster, Snapdragons, Salvia, Scabiosa, Ageratum and Petunias. These annuals may be secured in all colors and sizes, therefore, they will fit into every vacant spot in your garden making it a complete and beautiful picture all summer.

Frank Johnson

Proprietor of Lake View Gardens

Summer begins at 3:12 p.m. on Monday, June 21. The predictions are for a warm season.

GENEVA THEATRE- LAKE GENEVA, WIS.

Thursday-June 17

Katherine Hepburn- Franchot Tone in "QUALITY STREET"

Friday-June 18-Double Feature
WILL ROGERS in "DR. BULL"

and
JEAN MUIR in "OUTCASTS OF POKER
----- FLATS"

Saturday-June 19-Double Feature
(Saturday Matinee 2:30-regular
Mat. will be run at 2:30 for
the entire summer)

Laurel and Hardy in "WAY OUT WEST"
and

LEE TRACY in "CRIMINAL LAWYER"
Sun-Mon-Tues-June 20-21-22- Mat
Sunday-2:30

GINGER ROGERS- FRED ASTAIRE in
"SHALL WE DANCE"

Wed-Thurs- June 23-24-
MARLENE DIETRICH- CHARLES BOYER
in "THE GARDEN OF ALLAH" and
THE MARCH OF TIME

DELANVAN THEATRE- DELAVAN, WIS.

Thurs-Fri-June 17-18

KAY FRANCES -CLAUDE RAINS in
"STOLEN HOLIDAY"

Saturday-June 19

DON AMECHI- ANN SOTHERN
in "50-ROADS TO TOWN"
Sun-Mon-June 20-21-Mat. 2:30-Sun.
FRED ASTAIRE- GINGER ROGERS
in "SHALL WE DANCE"

Tues-Wed- June 22-23

"SWING HIGH SWING LOW"
with Carole Lombard-Fred MacMurra
Charles Butterworth, Jean Dixon
Thurs-Fri-June 24-25

JEAN HARLOW-ROBERT TAYLOR in
"PERSONAL PROPERTY"

SPRAGUE THEATRE- ELKHORN, WIS.

Thurs- June 17-

"A DOCTOR'S DIARY"

Friday-June 18

"ESPIONAGE"

Saturday-June 19-

"BLAZING SIXES"

Sun-Mon-June 20-21

"TURN OFF THE MOON"

Tues-Wed- June 22-23

"THE GARDEN OF ALLAH"

Thurs-June 24-

"INTERNES CAN'T TAKE MONEY"

BUCKNALL BROTHERS

" THE QUALITY SHOP "

Can supply your needs in --

VENETIAN BLINDS

WINDOW SHADES

BRASS RODS

FLOOR COVERINGS

LINGERIE

FOUNDATION GARMENTS

GLOVES -- HAND BAGS

HOSIERY -- SHOES

SILK & COTTON FROCKS

SPORT TOGS

SWIM SUITS

BEACH WEAR

LAKE GENEVA

REMEMBER FATHER'S DAY IS
SUNDAY, JUNE 20TH

Give him something he will appreciate -
something he can wear.

A BEAUTIFUL LINE OF NECKWEAR AWAITS
YOUR APPROVAL.

MANHATTAN SHIRTS - THE RECOGNIZED ARIST-
OCRATS of shirts are here in variety.

FLORSHEIM SHOES are for your inspection.

Mallory Hats carry the Guarantee of
Service and Satisfaction.

Jantzen Swim Suits are here in all the late
weaves and styles.

DRESS GLOVES are shown in the new shades
and leathers . Also Hosiery and SWEATERS.



Ties
for
DAD

BUCKNALL'S STORE FOR MEN

LAKE GENEVA PERSONALITIES

The story of the transition of Lake Geneva territory when it was passing from the hands of settlers and squatters to the hands of men and women who ultimately transformed it into such a playground as cannot be found anywhere else, is, to say the least, unique. Lake Geneva is so unusual in many of its features that it may well be said that it stands alone.

The names of these men and women are so intimately woven into the history and development of this middle west territory and the city of Chicago that they form the very background of the story. They are the characters who have played a drama which is filled with romance, beauty and achievement. Not elsewhere in this nation is found a lake whose forest-clad hills and curving shores lends itself so aptly to the artistic taste of the people of wealth and leisure who employed professional landscape gardeners to make the entire surroundings of the lake one continuous panorama of the beauties of nature enhanced by the art of man.

More than sixty years ago General Phil Sheridan named Sheridan Springs when the water was just bubbling from the ground and wantonly flowing away.

It was in the early seventies that the Chicago people first began the development of homes here at the lake. Among the very first to come were, Levi Z. Leiter, the three Sturgeses; Buckingham, Shelton and George. N.K. Fairbank, whose "Gold Dust Twins" have cleaned the world; Julian Rumsey; Messrs S.H. Wheeler and J.P. Wilson, whose sewing machines have lightened the labors of thousands of housewives. Professor David Swing; H. Gordon Selfridge, manager for Marshall Fields, Chicago, until he went to London and introduced American shopping in England. John J. Mitchell, the international banker, and his father, Wm H. Mitchell; James Hobart Moore of the Rock Island Railway; Tracy Drake of the hotel fame; Conrad Seip, the brewer; R.T. Crane the iron monger; Samuel Allerton who delighted to be called "Farmer Allerton"; Hubbard Carptenter; C.K.G. Billings of race horse fame; J.B. Grommes, the distiller; George D. Barnard, the St. Louis publisher; Otto Young of The Fair, Chicago; Martin A. Ryerson, steel manufacturer; A.C. Bartlett of Hibbard, Spencer & Bartlett, wholesale hardware dealer; Henry C. Lytton, of the "Hub"; N.W. Harris and A.W. Harris of Harris Trust Co.; L.W. Meyers, Rockford manufacturer; Mr. S.B. Chapin, New York broker, whose "Flowerside Farms" is one of the most beautiful estates on the lake and one in which no speck of decay shows after forty years. Each of the farms and the beautiful home on the shore are in the very pink of perfection year after year. Wm Wrigley Jr., who made the world "gum" conscious.; and now Philip K. Wrigley, his son; Edward F. Swift; Mr. Charles Hutchinson, whose estate is now turned into a haven for birds and wild plants; J.C. Fleming; Henry Bartholomay; A.F. Madlener; E.E. Ayers; Mason B. Starring; General Henry Strong; O.W. Potter; F.L. Chapman; Judge N.C. Sears; Albert Keep; H.M. Byllesby of General Motors; John M. Smyth, furniture dealer; Daniel Peterkin, who makes a specialty of raising pheasants and wild water fowl; Dr. O.F. Schmidt; Sidney Smith, whose "Andy Gump" provoked many a laugh; H.H. Porter.

(continued)

HOME COMFORTS

DEPENDS ON CAREFULLY PLANNED

PLUMBING & HEATING

PROPERLY INSTALLED

FOR DEPENDABLE EXPERIENCED SERVICE CALL US.

LARGE STOCK OF SUPPLIES AND FIXTURES ALWAYS ON HAND

W.J. HOOKER

923 Henry St.

LAKE GENEVA

Phone

117

WILLIAMS OIL-O-MATIC HEATING

SUBURBAN WATER AND DRAINAGE SYSTEMS

SEE

BUTTON BROS.

FLORISTS IN LAKE GENEVA

SINCE 1882

FLORAL DESIGNS
PARTY DECORATIONS

OUR SPECIALTY
CUT FLOWERS

AND

BEDDING
PLANTS



VISIT OUR GREENHOUSES OR
CALL Phone 18

LAKE GENEVA PERSONALITIES (Con't)

On one section of the South Shore of the lake the earlier comers built the Lake Geneva Country Club and golf links upon which the most noted of golf players have competed in the invitation tournaments.

The Northwestern Military and Naval Academy under the efficient direction of Colonel R.P. Davidson and his capable wife, occupies the site of the old Kaye's Park resort, which for many years catered to noted guests.

Yerkes Observatory; Y.M.C.A. Camp; Holiday Home all add their bit of beauty.

Now, while the names I have registered here are synonymous of the big things that Chicago and the country at large has done, I believe a more intriguing angle of these people would be the manner in which they played.

The first Chicago business men and captains of industry who came to Lake Geneva to play and rest secured large tracts of land and proceeded to develop landed estates, employing great numbers of gardeners, farmers, horsemen and stockmen, and took their entertainment in a leisurely way with large stately yachts on the lake and beautiful horses and equipages on the highways. They seemed always to have time to enjoy their surroundings and visit with their neighbors. Their memories will long be held sacred by surviving friends and their achievements will go on and on, far into the future.

Many interesting anecdotes of individuals are told by their friends. It is related of S.W. "Farmer" Allerton that at one time when a number of weekend guests were present at a formal dinner, Mr. Allerton quite ostentatiously picked up his napkin and draped it across his bosom tucking one corner into his collar then glanced across at Mr. George Dunlap who, by the way was quite a stickler for form, and said "George, didn't they give you any napkin?" Mr. Dunlap, coloring somewhat said, "O! yes, Mr. Allerton, I have a napkin," and Allerton with a sly twinkle in his eye responded, "Humph, you don't seem to be using it."

One of the characteristics of C.K.G. Billings was that while he owned many of the most famous race horses in the world, he never raced them.

James Hobart Moore had at one time in his stables at "Loramoor", his summer home on the south shore, more than fifty head of show horses, and his coach and "four" was a spectacle worth seeing.

Mr. John J. Mitchell was a great lover of horses and always used a carriage and pair for his trips to and from the railway station. Altho the automobile was in use for longer drives.

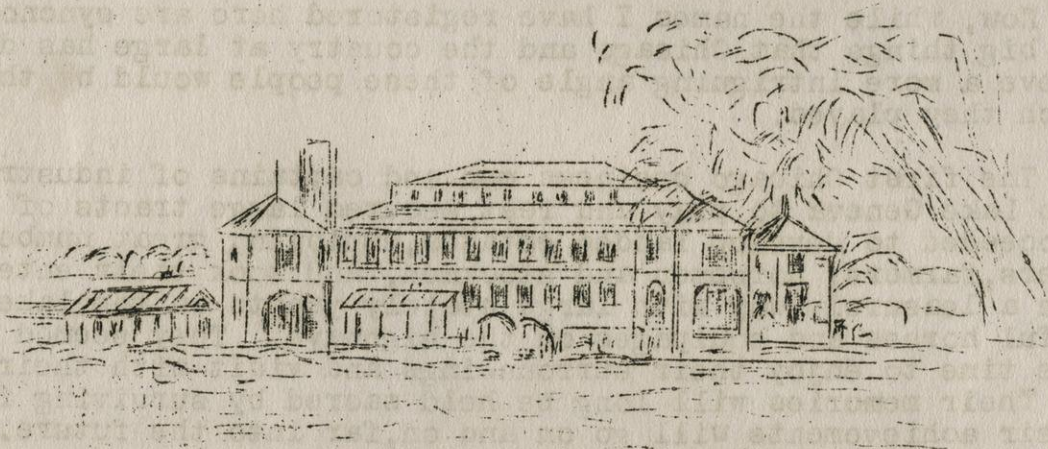
This article is the preliminary one of a series which Mr. F.M. Higgins, formerly editor of the Lake Geneva News from 1903-1917, and now a Justice of the Peace in Lake Geneva, will write for the "Lake Geneva Observer", telling the more intimate life of those who lived on the shores of the Lake in years gone by, or have been here for many years. Many have passed on to the other world but their memories still cling to the estates which they beautified.

EDITOR

RIVIERA

' ON THE LAKE '

LAKE GENEVA, WIS.



GALA SEASON'S OPENING

SATURDAY NIGHT JUNE 19TH

LOUIS PANICO

AND HIS BRILLIANT

BAND

NBC Broadcasting Orchestra

NOW - Dancing Every Evening ---- Except Monday

Coming, Saturday June 26th - Glen Brandy and his Orchestra,
with Dick Hendericks "Carl"-and all the favorites.

You are always assured a splendid evening entertainment at
the Riviera, with beautiful surroundings and refinement.

BAY LEAVES

NEWS ITEMS

Dr. C.Y. Wiswell has purchased the property in Oakwoods Estates where he lives, from the E.G. Riffel estate.

A son, Ude Janssen Imega, was born to Mr. and Mrs. Ude Imega, at the Walworth County Hospital on Monday, June 14.

Mr. Imega is foreman on the E.N. McDonnell estate on the north shore of the lake.

Mr. and Mrs. Russell Zabler of Chicago were weekend visitors at Mrs. Dorothy Fridell's home in Cedar Point Park.

Mr. and Mrs. Martin I. Foss of Chicago spent a few days in the J.S. Hotton home on Parkhurst Place, last week. Thursday they motored to Madison with Mr. and Mrs. Hotton.

Mr. Foss was formerly Director of Physical Education of George Williams College, Chicago, and is now assistant director of the Hyde Park United Church.

Prof. O.D. Frank of the University of Chicago and director of the Lake Geneva Summer School of Natural Science, spent the week-end in the E.R. Downing home for conference with Dr. E.R. Downing.

Mr. H.B. Dash, brother to Mrs. C.T. Larson, and who is the manager of one of Minneapolis leading Realty firms and his wife, secretary to Kraft Cheese Corporation, together with their son, Richard, are having a weeks vacation at Dr. and Mrs. C.T. Larson, 49 Geneva Street.

Mr. and Mrs. J. Myers, and daughter, Mrs. E.N. Hendricks and son, John, of Beverly Hills, Chicago, are at their summer home on Elm St. Mr. Hendricks spends the weekends here.

GIFTS FOR ALL OCCASIONS

AT THE BJORGE'S HOME

DECORATING & CRAFT SHOP

Ringless, Runstop Rollins

HOSIERY 79¢ - \$1.00

LENDING LIBRARY

ROSE-LANE RESORT

GOOD ROOMS AND MEALS

For information and

reservation

Write to

Mrs. J. Jorgenson,

Williams Bay, Wis.

Telephone- Lake Geneva 574-W-3

JOHNSON

Sea-horse
OUTBOARD MOTORS

SALES

SERVICE

Why not trade in that

old motor?

Repairing all amkes.

Boats - Marine Supplies

E.H. HOPKINS

Phone 1259R3

Wms Bay

SIXTH ANNUAL RECITAL
GENE EICHAR SCHOOL OF
MUSIC AND DANCE

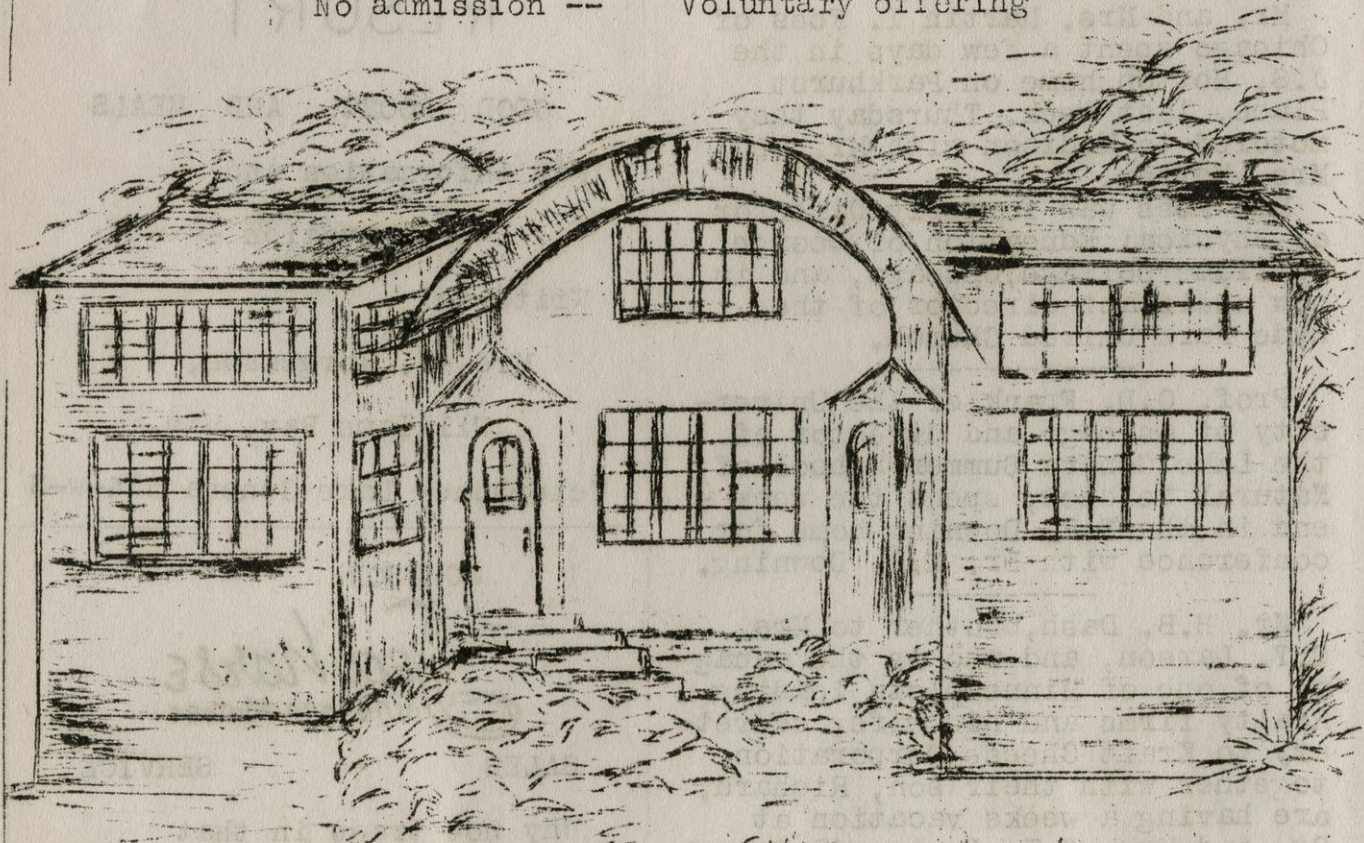
(FORMERLY FERANGENE)

ON THE HILLSIDE OF THEIR RESIDENCE STUDIO

" CHATEAU CHARLOTTE "

SUNDAY, JUNE 20th at TWILIGHT 7.00 p.m.

No admission -- Voluntary offering



CHATEAU CHARLOTTE

AT THE END OF STAM STREET

Williams Bay

(In case of rain watch for postponed date)

BEAUTY SHOPPE

LAUREL BEAUTY SHOPPE
Phone 1219-R-1

AXEL TULANE
Carpenter

REMODELING

REPAIRING

Wms Bay

Phone 1274-R-3

GARBAGE REMOVAL & HAULING

Call Henry Kenyon-- Ph-1202-R-2

V. FORMANEK

SHOE REPAIRING

HAT BLOCKING

TOOL and CUTLERY SHARPENING

!! NOTICE !!

At the morning service in the
Wms Bay Congregational Church,
Sunday, June 20, the soloists will
be Micheline Van Biesbroeck, violin-
ist, Mr. Charles Ciaugue, baritone.
Miss M. Van Biesbroeck, accompanist.

HAMBURGERS
AT
THEIR BEST

ORDERS MADE UP TO
TAKE OUT

PHIL'S GRILL
WMS. BAY

Mrs. Edwin Brant Frost will be
hostess at a luncheon for the
benefit of the Ladies Aid Society
of Congregational Church, at her
home, Tuesday, June 22, at one
o'clock. A charge of 35¢ will be
asked. Reservations will be for
32. Call Mrs. Frost or Mrs. L.A.
Hollister. Novel entertainment
will be in the afternoon. The
ladies are asked to bring their
sewing.

Granzow and Peterson have in-
stalled an electric coffee grinder
in their store which assures just
the right type of coffee for the
customers coffee pot.

At the Gene Eichar School of
Music and Dance Recital next Sun-
day, June 20, there will be beauti-
ful costumes, special musical sett-
ings and scenery. Pupils are from
Elkhorn, Delavan, Williams Bay, Lake
Geneva, Beloit and Janesville, Wal-
worth. Program starts at twilight,
7 o'clock at the Eichar Studio on
South Stamm St. on Eleanor Camp
road. A free will offering will
be asked. The public is invited.

Spence's on Geneva Street is a
popular place for parties. The
Superintendents Club of the Mil-
waukee Schools met there last Satur-
day. The teachers from the Fern-
wood School, Milwaukee, dined there
on Thursday. Mr. B.E. Sellgren of
Fontana, entertained a party of
friends on Tuesday, in honor of his
mother's birthday.

Mr. Edward Zabler is employed
at Camp Aurora, formerly Hotel
Minier on the south shore of the
lake. The buildings are being re-
modeled for a boy's camp.

The Village Board will meet
next Monday night to act upon the
applications filed for Liquor
Licenses in Williams Bay. Those
who have applied are: Mrs. M.C.
Spence, Mrs. Clara Ridell for
Clarendell, R. Stein, B.H. Van-
dercook for Bay Shore Hotel.
Meeting in Fire Station, 7.30 p.m.

COOLERATOR

MORE THAN 350,000 FAMILIES HAVE
CHANGED TO THIS BIG, BEAUTIFUL
REFRIGERATOR

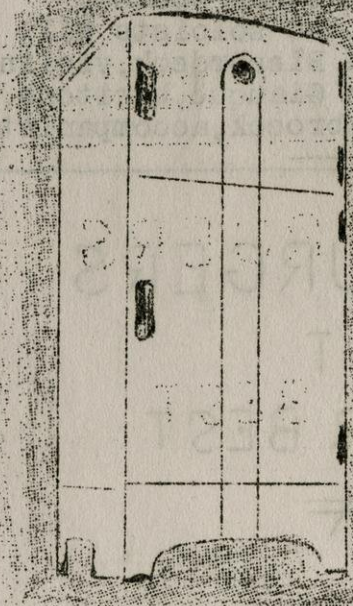
Make a 10 day trial free.

It's Big !

It's Beautiful

Coolerator saves you as much as \$100!

And with its patented air conditioning chamber, COOLERATOR will keep your foods fresher by preventing the rapid drying out of air. It uses ice in a totally different way to was humidify, circulate and coll the air that touches your food. One filling of ice lasts ordinarily from four to seven days -- gives you plenty of crystal clear, taste free ice cubes in 5 minutes .



ASK FOR

BOOKLET

TELLING

WHAT

USERS

SAY.

ASK YOUR ICE MAN FOR INFORMATION ,HE KNOWS

OR CALL AT THE SHOW ROOM OF THE WALWORTH CO.
DISTRIBUTOR

A M B R O S E B R O S .
I C E & C O A L C O .

WILLIAMS BAY
WIS.

GRANZOW & PETERSON'S

QUALITY-FOOD-SHOP-SPECIALS

With our young people out Sailing, Boating, Bathing, and Fishing, they are going to be plenty hungry, so a good supply of food on hand would 'nt be a bad idea. So we also say --AHOY--AHOY.



AHOY!

PURE CANE SUGAR		10-lbs 56¢	RAISINS 2-lb. pkg. 19¢
KWIK PIE DO		No Mixing, all ready to roll, 33¢	HILLS BROS COFFEE 2-lbs. 57¢
LaGRANGE BUTTER 2-lbs. 69¢	LEG of LAMB, LAMB SHOULDER, " BREAST, POT ROASTS, VEAL SHOULDER, PORK BUTTS, " SAUSAGE, PICNICS, HAMBURGER, STEWING HENS & SPRINGERS Fresh Fish on Friday	per lb. 36¢ " ".28¢ " ".15¢ " ".27¢ " ".20¢ " ".32¢ " ".28¢ " ".30¢ " ".24¢	MIRACLE WHIP Qt. jars, 39¢ GRAPE FRUIT JUICE 46oz. tins, 27¢ BROWN SUGAR 4-lbs. 22¢ POWDERED SUGAR 3-lbs. 23¢ SLICED PEACHES 30-oz. tins, 22¢ DILL PICKLES Qt. jars, 20¢ PUFFED WHEAT 3 oz. pkgs. 09¢ FRUIT for SALAD 1-lb. tins, 21¢ TUNA FISH 2-7oz. tins, 33¢ PRUNE JUICE Qt. jars, 23¢ GRAPE FRUIT JUICE 3-13½oz. tins 29¢ GREEN BEANS (cut) 2-20-oz. tins, 27¢ VALENCIA ORANGES 35 and 42¢ Doz. STRAWBERRIES, PINEAPPLES,
ROUNDY'S SALMON 1-lb. flat, 28¢			
HERSHEY'S COCOA 1-lb. tins, 15¢			
SODA CRACKERS 2-lb. pkgs. 21¢			
SLICED PINEAPPLE 30-oz. tins, 23¢	CAMPBELL'S TOMATO SOUP 3-10½-oz. tins, 25¢		
CORN or PEAS 2-20-oz. tins, 23¢	CAMPBELL'S BAKED BEANS 3-1-lb. tins, 25¢		
MIXED PICKLES Qt. jars, 28¢	SHREDDED WHOLE WHEAT 2-12oz. pkgs. 25¢		
KRAFTONE ½-lb. tins, 35¢	HARDING'S CORN BEEF HASH 1-lb. tins, 18¢		
G. and P. COFFEE per lb. 24¢	RICHELIEU QUICK OATS 3-lb. pkgs. 18¢		
PINEAPPLE JUICE 46oz. tins, 36¢	BREAD and BUTTER PICKLES 15oz. jars, 18¢		
MILD WIS. CHEESE per lb. 26¢	Dr. PRICES BAKING POWDER 12oz. tins, 21¢		
CANNED TOMATOES 2-20-oz. tins, 19¢	BABY STUART GOLDEN BANTAM CORN 2-20-oz. tins, 29¢		
ROYAL GELATINE 3-3½oz. pkgs, 17¢	CHASE & SANBORN COFFEE 2-lbs. 57¢		
RITZ CRACKERS 1-lb. pkgs. 23¢	ORANGE and GRAPE FRUIT SEG- MENTS, 20-oz. tins, 18¢		
Special Coffee Cakes Sat. Complete line of Fruits and Vegetables.			

GO TO CHURCH SUNDAY

CONGREGATIONAL CHURCH

Rev. Victor Keiser, pastor

Morning worship, 10:45. Sermon topic for Sunday, June 20; "Splinters and Planks". Sunday School at 9:30 a.m.

GOSPEL TABERNACLE

Rev. R.K. Kinney, pastor

Morning worship 10:30

"Thou art worthy, O, our God and Lord, to receive glory and honor and power: for thou hast created all things, and for thy pleasure they are and were created."

Sunday School 11:30

Classes for all ages and a warm welcome.

Junior Young Peoples 7:00

Mary Southwick in charge

Senior Young Peoples 7:00

Mary Vavra, Leader

Evening Service 8:00

A doctrinal message concerning the Third Person of the Trinity.

TONIGHT at 8 o'clock

Dr. H.A. Ironside, pastor of the Moody Memorial Church, Chicago, will speak on the subject "Full Assurance". Dr. Ironside is known from coast to coast and in many places abroad. He is one of the best Bible teachers of our day and well worth driving many miles to hear. We are indeed fortunate and grateful to be able to secure this potent man of God and trust that many in this locality will take advantage of this opportunity to see and hear him.

Wednesday evening Prayer and Bible Study at 8 P.M. We are considering the Book of Romans.

ST. BENEDICT CATHOLIC CHURCH

Fontana, Wis.

MASSES at 7:30- 9 and 10:30 A.M.

COLLEGE CAMP

Rev. John B. Hannah, pastor of the First Congregational Church, Appleton, Wis., will be the speaker Sunday morning, June 20 at 10:45.

COMMUNITY CHURCH

Fontana, Wis.

Morning Worship

10:45

FIRST EV. LUTHERAN

Lake Geneva

Morning Worship

10:30

Sunday School

9:15

Rev. H.J. Diehl, pastor

METHODIST EPISCOPAL CHURCH

John L. Walker, pastor

Morning Worship

11 A.M.

Sunday school

9:45 A M

Epworth League

6:30 p m

EPISCOPAL CHURCH

Rev. D.A. Schaefer, pastor

Communion services will be held

Sunday morning at 9 o'clock.

ENGLISH EV. LUTHERAN CHURCH

Arthur M. Neumann, Pastor

Bible School

9:15 a m

Morning Worship

10:30 a m

FIRST CONGREGATIONAL CHURCH

Rev. Thomas Alva Stubbins, Past

Morning Worship

11 a m

Sunday School

9:45 a m

ST. FRANCIS de SALES CATHOLIC CHURCH

Rev. J.G. Smith

Sunday Masses 8 and 10:30 a m

Weekday Masses 7:30 a m

GOSPEL HALL

Sunday School

10 a m

Sunday morning worship

11 a m

Sunday evening Gospel meet-

ing

7:30 p m

Thursday evening Meeting

7:30 p m

FIRST CHURCH OF CHRIST SCIENTIST

Morning service

11 a m

Sunday School

9:45 a m

Wednesday services

8 p m

BAPTIST CHURCH

Rev. E.L. Killam, pastor

Bible School

9:45 a m

Morning Worship

11 a m

Children's Day service will be

Sunday at 10:30. Combined service.

LOVELY LAKE GENEVA

Written by C.B. Holmes

Printed 1885 - National Music Co.

Lovely Lake Geneva,
Over thy waters blue,
Gaily the boats go drifting
Drifting the long day through.

Rocked on thy silvery bosom,
My head I lay, my head I lay,
While from heart like a burden,
The weary years fall away.

Lovely Lake Geneva
Fair to the Northern sky,
Clear in thy sylvan beauty
Thy sweet waters lie.

Night spreads her glittering mantel,
Gem'd with a star, gem'd with a star;
Still floats the dreaming boatman,
Out on thy waters afar.

Refrain-

Lovely Lake Geneva,
Over thy waters blue,
Gaily the boats go drifting,
Drifting the long day.
Glad my weary footsteps
Turn with joy to thee,
For by thy gleaming waters,
Loved ones are waiting for me.

COMMENCEMENT AT ACADEMY FRIDAY JUNE 11 to June 14

The forty-ninth annual Commencement exercises of the Northwestern Military and Naval Academy was held at Academy Park on the Lake Beginning on Friday, June 11, and closing on Monday, June 14. There were thirty graduates.

On Friday was held the field day, escort of colors and the oratorical contest for the Renwick medal.

On Saturday examinations were held; cutter races for the Chapin trophy, naval calisthenics, cutter drill, naval battalion drill, battalion parade and alumni dinner.

Sunday, June 13 was formal guard mount; baccalaureate sermon by the Rev. Clifford H. Newman, Evanston, Ills.; escort of the colors and vesper song service.

Monday, June 14, was held the graduating exercises. Address was by Col. Philip Fox, director of Rosenwald Museum of Science and Industry. The annual senior formal reception and dance was held on the evening of June 14.

Presentation of medals, honors and diplomas was made by Colonel R.P. Davidson.

BURTON & BURTON

ICE CREAM SPECIAL

SERVE

NEW YORK
BLACK WALNUT
CARAMEL



A 3-layer brick you will
not wish to miss. Your guests
will appreciate this treat
Sunday .

We now have on hand
Case Beer -- Miller ,
Pabst or Weber

We deliver ** Call Phone 818-J-3 ** Promptly



BURTON BROS.

SPECIAL THIS WEEK

CHOCOLATE
BUTTER ALMOND
CHOCOLATE

A delightful brick



819-J-2.

R.E. BURTON
BEACH WEAR

Jantzen Suits



Kedettes

TEL. 818-J-2.

BIG SEASON AHEAD FOR WATER SAFETY PATROL

A big season for the Water Safety Patrol on Lake Geneva is expected this season, according to H.C. Paterson, director of the Patrol and a faculty member of the University of Illinois. More life guards will be added, probably a signal system for the whole lake and the new speed boat, which is 20 feet, these features will make the Patrol one of the finest in the country.

The new speed boat will be used by Director Paterson to patrol the lake at various intervals and check up on the conditions at all the beaches and be able to reach the scene of an accident very quickly. The boat will be equipped with a resuscitator, stretcher, water scope, drag lines and a complete first aid material.

One of the big features of the Patrol program which has helped to make the organization the splendid one it is, is the life saving instruction work that is being done every year. More of this work will be done this year, in this way the Patrol system has given swimming instructions and life saving work to hundreds of persons of all ages during the seventeen years of the Patrol.

Director Paterson is planning several aquatic events for the season which will include, dual meets between the various beaches, State Swimming Meet, All Lake Swim, swimming and life saving classes.

MORE AND FASTER TRAINS ON C & N W

Not for many years has the railroad company operated as many trains between Chicago and the lake region of southern Wisconsin as has been inaugurated this season. Beginning with the Memorial Day weekend the Northwestern RR. put in service three fast trains each way on Sunday and holidays between Chicago, Lake Geneva and Williams Bay. Two fast trains operate each way on weekdays. Service of 90 minutes is provided between Chicago and Lake Geneva.

HOMWAY RESTAURANT

WILLIAMS BAY

(NEXT DOOR TO PARK)

CHICKEN DINNERS ON SUNDAY

FOUNTAIN SERVICE MILLER

SCHMIDT ICE CREAM BEER

ANDELL'S RESORT

WILLIAMS BAY

is open and in addition to regular service, also have soft drinks, candy, cigarettes and sandwiches.

TRY OUR SPECIAL SUNDAY
CHICKEN DINNER ---- 85¢

Phone 1202-R-4

Booklet - Anna Petersen
ANDELL, Prop.

WILLIAMS BAY LAUNDRY

No. 2 S. Walworth Av. Wms Bay

A COMPLETE FAMILY LAUNDRY

CLEANING, PRESSING & REPAIRING

We CALL AND DELIVER

Phone 1253-R-1

ALFRED JOHNSON

WILLIAMS BAY, WIS.

Tel. 1219-J-1

General Trucking - Hauling

Gravel - Sand - Black Dirt

Service anywhere around
Lake Geneva and vicinity

LET REDDY KILOWATT



YOUR ELECTRIC SERVANT

DO A COMPLETE ECONOMICAL JOB

IN YOUR HOME.

HOTPOINT AND MONARCH RANGES AND WATER HEATERS

GENERAL ELECTRIC

REFRIGERATORS



THOR WASHERS

AND

IRONERS

For COMPLETE
INFORMATION

CALL

Louis Kaphengst
Williams Bay
Tel. - 1267-R-1



John Horne
Walworth - Phone 17

WISCONSIN POWER & LIGHT CO.

LAKE GENEVA

TEL. 840

SOME LAKE GENEVA FACTS

Length of the Lake -- nine miles

Greatest width across from the Yerkes Observatory, one and three-eighths miles.

Width at the Narrows, one-half mile

Depth at maximum, off Conference Point-south east, - one hundred forty-two feet.

Walking distance around by the shore path, twenty-four miles.

Elevation of surface of the lake above sea level, 861 feet.
Above Lake Michigan, 282 feet.

The area of the lake is 8.6 square miles or 5504 acres across.

Williams Bay village limits enclose about 1100 acres. In round numbers, 900 acres land, 200 water.

A topographical survey of the lake bottom was made through the ice in the winter of 1898 by the Wisconsin Geological and Natural History Survey. A map was made giving the depths.

Population of Williams Bay, Census of 1930- 630

"	"	Lake Geneva City,	"	"	"	-	3073
"	"	Fontana,	"	"	"	-	385
"	"	Walworth,	"	"	"	-	920

J.S. Hotton

WISCONSIN DELLS ARE AT LEAST FIFTY MILLION YEARS OLD

In this age of billions, a sum of fifty million dollars makes little impression upon the public. Yet the Dells of Wisconsin has survived at least that long. And in some of its canyons one can stand on pre Cambrian granite and see the ripples cut into solid masses of rock by the Cambrian sea, which covered North America during the first period of Paleozoic era, the earliest geologic age.

SOME LAKE GENEVA FACTS

Length of the Lake — 22 1/2 miles

Greatest Water Depth — 148 feet
and three-fifths mile

Width at the Narrows — one-half mile

YOU WILL BE INTERESTED IN

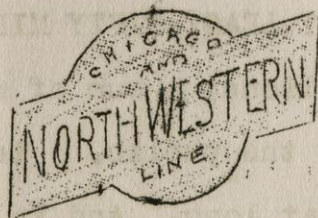
CHICAGO & NORTH WESTERN'S

NEW IMPROVED

SUMMER SERVICE

BETWEEN

WILLIAM S BAY - LAKE GENEVA -
CHICAGO



FULL PARTICULARS REGARDING TRAIN SERVICE AND LOW FARES WILL BE
FOUND ON ANOTHER PAGE

OUR LIBRARY IS GROWING UP

July 1 will mark a new period in the life of our village library, for on that day it will begin a new policy and will be open every afternoon except Sunday and two evenings a week as well.

From Play House to Library

Once upon a time our library was not a library at all but a boat storage place and play house for the Sturges children near Lake Geneva. One of its main features was a bowling alley. About to be removed to improve the view, it was offered to Williams Bay in 1907 by the heirs of Mrs. George Sturges.

The building was cut into sections and brought to Williams Bay by team. All other expense of foundation, re-erection, and stucco finish was borne by the Sturges family. A library association was incorporated, raised money for a lot, and assumed care of the building.

Until the village was incorporated in 1919, money was raised by moonlight excursions on the lake, by community movies, and voluntary contributions. From the beginning it has served as a gathering place for fraternal societies, school parties, receptions. The property was turned over to the village upon its incorporation.

One end of the bowling alley has been made into the attractive community room, a much needed small meeting place for garden clubs and the like.

New Step This Summer Toward Growing Up

If you attended open house at the library on Monday of this week, you saw a rejuvenated building. Floors have been refinished, new book shelves made, two tables for children added. With curtains at the windows and the middle room opened as a reading room, the atmosphere has been made most inviting.

New Interest

Of course much remains to be done, especially in the purchase of new books. But the new interest which has developed in the library is the most encouraging and important thing of all. For a good many years the village board has given generous support, not only in its annual appropriation but in taking care of the building and lawn besides. With the major projects the village has had on hand the last few years, however, it is not possible for that support to be sufficient for the library's fullest usefulness. And so volunteers have stepped in. There is Rudolph Johnson who gave his time for a large part of the recent refurnishing. There is Miss Van Biesbroeck, a trained librarian, who has offered to catalogue all books received since the library was catalogued a few years ago. And there is the group of people who have made themselves responsible for keeping the library open every weekday this summer by volunteer service.

We invite everyone to join in a new interest in the library and in making full use of its facilities. Remember, beginning July 1, the hours will be from 2 to 5 every afternoon except Sunday. On Friday and Saturday nights it will be open from 7 to 9.

THE LIBRARY BOARD

Mrs. Robert Anderson

Mrs. William Morgan

Mr. Volmer Sorensen, Chairman

Mr. Henry Granzow

Mrs. Clifford Wiswell

SPENCE'S

WILLIAMS BAY

DINNER PARTIES

FAMILY DINNERS

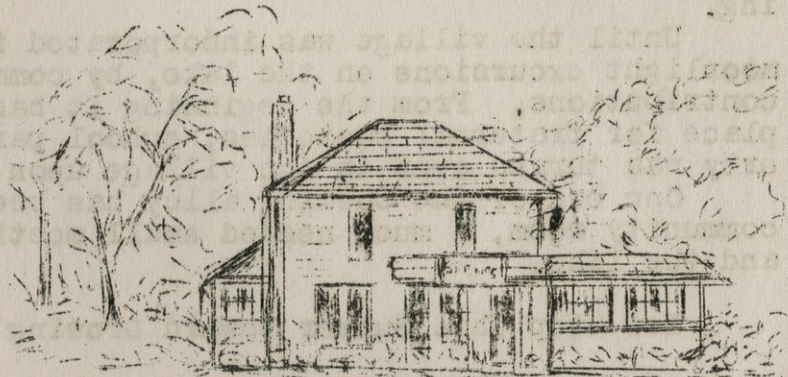
BUSINESS LUNCH

COCK TAIL LOUNGE

EARLY
AMERICAN

DINING ROOM

OVERLOOKING THE LAKE



IS IT HOT IN YOUR KITCHEN
OR SLEEPING QUARTERS?

DUAL AIR POWER
FANS

EXHAUST CIRCULATING

FOR ATTIC
or COOLING
KITCHEN

or
complete
home
ventilation

Highly Efficient - Moderate cost.

E.H.HOPKINS

Williams Bay Phone 1259-R-3



GOOD SELECTION
OF PLANTS

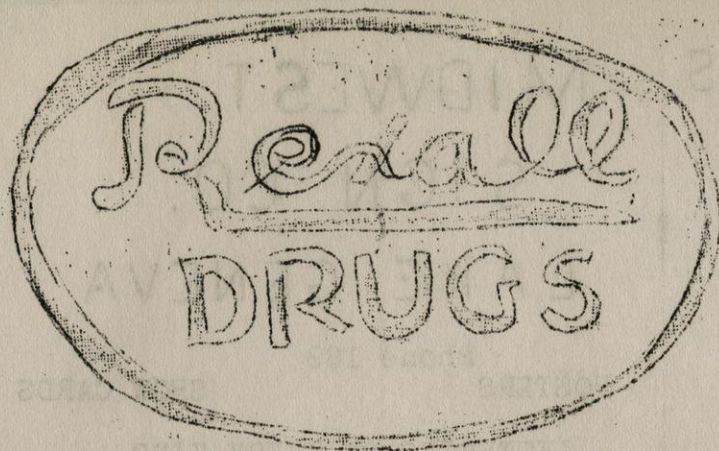
We still have a good selection
of Geraniums, Petunias, Cannas,
Zinnias, Marigold and other
bedding plants to brighten
up your gardens and window
boxes.

Petunia Special - 1.00 per flat

Also remeber us when you
need out flowers.

LAKE VIEW GARDENS

WILLIAMS BAY- Phone 1236 R 4



JUNE HEALTH
& BEAUTY SALE

SAVE WITH SAFETY ALL THIS MONTH

ARNOLD'S DRUG STORE
Lake Geneva, Wisconsin

K
O
D
A
K

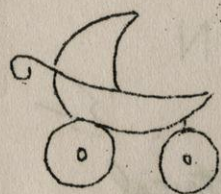
Most complete
stock of roll
film & movie
film in this
vicinity.

We carry all
sizes.

ALSO KODAKS
& SUPPLIES.

FILM

JUST ARRIVED!



Postoria
Glass

and other
distinctive lines.

NORTHWOODS GIFT SHOP

(more than a gift shop)

Main Street Lake Geneva

SHOP AT RASCH'S
THE AMERICAN WAY

GROCERIES

MEATS

Monarch Finer Foods and Choice

Juicy Meats

In business 43 years in Lake
Geneva.

Tel. 48 we will deliver to you.

MAYR'S SEED & FEED

FRESH EGGS & DRESSED POULTRY

A SPECIALTY

Bulk Garden Seeds

Pet Supplies of all kinds

Phone 99-We deliver

Main & Center Sts., Lake Geneva

COBB HARDWARE CO.

Established 1844

Lake Geneva

Phone 6

HARDWARE

PAINT

STOVES

FURNACES

TINWORK

HAMMERSLEY'S

WALGREEN SYSTEM
DRUG STORE

LAKE GENEVA

WIS.

Make your headquarters here.

You will find DRUGS properly
priced.

A complete line of SPORTING
GOODS.

MRS. SNYDER'S CANDY

LUICK'S ICE CREAM SERVED AT THE
LARGEST FOUNTAIN IN THIS VICINITY.

WE DESIRE TO SERVE AND PLEASE

YOU.

LAKE GENEVA AUTO STATION

Phone 600

LAKE GENEVA

BUICK

PONTIAC

SALES & SERVICE

FERGUSON'S ANIMAL HOSPITAL

LAKE GENEVA

421 Broad

145

If no answer, Call 357-J-

MIDWEST

SIGN CO.

LAKE GENEVA

Phone 189

POSTERS

SHOW CARDS

LETTERING OF EVERY KIND

KOHN & JENNINGS

CLOTHIERS

WHITE SHOES.

EDGERTONS at \$5.00

FREEMAN at \$4.00

LAKE GENEVA

McCLELLAN & SHERMAN

Everything Electrical

LAKE SHORE GARAGE INC.

LAKE GENEVA

Phone

390

NASH SALES & SERVICE

Open all Night

We service all makes of cars

LIST OF CONFERENCES FOR CONFERENCE POINT CAMP
Williams Bay, Wisconsin - 1937

- June 12 to 19, Illinois High School Athletic Girls Camp
- June 19 to 26, Geneva Summer School of Missions
- June 26 to July 3, Hi-League Institute (Methodist)
- July 3 to 17, A Series of Conferences by the International
Council of Religious Education
Dr. Harry C. Munro, Manager
203 North Wabash Ave., Chicago
- July 18 to 25, Lake Geneva Young Peoples Institute
Mr. George Granger, Registrar
4010 North Lawlor Ave., Chicago.
- July 25 to August 1- Chicago Baptist Assembly
- August 1 to 7, Guest Week (Guests get conference rates)
Write W.A. May, Camp Manager
Conference Point Camp, Williams Bay, Wisconsin.
- August 7 to 14, Lake Geneva Institute
- August 14 to 28, Youth Camp (International Council of
Religious Education)
Rev. Ivan M. Gould, Director
203 North Wabash Ave., Chicago
-

Y.M.C.A. NOTES

The Walworth County Y.M.C.A. with a full time executive for the first time in a number of years has made itself felt in every nook and corner of the county the past year. No better evidence of the work carried on this year can be found than the number of Clubs organized and other activities carried on. In all 8 Pioneer clubs for boys between the ages of 12 and 15 were organized. Six new Hi-Y Clubs formed; 5 Pilot clubs organized for boys 8 to 12 years of age; four girl's clubs; and 3 out-of-school age groups meeting in open forum. Besides the club work five all school conferences were held, bringing outstanding adult leaders and guidance men before large groups of high school age pupils. Five father and son Mixers were held at various points in the county, and two Pioneer rallies held involving a gala day for about 300 boys.

At the present time the secretary is rounding up campers for Phantom Lake camp and working on the organization of a summer outing and camp for underprivileged boys. The summer camp for the underprivileged will be held at the Boy Scout Camp at Williams Bay. About 80 boys have already been lined up for this outing.

In his spare time the County Secretary may be found counseling with adult leaders of young people's groups, assisting with Sunday School conferences, Conducting open forums, or addressing adult groups.

SERVICE

FOR ALL MAKES OF CARS

GENUINE PARTS FLAT RATE

TOWING LABOR CHARGE

WASHING & GREASING

Greasing	-----	75¢
Washing	-----	\$1.00
Washing & Greasing with oil change (plus oil)		\$1.50
Washing & Greasing		\$1.65

SALES

CHEVROLET OLDSMOBILE

GOOD USED CARS

Open Sundays, Holidays, Evenings

LAKE SIDE CHEVROLET
Lake Geneva SALES Tel. 446

* " If you Want the Best, Try " *

* *

* ESTELLE'S BAKERY *

* *

* Bread, Cakes and Pastry *

* *

* Wedding and Birthday Cakes *

* *

* a Specialty *

* *

* 501 Broad St. Lake Geneva. *

* *

* *****

The Lake View Press

WELDON & FOSTER

235 Broad St. Tel. 108

LAKE GENEVA

OFFICE SUPPLIES -STATIONERY

PRINTING

You will find what you need.

LITTLE DANISH TEA ROOM



LAKE GENEVA, WIS.

Known for its really enjoyable home-cooked food. A real and sincere contribution to this great business of making life more pleasant.

THREE BLOCKS SOUTH OF TOWN ON
U.S. ROUTE 12

OUR NEW COLUMBIA SUPER-SERVICE PROCESS

meets your cleaning needs in many different ways.

Here's what it does:

1. Restores original freshness and sparkle
2. Removes carefully all dirt and grease
3. Harmless to the most delicate of fabrics
4. Odorless, through cleaning
5. Garments stay clean longer
6. Press retains longer
7. Reduces wardrobe upkeep
8. Leaves garments moth proof

LET US CLEAN AND BLOCK YOUR HAT

Twenty years experience

Pick up and delivery

3-Hour Service if desired

Master Shoe Builder in connection

DE LUXE CLEANERS

711 Main St. LAKE GENEVA Tel. 660

PALMER BOAT COMPANY

DEALERS OF
CHRIS-CRAFT & HACKERCRAFT
GARWOOD

on
Lake Geneva at
PONTIAC WISCONSIN
Builders of
INLAND LAKE SAIL BOATS AND ICE BOATS



CALL AND SEE THE NEW

It has always been the finest and therefore the highest priced in the motorboat industry. Hacker prices now meet competition but the quality is as fine as ever. Early deliveries

The CLARENDELL HOTEL & COCKTAIL LOUNGE

Williams
Bay

OFFERS AT ALL TIMES A PLACE

TO SPEND A PLEASANT TIME

There will be special entertainment Saturdays with Hults Brothers & George Freewert at Piano.

Tues., Wed. & Thur. an extra fine 75¢ dinner served

We operate American and European Plan

SEE SI ! (Si Swails)

FOR DEMONSTRATION GARWOOD
AT SUMMER HAVEN SUB. WMS. BAY
PROMPT DELIVERY

LEE WELSH SHOE STORE

Exceptionally Large Selection
of Shoes for the Entire
Family

We specialize in shoes for feet that are hard to fit.

STUDEBAKER CADILLAC LA SALLE

SALES & SERVICE

Phone 195
ELKHORN

SCHMIDT'S GARAGE

ELKHORN, WIS.

The Water Front

Mrs. Frank Buckles, Prop.

Fontana, Wis.

REFRESHMENTS

LUNCHES

Nellie Groesbeck

Carrie Northrup

BUTTERNUT INN

CHICKEN AND STEAK DINNERS

Phone

Wal. Y-262

FONTANA

COOPER'S MARKET

MEATS AND GROCERIES

Phone 27 & 47 Walworth, Wis.

The

SUPER SERVICE

STORE

DELIVERY TWICE DAILY

BETWEEN

HOLIDAY HOME AND

N.W.M. ACADEMY

WALWORTH TIMES -Walworth, Wis.

L. BERGSTROM & SONS

WALWORTH, WIS.

PHONE 91

Cut Flowers and Potted Plants

Funeral Flowers

Shipped Anywhere

LAKE GENEVA

SAND & GRAVEL CO.

FONTANA, WISCONSIN

GRAVEL AND SAND FOR ALL

PURPOSES. SPECIFY OUR
PRODUCTS. YOUR DEALER WILL
FURNISH THEM.

FONTANA CONTRACTORS

Lew BUCKLES

Phone Walworth X161

Lyle ROBAR

Phone Walworth Y 51

"IT'S GOOD
BUSINESS TO
HAVE GOOD
PRINTING

LEE'S KITCHEN

WILLIAMS BAY

PLATE LUNCHESES 40¢

FRIED CHICKEN 85¢
(Full Course Dinner)

HERMANSON'S BAKERY

WILLIAMS BAY

SPECIALS

SILVER CAKE 40¢

FANCY COOKIES 40¢ per lb.

ERIC WERNER

WILLIAMS BAY

GENERAL CONTRACTOR

Telephone 1267-R-3

L.A. RASMUSSEN

WILLIAMS BAY

BLACKSMITHING

WELDING

GENERAL REPAIRING

TREES WELL ADAPTED FOR LAKE GENEVA REGION

In selecting trees for shade and ornamental purposes, a person should consider these points; the soil conditions and placement.

So often has been the case of planting soft wooded quick growing trees in an attempt to produce a comparatively immediate effect that they over plant with these less permanent trees and leave little or no space for the slower growing more desirable varieties. So in planning your plantings, give a little thought to the future.

Top soil conditions in this region vary greatly, from gravelly hillsides to lowland muck and peat; the subsoil gravel, clay and in the lowland usually blue clay and marl.

For upland planting we find that the maples, elms, oaks, lindens, ash, and poplars all do well except in extreme gravelly soil where they are likely to suffer from lack of moisture and fertility in the soil. But in lower areas where drainage is very poor, we must use care in our selection; using elms, poplars, and willows.

The following varieties of trees have been tried, tested and found most desirable for this region.

(List includes only those easily transplanted)

Maple(sugar)	Elms(American)
	Linden(American)
Maple(Norway)	"(Moline & Vase)
	Ash(White)
"(Schwedler)	Elms(Chinese)
	Ash(Mountain)
"(Amur)	Gintzo Honeylocust
"(Soft or Hackberry	
Silver)	Poplar Carolina
Oaks	Pin and Lombardy types
"	Scarlet.

In more confined spaces the smaller trees of ornamental types can be used such as the Hawthorne and ornamental flowering Crabs and Plums. There are other varieties of trees found growing on estates around the lake with varied success, such as magnolia, beech, tulip tree, redbud, etc; but these are not recommended for planting under ordinary conditions.

Walter Hansen.

SPECIALS

FISH LINE STORE

WILLIAMS BAY

FOR FRIDAY and SATURDAY, JUNE 18 and 19

<p>SUGAR Granulated 100# Bag- \$4.95</p> <p>SUGAR Granulated 10# Cloth Bag- 51¢</p>	<p>HILLS BROS. COFFEE</p> <p>2 lb Can- 55¢</p>	<p>GILT EDGE BUTTER</p> <p>2 lbs- 65¢</p>
<p>U. S. NEW POTATOES No. 1- 39¢ per peck</p>	<p>MENDOTA SLICED BACON</p> <p>$\frac{1}{2}$ lb Pkg- 15¢</p>	<p>MICHIGAN BERRIES</p> <p>2 quarts- 35¢</p>
<p>KRAFT</p> <p>2# AMERICAN CHEESE</p> <p>59¢</p>	<p>POT ROAST</p> <p>25¢ per lb</p>	<p>GOOD KIND JELLY</p> <p>2 lb Jar- 29¢</p>
<p>MIRACLE WHIP SALAD DRESSING</p> <p>Quart. Jar- 39¢-Pts-27¢</p>	<p>CAMPBELL'S PORK and BEANS</p> <p>3-1# Cans- 25¢</p>	<p>HAPPY VALE PEAS</p> <p>2-20 oz Cans- 25¢</p>
<p>ROSEMARY MILK</p> <p>3- 14$\frac{1}{2}$ oz Cans- 20¢</p>	<p>LAMB SHOULDER</p> <p>25¢ per lb</p>	<p>H E R R I N G</p> <p>ICELAND 4 K -nice and 2 for 25¢ fat</p>
<p>LITE MEAT TUNA</p> <p>2- 7 oz tins- 29¢</p>	<p>FORK BUTTS</p> <p>28¢ per lb</p>	<p>LIBBY'S PEACHES</p> <p>Sliced or Halves</p> <p>2- 29 oz Cans- 39¢</p>
<p>BAKERS</p> <p>PREMIUM BAKING CHOCOLATE</p> <p>2- $\frac{1}{2}$ lb Bars- 29¢</p>	<p>PINEAPPLE JUICE</p> <p>47 oz Can-33¢</p> <p>TOMATO JUICE</p> <p>47 oz Can- 25¢</p> <p>GRAPE FRUIT JUICE</p> <p>47 oz Can- 29¢</p>	<p>LIBBY'S CORN BEEF</p> <p>12 oz Can- 39¢</p>
<p>MACARONI or SPAGHETTI</p> <p>3- 1# rolls-20¢</p>	<p>OPEN SUNDAY</p> <p>8 AM to 10 AM</p>	<p>BULK PRUNES</p> <p>3 lbs- 29¢</p>