



LIBRARIES

UNIVERSITY OF WISCONSIN-MADISON

Site 3578: Oconto County, Township 29N, Range 17E, Section 17. 1953-07-04

[s.l.]: [s.n.], 1953-07-04

<https://digital.library.wisc.edu/1711.dl/5MS564BCFICD28M>

This material may be protected by copyright law (Title 17, US Code).

For information on re-use see:

<http://digital.library.wisc.edu/1711.dl/Copyright>

The libraries provide public access to a wide range of material, including online exhibits, digitized collections, archival finding aids, our catalog, online articles, and a growing range of materials in many media.

When possible, we provide rights information in catalog records, finding aids, and other metadata that accompanies collections or items. However, it is always the user's obligation to evaluate copyright and rights issues in light of their own use.

STAND RECORD

FORESTS

Stand No. 3578

Name:

Locality:

County: Oconto

T: 29N R: 17E Sec: 17

Date: 7-4-53

Observers: Christensen

Size of Stand:

Size of Area Sampled:

Forest Type: White cedar

Soil Type:

Topography: Flat, lowland, standing water in spots

Slope:

Directions

Condition of Stand:

Good stand. Many old large, but rotten stumps. No recent cutting. Many top-ups. Trees are rather large. No signs of deer. No browsing evident.

Open Grown Trees:

% Canopy:

Stumps:

1.	4.	7.	10.
2.	5.	8.	11.
3.	6.	9.	12.

Soil Data:

	pH	N	P	K	Ca	Mg	Org. Mat.	Colloids	W.H.C.
A ₀									
A ₁									
A ₂									
B									

DEPTH

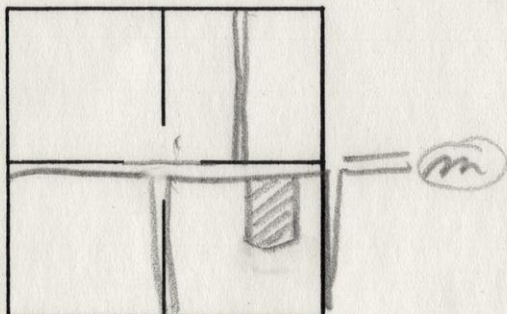
CHARACTERISTICS (Color, Texture, Structure, etc.)

A ₀	-----
A ₁	-----
A ₂	-----
B	-----

Parent Material:

A white cedar 1150" BFA measured
X = browse presence

Map:



Northern Pine-Hardwoods

Station Number: 3578

62.82

TREE	# PTS	# TRS	DOM. CLASSES			TOT. DOM.	# SAP	D. % SAP	F. % SDL.	F. % TRS.	% SUM F. TR.	D. % TRS.	DOM% TRS.	DFD INDEX	Lowland C. I.
			-80	-320	321										
Abies bals	6	7	7			316	19	14.96	30	15.0	5.66	4.43	2.46	12.55	32.65 56.47
Acer rubru	6	6	6			250	1	0.79	25	15.0	5.66	3.80	1.94	11.40	79.80 68.40
A. sacchar	5	6	5	1		352	2	1.57		12.5	4.72	3.80	2.74	11.26	112.60 112.60
A. spicatu									35						
Betula lut	15	17	14	3		1068	8	6.30	5	37.5	14.15	10.76	8.31	33.22	215.93 249.15
B. papyrif															
Carpinus c															
Fagus gran							1	0.79							
Ostrya vir															34.82
Picea glau	6	6	3	3		575				15.0	5.66	3.80	4.47	13.93	193.95 55.72
Pinus Bank															
P. resinosa															
P. Strobus															
Populus ba															
P. grandid															
P. tremulo															
Prunus pen															
Quercus el															
Q. rubra															
Tilia amer	7	7	3	4		755			10	17.5	6.60	4.43	5.87	16.90	118.30 143.65
Tsuga cana	15	23	21	2		1199	39	30.71		37.5	14.15	14.56	9.33	38.04	285.30 323.34
Thuja occi	34	74	55	16	3	7464	52	40.94		85.0	32.08	46.84	58.06	136.98	223.96 547.92
Ulmus amer	3	3	2	1		158	3	2.36	5	7.5	2.83	1.90	1.23	5.96	29.80 32.78
U. fulva															
Fraxinus	9	9	5	4		719	2	1.57	30	22.5	8.49	5.70	5.59	19.78	89.01 98.90
															12.77.17
	106	158	121	34	3	12856	127	99.99		100.	100.02	100	300.02	1436.30	1688.90

AVE. DIST. BTW'N TREES:

AVE B. A.:

TREES/ACRE:

DOM./ACRE:

81.37

HERB FREQUENCY

NORTHERN PINE-HARDWOODS

Stand No. 3578
Quadrat No. 1-10*St. lucas am 1*
*dec. spic. 35478(10)**Abies 6*

Actaea pachypoda

Fragaria virginiana

Potentilla simplex

Actaea rubra

Galium lanceolatum

Prenanthes alba

Adiantum pedatum

Galium triflorum 34

Pteridium aquilinum

Allium tricoccum

Gaultheria procumbens

Pyrola elliptica

Anemone quinquefolia

Gaylussacia baccata

Pyrola rotundifolia

Aquilegia canadensis

Geranium maculatum

Pyrola secunda

Aralia nudicaulis 56(10)

Geum canadense

Ranunculus recurvatus

Aralia racemosa 3

Gnaphalium obtusifolium

Rhus radicans 4

Arisaema atrorubens #579

Helianthemum sp.

Ribes americanum

Aster macrophyllus

Helianthus strumosus

Rosa sp. *causis 6*

Aster sagittifolius

Hepatica acutiloba

Rubus parviflorus

Athyrium angustum

Hepatica americana

Rubus (blackberry)

Botrychium virginianum

Impatiens biflora

Rubus (dewberry)

Brachyelytrum erectum

Linnaea borealis

Sambucus pubens

Carex albursina

Lonicera oblongifolia

Sanguinaria canadensis

Caulophyllum thalictroides

Lupinus *can 57* perennis

Sanicula gregaria

Chimaphila umbellata

Lycopodium annotinum

Smilacina racemosa

Circaea alpina 245678(10)

Lycopodium complanatum

Smilacina stellata

Circaea latifolia

Lycopodium lucidulum

Smilax ecirrhata

Clintonia borealis

Lycopodium obscurum

Solidago ulmifolia

Coptis trifolia 78

Lysimachia quadrifolia

Streptopus roseus 3

Corallorrhiza maculata

Maianthemum canadense 7

Taxus canadensis 8(10)

Cornus alternifolia

Mitchella repens

Thalictrum dioicum

Cornus canadensis

Mitella diphylla (10)

Trientalis borealis

Cornus rugosa

Mitella nuda 46

Trillium grandiflorum

Corylus americana

Monotropa uniflora

Uvularia grandiflora

Corylus cornuta

Myrica asplenifolia

Uvularia sessilifolia

Cypripedium acaule

Onoclea sensibilis

Vaccinium angustifolium

Diervilla lonicera

Oryzopsis asperifolia

Vaccinium pennsylvanicum

Dirca palustris

Osmorhiza claytoni

Viburnum acerifolium

Dryopteris linnaeana 8(10)

Oxalis montana

Viola canadensis

Dryopteris phegopteris

Phryma leptostachya

Viola cucullata

Dryopteris spinulosa 789(10)

Polygala pauciflora

Viola pallens

Epifagus virginiana

Polygonatum commutatum

Viola pubescens

Epigaea repens

Polygonatum pubescens 7

Waldsteinia fragarioides

Carex narrow 3456(10)
Scutellaria 46

HERB FREQUENCY

NORTHERN PINE-HARDWOODS

Stand No. 3578
Quadrat No. 11-20*Abies*
Betula lutea 14678*Larix laricina* 16789
Fragaria virginiana 235689
Salix 8

Actaea pachypoda

Fragaria virginiana

Potentilla simplex

Actaea rubra .

Galium lanceolatum

Prenanthes alba

Adiantum pedatum

Galium triflorum 36(10)

Pteridium aquilinum

Allium tricoccum

Gaultheria procumbens

Pyrola elliptica

Anemone quinquefolia

Gaylussacia baccata

Pyrola rotundifolia

Aquilegia canadensis

Geranium maculatum

Pyrola secunda

Aralia nudicaulis

Geum canadense 2

Ranunculus recurvatus

Aralia racemosa

Gnaphalium obtusifolium

Rhus radicans

Arisaema atrorubens 358

Helianthemum sp.

Ribes americanum

Aster macrophyllus

Helianthus strumosus

Rosa sp.

Aster sagittifolius

Hepatica acutiloba

Rubus parviflorus

Athyrium angustum

Hepatica americana

Rubus (blackberry)

Botrychium virginianum 7

Impatiens biflora 49(10)

Rubus (dewberry) 29

Brachyelytrum erectum

Linnaea borealis

Sambucus pubens

Carex albursina

Lonicera oblongifolia

Sanguinaria canadensis

Caulophyllum thalictroides

Lupinus perennis

Sanicula gregaria

Chimaphila umbellata

Lycopodium annotinum

Smilacina racemosa

Circaea alpina 12349(10)

Lycopodium complanatum

Smilacina stellata

Circaea latifolia

Lycopodium lucidulum 5

Smilax ecirrhata

Clintonia borealis 56

Lycopodium obscurum

Solidago ulmifolia

Coptis trifolia 5

Lysimachia quadrifolia

Streptopus roseus 36

Corallorrhiza maculata

Maianthemum canadense 26

Taxus canadensis

Cornus alternifolia

Mitchella repens

Thalictrum dioicum

Cornus canadensis

Mitella diphylla 348(10)

Trientalis borealis 6

Cornus rugosa

Mitella nuda 234569

Trillium grandiflorum

Corylus americana

Monotropa uniflora

Uvularia grandiflora

Corylus cornuta

Myrica asplenifolia

Uvularia sessilifolia

Cypripedium acaule

Onoclea sensibilis

Vaccinium angustifolium

Diervilla lonicera

Oryzopsis asperifolia

Vaccinium pennsylvanicum

Dirca palustris

Osmorhiza claytoni

Viburnum acerifolium

Dryopteris linnaeana 8

Oxalis montana

Viola canadensis

Dryopteris phegopteris 2

Phryma leptostachya

Viola cucullata

Dryopteris spinulosa 123459

Polygala pauciflora

Viola pallens

Epifagus virginiana

Polygonatum commutatum

Viola pubescens

Epigaea repens

Polygonatum pubescens

Waldsteinia fragarioides

Carex narrow 24579*Calamagrostis can.* 3*Asarum* 2 (10)*Lappacea* 9 (10)*Scutellaria lat.* 4 9*Scutellaria epilob.* 5

PRESENCE LIST

NORTHERN PINE-HARDWOODS

STAND NO. 3578

- ✓ *Abies balsamea*
- ✓ *Acer rubrum*
- ✓ *Acer saccharum*
- ✓ *Acer spicatum*
- ✓ *Amelanchier* sp.
- ✓ *Betula lutea*
- ✓ *Betula papyrifera*
- ✓ *Caprinus caroliniana*
- ✓ *Carya cordiformis*
- ✓ *Crategeus* sp.
- ✓ *Fagus grandiflora* (seedling)
- ✓ *Fraxinus americana* (sap.)
- ✓ *Fraxinus nigra*

- ✓ *Fraxinus pennsylvanica*
- ✓ *Juglans cinerea*
- ✓ *Larix laricina*
- ✓ *Ostrya virginiana*
- ✓ *Picea glauca*
- ✓ *Pinus banksiana*
- ✓ *Pinus resinosa*
- ✓ *Pinus strobus*
- ✓ *Populus balsamifera*
- ✓ *Populus grandidentata*
- ✓ *Populus tremuloides*
- ✓ *Prunus pennsylvanica*
- ✓ *Prunus serotina*

- ✓ *Prunus virginiana*
- ✓ *Quercus alba*
- ✓ *Quercus ellipsoidalis*
- ✓ *Quercus macrocarpa*
- ✓ *Quercus rubra*
- ✓ *Sorbus decora*
- ✓ *Thuja occidentalis*
- ✓ *Tilia americana*
- ✓ *Tsuga canadensis*
- ✓ *Ulmus americana*
- ✓ *Ulmus fulva*

HERBS AND SHRUBS

- ✓ *Actaea pachypoda*
- ✓ *Actaea rubra*
- ✓ *Adiantum pedatum*
- ✓ *Agrimonia grypsossepala*
- ✓ *Allium tricoccum*
- ✓ *Alnus rugosa*
- ✓ *Amphicarpa bracteata*
- ✓ *Anemone canadensis*
- ✓ *Anemone quinquefolia*
- ✓ *Antennaria* sp.
- ✓ *Apocynum androsaemifolium*
- ✓ *Apocynum cannabinum*
- ✓ *Aquilegia canadensis*
- ✓ *Aralia nudicaulis*
- ✓ *Aralia racemosa*
- ✓ *Arctostaphylos uva-ursi*
- ✓ *Arisaema atrorubens*
- ✓ *Asarum canadense*
- ✓ *Asclepias phytolaccoides*
- ✓ *Aster cordifolius*
- ✓ *Aster lateriflorus*
- ✓ *Aster macrophyllus*
- ✓ *Aster prenanthoides*
- ✓ *Aster sagittifolius*
- ✓ *Aster shortii*
- ✓ *Aster umbellatus*
- ✓ *Athyrium angustum*
- ✓ *Aureolaria pedicularia*
- ✓ *Boehmeria cylindrica*
- ✓ *Botrychium virginianum*
- ✓ *Brachyelytrum erectum*
- ✓ *Bromus purgans*
- ✓ *Campanula americana*
- ✓ *Carex albursina*
- ✓ *Carex pensylvanica*
- ✓ *Caulophyllum thalictroides*
- ✓ *Celastrus scandens*
- ✓ *Chimaphila umbellata*
- ✓ *Chiogenes hispidula*

- ✓ *Circaea alpina*
- ✓ *Circaea latifolia*
- ✓ *Claytonia caroliniana*
- ✓ *Claytonia virginiana*
- ✓ *Clintonia borealis*
- ✓ *Convolvulus spithameus*
- ✓ *Coptis trifolia*
- ✓ *Corallorrhiza maculata*
- ✓ *Corallorrhiza striata*
- ✓ *Cornus alternifolia*
- ✓ *Cornus canadensis*
- ✓ *Cornus femina*
- ✓ *Cornus rugosa*
- ✓ *Corylus americana*
- ✓ *Corylus cornuta*
- ✓ *Cryptotaenia canadensis*
- ✓ *Cypripedium acaule*
- ✓ *Cypripedium pubescens*
- ✓ *Cystopteris fragilis*
- ✓ *Danthonia spicata*
- ✓ *Dentaria diphylla*
- ✓ *Desmodium glutinosum*
- ✓ *Desmodium nudiflorum*
- ✓ *Dicentra canadensis*
- ✓ *Dicentra cucullaria*
- ✓ *Diervilla lonicera*
- ✓ *Dirca palustris*
- ✓ *Dryopteris linneana*
- ✓ *Dryopteris phegopteris*
- ✓ *Dryopteris spinulosa*
- ✓ *Epifagus virginiana*
- ✓ *Epigaea repens*
- ✓ *Equisetum arvense*
- ✓ *Erythronium americanum*
- ✓ *Fragaria virginiana*
- ✓ *Galium aparine*
- ✓ *Galium boreale*
- ✓ *Galium circaezans*
- ✓ *Galium concinnum*

- ✓ *Galium lanceolatum*
- ✓ *Galium triflorum*
- ✓ *Gaultheria procumbens*
- ✓ *Gaylussacia baccata*
- ✓ *Geranium maculatum*
- ✓ *Geum canadense*
- ✓ *Gnaphalium obtusifolium*
- ✓ *Goodyera pubescens*
- ✓ *Goodyera repens*
- ✓ *Habenaria bracteata*
- ✓ *Hamamelis virginiana*
- ✓ *Helianthus strumosus*
- ✓ *Hepatica acutiloba*
- ✓ *Hepatica americana*
- ✓ *Hieracium canadense*
- ✓ *Hydrophyllum virginianum*
- ✓ *Hystrix patula*
- ✓ *Impatiens biflora*
- ✓ *Lactuca canadensis*
- ✓ *Laportea canadensis*
- ✓ *Lappula virginica*
- ✓ *Lathyrus ochroleucus*
- ✓ *Ledum groenlandicum*
- ✓ *Linnaea borealis*
- ✓ *Lonicera canadensis*
- ✓ *Lonicera hirsuta*
- ✓ *Lonicera oblongifolia*
- ✓ *Lonicera prolifera*
- ✓ *Luzula multiflora*
- ✓ *Lycopodium annotinum*
- ✓ *Lycopodium clavatum*
- ✓ *Lycopodium complanatum*
- ✓ *Lycopodium lucidulum*
- ✓ *Lycopodium obscurum*
- ✓ *Lycopodium tristachyum*
- ✓ *Lycopus americanus*
- ✓ *Lycopus uniflora*
- ✓ *Lysimachia quadrifolia*
- ✓ *Maianthemum canadense*

- | | | |
|--------------------------|----------------------------|--------------------------|
| Melampyrum lineare | Pyrola elliptica | Smilax herbacea |
| ✓ Mitchellia repens | Pyrola rotundifolia | Smilax hispida |
| ✓ Mitella diphylla | ✓ Pyrola secunda | Solidago latifolia |
| ✓ Mitella nuda | Ranunculus abortivus | Solidago ulmifolia |
| Monarda fistulosa | Ranunculus recurvatus | Streptopus amplexifolius |
| Moneses uniflora | Ranunculus septentrionalis | Streptopus roseus |
| Monotropa uniflora | ✓ Rhus radicans | ✓ Taxus canadensis |
| Myrica asplenifolia | Rhus typhina | Thalictrum dioicum |
| ✓ Onoclea sensibilis | Ribes americanum | Tiarella cordifolia |
| Oryzopsis asperifolia | ✓ Ribes cynosbati | ✓ Trientalis borealis |
| ✓ Osmorhiza claytoni | ✓ Ribes lacustre | ✓ Trillium cernuum |
| ✓ Osmunda cinnamomea | ✓ Ribes triste | Trillium grandiflorum |
| Osmunda claytoniana | Rubus idaeus | Uvularia grandiflora |
| ✓ Oxalis montana | Rubus parviflorus | Uvularia sessilifolia |
| Panax quinquefolia | Rubus hispidus | Vaccinium angustifolium |
| Parietaria pennsylvanica | Rubus - blackberry | Vaccinium pennsylvanicum |
| ✓ Parthenocissus vitacea | Rubus - dewberry | Viburnum acerifolium |
| Pedicularis lanceolata | ✓ Rubus - raspberry | Viburnum affine |
| Phyrma leptostachya | Sambucus canadensis | Viburnum lentago |
| ✓ Podophyllum peltatum | Sambucus pubens | Viola canadensis |
| Polemonium reptans | Sanguinaria canadensis | Viola cucullata |
| Polygala pauciflora | Sanicula gregaria | Viola incognita |
| Polygonatum commutatum | Schizachne purpurascens | Viola pallens |
| ✓ Polygonatum pubescens | Scutellaria lateriflora | Viola pubescens |
| Potentilla simplex | Shepherdia canadensis | Vitis aestivalis |
| Prenanthes alba | Smilacina racemosa | Vitis riparia |
| Pteretis nodulosa | Smilacina stellata | Waldsteinia fragarioides |
| Pteridium aquilinum | Smilax ecirrhata | Zanthoxylum americanum |

Additional Species:

- Carex narrow*
Carex intum
Helle Venter dioica
Prunella vulgaris
Calamagrostis canadensis
Caltha palustris
Sanicula maillandiana
~~yellow, spp elipt~~ *Senecio aureus*
Slycena striata