



LIBRARIES

UNIVERSITY OF WISCONSIN-MADISON

Wausau, Wisconsin.

[Wausau, Wis.]: [Wausau Chamber of Commerce], 1923

<https://digital.library.wisc.edu/1711.dl/LV7XCKVL6LG7C8S>

<http://rightsstatements.org/vocab/NoC-US/1.0/>

The libraries provide public access to a wide range of material, including online exhibits, digitized collections, archival finding aids, our catalog, online articles, and a growing range of materials in many media.

When possible, we provide rights information in catalog records, finding aids, and other metadata that accompanies collections or items. However, it is always the user's obligation to evaluate copyright and rights issues in light of their own use.

W.

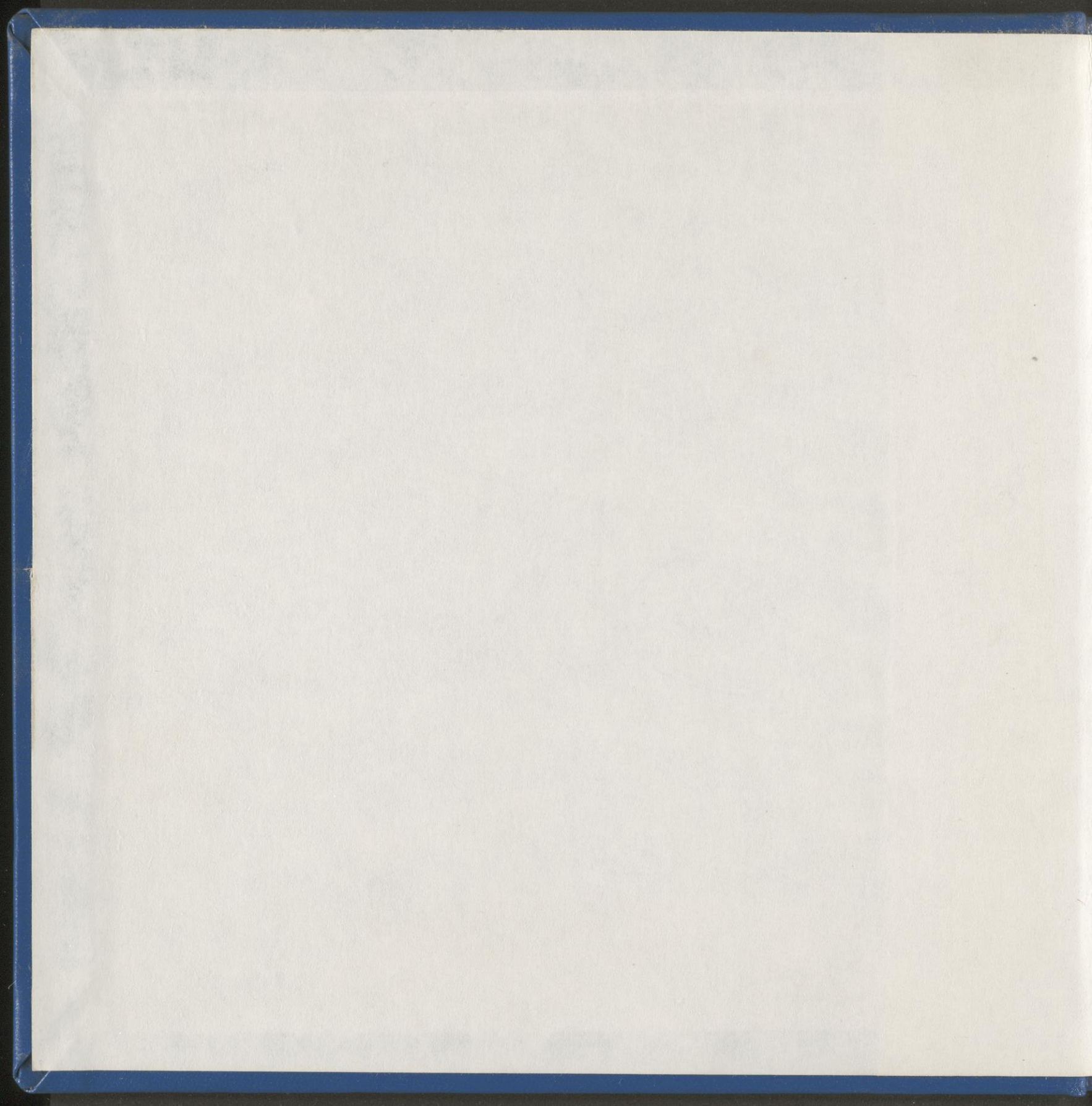
*

977.529

W3583

For Reference

Not to be taken from this room





ARAT

Wausau, Wausau: Hierher

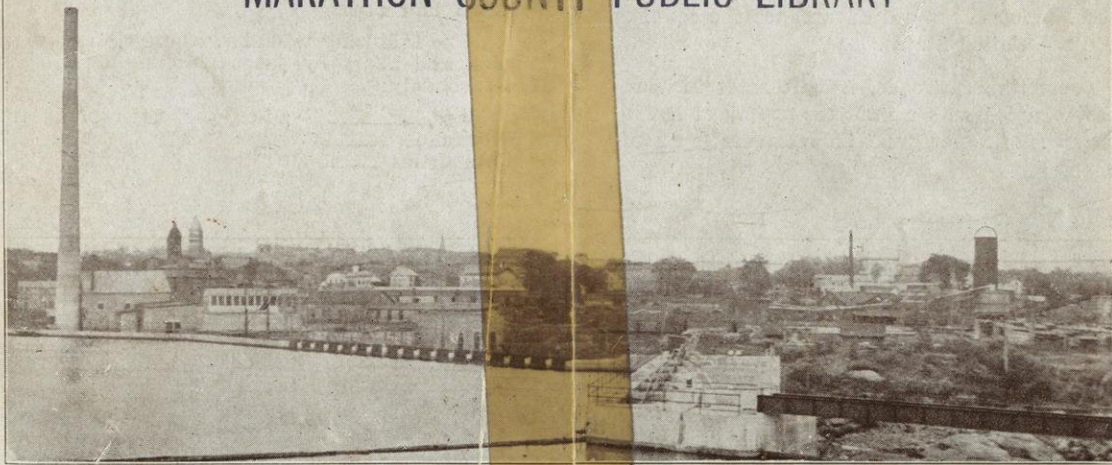
WAUSAU PUBLIC LIBRARY
WAUSAU. - WISCONSIN



WAUSAU WISCONSIN

County Seat of Marathon County, A City of Excellent Opportunities. Two Railroads, and Splendid Water Power. Population, 20,000. Elevation 12—1400 feet above sea level. 185 miles from Milwaukee, 268 miles from Chicago, and 210 miles from the Twin Cities. More than 60 Industries. Area 6 square miles.

MARATHON COUNTY PUBLIC LIBRARY



WAUSAU, WISCONSIN



C. M. & St. P. R. R.



C. & N. W. R. R.

PASSENGER STATIONS

WAUSAU NEAR THE CENTER OF THE GREAT BADGER KINGDOM

Wausau is just a few miles north of the exact geographical center of Wisconsin, and is closely connected with all parts of it by rail and with excellent county and state trunk highways that have become nationally famous by being enjoyed annually by hundreds of thousands of motor tourists. The state of Wisconsin has spent many millions of dollars in bringing its wonderful highway system up to its present high standard, and expects to continue its maintenance and building program, in order to give not only its residents, but the people of the country as a whole the finest equipment of roads to be found anywhere in the country. Just now the eyes of America are being focused on Northern Wisconsin as the result of an extensive publicity campaign being carried on by an association of resort owners and business men, organized to tell the world of the advantages of Wisconsin. However, Wausau is not dependent upon nearby developments to insure her progress, as it has natural advantages the equal of any city of its size in the United States.

Because of the competing railroads, freight rates in Wausau are low and these coupled with a limitless supply of hydroelectric power, at cheap rates, offer great inducements to manufacturing.

TRANSPORTATION—FREIGHT AND PASSENGER

Wausau is adequately served by the Wisconsin Valley Division of the Chicago, Milwaukee & St. Paul Railroad, and Ashland Division of the Chicago & Northwestern Road.

There are sixteen passenger trains and ten freight trains daily to all points, north, south, east and west. The fifteen miles of industrial side track within the city, is open to free interchange privilege.

Wausau is the natural distributing center for the upper part of Wisconsin, and because of its close proximity to the source of raw material for the lumber and paper industries, has long been a leader in these products. Low rates on logs and pulp wood make it possible for large paper and saw mills to operate successfully, even though the raw material is shipped considerable distances.

Additional passenger service to all the surrounding territory within a radius of forty miles, during the summer months, is afforded by numerous motor bus lines, that are constantly increasing in number as the demand for this rapid means of transportation increases.

The following will show the distances to various large markets, and hours by passenger, and by freight to these points respectively:

Chicago	-----268 miles,	passenger 11 hours,	freight 36 hours
Milwaukee	----185 " "	9 " "	24 "
Twin Cities	----219 " "	12 " "	36 "



C. M. & St. P. R. R.



C. & N. W. R. R.

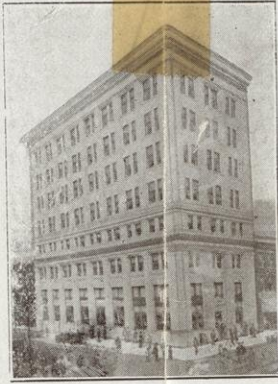
FREIGHT STATIONS

*
W
977-529
W3583

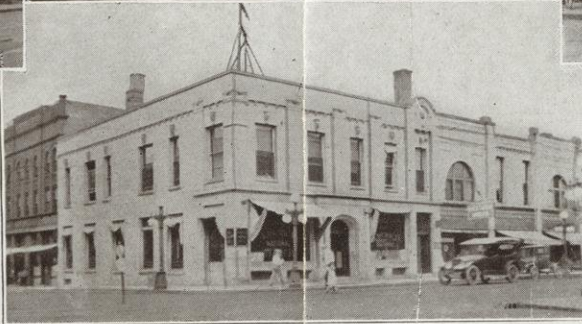
MARATHON COUNTY



First National Bank



Marathon County Bank



Proposed New American National Bank
Present American National Bank

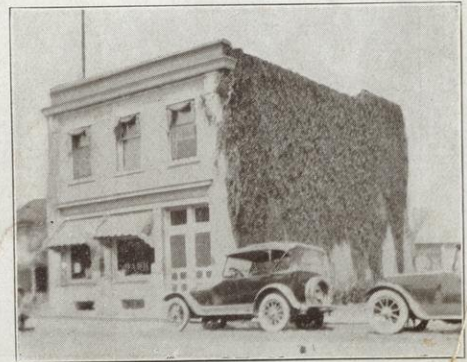
BANKING

Wausau has four banks, two national, and two state, and one trust company, the joint resources of which are \$11,520,885.00. Combined capital \$1,000,000.00. Total surplus and undivided profits \$571,202.00. Total deposits \$10,689,480.00.

A recent survey of Wisconsin cities over 10,000 population shows Wausau to be second highest in the state in rank of bank deposits per capita, with \$573.00 the per capita deposit.



Wisconsin Valley Trust Company



Citizens State Bank

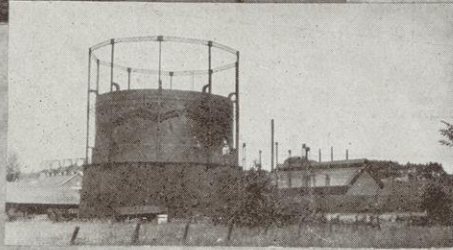
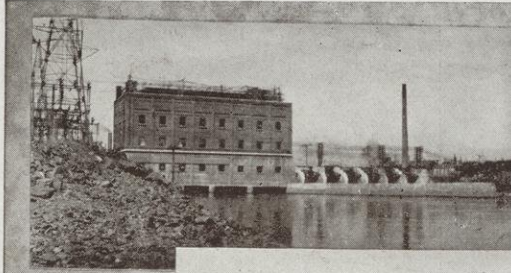
380

Brodery

Hectman

31, Aut 78

WAUSAU, WISCONSIN



Wisconsin Valley Electric Company Million Dollar Dam
Wausau Gas Co.



Street Railway System
Water Pumping Station

WATER SUPPLY

More than 48 miles of mains fed from deep wells, serve 3300 consumers. \$569,973.00 have been invested by the city in the water system. The pumping station is equipped with one six million gallon horizontal Cross compound pump, and one three million gallon horizontal Duplex pumping engine. The water rates are reasonable and will compare favorably with any plant in the country.

CITY GOVERNMENT

The government of the city of Wausau is in the charge of a mayor and eighteen aldermen elected by the people. The city is divided into nine wards.

GAS

Twenty-nine miles of gas mains. Plant valued at \$500,000.00, with a capacity of 225,000 cubic feet daily. More than 2400 consumers. Rates the same as those in larger cities.

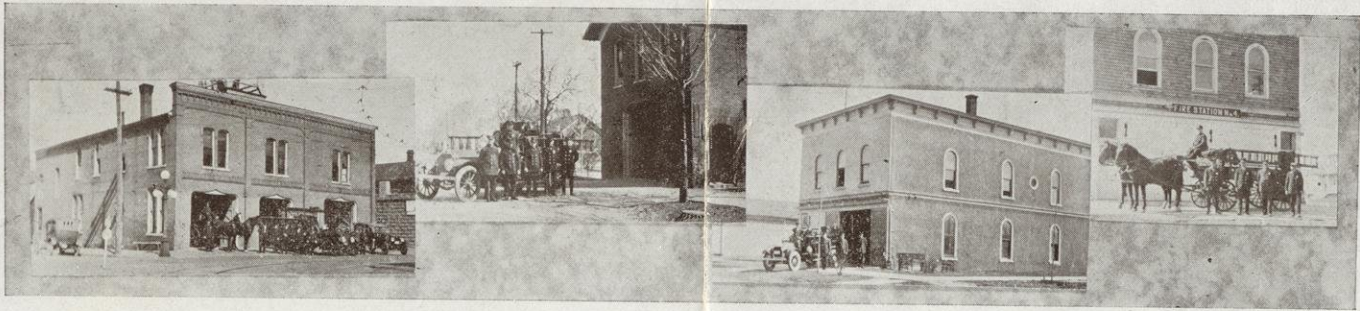


Carnegie Library



City Hall

MARATHON COUNTY



City Fire Department

FIRE PROTECTION

The paid fire department has 27 officers and men, with equipment for four stations in various parts of the city, completely motorized with the exception of two teams, soon to be replaced with motors. There are two steam fire engines, one triple combination, hose, chemical and pumper, two combination hose and chemical trucks, one horse drawn hook and ladder, one horse drawn hose wagon, 9,000 feet of 2½ inch hose. Gamewell fire alarm system, with 56 boxes.



Federal Post Office

POST OFFICE FACILITIES

The handsome Government Post Office building, completed in 1907 at a cost of \$87,000.00, is located at the corner of Fourth and Scott streets. There are 40 employees paid from this office. Twelve mails are received daily, and nine are dispatched. The comparative postal receipts of the Wausau office for the fiscal year ending April 1st, 1923, are \$111,374.00 for 1923, as compared with \$95,607.00 for 1922, or a gain of \$15,767.00. In 1914 the receipts were \$57,938.00; during the past eight years a gain of almost 100% having been made.

TELEPHONE AND TELEGRAPH

A local company operates the only automatic system in the state, and owns its own handsome three story building, which is next to the post office on Fourth Street. There are 3600 telephone subscribers.

Telegraph service is rendered by the Western Union.



Wausau Telephone Company Building

WAUSAU, WISCONSIN



EDUCATIONAL

CITY SCHOOLS

In Wausau there are eleven public and four parochial schools, and one business college, showing an investment of more than \$1,500,000. One hundred and fifty teachers were employed and over 5000 students were enrolled during the past year.

The construction of the second unit of the Central School at a cost of \$375,000.00 is under way, which will make this building one of the finest in the state.

COUNTY SCHOOLS

There are two hundred twenty-eight rural schools, seven high schools and one county normal in Marathon County. Approximately 450 teachers are required to instruct the 24,000 students in daily attendance.

(For facts pertaining to Marathon County Normal School turn to page twenty).

MARATHON, COUNTY



St. Mary's Hospital
New Wausau Memorial Hospital (Under Construction)



Mount View Tuberculosis Sanatorium
Wausau Hospital

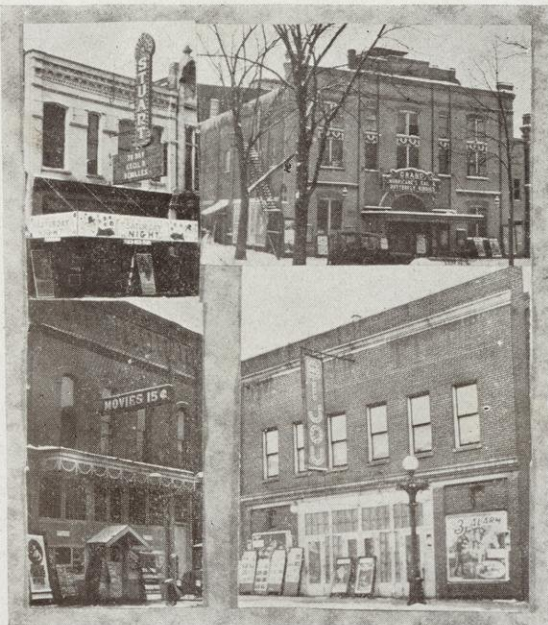
HOSPITALS

With the completion about January 1, 1924, of the Wausau Memorial Hospital at a cost close to \$400,000.00, Wausau will have as fine hospital facilities as can be found anywhere in a city of its size. There is also St. Mary's Hospital, to which a large addition was recently added, and Mount View Sanatorium, with a capacity of fifty tubercular cases, located four miles west of the city and maintained by the county. (For further information see page 20)

AMUSEMENTS

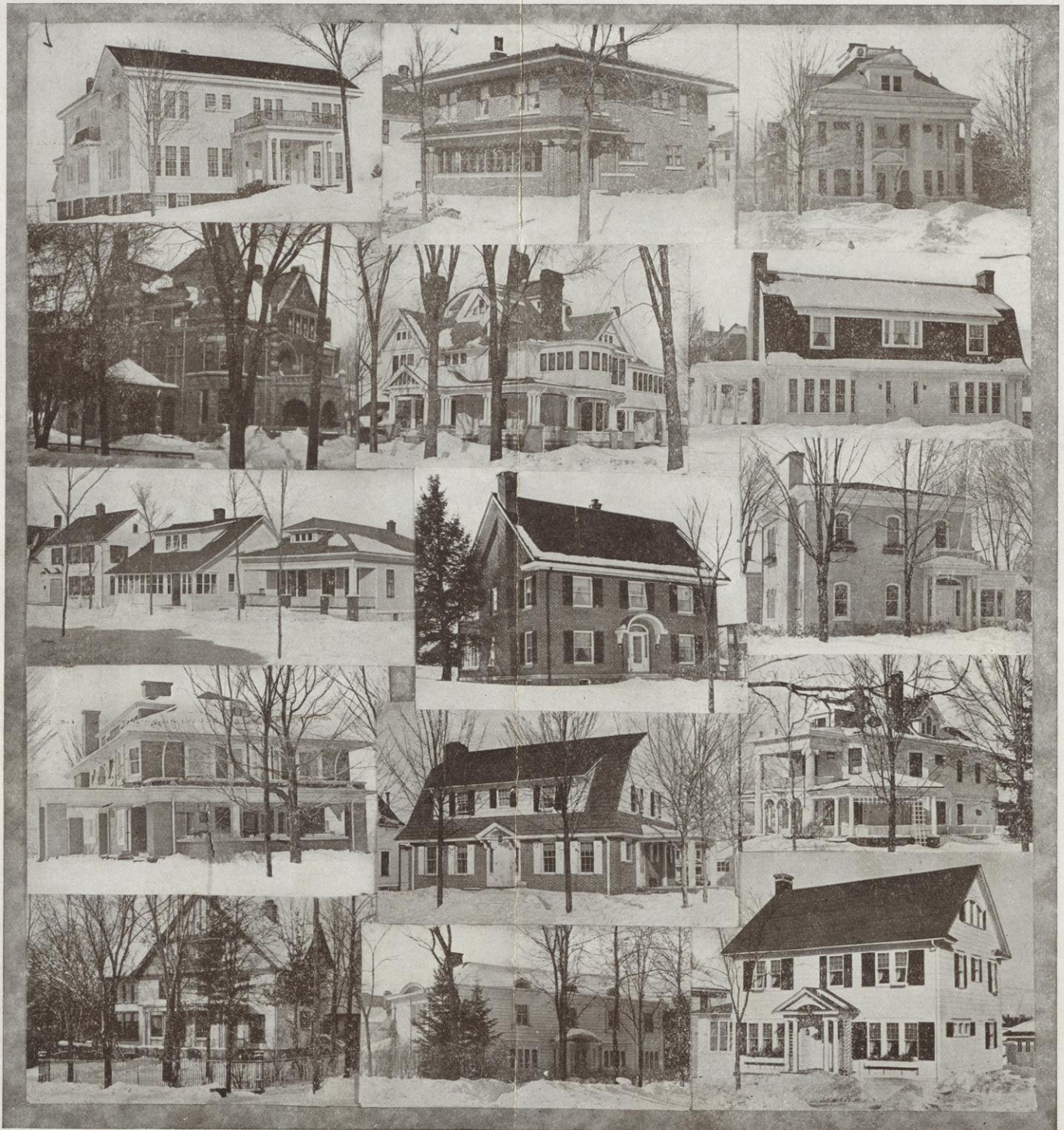
There are four theaters in Wausau, two of which are strictly movie houses, one that shows some vaudeville, and the fourth that features high class legitimate stage productions as well as pictures.

Those who enjoy dancing will find numerous opportunities to satisfy their desires at the many pavilions closely adjacent to the city.



Wausau Theaters

WAUSAU, WISCONSIN

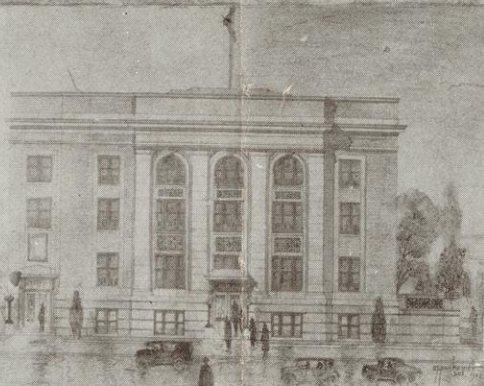


MARATHON COUNTY





MARATHON COUNTY



Business and Professional Women's Club
Wausau Club (to be remodeled)

B. P. O. Elks' New Club House (Under Construction)
Wausau Country Club

Masonic Temple
F. O. Eagles Building

LODGES AND CLUBS

Masons, Elks, Pythians, Eagles, Owls, Odd Fellows, Moose, Beavers, Yoemen, Catholic Knights, Knights of Columbus, Catholic Order of Foresters, Maccabees, Modern Woodmen, E. F. U., F. R. A., G. U. G. Germania, and I. O. B. B. have lodges in Wausau.

The Wausau Club home is soon to be improved at the cost of \$100,000.00. The Elks will move into their new \$100,000.00 club house by the first of January, 1924. The Wausau Country Club maintains tennis courts, an excellent eighteen hole golf links, and a commodious and attractive club house.



Y. M. C. A.



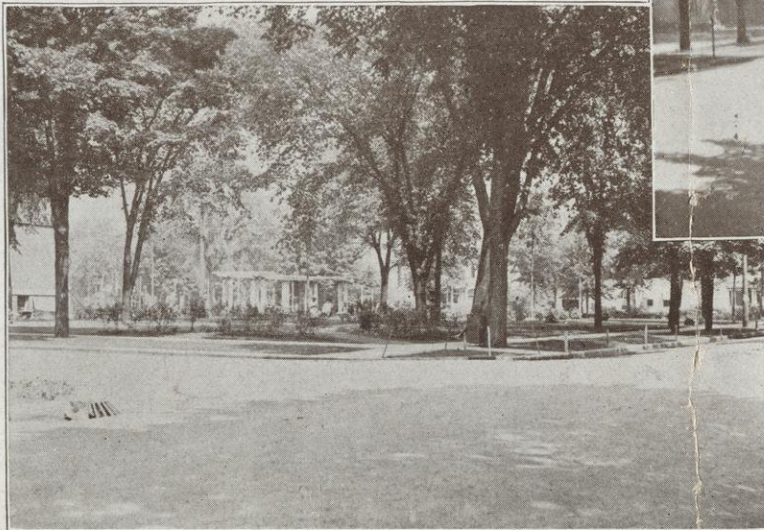
Y. W. C. A.



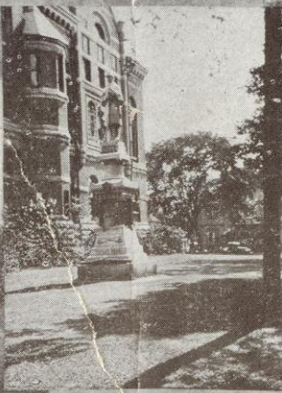
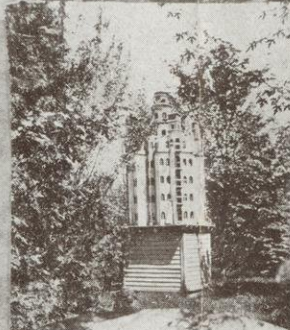
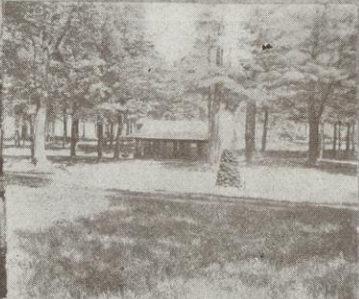
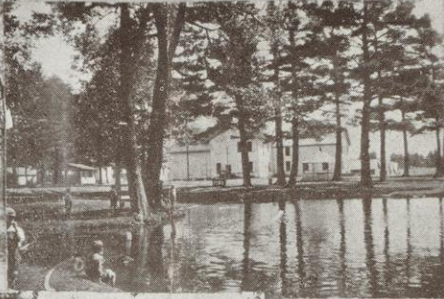
STREETS

Wausau has 150 miles of streets, 27 miles of which are paved with concrete and creosoted wood blocks. The balance of streets are well drained macadam and gravel.

There are also 150 miles of cement sidewalk, and an equal amount of sewers, which cover practically the entire city. Disposal of the waste is easily and safely accomplished in the Wisconsin River.



Wausau Street Scenes



WAUSAU, WISCONSIN



WAUSAU HOTELS

Wausau has at present twelve hotels. From the large amount of agitation of the subject, it is evident that in the very near future there will either be a material expansion in the facil-

ities of some of the existing hotels, or the erection of a modern new hotel, to take care of the steadily increasing demand for more and better hotel accommodations in Wausau.

MARATHON COUNTY

ELECTRICITY

Perhaps Wausau's greatest single advantage, is found in its almost limitless supply of hydro-electric power furnished by a local company that owns and operates five large power dams, with an equal number of auxiliary steam plants to insure continuous service. Not only does this give to Wausau industries and homes, the cheapest electric power in the state, but the fact that there are a large number of undeveloped sites owned by this company, still further insures the growth and prosperity of the community by making it possible for power to be furnished to all who may ever wish to use it. There are over 6,000 local electricity users, many of which are the large industrial plants of the city, which, especially during the warm summer months, when the exhaust steam from an engine has no commercial value for heating a factory, find it more economical to close down their steam plants entirely and buy their power outright, than to try to generate their own electricity, even when they are equipped to do so. No other testimonial than this, as to the fairness of the rates and reliability of the service need be given.

CHAMBER OF COMMERCE

Wausau has a modern Chamber of Commerce, which is enjoying its seventh year of continuous service to the community. Its 400 members have the best interests of "their" city at heart always, and help to make Wausau both better and bigger. The offices of the Chamber of Commerce are centrally located, well appointed, and under the expert supervision of a full time secretary and two assistants, who are always glad to be of service in any way possible.

BOY SCOUTS

Wausau has its Boy Scout work well in hand after three successful years, with a full time executive as general director of activities. This young man also devotes considerable of his time and effort to looking after the Scout work throughout the county, and in this way helps to bring the city and country closer together on a common ground of understanding.

CHURCHES

The religious needs of Wausau are well taken care of by thirty churches, many of which have imposing houses of worship. The following denominations are represented, Catholic, Lutheran, Methodist, Episcopal, Presbyterian, Universalist, Baptist, Christian Science, and in fact, all those found in any mid-western city.

Throughout the county there are many churches, the majority of which are Catholic or Lutheran.

RECREATION

Besides its numerous parks, Wausau has easy access by train and automobile, to the famous lake region of Northern Wisconsin, so that many families are able to enjoy economical outings in this great out-of-door playground.

Fish and game are plentiful in this region, and the streams, fields and woods are very popular with the sportsmen.



Some of Waupun Sixty Industries

WAUSAU, WISCONSIN



Part of Wausau's Wholesale District

WAUSAU AS A MANUFACTURING AND WHOLESALE CENTER

Originally a saw mill town, in which the mighty pine logs were converted into rough lumber, Wausau has made great strides forward as one of the leading industrial centers of the state. Today it has more than sixty industries turning out a wide variety of forty-five products, among the most important of which are found: leather, soft drinks, flour and feed, lumber, boxes, saw and paper mill machinery, wood veneer, sash, doors and interior finish, gravel, granite, paper bags, excelsior, shoes, rubber clothing, advertising novelties, ice-cream and oyster cartons, canned vegetables, tools, candy, chimney cleaning machinery, paper and pulp, brooms, sandpaper and abrasives, iron products, meat, toothpicks, electric motors.

Not only do these products find use in every state in the Union, but an extensive export trade is carried on with many foreign countries.

This extreme diversification of industry helps to stabilize the financial conditions of the community, and in times of depression elsewhere, there is much less unemployment in Wausau than in "one industry" towns. Most of the workmen own their own homes, which insures the permanency of the supply of labor and gets away from the troublesome elements that usually are present with a large transient population.

The cheap power previously mentioned, ample side track facilities, with inter-switching privileges for numerous additional industrial sites, and a good supply of reliable labor, are inducements for location in Wausau, which prospective manufacturers find very attractive.

Not only is Wausau the leading manufacturing center of central and northern Wisconsin, but it is rapidly coming into its own as a wholesaling center as well, because of its close proximity to a large trade area.

Among the products which are handled in Wausau in a wholesale manner are, dairy supplies, fruit and vegetables, groceries, meat, cheese, plumbing supplies, shoe findings, auto supplies, oil, gasoline, and candy.

Ability to be of real service by prompt deliveries, especially where motor trucks are used, is a matter of importance which wholesalers everywhere are coming to appreciate more and more, which fact is directly responsible for the rapid growth of Wausau as a wholesale center.

RETAILING IN WAUSAU

With more than a hundred thousand people to serve in a retail way, Wausau's stores and shops are among the best in the state. Every possible effort is made by the merchants to give to the public the largest possible choice of goods at the best possible prices. Through the Retail Division of the Chamber of Commerce and the Merchants Ad Club, much trade extension work is carried on throughout the rural sections and in the neighboring smaller cities.

The value of absolutely truthful advertising and fair dealings, has made itself felt, and is very well shown by the large number of people who come long distances to trade in Wausau.

Business locations in the retail district are always at a premium, and as fast as new buildings are erected, they are immediately used. There are no empty store buildings in Wausau.



Marathon Park (Fair Grounds and Tourist Camp Site)

MARATHON PARK AND WISCONSIN VALLEY EXPOSITION FAIR GROUNDS

Located on the western limits, only a mile from the Court House, in the heart of town, is found Marathon Park, a beautiful 80 acre grove of virgin white pine, which is being preserved for future generations by the county, in the form of a public park.

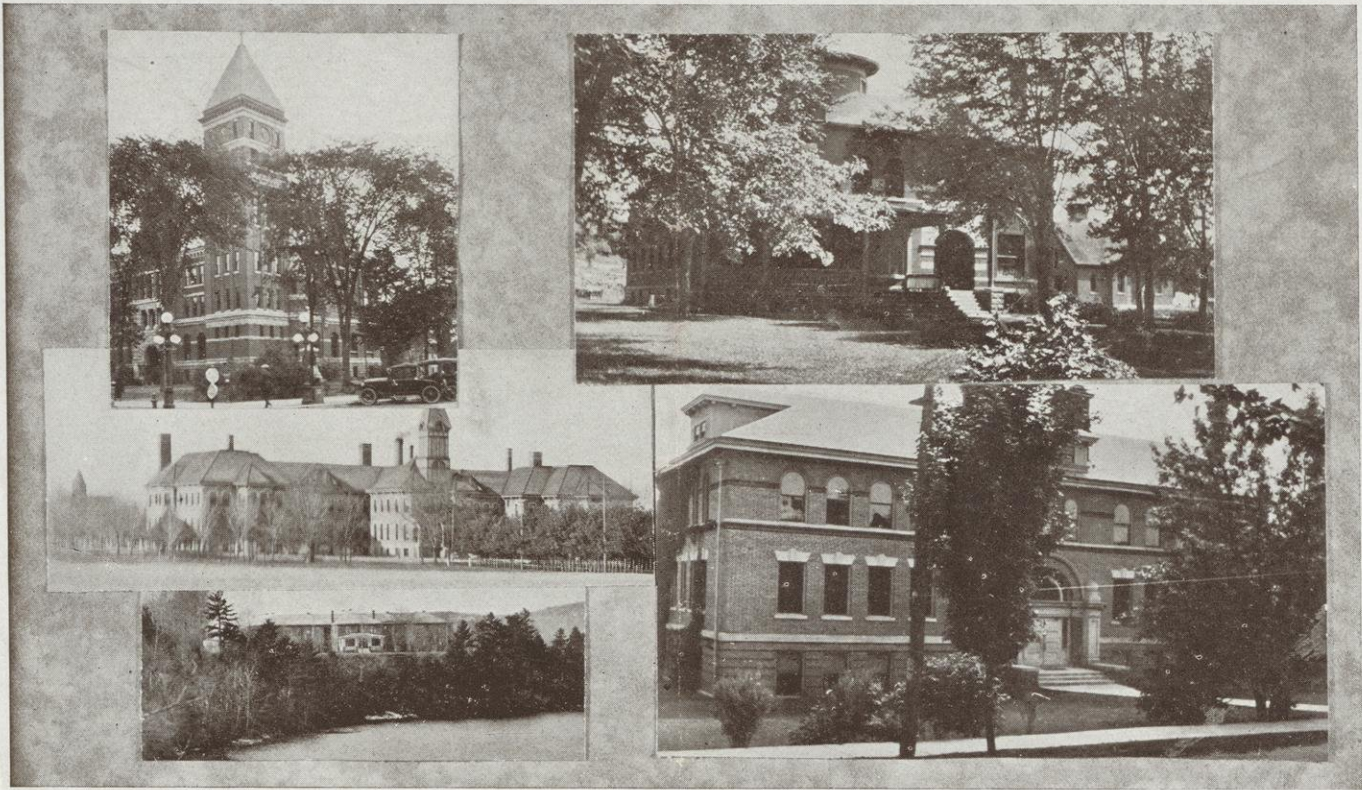
Here are also the splendid concrete and steel buildings of the Wisconsin Valley Fair and Exposition, one of the largest fairs held in the state.

The free tourist camping site is also located in Marathon Park, with a resident care-taker at hand at all times to assist the tourist. Free wood, water, and police protection make this camping site so popular with the tourist, that many come

to stay one night and like the restful quiet of the mighty pines so well that they linger for a week making, in the meantime, short side trips to the many beautiful spots in Marathon County, before continuing their northward journey. Then, on the way home at the end of a wonderful summer in the land-o-lakes, they again bid farewell to the pines in Marathon Park.

Hundreds of thousands of dollars have been spent in making Marathon Park one of the finest parks in the country. That success has crowned the efforts of the far-sighted people of Marathon County, in making this wise provision for the future, is proven by the thousands of people annually who enjoy the park.

WAUSAU, WISCONSIN



Court House

Asylum

County Home

Jail

County Normal School

MARATHON COUNTY BUILDINGS

MARATHON COUNTY

Although its land area exceeds that of the state of Rhode Island by 316 square miles, which gives it the right to lay claim to greatness upon the strength of being the largest county in the state, Marathon County, with its expanse of 51 miles east and west, and 35 miles north and south, is just as big in many other ways as it is in size.

Its public buildings are among the finest to be found anywhere. The court house, asylum, county home, jail and county normal school, all located in the various parts of the city of Wausau, have been well constructed at an outlay of nearly half a million dollars, and stand as monuments to the permanency of the community which they are meant to serve. The county

tuberculosis sanatorium, located five miles west of the city, with a capacity of 50 patients, is in keeping with the other county buildings and is something of which Marathon County people have just right to be proud.

The sixty-five thousand people who live in Marathon County are largely agricultural. Twenty-five thousand live in the cities and villages, and forty-five thousand on the 6500 farms.

With only twenty per cent of its land under cultivation, the county's dairy cattle number 55,000 head. Located in Wisconsin's clover belt with green pastures the rule, able to produce bumper crops of grain, and corn for silage, Marathon is truly the ideal dairy county.

MARATHON COUNTY



Marathon County Highway Scenes

ROADS

The county has twenty-two hundred miles of open highway. Five leading state trunk highways serve her residents, number 10 cutting the county from north to south and much of the way in sight of the Wisconsin river; number 16 running almost through the middle of the county from east to west, intersecting 10 at Wausau. Along the western edge highway 13 and just off

the eastern edge number 39, with route 64 paralleling the northern boundary, two to four miles distant. Every mile of these roads is worked by patrol men and utilized throughout the touring season by tens of thousands of motorists from all parts of the country.

SOIL - CLIMATE - RAINFALL

Marathon County has three leading soil types. The Colby or Spencer silt loams in the north and west, Marathon silt loam in the central part and the Kennan silt loam and sandy soil in the east. An abundance of rainfall, seasonably well distributed,

insures a maximum production of farm crops with good pasture from May to November. The average rainfall in the county is thirty-three inches. Length of growing season, 120 to 130 days.



Marathon County Apiary

WAUSAU, WISCONSIN



Clover

Potatoes

Corn

Wheat

MARATHON COUNTY CROPS

BEEES—One of the most important special crops in Marathon County is the raising of bees and production of large amounts of honey. There are one hundred and fifty owners, with from one to two hundred twenty-five hives, which brings the total number of colonies up to one thousand, valued at \$10,000.00. The annual output of 50 tons of honey is easily worth \$200.00 per ton, or \$10,000.00. The abundance of many kinds of flowers, particularly clover, insures high grade honey.

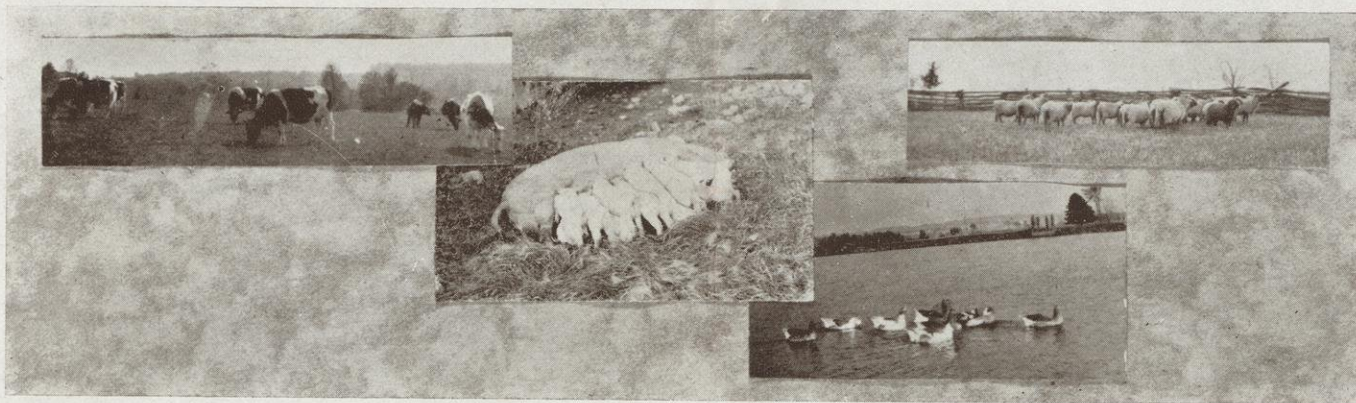
CLOVER—Being as it is in the heart of Wisconsin's famous "Clover Land", it is but natural to find in Marathon County splendid stands of this important forage crop.

POTATOES—While being a little north of one large potato area and south of another, there are each year a great many potatoes raised and marketed throughout Marathon County.

CORN—Both for silage and for crib corn, this staple stock food does extremely well in Marathon County. Bumper crops are the common thing instead of the exception.

SMALL GRAIN—Wheat, both winter and spring, rye, barley, and oats are easily grown, and make important parts of all crop rotations throughout the county.

MARATHON COUNTY



Dairy Cattle

Pigs

Geese

Sheep

MARATHON COUNTY LIVESTOCK

The following statistical report of Marathon County crop and livestock production will serve to show that the county is an empire not alone in size, but also in producing ability.

	No.	Value	Rank
Dairy Cows	67,938	\$3,125,194	3
Other Cattle	22,280	378,760	10
Hogs	27,508	305,339	24
Sheep	8,309	34,898	16
Horses and Mules	16,954	1,797,124	4
Farm Value L. Stock		5,641,315	4

	Acres	Bushels	Value	Rank
Oats	62,808	1,193,352	\$ 441,450	8
Winter Wheat	892	12,488	13,237	32
Spring Wheat	699	9,087	9,632	47
Rye	5,458	98,244	67,788	16
Barley	10,546	189,828	98,711	20
Peas	666	8,658	16,450	16
Potatoes	8,851	504,507	428,831	13
Clover & Timothy	84,517	109,872	1,714,003	3

COW TESTING ASSOCIATIONS

Marathon County is proud of the fact that it has a large number of cow testing associations, ranking second in the state with eleven active associations. In 1922 these eleven associations with a membership of from thirty to forty farmers in each organization

functioned for the purpose of spotting the boarder cow and putting the dairy operations of the county on a more profitable basis. These associations were well distributed over the county giving every farmer who desired an opportunity to become a member.

WAUSAU, WISCONSIN



Marathon County Silver Black Fox

FOX FARMING

With one hundred sixty-five fur farms in Wisconsin, Marathon County leads with thirteen, all of which are devoted exclusively to the raising of the famous silver black fox. Not only is the fur of these beautiful animals extremely valuable, but for breeding purposes pure bred stock sells from one thousand dollars per pair up.

Hundreds of thousands of dollars are invested in Marathon County in this new, but steadily growing industry, with the result that the fame of the county as the Wisconsin center of the fox business is being rapidly spread all over the country. By exhibiting at national shows and bringing buyers in from the outside, the producers are able to market their stock in every part of the United States.

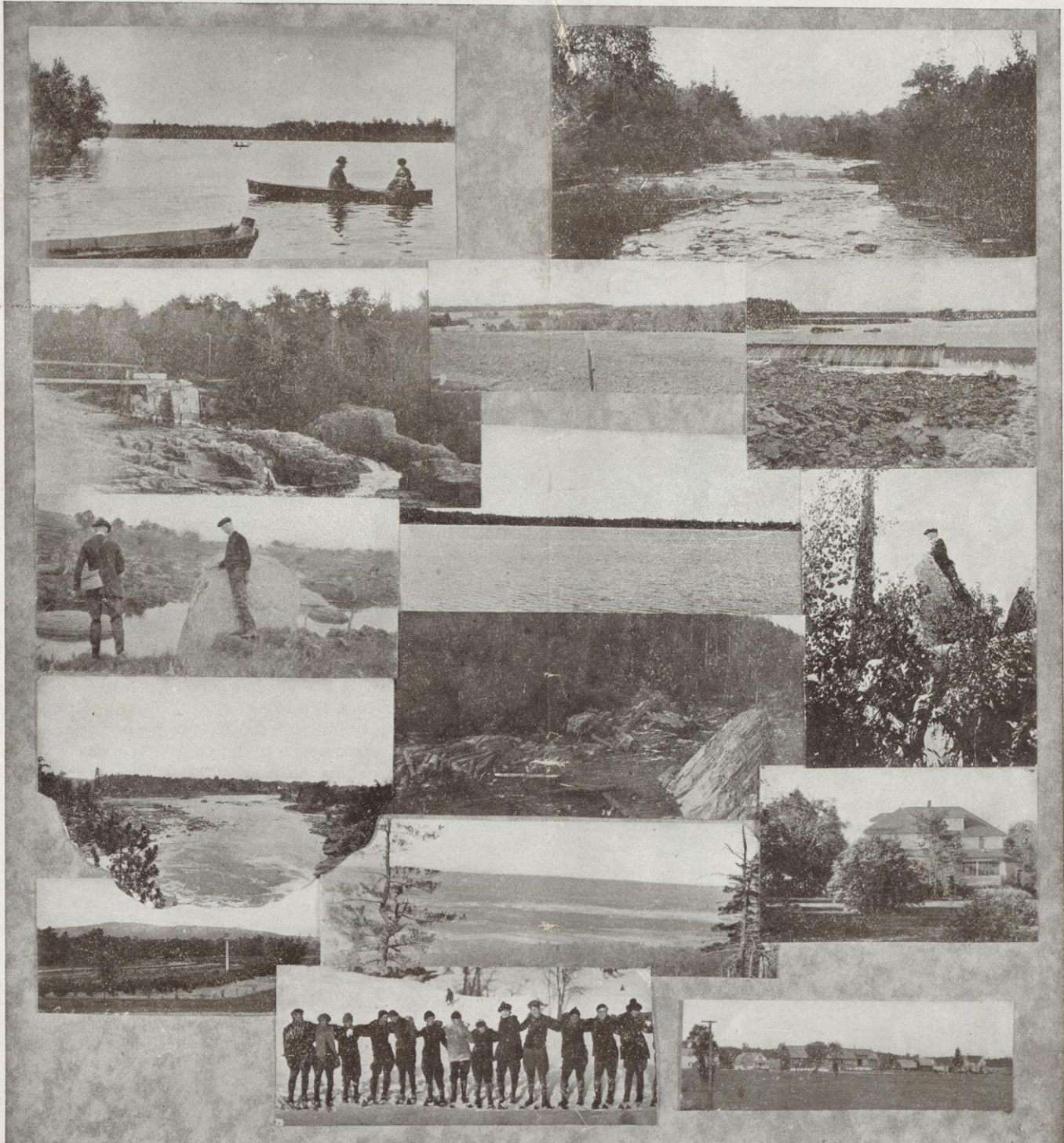
A visit to a modern fox farm is indeed interesting as well as highly instructive, for the business is conducted along lines as scientific as those used with the most expensive purebred dairy herds. Great care is required in handling the young foxes.

These farms are scattered throughout the entire county so that tourists can easily see them, no matter in what direction they may happen to be traveling. Everyone who has never visited a fox farm, is urged to do so before leaving Marathon County, for nowhere will one find a better opportunity to see so many fine animals.

GRANITE QUARRIES

Another nationally known product of Marathon County is its granite, which is quarried at various places around Wausau. This stone, which is of several colors, lends itself to use in monuments and public buildings, being extremely hard and durable,

and taking a splendid high polish. "Marathon Red" granite, as it is known to the trade, is shipped to practically every state in the union.



WAUSAU, WISCONSIN



A Marathon County Zoo

MARATHON COUNTY BEAUTY SPOTS

In addition to rich industrial development and wonderful agricultural possibilities, Marathon County lays claim to being one of the most beautiful scenic spots in all Wisconsin, which to those who know Wisconsin, means a great deal.

No matter where one goes, the eye is greeted by wide vistas of fertile farm lands, flanked by extensive woods, and with gently rolling hills to break the ever present monotony of prairie country. It is as if a giant Landscape Gardener had laid out Marathon County, with an idea of making it a thing of beauty and a joy forever, for all who should reside within its boundaries or drive over its wonderful highways.

Rib Hill, the highest point in the state, with an elevation of 1950 feet above sea level, stretches its majestic granite form five miles southwest of Wausau. Through the efforts of the local Kiwanis Club, a state appropriation was recently secured, which, coupled with local funds, made it possible to purchase the top quarter section of this hill for a state park. A climb to the top of Rib Hill affords the stranger a view of the broad fertile, Wisconsin River Valley, that will long be remembered. The "Queen's Chair," a huge rock formation should be seen by all who visit Marathon County.

The Wisconsin River, as it winds its way through the very heart of the county, is a thing of much beauty. Many twists and turns, with banks still wooded with the mighty white pine that played so important a part in the early development of this great county, serve to provide a constant source of pleasant optical surprises to the motor tourist. Fishing and swimming in the river are enjoyed through the summer months.

The Eau Claire Dells, seventeen miles east of Wausau, are annually visited by many thousand people. Here in a bit of virgin timber, the red granite outcrops, and the Eau Claire River in finding a torturous passage over and between the giant rocks, makes a miniature water falls that is one of the most beautiful things to be seen anywhere in this section of the state.

The Pine River Dells, fifteen miles north of Wausau is another spot much sought by picnic parties and motorists. A small river tumbles through a canyon in the granite, which for all the world gives the effect of western mountain scenery cut down to mid-western proportions. Of especial interest also in this connection, is the fact, that the Pine River is one of the few streams remaining in the state, upon which there is, each spring, a log drive. The flood waters of the river are used to transport the

MARATHON COUNTY



Interesting Marathon County Scenes

logs to a nearby railway siding, where they are loaded onto cars to complete their journey to the saw mill in the approved modern method. Many of the stranded logs left when the waters recede add materially to the elusive beauty of the scenery.

Numerous trout streams lure the fisherman far from the beaten paths of travel. For all who enjoy this great out-door sport, Marathon County holds much of interest, which can only be appreciated after having been experienced.

~~JUN 29 1978~~

SUMMARY

~~AUG 4 1978~~

As you have read the pages of this booklet and looked at the pictures it contains you have had a hasty glance of Wausau and Marathon County, not as we would like them to be, but rather, as they actually are today. No attempt has been made to gloss over defects which are always present in even the most ideal communities, nor to unduly emphasize the many good points.

In order to help fix permanently in your mind the outstanding characteristics of this great city and county, we are making here a brief summary of the story told on the preceding pages, in the hope that repetition of the facts may make them seem more real to you.

Well supplied with freight and passenger rail service, in addition to excellent highways, Wausau with its abundance of cheap electric power and plentiful supply of good labor, has much to offer prospective industries. A manufacturing, wholesale, and retail center, with more than a hundred thousand people to serve in its logical trading area the county seat of Marathon County is in a position to be sure of steady growth.

With more than the usual number of handsome public buildings, both city and county, with splendid schools, many fine churches, and above all many fine homes, Wausau has everything to offer the prospective

“home-seeker”, that can be found in any city of twenty thousand inhabitants. In fact, Wausau is such a city of homes, that more than eighty per cent of its residents own the house they occupy. This is responsible for the uniform neat appearance of all parts of the city, there being no slum or tenement section to mar its beauty.

Second in the state in per capita bank deposits, Wausau is so solid financially, as to immediately impress strangers as being an extremely wealthy city, in which the wealth is well distributed among a large number of people, instead of being centered in the hands of a comparative few. Its five banking institutions are monuments to the solidarity and permanence of the city that but a short time ago was a frontier logging center.

Excellent public utilities with very reasonable rates, do much to make home life pleasant and solve in part the problem of high cost of living. Ample opportunities for all kinds of wholesome recreation during both winter and summer go still further to make it a joy forever to live in Wausau and Marathon County. A rapidly developing park system that is being made possible equally by the far-sighted vision of the city officials and the unselfish generosity of a number of the wealthy families, still further insures the pleasure of living in this city.

MARATHON COUNTY

Wide diversity of manufacturing interests makes for stable conditions of employment. Times of depression are little felt in Wausau and never until they have become acute elsewhere.

Dairying is the principal agricultural pursuit throughout Marathon County, with many cheese factories converting the milk into the staple product consumed throughout all parts of the country. All forage and grain crops necessary to insure profitable farming thrive upon the fertile soil of this great inland empire, and make it possible for even the new settler on unimproved land to quickly improve his farm and make a good living while he is doing it.

Of beauty spots easily accessible to the tourist Marathon County has more than its share, all of which are well worth your time and effort to see. Rib Hill (1950 feet above sea level), the highest point in the state, the Eau Claire Dells, Pine River Dells, Mayflower Lake, granite quarries, and numerous fox farms all demand attention from those who are visiting Marathon County for the first time.

Twenty-two hundred miles of highway, one hundred and thirty of which is state trunk highway, penetrates the largest county in Wisconsin and to such an extent as to bring the distant corners in close relationship with community clubs and live stock to unite the rural population more

No small part of the credit for this unity of thought and action is due to the County Agricultural Agent and County Home Demonstration Agent, both of whom work out from their headquarters at Wausau, to all parts of the county, and are unceasingly active in spreading the gospel of bigger profits through better methods. Having been among the first counties to install both of these experts, Marathon County is now reaping the harvest of the seed already sown, in the form of increased profits and better living. Too much cannot be said about the importance of this work, as it is one of the things that has done more than anything else to cause Marathon County to forge to the front in the agricultural world.

We do not expect this modest little booklet to give you as good an idea of our city, as you will get when you visit it, but it has, nevertheless, an important mission to perform. For the home folks, who are familiar with all that is herein contained, it is hoped that seeing it all spread out before them in pictures, will serve to cause them to better appreciate the greatness of "the" city. For the person that is visiting Wausau for the first time, or contemplating such a visit, this booklet should serve as a guide to the things really worth while. By carefully studying all the facts set forth on these pages you will have a better knowledge than some of its oldest residents.

However, wish you to let matters rest, we respectfully request that you will embrace an opportunity to visit us, and see for yourself that what we say here is truth and not fiction.

DEC 20 1972

WAUSAU, WISCONSIN

WISCONSIN

JUL 6 1976



Badger Kingdom, with Wausau in Its Center,
Has Conspicuous Right to Claim
Greatness

DEC 9 1977

The Badger Kingdom has so many rights to claim greatness that it will be impossible here to more than touch upon the most important. Not as old or well known historically as many of her sister states, in the east and south, Wisconsin has a ready made name for herself through her marvelous state trunk highway system, which is directly responsible for bringing into the state annually hundreds of thousands of motor tourist.

Coupled with the good and plainly marked roads, is the most beautiful scenery imaginable. Lake, streams, woods and hills, all combine to make summer time in Wisconsin play time for everyone. Fishing, hunting, swimming, hiking, camping, motor-ing, and all the host of pleasant things that go with vacations in the open are yours for the asking in this great out-of-doors playground of the middle west.

The progress which Wisconsin is making is phenomenal. Perhaps no state in the Union has such a diversity of industry and agriculture. Entering on highway 15 from Chicago, one passes through an industrial area, where many nationally known concerns had their home. Truck gardening and milk form the principal agricultural products. To the north and west the pure bred live stock. Still to the west of this is the tobacco

the extreme southwestern part of the state is found much stock grazing and also the lead and zinc mines.

That ribbon of concrete, which now extends from St. Louis to Green Bay, in uninterrupted ease, will carry the tourist into the rich and fertile Fox River valley, where industry and agriculture are vieing with one another for supremacy. Still further north and east is the Door County peninsula, famous alike for the largest cherry orchard in the world, and fine tourists resorts. In the center of the state is the great potato area, and north of that more dairying.

The "Land-o-Lakes", in the northern part of the state, is so well known already that little need be added here, except to state that there is no more ideal place anywhere in God's out-of-doors, than northern Wisconsin for vacation.

In the extreme northern part of the state is the copper mining country, while along the western shore of the great Mississippi, lined with high bluffs, is the most beautiful scenery.

Taking it all in all Wisconsin has everything for the tourist or prospective citizen. Its climate is perfect and you are respectfully requested to come and see for yourself.

Wausau Wisconsin

DEC 20 1977

WISCONSIN

JUL 2 1977

Badger Kingdom with Wausau in its Center
His Conspicuous Right to Claim
Greatness

DEC 20 1977

Marathon County Public Library
300 N 1st St
Wausau WI 54403



The southwest part of the state is found much more
greater and also the land and the river
That ribbon of water which now extends from St. Louis
to find that in an unbroken line, WI carry the load and
the top and for the Fox River valley where industry and agri-
culture are vying with one another for supremacy. Still further
north and east to the Door County peninsula, famous alike for
the finest scenery in the world and the various re-
sorts in the winter of the year, in the great delta area, and
a strip of land more distant.
The "land-o-lakes" in the northern part of the state
so well known already that little need be added by an ex-
planation that there is no more than plain water in Lake
out of doors than anywhere Wisconsin for instance.
In the extreme northern part of it
other winter country, with snow the
great, thousands, then with high hills
beautiful scenery.
Taking it all in all Wisconsin has
the finest of prospective climate, the
can not find any more wonderful scenery
one has come and see the country.

The great Wausau has an early history as
that it will be impossible here to more than touch upon a few
important. For as old as well known historical records are
since 1815 in the east and south, Wisconsin has a long and
a name for herself through her marvelous state and her
system which is directly responsible for bringing the state
annually hundreds of thousands of water tourists.
- Located with its good and plain water, it is a
beautiful scenery, historic. Lake Superior, Lake Michigan, and the
all possible in this summer time in Wisconsin, and the
system. This is a fine wintering place for the
and all the best of physical things that we can
in the open air for the winter in this
instead of the winter war.
The progress which Wisconsin is making
phenomenal. Perhaps no state in the
diversity of industry and agriculture. For
highway is being laid out and the
industrial zone which is rapidly
years and that brings fresh and
with form the national agricultural
work and more the best of
and in the west of the in the future.

MARATHON COUNTY PUBLIC LIBRARY
WAUSAU, WI 54401



3 3468 00071 7280



S3P 78

N. MANCHESTER,
INDIANA 46962

