



LIBRARIES

UNIVERSITY OF WISCONSIN-MADISON

Annual reports of the officers of the Madison Park and Pleasure Drive Association for the years ending December 31, 1922, and December 31, 1923, respectively, with reports of annual meetings held Apri...

Madison, Wisconsin: [s.n.], [s.d.]

<https://digital.library.wisc.edu/1711.dl/P7NWUZALYHOUB8O>

This material may be protected by copyright law (Title 17, US Code).

Original material owned by Madison Public Library.

For information on re-use see:

<http://digital.library.wisc.edu/1711.dl/Copyright>

The libraries provide public access to a wide range of material, including online exhibits, digitized collections, archival finding aids, our catalog, online articles, and a growing range of materials in many media.

When possible, we provide rights information in catalog records, finding aids, and other metadata that accompanies collections or items. However, it is always the user's obligation to evaluate copyright and rights issues in light of their own use.

The Madison Park and Pleasure Drive Association

ANNUAL REPORTS FOR 1922-1923





FRANK W. HOYT

TREASURER, MADISON PARK AND PLEASURE DRIVE ASSOCIATION, SINCE 1894

ANNUAL REPORTS
of t h e
OFFICERS OF THE
MADISON PARK
AND PLEASURE
DRIVE ASSOCIATION

*For the Years Ending December 31, 1922,
and December 31, 1923, Respectively*

W i t h
Reports of Annual Meetings
Held April 10, 1923, and May 5, 1924.



Engravings by
BUREAU OF ENGRAVING,
MINNEAPOLIS

The Annual Meeting
of the
Madison Park and Pleasure Drive
Association

Held April 30, 1923.

The annual meeting of the Madison Park and Pleasure Drive Association was held at Room A, in the City Library, April 30, 1923.

The meeting was called to order by Ernest N. Warner, President.

The report of the treasurer was read and placed on file.

The report on behalf of the board of directors was made by President Ernest N. Warner.

Mr. M. B. Olbrich made an address on Madison's Park Program.

Mr. Thomas Coleman presented a proposal from the residents in Maple Bluff to contribute approximately \$4000.00 towards the construction of a concrete roadway through a portion of Maple Bluff. Upon motion it was voted that the association contribute \$3500.00 to supplement the proposed contributions by residents toward the construction of such a road.

Upon motion of W. J. P. Aberg, seconded by Mr. George Kroncke, the following officers were elected:

President, Ernest N. Warner.

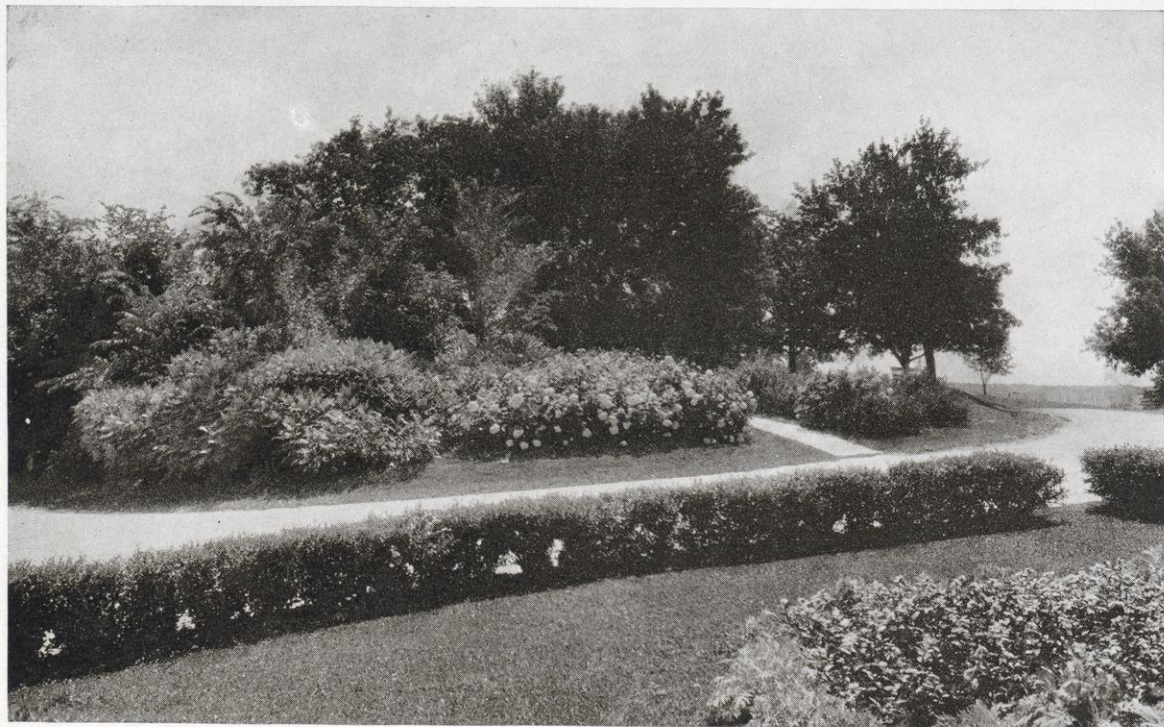
Vice-President, Charles N. Brown.

Secretary, John L. Bourke.

Treasurer, Frank W. Hoyt.

Directors, Corydon G. Dwight, Frank W. Hoyt, Herbert C. Schenk, Fred M. Schlimgen, Dennis C. Sullivan.

On motion the meeting adjourned.



HENRY VILAS PARK ERIN STREET ENTRANCE

President's Report

1923

Made on Eehalf of the Board of Directors

of the

Madison Park and Pleasure Drive Association

To the Members of the Madison Park and Pleasure Drive Association:

This meeting marks the thirty-first anniversary of the work of this association.

The relations between the Association and the City continue so harmonious that this voluntary organization still has imposed upon it the administration of the entire Park Program for the city of Madison, as well as the drives and park areas without the city limits, with the exception of the administration of Monona Park. Each year the city liberally provides funds for the administration of the Park Program within the city, including the maintenance of the Zoo, and annually appropriates funds towards the maintenance of the drives under the jurisdiction of the Association outside the city limits. This appropriation for the drives is based upon the expectation that the membership of the Association will subscribe at least a like amount.

There was expended last year on the parks and drives from the funds provided by the city the sum of \$42,199.00 and for the zoo the sum of \$23,589.91, a total of appropriations by the city of \$65,788.91, making a total amount provided by the city up to the end of last year \$756,358.30. This year's budget contains a provision for park work by the city of \$49,030.33 and for the zoo \$25,000.00, a total for zoo and parks of \$74,030.33. Funds received for the zoo on account of Tag Day and otherwise amounted to \$1,915.19, and last year's subscription for the drives to \$3,892.50.

Other sundry receipts not including the appropriation by the city brought the total subscription account for last year to \$7,449.20.

From funds carried over from the preceding year the concrete roadway at Owen Parkway was paid for in 1922, \$3,268.45, and by cooperation with the regents of the University and the Stevens Estate it was possible to construct a stretch of concrete roadway, sixteen feet in width and one thousand feet long, up Stevens Hill on Lake Mendota Drive at an expense of \$3,500.00.

Farwell Drive

Negotiations for the construction of a considerable stretch of concrete roadway at Maple Bluff this present season have made much progress. It has been the hope of your Board of Directors that a large part of each year's subscription could be devoted to permanent surfacing. This policy on the part of the Board looks to the expenditure of a minimum amount in ordinary upkeep and a maximum amount in permanent concrete surfacing. It is not possible at this time to make a definite announcement of how great a stretch of concrete can be built this season, nor what amount of additional contributions can be had from interested parties, but it is hoped that approximately one-half a mile of concrete road can be built at Maple Bluff during the present season.

Lake Mendota Drive

Progress has been made in the matter of a new and improved location to take the place of the road which has for so many years been open to the public and maintained by the Association, extending from the Sauk road to Lake Mendota Drive through the Merrill Farm. No moneys were expended on this stretch of road last season, as it was believed that the road would be relocated and that such funds as could be appropriately used on this stretch would be devoted to assisting in the construction of the new road. The Chicago, Milwaukee, and St. Paul Railroad has agreed

to be at the expense of the construction of an overhead bridge across its right-of-way at the section line between sections seventeen and eighteen. The Black Hawk Country Club and the Town of Madison have each appropriated \$3,000.00 towards building the approaches. Your Board of Directors has voted to cooperate in this improvement and has indicated a willingness to appropriate \$1,000.00 as its share. The course of the roadway at or near the Western limits of the Black Hawk Country Club has been selected by Mr. O. C. Simonds, and it is probable that a slightly road over a separated grade crossing and following easy grades will this present season be constructed to take the place of the old road across the Merrill Farm. Up to the present time all interested parties are cooperating in the carrying out of this fine improvement.

Beyond these substantial improvements little is anticipated in the way of work on the drives other than ordinary maintenance.

East Washington Boulevard

Within the city the large improvement outlined for this season will be the parking, grading, seeding, and planting of the East Washington Avenue central boulevard strip. The ties and rails which have marred the beauty of this avenue and boulevard and its development have been ordered removed; the Council has placed at the disposal of the Directors of this Association \$2,500.00 for grading, parking, seeding, and planting. It is confidently expected that the six blocks nearest the Capitol will be finished during the spring planting season. Work can be done on other blocks during the summer and planting done in the fall. A request is before the Board of Directors by the Madison Saddle Club for the construction of a bridle path through the centre of these planting strips. The Board did not favor the construction of such a path on the blocks that are to be immediately improved, and it especially invites discussion of the question of whether a bridle path should be constructed on that portion of the avenue lying farther from the centre of the city.

Lakeland Avenue

The city has from year to year extended the permanent improvement on Lakeland Avenue a few blocks at a time. This year a contract has been let to continue Lakeland Avenue through the Olbrich purchase to Atwood Avenue near the new Starkweather Creek Bridge. The permanent improvement of this last stretch of Lakeland Avenue will afford a delightful approach to the city through Lake Front Park along Monona's North Shore. A considerable fill for the building of this street will be necessary over a portion of the O'lbrich purchase. A particularly favorable opportunity presents itself in connection with this fill to also fill the low portion of this park. The fill for the street will be made by dredging from the lake. At the same time and in the same way, the low portion of this park will be filled at a cost to the city, since it is being done at the same time the street fill is made, of about one-half the charge per yard that would be made if the fill were contracted for as an independent proposition. The athletic field of six acres, secured to the city by gift in connection with the Olbrich purchase, will this year be disked and harrowed and made available as a playgrounds for this portion of the city.

There will be constructed in Lake Front Park a Comfort Station, appropriation for which was included in last year's budget.

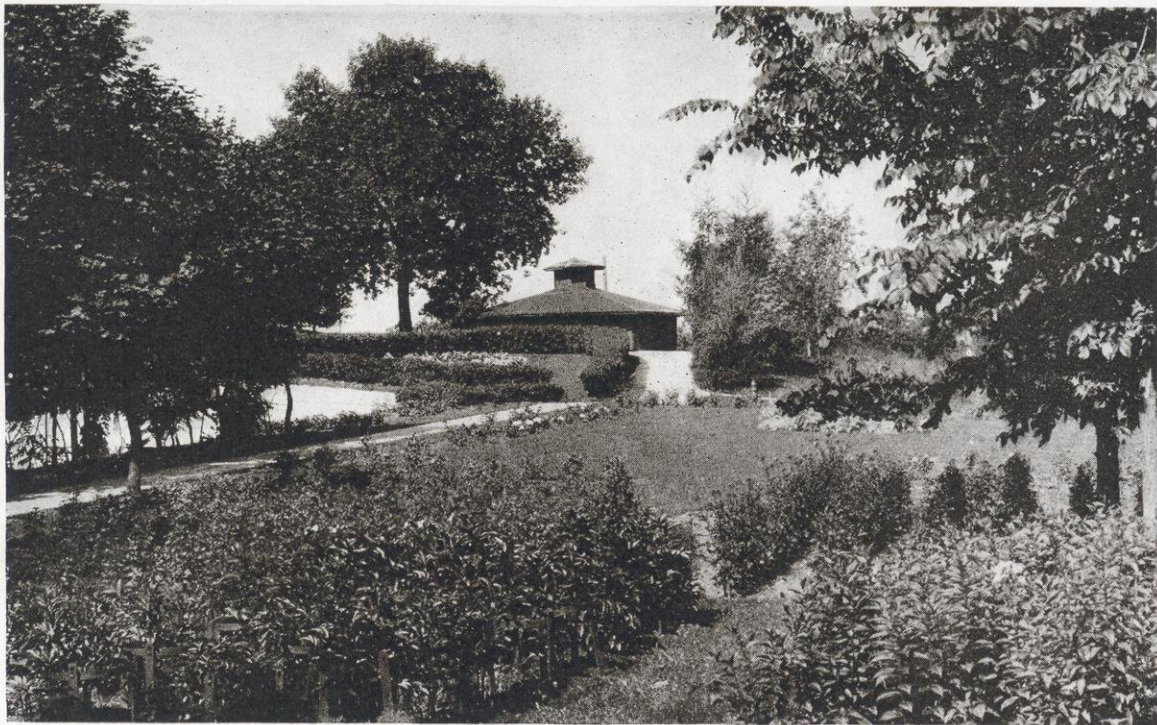
The park opposite Spaight Street has had a great deal of dirt delivered to it and will this year be graded, seeded, and planted. This improvement does not carry the park out into the lake to the proposed dock line. Only the area lying between Spaight Street and the present shore line will be parked. The extension of this shore line out to the proposed dock line only awaits a favorable opportunity to secure the fill. With active dredging operations going on in Lake Monona it would seem that this additional improvement should now be early provided for. It is confidently believed that when the city undertakes this long contemplated park fill citizens in the neighborhood will carry out the improvement to the dock line opposite their properties in both direc-

tions towards the city and toward the Yahara, thus vastly improving and beautifying Monona's north shore in the vicinity of this park.

Brittingham Park and Boulevard

Brittingham Park is probably, in proportion to its area, the most used park in the city. Play grounds supervised by the Board of Education occupy a portion of the park. Baseball games are in progress almost continuously at the northern end of the park. The boathouse and bathhouse are used and taxed to capacity. When it appeared at the time of making up the budget that the Board of Education did not contemplate the appointment of instructors for Brittingham Park and Tenney Park Bathing Beaches this coming season, suggestion was made to the Council that a fund be included in the park budget for such instructors. It seems inappropriate that the bathhouses and bathing beaches should be open to use without a woman swimming instructor. If possible there should be provided at each bathing beach both a man and woman swimming instructor. The Council has provided for life-guards, but in addition to these protective provisions there should certainly be swimming instructors to guide the young and maintain appropriate decorum on the part of older ones who patronize the beaches. It is certain that either in the park budget or in the supervised play provision under the Board of Education or otherwise the Council should provide for swimming instructors.

Brittingham Boulevard has been built and excellently maintained as far as Whittier Street in South Madison. The Association has held title through a 999 year lease to the lake edge and a road strip adjacent extending from Brittingham Park to the right-of-way of the Chicago Northwestern Railroad, except for fifty feet, which until last year it has never been able to obtain. By fortunate negotiations just when this piece of ground was changing hands it became possible for the Association to acquire this strip at a cost of \$350.00. Except for short distances aggregating about 100 feet the cost of macadam of the roadway will fall prim-



HENRY VILAS PARK SITE OF ANNIE C. STEWART MEMORIAL FOUNTAIN

arily on the owners of the abutting property. The Association should this season open and grade this stretch throughout its length and cooperate with the property owners to improve the portion that it is responsible for. The slope to the lake should be parked and cared for throughout the entire length as this is a part of the agreement made when this lake frontage was obtained. With the probability that this area will soon be annexed to the city it becomes increasingly appropriate that this public improvement should be immediately undertaken.

Tenney Park

The island in Tenney Park has in addition to providing a play space for the children and recreation for grown-ups accommodated baseball without apparent interference. The diamond is in great demand and until other play spaces are provided for athletics, there seems no alternative but to permit the use of areas in our parks for athletic games. For many years the Tenney Park tennis courts have been regularly patronized. Provision was made last year also for supervised play in this park. There should be emphasized in connection with Tenney Park the great need of swimming instructors at the bathing beach.

Henry Vilas Park

As one enters Henry Vilas Park from Brittingham Park over Erin Street, one cannot but wonder when the Annie C. Stewart Memorial Fountain is to be completed. Six years have elapsed since Mr. Frederick J. Clasgens was given the commission to design and construct this fountain. The bowl has been constructed, the side pieces have been delivered and our most recent communication from Mr. Clasgens states that the central portion will be forwarded and placed in position and the whole fountain completed and ready for use early in 1923. Many delays unforeseen and without Mr. Clasgens' power to control have intervened to postpone the completion of the fountain. The Board is persuaded

also that it is Mr. Clasgens' ambition to make of this fountain the expression of his finest artistic ability. In this faith the Board is content to await the perfection of his effort. The development of additional area in this park has opened up much play space without crowding. Additional baseball diamonds have been laid out and freely used. The zoo continues the leading attraction in this park, and is being maintained in accordance with the high standard early set in its building under the direct inspiration and personal supervision of Dr. C. G. Dwight. It is popular with young and old and attracts to the city many guests.

Burrows Park

The decision of the Court confirming in the Association the title to Burrows Park was announced at our last annual meeting. Friends of the Association in the vicinity of Burrows Park tendered a subscription of money and of labor to make immediate improvements. Wells were sunk, tourist accommodations provided and during all last season the park was most liberally patronized by the people living in its vicinity and by tourist campers.

Athletic Fields

The demand for playgrounds and athletic fields is increasing every year. The parks were not intended for athletic games, but the great pressure for opportunity for athletic exercise and, in the absence of sufficient grounds, areas in the parks have been set aside for games as far as possible consistent with the proper uses of the parks. The opening up of the athletic field in connection with the Olbrich purchase, the field at the East Side High School, the permissive occupancy of private fields, and the use of smaller park areas as Olive Jones Field, Burr Jones Field, Kendall Park tend in a small way to alleviate the growing demand, but the city of Madison should go forward and at once provide additional athletic fields. To maintain athletics and the liveliest interest in them, league and contest games are

necessary. The park areas cannot be assigned for league games purposes and sites for such league games the city must provide.

In conclusion, the published report will include the itemized statements of our treasurer, Mr. Frank W. Hoyt, covering the general subscription account and the Henry Vilas Park Zoo account, the Mr. and Mrs. A. H. Hollister fund, the Mary C. Stewart Memorial Fountain fund, the D. K. Tenney Park fund and also the balance sheet by the City Auditor, covering detailed operation maintenance and outlay expenditures on parks and playgrounds within the city. The general subscription account will show more than 400 subscribers, an increase of more than 40 per cent in numbers over the preceding year, and an increase of more than 50 per cent in amount of the subscriptions. There seems to continue to be a demand on the part of the citizens of Madison that the work of this Association go forward. The joy in doing the work is found in the appreciative confidence of the Common Council and the generous support of the Membership of the Association.

Respectfully submitted,

ERNEST N. WARNER,
President.



LAKE FRONT PARK

The Functions of the
Madison Park and Pleasure Drive
Association

By Michael B. Olbrich

A mayor of Madison once gave a statement to the press, in which he said, "The city has more parks than it needs. The city at present has fifty per cent more parks than can be crowded in twenty years." A certain rich man of this community, reputed a millionaire, with a cocksureness of attitude that the possession of a million seems to carry with it, refused to contribute to a park project because he had—and he seemed to feel that others ought to have,—something more to do than to spend their time just sitting in the parks. A Justice of the Supreme Court soberly proposed as a solution for congestion in the Capitol that the state build four more office buildings, one in each angle of the present Capitol building.

Those of us who plead guilty to enthusiasm for parks must recognize that these expressions are typical of a school of thought that has to be reckoned with by anyone interested in park promotion. The point of view may seem more interesting than persuasive, but I suspect was entertained with entire honesty in every case. Therefore, we ought not to be angry or unkind about it. I should hesitate to suggest that we be tolerant enough to accept the standard of the man who thought the state would be guilty of extravagance in acquiring land outside the Capitol Square before every available foot of space inside was occupied. I doubt very much the inspiration that lies back of the idea that a park to be successful must have a "standing room only" sign hung out on it continuously.

There is this special reason why those of us who are more or less on tip-toe in furthering the program for more parks ought not to be angry or unkind, because we suffer nothing from this point of view except as our sense of taste is offended, while if we succeed in getting our viewpoint accepted, it is likely to result in a very real and vital injury to the other fellow, because we may pinch him in the very sensitive nerve of his pocketbook. When told that we are crooked, or crazy, or perhaps a combination of both, in our insistence upon greater park development, we ought to accept it with a philosophical shrug.

The problem of park development is like the problem of all life. It is primarily a problem of proportion. It is just as possible to get the intoxication of magnitude, the drunken lust for large dimension, the mania for mere size, in the matter of parks as about anything else. A housekeeper may spend so much time polishing the brass knocker that adorns the front door that she has no time left to devote to the corned beef and cabbage that endow her lord and master with the strength to acquire potential brass knockers in the future. A farmer can devote so much of his domain to front door yard that he has no space left on which to cultivate corn and hay and grain enough to insure the continued possession of the beautiful lawn that is the pride of his heart.

Theoretically, a city may transform itself into a beautiful wilderness, with only here and there a place of residence too costly for the average human being to possess. My observation convinces me that, so far as Madison is concerned, this possibility is a most remote and fantastic one. On the contrary, there is much more danger that we will imitate the fly seated on the hub of the ox-cart, who in Aesop's fable exclaimed, "What a dust do I raise?" Seated here at the hub of the commonwealth, beneficiaries of the fact that this is the Capitol of the state, the home of the University, the seat of county government and of a department of the Federal Government, we all too frequently lose sight of the fact that those are not our accomplishments; they are not, so to speak, our "dust." Take them away,

and outside of the parks, what is there left for Madison to talk about? A comedian at a local theatre recently got a rousing laugh by the suggestion that he supposed the City Hall was a garage, until the Mayor told him otherwise.

God gave us one of the noblest water fronts in America, and we have adorned it with a row of railroad tracks, with machinery row, with a coal yard, and a brewery, and then the prize of the collection—those pearls of architecture about the lovely throat of the commonwealth—the boathouses in the neighborhood of the East Madison depot. This is our “dust,” but it is the kind more associated with sack cloth than with jubilation.

Your President stated sometime ago that during the space of thirty years Madison had contributed an aggregate of approximately a million dollars toward the park program. Upon analysis, this represents approximately a dollar per person per annum, on an average, for the thirty year period involved.

I spoke very recently before an organization that voluntarily taxes its members per person two dollars per annum to maintain an institution outside of the state, one of the prime features of which is a 200 acre park.

Perhaps we can best throw the matter into relief when we realize that upon the assumption that the war cost approximately thirty-five billion dollars, or \$350 per person, Madison possessing about average wealth, is paying therefore \$15,000,000 for the cost of the war. The money has been spent, and we have found, or are finding the way to pay it; and surely so far as Madison as a city is concerned, the direct benefits from the enterprise are much more remote than our park expenditures.

A park is intended to minister to human want. It is not set up as a mere memorial to some abstract standard of beauty, to be kept under glass, as it were; to be seen—not touched. The minimum objective of any park program here ought to be the acquisition of every available foot of the shore of Lake Monona for public use. As the Milwaukee Journal pointed out in a recent editorial, the need for the acquisition of lake shore is more apparent now than ever

before, as a result of a decision of our Supreme Court. This sets up an entirely feasible goal. It is just as practicable now as it ever was, and it will go far to help Madison realize her natural destiny to become one of the really beautiful cities of the world.

Some people have an ambition to shape the destiny of the world; others are anxious to determine the course of history here in the United States; others want to have their thumb nail cut a mark upon the scroll of destiny for the commonwealth. Our ambition may seem much more modest, because it concerns itself with the development only of a city. But what a city we hope to make it! We realize that the great city has not been made. Often it seems as if we were standing still and merely marking time. But viewed from the perspective of a decade, or a generation, progress is being made. The great city is in the process of making. The peculiar function of the Madison Park and Pleasure Drive Association is to hold steady before the people of Madison the burning ideal, the clear goal of what Madison ought to be and may become.



PARKED STREET END, MONONA AVENUE

Memorial

Mr. Thomas E. Brittingham

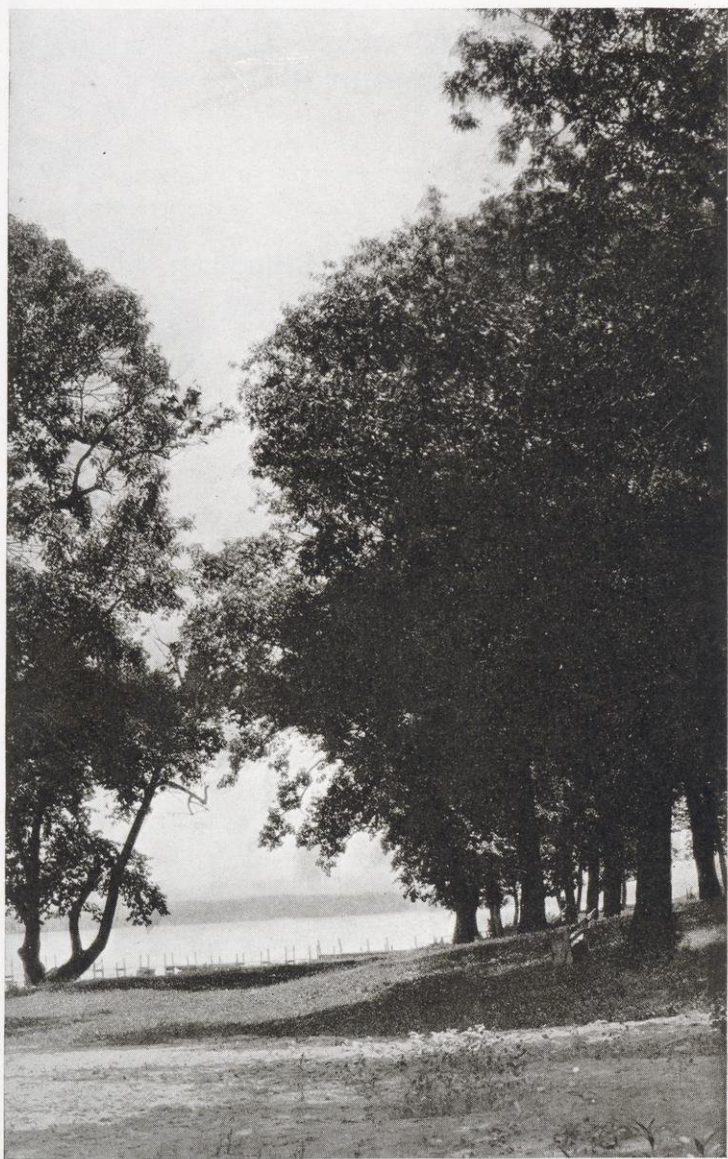
WHEREAS, on the second day of this month of May, Mr. Thomas E. Brittingham, for many years an honored citizen of Madison, departed this life, and

WHEREAS, this association and the City of Madison have been the objects of his oft repeated and generous benefactions, especially in connection with the building and development of Brittingham Park,

NOW, THEREFORE, BE IT RESOLVED by the members of the Madison Park and Pleasure Drive Association in annual meeting assembled, that we recognize with appreciation and gratitude the gifts to this association by Mr. Thomas E. Brittingham.

BE IT FURTHER RESOLVED that a copy of this resolution be spread upon our records as a permanent memorial of our appreciation, that it be published in the city papers, and that a copy be transmitted to the family of the deceased.

Adopted May 5, 1924.



OLIN PARK
FROM PROPOSED NEW ENTRANCE

The Annual Meeting
of the
Madison Park and Pleasure Drive
Association

Held May 5, 1924.

The annual meeting of the Madison Park and Pleasure Drive Association was held in Room A, in the City Library, May 5, 1924.

The report of the treasurer was read and placed on file. The report on behalf of the board of directors was made by the president, Ernest N. Warner.

Upon motion of Mr. Frank W. Hoyt, seconded by Mr. Conrad Hansen, it was voted that it be the sense of this association that Sherman Avenue from the Yahara to the Northwestern tracks be early improved by concrete surfacing, and that the co-operation be invited of all parties and municipalities interested in the improvement.

Upon motion of H. C. Schenk, seconded by Mr. W. J. P. Aberg, it was voted that a communication be addressed to the City Council suggesting the desirability of removing sign boards and improving by top dressing, grading and seeding the area opposite East Washington Avenue, lying between the Yahara River and the Northwestern tracks.

Mr. W. J. P. Aberg presented a proposal from interested property owners along Lake Mendota Drive to contribute approximately five thousand dollars toward the construction of a concrete roadway on Lake Mendota Drive from Eagle Heights westerly as far as funds would carry it, and invited the co-operation of the Madison Park and Pleasure Association. Upon motion by Mr. Frank W. Hoyt, duly seconded, it was voted that this association contribute, up to a maxi-

mun of five thousand dollars, an amount equal to the special contributions by interested parties towards the construction of such a road.

A resolution upon the death of Mr. Thomas E. Brittingham was offered by Mr. Dennis Sullivan and upon motion was unanimously adopted.

Upon motion of Mr. A. W. Tressler, seconded by Mr. W. J. P. Aberg, the following officers were elected:

President, Ernest N. Warner.

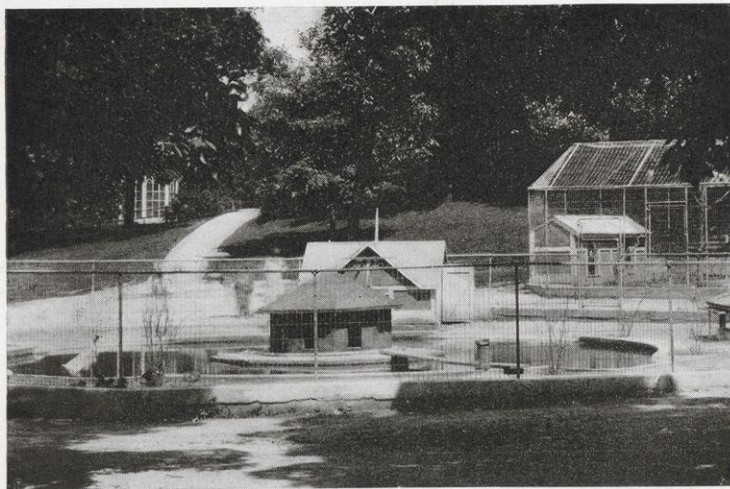
Vice-President, Charles N. Brown.

Secretary, John L. Bourke.

Treasurer, Frank W. Hoyt.

Directors, Corydon G. Dwight, Frank W. Hoyt, Herbert C. Schenk, Fred M. Schlimgen, and Dennis C. Sullivan.

Upon motion the meeting adjourned.



WATERFOWL ENCLOSURE

President's Report

1924

*Made on Behalf of the Board of Directors
of the**

Madison Park and Pleasure Drive Association

To the Members of the Madison Park and Pleasure Drive Association:

Again this voluntary association meets on the 32nd anniversary of its activities to listen to the reports of its officers for the last fiscal year and to elect officers for the ensuing year.

The report of your president made on behalf of the board of directors has annually emphasized the cordial relations existing between this association and the City of Madison. In addition to renewing the provision for the parks within the City and contributing the sum of three thousand dollars for use upon the drives outside of the City, the City Council has during the past year transferred to the Association the administration of the Park Funds appropriated for the upkeep of Olin Park, formerly known as Monona Park.

Olin Park

The re-christening of the old Lake Monona Assembly Grounds as Olin Park was the expression of appreciation by the City of Mr. Olin's tireless activities for many years in behalf of our city park and drive program. This significant act by the Council was brought to Mr. Olin's attention by letter from I. M. Kittleston, Mayor, dated November 14, 1924, as follows:

"My dear Mr. Olin:

"The citizens of Madison can at their best but inadequately express to you their sense of sincere appreciation for what your life and contributions to our city have meant. They recount your many acts of unselfish leadership in matters of civic welfare. Your whole life among us has been freely given to make Madison a better city to live in, and its citizens, better people to live among.

"Among your many services to our city the one service that will live longest and mean most to this and coming generations, has been your untiring zeal in securing for the city its parks and drives. When you began your great work our city had but a single block, less than four acres, of park area, no water frontage except street ends, no public drives beyond the city streets, opening up the magnificent vistas and scenic wonders of rivers, lakes, and hills. More than twenty-five miles of public drives and boulevards in and out of Madison, nearly eight miles of public water frontage, and more than three hundred acres of public park areas are now the property of the public in our city.

"You have secured, to the city, contributions from individuals and have unselfishly designated park areas by the names of liberal contributors, thus honoring them for their partial contributions to these parks. You have given of your very life and substantially of your means for the up-building of Madison's system of parks and drives.

"The city council by unanimous vote, seeking so far as it can to testify to its high regard for you and to in some sense express the city's great debt to you, has voted to name the only park which was wholly secured by city purchase, Monona Assembly Grounds, in your honor, Olin Park.

"It affords me genuine happiness to forward to you a duly attested copy of the resolution adopted by the Common Council and to bespeak for the council and the people of Madison your acceptance of this act as a token of the sincere affection and of the high regard genuinely felt for you in Madison."

And in response Mr. Olin accepted the honor as follows:

"Your kind letter of November 14, 1923, enclosing certified copy of resolution of the common council changing the name of Monona Park to Olin Park, has been received.

"It is difficult for me to express the sincere appreciation which I feel for the honor conferred upon me by this action of the common council—an honor which I gratefully accept.

"For the kind expressions of personal regard and good will, and for the generous recognition and appreciation of my efforts which are so unanimously and heartily evidenced by your letter and by the resolution, I wish to extend to you and to the members of the council through you, my most sincere thanks."

Subsequent to the renaming of this park, the council transferred the administration of park funds devoted to this park in the following resolution:

"Whereas, the Madison Park and Pleasure Drive Association has a more adequate organization and equipment for park development than any other department of the city, and

"Whereas, Olin Park is one of the most important points of contact with strangers in the City of Madison,

"Now, therefore, Be it resolved by the Common Council of the City of Madison that the amounts provided in the 1924 budget for Monona, now Olin Park, be placed at the disposal of the directors of the said Madison Park and Pleasure Drive Association for expenditure in the administration of said Olin Park by said Madison Park and Pleasure Drive Association.

"Be it further resolved that the said Madison Park and Pleasure Drive Association be and is hereby authorized to carry on the park development in the said park in the same manner as other parks of the city are administered by said Madison Park and Pleasure Drive Association.

"Be it further resolved that it is not the intention hereby to transfer from the City Council the management or control of the concessions, auditorium or dance hall in said park."

By this action of January 11, 1924, the city council has now passed to this Association the administration of all drives, boulevards, parks, street ends, open spaces, and public grounds in and about the city of Madison.

The City Auditor reports total cash expenditures through this Association for the year 1923 for parks at \$52,644.60, and for the zoo \$24,821.33, a total appropriation by the City of \$77,465.93, making a total amount provided by the City up to the end of last year for administration by this Board of \$833,824.23. This year's Budget contains a provision by the City for park work of \$64,754.97 and for the Zoo \$24,911.67, a total for Zoo and Parks of \$89,666.64.

The voluntary contributions for the Zoo last year amounted to \$1,974.53. Voluntary contributions for the general park work last year amounted to \$4,105.00, and special subscriptions amounted to \$4,095.32, other sundry receipts, not including the appropriation by the City of Madison, to \$522.58, a total of voluntary contribution towards the drives, \$8,722.90. To this must be added \$3,225.00 provided by the City for drives outside the City, including Owen Parkway, a total of receipts for expenditure on the drives outside the City limits of \$11,947.90.

Disbursements last year were for the concrete surfacing on Farwell Drive at Maple Bluff, \$8,884.38, for patching and repairs on Farwell Drive \$1,519.07, a total spent on Farwell Drive of \$10,403.45. The only amount spent on Lake Mendota Drive last year was for grading and repairing \$442.66.

Lake Mendota Drive

At the annual meeting a year ago, the Association was assured that substantial special contributions would be secured this year towards the construction of a stretch of concrete surface on Lake Mendota Drive. It should be made fully to appear at this meeting just what progress has been made towards obtaining such subscriptions, and what the Association can depend on in case it shall determine to use substantial sums of its general contributions towards building a stretch of concrete road on this drive.

At our last annual meeting report was made of the progress in relocating the drive which this Association has maintained for a great many years through the Merrill farm, connecting the Sauk Road and Lake Mendota Drive. The

relocated road, lying just west of the section line of sections seventeen and eighteen, has been surveyed and partially graded. The railroad company has finished the construction of an overhead across the right of way. The Town of Madison has increased its appropriation from three thousand to four thousand dollars and has directed its Town Board to complete the grading. It would seem that before the end of this season the old Merrill Road would be closed and the new Merrill Springs Road would be in use to take its place.

East Washington Boulevard

Fine progress was made during the last season in grading, parking, seeding, and planting East Washington Boulevard. The City of Madison has generously provided the funds with which to complete this work during the present season.

Likewise, during the past season, Elmside Boulevard, extending from Atwood Avenue to Lakeland Avenue was suitably graded, seeded, and planted.

Lake Front Park

Lakeland Avenue has been completed through this park to Atwood Avenue. The Comfort Station promised in last year's report has also been completed.

Brittingham Park

Several thousand yards of dirt fill have been delivered to Brittingham Park to raise its level to a point where it may be useful after storms and not inundated as it so often has been. This is the third distinct effort that has been made to raise the level of this park. An engineering difficulty has confronted us. The very weight of dirt upon the surface of this park has seemed to bear it down, and the reason that the dirt has not been leveled off and the park restored since the filling has been delivered to it, is because it has been settling and is still settling.

Since our last annual meeting South Madison has become a part of the City and agitation is again alive for the exten-

sion of Brittingham Boulevard across the tracks of the Northwestern road, the Chicago, Milwaukee & St. Paul Railroad, and over to Olin Park. Citizens in South Madison are much interested in this extension, and are bound to continue the agitation until the extension of Brittingham Boulevard to Olin Park is an accomplished fact.

The death of Mr. Thomas E. Brittingham, the generous benefactor to the City in connection with this park named for him, came as a shock to our City but a few days since. Mr. Brittingham has been a generous contributor to the work of this association every year since its organization. He made possible the development of this park by an original contribution in 1905 of \$8,000.00. In 1906 he contributed for the improvement of the triangle \$4,000.00; in 1907 for improving Brittingham Park and Parkway to South Madison, \$5,000.00; in 1908 to erect a public bathhouse in this park, \$7,500.00. Appropriate resolutions upon the life and death of Mr. Thomas E. Brittingham will be offered at this meeting and made a part of the permanent records of the association.

Henry Vilas Park

The increased demand for the use of all areas within this park has made it necessary for the Board to discontinue the baseball playing privileges in this park. The provision by the City of an athletic field since the last annual meeting is bound to relieve the present demands on the park areas for their use as playgrounds and athletic fields.

The City continues its liberal contribution toward the care and development of the Zoo. It has now assumed the entire responsibility for the salary of the Zoo director and minor items towards which voluntary contributions have heretofore been sought.

The Board is still awaiting the completion of the fountain by Mr. Clagens. The last letter received from him was an assurance that the central figure would be delivered to the city ready to be placed in the spring of 1924. It will be a source of great gratification to the Board and an event marking progress toward the finest art expression in our



ANNIE C. STEWART MEMORIAL FOUNTAIN
CENTRAL FIGURE

City when the Clasgens figures are in place at the Annie C. Stewart Memorial Fountain.

The provision by the City Council for the appointment by the board of a special policeman covering Brittingham and Henry Vilas Parks has proved a distinct advance in the matter of appropriate uses of these parks and the discontinuance of the threatened abuses.

Tenney Park

The Council provided a special policeman for Tenney Park and Parkway as well as for Henry Vilas and Brittingham Parks, and this has aided in preserving order and eliminating abuses in the parks.

The bathing beach and bathhouse in this park are the most popular in the City and the facilities for accommodating bathers are taxed to capacity. Swimming instructors and life guards are provided for each of the beaches and the instances reported last year were not few when lives were saved by the active and intelligent efforts of these officials. The time is shortly coming when it will be necessary to add to the number of life guards and also to reduce the hours that each guard shall be required to render service. There is no more important function in connection with the bathing beaches than the service rendered by the life guards.

Athletic Field

It is a great satisfaction to this Board to record the purchase by the City, since our meeting of a year ago, of the Breese J. Stevens Athletic Field. This field will serve the community and Central High School for practice and league games and will go a long way to relieve the pressure that has been brought to bear on our Board for use of fields in our parks.

In General

Some of the things accomplished during the last year in cooperation with the City Council and City officials should be noted.

The Council by ordinance has excluded houseboats from the Yahara River and from both the lakes within the jurisdiction of the City.

It has by resolution authorized the transfer to this Association for park and pleasure drive purposes of four rods off the south edge of the Quarry property adjoining a like strip procured by Professor Owen from Messrs. Olin and Hammersley.

Woodrow Street extending from Monroe Road to the westerly end of the three rod strip of land, conveyed by the "Sisters" to the Park Association, has been ordered improved. This will furnish a much needed additional entrance to Henry Vilas Park.

Monona Park has been renamed by the Council Olin Park and the administration of this park transferred to this Board.

Steps have been taken to extend the park strip on Thornton Avenue from Williamson Street to Rutledge Street. The Fauerbach property, a depth of 180 feet from the water's edge and extending from Williamson Street to Jenifer Street, has been purchased.

Likewise in the platting of the Soelch property between Spaight Street and Rutledge Street a strip of ground 154 feet in width bordering on the Yahara has been dedicated for park and boulevard purposes.

In cooperation with other civic organizations in the City this Association has contributed its influence towards removing sign boards on the roadsides leading in and out of Madison.

There seems to be a real place in this community for the continued service of this Association. Moneys to carry on its work within the City are provided by the City Council and voluntary funds for use on the drives outside the City are contributed each year on the postal card plan that has proved successful for so many years. The general contributions increase each year, which would seem to be an evidence of an increasing interest in the work of this Association on the part of the people of Madison.

In his address at our meeting a year ago, Mr. M. B. Olbrich pointed out what he conceived to be the function of

the Madison Park and Pleasure Drive Association. He did not say what he might have said and what the public of Madison is interested in knowing, namely, that the Madison Parks Foundation, a corporation of which Mr. Olbrich is secretary and treasurer, has been organized for the purpose of securing lands in and about Madison suitable for parks; that its members, some four hundred in number, have contributed towards the stock of the company more than \$37,300.00; that its sole aim in securing properties is to hold them until such time as the City desires to take them over at actual cost to this corporation, including carrying charges and interest on the original investment, at a rate not exceeding 6%; that this corporation has already secured and now holds, either by deed or on contract, lands that the City may want for park purposes, mostly lands with a shore line on Lake Monona and extending from the Yahara to Lake Front Park, at a cost of upwards of \$76,000.00; that this corporation is vigilantly engaged in securing wherever opportunity offers, and preserving for public park purposes, such additional lands as it is probable the City may need.

In this worthy public service the Madison Parks Foundation is cooperating in all ways with the Madison Park and Pleasure Drive Association and with the City.

It, too, has caught the vision and in its field is holding before the people of Madison "the burning ideal, the clear goal of what Madison ought to be and may become."

Respectfully submitted,

ERNEST N. WARNER,
President.



ANNIE C. STEWART MEMORIAL FOUNTAIN
FIGURES FOR OUTER RIM

APPENDIX

*Officers and Members of the Board of Directors of the Madison Park and Pleasure Drive Association since its Organization**

1894
 President . . . John M. Olin
 Vice-Pres. . . . John Hess
 Secretary . Charles N. Brown
 Treasurer . Frank W. Hoyt
 Directors—C. F. Cooley, Frank
 G. Brown, Julius Zehnter.

1895
 President . . . John M. Olin
 Vice-Pres. . . . John Hess
 Secretary . Charles N. Brown
 Treasurer . Frank W. Hoyt
 Directors—C. F. Cooley, Frank
 G. Brown, Julius Zehnter.

1896
 President . . . John M. Olin
 Vice-Pres. . Frank S. Warren
 Secretary . Charles N. Brown
 Treasurer . Frank W. Hoyt
 Directors—C. F. Cooley, Frank
 G. Brown, L. S. Hanks, Frank
 M. Wootton.

1897
 President . . . John M. Olin
 Vice-Pres. . Frank S. Warren
 Secretary . Charles N. Brown
 Treasurer . Frank W. Hoyt
 Directors—C. F. Cooley, Frank
 G. Brown, L. S. Hanks, Frank
 M. Wootton.

1898
 President . . . John M. Olin
 Vice-Pres. . Frank S. Warren
 Secretary . Charles N. Brown
 Treasurer . Frank W. Hoyt
 Directors—C. F. Cooley, Frank
 G. Brown, L. S. Hanks, Frank
 M. Wootton.

1899
 President . . . John M. Olin
 Vice-Pres. . A. R. Kentzler, Jr.

Secretary . Charles N. Brown
 Treasurer . Frank W. Hoyt
 Directors—L. S. Hanks, F.
 M. Wootton, F. G. Brown, C.
 F. Cooley, W. F. McConnell.

1900
 President . . . John M. Olin
 Vice-Pres. . A. R. Kentzler, Jr.
 Secretary . Charles N. Brown
 Treasurer . Frank W. Hoyt
 Directors—L. S. Hanks, F.
 Wootton, W. S. Main, Carl J.
 Hausmann, Daniel K. Tenney.

1901
 President . . . John M. Olin
 Vice-Pres. . Andrew S. Brown
 Secretary . Charles N. Brown
 Treasurer . Frank W. Hoyt
 Directors—L. S. Hanks, F. M.
 Wootton, W. S. Main, Carl J.
 Hausmann, Daniel K. Tenney.

1902
 President . . . John M. Olin
 Vice-Pres. . Andrew S. Brown
 Secretary . Charles N. Brown
 Treasurer . Frank W. Hoyt
 Directors—W. S. Main, D. K.
 Tenney, C. J. Hausmann, R. C.
 Vernon, Halle Steensland.

1903
 President . . . John M. Olin
 Vice-Pres. . Andrew S. Brown
 Secretary . Charles N. Brown
 Treasurer . Frank W. Hoyt
 Directors—Carl J. Hausmann,
 Wm. R. Bagley, Halle Steens-
 land, Magnus Swenson, Arthur
 O. Fox.

* From January, 1892, until July 10, 1894, a citizen's committee consisting of John M. Olin, Chairman, Prof. C. S. Slichter, Carl Hausmann, John L. Erdahl, L. S. Hanks, C. F. Cooley, M. R. Doyon, J. A. Aylward, M. S. Klauber, H. J. Veerhusen, A. L. Sanborn, secured subscriptions and disbursed moneys for the construction of the Bay Road and the Rustic Bridge, Mr. J. J. Suhr, now deceased, acting as treasurer of the committee.

1904

President . . . John M. Olin
Vice-Pres. . . Andrew S. Brown
Secretary . . Charles N. Brown
Treasurer . . Frank W. Hoyt
Directors—Carl J. Hausmann,
Wm. R. Bagley, Halle Steens-
land, Magnus Swenson, Arthur
O. Fox.

1905

President . . . John M. Olin
Vice-Pres. . . Andrew S. Brown
Secretary . . Charles N. Brown
Treasurer . . Frank W. Hoyt
Directors—Carl J. Hausmann,
Wm. R. Bagley, Halle Steens-
land, Magnus Swenson, Arthur
O. Fox.

1906

President . . . John M. Olin
Vice-Pres. . . Andrew S. Brown
Secretary . . Charles N. Brown
Treasurer . . Frank W. Hoyt
Directors—Wm. R. Bagley,
C. J. Hausmann, J. M. Naught-
in, Halle Steensland, Magnus
Swenson, * W. D. Curtis. †

1907

President . . . John M. Olin
Vice-Pres. . . Andrew S. Brown
Secretary . . Charles N. Brown
Treasurer . . Frank W. Hoyt
Directors—Mayor J. C. Schu-
bert, and Ald. John C. Prien,
ex-officio, Wm. R. Bagley, Wm.
D. Curtis, John M. Naughtin,
Fred M. Schlimgen, Halle
Steensland.

1908

President . . . John M. Olin
Vice-Pres. . . Andrew S. Brown
Secretary . . Charles N. Brown
Treasurer . . Frank W. Hoyt
Directors—Mayor J. C. Schu-
bert, and Ald. John C. Prien,
ex-officio, Wm. R. Bagley, Wm.
D. Curtis, John M. Naughtin,
Fred M. Schlimgen, Halle
Steensland.

1909

President . . . John M. Olin
Vice-Pres. . . Andrew S. Brown
Secretary . . Charles N. Brown
Treasurer . . Frank W. Hoyt
Directors—Mayor J. C. Schu-

bert, and Ald. C. W. Constan-
tine, ex-officio, Wm. R. Bagley,
John M. Naughtin, Fred M.
Schlimgen, Halle Steensland,
W. D. Curtis.

1910

President . . . J. C. Schubert
Vice-Pres. . . Andrew S. Brown
Secretary . . Charles N. Brown
Treasurer . . Frank W. Hoyt
Directors—Ald. Geo. Smith,
ex-officio, W. D. Curtis, Fred
M. Schlimgen, F. W. Cantwell,
F. W. Hoyt, G. M. Fisk.

1911

President . . . J. C. Schubert
Vice-Pres. . . Andrew S. Brown
Secretary . . Charles N. Brown
Treasurer . . Frank W. Hoyt
Directors—Ald. Geo. Smith,
ex-officio, F. W. Cantwell, W.
D. Curtis, Frank W. Hoyt,
Fred M. Schlimgen, Ernest N.
Warner.

1912

President . . Ernest N. Warner
Vice-Pres. . Charles N. Brown
Secretary . . E. J. B. Schubring
Treasurer . . Frank W. Hoyt
Directors—Mayor J. B. Heim,
and Ald. Milo Kittleson, ex-
officio, John L. Bourke, Ben F.
Mautz, Fred M. Schlimgen, F.
W. Cantwell, Frank W. Hoyt.

1913

President . . Ernest N. Warner
Vice-Pres. . Charles N. Brown
Secretary . . Eugene C. Smith
Treasurer . . Frank W. Hoyt
Directors—Mayor J. B. Heim,
and Ald. Arthur O. Utter, ex-
officio, John L. Bourke, Ben F.
Mautz, Fred M. Schlimgen,
John C. Prien, Frank W. Hoyt.

1914

President . . Ernest N. Warner
Vice-Pres. . Charles N. Brown
Secretary . . Eugene C. Smith
Treasurer . . Frank W. Hoyt
Directors—Mayor A. H. Kay-
ser and Ald. Arthur O. Utter,
ex-officio, John L. Bourke, Ben
F. Mautz, Fred M. Schlimgen,
John C. Prien, Frank W. Hoyt.

* Resigned May 19, 1906.

† Succeeded Magnus Swenson.

1915

President . Ernest N. Warner
Vice-Pres. . Charles N. Brown
Secretary . Eugene C. Smith
Treasurer . Frank W. Hoyt

Directors—Mayor A. H. Kayser and Ald. Arthur O. Utter, ex-officio, John L. Bourke, Ben F. Mautz, Fred M. Schlimgen, John C. Prien, Frank W. Hoyt.

1916

President . Ernest N. Warner
Vice-Pres. . Charles N. Brown
Secretary . John L. Bourke
Treasurer . Frank W. Hoyt

Directors—Mayor George C. Sayle and Ald. Arthur O. Utter, ex-officio, Corydon G. Dwight, John C. Prien, Edward J. Reynolds, Fred M. Schlimgen, Frank W. Hoyt.

1917

President . Ernest N. Warner
Vice-Pres. . Charles N. Brown
Secretary . John L. Bourke
Treasurer . Frank W. Hoyt

Directors—Mayor George C. Sayle and Ald. Arthur O. Utter, ex-officio, Corydon G. Dwight, John C. Prien, Edward J. Reynolds, Fred M. Schlimgen, Frank W. Hoyt.

1918

President . Ernest N. Warner
Vice-Pres. . Charles N. Brown
Secretary . John L. Bourke
Treasurer . Frank W. Hoyt

Directors—Mayor George C. Sayle and Ald. Thomas Quinn, ex-officio, Corydon G. Dwight, John C. Prien, Edward J. Reynolds, Fred M. Schlimgen, Frank W. Hoyt.

1919

President . Ernest N. Warner
Vice-Pres. . Charles N. Brown
Secretary . John L. Bourke
Treasurer . Frank W. Hoyt

Directors—Mayor George C. Sayle and Ald. Thomas Quinn, ex-officio, Corydon G. Dwight, John C. Prien, Edward J. Reynolds, Fred M. Schlimgen, Frank W. Hoyt.

1920

President . Ernest N. Warner
Vice-Pres. . Charles N. Brown
Secretary . John L. Bourke
Treasurer . Frank W. Hoyt

Directors—Mayor I. M. Kittleson and Ald. Thomas W. Quinn, ex-officio, Corydon G. Dwight, Arthur X. Merz, John C. Prien, Fred M. Schlimgen, Frank W. Hoyt.

1921

President . Ernest N. Warner
Vice-Pres. . Charles N. Brown
Secretary . John L. Bourke
Treasurer . Frank W. Hoyt

Directors—Mayor I. M. Kittleson and Ald. Thomas W. Quinn, ex-officio, Corydon G. Dwight, Arthur X. Merz, Fred M. Schlimgen, John Stock, Jr., Frank W. Hoyt.

1922

President . Ernest N. Warner
Vice-Pres. . Charles N. Brown
Secretary . John L. Bourke
Treasurer . Frank W. Hoyt

Directors—Mayor I. M. Kittleson and Ald. Thomas W. Quinn, ex-officio, Corydon G. Dwight, Herbert C. Schenk, Fred M. Schlimgen, John Stock, Jr., Frank W. Hoyt.

1923

President . Ernest N. Warner
Vice-Pres. . Charles N. Brown
Secretary . John L. Bourke
Treasurer . Frank W. Hoyt

Directors—Mayor I. M. Kittleson and Ald. Thomas W. Quinn, ex-officio, Corydon G. Dwight, Herbert C. Schenk, Fred M. Schlimgen, Dennis Sullivan, Frank W. Hoyt.

1924

President . Ernest N. Warner
Vice-Pres. . Charles N. Brown
Secretary . John L. Bourke
Treasurer . Frank W. Hoyt

Directors—Mayor I. M. Kittleson and Ald. Thomas W. Quinn, ex-officio, Corydon G. Dwight, Herbert C. Schenk, Fred M. Schlimgen, Dennis Sullivan, Frank W. Hoyt.

Private Contributions, Receipts Since Organization

For the years 1892 and 1893 -----	\$6,888 86
Amount contributed by Prof. Owen in 1892, in addition to above -----	3,000 00
For the year 1894 -----	655 00
For the year 1895 -----	995 00
For the year 1896 -----	1,580 00
For the year 1897 -----	10,160 23
For the year 1898 -----	2,171 32
For the year 1899, excluding gifts for Tenney Park -----	\$3,231 50
Gifts for Tenney Park, exclusive of the \$1,500 appropriated by the city --	5,778 00
	<hr/>
	\$9,009 50
For the year 1900 -----	5,313 20
For the year 1901 -----	5,286 00
For the year 1902 -----	5,409 00
For the year 1903, for the general work of the association -----	\$5,036 75
For the year 1903, for the Yahara River improvement -----	20,621 24
	<hr/>
	\$25,657 99
For the year 1904, for the general work of the association -----	\$5,665 50
For the year 1904, for the Yahara River improvement -----	4,658 50
	<hr/>
	\$10,324 00
For the year 1904, gift of Mr. and Mrs. Wm. F. Vilas for the purchase of Henry Vilas Park ----	18,000 00
For the year 1904, special subscription for im- proving Henry Vilas Park -----	10,171 00
For the year 1904, special subscription for im- proving Monona Lake Park -----	1,100 00
Amount contributed by D. K. Tenney for con- structing foot bridge in Tenney Park -----	368 00
Amount contributed by Julius Zehnter for same purpose -----	50 00
Amount contributed for all purposes for the year 1905, as follows:	
For general work of the association	\$5,663 25
For the extra work of the association	5,338 00
For securing the addition to Tenney Park -----	5,600 00
For improving Henry Vilas Park, contributed by Wm. F. Vilas --	10,000 00
For improving Brittingham Park, contributed by T. E. Brittingham	8,000 00
	<hr/>
	\$34,601 25
Amount contributed for all purposes for the year 1906, as follows:	
For the general work of the associ- ation -----	\$7,841 08
For improving Henry Vilas Park, contributed by William F. Vilas	5,000 00

40 *Madison Park and Pleasure Drive Association*

For improving triangle, contributed by T. E. Brittingham -----	4,000 00	
Legacy of Mary C. Stewart for constructing drinking fountain ----	\$2,000 00	
		<hr/> \$18,841 48

Amount contributed for all purposes for the year 1907, as follows:

For the general work of the association -----	\$8,741 25	
For improving Henry Vilas Park, contributed by William F. Vilas	2,000 00	
For improving Brittingham Park and Parkway to South Madison, contributed by T. E. Brittingham subsequent to annual meeting held April 23, 1907 -----	5,000 00	
		<hr/> \$15,741 25

Amount contributed for all purposes for the year 1908, as follows:

For the general work of the association -----	\$8,066 32	
Amount contributed by D. K. Tenney—five lots which were sold by the association for \$5,000—for improving addition to Tenney Park	5,000 00	
Amount contributed by association for improvement of addition to Tenney Park, being the excess realized on sale of fifteen lots over and above the \$5,000 heretofore stated as paid for the land for this addition to the Park --	9,400 00	
Amount contributed by T. E. Brittingham to erect a public bath-house in the year 1909 -----	7,500 00	
		<hr/> \$29,966 32

Amount contributed in 1909 by 827 subscribers for general work --	\$7,119 00	
Amount contributed by D. K. Tenney for improvement of addition to Tenney Park -----	2,500 00	
Amount contributed to secure general city plan -----	1,500 00	
Special contributions for the improvement of Tenney Park ----	1,875 00	
Special subscriptions for macadamizing road to Owen Park ----	350 00	
Value of gift of 12 acres of land under will of George B. Burrows	15,000 00	
		<hr/> \$28,394 50

Amount contributed for 1910:

Subscriptions -----	\$5,042 50	
Legacy of Sarah J. Riebsam -----	500 00	
Gift of Mrs. Anna M. Vilas ----	25,000 00	
		<hr/> \$30,542 50

Madison Park and Pleasure Drive Association 41

Amount contributed for 1911:		
Subscriptions -----	\$3,700 00	
Bequest of A. H. Hollister (estimated) -----	10,000 00	\$13,700 00
<hr/>		
Amount contributed for 1912:		
Subscriptions -----	\$3,355 00	
Gift of Marston Bridge by D. K. Tenney -----	3,321 00	
Subscriptions paving Capital Avenue -----	1,146 37	\$7,822 37
<hr/>		
Amount contributed for 1913:		
Subscriptions -----	\$4,989 50	
Mrs. A. H. Hollister estate confirming A. H. Hollister bequest, and in excess thereof -----	2,203 09	\$7,192 59
<hr/>		
Amount contributed for 1914:		
Subscriptions -----	\$3,925 55	
Dividends and interest -----	233 67	\$4,159 22
<hr/>		
Amount contributed for 1915.		
Subscriptions -----	\$2,518 50	
Dividends and interest -----	265 87	\$2,784 37
<hr/>		
Amount contributed for 1916:		
Subscriptions -----	\$2,562 00	
Dividends and interest -----	533 95	
Through Madison Zoological and Aquarium Society, Mrs. Anna M. Vilas, bird house and aquarium -----	6,900 00	\$10,085 95
<hr/>		
Amount contributed for 1917:		
Subscriptions -----	\$2,664 45	
Dividends and interest -----	372 00	
Through Madison Zoological and Aquarium Society, Dr. Charles H. Vilas, lion house -----	15,500 00	\$18,536 95
<hr/>		
Amount contributed for 1918:		
Subscriptions -----	\$2,274 50	
Dividends and interest -----	384 11	
D. K. Tenney bequest (annually) -----	500 00	\$3,158 61
<hr/>		
Amount contributed for 1919:		
Subscriptions -----	\$2,352 00	
Dividends and interest -----	423 00	
Daniel K. Tenney bequest -----	500 00	
Contributions for special work in Henry Vilas Park, 1918-1919 --	10,000 00	\$13,275 00
<hr/>		

42 *Madison Park and Pleasure Drive Association*

Amount contributed for 1920:

Subscriptions -----	\$3,270 00	
Daniel K. Tenney bequest -----	500 00	
Dividends and interest -----	388 27	
		<u>\$4,158 27</u>

Amount contributed for 1921, as follows:

Subscriptions -----	\$3,163 25	
Daniel K. Tenney bequest -----	500 00	
Contributions for zoo -----	2,187 48	
Dividends and interest -----	384 99	
Subscriptions for 1920 -----	52 00	
Subscriptions toward purchase of Olbrich holding for park -----	17,350 00	
Subscriptions for purchase of athletic field -----	7,500 00	
		<u>\$31,137 72</u>

Amount contributed for 1922, as follows:

Subscriptions -----	\$3,892 50	
Daniel K. Tenney bequest -----	500 00	
Contributions for zoo -----	1,971 37	
Dividends and interest -----	428 78	
Subscriptions for 1921 -----	10 00	
Burrows Park Subscriptions -----	152 00	
		<u>\$6,954 65</u>

Amount contributed for 1923, as follows:

Subscriptions -----	\$4,105 00	
Daniel K. Tenney bequest -----	500 00	
Contributions for zoo -----	1,182 12	
Dividends and interest -----	498 11	
Special Subscriptions Farwell Drive (Maple Bluff) -----	4,095 32	
		<u>\$10,380 55</u>

Total Contributions up to 1924 -----	<u>\$407,572 25</u>
--------------------------------------	---------------------

Contributions for 1924:

Subscriptions for 1924 to date ----	\$4,011 50	
Daniel K. Tenney bequest -----	500 00	
Special Subscriptions, Lake Mendota Drive -----	5,632 80	
		<u>\$10,144 30</u>
Total to date for 1924 -----		<u>\$417,716 55</u>

Appropriations by the City of Madison

For land for which no bonds were issued -----	\$8,000 00
For improving streets fronting on parks:	
Main Street -----	\$1,875 00
Washington Avenue -----	1,500 00
Drake Street -----	1,935 00
Johnson Street -----	2,500 00
Brittingham Park -----	2,326 00
Brittingham Place -----	1,675 00
Marston Avenue -----	2,965 00
Sherman Avenue -----	2,517 00
	<hr/>
	\$17,293 00
For streets within parks:	
Burr Oak Drive, Henry Vilas Park	\$2,900 00
Bay View Drive, Brittingham Park	7,153 00
Bay View Drive, Brittingham Park	4,900 00
	<hr/>
	\$14,593 00
For storm sewer extending through parks -----	3,266 00
For boathouse, Brittingham Park -----	5,000 00
	<hr/>
Total for permanent improvements -----	\$48,512 00
In addition to this the city has paid out since 1902 for park maintenance including prin- cipal and interest on bonds issued -----	\$112,808 00
General maintenance, 1912 -----	16,000 00
Filling at Brittingham Park -----	214 50
Taxes on streets abutting park property -----	4,269 75
Improving Henry Vilas Park Addition -----	5,000 00
Tenney Park Bathhouse -----	5,400 00
Filling Burrows Park -----	1,800 00
Reported by city auditor for park purposes for the year 1913 -----	32,086 85
Reported by city auditor for park purposes for the year 1914 -----	45,512 14
Reported by city auditor for park purposes for the year 1915 -----	54,756 30
Reported by city auditor for park purposes for the year 1916 -----	51,608 27
Reported by city auditor for park purposes for the year 1917 -----	48,276 74
Reported by city auditor for park purposes for the year 1918 -----	55,331 13
Reported by city auditor for park purposes for the year 1919 -----	49,019 19
Reported by city auditor for park purposes for the year 1920 -----	63,265 23
Reported by city auditor for park purposes for the year 1921 -----	56,709 29
Bond issue by city for Olbrich purchase -----	40,000 00
Reported by city auditor for park purposes for the year 1922 -----	63,840 00
Reported by city auditor for park purposes for the year 1923 -----	77,465 93
	<hr/>
Making a total of -----	\$831,875 32



HENRY VILAS PARK WINGRA STREET
WALK TO INDIAN MOUNDS

Treasurer's Report

To the Members of the Madison Park and Pleasure Drive Association:

GENTLEMEN: The following is a condensed statement of the financial transactions for the year ending December 31, 1922.

1922

Receipts

Balance in bank, Jan. 1, 1922 -----	\$3,033 82
1921 Subscriptions -----	10 00
1922 Subscriptions -----	3,982 50
Burrows Park Subscriptions -----	152 00
Interest -----	428 78
Zoo -----	1,915 19
Nolen Reports -----	21 00
Trees sold -----	20 00
Appropriations by City of Madison -----	3,150 00
Work by park men and materials sold -----	856 65
Barn sold -----	152 58
	<hr/>
	\$13,633 02

Disbursements

Miscellaneous -----	\$ 1,075 71
Automobile -----	295 19
Lake Mendota Drive -----	4,827 62
Farwell Drive -----	1,102 25
Zoo account -----	1,915 19
Owen Parkway -----	3,268 45
Work by park men -----	818 16
Burrows Park -----	200 99
Balance in bank Jan. 1, 1923 -----	129 46
	<hr/>
	\$13,633 02
Jan. 1, 1923, by balance -----	<hr/> \$129 46

Mr. and Mrs. A. H. Hollister Park Fund

Statement from January 1, 1922, to January 1, 1923

1922			
Jan.	1	By balance from annual report -----	\$15,478 88
Jan.	4	By Ole Gilbertson, interest to Feb. 27, 1922 -----	\$137 05
Mar.	11	By U. S. of America certificate of indebtedness, interest to Mar. 15, 1922 -----	7 84
Mar.	14	By John O'Connell, interest to Mar. 12, 1922 -----	19 25
Mar.	22	By John Hornung, interest to Mar. 22, 1922 -----	137 50
Apr.	19	By A. F. Menges, interest to Apr. 18, 1922 -----	27 50
May	2	By Aug. Halberslaben, interest to Apr. 30, 1922 -----	55 00
May	4	By Robt. C. O'Malley, interest to May 3, 1922 -----	110 00
Aug.	3	By First National Bank, interest on certificates --	5 93
Sept.	11	By U. of A. Gold Note, interest to Sept. 15, 1922 -----	8 25
Sept.	13	By John O'Connell, interest to Sept. 12, 1922 -----	19 25
Sept.	23	By John Hornung, interest to Sept. 22, 1922 -----	137 50
Oct.	19	By A. F. Menges, interest to Oct. 18, 1922 -----	27 50
Nov.	1	By Aug. Halberslaben, interest to Oct. 30, 1922 -----	55 00
Nov.	3	By Robt. C. O'Malley, interest to Nov. 3, 1922 -----	110 00
			857 57
To one-half of income \$857.57 paid to Madison Park and Pleasure Drive Association used on drives outside of the city -----			428 78
To Balance -----			\$15,907 67
			<u>\$16,336 45</u>
			<u>\$16,336 45</u>

1923

Jan. 1 By Balance ----- \$15,907 67

The above balance is invested in the name of the Madison Park and Pleasure Drive Association as Trustee of Mr. and Mrs. A. H. Hollister Park Fund as follows:

Joseph Hornung, mortgage, 5½%-----	\$5,000 00
Aug. Halberslaben, mortgage, 5½%-----	2,000 00
A. F. Menges, mortgage, 5½%-----	1,000 00
Robert C. O'Malley, mortgage, 5½%-----	4,000 00
John O'Connell, mortgage, 5½%-----	700 00

Madison Park and Pleasure Drive Association 47

Ole Gilbertson, mortgage, 6%-----	2,300 00
U. S. of America certificate of indebtedness, 5½%-----	300 00
U. S. of America certificate of indebtedness, 4½%-----	400 00
U. S. of America certificate of indebtedness, 4½%-----	200 00
First National Bank certificates, 2½, 3, 4%-----	4 13
First National Bank certificates, 2½, 3, 4%-----	3 54
	<u>\$15,907 67</u>

Original Capital

Principal, Sept. 17, 1913 -----	\$12,279 61
Principal, Sept. 20, 1917 -----	212 75

\$12,492 36

One-half income to Jan. 1, 1923 -----	3,415 31
---------------------------------------	----------

\$15,907 67

The Mary C. Stewart Memorial Fountain Fund

1922

Jan. 1	By Balance from annual report -----	\$3,199 54
Dec. 31	By interest 1 year at 4% -----	127 98
	To balance -----	\$3,327 52
		<u>\$3,327 52</u> <u>\$3,327 52</u>

1923

Jan. 1	By Balance -----	\$3,327 52
--------	------------------	------------

The above balance is invested in the name of the Madison Park and Pleasure Drive Association as Trustee of the Mrs. Stewart bequest as follows:

First National Bank certificates, 2½, 3, 4% --	\$3,327 52
--	------------

D. K. Tenney Park Fund

1922

Jan. 1	By Balance from annual report -----	\$2,613 54
Mar. 11	By U. S. of America certificate of indebtedness, interest in full -----	\$ 28 75
June 1	By Solomon Levitan, interest to June 1, 1922 ----	45 00
June 1	By First Nat. Bank, interest on certificates -----	76
Aug. 3	By First Nat. Bank, interest on certificates -----	91

48 *Madison Park and Pleasure Drive Association*

Sept.	11	By U. S. of America certifi- of indebtedness, interest to Sept. 15, 1922 -----	21 24	
Sept.	13	By First Nat. Bank, interest on certificate -----	1 15	
Nov.	20	By First Nat. Bank, interest on certificate -----	86	
Nov.	29	By Solomon Levitan, inter- est to Dec. 1, 1922 ----	45 00	
Dec.	23	By First Nat. Bank, interest on certificates -----	78	144 45
To Balance -----			<u>\$2,757 99</u>	<u>\$2,757 99</u>

1923				
Jan.	1	By Balance -----		\$2,757 99

The above balance is invested in the name of the Madison Park and Pleasure Drive Association as Trustee of the D. K. Tenney Park Fund as follows:

Solomon Levitan Trust Deed, 6% ----	\$1,500 00
U. S. of America certificate, 4½% ----	1,000 00
U. S. of America certificate, 4½% ----	100 00
U. S. of America certificate, 4½% ----	100 00
First National Bank, certificate of deposit, 2½, 3, 4% -----	6 85
First National Bank, certificate of deposit, 2½, 3, 4% -----	21 24
First National Bank, certificate of of deposit, 2½, 3, 4% -----	29 90
	<u>\$2,757 99</u>

Henry Vilas Park Zoo Account

Receipts

1922				
Jan.	1	By balance -----	\$ 636 23	
April	5	1 black bear -----	50 00	
June	15	Tag Day receipts -----	1,839 23	
June	27	Olson & Veerhusen Co. --	20 00	
June	27	Third Ward Society ----	5 00	
July	3	The Print Shop -----	22 14	
July	13	Fred L. Vilas -----	10 00	
July	21	A. C. Larson -----	25 00	
July	21	Mary E. V. Hanks -----	50 00	

Disbursements

1922				
Jan.	12	F. W. Winkelman, Dec. salary -----	\$ 83 33	
Jan.	28	American Railway Express Co., express	3 53	
Jan.	28	C. G. Dwight, express -----	6 98	
Feb.	6	F. W. Winkelman, Jan. salary -----	83 33	
Mar.	9	F. W. Winkelman, Feb. salary -----	83 33	
April	12	F. W. Winkelman, March salary ----	83 33	
May	24	F. W. Winkelman, April salary -----	83 33	
June	16	F. W. Winkelman, May salary -----	83 33	

June	21	American Express Railway Co., express	11	70
June	21	Mautz Bros. -----	23	45
June	29	Photoart House, zoo tag day expense --	4	50
June	29	L. E. Goff, zoo tag day expense -----	90	00
June	29	Fitch & Strauss, zoo tag day expense	45	75
June	29	Print Shop, zoo tag day expense ----	19	74
June	29	Print Shop, zoo tag day expense -----	22	14
June	29	Conklin & Sons -----	76	88
July	5	F. W. Winkelman, June salary -----	83	33
July	11	Henry Bartels -----	35	00
July	11	American Railway Express Co., express	2	51
Aug.	9	American Railway Express Co. -----	6	72
Aug.	9	General Paper & Supply Co. -----	2	64
Aug.	9	F. W. Winkelman, July salary -----	83	33
Sept.	14	F. W. Winkelman, August salary ----	83	33
Sept.	6	W. Stanley Hanson, 36 assorted Florida snakes -----	100	00
Sept.	6	Rentschler Floral Co., plants -----	24	72
Sept.	6	Wolff, Kubly & Hirsig -----	15	10
Sept.	6	Mautz Bros. -----	52	43
Oct.	4	Yellow Cab & Transfer Co. -----	1	00
Oct.	4	F. W. Winkelman, Sept. salary -----	83	33
Oct.	4	Yawkey Crowley Lumber Co. -----	133	75
Oct.	5	American Railway Express Co., express	2	36
Nov.	8	Heger & Harris -----	18	00
Nov.	8	American Railway Express Co., express	10	49
Nov.	8	Conklin & Sons Co., sand -----	13	87
Nov.	8	F. W. Winkelman, Oct. salary -----	83	33
Dec.	7	F. W. Winkelman, Nov. salary -----	83	33
Dec.	7	Conklin & Sons Co. -----	2	00
Dec.	8	Henry Bartels -----	104	50
Dec.	8	American Railway Express Co., express	2	14
Dec.	30	F. W. Winkelman, Dec. salary -----	83	33
Dec.	30	Balance in bank -----	742	41
			<u>\$2,657</u>	<u>60</u>
			<u>\$2,657</u>	<u>60</u>
Jan.	1	By Balance -----	\$742	41

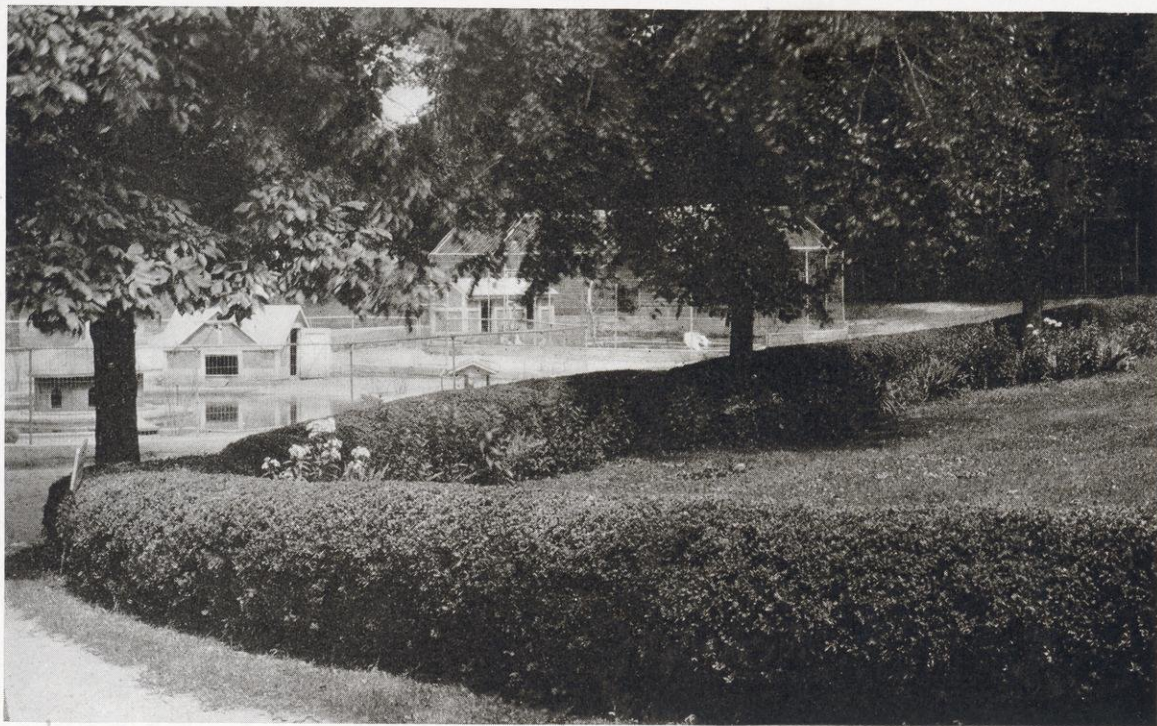
Respectfully submitted,

FRANK W. HOYT, *Treasurer.*

I hereby certify that I have examined the accounts of Frank W. Hoyt, treasurer, for the year 1922, and find them correct in all particulars.

Dated April 30, 1923.

ROBERT C. O'MALLEY.



HENRY VILAS PARK
IN THE HEART OF THE ZOO

General Subscription for 1922

Advance Rumley Thresher Company -----	\$10 00	Davis, Frederick A. --	10 00
Alford, Frank -----	5 00	Deadman, C. A. -----	5 00
Allen, Miss Katherine -	15 00	Dean, Joseph -----	10 00
Allison, M. B. -----	5 00	Ekern, Herman L. ---	10 00
American Ice Cream Co.	15 00	Ela, Emerson -----	15 00
Andelson, Louis & Abe	10 00	Electrical Supply Co. -	10 00
Babcock, S. M. -----	10 00	Ellman, George -----	2 00
Badger State Shoe Co.	25 00	Elsom, J. C. -----	3 00
Bean, E. F. -----	5 00	Fairchild, Mrs. F: B. -	25 00
Bitterman, J. C. -----	10 00	Fauerbach Brewing Co.	10 00
Blackburn, A. C. -----	10 00	Fauerbach, Philip ----	5 00
Blied, John J. & Sons	5 00	Ferguson, W. F. -----	5 00
Blied Printing Co. ---	5 00	Findorff, J. H. & Son -	15 00
Botham, George W. ---	15 00	Fish & Schulkamp ---	10 00
Boyce, S. R. -----	10 00	Fischer, Richard -----	10 00
Boyd, Joseph M. Co. ---	15 00	Fiske, G. C. -----	5 00
Boyd, Joseph M. ----	5 00	Fjelstad, George J. ---	5 00
Boyd, John L. -----	15 00	Flint, Albert S. -----	6 00
Bradley, H. C. -----	25 00	Forbes-Meagher Music Co. -----	5 00
Brandenberg, F. S. ---	10 00	Fox, A. O. -----	15 00
Brittingham, T. E. ---	25 00	Fox, J. H. -----	5 00
Brown, Charles N. ----	10 00	Fox, Philip R. -----	15 00
Brown, Fred M. -----	25 00	Frautschi, C. & Sons -	10 00
Burger, Peter -----	15 00	Frish, A. M. -----	10 00
Burrowbridge, George -	1 00	Ganser, Wm. J. -----	15 00
Butler, H. L. -----	25 00	Garver, James R. ----	10 00
Cady, Emil C. -----	4 00	Geffert, Louis A. -----	3 00
Cantwell Printing Co. -	25 00	General Agency Co. ---	5 00
Capital Wire Co. -----	3 00	Giddings, W. E. -----	10 00
Castle & Doyle -----	10 00	Gilbert, E. M. -----	5 00
Chase, Wayland J. ---	15 00	Gilman, Stephen W. ---	5 00
Cnare, Geo. C. & Son --	5 00	Graber, L. F. -----	5 00
Coe, J. H. -----	10 00	Grimm, John J. -----	5 00
Cole, Leon J. -----	3 00	Haak, W. -----	5 00
Coleman, Thomas F. -	25 00	Haley, Harry B. -----	5 00
Collins Bros. Lumber Co. -----	10 00	Hall, F. W. -----	5 00
Collyer, B. B. -----	5 00	Halligan, B. J. -----	10 00
Commons, John R. ---	10 00	Hanks, L. M. -----	25 00
Comstock, George C. --	10 00	Hanks, L. S. -----	15 00
Conklin and Sons Co. -	25 00	Hanks, Stanley C. ---	10 00
Corscot, John -----	5 00	Hart, Walter W. -----	5 00
Crescent Clothing Co. -	15 00	Hastings, E. G. -----	5 00
Critton, J. M. -----	5 00	Haswell, Clayton W. -	5 00
Crowe, Miss Belle C. --	5 00	Hatch, K. L. -----	5 00
Crowley, Leo. -----	25 00	Hauk, Henry -----	5 00
Crownhart, C. H. ----	10 00	Hausmann Brewing Co.	5 00
Cudahy Cash Market #1	10 00		

52 *Madison Park and Pleasure Drive Association*

Heddles, W. S. -----	15 00	Mack, John G. D. ----	5 00
Hefty, T. R. -----	5 00	Madison Cement Stave	
Helstrom, A. B. -----	10 00	Silo Co. -----	20 00
Herfurth, Theodore --	10 00	Madison Fuel Co. ----	10 00
Hill, Carl N. -----	10 00	Madison Gas and Elec-	
Hobbins, J. N. -----	10 00	tric Co. -----	25 00
Hoffman Feed Co. ----	10 00	Madison Packing Co. --	5 00
Holt, J. C. -----	2 50	Madison Realty Co. --	50 00
Holmes, George C. ----	5 00	Mansfield-Caughey Co.	5 00
Hopkins, Andrew W. --	5 00	Marlatt, Miss A. L. --	5 00
Hoppmann, A. C. ----	5 00	Marling, W. A. -----	10 00
Hotchkiss, W. O. -----	10 00	Marshall, A. J. -----	25 00
Hoyt, Frank W. -----	25 00	Marshall, Wm. S. ----	20 00
Hudson, Charles H. --	5 00	Martens, Conrad F. --	5 00
Humphrey, George C. --	7 50	Mason, Max -----	5 00
Hurd, R. W. -----	5 00	Mason, Vroman -----	5 00
Hyland, Mrs. John G. --	5 00	Mautz Brothers -----	15 00
Icke, John F. -----	10 00	McKenna, J. C. -----	5 00
Ingersoll, L. R. -----	3 00	McKillop, W. L. -----	5 00
Jackson, R. H. -----	15 00	McManamy, J. J. ----	5 00
Jacobs, Frank W. ----	10 00	Mead, Daniel W. ----	25 00
Jarvis, C. W. -----	3 00	Metz, Anton -----	10 00
Johnson, Carl A. -----	50 00	Montgomery, F. W. --	25 00
Johnson, Mrs. Elizabeth	25 00	Moore, R. A. -----	3 00
Johnson, Hobart S. --	25 00	Moran, John -----	10 00
Jones, Burr W. -----	25 00	Morgan Bros. -----	10 00
Karstens, F. W. -----	10 00	Moseley Book Co. ----	20 00
Kayser, A. H. -----	10 00	Mowry, Don E. -----	5 00
Kelsey, Wm. T. -----	5 00	Mueller, W. H. -----	5 00
Kennedy Dairy Co. --	25 00	Myrland, A. J. -----	5 00
Kenney, John T. -----	5 00	Neckerman, Geo. M. --	5 00
Kindschi, George W. --	5 00	Nelson, George -----	10 00
Kindschi, M. R. -----	5 00	Nelson, O. M. & Son --	5 00
Kirchoffer, W. G. ----	10 00	Nelson, M. L. -----	5 00
Kittleson, I. M. -----	5 00	Nelson, R. N. -----	5 00
Kney, E. O. -----	5 00	Netherwood, H. C. ----	5 00
Knox, P. B. -----	10 00	New York Store -----	10 00
Koch, Henry -----	5 00	Nichols, H. E. -----	5 00
Kundert, Alfred -----	10 00	Noe, Mrs. Jessie -----	25 00
Krauskopf, Francis C. --	2 00	Northwestern Securities	
Kroncke, George -----	10 00	Co. -----	10 00
Kropf, R. R. -----	5 00	Oakley, F. W. -----	15 00
Krueger & Tandvig --	10 00	Occident Baking Co. --	15 00
LaFollette, Robert M. --	10 00	Olbrich, M. B. -----	10 00
Laird, A. G. -----	5 00	Olin, John M. -----	25 00
Larson, A. C. -----	5 00	Olson & Veerhusen Co.	25 00
Law, A. R. -----	5 00	Olson, O. C. -----	5 00
Law, Edward J. -----	5 00	O'Malley, Robert C. --	10 00
Law, J. R. -----	5 00	Orvis, Wm. H. -----	5 00
Leith, B. D. -----	5 00	O'Shea, M. V. -----	5 00
Lindsay, W. T. -----	15 00	Overton, J. B. -----	10 00
Loftsgordon, H. J. ----	10 00	Owen, W. C. -----	10 00
Loomis, Mrs. F. S. ----	5 00	Owens, William -----	10 00
Lunstrum, Lewis -----	5 00	Palmer, J. H. -----	10 00
Lyons, Thomas E. ----	10 00	Paltz Brothers & Co. --	10 00

Park Hotel Company --	25 00	Stevens, E. Ray -----	10 00
Parke, H. J. -----	5 00	Stewart, C. B. -----	5 00
Parker, W. N. -----	5 00	Struck and Irwin Fuel	
Parkinson, E. E. -----	5 00	Co. -----	10 00
Parkinson, John B. --	5 00	Suhr, F. W. -----	10 00
Pepper, John W. ----	5 00	Suhr, John -----	15 00
Photoart House -----	10 00		
Pickford, H. W. -----	5 00		
		Taylor, Richard F. ---	5 00
Qualley, R. N. -----	2 00	Teckemeyer, W. J. ---	10 00
Quann, Mike -----	5 00	Tenney, Charles H. --	10 00
Quinn, Thomas -----	10 00	Thompson, H. L. ----	5 00
		Thwaites, F. T. -----	5 00
Ramsay, J. B. -----	15 00	Thwaites, Mrs. Jessie T.	5 00
Rayne, George T. ----	15 00	Toepfer, Otto F. ----	15 00
Reed, Frand D. -----	10 00	Tormey, Thomas W. --	10 00
Rennebohm, Oscar ----	10 00	Toussaint, H. -----	10 00
Richards, H. S. -----	5 00	Trachte Bros. Co. ----	10 00
Ritter Automobile Co. -	15 00	Tracy & Kilgore ----	10 00
Rogers, Alfred T. ---	10 00	Tressler, A. W. -----	10 00
Ross, E. A. -----	7 50	Turneure, F. E. ----	10 00
Roys, W. B. -----	10 00		
Rundell, S. P. -----	10 00	University Co-operative	
		Company -----	15 00
Sammis, J. L. -----	2 00	Van Vleck, E. B. ----	5 00
Sanborn, John B. ----	10 00	Vinje, A. J. -----	10 00
Sanderson, C. H. ----	5 00		
Sater, M. H. -----	5 00	Wagner, George -----	10 00
Sayle, George C. -----	10 00	Warner, Ernest N. ---	25 00
Scanlan-Morris Co. --	10 00	Waterman & Son ----	5 00
Schenk, H. C. -----	10 00	Wehrman, Charles &	
Schlimgen, Fred M. --	15 00	Son -----	10 00
Schmitz, August J. ---	5 00	Wiedenbeck-Dobelin Co.	25 00
Schoen, Frank -----	5 00	Wolff, Kubly & Hirsig	10 00
Schoelkopf, L. F. ----	25 00	Worcester, E. S. ----	5 00
Schwoegler, William --	5 00		
Seastone, C. V. -----	10 00	Young, E. J. -----	10 00
Sheldon, Charles S. ---	5 00		
Shorewood Land Co. -	100 00	Zimmerman, A. G. ---	5 00
Smith, Howard L. ----	5 00	Zoelle, E. J. -----	5 00
Smith, Leonard S. ---	5 00		
Smith, Walter M. ----	5 00	Acacia Fraternity ----	10 00
Smythe, H. A. -----	5 00	Alpha Gamma Rho ---	5 00
Snow, B. W. -----	5 00	Chi Psi -----	15 00
St. John, John -----	10 00	Phi Kappa Sigma ----	15 00
Stitgen, Bernard ----	5 00	Pi Kappa Alpha -----	10 00
Stark, The Paul E. Co.	10 00	Psi Upsilon -----	15 00
Stebbins, Byron H. ---	10 00	Sigma Phi -----	5 00
Steensland Land Co. -	30 00	Tau Kappa Epsilon ---	5 00
Stehr, Wm. C. -----	5 00		
Stevens, Mrs. B. J. --	25 00		
		Total -----	\$2,992 50

Special Contributions for 1922

SURFACING STEVENS HILL		Lease, Frank -----	1 00
Jackson, R. H. -----	\$100 00	Lease, Leonard -----	1 00
Stevens, Mrs. B. J.		Marling Lumber Co. --	10 00
and Amelia -----	350 00	McKenna, Thomas ----	2 00
University of Wisconsin		Ogden, Ralph -----	15 00
sin -----	450 00	Paulmann, G. A. ----	2 00
	<hr/>	Pierce, A. B. -----	1 00
	\$900 00	Pierce, C. E. -----	1 00
BURROWS PARK		Quinlan, B. W. -----	50
Affholder, A. I. -----	\$ 1 00	Raemisch, Geo. -----	1 00
Allen, W. H. -----	1 00	Reinfield, C. E. -----	1 00
Atkins, L. A. -----	1 00	Rohn, Louis -----	1 00
Becker, Frank -----	1 00	Rohn, S. J. -----	1 00
Brunge, E. G. -----	1 00	Roth, Paul -----	1 00
Bruns, Henry -----	2 00	Sachtjen, Carl -----	1 00
Cotton, W. G. -----	1 00	Sachjen, Wm. -----	1 00
Crowley, F. M. -----	10 00	Scafe, J. M. -----	1 00
Curtis, W. D., Jr. ----	2 00	Siebecker, R. L. -----	1 00
Doubleday, E. H. ----	4 00	Smith, G. W. -----	2 00
Findorff, J. H. -----	15 00	Tiffany, A. S. -----	1 00
Gotstein, J. I. -----	1 00	Whiting, C. L. -----	1 00
Hansen, Conrad -----	2 00		<hr/>
Hansen, L. A. -----	1 00		\$152 00
Harbort, C. -----	50		<hr/>
Harbort, W. H. -----	50	Total Special Subscrip-	
Johnson, B. R. -----	50	tions for 1922 ----	\$1,052 00
Knutson, Anton -----	5 00	Total General Sub-	
Lakewood Land Co. --	50 00	scription for 1922	\$2,992 50
Larson, Arthur L. ----	1 00		<hr/>
Larson, Mr. and Mrs.		Total Subscription for	
A. C. -----	5 00	1922 -----	\$4,044 50

BALANCE SHEET

By City Auditor

STATEMENT OF DETAIL OPERATION, MAINTENANCE, AND OUTLAY EXPENDITURES OF PUBLIC
PARKS AND PLAYGROUNDS FOR PERIOD JANUARY 1, 1922, TO DECEMBER 31, 1922

Account	Expenditure	Budget Appropriation	Unexpended Balance	Overdraft
ADMINISTRATION				
Salaries and Wages -----	\$2,974 45	\$2,950 00	-----	\$24 45
Printing, Stationery and Office Expense ----	769 68	900 00	\$130 32	-----
	\$3,744 13	\$3,850 00	\$130 32	\$24 45
TENNEY PARK				
Skating Rink -----	\$234 32	-----	-----	\$234 32
Salaries and Wages -----	4,397 77	\$4,055 00	-----	342 77
General Supplies -----	5 79	323 50	\$317 71	-----
Heat, Light, Power and Water -----	91 00	35 00	-----	56 00
Laundry and Janitor Supplies -----	4 63	-----	-----	4 63
Repairs and Replacements -----	1,190 02	1,265 00	64 98	-----
Real Estate and Structures -----	2,230 70	2,295 87	65 17	-----
Dry Goods, Bedding and Clothing -----	10 50	16 50	6 00	-----
	\$8,164 73	\$7,980 87	\$453 86	\$403 40

STATEMENT OF DETAIL OPERATION, MAINTENANCE, AND OUTLAY EXPENDITURES OF PUBLIC PARKS AND PLAYGROUNDS FOR PERIOD JANUARY 1, 1922, TO DECEMBER 31, 1922, CONTINUED

Account	Expenditure	Budget Appropriation	Unexpended Balance	Overdraft
TENNEY PARK BATHHOUSE				
Salaries and Wages -----	\$1,489 97	\$1,462 50	-----	\$27 47
Printing, Stationery and Office Expense ---	27 14	24 00	-----	3 14
Rent and Insurance -----	22 40	22 40	-----	
General Supplies and Expense -----	34 17	10 40	-----	44 53
Heat, Light, Power and Water -----	54 93	113 85	\$79 68	-----
Laundry and Janitor Supplies -----	157 17	170 70	13 53	-----
Dry Goods, Bedding and Clothing -----	246 90	276 80	29 90	-----
Medical Supplies -----		11 00	11 00	-----
Repairs and Replacements -----	237 92	240 00	2 08	-----
Real Estate and Structures -----	100 00	200 00	100 00	-----
	\$2,370 60	2,531 65	236 19	\$75 14
TENNEY PARK LAVATORY				
Real Estate and Structures -----		\$70 00	\$70 00	-----
Laundry and Janitor Supplies -----	\$8 34	20 85	12 51	-----
Medical Supplies -----		2 00	2 00	-----
Heat, Light, Power and Water -----	20 00	20 00	-----	-----
Repairs and Replacements -----		35 00	35 00	-----
	\$28 34	\$147 85	\$119 51	-----

STATEMENT OF DETAIL OPERATION, MAINTENANCE, AND OUTLAY EXPENDITURES OF PUBLIC PARKS AND PLAYGROUNDS FOR PERIOD JANUARY 1, 1922, TO DECEMBER 31, 1922, CONTINUED

Account	Expenditure	Budget Appropriation	Balance Unexpended	Overdraft
GENERAL PARK EQUIPMENT				
Salaries and Wages -----	\$657 19	\$700 00	\$42 81	
Printing, Stationery and Office Expense ---	10 48			\$10 48
General Supplies and Expense -----	230 08	197 50		32 58
Medical Supplies -----	3 00			3 00
Heat, Light, Power and Water -----	125 92	145 00	19 08	
Stable and Garage Expense -----	2,015 54	1,939 25		76 29
Repairs and Replacements -----	179 72	205 00	25 28	
Apparatus and Equipment -----	215 70	345 00	129 30	
	\$3,437 63	\$3,531 75	\$216 47	\$122 35
BRITTINGHAM PARK				
Skating Rink -----	\$159 41			
Salaries and Wages -----	4,154 35	\$3,950 00		\$363 76
General Supplies -----	414 84	535 50	\$120 66	
Heat, Light, Power and Water -----		10 00	10 00	
Repairs and Replacements -----	618 26	800 00	181 74	
Dry Goods, Bedding and Clothing -----		14 50	14 50	
Real Estate and Structures -----	300 00	300 00		
	\$5,646 86	\$5,610 00	\$326 90	\$363 76

STATEMENT OF DETAIL OPERATION, MAINTENANCE, AND OUTLAY EXPENDITURES OF PUBLIC
PARKS AND PLAYGROUNDS FOR PERIOD JANUARY 1, 1922, TO DECEMBER 31, 1922, CONTINUED

Account	Expenditure	Budget Appropriation	Unexpended Balance	Overdraft
BRITTINGHAM PARK BOATHOUSE				
Salaries and Wages -----	\$880 00	\$880 00		
Printing, Stationery and Office Expense ----	30 67	50 00	\$19 33	
General Supplies -----	25 36	30 70	5 34	
Heat, Light, Power and Water -----	55 84	69 90	14 06	
Dry Goods, Bedding and Clothing -----		8 00	8 00	
Repairs and Replacements -----	59 12	90 00	30 88	
Laundry and Janitor Supplies -----	4 60	5 10	50	
Medical Supplies -----		2 00	2 00	
	\$1,055 59	\$1,135 70	\$80 11	
BRITTINGHAM PARK BATHHOUSE				
Salaries and Wages -----	\$1,060 76	1,162 50	\$101 74	
Printing, Stationery and Office Expense ----	32 99	25 00		\$7 99
General Supplies -----	68 92	33 40		35 52
Laundry and Janitor Supplies -----	45 17	89 70	44 53	
Medical Supplies -----		11 00	11 00	
Heat, Light, Power and Water -----	101 77	130 20	28 43	
Dry Goods, Bedding and Clothing -----	191 90	276 80	84 90	
Repairs and Replacements -----	79 57	210 00	130 43	
Rent and Insurance -----	17 00	17 00		
	\$1,598 08	\$1,955 60	\$401 03	\$43 51

STATEMENT OF DETAIL OPERATION, MAINTENANCE, AND OUTLAY EXPENDITURES OF PUBLIC
PARKS AND PLAYGROUNDS FOR PERIOD JANUARY 1, 1922, TO DECEMBER 31, 1922, CONTINUED

Account	Expenditure	Budget Appropriation	Unexpended Balance	Overdraft
HENRY VILAS PARK				
Skating Rink -----	\$152 20			
Salaries and Wages -----	4,099 11	\$4,615 00	\$363 69	
General Supplies and Expense -----	235 40	577 00	341 60	
Heat, Light, Power and Water -----	114 76	250 00	135 24	
Dry Goods, Bedding and Clothing -----		14 50	14 50	
Repairs and Replacements -----	167 57	360 00	192 43	
Real Estate and Structures -----	852 78	1,352 79	500 01	
Printing, Stationery and Office Expense -----		10 00	10 00	
	5,621 82	\$7,179 29	\$1,557 47	
HENRY VILAS PARK LAVATORY				
General Supplies and Expense -----	\$1 68			\$1 68
Laundry and Janitor Supplies -----	45 22	\$26 50		18 72
Medical Supplies -----		6 80	\$6 80	
Heat, Light, Power and Water -----	115 05	190 00	74 95	
Repairs and Replacements -----	43 20			43 20
Salaries and Wages -----	50 00			50 00
	\$255 15	\$223 30	\$81 75	\$113 60

STATEMENT OF DETAIL OPERATION, MAINTENANCE, AND OUTLAY EXPENDITURES OF PUBLIC
PARKS AND PLAYGROUNDS FOR PERIOD JANUARY 1, 1922, TO DECEMBER 31, 1922, CONTINUED

Account	Expenditure	Budget Appropriation	Unexpended Balance	Overdraft
HENRY VILAS PARK ZOO				
Salaries and Wages -----	\$11,025 23	\$10,310 00	-----	\$715 23
Printing, Stationery and Office Expense ----	604 00	105 00	-----	499 00
Freight and Express -----	19 66	50 00	\$30 34	-----
Rent and Insurance -----	231 70	231 70	-----	-----
General Supplies -----	7,069 77	8,097 07	1,027 30	-----
Laundry and Janitor Supplies -----	99 97	85 50	-----	-----
Medical Supplies -----	38 50	50 65	12 15	-----
Heat, Light, Power and Water -----	2,821 96	3,629 00	807 04	-----
Dry Goods, Bedding and Clothing -----	22 00	36 00	14 00	-----
Stable and Garage Expense -----	2 00	-----	-----	2 00
Repairs and Replacements -----	416 90	570 00	153 10	-----
Real Estate and Structures -----	146 17	425 00	278 83	-----
	\$22,497 86	\$23,589 92	\$2,322 76	\$1,230 70
LAKE FRONT EXTENSION				
Salaries and Wages -----	\$433 89	\$500 00	\$66 11	-----
ORTON PARK				
Salaries and Wages -----	\$503 84	300 00	-----	-----
Real Estate and Structures -----	-----	25 00	\$25 00	-----
	\$503 84	\$325 00	\$25 00	\$203 84

STATEMENT OF DETAIL OPERATION, MAINTENANCE, AND OUTLAY EXPENDITURES OF PUBLIC
PARKS AND PLAYGROUNDS FOR PERIOD JANUARY 1, 1922, TO DECEMBER 31, 1922, CONTINUED

Account	Expenditure	Budget Appropriation	Unexpended Balance	Overdraft
SPAIGHT STREET PARK				
Salaries and Wages -----	\$199 74	\$200 00	\$ 26	-----
Real Estate and Structures -----	773 65	873 65	100 00	-----
	\$973 39	\$1,073 65	\$100 26	-----
BURROWS PARK				
Salaries and Wages -----	\$782 37	\$400 00	-----	\$382 37
Real Estate and Structures -----	28 71	200 00	\$171 29	-----
	\$811 08	\$600 00	\$171 29	\$382 37
LAKE FRONT PARK				
Skating -----	\$41 48	-----	-----	-----
Salaries and Wages -----	717 65	\$650 00	-----	\$109 13
Real Estate and Structures -----	547 66	2,565 08	\$2,017 42	-----
	\$1,306 79	\$3,215 08	\$2,017 42	\$109 13
WASHINGTON BOULEVARD				
Salaries and Wages -----	\$139 31	\$150 00	\$10 69	-----
ELMSIDE BOULEVARD				
Salaries and Wages -----	7 82	\$25 00	\$17 18	-----
Real Estate and Structures -----	100 00	100 00	-----	-----
	\$107 82	\$125 00	\$17 18	-----

STATEMENT OF DETAIL OPERATION, MAINTENANCE, AND OUTLAY EXPENDITURES OF PUBLIC
PARKS AND PLAYGROUNDS FOR PERIOD JANUARY 1, 1922, TO DECEMBER 31, 1922, CONTINUED

Account	Expenditure	Budget Appropriation	Unexpended Balance	Overdraft
MADISON GENERAL HOSPITAL				
Salaries and Wages -----	\$66 99	\$75 00	\$5 01	-----
EVERGREEN PARK				
Salaries and Wages -----	\$74 68	\$25 00	-----	\$49 68
OLIVE JONES FIELD				
Salaries and Wages -----	\$18 01	\$50 00	\$31 99	-----
Real Estate and Structures -----	254 35	141 06	-----	\$113 29
	\$272 36	\$191 06	\$31 99	\$113 29
BURR JONES FIELD				
Salaries and Wages -----	-----	\$50 00	\$50 00	-----
Real Estate and Structures -----	\$127 20	134 40	7 20	-----
	\$127 20	\$184 40	\$57 20	-----

STATEMENT OF DETAIL OPERATION, MAINTENANCE, AND OUTLAY EXPENDITURES OF PUBLIC
PARKS AND PLAYGROUNDS FOR PERIOD JANUARY 1, 1922, TO DECEMBER 31, 1922, CONTINUED

Account	Expenditure	Budget Appropriation	Unexpended Balance	Overdraft
MAPLE PARK				
Salaries and Wages -----	\$107 53	\$150 00	\$42 47	-----
SPOONER STREET VIADUCT				
Salaries and Wages -----	\$17 11	\$25 00	\$7 89	-----
KENDALL PARK				
Salaries and Wages -----	\$67 13	\$75 00	\$7 87	-----
Real Estate and Structures -----	369 96	369 96	-----	-----
	\$437 09	\$444 96	\$7 87	-----
WASHINGTON OVAL				
Salaries and Wages -----	\$171 32	\$125 00	\$46 32	-----
OWEN PARKWAY				
Salaries and Wages -----	\$172 68	\$150 00		\$22 68

STATEMENT OF DETAIL OPERATION, MAINTENANCE, AND OUTLAY EXPENDITURES OF PUBLIC
PARKS AND PLAYGROUNDS FOR PERIOD JANUARY 1, 1922, TO DECEMBER 31, 1922, CONTINUED

Account	Expenditure	Budget Appropriation	Unexpended Balance	Overdraft
STREET ENDS				
Salaries and Wages -----	\$81 13	\$175 00	\$93 87	-----
Real Estate and Structures -----	7 66			\$7 66
	\$88 79	\$175 00	\$93 87	\$7 66
QUARANTINE HOSPITAL				
Salaries and Wages -----	\$58 40	\$50 00		\$8 40
Real Estate and Structures -----	2 50			2 50
	\$60 90	\$50 00		\$10 90
OWEN PARKWAY				
Farwell Drive -----	\$3,000 00	\$3,000 00		
MORRISON STREET PARK				
Salaries and Wages -----	\$34 73	\$50 00		
Real Estate and Structures -----	50 27	50 27	\$15 27	
	\$85 00	\$100 27	\$15 27	

STATEMENT OF DETAIL OPERATION, MAINTENANCE, AND OUTLAY EXPENDITURES OF PUBLIC PARKS AND PLAYGROUNDS FOR PERIOD JANUARY 1, 1922, TO DECEMBER 31, 1922, CONTINUED

Account	Expenditure	Budget Appropriation	Unexpended Balance	Overdraft
MONONA SKATING RINK				
Salaries and Wages -----	\$161 46	\$350 00	\$188 54	-----
WILLOWS				
Salaries and Wages -----	\$300 00	\$300 00	-----	-----
TOTAL BUDGET APPROPRIATION, PARKS -----			\$45,480 43	-----
TOTAL EXPENDITURES, PARKS -----			-----	\$41,342 14
UNEXPENDED BALANCE, PARKS -----			-----	4,138 29
			<u>\$45,480 43</u>	<u>\$45,480 43</u>
TOTAL BUDGET APPROPRIATION, HENRY VILAS PARK ZOO -----			\$23,589 92	-----
TOTAL EXPENDITURES AND JOURNAL TRANSFERS, HENRY VILAS PARK ZOO -----			-----	\$22,497 86
UNEXPENDED BALANCE, HENRY VILAS PARK ZOO -----			-----	1,092 06
			<u>\$23,589 92</u>	<u>\$23,589 92</u>



FARWELL DRIVE MAPLE BLUFF

Treasurer's Report

To the Members of the Madison Park and Pleasure Drive Association:

GENTLEMEN: The following is a condensed statement of the financial transactions for the year ending December 31, 1923.

1923

Receipts

Balance in bank, Jan. 1, 1923 -----	\$ 129 46
General subscriptions, 1923 -----	4,105 00
Special Maple Bluff Subscriptions -----	4,095 32
Interest -----	498 11
Zoo -----	1,974 53
Trees sold -----	2 00
Appropriations by City of Madison -----	3,225 00
Labor by Park Men -----	11 67
Stewart Memorial Fund -----	10 80
	<u>\$14,051 89</u>

Disbursements

Miscellaneous -----	\$ 871 57
Automobile -----	89 91
Lake Mendota Drive -----	442 66
Farwell Drive -----	1,519 07
Zoo -----	1,974 53
Owen Parkway -----	196 08
Burrows Park -----	10 00
Maple Bluff Permanent Improvement -----	8,884 38
Stewart Memorial Account -----	10 80
Balance in Bank Jan. 1, 1924 -----	52 89
	<u>\$14,051 89</u>
Jan. 1, 1924, by balance -----	\$ 52 89

Mr. and Mrs. A. H. Hollister Park Fund

Statement from January 1, 1923, to January 1, 1924

1923			
Jan.	1	By Balance from annual report -----	\$15,907 67
Jan.	3	By Ole Gilbertson, interest to Jan. 1, 1923 -----	\$ 138 00
Mar.	12	By U. S. of America certificate of Indebtedness, interest to Mar. 15, 1923	10 52
Mar.	12	By U. S. of America certificate of Indebtedness, interest to Mar. 15, 1923	8 25
Mar.	13	By John O'Connell, interest to Mar. 15, 1923 -----	19 25
Mar.	23	By Joseph Hornung, interest to Mar. 22, 1923 --	137 50
Apr.	5	By Ole Gilbertson, interest in full -----	36 03
Apr.	5	By interest on First National Bank certificate --	07
Apr.	19	By A. F. Menges, interest to Apr. 18, 1923 -----	27 50
May	1	By Aug. Halberslaben, interest to Apr. 30, 1923 --	55 00
May	3	By Robt. O'Malley, interest to May 3, 1923 -----	110 00
June	5	By Aug. Halberslaben, interest in full -----	5 19
June	13	By U. S. of America certificate of Indebtedness, interest to June 15, 1923	4 50
Sept.	10	By U. S. of America certificate of Indebtedness, interest to Sept. 15, 1923	8 48
Sept.	10	By U. S. of America certificate of Indebtedness, interest to Sept. 15, 1923	8 25
Sept.	12	Aaron L. Parman, interest to Sept. 10, 1923 -----	74 92
Sept.	13	By John O'Connell, interest to Sept. 12, 1923 -----	19 25
Sept.	22	By Joseph Hornung, interest to Sept. 22, 1923	137 50
Oct.	18	By A. F. Menges, interest to Oct. 18, 1923 -----	27 50
Oct.	27	By A. F. Menges, interest in full -----	76
Nov.	5	By Robt. O'Malley, interest to Nov. 3, 1923 -----	110 00
Nov.	17	By Herbert Helt, interest to Nov. 16, 1923 -----	53 25
Dec.	10	By U. S. of America certificate of Indebtedness, interest to Dec. 15, 1923	4 50

To one-half income \$996 22 paid to Madison Park and Pleasure Drive Association and used on drives outside of the city -----	\$498 11	
To Balance -----	16,405 78	
	<u>\$16,903 89</u>	<u>\$16,903 89</u>

Jan. 1 By Balance ----- \$16,405 78

The above balance is invested in the name of the Madison Park and Pleasure Drive Association as Trustee of Mr. and Mrs. A. H. Hollister Park Fund as follows:

Joseph Hornung, mortgage, 5½% -----	\$5,000 00
Robt. C. O'Malley, mortgage, 5½% -----	4,000 00
John O'Connell, mortgage, 5½% -----	700 00
U. S. of America Certificates of In- debtedness, 4½% -----	400 00
U. S. of America Certificates of In- debtedness, 4½% -----	200 00
U. S. of America Certificates of In- debtedness, 5½% -----	300 00
Aaron L. Parman, mortgage, 6% -----	2,900 00
Herbert Helt, mortgage, 6% -----	2,200 00
Otto Brandt, mortgage, 6% -----	600 00
First National Bank certificates of deposit, 2½, 3, 4% -----	15 72
First National Bank certificates of deposit, 2½, 3, 4% -----	55 00
First National Bank certificates of deposit, 2½, 3, 4% -----	32 81
First National Bank certificates of deposit, 2½, 3, 4% -----	2 25
	<u>\$16,405 78</u>

Original Capital	
Principal, Sept. 17, 1913 -----	\$12,279 61
Principal, Sept. 20, 1917 -----	212 75
	<u>\$12,492 36</u>
One-half income to Jan. 1, 1924 -----	3,913 42
	<u>\$16,405 78</u>

The Mary C. Stewart Memorial Fountain Fund

1923		
Jan. 1	By Balance from annual report -----	\$3,327 52
Dec. 31	By interest to Dec. 31, 1923 at 4% --	133 10
Dec. 31	Paid to Yawkey-Crowley Lumber Co. -----	\$10 80
	To Balance -----	3,449 82
	<u>\$3,460 62</u>	<u>\$3,460 62</u>

70 *Madison Park and Pleasure Drive Association*

1924

Jan. 1 By Balance ----- \$3,449 82

The above is invested in the name of the Madison Park and Pleasure Drive Association as Trustee of the Mrs. Stewart bequest as follows:

First National Bank certificates, 2½, 3,
4% ----- \$3,449 82

D. K. Tenney Park Fund

1923

Jan. 1 By Balance from annual report ----- \$2,757 99

Mar. 1 By U. S. of America certificates interest to Mar. 15, 1923 ----- \$23 89

Mar. 31 By Solomon Levitan, interest to June 1, 1923 ----- 45 00

June 13 By U. S. of America certificates interest to June 15, 1923 ----- 2 25

Aug. 1 By Golden Rule Association ----- 500 00

Sept. 10 By U. S. of America certificates interest to Sept. 15, 1923 ----- 24 98

Sept. 12 By First National Bank, interest on certificates ----- 2 05

Nov. 30 By Solomon Levitan, interest to Dec. 1, 1923 ----- 45 00

Dec. 10 By U. S. of America certificates interest to Dec. 15, 1923 ----- 2 25

To Balance ----- 645 42

\$3,403 41 \$3,403 41

1924

Jan. 1 By Balance ----- \$3,403 41

The above balance is invested in the name of the Madison Park and Pleasure Drive Association as Trustee of the D. K. Tenney Park Fund as follows:

Solomon Levitan, bonds, 6% ----- \$1,500 00
U. S. of America certificate, 4¼% ----- 100 00
U. S. of America certificate, 4½% ----- 100 00
U. S. of America certificate, 4¾% ----- 500 00
U. S. of America certificate, 4½% ----- 1,000 00
First National Bank, certificate of
deposit, 2½, 3, 4% ----- 203 41

\$3,403 41

Henry Vilas Park Zoo Account

1923

Receipts

1923

Jan.	1	By Balance -----	\$ 742 41
Mar.	13	Bradley Hospital Children-----	1 00
May	4	1 Black Bear -----	50 00
June	18	Tag day -----	811 12
June	21	Mary S. Cargill -----	25 00
June	21	W. D. Curtis -----	10 00
Aug.	4	Monkey -----	55 00
Aug.	4	C. G. Dwight -----	200 00
Aug.	4	E. J. Young -----	50 00
Aug.	4	Louis Hirsig -----	15 00
Aug.	22	Print Shop -----	15 00

1923

Disbursements

Feb.	7	F. W. Winkelman, Jan. salary -----	\$ 83 33
Mar.	7	F. W. Winkelman, Feb. salary -----	83 33
Mar.	13	Grassyforks Fisheries -----	6 00
Mar.	13	Robison, animals -----	280 50
Mar.	13	American Railway Express -----	29 32
Apr.	10	F. W. Winkelman, Mar. salary -----	83 33
May	3	F. W. Winkelman, Apr. salary -----	83 33
June	11	F. W. Winkelman, May salary -----	83 33
June	28	Feldman Paper Co., zoo tag day expense -----	7 50
June	28	Capitol Mutual Club, zoo tag day expense -----	35 20
July	11	F. W. Winkelman, June salary -----	83 33
Aug.	1	American Railway Express -----	77 81
Aug.	1	F. W. Winkelman, July salary -----	83 33
Aug.	3	Ed. Bean, two swans -----	40 00
Aug.	21	The Print Shop -----	172 17
Sept.	5	F. W. Winkelman, Aug. salary -----	83 33
Sept.	10	Heger & Harris -----	25 00
Oct.	3	F. W. Winkelman, Sept. salary -----	83 33
Nov.	7	F. W. Winkelman, Oct. salary -----	83 33
Nov.	16	A. W. Robinson -----	301 07
Dec.	5	F. W. Winkelman, Nov. salary -----	83 33
Dec.	21	F. W. Winkelman, Dec. salary -----	83 33

\$1,974 53\$1,974 53

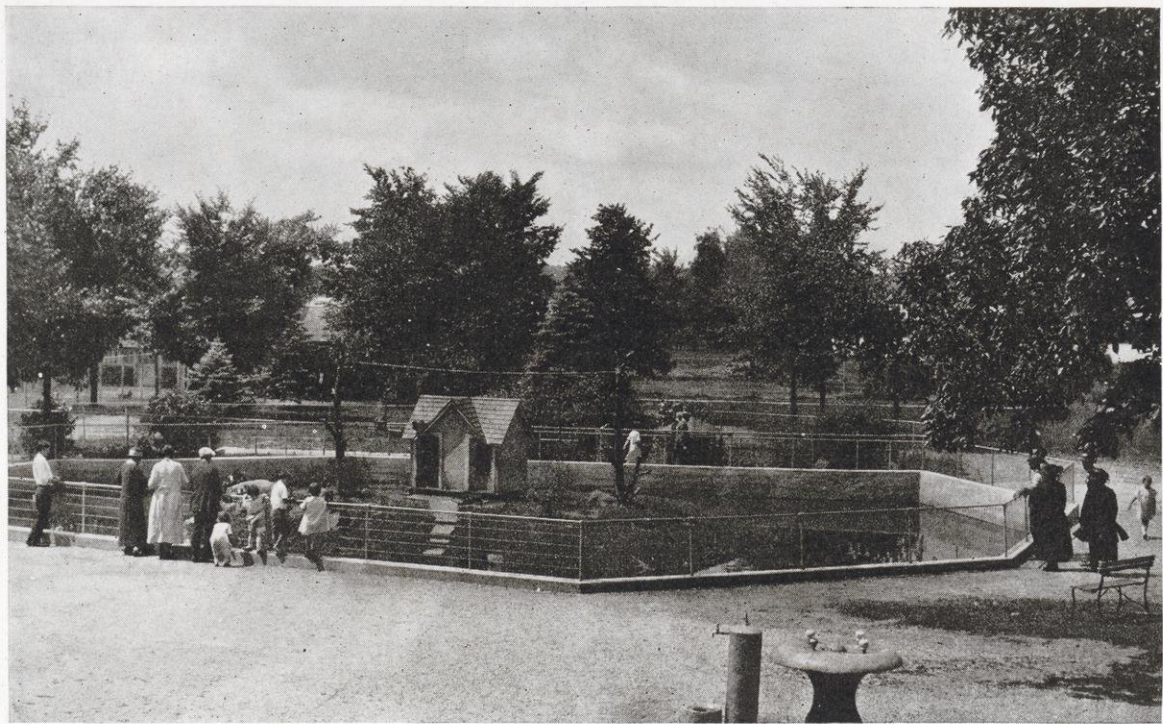
Respectfully submitted,

FRANK W. HOYT, *Treasurer.*

I hereby certify that I have examined the accounts of Frank W. Hoyt, treasurer, for the year 1923 and find them correct in all particulars.

Dated May 5, 1924.

ROBERT C. O'MALLEY.



HENRY VILAS PARK
MONKEY ISLAND

General Subscriptions for 1923

Aagard, Arthur	\$ 3 00	Capital City Tire Co.	5 00
Aberg, W. J. P.	10 00	Cargill, Mrs. Mary S.	15 00
Allen, Miss Katherine	15 00	Cargill, W. W.	3 00
American Ice Cream Co.	15 00	Castle and Doyle	10 00
Arnold, C. S.	3 00	Chase, W. J.	15 00
Ashcroft Co., The	5 00	Clemons, Henry	3 00
Askew, Charles	3 00	Cnare, A. W.	3 00
Atkins, L. A.	4 00	Coe, J. H.	10 00
Aust, Franz A.	3 00	Coleman, Thomas E.	25 00
Ayer, Mrs. Walter	25 00	Collins, C. C. Lumber	
Aylward, Richard	5 00	Co.	15 00
Babcock, Stephen M.	10 00	Collins, C. C.	10 00
Bagley, Wm. R.	25 00	Collins, W. K.	10 00
Baldwin, Zala S.	10 00	Collyer, B. B.	5 00
Bank of Wisconsin	25 00	Commons, John R.	10 00
Barclay, James	3 00	Corp, Charles I.	5 00
Barton, Albert O.	3 00	Corscot, John	5 00
Bean, Ernest	5 00	Cotton, W. G.	2 00
Bennett, W. B.	5 00	Crescent Clothing Co.	15 00
Bernard, William P.	15 00	Cretney, T. G.	5 00
Blied, John J.	5 00	Critton, James N.	10 00
Blied Printing Co.	25 00	Crowe, Miss Belle C.	5 00
Blind and Sander	10 00	Crowley, F. M.	10 00
Blum, John E.	10 00	Crowley, Leo T.	25 00
Boissard, G. A.	5 00	Crowl, Ralph S.	5 00
Botham, George W.	10 00	Crownhart, Charles H.	10 00
Boyce, S. R.	10 00	Cudahy Cash Market	
Boyd Company, The		#1	10 00
Joseph	10 00	Cullinan, W. T.	5 00
Boyd, Joseph M.	5 00	Davis, C. W.	5 00
Bradford, Miss Irene	3 00	Deadman, C. A.	5 00
Bradley, H. C.	25 00	Dean, Joseph	15 00
Brady, J. A.	10 00	Dick, Christian	5 00
Brandenburg, O. D.	10 00	Diemer, M. E.	5 00
Brayton, A. W.	10 00	Dobelin, Charles W.	5 00
Brittingham, T. E.	25 00	Drives, Alex M.	3 00
Brown, Charles N.	15 00	Drives, John	5 00
Brown, G. E.	3 00	East Side Motor Co.	3 00
Buckmaster, James	5 00	Ela, Emerson	25 00
Buehler, Fred W.	5 00	Ellman, George	2 00
Buell, Charles E.	10 00	Elsom, J. C.	5 00
Bunting, C. H.	5 00	Elwell, F. H.	5 00
Burger, Peter	15 00	Engsberg, Edward W.	3 00
Burrowbridge, George	1 00	Fairchild, Mrs. F. B.	25 00
Buser, R. E.	3 00	Farrell, J. Howard	3 00
Butler, Harry L.	25 00	Farrington, E. H.	5 00
Byrne, E. H.	5 00	Fauerbach, Philip	5 00
Cadby, John N.	10 00	Felton, A. P.	5 00
Canright, G. S.	5 00	Ferguson, Wm. F.	5 00
Cantwell Printing Co.	25 00		

74 *Madison Park and Pleasure Drive Association*

Fess, Perry -----	10 00	Heilprin, J. & Co. ----	5 00
Fessenden, R. V. -----	3 00	Henmon, Miss Kather-	
Fjelstad, George J. ----	5 00	ine -----	3 00
Finch, V. C. -----	3 00	Henry, Miss Eleanor --	5 00
First National Bank --	25 00	Herfurth, Theodore ---	10 00
Fischer, Richard -----	10 00	Hill, Carl N. -----	20 00
Fish, Carl Russell -----	10 00	Hirst, Arthur R. -----	10 00
Fish and Schulkamp --	15 00	Hobbins, Joseph N. ---	10 00
Fisk, Mrs. Geo. M. ----	5 00	Hobbins, Mrs. J. W. ---	5 00
Forbes Meagher Music		Hoffman Feed Co. ----	15 00
Co. -----	5 00	Holmes, George C. ----	10 00
Forward Oil Co. -----	10 00	Holt, J. C. -----	5 00
Fox, Arthur O. -----	25 00	Hook Bros. F. B. -----	5 00
Fox, Neill W. -----	10 00	Hopkins, A. W. -----	5 00
Fox, P. Rodney -----	15 00	Hoppman, A. C. -----	5 00
Frautschi, C. and Sons	10 00	Hotchkiss, Wm. O. ---	15 00
Frautschi, Emil J. -----	10 00	Hoyt, Frank W. -----	25 00
Frederickson, A. D. and		Hudson, Charles H. ---	5 00
J. V. -----	10 00	Humphrey, George C. --	5 00
Fritz, Carl B. -----	15 00	Hurd, Richard W. -----	5 00
		Hutchcroft, L. W. -----	5 00
Gallagher, Arthur J. --	5 00	Hyde, Grant M. -----	5 00
Gardner, E. H. -----	5 00		
Garver, James R. -----	10 00	Icke, John F. -----	15 00
Gary, G. E. -----	10 00	Ingersoll, Leonard ----	3 00
Gastrow, F. E. -----	3 00	Ingersoll, R. S. -----	5 00
Geisler, H. L. -----	10 00	International Harvester	
General Agency Co. --	5 00	Co. of America ----	25 00
Genske, C. A. -----	5 00		
Gesell, Walter B. -----	5 00	Jackson, Reginald H. -	15 00
Giddings, W. E. -----	10 00	Jacobs, Frank W. ----	10 00
Gifford, W. E. -----	5 00	Jacobson, N. S. -----	5 00
Gilbert, E. M. -----	5 00	Jarvis, Charles W. ----	3 00
Giles, J. T. -----	3 00	Jenkins, R. M. -----	5 00
Gilman, Stephen W. --	5 00	Jensen, Oscar -----	3 00
Gleason, H. B. -----	3 00	Johnson, C. E. -----	5 00
Glenz, Adolph H. -----	5 00	Johnson, Mrs. Elizabeth	25 00
Gould, Wells and Black-		Johnson, Hobart S. ---	25 00
burn -----	10 00	Johnson, Mrs. J. B. ---	15 00
Grinde, John -----	10 00	Jonas, A. F. -----	25 00
Guyer, M. F. -----	10 00	Jones, Burr W. -----	25 00
		Jones, T. E. -----	3 00
Hadley, F. B. -----	2 00		
Haley, Harry B. -----	5 00	Karstens, F. W. -----	15 00
Haley, John C. & Sons	5 00	Kartack, R. E. -----	25 00
Hall, F. W. -----	10 00	Kayser, Adolph H. -----	10 00
Halligan, B. J. -----	15 00	Keeley, James Y. -----	5 00
Hanks, L. M. -----	15 00	Kelsey, Wm. T. -----	10 00
Hanks, L. S. -----	20 00	Kemmerer, George -----	3 00
Hanks, Stanley C. -----	10 00	Kennedy Dairy Co. ----	25 00
Hansen, Conrad -----	5 00	Kenney, A. P. -----	2 00
Hart, Walter W. -----	10 00	Kenney, John T. -----	5 00
Hastings, Edwin G. ---	10 00	Kimball, N. C. -----	3 00
Hatch, K. L. -----	5 00	Kindschi, George W. --	5 00
Hauk, Henry -----	10 00	Kindschi, M. R. -----	5 00
Heddles, Mrs. W. S. --	5 00	King, R. S. -----	5 00
Hefty, Thomas R. -----	5 00	Kirchoffer, Wm. G. ---	15 00
Heggen, Anfin S. -----	5 00	Kissam, Everett T. ---	5 00

Kittleston, I. Milo	10 00	Mautz Brothers	15 00
Klein and Dickert Co.	10 00	Mayer, Andrew A.	10 00
Kney, E. O.	5 00	McCarthy, T. C.	25 00
Knox, P. B.	15 00	McGilvery, E. B.	3 00
Koch, Henry	10 00	McGuire, R. T.	3 00
Kramer, A. H.	5 00	McKay Nursery Co.	25 00
Krauskopf, F. S. C.	3 00	McKenna, John C.	10 00
Kroncke, George	10 00	McMullen, C. L.	10 00
Kronenberg, F. L.	10 00	Mead, D. W.	25 00
Kropf, R. R.	5 00	Mead, W. J.	5 00
Krueger & Tandvig	10 00	Mendenhall, C. E.	5 00
Krueger, Miss Jean	3 00	Menges, A. F.	10 00
Kuek, J. C.	5 00	Metz, Anton	10 00
		Meyers, E. J.	3 00
LaFollette, Robt. M.	15 00	Meyers, Miss Grace D.	5 00
Laird, Arthur G.	7 50	Milverstedt, A. G.	5 00
Langley, R. A.	3 00	Monteith, M.	3 00
Larson, A. C.	5 00	Moore, R. A.	5 00
Larson, G. L.	5 00	Morgan Brothers	10 00
Larson, M. D.	3 00	Moseley Book Co.	20 00
Law, A. R.	5 00	Mowry, Don E.	5 00
Law, Edward J.	5 00	Moyer, L. D.	5 00
Lawrence, R. E.	3 00	Mueller, Miss Julia A.	5 00
LeBré, H. W.	5 00	Mueller Co., Paul E.	10 00
Leith, B. D.	5 00	Mueller, W. H.	5 00
Leonard, S. A.	5 00	Murray, Thomas G.	5 00
Lester, George	3 00	Myrland, August J.	5 00
Lewis, Theodore	15 00		
Lindsay, Wm. T.	20 00	Nedderman, C. F.	3 00
Livermore, Joseph D.	3 00	Nelson, Edwin	3 00
Loftsgordon, H. J.	25 00	Nelson, M. L.	5 00
Log Cabin Bakery Co.	3 00	Nelson, Robert N.	10 00
Loomis, Mrs. Frances S.	7 50	Netherwood, Harry C.	10 00
Loughney, George	10 00	New York Store	10 00
Loveland, Reuben E.	5 00	Nichols, Harvey E.	10 00
Luetscher, J. J.	3 00	Noe, Mrs. Jessie B.	25 00
Lyons, Thomas E.	10 00		
		Occident Baking Co.	15 00
Mack, John G. D.	10 00	Ogden, Mrs. Lois M.	5 00
Madison Auto Club	10 00	Olbrich, Michael B.	15 00
Madison Gas and Elec-		Olin, John M.	25 00
tric Company	25 00	Olson, Oscar C.	5 00
Madison Realty Co.	50 00	Olson & Veerhusen Co.	25 00
Main, W. E. Agency	5 00	O'Shea, M. V.	5 00
Mahlkuech, Samuel A.	3 00	O'Sheridan, Philip	3 00
Malec, John S.	3 00	Otis, D. H.	5 00
Malec, Vincent	3 00	Ott, Harlow S.	5 00
Malone, R. J.	3 00	Owen, Walter C.	10 00
Malone, W. C.	5 00	Owens, William	15 00
Manchester, Harry S.	10 00		
Manny, Theodore B.	3 00	Palmer, J. Howard	10 00
Mansfield-Caughey Co.	10 00	Paltz, George & Co.	15 00
Marling, W. A.	10 00	Pantorium Co.	5 00
Marshall, Wm. S.	25 00	Park, Allan G.	5 00
Martens, Conrad	10 00	Park, Ben W.	3 00
Mason, Mrs. E. C.	3 00	Parke, H. J.	5 00
Mason, Vroman	5 00	Parker, E. E.	5 00
Mason, Max	10 00	Parker, W. N.	10 00

76 *Madison Park and Pleasure Drive Association*

Parkinson, John B. --	5 00	Slaughter, Mrs. M. S. _	10 00
Paulman, G. A. -----	2 00	Smith, Howard L. ----	10 00
Phillip, J. D. -----	5 00	Smith, Karl W. -----	5 00
Photoart House -----	10 00	Smith, Lathrop E. ----	5 00
Pickarts, L. J. -----	3 00	Smith, Leonard S. ----	5 00
Pickford, Henry W. --	5 00	Smith, Mark, Jr. -----	10 00
Piper, Roland A. -----	3 00	Smith, Walter McWynn	10 00
Powers, W. W. -----	5 00	Smythe, H. A. Jr. ----	10 00
Proudfit, Mrs. A. E. --	5 00	Speth, Carl E. -----	3 00
		Stark, Paul E., Land	
Qualey, R. N. -----	2 00	Co. -----	10 00
Quan, Arthur W. -----	5 00	State Journal -----	25 00
Quann, M. J. -----	5 00	Stebbins, Byron H. --	10 00
Quinn, Nicholas -----	49 50	Stebbins, N. W. -----	5 00
Quinn, T. W. -----	10 00	Steensland Land Co. --	30 00
		Steve, Wm. F. -----	5 00
Ratcliff Co. -----	10 00	Stevens, E. Ray -----	10 00
Rayne, Frederick W. --	3 00	Stevens, Mrs. M. Eliz.	25 00
Rayne, Geo. T. -----	25 00	Stitgen, Bernard -----	5 00
Reed, Frank D. -----	10 00	Storey, O. W. -----	3 00
Reinfried, C. E. -----	5 00	Strand, Olaf -----	3 00
Rennebohm, Oscar -----	10 00	Struck and Irwin Fuel	
Rieder, F. W. -----	10 00	Co. -----	15 00
Riley, Frank M. -----	5 00	Stubler, Theodore ----	5 00
Riley, Miles -----	10 00	Suhr, F. W. -----	10 00
Rogers, A. T. -----	10 00	Swadley, E. W. -----	3 00
Rosenberry, M. B. -----	10 00		
Ross, E. A. -----	10 00	Teckemeyer, William J.	10 00
Rowlands, A. E. -----	5 00	Thomas, Herbert -----	15 00
Roys, Wm. B. -----	15 00	Thomas, L. -----	10 00
Royston, R. T. -----	3 00	Thompson, Harvey L. -	5 00
Rundell, Sidney P. ----	15 00	Thwaites, F. T. -----	10 00
		Thwaites, Miss Jessie T.	10 00
St. John, John -----	5 00	Tiegs, H. R. -----	5 00
Sammis, J. L. -----	2 00	Toepfer, Otto -----	15 00
Sample, O. H. -----	5 00	Tormey, Albert R. ----	3 00
Sanborn, Philip G. ----	5 00	Tormey, Thomas W. --	10 00
Sanderson, C. H. & Co.	10 00	Toussaint, A. M. -----	3 00
Sannes, C. H. -----	3 00	Trachte, H. E. -----	3 00
Sater, M. H. -----	5 00	Trachte Bros. Co. ----	15 00
Satz, Henry -----	5 00	Tracy & Kilgore -----	15 00
Sauthoff, Harry -----	10 00	Tressler, Albert W. --	15 00
Sayle, George C. -----	15 00	Trumpf, E. G. -----	3 00
Scanlon-Morris Co. ----	10 00	Turneure, F. -----	10 00
Schenk, Herbert C. --	15 00		
Schimming, Henry -----	5 00	Universal Grocery Co. _	10 00
Schlingen, Fred M. ----	15 00	University Co-op. -----	100 00
Schlingen, L. G. -----	5 00		
Schmitz, August J. ----	10 00	Van Deusen, W. A. ---	10 00
Schoelkopf, Louis F. --	25 00	Van Vleck, Edward ---	5 00
Schoen, Frank X. -----	5 00	Vaughan, W. I. -----	5 00
Schulte, W. B. -----	5 00		
Seastone, C. V. -----	15 00	Wagner, George -----	15 00
Security State Bank --	15 00	Walton, E. A. -----	3 00
Sharratt, Henry F. ----	10 00	Warner, Ernest N. ----	25 00
Sheldon, Charles S. --	5 00	Waterman, H. G. -----	10 00
Simpson, Howard W. --	10 00	Weddig, Herman -----	5 00
Skinner, A. E. -----	10 00	Whitaker, H. C. -----	10 00

White, John C. -----	5 00	Yellow Cab Co. -----	10 00
Wiedenbeck-Dobelin Co. 25 00		Young, Edward J. -----	10 00
Wiedner, W. E. -----	10 00		
Wigglesworth, Fred --	10 00	Zimmerman, A. G. ---	5 00
Wilhelm Brothers -----	5 00	Zoelle, Frank J. -----	10 00
Wilhelm & Gillies -----	5 00		
Wilke, H. M. -----	5 00	Alpha Gamma Rho ---	5 00
Williams, Edward -----	10 00	Sigma Phi -----	5 00
Williams, Norton J. --	10 00	Theta Delta Chi -----	10 00
Winegar, A. B. -----	3 50		
Winslow, C. P. -----	5 00	Total General Subscrip-	
Wirka, R. M. -----	3 00	tion for 1923 ---	\$4,105 00
Wolff, Kubly and Hirsig 15 00			

Special Contributions to the Parks, 1923

Surfacing Farwell Drive, Maple Bluff Road

Brandenburg, Mrs. --	\$486 00	Total Special Sub-	
Brown -----	420 75	scription for 1923	\$4,095 32
Cassody -----	185 00		
Coleman, Thomas E. -	250 00	Total General Sub-	
Fisk, Mrs. -----	77 00	scription for 1923	\$4,105 00
Frederickson -----	415 00		
Johnson, Hobart S. --	797 50	Total Subscriptions for	
Lyman, William -----	185 00	1923 -----	\$8,200 32
Schuette, H. A. -----	165 00		
Steensland Land Co.-	1,114 07		



TEDDY AND BABE
BORN JAN. 29, 1924

BALANCE SHEET

By City Auditor

STATEMENT OF DETAIL OPERATION, MAINTENANCE, AND OUTLAY EXPENDITURES OF PUBLIC
PARKS AND PLAYGROUNDS FOR PERIOD JANUARY 1, 1923, TO DECEMBER 31, 1923

Account	Expenditure	Budget Appropriation	Unexpended Balance	Overdraft
ADMINISTRATION				
Salaries and Wages -----	\$3,185 43	\$3,250 00	\$64 57	-----
Printing, Stationery and Office Expense ----	234 99	200 00	-----	\$34 99
	\$3,420 42	\$3,450 00	\$64 57	\$34 99
MONONA SKATING RINK				
Salaries and Wages -----	\$317 66	\$350 00	\$32 34	-----
TENNEY PARK AND PARKWAY				
Salaries and Wages -----	\$4,385 76	\$4,430 00	\$44 24	-----
General Supplies -----	84 84	112 50	27 66	-----
Heat, Light, Power and Water -----	52 50	52 50	-----	-----
Repairs and Replacements -----	1,120 99	1,405 00	284 01	-----
Real Estate and Structures -----	4,790 11	3,753 88	-----	\$1,036 23
Dry Goods, Bedding and Clothing -----	-----	6 50	6 50	-----
	\$10,434 20	\$9,760 38	\$362 41	\$1,036 23

STATEMENT OF DETAIL OPERATION, MAINTENANCE, AND OUTLAY EXPENDITURES OF PUBLIC
PARKS AND PLAYGROUNDS FOR PERIOD JANUARY 1, 1923, TO DECEMBER 31, 1923, CONTINUED

Account	Expenditure	Budget Appropriation	Unexpended Balance	Overdraft
TENNEY PARK BATHHOUSE				
Salaries and Wages -----	\$1,607 38	\$1,462 50		\$144 88
Printing, Stationery and Office Expense ---	23 82	24 00	\$ 18	
Rent and Insurance -----	31 60	22 40		9 20
General Supplies -----	29 24	14 40		14 84
Laundry and Janitor Supplies -----	170 33	170 70	37	
Medical Supplies -----	1 50	11 00	9 50	
Heat, Light, Power and Water -----	65 68	71 00	5 32	
Dry Goods, Bedding and Clothing -----	263 00	290 80	27 80	
Repairs and Replacements -----	171 27	185 00	13 73	
Real Estate and Structures -----	200 00	200 00		
	\$2,563 82	\$2,451 80	\$56 90	\$168 92
TENNEY PARK LAVATORY				
Laundry and Janitor Supplies -----	\$13 50	\$20 50	\$ 7 00	
Medical Supplies -----		2 00	2 00	
Heat, Light, Power and Water -----	65 30	74 35	9 05	
Repairs and Replacements -----		35 00	35 00	
	\$78 80	\$131 85	53 05	

STATEMENT OF DETAIL OPERATION, MAINTENANCE, AND OUTLAY EXPENDITURES OF PUBLIC PARKS AND PLAYGROUNDS FOR PERIOD JANUARY 1, 1923, TO DECEMBER 31, 1923, CONTINUED

Account	Expenditure	Budget Appropriation	Unexpended Balance	Overdraft
GENERAL PARK EQUIPMENT				
Salaries and Wages -----	\$788 53	\$700 00	-----	\$88 53
General Supplies -----	308 16	204 50	-----	103 66
Heat, Light, Power and Water -----	187 64	165 00	-----	22 64
Stable and Garage Expense -----	1,818 29	1,831 00	\$12 71	-----
Repairs and Replacements -----	528 86	205 00	-----	323 86
Apparatus and Department Equipment ----	1,536 22	1,430 00	-----	106 22
	\$5,167 70	4,535 50	\$12 71	\$644 91
BRITTINGHAM PARK				
Salaries and Wages -----	\$3,916 74	\$3,887 50	-----	\$29 24
General Supplies -----	685 23	585 50	-----	99 73
Heat, Light, Power and Water -----		10 00	\$10 00	-----
Repairs and Replacements -----	522 63	815 00	292 37	-----
Dry Goods, Bedding and Clothing -----		14 50	14 50	-----
Real Estate and Structures -----	677 50	400 00	-----	277 50
	\$5,802 10	\$5,712 50	\$316 87	\$406 47

STATEMENT OF DETAIL OPERATION, MAINTENANCE, AND OUTLAY EXPENDITURES OF PUBLIC
PARKS AND PLAYGROUNDS FOR PERIOD JANUARY 1, 1923, TO DECEMBER 31, 1923, CONTINUED

Account	Expenditure	Budget Appropriation	Unexpended Balance	Overdraft
BRITTINGHAM PARK BOATHOUSE				
Salaries and Wages -----	\$880 00	\$880 00	-----	-----
Printing, Stationery and Office Expense ---	51 20	50 00	-----	\$1 20
Dry Goods, Bedding and Clothing -----	5 50	8 00	\$2 50	-----
General Supplies -----	8 17	4 20	-----	3 97
Laundry and Janitor Supplies -----	1 00	5 10	4 10	-----
Medical Supplies -----	-----	2 00	2 00	-----
Heat, Light, Power and Water -----	59 82	57 06	-----	2 76
Repairs and Replacements -----	4 75	190 00	185 25	-----
	\$1,010 44	\$1,196 36	\$193 85	\$7 93
BRITTINGHAM PARK BATHHOUSE				
Salaries and Wages -----	\$1,070 85	\$1,162 50	\$91 65	-----
Printing, Stationery and Office Expense ---	30 08	25 00	-----	\$5 08
General Supplies -----	-----	18 40	18 40	-----
Laundry and Janitor Supplies -----	30 85	89 20	58 35	-----
Medical Supplies -----	1 50	11 00	9 50	-----
Heat, Light, Power and Water -----	79 79	108 25	28 46	-----
Dry Goods, Bedding and Clothing -----	263 00	286 80	23 80	-----
Repairs and Replacements -----	176 57	205 00	28 43	-----
	\$1,652 64	\$1,906 15	258 59	\$5 08

STATEMENT OF DETAIL OPERATION, MAINTENANCE, AND OUTLAY EXPENDITURES OF PUBLIC
PARKS AND PLAYGROUNDS FOR PERIOD JANUARY 1, 1923, TO DECEMBER 31, 1923, CONTINUED

Account	Expenditure	Budget Appropriation	Unexpended Balance	Overdraft
HENRY VILAS PARK				
Salaries and Wages -----	\$5,494 56	4,862 50	-----	\$632 06
Printing, Stationery and Office Expense ----	18 75	10 00	-----	8 75
General Supplies -----	723 15	727 00	\$3 85	-----
Heat, Light, Power and Water -----	55 98	250 00	194 02	-----
Dry Goods, Bedding and Clothing -----		14 50	14 50	-----
Repairs and Replacements -----	1,095 16	605 00	-----	490 16
Real Estate and Structures -----	963 02	1,273 28	310 26	-----
Freight and express on crushed stone -----	137 28	-----	-----	137 28
	\$8,487 90	\$7,742 28	\$522 63	\$1,268 25
HENRY VILAS PARK ZOO				
Salaries and Wages -----	\$11,202 47	\$11,160 00	-----	\$42 47
Printing, Stationery and Office Expenses ----	106 75	116 61	\$9 86	-----
Freight and Express -----	7 28	50 00	42 72	-----
Rent and Insurance -----	84 50	292 10	207 60	-----
General Supplies -----	8,145 59	7,843 12	-----	302 47
Laundry and Janitor Supplies -----	169 80	161 52	-----	8 28
Medical Supplies -----	69 00	43 65	-----	25 35
Heat, Light, Power and Water -----	2,987 87	3,629 00	641 13	-----
Dry Goods, Bedding and Clothing -----	30 10	36 00	5 90	-----
Repairs and Replacements -----	1,849 77	1,418 00	-----	431 77
Real Estate and Structures -----	168 20	250 00	81 80	-----
	\$24,821 33	\$25,000 00	989 01	\$810 34

STATEMENT OF DETAIL OPERATION, MAINTENANCE, AND OUTLAY EXPENDITURES OF PUBLIC
PARKS AND PLAYGROUNDS FOR PERIOD JANUARY 1, 1923, TO DECEMBER 31, 1923, CONTINUED

Account	Expenditure	Budget Appropriation	Unexpended Balance	Overdraft
HENRY VILAS LAVATORY				
Laundry and Janitor Supplies -----	\$9 43	\$28 50	\$19 07	-----
Repairs and Replacements -----	41 77	30 00	-----	\$11 77
Medical Supplies -----	-----	6 80	6 80	-----
Heat, Light, Power and Water -----	21 80	190 00	168 20	-----
	\$73 00	\$255 30	\$194 07	\$11 77
SPAIGHT STREET PARK				
Salaries and Wages -----	\$182 29	\$200 00	\$17 71	-----
Real Estate and Structures -----	31 25	300 00	268 75	-----
	\$213 54	\$500 00	\$286 46	-----
ORTON PARK				
Salaries and Wages -----	\$436 32	\$300 00	-----	\$136 32
BURROWS PARK				
Salaries and Wages -----	\$477 99	\$300 00	-----	\$177 99
Real Estate and Structures -----	39 50	400 00	\$360 50	-----
	\$517 49	\$700 00	\$360 50	\$177 99

STATEMENT OF DETAIL OPERATION, MAINTENANCE, AND OUTLAY EXPENDITURES OF PUBLIC
PARKS AND PLAYGROUNDS FOR PERIOD JANUARY 1, 1923, TO DECEMBER 31, 1923, CONTINUED

Account	Expenditure	Budget Appropriation	Unexpended Balance	Overdraft
LAKE FRONT PARK				
Salaries and Wages -----	\$837 76	\$650 00	-----	\$187 76
Real Estate and Structures -----	2,962 13	1,509 38	-----	1,452 75
	\$3,799 89	\$2,159 38	-----	\$1,640 51
WASHINGTON BOULEVARD				
Salaries and Wages -----	\$180 00	\$125 00	-----	\$55 00
MAPLE PARK				
Salaries and Wages -----	\$166 70	\$150 00	-----	\$16 70
SPOONER STREET VIADUCT				
Salaries and Wages -----	\$18 03	\$25 00	\$6 97	-----
LAKE FRONT PARK EXTENSION				
Salaries and Wages -----	\$500 00	\$500 00	-----	-----

STATEMENT OF DETAIL OPERATION, MAINTENANCE, AND OUTLAY EXPENDITURES OF PUBLIC
PARKS AND PLAYGROUNDS FOR PERIOD JANUARY 1, 1923, TO DECEMBER 31, 1923, CONTINUED

Account	Expenditure	Budget Appropriation	Unexpended Balance	Overdraft
OLIVE JONES FIELD				
Salaries and Wages -----	\$48 73	\$50 00	\$1 27	-----
Real Estate and Structures -----	269 09	106 50	-----	\$162 59
	\$317 82	\$156 50	\$1 27	\$162 59
BURR JONES FIELD				
Salaries and Wages -----	\$132 78	\$50 00	-----	\$82 78
Real Estate and Structures -----		127 20	\$127 20	-----
	\$132 78	\$177 20	\$127 20	\$82 78
KENDALL PARK				
Salaries and Wages -----	\$79 51	\$75 00	-----	\$4 51
Real Estate and Structures -----	202 65	369 96	\$167 31	-----
	\$282 16	\$444 96	\$167 31	\$4 51
ELMSIDE BOULEVARD				
Salaries and Wages -----	\$25 00	\$25 00	-----	-----
Real Estate and Structures -----	50 00	50 00	-----	-----
	\$75 00	\$75 00	-----	-----

STATEMENT OF DETAIL OPERATION, MAINTENANCE, AND OUTLAY EXPENDITURES OF PUBLIC
PARKS AND PLAYGROUNDS FOR PERIOD JANUARY 1, 1923, TO DECEMBER 31, 1923, CONTINUED

Account	Expenditure	Budget Appropriation	Unexpended Balance	Overdraft
WASHINGTON BOULEVARD				
Salaries and Wages -----	\$303 77	\$150 00	-----	\$153 77
MORRISON STREET PARK				
General Supplies -----	\$48 49	\$50 00	\$1 51	-----
Real Estate and Structures -----	47 75	50 27	2 52	-----
	\$96 24	\$100 27	\$4 03	-----
OWEN PARKWAY				
Salaries and Wages -----	\$225 00	\$225 00	-----	-----
MADISON GENERAL HOSPITAL				
Salaries and Wages -----	\$86 68	\$75 00	-----	\$11 68

STATEMENT OF DETAIL OPERATION, MAINTENANCE, AND OUTLAY EXPENDITURES OF PUBLIC PARKS AND PLAYGROUNDS FOR PERIOD JANUARY 1, 1923, TO DECEMBER 31, 1923, CONTINUED

Account	Expenditure	Budget Appropriation	Unexpended Balance	Overdraft
EVERGREEN PARK				
Salaries and Wages -----	\$56 87	\$25 00	-----	\$31 87
QUARANTINE HOSPITAL				
Salaries and Wages -----	\$63 02	\$50 00	-----	\$13 02
WILLOWS				
Salaries and Wages -----	\$356 26	\$400 00	\$43 74	-----
STREET ENDS				
Real Estate and Structures -----	\$19 08	\$275 00	\$255 92	-----
EAST WASHINGTON BOULEVARD				
Salaries and Wages -----	\$1,836 47	\$2,000 00	\$163 53	-----
General Expense -----	50 00	-----	-----	\$50 00
Real Estate and Structures -----	902 80	500 00	-----	402 80
	\$2,789 27	\$2,500 00	\$163 53	\$452 80

STATEMENT OF DETAIL OPERATION, MAINTENANCE, AND OUTLAY EXPENDITURES OF PUBLIC
PARKS AND PLAYGROUNDS FOR PERIOD JANUARY 1, 1923, TO DECEMBER 31, 1923, CONTINUED

Account	Expenditure	Budget Appropriation	Unexpended Balance	Overdraft
OUTSIDE DRIVES Appropriation -----	\$3,000 00	\$3,000 00	-----	-----
TOTAL BUDGET APPROPRIATION, PARKS -----			\$48,630 43	-----
TOTAL EXPENDITURES AND JOURNAL TRANSFERS, PARKS -----			-----	\$52,644 60
TRANSFER FROM CONTINGENT FUND -----			3,125 00	-----
OVERDRAFT, PARKS -----			889 17	-----
			<u>\$52,644 60</u>	<u>\$52,644 60</u>
TOTAL BUDGET APPROPRIATION, HENRY VILAS PARK ZOO -----			\$25,000 00	-----
TOTAL EXPENDITURES AND JOURNAL TRANSFERS, HENRY VILAS PARK ZOO -----			-----	\$24,821 33
UNEXPENDED BALANCE, HENRY VILAS PARK ZOO -----			-----	178 67
			<u>\$25,000 00</u>	<u>\$25,000 00</u>

ANIMALS IN THE ZOOLOGICAL COLLECTION AT HENRY VILAS PARK

July 1, 1924

Mammals

Marsupiala: No. of Specimens
Parma wallaby kangaroo_ 1
(*Macropus parma*)

(*Ursus horribilis*)

Carnivora:

European Bear, Russian
Brown ----- 2

(*Ursus arctos*)

Grizzly bear ----- 2

(*Ursus horribilis*)

Black bear ----- 4

(*Ursus americanus*)

Cinnamon bear ----- 5

(*Ursus americanus cin-*
namomum)

Polar bear ----- 1

(*Thalarectos maritimus*)

Gray wolf ----- 2

(*Canis nubilus*)

Coyote ----- 2

(*Canis latrans*)

Red fox ----- 3

(*Vulpes fulva*)

Raccoon ----- 8

(*Procyon lotor*)

American badger ----- 5

(*Taxidea taxus*)

African civet cat ----- 2

(*Viverra civetta*)

Lion ----- 2

(*Felis leo*)

Bengal tiger ----- 1

(*Felis tigris*)

Leopard ----- 2

(*Felis pardus*)

Leopard ----- 1

(*Jaguar hybrid*)

Jaguar ----- 1

(*Felis onca*)

Mountain lion ----- 1

(*Felis hipolestes*)

Bay lynx ----- 1

(*Lynx ruffus*)

Rodentia:

Woodchuck ----- 4

(*Marmota monax*)

Prairie-dog ----- 6

(*Cynomys ludovicianus*)

Canadian Porcupine ----- 4

(*Erethizon dorsatus*)

Guinea pig ----- 12

(*Cavia porcellus*)

Lagomorpha:

Domestic rabbit ----- 6

(*Oryctolagus cuniculus*)

Primates:

Orang-utan ----- 1

(*Simia satyrus*)

White Handed Gibbon -- 1

(*Hylobates lar*)

Gray spider monkey ---- 2

(*Ateles geoffroyi*)

White-throated capuchin - 1

(*Cebus capucinus*)

Margarita capuchin ----- 1

(*Cebus margaritae*)

Mandrill ----- 1

(*Papio sphinx*)

Pig-tailed monkey ----- 2

(*Macaca nemestrina*)

Rhesus monkey ----- 6

(*Macaca rhesus*)

Javan macaque ----- 3

(*Macaca mordax*)

Sooty mangabey ----- 2

(*Cercocebus fuliginosus*)

Mona ----- 1

(*Lasiopyga mona*)

Patas monkey ----- 1

(*Erythrocebus patas*)

Blueball ----- 3

(*Callithrix moloch*)

Horned capuchin ----- 2

(*Capuchin apella*)

Sacred baboon ----- 1

(*Papio hamadryas*)

Sphinx baboon ----- 2

(*Papio Sphinx*)

Anubis baboon ----- 2

(*Papio anubis*)

Artiodactyla:

Llama ----- 2

(*Lama glama*)

Fallow deer ----- 1

(*Cervus dama*)

Sacred white fallow deer _11	Mandarin duck ----- 3
(<i>Dama vulgaris</i>)	(<i>Dendronessa galericu-</i>
Barasingha ----- 2	lata)
(<i>Rucervus duvaucelii</i>)	Canada goose ----- 5
Japanese deer ----- 3	(<i>Branta canadensis</i>)
(<i>Sika nippon</i>)	Egyptian goose ----- 2
Red European deer ----- 3	(<i>Chenalopex oegyptiaca</i>)
(<i>Cervus elaphus</i>)	African goose ----- 4
American elk ----- 5	(<i>Anser ganbeli</i>)
(<i>Cervus canadensis</i>)	Gray Swedish duck ----- 3
Virginia deer ----- 1	Black Muscovy duck --- 5
(<i>Odocoileus virginianus</i>)	White Muscovy duck --- 4
Tahr ----- 3	Whistling swan ----- 2
(<i>Hermitragus jemlahicus</i>)	(<i>Olor columbianus</i>)
Aoudad ----- 1	Mute swan ----- 1
(<i>Ammotragus lervia</i>)	(<i>Cyanus olor</i>)
Domestic ass ----- 1	
(<i>Equus domesticus</i>	
asinus)	
Zebu ----- 2	
(<i>Bos indicus</i>)	
American bison ----- 5	
(<i>Bison bison</i>)	

Proboscidea:

Indian elephant ----- 1
(<i>Elephas indicus</i>)

Birds*Ratitae:*

South African ostrich -- 2
(<i>Struthio australis</i>)
Rhea ----- 1
(<i>Rhea americana</i>)
Emu ----- 1
(<i>Dromiceius novaehol-</i>
landiae)

Ciconiiformes:

American white pelican _ 1
(<i>Pelecanus erythrorhyn-</i>
chos)
Great blue heron ----- 3
(<i>Ardea herodias</i>)
Black-crowned night her-
on -----15
(<i>Nycticorax nycticorax</i>
naervius)

Anseriformes:

Mallard duck -----14
(<i>Anas platyrhynchos</i>)
Black duck -----14
(<i>Anas rubripes</i>)
Pintail ----- 2
(<i>Dafila acuta</i>)
Wood duck ----- 3
(<i>Aix sponsa</i>)

Falconiformes:

Turkey vulture ----- 2
(<i>Cathartes aura</i>)
Golden eagle ----- 3
(<i>Aquila chrysaetos</i>)
Bald eagle ----- 3
(<i>Haliaetus leucocephalus</i>)
Red-tailed hawk ----- 3
(<i>Buteo borealis</i>)

Galliformes:

Silver pheasant ----- 4
(<i>Gennaeus nycthemerus</i>
Lady Amherst's pheasant 1
(<i>Chrysolophus amherst-</i>
iae)
Golden pheasant ----- 8
(<i>Chrysolophus pictus</i>)
Reeves pheasant ----- 4
(<i>Syrmatius reevesi</i>)
Ringneck pheasant ----- 4
(<i>Phasianus torquatus</i>)

Gruiformes:

Sandhill crane ----- 1
(<i>Grus mexicana</i>)
Demoiselle crane ----- 1
(<i>Anthropoides virgo</i>)
Stork ----- 1
(<i>Ciconia allea</i>)

Charadriiformes:

Herring gull ----- 5
(<i>Larus argentatus</i>)
Australian crested pigeon 2
(<i>Ocyphaps lophotes</i>)
Bronze-wing pigeon ---- 2
(<i>Phaps chalcoptera</i>)
Mourning dove ----- 4
(<i>Zenaidura macroura</i>)
Zebra dove ----- 2
(<i>Geopelia striata</i>)

Ringed turtle-dove -----	6
(<i>Streptopelia risoria</i>)	
Nicobur pigeon -----	2
(<i>Caloenus nicobarica</i>)	
Domestic pigeon -----	16
Wonga Wonga pigeon --	2
(<i>Leucosarcia picata</i>)	

Psittaciformes:

Grass paroquet (Green) _	24
(<i>Melopsittacus undulatus</i>)	
Grass paroquet (Yellow) _	4
(<i>Melopsittacus undulatus</i>)	
Yellow-headed parrot ---	1
(<i>Amazona ochrocephala</i>)	
Ringneck paroquet -----	4
(<i>Palaeornis torquatus</i>)	
Australian magpie -----	2
(<i>Gymnorhinatibicen</i>)	
Red-and-blue macaw ----	2
(<i>Ara chloroptera</i>)	
Blue-and-yellow macaw -	1
(<i>Ara ararauna</i>)	
Sulphur-crested cockatoo -	3
(<i>Cacatoes galerita</i>)	
Leadbeater's cockatoo --	1
(<i>Cacatoes leadbeateri</i>)	
Rosae cockatoo -----	4
(<i>Cacatoes roseicapilla</i>)	

Coraciiformes:

Giant kingfisher -----	2
(<i>Dacelo gigas</i>)	
Screech owl -----	5
(<i>Otus asio</i>)	
Great horned owl -----	6
(<i>Bubo virginianus</i>)	

Passeriformes:

Carrion crow -----	2
(<i>Corvus frugivorus</i>)	
Catbird -----	1
(<i>Dumetella carotinensis</i>)	
Black bird -----	5
(<i>Sturnus vulgaris</i>)	
Zebra finch -----	12
(<i>Taeniopygia castanotis</i>)	
Strawberry finch -----	10
(<i>Amandava amandava</i>)	
Canary -----	10
(<i>Serinus canarius</i>)	
Red-crested cardinal ----	1
(<i>Paroaria cuculata</i>)	
Blue jay -----	1
(<i>Cyanocetta cristata</i>)	
Robin -----	1
(<i>Planesticus migratorius</i>)	
Robin Japanese -----	12
(<i>Planesticus Japonica</i>)	

Gray Java sparrow -----	4
White Java sparrow ---	4

Rhamphastiformes:

Toca toucan -----	2
(<i>Rhamphastus toca</i>)	

Reptiles

Alligator -----	26
(Alligator Mississippien- sis)	

Fish

The number and variety of fish differ considerably during different seasons of the year. The following varieties are on exhibit some time during the year. On this date more than two hundred specimen are on display:

Small mouth black bass (<i>Micropterus dolomien</i>)	
Large mouth black bass (<i>Micropterus salmoides</i>)	
Calico bass (<i>Pomoxis sparoides</i>)	
White bass (<i>Roccus chrysops</i>)	
Rock bass (<i>Ambloplites rupestris</i>)	
Yellow perch (<i>Perca flarescens</i>)	
Common sunfish (<i>Eupomotis gibbosus</i>)	
Bluegill (<i>Lepomis pallidus</i>)	
Wall-eyed pike (<i>Stizostedion vitreum</i>)	
Muskallunge (<i>Esox masquinongy</i>)	
Great northern pike (<i>Esox immaculatus</i>)	
Pickrel (<i>Esox lucius</i>)	
Brook trout (<i>Salvelinus fontinalis</i>)	
Rainbow trout (<i>Salmo irideus</i>)	
Whitefish (<i>Coregonus clupeiformes</i>)	
Common chub (<i>Semotilus atromaculatus</i>)	
German carp (<i>Cyprinus carpes</i>)	

Common sucker
(*Moxostoma aureolum*)

Buffalo
(*Ictiobus cyprinella*)

Black bullhead
(*Ameiurus melas*)

Channel cat
(*Ictalurus punctatus*)

Lake sturgeon
(*Acipenser rubicundus*)

Dogfish
(*Haleocommorphi*)

Long nosed gar
(*Gingly modi*)

Tropical fish — ten varieties.

Goldfish — Several varieties

54 Common

25 Comets

25 Nymphs

25 Chinese Telescopes

25 Japanese Fantails

75 European Pear Roach cr
Rudd

Conchology

A collection of eight thousand shells — two hundred varieties carefully named.



GREAT BLUE HERON
ARDEA HERODIAS

Length of Lake and Park Drives

	Miles
Lake Mendota Drive	
University Drive -----	1
Bay Road and Eagle Heights -----	2
Eagle Heights to Merrill Springs -----	1.6
Mendota Beach -----	.7
Capital Avenue -----	.6
Sumac Drive -----	1.3
Total miles -----	7.2
Hammersley Road -----	.9
Owen Parkway -----	1.5
Farwell Drive	
Lakewood Boulevard -----	1.5
Maple Bluff and Woodward's Grove -----	2.8
State Hospital Drive -----	1
Woodward Farm Road -----	.6
Total miles -----	5.9
Tenney Park	
Thornton Avenue -----	1.
Sherman Avenue -----	.2
Marston Avenue -----	.5
Total miles -----	1.7
Lake Front Park	
Lake Drive -----	.5
Total miles -----	.5
Olbrich Purchase	
Atwood Avenue -----	1.3
Brittingham Park	
Brittingham Drive -----	.7
Brittingham Boulevard -----	.8
Total miles -----	1.5
Henry Vilas Park	
Elm Court -----	.1
Burr Oak Drive -----	.7
Meadow Drive -----	.5
Wingra Heights Drive -----	.4
Fenway Drive -----	1
Edgewood -----	.5
Total miles -----	3.2
West Washington Boulevard -----	1
Total miles -----	24.7

Park Areas and Water Frontage

Parks	Acres	Water Frontage
Breese J. Stevens Athletic Field -----	4.5	
Brittingham Park -----	27	4,370 ft.
Burr Jones Field -----	1.5	
Burrows Park -----	12	550 ft.
East Washington Ave. Parkway -----	10	
Elmside and Lake Front Park -----	5.1	2,000 ft.
Henry Vilas Park -----	62.6	6,000 ft.
Highlands -----	11	
Kendall Park -----	1.5	
Lake Edge Park -----	4.5	75 ft.
Olbrich purchase -----	25	3,610 ft.
Olin Park (formerly Monona) -----	30	1,350 ft.
Olive Jones Field -----	1.5	
Orton Park -----	3.6	
Owen Parkway -----	6	
South Madison Boulevard -----	5	4,800 ft.
Spring Harbor -----	1	270 ft.
Spaight Street Park -----	1.5	600 ft.
Tenney Park -----	44.2	3,800 ft.
Washington Oval -----	.9	
Wingra Monona Parkway -----	33	6,000 ft.
Yahara Parkway -----	16.9	7,200 ft.
Totals -----	308.3	40,625 ft.



