



LIBRARIES

UNIVERSITY OF WISCONSIN-MADISON

Traveling libraries in Wisconsin with directory of stations. 1910

Stearns, Lutie Eugenia

Madison, Wisconsin: [Wisconsin Free Library Commission], 1910

<https://digital.library.wisc.edu/1711.dl/GBD5YETEEPH4F9B>


Based on date of publication, this material is presumed to be in the public domain.

For information on re-use, see

<http://digital.library.wisc.edu/1711.dl/Copyright>

The libraries provide public access to a wide range of material, including online exhibits, digitized collections, archival finding aids, our catalog, online articles, and a growing range of materials in many media.

When possible, we provide rights information in catalog records, finding aids, and other metadata that accompanies collections or items. However, it is always the user's obligation to evaluate copyright and rights issues in light of their own use.



Wisconsin Free Library Commission
Madison, Wisconsin
Circular of Information, No. 7

PAM
93-
562

Traveling Libraries in Wisconsin

WITH

Directory of Stations

Compiled By

MISS LUTIE EUGENIA STEARNS

Chief Traveling Library Department

MADISON, WISCONSIN
1910

ZQC
W81
ST

11-2223

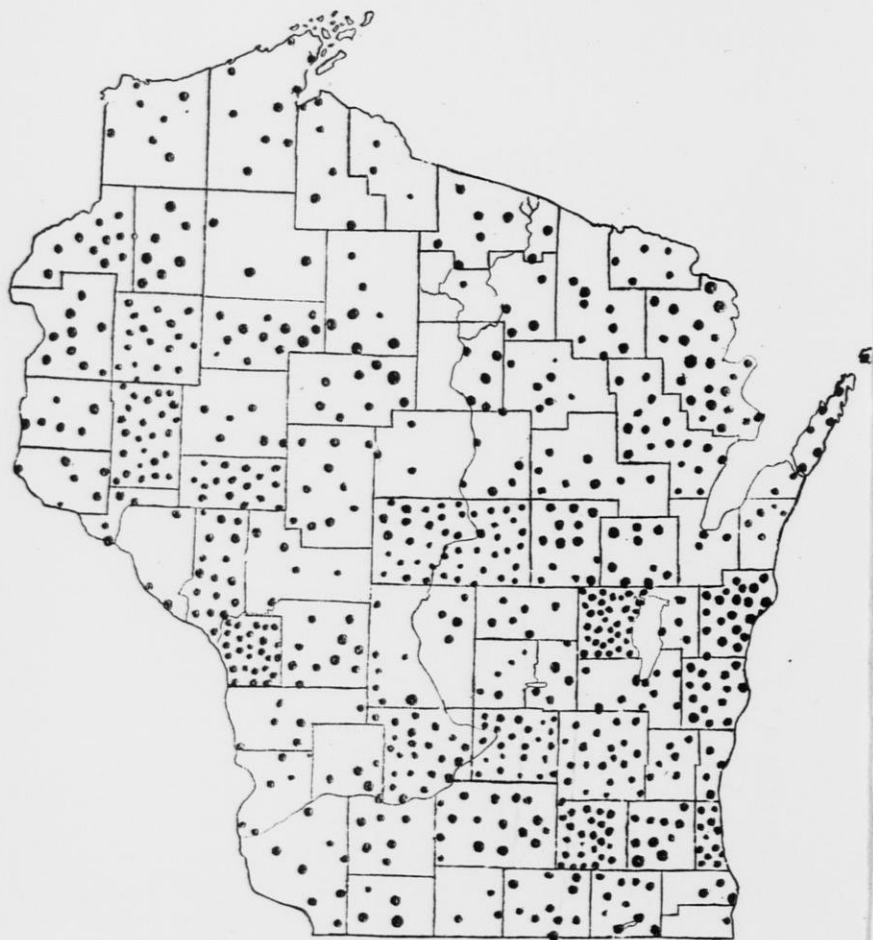
14-9-78

Toast to Traveling Libraries

Here's to our traveling libraries; the promoters of civilization; the makers of true homes; the moral uplifters of communities; the benefactors of our district schools; true missionaries in the homes of the isolated; co-operators with the district school library; destined to one day become one of the most powerful influences in our state.

*Mrs. Edward Porter, Estella, Wis.
Former Custodian Traveling Library*





FREE TRAVELING LIBRARIES IN WISCONSIN
State and County Systems

TRAVELING LIBRARIES IN WISCONSIN

I

HOW TO SECURE A TRAVELING LIBRARY.

Traveling libraries are small collections of books which are sent by the state from one community to another. They are maintained by the state and circulate from the offices of the Wisconsin Free Library Commission in the Capitol.

The libraries are made up of the best popular books of fiction, history, travel, biography, sociology, literature, useful arts, fine arts and science. A number of children's books are included. There are three sizes of these English collections. The 30 volume libraries are sent to the isolated hamlets in the northern part of the state. The 55 volume libraries are sent to the regular stations of average size. The libraries are kept for six months and are then returned to the Commission in exchange for another box. The only expense connected with securing these libraries is the payment of the freight on the box upon receipt and return.

The 100 volume libraries, which are kept for six months, are rented for \$12 a year to the smaller public libraries having inadequate book funds.

German, Yiddish, Danish, Norwegian and Polish traveling libraries, containing 35 volumes each, are loaned to

public libraries for a rental fee of \$7 a year, the boxes being returned to the Commission at intervals of six months.

Small groups of Bohemian, Danish, French, German, Norwegian, Polish and Swedish books are sent oftentimes with the English traveling libraries to settlements of foreigners.

The Commission also has special collections of young folks' books which it loans without charge to small public libraries.

It also has a number of study libraries, a list of which is given on page 14, which it loans for the payment of freight or express charges to women's clubs and other organizations.

The libraries are shipped in stout, hinged chests—not bookcases—with the necessary supplies for keeping records of circulation. When a library has been read at a station, it is returned to the Commission to be checked up, record of circulation taken, necessary repairs made and binding done, another library being sent to the station in its place.

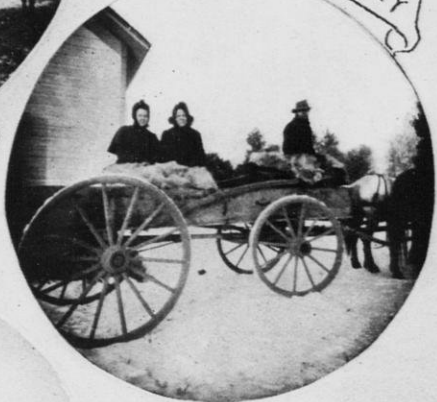
To secure a traveling library for a farming community or village, a library association, which shall include at least ten citizens, should first be organized. Application must be made on a blank furnished by the Commission. A librarian must be chosen. The books of the traveling library must be loaned without charge to any person in the community who will agree to handle books carefully and to pay all fines and damages. An agreement is sent with the library which each borrower is required to sign before drawing his first book.

The library should be kept in the most centrally located

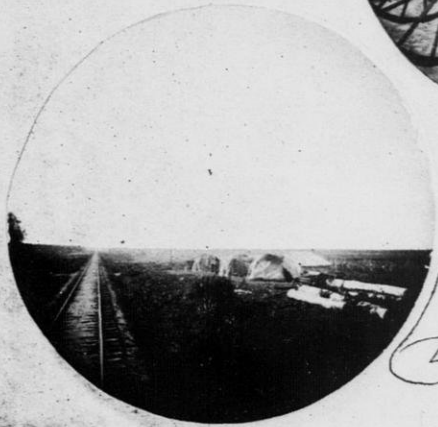
THE HOME OF
THE PIONEER



DELIVERING LIBRARY
IN
MARINETTE COUNTY



LIBRARY
MARINETTE COUNTY



A CHIPPEWA
INDIAN CAMP



and most easily accessible place that can be found. It may be placed in a store, post-office, creamery, or private residence. The library should not be located in the schoolhouse if any other place can be secured, for the reason that the schoolhouse is closed evenings and during long vacation periods and adults do not usually patronize libraries when so located.

Further information will be furnished by addressing the Traveling Library Department, Wisconsin Free Library Commission, Madison, Wisconsin.

II

THE CUSTODIAN OF THE TRAVELING LIBRARY.

The success or failure of the traveling library in any community depends almost wholly upon the one in charge. The librarian in the small hamlet has the advantage over the librarian in the larger town in knowing the community and in thus being able to fit the right book to the right person. The Commission finds great differences in the number of times books are circulated in communities of similar size. A library will be returned with a circulation in one community, for example, of ninety-one issues. This library will be sent to a community of similar size and conditions and will be returned with a circulation of four hundred and seventy-five issues. Investigation will prove that in the first instance the library has not been advertised in the community, many persons not knowing of its existence; whereas in the second case, the librarian has used every means to make the library known and to have it used by citizens. As someone has said, "Many a good woman has kept a traveling library

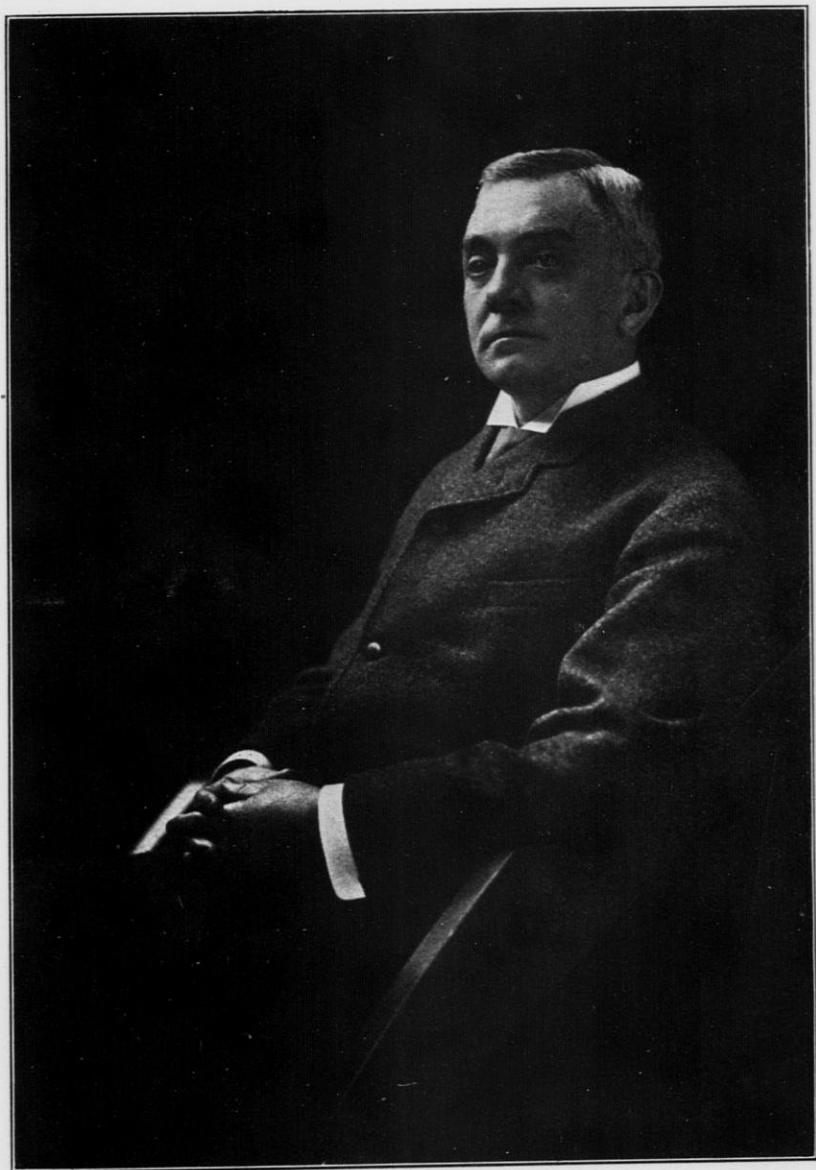
in her home, loaning the books only to her more intelligent neighbors and congratulating herself on the good she was doing, when the children of families about her were reading nothing or reading trash. Such a woman needs to be taught to reach out for neglected children by every means that a kindly tact and enthusiasm may suggest and to hold them by a loving sympathy until the book hunger grows."

III

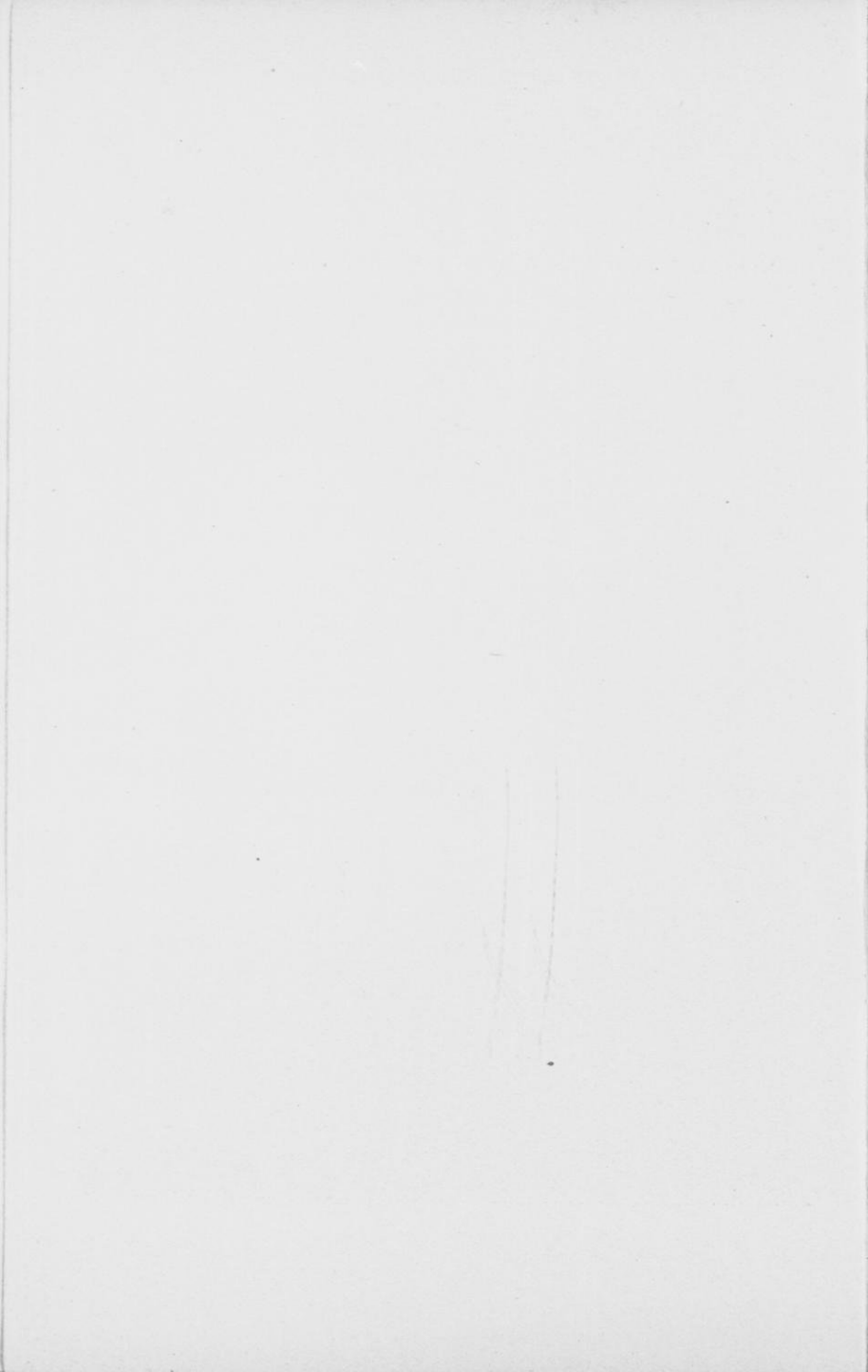
HISTORY OF TRAVELING LIBRARIES IN WISCONSIN.

In February, 1893, the library of the State of New York began to send out from Albany a number of small libraries of 100 volumes each to such of the smaller cities and villages as were not provided with free public libraries. Each of these small libraries remained in a community for six months and was then exchanged for another. The system of traveling libraries thus established proved so flexible, useful and popular as to attract wide notice and sympathy. In 1895 the legislature of Michigan appropriated \$2500 to buy books for a similar system and in 1896 the state of Iowa set aside \$5000 for a like purpose.

In Wisconsin, the system was founded on somewhat different lines by private philanthropy. In January, 1896, shortly after the organization of the Wisconsin Free Library Commission, Hon. James H. Stout, a State Senator from Menomonie, Wisconsin, asked the aid of the Commission in making plans for a traveling library system for his home county, for which he proposed to bear all expenses. Mr. Stout was a trustee of the Mabel



HON. JAMES H. STOUT, MENOMONIE, WIS.
Founder of the First Traveling Library System in Wisconsin.



Taintor Memorial Library of Menomonie. The books of this library were loaned without charge to the people of Dunn County, but comparatively few books were drawn by rural residents, owing oftentimes to the long trips necessary in getting and returning them.

Mr. Frank A. Hutchins, then Chairman of the Commission, was requested to visit the county to look into the local conditions and needs, and later to select the books desired. Five hundred books were purchased which were divided into sixteen libraries. The list of books in one of the libraries will give a better idea of its range than a general explanation:

Ivanhoe, John Halifax, Twice Told Tales, Wreck of the Grosvenor, Charles O'Malley, Ramona, A War-time Wooing, Singular Life, Hope Benham, Oakleigh, Cruise of the Canoe Club, Little Jarvis, Bird's Christmas Carol, In the Child's World, My Arctic Journal, Camps in the Rockies, Parkman's LaSalle, Story of Norway, Famous American Statesmen, Ball's Starland, First Principles of Agriculture, Cyclopaedia of Games and Sports, Boston Cook Book, Ivory King, Among the Law-makers, Franklin Square Song Book No. 1 and St. Nicholas—two bound parts.

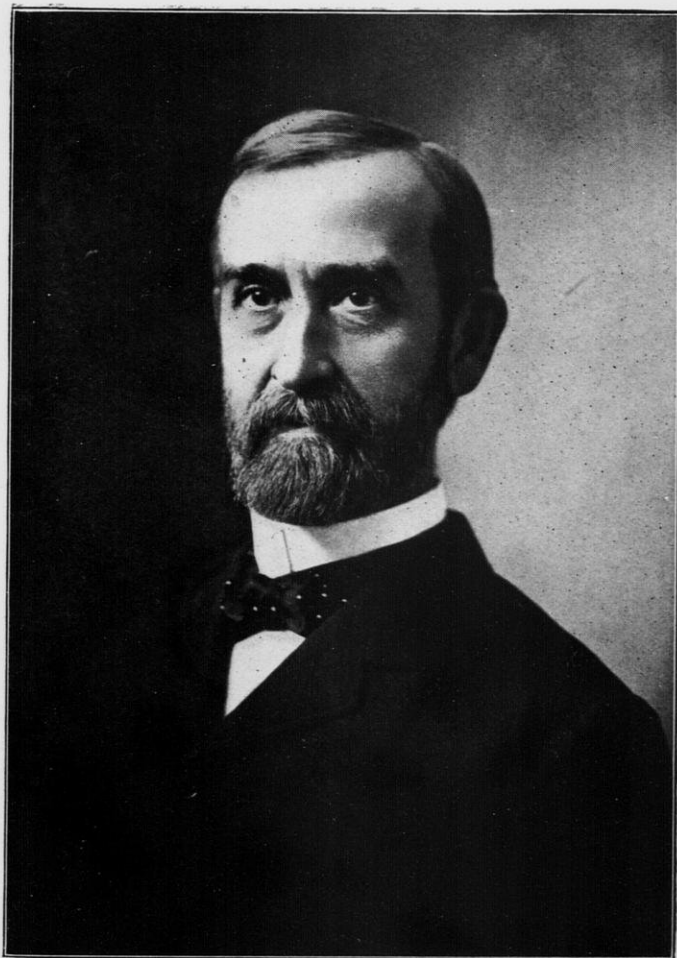
The ruling thought in selecting the books was to get volumes which would attract people who read but little and to give them the desire to read wholesome literature habitually. Each small library was put up in a substantial bookcase and was provided with a simple system of records. To insure good care for the volumes and continuous local interest, a library association was organized in each district. The number of these associations has now (1910) grown to 36, additional libraries having been

provided from time to time, there now being 37 libraries in the system, which is still maintained by Mr. Stout. Miss Eda Gilkerson of Menomonie is the librarian of the system. Miss Stearns of the Commission makes a yearly visit to Dunn County to exchange the boxes.

The immediate success of Senator Stout's system led to the inauguration during the same year (1896) of a similar one for Wood County by J. D. Witter of Grand Rapids. Upon the death of Mr. Witter it was found that he had left the sum of \$5000 for a permanent endowment fund. The books are sent out from the T. B. Scott library at Grand Rapids. There are now 32 libraries in the system, all being placed, four boxes having been loaned to meet a pressing demand in Portage county.

In November, 1896, the same year as the inauguration of the Stout and Witter systems, the Commission held a library meeting at Ashland. One session was devoted to traveling libraries. The interest in the subject was so great a mass meeting of citizens was called and an organization known as the Northern Wisconsin Traveling Library Association effected to furnish libraries to the people in a number of counties on the borders of Lake Superior. Mrs. E. E. Vaughn, the first President of the Association, was previously the founder of the Vaughn Public Library which became the headquarters of the system. Thirteen libraries were placed in the field.

During this same year of great traveling library activity, Miss Maude A. Earley, then librarian of the Chippewa Falls Public Library, and Miss Anna E. Schaffer, county superintendent of schools of Chippewa County, determined to make an effort to supply some traveling



FRANK A. HUTCHINS

Wisconsin's Foremost Promoter of Public and Traveling Libraries

libraries for their home county. Four libraries were sent out, one of which led to the establishment of a village library. Later, a county system of traveling libraries was inaugurated, ten libraries being purchased with county funds. For local reasons, the books of the system were later placed in the schoolhouses of the county.

Shortly after the inauguration of the Stout system, Mr. W. H. Bradley of Tomahawk started a system for the towns in which he had stores, mills and lumber camps in Lincoln County. With his death the system languished, though some of the books are still being circulated.

In Portage County, Miss Irene Warren, librarian of the Stevens Point Normal School, and Miss Mary E. Tanner, art director, secured three or four traveling libraries and collections of traveling pictures which were issued at meetings held in schoolhouses.

Mr. E. D. Smith, the donor of the Menasha public library building, established a system of 15 traveling libraries for Winnebago and Calumet Counties which he maintained until his death. So popular did the books prove to be, the citizens of Winnebago County secured the passage of a law in 1901 enabling that county and others to have county traveling library systems under county auspices through county appropriations.

Women's clubs also established systems. The Fortnightly Club of La Crosse gathered together six traveling libraries which were presented to the county upon the establishment of a county system. The Woman's Club of Eau Claire maintained a system until the county inaugurated one, when the books were given to the

county. The Woman's Club of Marinette sent out nine boxes to adjacent hamlets and maintained the system until a county system was adopted. The Monday Club of Waupaca circulated three boxes in Waupaca County. The Woman's Club of Madison gave money, books and periodicals for libraries to be circulated in the northern part of the state.

The Social Economics Club of Milwaukee purchased three traveling libraries for circulation by the Commission. The Ladies' Literary Club of Wausau established a system of 14 boxes for Marathon County through donations from club women and other citizens. The Woman's Club of Green Bay sent out a number of boxes in Brown County. The Lincoln County Traveling Library Association, with headquarters at Merrill, supplied ten stations.

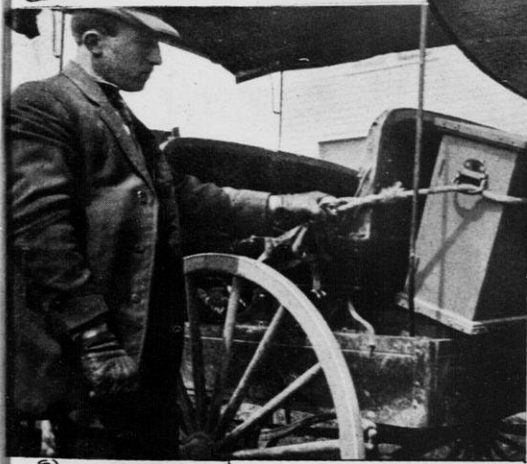
The Milwaukee Kalmia Club gave traveling libraries and also made gifts of books to establish permanent public libraries. The Madison Book Club has given its books to the Commission for years past. The Woman's Club of Beloit gave six boxes of books and periodicals. The Twentieth Century Club of Oshkosh gave two boxes of books and periodicals. The Woman's Club of Kenosha sent four boxes of periodicals. The Woman's Club of Racine gave two boxes of books and periodicals. The Woman's Club of Berlin circulated 5 traveling libraries in Green Lake County. The Woman's Club of Stevens Point sent out 4 libraries in Portage County. The Milwaukee Branch of Collegiate Alumnae donated a library, as did the Janesville History Club, the Study Club of Hudson and the New Century Club of Madison.



IN THE CHEERING-UP BUSINESS



A CREAMERY STATION
IN LINCOLN COUNTY



DELIVERING BOXES
IN DUNN COUNTY

A TRAVELING
LIBRARY STATION



MAIN ST. LAKE NEBAGAMON, WIS.



The students of Milwaukee-Downer College contributed 45 volumes. The Merrill Club of the Milwaukee West Side High School gave a library, as did the seventh and eighth grade classes of the Milwaukee Normal School. The Whitewater Normal School sent 6 boxes of periodicals. Vassar College students sent a box of periodicals.

The Milwaukee "Germania" and "Herold" secured many copies of German periodicals, and the Milwaukee Journal and Milwaukee Sentinel contributed many volumes.

Mr. Joseph Dessert of Mosinee gave the Commission \$500 for the purchase of 12 traveling libraries for general circulation. Senator Stout and Mr. Witter made gifts of a like nature, Mr. Stout providing six and Mr. Witter eight libraries. J. M. and T. J. Pereles of Milwaukee also gave money for the purchase of libraries. Mr. Gardner P. Stickney and the Misses Elizabeth and Louise Haisler gave collections of books, as did Charles M. Morris, all of Milwaukee. Miss Stearns of the Commission, contributed three libraries. Miss Julia Lapham of Oconomowoc collected 11 boxes of books and periodicals. Mrs. William F. Allen of Madison gave money for 2 traveling libraries. Hon. Levi Withee of La Crosse gave \$100 for the purchase of 2 traveling libraries. George Des Forges of Milwaukee gave \$50 for one library. D. E. Roberts, of Milwaukee, gave a library. Isaac P. Witter, Grand Rapids, W. J. Starr, Eau Claire, B. E. Sampson, Brownsville, and the Bannerman Granite Co. of Chicago each gave \$50 for the purchase of traveling libraries. For some years J. M. and T. J. Pereles gave \$100 a year for the cause. E. P. Arpin, a lum-

berman of Grand Rapids, gave \$300 to purchase libraries for a number of towns where he had business interests.

Hon. W. F. Vilas, L. S. Cheney, R. G. Thwaites, Mrs. S. H. Carpenter, Prof. W. W. Daniells, Amos P. Wilder, and Mrs. Lucius Fairchild, all of Madison, were contributors of books and periodicals.

The money for German traveling libraries was given by the Milwaukee National Bank, Geo. H. Heinemann, Fred Vogel, Jr., Pereles Brothers, Fred Pabst, Jr., J. G. Wagner, Chas. F. Pfister, F. A. W. Kieckheifer, all of Milwaukee; W. J. Starr, Eau Claire, W. C. Leitsch, Columbus, W. H. Hatton, New London, D. L. Plumer, Wausau, and Herman Erb, Appleton. A number of public libraries purchased German, Scandinavian and Polish libraries through the Commission.

IV

THE GROWTH OF THE MOVEMENT.

In 1898, there were 186 traveling libraries in Wisconsin, of which 35 were sent out by the Commission. In 1900, there were 238 libraries, 54 of which were issued by the Commission. In 1902, there were 305 libraries, 134 of which were sent out by the Commission. A number of communities sent \$50 to the Commission to purchase traveling libraries, thus making each of these communities a link in the chain of traveling libraries in the state. The demand for more traveling libraries became so pressing that a Department of Traveling Libraries was created by act of legislature in 1903 through the following enactment:

Section 373a as amended by chapter 53, laws of 1899, and chapter 348, laws of 1903:

* * * It (the commission) shall establish a department of traveling libraries in charge of an officer specially qualified and shall purchase books and supplies for traveling libraries and accept gifts for them. Said department of traveling libraries shall also aid in establishing and supervising county systems of traveling libraries. *

* *

In pursuance of this act, Miss Katharine I. MacDonald was given charge of the office part of the work, while Miss Stearns visited the traveling library stations in connection with her duties as the Library Visitor of the Commission. When Miss MacDonald resigned to become the editor of the A. L. A. Book List, Miss Stearns was made Chief of the Department.

Through the additional appropriation secured by the enactment, the number of state traveling libraries has been increased to the following proportions, as recorded in May, 1910:

25 to 30 volume libraries.....	30	894 vols.
50 to 55 volume libraries.....	254	14,402 vols.
100 volume libraries.....	41	4,100 vols.
New book libraries.....	19	950 vols.
Fiction libraries.....	17	432 vols.
Children's libraries.....	8	343 vols.
German libraries.....	101	3,501 vols.
Norwegian libraries.....	40	1,435 vols.
Polish libraries.....	9	295 vols.
Yiddish libraries.....	4	100 vols.
Study libraries.....	87	3,045 vols.
	<hr/>	<hr/>
Total number in state system.....	610	29,497 vols.
Total number in county systems.....	334	15,030 vols.
	<hr/>	<hr/>
Grand total.....	944	44,527 vols.

These figures do not include groups of Bohemian, Swedish, French, German, Norwegian, and Danish books which are sent out with the English traveling libraries.

V

STUDY CLUB LIBRARIES.

In connection with the Traveling Library Department the Commission sends out traveling reference libraries on special subjects with printed or type-written outlines. The material is sent to be kept during the study period for the payment of freight or express charges upon receipt and return. The Wisconsin Federation of Women's Clubs has turned over its study libraries to the Commission for general use by clubs, whether federated or unfederated. The Commission has purchased material from time to time and can now loan the following libraries and outlines:

American literature (6), Art—American; Art—English; Art—French; Art—German; Art poems—Browning, Longfellow, Tennyson; Austria; Bible as literature; Canada; China; Civics, (2); Educational topics; Egypt; George Eliot; England and Wales—Travel (2); English history; English literature—Normans to Stuarts; English literature—Hanoverian period; English literature—Victorian period; French history (4); Germany; Greece; Holland; Household economics (2); Italian Renaissance; Modern Italy—History; Japan; Marble Faun; Mexico; Modern drama (2); Music; Mythology; Nature study; Norway, Sweden, and Denmark (2); the Novel; Paris; Representative English authors; Rome; Russia; Sir Walter Scott; Scotland and Ireland—Travel (2); Shakespeare; South America; Spain; Switzerland; Tennyson; Thackeray; United States history—Discovery and exploration; United States history—Colonial period; United



STREET SCENE
 SOLON SPRINGS, WIS.

STATION IN
 DOUGLAS COUNTY



ROAD TO MINONG STATION



ENDING THE WAY THROUGH JACKSON COUNTY



TRAVELING LIBRARY STATION AT FOUNTAIN CITY.



States history—Revolution; United States history—Formation period; United States history—Expansion period; United States history—Civil War and Reconstruction period; United States history—From Reconstruction to date; United States history—the West; United States travel (4); Village and town improvement; Wisconsin history (11); Woman in education; Woman in the professions.

The Legislative Reference Department of the Commission will also supply clubs and debating societies with material along sociological lines, questions of the day, state and municipal affairs, etc.

The Wisconsin State Historical Library has loaned the Commission 11 reference libraries on Wisconsin history for the use of study clubs.

TRAVELING PICTURE COLLECTIONS.

The Commission owns a number of Copley prints, imported color prints, steel engravings, photographs, etc., which it loans to libraries for exhibition. The only expense is the payment of the express upon receipt and return.

VI

THE USE OF MAGAZINES.

The Traveling Library Department uses large quantities of the popular magazines and illustrated weeklies, such as *The Saturday Evening Post*, *Collier's*, *American Magazine*, *Everybody's*, *McClure*, *Youth's Companion*, etc., in connection with its traveling libraries. It also sends boxes of such material to the lumber camps in the northern part of the state. It will gladly wel-

come opportunity to send boxes to anyone willing to distribute such material anywhere in the state.

Those wishing to make donations of magazines should first communicate with the Commission to see if certain kinds are desired, as the department is usually overstocked.

VII

COUNTY TRAVELING LIBRARIES.

Desirous of making it possible for counties to establish traveling library systems, Mr. P. V. Lawson, of Menasha, in Winnebago County, drafted a bill, which was introduced at the session of the legislature in 1901 by Assemblyman E. A. Williams of Neenah and passed without opposition. The law has since been amended and now reads as follows:

Chapter 91, laws of 1901 as amended by laws of 1909. The board of supervisors of any county may establish a board of libraries, and elect five directors thereof, of either sex, who may hold their office for three years, and until their successors are qualified, excepting the first year, when there shall be elected two directors for one year, two for two years and one for three years. Their term of office shall begin at once on their first election, but thereafter at the same date with county officers. Vacancies shall be filled by similar election of a successor to complete the term. No compensation or expenses whatever shall be allowed said directors.

Section 1. Section 697-12. 1. The said directors shall, upon a date appointed by the chairman of the county board, within thirty days after their first election, elect from their number a president, vice-president, secretary,



A FRIENDLY VISIT
AT A LIBRARY
STATION



ADVERTISING TRAVELING LIBRARIES
AT A FAIR



THROUGH THE WOODS IN WOOD COUNTY.



"THE STAR ROUTE"

DELIVERING LIBRARIES ON THE STAR ROUTE



and such other officers as they may deem necessary, and thereafter hold their annual election during the last week in October. They may make and adopt rules and by-laws for their own guidance, and of the county traveling libraries and officers thereof or of such permanent libraries established under section 697-17 of the statutes. They shall have the exclusive control of the expenditures of all moneys appropriated, or property or money donated for the uses of the county traveling libraries, or such permanent libraries, and the establishment, location, supervision, care, control, and custody of such libraries; but shall not allow or pay any sums whatever for the keeping, care, transporting, or librarian service of such county traveling libraries. They shall have exclusive charge and control of all lands, buildings, moneys, or property devised, bequeathed, or given to any county for libraries.

2. The said supervising librarian shall report annually to the board of supervisors: (1) the number of volumes in libraries; (2) stations supplied during year; (3) expenses incurred; (4) number of books bought during year; and (5) any other information thereto as the board of supervisors may direct.

Section 697-13. The said board of libraries may appoint a supervising librarian for such county traveling libraries, at a salary not to exceed fifty dollars per annum, whose duty it shall be to arrange the books in their cases and repair them when slightly injured, keep the records, instruct the librarians of county traveling libraries in their duty, and perform such other duties as directed by the said board. Such supervising librarian shall be a resident of the county, of either sex, and may

be permitted such expenses as necessary travel in establishing county traveling libraries, or other expenses found necessary in the interest of the county traveling libraries. Such salary and expenses, not to exceed seventy-five dollars, to be paid by the county board on the certificate of president and secretary of the board of libraries out of the general fund.

Section 697-14. It shall be the duty of the board of libraries to purchase suitable books for the county traveling libraries, arrange them in proper cases, and distribute such cases of books to as many districts as equally distant from each other as their means will permit, with the object in view of finally serving libraries within easy reach of all the people of the county. Such libraries may be located at suitable places in any town, village or city, within the county, and not permitted to remain in one location longer than six months, except upon application of not less than five patrons holding cards in such library, when such time may be extended not to exceed thirty days. Upon such removal another library may be loaned in its place successively for similar periods.

Section 697-15. For the purpose of such county traveling libraries any county may appropriate the first year not to exceed five hundred dollars, and thereafter annually not to exceed two hundred dollars for the purchase of books, for repairs, rebinding, and the cases and freight or express on same. Such money shall be retained by the treasurer of the county in a separate fund. It shall be paid out on order of the board of libraries, signed by its president and secretary. All the books, property, moneys, donations, devises, bequests, or gifts, bought or appropriated or given for the purposes of this



LOGGING CAMP



SUNDAY MORNING IN THE
MEN'S SHANTY



TYPICAL LUMBER CAMP



RIVER DRIVERS



SAW MILL

S.P. MIL



act, shall remain the property of the county for the uses therein enacted.

Section 697-16. The Wisconsin free library commission may advise any board of libraries as far as practicable in the conduct of its work.

Section 697-17. Any county may receive by devise, bequests of gifts of lands, buildings, money, books or other property, for the purpose of establishing a public library for the county and may enter into an agreement to maintain a public library in consideration thereof, and shall be bound to faithfully perform such agreement. In such case the said board of libraries have full power to properly administer the same."

Under the operation of this law, county traveling library systems have been established in Winnebago, Marinette, Oconto, Dodge, Columbia, La Crosse, Trempealeau, Sauk, Eau Claire, Jefferson, Milwaukee, Chippewa and Portage Counties. Only one has been discontinued, that of Chippewa County, the books having been turned over to the schools for local reasons.

ESTABLISHMENT OF COUNTY SYSTEMS.

The Commission will aid in securing county systems only in counties where the library conditions at the county seat or elsewhere give assurance of permanent supervision by one experienced in library routine and management.

COUNTY SYSTEMS OF TRAVELING LIBRARIES.

County.	Headquarters.	Number of libra- ries.	Active stations.	Custodians.
Columbia.....	Portage.....	21	17*	Mrs. W. G. Claugh.
Dodge.....	Madison.....	16	14	J. L. B. Thomas.
Dunn ¹	Menomonie....	37	22*	Mrs. Eda Gilkerson.
Eau Claire.....	Eau Claire.....	13	13	Miss Mary A. Smith.
Jefferson.....	Jefferson.....	22	22	A. J. Thorne.
La Crosse.....	La Crosse.....	27	26	Miss Mary Alice Smith.
Marinette.....	Marinette.....	32	20	Miss Ada J. McCarthy.
Milwaukee.....	Milwaukee....	10	10	Joseph V. Cargill.
Oconto.....	Oconto.....	24	17*	Miss Gladys M. Tallett.
Portage.....	Stevens Point.	25	19*	Miss Mollie Catlin.
Sauk.....	Baraboo.....	22	22	Miss Kate M. Potter.
Trempealeau...	Whitehall....	14	14	Miss A. F. Chaffee.
Winnebago.....	Oshkosh.....	36	31*	Miss Miriam Noyes.
Wood ²	Grand Rapids..	35	27*	Miss Edith Rablin.
		334	274	

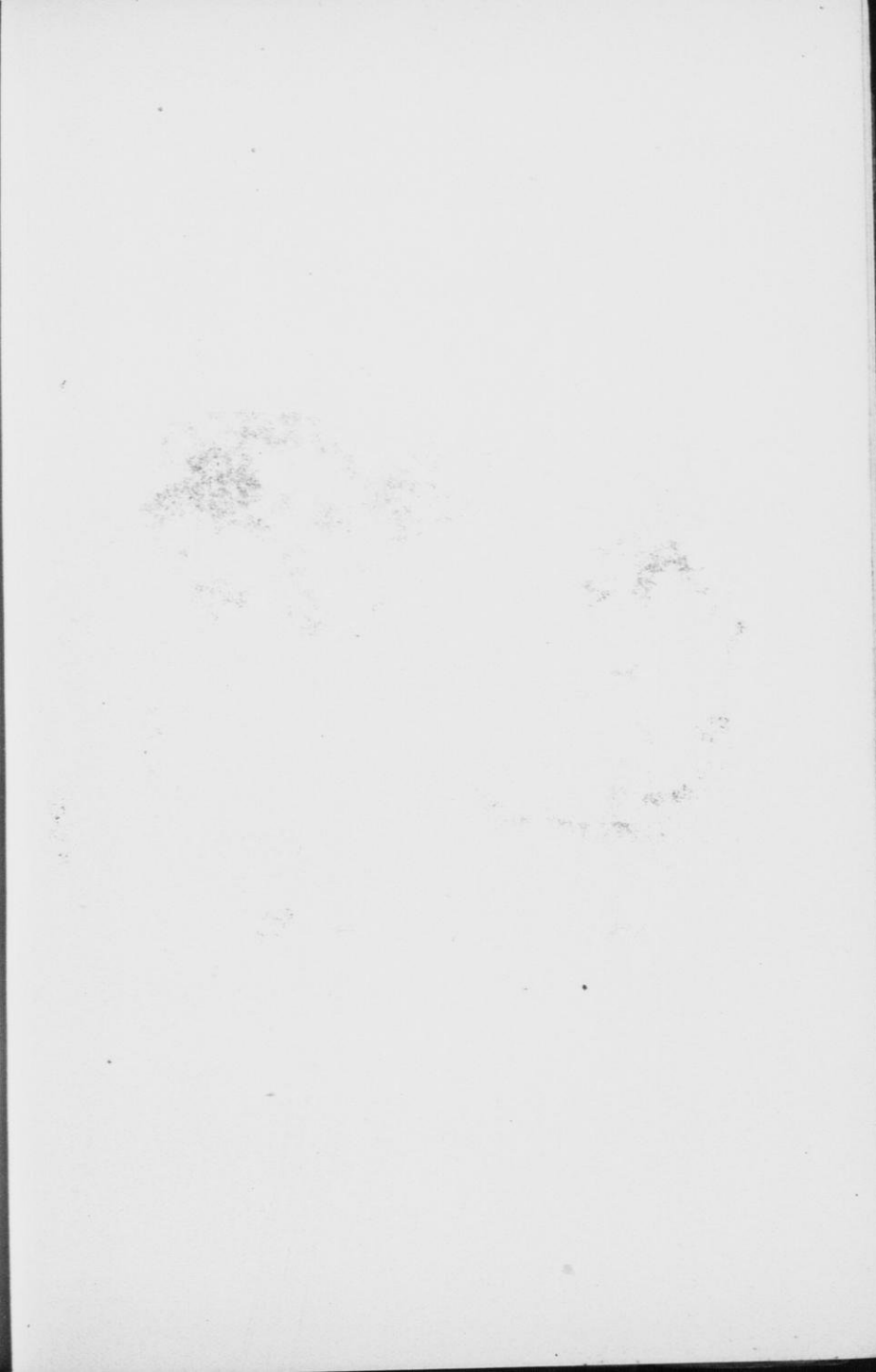
¹ Maintained by Hon. J. H. Stout.

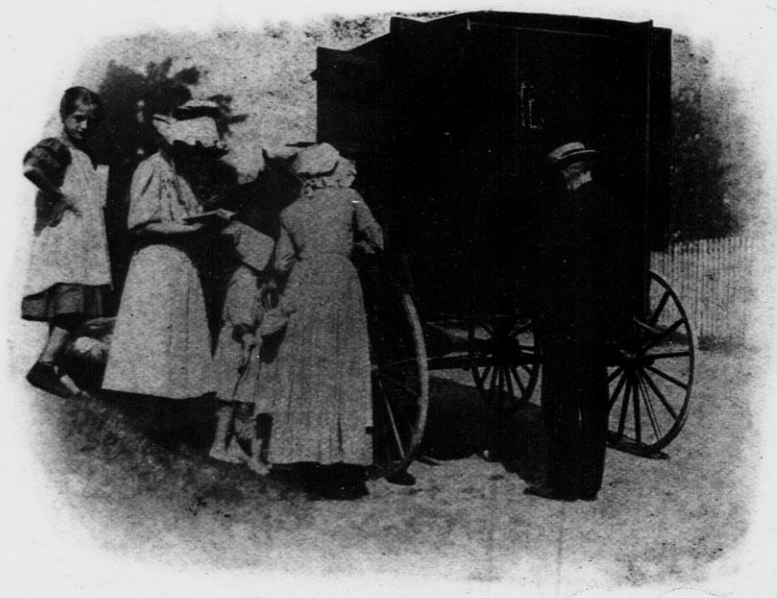
² Maintained by the J. D. Witter estate.

* In many cases two libraries are sent to one station, the number seemingly on hand being thus decreased.

SUPERVISION OF COUNTY SYSTEMS.

Every county system should have a supervising librarian who has the intelligence, the skill, and enthusiasm to make her influence felt in the various county stations. She should take the time to keep in touch with the custodians and inspire them to greater activities in the way of reaching every man, woman and child in their respective communities. The supervising librarian should not rest content till every hamlet in the county is supplied with good books which should be changed at frequent intervals. Every effort should be made to re-establish stations discontinued for any reason. An institute should be held occasionally at some convenient place at which problems connected with traveling libraries should be





THE WASHINGTON COUNTY (MARYLAND) BOOK WAGON

discussed and helpful talks given on the purpose and results of the work. The local workers are isolated, their work is unpaid, and they need encouragement and sympathy to inspire them to the unflagging zeal that will lead to the best results.

An appropriation for the work should be secured yearly for the purchase of new libraries and new books with which to freshen old collections. Interest will wane if books on live, current topics are not added from time to time.

VIII

THE BOOK WAGON.

The next step in the development of the county traveling library system should be the inauguration of the "book wagon"—house to house delivery of books and periodicals. That this method is practicable is shown by the success attending it in connection with the Washington County Library of Hagerstown, Maryland. Although there are 73 deposit stations in the county, the book wagon goes over 16 routes distributing books to the more isolated parts. Miss Mary L. Titcomb, the librarian of the system writes, "As yet no better way has been found of reaching rural communities than this form of house to house delivery. It far exceeds the traveling library or deposit station in its usefulness, in that the personal element enters into the work. The tastes of the individual can be consulted. If there are children attention can be called to the books which will please them. If the wagon does not contain what is desired, a memorandum can be taken then and there and the book mailed to the individual. The librarian has learned

that as far as lies within his resources, it is his business to see that the right book reaches the right person even if it involves convincing that person that he wants the book." Three thousand seven hundred books were distributed by the book wagon during 1908. The cost of the specially constructed wagon was one hundred and seventy-five dollars. It was designed to carry several of the traveling library cases in the interior with shelving having a capacity of about three hundred volumes on each side, the doors opening outward. In the course of the journey the cases are delivered, others brought in for exchange, and all of the out-of-the-way farm houses are visited where an invitation is given to the family to inspect and take the wares freely offered. Books are left for two months with the understanding that neighbors may exchange with each other. Thousands of books have been issued through this method during the past five years, the plan proving most successful and in every way worthy of imitation in other states.

IX

PARCELS POST AND TRAVELING LIBRARIES.

The usefulness of the state and county systems of traveling libraries would be greatly increased through the establishment of parcels post and the removal of the four pound weight limitation, especially on rural free delivery routes. In distributing libraries to rural stations the ridiculous sight is often presented of the rural mail carrier with ample facilities for carrying one or more boxes driving along the country road closely followed over exactly the same route by the traveling library de-



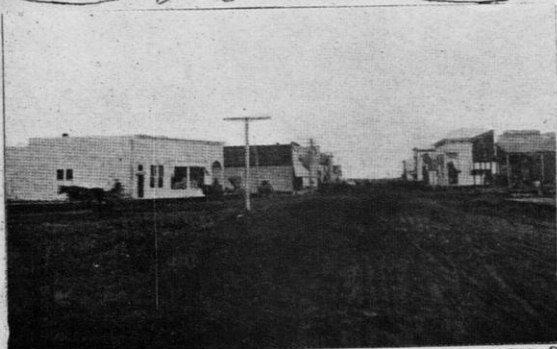
STATION FOR 100 VOLUME LIBRARY



AN IMPROVED ROAD IN NORTHERN WISCONSIN



CORDUROY ROAD IN NORTHERN WIS.



POLK COUNTY STATION



livery wagon. A great saving could be made, particularly in county systems, if the rural carrier could deliver and return the boxes. The work of the state system could be vastly enlarged if the rural mail carrier were allowed to call at depots for boxes sent to outlying stations. The abolishment of stage routes with no substitute for them has worked a hardship in this connection which should be speedily remedied.

X

THE FUTURE OF TRAVELING LIBRARIES.

Before the establishment of rural free delivery, there were over 1400 postoffices in Wisconsin. A community that is large enough to have a postoffice should also be provided with a traveling library. The state and the county systems now reach a little over one-half of the former postoffices. There are many places in the state, too small for postoffices, which should be provided with traveling collections. All of the libraries owned by the Commission were in the field during the winter of 1910, save a few that were kept on hand from day to day for exchange purposes. The books in the state system were read a total of 103,665 times during the past 11 months. The number of library stations could be vastly increased were adequate funds provided. Large forest areas which covered Northern Wisconsin a few years ago have been cut down by lumbermen or destroyed by fire. On to these clearings are coming settlers from Germany, Scandinavia, Bohemia, Italy, and Poland intent on building homes. They are industrious and thrifty but most of them are starting with scant means. Their

farms are usually mortgaged and to pay off this debt they must deny themselves all but the barest necessities of life. These are the people who appreciate the traveling libraries and the illustrated periodicals sent with them. One earnest woman who had charge of a traveling library in an isolated northern community wrote: "The books of the traveling library are out constantly and are doing a great deal of good. One family which had never had any books in the house except school books have taken eight books in the past two months. The Youth's Companions are taken by the teacher and read till they are all worn out. I can never tell you how much they like them and how much good they do." Although the Wisconsin Commission reaches more farming communities than any other state in the Union, there are thousands of settlements still untouched for lack of means to supply them. In no other activity in which the state is engaged are the people reached and benefited as through the state traveling libraries. As Mr. Hutchins has said, "Every sound instinct of national preservation and patriotism demands for the masses of our people a fuller education to train them to meet political, social, and industrial conditions that are annually becoming more complex. To the man upon the farm even more than to the man in the city, the news of the great movements of the world must come by reading. The state trains these people to read and then leaves the quantity and quality of their reading to chance. It gives them an expensive schooling for six or seven years and then when a few cents per capita annually would enable them to educate themselves throughout their lives, it neglects them.

Is it possible to devise any addition to our system of popular education which will give so much information, so carefully chosen, at so small cost, as will be gained by adding free traveling libraries to it? Not one citizen in one thousand could select as good books, not one in ten-thousand could buy as cheaply and none could make exchanges of readings as wisely, cheaply, and satisfactorily as all, working unitedly, may do for all."

Traveling Library Directory

Place	Librarian
Adams county:	
Big Flats	Mrs. Ada Shipway
Friendship	Jessie Pierce
Lincoln	Sadie Maynard
Strong's Prairie	Emma Hoffmann
Ashland county:	
Ashland*	Public Library
Butternut	Mrs. Jennette Schoenberger
High Bridge	Elvina R. Morse
Mellen	Mr. Gearing
Odanah	Mildred Parker
Shanagolden	Public Library
Barron county:	
Almena	Geo. Toynbee
Arland—No. 1	Ada Anderson
Arland—No. 2	N. J. Baird
Barron	Public Library
Barron—No. 2	Mrs. Frank Hall
Barron—Dist. 6.	Mrs. Otto Maaek
Cameron	W. J. Eberwein
Canton	F. L. Robb
Chetek	Mrs. W. G. Malcolm
Comstock	Harriet Williams
Comstock, R. 4	Wm. Mackay
Cumberland*	Public Library
Prairie Farm	F. J. McIntyre
Rice Lake*	Public Library
Rice Lake, R. 5	Sophie Berg
Silver Lake	Chas. A. Ness
Bayfield county:	
Bayfield*	Public Library
Cable*	Public Library
Cornucopia	Victoria Musolf
Iron River*	Public Library
Maple Ridge	W. R. Evans
Mason	H. J. Axness
Moquah	W. E. Wesche
Port Wing	E. Sehlin
Washburn*	Public Library
Brown county:	
De Pere*	Public Library
Green Bay*	Public Library
New Franken	A. L. Greiling

* Foreign or 100 volume library.

Place	Librarian
Buffalo county:	
Cochrane	A. F. Retzlaff
Fountain City	H. L. Kohlhepp
Mondovi*	Public Library
Burnett county	
Dewey	John Ireland
Freya	Alida Gustafson
Grantsburg	M. D. Loneragan
Jackson	Ida Kimball
Karlsburg	Mrs. A. B. Haight
Kruger	Mrs. Emma Peterson
May	Frank Fahland
Oakland	Mrs. Julia Wierschem
Orange	Mabel Connor
Trade Lake	Johnson & Schyttner
Calumet county:	
Forest Junction	Rev. J. Trautmann
Harrison	Alonzo Milner
Hayton	John A. Draheim
Stockbridge	Carl Golmgefsky
Chippewa county:	
Bloomer	Mrs. Laura Smith
Boyd	Mrs. U. M. Lund
Chippewa Falls*	Public Library
Cornell	Mrs. G. F. Sowle
Drywood	John Benson & Sons
Stanley*	Public Library
Clark county:	
Abbotsford*	Public Library
Columbia	Alma Anderson
Granton	Lloyd E. Davis
Greenwood	Sidney Smith
Hixon	S. M. Munson
Humbird	E. T. Hale
Loyal	Public Library
Neillsville*	Public Library
Thorp*	Public Library
Withee	Julius Steinert
Columbia county:	
Cambria	Miss M. Morgan
Columbus*	Public Library
Kilbourn*	Public Library
Lodi*	Public Library
Portage*	Public Library
Poynette	F. I. Doudna
Rio	Mrs. Frank Hall
Wyocena	Ida Bushnell

* Foreign or 100 volume library.

Place	Librarian
Columbia county system:	
Cambria	Miss M. Morgan
Dekorra	Mr. Batty
Doylestown	Dr. R. J. McDonald
Fall River	W. H. Weber
Fountain Prairie	Miss Effie Hoyt
Fountain Prairie—No. 2	W. B. McKay
Hampden	Miss Sadie Goodman
Lowville	Miss Marcellitte Haight
Marcellon	E. C. West
Marcellon village	Winifred McMahon
Pardeeville	H. P. Thompson
Poynette	M. L. Drake
Randolph	Public Library
Rio	Miss Mary I. Hall
Scott	Miss Luella Breneman
Springvale	Mrs. Z. E. Upham
Wyocena	Mrs. Ida Bushnell
Crawford county:	
Bridgeport	Mrs. Emma Bieloh
Prairie du Chien*	Public Library
Seneca	J. J. Collins
Soldiers Grove	Mrs. G. J. Jacobsen
Dane county:	
Black Earth	F. Edna Biglow
Blue Mounds	J. E. Dickson
Bryant's District	Mrs. Magnus Leslie
Burke	Henry Moehlmann
Cambridge	E. Kramer
Cottage Grove (village)	Geo. W. Briggs
Cottage Grove (rural)	Mrs. Grace Morehouse
Madison*	Public Library
Marshall	Mrs. Alice Devine
Mazomanie*	Public Library
Morrisonville	J. A. Ziebarth
Mt. Horeb*	Public Library
Mt. Horeb, R. F. D.	John O. Mael
Oregon*	Public Library
Stoughton*	Public Library
Sun Prairie*	Public Library
Windsor	Mary Robinson
Dodge county:	
Beaver Dam*	Public Library
Horicon*	Public Library
Hustisford	Chas. H. Rex
Juneau	Ferdinand Wendt
Kekoskee	
Lomira	Alois Schmidt
Mayville*	Public Library
Rubicon	
Theresa	Frank Lamphere

* Foreign or 100 volume library.

Place	Librarian
Dodge county system:	
Brownsville	J. F. Bretzke
Burnett Corners	John Weston
Burnett Junction	Roll U. Dehne
Clyman	J. W. Walsh
Fox Lake	Public Library
Herman	H. F. Ringle
Hustisford	Chas. H. Rex
Iron Ridge	Fred Sette
Juneau	Ferd. B. Wendt
Lomira	Alois Schmidt
Lowell	John Sturner
Randolph	Public Library
Reeseville	J. F. Hughes
Theresa	G. R. Rousseau
Door county:	
Bailey's Harbor	Roger Eatough
Detroit Harbor	B. L. Anderson
Egg Harbor	Mrs. W. G. Manney
Ephraim	C. S. Smith
Forestville	Wm. Fagg
Jacksonport	Mrs. Louis Martinson
Sawyer	Mrs. Wilmer Jacobs
Sister Bay	Frank Bunda
Douglas county:	
Foxboro	Mrs. P. N. Tannahill
Gordon	Nellie Cosgrove
Hawthorne	Kate Jensen
Lake Nebagamon	Mrs. Allan McPnee
Solon Springs	Andy Lucius
South Range	E. Gertrude Gahr
Superior*	Public Library
Dunn county:	
Colfax*	Public Library
Dunn county system:	
Boyceville	Mrs. T. J. Rundle
Davis	Mrs. Henry Clack
Dunnville	F. E. Freeman
Eau Galle	Dr. P. H. Doughty
Eau Galle	C. Earle Ingram
Elk Mound	Mrs. T. G. Govin
Elk Mound, R. F. D.	Elias Hutchins
Elk Mound (town)	Wm. Nussbaum
Fall City	Mrs. James Vesper
Forest Center	Mrs. A. E. Saxton
Foshbroke	Andre Bolland
Hay Creek	Mrs. J. D. Billings
Hudson Road	Mrs. Ever Brevad
Knapp	Farmers' Co-operative store
Lucas	Walter Hughes
Peru	Mrs. Thomas Turner
Ridgeland	O. E. Wooley
Sand Creek	Farmers' Co-operative store
Sand Creek	Mrs. E. P. Madison
Spring Brook	Mrs. Archie Remington
Waubeek and Dunn	Mrs. S. B. Ingram
Wheeler	Robt. B. Porter
Wilson	Miss Tena Olson

* Foreign or 100 volume library.

Place	Librarian
Eau Claire county:	
Augusta	E. G. Herrell
Eau Claire*	Public Library
Fairchild*	Public Library
Eau Claire county system:	
Bridge Creek	Mrs. F. L. Campbell
Brunswick	George Comings
Brunswick	J. B. Whipple
Clear Creek	F. B. Elkinton
Drammen	Ole K. Hanson
Fairchild	Public Library
Fairchild, R. F. D.	Mrs. Alva E. Petlis
Fall Creek	Fall Creek Mercantile Co.
Pleasant Valley	Miss Clara Wampole
Seymour	Miss Anna Bowman
Union	M. D. Graves
Union	Sam Wethern
Washington	Miss Bess Buck
Florence county:	
Commonwealth	W. F. Carr
Fence	Carl Fred
Florence	J. S. Pemberthy
Florence, R. F. D.	Libbie Greenwood
Homestead	John Elmer
Long Lake	J. E. Johnson
Fond du Lac county:	
Campbellsport	Miss Lillian Knickel
Dundee	Chas. Jandrey
North Fond du Lac*	Public Library
Osceola	Josephine F. Rach
Peebles	Mrs. F. M. Coffeen
Ripon*	Public Library
South Byron	Maud S. Bird
Waupun*	Public Library
Forest county:	
Blackwell	Mrs. Richard Powers
Carter	Mrs. A. B. Carter
Crandon	Mrs. J. R. Harrington
Hiles	Alice L. Auge
Laona	Gilbert Fonsted
North Crandon	Mrs. Martin Miller
Padus	Mrs. W. H. Tuell
Wabeno	H. W. Hubbard
Grant county:	
Bloomington*	Public Library
Boscobel*	Public Library
Elk Grove	Belle Phillips
Georgetown	Effie Dingman
Hazel Green	M. T. Berg
Livingston	Mrs. Eda M. Alton
Mt. Hope	Emily Corlitt
Muscoda	B. W. Weenink
Platteville*	Public Library

* Foreign or 100 volume library.

Place	Librarian
Green county: Albany Brodhead*	Louis Thalacker Public Library
Green Lake county: Berlin* Brooklyn Green Lake Markesan Marquette	Margaret Biggert E. M. Gilbert J. R. Brooks Public Library H. L. Millard
Iowa county: Cobb Dodgeville* Dry Bone Highland Mineral Point*	Mary L. Callow Public Library J. H. Pierick H. C. Hacker Public Library
Iron county: Mercer Saxon Upson	Frank M. Hawley Henry Walsh C. D. Lennan
Jackson county: Black River Falls* Knapp Merrillan Northfield	Anna C. Wylie J. O'Brien Williams & Johnson A. Skorstad
Jefferson county: Fort Atkinson* Jefferson* Johnson Creek* Lake Mills* Rome Waterloo*	Public Library Public Library Public Library Public Library J. A. Friedel & Sons Public Library
Jefferson county system: Aliceton Cambridge Cold Spring Concord (Dist. 4) Concord Ebenezer Grellton Hebron Helenville Hubbleton Ixonia Jefferson Johnson's Creek Milford Oak Hill Oakland Palmyra Rome Sullivan Sumner Waterloo Watertown	R. K. Jones J. Porter Fay Coon Lucia Haley Otto Dahms Gust Yaeck W. Owens Mr. Reil Ella Powers Mrs. Winger Public Library Emil Daugs J. S. Hooper Julia Burr J. N. Kripner Charles Williams O. Friedel Miss Tillie Grimm C. J. Drawes Peter Sheridan Public Library

* Foreign or 100 volume library.

Place	Librarian
Juneau county:	
Camp Douglas	Mrs. W. F. Eberhart
Elroy	Public Library
Hustler	Mrs. C. H. Vilmer
Mather	Mrs. Cora Burger
New Lisbon	Roy L. Heindel
Union Center	George C. Asby
Wonewoc	Public Library
Kenosha county:	
Kenosha*	Public Library
Kewaunee county:	
Casco	Mabel Drossart
Franklin	Laura Winneken
Luxemburg	Louis Leibl
West Kewaunee	Wenzel Sipple
La Crosse county:	
La Crosse*	Public Library
Onalaska	E. F. Berg
La Crosse county system:	
Bangor	G. Groezinger
Barre Mills	Hilma Dayl
Burns	J. N. Jones
Campbell	Mrs. C. H. Hawkins
Chipmunk Coolie	R. Heroeld
French Island	John McCann
Gills Coolie	B. C. Johnson
Greenfield	Casper Anderegg
Halfway Creek	E. C. Wall
Holmen	C. B. Sletteland
Midway	G. Standbergen
Mindoro	Mrs. H. Frazier
Mormon Coolie	Rev. Henry Andreas
New Amsterdam	Rev. J. S. Croasaz
North Hamilton	Hiram Lovejoy
Onalaska	County Training School
Onalaska	High School
Rice Lake	Charles Pfafflin
Rockland	Oswald Evans
St. Joseph P. O.	William Zanfers
Sand Lake Coolie	William Blankley
Shelby	E. Markel
Smith's Cooite	Mrs. Wesley Dawson
South Hamilton	W. I. Dudley
Stevenstown	A. O. Olson
West Salem	E. A. Tower
Lafayette county:	
Belmont	P. P. Patterson
Gratiot	J. A. Roberts
Shullsburg*	Public Library

* Foreign or 100 volume library.

Place	Librarian
Langlade county:	
Antigo*	Public Library
Bundy	Anne Kalouner
Parrish	Miss A. R. Burbey
Lincoln county:	
Gleason	A. W. Manthey
Heinemann	Mrs. Craig
Merrill*	Public Library
Tomahawk*	Public Library
Manitowoc county:	
Branch	F. W. Meisnest
Centerville	Mabel Sell
Clarks Mills	C. A. Robley
Cleveland	Lucy Schulte
Collins	T. L. Reichert
Eaton	Dr. T. O'Brien
Franklin	Maine Brennan
Hika	R. H. Hinz
Kasson	Samuel Schilling
Kiel	Ed. Guttenkunst
Kossuth	Randolf Stoehr
Manitowoc*	Lucile Cully
Manitowoc Rapids	E. Wehrwein
Mishicot (Dist. 4)	Charles Braun
Newton (Dist. 9)	Matilda Kelley
Newton	James F. Morriss
Reedsville	L. A. Busse
Tisch Mills	Lucy Stangel
Marathon county:	
Athens	C. E. Nulten
Colby*	Public Library
Galloway	Mrs. J. J. Westreu
Holton	Louisa Huisted
Mosinee*	Public Library
Staad	William C. Stadt
Wausau*	Public Library
Marinette county:	
Peshigo*	Public Library
Marinette county system:	
Amberg, Dist. No. 8	Mabel Sweeney
Athelstane	Wm. Cowie
Athelstane Dist. No. 4	Lillian Farrell
Brown's Spur	Mrs. Melvin England
Coleman	Nora Laabs
Crivitz	Lilian Lemere
Goodman	E. L. Schroeder
Grover, Dist. No. 4	Josephine Christianson
Grover, Dist. No. 7	Jennie Fleussus
Holley	Theodore Wise
Lakewood	Josephine Christianson
Loomis	Mr. J. B. Sanderson
Miles	Zella Seymour
Napper	Mrs. H. C. Armstrong
Niagara	Jas. A. Gallagher
Porterfield	Mame Bernardy
Pound	B. Gissenaas
Pound	Camilla Ruchleau
Winesville	Mrs. Eric Larsen
Walsh	H. B. Pederson

* Foreign or 100 volume library.

Place	Librarian
Marquette county	
Endeavor	E. D. Smith
Germania	S. N. Hartwell
Neshkoro	E. E. Detent
Oxford	W. O. Dyer
Packwaukee	F. C. Hart
Westfield	Mrs. G. A. Waldo
Westfield, R. F. D.	Rev. A. G. Taylor
Milwaukee county:	
Cudahy*	O. Frank
South Milwaukee*	Stella A. Whalen
West Allis*	Public Library
Milwaukee county system:	
Brown Deer	E. F. Ladwig
Carrrollville	G. Denison
East Milwaukee	H. Neumann
Granville	Nellie Foote
Greenfield	A. Corstvet
Hales Corners	J. Godsell
Layton Park	W. H. Dick
Oakwood	L. George
St. Martins	G. Vanderboom
Whitefish Bay	J. Singles
Monroe county:	
Cashton	A. A. Du Mez
Glendale	J. G. Moore
Kendall	Gammon & Co.
Leon	Sadie L. Link
Norwalk	Mollie Neumann
Tomah*	Public Library
Valley Junction	Mrs. Bird Hackett
Oconto county system:	
Abrams	Dr. Robert Faulds
Brazeau	J. P. Brazeau
Brookside	J. Goddard
Breed	A. W. Breed
Couillardville	Wm. Henry
Gillette	L. B. Stuelke
Kelly Brook	J. S. Peterson
Lena	J. P. Baldwin
Little River	Mrs. O. P. Saffard
Morgan	Mrs. W. A. Kliffoth
Mountain	H. M. Baldwin
Oak Orchard	Esther Minor
Oconto Falls	Public Library
Sobieski	Levi Cleveland
Stiles	J. W. Whipple
Stiles Junction	J. M. Parkinson
Swing	J. A. Kaufman

* Foreign or 100 volume library.

Place	Librarian
Oneida county:	
Monico	John S. Klinka
Pelican Lake	Libbie E. Revoir
Rhinelanders*	Public Library
Three Lakes	Helen Merrifield
Outagamie county:	
Appleton*	Public Library
Black Creek	J. E. Pierce
Hortonville*	Public Library
Kaukauna*	Public Library
Kimberly	Victor Viaene
Medina	H. M. Culbertson
Seymour*	Public Library
Shiocton*	Public Library
Ozaukee county:	
Port Washington*	Fred Kuhn
Pepin county:	
Albany	Louis Thalacker
Arkansas	E. S. Dunham
Durand*	Public Library
Pepin	Mr. C. Whitlock
Pierce county:	
Bay City	R. H. Dodge
Clifton	Miss Lou Copley
Elmwood	W. C. White
Martell	G. A. Thompson
Plum City	Mrs. W. A. Churchill
Prescott	Public Library
Polk county:	
Amery	W. W. Winchester
Balsam Lake	Mrs. H. W. Radcliff
Centuria	A. L. Peterson
Clear Lake	J. C. Saxton
Dresser Junction	Mark Pitman
Frederic	Mrs. P. P. Luke
Luck	Henrietta Lund
Milltown	J. H. Hermansen
Nye	Wm. Borschenius
Portage county:	
Amherst	L. J. Gavey
Stevens Point*	Public Library

* Foreign or 100 volume library.

Place	Librarian
Portage county system:	
Almond	The Press
Amherst Village	L. J. Carey & Co.
Amherst Junction	Mrs. Ed. Tobie
Arnott	Mrs. Esther Carley
Bancroft	Manley's Hardware Store
Blaine	Mrs. L. A. Taylor
Buena Vista	L. E. Wentworth
Custer	Miss Alma Ryan
Eau Claire	Thomas Pitt
Grant	William Gaulke
Jordan	Mrs. Vaughan
Junction City	Jacob Skibba
Lanark	William Brunker
Liberty Corners	S. Whittaker
Linwood	Mrs. Fontaine
New Hope	Benjamin Halverson
Polonia	Frank Omernick
Rosholt	O. G. Meyer
Towne	J. L. Dopp
Price county:	
Catawba	O. W. Wick
Kennan	Clarence L. Peck
Park Falls*	Public Library
Phillips	D. A. Swartz
Spirit	Fred Kardell
Worcester	Mrs. G. W. Nutter
Racine county:	
Burlington*	Public Library
Burlington, R. F. D.	Roy Moore
Corliss	J. W. Simmons
Racine*	Public Library
Richland county:	
Byrds Creek	H. E. Miller
Ithaca	A. Williams
Lone Rock	Mrs. M. B. Shannon
Richland Center*	Public Library
Sextonville	Mrs. Helena Whitaker
Rock county:	
Beloit*	Public Library
Edgerton*	Public Library
Janesville*	Public Library
Lima Center	J. S. Elphick
Milton Junction*	Public Library
Orfordville	Amanda Johnson

* Foreign or 100 volume library.

Place	Librarian
Rusk county:	
Apollonia	Stella Bowmann
Atlanta	Arpin Hardwood Lumber Co.
Conrath	R. P. Speer
Glen Flora	Dr. H. C. Johnson
Hawkins	E. R. Cram
Ingram	Fred Arrowsmith
Ladysmith*	Public Library
Weyerhauser	C. C. Guilford
St. Croix county:	
Baldwin	Florence Bockus
Burkhardt	L. Crandall
Glenwood	Alice Vander Hiden
Hammond	Mrs. Leonard
Hudson*	Public Library
New Richmond*	Public Library
Sauk county:	
Baraboo*	Public Library
Ironton	Mrs. J. R. Fitzgerald
La Valle*	Public Library
Lima Ridge	Anna B. Johnston
North Freedom*	Public Library
Reedsburg*	Public Library
Spring Green*	Public Library
Sauk county system:	
Abelmans	E. P. Popp
Delton—No. 1	A. J. Flickner
Delton—No. 2	Miss Odekirk
Delton—No. 3	Miss Bellows
Excelsior	Aug. Stackman
Fairfield	Mrs. Malloy
Glenville	Miss Platt
Ironton	Mrs. Fitzgerald
Ironton	W. H. Fragier
Loretto	Jas. Welch
La Valle	Mrs. Paddock
Limeridge	Mrs. Anna Johnson
Lyons	Mrs. Koons
Merrimac	Miss Smith
North Freedom	Mrs. Carpenter
Prairie du Sac	Ruth Hutchins
Sandusky	Mrs. C. Prouty
Sumpter	Mrs. G. Premo
School District No. 4	Miss Hanley
School District No. 9	Royce Scribbin
Sauk City	Mr. Marquardt
Westfield	John Rumpf
Sawyer county:	
Draper	M. G. Hoard
Hayward*	Public Library

* Foreign or 100 volume library.

Place	Librarian
Shawano county:	
Cecil	Mrs. H. C. Scheller
Mattoon	Mr. A. J. Raess
Shawano*	Public Library
Tigerton	H. U. Raffauf
Tilleda	Florence M. Brockmann
Wittenberg	I. R. Nye
Sheboygan county:	
Cascade	L. C. Bartlett
Cedar Grove	Edna Meengo
Elkhart Lake*	George Gerhard
Glenbeulah	Elizabeth A. Hoskins
Greenbush	Herbert Haslee
Howard's Grove	Chas. A. Ringer
Parnell	L. P. Reilly
Plymouth*	Public Library
Plymouth, R. F. D.	H. A. Chaplin
Sheboygan*	Public Library
Silver Creek	E. C. Theil
Taylor county:	
Goodrich	Mrs. C. H. Elliott
Hammell	Mrs. Emeline Morow
Justin	Etta Hawks
Maplehurst	H. E. Merrill
Medford	Public Library
Polley	Mrs. Jas. Wicks
Rib Lake*	Public Library
Westboro	Jessie Youmans
Trempealeau county:	
Arcadia*	Public Library
Eleva*	Public Library
Independence*	Public Library
Whitehall*	Public Library
Trempealeau county system:	
Blair	G. L. Solberg
Centerville	Mr. Carheel
Ettrick	Miss Bertha Runnestrand
Frenchville	H. F. Clausen
Galesville	O. S. Bergquist
Galesville, R. F. D.	Mrs. Warren Bender
Hale	Ole Horre
Iduna	John Horre
Lamarack	C. L. Boling
Pigeon Falls	Henry Jacobson
Russel	J. J. Jensen
Strum	Robbe Bros.
Trempealeau, R. F. D.	Mrs. Schapke

* Foreign or 100 volume library.

Place	Librarian
Vernon county:	
Avalanche	C. L. Christiaason
Hillsboro*	Public Library
Readstown	C. L. Moulton
Viroqua*	Public Library
Westby*	Public Library
Vilas county:	
Eagle River*	Public Library
Fosterville	Mary Hunt
Hackley	C. W. Boardman
Lac du Flambeau	Mrs. Nellie Pinch
Walworth county:	
Elkhorn*	Public Library
Fayetteville	E. H. Bronson
Fontana	F. A. Walbrant
Genoa Junction*	Public Library
La Grange	Mrs. Wm. Hackett
Lake Geneva	Public Library
Richmond	A. F. Hulce
Whitewater*	Public Library
Williams Bay*	Public Library
Washburn county:	
Chicog	Archie A. Gish
Earl	John Whitney
Lampson	H. L. Pease
Minong	Mrs. A. E. Mills
Shell Lake*	Public Library
Superior Junction	Robert Tripp
Washington county:	
Barton	J. R. Nigh
Colgate	Herman Berger
Fillmore	Anita Wittig
Hartford*	Public Library
West Bend*	Public Library
Waukesha county:	
Delafield	Maude Hanson
Dousman	F. G. Swoboda
Genesee Depot	R. C. Mason
Hartland	Public Library
Menomonee Falls*	Public Library
Pewaukee*	Public Library
Waupaca county:	
Clintonville*	Public Library
Fremont	Mrs. A. Steiger
Helvetia	Henry R. Dow
New London*	Public Library
Rural	C. S. Ashmun
Symco	Thos. H. Hart
Waupaca*	Public Library
Weyauwega	Pliny Myers

* Foreign or 100 volume library.

Place	Librarian
Waushara county:	
Coloma	W. A. Roblier
Mt. Morris	R. M. Westhagen
Pine River	Caroline Peterson
Red Granite	H. G. Bannerman
Winnebago county:	
Menasha*	Public Library
Neenah*	Public Library
Oshkosh*	Public Library
Winnebago county system:	
Algoma	Hazel Mather
Allenville—No. 1	Mrs. F. L. Bartlett
Allenville—No. 2	Tillie Bahrke
Black Wolf	F. H. Pfeiffer
Butte des Morts	Mrs. Ernest Benedict
Clemensville	Hallie Vosburg
Delhi	Mrs. Belle La Borde
Elo	Mrs. J. H. Sullivan
Eureka	H. E. Bareis
Fiske	J. A. Heuer
Larson—No. 2	J. Howard
Larson—No. 3	Miss Maude MacCammond
Larson—No. 4	Orville Babcock
Neenah	Mrs. Herman Ihde
Nekimi—No. 2	Mrs. Hartzheim
Omro	C. H. Larrabee
Omro Junction	Elizabeth Johnson
Oshkosh	Jessie Cowan
Oshkosh—No. 2	E. F. Jantz
Pickett—No. 1	Mrs. Enoch Skinner
Pickett—No. 2	Lucy J. Beach
Poygan	Amos Carter
Ring	Hattie Devons
Rushford—No. 2	Inga Karlson
Rush Lake	Mrs. Anna Holt
Waukau	Mrs. Anna Seymour
Winchester	H. D. Pederson
Winnebago	Alma Petersen
Winneconne, No. 1	N. A. Anderson
Winneconne, No. 2	Cora Jones
Wolf River	Mrs. Fred Neuschafer
Wood county:	
Grand Rapids*	Public Library
Marshfield*	Public Library

* Foreign or 100 volume library.

Place	Librarian
Wood county system:	
Auburndale	Fred Mandenwadit
Babcock	James Carey
Blenker	Lorenz Seidl
Carey	Frank Mere
Carey, R. F. D.	Mrs. Peter Amundson
County Training School	M. H. Jackson
Cranmoor	Ed. Kruger
Daly	Grace Daniels
Finley	G. A. Halferndahl
Five Mile Creek	Henry Burmeister
Four Mile Creek	Mrs. W. H. Gaffney
Lindsay	August Broker
Nekoosa	Mrs. Winnie Taylor
North Arpin	B. H. Hamlin
Pittsville	R. A. Salter
Port Edwards	Clay Lamberton
Richfield	Mrs. William Burhoff
Rudolph	Miss Bode
Saratoga	Mrs. S. W. Townsend
Seneca	Mrs. Wm. Jackson
Sherry	Rev. Mr. Agnew
South Arpin	Mrs. A. E. Gardner
Veedum	Miss Anna Wogenson
Vesper	Mrs. E. E. Whitehorne
Vesper	Kate Hoenereldt
Willing Workers	Mrs. Mattie Hurd
Portage county	Three libraries loaned

* Foreign or 100 volume library.



STUDY LIBRARIES

furnished by the

Book Selection and Study Club Department

of the

Wisconsin Free Library Commission

Madison, April 1914

Suggestions to clubs

Select a subject, or group of related subjects, on which a sufficient amount of material is available to cover a year's study. Find how much of this material can be obtained in the local library and ask the librarian to make a list of it. Send this list with your application for a library to the Study Club Department of the Library Commission. A list of the books furnished for this subject and when possible an outline will be sent to the club, and from these and the books available in the local library the program can then be made. Do not choose a subject and print a program before ascertaining whether or not a library can be furnished for it. If there is no local library, or it has little or no material on the subject chosen, the Commission will cover the whole year's study as fully as possible. It cannot undertake, however, to supply books for a program which scatters over a wide field. The more closely a study is restricted to a single subject, or a group of related subjects, the more satisfactory can the library be made. Clubs which have limited their study in this way testify to the greater interest and profit of the year's work.

Conditions

The only charge is that of transportation, both going and returning. The libraries are sent in wooden boxes, by freight unless otherwise requested. When a club asks for material on short notice it is sent by express collect or, if cheaper, by post. In the latter case return of postage is expected.

The library is sent in July, August or September, depending on when the club begins its work. It can be kept till the end of the year's work in April, May or June, unless otherwise stated. In the case of books and pamphlets which are in constant demand throughout the year by individuals, clubs, libraries and schools, clubs are sometimes requested to return them as soon as used.

The books are sent to the local library where possible, and clubs usually prefer to have them housed there. Where the

library is open but a few hours a week, however, it is advisable to have the books kept in the house of a club member.

The club secretary, or librarian, is requested to check the books with the list accompanying them, and to report at once if they do not agree. This list should be kept, and checked with the books as they are packed for return. The record of books loaned to club members can be most easily kept by means of the book card, to be found in the pocket inside the back cover. By writing the borrower's name on the card and retaining it, the secretary can at once locate any book that is not in her possession.

Two copies of the program or the year book prepared by the club should be sent to the Study Club Department as soon as issued. The department needs these records in order to be of the greatest usefulness to the club, and clubs frequently request the loan of year books on subjects they are considering.

Outlines lent to clubs should be returned promptly. With all clubs planning the year's work at the same time, it is difficult to meet requests for outlines adequately with the greatest promptness on the part of clubs borrowing them.

Clubs should not choose a subject which they cannot finish in nine or ten months' time. Except under very exceptional conditions libraries cannot be kept a second year, to finish a study planned for a single year.

Subjects represented in study libraries

The following list of subjects on which libraries can be furnished is printed here in order to aid clubs in choosing a subject for the year's study. It does not fully represent the resources of the Study Club Department, and requests for books on other subjects will be considered and granted whenever possible. With a few exceptions, the printed outlines are those published by the Library Commission. Printed outlines are indicated by a star; typed outlines by a dagger.

Art

American†

Dutch

English

Flemish and Dutch†

French*

German†

Greek†

Italian†

Italian painting†

Municipal†

Architecture†

Sculpture (syllabus)

Roman†

Art poems: Browning, Longfellow, Tennyson†

Arts and crafts†
 Home decoration†
Bible as literature
Bible study
Child study and training†
Civic improvement†
Drama
 Shakespearean
 General*†
 Plays*
 Post-Shakespearean†
 Modern†
 English prose dramatists of our day†
 Ibsen, Sudermann, Maeterlinck†
Education†
 Current educational topics
 School systems of the United States†
 Women's education
Family and society†
History and travel
 Africa
 Egypt†
 South Africa
 America
 Alaska†
 Canada*
 United States: history
 Discovery and exploration*
 Colonial period*
 Revolution*
 Formation period, 1783-1817*
 Expansion period, 1817-1860*
 Civil War and reconstruction, 1860-1876*
 From reconstruction to date, 1876-*
 Wisconsin*
 United States: travel†
 United States: possessions†
 Asia
 China†
 India
 Japan*
 Palestine and Syria†
 Europe
 European history since 1815 (syllabus)
 Austria-Hungary†
 Balkan States†
 Denmark (with Norway and Sweden)
 England: history*
 Early English history†

- Restoration†
- Victorian age†
- England and Wales: travel*
- France*
 - Paris†
- Germany†
- Greece (with Italy)
- Ireland (with Scotland)
- Italy†
 - Medieval†
 - Medieval and modern Italy and Greece†
 - Modern*
 - Florence (syllabus)
- Netherlands†
- Norway† (also with Scandinavia)
- Roman history†
- Scandinavia†
- Scotland and Ireland†
- Spain†
- Switzerland†
- Turkey (with Balkan States)
- Wales (with England)
- Mexico†
- Panama†
- South America†
- Home economics† (syllabus)
 - Food (syllabus)
 - Household management†
 - Shelter (syllabus)
- Hygiene and sanitation†
- Literature (see also Drama)
 - American†
 - English†
 - Arthurian legends†
 - Early Victorian period*
 - English poetry†
 - French
 - German (syllabus)
 - Italian
 - The novel†
 - Representative 19th century authors†
 - Twelve famous novels (syllabus)
 - Writers of to-day†
 - Authors
 - Browning, Robert*
 - Chaucer (syllabus)
 - Dickens, Charles†
 - Eliot, George†
 - Hawthorne's Marble Faun*

Longfellow, H. W. †
Meredith, George
Scott, Walter †
Ivanhoe*
Stevenson, R. L.
Tennyson, Alfred
Thackeray, W. M. †
Henry Esmond*

Music (The 10 printed outlines of the National Federation of Musical Clubs are available on request)

Appreciation of music
Grand opera
Oratorios and symphonies

Nature study

Problems of the day

Many of these subjects are important enough to warrant a year's study. In the case of others a grouping under a general heading can be made; e. g. Social welfare, consisting of a study of Child conservation and training, Divorce, Eugenics, Immigration, etc.; or, Industrial reforms, consisting of a study of Child labor, Industrial accidents, Minimum wage, Labor problems, Mothers' and old age pensions, Women and children in industry, Workmen's compensation, etc. Brief outlines can be furnished with most subjects.

Capital punishment
Child problem: conservation, guardianship laws, labor, home training, schooling, etc.
Churches and the changing order
Civic improvement †
Civics
Civil service reform
Commission government
Conservation, natural
Conservation of human life
Cooperation
Cost of living
Currency system
Divorce
Equal pay for equal work
Eugenics
Fire prevention
Government ownership
Immigration
Industrial accidents
Initiative
Judiciary
Juvenile delinquency
Labor problem (syllabus)

Leisure, use of
Liquor problem
Minimum wage
Moral and religious training in schools
Mothers' pensions
Municipal government
Occupational diseases
Old age pensions
Poverty and pauperism
Prisons and penal reform
Public health†
Race problem
Recall
Recreation
Referendum
Rural problems
School hygiene
Sex education and instruction
Short ballot
Socialism (syllabus)
Strikes
Syndicalism
Tariff
Trade unions
Transportation: railways, waterways, etc.
Trusts and corporation
Vice regulation
Village and town improvement†
Vocational education
War and peace
White slavery
Woman: suffrage, political and economic status, property
rights, etc.
Women and children in industry (bulletin)
Workmen's compensation
Social service†
Social welfare†
Women, Famous
Women, Professions for†
Women in education†





*Had I the power I would scatter libraries over the whole
land as a sower sows his wheat field.*

Horace Mann