



The daily cardinal. Vol. XXXII, No. 35 October 29, 1921

Madison, Wisconsin: University of Wisconsin, October 29, 1921

<https://digital.library.wisc.edu/1711.dl/YSX6ORO7MD6K38E>

<http://rightsstatements.org/vocab/InC/1.0/>

The libraries provide public access to a wide range of material, including online exhibits, digitized collections, archival finding aids, our catalog, online articles, and a growing range of materials in many media.

When possible, we provide rights information in catalog records, finding aids, and other metadata that accompanies collections or items. However, it is always the user's obligation to evaluate copyright and rights issues in light of their own use.

The Daily Cardinal

Owned and Controlled by the Student Body of the University of Wisconsin

VOL. XXXII. NO. 35

MADISON WIS., SATURDAY, OCTOBER 29, 1921

PRICE 15 CENTS

BADGERS AWAIT GOPHER ATTACK

MASSMEETING AND CARNIVAL OPEN PROGRAM

Huge Crowd Gathers on Lower Campus For Bonfire

Massmeetings at the gymnasium and music hall, a bonfire on the lower campus, and a carnival at the gymnasium successfully opened the Homecoming festivities early last evening.

"If we start off on our toes, we can beat Minnesota, and with this kind of start we can beat any team," said Coach John Richards at the Homecoming massmeeting. "It's just a matter of starting out with all cylinders hitting, and I think that they will all be there tomorrow."

Long before 7 o'clock the gymnasium was filled to capacity, and outside a spirited throng clamored for admittance.

Karel Presides

After the First Regimental band entered and "Gus" Tuckerman had led in several yells, John C. "Ikey" Karel, chairman of the massmeeting, was introduced by Arthur Kinnaman '22. After a short talk in which he predicted an easy win for Wisconsin, Judge Karel presented Prof. Carl Russell Fish, who appeared with the well known cardinal tie and vest.

Edward S. Jordan '05, who spoke next, predicted that the outcome of today's game would be favorable, and Edwin H. O'Hara '92, told about early football history at Wisconsin.

Sundt and Bunge Speak

After Coach Richards' talk, Captain Guy Sundt, and George Bunge told the crowd what they might expect from the team today, and with the singing of "Varstiy," the massmeeting proceeded to the lower campus where the bonfire was just starting.

At the overflow meeting in Music hall, arranged for those who were

(Continued on Page 30)

BIRGE'S WELCOME

The University extends a hearty welcome to all who return to the Homecoming game.

"Homecoming" is a good word and we hope that it is more than a word to you—that Wisconsin will always be more than a word to you—that Wisconsin will always be home to you, the center to which your hearts return wherever you may be. You come back not merely as to a home which you have left but also as to the home of many successive generations of students, past, present, and future. Such a home is our University, and it therefore claims your permanent affection, your constant care, and your ready help.

E. A. BIRGE,
President.

Cartwheels Clink Into Tin Buckets At Game Today

Hundreds of silver dollars clinking into the buckets of the Memorial Union workers will be one kind of music which will be heard at the game today.

Having rested in the vaults of the Commercial National bank last night after they had been brought to Madison by special express, the silver will be exchanged for paper at the distribution booths at Camp Randall today. Armed guards will watch over the booths at the football field, as they will at the exchange stations on Park street and University avenue.

The idea for a "Silver Dollar" day originated at Ohio State university when money was being raised for the new memorial stadium, and at Ohio's Homecoming game \$20,000 was raised in this manner.

A team of 150 women under the direction of W. A. A. will pass through the stands between the halves with large metal buckets, and catch the heavy coins as they are offered.

Information giving full particulars about this novel form of drive will be distributed from the two airplanes which will fly over Madison at all times today. The special airplanes used were chartered by the Memorial Union committee from an aero concern in Milwaukee.

GAMMA PHIS AND CHI PHIS HAVE BEST HOUSE DECORATION

Gamma Phi, Chi Phi, Barnard, and Grady's were awarded first honors for the best decorated houses after the judges toured the Latin quarter last night.

The judges, Dean F. W. Roe, Major John S. Wood, and Prof. Wm. H. Varnum, based their decisions on the following points: artistic qualities, ingenuity shown, the effect as a welcome, and the lighting.

Alpha Phi and Kappa Alpha Theta were given second and third places respectively among the sororities, and Sigma Nu and Kappa Psi carried off second and third places among the fraternities. In the rooming house contest Frawley's was judged second and Mahoney's third.

The Gamma Phi decorations were carried out in an oriental fashion having a background of lattice work supporting Japanese lanterns. In the yard, bushes with small white flowers showed up well in the unusual lighting arrangement.

Accentuating the spirit of Homecoming, the Chi Phi decorations combined a unique lighting effect, consisting of a flashing "M" and "W," with a background of autumn leaves. The house was outlined with a garland of colored lights, and the porch roof represented a rustic pagoda.

MINNESOTA THRONGS ARRIVE TO CHEER STRAPPING GOPHERS IN HOMECOMING GAME TODAY

HOMECOMING EVENTS FOR TODAY

9:30—Alumni board meeting, Alumni headquarters.
10:00—Hobo parade, starts from Library.
12:00—Alumni luncheon, S. G. A. room, Lathrop hall.
1:15—Band escorts guests of honor, students, and alumni to Camp Randall.
2:00—Kick-off, Wisconsin-Minnesota football game.
2:45—Special features.
4:30—Alumni council meeting, Music hall. Open to all alumni. President E. A. Birge will speak.
6:30—Class reunion dinners.
8:30 to 12—Homecoming ball, Lathrop hall.

FAKE TICKETS IN CIRCULATION

Bogus Cardboards Differ From Genuine in Details

A scheme to sell counterfeit tickets for the Homecoming game today was uncovered by the Athletic department yesterday noon when five of these bogus tickets were purchased on State street for five dollars apiece by Major G. E. Smalley, 271 Langdon street, an alumnus of the university.

These counterfeit pasteboards differ from the genuine ticket in many small details, and the Athletic department urges every person buying tickets from irregular sources to inspect them carefully, since the holders of such tickets will not be admitted to the stands this afternoon.

The tickets bought by Major Smalley are in Section E, Row 11, and the seat numbers run from 25 to 29 inclusive. On the face of these bogus tickets, the price is printed as \$2.50, while all tickets in Section E sell for \$3.00 and are so marked. The genuine tickets bear the regular union label, local number 95, and carry the style name of the firm which printed them, the Argus Ticket Co., Chicago.

These marks do not appear on the counterfeit ones. The type used in printing the bogus pasteboards differs in many respects from that of the regular ones; the stock of blue pasteboard used is a shade of blue darker than the genuine ones, and the size is slightly narrower. On the back of the illegal tickets purchased by Major Smalley is printed the following instructions: "Hold-

(Continued on Page 30)

Both Teams Crippled; Oss and Gibson to Be on Sidelines

By CHAS. J. LEWIN

Gaily attired in brilliant Homecoming trappings of Cardinal and White, Maroon and Gold, Wisconsin today awaits with impatient expectancy two onslaughts, both potentially awesome and fear-compelling.

The biggest, and also weakest, will be the sortie of more than 500 Minnesota football fans who arrive in Madison this morning to cheer their team on to victory or defeat. The most terrific aggression will

PROBABLE LINEUP

Minnesota	Wisconsin
Cole	L. E. Horne or Gould
Teberg (C.)	L. T. Brader
McLaury	L. G. Christianson
Aas	C. Bunge
Tierney	R. G. Hohlfeld
Larkin	R. T. Brumm
Wallace	R. E. Tebell
Brown	Q. B. Williams
Bailey	L. H. C.

Martineau R. H.
Gilstad F. B.
Officials—Masker, Nor referee; Schommer, Chicago, referee; Nichols, Oberlin, field judge; Young, Illinois Wesleyan, head linesman. Place—Camp Randall. Time—2 o'clock.

be that of eleven strapping, hardy Northmen who will race onto Camp Randall at 2 o'clock this afternoon and engage a Wisconsin football team in the biggest clash of the year before a colorful Homecoming crowd which, it is estimated, will reach 23,000 persons. A Minnesota aggregation, averaging six feet in height and 190 pounds in weight, will meet a Wisconsin combination

(Continued on Page 7)

KNIGHTS OF ROAD PROMENADE TODAY ON STATE STREET

Powder up girls, and cheer your hobo Adonais as he shuffles down State street in the second annual hobo parade at 10 o'clock this morning.

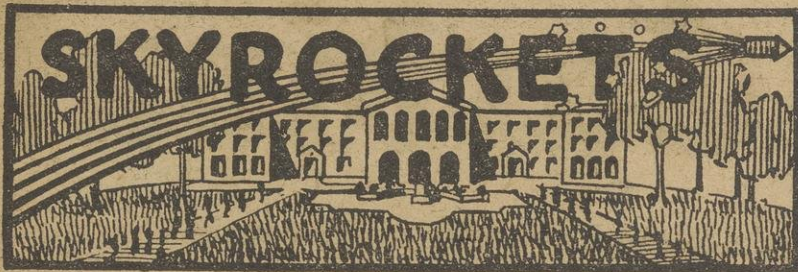
Over 300 knights of the dusty road will assemble on the lower campus at 9:45 a. m. The hoboes will parade up State street to the square and back again, led by the famous Jesse Cohen hobo band.

Strange sights and thrilling races will decide on merits of the promenade. The judges will be located on Park street near the library and will decide on the merits of the contestants. Various prizes ranging from silver loving cups to candy and trade checks will be offered to the best groups and individuals.

Don't Forget Your Silver Dollar

Bring it to the Game—Drop it in the Bucket

"BUILD A HOME FOR WISCONSIN SPIRIT"



ALUMNI AND ALMOST NIGH

YOU probably realize that the rest of the Cardinal is full of the same old stuff about Homecoming and the Wisconsin-Minnesota football games; nothing new about it but the date. But this column—well, that's a different story. It's all new and hot, so don't waste any of your time looking elsewhere for something to read. You can get just as bored here as any place else

BUT all serious aside and discarded, this is darn good stuff, even this stuff we are writing now. If you don't believe us, go up to the psychology lab and get examined. That's where we went and they told us that this was just the job for us. Therefore we know that this is high class drool, and are giving you fair warning beforehand.

EYES FRONT!

WIPE OFF THAT SMILE!

NOW that we have worked you up into a philanthropic mood, here is a gentle reminder that you are cordially invited to assist Prof. Olson, chairman of the outside activity committee of the SWEDE CLUB, who firmly believes that Abe the Railsplitter's ancestors chewed Copenhagen, in raising a fund to take our own little tin Abraham to the game. Abe whispered in our own little tin ear that he hasn't had a Saturday off since '65.

REMEMBER WAY BACK WHEN:

Florence Buckstaff laid the cornerstone of the Kappa house?
Sunny Pyre made a touchdown and Warner Taylor kicked goal?
The cadets wore blue uniforms?
The Madison police force was afraid to venture outside of the jail?

You used to go to Thompson's and buggy?
Had a dome?
And the co-eds roomed in the houses?
The Silver Dollar used to be out on University Avenue?
Illinois used to give us a good game?

THE judges of the Hobo parade will be Railroad Jack and Elizabeth Keith, two hard-boiled and competent individuals. Liz is looking for talent for her father's vaudeville circuit.

FAMOUS KICKS

Brogues.
A Ford
Hooch.
Hoochy-Koochy.
.... in the shins.
Blossom Seeley's.
.... off
.... in.

A POOR JOKE

"NOBODY KNOWS —"
(a solo)

I'm going out there to that game
And if my friends call out my name,
I'm nobody
For every year it's just the same,
I'm so unconscious that I claim
I'm nobody.

This year, I've fixed it in a way
To get some stuff to make me say,
I'm nobody
Then in the gaol at close of day,
When they inquire—Oh, then I'll say
I'm nobody.

HASHEESH.

PETE Burns extends his heartiest welcome to the returning grads.
—Paid Advertisement.

DID you notice that everyone seemed to be lit up at the bonfire last night. We can't understand it, because all they had was Terosene.

FAMOUS SLOGANS

Cook with gas.
Save W. S. S.
Say it with Flowers.
Use your judgment.
Three of a kind beat two pair.
If you can't walk, telephone.
THE KING.

IT is our notion that the Minnesota delegation ought to go out to the field early today, in order to warm up the new stands by game time.

WHAT a college graduate knows about love depends upon which sorority he learned it from.

THE Deltas have installed two new showers for their revival meeting this evening. A large and enthusiastic crowd is expected to attend.

THE Sigma Nus have served notice on us that they are going to press Pete's suit for libel. They resent the above exposition of Petah's chawactaw.

Teddy: "It doesn't take much to put a man out these days."
Bear: "No, a couple poors will do it."

WE hate to put a fly in your soup, alums, but you mustn't forget to have a good explanation for your wife when you have your second Homecoming.

OUT AT HOME!

When the grad meets his wife at the door,
Then she'll see the results of the game
As he picks himself up from the floor
When the grad meets his wife at the door,
Though she'll love him, he'll not be the same,
And he won't go to lodge any more.
When the grad meets his wife at the door,
Then she'll see the results of the game.

OSCAR WILDEST.

OUR DAILY EDITORIAL

Of course you want a Memorial Union building. Of course you do. So do we. Therefore be liberal. Somebody's got to be the goat. And when you stop to think (we never do) that some day you and I may want to get in out of the rain, and the proposed building is to have the best roof on the campus. Subscribe now. We hate the notoriety of being the first in line. Let us all get together and put this over on somebody. Between you and me, we hope to get a new office and typewriter out of the deal and in the building.

WE submit the following advice for the full enjoyment of the game:

If your tickets came on Thursday or thereafter, use the telescope on Observatory Hill.

Dress warmly, preferably in white flannels and gym shirt.

When we make our first touchdown, throw your neighbor's hat in the air. You may need yours later.

Keep your mouth shut when watching the airplanes. Remember, they are going to drop circulars and they might mistake you for a waste paper basket

THE CHANGING WORLD

Now you can tell a lawyer
By the cane on his wing;
Before he was known
By the bull he could sling.

APIS.

POPULAR PREVARICATIONS

1. I don't know what suit to wear.
2. Oh, girls, I've got five dates this week.
3. I never button for a soph.
4. When I'm home I can stay out as late as I want to.

CUSS p DOOR.

IT has been rumored around lately that there is an Anti-Fussing society being secretly organized on the campus. Several of the most ardent followers of the flapper have forsaken their former haunts, but what we started to say was, what are the boys up to now?

WE might add that we have noticed that Reginald Garstang has Heaven since he quit the I'll-be-there-at-nine-stuff.

"I satisfy," said Lord Chesterfield, as he went up in smoke



Copyright 1921, The House of Kuppenheimers

All Set For Homecoming?

Look into your wardrobe and see if you're prepared to spend a cold afternoon at Randall Field. Look your best when your out-of-town friends pull into Madison.

A Kuppenheimer or Fashion Park Suit and Overcoat will set you right—and then

Leather Vests \$8 to \$15
Sheep-lined Coats \$18 to \$40
Caps \$2 to \$3.50
Hats \$4 to \$7.50
Dress Shirts \$2 to \$9
Neckwear 75c to \$2.50
Flannel Shirts \$2 to \$7
Wool Hose 50c to \$1.50
Warmer Underwear \$2 to \$7

Speth's
ON STATE

**We Are Located Near
The Campus For
The Convenience of
The Student**

The Branch Bank of Wisconsin

CAPITAL and SURPLUS \$360,000

**Every Service That
A Good Bank
Gives**

**SAFETY BOXES
FOREIGN EXCHANGE**

ON WISCONSIN!

We Welcome All Homecomers,

Are you sure your clothing is warm enough to go to the GAME in.

Comfort Suggestions

Sheepskins, Overcoats, Sweaters, Wool Underwear, Wool Socks, Gloves, Knit Vests and Leather Vests.

Buying Quality Merchandise assures durability and satisfaction.



Sheepskins

\$18.00 and up

Fur Collared Overcoats

\$30.00 and up

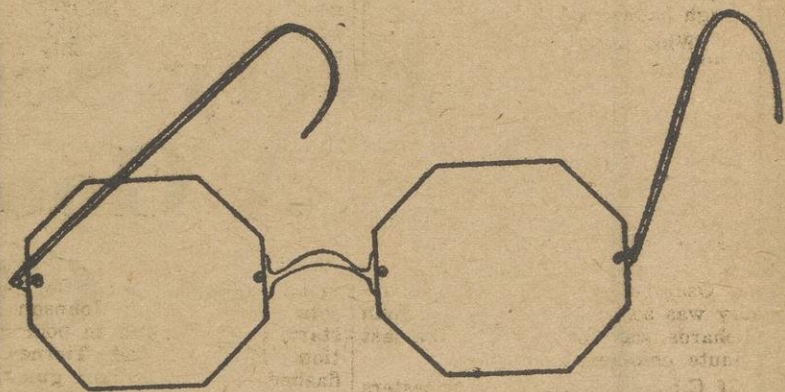
Wool Socks

75c and up



**R
U
N
K
E
L
'S**

The Varsity Eight



**Something
Different
New
Smart
Attractive**

Victor S. Maurseth

The Student's Optical Advisor

521 State

NEWS OF CONFERENCE SPORTS

TWO STARS ON SIDELINES FOR TODAY'S GAME

Both Elevens Expected to Play Straight Football

(Continued from Page 3)

much smaller and lighter, but faster. It will be a battle to delight the gods.

Awaiting the battle, both teams find themselves confident, itching to fight, but crippled by the loss of important cogs in the respective football machines. As the time for the struggle approaches, more and more doubt is expressed about Gibson's ability to start in the quarterback position. The plucky little pilot was badly hurt in the Illinois game, and although he worked out with the first team in drills of the past week, it is unlikely that his condition has improved enough to permit him to run the Badger eleven.

With chances only even that Gibson will play, Wisconsin partisans have lost much of their confident air and realize that it will be a steady grind all of the way. Breaks of the game may be the deciding factor in victory for either team.

Minnesota has lost the services of Arnold Oss, one of the greatest halfbacks who ever played on a

What Coach Richards said: "We intend to have a team out there that will fight all of the way. We have a good Varsity team. It is going to be a hard game, and we do not want our team to lose."

What Capt. Sundt said: "Remembering the way that Minnesota has fought Wisconsin in past years, we expect a tough battle with the Gophers. We thought it would be an easy game last year, but they held us to a 3 to 0 victory. The team is just rarin' to go. It expects a tough battle and will fight hard."

What Capt. Teberg said: "Minnesota is not disheartened by its only defeat at the hands of Ohio State. The Gophers will show all of the old fight that they are capable of when the teams battle here Saturday."

western gridiron. The Gophers, however, have had two weeks in which to prepare another player to fill Oss' shoes, while Gibson's injury was so recent that Coach John Richards was forced to make last minute changes.

If Gibson is out of it, dopsters figure "Rollie" Williams for the pilot job, with Gould at left half, and Horne in Gould's wing position. Gould is a good ball-carrier and one who is hard to stop. He might play half on the offense and then fill left end when the northmen were in possession of the oval. This arrangement, although somewhat complex, would be entirely effective. "Jimmy" Woods is another possibility for left half. He played good ball in the Illinois game.

In addition to Oss, the Gopher casualty list includes Brown, Johnson, and Gross. All three of these men are available for service, and "Doc" Williams is fairly sure to use them before the final whistle stops the contest this afternoon. The great Oss will probably view the game from a wheel chair on the sidelines.

Gopher Backs Powerful
Martineau and Gilstad are two powerful Gopher backs. Gilstad is likened to Solon, Wyman, and Kingsley, heroes in past days. Martineau has done a great deal of punting in the early season contests. He is a hard line plunger and a good defensive man. If the two teams are unable to gain from scrimmage, a brilliant punting duel

Leads Gophers Into Big Battle



CAPTAIN TEBERG

between Captain Sundt and Martineau may prove the undoing of the team with the weaker kicker.

In the line, Minnesota outweighs the Badger forwards. Bunge will meet his hardest opponent of the year in "Ollie" Aas, bulky Gopher pivot. Although he is only a sophomore, Aas is one of the most important cogs in the Minnesota line-up. He will kick the goals after touchdown if the Gophers score.

Stars at Tackle

Capt. Teberg and Larkin at the tackles will be pitted against Bradner and Drumm, stars of the first water and men who have had previous experience with the Minnesota shift. "Trig" Johnson may start, but he is still in poor condition. McLeary and Tierney, who flashed in the Indiana game, will probably rush against Christianson and Hohlfield at guards.

Both of the Badger guards are new to the game, but their showing in early season games has been good enough to arouse confidence in the most doubting Badger rooter. Both elevens are uncertain about the ends. Minnesota may use Core and Wallace or Moyle and Blumer. Wisconsin can depend upon Gus Tebell to hold down the right flank. The condition of the Badger backfield will decide whether Gould or Horne steps in at the left wing.

Straight Football Expected

"Minnesota appears to be one of the best short-enders of the year when it meets Wisconsin this afternoon," said an authority on football, from the northern institution. "In the first place, Gopher followers feel that Minnesota has sort of a jinx on the Badgers. Then again, the style of play of the two teams appears to be in favor of the northmen. Minnesota men have been brought up on straight football, and Wisconsin, judging from past performances is a straight football aggregation also. It will probably be a battle royal between the Minnesota shift as opposed to the sweeping Badger end runs from a punt formation."

No Better in West Than He



CAPTAIN SUNDT

GOPHERS CONFIDENT ON EVE OF STRUGGLE

(Via Dept. of Physics Wireless Station)

MINNEAPOLIS, Oct. 28. — A great deal of enthusiasm prevails on the campus in regard to tomorrow's game, and Minnesota has a great deal of confidence in its team. Every possible arrangement has been made to give the news of the game promptly to the students. This will be done both by telegraph and wireless.

The Gophers will have the solid support of not only the rooters fortunate enough to go to Madison, but also of those who stayed at home.

COUNTRY MEN MEET GOPHERS THIS MORNING

Badger Harriers Determined to Retain Lead in Dual Meets

When the Wisconsin cross country squad meets the Minnesota harriers at 11 o'clock this morning in the first meet of the season it will be with a grim determination to do their full share towards sending the Gophers home doubly defeated. While Minnesota has always been one of the leading conference schools in cross country work, Wisconsin has won six of eight dual meets with the Northerners.

Results of Former Dual Meets:

- 1913—Won by Wisconsin; Bresnahan, "W", first place.
- 1914—Won by Minnesota; Watson, "M", first place.
- 1915—Won by Wisconsin; Goldie "W", first place.
- 1916—Won by Wisconsin; Schardt, "W", first place.
- 1917—Won by Wisconsin; Dayton, "W", first place.
- 1918—Won by Wisconsin; Elsom, "W", first place.
- 1919—Won by Wisconsin; Burr, "W", first place.
- 1920—Won by Minnesota; Sweitzer, "M", first place.

In today's race the Badger runners will have a double purpose in trimming the Minnesota squad: to uphold the record set by former Wisconsin team, and to wipe out their defeat of last season.

The lineup for the rival schools will be:

Wisconsin	Minnesota
Wall	Halverstadt
(Captain)	(Captain)
Finkle	Sweitzer
Ramsay	Winters
Moorhead	Moon
Rossmiessel	Steenman
Daniels	Hulprich

Although three of the Badger men will be running their first cross country race, the team is confident of its ability to win. In contending for places with the experienced Gopher squad, the ability of these three novices, Moorhead, Rossmiessel, and Daniels, will be conclusively tested. Ramsay, who ran on the

(Continued on Page 30)

If your hair is thin and fine, come to the COMFORT SHOP and be taught how to wear a transformation.

THE COMFORT SHOP
210 Wisconsin Life Building

OLD GRADS KEEP IN TOUCH WITH WISCONSIN

DROP IN TO SEE US

Inclosed find \$3.00 for a year's subscription to the Daily Cardinal.

Name

Address

City and State

Honor Societies Raise Standards

Honorary fraternities and societies have done much to keep the standards of Wisconsin high and have been a constant incentive in bringing out the best in the people at the university. Honorary societies have been organized in most of the colleges and departments so that unusual merit and ability may be fitly rewarded according to the branch of work in which it is displayed.

The only honorary fraternity which draw its members from the entire university is Phi Kappa Phi, senior scholastic and activity fraternity.

Phi Beta Kappa elects its members from the juniors and seniors in the college of Letters and Science, elections being based upon scholarship. The Wisconsin chapter was established in 1898. Prof. Frank Chapman Sharp is its president.

Tau Beta Pi, the honorary engineering fraternity, was established at Wisconsin in 1899. It was founded at Lehigh university in 1885. There are 32 chapters in existence at the present time.

Alpha Zeta elects its members from the College of Agriculture. The Wisconsin chapter is named after Professor Babcock and was established in 1905.

Excellence in the course in Com-

merce is rewarded by membership to Beta Gamma Sigma. The members are drawn from the faculty and seniors only. Women doing exceptional work in Commerce are rewarded by membership to Alpha Gamma Pi.

Eta Kappa Nu and Pi Tau Sigma are departmental fraternities of the engineering school, the former being composed of electrical engineers and the latter, mechanical engineers.

Ability in forensic activities is rewarded by Delta Sigma Rho membership.

Interest in journalistic scholarship, university activities, and professional aims are qualifications for membership to Theta Sigma Phi, the national women's honorary journalistic sorority. Sigma Delta Chi, the men's journalistic fraternity, bases its membership on much the same lines. It was established at Wisconsin in 1901.

The Wisconsin chapter of Artus, the honorary economic fraternity, was founded in 1912 and was the first chapter to be organized. Omicron Nu, the Home Economic society, was founded in 1912 for the promotion of leadership and scholarship. Election is based upon general participation in all activities and ability in scholastic work. The organization maintains a scholarship fund for students in Home Economics.

Pi Epsilon Delta is an honorary dramatics society with chapters in the larger universities which offer special facilities for dramatic work. Elections are based on dramatic attainment in acting, manag-

ing, direction, and research.

All members of the medical faculty of the university are ex-officio

honorary members of Sigma Sigma. Student members are elected from the senior class of the Medical school.

BAPTIST ALUMNI

Hear

SUNSHINE SHERMAN

At the First Baptist Church

10:45 A. M. and 7:30 P. M.

SUNDAY, OCTOBER 30TH

Home Hour and Welcome

5-7:30 P. M.

PAPER "SPECIALS"

Try our No. 11 Paper, 500 sheets, 8½x11 for \$1.25

No. 21, good white Bond, 500 sheets of 8½x11, for 75c

Other grades at record breaking prices

THE PARKER COMPANY

125 Carroll St.

Next to Telephone Bldg.

Specials for U. W.
Students Homecoming

1,000 Spectacles FREE

Any student now working his or her way through the University of Wisconsin who will return 50 of the 1,000 free paper spectacles distributed for the Students' Hobo Parade to any Oculist or Registered Optometrist in or near Madison will be furnished free of charge with a pair of glasses or driving goggles to be prescribed by him.

WATCH FOR THEM

1,000 paper spectacles will be given out at the Student Hobo Parade tomorrow, so that it will be possible for twenty students to be benefited by this offer.

Your Fall Suit—

The well dressed man must make his choice of clothing with care. We have selected a wide assortment of fall materials that will please the most discriminating.

Come in and let us measure you for your Thanksgiving suit. Tweeds and herringbone are especially popular.

Tetzlaff & Babiljou

410 State Street

Badger 2211

Pay That Bet With a Sampler

From

The Chocolate Shop

"Home of the Hot Fudge"

Let's
Go
Wisconsin

Geier Brothers

THE STORE FOR MEN

Whip
The
Gophers

WISCONSIN ALUMNI AND GUESTS---We Welcome You!

Although this is our first Homecoming as a Madison Institution, your friends will tell you that GEIER BROTHER'S have already established a reputation for selling better merchandise. We invite you to call and get acquainted.

ARE YOU ALL SET TO SEE WISCONSIN WIN?

It'll be cold out at Camp Randall today but you won't notice it if you are warmly dressed.

Here are a few suggestions to help you keep warm so that you may get the greatest possible enjoyment out of the game.

WOOL SOX in leathers, browns, and mixed shades of green. They are attractively priced.

SWEATERS of finest wool, well knit, warm and durable. Colors are cardinal, white, heather and brown. You'll like them. They're priced at from \$7.00 up to \$10.00.

OVERCOATS, big burly fellows, built for warmth. They are unusually well made and cut in sensible styles. We'll be pleased to show them to you.

You'll want to get a big Cardinal Chrysanthemum to wear at the game. We are giving them away with every purchase of a dollar or more.

428 STATE STREET

The Pantorium Company

extends to all

Alumni and Former Students

A Hearty Welcome

PANTORIUM COMPANY

538 STATE STREET

B 1180

B1598

ZONA GALE WRITES IN COMMERCE MAG

Zona Gale, famous Wisconsin writer, with her contribution, "Learn More, Live More," and Dr. Alfred Ochsner of Chicago, will be year.

types which will appeal to all classes type of magazine which the Commerce students will put out Tues-

day when the Commerce "Mag" makes its first appearance of the A popular magazine for every student describes adequately the of students.

The game with Minnesota this year is Wisconsin's thirty-first game with the Gophers. Out of the 30 played Wisconsin has won 11, tied 2, and lost 17.



Take Home

"On Wisconsin"

VICTOR RECORD No. 17781

University Music Shop

508 State

"At The Co-OP"

Your Guests

as well as yourselves can get real service in our tailoring department during Homecoming. We will clean and press clothes in the shortest time possible. Phone Badger 7542. Let us know when want your suit or dress back and it will be back ON TIME.

The Co-Op.

506 State

Phone Badger 7542

Tiedeman's Pharmacy

HOME COMING
HEADQUARTERS

702-704 University Ave.

Those smooth Malted, Sodas and Sundaes
Drugs, Toilet Articles

READ CARDINAL ADS READ CARDINAL ADS

Homecoming Offer that Should Interest You!

In order that a student get the best results from his labor, it is essential that he have the necessary tools. A typewriter, next to Text-books, is the greatest aid to one who studies. Better grades result where notes and reports are typed.

The "Baby Grand" of writing machines is the new Gourland Portable typewriter. This machine possesses all the features of a standard office machine, including four bank keyboard and tabulating system.

The Portable Gourland at ten dollars less than the nationally advertised price.

We rent, repair, buy and sell every known make of writing machine.

A suggestion to Parents:

Less than 60 days before Xmas; why not place your order now for a typewriter for the student? It will prove a truly servicable and appreciated gift and will serve a lifetime.

SEE US TODAY OR WRITE

Wisconsin Typewriter Exchange,

519 STATE STREET, R. D. Brewingtod, Mgr.

At Netherwood Printing Co.

Stanley P. Stemp
Prop.

519 State Street

NINE WOMEN WEAR BIG "W"

Eleven Sports Are Recognized by W. A. A. in Awarding Emblems

Nine of the 150 members of the Womans Athletic association are big "W" wears. They are, Marjorie Severance '23, Ima Winchell '22, Auta Lyman '22, Zirian Bligh '22, Marion Strassburger '22, Mary Maxwell '22, Mabel Winter '22, Alice Tucker '22, and Louise Fritsche '22.

W. A. A. has an executive board consisting of the officers, Mabel Winter, president; Elizabeth Kirk, president of Outing club; and Margaret Croskey, head of graduate athletics; and the heads of the 11 sports: hockey, tennis, volleyball, archery, swimming, indoor baseball, basketball, bowling, track, dancing, and out-door baseball.

A point system with a basis of 100 is used. 1200 points are required to wear a big "W", 900 points for a small "W", 450 for a pin, and 125 for admittance.

Here is the way one gets into W. A. A.

- 1—Keep off probation.
- 2—Keep scholastic average above 77 and have no incompletes, conditions, failures or faculty actions.
- 3—Earn 125 points in one of the ways listed below.
- 4—Have a written application for membership listing one's points in the W. A. A. mail box before noon on the Thursday before a regular W. A. A. meeting. Meetings are held on the second and fourth Tuesdays of the month.
- 5—Your record will be examined and you will then be notified of further moves.

Points are won as follows:

- 100 Points—First team
- 25 Points—Squad.
- 15 Points—Second team.
- 50 Points—Honors in apparatus, it.

swimming, tennis, archery, or dancing. (Watch bulletin boards for notices of tryouts.)

25 Points—Hiking 40 miles with W. A. A. member. (Notices of hikes on bulletin in Lathrop hall.)

25 Points—Perfect record in gym one semester.

5, 10, 15 Points—Posture grades of B, B plus, or A for 9 consecutive weeks.

W. A. A. has charge of the selling of buttons and programs for Homecoming. The commission received for the sales plus the profit on Field day and the dues represent the annual income which is being used to maintain a scholarship of \$100 for one of the W. A. A. members, to pay for the Victrola in the dancing room, for the Freshman welcome party, the Dance drama expenses, to send delegates to the national and sectional conventions, to purchase a \$50 buffet for the S. G. A. Co-operative house, and for general expenses.

"Coots" Cunningham, Wisconsin's 120 pound bundle of nerves, played halfback in 1907. "Coots" was the only man on the team who was able to gain consistently through the heavy Minnesota line. It was in this game that Capron made 17 points for Minnesota and tied the score.

"Hurry-up" Yost, "Old Man" Stagg, and "Doc" Williams are the three landmarks among Conference coaches.

Zuppke of Illinois, Stiehm of Indiana, Wilce of Ohio State, and Richards are all former Wisconsin football stars.

Walter Powell, center on the Wisconsin team of 1911, is coach at Leland-Stanford this year.

The first big inter-sectional game of recent years was in 1914 when Oregon Aggies came from Corvallis and beat Michigan, 28-0.

The Suckers claim Wisconsin is their jinx, Minnesota claims to be Wisconsin's jinx. Wisconsin doubts it.

NEW YORK GRADS NAME SCHOLARSHIP FOR ZONA GALE

The Zona Gale scholarship of \$700 has been recently established by the New York branch of the Wisconsin Alumni association for the benefit of some student who has exceptional ability in one particular field and is handicapped by deficiencies in others.

The type of student benefiting by this scholarship might be one who, not having completed a required high school course of study, still was exceptional in one branch. Receiving this scholarship, he would be able to pursue just those university courses which would develop his special talent.

The scholarship is open to any one in the country, regardless of age, sex, or race. It is thought that

this experiment may yield some evidence as to whether or not it is desirable to modify the entrance requirements for persons of special talent. A committee consisting of Dean Henry Glicksman, Prof. V. A. C. Henmon, Prof. W. E. Leonard, Prof. C. E. Mendenhall, and Prof. M. V. O'Shea (chairman), will administer the fund, and keep watch of the student beneficiary.

McGovern, playing quarter for Minnesota in 1909, 1910, and 1911, was one of their most famous players, making the All-American team for two years. Al Baston, captain of Minnesota's team in 1916, was All-American end two years.

Out of twelve games Wisconsin has played with Illinois the Badgers have won six, tied one, and lost five. Wisconsin has played Illinois every year since 1914.

HOMECOMERS!

Remember

Reider's Pen Shop

Is the HOME of

24 Hour Pen Repair Service

527 State St.

527 State St.

MORGAN'S

Union Depot for Alumni and Students

Class Pipes---Any Year

The Daily Cardinal

Member Wisconsin Intercollegiate Press Association
Member Western Conference Editorial Association

10

Student owned and controlled university daily, established 1892, and combined with the Wisconsin Daily News, established in 1912. Published every morning except Monday during the college year. Entered as second class matter at the Madison, Wis., postoffice. Subscription rates \$3.50 a year; \$2.00 a semester in advance.

Editorial Offices—Union Building, Phone Badger 250.
Capital Times Building, Phone Badger 1137.

Business Offices—Union Building, Phone Badger 6606.

CARDINAL BOARD OF CONTROL

Adrian Scolten, President; Caryl Parkinson, Vice-president; Arthur Freytag, Secretary.

William M. Sale Managing Editor
Donald M. Bailey Business Manager

EDITORIAL STAFF

G. Fred Brewer News Editor
Marion Strassburger Woman's Editor
Charles J. Lewin Athletic Editor
Carleton Douglas Skyrocket Editor
Walter K. Schwinn Sunday Editor
Mary Bridgman Society Editor
H. Hickman Powell Assistant News Editor
G. Lowell Geiger Conference News Editor
Sterling Tracy Chief Editorial Writer
Melbourne Bergerman, Abraham Kaufman Editorial Writers
David K. Steenberg Desk Editor
Desk Assistants—Porter Butts, Robert Reynolds, Karl A. Maier, Maurice Perstein, Walter Pfister.
Special Writers—Margaret Daly, Bertha Burkhardt, Mary Dickson, Helen Smallshaw, Elizabeth Wadmond, Pennell Crosby, William J. Tannewitz.
Reporters—Margaret Callsen, Wilhelmina Mead, H. E. McClelland, Elizabeth Briggs, Marjorie Ruff, E. C. Crane, L. J. Melrose.

BUSINESS STAFF

Philip G. Bredesen Advertising Manager
Russell Frawley Circulation Manager
Associate Advertising Managers—Douglas K. Newell, Jean H. Rosenthal.
Merchandising Service Manager—Blanche K. Field
Advertising Assistants—Arthur H. Ardiel, Ambrose J. Pennfeather.
Business Assistants—William Peebles, Lorna Lewis, Margaret Turnbull, Louise Moyer, Katherine Felix.
Circulation Assistants—William Hayden, Calvin C. Oakford.

HOMEcoming GRADS

WELCOME home!

This is the message that blazes from every illuminated "W" and sounds from every lip as the younger sons and daughters of Wisconsin greet the old grads who are back for the happiest day of the year.

There is always something magical about Homecoming—something that gets into the blood, bringing newer life, keener enjoyment.

Perhaps it is because the very conception of Home has always deeply stirred the heart of man. Home is the sanctuary of friendship, of brotherhood, of love. Home is the great liberator of the human spirit, the haven where every care becomes lighter and every joy more intense.

No wonder, then, that Wisconsin's children are happy when they come back. They live over again for a day all the years they spent on the campus. They forget for a time the heat and burden of the day and abandon themselves to the spell a kindly Alma Mater weaves for them.

But they do more than this. They help the students already here to discover the university. Too many students take the university for granted and in the daily routine lose sight of its power and its majority. The natives of Athens seldom become enthusiastic about the beauties of the Parthenon. It takes the pilgrims coming from far and near to keep alive a due sense of admiration for this monument to Hellenic genius. In somewhat the same manner, it takes the return of the old grads to impress upon the students here the real worth of their university.

The grads are welcome for the inspiration they bring and no pains should be spared to make their stay one of happiness and rejoicing.

WITHOUT A HOME

IT is impossible to separate the spirit of Homecoming from the hope that before long Wisconsin will have a Memorial Union in keeping

with the prestige of the university.

One week from today a campaign for funds to build this union will begin. The campaign slogan is: "Build a home for Wisconsin spirit." No one has ever been able to define completely Wisconsin spirit. Whatever it may be, this is certain: Wisconsin spirit is without a home.

Thousands of fine spirited alumni and students have resolved that this shall be no longer. They have determined that the union shall be a reality.

Just a sketch of the plan will reveal its magnitude.

A beautiful memorial rotunda is to be erected in honor of the scores of Wisconsin's sons who died on the battlefield and the thousands of others who served gallantly in the Great War. Who now, in moving about the campus, could tell that there had ever been a war, and that Wisconsin's services will go down as one of the most splendid heritages of the war?

Then, the union will make it possible for the grads to get together when they come back for Homecoming, commencement, and reunions. The facilities for such meetings now are woefully inadequate. The fraternity men may meet in their individual chapter houses. But where is there a place where all the men, fraternity and non-fraternity men alike, may get together? To make possible such a meeting place would do more to solidify and unify Wisconsin men—yes, Wisconsin women, too—than any other single thing that could be done.

The Memorial Union will provide handsome quarters under the same roof for every campus activity. At present the activities are scattered about hither and yon with little cohesion. They need to be brought together. All the publications need offices in the same building. The literary societies should have permanent quarters for themselves instead of using class rooms. The various boards and self-government organizations at present have no abiding place.

The Memorial Union will have a beautiful auditorium to fill a need that has been felt for years. It is disgraceful to invite any speaker to address the university students in Music hall, the armory, or the stock pavilion.

The Memorial Union will utilize the lake front to the best possible advantage. By so doing, Wisconsin will boast superiority over every other university union in the country in beauty of situation. Balconies will be arranged overlooking Mendota, so that hundreds may witness the crew races and Venetian night entertainments.

The Memorial Union will provide in countless ways for the comfort and convenience of students. There will be a spacious ball room for dances. There will be rooms for alumni to stay when visiting the university. There will be committee rooms, parlors, a lobby, a soft drink fountain, billiard and pool tables, and many other features making for service and recreation.

All this is but a sketch of what the Memorial Union will mean. Surely, it is an undertaking to call forth the loyal support of every Wisconsin man and woman. Its erection will mean a new epoch in the life of the university.

Build a home for Wisconsin spirit!

HAIL AND FAREWELL

IX of the eleven men who represent Wisconsin on the football field this afternoon are playing their last Homecoming game. Most fittingly, the team meets Minnesota—traditional rivals of long standing; most hopefully we look for a victory.

But in the midst of the excitement this afternoon, when thousands will center their attention on the playing of the team, we cannot but look ahead to the Homecoming game of next fall when six of the men will be but a small part of the Badger alumni, back to watch the game as we do now.

BULLETIN BOARD

CADETS AND MIDSHIPMEN WANTED

The Wisconsin Civil Service commission announces preliminary examinations for cadet and midshipman to be conducted by this commission at selected centers throughout the state on November 12. These examinations should be of special interest to high school students or recent graduates who qualified and interested in the training offered at the naval and military academies. Persons interested are urged to make immediate application.

SENIOR SUMMARIES

Senior summaries are due. Address them to Helen Kasbeer, editor of the senior section, 1923 Badger. The section is being completed, and all seniors are urged to make appointments with some Badger photographer this week.

CLEF CLUB TRYOUTS

Clef club will hold upperclassman tryouts at the Alpha Chi Omega house, November 3, at 7 o'clock. Call Esther Vance '23, at B. 60 for appointments.

Freshman tryouts will take place next semester.

MEMORIAL UNION PICTURES

Those wishing Memorial Union pictures may obtain them by leaving their orders with Phil Bredeeson at the Cardinal business office. A sample picture will be at the office.

SUNDAY MORNING DISCUSSIONALS

Prof. Steve Gilman will talk to all interested and especially the freshman on "What's under the Hat?" All students are invited.

BADGER CLUB

The Badger club will meet Sunday evening as usual. "Dad" Wolf will speak on "Imperialism, Bolshevism, or Republicanism; Which Will Win Out in Germany?"

FOOTBALL USHERS

All ushers must note change of time for Saturday game. Report at 12:30 sharp.

COLLEGIATE LEAGUE

Collegiate League of women voters will hold regular meeting at 4:45 Monday in S. G. A. office.

LUTHERAN BROTHERHOOD SMOKER

A smoker for all Lutheran students will be held at 705 West Johnson street on Saturday, Oct. 29, from 8 to 9 o'clock.

Y. W. C. A. VESPERS

There will not be the usual Vesper service in Lathrop parlors this Sunday, Oct. 30, usually at 4:30 in the afternoon. The exception comes because of activities this week-end in favor of Homecoming.

THETA SIG

Theta Sigma Phi pledges meet at Union building at 12:45 Monday.

METHODIST HOMECOMING

Miss Rowena Brown, Russell J. Irish, Lawrence Boise, Robert P. Gerholz, Bernard Huebner, Paul Nichol, Elizabeth Luther, and Josephine Bemis as a committee of Methodist students at the Wesley foundation, corner of Charter and University, opposite the Chemistry building, will serve hot chocolate to guests and students after the game. Meet at the fire-place on way back.

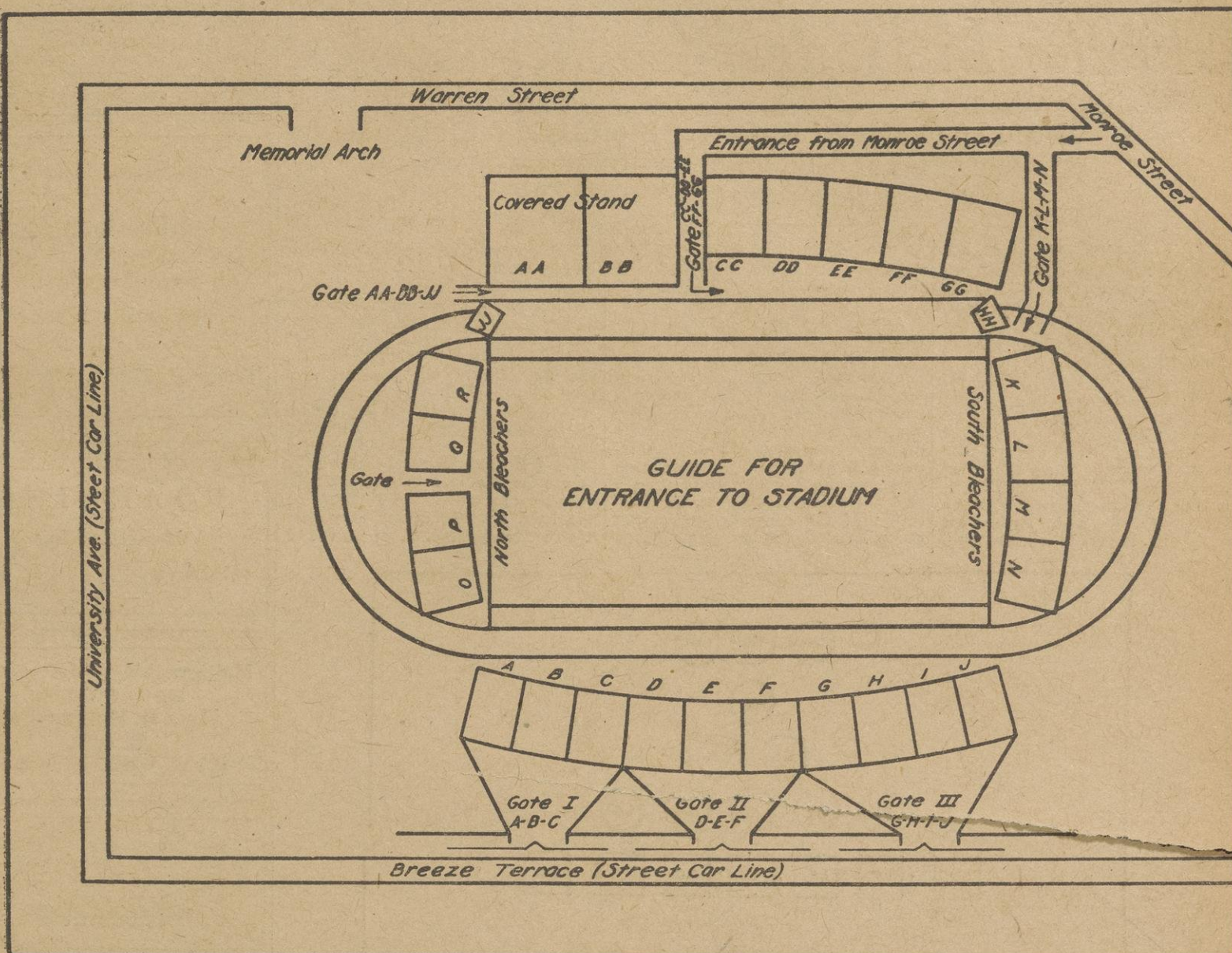
A. I. E. E.

All electrical engineers are welcome at the regular meeting of the A. I. E. E. in 204 E. E. laboratory at 8 p. m. Wednesday, Nov. 2. A. R. Cotton will speak on "Automatic Substances." Refreshments. Special meeting for members only at 7 p. m.

LUTHERANS

A Harvest Home festival will take the place of the regular Luther League meeting at Luther Memorial church, Sunday at 7 p. m. A Harvest Home cantata will be given by a special chorus under the direction of Edward Swain. This musical program is open to the public.

Here is Chart of Stadium Seats



To facilitate the proper handling of the Homecoming crowd at Camp Randall, the above sketch will show the proper entrances for ticket holders, and the directions below will enable each person to get to his seat location with the least possible difficulty.

The gates will be opened at 12:45 p. m. and the game will start at 2 o'clock sharp. People are strongly advised to make every possible ef-

fort to secure an early start and be in their seats by 1:50, the time set for the teams to come on the field. People holding tickets for the west stand are cautioned to read the signs over the entrances to get into the proper lanes. On the back of each ticket is printed the directions for persons to enter on three entrances of Breeze terrace, and entrances to covered stand, new concrete stand, and north and south bleachers.

West Stand—Blue Ticket
Sections A-B-C, enter Gate 1.
Sections D-E-F, enter Gate 2.
Sections G-H-I-J, enter Gate 3.
Entrance from Breeze terrace.

East Stand—White Tickets
Sections AA-BB-JJ, enter gate north end Covered Stand.
Sections CC-DD-EE-FF-GG-HH, enter gate between covered stand and new concrete stand.

North Bleachers—Red Tickets
Sections O-P-Q-R, enter gate on north end of field.

South Bleachers—Yellow Tickets
Sections K-L-M-N, enter gate on south end of new concrete stand.

Information to Holders Blue Ticket
In each of three gates, lanes will be marked with letters corresponding to section and each person will follow through the lane leading directly to aisle nearest seat location. It is absolutely necessary that persons entering shall get into the correct lane before reaching ticket taker.

5,042 BUTTONS SOLD BY W. A. A.

Exactly 5,042 Homecoming buttons were sold by 12:00 noon yesterday, when the sale closed.

"More buttons were sold this year than ever before," declared Dorothy Ware '22, who has been in charge of the sale. "Last year about 4,000 were sold. The hill sale alone has been a thousand more than that this year."

A total number of 650 sales was made by team 14, headed by Elizabeth Kirk '23. Louise Fritsche '22, captain of team 2, reported a total of 610. Team 15, under the direction of Alice Tucker '22, was third, with 430 sales.

The rest of the buttons are on sale down town for the alumni.

LARRY AND RED TO LEAD LOCOMOTIVES

Larry Hall '18, and Red Parker '14, varsity cheerleaders of their respective classes, will be on hand at the game today to assist in leading cheers. Parker and Hall were two of the best known cheerleaders Wisconsin has produced.

The regulars who will lead off with the "locomotives" are "Gus" Tuckerman '23, varsity cheerleader; "Chuck" Hawks '24, "Johnny" Blossom '24, and three first year men, Kingston, Derry, and Walstead.

Chicago has been Wisconsin's opponent in 24 games, the results breagring even for the schools, each having won 11 to 2 being tied. In regards to points, however, Chicago has piled up only 190 against Wisconsin's 312.

METHODISTS PLAN SPECIAL SERVICES FOR HOMECOMING

The Sunday program of the University Methodist church, opposite the Chemistry building, is designed to interest the former graduates and other visitors. At 10:30 a. m. the student vested choir under direction of Prof. L. L. Townsend will sing several sacred numbers and the sermon by the Rev. Edward W. Blakeman, who has been one of the university pastors for more than 14 years, will be upon "The Up-lifted Christ at Wisconsin" from the text "And if I be lifted up I will draw all men unto me." John XII: 32.

The Oxford club, an organization of graduate students, which meets in the Eaton parlor at noon will be the rallying place of former students. Gordon A. Beebe, Helen Crosby, Frankie Post, Laura Harker, George Garrigan, and Merl S. Nichol will have charge of introducing the strangers.

The Frank Hall Bible class, which has been frequented by students at the university for the past thirty years will meet at noon also and welcome back any former members.

In the evening at 5:30 a cost supper will be served in the dining room and at 7:00 the discussion will be upon "Sunday Study, Does It Pay?" a debate of the merits of the practice vs. its evils.

At 8:00 o'clock Dr. E. L. Eaton, well-known lecture-minister, will speak upon "The Starry Heavens." The Rev. Howard Hare will sing.

What is said to be the greatest game ever played in the west was the Minnesota-Wisconsin game of 1911.

On the kick-off Capron, Minnesota's fullback, ran the entire length of the field for a touchdown. With a score of 6-0 against them Wisconsin battled against Minnesota's

"long ton of beef," as the team was called that year, for it totaled over 2,000 pounds.

It was in the third quarter that the tide turned when "Eddie" Gillette caught Capron's punt and ran 50 yards for a touchdown, tying the score. The whistle blew just at dusk with Wisconsin on Minnesota's 6 inch line and three downs left.

WELCOME HOME!

WELCOME HOME!

WELCOME HOME!

Every Former Student

Will find a cheerful greeting and a hearty welcome at every turn. We have been waiting for you.

Lift the Latch

Prepare for a pleasant surprise. Our new home is in readiness to care for your every need.

Come in!

Make yourself at home. Use our rest room, telephone, or whatever you wish to make you feel comfortable.

Our House Is Yours

The latch string is always out. We are always in—at calling hours.

MARINELLO SHOP

"A Beauty Aid for Every Need"

Mrs. W. Wengel

225 State Street

WELCOME HOME!

Baffling Minnesota Shift May Be Factor In Badger-Gopher Contest

Play as Developed by Coach Williams Has Been Used With Variations by Teams Throughout Country—Diagram Shows Simple Form of Shift

The famous Minnesota shift, one of the most baffling of all football formations, was originated by "Doc" Williams, present coach of the Minnesota eleven. His shift has not only played a decisive part in western football but has reached out to change the character of the eastern game.

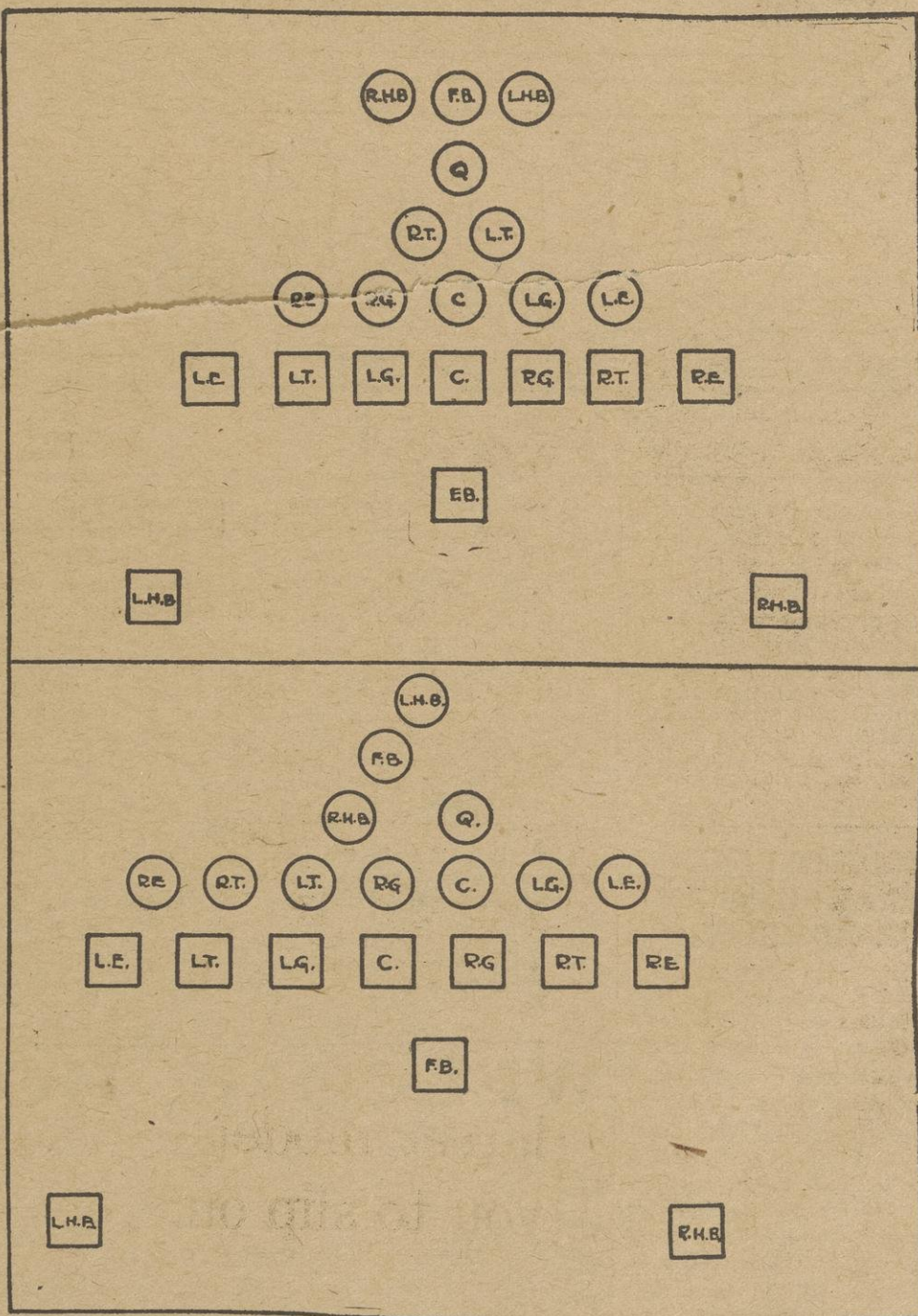
The shift requires a heavy, fast team with especially heavy backs for its best execution. From 1890 to 1895 Wisconsin suffered defeat at the hands of Minnesota. The following five years, however, while Richards, Karel, and Pyre were playing saw the situation reversed.

as tackle in this game and was awarded the honor of being the first All-American Badger player.

Introduced at Yale

A heavier team aided the operation of the shift in later years. The value of the Minnesota play was demonstrated when Tom Shelvin taught it to Yale in 1914 and 1915 and old Eli beat Princeton and then Harvard, having won no other game during the season. In 1917, Carpenter, Simpson, Scott, and Weston broke up the Northmen's shift in a 10-7 Wisconsin victory at the dedication of the concrete stadium at Camp Randall, the last game Presi-

The diagram represents the Minnesota shift in one of its simplest forms, as used by various schools. This is not Dr. Williams' shift, as he has played it in many variations, but it is a fair notion of the shift in theory. On the original line-up, the tackles drop back behind center; on the shift signal, they slip into the line between end and guard, which side depending on the way the play is to go. The back-field takes a Y formation and center may then pass the ball to quarter, who relays it to either the fullback or left half, or the center may pass it direct to either of these men. The



Key to Diagram

Squares represent defensive team playing against shift.

Circles represent offensive team, playing the shift.

The top diagram shows the orig-

inal line-up before the signals are given, with the tackles back. The lower diagram shows the line-up after the shift signal has been called, with the tackles slipped into the line, and the backfield in a Y form-

ation. Center may pass the ball to quarter, or directly to the back-field for the play.

The defensive quarter is playing back.

The shift was a great play in this stage of football, and Coach Richards, who is said to be the only man who has stopped it, got his first experience with the formation during these years.

A string of defeats followed after 1902. The shift proved a powerful factor in these defeats, although Minnesota's men were not very heavy. These defeats were stopped in 1911 when Richards first coached the Badgers. With "Keckie" Moll, one of Wisconsin's greatest quarters, and Al Buser playing, the shifty Minnesota squad was tied 6-6. In 1912 when Wisconsin won the western championship under the tutelage of Bill Juneau the shift was again beaten by a score of 12-0. But Butler did his part

dent Van Hise saw before he died. Richards' play executed by Carpenter at Center was the defeat of the shift in this game.

The tackles are used on the side of the line the play starts on in the Minnesota shift. The half who takes the ball usually fakes a run on the end with the heavy interference of tackles and backs and then dodges back to the other side where his interference has taken care of the light defense left on that side. There was sentiment among the students at Minnesota last year to give up the shift and use open game more this fall. The old shift remains an important factor in past and present football, nevertheless.

Explanation of Diagram

runner usually fakes a run to draw the opposing team, and then plunges through the line where the heavy interference of the tackles and guard have torn a hole. This is the big advantage of the shift: the placing of the strong men on one end of the line to make an unusually heavy interference. The play is almost invariably between the tackles, although it may go around either end.

Defenses Used

There have been defensive plays worked against this shift, with more or less success. The usual method is to keep the line in the original position, to attempt to break up the play through center, and to watch closely for the play, since it is very hard to tell just

where the ball is, and which way it will go. Coach Richards has beaten the shift at various times, but no one knows the precise play he used. This explanation of the shift does not claim to be authority; it is merely an attempt to explain a very famous and effective play that has had a great influence on football history all over the country.

"BOYD'S IS BEST"

Boyd's Orchestra

Now recognized for reliability and excellence

Phone B. 2729 The Studio

BOARDING

Home Cooking

441 Lorch B. 6238

Multigraphing, Mimeographing and Typing

Alma B. Roump-Fish
B. 4678

437 W. Washington Ave.

TYPEWRITERS

If you want to buy. If you want to sell. If you want to rent. If you want repairs—SEE

KELLEY
TYPEWRITERS

521 State F. 422

TYPEWRITERS RENTED

Special Rates to Students

Special bargains in standard makes of rebuilt typewriters. All makes repaired or exchanged. See our new Gourland portable typewriter. This machine has a standard keyboard.

Wisconsin Typewriter Exchange
519 State B. 1970

Dr. V. G. Bancroft

Dr. J. A. Bancroft

DENTISTS

Badger 3682 901 Univ. Ave.

Dr. Elva J. Lyman

OSTEOPATH

213 N. Hamilton St.

B. 3100

Kehl's School of Dancing

Class instruction Thursday nights.

Private lessons by appointment, day or evening. Lady or gentleman teacher.

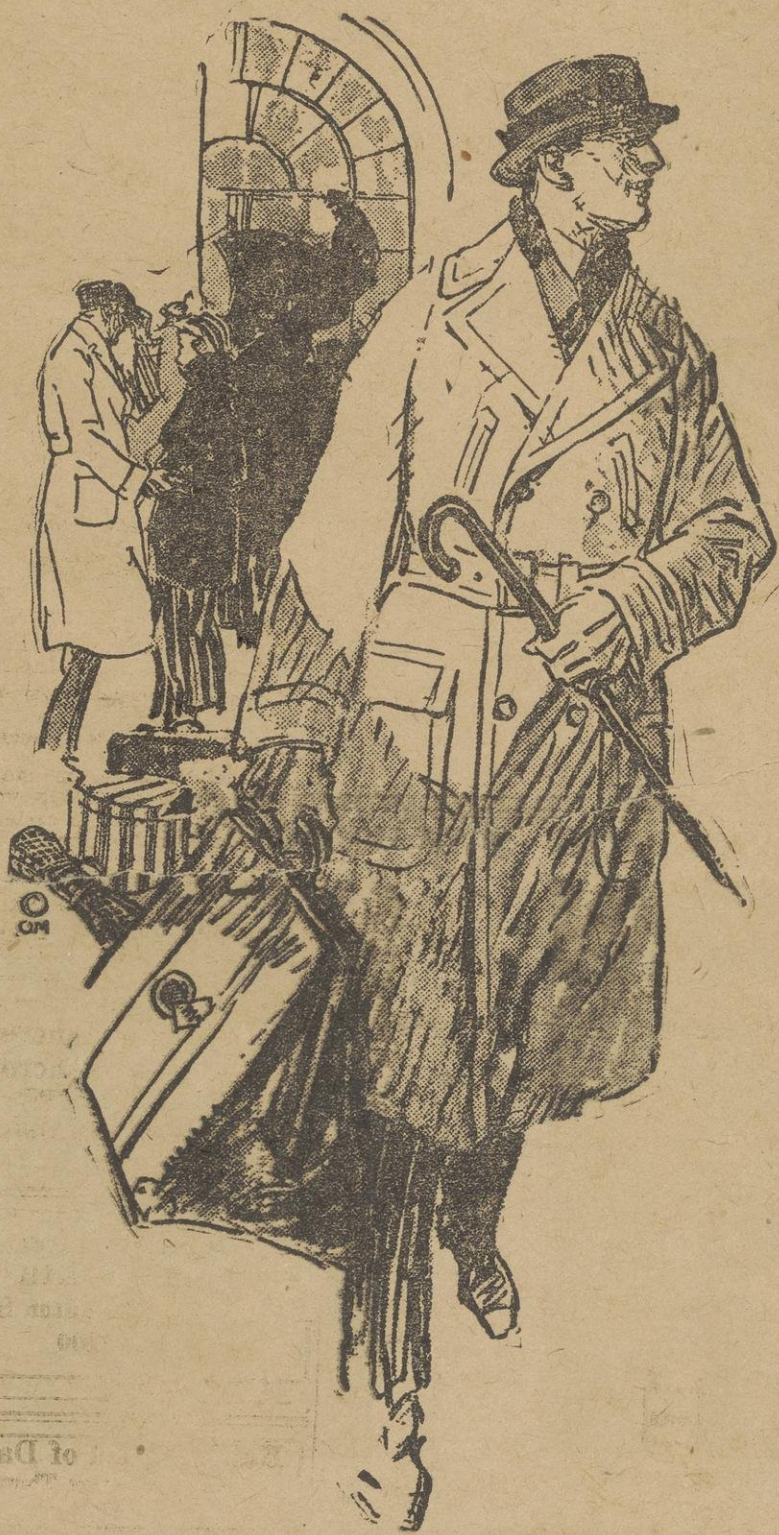
PHONE BADGER 1770

MORGAN'S MALTED MILK

HINKSON'S
644 STATE ST.
Recreation & Refreshments

Welcome All

Homecoming Students and Friends



Coming or Going---

Our "Stein Bloch" suits and overcoats are the smartest you'll find anywhere.

They are styled just right ---classy but not extreme, and have the distinguishing features of this season's clothes. They'll appeal to you---all the fellows like 'em.

Here you will find all the latest models---ready for you to slip on.

\$45 \$50 \$55

"Hub"
High-Grade
Furnishings

THE HUB

MADISON, WISCONSIN
F. J. SCHMITZ & SONS CO.

"Hub"
High-Grade
Shoes

Chairmen Whose Work Makes Tenth Annual Homecoming Possible

SHE MANAGES SALE
OF 5,000 BUTTONS



MISS DOROTHY WARE '22

HE PLANNED GALA
DISPLAY FOR EVENT



WILLIAM F. ENGELHARDT '22

HE MAKES PROGRAM
FINANCIAL SUCCESS



PHILIP G. BREDEZEN '22

HE HAD CHARGE OF
MAMMOTH BONFIRE



A. F. YOUNGBERG '22

STARTS THE EVENT
WITH PEP MEETING



ARTHUR H. KINNAN '22

HE DIRECTS WAYS
FOR PAYING BILLS



EDMUND ASCHENBRENER '23

RAISES MONEY FOR
\$6,000 HOMECOMING



BIRNEY F. MILLER '22

These Men Supervise the Work of Fourteen Committees



CARL J. ENGELHARDT '22



DAVID J. MAHONEY '22



WILLIAM M. SALE '22

The General Chairman



DONALD M. BAILEY '22

HIS LETTERS WENT
TO 8,000 ALUMNI



G. FRED BREWER '22

FOOTBALL FIRST
IN HIS PROGRAM



WALTER K. SCHWINN '22

PROVIDES FROLIC
BETWEEN HALVES



REGINALD GARSTANG '22

HIS PUBLICITY MADE
BIG PLAN SUCCESS



CHARLES P. MAC INNIS '22

PLANS NOVELTIES
FOR HOBO PARADE



FRANK P. HYER '22

HE ARRANGES FOR
NOVEL CARNIVAL



DONALD MURPHY '22

PLANS DANCE TO
ENTERTAIN GRADS



ARTHUR F. MARQUETTE '23



4,000 CONCRETE SEATS ADDED TO RANDALL STADIUM

Night Crew Finishes Work in Glare of Electric Lights

Seats for 4,000 people have been added to Wisconsin's stadium at Camp Randall during the past summer. An entire section has been built on the east side, raising the available seating capacity to nearly 53,000. Other sections will be added as the athletic department raises the money, till the completed stadium will seat 53,000 persons.

The east section has been completed in time for the Homecoming game only after great effort on the part of the athletic department, George Nelson, contractor, and C. B. Fritz, carpenter. The entire process was supervised by J. G. D. Mack, state engineer.

Work at Night

By stringing electric lights over the section and putting a 24-hour crew at work the department succeeded in finishing the section in record time, and in adding enough seats to accommodate a much larger crowd than last year with less inconvenience. The concrete was poured three weeks ago, and the risers and seats have been entirely completed.

"The plan for adding to the stands is to keep abreast of the needs, adding new sections as they are needed, providing we have the money," said T. E. Jones, director of athletics, in explanation.

Income from the present season looks as though it will enable us to go ahead with the next step in the program which calls for an addition to the section built this year, making it 28 rows high. Permanent dressing rooms will be installed underneath this section. Tunnel entrances from Breese Terrace will be added if the necessary money is earned this year," Mr. Jones continued.

Money Raised

"The money for the stadium is being raised by various means. The final appropriation was made by

the state legislature in 1915, when \$20,000 was given to build a new field. This appropriation was used to level the field and construct 5,300 permanent seats on the west side. Since then all construction has been financed by the stadium contributors and by the athletic department from gate receipts from athletic contests."

Completion of the lower deck of the west side in concrete 50 rows high with the superstructure for the upper deck is the next step after the tunnel entrances are added. Then 28 rows will be built on the south side of the field, the lower deck of 50 rows will be completed on the east side, and the final construction will be finishing the upper decks of 22 tiers on the east and west sides.

The completed stadium will resemble a horseshoe in shape, with the open end to the north. If necessary this end can be closed with concrete stands, raising the seating capacity to 65,000.

ALUMNI MAGAZINE CALLS BACK GRADS FOR HOMECOMING

The November issue of the Wisconsin Alumni magazine announces Homecoming to the alumni association. Porter F. Butts '24 describes the three day event in an appeal to the grads to come back for the 1921 celebration October 28, 29, and 30.

"Half a Million Secured for Memorial Building," by Prof. Edward H. Gardner, who is conducting a salesmanship course for canvassers in the student drive to complete the fund, tells about the dual role of the building as a memorial, with its beautiful rotunda, "a shrine for the memories of Wisconsin's soldiers," and as a unified center of university life.

Professor Gardner describes the relation of the building to the alumni, calling it "A meeting place for old grads, your home at Homecoming and Commencement; your place of gathering for business meetings and reunions; your club house to live in comfortably on visits to Madison; the lure to draw you back to greet the friends who means all the world to you. It will mean to you Wisconsin."

sin; its image will rise in your thoughts first when you think of Alma Mater."

Tribute was paid to the work of the late Dr. Charles McCarthy in an article called "College Spirit and Patriotism," by Irma Hochstein. Letters from alumni including J. W. Wilce and T. E. Jones tell of the work of Dr. McCarthy as coach at Wisconsin.

A report of Israel Shrimski, the retiring president of the alumni association, the usual alumni news and a review of athletics are also included in the November issue.

CONCENTRATED FUN TO SURPRISE CROWD AS FOOTBALL HALTS

"Concentrated entertainment plus," is the way in which Reginald Garstang '22, chairman of the committee on special features for the Homecoming game, expressed the plans that have been made for the amusement of the crowds at the contest.

"We have only 10 minutes in which to put on several original stunts," said Garstang last night, "but, nevertheless, we are going to surprise the alumni and all others who attend the game."

The movements of Butt's manual by the president's guard, in conjunction with the university band and the firing of parachute bombs are among the many features to be presented between halves, according to Garstang. Entertainment will also be provided for the fans before the

game. About 80 sophomores belonging to the guard have been practicing under the direction of Robert Luenig, major in the cadet corps and commander of the organization, for the past month in order to give the drill perfectly at the game. The drill is given almost entirely by music, spoken commands being used only to get the guard in the proper formation.

Paper parachutes with trailing flags of various colors will fly over the field during the intermission. These will be fired from a small cannon to be set up near the bleachers.

Sammy Becker '22, and several other burlesque actors in the university have completed plans for a number of entertaining stunts to be given before the game and also during the 10 minutes of intermission. The costumes have been designed to fit the occasion, according to the committee in charge.

The Only Place to Eat
Chicken Dinners
50c

Princess Cafe
437 State St.

HOMECOMING STUDENTS

WELCOME

to the

Lawrence Cafeteria

662 State St.

Smart Blouses And Novelties

Cunning Peter Pan collars and cuffs, in red felt, especially for Homecoming. Also a large assortment of collars and cuffs in white linen and attractive colors.

A TAILORED BLOUSE

always makes milady look trim and neat.

We have an unusually beautiful line of tailored blouses in pongee and wash materials.



SOMETHING NEW

Beautiful Jersey blouses in brown and blue, handsomely embroidered in chenille. Dainty yet warm, they are just the thing for fall wear.

And have you a "Wisconsin Rose." These dainty yet imperishable flowers of cardinal or-gandie just radiate the spirit of Homecoming. Real flowers are expensive — these are inexpensive, beautiful and attractive.

THE RAINBOW SHOP

"Make Your Dollars Have More Cents"

Two Winners!

Wisconsin

and

Teckemeyer's

Chocolates

Try one of the following four assortments
at \$1.25 a box and be convinced. . . .

Milk Maid

*Milk Coated Assorted
Creams*

Community

*Bitter Sweet Coated
Assorted Creams*

Aristocrat

*Milk Coated
Chocolates*

Gypsy Queen

*Bitter Sweet
Coated Chocolates*

See Our Window Displays

A Fresh Stock for Sale at all Stores

Teckemeyer Candy Co.
Madison, Wisconsin

Teaches Shift to Win His Games



COACH WILLIAMS

GRADS TO FROLIC AT LATHROP HALL

The Alumni Council, the legislative body of the General Alumni association, will hold its annual meeting after the game this afternoon in Muese hall. Representatives of every class and U. W. club throughout the country will meet at that time to participate in the yearly business meeting. Notices were sent out by the Alumni board a few weeks ago asking that class and local club to send an official representative to the conference. Representatives who could not come to Madison were asked to send proxies so that every organization could be represented when the general legislative work of the council is undertaken.

In addition to the regular business meeting, a special program has been arranged for the council. President E. A. Birge will give an address and Dr. M. E. Diemer, official photographer of the university and member of the class of 1911, will show moving pictures of campus life and activities.

It is expected that representatives from classes as far back as 1870 will be present at the meeting. Invitations were sent to Wisconsin clubs as far south as New Orleans and to clubs as far west as San Francisco. A large number are also expected from New York and the East. All members of the alumni and friends interested in the work of the council are invited to attend the session.

The Alumni board will hold its annual meeting this morning at 10:30 in the offices of Robert S. Crawford '03, general secretary of the board, in the Alumni headquarters at 821 State street. The regular business for the next year will be the subject of discussion. The board officers and members are as follows:

Israel Shrimski '88, president, Chicago; R. N. McMyn '94, Milwaukee; Helen B. Smith '19, recording secretary, Madison; Chas. N. Brown '81; F.H. Clauson '97, Horicon; Mrs. T. E. Brittingham '89, Madison; J. E. McConnell '87, LaCrosse; L. F. Van Hagan '04, Madison; Victor S. Falk '11, Stoughton; Stuart W. Reid '15, Oconomowoc.

Bunge sprang into prominence in the Illinois game last year when he played Captain Depler to a standstill.

Knights of "Dad" Morgan's Round Table Would Make All-Star Wisconsin Team

An inconspicuous object in the center of noisy throngs, a old polished round table continues its unglorified existence as the support for many empty malted milk glasses and the surface upon which rest tattered and torn newspapers. It is the famous "Dad" Morgan Round Table, and on its time-worn top are inlaid the carved names of many Badger athletes who brought fame and nation wide recognition to Wisconsin.

Shrine for Frosh

Since the old days of the "tandam" formation, mass play, three downs with five yards to go, the old table has been enshrined. Instead of winning a place in the Hall

ALL-ROUND TABLE ELEVEN

Ends—Dean and Hoeffel.
Tackles—Butler and Buck.
Guards—Riordan and Keeler.
Center—Carpenter.
Quarterback—Gillette, Karel.
Halfbacks—Driver, Cochems, Simpson.
Fullback—Larson.

of Fame, however, it continues its solitary existence, almost unnoticed, except by freshmen who gaze at the awe-compelling names with something of idolatry in their hearts.

For in this old relic, Badger athletes of yore were wont to carve their names. Sitting in Morgan's place while they talked over the results of many a hard-fought battle on gridiron, track, and diamond, heroes of the day drew out the old jackknife and hewed great chunks out of the table top.

It takes Walter Camp and Ecker-sall an entire season to select their All-American and All-Western football teams, but the lover of football can study names in the Round Table for 10 minutes and then pick a mythical eleven composed of former Badger stars who if in their prime could do battle with any team in the country and probably beat it.

Men who were the recipients of unlimited adoration when they brought Wisconsin to the fore in football would be given places on the squad. It would be a truly great All-Western football team, and one that would make Badger partisans proud of it.

1901 Backfield Intact

The chances are that the old 1901 backfield, consisting of Driver, Larsen, and Cochems, would be left intact. It is to be doubted whether or not the present Badger backfield is capable of gaining any more ground than were those old-timers, Eber Simpson would probably be retained as the third half-back. He was a three sport man, and the athletic record that he left at this institution will probably never be excelled.

Gillette and Karel would be assigned the quarterback position. The former piloted the championship team of 1912, and is known as Wisconsin's greatest light-weight athlete. Karel ran 5 yards for the touchdown to gain the first Badger victory over the Gophers.

The forward wall would be composed of stars whose records will ever be cited as true examples of real Badger athletes. "Chuck" Carpenter, captain and All-Western center two years ago, would be placed at center, and would have flanking him Riordan and "Tubby" Keeler. The latter is yet to be surpassed as a Badger guard, and was placed on the All-Western team of 1912. Two years later he was captain of the Badgers.

Plenty of Tackles

The team would be well supplied with tackles, but Butler and Buck would be the first choices, with Scott alternating with them. But-

The only game Wisconsin lost in 1911 was to Chicago by a score of 5-0. This gave Minnesota the Conference title, for they had not lost a single game and had tied the game with Wisconsin. Over-confidence was the cause of the defeat by Chicago.

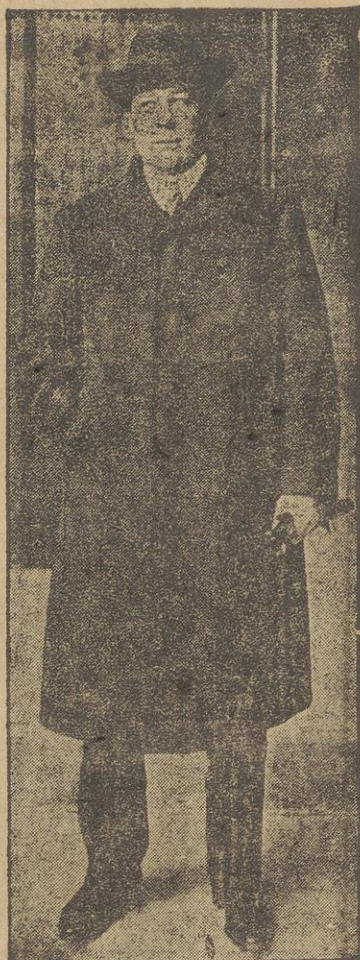
Northwestern has never beaten Wisconsin in football. Dopesters figure they should beat the Badgers in 1956.

ler wore the Cardinal in '12 and '13, and was placed on Walter Camp's All-American second team in the latter year. Buck played on the championship team of 1912 and was an All-Western man two years later. He is still playing football, as his name is seen in the papers each Monday morning as having stared with the Green Bay Packers on the day previous. The fact that "Scotty" was placed on Camp's All-American last year should entitle him to a place, but he is making a national name for himself with the Staley's this fall, and besides, the right of priority entitles the older men to a chance for honors.

After careful consideration, the end berths would be awarded to Dean and Hoeffel. The former, now practicing medicine in the city of Madison, was captain of the Badgers in 1910. His running mate played in '11 and '12 and was captain in the latter year. If a third man was necessary in either of the wing positions, the place would be awarded to "Red" Weston, captain last year and All-American end the year previous.

These men, with a wealth of substitute material available, would constitute a team which would have little difficulty in winning a national title for itself.

Turns Out Winners Each Year



COACH RICHARDS

Haswell Furniture Co.

117-119 State St.

Beautiful Floor Lamp Complete

Base End Shade

\$14.85

OUR SATURDAY SPECIAL

Dance To-Nite

at

The New Badger Room

Entertainment by
"DOC" DORWARD
Thompson's Feature Music

Ruth Blushes as She Registers; Co-ed Loses Pen

"Should I sign for you, dear?" he asked as he picked up the pen at the Registration booth.

"I should say not—I'll sign myself, Frank," she retorted indignantly, winking at the co-eds in the booth. "Woman's rights, you know."

Carefully he started to sign, pen poised in hand. "I wonder who's back," his twinkling eyes scanned the list anxiously. "There's George, only one I know. Staying at the old Beta house. Guess I'll drop around."

She took the pen, blushed a bit—"Funny to put my name right under yours..... Oh, same address! Heavens! That looks bad!"

Don't you know any ETAOIN "Don't know anybody else here, do you Ruth?"

"Guess not."

"There's a 'fifteenner.' Know her?"

"No, I..... Mercy me, that's Irene. I....."

"So it is; so it is; she was a great old girl."

"I just can't wait to see her.... I'm so thrilled—" she chuckled as she looked at him coyly. "Just like a little kiddo take down her address, Frank."

Frank obeyed, and they walked off.

"Soon the wedding bells will chime in Oshkosh," grinned one co-ed to the other. "Weren't they darling?"

"I should say.....but ye gods, they walked off with my only fountain pen," wailed the other one sadly.

Trying the Harvard tactics in 1916 lost us the game with Minnesota played at Minneapolis. After that year Wisconsin held to her own tactics.

Classified Ads

..Rates 1½c per word. Ads accepted over phone only from parties listed in the phone directory.

PHONOGRAPHS FOR RENT — Only \$3.00 per month. Call F. 610. tf.

FOR RENT—Quiet, homelike, rooms, handsomely furnished, for university instructors, graduates, and upperclassmen. Phone B. 3709. tf.

RENT YOUR SADDLE HORSES at White's Livery. New location, 214-20 N. Bassett. t.

LOST—15 jewel watch at gym. Reward. Return to this office. 4x26

WANTED—Man room mate. 822 Clymer place. 5x26

LOST—One pair long black kid gloves at Y. W. C. A. banquet, October 19. Finder please call B. 117. 3x27

LOST—Eversharp pencil with name engraved. Return to this office. Reward. 2x27

FOR RENT—Two double and one single room over Homecoming. C. L. Sniffen, 422 Marston avenue.

LOST—Sheaffer fountain pen with Sheaffer clip. Phone Orville Radke, F. 166. Reward. tf.

BOARD—High class home cooking. B. 6603. 6x28

LOST—Conklin fountain pen, on black ribbon, between P. C. B. and Barnard hall. Return to room 5, Barnard.

FOR RENT—One large front room —one block from Chemistry building. One or two girls. B. 6877. 4x29

YOUNG MAN wants a roommate. Single beds. 316 N. Lake. 5x29

LOST—Bill-fold, containing bills, tickets to game, and fee cards, in basement of Science hall yesterday. Notify C. R. Smith, 916 E. Gorham, B. 280. Reward.

LOST—One purse, between Y. M. C. A. and Music hall at 7:30 last night. Call Mrs. Bingenheimer at 308 Barnard hall. Reward.

STEVE GILMAN TO TALK AT Y. M. C. A.

"What's Under the Hat" will be the topic discussed by Prof. Steve Gilman at the Sunday morning discussion held at the Y. M. C. A. Prof. Gilman has given this address at Chicago, Minneapolis, and New York, and it is common opinion that it is one of "Steve's" best. In his talk he points out the qualities which are necessary for success in the business world.

All the groups of the various colleges will meet together for this talk. All freshmen especially, whether they are members of a group or not are invited to be present.

The discussion groups are the revival of a plan of two years ago. Prof. A. B. Millar has charge of the Engineers, Prof. G. C. Humphrey conducts the group for Ag students, and Milton Borman has the Commerce and Letters and Science students. Various phases of civil, campus, and religious life are discussed at these meetings.

Some of the future topics and speakers are as follows: Dean F. W. Roe, "The Educated Man and Literature"; Dr. H. H. Lumpkin, "Religion in Education"; and a personally conducted tour through the Historical Library by Walter M. Smith, head librarian.

"T" Gould came to the front in the Wisconsin-Illinois game of 1919 when on an off-tackle drive he ran

20 yards for a touchdown.

READ CARDINAL WANT ADS

Seventy-five Cents CHICKEN DINNER at

The Candy Shop

FRIDAY, SATURDAY, SUNDAY

MENU

Bullion	Crutons	Cream of Tomato
Olives	Pickles	Celery
Chicken with Dumplings		
or		
Prime Ribs of Beef, Brown Gravy		
Mashed Potatoes		Sweet Potatoes
Creamed Carrots		
Head Lettuce, 1,000 Island Dressing		
Choice		
Pie—Lemon Ice—Orange Ice		
Chocolate, Vanilla or Strawberry Ice Cream		
Coffee, Tea, Milk		
Reserve Tables for your friends		
C. L. SNIFFEN, Caterer and Confectioner		
B. 125		426 State St.



An Overcoat That Defies Cold Weather

HERE is a new Stratford overcoat that will give you comfort in coldest weather. The material is a fleecy fabric, thick as fur but light as down. You must see the tailoring on this coat to appreciate its perfection.

Namsirr stitching at cuffs and pockets protects the fabric at these points of greatest wear and adds a handsome finish to these luxurious winter overcoats. Be guided by Stratford styles.

It pays to buy the best.

Stratford Clothes

The new Fall and Winter Styles are now on display

The Crescent
CLOTHING CO
Specialists in Apparel for Men & Boys

ALUMNAE PLAY HOCKEY TODAY

Much Interest Shown in Women's Sports This Season

Two all-star teams will compete this morning at 10 o'clock in a championship encounter, when an alumni hockey team plays a team of W. A. A. women at Camp Randall.

"We hope to make it a tradition for the 'alums' to take part in a hockey contest at every Homecoming," said Miss Wesson, instructor of hockey. "All the grads have been notified, and we expect a brave array out for the game."

This year has witnessed especially keen interest among the co-eds, and hockey has claimed a great amount of competition and interest. Class squad have already been chosen, and teams will be announced next week.

Material Good

Material is especially good, and it is hard to pick the teams from the many who are trying out. Hard and fast will be the inter-class games, which start next week. Each year, more and more interested spectators come out for these contests, which have gained a reputation almost akin to the interest displayed among men for football.

Swimming has also proved popular as a fall sport. Over 500 are registered in the classes.

"Interest in swimming has been greatly advanced since the introduction of four tests, the passing of which enables each swimmer to add points toward the class score," said Miss Brownell, of the physical education department.

Another series of tests is being used which everyone is expected to pass after six weeks' work. Included in these test are the front dive, picking up an object in the bottom of the tank, and floating for one minute.

Class Teams Chosen

Class teams, which are larger than usual because of the increased enrollment, were chosen last Saturday. Competitive class contests will begin November 10.

"A new feature of the year is our 'grad' team," announced Miss Brownell. "This is the first year that there have been enough graduate students for a team."

Tennis and dancing are also favorites, to judge from the large enrollment. Teams in these sports are not chosen until spring.

Over 200 more women are out for athletics than there were last year. A total of 1622 are registered, 320 of which are upperclassmen.

"ARNEY" OSS' HISTORY

Arold Oss has had an interesting history. In 1919 Coach Williams asked Minnesota's track coach for a man who could run; and Oss, who had never played a game of football before in his life, was the man distinguished. In the game with Wisconsin that year Oss was the mainstay of the Gophers, winning the game for them.

In 1920 it was Oss with a cast around his leg who was the backbone of the losing Minnesota team. He is playing left half back this year.

The forward pass was successfully introduced into football by Notre Dame in 1913 when they beat the Army 35-7, Chicago, 30-0, Texas Long Horns 35-0, Nebraska 37-0, and then to make the victory complete beat Yale at New Haven. They were the undisputed champions of the world this year.

Notre Dame's defeat by Iowa this year is the first game she has lost in five years. However in 1916 Wisconsin battled them to a tie score of 0-0. It was in this year that Notre Dame beat the Army 7-0.

In 1919 Michigan did not want to enter the Conference because she said there was not enough competition. In that year she did not win a game. Last year Michigan won two games, from Chicago and Minnesota.

"Bobbie" Marshall, Minnesota's colored halfback, was the lightest man on their team in 1909, weighing 170 pounds.



Just As

Football Means Action

*Hart, Schaffner & Marx Clothes
Mean Style, Quality and Value*

Men Buy Here With Confidence

You can see style; you can't always see quality; but young men leave the quality end to us; we guarantee it. Hart, Schaffner and Marx finest suits and beautiful overcoats are

\$40 and \$45

One Third More Value Than Last Year

The Wisconsin Player

making the first touchdown in the Wisconsin-Minnesota Game will receive as a gift from us the best pair of Nunn-Bush hoes in our store. Now, go to it, boys!

Olson & Veerhusen Co.

The Home of Hart Schaffner & Marx Clothes

EVENTS PROGRESS
IN SOCCER LEAGUESport is Popuar Among 20
Teams Competing for
Championship

Soccer has fairly forced its way into the limelight during the past two weeks and as the twenty-team league goes into action much interest is being manifested in the national game of Scotland.

The fact that Coach Schlatter was able to organize twenty teams to enter the league should be enough proof that the game has taken a firm hold at Wisconsin, and the next step will be to recognize soccer as a minor sport. Many colleges throughout the country, Cornell among them, have recognized the game as a regular minor sport and letters are being awarded to players who make the squads. The game is still in its infancy here but it is safe to say that it has come to stay.

Thursday morning at 11 o'clock the crack squad from the International club was pitted against the picked team from the gym classes, in an exhibition game, on the lower campus. Wednesday in the first game of the season the Red Stars and the Red Wings clashed on the lower campus, putting up an interesting exhibition. At 5 o'clock the Black Triangles and the Crescents mixed in their scheduled game.

The following is the schedule up to the semi-finals. It is being run off by the elimination method. Oct. 31, Spades vs. Red Arrows; Nov. 11, Horse Shoes vs. Giants; Nov. 2, Blue Streaks vs. Pawn Brokers; Nov. 3, Red Circles vs. Clubs; Nov. 4, Shamrocks vs. Red Triangles; Nov. 5, Pirates vs. Black Circles, at 1:30, and Skul land Cross Bones vs. Black Squares at 2:30. All other games will be played at 4 o'clock unless otherwise announced.

The championship game between the two runners up will probably be played not later than November 9. Immediately upon the conclusion of the tournament, the inter-college series will be started. Coach Schlatter ask that the colleges get together and elect their captains and managers for the season now and as soon as this is done the officials of

the various colleges should report to him without delay in order to get the series under way by the second week in November. The winning college team members will be awarded their letters, and the college will receive points towards the Nelson trophy.

CLEF CLUB PLANS PROGRAM

Clef club held its regular meeting at 7:15 last night in Lathrop parlors. A banquet for old and new members will take place in the Badger room at 6:30 on November 10.

The program for the coming year will consist of a discussion of the history of music, of the opera, and of prominent musical composers. "Tryouts will be based upon tech-

nical ability, general appearance, musical selection, and interpretation," said Reba Hayden '22, president.

READ CARDINAL ADS

Chicago's trip east this year recalls the trip Wisconsin made to Yale in 1900. Yale won the game 6-0. The two Coy brothers, nationally known as football characters, played on the winning Yale team.

SPECIAL
CHICKEN DINNER

Every Sunday

11:00 A. M. to 2:00 P. M.

Roast Chicken, 60c
Chicken Pie, 50c
Home made Pies,
Per Cut, 10c

STAR CAFE

107 W. Mifflin
O. A. FARBER, Prop.
"Opposite Hook Bros."

Eds
and
Co-Eds

bring your Friends
with you when you
come to Krieger's

University
Inn

1317 University Ave.

Meals like mother
cooks for you. Whole-
some, nutritious and
clean.

Homecoming
Headquarters
For

Eats

Regular Dinner
20c

State
CoffeeHouse
306 State

Get Into The Game

Colors for Wisconsin and Minnesota

Arm Bands15c
Flowers10c
Pennants, with Canes45c
Tam-o-Shanters\$1.50
Song Books\$1.25
View Books25c to 75c
Colored Cards, Sepias, Photos, Folders,
etc.1c to 25c

Blankets for rent or sale

The Co-Op.

E. J. Grady, Mgr.

506-508 State

SPECIAL
TO STUDENTS

NOISELESS AND HAMMOND

We have made arrangements whereby we are in a position to furnish the student with either of the above makes of typewriters at a very attractive figure. Every machine guaranteed for one year. Write us for information. We will take your old machine in trade. Give make and number.

KELLEY
TYPEWRITERS
KELLEY

MADISON, WISCONSIN
521 State Street



Xmas Cards Now

If you are going to need greetings specially engraved and of K K quality, place your order early: because of the holiday rush. Now is none too soon.

The K K Shop

State at Frances

MRS. LA FOLLETTE TO SPEAK SUNDAY ON DISARMAMENT

Mrs. Robert M. La Follette, wife of the senior senator from this state, will address a public meeting on the subject of disarmament in the Assembly chamber of the capitol building at 7:30, Sunday evening, Oct. 30. Mrs. La Follette, representing the National Disarmament committee, will speak under the auspices of the Madison branch of the Wisconsin Women's Progressive association of which Mrs. E. C. Hoebel is president.

Mrs. John J. Blaine will accompany Mrs. La Follette on a speaking tour of the state beginning this week.

Mrs. La Follette is a pioneer in the field of the disarmament question. She spoke on the subject in the Senate chamber here last November and in Washington at a public meeting at Christmas time a year ago.

Miss Gena Thompson, executive secretary of the state committee, whose headquarters are in Madison, has the Sunday night meeting in charge. University women representing the Collegiate League of Women Voters will act as ushers.

RED ARROW ELECTS OFFICERS FOR YEAR

John G. Baker was elected president of Red Arrow, an organization of 32nd division veterans, at a meeting in the Law building yesterday noon. E. L. Peterson '23, vice president; W. R. Usher '23, secretary; and H. C. Oakey, treasurer.

Ceremonies to celebrate Armistice day, November 11, were voted for, but the sanction of President E. A. Elge will be sought before the form and procedure is decided upon. Observance will probably take place on the eleventh hour of the eleventh day which is when the Armistice is universally recognized.

Thurringer - Garbutt Co.

430 State Street

Special October Sale of Munsing Underwear for Women

Union Suits, fine cotton Rib - - - \$1.50 and \$1.00

Union Suits, Wool - - - \$2.50 to \$4.00

Union Suits, Silk and Wool - - \$3.75 to \$5.00

We carry a complete line of Phoenix hose, lisle, silk, wool and silk and wool

Thurringer - Garbutt Co.

430 State Street

Talk over old
Times while you
eat at

FRANK'S RESTAURANT

821 University Ave.

Headquarters for Homecomers

*Welcome to the Grads
from an old friend*

Always at Your Service

*Tell Your Friends You
Know Us*

**Commercial National
Bank**

READ CARDINAL ADS READ CARDINAL ADS

MACINTOSH SAYS FROSH BASKETBALL SQUAD LOOKS GOOD

"The prospects for the freshman basketball team look very bright," said Clarence McIntosh yesterday afternoon. "Mac" is in charge of the 65 yearling who are competing for places on the squad.

40 men on the freshman squad through the season. The men out represent all parts of the state and

country. A. D. Sporer is from Iowa, Leavitt is from Sioux Falls, S. D., F. W. Johnson is from Rockford, Ill., Kistner from Elkhart, Ind., Edgell from Leavenworth, Kan., Keyes from Richmond, Ind., Jacobson from Appleton, W. J. and C. D. Morrison from Columbus, and Stolte from Reedsburg.

Some of the other men who are out are: Feuchtwanger, H. Taylor, E. Hicks, Herts, Van Tassel, Bailey, W. C. Krueger, R. Ballou, Stephenson, B. Smith, Prunuske, R. Newman, F. Meyer, Landkanner,

Page, Fabera, Urbanke, Foxon, Willev. E. Rundell, C. McCormick, H. Meyers, H. Harris, Royer, Henning, L. Foster, Hotchkiss, Mabry, A. Wolf, Hager, K. Ray, Hipke, C. Robert, R. Porter, Davis, Memke, Brack-

ett, C. C. Rowland, R. J. Newman, A. L. Koch, Culbertson, H. Peck, K. Mainland, F. McCord, Atkinson, E. R. Evans, R. M. Evans, Rick, Holberg, Siggelkow, Hough, Stipek, L. L. Kissel, Amstutz, and Dembufsky.

The **W** Cafe

425 State St.

The place where good eats and good service
are always assured

TOM LAKA, Mgr.

Former manager of "Wayside Inn"

Welcome Alumni

Woman's Exchange

113 State Street

IN SINGER STORE

Badger 1215

Eat Chicken

--at--

Quinn's TODAY

712 University Avenue

Wholesome Meals For Your Guests!

We have made special preparations to serve both
and your guests.

University 'Y' Cafeteria

740 Langdon St.

LUDACHKA SISTERS
Managers of

University "Y" Cafeteria and Capital Cafe

Dance Tonight

AT

The Candy Shop

JESS COHAN

AND

ORCHESTRA

Come Early

Welcome, Homecoming Students

We are still serving the excellent
quality of food, at the same old place
—672-74 State Street—which leads
scores to say:

"I've been thinking for a whole year
of the good things I used to get at the
COLLEGE REFECTORY. That's
where I line up!"

Glad we are to see you! Come
again!

Keeley-Neckerman Co.

MADISON'S BIGGEST AND BUSIEST STORE

Charming Evening Gowns

When the orchestra coaxes you out on to the shining rectangle of the dance floor, the assurance that your gown is perfect will enhance your enjoyment of the formal parties to come. New York is the recognized authority for the most chic styles and we have from there Gowns in fucian shades—Cornflower blue with shimmering beaded edges, \$67.50, \$49.50-\$85.00.

The ever popular black velvet and tulle, embroidered, draped with silver trimming, \$79.50.

Soft chiffon in milange and lovely taffeta gowns, all attractively priced.



Hosiery

Wool—We have one of the most attractive lines of hosiery you could find. Wool and silk, \$2.50, \$2.75 and \$4.00.

Silk—a hand embroidered clocked hose of the sheerest silk. Lace hose of the finest quality, at once durable and beautiful, \$3.10, \$3.65 and \$4.75, including tax.

Novelties

A pretty, novel piece of jewelry brightens the dull serge dress and draws attention to the slim lines of the simplest frock. We have an extraordinary line of beads and brooches, necklace of sparkling lustre in every conceivable color. And jeweled combs which enhance the caiffure and draw attention to the dark lustre of milady's hair.

At the Theaters

AT THE GRAND

A thrilling football game is one of the big features of "Two Minutes to Go," starring Charles Ray, who is himself an ex-gladiator of the gridiron. This picture is now showing at the Grand.

Ray has the role of a football hero, Chester Burnett, temporarily fallen into disgrace with his fellow players because of some unknown reason to them, he suddenly quits the team. Financial reverses suffered by his father force Chet to earn his own living. Then comes the day of the big game, when only Chet can save his team from defeat. He jumps into the contest and things begin to happen all around. "Two Minutes to Go," a fascinating and humorous story of college life, provides Ray with just the sort of role best suited to his own peculiar and exceptional talent. It will be shown today only.

AT THE STRAND

Sydney Ainsworth, House Peters, and Irene Rich are now playing at the Strand Theatre in "The Invisible Power." It is an engrossing story of the underworld. Although the characters belong to the submerged tenth, the story deals entirely with the efforts of a reformed convict to lead an honest life. The fact that he has once been in jail, makes him a marked man for the secret police; and his attempts at reform meet with strange handicaps.

A Hal Roach comedy will also be shown.

AT THE ORPHEUM

Homecoming visitors and local

theatre goers are assured a treat in the line of vaudeville at the Orpheum today and tomorrow, for one of the best balanced six act bills is the offering. A variety of acts, not one conflicting with the other in style, is headed by the well played and swiftly moving playlet, "Now What," starring Wilfred Clarke, assisted by Grace Menken and company. Zuhn and Dreis, in a cross-fire conversation act, proves a scream and Emma Francis and Harold Hennedy, offering laughs, songs and dances hold up their position on the bill nicely. A cycle of thrills and smiles are provided by Jack and Jessie Gibson and Rodero and Marconi, with their violin and accordion prove a musical treat. The show opens with Pathe News and Aesop's Fables reels, followed by Juggling De Lisle, offering a new assortment of stunts. There will be matinee performances today and tomorrow, with two shows nightly at 7:15 and 9 o'clock.

"DAD" WOLF TO TALK ON GERMAN POLITICS

At the weekly meeting of the Badger club next Sunday evening, F. E. Wolf, secretary of the Y. M. C. A. will speak on the political situation in Germany. This talk will be a sequel to his address of two weeks ago in which he outlined the religious tendencies of Germany since the war. The title of his talk is "Imperialism, Bolshevism, or Republicanism; Which Will Win Out in Germany?"

"Dad" Wolf has made personal investigation this summer while in Germany. He had conference with many prominent politicians and did considerable research among the laborers.

"Doc" Dorward will furnish the music for the evening.

READ CARDINAL ADS

'Two Minutes To Go'

A Rousing Football Picture with Twelve of America's Greatest Players Smashing Through It.

Charles Ray's

LATEST PICTURE

Grand

Showing Last Times Today

Continuous From 2:00 to 11:00 P. M.

ADULTS 22¢
CHILDREN 10¢
PLUS GOV'T
TAX

NEVER CHANGING PRICES
STRAND
MADISON'S PHOTOPLAY THEATRE BUILDING

AFTERNOON
2 TO 5
EVENING
7 TO 11

LAST TIMES TODAY

"The Invisible Power"

With Sidney Ainsworth, House Peters, and Irene Rich

Also Showing
HAL ROACH COMEDY

Starting Sunday

ETHEL CLAYTON
in
"THE PRICE OF
POSSESSION"

HAROLD LLOYD
In a 3 Reel Comedy
"AMONG THOSE
PRESENT"



Special Sale on Roses Saturday and Sunday

Strictly fresh roses in all colors at \$1.00, \$1.50 and \$2.00 per doz., according to varieties and length of stem.

Carnations in all colors 75c per doz.

Large variety of other cut flowers, flowering plants and ferns, priced accordingly.

All guaranteed to be strictly fresh.

Store open daily from 7 a. m. until 8 p. m.
Sundays until noon

Rentschler Floral Company

Store 226 State. Phone Badger 179

Green houses and nursery next to cemeteries.
Phone Badger 3877

Delivery to any part of city

The oldest members of Florists' Telegraph Delivery, giving you service in 2000 cities in the United States and Canada.

The

Madisons Orchestral Association

Presents the

Cincinnati Symphony Orchestra

EUGENE YSAYE, Conductor

University Armory Next Tuesday
MAIL ORDERS NOW

Reserved Seats \$2.00, \$1.00—Students \$1.50

Open sale of seats now at Albert E. Smith's Music Store

Society News

Guests at the various houses who are here for Homecoming are as follows:

Alpha Delta Phi—Lud North, Bert Lund, Carlton Ferry, Milwaukee; Wallie Weller, Fond du Lac; Hobart Olson, Louis Smith, Jack Taylor, Benoit Bull, Skitch Bryan, Ward Erwin, Chicago; Lewis Castle, Duluth; Jimmy Yuill, Cedar Rapids, Iowa; Hobart Edmonds, Wausau; John Barrett, Freeport; Harold Bickel, Jack Ramsey, Racine; Frank Kurtz, Minneapolis. Bob Alton, Leo Burns, L. K. Wilson, and Pete Johnson are also guests at the Alpha Delta house.

Alpha Tau Omega—James Woodward, George Householder, Arthur Cushing, Daniel Steele, Kenneth Erickson, Chicago; Trayton Davis, Clarence Rice, Shephard Bartlett, Arthur Kutz, John McKinney, Walter Berger, Weary Comlin, Milwaukee; N. E. Faber, William Blow, Waupun; W. W. Crane, Chippewa Falls; Lyman Beeman, Neenah; James S. Rundell, Manitowoc; John Thompson, Centerville, S. D.; Don Fielder, Platteville; Lincoln Nep-rud, Westby; J. E. Baker, Peking, China.

Delta Sigma Phi—Lloyd L. Wilder, Harry Clark, Norman Holt, Chicago; J. Melvin Dewey, Milwaukee; Robert McCoy, Arthur Douglas, Sparta.

Theta Delta Chi—George Mead, Thede Brazeau, I. P. Witte, Wisconsin Rapids; Ray Colenfine, Louis Carlson, C. J. Otjen, Hallet Rhomé, Richard Charlton, Victor Kedish, Glen Vaughn, William Nevin, Arthur Sprinkman, Arthur Colentine, Milwaukee; John Gregg, Mason City, Iowa; Francis T. Bud, Chicago; Malcomb Mitchell, Beloit.

Phi Kappa Sigma—Loring Hammond, Ralph Hammond, Eddie Paul, Harry Shaw, Bill Howe, Ray Turner, Jack Clayton, C. H. Ray, Arthur Hallam, F. L. Drew, George Hauerstick, Carl Prange, L. C. Knollin, Carl Hyssen, Ray Hawkins, Jack Hendee, Robert Glenn, Milwaukee.

Phi Beta Pi—Drs. Hugh Caldwell, L. W. Peterson, A. M. Hansen, J. Morris, Chicago; A. Chipman, Boston; B. I. Pippin, Ben Brown, Excelsior, Wis.; L. J. Hannon, Hartford, S. D.; C. L. White, Mineral Point; J. W. Walters, La Crosse; H. Marsch, New York city; S. J. Bartholin, Minneapolis; A. R. Lan-ajahr, J. B. Hawkins, Milwaukee.

Lambda Chi Alpha—Charles Bennett, Minneapolis; Loren Bennett, Milwaukee; Newton Bowers, Minneapolis; John Oberly, Milwaukee; Bert Puerner, Milwaukee; Howard Stein, Milwaukee; Arthur Bettendorf, Chicago; Charles Hughes, Pardeeville; Forest Riek, Rhineland, and Joseph Heil, Milwaukee.

Phi Kappa Psi—Lyman Mather, Leroy Yerly, Armand Schiller, John Stuart, Frank MacNamara, Walker Perkins, Bernie Palmer, Fred Smith, Tom Hughes, Paul Kelly, Jay C. Owens, C. D. Ingersoll, Francis Lang, Pat Morris, F. L. Pillsbury, Norman Bradish, Hiller Boutin, Judge Luse, Frederick Carpenter.

Delta Kappa Epsilon—Warren Clark, J. L. Wright, John Greene, Harold Collins, Roland Boswell, R. J. Friedman, Clem Coleman, Willard Duncan, George Van Hagen, Irving Seidel, Tracy C. Drake, William Flogans, Caeol Evert, Donald Murdock, Horace Johnson, Portwood Blair, Anthony Zulphur, Frank Borwell, Sherman Watkins, Gerald Wroe, Ralph Hanners, Roger Peterson, William M. Stewart, Daniel Murphy, Charles Paine, Charles Hook, Mr. Blackburn, Mr. Llewellyn.

Chi Psi—Cyrus Philips '20, Robert Fitzgerald '19, Thomas Furlong '23, Lex Harsh '23, C. W. Finnerud '16, Paul E. Behrens '16, Louis Bunde '16, Murray McGowan '16, S. A. Brant Jr '16, C. L. Keator '07, H. F. Helmholtz '02, Frank Riley '08, H. G. Niederman '06, Harold

W. Mead '17, W. C. Kimball '07, Earl Anderson '19, Chester Munson '08, Stan Wanzer '18, T. B. Caldwell '20, E. B. Belden '86, D. L. Herrick '19, Sanford P. Drake '19, J. E. Belden '17, "Ducky" Wadsworth '17, L. M. Hanks and Jack Farrand.

Phi Delta Theta—Frank A. Frey, Milwaukee; Victor Sweeny, Edgerton; Jack Harding, Indianapolis; Earle W. Hardy, Waukesha; John M. Paddock, Milwaukee; George Geiger, Milwaukee; John P. Gesser, Milwaukee; Theodore Hannon, Chicago; Earl Carpenter, Superior; E. Leonard Moran, Superior; Byron S. Reid, Riverside, Ill.; Louis J. Hayes, Janesville; William McFadden, Fargo, N. D.; Lawrence B. Chapman, Great Bent, Kas.; Louis J. Pratt, Wausau; Arthur G. Wake-man, Oshkosh; Ralph R. Hartley, Oshkosh; Paul Briggs, St. Paul; George Appleyard, Minneapolis; Everett L. Grubb, Indianapolis; James K. Hevener, St. Paul; James Monahan, Milwaukee; Edmund S. Gillette, Aurora, Ill.; Robert McIntosh, Edgerton; Dean A. Buckmaster, Kenosha; Richard J. White, Oshkosh; Dan M. Spohn, Goshen, Ind.; Emmet Horan Jr., Milwaukee; Addison Hayes, St. Louis; Byron Webster, St. Paul; Lee T. Pond, Eau Claire.

Acacia—C. Saecker '18, Appleton; T. Ayton '21, Kenosha; L. Meyer '20, Neenah; G. Marshall '21, Belvidere; Glen Smith '09, Chicago; Everett Carpenter '20, Milwaukee; E. Johnson and wife '13, White-water; L. R. Morris '14, Chicago; Wm. Arvold and wife '16, Reedsburg; L. L. Stoddard '13, Mason City, Iowa; Spence Pease '86, Milwaukee; C. F. Rassmussen '21, Park Falls; Stewart Reid '15, Oconomowoc; G. W. Lyeon and wife '15, Plymouth; H. Kuechen-meister and wife '13, Milwaukee; P. O. Nyhus '18, Appleton; C. Holman '18, Chicago; F. V. Birch and wife '18, Milwaukee; G. Frazer and wife '12, Chicago; F. Florine '19, Cuba City; W. Johnson '18, Amhurst, Panama; Ralph Dunwiddie and wife '15, Delavan; W. Dunwiddie and wife '16, Fox Lake; Carl Young and wife '17, Green Bay; Gux Sell and wife '16, Oshkosh; C. A. Nesbitt '15, Miami, Okla.; H. Steiner '11, Stevens Point; W. Blair and wife '15, Waukesha; James Miller '20, Round Lake, Ill.; M. Sjoblom '13, Chicago; J. Wilson '19, Oshkosh; R. F. Taylor '19, Chicago.

Other out of town guests are Joe Baker and Leonard Kinsell of the Minnesota chapter.

Sigma Alpha Epsilon—Roy Burmeister, Gratiot; Arthur Leming

and C. A. Ledum, Milwaukee; W. L. Davis and C. M. Maurer, Madison; Fred Coffey, Chicago; George Blanchard, Edgerton; Dave Wirt, Oconomowoc; J. W. Walters, Fond du Lac; R. A. Hamilton, Omar T. McMahon and T. R. Scott, Milwaukee; Walter Craig, Janesville; Jack Wall, Robert Lynde and Merton McNamara, Antigo; Cully Haddorf, Rockford, Ill.; Torrey Beck, Racine; Bill Camlin, Rockford, Ill.; Lorrey Hume, Green Bay; Jack Schworf, Minneapolis; Hank and Orto Keyes, and Paul Gillin, Milwaukee; Carson F. Lyman, Lake Geneva.

Kappa Sigma—J. D. Peterson, J. E. McNeill, M. A. Breidster, R. A. Frank, E. R. Jacobs, J. W. Reichert, E. J. Falk, M. E. Bellis, A. B. Peterson, W. E. Holtz, C. S. Mercein, D. J. Godfrey, G. L. Jacobus, Elmer McBride, A. R. Tooman, J. J. Weiss, R. S. Crowl, R. E. Brennan, B. A. Solbraa, V. H. Jones, R. W. Beach, R. M. Paddock, I. N. Lovejoy, J. L. Fisher, R. L. Poppert, H. B. Hoag, I. P. Schauss, H. W. Brightman, J. F. McManus Jr., R. B. Roehr, J. F. Mungavin, S. G. Higgins, L. L. Harper, C. O. Hinricks, J. F. Bachelder, E. J. Vanderboom, G. S. Sverhart, C. F. Rohn, A. Farrell, Kendall Layden, A. E. Stocker, F. W. Fisher, P. D. McBride.

Sigma Phi Epsilon—Whitney H. Eastman, grand vice-president of the fraternity; Wm. J. C. Babcock, Rennsellaer, Ind.; P. E. Kircher, Sheboygan; Robert Morse, Rockford, Ill.; L. T. Roehm, Ashland; A. L. Feddersen, Racine; R. C. Drake, Burlington, Iowa; H. C. Scribner, Stevens Point; H. C. Dallwig, W. John, H. G. Abendorth, W. McCrory, J. Messmer, R. Wiethaup, H. L. Lindemann, G. W. Schroeder, G. J. O'Hanlon, I. P. Schulz, I. R. Witthuhn, and Ed. Boeck, Milwaukee; F. H. Hiestand and J. R. Hiestand, Lancaster; H. Sponholz, Los Angeles, Cal.; L. E. Dickelman, Fresno, Cal.; Paul Kurtz, Chicago; Berger Hagen, Stoughton; E. L. Vanderjagt, Milwaukee; Glenn Taylor, Norfolk, Va.; Walter R. Dally, Milwaukee.

Beta Theta Pi—Edwin H. Ahard '92, Halsey F. Owens '20, J. Dudley Young '20, Garvin W. Young '20, Charles Reed '13, Edward Pur-tell '24, Harry Cornish '20, Jack Brindley '22, Charles F. Burgess '93, William A. Walker '01, Paul R. McKee '05, O. T. Waite '97, Robert K. Coe '02, Charles Manson '22, Lyle B. Wilcox '17, Paul A. Schuette '03, Glen Gifford '21, John Quimby '20, Russell O. Ferguson '21, Seymour Boardman '21, Don R. Mihills '09, George L. Gilkey '05, Frank L. Meyer '11, Dudley Smith '20, John W. Faville '04, Sam Rogers '20, Robert McMasters '20, G. Brittan McKinley '19, Paul Stover '01, Andrews Allen '91, Steward McKinnon '21, Clyde Nash '21, N. Kirk Avery '21, Paul Tratt '00.

Alpha Phi—Elsa Wilmanns, Gert

rude Williams Wolleger, Dorothy Williams Hoff, Clara Neucomb, Violet Stevenson, Helen Jamison, Stella Geiber, Marporie Beech, Esther Mansfield, "Winkie" Hall, Dorothy Ritchie and Margaret Neal.

Alpha Delta Pi—Mrs. Henry Metz, Chicago; Mrs. Charles Brimmer, Wausau; Mrs. Juneau, Milwaukee; Mrs. Hamilton, White-water; Florence Owen, Wausau; Beth Stanley, Wausau; Leona Ruder, Wausau; Eulalia Emanuel, Chetek; Ruth Saecker, Appleton; Helen Delbridge, Marinette; Hazel Schuette, Wallace, Mich.; eVra Tyler, Ironwood, Mich.; Marie Jorsch, Mellen; Esther Graef, Appleton.

Pi Beta Phi—Olive Peterson Beardsley, Ethel Meshinger, Mildred Puckett, Emily Kimball, Katherine Schultz, Mildred Cousins Ewald, Gretchen Schweitzer, and Katherine Burr.

Alpha Chi Omega—Nesta Densmore, Irma Atkins, Adeline Burtling, Ella Boyce, and Ruth Haring Jacobus.

Alpha Omicron Pi—Dorothy Deitz, Chicago; Margaret Hines, Keil; Hildegard Wippermean, Shawano; Marie Mitchell, Milwaukee; Agnes Gilbertson, Stoughton; Ruth Tufts, Eau Claire; Mildred Johnson, Madison.

Phi Mu—Mrs. B. Coleman; Edna Gopen, Menomonie; Laura May Conell, Fond du Lac; Nell Larsen, and Iva McDonald, Milwaukee; Esther Krebs, Evansville; Marjory Huber, Stockton, Ill.; Marie Bodden, Chicago; Zelda Gopen, Orangeville; Gran Jones, Kewanee; Beatrice Siegel, Milwaukee; Marjorie Stetson, Edgerton, and Vivian Rhodes, Reedsburg.

Sigma Kappa—Esther Irish, Esther Malmin, Esther Schutz, Mildred Tollefson, Gladys Robinson, Marjorie Kennicot, Isabel Hill, all former students here; Louise Johnson, Milwaukee; Margaret Wiegand and Adine Kirschten, Chicago, and three Sigma Kappas from the Minnesota chapter.

Alpha Gamma Delta—Julia Olsen '21, Monmouth, Ill.; Edith Dopp '21, Davenport, Iowa; Hazel Kellogg '20, Marshalltown, Iowa; Esther Northep '20, Marshalltown, Iowa; Dorothy James, Oshkosh; Penn Shelton '18, Chicago; Aletha Hartung '20, Chicago; Grace Bray '19, Delavan; Lola Barnes '20, Garry; Helen Hauk '21, Marshfield; Helen Perkins '20, Oak Park; Florence Stacy, Ames, Iowa; Mr. and Mrs. Winkelman, H. Johnson, Omaha, Neb.; Mrs. Nelson, Oshkosh, and Mrs. Ehlart, Hillsboro.

Kappa Alpha Theta—Marjorie Storck '21, Mary Tillotson '21, Dorothy Schaper '21, Esther Graham '21, Daphne Conover '21, Gladys Buschner Nelson.

Listen Girls!

Shampoo and Marcel \$1.50

We do permanent waving, the oil process, instead of a kink wave. Our experience in this line is four years, so have curly hair.

Comfort Shop

Tel. F. 421.

210 Wisconsin Life Bldg.

Alexander Kornhauser

• C o m p a n y •

Off for the Game!



The Home Coming Game, it is almost here! It is sure to be a thrilling game, enthusiasm will run high—but look to your bodily comfort now—the joy of the contest will be intensified if you are warmly dressed. Dash and individuality are reflected in our sports apparel and accessories. Visit this store tomorrow and Saturday in preparation for the big sports event of the season.

Chappie Coats

For Sport Wear

Practical coats for sportswomen, warm comfortable and good looking. Some are lined with chamois other with chamois cloth, plain and trimmed with Australian opossum, raccoon and wombat. Sizes 16 to 44. Reasonably priced at

\$25.00 to \$52.50

Wool Skirts

\$10.75 and up

The seasons most favored styles are included at remarkably low prices. In the assortment are plaids, stripes, checks and plain colors.

Smart Sport Coats

For Women and Misses

Here are great coats for sport wear; for motoring; for street wear. Better quality than you have seen in women's coats before; fine all wool fabrics; superb tailoring. Prices lower than you would expect.

Hart Schaffner & Marx
Coats \$59.50 to \$135

Knickerbocker Suits

For Women and Misses

To know that one is correctly dressed for the game adds much to the enjoyment. For sports wear generally—for golf, for hiking, or an interested spectator on the sidelines, the knicker suit is a practical costume.

Knicker suits are here in two and three piece styles, of fine tweeds and manish serges. Prices are decidedly reasonable at

\$32.50 to \$100.00

Separate knickers

\$10.50 to \$25.00



A Warm Sweater

To Wear Under the Coat

A sweater supplies the extra wrap needed many times to assure complete comfort.

Here are all wool slip-over sweaters, plain and fancy knit, some with belts and pockets, many with Peter Pan collars. Colors are cardinal, henna, navy, brown, buff and black. Price \$4.50 to \$13.75.

Sport Jockets of heavy jersey, tuxedo model, \$8.50 to \$11.75.

Wool Scarfs

Luxurious Angora and plain knit scarfs in plain colors and combinations. \$2.50 to \$12.50.

Snuggle close to a warm Robe or Indian Blanket for thorough enjoyment of the game.

One can laugh at chilly October winds in the cozy embrace of a huge wool motor robe or Indian blanket—and one wants to be comfortable at the game. Besides there are many motor robes to be had, and innumerable times at home when a handsome robe or blanket serves as a useful, good looking couch cover. Choose here tomorrow.

Wool Motor Indian Robes Blankets

In Scotch plaid effects are decidedly attractive and pleasantly comfortable. They are to be had in sizes from 54 x 76 to 66x84 in many colors, at \$12.50.

Make one warm just to see them, the colors are so bright and cheerful. The designs are characteristically "Indian". Choose from a large assortment of these blankets at \$8.50, \$11.95 to \$22.50.

Wool Hose

Women's fine quality, full fashioned, silk and wool mixed hose, plain or ribbed, with double soles. Colors are brown and grey heather shades. Minor imperfections in manufacture bring the \$2.50 grade here at \$1.75. Plain and novelty wool hose in brown, grey and navy, pair \$1.00.

Warm Gloves

There is more than good looks in these gloves and gauntlets, they are mighty warm. Big, comfortable wool gauntlets in green, heather, buff and grey are low priced at \$1.25 to \$2.50. Mocha gloves with heavy fleece lining a pair \$2.25.

Friday and Saturday Only

An Extraordinary Home Coming Sale of



New Millinery

\$6.95

Dozens of New Modes in a Big Special Purchase, Values to \$12.50

Hats of such charm and distinction will meet with the instant approval of all who see them. Delightful styles in all the popular shapes and colors. A special purchase which is just in time to go on sale for **\$6.95** in this Home Coming Event. Values to \$12.50, low price at—

A compelling display of sport hats of stripped or plain felt, velvet and duvety from

\$2.75 to \$15.00

Many Smart Dresses

at \$11.50, \$15.00 up to \$27.50

A Saving of About 1-3

Daytime dresses of every sort are to be had in the very latest styles and colors. Several of our foremost manufacturers made special price concessions which we are passing on to our customers. Select from these silk and wool dresses.

Values to \$18.50 at ..	\$11.50	Values to \$29.50 at ..	\$19.75
Values to \$27.50 at ..	\$15.00	Values to \$39.50 at ..	\$25.00
Values to \$25.00 at ..	\$17.50	Values to \$52.50 at ..	\$27.50

BIG MEETINGS OPEN PROGRAM

(Continued from Page 3)

unable to crowd into the gymnasium, Walter Alexander '97, presided, and introduced the speakers as they were relayed from the big meeting.

Stacked more than 50 feet high, boxes and crates formed one of the biggest bonfires ever seen at Homecoming. At the top of the pile the figure of a Gopher stood until the licking flames consumed it, while an excited crowd filled every available space on the lower campus and in the vicinity of State and Langdon streets.

Feature Carnival

Long before the bonfire began to die the gymnasium was filled with a capacity crowd awaiting the Homecoming Feature carnival. The doors were forcibly closed while a large crowd still remained about the entrance.

A wrestling match, in which Ivan "Cy" Peterman, varsity wrestler, and Dave O. Farrand, captain of last year's freshman team, fought to a draw, opened the program. Edward Bourgett, wrestling instructor, refereed.

Haresfoot dramatic society presented "My Mexican Musketeers," with Mord Bogie carrying the lead, and Hobart Price, George Bartlett, Everett Yerley, and Huston Schae, were the musketeers. Samuel Becker coached the cast.

Ballads were sung by Kenneth Damon, an impersonation by Hanque Ringold, and songs by the "Rusty Hinge" quartet were features of the carnival drawing prolonged applause. Edwin Booth staged a melodramatic farce of "The Shooting of Dan McGraw."

A plea for the Memorial Union building was given by Scott H. Goodnight, dean of men, "All of us must have a part in it," he said.

Gymnastics closed the program. The varsity gym crew, coached by Fred E. Schlatter, kept the audience till the close of the show. The following men performed: Frank Furosch, Elmer Kletzien, Frank Bumer, Walter Porth, Norman Koch, Leslie Tache, and William Hamman.

MICHIGAN SEAT SALE NOW OPEN

Applications for tickets to the Michigan game next Saturday can be obtained at the gymnasium today. Applications which are in today will be given seats on the 50-yard line, according to Robert Quick, ticket sales manager.

NO UNION BOARD DANCE SATURDAY

The regular Union board student dance at Lathrop hall parlors will not be held on Saturday because of the Homecoming ball.

The Friday dance will, however, take place as usual, with Thompson's orchestra.

MENORAH ALUMNI BANQUET TONIGHT

After the Wisconsin-Minnesota game this afternoon the Menorah alumni and guests will be entertained at the annual Menorah Homecoming banquet in the Badger room at 6:00 o'clock.

About 200 members, alumni, and guests have already made reservations for the banquet which will be followed by a Halloween dance at Wheeler hall.

COUNTRY MEN MEET GOPHERS THIS MORNING

(Continued from Page 7)

1919 team, is expected to trail Wall and Finkle closely at the finish.

There is some doubt as to which of Coach Burke's star runners, Wall and Finkle, is the better man. Finkle is running for his first season with the hill and dale squad, but in all of the time trials has tied with the captain. After their yesterday's rest, the men are all in excellent condition, and will put up the fight of their lives against the Gophers.

Coach Frank, of Minnesota, arrived in Madison with his men yesterday morning and is staying at the Park hotel. They were taken over the course in automobiles yesterday afternoon.

It is reported that Sweitzer, Minnesota's best man, has been slightly sick for the past few days, and although he will be on hand for the race this morning, it is doubtful whether he will be able to offer Wall and Finkle the opposition which was expected of him.

In the time trial which the second Varsity squad held yesterday afternoon, Heriman finished first in 28 min. 41 sec. He was closely followed by Kover, whose time was 29 flat, Sommer, 29:10, Suzuki, 29:31, and Chase, 29:59. It is from these men that Coach Burke will choose the seventh man for the team which goes to Chicago next Saturday.

BOGUS TICKETS ARE CIRCULATED

(Continued from Page 3)

er of this ticket enter Gate 3 from Breese Terrace." This labels the ticket as illegal, since all tickets for Section E instruct holders to enter Gate 2.

These five tickets discovered are believed by the Athletic department to be only part of a large number printed and sold. Seats in other sections were probably run off at the same time, in the opinion of the department, and men will be stationed at each of the 16 entering aisles at the game today to inspect every ticket issued. Police in uniform will be with these inspectors, and every effort will be made to protect the rightful owners of the seats from those who have picked up bogus tickets at scalper's rates.

The person putting these tickets up for sale has not been located, and the Athletic department has found no indication of what printing office these tickets have come from. Every purchaser of tickets

from the box office in the gymnasium has been registered with the location of his seats, and the Athletic department can easily ascertain the rightful holder of coupons.

Try This Dollar Dinner Tomorrow Night

Soup	Olives
Celery	Choice of
Roast Beef with Brown Gravy	Baked Ham with Cider Sauce
Veal Birds with Bacon	Creamed Chicken with Mushrooms
Jones Sausage	Mashed or Maitre de Hotel Potatoes
Sweet Potatoes with Apples	Choice of
Buttered Peas	Creamed Corn
Choice of	Head Lettuce Salad with Thousand Island Dressing
Waldorf Salad	Tomato and Cucumber Salad
Choice of	Fruit Jello with Whipped Cream
Apple, Loganberry and Custard Pie	Apricot Whip
Chocolate Bars	Chocolate or Caramel Cake
Vanilla and Pineapple Ice Cream	Wheat, bran or Graham Bread, Rolls
Tea, Coffee, Cocoa, Milk or Mutttermilk	

CAPITAL CAFE

UNDER THE DOME

Management, The Misses Ludachka	
Regular Luncheons	40c and 65c
Regular Dinners	65c and \$1.00
Special Homecoming Hours Saturday	
11:00 to 1:30—5:00 to 7:00	

The management requests that the patrons refrain from tipping

TRY OUR DOLLAR DINNER TOMORROW

Official Notice

THANKSGIVING DAY RECESS November 24, 1921

In accordance with law and custom all university exercises will be suspended on Thanksgiving Day, November 24, 1921.

Under the rules of the University any student who shall be absent, without the written excuse of the dean of his college, from the last regular class, quiz, laboratory, or conference exercise in each study preceding Thanksgiving Day and similarly from the first regular exercise in each study after Thanksgiving Day, will not be admitted to the examination at the close of the semester in the study or studies involved.

The above regulations apply to undergraduates in all colleges and schools and to graduates enrolled in undergraduate classes.

W. D. HIESTAND,
Registrar.

October 25, 1921.

Shake hands with the Old Grads
and your friends at the

NEW LAWRENCE CAFETERIA
AND LUNCH ROOM

Still doing business at the old
stand

622 State St.

R. E. LAWRENCE, Prop.

Combined Band of 128 Pieces To Put Pep into Throng Today

A total of 128 pieces combining the First and Second Regimental bands of the university will furnish Wisconsin's share of the music at the game today. This with the visiting Minnesota band of 50 pieces should serve as sufficient music, no matter how large the crowd.

"Good music on the field seems to help foster clean sportsmanship. The goodfellowship of the consolidated bands at the game at Urbana certainly had a remarkable effect on the audience and brought favorable comment from 'The Daily Illini,' said Major E. W. Murphy, conductor of the bands.

Bands Developing

In explaining the development of the bands, Mr. Murphy went on to say:

"College bands are developing rapidly these days, but not every institution is so favored as Wisconsin in having two bands equally complete in their instrumentation to meet present day requirements.

"Bringing musicians from all quarters of the globe and moulding them into an organization capable of performing high grade music in perfect time, tune, and satisfactory ensemble is no small task.

"Only a month ago many of the players in our Wisconsin band were not even acquainted with each other, but by careful drilling and the proper kind of discipline and organization these men are now capable of producing a grade of work that is highly satisfactory."

Many Try Out

Players are selected by 30 minute try-outs, and about 70 men try out every year.

"In filling out the instrumentation it is necessary to change players from their favorite instruments to others. This means much instruction on the part of the director and patience, on the part of the players," Mr. Murphy explained further.

"It is certainly a great educational privilege when a person can attend an institution, secure a liberal education, and at the same time have an

opportunity to practice music of a type only presented by the best professional bands."

Gives Concerts

The band is not only for purposes of football games and celebrations. It also aims to spread the "gospel of better music more artistically performed."

In its repertoire are such composers as Wagner, Tschaikowsky, Leoncavallo, and Dvorak. At musical programs during the winter it renders classics like Wagner's Prelude from the Third Act of "Lohengrin," or Mozart's Overture to the Opera "The Magic Flute."

"That band gives me a line on what has made the University of Wisconsin so famous. Any educational institution that can take the raw material and develop it into the finished product such as this band, is truly great; and if the band was its only product, it would have justified every cent the university has cost the state," was the remark of a well known citizen at one of the concerts.

The present uniform of blue with white trimmings, and the brass lyre and "UW" insignia for collar ornaments has been the official uniform many years.

Organized in 1887

The first university band was organized in 1887 and contained only 12 members. Growth was slow at the beginning but after the first few years, development was assured, for the number increased annually.

Having two bands was not started until 1914. Then the Second regiment band was formed. Since then the first band has been called the University of Wisconsin First Regimental band. This is the band that gives the concerts.

At our Homecoming game in 1915 there was a collapse of a section of the bleachers between halves. The game was with Minnesota. "Cub" Buck, All-American tackle, was captain of the Wisconsin team this year.

"PAT" O'DEA'S KICK

Way back in 1899 the greatest football play ever known was pulled off by "Pat" O'Dea, the kangaroo kicker. The score was tied in the second half. On a dead run O'Dea started to the side lines with the ball, turned towards the stands and still on the run, made a drop kick. The ball traveled straight down the side lines for nearly two thirds the distance. At this point it turned, neatly went over the goal posts and over the fence to the railroad tracks beyond the Minnesota field. Four other drops won the game by a score of 19-0.

In 1894 "Ikey" Karel, Wisconsin halfback, made the only touchdown

of the game. In a later campaign for governor of Wisconsin the slogan was used "Give the ball to 'Ikey' Karel for another touchdown." Prior to 1894 Minnesota had beaten Wisconsin four consecutive games.

Wisconsin spilled the dope in 1908 when all the papers had given Minnesota the victory before the game was played. Doctor Williams' aggregation was defeated 5 to 0. This was way back when touchdowns counted five points. The game was played at Minneapolis.

Up to date Minnesota has 475 points to her credit against Wisconsin's 240.

Alumni and Students

Meet your classmates and dance to

Thompson's Orchestra

at

Thompson's Hall

Tonight

Featuring Gene Casserly

TONIGHT

Homecoming

"The Autumn Prom"

for Alumni and Students

Lathrop Hall

8:30 P. M.

Willard Sumner with Thompson's 10-Piece Orchestra

Featuring--"Doc" Dorward

Tickets \$2.00

On Sale at Mongan's, The Park Hotel and The University Pharmacy

TONIGHT

Ball

WELCOME—STRANGER



Burdick & Murray Co.



“On Wisconsin”



Keep Warm at the
Game—Ladies

For Saturday

Warm Fur Trimmed Coats

Carefully selected, smooth surfaced furs of darker hue are richly contrasted with curly furs in lighter tones, giving coats of youthfulness and ultra smartness. These coats are wonderful values for their furs alone. \$35.00 and up.

FUR TRIMMED SUITS

Loose but smart, the straight line front, the finger tip jacket, the profusion for fur, the neat fit at the hip—in the much favored materials of moosyne, yalama and tricotine, at 25% discount.

FUR TRIMMED GLOVES

Kid gauntlet, novel and new, finest quality, at \$7.50 pair.

WOOL GAUNTLETS GLOVES

In new fall shades and styles, at \$1.75 pair.

WOOL HOSE

“Luxite” wool hose, in fashionable winter shades, \$1.75.

SILK AND WOOL HOSE

Novel new winter shades to select from at \$2.50 pair.

WOOL DRESSES

1 Lot Special \$24.95 canton crepes, tricotines, satins and crepe de chine, and combinations, beautifully trimmed.

1 Lot Special \$13.75 tricotines and jersey sport dresses, very special values at this price.

VAN RAALTE HOSE

Answering every question of fashion. Finest quality glove silk, wide variety of shades and styles, at \$4.00.

Finest quality thread silk, full fashioned, at \$2.49.

WOOL SWEATERS

In new winter styles, at \$5.00 and up.

INDIAN BLANKETS

Ideal to take to the game with you, warm and durable, in beautiful Indian patterns, also used for couch covers, at \$8.50.

The Burdick & Murray Co.
Extends the “Glad Hand” to All
Homecoming Students, Students and Friends
COME IN