



# **The daily cardinal. Vol. LXXXIII, No. 51**

## **November 1, 1972**

Madison, Wisconsin: University of Wisconsin, [s.d.]

<https://digital.library.wisc.edu/1711.dl/YSX6ORO7MD6K38E>

The libraries provide public access to a wide range of material, including online exhibits, digitized collections, archival finding aids, our catalog, online articles, and a growing range of materials in many media.

When possible, we provide rights information in catalog records, finding aids, and other metadata that accompanies collections or items. However, it is always the user's obligation to evaluate copyright and rights issues in light of their own use.



## Math research in the 70's

# Selection of new MRC head is near

First of a two part series.

BY DAN SCHWARTZ  
and ROGER OLSON  
of the Cardinal Staff

The selection of a new director to replace J. Barkley Rosser as head of the Math Research Center of the U.S. Army in June has entered its final stages.

Sources close to the Search and Screen Committee which passed on the final recommendations to Madison Chancellor Edwin Young indicate that Victor La Rue Klee, a former president of the Math Association of America, is the top candidate.

The 47 year old mathematics professor from the University of Washington told the Cardinal that he could not comment on the negotiations. "I think I'll have to let them handle it from that end," Klee said when contacted Monday night at his Seattle home. "I've read your coverage of the center, however, and I consider it grossly unbalanced."

THE TWO UNIVERSITY administrators handling final negotiations, Chancellor Young and Letters and Science Dean Stephen Kleene, refused comment on whether the selection had been narrowed down to one person.

"I've learned from experience in these kind of matters," Young told the Cardinal. "It takes time for decisions to be made and you never want to discourage the number two man on the list."

Rosser's mandatory retirement this coming June sparked the creation of a Search and Screen Committee last year. Math professor R. Creighton Buck, the chairman of the committee, said that final list had been reduced from an original group of 150 before it was submitted to the Chancellor.

"We established criteria and worked the

list down," Buck said. "There were very few pressures over the question of the recommended people being Army people or not. The top five candidates were not from this University."

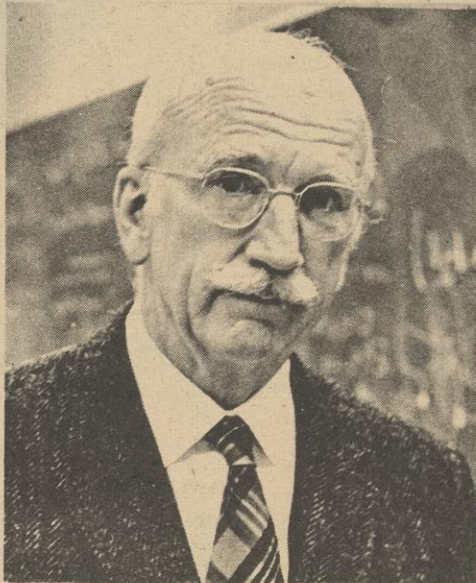
KLEE RECEIVED his doctorate from Virginia in 1949. He worked as a consultant to Boeing Science Research labs from 1963-1969 and also put in a stint with the Rand Corporation in 1966-1969.

According to one member of the Mathematics department who said he knew Klee professionally, "Klee is definitely not the Army man that Rosser is. But he is also extremely sympathetic to the Army's position."

Rosser, a noted military mathematician, guided the Center through a turbulent decade of student protest on the Madison campus. While the million dollar annual grant from the Defense Department has never been severed, University officials have often spoken of extending the funding base of the Center as a means of diversifying its research role.

Charges that the Center was engaged in classified Army research in the late sixties gave rise to a protest movement on campus aimed at cutting off research for the Army and indirectly the war in Vietnam. A series of articles published in the Daily Cardinal on AMRC annual reports, and an SDS co-ordinated protest movement peaked in 1970 with the bombing of the Center at its old location in Sterling Hall. The Center is now located in the WARF building near the Natatorium.

A GENTLE REFORM movement aimed at accelerating the movement away from the Army silently surfaced last semester in two Center related departments, and gave rise to the creation of the Chancellor's Advisory Faculty Committee on the Mathematics Research Center. The movement centered on the threat of denying inter-department appointments to



"Rosser lectured for two hours out of the three hours and no one believed a word he said."

Center researchers.

The history of the committee and the reform movement initiated by faculty in Computer Science and Mathematics is shrouded in silent dealings as is the history of the center itself.

A front page story appearing in the Capital Times on August 28, 1972 quoted Michael Bleicher, chairman of the mathematics department and a nationally known McGovern Democrat as noting that significant concessions had been made by the Center to the Math department.

The article state, "The concessions which amount to a shift in power from the Center to the department, include the elimination of required security clearances, the right of researchers to refuse to become consultants to the Army, and establishment during the summer of a faculty committee to advise the Madison campus chancellor on the Center's operations."

MANY OF THE changes noted (specifically the contract changes) originated from an Ad Hoc committee which had been established the previous year to study the relationship between the Center and the military. Bleicher told the Cardinal "The article perhaps gave the impression that more has been accomplished than actually is the case. The real fight will be played out in the committee and in the selection of the new head of the Center."

Buck, who worked on the original Ad Hoc

Committee, agreed too that the article exaggerated the department's hold on the center. "The Ad Hoc Committee actually gave birth to the idea of an advisory committee. Even on the search screen committee, we felt very little pressure over the question of de-emphasizing Army involvement with the Center. We were simply looking for a competent mathematician."

Chancellor Young notes, "The word military wasn't mentioned once in the entire search and screen selection. What we're looking for is a mathematician with an emphasis on applied mathematics."

EVEN AT THE TIME of the Bleicher interview, the new committee had only had The committee's official statement of purpose was approved by the Chancellor in the middle of October.

It stated in part:

"It is the experience of the University of Wisconsin that departments, centers, institutes, etc. develop best when the faculty of the University take strong and friendly interest in aiding such a development. Accordingly, the creation of an advisory committee to the Mathematics Research Center is consistent with the University's tradition to assure and protect the quality of its programs by positive contributions from the faculty."

Last spring's reform movement was not aimed at cutting off the research link with the Army as was the aim of the student protests of the sixties. Rather, it was an attempt by liberal scientists to force the Center's contract demands closer to those of the rest of the University community.

Bleicher is the first to admit that his forces hardly have a majority on the committee. "We definitely don't control the committee," Bleicher said, "But it's a beginning."

THE DEFINITION of power in the committee is quite clearly delineated in the statement of purpose: "The advisory committee is to be consulted on all permanent appointments to, and major decisions involved in the operation of the Center. Any unresolved differences between the Director and the Advisory Committee will be brought to the Chancellor for decision."

To date there have been no "unresolved differences." While committee meetings have been ordered closed to the press by the Chancellor because of personnel discussions, one committee had this to say: "Rosser lectured for two hours out of the three hours and no one believed a word he said."

Tomorrow: The reforms, the committee and the Center's future.

## Thieu gives conditions for Vietnam settlement

SAIGON (AP) — President Nguyen Van Thieu laid down some tough conditions for a settlement Wednesday and charged that those who claim he is blocking an agreement are using a "despicable" argument.

"I answer them directly," he said in an attack on his critics. "They want to sell the bodies and souls of the 17 1/2 million South Vietnamese to the Communist aggressors. They want to take the only free land of the remaining South to offer it to the Communists on a gold platter on their knees."

Thieu insisted that to make a peace settlement possible the North Vietnamese must withdraw their forces from South Vietnam, honor the ban on infiltration and aggression contained in the 1954 Geneva accords, drop their demand for a "disguised coalition" government in the South and let the Viet Cong and Saigon work out their own political solution.

THIEU'S REBUTTAL to critics, contained in a taped radio address on South Vietnam's national day, did not name his target. But his remarks appeared aimed at advocates and potential members of a neutralist third force that might participate in a political settlement for this war-torn country.


There was no indication Thieu was referring to the United States. His aides repeatedly have said there is no rupture between Saigon and the Nixon administration on the settlement question.

MEANWHILE, U.S. B52 bombers made their heaviest raids in three months over southern part of North Vietnam and eastern Cambodia in efforts to crush a precease-fire supply buildup by the Communist command, field reports said.

About 80 of the Stratofortresses dropped 2,000 tons of bombs on coastal supply routes

south of the North Vietnamese port of Vinh and on enemy base camps in eastern Cambodia opposite South Vietnam's 3rd Military Region. The 3rd Region includes Saigon and 11 surrounding provinces and shares 230 miles of border with Cambodia.

The raids were reported to have been carried out Tuesday and before dawn Wednesday.



## VOTE RIGHT VOTE REPUBLICAN

NOVEMBER 7th ☒

UP NORTH IN West Salem, Wisconsin, the campaign takes on a whole new strategy. Rather than try to fool the folk with the usual campaign rhetoric the Republicans are trying blatant truth.

Cardinal photo by James Korger





## start the season right

*"The days between Thanksgiving and Christmas are probably the best time of the year to Ski Vail—Warm Spring-like days, cold nightly snows building the winter's base."*

### THE BEST EARLY SEASON SKI TRIP AVAILABLE

- Round Trip Air Transportation
- Deluxe Double Rooms in the Village
- Bus from Denver to Vail and Return
- Lift Tickets for Six Days
- Continental Breakfast
- North America's Largest Single Ski Complex

● DEPART SUNDAY, NOV 26  
● TOTAL PRICE \$228

RETURN SATURDAY, DEC 2

### WISCONSIN UNION TRAVEL CENTER

Memorial Union second floor  
Phone 262-6200

*"The Wisconsin Union is a membership organization serving the University community."*

## happenings

#### VOYAGE TO ITALY

Wed-Thurs, November 1-2  
Movie Time Film 78¢  
2,4,7,9, pm Memorial Union Play Circle

#### EASY SOUNDS

Thursday, November 2  
Free folksinging and popcorn  
\$1 pitchers of beer  
8-10:30 pm Union South Red Oak Grill

#### THURSDAY STIFTSKELLER PROGRAM

Thursday, November 2  
Free entertainment with coffee and beer specials  
7:30-10:45 pm Memorial Union Stiftskeller

#### THE REIVERS

Fri-Sun, November 3-5  
Movie Time Film 78¢  
2,4,7,9,11, pm Memorial Union Play Circle

#### LEATHER BOTTLE

Friday, November 3  
This week stop in for ballon sculpturing,  
folktunes and harmonica originals. Coffee and  
punch on sale  
8:30-11:30 pm Union South

#### WEEKLY TGIF

Friday, November 3  
\$1 pitchers of beer  
Union South Red Oak Grill 4 pm - closing  
Memorial Union Stiftskeller

#### BADGER BASH

Saturday, November 4  
Bring your Homecoming party to Union South before and  
after the game. Before the game enjoy brats and beer  
on the Terrace, an Alumni Reception in the Main Lounge  
and the University Marching Band and Pom Pom Squad  
warm-up on the Terrace 45 minutes before kick-off.  
Drop in after the game for a jazz party with Doc  
DeHaven and beer, wine cheese and soda in the  
Carousel Cafeteria  
Union South, one block from Camp Randall

#### UNION SOUTH HOMECOMING NIGHTCLUB

Saturday, November 4  
Bring your Homecoming guests to a special nightclub  
for an evening of entertainment by Roberta Browne and  
a jazz combo. Beer, wine and mixed drinks on sale  
Admission \$1.25 at the door  
9 pm to midnight Union South Carousel Cafeteria

#### BADGER FOOTBALL FILM

Sunday, November 5  
Free highlights of yesterday's game  
7 pm Union South Assembly Hall

#### BEAUX ARTS TRIO CONCERT

Sunday, November 5  
Concert Red Series ticket or individual tickets  
\$4.16, 3.12, 2.60 at Union Box Office  
8 pm Wisconsin Union Theater

#### INDIA INTERNATIONAL DINNER

Sunday, November 5  
Serving Chicken Curry a la carte with  
regular menu  
5-6:30 pm Memorial Union Cafeteria

#### BASIC WHITE EXHIBITION OPENING

Sunday, November 5  
Opening day of the "BASIC WHITE— Prints and  
Porcelain by Greenwald and Hansoen" exhibition.  
On display through November 19  
Memorial Union Main Gallery

#### SIDE STREET

Monday, November 6  
Free Stiftskeller film directed by Anthony Mann  
8 pm Memorial Union Stiftskeller

#### ELECTION NIGHT TV PARTY

Tuesday, November 7  
Watch the returns at the Union! TV in  
Rath and Stiftskeller from 8 pm to midnight  
with free popcorn. Starting at midnight  
the party will move to the Lake/Plaza Rooms  
with free coffee, donuts and rolls.  
Memorial Union

# it's at the union



# Smith's television ad claims differ from Risser's record

By TOM FABER  
of the Cardinal Staff

Betty Smith, the Republican contender for the 26th District State Senate seat, is airing paid political television spots which distort the record of her opponent, State Senator Fred A. Risser, on an important issue, Risser supporters claim.

In the 60-second broadcasts, which have appeared on all three of Madison's commercial television stations, Mrs. Smith addresses herself to the question of state reimbursement to Madison for services which the city provides to state institutions.

"Each year, Madison provides more than \$1.5 million in fire and police protection for the state buildings," the ad says. "A bill was passed to pay you back for these services, but the governor vetoed it and your present state senator (Risser) did nothing."

A CHECK WITH legislative sources revealed that the bill Smith referred to (182-A, Municipal Services Bill) was sponsored by 11 state legislators, including Senator Risser.

Contrary to Smith's charges, Fred Risser immediately objected to the governor's veto of the bill. On July 27, the same day that Lucey's veto was announced Risser issued a statement to the press criticizing Gov. Lucey for "cutting the guts out of the bill."

Gov. Lucey later succumbed to the legislative pressure on the bill mounted by some state legislators under the leadership of Risser,

who is the Senate minority leader.

In a press release dated October 11, the Governor said, "At the request of Sen. Risser... (and other legislators)... a budget provision for repayment of municipalities for services to the state will be made in the coming biennium."

REPUBLICAN CHARGES of inaction apparently stem from a technicality which prevented Risser from actually doing anything legislatively after the Governor's veto. Since the bill originated in the Assembly, it went back there first for reconsideration. When it failed to garner the two-thirds vote

necessary to override the veto, it could not be sent on to the State Senate for further action. Thus, the bill was actually beyond Risser's reach.

Bob Smith, Betty Smith's campaign manager and son, told the Cardinal that "As a member of the Republican majority (in the State Senate) my mother would have had a greater effect on the legislation."

When asked how his mother would have reacted to Lucey's veto, he replied, "She would have made it known to the Governor beforehand how important the bill was."

## Risser gets support from McGovern group

The University Students for McGovern Steering Committee, an independent, non-Democratic Party organization working for the election of George McGovern released a statement today endorsing the incumbent in the 26th State Senate District (which includes the campus).

"We feel that State Senator Fred Risser represents the basic goals and aspirations for Wisconsin that Senator McGovern represents for the United States, including a determined opposition to the Indochinese War, and that his Republican opponent Betty Smith, a staunch supporter of Nixon's Vietnam policies, is opposed to the basic premises and values on which the candidacy of George McGovern is founded."

"The statement is not meant to imply an endorsement of the Democratic ticket, particularly in the State Representative race in the 78th District, but is limited to the Fred Risser-Betty Smith contest," according to McGovern coordinator Ray Davis.

## Restaurant workers go on strike

By DAVE KIMBALL

Workers at Luigi's Restaurant on 1026 Sherman Ave. walked out late yesterday afternoon after management refused to recognize the Madison Independent Worker's Union (MIWU) Local 4.

Management had responded to the union's demand for recognition on Monday by firing all the workers at the restaurant. After rehiring all but one worker on Tuesday morning and promising to recognize the union at a meeting later in the day, the manager switched lawyers to Jack Walker, a member of Melle's firm, known for union-busting work. At 4:30 p.m., they refused to recognize the union.

"HE MUST be crazy," exclaimed one striker. "The examples of the other three MIWU locals show that we will win—I hope he's smart enough to realize that, but if necessary we will drive him out of business."

When the union is recognized the workers will negotiate for higher wages, job security, and the right not to have to serve struck or boycotted products. "That means we won't be serving non-union lettuce, like Spudnuts on State Street," continued the striker. "The demand is a big step forward in promoting labor solidarity."

Aside from picketing and boycotting Luigi's the workers intend to file charges against Thomas Heisz, the owner, for illegally firing one member of the union.

THE STRIKERS would not speculate on "how long it will take him to give up," but business at Luigi's was at a low of about 15 per cent of normal.

The manager refused to comment on any aspect of the strike.

### TODAY'S WEATHER

Mostly cloudy and continued cool today with occasional periods of rain. High today in the mid-forties and low tonight in the 30's.



## Journal won't endorse either candidate

MILWAUKEE—The Milwaukee Journal says it will not make an editorial endorsement of either presidential candidate.

The Journal, which in the past has endorsed both Democrats and Republicans, said many persons will vote in next Tuesday's election with mixed emotions.

"Nixon has often turned them off, while his challenger, Sen. McGovern, has been unable to inspire them and capture their confidence," the Journal said in an editorial.

"The Journal shares this sense of disenchantment and this year will state no preference in the presidential race."

## Weaver: 'No plans to close campuses'

LA CROSSE—University of Wisconsin President John Weaver said Tuesday that the state university system had no plans to close any campuses despite Gov. Patrick Lucey's call for an austerity budget.

"The central administration of the university and, so far as I know, the Board of Regents, have no immediate intention of closing any campus," he told a news conference at the UW—La Crosse.

"I think this would be an extremely drastic move and it's one that could, or should, be made only after very exhaustive statewide academic planning has been completed and we simply are not at that state yet."



Mighty Specials	
mon.	Italian Chicken . . . 2.25
tues.	Spaghetti Meatballs . . 1.85
	-glass of wine-
wed.	Italian Fiesta . . . . . 3.50
thurs.	Lasagna . . . . . 2.00
fr.	Fish Fry . . . . . 1.75
sat.	Beef Scallopini . . . . 3.75
sun.	Italian Fiesta . . . . . 3.50

All specials include Salad Bar except Fish Fry.

11:00 TILL 12:30 MONDAY — SATURDAY  
SUNDAYS — NOON TILL 11:00

GET YOUR HOMECOMING  
**MUMS**  
FOR DATES AND PARENTS

**GOOD LUCK  
BADGERS!**

256-7727

**VOTE FOR  
GLENN MILLER  
INDEPENDENT  
CANDIDATE FOR  
DANE COUNTY  
SHERIFF**

**QUALIFICATIONS:**

- Member of Madison Committee on Public Safety
- Member of Madison Chamber of Commerce Committee on Public Safety
- Former Police Officer
- College Graduate, Drake University
- Certified Teacher in Police Science

**GLENN MILLER WANTS TO:**

- Set Up Higher Educational Qualifications and Moral Standards
- Set Up a Budget System that will let the Citizens of Dane County Know Where Their Tax Monies Go.
- Initiate a Sheriff's Community Relations Division
- More Participation With Youth

VOTE FOR GLENN B. MILLER FOR SHERIFF ON THE INDEPENDENT TICKET AND LET A QUALIFIED MAN TAKE OFFICE NOT OWING ANY POLITICIAN ANYTHING, BUT OWING THE PEOPLE OF DANE COUNTY EVERYTHING.

**JOHN  
HEASLEY**

is a workingman  
and a businessman  
not a  
professional  
politician.

"This is my first try for public office. I am running simply because, perhaps like you, I have become very disappointed with the efforts of a costly, inefficient, and frequently misguided State Government.

I am registering my protest by running for the State Assembly. I'm asking for yours in the form of a ballot."

**ELECT  
HEASLEY GOP 77th  
Assembly**

Auth. and paid for by Heasley for the Assembly Committee, Mrs. Lester Six, Sec'y.



# Cardinal

## opinion & comment

There are only two parties in America, the winners and the losers and the fix is on.

Kurt Vonnegut

### We Support Kastenmeier

The Daily Cardinal endorses the re-election of Second District Congressman Robert Kastenmeier.

Seeking his eighth term in the House of Representatives, Kastenmeier has a consistently liberal voting record in that rather conservative half of Congress. The Americans for Democratic Action rated him at 100 per cent for the past year's votes. Field and Stream magazine cited him as one of the eight Congressmen deserving of an "excellent" rating for his environmental record. His COPE (labor) record for 1970 was 100 per cent.

Kastenmeier's voting record alone recommends his re-election, but to us, the most crucial issue arguing for keeping Kastenmeier in Congress is his consistent and out-spoken opposition to the Indochina War. Long before most of us came to this University, Kastenmeier was holding grass roots hearings in this city to mobilize opposition to the war.

He has voted against the draft, against continuing funds for the war, for cutting off economic and military aid to Thailand. Even as peace rumors swirled about in the past week, Kastenmeier used his recent appearance on the campus to attack the Nixon administration's handling of the war.

Another area of Kastenmeier's concern—prison reform—recommends his re-election. As chairman of the House Judiciary subcommittee, the liberal Democrat has focused attention of prison conditions by taking his subcommittee inside prison walls across the nation and by holding public hearings. Legislation emerging from his subcommittee could reform the federal parole system if it is passed by Congress.

Ralph Nader's Congress Project emphasized Kastenmeier's liberalism, and noted that he is a "serious, scrupulous and hard-working Congressman" who is diligent in providing services to his constituents.

And, if all this is not enough reason to vote for Kastenmeier on Nov. 7, a look at his two opponents should be the clincher. One, an American Party candidate, is a sincere man who sees a conspiracy behind every tree. His point of view is interesting, but his politics are fundamentalist right-wing.

Kastenmeier's more serious opponent, a 25-year old Young American for Freedom turned Republican, deserves to be soundly repudiated by the University community. Arguing for a stronger military establishment (although a cheaper one), advocating cuts in programs dealing with human needs, and showing remarkable insensitivity of issues of concern to women, the Republican candidate is at the opposite end of the political spectrum from what we—and we believe the University community—stand for.

A final note—our endorsement of Kastenmeier should not be interpreted as a deification of the man. While his liberalism has been consistent, his length of stay in the House has dulled its cutting edge. We hope that he will sharpen it up again, rather than slowly become one of those "club members" who doesn't want to rock the boat. A voting record is not enough. What is needed is a challenge to the calcified power structure of the Congress.

Still, Kastenmeier's past record, combined with the sharp ideological differences with his opponents, are compelling reasons to vote for him on election day.

### Out in Left Field

## Dissension in the McGovern Camp

Eddie Handell

The myth that the 'McGovern for President' campaign in Madison has been the smooth running, unified campaign which it has been reported to be has been shattered. Dissension and antagonism has developed between the "Students for McGovern" organization and the regular McGovern staff. The "Students for McGovern" is a separate group with its own structure, leadership, and finances.

The antagonisms are based on who should control the "Students for McGovern"—the regular McGovern Staff (Democrats) or the students within the organization itself. The Democratic regulars would like to control the decision making policies and finances of the student group and use it as a vehicle for bringing students into the Democratic Party. Just as important they want the student group to work for the election of all Democrats.

ORGANIZERS of the "Students for McGovern," Ray Davis and Chuck Richards have been at odds with the regular staff since before the spring primary. They see students working for McGovern because they are interested in specific issues such as the war, rather than being used as workhorses for the Democratic Party working for candidates they might not agree with. They feel that control of the "Students for McGovern" by non-student regular Democrats would lead to a weakening of the organization and hurt the chances for a huge student vote.

Davis, who was in charge of the 'dorm organization' during the spring primary, was in constant conflict with the party regulars who wanted centralization of decision making and the merging of the student and city organization, with orders to be given from state headquarters in Milwaukee. When Davis balked at this, he ran into constant harassment from the regulars who attempted first to make him ineffective within the McGovern organization and then subtly purge him.

Davis maintains that this attempt by regulars to take control of the "Students for McGovern" organization led to the falling apart of the dorm structure and

a lower than expected student voter turnout in the spring primary.

However much antagonism occurred after the primary when students who had worked for McGovern found out that they could not take part in the process for choosing delegates to the National Convention unless they joined the Democratic Party. (Almost every student worker for McGovern was not a member of the Democratic Party. Rather, many old time Party regulars who might have done very little work for McGovern made the selections.)

AFTER McGovern was nominated, the independent "Students for McGovern" reorganized into its present composition. Party regulars were upset by this. At first they attempted to subtly buy off the leadership (they offered Ray Davis a seat on the Dane County Executive Committee of the 'McGovern for President' staff.

The regulars demanded that the card files be merged, and that the "Students for McGovern" follow orders given by the regulars. The regular organization refused to give any money to the "Students for McGovern;" but when they started raising their own money, the regulars demanded that they send it all to State Headquarters in Milwaukee. The regulars also demanded an audit of the books of "Students for McGovern" treasurer Chuck Richards, who saw this as an attempt to find some wrong doing in order to discredit him.

MANY students walk into McGovern headquarters to volunteer to sign up for work. The Party regulars guard their names and phone numbers even though they had promised to give them to the "Students for McGovern."

Attempts have been made by the party regulars to force canvassing by the student organization for all Democratic Party candidates. Pressure has been very heavy in the East Side ward organization to canvass for regular Democrat Ed Nager against Mary Kay Baum although there is much support for Baum among the students. The student organization has refused to distribute his literature so far.

## Feiffer

THE FOLLOWING WORD TEST IS TO GAUGE YOUR EMOTIONAL STABILITY.



BOMBING DIKES.



THE PENTAGON PAPERS.



DROPPING MORE BOMBS ON VIETNAM THAN WERE DROPPED IN WORLD WAR TWO AND KOREA COMBINED.



MY LAI.



HOW AM I, DOCTOR? PERFECTLY NORMAL.



### WSA Reps explain position

The purpose of the WSA Store in its conception was to serve as a base for student power. Those student concerns which include an end to exploitation by profit-oriented institutions and by the University need both political and economic foundations to have an impact in our society.

Members of the WSA Store Board have taken a position on behalf of students which has received much criticism in the past week. All involved—who recognize problems within the Store ("alienation" of worker spokesmen, failure to communicate store goals to the community and decreasing traffic in the Store)—have spent hours discussing possible solutions to the present situation.

It is easy to dismiss the WSA Store Board members as "bureaucrats", but the student community must consider the following flaws in the worker representatives' claim that worker control will solve all Store

problems and more truly effect community control:

1) Workers argue that a change in the structure in the Board will change the internal problems in the Store, reduce "alienation," make customers more comfortable, and be more responsive to the community. However, WSA Board members have noted that an increase of one, two or three workers on the Board should relax tensions for those three workers but would probably not generalize itself for the problems of all the workers and the people they deal with.

2) Workers have vaguely proposed "community" elections for one-third of the Board members while Board members have insisted that the "community" must be more clearly defined as the entire student body.

3) Workers contend that they instituted changes in the Store on behalf of the community; in reality, such changes have generally emanated from the

WSA Senate or the Board members themselves and often have faced worker opposition (e.g. transfer of Health and Beauty Aids to the Pharmacy, collection of the voluntary anti-war tax.)

4) Workers' claims that they have been hired on the basis of community service (and are thus representatives of the community) fail to recognize the primary considerations for hiring which is, and should be, financial need.

Finally, the heated emotions of some workers and some Board members have prevented any rational examination of the problems, and methods of implementing solutions which inevitably must have the approval of those who use the Store and those students who potentially will make use of its resources. Simplistic answers and inflammatory rhetoric cannot resolve the issues at hand.

WSA REPRESENTATIVES  
ON THE WSA STORE BOARD

## The Daily Cardinal

Founded April 4, 1892

THE DAILY CARDINAL is owned and controlled by elected representatives of the student body at the University of Wisconsin-Madison. It is published Monday through Friday mornings through the regular academic year. Saturday Sports Issues will be published on Sept. 9 & 23, Oct. 7 & 28 and Nov. 4, 1972. Registration Issues are one week prior to each semester.

THE DAILY CARDINAL publishes Tuesdays and Fridays during the Summer Session on the Madison campus, including the Fall Orientation Issue. The Daily Cardinal is printed in the University Typography Lab, and published by the New Daily Cardinal Corporation, 821 University Ave., Madison, Wis. 53706.

THE DAILY CARDINAL is a non-profit organization completely independent of University finances. Operating revenue is generated solely from advertising and subscription sales. Second class postage paid at Madison, Wisconsin. Business and Editorial phones at (608) 262-5854.

Editor-in-Chief  
Managing Editor  
City Editor  
Campus Editor  
Assistant News Editor  
Fine Arts Editor  
Copy Editor  
Sports Editor  
Sports Editor  
Photo Editor  
Poetry Editor

Daniel Schwartz  
Rich Grossman  
Keith Davis  
Douglas Johnson  
Tina Daniell  
Patrick McGilligan  
Chuck Ramsay  
Mike Juley  
Jeff Grossman  
James Korgor  
John Reilly



# WSA workers, Board continue conflict

By SANDRA OZOLS  
of the Cardinal Staff

WSA Store employees met Monday night to discuss how they should react to a compromise measure by the WSA Store Board proposed in response to the workers' proposal for increased power on the Board.

"I think that the workers were together Monday night on the point that Marc Kulkin's compromise proposal has to be defeated," stated employee Franca Freedman. "If our demands are voted down at the meeting Wednesday night, then we will discuss what measures to take next." Some workers have mentioned a strike as one possible tactic.

## Screen Gems

**Crazy Legs**, featuring our own Elroy Hirsch, 1953. B-10 Commerce; 8:15 and 10:15 p.m.

**Cool Hand Luke**, with Paul Newman and George Kennedy, 1968. 6210 Social Science, 7:45 and 10 p.m.

**Wizard of Oz**, with Judy Garland, directed by Victor Fleming, 1939. 1127 University Ave., 8 and 10 p.m.

**Experiment in Terror**, with Glenn Ford and Lee Remick, directed by Blake Edwards, 1962. Green Lantern, 604 University Ave., 8 and 10:15 p.m.

**Voyage to Italy**, with Ingrid Bergman and George Sanders, directed by Roberto Rossellini. Play Circle, 2,4,7, and 9 p.m.

## ACTION

Interviews for Action, Peace Corps, and Vista will be held on campus today and Thursday at the Placement Office. Many of the jobs require technical and teaching skills. Anyone who will be available within the year is encouraged to sign for an interview in 117 Bascom Hall.

## MADISON SYMPHONY

The Madison Symphony has opened a branch ticket office in the outer lobby of the University Branch of the First Wisconsin National Bank, University and Park Streets. Hours this week will be 11 a.m. to 1:30 p.m. today through Friday.

Tickets will be sold for the concerts of Nov. 4 and 5 at the Madison Area Technical College Auditorium, which will feature Music School faculty members Lowell Creitz, cello and Donald Whitaker, trumpet. Gil Hemsley of the Theatre Department will direct a light show during the Scriabin "Poem of Ecstasy." Student discounts are available.

## SOCIOLOGY COLLOQUIUM

Mr. Melvin Kohn, Chief of the Laboratory of Socioenvironmental Studies of the National Institute of Mental Health, will speak on "Occupational Experience and Psychological Functioning: An Assessment of Reciprocal Effects," at 3:30 today in 8417 Social Science. Faculty and students of all departments are invited.

## WEST AFRICA SPECIALIST

Victor D. DuBois, specialist in West Africa on the American Universities Field Staff (AUFS) will be on campus this week to take part in classes, seminars and discussions with interested groups. DuBois joined AUFS in 1962 to observe and report on developments in the newly-independent French-speaking countries of sub-Saharan Africa. Campus groups may arrange meeting with him by calling Mrs. Everett D. Hawkins, Office of International Studies and Programs, 262-2851.

## WSA STORE BOARD

There will be a WSA Store Board employee meeting at 10 tonight at the WSA office in the Memorial Union.

THE STORE BOARD will meet tonight to discuss the two proposals which are presently on the table. The workers' proposal calls for a restructured Board to consist of five employee representatives, five WSA representatives, and two community representatives. The compromise motion proposed by Board member Kulkin calls for four employee representatives, four WSA-representatives and four community representatives.

The workers' proposal is supported on the 12-member Store Board by the three employee-representatives presently seated, and by WSA-representative Don Palmer. It is opposed by the other members who are WSA officers and appointees.

Most of the other Store Board members said that they would support Kulkin's proposal if the four "community-representatives" are elected through WSA elections. But the workers want them elected in non-WSA elections, which would allow non-students to vote.

"The workers are willing to accept Kulkin's proposal if the four community representatives are elected in non-WSA elections," stated Freedman.

HOWEVER, this proposal would probably be considered a by-law, according to Allan Koritzinsky, lawyer for the Board. A by-law change requires the vote of at least eight Board members at two consecutive meetings.

## MINI-LECTURE

Election Series. "An Election Entertainment," "Canvassing for Votes," "The Polling," and "Chairing the Members," designed by William Hogarth between 1755-58, will be featured at 12:15 today at the Elvehjem Art Center.

## SKI-A-WEEK

in the

## SWISS ALPS

WINTER BREAK

## LEAVE

Jan. 5, 1973

## RETURN

Jan. 13, 1973

via Swissair

\$449 from Chicago

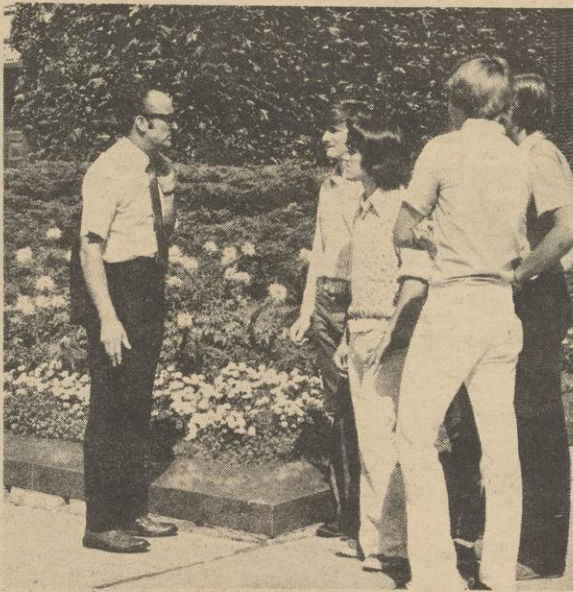
\$351 from New York

other trips also available

**Burkhalter Travel Agency**

305 State

256-0666



## JOHN HEASLEY wants:

To provide the kind of leadership that will stimulate industrial growth to broaden our tax base and provide more jobs. We must have positions available for the young people entering the job market.

## JOHN HEASLEY will:

Work to reverse the university merger provided by Gov. Lucey's "no-compromise" budget. We must be willing to support the cost of academic leadership.

## ELECT

**HEASLEY GOP 77th Assembly**

Auth. and paid for by Heasley for the Assembly Committee, Mrs. Lester Six, Sec'y.

# NOW NEW LOW PRICES

and

## Complete Stock!

GUITARS—GUITAR STRINGS  
HARMONICAS—DRUM STICKS  
DRUM HEADS

## Martin Guitars

—most models are in stock—

20% Discount

Gibson, Guild, Ovation, Yamaha,  
Alvarez Guitars  
20% Discount

## HARMONICAS

Marine Band Harmonicas.....3.19

Blues Harp Harmonicas.....3.42

## DRUM STICKS

Regal Tip Drum Sticks.....2.07 pr.

Ludwig Wood Tip Sticks .....1.89 pr.

## Ludwig Drum Heads

30% Discount

## GUITAR STRINGS

Black Diamond, 6 String..... 2.33 set

D'Angelico, 6 String..... 3.83 set

Darco, 6 String..... 3.00 set

E. Ball, 6 String..... 3.39 set

Fender, Rock & Roll..... 2.97 set

Gibson, 6 String..... 2.70 set

LaBella Classic, #900B..... 3.96 set

LaBella, 6 String Silk & Steel..... 3.08 set

Marquis, 6 String..... 3.75 set

Marquis, 12 String..... 7.13 set

Martin Classics..... 2.81 set

Martin, 6 String..... 2.63 set

Martin, 6 String Silk & Steel..... 3.38 set

Martin, 12 String..... 4.88 set

# PATTI MUSIC

414 State Street — Phone 257-5877



# A WORLD OF SOUND

Playback stands behind its merchandise, price and service, and is prepared to put its word in full force.

## PLAYBACK TRADE-IN POLICY

Playback will take your old equipment, regardless of age or condition, and make you the fastest offer toward any new equipment we sell.

## ONE-YEAR EXCHANGE SPEAKER SYSTEM POLICY

If, for any reason within one year after the purchase of any high-speaker system we sell, you are dissatisfied, you will receive FULL CREDIT of your purchase price toward the first price of ANY equivalent or higher priced speaker.

## 60-DAY EXCHANGE POLICY

Any other component in your hi-fi system may be exchanged within 60 days of purchase for an equivalent.

components is high priced and you may pay the difference. Many and more in the hi-fi field.

## 5 YEAR WARRANTY

Every hi-fi component we sell has an unconditional 5-year parts guarantee and a 3-year labor guarantee. The only way your investment is safe when you shop PLAYBACK.

## PLAYBACK'S PLEDGE

We pledge not only to give you the lowest prices possible, but the finest values—the most for your money. An honest approach which we feel will give you satisfaction with respect to quality, service, and complete Customer Protection.

The above policies will be the PLAYBACK POLICY wherever and whenever we continue to serve you, not just this weekend, or next week, or next year, but forever. PLAYBACK IS HERE TO STAY—just with us, as you.

**THE DYNACO FM-5 STEREO TUNER.** Dynaco triumphs again! Offers a level of performance previously available only in the highest priced tuners. "Dynatune" circuit automatically fine-tunes a station in stereo for distortion under 0.5%, AM rejection (a very important spec) is extraordinary—multiple distortion is virtually eliminated, selectivity is outstanding... we could rave on and on... but if you're a no-compromise audiophile, this is the tuner for you. Reg. \$249.95 189.00

**DYNACO PAT-4 PREAMPLIFIER—PERFECTION!** A virtually perfect preamp. Can be used with any tube or solid-state power amplifier. Simple, yet incredibly effective circuitry produces outstanding performance with extremely low levels of noise and distortion. As one super audiophile magazine reviewer put it: "...we cannot see how any preamp, present or future, could surpass the PAT-4". A stereo masterpiece! Reg. \$159.95 119.00

**DYNACO'S STEREO 120 POWER AMPLIFIER.** Uncompromising sonic quality, highly advanced circuitry and exceptional stability characterizes the Stereo 120. Typically produces a minimum of 60 watts RMS per channel with less than 0.5% THD and Total Harmonic Distortion. Easily handles any type speaker, including electrostatics, with ease. An absolutely beautiful performer! Reg. \$199.95 149.00

**THE PHASE LINEAR "400" 200-WATT PER-CHANNEL POWER AMPLIFIER.** For those who want the staggering amount of power the "400" has to offer, but without the "harshness" often associated with super-powered amps. Power output is at least 200 watts per channel RMS, both channels driven—with distortion typically less than .05%. Advanced electronic energy limiters provide complete speaker protection. One of the most advanced amps available. \$499.00

## SONY TA-2000F PREAMPLIFIER

**—CLEAN!** Offers a level of performance and specifications that verge on the unbelievable. Distortion is virtually at the vanishing point—every advanced design concept that has made Sony a worldwide leader of superior electronics has been incorporated into the 2000F. Unique (for a preamp) dual VU meters calibrated for zero VU permit output monitoring. If price is no object, this is the one! \$549.50

**COMPONENTS FOR THE CONNOISSEUR FROM SAE, THE PREMIER LINE OF AUDIOPHILE COMPONENTRY. THE MARK THREE BASIC AMPLIFIER** brings a new level of quality in audio reproduction. More than just a 120-watt RMS per-channel amp, the MARK III reveals subtleties of program material previously masked by most amplifiers. Many audiophiles favor it as the most "musical" amp around. A must hear! 700.00

**THE MARK ONE PREAMPLIFIER.** Ultra-low distortion, no-compromise construction (Military-grade epoxy circuit boards are used throughout), and outstanding flexibility characterize the MARK I. 550.00

**THE MARK SIX DIGITAL FM TUNER,** the ultimate stereo FM Tuner for the perfectionist. Has digital readout display for precise tuning, 3" oscilloscope for monitoring tuning and audio signals, 8-stage IC limiter, 75 dB S/N ratio, less than 0.1 harmonic distortion, 1.6 uV sensitivity a superior instrument. 950.00

**THE CITATION FIFTEEN STEREO TUNER—A REAL BREAKTHROUGH!** One of the most advanced Tuners available today! Unique Quieting Meter measures signal-to-noise of incoming signal, insuring optimum reception and lowest noise—turning your FM antenna as little as 1° affects meter's reading. Automatic phase-locked loop circuit locks in stereo signal, ensuring flawless performance. A spectacular Stereo FM Tuner! Hear it at Playback. \$395.00

## SUPER CARTRIDGES

**THE ADC XLM CARTRIDGE... THE AUDIOPHILE'S CHOICE.** ADC's newest and finest Cartridge. Offers state-of-the-art performance at a reasonable price. Utilizes ADC's unique controlled electrodynamic damping, enabling flawless tracking at exceptionally low tracking forces... as low as .4 gram in high quality tonearms for the most transparent, well-defined sounds a cartridge can produce. Reg. \$50 39.95

**THE SP-12 CARTRIDGE FROM BANG & OLUFSEN** for the discriminating record lover. Provides outstanding stereo separation, super clean sound and perfect tracking. Extremely low-mass diamond tip minimizes record and stylus wear. Capable of tracking between ¼ to 1½ grams, cleanly and with a minimum of distortion. Each SP-12 comes with a calibrated response graph. A gem! \$75.00

**SHURE'S V15 TYPE II (IMPROVED) ... TRACKABILITY INCORPORATED.** For years the standard of superior tracking ability... and still going strong! Designed for use the finest tonearms, the V15-II (Improved) will provide exceptional tracking performance at ¼ gram... record wear is virtually negligible. And, priced the Playback way, an unbeatable cartridge value! Reg. \$67.50 \$49.00

**THORENS TD-150 MK-II TURNTABLE/ADC 10E-MKIV—A NO-COMPROMISE BEST BUY.** A two-speed integrated Manual Turntable incorporating much of the same advanced design, ruggedness and precision available in the famous TD-125 series (also available at Playback). Low mass tonearm with adjustable low-mass plug-in shell permits optimum tracking angle adjustment and trackability as low as 0.5 grams, the perfect choice for ADC's 10E-MKIV Cartridge... a great combination! Reg. \$190.00 \$140.00

**GARRARD ZERO-100/B&O TURNTABLE PACKAGE.** One of the most advanced Automatic Turntable designs to date. Zero-100 tonearm provides a minimum of tracking error, a feat previously unheard of in an automatic turntable—permits super-low tracking forces, less distortion. And of course there's the typical Garrard features—Synchro-Lab motor, magnetic anti-skating, illuminated strobe, variable speed control, much more. With Base, Dust Cover and B&O's superb SP-14, a \$40 Cartridge. Reg. \$252.95 \$198.95

**THE ALL-NEW DUAL 1229 AUTO-TURNTABLE—BETTER THAN EVER!** Has everything the serious record lover could want in an automatic turntable. 12" dynamically balanced platter, gyroscopic gimbal-mounted tonearm, synchronous/continuous pole motor, pitch control. Plus many more precision features you'd expect from Dual. With Base and Shure's hi-tracking M93E Cartridge. Reg. \$254.40 \$199.50

## THREE OF THE FINEST STEREO HEADPHONES MONEY CAN BUY

**KOSS ESP-9 ELECTRO-STATIC STEREO HEADPHONES.** Used for professional applications and by the most demanding audiophiles, the ESP-9's offer super-wide frequency response delivers all 10 audible octaves, superb definition. With E-9 Energizer. Reg. \$150.00 99.00



**SENNHEISER'S HD-414 HEADPHONES.** Rated a "best buy" at their regular retail price by a leading consumer magazine these outperformers, super natural sounding, super comfortable, are a steal at Playback's money-saving price. Reg. \$38.95 \$23.95

**NEW! SUPEREX PEP-77C ELECTROSTATIC HEADPHONE SYSTEM.** Offers virtually flat frequency response over the entire audio range! The PEP control console (included) has separate-channel volume controls, accommodates 2 sets of phones. Reg. \$99. 79.00

**THE MARANTZ SOUND—UNEQUALLED PERFORMANCE—UNMATCHED AT ANY PRICE!** MODEL 3300 PREAMPLIFIER, a superb combination of low noise, dynamic range and precision control. Total harmonic and intermodulation distortion is less than 0.02%, with a full complement of Marantz features. \$395.00  
THE MODEL 11S AM/FM STEREO TUNER. A full-feature tuner incorporating the same uncompromised quality that has made Marantz the most respected name in high-fidelity. THD exceeds 0.15%, separation is an outstanding 42 dB—Gyro-Touch tuning, blackout dial, superb AM—every Marantz extra... and then some. \$249.95  
THE MODEL 250 BASIC AMPLIFIER (not illustrated). 250 watts RMS of flawless power, utter reliability—distortion: negligible. Direct-coupled output and complete automatic self-protective and current limiting circuitry plus instant over-load recovery make this a contender for one of the world's finest power amplifiers. For music lovers only. \$495.00



A QUALITY COMPANY OF HYDROMETALS, INC.

EAST TOWNE MALL

Playback



# FOR THOSE WHO KNOW

Playback has the widest selection of quality Audio of anybody around—and our selection is constantly growing. A matter of fact, there are audio buffs that, when they find we don't yet have what they want, are willing to wait until we do. We've actually had customers tell us they'd rather buy it at Playback because of the decent way we've treated people at our stores. And mainly because of our unique unqualified Warranty Policies. We've got them in writing... with all the specifics plainly spelled out. Please take the time to read it. You'll find it's a revelation. There's no "cute" vagueness hiding any limited qualifiers. It covers ANY HI-FI COMPONENT we sell, not just limited to certain systems. We feel it's the most genuinely progressive and fairest warranty in the audio retail industry. Read all the others, then refer to ours. We know you'll agree, Playback is "People Place".



**TANDBERG'S 3000X STEREO DECK IS ONE OF TODAY'S FINEST VALUES.** And Tandberg's exclusive Crossfield Head, enabling extended dynamic range, super flat response and an outstanding signal-to-noise ratio is the reason... at 3 3/4 ips speed! It also has 3 more heads for sound-on-sound, echo effects, monitoring, more. But if what you're primarily after is the finest tape performance in a home deck, the 3000X is for you. **\$49.00**



**THE TANDBERG 6000X IS ONE OF THE FINEST TAPE DECKS YOU CAN BUY...** at any price. And there's many good reasons why: the famous Tandberg Crossfield Head that assures ultra-wide dynamic range, superb high frequency reproduction and a signal-to-noise ratio that has yet to be bettered in a home deck—and this at 3 3/4 ips speed! And for good measure, you get 3 more heads for monitoring, sound on sound, etc.... a Limiting System for lazy recordists, quality galore. Just about the last word in tape decks. **\$29.00**



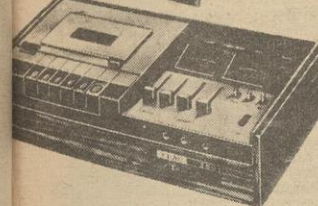
**AKAI'S 280D-SS 4-CHANNEL STEREO TAPE DECK.** A beautifully designed 3-motor four-head Tape Deck that just about does it all! Plays conventional 2-channel stereo, with all the eye-popping performance specifications you've come to associate with Akai—plus 4-channel record and playback capability. And for good measure, there's a repeat circuit for continuous 2 and 4-channel playback; automatic stop/shut-off, 4 separate VU meters and level controls. Push-button operation makes it all happen easily and smoothly. And you can save money if you buy it at Playback. **Reg. \$649.95 \$499.95**

## MAXELL RECORDING TAPE IS THE FINEST MONEY CAN BUY—AND PLAYBACK SELLS IT AT THE RIGHT PRICE

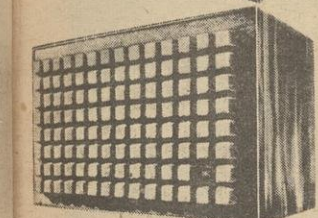
Ultra Dynamic Series		
	Reg.	Now
UD-C60	3.70	2.79
UD-90	4.80	3.59
UD-C120	6.70	4.99
Lo-Noise Open Reel		
7"-1800'	6.80	5.49
7"-2400'	10.00	7.99
10 1/2"-3600'	17.15	13.00
Ultra-Dynamic Open Reel		
7"-1800'	8.55	5.99
10 1/2"-2500'	18.00	13.00



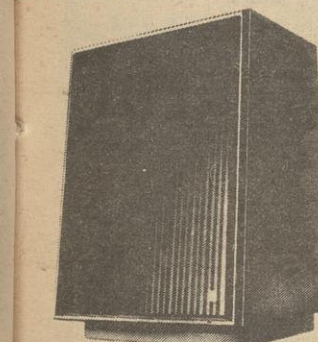
**THE TEAC AN-60 DOLBY SYSTEM FOR YOUR TAPE DECK.** This beautiful little unit provides all the essential advantages of a Dolby noise reduction system... the elimination of tape hiss... simply and easily. Controls are minimized, and with the Dolby level calibration tapes supplied for both reel-to-reel and cassette decks permits precise calibration without additional equipment. **\$9.50**



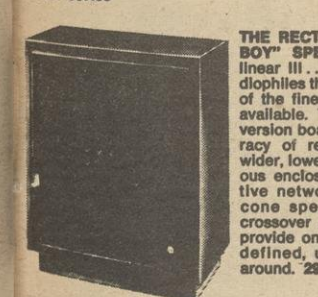
**TEAC'S 350 STEREO CASSETTE DECK WITH DOLBY.** Open-reel performance... cassette convenience—that's essentially what the Teac 350 is all about. Wide frequency response, low distortion and expanded dynamic range (thanks to the built-in Dolby Noise Reduction System) combine to produce ultra-clean recordings—limited only by the quality of the tape itself. **\$29.50**



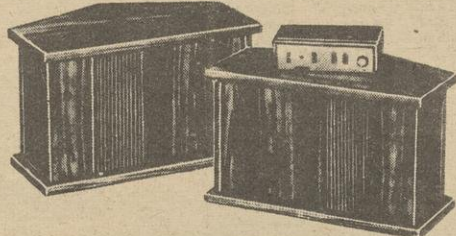
**THE JBL 100 CENTURY—THE BOOKSHELF MONITOR.** One of JBL's most popular speaker systems. 5" woofer, 5" midrange and 2" tweeter provides all the richness and wealth of sound you've come to expect from JBL. A real trend-setter! **\$73.00**



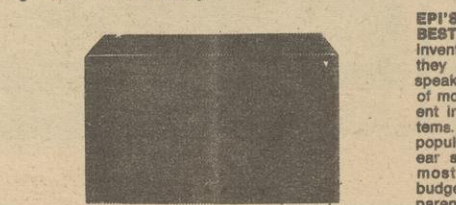
**JBL'S L200 SPEAKER SYSTEM — THE STUDIO MASTER.** The next record you buy was probably monitored on this magnificent speaker system. Manufactured to the highest quality specifications and detail of workmanship, this acoustic marvel consists of a 15" low frequency loudspeaker and high frequency compression driver for the sound JBL has been famous for. And, unlike a studio monitor, it's no eyesore. The graceful tapered form, three-dimensional grille and rich oiled walnut enclosure's appearance is nothing short of eloquent. A JBL classic! **\$97.00**



**THE RECTILINEAR III "LOWBOY" SPEAKER.** The Rectilinear III... acclaimed by audiophiles the world over as one of the finest speaker systems available. The new "lowboy" version boasts the same accuracy of reproduction... in a wider, lower and more sumptuous enclosure with an attractive network grille. The six cone speakers in a 4-way crossover system continue to provide one of the most well-defined, uncolored sounds around. **\$299.00**



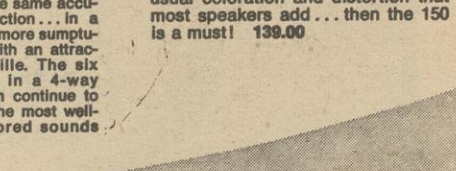
**THE BOSE 901'S—AUDIO CLASSICS!** The speaker system that's become a legend in its own time! Uses direct-reflecting principle and precision-designed equalizer (included) for one of the most incredible stereo images, staggering mid-bass and all-around realism of sound ever produced by a reproduction system. Power requirements are a minimum of 60 to a maximum of 270 watts RMS per channel, depending on your hearing. A must hear. **\$76.00/pr.**



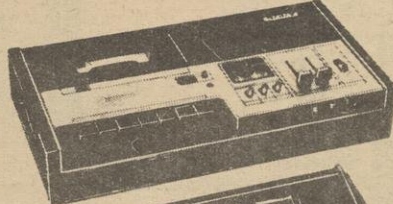
**THE JBL L88-1 "CORTINA" IS ONE OF THE BEST SPEAKERS JBL'S EVER MADE!** Ever since the Year One, the JBL Sound has captured the ears of many an audio buff—and the "Cortina" has proved to be one of the most popular in a long line of super bookshelves. Now's your chance to own a pair—and save a bundle of money. Heretofore fair-traded at \$198.00, we offer them at an unheard of: **\$110.00**



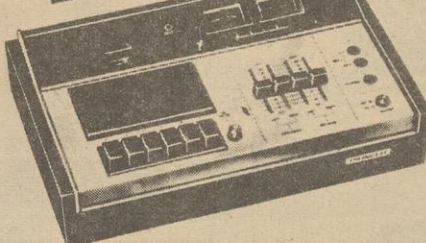
**THE EPI 150 HAS BROUGHT STATE-OF-THE-ART PERFORMANCE INTO THE \$140 RANGE.** If you want to hear exactly what's in the program material you play through your system... every detail and nuance, minus the usual coloration and distortion that most speakers add... then the 150 is a must! **\$139.00**



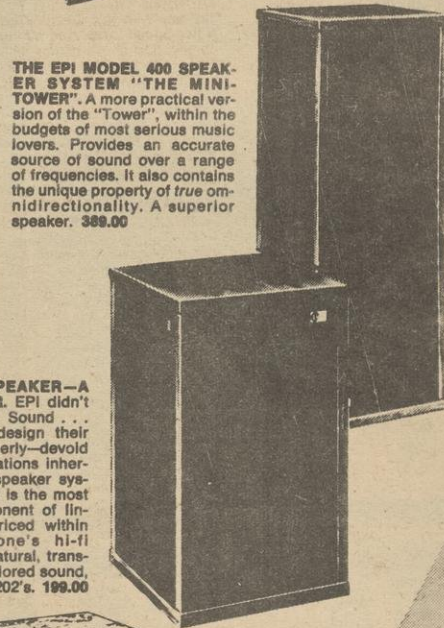
**EPI'S 202 SPEAKER—A BEST SELLER.** EPI didn't invent Linear Sound... they merely design their speakers properly—devoid of most colorations inherent in many speaker systems. The 202 is the most popular proponent of linear sound, priced within most everyone's hi-fi budget. For natural, transparent & uncolored sound, here are the 202's. **\$99.00**



**SONY/SUPERSCOPE TC-134SD DOLBIZED STEREO CASSETTE DECK.** Sony's unsurpassed quality, combined with a highly refined integral Dolby Noise Reduction System makes for the quietest performance. Not a trace of tape hiss to mar your recordings. Features like Total-Mechanism Shut-Off, long-lasting ferrite heads makes this one of the finest tape decks you can buy. **\$239.95**



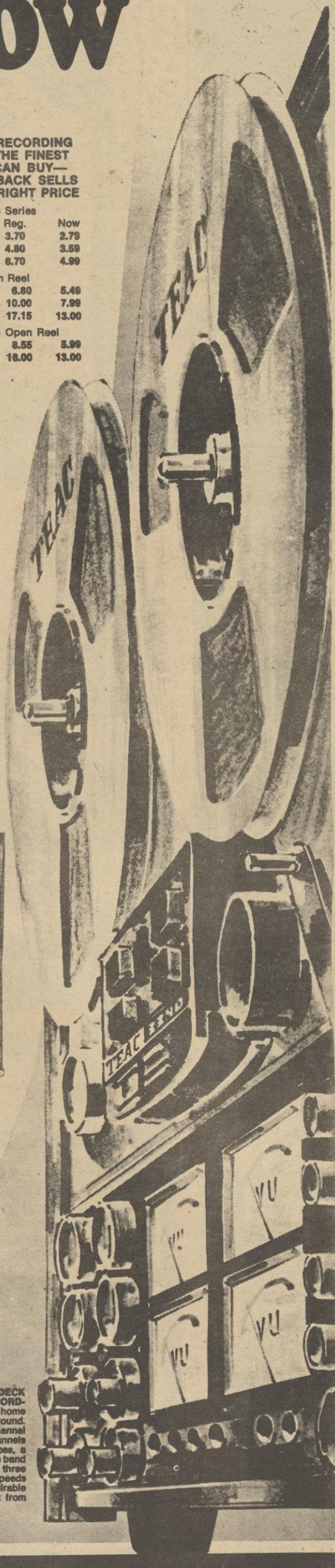
**THE PIONEER CT-4141 DELUXE STEREO CASSETTE DECK WITH (YOU GUESSED IT) DOLBY.** And chromium tape selector—and ferrite solid head for long-life performance—and automatic stop mechanism—and precision electronic-governor DC motor—and just about every feature and performance characteristic you'd ever want. The choice is yours—at Playback. **\$249.95**



**THE EPI MODEL 400 SPEAKER SYSTEM "THE MINI-TOWER".** A more practical version of the "Tower", within the budgets of most serious music lovers. Provides an accurate source of sound over a range of frequencies. It also contains the unique property of true omnidirectionality. A superior speaker. **\$89.00**



**TEAC'S 2340 4-CHANNEL TAPE DECK — THE WORLD'S SMALLEST RECORDING STUDIO.** The most versatile home and semi-professional Tape Deck around. Features unique Synchronized 4-Channel Overdubbing capability—4 separate channels recording 4 separate instruments, voices, a combination of both... or even a one-man band recording over, on 4 separate tracks. Offers three heads, 10 1/2" reel capacity, 15 and 7 1/2 ips speeds super-wide response, rugged transport, every desirable feature you'd expect from a 4-channel tape deck from Teac. **\$49.50**



**Playback**  
the electronic playground

**WEST TOWNE MALL**

CHARGE IT — PLAYBACK ARRANGED FINANCING MASTER CHARGE BANKAMERICARD AMERICAN EXPRESS



A QUALITY COMPANY OF HYDROMETALS, INC.



BOB HOPE  
EVA MARIE SAINT

## CANCEL MY RESERVATION

DAILY AT  
1:00-3:15-5:30  
"G"  
7:45-10:00

**Orpheum**  
255-6005

He sought  
the ultimate  
in  
**HUMAN  
AGONY!**



**SPECIAL NOTICE!**  
The management hereby  
disclaims any responsibility  
for patrons who suffer  
CARDIAC SEIZURES or  
FAINTING SPELLS during  
the shockingly gruesome  
scenes of this film.

## BARON BLOOD

AN ALFRED LEONE FILM • **TECHNICOLOR**  
JOSEPH COTTEN • ELKE SOMMER

PLUS "PG"  
"THE THING  
WITH 2 HEADS"

RAY MILLAND  
"ROSEY GRIER"  
Continuous Daily  
From 1:00 a.m.

**Strand**  
255-5603

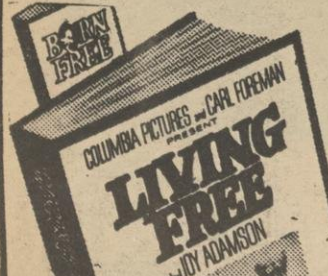
MGM presents  
all the excitement  
of ELVIS LIVE!

## ELVIS ON TOUR

in multiple-screen

"G"

PLUS



NIGHTLY FROM 6:00  
Thurs. thru Sunday  
Matinees from 1:30

**Cinema**  
2090 ATWOOD AVE.  
244-5833

## Childhood II

CHILDHOOD II IS NOT  
FOR CHILDREN.

The captivating experience  
of 12 strangers in a 48 hour  
nude encounter marathon.

"One of the most remarkable  
films I have ever seen."  
Otis Guernsey

CHILDHOOD II A MOVIE  
FOR PEOPLE WHO AREN'T  
AFRAID OF BEING TOUCHED.

Under 17 Not Admitted



**A NUDE ENCOUNTER**

**STAGE DOOR**  
257-6655 121 W. JOHNSON

**WORLD PREMIERE**  
Nightly at 6:30-8:15-10:00  
Sat. & Sun. at  
1:15-3:00-4:45-6:30-8:15-10:00

**GENERAL CINEMA CORPORATION**

**Cinema II**  
241-2211  
EAST TOWNE MALL  
INTERSTATE 90, 94 & RT. 151

"BAD COMPANY"  
IS GOOD COMPANY.  
GO SEE IT!"  
—Richard Schickel, Life Magazine

**"BAD  
COMPANY"**  
Color by Technicolor

PG

STARRING  
JEFF BRIDGES  
HARRY BROWN  
SHOWTIMES 1:30  
3:50-5:50-7:50-9:50



**Cinema I**  
241-2211  
EAST TOWNE MALL  
INTERSTATE 90, 94 & RT. 151

Lobo—1:00-3:30-6:00-8:35  
Dumbo—2:15-4:50-7:20-9:55



**Cinema I**  
836-3000  
WEST TOWNE MALL  
WEST BELTLINE & GAMMON RD.

It's BOB  
(Don't take any  
wooden nickels)  
**HOPE**

SHOWS—1:00-3:30  
5:45-7:45-9:55

COLOR

BOB HOPE • EVA MARIE SAINT  
in  
**CANCEL MY  
RESERVATION**

**Cinema II**  
836-3000  
WEST TOWNE MALL  
WEST BELTLINE & GAMMON RD.

SHOWTIMES 1:30-3:55  
5:55-7:55-10:00

THE REAL ELVIS REVEALED IN



**ELVIS  
ON TOUR**  
Metrocolor

PUSHBACK SEATS • FREE PARKING • GIANT SCREEN • ART GALLERY

## Priorities for campus parking spots do exist

by Charles Ehrlich  
of the Cardinal Staff

Are students getting their fair share of the limited parking spaces on campus?

According to University Parking Director Timothy Phillips, the parking pie is divided up according to "priority lists"—rankings of every person who applies for a campus parking permit.

"THE PRIORITY lists are done by the deans of each college," Phillips says. "We don't play politics with a priority list, and we try very hard not to vary from them."

Every person desiring a parking space in one of the University's lots must fill out a card listing his first four location choices. College deans then rank the applicants on varying criteria. Seniority of employment or length of residence in a dormitory usually weighs heavily. So does any serious health problem on the part of an applicant. Phillips makes the final allotments.

Phillips explained that his office receives 15 or 16 priority lists. His job, then, is to match one list against another in determining space allotment.

"We give handicapped people the first priority and after that we try to fit everyone close to their main working area. Sometimes, it is only a difference of one block from their first choice. Other times it might be 8 blocks."

PRESENTLY students use 30 per cent of the available parking space. The student's initial assignments are drawn up by the residence halls, based on the number of semesters a student has lived there. Right now, students use 80 per cent of Lot 60 and most of Lot 62, the lots furthest from the center of campus.

"Students get what's left over after the faculty and staff," Phillips says. "We don't consider an automobile essential to a student's formal education."

Phillips believes that the University should give the students a better deal. He cites the example of a department store, where the closest parking space is reserved for the customers.

"STUDENTS are customers in a way," he says.

To police the lots, six meter maids are employed. They issue approximately 400 tickets per day. Last year, \$104,000 was collected in fines. All of the money goes in to the state's general fund, according to Phillips.

FINES RANGE from \$3, for no permit, to \$5 for illegal parking. The fines double after 5 days.

There have been incidences of mistaken ticketing. Frequently, rolled down windows conceal permit stickers and the meter maid tickets the vehicle. However, all tickets can be reviewed by the parking office administrators and voided if necessary.

Concerning the abolishment of cars from campus, Phillips believes the great amount of the traffic is essential service-type vehicles, which are necessary for the funding of the University," he says.

In the future, Phillips thinks that there must be a balance between mass transit and automobiles. "We must make mass transit more desirable to people by making it faster and more efficient," he says.

**"BAD COMPANY" IS GOOD COMPANY. GO SEE IT!**  
—Richard Schickel, Life Magazine

**"BAD COMPANY"**  
Color by Technicolor • A Paramount Picture

PG

ADULTS: \$1.50 to 6, then \$2.00  
CHILDREN 50¢. STUDENTS save 50¢ Off Adult price with Esquire Discount Card, now on sale.

**ESQUIRE** 257-4441  
AT THE SQUARE—DOWNTOWN

WEEKDAY EVES: 5:45-7:45-9:45—Sat. & Sun: 1:30-3:35-5:40-7:45-9:45

## George McGovern Benefit



IF YOU  
DON'T WANT  
MILHOUS  
AROUND  
NEXT YEAR,  
SEE  
**MILLHOUSE**  
NOW!

**MILLHOUSE**

A White Comedy

Thursday, Nov. 2 7:00, 8:45 & 10:30 1127 University Ave.  
Friday, Nov. 3 7:00, 8:45 & 10:30 1127 University Ave.

sponsored by Magic Lantern Film Society



## Film Review: 'Voyage to Italy'

# Roberto Rossellini: 'Films A Decade Ahead of his Time'

BY LOUIS ALVAREZ  
of the Fine Arts Staff.

In the early 1950's, before anyone had ever heard of Jackie and Onassis, the most scandalous couple in the world were Ingrid Bergman and Roberto Rossellini. Ever since the American actress had given birth to the Italian film director's child out of wedlock, she had been anathema to audiences in the U.S. Not so in Europe, where her five year collaboration with Rossellini resulted in six films which show both director and star at the top of their respective arts. Critics agree that their most fruitful effort is the 1953 *Voyage to Italy* (at the Play Circle today and tomorrow), filmed in English and costarring George Sanders.

To a casual viewer it might appear that there is less to *Voyage to Italy* than meets the eye. A middle-aged British couple arrive in Naples on a business trip, where their already crumbling marriage begins to dissolve. Such an unadorned narrative may remind one of later filmmakers who popularized banality; as Andrew Sarris put it, "Rossellini preceded Antonioni by several years." But Rossellini is neither as pretentious nor as as pretentious nor as elusive as Antonioni, and he never really bores his audience. His examination of a foundering marriage from the standpoint of the wife is nothing short of amazing: the manner in which he expresses his ideas are almost more interesting than the ideas themselves.

THOSE WHO know Possellini from either his famous neorealist classics like *Open City* or his more recent detailed biographical films like *The Rise of Louis XIV* will discover a somewhat different style in *Voyage to Italy*. The contrived stories and occasionally melodramatic moments of his earlier postwar works have been supplanted by a sunny naturalism which can be found only in Renoir and Ozu. Although it's not a travelogue, *Voyage* succeeds in capturing the atmosphere of Southern Italy like no other film ever has: Rossellini's splendid subjective camera records the sights and sounds of crowded Neapolitan streets full of donkeys, nuns, and madonna statues. As Ingrid Bergman drives alone through this crowd, she is constantly reminded of her position as a wife and her status as a bourgeoisie. But the audience is not in turn bombarded with over-explicit monologues which reveal what the film maker thinks of his character's problems: Rossellini lets the viewer draw his own conclusions.

He places Ingrid Bergman in the familiar position of a well-heeled tourist in a foreign country; the film's brilliance stems from the new meanings that are taken on. To the guilt-ridden wife, every Greek statue and catacomb on her private tours add to her personal burden: it is as if all of antiquity were frowning on her conduct. The entombed lovers preserved in Vesuvian lava are an

ideal which she fears she can never attain; the small-town miracle that ends the film (of which we see only the results of off to one side—typical Rossellinian understatement) becomes a personal one as well.

*Voyage to Italy* is concerned almost totally with the feelings of the wife. The husband, who early in the film goes off in a huff to nearby Capri, is seen only twice—both times in the midst of thwarted sexual experience. Rossellini spends a minimum of time with him because his purpose is not to present an impartial view of the marriage but rather to explore the wife's psyche in the week she is separated from her husband. In this he is admirably supported by Ingrid Bergman, who conveys the anguish and

pleasure of her character's situation without ever resorting to contrived means; she doesn't appear to be acting at all.

THIS IS why *Voyage to Italy* is a decade ahead of its time. In a time when most directors were loading their films with meaning and relying on old techniques of narrative and physical style, Rossellini, always in the vanguard, introduced his special brand of apparently effortless filmmaking, devising new uses for the camera as well as manifesting his uncanny eye for everyday detail. Right down to the amiable chit-chat at a cocktail party, Rossellini's dialogue rings true. Anyone who has ever been to Europe will appreciate the comic insights in Mediterranean life

(such as the way Italians use their hands for expression), but even at its darker moments the film breathes naturalism. Even if one disagrees with Rossellini's solutions, they are presented so artlessly that it becomes difficult to object vehemently.

Time has proven Rossellini's insights correct, and we are now surrounded with movies in which the most banal dialogue is meant to represent profundity. Yet none have been able to duplicate Rossellini's light touch. Just remember: you saw it in *Voyage to Italy* first.

*Voyage to Italy* will be shown at the Union Play Circle today and tomorrow at 2, 4, 7 and 9 pm.

## Numismatics Review

### WHY I PLAYED THAT SCENE

By Samantha Nit, as told to Cardinal Theatreland  
Columnist Morris Edelson

"It was the most critical period of my acting class," said pretty blonde Samantha Nit, star of the controversial *Richard II*, now taking shape in John Ezell's private bar. "The University Theatre, formerly the Wisconsin Players, never asked me to do such a thing before. But my grade depended on it, and I am sure it was what Mr. Sandler wanted."

She was referring to the controversial scene in which she is seen in bed with a gorilla.

## W OVERSEAS SUMMER K

APPLICATION DEADLINE:  
WEDNESDAY, NOVEMBER 22

short form applications at:  
THE TRAVEL CENTER  
544 STATE STREET

## FILMS FOR SWINGERS

IT'S NOT WHAT  
WE DO...  
BUT HOW OFTEN  
WE DO IT!



FOR ADULTS ONLY  
The  
**Swingin' Pussycats**

PLUS—see what really goes on in the cockpit...

FLY THEM...AND GET A RIDE LIKE YOU'VE NEVER HAD IN YOUR LIFE WITH...

THE  
**Swingin' Stewardesses**



A HEMISPHERE PICTURES RELEASE  
EASTMAN COLOR

MATINEE TODAY!  
Continuous from 1:00 P.M.

**MAJESTIC**  
DOWNTOWN—255-6698

TONIGHT!!

**Wizard of**

75¢ **OZ** (color)

8 and 10

1127 UNIVERSITY AVE.

**COOL HAND LUKE  
TONIGHT!**

PAUL NEWMAN — GEORGE KENNEDY

7:45 & 10:00

6210 Soc. Science

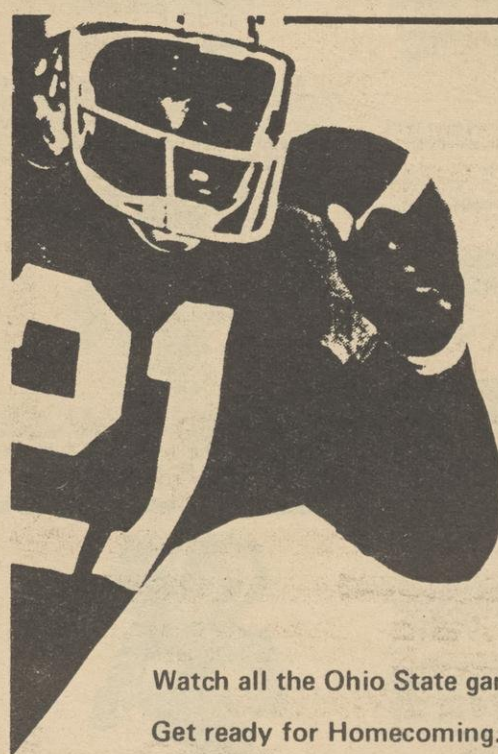


**Voters' Forum**

Our Local Candidates

Wed. Nov. 1 at 9/Sun. Nov. 5 at 6:30

**WHA-TV Channel 21**



Watch all the Ohio State game highlights.

Get ready for Homecoming.

Get it all together with

BADGER FOOTBALL

Tonight at 6:30

**Channel 21 WHA-TV**



# The Daily Cardinal Action Ads

## PAD ADS

**LARGE 1 bedrm pad for 2 people.** Full bath, eating area in kitchen. Large carpeted livingroom, air/cond. 6 min. from Bascom. 1309 Spring St. \$170 per mo or school yr leases. 271-9516, 256-2226 Mgr. Apt. 106. — xxx

**COED HOUSE** Kitchen, laundry, lounge, Convenient. Reasonable. 255-8216, 222-2724. — 40x11/21

**THE COURTYARD.** Uniquely furnished studio apartments featuring security intercom system, carpeting, air conditioning, laundry and storage facilities, 'beautifully' landscaped garden courtyard with bar-b-q and patios, downtown living at 102 North Franklin. Model open daily 12-8. Call 257-0744, 257-9110. — xxx

**UNIVERSITY COURTS—Bargain.** Bargain! 2302 University Ave. We'll pay \$25 toward your moving costs. Come over and look at what we have to offer in luxurious living. 2 bedroom, 2 bath apt. with 2 en-trances, indoor pool and free utilities; available at \$250 for 2 persons. Office hr. 2:30-8:00 p.m. Monday thru Friday; 10:00-5:00 p.m. Saturday; 1:00-5:00 p.m. Sunday. 233-0967; 257-5174. — xxx

**AVAILABLE NOW—Campus location.** 1-2-3 bedroom apts. 257-4535.—12 x 4

**ROOMMATE** wanted to share coed house with 3. Own room. Garage & near University. Nov. rent free! Laurie 256-6661. — 7x3

**ROOMMATE** to share apt. with 3. Own room \$65. Includes utilities. Furnished, excellent shower. 255-6816. — 7 x 7

**SUBLET: MODERN 1 bedroom apt.** on campus. Completely furnished and off street parking. Available Nov. 20th. Call 231-1444. — 3 x 2

**WEST 1/2 blk. from Zoo.** 1 bedrm. furnished \$145 including utilities. Available Nov. 1. 257-9703 - 249-4860.—3x1

**ROOMMATE** for unfurnished farmhouse. Car necessary. Grad student or together person preferred. Call after 5pm. 221-2119.—3x3

**WOMEN'S CO-op** \$46 a month, includes utilities. Share room - kitchen privileges. 257-8984.—2x2

**ONE BDRM.** furnished apt. \$150/mo. utilities incl. 1030 Jenifer; Front and backyard pets. Negotiable - avail now. 256-2998.—4x4

## SERVICES

**ABORTION** Contraception, Sterilization, VD treatment referral. ZPG 262-5500, 233-4562. — xxx

**WOMEN'S COUNSELING** Services. Counseling & referral for birth control, abortion & voluntary sterilization. 255-9149. 10 a.m.-10 p.m. — xxx

**MOVERS,** Quick cheap. 251-2004. — 20x7

**TYPING** of any kind \$.45 a page. Price negotiable. Call Linda 238-0347. Jan. 238-3011. E.H. quick service. — 20x7

**FAST XEROX** copies \$.05. 544 State Street. — xxx

**DRIVING** instruction. 244-5455. — 136xMay 7th

**TYPING—theses, term papers, etc.** 244-8497. — 10x8

**NEW YORK TIMES.** Sunday home delivery. \$.75. 256-5183 eves.—12 x 4

**PHOTOGRAPHY CLASS:** no experience necessary; learn to shoot, develop, print, and mount, \$25. Free session Nov. 12th. Call 241-2828.—9x10

**TYPING.** 231-3261 after 5:30pm.—3x3

**THESES TYPING & papers typed** in my home. Experienced. 244-1049.—12x15

**EAR PIERCING** done by M.D. Call 231-2510.—5x6

**SO YOU PLAY LOUSY POOL?** Free instruction from 10-1 Mon., Thurs. nite guar results. Action Billiards. — xxx

## FOR SALE

**SAMSONITE SUITCASE;** Bigsby tailpiece; Pocket Metronome; 9 x 12 braided rug. 251-5692. — 3 x 2

## FOR SALE

**STEREO: CONCEPT SOUND** offers name brand, factory sealed, fully warranted audio components and accessories at discount prices, 251-9683. Concept Sound. A sensible alternative. — xxx

**DOBRO \$400** Call 238-0832. — 5 x 4

**2 SNOW TIRES** 7.75 x 14 836-3733. — 4 x 3

**DUST COVER** and base for Dual 1219. Call 251-9608. — 2 x 1

**FREE** male tiger kitten, twelve wks. with shots, call 257-9076. — 5x1

**NIKON F** with F1.4 lens regular price \$519.50. Photoart price \$399.95. 411 State St. 256-1919. — 10 x 10

**CANNON F1.4 lens** regular price \$591.50. Photoart price \$439.95. 411 State St. 256-1919. — 10 x 10

**PENTAX SPOTMATIC II** regular price \$389.50 Photoart price \$299.95. 411 State St. 256-1919. — 10 x 10

**TYPEWRITER—excellent** condition 255-2552. — 5x1

**COMPONENTS,** receiver, speakers, 8-track player. Ask for John. 256-6484.—7x6

**AR AMP EC,** \$155.00. 256-8510—3x1

**AR TURNTABLE EC,** \$50. 256-8510.—3x1

**NIKON-FTN** body, black \$228. Nikon lens: 50mm f1.4 \$96. 135mm F2.8 \$132, 55mm micro \$126. All equipment in excellent, near new condition; sold separately or all together for \$575. Call 837-2336 9 to 2:30 or after 6 pm.—3x1

**HOCKEY TICKETS!** Unparalleled offer! Three Fri-nite season tickets all three together. Best offer. 255-2102.—3x3

**NIKON:** Camera and lens FTN body, black \$230, 50mm F1.4 \$95, 135mm F2.8 \$130, 55mm micro lens \$125. All equipment in excellent near-new condition. Sold separately or altogether \$550. Call 837-2336 between 9 & 2:30 or after 6pm.—4x4

**2 ARS'S EC** \$180 256-8510.—3x3

**AIR FORCE** parka. 257-4631.—3x3

**CANNON FTqI** almost new. Also albums, cassettes, fair prices! Linda. 256-5877.—2x2

## PERSONALS

**TO THAT** beautiful person who cares—meet me at the blood drive, Great Hall, any day this wk.—H.H. — 5 x 4

## WANTED

**ATTENTION ARTISTS** and Craftsmen. Display and sell your crafts at the Good Karma, opening soon at 311 State St. No consignment. Call 251-0555 for details, or stop in, 10 a.m. - 6 p.m. — 14x1

**RELAX** try Action Billiards.

**SALESCLERKS** for new men's clothing store opening in downtown Madison. No experience necessary. See Kathy at 661 State St. after Monday. 5x1

**TWO (2) SEASON** hockey tickets. Will pay Top dollar for good seats. Call Bob Collins. 222-0068.—4x2

**EXPERIENCED** Bassist needs work, can sing. 255-1370.—3x1

## PARKING

**CAMPUS PARKING.** Call 231-3486. — 10x4

## TRAVEL

**EUROPE:** Leave any day, return any day via 747. International Student ID Cards. Hostel info., Youthfare cards & Eurail passes. Travel Center, 544 State St. 256-6000 afternoons. — xxx

**NEW YORK** for Thanksgiving. \$72 Roundtrip Nov. 22-26. WSA Charter Flights, 664 State St. 262-6512 - 30xNov. 21

**THANKSGIVING AND CHRISTMAS** flights to New York. \$98.00 Reserved. Return on any flight. TRAVEL CENTER, 544 STATE STREET, 256-6000 AFTERNOONS. — xxx

**CHRISTMAS IN SPAIN** (and Morocco). Airfare & hotel with meals! Just \$249.00 only from TRAVEL CENTER, 544 STATE ST. 256-6000, AFTERNOONS. — xxx

**EUROPEAN JOBS.** Study programs, guaranteed. Young World, Mitchell Bldg. Milw. 53202, 414/271-3355. — xxx

**CHRISTMAS VACATION IN MOROCCO.** See Casablanca and Marrakech from Jan. 1-9th. Air fare, hotel, transfers and meals. All for \$249. Call CAMPUS TRAVEL, IDEAS. 255-4321 — xxx

## ETC. & ETC.

**THE COMMUNITY RAP CENTER** INC. If you have a problem and want to talk about it you can call 257-3522 or come to 923 Spring St. 8 p.m. to midnite. — xxx

**BUDDHIST MEDITATION** group meets Tues. & Thurs. Seminar Sundays. 836-3733, 262-7784. — 7 x 7

## WHEELS FOR SALE

**350 HONDA,** excellent condition. 257-0138.—10x13

**'71 VW** sq. back. 16,000 miles, excellent condition. Snow tires, AM/FM radio. Must sell. 255-6937 or 262-8902.—6x7

## RIDE NEEDED

**RIDE NEEDED** to Kansas or area. Nov. 2-3 Call 255-6960. — 2 x 1

## HELP WANTED

**MODELS** wanted by professional photographer for magazine figure work. No porn corn or experience required. Release necessary. Call Jerry or Edith Adam 312-882-3633 or Write V.I.P. Photography, Box 558 Hoffman Ests. Illinois 60172. — 20x7

**TYPIST WANTED:** Part time, must be UW student. Work will be from 11 p.m. to 3 a.m., Monday night thru Friday night working on the production of the Daily Cardinal. Job requires at least 65 words per minute. Apply by phone, 262-0896, Mr. Hinkson. \$2.25 per hour. — xxx

## LOST

**BOOKBAG** with 2 books; notebooks, MacDonald's (Univ. Ave.) 10-27, if found call Steve 255-9550; no questions asked!—5x6

**LOST:** gloves, reward. 256-0151.—7x8

**REWARD** \$50, gold watch brown face, alligator band. Call 262-7522.—4x4

**LEFT** a small black suitcase on curb near 1013 Milton St. Please return! 251-8030.—2x2

## FOUND

**FOUND ADS ARE FREE.** Two lines only (10 words) Maximum 2 days xxx

## DAILY CONTEST

### New Winners Daily

If your ID number is listed below, you're a winner. Stop in at the Daily Cardinal office, 821 University Ave. between 8 and 4 p.m. and draw a prize. Or call 262-5877 (Contest Calls Only).

### TODAY'S WINNERS ARE:

387506484  
4724886306  
0233834621  
5264655985  
0653411702  
1074077957  
1364278091  
2804221154  
2317054381  
9000066440

You have 3 days to claim a prize (not counting weekends) and will be eligible for the end-of-the-Semester Contest Grand Prize drawing.



Subscribe  
Daily

## SKI

### ST. MORITZ & SUISSE

complete pkg. from Milwaukee \$469. 1 wk., air fare, all accom., all lift tickets, 2 meals daily, unlimited transfers to ski areas, plus!!!!!! call:

### YOUNG WORLD LTD.

(414) 271-3355

## TERMPAPERS

Write today for our FREE catalogue of professionally researched term papers. We also prepare custom researched papers.

### MINUTE RESEARCH

470 Commonwealth Ave.  
Boston, Mass. 02215  
(617) 266-0204

"WE NEED A LOCAL SALESMAN"

## CAMPUS CAPITOL



- We're building something new in apartment living for the downtown area. So new in fact that the carpenters are still pounding nails.
- Deluxe decorator efficiencies and one bedrooms, conveniently located.
- Lease now and we will give you a construction rent credit. Offer good until we throw out the carpenters.
- Call 255-9433, eves. 271-4512

## Chapel Hill

5000 Sheboygan Ave.  
238-5533

NEW BEAUTIFUL  
SOUNDPROOFED  
SECURITY LOCKED  
INSIDE PARKING  
HEATED POOL  
QUIET  
FIREPLACES  
RECREATION RM.  
BUS SERVICE  
FURNISHED MODELS  
RENT CREDITS  
FROM \$140

## Valley View

2925 Fish Hatchery Road  
274-2255

NEW 300 UNITS  
SOUNDPROOFED  
SECURITY LOCKED  
TENNIS & POOL  
SAUNAS  
BUS SERVICE  
QUIET  
BEAUTIFUL  
FURNISHED MODELS  
RENT CREDITS  
FROM \$135

## PEACE CORPS & VISTA

Without your skills and know-how they are empty promises.

APPLICATIONS FOR PROGRAMS  
BEGINNING IN FEB. & MARCH ARE  
DUE BY NOV. 30.

Former Volunteers are in the Memorial Union and  
Various Placement Offices This Week.

## THANKSGIVING AND CHRISTMAS FLIGHTS

To New York — \$98 Roundtrip (Reserved)  
Return on any Flight

## CHRISTMAS IN SPAIN — \$249.00

Includes First Class Hotel, Meals, transportation, etc.

Travel Center 544 State Street 256-6000 (afternoons)

## CAN YOU QUALIFY?

### FOR WHAT?

AIR FORCE ROTC two-year program

- Financial Benefits
- Flying Training (Men only)
- A Challenging future.

### WHEN?

November 11, 1972

### WHERE?

Call 262-3440

Stop in at 1815 University Ave. for details.

HIRE • RENT • SWAP • HIRE • BUY • SELL • RENT •  
**LOW COST CLASSIFIED ADS**  
**GET RESULTS**  
We're underground at 821 University  
8 a.m. to 4 p.m. Monday thru Friday



# Madison Sustaining Fund sets Community Cache funding program

By LAURIE MOECKLER  
of the Cardinal Staff

Madison Tenants' Union, Blue Bus Clinic, Yellow Jersey Co-op, Draft Counseling Center, People's Office—these and 14 other groups are members of the growing Madison Sustaining Fund (MSF).

The Fund was established in 1971 as an alternative to the United Way. According to Sue Schmall, a representative of the Fund, the group funds organizations which "because of their political nature couldn't get funded another way."

The group sees itself as "representing an attempt by the people of Madison to seize control of their lives and the resources needed to live them to the fullest potential," according to a group pamphlet which is inserted in today's Cardinal.

THE FUND gets its money primarily from the Community Chip, a program that was initiated in October, 1971. This is a one per cent voluntary mark-up on goods sold at cooperating stores and organizations. So far, the Chip has yielded an average of about one thousand dollars per month. But according to MSF representative Charles Dancak, "four to five thousand is our goal."

Beginning this week, the Sustaining Fund will sponsor a program called the Community Cache, which asks for pledges for monthly contributions. Each month a volunteer Cache member would pick up the pledger's contribution and inform him on

the allocation of funds. Monthly contributions to the Community Cache insure a steady source of income for the month-to-month operation of alternative institutions.

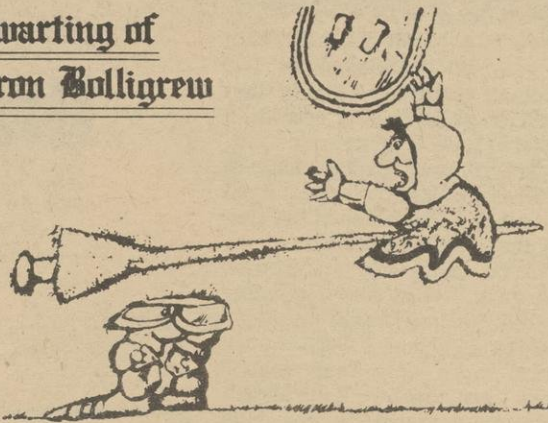
The MSF is currently seeking automatic payroll check-off rights for the Cache from the University, such as those granted to the United Fund. Each month, a set percentage of the contributing employee's paycheck would go to MSF.

Along with sponsoring Community Chip and the Community

Cache, MSF has raised additional dollars through special benefits like the "Bicycle Boogie" and through voluntary contributions by some member cooperatives which make profits. Monthly statements are provided to the public on the flow of all funds in the MSF.

MSF needs money and workers in order to survive. "We're asking for one hour's work a month," stated Dancak. If you want to volunteer, or if you have any questions, call the Madison Sustaining Fund, 257-1796.

## The Thwarting of Baron Bolligrew



a play for children by Robert Bolt  
(author of A Man for All Seasons)

Appropriate for grade 3 and up - adults will enjoy it too

Experimental Theatre - Vilas Communication Hall

TICKETS REMAIN FOR THE FOLLOWING  
PERFORMANCES:

SATURDAY, November 4 — 10:00 A.M. and 2:30 P.M.  
SATURDAY, November 11 — 10:00 A.M. and 2:30 P.M.

Tickets available at the Wisconsin Union Box Office

Only \$1.00

Call 262-2201 for your reservation today!  
Presented by the University Theatre

## PRINCETON UNIVERSITY

will interview men and women  
interested in the following careers:

GOVERNMENT SERVICE ELECTORAL POLITICS  
URBAN PLANNING POLICY RESEARCH  
JOURNALISM INTERNATIONAL  
ENVIRONMENTAL POLICY RELATIONS  
ECONOMIC DEVELOPMENT

at UNIVERSITY OF WISCONSIN-MADISON  
in Career Advising and Placement Office  
117 Bascom Hall  
on FRIDAY 3, 1972



WISCONSIN STUDENT  
ASSOCIATION &  
AL HAYWARD &  
JOHN SCHER  
PRESENT

## BEACH BOYS

THURS. NOV. 9TH AT 8 P.M.  
SPECIAL GUESTS  
POCO \$3.50 \$4.50 \$5.50 50% DISCOUNT  
W.S.A. Card Holders  
Limit two per card

Available at Coliseum box office Mon.-Sat. 9 AM-5 PM and  
Manchester's Dept. Store, Bank of Madison on the Capitol  
Square, Hillsdale State Bank, Hansen's Pharmacy, Charisma on  
campus, Memorial Union box office on campus & other locations  
call 257-5686. To order by mail: Enclose check or money order  
for amount of purchase plus 25¢ handling charge and a self-  
addressed, stamped envelope, and mail to: Name of Show,  
Ticket Center, Dane County Coliseum, Madison, Wisconsin 53713.

DANE COUNTY MEMORIAL COLISEUM

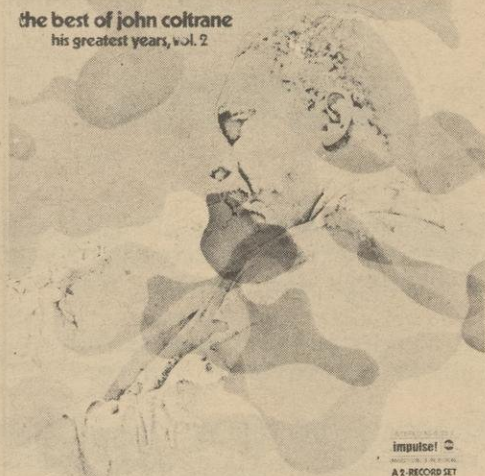
FAIRGROUNDS DRIVE, MADISON, WISCONSIN 53713

Now charge your tickets on your BankAmericard at Ticket Center

# THE BEST OF...

## John Coltrane Pharoah Sanders

the best of john coltrane  
his greatest years, vol. 2



Vol.  
II

LIST \$6.98

WSA PRICE

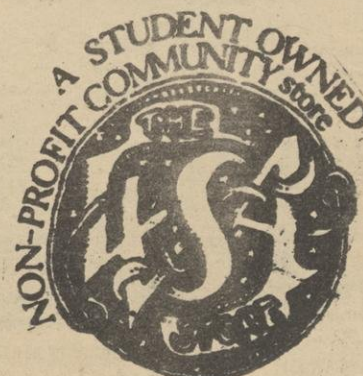
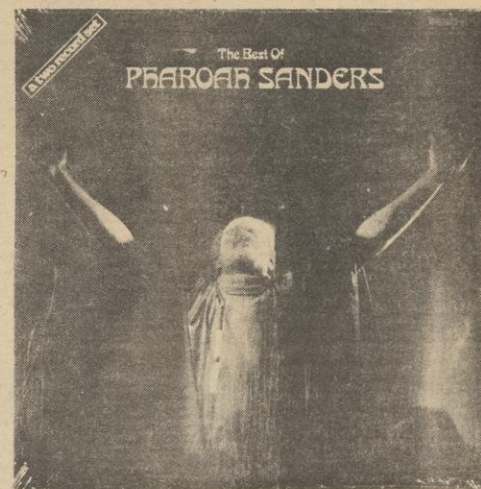
\$4<sup>23</sup>

TWO-RECORD SETS

impulse!

the most important name in

JAZZ



664 STATE IN MADISON



# Hawkeyes suffer up and down year

By BILL KURTZ  
of the Sports Staff

Iowa Sports Information Director George Wine told the Madison Pen and Mike Club's weekly luncheon at the Double H Steak House that "we've had a

pretty interesting season." A look at the Hawkeyes' record proved Wine's comment to be an understatement.

After a 21-0 loss at Ohio State in the season opener, Iowa beat Oregon State fairly easily, and

came within 36 seconds of upsetting Penn State on the road. The following week, however, the Hawks provided Purdue with its first victory. But despite the injury of quarterback Kyle Skogman in the Purdue game, Iowa then turned around to upset Northwestern, 23-12.

TWO WEEKS ago, the Hawkeyes hit a buzzsaw at Minnesota. The Gophers unveiled a befuddling "no-huddle" offense, with Wine calling Iowa's showing "the only game we've played poorly." Yet last week, the Hawkeyes held favored Michigan State to a 6-6 tie, forcing eight State fumbles.

Iowa is a better football team this year, Wine declared, for two principal reasons. One is that Coach Frank Lauterbur now has a season in Iowa City under his belt, so players and coaches have a better idea of what to expect from each other. The other is the new freshman eligibility rule.

"We're using more freshmen than most," said Wine, pointing out that the Hawks will bring ten frosh to Madison, "because we needed more help than most." Unlike most coaches, Wine added, Lauterbur praised the new rule at its adoption, knowing it could help Iowa.

PERHAPS THE key factor behind the Hawkeyes' erratic play is their inexperience. Only two offensive and two defensive starters from last season's squad are starting this year.

"Our offense," Wine declared, "hasn't been the same," since Kyle Skogman's injury, sophomore Bobby Ousley has called the signals, and in Wine's

words, "at times plays like a sophomore." Top rusher for the Hawkeyes is fullback Frank Holmes, a senior who sat out the 1969 season in a black boycott.

On defense, the Hawks are led by freshmen linebacker Andre Jackson, a walk-on.

"He had had two knee operations," Wine explained, "so

nobody wanted to take a chance on him."

"Wisconsin we view with trepidation," declared Wine. The Hawks remember what happened on their last visit to Camp Randall. Indeed, the last Iowa team to win at Madison was the 1958 team, Iowa's last Rose Bowl team.



RUDY STEINER, being blotted out by Van DeCree, was also blocked from receiving offensive player of the week by Ohio State quarterback Greg Hare.

## Harrier coach eyes Big Ten title possibility

Wisconsin has a great past tradition in cross country, coach Dan McClimon told the Madison Pen and Mike Club, although the Badgers' last Big Ten title came in 1950. This year, though, may be the year to bring back a title, McClimon feels. He thinks four or five teams will be in the running for the meet Saturday morning at Iowa City, Iowa, and expects the Badgers to be among them.

"WE MAY have better depth than anyone else," is how McClimon sums up his harriers. Besides depth, he also points to senior Glenn Herold, who McClimon feels has "an excellent change" to take individual honors. The coach thinks that Indiana's Steve Heidenreich and Michigan's Keith Brown are the main obstacles to a Big Ten crown for Herold.

In the team competition, McClimon sees defending champion Michigan State as the chief rival for the Badgers, who finished fourth last season. "They don't have too much depth," said McClimon, but the Spartans do boast a sub-four minute mile. Besides Michigan State, McClimon sees Indiana, Michigan, and possibly the host Iowa Hawkeyes as contenders for the team championship. "We should be very competitive," he concluded, "but whoever wins will have to have a good day."

## VW REPAIR

Engine Exchange,  
Repair, TuneUps  
& Parts  
Cheapest and most  
reliable in town  
Call Running Dog!  
Call: 256-9982  
255-6845  
1040 S. PARK ST.

## JAZZ-BLUES HOMECOMING SHOW

THE "ELECTRIFYING" EDDIE HARRIS  
BUDDY MONTGOMERY TRIO  
EDWARD "GUITAR PETE" FRANKLIN

DATE: Nov. 4, 1972 at Union Theatre  
8:00 P.M. \$4.50 General Admission

Tickets at 1120 W. Johnson,  
WSA Store, Union Theatre,  
5552 Humanities Bldg.



GEORGE M. VERBESKI  
WANTS TO BE YOUR  
SHERIFF

BECAUSE—He has experience in Sheriff's work  
BECAUSE—He will work with you and for you.  
BECAUSE—He owes favors to no one.  
BECAUSE—He is honest and fair.  
BECAUSE—He wants to help you.

YOU NEED THIS KIND OF MAN TO BRING BACK  
RESPECT TO AND CONFIDENCE IN OUR  
LAW ENFORCEMENT AGENCIES AND PERSONNEL

Authorized and Paid for by George M. Verbeski for Sheriff Comm.  
Richard R. McGuigan, Treas., 218 Bay View, Madison, Wis. 53715

## ABSENTEE VOTERS

NOTARY PUBLICS LOCATED AT:  
Memorial Union Information Booth  
Peterson Office Building, rm. 54  
First Wisconsin National Bank

Authorized and paid for by Students for McGovern, Chuck Richards, treas.

## SURE...

Lots of  
people talk  
about the  
WAR



## NAGER ACTED!

NAGER authored Assembly Bill 314 challenging Nixon's power to commit Wisconsin men to fight and die in an illegal and immoral War!

NAGER convinced the State Assembly to go on record against Nixon's War by a vote of 76-22!

NAGER believes that the War issues should and must be raised at all levels of government!

CHOOSE ACTION—not rhetoric

RE-ELECT

ED NAGER

78th Assembly Dist. DEMOCRAT

Auth. & pd. for by PEOPLE for NAGER, Lisa  
Bermau, ch., 150 W. Gorham, Madison, WI.