



LIBRARIES

UNIVERSITY OF WISCONSIN-MADISON

"DBS Staging Area -- Stopping Points on Road to Japan".

[s.l.]: [s.n.], 1945

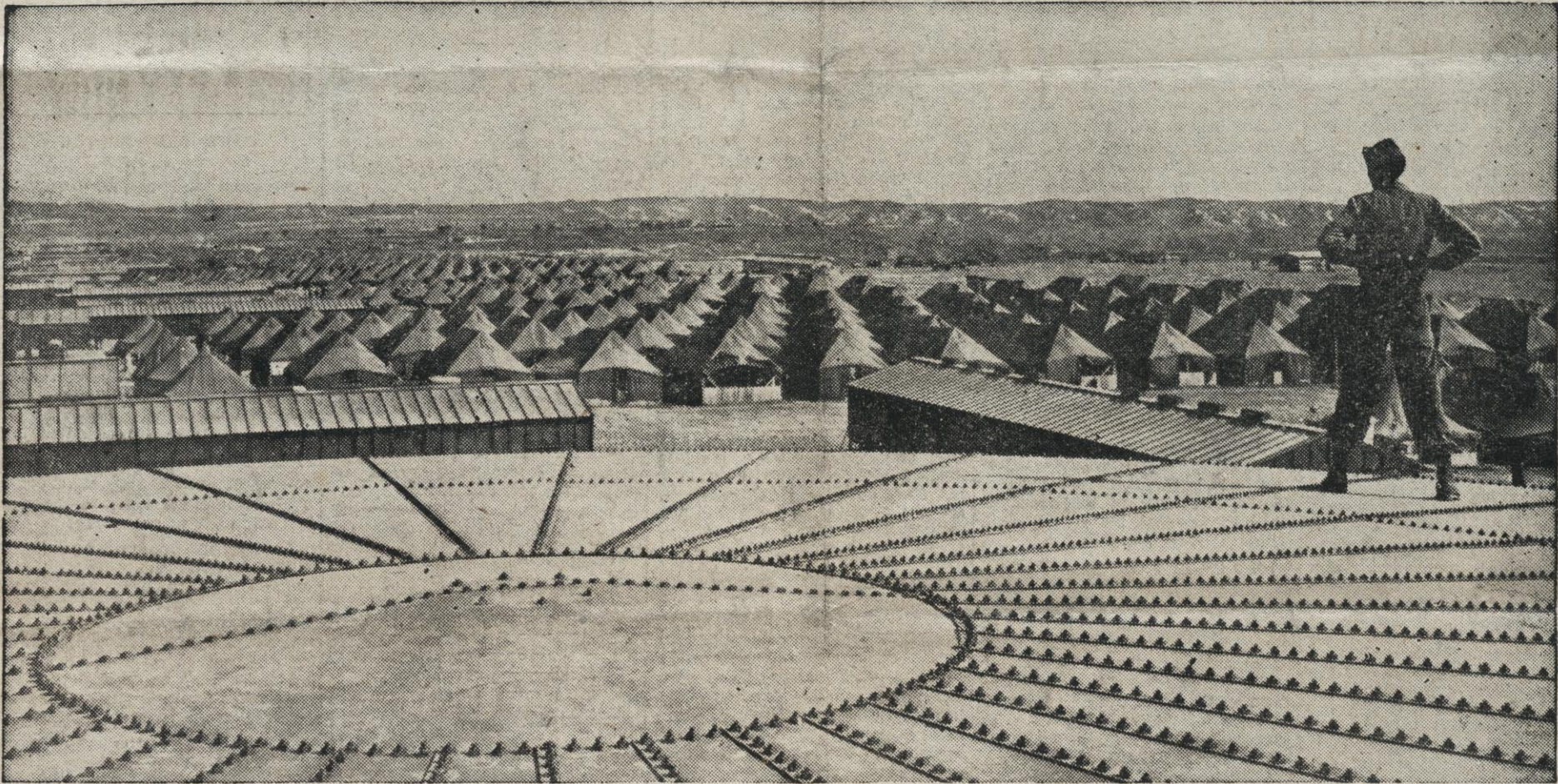
<https://digital.library.wisc.edu/1711.dl/VCA5NNRLISULX8Z>

<http://rightsstatements.org/vocab/UND/1.0/>

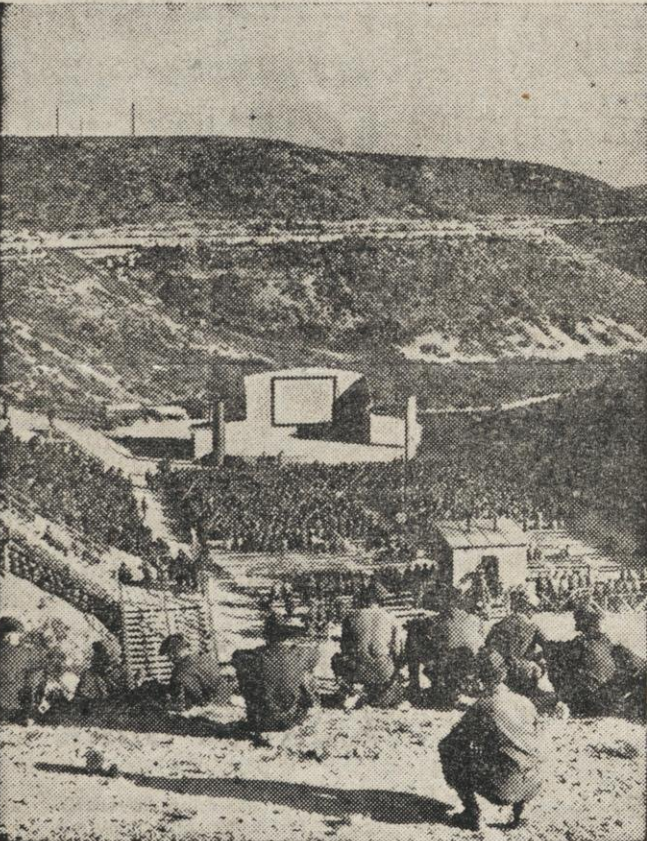
The libraries provide public access to a wide range of material, including online exhibits, digitized collections, archival finding aids, our catalog, online articles, and a growing range of materials in many media.

When possible, we provide rights information in catalog records, finding aids, and other metadata that accompanies collections or items. However, it is always the user's obligation to evaluate copyright and rights issues in light of their own use.

DBS Staging Area—Stopping Points on Road to Japan



FROM THE TOP OF A WATER TOWER A GI LOOKS OUT OVER A HUGE TENT CITY WHICH IS PART OF THE ARMY'S REDEPLOYMENT AREA.



AS MANY AS 18,000 GI's are entertained nightly at the Leslie J. McNair Memorial Amphitheater, part of the Calas Staging Area.

Pacific-bound service troops by the thousands are pouring into the three big staging areas near Marseille as the Army's redeployment program rapidly gains momentum. Redeployment in southern France is expected to reach its peak around mid-August.

These Army Pictorial Service photographs give an overall air view of Calas, St. Victoret and Arles Staging Areas which together can stage 200,000 troops at a time.

The Leslie J. McNair Memorial Amphitheater, named in memory of the late AGF commander, is the leading GI attraction at Calas Staging Area. It is equipped with two 35mm projectors and movies are shown nightly.

The FDR Memorial Amphitheater was officially opened last week at St. Victoret.

The average GI who moves through either of the staging areas is on his way to the land of the Mikado in a matter of days—unless he's one of the lucky ones who gets a trip home through Calas Staging Area, which, in addition to its outstaging for the Pacific, is equipped to handle 10,000 men eligible for shipment to the States, for discharge or reassignment.



SPRAWLED OVER a huge section of the Marseille plain is the Arles Staging Area, which will handle 200,000 men at a time at peak operation



THIS IS ST. VICTORET Staging Area, one of the three set up for troops going directly to combat in the Pacific from the ETO



AN AERIAL VIEW of the Calas Staging Area, Thousands of Pacific-bound men will also pass on their way to fight the forces of Japan.