



LIBRARIES

UNIVERSITY OF WISCONSIN-MADISON

Fourth annual dramatic and speech institute pamphlet. June/July 1931

[s.l.]: [s.n.], June/July 1931

<https://digital.library.wisc.edu/1711.dl/ROTZHEQPETCAO9D>

Based on date of publication, this material is presumed to be in the public domain.

For information on re-use, see

<http://digital.library.wisc.edu/1711.dl/Copyright>

The libraries provide public access to a wide range of material, including online exhibits, digitized collections, archival finding aids, our catalog, online articles, and a growing range of materials in many media.

When possible, we provide rights information in catalog records, finding aids, and other metadata that accompanies collections or items. However, it is always the user's obligation to evaluate copyright and rights issues in light of their own use.

F9029
U58
1931

FOURTH ANNUAL

DRAMATIC and SPEECH INSTITUTE

June 29 - July 11, 1931

Headquarters: Old Union Bldg.
On the Lake Shore
at Langdon and Park Streets.



Under the Direction of
The University Extension Division
and The Department of Speech
of The University of Wisconsin

F9029
U58
1931

For Information, Address--

*Ethel T. Rockwell, Box 154, Bascom Hall
Madison, Wis.*

Art is the ark of the covenant in which is carried all the ideals and beauty of the human race.

—Lorado Taft.

In these times when the theatre is losing ground as a commercial undertaking, it behooves all of us to keep it thriving in our communities and schools with performances of our own organizations and by support of the productions of other groups, by our drama reading clubs, by performances for children, and by interest in our local playwrights. When all of us who claim we love the drama will support our claim and make it manifest in constant activity, then it will be a far greater and stronger art than it was in the heyday of its commercial existence.

—Alexander Dean, Yale University

To forward the cause of community drama throughout Wisconsin, Miss Ethel Theodora Rockwell directs the Bureau of Dramatic Activities of the University of Wisconsin Extension Division. As a native of the State and a graduate of the University of Wisconsin she possesses exceptional qualifications for adapting the facilities of the Bureau to the particular needs and aptitudes of the groups thus served. Miss Rockwell was associated with the Extension Division of the University of North Carolina for several years, doing pioneer work in creating a statewide interest in dramatics. The University of Wisconsin then called her back to develop the present Bureau of Dramatic Activities. She will be happy to respond to all requests for information and service in the field of pageantry and drama.



MISS ROCKWELL

Chester D. Snell

Dean, University Extension Division

AN INVITATION

Everyone interested in the promotion of dramatic and other speech activities is cordially invited and sincerely urged to take advantage of this ten-day institute. It is hoped that all organizations, schools, churches, and communities interested in play production will send at least one representative who wishes to produce or to assist in producing plays, pageants, and festivals, so that he may learn successful methods and gain inspiration and ideas that will be of value to the group represented.

COURSES OFFERED

Daily at 8:30 a. m.

Pageantry — *Professor Rockwell*. A course designed to give training in the planning of historical, symbolical, and religious pageants in counties and communities, in research work and the organization of original material, in the writing and setting of the scenes, in selecting casts, and in choosing committees for production. Individual attention will gladly be given to anyone registering in this course who is interested in preparing a pageant for a specific occasion.

Character Study and Make-up — *Miss Smith*. Classroom demonstration of character delineation and make-up. Each student taking this course will be expected to furnish his own make-up. A special assortment of make-up may be obtained at Madison stores at the beginning of the course.

Daily at 9:30 a. m.

Business Management — *Mr. Lane*. Designed to give practical instruction in the management of Little Theatres, including organization, budgets, membership, advertising, publicity, and all other phases of the subject. Basic principles in making the community theatre a permanent financial success.

Play-Writing — *Professor Wise*. A course designed to encourage the writing of native drama, and to give to English, history, and language teachers plans, outlines, and ideas helpful in vitalizing their class work. Of interest also to persons wishing to write plays for Little Theatres and the professional stage.

Daily at 10:30 a. m.

Play Production — *Professor Rockwell*. A survey course in club organization, casting, business management, advertising, rehearsals, stagecraft, costuming, make-up, lighting. The class in Play Production will present a play at the end of the course for practical demonstration.

Stage Design — *Professor Varnum*. One of the most attractive and interesting of the courses offered at the University. Presents the newest methods of stage designing for artistic effects in scenery and lighting. Demonstrations given on a miniature stage.

Problems in Public Speaking — *Professor Ewbank*. A course offered for the benefit of lecturers and ministers attending the Institute for Rural Ministers. Open to anyone interested.

Personality and Social Adjustment (Mental Hygiene) — *Professor West*. A thought-provoking and practical course offered by the Rural Life Institute. Open to anyone interested.

Daily at 11:30 a. m.

Creative Dramatics — *Professor Troutman*. A course designed to inspire creative acting and play producing. Pantomime, improvisation, rhythm, artistic finish, how to transform a play into living drama.

Daily at 1:30 p. m.

Costume Design—*Professor Randolph*. The designing and dyeing of costumes and costume accessories. Advice about materials and methods of decorating. Color harmony in costume. Practical demonstrations to illustrate points discussed.

Stage Arts and Crafts—*Mr. Buerki*. Workshop methods. Practical work in the actual designing and building of stage scenery and properties. Making and hanging of curtains. Demonstration of simple devices for effective lighting.

Daily at 2:30 p. m.

Children's Dramatics—*Professor Dalzell*. Plays for children of the elementary grades. Aims and methods in children's dramatics. Production of an attractive play for demonstration.

Voice Training—*Mr. Bahn*. A very practical and interesting course in the technique of voice training for public speaking and effective voice work in drama.

Daily at 3:30 p. m. and 7:30 p. m.

Play Rehearsals will be held at these hours, or will be scheduled to suit the participants. The cast for the demonstration play will be selected from among the registrants in the Institute, at a tryout to be held in Room 103, Old Union Building, Tuesday, June 30, at 7:30 p. m.

FACULTY

Eugene Bahn—Assistant in the Department of Speech, University of Wisconsin. B.A. and M.A., University of Wisconsin. Formerly on the staff of the Denver Community Players, Denver, Colo. In studying for his doctor's degree, Mr. Bahn is specializing in Voice Training.

Frederick A. Buerki—Head of the Art and Dramatic Departments of the Kohler High School. For the past six Summer Sessions, Stage Technician at the University of Wisconsin. Graduate of the University of Wisconsin. Vice President of the Wisconsin Dramatic Guild. One of Wisconsin's cleverest designers of artistic stage scenery.

Cloyde Duval Dalzell—Assistant Professor of Dramatics, University of Southern California. Graduate, School of the Theatre, Carnegie Institute of Technology, Pittsburg. M.A., Occidental College. Graduate work, University of Wisconsin, 1928. Professional dramatic experience, New York City, 1921. Director, Broad Oaks School, Pasadena, California. Supervising Director, Workshop, Pasadena Community Playhouse, 1929. Has had wide experience in Children's Dramatics, and will have charge of Dramatics of the Creative Arts School for Children, University of Wisconsin Summer Session, 1931.

Henry Lee Eubank—Associate Professor of Speech, University of Wisconsin. Graduate of Ohio Wesleyan University. M.A., University of Michigan. Formerly Head of Speech Department of Albion College. Member of the Executive Committee of National Association of Teachers of Speech. Coach of the University Debating Teams.

J. Russell Lane—Business Manager and Technician, University Theatre. Graduate, University of Illinois. Graduate work at University of Iowa and University of Wisconsin. Formerly head of Speech Department of State Teachers' College at LaCrosse. Mr. Lane has had a great deal of practical experience in nearly all phases of dramatics.

Ruth Randolph—Assistant Professor of Home Economics, University of Wisconsin. Acting Chairman of Related Arts, University of Wisconsin. Graduate of Fine Arts, Columbia University. Student in Ecole de Louvre, Paris, summer of 1928.

Ethel Theodora Rockwell—Chief of the Bureau of Dramatic Activities, Extension Division, University of Wisconsin, and Assistant Professor of Speech. Secretary-Treasurer, Wisconsin Dramatic Guild. Formerly connected with the University of North Carolina and the College of William and Mary. Graduate of the University of Wisconsin. Author and director of numerous plays, pageants, and dramatic festivals.

Alethea E. Smith—Director of Dramatics, Florida State College for Women. A.B. and M.A., University of Wisconsin. Formerly assistant director of dramatics, University of Minnesota; had charge of all the work in make-up, both for classes and for productions. Taught make-up in Summer Session at Oregon State College.

William Chilton Troutman—Assistant Professor of Speech, University of Wisconsin. Graduate, University of Illinois. Director of University Theatre for the past five years. For five years preceding, Director of Dramatics at the University of Illinois. Has directed dramatics at Carroll College and at Lake Forest College. Stage direction at American Academy of Dramatic Art, New York City.

William H. Varnum—Professor of Art Education, University of Wisconsin. Chairman of Applied Arts. For several years has designed the stage sets for the Curtain Club, a faculty dramatic organization. Exhibits at various art galleries of the country. Graduate of Massachusetts State School of Arts. Pupil of Woodbury de Camp Major. Studied at Harvard and at the Julian Academie of Paris. Formerly Director of School of Fine and Applied Arts at Millikan University, Decatur, Ill.

Robert West—Professor of Speech Pathology, University of Wisconsin. Director of Speech Clinic. Ph. D., University of Wisconsin. During the war, a member of the Division of Psychology, Medical Department, U. S. Army. Formerly connected with the University of Iowa and University of Michigan. A member of the White Conference on Child Health and Protection. Member of the American Society for the Study of Disorders of Speech.

Claude M. Wise—Chairman of Speech Department, University of Louisiana. A. B., Teachers' College, Kirksville, Mo. M. A., University of Chicago. Graduate work in Washington University, Columbia University, and the American Academy of Dramatic Arts, New York. Doctor's degree, University of Wisconsin. Author of "Dramatics for School and Community" and of several short plays. Editor of the Gateway Series of Plays, for Row, Peterson & Co., and of the Thalian Series for Samuel French, Inc.

NOTE: An official certificate of attendance will be issued to those desiring it, provided satisfactory work has been done.

PROGRAM

Monday, June 29, 9:00 a.m. to 6:00 p.m. REGISTRATION. Room 101, Old Union Bldg. (Just north of Memorial Union Bldg.) A registration fee of \$3.00 for each course elected will be charged to help defray expenses.

Monday, June 29, 6:30 p.m. Dinner, Memorial Union Bldg., \$1.00 per plate. All those attending the Institute are urged to attend this dinner, where they will have an opportunity to meet the faculty and one another, as well as to learn much about the Institute plans. *Reservations must be made in advance, by writing Miss Rockwell.*

Tuesday, June 30, to Saturday, July 11. Regular classes. Each course will consist of ten lectures or workshop demonstrations.

Thursday, Friday, and Saturday, July 2, 3, 4, 8:00 p.m. University Theatre presentation of *Candida*, by George Bernard Shaw. Director, Professor Troutman.

Saturday, July 4. Holiday.

Friday, July 10, 8:00 p.m. University Theatre. Presentation of *The Piper*, by Josephine Preston Peabody. Produced by registrants in the Institute as a project play. The class in Children's Dramatics will have charge of the training of the children who take part in this play.

Saturday, July 11, 2:30 p.m. University Theatre. Second presentation of *The Piper*. Children's matinee.

Saturday, July 11, 8:00 p.m. University Theatre. Third presentation of *The Piper*.

Mondays, June 29 and July 6, 7:15 p.m. to 8:15 p.m. Music Hall. Musical program and group singing.

Tuesdays, June 30 and July 7, 7:15 p.m. to 8:15 p.m. Men's Gymnasium. Play Hour. Dr. J. C. Elsom.

OTHER INSTITUTES

In session at the same time.

Tenth Annual Wisconsin Rural Leadership Summer School College of Agriculture

This leadership summer school is intended primarily for clergy and lay workers in country and small town churches and communities. This year it will include courses for women, both voluntary and professional workers. The courses offered and the instructional staff are the very best. For information, write J. H. Kolb, College of Agriculture, Madison, Wis.

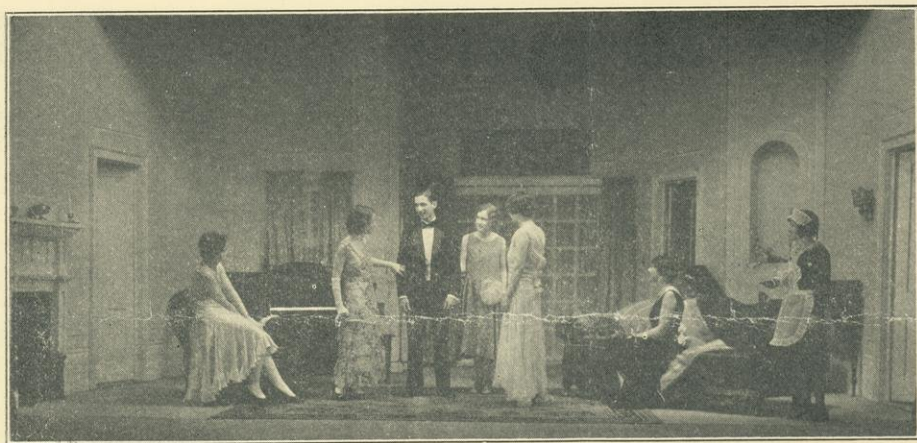
ROOMS

Arrangements have been made with the Park Hotel to furnish rooms at \$1.00 per night when two or more persons occupy the same room. Reservations should be made with the hotel management.



Alice in Wonderland

As dramatized and produced by Miss Cloyde Dalzell, who taught the Children's Dramatic Course in the Third Annual Dramatic Institute. All of the costumes elaborately designed and made of oil cloth, duvetyne, satin, and cambric may be rented for children of corresponding sizes from Miss Rockwell. Script of the play may be purchased at 25 cents a copy.



In the Spring a Young Man's Fancy

by Will S. Ranson. Presented as a project play in the Third Annual Dramatic Institute. Illustrates a realistic setting, effective in grouping and arrangement of the flats of a unit set.



Jazz and Minuet

by Ruth Giorloff. A costume fantasy presented as a special project during the Third Annual Dramatic Institute conducted by the Bureau at the University. June 30 to July 12, 1930.