



## Kwell Ointment advertisement.

[s.l.]: [s.n.], 1946

<https://digital.library.wisc.edu/1711.dl/UHZZPBHJOIH3A8T>

<http://rightsstatements.org/vocab/InC/1.0/>

The libraries provide public access to a wide range of material, including online exhibits, digitized collections, archival finding aids, our catalog, online articles, and a growing range of materials in many media.

When possible, we provide rights information in catalog records, finding aids, and other metadata that accompanies collections or items. However, it is always the user's obligation to evaluate copyright and rights issues in light of their own use.

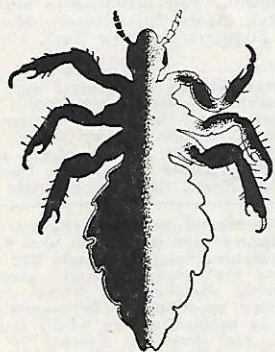
# New Dependability... New Rapidity of Action

## *in the control of* **SCABIES and PEDICULOSIS**

Quickly Lethal for



The *Sarcoptes scabiei*  
of scabies



*Pediculus humanus*

Kwell Ointment establishes a new high in therapeutic efficacy in the treatment of scabies and pediculosis. Its action is rapid, dependable, and positive. Pleasant to use, it produces no troublesome or disabling skin reaction or dermatitis. One application usually suffices for complete eradication; a second application is usually not required. Kwell Ointment contains 1% of the gamma isomer of 1,2,3,4,5,6-hexachlorocyclohexane in a vanishing cream base. At all pharmacies.

*Literature sent to nurses on request.*

*C.S.C. Pharmaceuticals*

A DIVISION OF

**COMMERCIAL SOLVENTS CORPORATION**

17 East 42nd St.  New York 17, N.Y.

Supplied in 2 oz. and 1 lb. jars



# **KWELL** OINTMENT