



LIBRARIES

UNIVERSITY OF WISCONSIN-MADISON

Site 3267: Taylor County, Township 31N, Range 2W, Section 20. 1953-08

[s.l.]: [s.n.], 1953-08

<https://digital.library.wisc.edu/1711.dl/WS66GUMNJ6CCQ8U>

This material may be protected by copyright law (Title 17, US Code).

For information on re-use see:

<http://digital.library.wisc.edu/1711.dl/Copyright>

The libraries provide public access to a wide range of material, including online exhibits, digitized collections, archival finding aids, our catalog, online articles, and a growing range of materials in many media.

When possible, we provide rights information in catalog records, finding aids, and other metadata that accompanies collections or items. However, it is always the user's obligation to evaluate copyright and rights issues in light of their own use.

STAND RECORD

FORESTS

Stand No. ~~5225~~ 3267

Name:

Locality:

County: Taylor

T: 31N

R: 2W

Sec: 20

Date: August 1953

Observers: Goder

Size of Stand: 80 acres

Size of Area Sampled:

Forest Type: hardwood-hemlock

Soil Type:

Topography: level to undulating

Slope: 15° Directions north

Condition of Stand:

Prob. .05

Open Grown Trees:

% Canopy: 80

Stumps:

1. hemlock	4.	7.	10.
2. yellow birch	5.	8.	11.
3.	6.	9.	12.

Soil Data:

	pH	N	P	K	Ca	Mg	Org. Mat.	Colloids	W.H.C.
A ₀	5.2	intervening,	4.7	mound					
A ₁	5.4	intervening;	mound	5.8					
A ₂	5.5	intervening;	mound	4.8					
B									

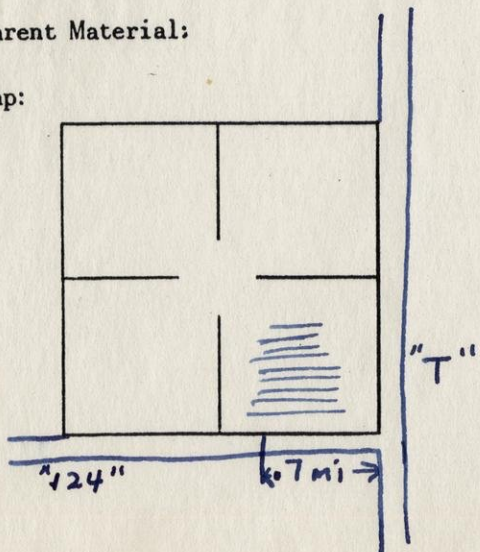
DEPTH

CHARACTERISTICS (Color, Texture, Structure, etc.)

A ₀	2"	friable mull type
A ₁	1/2"	
A ₂	3/4"	3" layer in intervening area
B		

Parent Material:

Map:



3267

POINT RECORD TREES

NORTHERN PINE-HARDWOODS

Stand No. 3823

STATION NO.	1	2	3	4	5	6	7	8	9	10
Abies balsam										
Acer rubrum				95				45 45	30 55	25
A. sacchar.	90 70 55	12 15	40 70	45 20 45	90 75	60	12 70	80 20	15	20 15
A. spicatum										
Betula lut.		45 60	70 15		90 75	25 50				12
B. papyrif										
Carpinus car										
Fagus gran										
Ostrya virg										
Picea glau										
Pinus Bank										
P. resinosa										
P. Strobus										
Populus bals										
P. grand										
P. trem										
Prunus pen.									12	
Quercus ell										
Q. rubra										
Tilia amer							20			
Tsuga can					120	120			170	40
Thuja occ										
Ulmus amer							170			
U. fulva										
<i>Little Ash</i>						30	30			
Distance	17 23	4 104	8 97	5 20 18	18 18 6	24 611	11 6 17	10 13 27	12 108	16 5.2

POINT RECORD TREES

NORTHERN PINE-HARDWOODS

Stand No. ~~3223~~ ³²⁶⁷

STATION NO.	1	2	3	4	5	6	7	8	9	10
Abies balsam			✓							
Acer rubrum										
A. sacchar.	31 40 95 80 ✓	80 40 65 46 ✓	35 95 ✓	90 15 12 ✓	30 35 30 ✓	30 15 55 35 ✓	20 12 15 20 45 ✓	50 80 15 20 55 ✓	50 15 15 60 ✓	1 15 55 89 ✓
A. spicatum										
Betula lut.	✓				520			✓	✓	20
B. papyrif										
Carpinus car										
Fagus gran										
Ostrya virg										
Picea glau										
Pinus Bank										
P. resinosa										
P. Strobus										
Populus bals										
P. grand										
P. trem										
Prunus pen.										
Quercus ell										
Q. rubra										
Tilia amer		✓	25 ✓					✓		
Tsuga can			90 160 ✓	90 40 ✓	15					
Thuja occ										
Ulmus amer	30									
U. fulva										
Distance	14 11 14	59 30	15 16 6	29 12 10	16 10 5	4	179 5 11 18	29 4	12 21 10	69 7

Plant Ecology Research
TREE DATA SUMMARY SHEET

Northern Pine-Hardwoods

Station Number: ³²⁶⁷~~3223~~

TREE	# PTS	# TRS	DOM. CLASSES			TOT. DOM.	# F ⁰ 10 ⁰ SAP SEED	# F ⁰ 10 ⁰ SAP	F. % SDL.	F. % TRS.	% SUM F. TR.	D. % TRS.	DOM% TRS.	DFD INDEX	C. I.
			-80	-320	321										
Abies bals								1							
Acer rubru	4	7	6	1		225			32.14	9.30		7.00	4.4	20.71	124.26
A. sacchar	20	66	59	7		2933	16	66	19	43		66.00	53.59	166.07	1660.70
A. spicatu							3	12	3	6					
Betula lut	7	11	9	1	1	982	4	16	11	25		11.00	19.25	46.53	372.24
B. papyrif															
Carpinus c															
Fagus gran															
Ostrya vir															
Picea glau															
Pinus Bank															
P. resinus															
P. Strobus															
Populus ba															
P. grandid															
P. tremulo															
Prunus pen	1	1	1			12			12.00	2.33		1.00	.24	3.57	14.28
Quercus el															
Q. rubra															
Tilia amer	1	2	2			45	1	4.9	7	15		2.00	.88	5.21	41.68
Tsuga cana	7	9	6	3		845			3	6		9.00	16.56	41.84	334.72
Thuja occi															
Ulmus amer	2	2	1	1		200			100.00	4.65		2.00	3.92	10.59	84.56
U. fulva															
Frax.am.	1	2	2			60			30.00	2.33		2.00	1.18	5.51	44.08
			86	13	1			24		44					
	43					5102									