



# LIBRARIES

UNIVERSITY OF WISCONSIN-MADISON

## **Orchestra parts: The widow. No. 400 [ca. 1890-1893]**

Gaunt, Percy; Hoyt, Charles H. (Charles Hale), 1859-1900  
New York: Arthur W. Tams Musical Library, [ca. 1890-1893]

<https://digital.library.wisc.edu/1711.dl/7RZFS4Y34CXBI8A>

This material may be protected by copyright law (e.g. Title 17, US Code).

For information on re-use see:

<http://digital.library.wisc.edu/1711.dl/Copyright>

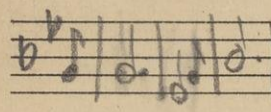
The libraries provide public access to a wide range of material, including online exhibits, digitized collections, archival finding aids, our catalog, online articles, and a growing range of materials in many media.

When possible, we provide rights information in catalog records, finding aids, and other metadata that accompanies collections or items. However, it is always the user's obligation to evaluate copyright and rights issues in light of their own use.

NO. 400

ARTHUR W. TAMS,  
MUSICAL LIBRARY,  
109 W. 28TH ST.,  
NEW YORK.

1.

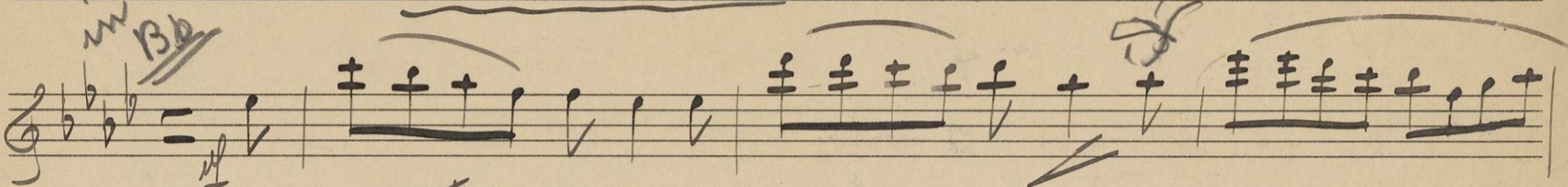


by the Bow in E b for Cistern

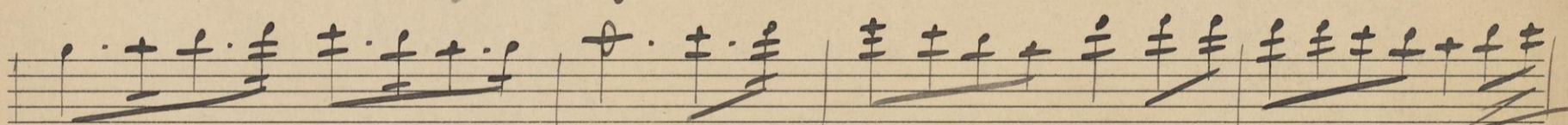
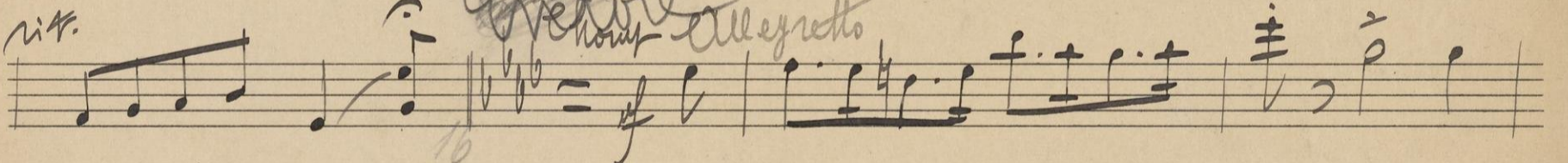
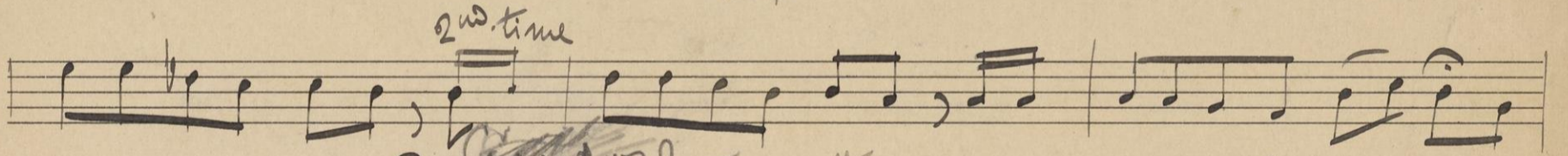
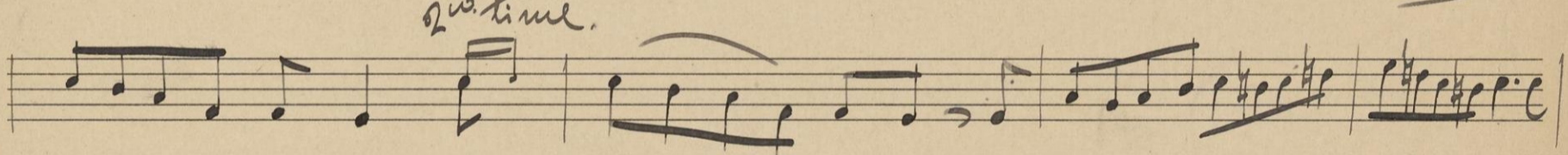
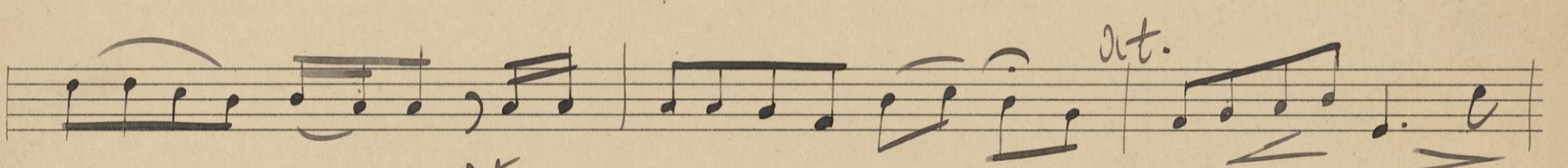
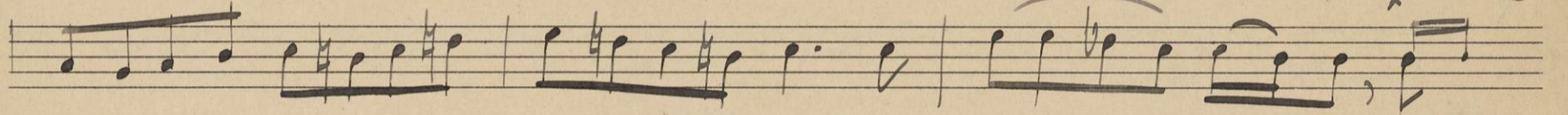
1st Violin

The Widow 2 Verses

2.



in Bb

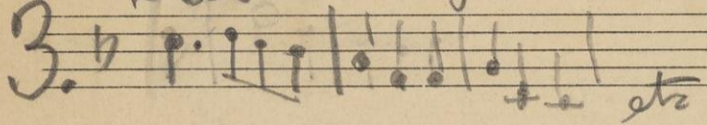


3

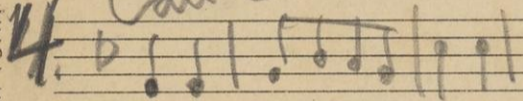
Lauterbach in 2<sup>nd</sup> Verse  
Opus and score from beginning

"THE SUPERB" A. W. TAMM MUSIC LIBRARY, NEW YORK

3. *W. Leiber Augustine in G*



4. *Can Can in G*



NO. 400

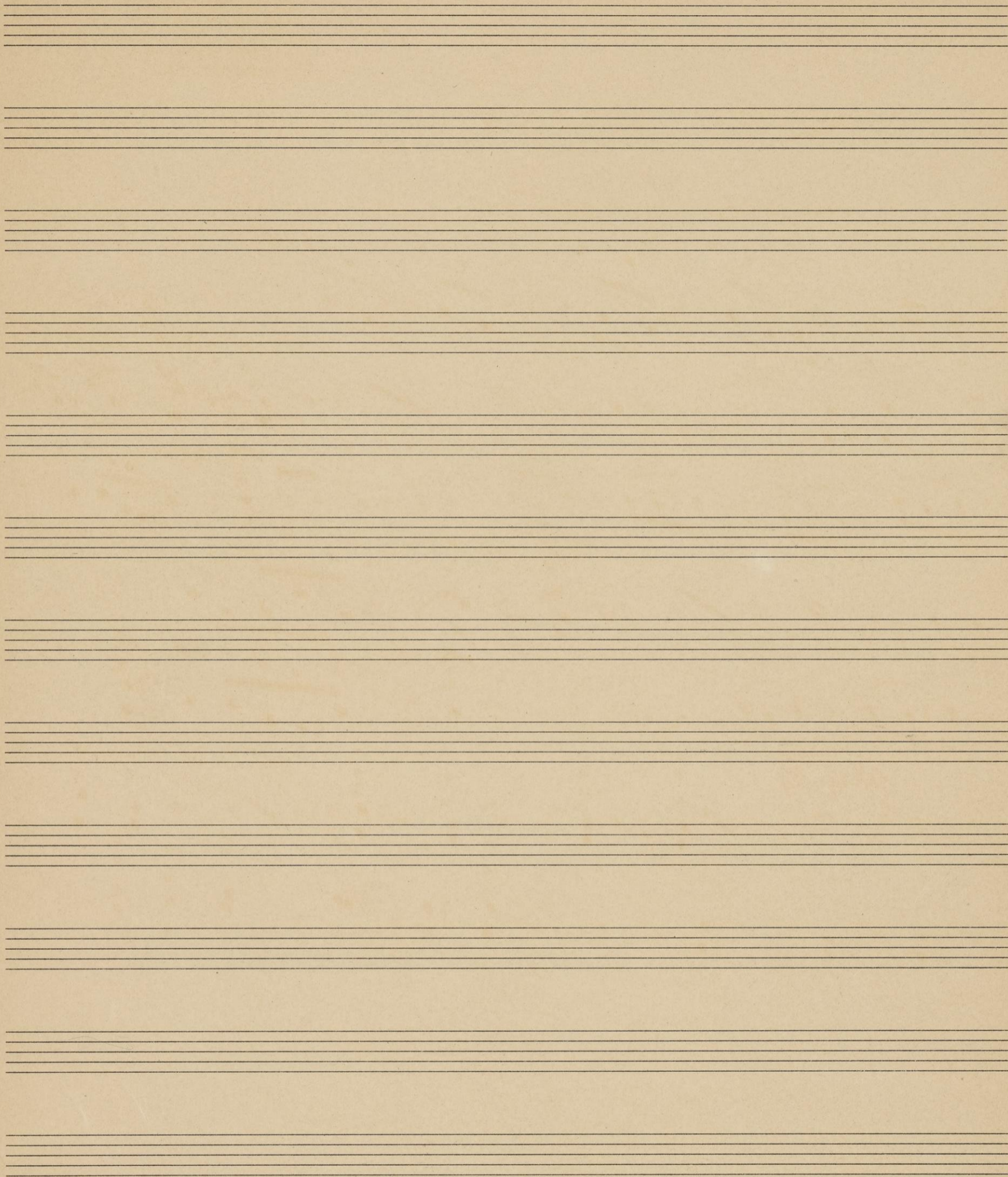
ARTHUR W. TAMS,  
MUSICAL LIBRARY,  
109 W. 28TH ST.,  
NEW YORK.

*2<sup>nd</sup> Violin*

*The Widow*

Handwritten musical score for 2nd Violin, titled "The Widow". The score consists of 12 staves. The first staff is a treble clef with a key signature of one flat and a 4/4 time signature. The music is written in a cursive, handwritten style. The score includes various musical notations such as notes, rests, slurs, and dynamic markings. Handwritten annotations include "rit." (ritardando) and "elbow allegretto" (likely a typo for "allegretto"). There are also some small numbers like "16" and "10" written near the notes. The paper shows signs of age and wear, with some staining and a small tear at the top edge.

"THE SUPERS" A. W. TAMS MUSIC LIBRARY, NEW YORK.



2

NO. 400

ARTHUR W. TAMS,  
MUSICAL LIBRARY,  
109 W. 23TH ST.,  
NEW YORK.

*Viola*

*The Widow*

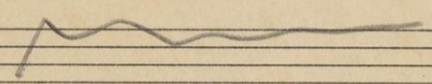
Handwritten musical score for Viola, titled "The Widow". The score consists of 12 staves of music. It begins with a treble clef and a key signature of one flat (B-flat). The music is written in a cursive, handwritten style. Performance markings include "f" (forte), "pizz." (pizzicato), "at." (accanto), "rit." (ritardando), and "allegretto". The score concludes with a double bar line and a decorative flourish.

*Encore Chorus*

"THE SUPERB" A. W. TAMS MUSIC LIBRARY, NEW YORK.

3

En G Galse



4

Galop in G

st. 2

ARTHUR W. TAMS,  
MUSICAL LIBRARY,  
109 W. 28TH ST.,  
NEW YORK.

bello

Che Widow.

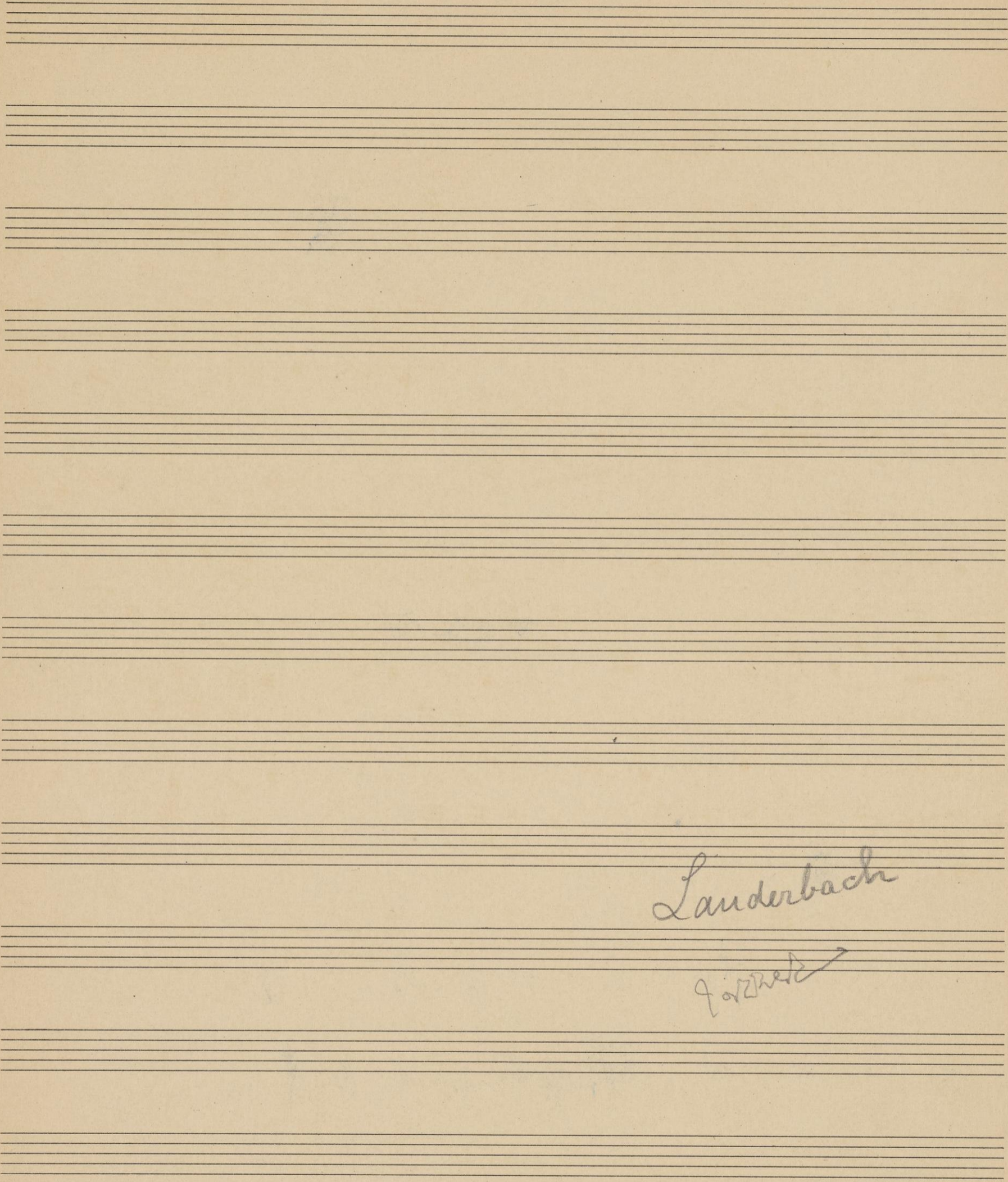
Handwritten musical score for 'Che Widow'. The score is written on five staves. The first staff begins with a treble clef, a key signature of two flats (B-flat and E-flat), and a common time signature (C). The music consists of a series of eighth and sixteenth notes, some beamed together. There are several dynamic markings: 'p' (piano) and 'f' (forte). A 'trill' marking is present above a note in the first staff. A 'rit.' (ritardando) marking is above a note in the fourth staff. A '16' is written at the end of the fourth staff.

Handwritten musical score for 'Chowy Encore'. The score is written on two staves. The first staff begins with a treble clef, a key signature of two flats, and a common time signature. The music consists of a series of eighth and sixteenth notes. A 'rit.' (ritardando) marking is above a note in the second staff. The score ends with a double bar line and a circled '3'.

after st 2      Landerbach in 3  
Arpheus aux enfers

"THE SUPERB" A W TAMS MUSIC LIBRARY, NEW YORK





Landerbach

Forrest

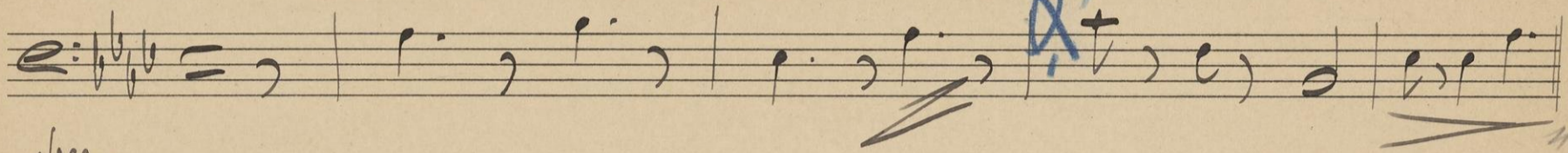
NO. 400

2

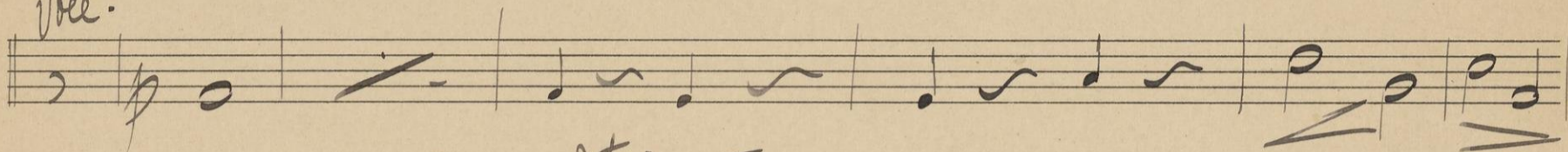
ARTHUR W. TAMS,  
MUSICAL LIBRARY,  
109 W. 28TH ST.,  
NEW YORK.

Basso

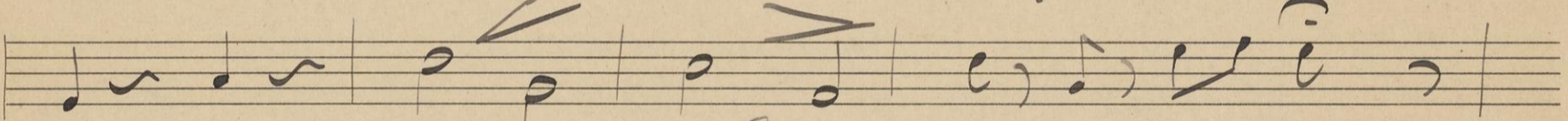
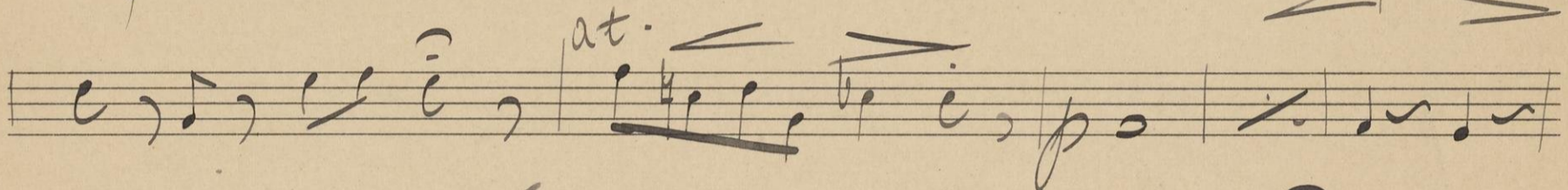
The Widow.



*Voce.*



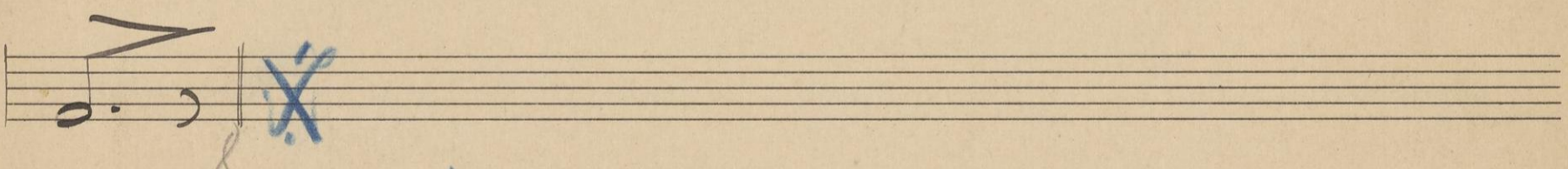
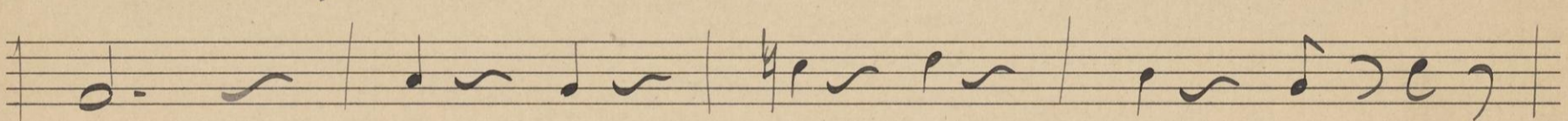
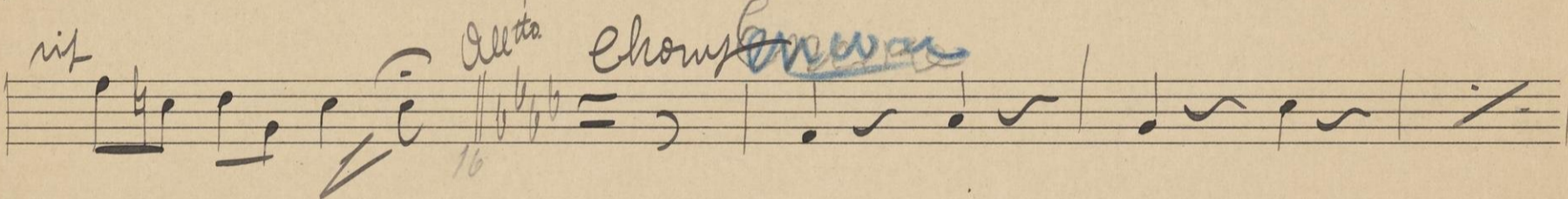
*at.*



*rit*

*Allto*

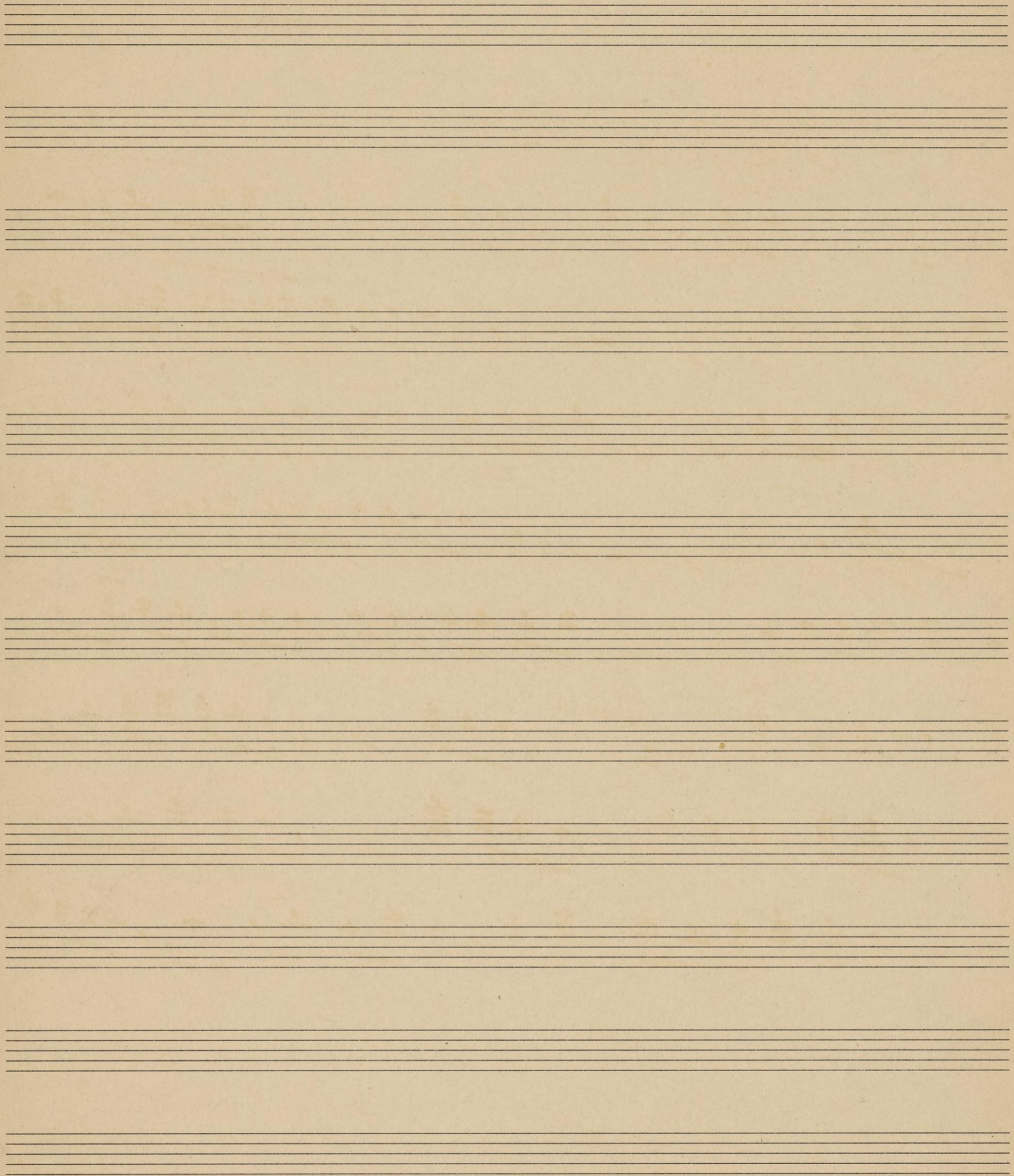
Chorus



$\frac{2}{2}$  - *Lento* - *g*

- *Allegretto* in *arco* - *g*

"THE SUPERB" A. W. TAMS MUSIC LIBRARY, NEW YORK.



NO. 400

*Flute*

ARTHUR W. TAMS,  
MUSICAL LIBRARY,  
109 W. 28TH ST.,  
NEW YORK.

*The Widow*

Handwritten musical score for 'The Widow' in G major, 4/4 time. The score consists of 12 staves. The first staff is a treble clef with a key signature of one sharp (F#) and a 4/4 time signature. The music features various rhythmic patterns, including eighth and sixteenth notes, and rests. There are several dynamic markings and performance instructions: 'p' (piano), 'f' (forte), 'rit' (ritardando), 'All the Chorus' (with a double bar line), and 'at-' (at the end of a phrase). The score ends with a double bar line and a fermata.

"THE SUPERB" A.W. TAMS MUSIC LIBRARY, NEW YORK

*Can Can*

*Chorus*

Handwritten text on musical staves:  
Gundelbach  
Pottler

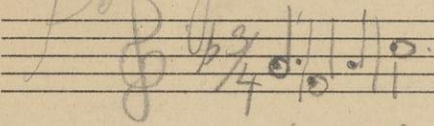
Handwritten text on musical staves:  
Pottler  
m C

Bb Clar

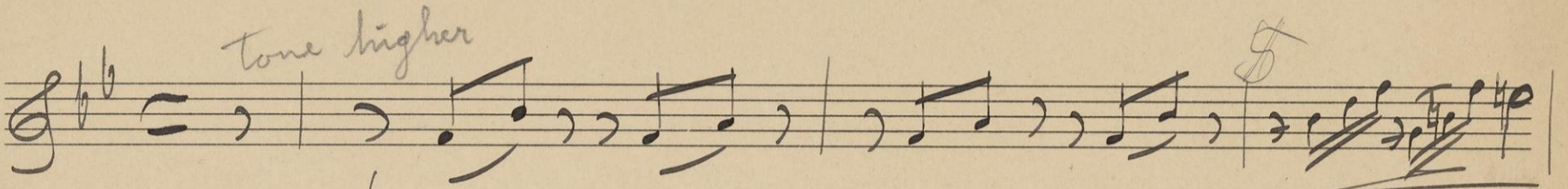
NO. 400

ARTHUR W. TAMS,  
MUSICAL LIBRARY,  
409 W. 28TH ST.,  
NEW YORK.

*Clarinet B<sup>b</sup>*



*Tone Higher*  
*The Widow*



Duet

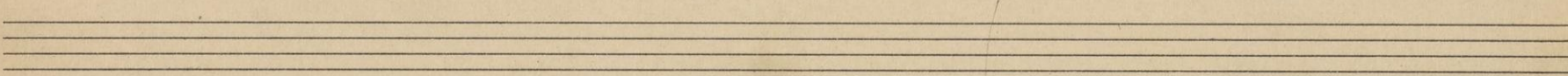
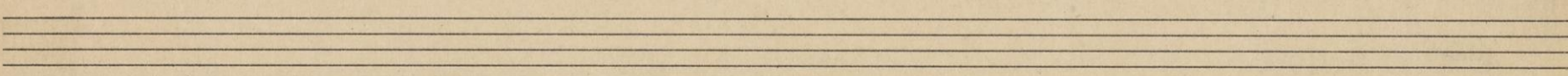
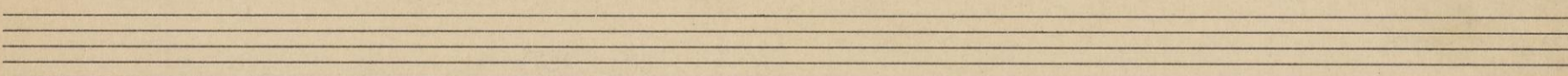
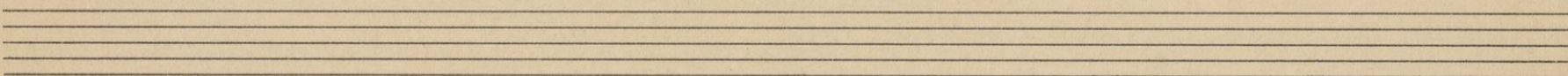
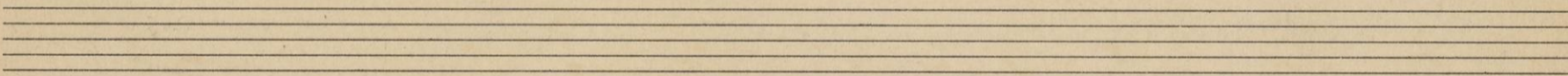
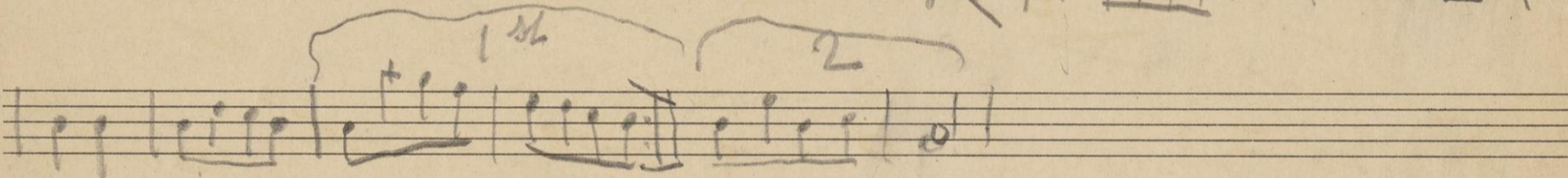
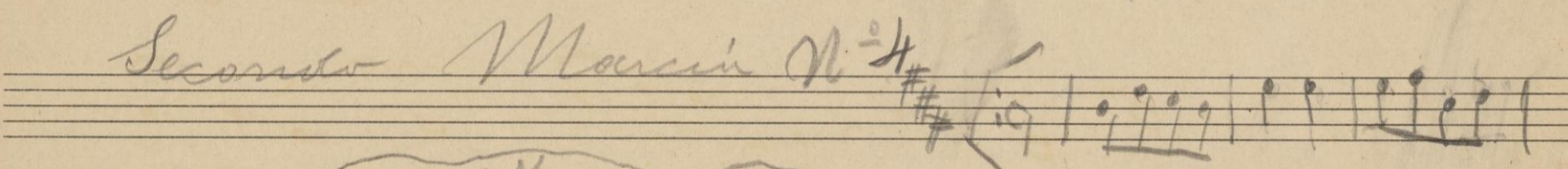
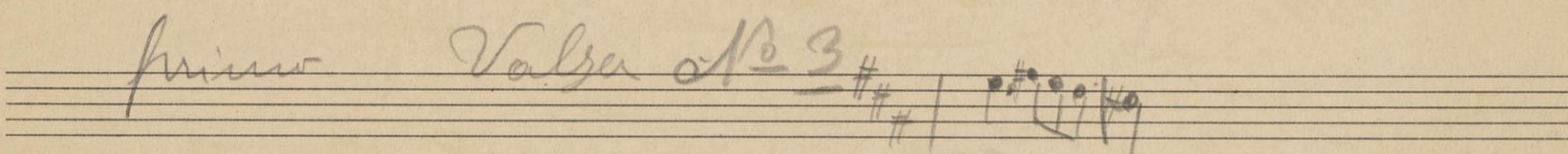
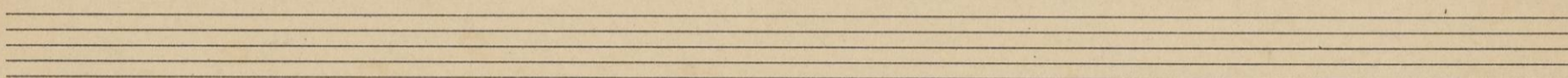
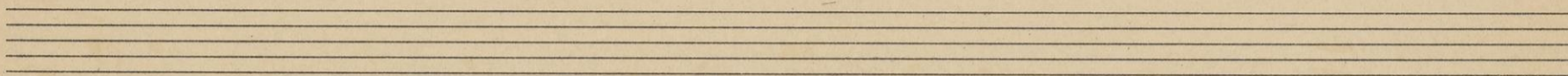
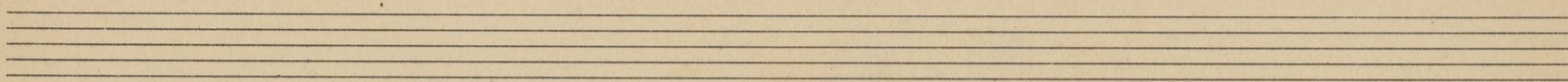
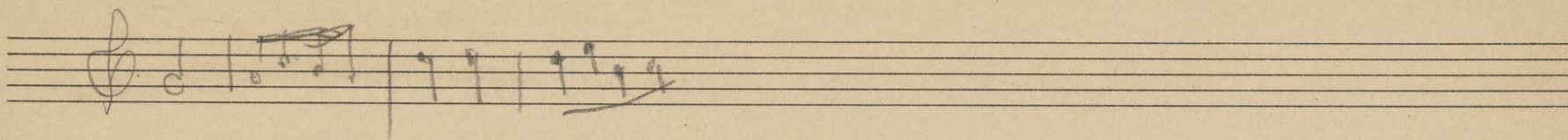
Argentine in F

Can Can

Sauterbach  
System  
Orpheus







#2

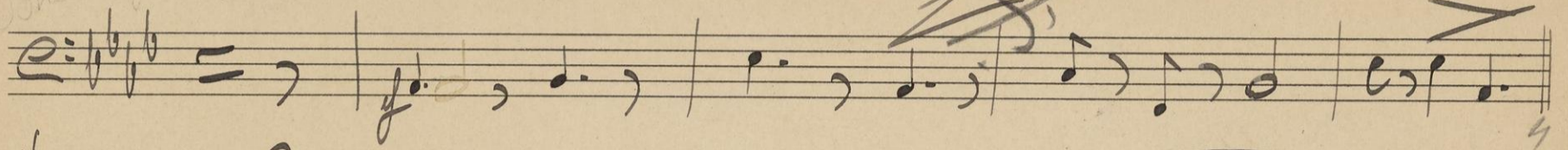
NO. 400

ARTHUR W. TAMS,  
MUSICAL LIBRARY,  
109 W. 28TH ST.,  
NEW YORK.

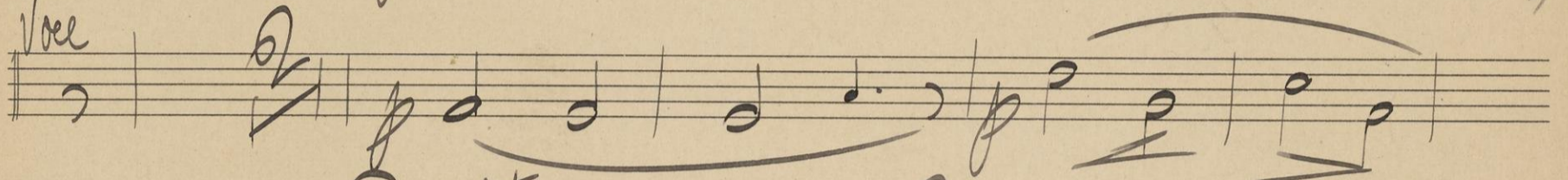
*Crombone*

*The Widow*

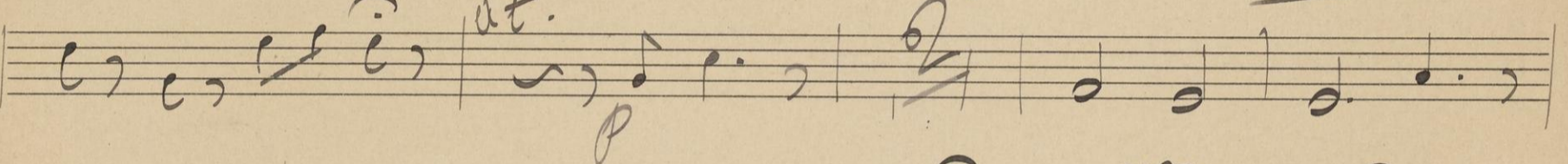
*Time higher*



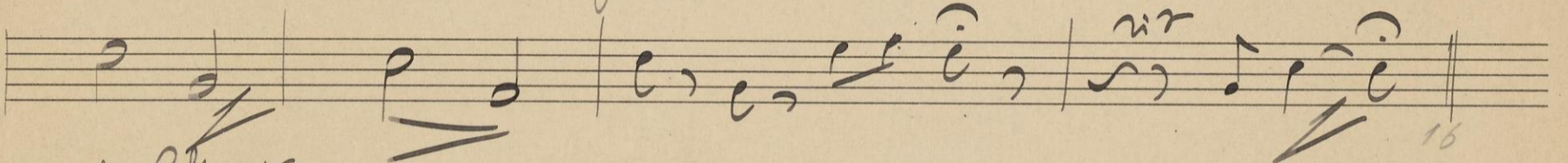
*Voce*



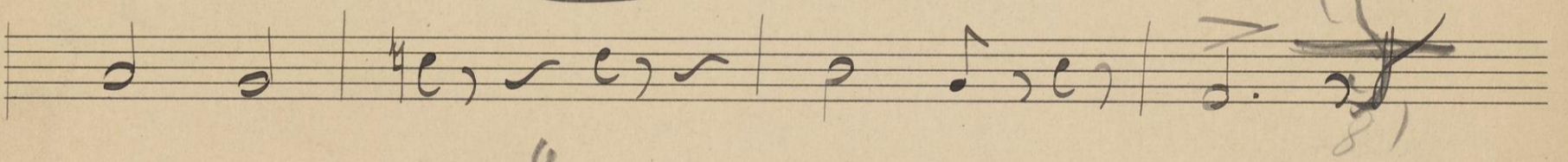
*at.*



*ur*



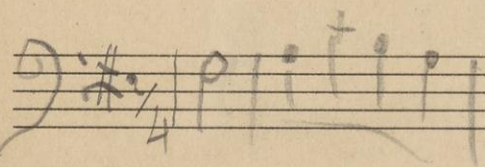
*All the Chorus*



*Encore choros*

*Valse en Sol*

*quadrille*



③ Valse Sol

④ quadrille Orphée aux enfers.

Dutch Dance

#2

NO. 400

ARTHUR W. TAMS,  
MUSICAL LIBRARY,  
409 W. 28TH ST.,  
NEW YORK.

*Drums*

*The Widow*

Handwritten musical score for 'The Widow'. The score is written on five staves. The first staff is a vocal line with notes and rests, including a '18.' marking. The second staff is a piano accompaniment with notes and rests, including an 'at-' marking and a '16' marking. The third and fourth staves continue the piano accompaniment. The fifth staff is a vocal line with notes and rests. The score includes various musical notations such as clefs, notes, rests, and dynamic markings.

*Encores U.S.A.*

#3 Next Fake Lauderbach  $\frac{3}{4}$  88 over 77.

#4 " "  $\frac{2}{4}$  fast ff.

THE SUPERB AW TAMS MUSIC LIBRARY NEW YORK

