



LIBRARIES

UNIVERSITY OF WISCONSIN-MADISON

Wisconsin alumnus football bulletin. Volume 59, Number 1 Sept. 12, 1957

[s.l.]: Wisconsin Alumni Association, Sept. 12, 1957

<https://digital.library.wisc.edu/1711.dl/QGZB5COYM65WR83>

This material may be protected by copyright law (e.g., Title 17, US Code).

For information on re-use, see

<http://digital.library.wisc.edu/1711.dl/Copyright>

The libraries provide public access to a wide range of material, including online exhibits, digitized collections, archival finding aids, our catalog, online articles, and a growing range of materials in many media.

When possible, we provide rights information in catalog records, finding aids, and other metadata that accompanies collections or items. However, it is always the user's obligation to evaluate copyright and rights issues in light of their own use.

WISCONSIN ALUMNUS FOOTBALL BULLETIN

RECEIVED

57862

UNIV. OF WISCONSIN
LIBRARIES

Serials Dept.

% Memorial Libr., Univ. of Wis.,
Madison 6, Wis.

Vol. 59 SEPTEMBER 12, 1957 No. 1

Wisconsin Alumni Association

Fellow Badgers

This *Football Bulletin* is the first in the 1957 series and your first membership dividend for the fiscal year which started September first.

As a member of the Wisconsin Alumni Association you will get four more of these *Bulletins* this fall. *Bulletin* No. 2 will cover the first three games of the 1957 season—with Marquette, West Virginia and Purdue. No. 3 will cover the games with Iowa and Ohio State. No. 4 will cover the games with Michigan State and Northwestern. No. 5 will cover the last two games of the season—the Homecoming game with Illinois on November 16 and the game with Minnesota at Minneapolis on November 23.

These *Football Bulletins* are published by the Wisconsin Alumni Association as a part of its information program for WAA members. They are NOT published by the University Athletic Department, as some Badgers have erroneously assumed.

This assumption probably is due to the fact that much of the copy in these *Bulletins* is written for us by members of the University Sports News Service. For several years, Art Lentz wrote this copy. Last year he resigned to handle press relations for the American Olympic Committee.

Since Art's resignation, Jim Mott of the UW Sports News Service has done a very good job for us. Fine cooperation from Jim and his associates in the Athletic Department has been helpful to us in publishing these *Football Bulletins* as a service for WAA members. We hope it brings you the kind of football news you want.

Your next membership dividend will be the October issue of the *Wisconsin Alumnus*, published monthly except in August and September.

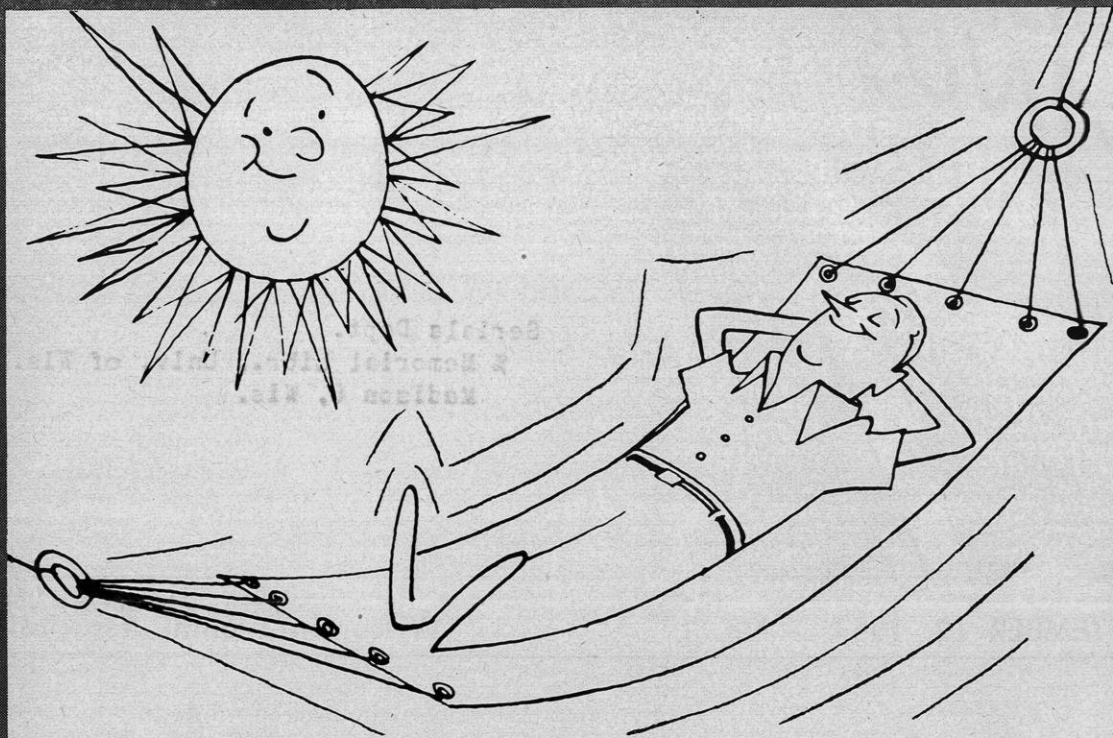
This October issue will reach you soon after the University of Wisconsin starts its 1957-58 academic year. It should be a good year because the legislature gave the University its biggest appropriation in Wisconsin history—\$40,880,744—for the 1957-59 biennium, nearly \$10 million more than the appropriation for 1955-57. This made it possible for the University to give substantial salary increases—long overdue. These increases will be very helpful in maintaining the top flight faculty needed to keep Wisconsin in the top ten among American universities.

During the coming year the regents will function as a committee of the whole in selecting a successor to Pres. E. B. Fred who will retire on June 30, 1958. Wilbur Renk, president of the board of regents, appointed the following regents to serve on a steering committee to do some of the preliminary work in selecting Wisconsin's new president: Charles Gelatt, La Crosse, Chairman; Carl Steiger, Oshkosh, vice-chairman; Ellis E. Jensen, Janesville; George E. Watson, Madison; and A. Matt. Werner, Sheboygan. Selection of the right man to serve as the next UW president is important to all WAA members, so future issues of the *Wisconsin Alumnus* will bring you the news of month by month developments.

John Berge

Executive Director

THE WISCONSIN ALUMNUS, published once monthly in December, January, February, March, April, May, June, July and September and three times monthly in October and November. Entered as second class matter at the post office at Madison, Wis., under the act of March 3, 1879. Subscription price (included in membership dues of the Wisconsin Alumni Association) \$2.50 a year; subscription to non-members, \$5.00 a year. Editorial and business offices at 770 Langdon St., Madison 6, Wis. If any subscriber wishes his magazine discontinued at the expiration of his subscription, notice to that effect should be sent with the subscription, or at its expiration. Otherwise it is understood that a continuance is desired.



takin' it easy-you bet!

Retirement age may seem far away . . . but if a man really wants to "start living" at age 60 or 65, the best time to begin planning is right *now*.

Now, while your premium payment is the lowest it will ever be, you can begin a planned insurance program that will guarantee you a monthly pay check for the rest of your life.

A National Guardian Life program offers you protection and savings in addition to retirement benefits. Why not call us or see us *today*?

National
Guardian Life
Insurance Company
HOME OFFICE • MADISON

Sophomores Hold Key to Badger Success in 1957

*Tackle positions present problems;
a crowd-pleasing offense will utilize the
running ability of quarterback candidates*

AS THE SOPHOMORES go, so go the Badgers in 1957."

A total of thirty-five sophomores dominate the squad of fifty-six football players that reported to head Football Coach Milt Bruhn on August 31 for equipment and the annual session with press and television photographers. That's right, 35 sophomores, six seniors (only two of them lettermen), and 15 juniors. Almost two-thirds of the talent available to Coach Bruhn in 1957 are sophomores, and from them he hopes to find the necessary keys to putting Wisconsin football back on the winning trail.

And, knowing Milt Bruhn, we know that's what he intends to do.

Dame Fortune did not smile often for Milt last season. She made all Wisconsin fans shudder all season long at the lack of success encountered by the beleaguered Badgers. Yet, it was interesting football in what writers like to call "one of those seasons."

The Badgers lost three games by just one touchdown (USC, Iowa, and Northwestern), and battled to three ties (Purdue, Illinois, and Minnesota). The Badgers had their ups and downs, too. They swamped Marquette, 41-0, but were

outplayed by Ohio State and Michigan State, 21-0, and 33-0, respectively.

And from that team, Milt Bruhn has lost eight of his starters—six by graduation, one by injury in the spring drills, and one by dropping out of school. Three of the starters return, along with eight other lettermen, and a lone 1955 letterman who did not compete last year. The lettermen all received solid experience last year, but the distribution by position is vastly uneven.

Three lettermen return at quarterback, last year's definite weakness; three ends—Dave Kocourek and Earl Hill from the 1956 squad, and Tom Peters, ineligible last year, return; one center, Dick Teteak (Art Bloedorn is out with injuries) are back, while the only other returning linemen are Captain Bill Geh-

ler at guard, and Myron Cooper, never a starter, and Melvin Morris, switched this spring from guard, at the tackles.

Only regular backfield man returning is Danny Lewis, the team's leading ground gainer in 1956, at left halfback. Jon Hobbs, sturdy guard a year ago, has been switched to fullback, and seemed to prosper there in spring drills. The quarterbacks returning are Sidney Williams, the top man there at the end of last season; Ron Carlson, the leading hope before a pre-season injury ended his effectiveness, and Gil Blackmun, who ranked fourth when last season's play ended.

Sophomores must, then, hold the key to Wisconsin's success in 1957. Coach Bruhn recognizes that they lack experience, so necessary to a winning record

By Jim Mott

UW Sports News Service

in the Big Ten, but the lack of other top flight material means the yearlings will see plenty of action.

Backfield replacements include Eddie Hart, the whiz from Kenosha's Mary Bradford high school, which also produced Alan Ameche—and Hart broke most of Ameche's high school marks. He is a strong runner with good speed, and will push Danny Lewis to improved performances at left halfback. Another top prospect at this position is Bob Altmann.

Sophomores Bill Hobbs, brother of Jon, and Ron Steiner appear to have the inside track at right half. The only experienced back, Gene Melvin, a 170 pounder, who won a junior varsity letter last year, and scored the Badgers only TD against Iowa, in a 13-7 loss, has given up football this year.

At fullback, Bob Zeman, a high school All-American at Wheaton, Il-

PARKING TIP

Have trouble with parking near Camp Randall? Chances are you'll find space in one of the three least-used of University special events parking lots. Two of them are in the neighborhood of Spring and Charter streets, just off Regent, the other is west of the Stock Pavilion. The special events parking charge is one dollar.

linois, and a transfer from Notre Dame, appears to be the best bet to back up Jon Hobbs here.

With the end and center positions adequately manned by returning lettermen, Bruhn's main concern is finding Big Ten tackles and guards. Sophomores Terry Huxhold and Karl Holzwarth, the latter a strong 235 pounds, hold forth

at right tackle, while Dan Lanphear appears set to back up the converted Morris at left tackle. Sophomores Fred Coe, 230 pounds, and Jim Heineke offer strength behind Captain Bill Gehler at left guard, while a junior varsity letterwinner at tackle last year—Jim Fraser, has been switched to right guard ahead of sophomore Jerry Stalcup.

Good sophomore end prospects are available, too, with Alan Schoonover, Jim Rogers, Jerry Geyso, and Joel Peterson all expected to battle the lettermen for starting berths. At center, squad man George Chryst returns to aid Teteak, while sophomore John Jooss is an outstanding candidate.

Returning to the quarterback situation, a real sophomore standout is Dale Hackbart, who may well be the answer to the problem here. He stands 6-3, is a

(continued on page 7)

... guiding the Badgers in '57



Here is the 1957 football staff, which contains two new faces: Perry Moss, former Illinois quarterback, and Deral Teteak, one of the Wisconsin "Hard-Rock" linemen of several years ago. From left to right are Paul Shaw, end coach; La Verne Van Dyke, junior varsity coach and scout; Robert Odell, backfield coach; Milton Bruhn, head coach; Fred Marsh, line coach; Moss, backfield coach, and Teteak, freshman coach.

Save This Page fold it into your wallet for ready information on 1957 football schedules in the Big Ten, the Wisconsin team roster, pictures, etc.

1957 SCHEDULE FOR WESTERN CONFERENCE

September 27
Illinois at UCLA (Night)

September 28
MARQUETTE AT WISCONSIN
(W Club Day)
Indiana at Michigan State
Utah State at Iowa
Michigan at Southern California
Washington at Minnesota
Northwestern at Stanford
Texas Christian at Ohio State
Notre Dame at Purdue

October 5
WEST VIRGINIA AT WISCONSIN
Colgate at Illinois
Indiana at Notre Dame
Washington State at Iowa

Georgia at Michigan
Michigan State at California
Purdue at Minnesota
Oregon State at Northwestern
Ohio State at Washington

October 12
WISCONSIN AT PURDUE
Illinois at Ohio State
Iowa at Indiana
Michigan State at Michigan
Minnesota at Northwestern

October 19
WISCONSIN AT IOWA
Minnesota at Illinois
Indiana at Ohio State
Northwestern at Michigan
Purdue at Michigan State

October 26
OHIO STATE AT WISCONSIN
(Dad's Day)
Illinois at Michigan State
Villanova at Indiana
Iowa at Northwestern
Michigan at Minnesota
Miami (O) at Purdue

November 2
MICHIGAN STATE AT WISCONSIN
Purdue at Illinois
Indiana at Minnesota
Iowa at Michigan
Northwestern at Ohio State

November 9
WISCONSIN AT NORTHWESTERN
Michigan at Illinois
Cincinnati at Indiana

Minnesota at Iowa
Notre Dame at Michigan State
Ohio State at Purdue

November 16
ILLINOIS AT WISCONSIN
(Homecoming)
Indiana at Michigan
Iowa at Ohio State
Minnesota at Michigan State
Northwestern at Purdue

November 23
WISCONSIN AT MINNESOTA
Northwestern at Illinois
Purdue at Indiana
Iowa at Notre Dame
Ohio State at Michigan
Kansas State at Michigan State

1957 GRID ROSTER

No.	Name of Squad Member	Pos.	Wt.	Ht.	Age	Class	Home Town, High School	Previous Awards
74	Allen, John E.	RT	220	6-1	19	So.	Chicago, Ill. (Lane)	Num-56
41	Altmann, Robert M.	LH	186	6-1	18	So.	Milwaukee (Luth.)	Num-56
24	Blackmun, Gilbert	QB	165	6-0	20	Jr.	Hammon, Ind.	W-56
27	Carlson, Ronald P.	QB	169	5-9	21	Jr.	St. Charles, Ill. (Comm.)	
46	Carl, DuWayne	LH	175	5-10	23	So.	Greenwood, Wis.	
51	Chryst, George	C	190	6-1	20	Jr.	Madison (Edgewood)	Num-55
63	Coe, Frederick	LG	235	6-1	20	So.	Phil., Pa. (Germantown Acad)	Num-56
71	Cooper, Myron	LT	220	6-4	23	Sr.	Euclid, Ohio	W-56
52	Corcoran, Gordon C.	C	194	5-11	20	Sr.	Madison (West)	JV-55
99	Dunai, Robert E.	LT	220	6-2	20	So.	Racine (Horlick)	Num-55
91	Esser, Norman V.	RE	183	6-1	19	So.	Madison (Edgewood)	Num-56
68	Fraser, James G.	RG	215	6-2	21	So.	Phil., Pa. (Germantown Acad)	JV-56
66	Gehler, William C.	LG	208	5-9	21	Sr.	Mendota, Ill.	JV-55, W-56
67	Genda, Thomas F.	LG	215	5-11	19	So.	Akron, Ohio (Garfield)	Num-56
95	Geyso, Gerald G.	RE	195	6-1	23	So.	Cudahy	Num-56
90	Goldenburg, Gary M.	LG	200	6-0	20	Jr.	Shorewood, Wis.	
61	Graham, Thomas F.	LG	188	5-11	19	So.	Cleveland, Ohio (Chardon)	None
28	Hackbart, Dale L.	QB	190	6-3	19	So.	Madison (East)	Num-56
44	Hart, Edward E.	LH	189	5-10	19	So.	Kenosha (Bradford)	Num-56
65	Heineke, James E.	RG	212	6-0	20	So.	Wis. Dells	Num-56
64	Heineke, John A.	LG	200	6-2	22	Sr.	Wis. Dells	JV-55-56
88	Hill, Earl, Jr.	RE	195	6-4	20	Jr.	New Rochelle, N. Y.	W-56
35	Hobbs, Jon R.	FB	193	6-0	21	Jr.	Eau Claire (Regis)	W-56
16	Hobbs, William G.	RH	170	5-8	19	So.	Eau Claire (Regis)	Num-56
97	Holmes, James F.	RE	205	6-3	21	So.	Madison (Edgewood)	
72	Holzwarth, Karl B.	RT	233	6-0	19	So.	Madison (West)	Num-56
78	Huxhold, Terry W.	RT	215	6-3	19	So.	Milwaukee (Rufus King)	Num-56
19	Ihling, Robert R.	RH	178	5-11	21	So.	West Allis (Nathan Hale)	Num-56
77	Jenkins, Lowell K.	LT	240	5-11	21	So.	Racine (Horlick)	Num-55
53	Jooss, John A.	C	186	6-0	19	So.	Appleton	Num-56
12	Joyce, Jack E.	RH	170	5-9	20	Jr.	Menomonie	
82	Kocourek, David A.	LE	206	6-4	20	Jr.	Berwyn, Ill. (Cicero)	W-56
98	Koenig, William H.	RE	210	6-2	19	So.	Waukesha	None
73	Lanphear, George D.	LT	225	6-2	19	So.	Madison (West)	Num-56
45	Lewis, Daniel N.	LH	197	6-1	21	Sr.	Freehold, N. J.	W-55; 56
36	Lukisk, Franklin D.	FB	194	6-0	21	Jr.	Austin, Minn. (Central)	Num-54
79	Morris, Melvin	LT	209	6-0	20	Jr.	E. Chicago, Ind. (Roosevelt)	W-56
70	Nelson, Robert E.	RT	235	6-5	20	So.	Oak Park, Ill.	Num-55
76	Nicolazzi, Richard D.	RT	220	5-11	24	Sr.	Kenosha (M. Bradford)	JV-55
86	Peters, Tom E.	RE	191	6-2	21	Jr.	Joliet, Ill. (Glenbard Township)	W-55
87	Peterson, Joel E.	LE	219	6-4	19	So.	Rockford, Ill. (East)	Num-56
57	Pidcoe, William W.	C	205	6-2	20	So.	Madison (West)	Num-56
84	Rogers, James E.	RE	185	6-0	19	So.	Toledo, Ohio (Libbey)	Num-56
85	Schoonover, Allan J.	LE	203	6-0	19	Jr.	Boscobel	Num-56
62	Sprague, Charles T.	RG	207	6-2	20	So.	Racine (Horlick)	Num-56
60	Stalcup, Jerry N.	RG	200	6-0	19	So.	Rockford, Ill. (East)	Num-56
15	Steiner, Ronald J.	RH	172	5-11	19	So.	Iron Mt., Mich.	Num-56
50	Tetatak, Richard D.	C	211	6-0	20	Jr.	Oshkosh	W-56
48	Tilley, Richard J.	LH	186	6-0	19	Jr.	W. Milwaukee	Num-55
18	Walker, Albert A.	RH	185	5-11	21	So.	Rockford, Ill. (East)	
75	Welch, Jerry A.	LT	244	6-2	22	So.	Elkhorn	Num-56
22	Williams, Sidney B.	QB	190	6-1	21	So.	Little Rock, Ark. (Dunbar)	W-56
89	Wodarski, Kenneth L.	LE	176	6-1	19	So.	Toledo, Ohio (DeVilbiss)	Num-56
33	Wrucke, John D.	FB	178	6-0	19	So.	Horicon	Num-56
34	Zeman, Robert E.	FB	190	6-1	19	So.	Wheaton, Ill.	Num-56
55	Zouvas, Peters S.	RG	200	6-0	20	Jr.	Wheaton, Ill.	

1956 SCORES		
Wisconsin	41	Marquette 0
Wisconsin	6	Southern California 13
Wisconsin	6	Purdue 6
Wisconsin	0	Ohio State 21
Wisconsin	7	Iowa 13
Wisconsin	0	Michigan State 33
Wisconsin	7	Northwestern 17
Wisconsin	13	Illinois 13
Wisconsin	13	Minnesota 13

Badger Football On the Air

Wisconsin football fans not fortunate enough to be at the scene of action will have plenty of opportunity to hear play-by-play accounts of each game, if they live in or near the state. Again this fall, five originating broadcasters will provide coverage of each home game for half a hundred individual stations in the mid-west. Many of these stations will also carry away-from-home game broadcasts.

Network television may also include a Badger contest, but this scheduling is done at a later date. There will be no local origination of any games, except under terms of the conference rules.

Originating broadcasts at Camp Randall will be Madison station WIBA; WTMJ and WEMP of Milwaukee; state radio council station WHA-FM, which will distribute broadcasts to the state network and to a number of private Wisconsin stations; and WFHR, Wisconsin Rapids, which will be reporting for a number of other stations in Wisconsin cities.

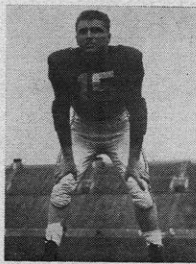
Administration and Staff

Athletic Director—Ivan B. Williams
Business Manager, Athletics—William H. Aspinwall
Director of Athletic Ticket Sales—Oscar C. Damman
Team Physician—Dr. John L. Bentley
Team Trainer—Walter Bakke

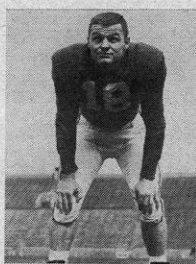
Equipment Manager—Art Lamboley
Stadium Manager—Joe Betlach

STUDENT MANAGERS

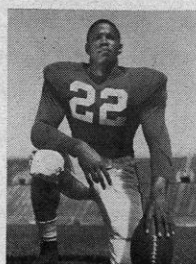
Senior—Niall Schmidt
Junior—Keith Yelinek
Sophomore—Fred Gerlach and Marlin Hoesly



Ronald J. Steiner
15—RH



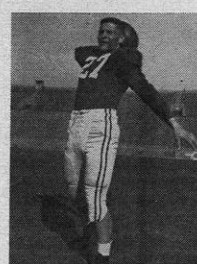
William G. Hobbs
16—RH



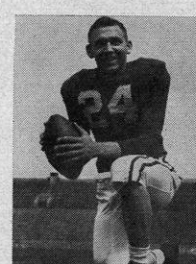
Sidney B. Williams
22—QB



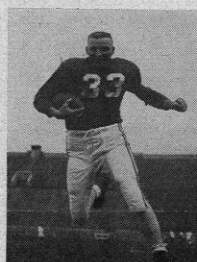
Gilbert Blackmun
24—QB



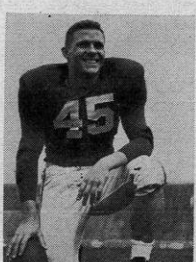
Ronald P. Carlson
27—QB



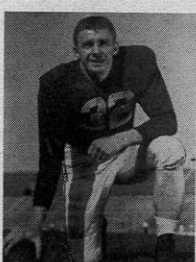
Dale L. Hackbart
28—QB



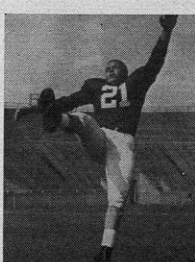
John D. Wrucke
33—FB



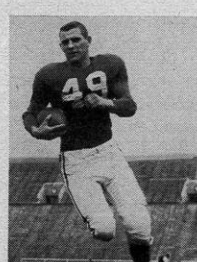
Robert E. Zeman
34—FB



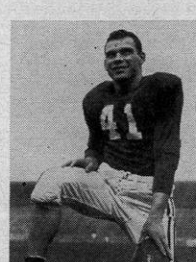
Jon R. Hobbs
35—FB



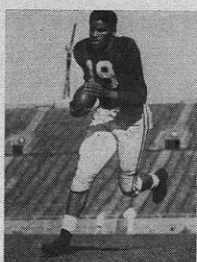
Franklin D. Luksik
36—FB



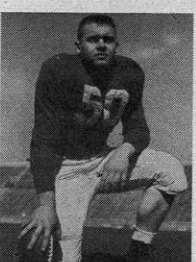
Robert M. Altmann
41—LH



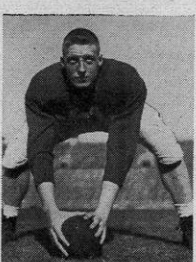
Edward E. Hart
44—LH



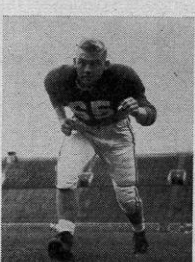
Daniel N. Lewis
45—LH



Richard D. Teteak
50—C



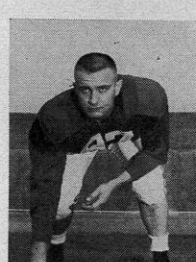
George Chryst
51—C



Jerry N. Stalcup
60—RG



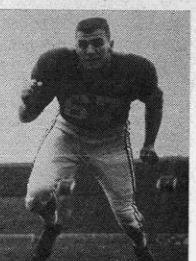
Frederick Coe
63—LG



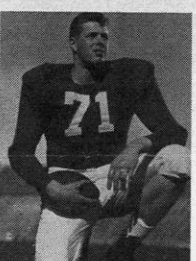
John A. Heineke
64—LG



William C. Gehler
66—LG



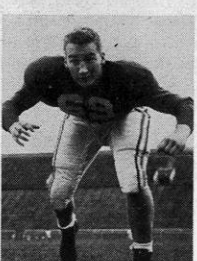
James G. Fraser
68—RG



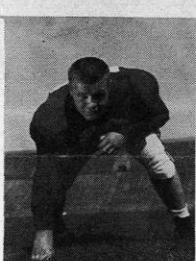
Myron Cooper
71—LT



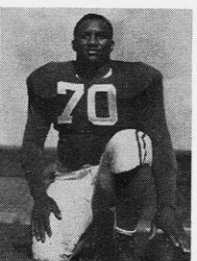
Karl B. Holzwarth
72—RT



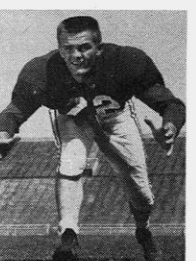
George D. Lanphear
73—LT



John E. Allen
74—RT



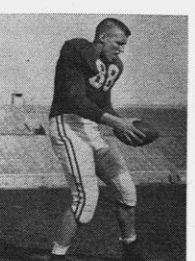
Lowell K. Jenkins
77—LT



Terry W. Huxhold
78—RT



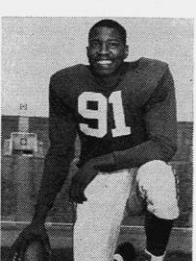
Melvin Morris
79—LT



David A. Kocourek
82—LE



Allen J. Schoonover
85—LE



Earl Hill, Jr.
88—RE

Convenient Pre-Game Luncheon to be Offered

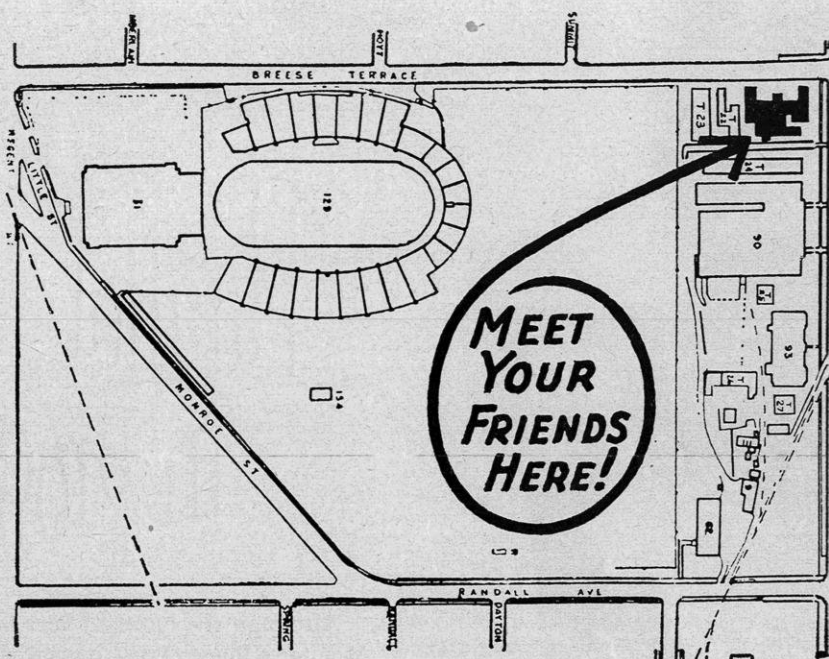
Quick and convenient pre-football game luncheons for Camp Randall-bound alumni will be offered this fall for the eighth year at the Memorial Union's Breese Terrace cafeteria.

Arrangement of this service by the Wisconsin Union and the Wisconsin Alumni Association has enabled many returning Badgers to ease their parking problems by

1. Getting to the stadium area before the big rush,

2. Dining at the cafeteria on the corner of University Avenue and Breese Terrace—only a block from the Stadium, and

3. Arriving in the stands in plenty of time for the 1:30 p.m. kick-off. Serving time is from 11:30 a.m. to 1 p.m.



Prospects *continued from page 4*

good passer, fakes well, and runs the option play with finesse. He was the outstanding back during spring drills.

Wisconsin's coaching staff also has undergone some changes since the final 1956 game. Coach Milt Bruhn has added Perry Moss, an assistant coach at Miami (Fla.) last year, as an assistant to replace Coach Tom Hearnden, who re-

signed to return to the professional coaching ranks.

Deral Teteak, a member of Wisconsin's famous "Hard Rocks" of 1951, was added to the staff as freshman coach after George Lanphear, who held the frosh job since 1947, was appointed director of Sports information.

Wisconsin's offense in 1957 will be a

crowd pleaser, with the installation of the balanced line "belly" series, functioning off the T-formation. The series is designed to take advantage of the option play, and with Hackbart and Williams available to run the offense, Coach Bruhn feels the new series will function smoothly.

Ticket Demand Continues High

Season and individual game tickets for 1957 football games at home and away were still available as this issue of the Football Bulletin went to press, according to Oscar Damman, director of ticket sales for the athletic department.

However, with something like 20,000 general public season tickets already distributed—together with allotments for students, the faculty, university employees and other groups—the most desirable locations in the Stadium were already pretty well reserved.

While plans now are definite for enlarging the Stadium by 10,000 seats in 1958, the old capacity of Camp Randall still holds (see October *Alumnus*). That's approximately 53,000, with only 18,000 of these between the goal lines.

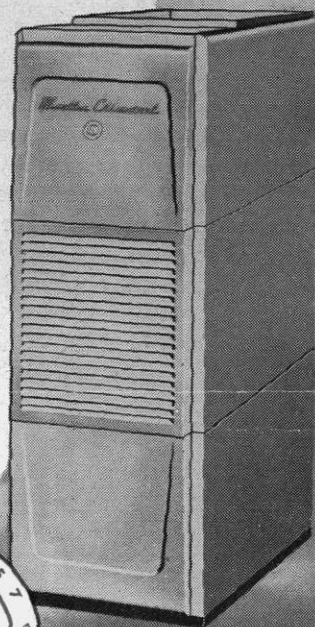
By conference rule, 3,000 seats, starting at the 50-yard line, are reserved for supporters of the visiting team. Should these be unfilled by the visiting school for any one game, they offer the single ticket buyer the best chance for a better location.

Ticket allotment this year followed the pattern set in previous years, Damman said. To persons who have been ordering season tickets over the years *without interruption* went top priority. Then new season ticket applications were processed, first call going to Wisconsin Alumni Association members. Finally, after all season tickets were assigned, individual tickets were allotted. Here again WAA members got first consideration.

Parallel in Progress

Although the hundred year history of Mueller Climatrol has moved in close cadence with the growth of the University, the common ground of achievement extends over a much broader base than age alone. The same progressive spirit that has brought stature to Wisconsin education has also guided the development of America's most complete line of heating and cooling equipment.

Next time you're concerned with your comfort, think first of Wisconsin-made Mueller Climatrol. Whatever the size or type of unit you need, the Mueller Climatrol dealer in your town can supply the finest of its kind — and point out the features that prove it.



Mueller Climatrol
Golden Centennial Furnace



Carillon Tower,
University of Wisconsin

Mueller Climatrol®

DIVISION OF WORTHINGTON CORP.

... Climate control for healthful living