



# LIBRARIES

UNIVERSITY OF WISCONSIN-MADISON

## **Banquet of the 1902 Badger Board program. May 9, 1902**

[s.l.]: [s.n.], May 9, 1902

<https://digital.library.wisc.edu/1711.dl/GE4BT7MMXSGJF8F>

Based on date of publication, this material is presumed to be in the public domain.

For information on re-use, see

<http://digital.library.wisc.edu/1711.dl/Copyright>

The libraries provide public access to a wide range of material, including online exhibits, digitized collections, archival finding aids, our catalog, online articles, and a growing range of materials in many media.

When possible, we provide rights information in catalog records, finding aids, and other metadata that accompanies collections or items. However, it is always the user's obligation to evaluate copyright and rights issues in light of their own use.

F9029  
U58  
1902

BANQUET OF

THE 1902

<sup>21</sup>  
BADGER

BOARD



State Historical Society  
OF WISCONSIN  
MADISON - WIS.

FRIDAY EVENING, MAY NINTH,  
NINETEEN HUNDRED TWO

==== KEELEY'S ====

F9029  
U58  
1902



PATRICK J. KELLEY



ROB'T M. DAVIS



MILAN R. BUMP



JOHN V. BRENNAN



NORA B. McCUE



WM. F. MOFFATT



HENRY L. JANES



J. BARTOW PATRICK  
CHAIRMAN



IDA ELLIOTT



AGNES MERRILL



DWIGHT E. BEEBE



JOHN H. WILLIAMS



JENNIE B. SHERRILL



GEORGE A. SCOTT

© INNER CH.

THE 1902 BADGER BOARD.



SARAH J. SEEBER



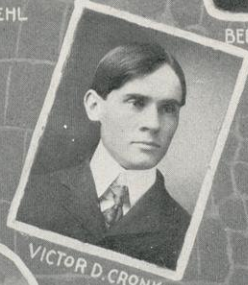
GUY E. DIEHL



BERNICE M. BALLARD



CARL F. STILLMAN



VICTOR D. CRONK



MARIE G. HINKLEY



WALTER F. MABBETT  
BUSINESS MANAGER



MARY B. SWAIN



MERLE S. PICKFORD



WILLIAM E. SMITH



SANFORD P. STARKS



MICHAEL B. OLBRICH



CARL B. MUTCHLER

THE 1902 BADGER BOARD.



# Toasts

*J. BARTOW PATRICK, Toastmaster*



*"What the 1902 Badger Board has Done."*

ROBERT M. DAVIS.

---

*"Our Badger Phi Beta Kappas."*

NORA B. MCCUE.

---

*"How I Got Out the Book."*

WILLIAM F. MOFFATT.

---

*"What the 1902 Badger Board Hasn't Done."*

MARY B. SWAIN.

---

*"The Badger Business Proposition."*

PATRICK J. KELLEY.

---

*"The 1903 Badger Board."*

SARAH J. SEEBER.

---

*"Why I Didn't Make Phi Beta Kappa."*

DWIGHT E. BEEBE.

---

*"Why We Were Successful."*

MICHAEL B. OLBRICH.

---

*"The 1902 Badger Board in 1912."*

IDA ELLIOTT.





# Menu



Strawberries in Tumbale Cases

---

Cream of Asparagus

Imperial Sticks

---

Roast Lamb with Mint Sauce

Potato Waffles Peas Cauliflower au gratin

Currant Jelly

Rolls

---

Badger Board Sherbert

---

Cucumber and Sweetbread Salad

Cheese Crusts

Stuffed Olives

Salted Almonds

---

Sherry Ice Cream

Fancy Cakes

Hot Chocolate Sauce

---

Coffee

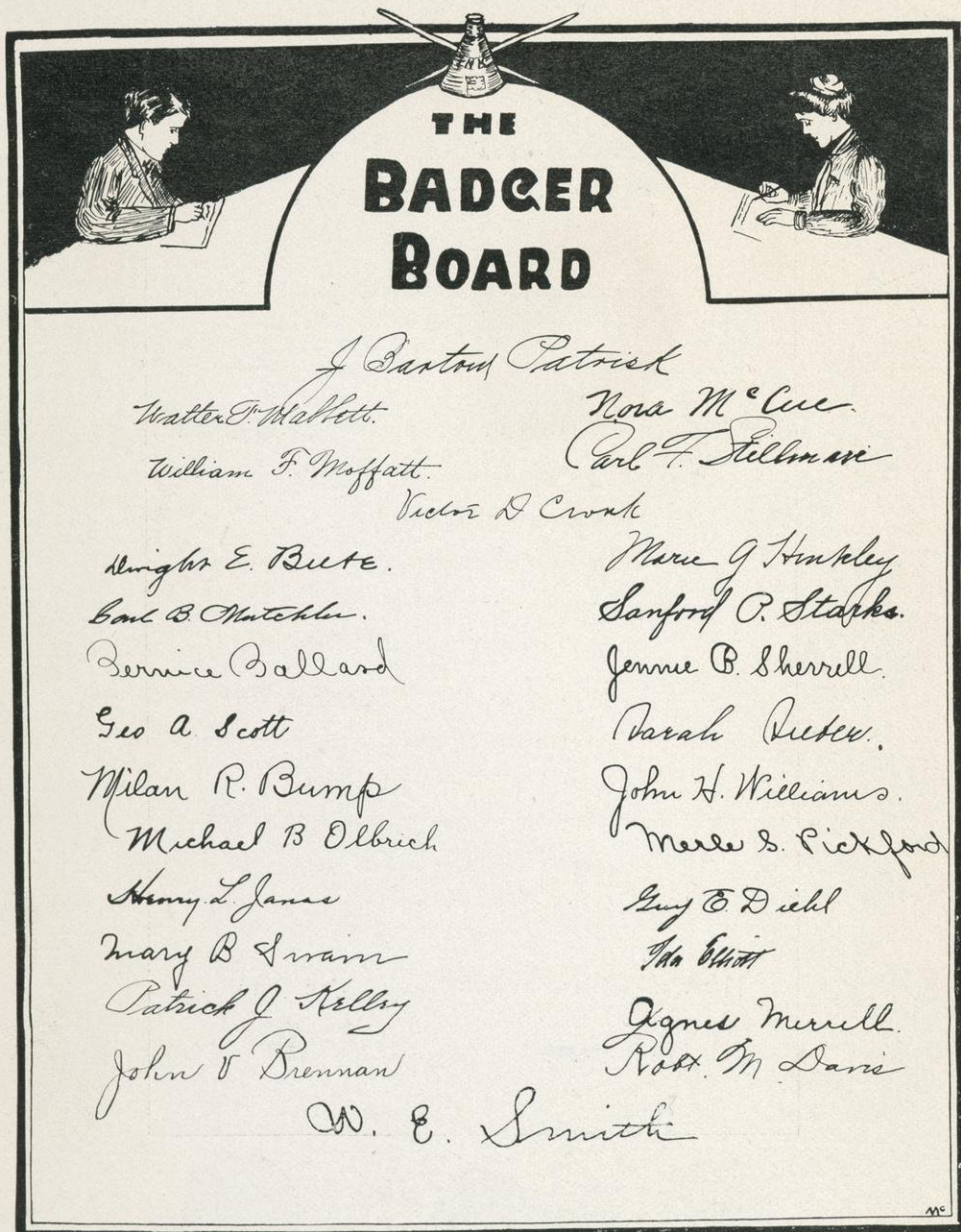
---

Cheese and Water Crackers

Bon Bons

---





**THE  
BADGER  
BOARD**

*J. Gaston Patrick*

*Walter F. Mallett.*

*Nora M. Cline.*

*William F. Moffatt.*

*Carl F. Sellman*

*Victor D. Crook*

*Albright E. Bute.*

*Marcus G. Hunkley*

*Carl B. Mitchell.*

*Sanford P. Starks.*

*Bernice Ballard*

*Jennie B. Sherrill.*

*Geo. A. Scott*

*Parah. Butler.*

*Milan R. Bump*

*John H. Williams.*

*Michael B. Olbrich*

*Meredith S. Pickford*

*Henry L. James*

*Guy B. Diehl*

*Mary B. Swann*

*Ma. Whit*

*Patrick J. Kelly*

*Agnes Merrill.*

*John V. Brennan*

*Ross M. Davis*

*W. E. Smith*



### Class Song



*Oh, Nineteen Two to thee,  
Pride of our 'Varsity,  
Pledge we ourselves to be,  
Loyal and true.*

*Class that we love so well,  
Thy praise no tongue can tell,  
Long in our memory dwell,  
Oh, Nineteen Two.*

