



LIBRARIES

UNIVERSITY OF WISCONSIN-MADISON

The meletean 1953. Vol. 42 1953

[River Falls, Wis]: [Wisconsin State University, River Falls], 1953

<https://digital.library.wisc.edu/1711.dl/23FQSF6EQ7IJF8P>

This material may be protected by copyright law (e.g., Title 17, US Code).

For information on re-use, see

<http://digital.library.wisc.edu/1711.dl/Copyright>

The libraries provide public access to a wide range of material, including online exhibits, digitized collections, archival finding aids, our catalog, online articles, and a growing range of materials in many media.

When possible, we provide rights information in catalog records, finding aids, and other metadata that accompanies collections or items. However, it is always the user's obligation to evaluate copyright and rights issues in light of their own use.



1953

MELETEAN





Master

WISCONSIN STATE COLLEGE

River Falls, Wisconsin

Volume 42



THE MELETEAN

1953



Twenty-five years ago, in 1928, twelve River Falls students received the first four-year degrees to be granted by the college. River Falls thus became a Teachers College instead of a Normal School.

"The members of this group will occupy a position comparable to that of the first graduating class in 1879," said the 1928 Meletean. With the granting of degrees to these first candidates, our school takes its rightful place among the Teachers Colleges of the country."

More than twenty-five hundred River Falls students have received the four-year teaching degree in these past twenty-five years. Whereas the four-year students were a small minority a quarter-century ago, they are now the large majority.

River Falls has progressed a step further since 1928; it now grants the non-teaching degree too, and is a State College. But it is still primarily a college for the training of teachers, and this, the 1953 Meletean, salutes the twenty-fifth anniversary of the granting of the first four-year teaching degree to a dozen students in 1928.



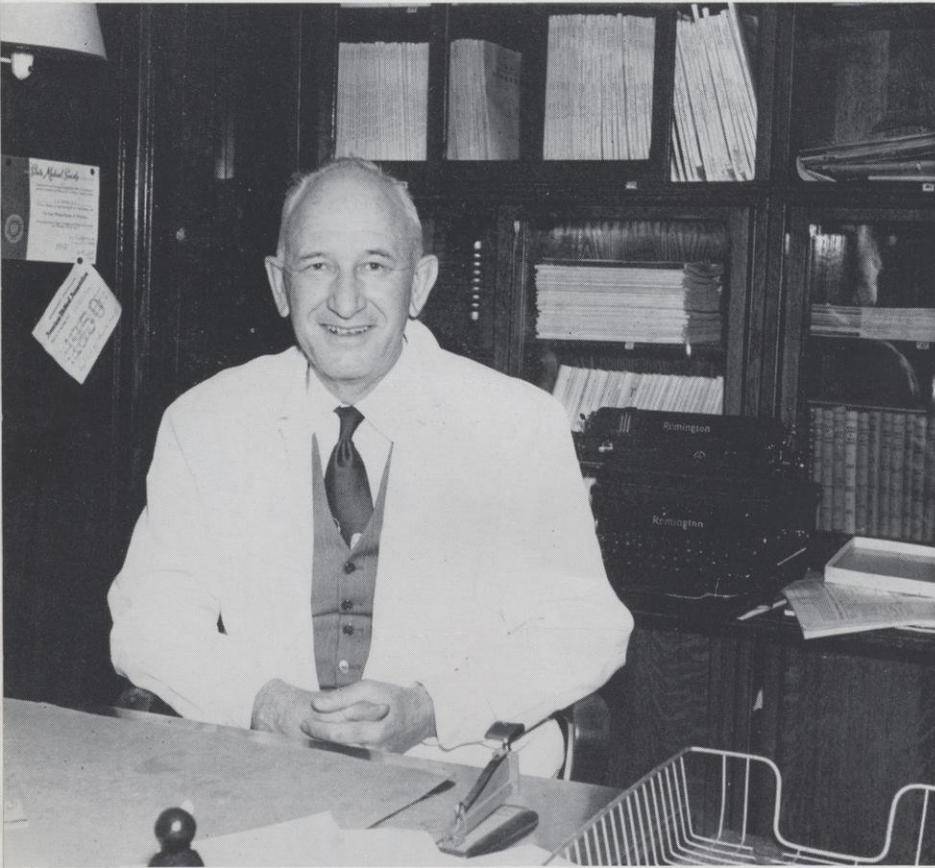
South Hall

FOREWORD

In this forty-second volume of the Meletean, our purpose has not been to present in a new way the events of the 1952-53 school year, but rather to leave you a record of what has happened at Wisconsin State College at River Falls in as vivid a form as possible. If it gives you an accurate reminder of this year's events, then it has fulfilled its purpose.

ANNIVERSARY OF THE FOUR YEAR DEGREE

DEDICATION



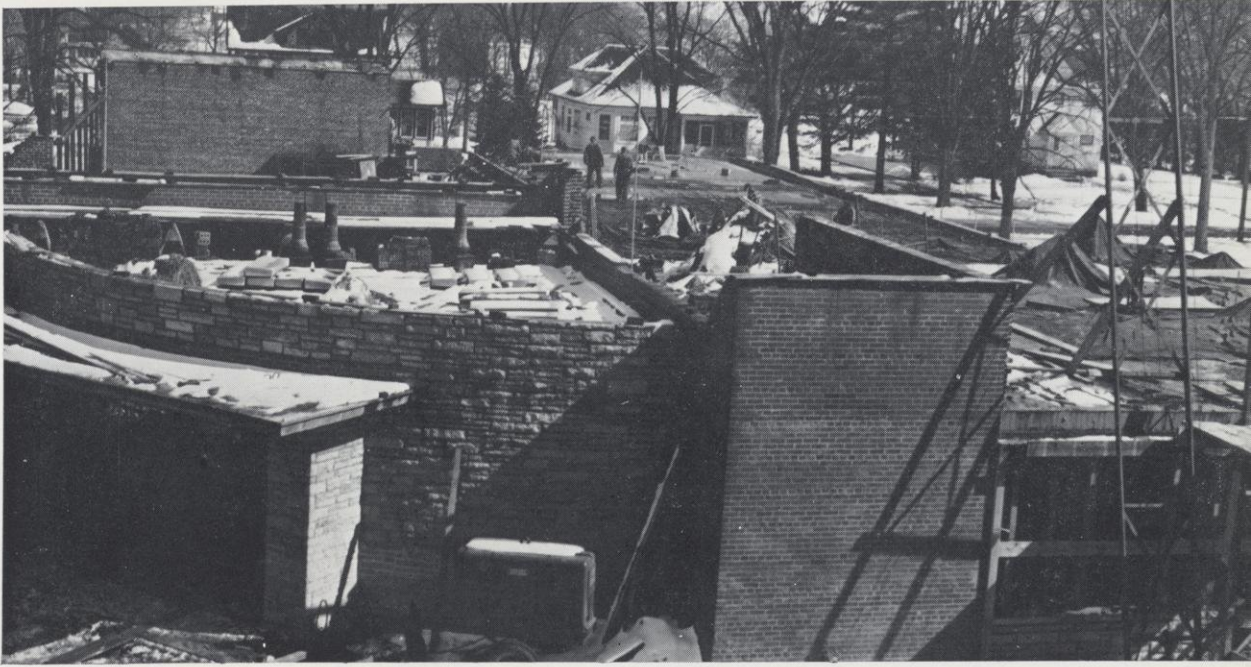
We dedicate the 1953 Meletean to Dr. Chalmer Davee, who has been the River Falls member of the Board of Regents of State Colleges since 1945.

The first regent to suggest the liberal arts degree and the change of name to Wisconsin State Colleges, Dr. Davee also has been responsible for securing a good share of the substantial college building program for River Falls.

When the Board of Regents unanimously accepted a resolution that the new library be named "The Chalmer Davee Library", President E. H. Kleinpell wrote Dr. Davee: "I hope it recognizes in some small way what you have done for the college at River Falls. It is my firm conviction, and one shared by the faculty, that you have attributed much to the stature of higher education in Wisconsin in general and to this college in particular."

We hope that by dedicating the 1953 Meletean to Dr. Davee we may express in another small way our appreciation for what Dr. Davee has done for River Falls and for us, the student body.

*Library
Construction*



The Chalmer Davee Library

River Falls' new \$650,000 library building, the Chalmer Davee Library, is scheduled to open sometime this autumn. The contract specifies that the entire project be finished by January 1, 1954.

Except for a mezzanine floor in the southwest corner of the building, next to South Hall, the library is to be a one-story structure. The mezzanine floor will house a music listening room, a special class room, three seminar rooms, and a conference room.

"The Little Theatre", seating 202 people, a model campus school library, a faculty reading room, a staff lounge, and a regional depository take up most of the basement.

On the first floor of the library there will be the main reading room, a circulation lobby, librarians' office, the main book stacks, a reserve book room, browsing room, and a library methods class room.

*Artist's sketch
of the
Chalmer Davee Library
Northwest corner*



NINETEEN HUNDRED AND FIFTY THREE

MELETEAN



North Hall

STAFF

JOHN REQUE

RITA RUEMMELE

Editors

JULIANNE RYAN

Business Manager

CLIFTON HARMANN

Photographer

LOUIS KOLLMAYER

M. WAYNE WOLFE

Advisers

CONTENTS

ADMINISTRATION . Page 9

CLASSES . . . Page 21

ORGANIZATIONS . Page 51

ACTIVITIES . . Page 89

25th ANNIVERSARY OF THE FOUR YEAR DEGREE







ADMINISTRATION



The President

The Meletean for this year commemorates the twenty-fifth anniversary of the granting of the first four-year degree at River Falls. Friends, alumni and students can well be proud of the record that their College has made in this quarter century. More than twenty-five hundred graduates, and thousands of other students have received their education at River Falls and gone forth to influence the vision and the imagination of the people of this state. Throughout the region, their records have established the reputation of River Falls as an outstanding collegiate institution.

And twenty-five years have brought changes to the physical appearance of the campus. The east wing of North Hall was completed in 1927-28. The Shop building and additional farm lands strengthened the program of the College in

agriculture. Hathorn Hall provided gracious living for women students, and the new library, to be completed this year, will promote the academic stature of River Falls.

Surely this quarter century may be considered only a prelude to a brilliant future for our College. As the demands for higher education increase with each decade, so the institution will grow to meet the challenge. It may confidently be predicted that when the Meletean of 1977-78 observes the fiftieth anniversary of the first degree, River Falls will be granting the master's degree, its campus will be further expanded — a gymnasium, a campus school, a dormitory for men, a student union — and its graduates, as those of yesterday, will be making their contribution to the building of the human resources of our land.

DR. E. H. KLEINPELL

Administration



MR. E. J. PRUCHA

Registrar



DR. JAMES J.
McLAUGHLIN

*Director
Division of
Arts and Science*

DR. DOROTHY LIPP

Dean of Women



MR. B. J. ROZEHNAL

Dean of Men



MR. JOHN M. MAY

*Director
Division of Agriculture*



DR. L. G. STONE

*Chairman
Professional Division*

Faculty

VIRGINIA AKINS

Biology

EARL G. ALBERT

Physics

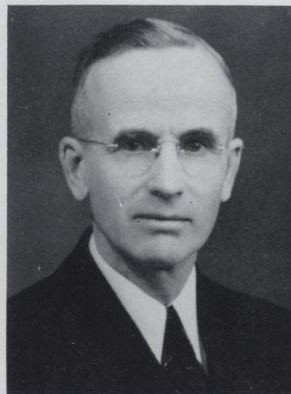


PHILIP S. ANDERSON

Education

CONSTANTIN APSOURI

Geology



PHILIP BELFIORI

Physical Education

CLYDE B. CAMPBELL

Agriculture



FRANCIS P. CHISHOLM

English

THEODORE CLYMER

Education

Faculty



BARBARA COOKLOCK

Education

RICHARD COOKLOCK

Librarian



BLANCHE E. DAVIS

Speech

CARRIE DORSEY

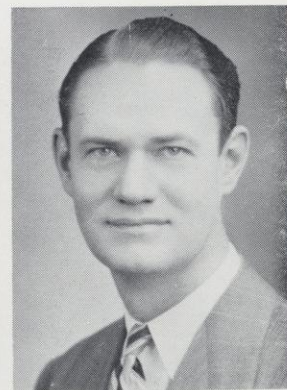
Education

ANN DUBBE

Education

WALTER J. ENGLER

English



CORA FARRELL

College Nurse

ROBERT FISLER

Education



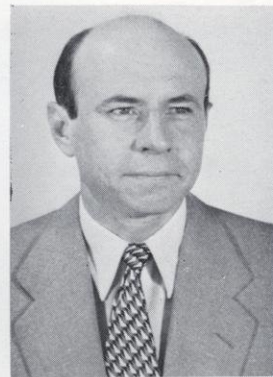
Faculty

RAY L. GARNETT

Education

GEORGE GILKEY

History

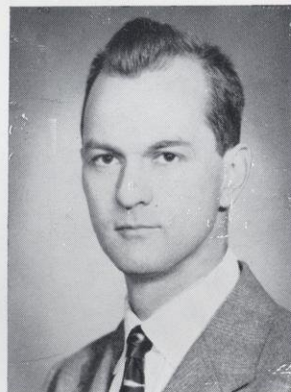


WILFRED C. HARRIS

Education

MARION HAWKINS

English



NICHOLAS JADINAK

Instrumental Music

ARTHUR N. JOHNSON

Agriculture



GLENN P. JUNKMAN

Mathematics

ERNST JURGENS

German

Faculty



BENJAMIN KETTELKAMP

Biology



CHAUNCEY B. KING

Vocal Music



ROBERT KLINE

Education



NANCY K. KNAAK

English

Resident Counselor,

Hathorn Hall

OPAL A. KNOX

Education

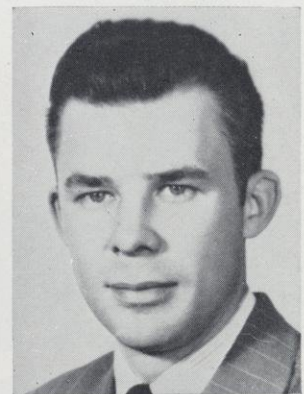
LOUIS KOLLMAYER

Art



VIRGIL KROEGER

Social Science



CATHERINE LIENEMAN

Biology



Faculty

DOROTHY LIPP

Dean of Women

HELEN McBRIDE

Physical Education



JAMES J. McLAUGHLIN

Mathematics

H. STRATTON MARTIN

French, English



ROGER A. MAX

Chemistry

JOHN M. MAY

Agriculture



JOHN G. MOSHER, JR.

Geography

VERA MOSS

English

Faculty



ADELINE PATTON

Education

EDWARD J. PRUCHA

Registrar

Agriculture



B. J. ROZEHNAL

Dean of Men

Instrumental Music

THEODORE SETTERQUIST

Chemistry

PHYLLIS SIMON GUTZLER

Education

GILBERT N. SMITH

Economics



WILLIAM SOLLEY

Physical Education

L. GORDON STONE

Psychology

Education



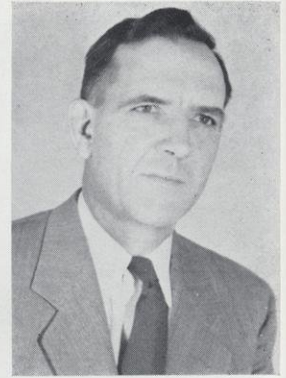
Faculty

THORVALD E. THORESON

Agricultural Engineering

MELVIN WALL

Agriculture



HARLEY F. WEHRWEIN

Agricultural Engineering

M. WAYNE WOLFE

Journalism



MARY BRADLEY

Assistant Librarian

WALKER D. WYMAN

History



RHEA GIBSON

Librarian

AMY FULLER

Assistant Librarian

CARA WHARTON

Piano, Organ

Board of Regents

Wisconsin State Colleges

W. D. McINTYRE, PRESIDENT	Eau Claire
GEORGE WATSON, EX-OFFICIO	Madison
EUGENE W. MURPHY	La Crosse
MRS. HELEN EBY	Madison
WILSON S. DELZELL	Stevens Point
ELTON S. KARRMANN	Platteville
MISS CATHERINE CLEARY	Milwaukee
DR. CHALMER DAVEE	River Falls
BARNEY BARSTOW	Superior
LEWIS C. MAGNUSON	Oshkosh
HAROLD G. ANDERSON	Whitewater
EUGENE MCPHEE	Secretary, Director

Office Staff



MRS. DAVISON AND MISS WEST

Office Staff

ALICE DAVISON	Administrative Typist
NAOMI HARTMAN	Registrar's Secretary
BETTY GREGOR	Dean's Secretary
ANN KOLBERG	Registrar's Secretary
ESTHER MURPHY	Secretary, Training School
ROSEMARY NEHMER	Registrar's Secretary
LEONA O'CONNOR	Stenographer
BERNICE MADSON	Stenographer
ETHEL WEST	Administrative Assistant



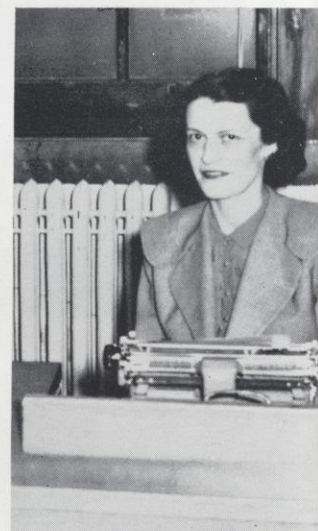
MISS MURPHY



MRS. MADSON



MRS. GREGOR



MRS. O'CONNOR



MRS. KOLBERG
MRS. NEHMER
MRS. HARTMAN



CLASSES

JEAN MARIE ALLIE Ellsworth

B.S.; English, Physical Education, Speech

WAA 2, 3, 4; CWA 1, 2, 3, 4, Vice president 3; Pi Kappa Delta 3, 4, Vice president 4; Student Senate 3, 4, Secretary 3, Treasurer 4; Dance Theater 4; Young Democrats 4; Sigma Chi Sigma 2, 3, 4; Kappa Delta Pi 3, 4; Meletean 1, 2, 3; Assistant Resident Counselor 4; "Hedda Gabler" 2; Who's Who in American Colleges and Universities 4.

KENNETH AMES River Falls

B.S.; Social Science, English, Psychology

DELBERT ANDERSON Stockholm

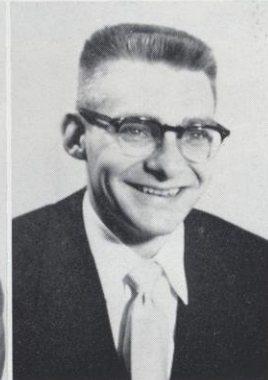
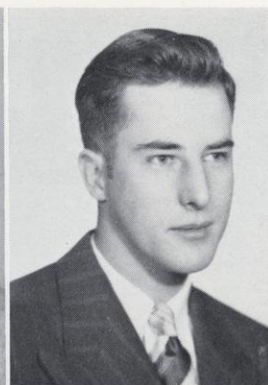
B.S.; Science, Mathematics, English

YMCA 1; Math Club 1, 3; FTA 3; Homecoming Committees 2, 4.

JAMES W. ASHLEY Chippewa Falls

B.S.; Elementary Education, English, Geography

A.C.E.I. 3, 4; FTA 4.



The Senior



PAUL J. BECKEL Kasota, Minn.

B.S.; Agriculture Education, Science

Newman Club 1, 2, 3, 4; YMCA 1; Toastmasters 2, 3, 4, President 2; Student Foundation Committee President 4; FFA 1, 2, 3, 4, Parliamentarian 3, 4; WSSF 1.

JOHN BETTINI Florence

B.S.; Agricultural Education, Science

FFA 1, 2, 3, 4; Toastmasters 4; Vets Club 3, 4; Newman Club 2, 3.

JEAN BJORNSON Stanley

B.S.; Elementary Education, History, Geography

Sigma Chi Sigma 2, 3, 4, Secretary 3; FTA 3, 4; A.C.E.I. 2, 3, 4; Newman Club 1, 2, 3, 4; Mixed Chorus 1; Kappa Delta Pi 3, 4; CWA 1, 2, 3, 4; Winter Carnival Committee 4.

JO ANN BJORNSTAD Ellsworth

B.S.; Elementary Education, Physical Education, Psychology

Class secretary, 1; A.C.E.I. 2, 3, 4, President 4; Choir 2, 3, 4, Librarian 4; WAA 3; YWCA 1, 2; Mixed Chorus 1; Sigma Chi Sigma 3, 4; FTA 3, 4; Social Committee 3; Homecoming Committees 1, 2, 3, 4.



CHARLES W. BRAUN Sarona
B.S.; *Agricultural Education, Science*

Class President 2; Football 1, 2, 3, 4; Track 1, 2; Intramural Basketball 2, 3, 4; "R" Club 1, 2, 3, 4, President 4; Vets Club 1, 2, 3, 4; FFA 2, 3, 4, Reporter 3, Student Advisor 4; Kappa Delta Pi 3, 4; Honor Society 1, 2.

JAMES CHAFFEE Menomonie
B.S.; *Agricultural Education, Science*

JUNE A. CLARK Osceola
B.S.; *Elementary Education, Music*

WAA 1, 2, 3, 4, Vice President 3; FTA 3, 4, President 4; A.C.E.I. 1, 2, 3, 4; YWCA 1, 2, 3, 4; Rec Club 2; MENC 1, 2, 3, 4; Young Democrats 3, 4, Secretary-Treasurer 3, 4; Band 1, 2, 3, 4, Librarian 4; Orchestra 1, 2, 3, 4.

ELEANOR G. DAVIS Spring Valley
B.S.; *Elementary Education, English, Social Science*

Class Treasurer 1; YWCA 1, 2, 3, 4; A.C.E.I. 3, 4; Choir 1, 2, 3, 4; Dance Theatre Group 4; Resident Councilor 4; Prom Committee 3; Homecoming Committee 2; "Macbeth" 4.

Class of 1953

HAROLD J. DINEEN Iola
B.S.; *Agricultural Education, Science*

Vets Club 3; FFA 3, 4, Reporter 3.

CAROL DOFFING River Falls
B.A.; *History, Economics, French*

DALE DOPKINS River Falls
B.S.; *Elementary Education, Physical Education*

Mixed Chorus 1, 2; Choir 3; Intramural Basketball 1, 2, 3; Meletean 2.

HEATHER DOPKINS Norwalk
B.S.; *English, Speech, Social Science*

Debate 1, 2, 3, 4; Pi Kappa Delta 1, 2, 3, 4, Secretary 2, President 3; Masquers 3, 4, President 4; Alpha Psi Omega 3, 4; Sigma Chi Sigma 3, 4; Kappa Delta Pi 3, 4; YWCA 2; CWA 1, 2, 3, 4; Dancing Club 1, 2; "Hedda Gabler" 2; "Romeo and Juliet" 3; "Winterset" 3; "The Corn Is Green" 3; "Imaginary Invalid" 4; "Macbeth" 4.



EDGAR DROGEMULLER Preston, Minn

B.S.; Agricultural Education, Science

Vets Club 3; Gamma Delta 3; FFA 1, 2, 3, 4; Toastmasters 3, 4; Intramural basketball 2, 3, 4; Intramural softball 2, 3, 4; Intramural football 2.

KEITH L. DRYSDALE Maple Plain, Minn.

B.S.; History, Science, English

Vets Club 1; FTA 4.

GERALD W. EASTON Footville

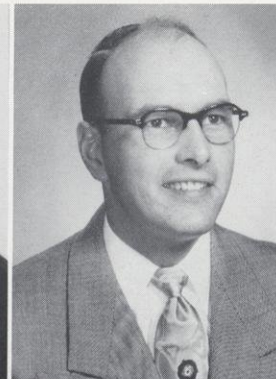
B.S.; Agricultural Education, Science

"R" Club 1, 2, 3, 4, President 3; FFA 1, 2, 3, 4, Treasurer 3; Student Senate 4; Football 1, 2, 3; Intramural basketball 1, 2, 3, 4; Intramural softball 2, 3; Prom Committee 3; Winter Carnival King 3; Who's Who in American Colleges and Universities 4.

LLOYD FELTES Arcadia

B.S.; Agricultural Education, Science

Vets Club 1, 2, 3; Toastmasters 2, 3, 4, Vice president 4, Treasurer 3; Newman Club 1, 2, 3, 4; FFA 1, 2, 3, 4, Reporter 4.



The Senior



ANNETTE L. GERAETS Elmwood

B.S.; Biology, Social Science, English

Class treasurer 3; Newman Club 1, 2, 3, 4, Secretary 3; Sigma Chi Sigma 2, 3, 4, Secretary 4; Kappa Delta Pi 3, 4; Band 3; FTA 4; Math Club 3; President's Award, 1952.

ARTHUR HAGEMANN Ellsworth

B.S.; Chemistry, Mathematics, English

Newman Club 1, 2, 3, 4; Math Club 2.

GENE HARTMAN Clintonville

B.S.; Agricultural Education, Science

Class treasurer 2; Toastmasters 4, President 4; FFA 3, 4, Treasurer 4; Vets Club 1, 3.

EARL R. HASSETT Wauwatosa

B.S.; History, Chemistry, English



JEAN J. HERALD Baldwin

B.S.; Elementary Education, Art, Psychology
Class secretary 4; A.C.E.I. 2, 3, 4; YWCA 1, 2, 3, 4;
Homecoming committees 1, 2, 3, 4; Prom committee 3;
"The Indian Captive" 3; Homecoming queen attendant 4.

JAMES HICKS Menomonie

B.S.; Agricultural Education, Science
FFA 3, 4; Toastmasters 4, Vice president 4; Vets Club
1, 2, 3; "R" Club 4.

ELDON P. HIGHT Elmwood

B.S.; History, Physical Education, Geography
"R" Club 1, 2, 3, 4, Vice president 4; Football 1, 2;
Baseball 1, 2, 3, 4; Intramural Basketball 1, 2, 3, 4.

WILLIAM E. HUFF Ladysmith

B.S.; Geography, Physical Education, History
"R" Club 2, 3, 4; Rec Club 3; Newman Club 1, 2, 3,
4; Intramural Sports 1, 2, 3, 4; Homecoming Commit-
tees 1, 2, 3, 4.

Class of 1953

JEROME HYTRY Mosinee

B.S.; Agricultural Education, Science
Class vice president 2; FFA 1, 2, 3, 4, Reporter 3, Vice
president 4; Newman Club 1, 2, 3; Intramural Sports
1, 2, 3.

JAMES JACOBSON Spring Valley

B.S.; History, Music, English
Choir 1, 2, 3, 4, Business manager 4; Band 1, 2, 3, 4;
Orchestra 1; Folk Singers 3, 4.

DONALD D. JENSEN LaFarge

B.S.; Agricultural Education, Science
FFA 2, 3, 4, President 4; Toastmasters 4, Treasurer 4;
Intramural Softball 2, 3, 4.

ROBERT JENSEN River Falls

B.S.; Biology, Speech, English
Class vice president 3; Choir 1, 2, 3, 4; Gamma Delta 2;
Masquers 3, 4; Alpha Psi Omega 4; MENC 3; FTA 4,
Governing Body 4; Homecoming Committee 4; "Ghosts"
2; "Romeo and Juliet" 3; "Medea" 4.

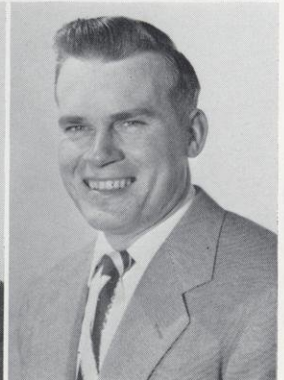


THOMAS JOHANIK Moquah
B.S.; Agricultural Education, Science
 FFA 2, 3, 4; Vets Club 3; Intramural Softball 3, 4;
 Northland College 1.

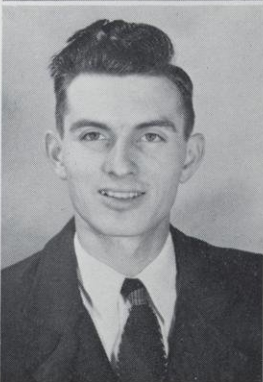
DAVID JOHNSON La Crosse
B.S.; Agricultural Education, Science
 FFA 1, 2, 3, 4.

EARL JOHNSON Whitehall
B.S.; Elementary Education, Biology, Geology
 Pi Kappa Delta 2, 3, 4; Kappa Delta Pi 3, 4; Gamma
 Delta 2, 3, 4, Vice president 2, Reporter 3; Debate 1,
 2; Honor Society 1, 2; YMCA 1, 2; A.C.E.I. 1, 2,
 3, 4; Dance Club 1, 2; Homecoming Committee 3.

RODNEY JOHNSON Luck
B.S.; Agricultural Education Science
 FFA 2, 3, 4, Vice president 4; Toastmasters 4; Intra-
 mural sports 1, 2, 3, 4; Football 1; Vets Club 3.



The Senior



DONNA LAURA JONES River Falls
B.S.; Speech, English

Masquers 3, 4; Alpha Psi Omega 3, 4; Dancing Club 2,
 3, Vice president 3; Orchestra 1; Choir 2, 3; Mixed
 Chorus 1, 2, YWCA 1, 2, 3; "Aladdin" 3; "The Corn
 Is Green" 3; "Romeo and Juliet" 3; "Good Housekeep-
 ing" 4; "The Imaginary Invalid" 4; "Macbeth" 4.

ALF E. KIRKEENG Rockland
B.S.; Agricultural Education, Science

FFA 1, 2, 3, 4, President 4, Secretary 3; YMCA 1, 2,
 3, Vice president 3.

ROGER H. KNieff Frederic
B.S.; Elementary Education, Music, Social Science

Class president 1; Band 1, 2, 3, 4, President 4; Student
 Senate 1, 2, 3, Treasurer 2, Vice President 3; Foundation
 Committee 4; Mixed Chorus 1, 2; Homecoming Com-
 mittee 4; Kappa Delta Pi 4; Who's Who in American
 Colleges and Universities 4.

DELORES KREUZIGER River Falls
B.S.; Elementary Education, Speech, Art

A.C.E.I. 1, 2, 3, 4; YWCA 1, 2, 3; Dancing Club 1,
 2, Treasurer 2; Masquers 3, 4; Alpha Psi Omega 3, 4;
 Chorus 2; "Aladdin" 3; "The Corn Is Green" 3;
 "Macbeth" 4.



ROGER KUSS River Falls
B.S.; History, Physical Education, English
 "R" Club 1, 2, 3, 4; Basketball 1, 2, 3, 4; Fieldhouse
 Foundation Committee 2.

DONALD LA BERGE Ladysmith
B.S.; Agricultural Education, Science
 University of Wisconsin Extension 1; FFA 2, 3, 4, 5;
 Vets Club 2, 3, 4, 5.

LLOYD LAINE Iron River
B.S.; Agricultural Education, Science
 FFA 2, 3, 4.

RICHARD E. LARAMY River Falls
B.S.; Chemistry, Mathematics, German
 Class vice president 1; Kappa Delta Pi 3, 4, Vice presi-
 dent 4; Math Club 2, 3, 4, Vice president 3; Chemistry
 Club 4; Social Committee 3; Prom Committee 3; Home-
 coming Committee 1, 2, 3; Who's Who in American Col-
 leges and Universities, 1953.

Class of 1953

ROYCE LARSON Ogdensburg
B.S.; Agricultural Education, Science

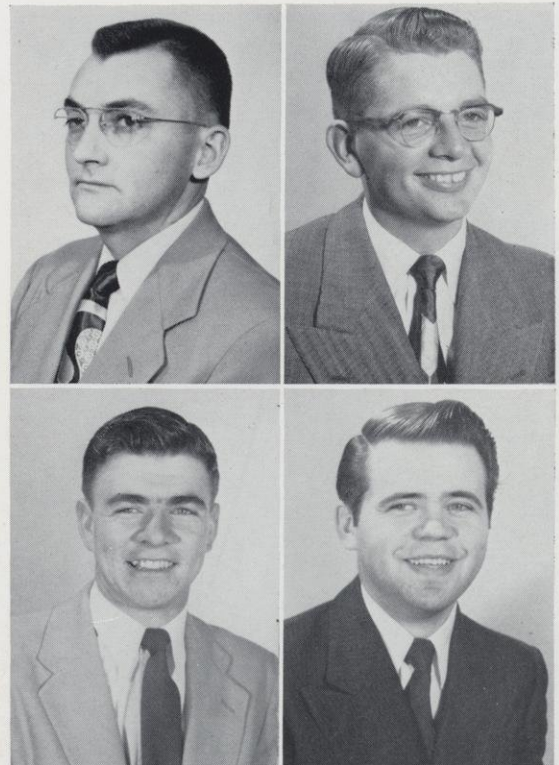
ARDELL LINNERUD Whitehall
B.S.; Agricultural Education, Science

DALE LIUM Barron
B.S.; Mathematics, Science, English

Math Club 2, 3; YMCA 1, 2; Choir 1, 2, 3, 4; In-
 tramural sports 1, 2, 3, 4; Prom Committee 3; Homecom-
 ing Committee 1, 4; Winter Carnival Committee 4.

ARVIN LOVAAS Hudson
B.S.; Chemistry, Physics, Mathematics

Mixed Chorus 1; Choir 1, 2, 3, 4; Chemistry Club 4;
 Math Club 3; Class of 1924 Scholarship, 4.



ROGER MALCHOW Dorchester

B.S.; Chemistry, Biology, English

Intramural Basketball 1, 2, 3, 4.

MELTON C. MARTINSON Holcombe

B.S.; Elementary Education, History, Psychology

FTA 4; YMCA 2, 3, 4; ACEI 2, 3, 4; Student Voice 4; Dancing Club 1, 2; Intramural sports 1, 2, 3, 4; Prom Committee 3; "The Indian Captive" 3.

RAMONA MEYER River Falls

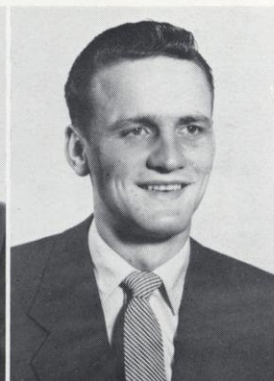
B.S.; Elementary Education, Art, Psychology

A. C. E. I. 3, 4; Newman Club 1, 2, 3, 4, Treasurer 4; Kappa Delta Pi 3, 4, Secretary 3, 4; CWA 1, 2, 3, 4; Homecoming Committees 1, 3.

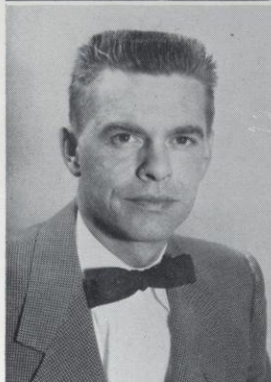
JOHN W. MILLS Providence, Rhode Island

B.S.; History, Physical Education, English

Vets 1, 2, 3, 4, Vice president 3, President 4; "R" Club 2, 3, 4; Basketball 1, 2, 3, 4; Dirty Dozen 2, 3, 4; Recreation Club 2; Baseball 1, 4; Golf 2, 3; Homecoming Chairman, 1952.



The Senior



RAY MOORE Catawba

B.S.; Agricultural Education, Science

FFA 1, 2, 3, 4, President 4; Vets Club 1; Kappa Delta Pi 3, 4.

LESTER MUCKINHERN Hudson

B.A.; Biology, Chemistry, Economics

Choir 2, 4.

KENNETH E. NEHMER Columbus

B.S.; Biology, Art, English

Newman Club 1, 3, 4; Meletean 4; Palette Club 1, 3; Vets Club 1, 3, 4; Student Senate 3, 4, President 4; Who's Who in American Colleges and Universities, 4.

DON NELSON Hammond

B.S.; Music, History, French

Band 1, 2, 3, 4; Choir 1, 2, 3, 4; MENC 2, 3, 4, President 3; Folk Singers 3, 4.



HARLAN NELSON Luck

B.S.; Agricultural Education, Science
FFA 1, 2, 3, 4; Baseball 1, 2, 3, 4; "R" Club 2, 3, 4.

DALE L. NESTINGEN Blair

B.S.; Agricultural Education, Science
FFA 1, 2, 3, 4; Toastmasters 3, 4, President 4.

GENEVIEVE OLSON Amery

B.S.; Elementary Education, Geography, Social Science
Choir 2, 3, 4 Publicity Manager 3; Mixed Chorus 1;
Sigma Chi Sigma 2, 3, 4, Vice President 4; Kappa Delta
Pi 3, 4, Treasurer 3, 4; A.C.E.I. 1, 2, 3, 4; FTA 3,
4; Prom Committee 3; Homecoming Committee 4; Grad-
uation Committee 4; "The Indian Captive" 3; Home-
coming Queen 3; Who's Who in American Colleges and
Universities 4.

WAYNE OTTO Fremont

B.S.; Language Arts, History, Economics
Oshkosh State College 1; Bethany College 2; Gamma
Delta 3, 4, Vice president 3; Kappa Delta Pi 3, 4, Pres-
ident 3, 4; FTA 3; Student Voice 3; Intramural bas-
ketball 3.

Class of 1953

AUDREY PARSNICK Bismark, N. D.

B.S.; Elementary Education
Stephens College 1, 2; Orchestra 3; Choir 4; MENC 3;
A.C.E.I. 4; CWA 3, CWA Board 4; Dance Theater 4;
Homecoming Committee 4; Winter Carnival Committee 4;
"Hansel and Gretel" 4.

ARLENE PECHACEK Hager City

B.S.; Elementary Education, Art, Social Science
Newman Club 1, 2, 3, 4; A.C.E.I. 1, 2, 3, 4; Recre-
ation Club 2; Palette Club 1, 2; Mixed Chorus 1; Mele-
tean 2, 3, 4, Editor 3; Homecoming Committees 1, 2, 3,
4; Prom Committee 3; "Hansel and Gretel" 4.

ROBERT PERRY Black River Falls

B.S.; Biology, English, History
Kappa Delta Pi 3, 4; Toastmasters 2; Social Committee 2.

JACK PETERSON River Falls

B.S.; History, Physical Education, English
"R" Club 2, 3, 4; Basketball 2, 3; Intramural Sports
2, 3, 4; Dirty Dozen 4.



MABEL PETERSON Deer Park
B.S.; Elementary Education, History

YWCA 1, 2, 3, 4, Secretary 3; A.C.E.I. 1, 2, 3, 4;
 Sigma Chi Sigma 2, 3, 4, President 4; Kappa Delta Pi 3,
 4; CWA 1, 2, 3, 4; Student Voice 1.

MARGARET REMUND Amery
B.S.; Elementary Education, Music

St. Olaf College 1, 2; MENC 3, 4, Secretary-treasurer 4;
 Choir 3, 4; Folk Singers 3, 4; YWCA 4; "Hansel and
 Gretel" 4; Homecoming Queen 4.

JAMES SAUERMAN Sparta
B.S.; Agricultural Education, Science

FFA 2, 3, 4; University of Wisconsin 1.

PHILIP E. SCHMIDT Ladysmith
B.S.; Agricultural Education, Science

FFA 3, 4; YMCA 1, 2, 3, 4, President 4.



The Senior



DONALD SCHOEDEL West Bend
B.S.; Agricultural Education, Science

Class President 4; FFA 1, 2, 3, 4, Reporter 4; Vets
 Club 1, 2, 3, 4; Gamma Delta 1, 2, 3, 4, President 2,
 Treasurer 3; Toastmasters 4; Social Committee 3; Student
 Senate 4; Chairman, Foundation Committee 3; Home-
 coming Committee 3; Prom Committee 3; Who's Who in
 American Colleges and Universities 4.

MARY SHANNON Ellsworth
*B.S.; Elementary Education, Physical Education,
 Social Science*

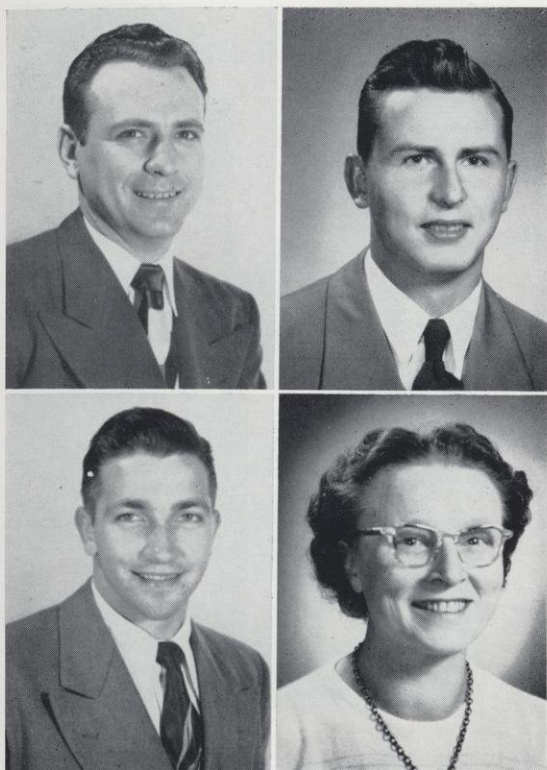
Sigma 2, 3, 4, Vice President 3; WAA 3, 4, Vice Pres-
 ident 4; Dance Theatre 4, President 4; Band 1, 2;
 A.C.E.I. 3, 4; Chairman, Social Committee 4; Assistant
 Chairman, Winter Carnival 4; Mixed Chorus 1, 2; Home-
 coming Committees 1, 2, 3, 4; Prom Committee 3; Grad-
 uation Committee 3.

MELVIN SLIND Downing
B.A.; Mathematics, Physics, Physical Education

Vets Club 2, 3; Math Club 3, 4; Intramural Sports 1,
 2, 3, 4.

PEGGY SMITH River Falls
B.S.; Elementary Education, Art, Psychology

Class Secretary 3; Kappa Delta Pi 3, 4; Historian-Reporter
 3, 4; CWA 1, 2, 3, 4; Honor Society 2; Homecoming
 Committees 1, 2, 3; Graduation Committees 3, 4;
 Augusta M. Thomas Scholarship 4.



DONALD SNIPPEN / River Falls
B.S.; *Agricultural Education, Science*
FFA 1, 2, 3, 4.

JAMES SUEHRING / Tigerton
B.S.; *Agricultural Education, Science*
FFA 1, 2, 3, 4, Secretary 4; YMCA 2; Debate 2; In-
tramural Sports 1, 2, 3.

ROBERT SWANSON / Mason
B.S.; *Chemistry, Mathematics, English*
Chemistry Club 4; Intramural Sports 1, 2, 3, 4; Math
Club 2, 3, 4; Dancing Club 1.

BELVA TANNER / River Falls
B.S.; *Elementary Education, Mathematics, German*
A.E.C.I. 4; University of Wisconsin 1, 2, 3.

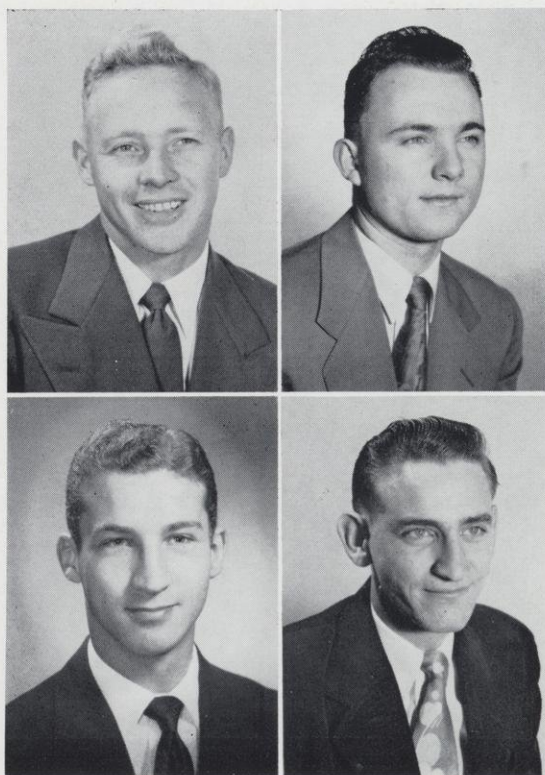
Class of 1953

DEAN M. TVETEN / Elcho
B.S.; *History, Physical Education, English*
Vets Club 2, 3.

HERBERT W. TAUCHEN / Dorchester
B.S.; *Agricultural Education, Science*
FFA 1, 2, 3, 4; Toastmasters 4; Pi Kappa Delta 3, 4;
Debate 1, 2, 3; Gamma Delta 1, 2, 3, Vice President
2, President 3.

JAMES E. VANDE BERG / Baldwin
B.S.; *History, Economics, Geology*
Class Treasurer 4; Student Senate 4; Intramural Basket-
ball 1, 2, 3, 4; Prom Committee Chairman 3; Who's
Who in American Colleges and Universities 4.

DUANE O. WESTERBERG / Pepin
B.S.; *Chemistry, German, Mathematics*
Class President 3; Math Club 1, 2, 3, 4; Student Senate
3, 4, Vice President 4; Chemistry Club 4; Intramural
Basketball 1, 2, 3, 4; Kappa Delta Pi 3, 4; Prom Com-
mittee 3; Faculty-Alumni Scholarship 2; Who's Who in
American Colleges and Universities 4.



ROGER T. WHITE River Falls
 B.S.; *History, English, Economics*
 Carroll College 2; San Jose State College, University of
 Montana 3.

LAVONA KLECKER WIFF Spring Valley
 B.S.; *Elementary Education, Art, Geography*
 Rural Life Club 1; Meletean 1; Mixed Chorus 1; ACE
 2, 3; YWCA 1, 2, 3, 4, Vice president 2, President 3,
 FTA 4.

PAUL WILLINK Baldwin
 B.S.; *Music, History, Art*
 Choir 1, 2, 3, 4, President 3; MENC 3, 4, Vice presi-
 dent 3, President 4; Band 1, 2, 3, 4, Business Manager 3;
 Prom Committee 3.

MARILYN FIEDLER Prescott
 B.S.; *Elementary Education, Art, Psychology*
 WAA 1, 2; A.C.E.I. 1, 4; Sigma Chi Sigma 4; Dance
 Group 4; Chorus 1, CWA 1, 2, 3, 4, Board member 1;
 Band 2; "Three Men on A Horse" 1; "Macbeth" 4.



1953 Seniors



JAMES MIDDLEBROOK New Richmond
 B.S.; *Chemistry, Economics*

Chemistry Club 3, 4; Intramural Sports 1, 2, 3, 4; As-
 sistant Homecoming Chairman 4.

JOHN SCHNEIDER Lake Elmo, Minn.
 B.S.; *Chemistry, English, Social Science*

CONRAD OLSEN Loyal
 B.S.; *Agricultural Education, Science*

FFA 2, 3, 4, Parliamentarian 3; Toastmasters 2, 3, 4,
 Deputy Governor 3, Vets Club 2.

CLIFFORD BUTLER New Richmond
 B.S.; *Elementary Education*

Graduating Seniors Not Pictured

ROBERT C. ADAMSON Somerset
B.S.; Mathematics, Physics, Geology
Basketball 1; Baseball 1; Football 4.

BEVERLY S. ANDREWS Stillwater, Minn.
B.S.; Elementary Education

MARCELLA APPEL River Falls
B.S.; Elementary Education

NORMAN S. DAHL Drummond
B.S.; Elementary Education

ROBERT E. ERICKSON Clear Lake
B.S.; Chemistry, Mathematics, German
Math Club 2, 3; Chemistry Club 4.

PAUL A. GAUSTAD River Falls
B.S.; English, Mathematics, Chemistry
Class vice president 4; Math Club 1, 2, 3, 4, Treasurer
3, President 4; Chemistry Club 4, Treasurer 4; Social
Committee 4; Kappa Delta Pi 3, 4.

GENE A. GILBERTSON Clear Lake
B.S.; History, Physical Education, English

DOROTHY L. HAMMELMAN Deer Park
B.S.; Elementary Education, Physical Education, History
WAA 3, 4; A.C.E.I. 4; Residents' Council 4; Home-
coming Committee 4; Graduation Committee 4.

VELORES L. HANSON Turtle Lake
B.S.; Elementary Education, History, Geography
Superior State College 1, 2, 3; Kappa Delta Pi 4.

VILAS D. HENDERSON Birnamwood
B.S.; Liberal Arts

CLAYTON E. HERUM River Falls
B.S.; Mathematics, Geography, Biology

THOMAS J. INGHAM Willernie, Minn.
B.S.; Social Science, English, Speech

YMCA 3, 4, WSSF Drive Chairman 3; FTA 3, 4; De-
bate 2, 3; Pi Kappa Delta 3, 4; University of Minnesota
1; "Hamlet" 2; "Importance of Being Earnest" 3.

BEULAH C. JOHNSON Frederic
B.S.; Secondary Education

GEORGE T. McKENZIE St. Croix Falls
B.S.; Chemistry, Mathematics, German
Chemistry Club 3, 4; Math Club 2, 3, 4.

WAYNE F. REICHERT Prescott
B.S.; Secondary Education

JOHN T. REQUE Spring Valley
B.A.; English, Social Science, French
Student Voice 1, 2, 3, 4, Editor 4; Meletean 2, 3, 4,
Business Manager 3, Co-editor 4; Young Democrats 4,
Vice president 4; "Romeo and Juliet" 3; "Medea" 4.

MARGARET B. ROBINSON River Falls
B.S.; Secondary Education

GEORGE E. SCHNEIDER Menomonie
B.S.; Social Science, Mathematics
Football 1, 2, 3, 4; Intramural Basketball 3, 4; Math
Club 2, 3, 4; "R" Club 2, 3, 4; Kappa Delta Pi 3, 4.

MAYNARD R. THORESON River Falls
B.S.; Elementary Education

CLYDE O. WEBER Beecher, Ill.
B.S.; Secondary Education

HISASHI YOSHIHARA Honolulu, Hawaii
B.S.; Mathematics, Physics, English

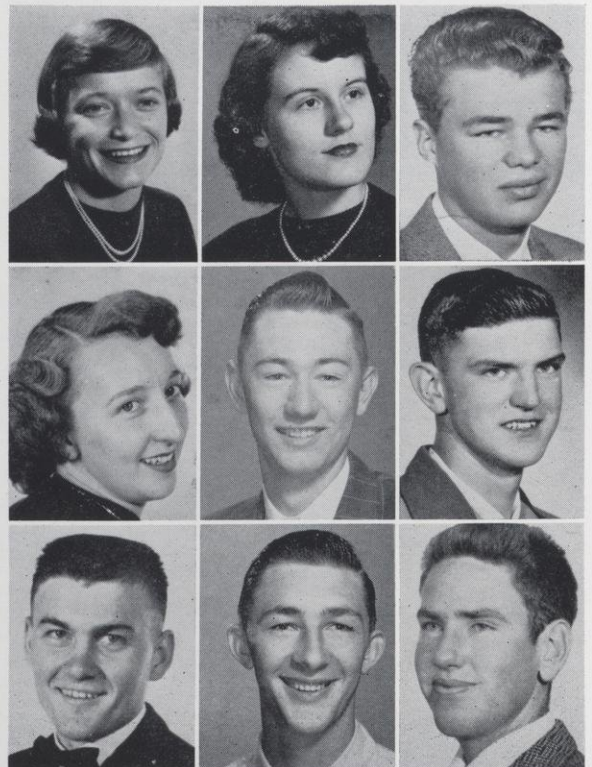
KENNETH J. ZEMSKE Clintonville
B.A.; Liberal Arts



Junior Class

BARBARA AABY	Woodville
Elementary	
CAROL ANDERSON	Clayton
Secondary	
ROBERT ANDERSON	Lewis
Elementary	
JAMES BELISLE	Menomonie
Secondary	
STANLEY BERGUM	Wheeler
Agriculture	
DAISY BOE	Deer Park
Elementary	
ARCHIBALD BOURNE	Durand
Agriculture	
RAYMOND BUCHEGER	Butternut
Agriculture	
JEAN CATURIA	Plum City
Elementary	
JAMES CERELLO	St. Croix Beach, Minn.
Secondary	
JAMES CHAFFEE	Menomonie
Agriculture	
BEULAH DAHLBERG	Frederic
Secondary	

MARGERY DEANS	Hammond
Secondary	
JACQUELINE EASTON	River Falls
Elementary	
HAROLD ERICKSON	Aniwa
Secondary	
THELMA ERICKSON	Hudson
Secondary	
MARVIN FAIT	Auburndale
Agriculture	
DONALD FICK	Wilton
Secondary	
WAYNE GAULKE	Rio Creek
Secondary	
JOHN GEHN	Elmwood
Secondary	
LAWTON GENTRY	River Falls
Agriculture	



Junior Class

ROBERT GRANUM		Holmen
	<i>Agriculture</i>	
ROBERT GUELDNER		Spring Valley
	<i>Secondary</i>	
MARY JANE HAESSLEY		Ellsworth
	<i>Elementary</i>	
WILLARD HAGSTROM		Arbor Vitae
	<i>Secondary</i>	
CLIFTON HARMANN		Algoma
	<i>Agriculture</i>	
MARGARET HELMER		Plymouth
	<i>Secondary</i>	
VAUGHN HOFFMAN		Plum City
	<i>Secondary</i>	
BERKLEY LARSON		Frederic
	<i>Liberal Arts</i>	
BILL LINDENBERGER		Wheeler
	<i>Agriculture</i>	
PATRICIA McCOLLOW		River Falls
	<i>Elementary</i>	
ELAYNE MEYER		River Falls
	<i>Elementary</i>	
ARLENE MILLER		Maiden Rock
	<i>Elementary</i>	



GERALD MOTT		Frederic
	<i>Secondary</i>	
ALLAN NELSON		Plum City
	<i>Agriculture</i>	
LESLIE NEWVILLE		Clear Lake
	<i>Liberal Arts</i>	
LORRAINE NORDBY		Prairie Farm
	<i>Secondary</i>	
JOHN OEDSMA		Galesville
	<i>Agriculture</i>	
CONRAD OLSON		River Falls
	<i>Agriculture</i>	
HAROLD OLSON		River Falls
	<i>Elementary</i>	
RUEBEN PATRICKUS		Clintonville
	<i>Agriculture</i>	
LAWRENCE PEDERSON		Cumberland
	<i>Liberal Arts</i>	



Junior Class

MARILYN PETERSON	Elementary	Maiden Rock
DELMAR POLZIN	Agriculture	Bloomer
MARVIN POSTLER	Agriculture	Birnamwood
RITA RUEMMELE	Elementary	Hudson
JAMES RUPERT	Secondary	River Falls
JULIANNE RYAN	Elementary	Hudson
DONNA SAMMONS	Elementary	Oshkosh
JAMES SAXTON	Secondary	Alma
MARLYN SEEHAFFER	Agriculture	Marshfield
PATRICIA SHEFFIELD	Liberal Arts	New Auburn
HARLAN SIEBRECHT	Elementary	Amery
MELVIN SLIND	Liberal Arts	Downing
EVEREST SONSALLA	Agriculture	Arcadia
CAROLYN STYER	Elementary	Menomonie
EUGENE SWANSON	Secondary	Hager City

GENEVIEVE THANNUM	Elementary	Hayward
LARRY VOLLRATH	Secondary	Greenwood
HELEN WERNER	Elementary	Menomonie
BETTY WISKERCHEN	Secondary	Pepin



Sophomore Class

JEAN ADRIAN	Secondary	Chippewa Falls
MARY ALDEN	Elementary	El Paso
ALLAN ANDERSON	Secondary	Grantsburg
HALBERT BELT	Secondary	Warrens
JOHN BELZ	Unclassified	Colfax
JANIS BENSON	Unclassified	River Falls
KONVAL BERGUM	Agriculture	Wheeler
HENRY BEYER	Unclassified	Hager City
JOAN BINKOWSKI	Rural	Elmwood
PAUL BLADL	Agriculture	Owen
LAVERNE BOLL	Unclassified	Plymouth
EDWARD BOODY	Unclassified	Hudson



JOHN BURT	Agriculture	Independence
DONALD CAREW	Unclassified	Elcho
ROGER CLEMONS	Unclassified	New Auburn
CLELAND COOK	Unclassified	Luck
HELEN DAVIS	Elementary	Spring Valley
BEVERLY DE NUCCI	Elementary	Roberts
BURT DEVINE	Agriculture	Withee
SALLY DICKENSON	Secondary	Hudson
NORMA DIERKS	Secondary	Comstock



Sophomore Class

MARY DOOLITTLE	Elementary	River Falls
ROBERT EASTON	Secondary	Footville
ALLAN ERICKSON	Unclassified	Grantsburg
FAITH ERICKSON	Elementary	Birnamwood
RAY FRANDA	Agriculture	Brussels
LLOYD FRYE	Agriculture	La Farge
JAMES GOETTL	Agriculture	Cadott
JANET GORRES	Rural	Amery
WALTER GRABON	Unclassified	Thorp
JOAN GRANDINETTI	Elementary	Barron
RICHARD GRANUM	Secondary	Holmen
MARILYN HAGLUND	Rural	Plum City

ROGER HAMMER	Unclassified	Hawkins
ILABELLE HANSON	Rural	Deer Park
JOAN HANSON	Elementary	Durand
THOMAS HAUGEN	Pre-professional	Hudson
MARK HAUGSBY	Unclassified	Hawkins
JOHN HENDRICKSON	Unclassified	Barron
EUGENE ISAACSON	Pre-professional	Baldwin
JOYCE JACOBSON	Elementary	Ridgeland
MERLE JARCHOW	Agriculture	New Richmond



Sophomore Class

LYLE JOHNSON	Unclassified	River Falls
RAYMOND KACZMARZYK	Agriculture	Mosinee
KENNETH KEEHN	Unclassified	Boyd
JEANNINE KUHN	Elementary	Wilson
BARBARA LADD	Rural	Barronett
IDA LARSON	Rural	River Falls
STANLEY LEHMAN	Agriculture	Mondovi
RICHARD LUCKWALDT	Secondary	Baldwin
ERNA MATSON	Elementary	Wilson
KATHLEEN MILLER	Elementary	Clayton
JANICE MOEN	Elementary	Prairie Farm
MARY MURPHY	Secondary	Ellsworth



MILDRED NARLOCK	Elementary	Iola
JOHN NELSON	Unclassified	Star Prairie
WILLARD OLSON	Unclassified	Tomah
MARILYN OSTNESS	Elementary	River Falls
DALE OWEN	Unclassified	Durand
PHYLLIS PABST	Elementary	Clayton
BARBARA PALEWICZ	Secondary	Glenwood City
ANNETTE PETERSON	Unclassified	Rice Lake
DONALD RICHARDS	Unclassified	River Falls



Sophomore Class

CLAIR RICHARDSON	Pre-professional	Watertown
RICHARD ROZEHNAL	Pre-professional	River Falls
TROY RUDESILL	Unclassified	Baldwin
RICHARD RUESCH	Unclassified	Medford
DARLENE RUHNKE	Elementary	Hastings, Minn.
CAROL RUNDHAMMER	Rural	Star Prairie
DORIS SCHAFFER	Elementary	Clayton
CHARLES SCHINDLER	Agriculture	Kendall
KENNETH SCHUMACHER	Unclassified	Cashton
LEROY SCHWAN	Secondary	Farmington
RICHARD SEEKAMP	Secondary	Baldwin
JOY SEYFORTH	Elementary	Ellsworth

CARL SHARP	Pre-professional	Cumberland
ELDON SKOGEN	Agriculture	Tomah
JOANN SLATER	Pre-professional	Hudson
ILA SMITH	Elementary	Glenwood City
SHIRLEY STEHR	Elementary	Balsam Lake
VERNON STONE	Agriculture	Amery
ROBERT STRAIN	Secondary	Baldwin
MARY SYKES	Unclassified	Cameron
JANET THODE	Secondary	Amery



Sophomore Class

ARDIS THOMPSON	Elementary	Glenwood City
MARION THOMPSON	Elementary	Ellsworth
LOUISE THOMPSON	Secondary	Hammond
JAMES TILLY	Secondary	Fond du Lac
ARLAN VANDEWATER	Agriculture	Holmen
WILLIAM VERKUILEN	Agriculture	Hatley
HERBERT VOSS	Secondary	Cedarburg
MARION WALLEVERD	Secondary	Wilson
RICHARD WELLS	Unclassified	River Falls
JANET WENSTAD	Rural	Star Prairie
SUSAN WIFF	Elementary	Spring Valley
CLARENCE WILD	Unclassified	Medford



LAWRENCE WITUCKI	Unclassified	Edgar
BRYANT WYMAN	Pre-professional	River Falls
ROBERT WOOD	Unclassified	Spring Valley
DONALD ZIMMERMAN	Unclassified	Fond du Lac
HAROLD GORR	Agriculture	Rice Lake
ANTON SENDELBACH	Agriculture	Cochrane



Freshman Class

BETTY ANDERSON / / / River Falls
Pre-professional

JAMES ANDERSON / / / Ettrick
Agriculture

LLOYD ANDERSON / / / New Richmond
Unclassified

MARILYN ANDERSON / / / Spring Valley
Elementary

AUDREY AUSEN / / / Amery
Rural

EUGENE BADZINSKI / / / Thorp
Pre-professional

MARILYN BAKER / / / New Richmond
Unclassified

MERLEE BARTZ / / / Downing
Rural

ALBERT BECKER / / / Eleva
Agriculture

EARL BEHREND / / / Athens
Pre-professional

TOM BENSON / / / River Falls
Unclassified

HANNAH BENTS / / / Comstock
Elementary

SHIRLEY BERGEN / / / Iola
Elementary

SANDRA BETZEL / / / Prescott
Unclassified

DOROTHY BINKOWSKI / / / Elmwood
Secondary

FRED BOENING / / / Owen
Agriculture

JOHN BOS / / / New Richmond
Liberal Arts

BETTY BRICHER / / / St. Paul, Minn.
Elementary

DWAYNE CARLSON / / / River Falls
Agriculture

VERNON CHRISTENSON / / / Grantsburg
Pre-professional

GENE COUNARD / / / Brussels
Agriculture



Freshman Class

JEANNINE DAVISON	Elementary	River Falls
RITA DOSTAL	Unclassified	Rice Lake
ANNABELLE EITLAND	Elementary	Spring Valley
RICHARD ELLIS	Pre-professional	Maywood, Ill.
JOYCE ELMQUIST	Unclassified	Minneapolis, Minn.
ARDEN EMMERICH	Pre-professional	Mosinee
JOSEPH ENDERS	Unclassified	Arkansas
TRUMAN EVERSON	Agriculture	Blair
VERNON FAIT	Agriculture	Auburndale
BEULAH FALKOFSKE	Elementary	Ellsworth
GORDON FALKOFSKE	Pre-professional	Ellsworth
CARL FINSTAD	Secondary	River Falls



THOMAS FISCHER	Agriculture	Ellsworth
CLETUS FONTAINE	Agriculture	Brussels
ELEANOR FORD	Elementary	Hammond
LUCY FOSTER	Elementary	Roberts
GERALD FOTH	Unclassified	Port Edwards
BERNARD GARLID	Agriculture	Baldwin
GAIL GIBBON	Secondary	Spring Valley
BILL GORMAN	Liberal Arts	Edgar
PATRICIA HAGEMANN	Secondary	Ellsworth

Freshman Class



NEVILLE HAGUE	Secondary	Maiden Rock
ARDELL HANSON	Pre-professional	Osseo
LENORE HASSETT	Unclassified	Wauwatosa
JOHN HELMING	Agriculture	Tomah
DALE HEMBROOK	Agriculture	Waukesha
ADELINE HICKMAN	Elementary	River Falls
ROGER A. HOFF	Agriculture	Hixton
ROGER W. HOFF	Agriculture	Galesville
JOEL HOFFMAN	Agriculture	St. Croix Falls
VIRGINIA HORMANN	Elementary	New Richmond
RAMONA HOWARD	Secondary	Spring Valley
KATHRYN HULVERSON	Elementary	Maiden Rock

LORRAINE JACOBSON	Pre-professional	Wilson
DONALD JELEN	Secondary	Independence
WILLIAM JENKINS	Pre-professional	River Falls
RONALD JENSON	Agriculture	Deer Park
HELEN JOHANNSEN	Elementary	Hudson
EARL JOHNSON	Unclassified	Owen
JEROME JOHNSON	Agriculture	Whitehall
PATRICIA JOHNSON	Secondary	Hudson
DONALD KALWITZ	Pre-professional	New London



Freshman Class

DEAN KASSERA	Plum City
Unclassified	
HARRIS KITTELSON	Woodville
Secondary	
BETTY KOSTKA	Ladysmith
Elementary	
CARL KRAMER	Chippewa Falls
Agriculture	
VICTOR KREUZIGER	River Falls
Pre-professional	
GERALD KUSILEK	River Falls
Unclassified	
JOHN LARSON	Owen
Secondary	
EUGENE LESCARBEAU	Bayport, Minn
Unclassified	
DORIS LINDEMANN	Barronett
Secondary	
NOLA MADSON	Spring Valley
Rural	
ARLENE MAIER	Maiden Rock
Elementary	
SALLY MALONE	Prescott
Secondary	



ROBERT MARGOTTO	Cumberland
Agriculture	
CAROL MARSON	Woodville
Elementary	
DONALD MARTHALER	Medford
Pre-professional	
LAVERN MAYER	Humbird
Unclassified	
JANET McCracken	New Auburn
Unclassified	
MYRON GAYLE MOEN	Hammond
Liberal Arts	
ADRIAN MORCHINEK	Independence
Agriculture	
DALE MORFITT	Amery
Agriculture	
MARILYN MURPHY	Ellsworth
Secondary	



Freshman Class

BLAKE MURRAY	Stillwater, Minn.
Elementary	
CLEO NELSON	Plum City
Pre-professional	
MELVEN NELSON	Barronett
Agriculture	
ROBERT NELSON	Hudson
Unclassified	
BEVERLY NESS	Minneapolis, Minn.
Elementary	
ELSIE NORDBY	Prairie Farm
Rural	
KAY NORELIUS	Hudson
Unclassified	
ANN NYGARD	Hudson
Elementary	
BETTEJANE OESTREICH	Loyal
Rural	
DAVID OHRT	Hudson
Pre-professional	
HOWARD OLSON	Woodville
Pre-professional	
JANIS OLUFSON	Mondovi
Elementary	

RUTH OSITS	River Falls
Elementary	
MARILYN OVERBYE	River Falls
Elementary	
DAVID PARISH	Durand
Unclassified	
JOYCE PEARSON	River Falls
Unclassified	
DARVIN PETERSON	Catawba
Agriculture	
RICHARD PLANSKY	Thorp
Pre-professional	
RICHARD POORE	Hawkins
Unclassified	
MELVIN POSTLER	Birnamwood
Unclassified	
VIRGINIA POTTER	Cable
Elementary	



Freshman Class

DONNA PROUE	Arkansaw
Unclassified	
BEVERLY RASMUSSEN	Amery
Elementary	
VERNON RASMUSSEN	River Falls
Pre-professional	
ROBERT RICHARDSON	Elmwood
Unclassified	
JO ANN RILEY	Ellsworth
Pre-professional	
HAROLD RISSE	Ashland
Agriculture	
DEAN ROE	Whitewater
Agriculture	
COLLEEN RYAN	Hudson
Elementary	
BERNARD SCHATZ	Ashland
Agriculture	
RALPH SCHMID	Chilton
Agriculture	
WILLIAM SCHOENWETTER	Emerald
Pre-professional	
ARLENE SCHOEPPER	Menomonie
Elementary	



DAVID SCHOMBERG	Durand
Pre-professional	
CLAYTON SIMPSON	Onalaska
Pre-professional	
HAROLD SLAUGHTER	Pepin
Pre-professional	
NANCY SONTAG	New Richmond
Elementary	
ROBERT SPAETE	Rice Lake
Unclassified	
RAY STALEY	Oregon
Secondary	
JANE STANDISH	River Falls
Secondary	
SIGUARD STENE	Baldwin
Unclassified	
JAMES STEPHENS	Owen
Agriculture	



Freshman Class

JAMES STRINGER	Agriculture	Elmwood
LEWIS SURA	Agriculture	Independence
MARY SVEEN	Pre-professional	Hudson
GRACE SYLLA	Pre-professional	Independence
ALVIN TEWS	Agriculture	Kennan
RAMONA THOMPSON	Elementary	McFarland
KAYE-DON TIBBETTS	Secondary	Frederic
LOIS TILLY	Unclassified	Fond du Lac
DORIS TOBIAS	Unclassified	River Falls
ANN TURNER	Unclassified	Cedar Rapids, Iowa
PATRICIA TURNER	Secondary	Hammond
DARRELL VANDE BERG	Agriculture	Prescott

JOHN WALLEVERD	Secondary	Wilson
JANICE WATKINS	Rural	Maiden Rock
DANE WATRUD	Agriculture	Clayton
CONSTANCE WAUGH	Rural	New Auburn
MARY WEBB	Elementary	Barronett
PEGGY WEISS	Secondary	Mondovi
WILLIAM WERBECKES	Unclassified	Sheboygan
GRANT WHITE	Secondary	Lakeland, Minn.
MARCENE WIEBUSCH	Elementary	Red Wing, Minn.



Freshman Class

JOHN WILHELM	Agriculture	Onalaska
AUDREY WINDAL	Secondary	Centuria
MAE WISKERCHEN	Secondary	Pepin
DELMAR WORSECH	Agriculture	Catawba
RICHARD WOOD	Unclassified	Spring Valley
DOUGLAS YOUNG	Secondary	River Falls
ALEX ZOMCHEK	Unclassified	Hawkins
DARWIN BRADLEY	Unclassified	Blair



1953 Class Officers

SENIORS

DONALD SCHOEDEL	President
PAUL GAUSTAD	Vice President
JEAN HERALD	Secretary
JAMES VANDEBERG	Treasurer

SOPHOMORES

ROBERT STRAIN	President
ROBERT WOOD	Vice President
MARY MURPHY	Secretary
KATHLEEN MILLER	Treasurer

JUNIORS

JOHN OEDSMA	President
JULIANNE RYAN	Vice President
RUEBEN PATRIKUS	Secretary
ALLAN NELSON	Treasurer

FRESHMEN

ROBERT RICHARDSON	President
JENNY SUE GARNETT	Vice President
RAMONA HOWARD	Secretary
MARILYN MURPHY	Treasurer





ORGANIZATIONS



SEATED: Wyman, Nehmer, Deans, Allie, Richardson.
STANDING: Strain, VandeBerg, Westerberg, Easton, Schoedel, Oedsma.

The Student Senate

OFFICERS

KEN NEHMER	President
DUANE WESTERBERG	Vice President
MARGERY DEANS	Secretary
JEAN ALLIE	Treasurer

MEMBERS

JEAN ALLIE
MARGERY DEANS
JERRY EASTON
KEN NEHMER

JOHN OEDSMA
BOB RICHARDSON
DON SCHOEDEL

ROBERT STRAIN
JIM VANDEBERG
DUANE WESTERBERG
BRYANT WYMAN

The student governing body at River Falls State College is the Student Senate, consisting of eleven members, seven of which are nominated and elected in May by the entire student body. The other members are presidents of the four classes.

The Student Senate acts as a representative to present students' needs and desires. The aims of the Senate are to promote the best interests of the college and to develop a spirit of cooperation and good fellowship throughout the school.

The editors of the Student Voice and the Meletean are elected by the Student Senate from nominations made by advisers of these publications.



Gaustad, Anderson, Miller, Shannon, Schwan, Sammons.

Social Committee

MEMBERS

ROBERT ANDERSON
PAUL GAUSTAD

BILL GOTZ
JENNY SUE GARNETT
DONNA SAMMONS

KATHY MILLER
LEROY SCHWAN
MARY SHANNON

The Social Committee is a sub-committee of the Student Senate. It makes the arrangements for and takes charge of social functions throughout the year. Every social function must be approved by this committee. Members of the Social Committee are appointed by the Student Senate. More dances in the gymnasium have been promoted by the committee this year, and dances in Hathorn Hall have been started.



Seyforth, Sveen, Narlock, Reque, Ruhnke, Ruemmele, Murphy, Wolfe (advisor), Nehmer

The 1953 Meletean

RITA RUEMMELE	Editors
JOHN REQUE	
CLIF HARMANN	Photographer
JULIANNE RYAN	Business Manager
KEN NEHMER	Art Work
JOY SEYFORTH, DARLENE RUHNKE, MARY SVEEN, MILDRED NARLOCK, MARY MURPHY, ARLENE PECHACEK	Assistants
LOUIS KOLLMAYER	Advisors
M. WAYNE WOLFE	

Working with the smallest staff in several years, the 1953 Meletean staff has tried to keep this yearbook on a par with the Meleteans of the past. The yearbook, published at the close of the school year, is the result of a whole year's work on pictures, layouts, writing, art work, and business details, resulting in a pictorial portrayal of the 1952-53 school year at RFSC.



FIRST ROW: Reque, Wiskerchen, Doolittle, Schoepper, Newville.
SECOND ROW: Richardson, Shern, Sharp, Wolfe (advisor), Martinson, Weiss, Cerello, Benson.

The Student Voice

BOB DOOLITTLE	Editor, Fall Term
JOHN REQUE	Editor, Winter and Spring Terms
JIM CERELLO	Business Manager
CLIF HARMANN	Photographer
CARL SHARP, CABBY WILD	Sports Writers
DOROTHY BINKOWSKI, TOM BENSON, GAYLE MOEN, SUE CHINNCOK, DAVE GILSTAD, MIMI GOTZ, BILL GOTZ, MARILYN MURPHY, JULES SHERN, PEGGY WEISS, AUDREY WINDAL, MARTY MARTINSON	Reporters
ARLENE SCHOEPPER, BLAKE MURRAY	Circulation
M. WAYNE WOLFE	Advisor

The Student Voice is the official student publication of RFSC. It is published semi-monthly and is a member of the Associated Collegiate Press. Special issues of the Voice this year included the Homecoming and Winter Carnival issues, the April Fool edition, and the High School edition.



FIRST ROW: Benson, Pederson, Schmidt, Newville, Vollrath, Stevens, Belisle.
 SECOND ROW: Sharp, Owens, Barrows, Hoff, Rudesill, Kassera, Erickson.

Young Men's Christian Association

OFFICERS

PHILIP SCHMIDT	President
LARRY VOLLRATH	Secretary
LES NEWVILLE	Treasurer
WAYNE WOLFE	Advisors
HARDEAN NAESETH	

YMCA activities began this year with the freshman mixer, which was sponsored jointly by the YM, the YW, and the Newman Club. The group next sponsored "Y" Day, which is essentially a membership drive to introduce new members to the YMCA.

Other YMCA activities this year included Thanksgiving, Christmas, Ash Wednesday and Easter service, which were sponsored with the YWCA at various churches in River Falls.



FIRST ROW: Wenstad, Slater, Thannum, Hanson, Rundhammer, Erickson.
 SECOND ROW: Wiff, Eitland, Oestreich, Matson, Benson, Rasmussen, Bergen, Garnett.
 THIRD ROW: Watkins, Ruhnke, Seyforth, Turner, Madson, Stehr, Davison, Dickenson, Thompson, Palewicz, Jacobson.
 FOURTH ROW: McCracken, Waugh, Anderson, Dierks, Turner, Ford, Thompson, Kuhn, Allie, Peterson, Deans.

Young Women's Christian Association

OFFICERS

GENEVIEVE THANNUM	President
BEULAH DAHLBERG	Vice President
ILABELLE HANSON	Secretary
JEAN CATURIA	Treasurer
MRS. PHILIP GUTZLER	} Advisers
MRS. JOHN FRITZMEIER	

YWCA activities at River Falls began this year with "Y" day shortly after school began. "Y" day introduces new students to "Y" activities on the campus. According to tradition, the YWCA sponsored the Big-and-Little-Sister Tea, the candlelight dedication service, and a series of Bible studies.

The YW worked jointly with the YM on many projects, including vesper services at Thanksgiving, Christmas, Ash Wednesday, and Easter, the Homecoming float, and the Christmas formal.



FIRST ROW: Shannon, Beckel, Jorgenson, Enders, Patrickus, Feltes, Seipel, Wood.
 SECOND ROW: Ruemmele, Haessley, McCollow, Binkowski, Meyer, Saxton, Murphy, Ryan, Goettel, Tobias.
 THIRD ROW: Peterson, Hagemann, Ryan, Riley, Bjornson, Narlock, Shannon, Geraets, Styer, Murphy, Binkowski, Wiskerchen, Meyer, Dodge.
 FOURTH ROW: Dostal, Martin, Schwan, Sonsalla, Larsen, Spindler, Foley, Huff, Kaszmarczyk, Ross, Schoenwetter, Donahue.

The Newman Club

OFFICERS

JAMES SAXTON	President
CLAIR MURPHY	Vice President
JULIANNE RYAN	Secretary
RAMONA MEYER	Treasurer
MR. ROBERT FISLER	Adviser

The purposes of Newman clubs at non-Catholic schools or colleges are to supplement the work of secular instruction, to give the Catholic students an opportunity to come together and to guide their spiritual, religious, and social life. The Newman Club fosters a spirit of peace, harmony, and fellowship on the campus.

Activities of the Newman Club include meetings on the second and fourth Tuesdays of each month, communion breakfasts and retreats once a term, holy hour once a month, business meetings by the council twice a month, and social meetings once a month.



FIRST ROW: Bricher, Schoepper, Erickson, Fraedrich, Otto, Lehman, Allie.
SECOND ROW: Belz, Postler, Bergum, Tewes, Hammer, Johnson, Schoedel, Buchholz.

Gamma Delta

OFFICERS

SHIRLEY BERGEN	President
JEROME JOHNSON	Vice President
ROGER HAMMER	Secretary
BEVERLY RASMUSSEN	Treasurer

The purpose of the local chapter of Gamma Delta is to learn and disseminate Christian knowledge and to improve relationships with other colleges throughout the country.

Gamma Delta, a fraternal organization of Synodical Conference Lutheran students on college campuses, was organized at River Falls in 1950. It maintains headquarters at its house at 561 South Fourth Street.



FIRST ROW: Huff, Nelson, Braun, Wood, Voss.
 SECOND ROW: Belisle, Williams, Fick, Wells, Saxton, Mills.
 THIRD ROW: Augsburg, Schwan, Weber, Murphy, Barrows, Easton, Rudesill.

The "R" Club

OFFICERS

CHARLES BRAUN	President
ELDON P. HIGHT	Vice President
REGINALD HANSON	Secretary-Treasurer
MR. PHIL BELFIORI	} Advisers
DR. BILL SOLLEY	

The "R" Club is made up of men who have received letters in competitive sports at River Falls: football, basketball, baseball, track, and golf. The group runs the concessions at all football and basketball games at River Falls State College and participates in various other campus activities.



FIRST ROW: Hammelman, Schoepper, Wiskerchen, Allie.
 SECOND ROW: Falkofske, Boe, Dickenson, Aaby, Murphy, Sammons, Seyforth.
 THIRD ROW: Lysdahl, Clark, Anderson, Thompson, Sveen, Meyer.

Women's Athletic Association

OFFICERS

MARY MURPHY	President
MARY SHANNON	Vice President
DOROTHY HAMMELMAN	Secretary-Treasurer
BETTY ANDERSON	CWA Representative
MRS. HELEN MCBRIDE	Adviser

The women's athletic association forms the nucleus which directs the intramural sports activities and carries on an active sports program throughout the year for women. WAA encourages individual sports. Members are given points for participation in sports.



FIRST ROW: Eitland, Kostka, Tilly, Binkowski, Dopkins, Clark, Davis (adviser).
SECOND ROW: Belt, Shern, Parker, Siebrecht, Anderson, Granum, Tibbetts, Buchholz.

Masquers

OFFICERS

HEATHER DOPKINS	President
BETTY WISKERCHEN	Vice President-Secretary
DONNA SAMMONS	Treasurer
DR. BLANCHE DAVIS	Adviser

Masquers, founded in 1928, is now completing its 25th successful year. Objectives of the group are to further student interest in dramatics, to keep members informed about present-day dramatics, and to give members an opportunity to act, direct, and do stage-work on Masquer productions.

"Good Housekeeping," "The Imaginary Invalid," and "Macbeth" were the 1952-53 Masquers' productions.

Alpha Psi Omega

OFFICERS

DONNA SAMMONS	President
BETTY WISKERCHEN	Secretary
DICK GRANUM	Treasurer
DR. BLANCHE DAVIS	Adviser



FIRST ROW: Davis, Granum, Buchholz, Sammons.
SECOND ROW: Dopkins, Erickson, Kreuziger, Jones, Wiskerchen.

Alpha Psi Omega is a national honorary dramatic fraternity for those doing a high standard of work in dramatics. Membership in Alpha Psi Omega is determined by points earned by activity in plays, such as acting roles, assistant directing, heading technical committees, prompting, and stage work.



FIRST ROW: Ryan, Geraets, Caturia, Peterson, Olson, Allie, Anderson.

SECOND ROW: McCollow, Seyforth, Bjornstad, Wiskerchen, Shannon, Wallesverd, Helmer, Inglis, Deans.

THIRD ROW: Doolittle, Ruemmele, Bjornson, Thompson, Thode, Miller, Murphy, Dopkins.

Sigma Chi Sigma

OFFICERS

MABEL PETERSON	President
GENEVIEVE OLSON	Vice President
ANNETTE GERAETS	Secretary
ETHEL NEWBURG	Treasurer
MRS. PHILIP BELFIORI	} Advisers
MRS. E. H. KLEINPELL	
MISS VERA MOSS	

Sigma Chi Sigma is an honorary sorority for four-year women students promoting service, culture, and sociability among its members. Members are chosen on the basis of scholastic achievement plus high personal qualifications. Of prime importance among Sigma's many annual activities is the awarding of the Sigma Chi Sigma scholarship on Honors Day to a worthy freshman girl who is a four-year student.



FIRST ROW: Ingham, Schoenwetter, Peterson, Helmer, Thompson, Dopkins, Binkowski, Shern, Fraedrich.

SECOND ROW: Gilkey, Smith (advisers), Belt, Granum, Tibbetts, Cerello, Hawkins, Kroeger (advisers).

QUESTION: "Resolved that the congress of the United States should enact a compulsory Fair Employment Practices Act."

Debate

The purpose of forensic activities is to stimulate progress and interest in debate, oratory, extemporaneous speaking, discussion, folktale telling, and after dinner speaking.

In a radical departure from previous years, a four member faculty committee, Miss Marion Hawkins, chairman, Virgil Kroeger, Dr. Gilbert Smith, and Dr. George Gilkey supervised the activity in 1952-53.

ST. OLAF WOMEN'S DEBATE TOURNAMENT, NORTHFIELD, MINNESOTA.

Margaret Helmer and Heather Dopkins, affirmative team, won four of five debates.

BRADLEY UNIVERSITY SPEECH TOURNAMENT, PEORIA, ILLINOIS.

Margaret Helmer and Heather Dopkins won three of four debates and received an "excellent" rating. Richard Granum and Royal Fraedrich won two and lost two debates. In individual events Heather Dopkins rated "excellent" in extemporaneous speaking, Margaret Helmer "excellent" in after dinner speaking and discussion, Louise Thompson "excellent" in folktale telling and "good" in discussion, Royal Fraedrich "excellent" in discussion and "good" in extemporaneous speaking, and Richard Granum "good" in oratory.

"B" INVITATIONAL TOURNAMENT, RIVER FALLS, WISCONSIN.

Forty teams representing 11 colleges and universities participated. St. Olaf won the trophy. Annette Peterson and Russell Thompson won three of four debates. Jules Shern and Audrey Ausen won two and lost two debates. William Schoenwetter and Halbert Belt won one and lost three debates. Louise Thompson and Richard Granum won one and lost three debates. Louise Thompson competed in the finals in after dinner speaking.

RED RIVER VALLEY TOURNAMENT, MOORHEAD, MINNESOTA.

Margaret Helmer and Heather Dopkins won four and lost two debates. Royal Fraedrich and Richard Granum, negative, and Mr. Fraedrich and Russell Thompson, affirmative, won four and lost two debates.

TWIN CITIES PRACTICE TOURNAMENT, UNIVERSITY OF MINNESOTA.

Halbert Belt and William Schoenwetter won two decisions out of two debates. Audrey Ausen and Annette Peterson lost two decisions. Louise Thompson and Jules Shern won one debate and lost one debate. In discussion the three teams entered as a single team with Halbert Belt as moderator. The discussion question was: How can state supported colleges and universities be protected from un-American influences?

ANNUAL SPEECH MEET, EAU CLAIRE STATE COLLEGE.

Margaret Helmer and Heather Dopkins took third place in the "A" division, winning four of five debates with a total of 77 points. Also in the "A" division Russell Thompson and Royal Fraedrich lost five of five debates but amassed 67 points. In the "B" division William Schoenwetter and Halbert Belt won three and lost two debates, receiving 68 points. Audrey Ausen and Annette Peterson won two and lost three debates, acquiring 57 points.

NORTHWEST TOURNAMENT, ST. THOMAS COLLEGE, ST. PAUL, MINNESOTA.

Heather Dopkins and Margaret Helmer reached the quarter-finals by winning seven of eight preliminary debates and receiving 93 points. Royal Fraedrich and William Schoenwetter won two and lost six debates, acquiring 85 points. Richard Granum and Halbert Belt won two and lost six debates, receiving 78 points.

DELTA SIGMA RHO DISCUSSION AND DEBATE TOURNAMENT, UNIVERSITY OF WISCONSIN

Heather Dopkins and Margaret Helmer won two rounds in cross-examination debate and received an "excellent" rating. William Schoenwetter and Royal Fraedrich also received an "excellent" rating in debate. In discussion Margaret Helmer had 61 points, Royal Fraedrich 62 points, Halbert Belt 62 points, and Heather Dopkins, 62 points. Mr. Belt participated in radio newscasting. River Falls and the University of Illinois were the only two schools having four speakers with over sixty points.

EIGHTEENTH BIENNIAL NATIONAL CONVENTION, KALAMAZOO, MICHIGAN.

Margaret Helmer and Heather Dopkins, and William Schoenwetter and Royal Fraedrich represented River Falls in debate. In individual events, Margaret Helmer participated in oratory and discussion, Heather Dopkins in extemporaneous speaking, William Schoenwetter in extemporaneous speaking, and Royal Fraedrich in discussion. Miss Marion Hawkins was on the tournament committee, heading the women's division.

Pi Kappa Delta

Pi Kappa Delta is a national honorary forensic fraternity, with local chapters on college campuses. The River Falls chapter was organized in 1936, and sponsors the "B" invitational tournament at RFSC each year. Membership is granted according to the extent of intercollegiate speech work done. These degrees are those of Fraternity, Proficiency, Honor, and Special Distinction.



FIRST ROW: Fraedrich, Allie, Helmer, Isaacson.

SECOND ROW: Johnson, Ingham, Hawkins, Dopkins, Cerello.



FIRST ROW: Fritz, Howard, Donahue, Beckel, Mills, Schoedel, La Berge.

SECOND ROW: Finstad, Geisness, Augsburg, Kittleson, Meyer, Nehmer, Stene, Hallberg, Wallesverd.

Student Veterans Association

OFFICERS

JOHN MILLS President

PAUL BECKEL Vice President

DON SCHOEDEL Secretary-treasurer

The Student Veterans Association is an active organization which has contributed to the Homecoming and Winter Carnival celebrations and has taken an interest in all campus affairs. The organization discussed and took action in current veterans' problems both on and off the campus.

The principle aim of the Vets Club is to install a feeling of unity and belonging among the veterans of World War II and the Korean War on the campus.



FIRST ROW: De Nucci, Madson, Eitland, Haglund, Sorenson, Hanson.

SECOND ROW: McCracken, Waugh, Oestreich, Matson, Gehn, Wenstad, Rundhammer, Slater, Watkins.

Rural Life Club

OFFICERS

MARILYN HAGLUND	President
NOLA MADSON	Vice President
ELSIE NORDBY	Secretary
ROLLIN SORENSON	Treasurer
DR. RAY GARNETT	Adviser

The Rural Life Club is an organization which aims to develop in the teacher a keener appreciation and understanding of rural problems. The members of the Rural Life Club are those students taking the two-year course in the training of rural teachers. Membership is voluntary; however, services and values of the organization gain membership from nearly all of the students in the rural education department.



SEATED: Peterson, Ruemmele, Anderson, Deans.
STANDING: Turner, Thompson, Haglund, Styer.

The College Women's Association

OFFICERS

RITA RUEMMELE	President
MARILYN PETERSON	Vice President
CAROL ANDERSON	Secretary
MARGERY DEANS	Treasurer
MISS NANCY KNAK	} Advisers
DR. CATHERINE LIENEMAN	
DR. DOROTHY LIPP	

BOARD MEMBERS

LOUISE THOMPSON
AUDREY PARSNICK

CAROLYN STYER
MARILYN HAGLUND

ANN TURNER
BETTY ANDERSON

The College Women's Association, organized in 1948, is a self-governing body composed of all college women.

The executive board of the CWA makes and enforces the rules governing all women students, and strives to provide an adequate social and cultural program for all college women. It is composed of the four officers, elected annually, and representatives of the four classes, Hathorn Hall, and the WAA. The board functions under the advisership of a selected faculty adviser, the Dean of Women, and the resident counselor at the dorm.

CWA board members and officers participated in the state CWA convention at Oshkosh State College on March 7.



FIRST ROW: Narlock, Peterson, Matson, Ryan, Aaby, Peterson, Ruemmele.
 SECOND ROW: Wiff, Erickson, Garnett, Slater, Caturia, Sammons, McCollow, Kuhn.
 THIRD ROW: Maurina, Seyforth, Sauerman, Bjornstad, Meyer, Pechacek, Herald, Bjornson.
 FOURTH ROW: Ruhnke, Stehr, Ryan, Ford, Miller, Meyer, Davis, Hanson, Shannon, Olson, Boll.
 FIFTH ROW: Rasmussen, Haessley, Styer, Thompson, De Nucci, Johnson, Martinson, Anderson, Siebrecht, Ashley, Hammelman, Thannum.

Association for Childhood Education International

OFFICERS

JOANN BJORNSTAD	President
MARILYN PETERSON	Vice President
JOY SEYFORTH	Secretary
ROBERT ANDERSON	Treasurer
JAMES ASHLEY	Publicity Manager
MISS ANN DUBBE	Adviser

The local chapter of the international organization of the Association for Childhood Education is designed to bring into active cooperation all childhood educational interests, to promote the progressive type of education in the primary grades, and to raise the standards of the professional training for the teachers and leaders in that field. All students enrolled in the primary department are eligible for membership.

Highlight of ACEI activities this year was the presentation of a children's play, "Hansel and Gretel," on March 21.



FIRST ROW: Carew, Gorr, Beckel, Gueldner, Ruesch, Olson, Feltes.

SECOND ROW: Schoedel, Belz, Hartman, Fait, Benson, Johnson, Granum, Drogemuller, Snippen.

Toastmasters Club

OFFICERS

<i>Fall</i>	<i>Winter</i>	<i>Spring</i>	
BOB GUELDNER	GENE HARTMAN	DALE NESTINGEN	President
HAROLD GORR	LLOYD FELTES	JIM HICKS	Vice President
DICK RUESCH	EDGAR DROGEMULLER	BILL JENSON	Secretary
LLOYD FELTES	DON JENSEN	JOHN BETTINI	Treasurer
PAUL BECKEL	TOM BENSON	CONRAD OLSON	Parliamentarian
DON CAREW	RODNEY JOHNSON	BILL LINDENBERGER	Sergeant-at-arms

The Toastmasters Club is an organized group of ambitious men who seek to improve themselves in the art of speech, both in conversation and in public address, as a means of increasing their usefulness in business, social, and civic relationships.

French Club

BETTY ANDERSON	President
JANIS BENSON	Vice President
MARILYN OSTNESS	Secretary-Treasurer
STRATTON MARTIN	Adviser

The French Club, "Le Cercle Francais," is composed of students who are now taking or who have previously studied French in college.

The club provides experience in using the French language and understanding French culture.



FIRST ROW: Anderson, Tilly, Hassett.
SECOND ROW: Hagemann, Proue, Martin (adviser), Rupert, Weiss, Benson.

German Club

OFFICERS

JIM RUPERT	President
NORMA DIERKS	Vice President
MARION WALLESVERD	Secretary-Treasurer
DR. ERNST JURGENS	Adviser

The German Club, "Die Deutsche Gessellschaft", gives students a chance to practice German conversation in a social setting.

Students of German, and students who have taken German, are eligible for membership in the German Club.



FIRST ROW: Dierks, Jurgens (adviser), Binkowski.
SECOND ROW: Beyer, Parker, Rupert, Peterson, Emmerich, Shock, Falkofske.



SEATED: *Miller, Grandinetti, Thompson, Thode, Clark.*
 STANDING: *Davison, Narlock, Matson, Ruhnke, De Nucci.*

Music Educators National Conference

OFFICERS

PAUL WILLINK	<i>President</i>
LOUISE THOMPSON	<i>Vice President</i>
MARGARET REMUND	<i>Secretary-Treasurer</i>
B. J. ROZEHNAL	<i>Adviser</i>

Formed in 1950 at River Falls, Music Educators National Conference aims to provide students an opportunity for professional cooperative development while in college. The organization offers a more practical conception of the music education profession as gained from the students' actual participation in programs, discussions, and performance groups.

Any undergraduate music education student is eligible for membership. When a student accepts a teaching position, he is transferred to a full, active MENC membership status.



FIRST ROW: Benson, Hoffman, Stevens, Palewicz, Wallesverd, Gaustad, Gueldner, Iberg.
 SECOND ROW: Dickey, Ruesch, Mott, Swanson, Wells, Laramy, Lansing, Swanson.

Math Club

OFFICERS

PAUL GAUSTAD	President
RICHARD LARAMY	Vice President
BARBARA PALEWICZ	Secretary
BOB GUELDNER	Treasurer
DR. J. J. McLAUGHLIN	} Advisers
MR. GLENN JUNKMAN	

The Mathematics Club is an active organization which gives to students interested in mathematics an opportunity to discuss topics and problems to broaden their knowledge of mathematics. Programs are conducted by the members of the club every two weeks. Membership is open to those students taking mathematics majors or minors.



FIRST ROW: Johnson, Laramy, Otto, Olson, Allie

SECOND ROW: Braun, Dopkins, Bjornson, Westerberg, Geraets, Gaustad, Peterson.

Kappa Delta Pi

OFFICERS

WAYNE OTTO	President
RICHARD LARAMY	Vice President
RAMONA MEYER	Secretary
GENEVIEVE OLSON	Treasurer
PEGGY SMITH	Historian-Reporter
DR. WALKER D. WYMAN	Adviser

Kappa Delta Pi is a national honorary scholastic fraternity open only to juniors and seniors who are preparing for teaching and who rank scholastically in the upper quartile of the school.

The Eta Lambda chapter of Kappa Delta Pi was organized on the River Falls campus in February, 1952. The chapter has since been active in campus activities and initiated several new members this year. Mrs. Adeline Patton, retiring instructor at the campus school, was honored by Kappa Delta Pi at a banquet in February.



FIRST ROW: Anderson, Ruesch, Easton, Richardson, Rozehnal, Theis.
 SECOND ROW: Ellis, Owen, Dickey, Bachler, Emmerich, Wallesverd, Erickson, Goettel, Badzinski.

Sitzmarker Ski Club

OFFICERS

CLAIR RICHARDSON	President
RICHARD RUESCH	Secretary
RICHARD ROZEHNAL	Business Manager
THORVALD THORESON	Adviser

The Sitzmarker Ski Club was active on the campus for the second year in 1952-53. The group is composed of skiing enthusiasts, both beginners and those with more experience.

The Sitzmarkers took several trips this year, to Mount Telemark at Cable, Wisconsin, and to Trollhaugen at Dresser. They also worked with the River Falls Lions Club in building a new ski run and tow at City Park.



FIRST ROW: *Durst, Helmer, Sharp, Owen, Belisle, Nelson.*

SECOND ROW: *Rundhammer, Wenstad, Sykes, Peterson, Wallesverd, Tobias, Sauerman, MacDonald.*

THIRD ROW: *Roe, Erickson, Jorgenson, Schoenwetter, Benson, Lansing, Carew, Richardson, Lexvold.*

Young Republicans

OFFICERS

CARL SHARP	President
DALE OWEN	Vice President
MARGARET HELMER	Secretary
JOYCE DURST	Treasurer
DR. GEORGE GILKEY	Adviser

Organizing for the first time in several years on the River Falls campus, the Young Republicans did their part in the community to assure a Republican victory in the November election. The group sponsored a float in the Homecoming parade, distributed campaign literature, and celebrated their victory November 4 with an election night party at the American Legion Club.



FIRST ROW: Ruhnke, Dostal, Dickenson, Allie.

SECOND ROW: Dodge, Anderson, Dopkins, Wyman, Clark, Kline (adviser), Reque, Deans.

THIRD ROW: McCollow, Dickey, Belz, Siebrecht, Mott, Anderson, Ruemmele, Foss, Murphy.

Young Democrats

OFFICERS

1952		1953
BRYANT WYMAN	President	LEE PARKER
JOHN REQUE	Vice President	EUGENE ISAACSON
JUNE CLARK	Secretary-Treasurer	DARLENE RUHNKE
PATRICIA MCCOLLOW	Publicity Manager	HALBERT BELT
ROBERT KLINE	Adviser	

Organized in the Spring of 1952, the Young Democrats organization at RFSC swung into high gear during Fall Term, and was very active in the presidential campaign. The Dems sponsored the address by Thomas Fairchild, Democrat candidate for U. S. Senator, who spoke on campus in October. They distributed campaign literature, addressed envelopes, sponsored a sharp-looking float in the Homecoming parade, took part in a panel discussion at River Falls High School, and, all in all, campaigned diligently though unsuccessfully for the Democratic candidates in the 1952 election.

Although their candidates lost the election, the Democrats have not disbanded, but meet monthly to keep themselves informed of Democratic activities in government.

June Clark, secretary-treasurer of the Young Dems, is serving as state treasurer of the Young Democrats.



FRONT ROW: Wiff, McCollow, Thannum, Bergen, Rasmussen, Ryan, Garnett, Maurina.
 SECOND ROW: Ryan, Peterson, Matson, DeNucci, Peterson, Clark, Dierks, Hanson, Slater, Haglund.
 THIRD ROW: Styer, Bjornstad, Geraets, Thompson, Narlock, Kuhn, Olson, Erickson, Wiff, Bjornson, Severson, Wenstad, Rundhammer.
 FOURTH ROW: Allie, Harris (adviser), Drysdale, Siebrecht, Hammer, Mott, Anderson, Jensen, Ashley, Anderson.

Future Teachers of America

OFFICERS

JUNE CLARK	President
HARLAN SIEBRECHT	Vice President
SHIRLEY BERGEN	Secretary
ILABELLE HANSON	Treasurer
CAROL RUNDHAMMER	Publicity Manager
ROBERT JENSEN	} Governing Body
ROBERT ANDERSON	
JANET WENSTAD	
ROGER HAMMER	

The John W. Crabtree chapter of the Future Teachers of America was organized in April, 1952. The membership numbers 45 this year. Three members attended the state convention in Milwaukee during the early part of the year and a group attended the district convention which was held at Eau Claire State College. Speakers at monthly meetings have included John J. Jarolimek, director of the University of Minnesota campus school, and N. E. Erickson, Superintendent of the Polk County Normal School. A project undertaken this year was the organization of F.T.A. chapters in surrounding high schools.



FIRST ROW: Olson, Nehmer, Schoedel, Westerberg, Allie.
SECOND ROW: Easton, Knieff, VandeBerg, Laramy.

Who's Who In American Colleges and Universities

1952-53 RFSC MEMBERS

JEAN ALLIE

CHARLES BRAUN

GERALD EASTON

ROGER KNIEFF

RICHARD LARAMY

GENEVIEVE OLSON

KENNETH NEHMER

DONALD SCHOEDEL

JAMES VANDEBERG

DUANE WESTERBERG

Ten seniors from River Falls State College were chosen to appear in the annual edition of "Who's Who Among Students in American Colleges and Universities" in 1953. Candidates are rated on the basis of scholarship, leadership, and participation in and contribution to college activities. The quota for each college is set up on the basis of enrollment.



FIRST ROW: Grandinetti, Martalock, Adrian, Alden, Parsnick, Murphy, Remund, Davis, Haglund, Olson, Matson, Moen, Bjornstad, Oestreich, Nordby, Windal.

SECOND ROW: Sheffield, Smith, Davison, Doolittle, Bohn, Thompson, Davis, Thode, Sykes, Erickson, Miller, Howard, Wilcox, Wiebusch, Nordby, King (director).

THIRD ROW: Hague, Meulemans, Vollrath, Lovaas, Lium, Ohrt, Willink, Heuser, Jacobson, Boody, Gaulke, Richardson.

FOURTH ROW: Haugen, Gibbon, Emmerich, Muckenhirn, Nelson, Strain, Jensen, Linnerud, Polzin, Kreuziger, Wyman, Prine.

A Capella Choir

OFFICERS

DON NELSON	President
JIM JACOBSON	Business Manager
KATHY MILLER	Secretary
JOANN BJORNSTAD	Librarian
CHAUNCEY B. KING	Director

FIRST SOPRANO

Marilyn Haglund
Eleanor Davis
Margaret Remund
Marilyn Murphy
Jeannine Davison
Mary Doolittle
Jean Adrian

SECOND SOPRANO

Janet Thode
Helen Davis
Marlene Martalock
Audrey Parsnick
Louise Thompson
Mary Alden
Ila Smith
Patricia Sheffield

FIRST ALTO

Genevieve Olson
Erna Mattson
JoAnn Bjornstad
Bettejane Oestreich
Lorraine Nordby
Janice Moen
Audrey Windal
Mary Sykes

SECOND ALTO

Kathie Miller
Thelma Erickson
Charlotte Wilcox
Elsie Nordby
Marcene Wiebusch

FIRST BASS

Dave Ohrt
Dick Meulemans
Larry Vollrath
Dale Lium
Arvin Lovaas

SECOND BASS

Bob Jensen
Delmar Polzin
Bob Strain
Don Nelson
Les Muckenhirn
Tom Haugen
Gail Gibbon
Nevill Hague
Arden Emmerich

FIRST TENOR

Jim Jacobson
Danny Prine
Wayne Gaulke
Bill Bittner

SECOND TENOR

Ardell Linnerud
Bryant Wyman
Bob Richardson
Vic Kreuziger



FIRST ROW: Remund, Adrian, Alden, Thode, Miller, Nordby.
SECOND ROW: Nelson, Haugen, Muelemans, Bittner, Jacobson.

Folk Singers

The Folk Singers are a group of twelve members of the college a cappella choir who have organized for the purpose of singing the traditional folk tunes of American and other countries. The group sings at choir concerts and on other occasions, such as High School Day. The director is Chauncey B. King.



College Band

OFFICERS

ROGER KNIEFF	President
WAYNE GAULKE	Business Manager
LOUISE THOMPSON	Secretary-Treasurer
JUNE CLARK	Librarian
PAUL KURENSKY	Stage Manager
NICHOLAS JADINAK	Director

PERSONNEL

FLUTES

Erna Matson
Shirley Bergen

OBOE

Jean Adrian

CLARINETS

Louise Thompson
Mildred Narlock
Jeannine Davison
Wayne Gaulke
Sally Malone
Joan Camp
Helen Werner
Don Nelson
Paul Willink

SAXAPHONES

Joan Binkowski
Beverly DeNucci
Jane Standish
Roger Hoff

FRENCH HORNS

Roger Knieff
James Jacobson
June Clark
Merlee Bartz

BARITONE

Ray Franda

BASSES

Douglas Young
Richard Muelemans

CORNETS

Robert Strain
Gerald Foth
Victor Kreuziger
Neville Hague
Dean Kassera
James Stephens
Patricia Turner
Ronald Heuser

TROMBONES

Donald Richards
Paul Kurensky
Dean Carlson
Colleen Ryan
Arden Emmerich
Eleanor Ford

PERCUSSION

Joan Grandinetti
Donald Cooper
JoAnn Riley



FIRST ROW: Hartman, Moore, Hytry, Suehring

SECOND ROW: Olson, Dineen, Braun, Bettini

Future Farmers of America

OFFICERS

First Half Year		Second Half Year	
RAY MOORE	President	DON JENSEN	
JERRY HYTRY	Vice President	EVEREST SONSALLA	
JIM SUEHRING	Secretary	EDGAR DROGEMULLER	
GENE HARTMAN	Treasurer	JERRY EASTON	
HAROLD DINEEN	Reporter	LLOYD FELTES	
JOHN BETTINI	Sentinel	LLOYD LAINE	
CONRAD OLSON	Parliamentarian	BILL LINDENBARGER	
CHARLES BRAUN	Assistant Adviser	ANTON SENDELBACH	
JOHN M. MAY	Adviser		

The River Falls collegiate chapter of the Future Farmers of America was organized in 1935. Its purpose is to train and develop advisers and leaders for high school FFA organizations.

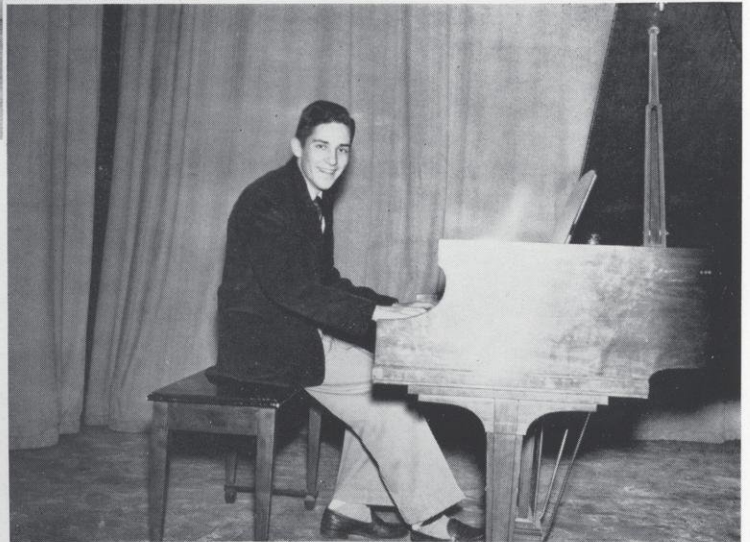
In addition to other activities, the FFA sponsors a rural school fair on the campus each year. Other activities included the sponsorship of the homecoming queen, Margaret Remund, a float for the parade, and supplying the torches for the snake dance and bon fire.

Highlight of the year was the FFA's annual banquet, at which C. F. Chafin, a graduate of RFSC, was principal speaker. At the close of the year a picnic was held at City Park and officers for the following year were elected.

FFA All-School Talent Show



*Jenny Sue Garnett
First Prize*



Dick Ellis — Second Prize

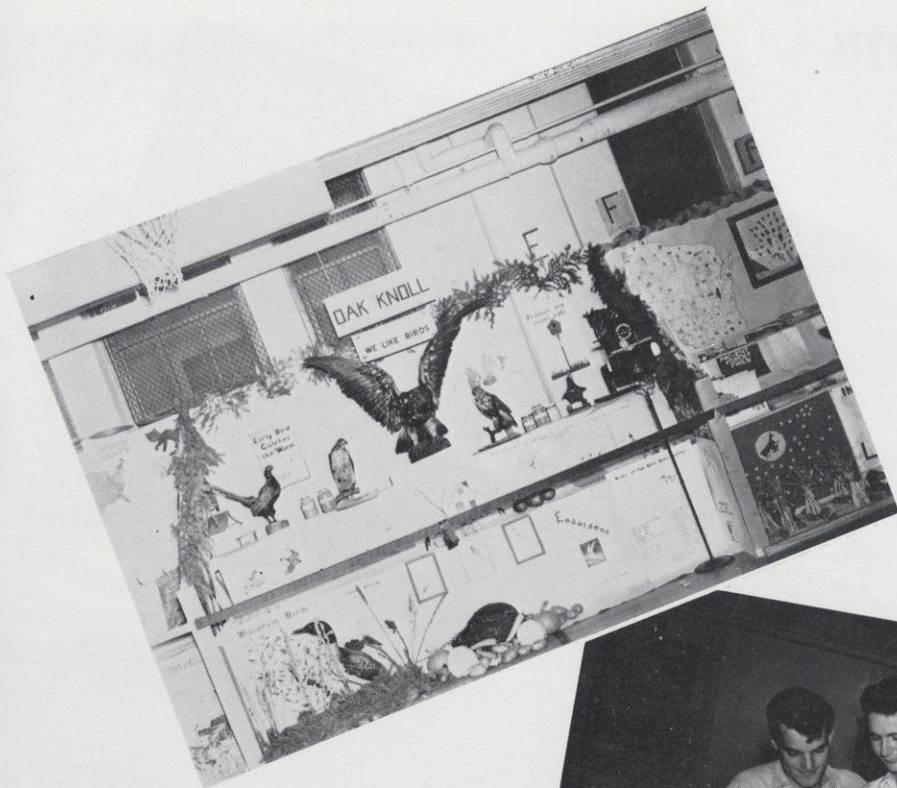


Jeannine Davison — Third Prize

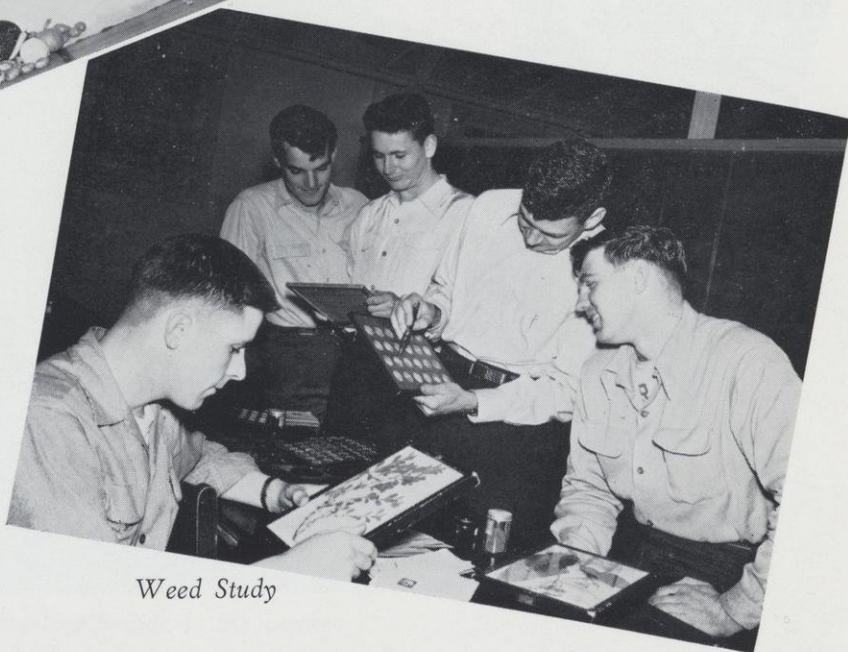


The Dixieland Band — Entertainment Prize

FFA Activities



*First Prize Booth
FFA Rural Fair*

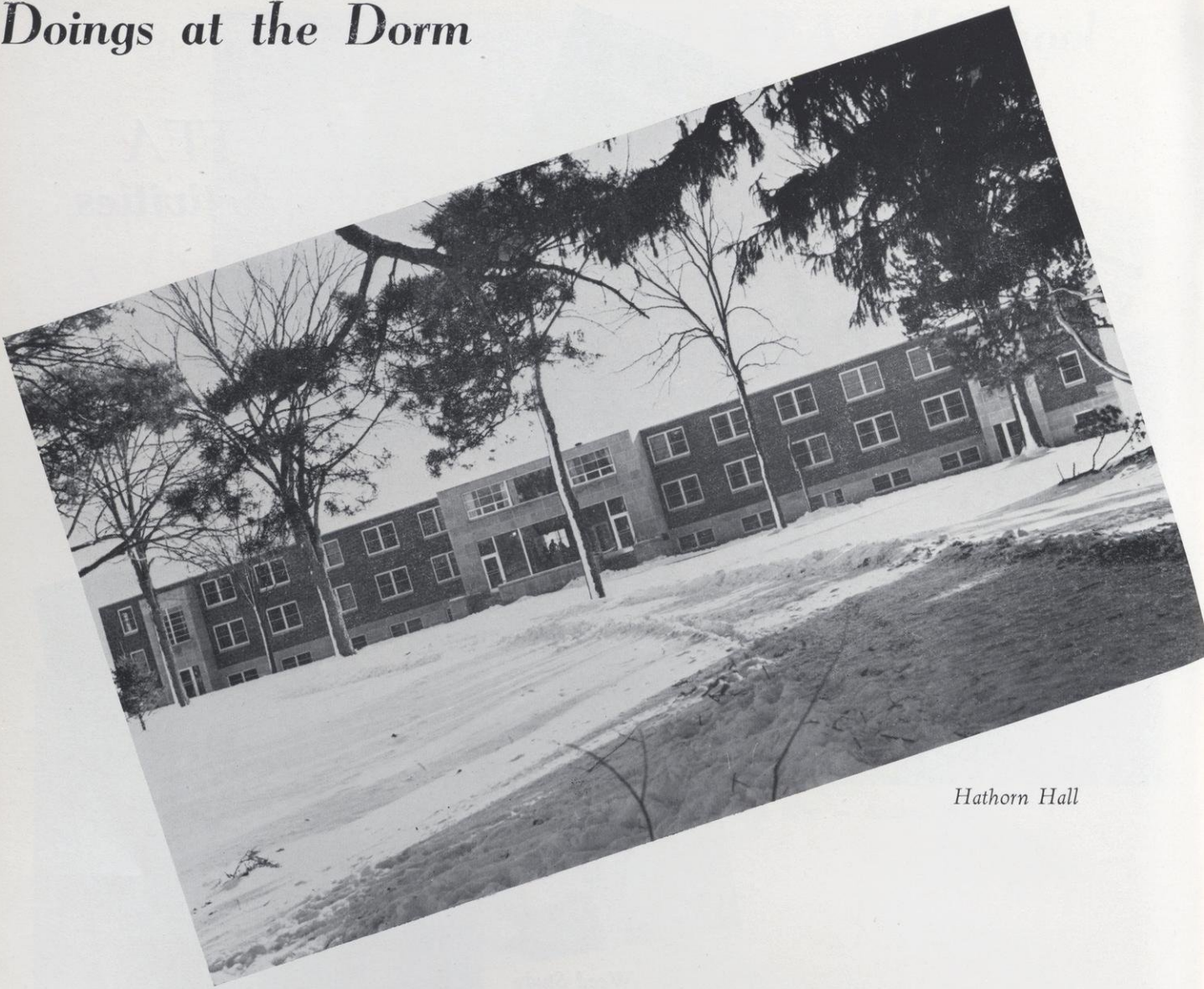


Weed Study



Annual FFA Banquet

Doings at the Dorm



Hathorn Hall



The Easter Bunny Snowman

Opened in December, 1951, Hathorn Hall completes its second year of operation this year. The dorm houses about 90 girls from the four classes, providing not only living quarters but laundry and kitchen facilities and many forms of recreational activities.

Dorm Doings



Burning That Midnight Oil



Time-Out Session in the Lounge



Using the Laundromat

Dorm Doings



Hen Session



Cooking Sunday Supper



Trying the Latest Batch of Candy



Fitting the New Formal



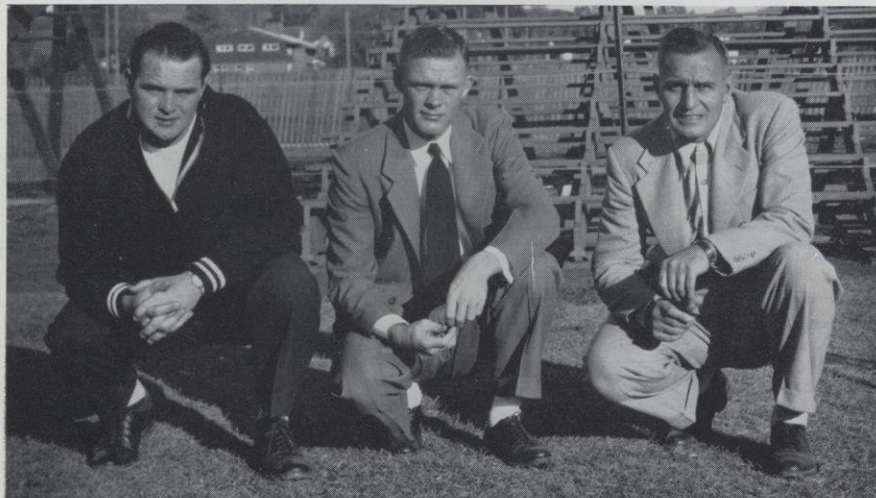
ACTIVITIES



FIRST ROW: Adamson, Lindemberger, Braun.
 SECOND ROW: Kochendorfer, Burman, Rudesill, Korhonen.
 THIRD ROW: Theis, Murphy, Schwan, Bladl.
 FOURTH ROW: Solley, Werbeckes, Wood, Krueger.
 FIFTH ROW: Jevert, Oedsma, Bernet, Donahue, Wood.



FIRST ROW: Helberg, Horn, Margotto, Hubers.
 SECOND ROW: Gotz, Grove, Spaete, Voss.
 THIRD ROW: Hoffman, Christenson, Shodahl, Mares.
 FOURTH ROW: Howard, Finstad, Guest, Schultz, Huff (Manager).
 FIFTH ROW: Linehan, Burgoyne, Hanson, Route, Baggott, Belfiori.



THE COACHES: Art Jevert, Bill Solley, Phil Belfiori.

1952

River Falls	20
River Falls	6
River Falls	21
River Falls	13
River Falls	20
River Falls	26
River Falls	7
River Falls	20

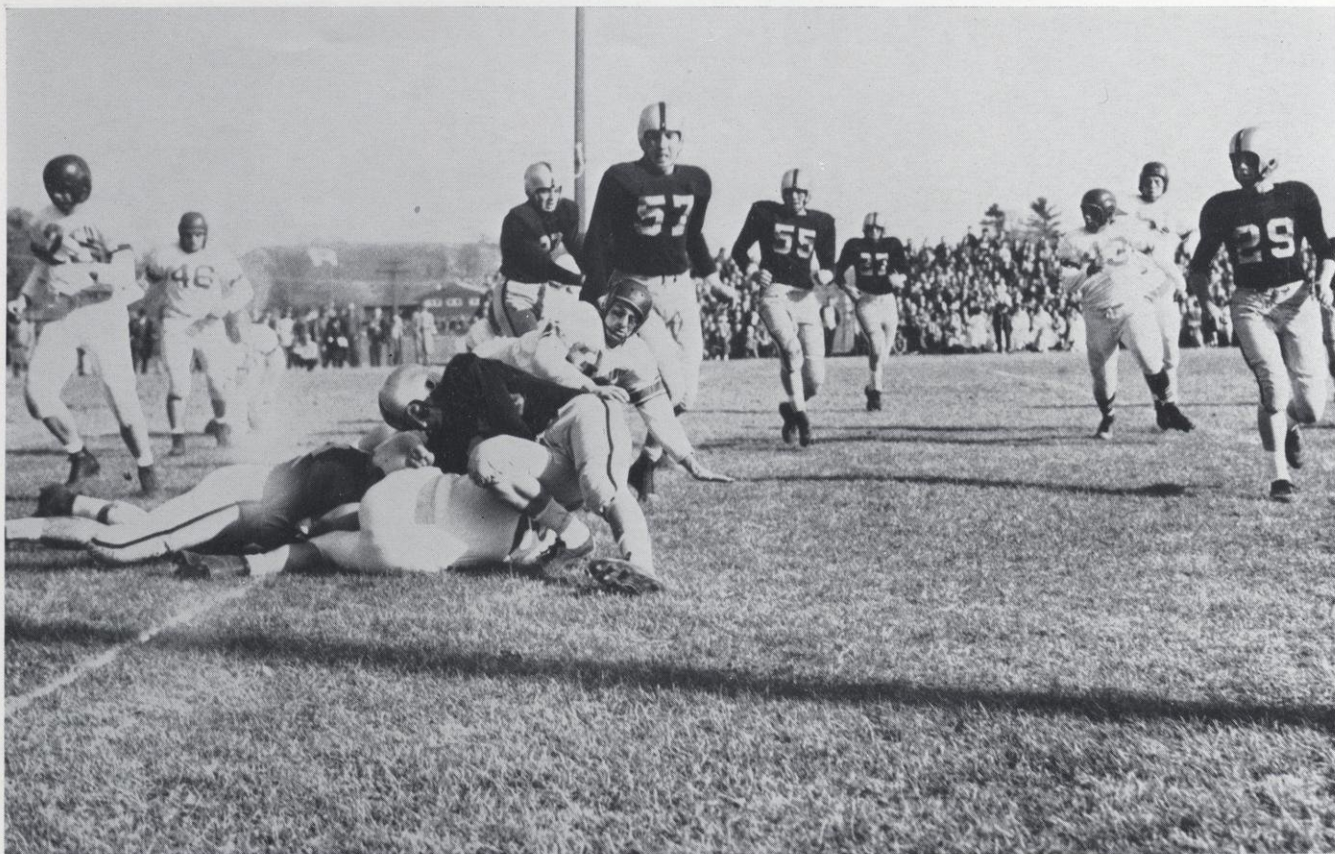
Football

SCORES

Augsturg	0
St. Cloud	18
Stout	0
Eau Claire	13
Superior	14
Winona	19
La Crosse	20
Mankato	0



THE CHEERLEADERS: JoAnn Riley, Louise Thompson, Audrey Windal, Betty Wiskerchen, Janis Olufson.



Pileup at the Homecoming Game

The '52 Falcon Football Season

The RF Falcons opened the football season at Ramer Field September 13 by sloshing to a watery 20 to 0 win over Augsburg. Clair Murphy scored the first TD, after a quick opening run from the 36 yard line. Murphy wedged through again after Bill Lindenberger caught a pass from Don Hubers on the 35. The score stood at 13-0. Bobby Wood scored the third and final TD in the third quarter to make the score 20-0.

St. Cloud, held to a 6-6 tie in the first half, exploded for two quick touchdowns in the third quarter to end an otherwise listless battle, 18-6, over River Falls September 20. Both squads appeared evenly matched in the first half, but River Falls' defense faded in the third quarter, and the Huskies won.

In the first conference game for both teams, River Falls' hot-and-cold defense turned on four quarters of something especially torrid to scald slightly favored Stout Saturday, September 27. Jerry Route started the fireworks in the second period, connecting with Joe Burgoyne for the first touchdown. Route and Burgoyne combined for a second touchdown in the third period, and Charlie Braun, Larry Kochendorfer, and Bill Burman cooperated to make the score 21-0.

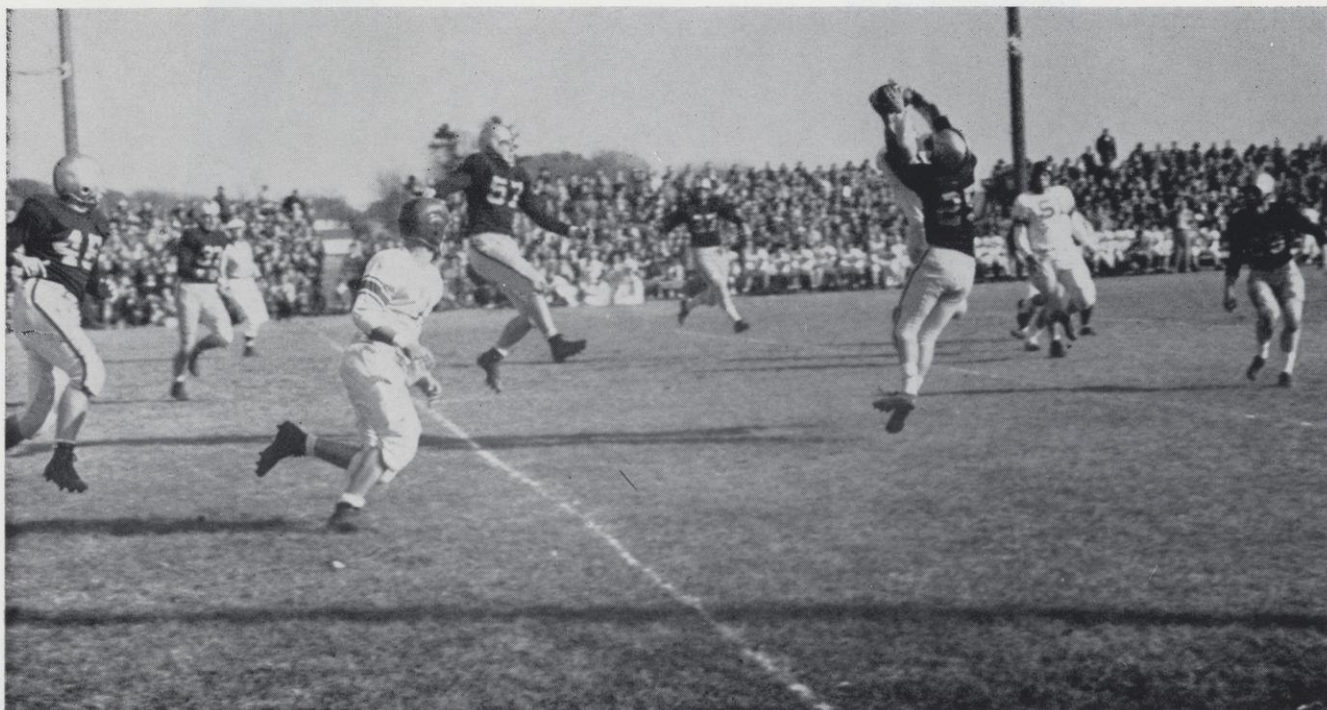
Coming from behind, River Falls battled to a 13-13 deadlock with highly rated Eau Claire October 4 in the annual Dad's Day game. Eau Claire made the score 7-0 early in the first quarter, and topped that by making it 13-0, but late in the second quarter Joe Burgoyne faded back and threw to Tom Linehan on a fine catch for the Falcons' first TD. In the third period, Murphy plowed across the Bears' tough defensive line to make the score 13-12, and Linehan made the extra point, to tie the game up, 13-13. There was no further scoring.

River Falls continued to roll in fits and starts but turned away a second half rally to upset the dopesters and spoil an otherwise successful Superior Homecoming October 11, 20-14. It was the first time in 19 years that the Yellowjackets had lost a Homecoming game. RF got its first touchdown the first time it got its hands on the ball when Clair Murphy scored. Hubers scored again in the first period and Burgoyne got a TD in the second quarter to end the half, 21-0. Superior rallied in the second half, but not quite enough to win, and the game ended, 20-14, for RFSC.

Winona's errors and Tom Linehan's two touchdowns cushioned a shaky River Falls team into the winner's circle again October 18 by a score of 26-19. Linehan, Kochendorfer, and Murphy scored for RF and although the Falcons weakened a few times, they made it another victory.

The La Crosse Indians were too much for River Falls when they beat them 20-7 before an October 25 Homecoming crowd at Ramer Field. The game gave the Indians top place in the Northern Division conference, with River Falls ending up second in line. Bill Burman scored the only Falcon TD in the second quarter, and the Indians scored in the first minute of play and in the second and fourth periods.

Coach Phil Belfiori's Falcons wound up their season November 8 by defeating Mankato Teachers there, 20-0. Tom Linehan, playing a sensational left half scored two touchdowns, while Joe Burgoyne bagged one. Merlin Frank, RF end in place of Linehan, scored two TDs, but had both called back. River Falls wound up its 1952 football season with a record of five wins, two losses, and one tie.





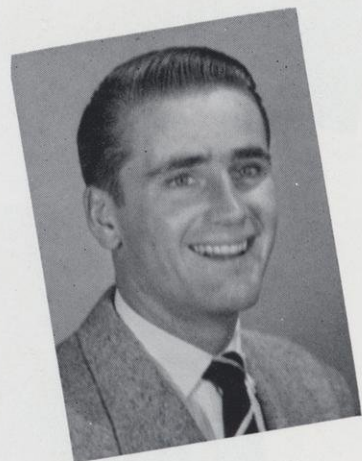
Queen Margaret Remund

1952 HOMECOMING



QUEEN MARGARET AND HER ATTENDANTS: Marilyn Haglund, Ilabelle Hanson, Elayne Meyer, Jean Herald.

HOMECOMING . . . biggest weekend of the year . . . a beautiful queen and her lovely court . . . a capable chairman . . . bon fires . . . snake dances . . . skits . . . the parade . . . the big game . . . the festive decorations . . . the perfect autumn weather . . . all combined this year to bring back lots of happy memories for the Old Grads and to create a lot of fresh memories for the present student body.



Chairman John Mills

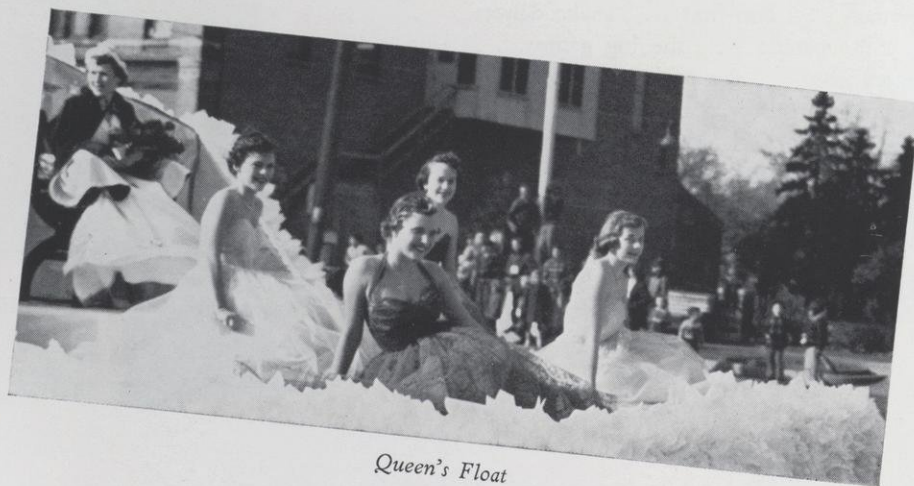


Dirty Dozen Skit



The Bear's Judging Contest

Swamp'Um



Queen's Float

Ninety-six



Sigma Skit

Injuns



Freshmen Float

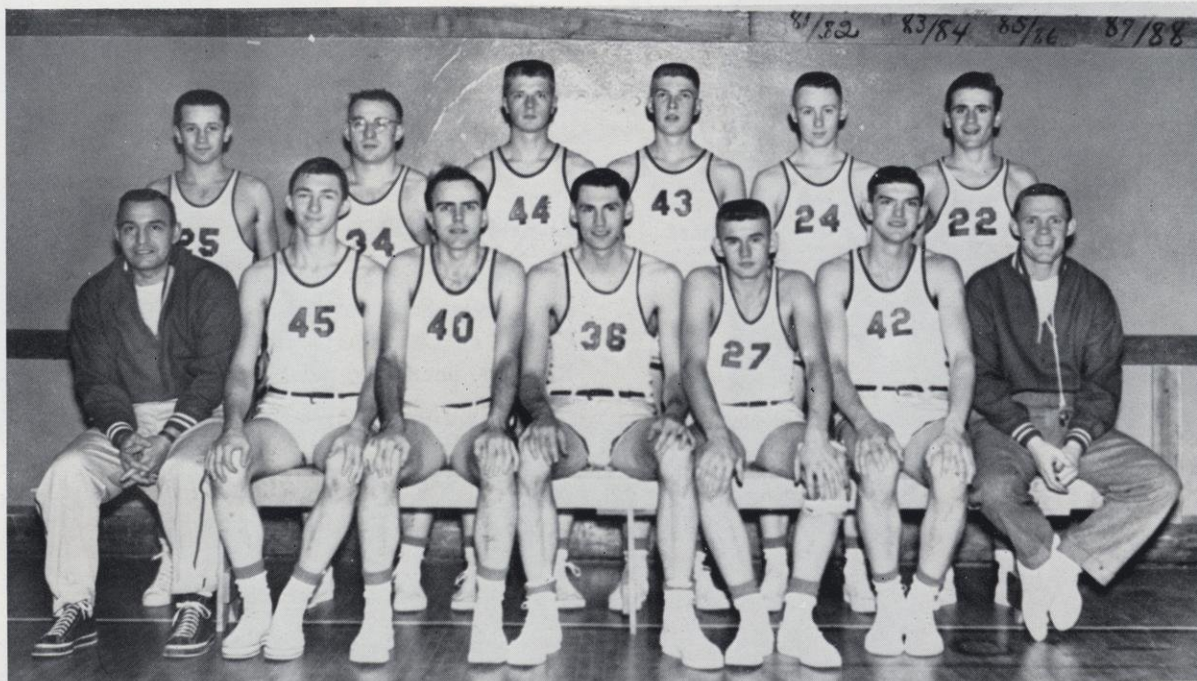
Senior Skit

Ninety-seven



After the 110-105 game with Stevens Point.

1953 Basketball



FIRST ROW: Coach Belfiori, Gehn, Saxton, Kuss, Williams, Fick, Coach Solley.
SECOND ROW: Belisle, Burgoyne, Hammer, Lehman, Wild, Mills.

FINAL CONFERENCE STANDINGS

	W	L
Platteville	10	2
RIVER FALLS	8	4
Superior	8	4
La Crosse	7	5
Milwaukee	6	6
Stevens Point	6	6
Oshkosh	6	6
Eau Claire	6	6
Stout	2	10
Whitewater	1	11

THE SCORES

River Falls	95;	Bethel	76	River Falls	102;	Superior	84
River Falls	102;	Winona	79	River Falls	75;	St. John's	80
River Falls	65;	Superior	82	River Falls	69;	La Crosse	71
River Falls	90;	La Crosse	87	River Falls	87;	Platteville	68
River Falls	69;	Lake Forest	80	River Falls	110;	Stevens Point	105
River Falls	79;	Wheaton	95	River Falls	81;	Winona	75
River Falls	85;	Whitewater	67	River Falls	83;	Bethel	64
River Falls	79;	Milwaukee	92	River Falls	103;	Stout	74
River Falls	86;	Stout	71	River Falls	86;	Eau Claire	91
River Falls	98;	Eau Claire	92	River Falls	88;	Carroll	87
				River Falls	72;	Mississippi Southern ..	106

The 1953 Basketball Season



River Falls 90 — LaCrosse 87

Bouncing back from the Superior defeat the Falls Falcons nosed out the LaCrosse Indians December 20 by a score of 90-87. The LaCrosse game was RF's third win in four games. The Falcons came from behind in the last six minutes of the final quarter to take the Indians. Rog Kuss hit for 38 points — 12 field goals and 14 free throws. Williams got 15 points, Saxton 16.

River Falls 69 — Lake Forest 80

River Falls 79 — Wheaton 95

Scoring 26 points in the final quarter wasn't enough to save River Falls from a defeat at the hands of Lake Forest January 10, by an 80-69 score. Rog Kuss accounted for nearly half the Falcons' score by getting 33 points. In the second game of the Falcons' weekend road trip to Northern Illinois, the team dropped a 95-79 game to Wheaton College on January 12.

River Falls 95 — Bethel 76

River Falls downed Bethel, St. Paul, by a 95-76 score in its season's opener December 6. The Falcons took a quick lead and held a decided margin over Bethel throughout the game. Rog Kuss scored 38 points for the victors; Jim Saxton bagged 17 and Bob Williams 16.

River Falls 102 — Winona 79

Showing greater offensive power than its opponents, River Falls downed Winona State Teachers' College on December 13 by a score of 102 to 79. Rog Kuss poured 49 points through the hoop. The Falcons forged ahead of Winona to take a 43-26 lead at halftime and splurged ahead again in the fourth quarter to make the score the largest on the River Falls scoreboard in several years. Bob Williams got 18 points for River Falls and Jim Saxton 16.

River Falls 65 — Superior 82

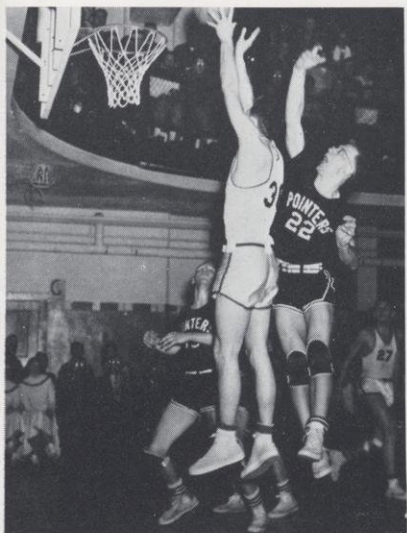
Superior's Yellowjackets rolled over the Falcons December 16 by a score of 82 to 65 in a game played on the Superior floor. It was RFSC's first conference game. River Falls trailed Superior throughout most of the game, and the going got rougher with each quarter. Behind 53-40 at the end of the third period, the Falcons slipped repeatedly and the Yellowjackets made the victory margin even greater. Kuss got 31 points.



The 1953 Basketball Season

River Falls 85 — Whitewater 67

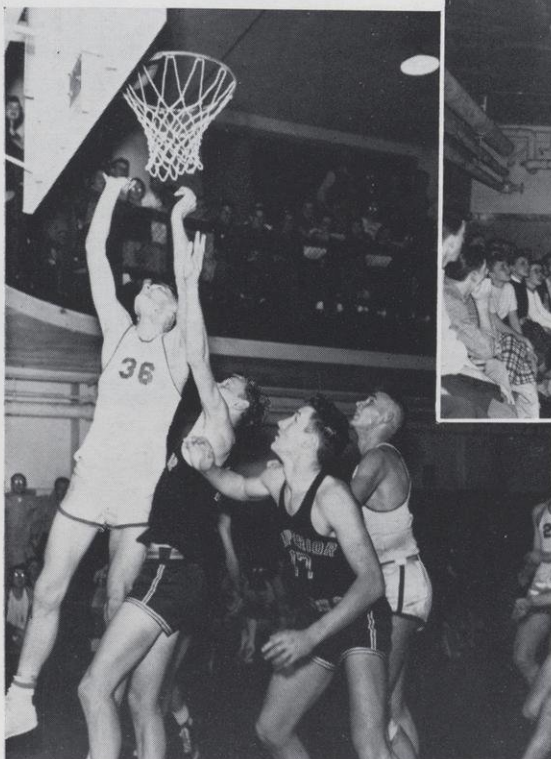
River Falls State College stopped the Whitewater Quakers, 1952 Wisconsin College Conference basketball champions, by a score of 85-67 on January 16. Rog Kuss counted 42 points for the Falcons with Bob Williams adding 15. The Falcons built up a 40-25 lead as Kuss and Williams combined for 32 of the 40 first half points. During the second half the whole squad saw action and every man dented the scoring column for at least one point.



River Falls 79 — Milwaukee 92

The Falcons lost the last game of their Southern Wisconsin road trip on January 17 when they ended up on the short side of a 92-79 battle with the Milwaukee State College Green Gulls. The first half was very even as the Falls led 46-45 at intermission. And the second half was equally as even until the final seven minutes when the fast scoring Gull attack finally came to life and won the game for Milwaukee. Kuss got 34 points, Wells 13, and Burgoyne 14.





The 1953 Basketball Season

River Falls 86 — Stout 71

River Falls rolled to its third conference victory as it downed hapless Stout January 24 in a game played in Menomonie, by the score of 86 to 71. Rog Kuss, the conference's scoring leader, tossed in 39 points for the Falcons. River Falls pulled ahead early in the first quarter of the game and were never overtaken. The score at the end of the first quarter was 23 to 15. RF kept pouring it on Stout, using the reserves a lot in the second quarter, and the Falcons lead Stout at the half 46-26. The Falcons kept up their high shooting percentage in the third period, using the reserves again and ended that quarter 71-48. Although Stout whittled off some of the Falcon lead in the last quarter River Falls went on to win 86-71.

River Falls 98 — Eau Claire 92

River Falls State College pushed its way into a three way tie with Milwaukee and Oshkosh for second place in the conference when it beat the Eau Claire Blugolds January 31 at the Winter Carnival basketball game by the score of 98-92. Rog Kuss scored 50 points in the Eau Claire game as River Falls took an early lead and held its own in all four quarters.

River Falls 102 — Superior 84

Scoring 200 points in its last two games the River Falls Falcons moved into undisputed second place in the conference when it rolled over Superior State College February 2 by a 102-84 score. Rog Kuss racked up 42 points in the Superior game for a total of 92 points in the two games. Rog also brought his free throw percentage to 38 as he hit 28 out of 33 free throws in the Eau Claire and Superior games.

The 1953 Basketball Season

River Falls 75 — St. John's 80

Records fell at the St. John's college fieldhouse in Collegeville, Minnesota February 5, but they weren't enough to keep the Falcons in the winning column and RF bowed to the Johnnies 80-75. Rog Kuss sank 46 points in the St. John's game — the most a college cager registered in Minnesota up to that time during the season. It was also the most points a player had ever made in the St. John's gymnasium. Bill Christopherson, St. John's forward, set a school scoring record, going over the 1,000 mark for four years of competition.

River Falls 71 — LaCrosse 69

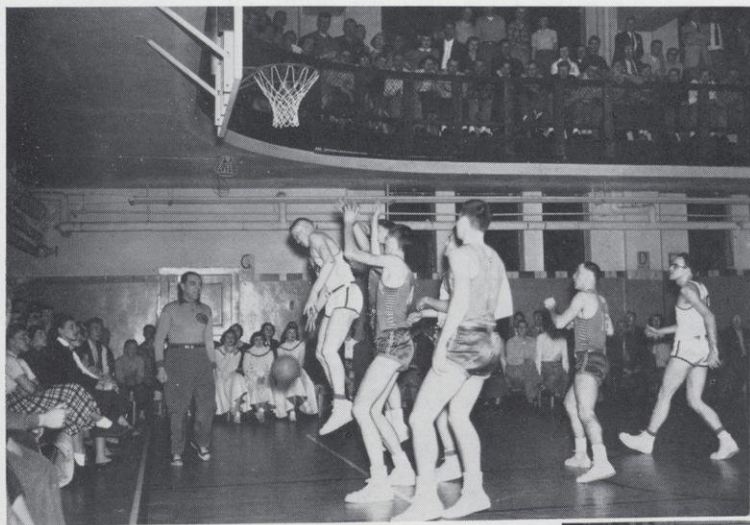
River Falls' Falcons dropped a conference thriller to LaCrosse February 7 on the Indians' court by a score of 71-69. It was the Falcons' third conference defeat.

LaCrosse took an early lead and held it through-

out the first half. Going into the third quarter RFSC was behind 12 points and then 18 points, but suddenly began hitting and narrowed the margin to three points at the close of the third quarter. The last period was a hard fought battle with River Falls gaining the lead a few times, only to lose it and the game, 71-69.

River Falls 87 — Platteville 68

Friday, February 13 proved to be unlucky for league-leading Platteville as the Falcons downed them 87-68 on the River Falls floor. Rog Kuss, playing little more than half the game, tossed in 30 points. The Falcon reserves and freshmen got their best work-out of the year after the starting five built a respectable lead over their opponents, building up a big lead in the first quarter — so big that at one time RFSC lead 17 to 1. Bob Williams was second high scorer for RF with 21.



The 1953 Basketball Season



River Falls 110 — Stevens Point 105

The floor was littered with broken records after the RF-Stevens Point battle February 14 when the Falcons downed the fighting Pointers by the fantastic score of 110-105.

The scoring spree resulted in Rog Kuss setting a new conference record for points made by a single player during a game. Kuss bagged 54 points. The game also set a new record for the North Hall gym with 215 points scored in a single game. Other records apparently broken were total points in a single conference game and the highest number of points made in a conference game by a team which lost. The game put River Falls in second place in the conference, behind Platteville.

River Falls 81 — Winona 75

River Falls pulled a Winona victory out of the hat February 18 in the last four minutes after the score was tied at 73-all. Reserve "Cabby" Wild spearheaded the attack for the Falcons in the closing minutes by scoring a free throw and missing another, which was tipped in by Rog Kuss for two more points. Fouls were heavy in the game, with many players having four or five. Bob Williams led the scoring with 23, followed by Kuss with 22.

River Falls 83 — Bethel 64

Traveling to St. Paul February 24, the Falcons trounced the Bethel basketball team, 83-64. The Falcons took a quick lead and defended it throughout the entire game. The entire Falcon squad saw action against Bethel. Kuss and Wells paced the victors with 34 and 21 points respectively.

River Falls 103 — Stout 74

Rog Kuss marked his last college game on the River Falls floor with a sensational record-breaking 57 points as the Falcons defeated Stout in their last home game, 102-74, on February 28.

Kuss' scoring in the Stout game gave him a total of 698 points in 18 games this season. In the Stout game he made 21 field goals out of 23 attempts and 15 free throws out of 16 attempts.

The Falcons started the game out fast, making their first seven shots on fast breaks and dead-eye shooting. Stout gained a little on River Falls in the second period but as the half ended River Falls still led by the wide margin of 53-36.

In the last period the reserves played most of the time, and John Mills, also playing his last home game, sank three buckets to lead the reserves in scoring. Kuss broke his record in the fourth quarter and shortly afterward left the game on fouls, receiving a tremendous ovation from the fans. Wells and Williams were second in Falcon scoring with 10 points apiece.

The 1953 Basketball Season

River Falls 86 — Eau Claire 91

River Falls State College lost its final conference game of the season March 2 when the Eau Claire Blugolds beat the Falcons on the ECSC floor, 91-86. The Falcons' loss threw them into a tie with Superior for second place in the conference, each having a record of eight wins and four losses. Rog Kuss scored 49 points against Eau Claire before fouling out in the beginning of the final quarter.

RF trailed at the half 44-41, but took a 73-64 lead at the end of the third quarter. However, the Falcons couldn't hold it and were again outscored by Eau Claire when the game ended.

River Falls 88 — Carroll 87

River Falls was victorious in a nip and tuck battle for the N.A.I.A. play-off with Carroll College at Waukesha March 5. Sparking the victory was Rog Kuss with 32 points.

The deciding factor of the game was the excel-

lent free throw shooting of the Falcons, who hit 34 of 39 attempts. With less than two minutes to play in the game Williams and Wells each made two free throws and Belisle made four to make the score 88-87.

The win over Carroll, conference champions among the private colleges in Wisconsin gave River Falls the right to go to the N.A.I.A. basketball tournament in Kansas City.

River Falls 72 — Mississippi Southern 106

River Falls' Falcons left for Kansas City on Saturday, March 7. The 32 teams were guests as a "Kickoff Banquet" Sunday night and drew numbers for their opening round games the next two days. The Falcons played Mississippi Southern on Monday, March 9, and lost the game 106-72. The team returned home two days later. Mississippi Southern was beaten in the quarter finals. Southwestern Missouri won the tournament.

The Falcon Freshman Squad

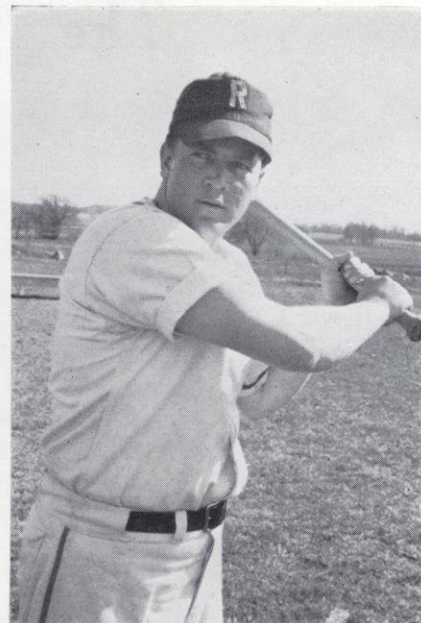


1952 Baseball



JOE BURGOYNE

River Falls 11; Eau Claire 2
River Falls 7; Mankato 5
River Falls 7; Mankato 4

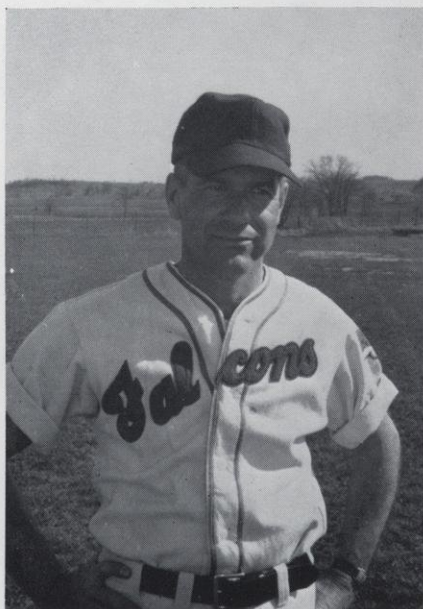


TOM LINEHAN



JOHN MILLS

River Falls 6; Eau Claire 5
River Falls 8; Stout 3
River Falls 3; St. Cloud 2
River Falls 2; St. Cloud 12
River Falls 1; Winona 6
River Falls 1; Winona 3



PAT CONNELLY



KENNY BARROWS



FIRST ROW: Thoreson, Sauerman, Beckel, Hawkins, Engler, Helmer.
SECOND ROW: Isaacson, Knieff, Clymer, Jurgens, Wolfe, Jadinak.

River Falls Foundation Committees

OFFICERS

MARION HAWKINS	Chairman, Faculty Alumni Foundation Committee
DR. WALTER ENGLER	Secretary, Faculty Alumni Committee
PAUL BECKEL	Chairman, Student Foundation Committee
MARY SAUERMAN	Secretary, Student Foundation Committee

The two groups on campus which work together for the RFSC Fieldhouse Foundation are the Faculty Alumni Foundation Committee and the Student Foundation Committee. The former group, composed of RF faculty members, works to build up alumni good will, establishes alumni chapters, and promotes interest in the River Falls Fieldhouse Foundation. Chapters which have been formed by alumni since the committee began its work are those at Chicago, Seattle, Minneapolis, Barron County, Hudson, and River Falls.

The Student Foundation Committee sponsored "Foundation Week" this year from April 20 to 25. Purpose of the week was to raise money for a new football scoreboard at Ramer Field. The week's activities included a baseball game, band concert, assemblies, and a dance.

Dance Theatre Group

New to the River Falls campus this year is the Dance Theatre group, organized during the fall term under the direction of Dr. Dorothy Lipp, Dean of Women, who directs the dancers.

Thirty-six girls belong to Dance Theatre, and the group is one of the largest of its kind at any college or university in the Midwest. The girls practice two evenings a week in the lounge of Hathorn Hall.



Ruth Osits, Betty Wiskerchen

"The Juggler of Notre Dame" was presented by the Dance Theatre Group on December 14, as a part of the annual Christmas Music Festival. Jenny Sue Garnett, freshman, played the title role. The Dance Group also participated in a play "The Imaginary Invalid", on December 11, and was represented at several occasions Spring Term.



"The Juggler of Notre Dame"



Work and Play at Dance Theatre Group Rehearsals

Ruth Osits, Peggy Weiss, Jenny Sue Garnett

Practice . . .



. . . And Still More Practice

Time Out After a Strenuous Rehearsal





"Macbeth"

Presented by the Masquers — College Auditorium — February 17, 19, 20

CAST

Macbeth	Lee Parker
Lady Macbeth	Dorothy Binkowski
	Betty Wiskerchen
Duncan	Gayle Moen
Malcolm	Richard Rozehnal
Donalbain	William Gorman
Banquo	Robert Krueger
Macduff	Herbert Voss
Lennox	John Bos
Ross	Orlan Larson
Siward	Jerry Mott
Young Siward	Bernard Decker
Sergeant	Norville Lansing
Lady Macduff	Virginia Horsmann
Gentlewoman	Eleanor Davis
Doctor	Gail Gibbon
1st Witch	Mae Wiskerchen
2nd Witch	Janis Olufson
3rd Witch	Delores Kreuziger
Porter	Dane Watrud
Macduff's Son	Terry Martin
Page	Rita Dostal
Hecate	Marilyn Fiedler

Ladies	Marilyn Murphy,
	Ann Eitland, Lois Tilly
Soldiers	Ray Staley,
	Kaye-Don Tibbetts

STAFF

DIRECTOR	Dr. Blanche Davis
STAGE MANAGERS	Robert Anderson
	Harlan Siebrecht
ELECTRICIANS	Calvin Thuot
	Delores Kreuziger
PROMPTERS	Donna Sammons
	Betty Kostka
SOUND EFFECTS	Heather Dopkins
PROPERTIES	James Cerello
	Donna Jones
COSTUMES	Mrs. Ann Wonderly
CONSTRUCTION CREW	Robert Jensen,
	Betty Wiskerchen, Marie Holmes, Rollin
	Sorenson, Nola Madson, Dale Gehn, Mer-
	lee Bartz
MUSIC	William Ramey
ART WORK	Ken Nehmer,
	Leroy Schwan



Duncan Arrives at Macbeth's Castle



Macbeth and Lady Macbeth



The King Hears of Macbeth's Bravery



Lady Macduff, Her Son, and Ross

The Imaginary Invalid

A Masquers Production

December 11, 1952

North Hall Auditorium

Argan	Harlan Siebrecht
Toinette	Muriel Clark
Beline	Carrie Dorsey
Angelique	Betty Kostka
Louison	Marjorie Hanson
Beralde	Bob Anderson
Cleante	Bob Strain
Monsieur Diaforius	Dick Ruesch
Thomas Diaforius	Jules Shern
Monsieur Pugon	Don Richards
Monsieur Fleurant	Orlan Larson
Monsieur Bonnfoi	Kaye-Don Tibbetts

Directed by Dr. Blanche Davis





FIRST ROW: *Murphy, Tibbetts, Kostka, Wiskerchen, Decker.*
 SECOND ROW: *Larson, Hanson, Shern, Eitland, Nygard.*

“Good Housekeeping”

An All-Freshmen Play — College Auditorium — October 16 and 17

CAST

Marian Burnett	Betty Kostka
Charles Burnett	Kaye-Don Tibbetts
Chris Burnett	Marilyn Murphy
Katy Burnett	Mae Wiskerchen
Eddie West	Orlan Larson
Nat Kahn	Bernard Decker
Jim O'Neal	Jules Shern
Mrs. Benson	Ann Nygard
Drum Majorette	Ann Eitland
Cheerleader	Marjory Hanson
DIRECTOR	Dr. Blanche Davis
ASSISTANT DIRECTOR	Donna Jones
TECHNICAL DIRECTOR	Delores Kreuziger
MUSIC	Richard Muelemans
	Jeannine Davison

STAFF

STAGE MANAGER	Grant White
ELECTRICIAN	Calvin Thuot
PROPERTIES	Sue Chinnock
PROMPTER	Pat Johnson
STAGE CREW	Bob Richardson, Marcene Wiebusch, Victor Kreuziger, Lois Tilly, Jane Standish
MAKE-UP	Rita Dostal Marcene Wiebusch, Ann Eitland
PUBLICITY	Dave Gilstad
ART WORK	Ken Nehmer

Winter Carnival Personalities



Carnival Chairman June Clark



Attendants Bob and Birdie Granum



*Attendants Paul Willink and Thelma
Erickson*



*The Guest of Honor — "Alice in Dairy-
land"; Miss Beverly Steffen*

Winter Carnival



Queen Margery Deans and King Jim Belisle

*Carnival
Clowns*



Carnival Calendar

Friday, January 30

Carnival Midway in South Hall Gym
Alice in Dairyland Arrives
Card Tournament
Bowling Tournament
Talent Show, sponsored by FFA
Record Dance, Hathorn Hall



*Jenny Sue Garnett,
Talent Show Winner*



King "Bugs" and Queen Margie

Carnival Calendar

Saturday, January 31

Snow Sculpturing Contest
Skiing and Tobogganing at the Mound
Skating at the High School Rink
Warm-up, Hathorn Hall
Basketball game, RF vs Eau Claire
Winter Carnival Dance, North Hall
Coronation of King and Queen



Grand Entrance of Carnival Royalty

Carnival Capers



*Winter
Carnival
Dance*



Look's Like Marilyn's Losing on the Roulette Wheel!

The Hoedown Club

Organized at the beginning of the Spring Term, the "Hoedown Club" now boasts about forty members, who meet in the Recreation Room of Hathorn Hall every second and fourth Fridays of the month for square-dance sessions.

Dr. Bill Solley of the athletic department calls the squares, and the Hoedowners mix in a little folk and old-time dancing with their square dancing.

Officers of the Hoedown Club are:

Dick Buck	President
Beverly Rasmussen	Vice president
Dick Seekamp	Secretary-treasurer
Dr. Wm. Solley	Adviser



"Grand Right and Left"



"Around You Go and Swing Like Thunder"



"Texas Star"



"Eight Hands Up"



"Swing Your Partner"



"Dive for the Oyster, Dive for the Clam"

Kuss Named N.A.I.A. Basketball Player of the Year

Roger Kuss, brilliant RFSC center, a six foot, five inch, 180 pounder who averaged 38.9 in 21 basketball games, chalking up a total of 817 points, has been chosen 1953 N.A.I.A. College Basketball Player of the Year by the Helms Athletic Foundation.

During the past three years, Kuss registered a total of 1,843 points for his River Falls teams — 817 in 1953, 524 in 1952, and 502 in 1951. Although the Falcons were beaten in their initial encounter in the N.A.I.A. Tournament at Kansas City this year in March it wasn't Kuss' fault, for the big star collected a count of 38 points in the game with Mississippi Southern.

Rio Grande College's "Bevo" Francis (Ohio) gave Kuss his closest competition for the N.A.I.A. Player of the Year laurels. The Helms choice of Kuss for Player of the Year included with it a spot for him on its First Team, as center.

