



The daily cardinal. Vol. LIV, no. 74 February 20, 1945

Madison, Wisconsin: New Daily Cardinal Corporation, February 20, 1945

<https://digital.library.wisc.edu/1711.dl/YSX6ORO7MD6K38E>

<http://rightsstatements.org/vocab/InC/1.0/>

The libraries provide public access to a wide range of material, including online exhibits, digitized collections, archival finding aids, our catalog, online articles, and a growing range of materials in many media.

When possible, we provide rights information in catalog records, finding aids, and other metadata that accompanies collections or items. However, it is always the user's obligation to evaluate copyright and rights issues in light of their own use.

Players & Orchesis To Give Double Bill

Wisconsin Players and Orchesis, campus drama and dance groups, will share the production spotlight at the Memorial Union theater this Thursday, Friday, and Saturday when they present the double bill of "Orpheus" and "The Man Who Married a Dumb Wife."

Gluck's opera, "Orpheus," will be presented as a dance mime by Orchesis. Miss Margaret H'Doubler, Louise Kloepper, and Ronald E. Mitchell are acting in an advisory capacity. The mime is based on the Elysian field myth and uses the music from the opera. This is one of the few productions ever attempted with dancers doing the movements and actors doing pantomime to the music.

Orpheus and Eurydice do the pantomime and the dancers take the supernatural characters and use pure dance movement to tell the

Dykstra Speaks: Campus Forms 'Leftovers Club'

The "Educational Leftovers club," with "Attic Hasbeen" as president, has been formed informally on the University campus, in line with former Pres. Clarence A. Dykstra's statement at UCLA that that college "doesn't have an educational attic full of leftovers."

The organization of this group, with latest reports announcing that membership cards are "going like hotcakes," was revealed in the Wisconsin State Journal Monday night. Dykstra assumed his new post as provost of the Los Angeles branch of the University of California last week, and told the Californians that he was happy to take his new job because UCLA "is young and doesn't have an educational attic full of leftovers."

Lecturer to Speak On Islam, Far East In Bascom Today

Dr. Jacques de Marquette, distinguished author and lecturer of the University of Paris, will speak on "Islam and the Far East" to Madison residents and students at the University of Wisconsin today at 4:30 in Bascom theater. Tonight Dr. de Marquette will speak informally to the French club.

The lecturer spent 10 years in the Far East studying the religious philosophies of Oriental countries. He delivered the Lowell lectures in Boston this fall and has written numerous books in his field.

Dr. de Marquette comes to Madison at the invitation of the University Lecture committee, under the general auspices of the Institute of International Education, and with the sponsorship of the departments of French, Italian, and Comparative Literature at the University.

UW PLAYERS TO GIVE 'THE CHILDREN'S HOUR'

Wisconsin Players will be presenting "The Children's Hour" by Lillian Hellman, in which nine of the characters are women and five must be under 5'2". There are character and straight roles, and only one male part in the show.

Try-outs will be held Monday, Feb. 26 and Tuesday, Feb. 27, at 7:30 and 7:30 p. m. in the Twelfth Night room in the Memorial Union. John E. Dietrich is the director.

All students, whether majoring in speech or not, are welcome to try out for parts.

SAVE CARDINAL FOR DIRECTORY

Save today's Daily Cardinal! It contains the first part of the second semester student directory printed in compact form. The second and last installment will appear in Thursday's Daily Cardinal of this week. Through an error, part of this directory was printed last week.

The business office is now carrying out their previous plans of printing the directory on the insert pages so they can be conveniently used as a supplement to your first semester directory.

story. An interesting section of the dance movement as seen in rehearsal is the scene in which the Furies attempt to keep Orpheus from the underworld when he goes down in quest of his wife.

A similar production was done by the Metropolitan Opera several years ago with singers in the pit (Continued on back page)

Conducts Minneapolis Symphony March 3



Both matinee and evening tickets for the Minneapolis Symphony orchestra, Dimitri Mitropoulos, conductor, which will present concerts at the Wisconsin Union theater on March 3, will go on sale at the theater box office at noon Monday, it was announced Saturday by Miss Dete Notaras, student concert manager. A heavy mail order took most of the tickets, it was reported by the box office, but demand was almost equal for both matinee and evening concerts so there are still a few seats available for each concert.

Roundtable Speakers Stress Buildings for War Memorial

Emphasizing the trend toward living war memorials which can be used by the students, speakers on WHA Radio Roundtable Monday at 4:30 suggested possibilities for a World War II Memorial.

Students who participated in the discussion were Sue Ammann, senior in journalism; John Hebal, sophomore in political science; Don Wetlaufer, senior in chemistry; and Man-Shun Wong, sophomore in agriculture. The faculty moderator was Edward Weidner, lecturer in political science.

After three years the war memorial fund totals \$2,250. The newest source for contribution to the fund is the 25c war stamp which students working at RMR donate to the fund from the money they make on their four-hour shifts.

Main proposals for living memorials were for a publications building which would house such pub-

Student Board Meeting Is Scheduled for Tonight

There will be a weekly meeting of the Student board of the Wisconsin Student Association tonight at 7:30 in the Round Table room of the Memorial Union. All interested students are invited to attend the meeting. Those who are considering running in the spring election to Board are especially requested to be present.

Launch City-wide Rally In Support of Wallace

Gaus Is Elected Political Science Association Head

Prof. John M. Gaus of the political science department of the University of Wisconsin, was elected president of the American Political Science association at a recent meeting of the executive council in Washington, D. C.

Professor Gaus is a nationally recognized leader and authority in the field of public administration and planning. In the University he has taught courses in these fields and in political theory. He is the author of several books including A Study of Civic Loyalty in Great Britain, and Public Administration and the United States' Department of Agriculture.

Professor Gaus is the fourth president of the American Political Science association from the University of Wisconsin. The others were: Professor Paul S. Reinsch, President Clarence A. Dykstra, and Professor Frederic A. Ogg.

The American Political Science association is a learned society of teachers of political science and public administration, public officials, and persons interested in public policies and problems. The members of this society are located in all parts of the world, but mainly in the United States.

Union Chairmen Post Schedules

Six Union committee chairmen have announced their interview schedules for students interested in committee work.

The Union House committee, sponsors of 770 Club, Coffee Hour, Mat dances, Folk Fiesta, Danskeller, Dance-Step, and Friday dances, will hold interviews Thursday, Feb. 22, 2:30-5:30 and Friday, Feb. 23 from 3:30-5:30 in the Loft in the Union. This was announced today by Charles Hervey, chairman of the Union House committee.

Students interested in Concert committee work may report for interviews on Friday, Feb. 23, from 3:00 to 4:30 in the Reception room at the Union, Jim Ziskind, Union concert manager, announced today.

The concert committee makes arrangements for the Star Concert series. The 1944-45 season was the 25th anniversary of the series, which included the Don Cossack chorus, (Continued on back page)

Supporters of Henry A. Wallace will hold a city-wide rally tomorrow night in the university's Music hall at 8 p. m. Madison citizens and students interested in securing the confirmation of Wallace as head of the United States department of commerce will air their opinions and pledge their support.

With the passage of the George bill in the Senate, taking the Reconstruction Finance corporation jurisdiction out of the hands of the commerce department, doubts as to the acceptance of President Roosevelt's appointee are lessened. March 1 marks the promised date of consideration of the appointment.

Supported by Madison's leading social, political, and religious groups, the program for tomorrow's rally includes addresses by the Rev. Kenneth L. Patton, pastor of the Unitarian church; Arnold Zander, president of the American Federation of (Continued on back page)

LATE BULLETINS

MARINES CUT IWO

United States Marines, with the added impetus of newly landed tanks and artillery, have cut Iwo island in two with a drive to the west coast.

The leathernecks smashed across the narrow southern end of the embattled island, and seized 1,000 yards of the west coast. The breakthrough was achieved only nine hours after the Yanks swarmed ashore on the eastern beaches.

SUPERFORTS STRIKE

The greatest force of American Superforts ever to strike Japan left large fires burning in the enemy capital Monday. Some 66 Japanese planes were shot down or damaged in the air battles over Tokyo. Three B-29's were lost.

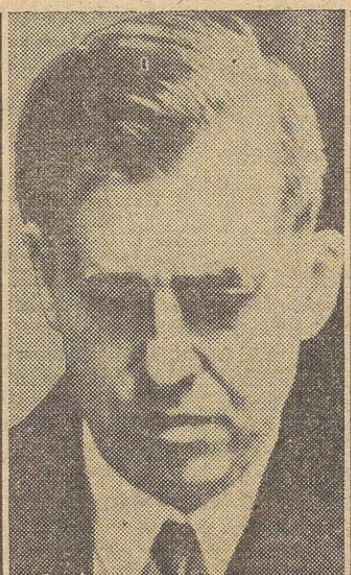
GOCH NEARLY TAKEN

On the Western Front — The German (Continued on Page 8)

Prof. Buckley to Lecture On 'The Late Victorians'

In the next in a series of lectures offered by the University of Wisconsin department of English, Dr. Jerome Buckley, instructor in English at the University, will talk Tuesday afternoon, Feb. 20, at 4:30 in 165 Bascom hall. Dr. Buckley will continue the discussion of the Victorian period, begun last week by Prof. Paul Fulcher. The subject of Tuesday's talk is "The Late Victorians."

Headliners to Be Found in This Week's News:



HENRY WALLACE



C. A. DYKSTRA



PROF. MITCHELL

"... that continual and fearless sifting and winnowing by which alone the truth can be found ..."

Cardinal Forum---A Page of Comment

A Lesson in Undermining Personnel, Prestige--- Board Action Must Be Free of Personal Differences

The Daily Cardinal has thus far refrained from discussing the present controversy in Student board concerning the resignation from that Board of the president of Cardinal board, Irving Slomowitz. But the present underhanded methods of William Rodiger, president of Student board, necessitates bringing the issue to the attention of the student body.

We anticipate in advance the probable retort of Mr. Rodiger that this editorial is just another indication of the influence Mr. Slomowitz wields on the editor and the editorial policy of the student newspaper. We reiterated, for the benefit of the unenlightened, that the members of Cardinal board have not, in the past four years at least, and we hope never will

have, any control of the editorial policy of the Cardinal.

CAN SUGGEST CHANGES

By electing the editor, they have signified their approval and acceptance of the ideas and policy upheld by that person. They discuss such policies from time to time, and if there seems to be a violent student reaction against one in particular, suggest that it be modified. A logical and sensible explanation to the editor of some fallacy in thought can and has been put, and this is considered carefully, since it is the opinion of a small cross-section of students.

These suggestions need not be followed. If some move is drastic enough, the Board could dismiss the editor, but since this would be tantamount to denying the principles of freedom of the press and of speech, to which the Cardinal is dedicated, such action is highly improbable.

Duality of membership is no novel thing on our campus. A former president of Cardinal board, Robert Lampman, was also president of the Wisconsin Union; a former member of the Cardinal board, Walter Panceo, was also president of the Union; another president of the Board, Robert Charn, headed the Badger political party. At the present time, Ardith MacDonald, secretary of the Union, who is a member of the Union Directorate and Union Council (until new officers of the Union are elected), sits on Student board, and most obviously and directly has represented the Union and its policies, rather than the students or Student board, in addition to being named assistant chairman of this year's Junior Prom.

There seems no fair reason why the president of Cardinal board, in general, especially since he has no more power or control than any member of the board, should be discriminated against in this case. When Slomowitz stood up for Cardinal interests concerning the Prom budget, he was also attempting to prevent any loss of prestige for Student board.

If there is a vital question of conflict between the two groups, a member who is involved in the conflicting organization or interest, could resign, or could absent himself from discussion and the vote on that sole issue. But such a policy must run both ways, and not work against a Cardinal board president, while permitting a member of the Union, who is usually interested in upholding Union policies over student or Student board ones, to remain. The Union, after all, has been and is one of the most constant and controversial issues before Student board.

END PERSONAL BATTLES

Petty personal antagonisms should not be considered on a student governing body; they only lead to a great decline in the respect people hold for the person displaying such traits, and serve no useful purpose when exhibited after a vote has taken place and was found to go against that person's wishes. We do not wholeheartedly support all of Slomowitz' actions, although we are in sympathy with his desires to show fairness and we are convinced of his sincerity. We cannot feel that he is purely a publicity hound; but if members feel that way, they should discuss it frankly with him and enable him to present his side, rather than to continue these insidious attempts at undermining Board personnel, prestige, and power.

We hope the Board will put its responsibility to the students above personal interests and consider these issues in that light, as they themselves see the light and the right, not as others seek to influence them.

Roosevelt administration to its former greatness, in spite of its worn-out self.

This Wednesday evening will be highlighted by a rally in Music hall to speed the confirmation, now in doubt, of Wallace's appointment to the commerce department. It goes without saying that you will attend. Its success, and the success of similar forums throughout the nation, will be measured by the majority rolled up for the President's choice on March 1. With public opinion awakened at last the little men can't win. The money-grubbers can't win.

And progressivism, now sorely tried, will have another lease on life.

Now It's My Turn



By ERNEST LILIENSTEIN

The little men in Congress are on the loose again. Every once in a while, rattled by their own intellectual frustrations, they embark upon large-scale maneuvers: Capitol hill just buzzes with hearings, caucuses, and investigations.

Often these piddlings are not particularly harmful. Insofar as they prevent our legislators from interfering in the genuinely significant problems, teapots tempests may even be desirable. At times, however, Congress stumbles upon an issue so very vital that we must be unusually watchful lest bungling cause irreparable harm.

At present we have the question of Henry Wallace's confirmation. Representing a philosophy totally alien to the 18th century congressional mind, he speaks of the "common man"; immediately Congress reverberates with the spiritual anguish of a Josh Bailey. Mr. Wallace voices a desire to employ government funds in helping even the "little fellow" to a share in post-war prosperity, and colleague George hastily concocts legislation to stifle any such threat of decent standards for the large mass of Americans.

Officially all opposition is based upon the former vice president's "visionary" tendencies. He is, in brief, not sufficiently callous for our legislative misanthropes. In his emphasis upon human values, Wallace approaches the dangerously "impractical." For in the 20th century it is still considered dangerous to advocate a genuine concern, on the part of a government, in the welfare of its people. Public service is a hindrance to those aspiring to office; our Congress feels much more at ease in confirming non-entities.

The alternative to Wallace is a die-hard "realist" a la Jesse Jones, at present distinguished solely for his failure to ensure the United States a sufficient supply of vital war materials during his tenure as head of the commerce department.

In contrast stands Wallace's eight years as agriculture secretary, marked, in the words of Bernard Baruch, by magnificent organization. Our present abundance of grain which enabled us to feed not alone ourselves but our allies as well, where normally there should have been near-famine, stands as a monument to the splendid impracticality of Henry Wallace.

The '44 elections did not represent a victory for liberalism. For every Nye who was defeated there is a Wiley to take his place. The 79th Congress presages no great improvement over the useless 78th. Nor does our President inspire a great deal of hope so far as progressivism is concerned. "Dr. New Deal," at a time when he is so urgently needed by an America tired of war and domestic obstructionism, "is dead."

Our commander-in-chief is a far cry from the spiritually mature, courageous idealist who stepped into, and cleared up, the mess left him by his none-too-bright predecessor. F.D.R. is a politician now, first and foremost. Social reform comes second, if at all. Our President is morally tired.

A few of the old-timers remain: Ickes, Wallace,—period. But in the wake of the little men, the Jesse Jones species of money-grubbers—the entire army of mentally insignificant but politically influential office-holders—they are completely powerless.

The issue is clear. Any further defeats would mean the end of whatever liberalism remains. The little men are in the saddle and riding hell-bent for reaction. You can't appease, pacify the little men. You can't kow-tow to the Bilbos, the Rankins, the Baileys, the Wileys, the Tafts and still maintain even a semblance of social self-respect. The days of giving-in are long, long past. It's just about time to dish it out again, to make at least an attempt to restore the

AMERICAN HEROES

by JULIAN OLLENDORFF



WHILE reconnoitering at night on the western front, Sgt. Arthur G. Volonte, New York City, stumbled into a German patrol consisting of an officer and seven men. Sgt. Volonte told the officer that they were surrounded and the Nazis followed him back to the American commander. The sergeant has been awarded a Silver Star for gallantry. Americans buy War Bonds to help men like that to win this war.

U. S. Treasury Department



Hitting the BADGER BEAT

with Jack Buntun

HELLO BADGERS ... Today is Tuesday, Feb. 20 ... the year is 1945 in case you're among the few who still write 44 ... Student board will confirm a Work Day chairman tonight ... also they may name some new men to War council ... only one more day of grace before six weeks and this is it ... Cinema shop at the Union ...

WHIFFENPOOF BALL ... Friday was the night ... campus support wasn't as it should have been ... nonetheless the dance was a success socially and may even clear financially ... highlight of the evening was Dennis Crowley's rendition of "Frankie and Johnny" with Ray O'Hara on the guitar ... emcee Harry Holloway was riding high with his patter ... and the decorations were very juicy ... all in all a fine dance except for the turnout ... don't miss it next year ...

FRIDAY NIGHT was also a big night for the Delta Sigs ... their combo toboggan and beer party got pretty rugged ... Kenny Wachowiak got on the short end of a little encounter and wound up with a stitched-up forehead and a rather black left eye and cheek ... chap-eroning was Prof. Gaumnitz, rapidly getting to be number one prof with the students in Comm-Econ ... Bill Druhan and Bob Nienow cut the meanest rug at the party in

the Hooper quarters ... to top it all off, one of the boys was actually studying ...

I-F BOARD GETS the glad hand this week ... and leading the recipients is Tom Troup of the Psi U ... current reports say that at Tom's last meeting as president, he delivered a few well-aimed comments at improving the Board of Council, whichever you prefer ... incidentally, the meeting did follow, for a change, a semblance of order ... among Troup's suggestions were: ... the appearance of the secretary and minutes at the future meetings ... treasurer's reports for each meeting ... better attendance ... and more of an air of meeting and legislation than the bull-session atmosphere recently employed ... keep it going, boys, if you want your old power back ...

SCENE ON CAMPUS ... the cigarette shortage lightening as Lent opens ... Phil Potash on the receiving end of a brawl between himself and three drunks—he says ... the girls at the Beta house having a little party ... some of the girls couldn't quite clear the cobwebs out of their heads the next day ... Bill Kueckenmeister starting to sing kids for sailing crews as spring hits the Hoopers ... the Sigs pledge Bob Abbot of the voice to go with

(Continued on page 3)

All American Pacemaker Complete Campus Coverage

The Daily Cardinal

Founded April 4, 1892, as a daily newspaper at the University of Wisconsin, owned and controlled by the student body. Published every morning except Saturday, Sunday, and Monday during the regular session by the New Daily Cardinal Company. Printed by the Campus Publishing Company.

Entered as a second class matter at the post-office at Madison, Wisconsin, under the act of March 3, 1879.

Subscription rates are \$4 per college year, \$2.25 per semester, in campus carrier area; mail, in Dane county, \$4.00, otherwise in Wisconsin, \$3.00; out of state, \$5.00 per year. Address The Daily Cardinal, 823 University Avenue, Madison 5, Wis.

OFFICES: Cardinal Building, 823 University Avenue. Business Office, 9-12, 1:30-5:30, P. 5000. Editorial Office, 2:30-12:30, P. 5001-3.

Intercollegiate Press

1944 Member 1945

EDITOR'S NOTE: The views and opinions expressed in all signed editorial columns are those of the writers and not necessarily those of The Daily Cardinal.

Executive Editor
EILEEN MARTINSON

Business Manager
ELAINE CASPERSON

Badger Beat-

(Continued from Page 2)

their song . . . incidentally, this looks like one of the better pieces of recent pledging as Bob seems to be smooth all-round . . . comment at the At Ease . . . "Never could figure out why they announce accordion pieces—they're all alike anyway" . . . Des Smith needs an eye exam . . . he only got 29 in Saturday's game . . . plans in the offing for a big Cardinal stag-hen party in a week or two . . . a new pressure group being rumored—the Fond du Lac club . . . lay off that stuff, Dallman . . . one of the boys at the House of Langdon drooling about a date with Les Shafer . . . the newest more or less regular twosome has Bob Kjeverud and Mary Ellen Fox, Chi O pledge, as the lucky two . . . the Alpha Phis objecting to the pet pet of one of their pledges and ordering the rat out of the house . . . the Pi Phis stealing a Kappa legacy in recent rushing . . . while we're with these girls, their prexy, Pat Strutz, had a busy weekend as three admirers came back . . . all the boys were Badgers in khaki . . . Bob Sprenger admitting that he thinks "Grex" "is beginning to like me"—she's wearing his pin, so it's okay . . . the Cabin was slightly dull this weekend according to some reports—plenty of kids, but not too many familiar ones . . . Bill Voss, SAE who lives at Hamilton's Happy Hacienda, getting a phone call from the fem at three o'clock in the morning . . . add him to your list of boys who must have it . . .

BREAK for all the readers . . . next issue of the Beat will be guest-ed by Jobe Soffa . . . read it in peace without fear of nastiness—you hope . . .

Frosh Speech Contest To Be Held Tomorrow

All freshmen interested in the Freshman Extemporaneous Speaking contest, sponsored by Forensic board, with Marion Bischoff as chairman, should sign up in the speech department office today.

The contest, to be held tomorrow afternoon at 3:30 in room 212, Bascom hall, will be on current events. Topics will be assigned tomorrow morning.

Mintz-Singer Engagement Is Announced to Campus

Announcement has been made of the engagement of Bernice Mintz, Worcester, Mass., to Dan Singer, Cincinnati, Ohio.

Bernice, a member of Phi Sigma Sigma, attended the University of Wisconsin, where she was graduated from the School of Journalism in 1944 with senior honors. She received the Sigma Delta Chi scholarship award. Bernice is doing graduate work at the University of Michigan.

Dan, signalman third class, U. S. Coast Guard Reserve, is a graduate of the University of Cincinnati and is serving in the Pacific.

CLASSIFIED ADS

LOST AND FOUND

LOST: GREEN-STRIPED LIFE-time Sheaffer pencil. Finder call F. 7101. Quinfanders.

FOUND: PEN. EUGENE CARUFEL, B. 2396. Owner may have same on identifying.

LOST: STRING OF IRIDESCENT beads and a white bunny fur mitten. Reward. Badger 4749 3x21

HELP WANTED

STUDENTS: GIRLS OR BOYS. Earn your meals and also get paid for it. Help needed during the noon hours. See Mr. Brennan, W. T. GRANT CO., 21 So. Pinckney St.

SERVICES

EXPERIENCED DRESSMAKERS, 206 No. Park, Fairchild 9458. Call mornings and after 6 p. m. 7x23

FOR SALE

FOR SALE: LOG-LOG DUPLEX slide rule, new, \$12.50. Edward Big, 204 No. Murray. 5x23

Second Semester Student Directory

The student directory for the second semester is being printed on the pages of the Tuesday and Thursday Cardinal of this week. Save these pages.

The directory is printed in this compact form for your convenience as a courtesy of Bob Foss, publisher of the directory, and the business office of The Daily Cardinal.

University of Wisconsin DIRECTORY SUPPLEMENT

Part II—Students

New and Reentered Students, Second Semester 1944-45

* Before the name indicates new student

* After the name indicates the student is married

*Abrams Stephen R—BA 1—884 West End Ave New York 25 N Y 105 Lathrop5 B5376
 *Ackerman Edith A—BA 1—15 Burling Ave White Plains N Y 130 Langdon3 F3502
 *Adler Lawrence H—PhB 1—4828 Adams Chicago 44 Ill 146 Langdon3 B1031
 Adler Libby Y—HE 2—1260 N Prospect Milwaukee 428 N Murray5 F 564
 Aeppler Mary-Ellen—PhB 2—704 S Concord Rd Oconomowoc 265 Langdon3 F7101
 *Affolter Edwin—BA 1—702 22nd Ave Monroe 428 N Murray5 F 564
 *Aibel Diana R—BA 1—275 Corbin Pl Brooklyn 29 N Y 615 Howard Pl6 F1133
 *Albofante Vera J—BA 1—R 2 Box 402 Kenosha Elizabeth Waters752
 *Alford Betty J—BA 1—2005 Kenilworth Louisville Ky 633 Langdon5 B7090
 *Allen Jean B—BA 1—407 Granite St Waupaca 622 Mendota Ct5 G4411
 *Alm Phyllis L—BA 1—3611 W Highland Blvd Milwaukee 8 Elizabeth Waters757
 *Altshuler Florence E—BA 1—731 14th Ave Paterson 4 N J 130 Langdon3 G5797
 *Amie Robert F—BA 1—Madison 125 E Gilman3 F3924
 *Anderson Alan A—BA 2—1108 Park Ave Racine 1021 Clymer Pl5 G1875
 Anderson Ruth M—HE 2—303 E 6th St Washburn 240 Lake Lawn Pl3
 *Aneiro George—BA 1—4318 14th Ave Brooklyn 19 N Y 1214 W Dayton5 B3314
 Anselmo Frances M—SJ 3—505 N Michigan Ave Chicago Ill 16 Langdon3 F6480
 *Applebaum Irving W—PreMed 1—1480 St Johns Pl Brooklyn N Y 207 W Washington Ave3
 Appleby Florence E—PhB 2—3910 Wilcox St Chicago Ill 233 Lake Lawn Pl4 F3502
 Areinoff Helen G—BA 3—19 Central Pkway Mt Vernon N Y 124 Langdon3 F 877
 Arend Joyce L—BA 2—White Acres Almond 115 N Orchard5 F 303
 Bahcall Carol R—HE 3—1120 Richmond Appleton Elizabeth Waters6151
 *Baier June E—BA 1—53 Oakland Oshkosh Elizabeth Waters752
 *Ballis Esther R—BA 1—815 E 53rd St Chicago 15 Ill 721 Clymer5
 Baird Parker K Jr—ChC 4—Madison 2210 Fox Ave5 F5864
 *Bakke Seymour D—PreMed 2—Madison 2218 Hillington Gr5 F4625
 *Ballard Deloris M—BA 1—Madison 923 Swarthmore Ct5 G4665
 *Balliet Stanley R—PhB 1—Madison 1107 Van Buren5
 Banks Sophia C—SED 3—6635 16th Ave Kenosha 622 Mendota Ct5 G4411
 *Banner Ethel E—BA 2—98 25 Rd Forest Hills N Y 615 Howard Pl3 F1133
 *Barndt Robert J—PreMed 1—Winnebago 625 N Frances3 B2396
 *Barnett Sally E—BA 1—4167 Ocean Ave Brooklyn 29 N Y 613 N Frances3
 *Bartling Mary S—LS Scholar—524 Locust Rockford Ill 1104 W Johnson5 B1251
 Bauch Frederick L—BA 1—4407 N Murray Milwaukee 207 Bernard Ct5 F3600
 Baumler Beth L—HygC 4—Potosi 1402 University Ave5 F3600
 *Beck Norman S—A Grad—6 Princeton Pl University City Mo 11 E Gilman5 F7016
 *Bendrick Benjamin D—A 1—826 Bridge St Wausau 224 Murray5 F3862
 *Bennett Ralph E—LS Grad—Madison 1902 E Dayton4 G3144
 Bennett Warren F—PhB 2—Oconomowoc 803 State5 B6070
 *Bereznick Philip J—PreMed 1—1453 Prospect Pl Brooklyn 13 N Y 625 N Frances3 B2396
 *Berezow Zeldia—BA 2—123 Graham Ave Brooklyn 6 N Y 936 W Johnson5 F4906
 *Berg Sanford M—BA 2—141 W 73rd New York N Y 309 N Lake5 B7197
 *Berkowitz Rhoda—BA 1—1665 E 7th Brooklyn 30 N Y 225 Lake Lawn Pl3 B 993
 *Bernstein Alice C—LS Grad—350 Empire Blvd Brooklyn 25 N Y 625 N Henry3 B1820
 Berry James H—PhB 2—3931 N 11th St Milwaukee 630 Langdon5 F2898
 Bethards Betty L—BA 2—146 Forest Park Blvd Janesville Elizabeth Waters6155
 *Bigler Margery D—HygC 1—3955 N Lamont Ave Chicago 41 Ill 265 Langdon3 F7101
 Bjorklund Jane E—LS Grad—307 Cottage St Merrill 612 Howard Pl3 F5385
 Black Jeanne V—PhB 1—649 Harrison Beloit 633 Langdon5 B7090
 Blake David K—A Grad—2117 Nott St Schenectady N Y 111 S Randall Ave5 F7515
 *Bloom Barbara A—BA 1—3325 N Murray Ave Milwaukee 11 Chadbourne1761
 Blum Robert H—BA 1—3203 Bedford Ave Brooklyn N Y 818 W Johnson5
 *Bobo Albert L—PreMed 1—2009 N 10th Milwaukee 5 549 Conklin Pl3 F6778
 Boelsing Zona D—HygC 4—705 S Dickinson Madison 1402 University Ave5 F3600
 *Boulware Marcus H—LS Grad—1312 Gregg St Houston Texas 740 Langdon5 F2500
 Boyce Arthur K—BA 1—Madison 1148 Jenifer3 F9566
 *Brady Marion S—BA 2—Greenspring & Ruscombe Lane Baltimore Md 265 Langdon3 F7101
 *Brandt Uclair W—PhB 2—Madison 804 Jenifer3 G4649
 *Braun Lois—BA 1—2814 Logan Blvd Chicago 47 Ill 233 Lake Lawn Pl3 F3502
 *Brenner Barbara L—BA 1—969 Park Ave New York N Y 108 Langdon5 G3890
 *Brobst Margaret I—BA 1—788 W Seminary Richland Center 3432 Sunset Dr5 G1141-W
 Bronkhorst Anne—Ed Grad—Madison 136 N Orchard5 U 295
 *Bronstein Leonard—PreMed 1—4957 N Lawndale Chicago 25 Ill 150 Iota Ct3 G 151
 *Brown (Jennie) Elizabeth—Ed Grad—Cedar Kansas 230 N Brooks5 F3287
 Brown Winston D—Ed Grad—Pewaukee Pewaukee
 Bullis George L—LS Grad—304 4th Ave Eau Claire 621 N Lake5 B4770
 *Burg Frank N—PhB 2—449 W Main Platteville 224 N Murray5 F7421
 *Burmeister Robert L—PhB 1—Madison 815 Minakwa Rd5
 *Busacca Margaret C—PhB 2—Madison 250 Langdon3
 *Bushell Barbara E—BA 1—38 E 85th New York 28 N Y 902 Grant5
 *Caparoon Clarence D—A Grad—Madison Box 351 B5100X-97
 Capponi Mario T—BA 3—Box 349 R 1 Kenosha 220 N Brooks5 F3654
 *Caraway Margaret N—BA 1—2020 Cypress Santa Ana Calif 622 Mendota Ct5 G4411
 *Carey Charlotte C—Ed Grad—4941 Russell Ave S Minneapolis Minn 230 N Brooks5 F3287

*Carr William P—PreMed 2—105 S Main Ave Albany 3 N Y 150 Iota Ct3
 *Carter Byrum E Jr—LS Grad—114 N 11th Frederick Okla 1710 Hoyt5 B3155
 Carufel Eugene W—BA 2—New Richmond 625 N Frances3 B2396
 Carver Jane H—BA 1—Madison 629 N Frances3 B4271
 *Cass Ermon C—PhB 2—402 N East Ave Viroqua 619 N Lake5 F4057
 *Cavanagh Elizabeth A—BA 3—7109 Kingsbury University City Mo 622 Mendota Ct5 G4411
 Chamberlin Lois P—HE 1—Madison 4157 Mandan Crescent5 B 707
 Chase Mary L—BA 2—713 Yuba St Janesville Elizabeth Waters2276
 Cherin Ruthanne—SC 4—Box 156 Denmark Chadbourne1931
 *Cherkinian Jack—BA 1—929 Huron Racine 619 N Lake5 F4057
 *Chiapetta Ida L—BA 1—1704 50th Kenosha 265 Langdon3 F7101
 *Chobanian Charles T—BA 1—1501 Superior Racine 1117 W Dayton5
 Christopherson (Bennett) Richard—LS Scholar—2564 N 50th Milwaukee 10 803 State5 B6070
 Clark Betty A—BA 3—Star Route 1 Box 6 Rhinelander Chadbourne1832
 Clayton Arthur F—BA 1—1808 N Clark Chicago 14 Ill 731 State5 B6498
 Cloutier Doria M—PreMed 3—Madison 632 Howard Pl5 B6414
 Cobin (Myrtle) June P—BA 2—Madison 1927 Commonwealth Ave5 F3280
 Coe Ruth L—LS Grad—Madison 3626 Tonyawatha4 F4517
 *Cohen Melvin S—BA 1—845 W End Ave New York 25 N Y 200 N Prospect Ave5 F1325
 *Cohen Mildred—PhBOT 1—2320 Valentine Ave Bronx 57 N Y Chadbourne2761
 Cohn Richard A—PhB 1—322 Central Park W New York N Y 419 N Murray5
 Colman Josephine—PhB 2—114 S 15th La Crosse 265 Langdon3 F7101
 *Companion Paula J—BA 1—1509 W Schreiber Chicago 26 Ill 636 Langdon5
 *Comstock John R—A 3—224 N Washington Elkhorn 432 N Lake5 F9087
 *Conlin Catherine E—HE 1—Madison Route 4 5 G5071-J
 *Connealy Mary J—PED 1—Dodgeville 4210 Wanetah Trail5
 Cooper George O—LS Grad—Madison 131 Kensington Dr4 G1068
 *Covelli Eugene F—BA 1—2222 55th Kenosha 220 N Brooks5 F3654
 *Cox Ruby J—PhB 2—6245 Revere Pl Dallas 14 Texas 633 Langdon5 B7090
 Crandall Doris J—PreMed 3—Madison 203 N Park5 G5994
 Crowley Dennis J—BA 2—16 Lamberton Pk Rochester 11 N Y 144 Langdon3 F4951
 Daly Hope N—BA 3—Madison 1145 Rutledge3 F9159
 *Davis Arnold E—BA 1—Stoddard
 *Davis Judith H—BA 1—1634 E 29th Brooklyn 29 N Y 615 Howard Pl5 F1133
 *Dawson Frank P Jr—BA 1—47 E 94th Chicago 19 Ill 740 Langdon5 F2500
 *Dean Barbara J—BA 1—Avalon 1211 Garfield5 B1966
 *Dehn William A—A 1—1900 Montrose Chicago 13 Ill 615 N Henry3
 *Denis Merle M—PhC 1—401 Vilas Ave Nekoosa 2702 Mason5
 *Denis Sidney A—PhC 1—401 Vilas Ave Nekoosa 2702 Mason5
 *Dennard (Hattie) Edith—PED 4—1121 N 9th Fort Smith Ark 625 N Henry3 B1820
 *DeVoe Norma S—HE 1—105 S Walnut Punxsutawney Pa 16 Mendota Ct5
 *Diamond Shirley B—BA 1—6424 Glenwood Chicago 28 Ill 104 Langdon3 G5520
 Dickson Joyce A—BA 1—685 River Niagara 613 N Frances3 B4168
 Doudna Quincy V—Ed Grad—Algoma Algoma
 *Dragancewitz Jeanette—PhBOT 1—1315 67th Pl Kenosha 234 Langdon3
 Drekeimer Charles A—BA 1—923 9th Beloit 203 N Park5
 Duclon Helen J—BA 2 265 Langdon3 F7101
 *Duggan Alice E—LS Grad—610 William Joliet Ill 602 N Henry3 G4142
 *Duke John H—PhB 1—2148 "O" St NW Washington D C 731 State5 B6498
 *Dunton Marguerite E—PhB 2—145 Cross Oconto 2715 Van Hise Ave5 G3315
 Dupuis Mavis J—HygC 4—681 River Niagara 1402 University Ave5 F3600
 *Dworetz Gloria A—PhB 1—276 Riverside Dr New York 25 N Y 225 Lake Lawn Pl3 B 993
 *Dwoskin Eunice M—BA 2—1622-B W Center Milwaukee 6 Elizabeth WatersU745
 *Egan Thomas D—BA 1—400 N Walnut Lansing Mich 150 Iota Ct3 G 150
 *Eppler Robert H—BA 1—805 Lake Ave Racine 408 S Baldwin3 G2464
 *Erbstein Helene K—PED 1—2209 N Hi Mt Blvd Milwaukee 8 108 Langdon3 G3890
 *Erickson Marceline L—LS Grad—Menomonie 412 N Frances3 F7890
 Everson Neva J—BA 2—Madison Lake Forest R 3 G5329
 *Falardeau Rita G—Ed Grad—Euclid Hotel Apts Superior 1104 W Johnson5 B1251
 *Fassett Katherine K—LS Grad—Madison 1635 Madison5 F1465
 *Feifer Milton—PreMed 1—111 Summit Ave Jersey City 4 New Jersey 302 N Murray5
 *Feller Rosaline S—BA 1—5130 W Center Milwaukee 10 1104 W Johnson5 B1251
 *Felsenthal Ruth—AA 1—6825 Paxton Chicago Ill 146 Langdon3 B6518
 *Fenchel Robert M—LS Grad—1552 S Hamlin Chicago Ill 224 N Brooks5 B5968
 *Fetek Norma—ChC 1—723 St Patrick Racine Barnard2351
 *Finkelman Seymour—PreMed 1—741 E 5th New York City 9 N Y 822 Clymer Pl5 F 394
 Fish Harold B—BA 1—10 Grovers Ave Winthrop Mass 627 Mendota Ct5
 *Fisher James E—A 1—7250 Gaston Ave Dallas 14 Texas 432 N Lake5
 *Fixler Joan B—BA 1—433 Briar Pl Chicago Ill 233 Lake Lawn Pl3 F3502
 Flad John J—BA 1—Madison 1157 Amherst Rd5 F9355
 *Fleshler Bertram—PreMed 1—23 Wayne St Jersey City 2 N J 302 N Murray5
 *Fornary Giulio J A—BA 1—1318 Quincy Racine 1021 Clymer Pl5 G1875
 *Forsman Vernon W—BA 2—603 N Stevens St Rhinelander Lake View Sanatorium Route 1 4
 *Freeman Joanne M—BA 1—3349 Berkley Cleveland Heights 18 Ohio 130 Langdon3 G5797
 *Fried Howard L—AA 1—3100 Sheridan Rd Chicago 14 Ill 126 Langdon3
 *Frost Ruth E—BA 1—6920 Sheridan Rd Chicago 26 Ill 146 Langdon3 B1031
 *Fry Jack E—BA 1—423 S 21st St La Crosse
 *Fulkerth Catherine M—PhB 3—904 N Forrest Forrest City Ark 208 N Lake5 B6379
 Fuller Homer W—LS Grad—209 Chelsea Dr Decatur Ga 2116 Keyes Ave5 G2197
 *Furman Donald L—PhB 1—Rosendale 307 Lathrop5 B7415
 Gaden Lois E—BA 4—5178 Jones Omaha Nebr 233 Langdon3 F9600
 *Gallaher John K—PhB 1—Box 253 Mexico Mo 200 N Prospect Ave5 F1325
 *Gallo Gregory L—BA 1—2110 60th St Kenosha 207 N Brooks5 F7947
 *Ganshirt Margaret R—BA 1—RR 1 Gratiot 430 N Randall Ave5 F3600
 Gardner Rosemary G—HygC 4—3260 N Holton St Milwaukee 12 1402 University Ave5 F3600
 *Garmendia Luis I—A 4—5457 Hudson St Montevideo Uruguay 2002 Madison5 F5937
 Gates Joanne W—BA 2—Madison 148 Breese Ter5 F8921
 Giles Edna T—LS Grad—Madison Shropshire Farm Route 4 Madison G525W
 *Gimbel Ann—BA 1—405 Newbold Rd Jenkintown Pa 130 Langdon3 G5797

Harrington Says Latin America Is U. S. Controlled

"Control of Latin America from the military and economic points of view has been the American policy with Latin American countries for a good many years."

Prof. Fred H. Harrington stressed this point in his speech on the direction of Latin American relations and policies at the Spanish department lecture in the Union theater last week.

Our military control has been carried out in order to protect ourselves against possible outside aggression, continued Prof. Harrington. Presidents Monroe, Lincoln, Theodore Roosevelt, Wilson, and Franklin Roosevelt have all tried to improve our military hold upon Latin America.

Economic control, Harrington then pointed out, has been in the forms of trade in agricultural products, capital investments, and selling of manufactured goods. Henry Clay, James Blaine, Woodrow Wilson, and Franklin Roosevelt have all contributed to these ends.

Force and threat of force are the two ways we have gained our ends, claimed Harrington, but some day Latin America may become less like Egypt and Greece and more like our Dominions.

Prof. Harrington's hope for the future is that Latin America and the United States may have a better appreciation of each other and that some day Latin America may emerge as a region that may work with us and not against or under us.

Ski Club Meeting Opens Busy Week for Hoofers; Hold Work Day Saturday

The first event on the busy Hoofers' calendar of this week will be the Ski Club meeting on Thursday evening at 7:30.

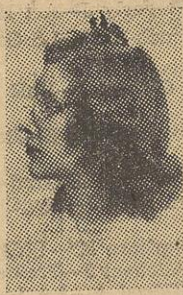
Saturday morning has been proclaimed as a Heel's Work Day at Hoofers' Quarters in preparation for the Hoofers Open House Saturday night. All students interested in Hoofers' activities are invited to visit Hoofers' Quarters and see firsthand some of the things Hoofers are doing this year.

Sunday night's Grub Stake at Hoofers' Quarters will end a busy weekend. Students are invited to be fed at cost around the blazing fire.

Music Committee Holds First Jazz Record Concert

The Jazz Record Hour presented by the Union Music committee under the direction of Jerry Chazen will hold its first concert this Wednesday evening, Feb. 21, at 7:30 in the Beefeaters room. All Union members are invited. There is no admission charge.

AFTER HOURS



By JOANN OYAAS

Guest Columnist this Week is Monnie Abrams

So what are you doing with your "after hours?" Bridge? Movies? Novels?

It's not difficult to answer this question. A glance around Madison provides sufficient evidence to furnish an affirmative answer to each of the three diversions mentioned. We're not denouncing this, but we are asking for help. Help in one of the biggest projects that has ever hit Wisconsin—namely, the Work for Victory drive.

STUDENTS FAIL TO COOPERATE
This project may fail because of lack of cooperation. Students simply will not give up their time to help win the war—they are much too engrossed with the more entertaining side of life.

As an example . . . Elizabeth Waters hall houses over 500 girls. Of this number, 52 girls said they would work approximately four hours a month at RMR if called upon. This shameful total is only exemplary of the majority. Special credit, however, must be given to the sororities who have turned out almost en masse.

We're not asking you to give up studying or outside work to participate in this job. We're only appealing to those students who are not putting themselves through school, those students who are only carrying fourteen or fifteen credits, those students who know they can spare the time.

HERO WORKS THERE
There's a man working full time at RMR who is a veteran of the Anzio campaign. When in battle, he

U. S. Navy Offers Radar Training To Qualified Men

The Navy recruiting station at Madison brings new and additional information of importance to young men who have a good aptitude in mathematics and physics.

Radar, with its uses of the formulae of math and science, has many applications of the things young men learn in school. In electronics, more than in any other branch of military service, a man has opportunity to apply as well as add to his store of knowledge.

Radar is the most uncrowded field with the greatest postwar job opportunities. It enjoys—in the Navy—a reputation of being a little difficult but easy for those who had a scientific high school background.

Unlimited complement in the petty officer brackets makes possible advancement after graduation, after 10 months in school, to petty officer ratings.

Many young men of 17, and others facing military service after their pre-induction physical through the draft, are seeking the information about radar from the Navy's recruiters. They are learning whether they qualify or what they need to know to pass the Eddy test, qualifying test for radar, which is given at the Navy Recruiting station in Madison on Tuesday, Thursday, and Saturday at 2 p. m. Those passing the Eddy test enter the Navy as Seaman First Class. Theirs is the opportunity to get, after "Boot," ten months of electronic engineering . . . the study of radar maintenance.

saw a buddy of his, a younger man, in direct line of enemy fire. Endangering himself, he saved his buddy. The result was his receiving an honorable discharge—and a wooden leg. He's working at RMR today to bring his buddy home more quickly.

It's more tragic than words can express that, apparently, the students of the University of Wisconsin haven't enough conception of what this war means to do something to help end it. This may sound presumptuous, but there is no other conclusion to draw in the face of the overwhelming lack of cooperation in one of the most vital drives ever projected—the Work for Victory drive.

Kennicott Flowers

627 State B. 1002

Parkway Theater

EVENING AT 8:30

Tuesday, February 27



MCA PRESENTS
THE GRANDEST SHOW
YOU'VE EVER SEEN!

IN CONCERT

"THE SINGING IDOL OF
ALL THE AMERICAS"

TITO
GUIZAR

AND HIS
PAN-AMERICAN
ENSEMBLE

★
FEATURING
OUTSTANDING LATIN
AMERICAN ARTISTS IN
A SPARKLING FIESTA OF
RHYTHMIC AND
IRRESISTIBLE MUSIC!
FAMOUS DANCING STARS!
BRILLIANT SOLOISTS!

★
COLORFUL AND GAY
AS OLD MEXICO!

★
SEATS AT
BOX OFFICE TOMORROW
Main Fl. \$1.80, \$2.40; Lages \$2.40
Bal. \$1.80, \$1.20

cult but easy for those who had a scientific high school background.

Unlimited complement in the petty officer brackets makes possible advancement after graduation, after 10 months in school, to petty officer ratings.

Many young men of 17, and others facing military service after their pre-induction physical through the draft, are seeking the information about radar from the Navy's recruiters. They are learning whether they qualify or what they need to know to pass the Eddy test, qualifying test for radar, which is given at the Navy Recruiting station in Madison on Tuesday, Thursday, and Saturday at 2 p. m. Those passing the Eddy test enter the Navy as Seaman First Class. Theirs is the opportunity to get, after "Boot," ten months of electronic engineering . . . the study of radar maintenance.

International Club to Hold Supper Meeting Feb. 18

International Club will hold supper meeting Sunday, Feb. 18, in the reception room of the Union at six o'clock, according to Jeanne Anderson, secretary. The supper will be followed by a program of French music.

WARNER BROS. MAJESTIC

LAST DAY

Twin Thrillers
"CRY OF THE WEREWOLF"
with Stephen Crane
and "SOUL OF A MONSTER"

— Tomorrow —

"DRAGON SEED" Katharine Hepburn, and Phil Baker in
"TAKE IT OR LEAVE IT"

SEATS AT BOX OFFICE WED. **PARKWAY • MAR. 2 & 3** MESSRS. SHUBERT present, **AN ALL-STAR CAST in** **THE MERRY WIDOW** A MODERN VERSION OF **MUSIC BY FRANZ LEHAR** NEW BOOK and LYRICS by ROWLAND LEIGH and RANDOLPH CROFT **BALLET FROM THE BOSTON OPERA COMPANY** MATINEE —Main Floor \$2.40 - \$1.80; Loges \$1.80; Balcony \$1.80 - \$1.20 EVENINGS —Main Floor \$3.00 - \$2.40; Loges \$2.40; Balcony \$1.80 - \$1.20

SPECIAL ANNOUNCEMENT!
Frankenstein, Dracula, Wolf Man, the Hunchback, the Mad Doctor
INVITE YOU TO THE
HORROR CONVENTION
at the
"HOUSE OF FRANKENSTEIN"
PARKWAY THEATER
STARTING THURSDAY
You Can't Miss It! Just Follow the Crowd!

ORPHEUM

TODAY & TOMORROW

IT'S JUMPIN' JIVE JUBILEE DAYS!

STAGE **CAB CALLOWAY** and his **COTTON CLUB ORCHESTRA** and **HARLEM REVUE**
FEATURING
BILL BAILEY
HOLMES & JEAN
DOTTY SAULTERS
J. C. HEARD & JONAH JONES
Tyree GLENN & Milton HINTON

ON THE SCREEN
MOST DANGEROUS LOVE A MAN EVER FOUGHT!
Destiny
with GLORIA JEAN and ALAN CURTIS
FRANK CRAYEN GRACE McDONALD
VIVIAN AUSTIN MINNA GONNELL FRANK EATON

WARNER BROS. **CAPITOL** NOW SHOWING
Bored Beauty Meets Bold Brigand
Joan Fontaine
Arturo de Cordova
"FRENCHMAN'S CREEK"
IN TECHNICOLOR
A MITCHELL LEISEN PRODUCTION
From the Novel by Daphne du Maurier
Directed by MITCHELL LEISEN
A Paramount Picture

PARKWAY NOW
Those Bumsteeds Are Here Again!
COLUMBIA'S **Leave it to Blondie**

STRANGE THINGS HAPPEN on
"MAIN STREET AFTER DARK"
with Edward ARNOLD
Hume CRONYN, Selena ROYLE

MADISON NOW
MIGHTY THEIR GLORY!
"THIRTY SECONDS OVER TOKYO"
A MERVYN LEROY PRODUCTION WITH
Van JOHNSON • Robt. WALKER
PHYLLIS THAXTER
SPENCER TRACY
LIEUTENANT COLONEL JAMES H. DOOLITTLE

STRAND NOW
Never so many stars . . .
Never such stirring drama!
TYRONE DOROTHY
POWER • LAMOUR
"Johnny Apollo"
RITA HAYWORTH • GINGER ROGERS • CHAS. LAUGHTON • HENRY FONDA
ROCHESTER • PAUL ROBESON • CHAS. BOYER
'Tales of Manhattan'

Boxers Nip Lions; Seahawks Fight Here Friday Night

Coach Tom Kenneally's Badger boxers open their 1945 home season Friday night, when they engage the Iowa Seahawks in the fieldhouse ring. Both teams have battled the Bunker Hill mittmen, and each squad came out with a 4-4 tie.

The Badger ringmen returned Sunday evening after walking off with a 5-3 victory at the State College, Pa. In taking all but two of the six bouts contested, each side forfeiting one bout to the other, the Wisconsin mittmen hung up their eighth win over the eastern school since 1936.

Two headline decisions raised ire on both benches. In the 127-pound class, previously unbeaten Akio Konoshima was, in the words of his coach, "robbed". The Japanese-American lad tired badly in the last round but outslugged his Navy trainee conqueror, Bob Fields of State, in the first two stanzas.

Also among the unpopular decisions was Hal Sullivan's triumph over Penn State's Joe Bondi. Sullivan, 145-pounder, carried two of the three rounds by his aggressive infighting and harder blows.

Carl Kulawinski, lone Badger vet when the boxers are on the road, remained in the unvanquished class along with Sullivan and Bill Neary, who topped off Cardinal scoring with a decisive trimming of sailor Ed Davies, in the 165-pound class. The lanky Kulawinski continued his winning ways in the light-heavy division by decisioning Vaughan Stapleton, normally a 165-pounder. The Merrill boxer's reach and added weight proved the margin of victory.

State's best men did not box, as Kenneally did not feel Eddie Ossowski's broken nose was sufficiently healed to allow him to clash with Captain Paul Smith in the 135-pound bracket. Heavyweight Larry Luhrs, injured in a meet with the Coast Guard Academy, was unable to compete for the Nittany Lions.

Badger Louis Davis succumbed in his first bout to the stinging lefts of Penn State's Nick Ranieri in the heavyweight bout. A clear-cut win was registered by V-6 Dave Turner, who gained the decision over Nittany 155-pounder Jack Seitchik by a series of rights to the head.

In their season opener at Bunker Hill, the Badgers emerged from the colorful slugfest with an even split in the eight matches. The Seahawks will come here Friday night also with an even split.

Middlemas Individual High Scorer in 3-Way Swim; Wildcats Win, 55-28-22

Badger swim captain Bob Middlemas, V-12 from Milwaukee, arose the individual star in the triangular meet at Evanston Saturday, which saw a strong Northwestern squad edge out Hoosier and Badger entrants to the tune of 55-28-22. The stocky Cardinal swimmer's iron-man trick of taking the three longest freestyle events in every meet was snapped at four straight.

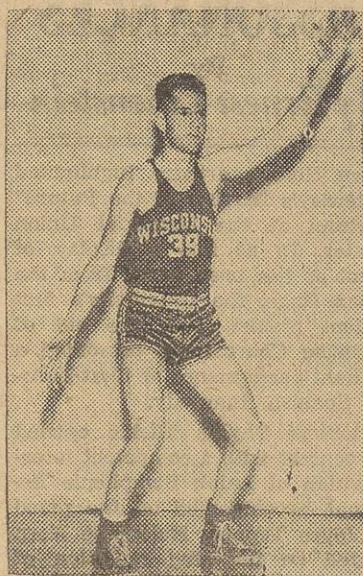
However, "Mouse" holds the distinction of inflicting the first defeat on Wildcat Bill Heusner in the 220. The Badger engineering trainee took the 100-yard dash but was stopped by the same Heusner in the quarter-mile.

In addition to the crack crawl man's accumulation of 11 points, other Cards registering markers include: Jim Price, Bill McMannis, Paul Klein, Ivan Carbine, and Frank Crick. The freestyle relay team of Klein, McMannis, Crick and Cox finished only a few feet behind the winning N.U. quartet.

BIG 9 STANDINGS

	W	L	PCT.
Iowa	8	1	.889
Illinois	7	1	.875
Ohio State	8	2	.800
Purdue	6	6	.500
Wisconsin	4	6	.400
Michigan	5	7	.416
Minnesota	3	7	.300
Northwestern	3	8	.273
Indiana	2	8	.200

Leaves for Service



BILL ZORN

Smith Is Second In Scoring Race

Wisconsin Forward Des Smith moved into second place in the Big Nine scoring race by making 33 points over the weekend, figures compiled late last night revealed. Max Morris still tops the point-makers with 169 markers, while Smith has 118.

The top 15 scorers:

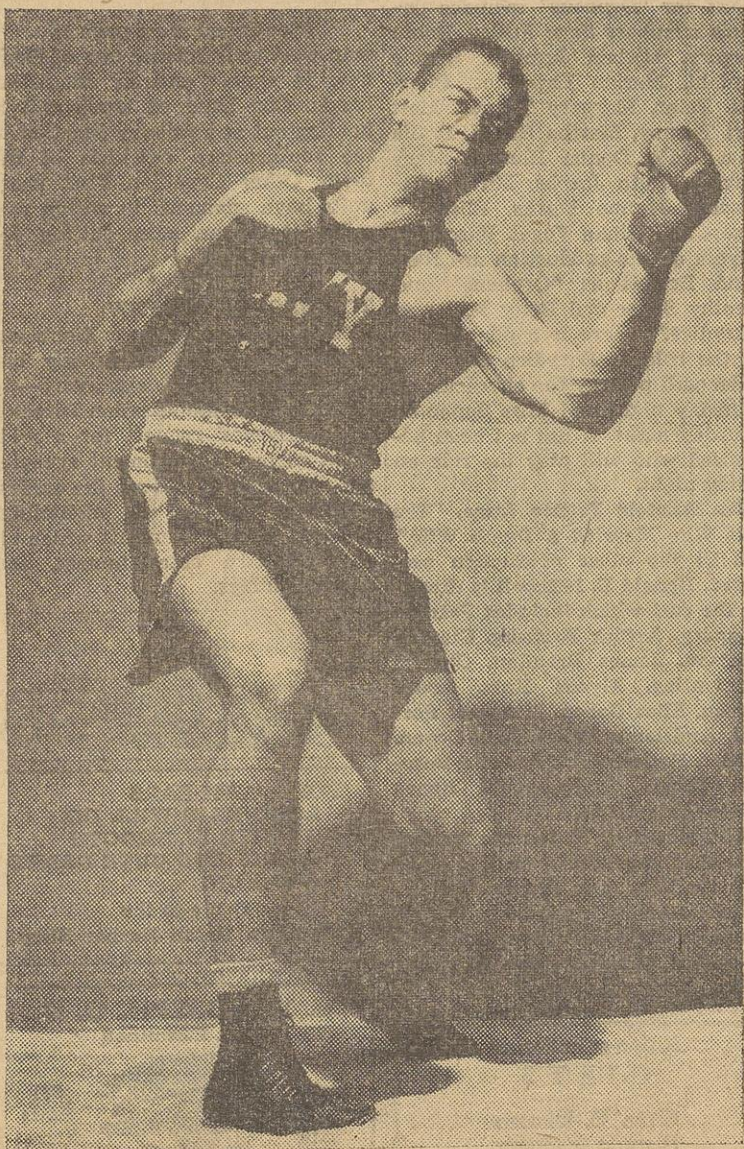
	G	FG	FT	PF	TP
Morris, N.U., c	11	61	47	30	169
Smith, Wis., f	10	52	14	33	118
Risen, O.S.U., c	10	46	24	29	116
G'han, Mich., f	12	45	24	28	114
And'son, Pur., f	12	43	27	22	113
H'm's'n, Minn., c	9	37	35	19	109
H'f'm'n, Pur., c-g	10	43	22	26	108
Pa'r'son, Wis., f-g	9	37	32	30	106
C. Wilk's'n, Ia., c	9	38	28	13	104
K'r'lov'y, Ind., c	10	34	35	44	103
J'h'n'son, Wis., g	10	40	21	16	101
Kirk, Ill., g	7	39	21	19	99
Ives, Iowa, f	9	35	19	22	89
C'pel'nd, Ind., f	10	34	20	17	88
H. Wilk's'n, Ia., g	9	32	22	22	86

*Not including the Minnesota-Illinois game Monday night.

Intermural Bowling to Start

Intermural bowling will get under way at the Union bowling alleys tonight, announced Jerry Chazen, chairman of intermural athletics for the House Presidents' council. Fourteen teams representing various men's houses on campus have already entered the league.

Seahawk Heavyweight Fights Here Friday



MELVIN LEVY—Iowa Pre-Flight

Badgers Almost Pull Upset Of Year; Hawks Win, 54-53

Daily Cardinal SPORTS

SEAHAWKS BEAT UW BY 4 POINTS IN CLOSE MEET

Threatening for two hours to upset the Iowa Pre-Flight track team, the Badgers saw disappointing defeat in the final event of Saturday's meet in the Armory annex. Wisconsin led by a score of 50-49 going into the relay, but the Seahawks were able to pull ahead and take this one-mile affair to win by a margin of 54-50.

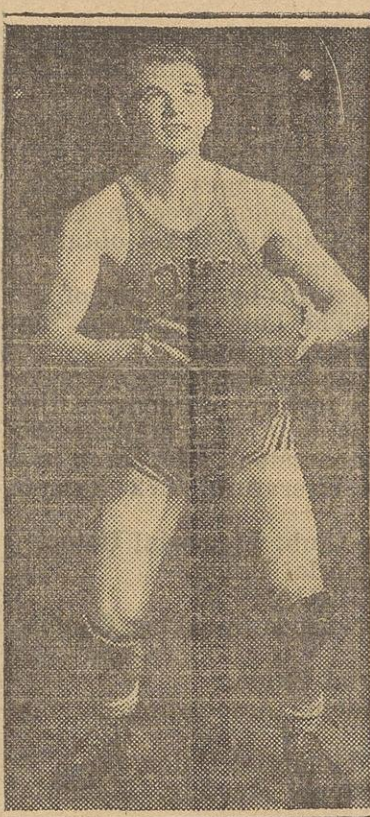
The Card lead was established early by the fine running of its distance men, who managed to win all four first places. Bob Johann started it off by nipping Len Weed, former Southern California star, at the tape in the mile run, as Warren DeVoe grabbed off third for the home team.

In the two mile run, Bill Lawson, Badger two-miler, trailed Weed until the last lap, when his strong finish gave the Pre-Flight star his second defeat.

In the half mile, Ken Chandler came home ahead of two Seahawk runners to win in the good time of 2:01. Captain Ray Zobel completed the grand slam by taking the quarter-mile from the Navy men.

Norm Sackett put on a great show to win the pole vault, the Iowa competitors pushing him up to 13 feet. Sackett thrilled the crowd by reaching this height and then coming back to tie Wisconsin's Don Rodeghier for a first in the high jump. Hank Jeffay captured the other of the Jonesmen's seven firsts in the 40-yard dash.

'Fly in the Ointment'



MURRAY WIER
Iowa Forward

Badgers Wallop Purdue by 64-48

Paul Hoffman of Purdue hit 27 points when Purdue came to Madison last year, but this time it was Des Smith, Wisconsin forward, who hit the score-plus tally, as he led the Badgers to a revenge 64-48 victory over the Boilermakers Saturday night at the fieldhouse.

Purdue led once, at the very beginning, when a free throw by Forward Bob Lewis gave the Indiana men a 1-0 lead. But Ray Patterson tossed in a free throw and two baskets to make the score Patterson 5, Purdue 1.

WISCONSIN ALL THE WAY

Then the rest of the Badgers chipped in, and Wisconsin held advantages of 8-3, 22-11, and 32-18 before leading, 37-22, at the half.

As the second half opened, Myrwin "Red" Anderson slipped 8 points through the nets and Paul Hoffman made a charity toss to cut Wisconsin's margin to 40-31. But free throws by Bill Johnson and a medium-length one-hander by Smith made the score 44-31, and from then on the Badgers' lead was never less than 11 points. The score at times was 49-36, 54-34, 59-44, and 64-44, before a rebound bucket by Jack Stillwell closed out the point-making.

HOFFMAN TOPS PURDUE

Hoffman netted 15 points to pace Purdue's offensive, and Anderson followed with 12. Patterson had 13 tallies for Wisconsin, and Johnson made 12.

At times during the game, Smith had half of Wisconsin's score. The Badgers led, 37-22, at halftime, and Des had 18 counters. When the Badgers led, 52-37, Smith had 27 of the markers.

Hill Defeated in Finals; Purdue Cops Mat Title

Bill Hill, Wisconsin's only representative at the Big Ten conference wrestling meet Saturday at Evanston, won his semi-final bout with Liang, of Purdue, 3-2, but was defeated by Bill Burwell in the finals, 5-4.

Purdue won the conference mat title, with Iowa second, Illinois fourth, and Indiana fifth. Ohio State's 345-pound heavyweight, George "Dreadnaught" Bollas, took his match with Lester Schmidt of Indiana, 3-0.

Johnson Nets 17; Illini Cop, 49-48

By REX CAPWELL

(Cardinal Special Correspondent)

Iowa City, Ia. — Wisconsin's Badgers gave the University of Iowa basketball team its worst scare of the season last night, by putting on a stirring last-minute rally that fell short by one point of tying the score. The Hawks' early second-half margin decided the game at 54-53 in their favor.

Little Murray Wier, back to his old tricks of winning ball games when called on to relieve an Iowa starter, turned the trick again at the fieldhouse by scoring 14 points to pace the Hawkeyes. Clayton Wilkinson, Iowa center, also had 14 counters.

But it was Badger Bill Johnson who stole scoring honors. The stocky guard put on a fine exhibition of long shooting to rack up 8 field goals, which, with 1 free throw, gave him 17 tallies. Center Ray Patterson had 14 markers for the Cards.

Wisconsin jumped into an early 8-3 lead, but the Hawks quickly overcame it, as Wier, called upon early in the game, threw in important baskets. It was Johnson's long shooting which kept the Badgers in the game, and they trailed at the half, 29-24. Bill hit 11 points in the first period.

Iowa lengthened its advantage to 33-24, but the Badgers came right back to make the count 33-26. The teams traded scores all the way through the second period, with the Hawkeyes always leading by 7-to-10 points.

WISCONSIN	FG	FT	PF	TP
Smith, f	1	2	4	4
Mathews, f	1	2	2	4
Bunke, f	3	0	0	6
Goering, f	3	0	0	6
Patterson, c	5	4	4	14
Johnson, g	8	1	4	17
Zorn, g	0	2	1	2

Totals 21 11 15 53

IOWA	FG	FT	PF	TP
Ives, f	6	0	3	12
Postels, f	1	0	0	2
Wier, f	5	4	1	14
C. Wilkinson, c	6	2	1	14
Spencer, g	0	1	4	1
H. Wilkinson, g	4	3	4	11

Totals 22 10 13 54

Officials: Townsend (Michigan) and Haarlow (Chicago).

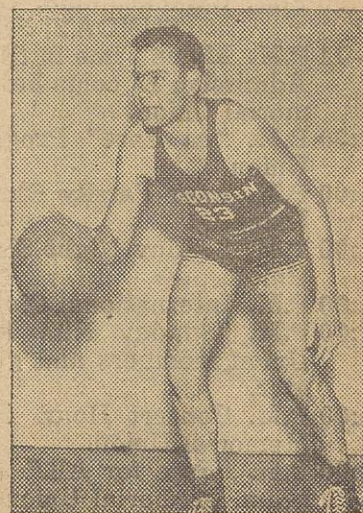
Attendance: 11,500.

Halftime score: 29-24 in favor of Iowa.

The Hawks held a 54-47 advantage with a minute and a half to play, but Patterson tipped a jump ball through the nets, and Vince Goering, called upon by Coach Harold "Bud" Foster for some long baskets, obliged with 2 set shots, but the Badgers couldn't score the one point they needed to tie.

In the other Big Nine game played Monday night, Illinois nosed out Minnesota, 49-48.

High Man for Cards



BILL JOHNSON

Directory Supplement-

(Continued from Page 3)

- *Glickman Irene—BA 1—307 W 79th St New York 24 N Y 1635 Monroe5
- *Goldberg Leon M—BA 1—4137 Euclid Indiana Harbor Ind 740 Langdon5 F2500
- *Goldblatt Salli J—BA 1—45 Warweek Winnetka 5 Ill 225 Lake Lawn Pl3 B 993
- Goldgruber John J—Ed Grad—Madison 301 Forest5 B3114
- *Goldwasser Rona—BA 1—3601 Ainslie Chicago Ill 108 Langdon3 F2916
- Gonerling Loretta C—BA 3—2018 N 22nd St Sheboygan 308 N Murray5 G5126
- Gooding Mary E—HE 2—Madison 1615 Hoyt5 G3688
- *Gorenstein Pauline—BA 1—7375 Tulane St Louis 5 Mo 602 Langdon5 F2799
- *Gothard Dorothy J—PreMed 1—9115 S Bell Ave Chicago 20 Ill 633 Langdon5 B7090
- *Graf Glenn W—PhB 1—2250 N 65th St Wauwatosa 13 106 N Prospect Ave5 G 405
- Graff Marjorie C—L 1—1523 N Durkee St Appleton 142 Langdon3 F1665
- *Grande Beatrice A—BA 3—Madison 406 Paunack Pl5 F9749
- Gray Helen Theodora—BA 2—1421 S Douglas Springfield Ill 326 S East Ave Viroqua 1402 University Ave5 F3600
- Greenfield Priscilla J—HygC 4—326 S East Ave Viroqua 633 Langdon5 B7090
- Greer Jane F—BA 2—Route 2 La Crosse 740 Langdon5 F2500
- *Griggs John S—PreMed 1—805 Broadway Baraboo 803 State5 B6070
- *Gunter H Glenn—LS Grad—1709 Hancock St Rockford Ill 1609 Monroe5 F1779
- Gwitzman Rita J—BA 1—1087 E 8th St Brooklyn N Y 150 Iota Ct3 G 151
- Hack Lenore E—BA 1—Box 174 Goodman 150 Iota Ct3 G 151
- Hade John E—PhB 1—3820 N Oakland Ave Milwaukee 11 150 Iota Ct3 G 151
- *Hagen Carol L—SJ 3—3736 N Port Washington Ave Milwaukee 12 Chadbourne1501
- *Haines Hubert R—BA 1—Madison 2125 E Washington Ave4 B1519
- *Halbreich Janice—BA 2—755 Ocean Ave Brooklyn N Y 216 Langdon3 G3616
- *Halbreich Stanley M—BA 1—19 Admiral Rd Buffalo N Y 311 N Brooks5 G5393
- Halldorson Thorhallur—A 2—Laujas Reykjavik Iceland 1210 W Dayton5 G4057
- Halverson Andrew W—A Grad—Madison 305 Lathrop5 B1387
- *Halverson Lois A—BA 2—Hillsboro N D 16 Mendota Ct5 F8523
- Halverson Shirley J—BA 1—Lake Kegonsa R 1 McFarland Elizabeth Waters708
- *Hamann Shirley L—MedT 1—3103 W Wells St Milwaukee 8 3432 Sunset Dr5 G1141-W
- *Hambrecht Duane A—PhB 1—2413 Franklin Ave Middleton Middleton
- Hannan Mariel J—PhBOT 2—Baskerville Harbor Pheasant Branch Madison 621 N Frances3 G2541
- *Harbaugh George O—PreMed 1—R 4 Box 167 Kenosha 625 N Frances3 B2797
- *Harden Russell J—PhB 1—RR 1 Fond du Lac 219 N Brooks5 B2797
- *Harley William G—PhB 1—530 N Central Ave Chicago 44 Ill 150 Iota Ct3 G 151
- *Harms Laura E—HE 1—Grafton 265 Langdon3 F7101
- Harriman Albert O—L 1—Madison R 4 Madison5 O20J2
- *Harris Arlene V—BA 1—229 W 78th St New York 24 N Y 124 Langdon3
- Harris Susan—PhB 1—Cottage Grove Elizabeth Waters752
- Harrison Amy L—HygC 4—Ringwood Ill 1402 University Ave5 F3600
- Hartlett Helen D—BA 3—Madison 228 N Mills5 F5387
- *Hauser Lorraine C—BA 1—Box 56 Tony Barnard2356
- Hayes Alfred S—LS Grad—Madison 1906 University Ave5 F2239
- *Heiz Lucille F—PhB 1—66-20 108th St Forest Hills N Y 16 Mendota Ct5 F8523
- *Helmke Virginia W—A Fellow—Madison 421 N Murray5 G1479
- *Henriksen John R—PhB 1—1210 Harlem Blvd Rockford Ill 614 Langdon5
- *Hester Robert A—PED 1—2908 N 5th St Milwaukee 12 705 Langdon5 F1816
- Hillary Orvin F—L 1—Shullsburg 740 Langdon5
- *Hilliard Kali R—BA 1—Box 175 Gratiot 615 N Lake5 B7054
- Hines Joyce R—BA 4—Frances Sheimer College Mt Carroll Ill 703 W Johnson5 F3551
- *Hines Roberta J—GrN 1—7413 23rd Ave Kenosha Elizabeth Waters757
- *Hinze LeRoy W Jr—A Grad—Madison 703 W Johnson5 F3551
- *Hirsch Phyllis J—BA 2—312 Ave F Brooklyn 18 N Y 708 Langdon5 B1571
- *Hirschfeld Ruth F—BA 1—200 Pinehurst Ave New York 33 N Y 114 N Orchard5 G3534
- *Hirt Susanne—PreMed 3—Madison 752 W Washington Ave5 F3406
- Hopkins Jean—BA 2—Madison 752 W Washington Ave5 F3406
- *Hornstein Marvin J—PreMed 1—5520 S Shore Chicago Ill 111 S Orchard5
- *Horsey Thomas C Jr—BA 3—Madison 2639 Kendall Ave5 F2279
- *Hovek Rosemary G—BA 1—715 E Washington Appleton Elizabeth Waters745
- *House Joan R—BA 2—R 3 Ravenna Ohio 625 N Henry3 B1820
- Huchthausen Jean A H—HE 2—R 5 West Bend 911 Clymer Pl5 G1191
- *Humphrey Madge A—HE Grad—Patch Grove 230 N Brooks5 F3287
- Imhoff Lorraine D—HygC 4—2518 Dahle St Madison 4 1402 University Ave 5 F3600
- *Irvine Dorothy A—BA 2—308 6th Ave Iron River Mich 265 Langdon 3 F7101
- Jackson Joanne—HE 2—1901 Adams St Madison 5 265 Langdon 3 F7101
- *Jackson Mrs Marjorie C M—BA 3—Madison 1438 Vilas Ave5
- *Jacobson Doris S—BA 1—160 Bush St New York 53 N Y 936 W Johnson 5 F4906
- *Jacobus Charles D—PhB 1—8117 Warren Ave Wauwatosa 13 744 Langdon 5 F3600
- *Jakubowski Richard C—PreMed 1—8227 Coles Ave Chicago 17 Ill 640 N Henry 3 B2623
- *Jasa Mary L—PhC 1—3717 N 17th St Milwaukee 6 1634 Sherman Ave 4 F4384
- *Jayko John R—PreMed 1—618 N Spaulding Ave Chicago 24 Ill 314 N Murray 5 B1205
- *Jensen Sylvia M—BA 1—Milltown 615 Howard Pl 3 F1133
- Jindra Alvin C—A 2—Mishicot 432 N Lake 5 F9087
- *Johnson Dorothy M—BA 2—429 Grayton Rd Kingsford Hts Ind 142 Langdon 3 F1665
- *Joseph Essene H—BA 1—12 S Sophia St Fond du Lac 825 S Shore Dr 5 B 438
- Josheff Luba V—BA 1—Madison Monona Dr R 4 5 F8519
- *Juday Elizabeth A—LS Grad—433 Dahl St Rhinelander 521 N Henry 3
- Judson Judith I—HygC 4—319 6th Ave Baraboo 1402 University Ave 5 F3600
- Juster Barbara J—AA 3—Madison 730 Miami Pass 5 B 164
- Kacin Shirley H—BA 1—6325 N Hermitage Ave Chicago Ill 234 Langdon 3 B7437
- *Kahn Lester H—PhC 1—34 Ericsson St Rochester 10 N Y 220 N Brooks 5 F3654
- *Kaiser Joanne E—BA 1—7000 Third Ave Kenosha Elizabeth Waters757
- *Kalt Gloria J—BA 1—67-56 Groton St Forest Hills N Y 16 Mendota Ct 5 F8523
- *Kaswell Joan R—BA 1—751 Walton Ave New York N Y 140 Langdon 3 G5520
- Kautz Florence M—SJ 3—540 E 23rd St Brooklyn 10 N Y 211 Langdon 3 F8271
- *Kawahara Fred K—LS Grad—5-9-A Topaz Utah 1021 Clymer Pl5 G1875
- *Kehoe (Daniel) Patrick—BA 1—1455 Newberry Ave Marinette 1021 Clymer Pl 5 B1875
- Keith George M—LS Grad—Madison 4158 Cherokee Dr5 F7444
- Kelley Gordon A—PreMed 2—New Kingston Pike Bearden Sta R 14 Knoxville Tenn 1021 W Johnson 5 F2424
- *Keyes B Jane—BA 1—6037 35th Ave Kenosha Elizabeth Waters708
- *Kindschi Kenneth H—BA 1—Madison 302 Owen Dr 5 O110R12
- King Ethel K—PhC 2—370 Grove St Chicopee Falls Mass 265 Langdon 3 F7101
- *King Hai T—LS Grad—c/o Dr Ling Lien-Ching Cheeloo Univ Chengtu China 307 N Orchard 5 B3971
- *King Mildred L—PhBOT 2—2937 N Marietta Milwaukee 11 Barnard1121
- *Klein Fern—BA 1—1706 E 77th St Chicago 49 Ill 225 Lake Lawn Pl 3 B 993
- *Kliscz Mildred—BA 1—Lublin 615 Howard Pl 3 F1133
- Klosterman Charles C—LS Grad—2401 Page Ave Louisville Ky 740 Langdon 5 F2500
- *Klosterman Marjorie A—PreMed 1—Mineral Point 823 Irving Pl 5 F8505
- *Knoke Lorraine B—BA 1—Gresham 819 Irving Pl 5 F8505
- *Knowles Robert P—A Grad—Box 269 Unity Saskatchewan Can 324 N Charter F 749
- *Knutson Elaine R—GrN 1—Madison 405 E Washington Ave3 G2512
- Koch Richard W—PreMed 1—R 1 Miamisburg Ohio 428 N Murray 5
- Koerth Roland G—BA 1—Madison 148 W Gilman3 B3852
- *Koppel Marjorie R—LS Grad—1225 Ave R Brooklyn N Y 625 N Henry 3 B1820
- *Kosloske Roger A—BA 2—177 W 12th St Fond du Lac 630 Langdon 5 F2898
- *Kosterlitz Janet R—BA 1—1301 Madison Park Chicago 15 Ill 225 Lake Lawn Pl 3
- *Kotnik Carolyn M—BA 2—1738 N 12th St Sheboygan Elizabeth Waters2364
- *Kramer Herbert A C—BA 1—630 Winneconne Neenah 1015 W Johnson 5 B3281
- *Kreml Richard C—AA 1—1442 N Lockwood Chicago 51 Ill 812 W Johnson 5
- *Krohn Donovan L—A 1—300 S Beaumont Rd Prairie du Chien 1800 University Ave5 F3600
- Krohn Elvera E—HygC 3—214 Randall St Shawano 1402 University Ave 5 F3600
- *Kwan Chi Kai—LS Grad—11 Linhw St Chungking China 310 Campbell5 F8963
- *Ladd Marilyn J—BA 1—1235 4th Ave SE Cedar Rapids Iowa 615 Howard Pl 3 F1133
- *Lader Bette G—BA 2—3354 Dorchester Rd Shaker Hts 20 Ohio 244 Lake Lawn Pl 3 F6839
- *Ladner William—PreMed 1—1710 Crotona Pk E Bronx 60 N Y 1024 Clymer Pl 5 F3892
- *Lane Charlotte W—LS Grad—Mineral Ridge Ohio 230 N Brooks 5 F 833
- LaReau William L—BA 1—Madison Hoboken Beach 5
- *Lassen Roslyn—HE 1—Madison 4109 Winnemac Ave 5
- *Latham Barbara J—BA 1—Madison 539 W Main G3036
- Lawson Margaret L—BA 1—1644 Mountain Ave Wauwatosa 13 633 Langdon 5 B7090
- *Leaf Selma F—BA 1—3902 Congress Chicago 24 Ill 225 Lake Lawn Pl 3 B 993
- Leahy William E—Ed Grad—301 Bates Sauk City Sauk City
- *Lee Shang—LS Grad—c/o Lee Chi-Xon Judicial Yuen Chungking China 1823 University Ave 5 F2082
- Legere Marcia P—BA 3—1928 Silverwood Ter Los Angeles Calif 622 Mendota Ct 5 G4411
- *LeMieux Albert F—LS Grad—St Norbert Abbey W DePere 10 S Park 5 B7264
- Leonberger Jane C—PhB 1—Durand Elizabeth Waters
- *Levi Gary M—PreMed 1—98 Argyle St Rochester 7 N Y 625 N Frances 3 B2396
- *Levi Joel H—PreMed 2—98 Argyle St Rochester 7 N Y 625 N Frances 3 B2396
- *Levinson Ira L—BA 1—50 E 191 St New York N Y 740 Langdon 5 F2500
- *Levitt Dorothy—BA 3—4035 Paseo Kansas City 4 Mo Barnard1876
- *Lichtenwalter Calvin J—PhB 1—3558 W Armitage Ave Chicago 47 Ill 312 N Mills 5
- *Lieberman Evelyn D—BA 1—108 S Parkside Chicago 44 Ill 636 Langdon 5
- Lieberman Minette—BA 2—4908 Sheridan Rd Chicago Ill 925 University Ave 5
- *Lins George T—A 4—R 1 Box 12 Spring Green
- *Linzer Blossom N—BA 1—2302 Ave O Brooklyn 10 N Y
- *Linzer Blossom N—BA 1—3202 Ave O Brooklyn 10 N Y 1609 Monroe 5 F1779
- *Littig Lawrence W—PreMed 1—Madison 2811 Monroe 5 B6649
- *Lord Marion J—PhB 1—Rib Lake 265 Langdon 3 F7101
- Lorenz Paul K—PreMed 2—Madison 115 E Gilman 3 F2442
- *Lorenz Senta A—LS Scholar—24473 King Rd Romulus Mich 230 Brooks 5 F3287
- *Lowell Scott R—BA 1—Box 523 Onalaska 740 Langdon 5 F2500
- *Lubitz Mildred M—960 Grand Concourse Bronx 56 N Y 215 W Mifflin
- Lublin Sheldon—BA 1—1064 Carroll Pl New York 56 N Y 626 N Henry 3 G1467
- Luby Sylvester D—LS Scholar—302 Center Janesville 723 State 5 B2698
- *Lueck Robert B—PhB 1—815½ N Ashland Ave Green Bay 939 University Ave5 F2737
- *Luick Frederick L—BA 1—Madison 1239 E Johnson 3 F7679-M
- *Lyle John P Jr—LS Grad—5037 7th Ave So Birmingham Ala 200 N Prospect Ave 5 F1325
- MacArthur Mary L—BA 2—7 Old Hartford Tpke Hamden Conn 265 Langdon 3 F7101
- McHugh Catherine M—BA 1—25 Wilson St Worcester Mass 524 N Henry 3 G4625
- McKee Caroline M—HygC 3—R 1 Watertown 1402 University Ave 5 F3600
- *McMahon Helen M—BA 1—1220 Wilson Ave Menomonie 633 Langdon5 B7090
- *McVey David F—PreMed 1—5845 N Kingsdale Ave Chicago 30 Ill 640 N Henry3 B 263
- Maechtle Lowell E—LS Grad—605 Academy Elroy Elroy U 85
- *Magida Audrey—BA 1—161 W 86th St New York 24 N Y 16 Mendota Ct5 F8523
- *Mancuso Rose M—PhC 2—513 S Chicago St Joliet Ill 110 Chestnut5 G 274
- *Marcus Anita J—BA 1—2661 N 68th St Milwaukee 13 124 Langdon3 F 877
- *Markoe Seymour J—BA 1—845 W End Ave New York 25 N Y 312 N Mills5 F2930
- *Marshak Shirley M—PhB 1—6818 N Ashland Ave Chicago 26 Ill 225 Lake Lawn Pl3 F3914
- *Martin Chester E—BA 1—Madison 2138 Oakridge Ave4
- *Martin Nancy G—BA 2—2104 Kenmore Ter Brooklyn 26 N Y 16 Langdon3 F3590
- Marting Catherine L—Ed Grad—Madison 251 Langdon3 F244-R
- *Martinson Robert D—Lear 100 W Johnson 5
- Mason Elizabeth L—PE 100 W Johnson 5
- Matheson Helen M—LS Grad 100 W Johnson 5
- *Matros Fern A—BA 1—100 W Johnson 5
- Maynard Helen V—BA 3—100 W Johnson 5
- *Meadow Doris S—BA 1—100 W Johnson 5
- Meldman Grace—PhB 3—100 W Johnson 5
- *Melvin Beverly J—BA 1—100 W Johnson 5
- *Mendelsohn Bernice L—100 W Johnson 5
- *Mendelsohn Monroe P—100 W Johnson 5
- *Mendelson Helen—BA 1—100 W Johnson 5
- Menn John B—L 1—100 W Johnson 5
- Merkin Norman—BA 3—100 W Johnson 5
- *Merling Danielle D—BA 1—100 W Johnson 5
- Mickelson Elaine V—BA 1—100 W Johnson 5
- *Miller Patsy R—PhB 1—100 W Johnson 5
- *Miller Vera M—HE Grad 100 W Johnson 5
- *Mittelstadt Charles A—A 100 W Johnson 5
- Molinaro Eileen O—PhB 100 W Johnson 5
- Mollod Shirley P—SJ 3—100 W Johnson 5
- Moody Evelyn V—PhB 4—100 W Johnson 5
- Moore Peter R—A Grad 100 W Johnson 5
- *Morgan Bessie S—Ed Grad 100 W Johnson 5
- Morrison Anna E—Ed Grad 100 W Johnson 5
- Morter Jean M—PhB 1—100 W Johnson 5
- *Moulds Richard W—A 2—100 W Johnson 5
- *Mueller Gertrude M—BA 1—100 W Johnson 5
- *Mueller Gretchen A—Ed Grad 100 W Johnson 5
- Murphy Daniel P—PED 3—100 W Johnson 5
- *Murphy Jerome C—BA 1—100 W Johnson 5
- *Namrow Morton—BA 1—100 W Johnson 5
- Neesley Elizabeth P D—LS 100 W Johnson 5
- *Nelson Barbara M—BA 1—100 W Johnson 5
- Nelson Louise G—PhB 4—100 W Johnson 5
- *Nelson Marshall W—PhB 1—100 W Johnson 5
- *Nelson Phyllis I—BA 1—100 W Johnson 5
- *Nemshoff Earl R—PreMed 100 W Johnson 5
- *Neshek James A—BA 1—100 W Johnson 5
- *Neshek Jerome E—BA 1—100 W Johnson 5
- *Neuner Norma—LS Grad—100 W Johnson 5
- *Newman Bella—LS Grad—100 W Johnson 5
- *Nieman Herbert A—BA 1—100 W Johnson 5
- *Nitzkin Donald L—BA 1—100 W Johnson 5
- Noble Nelson C—PreMed 100 W Johnson 5
- *Norakovich Joseph T—A 1—100 W Johnson 5
- Nystrom Alice J—BA 1—100 W Johnson 5
- Oakey Charles W Jr—L 1—100 W Johnson 5
- O'Connor Vicki C—SED 1—100 W Johnson 5
- von Oettingen Elizabeth L—Bethesda Md 100 W Johnson 5
- *Oiseth Alice J—HE Grad—100 W Johnson 5
- *Olson Peter J—A Hon Fellow 100 W Johnson 5
- Olson William J—A Grad—100 W Johnson 5
- O'Neil Mary K—SED 3—Madison 100 W Johnson 5
- Oppert Shirley R—HE 1—100 W Johnson 5
- *Orent Thea H—BA 1—1531 E 10th St 100 W Johnson 5
- *Parker Evvajean M—HE 1—100 W Johnson 5
- *Pasbrig Wallace J—PhB 1—100 W Johnson 5
- Patton Kenneth L—LS Grad—100 W Johnson 5
- *Payson Frances—BA 1—100 W Johnson 5
- *Peavey Harold L—BA 1—100 W Johnson 5
- *Pedersen Harriet C—BA 1—100 W Johnson 5
- Penney Peggy L—BA 1—100 W Johnson 5
- Perego Patricia A—SJ 3—100 W Johnson 5
- *Perkins Marvin W—Ed Grad—100 W Johnson 5
- *Perlmutter Estelle F—BA 1—100 W Johnson 5
- *Perry Gordon S—PhB 2—100 W Johnson 5
- Peter Margaret L—HygC 4—100 W Johnson 5
- *Peters Mary J—SJ 3—116A St 100 W Johnson 5
- Petersen Betty J—BA 2—100 W Johnson 5
- Peterson Eugene R—PhB 2—100 W Johnson 5
- *Peterson Robert L—PhB 1—100 W Johnson 5
- *Pfister Henry—PhB 1—100 W Johnson 5
- *Phillips Janet A—HE Grad—100 W Johnson 5
- Pitman Marion B—BA 2—100 W Johnson 5
- *Pomerantz Lucille V—BA 1—100 W Johnson 5
- *Posthuma Sam G—PreMed 100 W Johnson 5
- *Poulson Kenneth A—PreMed 100 W Johnson 5
- Prideaux Walter I—SED 1—100 W Johnson 5
- *Pyne Anita J—BA 3—310 W 100 W Johnson 5
- *Quam Marion C—MedT 1—100 W Johnson 5
- *Randall Beryl I—PreMed 100 W Johnson 5
- *Randhan Louis F—BA 1—100 W Johnson 5
- Raulin Paula J—BA 2—344 W 100 W Johnson 5
- Rawlings Dorothy M—PhC 1—100 W Johnson 5
- *Rechtman Renee—BA 1—100 W Johnson 5
- Regling Kurt F—Ed Grad—100 W Johnson 5

<p>Re River 1309 W Johnson5 B6610 Anchorage Ky 419 Sterling Ct5 F4757 610 Chadbourne Ave5 G6197 Wilmette Ill 225 Lake Lawn Pl3 B 993 Brooklyn N Y 211 Langdon3 F8271 St Chicago 44 Ill 124 Langdon3 F 877 Milwaukee Barnard1321 621 N Frances3 G2541 News Ave 225 W Gilman3 F7003 Wood Chicago 26 Ill 308 Huntington Ct5 B4895 On Ave 225 Lake Lawn Pl3 B 993 1004 E Dayton3 Brooklyn N Y N Bronx N Y 625 N Henry3 B1820 112 Langdon3 F 599 Wauwatosa 13 265 Langdon3 F7101 935 Drake5 4142 Hiawatha Dr5 F8734 Kenosha 68 Cambridge Rd4 G 468 New York N Y 615 Howard Pl 3 F1133 429 N Park 5 G6380 305 Lathrop Fairmont W Va 1104 W Johnson 5 B1251 215 1/2 N Mills 5 M-PhB 300 234 Langdon 3 B7437 ard W-lyn Ill 514 S Park 5 trude M-St Mayville 217 Lake Lawn Pl 3 tchen A-je Marinette 104 Langdon 3 G1638 iel P-Ph Ave Chicago 25 Ill 207 N Brooks 5 ome C-Kenosha 625 N Frances 3 B2396 orton-R- York N Y abeth P-ke Rd Oconomowoc Oconomowoc ara M-Blosa Elizabeth Waters757 se G-Phye Kaukauna 524 N Henry 3 G6425 shall W-ive Rockford Ill 614 Langdon 5 lis I-Basha Elizabeth Waters757 Carl R-P Ave Sheboygan 705 Langdon 5 F1816 es A-B- 12 E Gilman 3 B2921 ome E-B- 12 E Gilman 3 B2921 ma-TS- 1708 Summit Ave 5 B3976 alla-LS- Milwaukee 139 W Gilman 3 B7719 bert A-B- 625 Mendota Ct 5 B3173 ald L-B- Chicago 49 Ill 627 Mendota Ct 5 F9563 on C-Phye Janesville 1717 Monroe 5 G2767 Joseph T- 432 N Lake 5 F9087 ice J-B-asha Barnard1126 les W- 1423 Regent 5 F5997 icki C-S- 110 N Butler 3 G2830 en Elizabeth esda M- 508 N Frances 3 B6856 e-JE- Minn Minneapolis Minn 1902 Arlington Pl 5 F5062 J-A-ore Rd Winnipeg Can 803 State 5 B6070 am J-A-Waukesha 118 Chestnut 5 B1847 K-S- 201 N Randall Ave 5 B7417 ley R-B- 205 S Mills 5 G2664 H-B-lyn 30 N Y 615 Howard Pl 3 F1133 ajeant M- 234 Langdon 3 B7438 lance J-B- Milwaukee 4 224 N Murray 5 meth L- 12 Hillington Green 5 B5017 lyn 17 N Y 265 Langdon 3 ysmith 812 W Johnson 5 G 516 ster Ave Chicago Ill 633 Langdon 5 Chadbourne1483 eloit ave Milwaukee 11 622 Mendota Ct 5 G4411 Beaver Dam Beaver Dam er Newark 8 N J 708 Langdon 5 B8844 auwatosa 13 630 Langdon 5 F2398 erdeen Proving Grd Md 402 University Ave 5 F3600 field 142 Langdon 3 F1665 J-S- 2730 Kendall Ave 5 B3441 etty J-B- 1021 W Johnson 5 F2424 Rd Kenosha 619 Mendota Ct 5 F9479 leboygan 310 Campbell 5 F8963 Pittsburgh 5 Pa 1104 W Johnson 5 B1251 rk Chicago Ill 130 Langdon 3 G5797 ena St Philadelphia Pa 615 Howard Pl 3 F1133 Lucille Y am G-nion Grove 428 N Murray 5 G 564 1251 Spaight 4 F7034 York 24 N Y 124 Langdon 3 F 877 420 N Lake 5 B4524 an Ave Chicago Ill 740 Langdon 5 F2500 rd Gary Ind 201 N Park 5 F 457 kegon Hts Mich 820 Irving Pl 5 F4356 376 West Lawn Ave 5 onx 63 New York 1509 Madison 5 on St Beaver Dam Beaver Dam</p>	<p>*Reichenbach June A-BA 2-Sandstone Green Lake 16 Langdon 3 F3590 Reik Willard J-SC 4-2657 N 46th St Milwaukee 803 State 5 B6070 *Reinheimer Patricia A-BA 1-827 69th Ave Philadelphia 26 Pa 252 Langdon 3 F1015 *Reiss Fred-BA 1-975 Walton Ave New York 52 N Y 309 N Lake 5 Remde Waldemar E-PhB 3-221 E Park Ave Menomonee Falls 1316 W Dayton 5 *Reneau Betty J-BA 3-1114 11th St Beloit 625 N Henry 3 B1820 Reynolds Martha M-Ed Grad-Madison 2202 Van Hise Ave 5 Rice Catherine L-M 3-4319 W Garfield Ave Milwaukee 8 Elizabeth Waters 752 *Robinson Jay H-PhB 3-124 Fremont Ave Dubuque Iowa *Rogers Jean E-LS Grad-16827 Sunderland Rd Detroit 19 Mich 142 Langdon 3 F1665 *Rohland Marshall R-ChC 1-531 W Center St Milwaukee 12 911 W Johnson 5 B7244 *Rosalsky Seymour W-PreMed 1-297 Columbia St Brooklyn N Y 302 Huntington Ct 5 B5766 Rose Dorothy G-HygC 4-Madison 2141 Fox Ave 5 B1811 *Rose Kenneth E-BA 1-530 West End Ave New York 24 N Y 1108 Garfield 5 F5360 *Rosenberg Leon V-PhB 1-204 Ward St Newton Mass 114 N Orchard 5 F1252 *Rosenberg Sylvia J-LS Grad-3526 N Summit Ave Milwaukee 522 N Pinckney 3 *Rosenblatt Lawrence J-BA 1-845 West End Ave New York 25 N Y 200 N Prospect Ave 5 F1325 *Rosenbloom Elaine P-BA 1-6838 Oglesby Ave Chicago Ill 225 Lake Lawn Pl 3 F7591 *Rosenzweig Ruth B-BA 1-5011 Blackstone Ave Chicago Ill 216 Langdon 3 *Ross Frank A-BA 1-Madison Shorewood Hills 5 B7545 Rude Twila V-SED 4-Colfax 515 N Lake 5 F2645 *Ruffolo Virginia J-BA 1-3808 10th Ave Kenosha Elizabeth Waters752 *Russo Ben J-BA 1-825 64th St Kenosha 220 N Brooks 5 F3645 Rust Dorothy F-HE 2-11070 W National Ave West Allis Barnard2376 *Sannes Dorothy E-PhB 1-R 1 Scandinavia Chadbourne 1246 *Saperstein Natalie D-BA 1-6538 N Ashland Ave Chicago 26 Ill 225 Lake Lawn Pl 3 *Saubertlick Howerde E R-A Grad-R 2 Box 245 Appleton 2121 Commonwealth Ave 5 B7457 *Savitzky (Selma) Ruth-PED 2-3235 Grand Concourse Bronx N Y 1019 University Ave 5 B2975 *Sayre Dorothy B-M 3-Madison 318 N Randall Ave 5 *Schechter Helen-BA 1-Warren Ave East Northport N Y 2011 Chadbourne Ave 5 B5454 *Schechterman Bernard-BA 1-24 Bay 28th St Brooklyn 14 N Y 309 N Lake 5 B7179 *Scheman Audrey S-BA 1-176 Clarkson Brooklyn N Y 252 Langdon 3 F 284 *Schlafman Barbara-PhB 3-22 Summer St Haverhill Mass 225 Lake Lawn Pl 3 B 993 *Schleicher Virginia E-Hyg 1-122 E Cook St Portage 2021 Chamberlin Ave 5 G1304 *Schnorenberg John J-BA 1-370 W State St Hartford 219 N Brooks 5 B6797 *Schranck Barbara V-BA 2-2722 E Newton Ave Milwaukee 11 265 Langdon 3 F7101 *Schultz Harry W-BA 1-611 Adams La Crosse 705 Langdon 5 F1816 *Schwartz Ruth B-BA 1-701 W 175th St New York N Y 1020 Clymer Pl 5 F7003 *Secord Muriel A-BA 1-72 Bay 32 St Brooklyn N Y 625 N Henry 3 *Seeger Helen -BA 3-716 Montgomery St Brooklyn 13 N Y Barnard1541 *Sernovitz Burton M-BA 1-2445 N 50th St Milwaukee 10 421 Sterling Ct 5 *Sertner Morton I-PhB 1-1555 Odell St Bronx N Y 640 N Henry 3 B2623 *Shackel M Leith-LS Grad-3145 James Ave So Minneapolis Minn 230 N Brooks 5 F3287 230 N Brooks 5 F3287 *Shaine David-PreMed 1-27 W 72nd St New York 23 N Y 309 N Lake 5 B7197 *Sherr Leonard A-ChC 2-937 Hoe Ave Bronx 59 N Y 140 W Gorham 3 F6517 *Shih Ko C-LS Grad-100 Nan-Sen St Hwiensen Honan China 205 N Mills 5 Shimon Fern S-BA 3-4225 N Murray Milwaukee Barnard1326 Shores Marilyn A-BA 1-Madison 4009 Hammersley Rd 5 F4149 *Shpetner Stanley-PhB 2-616 E Lincoln Ave Mt Vernon N Y 615 N Henry 3 *Shu Po-Wo-LS Grad-Lukaing Anwhei China 2418 Chamberlin Ave 5 *Shulwitz Ruthe-BA 1-1937 Oakman Blvd Detroit 6 Mich 225 Lake Lawn Pl 3 F7591 *Shurman Michael M-LS Grad-2579 N Stowell Ave Milwaukee 1315 University Ave 5 Siegel Bernard M-PreMed 2-148 Parkside Ave Brooklyn N Y 740 Langdon 5 F2500 Siegel Esther G-PhB 1-1333 Estes Ave Chicago 26 Ill 124 Langdon 3 *Silberberg Ethel I-M 2-35 Arlington St Cambridge Mass 615 Howard Pl 3 *Silbert Arlyne B-BA 1-61-41 Saunders St New York N Y 225 Lake Lawn Pl 5 B 993 *Simonson Gene R-BA 1-R 1 Waupaca 309 N Mills 5 F 909 *Sisk Carol A-BA 2-Madison 41 Fuller Dr 4 B1808 *Skala Roy C-PhB 1-526 N Longcommon Rd Riverside Ill 1604 Regent 5 Smith Frances B-BA 4-W Grand Ave Waukegan Ill 625 N Henry 3 B1820 *Smith Nancy E-BA 1-Madison 38 Breese Ter 5 G3305 *Smith Paulette D-BA 3-555 Ocean Ave Brooklyn 26 N Y 211 Langdon 3 F8271 *Sodos Helen-AA 1-5005 W Wash Blvd Milwaukee 8 Elizabeth Waters757 Soffa Jobe W-BA 2-355 Amory St Fond du Lac 619 Mendota Ct 5 F9479 *Solomon Marcelle A-BA 1-1453 Elmdale Chicago 26 Ill 636 Langdon 5 B5720 *Soref Jerome-PhB 2-2742 N 53rd St Milwaukee 10 1021 W Johnson 5 F2424 Spengler Susan E-AA 1-342 Park St Menasha 265 Langdon 3 F7101 Spindler Eleanor M-HE 1-Grand Marsh 902 Grant 5 F3279 *Stanton Kathryn B-PhB 1-1420 Jonquil Chicago 26 Ill Chadbourne1943 Stein Burton M-PhB 1-1856 N 12th St Milwaukee 625 N Frances 3 B2396 *Steinbach Bette B-BA 1-7404 Wellington Way Clayton 5 Mo 130 Langdon 3 G5797 *Steller Roberta I-BA 2-Excelsior Minn 633 Langdon 5 B7090 *Sternberg Jean M L-BA 2-Madison 414 N Broom 3 *Stone Mary E-BA 1-Madison 134 N Hancock 3 F4019-J *Strehrer Allen F-LS Grad-631 Park Ave Johnstown Pa 511 N Carroll 3 B2903 741 W Dayton 5 F2450 *Streich Morris E-PhB 1-R 2 Jefferson *Suwshine Abraham-PreMed 1-3451 Giles Pl New York 63 N Y 614 Langdon 5 B2746 *Surgies Grace G-LS Grad-Madison 2324 Kendall Ave 5 F4166-R *Suthers Gordon J-A 4-R 4 Mineral Point 206 N Park 5 *Sword Carol M-HygC 1-Madison 313 Kensington Dr 4</p>	<p>*Sylvester Robert C-PreMed 1-2319 W Michigan St Milwaukee 3 224 N Murray 5 F3862 Talty Beverly J-Art Ed 2-Madison 227 Princeton Ave 5 G4086 *Tan Hsueh-Kai-LS Grad-365 3rd St Wan Hsien Szechnan China 2418 Chamberlain Ave F 829 *Tanck Gilbert J-PhB 1-1817 52nd St Kenosha 811 W Dayton 5 F3923 *Tanenbaum Faye S-BA 1-1206 Parkway Austin 21 Texas 130 Langdon 3 G5797 *Tang Tao H-LS Grad-2 South-east city Hingning Kwangtung China Tearnan Sara J-HygC 4-445 W William St Decatur Ill 1402 University Ave 5 F3600 Teige Barbara K-PhB 4-Madison 603 Farwell Dr 4 G2511 *Teller Michael J-PreMed 1-920 Ocean Ave Brooklyn 26 N Y *Tess Mildred A-AA 1-6911 N Olcott Chicago 31 Ill 633 Langdon 5 B7090 1731 Regent 5 B6079 *Thedinga Ella J-PhB 2-264 Prospect Oshkosh *Thomas Neil A-PreMed 1-2517 N 90th St Wauwatosa 13 744 Langdon 5 *Thompson David L-BA 1-820 Arthur Racine 1021 Clymer Pl 5 G1875 *Thomsen Evelyn E-PhB 3-9035 S Marshfield Chicago Ill Barnard2326 *Thorp James M-PhB 1-Fish Creek 619 Mendota Ct 5 F9479 *Tinkham Joida M-BA 1-118 1st St Baraboo 310 N-Murray 5 B6912 *Toki Toshi-LS Grad-Madison R 4 Monona Dr 5 F762-W *Tollund Janice A-BA 1-208 S 8th St Mt Horeb 602 N Henry 3 G4142 610 Emerson 5 F6870 Trace Mary Ann-HygC 4-Seymour 1402 University Ave 5 F3600 *Tuder Geraldine L-ChC 1-2334 S Drake Ave Chicago Ill 622 Mendota Ct 5 G4411 *Tunici Rosemarie L-BA 2-200 Barry Ave Lockport Ill 110 Chestnut 5 G 274 *Turner Jane S-BA 2-Madison 2215 Eton Ridge 5 G5616 *Udell Arlene C-BA 1-4873 N Talman Ave Chicago 25 Ill 225 Lake Lawn Pl 5 F7591 *Voegeli Donald J-M Grad-Madison 616 W Johnson 5 *Vrooman Charlotte A-HygC 4-Westfield 1402 University Ave 5 F3600 *Vye John B-BA 1-1100 Grant St Waukesha 222 Lake Lawn Pl 3 F 138 202 N Brooks 5 G6056 Wagner Raphael D-LS Grad-Madison 935 University Ave 5 G2199 Wald Ellen R-BA 1-R 1 Delavan Wall Clifford C-L 2-R 6 Green Bay Truax Field Sec C 7 *Wang Wen-Tseng-LS Grad-Chungking China 441 N Lake 5 *Ward John P-PhB 1-Durand 432 N Lake 5 F9087 *Wassink Gilbert J-A 1-Box 23 Adell 63 N Y *Watnick David-BA 1-2460 Grand Ave Bronx 511 N Carroll 3 B2903 *Watson Robert J-LS Grad-296 S Main St Fond du Lac 207 Bernard Ct 5 B5877 *Webb Joseph E-BA 1-2409A S Logan Ave Milwaukee 31 N Pinckney 3 F1045 803 State 5 B6070 Weber Edward R-BA 4-402 Middle St Plymouth 223 N Charter 5 B6183 Webster Barbara A-HygC 1-Winnebag 430 N Randall Ave 5 F3600 Wedepohl Regina A-HygC 2-R 6 Merrill Weidner Edward W-LS Grad-2910 Dorman Ave Minneapolis 6 Minn 215 1/2 N Mills 5 *Weinstein Cynthia C-BA 1-1243 E 12th St Brooklyn 30 N Y 130 Langdon 3 *Weintraub Helen L-BA 1-124 W 93rd St New York 25 N Y 244 Lake Lawn Pl 3 F6839 *Weissenborn Lucille E-PhBOT 1-2561 N Cramer St Milwaukee 11 217 Lake Lawn Pl 3 *Weissner Rhoda-BA 1-1695 E 21st St Brooklyn 29 N Y 514 N Lake 5 B7688 *Wendlandt William E-M 2-135 Mead Ave Plymouth 132 N Mills 5 F2930 *Wenzel Bruce B-PhB 1-1526 S 9th St Milwaukee 4 224 N Murray 5 Wepfer Fae C-BA 4-Madison 1308 Drake 5 F5991 *Werderitsch Harriett J-BA 1-Madison 1143 E Dayton 3 B7085 *Wheeler Donald J-PreMed 1-Madison 301 N Lake 5 G6226 *Whitehead Eugene I-A Grad-802 11th Ave Brookings S D 205 Lathrop 5 B2141 *Wichman Harold C-PreMed 1-1940 N 38th St Milwaukee 1314 Spring 5 G6311 *Wien Evangeline-BA 1-64-31 Alderton St W Forest Hills Long Island N Y 225 Lake Lawn Pl 3 F7591 *Wien Sondra D-BA 1-2301 Kings Highway Brooklyn 29 N Y 514 N Lake 5 B7688 *Williams Avis F-Ed Grad-204 E Maple Ave Beaver Dam Beaver Dam *Wilson Margaret A H-PhB 1-Masonic Home Dousman Elizabeth Waters745 Winch Hazel M-HE 3-Arena 25 E Dayton 3 G1957 Wisch Clemens T-Ed Grad-3025 N 6th St Milwaukee 2217 University Ave 5 Wisland Shirley D-BA 3-6216 Washington Circle Wauwatosa 152 Langdon 3 B 306 33 Cambridge Rd 4 G 808 *Witt Albert-A VSP 1-Minocqua *Wolff Alvin B-BA 1-1 Merrill St Dorchester Mass 309 N Lake 5 *Wolman (Sidney) Shepard-A Grad-799 E Parkway Brooklyn N Y 803 State 5 B6070 *Wolowitz Franklin S-PhB 1-293 Garfield Pl Brooklyn 15 N Y 818 W Johnson 5 *Wright Wilfred D-BA 1-1124 S 24th St Milwaukee 4 207 Bernard Ct 5 *Young James G-PhC 1-4449 W Capitol Dr Milwaukee 10 319 N Park 5 B5555 175 Virginia Ter 5 F7327 Zander Arnold S-L 1-Madison *Zapel Arthur L Jr-BA 2-R 1 White Pigeon Mich 234 Lathrop 5 B 809 *Zimmern Robert S-BA 1-400 West End Ave New York 24 N Y 526 W Johnson 5 F2179 *Zintek Marian R-BA 1-2108 S 85th St West Allis Elizabeth Waters587 *Zoerb Betty N-HE 4-Madison 2938 McKinley 5 F7232 *Zuercher Joseph C-A Grad-636 Ridge Ave Evanston Ill 1716 Hoyt 5 *Navy College Training Program-V-12 *Army Specialized Training Program *(After name) Married *Abrams Julian E-Med 3-Madison 206 N Park5 F7226 *Akwa Carl M-Med 4-2039 N 10th St Milwaukee 206 N Park5 F7226 Albrecht James E-Med 2-R 1 Beaver Dam 1226 W Dayton5 F4215 Allen Charles R-Med 3-Madison 1912 West Lawn Ave5 F 566 *Anderson Donald T-Med 4-Madison 108 Breese Ter5 B7852 *Anderson Richard B-BA 4 Med 2-Madison 702 S Prospect Ave5 B2084 211 N Randall Ave5 F3017 *Apell Melvin G-Med 3-Madison *Arhelger Stuart W-Med 4-New Richmond 211 N Randall Ave5 F4172 Arnovitz Harriet J-BS 4 Med 2-1914 Prospect Milwaukee 633 Langdon5 B7090 *Arvold David S-Med 3-318 N Walnut St Reedsburg 260 Langdon3 B 446 *Averbrook Beryl D-Med 4-1621 John Ave Superior *Ayres John N-Med 1-1737 California Ave Seattle 5 Wash 308 N Orchard5 F 106 *Baker Homer P-Med 4-Blanchardville Bardeen Ann-Med 4-Madison 23 Mendota Ct5 B3488 Bates Patrick J-BS 4 Med 2-226 S Lake St Phillips 1124 W Johnson5 G4979x Baum Gerald L-BS 4 Med 2-4421 N Maryland Ave Milwaukee 11 145 Iota Ct5 F4257 *Becker Irvin M-BS 4 Med 2-3045 N Maryland Ave Milwaukee 803 State5 B6070</p>
---	--	---

(To be continued)

OFFICIAL BULLETIN THE UNIVERSITY OF WISCONSIN

Exhibit daily 9:00 A.M. to 5:00 P.M., Sundays and holidays 2:00 to 5:00 P.M., in the **State Historical Museum**, fourth floor of the Library Building: Prehistoric Wisconsin (main floor of the Library Building); Circus Paintings from Central Junior High School; Exhibit of Dolls; Julius C. Rehder's Oil Paintings; Portrait of the Week—Joseph T. Mills.

Exhibit daily 9:00 A.M. to 11:00 P.M. in the Main and Theater Galleries of the **Memorial Union**: Sixth Rural Art Exhibition.

TUESDAY, FEBRUARY 20

4-7-9 P.M. Cinema Shop. The Languages We Speak: "Night of the Mayas." Admission free to Union members on presentation of special ticket obtained at box office. Play Circle, Memorial Union.

4:30 P.M. Sixth in a series of lectures by members of the Department of English: "The Late Victorians," by Dr. Jerome Buckley. 165 Bascom Hall.

4:30 P.M. Lecture by Dr. Jacques de Marquette (University of Paris), author and lecturer on comparative religions, and the Far East, on "Islam and the Far East." Auspices of the Departments of French and Italian and Comparative Literature. 272 Bascom Hall.

7:15 P.M. Women's Commerce Club. Memorial Union.

7:30 P.M. Student Board. Memorial Union.

WEDNESDAY, FEBRUARY 21

3:30 P.M. Freshman Extemporaneous Speaking Contest. Bascom Hall.

7:30 P.M. Pre-Medica. Memorial Union.

7:30 P.M. Women's Local Students Association. Memorial Union.

7:30 P.M. Jazz Record Hour. Memorial Union.

7:39 P.M. Latin-American Students Meeting. Memorial Union.

7:30 P.M. War Council. Memorial Union.

8:00 P.M. Sigma Xi announces a lecture by Prof. J. C. Walker of the Department of Plant Pathology on "Disease Resistance in Plants." Open to the public. 119 Science Hall.

THURSDAY, FEBRUARY 22

7:30 P.M. Vanguard. Memorial Union.

8:00 P.M. Wisconsin Players and Orchestras present "The Man Who Married a Dumb Wife" and "Orpheus." Wisconsin Union Theater.

8:00 P.M. Norse Club. Memorial Union.

FRIDAY, FEBRUARY 23

2-11 P.M. Movie Time in the Play Circle: "North Star." Admission 18 cents before 6:00, 30 cents after. Memorial Union.

4:00 P.M. Coffee Hour. For students and faculty. Council Room, Memorial Union.

7:45 P.M. Language and Literature Club. Memorial Union.

8:00 P.M. Boxing—Iowa Pre-Flight vs. Wisconsin. Ringside seats \$1.10, reserved seats 85 cents, general admission 60 cents, service personnel 30 cents. Field House.

8:00 P.M. Danskeller. Admission 10 cents for Union members, 25 cents for non-members. Rathskeller, Memorial Union.

8:00 P.M. Wisconsin Players and Orchestras present "Orpheus" and "The Man Who Married a Dumb Wife." Admission by season ticket or individual ticket at 80 cents. Wisconsin Union Theater.

SATURDAY, FEBRUARY 24

2-11 P.M. Movie Time in the Play Circle—"North Star." Admission 18 cents before 6:00, 30 cents after. Memorial Union.

3-5 P.M. Sigma Epsilon Sigma Bridge. Benefit of Scholarship Fund. Tickets 35 cents. Elizabeth Waters Hall.

4:15 P.M. Matinee Dance. Admission by fee card or Union membership card. Great Hall, Memorial Union.

8:00 P.M. Danskeller. Admission 10 cents for Union members, 25 cents for non-members. Rathskeller, Memorial Union.

8:00 P.M. Basketball—Iowa vs. Wisconsin. Field House.

8:00 P.M. Wisconsin Players and Orchestras present "Orpheus" and "The Man Who Married a Dumb Wife." Admission by season ticket or individual ticket at 80 cents. Wisconsin Union Theater.

9:00 P.M. Campacabana. Great Hall, Memorial Union.

SUNDAY, FEBRUARY 25

2-11 P.M. Movie Time in the Play Circle—"North Star." Admission 18 cents before 6:00, 30 cents after. Memorial Union.

3:30 P.M. "At Ease" Program. Great Hall, Memorial Union.

4:00 P.M. Inter-Varsity Christian Fellowship. Memorial Union.

7:00 P.M. Sunday Night Sing. Council Room, Memorial Union.

7:30 P.M. International Club Forum. Memorial Union.

8:00 P.M. "Sunday Nite Flickers." Movie shorts for Union members and guests. Wisconsin Union Theater.

8:00 P.M. Concert Hour. Program of recorded music. Memorial Union.

8:00 P.M. "Free for All." Sunday night discussion program. Memorial Union.

8:00 P.M. Concert by Pro Arte Quartet. Open to the public without charge. Music Hall.

Interviews--

(Continued from page 1)

Ezio Pinza, Isaac Stern, Luboshutz and Nemenoff, Bidu Sayao and the individual concerts of the Minneapolis Symphony orchestra.

UNION WORKSHOP

Janet Bruechert announces that interviews for persons interested in the Union Workshop committee will be held on Wednesday, Feb. 21, and Friday, Feb. 23, from 2:30 to 5 in the Workshop lobby—third floor in the theater wing of the Union.

The committee has conducted informal craft and art classes in the past and it decorates the Union for special occasions. Committee experience is not necessary but participants should be interested in formulating the policies for the Workshop and photo darkrooms.

MUSIC COMMITTEE

Interviews for membership in the Union Music committee will be held in room 312 at the Union on Thursday, Feb. 22, from 2-4:30, and on Friday, Feb. 23, from 2-5. Joan Coote, chairman of the Union Music committee, announces that those interested should make out applications in the Activities Bureau office so that they can be called for appointments.

Interviews for students interested in applying for membership on the Union Theater committee will be held Wednesday afternoon in the Rosewood room of the Union from 3:30 to 5. Students unable to appear at this time will be contacted if they leave their names and telephone numbers in the theater committee mail box, located at the Union information desk.

Interviews for the Union Forum committee will be held tomorrow from 1:30 to 3:30 in the Memorial Lounge of the Union and Thursday from 3:30 to 5:30 in room 312 at the Union, according to Judith Stillman, chairman.

Players--

(Continued from page 1)

and ballet dancers doing the movement. Vassar college presented the opera without singers by employing pantomime to recorded music.

Costumes for "Orpheus" are the result of special research by Doris Uehling, instructor in the home economics department in clothing and textiles. Adapting the Greek toga to modern use, she both designed and executed the costumes with the help of a costume crew.

ANNOUNCE CASTS

Cast for "Orpheus" includes Orchestras members Sage Fuller, Robin Gregory, Miriam Jerabek, Rogine Kupfahl, Marian Lawrence, Charlotte Peter, Margery Turner, Matt Hart Turney, Martha Brand, Fralia Hancock, Donna Hanson, Mary Hinkson, Ruth Jacobs, Miriam Levinsohn, Jeanne Marks, Elisabeth Mason, and Ginka Vogel. Wisconsin Players on the production are Raymond Brandt as "Orpheus" and Dorothy Saper and Betty Miller as "Eurydice." There is a double cast for the role of Eurydice and Miss Miller will portray the character on Thursday night and Miss Saper on Saturday night. It has not been announced who will play the role on Friday night.

The Anatole France farce, "The Man Who Married a Dumb Wife," will be the other production presented. Ronald E. Mitchell is directing the cast which includes Patricia Flannery, Arthur Hrobsky, Clayton Peterson, James Brandon, Charles Constantine, Myron Katz, Lonni Gerson, Elias Cohen, Margaret Paschal, Audrienne Weiss, Jack Cogan, Gordon Kwiatkowski, Annette Suravits, Donna Deffenbaugh, Renee Sklair, Lyle Heck.

Of this cast of 16, ten are making their first appearance on this stage with the Wisconsin Players.

Tickets are still available for the Thursday night production with only a few remaining for Saturday night.

A fine selection of

GIFTS

Otto E. Braun
Electric Company
673 State

DISSONANCES

By

By Ernest Lilienstein

Lee Hoiby's artistry highlighted yesterday's "Artists of the Future" program at the Memorial Union theater. In as fine a display of talent as has been heard from the Union stage, the University's first student pianist, with the aid of Christine Charnstrom, presented a brilliant performance of Liszt-Busoni's Spanish Rhapsody.

Violinist Phyllis Mickle opened the concert with a competent interpretation of Lalo's Symphonie Espagnole, accompanied on the piano by Joyce Tappen. Helenjane Horn offered an inspiring rendition of four selections, with Betty Zwicky at the piano: Handel's Care Selve, Daniel Proterde's O. Love but a Day, Schubert's Ungeduld, and Puccini's Vissi D'Arte from "Tosca." The entire second half of the program was devoted to the U. S. Navy (V-12) band and chorus.

WAS HOIBY'S DAY

But it was Hoiby's day. The Rhapsody is by nature a flashing, technically intricate selection, easily ruined by over-playing and dramatic superficiality. That it retained its individual sparkle without descending to the level of the pretentious, was due in large measure to the other half of yesterday's duo-piano team, Christine Charnstrom. A more than able artist herself, she permitted Hoiby to remain in the spotlight while providing him ideal support. As for Hoiby, he proved himself an artist who deserves the respect of every University music-lover. In addition to near-flawless technique, in itself sufficient to merit attention, Hoiby is capable of power which transforms any showpiece into a work of genuine meaning. He is probably Wisconsin's most outstanding young artist at present.

NAVY BAND PERFORMS

The Navy Choir and band both showed the effects of a lack of rehearsal time. The V-12 program does not extend special privileges to the musically inclined, and the boys are unable to practice more than once a week as a group. Nevertheless, their rendition of typical songs of the sea, particularly Chucleigh-Candish's "Song of the Jolly Roger", was sufficiently skilled and rollicking.

Bulletins--

(Continued from page 1)

man west wall defense city of Goch now is almost entirely in Allied hands. One band of Nazis still is holding out at a railway junction in the southeastern outskirts of the town. Other Canadian First army units have advanced to within two miles of Calcar, after cutting the road from Goch.

TO ENFORCE CURFEW

Here at Home—The nation's entertainment world grudgingly has agreed—for the most part—to abide by War Mobilization Director James Byrnes' request for a midnight curfew. Government agencies are preparing to enforce the curfew beginning Monday, in nightclubs, theaters, bars, restaurants which also provide entertainment, and bowling alleys.



FOR WARM EARS
LONG HAIR WILL DO.
BUT WITH IT, SMOOTH
LOOKS AND CUTE DAMES
ARE FEW.

Come to the
Wisconsin Union Barber Shop

B. W. JOSEPH, O. D.

Eyes Examined

Fair-

child

4510

231

State

Street

Lenses Duplicated

Roundtable--

(Continued from page 1)

of the students living in the International House would be American it was stressed.

The need for both a publication building and an international house is recognized, the speakers said. Publications building would represent freedom of the press, said Ammann, and would express the spirit of the campus. Libraries and reference rooms as well as publication offices would be included in the building. Hebal and Wong emphasized the need for adequate housing facilities and opportunities for social life and education which would be answered by the erection of an International house.

Other proposals were for a professorial chair, a new library, a combination of Book Mart offices, International center, Publications building and Student board headquarters in one building. The latter project would cost between \$300,000 and \$1,500,000, Hebal estimated.

Wallace Rally--

(Continued from page 1)

State, County, and Municipal employees; Clifford Johnson, of the Madison CIO-Political Action committee; Henry Hamilton, chairman of the Madison chapter of the National Association for the Advancement of Colored People; and Prof. Selig Perlman, professor of economics at the University of Wisconsin.

Prof. Gunnar Johansen's first public performance of his "Chinese Song" will highlight the program. Faculty committee members operating in the pro-Wallace project are Walter A. Morton, Kenneth E. Parson, Selig Perlman, Walter A. Agard, William Ebenstein, Helen C. White, Elizabeth Brandeis, Noel Gist, Merle Curti, Harold Taylor, Samuel Rogers, Einar Haugen, Scudder Mekeel, and Mrs. John Barton.

With Your Radio--

WHA—170

Tuesday, Feb. 20, 1945

4:30 Adventures in Research
4:45 American Red Cross
5:00 Masterworks of Music
5:30 Adventure Stories
5:45 Afternoon News
6:00 Dinner Musicale
6:29 Sign Off

Wednesday, Feb. 21, 1945

3:30 Reading for Wartime
4:00 Excursions in Science
4:15 Treasury Salute
4:30 University of Wisconsin Band
5:00 Masterworks of Music
5:30 Adventure Stories
5:45 Afternoon News
6:00 Dinner Musicale
6:29 Sign Off

Nationally
Famous
Watches



Our watches, lovely in appearance, precise in movement and a token to be cherished... the ever-so-right gift for you. Choose one for your lapel or your wrist from our collection of nationally advertised jewelry.

J. J. SMITH
JEWELRY

115 State St.

F. 4378