



LIBRARIES

UNIVERSITY OF WISCONSIN-MADISON

A week's cruise, Goodrich Steamship Lines 1913.

[s.l.]: [s.n.], 1913

<https://digital.library.wisc.edu/1711.dl/4QKXLXE3GUDG78M>

<http://rightsstatements.org/vocab/UND/1.0/>

The libraries provide public access to a wide range of material, including online exhibits, digitized collections, archival finding aids, our catalog, online articles, and a growing range of materials in many media.

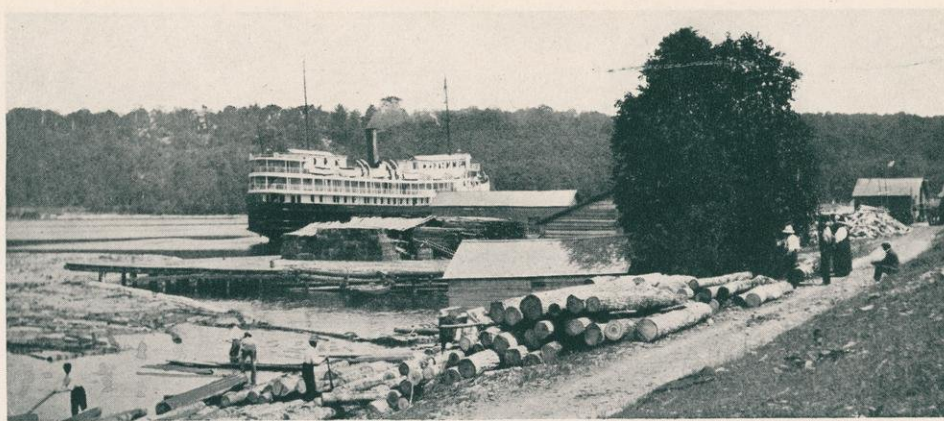
When possible, we provide rights information in catalog records, finding aids, and other metadata that accompanies collections or items. However, it is always the user's obligation to evaluate copyright and rights issues in light of their own use.

A W E E K ' S C R U I S E



GOODRICH STEAMSHIP LINES

A W E E K ' S C R U I S E



Steamship Arizona at Kagawong



Jesuit Fathers built chapels and essayed to teach the Indians the arts of peace, and through its trackless wilderness wandering trappers fought the Indians and made thrilling history in frontier days.

This cruise affords opportunities to go ashore at many delightful and interesting points, including Sault Ste. Marie, Collingwood, Parry Sound, Killarney, Little Current, Kagawong, Mackinac Island, Harbor Springs, Keweenaw, Manitowoc, Sheboygan and Milwaukee; whence, at sundown, the steamer's prow points toward the head of the lake, and almost before the dawn, Chicago's sky-scrapers

and smoke stacks reappear on the horizon. The cruise is ended and you have returned from a real vacation, an ideal recreation and the most delightful voyage of your life.

CHICAGO

Lv. 2.00 p.m. Saturday

From the dock at Chicago, the steamer passes out through the magnificent harbor and turns northward, affording a fine view of the great city and its long line of beautiful suburbs crowning the lake shore for many miles. Between Chicago and Milwaukee are Waukegan, Kenosha and Racine, cities of immense manufacturing interests and great wealth.

A W E E K ' S C R U I S E G O O D R I C H S T E A M S H I P L I N E S



S. S. IOWA



S. S. VIRGINIA



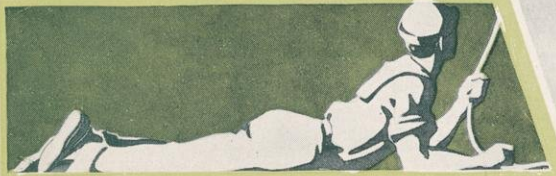
S. S. COLUMBUS



S. S. CAROLINA



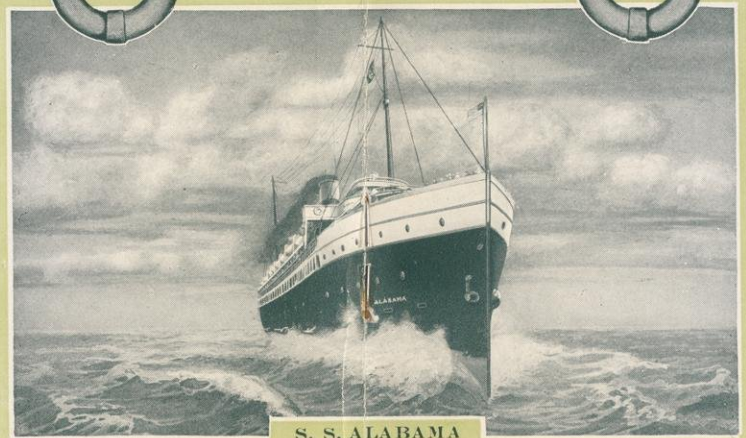
S. S. GEORGIA



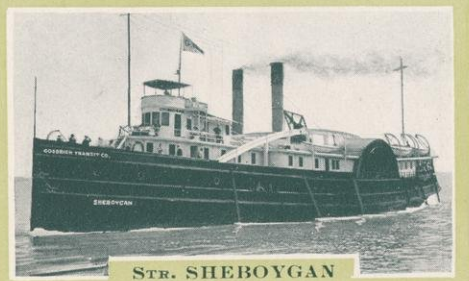
S. S. ARIZONA



STR. CHICAGO



S. S. ALABAMA



STR. SHEBOYGAN



S. S. INDIANA

WIRELESS TELEGRAPH ON ALL STEAMERS

IN SIGHT OF LAND ALL THE WAY