



# LIBRARIES

UNIVERSITY OF WISCONSIN-MADISON

## Scenes that are brightest.

St. Louis, MO: W. W. Wakelam, [s.d.]

<https://digital.library.wisc.edu/1711.dl/IBHRRVB46FGHY84>

<http://rightsstatements.org/vocab/NKC/1.0/>

The libraries provide public access to a wide range of material, including online exhibits, digitized collections, archival finding aids, our catalog, online articles, and a growing range of materials in many media.

When possible, we provide rights information in catalog records, finding aids, and other metadata that accompanies collections or items. However, it is always the user's obligation to evaluate copyright and rights issues in light of their own use.



SCENES THAT ARE BRIGHTEST

BALLAD

FROM THE GRAND OPERA OF

MARITANA

COMPOSED BY

W. VINCENT WALLACE.

PUBLISHED BY FIRTH, POND & CO. FRANKLIN SQUARE,  
New York

Pittsburgh H. KLEBER.

St. Louis W. W. WAKELAM.

P. P. WERLEIN, New Orleans.



# SCENES THAT ARE BRIGHTEST

from the Opera of  
M A R I T A N A

Words by ALFRED BUNN Esq.

Music by W. V. WALLACE.

**VOICE.**

*Cantabile e con molta semplicita.*       $\text{♩}$  (Maritana)

**PIANO.**

*Ped.*      *pp*      \*

1<sup>st</sup> VERSE. Scenes that are  
2<sup>d</sup> " Words can -- not

bright -- est      May charm ..... a -- while.....  
seat - - - - ter      The thoughts ..... we fear .....

For tho?..... they fla - - - ter,  
Hearts which are light - est, And eyes ..... that smile: Yet  
For tho' they flat - - - ter, They mock..... the ear.



4

o'er..... them, a - - - bove us Tho'..... na - - - ture  
 Hopes will still de - - - ceive..... us With..... tear - - - ful

tear - - - ful

dolento.

beam,..... With none..... to love us, How  
 cost..... And when..... they leave us The

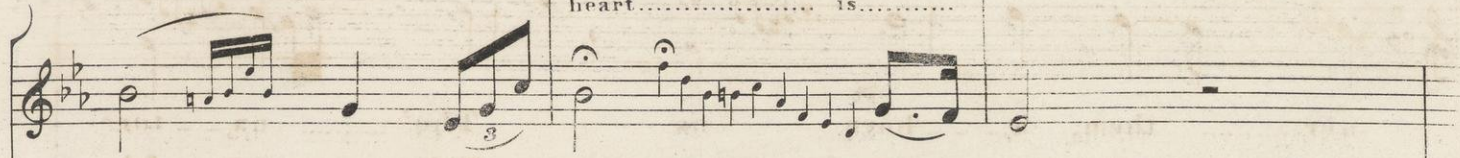
dim.

sad..... they seem..... With none..... to  
 heart..... is lost..... And when..... they





heart..... is.....



love us, How sad..... they seem!

leave us The heart..... is lost.



End of 1<sup>st</sup> Verse.



End of 2<sup>d</sup> Verse.

