



# LIBRARIES

UNIVERSITY OF WISCONSIN-MADISON

## Wisconsin Dairymen's Association year book 1949. 1949

Wisconsin Dairymen's Association

Wisconsin: The Association, 1949

<https://digital.library.wisc.edu/1711.dl/YT2UROS NKW5LD8N>

This material may be protected by copyright law (e.g., Title 17, US Code).

For information on re-use, see

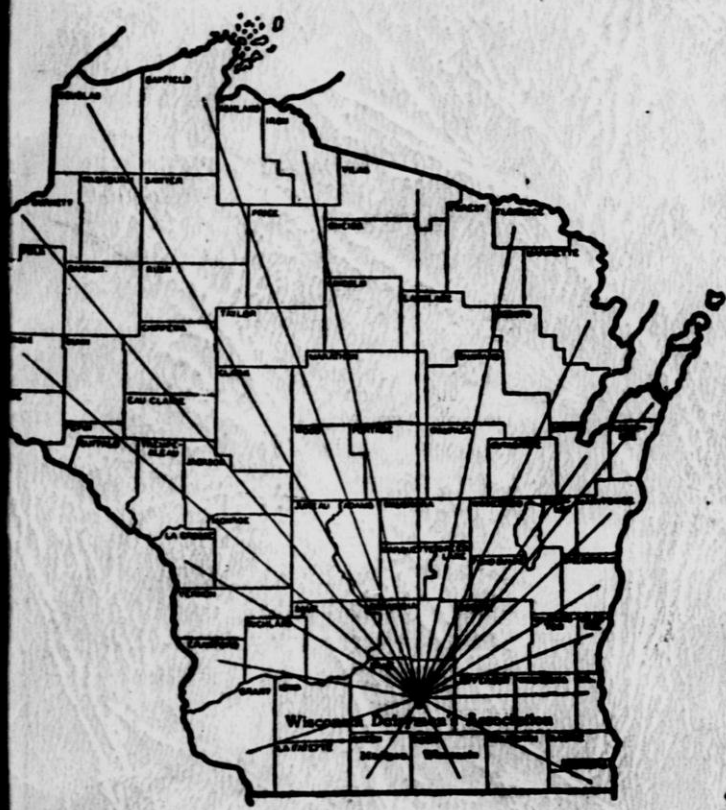
<http://digital.library.wisc.edu/1711.dl/Copyright>

The libraries provide public access to a wide range of material, including online exhibits, digitized collections, archival finding aids, our catalog, online articles, and a growing range of materials in many media.

When possible, we provide rights information in catalog records, finding aids, and other metadata that accompanies collections or items. However, it is always the user's obligation to evaluate copyright and rights issues in light of their own use.

BW7  
DIS  
y  
1949

# WISCONSIN DAIRYMEN'S ASSOCIATION YEAR BOOK 1949



Attend the  
Wisconsin Dairymen's  
Association  
and  
Wisconsin Junior  
Dairymen's Convention  
Mauston  
March 14



# Competition

may be

# Stiffer

in 1949

The good dairyman will meet the increased competition for the consumer's food dollar by . . .

**1. IMPROVED QUALITY**

Always the keystone of profitable dairying, quality will be more important than ever.

**2. IMPROVED PRACTICES**

Better feeding, more efficient crop production, more careful management for profitable dairying.

**3. BETTER SALESMANSHIP**

More efficient marketing . . . new outlets for dairy foods, better packaging to build demand for Wisconsin dairy foods.

**Help Wisconsin Maintain Its Reputation  
as America's Primary Source of Top  
Quality Dairy Products!**

**Wisconsin  
STATE DEPARTMENT  
OF AGRICULTURE**

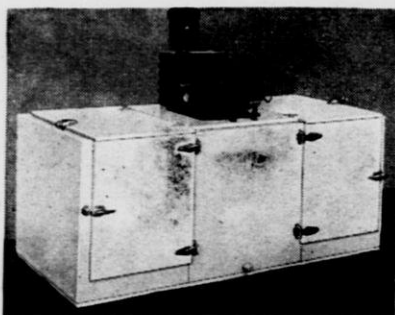
# **SUB-ZERO**

**Freezers and Milk Coolers**

For MODERN LIVING —

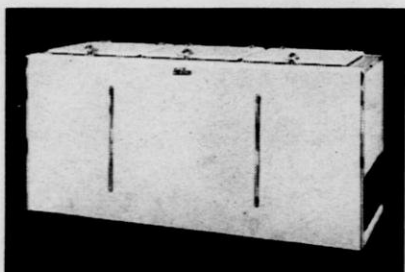
*With Economy and  
Convenience*

*Milk Coolers . . .*



**8 CAN DE LUXE COOLER.** For fast, thorough, economical cooling. Uses "Cascading Water" principle. 6 and 12 can models also available.

*Freezers . . .*



**MODEL 20-C FREEZER.** Capacity of 20 cu. ft. Sub-Zero freezers are available in chest-types, uprights and two temperature cabinets from 10 cu. ft. and up.

Manufactured In Madison By  
**SUB-ZERO FREEZER CO., INC.**  
Madison 3, Wisconsin

**WISCONSIN JUNIOR DAIRYMEN'S ASS'N.**  
**Madison, Wisconsin**  
**Organized 1947**  
**OFFICERS**



**John Falter**  
West Bend  
President



**Dale Marquard**  
Mosinee  
Vice-President



**Elmer Meyer**  
Hillpoint



**Gilbert Lilley**  
Barron



**Lewis Hintz, Jr.**  
Omro



**Melvin Steiner**  
New Holstein



**Wayne Danielson**  
Cadott

WISCONSIN DAIRYMEN'S ASSOCIATION  
 Madison, Wisconsin  
 Organized 1872 Incorporated 1917  
**OFFICERS**



Lawrence Blank  
 Ripon  
 President



George T. Miller  
 Antigo  
 Vice-President



B. R. Dugdale  
 Madison  
 Secretary and Treasurer

**DIRECTORS**



Willard Evans  
 Waukesha



R. I. Dimick  
 Almena



Stanley Jamison  
 Appleton



Wm. Curtis  
 Mauston



Elmer Wilkins  
 Platteville



## Dairying in Wisconsin's Second Century

As we enter the second century of Wisconsin's statehood, dairy farmers are faced with many of the same problems that were common to the latter part of the first century.

We are again facing the threat of substitutes that seek to undermine our markets for dairy products. It is important that every dairyman realize the seriousness of this threat and let those who represent us in our legislative halls know where we stand on this question. Your Wisconsin Dairymen's Association has always fought and will continue to fight against unfair competition in marketing your dairy products.

We must continue to improve the quality of our products so that the consumer can depend on getting a clean healthful product on his table. There will always be a market for quality dairy products in the second century.

We believe that the future of America's Dairyland is safe in the hands of the members of our Wisconsin Junior Dairymen's Association. Their program is aimed at eliminating the unprofitable cows, improving our pastures, better feeding practices and producing quality milk and other dairy products. There is no more important job for us as dairymen than to lend our encouragement and help to these future dairymen of Wisconsin. If we do this our second century of dairying will be even better than the first.

*Lawrence Blank*

President, Wisconsin Dairymen's Association.

A

## Proclamation



This year Wisconsin begins the second century of its statehood. During the past 100 years, our agriculture has grown from a struggle for subsistence in a wilderness country to a billion dollar industry.

During the formative years, when this basic Wisconsin industry was fighting for survival against crop failures, insect pests and soil depletion, dairying opened the doors to agricultural prosperity. Today, our livestock and dairy industry provides nearly nine dollars of gross farm income for every dollar from field crops. It is the solid rock upon which our farm welfare is built.

In the growth of the Wisconsin dairy industry, the Wisconsin Dairymen's Association has played a large part. It provided the first organized dairy markets and did much of the pioneer work in quality improvement. Through the Junior Dairymen's Association it is teaching the sound principles of good dairying to the youth of the state.

The 77th annual convention of the Wisconsin Dairymen's Association, to be held at Mauston, Monday, March 14, offers an opportunity for careful consideration of today's problems of the Wisconsin dairy industry.

Therefore, I, Oscar Rennebohm, Governor of Wisconsin, do hereby designate and proclaim Monday, March 14, 1949, as DAIRY DAY and urge that the occasion be observed in recognition of the contribution of dairying and of the Wisconsin Dairymen's Association to the prosperity of Wisconsin agriculture.

IN TESTIMONY WHEREOF, I have hereunto set my hand and caused the great seal of the State of Wisconsin to be affixed. Done at the Capitol in the City of Madison this 21st day of February in the year of our Lord, one thousand nine hundred and forty-nine.

A large, flowing cursive signature of Oscar Rennebohm. The signature is written in dark ink and is positioned above a horizontal line.

Governor of Wisconsin



# Program

77th Annual Convention  
Wisconsin Dairymen's Convention  
and  
2nd Annual Convention  
Wisconsin Junior Dairymen's Association  
Mauston, Wis.

- 9:30 A.M.—10:00 A.M. Registration
- 10:00 A.M.—12:00 A.M. Business Meeting Wisconsin Dairymen's Association-Assembly Room in basement of Juneau County Court House  
Business Meeting Wisconsin Junior Dairymen's Association-Circuit Court Room, Court House
- 12:30 P.M.—Joint Luncheon of Junior and Senior Dairymen-High School Gym  
Entertainment-Mauston High School  
Welcome to Dairymen-Russell Hale, President, Mauston Chamber of Commerce  
Response-Lawrence Blank, President, Wisconsin Dairymen's Ass'n., and John Falter, President, Wisconsin Junior Dairymen's Ass'n.  
Awards-Wisconsin Junior Dairymen and 4-H Club Dairy Achievement Members
- 1:30 P.M.—The Junior D.H.I. Program in Vocational Agriculture— Dr. G. P. Deyoe, Dept. of Agricultural Education, University of Illinois, Urbana, Ill.
- 2:00 P.M.—Demonstration - Television Neighbors, Neil Davies and John Morgan, Oshkosh, Jr. D.H.I.A.
- 2:30 P.M.—Undulant Fever and Bangs Disease—Dr. A. R. Zintek, State Dept. of Public Health, Madison
- 3:00 P.M.—Our Dairy Market-Carl Schoemaker, Dairy Marketing Specialist, College of Agriculture, Madison
- 3:30 P.M.—The Battle of the Substitutes-Milo K. Swanton, Executive Secretary, Wisconsin Council of Agriculture Cooperatives, Madison
- 4:00 P.M.—Door Prizes-Mauston Chamber of Commerce

A sincere

# 'Thank You'



*to all whose cooperative efforts have made possible the 77th annual convention and the 2nd annual Wisconsin Junior Dairymen's Association convention. Especially the committees of the Mauston Chamber of Commerce for their splendid cooperation.*

To folks who live in the other 47 states of the Union, Wisconsin means DAIRY COWS and DAIRY PRODUCTS. To the Dairy Farmers of Wisconsin, the Wisconsin Dairyman's Association is a symbol of progress and enlightenment . . . a guiding hand toward better ways of dairy farming and farm life. For 35 years your association has played a most worthy part in helping to put Wisconsin at the top as a dairy state.

Jamesway was only ten years old when your association was founded. We have been privileged to watch its lusty growth. We have intimately known the men who have been responsible for that growth . . . and that takes in just about your entire roster of members. We can truthfully say that a finer group of businessmen would be hard to find in ANY industry.

Here's our wish for a still bigger and better WDA in the years ahead!



# MANURE HAULING

## *Easier*

### from Start to Finish



### Quick Hitching

No need to lift the front end of the Case tractor spreader, nor to prop it up. The self-hoisting hitch rests right on the ground while hooking up; lifts front of the box when tractor starts ahead. Sliding clevis makes hitching quicker, easier, safer. It's so handy that daily spreading is really practical, whether you have big herds or only a few head.

### Easy Loading

Low wheels and low box make loading easier, faster, whether by hand or by mechanical loader. Self-hoisting hitch lets front of box down for still lower loading. This Case spreader backs into barns, pulls close to piles like a two-wheel cart. Sturdy steel frame, long-lived bearings and good lubrication give **ENDURANCE**—long life with low upkeep.

### Sure Spreading

Spreader wheels are placed so weight of load aids their "ground-grip" until fully loaded; full load adds weight to tractor wheels, aids their traction. Sharp beater teeth shred manure thoroughly; steadier apron travel assures even spreading. Geared for rubber-tired speed, this spreader makes practical the extra gains of thinner spreading on greater acreage.

See this Handy Sturdy Spreader. Let your Case dealer show you this stronger, more durable, more convenient spreader. Send for new booklet that tells how to make manure go farther, produce up to twice as big a boost in crop yields.

J. I. Case Company, Racine, Wisconsin



# CASE

---

# THERE'S MORE MONEY in Milking THE DE LAVAL WAY



The De Laval Magnetic Speedway is the only absolutely uniform milker—for best, fastest, cleanest milking. No adjustments, fool-proof, dependable. If you want the best in milking performance—this is it.

The De Laval Sterling Milker is the leader of the pneumatic pulsator type milkers. Fast, precise milking action. Complete outfits—or units only for operation on your present milker pipe line for improved milking.



Because De Laval Milking gives you highest yield per cow—bigger milk checks—cleanest, low count milk—easiest, quickest cleaning—sound, healthier udders—simple, dependable operation—greatest time and labor savings—long service-life—lowest yearly operating costs.

When are YOU going to change to the  
NEW DE LAVAL?

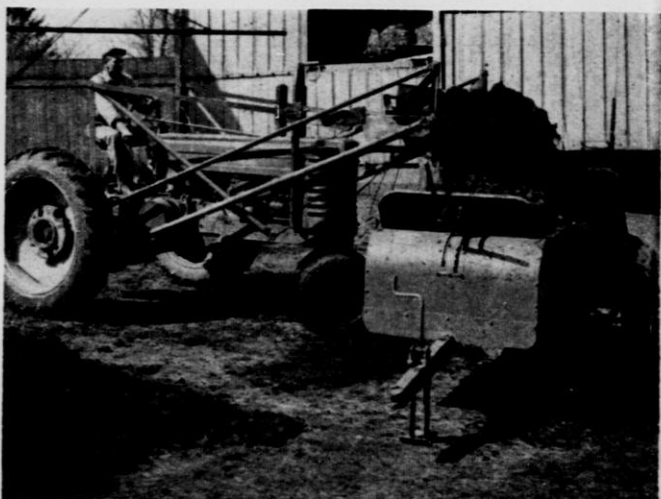
The De Laval Separator Co.

165 Broadway  
New York 6

427 Randolph St.  
Chicago 6

---

# SAVE Time - Work - Money



## with **JOHN DEERE** **Manure Handling Equipment**

Here's the fast, easy, low-cost way to get manure out of your sheds and feed lots and onto the field where it is worth from \$7 to 9 per ton in increased crop yields. With the John Deere No. 25 Push-Type Manure Loader and the John Deere Model "H" Tractor Spreader, you, alone, can handle up to 35 loads per day.

The No. 25 Loader, with exclusive flywheel drive and parallel arm construction insures faster loading and less work for the operator. Simple . . . rugged . . . easy to attach or detach, you'll find the No. 25 offers extra value for your money.

The sturdy, sure-footed, all-steel Model "H" Tractor-Drawn Spreader and the light-running Model "K" Horse-Drawn Spreader are ideal working mates for the No. 25 Loader. The strong, well-braced frame and box stand up under heavy work. Feed ratchet is enclosed and runs in oil. Chain and drives are completely shielded. Heavy-duty, roller-bearing beaters completely shred the manure and spread it evenly for biggest returns.

The next time you're in town see your John Deere dealer for complete information on this outstanding time-, work-, and money-saving manure handling equipment. Write today for free folders.

**JOHN**  **DEERE**

*Moline, Illinois*

# PROTECTION

against



## "HIDDEN HUNGER"

"HIDDEN HUNGER" . . . Lack of essential mineral elements needed by livestock for sturdy health, rapid growth, peak production and reproduction.

NEAR'S

# MINRALTONE

WITH VITAMIN D

A MINERAL FEED SUPPLEMENT



For All Livestock and Poultry

Write for Complete Information

**NEAR'S FOOD CO., Inc.**

Est. 1899

BINGHAMTON, N. Y.

# SECRETARY'S REPORT

JANUARY 1, 1948 — JANUARY 1, 1949

## Bull Associations

Continual emphasis has been placed on the all important program of cooperative bull testing associations as a sound economical way of providing superior sire service over more herds. We are continuing to organize new ones with the help of county agents and vocational agriculture instructors. At Phillips in Price county a bull association has been formed by boys and their dads who have carried the bull calf project in the Agricultural Department, thus insuring the use of the good bull calves that are in the community. More such associations should be formed with the bull calves that are raised by FFA and 4-H club members in counties where the bull calf project is carried on.

## Membership

Membership in the Wisconsin Dairymen's Association has continued to grow steadily. Three new counties have enrolled their D.H.I.A. members the past year. They are Crawford, Dane and Dunn. The total number of new members from these three counties is 604.

Many veteran-on-the-farm training groups have enrolled in the special membership plan offered them by the Dairymen's Association.

The membership of the Wisconsin Junior Dairymen's Association is also growing steadily as indicated in the list of member Jr. D.H.I.A. listed elsewhere.

## Hoof Trimming Demonstrations

Many hoof trimming demonstrations were conducted by your secretary the past year at farms, fair, agricultural departments and 4-H club meetings. A large crowd gathered at President Lawrence Blank's farm at Ripon to witness a demonstration there.

Many good sires have been saved from the block by these demonstrations and their service prolonged in the herd. More dairymen would do well to set aside some time to care for the feet of the dairy cattle in their herds.

## Bull Paddocks

Continued emphasis has been put on building Bull paddocks among members of the Dairymen's Association. Plans and suggestions are available for paddocks. We also have forms for building concrete posts available to members.

## Record Using Clinics

Many more Record Using Clinics were held the past year. These small group meetings are a means of talking over the use dairymen can make of the records to do a better job of weeding, feeding and breeding dairy cattle.

Your secretary has talked on Jr. D.H.I.A. at many agricultural departments to hundreds of Junior Dairymen the past year. Many veteran groups have been visited and herd management problems discussed with the members. Talks have been given before many annual meetings of county D.H.I.A. co-ops the past year. Other groups talked to were farmers evening schools, young farmer groups, county dairy picnics, vocational agricultural instructors, summer conferences and the American Vocational Association.

## SECRETARY'S REPORT (Continued)

### District Meetings

For the first time district meetings have been held for Junior and Senior members of the Dairy-men's Associations. These meetings were usually held in the late afternoon. The Junior and Senior directors in each district with the help of the junior advisor have been responsible for planning the program. These meetings which were held at Bar-ron, Omro, West Bend, and Shawano, have been very successful and were well attended. Subjects discussed included lacations, awards, quality milk production and breeding better dairy cattle.

### The Wisconsin Junior Dairymen

According to a recent survey made by your secre-tary 100,000 cows are being tested by all day and junior farmers in the Vocational Agricultural de-partments in Wisconsin. We have worked out new forms for making better use of the records obtained. These forms are furnished at cost to Junior Dairy-men and Veteran training groups.



Members of the Wisconsin Junior Dairymen's Asso-ciation and the Omro FFA Chapter testing their herds.

Many long time testing programs are being car-ried on such as the one below of the Frederickson herd in the Osceola Jr. D.H.I.A. for years by Donald and Marvin Frederickson.

1940—319.4	lb.	B.F.
1941—326.0	lb.	B.F.
1942—337.6	lb.	B.F.
1943—348.1	lb.	B.F.
1944—358.5	lb.	B.F.
1945—377.5	lb.	B.F.
1946—361.7	lb.	B.F.
1947—402.6	lb.	B.F.



## SECRETARY'S REPORT (Continued)

### Proving Cow Families

Many of the Junior Dairymen have sufficient records now to develop proven cow families from brood cows such as the one pictured below of a cow, her daughter, and granddaughter who all have records of over 500 lbs. G B.F. in 305 day on 2X milking.



## WISCONSIN DAIRYMEN'S ASSOCIATION

### Financial Statement

July 1, 1947 to July 1, 1948

#### Receipts

Balance on Hand July 1, 1947 .....	\$ 737.55
State Aid .....	\$ 5,500.00
Membership .....	1,282.05
Supplies .....	2,481.65
Advertising .....	1,133.17
Other sources (refunds etc.) .....	23.65
Total Receipts .....	<u>\$11,158.07</u>

#### Disbursements

Salaries (Including Income Tax) ....	\$ 4,650.97
Printing & Supplies .....	3,175.96
Postage .....	182.00
Travel Expense .....	1,557.62
Annual Meeting .....	434.83
Directors Expense .....	131.77
Awards & Premiums .....	30.50
Telephone & Telegraph .....	284.74
All other .....	371.07
State Fair & refunds .....	147.48
Total Disbursements .....	<u>\$10,966.94</u>
Accounts payable July 1, 1948 .....	\$ 1,076.16
Accounts Receivable July 1, 1948 .....	287.50
Difference .....	<u>\$ 788.66</u>
Less cash on hand .....	191.43
Deficit .....	<u>\$ 597.23</u>

**MEMBERS OF  
THE WISCONSIN JUNIOR DAIRYMEN'S ASS'N.**

<b>Junior DHIA</b>	<b>Instructor</b>	<b>No. of Members</b>	<b>No. Cows On Test</b>
Antigo	Cyril Lyons	13	196
Arcadia	Merrill Pinch	13	259
Athens	Glen Barquest	16	239
Auburndale	Virgil Martinson	20	413
Barron	D. A. Hendrickson	40	742
Beaver Dam	Stanley Thompson	14	280
Belleville	Kenneth Kramer	15	379
Berlin	L. A. Blackburn	25	405
Birnamwood	Frank Pappenfuss	8	156
Black River Falls	Leo Grosskreutz	15	220
Blanchardville	Ed Scadden	8	231
Bloomer	Clifford O. Nenzel	10	229
Bloomington	L. W. Dartland	12	195
Bonduel	D. C. Aderhold	20	395
Brandon	A. W. Holander	24	435
Brillion	Chas. G. Rohr	24	407
Bruce	E. L. Howard	20	308
Cadott	H. W. Duxbury	20	
Cameron	M. S. Murray	10	
Campbellsport	John Collier	27	486
Casco	H. W. Majeski	18	357
Cashton	E. R. Olson	24	453
Chilton	Harold Sheedy	19	346
Chippewa Falls	Joe Lucenta	28	411
Clear Lake	Allen Linster	32	573
Clintonville	E. A. Hutchinson	25	486
Cornell	A. H. Brawner	24	406
Cumberland	Howard Hunt	6	91
Dunn Co.	F. J. Haugh	19	
Eau Claire	A. B. Cordes	25	350
Edgerton	Dale Wesenberg	21	472
Ellsworth	Kenneth Wall	27	376
Fond du Lac	Wallace Ekvall	8	182
Frederic	W. J. Steneman	32	420
Galesville	J. O. Beadle	15	270
Gays Mills	A. L. Cumming	14	
Gilmanton	Eugene King	17	305
Glenwood City	R. C. Wall	24	347
Grantsburg	George E. Frenchick	18	232
Hartford	Neal Nicholson	8	
Hillsboro	John Wachter	17	
Johnson Creek	Robert Thayer	16	257
Kendall	Lewis Ewers	14	
Kiel	R. A. Kramer	35	656
Ladysmith	E. E. Barber	6	124
Lake Geneva	J. S. Smith	14	334
Lake Mills	A. L. Zurbuch	20	430
Luck	J. Alfred Olson	15	268
Madison East	Irving Gerhardt	26	413
Manawa	Merlin Jennings	15	268
Marshfield	Arnold Bluemke	44	783
Mauston	Keith Wiettenhiler	33	398
Mayville	Andrew Magyar	19	403
Medford	Wm. Waterman	35	850
Melrose	James Tistow	14	270
Merrill	Willard Ekvall	24	328
Mishicot	Donald Halada	18	323
Mondovi	L. Niedzwieck	12	206
Monroe	R. E. Davenport	62	1558
Montello	Jack Whirry	18	253
Mosinee	Ben Hylkema	40	528
Mt. Horeb	Kenneth Erickson	15	381
New Auburn	V. L. Berg	11	162
New Holstein	Duane Ottum	23	
New London	Don Hohman	44	759
Omro	R. L. Hoeft	18	281
Osceola	Howard Askov	29	685

1934

**MEMBERS OF THE WISCONSIN JUNIOR DAIRYMEN'S ASS'N**

Junior DHIA	Instructor		
Oshkosh	F. J. Miller	17	306
Osseo	A. L. Herum	25	448
Owen	Louis M. Daniel	15	250
Oxford	Ray Johnson	15	247
Palmyra	George A. Nelson	12	300
Plymouth	R. Delorit	35	570
Port Washington	Herbert A. Portz	21	332
Prairie du Chien	G. C. Ralph	13	185
Pulaski	Merlin Schultz	38	544
Randolph	Kenneth Afdahl		
Reedsburg	T. R. Lathrop	50	927
Rice Lake	J. Russell Solheim	28	579
Ripon	Donald Walters	22	308
Seneca	Glen N. Holman	19	821
Sparta	M. L. Schweers	17	284
Spooner	Norman Aderhold	4	83
Stanley	Vernon O. Horne	37	733
Stratford	Fred V. Meinke	20	403
Turtle Lake	O. C. Pederson	16	
Tomah	James K. Ness	12	176
Valders	Leonard Turnell	8	230
Watertown	Darrell Shultis	8	139
Wausau	Eugene Lehrmann	6	81
Wautoma	A. S. Peterson	7	89
West Bend	Arthur Kurtz	41	672
Westby	R. M. Cooper	11	192
Wilton	Emil Path	11	213

**PAST PRESIDENTS OF THE WISCONSIN DAIRYMEN'S ASSOCIATION**

1872-74	Chester Hazen	Fond du Lac
1875-76	Hiram Smith	Sheboygan
1877	A. D. Leland	Sheboygan
1878	H. F. Dousman	Waukesha
1879	Z. G. Simmons	Kenosha
1880	Stephen Favill	Walworth
1881-82	C. R. Beach	Walworth
1883-86	W. H. Morrison	Walworth
1886	Stephen Favil	Dane
1887-89	H. C. Adams	Dane
1890	W. A. Henry	Dane
1891-93	W. D. Hoard	Jefferson
1894-95	C. H. Everett	Racine
1896-97	G. W. Burchard	Jefferson
1898-99	H. C. Taylor	Rock
1900-01	C. P. Goodrich	Jefferson
1901-03	J. Q. Emery	Dane
1904-05	Chas. L. Hill	Fond du Lac
1906-07	W. J. Gillette	Fond du Lac
1908-09	F. H. Schribner	Fond du Lac
1910-11	H. D. Griswold	La Crosse
1912-13	E. C. Jacobs	Dunn
1914-15	M. L. Welles	Fond du Lac
1916-17	Math Michels	Fond du Lac
1918-19	Geo. McKerow	Waukesha
1920-21	Chas. A. Peterson	Fond du Lac
1922-23	Geo. C. Humphrey	Dane
1924-25	H. F. Schroeder	Washington
1926-27	W. J. Dougan	Rock
1928-29	S. H. Bird	Fond du Lac
1930-31	J. E. Powen	Barron
1932	W. J. Katterhenry	Rock
1933-34	P. C. Burchard	Jefferson
1935-36	G. W. Vergeront	Dane
1936-37	H. E. Hill	Sheboygan
1938-40	Richard Brackett	Dunn
1941-42	Stanley Jamison	Outagamie
1942-44	H. F. Schroeder	Washington
1944-46	A. W. Ritchie	New London
1946-47	Stanley Jamison	Outagamie

# Who's Who



Alphabetical List of  
Wisconsin Dairymen's  
Association Members



Breed Associations



Wisconsin D. H. I. A.



Wisconsin Junior  
Dairymen's Association  
Members



Wisconsin Bull  
Testing  
Associations  
*and*  
Artificial Breeding  
Associations



*Destroys*

**ONE of every SEVEN  
DAIRY COWS!**

You can't afford to risk mastitis in your herd.

Avoid teat and udder injuries that lead to mastitis. Get higher production faster without stripping. Use the modern



J. C. MARLOW

● The new, modern MARLOW MILKER, with perfected low vacuum and non-crawl teat cups, is the result of J. C. Marlow's 40 years experience selling and servicing milking machines and breeding purebred dairy cattle. That experience is built into the MARLOW MILKER, which gives you a combination of features which eliminate the major cause of mastitis.

**SATISFACTION GUARANTEED!**

Investigate this udder saving, money making MARLOW MILKER today.

J. C. Marlow Milking Machine Co.  
Mankato, Minn.



Wisconsin Ayrshires are noted for their freedom from disease, heavy production and good type — many herds from which to choose.

**WHY—**  
***The AYRSHIRE***  
***Is the Cow for***  
***Wisconsin Farmers***

1. Heaviest Producer of 4% Milk—at least feed cost.
2. Wears like Iron — more 100,000 producers of 4% milk than any other breed.
3. Milk in demand for special market purposes.
4. Good grazers — hardy — rugged.
5. Correct type — sound udders — the buyers choice.



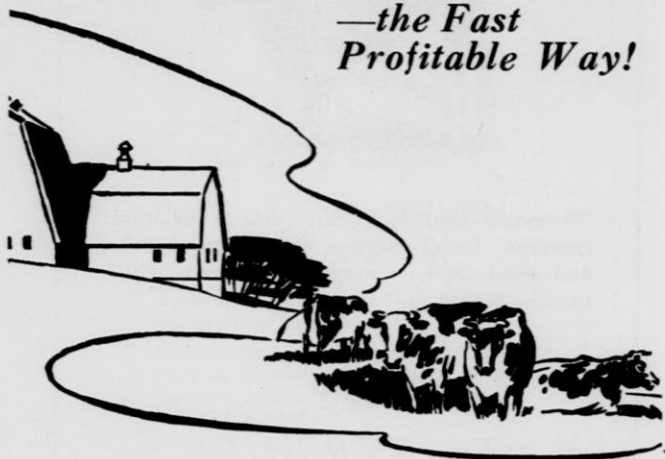
For Literature or Help Locating Stock Write

**Ayrshire Breeders' Association**  
41 Center Street                      Brandon Vermont

---

# Harvest Your "Milk Crop"

—the Fast  
Profitable Way!



Today's dairying methods demand SPEED plus EFFICIENCY! You want to milk your herd quickly and completely. You want to get as much milk as possible to benefit from current high prices. And you want to cool your milk promptly, chilling it to lowest bacteria count possible.



The answer to your needs is efficient, dependable McCormick Dairy Equipment. The McCormick milker can easily handle your milking job. Its smooth action, stainless steel construction, and top sanitation features will mean more milk, better milk, and increased dairy profits for you.

See your local International Harvester dealer for a quick demonstration of any one of the modern McCormick dairy machines. Let him show you how your dairy operation can be put on a more profitable basis!



**International Harvester**

**Madison**

**Green Bay**

**Milwaukee**

# AYRSHIRE BREEDERS



## Active Members of the Wisconsin Dairymen's Ass'n.

Name	Address	Reg. G., No.
Blank, Lawrence, Rt. 1, Ripon	.....	Reg. 15
Cuhel, Ludwig, Rt. 2, Cadott	.....	45
Dalton, J. A., Rt. 1, Oconomowoc	.....	Reg. 24
Dalton, Merwin, Rt. 2, Oconomowoc	.....	30
Draws, M. A., Rt. 1, Mukwonago	.....	Reg. & Gr. 14
Elverman, John, Rt. 3, Burlington	.....	Reg. & Gr. 22
Gilbert, Virgil, Rt. 1, Sullivan	.....	Reg. 10
Fischer, Wm. J., Rt. 4, Box 31, Manitowoc	.....	Reg. 30
Greenacres Farm, Neva	.....	Reg. 30
Hafs, Oscar W. & Sons, Genoa City	.....	Reg. 15
Helms, Edgar, Rt. 1, New London	.....	Reg. 27
Jacob, Raymond, Sharon	.....	Reg. 10
Jones, Cornelius E., Juneau	.....	Reg. 33
Krenke, H. F., Rt. 2, Fremont	.....	Reg. 6
Sands, Alex, Rt. 1, Box 290, Racine	.....	Reg. 20
Seitz, Louis & Robert, Rt. 2, Reg.	.....	4
Simmons, Geo., Pewaukee	.....	Reg. 21
Sweeney, Mrs. J. Elsie, 1023 14 Ave. S.E., Minneapolis	.....	Reg. 24
Ula, John D., Blanchardville	.....	Grade 38
Wonoski, Gus A., Rt. 1, Dousman	.....	Reg. & Gr. 16

### Wisconsin Ayrshire Breeder

Are you a member of your State Breed Association? This Association works for your interest. JOIN NOW, your support will be appreciated.

### Wisconsin Ayrshire Breeders Association

Glen Hacker, Pres.  
Brillion, Wisconsin

Lawrence Blank, Sec.  
Ripon, Wisconsin

### Additional Members of the Wisconsin Ayrshire Association not Already Listed

Name	Address
Jacob Abbuhl	.....Columbus
Millard Bonney	.....Rt. 3, Sturgeon Bay
Frank D. Borchardt	.....Rt. 1, Neosho
Fred & Higgins Bobolz	.....Avalon
Peter Cupery	.....Dousman
Earl Craven	.....Sussex
Harold Cobb	.....Lodi
Oscar Draws	.....Rt. 2, Mosinee



## AYRSHIRE BREEDERS (Continued)

Name	Address
Robert A. Douvak .....	Rt. 1, Yuba
George Dobratz .....	Merrimac
Walter Dalke .....	Rt. 2, Wittenburg
A. G. Dayton .....	Rt. 1, Hancock
Herman Dreier .....	Rt. 2, Kewaunee
Forest Ewers & Son .....	Richland Center
John Elverman .....	Burlington
Alvin Ewers .....	Richland Center
Arnold Fuhrmann .....	Dale
George Feeder .....	West Allis
Gerhardt Glandt .....	Kewaunee
Harvey Hilbelink .....	Rt. 1, Cedar Grove
Robert Hacker .....	Brillion
Hacker Bros. ....	Brillion
Ray Henschell .....	Sturgeon Bay
John Hofberger .....	Rt. 1, Larsen
Carl A. Hannemann .....	Rt. 2, Wautoma
E. J. Harder .....	Phillips
Herbert Helm .....	Winneconne
Ray Held .....	Rubicon
Joseph Halfman .....	Rt. 1, Malone
Millard Ihde .....	Neenah
Russell E. Jessop .....	Rt. 1, LaValle
Royal Jones .....	Darien
Lester F. Johnson .....	Rt. 1, Minong
Alfred Kiekhafer .....	Rt. 3, Denmark
Rubert Kiekhafer .....	Rt. 2, Greenleaf
Allen Knoespel .....	Forest Junction
Harold Kressin .....	Rockfield
Albert J. Kramer .....	Rt. 1, Racine
Arthur F. Krueger .....	Ixonina
Lind Bros. ....	Viroqua
Rov Lambrecht .....	Dalton
Hugh Mitchell .....	Rt. 1, Racine
Mrs. Mvrtle J. Moyer .....	Rt. 2, Whitewater
Ter Michalek .....	Rt. 1, Kewaunee
E. B. Marquart .....	Knowles
Florian Mastev .....	Nichols
Julius Mover & Son .....	Reedsburg
F. Matecki .....	Pestigo
Wayne Nelson .....	Rt. 1, Edgerton
Clarence Na Green .....	Rt. 2, Neenah
William Neitzel .....	Rt. 1, Menomonie
Frank G. Ott .....	Rt. 1, Menasha
Roger Ott .....	Rt. 1, Menasha
Cecil Powell & Son .....	LaValle
Louis Peterson .....	Holman
Clem Richards .....	Rt. 1, Sheboygan Falls
Arthur Roelke .....	Rio
Harry Richardson .....	Spring Green
O. R. Rice .....	Delavan
Edmund Reyer .....	Rt. 3, Sheboygan
R. P. Selle .....	Rt. 1, Sheboygan Falls
Archie W. Summers .....	Portage
M. G. Stone .....	Fisk
Leslie Schmidt .....	Greenleaf
Fred Schroeter .....	Grafton
Harvey Schultz .....	Athens
Alvin Seidl .....	Two Rivers
Erwin Schussman .....	Rt. 1, Malone
Emil C. Schmidt .....	Rt. 2, Two Rivers
Robert Thomey .....	Bristol
Ernest J. Vine .....	Granton
Wilbur Viestinz .....	Rt. 1, Oconto
Christ Wald .....	Alma
H. L. Wurl .....	Mayville
Otto Westphal .....	Kendall
Walter W. Wilquet .....	Sawyer
D. D. Whitmore .....	Evansville
Mrs. Julia Kraft .....	Genoa City

# LAWN HURST FARM

Registered Ayrshires

BRED FOR PRODUCTION AND TYPE

Herd headed by "June's Happy Henry 76396"  
Son of "Whitpain Sunny Ladgwyn 57766 and  
"Lone Chestnut's June 201360" with a 6 yr.  
record of 11594 lb. Milk, 510 lb. butterfat and  
a 7 yr. record of 11647 lb Milk, 499 lb butterfat.

A few choice bull calves for sale.

LAWRENCE BLANK

Ripon, Wisconsin

## FREE—Catalog—FREE

Write today for most complete catalog on  
agricultural equipment ever published. Every-  
thing you need for D.H.I.A., Artificial Insem-  
ination, Veterinary Instruments, and Breeding  
Equipment.

National Agricultural Supply Co.

Fort Atkinson, Wis.

FINE MEATS



Madison, Wisconsin

# IS THIS AN OUTSTANDING BROWN SWISS COW?



During her 15 years of life she has produced 11 living offspring, 7 heifers and 4 bulls. In addition she has produced 122,066 pounds of milk and 4,747 lbs. of butterfat. She and the five of her daughters in production have produced a total of 422,155 pounds of milk and 17,241 pounds of butterfat in 40 lactations (5 incomplete) totaling 13,405 days. This is an average of 431 pounds of fat per average lactation of 335 days. All of them are still producing. Her owner has registered 50 of her direct line descendants—not including the offspring of her sons.

**YES,** she is an outstanding cow. (most would have more bulls). But will be surprised at the number of Brown Swiss herds throughout the country started from a cow just like her. One cow producing healthy offspring year after year will in a relatively short time build a good sized, profitable herd of this large, rugged, high producing breed. One Brown Swiss cow can do the same to you!

**YES,** she is a Wisconsin cow and Wisconsin is a good place to find more like her, or her offspring.

## Wisconsin Brown Swiss Association

(Have you joined this year?)

Willard R. Evans  
Waukesha, Pres.

E. A. David  
Wentworth, Vice Pres.

Mrs. Norman E. Magnussen  
Lake Mills, Sec'y-Treas.



# Brown Swiss Breeders

## Active Members of The Wisconsin Dairymen's Association

Name	Address	Reg. G., No.
Allyn, J. P., Delavan	.....	Reg. 70
Antholt, Clarence, Brussels	.....	Reg. & Gr. 20
Badinger, D. A., Rt. 2 Eagle	.....	Grade 14
Baumgartner, E. & Son, Rt. 3, Waukesha	.....	Reg. 24
Becker, Willis, Rt. 1, Appleton	.....	Reg. 17
Behnke, Fred W. & Sons, Rt. 2, Brillion	.....	Reg. 22
Bentz, Otto, Cedarburg	.....	Reg. 29
Berg, Walter, Rt. 2, Waukesha	.....	Reg. 14
Blechinger, John, Almena	.....	Grade 14
Brennecke, C. F., Monroe	.....	Reg. 25
Buckingham, C. L., Dodgeville	.....	Reg. & Gr. 12
Chadbourne, Gilbert, Rt. 3, Fond du Lac	.....	Grade 19
Cooke, George, Est, Racine	.....	Reg. 11
Crossman, Dale, Rt. 1, Elrodado	.....	Grade 27
Davis, Howard, Downing	.....	Grade 19
Dedrick Bros., Weyauwega	.....	Reg. 16
Dietenberger, Ed, Rt. 2, Hartford	.....	Grade 12
East Central Breeders Ass'n Coop.,	.....	Reg. 15
Emerson, Palmer, Ferryville	.....	Reg. & Gr. 15
Evans, Willard, Rt. 1, Waukesha	.....	Reg. 25
Elser, Theodore E., Rt. 1, Beaver Dam	.....	Reg. 35
Erasmus, W. A., Waukesha	.....	Reg. 24
Friz, Rt. 4, Waukesha	.....	Reg. & Gr. 10
Fromm, Howard, Shullsburg	.....	Reg. & Gr. 22
Galloway, E. P., Rt. 3, Fond du Lac	.....	Reg. 22
Gear, Carroll A. & Son, Rt. 1, Plainfield	.....	Reg. & Gr. 31
Gehler, Rudolph, Rt. 4, Watertown	.....	Reg. 15
Gilbertson, Morris L., Rt. 1 Evansville	.....	Reg. 30
Grootemaat, R. L., Rt. 1, Hartford	.....	Reg. 12
Hansen, Geo., Rt. 1, Hubertus	.....	Reg. & Gr. 16
Hansen, Dr. R. T., Rt. 1, Hartland	.....	Reg. 18
Hazel Mor Farm, Rt. 2, Kenosha	.....	Reg. & Gr. 38
Hendricks, Ray, Rt. 1, Campbellsport	.....	Grade 15
Henning, Geo., Burlington	.....	Reg. & Gr. 15
Grueneberg, Herbert, Columbus	.....	Reg. 16
Hess, J. W., Rt. 2, Jefferson	.....	Reg. 13
Hodgson, Fraz, Apple River, Ill.	.....	Reg. 28
Howard, Leslie, Rt. 1, Campbellsport	.....	Grade 16
Illing, H. T., Rt. 3, Waukesha	.....	Reg. 19
Ingold, Fred, Monroe	.....	Reg. 80
Inman, Ira, Beloit	.....	Reg. 10
Jensen, Emil J., Menomonie	.....	Reg. 20
Koenigs, P., Rt. 2, Pewaukee	.....	Reg. & Gr. 18
Kranke Bros., Rt. 2, Fond du Lac	.....	Grade 34
Lee, Carl, 2919 N. Prospect Ave., Milwaukee, and Germantown	.....	Reg. 13
Magnusson, Iver, Rt. 2, Augusta	.....	13
Meirer, Alfred, Rt. 2, Monroe	.....	Reg. 28
Menneke, Mrs. Alice, Hustler	.....	Reg. 6
Merrill, Donald, Shiocton	.....	Grade 13
Mezera, Albert, Barnum	.....	Reg. & Gr. 30
Mills, S. J., Union Grove	.....	Reg. & Gr. 30
Moody, Howard, Belmont	.....	Grade 23
Mueller, Herbert, Rt. 2, Seymour	.....	Grade 21
Mueller, Reinhold, Rt. 2, Seymour	.....	Grade 20
Mullen, Thomas, Apple River, Ill.	.....	Reg. & Gr. 28
Nacker, A. N., West DePere	.....	Reg. 18
Newhouse, Weslev, Kaukauna	.....	Reg. 22
Noble & Shaw, Shullsburg	.....	Reg. 23

## BROWN SWISS BREEDERS (Continued)

Name	Address	Reg. G., No.
Norvic Farm, Rt. 1, Lake Mills		Reg. 28
Olmstead, Donald, Apple River		Grade 26
Olson, Roy, Barnum		Reg. 15
Oosterwuk, Garrett, Rt. 1, Brandon		Grade 13
Ostland Farm, Elkhorn		Reg. 33
OstVal Farms, Burlington		Reg. 68
Petersen, A., Rt. 1, Oconomowoc		Reg. & Gr. 16
Prager, Edgar, Rt. 1, Waukesha		Grade 15
Ruskosky, Mrs. A., Mauston		Reg. & Gr. 20
Schmid, Edna, Monroe		Reg. 28
Schroeder, Gordon, Rt. 1, Appleton		Grade 17
Schultz, Lloyd, Rt. 2, Hortonville		Grade 19
Sherry, Orbec, Viroqua		Reg. 24
Selle, Dr. F., Rt. 4, Waukesha		Reg. 20
Sommers, Reinhardt, Rt. 2, Appleton		Grade 13
St. Francis Monastery, Burlington		Reg. & Gr. 19
Stubber, Orval, Rt. 4, Fond du Lac		Grade 28
Tanner & Gruber, Rt. 5, Mondovi		Reg. 28
Tri-State Breeders Coop., Westby		
Voegeli, Jake, Monticello		52
Voegeli, John, Lodi		Reg. 35
Von Schleinitz, Fred, Rt. 5, West Bend		Reg. 12
Wastrack, Dr. W. R., Cedarburg		Reg. & Gr. 26
Wenzel, Carl, Rt. 1, Slinger		Grade 17
Widish, Roy, Argyle		Reg. & Gr. 21
West, Weber, Sarona		Reg. 30
Yahnke, Otto & John, Rt. 4, Burlington		Reg. & Gr. 18
Zellner, Elma L., Luxemburg		Reg. 11
Lester A Rothmund	Rt. 2, Manitowoc	
John Capaul	Alma Center	
Wallace Pfaff	Melrose	
H. G. Lenz & Son	Tomah	
F. W. Behnke	Brillion	
Martin Bros.,	West Salem	
A. M. Nackers	West DePere	
Glen Wilson	Tomah	
Mrs. Margaret Lyons & Sons	Galesville	
Wm. J. Hensel & Son Est.	Alma Center	
Archie Sahlstrom & Sons	Galesville	
Iver M. Magnussen	Augusta	
Louis Beyerl & Son	Colby	
W. A. Drollinger — Son	Auburndale	
Gross Bros.	Wisconsin Rapids	
Adeline & Frank Lang	Milladore	
Edw. Gearing & Sons Est.	Alma Center	
Floyd W. Plankey	Beloit	
Sol Engle	Mukwonago	
Martin E. Fromm	Waukesha	
Kenneth Heller	Cecil	
Elmer L. Zellmer	Luxemburg	
Ambrose Wilhelm	Ogema	
Alois Kastenmeier	Beaver Dam	
Frank Leibl	Milladore	
George Kastenmeier	Beaver Dam	
Ben Neis	Beaver Dam	
John Renner	Elkhorn	
C. H. Tabot	Beaver Dam	
Joe Kastenmeier	Beaver Dam	
Harry Greenwaldt	Waukesha	
Earl Zick	Black Creek	
Richard Behnke	Hilbert	
John W. Behnke	Hilbert	
A. W. Jeske	Seymour	
Art Jeske	Seymour	
Frank Kruswick	Algoma	
Joe Reuter	Rt. 3, Oconomowoc	
Archie W. Peterson	Oconomowoc	
Hilbert Farm	Germantown	

# EVANSDALE FARM

Registered Brown Swiss

T. B. Accredited since 1922

Calfhood vaccination practiced since 1930

Production tested since 1932

Home of the 1947 Jr. Champ at the Wis. State Fair—Evansdale Royal Belle whose dam Slyanna Belle of Evansdale has 531.8 lb. fat as a 5 yr. old with 4.1% test.

Herd of 60 females all home bred.

Inquiries invited.

**WILLARD R. EVANS, Waukesha, Wis.**

## BROWN SWISS BREEDERS (Continued)

Name	Address
Harley Fox	Columbus
Charles Damerow	Beloit
Alfred J. Meier	Monroe
Smith & Rink	Beloit
Bruno Mever	Norwalk
Clifford Morgan	Sparta
Dominic Yeager	Holman
Ralph Green	Sparta
Emil Schmidt & Sons	Manitowoc
Frank A. Ginsbach	Elmwood
B. C. Schneider & Son	Baldwin
Wm. Schalla & Son	Knapp
Lewis W. Owen	Nelson
Adolph Schiefelbein	Somerset
Wm. Landry	Baldwin
Nick Powers & Son	Hammond
Earl Henning	Eleva
R. G. Orth	Eau Claire
Herbert G. Flick	Menomonie
Henry Schneider	Chilton
Jerome Greibe	Sheboygan Falls
Clark Weeden	Sheboygan
Clarenc Bezold	Germantown
Albert Burgener	Irma
W. J. Becherer	Colby
Clarence Worden	Wausau
Walter Bartel	Green Lake
Otto W. Riemer	Underhill
Theo. K. Schott	New Franken
Casper Schauer	New Franken
John Schauer	New Franken
John Reinke	Kewaunee
Harold Morke	Cable
Fred Russom	Sta. B, Superior
Pete Nielson	Sta. B, Superior
Roy Dibble	Cumberland
Russell Lairne	South Range
Wm. Quinne	Mason
Ed Peterson	Bennett
E. A. David	Wentworth
Downey Bros.	Sta. B, Superior
Seno Bast	Rockfield
Albert & Norbert Koppelman	Sheboygan
Stanley Larson	Cushing
Dick Post	Beloit
Keith Weitzel	Middleton
Reuter & Hasz	Middletan

## BROWN SWISS BREEDERS (Continued)

Name	Address
Joe Van Kauweenberg .....	West DePere
J. C. Mortensen .....	Franksville
Weber West .....	Sarona
Ostland Farm .....	Elkhorn
Harvey Leach .....	Elkhorn
Harvey Swartz .....	Waukesha
Ed Pusch .....	Rubicon
Ira Oelhafen .....	West Bend
Frank Hansen .....	Colgate
Otto Bentz .....	Cedarburg
Dr. Jos. F. Miller .....	Mt. Calvary
Ben Barta .....	Bryant
Raymond Harder .....	Chilton
Allen E. Behnke .....	Hilbert
Reinhard Sommers .....	Appleton
Charles Storzer .....	Gillette
Richar F. Behnke .....	Hilbert
John C. Jutz .....	Collins
Franklin O. Ferg .....	Manawa
Dwight Kreul .....	Fennimore
Jacob Shefchik .....	Luxemburg
Gerald Smith .....	West DePere
Fred Winters .....	Pond

### Only One Milker Can Be THE BEST



Does the one you sell or use have the approval of Health authorities of New York and other large Cities for sanitary milk? Is it equipped with trouble free, **LIFE TIME PULSATOR**? Is it a quiet smooth running fast Milker?... Investigate The **AMERICAN**.

**BUILT RIGHT, STAYS RIGHT**

**W. H. Combs, State Dealer**  
Phone 118 Owen, Wis.

## WELCOME

The Juneau County Dairy Herd Improvement Association and the City of Mauston are proud to be hosts to the members of the Wisconsin Dairymen's Association and the Wisconsin Junior Dairymen's Association for their

### Annual Convention

on

Monday, March 14th

We invite you to attend the convention, visit our dairy herds and be our guests.

### Juneau County Guernsey Breeders Association

PRODUCTION BRED GUERNSEYS

Visit our herds while at the convention.

Frank Gorham, New Lisbon, Pres.  
Wm. Retzlaff, Elroy, Vice Pres.  
Wm. Barnes Jr., New Lisbon, Sec.

### Juneau County Holstein Breeders Association

PRODUCTION BRED HOLSTEINS

Visit our herds while at the convention.

Tim Barrett, Camp Douglas, Pres.  
Wm. Curtis, Mauston, Vice Pres.  
Andy Kieffer, Mauston, Sec.



## Registered Guernseys for BETTER INCOMES

A sound BREED - BRAND program with a QUALITY - QUANTITY dairy breed means EXTRA INCOME for dairymen and breeders in Wisconsin.

The Guernsey BREED-BRAND program offers

Registration	Field Service
Production Testing	GOLDEN GUERNSEY
Performance	trade name
Publishing	Milk Marketing Service
The Breeders' Journal	Radio Advertising
4-H Club Awards	National Advertising
Marketing Cattle and Milk	Promotional Literature

### Wisconsin Guernsey Breeders' Association

George D. Britts, Secretary, 133 Barstow St.,  
Box 14, Waukesha  
Maynard Matthys, Ass't. Secretary

#### THE AMERICAN GUERNSEY CATTLE CLUB

GOLDEN GUERNSEY, Inc.  
Peterborough New Hampshire

## SENRAB FARM GUERNSEYS

Bangs free No. 4753 "They Produce"

1947 herd average—33 cows—459 lbs. fat  
1948 herd average—32 cows—477 lbs. fat

All cows machine milked 2x with ordinary farm care.

#### Some Senrab Guernsey A.R. records

	Milk	Test	Fat	Class
Anna Fay				
Marie	11745	5.17	607	305C-2x-6 yrs.
Prince's Gurine				
Blossom	10869	5.11	555	305C-2x-Jr. 3
Prince's				
Bertha Lou	9866	5.36	5.29	305C-2x-Sr. 4
Ava Hannah	10005	5.29	529	305C-2x-5 yrs.
Senrab				
Senrab Monarch's				
Duchess	9617	5.16	496	305C-2x-Jr. 2
Prince's				
Marie Ann	10511	4.58	4.81	305C-2x-Jr.2
Senrab Monarch's				
Dora	9066	5.28	479	305C-2x-Jr. 2
Senrab Aristocrat's				
Cherrie	8126	5.35	435	305C-2x-Jr. 2
Average	9975	5.15	514	305C-2x six immature

**William H. Barnes & Sons**  
New Lisbon, Wis. Route 1

# GUERNSEY BREEDERS

## Active Members of the

### Wisconsin Dairymen's Ass'n.

Name	Address	Reg. G., No.
Alien, E. C., Rt. 1, Cameron	.....	Reg. & Gr. 14
Amdall, Ellis, Dallas	.....	Grade 21
Anderson, Robert, Ferryville	.....	Grade 11
Apher, Russell, Wonewoc	.....	Reg. & Gr. 16
Atlasta Farm, E. Bakken, Menomonie	.....	Reg. & Gr. 9
Altreuter, Otto, Rt. , Jefferson	.....	Grade 16
Audley, T. B., Rt. 1, Pewaukee	.....	Reg. & Gr. 27
Backlin, Roy, Barron	.....	Grade 20
Badger Breeders Coop, Shawano	.....	Reg. 25
Ballard, Chas., Rt. 1, Waukesha	.....	Grade 21
Ballard Robert, Waukesha	.....	Grade 21
Balson, Charles, Rt. 1, Fond du Lac	.....	Reg. 27
Bandli, Henry, Rt. 4, Rice Lake	.....	Reg. & Gr. 21
Barnes, Wm. H. & Sons, New Lisbon,	.....	Reg. & Gr. 33
Barrharst, Rudolph, Hustler	.....	Grade 12
Barstad, Carl, Barron	.....	Grade 42
Bartell, Lawrence, Rt. 1, Waukesha,	.....	Reg. & Gr. 24
Bartell, E. A., Cedarburg	.....	Reg. & Gr. 24
Barta, Calvin, Rt. 1, Two Rivers	.....	Grade 17
Bascom, Dean, West Bend	.....	Reg. & Gr. 16
Bass, Glenn, Hillsboro	.....	Grade 13
Basse, William H, Rt. 3, Box 317, Waukesha	.....	Reg. 25
Bauernfeind Robert, 8120 W. Br. Deer Rd., Milwaukee	.....	Reg. & Gr. 32
Baumgartner Bros., Wrightstown	.....	Reg. 80
Becker, Harry J., Rt. 3, Ft. Atkinson	.....	Reg. 10
Becker, Walter G., Rt. 1, Ft. Atkinson	.....	Reg. 12
Becker, Wilbur, Rt. 1, Ft. Atkinson	.....	Reg. 23
Behrens, Bernhard, Grafton	.....	Reg. & Gr. 23
Bell, Norman, Camp Douglas	.....	Reg. & Gr. 18
Bence, Jerome, Menomonee Falls	.....	Reg. & Gr. 23
Bergeman, August, Rt. 2, Appleton	.....	Grade 20
Beranek, Ed, Mauston	.....	Grade 12
Berg, Harold, Chetek	.....	Grade 30
Berg, Ray, Clayton	.....	Grade 17
Best, Ted J., Downing	.....	Reg. & Gr. 26
Betts, T. F., Eagle	.....	Reg. & Gr. 20
Biemel, E., Mauston	.....	Grade 24
Bintzler, John, Lyndon Station	.....	Grade 10
Blake, Walter, Black Creek	.....	Grade 23
Bock, Elmer, Rt. 1, Malone	.....	Reg. 23
Bockler, John, Catawba	.....	Grade 12
Bodenberg, Roy, Phillips	.....	Grade 16
Boese, W. R. & Son, Rt. 2, Ft. Atkinson	.....	Reg. 8
Bohman, Francis, Hortonville	.....	Grade 8
Bonde, Frederick, Rt. 1, Valders	.....	Reg. Gr.
Borlen, Anthony, Rt. 1, Hubertus	.....	Reg. & Gr. 21
Bornschen Bros., Jefferson	.....	Grade 24
Bossenbrook, Leonard, Rt. 1, Waupun	.....	Grade 26
Boux, Louis, Mauston	.....	Reg. 12
Braun Bros., Rt. 1, Malone	.....	Grade 21
Breitrich, O. H., Rt. 1, Appleton	.....	Reg. 18
Bresser, Gilbert, Rt. 1, Waupun	.....	Grade 14
Brickson, Alfred, Rt. 3, Ft. Atkinson	.....	Reg. 16
Broadlands, North Prairie	.....	Reg. & Gr. 17

**GUERNSEY BREEDERS (Continued)**

<b>Name</b>	<b>Address</b>	<b>Reg. G.,</b>	<b>No.</b>
Brown & Fran	Morley, Arland	Grade	23
Brunclik, Anton & Son,	Birchwood	Reg. & Gr.	20
Brunner, Jos. L., Rt. 4,	Manitowoc	Reg. & Gr.	62
Buboltz, Ed, Rt. 1,	Eldorado	Grade	16
Burchard & Erdman,	Rt. 2, Jefferson,	Reg. & Gr.	22
Burhop, Fred,	Grafton	Reg. & Gr.	18
Burns, Floyd,	Hortonville	Grade	25
Burton, Donald, Rt. 1,	Eagle	Reg. & Gr.	9
Carr, Ray,	Barron	Grade	17
Casper, Gregor,	Rt. 2, New Holstein	Grade	18
Cesik, Aldrich,	Rt. 2, Rice Lake	Grade	24
Chapin, A. J., t. 2,	Brandan	Reg.	28
Chapman, Wm.,	Fifield	Reg. & Gr.	7
Clark,, Henry,	Mauston	Grade	8
Clausen, Harold,	Bruce	Reg. & Gr.	16
Clausing, Elmer,	Cedarburg	Reg. & Gr.	21
Clausing, Harold,	Bruce		
Clausing, Milton & Roland,	Grafton	Reg.	22
Clausing, Armin,	Grafton	Reg. & Gr.	29
Clausing Bros.,	Thiensville	Reg. & Gr.	28
Clausing, Herbert,	Grafton	Reg.	31
Coleman, Wallace,	Rt. 3, Rice Lake	Grade	21
Congdon, Bert C.,	Galesville	Grade	16
Connell, Clarence,	Rt. 1, Germantown	Reg.	23
Cotton, Fred,	Rt. 6, Chippewa Falls		10
Cowin, Harold,	Barron	Grade	12
Cramer, Joe & Son,	Menomonie	Reg. & Gr.	40
Cramer, Joe & Son,	Menomonie	Reg. & Gr.	10
Craig, Birkett,	Darlington	Grade	7
Crase, Earl,	Mineral Point	Grade	17
Davies, Dr. E. B.,	233 S. St., Waukesha	Reg. & Gr.	57
Decorah Farm Dairy,	Rt. 5, West Bend	Reg.	31
DeCramer, A. C., Rt. 1,	Eldorado	Grade	20
Denow, Archie,	Cedarburg	Reg. & Gr.	19
Dickerson, Le Roy,	Fifield	Reg. & Gr.	15
Dietrich, John,	Cedarburg	Reg. & Gr.	15
Debberpuhl, Adolph,	Thiensville	Reg. & Gr.	15
Dutton, Leonard,	Elroy	Reg. & Gr.	24
Dwyer Bros.,	Kendall		
East Central Breeders Ass'n	Coop	Reg.	
Eide, Arthur,	Cumberland	Grade	13
Elsner, R., Rt. 1,	Hartland	Grade	11
Ellis, Ed,	Eastman	Reg. & Gr.	18
Elverman, Wm., Rt. 3,	Burlington	Grade	18
Emde, Robert,	Rt. 1, Colgate	Reg.	20
Engebretson, Victor O.,	Black River Falls,	Grade	14
Erdman, Louis,	Rt. 2, Augusta		18
Erdman, Louis C.,	Rt. 2, Jefferson,	Reg. & Gr.	22
Erpenbach, Henry,	Rt. 2, Elk Mound		22
Ewer Bros.,	Rt. 3, Holcombe		25
Ewings, Ralph,	Rt. 1, Jim Falls		19
Ewings, W. R.,	Rt. 1, Jim Falls		27
Fahrenwald Farm,	Oshkosh	Reg. & Gr.	80
Ford, John,	Wilton		
Fostvedt, Sidney,	Chetek	Grade	18
Franzke, Warren,	Rt. 1, Appleton	Grade	13
Frey, Louis,	Rt. 2, Hartford	Reg.	17
Frie, Martin,	Cumberland	Grade	16
Frohmaster, I. A.,	Camp Douglas	Grade	20
Fruit, C. E. & Son,	Rt. 2, Waukesha,	Reg. & Gr.	40
Fulton Farm,	Waukesha	Reg.	32
Fulton & Duncan,	Rt. 2, Waukesha	Reg. & Gr.	25
Furlong, Melvin,	Rt. 2, Campbellsport	Reg. & Gr.	18
Gates, D. F.,	Rt. 2, Amherst	Reg.	24
Gebiant, Jess,	LaValle	Reg.	13
Galle, Fred,	Rt. 1, Fond du Lac	Grade	28
Gerlach, Walter,	Rt. 1, West Bend	Grade	16
Giezendanner, John,	Barron	Reg. & Gr.	22

**GUERNSEY BREEDERS (Continued)**

Name	Address	Reg. G., No.
Glovka, George, Comstock	.....	Grade 18
Golden Prairie Farm Inc., Union Grove	.....	Reg. & Gr. 32
Gonske, Gottlieb, Rice Lake	.....	Reg. & Gr. 14
Gorham, Frank, Camp Douglas	.....	Reg. & Gr. 38
Goth, Wm., Phillips	.....	Grade 13
Graf, Waldo, Rt. 1, Box 154, Kiel	.....	Reg. & Gr. 26
Griesbach, Henry, Greenville	.....	Grade 10
Griffin, Wm., Rt. 1, Palmyra	.....	Grade 38
Griswald, G. B., Rt. 1, Hartland	.....	Grade 13
Groh, Fracis, Rt. 1, Kiel	.....	Reg. & Gr.
Grosskreutz, Paul, Clayton	.....	Grade 18
Gugdahl, Carl, Mauston	.....	Grade 14
Gugdahl, Herman, New Lisbon	.....	Reg. 16
Haase, C. A., Menomonie	.....	Reg. & Gr. 31
Haferbecker, Melvin, Rt. 2, Appleton	.....	Reg. 22
Halbach, Melvin, Rt. 1, Malone	.....	Grade 20
Halvorson, Albert, Rt. 4, Rice Lake	.....	Reg. & Gr. 29
Halverson, Donald, Dallas	.....	Grade 19
Halverson, Mrs. Rena, Rt. 4, Rice Lake	.....	Reg. & Gr. 20
Hammons, Freeman, Clear Lake	.....	Reg. 16
Hammons, Freeman M., Clear Lake	.....	Reg. 19
Hanson, Earl, Neillsville	.....	Reg. & Gr. 31
Hansen, V. I., New Lisbon	.....	Grade 10
Hargrave, A. W., Rt. 1, Ripon	.....	Reg. & Gr. 27
Harness, R. W., Neenah	.....	Reg. 30
Harshman, Boyd	.....	Reg. 22
Hartway, Carl, Park Falls	.....	Reg. & Gr. 42

**OUR 60th YEAR**

**Burlap and Cotton Bags**

**FREDMAN BAG CO.**

330 E. Clybourn St.

Milwaukee 2, Wis.

**KLENZADE**

Chemical specialists for Dairy, Food, and Industrial Sanitation—Water treatments—Chemical feeding and proportioning equipment—Engineering, technical and laboratory services.

**KLENZADE PRODUCTS**

INCORPORATED

Beloit, Wis. Distributors in Principal Cities

## Wisconsin Guernsey Breeders' Association

### SERVICE:

To breeders—We offer our sales service for dispersal sales and for private sales. Also cooperate with our county association sales groups.

Let us know if you need help on your back registrations. We can help you.

We supervise the sale of Golden Guernsey milk in Wisconsin—The best market for a high quality milk.

Wisconsin Guernseys—Our state magazine to every member, your membership is needed—we will give you value received.

### OUR YOUTH PROGRAM:

20 special awards to 4-H and FFA members. Showmanship awards and other special awards given at County and State Fair.

Co-operating with county associations to give more help and awards to our junior breeders.

George D. Britts, Secretary  
Box 14 — Waukesha, Wisconsin

## HOMESTEAD FARM GUERNSEYS

### HERD SIRE

*Chedco Shiek A. R.*

6 A. R. daughters

### SIRE

**Chedco King of the Meads A.R.**

10 A. R. daughters

### DAM:

**Chedco Selma**

Milk 13907 lbs., Fat 719.5 lbs

Milk 11132 lbs. Fat 549.3 lbs.

**JAMISON BROS.**

Rt. 1, Appleton, Wis.

**MONEY  
MAKING  
MILKING  
IS WHAT WE  
HAVE TO SELL!**



## **The SURGE MILKER**

*A lot of people like the Surge . . . that's why we are making more Surge Milkers than ever before, and the demand still exceeds production. Perhaps the reason is because Surge is backed by a national organization of Surge Service Dealers pledged to keep the Surge a good milking machine year in and year out.*



**BABSON BROS. CO.**  
2843 W. 19th ST., CHICAGO

# JERSEYS

## The Profit Plus Breed

Facts that Spell \$ \$ \$ to the Dairyman  
Who Selected Jerseys for His Breed

1. JERSEY—proved by test to be the most economical producer of butterfat.
2. JERSEY—milk the highest in energy units (880 per quart of 5.3% fat).
3. JERSEY—the champion lifetime butterfat producer of all breeds (Silken Lady Ruby of F. with 166,020 pounds milk, 9,165 pounds fat in 16 consecutive lactations).
4. JERSEY—the only breed that has developed a sire (Silken Ruby's Lad) whose 10 unselected daughters on twice a day milking in 305 days average 13,172 pounds milk, 744 pounds fat.
5. JERSEY—a Jersey cow produced an average of 1,061 pounds of fat for six lactations.
6. JERSEY—a Jersey cow produced an average of 905 pounds of fat for eight lactations.
7. JERSEY—the choice of 2,000,000 American dairy farmers to make a higher standard of living through greater profits.

For List of Breeders Write:

## Wisconsin Jersey Cattle Club

Phil N. Steffanus, Delavan, President

Ed J. Saugstad, Westby, Vice-Pres.

George B. Price, Rt. 3, Kenosha, Secretary

# ELK LAKE FARM JERSEYS

## HERD SIRES

**Brampton Favorite Royal 382599**

**CLASSIFIED GOOD PLUS**

By Right Royal 79285 C. J. C., Gold and Silver Medal. Out of Brampton Favorite Girl 164965 C. J. C. C., Medal of Merit, Gold and Silver, with 1,020 lbs. butterfat.

**Brampton Royal Aim High 391550**

Classified Very Good—Jr. Champ. Minn 1939  
By Valiant Aim P. S. 7133 H. C. First on Jersey, 1936. Classified Very Good. Out of Brampton Royal Vicki 94606 C. J. C. C. 544 lbs. butterfat as 4-year-old. Reserve Junior Champion, Grouville-St. Saviour.

## RICHARD BRACKETT

ELK MOUND, WISCONSIN

# Jersey Breeder's



## Active Members of the Wisconsin Dairymen's Ass'n.

Name	Address	Reg. G., No.
Amberg Jersey Farm,	Hillsboro	Reg. 30
Balko, Arnold A.,	Rt. 1, Alma	Grade 16
Bergstrom, Sidney,	Clayton	Grade 20
Blank, Alvin,	Grafton	Reg. 21
Bosher, Ray,	Rt. 2, Augusta	Grade 18
Brackett, R. A.,	Elk Mound	Reg. & Gr. 50
Bruins, Clarence,	Rt. 1, Fairwater	Reg. 27
Christenson, A. E.,	Soldiers Grove	Reg. & Gr. 21
Clark & Plummer,	Sturtevant	Reg. 38
Dimick, R. I. & Sons,	Alma	Reg. & Gr. 25
Drinks, Frank,	Rt. 2, Appleton	Grade 20
Eddy, Fred H.,	Rt. 4, Beloit	Reg. 12
Finn, Charles B.,	Bridgeport	Reg. 20
Frisinger, Marshall,	Barron	Grade 16
Fryda, E. A.,	Rt. 1, Sussex	Reg. 22
Gil-Bar Farms,	Barless, Stewart, Janesville	
Godfrey & Mauleg,	Mineral Point	Reg. 24
Gunnelson, Laurence,	Rt. 2, Cambridge	Reg. & Gr. 34
Hallstrum, R.,	Rt. 1, Waukesha	Reg. & Gr. 42
Hanson, Art,	Chetek	Reg. & Gr.
Hartkopf, C. & M. R.,	Rt. 2, Mukwonago	Reg. 23
Hasslinger, C.,	Hartland	Reg. 23
Hasslinger, Clara A.,	Rt. 1, Nashotah	Reg. & Gr. 31
Haupt, Robert,	Rt. 3, Manitowoc	Reg. & Gr.
Havens, O. D.,	Darlington	Reg. & Gr. 12
Heitz, Ralph, Ft.	Atkinson	Reg. 23
Heitz, Warner, & Sons,	Rt. 1, Fort Atkinson	Reg. 10
Helwig, Lester & Son,	Rt. 2, Eau Claire	15
Hepburn, Howard,	Prairie Farm	Reg. & Gr. 37
Hoffman Farms,	Grafton	Reg. 22
Holloway, Charles,	Union Grove	Reg. & Gr. 18
Holloway, John,	Union Grove	Reg. 21
Hong, Norman,	Rt. 3, Barron	Reg. & Gr. 14
Howell, H.,	Rt. 1, Waukesha	Reg. & Gr. 24
Huber, Ulrich,	Rt. 1, Germantown	Reg. 25
Huston, Gordon,	Rice Lake	Grade 25
Kimpel, Eugene & Son,	Honey Creek	Reg. 15
Jacobson & Rust,	Alma	Grade 21
Jackson, Willard,	Rt. 3, Eleva	Grade 18
Jerseyholm Farm,	Shafer, W. C. E. & Sons, Amery	Reg. 11
Johnson, Lawrence,	Ogema	Reg. & Gr. 17
Johnson, Thorval,	Union Grove	Reg. 10
Kern, Marvin,	Alma	Grade 17
Keup, Edwin,	Cedarbug	Reg. & Gr. 24
Kubicek, Henry,	Phillips	Reg. & Gr. 16

### RICH-FLO JERSEYS

Oaklands, Lords & Volunteers

D. I. DIMICK & SONS

Alma, Barron Co., Wis.



## Barron County Jerseys are:

1. PRODUCTION BRED
2. CLASSIFIED FOR TYPE
3. ECONOMICAL PRODUCERS
4. BRED BY FARMER BREEDERS

## Barron County Jersey Breeders Association R. I. Dimick, Sec.

### GUERNSEY BREEDERS (Continued)

Name	Address	Reg. G., No.
LaBarre, Kenneth	Barker Rd., Brookfield	Reg. 18
Laity, Charles	Shullsburg	Reg. & Gr. 61
Lugh, Leslie	Mauston	Grade 13
Mayte, John	Clayton	Grade 14
Moy, W. S.	Mondovi	Grade 30
McGuire, Richard	Rt. 1, Cato	Grade
Miller, Morton F.	Rt. 3, Cumberland	Reg. & Gr. 16
Miller, George	Barron	Reg. & Gr. 24
Mills, Ray	Barron	Grade 9
Mullen, Steve	Seymour	Reg. & Gr. 35
Olmsted, R. & Neil	Steuben	Reg. & Gr. 17
Pardee, H.	Eagle	Reg. & Gr. 11
Pellett, Orval	Viola	Reg. 18
Peterson, Chas. A.	Rosendale	Reg. 60
Potts, Truman R.	Rt. 2, Waupaca	Reg. & Gr. 23
Remington, Neal	Elroy	Reg. 11
Rettler, Milo	Black Creek	Grade 21
Reedal, John	Phillips	Reg. 30
Rheineck, Dr. A. F.	Oconomowoc	Reg. 41
Saugstad, Ed	Westby	
Styer, Grant	Knapp	Reg. & Gr. 30
Schonthal, B. E.	Rt. 3, Whitewater	Reg. 35
Skarphol, H. M.	Waukesha	Reg. 15
Slayton, David	Gays Mills	Reg. & Gr. 18
Steffanus, P. N.	Delavan	Reg. 40
Stirn Bros.	Cochrane	Reg. & Gr. 24
Stoecker, W. J.	Rt. 1, Mukwonago	Reg. 27
Tri-State Breeders Coop.	Westby	
White, O. M.	Rt. 2, Mukwonago	Reg. & Gr. 12
Wilson, W. B.	Jefferson	Reg. 20
Wolcot, Lee	Edgerton	Grade 8

## FAWN DAWN FARM

### Registered Jerseys

PRODUCTION TESTED FOR 24 YEARS

Classified for Type

Breeding Stock Usually For Sale

**P. N. Steffanus & Son**

Delavan, Wis.

# GIL-BAR FARMS

## *Registered* JERSEYS

Breeding Stock For Sale

Janesville

Wisconsin

### JERSEY BREEDERS (Continued )

Additional Members of the Wisconsin Jersey  
Cattle Club Not Already Listed

Name	Address
Fred Shepard	Oconomowoc
Fred Bushing	Salem
Morris R. Hartkopt	Mukwonago
Wm. C. Tetzlaff	Grafton
W. I. Puddicombe	Sturtevant
Emery Christenson	Union Grove
Karl T. Albright	Racine
Francis Moss	Whitewater
Roy Jorgenson	Janesville
Verlin Hawley	Beloit
M. C. Vosberg & Son	Ft. Atkinson
Charles Williams	Edgerton
Eric Martin	Edgerton
Harry Giese & Son	Loganville
Larry Downing	Fennimore
Harold Johnson	Richland Center
Will Glaeser & Son	Montfort
Vivian Wilkins	Livingston
Donald Ketterer	Fennimore
Guy Walker	Fennimore
Lester Wahrle	Fennimore
Geo. S. H. Harris	Bagley
Frederick Zeng	Bagley
Rolland Black	Mount Ida
Richard McMahan	Lancaster
W. J. Stoecker	Muwonago
Clarence Ling	Kansasville
J. G. Wormington	Hartland
Nordahle Kirking	Ontario
George Jerry	Exland
Conrad Lorentz	Lorentz
Harry Davis	Ladysmith
Wallace Houston	Comstock
Jake Hawkinson	Barron
Ed Behling	Cumberland
Roy Mills	Barron
Millard Chadwick	Greenwood
Sanford Barth	Black Creek
David T. Wilms	Neenah
Leo V. Bevers	Manawa
L. J. Boyerl	Gilman
Emmett Colvin	Stratford
John Dykstra	Randolph
Clarence Bruins	Fairwater
Art F. Bresowsky	Merrill
Theo. E. Krueger	Merrill
Hugo Breit	Stratford
Joe H. Bauman	Marathon

## GUERNSEY BREEDERS (Continued)

Name	Address
Herman Wussow .....	Black Creek
Lawrence J. Rickert .....	Berlin
Roland Barrett .....	Greenwood
Clarence Petri .....	Seymour
Raymond Nagel .....	Elkhart Lake
H. A. Sluckmann .....	Plymouth
Rolland E. Vogt .....	Manitowoc
John Kolb .....	Cleveland
Arvin Dehne .....	Newton
Mrs. Anna Hartman .....	Manitowoc
Joel Abrahamson .....	Sawyer
Helbert Stefl .....	Mishicot
Adolph Hermann .....	Sheboygan
Walter Dehne .....	Newton
Othmar Pritzl .....	Cato
Edgar Schroeder .....	Plymouth
Edward O. Reichel .....	Brillion
Rollin C. Gillingham .....	Neenah
Virgil F. Albert .....	Sawyer
Norman Roder .....	Sawyer
Albon Sordahl .....	Viroqua
John G. Opus .....	Coon Valley
Hjalmer Paulsen .....	Westby
A. J. Latimer .....	Viroqua
Melvin Strafslein .....	Viroqua
Pelmer Melby .....	Melvina
Sturdevant & Williams .....	Melvina
Martin Rusdal .....	Westby
Merl O. Remington .....	Mauston
Austin Christensen .....	Soldier Grove
Otto Olson .....	Viroqua
Tollackson Bros. ....	Viroqua
J. Clark Johnson .....	Viroqua
Lars Rusdal .....	Viroqua
H. M. Wallace .....	Norwalk
Walton Ofstedahl .....	Holmen
Alan Hendrickson .....	Holmen
H. T. Allen .....	La Farge
Louis A. Slatte .....	Cashton
O. A. Feldman .....	Augusta
Howard Glurkink .....	Baldwin
David Kelly .....	Hudson
Donald Haeuser .....	Fountain City
Leland Chapman .....	River Falls
Marvin Nelson & Son .....	River Falls
Joe Schultz .....	River Falls
Ray J. Krenz .....	Osceola
Nick Buhr .....	Hudson
Robert H. Kimmey .....	Hudson
Haluser & KammueUer .....	Fountain City
Edward A. Miller .....	Ridgeland
Arthur Hansen .....	Chetek
Louis La Rue .....	Osceola
Ervin Scribner .....	Comstock
Wm. Rathsack .....	Tony



## Milking Shorthorns

### Active Members of the Wisconsin Dairymen's Ass'n.

Name	Address	Reg. G., No.
Chapman, C. L. & Sons,	Rt. 2, Waukesha,	Reg. 26
Gauger, Emil,	Rt. 1, West Bend	Grade 18
Gerner & Son, Ed,	Rt. 2, West Bend	Reg. 24
Ewing Bros.,	Benton	Reg. 16
Jones, Leslie,	Barron	Grade 10
Lamb, R. W.,	Janesville	Reg. 20
Check, Vincent & Sons,	Wauzeka	Reg. & Gr. 21
Peterson, John A. & Son,	Lynxville	20
Masonic Home,	Dousman	Reg. & Gr. 32
Northquist, Robert,	St. Croix Falls	Grade 26

## DOUBLE BENEFITS . .

*with*



## ARCHER Calf Starter

Archer Calf Starter actually works two ways. It builds healthy, sturdy calves, develops them into high producing cows. Vitamin fortified Archer Calf Starter also makes more milk available for market, more profits for you, because Archer Calf Starter contains even more nutrients necessary for rapid growth and good health than whole milk.

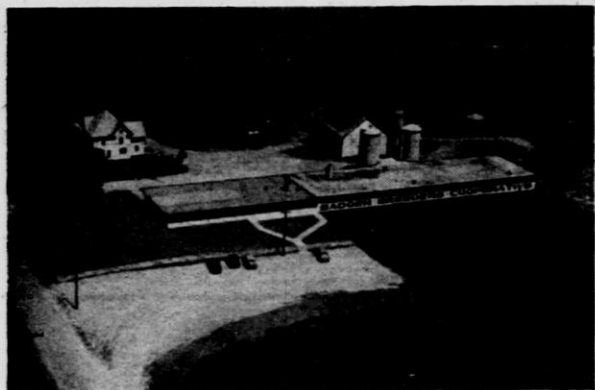


## ARCHER CALF STARTER

---

**Real Herd Improvement—  
now available to all farmers in  
24 counties served by Badger  
Breeders Cooperative through  
artificial breeding.**

**108,881 cows bred in 1948**



*Cooperatively owned by  
12,467 Dairymen*



**BADGER BREEDERS  
Cooperative**

**Shawano, Wisconsin**

**VISITORS WELCOME**

# MILKING SHORTHORN CATTLE

**"The Cattle of the Century"**



Milking Shorthorn cattle are the oldest of improved breeds, the first to become registered in the United States (1846) and TODAY the most modern of all cattle breeds in adaptation to general farm needs.

## *Visit Wisconsin Herds*

The Milking Shorthorn cow is popular with Wisconsin farmers. They appreciate her TWO-WAY bargaining power. On farm feeds and roughage she will produce more 4 percent milk and offer greater salvage value when through milking than other breeds.

## *Pounds Count*

You sell milk by the pound—Beef by the pound. With Milking Shorthorns you get more of both in one animal at the same time—**MORE PROFIT.**

## *Get the Facts*

Subscribe to Milking Shorthorn Journal, the official breed magazine—\$2.00 per year.

FREE list of breeders sent on request to

**American  
Milking Shorthorn Society**

4122 South Union Ave.

Chicago 9, Ill.

**Additional Members of The Wisconsin  
Milking Shorthorn Association not Already listed.**

<b>County</b>	<b>Name</b>	<b>Address</b>
Barron	Johnson, Hjalmer,	Rt. 3, Box 41, Barron
"	Shervick, Andrew,	Rt. 1, Rice Lake
"	Young, W. H., & Son,	Cumberland
Bayfield	Larson, C. A.,	Port Wing
Brown	Lycan, Rebecca H.,	De Pere
"	Schleis, John F.,	Rt. 1, Denmark
Burnett	Burnikel, Wm. J.,	Rt. 3, Siren
"	Hagstrom, Axel,	Grantsburg
"	Hanson, Jos. B.,	Siren
Calumet	Aebischer, Denton (PM),	Rt. 4, Box 74, Chilton
"	Aebischer, Gordon,	Rt. 6, Box 73, Chilton
"	Becker, Henry,	Rt. 1, Brillion
"	Gray, Edgar J.,	Rt. 2, Hilbert
Chippewa	Henry, W. F.,	Bloomer
"	Neisius, John & Son,	Cadott
Clark	Boie, Harry,	Thorp
"	Greene, Russel A.,	Rt. 1, Chili
"	Goakey, E. L.,	Rt. 2, Withee
"	Kern, Eddie,	Greenwood
"	Kern, George, Sr.,	Greenwood
Columbia	Derr, Arthur M.,	Columbus
"	Derr, Cyril T.,	Columbus
Crawford	Krueger, Mrs. Val H. & A. B.	Wilkinson, Bridgeport
"	Schwert, Wm.,	Wauzeka
Dane	Bergum, Andrew,	De Forest
"	Derr, Alvin H.,	Marshfield
"	Derr, Michael,	Marshfield
"	Schneider, H. A.,	Rt. 1, Oregon
"	Seltzner, Edward,	Sun Prairie
Dodge	Calkins, E. A.,	Juneau
"	Smith, Geo. W., & Sons,	Burnett
Douglas	Leffel, Norman W.,	Maple
"	Nelson, Philip E.,	Rt. 1, Maple
Eau Claire	Rabensdorf, Fred,	Fairchild
Florence	Stefan, Sam,	Tipler
Fond du Lac	Timblin Bros.,	Eden
Grant	Taylor, Edw.,	Lancaster
Jackson	Letson, H. I.,	Taylor
"	Olson, C. E.,	Taylor
"	Schlegel, Geo. E.,	Melrose
Jefferson	Hooper, John T.,	Palmyra
"	Wenham, C. D.,	Ft. Atkinson
"	Wenham, Hubert G.,	Rt. 2, Ft. Atkinson
Juneau	Conway, D. F.,	Elroy
"	Jindrick, Joseph,	Rt. 3, Box 71, Wonewoc
"	Rohrbeck, Wm. B.,	Rt. 2, Lyndon Station
LaCrosse	Bassett, W. S.,	1522 Main St., LaCrosse
"	Jones, S. D.,	P.O. Box 252, West Salem
"	Kirkeeng, Wilhelm,	Rockland
Lafayette	Robbins, J. H.,	New Diggings
Manitowoc	Gaedke, E. P., (PM),	Rt. 1, Reedsville
Marathon	Schoppenhorst, Frank,	Rt. 3, Box 81, Edgar
Marinette	Brown, Harold J.,	Rt. 1, Endeavor
Marquette	Nielson, Roy J.,	Rt. 1, Endeavor
Milwaukee	Goelzer Bros.,	Oakwood
"	Streiff, Gilbert, (PM),	9044 N. Richards St., Milwaukee

County	Name	Address
Monroe	Goetz, Anton F.,	Norwalk
"	Moseley, Harlan & Sons,	Warrens
"	Wells, Lee R.,	Sparta
Outagamie	Julius, August,	Appleton
Ozaukee	Vajgrt, Frank,	Port Washington
Pierce	Anderson, Milton,	Spring Valley
"	Anderson, Oscar W.,	Rt. 2, Maiden Rock
"	Mortimer, Jos. & Son,	(PM), Maiden Rock
"	Taylor, H. R.,	River Falls
"	Traynor, Victor,	Spring Valley
Polk	Peterson, Henry,	Centuria
"	Swanson, H. L.,	Amery
Price	Shelberg Bros.,	Phillips
Racine	Fritchen, Kenneth S.,	Franksville
Richland	Mullendore, Clarence H.,	Viola
"	Rockweiler, John,	Cazenovia
"	Rockweiler & Milfred,	Box 173, Cazenovia
Rock	Arnold, Emmett R.,	Rt. 1, Janesville
"	Arnold, Geo. H. & Son,	Rt. 1, Avalon
"	Campion, James & Son,	Milton Junction
"	Campion, John J.,	Milton Junction
"	Campion, Robert,	Rt. 2, Milton Junction
"	Carroll, Richard,	Rt. 5, Janesville
"	Cassady, Thos.,	Rt. 2, Box 136, Evansville
"	Conry Bros., c/o Thos L. Conry,	Clinton
"	Davis, J. Edward,	Janesville
"	Dunham, C. E.,	Rt. 7, Janesville
"	Gravdale Bros.,	Rt. 4, Beloit
"	Little, M. J.,	Janesville
"	Little, Victor D.,	Janesville
"	Little, Walter,	Estate, Evansville
"	Mannagh, W. F.,	Beloit
"	Marquart Bros.,	Milton Junction
"	McCann, J. J. & Son,	Janesville
"	Pierce, Gailen A.,	Edgerton
"	Quinn, Charles E.,	Clinton
"	Reilly, E. J.,	Janesville
"	Reilly, Raymond,	Rt. 4, Janesville
"	Rye Bros.,	Avalon
"	Rye, C. L. & Son,	Avalon
"	Rye, Theo.,	Avalon
"	Sayre, D. F. & Son,	Edgerton
"	Sweeney, J. M. & Sons,	Edgerton
"	Traynor, Robert,	Milton Junction
"	Wentworth, Archie I.,	Edgerton
St. Croix	Hunter, James,	Rt. 1, Roberts
"	LaGrandeur, Alfred J.,	Somerset
"	Lathrop, M. B.,	Roberts
"	Relander Bros.,	Boardman
"	Ruemmele, John F.,	Hudson
Sauk	Gasser, Herman L. & Son,	Plain
"	Green, W. A.,	Merrimack
"	Hashreider Bros.,	Plain
"	Laper, Oscar A., (PM),	Rt. 1, Abelman
"	Laridaen, Harry,	Rt. 5, Reedsburg
"	Montgomery, Paul,	Reedsburg
"	Morley, Frank,	Baraboo
"	Morley, R. A., Co.,	Baraboo
"	O'Conner, Roland E.,	Rt. 1, Box 142, Reedsburg
"	Pearson, Charles, Jr.,	LaValle
Shawano	Nordwig, H. O.,	Leopolis



County	Name	Address
Sheboygan	Engle, Geo. & Son,	Wautoma
"	Dillman, Francis E.,	Waldo
Taylor	Gerner Farms,	Rt. 1, Adell
"	Nelson, Carl P. & Son,	Rt. 3, Box 67, Medford
Trempealeau	Christianson, O. A.,	Rt. 3, Blair
"	Herbert, Hugo P.,	Arcadia
"	Johnson, Raymond M.,	Blair
"	Lehrke, Paul,	Whitehall
Vernon	Monson Bros.,	Osseo
"	Anderson, G. W.,	Rt. 1, Readstown
"	Johnson, Peter C.,	Rt. 5, Viroqua
"	McDonald, C. K. & Son,	DeSoto
"	Richards, R.,	Hillsboro
Walworth	Borg Farms, The,	Delavan
"	Dunbar, C. S.,	Rt. 1, Elkhorn
"	McKinney, Earl,	Rt. 2, Delavan
Washburn	Palmar, H. W.,	Honey Creek
Waukesha	Brandt, Harry C. & Sons,	Birchwood
"	Gray, A. E. & Son,	Rt. 4-355, Waukesha
Waupaca	Schwartz, John & Sons,	Nashotah
Waushara	Johnson, Julius,	Waupaca

## MIXED BREEDS

### Active Members of the Wisconsin Dairymen's Ass'n.

Ahrens Dairy Farm,	Prairie du Chien,	Reg. & Gr.	87
Allen Bros.,	Rt. 3, Chetek	Grade	22
Alexander, Walter A.,	Rt. 1, Owen	Grade	18
Amundson, H. O.,	Rt. 1, Cameron	Grade	15
Anderson, Joseph,	Ferryville	Reg. & Gr.	12
Anderson, Hans V.,	Rt. 3, Rice Lake,	Reg. & Gr.	28
Armitage, Dale K.,	Rt. 4, Neillsville	Grade	15
Barndt, Jessie,	Rt. 1, Germantown,	Reg. & Gr.	14
Barnes, Vivian,	Darlington	Reg. & Gr.	18
Barness, Lloyd,	Barron	Reg. & Gr.	20
Bauer, Art,	Rt. 1, Rockfield	Reg. & Gr.	15
Benoy, Art,	Chetek	Grade	14
Bergstrom, Henning,	Prairie Farm	Grade	20
Bogenschneider, R.,	Rt. 3, Kewaskum,	Reg. & Gr.	20
Bohn, Clarence,	Rt. 2, Campbellsport	Grade	14
Boillergeon, Morris,	Somerset	Grade	13
Binversie, Alfred,	Rt. 1,	Reg. & Gr.	
Brotz, Dennis,	Rt. 1, Newton	Grade	
Bruner, Charles,	Ogema	Grade	14
Byrnes, Frank,	Rice Lake	Grade	20
Gaugert, Gilbert,	Sullivan	Grade	13
Cherney, Jerome,	Kellnersville	Grade	
Cowing, Charles,	St. Croix Falls	Grade	8
Curran, Austin,	Shullsburg	Reg. & Gr.	20
Davis, Mason,	Rt. 2, Chetek	Reg. & Gr.	21
Deitrick, George,	Clayton	Grade	16
Derge, Dale,	Rt. 1, Allenton	Reg. & Gr.	18
Dostal, Norbert,	Rice Lake	Grade	13
Drake, Vilas,	Gays Mills	Grade	23
Du Charme, Richard,	Eastman	Grade	15
Erickson, Frank,	Almena	Grade	11
Ertel, William,	Barnum	Reg. & Gr.	21
Falk, John,	Rt. 1, West Bend	Grade	21
Fitzgerald, Walter,	Rt. 2, Dancy	Grade	10
Freeman, Fred & Hubert,	Gays Mills	Grade	26
Gardner, Russel,	Barron	Reg. & Gr.	17
Gehler, Fred,	Rt. 1, Cameron	Grade	13
Gilbert, Clarence,	Chetek	Reg. & Gr.	9
Glasbrenner, Leo,	Boscobel	Grade	30
Graese, Walter,	Deronda	Grade	12

MIXED BREEDS (Continued)

Name	Address	Reg. G., No.
Grager, Henry,	Rt. 1, Brandon	15
Grengs, Gordon,	St. Croix Falls	Grade 8
Guell, Herbert H.,	Rt. 2, Fond du Lac	Grade 26
Haensgen, Sylvester,	Rt. 2, New Holstein,	Grade 14
Hansen, Richard,	Almena	Reg. & Gr. 14
Hargrave, Allan,	Rt. 1, Ripon	22
Haugan, Woodrow,	Barron	Reg. & Gr. 16
Heldstab, John,	Rt. 3, Rice Lake	Grade 27
Heldstab, Clarence,	Rt. 4, Rice Lake	Grade 15
Hembre, E. L.,	Rt. 1A, Cameron	Grade 9
Henthorne, Perry,	Soldiers Grove	24
Hegna, Ole & Walter,	Cameron	Grade 24
Herchenroeder, Ernest,	Senaca	17
Hilbert Farm,	Rt. 1, Germantown,	Reg. & Gr. 14
Hubbard, Larry,	Clayton	Grade 9
Hull, John H.,	Rt. 1, Waupun	24
Johnson, Howard,	Rt. 1, Star Prairie	Grade 9
Jones, Thomas,	Rt. 1, Eldorado	21
Jones, Ivan,	Rt. 1, Ft. Atkinson	16
Karpinske, Edwin W.,	Rt. 1, Owen	Grade 8
Kemmerling, Fred,	Dousman	Grade 20
Kempen, Bernard,	Kennan	Grade 11
Kleiber, Bernard,	Rt. 5, Manitowoc	Reg. & Gr.
Kletti, Walter,	Rt. 5, West Bend	Reg. & Gr. 11
Knoll, Ervin,	Rt. 2, Chetek	Grade 14
Koshak, Louis,	Butternut	Reg. & Gr. 14
Kowalski, Adam,	Rt. 2, Dancy	Grade 13
Kraby, Herman,	Rt. 1, Lake Mills	9
Kuehl, Marvin,	Rt. 3, Kewaskum	Grade 21
Kurth, Frank,	Catawba	Grade 20
Larson, Louis,	Chetek	Grade 17
Lathrop, Norbert,	Rt. 1, Lake Mills	14
Legner, Louis,	Rt. 2, Dancy	Grade 15
Legner, Jim,	Knowlton	Grade 25
LeJeune, E. & Johnson,	M. Poskin,	Reg. & Gr. 46
Loney, Melvin,	Rt. 2, St. Croix Falls	Grade 10
Losey, L. M.,	Rt. 1, Canton	Grade 20
Magnussen, R. G.,	Rt. 1, Lake Mills	18
Makovec, Frank M., Jr.,	Rt. 1, Owen	Grade 16
Martin, Gilbert,	Warren	Grade 18
Marsden, Louis,	Rt. 3, Edgerton	22
Massie, Gomer,	Chetek	Grade 20
McKittrick, Isaac,	Kennan	Grade 18
Meinhardt, Clarence E.,	Greenwood	Grade 18
Merle, Mike,	Almena	Grade 22
Mikula, Walter,	Rt. 3, Chetek	Reg. & Gr. 19
Miller, Oscar,	Rt. 1, Cedarburg	Grade 14
Mueller, Ervin,	Cuba City	Grade 25
Nabbefeld, Phillip,	Catawba	Grade 15
Nelson, Carl A.,	Prentice	Grade 14
Nickols, Wm. J.,	Rt. 3, Chetek	Reg. & Gr. 18
Nelson, Emil C.,	Rice Lake	Grade 15
Nicolai, Arvel, Al.,	Ferryville	16
Norman, Roger,	Watertown	11
Novacek, Ralph,	Prairie du Chien	22
Novak, Ed,	Weyerhauser	Grade 17
Oestrich, Oscar W.,	Rt. 1, Loyal	Grade 24
Peterson & PenLalljon,	Darlington	Grade 27
Polzin, Wm.,	Rt. 4, West Bend	Grade 17
Puddicombe, Burdell,	Star Rt., Cambridge	10
Rakoves, John L.,	Rt. 2, Loyal	Grade 12
Reindl, Allen,	Rt. 2, Kewaskum	Grade 17
Retzlaff, Alfred,	Rt. 1, Ripon	11
Roberts, Hayman,	Ferryville	11
Robinson Bros.,	Rt. 2, Chetek	Reg. & Gr. 27
Roblee, Stanley,	Rt. 2, Fond du Lac	Grade 14
Pulvermacker, John,	Wauzeka	23
Rudex, Lawrence,	Sullivan	Grade 12
Ruff, Egner,	Almena	Reg. & Gr. 10

MIXED BREEDS (Continued)

Name	Address	Reg. G., No.
Schieffer, Milo,	Rice Lake	Grade 15
Schoenfeld, Milton E.,	Rt. 4, Neillsville	Grade 18
Schoenfelder, Otto,	Kennan	Grade 12
Schreck Bros.,	Barnum	
Schussman, Ervin,	Rt. 1, Malone	13
Seebandt, Henry A.,	Rt. 4, Neillsville	Grade 10
Seyfert, Howard,	Rt. 5, West Bend	Grade 15
Sheldon, Bernard,	Rice Lake	Grade 16
Shulka, Herman,	Prairie du Chien	18
Sime, Herman,	Ferryville	24
Steffen, George,	Rt. 4, West Bend	Grade 17
Smith, F. A.,	Rt. 5, West Bend	Grade 6
Sukowaty, Herbert,	Rt. 1, Newton	Grade
Swiggum, Oscar,	Gays Mills	13
Tangman, Clarence,	Rt. 1, Canton	Grade 25
Tetzlaff, Theodore,	Rt. 1, Newton	Grade
Thompson, Hilmer,	Ferryville	36
Trampush, Henry A.,	Rt. 1, Greenwood	Grade 16
Treleven Bros.,	Rt. 3, Fond du Lac	Grade 30
Turk, Paul,	Gays Mills	Grade 15
Van Dorston, Elmer,	Chetek	Grade 6
Volck, Robert,	Rice Lake	Reg. & Gr. 101
Wiedmeyer, John J.,	Rt. 1, West Bend	Reg. & Gr. 11
Wheaton, James,	Rt. 1, Loyal	Grade 18
Wuest, Joe P.,	Rt. 1, Fond du Lac	16
Zempke, Paul,	Clayton	Grade
Zinsmaster, Bill,	Chetek	Grade 20

*Valuable Information Relative to Building Herd Efficiency*

— on —

Good Feeding and  
Herd Management  
Managed Milking  
Mastitis Control



Is Yours for the Asking



— Write —

Wisconsin Dairymen's  
Association

Madison, Wisconsin

# MISCELLANEOUS

Name	Address	
Aebischer, D. C.,	St. Bd. of Vocational & Adult Education, St. Office Bldg., Madison	
Ahlers & Son, J. B.,	Rt. 5; West Bend	Reg. 12
Block,	Alton Dale, Dodge County Dairy Agent, Juneau	
Bonsack, C. H.	St. Bd. of Vocational & Adult Education, St. Office Bldg., Madison	
Cooper, Melvin,	Asst. Veteran-On The-Farm Supervisor, 1 West Main St., Madison	
Cramer, A. J.,	Ext. Dairyman, College of Agr. Madison	
Engendorff, O. H.,	Worland, Wyoming	
Fay, Ivan G.,	Veterans On The Farm State Supervisor, 1 West Main St., Madison	
Harris, Roy T.,	Extension Dairyman College of Agri., 207 King Hall, Madison	
Ketchum, Glenn,	Instructor, Neillsville	
Knox, Wm.,	Hoard's Dairyman, Ft. Atkinson	
Lewandoske, Herman,	Rusk	
Nelson, Harry,	Asst. Supervisor Veteran On The Farm Sup. Wisconsin Rapids	
Sasman, L. M.,	St. Bd. of Voc. & Adult Edu. St. Office Bldg., Madison	
Stallard, J. E.,	Ext. Dairyman, College of Agri., Madison	
Rogan, Wm. D.,	County Agent, Phillips	
Rivers, E. L.,	Rt. 8, Box 856, Wauwatosa 13	
Senniff, Joseph,	Rt. 4, Burlington	
Vergeront, Glen W.,	Ext. Dairyman, College of Agri., Madison	
River Falls St. Teachers College,	River Falls	
Platteville St. Teachers College,	V. E. Nylin Platteville	

## Members of Dunn County DHIA Co-op. Unidentified As To Breed

Name	Address	Reg. G., No.
Houser, Melvin,	Rt. 6, Menomonie	
Johnson, Gaylord,	Clear Lake	
Toy, Frank,	Prairie Farm	
Rasmusson, Melvin,	Wheeler	27
Swenby, Selmar,	Clear Lake	18
Sneen, Louis A.,	Menomonie	11
Miller, Jim,	Rt. 3, Menomonie	25
Quilling, L. H.,	Elk Mound	20
Smith, Tom,	Rt. 1, Boyceville	31
Cole, Duard,	Ridgeland	26
Wyss, Carl,	Rt. 2, Menomonie	18
Myers, John,	Rt. 2, Colfax	24
Kothlow, Lloyd,	Rt. 2, Menomonie	23
Wilsey, Don,	Menomonie	24
Haldeman, Arnold,	Rt. 2, Menomonie	25
Lausted, Harold,	Rt. 2, Colfax	18
Meyer, Reaul,	Elk Mound	15
Jacobson, Russell,	Rt. 3, Menomonie	31
Egan, John,	Rt. 3, Menomonie	12
Welch, John,	Rt. 3, Menomonie	11
Torgerson, John,	Rt. 3, Menomonie	9
Anderson, Esten,	Rt. 3, Elk Mound	18
Kopp, Fred,	Rt. 3, Elk Mound	22
Coleman, Les,	Rt. 3, Elk Mound	25
Quilling, Alvin,	Elk Mound	13
Weber, Wm.,	Rt. 5, Menomonie	32
Williams, Athol W.,	Menomonie	16



## THIS PAIL

# Saves 250 lbs. of Whole Milk

- ★ Weans calves safely at 10 days.
- ★ Grows big, thrifty calves
- ★ If you have any calves on milk on your farm, start feeding Kaff-A now and sell the milk you save.
- ★ Double your money. Buy a pail at your feed dealer—today.

# KAFF-A

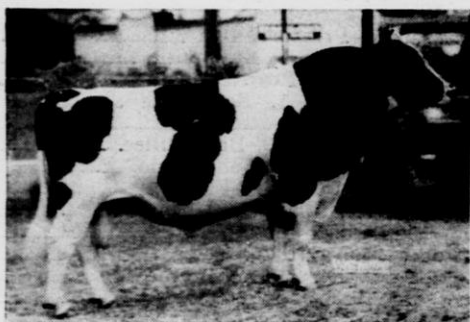
The Dairyfood for Calves

Consolidated Products Company

Danville, Illinois

**EAST CENTRAL  
BREEDERS  
Ass'n Co-op**

**Waupun, Wisconsin**



An "East Central" Sire

**H-32 PABST BURKE PREMIER**  
A son of Wisconsin Admiral Burke Lad.  
Classified "Excellent"



- **Holsteins**
- **Guernseys**
- **Brown Swiss**
- **Aberdeen-Angus**



Serving Dodge, Fond du Lac, Columbia,  
Washington, Green Lake and Ozaukee  
Counties as well as some adjacent parts  
of Jefferson, Dane and Winnebago  
Counties.

## UNIDENTIFIED AS TO BREED (Continued)

Name	Address	Reg. G., No.
Guptill, Robert, Rt. 1, Menomonie	.....	24
Clark, Alton, Boyceville	.....	18
Crosby, Dick, Rt. 6, Menomonie	.....	16
Hofland, Ed., Rt. 5, Menomonie	.....	66
Palmer, Merle C., Boyceville	.....	11
Clark, Guy E., Rt. 6, Menomonie	.....	17
Munson, Edwin, Boyceville	.....	13
Bird, Wm. E., Wheeler	.....	9
Nelson, Oscar M., Rt. 1, Wheeler	.....	8
Kostman, Carl, Downing	.....	9
Blodgett, Percy, Boyceville	.....	8
Johnson, Ken, Downing	.....	11
Larson, L. O., Downing	.....	22
Setter, Wm., Boyceville	.....	9
Mathews, Ray, Prairie Farm	.....	36
Clark, Clarence, Rt. 1, Boyceville	.....	21
Thompson, Thorfin, Prairie Farm	.....	14
Clack, Clinton, Rt. 1, Boyceville	.....	18
West, Amos, Wheeler	.....	5
Jurkovic, Mrs. E., Rt. 2, Boyceville	.....	16
Atlasta Farm, Rt. 6, Menomonie	.....	26
Shepard, George, Prairie Farm	.....	21
Meyers, Wilbert, Elk Mound	.....	13
Benson, Lloyd, Elk Mound	.....	17
Foss, Eston, Colfax	.....	12
Birkholz Bros., Rt. 2, Menomonie	.....	14
Chilson, Donald, Rusk	.....	16
Emmertson, Dan, Colfax	.....	27
Repaal, Ole, Rt. 3, Colfax	.....	27
Christopherson, Boyd, Elk Mound	.....	13
Goehning, Milton, Rt. 2, Menomonie	.....	40
Honaas Bros., Elk Mound	.....	39
Johnson, Lloyd, Rt. 1, Elk Mound	.....	20
Mames, Orville, Rt. 2, Elk Mound	.....	19
Lee, Alf, Colfax	.....	23
Bates, Neil, Colfax	.....	18
Retzloff, Loren, Rt. 2, Menomonie	.....	22
Overby, George, Rt. 2, Menomonie	.....	11
Smith, Heth, Rt. 2, Colfax	.....	19
Sonnenberg, Werner, Colfax	.....	13
Hones, Roger, Colfax	.....	32
Olson, Eddie, Rt. 2, Menomonie	.....	9
Rank, Bert, Rt. 3, Menomonie	.....	23
Curtiss, George, Arkansaw	.....	17
Smith, Grant, Eau Galle	.....	24
Deutsch, Edwin, Eau Galle	.....	18
Hazen, Emery, Rock Falls	.....	12
Lowe, Jess, Rt. 4, Menomonie	.....	13
Sinz, Cyril, Rt. 2, Elmwood	.....	20
Hanson, Herman A., Rt. 4, Menomonie	.....	13
Renholen, Harold, Rock Falls	.....	15
Fuhrman, Paul, Rt. 2, Elmwood	.....	16
Herman, Louis, Rt. 4, Menomonie	.....	7
Lieffring, Charles, Eau Galle	.....	18
Dahl, Thalman, Rock Falls	.....	14
Kraft, Charles, Rt. 4, Menomonie	.....	12
Torgerson, Raymond, Rock Falls	.....	13
Biesterveld, Ted, Rt. 4, Menomonie	.....	13
Stringer, Earl, Elmwood	.....	12
Meyers, Kenneth, Rt. 5, Menomonie	.....	11
Wittag, Joseph, Durand	.....	6
Bauer, Anton A., Rt. 1, Durand	.....	8
Pittman, Wm., Arkansas	.....	14
Hanson, Raymond, Rt. 4, Menomonie	.....	14
Schuaf, Wm., Rock Falls	.....	15
Catt, Cym, Durand	.....	15
Schlottman, Louren, Rt. 1, Boyceville	.....	22
Schlottman, Richard, Rt. 6, Menomonie	.....	21
Schults, Orville, Boyceville	.....	19

## UNIDENTIFIED AS TO BREED (Continued)

Name	Address
Overby, Simon, Rt. 6, Menomonie .....	17
Lerch, Fred, Rt. 1, Boyceville .....	14
Larson, Roy, Rt. 6, Menomonie .....	12
Bird, Fred, Rt. 1, Boyceville .....	20
Mikesell, Landis, Rt. 6, Menomonie .....	16
Moen, Harold, Wheeler .....	31
Dietsche, Herbert, Rt. 3, Bloomer .....	28
Carlson, Ted, Bloomer .....	19
Wingets, Wm., Colfax .....	24
Knutson, Willard, Rt. , Chetek .....	18
Omtvedt, Tom, Bloomer .....	19
Halpin, S. H., Ridgeland .....	19
Hanson, Raymond, New Auburn .....	17
Madison, Gerald, New Auburn .....	14
Kottke, Loren, Rt. 2, Colfax .....	11
Lofters, Clarence, New Auburn .....	15
Tweed, Juno, Colfax .....	15
Lebies, Douglas, Bloomer .....	22
Ellefson, Norval, Dallas .....	26
Andreassen, Dr. S. K., Menomonie .....	28
Rogers, H. J., Wheeler .....	27
Score, Olaf, Rt. 1, Wheeler .....	21
Trinko, Donald, Wheeler .....	25
Miller, Ed. & Son, Ridgeland .....	28
Thompson, Lester, Dallas .....	11
Schlough, Herbert, Wheeler .....	24
Thompson, Ingvald, Dallas .....	17
Kostman, Earl, Downing .....	14
Olson, Clyde, Boyceville .....	
Bartz, Paul, Downing .....	43
Schlough, Robert, Boyceville .....	
Hyben, Andrew R., Clear Lake .....	10
Garland, Palmer, Boyceville .....	9
Johnson, G. L., Rt. 1, Knapp .....	17
Koshauk, Orville, Rt. 1, Boyceville .....	12
Thatcher, Lester, Clear Lake .....	46
Haile, R., Rt. 1, Knapp .....	19
Raasch, Dale, Rt. 1, Knapp .....	16
Christianson, E. B., Rt. 1, Menomonie .....	18

## Members of Dane County DHIA Co-op. Unidentified As To Breed

Name	Address	Reg. G., No.
Joe Acker .....		Waunakee
Jerome Adler .....		Middleton
Obert Agerjord .....		Waunakee
Delbert Anderson .....		Stoughton
Frank Anderson .....		Oregon
Phillip Andrews .....		Verona
T. S. Arthur .....	Cottage Grove	
Alfred Ballweg .....	Mazomanie	
Chas. Ballweg .....	Sauk City	
Wen*elin Ballweg .....	Sauk City	
Erwin Barkhahn .....	Verona	
Warren Bass .....	Cottage Grove	
Walter & Art Basthemer .....	Mt. Horeb	
Art Fleming, John Flynn .....	Verona	
Alvin Bavery .....	Verona	
Arthur Berlin .....	Marshall	
Paul Berlin .....	Marshall	
J. C. Biederman, Est. ....	Columbus	
John Bjoin, Est. ....	Stoughton	
Edwin Blaney .....	Madison	



## UNIDENTIFIED AS TO BREED (Continued)

Name	Address
Albert Blaschka, Helmer Lewis .....	McFarland
C. H. Balschka .....	Cottage Grove
Arthur Brown .....	Oregon
Norman Brown .....	Oregon
Floyd Bruni .....	Verona
John Brunner .....	Cross Plains
Leo Brunner .....	Cross Plains
Otto Brunner .....	Cross Plains
Wm. Calhoun .....	Oregon
Keith Campell .....	Blue Mounds
Ed. Carpenter .....	Madison
John Chancellor .....	Mt. Horeb
Russel Clemans .....	Oregon
Lawrence Cole .....	Waterloo
Elmer Conley .....	Mt. Horeb
Otis Crary .....	Dane
Tilman Dahl .....	Cottage Grove
Chas. Dahlk .....	Verona
Norman Dahlk .....	Madison
Vernon Dalton .....	Morrisonville
Frank Davis .....	Stoughton
Eldon Smith .....	Blank Earth
Chas. Detert .....	Marshall
Alvin Dettweiler .....	Mt. Horeb
Clifford Sihno .....	Windsor
Mr. A. G. Doerfer .....	Oregon
George Doerfer .....	Verona
Mrs. Stella Leverson .....	Deerfield
John Drunasky .....	Sun Prairie
Robert Eby .....	Madison
Louis Egre .....	DeForest
Bernie Elleckson .....	Cambridge
Mrs. Catherine Endres .....	Waunakee
Theo Erickson .....	DeForest
Fred Farnham .....	Madison
Harold Fedkenheur .....	Deerfield
Millard Felland .....	Stoughton
Gottlieb Feller .....	Verona
William Festge .....	Cross Plains
Wayne Fitzgibbons .....	Waunakee
John Ford .....	Mazomanie
Carl Reiersen .....	McFarland
John Fosshage .....	Mt. Horeb
Fred Fankhauser .....	Madison
Louis Frese .....	Cottage Grove
Herman Frye .....	Mt. Horeb
Clayton Garfoot .....	Black Earth
Vaughn H. Garfoot .....	Verona
Vincent Garvoille .....	Sun Prairie
Kenneth Good .....	Cottage Grove
Edward Grady .....	Verona
Benno Graffin .....	Deerfield
M. R. Schweers, Gordon Grinde .....	Morrisonville
Joe Gronenthal .....	Cross Plains
Wm. H. Dahle .....	Stoughton
Wilfred Groseman .....	Cambridge
Oscar Gunderson .....	Cottage Grove
Dr. J. A. Eyster .....	Madison
Joe Haack .....	Cross Plains
George Haag .....	Mt. Horeb
L. G. Haag .....	Mt. Horeb
Bennie Haakenson .....	Deerfield
Frank Hageman .....	Verona
Harold Hall .....	Edgerton
John Hamilton .....	Cross Plains
R. L. Hammond .....	Cottage Grove
Anton E. Hanson .....	Stoughton
Maxwell Hanson .....	Stoughton
Clement Haswell .....	DeForest
John Hauge .....	Cottage Grove

## UNIDENTIFIED AS TO BREED (Continued)

Name	Address
Martin Huag, Est .....	Stoughton
Carl Hauge & N. Veum .....	Cambridge
Melvin Hauge .....	Stoughton
Hjalmer Haugen .....	Mt. Horeb
Alfred E. Havey .....	Stoughton
Albert Helgeson .....	Mt. Horeb
Paul Helgeson .....	Cottage Grove
Jay A. Henderson .....	Cross Plains
Tom Hensel .....	Cambridge
Matt Hensen-Hobbins .....	Sun Prairie
Paul Herried & Breiby .....	Deerfield
Harold Herschleb .....	Morrisonville
George Hodgson .....	Arena
Clarence Hoepker .....	Madison
Fred Hollfelder .....	Cross Plains
Alvin Holzheuter .....	Marshall
Kenneth Holzheuter .....	Marshall
P. M. Johnson Est. ....	Stoughton
Russel Hyslop .....	Dane
Jacobson Bros .....	Cambridge
Olaf Hestness .....	Deerfield
Arthur Johnson & Son .....	London
James O. Johnson .....	Dane
Rodney Johnson .....	Cambridge
Grant C. Jones .....	Arena
Junior Jordan .....	Deerfield
Clem Kalscheur .....	Cross Plains
Henry Kalscheur .....	Cottage Grove
Mel Kascheur .....	Deerfield
A. J. Kaltenberg .....	Waunakee
Leslie Karn .....	Cross Plains
Wm. Keenan .....	McFarland
O. S. Kellesvig .....	Mt. Horeb
Lerov Kelly .....	Deerfield
Oswin Kerl .....	Cross Plains
Ralph Kinischi .....	DeForest
Theo Kittleson .....	Mt. Horeb
Francis Klein .....	Waunakee
H. Gracely Klinfelter .....	Deerfield
Geo. Klongelan .....	Cottage Grove
Melvin Kurlbertanz & Fred Frank .....	Sun Prairie
Gaylord Knight .....	Arena
Carl Korfmacher .....	Cottage Grove
Fred Korfmacher .....	McFarland
Raphael Krantz .....	Cross Plains
Ed. Kroneman .....	Deerfield
Peder Knudsvig .....	Deerfield
F. P. Kuehn .....	Waunakee
Wm. Lally .....	Oregon
Carl Landerud .....	McFarland
Chas. Langer .....	Marshall
Leo P. Larson .....	Deerfield
Theo C. Larson .....	Stoughton
Lloyd Lawrence .....	Stoughton
Raymond Lee .....	Cross Plains
Harland Legler .....	Cottage Grove
Fred Lohmair .....	Madison
Bernard Loper .....	Lodi
Herbert Kuhreson .....	Cottage Grove
Olaf Lunde .....	Stoughton
Lynch Bros. ....	Blue Mounds
Gaylord Martinson .....	Mt. Horeb
Harold Marquardt .....	Madison
Henry F. Maurer .....	Madison
Eugene Meir .....	Verona
John Mell .....	DeForest
Melster Farms .....	Cambridge
R. H. Michaelis .....	Black Earth
Morris Mikkelson .....	Deerfield
Howard Miner .....	Madison

## UNIDENTIFIED AS TO BREED (Continued)

Name	Address
Can McCloskey .....	Sun Prairie
Carl Kahl & John McCann .....	Blue Mounds
Catherine Naismith .....	Oregon
Donald Nelson .....	
Kolland Neindorf .....	Mazomanie
Rudolph Neindorf .....	Mazomanie
Jerome Norseman & Son .....	DeForest
Allen Notstad .....	Deerfield
George Oakley .....	Edgerton
Olman Bros. ....	Deerfield
Earl Olson .....	Black Earth
Harold Olson .....	Brooklyn
Matt Olson & Ward Olson .....	Deerfield
Glen Osmundson .....	Madison
Loren Paddock .....	Black Earth
A. J. Paus .....	McFarland
Carlo Peterson .....	Cottage Grove
Elmer Peterson .....	Stoughton
Gilbert Peterson & Harker .....	Madison
Gailen Pierce .....	Edgerton
Elmer Pooch .....	Deerfield
Marvin Pooch .....	Deerfield
Vincent Powers .....	Mazomanie
Bertram Quale .....	Cottage Grove
F. C. Raemisch & Sons .....	Waunakee
Wm. F. Renk & Sons .....	Sun Prairie
Wm. Rettenmund .....	Black Earth
Henry Reynolds .....	Madison
C. R. Richards .....	DeForest
Wesley Riley .....	Cross Plains
Willard Rinden .....	Cottage Grove
Wm. Ripp .....	Black Earth
Alan Roberts .....	Cross Plains
Arnold Roebertson .....	Stoughton
Frank Rodenschmidt .....	Cross Plains
Roy Rolstad .....	Verona
Thor Rossebo .....	Mt. Horeb
Wm. Schaller .....	Basco
Marshall Gefke, Ted Scheel .....	Cambridge
John Schlimgen & Sons .....	Mt. Horeb
Leo Schoepp .....	Cross Plains
Art Schroeder .....	Cottage Grove
Roy Schroud .....	Sun Prairie
Donald Schumann .....	Mazomanie
Walter Schwartz .....	Mt. Horeb
Norman Seamonson .....	Stoughton
Dean Seston .....	Mazomanie
Lowell Sherin .....	Stoughton
Robt. A. Shower .....	Mazomanie
Sinomonson Bros .....	Deerfield
Jorgen Skolet .....	Black Earth
Sever Skolet .....	Cross Plains
Russell Skuldt .....	Blue Mounds
George Staff .....	Edgerton
Teisberg Bros. & Ed. Stenjum .....	Cottage Grove
John Stenjum .....	McFarland
Stenjum & Tiedeman .....	McFarland
Francis Stensaas .....	Cottage Grove
Matt Olson & Marm Stansrud .....	Deerfield
Lewis O. Stockstad .....	Edgerton
Tom Stolen .....	Cottage Grove
Alvin Storkson .....	Cross Plains
Harold Swalheim .....	Cottage Grove
Milo K. Swanton .....	Madison
Milton Swingen .....	Mt. Horeb
Bennie Taves .....	Marshall
Robt. Theis .....	Sun Prairie
Alvin Thompson .....	Mt. Horeb
Melvin Thompson .....	Mt. Horeb
Willard Thompson .....	Stoughton

## UNIDENTIFIED AS TO BREED (Continued)

Name	Address
Leo. T. Thorson .....	Stoughton
Edwin H. Tofte .....	Cottage Grove
F. A. Torgerson .....	Cottage Grove
Clarence Tourdot .....	London
Clifford Trager .....	Mazomanie
Walter Tschantz .....	Madison
Ed. Uphoff & Mrs. Harold Uphoff, .....	Cottage Grove
Clifford Vickers .....	Edgerton
John J. Voegli .....	Waunakee
E. C. Voit .....	Madison
John Wagner .....	Sun Prairie
Ralph L. Walker .....	Madison
LaVerne Weichmann .....	Rio
Ray Wells & Chapman .....	Waunakee
Chas. Wesenberg .....	Edgerton
Andrew Wikum .....	Stoughton
Tom Williamson .....	Waunakee
Lester Witte .....	McFarland
Harland Wolf .....	Sun Prairit
Roger Yelk .....	Marshall
Ray Zickert & Hans Breiby .....	Deerfield
Huldreich Zurbuchen .....	Verona
A. R. Amundson .....	Cambridge
Milo O. Anderson .....	Belleville
Mrs. Curtis Baker .....	Mt. Horeb
Edmund Elda .....	DeForest
Fred Bookhout .....	Morrisonville
Ganser & Bowers .....	Madison
Milton E. Brinkhoff .....	Cottage Grove
Mark Chappel .....	Brooklyn
Tom Coyle .....	Cottage Grove
Dr. W. J. Durkopp & Olson .....	Madison
Tubbs & Esser .....	Cross Plains
Hemsing & Garvoille .....	Stoughton
Freeman Green & Sons .....	Stoughton
Edgar Gust .....	Verona
O. J. Hanna .....	Mt. Horeb
Mrs. H. H. Rees e& Hartley .....	Oregon
Hersig & Brunner .....	DeForest
Sam Hoffman .....	Stoughton
J. E. O'Brein & Hurckman .....	Columbus
Albert Kahl .....	Mt. Horeb
Alfred Keller .....	Madison
Fred C. Kellog & Dlubertanz .....	Edgerton
Leonard Kuhl .....	Marshall
Willard Lowe .....	McFarland
Walter Maly .....	Waunakee
John Walbridge & Miller .....	Marshall
Harvey Wedeward .....	Marshall
Harland Weisensel .....	Sun Prairie
Oscar Wendt .....	Mazomanie
Clarence Weston .....	Oregon
Fred Wigglesworth .....	Madison
Leo Witzko .....	Mazomanie
Harold Halverson & Wolfe .....	Stoughton
Vernon Zickert .....	Deerfield
Roman Zwettler .....	Blue Mounds
Kenneth Anderson .....	Mt. Horeb
Sanford Anderson .....	Cambridge
Conrad Belda .....	DeForest
Andrew Bergum .....	DeForest
LaVerne Bostad .....	DeForest
Anfin Brietson .....	Deerfield
Stanley Chandler .....	Cottage Grove
Evster & Clason .....	Mazomanie
Albert Drunasky .....	Sun Prairie
Ray Enloe .....	Blue Mounds
Otto Festge .....	Cross Plains
R. A. Gefke & Sons .....	Oregon
McKee Gunsolus .....	Stoughton

## UNIDENTIFIED AS TO BREED (Continued)

Name	Address
Wilfred C. Halvorson .....	Deerfield
Palmer Hanna .....	Verona
Kenneth Helgeland .....	Cottage Grove
Gilman Page & Hinchley .....	Edgerton
Oscar Holte .....	Stoughton
Ralph Jacobs .....	Verona
Nancie & Mary Clark and Al France, .....	Cottage Grove
Byron Kenyon .....	Stoughton
Julius E. Krebs .....	Sun Prairie
Herman Legler .....	Sun Prairie
Peter A. Lukken .....	Madison
Wm. Maly .....	Cross Plains
M. M. Markins .....	Cross Plains
Wm. Mielke .....	DeForest
Jacob Miller .....	Columbus
Earl Munson .....	Cambridge
Dr. W. E. Ogilvie & Mullikin .....	Oregon
Dr. C. O. Vingom & Olson .....	McFarland
Nels J. Quam & Son .....	Stoughton
A. J. Baumann & Carl Rattman .....	Cottage Grove
Fred Reuter .....	Middleton
LaFollette & Riley .....	Mazomanie
Ed. Rowe .....	Oregon
R. H. Schuster .....	Oregon
Geo. Schower & Kading .....	Cross Plains
Albert Skolas .....	Madison
Nancie & Mary Clark & Victor Stapleman .....	Cottage Grove
E. R. Stoneman & Hibbard .....	Madison
Harold Sveum .....	Stoughton
Gerald Swenson .....	Blue Mounds
Teisberg Bros. .....	Cottage Grove
Joel Tvesme .....	Edgerton
Art Vieth & Sons .....	Sun Prairie
Iars Walheim .....	Stoughton
Ray Weist .....	Mt. Horeb
Weix Farms .....	Sun Prairie
Sanford Wick & Rendall .....	Oregon
Fred Witte .....	Cottage Grove
Frank Wolf .....	Mazomanie
Barnes & Schneider .....	Middleton
Lester Dettweiler .....	Verona
Leslie Febock .....	London
Ralph Gust .....	Verona
McKee Bros. .....	Madison
Oscar E. Nelson .....	Edgerton
Sidney Norland .....	Belleville
Oscar Rennebohm & Arnold Jurgins, .....	Sun Prairie
Frederick Showers & Schumann .....	Mazomanie
R. J. McCarthy .....	Cottage Grove
Louis Nelson & Son .....	Oregon
Morris Nichols .....	Stoughton
Edner Norland .....	Belleville
W. A. O'Keefe .....	Waunakee
Clarence Otto .....	Sun Prairie
Mrs. H. H. Reese & Raedel & Tracy .....	Brooklyn
Herman Reiman .....	Arena
John Rhiner .....	Mt. Horeb
Vernon Roske .....	DeForest
Karl Schumann .....	Mazomanie
Fred Schwoerer Est. .....	Mt. Horeb
Neli Skaar .....	Cottage Grove
Lyle Slaney & Bridham .....	Blue Mounds
John & Henrik Stockstad .....	Edgerton
Keith Sutcliffe .....	Black Earth
Percy Swalheim .....	Cottage Grove
B. W. Huiskamp & Taylor .....	Waunakee
Lerner & Tourdot .....	Stoughton
Ray Uphoff .....	Cottage Grove
W. J. Wagner .....	Middleton

## UNIDENTIFIED AS TO BREED (Continued)

Name	Address
Ernest Ward	Waterloo
Keith Weitzel	Middleton
Howard Wentworth	Edgerton
Chas. Williams	Edgerton
Julius Witte	Cottage Grove
Wm. Zickert	Deerfield
Dane County Farm	Verona
Emerson Ela	Madison
Louis Gray	DeForest
Smith & Kessenich	DeForest
Nesbbit & Pfeil	DeForest
Ogilvie & Brattrud	Mt. Horeb
H. O. Roberts	Arena
Sisk & Pertzborn	Waunakee
John Wagner	Waunakee
Frank Cairns	Mazomanie
George Drunasky	Sun Prairie
Harley Fox	Columbus
Russel Fox	Waterloo
Martin Gunnelson	Cambridge
Dr. Paul H. Phillips	Middleton
Mendota State Hospital and Wisconsin Colony Herds	

## Unidentified as to Breed

Name	Address	Reg. G., No.
Abel, Ruven, Rt. 2, Seymour		14
Arnold, Alvin, Rt. 1, Seymour		21
Beyer, Harold, Rt. 2, Appleton		17
Bromley, Fred, Rt. 2, Whitewater		20
Carlson, George H., Rt. 2, Ft. Atkinson		12
Coates, Archie, Rt. 1, Palmyra		16
Dempsey, Martin, Bear Creek		10
Drephal, Arthur, Rt. 2, Black Creek		18
Drephal, Emer, Rt. 2, Black Creek		18
Einer, Arvid M., Cashton	Grade	5
Fletcher & R. Hass, Rt. 1, Jefferson		26
Ganzel, Lawrence, Rt. 2, Seymour		27
Gardner, Fenton, Seymour		17
Garvey, James, Rt. 2, West De Pere		19
Haag, Elmer, Rt. 3, Jefferson		25
Hedrick, Francis, Rt. 1, Ft. Atkinson		28
Hendrick, Leo, Rt. 4, Appleton		23
Henry, Harold, Shiocton		18
Henke, Willard, Rt. 3, Appleton		26
Jelnick, C., Rt. 2, Ft. Atkinson		18
Jones, Lloyd, Rt. 1, Helenville		20
Kieffer, Martin, Rt. 2, Kaukauna		20
Jens, Orval, Rt. 3, Appleton		16
Jepson, Leonard, Rt. 1, Bear Creek		23
Karweick, Claude, Rt. 3, Seymour		16
Kluge, John, Rt. 2, Black Creek		19
Krull, Marvin, Nichols		32
Krueger, Bennie, Rt. 2, Seymour		18
Lueck, Elmer, Rt. 3, Seymour	Grade	11
Marcks, Harvey, Rt. 1, Black Creek		20
Matz, Alfred, Sugar Bush		19
Menning, Don, Rt. 1, Appleton		16
Mennen, Jos., Kaukauna		21
Mlsna, Francis, B., Cashton	Grade	6
Neff, Donald, Navarino		10
Nettekoven, Arnold, Rt. 2, Black Creek		20
Nichos, Louis, Rt. 2, Black Creek		20
Perkins, Stanley Medina		16
Plaman, Emro, Rt. 1, Black Creek		19
Ransom, Harold, Bear Creek		21
Red Dot Foods, Rt. 3, Ft. Atkinson		13

## UNIDENTIFIED AS TO BREED (Continued)

Name	Address
Schroeder, Norbert, Appleton .....	16
Schroeder, Ervin, Rt. 2, Watertown .....	13
Schroeder, Arnold, Rt. 2, Ft. Atkinson .....	14
Schiesser, Gordon, Dale .....	29
Schilberg, Carl, Rt. , Watertown .....	29
Schlitz, Carlton, Rt. 2, Shiocton .....	23
Schlitz, Clifford, Rt. 2, Shiocton .....	17
Staley, Elwyn, Rt. 1, Seymour .....	25
Stauffer, Werner, Rt. 1, Helenville .....	14
Simon, Stephen, Black Creek .....	11
Tellock, Arlo, Rt. 1, Appleton .....	27
Trescher, Gerald V., Cashton .....	Grade 12
Tubbs, Geo. & Vernon, Rt. 2, Seymour .....	23
VanderHeiden, Mrs. P., Rt. 2, Kaukauna .....	20
Van Schyndel, Martin, Rt. 2, Kaukauna .....	14
Verhagen, W. Ben, Kaukauna .....	13
Vissers, Cornelius, Rt. 3, Seymour .....	19
Volkman, Nolan, Rt. 2, Black Creek .....	17
West, John B., Rt. 2, Whitewater .....	21
Winters, Omar, Hortonville .....	15
Young, Walter, Rt. 2, New London .....	23
Zuleger, Lester, Rt. 1, Black Creek .....	22
Zuleger, Emil, Rt. 1, Black Creek .....	16

## WISCONSIN DAIRYMEN'S ASSOCIATION

### Inventory of Supplies and Equipment

July 1, 1948

#### Salable Supplies on Hand

D. H. I. A. Herd book covers .....	\$164.00
Monthly Herd Summaries .....	5.00
Cow Cards .....	84.00
D. H. I. A. Barn Cards .....	80.00
D. H. I. A. Barn Breeding Records .....	30.00
D. H. I. A. Pedigree Sheets .....	14.00
Total .....	\$377.00

#### Supplies and Equipment not Salable

Typewriter and Stand .....	\$ 30.00
Stenographers Chair .....	12.00
4 Letter Files .....	75.00
1 Storage Cabinet .....	25.00
One 8-drawer Card File .....	4.00
One 1-draw Card File .....	3.00
2-wheel Trailer .....	10.00
1 Camera and Case .....	50.00
1 Light Meter and Case .....	18.00
1 Flash Gun for Camera .....	25.00
1 Projector and Screen .....	80.00
1 Tripod .....	2.00
3 Slide Cases .....	5.00
1 Hoof Trimming Kit .....	25.00
1 Public Address System .....	60.00
3 Letter Trays .....	3.00
Miscl. Exhibit Material .....	100.00
1 Addressograph Machine, Trays and Cabinet	150.00
Miscl. Stationary & Office Supplies .....	75.00
1 Mimeograph Machine .....	50.00
2 Postal Scales .....	15.00
Total .....	\$817.00

# Guernsey Bull Testing Associations

Douglas County No. 1 — Organized 1941

Members:

1. Paul Anderson, Poplar
2. Roger Elm, Wentworth
3. Wm. Holm, South Range
4. Erwin C. Alberts, Wentworth

Door County No. 1 — Organized 1945

Members:

1. Lawrence Johnson, Algoma
2. Ottmar Schmidt, Sturgeon Bay
3. Clarence Larson, Algoma

Eau Claire County No. 1 — Organized 1946

Members:

1. E. E. Haskins, Augusta
2. E. C. Strey, Augusta
3. Truman C. Solie, Augusta

Manitowoc County-Mishicot No. 1 — Organized 1938

Members:

1. Hans Beyer, Mishicot
2. Oscar Samz, Mishicot
3. Roland Samz, Mishicot
4. Calvin Barta, Two Rivers

Manitowoc County-Valders — Organized 1939

Members:

1. Otis Marken & Son, Valders
2. Otis I. Berge & Son, Valders
3. Anton O. Oley, E. Berge, Valders
4. H. L. Fisher & Son, Valders

Monroe County-Wilton — Organized 1936

Members:

1. Dwyer Bros., Kendall
2. John Ford, Wilton
3. Alfred Johnson, Sparta
4. George Steinhoff, Wilton
5. Mrs. Henry Steinhoff & Sons, Wilton

Outagamie County No. 1 — Organized 1939

Members:

1. Melvin Haferbecker, Appleton
2. Otto Zschaechner, Appleton
3. Jamison Bros., Appleton
4. Victor Leppla, Appleton

Outagamie County No. 2 — Organized 1939

Members:

1. Stanley Jamison, Appleton
2. O. H. Breitrack, Appleton
3. Ed. W. Dietz, Appleton
4. John Fredrich, Appleton

Outagamie County No. 3 — Organized 1939

Members:

1. Jamison Bros., Appleton
2. O. H. Breitrack, Appleton
3. Otto Zschaechner, Appleton
4. Victor Leppla, Appleton
5. Ed. W. Dietz, Appleton

Ozaukee County-Mequon — Organized 1941

Members:

1. Henry W. Reimer, Thiensville
2. Theo. Willde, Thiensville
3. Edgar Wille, Thiensville
4. Erwin J. Riemer, Cedarburg

Ozaukee County-Pleasana — Organized 1938

Members:

1. Herbert Clausing, Grafton
2. Mrs. Julius Clausing, Grafton
3. Armin Clausing, Grafton
4. Bernard Behrens, Grafton



## GUERNSEY BULL TESTING ASS'N. (Cont.)

- Price County-Phil-Park — Organized 1945**  
Members:  
1. Roy Bodenburg, Phillips  
2. Carl Hartway, Park Falls  
3. Roy Helberg, Butternut  
4. Vincent Zellinger, Phillips
- South Price County — Organized 1947**  
Members:  
1. A. P. Andree & Sons, Ogema  
2. George Bierman, Ogema  
3. Frank Bejeck, Sr., Phillips
- St. Croix County No. 1 — Organized 1939**  
Members:  
1. Emmet Jensen, River Falls  
2. Newton Pearson, River Falls  
3. Bernard Casaw, Hudson  
4. Ralph Katner, Hudson
- St. Croix County No. 2 — Organized 1943**  
Members:  
1. John Parslow, River Falls  
2. Alfred Kusilek, River Falls  
3. Mauris Simon, Hudson  
4. Ed. Day, River Falls
- Trempealeau County-Galesville No. 2 — Organized 1939**  
Members:  
1. M. E. Oynes, Galesville  
2. L. E. Oines, Galesville  
3. Blaine G. Paulson, Rt. 3, Melrose  
4. Bert C. Congdon, Galesville
- Winnebago County No. 1 — Organized 1938**  
Members:  
1. R. W. Harness, Neenah  
2. Harlan J. Wilson, Rush Lake  
3. Farhnwald Farm, Oshkosh  
4. R. C. Heffernan, Oshkosh

---

## Holstein Bull Testing Associations

- Columbia County-Columbus No. 1 — Organized 1938**  
Members:  
1. B. A. Conlin, Columbus  
2. Louis Trapp, Coumbus  
3. Sam Austin, Columbus  
4. Arthur Biedermann, Columbus  
5. Arthur Weiner, Columbus
- Dodge County No. 1 — Organized 1938**  
Members:  
1. E. A. Beule, Fox Lake  
2. Harley Jaeger, Watertown  
3. Frisbie Bros., Juneau
- Manitowoc County-Mishicot No. 1 — Organized 1941**  
Members:  
1. Alvin Jindra, Mishicot  
2. George M. Reis, Cato  
3. Herman Echardt, Cato
- Manitowoc County-Mishicot No. 2 — Organized 1943**  
Members:  
1. John Benzinger, Mishicot  
2. August Hean, Mishicot
- St. Croix County No. 1 — Organized 1941**  
Members:  
1. Clark Hunter, Hudson  
2. Relander Bros., New Richmond  
3. Dusek Bros., River Falls  
4. Bennett Bros., River Falls

## HOLTEIN BULL TESTING ASS'N. (Cont.)

**Ton of Gold — Organized 1948**

Members:

1. Harold Burdick & Son, Hillsdale
2. Harold Ward, Hillsdale
3. George Schmidt, Hillsdale
4. Kenneth Brehm, Knapp
5. Mr. Hanson, St. Croix Co.

**Trempealeau County No. 1 — Organized 1938**

Members:

1. Ralph Schansberg, Whitehall
2. C. A. Scharlau, Arcadia
3. Geo. Lund, Arcadia
4. R. A. Lamberson, Whitehall
5. Julius Nilsestuen, Arcadia

**Winnebago County No. 1 — Organized 1944**

Members:

1. U. C. Boss, Oshkosh
2. August Metzger, Oshkosh

## Counties Operating on the Standard D. H. I. A. Plan

County	County Agent	Address	No. of Ass'n.
Barron	H. J. Vruwink	Barron	10
Dane	R. V. Hurley	Madison	2
Douglas	Manley Sharp	Superior	2
*Dunn	Archie Johnson	Menomonie	2
Iowa	E. O. Conrad	Dodgeville	1
LaFayette	N. R. Larson	Darlington	1
Manitowoc	J. Bucholz	Manitowoc	1
Milwaukee	S. S. Mathisen	Milwaukee	1
Outagamie	J. F. Magnus	Appleton	1
*Racine	E. H. Polley	Rochester	2
Richland	A. V. Miller	Richland Center	2
Rock	R. T. Glassco	Janesville	3
Rusk	Ed. Sirek	Ladysmith	1
St. Croix	E. E. Anderson	Baldwin	1
Trempealeau	Tim Maine	Whitehall	1
Walworth	J. G. Beattie	Elkhorn	3
Waukesha	J. F. Thomas	Waukesha	2

\*Members Wisconsin Dairymen's Association

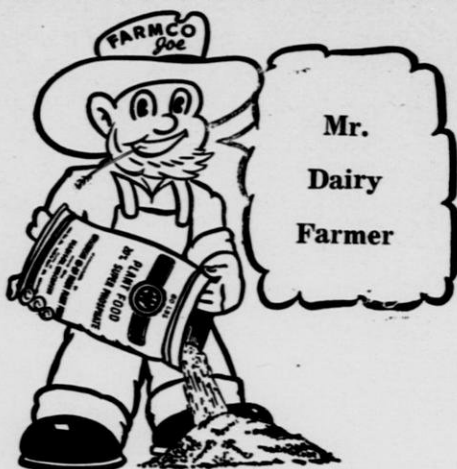
### Farmway Barn Cleaner

A sensationally new circular cleaner

3 H. P. Heavy Duty Drive Unit  
 26,000 lb. Test Pinless Gutter Chain  
 Automatic - Efficient - Durable - Dependable

For literature and prices write to

**Dretzke Sales Co.**  
 Manawa, Wisconsin



**FARMCO**  
**SUPER-PHOSPHATE**  
*Easy To Use*

1. In gutters use 1 pound daily per cow
2. In loafing sheds spread weekly at rate of 1 pound per animal per cow.
3. Manure spread daily can be fortified by adding 40 pounds to each load.

**NOTE:** Do not use Super-Phosphate in driveways. Pulverized limestone is recommended.

**FORTIFY BARN MANURE WITH**  
**FARMCO SUPER-PHOSPHATE**  
Conserve Nitrogen and Potash

**FARMCO PLANT FOODS ARE MANUFACTURED BY WISCONSIN CO-OPERATIVE PLANT FOODS.**

Home Offices at  
18 S. Thornton Avenue, Madison, Wis.  
Plants  
Prairie du Chien, Green Bay & Hartsdale, Ind.

## Artificial Breeding Cooperatives in Wisconsin

- Ashland-Bayfield Cooperative, 122 Third Street  
West, Ashland, Wisconsin
- Ladger Breeders Cooperative, Kenneth Wallin,  
Manager, Sawano, Wisconsin
- Barron County Breeders Cooperative, W. B. Bar-  
ritt, Manager, Box 482. Barron, Wisconsin
- Barron County Proved Sire Cooperative, 49 South  
Seventh Street, Barron, Wisconsin
- Buffalo Breeders Cooperative, Alma Wisconsin.
- Burnett County Breeders Cooperative, Henry B.  
Peterson, Secretary, Rt. 1, Grantsburg, Wis-  
consin
- Central Wis. Breeders Assn. Coop., 801 E. Second  
Street, Marshfield, Wisconsin
- Chippewa County Cooperative Breeders Assn.,  
Court House Annex, Chippewa Falls, Wiscon-  
sin
- Clark County Breeders Cooperative, Arthur Swen-  
son, Secretary, Owen, Wisconsin.
- Dane County Cooperative D. H. I. A., 353 W. John-  
son Street, Madison, Wisconsin.
- Dane-Iowa Breeders Cooperative, Thomas Doloh-  
anty, Manager, Mount Horeb, Wisconsin
- Douglas County Breeders Cooperative, William  
Kinnunen, Manager, Maple, Wisconsin
- Dunn County Artificial Breeding Co-op., 1102 N.  
Broadway, Menomonie, Wisconsin
- East Central Breeders Assn. Coop., Dr. E. R. Carl-  
son, Manager, 314 Beaver Dam Street, Waupun,  
Wisconsin
- Eau Claire Cooperative D. H. I. A., Court House  
Annex, Eau Claire, Wisconsin
- Grant Breeders Cooperative, 622 E. Main Street,  
Platteville, Wisconsin
- Green County Breeders Assn. Coop., Merlyn Reefer,  
Manager, Room B-5, Court House, Monroe,  
Wisconsin
- Iowa County Breeders Cooperative, Court House,  
Dodgeville, Wisconsin
- Jackson Breeders Cooperative, Court House, Black  
River Falls, Wisconsin
- Lafayette County Breeders Cooperative, Court  
House, Darlington, Wisconsin
- Manitowoc County Breeders Cooperative, Court  
House, Darlington, Wisconsin
- Pierce County Breeders Cooperative, Plum City,  
Wisconsin
- Polk County Breeders Cooperative, Milltown, Wis-  
consin
- Rock County Breeders Cooperative, Amos Grundahl,  
Manager, 425 So. Ringold Street, Janesville,  
Wisconsin.
- Rusk County Breeders Cooperative, c-o Golden  
State Co., Ltd., Ladysmith, Wisconsin
- St. Croix County Breeders Cooperative, Lloyd Hel-  
geson, Manager, Hammond, Wisconsin
- Sauk County Breeders Cooperative, 136 Third Street,  
Baraboo, Wisconsin
- Southeastern Wisconsin Breeders Coop., John Lyons,  
Manager, Union Grove, Wisconsin
- Tri-State Breeders Cooperative, T. Albon Sordahl,  
Manager, Westby, Wisconsin
- Washburn County Breeders Cooperative, Shell  
Lake, Wisconsin
- Waukesha Cooperative Breeding Association, Court  
House, Waukesha, Wisconsin
- Western Bayfield County Breeders Cooperative,  
Bertyl Nelson, Secretary, Port Wing, Wiscon-  
sin

# Co-op Dairy Herd Improvement Associations Active January 1, 1949

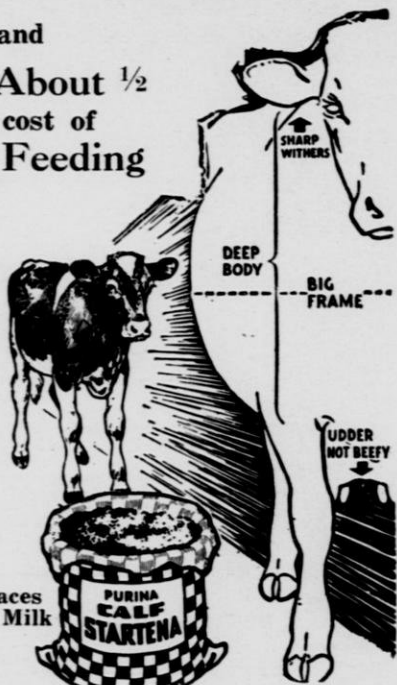
County	County Agent	Address
<b>Brown</b>	J. N. Kavanaugh	Green Bay
<b>Buffalo</b>	V. C. Hendrickson	Alma
<b>Calumet</b>	Orrin Meyer	Chilton
<b>Clark</b>	E. O. Wright	Neillsville
<b>*Chippewa</b>	H. G. Horne	Chippewa Falls
<b>Columbia</b>	M. V. Framberger	Portage
<b>*Crawford</b>	Paul Wolske	Prairie du Chien
<b>*Dane</b>	R. V. Hurley	Madison
<b>Dodge</b>	D. A. Brickbauer	Juneau
<b>Douglas</b>	Manley Sharp	Superior
<b>Door</b>	G. T. Mullendore	Sturgeon Bay
<b>*Dunn</b>	Archie Johnson	Menomonie
<b>*Eau Claire</b>	Carl Johnson	Eau Claire
<b>*Fond du Lac</b>	G. F. Massey	Fond du Lac
<b>Grant</b>	George Dehnert	Lancaster
<b>Green Lake</b>	L. Kleach	Green Lake
<b>Green</b>	M. E. Jeglum	Monroe
<b>Iowa</b>	E. O. Conrad	Dodgeville
<b>Iron</b>	H. W. Kinney	Hurley
<b>Jackson</b>	W. D. Bean	Black River Falls
<b>*Jefferson</b>	Forest Fellows	Jefferson
<b>*Juneau</b>	Leo Schaefer	Mauston
<b>*Kenosha-Racine</b>	E. V. Ryall & E. A. Polley	Kenosha & Rochester
<b>Kewaunee</b>	Kenneth Werdin	Kewaunee
<b>La Crosse</b>	L. A. Davis	La Crosse
<b>*La Fayette</b>	N. R. Larson	Darlington
<b>Langlade</b>	W. Goodell	Antigo

**CO-OP DAIRY HERD IMPROVEMENT  
ASSOCIATIONS (continued)**

<b>Lincoln</b>	Verlen Hilleshiem .....	Merrill
<b>Manitowoc</b>	J. Bucholz .....	Manitowoc
<b>Marathon</b>	W. J. Rogan .....	Wausau
<b>Marinette</b>	V. H. Quick .....	Marinette
<b>Monroe</b>	A. D. Begley .....	Sparta
<b>Oconto</b>	O. G. Woelfel .....	Oconto
<b>*Outgamie</b>	J. F. Magnus .....	Appleton
<b>*Ozaukee</b>	C. C. Gilman .....	Port Washington
<b>Pierce</b>	H. G. Seyforth .....	Ellsworth
<b>Polk</b>	I. J. Mork .....	Balsam Lake
<b>Portage</b>	M. P. Pinkerton .....	Stevens Point
<b>*Price</b>	W. D. Rogan .....	Phillips
<b>Rock</b>	R. T. Glassco .....	Janesville
<b>Rusk</b>	Ed. Sirek .....	Ladysmith
<b>Sauk</b>	F. N. Campbell .....	Baraboo
<b>Shawano</b>	Chas. Krumm .....	Shawano
<b>Sheboygan</b>	G. W. Lycan .....	Sheboygan
<b>Taylor</b>	Carl R. Zoerb .....	Medford
<b>St. Croix</b>	E. E. Anderson .....	Baldwin
<b>Trempealeau</b>	Tim Main .....	Whitehall
<b>Vernon</b>	Jerome Riedy .....	Viroqua
<b>Vilas</b>	Russell Johnson .....	Eagle River
<b>So. Walworth</b>	J. G. Beattie .....	Lake Geneva
<b>Washburn</b>	W. H. Dougherty .....	Spooner
<b>*Washington</b>	E. E. Skaliskey .....	West Bend
<b>*Waukesha</b>	J. F. Thomas .....	Waukesha
<b>Waupaca</b>	Micheal Drozd .....	Waupaca
<b>Waushara</b>	H. N. Haferbecker .....	Wautoma
<b>Winnebago</b>	V. W. Proutky .....	Oshkosh
<b>Wood</b>	Donald Rowe .....	Wisconsin Rapids
<b>*100% Membership in Wisconsin Dairymen's Ass'n.</b>		

# SEE THE FUTURE COW in 4-MONTH CALF

and  
Save About  $\frac{1}{2}$   
the cost of  
Milk Feeding



100 lbs. Replaces  
40 Gallons of Milk

A big-framed, quality 4-month-old heifer almost always makes you a good milk cow. And you can see the real dairy quality in calves raised on Purina Calf Startena. So this year, raise a couple of calves on the Purina Calf Startena Plan. You get a good big calf and save about  $\frac{1}{2}$  the cost of milk feeding, too.

**RAISE *BIG* CALVES**  
with Real Dairy Quality  
on  
**Purina Calf Startena**

THE RALSTON PURINA COMPANY  
Minneapolis, Minn.\*  
St. Louis, Mo.

Effective and Easy to Use  
Lederle's New, "JUST RIGHT" Tube

# VETICILLIN\* OINTMENT

## Penicillin

For Treating Mastitis

- ACTIVE FOR 48 HOURS
- NO DANGER OF CONTAMINATION
- SMALL, SAFE INFUSING END
- FREE FLOWING OINTMENT
- NO SYRINGE OR MILK TUBES

Lederle's ready-to-use tube with the small infusing end is convenient and efficient. Danger of tearing or scratching the teat opening is avoided.

Simply insert the infusing end into the teat canal to the tube's base, squeeze out the contents.

VETICILLIN Penicillin OINTMENT is an outstanding treatment for dry or milking cows with chronic or acute mastitis caused by organisms susceptible to penicillin.

Each tube contains enough material to treat an infected quarter one time—75,000 units of VETICILLIN Penicillin incorporated in 7.5 grams of special type ointment base.

This colorless, odorless, nonirritating, lighter-than-milk base carries the penicillin into the deepest parts of the udder.

Following an infusion of the recommended amount of VETICILLIN Penicillin OINTMENT into the quarter, enough penicillin is maintained in the udder for 48 hours, even though the udder is milked out every 12 hours, to be active against *Streptococcus agalactiae*. However, administration every 24 hours, assures maximum antibacterial action.

Frequently only one infusion is necessary to return the quarter to the production of salable milk; seldom more than three treatments.

VETICILLIN Penicillin OINTMENT is packaged—ready for use in a throw-away tube, avoiding any chance of contamination or the need for syringe and milk tubes.

For best management practices, and disease-control procedures, consult your veterinarian.

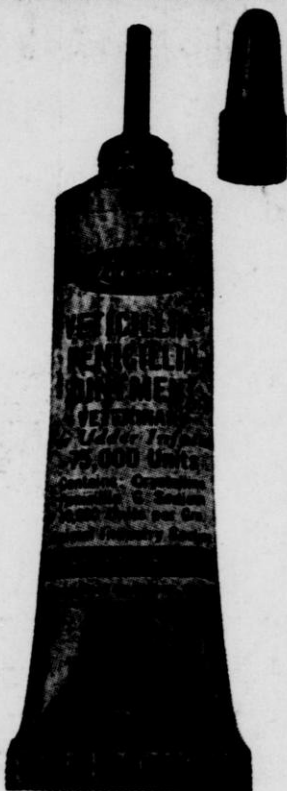
\*Reg. U. S. Pat. Off.

**LEDERLE LABORATORIES DIVISION**

*AMERICAN Cyanamid COMPANY*

30 ROCKEFELLER PLAZA

NEW YORK 20, N. Y.





WISCONSIN

# DAIRYMEN'S ASSOCIATION

MADISON, WISCONSIN



Organized 1872

Building

Wisconsin

Dairy Herd

Income

Sec. 562 P. L. & R.

U. S. POSTAGE

PAID

PERMIT NO. 85

Madison, Wis.