



# LIBRARIES

UNIVERSITY OF WISCONSIN-MADISON

## Lake Forester. Vol. 2, No. 10 1921-05-15

[Madison, Wisconsin]: [Lake Forest Company], 1921-05-15

<https://digital.library.wisc.edu/1711.dl/5DT5NM2IJ7SFG8X>

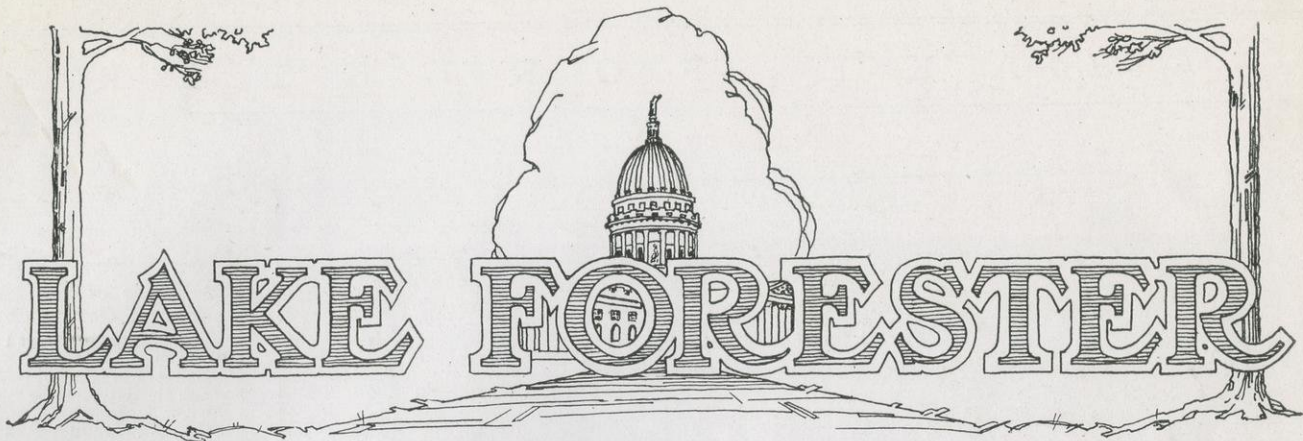
<http://rightsstatements.org/vocab/NoC-US/1.0/>

For information on re-use, see

<http://digital.library.wisc.edu/1711.dl/Copyright>

The libraries provide public access to a wide range of material, including online exhibits, digitized collections, archival finding aids, our catalog, online articles, and a growing range of materials in many media.

When possible, we provide rights information in catalog records, finding aids, and other metadata that accompanies collections or items. However, it is always the user's obligation to evaluate copyright and rights issues in light of their own use.



## “And Then He Took Up Golf”

The popularity of the Lake Forest Golf Club has grown by leaps and bounds; applications for membership have almost exceeded the capacity of the course, and others are inquiring daily about whether they might become members.

In the meantime a meeting of the members was held at the Association of Commerce on Thursday evening, May 5, and the details of organization begun. The meeting was attended by many who are already enthusiastic golf players, and by some who are anxious to learn the game.

The following men were elected directors: John McKenna, Dr. J. W. Madden, Oscar Toebaas, William Aberg and Oscar Rennebohm. They will attend to the details of administering the club.

The club enthusiastically and gratefully accepted the offer of the Lake Forest Company to grant the use of the course and to donate the work that has already been done in preparing the course for playing. This is no inconsiderable amount. In exchange for the privileges granted by the company the club agrees to maintain a golf course in such shape that it will be available during the season for actual playing.

The promptness that so many have shown in joining the club indicates how widely the need for it is felt. The Maple Bluff Country Club affords a fine course, but its membership is limited. The idea be-

The following is a list of the members of the Lake Forest Golf Club:

|                     |                    |
|---------------------|--------------------|
| D. B. Cantwell      | D. C. Roberts      |
| Don E. Mowry        | Carl E. Speth      |
| J. W. Madden        | H. C. Balch        |
| Ed. Schmitz         | M. C. Riley        |
| N. J. Frey          | J. A. Bancroft     |
| George C. Flynn     | V. G. Bancroft     |
| A. J. Brehm         | Karl F. McMurry    |
| Edward H. Gardner   | C. B. Chapman      |
| E. J. Grady         | H. C. Hengoll      |
| Paul Graven         | Wayne D. Bird      |
| J. S. Dreher        | Roman Heilman      |
| W. A. Devine        | Urban John Meuer   |
| H. Williams         | Oscar T. Toebaas   |
| A. O. Paunack       | R. W. Niederer     |
| Henry T. Sheldon    | Howard F. Weiss    |
| Wm. J. P. Aberg     | John L. Hicks      |
| R. J. Nickles       | J. P. Brahamy      |
| R. E. Andrews       | Willis J. Erd      |
| J. T. Tappins       | L. B. Harned       |
| Louis Andelson      | H. C. Netherwood   |
| Chas. L. Woldenberg | M. E. McCaffery    |
| H. L. Geisler       | Oscar Rennebohm    |
| N. M. Oscar         | P. H. Highland     |
| L. F. Collins       | C. R. Carpenter    |
| H. M. Howitt        | C. R. Acly         |
| S. A. Oscar         | Wm. O. Kleinheinz  |
| Edward J. Law       | R. F. Rowe         |
| Fred G. Speth       | C. H. Sanderson    |
| O. F. De Longe      | Thomas D. Williams |
| N. J. Cramton       | F. H. Riley        |
| Geo. H. Fett        | R. J. Meuer        |
| M. B. Findorff      | S. E. Clark        |
| A. C. Larson        | R. A. McCormick    |
| Edward H. Drews     | Art O. Hedquist    |
| B. C. Fisher        | J. E. Meagher      |
| R. C. Stephenson    | H. W. Dahmen       |
| E. T. Gustavson     | E. F. Starck       |
| B. R. L'Hommedieu   | Fred L. Kramer     |
| W. C. Malone        | C. J. Burrowbridge |
| W. R. Moak          | D. E. Morgan       |
| John H. Lee         | H. C. Bracklin     |
| H. H. Hile          | H. C. Buser        |
| Homer M. Carter     | J. W. Conklin      |

Continued on page 2

hind the Lake Forest Golf Club is to popularize the sport. This will be accomplished, it is hoped, by providing facilities for more people to play and by making the expense involved low enough to permit a great many to join who can not pay the higher fees of the other club. Many of these, who do not know the game, are anxious to try it and learn the secret of its power over its devotees.

For there is “more truth than poetry” in the jests that have been made at the man who was bored by his existence, uncheered by the bright sunshine and the balmy winds of spring-time, lackadaisical and half-hearted in whatever he did, and—“then he took up golf.”

The reason is perfectly natural. Golf takes you out into the open. In your concentrated concern at getting around in the least possible

number of strokes, at being perfectly sure that your “putts” go exactly far enough and not too far, and that your drives do not prove to be abortive “slices” or exasperating misses, you forget the humdrum of business and the weariness of work. You give your body and your mind both a chance to recuperate from the strain of winter—you recreate yourself.

So come along, and take a few hearty swings with your “brassie.” Greet the summer sunshine with an eagerness born of the vacation spirit.



**Members of the Lake Forest Golf Club:**

Continued from page 1

H. F. Ohm  
 Robert C. O'Malley  
 A. F. Gallistel  
 Mrs. S. H. Smith  
 Willard R. Denu  
 W. H. Dietrich  
 Hugh Flannery  
 Clayton Maranville  
 A. P. Desormeaux  
 C. D. Morgan  
 P. L. Morgan  
 James Barclay  
 H. A. Smythe  
 R. L. Chamberlain  
 Forrest W. Trumpf  
 C. R. Pierce  
 W. W. Cook  
 F. H. Elwell  
 J. C. McKenna  
 H. A. Burd  
 Wm. J. Wandrey  
 Dr. S. C. Gould  
 Lawrence J. Maisel  
 Carl Hill  
 Sam Woldenberg  
 H. H. Petrie  
 Jennie Erickson  
 R. B. Michell

## New Signs Make Their Appearance

The new signs have been put up in Lake Forest. The first actually to appear is at the end of Capitol Avenue. Others will soon be seen along Capitol Avenue and Carver Street, indicating points of interest and giving information about the community.

The one shown here is standing in the Civic Center at the end of Capitol Avenue. It is designed to give visitors and passersby a glimpse of the idea that lies behind Lake Forest. This idea has been compacted into the phrase: "Planned before built,—then built as planned."

For of all the excellencies of our community, we claim this as the greatest, that before the work began there was formed a complete plan, as thorough as it is practical, as comprehensive as it is idealistic.

And the greatest excellence of the plan lies in the fact that it is being worked out. Steadily and without variation the streets are being placed; rows of trees are springing up where called for upon original maps and paintings; the lagoon has crept back through to the very edge of the Civic Center; and Capitol Avenue—the realization of the stupendous task of the building of a roadway where it was "impossible"—has become a reality,—as smooth a boulevard for automobiling as you can find anywhere in the city.

Throughout the community, every need has been foreseen and planned for; and now it is being provided for just as planned.

"A contribution to a beautiful city. Planned before built—then built as planned."

## MADISON CITY COUNCIL CONSIDERS PLAN TO BEAUTIFY LAKE SHORE

The Madison City Council is considering a plan for beautifying the shore of Lake Monona, particularly that section which lies nearest the State Capitol.

It is proposed to lay out a park along the shore of the lake and to fill in beyond the railroad track so as to have space for recreation grounds there.

This suggestion is in keeping with the tradition of Madison's beauty. It is a step in the process of making the surroundings of the State Capitol the most beautiful in the world—as befits the most beautiful state capitol building. It starts the process of realizing what travelers and city planners have long seen possible in Madison.

## Central Wisconsin Automotive Exposition Attracts Thousands to Madison

The annual Central Wisconsin Automobile Exposition, given last week under the auspices of the Madison Automobile Dealers Association, was a splendid success. Everything from a Ford to a Rolls-Royce was represented, including more than \$500,000 worth of cars. There were more than fifty different makes of pleasure cars, sixteen trucks, and five different tractors.

It is estimated that 40,000 people attended the exposition. A large proportion of these visitors came from the surrounding towns and cities. A special day was held for each of these communities in accordance with the following schedule:

Tuesday—Watertown, Jefferson, Ft. Atkinson.

Wednesday—Portage, Baraboo, Beaver Dam, Sauk City.

Thursday—Beloit, Janesville, Edgerton, Stoughton.

Friday—Platteville, Boscobel, Dodgeville, Monroe, Richland Center, Mt. Horeb.

Saturday—Madison Day.

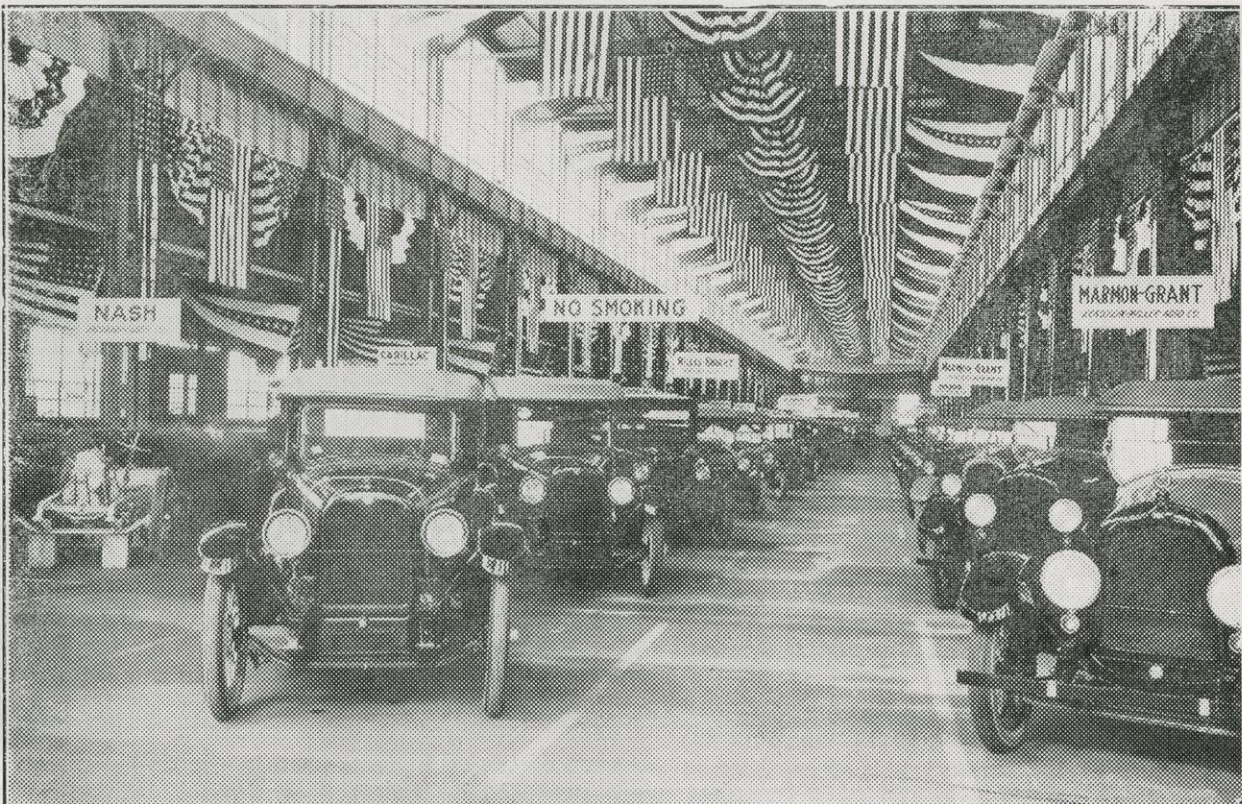
And the way the people came in from these places testified to the interest they took in the show.

A \$3500 National was given away on the last night of the Exposition. Every one who attended got a chance at the prize.

Particular interest was manifested in the exhibition of the Elwood Tractor. This machine, a one-man tractor that can be used in connection with any horse power farm implements, has been perfected in Madison. The company has been formed largely by Madison capital, and the factory is located here. The thoroughness with which this company has analyzed its problems in the perfection of its machine should augur well for both the product and the company behind it. It is an industry that Madison may well be proud of.

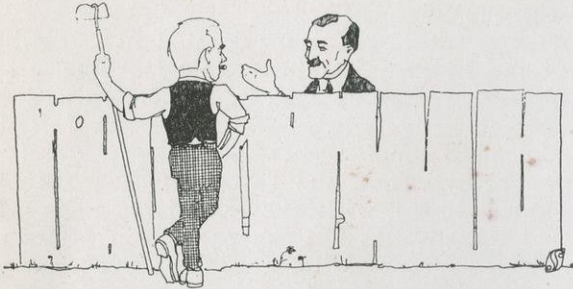
The extent and completeness of the Exposition indicates what a tremendous force the Automobile has become in American life. Already there are more than 9,000,000 cars in the United States, and a prominent official of a large tire manufacturing concern has estimated that in 1925 there will be more than 19,000,000. Wisconsin has already a registration of over 267,000 pleasure cars for the year.

Madison is fortunate in being the center of such a wide area for such a prominent trade.



A part of the \$500,000 display at the Automobile Exposition

## Over the BACK FENCE



### ELECTRICITY INSTALLED IN LAKE FOREST HOMES

The row of newly-set poles that enters Lake Forest from the direction of the Fish Hatchery Road has brought the electric current from the city to Lake Forest.

The workmen of the Madison Gas & Electric Company have completed their job, and now the homes of Lake Foresters are brilliant with electric lights.

Along the first section that lies on Carver Street, the new lines have been strung, and the lines are ready to be extended to other sections of the community as rapidly as need develops.

### WISCONSIN RELEASES FIRST UNIVERSITY PRODUCED "MOVIE."

Last week the University released the first moving picture film ever originated and produced by an American University.

The title of the film is "Not Responsible." The scenes were laid on and around the campus and are designed to portray typical experiences of the students in the University.

Students wrote the scenario, directed the production, and are managing the film. Of course the parts are all played by students. The belle of the Egyptian court and the hero of an ice boating escapade are both familiar faces on the campus. Besides this very attractive feature, a story has been woven into the scenes that are presented.

The film will be shown in a number of Wisconsin theatres; managers from Milwaukee, and a number of other Wisconsin cities have contracted to show the film in their houses.

After it has gone the rounds of the Wisconsin theatres, the film will be leased to movie houses throughout the United States.

And again our University sets the pace for the rest of the world.

### TOKENS OF SPRING IN LAKE FOREST

It's mighty encouraging to visit Lake Forest these days; there is action and progress in the air that bring an inspiration with them.

The visible signs of activity extend from one side of the plat to the other. Whether you enter from the Fish Hatchery road on the eastern end where Mr. Brown's crews are perfecting the golfing greens or across Capitol Avenue bridge, where the city workmen are finishing up the grading of Mills street—you're bound to encounter encouraging signs of progress.

The shrubbery and new trees along Carver Street are springing into full leaf; the tulip beds in the parkings in the cross streets are brilliant with varied colors, and the green sod along the parking has already yielded once to the disciplining hand of the lawn-mower.

Activity at the Civic Center has resulted in the breaking up and clearing out of undesirable underbrush and resurfacing that will soon permit of a fine sod of green grass. More parkings are being completed, and the grass is already green along a number of cross streets from Carver.

The work of the men on Mills Street Extension is progressing very rapidly. The whole of the bank has disappeared out of the way of the street, and before many more issues, we shall publish a picture of the first automobile making use of the valuable short-cut.

### "THE GREAT COMMONER" SPEAKS AT THE UNIVERSITY

William Jennings Bryan, "the Great Commoner," three times candidate for President of the United States and generally acknowledged one of the greatest orators America ever produced, spoke at the University gymnasium on Thursday evening, May 5.

Mr. Bryan has been active in politics for more than twenty-five years, but he seems to have lost none of his enthusiasm or his charm on the platform—certainly he has lost none of his geniality. For more than an hour and a half he held his large audience. The clear tones of his voice penetrated to the remotest corner of the armory—distinct and pleasant.

Whether we agree or disagree with Mr. Bryan politically, we all pay homage to his power of speaking—and to his persistency, even in running for President. It is a privilege to have him in our city.

Seven of the eight tests used in the dairy industry were invented by research workers in Wisconsin's College of Agriculture.