



# LIBRARIES

UNIVERSITY OF WISCONSIN-MADISON

## **Orchestra part: drums. No. 2677 [between 1910 and 1930?]**

[s.l.]: [s.n.], [between 1910 and 1930?]

<https://digital.library.wisc.edu/1711.dl/EXM2Y6LAVX4558V>

This material may be protected by copyright law (e.g. Title 17, US Code).

For information on re-use see:

<http://digital.library.wisc.edu/1711.dl/Copyright>

The libraries provide public access to a wide range of material, including online exhibits, digitized collections, archival finding aids, our catalog, online articles, and a growing range of materials in many media.

When possible, we provide rights information in catalog records, finding aids, and other metadata that accompanies collections or items. However, it is always the user's obligation to evaluate copyright and rights issues in light of their own use.

NO. 2677

Drums.



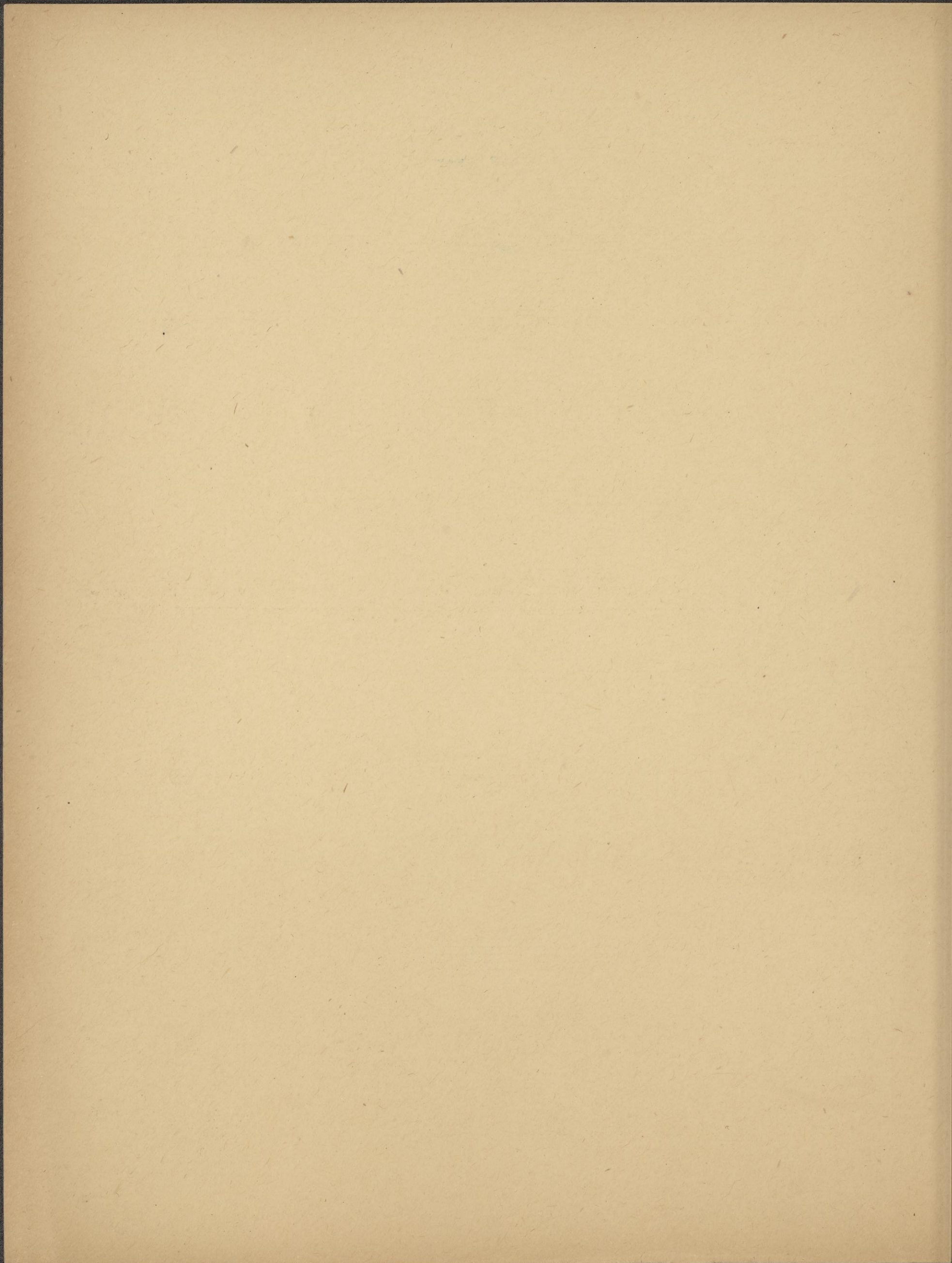
Set No. ....

Orchestration  
of  
STREETS OF NEW YORK

No Copying of this Work Allowed Under Any Circumstances.



Furnished by  
ARTHUR W. TAMS  
MUSIC LIBRARY  
109 W. 28<sup>TH</sup> ST  
NEW YORK.



Street of New York

Act 1<sup>st</sup>

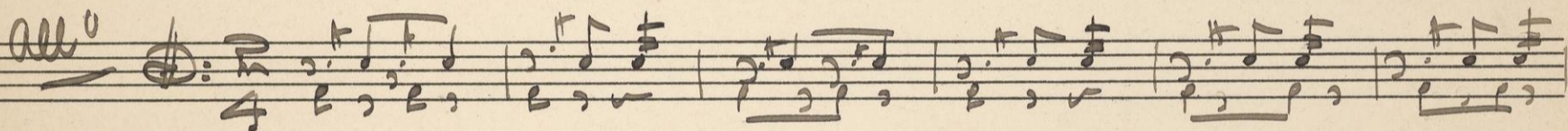
Drums.

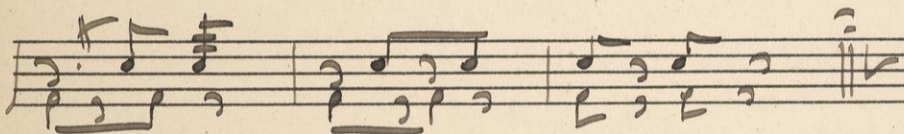
No 4.

Pis

Tact

No. 10.

*all<sup>o</sup>* 



No 3

and

No-4

Tact.

Curtain

v. 5



Act 2<sup>nd</sup>

No. 5

*all<sup>o</sup>* Musical notation for No. 5, first staff. It begins with a treble clef, a key signature of one sharp (F#), and a 6/8 time signature. The notation includes several measures of music with slurs and repeat signs.

Musical notation for No. 5, second staff. It continues the piece with a few more measures of music.

No. 6 *And No. 7 Tacit.*

No. 8

*out* *all<sup>o</sup>* Musical notation for No. 8, first staff. It begins with a treble clef, a key signature of one sharp (F#), and a 4/4 time signature. The notation includes several measures of music with slurs and repeat signs.

Musical notation for No. 8, second staff. It continues the piece with a few more measures of music.

Handwritten musical notation on a five-line staff, including a treble clef, a key signature of one sharp (F#), and the tempo marking Tacit.

Handwritten musical notation on a five-line staff, including the tempo marking Segue.

Handwritten musical notation on a five-line staff, including a treble clef, a key signature of one sharp (F#), and the tempo marking All<sup>o</sup>.

Handwritten musical notation on a five-line staff, including a treble clef, a key signature of one sharp (F#), and the tempo marking All<sup>o</sup>. The notation consists of a series of eighth and sixteenth notes.

Handwritten musical notation on a five-line staff, including a treble clef, a key signature of one sharp (F#), and the tempo marking All<sup>o</sup>. The notation consists of a series of eighth and sixteenth notes.

Handwritten musical notation on a five-line staff, including the tempo marking Curtain.

Handwritten musical notation on a five-line staff, including the tempo marking Act 3<sup>d</sup>.

Handwritten musical notation on a five-line staff, including a treble clef, a key signature of one sharp (F#), and the tempo marking Tacit.

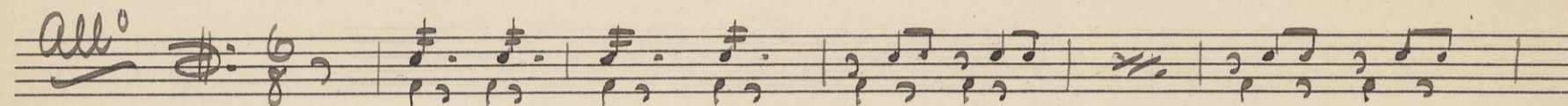
Handwritten musical notation on a five-line staff, including a treble clef, a key signature of one sharp (F#), and the tempo marking All<sup>o</sup>.

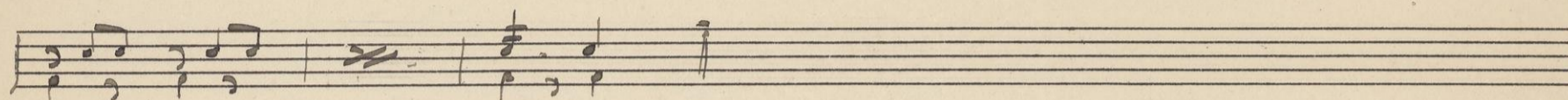
Handwritten musical notation on a five-line staff, including a treble clef, a key signature of one sharp (F#), and the tempo marking All<sup>o</sup>. The notation consists of a series of eighth and sixteenth notes.

Handwritten musical notation on a five-line staff, including a treble clef, a key signature of one sharp (F#), and the tempo marking All<sup>o</sup>. The notation consists of a series of eighth and sixteenth notes, ending with a double bar line and the initials V.S.



No. 13

*all<sup>o</sup>*  Musical notation for No. 13, first staff. It begins with a treble clef, a key signature of one sharp (F#), and a 6/8 time signature. The notation consists of a series of eighth and sixteenth notes with stems pointing down.

 Musical notation for No. 13, second staff. It continues the notation from the first staff, ending with a double bar line.

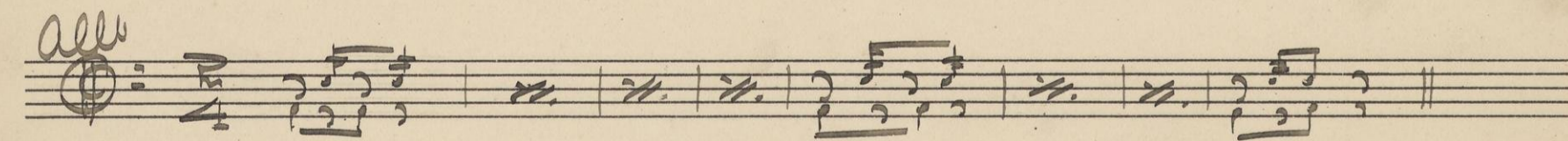
Curtain

Act 4<sup>th</sup>

No. 14 Ris Tacit.

No. 15. No. 16 and No. 17 Tacit.

No. 18

*all<sup>o</sup>*  Musical notation for No. 18, first staff. It begins with a treble clef, a key signature of one sharp (F#), and a 4/4 time signature. The notation consists of a series of eighth and sixteenth notes with stems pointing down.

Segue

No. 19 Tacit.

No. 20 Tacit.

No. 21

All<sup>o</sup> Agitato  $\text{F}^{\#}$ : c 2 |  $\text{F}^{\#}$ . | . | . | . | . |  $\text{F}^{\#}$ . | . |

| . | . | . | . | // | // |  $\text{F}^{\#}$   $\text{F}^{\#}$  |  $\text{F}^{\#}$   $\text{F}^{\#}$  |

Curtain

V.S.





Act 5<sup>th</sup>

No. 22

All<sup>o</sup> 4/4

Musical notation on a single staff.

No. 23

All<sup>o</sup> C

Musical notation on a single staff.

Musical notation on a single staff.

Musical notation on a single staff.

Curtain

Act 6<sup>th</sup>

No. 24 Ris Tacit.

No. 25

*all<sup>o</sup>*  $\text{\textcircled{D}}$   $\text{\textcircled{4}}$

No. 26 Repeat No. 25 til

Fine

Jud. P. Chauplin.  
Copy.



