



LIBRARIES

UNIVERSITY OF WISCONSIN-MADISON

Annual reports of the officers of the Madison Park and Pleasure Drive Association for the years ending December 31, 1924, December 31, 1925, and treasurer's report to November 15, 1926 with reports of...

Madison, Wisconsin: [s.n.], [s.d.]

<https://digital.library.wisc.edu/1711.dl/P7NWUZALYHOUB80>

This material may be protected by copyright law (Title 17, US Code).

Original material owned by Madison Public Library.

For information on re-use see:

<http://digital.library.wisc.edu/1711.dl/Copyright>

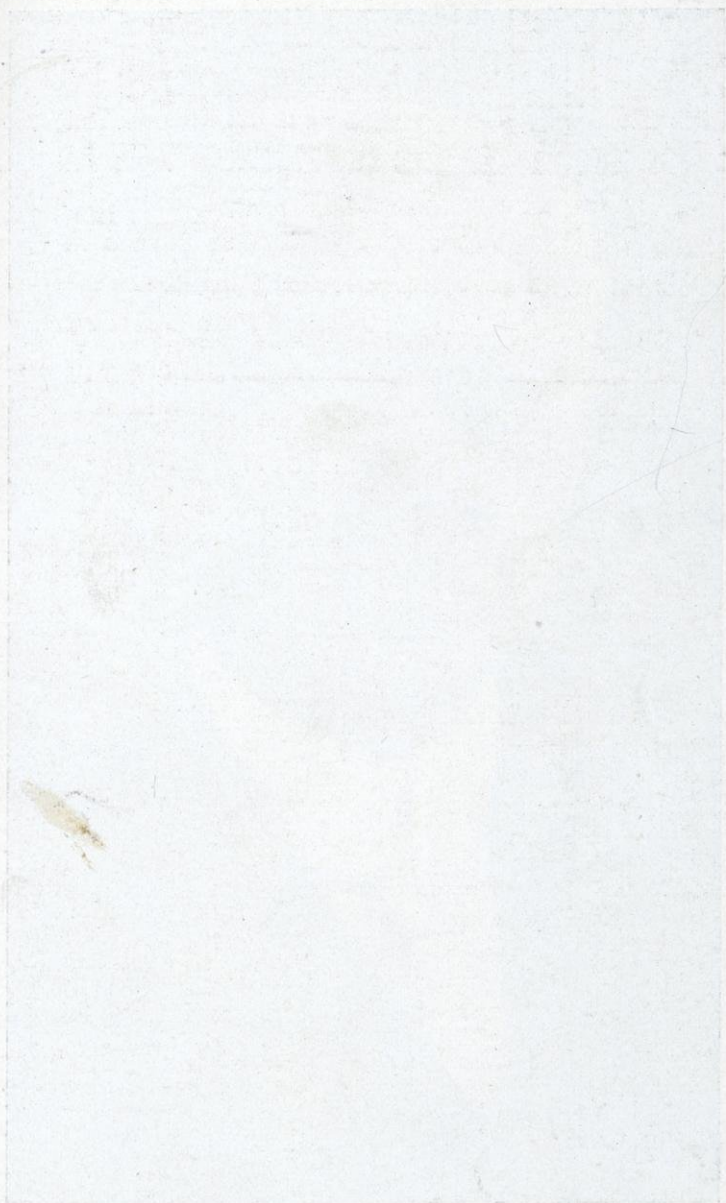
The libraries provide public access to a wide range of material, including online exhibits, digitized collections, archival finding aids, our catalog, online articles, and a growing range of materials in many media.

When possible, we provide rights information in catalog records, finding aids, and other metadata that accompanies collections or items. However, it is always the user's obligation to evaluate copyright and rights issues in light of their own use.

The Madison Park and Pleasure Drive Association

ANNUAL REPORTS FOR THE YEARS
1924 ————— 1925 ————— 1926







CHARLES N. BROWN
Secretary 1894-1911. Vice-President 1912-1925

Annual Reports
of the
Officers of the
**Madison Park and Pleasure
Drive Association**



For the Years Ending December 31, 1924.
December 31, 1925, and Treasurer's
Report to November 15, 1926

with

Reports of Annual Meetings
Held May 5, 1925, and May 12, 1926

PRINTED BY
CANTWELL PRINTING COMPANY
MADISON, WISCONSIN

ENGRAVINGS BY
BROCK ENGRAVING COMPANY
MADISON, WISCONSIN

The Annual Meeting
of the
Madison Park and Pleasure Drive
Association

Held May 5, 1925

The annual meeting of the Madison Park and Pleasure Drive Association was held at Room A, in the City Library, May 5, 1925.

The meeting was called to order by Ernest N. Warner, President.

The report of the treasurer was read and placed on file.

The report on behalf of the Board of Directors was made by President Ernest N. Warner.

A resolution was offered by Professor W. J. Chase on the death of Hon. John M. Olin, which resolution will appear in this report.

On motion of Mr. John C. McKenna the following officers were elected for the ensuing year:

President, Ernest N. Warner.

Vice-President, Charles N. Brown.

Secretary, John L. Bourke.

Treasurer, Frank W. Hoyt.

Directors, Corydon G. Dwight, Frank W. Hoyt, Herbert C. Schenk, Fred M. Schlingen, and D. C. Sullivan.

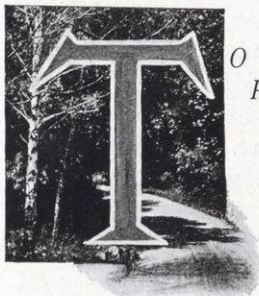
On motion the meeting adjourned.



STEVENS HILL LAKE MENDOTA DRIVE

President's Report 1925

Made on Behalf of the Board of Directors of the Madison
Park and Pleasure Drive Association



*O the Members of the Madison Park and
Pleasure Drive Association:*

This meeting marks the 33rd anniversary of the Madison Park and Pleasure Drive Association, which is a generation as the span of life is measured, and with this anniversary we record the passing during the past year of Mr. John M. Olin, the one who above all others has been the leader and inspiration of the program and activities of the association.

Mr. Olin will be known as the Father of Madison's park system. A keen analysis of the development of this system under Mr. Olin was made by Mr. M. B. Olbrich in an address before the Rotary Club of Madison last August. Among other things, Mr. Olbrich paid this tribute to Mr. Olin:

"In the very forefront of heroes that I aim to tell my boys about is John M. Olin. His activities constitute a chapter in the romance of the American city comparable with mighty work that Boss Shepherd did for Washington and that Elliot did for Boston when he endowed her with the finest park system in the world."

In a community unmoved by any sense of park values, with only an abandoned cemetery of 3½ acres, with neither a park board nor any park appropriation, Mr. Olin stirred the spirit of this city to such activity that in 18 years of leadership he had acquired in the name of this association in trust for the city over 269 acres of park lands, appropriations secured from the city for park purposes \$161,320.00, and private contributions to the amount of \$243,683.90, and an increased valuation of the assessable property of the city estimated by a citizens' committee, appointed for the purpose of determining the effect of

park development upon real estate values of approximately one and one-half millions of dollars.

These figures express but the barest material facts. The movement thus so auspiciously started gathered momentum which has not ceased down to this day. Appropriations by the city for park purposes in the last fifteen years have aggregated \$844,990.88, and voluntary contributions have amounted, in the last fifteen years, including accumulated interest on the Stewart, Tenney and Hollister funds, to \$188,040.45. The park acreage has increased by gift and by purchase some 50 acres and the water frontage by over 4000 feet. The park program for Madison in the last fifteen years has been represented largely by the development of park lands theretofore acquired. The attitude of the people of Madison and the Common Council has been cordially in support of park work.

A survey of park conditions in the principal cities of Wisconsin places Madison first in nearly every respect regarding parks. Mr. Carlson, director of parks of Kenosha, who made the survey, writes, "I certainly must congratulate you and your organization for the splendid work that you are doing in advancing public recreation for your city. I do not believe that any city of your size in the country can show better results."

The results obtained by Mr. Olin in his eighteen years of active efforts in behalf of parks and drives were unique and little less than magical. All the development since that time is largely the result of his painstaking education of the people of our city and his inspirational leadership.

Mr. Olin loved Madison and gave his life freely in its service. In his passing last November 7th, Madison lost a most distinguished citizen. His work for Madison's park program is his great monument. He wished Madison to continue to develop as a beautiful city. By his will he left a substantial bequest to be known as the Olin Park Fund, for the uses of the city of Madison:

One-half of the net income from the fund is to be paid annually to the Common Council and the other one-half is to be added annually to the principal of the fund, so that the amount payable to the Common Council is increased from year to year as the principal is augmented. The principal of this trust fund

is to be augmented from the income thereof until the fund reaches twenty fold its original amount, from which time the whole of the net annual income is to be paid to the Common Council. The moneys which thus from time to time go to the city are to be used as follows:

The net annual income from said fund so given in trust for the benefit of the City of Madison, shall be used by said city toward improving, beautifying and adorning the public parks, squares, boulevards and drives now or hereafter owned by said city, or held in trust for said city, whether located within or without the limits of said city, and for the acquiring by purchase or condemnation lands for park or boulevard purposes. But it is not my intention that the income from said fund, or any part thereof, shall ever be used for the purpose of maintaining or improving, for the purposes of travel, the ordinary public streets located within or without said city of Madison, but that the same can be used for the purposes of ornamenting the public streets within the city, or the drives without the city, it being my thought and purpose, especially, that the income from the fund hereby created will best help the city by being used mainly to meet the expenses of doing such things as the city might not feel inclined to do through funds raised by general taxation. And I hereby expressly authorize my executors and trustees, in their discretion, to withhold the payment of said income for a period of not to exceed five years at any one time, when in their judgment it is deemed wise so to do, to enable them to meet the expense of erecting some work of public or municipal art determined by them to be for the best interests of the city. The net annual income from said fund, subject to the direction as to accumulations and to the discretionary power vested in said executors and trustees, shall be by them paid to the treasurer of the city of Madison, and shall be expended under the supervision of the proper officials or board of said city having in charge the park work thereof. And it is a condition of this gift that all parks, parkways, park boulevards, drives, etc., in which the legal title is in the city or in the directors of the Madison Park and Pleasure Drive Association in trust for said city shall be managed and controlled by a park board, either the directors of the Madison Park and Pleasure Drive Association, or such other park board as may be at any time legally established in place of the directors of said Madison Park and Pleasure Drive Association. Such Association or Park Board shall not only have the power, but it shall be its duty, to expend from time to time out of the income of said trust fund whatever sum may be by it deemed to be necessary to secure the aid, advice and service of a competent landscape architect or landscape gardener, not only



LOOKING ACROSS BAY, FARWELL DRIVE

in the maintenance of existing parks, parkways and park boulevards, but in the planning and laying out of any new parks, parkways and park boulevards; and also to secure the aid of competent expert advice and services before constructing or erecting any work of public art within the city or outside its limits."

The amount of this bequest immediately available is estimated at \$41,400.00, and this amount will be increased upon the death of Mary E. Olin by the further sum of \$25,000.00.

Appropriate resolutions upon the death of Mr. Olin will be offered at this meeting and be printed at length in the next published report of the association.

Various suggestions have been made for a monument by way of a statue to Mr. Olin. No monument of this kind would begin to mean so much to this city or to Mr. Olin or to his memory as an enlarged and sanely envisioned park program commensurate with the great ideals he had. The activities of the Madison Parks Foundation were referred to in the report of your board a year ago. Their conception of the park needs of this city are sane and conservative. They have done a wonderful work in acquiring properties along the shoreline of Lake Monona, extending from the Yahara River to Hudson Park.

The burden carried by these public-spirited individuals should be assumed by the public and the development of a park area extending continuously from Brittingham Park to the Yahara should be an ideal towards which this city should press with all convenient speed. The elimination of the boathouses along this shoreline must be anticipated by the construction of additional boathouses under city control, to care for the number of boats thus displaced from their housings.

In his carefully reasoned arguments before the Rotary Club, Mr. Olbrich concluded that our city is today 300 acres behind where it should be in the matter of park area. He states also that we are approximately \$250,000 to \$350,000 short in our bonded park investment—this for an average, ordinary city, but, says Mr. Olbrich, "Madison is not an ordinary city and it ought not to be contented with mere average results. . . . Madison was, and is the home of one of the great civic leaders of his generation (Mr. Olin). She owes him a debt, an obligation which she cannot honorably evade to keep somewhere

near in line with the standards that he set for her advance. I can think of no finer tribute that we can pay to Mr. Olin than to make use of the constitutional amendment which was adopted in 1912, authorizing cities to issue 50 year bonds for the purchase of lands. I believe that he considered this quite as important as anything he ever did. For 12 years this magnificent device for carrying over to the second and third generation the burden of improvement out of which such generation will primarily benefit has laid in rust and disuse." And with Mr. Olbrich in his conclusion may we not all join in saying:

"All that I ask is the opportunity to help press along the work which John M. Olin so gloriously began, let him know that we have caught the meaning of his message to our day and that Madison still partakes something of his eager interest and high hopes for her future."

The voluntary contributions received up to this time this year amounted to \$4,664.36, and are fully 25% in excess of the contributions for the preceding year. Likewise the number of contributors has largely increased over former years. The city has included in its budget for 1925, for parks, \$64,574.01, for Zoo \$30,011.12, a total of \$94,585.13 for recreation. Details of receipts and expenditures will appear in full in the published report.

Lake Mendota Drive

Following the action of the annual meeting held in 1924, interested property owners tendered the association for the building of a concrete roadway westerly from Eagle Heights, subscriptions to the amount of \$5,792.80. Mr. O. C. Simonds, our landscape adviser, in cooperation with Mr. E. E. Parker, City Engineer, staked and fixed the grade for a distance of about 3,700 feet. To bring this roadway to the new proposed grade, the association expended nearly \$2,000.00 through its own organization. A contract was let to Mr. John F. Icke to do the concrete work at a cost of \$12,664.20. To build this road for the desired distance it was necessary to raise \$2,000.00 additional to the amounts available from special subscriptions and the \$5,000.00 that the association had voted. The town board of the Town of Madison, realizing the advantages

that the park drives are to the town, and anxious that this particular stretch should be completed at this time, agreed to recommend to the annual meeting of the Town of Madison, the appropriation of \$2,000.00 for this purpose. This they did, and at the spring election this year the town voted and there has been paid to Mr. Icke the remaining \$2,000 on his contract.

No single improvement has been made by this present Board of Directors in any one year equal in importance to this stretch of improved roadway on Lake Mendota Drive. It, of course, has taxed the resources of the association beyond a single year's contributions, and it will not be possible this current year to undertake any considerable stretch of permanently improved roadway. The funds available this year will be used in patching and oiling Owen Parkway Drive, Farwell Drive, and that portion of Lake Mendota Drive extending westerly from the concrete stretch built last year.

Some further improvement in East Washington Boulevard was made last year. The parks were maintained and the new filling in Brittingham Park graded and will be seeded this spring.

The Annie C. Stewart Memorial Fountain has been completed and is now serving the purpose intended by Mrs. Mary C. Stewart as a drinking fountain. The gift from Mrs. Stewart for this purpose was \$2,000.00. Its accumulation of interest swelled the total available to the sum of \$3,587.81, \$200.00 of which was retained for water connections to be made by the city, and the balance, \$3,387.81, paid to Mr. Frederick Clasgens for his work. The fountain at the head of Erin Street, makes a beautiful approach to Henry Vilas Park at this entrance. It is the result of several years' work by Mr. Clasgens and represents an actual outlay in material and transportation in excess of twice the amount available to the association for its construction. This excess in cost came about through change in prices after the contract was let. It delayed for some time the execution of the commission by Mr. Clasgens, but through him and his friends the increased expense was met and the city is indebted to him for his devotion to the task and his completion of a really fine piece of work.

Respectfully submitted,

ERNEST N. WARNER, *President.*



EDGEWOOD DRIVE

Memorial

HON. JOHN M. OLIN

WHEREAS, On the 7th day of November, 1924, Hon. John M. Olin, for many years one of Madison's esteemed and foremost citizens, departed this life, and

WHEREAS, This association, and the City of Madison, State of Wisconsin, have been the beneficiaries of his foresight, industry and public spirit; and said city is indebted to him for the creation and guidance of its present park system, and,

WHEREAS, By his last will and testament he has created a perpetual fund for the maintenance and extension of such park system;

NOW, THEREFORE, Be it resolved by the members of the Madison Park and Pleasure Drive Association in annual meeting assembled, that said association by this method desires to express its appreciation and its deep gratitude for the unexcelled service rendered by Mr. Olin during his lifetime, and for the generous remembrance in his will by which he has laid the people of Madison under perpetual obligation to his public spirit and philanthropy,

BE IT FURTHER RESOLVED, That a copy of this resolution be spread upon our records as a permanent record of our appreciation, that it be published in the papers of this city and that a copy be transmitted to the immediate Madison relative of the deceased.



APPROACHING THE CAPITOL ON EAST WASHINGTON AVE. BOULEVARD

The Annual Meeting
of the
Madison Park and Pleasure Drive
Association

Held May 12, 1926

The annual meeting of the Madison Park and Pleasure Drive Association was held at Room A, in the City Library, May 12, 1926.

The meeting was called to order by Ernest N. Warner, President.

The report of the treasurer was read and placed on file.

The report on behalf of the Board of Directors was made by President Ernest N. Warner.

A resolution was offered by Mr. Fred M. Schlimgen on the death of Hon. Charles N. Brown, which resolution will appear in this report.

On motion of Walter Plaenert the following officers were elected for the ensuing year:

President, Ernest N. Warner.

Vice-President, Frank W. Cantwell.

Secretary, John L. Bourke.

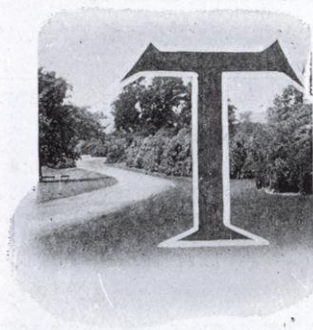
Treasurer, Frank W. Hoyt.

Directors, Corydon G. Dwight, Frank W. Hoyt, Herbert C. Schenk, Fred M. Schlimgen, D. C. Sullivan.

On motion the meeting adjourned.

President's Report 1926

Made on Behalf of the Board of Directors of the Madison
Park and Pleasure Drive Association



*To the Members of the Madison Park
and Pleasure Drive Association:*

This meeting is the thirty-fourth anniversary of the Madison Park and Pleasure Drive Association. At the meeting a year ago, we recorded the passing of Mr. John M. Olin, who will always be remembered as the father of the Madison

park system. His was the great inspiration and the great power back of the park program. He served the association as its president for some eighteen years.

This year the association is called to record the passing and to mourn the loss of Mr. Charles N. Brown. He began to labor in the park program with Mr. Olin at its very commencement. During all the time of Mr. Olin's presidency, Mr. Brown looked after the details; he kept the records; he arranged the annual meetings; he gathered the material for and put out the Park Reports; he was secretary and ex officio director from the beginning of the association through the year 1911—twenty years. In 1909, 1910, and 1911, he wrote the annual report for the Board of Directors, and continuously from 1912 to the close of 1925—thirteen years—he served as vice president of the association, many times as executive head in the absence of the president. In an address to the Social Political Science Club, he reviewed the work of this unique association and made a valued contribution to its historical significance. For many years the annual meetings of the association were made popular and drew large attendance because of the talks by Mr. Brown, illustrated by lantern slides, showing the progress of the work of the association. These slides were produced by Mr. Brown from pictures

taken by him and are still in wide use in illustrating addresses and the instruction of classes in park and city planning. Mr. Brown personally took most of the pictures that were used in the illustration of the Annual Reports of the association during the time that he was its secretary.

In the report of a year ago, it was said of Mr. Olin that he was "the one who above all others has been the leader and inspiration of the program and activities of the Association." Mr. Charles N. Brown is the one who above all others has told the story in pamphlet, words and pictures of the development of Madison's system of parks and pleasure drives.

At the annual meeting, in 1925, a report was made of the building of approximately thirty-seven hundred feet of concrete on Lake Mendota Drive. The cost of this improvement taxed the resources of the association beyond its capacity to pay all the bills during the year of the construction, and it was necessary to use a portion of the funds raised last year to complete the payments on this road. In its report of a year ago, the Board held out no promise of any permanent road improvements for last year. After the payment of balance due, approximately \$5,000.00, on account of the permanent improvement of Lake Mendota Drive, the funds contributed were used for patching and oiling the drives.

It has been the ambition of the Board to accomplish this year some definite, permanent improvement. Property owners at Woodward Grove, on Farwell Drive, have appointed committees, studied types of improvement, and assured the Board of substantial, special contributions towards the permanent surfacing of the Drive opposite their properties. Mr. Steensland, Mr. Ramsay, and others at Maple Bluff, are still working out a plan to assist the association in carrying the concrete at Maple Bluff for a substantial distance on to the north. The Board of Directors is most desirous that its large effort be devoted to a stretch of permanent surfacing on this drive. The subscriptions for this year at this time aggregate \$4,200.00. The city council has included in this year's budget, \$3,000.00, as it has annually for several years past. No special contributions were asked for nor received last year. Assurances have been made to the board that special contributions to the amount of several

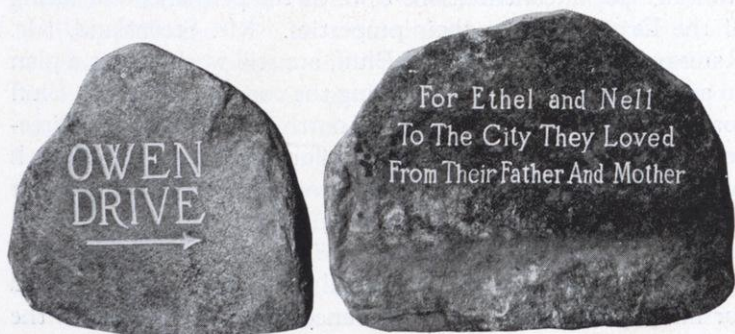
thousand dollars might be procured for the Farwell Drive permanent improvement, and so long as there is probability of the association's securing substantial contributions for this work it would seem that the general subscription funds should, in large measure, be used to promote this improvement.

Owen Parkway

The City Council has included in this year's street program the building of a permanent concrete roadway on Owen Drive, from Highland Avenue to Farley Avenue, the present city limits. The new city reservoir is being completed just beyond Farley Avenue, and it is probable that substantial special contributions could be secured towards building a concrete road beyond Farley Avenue, along Owen Drive. The City of Madison, represented by its water department, is interested in such a hard surfaced roadway. The Owen Park Land Company is developing a tract adjacent to Owen Park, and would be interested doubtless in assisting in the construction of an additional stretch of concrete leading to Sunset Point, on the Owen Parkway Drive.

Brittingham Boulevard

Included in this year's street program is an appropriation of approximately \$37,500.00 for rebuilding Brittingham Boulevard Drive from Bedford Street to Washington Avenue. It is greatly to be hoped that the council will find it possible to include this improvement this year. There is no park drive over which guests visiting this city come in to the city in such large



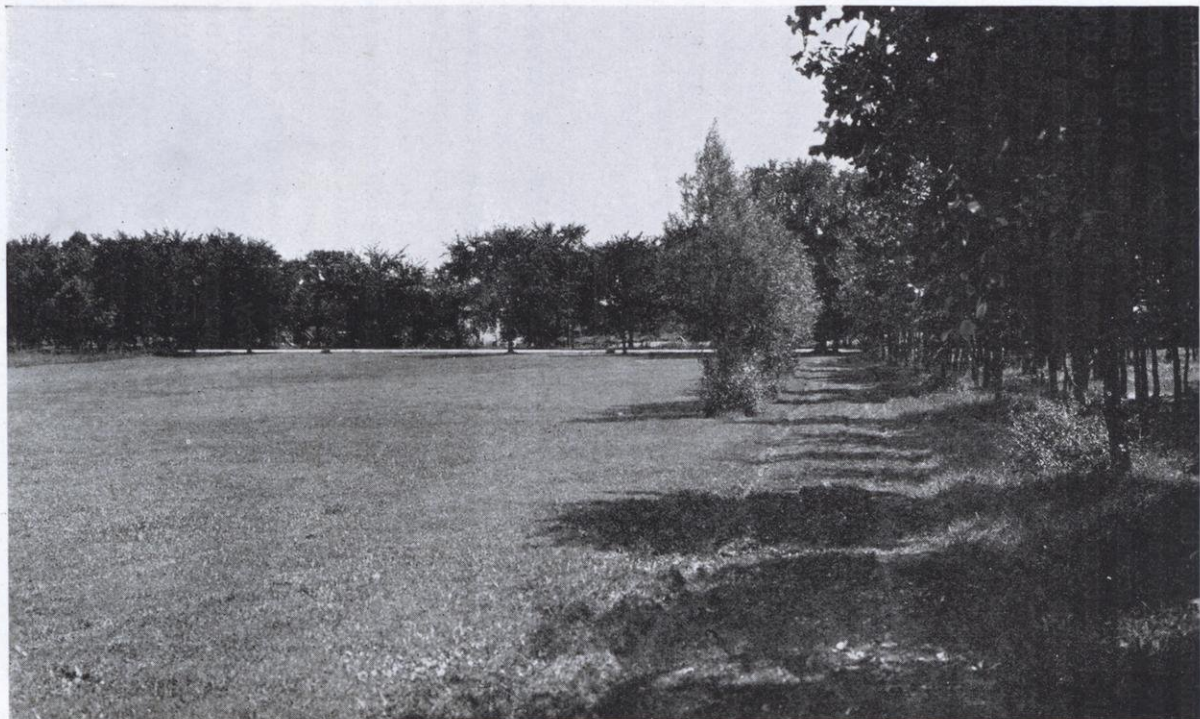
BOULDER MARKINGS AT OWEN PARKWAY DRIVE

numbers as over the Brittingham Boulevard Drive. Complaints have been severe and numerous of the condition of this road for the last several years. Nothing so contributes to the good will of guests entering a city as beautiful approaches to the city, and it is doubtful if any expenditure of like sum could promote good will among the guests of Madison and the enjoyment of its drives by its citizens as the construction of an attractive, permanent driveway through Brittingham Park.

Henry Vilas Park

This park continues to be the park of great popularity, partly because of the beautiful views, broad and pleasing lawn, shaded nooks, the zoo, the playground's equipment, the lagoons, and canoe service. A cement road was several years ago built along the outer edge of the Island connecting the two bridges. This attractive drive induces many people into the park and over the course of the Island Road. The other roads in the park, however, have been, for several years, no pleasure drives. The Board has, for the last three years, made request of the city to include in its street program, the permanent improvement of the entrance drive and Burr Oak Drive, but with the other demands upon the city it has not seemed possible to include these improvements. It is most desirable that these streets as soon as possible be permanently improved to complete the driving pleasure through this park.

In general the past year has been almost entirely devoted to carrying on the park work without unusual incident. The planting of the East Washington Boulevard strip has been finally fully completed. Grading and the development of Lake Front Park Extension is under way. The council continues liberal in its support of the park program. In addition to the appropriations, as included in the report of the treasurer, the council, during the past year, has purchased for public park area the property of the City Boat Company on Lake Mendota, at the corner of Gorham and Franklin Streets at a cost of \$19,000.-00. This site has a water frontage of approximately sixty-six feet and a depth from Gorham Street of approximately two hundred fifty feet. It furnishes access to the Lake for boating and bathing close to the heart of the city. The purchase was made after the



BURROWS PARK

budget provisions had been determined upon, so that there were no funds provided in this year's budget for building or developing at this Lake frontage this year. An arrangement has been made for the proprietor of the canoe livery, formerly located at the foot of Carroll Street, to occupy the old building and care for the property without expense to the city the present year.

The council is negotiating the purchase from the Illinois Central Railroad Company for park and playground purposes the area bounded by Frances, Dayton and Bedford Streets at a cost of approximately \$18,500.00, and by them named in honor of the Alderman from that ward, who is entitled to the credit for bringing about this purchase—Barry Park.

The city also purchased the remaining frontage on Lake Monona opposite Spaight Street from Mr. Charles F. Lamb, at a cost of \$1,750.00, to be added to Spaight Street Park.

It also has made available to the public that stretch of land along Lake Monona held by the Madison Parks Foundation by remitting to the Madison Parks Foundation the amount of its taxes for 1925, approximately \$2,700.00 (\$2,714.45).

Burrows Park

During the past year the Board has been involved in much discussion in regard to the proper development of Burrows Park. A proposed roadway leading from Fuller's Woods to Lakewood, through this park was approved by the Board of Directors, and in cooperation with the adjoining owners and the Madison Town Board, an effort was made to open a road in full view of the Lake and not far from it, extending from Fuller's Woods to Lakewood. The opening of this road was objected to by the proprietor of Fuller's Woods, and the matter is now in court. The issues have been much narrowed and it is the hope and expectation of those in charge of the litigation for the Town Board that a favorable decision will eventually be made that will open this drive to the public. Property about Burrows Park is rapidly developing and upon overtures being made to the Board for a development of this park in harmony with the development of surrounding area, the Board invited Professor Aust, landscape advisor of the University, to submit to the Board a design for a proposed improvement, which he did with

a full letter of explanation in support of the recommendations he made. This design was approved by the Board, and if carried out, will provide for another road across the park, not far from Sherman Avenue, leaving a triangle between the drive and Sherman Avenue, which according to the Aust design should be planted with trees to shut out the Avenue, its country traffic, and certain territory not aesthetically attractive on the opposite side of Sherman Avenue.

The council included no provision this year for putting out the published report. In the judgment of the Board this is a matter of doubtful economy. These reports are widely read by people interested in Madison. They are the only official record of Madison's park program, a park development absolutely unique in that it is so largely the work of a voluntary association. When one considers the development over the last thirty-three years and the continuing development in a park way, it would seem that it is highly desirable to put out this report at least as often as once in two years.

When the report is published there will, of course, be reviewed the appropriations by the city, the special contributions by individuals, and the general subscriptions, with the record of disbursements of moneys each year.

The Park Board has always been anxious to keep within the budget provisions, and has been almost uniformly successful. During 1925, the Board found difficulty in knowing from month to month just the state of its various budget provisions, and with the purpose in mind to keep within its budget, and not knowing the exact state of its accounts, failed to expend moneys raised by taxation for park purposes for the year 1925, of some \$8,000.00. It would seem that this money having reverted to the contingent fund at the close of 1925, should be available for some neglected provisions in the 1926 budget, most prominent among which, in the opinion of the Board, is the publishing of the Annual Reports.

Respectfully submitted,
ERNEST N. WARNER,

President.

Memorial

HON. CHARLES N. BROWN

WHEREAS, On the 31st day of December, 1925, Hon. Charles N. Brown, for many years one of Madison's first citizens, departed this life, and

WHEREAS, This association and the City of Madison, State of Wisconsin, are deeply indebted to him for his thirty-three years of service in the building of a system of parks and drives in Madison and vicinity;

NOW, THEREFORE, Be it resolved by the members of the Madison Park and Pleasure Drive Association in annual meeting assembled, that this association expresses its deep appreciation and keen gratitude for the devoted service rendered by Mr. Charles N. Brown;

BE IT FURTHER RESOLVED, That a copy of this resolution be spread upon our records as a permanent record of our appreciation, that it be published in the papers of this city and that a copy be transmitted to the family of the deceased.

Tree Ordinance

Adopted by City and Published
August 18, 1926

Section 1. Sections 59, 60 and 61 of Chapter 15, section 4 of Chapter 20 of the General Ordinances of the City of Madison are hereby repealed:

Section 2. There are added to Chapter 20 of the General Ordinances of the City of Madison, thirteen new sections to read—

Section 20. No person shall fasten any horse or any animal to any ornamental or shade tree, in any street, or other public place within the limits of said city, nor to any box or case around such tree, nor shall he cause or permit a horse or other animal to stand so that said horse or other animal can injure a tree in any such street or other public place, under a penalty of not less than five dollars nor exceeding twenty dollars for each and every offense.

Section 21. No person, corporation, or association shall plant, cut, prune or remove any living tree or shrub in a public highway in the City of Madison, or cut, disturb or interfere in any way with the roots of any tree, to the extent of causing serious injury to such tree, in such public highway, or spray any such trees or shrubs with any chemicals or insecticides without written permit of the Madison Park and Pleasure Drive Association.

Nothing herein shall be construed as preventing the City Engineer or Street Superintendent from trimming trees so as to prevent interference with street illumination provided, however, that before trimming the trees said City Engineer or Street Superintendent shall obtain the suggestion of the City Forester, and if the trimming suggested by him shall be sufficient to accomplish the purpose they shall be trimmed accordingly.

Section 22. No shade or ornamental tree or shrub shall be planted in any of the public highways of the City of Madison until such tree and the place where it is to be planted shall have first been approved by the Madison Park and Pleasure Drive Association, and a permit granted by said Association therefor.

Section 23. No person shall place or maintain upon the ground, in a public highway of the City of Madison, stone, cement, lumber, or other substance or material which shall impede the free passage of water and air to any tree or shrub in such highway without leaving an open space of ground outside the trunk of said tree, the base of said shrub of an area not less than sixteen square feet. Before depositing any material in any highway of the City near to trees therein, the person so depositing said materials shall place such guards around the trees as shall effectually prevent injury to them.

Section 24. No person shall break or injure any tree planted in any highway in the City of Madison nor shall he pour salt water on any such public highway in such places as to injure any tree or shrub planted or growing therein.

Section 25. No person, corporation, or association shall attach any electric insulator, or any device, for holding of electric wire, to any tree growing or planted upon any public highway of the City of Madison. Every person, corporation or association having any wire or wires charged with electricity running through a public highway shall securely fasten such wire or wires to a post or other structure so that they shall not come in contact with any tree therein and every such person, corporation or association shall, when and if the Park and Pleasure Drive Association determine to be necessary in order to prune or cut down any trees growing on a

public highway in the City of Madison, temporarily remove any such wire or wires or cut off the electricity within twenty-four hours after service upon the owner of said wire or wires, or his or its agents, of a written notice signed by two officers of the Madison Park and Pleasure Drive Association to remove said wire or wires or cut off said electricity.

Section 26. No person, corporation, or association shall prevent, delay or interfere with the Madison Park and Pleasure Drive Association or its employees in the planting, pruning, spraying or removing of a tree or trees, living or dead, in that part of any street lying between the lot line and the curb or in the center or side plots of boulevards on the city, or from removing stone, cement, lumber or other substances placed about a tree in a highway in said City contrary to the provisions of section 21 to section 30, of Chapter 20 of the general code of the City of Madison.

Section 27. No person shall hereafter sell or plant, within the City of Madison, the "*Berberis vulgaris*" commonly known as the tall barberry or the "*Berberis purpurea*," commonly known as the purple barberry.

Section 28. Any person violating any of the provisions of section 21 to section 27, inclusive, shall, upon conviction, pay a penalty to the City of Madison of not less than ten dollars nor more than twenty-five dollars for each and every offense. Each day in which the ordinance is violated shall constitute a separate offense.

Section 29. Full power and authority over the trees planted or to be planted in that part of each and every street, the grade of which has been established, lying between the lot line and the curb and in the center or side plots in all boulevards in said City is hereby delegated to the Madison Park and Pleasure Drive Association and such Association shall have the right and power to establish rules and regulations relating to the planting, maintenance, protection, and care of such trees and it shall be the duty of said Association to recommend to the Common Council of the City of Madison the enactment of such ordinances as it may deem necessary to protect said trees and shrubs.

Section 30. The Madison Park and Pleasure Drive Association in order to carry out the purpose of this act shall have authority to appoint from its employees such person or persons as it may deem necessary to take charge of and direct, subject to the supervision and control of the said Madison Park and Pleasure Drive Association all of the work authorized to be done by said Madison Park and Pleasure Drive Association under this act; said Madison Park and Pleasure Drive Association shall have sole power and authority to fix the work of said employees and to remove at pleasure persons appointed for such work. They shall also have power and authority to purchase all machinery, tools and implements and incur such other expenses as they may deem necessary for the conduct of the work.

Section 31. The Common Council shall include in its annual budget such sum as it may deem necessary, if any, to meet all expenses of doing said work during the following fiscal year, excepting so much of the expense of doing said work as is assessable to abutting property, and the taxes levied for such purpose shall be in addition to all other taxes for park and boulevard purposes.

The Madison Park and Pleasure Drive Association shall have power to plant and transplant trees and remove trees, living or dead, spray and otherwise care for and protect all trees on or in that part of the streets, avenues and boulevards, over which the Madison Park and Pleasure Drive Association is given control under section 29 hereof.

When the Madison Park and Pleasure Drive Association shall propose the planting or removing of any living shade tree in a section of any street, avenue or boulevard, it shall give two weeks' written notice by mail, or otherwise, to the owner or his agent if known, of any property abutting on that section of said street, avenue or boulevard, or if said owner or his agent are unknown and there be a tenant occupying said property, then,

to the tenant thereof, of a time at which said contemplated work is to be considered by them, specifying in detail the street, avenue or boulevard, and portion thereof, upon which trees are proposed to be planted or removed and the general nature and character of the changes and improvements contemplated. After any hearing had upon such notice, the Madison Park and Pleasure Drive Association may abandon said work or may proceed with it according to what it deems to be to the best interests of the public.

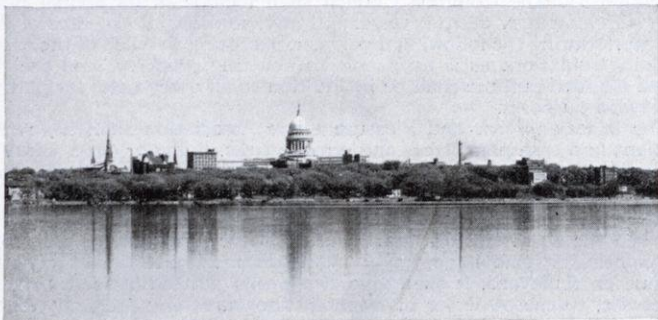
Section 32. The entire cost of protecting, trimming, spraying, planting, renewing and removal of trees between the lot line and the curb in front of any lot or parcel of land abutting on a street, avenue or boulevard shall be chargeable to and assessed upon such lot or parcel of land.

Section 33. The Madison Park and Pleasure Drive Association shall keep a strict account of the cost of protecting, planting, renewing, removing, trimming, spraying and caring for trees in front of each lot or parcel of land abutting on any street, avenue, or boulevard and it shall be the duty of said Association prior to the tenth day of November in each year to make a report to the City Auditor of all work done for which assessments shall have been made as hereinbefore has been provided, stating and certifying the description of lands, lots, parts of lots and parcels of land abutting on a street, avenue, or boulevard in which any such work shall have been done and the amount chargeable to each such piece of property and the said City Auditor shall, at the time of making his annual report to the Common Council, of the lands or parcels of land subject to special assessment, include therein the lots or parcels of land so reported to him by the Madison Park and Pleasure Drive Association that the amount chargeable thereto for work done during the preceding year and such amount shall be levied on said lots or parcels of land, respectively, to which they are chargeable and shall constitute a lien thereon and shall be collected in like manner as other special taxes are levied and collected in said City.

The Madison Park and Pleasure Drive Association shall advance out of the funds set aside for them in the budget sufficient money for doing said work and the said special assessments shall be credited to the Madison Park and Pleasure Drive Association fund of said City and shall not be diverted or used for any other purpose.

Nothing herein contained shall be construed as changing or interfering in any way with the provisions of the ordinances of the City of Madison, delegating certain authority over the Parks and Public Drives in the City of Madison to the Madison Park and Pleasure Drive Association.

Section 34. The provisions of this ordinance shall take effect from and after the passage and publication of this ordinance.



THE CITY FROM OLIN PARK

Appendix

*Officers and Members of the Board of Directors of the Madison Park and Pleasure Drive Association Since its Organization**

1894

President John M. Olin
 Vice-Pres. John Hess
 Secretary Charles N. Brown
 Treasurer Frank W. Hoyt
 Directors—C. F. Cooley, Frank G. Brown, Julius Zehnter.

1895

President John M. Olin
 Vice-Pres. John Hess
 Secretary Charles N. Brown
 Treasurer Frank W. Hoyt
 Directors—C. F. Cooley, Frank G. Brown, Julius Zehnter.

1896

President John M. Olin
 Vice-Pres. Frank S. Warren
 Secretary Charles N. Brown
 Treasurer Frank W. Hoyt
 Directors—C. F. Cooley, Frank G. Brown, L. S. Hanks, Frank M. Wootton.

1897

President John M. Olin
 Vice-Pres. Frank S. Warren
 Secretary Charles N. Brown
 Treasurer Frank W. Hoyt
 Directors—C. F. Cooley, Frank G. Brown, L. S. Hanks, Frank M. Wootton.

1898

President John M. Olin
 Vice-Pres. Frank S. Warren
 Secretary Charles N. Brown

Treasurer Frank W. Hoyt
 Directors—C. F. Cooley, Frank G. Brown, L. S. Hanks, Frank M. Wootton.

1899

President John M. Olin
 Vice-Pres. A. R. Kentzler, Jr.
 Secretary Charles N. Brown
 Treasurer Frank W. Hoyt
 Directors—L. S. Hanks, F. M. Wootton, F. G. Brown, C. F. Cooley, W. F. McConnell.

1900

President John M. Olin
 Vice-Pres. A. R. Kentzler, Jr.
 Secretary Charles N. Brown
 Treasurer Frank W. Hoyt
 Directors—L. S. Hanks, F. Wootton, W. S. Main, Carl J. Hausmann, Daniel K. Tenney.

1901

President John M. Olin
 Vice-Pres. Andrew S. Brown
 Secretary Charles N. Brown
 Treasurer Frank W. Hoyt
 Directors—L. S. Hanks, F. M. Wootton, W. S. Main, Carl J. Hausmann, Daniel K. Tenney.

1902

President John M. Olin
 Vice-Pres. Andrew S. Brown
 Secretary Charles N. Brown
 Treasurer Frank W. Hoyt
 Directors—W. S. Main, D. K. Tenney, C. J. Hausmann, R. C. Vernon, Halle Steensland.

*From January, 1892, until July 10, 1894, a citizen's committee consisting of John M. Olin, Chairman, Prof. C. S. Slichter, Carl Hausmann, John L. Erdahl, L. S. Hanks, C. F. Cooley, M. R. Doyon, J. A. Aylward, M. S. Klauber, H. J. Veerhusen, A. L. Sanborn, secured subscriptions and disbursed moneys for the construction of the Bay Road and the Rustic Bridge. Mr. J. J. Suhr, now deceased, acting as treasurer of the committee.

1903

President . . . John M. Olin
 Vice-Pres. . . Andrew S. Brown
 Secretary . . . Charles N. Brown
 Treasurer . . . Frank W. Hoyt
 Directors—Carl J. Hausmann,
 Wm. R. Bagley, Halle Steensland,
 Magnus Swenson, Arthur O. Fox.

1904

President . . . John M. Olin
 Vice-Pres. . . Andrew S. Brown
 Secretary . . . Charles N. Brown
 Treasurer . . . Frank W. Hoyt
 Directors—Carl J. Hausmann,
 Wm. R. Bagley, Halle Steensland,
 Magnus Swenson, Arthur O. Fox.

1905

President . . . John M. Olin
 Vice-Pres. . . Andrew S. Brown
 Secretary . . . Charles N. Brown
 Treasurer . . . Frank W. Hoyt
 Directors—Carl J. Hausmann,
 Wm. R. Bagley, Halle Steensland,
 Magnus Swenson, Arthur O. Fox.

1906

President . . . John M. Olin
 Vice-Pres. . . Andrew S. Brown
 Secretary . . . Charles N. Brown
 Treasurer . . . Frank W. Hoyt
 Directors—Wm. R. Bagley, C. J.
 Hausmann, J. M. Naughtin, Halle
 Steensland, Magnus Swenson,* W.
 D. Curtis.†

1907

President . . . John M. Olin
 Vice-Pres. . . Andrew S. Brown
 Secretary . . . Charles N. Brown
 Treasurer . . . Frank W. Hoyt
 Directors—Mayor J. C. Schubert
 and Ald. John C. Prien, ex-officio,
 Wm. R. Bagley, Wm. D. Curtis,
 John M. Naughtin, Fred M. Schlim-
 gen, Halle Steensland.

1908

President . . . John M. Olin
 Vice-Pres. . . Andrew S. Brown
 Secretary . . . Charles N. Brown
 Treasurer . . . Frank W. Hoyt
 Directors—Mayor J. C. Schubert
 and Ald. John C. Prien, ex-officio,

Wm. R. Bagley, Wm. D. Curtis,
 John M. Naughtin, Fred M. Schlim-
 gen, Halle Steensland.

1909

President . . . John M. Olin
 Vice-Pres. . . Andrew S. Brown
 Secretary . . . Charles N. Brown
 Treasurer . . . Frank W. Hoyt
 Directors—Mayor J. C. Schubert
 and Ald. C. W. Constantine, ex-
 officio, Wm. R. Bagley, John M.
 Naughtin, Fred M. Schlimgen,
 Halle Steensland, W. D. Curtis.

1910

President . . . J. C. Schubert
 Vice-Pres. . . Andrew S. Brown
 Secretary . . . Charles N. Brown
 Treasurer . . . Frank W. Hoyt
 Directors—Ald. Geo. Smith, ex-
 officio, W. D. Curtis, Fred M.
 Schlimgen, F. W. Cantwell, F. W.
 Hoyt, G. M. Fisk.

1911

President . . . J. C. Schubert
 Vice-Pres. . . Andrew S. Brown
 Secretary . . . Charles N. Brown
 Treasurer . . . Frank W. Hoyt
 Directors—Ald. Geo. Smith, ex-
 officio, F. W. Cantwell, W. D.
 Curtis, Frank W. Hoyt, Fred M.
 Schlimgen, Ernest N. Warner.

1912

President . . . Ernest N. Warner
 Vice-Pres. . . Charles N. Brown
 Secretary . . . E. J. B. Schubring
 Treasurer . . . Frank W. Hoyt
 Directors—Mayor J. B. Heim
 and Ald. Milo Kittleson, ex-officio,
 John L. Bourke, Ben F. Mautz,
 Fred M. Schlimgen, F. W. Cantwell,
 Frank W. Hoyt.

1913

President . . . Ernest N. Warner
 Vice-Pres. . . Charles N. Brown
 Secretary . . . Eugene C. Smith
 Treasurer . . . Frank W. Hoyt
 Directors—Mayor J. B. Heim
 and Ald. Arthur O. Utter, ex-officio,
 John L. Bourke, Ben F. Mautz,
 Fred M. Schlimgen, John C. Prien,
 Frank W. Hoyt.

* Resigned May 19, 1906.

†Succeeded Magnus Swenson

1914

President . . . Ernest N. Warner
 Vice-Pres. . . Charles N. Brown
 Secretary . . . Eugene C. Smith
 Treasurer . . . Frank W. Hoyt
 Directors—Mayor A. H. Kayser
 and Ald. Arthur O. Utter, ex-officio,
 John L. Bourke, Ben F. Mautz,
 Fred M. Schlimgen, John C. Prien,
 Frank W. Hoyt.

1915

President . . . Ernest N. Warner
 Vice-Pres. . . Charles N. Brown
 Secretary . . . Eugene C. Smith
 Treasurer . . . Frank W. Hoyt
 Directors—Mayor A. H. Kayser
 and Ald. Arthur O. Utter, ex-officio,
 John L. Bourke, Ben F. Mautz,
 Fred M. Schlimgen, John C. Prien,
 Frank W. Hoyt.

1916

President . . . Ernest N. Warner
 Vice-Pres. . . Charles N. Brown
 Secretary . . . John L. Bourke
 Treasurer . . . Frank W. Hoyt
 Directors — Mayor George C.
 Sayle and Ald. Arthur O. Utter, ex-
 officio, Corydon G. Dwight, John C.
 Prien, Edward J. Reynolds, Fred M.
 Schlimgen, Frank W. Hoyt.

1917

President . . . Ernest N. Warner
 Vice-Pres. . . Charles N. Brown
 Secretary . . . John L. Bourke
 Treasurer . . . Frank W. Hoyt
 Directors — Mayor George C.
 Sayle and Ald. Arthur O. Utter, ex-
 officio, Corydon G. Dwight, John C.
 Prien, Edward J. Reynolds, Fred M.
 Schlimgen, Frank W. Hoyt.

1918

President . . . Ernest N. Warner
 Vice-Pres. . . Charles N. Brown
 Secretary . . . John L. Bourke
 Treasurer . . . Frank W. Hoyt
 Directors — Mayor George C.
 Sayle and Ald. Thomas Quinn, ex-
 officio, Corydon G. Dwight, John C.
 Prien, Edward J. Reynolds, Fred M.
 Schlimgen, Frank W. Hoyt.

1919

President . . . Ernest N. Warner
 Vice-Pres. . . Charles N. Brown
 Secretary . . . John L. Bourke
 Treasurer . . . Frank W. Hoyt
 Directors — Mayor George C.
 Sayle and Ald. Thomas Quinn, ex-
 officio, Corydon G. Dwight, John C.
 Prien, Edward J. Reynolds, Fred M.
 Schlimgen, Frank W. Hoyt.

1920

President . . . Ernest N. Warner
 Vice-Pres. . . Charles N. Brown
 Secretary . . . John L. Bourke
 Treasurer . . . Frank W. Hoyt
 Directors—Mayor I. M. Kittleson
 and Ald. Thomas W. Quinn, ex-
 officio, Corydon G. Dwight, Arthur
 X. Merz, John C. Prien, Fred M.
 Schlimgen, Frank W. Hoyt.

1921

President . . . Ernest N. Warner
 Vice-Pres. . . Charles N. Brown
 Secretary . . . John L. Bourke
 Treasurer . . . Frank W. Hoyt
 Directors—Mayor I. M. Kittleson
 and Ald. Thomas W. Quinn, ex-
 officio, Corydon G. Dwight, Arthur
 X. Merz, Fred M. Schlimger, John
 Stock, Jr., Frank W. Hoyt.

1922

President . . . Ernest N. Warner
 Vice-Pres. . . Charles N. Brown
 Secretary . . . John L. Bourke
 Treasurer . . . Frank W. Hoyt
 Directors—Mayor I. M. Kittleson
 and Ald. Thomas W. Quinn, ex-
 officio, Corydon G. Dwight, Herbert
 C. Schenk, Fred M. Schlimgen,
 John Stock, Jr., Frank W. Hoyt.

1923

President . . . Ernest N. Warner
 Vice-Pres. . . Charles N. Brown
 Secretary . . . John L. Bourke
 Treasurer . . . Frank W. Hoyt
 Directors—Mayor I. M. Kittleson
 and Ald. Thomas W. Quinn, ex-
 officio, Corydon G. Dwight, Herbert
 C. Schenk, Fred M. Schlimgen,
 Dennis Sullivan, Frank W. Hoyt.

1924

President . . . Ernest N. Warner
 Vice-Pres. . . Charles N. Brown
 Secretary . . . John L. Bourke
 Treasurer . . . Frank W. Hoyt

Directors—Mayor I. M. Kittleson
 and Ald. Thomas W. Quinn, ex-
 officio, Corydon G. Dwight, Herbert
 C. Schenk, Fred M. Schlimgen,
 Dennis Sullivan, Frank W. Hoyt.

1925

President . . . Ernest W. Warner
 Vice-Pres. . . Charles N. Brown
 Secretary . . . John L. Bourke

Treasurer . . . Frank W. Hoyt
 Directors—Mayor I. M. Kittleson
 and Ald. Walter Plaenert, ex-
 officio, Corydon G. Dwight, Herbert
 C. Schenk, Fred M. Schlimgen, D.
 C. Sullivan, Frank W. Hoyt.

1926

President . . . Ernest N. Warner
 Vice-Pres. . . Frank W. Cantwell
 Secretary . . . John L. Bourke
 Treasurer . . . Frank W. Hoyt

Directors—Mayor A. G. Schmede-
 man and Ald. Walter Plaenert, ex-
 officio, Corydon G. Dwight, Herbert
 C. Schenk, Fred M. Schlimgen, D.
 C. Sullivan, Frank W. Hoyt.



LEOPARD

Private Contributions, Receipts Since Organization

For the years 1892 and 1893.....		\$6,888 86
Amount contributed by Prof. Owen in 1892, in addition to above.....		3,000 00
For the year 1894.....		655 00
For the year 1895.....		995 00
For the year 1896.....		1,580 00
For the year 1897.....		10,160 23
For the year 1898.....		2,171 32
For the year 1899, excluding gifts for Tenney Park.....	\$3,231 50	
Gifts for Tenney Park, exclusive of the \$1,500 appropriated by the city.....	5,778 00	
		<u>\$9,009 50</u>
For the year 1900.....		5,313 20
For the year 1901.....		5,286 00
For the year 1902.....		5,409 00
For the year 1903, for the general work of the Association.....	\$5,036 75	
For the year 1903, for the Yahara River improvement.....	20,621 24	
		<u>\$25,657 99</u>
For the year 1904, for the general work of the association.....	\$5,665 50	
For the year 1904, for the Yahara River improvement.....	4,658 50	
		<u>\$10,324 00</u>
For the year 1904, gift of Mr. and Mrs. Wm. F. Vilas for the purchase of Henry Vilas Park.....		18,000 00
For the year 1904, special subscription for improving Henry Vilas Park.....		10,171 00
For the year 1904, special subscription for improving Monona Lake Park.....		1,100 00
Amount contributed by D. K. Tenney for constructing foot bridge in Tenney Park.....		368 00
Amount contributed by Julius Zehnter for same purpose....		50 00
Amount contributed for all purposes for the year 1905, as follows:		
For general work of the association.....	\$5,663 25	
For the extra work of the association.....	5,338 00	
For securing the addition to Tenney Park...	5,600 00	
For improving Henry Vilas Park, contributed by Wm. F. Vilas.....	10,000 00	
For improving Brittingham Park, contributed by T. E. Brittingham.....	8,000 00	
		<u>\$34,601 25</u>
Amount contributed for all purposes for the year 1906, as follows:		
For the general work of the association.....	\$7,841 08	
For improving Henry Vilas Park, contributed by William F. Vilas.....	5,000 00	
For improving triangle, contributed by T. E. Brittingham.....	4,000 00	
Legacy of Mary C. Stewart for constructing drinking fountain.....	2,000 00	
		<u>\$18,841 08</u>

Amount contributed for all purposes for the year 1907, as follows:		
For the general work of the association	\$8,741 25	
For improving Henry Vilas Park, contributed by William F. Vilas	2,000 00	
For improving Brittingham Park and Parkway to South Madison, contributed by T. E. Brittingham subsequent to annual meeting held April 23, 1907	5,000 00	
	<hr/>	\$15,741 25
Amount contributed for all purposes for the year 1908, as follows:		
For the general work of the association	\$8,066 32	
Amount contributed by D. K. Tenney—five lots which were sold by the association for \$5,000—for improving addition to Tenney Park	5,000 00	
Amount contributed by association for improvement of addition to Tenney Park, being the excess realized on sale of fifteen lots over and above the \$5,000 heretofore stated as paid for the land for this addition to the Park	9,400 00	
Amount contributed by T. E. Brittingham to erect a public bathhouse in the year 1909	7,500 00	
	<hr/>	\$29,966 32
Amount contributed in 1909 by 827 subscribers for general work		\$7,119 50
Amount contributed by D. K. Tenney for improvement of addition to Tenney Park	2,500 00	
Amount contributed to secure general city plan	1,500 00	
Special contributions for the improvement of Tenney Park	1,875 00	
Special subscriptions for macadamizing road to Owen Park	350 00	
Value of gift of 12 acres of land under will of George B. Burrows	15,000 00	
	<hr/>	\$28,344 50
Amount contributed for 1910:		
Subscriptions	\$5,042 50	
Legacy of Sarah J. Riebsam	500 00	
Gift of Mrs. Anna M. Vilas	25,000 00	
	<hr/>	\$30,542 50
Amount contributed for 1911:		
Subscriptions	\$3,700 00	
Bequest of A. H. Hollister (estimated)	10,000 00	
	<hr/>	\$13,700 00
Amount contributed for 1912:		
Subscriptions	\$3,355 00	
Gift of Marston Bridge by D. K. Tenney . . .	3,321 00	
Subscriptions paving Capital Avenue	1,146 37	
	<hr/>	\$7,822 37
Amount contributed for 1913:		
Subscriptions	\$4,989 50	
Mrs. A. H. Hollister estate confirming A. H. Hollister bequest, and in excess thereof . . .	2,203 09	
	<hr/>	\$7,192 59

Amount contributed for 1914:		
Subscriptions.....	\$3,925 55	
Dividends and interest.....	233 67	
	<hr/>	\$4,159 22
Amount contributed for 1915:		
Subscriptions.....	\$2,518 50	
Dividends and interest.....	265 87	
	<hr/>	\$2,784 37
Amount contributed for 1916:		
Subscriptions.....	\$2,562 00	
Dividends and interest.....	533 95	
Through Madison Zoological and Aquarium Society, Mrs. Anna M. Vilas, bird house and aquarium.....	6,900 00	
	<hr/>	\$9,995 95
Amount contributed for 1917:		
Subscriptions.....	\$2,664 45	
Dividends and interest.....	372 50	
Through Madison Zoological and Aquarium Society, Dr. Charles H. Vilas, lion house..	15,500 00	
	<hr/>	\$18,536 95
Amount contributed for 1918:		
Subscriptions.....	\$2,274 50	
Dividends and interest.....	384 11	
D. K. Tenney bequest (annually).....	500 00	
	<hr/>	\$3,158 61
Amount contributed for 1919:		
Subscriptions.....	\$2,352 00	
Dividends and interest.....	423 00	
Daniel K. Tenney bequest.....	500 00	
Contributions for special work in Henry Vilas Park, 1918-1919.....	10,000 00	
	<hr/>	\$13,275 00
Amount contributed for 1920:		
Subscriptions.....	\$3,270 00	
Daniel K. Tenney bequest.....	500 00	
Dividends and interest.....	388 27	
	<hr/>	\$4,158 27
Amount contributed for 1921, as follows:		
Subscriptions.....	\$3,163 25	
Daniel K. Tenney bequest.....	500 00	
Contributions for zoo.....	2,187 48	
Dividends and interest.....	384 99	
Subscriptions for 1920.....	52 00	
Subscriptions toward purchase of Olbrich holding for park.....	17,350 00	
Subscriptions for purchase of athletic field	7,500 00	
	<hr/>	\$31,137 72
Amount contributed for 1922, as follows:		
Subscriptions.....	\$3,892 50	
Daniel K. Tenney bequest.....	500 00	
Contributions for zoo.....	1,971 37	
Dividends and interest.....	428 78	
Subscriptions for 1921.....	10 00	
Burrows Park subscriptions.....	152 00	
	<hr/>	\$6,954 65
Amount contributed for 1923, as follows:		
Subscriptions.....	\$4,105 00	
Daniel K. Tenney bequest.....	500 00	

Contributions for zoo.....	\$1,182 12	
Dividends and interest.....	498 11	
Special subscriptions Farwell Drive (Maple Bluff).....	4,095 32	
	<hr/>	\$10,380 55
Amount contributed for 1924, as follows:		
Subscriptions.....	\$4,048 50	
Daniel K. Tenney bequest.....	500 00	
Dividends and interest.....	474 30	
Special subscriptions, Lake Mendota Drive..	4,392 80	
Subscriptions for 1923.....	10 00	
Subscriptions for 1922.....	5 00	
	<hr/>	\$9,430 60
Amount contributed for 1925, as follows:		
Subscriptions.....	\$4,692 90	
Daniel K. Tenney bequest.....	500 00	
Dividends and interest.....	461 69	
Special subscriptions, Lake Mendota Drive..	2,680 00	
Special subscriptions, Stewart Memorial Fountain.....	3,590 96	
Subscriptions for 1924.....	10 00	
Special subscription, L. M. Hanks for skating rink expense.....	74 96	\$12,010 51
	<hr/>	
Total Contributions up to 1926.....		\$428,873 36
Contributions for 1926:		
Subscriptions for 1926 to date.....	\$4,319 90	
Daniel K. Tenney bequest.....	500 00	
Special subscriptions, Farwell Drive.....	2,040 00	
Contributions from tourist camp.....	397 50	
Dividends and interest.....	462 57	
Rent from City Boat House.....	201 75	
Subscriptions for 1925.....	18 00	
	<hr/>	
Total to date.....		\$7,939 72
	<hr/>	
Grand Total to Date.....		\$436 813 08

Appropriations by the City of Madison

For land for which no bonds were issued.....	\$8,000 00
For improving streets fronting on parks:	
Main Street.....	\$1,875 00
Washington Avenue.....	1,500 00
Drake Street.....	1,935 00
Johnson Street.....	2,500 00
Brittingham Park.....	2,326 00
Brittingham Place.....	1,675 00
Marston Avenue.....	2,965 00
Sherman Avenue.....	2,517 00
	\$17,293 00
For streets within parks:	
Burr Oak Drive, Henry Vilas Park.....	\$2,900 00
Bay View Drive, Brittingham Park.....	7,153 00
Bay View Drive, Brittingham Park.....	4,900 00
	\$14,953 00
For storm sewer extending through parks.....	3,266 00
For boathouse, Brittingham Park.....	5,000 00
	\$48,512 00
Total for permanent improvements.....	\$48,512 00
In addition to this the city has paid out since 1902 for park maintenance including principal and interest on bonds issued.....	\$112,808 00
General maintenance, 1912.....	16,000 00
Filling at Brittingham Park.....	214 50
Taxes on streets abutting park property.....	4,269 75
Improving Henry Vilas Park Addition.....	5,000 00
Tenney Park Bathhouse.....	5,400 00
Filling Burrows Park.....	1,800 00
Reported by city auditor for park purposes for the year 1913.....	32,086 85
Reported by city auditor for park purposes for the year 1914.....	45,512 14
Reported by city auditor for park purposes for the year 1915.....	54,756 30
Reported by city auditor for park purposes for the year 1916.....	51,608 27
Reported by city auditor for park purposes for the year 1917.....	48,276 74
Reported by city auditor for park purposes for the year 1918.....	55,331 13
Reported by city auditor for park purposes for the year 1919.....	49,019 19
Reported by city auditor for park purposes for the year 1920.....	63,265 23
Reported by city auditor for park purposes for the year 1921.....	56,709 29
Bond issue by city for Olbrich purchase.....	40,000 00
Reported by city auditor for park purposes for the year 1922.....	63,840 00
Reported by city auditor for park purposes for the year 1923.....	77,465 93
Reported by city auditor for park purposes for the year 1924.....	86,587 66
Reported by city auditor for park purposes for the year 1925.....	87,847 90
Budget 1926.....	103,541 16
Barry Park purchase.....	18,500 00
Franklin Street Park (City Boat House) purchase.....	19,000 00
Charles F. Lamb lot, Spaight Street Park.....	1,750 00
Madison Parks Foundation tax remittance.....	2,714 45
	\$1,151,816 49
Making a total of.....	\$1,151,816 49

Treasurer's Report

To the Members of the Madison Park and Pleasure Drive Association:

GENTLEMEN:

The following is a condensed statement of the financial transactions for the year ending December 31, 1924.

Receipts

Balance in Bank, January 1, 1924.....	\$52 89
1922 Subscriptions.....	5 00
1923 Subscriptions.....	10 00
1924 Subscriptions.....	4,048 50
Lake Mendota Drive Subscriptions.....	4,392 80
Interest.....	474 30
Culvert, Farwell Drive.....	28 80
Trees sold.....	7 00
Sacks returned, Lake Mendota Drive.....	10 10
Work by park men.....	87 76
Appropriation by City of Madison.....	3,000 00
	\$12,117 15

Disbursements

Miscellaneous.....	\$825 48
Lake Mendota Drive.....	9,393 64
Farwell Drive.....	1,195 66
Owen Parkway.....	459 63
Work by park men.....	87 76
Balance in bank, January 1, 1925.....	154 98
	\$12,117 15
January 1, 1925, by balance.....	\$154 98

Mr. and Mrs. A. H. Hollister Park Fund

Statement from January 1, 1924, to January 1, 1925

1924			
Jan. 1	By Balance from annual report.....	\$16,405	78
Mar. 17	By U. S. of America Certificate of of Indebtedness, interest to Mar. 15, 1924.....	\$	16 77
Apr. 30	By Aaron L. Parman, interest to Mar. 10, 1924.....		87 00
Apr. 30	By Joseph Hornung, interest to Mar. 22, 1924.....		137 50
Apr. 30	By Otto Brandt, interest to Mar. 23, 1924.....		18 00
Apr. 30	By John O'Connell, interest to Mar. 12, 1924.....		19 25
May 5	By Robert C. O'Malley, interest to May 3, 1924.....		110 00
May 17	By Herbert Helt, interest to May 16, 1924.....		66 00
July 28	By U. S. of America Certificate of Indebtedness, interest to June 15, 1924.....		4 50
Sept. 9	By U. S. of America Certificate of In- debtedness, interest to Sept. 15, 1924.....		16 73
Sept. 9	By Aaron L. Parman, interest to Sept. 10, 1924.....		87 00
Sept. 12	By interest on Bank Certificates.....		1 81
Sept. 15	By John O'Connell, interest to Sept. 12, 1924.....		19 25
Sept. 23	By Joseph Hornung, interest to Sept. 22, 1924.....		137 50
Oct. 14	By Otto Brandt, interest to October 23, 1924.....		18 00
Nov. 4	By Robert O'Malley, interest to Nov. 3, 1924.....		110 00
Nov. 17	By Herbert Helt, interest to Nov. 16, 1924.....		66 00
Nov. 18	By interest on Bank Certificates.....		3 59
Nov. 19	By Otto Brandt, interest in full.....		2 60
Nov. 20	By interest on Bank Certificates.....		1 88
Nov. 20	By Herbert Helt, interest in full.....		1 46
Nov. 28	By U. S. of America Certificate of Indebtedness, interest to Dec. 15, 1924.....		4 50
			<u>\$929 34</u>
To one-half of income \$929.34 paid to Madison Park and Pleasure Drive Association used on drives outside of the city.....			464 67
	To Balance.....		<u>16,870 45</u>
		\$17,335	12
		\$17,335	12
1925			
Jan. 1	By Balance.....	\$16,870	45

The above balance is invested in the name of the Madison Park and Pleasure Drive Association as Trustee of Mr. and Mrs. A. H. Hollister Park Fund as follows:

Joseph Hornung, mortgage, 5½%	\$5,000 00
Robert C. O'Malley, mortgage, 5½%	4,000 00
John O'Connell, mortgage, 5½%	700 00
Aaron L. Parman, mortgage, 6%	2,900 00
John H. Lee, mortgage, 6%	500 42
Ginneppina Galina Corona, mortgage, 6%	3,200 00
U. S. of America Certificates of Indebtedness, 4¼%	400 00
U. S. of America Certificates of Indebtedness, 4½%	200 00
	<hr/>
	\$16,900 42
Less amount due Frank W. Hoyt	29 97
	<hr/>
	\$16,870 45
<hr/>	
Original Capital:	
Principal, Sept. 17, 1913	\$12,279 61
Principal, Sept. 20, 1917	212 75
	<hr/>
	\$12,492 36
One-half income to Jan. 1, 1925	4,378 09
	<hr/>
	\$16,870 45

The Mary C. Stuart Memorial Fountain Fund

1924		
Jan. 1	By Balance from annual report	\$3,449 82
Dec. 31	By interest 1 year at 4%	137 99
1925		
Jan. 15	Paid to Frederick J. Clasgens	\$3,387 81
	To Balance	200 00
		<hr/>
		\$3,587 81
		<hr/>
		\$3,587 81
1925		
Jan. 15	By Balance	\$ 200 00
	The above balance is invested in the name of the Madison Park and Pleasure Drive Association as Trustee of the Mrs. Stewart bequest as follows:	
	First National Bank certificates, 2, 2½, 3%	\$ 200 00

D. K. Tenney Park Fund

1924		
Jan. 1	By Balance from annual report	\$3,403 41
Jan. 2	By interest on Bank Certificates	27
Mar. 18	By U. S. of America Certificates of Indebtedness, interest to Mar. 15, 1924	36 50
May 31	By Solomon Levitan, interest to June 1, 1924	45 00
July 28	By U. S. of America Certificates of Indebtedness, interest to June 15, 1924	2 25
Sept. 9	By U. S. of America Certificates of Indebtedness, interest to Sept. 15, 1924	14 00

Sept. 12	By interest on Bank Certificates.....	\$ 6 95	
Sept. 23	By interest on Bank Certificates.....	17 15	
Nov. 28	By Solomon Levitan, interest to Dec. 1, 1924.....	45 00	
Nov. 28	By U. S. of America Certificates of Indebtedness, interest to Dec. 15, 1924.....	2 25	
Nov. 30	By Golden Rule Association.....	500 00	
Dec. 31	By Theta Building Association, interest to Jan. 1, 1925.....	23 00	
	To Balance.....	<u>\$4,095 78</u>	692 37
		<u>\$4,095 78</u>	<u>\$4,095 78</u>

1925

Jan. 1 By Balance..... \$4,095 78

The above balance is invested in the name of the Madison Park and Pleasure Drive Association as Trustee of the D. K. Tenney Park Fund as follows:

Solomon Levitan Trust Deed, 6%	\$1,500 00
U. S. of America certificate, 4¼%	100 00
U. S. of America certificate, 4½%	600 00
Theta Building Association, mortgage, 6½%	1,300 00
First National Bank, certificate of deposit, 2½, 3, 4%	7 12
First National Bank, certificate of deposit, 2½, 3, 4%	46 41
First National Bank, certificate of deposit, 2½, 3, 4%	500 00
First National Bank, certificate of deposit, 2½, 3, 4%	42 25
	<u>\$4,095 78</u>

Respectfully submitted,

FRANK W. HOYT,

Treasurer.

I hereby certify that I have examined the accounts of Frank W. Hoyt, treasurer for the year 1924, and find them correct in all particulars.

Dated April 30, 1924.

ROBERT C. O'MALLEY.

General Subscriptions for 1924

Aagard, Arthur.....	\$3 00	Castle & Doyle.....	\$25 00
Aberg, W. J. P.....	10 00	Chase, Prof. W. J.....	15 00
Allen, Miss Katherine.....	15 00	Clarke, B. B.....	5 00
American Ice Cream Co.....	15 00	Cnare, George C. & Son.....	10 00
Anderson, Charles W.....	5 00	Coe, J. H.....	10 00
Armbrecht, George H.....	5 00	Coleman, Thomas A.....	25 00
Arnold, C. S.....	5 00	Coleman, Thomas E.....	25 00
Ashcroft, O. R.....	5 00	College Refectory.....	5 00
Askew, Chas.....	5 00	Collins Lumber Co.....	20 00
Atwood, Myron H.....	5 00	Collins, C. C.....	10 00
Ayer, Mrs. Walter.....	25 00	Collins, Mrs. W. H.....	15 00
Aylward, Dr. Richard.....	5 00	Commons, Prof. John R.....	10 00
Babcock, Prof. Stephen M.....	10 00	Conklin & Sons Co.....	30 00
Bank of Wisconsin.....	25 00	Corscot, John.....	10 00
Barclay, James.....	5 00	Critton, James N.....	10 00
Barton, Albert O.....	1 00	Crowe, Miss Belle C.....	5 00
Bassett, Norman D.....	5 00	Crowley, F. M.....	15 00
Bates, W. B.....	10 00	Crownhart, Charles H.....	10 00
Bay View Stone Co.....	15 00	Cudahy Cash Market No. 1.....	10 00
Bennett, Mr. and Mrs. W. B.....	5 00	Cullinan, W. T.....	5 00
Bleyer, Willard G.....	5 00	Deadman, C. A.....	5 00
Blied Printing Co.....	25 00	Dean, Dr. James P.....	15 00
Blied, John J. & Son.....	5 00	Dean, Dr. Joseph.....	15 00
Blind & Sander.....	5 00	De Longe, O. F.....	10 00
Botham, George W.....	10 00	Dick, Christian.....	5 00
Boyce, Dr. S. R.....	10 00	Dobelin, Chas. W.....	5 00
Boyd Co., The Joseph M.....	5 00	Donald, John S.....	5 00
Boyd, Joseph M.....	5 00	Drives, Alex M.....	5 00
Bradley, Mr. and Mrs. H. C.....	25 00	Dwight, Dr. C. G.....	10 00
Brady, J. A.....	5 00	Ekern, Herman L.....	10 00
Brandenburg, O. D.....	10 00	Ela, Emerson.....	25 00
Brayton, A. M.....	10 00	Ellman, George.....	2 00
Brittingham, Mrs. T. E.....	25 00	Elsom, Prof. J. C.....	5 00
Brown, Charles N.....	15 00	Elwell, F. H.....	5 00
Brown, Dr. Ernest J.....	5 00	Excelsior Shoe Store.....	5 00
Buehler, Fred W.....	5 00	Fairchild, Mrs. F. B.....	25 00
Buell, Charles E.....	10 00	Farrell, J. Howard.....	5 00
Bull, Benjamin.....	5 00	Fauerbach Brewing Co.....	10 00
Bunting, C. H.....	5 00	Fauerbach, Philip.....	5 00
Burger, Peter.....	15 00	Felton, A. P.....	5 00
Burgess Battery Co.....	25 00	Ferguson, Mrs. William F.....	5 00
Burgess, Charles F.....	15 00	Fess, Perry.....	10 00
Burrowbridge, George.....	2 00	Finch, V. C.....	3 00
Buser, R. E.....	3 00	First National Bank.....	25 00
Butler, Harry L.....	25 00	Fischer, Prof. Richard.....	10 00
Cady, Emil C.....	2 00	Fish & Schulkamp.....	15 00
Canright, G. S.....	10 00	Fish, Prof. Carl Russell.....	5 00
Cantwell Printing Co.....	25 00	Fisk, Mrs. George M.....	5 00
Capital City Tire Co.....	10 00	Fjelstad, George J.....	5 00
Capital Wire Co.....	3 00	Forbes-Meagher Music Co.....	5 00
Cargill, Mrs. Mary S.....	15 00	Forward Oil Co.....	5 00
Cargill, W. W.....	3 00	Fox, Arthur O.....	25 00
Carter, Dr. Homer M.....	5 00	Fracker, S. B.....	1 00

Frautschi, C., & Sons.....	\$10 00	Jarvis, Charles W.....	\$ 3 00
Frederickson, A. D. & J. V.....	20 00	Johnson, Carl A.....	25 00
Fritz, Carl B., Lumber Co....	15 00	Johnson, Mrs. Elizabeth H.	25 00
Gardner, E. H.....	10 00	Johnson, Hobart S.....	25 00
Graver, James R.....	5 00	Johnson, Mrs. Phoebe.....	25 00
Gastrow, F. E.....	3 00	Jonas, A. F.....	25 00
Geisler, H. L.....	10 00	Jones, Burr W.....	25 00
Gettle, L. E.....	5 00	Jones, Jerome J.....	10 00
Giddings, W.....	10 00	Kartack, R. E.....	25 00
Gilbert, Prof. E. M.....	5 00	Karstens, F. W.....	10 00
Gilman, Prof. Stephan W....	5 00	Kayser, Mrs. Adolph H.....	5 00
Gleason, H. B.....	5 00	Kemmerer, Prof. George I...	3 00
Goerst, Dr. Charles.....	10 00	Kennedy Dairy Co.....	25 00
Gratz, A. W.....	3 00	Kiekhoefer, Prof. W. H.....	10 00
Grimm, John J.....	5 00	Kindschi, George W.....	5 00
Grinde, John.....	10 00	Kindschi, M. R.....	5 00
Guyer, Prof. M. F.....	10 00	Kirchoffer, Wm. G.....	15 00
Haley, Harry B.....	5 00	Kissam, Everett T.....	5 00
Haley, John C. & Sons.....	5 00	Kittleson, Hon. I. Milo.....	10 00
Hall, F. W.....	10 00	Klein & Dickert Co.....	10 00
Halligan, B. J.....	15 00	Kney, E. O.....	5 00
Hanks, L. M.....	15 00	Knox, Rev. P. B.....	15 00
Hanks, L. S.....	20 00	Koch, Henry.....	5 00
Hanks, M. W.....	5 00	Kramer, A. H.....	5 00
Hansen, Conrad.....	5 00	Krauskopf, Prof. F. S. C....	3 00
Harley, J. A.....	3 00	Kroncke, George.....	10 00
Harper, J. C.....	10 00	La Follette, Robert M.....	15 00
Harrington, G. H.....	2 50	Laird, Arthur G.....	7 50
Hart, Prof. Walter W.....	10 00	Larson, A. C.....	10 00
Hastings, Prof. Edwin G....	5 00	Larson, C. M.....	5 00
Hatch, Prof. K. L.....	5 00	Larson, G. L.....	5 00
Hauk, Henry.....	10 00	Larson, M. D.....	3 00
Heddles, Mrs. W. S.....	5 00	Larson, P. L.....	2 00
Heilman, Roman A.....	10 00	Lawrence, R. E.....	5 00
Heilprin, J.....	5 00	Le Bre, Hubert, W.....	10 00
Henmon, Katherine.....	10 00	Leith, Prof. B. D.....	5 00
Herfurth, Theo.....	10 00	Libby, Dr. F. N.....	5 00
Hill, Carl N.....	10 00	Lindsay, Dr. Wm. T.....	20 00
Hirst, A. R.....	10 00	Livermore, Joseph D.....	3 00
Hobbins, Mrs. J. W.....	10 00	Loftsgordon, H. J.....	25 00
Hobbins, Mrs. Shirley Fuller	10 00	Loomis, Mrs. Frances S....	7 50
Hoffman Feed Co.....	15 00	Lorenz, Dr. W. F.....	10 00
Holmes, George C.....	10 00	Lotz, Henry.....	5 00
Holt, J. C.....	5 00	Loughney, Rev. George.....	10 00
Hoppman, Hon. A. C.....	5 00	Loveland, Reuben E.....	10 00
Hotchkiss, Wm. O.....	15 00	Lyons, Thomas E.....	5 00
Hoyt, Frank W.....	25 00	McGilvery, E. B.....	5 00
Hudson, Charles H.....	5 00	McKay Nursery Co.....	25 00
Humphrey, George C.....	5 00	McKenna, John C.....	10 00
Hurd, Dr. Richard W.....	5 00	McLeod, Arthur A.....	10 00
Hutchcroft, L. W.....	5 00	McMullen, C. L.....	10 00
Hyde, Grant M.....	5 00	Madison Auto Club.....	10 00
Hyland, Walter J.....	10 00	Madison Fuel Co.....	10 00
Icke, John F.....	25 00	Madison Gas & Electric Co.	25 00
Ingersoll, Prof. Leonard R...	3 00	Madison Realty Co.....	50 00
Ingersoll, Dr. R. S.....	5 00	Main, W. E. Agency.....	5 00
International Harvester Co.		Malec, Vincent.....	3 00
of America.....	25 00	Malone, R. J.....	3 00
Jacobs, Frank W.....	10 00	Malone, W. C.....	5 00

Manchester, Harry S.....	\$15 00	Owen, Walter C.....	\$10 00
Mansfield-Caughey Co.....	15 00	Owens, William.....	15 00
Marlatt, Prof. Abbie L.....	5 00	Palmer, J. Howard.....	10 00
Marling, W. A.....	10 00	Paltz, Emmerich & Conway	10 00
Marschall, A. J.....	15 00	Park Hotel Company.....	25 00
Marsh, Dr. H. E.....	3 00	Park, Allen G.....	5 00
Marshall, Prof. Wm. S.....	20 00	Parke, H. J.....	5 00
Martens, Conrad F.....	10 00	Parker, W. N.....	10 00
Mason, Mrs. E. C.....	5 00	Parkinson, John B.....	5 00
Mason, George W.....	15 00	Paulman, G. A.....	3 00
Mason, Prof. Max.....	10 00	Peasson, Joe Jr.....	5 00
Mason, Vroman.....	5 00	Peterson, John.....	10 00
Mathews, George C.....	5 00	Phillip, Prof. J. D.....	5 00
Mathews, J. H.....	5 00	Photoart Shop.....	10 00
Maurer, Prof. E. R.....	5 00	Pickarts, L. J.....	3 00
Mautz Bros.....	15 00	Pickford, Henry W.....	5 00
Mayer & Co., Oscar.....	20 00	Pollard, George W.....	10 00
Mayer Printing Co.....	10 00	Post, Lewis.....	5 00
Mayers, Andrew A.....	10 00	Powers, W. W.....	5 00
Mead, D. W.....	25 00	Qualey, R. N.....	2 00
Mead, W. J.....	10 00	Quan, Arthur W.....	10 00
Mendenhall, Prof. C. E.....	5 00	Quann, Mike.....	5 00
Menges, Mrs. A. F.....	5 00	Rayne, Frederick W.....	3 00
Metz, Anton.....	10 00	Rayne, George T.....	15 00
Meyers, Rev. E. J.....	5 00	Reed, Mrs. Frank D.....	10 00
Meyers, Grace D.....	5 00	Reierson, C. R.....	5 00
Michelson, Albert G.....	5 00	Reinfried, Dr. C. E.....	5 00
Milverstedt, A. G.....	5 00	Rennebohm, Oscar.....	10 00
Moran, John.....	10 00	Rentschler, Fred.....	10 00
Morgan Brothers.....	10 00	Reynolds, B. S.....	5 00
Moseley Book Co.....	20 00	Riley, Miles C.....	10 00
Mueller, Miss Julia A.....	5 00	Ritter Automobile Co.....	10 00
Mueller, Dr. W. H.....	5 00	Rodolf, Dr. C. J.....	5 00
Myrland, August J.....	5 00	Rogers, A. T.....	10 00
Neckerman, Mr. and Mrs. George M.....	10 00	Rosenberry, Jdg. M. B.....	10 00
Nelson, M. L.....	5 00	Ross, Prof. E. A.....	8 00
Nelson, O. M. & Son.....	10 00	Rowlands, A. E.....	5 00
Nelson, Robert N.....	10 00	Roys, Wm. B.....	10 00
Netherwood, Harry G.....	10 00	Royston, R. T.....	5 00
New York Store.....	10 00	Rundle-Spence Mfg. Co.....	10 00
Nichols, Harvey E.....	15 00	Rundell, Sidney P.....	15 00
Noe, Mrs. Jessie.....	25 00	Ryan, Wm.....	10 00
Northwestern Securities Co.	10 00	St. John, John.....	5 00
Nuzum, W. E.....	5 00	Sample, Omar H.....	10 00
Oakley, Frank W.....	10 00	Sanborn, J. B.....	10 00
Occident Baking Co.....	15 00	Sanborn, Philip G.....	5 00
Olbrich, Michael B.....	15 00	Sanderson, C. H.....	10 00
Olin, John M.....	25 00	Sauthoff, Harry.....	10 00
Olman, A. O.....	5 00	Sayle, George C.....	15 00
Olson & Verhusen Co.....	25 00	Scanlon-Morris Co.....	10 00
Olson, Oscar C.....	5 00	Scheibel, R. S.....	5 00
Olympic Chocolate Shop.....	10 00	Schenk, Herbert C.....	15 00
O'Malley, R. C.....	10 00	Schlimgen, Fred M.....	15 00
Orvis, Wm. H.....	5 00	Schlimgen, L. G.....	5 00
O'Shea, M. V.....	5 00	Schmitz, August J.....	5 00
O'Sheridan, Phil.....	5 00	Schoelkopf, Louis F.....	25 00
Otis, Mr. and Mrs. D. H.....	3 00	Schoen, Frank X.....	5 00
Owen, Ray S.....	5 00	Schulte, W. B.....	5 00
		Sears, I. W.....	5 00

Seastone, C. V.....	\$15 00	Thwaites, Jessie T.....	\$10 00
Security State Bank.....	15 00	Tormey, Dr. Thomas W....	15 00
Shakshesky, L. W.....	10 00	Toussaint, A. M.....	5 00
Sheldon, Dr. Chas. S.....	5 00	Toussaint, N.....	10 00
Smith, L. A.....	3 00	Trachte, H. E.....	3 00
Smith, Lathrop E.....	5 00	Tressler, Albert W.....	15 00
Smith, Prof. Leonard S.....	5 00	Trumpf, E. G.....	3 00
Smith, Walter McWynn....	10 00	Turneure, Dean F.....	10 00
Smythe, H. A., Jr.....	10 00	Universal Grocery Co.....	10 00
Snow, Prof. B. W.....	5 00	University Co-Operative Co.	100 00
Sommers Dr. J. G.....	10 00	Van Dusen, W. A.....	5 00
Speth, Carl E.....	5 00	Van Hise, Mrs. C. R.....	5 00
Stark, Paul E.....	10 00	Wagner, Prof. George.....	15 00
State Journal.....	25 00	Warner, Ernest N.....	25 00
Stebbins, Byron H.....	10 00	Warner, Paul S.....	10 00
Stebbins, Dr. W. W.....	5 00	Waterman, H. G. & Sons...	10 00
Steffen, H. J.....	3 00	Weddig, Herman.....	5 00
Steve, Prof. Wm. F.....	5 00	White, John C.....	10 00
Stevens, Hon. E. Ray.....	10 00	Wiedenbeck-Dobelin Co....	25 00
Stevens, Mrs. M. Elizabeth.	25 00	Wilkie, H. M.....	10 00
Stitgen, Bernard.....	5 00	Williams, Edward.....	10 00
Storey, O. W.....	5 00	Winegar, A. B.....	5 00
Strand, Olaf.....	3 00	Winslow, C. P.....	5 00
Strauss Printing Co.....	10 00	Wirka, R. M.....	5 00
Struck & Irwin Fuel Co....	15 00	Wolff, Kubly & Hirsig....	10 00
Suhr, F. W.....	10 00	Yawkey-Crowley Lmbr. Co.	10 00
Suhr, John.....	10 00	Young, Edward J.....	10 00
Swadley, E. W.....	3 00	Zimmerman, Hon. A. G....	5 00
Teckemeyer, William J....	10 00	Alpha Gamma Rho.....	5 00
Tenney, Chas. H.....	10 00	Theta Delta Chi.....	10 00
Thomas, Herbert.....	15 00	Triangle.....	10 00
Thomas, L.....	5 00		
Thompson, Harvey L.....	5 00	Total General Subscription	
Thwaites, F. T.....	10 00	for 1924.....	\$4,058.00

Special Contributions to the Parks, 1924

Lake Mendota Drive

Aberg, Wm. J. P.....	\$616 00	Otterson, Joseph.....	\$80 00
Aeschlimann, J. J.....	160 00	Rideout, W. L.....	80 00
Eagle Heights Land Co....	2,000 00	Runkel, John F.....	160 00
Forbes-Meagher Music Co	100 00	Schroeder, H. W.....	80 00
Fuller, F. R.....	160 00	Simpson, Mrs. Howard W.	80 00
Grady, C. W.....	80 00	Taylor, Miss Elsie A.....	160 00
Groves, Miss Regina.....	80 00	Woodbourne, James Z....	80 00
Hatzl, A.....	80 00		
Heilman, Arthur.....	160 00	Total Special Subscription	
Heilprin, J.....	80 00	for 1924.....	\$5,643 04
Helstrom, A. B.....	320 00		
Hommell, W. H.....	80 00	Total General Subscription	
Hyde, Mrs. Georgia C....	80 00	for 1924.....	\$4,058 00
McKenna, John.....	330 24		
Meanwell, Walter E.....	356 80	Total Subscriptions for	
Morgan, D. E.....	80 00	1924.....	\$9,701 04
Morgan, W.....	80 00		



"S" CURVE RELOCATED, FARWELL DRIVE

Madison Park
and
Pleasure Drive Association
Cash and Disbursements
Park Budget
1924

STATEMENT OF BUDGET EXPENDITURES, MADISON PARK AND PLEASURE DRIVE ASSOCIATION
JANUARY 1, 1924—DECEMBER 31, 1924

Account	Budget Appropriation	Amount Expended	Balance	Overdraft
ADMINISTRATION				
1. Salaries and Wages.....	\$3,750 00	\$3,752 60		\$2 60
2. Printing, Stationery and Office Expense.....	900 00	922 48		22 48
	\$4,650 00	\$4,675 08		\$25 08
MONONA SKATING RINK*				
1. Salaries and Wages.....	\$350 00	\$467 70		\$117 70
TREE TRIMMING				
1. Salaries and Wages.....	\$750 00	\$511 60	\$238 40	
TENNEY PARK AND PARKWAY*				
1. Salaries and Wages.....	\$4,630 00	\$5,259 16		\$629 16
8. General Supplies and Expense.....	273 50	6 08	267 42	
11. Heat, Light, Power and Water.....	75 00	197 78		122 78
12. Dry Goods, Bedding and Clothing.....	15 00	29 25		14 25
14. Repairs and Replacements.....	405 00	131 44	273 56	
17. Apparatus and Other Equipment.....		58 00		58 00
18. Real Estate and Structures.....	4,568 12	4,605 63		37 51
	\$9,966 62	\$10,287 34	\$540 98	\$861 70

*

STATEMENT OF BUDGET EXPENDITURES, MADISON PARK AND PLEASURE DRIVE ASSOCIATION,
JANUARY 1, 1924—DECEMBER 31, 1924

Account	Budget Appropriation	Amount Expended	Balance	Overdraft
TENNEY PARK BATHHOUSE				
1. Salaries and Wages.....	\$1,387 50	\$1,425 66		\$38 16
2. Printing, Stationery and Office Expense.....	24 00	29 44		5 44
7. Rent and Insurance.....	22 40	31 60		9 20
8. General Supplies and Expense.....	82 40	17 34	65 06	
9. Laundry and Janitor Supplies.....	170 70	114 07	56 63	
10. Medical Supplies.....	11 00		11 00	
11. Heat, Light, Power and Water.....	70 00	74 91		4 91
12. Dry Goods, Bedding and Clothing.....	183 80	149 38	34 42	
14. Repairs and Replacements.....	170 00	15 52	154 48	
18. Real Estate and Structures.....	200 00		200 00	
	\$2,321 80	\$1,857 92	\$521 59	\$57 71
TENNEY PARK LAVATORY				
8. General Supplies and Expense.....	\$48 00			
9. Laundry and Janitor Supplies.....	20 85			
10. Medical Supplies.....	2 00			
11. Heat, Light, Power and Water.....	150 00			
14. Repairs and Replacements.....	35 00			
	\$255 85			

STATEMENT OF BUDGET EXPENDITURES, MADISON PARK AND PLEASURE DRIVE ASSOCIATION
JANUARY 1, 1924—DECEMBER 31, 1924

Account	Budget Appropriation	Amount Expended	Balance	Overdraft
BRITTINGHAM PARK				
1. Salaries and Wages.....	\$3,872 50	\$4,337 71		\$465 21
8. General Supplies and Expense.....	570 50	148 85	421 65	
11. Heat, Light, Power and Water.....	10 00	22 68		12 68
12. Dry Goods, Bedding and Clothing.....	13 00	22 25		9 25
14. Repairs and Replacements.....	1,300 00	764 64	535 36	
18. Real Estate and Structures.....	2,150 00	994 80	1,155 20	
	\$7,916 00	\$6,290 93	\$2,112 21	\$487 14
BRITTINGHAM PARK BOATHOUSE				
1. Salaries and Wages.....	\$880 00	\$880 00		
2. Printing, Stationery and Office Expense.....	48 00	47 82	18	
7. Rent and Insurance.....	120 00	46 00	74 00	
8. General Supplies and Expense.....	104 20	5 72	98 48	
9. Laundry and Janitor Supplies.....	5 10	3 53	1 57	
10. Medical Supplies.....	2 00		2 00	
11. Heat, Light, Power and Water.....	64 00	25 54	38 46	
12. Dry Goods, Bedding and Clothing.....	8 00	3 00	5 00	
14. Repairs and Replacements.....	190 00	10 00	180 00	
18. Real Estate and Structures.....		170 93		170 93
	\$1,421 30	\$1,192 54	\$399 69	\$170 93

STATEMENT OF BUDGET EXPENDITURES, MADISON PARK AND PLEASURE DRIVE ASSOCIATION,
JANUARY 1, 1924—DECEMBER 31, 1924

Account	Budget Appropriation	Amount Expended	Balance	Overdraft
BRITTINGHAM PARK BATHHOUSE				
1. Salaries and Wages.....	\$1,162 50	\$915 20	\$247 30	
2. Printing, Stationery and Office Expense.....	24 00	26 30		2 30
7. Rent and Insurance.....	51 00		51 00	
8. General Supplies and Expense.....	82 40	8 11	74 29	
9. Laundry and Janitor Supplies.....	89 70	29 35	60 35	
10. Medical Supplies.....	11 00		11 00	
11. Heat, Light, Power and Water.....	70 00	81 04		11 04
12. Dry Goods, Bedding and Clothing.....	186 80	152 37	34 43	
14. Repairs and Replacements.....	170 00	31 64	138 36	
18. Real Estate and Structures.....		14 00		14 00
	\$1,847 40	\$1,258 01	\$616 73	\$27 34
HENRY VILAS PARK				
1. Salaries and Wages.....	\$4,997 50	\$5,942 67		\$945 17
2. Printing, Stationery and Office Expense.....	10 00		10 00	
8. General Supplies and Expense.....	702 00	7 83	694 17	
11. Heat, Light, Power and Water.....	400 00	37 90	362 10	
12. Dry Goods, Bedding and Clothing.....	15 00	5 25	9 75	
14. Repairs and Replacements.....	635 00	579 45	105 55	
18. Real Estate and Structures.....	1,644 11	1,842 34		198 23
	\$8,453 61	\$8,415 44	\$1,181 57	\$1,143 40

STATEMENT OF BUDGET EXPENDITURES, MADISON PARK AND PLEASURE DRIVE ASSOCIATION.
 JANUARY 1, 1924—DECEMBER 31, 1924

Account	Budget Appropriation	Amount Expended	Balance	Overdraft
HENRY VILAS PARK LAVATORY				
8. General Supplies and Expense.....	\$93 00	\$54 85	\$38 15
9. Laundry and Janitor Supplies.....	28 50	21 42	7 08
10. Medical Supplies.....	6 80	6 80
11. Heat, Light, Power and Water.....	170 00	102 50	67 50
14. Repairs and Replacements.....	30 00	1 65	28 35
	\$328 30	\$180 42	\$147 88
GENERAL PARK EQUIPMENT				
1. Salaries and Wages.....	\$2,260 00	\$2,026 07	\$233 93
7. Rent and Insurance.....	120 00	120 00
8. General Supplies and Expense.....	266 75	780 87	514 12
9. Laundry and Janitor Supplies.....	15 05	15 05
11. Heat, Light, Power and Water.....	216 00	331 14	115 14
13. Stable and Garage Expense.....	1,831 00	1,953 50	122 50
14. Repairs and Replacements.....	205 00	607 84	402 84
17. Apparatus and Other Equipment.....	918 75	453 92	464 83
	\$5,697 50	\$6,288 39	\$698 76	\$1,289 65
SPAIGHT STREET PARK				
1. Salaries and Wages.....	\$200 00	\$39 01	\$160 99
18. Real Estate and Structures.....	300 00	270 51	29 49
	\$500 00	\$309 52	\$190 48

STATEMENT OF BUDGET EXPENDITURES, MADISON PARK AND PLEASURE DRIVE ASSOCIATION,
 JANUARY 1, 1924—DECEMBER 31, 1924

Account	Budget Appropriation	Amount Expended	Balance	Overdraft
ORTON PARK*				
1. Salaries and Wages.....	\$300 00	\$503 95	\$203 95
BURROWS PARK*				
1. Salaries and Wages.....	\$700 00	\$829 61	\$129 61
18. Real Estate and Structures.....	200 00	217 23	17 23
	\$900 00	\$1,046 84	\$146 84
LAKE FRONT PARK*				
1. Salaries and Wages.....	\$550 00	\$569 21	\$19 21
14. Repairs and Replacements.....	10 00	10 00
18. Real Estate and Structures.....	541 90	544 41	2 51
	\$1,101 90	\$1,113 62	\$10 00	\$21 72
WASHINGTON OVAL*				
1. Salaries and Wages.....	\$125 00	\$245 86	\$120 86
MORRISON STREET PARK				
1. Salaries and Wages.....	\$50 00	\$14 22	\$35 78
18. Real Estate and Structures.....	45 16	45 19	03
	\$95 16	\$59 41	\$35 78	03

Madison Park and Pleasure Drive Association

STATEMENT OF BUDGET EXPENDITURES, MADISON PARK AND PLEASURE DRIVE ASSOCIATION,
JANUARY 1, 1924—DECEMBER 31, 1924

Account	Budget Appropriation	Amount Expended	Balance	Overdraft
MADISON GENERAL HOSPITAL				
1. Salaries and Wages.....	\$75 00	\$52 10	\$22 90	
OLIVE JONES FIELD				
1. Salaries and Wages.....	\$50 00	\$54 18		\$4 18
18. Real Estate and Structures.....	205 20	189 54	15 66	
	\$255 20	\$243 72	\$15 66	\$4 18
EVERGREEN PARK				
1. Salaries and Wages.....	\$25 00	\$35 30		\$10 30
WEST WASHINGTON BOULEVARD*				
1. Salaries and Wages.....	\$150 00	\$249 48		\$99 48
MAPLE PARK*				
1. Salaries and Wages.....	\$150 00	\$223 18		\$73 18
SPOONER STREET VIADUCT				
1. Salaries and Wages.....	\$25 00	\$3 62	\$21 38	

STATEMENT OF BUDGET EXPENDITURES, MADISON PARK AND PLEASURE DRIVE ASSOCIATION,
JANUARY 1, 1924—DECEMBER 31, 1924

Account	Budget Appropriation	Amount Expended	Balance	Overdraft
BURR JONES FIELD				
1. Salaries and Wages.....	\$150 00	\$63 24	\$86 76	
11. Heat, Light, Power and Water.....	25 00		25 00	
18. Real Estate and Structures.....	525 00	547 47		22 47
	\$700 00	\$610 71	\$111 76	\$22 47
OLBRICH PARK*				
		\$916 16		\$916 16
QUARANTINE HOSPITAL				
1. Salaries and Wages.....	\$50 00	\$73 20		\$23 20
WILLOWS				
1. Salaries and Wages.....	\$300 00	\$280 00	\$20 00	
14. Repairs and Replacements.....	34 00	33 15	85	
	\$334 00	\$313 15	\$20 85	
STREET ENDS				
1. Salaries and Wages.....	\$25 00	\$127 67		\$102 67
18. Real Estate and Structures.....	100 00	23 40	76 60	
	\$125 00	\$151 07	\$76 60	\$102 67

Madison Park and Pleasure Drive Association

STATEMENT OF BUDGET EXPENDITURES, MADISON PARK AND PLEASURE DRIVE ASSOCIATION,
JANUARY 1, 1924—DECEMBER 31, 1924

Account	Budget Appropriation	Amount Expended	Balance	Overdraft
OUTSIDE DRIVES				
Materials and Supplies.....	\$3,000 00	\$3,000 00		
LAKE FRONT EXTENSION				
1. Salaries and Wages.....	\$500 00	\$275 41	\$224 59	
18. Real Estate and Structures*.....		518 36		518 36
	\$500 00	\$793 77	\$224 59	\$518 36
ELMSIDE BOULEVARD				
1. Salaries and Wages.....	\$25 00	\$19 98	\$5 02	
18. Real Estate and Structures.....	50 00	50 00		
	\$75 00	\$69 98	\$5 02	
KENDALL PARK				
1. Salaries and Wages.....	\$75 00	\$110 76		\$35 76
18. Real Estate and Structures.....	189 53	192 28		2 75
	\$264 53	\$303 04		\$38 51

STATEMENT OF BUDGET EXPENDITURES, MADISON PARK AND PLEASURE DRIVE ASSOCIATION,
JANUARY 1, 1924—DECEMBER 31, 1924

Account	Budget Appropriation	Amount Expended	Balance	Overdraft
EAST WASHINGTON BOULEVARD*				
1. Salaries and Wages.....	\$690 00	\$1,195 97	\$505 97
18. Real Estate and Structures*.....	3,000 00	3,133 16	133 16
	\$3,690 00	\$4,329 13	\$639 13
OLIN PARK				
1. Salaries and Wages.....	\$2,554 00	\$2,793 58	\$239 58
2. Printing, Stationery and Office Expense.....	80 00	30 50	49 50
7. Rent and Insurance.....	106 80	162 85	56 05
8. General Supplies and Expense.....	425 00	541 99	116 99
9. Laundry and Janitor Supplies.....	80 00	132 56	52 56
11. Heat, Light, Power and Water.....	460 00	197 33	262 67
13. Stable and Garage Expense.....	170 00	170 00
14. Repairs and Replacements.....	1,275 00	499 23	775 77
17. Apparatus and Other Equipment.....	550 00	174 30	375 70
18. Real Estate and Structures.....	800 00	859 90	59 90
	\$6,500 80	\$5,392 24	\$1,633 64	\$525 08

Madison Park and Pleasure Drive Association

STATEMENT OF BUDGET EXPENDITURES, MADISON PARK AND PLEASURE DRIVE ASSOCIATION,
 JANUARY 1, 1924—DECEMBER 31, 1924

Account	Budget Appropriation	Amount Expended	Balance	Overdraft
HENRY VILAS PARK ZOO				
1. Salaries and Wages.....	\$11,810 00	\$12,322 46		\$512 46
2. Printing, Stationery and Office Expense.....	100 00	75 00	25 00	
4. Freight and Express.....	100 00	156 06		56 06
7. Rent and Insurance.....	224 10	213 20	10 90	
8. General Supplies and Expense.....	7,807 27	7,208 55	598 72	
9. Laundry and Janitor Supplies.....	90 90	83 45	7 45	
10. Medical Supplies.....	45 40	84 68		39 28
11. Heat, Light, Power and Water.....	2,939 00	2,781 29	157 71	
12. Dry Goods, Bedding and Clothing.....	35 00	18 30	16 70	
13. Stable and Garage Expense.....		58 42		58 42
14. Repairs and Replacements.....	1,560 00	1,490 25	69 75	
18. Real Estate and Structures.....	200 00	631 58		431 58
	\$24,911 67	\$25,123 24	\$886 23	\$1,097 80

MADISON PARK AND PLEASURE DRIVE ASSOCIATION
STATEMENT FOR YEAR 1924

RECAPITULATION

TOTAL BUDGET APPROPRIATION FOR PARKS, YEAR 1924			
Salaries and Wages	\$30,559 00		
Materials, Supplies and Outlay	31,790 97		
Transfers from Contingent Fund	550 00		
Total Cash Expenditures and Journal Charges		\$61,464 42	
Credit or Unexpended Balance		1,435 55	
	\$62,899 97	\$62,899 97	

VILAS PARK ZOO

TOTAL BUDGET APPROPRIATION			
Salaries and Wages	\$11,810 00		
	13,101 67		
Total Cash Expenditures and Journal Charges		\$25,123 24	
Expenditures in Excess of Budget Provision	211 57		
	\$25,123 24	\$25,123 24	

*NOTE: Denotes blanket purchase orders issued for various Materials and Supplies without proper distribution being made during year according to budget provision. Individual purchase orders will be issued in future in order to have same charged against proper budget appropriation and will give us check on the control account.

Treasurer's Report

To the Members of the Madison Park and Pleasure Drive Association:

GENTLEMEN:

The following is a condensed statement of the financial transactions for the year ending December 31, 1925.

Receipts

Balance in Bank, January 1, 1925.....	\$ 154 98
1924 Subscriptions.....	10 00
1925 Subscriptions.....	4,695 90
Lake Mendota Drive Subscriptions.....	2,680 00
Interest.....	461 69
Trees sold.....	3 00
Spraying fund receipts.....	653 00
Appropriation by City of Madison.....	3,000 00
Stewart Memorial Fountain.....	3,590 96
Work by park men.....	189 50
Skating rink expense repaid by L. M. Hanks.....	74 96
Credit Mendota Drive, Owen Parkway, Farwell Drive (Golf Club).....	93 63
	\$15,607 62

Disbursements

Miscellaneous.....	\$1,147 33
Lake Mendota Drive.....	7,968 03
Farwell Drive.....	1,204 11
Owen Parkway.....	488 44
Work by park men.....	189 50
Automobile expense.....	25 30
Stewart Memorial Fountain.....	3,633 89
Park Equipment.....	181 81
Spraying Fund.....	499 92
Skating rink expense.....	74 96
Road materials for Mendota Drive, Owen Parkway, Farwell Drive charged to Maple Bluff Golf Club.....	93 63
Balance in bank, January 1, 1926.....	100 70
	\$15,607 62
January 1, 1926, by balance.....	\$100 70

Mr. and Mrs. A. H. Hollister Park Fund

Statement from January 1, 1925, to January 1, 1926

1925			
Jan. 1	By balance from annual report.....	\$16,879	45
Mar. 5	By John H. Lee, interest to Mar. 5, 1925.....	\$	14 58
Mar. 9	By Aaron Parman, interest to Mar. 10, 1925.....		87 00
Mar. 9	By U. S. of America Certificate of Indebtedness, interest to Mar. 15, 1925.....		8 52
Mar. 13	By John O'Connell, interest to Mar. 12, 1925.....		19 25
Mar. 24	By Joseph Hornung, interest to Mar. 22, 1925.....		137 50
Mar. 24	By G. G. Corona, interest to Mar. 24 1925.....		66 13
May 5	By Robert O'Malley, interest to May 3, 1925.....		110 00
June 13	By U. S. of America Certificate of Indebtedness, interest in full.....		4 50
Aug 24	By John M. Melass, interest to Aug. 23, 1925.....		22 75
Sept. 3	By John H. Lee, interest to Sept. 5, 1925.....		15 00
Sept. 10	By Aaron L. Parman, interest to Sept. 10, 1925.....		87 00
Sept. 11	By interest on Bank certificates.....		1 60
Sept. 11	By U. S. of America Certificate of Indebtedness, interest to Sept. 15, 1925.....		8 48
Sept. 14	By John O'Connell, interest to Sept. 12, 1925.....		19 25
Sept. 23	By Joseph Hornung, interest, to Sept. 22, 1925.....		137 50
Sept. 25	By G. G. Corona, interest to Sept. 24, 1925.....		66 00
Oct. 12	By Northwestern Securities Company, interest in full.....		1 50
Nov. 4	By Robert O'Malley, interest to Nov. 3, 1925.....		110 00
Nov. 25	By Northwestern Securities Company, interest in full.....		3 07
Dec. 9	By G. G. Corona, interest in full.....		3 75
			923 39
To one-half of income \$923.39 paid to Madison Park and Pleasure Drive Association used on drives outside of the City.....			461 69
To Balance.....			17,332 15
		<u>\$17,793 84</u>	<u>\$17,793 84</u>

1926

Jan. 1	By Balance.....	\$17,332	15
The above balance is invested in the name of the Madison Park and Pleasure Drive Association as Trustee of Mr. and Mrs. A. H. Hollister Park Fund as follows:			
	Joseph Hornung, mortgage, 5½%.....		5,000 00

Robert C. O'Malley, mortgage, 5½%	\$4,000 00
John C. O'Connell, mortgage, 5½%	700 00
Aaron L. Parman, mortgage, 6%	2,900 00
John H. Lee, mortgage, 6%	500 00
John M. Melass, mortgage, 5½%	1,000 00
Russell S. Corona, mortgage, 6%	505 00
Frank LaWohl, mortgage, 6%	400 00
G. E. Gedwith, mortgage, 5½%	1,327 15
U. S. of America Certificates of Indebtedness, 4½%	400 00
C. H. Osthoff, mortgage, 5½%	600 00
	<hr/>
	\$17,332 15
Original Capital:	
Principal Sept. 17, 1913	\$12,279 61
Principal Sept. 20, 1917	212 75
	<hr/>
	\$12,492 36
One-half income to Jan. 1, 1926	4,839 79
	<hr/>
	\$17,332 15

The Mary C. Stewart Memorial Fountain Fund

1925		
Jan. 1	By Balance from annual report	\$3,587 81
Sept. 2	By interest of Bank certificate	3 15
Jan. 15	Paid to Frederick J. Clasgens in full	\$3,387 81
Sept. 2	Paid to Madison Park and Pleasure Drive Association for plumbing (paid city of Madison)	203 15
		<hr/>
		\$3,590 96
		<hr/>
		\$3,590 96

D. K. Tenney Park Fund

1925		
Jan. 1	By Balance from annual report	\$4,095 78
Jan. 2	By interest on Bank Certificates	\$ 28
Mar. 9	By U. S. of America Certificate of Indebtedness, interest to Mar. 15, 1925	14 00
Apr. 20	By Vera Voght, interest to Apr. 20, 1925	7 25
May 27	By Solomon Levitan, interest to June 1, 1925	45 00
June 13	By U. S. of America Certificate of Indebtedness, interest in full	2 25
June 29	By Theta Building Company, interest to July 1, 1925	42 25
Sept. 11	By U. S. of America Certificate of Indebtedness, interest to Sept. 15, 1925	14 00
Oct. 19	By Vera Voght, interest to Oct. 20, 1925	15 00
Nov. 27	By Solomon Levitan, interest to Dec. 1, 1925	45 00

Dec. 3	By interest on Bank Certificates.....	1 85	
Dec. 31	By interest on Bank Certificates.....	1 91	188 79
		<hr/>	
Sept. 10	By Golden Rule Society.....		500 00
	To Balance.....	\$4,784 57	
		<hr/>	
		\$4,784 57	\$4,784 57

1926

Jan. 1	By Balance.....		\$4,784 57
--------	-----------------	--	------------

The above balance is invested in the name of the Madison Park and Pleasure Drive Association as Trustee of the D. K. Tenney Park Fund as follows:

Solomon Levitan, mortgage, 6%	\$1,500 00
U. S. of America certificate, 4½%	100 00
U. S. of America certificate, 4¾%	500 00
Theta Building Association, mortgage, 6½%	1,300 00
Vera Voght, mortgage, 6%	500 00
Russell S Corona, mortgage, 6%	505 00
First National Bank, certificate of deposit, 2, 2½, 3%	21 25
First National Bank, certificate of deposit, 2, 2½, 3%	45 00
First National Bank, certificate of deposit, 2, 2½, 3%	102 25
First National Bank, certificate of deposit, 2, 2½, 3%	42 25
First National Bank, certificate of deposit, 2, 2½, 3%	24 00
First National Bank, certificate of deposit, 2, 2½, 3%	48 26
First National Bank, certificate of deposit, 2, 2½, 3%	45 00
First National Bank, certificate of deposit, 2, 2½, 3%	51 56

\$4,784 57

Respectfully submitted,

FRANK W. HOYT,
Treasurer.

I hereby certify that I have examined the accounts of Frank W. Hoyt, treasurer, for the year 1925, and find them correct in all particulars.

Dated April 30, 1925.

ROBERT C. O'MALLEY.

General Subscriptions for 1925

Aaberg, W. J. P.....	\$15 00	Buehler, Fred W.....	\$ 5 00
Acly, C. R.....	5 00	Buell, Charles E.....	10 00
AdvanceRumleyThresherCo.	10 00	Bunting, C. H.....	5 00
American Ice Cream Co.....	15 00	Burch, L. W.....	5 00
Anderson, Chas. W.....	5 00	Burdick & Murray.....	10 00
Andrews, L.....	3 00	Burger, Peter.....	15 00
Arnold, C. S.....	5 00	Burrowbridge, Geo.....	3 00
Aust, Franz A.....	3 00	Butler, Harry L.....	25 00
Ayer, Mrs. Walter.....	25 00	Byneske, R. H.....	2 00
Aylward, Dr. Richard.....	10 00	Cairns, Prof. W. B.....	5 00
Baas, Alexius H.....	10 00	Canright, G. S.....	10 00
Babcock, Prof. Stephen M.....	10 00	Capital City Bank.....	25 00
Baker, Dr. James B.....	5 00	Capital City Tire Co.....	10 00
Baker, N. D.....	3 00	Capital Garage.....	5 00
Balch, H. C.....	2 00	Capital Wire Co.....	5 00
Baldwin, Zala.....	10 00	Cargill, George.....	5 00
Ballard, Floyd E.....	5 00	Cargill, Mrs. Mary S.....	15 00
Bank of Wisconsin.....	25 00	Cargill, W. W.....	3 00
Barlow, Dr. R. A.....	5 00	Carter, Homer M.....	5 00
Barstow, Rev. R. W.....	5 00	Castle & Doyle.....	25 00
Bartlett, R. D.....	5 00	Cawley, James.....	5 00
Bay View Stone Co.....	20 00	Chase, Prof. W. J.....	15 00
Beckwith, D. H.....	5 00	City Boathouse.....	10 00
Bennett, Ed.....	5 00	Clarke Publishing Co.....	25 00
Bergh, Marcus C.....	5 00	Clarke, H. J.....	2 00
Bernard, William P.....	15 00	Claude & Starck.....	10 00
Birge, Miss Anna.....	5 00	Cleveland, W. T.....	2 50
Birge, E. A.....	15 00	Cnare, Frank.....	3 00
Bitney, J. C.....	5 00	Cochrane, Mrs. E. K.....	5 00
Bitterman, J. C.....	5 00	Coddington, Miss Hester...	3 00
Blackburn, Albert C.....	5 00	Coe, J. H.....	10 00
Bleyer, W. G.....	5 00	Coleman, Thomas A.....	25 00
Blied Printing Co.....	25 00	Coleman, Thomas E.....	25 00
Blowusch, John.....	2 00	Collins Lumber Co.....	10 00
Bolz, Adolph.....	5 00	Collins, C. C.....	10 00
Botham, George W.....	10 00	Collins, Mrs. W. H.....	10 00
Boyce, Dr. S. R.....	10 00	Collins, W. K.....	5 00
Boyd Co., The Joseph M.....	10 00	Commerical National Bank.	25 00
Boyd, Joseph M.....	10 00	Commons, Prof. John R.....	10 00
Bradford, Irene.....	5 00	Conklin, M. H.....	5 00
Bradley, Mr. and Mrs. H. C.	25 00	Corscot, Gerret J.....	5 00
Brandenburg, O. D.....	15 00	Corscot, John.....	5 00
Brayton, A. M.....	5 00	Crescent Clothing Co.....	10 00
Breitenbach, G. H.....	5 00	Crescent Electric Co.....	2 00
Briggs, P. A.....	2 00	Cretney, T. G.....	10 00
Bristol, Elsey L.....	5 00	Critton, James N.....	5 00
Brittingham, T. E.....	10 00	Crowl, Ralph S.....	5 00
Brittingham, Mrs. T. E.....	25 00	Crowley, F. M.....	15 00
Brown, Charles N.....	15 00	Crownhart, Charles H.....	10 00
Brown, Dr. Damon A.....	5 00	Cullinan, W. T.....	5 00
Brown, Dr. Ernest J.....	5 00	Davis, Dr. F. A.....	10 00
Brown, S. L.....	5 00	Deadman, C. A.....	5 00
		Dick, Christian.....	5 00

Diedrick, M.	3 00	Haake, Peter	\$ 5 00
Dobelin, Chas. W.	5 00	Haley, Harry B.	5 00
Eagle Heights Land Co.	25 00	Halligan, B. J.	15 00
Edgerton, Alanson H.	5 00	Halpin, Prof. J. G.	5 00
Ekern, H. L.	10 00	Hanks, L. M.	25 00
Ela, Emerson	25 00	Hanks, L. S.	20 00
Ellis, G. E.	3 00	Hanks, Mrs. Mary E. C.	25 00
Ellman, George	2 00	Hanks, M. W.	5 00
Elsom, Prof. J. C.	5 00	Hansen, B.	2 00
Elver, G. W.	5 00	Hansen, Conrad	5 00
Ely, Dr. R. T.	10 00	Hansen, D. M.	5 00
Emery, W. E.	5 00	Hanson, G. O.	5 00
Endres, Joseph L.	5 00	Hanson, H. O.	1 00
Engsberg, Edwin, W.	3 00	Harley, J. A.	5 00
Epstein, Abe E.	2 00	Harned, Dr. Louis	5 00
Farrell, J. Howard	5 00	Harper, Dr. Carl S.	5 00
Farrell, Sam.	5 00	Harper, J. C.	10 00
Farrington, Prof. Edward H.	5 00	Harris, Roy	5 00
Fauerbach, Philip	5 00	Hart, Prof. Walter W.	15 00
Febock, W. F.	5 00	Hastings, Prof. Edwin G.	5 00
Felton, Carl	5 00	Hastings, W. A.	2 00
Fess Hotel	5 00	Hatch, Prof. K. L.	5 00
Fessenden, R. V.	3 00	Haugen, N. P.	5 00
Finch, V. C.	5 00	Hauk, Henry	10 00
First Nat'l Bank & Cent. Wis. Trust Co.	35 00	H'Doubler, Miss M. M.	2 00
Fischer, Prof. Richard	10 00	Heddles, Mrs. W. S.	5 00
Fish & Schulkamp	10 00	Hefty, Mr. and Mrs. Thomas	10 00
Fish, Prof. Carl Russell	10 00	Heilman, Roman A.	10 00
Fisk, Mrs. Geo. M.	5 00	Helmicks, G. A.	5 00
Flett, Mrs. Clara B.	5 00	Herfurth, Theo.	10 00
Forbes-Meagher Music Co.	10 00	Herling, W. H.	2 00
Ford, J. C.	5 00	Herrington, C. W.	5 00
Forward Oil Co.	10 00	Hibbard, C. V.	5 00
Frautschi, C. & Sons	10 00	Hill, Thomann & Beckwith	15 00
Frautschi, Emil J.	10 00	Hill's, Inc.	5 00
Frish, A. M.	5 00	Hobbins, Mrs. J. W.	10 00
Fritz, Carl B.	15 00	Hobbins, W. J.	10 00
Gallistel, A. F.	5 00	Hoffman Feed Co.	15 00
Ganser, Dr. W. J.	10 00	Holmes, Geo. C.	10 00
Gardner, E. H.	10 00	Holt, J. C.	2 50
Gauer, Paul G.	5 00	Hopkins, R. L.	10 00
Gay, Miss L. M.	5 00	Horner, Frank R.	5 00
Geisler, H. L.	15 00	Horth, E. E.	5 00
General Paper & Supply Co.	25 00	Horton, Ralph	3 00
Germond, H.	5 00	Hotchkiss, Wm. O.	10 00
Gettle, L. E.	5 00	Hoyt, Frank W.	25 00
Giddings, W.	10 00	Hudson, Charles H.	5 00
Gilman, Prof. Stephen W.	5 00	Hummel, W. H.	5 00
Gorst, Dr. Charles	10 00	Humphrey, George C.	5 00
Grabber, Prof. L. F.	5 00	Hunt, G. M.	2 00
Gratz, A. W.	3 00	Hunt, Henry J.	5 00
Grimm, John G.	5 00	Hunter, P. F.	5 00
Grinde, John	10 00	Hurd, Dr. Richard W.	5 00
Grover, Miss Alice M.	2 50	Hutchcroft, L. W.	5 00
Grover, Miss Arlene	2 50	Hyde, Grant M.	5 00
Groves, Miss Regina E.	10 00	Icke, John F.	25 00
Gulesserian, S. A.	5 00	Ingersoll, Prof. L. R.	3 00
Guyer, Prof. M. F.	10 00	Ingersoll Dr. R. E.	5 00

International Harvester Co. of America.....	\$25 00	Lobeck, Prof. A. K.....	\$ 3 00
Jackson, Dr. Reginald H....	25 00	Loftsgordon, H. J.....	25 00
Jacobs, Frank W.....	10 00	Loomis, Mrs. Frances S....	5 00
Jamieson, H. C.....	5 00	Lorraine Hotel.....	10 00
Jarvis, Charles W.....	3 00	Lotz, Henry.....	5 00
Johnson, C. A.....	25 00	Loughney, Rev. George....	10 00
Johnson, C. H.....	3 00	Ludachka, Misses Anna and Frances.....	10 00
Johnson, Mrs. E. H.....	25 00	Lumpkin, Rev. H. H.....	2 00
Johnson, G. E.....	2 00	Lunder, O. G.....	3 00
Johnson, Hobart S.....	25 00	Lunenschloss, L. L.....	2 00
Johnson, J.....	3 00	Luther, Prof. E. L.....	5 00
Johnson, Mrs. J. A.....	5 00	Lyman, Wm.....	5 00
Johnson, Laura.....	5 00	McGilvery, E. B.....	5 00
Johnson, Phoebe.....	15 00	McKay Nursery Co.....	15 00
Jonas, A. F.....	25 00	McKenna, John C.....	15 00
Jones, Burr W.....	25 00	McMullen, C. L.....	10 00
Jones, Thomas E.....	5 00	Madden, Dr. J. W.....	5 00
Kampen, O. A.....	5 00	Madison Auto Club.....	10 00
Karstens, F. W.....	10 00	Madison Bowling & Billiard Co.....	10 00
Kartack, R. E.....	10 00	Madison Fuel Co.....	5 00
Keller, U. S. G.....	5 00	Madison Gas & Electric Co.	25 00
Kemmerer, Prof. Geo. I....	5 00	Madison Realty Co.....	50 00
Kennedy Dairy Co.....	25 00	Madison Steam Dye Works.	5 00
Kenney, A. P.....	2 00	Mahlkueck, Samuel A....	3 00
Kieckhofer, Prof. W. H....	10 00	Main, W. E. Agency.....	5 00
Kimball, Rev. N. C.....	3 00	Malec, Vincent.....	3 00
Kind, Mr. and Mrs. John L.	5 00	Malone, R. J.....	5 00
Kirchoffer, Wm. G.....	15 00	Malone, W. C.....	5 00
Kissam, Everett T.....	5 00	Manchester, Harry S.....	20 00
Klein & Dickert Co.....	10 00	Mansfield-Caughey Co....	20 00
Kleinheinz, Prof. F.....	1 00	March, Prof. H. W.....	5 00
Kleinpell, Mrs. Carrie M....	2 00	Markwardt, L. J.....	2 00
Kliefoth, Max.....	1 00	Marlatt, Prof. A. L.....	5 00
Kneller, S.....	5 00	Marling, Robert.....	5 00
Kney, E. O.....	5 00	Marling, W. A.....	10 00
Knox, Rev. P. B.....	15 00	Marschall, A. J.....	25 00
Koch, Henry.....	3 00	Marsh, Mrs. H. E.....	5 00
Kramer, A. H.....	10 00	Marshall, Prof. Wm. S....	20 00
Kraus, Prof. E. J.....	5 00	Martens, Conrad F.....	5 00
Krauskopf, Prof. F. S. C....	3 00	Mason, Mrs. E. C.....	5 00
Kroncke, George.....	10 00	Maxon, Max.....	10 00
Kropf, R. R.....	10 00	Mason, Vroman.....	20 00
LaFollette, Robt. M.....	15 00	Mathews, Geo. C.....	5 00
Laird, Arthur G.....	10 00	Mathews, J. H.....	5 00
Lake City Bottling Works..	3 00	Matzdorf, W.....	3 00
Lamb, L. L.....	5 00	Maurer, Prof. E. R.....	5 00
Langley, R. A.....	5 00	Mautz Bros.....	15 00
Larson, A. C.....	10 00	Mautz Paint & Glass Co....	5 00
Larson, M. D.....	10 00	Mayer & Co., Oscar.....	30 00
Laub, Wm.....	2 00	Mead, D. W.....	25 00
Law, Edward J.....	5 00	Mead, W. J.....	10 00
Law, James R.....	5 00	Meade, Dr. Frank S.....	5 00
Lawrence, R. E.....	5 00	Mendenhall, Prof. C. E....	5 00
LeBre, H. W.....	10 00	Menges Pharmacy.....	10 00
Lecomte, Mrs. Vera S.....	5 00	Mertzeke, Arthur J.....	5 00
Levenick, M. H.....	5 00	Messerschmidt, J. E.....	5 00
Lewis, Theodore.....	5 00	Metz, Anton.....	10 00
Livermore, Joseph D.....	5 00		

Meyer, Rev. E. J.....	\$5 00	Pfanku, Vern C.....	\$ 5 00
Meyers, Grace D.....	5 00	Phillip, Prof. J. D.....	5 00
Michell, Prof. R. B.....	5 00	Phillips, C. H.....	5 00
Michelson, Albert G.....	5 00	Photoart Shop.....	10 00
Miller, G. J.....	1 00	Pickarts, L. J.....	5 00
Milverstedt, A. G.....	5 00	Pickford, Henry W.....	5 00
Modie, Dr. C. R.....	5 00	Piper, Howard D.....	3 00
Monteith, Mary.....	5 00	Platt, Chester.....	3 00
Moores, H. O.....	5 00	Pleuss, H. D.....	2 00
Morgan Bros.....	10 00	Post, Mr. and Mrs. Chas....	5 00
Morgan, Frank.....	5 00	Potter, E. J.....	3 00
Morris, A. B.....	5 00	Power Co., M. J.....	5 00
Morrison, F. B.....	5 00	Powers, W. W.....	5 00
Mosby, W. H.....	3 00	Prescott, N. A.....	2 00
Moseley Book Co.....	20 00	Priestley, T. M.....	10 00
Mowry, Prof. W. A.....	5 00	Proudfit, Mrs. Clara L.....	5 00
Mueller, Miss Julia A.....	5 00	Putnam, C. M.....	10 00
Mueller, Dr. W. H.....	5 00	Qualley, R. N.....	2 00
Myrland, August J.....	5 00	Quann, Mike.....	5 00
Nardin, Dean F. Louise.....	5 00	Rath, F. C.....	3 00
Neckerman, Mr. and Mrs. George.....	10 00	Rayne, Frederick W.....	5 00
Neckerman, Rueben J.....	5 00	Reierson, C. R.....	5 00
Neesvig, Oswald.....	5 00	Reinfried, Dr. C. E.....	5 00
Neff, Dr. Eugene E.....	5 00	Rennebohm, Oscar.....	10 00
Nelson, M. L.....	5 00	Rentschler, Fred.....	15 00
Nelson, Robt. N.....	10 00	Reynolds, B. S.....	5 00
Netherwood, Harry G.....	5 00	Richards, Prof. G.....	1 00
New York Store.....	10 00	Richtman, Prof. W. O.....	5 00
Newlin, J. A.....	3 00	Rieder, August.....	3 00
Nichols, Harvey E.....	15 00	Riley, George C.....	1 00
Nikias, N. C.....	5 00	Ritter Automobile Co.....	10 00
Northwestern Securities Co.	15 00	Roach, Mrs. W. L.....	10 00
Oakley, Frank W.....	10 00	Rodolf, Dr. C. J.....	5 00
Oetking, Frank.....	5 00	Roebuck, Prof. J. R.....	5 00
Olbrich, M. B.....	15 00	Rogers, A. T.....	10 00
Olds, L. L.....	10 00	Rosenberry, Jdg. M. B.....	10 00
Olman, A. O.....	5 00	Ross, Prof. E. A.....	10 00
Olson & Veerhusen Co.....	25 00	Rowlands, A. E.....	5 00
Olson, Oscar C.....	5 00	Roys, Wm. B.....	10 00
O'Malley, R. C.....	10 00	Royston, R. T.....	5 00
Onstad, E. J.....	3 00	Rue, John D.....	5 00
Orne, Emil.....	2 00	Rundle-Spence Mfg. Co.....	10 00
Otis, Mr. and Mrs. D. H.....	5 00	Runge, A. E.....	5 00
Ott, Harlow S.....	5 00	St. John, John.....	10 00
Owen, Ray S.....	5 00	Sammis, Prof. J. L.....	5 00
Owen, Walter C.....	10 00	Sample, Omar H.....	10 00
Owens, William.....	15 00	Sanborn, Philip G.....	5 00
Palmer, J. Howard.....	10 00	Sander, Wm. R.....	5 00
Park, Allan G.....	5 00	Sandord, Miss Delia C.....	5 00
Park, Ben W.....	3 00	Sanford, Miss Fannie.....	5 00
Parke, H. J.....	5 00	Sauthoff, Harry.....	10 00
Parker Co., The.....	10 00	Sayle, George C.....	15 00
Parker, E. E.....	5 00	Scanlon-Morris Co.....	10 00
Peake, Hugh.....	2 00	Schenk, Herbert C.....	15 00
Pearse, Prof. A. S.....	5 00	Schimming, Henry.....	5 00
Perry, Prof. H. T. E.....	5 00	Schlimgen, Fred M.....	15 00
Peterson, John.....	10 00	Schmelzkopf, E.....	5 00
Peterson, Prof. W. H.....	3 00	Schmitz, August J.....	5 00
		Schmitz, N. J.....	2 00

Schneider, C. J.	\$ 1 00	Thomas, H. H.	\$ 5 00
Schoelkopf, Louis F.	100 00	Thomas, L.	5 00
Schoen, Frank X.	5 00	Thomas, S.	2 00
Schoenwetter, F. O.	3 00	Thompson, H. L.	5 00
Schubring, E. J. B.	15 00	Thwaites, F. T.	10 00
Schuette, Prof. H. A.	5 00	Thwaites, Jessie T.	10 00
Schulte, W. B.	5 00	Tiffany, A. S.	2 00
Schumacher, Wm. G.	5 00	Toebaas, O. T.	5 00
Security State Bank.	15 00	Tolf, C. J.	3 00
Shakshesky, L. W.	10 00	Tottingham, Prof. W. E.	5 00
Sharratt, C. A.	3 00	Tough, Edward	5 00
Sharratt, Henry F.	5 00	Toussaint, A. M.	5 00
Sheldon, Dr. Chas. S.	5 00	Trachte Bros. Co.	10 00
Showerman, Prof. G.	5 00	Tracy & Kilgore	10 00
Silver Springs Water Co.	2 00	Tressler, Albert W.	15 00
Sinaiko Bros.	10 00	Trumpf, E. C.	3 00
Slaughter, Mrs. M. S.	5 00	Trumpf, E. G.	3 00
Smith, Prof. Charles F.	5 00	Troug, Prof. E.	5 00
Smith, Howard L.	5 00	Turneaure, Dean F.	10 00
Smith, Dr. Karl W.	10 00	Turner, Glenn P.	5 00
Smith, L. A.	5 00	Union Transfer & Storage Co.	5 00
Smith, Lathrop E.	5 00	Uhl, Prof. W. L.	5 00
Smith, Prof. Leonard S.	5 00	Universal Grocery Co.	10 00
Smith, Walter McWynn	10 00	University Cooperative Co.	100 00
Smythe, H. A.	10 00	Valvoline Oil Co.	5 00
Snow, Prof. B. W.	5 00	Van Hise, Mrs. C. R.	5 00
Sommers, Dr. J. G.	10 00	Van Valzah, Dr. Robert	5 00
Speth, Carl E.	5 00	Van Vleck, Prof. Edward	5 00
Standard Oil Co.	10 00	Vaughan, W. I.	5 00
Stark, Paul E.	10 00	Vreeland, L. K.	2 00
State Bank	10 00	Wagner, Prof. George	15 00
Stebbins, Byron H.	10 00	Waite, B. D.	5 00
Stebbins, Prof. Joel	5 00	Wald, C. J.	5 00
Stebbins, Dr. W. W.	5 00	Walterscheid, Ben.	3 00
Stephens, Glenn W.	10 00	Warner, Ernest N.	25 00
Steve, Prof. Wm. F.	5 00	Waterman, H. G.	10 00
Stevens, Mrs. M. Elizabeth and Miss Amelia Stevens.	25 00	Weddig, Herman	5 00
Stewart, Clinton B.	5 00	Wehrmann, Charles	5 00
Stewart, H. W.	3 00	Weiler, Dorothy	5 00
Sritgen, Bernard	5 00	Welke, C. G.	5 00
Storey, O. W.	5 00	White, John C.	5 00
Strand, Olaf	3 00	Whitney, Edward N.	5 00
Strauss Printing Co.	10 00	Wiedner, W. E.	5 00
Struck & Irwin Fuel Co.	10 00	Wilhelm & Gillies	5 00
Struck, H. J.	5 00	Wilkie, H. M.	10 00
Sturm, George J.	5 00	Williams, Edward	10 00
Suhr, F. W.	10 00	Williams, Norton J.	5 00
Suhr, John	10 00	Wilson, Prof. H. F.	5 00
Sullivan, W. E.	5 00	Winslow, Cap.	5 00
Sweet, C. V.	1 50	Wisconsin Advertising Co.	5 00
Swenson, Hon. Magnus	10 00	Witte, E. E.	5 00
Taylor, Edwin L.	5 00	Wolff, Kubly & Hirsig	25 00
Taylor, Prof. Warner	4 40	Ylvisaker, Rev. S. C.	3 00
Teckemeyer, A. O.	3 00	Young, E. J.	10 00
Teckemeyer, H. O.	5 00	Zimmerman, Hon. A. G.	5 00
Teckemeyer, Russell A.	5 00	Chi Psi	15 00
Teckemeyer, W. J.	10 00	Kappa Kappa Gamma	5 00
Tenny, Chas. H.	10 00		
Tesar, F. A.	3 00		
		Total General Subscription for 1925	\$4,713.90

Madison Park
and
Pleasure Drive Association
Cash and Disbursements
Park Budget
1925

MADISON PARK AND PLEASURE DRIVE ASSOCIATION
STATEMENT FOR YEAR 1925

Account	Budget Appropriation	Amount Expended	Balance	Overdraft
ADMINISTRATION				
1. Salaries and Wages.....	\$3,750 00	\$3,719 75	\$30 25	
2. Printing, Stationery and Office Expense.....	200 00	306 91		106 91
	\$3,950 00	\$4,026 66	\$30 25	\$106 91
MONONA SKATING RINK				
1. Salaries and Wages.....	\$475 00	\$503 03		\$28 03
Materials and Supplies.....		21 82		21 82
	\$475 00	\$524 85		\$49 85
TREE TRIMMING				
1. Salaries and Wages.....	\$750 00*	\$56 01	\$693 99	
TENNEY PARK AND PARKWAY				
1. Salaries and Wages.....	\$4,700 00	\$5,005 16		\$305 16
8. General Supplies and Expense.....	143 50	130 13	13 37	
11. Heat, Light, Power and Water.....	75 00*		75 00	
12. Dry Goods, Bedding and Clothing.....	12 00		12 00	
14. Repairs and Replacements.....	569 00*	122 88	446 12	
18. Real Estate and Structures.....	4,657 75	4,477 96	179 79	
	\$10,157 25	\$9,736 13	\$726 28	\$305 16

MADISON PARK AND PLEASURE DRIVE ASSOCIATION
STATEMENT FOR YEAR 1925

Account	Budget Appropriation	Amount Expended	Balance	Overdraft
TENNEY BATHHOUSE				
1. Salaries and Wages.....	\$1,500 00	\$1,384 76	\$115 24	
2. Printing, Stationery and Office Expense.....	24 00	26 50		2 50
7. Rent and Insurance.....	31 60	77 00		45 40
8. General Supplies and Expense.....	15 90	6 78	9 12	
9. Laundry and Janitor Supplies.....	166 70	127 48	39 22	
10. Medical Supplies.....	10 00*		10 00	
11. Heat, Light, Power and Water.....	80 00	38 61	41 39	
12. Dry Goods, Bedding and Clothing.....	46 30	3 00	43 30	
14. Repairs and Replacements.....	220 00	54 89	165 11	
	\$2,094 50	\$1,719 02	\$423 38	\$47 90
TENNEY PARK LAVATORY				
7. Rent and Insurance.....	\$15 00		\$15 00	
9. Laundry and Janitor Supplies.....	17 25		17 25	
10. Medical Supplies.....	2 00		2 00	
11. Heat, Light, Power and Water.....	75 00		75 00	
14. Repairs and Replacements.....	80 00		80 00	
	\$189 25*		\$189 25	

MADISON PARK AND PLEASURE DRIVE ASSOCIATION
STATEMENT FOR YEAR 1925

Account	Budget Appropriation	Amount Expended	Balance	Overdraft
BRITTINGHAM PARK				
1. Salaries and Wages.....	\$4,235 00*	\$4,593 09		\$358 09
8. General Supplies and Expense.....	105 50	479 52		374 02
11. Heat, Light, Power and Water.....	10 00		10 00	
12. Dry Goods, Bedding and Clothing.....	6 00		6 00	
14. Repairs and Replacements.....	1,400 00*	784 21	615 79	
18. Real Estate and Structures.....	500 00	790 48		290 48
	\$6,256 50	\$6,647 30	\$631 79	\$1,022 59
BRITTINGHAM BOATHOUSE				
1. Salaries and Wages.....	\$920 00	\$920 00		
2. Printing, Stationery and Office Expense.....	48 00	52 60		4 60
7. Rent and Insurance.....	120 00	110 50	9 50	
8. General Supplies and Expense.....	4 20	1 82	2 38	
9. Laundry and Janitor Supplies.....	5 50		5 50	
10. Medical Supplies.....	2 00		2 00	
11. Heat, Light, Power and Water.....	88 00	42 59	45 41	
12. Dry Goods, Bedding and Clothing.....	10 00		10 00	
14. Repairs and Replacements.....	1,160 00	591 43	568 57	
18. Real Estate and Structures.....	3,000 00*	3,225 00		225 00
	\$5,357 70	\$4,943 94	\$643 36	\$229 60

MADISON PARK AND PLEASURE DRIVE ASSOCIATION
STATEMENT FOR YEAR 1925

Account	Budget Appropriation	Amount Expended	Balance	Overdraft
BRITTINGHAM BATHHOUSE				
1. Salaries and Wages.....	\$1,137 50	\$1,123 75	\$13 75	
2. Printing, Stationery and Office Expense.....	24 00	20 29	3 71	
7. Rent and Insurance.....	51 00	21 50	29 50	
8. General Supplies and Expense.....	17 40	10 16	7 24	
9. Laundry and Janitor Supplies.....	95 00	39 15	55 85	
10. Medical Supplies.....	10 00		10 00	
11. Heat, Light, Power and Water.....	85 00	44 37	40 63	
12. Dry Goods, Bedding and Clothing.....	42 00		42 00	
14. Repairs and Replacements.....	170 00	28 34	141 66	
	\$1,631 90	\$1,287 56	\$344 34	
HENRY VILAS PARK				
1. Salaries and Wages.....	\$6,400 00	\$6,387 80	\$12 20	
2. Printing, Stationery and Office Expense.....	25 00		25 00	
8. General Supplies and Expense.....	156 00*	498 75		342 75
11. Heat, Light, Power and Water.....	400 00*	131 98	268 02	
12. Dry Goods, Bedding and Clothing.....	12 00		12 00	
14. Repairs and Replacements.....	1,250 00*	794 79	455 21	
17. Apparatus and Equipment.....	300 00*	16 40	283 60	
18. Real Estate and Structures.....	1,296 35*	839 95	456 40	
9. Laundry and Janitor Supplies.....		13 96		13 96
	\$9,839 35	\$8,683 63	\$1,512 43	\$356 71

MADISON PARK AND PLEASURE DRIVE ASSOCIATION
STATEMENT FOR YEAR 1925

Account	Budget Appropriation	Amount Expended	Balance	Overdraft
HENRY VILAS PARK LAVATORY				
9. Laundry and Janitor Supplies.....	\$31 50	\$20 70	\$10 80	
10. Medical Supplies.....	20 50		20 50	
11. Heat, Light, Power and Water.....	162 00	1 53	160 47	
14. Repairs and Replacements.....	105 00	48 50	56 50	
	\$319 00*	\$70 73	\$248 27	
GENERAL PARK EQUIPMENT				
1. Salaries and Wages (Includes amount set up for general repairman all parks).....	\$2,500 00	\$2,280 00	\$220 00	
7. Rent and Insurance.....	120 00	120 00		
8. General Supplies and Expense.....	364 50	147 29	217 21	
11. Heat, Light, Power and Water.....	236 00	186 90	49 10	
13. Stable and Garage Expense.....	2,149 00*	522 41	1,626 59	
14. Repairs and Replacements.....	500 00	644 26		144 26
17. Apparatus and Equipment.....	1,000 00*	350 00	650 00	
18. Real Estate and Structures.....		54 18		54 18
	\$6,869 50	\$4,305 04	\$2,762 90	\$198 44
SPAIGHT STREET PARK				
1. Salaries and Wages.....	\$200 00*	\$402 29		\$202 29
14. Repairs and Replacements.....		58 27		58 27
18. Real Estate and Structures.....	200 00*		200 00	
	\$400 00	\$460 56	\$200 00	\$260 56

MADISON PARK AND PLEASURE DRIVE ASSOCIATION
STATEMENT FOR YEAR 1925

Account	Budget Appropriation	Amount Expended	Balance	Overdraft
ORTON PARK				
1. Salaries and Wages	\$300 00	\$496 96		\$196 96
14. Repairs and Replacements	30 00		30 00	
	\$330 00	\$496 96	\$30 00	\$196 96
BURROWS PARK				
1. Salaries and Wages	\$820 00	\$808 89	\$11 11	
18. Real Estate and Structures	250 00	89 00	161 00	
	\$1,070 00	\$897 89	\$172 11	
WASHINGTON OVAL				
1. Salaries and Wages	\$200 00	\$195 01	\$4 99	
OWEN PARKWAY				
1. Salaries and Wages	\$200 00	\$108 05	\$91 95	
14. Repairs and Replacements		8 34		8 34
	\$200 00	\$116 39	\$91 95	\$8 34

MADISON PARK AND PLEASURE DRIVE ASSOCIATION
STATEMENT FOR YEAR 1925

Account	Budget Appropriation	Amount Expended	Balance	Overdraft
LAKE FRONT PARK				
1. Salaries and Wages *(27.21 chargeable to Lake Front Skating Rink).....	\$780 00	\$861 12*	\$81 12
14. Repairs and Replacements.....	15 00	15 00
18. Real Estate and Structures.....	642 73*	1,024 76	382 03
	\$1,437 73	\$1,885 88	\$15 00	\$463 15
MORRISON STREET PARK				
1. Salaries and Wages.....	\$50 00	\$19 46	\$30 54
18. Real Estate and Structures.....	45 15	45 15
	\$95 15	\$19 46	\$75 69
MADISON GENERAL HOSPITAL				
1. Salaries and Wages.....	\$75 00	\$155 31	\$80 31
OLIVE JONES FIELD				
1. Salaries and Wages.....	\$100 00	\$39 65	\$60 35
18. Real Estate and Structures.....	200 24	200 26	02
	\$300 24	\$239 91	\$60 35	02

MADISON PARK AND PLEASURE DRIVE ASSOCIATION
STATEMENT FOR YEAR 1925

Account	Budget Appropriation	Amount Expended	Balance	Overdraft
EVERGREEN PARK				
1. Salaries and Wages.....	\$25 00	\$14 19	\$10 81	
WEST WASHINGTON BLVD.				
1. Salaries and Wages.....	\$200 00	\$203 06		\$3 06
MAPLE PARK				
1. Salaries and Wages.....	\$200 00	\$195 06	\$4 94	
SPOONER STREET VIADUCT				
1. Salaries and Wages.....	\$25 00	\$3 50	\$21 50	
PARK CORNER COMMONWEALTH AND HOLLISTER AVENUES				
1. Salaries and Wages.....	\$75 00		\$75 00	
BURR JONES FIELD				
1. Salaries and Wages.....	\$150 00	\$121 72	\$28 28	
11. Heat, Light, Power and Water.....	25 00		25 00	
	\$175 00	\$121 72	\$53 28	

MADISON PARK AND PLEASURE DRIVE ASSOCIATION
STATEMENT FOR YEAR 1925

Account	Budget Appropriation	Amount Expended	Balance	Overdraft
WILLOWS				
1. Salaries and Wages.....	\$500 00	\$437 50	\$62 50	
14. Repairs and Replacements.....	34 00	35 94		1 94
	\$534 00	\$473 44	\$62 50	\$1 94
STREET ENDS				
1. Salaries and Wages.....	\$100 00	\$92 73	\$7 27	
14. Real Estate and Structures.....	200 00		200 00	
	\$300 00	\$92 73	\$207 27	
OUTSIDE DRIVES.....	\$3,000 00	\$3,000 00		
LAKE FRONT PARK EXTENSION				
1. Salaries and Wages.....	\$1,366 49*	\$406 43	\$960 06	
18. Real Estate and Structures.....		195 08		195 08
	\$1,366 49	\$601 51	\$960 06	\$195 08
ELMSIDE BOULEVARD				
1. Salaries and Wages.....	\$50 00		\$50 00	
18. Real Estate and Structures.....	50 00		50 00	
	\$100 00		\$100 00	

MADISON PARK AND PLEASURE DRIVE ASSOCIATION
STATEMENT FOR YEAR 1925

Account	Budget Appropriation	Amount Expended	Balance	Overdraft
KENDALL PARK				
1. Salaries and Wages.....	\$100 00	\$66 64	\$33 36	
18. Real Estate and Structures.....	104 94		104 94	
	\$204 94	\$66 64	\$138 30	
EAST WASHINGTON AVENUE BOULEVARD				
1. Salaries and Wages.....	\$1,470 00	\$1,421 30	\$48 70	
8. General Supplies and Expense.....	\$10 00		\$10 00	
14. Repairs and Replacements.....		76 52		76 52
18. Real Estate and Structures.....	1,000 00*	551 25	448 75	
	\$2,480 00	\$2,049 07	\$507 45	\$76 52
OLIN PARK				
1. Salaries and Wages.....	\$3,020 00	\$3,092 26		\$72 26
2. Printing, Stationery and Office Expense.....	122 00	27 00	95 00	
7. Rent and Insurance.....	104 50	112 10		7 60
8. General Supplies and Expense.....	39 00	121 16		82 16
9. Laundry and Janitor Supplies.....	82 00	82 01		01
10. Medical Supplies.....	23 00		23 00	
11. Heat, Light, Power and Water.....	500 00	146 10	353 90	
14. Repairs and Replacements.....	700 00	459 31	240 69	
17. Apparatus and Equipment.....		259 00		259 00
18. Real Estate and Structures.....	625 00*	342 39	282 61	
	\$5,215 50	\$4,641 33	\$995 20	\$421 03

MADISON PARK AND PLEASURE DRIVE ASSOCIATION
STATEMENT FOR YEAR 1925

Account	Budget Appropriation	Amount Expended	Balance	Overdraft
VILAS PARK ZOO				
1. Salaries and Wages.....	\$12,260 00	\$12,292 82		\$32 82
2. Printing, Stationery and Office Expense.....	109 00	75 00	34 00	
4. Freight and Express.....	100 00	99 01	99	
7. Rent and Insurance.....	224 10	213 20	10 90	
8. General Supplies and Expense.....	7,915 27	6,855 16	1,060 11	
9. Laundry and Janitor Supplies.....	94 85	94 81	04	
10. Medical Supplies.....	44 90	14 40	30 50	
11. Heat, Light, Power and Water.....	2,779 00	2,218 38	560 62	
12. Dry Goods, Bedding and Clothing.....	24 00	10 50	13 50	
13. Stable and Garage Expense.....		369 40		369 40
14. Repairs and Replacements.....	1,760 00	1,750 88	9 12	
18. Real Estate and Structures.....	4,700 00	3,756 97	943 03	
	\$30,011 12	\$27,750 53	\$2,662 81	\$402 22

MADISON PARK AND PLEASURE DRIVE ASSOCIATION
STATEMENT FOR YEAR 1925

RECAPITULATION			
TOTAL BUDGET APPROPRIATION FOR PARKS—YEAR 1925			
Salaries and Wages.....	\$36,373	99	
Materials, Supplies and Outlay.....	26,525	01	
Transfer from Contingent Fund.....	3,000	00	
Total Cash Expenditures and Journal Charges.....			\$57,930 49
Journal Transfer from Street Equipment to Park Equipment (Feed and Bedding for Park Horses).....			1,500 00
Street Improvements—1925.....			666 88
Credit or Unexpended Balance.....			5,801 63
	\$65,899	00	\$65,899 00

VILAS PARK ZOO			
TOTAL BUDGET APPROPRIATION			
Salaries and Wages.....	\$12,260	00	
Materials, Supplies and Outlays.....	17,751	12	
Total Cash Expenditures and Journal Charges.....			\$27,750 53
Credit or Unexpended Balance.....			2,260 59
	\$30,011	12	\$30,011 12

*NOTE: Denotes blanket purchase orders issued for various Materials and Supplies without proper distribution being made during year according to budget provision. Individual purchase orders will be issued in future in order to have same charged against proper budget appropriation and will give us check on the control account.

Treasurer's Report

To the Members of the Madison Park and Pleasure Drive Association:

GENTLEMEN:

The following is a condensed statement of the financial transactions for the year ending November 15, 1926.

Receipts

Balance in Bank, January 1, 1926.....	\$	100 70
1925 Subscriptions.....		18 00
1926 Subscriptions.....		4,359 90
Lake Mendota Drive Subscriptions.....		570 24
Farwell Drive Subscriptions.....		2,660 00
Interest.....		462 57
Spraying fund receipts.....		350 20
Appropriation by City of Madison.....		3,000 00
Rent from City Boathouse property.....		201 75
Tourist Camp receipts.....		397 50
Work by park men.....		62 68
Credit Farwell Drive (Refund by University).....		547 97
		<hr/>
		\$12,731 51
		<hr/>

Disbursements

Miscellaneous.....	\$	802 44
Lake Mendota Drive.....		1,052 50
Farwell Drive.....		8,327 70
Work by park men.....		62 68
Park equipment.....		62 46
Spraying fund.....		87 62
City Boathouse expense.....		36 00
Henry Vilas Canoe House.....		289 15
Tourist camp expense.....		27 34
Balance in Bank, November 15, 1926.....		1,983 62
		<hr/>
		\$12,731 51
		<hr/>

Mr. and Mrs. A. H. Hollister Park Fund

Statement from January 1, 1926, to November 15, 1926

1926			
Jan. 1	By Balance from annual report.....	\$17,332	15
Jan. 11	By R. S. Corona, interest to Jan. 10, 1926.....	\$	10 00
Feb. 23	By John A. Melaas, interest to Feb. 23, 1926.....		27 50
Mar. 3	By John H. Lee, interest to Mar. 5, 1926.....		15 00
Mar. 8	By U. S. of America Certificate of Indebtedness, interest to Mar. 15, 1926.....		8 52
Mar. 8	By Aaron L. Parman, interest to Mar. 10, 1926.....		87 00
Mar. 13	By John O'Connell, interest to Mar. 8, 1926.....		19 25
Mar. 19	By Frank LeWohl, interest to Mar. 22, 1926.....		12 00
Mar. 23	By Joseph Hornung, interest to Mar. 22, 1926.....		137 50
Apr. 9	By C. H. Osthoff, interest in part....		8 29
May 4	By Robert C. O'Malley interest to May 4 1926.....		110 00
May 17	By C. H. Osthoff, interest to April 8, 1926.....		8 21
May 17	By George L. Ledwith, interest to May 17, 1926.....		33 64
July 8	By Russell M. Corona, interest to July 15, 1926.....		15 00
Aug. 20	By John M. Melaas, interest to Aug. 23, 1926.....		27 50
Sept. 8	By John H. Lee, interest to Oct. 5, 1926.....		15 00
Sept. 8	By Aaron L. Parman, interest to Sept. 10, 1926.....		87 00
Sept. 8	By U. S. of America, Certificate of Indebtedness, interest to Sept. 15, 1926.....		8 48
Sept. 13	By John O'Connell, interest to Sept. 12, 1926.....		19 25
Sept. 20	By Frank LeWohl, interest to Sept. 22, 1926.....		12 00
Sept. 23	By Joseph Hornung, interest to Sept. 22, 1926.....		137 50
Oct. 9	By C. H. Osthoff, interest to Oct. 8, 1926.....		16 50
Nov. 4	By Robert C. O'Malley, interest to Nov. 3, 1926.....		110 00
			925 14
To one-half of income \$925.14 paid to Madison Park and Pleasure Drive Association used on drives outside of the city.....		462	57
To Balance.....		\$17,794	72
		<u>\$18,257</u>	<u>29</u>
		<u>\$18,257</u>	<u>29</u>

1926		
Nov. 15	By Balance	\$17,794 72
The above balance is invested in the name of the Madison Park and Pleasure Drive Association as Trustee of Mr. and Mrs. A. H. Hollister Park Fund as follows:		
	Joseph Hornung, mortgage, 5½%	\$5,000 00
	Robert C. O'Malley, mortgage, 5½%	4,000 00
	John C. O'Connell, mortgage, 5½%	700 00
	Aaron L. Parman, mortgage, 6%	2,900 00
	John L. Lee, mortgage, 6%	500 00
	John M. Melaas, mortgage, 5½%	1,000 00
	Russell S. Coronna, mortgage, 6%	500 00
	Frank LeWohl, mortgage, 6%	400 00
	C. H. Osthoff, mortgage, 5½%	600 00
	G. E. Ledwith, mortgage, 5½%	1,800 00
	First National Bank Certificate, 2, 2½, 3%	251 11
	First National Bank Certificate, 2, 2½, 3%	75 75
	First National Bank Certificate, 2, 2½, 3%	67 86
		<u>\$17,794 72</u>
Original Capital		
	Principal Sept. 17, 1913	\$12,279 61
	Principal Sept. 20, 1917	212 75
		<u>\$12,492 36</u>
	One-half income to Nov. 15, 1926	5,302 36
		<u>\$17,794 72</u>

D. K. Tenney Park Fund

1926		
Jan. 1	By Balance from annual report	\$4,784 57
Jan. 2	By Theta Building Association, interest to Jan. 1, 1926	\$ 42 25
Jan. 11	By R. S. Coronna, interest to Jan. 10, 1926	10 00
Mar. 8	By U. S. of America Certificates of Indebtedness, interest to Mar. 15, 1926	2 13
Mar. 8	By U. S. of America Certificates of Indebtedness, interest to Mar. 15, 1926	11 87
Apr. 19	By Vera Voght, interest to Apr. 20, 1926	15 00
May 26	By Solomon Levitan, interest to June 1, 1926	45 00
June 3	By Interest on Bank Certificate	2 05
June 14	By interest on Bank Certificate	3 07
June 28	By Theta Building Association, interest to July 1, 1926	42 25
July 8	By R. S. Coronna, interest to July 10, 1926	15 00
Aug. 13	By interest on Bank Certificate	1 27
Sept. 8	By U. S. of America Certificate of Indebtedness, interest to Sept. 15, 1926	11 88

Sept. 8 By U. S. of America Certificate of Indebtedness, interest to Sept. 15, 1926.....	\$ 2 12	
Sept. 29 By Golden Rule Association.....	500 00	
Sept. 29 By Golden Rule Association, interest.....	7 50	
Oct. 18 By Vera Voght, interest to Oct. 20, 1926.....	15 00	
Oct. 20 By interest on Bank Certificate.....	72	\$727 11
	<hr/>	
To Balance.....	\$5,511 68	
	<hr/>	
	\$5,511 68	\$5,511 68

1926

Nov. 15 By Balance.....		\$5,511 68
The above balance is invested in the name of the Madison Park and Pleasure Drive Association as Trustee of the D. K. Tenney Park Fund as follows:		
Solomon Levitan, Trust Deed, 6%.....	\$1,500 00	
U. S. of America Certificate, 4¾%.....	500 00	
Theta Building Association, mortgage, 6½%.....	1,300 00	
Vera Voght, mortgage, 6%.....	500 00	
Russell S. Coronna, mortgage, 6%.....	500 00	
First National Bank, certificate of deposit, 2, 2½, 3%....	1,211 68	
	<hr/>	
	\$5,511 68	

Respectfully submitted,
FRANK W. HOYT,
Treasurer.

I hereby certify that I have examined the accounts of Frank W. Hoyt, treasurer, for the year 1926 to date, and find them correct in all particulars.

Dated November 15, 1926.

ROBERT C. O'MALLEY.

General Subscription for 1926

Abbott, Mrs. Chas.....	\$ 1 00	Breitenbach, G. H.....	\$ 5 00
Aberg, W. J. P.....	15 00	Briggs, P. A.....	2 00
Adams, G. D.....	5 00	Bristol, Elsey L.....	5 00
Adams, T. S.....	5 00	Brittingham, T. E.....	10 00
Adkin, Henry.....	5 00	Brittingham, Mrs. T. E.....	5 00
Alford Bros.....	10 00	Brown, Mrs. Frank G.....	15 00
Allen, Katherine.....	10 00	Brown, S. L.....	5 00
Allison, M. G.....	5 00	Buehler, Elizabeth.....	5 00
American Ice Cream Co.....	15 00	Buehler, Fred.....	5 00
American Stores Co.....	10 00	Buell, Chas. E.....	10 00
Arnold, A. S.....	5 00	Bunting, C. H.....	5 00
Aust, Franz A.....	5 00	Burdick & Murray.....	15 00
Aylward, R. C.....	5 00	Burwell, Edward L.....	5 00
Baas, Alexius.....	10 00	Butler, H. L.....	25 00
Babcock, Prof. Stephen M.....	10 00	Cadby, John.....	10 00
Baker, Dr. James B.....	5 00	Cady, Emil C.....	3 00
Ballard, Floyd.....	5 00	Cairns, Prof. W. B.....	5 00
Bancroft, J. A.....	5 00	Cantwell Printing Co.....	25 00
Bank of Wisconsin.....	25 00	Capital City Bank.....	25 00
Barlow, Stella.....	5 00	Capital City Tire Co.....	10 00
Baron Bros.....	10 00	Capital Wire Co.....	5 00
Barstow, R. W.....	5 00	Cargill, George.....	5 00
Bartlett, R. D.....	5 00	Cargill, Mrs. Mary S.....	15 00
Barton, Albert O.....	1 50	Cargill, W. W.....	3 00
Bates, W. B.....	5 00	Carter, Dr. Homer M.....	5 00
Bayley, A. W.....	5 00	Castle & Doyle.....	25 00
Bean, E. F.....	5 00	Cawley, James.....	5 00
Bennett, Prof. E.....	5 00	Chapman, Austin.....	5 00
Benson, A. O.....	5 00	Chase, Wayland.....	15 00
Bergh, Marcus C.....	5 00	Clark, Elizabeth.....	3 00
Bernard, Wm. A.....	15 00	Clark, H. J.....	2 00
Beswick, F. W.....	5 00	Claude & Starck.....	10 00
Birge, Anna.....	5 00	Cnare, A. W.....	3 00
Birge, E. A.....	15 00	Cnare, Frank.....	3 00
Bitney, J. C.....	5 00	Cochrane, Mrs. E. K.....	5 00
Bitterman, J. C.....	5 00	Coddington, Miss Hester...	3 00
Blackburn, Albert C.....	5 00	Coe, J. H.....	10 00
Bleyer, Willard G.....	5 00	Coleman, Joseph.....	10 00
Blied Printing Co.....	20 00	Coleman, Thomas E.....	25 00
Blowusch, John.....	2 00	Collins, C. C. Lumber Co...	10 00
Boning, Mrs. C. B.....	1 00	Collins, Mrs. W. H.....	5 00
Bormann, A. F.....	2 00	Commons, Prof. John R.....	10 00
Boss & Nilles.....	5 00	Commonwealth Tel. Co....	5 00
Botham, George.....	10 00	Conklin, M. H.....	5 00
Bower, Dr. Richard L.....	5 00	Corp, Chas. J.....	5 00
Boyce, Dr. S. R.....	10 00	Corscot, John.....	5 00
Boyd Co., The Joseph M....	5 00	Craig, Walter S., Inc.....	5 00
Boyd, Joseph M.....	5 00	Crescent Clothing Co.....	10 00
Brabant, Edmond J.....	5 00	Critton, James N.....	5 00
Bradford, Irene.....	5 00	Crowley, F. M.....	15 00
Bradley, Mr. and Mrs. H. C.	25 00	Crowley, Leo T.....	25 00
Brandenburg, O. D.....	15 00	Crownhart, C. H.....	10 00
Brayton, A. M.....	5 00	Cullinan, W. T.....	5 00

Cullinane, John R.	\$ 5 00	Geisler, H. L.	\$15 00
Cummings, Alice	2 00	Germond, H.	5 00
Davis, C. W.	5 00	Gettle, L. E.	5 00
Davis, Dr. F. A.	10 00	Giddings, W.	10 00
Deadman, C. A.	5 00	Gilbert, Prof. E. M.	5 00
Dean, Dr. Joseph	15 00	Gilman, Stephan	5 00
Denniston, R. H.	5 00	Gorst, Charles	10 00
Dick, Christian	5 00	Gould, Wells & Blackburn	10 00
Diedrick, M.	3 00	Gratz, A. W.	3 00
Diemer, M. E.	5 00	Greeley, Dr. H. P.	5 00
Dobelin, Chas.	5 00	Greenleaf, Chas.	3 00
Dodge, Mrs. Bernice	2 00	Grimm, John J.	5 00
Donald, John S.	5 00	Grover, Miss Alice	2 50
Drives Fuel Co.	5 00	Grover, Miss Arlene	2 50
Eagle Heights Land Co.	25 00	Gulesserian, S. A.	5 00
East Side Capital Dairy	5 00	Guyer, Prof. M. F.	10 00
Ekern, H. L.	10 00	Halbert, C. A.	5 00
Ela, Emerson	25 00	Haley, Harry B.	5 00
Ellefson Lumber Co.	10 00	Hall, F. W.	10 00
Ellis, G. E.	3 00	Hallauer, F. Y.	5 00
Ellman, George	2 00	Halligan, B. J.	10 00
Elwell, F. H.	5 00	Hanks, L. M.	25 00
Emery, W. E.	5 00	Hanks, Mrs. Mary E. V.	25 00
Engler, Wm.	5 00	Hansen, Ben.	2 00
English, H. R.	3 00	Hanson, D. M.	5 00
Engsberg, Minnie	1 00	Hanson, G. O.	5 00
Extrom, J. P.	1 00	Harbort, H. H.	2 00
Fargo, J. M.	5 00	Harley, J. A.	5 00
Farrell, Sam	5 00	Harper, J. C.	10 00
Fauerbach, Philip	5 00	Hastings, Edwin	5 00
Felton, A. P.	5 00	Hastings, W. A.	2 00
Felton, Carl	5 00	Hatch, K. L.	5 00
Fess, Perry	10 00	Hauk, Henry	10 00
Fessenden, R. V.	3 00	Hawley, L. F.	10 00
Finch, V. C.	5 00	Hayward, Ruth	3 00
Findorff, J. H.	10 00	H'Doubler, Margaret	2 00
Fiore, A., Coal Co.	5 00	Heddles, Mrs. W. S.	5 00
First Farm Mortgage Co.	5 00	Hefty, Mr. and Mrs. Thomas	10 00
First National Bank & Central Wisconsin Trust Co.	25 00	Heilman, Roman	10 00
Fischer, Prof. Richard	10 00	Heise, O. E.	5 00
Fish & Schulkamp	15 00	Helmicks, G. A.	5 00
Fish, Prof. Carl Russell	5 00	Herfurth, Theodore	10 00
Fisk, Mrs. George M.	5 00	Herling, W. H.	3 00
Flett, Mrs. Clara B.	5 00	Hersch, B. Z.	2 00
Forbes-Meagher Music Co.	10 00	Hibbard, C. V.	5 00
Fowlkes, Prof. J. G.	5 00	Hill, Thoman & Beckwith	15 00
Fox, Arthur O.	25 00	Hill, Carl N.	5 00
Fox, Philip R.	5 00	Hill's Store, Inc.	5 00
Frautschi, C., & Sons	10 00	Hobbins, J. W.	10 00
Frautschi, E. J.	5 00	Hobbins, W. J.	10 00
Fritz, Carl B.	15 00	Hoffman Feed Co.	15 00
Fuller, J. H.	15 00	Holmes, George	10 00
Gadfriaux, L. E.	5 00	Holt, J. C.	2 50
Gallagher, John	5 00	Hommell, R. H.	5 00
Garner, E. H.	10 00	Hopkins, R. L.	10 00
Gastrow, F. E.	5 00	Hoppman, Hon. A. C.	5 00
Gay, Miss L. M.	5 00	Horton, Ralph	3 00
Gay, Sarah	5 00	Hoyt, Frank W.	25 00
		Hub, The, Co.	5 00

Hudson, Chas.	\$ 5 00	Lampert, Matt, Jr.	\$ 5 00
Humphrey, George	5 00	Lampert, Matt, Sr.	5 00
Hurd, Richard	5 00	Larson, A. C.	10 00
Hutchcroft, L. W.	5 00	Larson, E. M.	3 00
Hyatt, J. B.	1 00	Law, James R. and Edward J	5 00
Hyde, Grant	5 00	Lawrence, R. W.	5 00
Hyland, Mrs. John G.	5 00	Lecomte, Mrs. Vera.	5 00
Icke, John F.	25 00	Lewis, F. J.	5 00
Ingersoll, E. R.	3 00	Livermore, Joseph D.	3 00
Jackson Clinic	10 00	Lobeck, Prof. A. K.	3 00
Jackson, Dr. Reginald	25 00	Loftsgordon, H.	25 00
Jacobs, Frank W.	10 00	Loomis, Frances	5 00
James, J. C.	5 00	Lotz, Henry	5 00
Jamieson, H. C.	5 00	Loughney, Rev. George	10 00
Jarvis, C. M.	3 00	Lumpkin, H. H.	2 00
Jensen, Andrew	5 00	Lunenschloss, L. L.	5 00
Herdin, C.	5 00	Luther, Ernest	5 00
Johnson, Carl A.	25 00	McConnell, George K.	5 00
Johnson, Chas. H.	5 00	McGilvery, E. B.	5 00
Johnson, Miss G. E.	2 00	McKay Nursery Co.	15 00
Johnson, Hobart S.	25 00	McKenna, John C.	15 00
Johnson, Mrs. Hobart S.	25 00	McLeod, Arthur A.	10 00
Johnson, J. A.	5 00	McMullen, C. L.	10 00
Johnson, Mrs. Phoebe	15 00	Mack, Mrs. J. A.	25 00
Jonas, Dr. A. F.	25 00	Mack, Mrs. J. G. D.	10 00
Jones, Burr W.	25 00	Mack, Herman	5 00
Jones, Fred	5 00	Madison Bowling & Billiard	
Kampen, O. C.	5 00	Co.	10 00
Kanneberg, Adolph	10 00	Madison Fuel Co.	10 00
Karstens, F. W.	10 00	Madison Gas & Electric Co.	25 00
Kartack, R. E.	10 00	Madison Packing Co.	5 00
Kelley, M. W.	5 00	Madison Realty Co.	50 00
Kelley, Prof. F. T.	2 00	Madison Steam Dye Works	5 00
Kemmerer, Prof. Geo. I.	5 00	Malec, R. Vincent	3 00
Kennedy Dairy Co.	25 00	Malone, W. C.	5 00
Kenney, A. P.	2 00	Manchester, Harry S.	10 00
Kentzler, A. R.	5 00	Mansfield-Caughey Co.	20 00
Kessenick, Frank	5 00	Marks & Flint	5 00
Kiekhoefer, W. H.	10 00	Marlatt, Prof. Abbie L.	5 00
Kimball, Norman	3 00	Marling, W. A.	10 00
Kirchoffer, Wm.	15 00	Marsh, H. E.	5 00
Kissam, Everett	5 00	Marshall, Prof. Wm. S.	20 00
Kittleson, I. M.	5 00	Martens, Conrad	5 00
Klein & Dickert Co.	10 00	Mason, Mrs. E. C.	5 00
Kleinheinz, A.	5 00	Mason, G. H.	5 00
Kleinheinz, Prof. F.	1 00	Mason, George W.	15 00
Kniebusch, A. F.	5 00	Mason, Vroman	10 00
Kney, E. O.	5 00	Mathews, George	5 00
Knox, P. B.	15 00	Matzdorf, W.	3 00
Koch, Henry	3 00	Maurer, Prof. E. R.	5 00
Koen, Ross M.	5 00	Mautz Bros.	15 00
Kramer, A. H.	10 00	Mayer Printing Co.	10 00
Kraus, E. J.	5 00	Mayers, Andrew	10 00
Krauskopf, Prof. F. S. C.	3 00	Mead, Daniel	25 00
Kroncke, George	10 00	Mead, W. J.	10 00
Kropf, R. R.	10 00	Meanwell, Prof. W. E.	5 00
Kubly, Mrs. V. S.	5 00	Menges Pharmacy	10 00
Laird, Arthur G.	10 00	Meyers, A. L.	5 00
Lake City Bottling Works	3 00	Meyers, Rev. E. J.	5 00

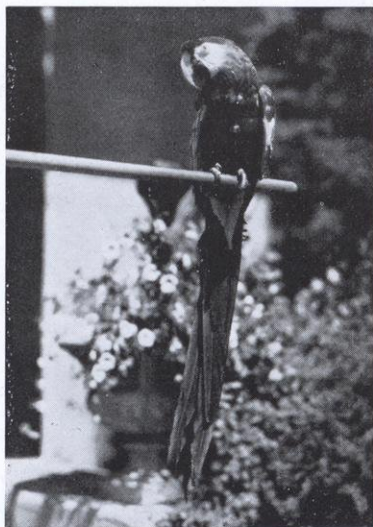
Michell, R. B.....	\$ 5 00	Proudfit, Clara.....	\$ 5 00
Michelson, Albert G.....	5 00	Purcell Auto Co.....	10 00
Millar, Prof. A. V.....	3 00	Putnam, C. M.....	5 00
Miller, B. E.....	5 00	Qualey, R. N.....	2 00
Miller, G. J.....	1 00	Quann, Mike.....	5 00
Milverstedt, A. G.....	5 00	Rayne, Fred.....	5 00
Modie, Dr. C. D.....	3 00	Reickert & Rockey Co.....	5 00
Montieth, Mary.....	5 00	Reinfried, Dr. C. E.....	5 00
Moore, Prof. J. G.....	5 00	Reitan-Lerdahl & Co.....	5 00
Moran, John.....	10 00	Rennebohm, Oscar.....	10 00
Morgan Brothers.....	10 00	Rentschler, Fred.....	15 00
Morris, A. B.....	5 00	Reynolds, B. S.....	5 00
Morrison, F. B.....	5 00	Richtman, W. A.....	5 00
Morriss, Miss Sarah J.....	3 00	Rieder, August.....	3 00
Moseley Book Co.....	20 00	Risser, Frederic.....	5 00
Mowry, W. A.....	5 00	Ritter Automobile Co.....	10 00
Mueller, Dr. W. H.....	5 00	Roach, Mrs. W. L.....	10 00
Myrland, August J.....	5 00	Roebuck, Prof. J. R.....	5 00
Myrland, Ruth.....	3 00	Rogers, A. T.....	10 00
Neckerman, Mrs. and Mrs. Geo. M.....	10 00	Rosenberry, Jdg. M. B.....	10 00
Neckerman, R. J.....	5 00	Ross, E. A.....	10 00
Nelson, Andrew.....	2 00	Rowlands, A. E.....	5 00
Nelson, George.....	5 00	Royal Rapid Transit Co.....	10 00
Nelson, R. N.....	10 00	Roys, Wm. B.....	10 00
Netherwood, H. G.....	5 00	Royston, R. T.....	5 00
New York Store.....	5 00	Rue, John.....	5 00
Noe, Jessie.....	25 00	Rundle-Spence Mfg. Co.....	10 00
Northwestern Securities Co.....	15 00	Russell, H. L.....	10 00
Oetking, Frank.....	5 00	Ryan, Wm.....	10 00
Olbrich, M. B.....	15 00	Sachtjen, Wm.....	2 00
Olman, A. O.....	5 00	St. John, John.....	10 00
Olson, Elliott.....	1 00	Sammis, Prof. J. L.....	5 00
Olson, Oscar.....	5 00	Sample, Omar.....	5 00
O'Shea, M. V.....	5 00	Sanborn, John.....	10 00
Otis, Mr. and Mrs. D. H.....	5 00	Sanborn, Philip.....	5 00
Overton, J. B.....	5 00	Sander, W. R.....	5 00
Owen, Ray S.....	5 00	Sanford, Miss Delia C.....	5 00
Owens, Wm.....	15 00	Sanford, Miss Fanny.....	5 00
Pantorium Co.....	10 00	Sater, H. H.....	5 00
Park, Allan J.....	5 00	Sauthoff, Harry.....	10 00
Park, Ben W.....	3 00	Sayle, George.....	15 00
Parke, H. J.....	5 00	Scanlan-Morris Co.....	10 00
Parker Co.....	10 00	Schafer, Joseph.....	5 00
Parker, E. E.....	5 00	Schenk, Herbert C.....	15 00
Parkinson, Edward E.....	5 00	Schlatter, Prof. E. B.....	5 00
Parkinson, John B.....	5 00	Schlingen, Fred M.....	15 00
Perry, H. F. E.....	5 00	Schmedeman, A. G.....	5 00
Peterson, John.....	10 00	Schmedeman, R. L. & Co.....	5 00
Peterson, Prof. W. H.....	3 00	Schmitz, August J.....	5 00
Pfanku, Vern C.....	5 00	Schneider, C. J.....	3 00
Phillipp, F. D.....	5 00	Schoen, Frank.....	5 00
Photoart House.....	5 00	Schoenwetter, F. O.....	3 00
Pickford, Henry W.....	5 00	Schubring, E. J. B.....	15 00
Plaenert, F. C.....	5 00	Schulkamp, A. W.....	5 00
Plaenert, Walter.....	5 00	Schulte, W. B.....	5 00
Post, Mr. and Mrs. Chas.....	2 50	Security State Bank.....	15 00
Potter, Ellis J.....	3 00	Shakshesky, L. W.....	10 00
Priestley, F. M.....	5 00	Sharratt, C. A.....	3 00
		Sharratt, H. F.....	5 00

Sheffer, E. W.....	\$ 2 00	Thuringer-Garbutt Co.....	\$ 3 00
Sheldon, Chas.....	5 00	Thwaites, F. T.....	5 00
Shimming, H.....	5 00	Thwaites, Jessie.....	10 00
Showerman, Prof. G.....	5 00	Toebaas, O. T.....	10 00
Siebecker, R. L.....	2 00	Tofte, Ernestine.....	10 00
Simon Bros.....	5 00	Tormey, Thos.....	15 00
Simpson Garment Co.....	5 00	Tottingham, Prof. W. E.....	5 00
Slaughter, Gertrude.....	5 00	Tough, Edward.....	5 00
Sloan, Will F.....	5 00	Toussaint, A. M.....	5 00
Smith, Harrison.....	5 00	Toussaint, H.....	10 00
Smith, Hugh.....	5 00	Trachte Bros.....	10 00
Smith, L. A.....	5 00	Trachte, H.....	3 00
Smith, Lathrop E.....	5 00	Tracy & Kilgore.....	10 00
Smith, Leonard S.....	5 00	Tressler, Albert W.....	15 00
Smith, Walter McWynn.....	10 00	Turbin, Louis.....	5 00
Smythe, H. A.....	10 00	Turneaure, T. E.....	10 00
Sommers, J. C.....	10 00	Turner, Glenn P.....	5 00
Standard Oil Co.....	5 00	Ulve, E. M.....	5 00
State Bank.....	10 00	Universal Grocery Co.....	10 00
Stebbins, Joel.....	5 00	University Co-operative Co.....	100 00
Stebbins, Dr. W. W.....	5 00	Valvoline Oil Co.....	15 00
Steensland Land Co.....	30 00	Van Hise, Alice.....	5 00
Steimel, H. J.....	5 00	Van Valzah, Dr. Robert.....	5 00
Steinbach, J. C.....	5 00	Van Vleck, Prof. Edward.....	5 00
Steve, Prof. Wm. F.....	5 00	Viel, L. C.....	1 00
Stevens, Miss Amelia and Mrs. Elizabeth Stevens Jackson.....	25 00	Wadsworth, M. Harriett.....	2 00
Stewart, H. W.....	3 00	Wagner, Prof. George.....	15 00
Storey, O. W.....	5 00	Wald, C. J.....	5 00
Strand, Olaf.....	3 00	Walker, R. C.....	5 00
Strauss Printing Co.....	10 00	Warner, Ernest N.....	15 00
Stroud, R. M.....	5 00	Waterman, H. G.....	10 00
Struck & Irwin Fuel Co.....	10 00	Weiler, Dorothy.....	5 00
Struck, H. J.....	5 00	Welch, E. R.....	5 00
Suhr, F. W.....	10 00	West Kentucky Coal Co.....	5 00
Suhr, John.....	10 00	West, Dr. J. P.....	5 00
Sullivan, A. G.....	5 00	Weston, F. L.....	5 00
Sullivan, W. E.....	5 00	White, John.....	5 00
Swenson, Wm.....	5 00	Whyte, Dr. W. H.....	5 00
Taylor, E.....	5 00	Wiedner, W. E.....	5 00
Taylor, Frank.....	5 00	Wilder, J. W.....	5 00
Taylor, W.....	4 40	Wilke, E. G.....	5 00
Taylor, W. F.....	5 00	Williams, Edward.....	10 00
Teckemeyer, Russell A.....	5 00	Winslow, E. P.....	5 00
Teckemeyer, W. J.....	5 00	Wisconsin Advertising Co.....	5 00
Teesdale, L. V.....	5 00	Wolf, Kubly & Hirsig.....	25 00
Tenney, Chas.....	10 00	Young, E. J.....	10 00
Thiessen, Frank.....	5 00	Zantrow, Mrs. H.....	3 00
Thomas, Herbert H.....	10 00	Zimmerman, Hon. A. G.....	5 00
Thomas, L.....	5 00	Acacia Fraternity.....	10 00
Thompson, H. L.....	5 00		
		Total General Subscription for 1926.....	\$4,359 90

Special Contributions to the Parks, 1926

Surfacing Farwell Drive, Including Concrete at Maple Bluff

Adams, T. S.....	\$ 25 00	Park, Allan G.....	\$ 10 00
Balderston, Wm.....	240 00	Power, W. W.....	10 00
Bernard, Wm. P.....	25 00	Ramsay, J. B.....	1,000 00
Boissard, Geo. A.....	25 00	Richards, H. S.....	25 00
Cantwell, F. W.....	25 00	Slichter, Chas.....	25 00
Cantwell, J. R.....	25 00	Starck, Edward F.....	25 00
Comstock, George.....	25 00	Stensland Land Co.....	740 00
Conlin, W. H.....	160 00	Warnke, Chas. H.....	25 00
Felton, A. P.....	25 00	Wootton, Frank.....	25 00
Giddings, Wm.....	25 00		
Guyer, M. F.....	25 00	Total Special Subscription	
Herfurth, Theo.....	25 00	for 1926.....	\$2,660 00
Hyland, Mrs. J. G.....	25 00		
Hyland, W. J.....	25 00	Total General Subscrip-	
Jonas, A. F.....	25 00	tion for 1926.....	\$4,359 90
Kennedy, Drs. T. F. &			
G. F.....	25 00	Total Subscriptions for	
Kuck, John.....	25 00	1926.....	\$7,019 90



RED MACAW

Animals in the Zoological Collection at Vilas Park Zoo

November 1, 1926

MAMMALS

<i>Carnivora:</i>	<i>Specimens</i>
European Bear, Russian Brown..... (Ursus arctos).....	2
Grizzly Bear..... (Ursus horribilis).....	2
Black Bear..... (Ursus americanus).....	4
Cinnamon Bear..... (Ursus americanus namomum).....	5
Gray Wolf..... (Canis nubilus).....	1
Coyote—Prairie Wolf..... (Canis latrans).....	1
Brush Wolf..... (Canis).....	1
Red Fox..... (Vulpes fulva).....	1
Black Fox..... (Vulpes).....	2
American Badger..... (Taxidea taxus).....	2
Raccoon..... (Procyon lotor).....	4
African Civet Cat..... (Viverra civetta).....	1
African Lion..... (Felis leo).....	2
African Leopard..... (Felis pardus).....	2
Jaguar..... (Felis onca).....	1
Leopard Jaguar Hybrid..... (Felis pardus-onca).....	1
American Mountain Lion..... (Felis hipposlestes).....	1
Bay Lynx..... (Lynx ruffus).....	1
<i>Primates:</i>	
Orang Utan..... (Simia satyrus).....	2
White-handed Gibbon..... (Hylobates lar).....	1
Hamadryas Baboon..... (Papio hamadryas).....	1
Mandrill Baboon..... (Papio sphinx).....	1
Anubis Baboon..... (Papio anubis).....	1
Sphinx Baboon..... (Papio sphinx).....	2
Pig-tailed Monkey..... (Macaca nemestrina).....	2
Gray Spider Monkey..... (Ateles geoffroyi).....	1
Javan Macaque..... (Macaca mordax).....	3
Mona Monkey..... (Lasiopyga mona).....	1
Sooty Mangabey..... (Cercocebus fuliginosus).....	2
Blueball Monkey..... (Callithrix moloch).....	2
Rhesus Monkey..... (Macaca rhesus).....	8
Cinnamon Capuchin..... (Cebus fatuellus).....	1
Margarita Capuchin..... (Cebus margaritae).....	1
White-throated Capuchin..... (Cebus capucinus).....	1
Horned Capuchin..... (Capuchin apella).....	1
Ruffed Lemur..... (Lemur variegatus).....	2
Black Apes Black Celebes Macaque (Cynopithecus maurus).....	2
<i>Rodentia:</i>	
Woodchuck..... (Marmota monax).....	2
Fox Squirrel..... (Sciurus vulpinus).....	2
White Squirrel..... (Sciurus carolinensis).....	1
Canadian Porcupine..... (Erethizon dorsatus).....	1
Guinea Pig..... (Cavia porcellus).....	3
Domestic Rabbit..... (Oryctolagus cuniculus).....	6

Masupialia:

Opossum.....(Didelphis virginiana)..... 1

Pinnipedia:

California Sea Lion.....(Zalophus californianus)..... 2

Artiodactyla:

Llama.....(Lama glama)..... 2

Sacred White Fallow Deer.....(Dama vulgaris)..... 11

Japanese Deer.....(Sika nippon)..... 1

European Red Deer.....(Cervus elaphus)..... 2

Virginia Deer.....(Odocoileus virginianus)..... 3

American Elk.....(Cervus canadensis)..... 8

American Bison.....(Bison bison)..... 5

Zebu.....(Bos indicus)..... 2

Tahr.....(Hermitragus jemlahicus)..... 2

Aoudad.....(Ammotragus lervia)..... 2

Domestic Milk Goat.....(Europe)..... 3

Indian Pony..... 1

South American Tapir.....(Tapirus americanus teastris)..... 1

Proboscidea:

Indian Elephant.....(Elephas indicus)..... 1

BIRDS

Ratitae:

South African Ostrich.....(Struthio australis)..... 1

Ciconiiformes:

American White Pelican.....(Pelecanus erythrorhynchos)..... 1

Great Blue Heron.....(Ardea herodias)..... 3

Black-crowned Night Heron.....(Nycticorax nycticorax naervius)..... 7

Anseriformes:

Mallard Duck.....(Anas platyrhynchos)..... 12

Black Duck.....(Anas rubripes)..... 6

Canada Goose.....(Branta canadensis)..... 2

Canada Black Brent.....(Branta canadensis)..... 1

African Goose.....(Anser gabeli)..... 2

Whistling Swan.....(Olo columbianus)..... 2

European Mute Swan.....(Cyanus olor)..... 1

Falconiformes:

Turkey Vulture.....(Cathartes aura)..... 2

Golden Eagle.....(Aquila chrysaetos)..... 2

American Bald Eagle.....(Haliaeetus leucocephalus)..... 4

Red-tailed Chicken Hawk.....(Buteo borealis)..... 3

Galliformes:

Silver Pheasant.....(Gennaeus nycthemerus)..... 2

Lady Amherst's Pheasant.....(Chrysolophus amherstiae)..... 2

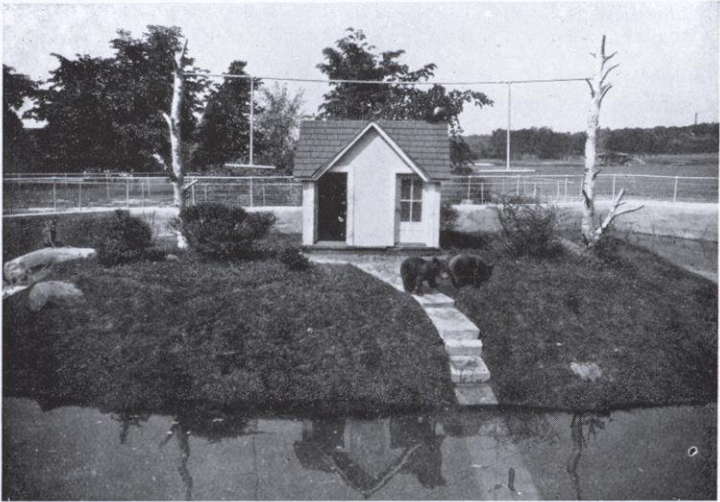
Golden Pheasant.....(Chrysolophus pictus)..... 5

Ringneck Pheasant.....(Phasianus torquatus)..... 14

Indian Peafowl.....(Pavo cristatus)..... 1

English Game Bantam..... 24

Japanese Silky Bantam..... 2



BABY BEARS AT VILAS PARK ZOO

Gruiformes:

Demoiselle Crane.....	(<i>Anthropoides virgo</i>).....	2
-----------------------	------------------------------------	---

Charadriiformes:

Herring Gull.....	(<i>Larus argentatus</i>)	6
Mourning Dove.....	(<i>Zenaidura macroura</i>).....	2
Ringed Turtle-Dove.....	(<i>Streptopelia risoria</i>).....	4
Wonga-Wonga Pigeon.....	(<i>Leucosarcia picata</i>).....	1
Bleeding Heart Pigeon.....	(<i>Phlogaenas luzonica</i>).....	4
White King Pigeon.....		3
White Owl Pigeon.....		2
White Fan-tail Pigeon.....		1
Carrier Pigeon.....		3
Pearlneck Dove.....		2

Psittaciformes:

Australian Shell Paroquet.....	(<i>Melopsittacus undulatus</i>).....	9
Blue Mountain Lory.....	(<i>Malay luri</i>).....	1
Australian Magpie.....	(<i>Gymnor hinatibicen</i>).....	1
Chinese Magpie.....		1
Red Macaw.....	(<i>Ara chloroptera</i>).....	1
Blue Macaw.....	(<i>Ara ararauna</i>).....	1
Sulphur-crested Cockatoo.....	(<i>Cacatoes galerita</i>).....	1
Rosae Cockatoo.....	(<i>Cacatoes roseicapilla</i>).....	6

Coraciiformes:

Giant Kingfisher.....	(<i>Dacelo gigas</i>).....	1
Screech Owl.....	(<i>Otus asio</i>).....	2
Great Horned Owl.....	(<i>Bubo virginianus</i>).....	7
Monkey-faced Owl.....		4

Passeriformes:

Carrion Crow.....	(<i>Corvus frugivorus</i>).....	2
Black Bird.....	(<i>Sturnus vulgaris</i>).....	6
Redwing Black Bird.....		6
Yellow-headed Black Bird.....		6
Blue Jay.....	(<i>Cyanocetta cristata</i>).....	8
Redcrested Cardinal.....	(<i>Paroaria cuculata</i>).....	1
Gray Java Sparrow.....		4
White Java Sparrow.....		2

REPTILES

Alligator.....	(<i>Alligator mississippiensis</i>).....	26
----------------	--	----

FISH

The number and variety of fish differ considerably during different seasons of the year. The following varieties are on exhibition some time during the year. On this date we have an extra fine collection of native specimen on display:

- Large Mouth Black Bass. (*Micropterus salmoides*)
- Calico Bass..... (*Pomoxis sparoides*)
- White Bass..... (*Roccus chrysops*)
- Rock Bass..... (*Ambloplites rupestris*)
- Yellow Perch..... (*Perca flarescens*)
- Common Sunfish..... (*Eupomotis gibbosus*)
- Blue Gill..... (*Lepomis pallidus*)
- Wall-eyed Pike..... (*Stizostedion vitreum*)

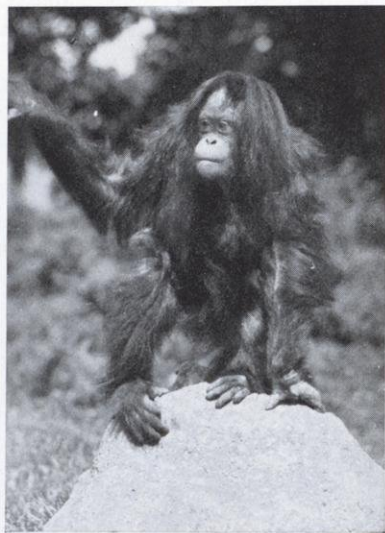


NERO

Muskallung.....	(<i>Esox masquinongy</i>)
Great Northern Pike.....	(<i>Esox immaculatis</i>)
Pickrel.....	(<i>Esox lucius</i>)
Rainbow Trout.....	(<i>Salmo irideus</i>)
Common Chub.....	(<i>Semotilus atromaculatus</i>)
Carp.....	(<i>Cyprinus carpes</i>)
Buffalo.....	(<i>Ictiobus cyprinella</i>)
Black Bullhead.....	(<i>Ameiurus melas</i>)
Channel Cat.....	(<i>Ictalurus punctatus</i>)
Dog Fish.....	(<i>Haleocommophi</i>)
Long Nosed Gar.....	(<i>Gingly modi</i>)
Tropical Fish.....	(Several varieties)
Gold Fish.....	(several varieties)
6 large mounted specimen of Atlantic Ocean Fish.	

Conchology:

A splendid collection of fresh and saltwater Shells:
200 varieties carefully named.



JIGGS—THE ORANGOUTANG

Length of Lake and Park Drives

	Miles
Lake Mendota Drive	
University Drive.....	1
Bay Road and Eagle Heights.....	2
Eagle Heights to Merrill Springs.....	1.6
Mendota Beach.....	.7
Capital Avenue.....	.6
Sumac Drive.....	1.3
Total miles.....	— 7.2
Hammersley Road.....	.9
Owen Parkway.....	1.5
Farwell Drive	
Lakewood Boulevard.....	1.5
Maple Bluff and Woodward's Grove.....	2.8
State Hospital Drive.....	1
Woodward Farm Road.....	.6
Total miles.....	— 5.9
Tenney Park	
Thornton Avenue.....	1
Sherman Avenue.....	.2
Marston Avenue.....	.5
Total miles.....	— 1.7
Lake Front Park	
Lake Drive.....	.5
Total miles.....	— .5
Olbrich Purchase	
Atwood Avenue.....	1.3
Brittingham Park	
Brittingham Drive.....	.7
Brittingham Boulevard.....	.8
Total miles.....	— 1.5
Henry Vilas Park	
Elm Court.....	.1
Burr Oak Drive.....	.7
Meadow Drive.....	.5
Wingra Heights Drive.....	.4
Fenway Drive.....	1
Edgewood.....	.5
Total miles.....	— 3.2
West Washington Boulevard.....	1
Total miles.....	— 24.7



TEDDY—BABY CINNAMON BEAR
BORN IN VILAS PARK ZOO



TOMMY—THE SPHINX BABOON

Park Areas and Water Frontage

Parks	Acres	Water Frontage
Barry Park.....	1.4	
Breese J. Stevens Athletic Field.....	4.5	
Brittingham Park.....	27	4,370 ft.
Burr Jones Field.....	1.5	
Burrows Park.....	12	550 ft.
East Washington Ave. Parkway.....	10	
Elmside and Lake Front Park.....	5.1	2,000 ft.
Franklin Street Park (City Boathouse).....	.2	70 ft.
Henry Vilas Park.....	62.6	6,000 ft.
Highlands.....	11	
Hillington Park.....	.8	
Kendall Park.....	1.5	
Lake Edge Park.....	4.5	75 ft.
Olbrich purchase.....	25	3,610 ft.
Olin Park (formerly Monona).....	30	1,350 ft.
Olive Jones Field.....	1.5	
Orton Park.....	3.6	
Owen Parkway.....	6	
South Madison Boulevard.....	5	4,800 ft.
Spring Harbor.....	1	270 ft.
Spaight Street Park.....	1.5	600 ft.
Tenney Park.....	44.2	3,800 ft.
Washington Oval.....	.9	
Wingra Monona Parkway.....	33	6,000 ft.
Yahara Parkway.....	16.9	7,200 ft.
Totals.....	310.7	40,695 ft.





