



LIBRARIES

UNIVERSITY OF WISCONSIN-MADISON

White Star Line schedule of steamer service and connections, 1923.

[s.l.]: [s.n.], 1923

<https://digital.library.wisc.edu/1711.dl/G5BKOAI6YH2YL9B>

<http://rightsstatements.org/vocab/UND/1.0/>

The libraries provide public access to a wide range of material, including online exhibits, digitized collections, archival finding aids, our catalog, online articles, and a growing range of materials in many media.

When possible, we provide rights information in catalog records, finding aids, and other metadata that accompanies collections or items. However, it is always the user's obligation to evaluate copyright and rights issues in light of their own use.

WHITE STAR LINE

1923

SCHEDULE OF STEAMER SERVICE AND CONNECTIONS

WHITE STAR LINE

1923

SCHEDULE OF STEAMER SERVICE AND CONNECTIONS



TOLEDO, SUGAR ISLAND, DETROIT,
ST. CLAIR FLATS, TASHMOO PARK,
SARNIA, ONT. PORT HURON, MICH.

TOLEDO, SUGAR ISLAND, DETROIT,
ST. CLAIR FLATS, TASHMOO PARK,
SARNIA, ONT. PORT HURON, MICH.

Steamers Tashmo, Greyhound, City of Toledo, Owana and Wauketa

Two Boats Daily between Toledo, Ohio, and Detroit, Michigan. Three Daily between Detroit, the famous St. Clair Flats and Port Huron

TOLEDO and DETROIT

Steamers GREYHOUND and CITY OF TOLEDO

Toledo to Sugar Island Park and Detroit.

Detroit to Sugar Island Park and Toledo

NORTH BOUND		Daily	Daily
Eastern Time	Miles	April 15 to Nov. 1	June 17 to Sept. 3
Lve. Toledo.....		8 30 am	2 30 pm
Arr. Sugar Island.....	42	11 15 "	5 15 "
Lve. " ".....		11 30 "	5 30 "
Arr. Detroit.....	60	1 00 pm	7 15 "

SOUTH BOUND		Daily	Daily
Eastern Time	Miles	June 17 to Sept. 3	April 15 to Nov. 1
Lve. Detroit.....		9 00 am	4 00 pm
Arr. Sugar Island.....	18	10 15 "	5 15 "
Lve. " ".....		10 20 "	5 30 "
Arr. Toledo.....	60	1 15 pm	8 15 "

SPECIAL STEAMER Detroit to Sugar Island Park Saturdays and Sundays 1.30 p. m.

NOTE—In case of necessity this Time Card or the Route of any Steamer is subject to change without Notice.

DETROIT and PORT HURON

NORTH BOUND	STEAMER TASHMOO	STEAMER OWANA or WAUKETA	
	Daily	Daily	Daily except Sunday
	DETROIT TO PT. HURON	DETROIT TO PT. HURON	DETROIT TO PT. HURON
EASTERN TIME			
Mis.	May 30 to Sept. 9	April 15 to Nov. 1	June 18 to Sept. 1
Lv. DETROIT, MICH.....	9 15 am	2 30 pm	14 30 pm
27 " *Old Club.....	11 15 "	4 20 "	6 40 "
" *Hotel Gorman.....	11 18 "		6 45 "
28 " *STAR ISLAND.....	11 20 "	4 35 "	7 05 "
" *Marshland.....	11 25 "	4 40 "	7 15 "
" Idle Hour Club.....	11 28 "		7 30 "
" *Forster's.....	11 35 "	4 50 "	7 40 "
" *Joe Bedore's.....	11 40 "	5 00 "	7 50 "
" *Muir's.....		5 10 "	8 00 "
34 " TASHMOO PARK.....	12 00 "	5 20 "	
" *San Souci.....			8 15 "
" *Grande Pointe.....	12 15 pm	5 30 "	8 25 "
" *Russell's Island.....			
37 " ALGONAC.....	12 30 "	5 45 "	8 50 "
" *Port Lambton, Ont.....			
44 " MARINE CITY.....	1 05 "	6 20 "	
52 " ST. CLAIR.....	1 30 "	7 05 "	
" *Marysville.....	1 50 "	7 25 "	
" *South Park.....			
64 " SARNIA, ONT.....	2 30 "	8 05 "	
65 Ar. PORT HURON, MICH.....	2 45 "	8 15 "	

SOUTH BOUND	STEAMER OWANA or WAUKETA	STEAMER TASHMOO
	Daily except Sunday	Daily
	PT. HURON TO DETROIT	PT. HURON TO DETROIT
EASTERN TIME		
Mis.	June 19 to Sept. 4	April 15 to Nov. 1
Lv. PORT HURON, MICH.....	§8 30 am	3 45 pm
" SARNIA, ONT.....	8 35 "	3 54 "
" *South Park.....		
" *Marysville.....	9 00 "	4 15 "
13 " ST. CLAIR.....	9 30 "	4 30 "
" MARINE CITY.....	10 05 "	5 00 "
" *Port Lambton, Ont.....		
" ALGONAC.....	6 00 am	10 35 "
" *Russell's Island.....		
" *Grande Pointe.....	6 15 "	10 48 "
" *San Souci.....	6 25 "	
31 " TASHMOO PARK.....		11 00 "
" *Muir's.....	6 35 "	11 10 "
" *Joe Bedore's.....	6 45 "	11 20 "
" *Forster's.....	6 48 "	11 23 "
" *Idle Hour Club.....	6 55 "	11 33 "
" *Marshland.....	7 00 "	11 35 "
" *STAR ISLAND.....	7 05 "	11 35 "
" *Hotel Gorman.....	7 08 "	
" *Old Club.....	7 10 "	11 45 "
65 Ar. DETROIT, MICH.....	9 10 am	1 30 pm

*Flag Stations—Steamers stop on signal when time is given only.

§Spring and Fall Leave Port Huron 6:00 a. m. week days. Arrive Detroit 11:00 a. m.

Spring and Fall—Sundays, leave Detroit 9:15 a. m.; returning leave Pt. Huron, 3:45 p. m.

†On Saturdays this Steamer will leave Detroit for upriver points at 6.00 p. m.

NOTE—The 2.30 p. m. boat for Port Huron may be either the Wauketa or Owana as occasion requires. The same rule applying to the 8.30 a. m. boat out of Port Huron.

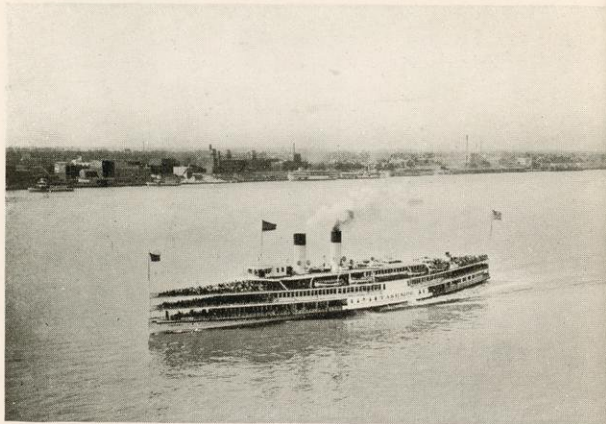
J. T. Lynn, President - - - - Detroit
 John Pridgeon, Jr., Vice-Pres. - - - - Detroit
 C. F. Bielman, Jr., Sec'y and Gen'l Manager - - - - Detroit
 C. B. Percy, Treasurer - - - - Detroit
 N. F. MacLean, Gen'l Passenger Agent - - - - Detroit
 H. R. Barrie, Gen'l Freight Agent - - - - Detroit

C. Leidich, Agt., - - - - 227 Fort St. W. Detroit
 City Ticket Office, - - - - 1549 Broadway Detroit
 A. N. Knapp, Agent - - - - Toledo
 H. E. Stalker, D. P. A. - - - - Toledo
 M. C. Lively, Agent - - - - Port Huron
 Northern Nav. Co., Agents - - - - Sarnia, Ont.

Steamers Leave
 Foot of Madison St., TOLEDO

General Offices
 Foot of Griswold St., DETROIT
 Phone Main 3832

Foot of
 Gd. River Ave., PORT HURON



The Tashmoo Starts on Its 130 Mile Trip of Happiness

The White Star Line Waterway

Excursion—what a mental picture of joy that little word brings up.

A bustling dock of fathers and mothers, kiddies and couples—all bubbling over with sparkling enthusiasm of a day on the water—games and lunches and bathing—and then a trip back when the sun is setting in a riot of colors and twilight and peace and the witchery of moonlight and shadow waters.

Dressed for Day in the Open

All are dressed for a day in the open—girls in dainty white dress and beribboned hats—men in panamas and straw hats and the kiddies for a rough-and-tumble day of sports. And finally the last siren warning and the steamer rides majestically from the dock. The band strikes up a melody in ripe harmony with the spirit of a sun-kissed day.

If you are aboard you hunt for a cozy nook of shade, where you can view with pleasure the myriad of sights along the shore and the passing steamers, freighters, launches and yachts. There is a happy,

friendly throng aboard, and if perchance you are alone, you can quickly find congenial companions, for no place are human folk more informal and friendly than aboard a steamer.

You watch the dock grow faint in the distance, finally recede and disappear. And then you invariably settle back in your seat and watch the scenes ahead as one cameo of beauty after another unfolds itself.

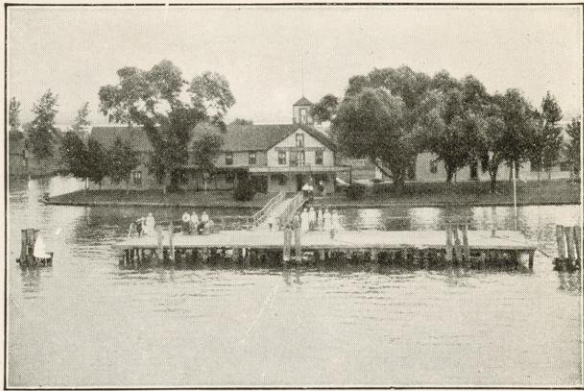
A Route of Beauty

The routes of the White Star Line from Detroit, Toledo, Port Huron and intermediate ports are as numerous as they are varied in character. Every type of scenery, the picturesque and the simply beautiful; every type of water, the calm and placid, and the slowly rolling, are encountered in the course of these trips. There are short afternoon and evening trips and there are all day trips; trips as economical for business purposes as they are pleasurable. And trips just for a jolly good time.

The full route of the White Star Line steamers extends from



Approaching The Flats



Bedore's Landing—The Flats

Toledo, Ohio, across the blue waters of Lake Erie to the Detroit River, past Detroit and gorgeous Belle Isle, on across the shimmering Lake St. Clair into the marvels of The Flats, and then up the beautiful St. Clair River to Port Huron.

Constantly Shifting Scenes

Every foot of the way offers a panorama of beauty. The numerous lowland islands comprising The Flats constitute one of the famous spots in the Great Lakes region known far and wide for their picturesque old-world beauty, studded as these islands are with green cottages and homey hotels.

This territory is almost as old as the history of civilization in America, for white men began the reclaiming of the wilderness more than two hundred years ago; it was in 1701 that Antoine de la Mothe Cadillac appeared on the banks of the Detroit River and reared the stockade that later grew into Detroit.

A Primitive Forest

Soft footed animals stalked the forest, their only rivals the Indians of the trail and surrounding all was a primeval, savage newness. Where the Indians roamed are now farms, villages and giant-loomng cities, effacing every trace of those early days.



Tashmo Park Landing

The beauties of the water-way from Toledo to Port Huron are rich in variety and splendor of water coloring. Much of the vastness of the ocean is encountered in the open lake—a real blue field of endless roll and dancing waves, often white-capped when ruffled by a strong wind.

Every pleasure of an ocean trip is on tap with none of its dangers. It is a good 250 miles from Toledo to Port Huron and return and every mile is a mile of storied scenery. On leaving Lake Erie the steamers move into the wide and majestic Detroit River, deep and silent in its vast strength, colorful with excursion steamers and freighters—a river capable of bearing all the navies of the world.

Islands, wooded and beflowered, spring into being as the steamer moves onward and on both sides, American and Canadian, the summer homes of thousands add a touch of hominess to the beauties of nature. At Wyandotte the first hint of the enormous commercial life of Detroit is seen in the towering factory buildings, the long line of freight steamers and the thunder of crane and conveyor. Then comes Detroit, with its sky-reaching office buildings, its parks and countless streets, a picture equalled only by the water approach to New York.

But any trip, short or long, for pleasure or business, is only delightful and restful in so far as the steamers making the trips are built and serviced to cater to the comforts of the passengers.

White Star Steamers Unsurpassed

The steamers of the White Star Line are nowhere surpassed for beauty, comfort or safety by excursion steamers anywhere in the world. They were designed to give pleasure to the thousands who seek the delightful coolness of lake and river; so built as to give an unobstructed view of the passing scenery; and possessing every facility for fun, comfort and even luxury.



Typical Sport at The Flats

The designers created these steamers so that every passenger could rest, stroll, dance, eat or participate in deck games and at the same time be borne swiftly, smoothly and safely along.

There are five steamers in the fleet of the White Star Line: the Tashmoo, the Greyhound, the City of Toledo, the Owana and the Wauketa. They are clean, white ships with interior decorations of soft, restful colors. Their lines are the lines of racing yachts and so artfully designed that the maximum of space and safety has been obtained without losing either beauty or speed.

Private Parlors in Every Steamer

Every steamer has its private parlors, large enough to care for a party of a dozen, cozy enough to give delight to a few. For families, bridal couples or private parties, these parlors offer a retreat from the crowds, and quiet for any type of amusement.

The Tashmoo and The Greyhound possess splendid dining rooms, with excellent food and service—food that delights the palate made keen by the wind and sunshine of the outdoors. The management has established a precedent by offering to the public the finest meals at cost.



Riding the Surf

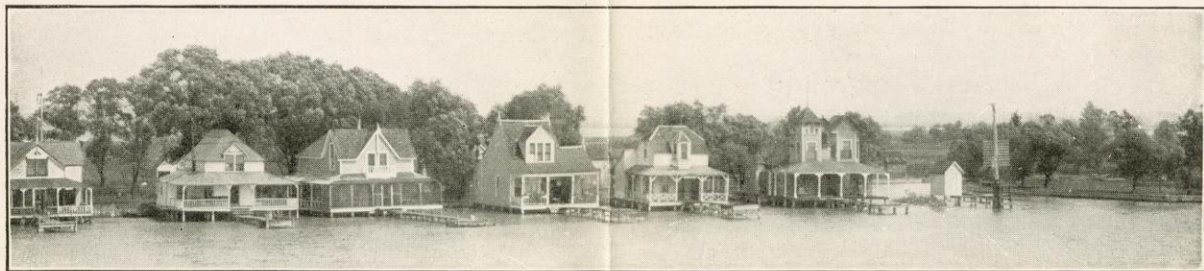
Ballrooms For Dancing

The ballrooms on three of the steamers provide an unexcelled floor for dancing by moonlight or in the shade of the upper deck where cool breezes blow. The dancing is free to all patrons. Music is furnished by the famous Finzel orchestras.

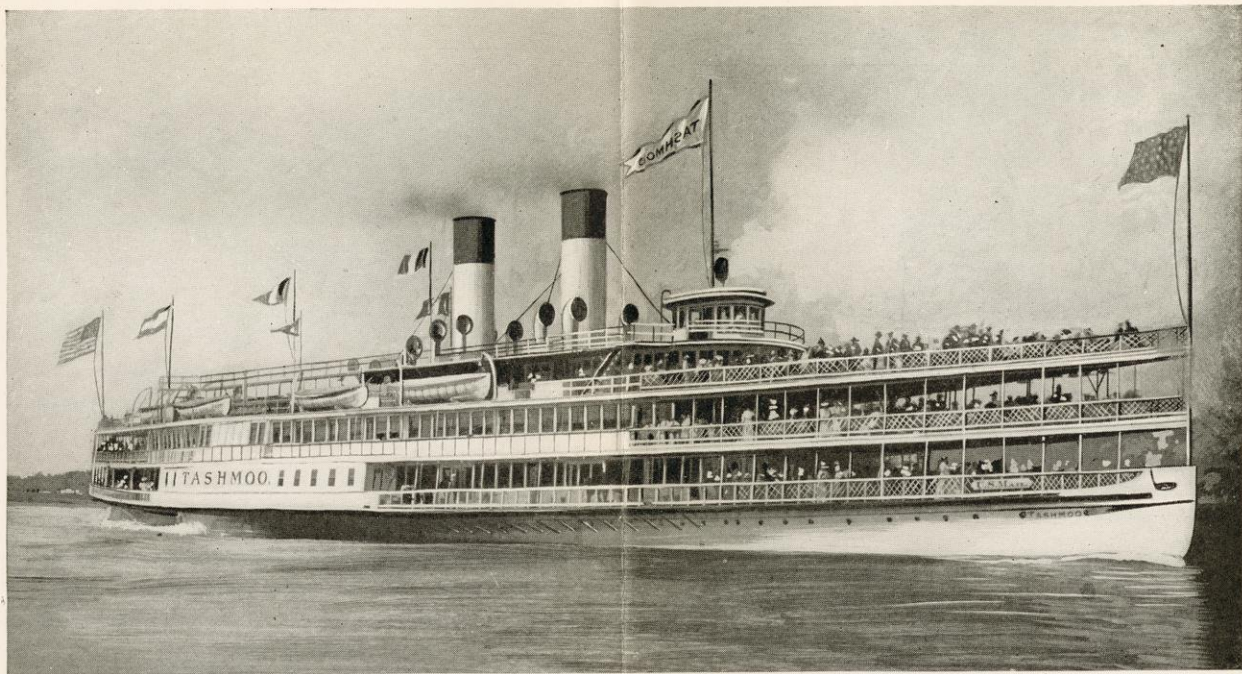
That every modern device to protect the public from every form of accident is in operation on these steamers cannot better be attested to than by the fact that in all the years the White Star Line steamers have been in operation not a single life has been lost or a serious accident reported, though hundreds of thousands of passengers are carried every summer.

Steel hulls, collision bulkheads, modern fire fighting devices and trained crews all go to eliminate the slightest danger. Added to this is the remarkable water ballast system which keeps the steamers on an even keel, regardless of how the weight of the load is distributed.

The decks are protected by woven steel railings. There are chairs in sufficient numbers for every occupant of each steamer. Shaded space is provided for those who wish it and also open spaces for those who love the sun and wind, and rather covet a coat of tan. All steamers are scrubbed and cleaned from top to bottom each day.



A Colony of Rest, Quiet and Beauty at The Flats



Steamer Tashmo Leaves Detroit Every Morning at 9:15 for The Flats, Tashmo Park and Port Huron Way Ports

PORT HURON

(All Day Round Trip)

A superb outing is the all-day ride up the river to Port Huron, leaving Detroit at 9:15 a. m. daily on the magnificent Steamer Tashmo and arriving back in Detroit at 8:45 in the evening. Stops are made at all points of interest along the 130 miles of constantly changing scenery.

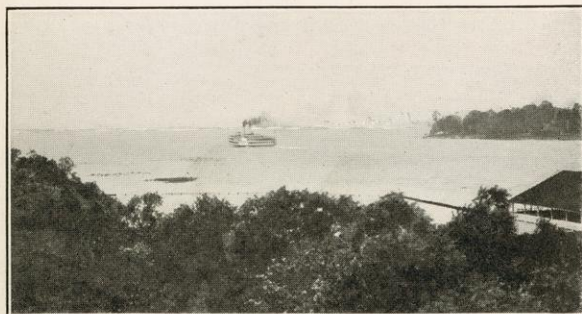
Through beautiful Lake St. Clair into the low-lying Flats, the prow of the steamer glides into one picture after another. The quaint Flats are a never-ending marvel of delight of green wooded lands, delightful homey houses and comfortable hotels.

A Natural Playground

The great summer playground, Tashmo Park, looms into view and many passengers get off to enjoy the delights of the park. On the steamer goes, until it arrives at the twin cities, Port Huron, and Sarnia, across the water on the Canadian side.

Port Huron is a small, modern American city, with quaint charm and many interesting spots. It is restful to visit and wander about after the strident bustle of larger cities. Sarnia is one of the most picturesque of the Canadian border cities. The summer hotels in both cities are large, finely appointed and popular with thousands every summer.

Fine cafe and lunch service aboard. Finzel's orchestra supplies music for dancing. The round trip fare is \$2.00. Children under 12, half fare.



Entering Lake St. Clair