



# LIBRARIES

UNIVERSITY OF WISCONSIN-MADISON

## 1954 meletean. [Vol. 43] 1954

[River Falls, Wis]: [Wisconsin State University, River Falls], 1954

<https://digital.library.wisc.edu/1711.dl/23FQSF6EQ7IJF8P>

This material may be protected by copyright law (e.g., Title 17, US Code).

For information on re-use, see

<http://digital.library.wisc.edu/1711.dl/Copyright>

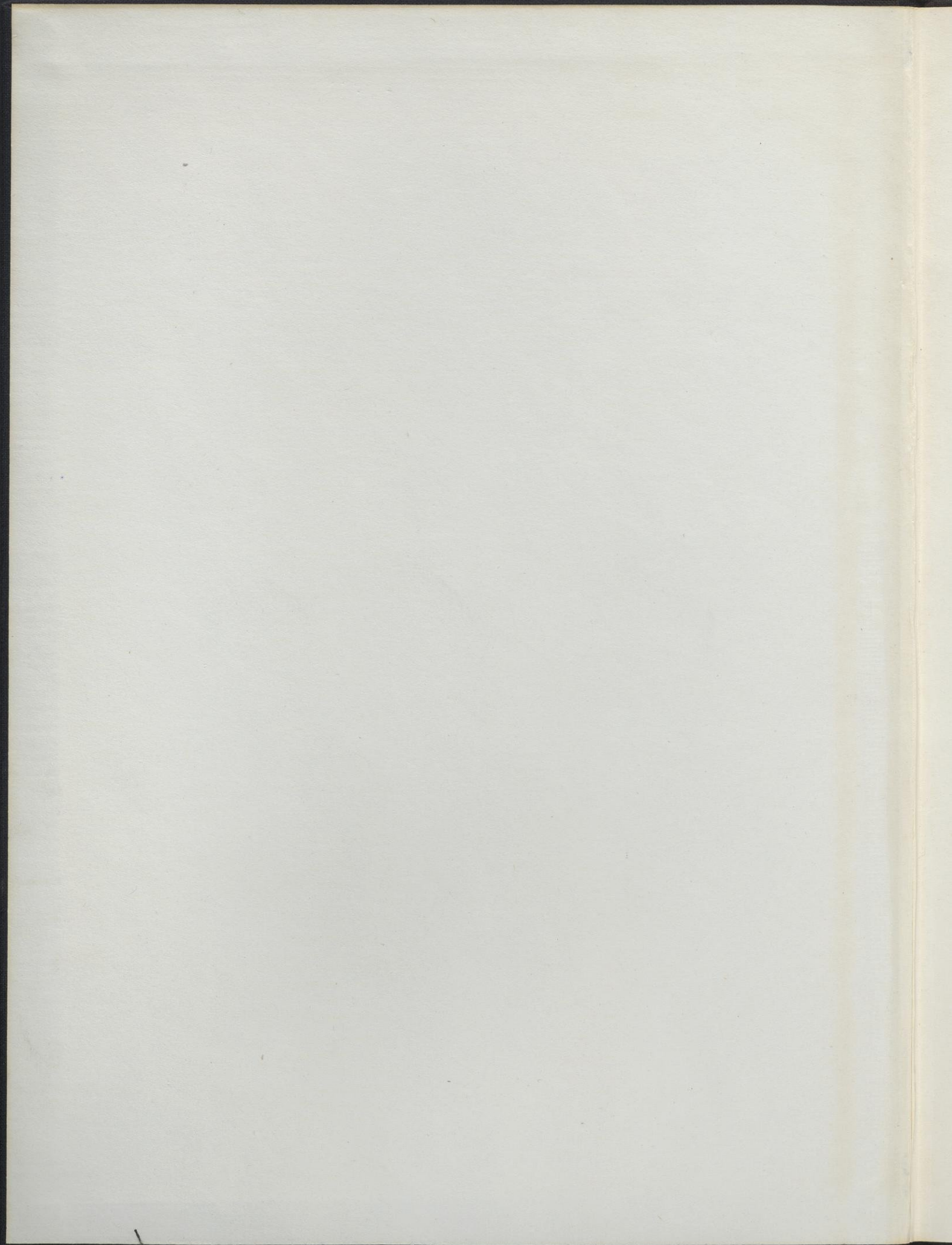
The libraries provide public access to a wide range of material, including online exhibits, digitized collections, archival finding aids, our catalog, online articles, and a growing range of materials in many media.

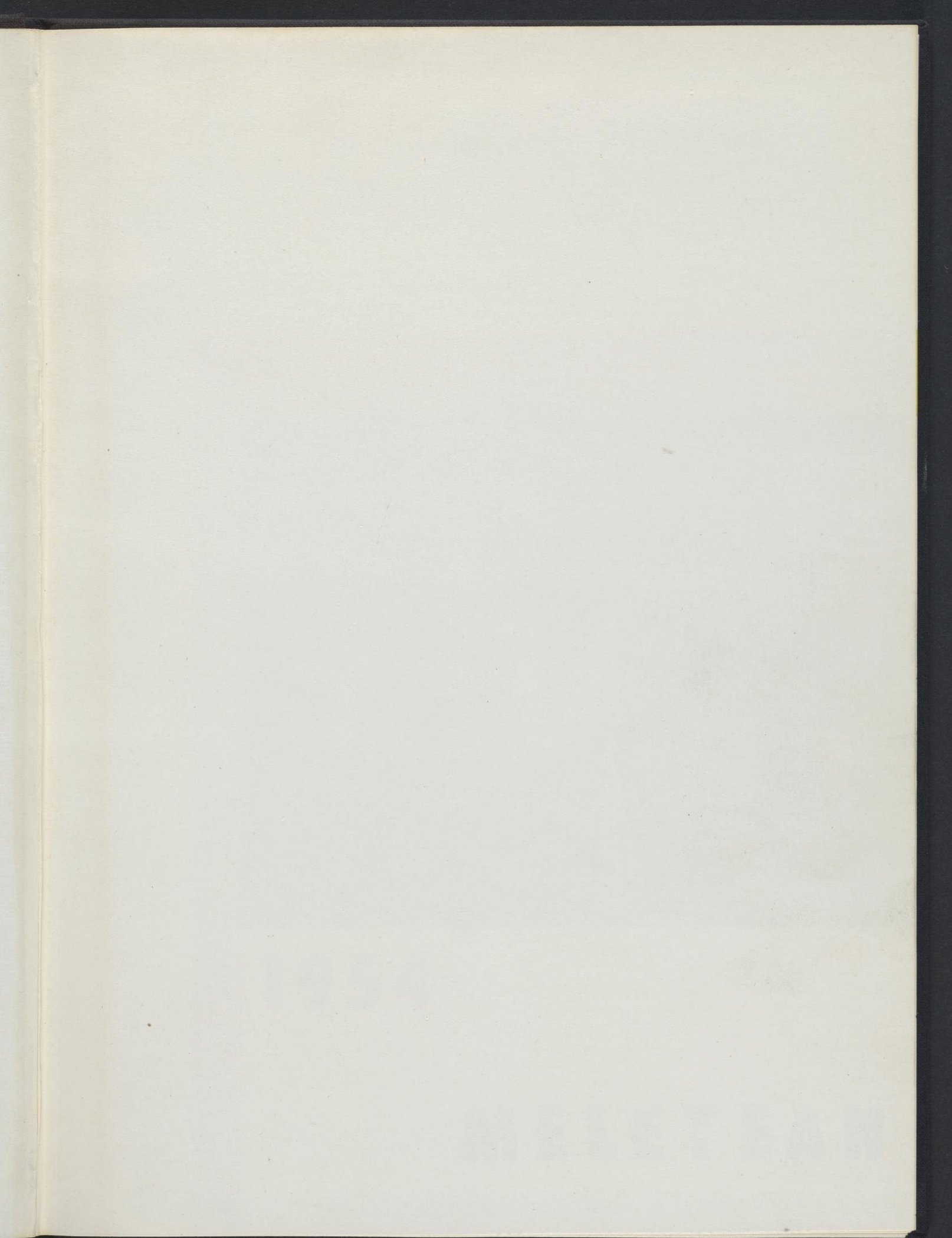
When possible, we provide rights information in catalog records, finding aids, and other metadata that accompanies collections or items. However, it is always the user's obligation to evaluate copyright and rights issues in light of their own use.

1954

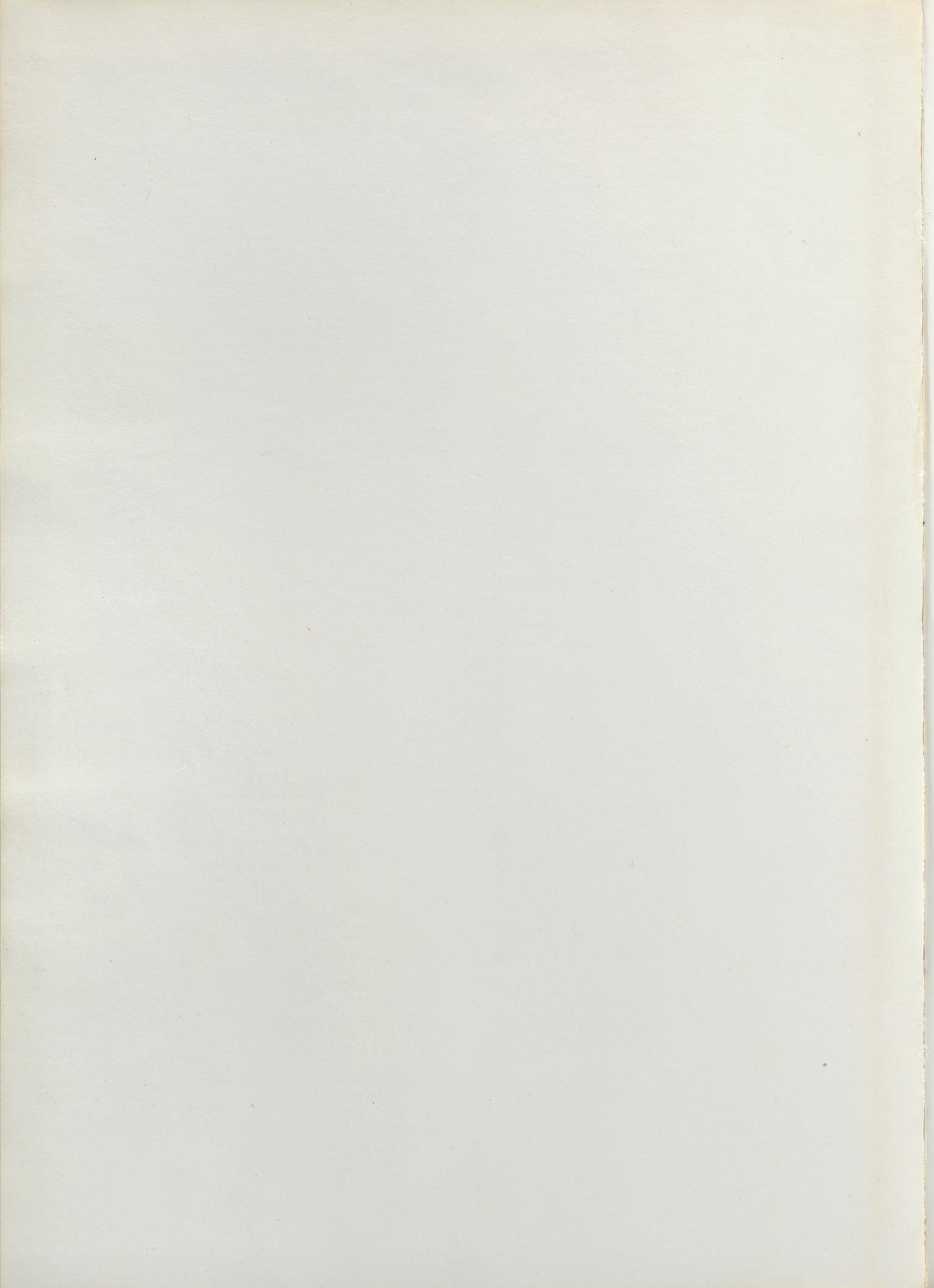
mcLETCAN

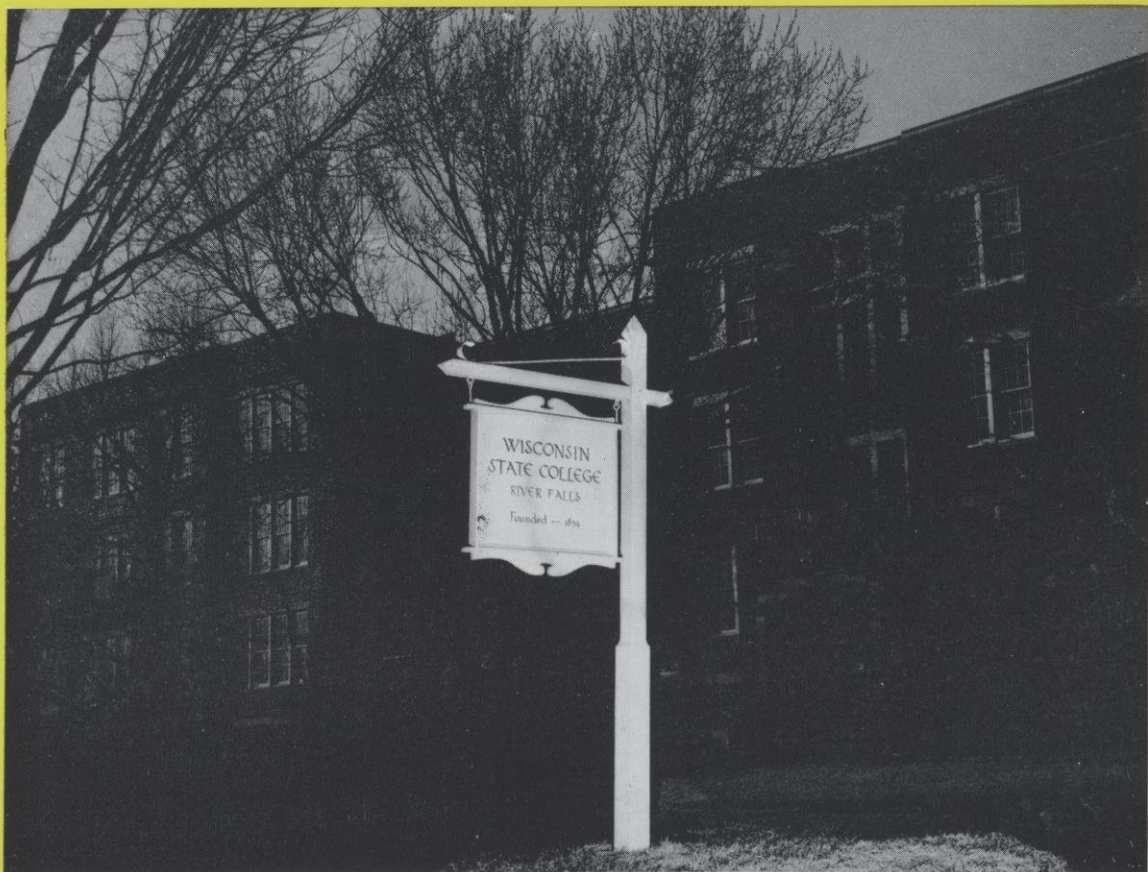












**1954**


**MELETEAN**





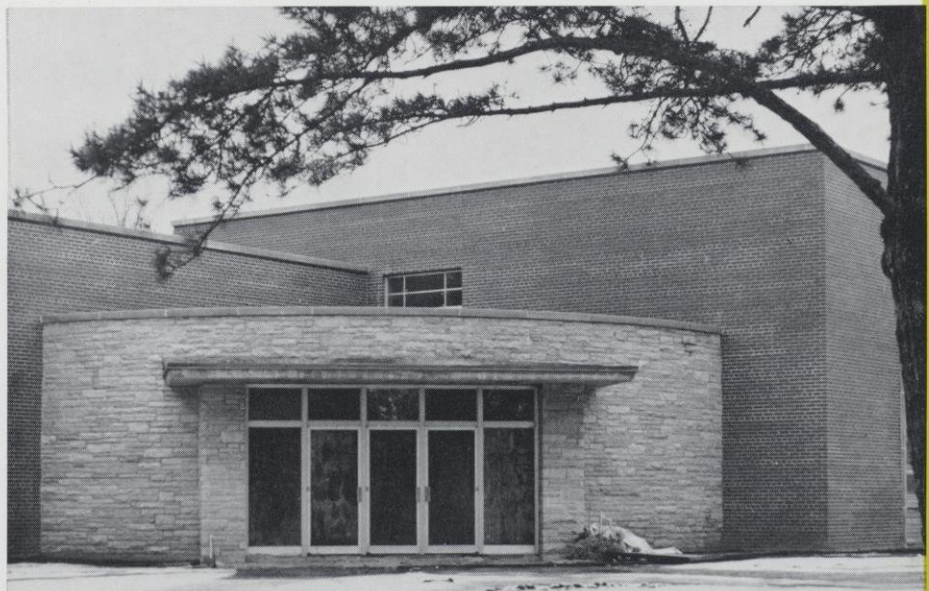
## **BOARD OF REGENTS WISCONSIN STATE COLLEGES**

<b>WILLIAM D. McINTYRE</b>	-	-	-	Eau Claire
<b>EUGENE MURPHY</b>	-	-	-	La Crosse
<b>MRS. AVERY SHERRY</b>	-	-	-	Milwaukee
<b>LEWIS C. MAGNUSEN</b>	-	-	-	Oshkosh
<b>ELTON S. KARRMANN</b>	-	-	-	Platteville
<b>HERMAN T. HAGESTAD</b>	-	-	-	River Falls
<b>WILSON S. DELZELL</b>	-	-	-	Stevens Point
<b>BARNEY B. BARSTOW</b>	-	-	-	Superior
<b>HAROLD G. ANDERSON</b>	-	-	-	Whitewater
<b>MRS. ROBERT C. EBY</b>	-	-	-	Madison
<b>GEORGE E. WATSON</b>	-	-	-	Madison
<b>EUGENE R. McPHEE</b>	-	-	-	Madison



# DEDICATION

The 1954 MELETEAN is dedicated to the Chalmer Davee Library which is not just another building on campus but a monument to the progress and expansion which is going on at River Falls State College. Education is the hope of the nation as a way to world peace, and this hope is personified, here at River Falls, in the expansion program.








# FOREWORD


**This book was not compiled to tell you a story or recruit students to this college. Its sole purpose is to act as a reminder of what went on in 1953-1954 at River Falls State College. It is not a memory book because the memories of this college year are the individual's and his alone.**





## CONTENTS

Administration . . .	7
Classes . . . . .	19
Athletics . . . . .	46
Organizations . . .	59
Activities . . . . .	93





# STAFF

**WILLIAM GOTZ, MIMI GOTZ** - - - - - Editors

**JOHN TOOLEY** - - - - - Photographer

**DORIS LINDEMANN, BEULAH FALKOFSKE**

**BLAKE MURRAY, AUDDREY WINDAL**

**MONA THOMPSON, MAE WISKERCHEN**

**JERRY MOTT** - - - - - Assistants

**HARRY H. GRIGGS, LOUIS KOLLMAYER**

**O'NEAL MASON, ROBERT KRUEGER** - - - Advisors





**ADMINISTRATION**



# THE PRESIDENT



E. H. KLEINPELL

# ADMINISTRATIVE STAFF

## **DR. DOROTHY LIPP**

Dean of Women



## **MR. JOHN M. MAY**

Director  
Division of Agriculture



## **MR. E. J. PRUCHA**

Registrar



## **DR. L. G. STONE**

Director  
Division of Education and Placement



## **DR. JAMES J. McLAUGHLIN**

Director  
Division of Arts and Science



## **MR. B. J. ROZEHNAL**

Dean of Men





# FACULTY



**EARL G. ALBERT**

Physics



**MARY ULLMAN**

Education



**PHILIP S. ANDERSON**

Education



**PHILIP BELFIORI**

Physical Education



**MARY BRADLEY**

Librarian



**RICHARD COOKLOOK**

Librarian

# FACULTY

**FRANCIS P. CHISHOLM**

English



**BLANCHE DAVIS**

Speech



**MYRN DEVINE**

Music



**ANN DUBBE**

Education



**WALTER J. ENGLER**

English



**CORA FARRELL**

Nurse







## FACULTY

**AMY FULLER**

Librarian



**ROBERT C. FISLER**

Education



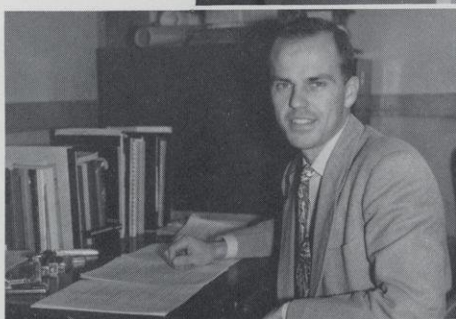
**SARA E. GARNER**

Education



**RAYMOND L. GARNETT**

Education



**GERBER**

Agricultural Engineering



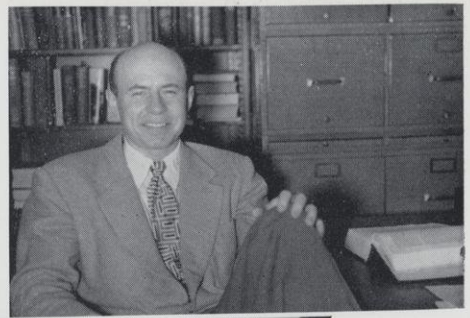
**RHEA GIBSON**

Librarian

# FACULTY

**GEORGE GILKEY**

History



**HARRY GRIGGS**

Journalism



**WILFRED C. HARRIS**

Education



**MARION E. HAWKINS**

English



**NICHOLAS J. JADNAK**

Music



**ARTHUR N. JOHNSON**

Agriculture





# FACULTY



**GLEN P. JUNKMAN**

Mathematics



**ERNST F. JURGENS**

German, Philosophy



**B. H. KETTELKAMP**

Biology



**CHAUNCEY B. KING**

Music



**NANCY KNAAK**

English



**OPAL A. KNOX**

Education

# FACULTY

**LOUIS A. KOLLMEYER**

Art



**ROBERT B. KREUGER**

Education



**ADELINE L. LEVIN**

Physical Education



**CATHARINE LIENEMAN**

Biology



**BERNARD L. McCARTHY**

Social Science



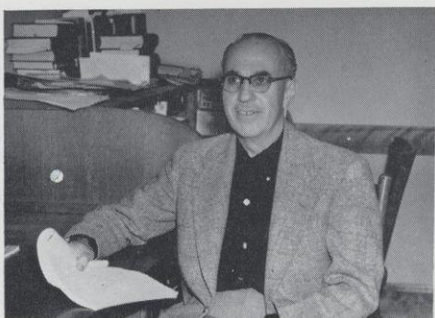
**LESLIE C. McKEEN**

French, Spanish





# FACULTY



**O'NEAL MASON**

Chemistry



**JOHN G. MOSHER, JR.**

Geography



**VERA M. MOSS**

English



**HARDEAN NAESETH**

Art



**ROBERT POLK**

Geology



**IRENE F. QUINN**

Education

# FACULTY

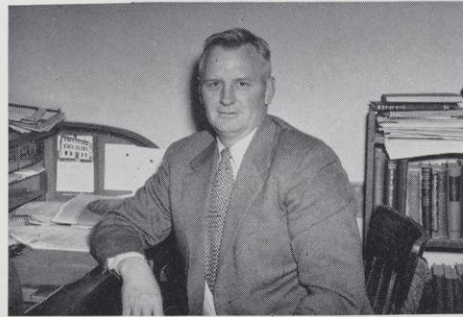
**MARY JO ROBERTS**

Education



**THEODORE SETTERQUIST**

Chemistry



**NORMAN SEVERSON**

Chemistry



**GILBERT SMITH**

Economics



**WILLIAM SOLLEY**

Physical Education



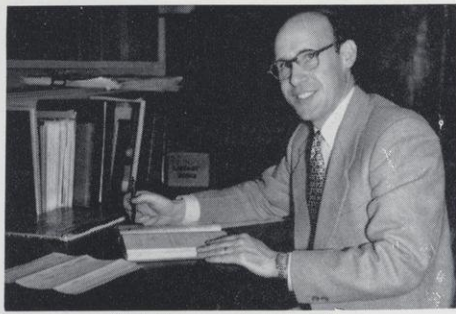
**LENETA SUBLETT**

Education





## FACULTY



**MARVIN THOMPSON**

Agricultural Engineering



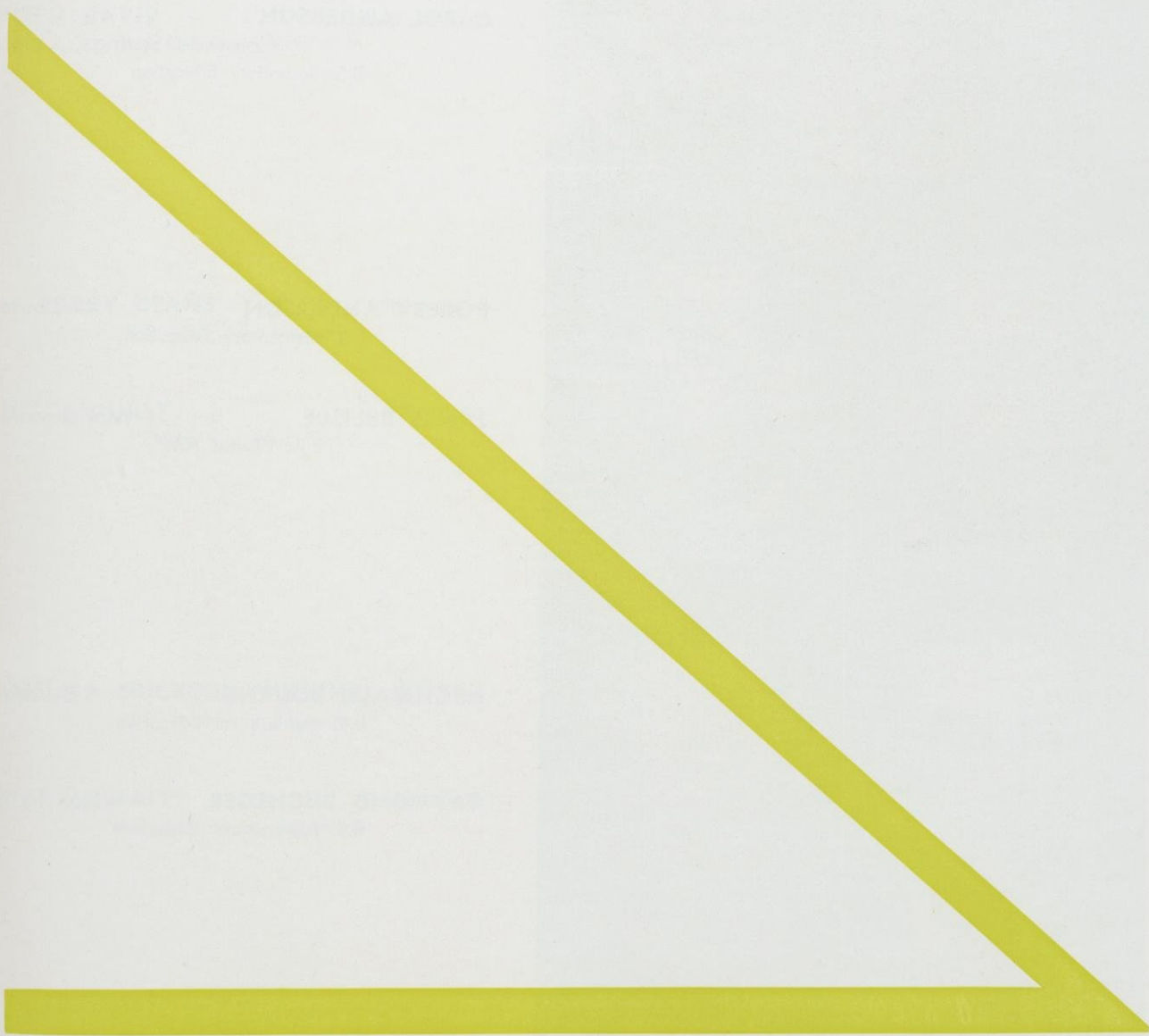
**THORVALD E. THORESON**

Agricultural Engineering



**WALKER D. WYMAN**

History



**CLASSES**



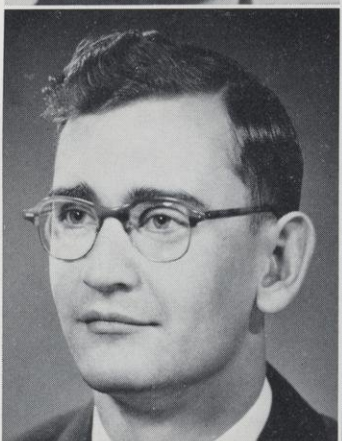
# GRADUATES 1954



**BARBARA AABY** - - - Woodville  
B.S. Elementary Education



**CAROL ANDERSON** - - -  
Colorado Springs, Colo.  
B.S. Secondary Education



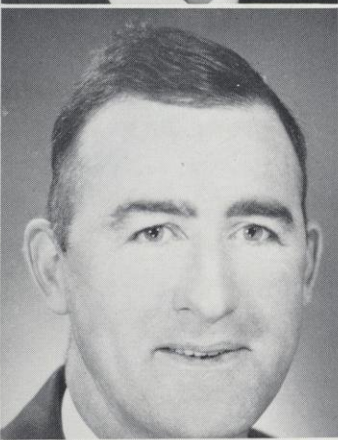
**ROBERT ANDERSON** - - - Lewis  
B.S. Elementary Education



**JAMES BELISLE** - - - Menomonie  
B.A. Liberal Arts



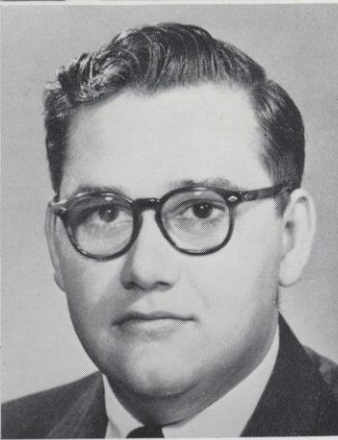
**ARCHIBALD BOURNE** - - Durand  
B.S. Agricultural Education



**RAYMOND BUCHEGER** - River Falls  
B.S. Agricultural Education



**JEAN CATURIA** - - Maiden Rock  
B.S. Elementary Education



**JAMES CERELLO** St. Croix Beach, Minn.  
B.S. Secondary Education



# GRADUATES 1954

**BUELAH DAHLBURG** - - - Frederic  
B.S. Secondary Education

**RUTH DAVIS** - - - Spring Valley  
B.S. Elementary Education



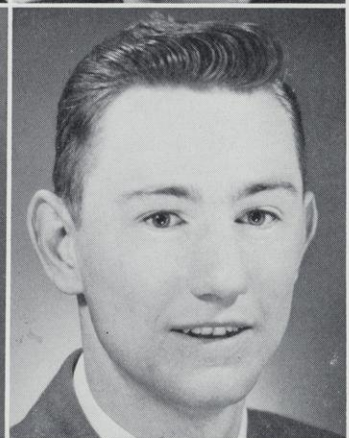
**MARGERY DEANS** - - - Hammond  
B.S. Secondary Education

**JOYCE DURST** - - - Algoma  
Elementary Education



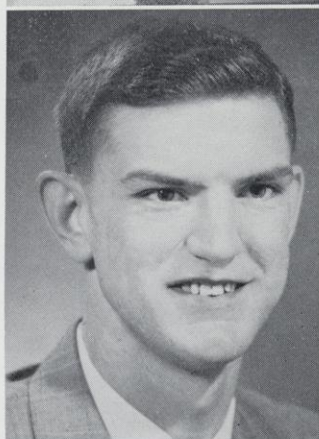
**THELMA ERICKSON WILLINK** Hudson  
B.S. Secondary Education

**MARVIN FAIT** - - - Auburndale  
B.S. Agricultural Education



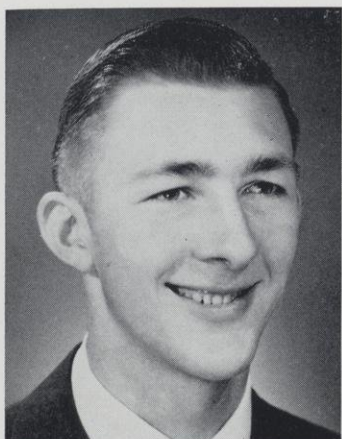
**DONALD FICK** - - - Wilton  
B.S. Secondary Education

**LAWTON GENTRY** - - - River Falls  
B.S. Agricultural Education





# GRADUATES 1954



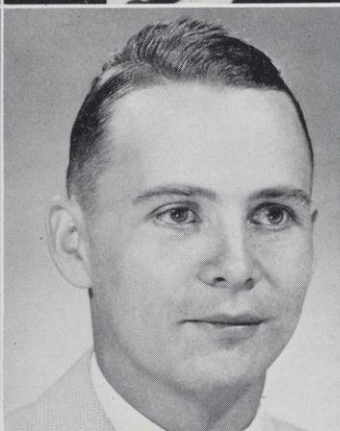
**JOHN GEHN** - - - Elmwood  
B.S. Secondary Education



**ROBERT GUELDNER** - Spring Valley  
B.S. Secondary Education



**BEATRICE HARMON** - - Clear Lake  
Elementary Education



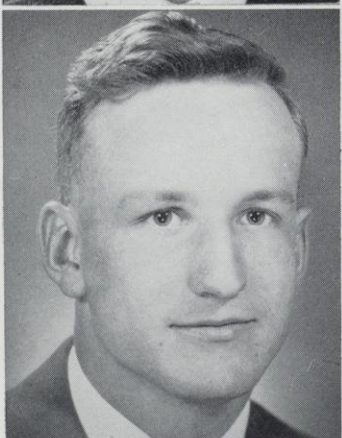
**WILLARD HAGSTROM** - Arbor Vitae  
B.S. Secondary Education



**BERNARD HART** - - Alma Center  
B.S. Agricultural Education



**MARGARET HELMER** - - Plymouth  
B.S. Secondary Education



**VAUGHN HOFFMAN** - - Arkansaw  
B.S. Secondary Education



**DOROTHY INGLIS** - - River Falls  
B.S. Elementary Education



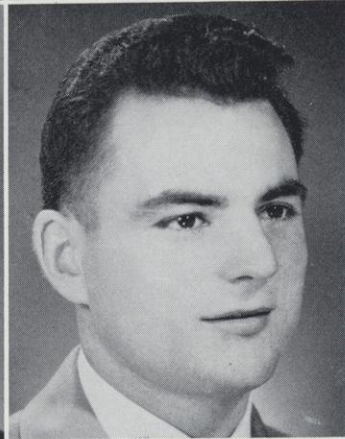
# GRADUATES 1954

**WILLIAM JENSON** - - - Friendship  
Elementary Education



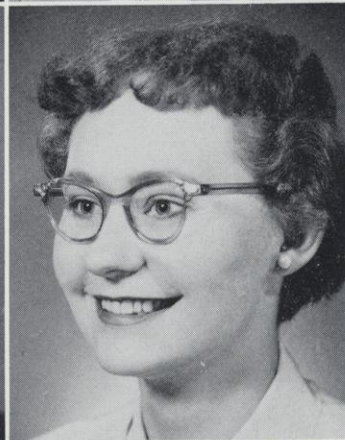
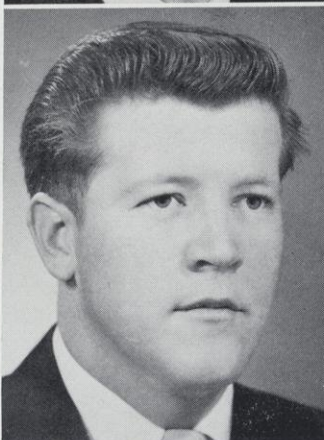
**ARVID KARLSTAD** - - - Prairie Farm  
B.S. Agricultural Education

**BERKLEY LARSON** - - - Frederic  
B.A. Liberal Arts



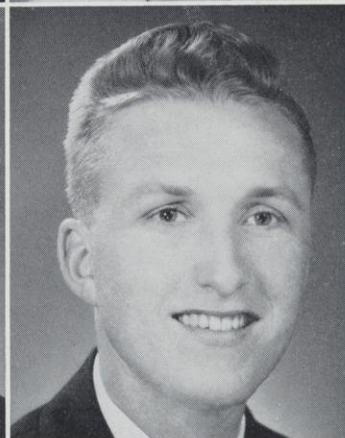
**WILLIAM LINDENBURG** - - - Wheeler  
B.S. Agricultural Education

**THOMAS LINEHAN** - - - River Falls  
B.S. Secondary Education



**ERNA MATSON** - - - - Wilson  
Elementary Education

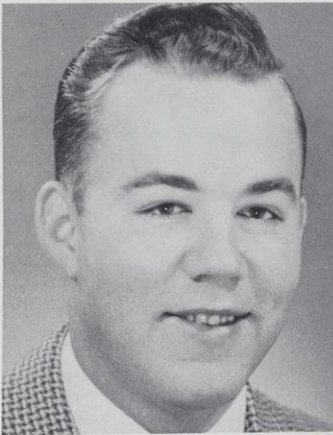
**JANICE MOEN** - - - - Praire Farm  
Elementary Education



**GERALD MOTT** - - - - Frederic  
B.S. Secondary Education



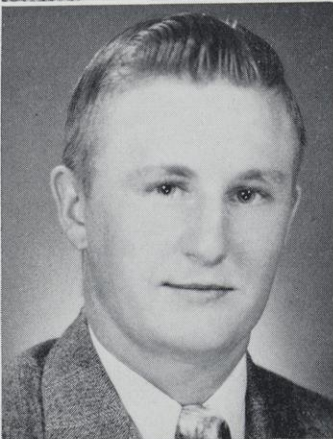
# GRADUATES 1954



**JAMES McLAUGHLIN** - - - River Falls  
B.S. Secondary Education



**ELAYNE MEYER** - - - River Falls  
B.S. Elementary Education



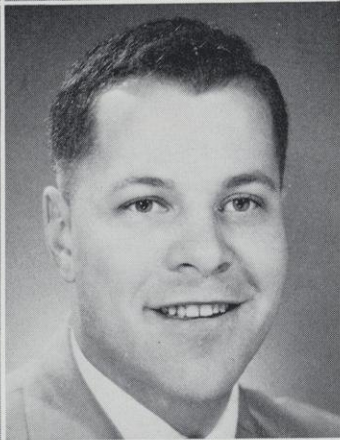
**ALLEN NELSON** - - - Plum City  
B.S. Agricultural Education



**ETHEL NEWBERG** - - - River Falls  
B.S. Elementary Education



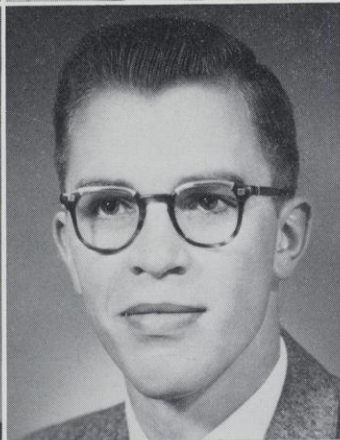
**LORRAINE NORDBY** - - - Prairie Farm  
B.S. Secondary Education



**HAROLD OLSON** - - - River Falls  
B.S. Elementary Education



**REUBEN PATRIKUS** - - - Clintonville  
B.S. Agricultural Education



**DELMOR POLZIN** - - - Bloomer  
B.S. Agricultural Education



# GRADUATES 1954

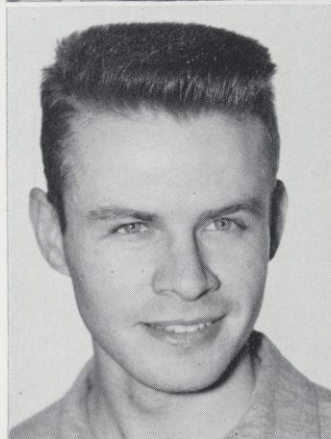
**JAMES RUPERT** - - - River Falls  
B.S. Secondary Education

**RITA RUEMMELE** - - - Hudson  
B.S. Elementary Education



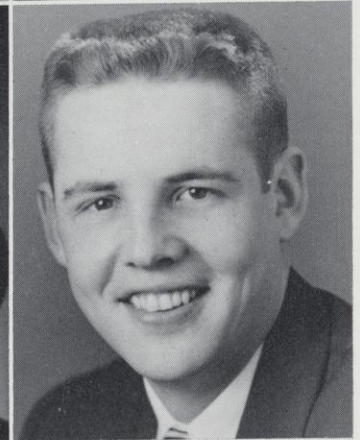
**LELAND PRENTICE** - - - Cornell  
B.A. Liberal Arts

**JULIANNE RYAN** - - - Hudson  
B.S. Elementary Education



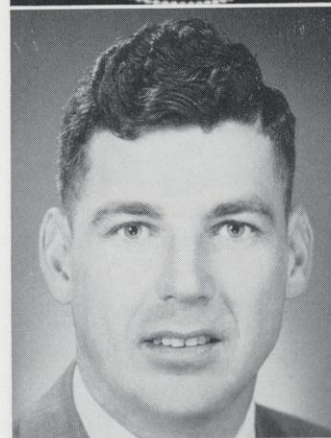
**DONNA SAMMONS** - - - Oshkosh  
B.S. Elementary Education

**MARYLN SEEHAFFER** - - - Marshfield  
B.S. Agricultural Education



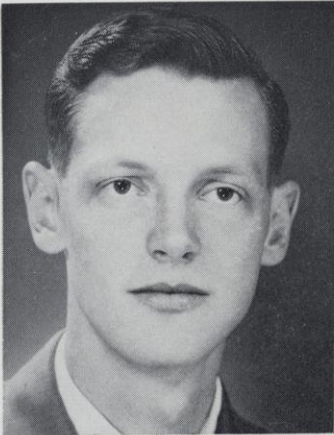
**ANTON SENDELBACH** - - - Cochrane  
B.S. Agricultural Education

**JAMES SAXTON** - - - Alma  
B.S. Secondary Education





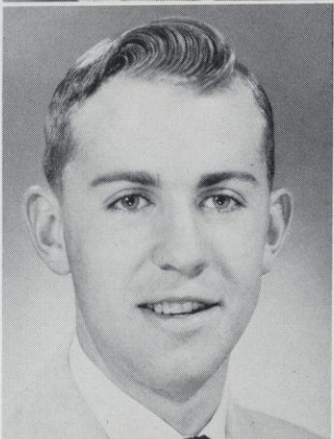
# GRADUATES 1954



**HARLAN SIEBRECHT** - - - - Amery  
B.S. Elementary Education



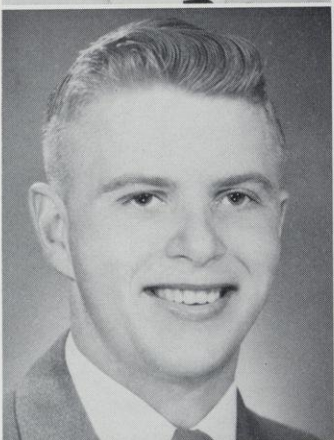
**GLADYS SIGVALDSON** - River Falls  
B.A. Liberal Arts



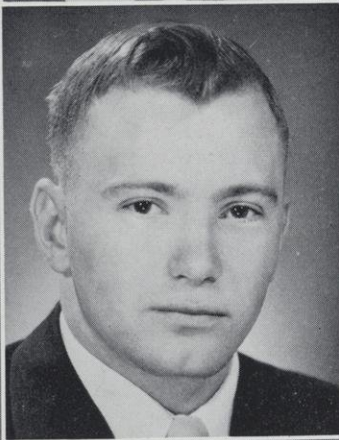
**ELDON SKOGEN** - - - - Tomah  
B.S. Secondary Education



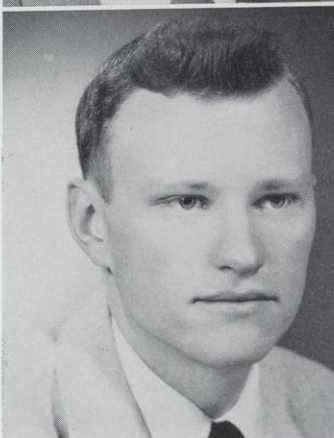
**EVEREST SONSALLA** - Spring Valley  
B.S. Agricultural Education



**EUGENE SWANSON** - - - Ellsworth  
B.S. Secondary Education



**HUBERT STEVENS** - - - Ladysmith  
B.S. Secondary Education



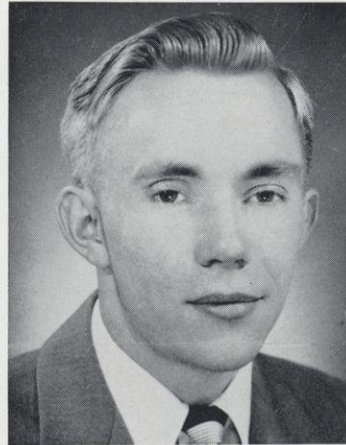
**LARRY VOLRATH** - - - Greenwood  
B.S. Secondary Education



**BETTY WISKERCHEN DOOLITTLE** Pepin  
B.S. Secondary Education

# GRADUATES 1954

**WILLIAM THALDORF** - Fountain City  
B.S. Agricultural Education





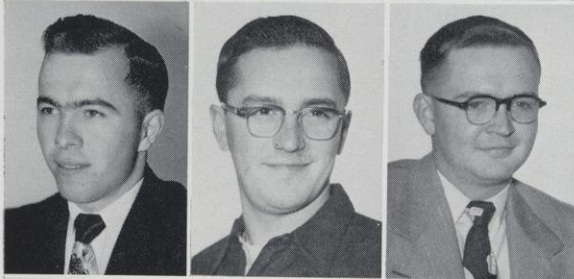
# JUNIORS



**KONVAL BERGUM** - - - - Wheeler  
Agriculture

**HENRY BEYER** - - - - Hager City  
English

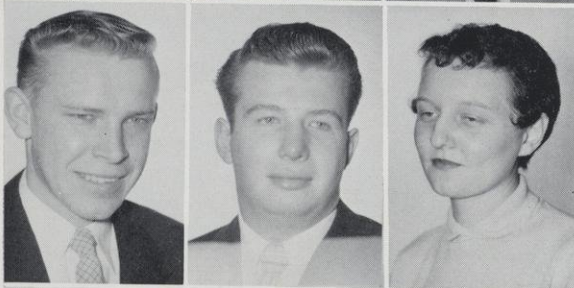
**NORMA DIERKS** - - - - Comstock  
English



**LLOYD FRYE** - - - - LaFarge  
Agriculture

**JAMES GOETTLE** - - - - Cadott  
Agriculture

**RICHARD GRANUM** - - - - Holmen  
Agriculture



**RAYMOND KACZMARZYK** - - - - Mosinee  
Agriculture

**ROBERT KRUEGER** - - - - New Richmond  
History

**JEANNINE KUHN** - - - - Wilson  
Elementary



**KATHY MILLER** - - - - Clayton  
Elementary

**MILDRED NARLOCK** - - - - Iola  
Elementary

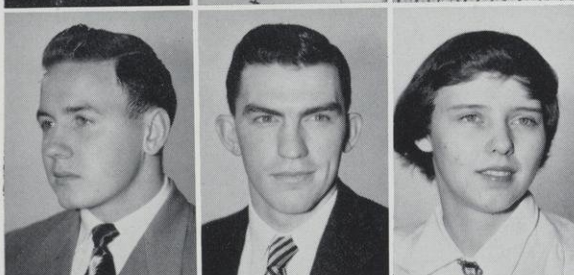
**WILLARD OLSEN** - - - - Tomah  
Agriculture



**PHYLLIS PABST** - - - - Clayton  
Elementary

**BARBARA PALEWICZ** - - - - Glenwood City  
Mathematics

**ANNETTE PETERSON** - - - - Rice Lake  
English



**JERRY ROUTE** - - - - Amery  
History

**TROY RUDESILL** - - - - Baldwin  
Mathematics

**DARLENE RUHNKE** - - - - Hastings, Minn.  
Elementary

# JUNIORS

**DORIS SCHAFFER** - - - - Clayton  
Elementary

**KENNETH SCHUMACHER** - - - Cashton

**MATHEW SHUBAT** - - - - Mason  
Agriculture  
Agriculture

**ROBERT STRAIN** - - - - Baldwin  
Music

**SHIRLEY STEHR** - - - - Balsam Lake  
Elementary

**JAMES TILLY** - - - - Fond du Lac  
History

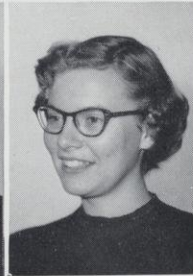
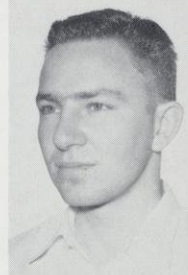
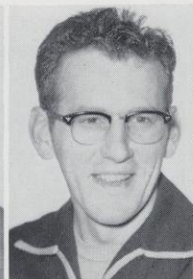
**MARIAN THOMPSON** - - - - Ellsworth  
Elementary

**WILLIAM VERKUILEN** - - - - Hatley  
Unclassified

**SUSAN WIFF** - - - - Spring Valley  
Elementary

**CHARLOTTE WILCOX** - - - - Balsam Lake  
Elementary

**ROBERT WILLIAMS** - - - - Barron  
History





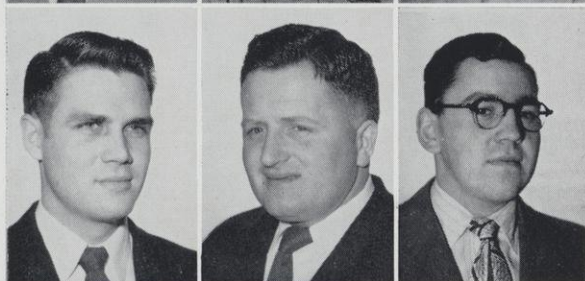
# SOPHOMORES



**JAMES ANDERSON** - - - - - Ettric  
Agriculture

**HANNAH BEETS** - - - - - Comstock  
Elementary

**DOROTHY BINKOWSKI** - - - - Elmwood  
Elementary



**JOHN BOS** - - - - - New Richmond  
History

**WILLIAM BOYLE** - - - - - Mauston  
Agriculture

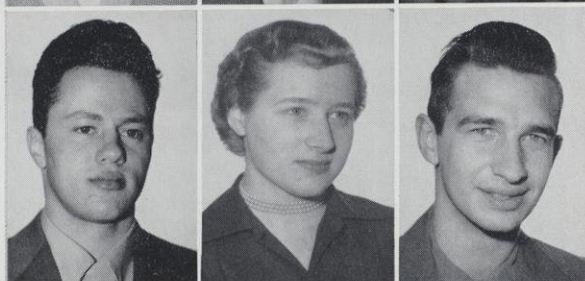
**DEAN CARLSON** - - - - - Dresser  
Agriculture



**GENE COUNARD** - - - - - Brussels  
Agriculture

**ARNOLD DAVIS** - - - - - Chetek  
Agriculture

**JEANNINE DAVISON** - - - - River Falls  
Elementary



**DAVID DICKEY** - - - - Black River Falls  
Unclassified

**ANN EITLAND** - - - - - Wilson  
Elementary

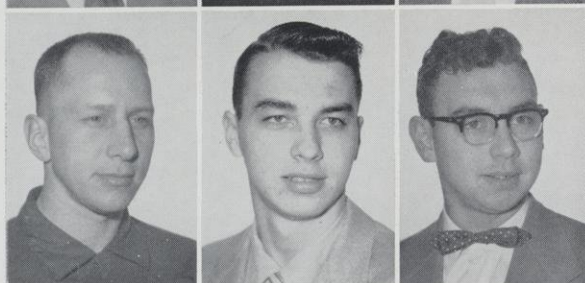
**FRANK ENDERS** - - - - - Arkansaw  
Unclassified



**VERNON FAIT** - - - - - Auburndale  
Agriculture

**BEULAH FALKOFSKE** - - - - Ellsworth  
Elementary

**PAUL FELSHEIN** - - - - - Arcadia  
Science



**CARL FINSTAD** - - - - - River Falls  
Science

**THOMAS FISCHER** - - - - Ellsworth  
Agriculture

**CLETUS FONTAINE** - - - - Brussels  
Agriculture



# SOPHOMORES

**ELEANOR FORD** - - - - Hammond  
Elementary

**ALLEN FRITZ** - - - - Owen  
Pre-Engineering

**BERNARD GARLID** - - - - Baldwin  
Agriculture

**DALE GHEN** - - - - Spring Valley  
Rural

**MARGUERITE GOTZ** - - - - River Falls  
English

**WILLIAM GOTZ** - - - - River Falls  
English

**VICKEY GRIMM** - - - - River Falls  
Unclassified

**HAROLD HECK** - - - - Mondovi  
Agriculture

**PATRICIA HAGEMANN** - - - - Ellsworth  
English

**DALE HEMBROOK** - - - - Waukesha  
Liberal Arts

**ROGER HOFF** - - - - Galesville  
Agriculture

**ROGER HOFF** - - - - Nixon  
Unclassified

**VIRGINIA HORSMANN** - - - - New Richmond  
Rural

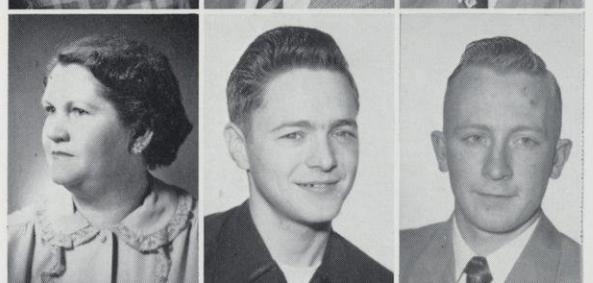
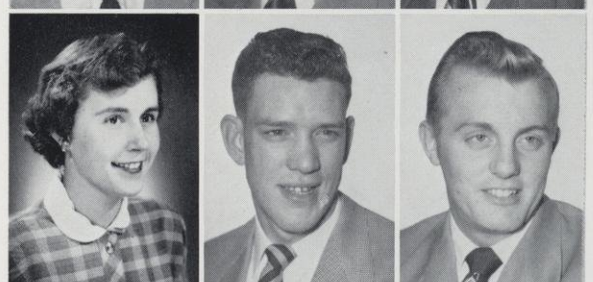
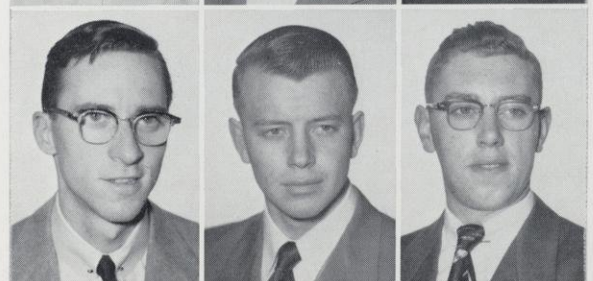
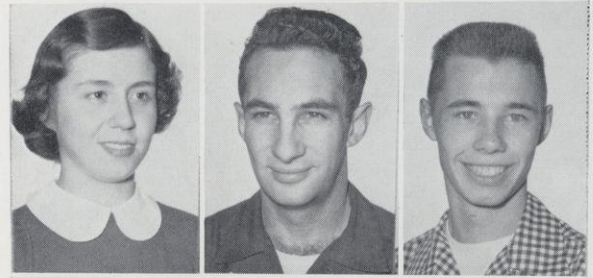
**ROBERT HUBERT** - - - - Tomah  
Agriculture

**RONNIE JENSEN** - - - - Amery  
History

**SHIRLEY JENSON** - - - - River Falls  
Rural

**DALE JOHNSON** - - - - River Falls  
Unclassified

**DONALD KNUTSON** - - - - Fall Creek  
Agriculture





# SOPHOMORES



**BETTY KOSTKA** - - - - - Ladysmith  
Rural

**BEVERLY KROEZE** - - - - - Beldenville  
Unclassified

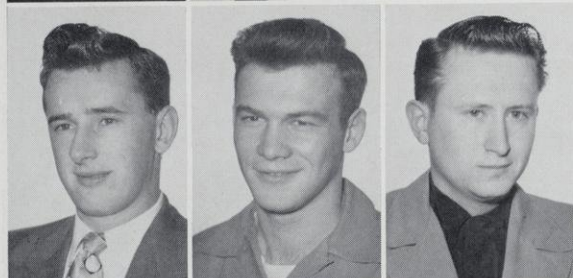
**GERALD KUSILEK** - - - - - River Falls  
Unclassified



**NOLA MADSON** - - - - - Spring Valley  
Rural

**EDWARD MAHLUM** - - - - - Mondovi  
Agriculture

**SALLY MALONE** - - - - - Prescott  
Music



**STANLEY MARES** - - - - - Chetek  
Agriculture

**DONALD MARTHALER** - - - - - Medford  
Unclassified

**JERRY MARTIN** - - - - - Plum City  
Unclassified



**LA VERN MAYER** - - - - - Humbird  
Agriculture

**DE WAYNE MEYER** - - - - - River Falls  
Agriculture

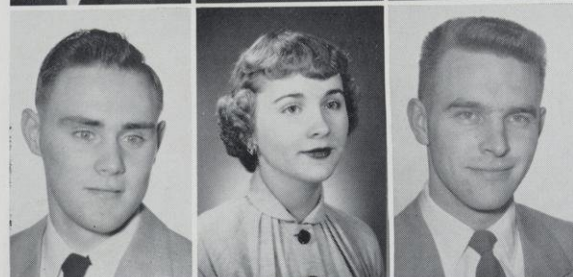
**PATRICIA MACHAELIS** - - - - - Iola  
Elementary



**MYRON MOEN** - - - - - Hammond  
English

**BLAKE MURRAY** - - - - - Stillwater, Minn.  
Elementary

**CLEO NELSON** - - - - - Plum City  
Unclassified



**MELVEN NELSON** - - - - - Barronett  
Agriculture

**ELSIE NORDBY** - - - - - Prairie Farm  
Rural

**DAVID OHRT** - - - - - Hudson  
Unclassified



# SOPHOMORES

**HOWARD OLSEN** - - - - - Woodville  
Agriculture

**WILLARD OLSON** - - - - - Nye  
Unclassified

**BETTY JUNE OESTREICH** - - - Plum City  
Unclassified

**DAVID POULTON** - - - - - Neenah  
Agriculture

**DONNA PROUE** - - - - - Arkansaw  
Elementary

**BEVERLY RASMUSSEN** - - - - - Amery  
Elementary

**DEAN ROE** - - - - - Whitewater  
Social Science

**COLLEEN RYAN** - - - - - Hudson  
Elementary

**RALPH SCHMIDT** - - - - - Chilton  
Agriculture

**GAIL SCHMIDT** - - - - - Ladysmith  
Unclassified

**WILLIAM SCHOENWETTER** - - - Emerald  
Unclassified

**ROBERT SPAETE** - - - - - Rice Lake  
Science

**SIGVARD STENE** - - - - - Baldwin  
Unclassified

**PATRICIA TURNER** - - - - - Hammond  
English

**JANICE WATKINS** - - - Maiden Rock  
Rural

**PEGGY WEISS** - - - - - Mondovi  
English

**WILLIAM WERBECKES** - - - Sheboygan  
Mathematics

**AUDREY WINDAL** - - - - - Centuria  
English





# SOPHOMORES



**MAE WISKERCHEN** - - - - - Pepin  
English

**MARCENE WIEBUSCH** - - Red Wing, Minn.  
Elementary

# FRESHMEN

**ROBERT ACCOLA** - - - - Mondovi  
Agriculture

**DUDLEY ANDERSON** - - - - Fremont  
Agriculture

**DONALD BARNES** - - - - New Auburn  
History

**HEATHER BERGGREN** - - - - Lola  
Elementary

**KENNETH BERQUIST** - - - - Amery  
Unclassified

**DONNA BERQUIST** - - - Stillwater, Minn.  
Elementary

**GERALD BORNER** - - - - Prescott  
Unclassified

**BARBARA BRISKI** - - - - Ellsworth  
Elementary

**GERALD BRYNILDSON** - - Black River Falls  
Unclassified

**BRADLEY BUTCHER** - - - - Amery  
Unclassified

**ROBERT BUTTERFIELD** - - - New Auburn  
Agriculture

**THOMAS CALVERT** - - - - Benton  
Agriculture

**CLAUDETTE CAMPBELL** - - - Ellsworth  
Rural

**FREDERIC BEEDEE** - - - - Osseo  
Unclassified

**MARILYN CARLSON** - - - - Amery  
Elementary

**CARL CHRISTENSEN** - - - Marshfield  
Agriculture

**CHARLES CHRISTENSEN** - - - Baldwin  
Agriculture

**EUGENE CLEMENS** - - - Friendship  
Unclassified





# FRESHMEN



**JOHN CLEMENS** - - - Chippewa Falls  
English  
**ALTA MAE CROSBY** - - - Glenwood City  
Science  
**LUCILLE DAHM** - - - - River Falls  
Music



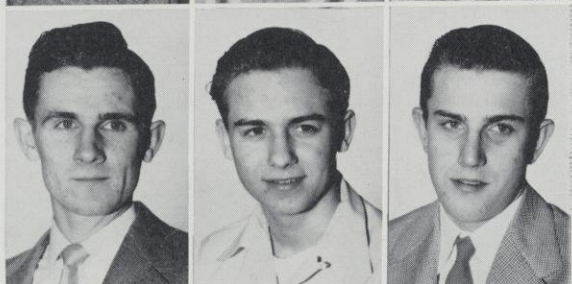
**ROBERT DAY** - - - - Hudson  
Agriculture  
**BETTY DE GIDIO** - - - Cumberland  
Unclassified  
**CAROL DEISS** - - - - Ellsworth  
English



**DONALD DOBRZYNSKI** - - - - Thorp  
Unclassified  
**BEVERLY DOMAIKA** - - - Rhinelander  
Pre-Professional  
**SHIRLEY ENGLEMAN** - - - Woodville  
English



**MARY ANN ENGEL** - - - - River Falls  
Elementary  
**BETTY ERICKSON** - - - Maiden Rock  
Elementary  
**DAVID EVENSON** - - - River Falls  
Unclassified



**FRANK EWIG** - - - - Sheboygan  
Science  
**NOEL FLAKOFSKE** - - - Ellsworth  
History  
**NORMAN FESING** - - - Plymouth  
Unclassified



**JOANNE FICK** - - - - Wilton  
Elementary  
**HOWARD FLEN** - - - Red Wing, Minn.  
Social Science



# FRESHMEN

**PATRICIA FLEMING** - - - Hudson  
Pre-Professional

**AL FORSYTHE** - - - River Falls  
English

**LAWRENCE GANNON** - - Chippewa Falls  
Agriculture

**LAURA GARDNER** - - - Fall River  
Music

**FRANCIS GILSON** - - - Casco  
Agriculture

**HAROLD GRANGER** - - Stillwater, Minn.  
Agriculture

**DIXIE GRIMM** - - - River Falls  
Unclassified

**RICHARD GUELDER** - - - Spring Valley  
Mathematics

**ROBERT HAGEMANN** - - - Arpin  
Agriculture

**HERBERT HAHN** - - - Humbird  
Unclassified

**SALLY HALLENBERGER** - - - Hudson  
Pre-Professional

**ARDELLE HANSEN** - - - Luck  
Rural

**LARRY HANSON** - - - Rice Lake  
Science

**ROGER HANSON** - - - New Richmond  
Agriculture

**JOHN HARTWIG** - - - Medford  
Agriculture

**LARRY HENNEMAN** - - - River Falls  
Unclassified

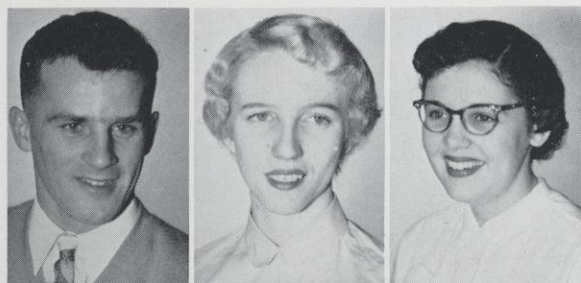
**DAVID HERUM** - - - River Falls  
Mathematics

**JOYCE HISCHKE** - - - Prairie Farm  
Unclassified





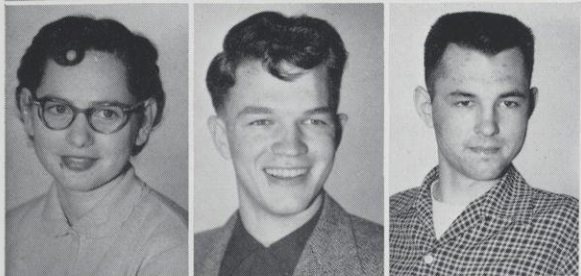
# FRESHMEN



**RICHARD HOFFMAN** - - - - - Arpin  
Unclassified  
**ROSALIE HOLDEN** - - - - - Spring Valley  
Rural  
**CATHERINE HOOLEY** - - - - - Hudson  
Unclassified



**WINNEFRED HOP** - - - - - Hammond  
Unclassified  
**EDSIL HUDSON** - - - - - River Falls  
Unclassified  
**ROBERT JACOBSON** - - - - - Alma Center  
Agriculture



**LORRAINE JENSEN** - - - - - Friendship  
Rural  
**CHARLES JOHNSON** - - - - - Amery  
Unclassified  
**DONALD JOHNSON** - - - - - Kingsdale, Minn.  
Pre-Professional



**SHIRLEY JOHNSON** - - - - - Stockholm  
Elementary  
**RUTH JOLIS** - - - - - Boyceville  
Elementary  
**JULIA KAMINSKI** - - - - - Stanley  
English



**FRANKLYN KELLEY** - - - - - Red Wing, Minn.  
Physics  
**ARDYS KEMLING** - - - - - Cylon  
Rural  
**ALLAN KIND** - - - - - River Falls  
Unclassified



**MARCUS KNUF** - - - - - Unity  
Agriculture  
**HOWARD KOHNERT** - - - - - Black River Falls  
Unclassified  
**WILLIAM KRAFT** - - - - - Summit Lake  
Agriculture



# FRESHMEN

**KENNETH LARSON** - - - - Hudson  
History

**STANLEY LARSON** - - - - Eleva  
History

**DONALD LAUE** - - - - River Falls  
Unclassified

**STEVEN LEADHOLM** - - - - Amery  
Unclassified

**PEARL LIEN** - - - - Beldenville  
Unclassified

**BARBARA LOVASS** - - - - Osceola  
Elementary

**KENNETH LUNDEEN** - - - - Frederic  
Unclassified

**LORETTA LYNUM** - - - - Woodville  
Unclassified

**MARLYS MEENTS** - - - - River Falls  
Unclassified

**BOB MEIER** - - - - Fond du Lac  
Agriculture

**CHARLES MERTA** - - - - River Falls  
Unclassified

**NORBERT MEYER** - - - - River Falls  
Unclassified

**WALDEMAR MOLINE** - - - - Frederic  
Agriculture

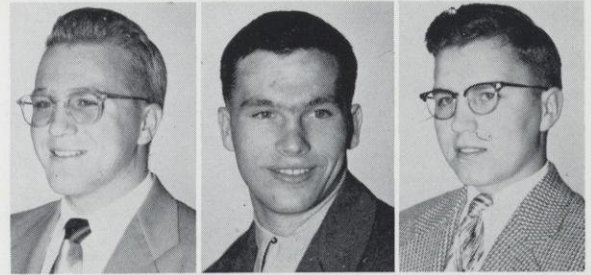
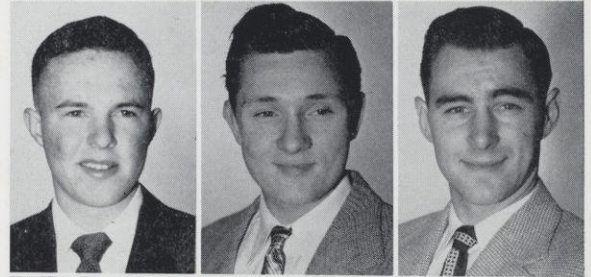
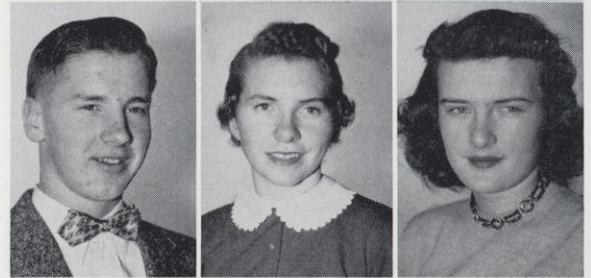
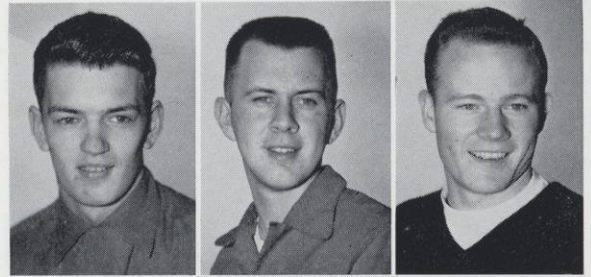
**MARVIN MONICKEN** - - - - Woodville  
Agriculture

**ELAINE MORTSON** - - - - Webster  
Unclassified

**ROBERT MOUNTFORD** - - - - Poynette  
Agriculture

**GERALD MURPHY** - - - - River Falls  
Unclassified

**DON NEVELA** - - - - Thorp  
Science

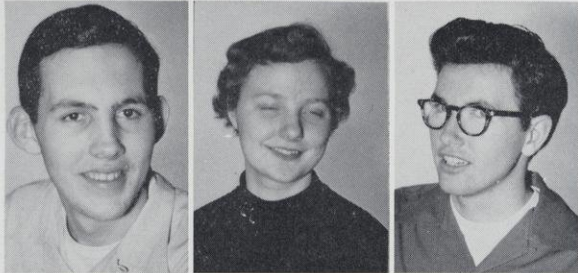




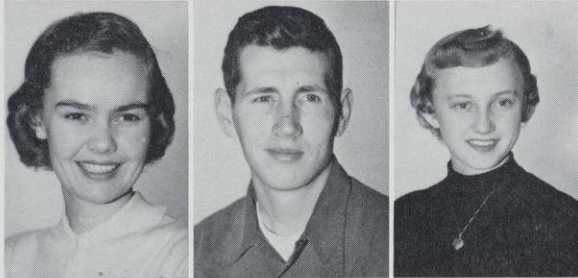
# FRESHMEN



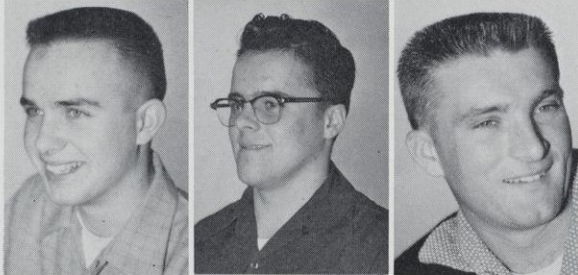
**ROGER NICHOLS** - - - - Deer Park  
Agriculture  
**CARLA NORDEEN** - - - - Centuria  
English  
**DONALD OLKER** - - - - Hayward  
Agriculture



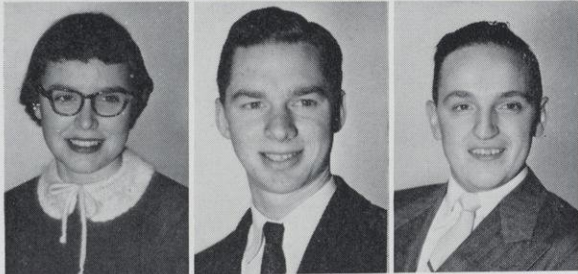
**MANLEY OLSON** - - - - Maiden Rock  
Mathematics  
**MARLYS OLSON** - - - - Baldwin  
Music  
**MARVIN OLSON** - - - - Menomonie  
Unclassified



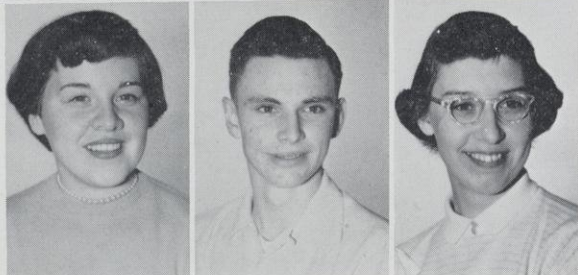
**MARY OLSON** - - - - Spring Valley  
English  
**MYRON OLSON** - - - - Spring Valley  
English  
**SHIRLEY OLSON** - - - - Spring Valley  
Unclassified



**WAYNE OLSEN** - - - - Amery  
Unclassified  
**JOSEPH PAFFEL** - - - - Minneapolis, Minn.  
Music  
**RICHARD PASSON** - - - - Milwaukee  
Agriculture



**HELEN PECHACEK** - - - - Hastings, Minn.  
Elementary  
**RICHARD PEDERSON** - - - - Cumberland  
Pre-Professional  
**ROBERT PEOT** - - - - Sturgeon Bay  
Unclassified



**ELVERA PETERSON** - - - - Amery  
Unclassified  
**WAYNE PETERSON** - - - - Glenwood City  
Agriculture  
**ALEDA PETH** - - - - Wilton  
Elementary



# FRESHMEN

**JOSEPH PIETREK** - - - - - Arcadia  
Agriculture

**ROBERT PITTS** - - - - - River Falls  
Unclassified

**WILLIAM PRODOEHL** - - - - - Antigo  
Unclassified

**CELIA QUIROZ** - - - - - Mexico  
English

**MELVIN RAND** - - - - - Webster  
Agriculture

**WILLARD RIDLEY** - - - - - Hammond  
Unclassified

**ALBERT RIEBE** - - - - - Centuria  
Unclassified

**KARL RIHN** - - - - - Chippewa Falls  
Social Science

**BARBARA ROHL** - - - - - Roberts  
Elementary

**DENNIS RUHNKE** - - - - - Hastings, Minn.  
Agriculture

**BETTY SCHMIDT** - - - - - Hudson  
Unclassified

**MARY SCHMITZ** - - - - - Clayton  
Mathematics

**RODNEY SCHUBERT** - - - - - Brandon  
Agriculture

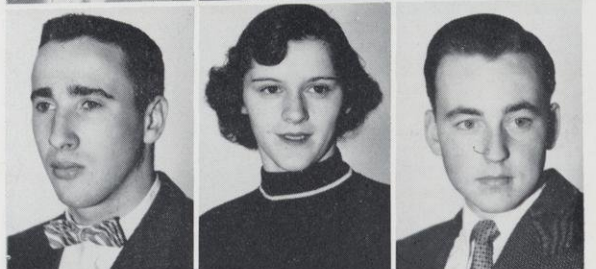
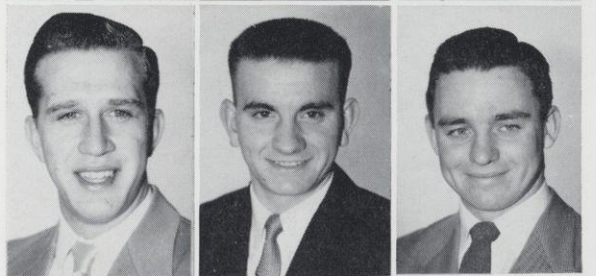
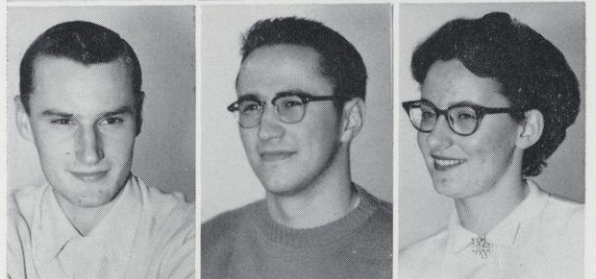
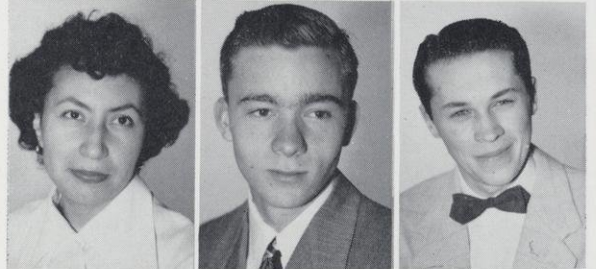
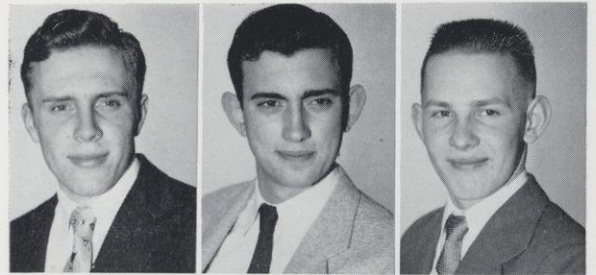
**PAUL SCHUMANN** - - - - - Antigo  
Unclassified

**RICHARD SCHWENK** - - - - - Hudson  
Agriculture

**LE ROY SEGERSTROM** - - - - - Mondovi  
Agriculture

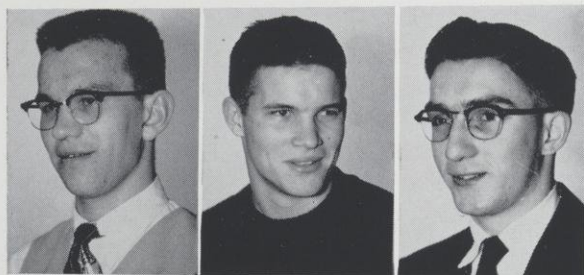
**ARDIS SHANNON** - - - - - Menomonie  
Elementary

**KENNETH SHEARROW** - - - - - Rice Lake  
Agriculture

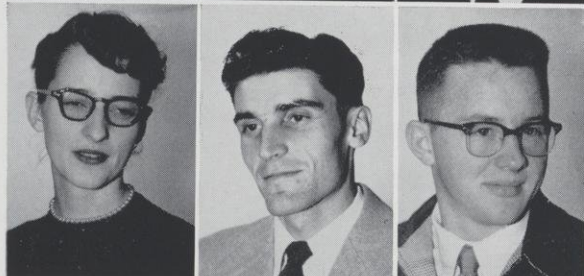




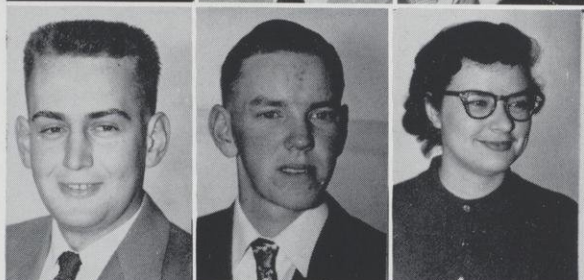
# FRESHMEN



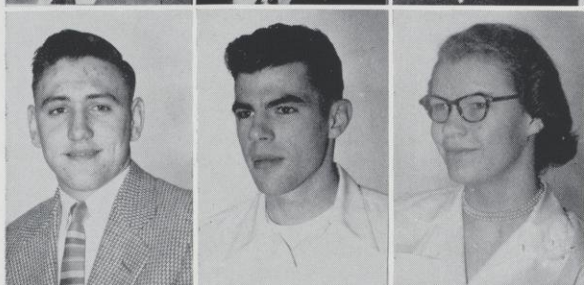
**ALBERT SIREK** - - - - Rice Lake  
Agriculture  
**RAY SMITH** - - - - New Auburn  
Agriculture  
**RICHARD SMITH** - - - - Roberts  
Agriculture



**ELAINE SOLUM** - - - - Woodville  
Unclassified  
**JAMES SPARKS** - - - - Wausau  
Agriculture  
**LAWRENCE STASSEL** - - - - Sheldon  
Mathematics



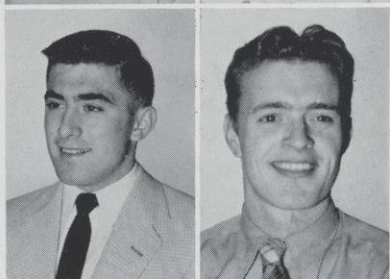
**LLOYD STONE** - - - - Webster  
Agriculture  
**NORMON STUBER** - - - - Strom  
Agriculture  
**LE VAUN SWARTZ** - - - - Cumberland  
Elementary



**RICHARD TECLAW** - - - - Thorp  
Unclassified  
**KENNETH THOMAS** - - - - Osceola  
Unclassified  
**GEORGIA THOMPSON** - - - St. Croix Falls  
Elementary



**LA VONNE THOMPSON** - - - - Luck  
Rural  
**JOAN TRAYNER** - - - - Spring Valley  
Elementary  
**BERNARD VAN CANNEYT** - - - Webster  
Agriculture



**THEODORE VER HAAGH** - - - - Antigo  
Unclassified  
**JAMES WATURD** - - - - Clayton  
Agriculture

# FRESHMEN

**PHYLLIS WAXON** - - - - River Falls  
Elementary

**NANCY ANN WEBER** - - - - Birchwood  
Elementary

**PATRICIA WILLIAMS** - - - - River Falls  
Unclassified

**RICHARD WIATER** - - - - - Thorp  
Unclassified

**GEORGE WOLF** - - - - - Prescott  
Unclassified

**DARLENE ZIELKIE** - - - - Bay City  
English

**DAVID ZERAHN** - - - - - Baldwin  
Music









**ATHLETICS**





Coach Phil Belfiori



Coach Bill Solley

## FOOTBALL 1953

The 1953-54 grid season was very successful for the Falcons from River Falls State College, as they lost only two games and wound up in third place in the final conference standings. One defeat was the season opener to a tough Mankato crew in a ragged game. The other loss was to powerful La Crosse who went on to share the crown with an undefeated eleven from Platteville.

Coaches Belfiori and Solley molded a fine team out of many new boys, and the prospect of improving this year's record in the next campaign are very bright. The headliner frosh was the scatback, John Steffen. This boy powered and raced his way to eight touchdowns this year, to lead the Falcon scoring attack. He was followed by the block busting fullback, Clair Murphy, who crossed into the promised land four times, and booted ten extra points with his educated toe for a total of 34 points.

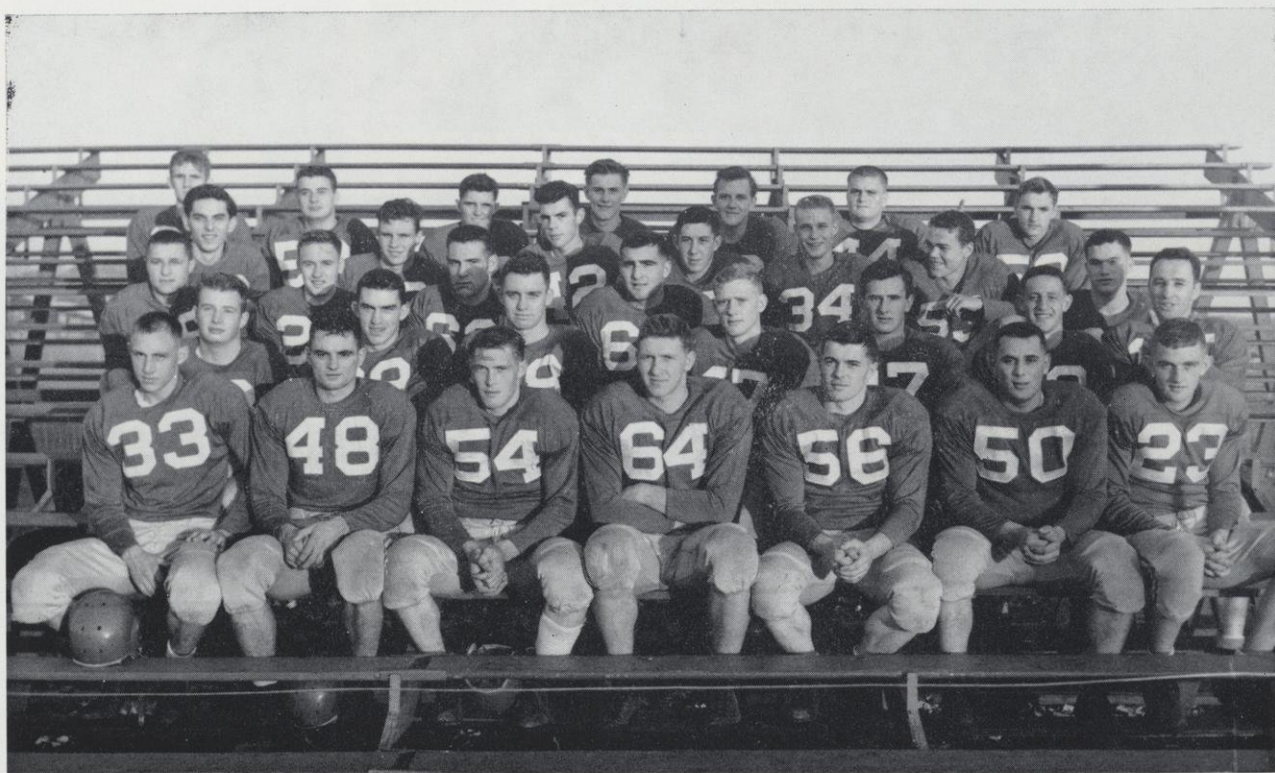
These two, along with many other stars, will lead a talent loaded team back to the gridiron next fall to try to bring the league title back to the campus of RFSC.

## INDIVIDUAL GAME RESULTS FOR 1953

River Falls ....	0	St. Cloud .....	14
River Falls ....	22 (Dad's Day)	Stout .....	0
River Falls ....	14	Eau Claire ....	0
River Falls ....	21 (Homecoming)	Superior .....	0
River Falls ....	45	Winona .....	13
River Falls ....	6	La Crosse .....	34
River Falls ....	20	Mankato .....	6

## FINAL 1953 FOOTBALL STANDINGS

TEAM	WON	LOST	PTS.	OPP.
La Crosse .....	5	0	180	6
Platteville .....	4	0	57	14
River Falls .....	3	1	63	34
Stevens Point .....	4	2	103	73
Eau Claire .....	4	3	117	81
Milwaukee .....	2	3	45	59
Whitewater .....	2	3	47	84
Superior .....	1	3	19	78
Oshkosh .....	0	5	35	130
Stout .....	0	5	26	133



**Front row**, left to right: Bob Kraft, Bill Lindemberger, Gene Luebker, John Oedsma, Dick Alexander, Bob Margotte, Bob Day. **Second row**: Bob Krueger, Troy Rudesill, Dick Schwenk, Herb Voss, Stan Mares, Dick Wood, Clair Murphy. **Third row**: Don Helberg, Jerry Route, Bob Haas, "Bucky" DiSalvo, Jerry Murphy. **Fourth row**: Bill Werbeckes, Bob Staff, Ken Thomas, John Steffen, Bob Spaete, Larry Gannon. **Fifth row**: Frank Ewig, Roger Hanson, Rusty Titel, Jack Wade, Ronald Wonrow, Reg Hansen, Jim Horn.

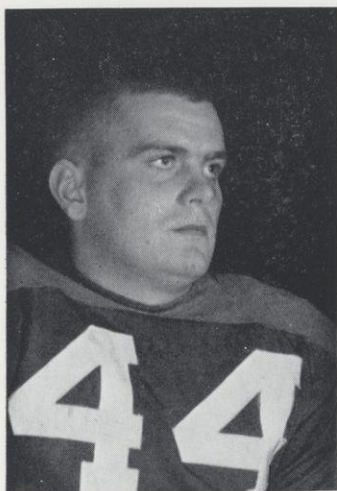




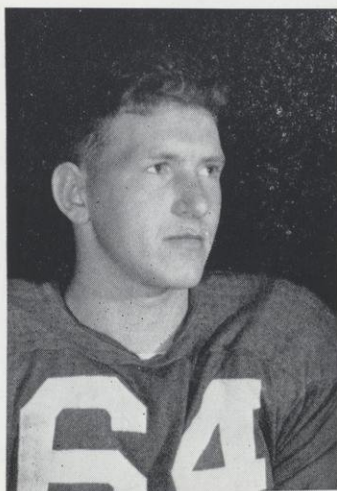
Move your arm buddy, I'm in a hurry



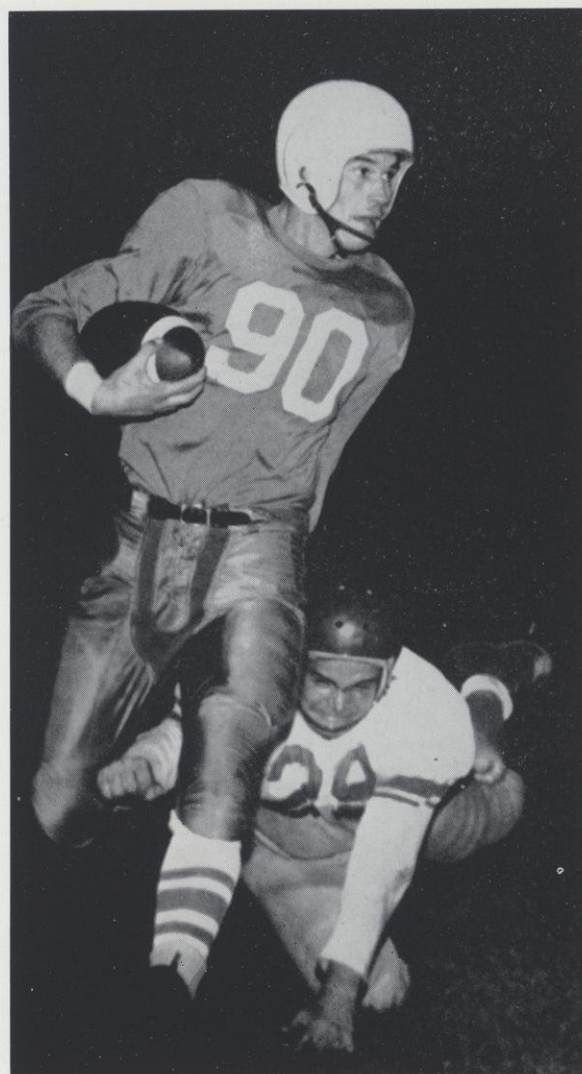
Ouch — get off my back



REG HANSEN



JOHN OEDSMA

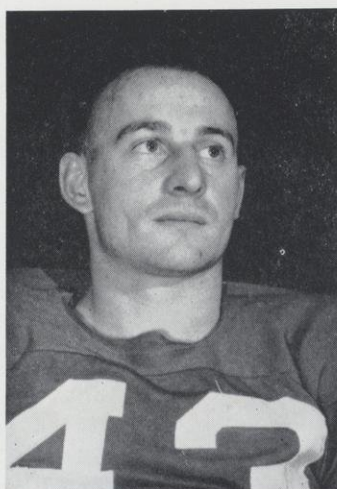


Better luck next time pal . . .

LARRY GANNON



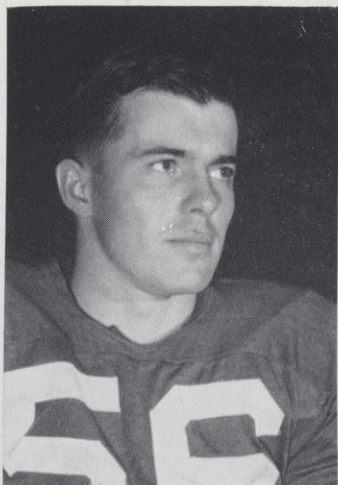
JOE BURGOWNE



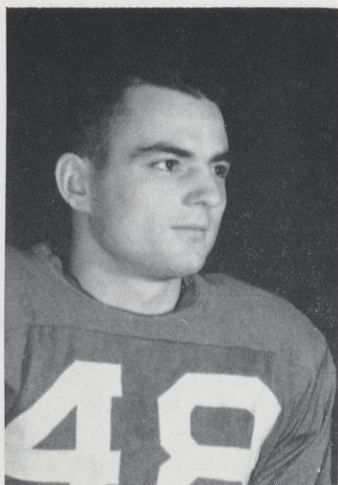
BOB MARGOTTO







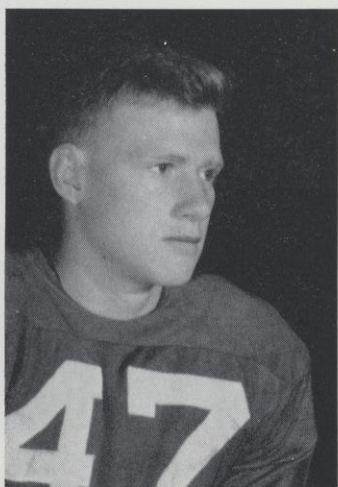
DICK ALEXANDER



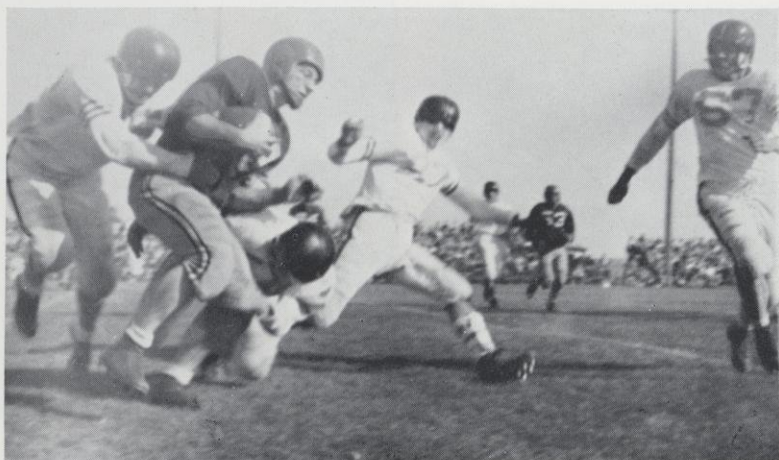
BILL LINDENBERGER



JOHN STEFFEN



HERB VOSS



Going nowhere in a big hurry

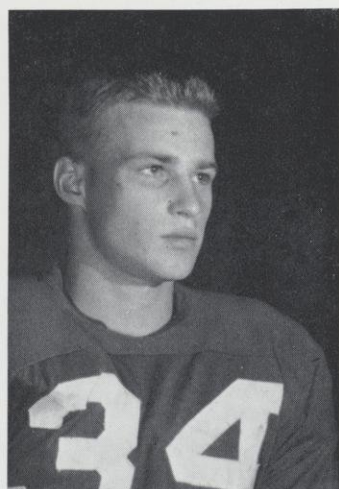
CLAIR MURPHY



DON HELBERG



BOB SPAETE





After a thirty yard gain — a stone wall!



Bad odds — two to one

Where'd he go to?

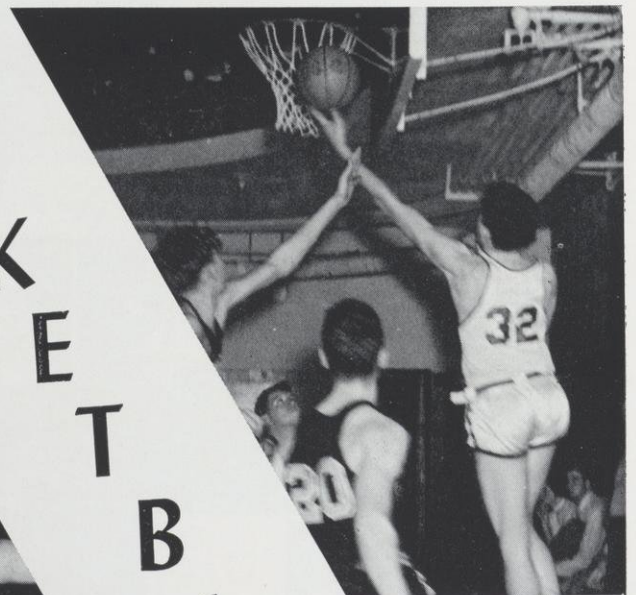


Fifty-one



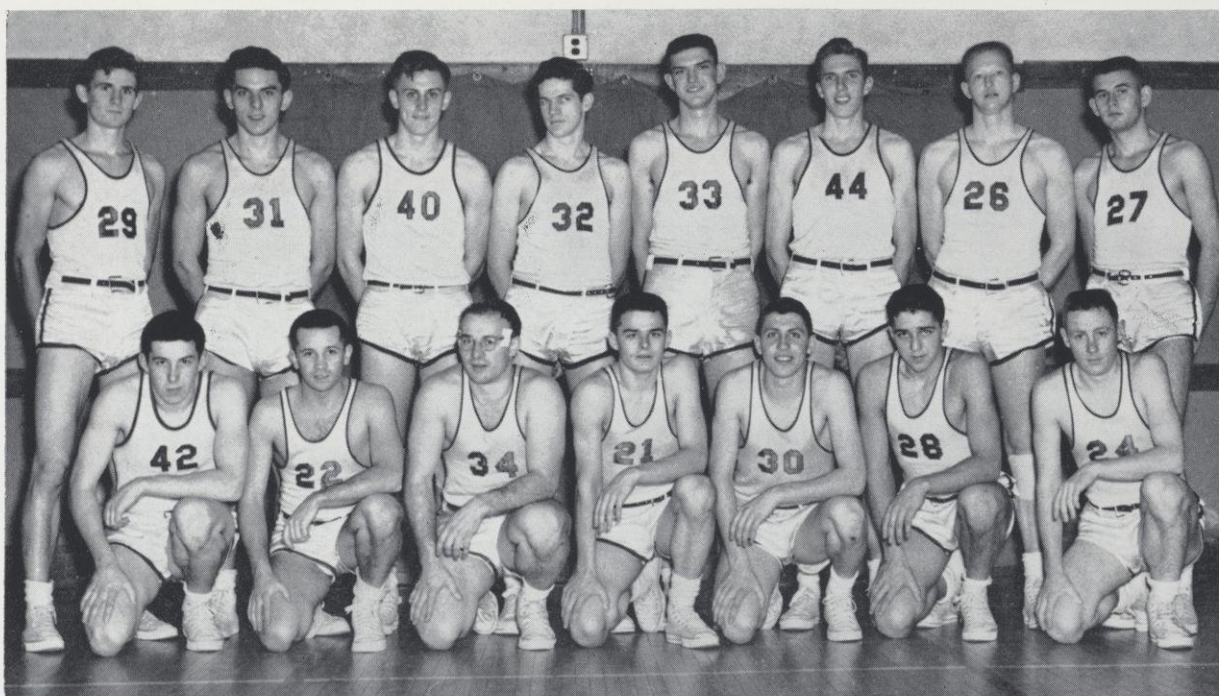


# B A S K E T B A L L



'54





**Kneeling:** John Steffen, Jim Belisle, Joe Burgoyne, Dave Fisher, Darrell Youngberg, Dick Fisher, "Cabby" Wild.  
**Standing:** Frank Ewig, Bill Werbeckes, Jack Wade, Dan Linehan, Don Fick, Dave Herum, "Zeke" Wells, and Bob Williams.



**Springs on his feet?**

**Jump, man, jump!**







Hold that ballet pose.

# 1953-54 BASKETBALL RESULTS

River Falls .....	87	St. John's .....	77
River Falls .....	105	Winona .....	80
River Falls .....	81	Valley City .....	64
River Falls .....	100	Stout .....	58
River Falls .....	68	Eau Claire .....	94
River Falls .....	73	Winona .....	81
River Falls .....	76	Superior .....	70
River Falls .....	78	Milwaukee .....	95
River Falls .....	65	Whitewater .....	62
River Falls .....	78	La Crosse .....	91
River Falls .....	83	Bethel .....	66
River Falls .....	69	Augsburg .....	71
River Falls .....	84	Stout .....	75
River Falls .....	93	Eau Claire .....	80
River Falls .....	77	Platteville .....	90
River Falls .....	83	Oshkosh .....	86
River Falls .....	71	Superior .....	88
River Falls .....	100	Bethel .....	58
River Falls .....	89	La Crosse .....	75

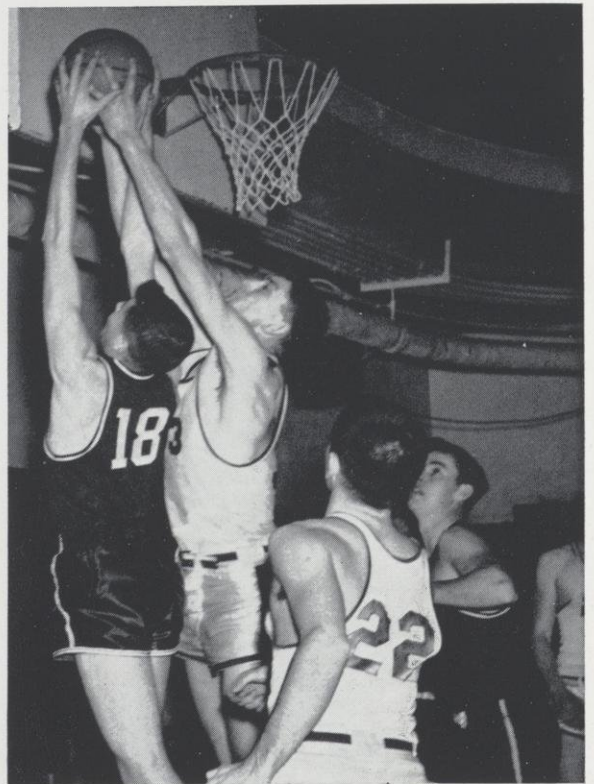
Season's record: 11 wins, 8 losses

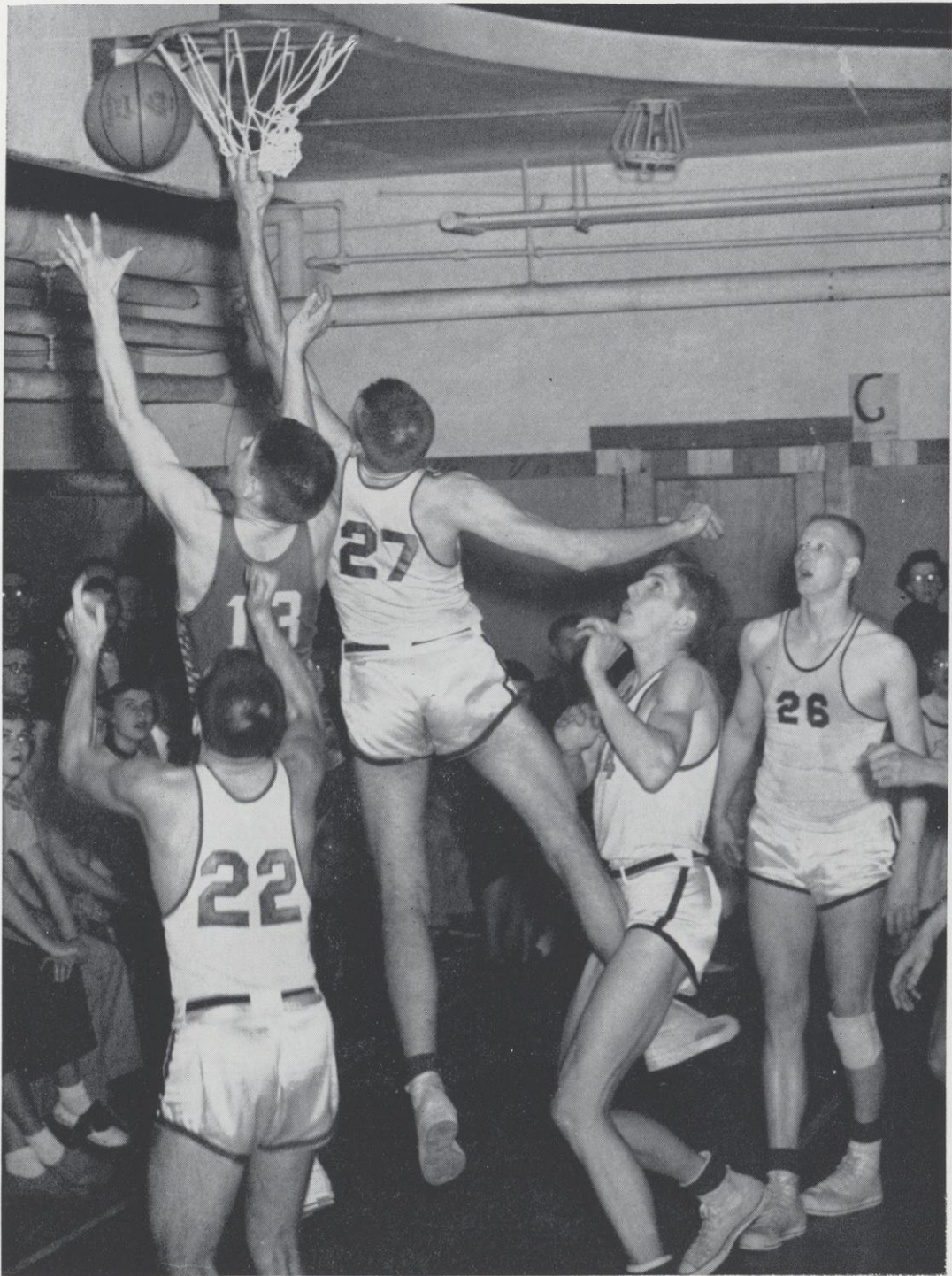




# FINAL 1953-54 BASKETBALL STANDINGS

TEAM	WON	LOST	PTS.	OPP.
Platteville .....	11	1	1073	879
Eau Claire .....	9	3	993	873
Milwaukee .....	9	3	953	875
River Falls .....	6	6	964	964
Oshkosh .....	5	7	946	978
La Crosse .....	5	7	897	935
Stevens Point .....	5	7	800	881
Superior .....	5	7	827	821
Whitewater .....	3	9	762	865
Stout .....	2	10	871	1015





Things are rough all over.



# CHEERLEADERS



Janis Olufson, Louise Thompson, Natalie Vanderhoof, Dave Zerahn,  
Audrey Windal, Beulah Falkofske, Lavonne Thompson.



**ORGANIZATIONS**





**Front row**, left to right: Marge Deans, Beverly Rasmussen, Allen Kind, William Verkuilen, Rita Ruemmele, Robert Strain, James Belisle, Robert Gueldner. **Back row**: Julianne Ryan, Jenny Sue Garnett.

## Student Senate

MARGERY DEANS	-	-	-	-	-	-	-	-	President
ROBERT GUELDNER	-	-	-	-	-	-	-	-	Vice President
JULIANNE RYAN	-	-	-	-	-	-	-	-	Secretary
JENNY SUE GARNETT	-	-	-	-	-	-	-	-	Treasurer

The student governing body at River Falls State College is The Student Senate, consisting of eleven members, seven of whom are nominated and elected in May by the entire student body. The other members are presidents of the four classes.

The Student Senate acts as a representative to present students' needs and desires. The aims of the Senate are to promote the best interests of the college and to develop a spirit of cooperation and good fellowship throughout the school.



# L. S. A.

ERNA MATSON	- - - - -	President
PHYLLIS PABST	- - - - -	Vice President
JIM ANDERSON	- - - - -	Secretary
ROGER A. HOFF	- - - - -	Treasurer
PHILIP ANDERSON, REV. A. JOHNSON	- - - - -	Advisors

The Lutheran Student Association meets each Sunday night to provide food and fellowship to the Lutheran students on campus. The organization sponsors various church activities such as Lenten breakfasts, Thanksgiving and Christmas services.





# Sigma Chi Sigma

ETHEL NEWBURG	- - - - -	President
ELAINE MEYER	- - - - -	Vice President
DOROTHY INGLIS	- - - - -	Secretary
JOY SEYFORTH	- - - - -	Treasurer
MRS. PHILIP BELFIORI, MRS. E. H. KLEINPELL		
MISS VERA MOSS	- - - - -	Advisors

Sigma Chi Sigma is an honorary sorority for four-year women students promoting service, culture, and sociability among its members. Members are chosen on the basis of scholastic achievement plus high personal qualifications. Of prime importance among Sigma's annual activities is the awarding of the Sigma Chi Sigma Scholarship to a worthy freshman girl who is a four-year student.



**First row:** Ryan, McCollow, Caturia. **Second row:** Ruhnke, Murphy, Miller, Peterson, Lindemann, Windal, Seyforth, Inglis, Doolittle, Pabst, Wiff, Thode, Ruemmele, Deans, Anderson, Ryan.





Griggs (advisor), Cerello, Shannon, Ridley, Standish.

## Student Voice

JAMES CERELLO	-	-	-	-	-	-	-	-	-	Editors
GAYLE MOEN	-	-	-	-	-	-	-	-	-	City Editor
SUE CHINNOCK	-	-	-	-	-	-	-	-	-	News Editor
RONNIE JENSEN	-	-	-	-	-	-	-	-	-	Sports Editor
JANE STANDISH	-	-	-	-	-	-	-	-	-	Business Manager
PAT TOBIN	-	-	-	-	-	-	-	-	-	Circulation Manager
JACK TOOLEY	-	-	-	-	-	-	-	-	-	Photographer
MR. GRIGGS	-	-	-	-	-	-	-	-	-	Advisor

The Student Voice is the official newspaper of River Falls State College. The Voice published four special issues this year: Homecoming, Winter Carnival, April Fool, and High School editions.

A semi-monthly publication, the paper is a member of the Associated Collegiate Press.





**First row:** Watkins, Madson, Mrs. Cooklock (advisor), Bents, Dierks, Rasmussen, Garnett.  
**Second row:** Mr. Naesth (advisor), Barboad, Carlson, Peterson, Gydeloo, Jenson, Marske, Mr. Thompson (advisor).

## YM - YWCA

<b>SHIRLEY STEHR</b>	-	-	-	-	-	-	-	-	-	-	-	-	-	-	-	-	-	President
<b>MIKE HAUGSBY</b>	-	-	-	-	-	-	-	-	-	-	-	-	-	-	-	-	-	Vice President
<b>DARLENE RUHNKE</b>	-	-	-	-	-	-	-	-	-	-	-	-	-	-	-	-	-	Secretary
<b>NOLA MADSON</b>	-	-	-	-	-	-	-	-	-	-	-	-	-	-	-	-	-	Treasurer
<b>MR. NAESETH, MRS. COOKLOCK</b>	-	-	-	-	-	-	-	-	-	-	-	-	-	-	-	-	-	Advisors

The YMCA and YWCA were combined this year to afford more cooperation on the various activities of the organizations. The activities include social and devotional opportunities for students of all religious denominations.

The YM-YW co-sponsored with the churches, this year, Thanksgiving, Ash Wednesday, and Easter services for the students.





**First row:** Ryan, Traynor, Pechacek, Kaminski, Schoenwetter, Spindler, Kaczmarzyk, Saxton, Peichel, Meir, Neises. **Second row:** Domaika, J. Ryan, Alden, Meirhaeghe, Peot, Margotto, Verkuilen. **Third row:** Murphy (pres.), Rohl, Shannon, Reichert, Vanderhoof, Schmitz. "Will those standing in the back please come up to the front pews?"

## Newman Club

The Newman Club, a Catholic student organization, meets twice a month to provide spiritual guidance and recreation for its members. First Friday communion breakfasts are a monthly project of the club.





**First row:** Smith, Thompson, Benoy, Jenson, Lee, Kammerud, Dickson, Ruhnke, Benson Rasmussen, Mr. Harris (advisor).

## Theology Club

LE ROY LEE	-	-	-	-	-	-	-	-	-	President
MARSHALL KAMMERUD	-	-	-	-	-	-	-	-	-	Vice President
BEVERLY RASMUSSEN	-	-	-	-	-	-	-	-	-	Secretary-Treasurer
WILFRED C. HARRIS	-	-	-	-	-	-	-	-	-	Advisor

**The Theo Club consists of members going into full time Christian vocations. The purpose of the interdenominational organization is to study religious philosophies from an objective view enabling the members to better understand their own philosophy.**



# Women's Athletic Association

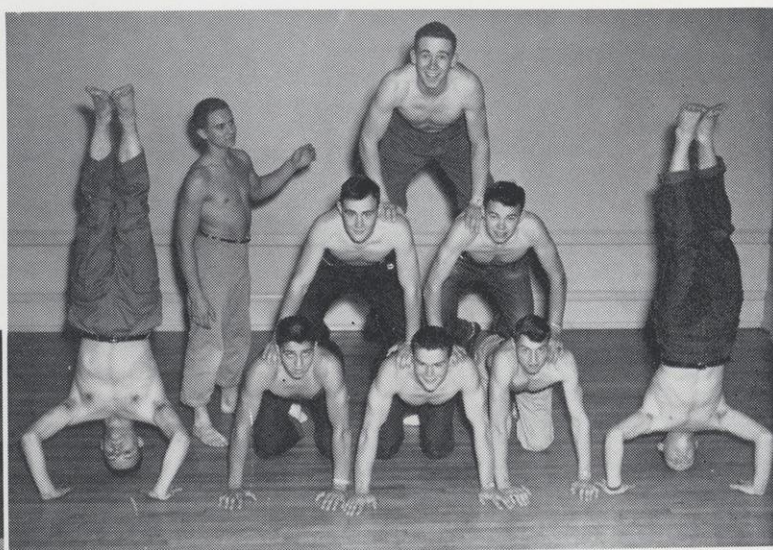
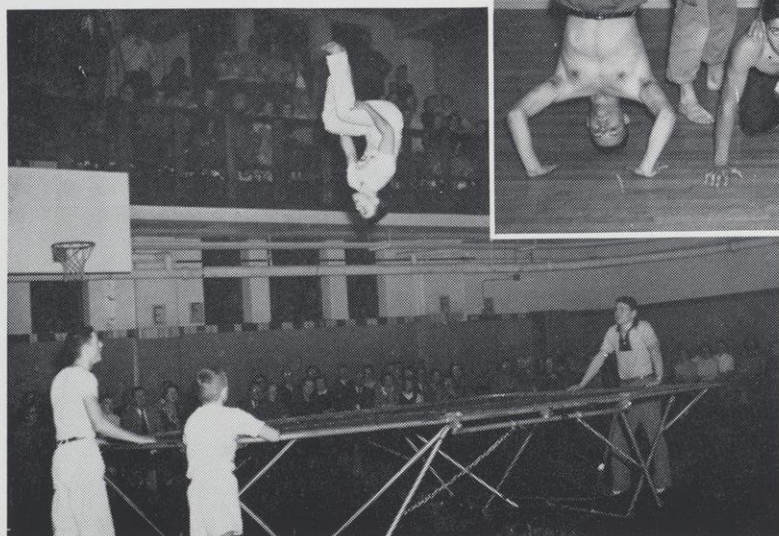
PEGGY WEISS	- - - - -	President
MAE WISKERSHEN	- - - - -	Vice President
SHIRLEY JOHNSON	- - - - -	Secretary-Treasurer
RAMONA THOMPSON	- - - - -	C.W.A. Representative
ADELINE LEVINS	- - - - -	Advisor

The Women's Athletic Association forms the nucleus which directs the intramural sports activities and carries on an active sports program throughout the year for women. WAA encourages individual sports. Members are given points for participation.



**First row**, left to right: Mary Murphy, Patricia Michaelis, Barbara Rohl, Mary Ann Schmitz, LeVaun Swartz, Sally Hallenberger, Mary Webb, Jean Caturia, Barbara Briski, Betty Erickson, Shirley Johnson, Peggy Weiss. **Second row**: Blake Murray, Doris Lindemann, Virginia Horsmann, Patricia Fleming, Heather Berggren, Aleda Peth.





DICK BUCK - - - - - President, Secretary, Treasurer

## Acrobats of RFSC

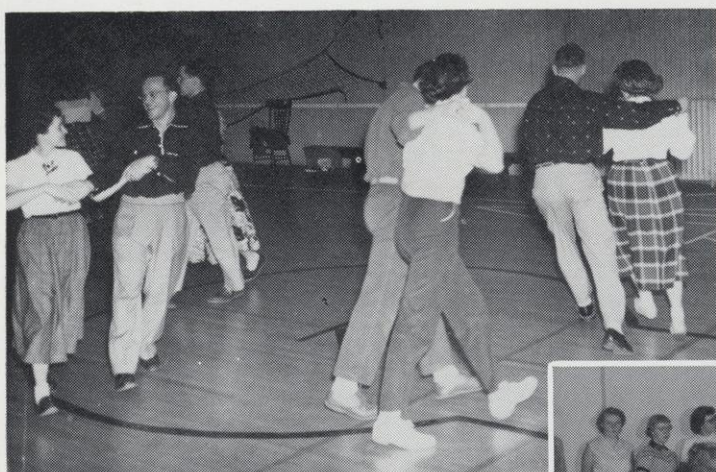
The Acrobats club of River Falls State College is the only physical culture club on campus. They meet in North Hall gymnasium for gymnastics and body building exercises.



# Hoedown Club

DICK BUCK - - - - - President  
BEVERLY RASMUSSEN - - - - - Vice President  
DICK SEEKAMP - - - - - Secretary-Treasurer  
SOLLEY - - - - - Advisor

The Hoedown club is composed of students interested in folk dancing.  
They meet regularly for dancing and refreshments.







**First row:** Halbert Belt, Darlene Ruhnke, Colleen Ryan, Willard Ridley, Harlan Siebrecht, Jerry Mott, Ronald Jensen. **Second row:** Wayne Peterson, Dale Wagner, Paul Felsheim, B. L. McCarthy, Dennis Ruhnke.

## Young Democrats

<b>WILLARD RIDLEY</b>	-	-	-	-	-	-	-	-	President
<b>HALBERT BELT</b>	-	-	-	-	-	-	-	-	Vice President
<b>DARLENE RUHNKE</b>	-	-	-	-	-	-	-	-	Secretary-Treasurer
<b>BEARNARD McCARTHY</b>	-	-	-	-	-	-	-	-	Advisor

**The organization of Young Democrats provides information to those interested in political affairs. It meets monthly to keep the members informed of Democratic activities in government.**



# Kappa Delta Pi

ALLEN NELSON	- - - - -	President
TONY SENDELBACH	- - - - -	Vice President
JULIANNE RYAN	- - - - -	Secretary
MARGE DEANS	- - - - -	Reporter-Historian
DR. W. D. WYMAN	- - - - -	Advisor

The Eta Lambda chapter of Kappa Delta Pi was organized on the River Falls campus in February of 1952. The organization is a national honorary scholastic fraternity open to juniors and seniors who are preparing for teaching and who rank scholastically in the upper quartile of the school.



Ryan, Fait, Gueldner, Newberg, Deans, Ruemmele, Nelson, Olson, Sendlebach.





Nelson, Helberg, Fait, Lindenberg, Polzin.

# FFA

## OFFICERS

### FALL

CONRAD OLSON	-	-	-	-	-	-	-	President
ROBERT GRANUM	-	-	-	-	-	-	-	Vice President
BILL LINDENBERGER	-	-	-	-	-	-	-	Secretary
DELMAR POLZIN	-	-	-	-	-	-	-	Treasurer

### WINTER

ANTON SENDELBACH	-	-	-	-	-	-	-	President
MARLYN SEEHAFFER	-	-	-	-	-	-	-	Vice President
ARCHIE BORNE	-	-	-	-	-	-	-	Secretary
LLOYD FRYE	-	-	-	-	-	-	-	Treasurer

### SPRING

DELMAR POLZIN	-	-	-	-	-	-	-	President
REUBEN PATRIKUS	-	-	-	-	-	-	-	Vice President

To train and develop advisors and leaders for high school FFA groups is the aim of the college chapter of the FFA. The River Falls chapter was organized in 1935 and since then has been one of the most active organizations on campus. The annual rural school fair is their big event of the year.



# Chemistry Club

CLELAND COOK	-	-	-	-	-	-	-	-	President
JACK SWANSON	-	-	-	-	-	-	-	-	Vice President
BILL PENCE	-	-	-	-	-	-	-	-	Secretary-Treasurer
MR. SEVERSON	-	-	-	-	-	-	-	-	Advisor

The Chemistry Club is an organization which gives students interested in chemistry an opportunity to discuss topics and problems to broaden their knowledge of chemistry and to keep abreast of the field. Membership is open to those students taking a major or minor in chemistry.



**First row:** Cook, Olson, Fick, Hoffman, Wells, Severson. **Second row:** Carew, Raether, Olson, Pence, Gueldner.





**First row:** Palewicz, Hoffman, Olson, Lansing. **Second row:** Mr. McLaughlin, Olson, Lundeen, Wallesverd, Kohnert. **Third row:** Olson, Stene, Howard, Fritz, Wallesverd, Shock. **Standing:** Jerry Mott.

## Math Club

JERRY MOTT	- - - - -	President
NORVILLE LANSING	- - - - -	Vice President
MARIAN WALLESVERD	- - - - -	Secretary-Treasurer
DR. J. J. McLAUGHLIN	- - - - -	Advisor

The Math Club is an organization which gives students interested in mathematics an opportunity to discuss topics and problems to broaden their knowledge of mathematics. Programs are conducted by the members of the club every two weeks. Membership is open to those students taking mathematics majors or minors.



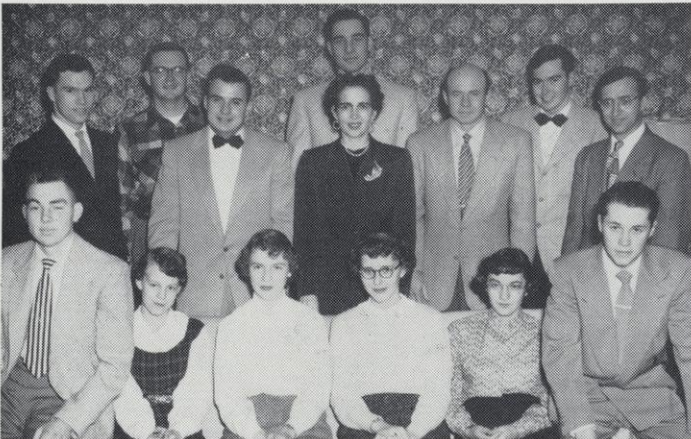
# Pi Kappa Delta

## PI KAPPA DELTA OFFICERS

DICK GRANUM	- - - - -	President
HALBERT BELT	- - - - -	Vice President
BILL SCHOENWETTER	- - - - -	Secretary-Treasurer
ANNETTE PETERSON	- - - - -	Reporter
MISS HAWKINS	- - - - -	Advisor

The River Falls chapter of Pi Kappa Delta, a national honorary fraternity, was organized in 1936. The organization sponsors the "B" invitational tournament at RFSC each year.

The Debate organization is open to all interested in participating in forensic activities.



PI KAPPA DELTA

## DEBATE





# Palette Club

DARLENE RUHNKE	- - - - -	President
SHIRLEY STEHR	- - - - -	Vice President
JEANNINE KUHN	- - - - -	Treasurer
MR. KOLLMAYER	- - - - -	Advisor

The Palette Club was organized as an aid to those interested in art's place in education. It also provides an opportunity, for those interested in art, to use the facilities of the art department outside of class.



Seyforth, Schaffer, Wiff, Narlock, Kollmeyer, Ruhnke, Stehr, Kuhn, Thompson.





# Foundation Committee

## MEMBERS

### STUDENTS

Vaughn Hoffman  
 Louise Thompson  
 Janis Olufson  
 Harlan Siebrecht  
 Gerald Borner  
 Gail Schmidt  
 Norville Lansing

### FACULTY

Ernst Jurgens  
 Nicholas Jadinak  
 Richard Delorit  
 Marion Hawkins  
 Thorvald Thoreson  
 Walter J. Engler  
 Harry H. Griggs

**The Foundation Committee, composed of RFSC faculty members and students, works to build up alumni goodwill, establish alumni chapters, and promote interest in the River Falls expansion program.**





**Standing:** Roe, Laue, Schmid, Berggren, Rev. Fritzmeier, Risse, Chinnock, Hahn, Nygard.  
**Sitting:** Dahm, Behn, Foster, Lansing, LaRue, Adrian, Benson, Ridley, Hop, Jensen, Williams, Garnett, Deans.

## United Student Fellowship

JANIS BENSON	- - - - -	President
JEAN ADRIAN, RALPH SCHMID	- - - - -	Vice Presidents
ANN NYGARD	- - - - -	Secretary
NORVILLE LANSING	- - - - -	Treasurer

**United Student Fellowship is an organization of the Evangelical and Reformed Congregational students at River Falls. The aim of the organization is to fulfill the social and spiritual needs of its members.**



# Student Veterans Association

CARL FINSTAD - - - - - President

ALLAN FRITZ - - - - - Vice President

DE WAYNE MEYER - - - - - Secretary-Treasurer

**An organization of World Wars I, II, and Korean veterans. The Vets' Club acts as an aid to rehabilitate and adjust veterans to school life. The club meets bi-monthly to discuss national and local issues concerning veterans.**





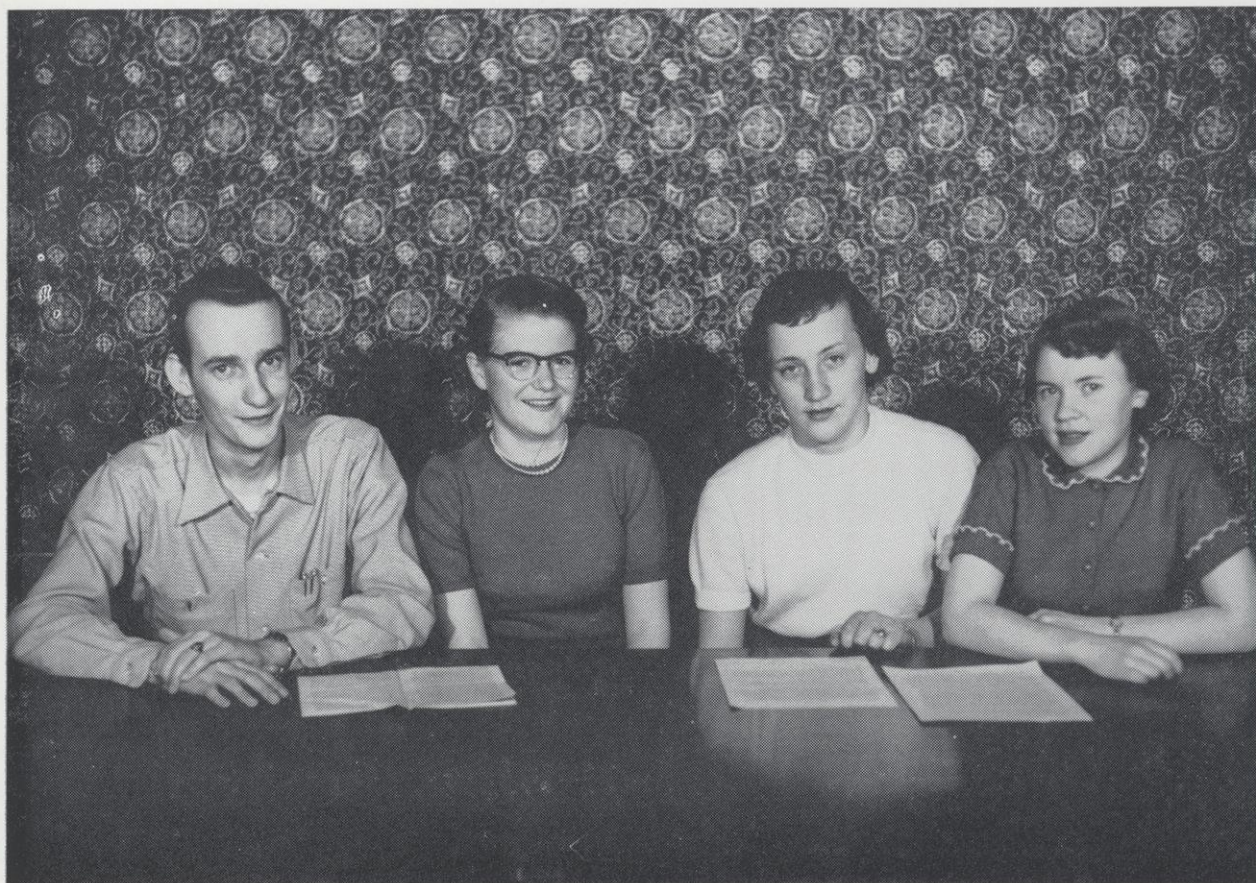
# Toastmasters Club

WILLIAM JENSON	- - - - -	President
WILLIAM LINDENBERGER	- - - - -	Vice President
RICHARD GRANUM	- - - - -	Secretary
MARVIN FAIT	- - - - -	Treasurer
CONNIE OLSON	- - - - -	Sergeant at Arms
ROBERT GRANUM	- - - - -	Parliamentarian
MR. POLK	- - - - -	Advisor

Toastmasters, one of the rapidly growing clubs on campus, was organized to give students an opportunity to practice public speaking and acquire skills which will benefit them in their prospective fields.







Bennett, Watkins, Lien, Waugh.

## Rural Life

CONNIE WAUGH	- - - - -	President
JANICE WATKINS	- - - - -	Vice President
PEARL LIEN	- - - - -	Secretary
DICK BENNETT	- - - - -	Treasurer
DR. GARNETT	- - - - -	Advisor

The members of the Rural Life Club are those students taking the two-year course in rural teaching. The aim of the organization is to develop in the teacher a keen appreciation and understanding of rural problems.





**First row:** Miller, Crosby, Mahlum, Kroeze, Riebe. **Second row:** Rasmussen, Hammer, Johnson, Bergen, Mrs. Winters, Rev. Winters. **Third row:** Knuf, Carlson, Hallenberger, Reather, Polzin, Wild, Postler, Mrs. Bohn, Hanson, Wagner, Schultze. **Fourth row:** Luetsch-wager, Teska, Watrud, Lehman, Watrud, Heck.

## Gamma Delta

SHIRLEY BERGEN	-	-	-	-	-	-	-	-	President
JEROME JOHNSON	-	-	-	-	-	-	-	-	Vice President
BEV RASMUSSEN	-	-	-	-	-	-	-	-	Treasurer
ROGER HAMMER	-	-	-	-	-	-	-	-	Secretary

Gamma Delta is a fraternal organization of the Missouri Synod Lutheran students on college campuses. The River Falls chapter, which was organized in 1950, has headquarters at 561 South Fourth Street.



# C.W.A.

JULIANN RYAN	-	-	-	-	-	-	-	-	President
MARGE DEANS	-	-	-	-	-	-	-	-	Vice President
KATHY MILLER	-	-	-	-	-	-	-	-	Secretary
MARY DOOLITTLE	-	-	-	-	-	-	-	-	Treasurer

**The College Women's Association is a self-governing organization composed of all college women.**

**The CWA board makes and enforces the rules governing all women students. Its aim is to provide an adequate social and cultural program for the college women.**



Thompson, Murphy, Miller, Ryan, Murphy.





**First row:** Kuhn, Wiff, Anderson, Windal, Falkofske, Palewicz, Jacobson. **Second row:** Caturia, Thompson, Dierks, Rasmussen, Garnett, Thompson. **Third row:** Schaffer, Ball, Ruhnke, Webb, Madson, Jensen, Shannon. **Fourth row:** Moen, Nordby, Sammons, Aaby, Meyer, Swartz, Rohl, Berggren. **Fifth row:** Peth, Seyforth, Norlock, Stehr, Engleman, Peterson, Carlson. **Sixth row:** Chappelle, Mr. Harris, Mott, Siebrecht, Olson, Hammer, Dr. Garnett, Belt.

## Future Teachers of America

BOB ANDERSON	-	-	-	-	-	-	-	-	President
ROGER HAMMER	-	-	-	-	-	-	-	-	Vice President
SUSAN WIFF	-	-	-	-	-	-	-	-	Secretary
JENNY SUE GARNETT	-	-	-	-	-	-	-	-	Treasurer
JERRY MOTT	-	-	-	-	-	-	-	-	Librarian

The River Falls chapter of the Future Teachers of America was organized in 1952. Since its organization the membership has increased rapidly. The organization provides an opportunity for the members to learn about the field they have chosen.



# Dance Theatre Group

**Dr. Dorothy Lipp, Choreographer**

The Dance Theatre Group, now in its second year at River Falls State College, is one of the few such groups in the Northwest. With the veterans of last year and under the able direction of Dr. Dorothy Lipp, the group presented a type of entertainment new to River Falls. Their biggest and best production of the year, "Down in the Valley," drew one of the largest crowds of the year.



**ADVANCED GROUP**

Left to right: Wiskerchen, Pennington, Tobin, Hanson, Davis, Garnett, Seyforth, Nordby, Vanderhoof, Waugh, Benson.





At piano: Marlys Olson. **Standing**, left to right: Darlene Ruhnke, Louise Thompson, Kathie Miller, Jeannine Davison, Audrey Windal, Bob Strain, Joe Paffell, Dave Zerong, Glen Sanove.

## Music Educator's National Conference

LOUISE THOMPSON	- - - - -	President
JEAN ADRIAN	- - - - -	Vice President
KATHIE MILLER	- - - - -	Secretary-Treasurer
MR. B. J. ROZEHNAL	- - - - -	Advisor

Formed in 1950 at River Falls, MENC aims to provide students an opportunity for professional cooperative development while in college. The organization offers a more practical conception of the music education profession as gained from the students' actual participation in programs, discussions, and performance groups.



# "R" Club

RICHARD WELLS	- - - - -	President
ROBERT WILLIAMS	- - - - -	Vice President
REGINALD HANSON	- - - - -	Secretary-Treasurer
MR. PHIL BELFIORI, DR. BILL SOLLEY	- - -	Advisors

The "R" club is made up of men who have received letters in competitive sports at River Falls: football, basketball, baseball, track and golf.



**First row:** Spaete, Voss, Werbeckes, Rick, Tiska, Belisle, Wilde. **Second row:** Wood, Ewig, Feitel, Margotto, Williams, Wunrow, Wells, Lubker, Matson, Stiffen, Rudisille.





# College Band

## PERCUSSION

Sally Hallenberg  
Tom Haugen  
Ralph Schmid

## CLARINETS

Dave Zerahn  
Glenn Gill  
Marlys Olson  
Elaine Mortson  
Laura Gardner  
Marlys Meents  
Patricia Fleming  
Louise Thompson  
Mildred Narlock  
Sally Malone  
Jeanninne Davison

## BASSES

Dick Olson  
Bob Meyer  
Frank Kelley

## CORNETS

Patricia Turner  
Betty Erickson  
Lawrence Witucki  
Glenn Sandve  
Robert Strain  
Dean Kassera  
Harold Granger

## FRENCH HORNS

Julia Kaminski  
William Bittner

## BARITONES

Shirley Engleman  
Joseph Pietrek

## KETTLE DRUMS

Don Cooper

## TROMBONES

David Evenson  
Richard Pederson  
Eleanor Ford  
Joseph Paffel  
Catherine Hooley  
Donald Richards

## SAXOPHONES

Robert Mountford  
Duane Hendrickson  
Roger Hoff

## OBOES

Jean Adrian

## FLUTES

Joan Hanson  
Ernest Johnson



# Band

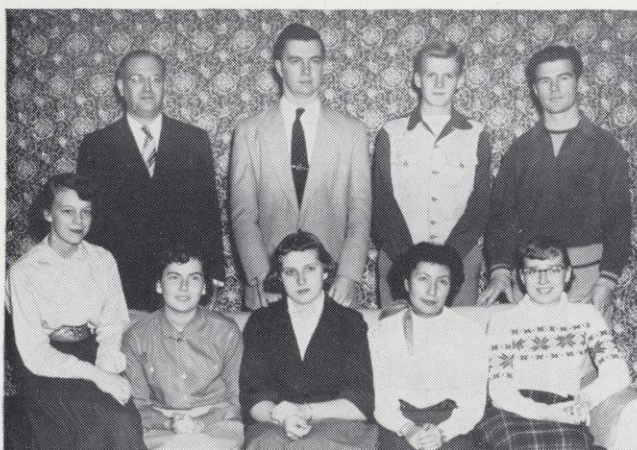
The band, this year under the direction of B. J. Rozehnal, was a greatly improved one. In addition to their seasonal concerts, they played at the home football games and other school activities. The band, an integral part of any college, adds much to the festivity of the extra-curricular activities at River Falls.

## DIRECTOR



MR. B. J. ROZEHNAL





GERMAN

FRENCH



## Language Clubs

### DIE DEUTSCHE GESSELLSCHAFT

ROBERT NELSON	-	-	-	-	-	-	-	-	President
RUTH LEWIS	-	-	-	-	-	-	-	-	Secretary-Treasurer
DR. ERNST JURGENS	-	-	-	-	-	-	-	-	Advisor

### LE CERCLE FRANCAIS

AUDREY WINDAL	-	-	-	-	-	-	-	-	President
JANIS BENSON	-	-	-	-	-	-	-	-	Vice President
BEVERLY DOMAIKA	-	-	-	-	-	-	-	-	Secretary-Treasurer
DR. LESLIE McKEEN	-	-	-	-	-	-	-	-	Advisor

Die Deutsche Gesellschaft and Le Cercle Francais, the German and French language clubs, give the members an opportunity to converse in the foreign language they are studying.



# Alpha Psi Omega Masquers

## ALPHA PSI OMEGA

JOHN BOS	-	-	-	-	-	-	-	-	-	President
HERB VOSS	-	-	-	-	-	-	-	-	-	Vice President
MARILYN MURPHY	-	-	-	-	-	-	-	-	-	Secretary-Treasurer
DR. DAVIS	-	-	-	-	-	-	-	-	-	Advisor

## MASQUERS

DONNA SAMMONS	-	-	-	-	-	-	-	-	-	President
MAE WISKERCHEN	-	-	-	-	-	-	-	-	-	Vice President
ANN EITLEND	-	-	-	-	-	-	-	-	-	Publicity
DR. DAVIS	-	-	-	-	-	-	-	-	-	Advisor

Alpha Psi Omega is a national honorary dramatic fraternity for those doing a high standard of work in dramatics. Masquers, now completing its 26th successful year, is an organization for all interested in dramatics. Objectives of the group are to further student interest in dramatics, and to give members an opportunity to act, direct, and do stage-work.







## Choir Personnel

### BASS

Thomas Calvert  
Dean Carlson  
Don Cooper  
LeRoy Lee  
Dave Norrbom  
Larry Vollrath  
James Anderson  
Gail Gibbon  
Tom Haugen  
Ronnie Jensen  
Kenneth Larson  
Delmar Polzin  
Dennis Ruhnke  
Richard Schwenk  
Bob Strain  
Don Laue  
David Zerahn

### TENORS

William Bittner  
Marlys Meents  
Kathie Miller  
Joe Paffel  
Richard Smith  
George Wolf  
Glenn Behn  
Charles Johnson  
Burke Marske  
Wayne Olson  
Marshall Kammerud  
Dale Wagner

### SOPRANO

Jean Adrian  
Jeannine Davison  
Mary Doolittle  
Ruth Joles  
Luanne Larson  
Loretta Lynum  
Marilyn Murphy  
Helen Davis  
Sally Malone  
Elaine Mortson  
Blake Murray  
Shirley Olson  
Darlene Ruhnke  
Janet Thode  
Louise Thompson  
Joan Traynor  
Natalie Vanderhoof

### ALTO

Viola Bristol  
Lucille Dahm  
Betty DeGidio  
Joanne Fick  
Erna Matson  
Janice Moen  
Lorraine Nordby  
Bettejune Oestreich  
Mary Louise Olson  
Dorothy Roepke  
Mary Sykes  
Alta Mae Crosby  
Thelma Willink  
Rosalie Holden  
Elsie Nordby  
Elaine Solum  
Charlotte Wilcox  
Patricia Williams  
Audrey Windal



# A Capella Choir

THELMA WILLINK	-	-	-	-	-	-	-	-	President
DELMAR POLZIN	-	-	-	-	-	-	-	-	Business Manager
KATHIE MILLER	-	-	-	-	-	-	-	-	Secretary
JEAN ADRIAN	-	-	-	-	-	-	-	-	Librarian
MR. CHAUNCEY B. KING	-	-	-	-	-	-	-	-	Director

The A Capella Choir at River Falls is a group of some sixty members. It has given a fall and spring concert and performed at surrounding high schools.

## Folk Singers

The Folk Singers, directed by Mr. C. B. King, is a group of the college A Capella Choir members who have organized for the purpose of singing the traditional folk songs of America and other countries.





### **EDITORS' NOTE**

**The 1954 MELETEAN was published under most adverse conditions. These conditions being complete incompetence of the editors. If your name is with your picture and by even greater coincidence you are in the right class, consider yourself favored by the gods of chance.**

**W. G. and M. G.**





# ACTIVITIES



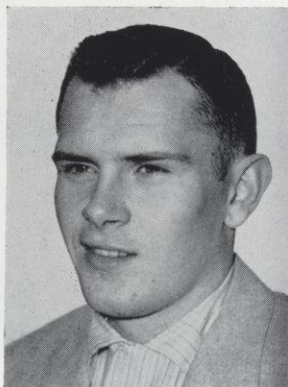
## QUEEN'S FLOAT



Attendants Donna Sammons, Marge Deans, Virginia Horsmann, Rita Ruemmele, and Queen Louise Thompson.

# Homecoming 1953

Tingling excitement of a snake dance, parade, music, and the big game make Homecoming the most spectacular event of the year. For the alumni and students Homecoming is always something to remember. Chairman Jim Tilly and his assistants organized one of the finest Homecomings in many years. The students put on the largest parades in a long time. Beautiful music and decorations added to the sentimental climax of the dance.



CHAIRMAN  
JIM TILLY



**"Jumpin' at the Savoy"**



**Queen Louise and  
escort Bob Williams**



**Stag Line?**

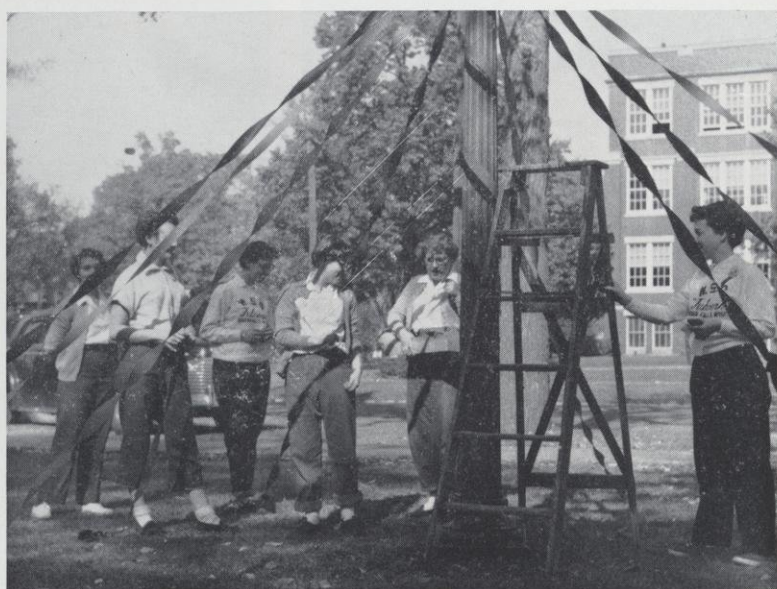




**Days Long Gone By**



**Freshman Skit  
1st Place**



**Maypole?  
No, decorators.**





Winter Weather Wherefor Art Thou?

## Winter Carnival

Spirits soared and so did the temperature (50-55°) at the River Falls State College annual Winter Carnival. The weather man did River Falls no favor for Winter Carnival but Kathy Miller, chairman of the event, adjusted the program to suit the weather and "a good time was had by all."



CHAIRMAN  
KATHY MILLER



## WINTER CARNIVAL ROYALTY



Bill Lindemberger and Nancy Weber.

## CARNIVAL SCHEDULE

### FRIDAY, FEBRUARY 5

**Figure Skating Exhibition**

**FFA Talent Show**

**Coronation of King**

**Record Dance**

### SATURDAY, FEBRUARY 6

**Bowling Tournament**

**Card Tournament**

**Dorm Party**

**Eau Claire - RF Basketball Game**

**Carnival Dance**





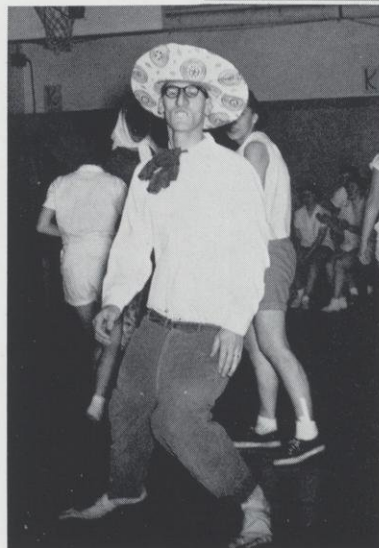
Winners of the FFA beard growing contest, another Winter Carnival event. Left: Tammy Gydeloo; right: Don Helberg.



A Finesse?



WAA girls vs. women (?)  
faculty members







**Jeannine Davison**  
3rd place



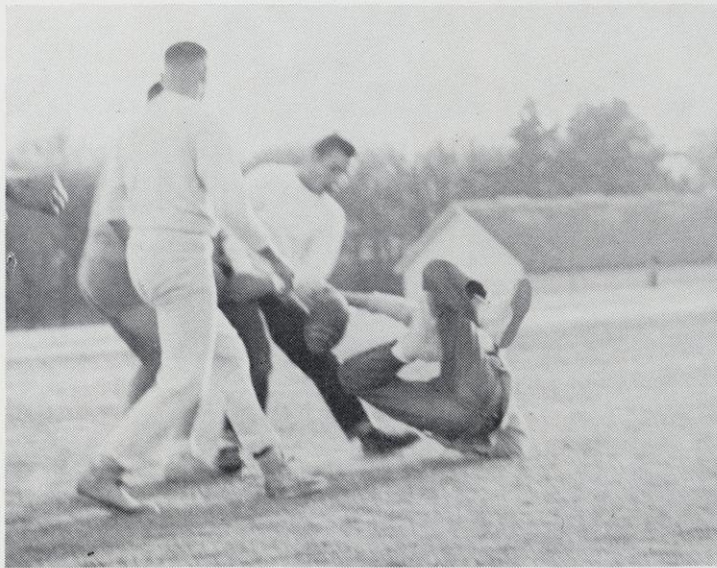
**Janis Benson**  
2nd place

**Jennie Sue Garnett and Lee Prentice**  
1st place



# FFA TALENT SHOW





# INTRAMURAL SPORTS

The intramural sports program at River Falls College has been increasing in scope and participation during the past year, and promises to continue to do so. The program is considered to be one of the best in the state college system because of the large number of students taking part, and also because of the minimum of faculty supervision. Both of the directors, Miss Levin and Dr. Solley, are well satisfied with the results of this type of program.

The team sports have reached an all time peak during 1953-54 and the single and dual activities are increasing at a rapid rate. The program includes softball, basketball, volleyball and football on the team level; table tennis, badminton, tennis, and golf on the individual and dual level.



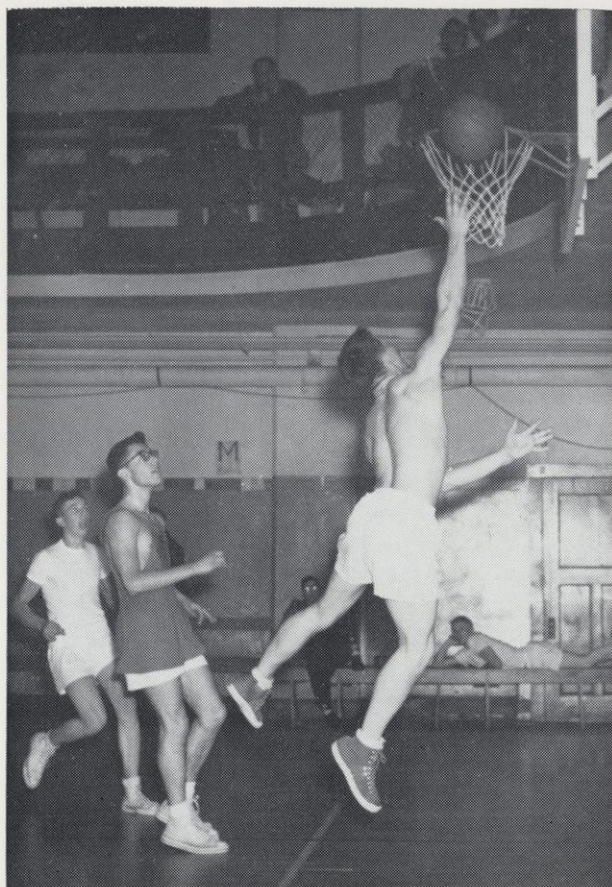


**"Somebody please break  
in the clear."**



**As a teammate decides whether to hook a shot, Catherine drives for  
position on the rebound, if there is one.**





As his opponent looks on, one of the many intramural basketball players drives in for a layup shot, employing somewhat unusual form.

What a tangle that is!



Chalk up two more for Johnnies!





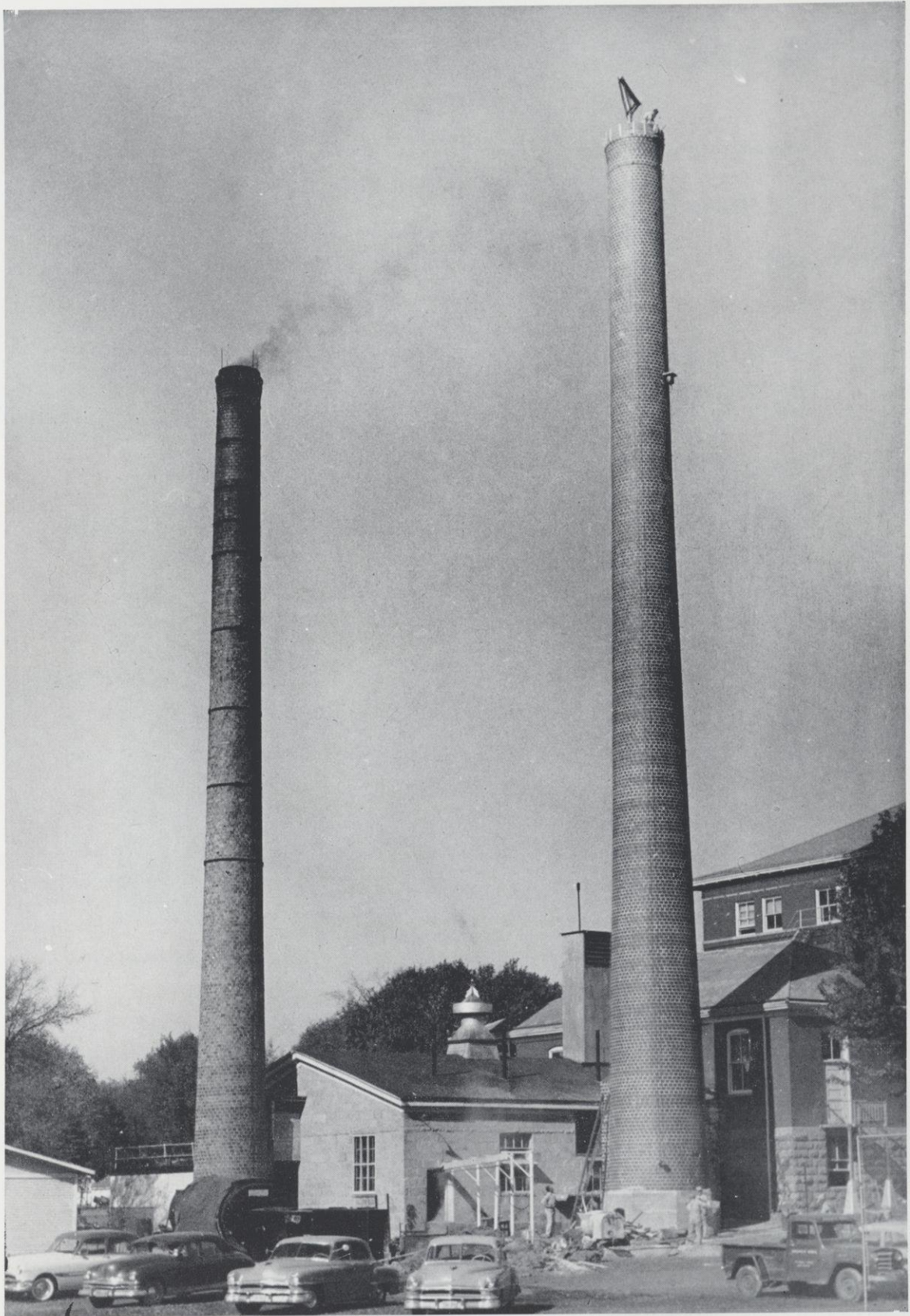
## Smokestack Falls

The felling of the smokestack which had served RFSC for 35 years symbolized the expansion of the college. The old gave way for the new on January 15th when the Steighauf Company wrecked the inadequate stack in favor of the newly completed one.

Because the 109 ft. chimney fell before planned, the students and faculty were cheated out of an anticipated show.

Pictures of the event, taken by Meletean photographer Jack Tooley, appeared in several city papers and were shown on television.





Old and New side by side



Going



Going



Gone





## SENIOR INDEX

**CAROL ANDERSON** - - - - - **Colorado Springs, Colo.**

Major - Social Science, English  
Minor - French

Sigma Chi Sigma 2, 3, 4; YWCA 1, 2, 3; CWA 1, 2, 3, 4; Executive Board 2, Secretary 3; FTA 3, 4.

**ROBERT ANDERSON** - - - - - **Lewis**

Major - Elementary Education  
Minor - Psychology

ACE 2, 3, 4, Treasurer 3; Alpha Psi Omega 3, 4; Masquers 2, 3, 4; FTA 2, 3, 4, President 4; Class Vice President 4; Baseball 1, 2; Intramural sports 1, 2, 3, 4; Winterset 2; Macbeth 3; Imaginary Invalid 3; Arthur and the Magic Sword 4, Stage manager.

**JAMES BELISLE** - - - - - **Menomonie**

Major - Social Science  
Minor - Physical Education

Hamline U. 1; YMCA 3; R Club 2, 3, 4; Student Senate 4; Young Republicans 3; Basketball 2, 3, 4; "Who's Who in American Colleges and Universities" 4; Winter Carnival King 1953.

**LYAL BESTUL** - - - - - **Fond du Lac**

Major - Biology  
Minor - Geography, English

R Club 3, 4; Track 2, 3; Intramural sports 1, 2, 3, 4; Social Committee 3, 4; Homecoming chairman 4.

**WILLIAM BITTNER** - - - - - **Prairie du Chien**

Major - Music, English

U. of Wis. 1; German Club 2; Band 2, 3, 4; Choir 2, 3, 4; Folk Singers 3, 4; Orchestra 2; The Double Ax 2; Stalag 17 4.

**ARCHIBALD JAMES BOURNE** - - - - - **Durand**

Major - Agriculture, Science

FFA 1, 2, 3, 4, Secretary 4; Life saving and instructors courses 2.

**RAYMOND FRANK BUCHEGER** - - - - - **Glidden**

Major - Agriculture, Science



## SENIOR INDEX

**JEAN CATURIA** - - - - - **Maiden Rock**

ACE 1, 2, 3, 4; Sigma Chi Sigma 2, 3, 4; WAA 1, 2, 3, 4; YWCA 2, 3, 4, Secretary 3; CWA 1, 2, 3, 4; FTA 4.

**JAMES A. CERELLO** - - - - - **St. Croix Beach, Minn.**

Major - English, Speech

Masquers 4; Pi Kappa Delta 2, 3, 4; Debate 1, 2; Medea 3; Student Voice 1, 2, 3, 4, Editor 4.

**BEULAH M. DAHLBERG** - - - - - **Frederic**

Major - Biology

Minor - Geology, Social Science

Class Secretary 4; Prom Chairman 4; YWCA 1, 2, 3, Vice president 3; CWA 1, 2, 3, 4; FTA 4; Kappa Delta Pi 4.

**RUTH ANN DAVIS** - - - - - **Spring Valley**

Major - Upper Elementary

Minor - Art, Psychology

ACE 2, 3, 4, Publicity Chairman 3; Palette Club 4; YWCA 1, 2, 3, 4; YGOP 3; FTA 3; USF 1, 2, 3, 4.

**MARGERY DEANS** - - - - - **Hammond**

Major - English, History

Minor - French

French Club 1, 2, Treasurer 2; Masquers 1, 2; Sigma Chi Sigma 2, 3, 4; Prom Committee 3; Commencement Committee 4; "Who's Who in American Colleges and Universities" 4; Homecoming Queen Attendant 4; Winter Carnival Queen 3; YWCA 1, 2, 3, 4, Treasurer 4; CWA Advisory Board 3, 4, Treasurer 3, Vice president 4; Kappa Delta Pi 3, 4; FTA 4; Student Fountain Committee 2; Young Democrats 2, 4; Student Senate 2, 3, 4, Secretary 3, President 4; United Student Fellowship 1, 2, 3, 4.

**MARVIN FAIT** - - - - - **Auburndale**

Major - Agriculture, Science

Central State at Stevens Point, Wis., 1; FFA 2, 3, 4, Reporter 4; Honor Society 3, 4; Kappa Delta Pi 3, 4; Baseball 2, 3; Basketball 1; YMCA 2; Newman Club 1, 2, 3, 4; Toast Masters 2, 3, 4, Treasurer 4, Vice president 4; Intramural sports 1, 2, 3, 4.

**DONALD L. FICK** - - - - - **Wilton**

Major - Science (Chemistry)

Minor - History, English

German Language Club 2, 3, Vice president 2; Mathematics Club 2, 3; R Club 2, 3, 4, Vice president 1; Baseball 1; Basketball 1, 2, 3, 4; Band 1; YMCA 3, 4; LSA 1, 2, 3, 4; Intramural sports 1, 2, 3, 4.



## SENIOR INDEX

**JOHN GEHN** - - - - - **Elmwood**

Major - Social Science (History)

Minor - Physical Education, Geography

Class President 2; Basketball 1, 2, 3; Intramural sports 1, 2, 3, 4.

**ROBERT LEE GRANUM** - - - - - **Holmen**

Major - Agriculture Education

FFA 1, 2, 3, 4, Vice president 4; YMCA 1; Toastmasters 3, 4; Winter Carnival Attendant 3.

**ROBERT GUELDER** - - - - - **Spring Valley**

Major - Science, Mathematics

Math Club 1, 2, 3, 4, Treasurer 3; Toastmasters 2, 3, 4, President 3; Kappa Delta Pi 3, 4; Student Senate 4, Vice president 4; Class President 4; Intramural sports 1, 2, 3, 4; Prom Committee 3; Kleinpell Scholarship 4; "Who's Who in American Colleges and Universities" 4.

**BERNARD HART** - - - - - **Alma Center**

Major - Agriculture, Science

Santa Ana Jr. College 1, 2; U. of Wis. 3; FFA 3, 4, Advisor 4; German Club 1, 2, Vice president 2; Honor Society 2, 3, 4; Kappa Delta Pi; Newman Club 2, Vice president 2; Intramural sports 1, 2, 3, 4.

**MARGARET HELMER** - - - - - **Plymouth**

Major - Speech, Social Science, English

Pi Kappa Delta 2, 3, 4, President 3; Sigma Chi Sigma 2, 3, 4; Debate 1, 2, 3, 4, Student Debate Manager 3, 4; Orchestra 1; Band 1; Summer and Smoke 4; Student Foundation Committee 3.

**VAUGHN HOFFMAN** - - - - - **Arkansaw**

Major - Chemistry, Mathematics

Math Club 1, 2, 3, 4; Chemistry Club 3, 4, President 3; Intramural sports 1, 2, 3, 4; Student Foundation Committee 4, Chairman 4; "Who's Who in American Colleges and Universities" 4.

**DOROTHY INGLIS** - - - - - **River Falls**

Major - Lower Elementary

Minor - English, Physical Education

Stout 1; ACE 4; YWCA 1; CWA 4; Sigma Chi Sigma 3, 4, President 4; FTA 1; March of Dimes Chairman 4.



## SENIOR INDEX

**WILLIAM JENSEN** - - - - - **Friendship**

Major - Education, Science

Central College, Stevens Point, Wis.; ACE 4; FFA 2; King Arthur and the Magic Sword 4; Toastmasters 3, 4, Secretary 2, President 4.

**ARVID J. KARLSTAD** - - - - - **Prairie Farm**

Major - Agriculture Education, Science

Rice Lake U. of Wis. Extension; FFA 2, 3, 4; USA 2, 3, 4; YMCA 2, 3.

**BERKLEY LARSON** - - - - - **Frederic**

Language Club 2; Student Voice 2; YMCA 1, 2, 3, 4; Intramural sports 1, 2.

**WILLIAM F. LINDENBERGER** - - - - - **Wheeler**

Major - Agriculture, Science

FFA 1, 2, 3, 4, Parliamentarian, Secretary; R Club 3, 4; Vets Club 1, 4; Football 2, 3, 4; Toastmasters 3, 4; Intramural sports 1, 2, 3, 4.

**JAMES H. McLAUGHLIN** - - - - - **River Falls**

Major - Chemistry

Minor - Biology, Mathematics

U. of Wis. 2; Math Club 1, 3; Newman Club 1, 3; ACE 3, 4.

**ELAYNE MEYER** - - - - - **River Falls**

Major - Lower Elementary

Minor - Art

ACE 1, 2, 3, 4; Sigma Chi Sigma 4, Vice president 4; WAA 3; FTA 4; Goodbye Again 1; Goodby My Fancy 1; Homecoming Committee 2, 3; Homecoming Attendant 3; Newman Club 1, 2, 3, 4; CWA 1, 2, 3, 4.

**GERALD MOTT** - - - - - **Frederic**

Major - Mathematics, Science

Masquers 2; Math Club 1, 2, 3, 4, President 4; FTA 2, 3, 4, Treasurer 2; Winterset 2, Corn Is Green 2, Macbeth 3; Meletean 4; Track 1; Intramural sports 1, 2, 3, 4.



## SENIOR INDEX

**ALLEN NELSON** - - - - - **Plum City**

Major - Agriculture, Science

FFA 1, 2, 3, 4, Sentinel 4; Newman Club 1, 2, 3, 4; Kappa Delta Pi 3, 4, President 4; Class Treasurer 3.

**ETHEL NEWBERG** - - - - - **River Falls**

Major - Elementary Education

Minor - English, Social Science

ACE 4; Kappa Delta Pi 3, 4, Treasurer 4; Sigma Chi Sigma 2, 3, 4, Treasurer 3, President 4; FTA 4; March of Dimes 4.

**LORRAINE GERTRUDE NORDBY** - - - - - **Prairie Farm**

Major - Biology

Minor - English, History

St. Olaf College 1; YWCA 4; CWA 2, 3, 4; FTA 4; Chorus 2, 3, 4; Folk Singers 4.

**REUBEN J. PATRIKUS** - - - - - **Clintonville**

Major - Agriculture, Science

FFA 1, 2, 3, 4, Vice president; Newman Club 1, 2, 3, 4; Class Secretary 3; Graduation Committee 3; Homecoming Committee 1, 3; Prom Committee 3.

**DELMAR POLZIN** - - - - - **Bloomer**

Major - Agriculture, Education

FFA 1, 2, 3, 4, Secretary, President; Gamma Delta 3, 4; Intramural sports 1, 2; Chorus 1, 2, 3, 4, Business Manager 4; Junior Prom Committee 3; Homecoming Committee 1, 2, 3, 4; Graduation Committee 3.

**LEE PRENTICE** - - - - - **Cornell**

Major - History

Minor - Economics, Science

International Relations Club 3; Masquers 3; Vets Club 4; FFA 1, 2; Ski Club 4; Modern Dance 4.

**RITA RUEMMELE** - - - - - **Hudson**

Major - Elementary Education

Minor - Geography

ACE 1, 2, 3, 4; Kappa Delta 3, 4; Sigma Chi Sigma 2, 3, 4; Newman Club 1, 2, 3, 4, Treasurer 2; CWA 1, 2, 3, 4, President 3; Hansel and Gretel 3; Announcement Committee Chairman; "Who's Who in American Colleges and Universities 4; Homecoming Queen Attendant 4; Student Senate 4, Secretary 4; Langwear Award 2; Augusta M. Thomas Scholarship 3.



## SENIOR INDEX

**GLADYS SIGVALDSON** - - - - - **River Falls**

Major - English  
Minor - German, Library Science

Moorhead State Teachers College 1, 2; Student Voice 4.

**EVEREST EDWARD SONSALLA** - - - - - **Arcadia**

Major - Agriculture, Science

FFA 1, 2, 3, 4, Vice president 4; Honor Society 2; Dance Club 1; Intramural sports 1, 2; Romeo and Juliet 2.

**HUBERT V. STEVENS** - - - - - **Ladysmith**

Major - Mathematics  
Minor - Chemistry, Physics

Math Club 2, 3, Secretary 3; YMCA 2, 3; Intramural sports 1, 2, 3, 4.

**EUGENE SWANSON** - - - - - **Hager City**

Major - Science, Mathematics

Kappa Delta Pi 4; Math Club 2, 3, 4; Chemistry Club 3, 4, Vice president 4; Intramural Sports 1, 2, 3, 4.

**WILLIAM THALDORF** - - - - - **Fountain City**

Major - Agriculture, Science

FFA 1, 2, 3, 4; Gamma Delta 1, 2, 3, 4 Intramural sports 1, 2, 3, 4.

**LARRY L. VOLLRATH** - - - - - **Greenwood**

Major - Biology  
Minor - Mathematics, Music

FTA 4; MENC 2; YMCA 1, 2, 3, Secretary 3; Intramural sports 1; Chorus 1, 2, 3, 4; Chairman YMCA Homecoming Float Committee 2; Christmas Formal Committee 3.

**LEONARD A. WARWICK** - - - - - **River Falls**

Major - Agriculture, Science

ACE 2, 3; FTA 1, 2, 3, 4; Kappa Delta Pi 3, 4; Newman Club 3, 4.



## SENIOR INDEX

**GLADYS SIGVALDSON** - - - - - **River Falls**

Major - English

Minor - German, Library Science

Moorhead State Teachers College 1, 2; Student Voice 4.

**EVEREST EDWARD SONSALLA** - - - - - **Arcadia**

Major - Agriculture, Science

FFA 1, 2, 3, 4, Vice president 4; Honor Society 2; Dance Club 1; Intramural sports 1, 2; Romeo and Juliet 2.

**HUBERT V. STEVENS** - - - - - **Ladysmith**

Major - Mathematics

Minor - Chemistry, Physics

Math Club 2, 3, Secretary 3; YMCA 2, 3; Intramural sports 1, 2, 3, 4.

**EUGENE SWANSON** - - - - - **Hager City**

Major - Science, Mathematics

Kappa Delta Pi 4; Math Club 2, 3, 4; Chemistry Club 3, 4, Vice president 4; Intramural Sports 1, 2, 3, 4.

**WILLIAM THALDORF** - - - - - **Fountain City**

Major - Agriculture, Science

FFA 1, 2, 3, 4; Gamma Delta 1, 2, 3, 4 Intramural sports 1, 2, 3, 4.

**LARRY L. VOLLRATH** - - - - - **Greenwood**

Major - Biology

Minor - Mathematics, Music

FTA 4; MENC 2; YMCA 1, 2, 3, Secretary 3; Intramural sports 1; Chorus 1, 2, 3, 4; Chairman YMCA Homecoming Float Committee 2; Christmas Formal Committee 3.

**LEONARD A. WARWICK** - - - - - **River Falls**

Major - Agriculture, Science

ACE 2, 3; FTA 1, 2, 3, 4; Kappa Delta Pi 3, 4; Newman Club 3, 4.



## SENIOR INDEX

### **THELMA WILLINK - - - - - Hudson**

Major - English, Speech  
Minor - History

Alpha Psi Omega 2, 3, 4, Vice president 4; French Club 1, 2; Masquers 1, 2, 3, 4, Secretary 3; Sigma Chi Sigma 4; Kappa Delta Pi 4; Chorus 1, 2, 3, 4; Goodbye My Fancy 1, Ghosts 2, Alladin and the Magic Lamp, Helena's Husband, Glass Menagerie; Prom Committee 3; Winter Carnival Attendant 3; YWCA 1, 2, 3; CWA 1, 2, 3, 4; FTA 3, 4.

### **BETTY DOOLITTLE - - - - - Pepin**

Major - English, Speech  
Minor - Library Science

Alpha Psi Omega 2, 3, 4; German Club 2; Honor Society 1, 2, 3, 4; Masquers 1, 2, 3, 4, Secretary, Vice president; Pep Club 2, President 2; Three Men on a Horse 1, Romeo and Juliet, Goodbye My Fancy, St. Joan, Helena's Husband; Co-Chairwoman of Winter Carnival 3; Winter Carnival Queen Attendant 1; Varsity Squad Cheerleader 1, 2, 3; Dance Theatre Group 3; Newman Club 2, 3; CWA 1, 2, 3, 4.







